



WELCOME

Please visit our posters before the presentation to talk with our technical team!

POSTER TOPICS
Background Radiation
Excavation Material Handling
Perimeter Air Monitoring Station Locations
Remediation Material Flow Overview
Site Layout
Types of Radiation and Shielding Properties
Waste Transportation
Waste Transport Route
Wastewater Treatment Plant

For more information:

(412) 395-7500

CELRP-PA@usace.army.mil



U.S. ARMY



US Army Corps
of Engineers®



FORMERLY UTILIZED SITES REMEDIAL ACTION PROGRAM (FUSRAP)

**Shallow Land Disposal Area
(SLDA)**

Public Information Session

June 5, 2025



U.S. ARMY



US Army Corps
of Engineers®



OPENING COMMENTS AND INTRODUCTIONS



U.S. ARMY



US Army Corps
of Engineers®



PROJECT SENIOR LEADERSHIP



Pittsburgh District

- Col. Nicholas Melin, District Commander
- Bryan Trzaska, Deputy for Programs & Project Management



Buffalo District

- Lt. Col. Robert Burnham, District Commander
- David Conboy, Chief of Engineering and Construction



U.S. ARMY



US Army Corps
of Engineers®



PARTNER COORDINATION

The Corps of Engineers is actively engaged with our project partners to foster awareness and involvement:

- Nuclear Regulatory Commission (NRC)
- U.S. Department of Energy Office of Environmental Mgmt. (DOE-EM)
- National Nuclear Security Administration (NNSA)
- U.S. Environmental Protection Agency (USEPA) Region 3
- Pennsylvania Department of Environmental Protection
- Southwest Pennsylvania Commission
- Armstrong County Department of Public Safety
- Parks Township
- Local first responders
- Federal, State, County, and local elected officials



U.S. ARMY



US Army Corps
of Engineers®



AGENDA

- Project Goals
- FUSRAP History & Mission
- Project Site Background
- Project Timeline
- Community Safety
- Remediation Activities
- Open Q&A Session



U.S. ARMY



US Army Corps
of Engineers®



PROJECT GOALS

1. Safety and Security

Safeguard the community, the workers, and the environment during the excavation, characterization, packaging, transportation, and disposal of contaminated site materials

2. Transparency

Provide timely and useful information to the public about our actions consistent with information security limitations

3. Community Involvement

Update the community and provide a venue for questions and comments



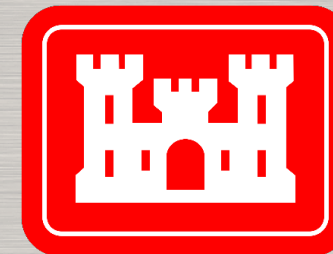
U.S. ARMY



US Army Corps
of Engineers®



FUSRAP HISTORY & MISSION



(1941-1947)

(1947-1974)

(1974-1997)

(1997-Present)

FUSRAP = Formerly Utilized Sites Remedial Action Program

Mission: To identify, investigate and, if necessary, clean up or control sites throughout the United States that were contaminated as a result of the early atomic weapons program.

Authority: By law, the Corps of Engineers is directed to clean up radioactive waste at the SLDA site under the FUSRAP. The Corps of Engineers is only authorized to clean up radioactive waste, and chemical contamination that is comingled with radioactive waste, within the site boundaries that are above levels considered protective of current and future land users.



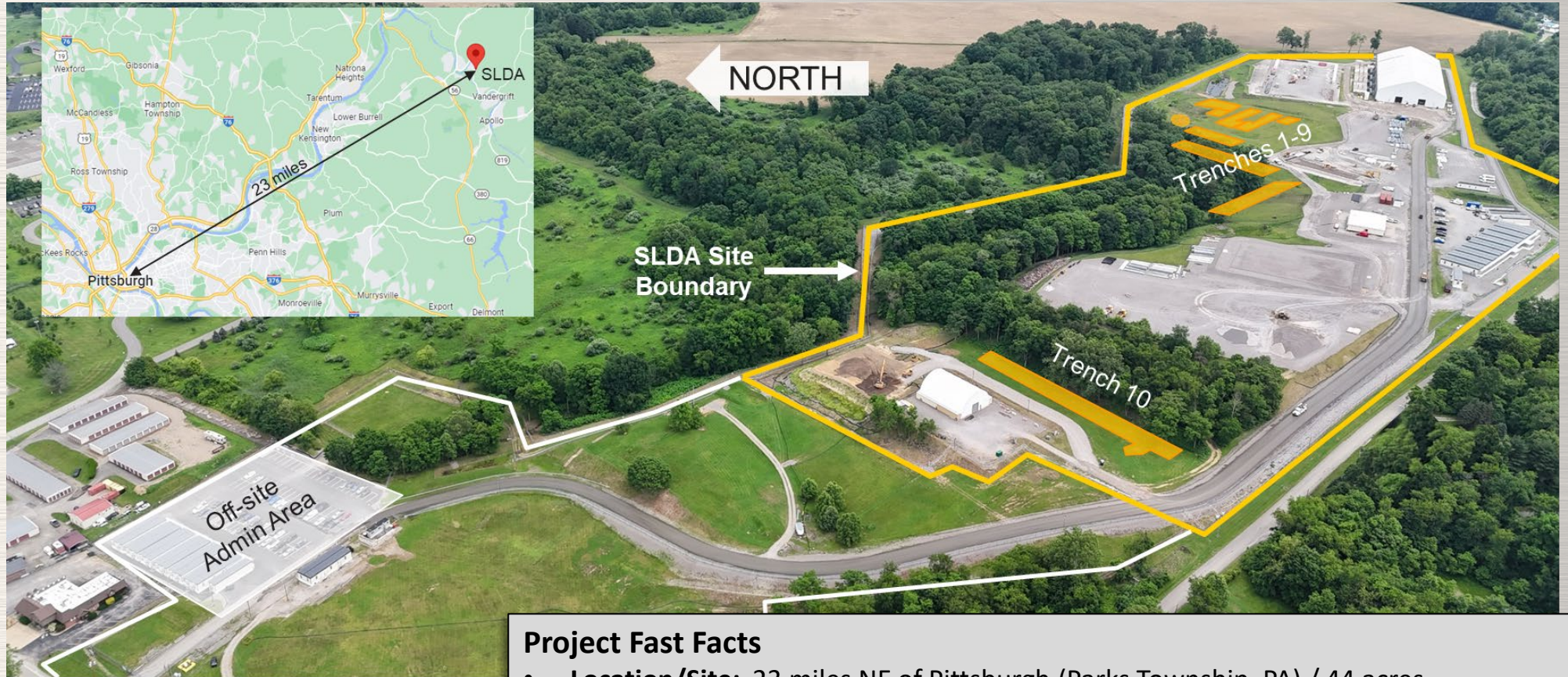
U.S. ARMY



US Army Corps
of Engineers®



PROJECT SITE BACKGROUND



Project Fast Facts

- **Location/Site:** 23 miles NE of Pittsburgh (Parks Township, PA) / 44 acres
- **Objective:** Safely excavate, process & remove 30,000 cubic yards of radiological waste
- **Risks:** Worker exposure to radiation and beryllium, and community safety
- **Contractor:** Amentum, Inc. (formerly Jacobs), \$435M ceiling + 10-years (2017-2027)



U.S. ARMY



US Army Corps
of Engineers®



PROJECT TIMELINE



	2019	2020	2021	2022	2023	2024	2025	2026	2027	2028	2029	2030	2031	2032	2033	2034	2035
Program Level Work Plans																	
Remedial Design																	
Site Infrastructure																	
Excavation & Disposal																	
Project Closeout																	

Abbreviations:
CR = Closeout Report, TO = Turnover of site to NRC



US Army Corps
of Engineers®



COMMUNITY SAFETY



U.S. ARMY



US Army Corps
of Engineers®



MULTIPLE LAYERS OF PROTECTION

- USACE and our contractor team are committed to keeping the community safe by using best practices to protect:
 - Air
 - Water
 - Workers
 - Public
- Safety is the #1 priority for this project.



U.S. ARMY



US Army Corps
of Engineers®



PROTECTION OF AIR

- Physical contamination can only be spread by contacting contaminated dust/dirt
- Dust control by applying water to roadway
- Building air filtration and monitoring
- Air Monitoring Program
 - Personnel air monitors
 - Work area air monitors
 - Site perimeter air monitors
 - Site perimeter dust monitors
- PaDEP perimeter air monitors



U.S. ARMY



US Army Corps
of Engineers®



PROTECTION OF WATER

- All water that contacts waste materials will be treated and tested before discharge
- Site structures are designed to prevent precipitation from contacting waste
- Site sanitary wastes are collected in holding tanks
- Annual site groundwater and surface water monitoring program



U.S. ARMY



US Army Corps
of Engineers®



PROTECTION OF WORKERS

- All site personnel receive relevant health and safety trainings
- Site personnel undergo routine medical monitoring
- Workers must wear personal protective equipment (PPE) in the “dirty” zone
- Decontamination facility for workers to safely remove PPE and shower after leaving dirty zone
- We will employ best practices to prevent the spread of contamination



US Army Corps
of Engineers®



PROTECTION OF THE PUBLIC

- Development of the Project Safety Analysis (PSA)
- Ongoing coordination with local officials and first responders
- Tabletop exercises to simulate recovery and emergency scenarios
- On-site emergency drill on September 10, 2025
- Off-site emergency response actions are the responsibility of local emergency response officials



U.S. ARMY



US Army Corps
of Engineers®



REMEDIATION ACTIVITIES



U.S. ARMY



US Army Corps
of Engineers®



A DAY IN THE LIFE OF SLDA

- Work schedule: Mon-Fri, 10-hr days, 150 personnel
- Workers begin arriving by 4:30 AM
- Three waste shipments leave the site mid-morning
- Site maintenance activities will continue
- Guards will make routine patrols around the site
- Three waste shipments in the early afternoon
- Most workers leave in the evening by 5:00 PM
- Lab workers and cleaning crews will work later



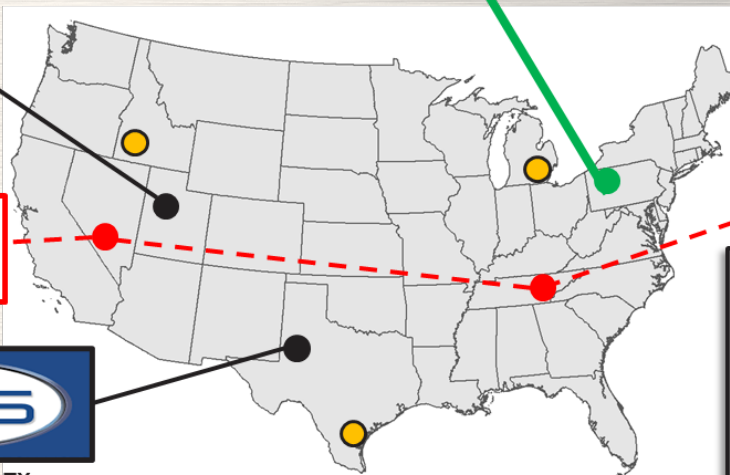
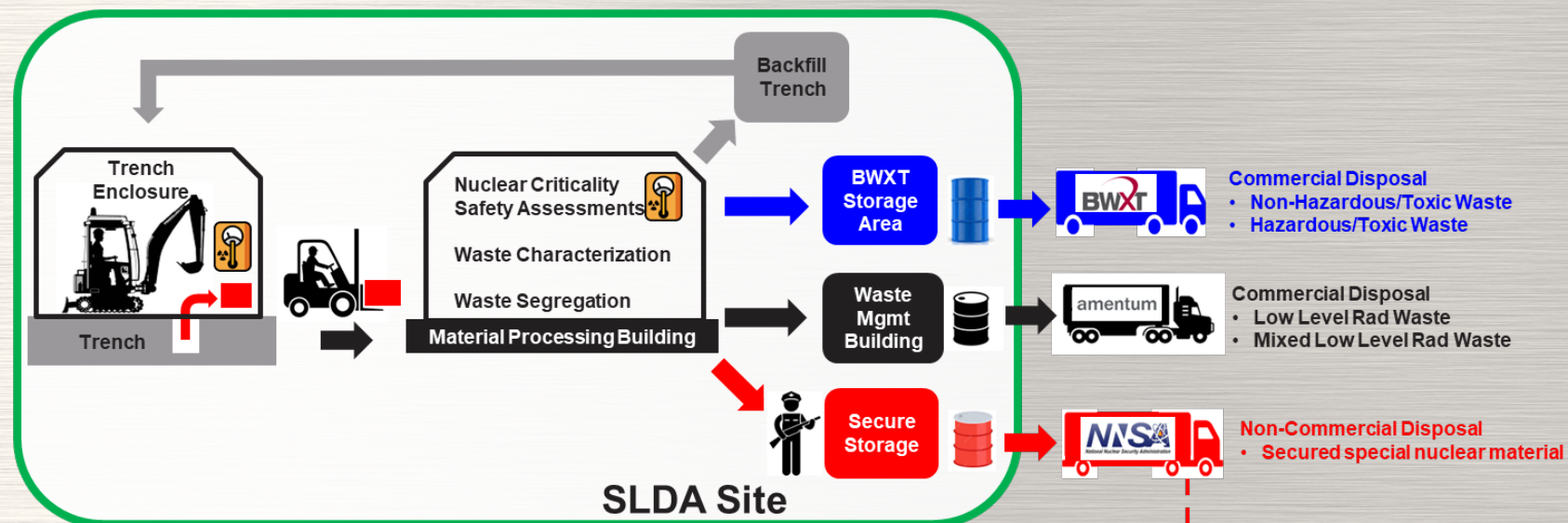
U.S. ARMY




US Army Corps
of Engineers®



REMEDIATION OVERVIEW



- USACE audited commercial facility approved for disposal of FUSRAP waste + SLDA NRC licensed material
 - USACE audited commercial facilities approved for disposal of FUSRAP waste (but not for SLDA NRC licensed material)
- 



U.S. ARMY



US Army Corps
of Engineers®



SUMMARY OF REMEDIATION ACTIVITIES (BIG PICTURE)

- Scan first – objects of interest removed
- Slow, methodical excavation – ½ cubic yard at a time
- Materials placed in soil bags which are placed in metal trays
- Materials transferred to material processing building for characterization
- Characterized materials transferred to waste mgmt. building for packaging
- Bags placed in intermodal containers (IMCs) and IMCs sealed shut
- IMCs scanned for contamination and loaded onto trucks
- Each waste shipment is inspected prior to departure



U.S. ARMY



US Army Corps
of Engineers®



WASTE COMPOSITION



Excavated Material (2011)



U.S. ARMY



US Army Corps
of Engineers®



WASTE TRANSPORTATION

USACE transports waste in accordance with U.S. Department of Transportation (DOT) regulations regarding the interstate shipment of wastes.

- All acceptable wastes will be packaged, marked, labeled, and manifested for transport per USDOT and USEPA requirements.
- All waste shipping containers will be decontaminated and scanned to prevent the spread of contamination.
- USACE personnel will inspect each transport vehicle and waste container to ensure compliance with DOT regulations.
- No immediate hazards from waste exposure in the unlikely event of a shipping incident.



U.S. ARMY



US Army Corps
of Engineers®



QUESTIONS & ANSWERS



U.S. ARMY



US Army Corps
of Engineers®



OPEN Q&A SESSION

Ground Rules:

- 20 minutes for the Q&As
- Please be respectful of others
- Please raise your hand, so we can bring you a microphone
- Only one person speaking at a time
- Please wait to speak when you have the microphone, so others can hear you
- Please hold side conversation to a minimum so everyone can hear

SLDA Post-Event Feedback Survey
June 5, 2025



U.S. ARMY



US Army Corps
of Engineers®



EVENT FEEDBACK SURVEY



U.S. ARMY



US Army Corps
of Engineers®



BACKUP SLIDES



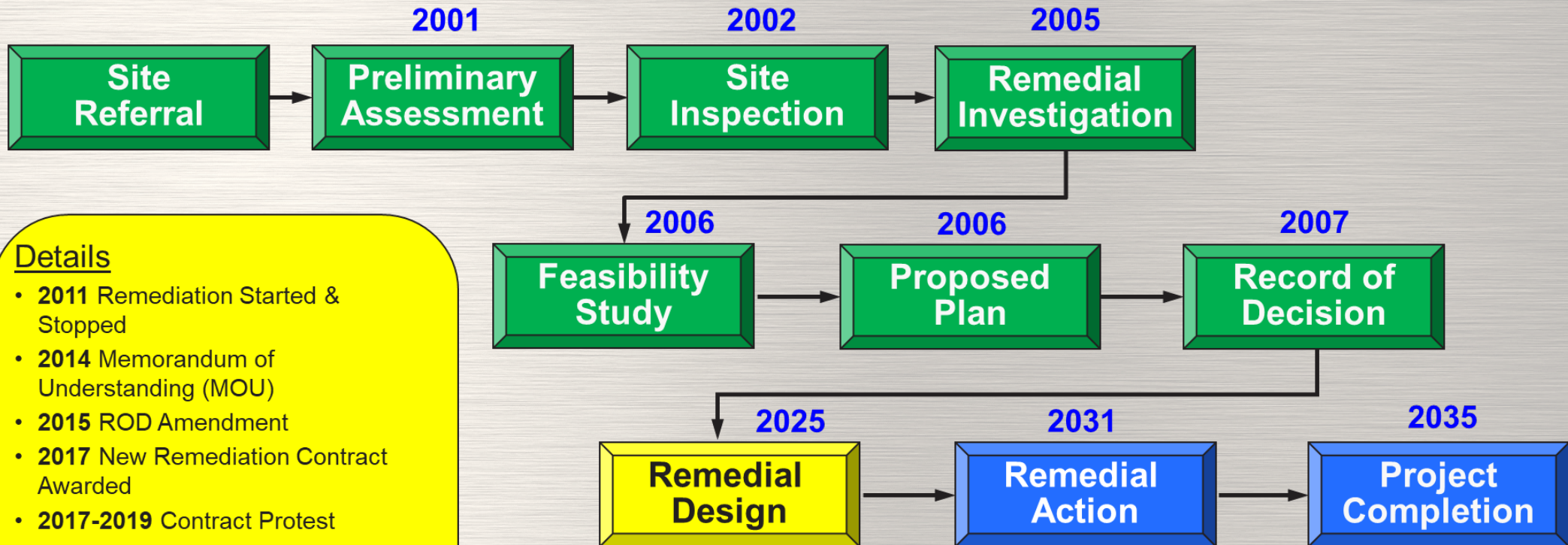
U.S. ARMY



US Army Corps
of Engineers®



CERCLA TIMELINE FOR SLDA



Details

- **2011** Remediation Started & Stopped
- **2014** Memorandum of Understanding (MOU)
- **2015** ROD Amendment
- **2017** New Remediation Contract Awarded
- **2017-2019** Contract Protest
- **2019** Notice-to-Proceed
- **2019-Present** Work Planning, Site Prep, Infrastructure Construction

CERCLA = Comprehensive Environmental Response, Compensation, and Liability Act of 1980, a.k.a., Superfund.



U.S. ARMY



US Army Corps
of Engineers®



Complete



Currently performing



To be completed



PUBLIC OUTREACH

- **Project Website**

- <https://www.lrd.usace.army.mil/Mission/Projects/Article/3646985/shallow-land-disposal-area/>

- **Social Media**

- Facebook: <https://www.facebook.com/PittsburghUSACE>
- Instagram: <https://www.instagram.com/pittsburghusace/>

- **Community Outreach**

- Mail, phone, text, and email notifications
- Flyers in the community
- Project Fact Sheet available at the site location

- **Pittsburgh District Contact Info**

- Phone: (412) 395-7500
- E-mail: CELRP-PA@usace.army.mil



U.S. ARMY



US Army Corps
of Engineers®