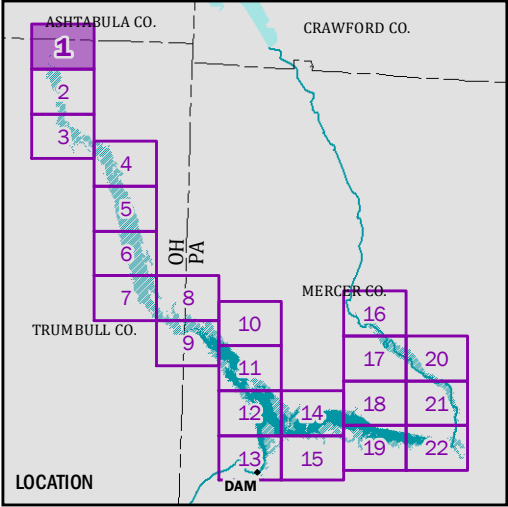


Coordinate System: NAD 1983 2011 StatePlane Pennsylvania North FIPS 3701 Ft US
Projection: Lambert Conformal Conic



Legend

- Reservoir full pool
- State boundary
- County boundary
- Unincorporated area boundary
- Fee boundary

National Wetlands Inventory

Wetland type

- Freshwater forested/shrub wetland

National Wetlands Inventory (NWI) by US Fish and Wildlife Service, is shown clipped to fee boundary.

Data: Esri, USGS, USACE, OSIP, PEMA, USFWS

SHENANGO RIVER LAKE

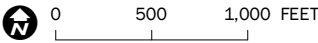
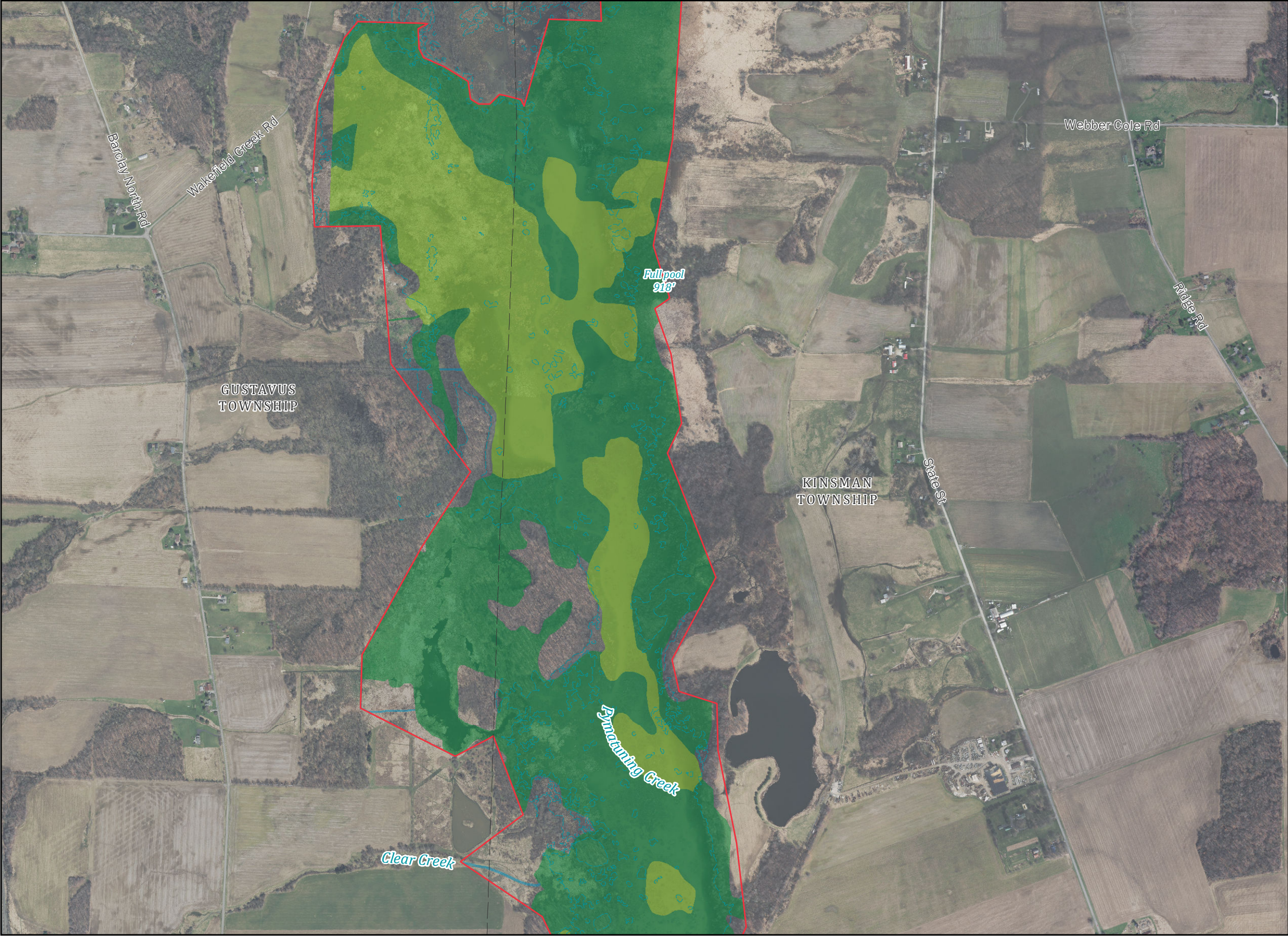
Master Plan

Plate 5: Wetlands

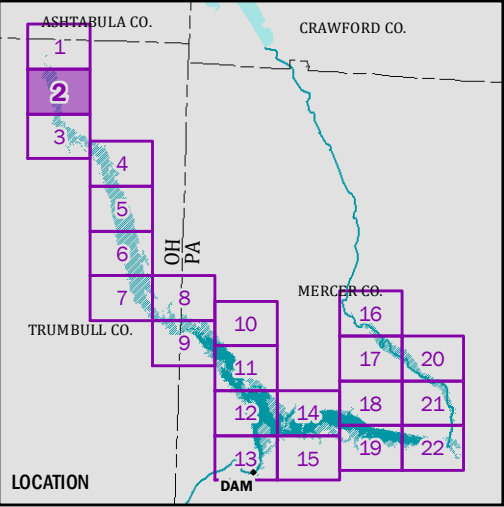
Sheet 1 of 22

US Army Corps of Engineers
Pittsburgh District

Pub. 10 March 2023
Rev. 29 January 2024
USACE LRP Geospatial
erik.w.breedon



Coordinate System: NAD 1983 2011 StatePlane Pennsylvania North FIPS 3701 Ft US
Projection: Lambert Conformal Conic



Legend

- Reservoir full pool
- State boundary
- County boundary
- Unincorporated area boundary
- Fee boundary

National Wetlands Inventory

Wetland type

- Freshwater emergent wetland
- Freshwater forested/shrub wetland
- Riverine

National Wetlands Inventory (NWI) by US Fish and Wildlife Service, is shown clipped to fee boundary.

Data: Esri, USGS, USACE, OSIP, PEMA, USFWS

SHENANGO RIVER LAKE

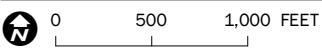
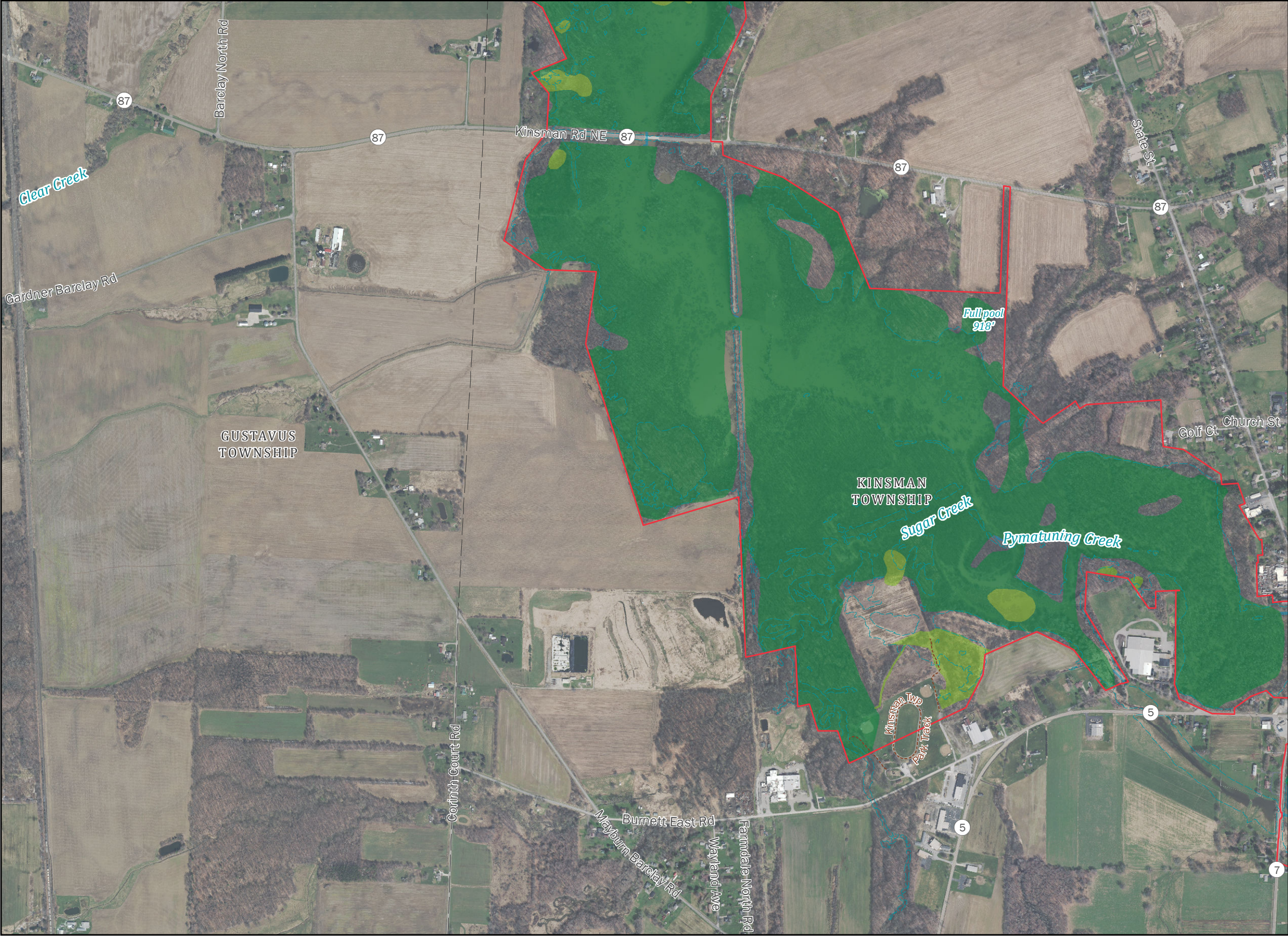
Master Plan

Plate 5: Wetlands

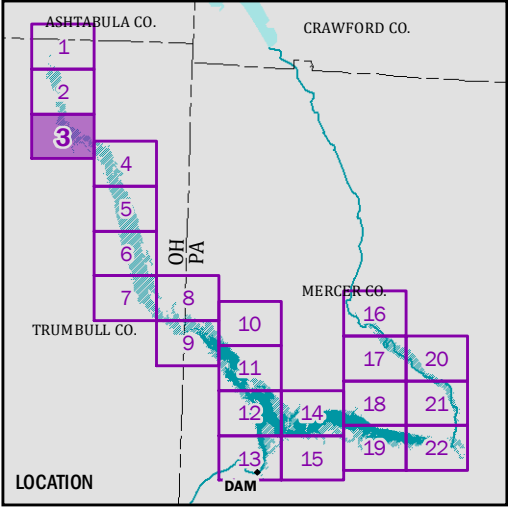
Sheet 2 of 22

US Army Corps of Engineers
Pittsburgh District

Pub. 10 March 2023
Rev. 29 January 2024
USACE LRP Geospatial
erik.w.breedon



Coordinate System: NAD 1983 2011 StatePlane Pennsylvania North FIPS 3701 Ft US
Projection: Lambert Conformal Conic



Legend

- Trail
- Reservoir full pool
- State boundary
- County boundary
- Unincorporated area boundary
- Fee boundary

National Wetlands Inventory

Wetland type

- Freshwater emergent wetland
- Freshwater forested/shrub wetland
- Riverine

National Wetlands Inventory (NWI) by US Fish and Wildlife Service, is shown clipped to fee boundary.

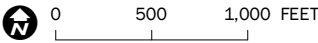
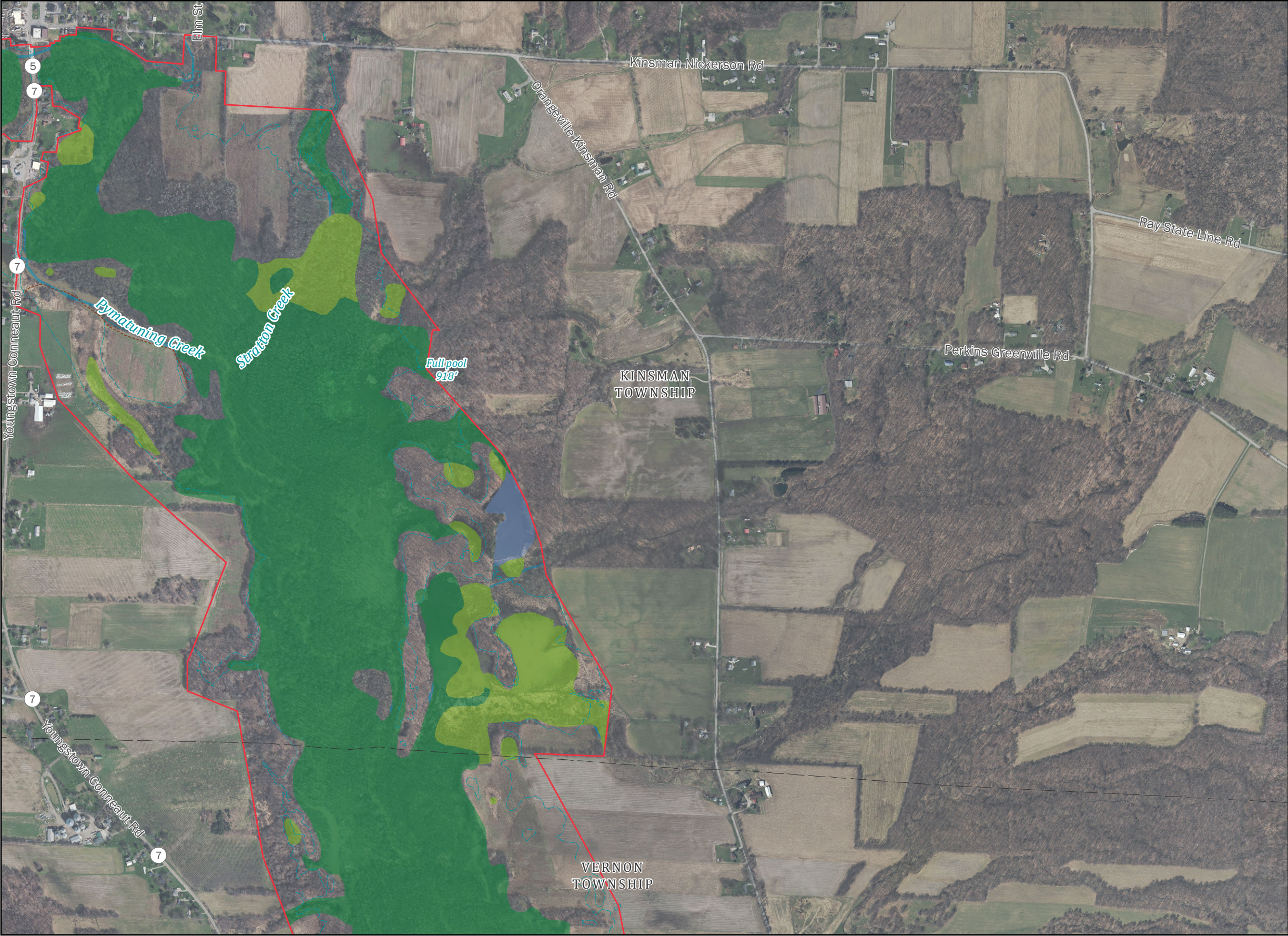
Data: Esri, USGS, USACE, OSIP, PEMA, USFWS

SHENANGO RIVER LAKE

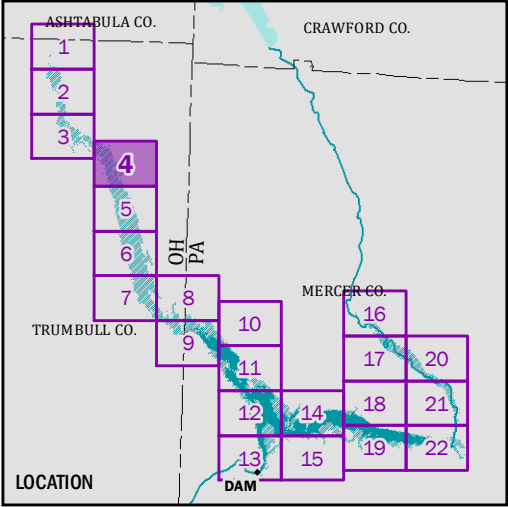
Master Plan

Plate 5: Wetlands

Sheet 3 of 22



Coordinate System: NAD 1983 2011 StatePlane Pennsylvania North FIPS 3701 Ft US
Projection: Lambert Conformal Conic



Legend

- Trail
- Reservoir full pool
- State boundary
- County boundary
- Unincorporated area boundary
- Fee boundary

National Wetlands Inventory

Wetland type

- Freshwater emergent wetland
- Freshwater forested/shrub wetland
- Freshwater pond
- Riverine

National Wetlands Inventory (NWI) by US Fish and Wildlife Service, is shown clipped to fee boundary.

Data: Esri, USGS, USACE, OSIP, PEMA, USFWS

SHENANGO RIVER LAKE

Master Plan

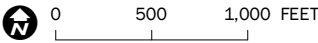
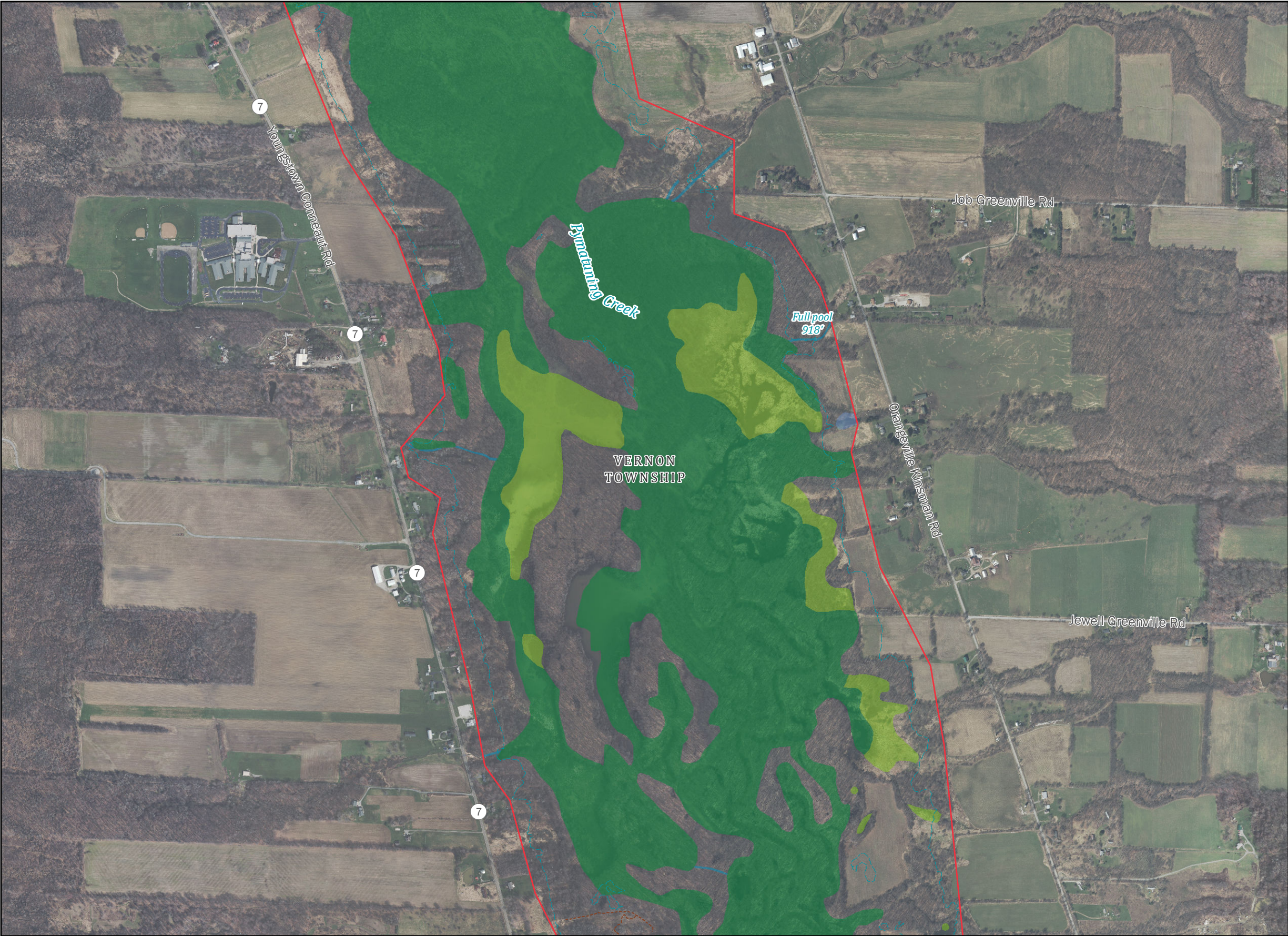
Plate 5: Wetlands

Sheet 4 of 22

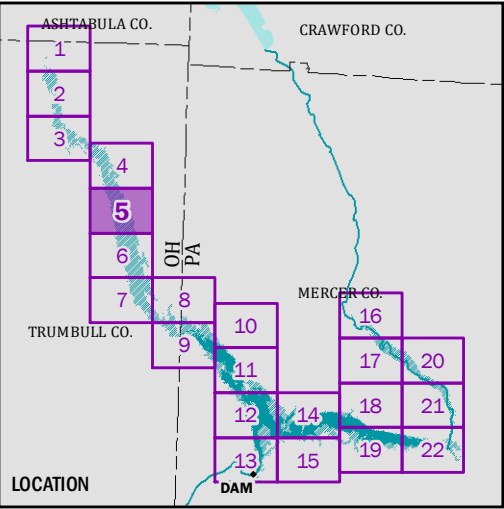


US Army Corps of Engineers
Pittsburgh District

Pub. 10 March 2023
Rev. 29 January 2024
USACE LRP Geospatial
erik.w.breedon



Coordinate System: NAD 1983 2011 StatePlane Pennsylvania North FIPS 3701 Ft US
Projection: Lambert Conformal Conic



Legend

- Trail
- Reservoir full pool
- State boundary
- County boundary
- Fee boundary

National Wetlands Inventory

Wetland type

- Freshwater emergent wetland
- Freshwater forested/shrub wetland
- Freshwater pond
- Riverine

National Wetlands Inventory (NWI) by US Fish and Wildlife Service, is shown clipped to fee boundary.

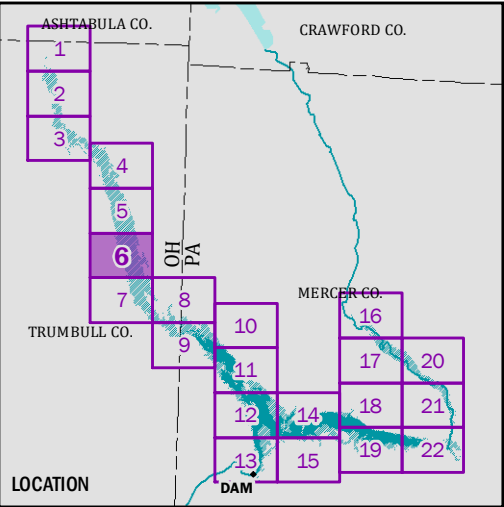
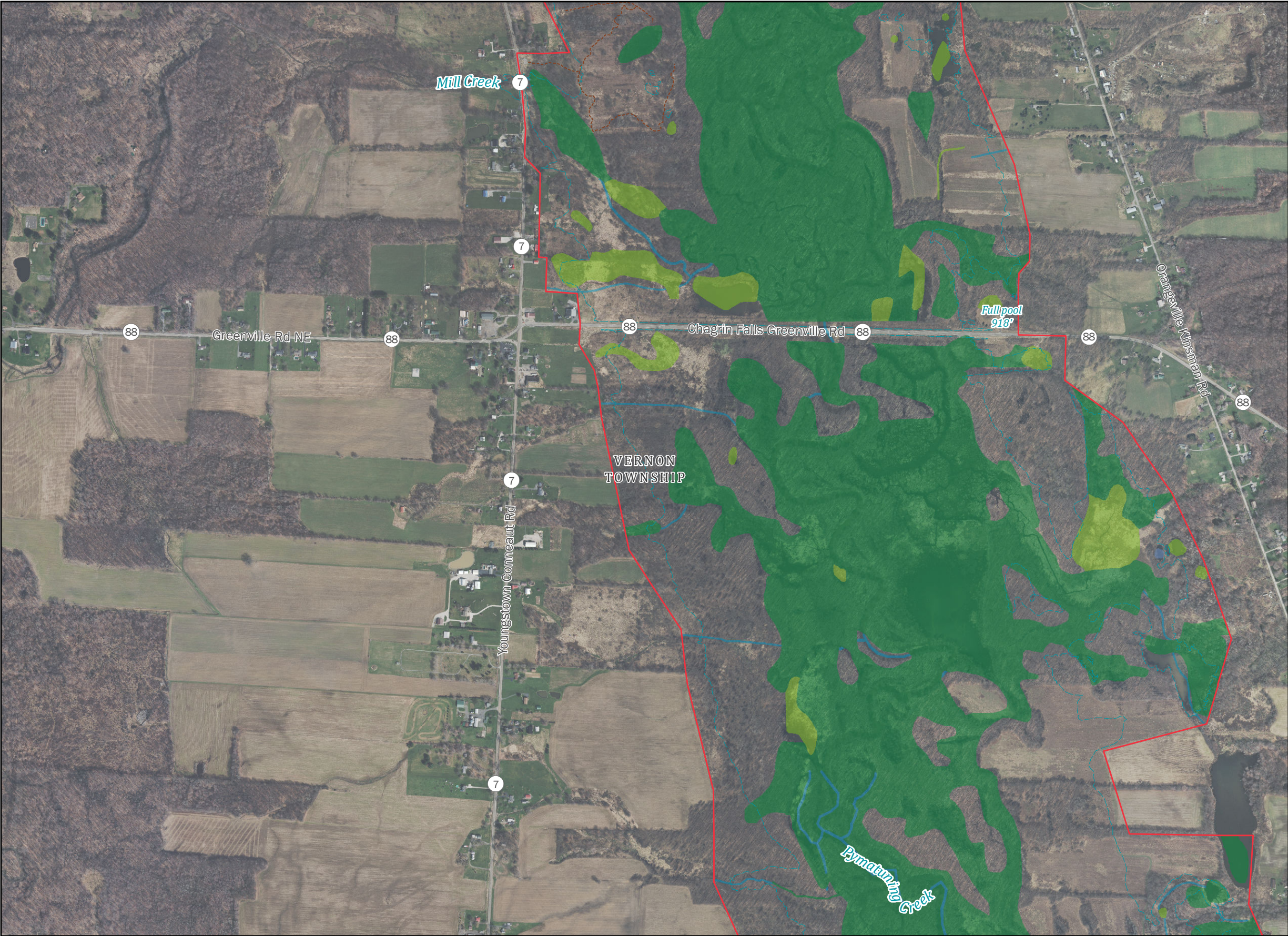
Data: Esri, USGS, USACE, OSIP, PEMA, USFWS

SHENANGO RIVER LAKE
Master Plan
Plate 5: Wetlands
Sheet 5 of 22



US Army Corps of Engineers
Pittsburgh District

Pub. 10 March 2023
Rev. 29 January 2024
USACE LRP Geospatial
erik.w.breedon



Legend

- Trail
- Reservoir full pool
- State boundary
- County boundary
- Fee boundary

National Wetlands Inventory

Wetland type

- Freshwater emergent wetland
- Freshwater forested/shrub wetland
- Freshwater pond
- Riverine

National Wetlands Inventory (NWI) by US Fish and Wildlife Service, is shown clipped to fee boundary.

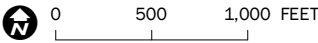
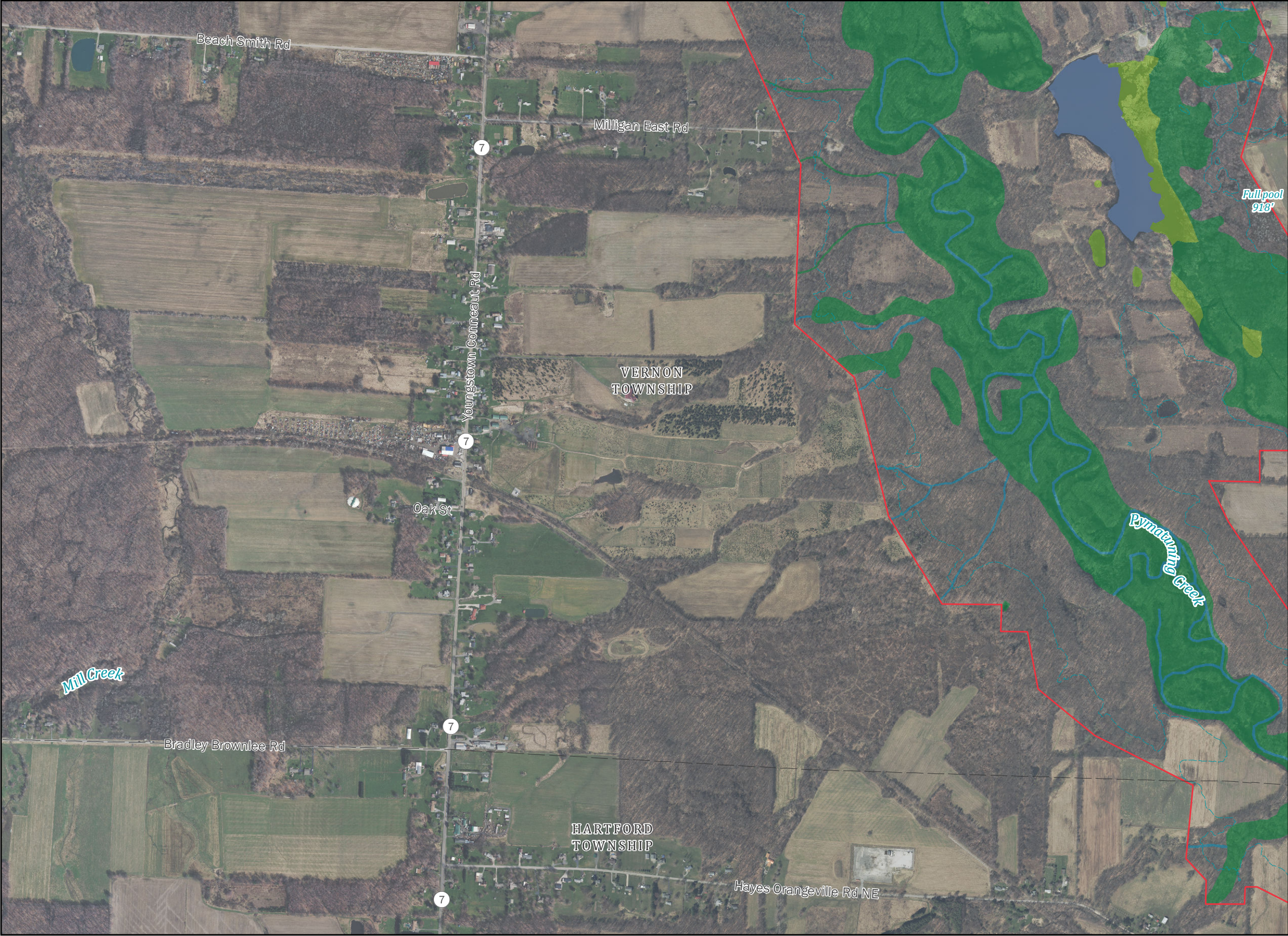
Data: Esri, USGS, USACE, OSIP, PEMA, USFWS

SHENANGO RIVER LAKE

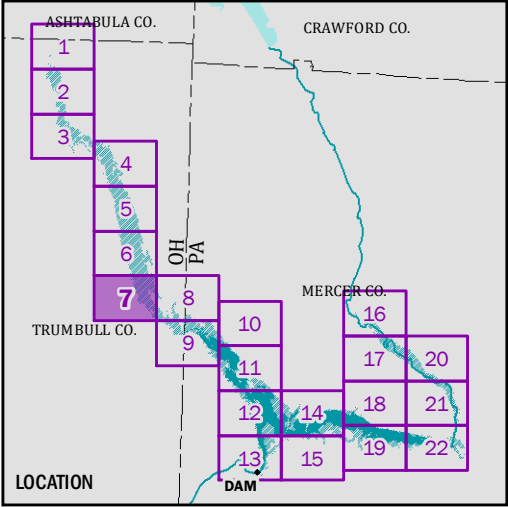
Master Plan

Plate 5: Wetlands

Sheet 6 of 22



Coordinate System: NAD 1983 2011 StatePlane Pennsylvania North FIPS 3701 Ft US
Projection: Lambert Conformal Conic



Legend

- Reservoir full pool
- State boundary
- County boundary
- Unincorporated area boundary
- Fee boundary

National Wetlands Inventory

Wetland type

- Freshwater emergent wetland
- Freshwater forested/shrub wetland
- Freshwater pond
- Riverine

National Wetlands Inventory (NWI) by US Fish and Wildlife Service, is shown clipped to fee boundary.

Data: Esri, USGS, USACE, OSIP, PEMA, USFWS

SHENANGO RIVER LAKE

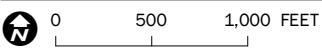
Master Plan

Plate 5: Wetlands

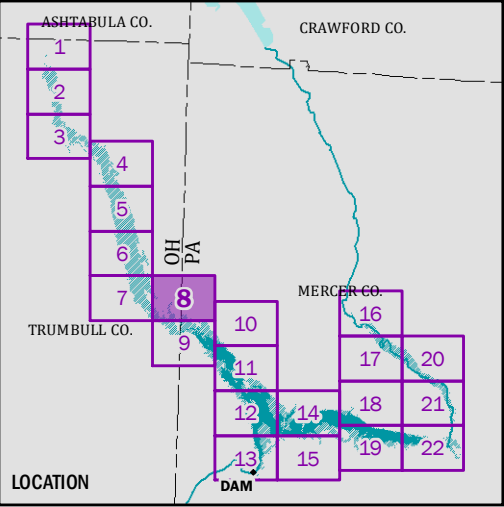
Sheet 7 of 22

US Army Corps of Engineers
Pittsburgh District

Pub. 10 March 2023
Rev. 29 January 2024
USACE LRP Geospatial
erik.w.breedon



Coordinate System: NAD 1983 2011 StatePlane Pennsylvania North FIPS 3701 Ft US
Projection: Lambert Conformal Conic



Legend

- Reservoir full pool
- State boundary
- County boundary
- Incorporated area boundary
- Unincorporated area boundary
- Fee boundary

National Wetlands Inventory

Wetland type

- Freshwater emergent wetland
- Freshwater forested/shrub wetland
- Freshwater pond
- Riverine

National Wetlands Inventory (NWI) by US Fish and Wildlife Service, is shown clipped to fee boundary.

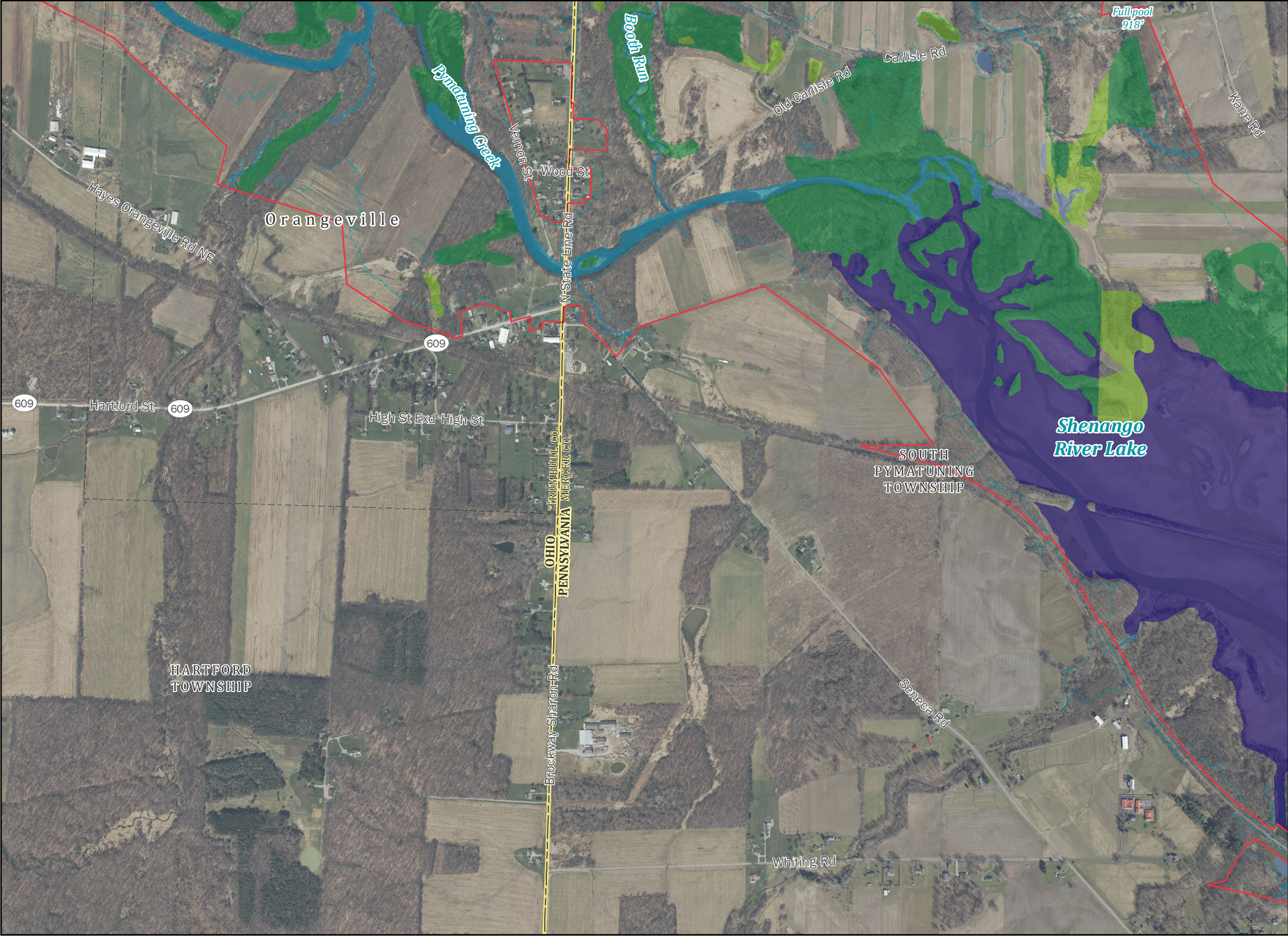
Data: Esri, USGS, USACE, OSIP, PEMA, USFWS

SHENANGO RIVER LAKE
Master Plan
Plate 5: Wetlands
Sheet 8 of 22



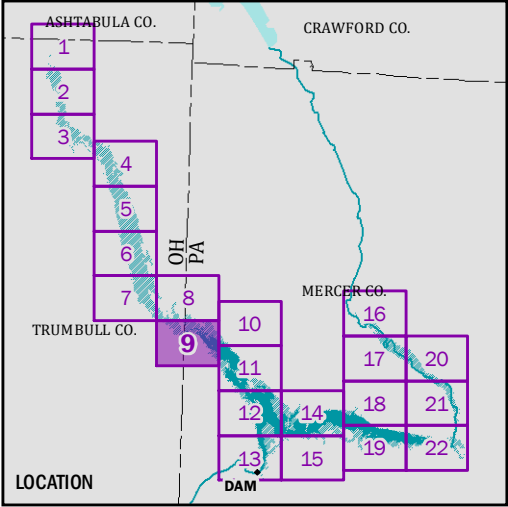
US Army Corps of Engineers
Pittsburgh District

Pub. 10 March 2023
Rev. 29 January 2024
USACE LRP Geospatial
erik.w.breedon



0 500 1,000 FEET

Coordinate System: NAD 1983 2011 StatePlane Pennsylvania North FIPS 3701 Ft US
Projection: Lambert Conformal Conic



Legend

- Reservoir full pool
- State boundary
- County boundary
- Incorporated area boundary
- Fee boundary

National Wetlands Inventory

Wetland type

- Freshwater emergent wetland
- Freshwater forested/shrub wetland
- Freshwater pond
- Lake
- Riverine

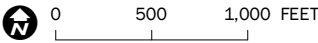
National Wetlands Inventory (NWI) by US Fish and Wildlife Service, is shown clipped to fee boundary.

Data: Esri, USGS, USACE, OSIP, PEMA, USFWS

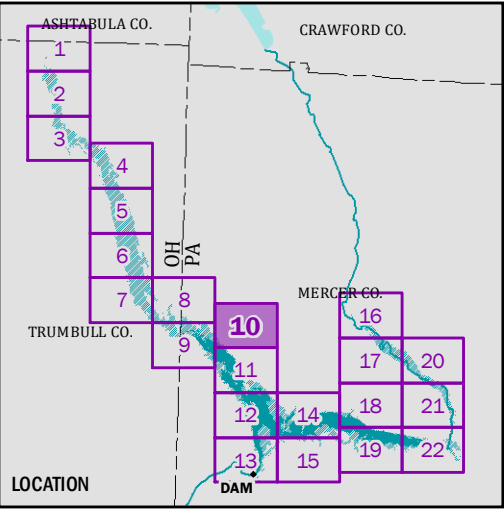
SHENANGO RIVER LAKE
Master Plan
Plate 5: Wetlands
 Sheet 9 of 22



Pub. 10 March 2023
Rev. 29 January 2024
USACE LRP Geospatial
erik.w.breedon



Coordinate System: NAD 1983 2011 StatePlane Pennsylvania North FIPS 3701 Ft US
Projection: Lambert Conformal Conic



Legend

- Reservoir full pool
- State boundary
- County boundary
- Unincorporated area boundary
- Fee boundary

National Wetlands Inventory

Wetland type

- Freshwater forested/shrub wetland
- Lake
- Riverine

National Wetlands Inventory (NWI) by US Fish and Wildlife Service, is shown clipped to fee boundary.

Data: Esri, USGS, USACE, OSIP, PEMA, USFWS

SHENANGO RIVER LAKE

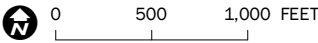
Master Plan

Plate 5: Wetlands

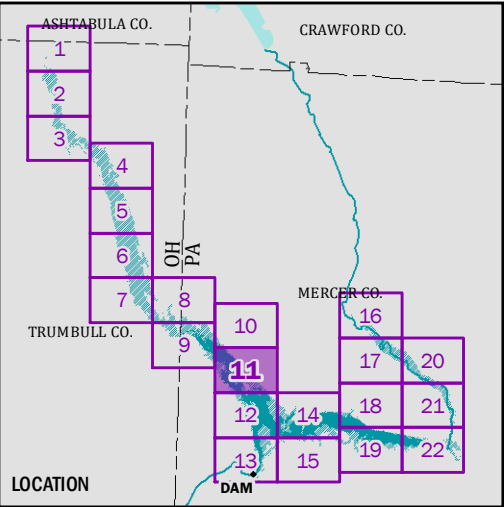
Sheet 10 of 22

US Army Corps of Engineers
Pittsburgh District

Pub. 10 March 2023
Rev. 29 January 2024
USACE LRP Geospatial
erik.w.breedon



Coordinate System: NAD 1983 2011 StatePlane Pennsylvania North FIPS 3701 Ft US
Projection: Lambert Conformal Conic



- Legend**
- Trail
 - Reservoir full pool
 - State boundary
 - County boundary
 - Unincorporated area boundary
 - Fee boundary
- National Wetlands Inventory**
- Wetland type**
- Freshwater emergent wetland
 - Freshwater pond
 - Lake
 - Riverine

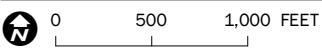
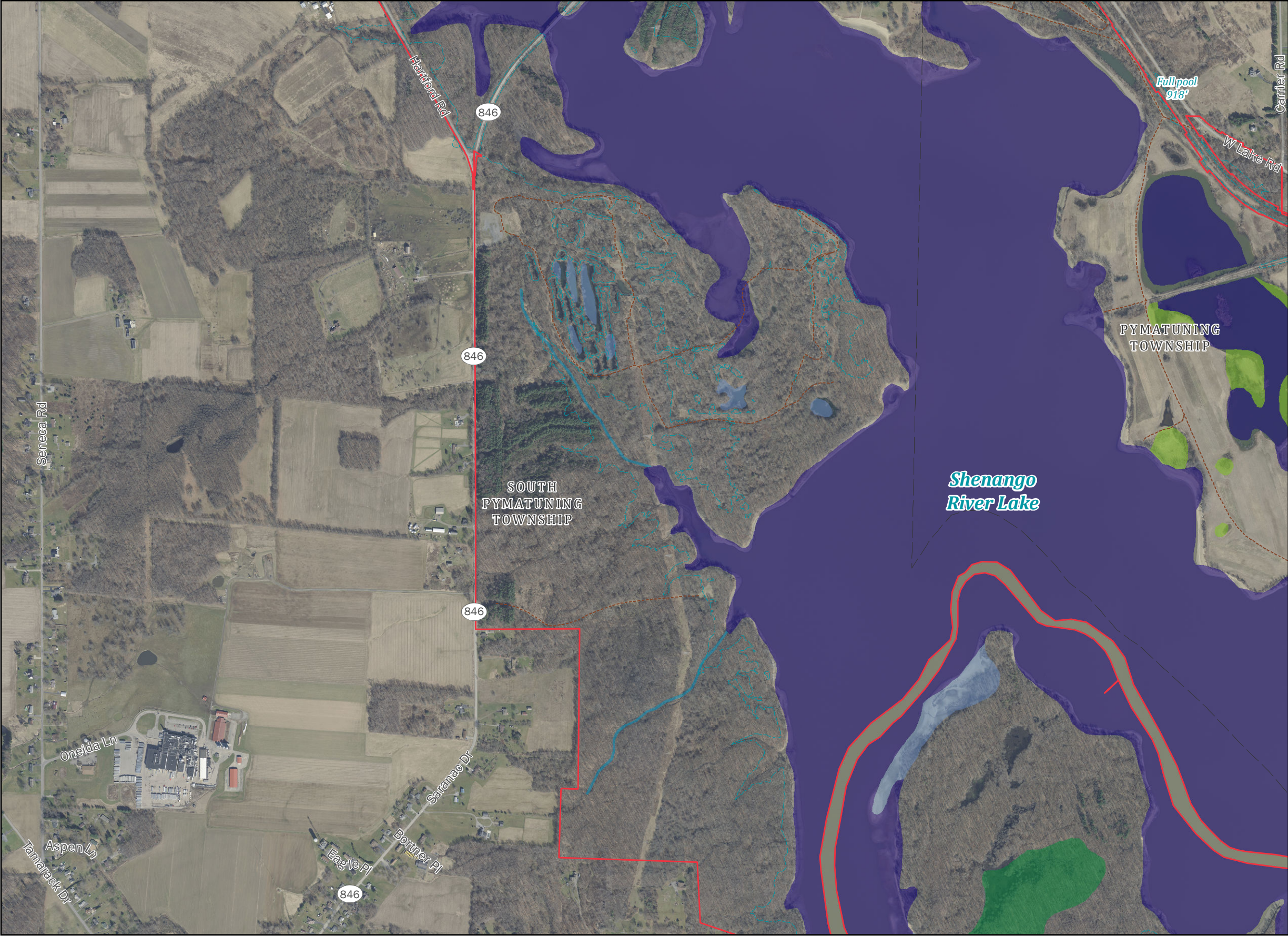
National Wetlands Inventory (NWI) by US Fish and Wildlife Service, is shown clipped to fee boundary.

Data: Esri, USGS, USACE, OSIP, PEMA, USFWS

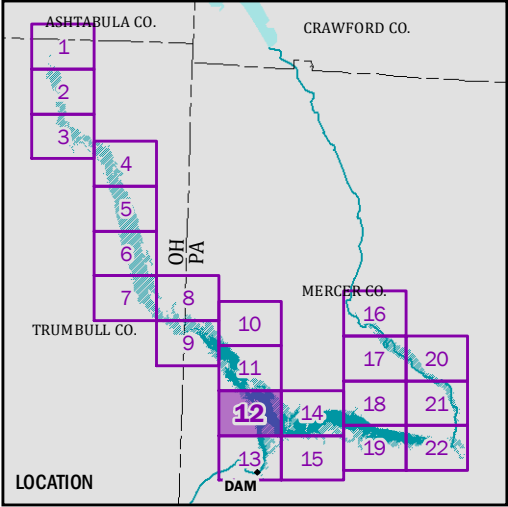
SHENANGO RIVER LAKE
Master Plan
Plate 5: Wetlands
Sheet 11 of 22



Pub. 10 March 2023
Rev. 29 January 2024
USACE LRP Geospatial
erik.w.breedon



Coordinate System: NAD 1983 2011 StatePlane Pennsylvania North FIPS 3701 Ft US
Projection: Lambert Conformal Conic



Legend

- Trail
- Reservoir full pool
- State boundary
- County boundary
- Unincorporated area boundary
- Fee boundary

National Wetlands Inventory

Wetland type

- Freshwater emergent wetland
- Freshwater forested/shrub wetland
- Freshwater pond
- Lake
- Riverine

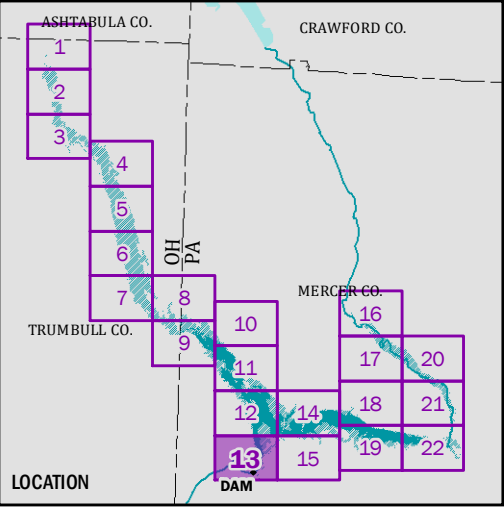
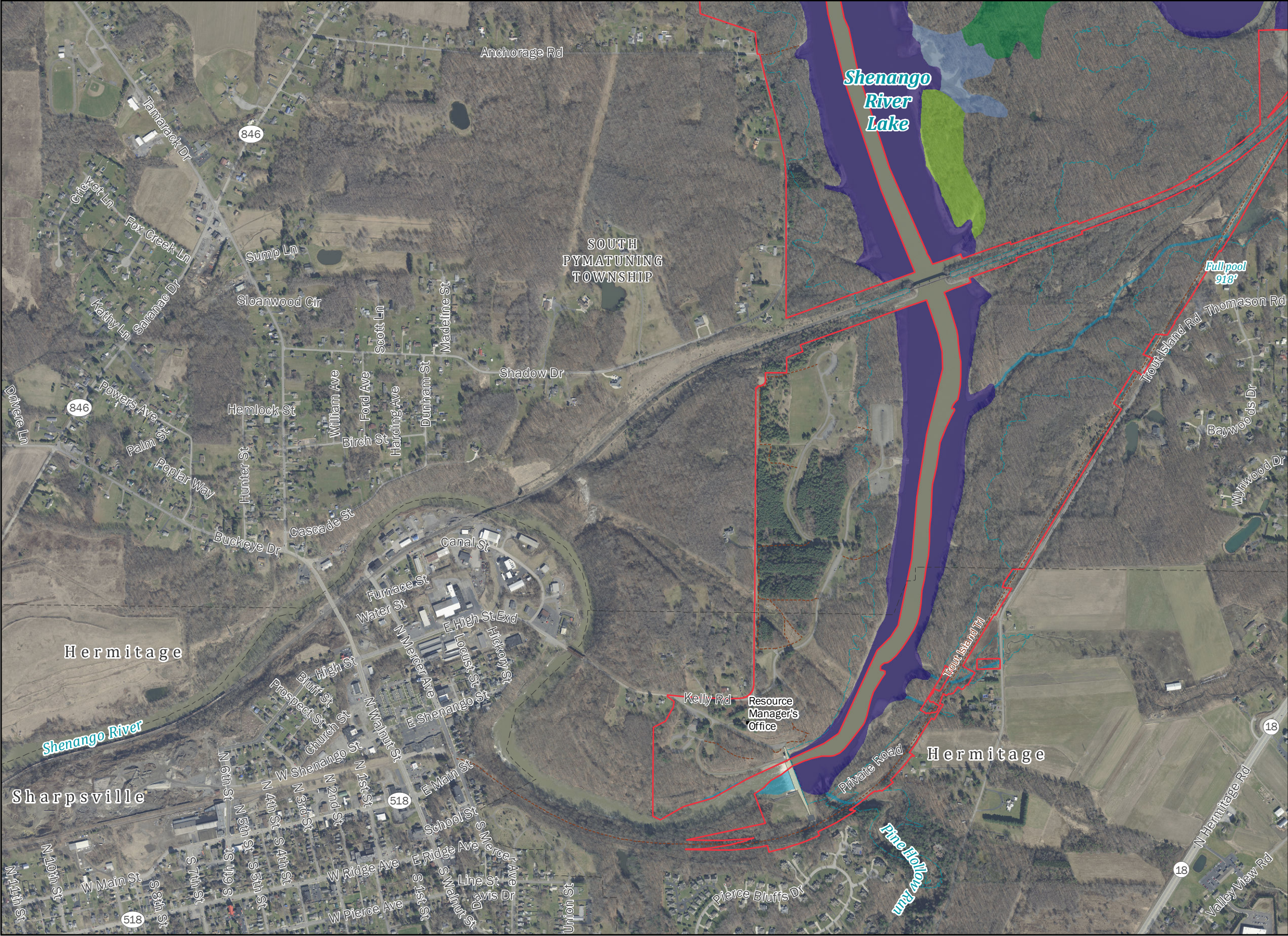
National Wetlands Inventory (NWI) by US Fish and Wildlife Service, is shown clipped to fee boundary.

Data: Esri, USGS, USACE, OSIP, PEMA, USFWS

SHENANGO RIVER LAKE
Master Plan
Plate 5: Wetlands
Sheet 12 of 22



Pub. 10 March 2023
Rev. 29 January 2024
USACE LRP Geospatial
erik.w.breedon



Legend

- Trail
- Reservoir full pool
- State boundary
- County boundary
- Incorporated area boundary
- Fee boundary

National Wetlands Inventory

Wetland type

- Freshwater emergent wetland
- Freshwater forested/shrub wetland
- Freshwater pond
- Lake
- Riverine

National Wetlands Inventory (NWI) by US Fish and Wildlife Service, is shown clipped to fee boundary.

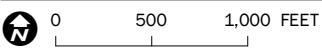
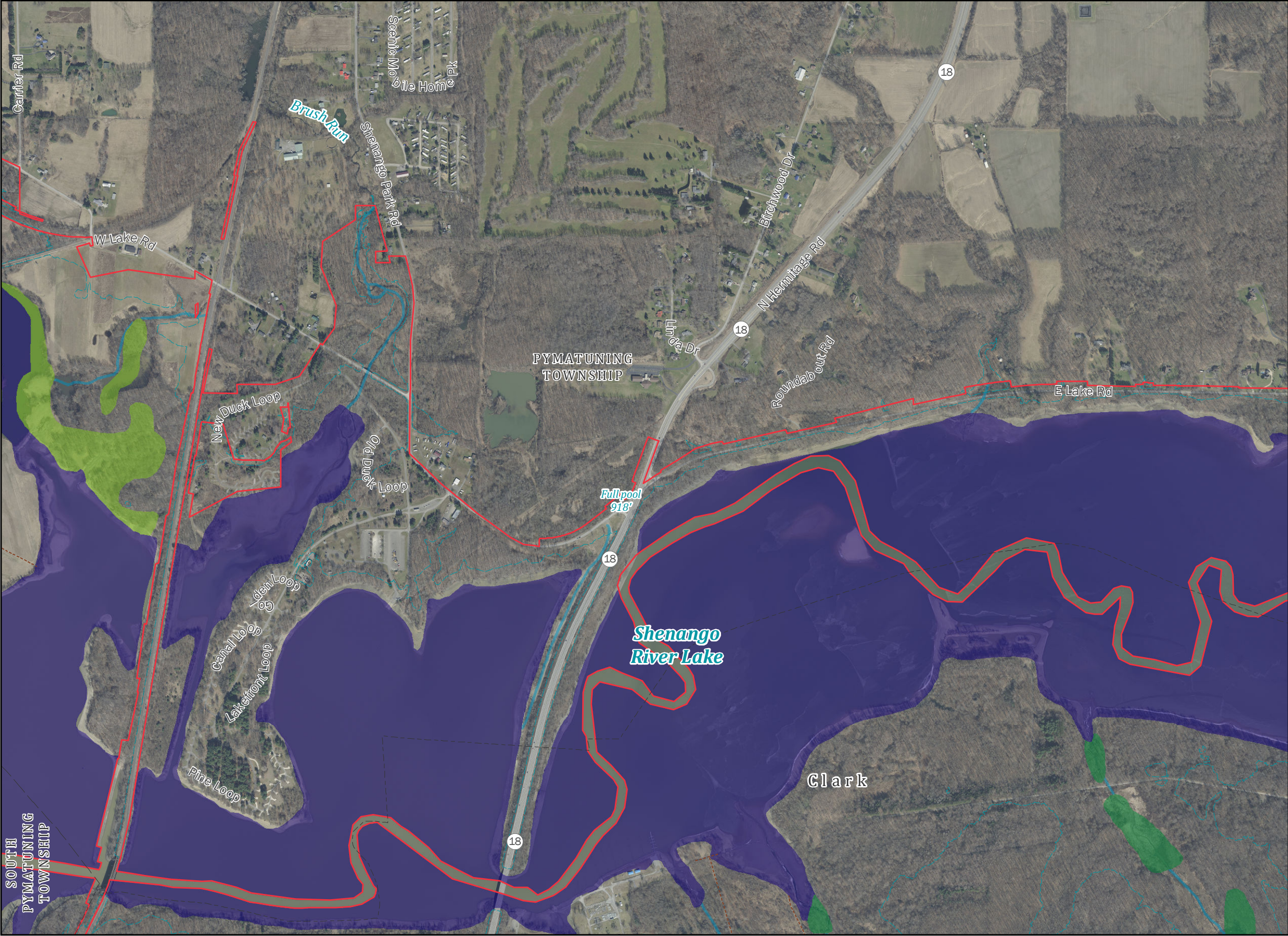
Data: Esri, USGS, USACE, OSIP, PEMA, USFWS

SHENANGO RIVER LAKE

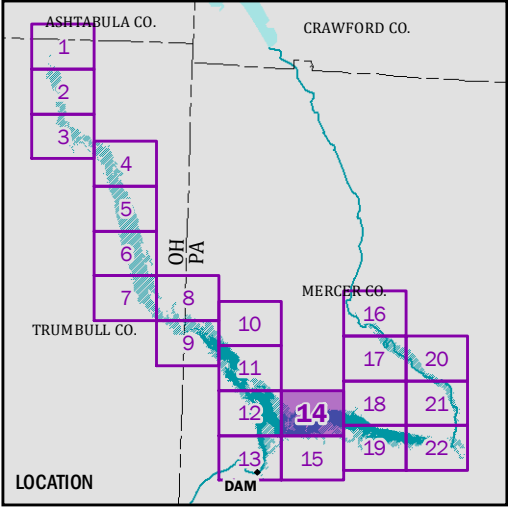
Master Plan

Plate 5: Wetlands

Sheet 13 of 22



Coordinate System: NAD 1983 2011 StatePlane Pennsylvania North FIPS 3701 Ft US
Projection: Lambert Conformal Conic



Legend

- Trail
- Reservoir full pool
- State boundary
- County boundary
- Incorporated area boundary
- Unincorporated area boundary
- Fee boundary

National Wetlands Inventory

Wetland type

- Freshwater emergent wetland
- Freshwater forested/shrub wetland
- Lake
- Riverine

National Wetlands Inventory (NWI) by US Fish and Wildlife Service, is shown clipped to fee boundary.

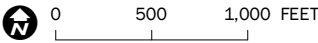
Data: Esri, USGS, USACE, OSIP, PEMA, USFWS

SHENANGO RIVER LAKE
Master Plan
Plate 5: Wetlands
 Sheet 14 of 22

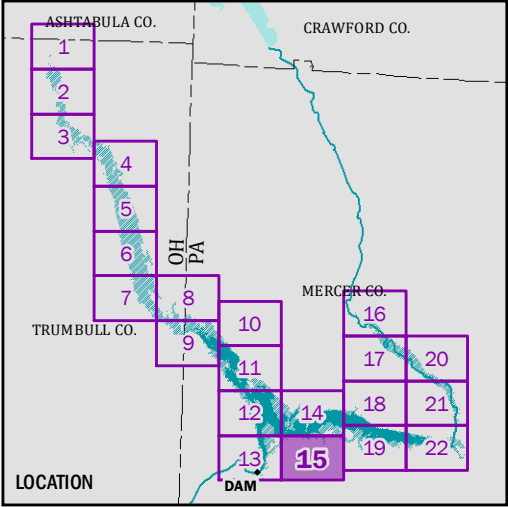


US Army Corps of Engineers
Pittsburgh District

Pub. 10 March 2023
Rev. 29 January 2024
USACE LRP Geospatial
erik.w.breedon



Coordinate System: NAD 1983 2011 StatePlane Pennsylvania North FIPS 3701 Ft US
Projection: Lambert Conformal Conic



Legend

- Trail
- Reservoir full pool
- State boundary
- County boundary
- Incorporated area boundary
- Fee boundary

National Wetlands Inventory

Wetland type

- Freshwater forested/shrub wetland
- Lake
- Riverine

National Wetlands Inventory (NWI) by US Fish and Wildlife Service, is shown clipped to fee boundary.

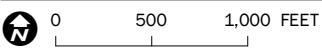
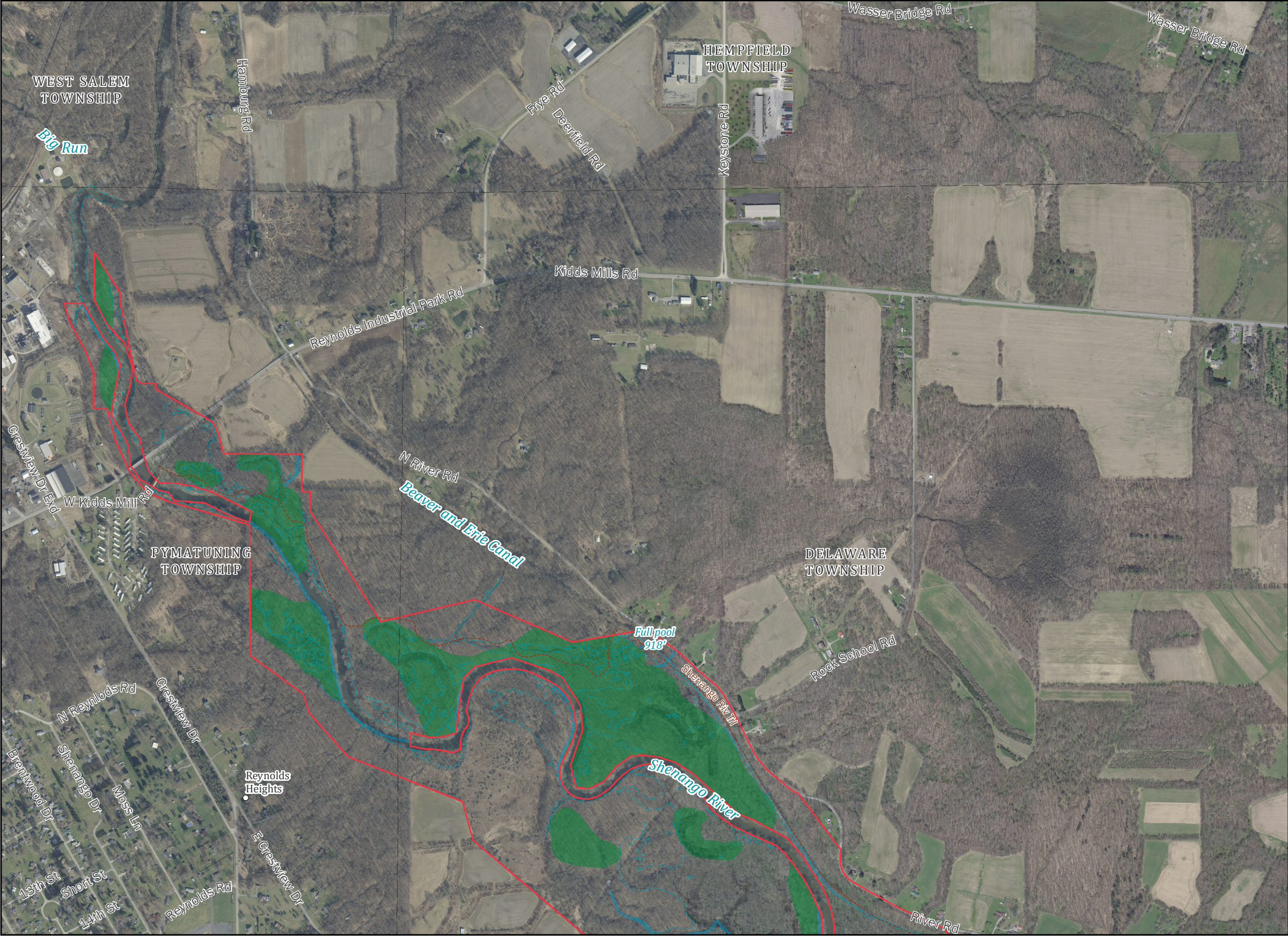
Data: Esri, USGS, USACE, OSIP, PEMA, USFWS

SHENANGO RIVER LAKE

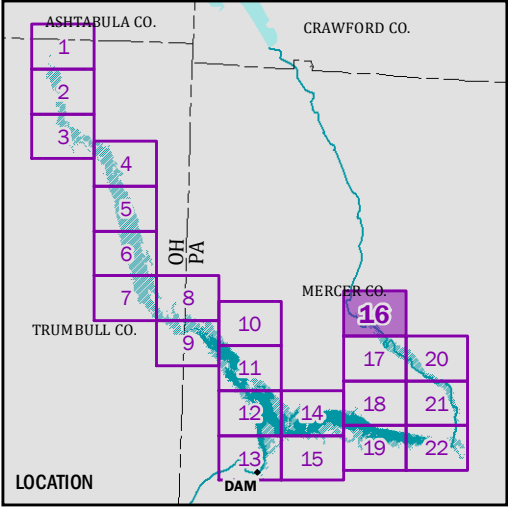
Master Plan

Plate 5: Wetlands

Sheet 15 of 22



Coordinate System: NAD 1983 2011 StatePlane Pennsylvania North FIPS 3701 Ft US
Projection: Lambert Conformal Conic



Legend

- Trail
- Reservoir full pool
- State boundary
- County boundary
- Unincorporated area boundary
- Fee boundary

National Wetlands Inventory

Wetland type

- Freshwater forested/shrub wetland
- Riverine

National Wetlands Inventory (NWI) by US Fish and Wildlife Service, is shown clipped to fee boundary.

Data: Esri, USGS, USACE, OSIP, PEMA, USFWS

SHENANGO RIVER LAKE

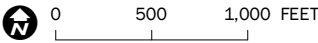
Master Plan

Plate 5: Wetlands

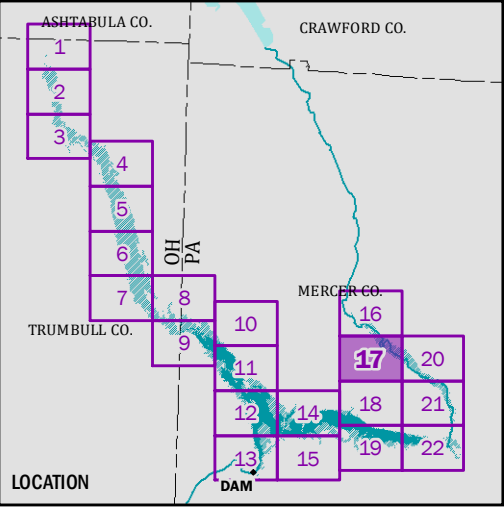
Sheet 16 of 22

US Army Corps of Engineers
Pittsburgh District

Pub. 10 March 2023
Rev. 29 January 2024
USACE LRP Geospatial
erik.w.breedon



Coordinate System: NAD 1983 2011 StatePlane Pennsylvania North FIPS 3701 Ft US
Projection: Lambert Conformal Conic



Legend

- Trail
- Reservoir full pool
- State boundary
- County boundary
- Unincorporated area boundary
- Fee boundary

National Wetlands Inventory

Wetland type

- Freshwater emergent wetland
- Freshwater forested/shrub wetland
- Riverine

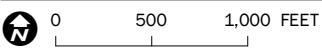
National Wetlands Inventory (NWI) by US Fish and Wildlife Service, is shown clipped to fee boundary.

Data: Esri, USGS, USACE, OSIP, PEMA, USFWS

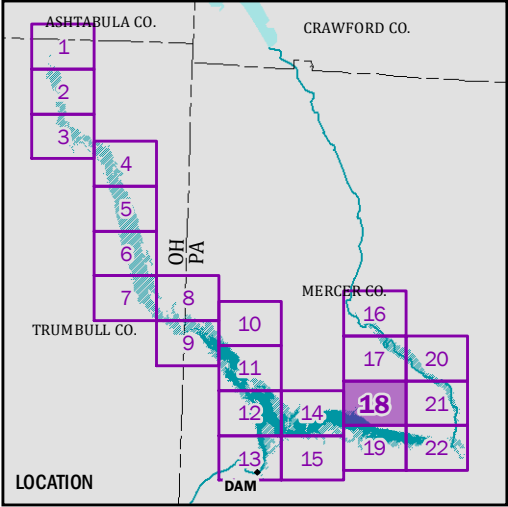
SHENANGO RIVER LAKE
Master Plan
Plate 5: Wetlands
Sheet 17 of 22



Pub. 10 March 2023
Rev. 29 January 2024
USACE LRP Geospatial
erik.w.breedon



Coordinate System: NAD 1983 2011 StatePlane Pennsylvania North FIPS 3701 Ft US
Projection: Lambert Conformal Conic



Legend

- Trail
- Reservoir full pool
- State boundary
- County boundary
- Incorporated area boundary
- Unincorporated area boundary
- Fee boundary

National Wetlands Inventory

Wetland type

- Freshwater emergent wetland
- Lake
- Riverine

National Wetlands Inventory (NWI) by US Fish and Wildlife Service, is shown clipped to fee boundary.

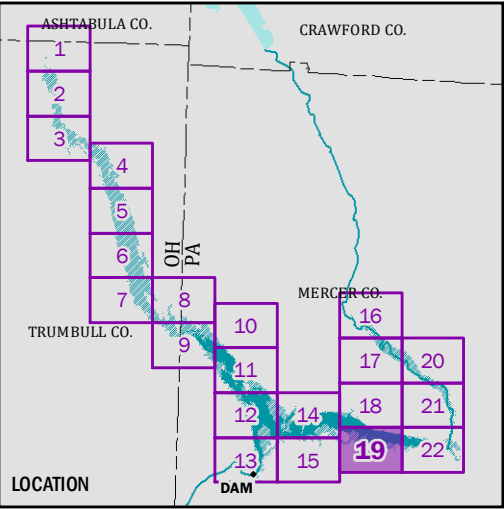
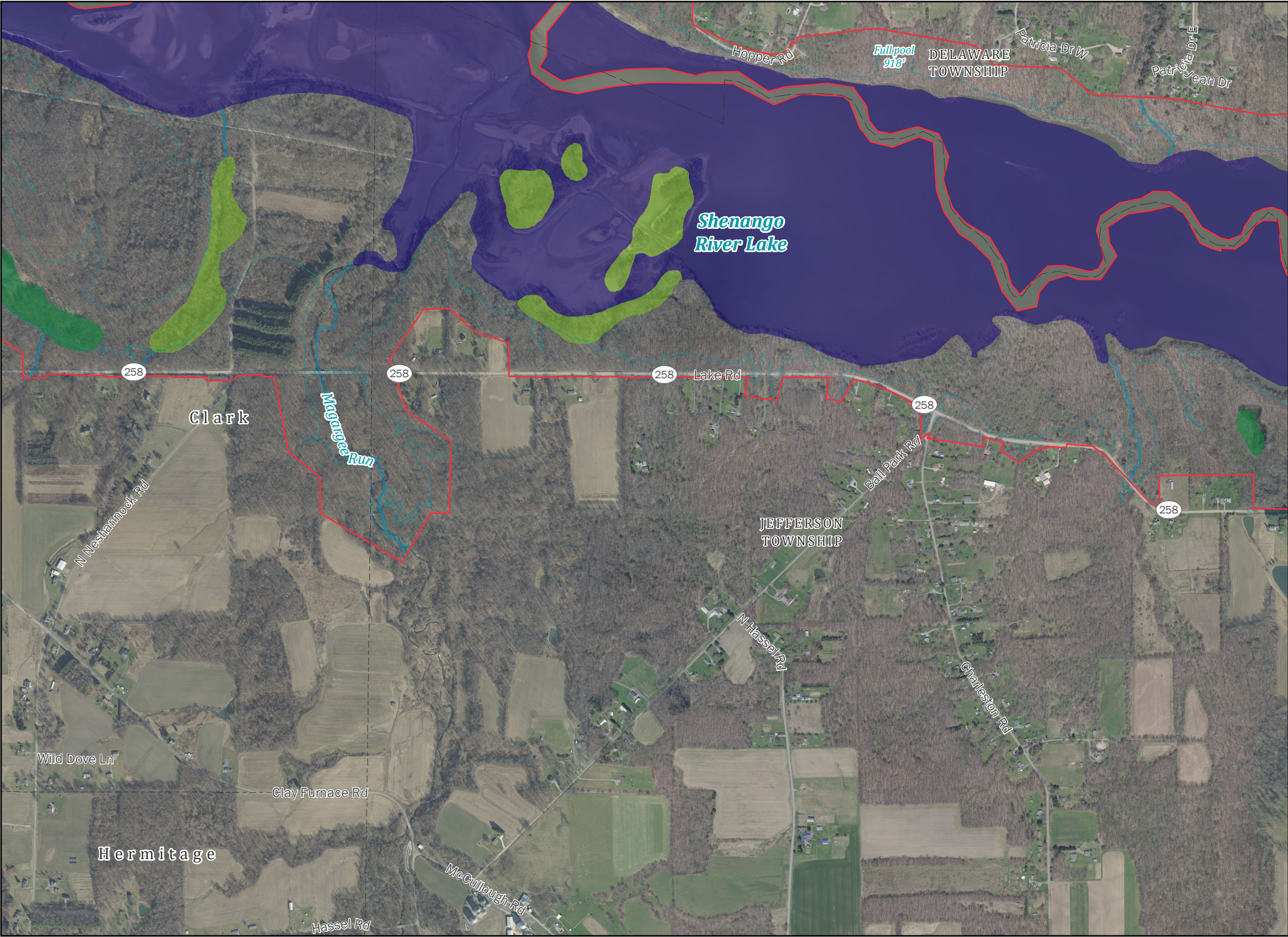
Data: Esri, USGS, USACE, OSIP, PEMA, USFWS

SHENANGO RIVER LAKE

Master Plan

Plate 5: Wetlands

Sheet 18 of 22



Legend

- Trail
- Reservoir full pool
- State boundary
- County boundary
- Incorporated area boundary
- Unincorporated area boundary
- Fee boundary

National Wetlands Inventory

Wetland type

- Freshwater emergent wetland
- Freshwater forested/shrub wetland
- Lake
- Riverine

National Wetlands Inventory (NWI) by US Fish and Wildlife Service, is shown clipped to fee boundary.

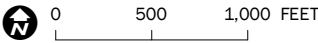
Data: Esri, USGS, USACE, OSIP, PEMA, USFWS

SHENANGO RIVER LAKE

Master Plan

Plate 5: Wetlands

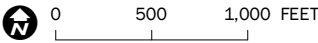
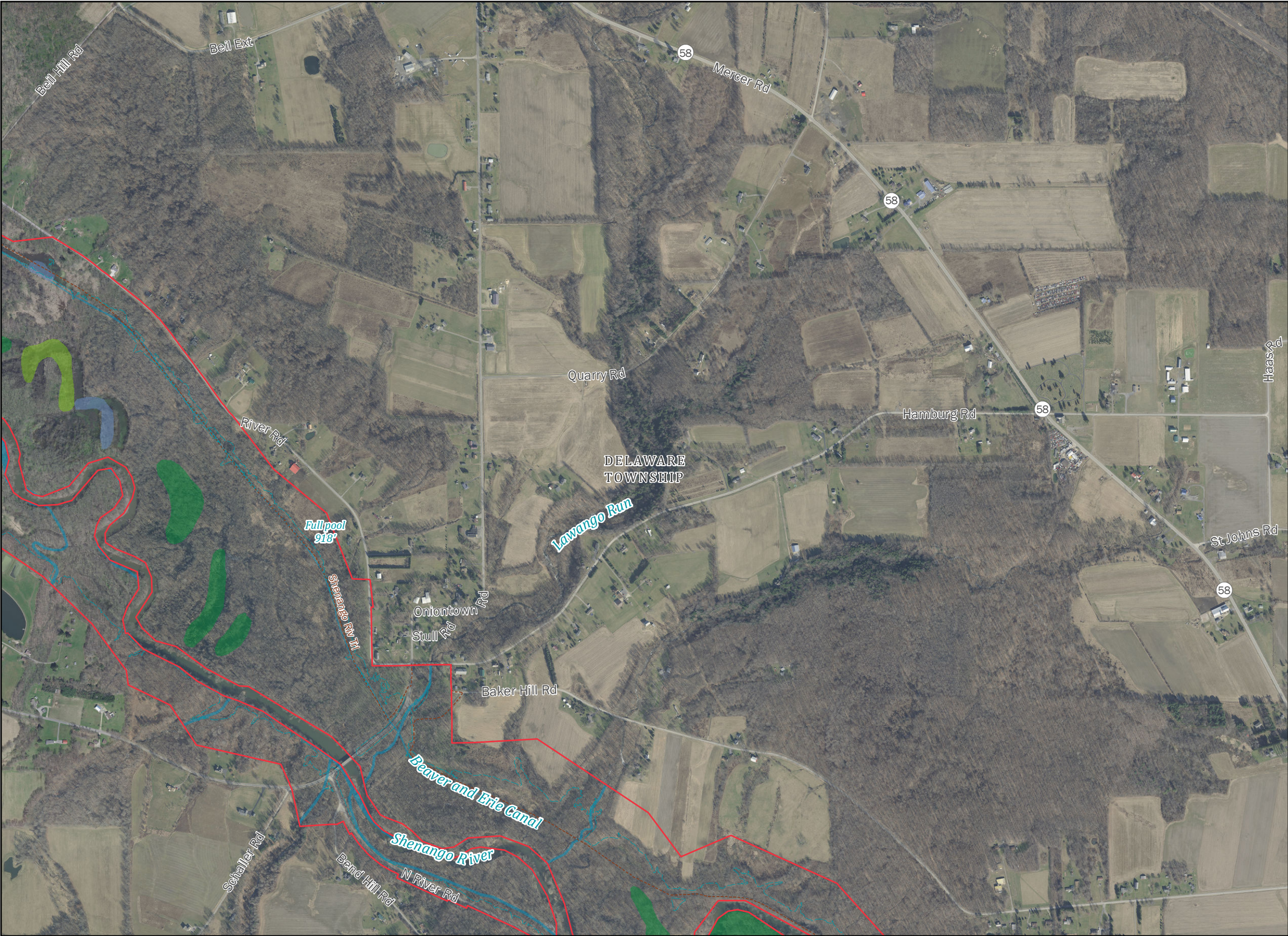
Sheet 19 of 22



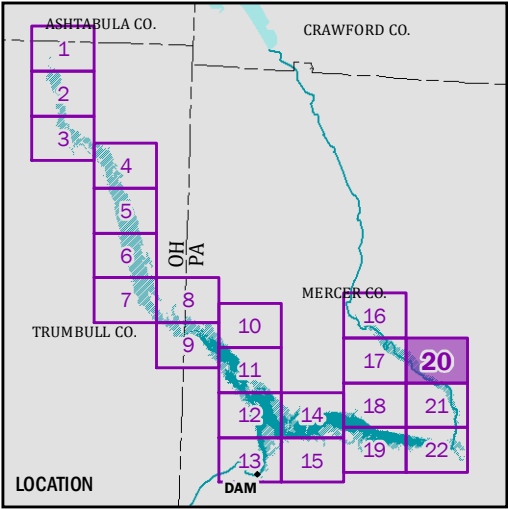
Coordinate System: NAD 1983 2011 StatePlane Pennsylvania North FIPS 3701 Ft US
Projection: Lambert Conformal Conic



Pub. 10 March 2023
Rev. 29 January 2024
USACE LRP Geospatial
erik.w.breedon



Coordinate System: NAD 1983 2011 StatePlane Pennsylvania North FIPS 3701 Ft US
Projection: Lambert Conformal Conic



Legend

- Trail
- Reservoir full pool
- State boundary
- County boundary
- Fee boundary

National Wetlands Inventory

Wetland type

- Freshwater emergent wetland
- Freshwater forested/shrub wetland
- Freshwater pond
- Riverine

National Wetlands Inventory (NWI) by US Fish and Wildlife Service, is shown clipped to fee boundary.

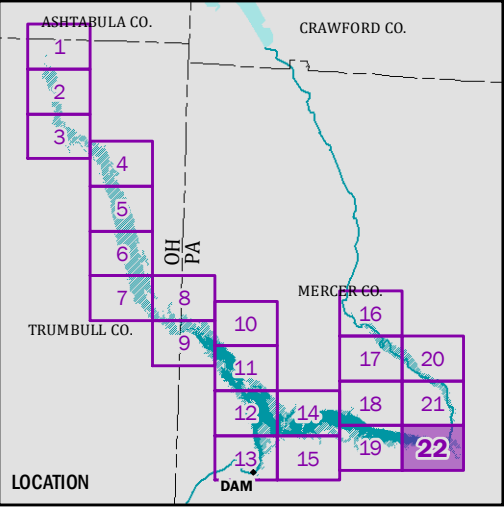
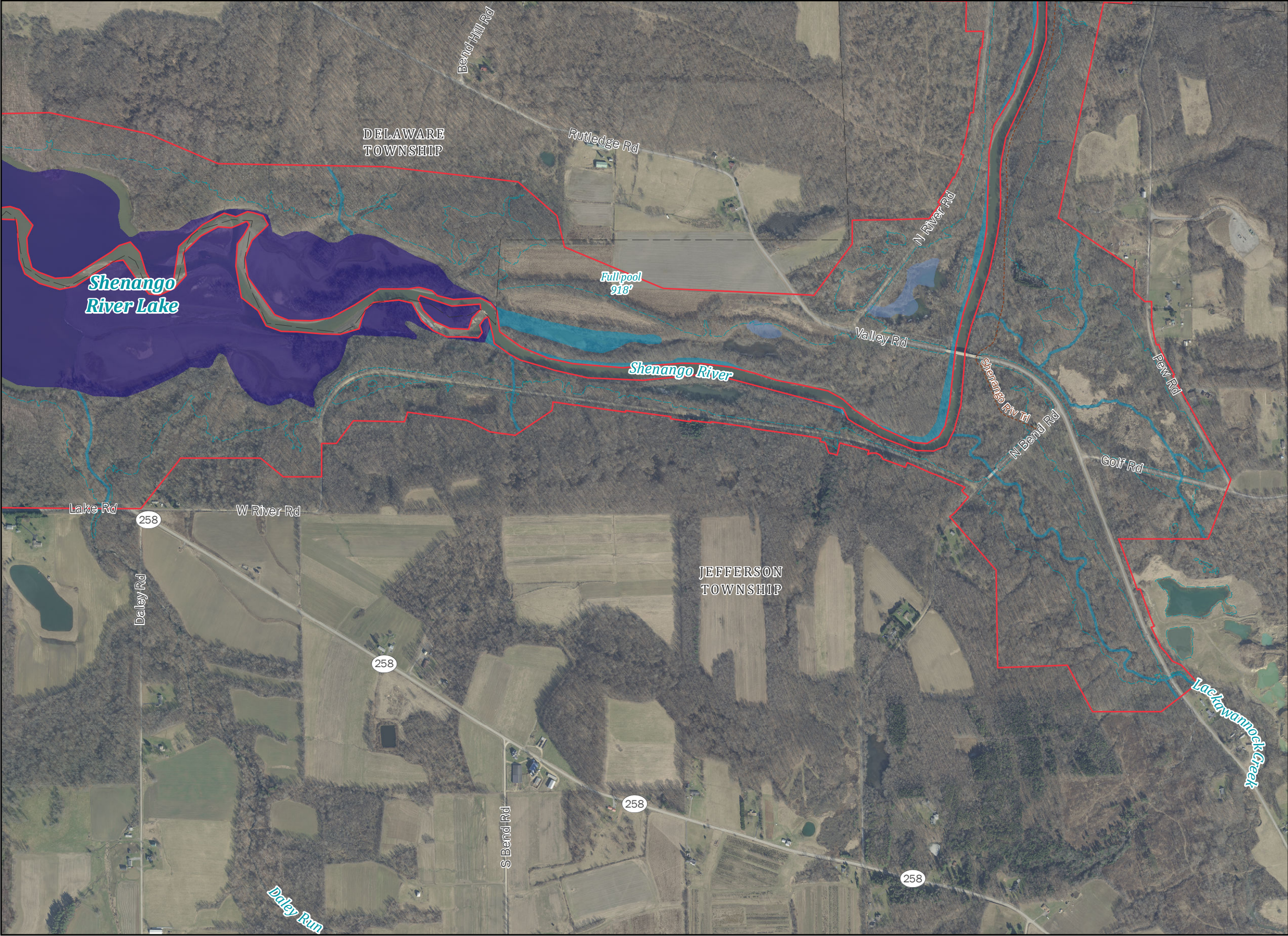
Data: Esri, USGS, USACE, OSIP, PEMA, USFWS

SHENANGO RIVER LAKE

Master Plan

Plate 5: Wetlands

Sheet 20 of 22



Legend

- Trail
- Reservoir full pool
- State boundary
- County boundary
- Unincorporated area boundary
- Fee boundary

National Wetlands Inventory

Wetland type

- Freshwater forested/shrub wetland
- Freshwater pond
- Lake
- Riverine

National Wetlands Inventory (NWI) by US Fish and Wildlife Service, is shown clipped to fee boundary.

Data: Esri, USGS, USACE, OSIP, PEMA, USFWS

SHENANGO RIVER LAKE

Master Plan

Plate 5: Wetlands

Sheet 22 of 22