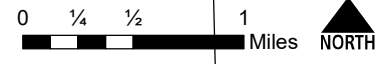
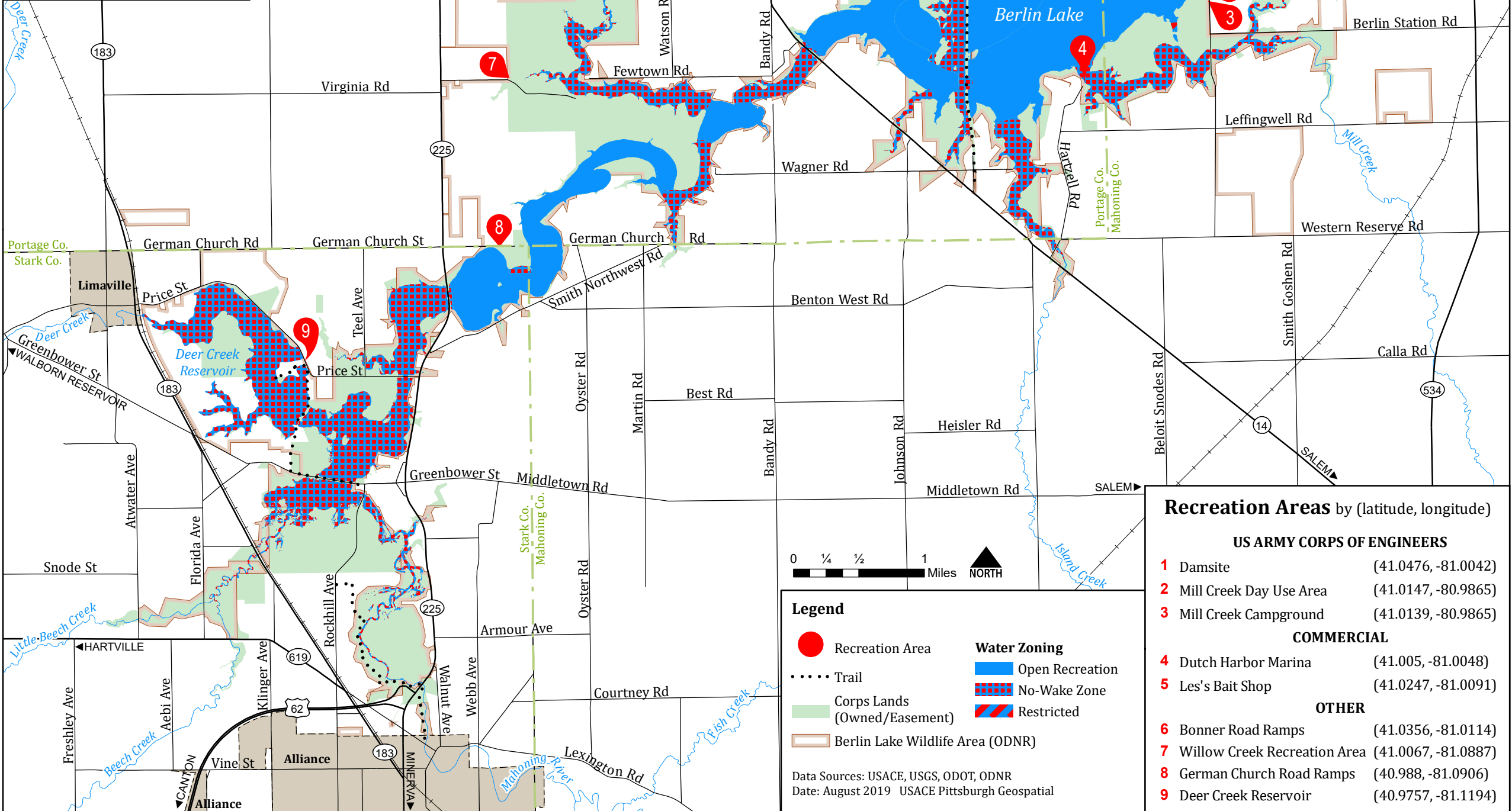
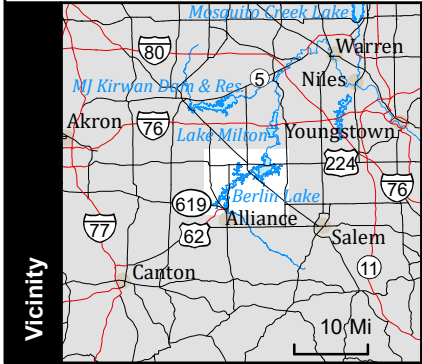




**US Army Corps of Engineers**  
Pittsburgh District

# Berlin Lake

Mahoning, Portage and Stark Counties, Ohio



**Legend**

- Recreation Area
- ..... Trail
- Corps Lands (Owned/Easement)
- ▭ Berlin Lake Wildlife Area (ODNR)

**Water Zoning**

- Open Recreation
- ▨ No-Wake Zone
- ▨ Restricted

Data Sources: USACE, USGS, ODOT, ODNR  
Date: August 2019 USACE Pittsburgh Geospatial

## Recreation Areas by (latitude, longitude)

US ARMY CORPS OF ENGINEERS		
1	Damsite	(41.0476, -81.0042)
2	Mill Creek Day Use Area	(41.0147, -80.9865)
3	Mill Creek Campground	(41.0139, -80.9865)
COMMERCIAL		
4	Dutch Harbor Marina	(41.005, -81.0048)
5	Les's Bait Shop	(41.0247, -81.0091)
OTHER		
6	Bonner Road Ramps	(41.0356, -81.0114)
7	Willow Creek Recreation Area	(41.0067, -81.0887)
8	German Church Road Ramps	(40.988, -81.0906)
9	Deer Creek Reservoir	(40.9757, -81.1194)



US Army Corps  
of Engineers  
Pittsburgh District

# Berlin Lake Recreation Areas

*CAUTION: Hazards may exist due to fluctuating pool levels. Be aware of submerged stumps, logs and rocks, especially near the shoreline and in shallow water. Children should remain under close supervision at all times.*

	AMPHITHEATER	BOAT RENTALS	CAMPGROUND	CAMPGROUND PROGRAMS	DRINKING WATER	ELECTRICAL HOOKUPS	FEE AREA	FISHING ACCESS	GRILLS	HUNTING	INFORMATION	LAUNCHING RAMPS	MARINA	PARKING	PETS (ON LEASH)	PICNIC AREAS	PICNIC SHELTER	PLAYGROUND	RESTROOM	SANITARY DUMPING STATION	SHOWERS	STORES	SWIMMING (DEVELOPED AREAS)	TRAILS	WATER SAFETY PROGRAMS	SEASON:	
<b>CORPS OF ENGINEERS</b>																											
1									•					•	•	•	•		•								YEAR ROUND
2					•			•	•		•			•	•	•	•	•	•								
3	•		•	•	•	•	•	•	•			•		•	•	•		•	•	•	•	•	•	•	•	•	MAY-SEP
<b>COMMERCIAL</b>																											
4								•				•	•	•	•				•			•					VARIABLE
5								•				•	•	•	•							•					
<b>OTHER</b>																											
6								•				•															YEAR ROUND
7								•		♿																	
8								•				•															
9	•							•				•							•						•		

LEGEND: ♿ = ADA ACCESS

**DAM**  
 LOCATION: On the Mahoning River in Portage and Mahoning Counties, Ohio  
 PURPOSE: Flood control, low flow augmentation, pollution abatement, recreation, conservation, fish/wildlife.  
 OPERATING SINCE: 1943  
 LENGTH: 5,750 feet  
 MAX. HEIGHT: 96 feet above stream bed  
 MAX. BASE WIDTH: 73 feet

**RESERVOIR**  
 SUMMER POOL: 1024 ft above sea level  
 LENGTH: 18.6 miles  
 AREA: 3590 acres  
 DEPTH AT DAM: 76 feet (summer pool)  
 SHORELINE: 70 miles  
 No horsepower limit

**KNOW** THE WATERWAYS  
**TAKE** A WATER SAFETY COURSE  
**WEAR** A LIFE JACKET

**FOUR MAJOR CAUSES OF DROWNING**

- Excessive use of alcohol
- Not wearing Personal Floatation Devices (PFD's)
- Insufficient swimming skills
- Hypothermia in cold water

**PFD'S MUST BE WORN AT ALL TIMES BY:**

- children under age 13
- all non-swimmers
- all persons on canoes or kayaks
- all persons on boats less than 16 feet in length

All boaters are reminded that U.S. Coast Guard approved life jackets are required for each person on board, and that the best protection against drowning is to wear your life jacket at all times.

**INFORMATION**

<https://www.lrp.usace.army.mil/Missions/Recreation/Lakes/Berlin-Lake/>  
 Daily lake information: 330-547-5445  
 General info: Resource Manager: 330-547-3781  
<https://www.facebook.com/BerlinLakeUSACE>  
 Campground reservations: 1-877-444-6777; <https://www.recreation.gov/>

**FOR POLICE, FIRE, or AMBULANCE DIAL 911**