



USS DWIGHT D. EISENHOWER 45 YEARS IN REVIEW



MOMENTS THAT MADE IKE

BY MC2 BRIANNA THOMPSON

One of the most recalled incidents from Dwight D. Eisenhower's childhood regards his brother, Earl. When Earl was just three, Ike was whittling with a knife in a toolshed, and decided to take a break. Looking around him for a safe place to put the knife down, he noticed that the window sill was out of his brother's reach, and placed it there.

Ike, however, being very young himself, momentarily lost track of his younger brother, who at one point climbed up on a chair and tried to grasp the knife. The knife slipped from Earl's hand and fell, piercing his eye.

Though his parents felt Ike did not need any further consequences after the mishap, the incident stuck with him for the rest of his life, as Ike has been recorded speaking of his "feeling of regret...heightened by a sense of guilt."

Michael Korda, Ike's biographer, connected this formative event to one of Ike's most famous characteristics—his extreme sense of responsibility. There are several events that shaped Ike into the leader Americans now understand he was, and the decisions he made have had great effect on the country and the military.

As a new upperclassman and corporal at West Point Military Academy, Ike had a brief but meaningful encounter that would have a lasting impact on his leadership style.

The incident began when an underclassman accidentally bumped into him while running to complete an errand. At the time, bullying and harassment from the upperclassman towards the underclassman were seen as character-building and a part of the culture. Ike, duty-bound to "crawl" the plebe, condescendingly asked what the younger soldier had done for a living, mockingly noting: "You look like a barber!"

Embarrassed, the plebe quietly replied that he had, in fact, been a barber before being a soldier.

Soon after, Ike expressed his regret to his roommate. "I'm never going to crawl another Plebe as long as I live," he said. "I've done something that was stupid and unforgivable. I managed to make a man ashamed of the work he did to earn a living."

Over the next three years, Ike faced a lot of social pressure to treat others the way he had treated that plebe, but he always refused, determined to never again humiliate another soldier.

After several days of planning, contemplating, and ultimately greenlighting the invasion of Normandy as the supreme allied commander, Ike decided he wanted to visit as many airborne troops as he could. He knew these soldiers were the ones facing the highest risk of death, and Ike felt it was important he meet as many of these men as he could, look them in the eyes, and reassure them, if possible.

Kay Summersby, who was Ike's driver, social secretary, and confidante, would later recount her memories of these meetings.

"Ike got out and just started walking among the men," wrote Summersby. "When they realized who it was, the word went from group to group like the wind blowing across a meadow, and then everyone went crazy—the roar was unbelievable."

Ike spoke a few words with each man he met, looking them in the eye and wishing them success. But eventually time ran out, and the mission had to begin.

As he watched the aircraft take off, an American correspondent saw tears running down his cheeks. He would later confide in Summersby, saying, "It's very hard really to look a soldier in the eye when you fear that you are sending him to his death."

Ike won the presidency in 1952 by a landslide, scooping up 442 of the 531 electoral votes, but it wasn't long before that Ike was reluctant to enter politics at all.

The unusual fervor for Ike to take up a presidential run is difficult to describe today, but was very real. In 1950, the playwright Irving Berlin debuted what would come to be a smash hit musical—"Call Me Madam." The play was based on the life of Mamie's best friend, Perle Mesta, but the most popular number was called "They Like Ike." The lyrics help prove the passion that had overcome the nation:

**"THE PRESIDENTIAL YEAR WILL SOON BE
DRAWING NEAR;
THE PEOPLE SOON WILL CHOOSE THEIR
FAVORITE SON.
I WONDER WHAT THEY'LL DO IN NINETEEN
FIFTY-TWO?
I WONDER WHO THEY'LL SEND TO
WASHINGTON...
THEY LIKE IKE, AND IKE IS GOOD ON A
MIKE.
THEY LIKE IKE, BUT HE SAYS HE WON'T
TAKE IT!
AH, THAT MAKES IKE,
THE KIND OF FELLER THEY LIKE,
AND WHAT'S MORE, THEY SEEM TO
THINK HE'LL MAKE IT."**

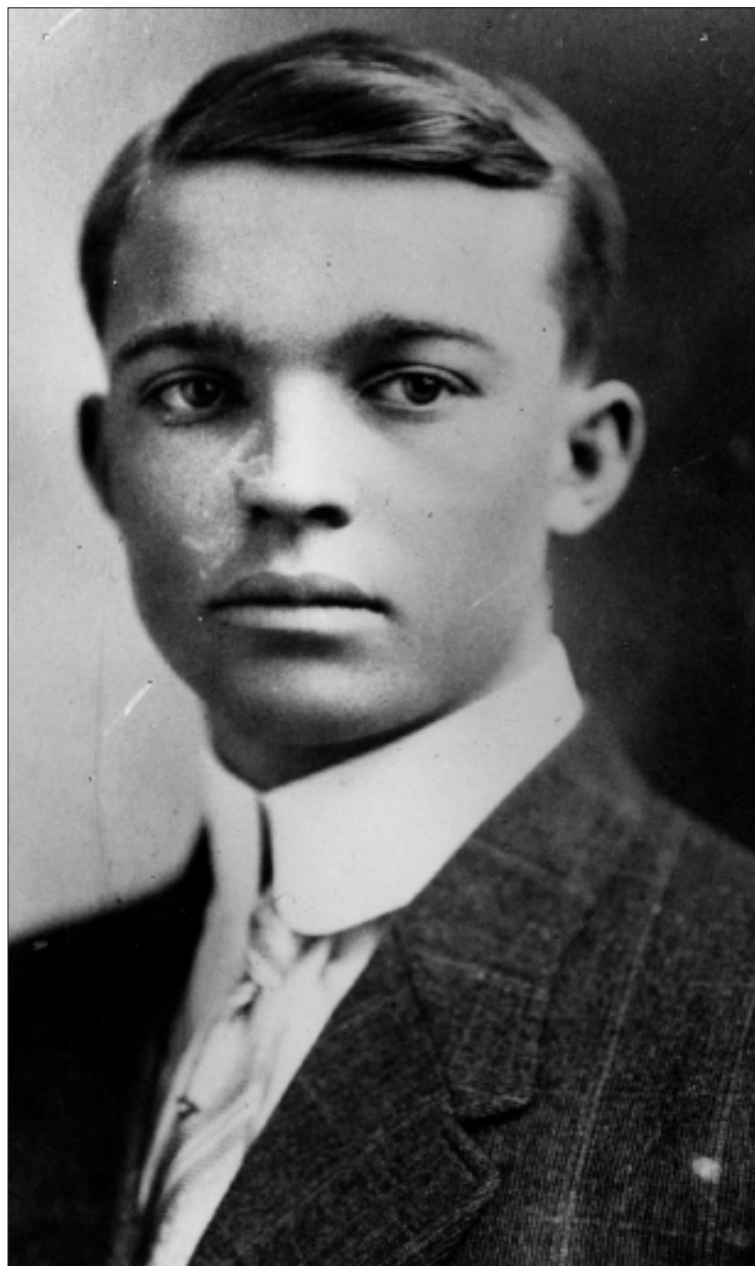
As President, Ike pushed for diplomacy and harmony between nations during the Cold War with his "Atoms for Peace" speech, where he called for world powers to use atomic energy for innovative causes other than war.

He established NASA, the first nuclear powered submarine USS Nautilus (SSN 571), the creation of the Interstate Highway System, and assisted in the progression of civil rights movement.

Even though he is gone from this world his team player ideals, standards, and commitment to duty are upheld by the aircraft carrier named in his honor, USS Dwight D. Eisenhower (CVN 69). On October 18, 1977, over 10,000 spectators witnessed USS Dwight D. Eisenhower's commissioning as the Navy's second nuclear-powered Nimitz class aircraft carrier.

Since then, Ike has conducted 18 deployments in Europe, South America, and the Middle East.

Recently she was the U.S. Navy's first ship to complete a 206-day deployment with more than 5,000 embarked Sailors, who handled it with style and grace. In 2022, we continue to celebrate her accomplishments, as well as those of her namesake—President Dwight D. Eisenhower.

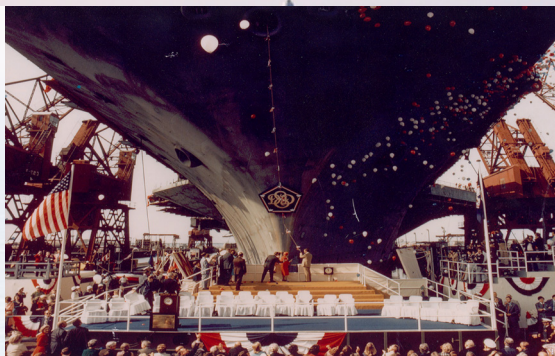


IKE 45 YEARS IN REVIEW

A LOOK INSIDE IKE'S MAJOR OPERATIONS THROUGHOUT THE YEARS.

1977

IKE was commissioned October 18. Dwight D. Eisenhower's wife, Mamie Eisenhower, and other family members were in attendance.



1979

IKE set sail for its first deployment, operating in the Mediterranean Sea. During this deployment, while off the coast of Israel, Israeli Prime Minister Menachem Begin visited IKE.

1990

IKE deployed for the Mediterranean Sea. This deployment was part of a centennial event celebrating the 100th anniversary of the late president's birth.



1994

IKE departed for a six-month deployment which included flying missions in support of Operation Southern Watch and Operation Desert Storm. This deployment marked the first time women had deployed as members of a U.S. Navy combatant ship.

2006

IKE conducted a six-month deployment in the 5th and 6th Fleet areas of responsibility. IKE also conducted exercises with U.S. allied vessels as a part of Combined Task Force (CTF) 150.



2013

IKE deployed to the Middle East, conducting operations in the U.S. 5th and 6th Fleet areas of responsibility. While there, the German Sachsen-class frigate Hamburg integrated into the Eisenhower Strike Group.

**1982**

IKE returned to the Mediterranean Sea for her third deployment. During this deployment, on June 24, IKE participated in the evacuation of the U.S. Embassy staff from Beirut, Lebanon.

**2001**

IKE undergoes its refueling and complex overhaul (RCOH). This shipyard period lasted almost four years.

**2020**

During a global pandemic, IKE deployed to the Mediterranean and the Middle East for 206 days without any port visits. IKE set out for a second deployment in 2021. IKE's crew endured this "double pump" deployment with exceptional resiliency and poise.



Mighty IKE Commissioning



USS Dwight D. Eisenhower (CVN-69)

Built by

Newport News Shipbuilding and Drydock
Company Newport News, Virginia

Keel Laid
August 15, 1970

Launched
October 11, 1975

Sponsor
Mrs. Mamie Doud Eisenhower

Matron of Honor
Mrs. John S.D. Eisenhower

Commissioned
October 18, 1977 Pier 12

SPECIFICATIONS

Authorized by Congress.....1970
Builder.....Newport News Shipbuilding
Propulsion.....Two Nuclear Reactors
Length, overall.....1,092 feet
Width, extreme.....252 feet
Beam at Waterline.....134 feet
Area of Flight Deck...About 4.5 acres
Combat Load Displacement..95,000 tons
Speed.....Over 30 knots
Number of Screws.....Four
Number of Rudders.....Two
Number of Anchors.....Two
Weight of each Anchor...60,000 pounds
Number of Aircraft Elevators.....Four
Size of Elevators...3,880 Square Feet
Number of Catapults.....Four
Accommodations.....6,287 persons

Welcome to this week's column dedicated to informing the reader about all the ship's systems both those under the deck plates and the ones that occasionally drip water onto our heads. This column is meant to provide information and training to help prevent outages to important equipment, generally make our lives better, and IKE more mission effective. Praise the porcelain throne because this week we are scrubbing all the

crust and built-up calcium off our favorite seat. That's right, in the next 356 words you will learn how to really bring your toilet's pearly whites back to the limelight. I know every Sailor was trained on how to properly clean, and if we don't get these toilets clean, mom and dad will be coming down for an inspection. Mom and dad being your chief and DIVO.

The miracle of modern science has shown that the best method to clean Navy toilets is with RY-LIME. You can get yourself some of this magical solution from HAZMAT today for the low price of a HAZMAT request sheet.

The REPO's trained toilet specialists have concluded that the best method of cleaning toilets is to pour two quarts of RY-LIME onto the calcium buildup in the toilet. Then, let it sit for three days without flushing it. After three days simply flush the toilet. If there is any remaining calcium buildup, you can attempt the same process again, or you can GENTLY scrape the calcium buildup with a flat tip screw driver.

If this also fails then it's time to break out the most powerful weapon in our arsenal, our efficient and easy to use supply system, to request a replacement. You will need to know if the toilet is a wall mount or a floor mount. This is determined by locating where the bolts are that secure the toilet in place. **The NIIN for wall mount toilets is: 01-515-8516. The NIIN for floor mount toilets is: 00-540-1711.**

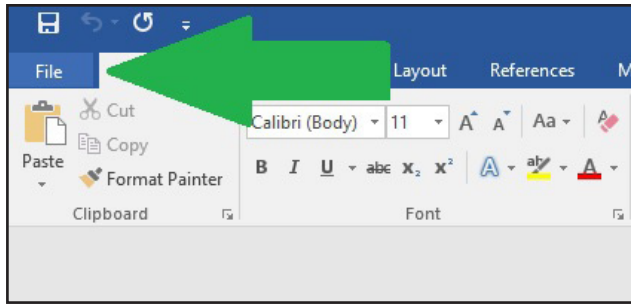
Unfortunately, our supply system hasn't caught up to Lowes or Home Depot yet. We have to order the toilet seats separately, as they don't come with the new toilet. Please disregard the fact that one of these toilet seats probably cost more than what you make in a year. **The NIIN for wall mount toilet seats is: 00-247-1370. The NIIN for floor mount toilets seats is: 00-277-1645.**

FEAR^{THE} REPO



1.

Select "File"

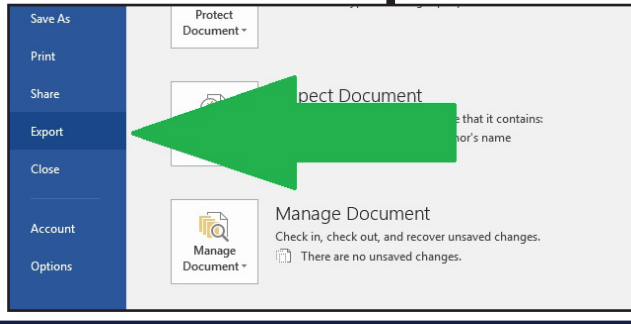


EXPORT WORD DOCUMENTS AS PDFs



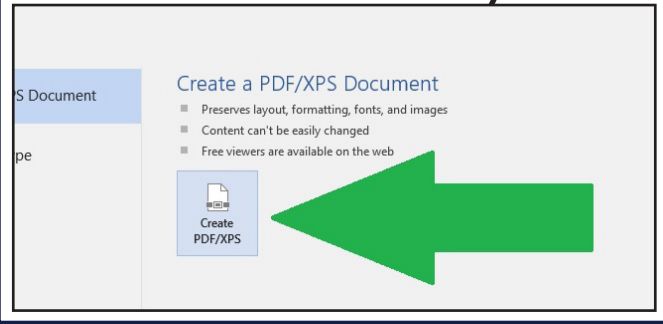
2.

Select "Export"



3.

Select "Create PDF/XPS"



**IKE
MEDIA
DEPARTMENT**

Do you have a story or an IKE hack
that you would like to see featured in
Mighty IKE's Five Star?
Send us an e-mail [@FiveStar](#) Give us a call
J-6344



MEDICAL DEPARTMENT HEALTH RISK ASSESSMENT



How can we best help
YOU?
Scan the QR code to
complete your Health
Risk Assessment so that
we can find out!

IKE MEDIA

COMMANDING OFFICER
Capt. Paul Campagna

EXECUTIVE OFFICER
Capt. Colin Price

COMMAND MASTER CHIEF
CMDM(SW/AW) Quentin Newsom

PUBLIC AFFAIRS OFFICER
Lt. Cmdr. Shawn Eklund

DIVISION OFFICER
Ensign Joshua Keim

DEPARTMENT DLCP
MCCS(SW/AW) Jennifer Blake

DEPARTMENT LCPO
MCC(SW) Brandon Sheldner

DEPARTMENT LPO
MCI(SW/AW) Somers Steelman

**Follow IKE
on social
media**

