

VOLUME 66 NUMBER 20

MAY 16, 2026

# THE KWAJALEIN HOURGLASS





PHOTOS BY ANTHONY CARNELLI

## HOST NATION RELATIONS EBEYE STUDENTS CREATIVELY TAKE THE WORLD INTO THEIR CLASSROOMS, WELCOME KWAJALEIN JUDGES

### HOURLASS REPORT

By Anthony Carnelli,  
Hourglass Story Writer

Before the dances began, the work was already visible.

It was in the bright handmade costumes worn by students as they circled the courtyard at Ebeye Seventh-Day Adventist School. It was in the classroom decorations, the prepared food and the small details parents and teachers had shaped by hand. For the Kiribati presentation, even old cassette tapes had been transformed into grass-style skirts — a small act of creativity that said as much about the community behind the event as it did about the country being represented.

For one day, International Day was not just a lesson about other places. It was a celebration built by students,

parents and teachers with patience, imagination and the resources they had close to home.

The school's K-4 classrooms became a small tour of places near and far — Tahiti, American Samoa, Hawaii, the Philippines, Kiribati and Belgium. Students paraded before a panel of judges from Kwajalein, performed cultural dances and stood proudly inside classrooms transformed to reflect the countries, islands and territories they had spent weeks studying.

The annual event on Ebeye gives students in kindergarten through fourth grade a chance to explore the wider world through food, traditional dress, dance, customs and short presentations. It also carries a cross-lagoon connection, as eight judges traveled from Kwajalein to

visit the classrooms, sample the food, observe the dances and take part in a celebration shaped by Ebeye students, families and teachers.

The preparation showed in nearly every corner of the

school. Each classroom was decorated with detail to reflect a different culture, with handmade displays, props and visual details that helped bring each location to life. Parents and teachers worked



PHOTO BY KRISTIN MALLORY

outside the normal rhythm of the school day to create elaborate costumes in bold colors and careful detail, turning fabric, paper and found materials into outfits students could wear with pride.

That effort gave the event much of its feeling. The costumes were not ordered from a catalog. The displays in the classroom were not built from expensive supplies. Much of what judges saw was

the result of people looking at what they had available and finding a way to make it work.

Students highlighted Hawaii through traditional Hawaiian culture, introduced American Samoa as a U.S. territory in the South Pacific, and showcased the Philippines, Kiribati, Tahiti and Belgium through food, attire, classroom displays and performances.

Most of the places represented were tied to the Pa-

cific, making the country Belgium stand out even more because it's so far from home.

Judges moved from classroom to classroom, listening as students delivered short speeches and explained what they had learned. Each stop ended with a taste of food prepared for that country or island. Parents, teachers and students worked with the resources available on Ebeye to make each table feel connected to its assigned cul-

ture, preparing dishes that included fresh stew, fish and pastries.

In the courtyard, the event became louder, warmer and more personal. Students lined up in their costumes and performed dances representing each class's assigned place. The dances were elaborate, and so were the outfits — the kind of detail that made clear how many hands had been involved before the judges ever arrived.



danced, some parents could not contain their excitement. They stepped forward, smiling, and tucked money into their children's outfits — a familiar Marshallese expression of pride, affection and celebration during events like this. It was a small gesture, but one that changed the feeling of the moment. The performances were not just being watched. They were being answered.

“It was wonderful to see the children really embrace their own countries and islands,” said Keri Jones, one of the judges from Kwajalein. “There were so many smiles — along with a mix of excitement and nervous energy — as they prepared for their presentations and dances.”

That mix of excitement and nervous energy ran through the day. Some students spoke carefully from their written notes. Others smiled shyly from inside handmade costumes. Many seemed eager simply to show what their class had created.

Their joy gave the event much of its force — not polished in the way of a professional performance, but sincere in the way children can be when they are innocently proud of what they have learned.

Belgium stood out to several judges because of how far it sat from anything else on the program.

“I liked Belgium,” said Kate Cannon, another judge from Kwajalein. “It’s mainland Europe, so different and far away from this island nation.”

Jones also noted the contrast, saying Belgium stood apart from the Pacific countries represented throughout the day.

Kiribati brought its own surprise. During the presentations, Jones said she was fascinated to learn that the island nation is the only country in the world that spans all four hemispheres — proof that even a grade-school presentation could leave the adults learning something



PHOTO BY KRISTIN MALLORY

new.

When the judges tallied their votes, Belgium, Kiribati and Tahiti were selected as the majority favorites. For Cannon, however, the value of the day was not only in choosing a winner.

“I appreciate the opportunity to engage with our host community,” she said. “The Marshallese are very welcom-

ing. It was fun to experience the children’s excitement surrounding the day.”

That excitement was what stayed with the event. So did the work behind it: the handmade costumes, the decorated classrooms, the prepared food, the carefully choreographed dances and the parents and teachers who turned limited materials into some-

thing colorful, detailed and memorable.

On Ebeye, it began with children standing proudly in costumes made by the people who love them, and judges from Kwajalein watching as students brought the wider-world to life with the resources, creativity and joy of their own island. ▾







**Front Cover: International Day by Kristin Mallory**

**Back Cover: Points Past the Horizon by Isaiah Matthews**

The Kwajalein Hourglass is named for the insignia of the U.S. Army's 7th Infantry Division, which liberated the island from the forces of Imperial Japan on Feb. 4, 1944. The Kwajalein Hourglass is an authorized publication for military personnel, federal employees, contractor workers and their families assigned to U.S. Army Garrison-Kwajalein Atoll.

Contents of the Hourglass are not necessarily official views of, or endorsed by, the U.S. Government, Department of War, Department of the Army or USAG-KA. It is published Saturdays in accordance with Army Regulation 360-1.  
 Phone: Defense Switching Network: 315-480-5169  
 Local phone: 480-5169

Garrison Commander.....Col. Matthew Cannon  
 Garrison CSM.....Command Sgt. Maj. Stanley Jackson  
 Public Affairs Officer.....Sherman Hogue  
 Editor.....Muhammad Rasheed  
 Communications Specialist, Sr.....Isaiah Matthews  
 Communications Specialist.....Stephen Elson  
 Communications Specialist.....Anthony Carnelli  
 Story Writer.....Annette Monk  
 Story Writer.....Christy Wagon  
 Media Capture.....Raneesh Thiruvareth



PHOTOS BY ANTHONY CARNELLI

## COMMUNITY

# KJSHS CLASS OF 2026 REFLECTS, CELEBRATES AT BACCALAUREATE CEREMONY

### HOURLASS REPORT

By Anthony Carnelli,  
Hourglass Story Writer

A reflective sendoff blended speeches, song and shared memories for Kwajalein’s Junior Senior High School (KJSHS) graduating class of 2026.

On the evening of May 10, the Island Memorial Chapel filled to near-capacity as the seniors walked the center aisle. One by one, they made their way to the stage as their photos cycled across the projection screen and their own voices, prerecorded, drifted through the chapel — each graduate offering a small reflection on the impact that living on Kwajalein has had on their young lives.

The moment captured the purpose of the baccalaureate itself: to give graduates space to look back before stepping

forward. A baccalaureate ceremony is a longtime tradition that offers graduating students a meaningful pause before the formal presentation of diplomas. More intimate than ceremonial, the evening centered on prayer, music and remarks that honored not only the students’ academic achievements, but also their personal growth and the futures waiting beyond graduation.

Father Jim Ludwikoski of the Blessed Sacrament Parish-Kwajalein organized and facilitated the ceremony, handing the microphone in turn to a lineup of speakers who have watched this class grow up on the island. KJSHS Principal Dr. Matthew Gerber, who also leads one of the local youth groups, addressed the seniors first. School counselor Carmen Parra followed, reflecting on the privilege of walking alongside students

and their families during her time on Kwajalein. She described her work as a calling — one she approaches with encouragement, compassion and grace.

Midway through the ceremony, students were invited

to reach beneath their seats. Each found a small bag containing the Chapel’s Coin and a travel blanket — keepsakes meant to follow them wherever the next chapter takes them.

New Kwajalein Protestant



Chaplain Scott Bullock offered closing remarks, while the speaking part of the program concluded with Brian Africano, optics group lead for RGNext and the Reagan Test Range, where he has worked since December 2019.

Africano also brought a deeper history of service to the moment, having spent at least 30 years teaching confirmation classes and leading youth groups — experience that gave his message the weight of someone who has spent decades walking alongside young people as they prepare for what comes next.

The seniors also performed a Marshallese dance to “*Angel rej al Ekwojarjar*,” a religious song of praise that translates to “All the Angels Are Singing Holy.” The performance brought motion, music and a surge of energy to the chapel, drawing the loudest response of the night.

Then, as each graduate was called from the stage, the



voice of a parent or grandparent played overhead — a few words of pride, a few words of encouragement, sent across whatever distance separated family from the moment.

Afterward, the chapel remained full of small moments — hugs, photos, congratulations and quiet conversations that stretched the evening beyond the formal program. On this evening though, the point was simply to pause, reflect and encourage. ▾





PHOTOS BY ANNETTE MONK

## COMMUNITY

# MOTHER'S DAY BRUNCH BRINGS COMMUNITY TOGETHER ON KWAJALEIN

### HOURLASS REPORT

By Annette Monk, Hourglass Story Writer

Families across Kwajalein gathered Sunday, May 10, for an elegant Mother's Day Brunch hosted by MWR, creating a memorable celebration honoring mothers and the important role families play within the island community.

Guests enjoyed an upscale dining experience featuring a thoughtfully curated menu, live entertainment, and a warm atmosphere designed to make the occasion feel both intimate and unforgettable. The event featured musical performances by singer Annette Monk and 10-year-old guitarist Cameron Smith, whose music added a heartfelt and relaxing touch to the celebration.

The brunch menu reflected a blend of comfort foods and elevated dining selections that offered guests something unique from the tradition-

al island dining experience. Guests enjoyed favorites including blackened shrimp and grits, chicken Coq au Vin, grilled teriyaki steak, shakshuska, vegetarian pesto pasta, assorted pancakes, French toast, frittata, strawberry spring salad, fresh fruit, pastries, coffee, and punch.

According to Jourdan Williams, Food Services Manager, the menu was intentionally designed to provide the community with a more refined culinary experience.

"The menu was inspired by a sense of elevated elegance," Williams said. "We wanted to offer something unique—something you don't often find on Kwaj."

The brunch received overwhelmingly positive feedback from attendees, many of whom expressed interest in seeing similar themed events hosted more often.

"The community absolutely loved the brunch, and many people asked if we could host it more often," Williams



shared. “Events like this matter because they show how we can come together and make Kwaj feel like home.”

For Michael Michael and his wife Naomi Michael, the event provided a meaningful cultural experience and an opportunity to enjoy something different together as a family.

“Being Marshallese, it was a once-in-a-lifetime experience for both of us, as we truly enjoyed immersing ourselves in a culture different from our own,” they shared.

Brunch attendee Jacklyn Ann Rothenberger also reflected on the meaningful experience the event created for families.

“There was so much to appreciate, from the thoughtful food selection to the talented musical performers,” Rothenberger said. “The whole morning was a testament to the wonderful work of MWR, both through their attention to detail and also how they create magic out of limited resources.”

Rothenberger shared that one of the things she treasures most about life on Kwajalein is the extra quality time families are able to spend together.

“One of the things I love most about Kwaj is how much more quality time I have with my family,” she said. “Time

that would have been spent commuting or in mindless activity is now spent making memories with my family. We have extra hours in our day to connect over things like games or fishing.”

As a parent, Rothenberger said she has learned the importance of perspective and appreciating the fleeting moments of motherhood.

“The trick that helps me most as a parent is zooming out,” she explained. “Many times I am annoyed or agitated in some way by parenting. In those moments I remember in a few short years he will be out of the house and I will be missing these days. It allows me to take a breath, put things in perspective, and respond in a way that aligns with my parenting values.”

MWR Supervisor and Brunch Coordinator Oana Neagu explained that Mother’s Day brunches have long been a tradition across military installations as a way to celebrate military families and honor mothers in a special setting. This year, organizers wanted to create a fresh experience for the Kwajalein community by shifting away from the traditional bright spring brunch atmosphere toward a more intimate and elegant ambiance.

“Since Kwajalein has a limited number of venues, we aimed this year to provide a

different setting and ambiance — an alternative, distinct experience than last year’s Country Club event,” Neagu said. “The 2026 Mother’s Day Brunch shifted away from classic bright, pastel spring brunches toward a more intimate, moody ambiance with low lighting, live music, and an elegant, restaurant-quality menu.”

Community feedback highlighted appreciation for the menu diversity, the elegant atmosphere, and the live music throughout the event. While many guests enjoyed the unique indoor setting, some also shared fond memories of the beachside atmosphere offered by previous venues.

Neagu emphasized the importance of community-centered events on Kwajalein,

where entertainment and dining options are naturally limited due to the island’s remote location.

“Events like a Mother’s Day Brunch are vital for building community and supporting families on Kwajalein Atoll,” Neagu said. “Since off-island entertainment is not easily accessible or affordable, the community is showing a keen interest in accessibility to anything local, especially when it comes to events and alternative dining experiences.”

With the success of this year’s celebration, themed brunches may become a more frequent opportunity for the community to gather, connect, and create lasting memories together. ▾



PHOTO BY OANA NEAGU



 COURTESY PHOTO

## COMMUNITY

# THE QUIET COMPROMISE: WHY SHARING PASSWORDS IS NEVER A SMALL THING

### HOURLASS REPORT

By **Isaiah Matthews**,  
Hourglass Story Writer

On Kwajalein, where coworkers may also be neighbors, teammates, dive buddies or dinner companions, helping someone out can feel natural. A deadline is approaching. A coworker is on leave. A new employee is waiting for access. Someone needs one file, one form or one system entry.

In those moments, sharing a password may seem like a quick fix.

Cybersecurity professionals say it is anything but.

“When a password is shared, the binding between a human being and a digital identity is severed,” said Antonio Brown, a system administrator said. “From a governance perspective, this collapses three pillars simultaneously: accountability, non-repudiation and the principle of least privilege.”

In plain terms, a system account is supposed to answer

three basic questions: who did something, whether that person can deny doing it, and whether that person had only the access required for their role. When a password is shared, those answers become unreliable.

The system may still look normal. Users may still log in. Security dashboards may still show green. Audit logs may still fill with activity.

But the meaning of those logs has changed.

“A username on an audit record no longer denotes a person,” Brown explained. “It denotes a population of unknown size.”

That unknown population may include people whose access was never approved, whose need-to-know was never reviewed, or whose presence is invisible to the security team. In regulated environments, that can become more than a local mistake. For organizations operating under Department of Defense Risk Management Framework controls, Federal Information Security Mod-

ernization Act (FISMA) requirements or Cybersecurity Maturity Model Certification standards, shared credentials can create compliance problems with serious consequences.

Behind the scenes, every login creates a trail. A system may issue a ticket, create a session token, generate a temporary credential or log activity in a security monitoring platform. Each of those records inherits the name of the account holder, not necessarily the person sitting at the keyboard.

That distinction matters.

Once created, those authentication artifacts can move through an environment in ways most users never see. A session may be cached in a browser, recorded by a monitoring tool, referenced by another service or preserved in a backup. Security systems that rely on behavior analytics may begin building a false profile by combining the habits of multiple people under one account.

“When that phantom lat-

er does something genuinely anomalous, the detection engine’s confidence is degraded by the noise of the original sharing arrangement,” he noted.

The problem does not end when the favor is finished. A password, once disclosed, is hard to truly unshare. It may be written down, stored in a browser, saved in a message, reused somewhere else or exposed through a later compromise. Even if the original intent was harmless, the credential has left the control of the person responsible for it.

Many password-sharing situations begin with friction, not malice.

A coworker is absent and a task cannot wait. A new employee has not yet received an account. A legacy system uses a functional account that has been passed down through habit. A support technician asks for a password to troubleshoot an issue. Personal habits from streaming services, shopping accounts or shared family logins carry into the workplace.

In a close-knit community, the pressure can be social as well as operational.

“On a small, tight-knit installation like Kwajalein, where colleagues are also neighbors, dive buddies and dinner companions, the social cost of declining a credential request can feel disproportionate to the perceived security benefit,” Brown said.

That is why mature security programs do more than tell users not to share passwords. They also build alternatives. Delegated permissions, password vaulting, just-in-time access, role-based access controls and break-glass procedures can help keep work moving without requiring someone to hand over a credential.

The phrase “just this one time” creates another problem. Password sharing is not truly a one-time act unless the password is changed immediately and any relat-

ed access is reviewed. Until then, the credential remains shared.

There is also a cultural cost. One exception can quietly become the new standard.

“Each unchallenged exception quietly redefines what a policy means in practice,” Brown stated. “The first share is justified by emergency. The second is justified by precedent. The third is justified by the fact that nothing bad happened the first two times.”

That pattern, sometimes called normalization of deviance, can turn small shortcuts into accepted practice. In cybersecurity, the danger may not appear immediately. But when an incident occurs, shared credentials can make it difficult or impossible to determine who accessed a file, sent a message, changed a setting or initiated a transaction.

That uncertainty can slow incident response and weaken accountability.

The risk also extends beyond one account. Attackers often use one compromised credential as a foothold to move through a network. An email password, for example, can provide access to password resets, contact lists, attachments and internal conversations. From there, an attacker may attempt phishing, search for sensitive information or pivot to other systems.

In a mission-critical environment, that blast radius can grow quickly. A shared credential may cross boundaries between systems or networks that were designed to remain separate. It may also compromise the integrity of audit data required for inspections, accreditation packages and after-action reviews.

The larger concern is that password sharing weakens defense in depth. Every security layer depends on knowing who is using the system.

When one credential represents multiple people, the identity model underneath those defenses is no longer trustworthy.

“The remedy is not exhortation; it is engineering,” Brown said. “Password managers, single sign-on, just-in-time privileged access, role-based delegation and well-designed break-glass procedures eliminate most of the legitimate reasons people share credentials in the first place.”

For individual users, the rule is simple: do not share passwords. For organizations, the goal is broader: make the secure path the easiest path.

When users have proper access, clear procedures and workable alternatives, the question changes. It is no longer whether sharing a password is worth the risk.

It becomes why anyone would need to ask in the first place. ❏





# THE **minute** HAND

A USAGKA Community Information Update

**Care** - We all know that life on Kwajalein Atoll can be beautiful and challenging at the same time. It is very important that you take the time for **SELF-CARE**: Mentally, Spiritually, and Physically. And throughout your day take a moment to check on each other: **family, friends, and co-workers** alike.

**Memorial Day Ceremony** - USAG-KA will be holding a Memorial Day Ceremony on May 25<sup>th</sup> at the flag poles near the chapel. Ceremony will begin at 9am.

**Memorial Day Observance** - Our Memorial Day will continue at Emon beach on May 25<sup>th</sup> at 4:30.

**Weather Radar Down** - The parts to repair the weather station radar have been ordered. Repairs will be made as soon as the parts arrive on island.

**Hunt Bros Pizza** - With the loss of their pizza oven, Hunt Bros pizza will be closed until a replacement is delivered.

**US Embassy Visit** - The U.S. Embassy to the RMI will be on here to provide Notary services on May 19 from 3-5pm in the library. Email [consmajuro@state.gov](mailto:consmajuro@state.gov) for appts or questions. All payments via pay.gov



# THE **minute** HAND

A USAGKA Community Information Update

**Microwaves at AAFES** - The store currently has an abundance of microwaves on hand.

**New MWR Carts** - With the arrival of additional new carts to the MWR Cart shop, this is a friendly reminder to take care of what we have, just because they are rentals doesn't mean they can be abused.

**AAFES Jobs** - AAFES has multiple job opportunities available here on Kwaj. See more at [www.applymyexchange.com](http://www.applymyexchange.com)

**Zamperini South** - Zamperini South is open for business starting 15 May 2026. The DFAC will serve a limited menu consisting of a hot breakfast, sandwich and snack lunch, and a hot dinner while we ramp up operations.

Hours of operations are as follows:

<b>Breakfast:</b>	<b>Lunch:</b>	<b>Dinner:</b>
Tues-Sat- 0530-0800	Tues-Mon- 1100-1300	Tues-Mon- 1630-1900
Sun-Mon- 0730-0900		

**Approved Drone Activities** - There will be approved drone activity in the B-1116 area from May 10-18<sup>th</sup>

**Deep Freezers** - AAFES is selling Deep Freezers to RMI C and D Badge Holders for the entire month of May!!!!



# THE **minute** H A N D

A USAGKA Community Information Update

**Post Office Closure** – The Post Office will be closed on May 26<sup>th</sup> in observance of the Memorial Day Holiday..

**Newcomers Orientation** - The next Orientation will be on May 29 and 30<sup>th</sup>. The orientation will go over all things Kwaj beginning at 9am in the REB. Everyone is welcome.

**Outrigger Remodel** - Work on the outrigger kitchen has started on the outside portion, the kitchen will be open until May 26<sup>th</sup> when the inside work will begin and will continue for an estimated 45 days.

**My Army Post is ACTIVE** - For all things Kwajalein Atoll, go to your app store on your mobile device and download the *My Army Post* app. EVENTS-LOCATIONS-HOURS-PHONE for Kwaj and Roi-Namur

**Facility Managers** - Want to help in your area? Facility Managers aid the work orders and maintenance efforts. Email Naomi Halsey at: [Naomi.Halsey@gov2x.com](mailto:Naomi.Halsey@gov2x.com)

**Containers** - Do you have a container on the Atoll? Matson, Company Storage, or even boat yard. DPW needs to know. Email: [usarmy.bucholz.smdc.list.shipping-receiving@army.mil](mailto:usarmy.bucholz.smdc.list.shipping-receiving@army.mil)



# THE **minute** HAND

A USAGKA Community Information Update

**ARMA** - Need something fixed in your housing, BQ or Office?  
Go to ARMA : <https://maintenance.army.mil/arma> or call 480-3550.

**Airfield STOPS!!!!** - Come to a full stop look **BOTH** ways on the runway and in the sky to check for planes before proceeding. You will be ticketed if found in violation.

**ICE** - To voice your concerns or to say GOOD JOB visit the Interactive Customer Evaluation page for Kwajalein at:  
[https://ice.disa.mil/index.cfm?fa=site&site\\_id=984](https://ice.disa.mil/index.cfm?fa=site&site_id=984)

**Fire Safety** - Don't become complacent while cooking. It only takes seconds for things to get out of control and safety to be jeopardized.

**Rain** - May has received 7.5 inches of rain so far, which is 5 inches above normal for the month. We are just over 35" for this year. RTS Weather: <https://www.rts-wx.com/forecasts/kwajalein-atoll-forecast/>

**The Roller on Youtube** - From the home page click on the Crest with the "LIVE" indicator on it. [U.S. Army Garrison Kwajalein Atoll Live Stream](#)

**Kwaj Radio**- Kwajalein Radio: 99.9<sup>FM</sup>/102.1<sup>FM</sup>/104.1<sup>FM</sup>, Roi-Namur 97.9<sup>FM</sup> – Roi Rat Radio



# THE **minute** HAND

A USAGKA Community Information Update

**Access to USAG-KA** - Do you have someone coming to Kwajalein? Check out the regulation that controls entry to USAG-KA: [190-10 Regulation HERE](#)

- **Day Pass Form:** [DAY PASS HERE](#)  
– Fill out and send to the DSC Mailbox at: [usarmy.bucholz.id-pacific.mbx.usag-ka-dsc@army.mil](mailto:usarmy.bucholz.id-pacific.mbx.usag-ka-dsc@army.mil)
- **Overnight Guests Form 480:** [480 OVERNIGHT GUEST FORM HERE](#)  
– Fill out and then email to E/E: [usarmy.bucholz.id-pacific.mbx.usag-ka-e-e@army.mil](mailto:usarmy.bucholz.id-pacific.mbx.usag-ka-e-e@army.mil).

## Marshallese

KARIWOJLOK – GRADUATION  
(KAHREE-WOCH-LOCK)

Congratulations to the KSS Class of 2026 on your day of  
KARIWOJLOK!

---

**Events** - Events can be found on Kwajalein Community Events FB

- **Yolah Band** - May 16<sup>th</sup> 8pm Coral Sands
- **Last Day of School** - May 23!!!!!!!!!!!!!!!!!!!!
- **Memorial Day Ceremony** – May 25<sup>th</sup> 9am Flag Poles
- **Memorial Day Observance** – May 25<sup>th</sup> 4:30pm Emon

Have an upcoming event? Email [HERE](#) to get the word out.



PHOTOS BY CHRISTY WAGNON

## COMMUNITY

# BLOOM & BRUSH CREATES LASTING MOTHER'S DAY MEMORIES AT THE YOUTH CENTER

### HOURLASS REPORT

By Christy Wagon,  
Hourglass Staff Writer

Mother's Day is often celebrated with flowers, cards, and breakfast in bed, but at the CYS Youth Center this year, families celebrated by creating even more meaningful memories together.

The Youth Center's Bloom & Brush Mother's Day event invited youth and their mothers, grandmothers, and special guests to spend the evening painting flower and plant prints inspired by the natural beauty of Kwajalein. The event combined art, creativity, laughter, and connection into a relaxed evening centered around quality time together.

For Youth Education Specialist Ariel Smock, the inspiration behind the event came from a meaningful experience while living in Alaska.

"Bloom & Brush was inspired by a craft I did while living in Alaska where we made nature prints using local flowers and plants,"

Smock explained. "It felt like I got to keep a little piece of Alaska with me through art."

That memory sparked the idea to create something similar on Kwajalein using flowers and plants found around the island so families could create keepsakes connected to their own island experience. The event carried an even deeper meaning for Smock because her own mother lives on Kwaj and was able to attend the event as well.

"I wanted families to walk in feeling welcomed, relaxed, and excited to spend quality time together creating memories," she said.

As families entered the Youth Center, they were greeted with art supplies, flowers and plants collected from around the island, refreshments, a photo booth, and an atmosphere intentionally designed to feel calm, welcoming, and creative.

Behind the scenes, staff spent significant time preparing the event space, organizing supplies, and even gathering flowers and greenery around Kwaj during the is-

land's recent thunderstorms. Smock's mother also contributed homemade cookies for the event, adding another personal touch to the evening.

One of Smock's favorite moments came as she watched families begin creating their artwork together.

"Even though everyone

used similar flowers and plants from around Kwaj, every piece ended up looking completely different and personal," Smock said. "It was really special seeing families get creative together, experiment with different designs, and take pride in what they made."

For many attendees, the



evening became about far more than painting.

Parent Christi Cardillo shared how meaningful the evening was for her family and appreciated the opportunity to simply enjoy the experience alongside her children.

"It was great to have an opportunity to make new memories," Cardillo said. "My 12-year-old twins were delighted with the 'fancy drinks' and Daniel and Lobo made it more memorable as they took on the role of fancy waiters."

She also praised the art activity itself and the relaxed nature of the evening.

"Ariel led us in a fun and easy-to-do art activity that my sons and I were surprised by how much we liked our final product," she said. "I really appreciated a Mother's Day activity where I didn't have to do anything but show up."

Parent Sarah Morrissey echoed with similar feelings about the experience.

"My son and I enjoyed creating artwork together at the Bloom & Brush event," Morrissey shared. "We have a lovely keepsake to display in our home that will remind us of this special evening together."

According to Smock, that

kind of connection was exactly the goal.

"The event created a really natural space for connection," she explained. "Painting together gave families something to focus on, but it also opened the door for conversation, teamwork, and shared laughter. It wasn't forced, it just happened organically."

Events like Bloom & Brush reflect the Youth Center's larger mission of creating opportunities for creativity, connection, and positive experiences for both youth and families.

"We want the Youth Center to feel like more than just a place kids go after school," Smock said. "We want it to feel like a supportive community space where creativity, connection, and positive memories are encouraged."

On a small island community like Kwajalein, opportunities for shared experiences can carry even greater meaning. Through evenings like Bloom & Brush, the Youth Center continues creating spaces where families can slow down, spend intentional time together, and leave with memories that last long after the paint has dried. ❖



# PUBLIC NOTICE

Controlled Unclassified Information (CUI)/OPSEC



## LIDSSair on Illeginni

- LIDSS will conduct a lagoon test right off the coast of Kwaj.
- Will utilize rafts with drones.
- Radius and altitude are shown.
- Planned dates: 16-18MAY26.
- Times: 0900-1600.

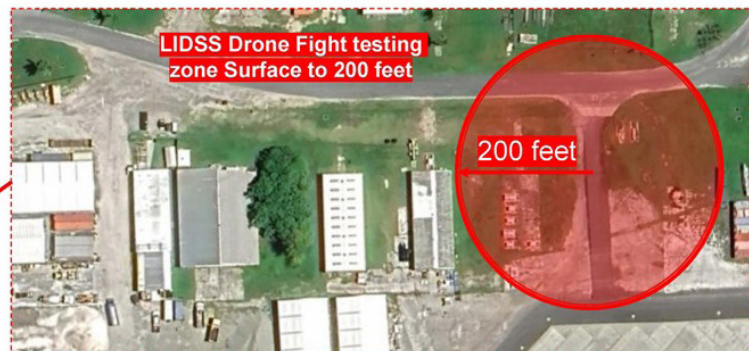
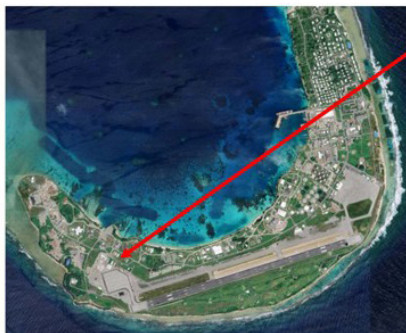


Controlled Unclassified Information (CUI)/OPSEC



## LIDSSair on Kwajalein

- LIDSS will conduct a night flight in vicinity of building 1116
- Radius and altitude are shown.
- Planned dates: 10MAY to 18MAY.
- Time will be announced but would like the ability to operate throughout the day and night.



A RANGE OPERATION IS SCHEDULED FOR 20-21 MAY 2026. CAUTION TIMES ARE 7:00 PM. (1900hrs) THROUGH 2:09 A.M. IN CONJUNCTION WITH THIS OPERATION. 21-22 MAY IS BACKUP DAY WITH SAME CAUTION TIMES.

DURING OPERATIONS, NOTICE TO MARINERS (NOTMAR) AND NOTICE TO AIR MISSION (NOTAM) CAUTION AREAS WILL EXTEND INTO THE OPEN OCEAN NEAR THE KWAJALEIN ATOLL AND SURROUNDING AREAS.

**THE MID-ATOLL CORRIDOR WILL BE CLOSED FROM 1601 HOURS, 16-MAY-2026 THROUGH ACTIVITY COMPLETION. THE CAUTION AREA EXTENDS FROM THE SURFACE TO UNLIMITED ALTITUDE.**

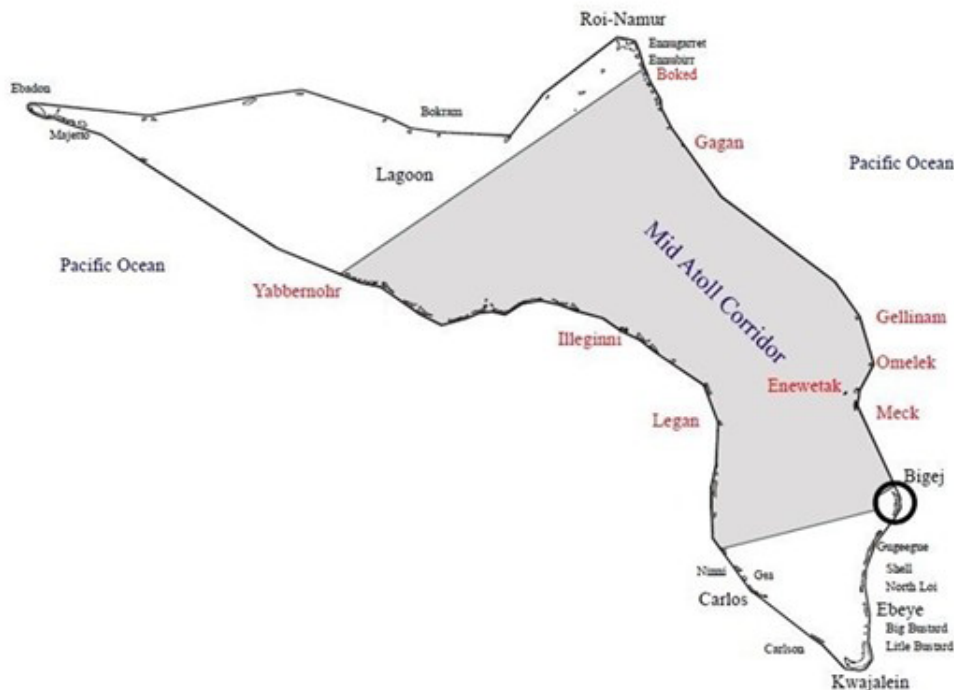
SEE THE ROLLER AND HOURGLASS DATED 09MAY & 16MAY FOR A MAP OF THE CLOSED AREAS. QUESTIONS SHOULD BE DIRECTED TO REAGAN TEST RANGE (RTR) MISSION SAFETY OFFICE AT (808) 580-2230.

JUON IEN KOKEMELMEL ENAJ KOMAN ILO RAN KO 20-21 RAN IN MAY 2026. AWA KO REKAUWOTOTA EJ JEN 7:00PM JOTA LOK NAN 2:09AM IN JIMAROK/JIBON. 21-22 RAN MAY EJ BACKUP NAN KOMELEMEL IN.

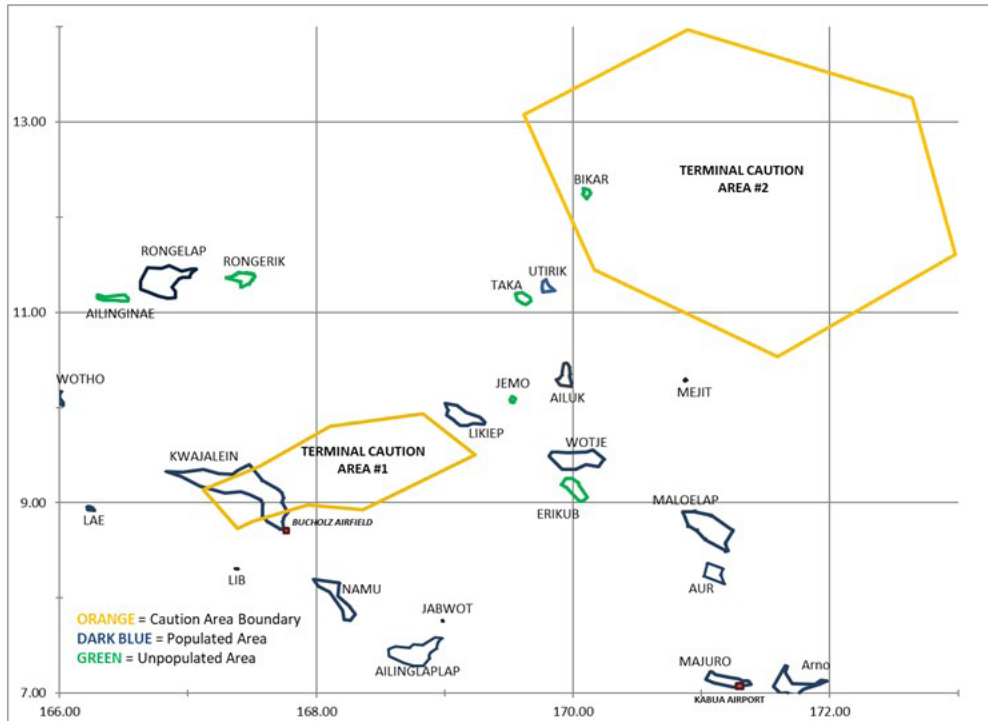
ILO IEN KOMELMEL IN, ILO KILAAN KARONG NAN MARINERS (NOTMAR) IM AIRMEN (NOTAM), JIKIN KAUWOTATA KEIN RENAJ LAPLOK IM KITBUUJ MALO ILO TURIN AILIN IN IM MALO KO TURIN BELAAK IN AILIN IN BAREINWOT.

**ENE KO ILO IOLAP IN AELON IN (MID-ATOLL CORRIDOR) RENAJ KILOK JEN 4:01PM AWA ELKIN RAELEP ILO 16 RAN IN MAY NAN NE EDEDELOK KOKEMELMEL KEIN.**

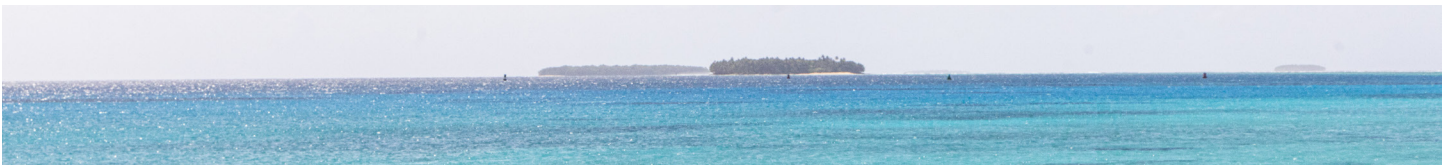
LALE ROLLER IM HOURGLASS EO JUON 09 RAN MAY IM 16 RAN IN MAY 2026 NAN AM LALE IA KO REJ KILOK. NE EWOR AM KAJITOK JOUJ IM CALL E LOK KWAJALEIN RANGE SAFETY OPIJA RO ILO (808) 580-2230.



**MID-ATOLL CORRIDOR CLOSED FROM 1601 HOURS, 16-MAY-2026 THROUGH OPERATION COMPLETION (TENATIVELY 21MAY) OR WHEN FLAGS ARE REMOVED**



Broad Ocean Area and Caution Area  
 RTS AIROPS 445/1 (NOTAM & NOTMAR CAUTION AREAS)



**The Mic Shop is always looking for Volunteers!**

It is a great way to connect with the community and help our mission of **Education Grants and Scholarships**

Contact **Jacki Blumenauer** (jackiblume64@hotmail.com) or stop in the Mic Shop

**Only 2 hours of your time each month to make a big difference**

**Sundays and Mondays: 12:00pm - 2:00pm  
 Wednesdays and Fridays: 4:30pm - 6:30pm**

# PUBLIC NOTICE

**Notice of Availability  
USAG-KA Draft Document of Environmental Protection  
for Air Emissions From Major and Synthetic Minor Stationary Sources**

The U.S. Army - Kwajalein Atoll (USAKA) Environmental Standards (UES) require specific USAKA activities with the potential to affect public health and the environment must be defined in a Document of Environmental Protection (DEP). The UES further provides a review and comment period by the public and the regulatory agencies on the draft DEP.

The Draft DEP for the continued activity associated with Air Emissions from Major and Synthetic Minor Stationary Sources includes the operations and conditions to provide air quality protection at the U.S. Army Garrison - Kwajalein Atoll.

The public is invited to review and comment on the Draft DEP. The Draft DEP and the UES are available for review at the Grace Sherwood Library (Kwajalein Island), the Roi-Namur Library, and the RMI Environmental Protection Authority (RMEPA) offices on Ebeye and Majuro.

Written comments regarding the Draft DEP can be directed to:

Gus Aljure  
U.S. Army Garrison-Kwajalein Atoll  
Attn: V2X Environmental Services  
PSC 701 - Building 357  
APO AP 96555-9998

Or sent electronically to:

Gustavo.A.Aljure.ctr@army.mil

A period of at least 30 days will be provided for public comment. Comments on the Draft DEP should be postmarked no later than June 8, 2026.

**Naan In Kokabilokok  
USAG-KA Draft Document of Environmental Protection non  
Air Emissions From Major and Synthetic Minor Stationary Sources**

The U.S. Army - Kwajalein Atoll (USAKA) Environmental Standards (UES) ej aikuj bwe aolep makitik ko an USAG-KA make im remaron jelet ejmour eo an jukjukin ped eo ren alikar ilo Document of Environmental Protection (DEP). UES ej bareinwot remaanlok wot im lala melele kein jen public im kakien ko jen agencies ikijen draft in DEP.

Draft DEP in ej swonmanlok kin makitik ko bedbed wot ion Air Emissions jen Major im Synthetic Minor Stationary Sources ekoba makitik im wewein ko ikijen air quality nan kejbroke eo ilo U.S. Army Garrison - Kwajalein Atoll.

Aolep rej ruwainene nan lala im iik aer melele ikijen Draft DEP in. Draft DEP in kab UES ej bellok nan advoj lala ilo Grace Sherwood Library (Kwajalein Island), im ilo Roi-Namur Library, im bareinwot ilo opij ko an RMI Environmental Protection Authority ion Ebeye kab Majuro.

Ne ewor melele ak Kakobaba nan Draft DEP in remaron etal non:

Gus Aljure  
U.S. Army Garrison-Kwajalein Atoll  
Attn: V2X Environmental Services  
PSC 701 - Building 735  
APO AP 96555-9998

Ak jilintok nan email in lal:

Gustavo. A. Aljure.ctr@army.mil

Enaj bellok iumwin 30 raan non jabdwot eo ekonaa likit melele ko ak wawein im lemmak ko kin DEP Draft in. melele kein rej aikuj postmark mokta jen June 8, 2026.



**Department eo an Navy im Department eo an Army  
REJ KUR EOK NAN AM BOK KONAAM  
Ilo juon jerpal eo ej komman nan aolep armej  
nan pileeni Makutkut ko an Joint Flight  
Second Supplemental EA/OEA**

Ra ko ruo an US Navy im Army emoj aer kebooje juon Draft Supplement Environmental Assessment/Overseas Environmental Assessment (EA/OEA) nan etale jonan kajoor in an kommelmel in kokkelok mijel ko naj jelet belaaq ko ilo aer komman ilo Malo ko jimor ilo Atlantic im Pacific. Draft Supplemental EA/OEA in ej etale jonan kajoor in kommelmel in kokkelok kein jen jikin ko rekaal lok nan ijoko rar jino komman ie ilo Wake Island, eo ej mottan Majel, im San Nicolas Island ilo California, im bareinwot raft ko rej ebbebe ilo malo ko ilo Pacific im Atlantic.

**Ien Emman Nan An Armej Bok Konaer**

Navy eo im Army eo rej karuwaineneik am etale im komman am ennaan ikkujjeen Draft Supplemental EA/OEA in im Draft Finding of No Significant Impact (Pija eo emoj loe ke ejjelok oktak elap enaj walok jen jerpal in)/ Finding of No Harm (Loo bwe ejjelok jorreen enaj walok) (FONS/FONSH) ilowaan 30 raan ko emoj ko-belloki nan an armej kwalok aer ennaan.

Ennaan ko remaron ilok ilo online nan

<https://www.nepa.navy.mil/JFCSecondSupplemental/EA>  
ak ilo mail nan:

Environmental Program Manager/SP2521  
Strategic Systems Programs  
1250 10th Street SE, Bldg. 200, Suite 3600  
Washington Navy Yard, DC 20374-5127



**Aolep konono ak ennaan ko raikuj ilok ilo online ak ilok ilo mail eo ar jitaam ilo June 10, 2026.**

Draft Supplemental EA/OEA im Draft FONS/FONSH ko rej bed online ilo <https://www.nepa.navy.mil/JFCSecondSupplemental/EA> ak ilo public laibrare kein: Oxnard Downtown Main Library, California; Hawaii State Library-Honolulu; Kwajalein Island's Grace Sherwood Library im Roi-Namur Library, ilo Republic of the Marshall Islands.



**The Department of the Navy and Department of the Army  
INVITE YOU TO PARTICIPATE  
in the Public Involvement Process for the  
Joint Flight Campaign Second Supplemental  
EA/OEA**

The U.S. Department of the Navy and Department of the Army have prepared a Draft Supplemental Environmental Assessment / Overseas Environmental Assessment (EA/OEA) to evaluate the potential environmental impacts of conducting missile flight tests in both Atlantic and Pacific Ocean regions. The Draft Supplemental EA/OEA evaluates the potential impacts of flight tests involving launch from new potential land-based launch locations at Wake Island, Meck Islet in the Republic of the Marshall Islands, and San Nicolas Island in California, as well as the use of floating target rafts in broad ocean areas of the Pacific and Atlantic Oceans.

**Public Involvement Opportunity**

The Navy and Army welcome your review and comments on the Draft Supplemental EA/OEA and Draft Finding of No Significant Impact / Finding of No Significant Harm (FONS/FONSH) during a 30-day public comment period. Comments may be submitted online at

<https://www.nepa.navy.mil/JFCSecondSupplemental/EA>  
or by mail to:

Environmental Program Manager/SP2521  
Strategic Systems Programs  
1250 10th Street SE, Bldg. 200, Suite 3600  
Washington Navy Yard, DC 20374-5127



**All comments must be submitted online or postmarked by June 10, 2026.**

The Draft Supplemental EA/OEA and Draft FONS/FONSH are available online at <https://www.nepa.navy.mil/JFCSecondSupplemental/EA> or at the following public libraries: Oxnard Downtown Main Library, California; Hawaii State Library-Honolulu, Kwajalein Island's Grace Sherwood Library, and Roi-Namur Library, Republic of the Marshall Islands.

# **ROI PUBLIC NOTICE: UXO CLEARANCE OPERATIONS**

**DATES: MAY - NOV 2026**

The UXO Clearance Team will conduct daytime intrusive excavation operations in support of the DP2026-35 UXO Clearance Roi LSA South.

Daily operations: 6:00 AM – 4:30 PM

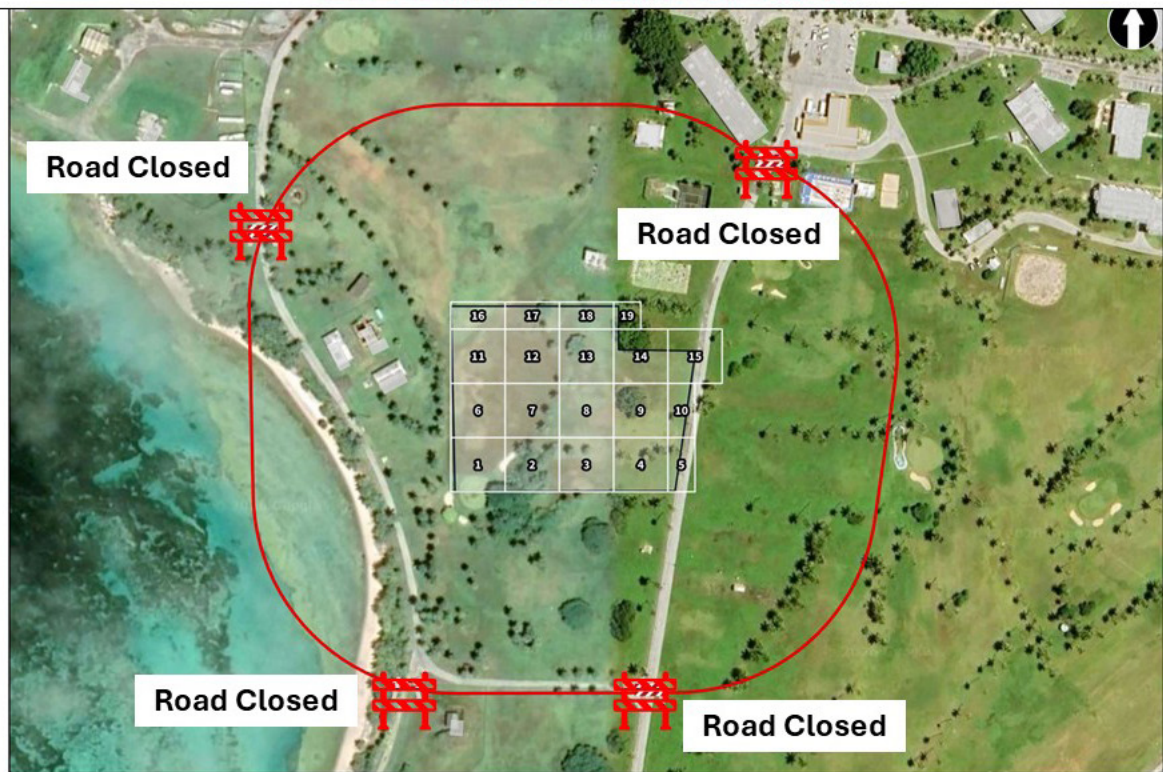
**Schedule:** Thursday – Sunday until project completion

### **Safety Notice:**

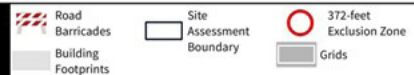
During these periods, the designated exclusion zone (see accompanying map) will be strictly off-limits to all personnel. Road barricades will mark restricted access points. For your safety: Do not enter or cross any barricaded areas during the specified time frames. Follow all posted signage and instructions from safety personnel. We appreciate your cooperation in maintaining a safe work environment.

**Emergency Services can come through exclusion zone, blast horn to notify UXO team.**

UXO Clearance Operations: DP2026-35



**DO NOT ENTER AREA IF BARRICADES UP!**

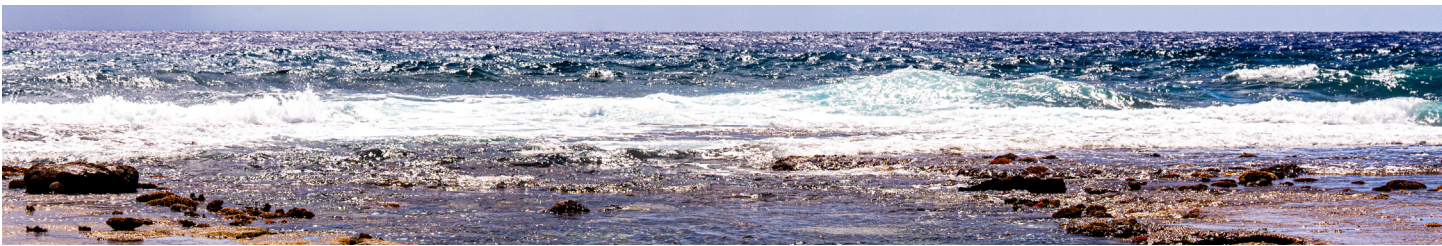




# Community Notice

## New Matting at Millican Family Pool

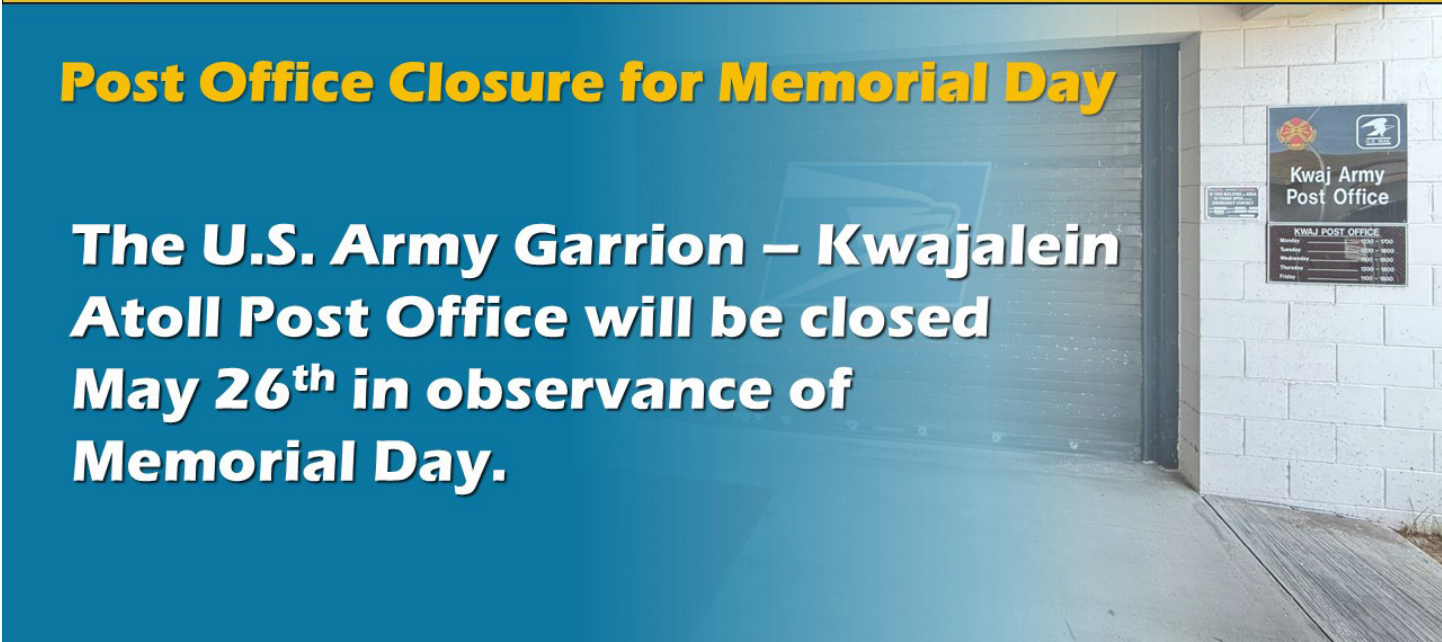
New matting is currently being put in place at the Millican Family Pool. While the project will take a few days, the pool will remain open during regularly scheduled hours. Please visit the pool to see how the new matting feels to bare feet!



# Community Notice

## Post Office Closure for Memorial Day

The U.S. Army Garrison – Kwajalein Atoll Post Office will be closed May 26<sup>th</sup> in observance of Memorial Day.



KWAJ POST OFFICE	
Monday	0800 - 1700
Tuesday	0800 - 1600
Wednesday	0800 - 1600
Thursday	0800 - 1600
Friday	0800 - 1600



# Community Notice

## Zamperini Dining Area Remodel

Construction will begin on the Zamperini dining room beginning May 1<sup>st</sup>. During this time, the dining area will be sectioned off one half at a time while the work is done. Zamperini South will come online soon to support the adjusted dining area footprint.



# Community Notice

## The Outrigger Kitchen Remodel

Work on the Outrigger Kitchen Remodel is due to begin May 9<sup>th</sup> and is scheduled to be conducted for 45 days. During this time the kitchen will be fully closed. This does not affect the rest of the Outrigger areas.



# Red, White, and Ocean Blue

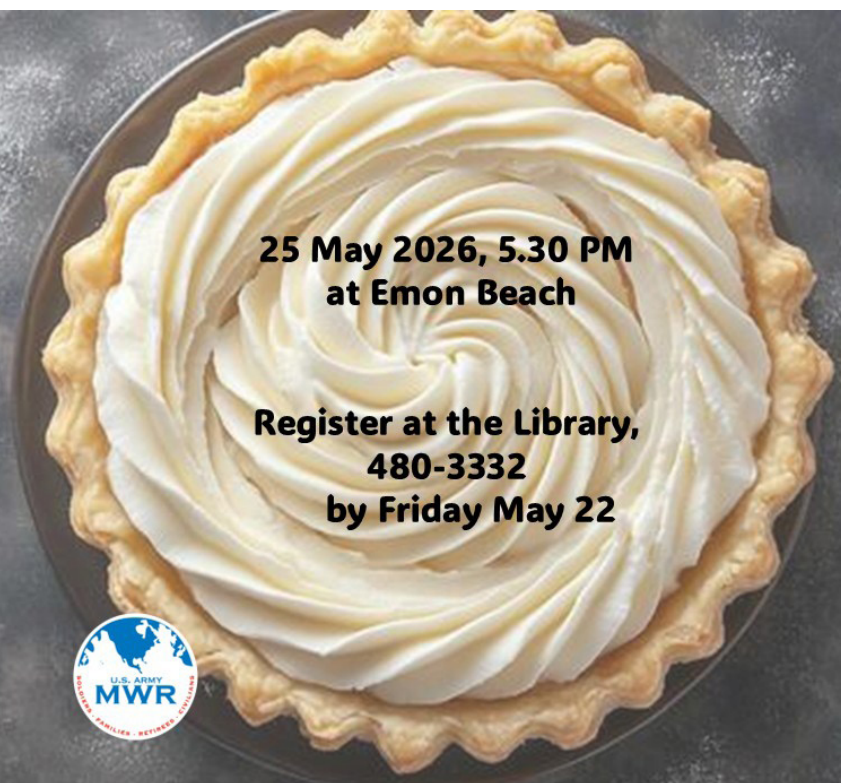
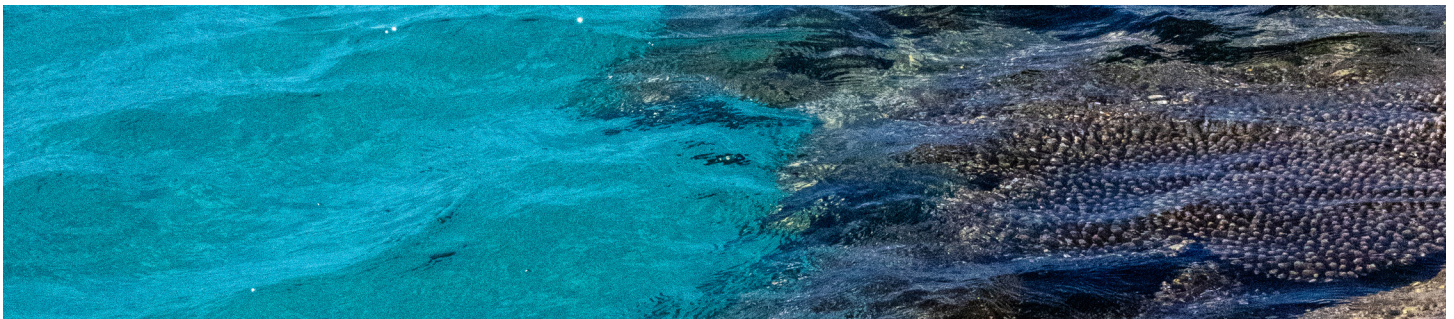


## Memorial Day Event

at Emon Beach  
May 25, 4.30 pm



**PIE EATING CONTEST**  
Concessions  
And much more.....



**25 May 2026, 5.30 PM**  
at Emon Beach

**Register at the Library,**  
**480-3332**  
**by Friday May 22**



### E-wareness: Stormwater Pollution Prevention

Stormwater discharges are a significant source of pollutants. Stormwater can become polluted as it flows over contaminated surfaces. This leads to contamination of lagoon waters and potential damage to corals and other marine species.

What can you do?

- Good housekeeping
- Preventive maintenance on vehicles and equipment
- Maintain spill prevention and quick response supplies
- Preserve sediment erosion control
- Manage storm water runoff
- Employee training

For more information on stormwater pollution prevention or training opportunities, contact V2X Environmental at 480-1134.



### E-wareness: Kejbarok jen paijin in an toor dren

Ijoko elap an toor dren ie rej jikin ko elap menin paijin/kij ko remaron in bar walok ie. Ekka wot an jede paijin kein jen ijoko dren eo ej toorlok ie. Elane ej toor dren kein nan lojet innem enaj kakure lojet eo, wod ko ie im menin mour/eddrek ko ie.

Ta komaron komane?

- Karreo
- Kejbarok wot jerbak ko bwe in driklok an nej walok jorren im kein jerbak
- Kojerbak spill kit ko im mokaj nan jerbak ko
- Lale men ko rej elejo bwe renjab toor nan lojet
- Manage e drenin wot ko ial ko
- Etal nan Training ko nan ekatak

Nan melele ko relaplok ikijeen wewein kein ak training, call e V2X ilo 480-1134.



U.S. Embassy Consular Section  
**Notary Appointments**

**Tuesday, May 19**  
**1500 to 1700**



*Location: Library*  
*All Payments via PAY.gov*

Email: [\*\*Consmajuro@state.gov\*\*](mailto:Consmajuro@state.gov)

**for appointments and paperwork details**

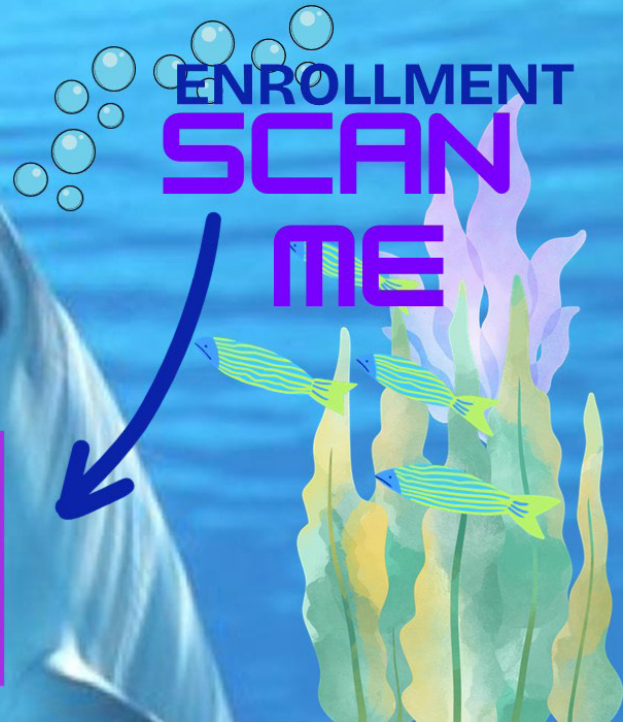




26-27 KINDERGARTEN

ENROLLMENT  
**SCAN  
ME**

CALL  
480-3601  
for an online  
link



# Kwajalein Atoll

Do you have a Concern or Kudos?  
Go to the Interactive Customer Evaluation  
and give us your feedback.

**GO  
TO ICE**  
INTERACTIVE CUSTOMER EVALUATION



# ALWAYS CALL...

...if your building's Fire Alarm is sounding



## Meal Card scanning from AIE Badge



FROM THIS

TO THIS  
AIE BADGE



We have begun transitioning the Meal Card system to accept the new AIE badge, replacing the need to carry a meal card. Thank you for your patience as we streamline your dining experience. If you have any questions or concerns, please ask for a manager at the dining facility and we can explain the process.

# Dome Home Trash & Recycling



**Gov2x** will be installing Green Residential Trash bins and Blue Recycle bins at each Dome Home. This will be a new experience for our Dome Home residents that we hope will enhance your stay on our island.

Please be sure your personal property and potted plants are set safely back from the road.

**Please keep curious children away from the Compactor Truck as it visits each Dome.**

*CARDBOARD and PLASTICS are not recycled on Kwajalein.*

*TRASH and RECYCLE bins are collected Tuesday and Friday.*

*You can deposit all glass, aluminum, bottles and metal into the same blue recycle bin.*

**For Questions, call 480-1760**



## **Kwajalein /Roi Driver Orientation**

**Sponsors need to bring newcomers to Bldg 856**

**Wednesdays:**

**At 0900 - Marshallese**

**At 1300 - EXPATS**

**To find out the requirements to obtain a base license**

**Roi Classes every 2nd Friday time base on flight schedule in Bldg C**

**POC's on this matter are:**

**George.parker3@gov2x.com and Wilson.Kaisha@gov2x.com**

**or Stop by Bldg 856, Room 101**

Tried to STOP, But You  
Can't

Has Alcohol become an  
OBSESSION

There is a Solution to  
the Problem with Alcohol

**REACH OUT FOR  
HELP**

# ALCOHOLICS ANONYMOUS

ROOM 214 KWAJ RELIGIOUS EDUCATION  
BUILDING (UPSTAIRS)

BUILDING #671

FRIDAY-SATURDAY-SUNDAY

7PM-8PM

QUESTIONS? EMAIL: [kwajchapel@gmail.com](mailto:kwajchapel@gmail.com)  
OR CALL 480-2116



**American  
Red Cross**

Service to the Armed Forces

## **Volunteer Opportunity at Kwajalein Atoll**

Join the American Red Cross and help bring our Services and Programs to the Kwajalein Atoll community!

**Online & Virtual Training Provided**

**No experience needed!**

We provide all necessary training. Just bring your passion and commitment to helping others!

Contact **Alana Wilson** at [alana.wilson@redcross.org](mailto:alana.wilson@redcross.org)

Let's work together to build a more prepared and resilient community.

# Kwajalein to Ebeye Ferry Schedule



- C-BADGE WORKERS** have priority, EXCEPT on the following runs:
  - 0650 run (arriving at Ebeye at 0715) High Schools students have priority ridership.
  - 0720 run (arriving at Ebeye at 0745) and the 1600 run (departing from Kwaj) Kwajalein School Guest students have priority rider-ship.
- On Stevedoring days, workers involved with cargo operations have priority on the 2000 ferry.
- SMOKING, TOBACCO, CHEW, BETEL NUT, EATING and DRINKING ARE PROHIBITED ON ALL FERRIES.
- Boats will not be overloaded: Maximum capacities are 150 passengers (CATs and ferries) and that number may be reduced during inclement weather or at the Captain's discretion due to safety concerns.
- Meck catamarans may operate on a dynamic schedule and will be available by calling Meck Management.
- SATURDAY ONLY – THERE WILL NOT BE A 2130 FERRY INSTEAD THE FERRY WILL DEPART AT 2200.**

## EBEYE – Tuesday to Saturday

## EBEYE – Sunday & Holiday

ETD	ETA	ETD	ETA	TYPE	ETD	ETA	ETD	ETA	TYPE
	EBEYE	EBEYE	KWAJ	VESSEL	KWAJ	EBEYE	EBEYE	KWAJ	VESSEL
0245	0310	0315	0340	FB N/1	0400	0425	0430	0455	FB N/1
0420	0445	0450	0515	FB 1	0500	0525	0530	0555	FB 1
0450	0515	0520	0545	FB 2	0600	0625	0630	0655	FB 1
0520	0545	0550	0615	FB 1	0830	0855	0900	0925	FB 1
0550	0615	0620	0645	FB 2	1140	1205	1210	1235	FB 1
0620	0645	0650	0715	FB 1	1530	1555	1600	1625	FB 1/N
0650	0715	0720	0745	FB 2	1700	1725	1730	1755	FB N
0720	0745	0750	0815	FB 1	2000	2025	2030	2055	FB N
0900	0925	0930	0955	FB	2200	2225	2230	2255	FB N
1140	1205	1210	1235	FB 2/A	Holidays only ADD extra run below				
1300	1325	1330	1355	FB	1830	1855	1900	1925	FB N
1440	1505	1510	1535	FB A	Monday				
1600	1625	1630	1655	FB A	0315	0340	0345	0410	FB N/1
1700	1725	1730	1755	FB A	0500	0525	0530	0555	FB 1
1730	1755	1800	1825	FB N	0600	0625	0630	0655	FB 1
1800	1825	1830	1855	FB A	0720	0745	0750	0815	FB 1
1830	1855	1900	1925	FB N	0830	0855	0900	0925	FB 1
1900	1925	1930	1955	FB A	1140	1205	1210	1235	FB 1
2000	2025	2030	2055	FB N	1440	1505	1510	1535	FB 1/N
2130	2155	2200	2225	FB N	1645	1710	1715	1740	FB N
(TUESDAY-FRIDAY) 2130 is final run of day					1745	1810	1815	1840	FB N
2200	2225	2230	2255	FB N	1900	1925	1930	1955	FB N
SATURDAY - No 2130 ferry; 2200 is final run of day					2000	2025	2030	2055	FB N
	FB =	Ferry	Boat		2130	2155	2200	2225	FB N



# Roi-Namur / Enniburr Ferry Schedule



## Tuesday to Saturday

Run Number	ETD Roi-Namur	ETA Enniburr	ETD Enniburr	ETA Roi-Namur	Vessel
1	0520	0535	0555	0610	FB
2	0730	0745	0805	0820	FB
3	1250	1305	1325	1340	FB
4	1715	1730	1750	1805	FB
5	1940	1955	2015	2030	FB

## Sunday-Monday-Holiday

Run Number	ETD Roi-Namur	ETA Enniburr	ETD Enniburr	ETA Roi-Namur	Vessel
1	0650	0705	0725	0740	FB
2	0940	0955	1015	1030	FB
3	1450	1505	1525	1540	FB
4	1940	1955	2015	2030	FB

### FIRST PRIORITY: BADGE WORKERS

Passengers are to board and disembark ONLY at the gangway area. As deemed by the Captain, any passengers, who are unruly and pose a safety hazard to the crew, other passengers, or vessel will not be allowed to ride the ferry. Maximum passenger load is 150 passengers.

**SMOKING, TOBACCO CHEWING, BEETLE-NUT, EATING and DRINKING ARE STRICTLY PROHIBITED ON ALL FERRIES.**

The clock kept by the ferry Captain is the official time. Departure times from Roi-Namur are mandatory times. Return times to Roi-Namur may change slightly due to the offloading of water at Enniburr.

Any questions? Please call the Port Captain in Kwajalein, 480-2173.

# Kwajalein Island Trash & Recycling

Residential Trash Collection 480-1760  
Yard Vegetation Collection 480-1890  
Hazardous Waste Pickup Line 480-8858



## TRASH & RECYCLING PICKUP SCHEDULE

The Green Residential TRASH receptacles are collected every **Tuesday and Friday**.  
The blue RECYCLE bins are also collected every **Tuesday and Friday**.  
The large black General Solid Waste Community Containers are emptied on Monday, Wednesday, Thursday, and Saturday.

**Safety First!** Please keep any curious children away from the Compactor Truck as it feeds contents into the truck.

Recyclable materials are also collected by both *solid waste* and *horizontal maintenance personnel*, in conjunction with general trash collection. Currently the island only recycles glass, aluminum, metal, and bulk organic materials. **Cardboard and plastics are not recycled materials on Kwajalein.** These items should be placed into the general trash stream for disposal/incineration.



Residential users will be given a **green trash** receptacle and a smaller **blue receptacle** for recyclable materials. It is requested that residences place their recyclable items into the blue containers, and stack larger materials next to the bins. Lawn clippings and leaves should be bagged and placed next to bins. Palm fronds and coconuts should also be stacked up next to the bins for removal by horizontal maintenance personnel.



## BARGAIN BAZAAR: COMMUNITY & MISSION

- Volunteer-run resale shop on Kwajalein
- Donations fund scholarships & school grants
- Supports education across the Marshall Islands & Micronesia
- Open Every Wednesday 4:30 to 6:30 PM  
& 1st Saturday 4:00 to 6:00 PM
- Promotes reduce, reuse & recycle
- A hub for connection and community

### We Accept:

Clean clothing, baby gear, shoes, linens, kitchenware, décor, working electronics, books, toys, school supplies, jewelry & holiday décor

### We Do NOT Accept:

Food or medications

### How to Donate:

Stop by DSC for gate access

Bring items directly to BB door

Wrap breakables & attach cords

ALL PROCEEDS SUPPORT THE YYWC EDUCATION ASSISTANCE COMMITTEE.  
KOMMOLTATA FOR YOUR DONATION!

Now Available by Appointment...

# PASSPORT PHOTO SERVICES

# PASSPORT

Located on the 2nd floor of Bldg. 805 on Kwajalein. When taking your photo, remember the following guidance for a successful shoot:

- Directly face the camera without tilting your head.
- Have a neutral facial expression with both eyes open and mouth closed.
- Take off your eyeglasses, headphones or wireless hands-free device.
- Do not wear a uniform, clothing that looks like a uniform, or camouflage.
- Remove hats or head coverings or submit a signed statement or doctor's note that says you must wear it for religious or medical purposes.



*United States  
of America*



To schedule an appointment,  
contact IMD/AVD personnel at:

[KwajaleinHourglass@gov2x.com](mailto:KwajaleinHourglass@gov2x.com)



## FOLLOW US AT THESE LOCATIONS



Click QR Code to jump to social page

Kwajalein MIA Project



# NEVER FORGET.

<https://kwajaleinmiaproject.us/>

# COMMUNITY CLASSIFIEDS

## Submit Announcements to the Roller Channel and The Kwajalein Hourglass

**OPEN CALL FOR ANNOUNCEMENTS**  
*The island community is invited to submit listings for events and for sale items; announcements; department trainings; safety updates; public service messages; and thank-you messages.*

### Preparing Your Message

*For questions about your messaging, please reach out to the USAG-KA Public Affairs Office at 480-4848.*

*Ads should always include a point of contact, phone number and/or email address.*

*Private parties, fundraisers and events requesting and/or accepting donations are typically not allowed for publication per AR 360-1. Fundraisers and support activities for private and schools-based organizations, scouting groups, civic clubs and other listings may be subject to a legal counsel review to determine their eligibility for publication.*

### Formatting Your Listings

*It is recommended that graphical adver-*

*tisements and announcements intended for the Hourglass and the AFN Roller Channel be formatted as PowerPoint slides.*

*Graphic designers are asked to maintain a generous margin (.75-1-inch) around all sides and to size fonts no smaller than pt. 20.*

*If your Roller Channel advertisement requires a special expiration date, please note this for the Roller team in the body of your message.*

### Deadlines for Submissions

*Send advertisements for the Kwajalein Hourglass and the AFN Roller Channel to [kwajaleinhourglass@gov2x.com](mailto:kwajaleinhourglass@gov2x.com) on Wednesdays by close of business/Thursday morning.*

*Roller Channel ads are accepted on a rolling basis by 4 p.m. for a mid-week and late-week update. Ads received after 4 p.m. will be loaded in the next update. Please ensure you submit ads in good time to ensure timely upload.*

For more information, reach out to the USAG-KA Command team through the USAG-KA Facebook page.

## ANNOUNCEMENTS

**AFH Construction Is Ongoing.** Nan, Inc. Construction is scheduled to commence the telecommunication scope of work for the Kwajalein Army Family Housing project in our community. Residents and commuters should be aware of possible changes in traffic patterns and to plan their routes accordingly. Nan, Inc. Construction is committed to minimizing any inconveniences, and we will strive to ensure a smooth and efficient construction process.

**ArMA.** Log in to ArMa, the Army Maintenance Application, to report issues for all buildings maintained by the Department of Public Works. Contact Public Works at 480-3550.

**CAC Office.** Before your visit to the Common Access Card Office, ensure all paperwork is completed by your human resources representative before making an appointment. Bring two forms of government-issued IDs with you. Walk-in appointments are welcome, but there may be a wait. CAC Office Hours, Bldg. 835, are Tuesday – Saturday, 8 a.m. – 4 p.m.; (Lunch: noon - 1 p.m.). Call 480-8496.

**Demolition at the Capt. Louis S. Zamperini Dining Facility.** Phase three of the Zamperini DFAC demo has begun and is projected to be finished March 2026 for the dining and serving area. Be careful around the dining facility during the phases.

**Do Not Take Cultural Artifacts.** It is illegal to remove cultural resources from the atoll. This includes any protected species, unexploded ordnance, WWII-era artifacts and ancient Marshallese artifacts. These resources are protected under U.S. federal and RMI law. Contact the Kwajalein Archaeology Office at 480-8867.



Contact the USAG-KA Sexual Harassment/ Assault Response and Prevention Victim Advocate

Captain Tameka Edmonson  
SHARP Victim Advocate

Work: 480-1419 or

Major Matthew DeMartino  
Work: 480-1402

USAG-KA SHARP

Pager: 808-580-3241  
DOD SAFE Helpline: 877-995-5247

**Emergency Management.** Visit the USAG-KA Emergency Management webpage, <https://home.army.mil/kwajalein/index.php/my-fort/EM>; 2) Click on "Mass Notification"; 3) Follow the registration instructions.

**E-Wareness:** It is each driver's responsibility to ensure vehicles are not leaking fluids other than air conditioning condensate. Call 911 to report spills and arrange with automotive for routine maintenance. Please call Environmental at 480-0722 with questions. Ej an ri-kator eo eddo non lolorjake bwe wa eo ejjab leak jabdewot oil ijelak in drennin air condition eo jen wa eo. Ne elon jabdwt leak/lutok in oil jen wa eo, Kiir 911 non report- e lutok eo. Ak kiir Environmental ilo 480-0722 non kajitok.

**Fire Safety Tips.** Some pets are chewers. Watch pets to make sure they don't chew through electrical cords. Pets are curious. They may bump into, turn on, or knock over cooking equipment. Keep pets away from stoves and countertops. Make sure pets are included in your family's fire evacuation plan. Build an evacuation kit for each pet in your household.

**Flights.** Please note that all flights are subject to change. For the latest update on your flights on United, ATI or Air Marshall Islands: ATI: 480-2169; AMI: 480-3469; United: 480-4852 or 1-800-UNITED1; Air Terminal Services: 480-2660; Flight Information Recording: 480-3589

**UA Schedule Effective Now:** Monday and Friday—UA 155 (HNL); Check-in 2 – 4:50 p.m.;

Wednesday—UA 133 (HNL); Check-in 2 – 4:15 p.m.; Tuesday and Saturday—UA 154 (GUM); Check-in 10:45 – 11:15 a.m.

FlyRoi Reservations. To schedule reservations and for correspondence related to flights, email [LCVKwajaleinFlyRoi@versar.com](mailto:LCVKwajaleinFlyRoi@versar.com).

How to dress in the RMI. Out of respect for the Marshallese culture, residents are asked to dress appropriately when visiting Ebeye, Third Island, or anywhere within Kwajalein Atoll. Women should wear clothing to cover shoulders and knees. None are permitted to wear shorts when visiting churches on Ebeye. Men should wear long slacks to church.

Kwaj Small Boat Marina hours are 7:30 a.m. – 6 p.m. Friday through Monday, and on holidays, excluding Thanksgiving and Christmas. Morning boat reservation times are from 7:30 a.m. – noon. Afternoon boat reservations are from 1 – 5 p.m.

Not Feeling Well? Call 480-2223 to make an appointment for a COVID-19 test, Tuesday through Saturday from 7:30 a.m. – 4:30 p.m. If you are not feeling well, please wear a mask when you are around others in the community.

Operational Security. See something, say something. All employees on USAG-KA are required to receive annual Threat Awareness and Reporting Program training provided by KRO; Reporting: Report suspicious activities to the Kwajalein Resident Office at 480-9859/1293/8006 at Bldg. 1163.

PCS & Vacation Tips. Notify the post office before leaving for 30 days or PCS'ing. Per DOD 4525.6-M, mail is only allowed to be held for 30 days with or without prior notice. Mail is considered unclaimed on day 31 and will be returned to the sender. Email the post office to authorize pick up for your mail and packages. When PCS'ing, provide a forwarding address. Contact Jose Burgos-Rivera with questions at 480-3461 and [Jose.Burgos-Rivera@gov2x.com](mailto:Jose.Burgos-Rivera@gov2x.com).

Salon Walk-Ins. Surfside Salon Walk-In Appointments are available on Fridays from 1:30 - 6 p.m.

Smoking. USAG-KA, smoking is permitted in designated smoking areas only. Smoking and cigarette butt receptacles must be at least 50 feet from the entrance of facilities.

Taxi Service. Call 480-TAXI (8294) or 3341 to

# HELP WANTED

For employment with contractors within the U.S. Army Garrison - Kwajalein Atoll please check contractor company websites for employment opportunities.

book your ride at least 24 hours in advance of check-in time.

Millican Family Pool Hours. Closed for cleaning on Thursdays. Open noon to 5 p.m. Tuesdays, Wednesdays, Fridays and Saturdays. Open 11 a.m. to 5 p.m. Sundays and Mondays.

The NEC Testing Center Is Open to the Community - Giving you the head start you need to thrive! - Open Tuesday through Saturday by appointment  
Authorized Pearson VUE Test Center. Schedule A test Today!  
NEC testing Center, 480-4344, FN 1008-131  
ACUITY International

Kwajalein / Roi Namur Licensing Classes on Kwajalein are every Wednesday @0900 Marshallese @1245 Expats (by appointment only as class side is limited)  
Classes are in Bldg. 856 Rm 101, Vehicle Maintenance Compound  
Roi classes every 2nd Friday in Bldg. C, timed based on flight schedule  
No registration needed for Roi classes.  
To register, send email to either of the following:  
[George.Parker@gov2x.com](mailto:George.Parker@gov2x.com)  
[Wilson.Kaisha@gov2x.com](mailto:Wilson.Kaisha@gov2x.com)  
...or stop by Bldg. 856, Rm 101

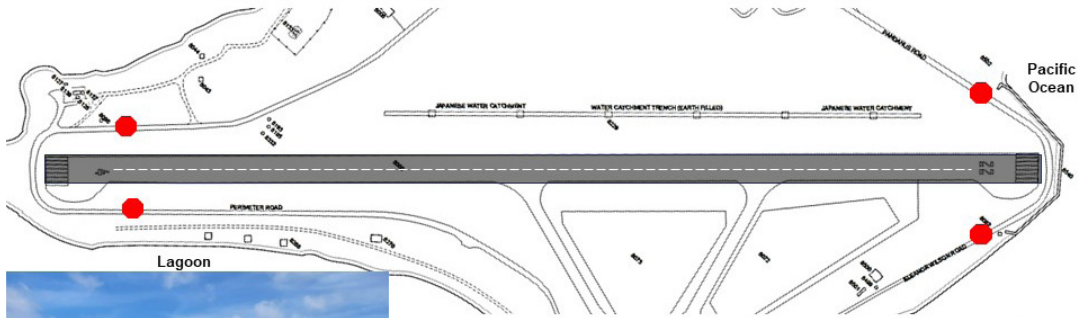


**OPSEC IS NOT RETROACTIVE.**  
**THINK BEFORE YOU SHARE INFORMATION. ONLINE AND OFFLINE.**

Like and share @USArmyOPSEC

# ROI-NAMUR FOR AIRCRAFT!!

Stop and look both ways for aircraft on Perimeter Rd., Pandanus Rd., Eleanor Wilson Rd.  
If aircraft are on approach or taking off, you must hold your position and wait!

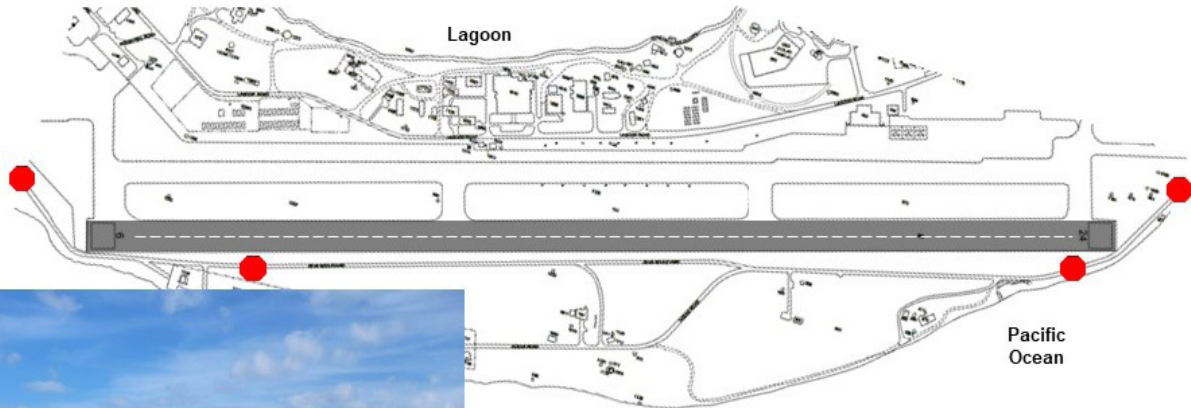


Stop at designated signs and look for aircraft landing or taking off.

If you see an aircraft, hold your position at the stop sign and wait until the aircraft has landed or departed before moving.

# KWAJALEIN FOR AIRCRAFT!!

Please remember to stop and look both ways for aircraft on Zeus Blvd. or Ocean Rd.  
If aircraft are on approach or taking off, you must hold your position and wait!



Stop at designated signs and look for aircraft landing or taking off.

If you see an aircraft, hold your position at the stop sign and wait until the aircraft has landed or departed before moving.

# NOW SHOWING at the YUK THEATER

**SATURDAY, MAY 2**

“Star Wars: Episode IV - A New Hope”  
(1977)  
(PG) 121 min.

**SUNDAY, MAY 3**

“A Madea Family Funeral” (2019)  
(PG-13) 109 min.

**SATURDAY, MAY 9**

“Corpse Bride” (2005)  
(PG) 77 min.

**SUNDAY, MAY 10**

“The Departed” (2006)  
(R) 151 min.

**SATURDAY, MAY 16**

“Sarah’s Oil” (2025)  
(PG) 103 min.



**SUNDAY, MAY 17**

“Christy” (2025)  
(R) 135 min.

**SATURDAY, MAY 23**

“The Lego Batman Movie” (2017)  
(PG) 104 min.

**SUNDAY, MAY 24**

“Bugonia” (2025)  
(R) 118 min.

**SATURDAY, MAY 30**

“Teenage Mutant Ninja Turtles: Mutant  
Mayhem” (1999)  
(PG) 99 min.

**SUNDAY, MAY 31**

“Any Given Sunday” (1999)  
(R) 162 min.



# WEEKLY TROPICAL WEATHER THREAT OUTLOOK

RTS WEATHER STATION STAFF

## Discussion:

So far in May, we have received more than 7.5 inches of rain, which is about 5 inches above normal for the month, and the year now sits at more than 15 inches above normal at just over 35 inches. We will continue significantly above normal shower coverage for the next seven days over the atoll with Friday morning being particularly wet, coming down some for the weekend with Sunday looking like the driest as just isolated showers across the atoll. We observed one lightning/thunderstorm day last week. A thunderstorm day is defined by an "in situ" lightning strike, meaning lightning is observed or thunder is heard within five miles of the Kwajalein airfield. The greatest risk of lightning will be Saturday. The Madden-Julian Oscillation's (MJO) is currently having little effect on the RMI. The Intertropical Convergence Zone (ITCZ) is robust just to our south and is the driving force for bringing

in a train of atmospheric waves east to west across the central RMI. El Nino Southern Oscillation (ENSO) has sea-surface temperatures (SST) between the RMI and the Date Line now trending above normal with ENSO-neutral conditions transitioning quickly into a strong El Nino this summer and into the fall, having a positive impact on precipitation and tropical cyclone development to the east of the RMI. This coming El Nino looks to be one of the strongest ever recorded since the Spanish Empire started keeping records in the 1600s.

## Tropical Cyclones:

None. We are anticipating more tropical cyclone activity than normal in the RMI through November.

## Damaging West Winds / Westerly Swell:

Not anticipated for the next seven days. We are also looking at a higher-than-normal west wind threat this year

## Swell / Tid Inundation For Kwajalein Atoll and Wake Island and Winds:

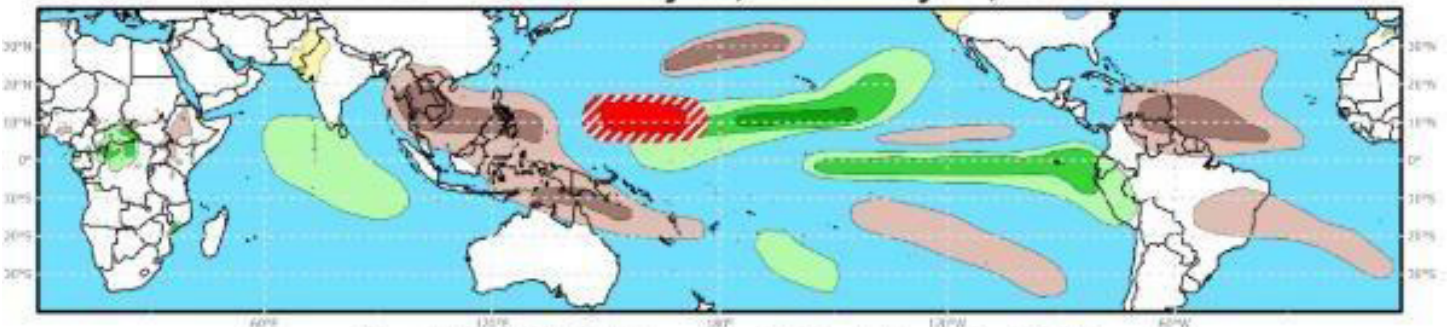
The new moon is on Saturday along with a peak high tide in the early morning on the 17th and 18th at 5.1 feet. Winds: will maintain mostly in the middle teens with some upper teens this afternoon and Friday afternoon out of the east-northeast. There will times when the winds are out of the east-southeast on Friday coming down to the lower teens. Tuesday will see the lowest winds around 8 to 11 knots and troughing (ENE-ESE in direction). Short gusty outflow winds are possible near heavy showers. A Small Craft Advisory (SCA) is possible for short periods of time during gusty outflow events near heavy showers. A High Surf Advisory (HSA) is not expected, but we will see some splash-over on eastnortheast facing shores around high tides from the 16th into the 18th due to the combination of higher high tides and continuous trade-

winds in the middle teens..

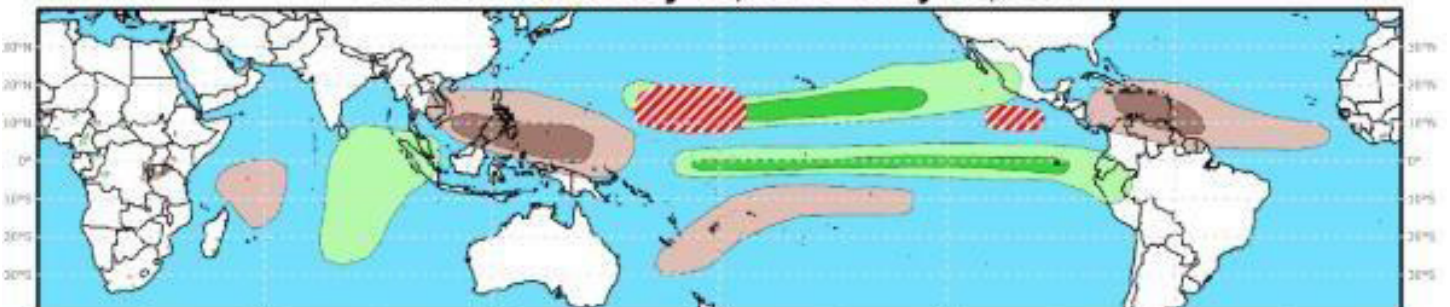
## Purpose:

This weekly briefing is delivered Thursday mornings to island leadership. The intention of this briefing is to provide situational awareness of weather events that may interrupt operations and transportation around Kwajalein, to/from Hawaii and Guam, and in the Wake vicinity. The main threat assessed in this brief is existing and potential development of tropical cyclone activity. This brief also provides an outlook of abnormal winds, sea state, and precipitation guidance for next 7 days around the Kwajalein Atoll. The distribution list will also receive updates on any developing tropical cyclone activity in the Kwajalein region that occur between the weekly outlook products. ⚡

Week 2 - Valid: May 06, 2026 - May 12, 2026



Week 3 - Valid: May 13, 2026 - May 19, 2026



Tropical Cyclone (TC) Formation Probability

Above-Average Rainfall Probability

Below-Average Rainfall Probability

Above-Average Temperatures Probability

Below-Average Temperatures Probability

*Until Next Week!*

