

VOLUME 66 NUMBER 18

MAY 02, 2026

THE KWAJALEIN HOURGLASS



USAG-KA LEADERS OUTLINE PROGRESS, CHALLENGES AT APRIL COMMUNITY INFORMATION EXCHANGE

HOURLASS REPORT

By **Anthony Carnelli**, Hourglass Story Writer

Members of the Kwajalein community gathered in the Junior-Senior High School multi-purpose room on April 22 for what usually plays out as a meat-and-potatoes briefing. But before Col. Matthew Cannon, commander of U.S. Army Garrison-Kwajalein Atoll, walked through project timelines and event dates, he paused on something heavier.

“This year, we’ve had five fatalities on Kwajalein within the atoll,” Cannon said. “That’s a striking number, based on the trends and what we have seen. This is certainly anomalous, and that’s tough.”

He asked for a simple response. “Take care of each other. We are a small community. Ask how somebody is doing. If something happens in their life, ask if they need anything. Be there for each other.”

From there, the April Community Information Exchange moved into a customary wide-ranging review of housing, internet upgrades, air service, infrastructure work on Kwajalein and Roi-Namur, and a new mobile app.

Taken together, the updates showed how daily quality-of-life issues on Kwajalein are increasingly tied to bigger questions of infrastructure resilience, strategic relevance and advocacy at higher levels.

Senior Visits As Advocacy

Cannon framed much of the evening around a recent stretch of high-level visits — senior Army leaders including Maj. Gen. Lance A.

Okamura, deputy commanding general, and Gen. Ronald P. Clark, commanding general, U.S. Army Pacific (US-ARPAC), as well as a Senate Armed Services Committee delegation. Those visits, he said, matter because they turn budget lines into lived experience.

“You cannot understand Kwaj from PowerPoint or from reading things,” Cannon said. “You have to come here to understand it.”

That visibility, he stated, moves dollars and decisions on Assignment Incentive pay, emergency response, aging utilities and the long-term case for the installation.

A Housing Policy Shift

One of most significant policy announcement of the night involved housing. Cannon said Category D Preferred housing will be eliminated and folded into Category C, while key and essential contractors will also be eligible for Cat. C homes. The change means homes on Ocean Drive, the North Point domes and A-frames previously listed as Category D Preferred will now be classified as Category C.

For current residents, Cannon said the change will not trigger forced moves.

“The short answer is no,” Cannon said. “If you are in a Cat. D Preferred home that becomes Cat. C, you will not be required to move.”

Cannon also pointed to the first new housing built on Kwajalein in 20 years — 24 units in all — with Phases 2 and 3 projected for completion around Jan. 29, 2027. Alongside the new construction, the garrison is rolling out an awning program aimed at narrowing the qual-



PHOTO BY SHERMAN HOGUE

ity gap between housing categories where square footage cannot be changed.

Internet Upgrades Continue

Two of the most immediately resident-facing updates pulled in opposite directions.

In terms of internet, infrastructure work is complete in the Shell, Sands, Tropics bachelor quarters, and the North Point domes, with the rest of the island targeted by year’s end. Paired with upcoming high-speed Digital Subscriber Line (VDSL) upgrades, home speeds could reach about 100 megabits per second — a significant jump from current available service.

Air Service Questions Remain

Cannon also updated residents on air service — both a short-term issue and a lon-

ger-range proposal that could change how people and cargo get to and from Kwajalein.

The short-term piece has to do with Air Travel International (ATI), the pay and travel benefit program that helps make remote assignments like Kwajalein worthwhile for service members and their families. The garrison has submitted an ETP to Army leadership to address adjusted postures Air Mobility Command (AMC) has implemented. He’s waiting on a decision.

The bigger concern is further down the road, in fiscal year 2027. Right now, Kwajalein has two flights a week on a 757 Combi — a plane that carries both passengers and cargo on the same trip. Under the proposal being considered, those combined flights would go away. In their place, Kwajalein would get one pas-

senger flight a week, and one cargo flight a week.

Power, Infrastructure and Quality of Life

On Roi-Namur, Cannon described a mix of quality-of-life projects and harder infrastructure work aimed at keeping the island functional as construction activity increases.

Design work on The Outrigger is finished, and construction on the expanded kitchen and freezer space is expected to begin next month, allowing for a broader menu. The length of the facility's closure during the remodel is still unknown. Cannon added that the Child Development Center classrooms are fully designed and funded, and the garrison is now reviewing execution options.

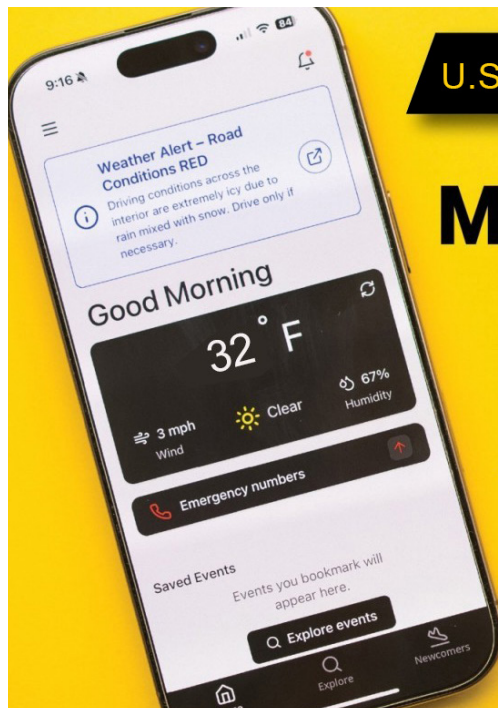
Several other projects on Kwajalein and Roi are either in the works or already underway.

- *Power distribution.* The island's aged distribution network is being scoped for broader repair.

- *Shoreline protection.* Interim work is beginning at DACC after wave damage tore out part of the road, with wider protection to follow under the runway project.

- *Rotary-wing hangar.* Restoration is underway

- *Water.* A reverse-osmosis project remains in the works as Roi prepares for a larger worker population tied to upcoming construction projects.



U.S. Army Garrison - Kwajalein Atoll

MY ARMY POST APP

AVAILABLE NOW!



A New App, And A New Look For Surfway

Not everything on the agenda was weighty. Two of the more upbeat items in the evening gave residents something to look forward to — one in their pocket, one on a storefront.

The first was the *My Army Post* app, which now includes Kwajalein and is already live. For a community where information has long been spread across bulletin boards, email threads, social media and word of mouth, the app pulls much of that together into one place residents can carry with them.

Users can pull up weather, upcoming events, work orders, appointments, retail hours, maps and schedules, and they can receive push

The *My Army Post* app is now live for Kwajalein, offering key info, schedules and real-time alerts in one place.

notifications for things that actually affect the day — including ATI flight changes and water outages. Rather than hunting down the right phone number or waiting for an email to filter through, residents get the alert the moment it goes out.

Cannon asked residents to help keep it accurate, too. If something is missing, outdated or wrong, user feedback is the fastest way to get it corrected — which makes the rollout a two-way tool rather than a one-way broadcast.

The second piece of good news came with a name. Cannon announced the results of the *Surfway* sign vote, part of a broader effort by the garrison and local artists to give the store a fresh look. Con-

cepts for the new sign have been in development since November, and 1901 votes were weighed in on the final choice.

A Quieter Reminder, And What's Next

Near the close, Kwajalein Atoll — Command Sgt. Maj. Stanley L. Jackson flagged a persistent problem: residents leaving island housing in inadequate condition during out-processing. Cannon backed him up plainly: The garrison would rather spend money on awnings and amenities than on cleaning up poorly cleared homes.

Residents can submit feedback through the Interactive Customer Evaluation (ICE), download the *My Army Post* app or reach out through their Occupant Housing Representative.

The meeting offered no shortage of immediate updates — on housing, internet, flights and infrastructure — but it also underscored a larger reality: many of Kwajalein's most everyday concerns now sit inside bigger decisions about funding, priorities and the atoll's long-term future. ▾



Congratulations to the winning design for the new Surfway sign by Kim Healy



Front Cover: April Community Information Exchange by Sherman Hogue

Back Cover: Secluded Beach by Isaiah Matthews

The Kwajalein Hourglass is named for the insignia of the U.S. Army's 7th Infantry Division, which liberated the island from the forces of Imperial Japan on Feb. 4, 1944. The Kwajalein Hourglass is an authorized publication for military personnel, federal employees, contractor workers and their families assigned to U.S. Army Garrison-Kwajalein Atoll.

Contents of the Hourglass are not necessarily official views of, or endorsed by, the U.S. Government, Department of War, Department of the Army or USAG-KA. It is published Saturdays in accordance with Army Regulation 360-1.
 Phone: Defense Switching Network: 315-480-5169
 Local phone: 480-5169

Garrison Commander.....Col. Matthew Cannon
 Garrison CSM.....Command Sgt. Maj. Stanley Jackson
 Public Affairs Officer.....Sherman Hogue
 Editor.....Muhammad Rasheed
 Communications Specialist, Sr.....Isaiah Matthews
 Communications Specialist.....Stephen Elson
 Communications Specialist.....Anthony Carnelli
 Story Writer.....Annette Monk
 Story Writer.....Christy Wagnon
 Media Capture.....Raneesh Thiruvrath



PHOTOS BY ISAIAH MATTHEWS

COMMUNITY

MORE THAN A PACKAGE COUNTER: INSIDE THE WORK BEHIND KWAJALEIN'S MAIL PROCESS

HOURLASS REPORT

By **Isaiah Matthews**,
Hourglass Story Writer

For many on Kwajalein, the post office experience begins with a simple notification: an email arrives, a package is ready, and it is time to head over for pickup.

What most customers never see is the chain of work that happens before that message ever reaches their inbox.

Behind the counter, inside the sorting area and long after aircraft touch down, the mail process is driven by a detailed system of scanning, sorting, repair and accountability. For Postal Manager Von Jenkins and Postal Supervisor Celso Adriano, every package that comes through the facility represents far more than a box with a label on it. It is part of a process built on precision, communication and a steady pace that prioritizes accuracy over speed.

When incoming mail reaches Kwajalein from the airfield, the process begins the moment it is handed off by the Moving Con-

trol Team.

"It gets dropped off here, the post office by MCT," Jenkins said.

From there, the team moves quickly into the first stage: unloading.

"Basically, the first thing we're going to do is offload the pallets or the shipping containers," Jenkins said.

Once the pallets and containers are opened, each individual item is scanned into the system.

"That package has arrived at this facility," Jenkins said, describing the purpose of the first scan.

This initial scan creates the first digital record that the item has reached its destination on Kwajalein, allowing both the sender and the recipient to see that it has arrived on island.

But arrival is only the beginning.

After the first scan, each package is sorted according to its assigned post office box or designated pickup location.

"Those particular packages will get sorted to their areas," Jenkins said.

Only after the sorting process is complete does the sec-

ond scan occur, the one most customers are familiar with.

"We'll scan it again, which will alert the customer that it's available for pickup," Jenkins said.

That email notification, simple as it may seem, is the final result of several deliberate steps.

During periods of high mail volume, such as holidays or major shipping windows, the workload can increase significantly. Still, the approach re-

mains the same.

"One piece at a time," Jenkins said. "Whether we have a little bit or a whole lot, the process is the same. We don't stop until we're done."

That steady approach is intentional.

Rather than rushing through the process, the team focuses on consistency.

"You can't really do both," Jenkins said when asked about balancing speed and accuracy. "We try to keep a steady pace



but pay attention to detail.”

For Adriano, the work behind the scenes is far more involved than many people realize.

“A lot of people see us, okay, we deliver package, that’s it,” Adriano said. “But they don’t really see what happens inside.”

Inside, much of the work involves dealing with packages that arrive in less-than-ideal condition.

One of the most common challenges the team faces is improper packaging before items ever begin their trip.

“Improper packaging,” Adriano said.

Packages that contain liquids, glass containers or items with weak seals are especially vulnerable during transit.

“Spaghetti sauce in a bottle ... the whole bag gets messed up,” Adriano said.



Because mail often makes multiple stops before reaching Kwajalein, smaller packages can be consolidated with heavier freight, increasing the risk of damage.

“If you have a small package, then maybe three or four pounds, and there’s a 40-pound box in there, it’s going to crush,” Jenkins said.

That means the post office team often takes on additional work before a package is ever made available for pickup.

“We have to repair the packages,” Adriano said. “That’s why you see USPS resealed tapes.”

According to Adriano, as many as 30 to 40 percent of incoming packages may need to be resealed, rebuilt or otherwise stabilized before release.

That repair process is also documented digitally.

If an item arrives damaged, wet or with missing contents, the condition is entered into the system to create a digital record for the customer.

“It makes their claim a little bit easier,” Jenkins said.

For the team, one of the biggest misconceptions customers have is assuming the damage happened locally.

“They don’t realize that it makes several stops before we even see them,” Jenkins said.

In many cases, delays work the same way.

Flight schedules, weather and mechanical issues at previous stops can all affect arrival times.

“Mechanical issues, things that are beyond our control,” Jenkins said when reflecting on what causes the biggest delays.

Still, communication with the airfield helps the team prepare.

“They do a very good job of communicating with us,” Jenkins said.

Sometimes flights arrive much later than expected.

“We’ve seen it come as late as 7 o’clock in the night,” he said. “We’re here at 7, and we go through the process.”

That level of dedication is what keeps the system moving.

For Jenkins, he wants the community to understand its patience.

“The biggest thing for us is just having the customer be a little patient and understanding,” he said.

By the time that pickup email appears, the package has likely traveled through multiple gateways, been scanned more than once and possibly repaired before ever reaching the customer’s hands.

Behind every package is a team making sure it gets there in the best condition possible.

One piece at a time. ❖



PHOTOS BY ISAIAH MATTHEWS

COMMUNITY

EXPLORING THE MAGIC OF KWAJALEIN'S TIDE POOLS: A COMMUNITY EXPERIENCE TO REMEMBER

HOURLASS REPORT

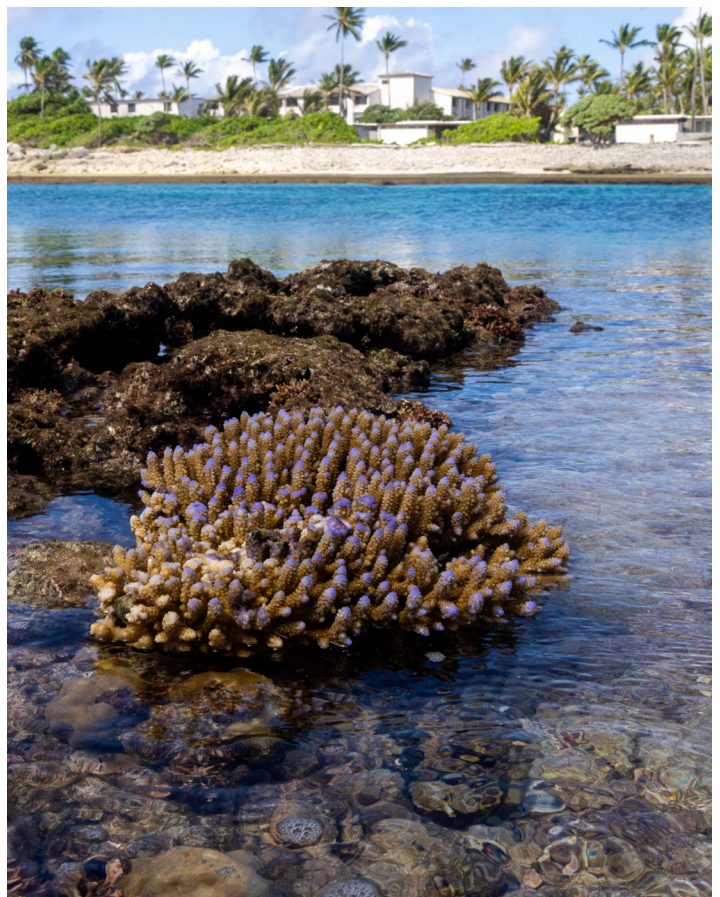
By Annette Monk, Hourglass Story Writer

There are few places on Earth where nature feels as intimate and alive as it does along the shores of Kwajalein Atoll. Recently, that connection was on full display as the U.S. Army Garrison Kwajalein Atoll hosted a community tide pool event that brought residents together for a shared experience rooted in curiosity, discovery, and appreciation for the island's natural beauty.

Timed perfectly with the low tide, families, students, and longtime residents gathered along the reef to explore a world that is usually hidden beneath the ocean's surface. As the tide receded, it revealed a vibrant ecosystem teeming with life: tiny fish darting between coral crevices, hermit crabs scuttling

across sandy pockets, and sea cucumbers resting quietly in shallow pools. For many, it was a reminder that even in familiar surroundings, there is always something new to discover.

For some, however, the experience went even deeper—literally. First-time tide pool snorkelers slipped beneath the surface with a mix of excitement, courage, and wonder, discovering an entirely new perspective of this delicate ecosystem. What they found felt almost surreal. Starfish clung like living constellations against the reef floor, their colors vivid against the coral. Gigantic clams, their iridescent mantles shimmering in shades of electric blue and green, pulsed gently with the rhythm of the water. In a moment that felt almost cinematic, a sea turtle glided effortlessly through the shallows, unbothered and





📷 COURTESY PHOTO

graceful, drawing quiet awe from those lucky enough to witness it.

And then, for a select few, came the kind of encounter that becomes a story told again and again — an octopus. Camouflaged almost perfectly against the reef, it revealed itself in a subtle shift of color and movement, mesmerizing onlookers as it flowed like water from one hiding place to another. It was a rare and unforgettable glimpse into the intelligence and mystery of marine life. For these first-time explorers, it wasn't just snorkeling, it was discovery in its purest form.

The event offered more than just sightings, it created connection. Parents knelt beside their children, pointing out discoveries with shared excitement. Friends laughed while carefully navigating the rocky terrain. Others simply paused, taking in the intricate beauty around them and the rhythmic sound of waves just beyond the reef.

What made the experience especially meaningful was its sense of community. On an island where life is already closely connected, events like this deepen those bonds. Whether someone was witnessing a tide pool for the first time or returning with years of familiarity, everyone shared in the same sense of wonder and exploration.

Organizers from the Garrison helped guide participants, offering insight into the reef's delicate balance and encouraging respectful interaction with marine life. Their presence reinforced an important message: these ecosystems are not only breathtaking, but also fragile and worthy of protection. Events like this highlight how intentional moments in nature can deepen appreciation for the environment while strengthening the ties that bring a community together.

Kwajalein's tide pools are more than a scenic feature; they are a living classroom, a place of discovery, and a re-

minder of the beauty that exists just beneath the surface. As the tide slowly returned and the pools started to disappear once more beneath the ocean, participants left with sandy feet, unforget-

table encounters, and a renewed sense of appreciation.

For a brief window of time, the ocean had opened up its hidden world, and Kwajalein came together to experience it. ▼





PHOTOS BY ANNETTE MONK

COMMUNITY

BRIDGING TO GREATNESS: KWAJALEIN GIRL SCOUTS CELEBRATE LEADERSHIP, LEGACY, AND SERVICE

HOURLASS REPORT

By Annette Monk, Hourglass Story Writer

Kwajalein’s close-knit community gathered in a spirit of pride, reflection, and celebration as local Girl Scouts marked an important milestone during this year’s Bridging Ceremony—an event that honored growth, leadership, and the powerful impact of dedicated volunteers.

At the heart of the ceremony was Isabella, who officially bridged from Senior to Ambassador, the highest level in Girl Scouting. Her journey, marked by confidence and purpose, was recognized with words that captured both her personal transformation and her future potential. Once a participant, Isabella has grown into a pioneer—finding her voice, sharpening her leadership skills, and advocating for meaningful causes.

As she crossed the symbolic bridge, she stepped into a new role not just as a leader, but as a representative of Girl Scout values to the wider world.

Her achievements did not stop there. Isabella was also awarded the prestigious Gold Torch Award, recognizing her deep commitment to community service and leadership beyond troop meetings. The honor reflected her vision, responsibility, and servant-hearted approach—qualities that have left a lasting light on those around her.

While the ceremony celebrated youth achievement, it also shined a spotlight on the adults and volunteers who make the Girl Scout program on Kwajalein possible.

Special appreciation was extended to several individuals whose behind-the-scenes efforts have been vital to the program’s success. Zoe King was recognized for her con



sistent support of the Brownies and her helping hand at meetings. Miss Rosita was warmly thanked for her dedication in ensuring girls could attend activities—coordinating transportation, assisting with camping trips, and serving as a reliable presence for families.

Gratitude was also shared for Karen Brown, whose continued support, even from afar, has made a lasting impact on the troop. Additional recognition went to Teresa Mitchell and Yesenia Johnson, both honored through a formal council-approved process that included heartfelt letters of recommendation—testaments to the difference they've made not only within Girl Scouts but in the lives of their own daughters.

Volunteers like Aaron were applauded for their contributions to cookie sales and program support, while Joyce received special acknowledgment for her tireless leadership and willingness to step in wherever needed—wheth-

er organizing logistics, supporting events, or mentoring girls. Her presence, many noted, will require “an army” to replace.

The most significant volunteer honor of the day, however, was presented to Michelle Soto, who received the distinguished Minor Pin Award. Recognized for five years of unwavering dedication, Michelle's impact on Kwajalein's Girl Scout program is immeasurable. Her leadership, commitment, and passion have helped sustain and grow the program in a small and remote community where opportunities can be limited.

As shared during the ceremony, without Michelle's consistent effort year after year, Girl Scouts on Kwajalein might not exist in the way it does today. Her work has helped shape young girls into confident, independent leaders—instilling values that will carry far beyond the island.

The ceremony concluded with a reminder of what

makes Kwajalein's Girl Scout community so special: families, volunteers, and leaders coming together with a shared purpose. Over the past five years, that unity has created something meaningful and lasting—an environment where girls are empowered to grow, lead, and thrive.

As chairs were stacked and the room transitioned into the next community event, the Daddy-Daughter Dance, the spirit of the evening lingered—one of gratitude, celebration, and hope for the next generation of leaders rising from this small but extraordinary island. ❧





PHOTOS BY ANTHONY CARNELLI

ENTERTAINMENT

RAIN-SOAKED START GIVES WAY TO BIG NIGHT FOR MUSIC AT RICHARDSON THEATER

HOURLASS REPORT

By Anthony Carnelli,
Hourglass Story Writer

Rain — and plenty of it early on — could not keep Majuro's *Jokki Band* and local artist *Bed Shamory* off the stage at Richardson Theater, where they delivered a high-energy, three-hour concert packed with upbeat American classic rock reimagined with an island-style sound.

The April 25 show became a polished production powered as much by persistence as performance. Wind gusts topped 20 mph at times. Tarps covered the speakers and mixing gear, chairs blew over, and water pooled on the stage faster than it could drain.

Even so, staff and volunteers kept working through the downpour, turning what could have been a



weather-shortened disappointment into something distinctly Kwajalein: improvised, weather-beaten and carried forward by people who refused to let the rain win.

Local Marshallese musician Bed Shamory pitched in, sweeping water from the stage. Nik Meinzer, from the audiovisual department, kept watch over the electronics, making sure cables, amps and the soundboard stayed dry and working under the tarps. Around them, event staff hustled to clear water, dry surfaces and adjust gear so the music could continue. None of it was glamorous, and none of it stopped.

About a half hour after the show was supposed to start,

the heaviest rain began to taper off. The artists took the stage together, and Richardson started to come back to life. What started as a weather delay quickly became a concert.

Jokki Band traveled from Majuro for the show. One of the capital's local favorites, the group has also built a large following among Marshallese communities in the United States and other places in the Pacific. The band, which has been playing together since childhood, is known for blending popular classic rock with island-style rhythms and sound, part of the broader Marshallese live-band tradition tied to family events, birthdays and local celebrations.

Bed Shamory, an Ebeye artist who works on Kwajalein, is known for taking American classic rock — songs like The Eagles' "Hotel California" — and remixing them with island lyrics, beats and feel.

Together on stage, the two acts leaned into that hybrid sound for three full hours without stopping. The set stayed upbeat from start to finish, heavy on classic rock anchors recast with Marshallese phrasing and rhythm.

The crowd showed up, too. Despite the damp weather, people kept filtering in throughout the night, grabbing food and settling in as the music carried across Richardson. By the second half, the energy on stage had

spilled into the audience, with a handful of people dancing and the artists playing right back to them.

The concert was brought to Kwajalein by Majuro's 69Too Productions and supported by Morale, Welfare and Recreation, which handled the logistics of staging a live show at Richardson before and during the worst of the weather.

By the time the last song wrapped, the tarps were still up and the stage was still wet. But Jokki Band and Bed Shamory had delivered the show they came to give, pushing the night past its rain-drenched start and into the full concert atmosphere the crowd had waited for. ▾





PHOTOS BY RANEESH THIRUVARATH

COMMUNITY SPORTS

RAIN DELAYS, COED STATEMENTS & PLAYOFFS AHEAD AS KWAJALEIN SOFTBALL NEARS THE FINISH

HOURLASS REPORT

By Anthony Carnelli,
Hourglass Story Writer

Softball on Kwajalein hit some weather bumps this last week, but the season still found a way to deliver movement in the standings, a few important results and plenty to watch as playoff action begins.

Rain washed out all games Tuesday, and Wednesday's schedule did not last much longer. Spartans 1 and Jinetiptip managed to get one Women's League game started before showers moved through, forcing play to stop with Jinetiptip leading 6-4.

The weather may have slowed the week, but it did not stop the season from building toward a busy stretch of makeups, playoff games and league races that

remain tight across multiple divisions.

WOMEN'S LEAGUE: FIRST PLACE STILL UP FOR GRABS

The Women's League remains one of the tighter races of the season. Pitch Perfect and Jinetiptip are tied for first at 4-2, while Sup-Fly is close behind at 4-2-1. Liahona remains right there at 4-3-1, followed by Spartans 1 at 2-4 and Spartans JV at 1-6.

With the unfinished Spartans 1-Jinetiptip game still to be completed, the standings could continue to shift quickly.

Standings:

1. Pitch Perfect: 4-2
2. Jinetiptip: 4-2
3. Supa Fly 4-2-1
4. Spartans 1: 2-4
5. Spartans JV: 1-6

MEN'S B LEAGUE: LOJOKOMLAK STILL PERFECT- Men's B League remain tight

across multiple divisions.

Standings:

1. Lojokomlak: 6-0
2. Love Love: 5-2
3. H2 Imports: 4-1-3
4. Too Much Busy: 4-1
5. KAYFC: 5-2
6. Ebejedrik: 4-3
7. NTL: 3-1
8. Yokwe: 3-3
9. Power Plant: 2-4
10. Monkubok: 2-3
11. North Camp: 2-6
12. Mid Corridor: 1-5
13. Arkel B: 0-4
14. Arkel A: 0-7

COED: BLUE FOOTED-BOOBIES PULL EVEN AT THE TOP

Two Coed League games were played Thursday night on Brandon Field, and both carried weight in the standings.

Frequent Flyers picked up a strong 15-11 win over Rainbow Runners, adding another competitive result to a league

that has had plenty of back-and-forth games this season.

The bigger standings shift came in the second game, where Blue Footed Boobies defeated Helmet Crabs 12-4. With the win, Blue Footed Boobies moved into a tie for first place in the Coed League with Heavy Cargo. Both teams now sit at 5-0-1, setting up a strong finish at the top of the division.

Standings:

1. Blue Footed Boobies: 5-0-1
2. Heavy Cargo: 5-0-1
3. Helmet Crabs: 4-4
4. Rainbow Runners: 3-4
5. LAN Lords 2-3-1
6. Frequent Flyers: 2-4
7. Spartans 2: 0-7-1

MEN'S A LEAGUE: PLAY-OFFS ARRIVEwith Heavy Cargo. Both teams now sit at 5-0-1, setting up a strong finish at the top of the division.

Standings:

1. Blue Footed Boobies: 5-0-1
2. Heavy Cargo: 5-0-1
3. Helmet Crabs: 4-4
4. Rainbow Runners: 3-4
5. Frequent Flyers: 2-4
6. Spartans 2: 0-7-1

MEN'S A LEAGUE: PLAY-OFFS ARRIVE

The regular-season race in Men's A League has come down to a tight battle at the top. Under the Radar and Usual Suspects are tied for first place, while the play-offs have already kicked off (*scores will be posted in next issue*).

Standings:

1. Under the Radar: 5-2
2. Usual Suspects: 5-2
3. Ekk In Ae: 3-4
4. Spartans 1: 1-6

Tuesday will bring a semifinal A League Playoff game at 8 p.m.

LOOKING AHEAD

Tuesday's schedule is packed with Coed makeup games at 6:45 p.m. and 8 p.m., a Women's League makeup game at 5:30 p.m. and A League semifinal playoff action at 8 p.m. As the regular season wraps and playoffs begin, every inning is starting to matter.

Games that were postponed due to rain and are not reflected in this week's recap. ▼



RUSTMAN

TEAM SCORES

SOLO SCORES

TEAM	SWIM	BIKE	RUN	TOTAL
CORRODE & CONQUER RICCARDI, SUZY; EDWARDS, CHRIS; MILLER, INGA	0:19:52	1:19:47	1:01:04	2:40:43
WE THOUGHT IT WAS CARDBOARD REGATTA TSAI, ANDREA; DAHIR, ANDREW; DAHIR, ANDREW	0:18:43	1:32:30	1:02:13	2:53:26
PK FIRE MILLER, ELLIE; RIOS, CAEDMON; MILLER, ELLIE	0:17:18	1:36:59	1:04:55	2:59:12
THE WHALE & 2 BELLYS CASTILLO, ANNALISE; BRADY, SHAWN; PATTON, EMMA	0:19:41	1:25:57	1:13:53	2:59:31
WHO NEEDS PRACTICE? SOTO, NOAH; NAUT, JOSEPH; ABOUD, DYLAN	0:25:46	1:43:06	1:04:38	3:13:30

NAME	SWIM	BIKE	RUN	TOTAL
MELODY, Mandy (7+) *	0:21:09	1:16:29	0:48:35	2:26:13
MILLER, Eric (8) **	0:23:17	1:18:35	0:53:42	2:35:34
JA HNKE, Jonathan(12) ***	0:20:35	1:12:39	1:03:49	2:37:03
WILLIAMS, Colleen (3)	0:19:10	1:25:27	0:54:45	2:39:22
GJERSVIK, A dam (4)	0:22:07	1:23:14	1:02:18	2:47:39
GA SPAR, Mark (2+)	0:23:06	1:28:02	0:58:41	2:49:49
FOX, Kevin (2+)	0:24:35	1:20:22	1:07:47	2:52:44
JA HNKE, Samuel (2)	0:15:50	1:21:09	1:17:26	2:54:25
A BOUD, Taylor (2+)	0:17:41	1:39:28	0:58:05	2:55:14
WYNN, Chuck (4+)	0:23:20	1:33:26	0:58:49	2:55:35
EVA NS, Jacob (2+)	0:19:33	1:31:06	1:07:49	2:58:28
HILL, Zach (5)	0:17:52	1:29:43	1:13:04	3:00:39
BERBERT, Laura (1)	0:19:15	1:41:09	1:03:36	3:04:00
MILLER, Kyle (7)	0:26:20	1:30:57	1:07:48	3:05:05
SHOLAR, David (5)	0:19:51	1:33:25	1:12:47	3:06:03
SMITH, Nathaniel (1)	0:20:51	1:36:40	1:09:50	3:07:21
MELODY, Nathan (4)	0:19:20	1:29:27	1:22:34	3:11:21
HALTTUNEN, Andrew (1)	0:16:20	1:33:22	1:26:06	3:15:48
CARDILLO, Christi (15)	0:23:49	1:45:32	1:09:26	3:18:47
BRIAN, C (1)	0:22:38	1:43:34	1:13:01	3:19:13
GERBER, Matt (3)	0:26:58	1:43:01	1:22:20	3:32:19
GUZIK, David (2)	0:20:19	1:45:02	1:28:16	3:33:37
WALTER, Emily (1)	0:26:35	1:39:35	1:34:30	3:40:40
MILLER, Heather (2)	0:26:18	2:04:01	1:13:57	3:44:16
MELODY, Michael (2)	0:20:20	1:59:56	1:33:05	3:53:21
HOGUE, Vicki (1)	0:32:46	2:45:57	2:00:43	5:19:26
***Individual Contestants Self-Timed on Different Days (could not attend scheduled event)				
BROWN, Zachary (3+)	0:26:19	1:40:24	1:21:55	3:28:38
ROSENBERY, Donald (1)	0:52:00	5:47:00	3:26:00	10:05:00

M=Male F=Female / Y=Youth, T=Teen, O=Open, M=Masters, S=Seniors, SSE = Social Security Eligible (62+)
 (N) number after name counts RustMan annual participations.
 (+) Plus sign indicates personal best in 2026 for repeat contestants.
 * 4th female ever to finish before all males in 47 competitions.
 ** First win after coming close in 7 prior attempts.
 *** Jon Jahnke moves up from 4th to 2nd on all time Social Security Eligible (SSE age 62+) finishers list.

Check out more event photos on the Kwajalein Hourglass Flickr Gallery page!



VIEW MORE PHOTOS
SCAN THE QR CODE
 for the full Event Gallery

RUSTMAN
47
 by the
 NUMBERS



THE **minute** HAND

A USAGKA Community Information Update

Care - We all know that life on Kwajalein Atoll can be beautiful and challenging at the same time. It is very important that you take the time for **SELF-CARE**: Mentally, Spiritually, and Physically. And throughout your day take a moment to check on each other: **family, friends, and co-workers** alike.

Zamperini South - Construction will begin on the Zamperini dining room beginning May 1st. During this time, the dining area will be sectioned off one half at a time while the work is done. Zamperini South will come online soon to support the adjusted dining area footprint.

My Army Post is ACTIVE - For all things Kwajalein Atoll, go to your app store on your mobile device and download the **My Army Post** app. EVENTS-LOCATIONS-HOURS-PHONE for Kwaj and Roi-Namur

Churro Cart - Keep an eye out for a new addition to the bakery...a Churro Cart, that will be seen spreading yummy goodness around the island. Question is...will there be music?

Newcomers Orientation - The next newcomers Orientation will be on May 29 and 30th. The orientation will go over all things Kwaj beginning at 9am in the REB. Everyone Welcome



THE **minute** HAND

A USAGKA Community Information Update

USAG-KA Passport Session- The next Passport session will be via appt only on May 14th 9am – 12pm and 1pm – 4:30pm email: [Here](#) for appointments.

VA Outreach Session- The Manila Regional Office of the U.S. Department of Veterans Affairs will be holding an outreach event on Thursday, May 7th at the Kwajalein Atoll American Legion Post 44/Veterans Hall From 9am - 5pm.

Outrigger Remodel - Work on the outrigger kitchen is scheduled to start May the 9th and will continue for an estimated 45 days.

AIE Timeline - The prep timeline for getting someone enrolled into AIE has been extended to 90 days prior to arrival.

Pharmacy- Pharmacy will close for two days on May 16 and 17th for inventory.

Fire Safety - Don't become complacent while cooking food. It only takes seconds for things to get out of control and safety to be jeopardized.

Approved Drone Activities - There will be approved drone activity in the B-1116 area from May 10-18th



THE minute HAND

A USAGKA Community Information Update

RMI Shopping Day- May 1st for AAFES Express on Kwajalein and Roi-Namur. 12noon - 6pm. \$800 limit. \$35 daily limit on normal shoppette items. C and RDV Badge Holders only

Meal Cards to Badges - Meal cards are being synched to AIE badges. The process will be done during slow periods at the DFAC. This will alleviate the need to carry the meal card.

Housing Survey- Keep an eye out for this year's Army Family Housing Surveys arriving at your door, in your mailbox, and in your email (check you junk mail). Follow the links provided to give your feedback on YOUR house. The links you will receive are tied directly to YOUR quarters.

Facility Managers — Want to help in your area? Facility Managers aid the work orders and maintenance efforts. Email Naomi Halsey at: Naomi.Halsey@gov2x.com

MWR Boats Fuel Price Increase- Fuel prices for MWR boat usage has increase to \$4.56 per gallon with a \$5.00 service fee for each transaction.

Containers - Do you have a container on the Atoll? Matson, Company Storage, or even boat yard. DPW needs to know. Email: usarmy.bucholz.smdc.list.shipping-receiving@army.mil



THE **minute** HAND

A USAGKA Community Information Update

Airfield STOPS!!!! - Come to a full stop look BOTH ways on the runway and in the sky to check for planes before proceeding. You will be ticketed if found in violation.

ICE - To voice your concerns or to say GOOD JOB visit the Interactive Customer Evaluation page for Kwajalein at:
https://ice.disa.mil/index.cfm?fa=site&site_id=984

ARMA - Need something fixed in your housing, BQ or Office? Go to ARMA : [ARMAhttps://www.armymaintenance.com/arma](https://www.armymaintenance.com/arma) or call 480-3550.

Rain - April received 5.79 inches of rain so far, which is about 1.44 inches above normal for the month. We have received 24.55" of precipitation this year, putting us above normal. RTS Weather:
<https://www.rts-wx.com/forecasts/kwajalein-atoll-forecast/>

The Roller on Youtube - From the home page click on the Crest with the "LIVE" indicator on it. [U.S. Army Garrison Kwajalein Atoll Live Stream](#)

Catch the Airwaves - For music and info - Kwajalein: 99.9^{FM}/102.1^{FM}/104.1^{FM}, Roi-Namur 97.9^{FM} – Roi Rat Radio

Marshallese - "Wind" – kōto (kew-tew)

"Rain" – wōt (wawt)



THE **minute** HAND

A USAGKA Community Information Update

Access to USAG-KA - Do you have someone coming to Kwajalein? Check out the regulation that controls entry to USAG-KA: [190-10 FORM HERE](#)

- **Day Pass Form:** [DAY PASS HERE](#)
– Fill out and send to the DSC Mailbox at: usarmy.bucholz.id-pacific.mbx.usag-ka-dsc@army.mil
- **Overnight Guests Form 480:** [480 OVERNIGHT GUEST FORM HERE](#)
– Fill out and then email to E/E: usarmy.bucholz.id-pacific.mbx.usag-ka-e-e@army.mil.

Events - Events can be found on Kwajalein Community Events FB

- **GSES Band Concert** - May 1st 5:15pm MP Room
- **KSS Scholarship Night** - May 2nd 6pm MP Room
- **K-4 Music Concert** - May 8th 5:15pm MP Room
- **Mother's Day Brunch** - May 10th MP Room 10am, Get tickets at the Library
- **KSS Graduation Night** - May 15th 7pm MP Room
- **Yolah Band** - May 16th 8pm Coral Sands
- **High School Graduation Party** - May 17th 7pm Emon
- **Last Day of School** - May 23!!!!!!!!!!!!!!!
- **Memorial Day Beach Bash** – May 25th 4pm Emon

Have an upcoming event? Email [HERE](#) to get the word out.

Kwajalein Reclaimed Water Standard Violation

In March 2026, 88.5% of reclaimed water samples were above 0.5 mg/L chlorine concentration which is less than the required 95% standard. Chlorine is added as a disinfectant at the Point of Entry (POE) into the Reclaimed Water System.

On 10-12 and 21 March 2026, the minimum chlorine residual at the POE was less than the minimum standard of 0.5 mg/L.

On 10-12, 21, and 22 March 2026, the 7-day rolling turbidity average in the reclaimed water distribution system measured above the 2.0 Nephelometric Turbidity Units (NTUs) standard. **There are no negative health effects associated with the exceedances.**

Questions? Contact V2X Environmental at 480-0722.



Jorraan Eo Ilo Reclaimed Water System Eo Ion Kwajalein

Kar Maaj 2026, 88.5% in kar reclaimed water sample ko rar ilon in 0.5 mg/L ilo chlorine concentration erik lok jen jonon in ej required 95% standard. Rekar bar ilik chorine non karreoiki lok non jonon in ej delon ilo Reclaimed Water System eo.

Ilo 10-12 im 21 Maaj 2026, jonon chlorine residual aer delon ie elal in jonon ko ilo standard in 0.5 mg/L.

Ilo 10-12, 21 im 22 Maaj 2026, 7-ran rolling turbidity average in the reclaimed water distribution system eo ej kalok ke ej ilo lok 2.0 Nephelometric Turbidity Unit (NTU) Standard. **Jokjok in eban jelet ejmour ak jukjuk bed ilon alik kar ilo ekotak kein.**

Kajjitok? Kurlok V2X Environmental ilo 480-0722.

QUIZZO

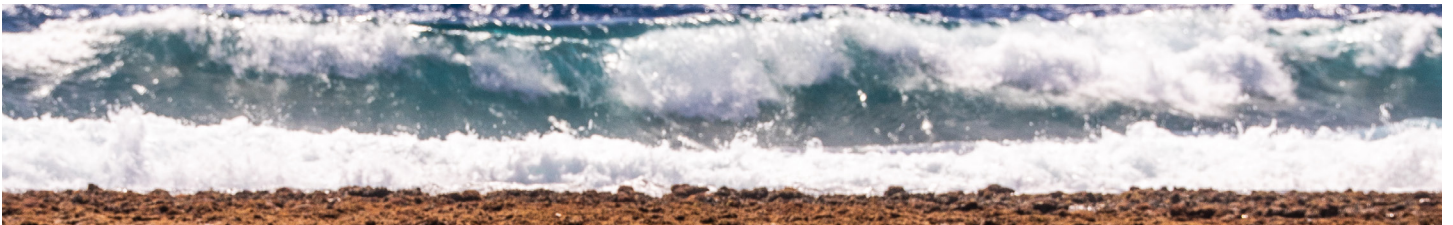


STAR WARS

THEMED

SUNDAY MAY 3RD, 8 PM, OCEAN VIEW

Hosted by BRIAN LEE



Tuesday, May 5, 8 pm



CINCO DE MAYO

Party at the Ocean View



Community Notice

Zamperini Dining Area Remodel

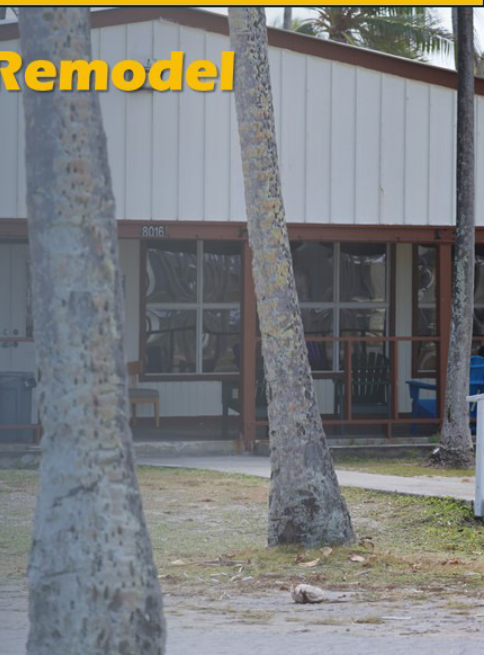
Construction will begin on the Zamperini dining room beginning May 1st. During this time, the dining area will be sectioned off one half at a time while the work is done. Zamperini South will come online soon to support the adjusted dining area footprint.



Community Notice

The Outrigger Kitchen Remodel

Work on the Outrigger Kitchen Remodel is due to begin May 9th and is scheduled to be conducted for 45 days. During this time the kitchen will be fully closed. This does not affect the rest of the Outrigger areas.





Department of the Navy and Department of the Army
REJ KUR EOK NAN AM BOK KONAAM
 Ilo juon jeral eo ej komman nan aolep armej
 nan pileeni Makutkut ko an Joint Flight
 Second Supplemental EA/OEA

Ra ko ruo an US Navy im Army emoj aer kebooje juon Draft Supplement Environmental Assessment/Overseas Environmental Assessment (EA/OEA) nan etale jonan kajoor in an kommelmeel in kokkelok mijel ko naj jelet belaak ko ilo aer komman ilo Malo ko jimor ilo Atlantic im Pacific. Draft Supplemental EA/OEA in ej etale jonan kajoor in kommelmeel in kokkelok kein jen jikin ko rekaal lok nan ijoko rar jino komman ie ilo Wake Island, eo ej mottan Majel, im San Nicolas Island ilo California, im bareinwot raft ko rej ebbebe ilo malo ko ilo Pacific im Atlantic.

Ien Emman Nan An Armej Bok Konaeer

Navy eo im Army eo rej karuwaineneik am etale im komman am ennaan ikkujjeen Draft Supplemental EA/OEA in im Draft Finding of No significant Impact (Pija eo emoj loe ke ejjelok oktak elap enaj walok jen jeral in)/ Finding of No Harm (Loe bwe ejjelok jorreen enaj walok) (FONS/FONSH) ilowaan 30 raan ko emoj ko-belloki nan an armej kwalok aer ennaan.

Ennaan ko remaron ilok ilo online nan
<https://www.nepa.navy.mil/JFCSecondSupplemental/EA>
 ak ilo mail nan:

Environmental Program Manager/SP2521
 Strategic Systems Programs
 1250 10th Street SE, Bldg. 200, Suite 3600
 Washington Navy Yard, DC 20374-5127



Aolep konono ak ennaan ko raikuj ilok ilo online ak ilok ilo mail eo ar jitaam ilo June 10, 2026.

Draft Supplemental EA/OEA im Draft FONS/FONSH ko rej bed online ilo
<https://www.nepa.navy.mil/JFCSecondSupplementalEA>
 ak ilo public laibrare kein: Oxnard Downtown Main Library, California ; Hawai'i State Library-Honolulu; Kwajalein Island's Grace Sherwood Library im Roi-Namur Library, ilo Republic of the Marshall Islands.



The Department of the Navy and Department of the Army
INVITE YOU TO PARTICIPATE
 in the Public Involvement Process for the
 Joint Flight Campaign Second Supplemental
 EA/OEA

The U.S. Department of the Navy and Department of the Army have prepared a Draft Supplemental Environmental Assessment / Overseas Environmental Assessment (EA/OEA) to evaluate the potential environmental impacts of conducting missile flight tests in both Atlantic and Pacific Ocean regions. The Draft Supplemental EA/OEA evaluates the potential impacts of flight tests involving launch from new potential land-based launch locations at Wake Island, Meck Islet in the Republic of the Marshall Islands, and San Nicolas Island in California, as well as the use of floating target rafts in broad ocean areas of the Pacific and Atlantic Oceans.

Public Involvement Opportunity

The Navy and Army welcome your review and comments on the Draft Supplemental EA/OEA and Draft Finding of No Significant Impact / Finding of No Significant Harm (FONS/FONSH) during a 30-day public comment period. Comments may be submitted online at

<https://www.nepa.navy.mil/JFCSecondSupplementalEO>
 or by mail to:

Environmental Program Manager/SP2521
 Strategic Systems Programs
 1250 10th Street SE, Bldg. 200, Suite 3600
 Washington Navy Yard, DC 20374-5127



All comments must be submitted online or postmarked by June 10, 2026.

The Draft Supplemental EA/OEA and Draft FONS/FONSH are available online at <https://www.nepa.navy.mil/JFCSecondSupplementalEA> or at the following public libraries: Oxnard Downtown Main Library, California; Hawai'i State Library-Honolulu, Kwajalein Island's Grace Sherwood Library, and Roi-Namur Library, Republic of the Marshall Islands.

Celebrate Mom with a delightful

Mother's Day Brunch

on **Sunday, May 10, 2026**

at the **MP Room.**

Available seating for reservation:

- Time slot 1: 10.00 – 11.00
- Time slot 2: 11.30 – 12.30
- Time slot 3: 13.00 – 14.00

Early reservation is recommended to secure preferred table arrangements.

Book your slot at the MWR Library before May 4, 2026

\$30 per person



26-27 KINDERGARTEN

**ENROLLMENT
SCAN
ME**

**CALL
480-3601
for an online
link**



Kwajalein Atoll

**Do you have a Concern or Kudos?
Go to the Interactive Customer Evaluation
and give us your feedback.**

**GO
TO**

ICE
INTERACTIVE CUSTOMER EVALUATION



E-Wareness: Compressed Gas Cylinder Storage

- ✦ Protect cylinders from weather and heat
- ✦ Contents must be labeled per OSHA
- ✦ Separate by type and compatibility
- ✦ No flames or sparks within 50 feet
- ✦ Label empty cylinders as EMPTY



Jikin Kakon Compressed Gas Cylinder Ko

- ✦ Kejbarok cylinder ko jen menen im dret
- ✦ Renaj aikuj label nan read im melele kaki ekar non OSHA
- ✦ Kejenolok ko aerwotjuon jen ko jet
- ✦ Ejjelok kobatat ak kijeek turinlok 50 ne
- ✦ Label e kin EMPTY elane ejjelok kobban



Kwajalein Atoll

U.S. Department of Veterans Affairs **MANILA REGIONAL OFFICE** **Outreach Event**

Join the **Manila Regional Office** for an in-person Claims Clinic dedicated to supporting our Veterans.

Our Veterans Benefits Administration (VBA) representatives will provide assistance with:

- Answers to questions about VA benefits and claims;
- Assistance with compensation or pension applications;
- Guidance on filing claims related to Sergeant First Class Heath Robinson Honoring our Promise to Address Comprehensive Toxics (PACT) Act.

Need help with a claim or have questions about VA benefits? We're here to support you.

Location: American Legion Post 44/Veterans Hall
(Facility 976)

Date: May 7, 2026 (Thursday)

Time: 9:00 AM - 5:00 PM

Veterans Affairs Session May 7th 9am - 5pm at the American Legion Post 44

Phone: #MyVA (#6982) | 632-8550-3888 | 1-800-1888-5252, select Option 1
Mondays to Fridays - 7:30 am to 3:00 pm
Fax: 028-550-3942 | 1-800-1888-5252 and dial 3942
ask.va.gov www.va.gov

ALWAYS CALL...

...if your building's Fire Alarm is sounding



Meal Card scanning from AIE Badge



FROM THIS

TO THIS
AIE BADGE



We have begun transitioning the Meal Card system to accept the new AIE badge, replacing the need to carry a meal card. Thank you for your patience as we streamline your dining experience. If you have any questions or concerns, please ask for a manager at the dining facility and we can explain the process.

Dome Home Trash & Recycling



V2X will be installing Green Residential Trash bins and Blue Recycle bins at each Dome Home. This will be a new experience for our Dome Home residents that we hope will enhance your stay on our island.

Please be sure your personal property and potted plants are set safely back from the road.

Please keep curious children away from the Compactor Truck as it visits each Dome.

CARDBOARD and PLASTICS are not recycled on Kwajalein.

TRASH and RECYCLE bins are collected Tuesday and Friday.

You can deposit all glass, aluminum, bottles and metal into the same blue recycle bin.

For Questions, call 480-1760



BARGAIN BAZAAR: COMMUNITY & MISSION

- Volunteer-run resale shop on Kwajalein
- Donations fund scholarships & school grants
- Supports education across the Marshall Islands & Micronesia
- Open Every Wednesday 4:30 to 6:30 PM
& 1st Saturday 4:00 to 6:00 PM
- Promotes reduce, reuse & recycle
- A hub for connection and community

We Accept:

Clean clothing, baby gear, shoes, linens, kitchenware, décor, working electronics, books, toys, school supplies, jewelry & holiday décor

We Do NOT Accept:

Food or medications

How to Donate:

Stop by DSC for gate access

Bring items directly to BB door

Wrap breakables & attach cords

Donations

**ALL PROCEEDS SUPPORT THE YYWC EDUCATION ASSISTANCE COMMITTEE.
KOMMOLTATA FOR YOUR DONATION!**

VOLUNTEER

The Mic Shop is always looking for Volunteers!

It is a great way to connect with the community and help our mission of **Education Grants and Scholarships**

Contact **Jacki Blumenauer** (jackiblume64@hotmail.com) or stop in the Mic Shop

Only 2 hours of your time each month to make a big difference

**Sundays and Mondays: 12:00pm - 2:00pm
Wednesdays and Fridays: 4:30pm - 6:30pm**



Monthly tip from the USAG-KA Fire Prevention Office

Parking near Fire Protection Devices

Never park or chain a bike to red painted fire protection piping.

Do not park in front of a fire hydrant.

Do not block facility EXITS with bikes or vehicles.

Do not store items within 3 feet of fire sprinkler systems.

Combustible storage is prohibited in electrical mechanical rooms.

Do not store bikes or other items underneath inside stairwells.



Tried to STOP, But You
Can't

Has Alcohol become an
OBSESSION

There is a Solution to
the Problem with Alcohol

**REACH OUT FOR
HELP**

ALCOHOLICS ANONYMOUS

ROOM 214 KWAJ RELIGIOUS EDUCATION
BUILDING (UPSTAIRS)

BUILDING #671

FRIDAY-SATURDAY-SUNDAY

7PM-8PM

QUESTIONS? EMAIL: kwajchapel@gmail.com
OR CALL 480-2116



**American
Red Cross**

Service to the Armed Forces

Volunteer Opportunity at Kwajalein Atoll

Join the American Red Cross and help bring our Services and Programs to the Kwajalein Atoll community!

Online & Virtual Training Provided

No experience needed!

We provide all necessary training. Just bring your passion and commitment to helping others!

Contact **Alana Wilson** at alana.wilson@redcross.org

Let's work together to build a more prepared and resilient community.

Kwajalein to Ebeye Ferry Schedule



- C-BADGE WORKERS** have priority, EXCEPT on the following runs:
 - 0650 run (arriving at Ebeye at 0715) High Schools students have priority ridership.
 - 0720 run (arriving at Ebeye at 0745) and the 1600 run (departing from Kwaj) Kwajalein School Guest students have priority rider-ship.
- On Stevedoring days, workers involved with cargo operations have priority on the 2000 ferry.
- SMOKING, TOBACCO, CHEW, BETEL NUT, EATING and DRINKING ARE PROHIBITED ON ALL FERRIES.
- Boats will not be overloaded: Maximum capacities are 150 passengers (CATs and ferries) and that number may be reduced during inclement weather or at the Captain's discretion due to safety concerns.
- Meck catamarans may operate on a dynamic schedule and will be available by calling Meck Management.
- SATURDAY ONLY – THERE WILL NOT BE A 2130 FERRY INSTEAD THE FERRY WILL DEPART AT 2200.**

EBEYE – Tuesday to Saturday

EBEYE – Sunday & Holiday

ETD	ETA	ETD	ETA	TYPE	ETD	ETA	ETD	ETA	TYPE
	EBEYE	EBEYE	KWAJ	VESSEL	KWAJ	EBEYE	EBEYE	KWAJ	VESSEL
0245	0310	0315	0340	FB N/1	0400	0425	0430	0455	FB N/1
0420	0445	0450	0515	FB 1	0500	0525	0530	0555	FB 1
0450	0515	0520	0545	FB 2	0600	0625	0630	0655	FB 1
0520	0545	0550	0615	FB 1	0830	0855	0900	0925	FB 1
0550	0615	0620	0645	FB 2	1140	1205	1210	1235	FB 1
0620	0645	0650	0715	FB 1	1530	1555	1600	1625	FB 1/N
0650	0715	0720	0745	FB 2	1700	1725	1730	1755	FB N
0720	0745	0750	0815	FB 1	2000	2025	2030	2055	FB N
0900	0925	0930	0955	FB	2200	2225	2230	2255	FB N
1140	1205	1210	1235	FB 2/A	Holidays only ADD extra run below				
1300	1325	1330	1355	FB	1830	1855	1900	1925	FB N
1440	1505	1510	1535	FB A	Monday				
1600	1625	1630	1655	FB A	0315	0340	0345	0410	FB N/1
1700	1725	1730	1755	FB A	0500	0525	0530	0555	FB 1
1730	1755	1800	1825	FB N	0600	0625	0630	0655	FB 1
1800	1825	1830	1855	FB A	0720	0745	0750	0815	FB 1
1830	1855	1900	1925	FB N	0830	0855	0900	0925	FB 1
1900	1925	1930	1955	FB A	1140	1205	1210	1235	FB 1
2000	2025	2030	2055	FB N	1440	1505	1510	1535	FB 1/N
2130	2155	2200	2225	FB N	1645	1710	1715	1740	FB N
(TUESDAY-FRIDAY) 2130 is final run of day					1745	1810	1815	1840	FB N
2200	2225	2230	2255	FB N	1900	1925	1930	1955	FB N
SATURDAY - No 2130 ferry; 2200 is final run of day					2000	2025	2030	2055	FB N
FB =	Ferry	Boat			2130	2155	2200	2225	FB N



Roi-Namur / Enniburr Ferry Schedule



Tuesday to Saturday

Run Number	ETD Roi-Namur	ETA Enniburr	ETD Enniburr	ETA Roi-Namur	Vessel
1	0520	0535	0555	0610	FB
2	0730	0745	0805	0820	FB
3	1250	1305	1325	1340	FB
4	1715	1730	1750	1805	FB
5	1940	1955	2015	2030	FB

Sunday-Monday-Holiday

Run Number	ETD Roi-Namur	ETA Enniburr	ETD Enniburr	ETA Roi-Namur	Vessel
1	0650	0705	0725	0740	FB
2	0940	0955	1015	1030	FB
3	1450	1505	1525	1540	FB
4	1940	1955	2015	2030	FB

FIRST PRIORITY: BADGE WORKERS

Passengers are to board and disembark ONLY at the gangway area. As deemed by the Captain, any passengers, who are unruly and pose a safety hazard to the crew, other passengers, or vessel will not be allowed to ride the ferry. Maximum passenger load is 150 passengers.

SMOKING, TOBACCO CHEWING, BEETLE-NUT, EATING and DRINKING ARE STRICTLY PROHIBITED ON ALL FERRIES.

The clock kept by the ferry Captain is the official time. Departure times from Roi-Namur are mandatory times. Return times to Roi-Namur may change slightly due to the offloading of water at Enniburr.

Any questions? Please call the Port Captain in Kwajalein, 480-2173.

Kwajalein Island Trash & Recycling

Residential Trash Collection 480-1760
Yard Vegetation Collection 480-1890
Hazardous Waste Pickup Line 480-8858



TRASH & RECYCLING PICKUP SCHEDULE

The Green Residential TRASH receptacles are collected every **Tuesday and Friday**.
The blue RECYCLE bins are also collected every **Tuesday and Friday**.
The large black General Solid Waste Community Containers are emptied on Monday, Wednesday, Thursday, and Saturday.

Safety First! Please keep any curious children away from the Compactor Truck as it feeds contents into the truck.

Recyclable materials are also collected by both *solid waste* and *horizontal maintenance personnel*, in conjunction with general trash collection. Currently the island only recycles glass, aluminum, metal, and bulk organic materials. **Cardboard and plastics are not recycled materials on Kwajalein.** These items should be placed into the general trash stream for disposal/incineration.



Residential users will be given a **green trash** receptacle and a smaller **blue receptacle** for recyclable materials. It is requested that residences place their recyclable items into the blue containers, and stack larger materials next to the bins. Lawn clippings and leaves should be bagged and placed next to bins. Palm fronds and coconuts should also be stacked up next to the bins for removal by horizontal maintenance personnel.



Kwajalein /Roi Driver Orientation

Sponsors need to bring newcomers to Bldg 856

Wednesdays:

At 0900 - Marshallese

At 1300 - EXPATS

To find out the requirements to obtain a base license

Roi Classes every 2nd Friday time base on flight schedule in Bldg C

POC's on this matter are:

George.parker3@gov2x.com and Wilson.Kaisha@gov2x.com

or Stop by Bldg 856, Room 101

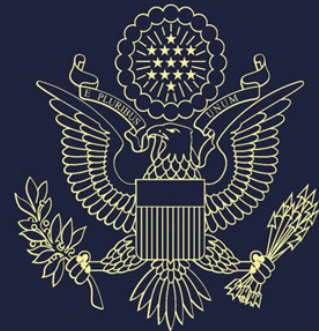
Now Available by Appointment...

PASSPORT PHOTO SERVICES

PASSPORT

Located on the 2nd floor of Bldg. 805 on Kwajalein. When taking your photo, remember the following guidance for a successful shoot:

- Directly face the camera without tilting your head.
- Have a neutral facial expression with both eyes open and mouth closed.
- Take off your eyeglasses, headphones or wireless hands-free device.
- Do not wear a uniform, clothing that looks like a uniform, or camouflage.
- Remove hats or head coverings or submit a signed statement or doctor's note that says you must wear it for religious or medical purposes.



*United States
of America*



To schedule an appointment,
contact IMD/AVD personnel at:

KwajaleinHourglass@gov2x.com



FOLLOW US AT THESE LOCATIONS



Click QR Code to jump to social page

Kwajalein



MIA Project

NEVER FORGET.

<https://kwajaleinmiaproject.us/>

COMMUNITY CLASSIFIEDS

Submit Announcements to the Roller Channel and The Kwajalein Hourglass

OPEN CALL FOR ANNOUNCEMENTS
The island community is invited to submit listings for events and for sale items; announcements; department trainings; safety updates; public service messages; and thank-you messages.

Preparing Your Message

For questions about your messaging, please reach out to the USAG-KA Public Affairs Office at 480-4848.

Ads should always include a point of contact, phone number and/or email address.

Private parties, fundraisers and events requesting and/or accepting donations are typically not allowed for publication per AR 360-1. Fundraisers and support activities for private and schools-based organizations, scouting groups, civic clubs and other listings may be subject to a legal counsel review to determine their eligibility for publication.

Formatting Your Listings

It is recommended that graphical adver-

tisements and announcements intended for the Hourglass and the AFN Roller Channel be formatted as PowerPoint slides.

Graphic designers are asked to maintain a generous margin (.75-1-inch) around all sides and to size fonts no smaller than pt. 20.

If your Roller Channel advertisement requires a special expiration date, please note this for the Roller team in the body of your message.

Deadlines for Submissions

Send advertisements for the Kwajalein Hourglass and the AFN Roller Channel to kwajaleinhourglass@gov2x.com on Wednesdays by close of business/Thursday morning.

Roller Channel ads are accepted on a rolling basis by 4 p.m. for a mid-week and late-week update. Ads received after 4 p.m. will be loaded in the next update. Please ensure you submit ads in good time to ensure timely upload.

For more information, reach out to the USAG-KA Command team through the USAG-KA Facebook page.

ANNOUNCEMENTS

AFH Construction Is Ongoing. Nan, Inc. Construction is scheduled to commence the telecommunication scope of work for the Kwajalein Army Family Housing project in our community. Residents and commuters should be aware of possible changes in traffic patterns and to plan their routes accordingly. Nan, Inc. Construction is committed to minimizing any inconveniences, and we will strive to ensure a smooth and efficient construction process.

ArMA. Log in to ArMa, the Army Maintenance Application, to report issues for all buildings maintained by the Department of Public Works. Contact Public Works at 480-3550.

CAC Office. Before your visit to the Common Access Card Office, ensure all paperwork is completed by your human resources representative before making an appointment. Bring two forms of government-issued IDs with you. Walk-in appointments are welcome, but there may be a wait. CAC Office Hours, Bldg. 835, are Tuesday – Saturday, 8 a.m. – 4 p.m.; (Lunch: noon - 1 p.m.). Call 480-8496.

Demolition at the Capt. Louis S. Zamperini Dining Facility. Phase three of the Zamperini DFAC demo has begun and is projected to be finished March 2026 for the dining and serving area. Be careful around the dining facility during the phases.

Do Not Take Cultural Artifacts. It is illegal to remove cultural resources from the atoll. This includes any protected species, unexploded ordnance, WWII-era artifacts and ancient Marshallese artifacts. These resources are protected under U.S. federal and RMI law. Contact the Kwajalein Archaeology Office at 480-8867.



Contact the USAG-KA Sexual Harassment/ Assault Response and Prevention Victim Advocate

Captain Tameka Edmonson
SHARP Victim Advocate

Work: 480-1419 or

Major Matthew DeMartino
Work: 480-1402

USAG-KA SHARP

Pager: 808-580-3241
DOD SAFE Helpline: 877-995-5247

Emergency Management. Visit the USAG-KA Emergency Management webpage, <https://home.army.mil/kwajalein/index.php/my-fort/EM>; 2) Click on "Mass Notification"; 3) Follow the registration instructions.

E-Wareness: It is each driver's responsibility to ensure vehicles are not leaking fluids other than air conditioning condensate. Call 911 to report spills and arrange with automotive for routine maintenance. Please call Environmental at 480-0722 with questions. Ej an ri-kator eo eddo non lolorjake bwe wa eo ejjab leak jabdewot oil ijelak in drennin air condition eo jen wa eo. Ne elon jabdewot leak/lutok in oil jen wa eo, Kiir 911 non report- e lutok eo. Ak kiir Environmental ilo 480-0722 non kajitok.

Fire Safety Tips. Some pets are chewers. Watch pets to make sure they don't chew through electrical cords. Pets are curious. They may bump into, turn on, or knock over cooking equipment. Keep pets away from stoves and countertops. Make sure pets are included in your family's fire evacuation plan. Build an evacuation kit for each pet in your household.

Flights. Please note that all flights are subject to change. For the latest update on your flights on United, ATI or Air Marshall Islands: ATI: 480-2169; AMI: 480-3469; United: 480-4852 or 1-800-UNITED1; Air Terminal Services: 480-2660; Flight Information Recording: 480-3589

UA Schedule Effective Now: Monday and Friday—UA 155 (HNL); Check-in 2 – 4:50 p.m.;

Wednesday—UA 133 (HNL); Check-in 2 – 4:15 p.m.; Tuesday and Saturday—UA 154 (GUM); Check-in 10:45 – 11:15 a.m.

FlyRoi Reservations. To schedule reservations and for correspondence related to flights, email LCVKwajaleinFlyRoi@versar.com.

How to dress in the RMI. Out of respect for the Marshallese culture, residents are asked to dress appropriately when visiting Ebeye, Third Island, or anywhere within Kwajalein Atoll. Women should wear clothing to cover shoulders and knees. None are permitted to wear shorts when visiting churches on Ebeye. Men should wear long slacks to church.

Kwaj Small Boat Marina hours are 7:30 a.m. – 6 p.m. Friday through Monday, and on holidays, excluding Thanksgiving and Christmas. Morning boat reservation times are from 7:30 a.m. – noon. Afternoon boat reservations are from 1 – 5 p.m.

Not Feeling Well? Call 480-2223 to make an appointment for a COVID-19 test, Tuesday through Saturday from 7:30 a.m. – 4:30 p.m. If you are not feeling well, please wear a mask when you are around others in the community.

Operational Security. See something, say something. All employees on USAG-KA are required to receive annual Threat Awareness and Reporting Program training provided by KRO; Reporting: Report suspicious activities to the Kwajalein Resident Office at 480-9859/1293/8006 at Bldg. 1163.

PCS & Vacation Tips. Notify the post office before leaving for 30 days or PCS'ing. Per DOD 4525.6-M, mail is only allowed to be held for 30 days with or without prior notice. Mail is considered unclaimed on day 31 and will be returned to the sender. Email the post office to authorize pick up for your mail and packages. When PCS'ing, provide a forwarding address. Contact Jose Burgos-Rivera with questions at 480-3461 and Jose.Burgos-Rivera@gov2x.com.

Salon Walk-Ins. Surfside Salon Walk-In Appointments are available on Fridays from 1:30 - 6 p.m.

Smoking. USAG-KA, smoking is permitted in designated smoking areas only. Smoking and cigarette butt receptacles must be at least 50 feet from the entrance of facilities.

Taxi Service. Call 480-TAXI (8294) or 3341 to

HELP WANTED

For employment with contractors within the U.S. Army Garrison - Kwajalein Atoll please check contractor company websites for employment opportunities.

book your ride at least 24 hours in advance of check-in time.

Millican Family Pool Hours. Closed for cleaning on Thursdays. Open noon to 5 p.m. Tuesdays, Wednesdays, Fridays and Saturdays. Open 11 a.m. to 5 p.m. Sundays and Mondays.

The NEC Testing Center Is Open to the Community - Giving you the head start you need to thrive! - Open Tuesday through Saturday by appointment
Authorized Pearson VUE Test Center. Schedule A test Today!
NEC testing Center, 480-4344, FN 1008-131
ACUITY International

Kwajalein / Roi Namur Licensing Classes on Kwajalein are every Wednesday @0900 Marshallese @1245 Expats (by appointment only as class side is limited)
Classes are in Bldg. 856 Rm 101, Vehicle Maintenance Compound
Roi classes every 2nd Friday in Bldg. C, timed based on flight schedule
No registration needed for Roi classes.
To register, send email to either of the following:
George.Parker@gov2x.com
Wilson.Kaisha@gov2x.com
...or stop by Bldg. 856, Rm 101

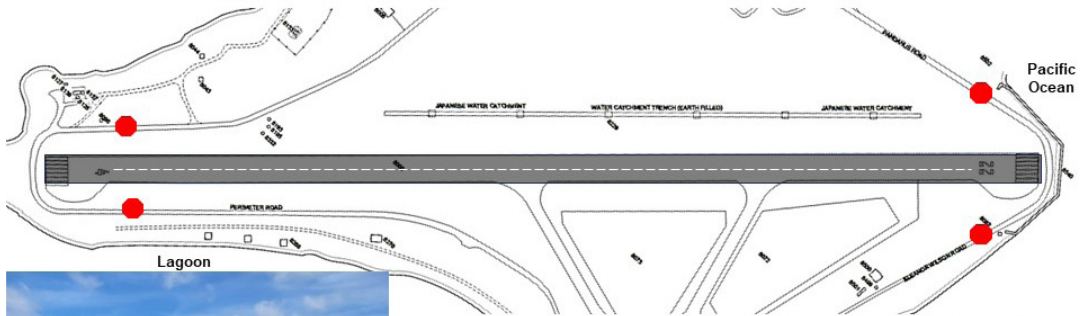


OPSEC IS NOT RETROACTIVE.
THINK BEFORE YOU SHARE INFORMATION. ONLINE AND OFFLINE.

Like and share @USArmyOPSEC

ROI-NAMUR FOR AIRCRAFT!!

Stop and look both ways for aircraft on Perimeter Rd., Pandanus Rd., Eleanor Wilson Rd.
If aircraft are on approach or taking off, you must hold your position and wait!

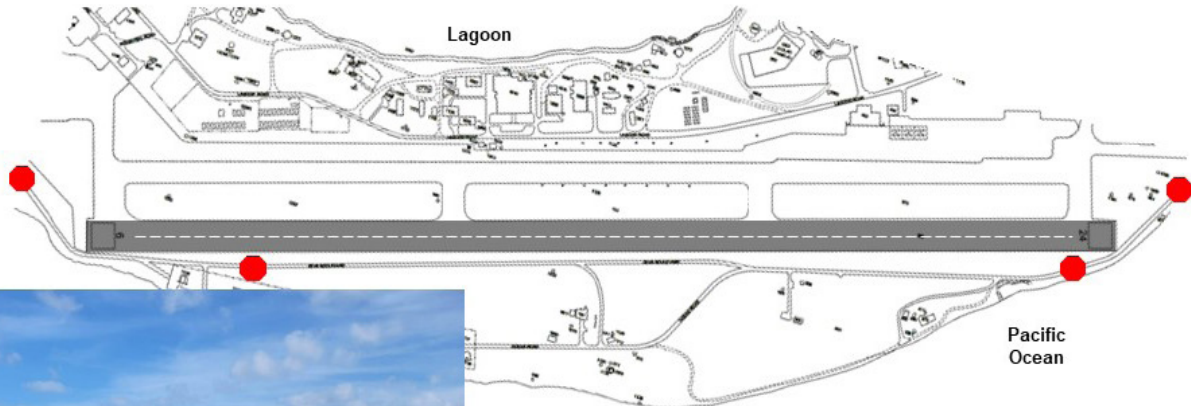


Stop at designated signs and look for aircraft landing or taking off.

If you see an aircraft, hold your position at the stop sign and wait until the aircraft has landed or departed before moving.

KWAJALEIN FOR AIRCRAFT!!

Please remember to stop and look both ways for aircraft on Zeus Blvd. or Ocean Rd.
If aircraft are on approach or taking off, you must hold your position and wait!



Stop at designated signs and look for aircraft landing or taking off.

If you see an aircraft, hold your position at the stop sign and wait until the aircraft has landed or departed before moving.

NOW SHOWING at the YUK THEATER

SATURDAY, MAY 2

“Star Wars: Episode IV - A New Hope”
(1977)
(PG) 121 min.

SUNDAY, MAY 3

“A Madea Family Funeral” (2019)
(PG-13) 109 min.

SATURDAY, MAY 9

“Corpse Bride” (2005)
(PG) 77 min.

SUNDAY, MAY 10

“The Departed” (2006)
(R) 151 min.

SATURDAY, MAY 16

“Sarah’s Oil” (2025)
(PG) 103 min.



SUNDAY, MAY 17

“Christy” (2025)
(R) 135 min.

SATURDAY, MAY 23

“The Lego Batman Movie” (2017)
(PG) 104 min.

SUNDAY, MAY 24

“Bugonia” (2025)
(R) 118 min.

SATURDAY, MAY 30

“Teenage Mutant Ninja Turtles: Mutant
Mayhem” (1999)
(PG) 99 min.

SUNDAY, MAY 31

“Any Given Sunday” (1999)
(R) 162 min.



WEEKLY TROPICAL WEATHER THREAT OUTLOOK

RTS WEATHER STATION STAFF

Discussion:

April has received 7.07" of rain so far, which is about 1.27" above normal for the month. We have received 25.83" of precipitation for the year, putting us more than 9.16" above normal. Expect a wet weather pattern for the next couple of days across the atoll, as trade winds move through the region, along the Intertropical Convergence Zone (ITCZ). Expect isolated to scattered showers with NE trade winds in the mid-teens throughout the workweek. Although Friday and Saturday will see a break from the showery weather. Increased shower activity will return over the weekend with the trade winds surging into the mid 20's, with higher gusts near showers. This surge in wind will increase localized convergence across the atoll as well as increase the chances for showers. We've had the right conditions for convection, but no thunderstorms have been observed over the last week. A thunderstorm

day is defined by an "in situ" lightning strike, meaning lightning is observed or thunder is heard within five miles of the Kwajalein airfield. The thunderstorm risk will remain slightly elevated with the current weather pattern in the region. There is an area (Invest 91W) south of Kosrae that National Weather Service Guam is keeping an eye on, but no cyclogenesis is expected currently. The ITCZ has receded east slightly but will remain draped across the region throughout the week. El Nino Southern Oscillation (ENSO) is in la Nina conditions for our part of the Pacific but starting to erode as sea-surface temperatures (SST) between the RMI and the Date Line are now warmer, having less of a negative impact on the RMI's rainfall coverage. Conditions are becoming neutral this month, helping the RMI maintain normal precipitation coverage outside of other parameters. El Nino conditions are becoming more likely this

summer, having a positive impact on precipitation for the RMI and circulation spin-up to our east. Above normal precipitation for the RMI and will see the tropical cyclone risk diminish deeper into the month as an El Nino pattern establishes.

Tropical Cyclones:

None for the RMI.

Damaging West Winds / Westerly Swell:

Not anticipated.

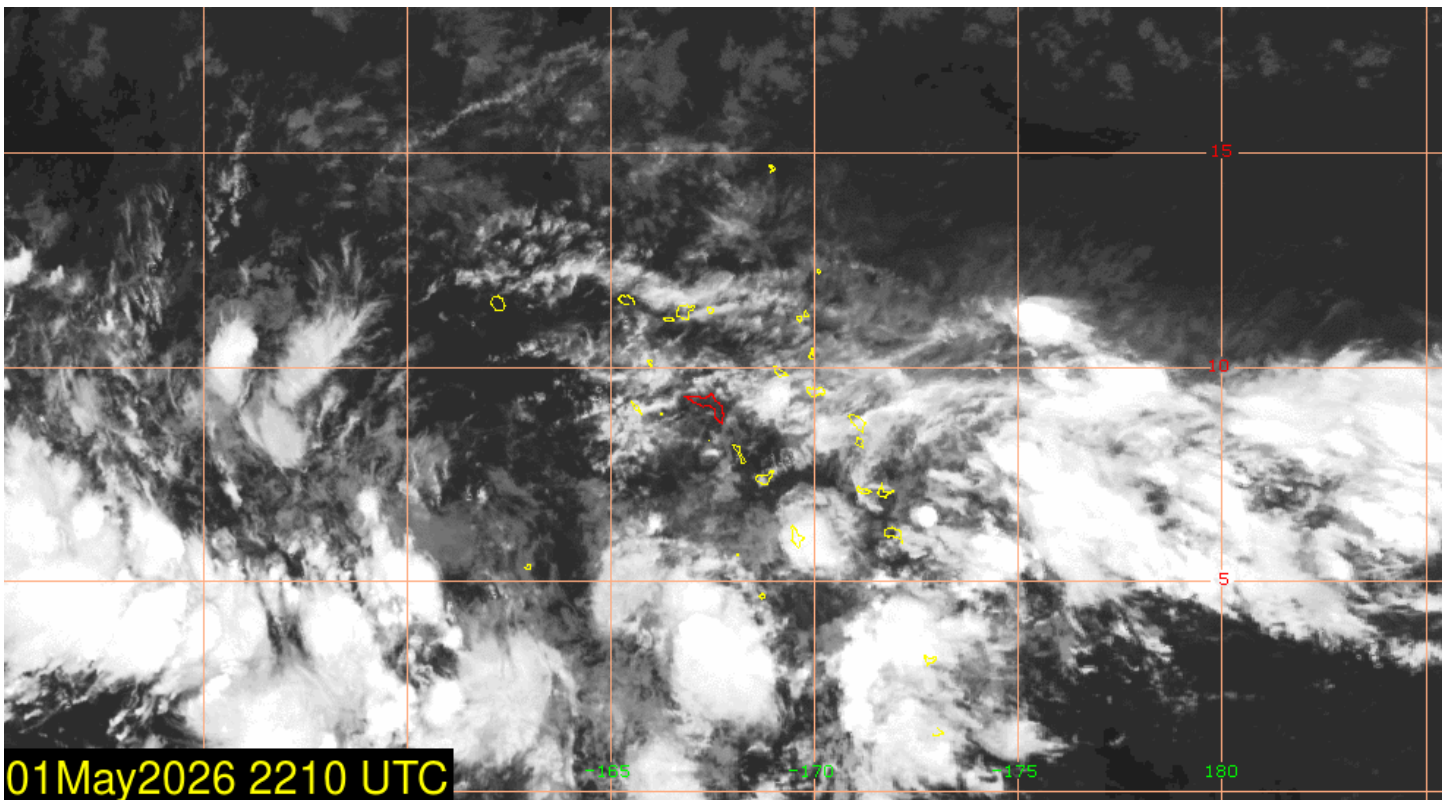
Swell / Tid Inudation For Kwajalein Atoll and Wake Island and Winds:

As the moon is growing towards a full moon (Flower moon) on May 1st tides will be more pronounced with the peak high tide being on May 2nd at 4.62' and a low tide of -0.24'. Winds: N-NE in the mid-teens for the rest of today, then look for an increase in speeds by Thursday afternoon into the low 20s. A Small Craft Advisory (SCA) over the weekend is possible

as wind speeds approach the mid-20s. A High Surf Advisory (HSA) is not expected. expected.

Purpose:

This weekly briefing is delivered Thursday mornings to island leadership. The intention of this briefing is to provide situational awareness of weather events that may interrupt operations and transportation around Kwajalein, to/from Hawaii and Guam, and in the Wake vicinity. The main threat assessed in this brief is existing and potential development of tropical cyclone activity. This brief also provides an outlook of abnormal winds, sea state, and precipitation guidance for next 7 days around the Kwajalein Atoll. The distribution list will also receive updates on any developing tropical cyclone activity in the Kwajalein region that occur between the weekly outlook products. X



WEATHER

RTS WEATHER STATION STAFF

WEATHER DISCUSSION

An increase in shower activity is expected to wrap up the workweek as the Inter-Tropical Convergence Zone (ITCZ) sends another round of unsettled weather over the central RMI. The weekend will likely feature active weather at times with the potential for small craft advisory conditions as the ridge to the north and ITCZ to the south work to tighten the pressure gradient. Sustained wind speeds will likely reach the upper teens to low twenties out of a northeasterly direction at times on Sunday and Monday. Shower activity could be confined to the overnight and morning periods throughout the weekend. Impulses from the ITCZ will continue to bring unsettled weather as we head into the early part of next week with more heavy rain and thunderstorm potential. Wind speeds are expected to recede into the low-mid teens next week as the pressure gradient relaxes across the RMI.

Mostly cloudy with widely scattered showers and stray thunderstorms. Winds NE-E at 10-15 knots with higher gusts possible near showers.

SUNDAY

Partly sunny with isolated to widely scattered showers and stray thunderstorms. Winds NE-E at 14-19 knots with higher gusts possible near showers.

MONDAY

Partly sunny with isolated to widely scattered showers and a possible stray thunderstorm. Winds NE-E at 16-21 knots with higher gusts possible near showers.

NEXT WEEK

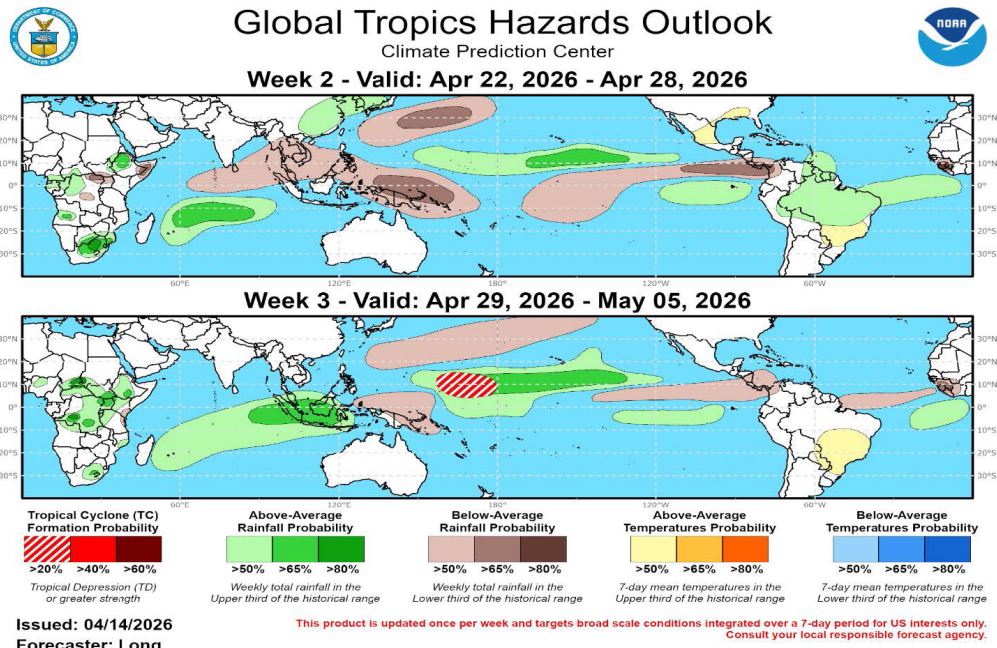
As the ITCZ lingers near the south-central RMI, shower coverage is likely to remain elevated throughout the workweek with heavy rainfall potential and stray thunderstorm chances. Winds will likely relax into the low mid-teens by Tuesday. ▲

SATURDAY

SUN-MOON-TIDES

	SUNRISE SUNSET	MOONRISE MOONSET	HIGH TIDE	LOW TIDE
SUNDAY	6:33 a.m. 6:59 p.m.	8:11 p.m. 7:13 a.m.	4:47 a.m. 4.6' 5:03 p.m. 3.6'	11:08 a.m. -0.2' 10:55 p.m. -0.1'
MONDAY	6:32 a.m. 6:59 p.m.	9:03 p.m. 8:00 a.m.	5:14 a.m. 4.5' 5:31 p.m. 3.4'	11:37 a.m. -0.1' 11:21 p.m. 0.1'
TUESDAY	6:32 a.m. 7:00 p.m.	9:55 p.m. 8:49 a.m.	5:41 a.m. 4.3' 6:00 p.m. 3.1'	12:08 p.m. 0.1' 11:48 p.m. 0.3'
WEDNESDAY	6:32 a.m. 7:00 p.m.	10:46 p.m. 9:41 a.m.	6:11 a.m. 4.0' 6:31 p.m. 2.8'	12:41 p.m. 0.4' -----
THURSDAY	6:32 a.m. 7:00 p.m.	11:34 p.m. 10:32 a.m.	6:44 a.m. 3.8' 7:07 p.m. 2.6'	12:17 a.m. 0.6' 1:20 p.m. 0.7'
FRIDAY	6:31 a.m. 7:00 p.m.	----- 11:24 a.m.	7:26 a.m. 3.4' 8:00 p.m. 2.3'	12:51 a.m. 0.9' 2:11 p.m. 1.0'
MAY 9	6:31 a.m. 7:00 p.m.	12:20 a.m. 12:14 p.m.	8:25 a.m. 3.2' 9:37 p.m. 2.2'	1:38 a.m. 1.2' 3:29 p.m. 1.2'

FOR QUESTIONS ABOUT ISLAND LIFE AND ARMY REGULATIONS, PLEASE CALL THE COMMANDER'S HOTLINE AT 480-1098. FOLLOW THE UPDATES REGARDING SAFETY INFORMATION, EVENTS AND OFFICIAL COMMAND ACTIVITIES.



Until Next Week!

