

VOLUME 66 NUMBER 16

APRIL 18, 2026

THE KWAJALEIN HOURGLASS





PHOTO BY ANTHONY CARNELLI

COMMUNITY

26 YEARS OF MUSIC, COMMUNITY AND HEART: KWAJALEIN'S BIGGEST BLOCK PARTY RETURNS TO THE YACHT CLUB

The 26th Annual Spring Break Music Festival drew one of Kwajalein's largest turnouts in recent memory — and raised funds for two Kwaj families facing life-altering hardship.

HOURLASS REPORT

By Anthony Carnelli,
Hourglass Story Writer

Rows of lawn chairs stretched across the grounds of the Kwajalein Yacht Club on Sunday, April 12, and enough parked bikes lined the grass to make the lawn look like a crowded Disneyland parking lot. The crowd — one of the largest gatherings in recent memory — filled the main outdoor seating area, while on one side a large tent covered several of Kwaj's home-brewers and Camp Hamilton buzzed with food and merchandise vendors. The island's biggest block party was back.

The 26th Annual Spring Break Music Festival, pre-

sented by the Yacht Club and MWR, ran from 3 to 10 p.m. What began in 2000 as long-time resident Jim Stepchew's idea for a musical takeover of Emon Beach has grown into a full-scale community tradition — one that has outlasted relocations, personnel rotations and even a pandemic.

"It started off small and went really big," Stepchew said.

The festival eventually moved from Emon Beach to the Yacht Club, where the music gear is housed and the venue can accommodate the event's expanding footprint. This year's edition featured the largest lineup of artists in several years, according to vice commodore Tim Roberge. The main outdoor seating area was packed. On

one side, a large tent sheltered Kwajalein's home-brewers. On the other side, Camp Hamilton buzzed with food and merchandise vendors.

"Even during COVID we kept it going," Roberge said.

The acts reflected the atoll's eclectic musical spirit. Young children took the stage to sing and strum ukuleles. Cover bands rocked favorites from bands like Weezer and Cake. The lineup included *Kings of Emon*, *Anywhere Atoll*, *Pure Aloha*, *Knight Strummers* and many more — an electric mix that kept the crowd pumped from afternoon sun to a clear night under the evening stars.

Out in the lagoon, snorkelers and swimmers cooled off while others lounged on sailboats anchored just offshore. Onshore, vendors kept the

energy high. Eric Rice sold fresh-baked sweets. The Kwajalein Fishing Club moved merchandise. And the Yoke Yuk Welcome Club offered handcrafts from The Mic Shop alongside raffle tickets for a special drawing.

The raffle prize was a signed copy of "Just Another Day in Paradise: A History of Kwajalein, Marshall Islands" by Bill Remick — one of a limited number published, offering a detailed historical look at some of the most storied islands in Kwajalein Atoll. Tickets sold for \$10, with proceeds supporting education in Micronesia. Col. Matthew Cannon, Commander U.S. Army Garrison - Kwajalein Atoll announced the winning ticket during the festival.

But beneath the music and

festival.

But beneath the music and the laughter, this year's festival carried a somber weight. Every year, the Spring Break Music Festival raises money for a charitable cause. This year, the cause hit close to home.

"There are two families we're supporting for this year's Spring Break Music Fest," Roberge said.

The first is the Turpie family. Bari Turpie works for RGNext on Roi-Namur. He and his wife, Megan, have three children. Their middle child underwent emergency brain surgery just days before the festival.

The second family carries an even heavier burden. Ursula Labrie, a former Kwajalein resident and Yacht Club vice commodore whose family was deeply involved in the island community — including her husband's service as police chief — is now facing a far different kind of loss. Labrie lost her son, Cameron Dimond, in an automobile accident earlier this year. He is survived by his wife, two children and a third child who was on the way at the time.

The donations collected

at this year's festival will be split between the Turpie and Dimond families — an arrangement that, for organizers, reflects the deeper spirit behind the event.

"Kwaj family isn't just here on Kwaj," Roberge said. "Kwaj family is for life, off of Kwaj. So that's what it's all about. Helping family and friends that used to be here or are still here."

As the evening wore on and the final notes rang out from crowd-pleasing sets by *Kings of Emmon* and *Anywhere Atoll*, the festival's 26-year legacy felt as strong as ever. Though Stepchew has said this may be his last year organizing the event, Roberge noted with a laugh that he made the same claim last year. For now, at least, organizers are hoping he sticks around for one more.

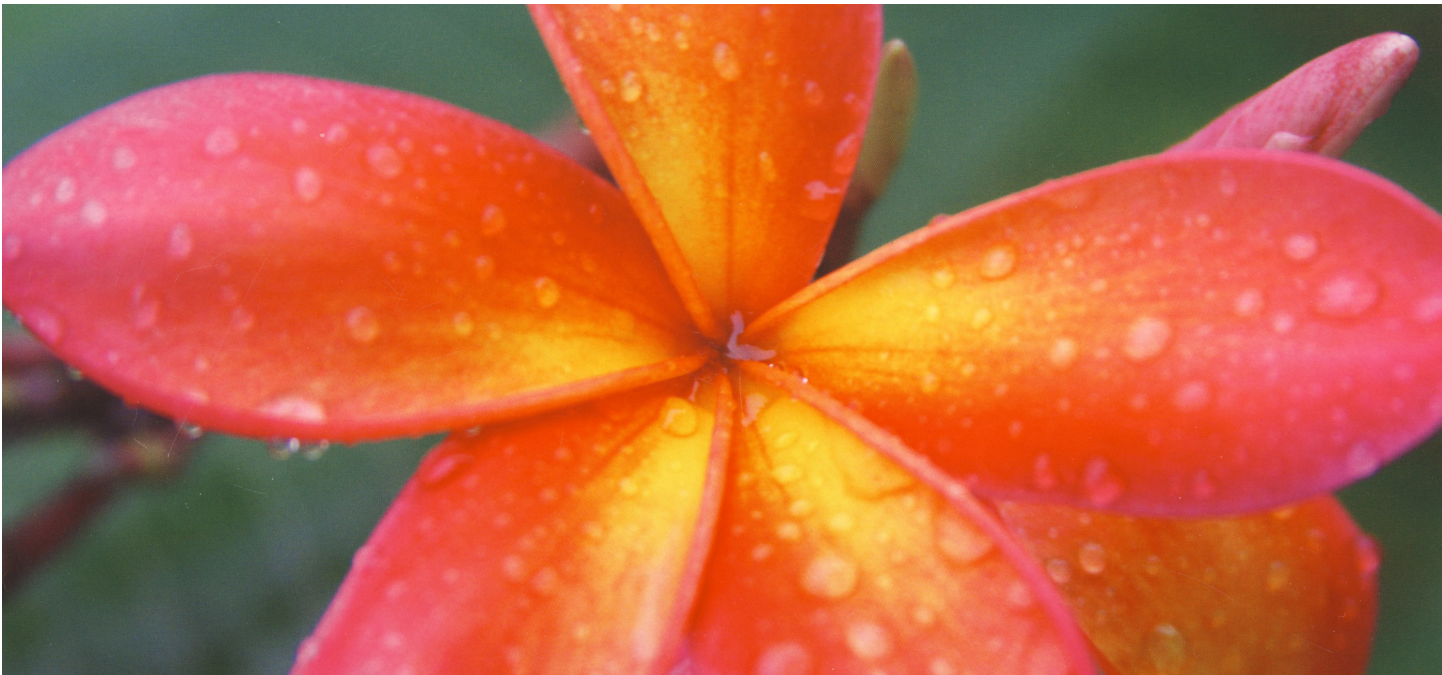
Twenty-six years in, the Spring Break Music Festival has grown far beyond a day of live music and homebrew. It has become a tradition that reflects Kwaj at its best — neighbors showing up, old ties holding fast and a community gathering not just to celebrate, but to care for its own. ▾



PHOTO BY ISAIAH MATTHEWS



PHOTO BY ANTHONY CARNELLI



Front Cover: Springtime Serenade by Susan Wynn

Back Cover: Sunny Paths by Isaiah Matthews

The Kwajalein Hourglass is named for the insignia of the U.S. Army's 7th Infantry Division, which liberated the island from the forces of Imperial Japan on Feb. 4, 1944. The Kwajalein Hourglass is an authorized publication for military personnel, federal employees, contractor workers and their families assigned to U.S. Army Garrison-Kwajalein Atoll.

Contents of the Hourglass are not necessarily official views of, or endorsed by, the U.S. Government, Department of War, Department of the Army or USAG-KA. It is published Saturdays in accordance with Army Regulation 360-1.
 Phone: Defense Switching Network: 315-480-5169
 Local phone: 480-5169

Garrison Commander.....Col. Matthew Cannon
 Garrison CSM.....Command Sgt. Maj. Stanley Jackson
 Public Affairs Officer.....Sherman Hogue
 Editor.....Muhammad Rasheed
 Communications Specialist, Sr.....Isaiah Matthews
 Communications Specialist.....Stephen Elson
 Communications Specialist.....Anthony Carnelli
 Story Writer.....Annette Monk
 Story Writer.....Christy Wagnon
 Media Capture.....Raneesh Thiruvath



PHOTOS BY ISAIAH MATTHEWS

COMMUNITY

BEHIND THE BOARD: THE ENGINEERING BEHIND SPRING BREAK'S BIGGEST SOUND

HOURLASS REPORT

By **Isaiah Matthews**,
Hourglass Story Writer

For most festival goers, the music starts the moment the first artist takes the stage.

For Nik Meinzer, an audio engineer, it starts long before that, in signal paths, gain levels, speaker placement, and the constant challenge of turning dozens of separate sound sources into one seamless listening experience.

As the sound engineer for the Spring Break Music Festival, Meinzer's role begins well before event day. This year, the engineering challenge started with unfamiliar equipment.

"Because this is a brand-new sound board that I was completely unfamiliar with, I was lucky enough to get it about a week before the festival, so I could start programming it and getting familiar with it," Meinzer said.

That week of preparation was critical.

Before a single microphone was plugged in, Meinzer had to learn the board's architecture,

channel routing, compression settings, equalization controls, and output mapping. In practical terms, that meant building the entire audio workflow from the input stage to the speakers.

At the center of that system is signal flow, the engineering chain that carries sound from source to audience.

Every microphone, instrument cable, and voice box first runs into the stage boxes positioned near the performers. From there, the signal is transmitted to the board, where it must be individually processed.

"The signal flow has to go through the stage box," Meinzer explained. "Then it goes through the board."

Once there, each channel becomes its own engineering problem. A vocal microphone behaves differently from a bass guitar. A drum kit produces a vastly different frequency spectrum than a ukulele or guitar. That means each input requires separate adjustments for gain, compression, and equalization.

"You have to know what frequencies it hits," Meinzer said. "Too much gain, feedback."

That balance is one of the

most important engineering tasks of the event.

Gain controls how strongly the incoming signal is amplified at the input stage. Too little, and the sound disappears into the mix. Too much, and the system risks distortion or the sudden high-pitched squeal of feedback.

For Meinzer, avoiding that is

a point of professional pride.

"I pride myself when I have a full event with no feedback," he stated ecstatically. "That's my ultimate goal."

Preventing feedback begins long before the first sound check. Speaker and microphone placement are part of the engineering design itself.

"Typically, you want your



main speakers at the most front and all your microphones behind the speakers,” Meinzer said.

That physical layout helps prevent sound from looping back into microphones, one of the most common causes of live-event audio issues.

The outdoor environment adds another layer of complexity. Unlike indoor spaces, where sound reflects off walls and ceilings, outdoor sound behaves differently.

“Here, sound just continues to travel,” Meinzer noticed. “It doesn’t bounce back.”

From an engineering perspective, that changes how he approaches the mix.

Indoor events require careful management of reflections, echo, and room resonance. Outdoors, those reflections are minimized, but engineers must account for wind, distance, and sound dispersion across an open area.

On festival day, the technical challenges continued. Because equipment was sourced from multiple departments, not every cable and microphone performed as expected.

“We had to do a lot of troubleshooting on the fly,” Meinzer said. “One of the mics turned out not to be working.”

That forced real-time diagnostics. A failed microphone could mean a bad cable, a damaged connector, incorrect channel routing, phantom power issues, or a board-side input problem. Every minute spent troubleshooting pushes against the show schedule.

Still, Meinzer sees those moments as part of the craft.

“It makes me a better sound engineer to troubleshoot quickly on the fly,” he said.

The complexity increases with every act. With 14 bands and multiple instrument configurations, the board must be constantly reconfigured in real time.

A drum kit may require multiple microphones and dedicated channels for kick, snare, and overheads. The next act may arrive with only vocals and acoustic instruments. Each transition means rebuilding the sound architecture in seconds.



seconds.

“I quickly have to make adjustments,” said Meinzer. “That makes me a better sound guy.”

For Meinzer, the engineering goal is not simply loudness. In fact, he draws a clear distinction between volume and quality.

The work behind the soundboard ultimately comes down to service. Beyond the engineering, the signal flow and the constant real-time adjustments, his focus is on serving the artists first, bringing out and highlighting their talent so that what is inside them, their voice, emotion and energy, reaches the audience the way it was meant to be heard. He described his role as helping performers shine, making sure the sound supports rather than overshadows their presence on stage.

At the same time, he said he is equally committed to serving the audience, shaping every level and transition to make the event feel as special and memorable as possible. Every adjustment at the board is made with the goal of creating a shared experience that honors the artists and leaves the crowd with a performance they will remember long after the last song ends.

“You’re really looking for full-

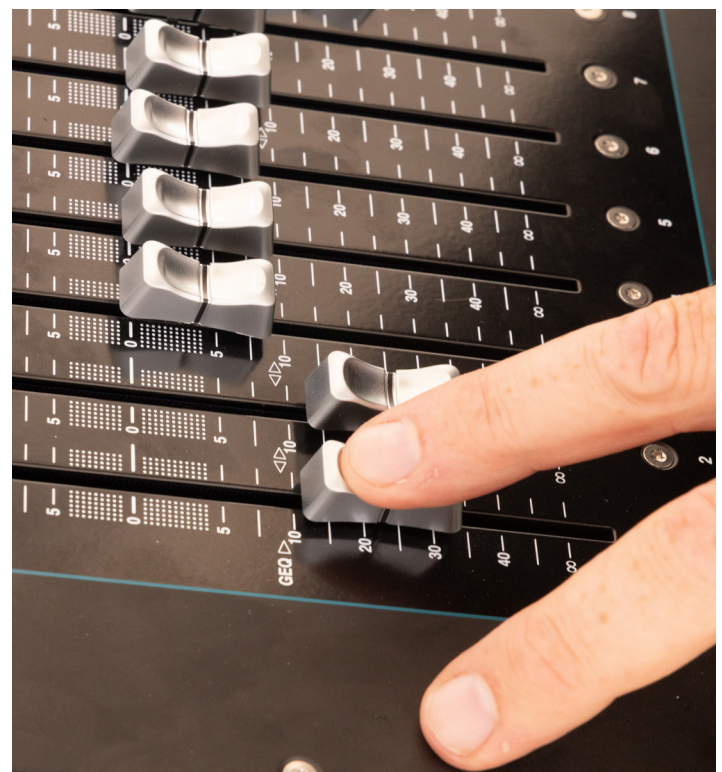
ness,” he stated, describing the goal of creating depth, separation, and clarity across the full frequency spectrum.

That means making sure every sonic layer can be heard distinctly.

“I want to hear every single voice,” he said. “I want to hear every single cadence of the drum kit. I want to hear the bass line.”

When the engineering is done right, the audience never notices the work itself. They only hear clean sound, balanced instruments, clear vocals and smooth transitions.

For Meinzer, that invisibility is the point. The engineering disappears so the music can take over. And for a live festival, that may be the highest technical achievement of all. ▾





📷 COURTESY PHOTO BY JIM RHEA

COMMUNITY HISTORY

Special thanks to Bill Remick for compiling several of the photos in this article and for providing them for use in The Hourglass.

KWAJALEIN'S FRONT DOOR, PART 1: A LOOK AT THE AIRPORT TERMINAL DURING ITS MANY YEARS OF OPERATION

Before its demolition, Building FN901 spent nearly six decades as more than just a place to catch a flight — it was a working landmark woven into daily life on Kwajalein.

HOURLASS REPORT

By **Anthony Carnelli**,
Hourglass Story Writer

For nearly six decades, Building FN901 served as far more than Kwajalein's airport terminal. It was the island's front door — the first place many newcomers encountered, the place residents returned to after trips off-island, and the setting for generations of enthusiastic arrivals, somber departures and joyful reunions.

That role gave the building an importance that extended well beyond air travel. Whether someone was reporting for duty, coming home from vacation or passing through as a transient, the terminal was often both

a first impression and a final memory of Kwajalein — a working landmark folded into the rhythm of island life.

A Terminal Meant to Impress

From the beginning, that sense of welcome was part of the vision. The terminal opened in March 1954, replacing earlier wartime-era facilities that had supported air operations on the island in the years after World War II. According to local historical research compiled by Bill Remick — before Building 901 there had been a combined Naval Air Transport Service and Air Transport Command terminal built in 1945. A separate ATC terminal later opened at the west end of the island before operations ultimately moved to

the new terminal in 1954.

A 1953 article in the now-defunct Kwajalein Post boasted that the “new terminal” would rival the best stateside air terminals. Painted sand tan and cool green in its heyday, the building greeted travelers with open-air breezes, a passenger lobby, large restrooms, souvenir stands, magazines, candy, a snack bar and an information booth. Even on an extremely remote island like Kwajalein, the goal was to make arrival feel familiar, comfortable and inviting.

More Than Just an Airport

But Building 901 evolved into more than an airport terminal. Formally known as the Terminal/Administration Building, it opened when

the installation was still U.S. Naval Station, Kwajalein. In the years that followed, it became a working hub of island life: housing offices, the commander's office, administrative space and community-use rooms that made it a central part of garrison operations.

The terminal was designed not only for technical efficiency but also for passenger comfort and eye appeal. Unusual construction features accounted for the tropical climate, and an interior galley offered food service to those waiting for flights. By the early 1960s, editions of The Hourglass were describing a multi-room facility with a passenger lobby, a briefing room used for community events and access rules

governing the terminal area during arrivals and departures.

The building continued to evolve. The outdoor gate area was added in late 1954, and in 1994 that space was replaced with a roofed addition. Over the years, the terminal adapted to new needs while still retaining much of the simple, open layout that longtime residents remembered.

That simplicity is part of what remains so vivid in memory.

What People Remember Most

Kammy Minor, who lived and worked on Kwajalein from 1964 to 1981, said the terminal “looms large” in her recollections of island life.

“Returning home to Kwaj after a stateside vacation, we couldn’t wait to get off the plane and rush into the terminal where we knew our friends would be waiting,” Minor said.

She remembered a terminal that was unadorned but deeply social: “The Airport Terminal was very simple inside, a big open room we could all gather in and then passengers only moved into a smaller space just prior to



📷 COURTESY PHOTOS PROVIDED BY GAYLE ROBERTS SKLAR

boarding.”

Crowded, Hot and Unforgettable

Others remembered that same open interior from a different era, and with a different kind of energy. Long time Kwajalein resident Robert Sholar recalled the air terminal lobby as “like a scene out of the *Casablanca* movie” — high ceiling fans overhead, a smokey room crowded with

people standing and waiting, many of them glistening with sweat.

He remembered one especially vivid moment from about 30 years ago, when he, his wife Jane and their infant son were waiting to depart on a Continental Airlines flight to Oahu. The flight had been overbooked because of a medical stretcher medevac, and the local supervisor

ing over the public address system for volunteers to give up their seats in exchange for cash vouchers.

The offer kept rising. “We heard the offer per seat going up ... \$400, 500, 600, 700 and finally 800,” he recalled. “I could not stand it and bit at the \$600 announcement. But they gave us all 800 in the end.”

The next morning, he said, he took the Continental voucher to the Kwaj bank and received 24 \$100 bills before his family departed a day later on a government MAC flight.

That story, humorous in hindsight, also captures something essential about the old terminal: it was rarely polished, often crowded and unmistakably human. Travel therefore could be uncomfortable, delayed or improvised, but it also produced the kinds of memories people carried for decades.

Minor also recalled details that tied the terminal to everyday community life. Back in those years, she said, the Mic Shop operated inside the building, and the iconic cross-hatch sign showing distances to other places stood in the waiting area on the runway side. The Mic Shop’s presence in the terminal





PHOTO BY HARVEY REMICK

dates back at least as far as the 1960s, according to supplemental historical notes gathered for this story.

Flights, Farewells and Daily Routine

For Minor, the building's emotional weight came not just from arrivals, but from departures. "There were endless photos ... and a toast of Cold Duck/Asti Spumante or Boone's Farm Strawberry Hill were required for a proper send-off," she said. "In those days before social media and no easy way to talk via phone, a Kwaj goodbye was devastating. But, 45 years later, my Kwaj people are still in my life!"

At its peak, Building 901 was almost a vertical community. Shannon Paulsen, an air traffic controller who worked in the tower during the terminal's final years, recalled the density of operations and how the building read like a directory of island life stacked floor-by-floor.

"Everyone in USAG-KA was on the second and third floor," Paulsen said. "And that was really cool because everyone was close. You could just go in — MWR was there. We had legal there. The command was there."

Meanwhile, on the ground floor, the terminal continued to serve its original purpose. Commercial carriers came

and went over the decades. One account from someone on island in the 1960s recalled Hawaiian Airlines serving Kwajalein during that era, while Continental Airlines continued commercial service through the airfield as late as 2000. That same year, the terminal lobby received an upgrade with new air conditioning and doors.

For Paulsen, checking in there felt nothing like a mainland airport — and that was part of its charm.

"It was comfortable," she said of the open-air check-in area. "I enjoyed being in the open air at the check-in. It didn't feel hot."

The layout followed an island style familiar across the Freely Associated States. Passengers checked-in inside, passed through security and then waited in an open-air section before boarding — similar to airports in places such as Kosrae or Pohnpei.

For others, the terminal was tied not to vacation travel, but to work. Supplemental notes and recollections gathered for this article describe how, in the 1970s, personnel working on Meck Island took a daily Caribou flight from Kwajalein. Stephen Briggs, who was on Kwajalein from 1974 to 1976, remembered those early commutes in viv

id detail.

"I remember dark mornings riding my ramshackle bike with a flashlight tethered to the handlebar from Silver City to the terminal to catch the 6 a.m. Caribou flight to Meck," Briggs said. "On rainy mornings you could see us stop, grab flip-flops and rain gear from our blue Kwaj bags and continue on trying hard to see and avoid downed palm branches in the road. Loved every second."

He also remembered the flights themselves with a mix of humor and resignation.

"If you were unlucky enough to be in the last three people to board, you were



PHOTO PROVIDED BY BILL REMICK COLLECTION



📷 COURTESY PHOTO PROVIDED BY BILL REMICK

guaranteed to sit in one of the three seats directly in line with the propellers,” Briggs said. “Not being a morning person I occupied one of those seats pretty frequently.”

The airport saw its share of changes over the years. In 1975, the airfield was re-surfaced, and the Hourglass memorial plaque — now located on the field near Island Memorial Chapel — was first noted at the terminal. By 1998, long-term bicycle parking at the building was eliminated after vacationing residents had taken to leaving

their bikes there for weeks at a time.

The View From the Tower

For Paulsen, though, the best part of working in Building 901 had nothing to do with the offices or lobby. It was the view from the tower.

The old control tower atop the terminal was several times larger than the temporary control facility used today. From that perch, controllers could see not just the airfield, but the ocean beyond it — a wide, elevated view that made even routine shifts memorable.

“Being able to have the higher vantage point of the airfield meant we could look out to the ocean,” Paulsen said. “We could see dolphins and whales and stuff. We could see to the left and also down to the right, to the end of the runway, because we were up so high.”

The End of Building 901

By its final chapter, though, the signs of age were hard to ignore. Cracks ran through the concrete. Chunks of cement collected on the ground between visits. Paulsen and her fellow controllers were

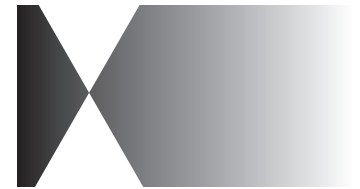
among the last to work in the building, wearing hard hats through the stairwells on their way up to the tower.

“There were chunks of cement falling down onto the ground, and you never knew where they were going to land,” she said with a laugh.

In 2014, passenger departures moved to Building 902, and the old terminal’s doors closed for good.

In an environment where salt, heat and humidity eventually claim most things, nearly 60 years of continuous operation is a long run. But what the structure gave the community is harder to measure than its lifespan. It was the place where homecomings happened, where friends gathered at the edge of travel, where families reunited on the tarmac and where others waved goodbye not knowing when — or whether — they would return.

Offices came and went. Airlines changed. The concrete aged. Through all of it, Building FN901 did what it was built to do — it kept the island connected to everything beyond the reef.



📷 COURTESY PHOTO FROM JODY RAGAN-TAYLOR COLLECTION

KWAJALEIN

Reports from the Realm



of the Killer Clam



VOL. 1, NO. 14

U. S. NAVAL STATION, KWAJALEIN, MARSHALL ISLANDS

12 OCTOBER 1953

New Terminal Building Is Near Completion

The new air terminal and operations building is almost completed. The construction is by Mid-Pac Contractors, Navy contract Noy 22840. In line with current Navy policy, the design of Kwaj's new terminal has kept in mind not only technical efficiency, but eye-appeal and passenger comfort.

The large control tower is perched on a corner atop four stories of concrete block and glass. (The lee side is 50% windows in continuous strip). This structure is the last word in design, construction and technical apparatus. Facilities will be installed complete enough to handle all air traffic and operations.

The building will be air conditioned on the whole third floor. The exterior is painted a sand tan, inside walls done in cool green, outside fittings of non-corrosive metal, and doors of Philippine mahogany.

Kwaj's inflight mess—already quality famous over the Pacific—will have a galley furnished in light yellow tile and stainless steel. This combination not only creates a spic and span appearance, but will be impervious to the corrosion other materials suffer from in this climate. Stored food will be carefully protected in two huge walk-in refrigerators with stainless steel doors.

The ground floor will be like the best stateside Air Terminals, with large rest rooms, stands for souvenirs, magazines, candies, a snack bar, an information booth, besides the desks for baggage checking and stamping travel orders.

Unusual construction features were especially designed for local purposes on climate. A one-floor annex stretches out to the plane ramp like an index finger. It will be outfitted to handle any sick or injured transients.

Then there are flat, wide ledges sticking out from each deck. They act as buffers against driving rain, and as clever fire control. Fire cannot flash upwards around them to a higher floor and windows.

Again there are exterior stairs

to the upper floors and control tower. This construction allows trade winds to ventilate stairwells. They are still protected from salt spray and rain by a sheer four foot slab of concrete outside that windward corner.

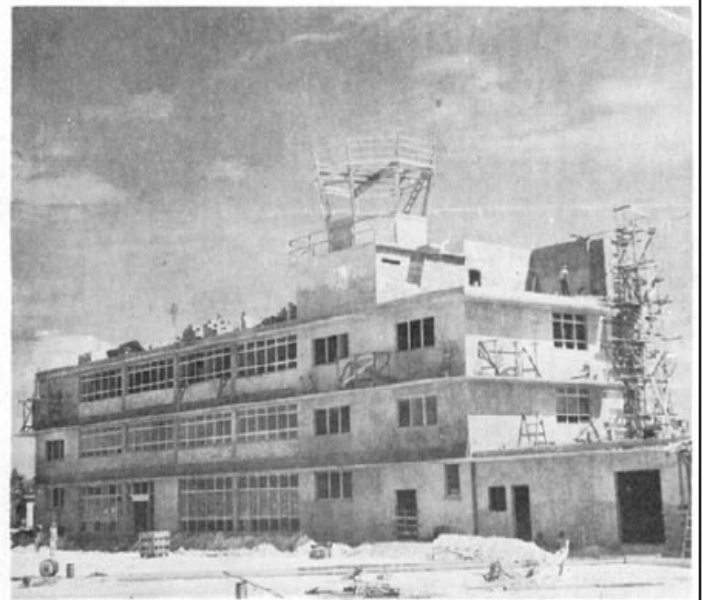
The building is central on the island, facing runways and sea, and backed by Ocean Road, a palm tree park, and the chapel. The whole layout will be a pleasant spot to land if reporting for duty, and a refreshing stopover for transients.

WXIG To Operate On New Schedule

Beginning 19 October, Kwaj's radio station WXLG will operate under a new program schedule. Revision of the old program was made possible through use of the questionnaire recently distributed to personnel.

Three "live" shows have been added, and will originate from WXLG studios. A live show is one which is broadcast direct from the studio itself and is not transcribed. Personnel who wish to view or take part in the shows are invited by the staff of WXLG to "sit in" on a program.

Station WXLG hopes to operate for a longer period of time in the near future. This will not go into effect, however, until proper equipment can be obtained and added to the studio and transmitter. The rigging of a new antenna to the transmitter is also planned soon to increase the coverage.



NEW TERMINAL BUILDING under construction. When completed, it will boast some services and advantages not to be had even stateside.



COURTESY PHOTO PROVIDED BY STEPHEN BRIGGS

ABOVE: Clip from a 1953 issue of the now-defunct Kwajalein Post, highlighting the touted progress and amenities of the island's "new" airport terminal (Courtesy of Bill Remick)

Kwajalein Airport Terminal Memories



1944



1945



1946



1946



1947



1948



1950



1951



1953



1957



1959



1961



1964



1967



1989



2013

📷 COURTESY PHOTO PROVIDED FROM BILL REMMICK COLLECTION

“Been up in the tower a bunch of times. When we were kids we would go there, to the/ Kenton photo lab. They were good souls, they kicked us out when they got tired of you. I think a lot of the guys who were on bachelor status probably had wives and kids back home but couldn’t get housing. My Dad worked there 4 years until we did. So I think they liked interacting with us missing their own families. We went everywhere.”

- Eric Wharton

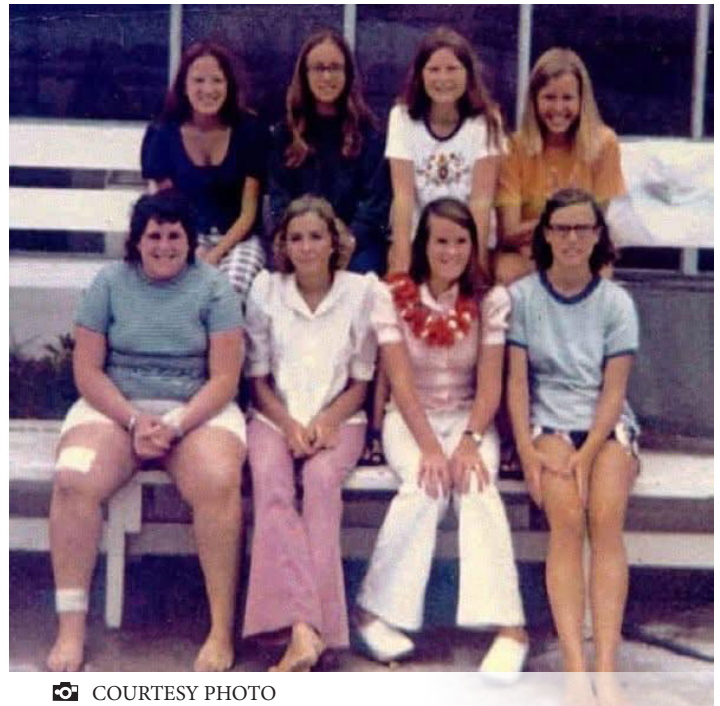
- Rob Mount

“I was on the island ’68-’74. One of my vivid memories is hearing the engines from planes under repair at the “nose hangers” revving up during movies at the Richardson Theater. I couldn’t hear anything from the movie soundtrack when that happened.”



📷 COURTESY PHOTO

ABOVE: A former Kwaj resident somberly saying goodbye from inside of the airport terminal before her permanent departure from the island.



📷 COURTESY PHOTO

- Beth Wolfe Castrati

“Terminal of Tears - happy and sad! Any time I was there it was emotional! Of course when Vinnie (the drug-sniffing Beagle) was there, it was funny because he would eat any open food in people’s carry-ons, which were lined up on the floor. The kids loved him! We were there from 89-91.”



📷 COURTESY PHOTO PROVIDED FROM BILL REMMICK COLLECTION

LEFT: The airport terminal newly constructed in 1954 - before its grand opening.

- Suellen Barwick

“We rode through a tidal wave warning sitting on the roof of the terminal in 1961. Reef broke it up but it continued across the pacific and wreaked havoc in the Hilo port.

Bob worked in the tower as an operations agent and flight planned both incoming and outgoing flights. Hawaiian airlines had the contract to bring in employees for TCT and TMZ. Sad memory was seeing some flights stopping on their way to Viet Nam with troops aboard.”



LEFT: The Micronesian Shop in 1975, during the period when it was housed inside the airport

- Shari Scott

"I was there when the Micronesian Handicraft Shop was right there in the terminal. Folks could get off the plane for short periods of time, and we did a pretty booming business."

📷 COURTESY PHOTO BY REX SIMMONS

- Bill Remick

"The terminal was also a community gathering place, welcoming new arrivals, friends returning from vacation, and some tearful departures. The terminal also housed the Mic Shop until the 9-11 event changed how airports were run."

- Dana Craig

"Sitting in that terminal with our boys waiting to leave island for the last time was so emotional. The boys and I were in tears. As the friends came to see us off it broke our hearts. What a blessing we had that experience of living in paradise!"



📷 COURTESY PHOTO



📷 COURTESY PHOTO PROVIDED FROM BILL REMICK COLLECTION

ABOVE: Image of the old Air Traffic Control terminal, taken in 1946. The ATC originally decided they wanted their own facility and constructed one at the west end of the island. It operated separately until the main airport terminal was built.

- Kim Kaholokula Waters

"I remember standing on the white bridge that ran along the wall or standing along the wall greeting our friends back as they were getting off the plane or saying goodbye as they were walking out to get on the plane...oh the memories."



📷 COURTESY PHOTO



PHOTOS BY ISAAH MATTHEWS

COMMUNITY

MORE THAN A GAME: KEYSTONE CLUB DONATION BUILDS COMMUNITY ACROSS THE LAGOON

HOURLASS REPORT

By **Isaiah Matthews**,
Hourglass Story Writer

What began as an idea among young leaders on Kwajalein became something tangible in the hands of children on Ebeye and, moments later, something even more meaningful on the court.

During a recent community service initiative, members of the Keystone Club delivered new basketball hoops to Ebeye, turning months of planning, fundraising and teamwork into a donation designed to create lasting opportunities for youth across the lagoon. But the day did not end with the presentation of the hoops. After the donation, club members stayed to play basketball with the Ebeye

children, transforming the gift into an immediate moment of laughter, movement and connection.

For Taylor Aboud, president of the Keystone Club, the moment represented the visible result of months of effort.

"It's very enjoyable to see all of our work come to fruition," Aboud said. "See our labors turn into actual physical objects, hoops that we brought to Ebeye."

For the students involved, the donation was about more than sports equipment. It was about solving a problem unique to island life.

With salt air and constant exposure to the elements, traditional basketball nets and hoops often deteriorate quickly. That challenge led the club to search for a more durable

solution.

"It was the only business that I saw that had a solution that wasn't nets," Aboud said, explaining the decision to use Infinity Hoops, a design intended to better withstand the island environment.

The project also reflected a broader shift in the club's focus.

"I feel like more involvement with Ebeye and with the neighboring islands, it's definitely something that we should aspire to," Aboud said.

That outreach effort stood out as one of the most meaningful aspects of the project for Keystone treasurer Michael Melody.

"It kind of showed me how to reach out to people and not just stick in your own little bubble of space that you're comfortable in," Melody said.

For Melody, leadership through service meant pushing beyond familiar boundaries and building new connections.

"It really opened my mind to actually maybe doing more, becoming more, and reaching out more," he said.

Those connections came to life almost immediately after the donation, when Keystone members joined the children for a game of basketball.

For Melody, that moment captured the real purpose of the day.

"I think just getting to know the kids," he said. "Just to see them laugh while we're playing."

That simple image, students from Kwaj and children from Ebeye sharing the court together, became the clearest expression of what the donation was meant to do.

More than equipment, it created space for interaction.

More than a ceremony, it became shared experience.

That sense of joy, Melody said, is what he hopes remains long after the day is over.

"I hope they remember the fact that they had fun with it," he said. "And that it's a lasting thing."

For club advisor and Youth Center program assistant Lobo Arelong, the donation was also an opportunity for young people to see the direct result of their work.

"I think it's very important," Arelong said. "Not just that this is something adults do, but watching these kids do it."

That visibility, he said, helps reinforce the value of leadership and teamwork.

"I think especially it's leadership and just working together," Arelong said. "Just teamwork."

Beyond leadership devel-



opment, the donation carries broader hopes for the Ebeye community.

Arelong pointed to the role that sports and outdoor activity can play in promoting health and community engagement.

"Sports and activities like this are important," he said. "I think it just opens up that starting young to exercise and do sports is great."

For Arelong, moments like this also help strengthen ties between neighboring communities that, while physically close, often move within different cultural spaces.

"I think it builds this bridge," he said. "It helps bridge different cultures."

That bridge may be the most enduring part of the project.

What arrived on Ebeye was not simply a set of basketball hoops.

It was a visible reminder that young leaders on Kwajalein are looking outward, investing in their neighboring community and learning what service can look like in action.

And when the formalities were over, the true meaning of the donation was already taking shape on the court, in the sound of sneakers on pavement and children laughing through the first game.

For the Keystone Club, the hoops may be made of metal, but the real structure being built is something far less visible and far more lasting: trust, leadership and connection across the lagoon. ▾



PHOTOS BY RANEESH THIRUVARATH

COMMUNITY

CYS NINJA WARRIOR: SWEAT, SPLASH, AND SIBLING RIVALRY

HOURLASS REPORT

By **Christy Wagnon**,
Hourglass Story Writer

If you heard a lot of cheering (and maybe a few dramatic groans) coming from the fields by Emon Beach recently, that was the sound of 31 Kwaj kids taking on the ultimate challenge, this year's CYS Ninja Warrior finale.

But this wasn't just a one-day event. This year, the program was designed with intention. Over four weeks, youth in grades K-6 trained, practiced, and built endurance so they could take on the entire course all at once. No shortcuts, no surprises. And then... we added water. Because why not?

Right in the middle of the course, participants had to hit a water element and retrieve an item before continuing. It seemed like a great idea, until everyone realized

that it was only halfway.

"I was getting tired coming out of the water," said Alonzo Cardillo, who still managed to push through and secure third place with a time of 2:50.78. Not bad for someone already running on empty.

Taking the top spot was Berkeley Cardillo at 2:30.76, followed by Rush Razook at 2:44.58. And in a moment that will live on in twin history, Berkeley, who is six minutes younger than Alonzo, had this to say about beating his brother: "When I found out I was 20 seconds faster, I gloated a little." Oh, brotherly love.

The course itself was no joke with a slip and slide, slack line, gauntlet, giant obstacle course, plus smaller obstacles the youth had been working on each week. By the time they hit the finale, nothing was new... just harder, faster, and all at once.

And that was the point.

"The goal was to build strength, agility, and coordination while helping kids grow in confidence," said CYS Sports Education Specialist Annie Hepler. "We wanted them to challenge themselves, try new things, and not give up when something felt hard."

And they didn't.

Over the weeks, kids who started out unsure were suddenly flying through obstacles they once avoided. Confidence went up. Skills improved. And by the finale, they weren't just participating, they were owning it.

Natalie Mitchell, for example, came in confident in her ninja rolls and absolutely delivered.

One thing nearly everyone agreed on?

This was way harder than it looked.

"The kids loved the challenge," Hepler said. "But they were also surprised by how

tired they got." Translation: Ninja Warrior is not for the faint of heart.

What made the program stand out even more was that it wasn't about beating each other, it was about beating your own best. Kids tracked their progress, pushed themselves, and celebrated improvement, not just rankings.

Parents noticed too.

Families shared that their kids were excited to show up each week and were building confidence along the way. And while Kwaj has no shortage of sports, this gave youth something different, less about competition, more about growth.

Behind the scenes, it also took some creativity. With limited Ninja Warrior-specific equipment, the team had to get resourceful, modifying and building obstacles that still challenged balance, strength, and coordination.

And it worked.

“The finale was my favorite moment,” Hepler said. “Watching them take everything they learned and do it in front of a crowd. You could see how proud they were. It felt like they were really seen and celebrated.”

Huge shoutout to Erica Simon, CYS Youth Education Supervisor and Daniel Roan, CYS Children and Youth Program Assistant, for helping coach, support, and keep the whole thing running smoothly and safely. Additional thanks to Oana Neagu and the MWR team for setting up tables, tents, and obstacles, no small task, and to the AVD team for capturing it all on camera. Keep an eye out, because this one’s headed to a future episode of the Kwaj Current.

At the end of the day, Ninja Warrior wasn’t just about who finished fastest, it was about who kept going when it got hard... especially coming out of that water. And maybe, just maybe, who gets bragging rights at home. 🏆





PHOTOS BY RANEESH THIRUVARATH

COMMUNITY

KWAJALEIN SOFTBALL KEEPS ROLLING: CLOSE FINISHES, HOT STREAKS & BIG SWINGS ACROSS THE LEAGUES

HOURLASS REPORT

By **Anthony Carnelli**,
Hourglass Story Writer

Softball season on Kwajalein continued to build momentum this week with another packed slate of games across the Women's League, Men's B League, Coed and Men's A League. From blow-out wins to one-run nail-biters, the fields once again delivered the mix of competition, energy and island community spirit that has quickly become the rhythm of the season.

Some teams continued to separate themselves, others showed grit in tough losses, and a few matchups came down to just one timely hit or one key defensive stop. Across every league, the week offered another reminder that on Kwajalein, even rou-

tine regular-season games can turn into something worth staying to watch.

WOMEN'S LEAGUE; POWER, DEFENSE & PURE HEART

The Women's League continued to show balance and competitiveness this week. Supa-Fly picked up an 11-0 win over Spartans 1, then battled Liahona to a 4-4 tie in a game that underscored how competitive both teams have become.

Supa-Fly, in particular, continues to climb and looks more dangerous with each outing. The scores told part of the story, but the larger takeaway was that this division keeps producing teams that are settling in and finding their stride.

- Supa Fly 11-0 over Spartans 1
- Pitch Perfect 16-1 over Spartans JV

- Supa Fly 4-4 tie with Liahona

MEN'S B LEAGUE: OFFENSE, ATTITUDE & A ONE-RUN THRILLER

Men's B League delivered another lively week, mixing high-scoring games with one of the closest finishes on the schedule. Lojokomlak earned a 13-6 win over Too Much Busy in a game that was still fun to watch despite the loss for the MWR squad — especially with Command Sgt. Maj. Stanley Jackson joining the team.

Yokwe powered past Arkel A, but even in defeat Arkel A stood out for its positive attitude and energy. H2 Imports kept rolling with a win over Power Plant and continues to impress as one of the league's stronger teams. The closest game came when North Camp edged KAYFC, surviving by a single run. Mid-Cor-

ridor also picked up a 13-3 win over Love Love, while Ebejedrik slipped past North Camp, in another tight finish.

- Lojokomlak 13-6 over Too Much Busy
- Yokwe over Arkel A 20-3
- H2 Imports over Power Plant 20-2
- North Camp over KAY-FC 13-12
- Mid-Corridor over Love Love 13-3
- Ebejedrik over North Camp 12-11

COED DEFENSIVE PLAYS & A REMATCH TO WATCH

The Coed League offered both standout defensive moments and a matchup to keep an eye on.

- Helmet Crabs over Frequent Flyers 20-0
- Rainbow Runners over Blue Footed Boobies 22-6

(next page)

(Cont'd)

A resumed Blue Footed Boobies-Heavy Cargo match-up also looms as one of the more interesting games on deck, with Blue Footed Boobies having held the edge against one of the league's best teams.

MEN'S A LEAGUE: HOT TEAMS & WALK-OFF DRAMA

Men's A League brought more statement wins and one of the week's best finishes. Usual suspects, meanwhile, stayed hot.

- Under the Radar over Spartans 15-5
- Under the Radar over Ekk In Ae 22-8
- Usual Suspects over Ekk In Ae, 12-11

PLAYER SPOTLIGHTS/LOOKING AHEAD

Nate Smith, Marcus Brooklyn Hill, Phillip Patton, Shawn Brady and Mason Finley all delivered memorable moments this week. With several teams heating up and close games becoming more common, the next round of action should bring even more drama.

Please note that some games were postponed due to rain and are not reflected in this week's recap. ❌





THE **minute** HAND

A USAGKA Community Information Update

Care - We all know that life on Kwajalein Atoll can be beautiful and challenging at the same time. It is very important that you take the time for **SELF-CARE**: Mentally, Spiritually, and Physically. And throughout your day take a moment to check on each other: **family, friends, and co-workers** alike.

Town Hall - US Army Garrison - Kwajalein Atoll

Command Team would like to invite you to the next Town Hall on Apr. 22nd, 6:30 at the MP room to hear about all things Kwajalein Atoll.

My Army Post is ACTIVE - Go to your ap store on your mobile device and download the *My Army Post* app. In the upper left corner click on the three horizontal lines and then search for USAG Kwajalein. Once you have Kwaj selected, on the home page click on the Explore button on the lower right, then browse through the needed service or activities. Events will also be listed. We welcome input to ensure accuracy and complete information.

Churro Cart - Keep an eye out for a new addition to the bakery....a Churro Cart!! that will be seen spreading yummy goodness around the island. Question is....will there be music?

RMI Shopping Day - AAFES will be conducting another RMI shopping day on 1 May. Limit is \$850 and the time is from 12 noon till 6pm. This also includes Roi-Namur.



THE **minute** HAND

A USAGKA Community Information Update

AIE Timeline - The preparation timeline for getting someone enrolled into AIE has been extended to 90 days prior to arrival.

Rustman 47 - The 47th Swim – Bike – Running of the Kwajalein RustMan will be this Monday Apr 20th so come out to cheer all the competitors on. Starting pistol will sound at 4pm as swimmers start from Echo Pier.

Refrigerator Unit- The back-wall refrigerator unit at Surfway is being worked on. If there is something that normally resides there that you need, please ask staff to get it from the back.

Pet ETP - The Pet ETP has cleared upper levels of Army and is now with the DOW.

Meal Cards to Badges - Meal cards are being synched to AIE badges. The process will be done during slow periods at the DFAC. This will alleviate the need to carry the meal card.

New Post Office Hours - Beginning April 4th, 2026, the USAG - KA Post Office Days of Operation and Hours will be changing to Tuesday - Saturday from 12 to 6pm. Also please note that all payments are shifting to a cashless system.



THE **minute** HAND

A USAGKA Community Information Update

Housing Survey- Keep an eye out for this year's Army Family Housing Surveys arriving at your door, in your mailbox, and in your email (check you junk mail). Follow the links provided to give your feedback on YOUR house. The links you will receive are tied directly to YOUR quarters.

Facility Managers - Would you like to be the Facility Manager for your BQ or Work building? Facility Managers aid the work orders and maintenance efforts around the Atoll. To get more info or sign-up email Naomi Halsey at: Naomi.Halsey@gov2x.com

MWR Boats Fuel Price Increase-

Fuel prices for MWR boat usage has increase to \$4.56 per gallon with a \$5.00 service fee for each transaction.

Containers - Do you have a container on the Atoll?

Matson, Company Storage, or even boat yard. DPW needs to know. Email: usarmy.bucholz.smdc.list.shipping-receiving@army.mil

Airfield STOPS!!!! - Come to a full stop look BOTH ways on the runway and in the sky to check for planes before proceeding. You will be ticketed if found in violation.

ICE - To voice your concerns or to say GOOD JOB visit the Interactive Customer Evaluation page for Kwajalein at: https://ice.disa.mil/index.cfm?fa=site&site_id=984



THE **minute** HAND

A USAGKA Community Information Update

ARMA - Need something fixed in your housing, BQ or Office?

Go to ARMA : [ARMAhttps://www.armymaintenance.com/arma](https://www.armymaintenance.com/arma)
or call 480-3550.

Rain - April received 4.89 inches of rain so far, which is about 1.79 inches above normal for the month. We have received 23.65” of precipitation for the year, putting us more than 9.86 inches above normal. RTS Weather: <https://www.rts-wx.com/forecasts/kwajalein-atoll-forecast/>

The Roller on Youtube - From the home page click on the Crest with the “LIVE” indicator on it. [U.S. Army Garrison Kwajalein Atoll Live Stream](#)

Catch the Airwaves - For music and info - Kwajalein: 99.9^{FM}/102.1^{FM}/104.1^{FM}, Roi-Namur 97.9^{FM} – Roi Rat Radio

Marshallese - Tastes good: enno
As in churros ENNO, I can't wait to get one.



THE **minute** HAND

A USAGKA Community Information Update

Access to USAG-KA - Do you have someone coming to Kwajalein? Check out the regulation that controls entry to USAG-KA: [190-10 FORM HERE](#)

- **Day Pass Form:** [DAY PASS HERE](#)
 - Fill out and send to the DSC Mailbox at: usarmy.bucholz.id-pacific.mbx.usag-ka-dsc@army.mil
- **Overnight Guests Form 480:** [480 OVERNIGHT GUEST FORM HERE](#)
 - Fill out and then email to E/E: usarmy.bucholz.id-pacific.mbx.usag-ka-e-e@army.mil.

Events - Events can be found on Kwajalein Community Events FB

- **KSS Prom** - Apr 19th 5pm Country Club
- **47th RustMan** - Apr 20th Starting at Echo Pier to Emon at 4pm
- **Town Hall** - Apr 22nd 6:30pm in the MP room
- **Island Wide Yard Sale** - Apr 25th 3:30pm Macy's sidewalk area
- **KHS Band Concert** - Apr 30th 6:30pm MP Room
- **GSES Band Concert** - May 1st 5:15pm MP Room
- **KSS Scholarship Night** - May 2nd 6pm MP Room
- **K-4 Music Concert** - May 8th 5:15pm MP Room
- **KSS Graduation Night** - MP Room, May 15th 7pm

Have an upcoming event? Email [HERE](#) to get the word out.

Kwajalein Reclaimed Water Standard Violation

The Reclaimed Water System Document of Environmental Protection (DEP) requires public notification when the standards for reclaimed water are not met. On 15, 16, and 28 February 2026, the minimum chlorine residual concentration at the entry point to the reclaimed water distribution dropped to 0.6 ppm (parts per million), 0.6 ppm, and 0.7 ppm, respectively for less than 16 hours each time. The minimum chlorine residual concentration standard is 1.0 ppm. Chlorine is added as a disinfectant at the entry point to the distribution system. **No health-based restrictions on the normal use (irrigation, vehicle washing, etc.)** of reclaimed water are necessary. There is no threat to public health or the environment resulting from this chlorine minimum. Questions? Contact V2X Environmental at 480-0722.

Jorraan Eo Ilo Reclaimed Water System Eo Ion Kwajalein

Ekkar non Reclaimed Water Document eo an Environmental Protection/ak naetan (DEP) aikuj karon jukjuk in ped, elane standards eo ilo jikin liklik dren ejjab tobar jonon ko. . Ilo 15, 16, im 28 February 2026, dretton chlorine residual concentration eo ej dreton non jikin liklik dren in ekar ajej im walloltak non jonin 0.6 ppm (parts per million), 0.6 ppm, im 0.7 ppm respectively ilo an driklok jen 16 awa ilo kajojo awa. Jonon chlorine residual concentration standard eo 1.0 ppm ilo ar kar ilik chlorine non karreoiki jen jonon in ej dreton ilo an driwojlok jen jikin liklik in. **Ejjab jelet ejmour non karon im rejan ikkijeen kojerbal dren in (non wutdrikdrik, kwali waa ko, im jermal ko eirlokwo)** non aikuij ko **jet**. Jokjok in eban jelet ejmour ak jukjuk bed in ilo an kalik karelok jen drettan chlorine eo. Kajitok kir V2X Environmental ilo 480-0722.

BOAT CAPTAIN CLASS



April 27-28, 5.00 P.M.

At the Automotive Classroom

**Sign up at the Small Boat Marina
during normal operating hours.**

480-3643

\$40 Fee





APRIL 2026 – Load Test Schedule

| Sunday | Monday | Tuesday | Wednesday | Thursday | Friday | Saturday |
|--|--|--|-----------|---|-----------|---|
| <p>The scheduled load testing is for monthly maintenance on the generators and the ATS Systems. Functioning backup systems are used in case of power outages.</p> | | | | <p>9 BLDG 1010 BMDTS LCV2005747 550-01 09:00-10:00 BLDG 1008 MDA LCV2004601 200-08 10:15-11:15 BLDG 845 DSCS [SATCOMM] LCV2005750 350-07 13:00-14:00</p> | <p>10</p> | <p>11 BLDG 1349 TACON FACILITY LCV2013754 150-02 09:00-10:00 BLDG 754 GENERATOR SHELTER (DASAR) LCV2013752 100-12 10:15-11:15 BLDG 907 WEATHER STATION LCV2005760 130-26 14:00-15:00</p> |
| | | | | <p>12 BLDG 5 700, 735, 853 LC SUPPORT, V2X HR, PMO LCV2011054 40-100 09:00-10:00</p> | <p>13</p> | <p>14 BLDG 639 COLD STORAGE LCV2005756 500-07 10:00-11:00</p> |
| <p>19</p> | <p>20</p> | <p>21 BLDG 1261 GPS LCV2005749 125-14 13:00-14:00</p> | <p>22</p> | <p>23 BLDG 1017 HG TRANSMITTER BLDG LCV2005745 60-09 09:00-10:00</p> | <p>24</p> | <p>25</p> |
| <p>26</p> | <p>27 BLDG 897 AIRPORT TERMINAL LCV2005761 30-25</p> | <p>28</p> | <p>29</p> | <p>30</p> | | |



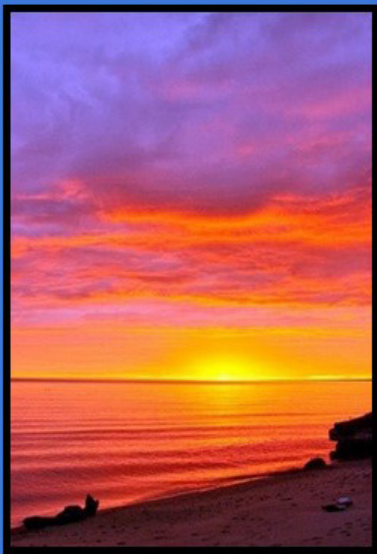
BED SHAMORY AND JOKKI BAND
 25 APRIL
 MICRONESIAN & PACIFIC LIVE MUSIC
 Richardson Theater @7pm



26-27 KINDERGARTEN

ENROLLMENT
**SCAN
ME**

CALL
480-3601
for an online
link



Kwajalein Schools Spring Band Concerts:

Jr/Sr High School Bands:
Thursday, April 30 @ 6:30pm

GSES Bands:
Friday, May 1 @ 5:15pm

Davey Davis Multi Purpose Room

Accepting Donations: breakfast bars, granola bars, and snacks for our Ri-Katak students.



Fogging Schedule

- 5:30-7:30 P.M.
- Roi Namur: April 24, 2026
- Kwajalein: April 28, 2026, thru April 30, 2026
- Weather dependent
- Avoid fogged area for ~30 minutes

Fogging with Eco-friendly EcoVia EC Insecticide

- Liquid botanical oil insecticide
- Active ingredients include Thyme Oil & Rosemary Oil
- Safe to use in and around homes and near water
- Safe to use around children and pets

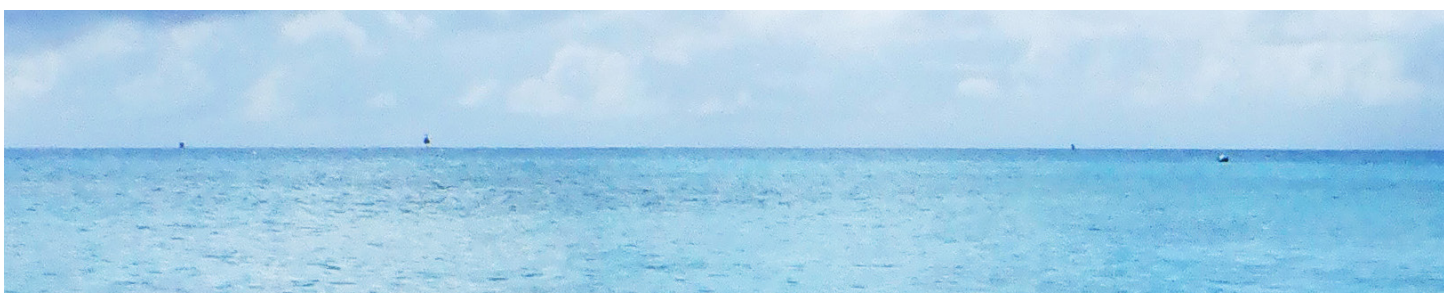
Do your part to eliminate mosquitoes:

- Check for standing water where mosquitoes breed
- Dump any accumulated water at least weekly
- Manage vegetation and eliminate accumulated leaves

Do your part to eliminate flies:

- Do not add food waste directly into open trash cans such as the Emon Beach trash containers, large black trash cans, or residential green trash receptacles.
- Always seal food and animal waste inside trash/plastic bags before adding to trash cans.
- Periodically clean outdoor trash receptacles.

Dump standing water



ALWAYS CALL...

...if your building's Fire Alarm is sounding



Meal Card scanning from AIE Badge



FROM THIS

TO THIS
AIE BADGE



We have begun transitioning the Meal Card system to accept the new AIE badge, replacing the need to carry a meal card. Thank you for your patience as we streamline your dining experience. If you have any questions or concerns, please ask for a manager at the dining facility and we can explain the process.

Dome Home Trash & Recycling



V2X will be installing Green Residential Trash bins and Blue Recycle bins at each Dome Home. This will be a new experience for our Dome Home residents that we hope will enhance your stay on our island.

Please be sure your personal property and potted plants are set safely back from the road.

Please keep curious children away from the Compactor Truck as it visits each Dome.

CARDBOARD and PLASTICS are not recycled on Kwajalein.

TRASH and RECYCLE bins are collected Tuesday and Friday.

You can deposit all glass, aluminum, bottles and metal into the same blue recycle bin.

For Questions, call 480-1760



BARGAIN BAZAAR: COMMUNITY & MISSION

- Volunteer-run resale shop on Kwajalein
- Donations fund scholarships & school grants
- Supports education across the Marshall Islands & Micronesia
- Open Every Wednesday 4:30 to 6:30 PM
& 1st Saturday 4:00 to 6:00 PM
- Promotes reduce, reuse & recycle
- A hub for connection and community

We Accept:

Clean clothing, baby gear, shoes, linens, kitchenware, décor, working electronics, books, toys, school supplies, jewelry & holiday décor

We Do NOT Accept:

Food or medications

How to Donate:

Stop by DSC for gate access

Bring items directly to BB door

Wrap breakables & attach cords

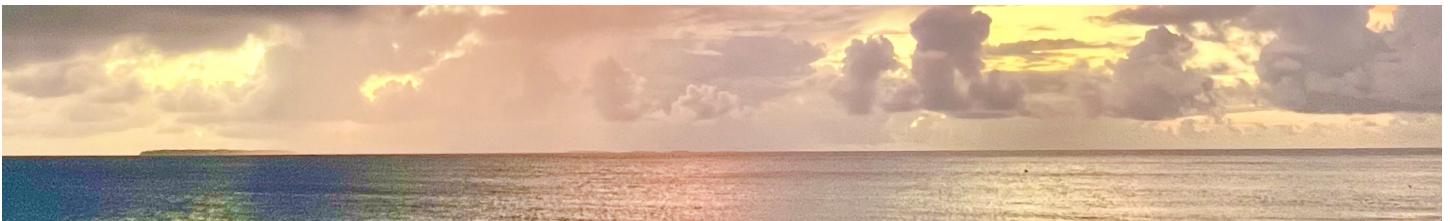
Donations

**ALL PROCEEDS SUPPORT THE YYWC EDUCATION ASSISTANCE COMMITTEE.
KOMMOLTATA FOR YOUR DONATION!**

U.S. Army Kwajalein Atoll



TOWN HALL
Wednesday April 22
6:30pm in the MP Room



Annual Hazardous Materials, Wastes, and Petroleum Product

(HMWPP) Training (ENV-100) and Spill Response Awareness Training (ENV-110)

Training is required for organizations/departments that manage HMWPP storage areas (i.e., facilities that store an aggregate quantity greater than 55-gallons of HMWPP). Each HMWPP facility is to have at least two trained custodians (primary and alternate).

KWAJALEIN (at the Religious Education Building, REB Conference Room):

Tuesday, April 28th, 2026

- 9:00 a.m. – 11:00 a.m.
- 1:30 p.m. – 3:30 p.m.

Thursday, April 30th, 2026

- 9:00 a.m. – 11:00 a.m.
- 1:30 p.m. – 3:30 p.m.

ROI-NAMUR (at the TRADEX Conference Room):

Friday, May 1st, 2026

- 9:30 a.m. – 11:30 a.m.
- 12:30 p.m. – 2:30 p.m.

Personnel will only need to attend ONE of the sessions. Pre-registration is not required to attend training. Questions? Please Call the Environmental Department at 480-2633.





The Mic Shop is always looking for Volunteers!

It is a great way to connect with the community and help our mission of **Education Grants and Scholarships**

Contact **Jacki Blumenauer** (jackiblume64@hotmail.com) or stop in the Mic Shop

**Only 2 hours of your time each month
to make a big difference**

**Sundays and Mondays: 12:00pm - 2:00pm
Wednesdays and Fridays: 4:30pm - 6:30pm**



Monthly tip from the USAG-KA Fire Prevention Office

Parking near Fire Protection Devices

Never park or chain a bike to red painted fire protection piping.

Do not park in front of a fire hydrant.

Do not block facility EXITS with bikes or vehicles.

Do not store items within 3 feet of fire sprinkler systems.

Combustible storage is prohibited in electrical mechanical rooms.

Do not store bikes or other items underneath inside stairwells.



Tried to STOP, But You
Can't

Has Alcohol become an
OBSESSION

There is a Solution to
the Problem with Alcohol

**REACH OUT FOR
HELP**

ALCOHOLICS ANONYMOUS

ROOM 214 KWAJ RELIGIOUS EDUCATION
BUILDING (UPSTAIRS)

BUILDING #671

FRIDAY-SATURDAY-SUNDAY

7PM-8PM

QUESTIONS? EMAIL: kwajchapel@gmail.com
OR CALL 480-2116



**American
Red Cross**

Service to the Armed Forces

Volunteer Opportunity at Kwajalein Atoll

Join the American Red Cross and help bring our Services and Programs to the Kwajalein Atoll community!


Online & Virtual Training Provided

No experience needed!

We provide all necessary training. Just bring your passion and commitment to helping others!

Contact **Alana Wilson** at alana.wilson@redcross.org

Let's work together to build a more prepared and resilient community.



E-wareness: Eniwetak Conservation Area (ECA)

The ECA was established for conservation of wildlife and coral reef. Visitors are NOT allowed without consent from USAG-KA. This includes the waters and reefs surrounding Eniwetak. For more information call RGNNext at 480-8855.

Eniwetak Conservation Area (ECA) ej juon jikin eo emoj kajenolak e bwe en jikin kejbarok menin mour ko ion ene/lojet im bar einwot kein ekkan ko ie im bedbed eo. Jabdwot armej ejjab maron etal nan ijin elane ejjelok melim ak men ko erlok wot jen USAG-KA. Elane elon kajjitok, jouj im kurlok RGNNext ilo 480-8855.



Kwajalein Atoll

Do you have a Concern or Kudos?
Go to the Interactive Customer Evaluation
and give us your feedback.




GO TO ICE
INTERACTIVE CUSTOMER EVALUATION

Kwajalein to Ebeye Ferry Schedule

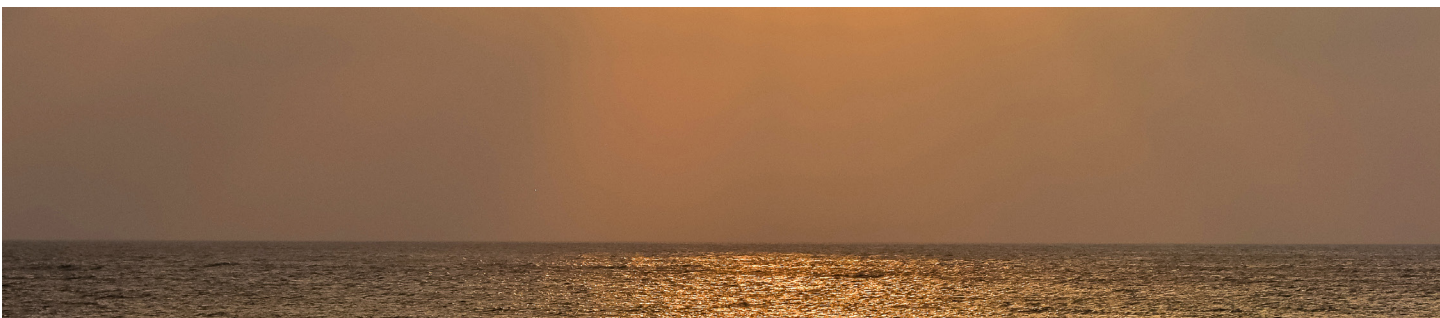


- C-BADGE WORKERS** have priority, EXCEPT on the following runs:
 - 0650 run (arriving at Ebeye at 0715) High Schools students have priority ridership.
 - 0720 run (arriving at Ebeye at 0745) and the 1600 run (departing from Kwaj) Kwajalein School Guest students have priority rider-ship.
- On Stevedoring days, workers involved with cargo operations have priority on the 2000 ferry.
- SMOKING, TOBACCO, CHEW, BETEL NUT, EATING and DRINKING ARE PROHIBITED ON ALL FERRIES.
- Boats will not be overloaded: Maximum capacities are 150 passengers (CATs and ferries) and that number may be reduced during inclement weather or at the Captain's discretion due to safety concerns.
- Meck catamarans may operate on a dynamic schedule and will be available by calling Meck Management.
- SATURDAY ONLY – THERE WILL NOT BE A 2130 FERRY INSTEAD THE FERRY WILL DEPART AT 2200.**

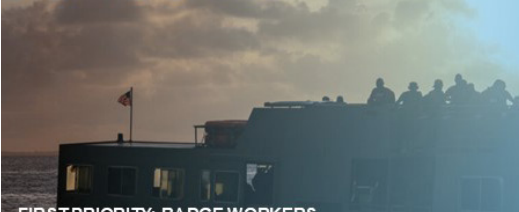
EBEYE – Tuesday to Saturday

EBEYE – Sunday & Holiday

| ETD | ETA | ETD | ETA | TYPE | ETD | ETA | ETD | ETA | TYPE |
|--|-------|-------|------|--------|-----------------------------------|-------|-------|------|--------|
| | EBEYE | EBEYE | KWAJ | VESSEL | KWAJ | EBEYE | EBEYE | KWAJ | VESSEL |
| 0245 | 0310 | 0315 | 0340 | FB N/1 | 0400 | 0425 | 0430 | 0455 | FB N/1 |
| 0420 | 0445 | 0450 | 0515 | FB 1 | 0500 | 0525 | 0530 | 0555 | FB 1 |
| 0450 | 0515 | 0520 | 0545 | FB 2 | 0600 | 0625 | 0630 | 0655 | FB 1 |
| 0520 | 0545 | 0550 | 0615 | FB 1 | 0830 | 0855 | 0900 | 0925 | FB 1 |
| 0550 | 0615 | 0620 | 0645 | FB 2 | 1140 | 1205 | 1210 | 1235 | FB 1 |
| 0620 | 0645 | 0650 | 0715 | FB 1 | 1530 | 1555 | 1600 | 1625 | FB 1/N |
| 0650 | 0715 | 0720 | 0745 | FB 2 | 1700 | 1725 | 1730 | 1755 | FB N |
| 0720 | 0745 | 0750 | 0815 | FB 1 | 2000 | 2025 | 2030 | 2055 | FB N |
| 0900 | 0925 | 0930 | 0955 | FB | 2200 | 2225 | 2230 | 2255 | FB N |
| 1140 | 1205 | 1210 | 1235 | FB 2/A | Holidays only ADD extra run below | | | | |
| 1300 | 1325 | 1330 | 1355 | FB | 1830 | 1855 | 1900 | 1925 | FB N |
| 1440 | 1505 | 1510 | 1535 | FB A | Monday | | | | |
| 1600 | 1625 | 1630 | 1655 | FB A | 0315 | 0340 | 0345 | 0410 | FB N/1 |
| 1700 | 1725 | 1730 | 1755 | FB A | 0500 | 0525 | 0530 | 0555 | FB 1 |
| 1730 | 1755 | 1800 | 1825 | FB N | 0600 | 0625 | 0630 | 0655 | FB 1 |
| 1800 | 1825 | 1830 | 1855 | FB A | 0720 | 0745 | 0750 | 0815 | FB 1 |
| 1830 | 1855 | 1900 | 1925 | FB N | 0830 | 0855 | 0900 | 0925 | FB 1 |
| 1900 | 1925 | 1930 | 1955 | FB A | 1140 | 1205 | 1210 | 1235 | FB 1 |
| 2000 | 2025 | 2030 | 2055 | FB N | 1440 | 1505 | 1510 | 1535 | FB 1/N |
| 2130 | 2155 | 2200 | 2225 | FB N | 1645 | 1710 | 1715 | 1740 | FB N |
| (TUESDAY-FRIDAY) 2130 is final run of day | | | | | 1745 | 1810 | 1815 | 1840 | FB N |
| 2200 | 2225 | 2230 | 2255 | FB N | 1900 | 1925 | 1930 | 1955 | FB N |
| SATURDAY - No 2130 ferry; 2200 is final run of day | | | | | 2000 | 2025 | 2030 | 2055 | FB N |
| | FB = | Ferry | Boat | | 2130 | 2155 | 2200 | 2225 | FB N |



Roi-Namur / Enniburr Ferry Schedule



FIRST PRIORITY: BADGE WORKERS
 Passengers are to board and disembark ONLY at the gangway area. As deemed by the Captain, any passengers, who are unruly and pose a safety hazard to the crew, other passengers, or vessel will not be allowed to ride the ferry. Maximum passenger load is 150 passengers.
SMOKING, TOBACCO CHEWING, BEETLE-NUT, EATING and DRINKING ARE STRICTLY PROHIBITED ON ALL FERRIES.
 The clock kept by the ferry Captain is the official time. Departure times from Roi-Namur are mandatory times. Return times to Roi-Namur may change slightly due to the offloading of water at Enniburr.
 Any questions? Please call the Port Captain in Kwajalein, 480-2173.

Tuesday to Saturday

| Run Number | ETD Roi-Namur | ETA Enniburr | ETD Enniburr | ETA Roi-Namur | Vessel |
|------------|---------------|--------------|--------------|---------------|--------|
| 1 | 0520 | 0535 | 0555 | 0610 | FB |
| 2 | 0730 | 0745 | 0805 | 0820 | FB |
| 3 | 1250 | 1305 | 1325 | 1340 | FB |
| 4 | 1715 | 1730 | 1750 | 1805 | FB |
| 5 | 1940 | 1955 | 2015 | 2030 | FB |

Sunday-Monday-Holiday

| Run Number | ETD Roi-Namur | ETA Enniburr | ETD Enniburr | ETA Roi-Namur | Vessel |
|------------|---------------|--------------|--------------|---------------|--------|
| 1 | 0650 | 0705 | 0725 | 0740 | FB |
| 2 | 0940 | 0955 | 1015 | 1030 | FB |
| 3 | 1450 | 1505 | 1525 | 1540 | FB |
| 4 | 1940 | 1955 | 2015 | 2030 | FB |

Rustman 47

Another Kwaj tradition –
a triathlon for individuals or teams



The race is on **Monday, April 20**, starting at 4:00 PM, but you must pre-register. Forms available on mini-mail bulletin board downtown, at Quarters 210-A and hopefully on Facebook.

Drop registration forms off to Bob or Jane Sholar at QTRS. 210A

Questions? Contact Bob or Jane Sholar at 480-0704 or janesholar@gmail.com

Volunteers are also needed to support the event. Contact Bob and Jane if you can help out on race day.



ATTENTION VETERINARIAN KWAJALEIN VISIT

**Dr. Hall will be on island
until April 20, 2026.**

Note: The dental scaler is in need of repair, so the Veterinarian cannot perform dental cleanings. All other anesthetic procedures can still be scheduled.

Please call: **580-2165**



Kwajalein Island Trash & Recycling

Residential Trash Collection 480-1760
Yard Vegetation Collection 480-1890
Hazardous Waste Pickup Line 480-8858



TRASH & RECYCLING PICKUP SCHEDULE

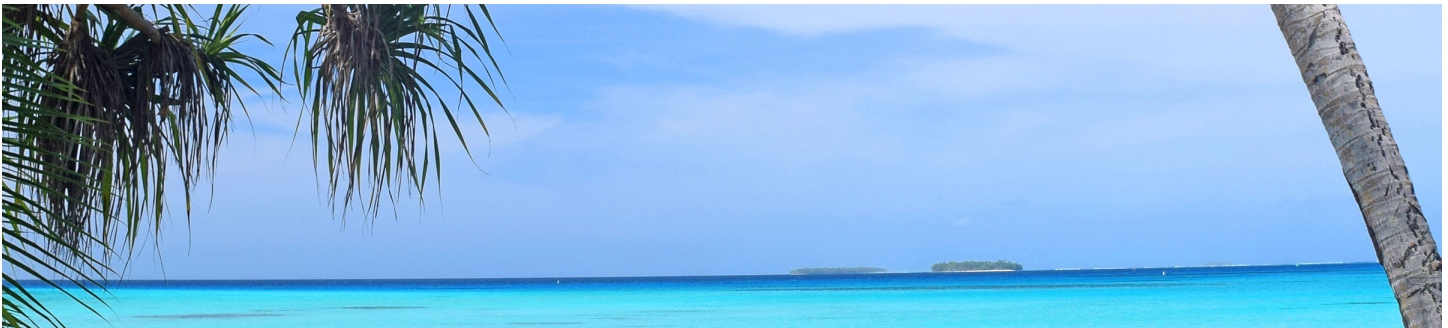
The Green Residential TRASH receptacles are collected every **Tuesday and Friday**.
The blue RECYCLE bins are also collected every **Tuesday and Friday**.
The large black General Solid Waste Community Containers are emptied on Monday, Wednesday, Thursday, and Saturday.

Safety First! Please keep any curious children away from the Compactor Truck as it feeds contents into the truck.

Recyclable materials are also collected by both *solid waste* and *horizontal maintenance personnel*, in conjunction with general trash collection. Currently the island only recycles glass, aluminum, metal, and bulk organic materials. **Cardboard and plastics are not recycled materials on Kwajalein.** These items should be placed into the general trash stream for disposal/incineration.



Residential users will be given a **green trash** receptacle and a smaller **blue receptacle** for recyclable materials. It is requested that residences place their recyclable items into the blue containers, and stack larger materials next to the bins. Lawn clippings and leaves should be bagged and placed next to bins. Palm fronds and coconuts should also be stacked up next to the bins for removal by horizontal maintenance personnel.



Kwajalein /Roi-Namur Driver Licensing

Kwajalein classes are every Wednesday.

- 9:00 a.m. Marshallese
- 12:45 p.m. EXPATS **by appointment only as class size is limited**
- Building 856, Room 101 at the Vehicle Maintenance Compound
- To register, send email to the following: George.parker3@gov2x.com and Wilson.Kaisha@gov2x.com or stop by Bldg 856, Room 101

Roi-Namur Classes are every 2nd Friday (time base on flight schedule and location is Building C). No registration needed for Roi classes. Send any questions to the emails above.

Now Available by Appointment...

PASSPORT PHOTO SERVICES

PASSPORT

Located on the 2nd floor of Bldg. 805 on Kwajalein. When taking your photo, remember the following guidance for a successful shoot:

- Directly face the camera without tilting your head.
- Have a neutral facial expression with both eyes open and mouth closed.
- Take off your eyeglasses, headphones or wireless hands-free device.
- Do not wear a uniform, clothing that looks like a uniform, or camouflage.
- Remove hats or head coverings or submit a signed statement or doctor's note that says you must wear it for religious or medical purposes.



*United States
of America*



To schedule an appointment,
contact IMD/AVD personnel at:

KwajaleinHourglass@gov2x.com



FOLLOW US AT THESE LOCATIONS



Click QR Code to jump to social page

Kwajalein



MIA Project

NEVER FORGET.

<https://kwajaleinmiaproject.us/>

COMMUNITY CLASSIFIEDS

Submit Announcements to the Roller Channel and The Kwajalein Hourglass

OPEN CALL FOR ANNOUNCEMENTS
The island community is invited to submit listings for events and for sale items; announcements; department trainings; safety updates; public service messages; and thank-you messages.

Preparing Your Message

For questions about your messaging, please reach out to the USAG-KA Public Affairs Office at 480-4848.

Ads should always include a point of contact, phone number and/or email address.

Private parties, fundraisers and events requesting and/or accepting donations are typically not allowed for publication per AR 360-1. Fundraisers and support activities for private and schools-based organizations, scouting groups, civic clubs and other listings may be subject to a legal counsel review to determine their eligibility for publication.

Formatting Your Listings

It is recommended that graphical adver-

tisements and announcements intended for the Hourglass and the AFN Roller Channel be formatted as PowerPoint slides.

Graphic designers are asked to maintain a generous margin (.75-1-inch) around all sides and to size fonts no smaller than pt. 20.

If your Roller Channel advertisement requires a special expiration date, please note this for the Roller team in the body of your message.

Deadlines for Submissions

Send advertisements for the Kwajalein Hourglass and the AFN Roller Channel to kwajaleinhourglass@gov2x.com on Wednesdays by close of business/Thursday morning.

Roller Channel ads are accepted on a rolling basis by 4 p.m. for a mid-week and late-week update. Ads received after 4 p.m. will be loaded in the next update. Please ensure you submit ads in good time to ensure timely upload.

For more information, reach out to the USAG-KA Command team through the USAG-KA Facebook page.

ANNOUNCEMENTS

AFH Construction Is Ongoing. Nan, Inc. Construction is scheduled to commence the telecommunication scope of work for the Kwajalein Army Family Housing project in our community. Residents and commuters should be aware of possible changes in traffic patterns and to plan their routes accordingly. Nan, Inc. Construction is committed to minimizing any inconveniences, and we will strive to ensure a smooth and efficient construction process.

ArMA. Log in to ArMa, the Army Maintenance Application, to report issues for all buildings maintained by the Department of Public Works. Contact Public Works at 480-3550.

CAC Office. Before your visit to the Common Access Card Office, ensure all paperwork is completed by your human resources representative before making an appointment. Bring two forms of government-issued IDs with you. Walk-in appointments are welcome, but there may be a wait. CAC Office Hours, Bldg. 835, are Tuesday – Saturday, 8 a.m. – 4 p.m.; (Lunch: noon - 1 p.m.). Call 480-8496.

Demolition at the Capt. Louis S. Zamperini Dining Facility. Phase three of the Zamperini DFAC demo has begun and is projected to be finished March 2026 for the dining and serving area. Be careful around the dining facility during the phases.

Do Not Take Cultural Artifacts. It is illegal to remove cultural resources from the atoll. This includes any protected species, unexploded ordnance, WWII-era artifacts and ancient Marshallese artifacts. These resources are protected under U.S. federal and RMI law. Contact the Kwajalein Archaeology Office at 480-8867.



Contact the USAG-KA Sexual Harassment/ Assault Response and Prevention Victim Advocate

Captain Tameka Edmonson
SHARP Victim Advocate

Work: 480-1419 or

Major Matthew DeMartino
Work: 480-1402

USAG-KA SHARP

Pager: 808-580-3241
DOD SAFE Helpline: 877-995-5247

Emergency Management. Visit the USAG-KA Emergency Management webpage, <https://home.army.mil/kwajalein/index.php/my-fort/EM>; 2) Click on "Mass Notification"; 3) Follow the registration instructions.

E-Wareness: It is each driver's responsibility to ensure vehicles are not leaking fluids other than air conditioning condensate. Call 911 to report spills and arrange with automotive for routine maintenance. Please call Environmental at 480-0722 with questions. Eja ri-kator eo eddo non lolorjake bwe wa eo ejjab leak jabdewot oil ijelak in drennin air condition eo jen wa eo. Ne elon jabdewot leak/lutok in oil jen wa eo, Kiir 911 non report- e lutok eo. Ak kiir Environmental ilo 480-0722 non kajitok.

Fire Safety Tips. Some pets are chewers. Watch pets to make sure they don't chew through electrical cords. Pets are curious. They may bump into, turn on, or knock over cooking equipment. Keep pets away from stoves and countertops. Make sure pets are included in your family's fire evacuation plan. Build an evacuation kit for each pet in your household.

Flights. Please note that all flights are subject to change. For the latest update on your flights on United, ATI or Air Marshall Islands: ATI: 480-2169; AMI: 480-3469; United: 480-4852 or 1-800-UNITED1; Air Terminal Services: 480-2660; Flight Information Recording: 480-3589

UA Schedule Effective Now: Monday and Friday—UA 155 (HNL); Check-in 2 – 4:50 p.m.;

Wednesday—UA 133 (HNL); Check-in 2 – 4:15 p.m.; Tuesday and Saturday—UA 154 (GUM); Check-in 10:45 – 11:15 a.m.

FlyRoi Reservations. To schedule reservations and for correspondence related to flights, email LCVKwajaleinFlyRoi@versar.com.

How to dress in the RMI. Out of respect for the Marshallese culture, residents are asked to dress appropriately when visiting Ebeye, Third Island, or anywhere within Kwajalein Atoll. Women should wear clothing to cover shoulders and knees. None are permitted to wear shorts when visiting churches on Ebeye. Men should wear long slacks to church.

Kwaj Small Boat Marina hours are 7:30 a.m. – 6 p.m. Friday through Monday, and on holidays, excluding Thanksgiving and Christmas. Morning boat reservation times are from 7:30 a.m. – noon. Afternoon boat reservations are from 1 – 5 p.m.

Not Feeling Well? Call 480-2223 to make an appointment for a COVID-19 test, Tuesday through Saturday from 7:30 a.m. – 4:30 p.m. If you are not feeling well, please wear a mask when you are around others in the community.

Operational Security. See something, say something. All employees on USAG-KA are required to receive annual Threat Awareness and Reporting Program training provided by KRO; Reporting: Report suspicious activities to the Kwajalein Resident Office at 480-9859/1293/8006 at Bldg. 1163.

PCS & Vacation Tips. Notify the post office before leaving for 30 days or PCS'ing. Per DOD 4525.6-M, mail is only allowed to be held for 30 days with or without prior notice. Mail is considered unclaimed on day 31 and will be returned to the sender. Email the post office to authorize pick up for your mail and packages. When PCS'ing, provide a forwarding address. Contact Jose Burgos-Rivera with questions at 480-3461 and Jose.Burgos-Rivera@gov2x.com.

Salon Walk-Ins. Surfside Salon Walk-In Appointments are available on Fridays from 1:30 - 6 p.m.

Smoking. USAG-KA, smoking is permitted in designated smoking areas only. Smoking and cigarette butt receptacles must be at least 50 feet from the entrance of facilities.

Taxi Service. Call 480-TAXI (8294) or 3341 to

HELP WANTED

For employment with contractors within the U.S. Army Garrison - Kwajalein Atoll please check contractor company websites for employment opportunities.

book your ride at least 24 hours in advance of check-in time.

Millican Family Pool Hours. Closed for cleaning on Thursdays. Open noon to 5 p.m. Tuesdays, Wednesdays, Fridays and Saturdays. Open 11 a.m. to 5 p.m. Sundays and Mondays.

The NEC Testing Center Is Open to the Community - Giving you the head start you need to thrive! - Open Tuesday through Saturday by appointment
Authorized Pearson VUE Test Center. Schedule A test Today!
NEC testing Center, 480-4344, FN 1008-131
ACUITY International

Kwajalein / Roi Namur Licensing Classes on Kwajalein are every Wednesday @0900 Marshallese @1245 Expats (by appointment only as class side is limited)
Classes are in Bldg. 856 Rm 101, Vehicle Maintenance Compound
Roi classes every 2nd Friday in Bldg. C, timed based on flight schedule
No registration needed for Roi classes.
To register, send email to either of the following:
George.Parker@gov2x.com
Wilson.Kaisha@gov2x.com
...or stop by Bldg. 856, Rm 101

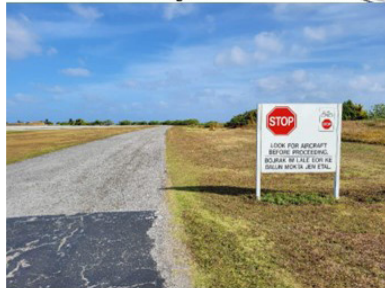
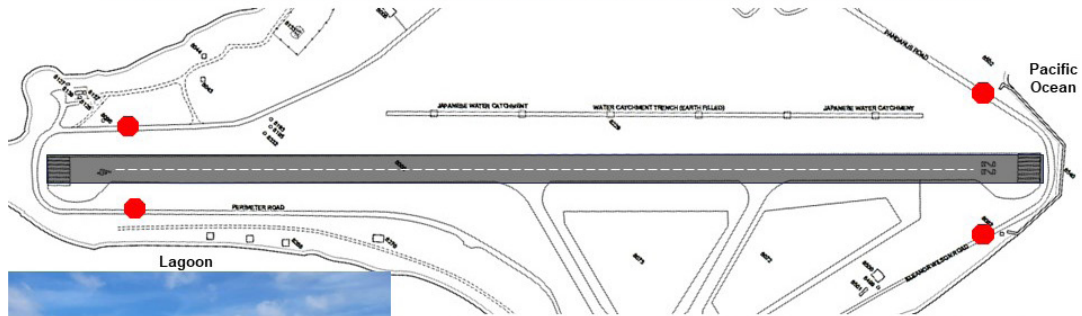


OPSEC IS NOT RETROACTIVE.
THINK BEFORE YOU SHARE INFORMATION. ONLINE AND OFFLINE.


Like and share @USArmyOPSEC

ROI-NAMUR FOR AIRCRAFT!!

Stop and look both ways for aircraft on Perimeter Rd., Pandanus Rd., Eleanor Wilson Rd.
If aircraft are on approach or taking off, you must hold your position and wait!

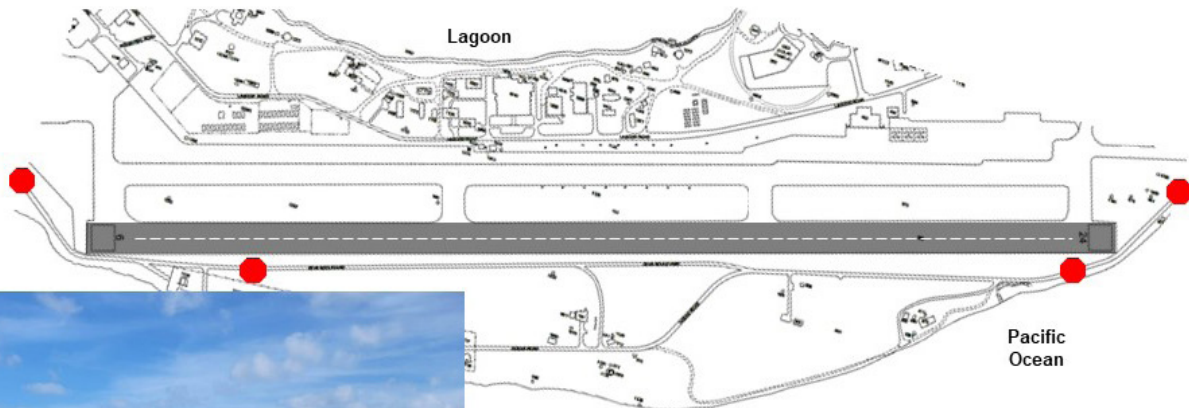


Stop at designated signs and look for aircraft landing or taking off.

If you see an aircraft, hold your position at the stop sign and wait until the aircraft has landed or departed before moving.

KWAJALEIN FOR AIRCRAFT!!

Please remember to stop and look both ways for aircraft on Zeus Blvd. or Ocean Rd.
If aircraft are on approach or taking off, you must hold your position and wait!



Stop at designated signs and look for aircraft landing or taking off.

If you see an aircraft, hold your position at the stop sign and wait until the aircraft has landed or departed before moving.

NOW SHOWING at the YUK THEATER

SATURDAY, APRIL 4
"Finding Nemo" (2003)
(G) 100 min.

SUNDAY, APRIL 5
"Ant-Man and the Wasp" (2018)
(PG-13) 118 min.

SATURDAY, APRIL 11
"Raiders of the Lost Ark" (1981)
(PG) 115 min.

SUNDAY, APRIL 12
"The Blues Brothers" (1980)
(PG-13) 133 min.



SATURDAY, APRIL 11
"Ice Age – Collision Course" (2016)
(PG) 94 min.

SUNDAY, APRIL 19
"Iron Man" (2008)
(PG-13) 126 min.

SATURDAY, APRIL 25
"Ralph Breaks the Internet" (2018)
(PG) 112 min.

SUNDAY, APRIL 26
"Shazam!:Fury of the Gods" (2023)
(PG-13) 130 min.



WEEKLY TROPICAL WEATHER THREAT OUTLOOK

RTS WEATHER STATION STAFF

Discussion:

April has received 4.45 inches of rain so far, which is about 1.97 inch above normal for the month. We have received 23.21" of precipitation for the year, putting us more than 9.86 inches above normal. We will continue to see above normal shower coverage for the next seven days over the atoll. Today will remain rather wet for the atoll and carry those conditions into tomorrow with troughing E-ESE in the winds. The weekend will see more troughing with on and off showers, some of which may be heavy, along with winds in the mid-teens and higher in and near showers. This higher-than-normal shower coverage will continue into the workweek. We've had 2 thunderstorm days last week. A thunderstorm day is defined by an "in situ" lightning strike, meaning lightning is observed or thunder is heard within five miles of the Kwajalein airfield. The thunderstorm risk will re-

main elevated through Friday morning, due to the increase atmospheric dynamics across the region. The Madden-Julian Oscillation's (MJO) is showing positive qualities over the RMI contributing to increased shower coverage. The Intertropical Convergence Zone (ITCZ) will remain unusually close to the central RMI diminishing some on Sunday then reestablish to the north of the atoll on the weekend giving us relatively light southeast trade wind. El Nino Southern Oscillation (ENSO) is in la Nina conditions for our part of the Pacific but starting to erode as sea-surface temperatures (SST) between the RMI and the Date Line are now warmer, having less of a negative impact on the RMI's rainfall coverage. Conditions are becoming neutral this month, helping the RMI maintain normal precipitation coverage outside of other parameters. El Nino conditions are becoming more likely this summer, having a

positive impact on precipitation for the RMI and circulation spin-up to our east.

Tropical Cyclones:

None for the RMI. Typhoon Sinlaku Risk to Guam and surrounding Marianas through the week.

Damaging West Winds / Westerly Swell:

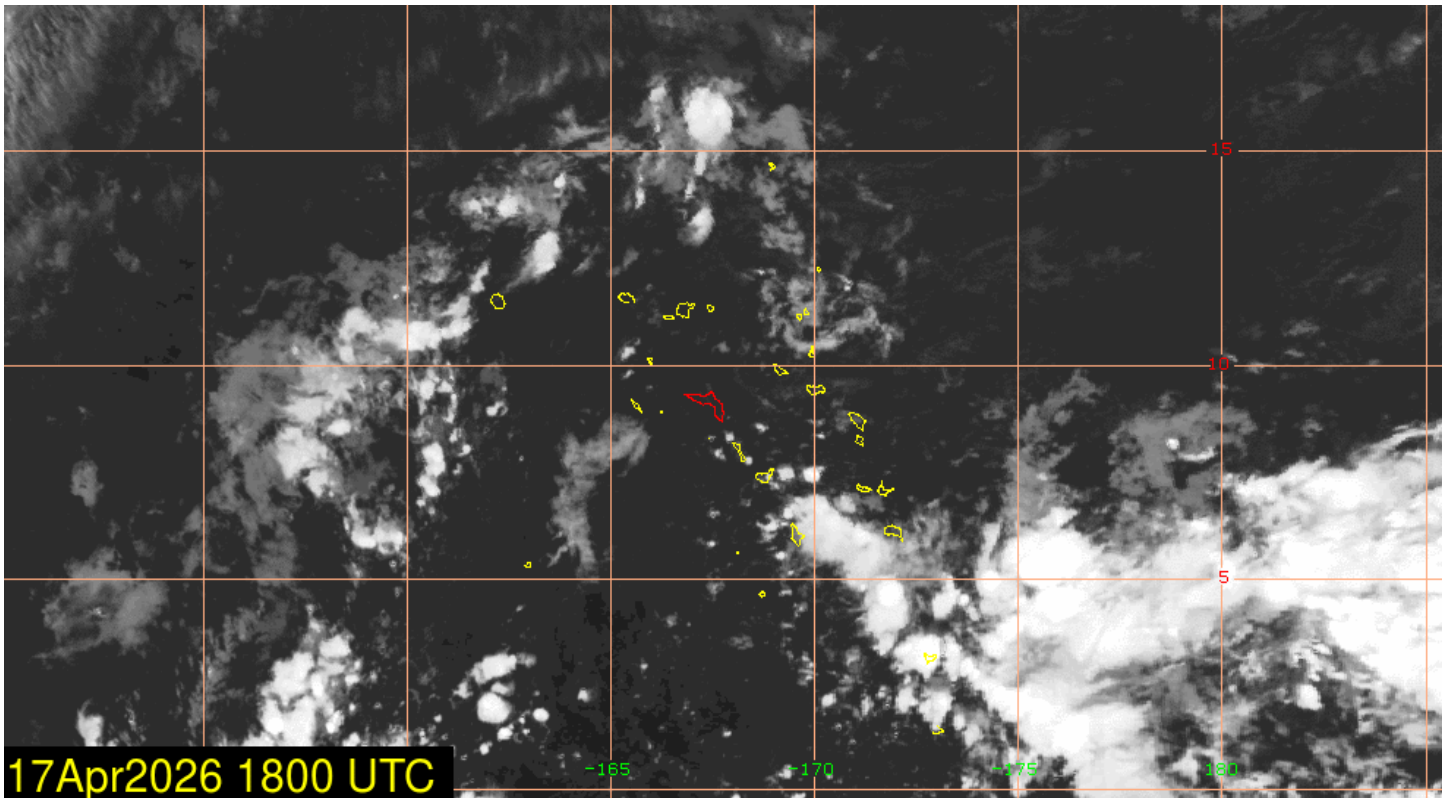
Not anticipated.

Swell / Tid Inudation For Kwajalein Atoll and Wake Island and Winds:

There is a new moon with peak high tides on the 18th and 19th at 5.1 feet with more of a Peregian moon. Winds: E-ESE in the upper single digits for the rest of today, then look for an ESE-S wind direction and speed dropping into the single digits on Friday. Saturday afternoon trade winds will return to the mid-teens and continue through the weekend. A Small Craft Advisory (SCA) is not expected. A High Surf Advisory (HSA) is not expected.

Purpose:

This weekly briefing is delivered Thursday mornings to island leadership. The intention of this briefing is to provide situational awareness of weather events that may interrupt operations and transportation around Kwajalein, to/from Hawaii and Guam, and in the Wake vicinity. The main threat assessed in this brief is existing and potential development of tropical cyclone activity. This brief also provides an outlook of abnormal winds, sea state, and precipitation guidance for next 7 days around the Kwajalein Atoll. The distribution list will also receive updates on any developing tropical cyclone activity in the Kwajalein region that occur between the weekly outlook products. ▾



WEATHER

RTS WEATHER STATION STAFF

WEATHER DISCUSSION

Drier weather looks to take hold for the end of the workweek and the upcoming weekend. The Inter-Tropical Convergence Zone (ITCZ) looks to be quite fragmented and diffuse, and a subtropical high-pressure system to the north will push drier air into the mid-upper atmosphere. Areas of trade wind convergence may increase shower activity to isolated from time to time, especially on Sunday and Monday, but heavy showers appear unlikely. Winds look to be in the upper single digits to low teens on Saturday, before gradually decreasing on Sunday and Monday as the subtropical ridging to the north shifts away from the region and allows the pressure gradient across the RMI to relax.

SATURDAY

Partly sunny with stray showers. Winds NE-E at 7-12 knots with higher gusts possible near showers.

SUNDAY

Partly sunny with isolated showers. Winds NE-E at 6-11 knots with higher gusts possible near showers.

MONDAY

Partly sunny with isolated showers. Winds ENE-ESE at 4-9 knots with higher gusts possible near showers.

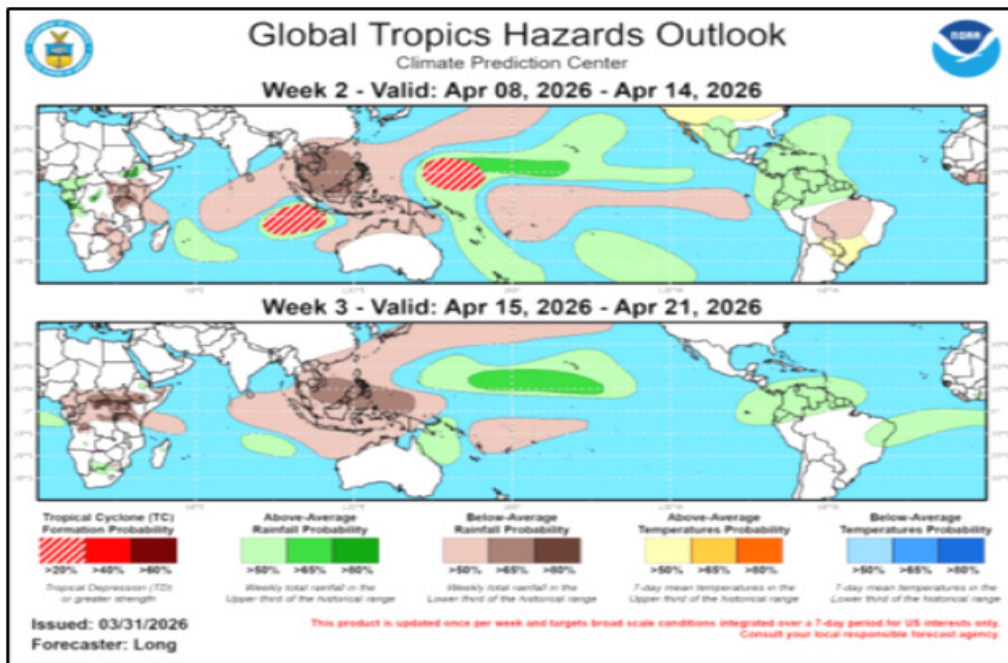
NEXT WEEK

Relatively dry conditions and light winds look to be in place at the start of next week. As the week progresses, subtropical ridging to the north looks to strengthen, and the ITCZ may gradually reorganize to the south. This will work to tighten the pressure gradient across the RMI and increase the wind speeds, and it may also lead to wetter weather toward the end of the week. However, this is a long way out and far from certain. ▼

SUN-MOON-TIDES

| | SUNRISE SUNSET | MOONRISE MOONSET | HIGH TIDE | LOW TIDE |
|------------------|------------------------|--------------------------|-----------------------------------|--------------------------------------|
| SUNDAY | 6:38 a.m. 6:59 p.m. | 7:41 a.m. 8:41 p.m. | 5:07 a.m. 5.1' 5:27 p.m. 4.1' | 11:28 a.m. -0.7' 11:23 p.m. -0.5' |
| MONDAY | 6:38 a.m. 6:59 p.m. | 8:39 a.m. 9:46 p.m. | 5:44 a.m. 5.0' 6:05 p.m. 3.7' | 12:09 p.m. -0.5' 11:57 p.m. -0.2' |
| TUESDAY | 6:37 a.m. 6:59 p.m. | 9:42 a.m. 10:52 p.m. | 6:22 a.m. 4.7' 6:46 p.m. 3.2' | 12:54 p.m. -0.1' ----- |
| WEDNESDAY | 6:37 a.m. 6:59 p.m. | 10:47 a.m. 11:55 p.m. | 7:06 a.m. 4.2' 7:35 p.m. 2.7' | 12:34 a.m. 0.3' 1:47 p.m. 0.5' |
| THURSDAY | 6:36 a.m. 6:59 p.m. | 11:51 a.m. ----- | 8:02 a.m. 3.7' 8:53 p.m. 2.2' | 1:16 a.m. 0.8' 3:02 p.m. 0.9' |
| FRIDAY | 6:36 a.m. 6:59 p.m. | 12:51 p.m. 12:53 a.m. | 9:32 a.m. 3.2' 11:29 p.m. 2.2' | 2:20 a.m. 1.3' 5:08 p.m. 1.1' |
| APRIL 25 | 6:36 a.m. 6:59 p.m. | 1:47 p.m. 1:45 a.m. | 11:43 a.m. 3.1' ----- | 4:41 a.m. 1.6' 6:51 p.m. 0.9' |

FOR QUESTIONS ABOUT ISLAND LIFE AND ARMY REGULATIONS, PLEASE CALL THE COMMANDER'S HOTLINE AT 480-1098. FOLLOW THE UPDATES REGARDING SAFETY INFORMATION, EVENTS AND OFFICIAL COMMAND ACTIVITIES.



Until Next Week!

