

Welcome!

Please sign in and get added to the project mailing list.

AGENDA

5:00 - 6:30 p.m.

Open-house

- view displays
- ask questions
- make comments

This meeting is an informal process where participants

- can learn about the project,
- explore various displays related to the meeting purpose, and
- ask questions.

A court reporter will be present to take formal comments, or you can provide feedback other ways.



For more information

**Comments
can be
submitted**

**4
Ways**

Submit comments during this public involvement process for consideration in the EIS by:

- 1** Submitting a written comment at this meeting.
- 2** Making an oral comment to the court reporter at this meeting.
- 3** Emailing comments to SVADAEIS@tetrattech.com by January 26, 2026.
- 4** Mailing comments via U.S. mail to:
SVADA EIS c/o Tetra Tech
107 St. Francis Street, Suite 2370
Mobile, AL 36602

Please submit comments within the 45-day Draft EIS review period ending on *January 26, 2026.*



Base Realignment and Closure Savanna Army Depot Activity
ENVIRONMENTAL IMPACT STATEMENT

CEQ Unique Identifier: EISX-007-21-000-1729699335

Base Realignment and Closure

National Environmental Policy Act Documentation

NEPA The National Environmental Policy Act of 1969 (NEPA), as amended

- Addresses concerns about federal actions and their effects on the environment
- Is implemented when a federal agency develops a proposal for a project that might affect the human or natural environment


NEPA’s Main Objectives

- **Ensure high-quality analysis** of potential effects of proposed major federal actions
- **Inform the public** of proposed federal activities that might affect environmental quality
- **Encourage and facilitate public involvement** in the decision-making process
- **Inform decision-making** by identifying issues of concerns and potential effects of proposed action implementation

Proposed Action and Alternatives

NEPA requires the agencies to evaluate

- Proposed Action: The project being considered for implementation
- No Action: Conditions if the project under consideration is not implemented
- Reasonable alternatives to implementing the project Proposed Action

SVADA BRAC EIS Major Milestone Schedule			
Milestone	Completion Date	Completed	
NOI in Federal Register	Winter 2024	<input checked="" type="checkbox"/>	
Scoping Meeting	Winter 2025	<input checked="" type="checkbox"/>	
Scoping Period	Winter 2025	<input checked="" type="checkbox"/>	
Draft EIS for Public Review	Dec 12, 2025 - Jan 26, 2026	<input checked="" type="checkbox"/>	
Draft EIS Public Meeting	Jan 13, 2026	<input checked="" type="checkbox"/>	
Draft EIS Comment Period Closes	Jan 26, 2026		
Final EIS for Public Review	Spring 2026		
Final Record of Decision	Summer 2026		



Base Realignment and Closure Savanna Army Depot Activity ENVIRONMENTAL IMPACT STATEMENT

CEQ Unique Identifier: EISX-007-21-000-1729699335

Base Realignment and Closure

National Environmental Policy Act Documentation

BRAC Base Realignment and Closure (BRAC) is:

- Department of Defense process to reorganize military bases to meet changing needs
- Ensures military resources are used effectively while minimizing the negative effects on local communities



SVADA Savanna Army Depot Activity

SVADA, established in 1917 during World War I, supported a proof and test facility for artillery guns and howitzers produced at Rock Island Arsenal, IL. Operations were expanded to include storage of ordnance and the loading and renovation of shells and bombs. Levels of ammunition maintenance and supply operations were reduced in 1972. The Base Closure Commission identified SVADA for closure in 1995.

BRAC 95 Disposal and Reuse of the Savanna Army Depot Activity Environmental Impact Statement, Savanna, Illinois (1997 BRAC EIS) was finalized for SVADA in July 1997. SVADA ceased operations and officially closed on May 20, 2000.

The BRAC process

- ✓ Commits to necessary environmental remediation or certifies SVADA property parcels are clean from environmental contaminants
- ✓ Facilitates Army property transfer to federal, state, or local agencies

Owners of Savanna Army Depot Activity parcels:

- U.S. Army
- U.S. Army Corps of Engineers (USACE)
- U.S. Fish and Wildlife Service (USFWS)
- Illinois Department of Natural Resources (DNR)
- Jo-Carroll Depot Local Redevelopment Authority (LRA)



Base Realignment and Closure Savanna Army Depot Activity ENVIRONMENTAL IMPACT STATEMENT

CEQ Unique Identifier: EISX-007-21-000-1729699335

The BRAC SVADA

Environmental Impact Statement Alternatives

View Alternative 5 full plan [here](#).



Draft EIS

has been prepared because:

- There have been substantial changes to the proposed action since the 1997 EIS and,
- Significant new circumstances and information relevant to environmental concerns and bearing on the proposed action’s effects have been identified.

Purpose: Army disposal of LRA Parcel 20 through transfer to the LRA or other appropriate recipients.

Need: Carry out BRAC recommendations for the closure of SVADA, which became law, and make the parcel available for reuse.

Alternatives

The Draft EIS evaluates five alternatives. The Army’s preferred alternative is **Alternative 2, Accelerated Disposal**. The Army has no preference with respect to reuse because reuse is not an Army action.

- ➔ **Alternative 1, No Action Alternative:** The Army would not dispose of the parcel. LRA Parcel 20 would be retained in caretaker status by the Army.
- ➔ **Alternative 2, Accelerated Disposal Alternative:** The Proposed Action is the Army’s disposal of LRA Parcel 20 by transferring it to the LRA or other appropriate recipient(s) for their reuse. The Army would take advantage of various property transfer and disposal methods that allow reuse of the property before environmental remedial action has been completed, but with a commitment by the Army to complete remediation or fund remediation to completion.
- ➔ **Alternative 3, Recreation Only Reuse Alternative:** A new owner would implement passive recreational improvements on LRA Parcel 20, such as an elevated, boardwalk-style walking trail; a canoe and kayak ramp on Commander’s Pond; and a recreational area atop the capped landfill on the parcel.
- ➔ **Alternative 4, Recreation and Solar Reuse Alternative:** A new owner would implement passive recreational improvements on LRA Parcel 20 as described for Alternative 3, except solar photovoltaic (PV) arrays would be installed on top of the landfill in lieu of a recreation area.
- ➔ **Alternative 5, LRA Reuse Alternative:** The LRA would implement its 2023 reuse plan that develops a new port facility with docks, wharves, conveyor system, and roads, plus recreational facilities and potentially solar development. The LRA’s proposed development would occur on LRA Parcel 20 and extend outside the boundary of the parcel into the Apple River, Brickhouse Slough, and along Apple River Island in the Mississippi River. The LRA proposes to implement port development in three phases of 5 years each.

Alternative 5: LRA Reuse Features

- An 800-foot by 100-foot dry and liquid bulk wharf
- A conveyor system
- A floating dry dock
- A haul road
- A 350-foot lift-on/lift-off wharf
- A 600-foot lift-on/lift-off wharf
- A liquid bulk pipeline
- A recreational boat ramp
- A recreational trail
- A fleet repair area
- A solar farm or recreational area atop a closed landfill
- Travel lift piers with a landside dry dock
- A wharf access road
- Dredging up to 2.1 million cubic yards of sediment from within Commander’s Pond and the Mississippi River’s Brickhouse Slough and main channel
- Barge fleeting areas in Brick House Slough and the Mississippi River
- 16 acre aquatic habitat restoration area in Commander’s Pond



Base Realignment and Closure Savanna Army Depot Activity ENVIRONMENTAL IMPACT STATEMENT

CEQ Unique Identifier: EISX-007-21-000-1729699335

NEPA

Draft EIS Findings

The Department of the Army invites you to comment on the environmental and socioeconomic findings of the Draft EIS.

Summary of Effects

Resource Area	Alternative 1: No Action	Alternative 2: Accelerated Disposal	Alternative 3: Recreation Only Reuse	Alternative 4: Recreation and Solar Reuse	Alternative 5: LRA Reuse
Land Use	---	---	✓✓	✓✓	✓
Aesthetics and Visual	---	---	✓	✓	✓
Air Quality	---	✓	✓✓	✓✓	✓
Noise	---	✓	✓✓	✓✓	✓
Geology and Soils	---	---	✓	✓	✓
Water	---	---	✓	✓	✓
Biological	---	---	✓	✓	✓
Cultural	---	---	✓	✓	✓
Socioeconomics	---	✓	✓	✓	✓✓
Navigation	---	---	---	---	✓✓
Transportation	---	---	✓	✓	✓
Utilities	---	---	---	✓	✓✓
Hazardous and Toxic Materials	---	---	✓✓	✓✓	✓

Legend of Effects

- **No effects:** No effects on a resource would be expected.
- ✓ **Negligible effects:** Effects would be expected but would not be perceptible or apparent or attributable to the action.
- ✓ **Less than significant effects:** Effects would not be significant but would be perceptible, readily apparent and mitigation may be appropriate.
- ✓ **Significant but mitigable effects:** Effects would be significant, but measures proposed for implementation would reduce adverse effects of an action to less than significant.
- ✓ **Significant adverse effects:** Effects would be obvious, short or long term, seriously impair a resource, and mitigation would not reduce effects to less than significant.
- ✓ **Beneficial effects:** Effects would be positive or improve the resource.



Base Realignment and Closure Savanna Army Depot Activity

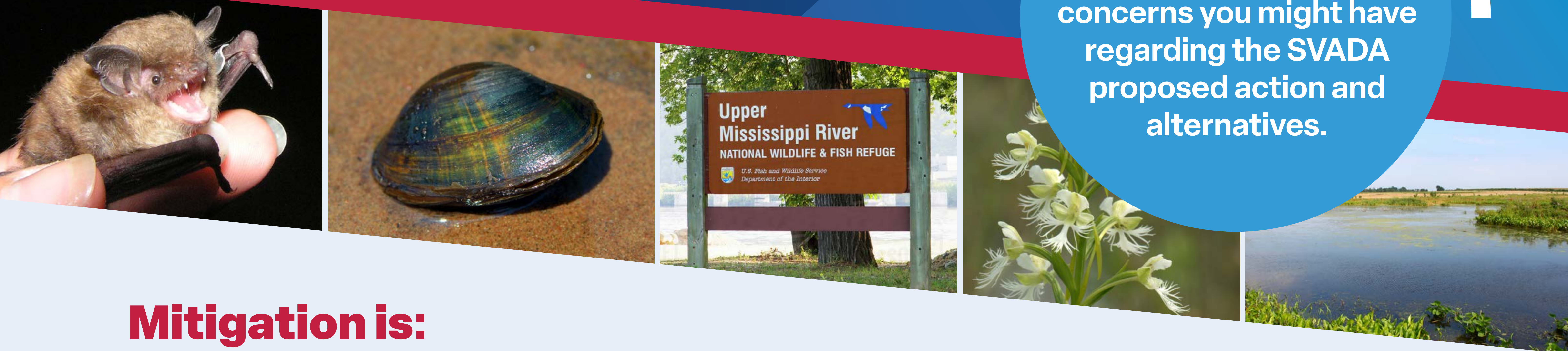
ENVIRONMENTAL IMPACT STATEMENT

CEQ Unique Identifier: EISX-007-21-000-1729699335

The BRAC SVADA

Environmental Impact Statement Mitigation

You are invited to comment on these, or other concerns you might have regarding the SVADA proposed action and alternatives.



Mitigation is:

Avoiding, minimizing, and compensating for unacceptable effects on the human environment and other resources that might result from a proposed action.

Previously identified areas of potential concern at SVADA that may require mitigation include:

Waters of the United States (WOTUS), including wetlands

- Dredging of WOTUS in Commander’s Pond
- Access channel dredging in Brick House Slough
- Barge fleeing dredging in Brick House Slough and the Mississippi River

Floodplains

- Redevelopment alternatives may be constructed within the floodplain

Upper Mississippi River National Wildlife and Fish Refuge

- Redevelopment activities may affect Upper Mississippi refuge property or property currently managed by the U.S. Fish and Wildlife Service for conservation

Cultural and historic resources

- Cultural and historic resources can be expected within alternative’s Area of Potential Effect (APE)

Hazardous and toxic contamination

- Areas of remediated hazardous and toxic contamination are in the project area
- A capped landfill is in the project area

Inland navigation features

- The proposed redevelopment includes modification of the Mississippi River Navigation Channel
- Inland navigation features may be impacted by proposed redevelopment
- Activities associated with operation of the LRA’s proposed inland port could affect navigation features, water conveyance, and sediment conveyance in the project vicinity

Federally and state listed protected species

- Federally and state protected species have been documented in the project vicinity and may be affected

Protected Species That Might Occur on LRA Parcel 20			
Common Name	Scientific Name	Federal Status	State Status
Mammals			
Indiana bat	<i>Myotis sodalis</i>	E	E
Northern long-eared bat	<i>Myotis septentrionalis</i>	E	T
Tricolored bat	<i>Perimyotis subflavus</i>	PE	—
Birds			
Whooping crane	<i>Grus amaericana</i>	EXPN	—
Reptiles			
Lined snake	<i>Tropidoclonion lineatum</i>	—	T
Plains hog-nosed snake	<i>Heterodon nasicus</i>	—	T
Fish			
Pallid shiner	<i>Hybopsis amnis</i>	—	E
Weed shiner	<i>Notropis texanus</i>	—	E
Western sand darter	<i>Ammocrypta clarum</i>	—	E
Clams (mussels)			
Butterfly	<i>Ellipsaria lineolate</i>	—	T
Higgins eye pearlymussel	<i>Lampsilis higginsii</i>	E	E
Sheepnose mussel	<i>Plethobasus cyphus</i>	E	E
Insects			
Eastern regal fritillary	<i>Argynnis idalia idalia</i>	PE	E
Monarch butterfly	<i>Danaus Plexippus</i>	PT	—
Western regal fritillary	<i>Argynnis idalia occidentalis</i>	PT	—
Flowering plants			
Eastern prairie fringed orchid	<i>Platanthera leucophaea</i>	T	E
False heather	<i>Hudsonia tomentosa</i>	—	E
James’s clammyweed	<i>Polanisia jamesii</i>	—	E

Sources: IDNR 2015; USFWS 2020.



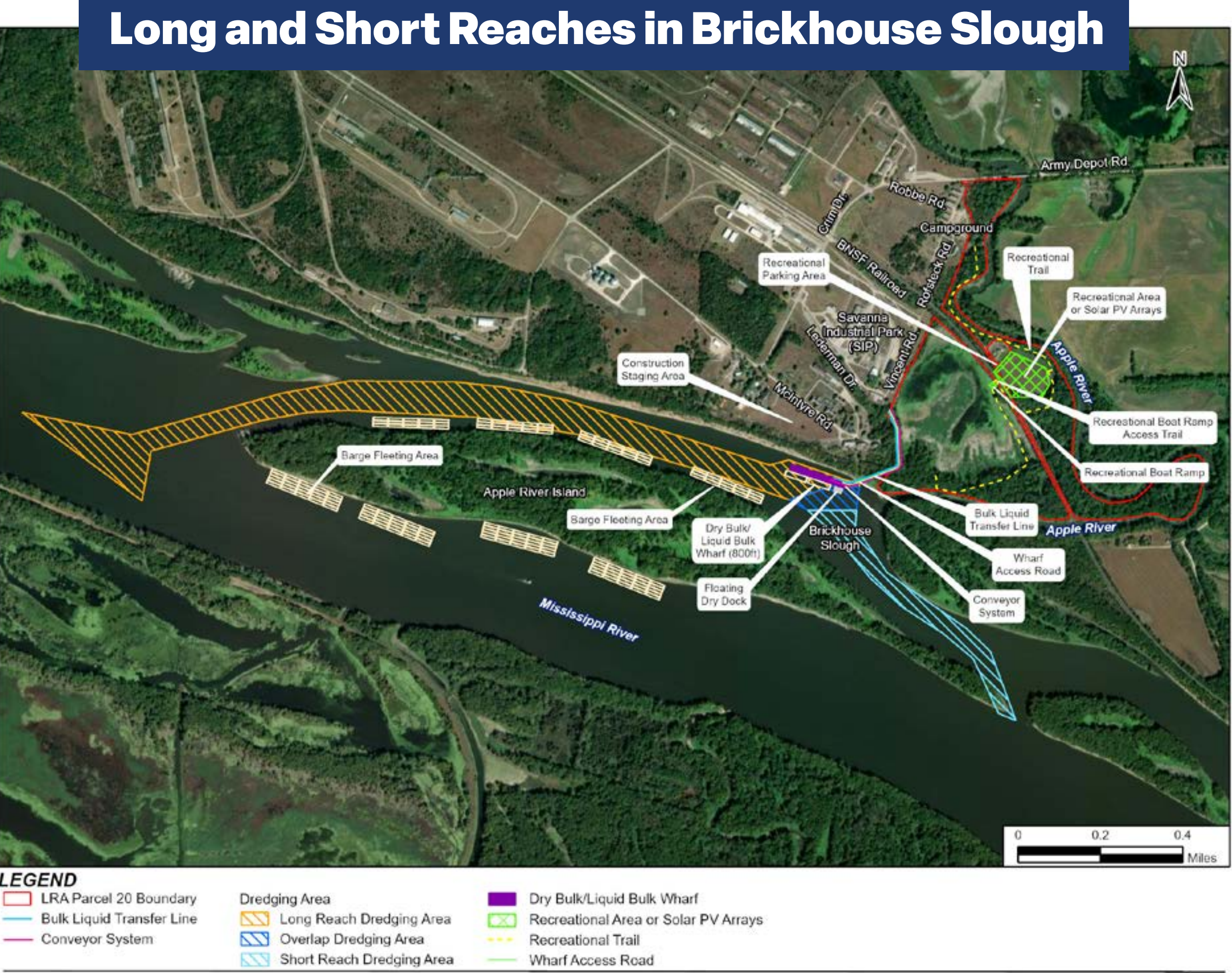
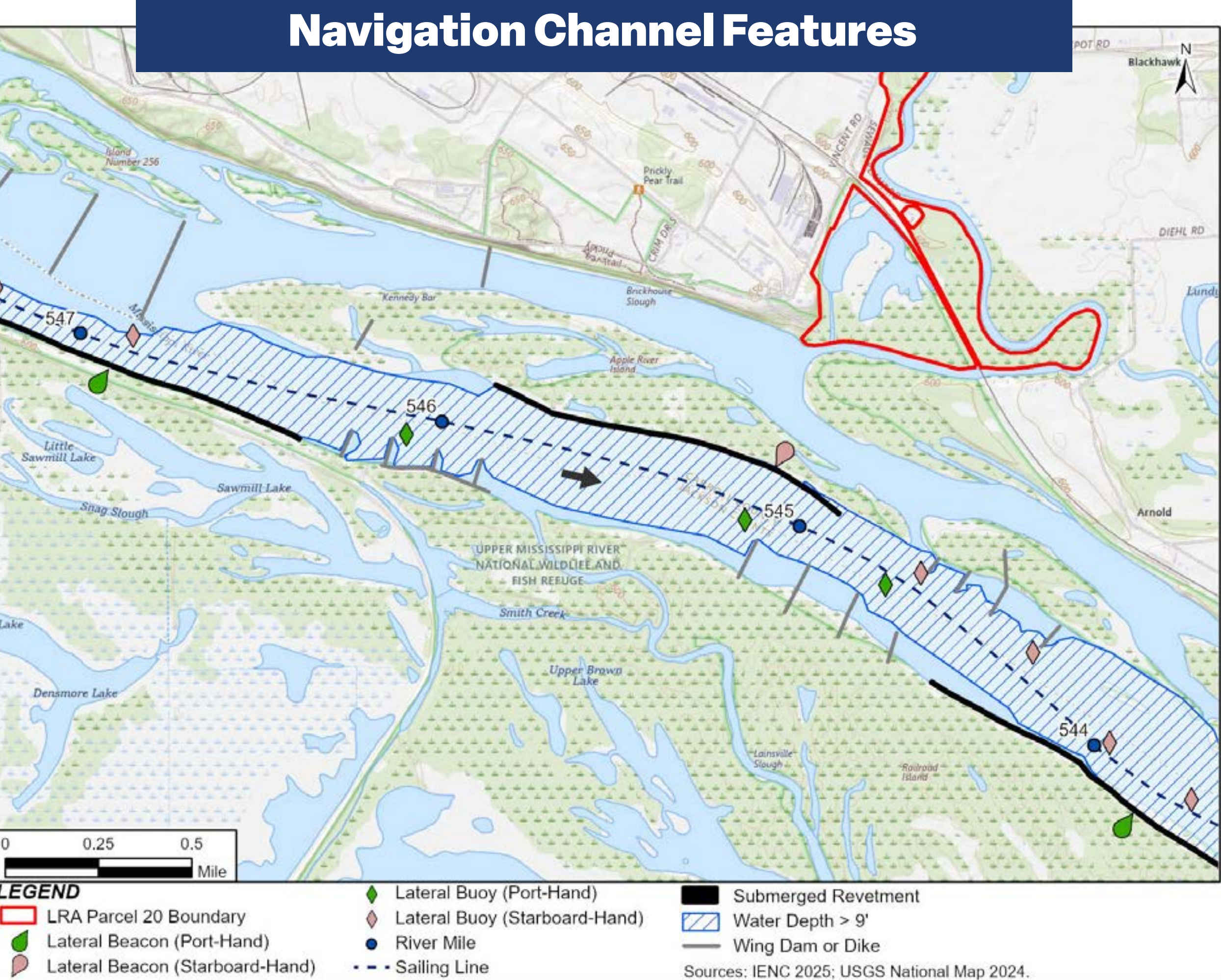
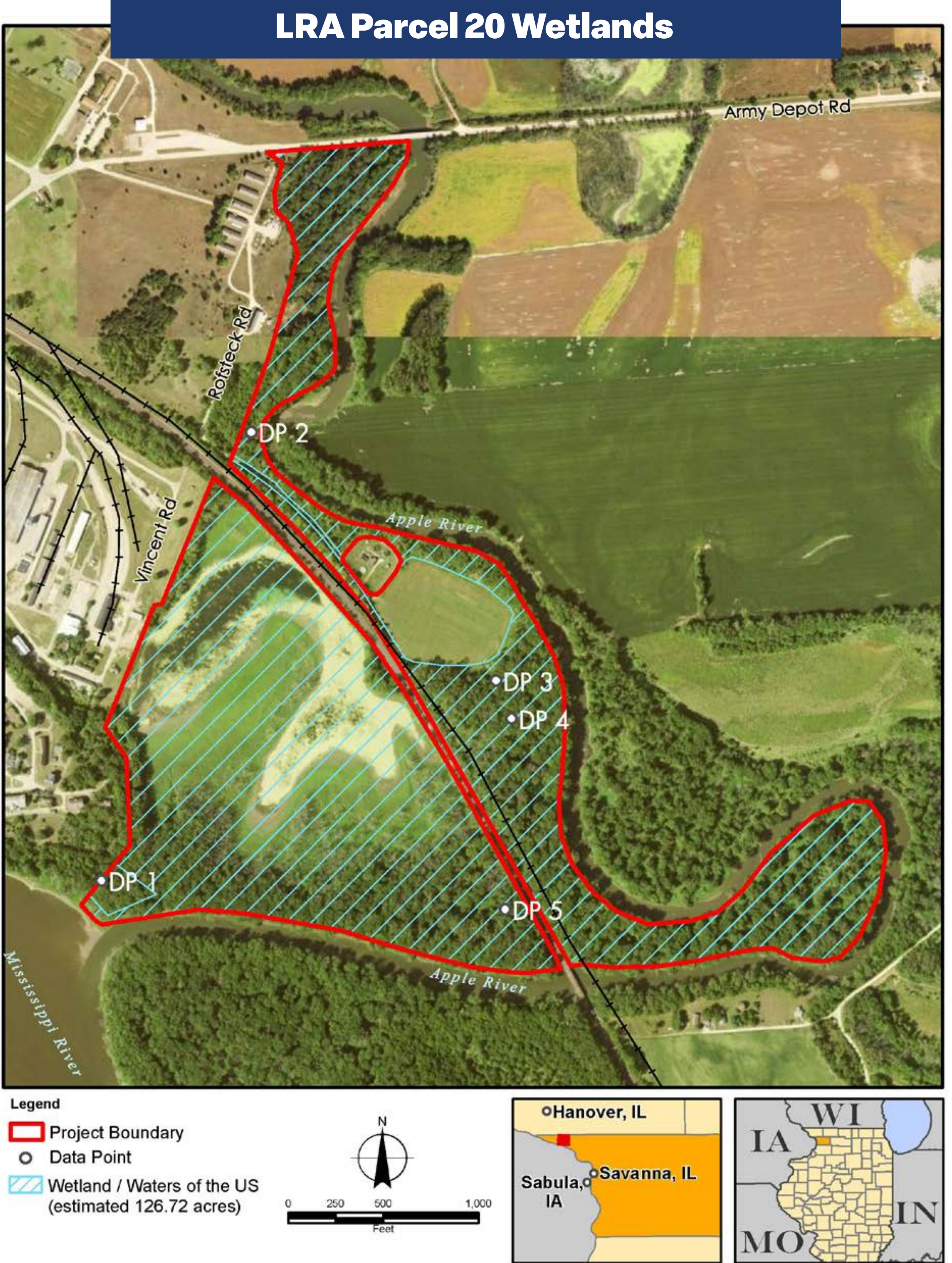
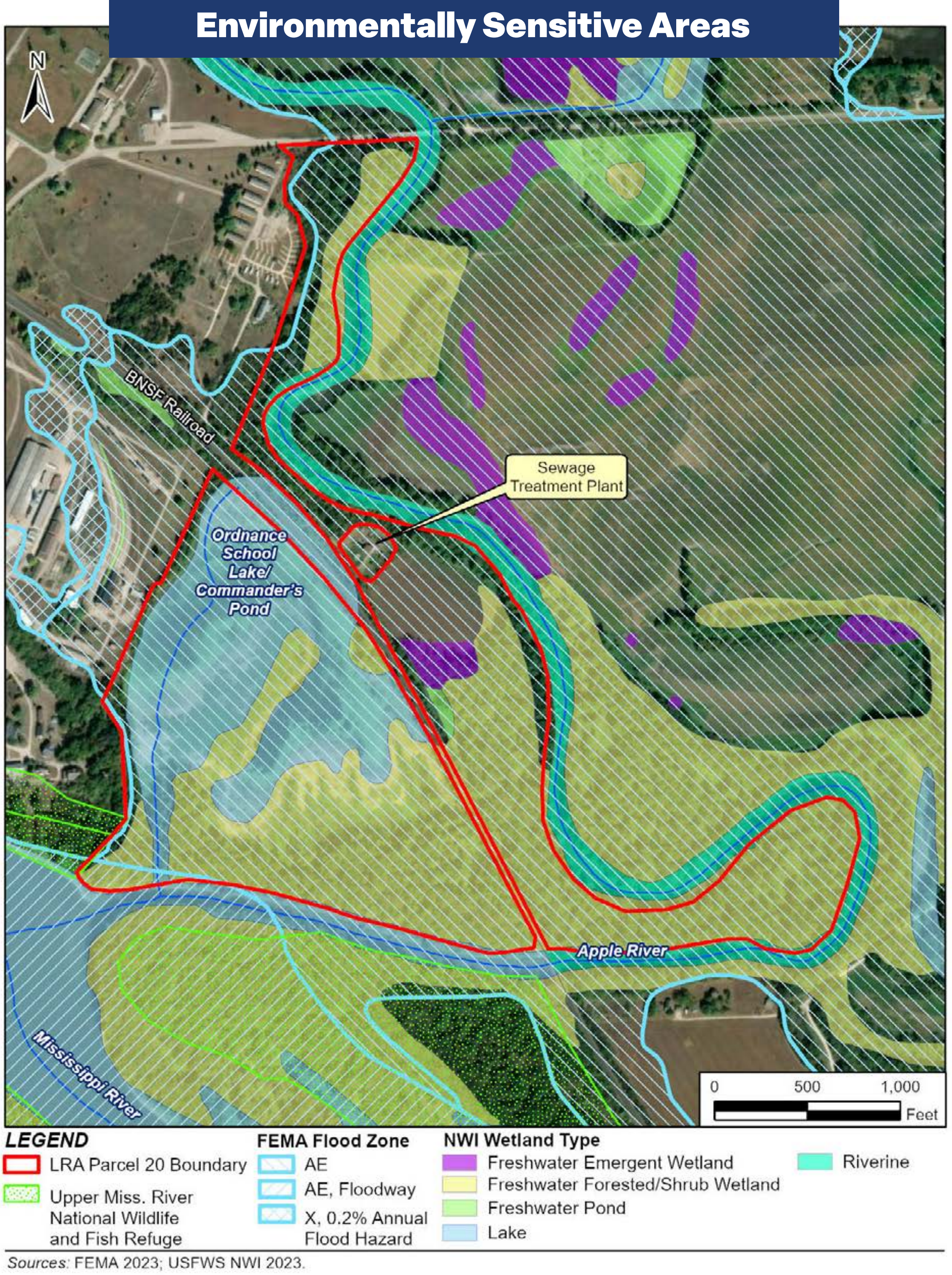
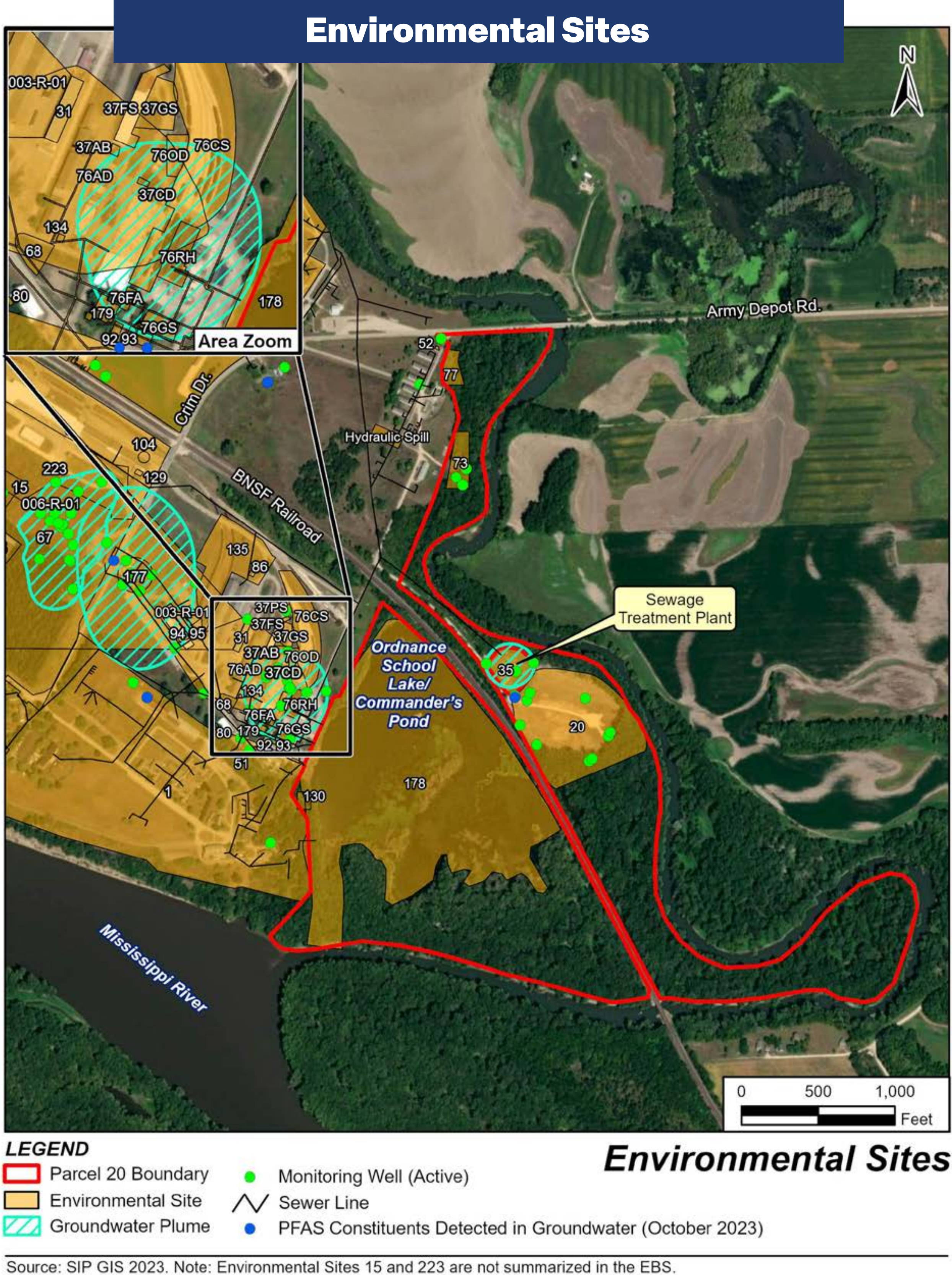
Notes: E = endangered; EXPN = experimental population, nonessential; PE = proposed endangered; PT = proposed threatened; T = threatened.

Base Realignment and Closure Savanna Army Depot Activity

ENVIRONMENTAL IMPACT STATEMENT

CEQ Unique Identifier: EISX-007-21-000-1729699335

MAPS



Base Realignment and Closure Savanna Army Depot Activity ENVIRONMENTAL IMPACT STATEMENT

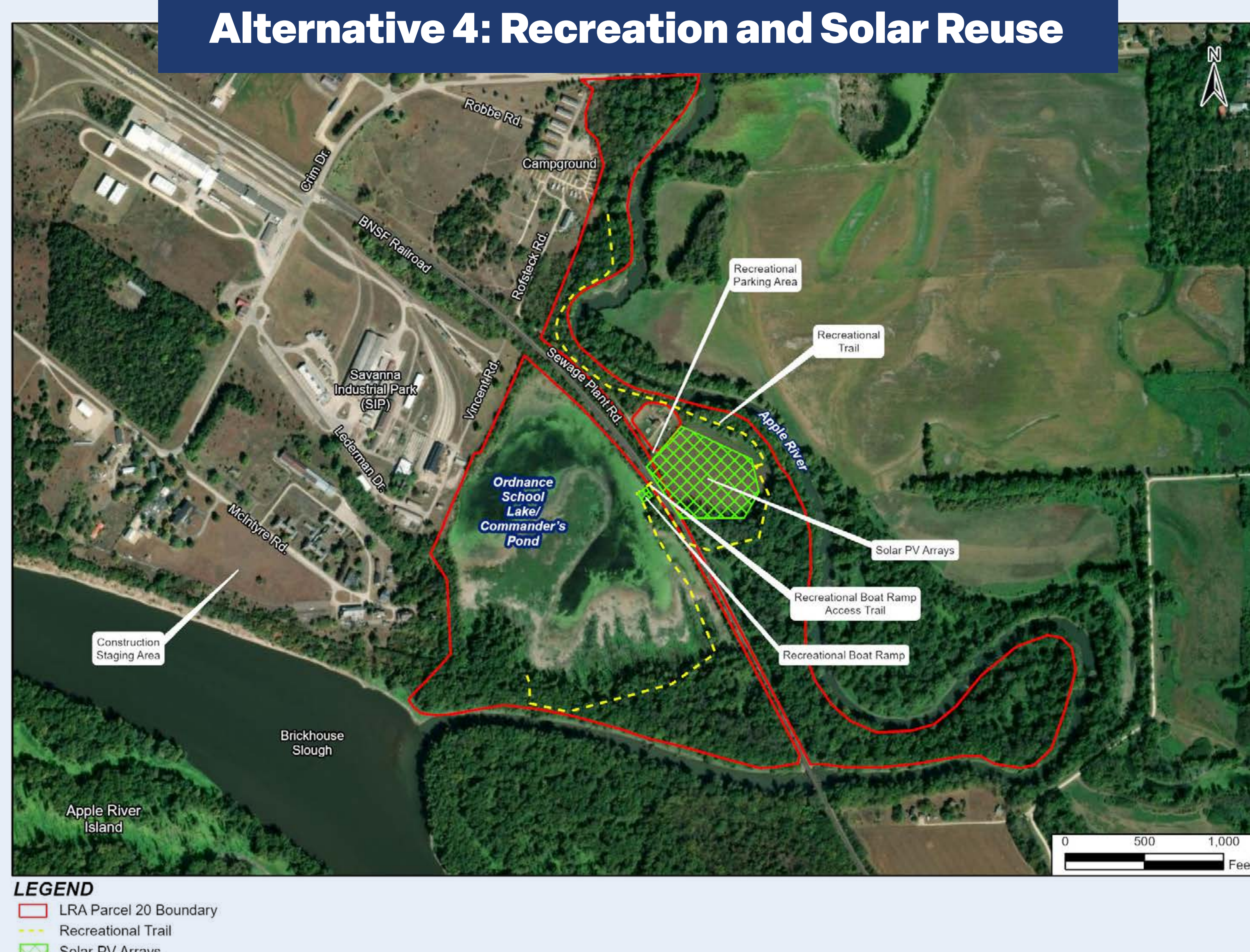
CEQ Unique Identifier: EISX-007-21-000-1729699335

Alternatives 3 & 4

Alternative 3: Recreation Only Reuse



Alternative 4: Recreation and Solar Reuse



Resource Findings of Effects for Alternatives 3 and 4

Beneficial Effects:

- **Land Use:** New public recreational land.
- **Socioeconomics:** Jobs and new recreational opportunities.
- **Utilities:** New solar facility.

Adverse Effects:

- **Aesthetic and Visual:** Solar array would change visual character.
- **Air Quality:** Airborne dust and other pollutants during construction.
- **Noise:** Construction noise.
- **Biological:** Temporary disturbance of vegetation, wildlife, and threatened and endangered species, and potential loss of habitat.
- **Cultural:** Potential to disturb known cultural sites.
- **Soils:** Erosion during construction.
- **Water:** Increased turbidity during construction, and long-term increase in impervious surface.
- **Hazardous:** Construction vehicles and equipment.



Base Realignment and Closure Savanna Army Depot Activity ENVIRONMENTAL IMPACT STATEMENT

CEQ Unique Identifier: EISX-007-21-000-1729699335

Alternative 5

LRA Reuse Alternative

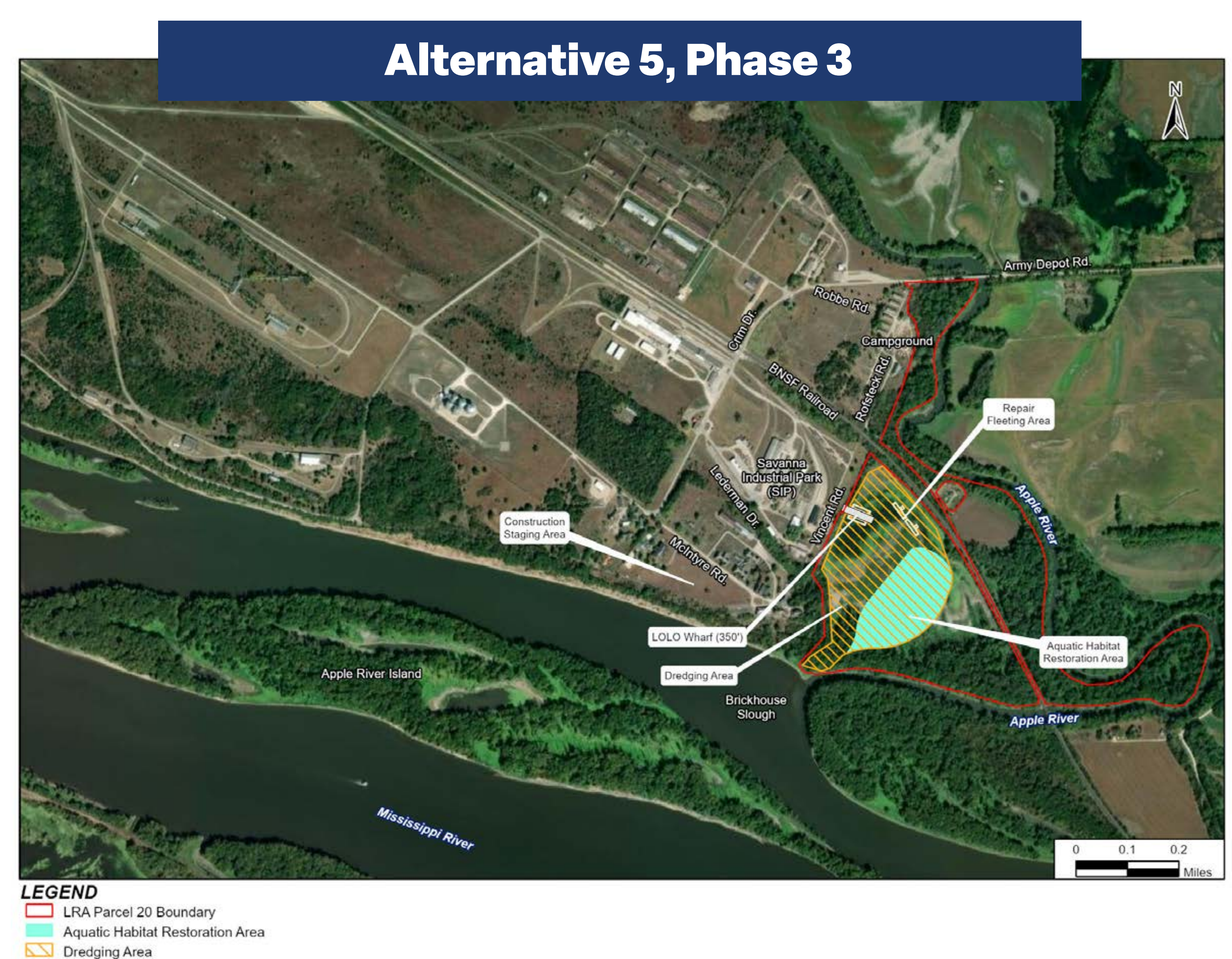
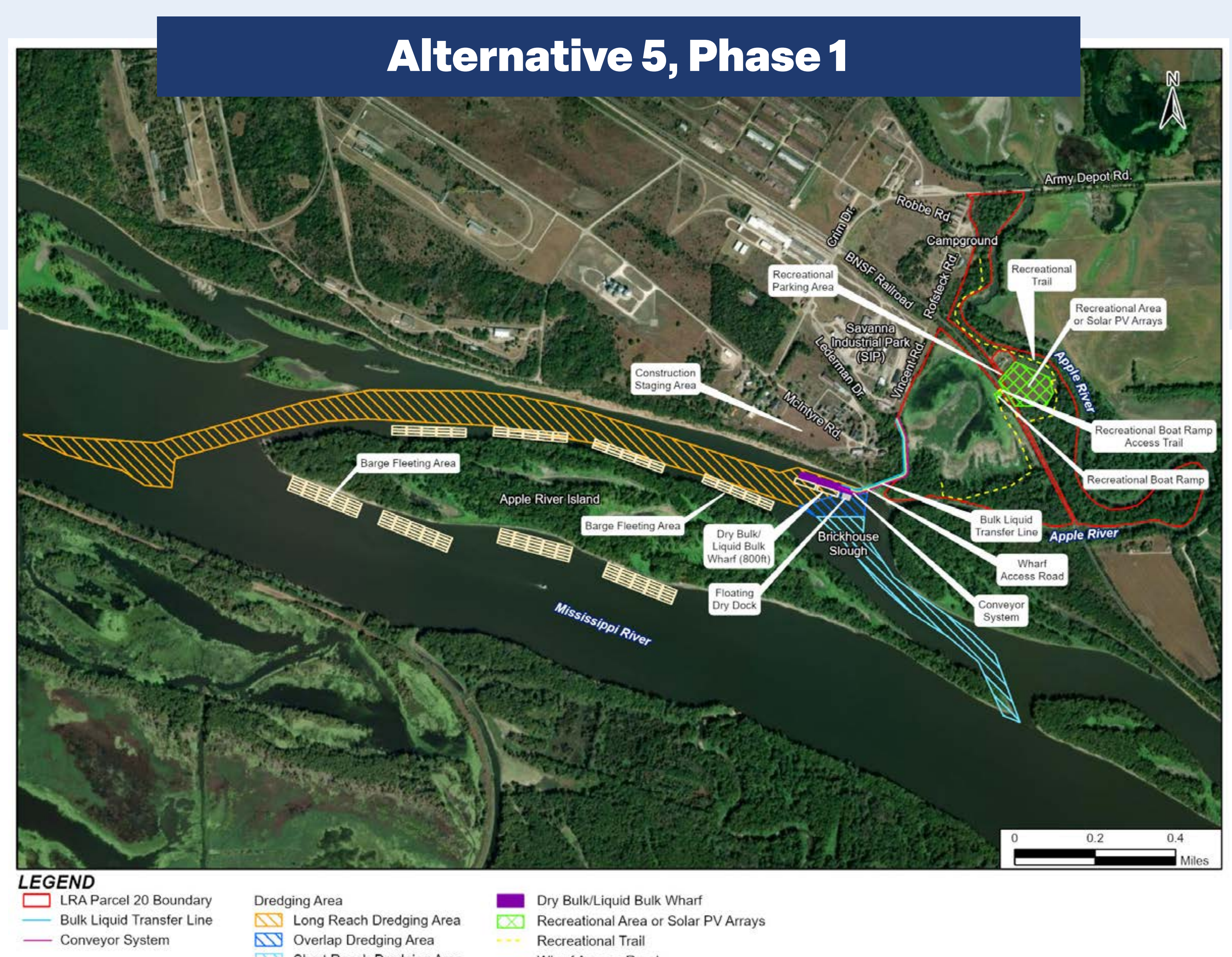
Resource Findings of Effects for Alternative 5

Beneficial Effects:

- **Socioeconomics:** Jobs and new recreational opportunities.
- **Navigation:** New navigation support facilities.
- **Utilities:** New utility systems, potential for solar facility.

Adverse Effects:

- **Land Use:** Permanent alteration of land use character.
- **Aesthetics and Visual:** Permanent visual alteration.
- **Water:** Turbidity, increase in impervious surface, increased river traffic, changes in water flow.
- **Biological:** Temporary and permanent disturbance of terrestrial and aquatic habitat, including in Upper Mississippi River National Wildlife and Fish Refuge.
- **Cultural:** Potential to disturb known cultural sites.
- **Navigation:** Impact channel navigation features.
- **Hazardous:** Disturbance of potentially contaminated sediment in Commander's Pond.



Base Realignment and Closure Savanna Army Depot Activity

ENVIRONMENTAL IMPACT STATEMENT

CEQ Unique Identifier: EISX-007-21-000-1729699335