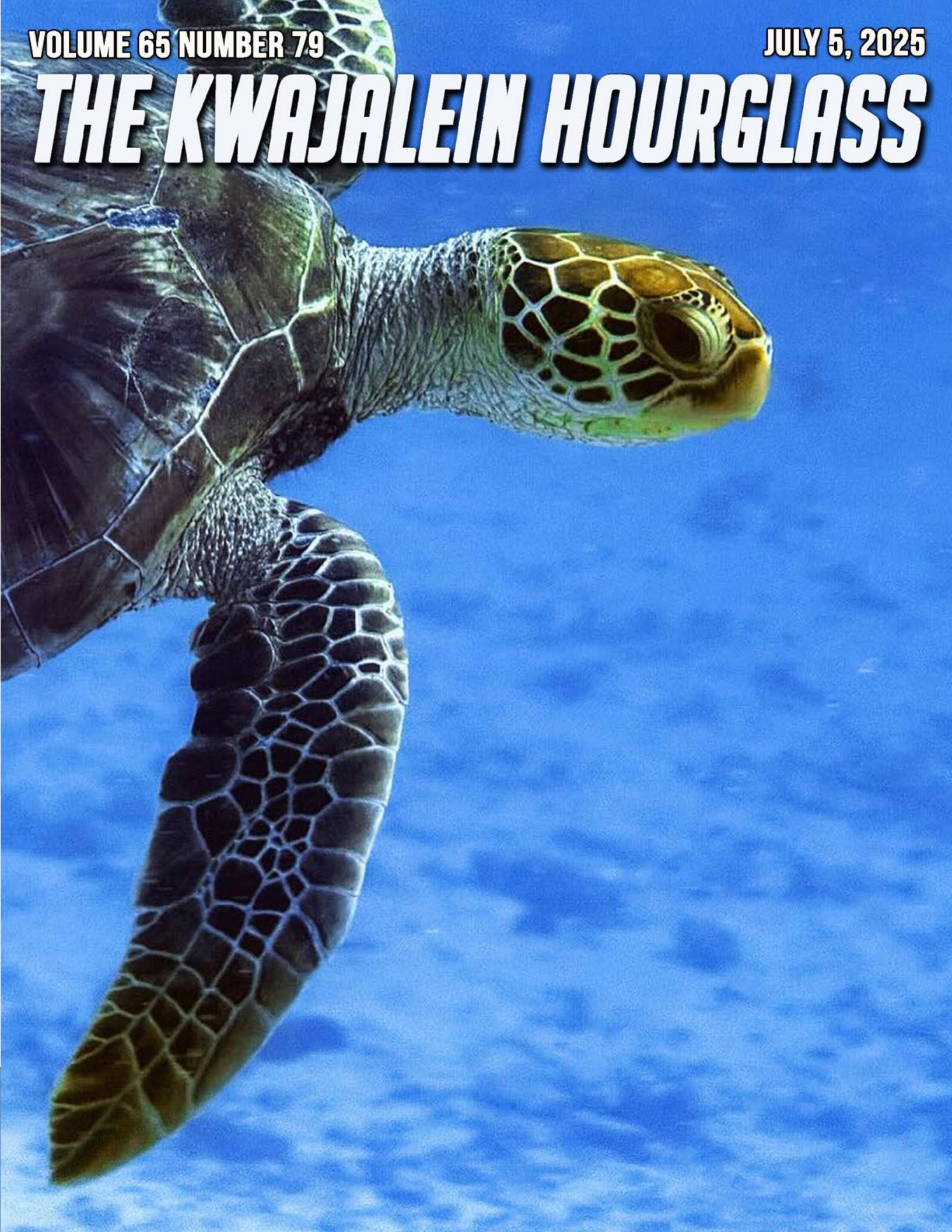


VOLUME 65 NUMBER 79

JULY 5, 2025

THE KWAJALEIN HOURGLASS





PHOTOS BY MICHAEL DIAZ

ABOVE: An Interview with Author and George Seitz Elementary School Teacher Brooke Dean

COMMUNITY

K IS FOR KWAJALEIN: AN ISLAND STORY THROUGH A CHILD'S EYES

HOURLASS REPORT

By Dr. Amy Blakey; Superintendent of KSS

When Brooke Dean first arrived on Kwajalein, she didn't expect the island to inspire a children's book. But after years of teaching, exploring, and falling in love with the small moments that make island life special, she knew she had a story to tell.

"I've noticed that most books about Kwajalein focus on history and are geared toward adults," Brooke shared. "I wanted to create something different—a fun, playful book that both kids and adults could enjoy. K is for Kwajalein is my way of celebrating island life and sharing the everyday beauty and

charm of Kwaj with readers of all ages."

Brooke's new book, *K is for Kwajalein: A Marshall Islands Alphabet Book*, is a colorful, rhyming journey through the alphabet, all told from the perspective of a "Kwaj kid." From sunsets to sea creatures, each page is a tribute to the magic of life on the island.

"As an elementary teacher, I'm surrounded by picture books every day, so creating one of my own felt especially meaningful," she said. "I even read early drafts to my students when it was just a Word document. Their encouragement helped keep me motivated."

Though the book is written

for ages 5 to 8, Brooke says it's meant for everyone. "I hope it brings a sense of nostalgia to former Kwaj kids and residents, while also sparking curiosity in those who've never been here."

The process from idea to publication was no small feat. This is Brooke's second self-published book (following *Parker's Markers*), and she tackled everything from editing to copyright to finding the perfect illustrator—who lives in the UK and whom she's never met in person.

"There were some bumps along the way," she admitted. "Two big book shipments never arrived to the island! I

ended up having the publisher send them to my parents, who then shipped them to me. It taught me to stay flexible and build in extra time for delays."

Despite the logistical hurdles, the response from the Kwaj community has been overwhelmingly positive. "People are so excited—some want to know everything about it, and others don't want any spoilers! I've loved seeing that kind of enthusiasm."

And she's not stopping here. Brooke has big plans to expand the Kwajalein universe with companion products like plushies, coloring books, stickers, and more. "I

want to keep creating things that help people feel connected to this place.”

To follow Brooke’s journey or get in touch, please email her at brookenicholedean@gmail.com. 📧



IT'S KITTEN SEASON

Interested in Adopting a Kwaj Cat?

Call **480-2017** or stop by the **Vet Clinic** to inquire and gather the paperwork.

Foster Parents also wanted!

Call or Email us your information if you would like to become a Kwaj Cat foster parent!

kwajvetclinic@acuityinternational.com

Coral Reefs Around USAG-KA

- Coral around the atoll is protected by U.S. and RMI laws.
- No coral is allowed to be taken from USAG-KA.
- Some coral contains toxins that can cause injury.
- Protect the environment by not stepping on live coral growth areas.
- Treat all underwater habitats with care.

- Wod ko kajojo ibelaakin Kwajalein Atoll rej bed iuumin kien nan kejbarok eo an U.S. im RMI.
- Ejjelok wod ej aikuj in emakit im buki jen lojet eo an USAG-KA.
- Ewor wod ko rebaaijin im remaron in komman joreen.
- Kejbarok ijoko im wod kein rej bed ie im jab bed iraan wod ko kajojo.
- Kejbarok aolep men kein iuumin lojet ilo am kea.

E-Wareness



EARN YOUR TEAM KWAJ TAB!

Front Cover: Sea Turtle by Christy Wagnon

Back Cover: Psalms2 by Melissa Dethlefsen

The Kwajalein Hourglass is named for the insignia of the U.S. Army's 7th Infantry Division, which liberated the island from the forces of Imperial Japan on Feb. 4, 1944. The Kwajalein Hourglass is an authorized publication for military personnel, federal employees, contractor workers and their families assigned to U.S. Army Garrison-Kwajalein Atoll.

Contents of the Hourglass are not necessarily official views of, or endorsed by, the U.S. Government, Department of Defense, Department of the Army or USAG-KA. It is published Saturdays in accordance with Army Regulation 360-1.
Phone: Defense Switching Network: 315-480-5169
Local phone: 480-5169

Garrison Commander.....Col. Matthew Cannon
Garrison CSM.....Command Sgt. Maj. Stanley Jackson
Public Affairs Officer.....Sherman Hogue
Editor.....Muhammad Rasheed
Communications Specialist.....Stephen Elson
Media Capture.....Melissa Dethlefsen
Story Writer.....Christy Wagnon



📷 COURTESY PHOTO

COMMUNITY FATHER'S DAY: CELEBRATING THE MEN WHO SHAPE OUR LIVES

HOURLASS REPORT

By Christy Wagon; CYS
Deputy Director

Each year on the third Sunday of June, families across the United States and in many countries around the world come together to celebrate Father's Day—a day dedicated to honoring fathers, father figures, and the invaluable role they play in our lives.

Father's Day is more than a simple greeting card holiday.

It is a heartfelt recognition of the love, sacrifices, and steady presence that fathers offer throughout our lives. Whether they are biological fathers, stepfathers, grandfathers, uncles, mentors, or guardians, these individuals shape our values, build our confidence, and offer support in ways that last a lifetime.

The idea of Father's Day was first proposed in the early 20th century. In 1910, Sono-

ra Smart Dodd of Spokane, Washington, inspired by the recently established Mother's Day, advocated for a similar day to honor fathers—especially her own, a Civil War veteran who raised six children as a single parent. The first Father's Day celebration took place on June 19, 1910. In 1972, President Richard Nixon signed it into law as a permanent national holiday.

Father's Day is often

marked by expressions of gratitude: a phone call, a handwritten card, a favorite meal, or a day spent enjoying quality time together. On Kwajalein, MWR hosted a community celebration that brought families together through sweet treats, creative crafts, and joyful conversations.

"We had about 20 dads with their kids come through," said Tina Carmichael of MWR. "They got to sit down and enjoy some yummy sugary treats. We also had an art table where the kids could color or make their dad a tie. The younger children answered 'how well do you know your dad?' questions—very cute and fun answers with that one."

For older children, a questionnaire helped spark friendly competition between siblings over who knew dad best. "I hope the dads walked away knowing how important they are to their children and that they need to be celebrated," Carmichael added.

Meanwhile, our local preschoolers had their own sweet and silly stories to share about the dads they adore. When asked how old their dads are, we heard everything from 1 to 44. Coraline proudly reported that her dad is great at obstacle courses. Aurora shared that her dad is good at soccer. Emmy said her dad smells like frosting, and her favorite thing to do together is go swimming while Oliver enjoys playing hide and seek with his dad.

All the children agreed that if their dads had a superpower, it would definitely be flying. When asked what makes her dad laugh, Alila answered simply and sweetly: "me." As for what their dads do for work? Miller confidently answered, "work."

To all the fathers and father figures who show up, lift us up, and help us grow—thank you. ❖

“Randy”



PHOTO BY GRACE WOOD

COMMUNITY

WORLD SEA TURTLE DAY: CELEBRATING OCEAN AMBASSADORS

HOURLASS REPORT

By Christy Waggon; CYS Deputy Director

Every year on June 16, people around the world celebrate World Sea Turtle Day, a tribute to one of the ocean's most ancient and beloved creatures. This date also honors the birthday of Dr. Archie Carr, the “father of sea turtle conservation,” whose revolutionary research and advocacy shaped global efforts to protect these gentle giants.

Sea turtles have glided through Earth's oceans for millions of years, helping to maintain the balance of marine ecosystems. They regulate jellyfish populations,

support healthy seagrass beds, and contribute to coral reef vitality. As both predator and prey, sea turtles are essential to a thriving ocean food web.

Today, six of the seven sea turtle species are endangered or vulnerable, facing threats like plastic pollution and marine debris, climate change and rising sand temperatures, coastal development and habitat loss, and getting caught up in commercial fishing gear.

World Sea Turtle Day is more than a celebration—it's a call to action. Simple steps like reducing single-use plastics and joining beach clean-

ups make a difference.

Here on Kwajalein Atoll, green sea turtles and hawksbill turtles are part of the daily seascape—seen by divers, snorkelers, and beachgoers alike. Their graceful movements inspire admiration and affection.

For sea turtle enthusiast Grace Hood, spotting turtles in the lagoon has become a treasured experience. Each one, she says, has a personality of its own. “This first one is Tiny Tim! He is one of the smallest turtles I've seen out here—hence the ‘Tiny’—and I thought he looked like a Timothy!” Another local favorite is a laid-back regular

near the ski steps, Stanley, “he hangs out right off the ski steps and he's either sleeping or eating! I named him Stanley from *The Office*—they give the same vibes. Finally, there's Randy—cool, calm, and collected, “Randy is so nonchalant and chill, he kind of reminded me of Randy Hisle!”

These heartfelt moments reflect the deep connection many island residents feel toward the marine life around them. Grace's turtle tales are a reminder that conservation begins with appreciation—and that every encounter builds empathy for protecting these incredible creatures. ❧

“Stanley”



📷 PHOTO BY GRACE HOOD



📷 PHOTO BY CHRISTY WAGNON



📷 PHOTO BY CHRISTY WAGNON

“Tiny Tim”



📷 PHOTO BY GRACE HOOD

a cultural hub, to preserve and share stories, the skills of the artisans and Micronesian heritage. I think we can best serve the Kwaj community by offering products that are both meaningful and accessible. By reinvesting our profits in education and the schools of the RMI, it strengthens the very roots it celebrates. True success lies in being a bridge between tradition and today, without compromising either."

A special thank you goes to Stacey Morgan for her outstanding work on Mic Shop t-shirt designs and her consistent support with publicity—your creativity and responsiveness brought color and attention to the shop in a truly meaningful way.

Mic Shop Board Treasurer and volunteer Erin Gertsema shared one of her favorite stories: "One of the postcards of a child is a girl someone met here recently as an adult." This special connection is just one example of the personal and cultural threads woven throughout the shop's

inventory.

Another unique item featured in the shop is a beautifully illustrated map of Ebeye, designed by Stacey Morgan. In addition, visitors can now explore the newly introduced "Kwaj Corner," a curated section of goods created by artisans who currently live on Kwajalein.

The Mic Shop thrives because of the dedicated volunteers who give their time each month. These individuals ensure the shop is stocked, welcoming, and staffed: Prescilla Price, Stacey Morgan, Katie Colello, Brian Powers, Nellie Walter, Bonnie Smith, Jacque Phelon, Jacki Blumenauer, Kristi Warwick, Sandee Colby, Amber Fox, Sheila Rumpf, Karen Reed, Erin Gertsema, Sarah Morrissey, Rachel Raczynski, Liz Haggerty, Stephanie Fontanez, and Rita Pyne.

Your service and spirit of generosity sustain not just the shop, but the mission it represents. Thank you for showing up, lending a hand, and keeping the doors open

with warmth and professionalism.

Whether you're buying a gift, exploring regional culture, or volunteering to support local artisans, the Mic Shop invites everyone to be part of something meaningful. If you're interested in joining the volunteer team, stop

by the shop during normal operating hours—Mondays 12:00–2:00pm, Wednesdays and Fridays 5:00–7:00pm—or contact the Volunteer Coordinator, Amber Fox, at Amberzdawn@gmail.com. No retail experience required—just a heart for community and a willingness to serve. ❏



Kwajalein Island Trash & Recycling

Residential Trash Collection	480-1760
Yard Vegetation Collection	480-1890
Hazardous Waste Pickup Line	480-8858



TRASH & RECYCLING PICKUP SCHEDULE

The Green Residential TRASH receptacles are collected every **Tuesday and Friday**.

The blue RECYCLE bins are also collected every **Tuesday and Friday**.

The large black General Solid Waste Community Containers are emptied on Monday, Wednesday, Thursday, and Saturday.

Safety First! Please keep any curious children away from the Compactor Truck as it feeds contents into the truck.

Recyclable materials are also collected by both *solid waste* and *horizontal maintenance personnel*, in conjunction with general trash collection. Currently the island only recycles glass, aluminum, metal, and bulk organic materials. **Cardboard and plastics are not recycled materials on Kwajalein.** These items should be placed into the general trash stream for disposal/incineration.



Residential users will be given a **green trash** receptacle and a smaller **blue receptacle** for recyclable materials. It is requested that residences place their recyclable items into the blue containers, and stack larger materials next to the bins. Lawn clippings and leaves should be bagged and placed next to bins. Palm fronds and coconuts should also be stacked up next to the bins for removal by horizontal maintenance personnel.

EARN YOUR TEAM KWAJ TAB

1. Attend Col. Cannon's TEAM KWAJ brief (either Teammate or Community version), read and adhere to the TEAM KWAJ Teammate Pact, presented at initial town halls, and periodically thereafter.

2. Attend the Island Newcomer's Briefing.

3. Attend at least one group greeting at air terminal for personnel arriving on island. Make them feel welcome and show them we are happy they are on Kwaj with us.

4. Attend at least two garrison after-hours team-building or social events (TEAM KWAJ Happy Hour, Commander's Call, Hail/Farewell).

5. Attend at least two TEAM KWAJ PT/Wellness sessions. Become a regular attendee!

6. Visit Marshallese Cultural Center in last 3 months prior to tab award.

7. Visit Ebeye, Third island or Majuro in last 3 months prior to tab, use a Marshallese phrase or two and visit a store/restaurant.

8. Tell three co-workers how to earn the TEAM KWAJ tab.

9. Swim, snorkel, boat or paddle on the lagoon at least once with a teammate.

10. Complete the TEAM KWAJ Circle-island 6-mile ruck march/walk/bike and read all historic battlefield markers. This is an organized USAG-KA hosted event several times per year.

11. Mission Partner wild card event—discuss with your supervisor any additional organizational requirement. Could be knowledge-based, achievement-based, or physical challenge.

12. Final event, "Board of Review" — meet with Col. Cannon face-to-face individually or in a small group with all requirements fulfilled. Schedule with garrison front office. Discussion items may include but are not limited to; TEAM KWAJ pact - "Healthy Community of Excellence," Kwaj history, Marshallese culture, military/strategic missions and their significance, and future operational potential.

Once you have the first 11 items completed, contact Terri Wilson at 480-4322 or at terri.l.wilson20.civ@army.mil to set up a date/time with the commander for the final event.



Check out more news and entertainment about Kwaj life on the USAG-KA YouTube Channel, at <https://www.youtube.com/USArmyGarrisonKwajaleinAtoll>.

FOLLOW US AT THESE LOCATIONS



Click QR Code to jump to social page

Kwajalein



MIA Project

NEVER FORGET.

<https://kwajaleinmiaproject.us/>

COMMUNITY CLASSIFIEDS

Submit Announcements to the Roller Channel and The Kwajalein Hourglass

OPEN CALL FOR ANNOUNCEMENTS
The island community is invited to submit listings for events and for sale items; announcements; department trainings; safety updates; public service messages; and thank-you messages.

Preparing Your Message

For questions about your messaging, please reach out to the USAG-KA Public Affairs Office at 480-4848.

Ads should always include a point of contact, phone number and/or email address.

Private parties, fundraisers and events requesting and/or accepting donations are typically not allowed for publication per AR 360-1. Fundraisers and support activities for private and schools-based organizations, scouting groups, civic clubs and other listings may be subject to a legal counsel review to determine their eligibility for publication.

Formatting Your Listings

It is recommended that graphical advertisements and announcements intended for the Hourglass and the AFN Roller Channel be formatted as PowerPoint slides.

Graphic designers are asked to maintain a generous margin (.75-1-inch) around all sides and to size fonts no smaller than pt. 20.

If your Roller Channel advertisement requires a special expiration date, please note this for the Roller team in the body of your message.

Deadlines for Submissions
Send advertisements for the Kwajalein Hourglass and the AFN Roller Channel to kwajaleinhourglass@gov2x.com on Wednesdays by close of business/Thursday morning.

Roller Channel ads are accepted on a rolling basis by 4 p.m. for a mid-week and late-week update. Ads received after 4 p.m. will be loaded in the next update. Please ensure you submit ads in good time to ensure timely upload.

Demolition at the Capt. Louis S. Zamperini Dining Facility. Phase three of the Zamperini DFAC demo has begun and is projected to be finished March 2026 for the dining and serving area. Be careful around the dining facility during the phases.

Do Not Take Cultural Artifacts. It is illegal to remove cultural resources from the atoll. This includes any protected species, unexploded ordnance, WWII-era artifacts and ancient Marshallese artifacts. These resources are protected under U.S. federal and RMI law. Contact the Kwajalein Archaeology Office at 480-8867.

For more information, reach out to the USAG-KA Command team through the USAG-KA Facebook page.

ANNOUNCEMENTS

AFH Construction Is Ongoing. Nan, Inc. Construction is scheduled to commence the telecommunication scope of work for the Kwajalein Army Family Housing project in our community. Residents and commuters should be aware of possible changes in traffic patterns and to plan their routes accordingly. Nan, Inc. Construction is committed to minimizing any inconveniences, and we will strive to ensure a smooth and efficient construction process.

ArMA. Log in to ArMa, the Army Maintenance Application, to report issues for all buildings maintained by the Department of Public Works. Contact Public Works at 480-3550.

CAC Office. Before your visit to the Common Access Card Office, ensure all paperwork is completed by your human resources representative before making an appointment. Bring two forms of government-issued IDs with you. Walk-in appointments are welcome, but there may be a wait. CAC Office Hours, Bldg. 835, are Tuesday – Saturday, 8 a.m. – 4 p.m.; (Lunch: noon - 1 p.m.). Call 480-8496.



Contact the USAG-KA Sexual Harassment/ Assault Response and Prevention Victim Advocate

Chief Warrant Officer 2 Nate Elkins
SHARP Victim Advocate
Work: 480-0660 or 480-3421
USAG-KA SHARP Pager:
808-580-3241
DOD SAFE Helpline: 877-995-5247

Emergency Management. Visit the USAG-KA Emergency Management webpage, <https://home.army.mil/kwajalein/index.php/my-fort/EM>; 2) Click on "Mass Notification"; 3) Follow the registration instructions.

E-Wareness: It is each driver's responsibility to ensure vehicles are not leaking fluids other than air conditioning condensate. Call 911 to report spills and arrange with automotive for routine maintenance. Please call Environmental at 480-0722 with questions. Ej an ri-kator eo eddo non lolorjake bwe wa eo ejjab leak jabdwot oil ijelak in drennin air condition eo jen wa eo. Ne elon jabdwot leak/lutok in oil jen wa eo, Kiir 911 non report- e lutok eo. Ak kiir Environmental ilo 480-0722 non kajitok.

Fire Safety Tips. Some pets are chewers. Watch pets to make sure they don't chew through electrical cords. Pets are curious. They may bump into, turn on, or knock over cooking equipment. Keep pets away from stoves and countertops. Make sure pets are included in your family's fire evacuation plan. Build an evacuation kit for each pet in your household.

Flights. Please note that all flights are subject to change. For the latest update on your flights on United, ATI or Air Marshall Islands: ATI: 480-2169; AMI: 480-3469; United: 480-4852 or 1-800-UNITED1; Air Terminal Services: 480-2660; Flight Information Recording: 480-3589

UA Schedule Effective Now: Monday and Friday—UA 155 (HNL); Check-in 2 – 4:50 p.m.;

Wednesday—UA 133 (HNL); Check-in 2 – 4:15 p.m.; Tuesday and Saturday—UA 154 (GUM); Check-in 10:45 – 11:15 a.m.

FlyRoi Reservations. To schedule reservations and for correspondence related to flights, email LCVKwajaleinFlyRoi@versar.com.

How to dress in the RMI. Out of respect for the Marshallese culture, residents are asked to dress appropriately when visiting Ebeye, Third Island, or anywhere within Kwajalein Atoll. Women should wear clothing to cover shoulders and knees. None are permitted to wear shorts when visiting churches on Ebeye. Men should wear long slacks to church.

Kwaj Small Boat Marina hours are 7:30 a.m. – 6 p.m. Friday through Monday, and on holidays, excluding Thanksgiving and Christmas. Morning boat reservation times are from 7:30 a.m. – noon. Afternoon boat reservations are from 1 – 5 p.m.

Not Feeling Well? Call 480-2223 to make an appointment for a COVID-19 test, Tuesday through Saturday from 7:30 a.m. – 4:30 p.m. If you are not feeling well, please wear a mask when you are around others in the community.

Operational Security. See something, say something. All employees on USAG-KA are required to receive annual Threat Awareness and Reporting Program training provided by KRO; Reporting: Report suspicious activities to the Kwajalein Resident Office at 480-9859/1293/8006 at Bldg. 1163.

PCS & Vacation Tips. Notify the post office before leaving for 30 days or PCS'ing. Per DOD 4525.6-M, mail is only allowed to be held for 30 days with or without prior notice. Mail is considered unclaimed on day 31 and will be returned to the sender. Email the post office to authorize pick up for your mail and packages. When PCS'ing, provide a forwarding address. Contact James Smith with questions at 480-3461 and james.e.smith2295@army.mil.

Salon Walk-Ins. Surfside Salon Walk-In Appointments are available on Fridays from 1:30 - 6 p.m.

Smoking. USAG-KA, smoking is permitted in designated smoking areas only. Smoking and cigarette butt receptacles must be at least 50 feet from the entrance of facilities.

Taxi Service. Call 480-TAXI (8294) or 3341 to

HELP WANTED

For employment with contractors
within the
U.S. Army Garrison - Kwajalein Atoll
please check
contractor company
websites
for employment opportunities.

book your ride at least 24 hours in advance of check-in time.

Millican Family Pool Hours. Closed for cleaning on Thursdays. Open noon to 5 p.m. Tuesdays, Wednesdays, Fridays and Saturdays. Open 11 a.m. to 5 p.m. Sundays and Mondays.

The NEC Testing Center Is Open to the Community - Giving you the head start you need to thrive! - Open Tuesday through Saturday by appointment
Authorized Pearson VUE Test Center. Schedule A test Today!
NEC testing Center, 480-4344, FN 1008-131
ACUITY International

Kwajalein / Roi Namur Licensing
Classes on Kwajalein are every Wednesday @0900 Marshallese @1245 Expats (by appointment only as class side is limited)
Classes are in Bldg. 856 Rm 101, Vehicle Maintenance Compound
Roi classes every 2nd Friday in Bldg. C, timed based on flight schedule
No registration needed for Roi classes.
To register, send email to either of the following:
Audrey.Hughes@gov2x.com
Wilson.Kaisha@gov2x.com
...or stop by Bldg. 856, Rm 101





**OPSEC
IS NOT
RETROACTIVE.**

**THINK BEFORE
YOU SHARE
INFORMATION.
ONLINE AND OFFLINE.**



Like and share @USArmyOPSEC

KWAJALEIN HOSPITAL

Helping the community navigate healthcare needs after-hours with RN4U NURSE LINE:

RN4U NURSE LINE:
480-RN4U(7648)



What is RN4U?

RN4U is an after-hours nurse line designed to promote patient safety and appropriate use of emergency services. The on-call nurse is available to assist in determining the level of care needed.

When is RN4U After-Hours Nurse Line available?

Tuesdays - Saturday from 1630-0730,
Sundays & Mondays: 24 hours
(excluding Garrison Holidays)



For medical emergencies please dial 9-1-1 immediately

For non-urgent clinic questions during normal business hours,
please call the hospital at 480-2223



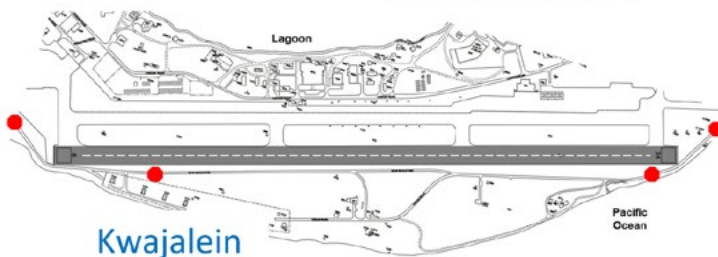
KWAJALEIN & ROI NAMUR,

STOP FOR AIRCRAFT!!



Please remember to stop and look both ways for aircraft on:
Zeus Blvd., Ocean Rd., Perimeter Rd., Pandanus Rd., Eleanor
Wilson Rd.

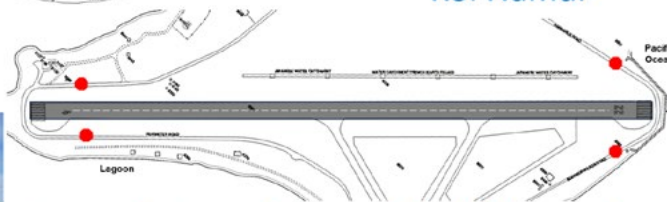
**If aircraft are on approach or taking off, you must hold your
position and wait!**



Kwajalein



Roi Namur



**Stop at designated signs and look for aircraft
landing or taking off. If you see an aircraft, hold
your position at the stop sign and wait until the
aircraft has landed or departed before moving.**

**PUBLIC NOTIFICATION
IMPORTANT INFORMATION ABOUT YOUR DRINKING WATER**

Kwajalein Drinking Water Total Trihalomethanes (TTHMs) Maximum Contaminant Level (MCL) Exceedance

The Kwajalein drinking water system recently exceeded a drinking water standard. This incident is not an emergency. However, public notification is required to meet the requirement in the USAKA Environmental Standards (UES). The information below is a summary of cause of non-compliance and actions taken to ensure drinking water quality.

- Testing results from the second quarter of fiscal year 2025 (2QFY25; January – March 2025) show the Kwajalein Island drinking water system exceeded the standard or MCL, for the TTHMs locational running annual average (LRAA) at three locations.
- The MCL is determined by averaging the results of samples collected at each sampling location for the past four quarters. The MCL for TTHM LRAA is 0.080 mg/L.
- The LRAA concentrations exceeded the standard at 0.081 mg/L, 0.082 mg/L, and 0.092 mg/L.

What should I do?

- Nothing. You do not need to boil your water or take other corrective actions.
- If you have any specific health concerns, consult your doctor.

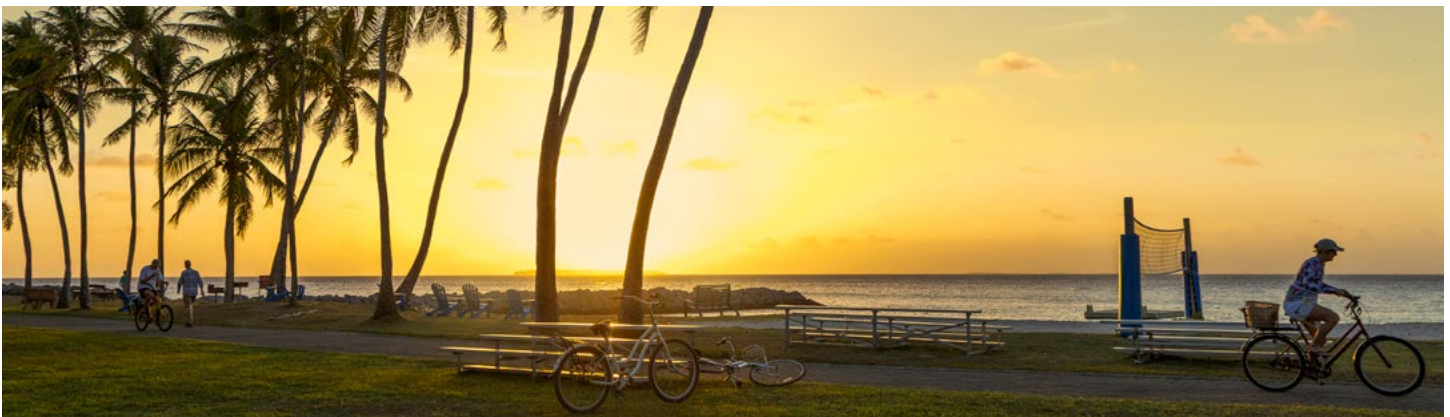
What does this mean?

- This is not an emergency!
- TTHMs are four volatile organic chemicals which form when disinfectants, such as chlorine, react with natural organic matter in the water.
 - Per the Environmental Protection Agency, some people who drink water containing trihalomethanes in excess of the MCL over many years may experience problems with their liver, kidney, or central nervous system, and an increased risk of cancer.
 - Short term exposure has not been shown to lead to adverse health effects.
 - Potential exposure to Kwajalein personnel is considered short term due to the limited time the MCL has been exceeded.

What is being done?

- The Kwajalein Island water system includes a Granular Activated Carbon (GAC) filter system, which treats the entire Kwajalein drinking water supply to remove naturally occurring organic compounds before the water is disinfected with chlorine reducing the resulting TTHMs to minimal levels.
- An investigation revealed an unexpected degradation of the adsorption capability of the GAC system.
- Scheduled replacement of the spent carbon in the GAC system is currently in progress.

For questions, please contact Environmental Services at 480-0722.



MELELE KO RAUROK KIN DREN IN IDRAAK EO

Jonan Total Trihalomethanes (TTHMs) ilo dren in idraak eo ilo Kwajalein ekar le jen jonak eo emoj an kien karoke (MCL)

Dren in idrak eo ion Kwajalein emoj an la ilon in standard eo an dren in idrak. Joraan in ejjab juon idin. Botab, karon jukjuk in bed in ej juon requirement ilo USAKA Environmental Standards (UES) me ej aikuj komane. Ilal ej melele ko ikijien likjab in im ta buntan ko emoj ejaki non bobrae likjab in.

- Result in taaj ko jen kuwata 2 eo an iio in 2025 (2QFY25; January - March 2025) ej kwalok ke dren in idrak eo ion Kwajalein emoj an la ilon in kakien eo, ak jonok ko (MCL non TTHM locational running annual average (LRAA) at three locations..
- Jonok eo, ak MCL non TTHMs LRAA ej 0.080 mg/L eo me ej walok jen sample ko emoj boki jen jikin ebok sample ko jen kuwata ko 4 remootlok. Ilo MCL non TTHM LRAA ej 0.080 mg/L.
- Jonan level in LRAA emoj an tobar jonak eo emoj korake ej 0.081 mg/L, 0.082 mg/L, im 0.092 mg/L..

Ta eo kwoj aikuj in komane?

- Ejelok men kwoj aikuj komane. Kwojjab aikuj boil i dren eo ak komane jabdrewot.
- Ne kwoj loe ke ewor jabdrewot naninmij ejelt ejmour, kebaak tokto.

Ta melele in?

- Ejjab emergency ak menin idin.
- TTHM ej emen volatile organic chemicals ko im rej walok ne jej kojerbal jerajko non karreo dren in idraak,
 - o Jen Environmental Protection Agency, jet armij ro rar idraak dren in bedbed ioon trihalomethanes ekoba MCL ilo elon yio remaron melele lok kin jorren kein nan aj im kidney ak naninmej in cancer.
 - o Ilo to kadru in ejannin wor joraan ewalok ejelet ejmour.
 - o Kakolkol ko rej walok non armej in Kwajalein ej bed wot ilo ien eo ekadru ilo jokjok in emoj an MCL eo ela jen jonak ko..

Te eo emoj komane?

- Jikin dren eo ioon Kwajalein in ej kakobaik GAC jikin liklik eo, eo im ej liklik im kare-oik aolep drenin draak ioon Kwajalein in im bareinwot jabalak im jolok aolep kij ko mokta jen an dren ko liklik kon chlorine nan kadriklok TTHMs nan jonon eo edrik.
- Ilo etale im katak kake ej kwalok wawein ko ma rejab alikar ikijeen driklok in an GAC system eo baur men ko.
- Scheduled in koman oktak nan spent eo ilo GAC system eo ej bok jikin kio maan lak

Ne elon am kajitok, jouj im kurlok Environmental Services ilo 480-0722.



Water Source

The U.S. Army Garrison - Kwajalein Atoll (US-AG-KA) operates drinking water systems on Kwajalein, Roi-Namur, and Meck Islands. Collected & treated rainfall accounts for the majority of the water supplied in all three systems. Additionally, Kwajalein and Roi-Namur have extensive groundwater well systems to supplement the water supply during periods of low rainfall or drought. When necessary, Kwajalein can barge treated water to the other islands, supplementing their drinking water supplies.

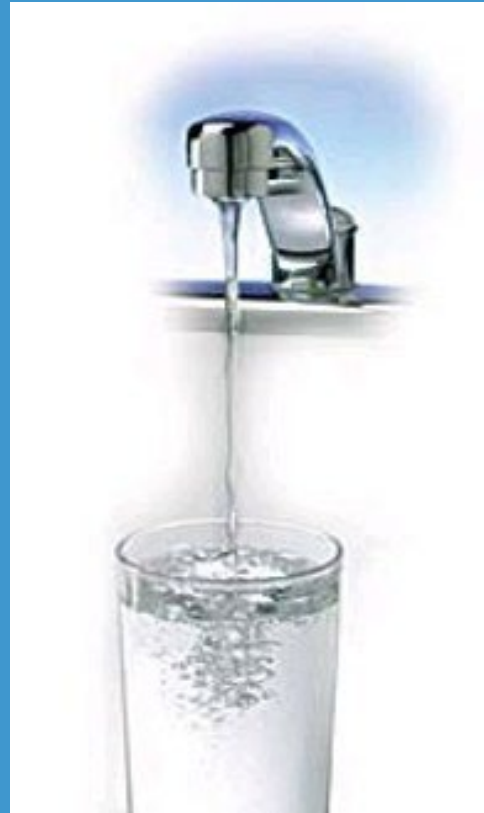
Rainwater is the preferred source of water due to its purity and ease of collection. Kwajalein Atoll averages more than 100 inches of rain a year. The runway and aircraft taxiways on Kwajalein, Roi-Namur and Meck are sloped to drain toward collection sumps that pump raw rainwater to storage tanks for treatment. Rain that falls on the island, but is not collected or diverted to storm drains, percolates through the coral sands of the islands and forms a thin layer (or lens) of fresh water floating atop the saltwater which flows through the islands. The lens is less than 10 feet below the surface. This water is tapped by unique horizontal wells called lens wells installed in the centers of both Kwajalein and Roi-Namur Islands where the lens is thickest. The lens well water is pumped and filtered by a Reverse Osmosis (RO) system. Following a 2008 storm event and the resulting saltwater infiltration to the fresh-water lens, USAG-KA installed the RO filter on Roi-Namur. This unit makes it possible to treat water with high salinity. Four additional lens wells were installed on Roi-Namur in 2012 and 2013. Baseline monitoring for these wells began in 2014 and finished in 2017.

Granular Activated Carbon (GAC) filtration units are used on Roi-Namur and Meck to filter treated water before it enters the distribution system. A similar unit was installed on Kwajalein in February 2021. All three of the USAG-KA drinking water systems use direct filtration processes to remove harmful particles, dirt, and algae from the water. Kwajalein, Roi-Namur, and Meck installed advanced filtration plants in 1990, 1996, and 2001, respectively. These automated filtration plants employ enhanced mixing, flocculation, and turbidity removal in absorption clarifiers followed by mixed media filters. The turbidity, or cloudiness, of the water entering the plants is monitored continuously and treatment chemicals are adjusted automatically to provide maximum filtering. Following filtration, the water is disinfected with chlorine and placed in covered tanks called 'clearwells' where it is pumped to the distribution system based on consumer demand. Fluoride is added to the treated water on Kwajalein to promote dental health.

The rainwater catchments and the shallow freshwater lens are very sensitive to contamination from spills. Because of this, tight restrictions are placed on airfield activities and a spill prevention program is in place to avoid contamination. Potential sources of contamination are fuel spills from aircraft and vehicles, leaks from sewage lines or septic tanks, and improper management of hazardous materials, wastes, and petroleum products.

ENGLISH
U.S. Army Garrison Kwajalein Atoll

2024 Water Quality Report



**Published by
V2X
for U.S. Army Garrison
Kwajalein Atoll
June 2025**

The 2024 Water Quality Report is published in accordance with the USAKA Environmental Standards, which establishes drinking water criteria and requires suppliers to provide drinking water quality information to their customers. It is important that our customers know all the facts about USAG-KA's drinking water. This report, issued each year, includes test results, source water descriptions, an overview of the treatment process and other valuable information relating to the quality of our installation's drinking water supply. If you have any questions regarding this report or your drinking water, contact the Liquid Systems Manager, Stan Jazwinski at 480-4400, or Environmental at 480-0722.

EWOR UKOK IN REPORT IN ILO KAJIN MAJOL (Notice to all Marshallese):

Naan in jiron kein rej kwalok melele ko raurok kin dren in idrak eo ilo USAG-KA in. Ewor ukok in report in ilo kajin majol. Kir lok Environmental Department eo ilo 480-0722 kin melele ko relap lok.

We are pleased to report the drinking water provided by USAG-KA consistently meets or exceeds the established water quality standards (with exceptions noted on the following page) and is, therefore, safe for consumption.

The Utilities Department collects over 10,000 samples annually to ensure water quality. Drinking water regulations require all public water supply systems to test for a variety of contaminants in drinking water. For many of the contaminants, the U.S. Environmental Protection Agency (EPA) has set enforceable standards for the maximum amount of contaminants allowed in drinking water. These standards are based on possible health effects of consuming the water. The standards are known as maximum contaminant levels (MCLs) and are published as national primary drinking water regulations.

MCLs are set at levels where no significant health effects would occur if water was consumed for an entire lifetime. In other words, a person would have to drink 2 liters of water every day at the MCL for a lifetime to have a one-in-a-million increase in the chance of having the described health effect. MCLs are set by the EPA, and then adopted by USAG-KA through the USAKA Environmental Standards (UES). The UES adopts MCL standards at least as stringent as EPA, and in some cases it has adopted more stringent standards. The UES requires USAG-KA to sample as if the size of the served community was 10,000 people. This increased sampling helps to further ensure safe drinking water.

The EPA and the UES also set Action Levels (AL). An AL is the concentration of a contaminant which, if exceeded, triggers treatment or other requirements for water systems. Examples of contaminants subject to an AL include Lead and Copper.

Water served by USAG-KA is tested by the Utilities Department, the Kwajalein Hospital, and by the Defense Centers for Public Health in Aberdeen, Maryland. Also, routine examinations of treatment plant performance are conducted, the distribution systems are routinely tested, and groundwater is tested for saltwater intrusion (which helps manage the thin groundwater lens by protecting it from being mixed with the saltwater on which it floats).

The Utilities Department works hard to provide top quality water to every tap. Please help us protect

our water sources by using good water conservation practices and by using effective spill prevention.



Reverse Osmosis



**Granulated
Activated Carbon
Filters**

Important Health Information

Drinking water, including bottled water, may reasonably be expected to contain at least small amounts of some contaminants. It's important to remember that the presence of these contaminants does not necessarily pose a health risk. More information about contaminants and potential health effects can be obtained by calling the Environmental Protection Agency Safe Drinking Water Hotline at 800-426-4791.

The sources of drinking water (both tap water and bottled water) include rivers, lakes, streams, ponds, reservoirs, springs, and wells. As water travels over the surface of the land or through the ground, it dissolves naturally occurring minerals and, in some cases, radioactive material, and can pick up substances resulting from the presence of animals or from human activity. Some people may be more vulnerable to contaminants in drinking water than the general population. Immuno-compromised persons such as those with cancer undergoing chemotherapy, recovering from organ transplants, or living with HIV/AIDS and other immune system disorders can suffer negative effects. Some elderly and infants can also be particularly at risk from infections. These people should seek advice about drinking water from their health care providers. EPA/CDC guidelines on appropriate means to lessen the risk of infection by cryptosporidium and other microbiological contaminants are available from the Safe Drinking Water Hotline.

If present, elevated levels of lead can cause serious health problems, especially for pregnant women and young children. Lead in drinking water is primarily from materials and components associated with service lines and home plumbing. USAG-KA is responsible for providing high quality drinking water, but cannot control the variety of materials used in plumbing components. When water has been sitting for several hours, you can minimize the potential for lead exposure by flushing your tap for 30 seconds to 2 minutes before using water for drinking or cooking. If you are concerned about lead in your water, you may wish to have your water tested. Information on lead in drinking water, testing methods, and steps you can take to minimize exposure is available from the Safe Drinking Water Hotline or at www.epa.gov/safewater/lead. For more information, contact the V2X Environmental Department at 480- 0722.

Per/Poly-Fluoroalkyl Substance Monitoring

Per/Poly-Fluoroalkyl Substances (PFAS) are a large group of man-made chemicals used in a broad array of consumer products and industrial processes. Manufactured since the 1940s, PFAS are resistant to heat, oils, stains, grease, and water. Therefore, these properties make them especially advantageous for use across a wide range of applications in many global industries, and are also why certain levels of these chemicals are persistent throughout the environment. PFAS residuals are present in nearly all industrial sites throughout the world, including Kwajalein Atoll. Most Americans have detectable levels in their bloodstreams.

In April 2024, the EPA promulgated drinking water standards for two PFAS chemicals; perfluorooctanoic acid (PFOA) and perfluorooctane sulfonate acid (PFOS). A MCL of 4 ppt and a MCLG of 0 ppt for each chemical became effective in June 2024. The finished water from the Kwajalein, Roi-Namur, and Meck water systems were sampled in CY 2024 and the results were below the MCLs. The

results had only one detection of PFOA at 0.74J ppt and one detection of PFOS 0.63J ppt at the Kwajalein Water Systems. The "J" qualifier means it is an estimated value below the laboratory method's limit of quantification.

Monitoring Total Colliform and E. Coli

Level 1 assessments were triggered at the Kwajalein Public Water Systems on 30 January, 23 April, and 1 June 2024 due to positive total coliform (TC+) and/or Escherichia coli (E. coli) results. A Level 1 assessment is triggered when more than one positive TC+ and/or E. coli result occurs within the same month. A Level 2 assessment is triggered when more than one Level 1 assessment is triggered within a 12-month period. Since there were three Level 1 Assessments triggered within a 12-month period, Level 2 Assessment were required. It is important to note each incident required repeat samples collected immediately after the positive results and the repeat samples were negative for TC+ and E.coli. Therefore, there were no exceedances of the drinking water standard.

In February 2024, the Army Public Health Command-Pacific conducted a Level 2 Assessment of the Kwajalein Public Water System to identify possible causes and corrective measures to address the false positive results. The assessment recommended more appropriate sample site locations and the hiring of certified operators as corrective measures to prevent false positive results. Additionally, the US Environmental Protection Agency indicated they would be visiting USAG-KA in the future to evaluate the public water systems. After the June 2024 incident, there were no positive results through the remainder of 2024.

Water Quality Monitoring

USAG-KA routinely monitors for constituents in your drinking water according to the UES and DEP for Drinking Water Treatment. Depending on the specific contaminant, the UES may require weekly, monthly, quarterly, annual, biennial (2 year), triennial (3 year), quadrennial (4 year), and novennial (9 year) sampling intervals. The table on the right shows the most recent information on contaminants detected for the period of Jan 1, 2024 to Dec 31, 2024. If the contaminant is not listed in the table, results were below the minimum detection limit (MDL).

The following parameters were monitored during 2024:

- Aesthetic Constituents and Sodium
- Disinfection Byproducts [Total Trihalomethanes (TTHM) and Five Haloacetic Acids (HAA5)]
- Volatile Organic Chemicals (VOCs)
- Total Organic Carbon (TOC)
- Nitrate/Nitrite Combined
- Pesticides and Synthetic Organic Chemicals (SOCs)
- Inorganic Chemicals (IOCs)
- Lead and Copper

Test Results

To better understand the terms and abbreviations in the table below, the following definitions are provided:

Action Level (AL) - The concentration of a contaminant which, if exceeded, triggers treatment or other requirements which a water system must follow.

Inorganic Contaminants - Contaminants of mineral origin such as metals and salts.

Maximum Contaminant Level (MCL) - The highest level of a contaminant that is allowed in drinking water.

Maximum Contaminant Level Goal (MCLG) - The level of a contaminant in drinking water below which there is no known or expected risk to health. MCLGs allow for a margin of safety and are not regulatory limits.

Microbiological Contaminants - Very small organisms, such as bacteria, algae, plankton, and fungi.

Minimum Detection Limit (MDL) - The smallest quantity of a substance that can be detected by the analytical instrument.

Not Tested (NT) - Testing was not performed for this contaminant during the specified calendar year.

Nephelometric Turbidity Units (NTU) - The unit of measurement for the cloudiness or haziness of water.

Organic Contaminants - Naturally occurring or synthetic substances containing mainly carbon, hydrogen, nitrogen, and oxygen.

ppm - Parts of contaminant per million parts water. **ppb** - Parts per billion. **ppt** - Parts per trillion.

Treatment Technique (TT) - An enforceable procedure that drinking water systems must follow in treating water for primary contaminants.

Substance (Unit of Measure)	MCL	MCLG	Kwajalein	Roi-Namur	Meck	Standards Met?	Possible Source
ORGANIC CONTAMINANTS							
THM (ppb) ^a	80	0	73.75 (13-159)	45 (3-78)	16 (0-32)	Yes	By-product of drinking water chlorination.
HAA5 (ppb) ^a	60	60	29 (0-51)	11 (1-16)	3 (0-8)	Yes	By-product of drinking water chlorination.
PFOA (ppt) ^c	4	0	0.63	0	0	Yes	Aqueous Film-Forming Foam (AFFF) used in firefighting applications
PFOS (ppt) ^c	4	0	0.74	0	0	Yes	Aqueous Film-Forming Foam (AFFF) used in firefighting applications
INORGANIC CONTAMINANTS							
Barium (ppm) ^b	2	2	0.004	0.002	0.007	Yes	Discharge of drilling wastes; Discharge from metal refineries; Erosion of natural deposits.
Fluoride (ppm) ^b	2	2	0.29	0.20	0.36	Yes	Erosion of natural deposits; Water additive which promotes strong teeth (Kwajalein only); Discharge from fertilizer and aluminum factories.
Lead, ppb 90 th percentile value ^c (# of times AL exceeded)	15 (AL)	0	1.5 (0)	1.9 (0)	<MDL (0)	Yes	Corrosion of household plumbing systems; Erosion of natural deposits.
Copper, ppb 90 th percentile value ^c (# of times AL exceeded)	1300 (AL)	0	88 (0)	140 (0)	23 (0)	Yes	Corrosion of household plumbing systems; Erosion of natural deposits.
RADIOLOGICAL PARAMETERS [Shown in units of picocuries per liter (pCi/L)]							
Gross Alpha Particle Activity ^c	15	0	-0.484	-0.405	-0.320	Yes	Erosion of natural deposits.
Radium-226 and Radium-228	5	0	5.6E-02	1.3E-01	8.3E-02	Yes	Naturally present in environment.
Gross Beta Particle Activity ^c	50	0	1.29	2.80	2.12	Yes	Decay of natural and man-made deposits.
Tritium	20,000	0	-2.9E+001	-5.9E+001	6.4E+001	Yes	Naturally present in environment.
Strontium-90	8	0	0.249	0.332	0.457	Yes	Widely dispersed in the environment as a result of global nuclear activity.
MICROBIOLOGICAL CONTAMINANTS							
Coliform Bacteria ^c (Positive samples/month)	TT	N/A	4	0	0	Yes	Naturally present in environment.
<i>E. coli</i> ^c (Positive samples/month)	TT	N/A	3	0	0	Yes	Naturally present in environment.
TURBIDITY							
Turbidity (NTU) ^f	>95% ≤0.3	100%	100.0%	100.0%	100.0%	Yes	Soil runoff
	1	0	0	0	0	0	

Table Notes:

a - Under the Stage 2 Disinfection Byproducts Rule (DBPR) for THM and HAA5, systems must report the highest Locational Running Annual Average (LRAA) and the range of quarterly results (for all locations).

b - Testing for inorganic contaminants (with the exception of lead and copper) is on a three-year cycle. Results shown are from 2024 testing. Next sampling will occur in 3QFY27.

c - Compliance for lead/copper is determined by the 90th percentile values (the AL for lead/copper is exceeded if the concentration in more than 10 percent of tap-water samples collected during any monitoring period is higher than the AL). The 90th percentile value and the number of sampling sites exceeding the AL (in parentheses) are shown.

d - Gross alpha/beta results shown are from 3QFY24. Gross alpha is required every two years; gross beta is required every three years. USAG-KA samples for both every two years. Next sampling will occur in 3QFY26. Note that Radium-226 & Radium-228 results are from 3QFY2018. Values may be negative due to both the low radioactivity of the sample and the calculations prescribed in the analytical method (EPA 900, SM 306, SM 303, ASTM D 5174, etc.).

e - Each water system is tested weekly for coliform bacteria and *Escherichia coli* (*E. coli*) at multiple sampling sites. In the event of a positive result, repeat samples are taken within 24 hours at the original site and upstream and downstream from the original site.

f - Turbidity levels must be less than or equal to 0.3 Nephelometric Turbidity Units (NTUs) in at least 95% of monthly samples and shall at no time exceed 1 NTU. For 2024, the lowest monthly percentage for compliance with >95% and the highest monthly count for samples exceeding the 1 NTU limitation are shown.

g - Perfluorooctanoic Acid (PFOA) and Perfluorooctane Sulfonate Acid (PFOS) are manmade chemicals used in consumer products and industrial processes that are highly resistant to degradation and they bioaccumulate in the environment. In April 2024, the EPA established a MCL at 4 ppt and MCLG at 0 ppt for each chemical. Water systems must comply with regulation by 2029. The "J" qualifier in the results means it is an estimated value below the laboratory method's limit of quantification.

bold and highlighted indicates an exceedance in the MCL, MDCL, or AL.

The polyacrylamide used at USAG-KA (Superfloc N-300) as part of the drinking water treatment operations is certified by the National Sanitation Foundation as complying with the requirements for percent monomer and dosage as contained in the UES and 40 CFR 141.111.

Ia Eo Ej Itok Dren Jen E

Dren in idrak eo ion USAG-KA in ej itok jen dren in wot eo emoj ae ion Kwajalein, Roi-Namur, im Meck. Dren in wot ko emoj ae, wunoiki, im kebooje nan aer jerbal ilo ene kein jilu. Ilo ien mora ak anonean, ewor aiboj lal ko relap ilo Kwajalein im Roi Namur im rej kojerbali non ien rot kein. Ilo ien aikuj, Kwajalein emaron bar kanne barge kin drenin drak im jilkinlok nan aeto ko jet rej aikuji.

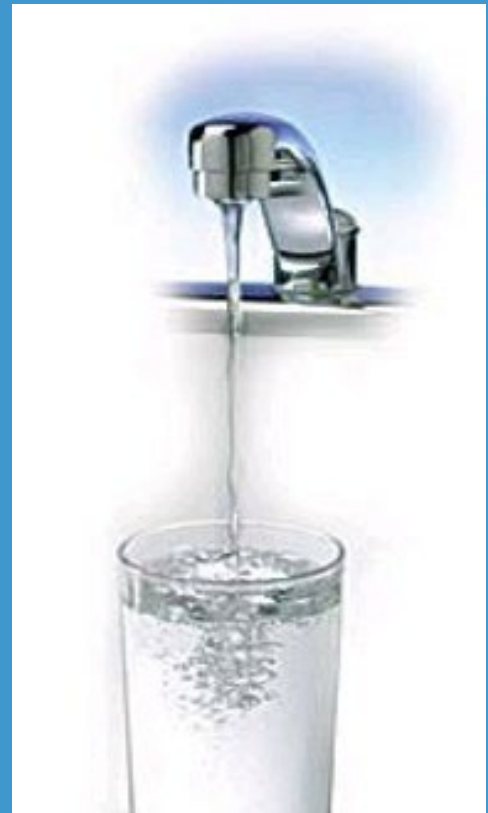
Dren in wot ej dren eo eman tata nan kojerbal ilo USAG-KA itok wot jen an bidodo ae im erre. Ilo juon yio, Kwajalein ej loe tarin 100 inij in wot. Jikin jook an baluun ilo Kwaj, Roi-Namur im Meik rej rejbal nan ae dren in wot. Jen ijon, dren in ej pump lok non tank kan im kottar non ien liklik im komat. Jabdrewot dren in wot ko rejjab collect ilo jikin jook ko an baluun, im rejjab bar drebdreb ilo storm drain ko, rej drebil lok im pepe ion dren in salt, eo ej peddejake aolepen enne kein. Dren in ej drebdreb ilo jikin ko naeter lens well, ko emoj likiti ilo iolap in Kwajalein im Roi-Namur. Lens well kein rej pump jeni im kojerbal kein liklik ak reverse osmosis. Emoj kelaak reverse osmosis ilo Roi-Namur ilo 2008 elkin kar koto im ekar koman an dren in salt dreton ilo lens well ko. Unit in ekoman an bidodo aer treat i dren ko im elap aer salt. Rekar bar kob 4 aiboj lal ilo Roi Namur ilo 2012 im 2013. Jerbal in etale im bukot jonak ko rej aikuj loori (baseline monitoring) renaj jino koman ilo aiboj lal kein ilo 2014 im kotmene bwe en bojak ilo 2017.

Filter unit ko ak kein drebdreb etoon ko naetan Granular Activated Carbon (GAC) rej jerbal ion Roi-Namur im Meck nan bour etton ko ilo dren eo mok-ta jen an etal nan jikin komman dren eo. Ewor juon unit kaal emoj kolaake ilo Kwajalein February 2021. Aolep jikin koman dren kein jilu ilo USAG-KA rej kojerbal jokjok in likilik dren eo rej nae etan direct filtration process nan karreoki dren jen etoon im kij ko. Rekar kelaak kein liklik dren ilo enne kein ilo: Kwajalein 1990; Roi-Namur 1996; im Meck 2001. Kein liklik dren in idrak eo ej karreo im kojerbal jerajko non mane kij im jabdrewot etoon ko ie mok-ta jen likiti ilo tank ko naetaer "clearwells", ijo rej bed ie non tore eo jej aikuji. Rej bar kobaik fluoride nan dren nan kakajoor ni.

Ijoko rej ae dren in wot im aiboj lal rejjab mulal (rejjab mulal lak jen 10 ne) rebidodo an kare dren eo ne elon lutok. Emenin aurok bwe en wor buntan ko kab jokjok ko rej walok elane enaj wor lutok ko rejidrimkij an men ko rekauwotata, einwot fuel, oil, gas im bareinwot kwobej ko rekauwatata im petro-leum products.

MARSHALLESE
U.S. Army Garrison Kwajalein Atoll

2024 Water Quality Report



Published by
V2X
for U.S. Army Garrison
Kwajalein Atoll
June 2025

Ilo 2024 Water Quality Ripoot eo ej koman ekkar non kakien ko emoj karroki ilo USAKA Environmental Standards (UES) eo, eo ej kamelet bwe ro rej leto-le-tak dren in idrak (aiboj) ren loori jonak ko emoj karroki im bareinwot tilmake melele ko raurok non ro rej idrak jen aiboj eo. Ilo melele kein, ebareinwot koba result in teej ko, jikin ko aiboj in ej itok jeni, im wawein process e aiboj in, im bar melele ko jet. Elap an aurok bwe ro rej idrak jen aiboj in ren jela im melele kin aiboj eo rej idrake jen USAG-KA. Elane ewor am kajitok ak abnono kake melele kein ilo ripoot in ikkijeen aiboj eo kwoj ilimi, jouj im kebak e lok Stan Jazwinski ilo 480-4400, ak komaron in bar bojrak lok ilo Utilities Department eo elane jab, ekwe call e Environmental ilo 480-0722.

EWOR UKOK IN RIPOOT IN ILO KAJIN BELLE:

Naan in karon kein rej kwalok melele ko raurok kin dren in idrak eo ilo USAG-KA. Ewor ukok in ripoot in ilo kajin belle. Kir lok Environmental Department eo ilo 480-0722 kin melele ko relap lok.

Emenin utiej buru non kwalok ke dren in idrak eo letok in USAKA ej tobare jonok ko emoj karroki non dren in idrak kin men in, ejjelok uwota ilo ilimi dren eo jen aolep bojet in dren in idrak ko.

Aolep yio, Utilities Department eo ej boke tarin 10,000 sample in dren in idrak eo ilo USAG-KA in non lolorjake bwe tiljek in komane aiboj in jej idrak jene en erre. Kakien ko rej kipel bwe ro rej leto-le-tak dren in idrak ren teej e dren eo non lale ewor ke jabdrewot men ko retoon ie, ko me remaron in bed ilo dren in idrak eo. Result in teej ko an dren ko rej bedbed wot ion jonak ko emoj an U.S. Environmental Protection Agency (PA) eo karroki. Jonak kein rej naetaer Maximum Contaminant Levels ak MCLs.

MCLs ko rej bedbed wot ion jonak ko me rejjab maron in kwalok naninmij non armij. Juon armij emaron idraak e ruo liter in dren ilo aolepen mour eo an im jab naninmej jen e, ak emaron lon an juon mottan juon million ien bwe en ione naninmij. Jonak kein rej itok jen EPA innem USAG-KA ej loori ikijen USAKA Environmental Standards (UES) ko. UES kein rej bedbed ion karrok ko an MCL, im jet ien emaron laplok aer pen jen karrok ko an EPA. UES kein rej bareinwot konan bwe USAG-KA en komman jonan jambol ekkar nan an maron lelok nan 10,000 armej. Jonan lap im jambol in enaj jiban elon armej im kokmanmanlok drenin drak eo.

Emoj an EPA im UES karrok jet bunten ko naetan Action Level (AL). AL in ej jermal non lale jonan etoon ko ilo dren eo, bwe ne relaplok jen jonak eo emoj karroke innem renaj aikuj in treat i im karreoik dren eo ekkar nan kakien ko. Waan jonak in etoon ko remaron loi ej enwot lead im koba (copper).

Utilities Department, USAG-KA Hospital, im Defense Center eo nan Public Health ilo Aberdeen, Maryland ej droulul ko jilu rej teej e aiboj in idrak eo ion USAG-KA. Ibben jikin jermal kein jilu, USAG-KA ej bareinwot make etale tiljek in an jikin kein koman dren eo jermal, koman teej ko remakijkij non lolorjake erre eo an dren in idrak eo ej driwojlok, im bareinwot lale bwe jool en jab tobare aiboj lal eo.

Jikin koman dren eo ej jermal non letok dren in idrak eo etiljek im erre. Jiban kejbarok dren in idrak eo nimed. Jukjuk in bed in ad, mour kein ad, kab an ro nejid rej bedbed ion kejbarok in am. Bok koman; kejbarok dren in idrak eo ilo wawein ko rekkar.



Reverse Osmosis



**Granulated
Activated Carbon
Filters**

Melele Ko Raurok Ikkijeen Ejmour

Aolep dren in idrak ko, ebar kobalok dren ko ilo bato ak plastic ko, emaron in wor jijidrikdik in men ko retoon ie. Ijo wot ke, elap an aurok bwe jen kemejmej bwe mene ewor men kein retoon ilo dren in idrak eo jej ilimi, ejab melele in ke jemaron in naninmij jen dren eo. Kir lok Environmental Protection Agency Safe Drinking Water Hotline (800-426-4791) non boki melele ko relaplok.

Aolep dren in idrak ko (ko im rej itok jen bojet im ko ilo bato in aiboj) rej itok jen reba, lake, streams, ponds, reservoirs, springs im aiboj lal. Ilo an dren emakitkit ion enne ak ilo bulon lal, ej koba lak jet minerals ie, jet ien ej lon baijin ko jen radioactive material eo im ej itok jen menin mour ko ak armej. Ewor jet armij emojno anbwini. Armij rein aolep ewor aer naninmij enwot cancer im rej chemo, ekar koman jen aer mwijmwij, ak mour in HIV/AIDS im ro ewor aer naninmij jiron im likao remaron jab jelet er. Rit-to im bareinwot ninnin ko naninmij in emaron bar bed ib-beir. Armij rein rej aikuj in kebaak jikin takto ko aer im bok melele. EPA/ CDC guidelines ko kin infection in cryptosporidium im kij ko jet rej bed ilo Safe Drinking Water Hotline.

Elane elap im lon lead enaj komman joreen ko relap nan ejmour, ekka an bar walok nan kora ro rej bororo im ajiri jiddrik ro. Lead ko ekkar aer walok ilo dren in idraak ko rej itok im walok jen pipe ko inabojen im iloan imoko jej jokwe ie. Ej an USAG-KA eddo nan kotoor im lewaj dren in idraak eo erre, ak ejjab maron in loe, etale, jela im edoiki kain men drikdik ko rej dreloni im bed iloan pipe ko. Elane dren ko ilo pipe ko renaj etolok aer toor ilo kotoan eo aetok, kwomaron in komman bwe kwon jab joreen jen lead koi lo am kotoore im kadriwojlok jen bojet eo am iuumin 30 second ko lok nan 2 minute ko mokta jen am naj ko-jerbal dren eo nan idraak ak komman mona kake. Elane ewor am uwota im inebata kin lead ilo dren eo kwoj aikuj in etale mokta. Melele ko jet kin lead ilo dren in idraak ko, kilen im wawein etale, im bunten ko nan jolok im kadriklok joreen ko nae dren ej alikar ilo Safe Drinking Water Hotline ak ilo www.epa.gov/safewater/lead. Nan melele ko jet, jouj im kir lok V2X Environmental Department ilo 480-0722.

Per/Poly-Fluoroalkyl Substance Monitoring

Per/Poly-Fluoroalkyl Substances (PFAS) are a large group of Per/Poly-Fluoroalkyl Substances (PFAS) eo ej juon kamikol koba ippen dren eo im armij make ekar ejaake im kojerbale im ej jerbal einwot juon kamikol eo ekka am kojerbale. Ekar koman jen yio ko mokta lok einwot 1940s ko, PFAS remaron jerbal nan jelmae meneen, oil, elajo, kurij, im dren. Kon menin, kamikol in ekar ejaak im elap an aurok ibelakin lal in ilo kajojo jikin kamikol ko, im ej bareinwot un eo unin an lukun aurok nan kajojo jukjuk in bed. Kamikol in an PFAS ej bed ilo kajojo jikin jerbal ko ibelakin lal in, koba ioon Kwajalein Atoll. Bwijin riAmedaka moj loe ke kamikol in ej bed ilo iaal in botoktok ko aer.

Ilo kar April 2024, EPA eo ekar kalikar ke drenin idraak ko rekar ekar jonok im liklik er ippen ruo iaan PFAS kamikok; PFOA innem kab PFOS. Ilo MCL jonok eo an 4ppt im ilo MCLG jonok eo an 0ppt rekar jet jonok ko raar ekar ilo kamikol kein ruo innem ekar bok jikier ilo June 2024. Dren ko rekar moj kajejjot er ioon Kwajalein, Roi-Namur, im kab Meck ilo jikin dren ko rekar jet sample ilo CY 2024 im dre-drelok in jonok ko rekar bed ilal in MCLs eo. Ilo jonok moj etali rekar loe ear wor 0.74Jppt PFOA im 0.63J ppt in PFOS

ilo jikin dren eo ioon Kwajalein. "J" ne ej jutak kon melele in emoj an jikin katak kake eo kab jikin etale eo loe ke ejejot

Etale jonan Coliform im E.Coli

Labol 1 in etale eo ekar walok ilo jikin dren eo Kwajalein ilo kar 30 January, 23 April, im 1 June itok wot jen an wor positive (TC+) im/ak walok lum (E.coli). Ne ej wor labol 1 in etale eo ej konke elon lak jen juon alen an walok TC+ im/ak wor lum ilowaan wot juon alon. Labol 2 eo ej bok jikin elane labol 1 in etale eo ej ejaak im walok ilowaan wot 12 alon aetokin. Konke ekar wor jilu etale in labol 1 eo im ekar walok ilowaan wot alon kein 12, etale im jerbal ko an labol 2 rej aikuj bok jikier. Elap an aurok nan komejajaik jerbal in etale kein ien eo emokajtata ne ej wor positive im sample ko rej aikuj bojak elane jet iaer ekar negative nan TC+ im lum. Kon menin ekar ejjelok alikar nan drenin in idraak ko.

Ilo February 2024, jikin ejmour eo an Army Public Health Command-Pacific ekar wonmanlok im komane jerbal ko an ilo etale eo an Labol 2 ilo jikin dren eo ioon Kwajalein nan an maron komane jet jonok ko rejimwe im jejjot nan kajeon bo-brae result ko im renana. Wawein katak kake eo ekar lukun aikuj kein jerbal im rijerbal ro im ewor aer melim im jonok nan komane jerbal in im kajeon kalikar im bobrae jen an walok jonok ko rejab jimwe im jejjot. EPA eo an US ekar barein-wot kwalok an itok limoin nan an maron loe tok USAG-KA nan bok jonok kon an jikin dren eo an. Tokelikin wawein eo ekar walok ilo June 2024, ekar ejjelok tok im kio positive in E.coli ilo dren ko im kar eindrein maanlok ilo kar 2024.

Water Quality Monitoring

USAG-KA ej teej e im etale dren in idrak eo kwoj ilimi non lale ewor etoon ke dren eo, ekkar non kakien ko ilo UES eo im DEP nan Drinking Water Treatment. Ekkar non jonan etoon ko ilo dren in idrak eo, UES enaj letok ien etale. Ewor etoon ko jej teeji elikin juon wiik, juon allon, juon kuwata, juon yio, ruo yio, jilu yio, emen yio, kab ruatim-juon yio. Jaat in ilal ej kwalok melele ko ikkijeen men ko retoon rar bed ilo dren in idrak eo ion USAG-KA in ilo kotan in January 1, 2024 non December 31, 2024. Elane etoon kein rejjab walok ilo jaat in, melelein ke rar bed ilal in jonak ko redriktata emoj karroki ak minimum detection limit (MDL).

Ijin ilal ej lajra kin men ko rekar teeji im etali ilo 2024:

- Aesthetic Constituents and Sodium;
- Disinfection Byproducts [Total Trihalomethanes (TTHM) and Five Haloacetic Acids (HAA5)]
- Volatile Organic Chemicals
- Total Organic Carbon (TOC)
- Nitrate/Nitrite Combined
- Pesticides and Synthetic Organic Chemicals (SOCs)
- Inorganic Chemicals (IOCs)
- Lead and Copper

Tarlep in teej ko rej kemlet bwe dren eo ion USAKA emon non idrak

Non jiban yuk melele ken naan in kamelele ko aer ilo jaat in ilal, errein ej melele ko emoj kollaajraki:

Action Level - AL in ej jermal non lale jonan etoon ko ilo dren eo, bwe ne relaplok jen jonak eo emoj karroke innem renaj aikuj in treat i im karreok dren eo ekkar nan kakien ko.

Inorganic Contaminants - Etoon in mineral im ej itok jen aen im jool

Maximum Contaminant Level - Jonak eo ilontata ikkijeon etoon ko rej walok ilo dren in idrak ko im emoj an EPA karroke.

Maximum Contaminant Level Goal - Jonak in etoon in dren in idrak eo im ejjab jelet ejmour eo an armij. MCGLs ej nan kakkol wot ak ejjab rubwe jonak ko emoj an EPA karroki.

Minimal Detection Limit (MDL)- Jonak ko redrikdrik im rej loi ne rej kojerbal kein teej dren eo. Microbial Contaminants- Etoon im kij ko jejjab maron loi einwot bacteria, algae, plankton im fungi. NT - Rar jab tej e - rar jab koman kakolkol in tej nan contaminant in.

Nephelometric Turbidity Units (NTU)- Jonak eo rej kojerbal nan measure e lim in dren eo.

Organic Contaminants - Kij ak etoon kein ekka aer walok ilo koto ko jej emenonoiki einwot carbon, hydrogen, nitrogen, im oxygen.

ppm – jonan mottan in etoon, kij ak chemical ko rej loi iloan million particulates in dren; **ppb** – jonan mottan in etoon, kij ak chemical ko rej loi iloan billion particulates in dren; **ppt** – jonan mottan in etoon, kij ak chemical ko rej loi iloan trillion particulates in dren

Treatment Technique (TT) - Jokjok eo emoj an jejjet kutien nan drinking water system ko bwe ren loore ilo air treat i dren ko nan primary contaminants.

Substance (Unit of Measure)	MCL	MCLG	Kwajalein	Roi-Namur	Meck	Standards Met?	Possible Source
ORGANIC CONTAMINANTS							
THM (ppb) ^a	80	0	73.75 (13-159)	45 (3-78)	16 (0-32)	Yes	By-product of drinking water chlorination.
HAA5 (ppb) ^a	60	60	29 (0-51)	11 (1-16)	3 (0-8)	Yes	By-product of drinking water chlorination.
PFOA (ppt) ^a	4	0	0.63	0	0	Yes	Aqueous Film-Forming Foam (AFFF) used in firefighting applications
PFOS (ppt) ^a	4	0	0.74	0	0	Yes	Aqueous Film-Forming Foam (AFFF) used in firefighting applications
INORGANIC CONTAMINANTS							
Barium (ppm) ^b	2	2	0.004	0.002	0.007	Yes	Discharge of drilling wastes; Discharge from metal refineries; Erosion of natural deposits.
Fluoride (ppm) ^b	2	2	0.29	0.20	0.36	Yes	Erosion of natural deposits; Water additive which promotes strong teeth (Kwajalein only); Discharge from fertilizer and aluminum factories.
Lead, ppb 90 th percentile value ^c (# of times AL exceeded)	15 (AL)	0	1.5 (0)	1.9 (0)	< MDL (0)	Yes	Corrosion of household plumbing systems; Erosion of natural deposits.
Copper, ppb 90 th percentile value ^c (# of times AL exceeded)	1300 (AL)	0	88 (0)	140 (0)	23 (0)	Yes	Corrosion of household plumbing systems; Erosion of natural deposits.
RADIOLOGICAL PARAMETERS [Shown in units of picocuries per liter (pCi/L)]							
Gross Alpha Particle Activity ^d	15	0	-0.484	-0.405	-0.320	Yes	Erosion of natural deposits.
Radium-226 and Radium-228	5	0	5.6E-02	1.3E-01	8.3E-02	Yes	Naturally present in environment.
Gross Beta Particle Activity ^d	50	0	1.29	2.80	2.12	Yes	Decay of natural and man-made deposits.
Tritium	20,000	0	-2.9E+001	-5.9E+001	6.4E+001	Yes	Naturally present in environment.
Strontium-90	8	0	0.249	0.332	0.457	Yes	Widely dispersed in the environment as a result of global nuclear activity.
MICROBIOLOGICAL CONTAMINANTS							
Coliform Bacteria ^e (Positive samples/month)	TT	N/A	4	0	0	Yes	Naturally present in environment.
<i>E. coli</i> ^e (Positive samples/month)	TT	N/A	3	0	0	Yes	Naturally present in environment.
TURBIDITY							
Turbidity (NTU) ^f	>95% ≤0.3	100%	100.0%	100.0%	100.0%	Yes	Soil runoff
	1	0	0	0	0	0	

Table Notes:

a - Under the Stage 2 Disinfection Byproducts Rule (DBPR) for THM and HAA5, systems must report the highest Locational Running Annual Average (LRAA) and the range of quarterly results (for all locations).

b - Testing for inorganic contaminants (with the exception of lead and copper) is on a three-year cycle. Results shown are from 2024 testing. Next sampling will occur in 3QFY27.

c - Compliance for lead/copper is determined by the 90th percentile values (the AL for lead/copper is exceeded if the concentration in more than 10 percent of tap-water samples collected during any monitoring period is higher than the AL). The 90th percentile value and the number of sampling sites exceeding the AL (in parentheses) are shown.

d - Gross alpha/beta results shown are from 3QFY24. Gross alpha is required every two years; gross beta is required every three years. USAG-KA samples for both every two years. Next sampling will occur in 3QFY26. Note that Radium-226 & Radium-228 results are from 3QFY2018. Values may be negative due to both the low radioactivity of the sample and the calculations prescribed in the analytical method (EPA 900, SM 306, SM 303, ASTM D 5174, etc.).

e - Each water system is tested weekly for coliform bacteria and *Escherichia coli* (E. coli) at multiple sampling sites. In the event of a positive result, repeat samples are taken within 24 hours at the original site and upstream and downstream from the original site.

f - Turbidity levels must be less than or equal to 0.3 Nephelometric Turbidity Units (NTUs) in at least 95% of monthly samples and shall at no time exceed 1 NTU. For 2024, the lowest monthly percentage for compliance with >95% and the highest monthly count for samples exceeding the 1 NTU limitation are shown.

g - Perfluorooctanoic Acid (PFOA) and Perfluorooctane Sulfonate Acid (PFOS) are manmade chemicals used in consumer products and industrial processes that are highly resistant to degradation and they bioaccumulate in the environment. In April 2024, the EPA established a MCL at 4 ppt and MCLG at 0 ppt for each chemical. Water systems must comply with regulation by 2029. The "J" qualifier in the results means it is an estimated value below the laboratory method's limit of quantification.

bold and highlighted indicates an exceedance in the MCL, MDCL, or AL

The polyacrylamide used at USAG-KA (Superfloc N-300) as part of the drinking water treatment operations is certified by the National Sanitation Foundation as complying with the requirements for percent monomer and dosage as contained in the UES and 40 CFR 141.111.



**American
Red Cross**

Service to the Armed Forces

Volunteer Opportunity at Kwajalein Atoll

Join the American Red Cross and help bring our Services and Programs to the Kwajalein Atoll community!

Online & Virtual Training Provided

No experience needed!

We provide all necessary training. Just bring your passion and commitment to helping others!

Contact **Alana Wilson** at alana.wilson@redcross.org

Let's work together to build a more prepared and resilient community.



Remember the 3-R's of UXO Safety!



RECOGNIZE



RETREAT



REPORT

Unexploded ordnance are munitions that fail to detonate during live fire training. They are **extremely dangerous** and could explode if tampered with, even though the Kwajalein ordnance is 80-years-old.

NEVER touch UXO and report the location of **ANY** suspected UXO to the UXO Team **IMMEDIATELY** at:

Phone: 480-1550/1433

Email: Darren.r.Wheeldon.ctr@army.mil



C
I
N
E
M
A

Now Showing at the Yuk Theater

SATURDAY, JULY 6
 "Argylle" (2024)
 (PG-13) 139 min.

SUNDAY, JULY 7
 "We Live in Time" (2024)
 (R) 108 min.

SATURDAY, JULY 13
 "Alice in Wonderland" (2010)
 (PG) 108 min.

SUNDAY, JULY 14
 "Saturday Night" (2024)
 (R) 109 min.

SATURDAY, JULY 20
 "Piece by Piece" (2024)
 (PG) 93 min.

SUNDAY, JULY 21
 "Smile 2" (2024)
 (R) 127 min.

SATURDAY, JULY 27
 "Wreck it Ralph" (2012)
 (PG) 101 min.

SUNDAY, JULY 28
 "Here" (2024)
 (PG-13) 104 min.

All showtimes start at 7:30 p.m.



WEEKLY TROPICAL WEATHER THREAT OUTLOOK

RIS WEATHER STATION STAFF

Discussion:

In the first two days of July, we recorded 0.06 inches of rain, which is only 0.58 inches below normal for the month. So far in 2025, we have only received 20.14 inches of precipitation, which is 12.05 inches below normal for the year. On the scale of Do to D4, Kwajalein Atoll is in Moderate Drought D1, which is a general improvement. Conditions remain particularly bad in the northern Ratak Chain to our east, which is currently suffering with Extreme Drought D3, but there has been improvement for all of the RMI in the last week. As we move through the first week of July into the heart of the wet season, rarely will a day pass without at least part of the atoll receiving precipitation. Today, we will see an atmospheric wave pass through the central RMI, increasing shower coverage and augmenting the thunderstorm risk due to very favorable upper-level conditions. The 4th of July looks pretty good with just isolated shower chances. Showers that move through will be short in duration. The weekend will be rather wet for the atoll, and this elevated shower coverage will continue into the early workweek. There will be a more augmented thunderstorm risk for today, than for the next seven day, but the risk will be

slightly elevated this weekend due to the troughing affecting the vertical atmospheric column. No thunderstorm days occurred over the past seven days. A thunderstorm day is defined as an "in situ" lightning strike within five miles of the weather station or thunder heard. The Madden-Julian Oscillation (MJO) has become rather stationary with respect to its normal eastward propagation, enhancing convection over the Indonesia and the western Pacific, including the RMI. The Intertropical Convergence Zone (ITCZ) is a bit more fragmented at this time, but still offering assistance to trade-wind troughs that come through east to west. This positioning will allow for our normal increased shower coverage for the atoll for the next seven day, with episodic transiting troughs that greatly increase shower coverage. The El Nino Southern Oscillation (ENSO) is in ENSO-neutral conditions. With the end of La Nina, the transition to ENSO-neutral favors increased shower coverage, entering the rainy season. Sea surface temperatures (SST) in the central Pacific between the RMI and the Date Line are now at about normal. Besides increased rainfall, these warming near normal SSTs tend to favor tropical cyclone development, but the RMI is still outside its climatological peak tropical cyclone season, thus little threat is expected

for the rest of June.

Tropical Cyclones:

No significant tropical cyclone activity expected to affect anywhere in Micronesia, the Mariana Islands, Wake Island or Hawai'i. We are now in the tropical cyclone season for the western Pacific, though not quite at its peak. The MJO's phase will act to promote tropical cyclone development for the first half of July over the western Pacific.

Damaging West Winds / Westerly Swell:

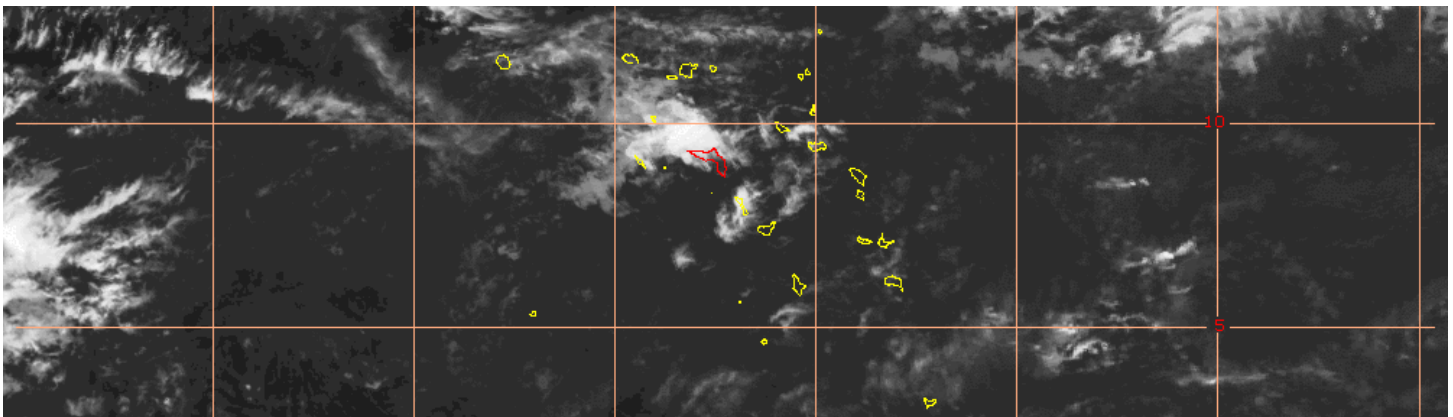
None expected. Most of Micronesia is northeast trade wind dominant. There will be some westerly winds over the western FSM, but are not expected to reach the RMI.

Swell / Tide Inundation for Kwajalein Atoll and Wake Island:

The moon waxed to a half-moon yesterday, and expect all high tides to be below four feet until the full-moon on the 10th. Winds today will be in a troughing pattern with an ENE-E-ESE directional change with time, and stay mostly in the upper single digits to low teens and the occasional gusty outflow winds when heavy showers are just off to our east. Winds will recover to the middle teens on Friday and Saturday out of a ENE direction, before diminishing to the upper single digits, becoming near-

ly calm at times on Sunday and Monday. The start of the workweek will see winds gradually climb back to the middle teens. There will be gusty winds possible near any heavy showers that occur, particularly if those showers occur off to our immediate east. A Small Craft Advisory (SCA) may be issued for short periods of time on the open lagoon and ocean during instances of gusty outflow. High Surf Advisory (HSA) conditions are not expected for the next seven days.

Purpose: This weekly briefing is delivered Thursday mornings to island leadership. The intention of this briefing is to provide situational awareness of weather events that may interrupt operations and transportation around Kwajalein, to/from Hawaii and Guam, and in the Wake vicinity. The main threat assessed in this brief is existing and potential development of tropical cyclone activity. This brief also provides an outlook of abnormal winds, sea state, and precipitation guidance for next 7 days around the Kwajalein Atoll. The distribution list will also receive updates on any developing tropical cyclone activity in the Kwajalein region that occur between the weekly outlook product. ▼





25-26 KINDERGARTEN ENROLLMENT

CALL
480-3601
for an
online
enrollment
form link



**SCAN
ME**

WEATHER

RTS WEATHER STATION STAFF

WEATHER DISCUSSION

Calm and mostly dry weather is expected across Kwajalein Atoll as we head into the weekend. A relaxed pressure gradient will bring light winds, mostly in the single digits, throughout the weekend. Only a few stray showers are likely, with the majority of any rain occurring during the early morning hours due to nighttime instability. By Monday, a building subtropical high to the north will tighten the pressure gradient, increasing winds and restoring the trade wind pattern. Unsettled weather could make its return Tuesday and remain in place through mid-week, as the Inter-tropical Convergence

Zone (ITCZ) strengthens and shifts into the region. Increased wind speeds may enhance surface convergence, and with upper-level support in place, there's a potential for stray thunderstorms Tuesday evening into Wednesday.

SATURDAY

Partly sunny with stray showers. Winds light and variable 5-10 knots with higher gusts near showers.

SUNDAY

Partly sunny with stray showers. Winds light and variable 5-10 knots with higher gusts near showers.

MONDAY

Partly sunny with stray showers. Winds NE-E at 9-14 knots

with higher gusts near showers.

NEXT WEEK

Increased shower activity beginning Tuesday through mid-week as the ITCZ makes its return to the RMI. Stray thunderstorms are possible during this time. Winds are expected to increase to mid-teens out of the east-northeast. Expect decreasing shower coverage and increasing trade winds potentially in to the upper-teens towards the end of the work week. ⚡



FOR QUESTIONS ABOUT ISLAND LIFE AND ARMY REGULATIONS, PLEASE CALL THE COMMANDER'S HOTLINE AT 480-1098. FOLLOW THE USAG-KA FACEBOOK PAGE TO RECEIVE INFORMATION AND UPDATES REGARDING SAFETY INFORMATION, EVENTS, AND OFFICIAL COMMAND ACTIVITIES.

Until Next Week!

