



The U.S. Army's Twilight Tattoo is an action-packed live military event featuring Soldiers from the U.S. Army Military District of Washington's ceremonial units, the 3d U.S. Infantry Regiment (The Old Guard) and The U.S. Army Band "Pershing's Own."

The show features performances by The U.S. Army Blues, The U.S. Army Band Downrange, The Commander-in-Chief's Guard, The U.S. Army Old Guard Fife and Drum Corps, and The U.S. Army Drill Team.

All performances are conducted on Summerall Field at Joint Base Myer-Henderson Hall (JBM-HH). Start time for Twilight Tattoo is 7 pm. Pre-show music begins at 6:30 pm. The show lasts approximately 1 hour, until 8 pm. At the completion of the performance Soldiers and guests interact with the public audience on Summerall Field for approximately 20-30 minutes.

***A valid form of identification are required to gain access to
Joint Base Myer-Henderson Hall.***

~

Recommend attendees allow extra time for processing through security.

~

Military Police will be on hand to assist.

~

For more information, visit our web site at <https://jtfncr.mdw.army.mil/twilighttattoo/>

Twilight Tattoo Driving Directions

Joint Base Myer-Henderson Hall

Joint Base Myer-Henderson Hall, Virginia is located across the Potomac River from Washington, D.C., adjacent to and west of Arlington National Cemetery. The main gate (Hatfield) is open twenty-four hours a day. It is located on Washington Blvd at South 2nd Street.

FROM THE SOUTH ON INTERSTATE 95:

Inside the Capital Beltway, I-95 becomes I-395. Proceed north toward Washington. Take Exit 8A (7 miles inside the beltway), marked "Washington Blvd, Route 27." Bear left on the ramp, following the signs. Exit Washington Blvd to the right at the exit marked "Fort Myer Only." Enter the Hatfield Gate. Proceed through the security check point to Carpenter Rd. **At the 3-way stop sign, turn left onto McNair Rd. Take the first left onto Pershing Dr. At the end of Pershing Dr, take a right onto Sheridan Ave. Continue on Sheridan Ave for about .5 mile. The entrance for parking for Summerall Field is on your right. Conmy Hall is ahead to your left. For Patton Hall, continue to the stop sign at the end of Sheridan Ave and turn right onto Buffalo Soldier Ave. At the next stop sign, Patton Hall is on your left.**

FROM THE WEST ON INTERSTATE 66:

Proceed on I-66 inside the Capital Beltway. Take exit 26 (7 miles inside the Beltway) marked "Route 110 South, Pentagon, Alexandria." Continue on Route 110 South (the Pentagon will be on your left) and take the exit marked Washington Blvd / Columbia Pike. Proceed ¼ mile and take the exit marked VA27 North (Washington Blvd). Proceed on Washington Blvd. and take the exit marked "Fort Myer Only" on the right. Enter the Hatfield Gate. **At this point, follow the directions above in bold.**

FROM THE NORTH ON THE CAPITAL BELTWAY (I-495):

After crossing the American Legion Bridge into Virginia, take exit 43-44 for VA-193/George Washington Memorial Parkway / Georgetown Pike toward Great Falls, Virginia / Langley / Washington. Keep right at the fork to continue on exit 43 and follow signs for George Washington Memorial Parkway / Washington. Take the I-66 East/US 50 exit toward Roosevelt Bridge / Washington / Rosslyn. Keep right, follow signs for US 50 / Rosslyn. Continue on Arlington Blvd. and drive to the Washington Blvd toward Pentagon/I-395 exit on the right. Take Washington Blvd to the South Courthouse Rd/2nd Street South exit on the right. Turn left on South Courthouse Rd and left onto 2nd Street. The 2nd Street Bridge will lead directly to Hatfield Gate. Enter the Hatfield Gate. **At this point, follow the directions above in bold.**

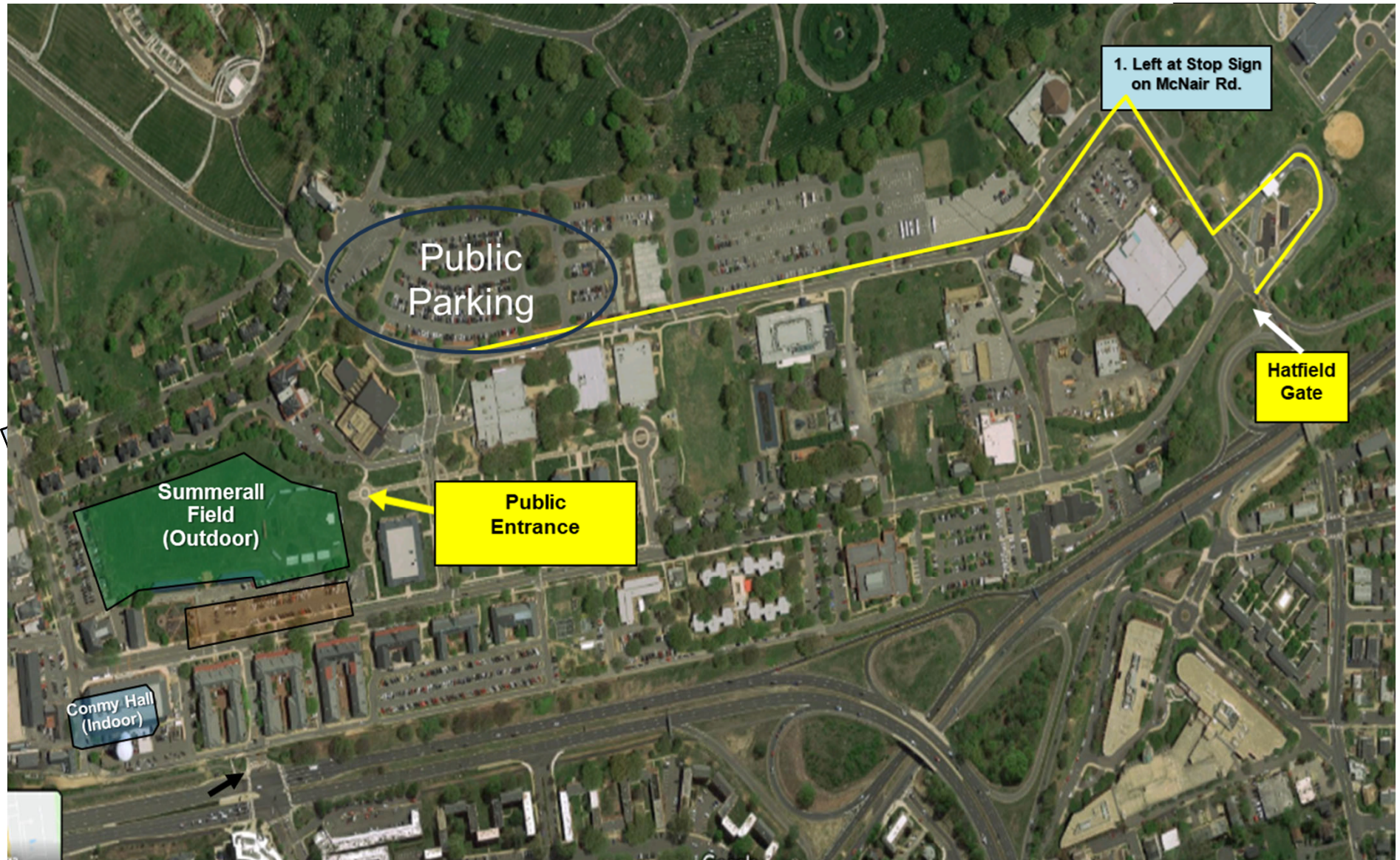
FROM WASHINGTON D.C.:

Take I-395 South out of the city and into Virginia. Pass the Pentagon and take Exit 8A for Washington Blvd and take the exit marked "Fort Myer Only" on the right. Enter the Hatfield Gate. **At this point, follow the directions above in bold.**

Summerall Field
401 Sheridan Avenue Fort Myer, VA 22211

Twilight Tattoo Location

Joint Base Myer-Henderson Hall



Twilight Tattoo Location

Joint Base Myer-Henderson Hall

