

Progress at the Port of Los Angeles

(l to r) Vern Hall, Harbor Director of Development, Steve Kuydendall, Calif. State Assemblyman, COL Larry Davis, L.A. District Engineer, Rudy Svorinich, Jr., L.A. District Councilman, BG J. Richard Capka, South Pacific Division Commander, Leland Wong, President Board of Harbor Commissioners, Larry Keller, Harbor Executive Director, Ruth Galanter, L.A. District Councilwoman, participated in a special Port of Los Angeles ceremony to celebrate milestones in port development.



Eagle's View..... COL Robert L. Davis, District Engineer

Random Thoughts/Concerns

As I reflect upon the past eleven months and our recent Town Hall meetings, a number of things come to mind which I'd like to share with you:

Safety

We have no asset more precious than our people. We presently enjoy a very enviable safety record - one that is well within the goals established by HQ, USACE. This is only possible through constant vigilance. We must all do our part to ensure we consider safety in everything we do.

We must watch out for each other and ensure our contractors do the same for their employees. Consider all the risks and then put those safety precautions in place to ensure we minimize the dangers to our folks. Never let your guard down.

Cost of Doing Business

As I mentioned in the Town Hall, the most common criticism I hear as I meet with our customers in that "we cost too much". While some of this is unavoidable because we operate in one of the highest cost-of-living areas of the U.S., I see examples every day where we could be a little more budget conscious. We wait until the last minute to complete our staff work and then must waste money using overnight express mailing to meet a deadline.

We send two or three people TDY when one person could handle the mission. We waste huge amounts of money on EEO grievances when treating our team members with dignity and respect could avoid many of these

misunderstandings. The list goes on and on.

If we are going to remain a powerful, healthy District, we must all pitch in and do our part to keep costs down. What can you do to contribute?

Property Accountability

Since I have arrived, I have seen several Reports of Survey for missing government property. I have always taken this issue seriously. We are responsible for safeguarding the property provided to us by the government. If you lose that property, I have an obligation to require you to reimburse the government for that loss, and I will do so. Lap-top computers, cell phones, etc. have a way of disappearing if you don't maintain tight control on them. Lock up pilferable equipment when you are not using it!

Delinquent American Express Accounts

Need your help here. This is an item of personal interest to the Chief of Engineers, and thus to all of us. We are doing better but still have a ways to go until we clean up all our delinquent accounts.

O.K. - enough lecturing. I hate to feel like I am preaching to you, but these are all serious issues and we cannot ignore them. To end on a positive note, just let me remind you of the other thing I hear over and over as I meet with our customers and sponsors. That is, "Colonel Davis, do you realize how lucky you are to have so many great people working for you?" Absolutely! We are blessed with a great team here in the Los Angeles District and I am proud to be a part of it.

TRUST, QUALITY, TEAMWORK

The Los Angeles District Newcastle

Commander

COL Robert L. 'Larry' Davis

PAO

Dr. Fred-Otto Egeler

Public Affairs Staff

Dr. Anthony Turhollow, Mona Lee Goss,
Herb Nesmith, Beverly Patterson,
Delsie Sharp

The Newcastle is published monthly under the provisions of AR 360-81 for the employees and extended engineer family of the Los Angeles District, USACE. Views and opinions expressed herein are not necessarily those of the District or the Department of Defense. Deadline submission is the 15th of the previous month and publication date is the 20th of each month. We publish material furnished by the American Forces Information Service and the Public Health Service. Address mail to the Los Angeles District Public Affairs Office, ATTN: Newcastle Editor, PO Box 532711, Los Angeles, CA 90053-2325. Tel: (213) 452-3921 or FAX: 4209. You can E-mail your information to the attention of the Public Affairs staff listed above.

Pounds of dropped rock signal a successful end and a new start for the Corps and L.A. Port

By Mona Lee Goss

The Los Angeles District marked another milestone, August 18, in its ongoing relationship with the Port of Los Angeles – a relationship that goes back to the District's formation, almost 100 years ago. The District and the Port held a special ceremony to mark the successful completion of the first part of the Port of L.A. Harbor dredging and landfill Project on Pier 400 and the beginning of Stage II.

The event was held at the American President Lines' (APL) newly opened Global Gateway South Berth, itself the result of an earlier project, across the channel and within sight of the completed first portion of Pier 400.

BG J. Richard Capka, South Pacific Division commander, and COL Larry Davis, L.A. District Engineer, were among the state and local dignitaries who spoke to invited guests.

The guests included representatives of California Senators Fein-

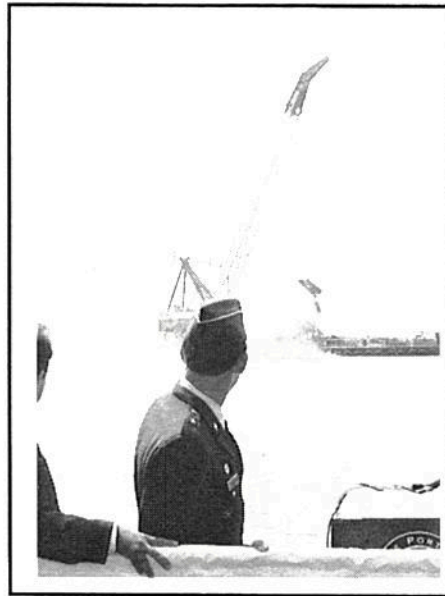


Photo by Mona Lee Goss

BG J. Richard Capka, SPD commander, looks on with assembled speakers and guests as the first rock is dropped for Stage II of the Pier 400 project.

stein and Boxer, House of Representatives Millender-McDonald and Horn, plus representatives from the offices of state Senator Karenette and Assemblyman Kuykendall, among others with key interests in the project.

California State Assemblyman

Kuykendall also joined the speakers in congratulating the port and the Corps for their progressive accomplishments.

During the Corp's portion of the speaking program, COL Davis praised all the partners involved in reaching this important stage of harbor development.

"Our partnership with the port and contractors working on this project has had excellent results," said COL Davis.

"We look forward to continued success in working together to build a first class world trade facility benefiting both the local and national economy," he said.

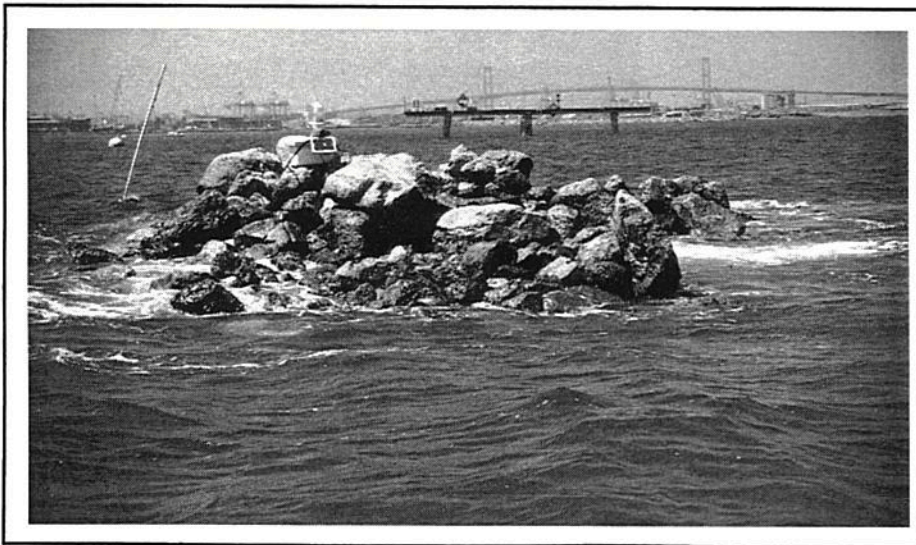
Davis also introduced BG Capka, who discussed more details about the project and its impact on Los Angeles and the U.S. trading goods community.

"Three areas are considered as we look at projects – economics, engineering and the environment," said Capka. "Planners from both the Port of Los Angeles and the Corps are to be congratulated for ensuring that the necessary equation for success – the three 'E's' – was balanced in this project.

"We, in the Army Corps of Engineers, look forward to our second century of service to the people of Southern California and the nation," said Capka.

The present project began in 1994 with the start of Stage I dredging and landfill operations.

Stage I dredging was completed in July, deepening shipping channels to water depths of 50 feet



These are the first rocks to emerge as Pier 400, marking a significant milestone for the nation's largest dredging and landfill project. (Photo by Port of L.A.)

District keeps eye on El Niño

The Los Angeles District has been tracking the development of Tropical Storm Ignacio this month, and for a reason, reported Jim Crum, chief of the Emergency Management Branch (Construction-Operations Division).

"The storm track has followed a more northerly course than expected from similar type storms due to increasing ocean temperatures along the western U.S. coastline," Crum said. "These temperatures have been monitored by the National Weather Service and the Los Angeles District in relation to an El Niño condition developing on the West Coast."

"Strong El Niño conditions are developing in the tropical Pacific," the National Weather Service said. "The warm event will bring wetter, cooler weather for the southern half of the United States from November through March, while the northern part of the country from Washington east to the western Great Lakes will experience warmer than normal temperatures, according to predictions from the National Oceanic and Atmospheric Administration's Climate Prediction Center."

El Niño is an abnormal state of the ocean-atmosphere system in the tropical Pacific with important consequences for weather around the globe.

"These are the typical weather impacts during a warm phase based on an average of all El Niño events," said Ants Leetmaa, director of the Climate Prediction Center.

History repeating itself?

"This El Niño event is shaping up to be similar to the strong events of 1957, 1972 and 1982-83. During those years, many sections of the southern half of the United States, including California, experienced above-normal rainfall from September through the following May."

In the 1982-83 winter season, Crum said, California had \$265 million in damages and 15,000 people evacuated. The current El Niño is developing on pace with the 1982-83 event.

The Scripps Institute of Oceanography held a public work August 19 to warn about the impending event, which could bring with heavy rain – as much

Coastal ocean waters grew warmer in July. The map shows the mean standard surface temperature (°F) and deviation from normal.

as 200 percent to 300 percent more than normal – along with damaging coastal storms and wave actions.

El Niño events usually occur approximately every two to seven years. Recent events occurred in 1976-1977, 1982-1983, 1986-1987, 1991-1993 and 1994-1995. The first half of the 1990s is unusual in that four out of five years featured weak, warm-episode conditions in the tropical Pacific.

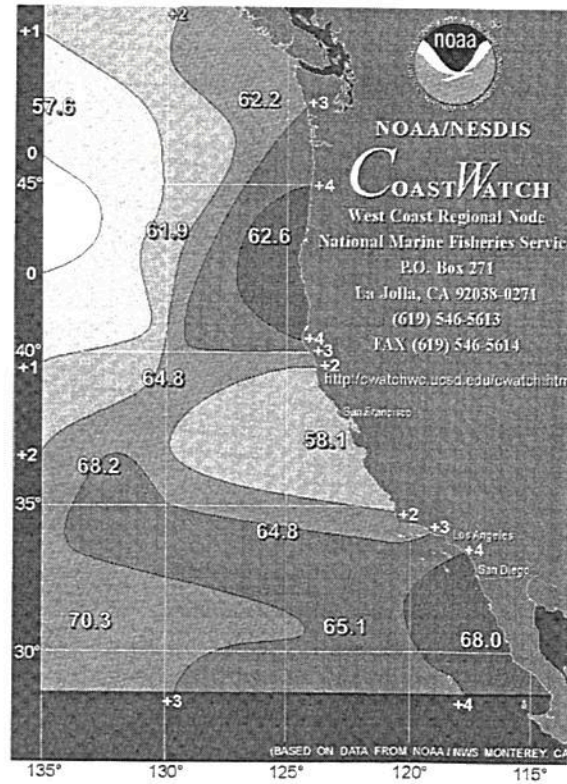
However, a cold episode occurred in 1995-1996 and its effects lingered until late 1996.

El Niño events usually occur approximately every two to seven years. Recent events occurred in 1976-1977, 1982-1983, 1986-1987, 1991-1993 and 1994-1995. The first half of the 1990s is unusual in that four out of five years featured weak, warm-episode conditions in the tropical Pacific.

However, a cold episode occurred in 1995-1996 and its effects lingered until late 1996.

On the other hand, the El Niño event of 1977 was predicted to bring drenching rains, but it turned out to be a draught year. Predicting what will happen is an uncertain business.

So what is the Corps doing to prepare for a possible El Niño wet winter? "Nothing out of the ordinary," said Joe Evelyn, chief of the Hydrology & Hydraulics Branch (Engineering Division). "We plan as if every winter was going to be wetter than



usual. If that happens, the weather won't give us time to get ready, so we have to be prepared going in."

The branch brings its people up to speed with training on any new technology, such improved computer programs. It also contacts other agencies, such as county flood control districts it would coordinate with in the event of flooding, and makes sure all contact names and numbers are up to date. "We've got to be ready every year," Evelyn said.

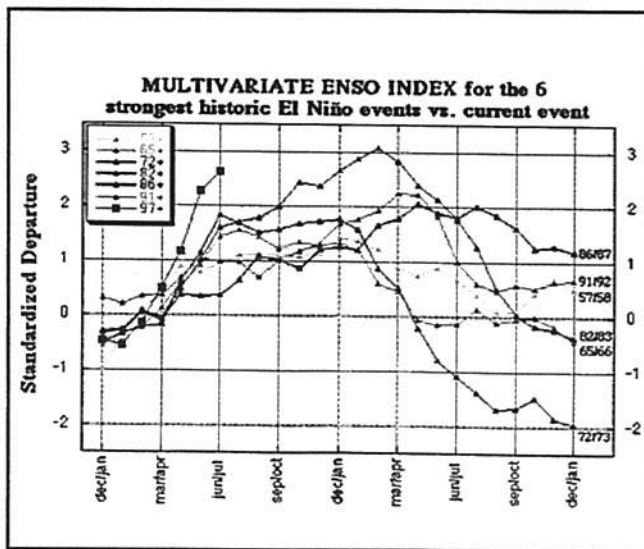
El Niño events usually occur approximately every two to seven years. Recent El Niño events occurred in 1976-1977, 1982-1983, 1986-1987, 1991-1993 and 1994-1995. The first half of the 1990s is unusual in that four out of five years featured weak, warm-episode conditions in the tropical Pacific.

However, a cold episode occurred in 1995-1996 and its effects lingered until late 1996.

"The Los Angeles District EOC (Emergency Operations Center) will continue to track the development of tropical depressions in the Pacific," Crum said. No significant activity from Tropical Depression Ignacio was expected as the storm was in a weakening pattern.

"The EOC coordinates our data and status with the local office of the California state agency that responds to natural disasters, the Governor's Office of Emergency Services, at Los Alamitos Armed Forces Reserve Center."

Details and tracking of this condition are available on a special El Niño homepage on the Internet at http://www.nws.mbay.net/el_nino.html, Crum said.



A little complicated to read (for non-technical folk), the graph shows this winter's El Niño (line at far left, with boxes) is on track to at least match those of previous years.

August Golf Memo



by Jack Hughes
Secretary-Treasurer, LADGC

The Los Angeles District Golf Club played its August tournament at the Navy Golf Course at Los Alamitos. The course is on the Armed Forces Reserve Center, near Seal Beach.

The winners were:

A Flight: 1. Arnie Shatz; 2. Glen Itow; 3. Ed Demesa; Least Putts: Nick Adelmeyer

B Flight: 1. Charlie Fisher; 2. Dale Bulick; 3. T. Kitamura; Least Putts: Bill Trott

C Flight: 1. Sean Murphy; 2. Mary Workman; 3. Jim Kennedy; Least Putts Frank Hubel

Low Gross: Shatz, 77. **Birdies:** Adelmeyer, Shatz and Itow. **Closest to hole** (#9 was the designated hole): Shatz and Mel Kirkland. **The Stats:** One in the 70s, one in the 80s, four in the 90s, five in the 100s-110s, and the rest of us played for the fun of it.

It was another great day. Everything was great except the scores. Seems as though when we play a tournament we don't do very well, yet when we play on our own we do just great. I wonder why that is? Anyway, the course was in great shape, and we'll go again next year.

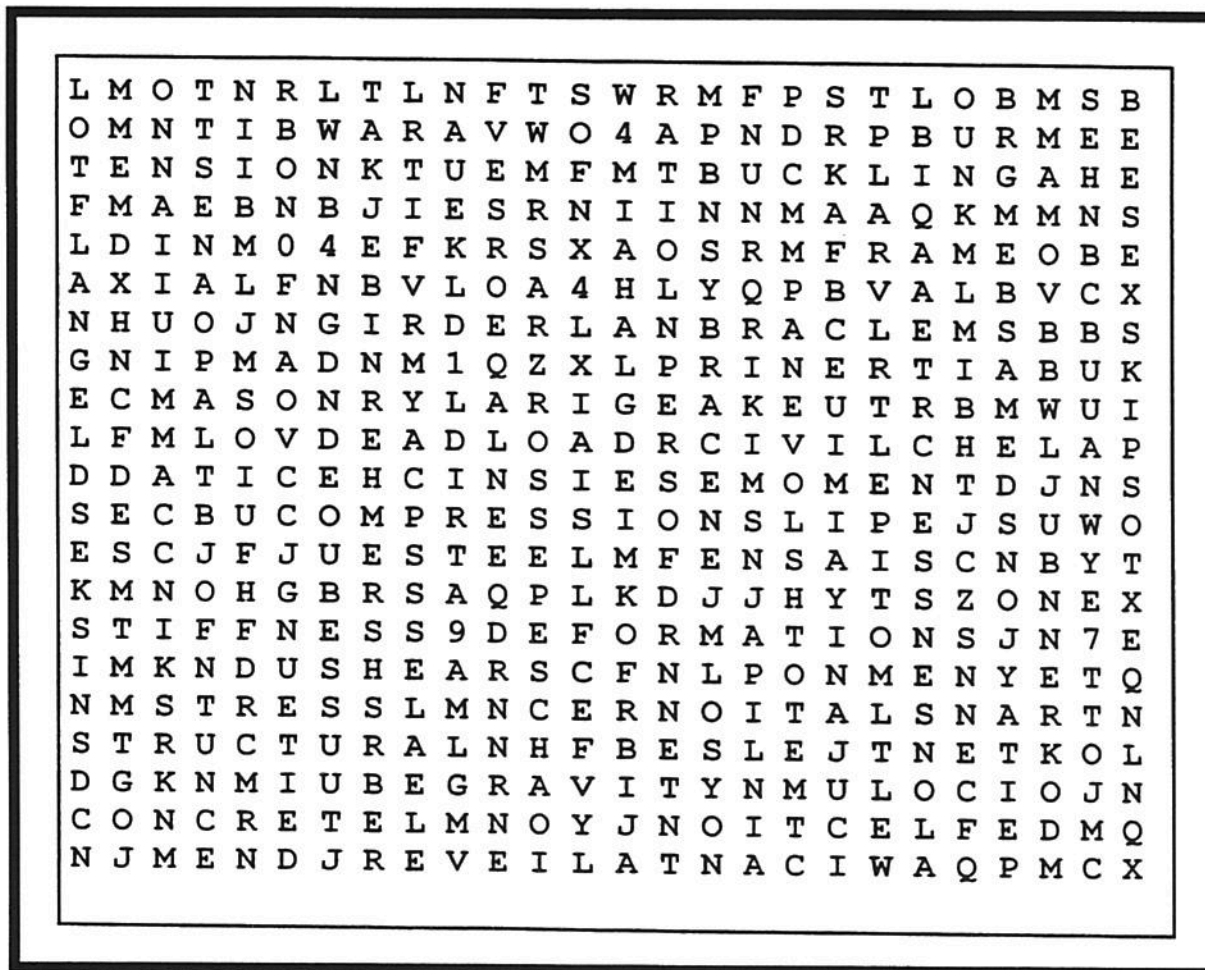
OK, take notice of this: when a tournament is being played, there are *no* mulligans, and there are *no* gimmies where putts are concerned. Both of these infractions are taking place. Shame on you.

The next tournament will be Friday morning, Sept. 5, at the Wilson Course in Griffith Park. It starts at 8:30 a.m. (yes, a.m.). Be there by 8:15 so I or Art Shak won't physically and verbally assault you. The cost is \$29.

Fill out your division-wide tournament entry forms *now*. Hand them in to me (in Planning) or Shak (Coastal Engineering). For more information, call me at Ext. 3813.

ENGINEERING 101

by Felita Jones



Look for these words in the puzzle.

BOLTS	CANTALIEVER	TENSION	BUCKLING
GRAVITY	CIVIL	KSI	FLANGE
STIFFNESS	MASONRY	DEFELCTION	LATERAL
DEAD LOAD	SEISMIC	TRUSS	AXIAL
SHEARS	DAMPING	CODES	ZONE
COLUMN	TRANSLATION	STRESS	BEAM
INERTIA	FRAME	STRUCUTAL	DEFORMATIONS
MOMENT	KIP	COMPRESSION	STEEL
CONCRETE	UBC	GIRDER	BRACE
AISC	RATIO		

First three correct entries received in Public Affairs

JUNE NEWSCASTLE CORRECTIONS

The article on Asian-Pacific Islanders month in June's issue of the Newcastle contained some errors about the background of Noelani Lei Weaver and her father, David Weaver.

The older Weaver works in the Engineering Division, not the Con-Ops Division. His daughter Noelani, performed specific Hawaiian dances. Polynesian refers to a variety of cultures within the Asian Pacific geographic area.

The younger Weaver is indeed talented. Her graduation this year was from California State University Long Beach - not high school - however,

she did earn sports letters in varsity basketball, volleyball, softball and tennis while in high school. She also ran track in high school.

Her sports activities continued along with her studies through her college years. At Pasadena Community College, she was the captain of the girl's basketball team and earned her AA in Business Administration. Her four-year degree was a BA in Political Science.

Attendees at the ceremony were impressed with the young Weaver's presentation and performance skills.



David Weaver, Engineering Division, assisted his daughter, Noelani, during her performance at the District's Asian-Pacific Islander ceremony in June.



Ahhhhhhh . . . A licensed massage therapist, Denean Cochran, gives John Sunshine, Real Estate, a neck and back massage. The activity was sponsored by Fit-To-Win coordinator, Marie Plageman.

Inside this issue

**Pier 400 Dedication
El Nino
Engineer Puzzle**

**LOS ANGELES DISTRICT
U. S. ARMY CORPS OF ENGINEERS
PO BOX 532711
LOS ANGELES, CA 90053-2325**

Annual Retirees Luncheon, October 16, Luminaria's Restaurant, Monterey Park (open to everyone)