

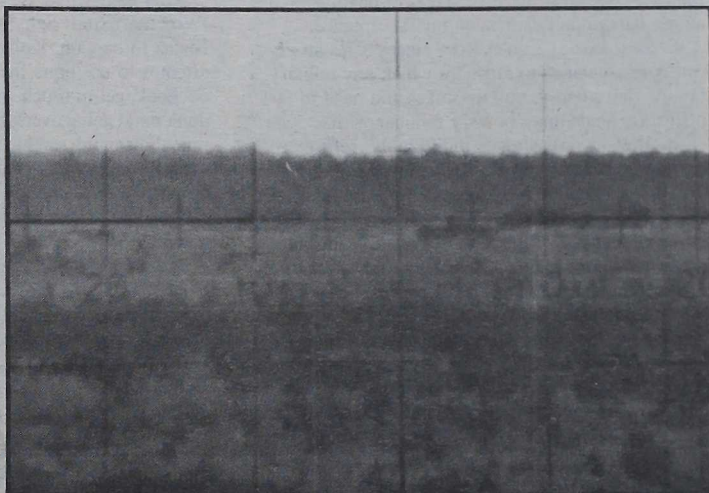
Brrrrrr...
 Staying in shape
 for a frigid
 Arctic encounter
 Pages 8 - 13A
 Vol. 50, No. 5
 February 4, 1988
 X-LARGE
 EM PIZZA
 F-R-E-E
 ER PEPS
 \$9.99
 n accepted with the
 ES NOT INCLUDE TR
 PEOPLE
 USA
 PIZZA
 CITY,
 OUT OU
 DELIG
 PIZZA
 ECIAL!
 BERT
 6-1111
 327-200
 8-2000
 PIZZA CITY,
 VIDEO MOVIE
 PICK UP LARGE
 X-LARGE PIZZA
 other coupon accepted with

CAMP LEJEUNE GLOBE



Vol. 50, No. 5

February 4, 1988



A look at the enemy as seen through the sights of the MULE.

Pinpointing enemy targets a cinch with the help of three-legged MULES

Story and photos by
Lance Cpl. Kevin Doll

The AV-8B Harrier skirts into range just over tree-top level, with the unsuspecting enemy target directly ahead. "Laser on!" orders Capt. Robert L. McCollum, forward air control officer for 3/6.

Lance Cpl. Stephen P. Ames, 3/6 radio operator, activates the Modular Universal Laser Equipment (MULE) and the beam of invisible ultraviolet laser light targets the enemy vehicle over a mile away.

Overhead, the special equipment on-board the Harrier immediately picks up the intense beam of light. The jet's computer determines the correct trajectory for the ordnance, locks on the sights and the pilot releases the payload.

"Laser off!"
If the Harrier had been carrying actual explosives, the enemy vehicle would be in ruins, the result of a direct hit only seconds after the jet appeared on the scene.

See MULES, Pg. 8A

Stephen P. Ames, a radio operator with 3/6, sights in on a target with MULE. The laser operated MULE can pinpoint targets 2,500 meters away.

Base sponsors black history essay contest

In conjunction with Black History Month, the 22nd Marine Air-Ground Task Force (MAGTF) at Camp Lejeune, North Carolina, is sponsoring a Black History essay contest. The contest is open to all members of the 22nd MAGTF, including active duty military, civilian employees, and family members. The contest is designed to honor the contributions of African Americans to the United States and the Marine Corps. The contest is open to all members of the 22nd MAGTF, including active duty military, civilian employees, and family members. The contest is designed to honor the contributions of African Americans to the United States and the Marine Corps.

does black awareness mean to me? Black Americans and their contributions to America. A biography of a black American and how that individual serves as an inspiration to me.

Entry forms must be stapled to each entry and delivered to the Base Headquarters, Bldg. 1, Room 130, by 4:30 p.m. on Feb. 19.

Forms are available at the Base Special Services IIT Office, located in Goettge Memorial Fieldhouse and at Bldg. 1, Room 130. Essay contest winners will be announced on Feb. 26.

The entry categories are:

- Active Duty Military--Officers
- Active Duty Military--Staff NCOs
- Active Duty Military--Enlisted

- Civilian Employees
- Civilian Family Members (not employed on base)
- Schools (Grades 9-12)
- Schools (Grades 7-8)
- Schools (Grades 4-6)

Essays should be typed, double-spaced and should be approximately 500 words in length. They will be judged on the following items:

- Introduction
- Neatness
- Continuity
- Readability
- Creativity in writing
- Sincerity
- Interest

- Motivation
- What the reader learned from the essay
- Conclusion

What's inside...

22nd MAU descends on Toulon...Pg. 4A

3/4 turns island into embassy...Pg. 6A

Division ceremonies highlighted...Pg. 7A

Editorial opinion

Life doesn't end with orders to the 'rock'

By Sgt. Ray P. Hartsfield
Okinawa, Japan

In the mid-1960s, Elisabeth Kubler-Ross conducted studies into the attitudes of terminally ill people at the university of Chicago. The end result was the development of her five stages of death; denial, anger, bargaining, depression and acceptance.

A closer look at Kubler-Ross' stages bares an uncanny resemblance to attitudes which any military family, that's had to pull up stakes and head to far off exotic lands, may be very familiar with.

In the denial stage, individuals refuse to acknowledge the reality of their impending death. This denial of reality acts as a buffer to their personal shock. Receiving orders to Okinawa is a reality which brings on exhausting searches for possible mistakes at their admin section. "Hey come on, check the message traffic again, I'm sure there must be another Staff Sgt. Smithe, R. C. SSN 456789123."

Once we find that denial no longer successful, we enter the anger stage. According to Kubler-Ross, this stage is characterized by hostilities and resentment directed at those close to us. Work section beware!

"Hey Staff Sgt. Smithe, I hear you and your family are headed off to a beautiful island in the Pacific. Boy, I sure wish it was me."

Of course Staff Sgt. Smithe greets his co-worker with a good-natured smile, while thinking to himself, "Yea, I wish it was you too."

After denial, (No, it must be a mistake) and anger (Why me?), Staff Sgt. Smithe changes strategy and begins to bargain. Kubler-Ross calls bargaining an attempt to postpone the inevitable.

"Look, get in touch with HQMC and tell them I don't mind going overseas, it's just that now is a bad time. I mean my son has little league coming up and the wife is really looking forward to K-mart's next 10 bluelight specials. So look, you let us get those little things out of the way and I'll go, no questions asked."

Bargaining is followed by depression, or what Kubler-Ross calls preparatory grief.

No longer having anything to bargain with or for, the individual becomes consumed by a deep sense of loss. He becomes a silent, sullen character who is just a fraction of the once motivated leader. His imminent departure from the good 'ole USA is filling him

with anxiety.

Kubler-Ross calls this fall into depression for the final stage of acceptance. She describes this stage as being marked by communication and quiet expectation. It makes peace with the inevitable, rather than fighting against it.

"Hello TMO, yea, this is Staff Sgt. Smithe. I think you can come pick up my household. My flight date? It's in two weeks. Yea, I'm cutting it kind of close but I've been real busy."

After pulling off one of the most miraculous up-stakes jobs in history, and everyone at the airport with his family breathing his last words. "Okinawa-a-a-a, I ACCEP

Three years later, after this perilous tour overseas, we find Staff Sgt. Smithe, far from his admin shop.

"Hey look, you think we could extend our tour. It's like my wife hasn't finished her yet and my son is really looking forward to soccer season."

3/6 Marine tops Ranger class

Story and photo by Lance Cpl. Kevin Doll

Army Ranger school is heralded by many as the premiere leadership school. It consists of two months of mental and physical stress and training in four different areas of the United States. The training is designed to build or improve upon the leadership and military skills needed to survive and carry out the mission of infantry patrols in all types of terrain and weather conditions.

"It's common for each class to drop over half of the trainees before graduation due to the intense training," said Sergeant Thomas R. Dewitt, India Co., 3/6. "I didn't make it through Ranger school on my first try."

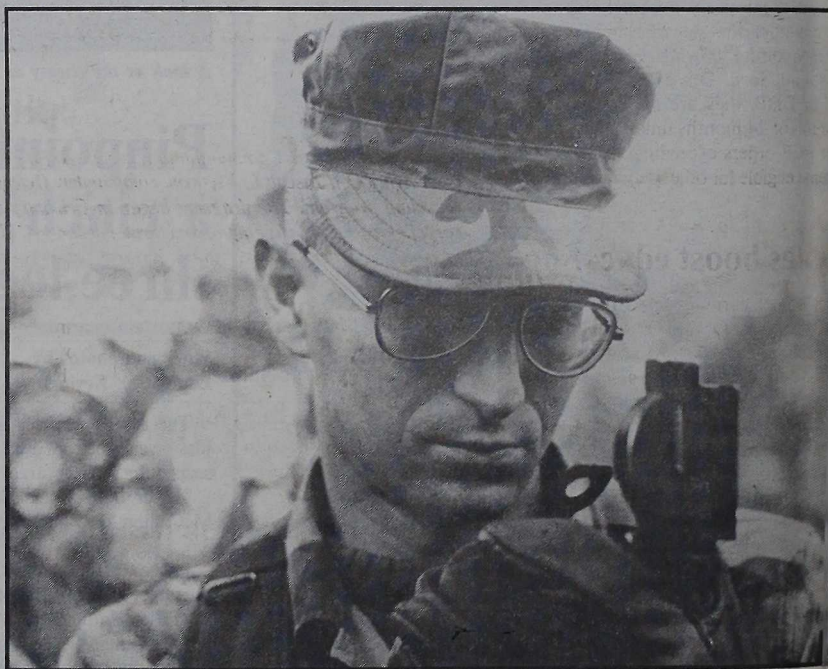
However, it wasn't due to any lapse in motivation or physical impairment.

"My wife, who was five months pregnant at the time, started going into labor," said the Mt. Carmel, Ill., native, "so I dropped out to go home and be with her."

His performance during his interrupted training was promising enough to validate his return the following year and upon graduation, Dewitt was designated the distinguished enlisted honor graduate of class 1-88. He was also the recipient of both the Merrill's Marauder Award for best land navigation and the William O. Darby Award for outstanding Ranger spirit, the latter being given only when the school commander deems it deserving.

"The awarding of the honor graduate is based on peer reports, Ranger instructors' evaluations and overall performance on patrols," said Dewitt.

From a beginning class of 260 trainees, Dewitt finished first among the 125 graduates, which included 25 recycles from previous classes. There were three other enlisted Marines in his class and three Marine officers, one of whom was the distinguished officer



Sergeant Thomas R. Dewitt

honor graduate.

Dewitt's training began in the wooded areas of Fort Benning, Ga., continued in the Tennessee Mountain Divide near Dahlonega, Ga., the desert of the Dugway Proving Grounds in Utah, and ended in the swamps of Florida at Eglin Air Force Base.

"We were graded in numerous areas," said the honor graduate. "Sometimes we were leading one another as a squad leader, other times as platoon sergeant or platoon commander. There were Army aggressor patrols we had to be on the lookout for, also."

Dewitt, platoon sergeant for India Company's weapon's platoon, stated that each patrol member's job was reassigned every few hours or so.

"During the course of one day, you're a radioman, ammmoman and pointman, a formation affected your patrol leader."

"Sometimes we marched an average of a day with 95-pound packs and very little sleep," Dewitt said. "Often MREs were our only food. You're leading are tired, hungry and any motivation to carry out the mission is gone. Teamwork very fast."

"The training was tough and it was like that all over again. The instructors try and push you to your limit," said the Marine. "I'm glad I made it, but I wouldn't want to do it again in actual combat."

This CE publication is an authorized publication for members of the Military Services. Contents of the *Globe* are not necessarily the official views of, or endorsed by, the U.S. Government, the Department of Defense or Jacksonville Printing Co., Inc.
The appearance of advertising in this publication, including inserts or supplements, does not constitute endorsement by the Department of Defense or Jacksonville Printing Co., Inc. of the products or services advertised.
The editorial content is edited, prepared, and produced by the Public Affairs Office of

Camp Lejeune, N.C. (Phone 451-5655/5782/1607) Everything advertised in this publication shall be made available for purchase, use, or patronage without regard to race, color, religion, sex, national origin, age, marital status, physical handicap, political affiliation, or any other nonmerit factor of the purchaser, user, or patron.
Published by Jacksonville Printing Co., Inc., a private firm in no way connected with the Department of Defense or the U.S. Marine Corps under exclusive written contract with

CG, MCB Maj. Gen.
Director, JPAO Maj.
Managing Editor 2nd Lt.
Press Chief Gunnery Sgt. J. B.
Editor Sgt. K.

rock Newsbriefs...

Post offices to remain open
Postal Service has rescinded their closure Tuesday afternoon and Saturday retail post offices will remain open as they Dec. 26, 1987.
Feb. 6, the Unit 4 Military Post Office will return to normal operating hours and on Saturday.

Changes to dental plan
Changes to the Dependent Dental Plan adopted by Marines, Sailors and their dependents not eligible for the DDP. Annual allowable reimbursement levels for both participating and non-participating dentists are now 90 percent of the old 51 percentile for non-participating dentists and 90 for participating dentists. Problems with eligibility dates, some have been suspended for 60 days. If a dependent is denied because of questionable information, a person should check with his personal file to update necessary information. Dependents are reminded that dental benefits begin the first of the month following the month they submit form DD 2494. Also, once a dependent is in DDP, they are required to participate a minimum of 24 months unless they waive PCS orders exceeding 50 miles, or dependents become eligible for other dental insurance coverage.

Be sales boost education
Percent of net earnings from the sale of timber at the base goes to the Onslow County District each year. While the remainder goes to the Marine Corps to augment the efforts of forestry related programs at other bases. In Fiscal Year 87 the forestry branch of the school district a check for \$60,579.06. Funds provided to Onslow County education department the requirements Camp Lejeune has under Public Law 9799. The base manages approximately 58,000 acres and an average of six thousand acres annually."

Comments
The Marine Corps has a pessimistic future. Addressing a Defense Writers Group in Washington, D.C. on Jan. 19 the Commandant, Gen. A. M. Gray was optimistic about the future of the Marine Corps Programs and continued efforts. We are entering this economic situation in pretense. We are as well equipped and as any force can be. We have very good leadership, so we have a good position. Having said all that, there are concerns in the small dollar arena as to how to protect funding that tends to improve the welfare of the Marine Corps Family is always concern among field commanders what we do whatever we can to protect and maintenance funding."



Lance Cpl. F. E. Charles

Recycling award

Marine Corps Base Commanding General, Major Gen. J. Edward Cassity, accepts a check for \$120,087.50 from Army Col. Joseph L. Methvin, commander, Defense Logistics Agency, for the base's part in a DoD materials recycling program. The program began in February of 1987 and is designed to promote savings through the recycling of brass, aluminum, steel and cardboard. The funds will be used on the recycling program, morale and welfare, energy conservation, natural resources and environmental projects here.

said Danny Marshburn, forester at the Department of Natural Resources. "The harvest provides about 16,000 cord of pine and 6,000 cord of hardwood."

The harvest also provides enhanced benefits such as improved training and recreational areas, better quality timber, wildlife habitat and aesthetics.

Black history luncheon

There will be a Black History Month luncheon

held at the Base Cafeteria on Thurs., Feb. 25 from 11:30 to 1 p.m.

Featured speaker will be Brig. Gen. Jerome G. Cooper, commanding general, 4th FSSG.

The luncheon is open to all personnel, military and civilian. Tickets will be sold on a first come first serve basis and must be purchased by Feb. 18. Seating is limited to 450. Tickets are \$5 per person and can be purchased from command representatives or through Maj. D. W. Rowland in Room 130 of Bldg. 1.

For information call Maj. Rowland at 451-5839.

Lavert concert rescheduled

In order to be in California on Feb. 26 to receive an award from the American Music Association, Lavert will be performing in concert at Goettge Memorial Field House on March 4 at 8 p.m. instead of Feb. 26 as previously announced. Ticket prices are \$15 in advance and \$17.50 at the door. Tickets may be purchased at the Information, Ticket and Tours Office in the field house between the hours of 8 a.m. and 4:30 p.m. Mon. through Fri.

Early tickets purchasers will also have the opportunity for front row seats and a backstage pass to meet LeVert and have photos taken with them. The night of the concert, three ticket stubs will be drawn from tickets purchased in advance. The holders of those stubs will receive these special prizes.

Key wives training course

A Family Readiness Key Wives training course will begin Feb. 9 and meet every Tues. and Thurs. until Mar. 17. The meetings will be at Bldg. 4120, MCAS, New River from 6-9 p.m. The course is sponsored by MAG 26 and MAG 29. Free babysitting will be provided for attendees at the MCAS Child Development Center. For information call 451-6157.



Gen. A. M. Gray

CG, MCB
Director, JPAO
Managing Editor
Press Chief
Editor

Helping hands

Training takes a brief back seat as MAU hosts French youngsters

Story and photo by
Gunnery Sgt. Jim Gladkowski
22nd MAU (SOC)

Scores of Marines and Sailors participated in three community relations projects during a recent port visit at Toulon, France.

Servicemen in Amphibious Squadron Two/22nd MAU (SOC), from the *USS Nassau* (LHA-4), first escorted 24 disadvantaged children from the foundation Barthelow to the ship for an afternoon visit. Each boy was assigned a Marine or Sailor as a personal escort.

Arriving by bus, the boys were treated to lunch and a special tour of the amphibious ship. They "oohed" and "aahed" when they saw the Marine Corps aircraft and Navy equipment.

At the end of the day the boys and their escorts once again boarded their bus enroute to Barthelow. On the return trip emotions began to surface in both the boys and the servicemen. Lasting friendships were begun in those few hours and made the parting difficult. Many ad-

resses and sincere promises to keep in touch were exchanged as the men returned to the ship.

"I felt for them," explained Lance Cpl. Roger Enders of the command element who escorted a 13-year-old boy named Richard. "He asked for my address and I gladly gave it to him. I took some pictures and I promised him I'd send him some."

In the second community relations project 150 Marines and Sailors from the *USS Nassau*, *USS Shreveport* and *USS Manitowoc* planted 1,000 pine trees atop Mount Faron overlooking the city of Toulon. This reforestation project required the servicemen to work in extremely rocky terrain.

"First, we cleaned out the entire replanting area and burned the dead wood and brush," said Lance Cpl. J.R. Aguilar, a supply clerk with 22nd MAU (SOC). "Because of the steep hillside, where the planting area was, movement had to be slow. Big rocks were also a consideration. But, when we were through planting, I felt good knowing those trees



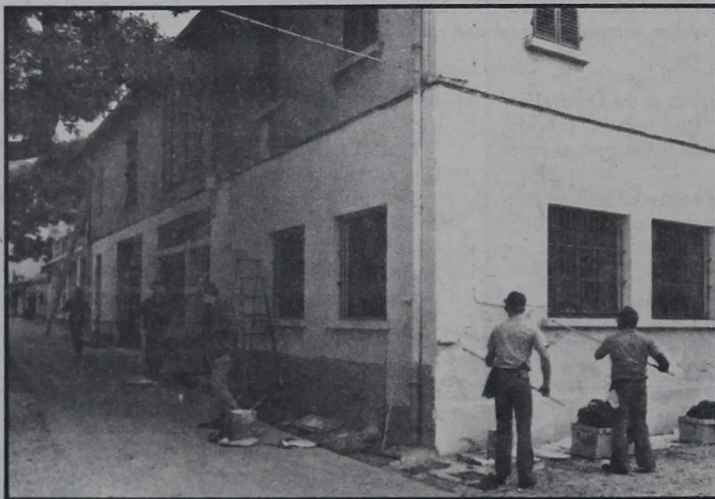
Lance Cpl. Roger Enders talks with "his buddy" Richard enroute to the ship. Richard was one of 24 disadvantaged children given a tour of the ship.

would grow and provide a resource to the people of France for years to come."

The final project carried out by the MARG servicemen was the rehabilitation of the Little Sisters of the Poor, a home for the elderly in Toulon. Here, some 60 Marines and Sailors from the three ships painted the exterior of three buildings and the interior of the kitchen. They also repaired some furniture.

"I get involved with projects like this every time I come to the Mediterranean

Sea region," said CPO Robert... while repainting a statue of the house. "I do it because I have appreciation on their faces that makes it all worthwhile." ...ing aboard the *USS Nassau*... Marines and Sailors from 22nd MAU (SOC) are homebased at MCAS New River Point. They are serving with the Sixth Fleet with the 2nd Fleet based at Norfolk and L...



Marines and Sailors from the Mediterranean Amphibious Ready Group paint a building for the Little Sisters of the Poor for the elderly in Toulon, France. The building was one of three that the Sailors gave a facelift.

Featuring
Delicious
Cooked to
Order Seafood,
Steaks, and
Prime Ribs

Capt' Charlie's
Restaurant
Swansboro, N.C.

We Open Nightly
at 5:30 during
June, July and
August.
The other months
we are closed
on Mondays.

Visit our Lounge featuring DEEDRE' Bartender Extraordinaire
Where cooking is an art & eating is a pleasure.
Reservations accepted for large parties only.

Located right on Hwy. 24 in Swansboro's Historic District 326-4303

PEKING PALACE

RESTAURANT LOUNGE
CHINESE AND AMERICAN FOOD

北京宮

ALL ABC PERMITS

— OPEN —
7 DAYS A WEEK
HOURS
11:30 AM
10:30 PM

DELIVER SERVICE

LUNCHEON BUFFET
ALL YOU CAN EAT

DINNER SPECIALS
353
353

187 WESTERN BLVD JACKSONVILLE, NC



**WHY WAIT
FOR YOUR
TAX REFUND
WHEN YOU CAN
GET YOUR MONEY FAST!**

Use H&R Block's Rapid Refund Program.

It's available whether H&R Block prepares your tax return or not.

IT'S FAST! H&R BLOCK

For more details or to see if you qualify call H&R Block now.

H&R BLOCK

THE INCOME TAX PEOPLE

31 Western Blvd. • New River Shopping Center
353-6533 455-3282

Other locations open 9AM-9PM Weekdays, 9-5 Sat. & Sun.

MasterCard, VISA and Discover Card accepted at most area locations.



INJURED?

AUTO ACCIDENTS MEDICAL MALPRACTICE
ACCIDENTAL INJURY OR DEATH
NO FEE UNLESS YOU RECOVER

Property Damage/Rental Car Assistance Access to Experts for Medical Testimony.
Step-by-step Documentation Kit Economic Loss, Accident Reconstruction
Staff Investigator Nursing Consultant

FORMER
MARINES
SERVING THE
COMMUNITY

455-4065

TRIAL TEAM
APPROACH
TO CASES

BANKRUPTCY

- PERSONAL • BUSINESS
- HARASSED BY CREDITORS?
- NEED A FRESH START?
- WORRIED ABOUT LOSS OF PERSONAL ASSETS?
- STOP REPOSSESSION & FORECLOSURES
- THERE IS A LEGAL REMEDY AVAILABLE TO YOU

DIVORCE

- SEPARATION
- SUPPORT & CUSTODY MATTERS
- ADOPTIONS/FAMILY LAW
- EQUITABLE DISTRIBUTION
- PROTECTION OF PENSION

TAKE TIME TO KNOW YOUR RIGHTS BEFORE YOU SIGN

CRIMINAL

- DWI TRAFFIC TICKETS
- COURTS/MARTIAL
- FELONY CASES
- SPECIAL DRIVING PRIVILEGES

PROTECT YOUR DRIVING PRIVILEGES AND YOUR INSURANCE RATES

PRACTICE LIMITED TO THESE AREAS FOR BEST SERVICE TO YOU

Unforgettable

Review & Floor Show.

Ladies! Ladies!

Coming in March to

Branch Creek

March 1988

Only \$5 at Door!

Call 151-1446 for info!

Fabulous Tails For Females

YOUR CALENDARS!

THE PRICE THAT "COUNTS" THE "BOTTOM" PRICE

"7" DIAMONDS WIDE BAND \$99 SHE WILL LOVE IT!

"7" RADIANT DIAMONDS \$45 BRIGHTEN HER DAY

"7" SPARKLING DIAMONDS \$79 SHOW HER YOU CARE

GREAT "VALENTINES" DAY GIFT

GIVE HER A "MEMORY" ...VALENTINE'S DAY

The Name To Trust... **Barnes** Jewelers And Diamond Gallery

JACKSONVILLE, GREENVILLE, KINSTON, ATLANTIC BEACH
COLLEGE PLAZA WESTERN BLVD. 347-4300

Getting them out safely is key to Okinawa rescue

By Staff Sgt. Hartman Slate
Okinawa, Japan

CAMP FOSTER, Japan--Marines from 3/4 staged a non-combatant evacuation exercise here recently.

The exercise scenario called for the Marines to conduct an amphibious landing in a fictitious country (actually Camp Foster), secure a helicopter landing zone and beef up security forces at the local embassy. The 3/4 Marines would then begin evacuating the embassy personnel and other non-combatants and stand by to conduct combat operations in support of the evacuation.

Supporting infantry Marines in the exercise were members of Camp Butler's H&SBn. Marines from base acted as embassy staff, dependents and demonstrators.

The exercise was designed to expose the infantry Marines with the complexities of missions involving non-combatants and close coordination with American agencies outside the Department of Defense, according to 3/4's operations officer, Capt. John Allen.

While non-combatant evacuations are not new to the Marine Corps mission, the one conducted at Camp Foster was still

a challenge for the 3/4 Marines. The battalion, deployed to Okinawa on the Unit Deployment Program, had just completed exhaustive field maneuvers in the Republic of Korea during exercise Bear Hunt '88. Marines of the battalion arrived back on Okinawa and launched their NEO exercise within 36 hours.

With a tired staff and infantrymen running on little more than adrenalin, determination and their unit's reputation for tenacity, 3/4 tested a new combat operations plan with its NEO annex.

"This was a first for a lot of officers and staff NCOs in the battalion," said Capt. Thomas Chaney, the battalion's assistant operations officer. "The battalion's mission has always been to locate, close with and destroy the enemy, but times are changing and we're going to start doing more of these kinds of missions. Our primary mission is still there, but we have to train for the other jobs we might be given."

The mission, Chaney explained, is a tough one. "We're used to the yelling and screaming and abuse of the battlefield," Chaney said. "There has to be a lot of self-discipline on the part of the individual Marine, though. He's probably going to make the landing with a mind-set that



Sgt. S. L. [Name] [Rank] [Unit] [Location] [Action]
Marines from 3/4 apprehend infiltrators near a mock American consulate during a non-combatant evacuation exercise held on Okinawa. The Marines from 3/4 are based at Camp Lejeune and are participating in the unit rotation program.

everyone around him is a bad guy and every sudden movement a threat to his life. He has to learn to be alert but not to overreact."

In the grand scheme of things, Chaney said the battalion learned some important lessons. "We learned the need to coordinate closely with the Department of State people that run our embassies," he said. "We also re-learned the need to work together with our own supporting units. If you have to conduct an operation like we did, things are naturally

going to be a little chaotic. We need Marines going in have to work together and work together."

"These NEO operations are going to be a part of our regular training," Chaney said. "They are an important mission we have devised a plan to coordinate them. The NEO on Camp Foster was the first step in the program. We learned a lot in our walking phase. We're going to start jogging along and then start seeing this battalion take a hard run and hit the ground running."

Pokey's

Serving Your Favorite Spirited Beverages

Featuring Disc Jockey Terry Grimble Friday & Saturday Nights

THE GREEN ROOM

- Pool Table • Videos • TV for Sports
- Top 40's Juke Box • Wheel of Fortune

Topsail Island
328-1655
Hwy. 210 - Topsail Island
(5 mi. S. of Bridge)

THE NEW **CARLENE'S, INC.**
USED CARS / Rentals

Stop Walking and Start Talking!
We Will Rent You One!
We Will Sell You One!
We Will Finance You One!

WE CARE

346-6111
470 Western Blvd.

We're Fighting For Your Life.

WE'RE FIGHTING FOR YOUR LIFE American Heart Association

X-MEN and other MARVEL COMICS are available

347-5506
MONARCH BOOKS

Open 10 a.m.-7 p.m.

Eric A. Buffong, M.D., F.A.C.O.G.
Henry S. Haye, M.D.

Obstetrics — Gynecology
Reproductive Endocrinology
Intra Uterine Insemination
Artificial Insemination

Tubal Micro Surgery

Approved by Champus Accepts All Major Insurances
By Appointment

Country Club Square
1703 Country Club Rd., Suite 203
Jacksonville, N.C. 28540

(919) 346-2182

Mon.-Fri. 10 a.m.-6 p.m., Saturday 10 a.m.-2 p.m.

CHECKPOINT
CHECKS CASHED

216 Brynn Marr Drive
Brynn Marr Plaza
Jacksonville, N.C.
577-7122

- Personal
- Payroll
- Money Orders
- Government
- Travelers Checks
- Tax Refunds
- Out-of-State
- Two Party
- Unemployment
- Insurance
- Cashier's Checks

**N
E
W
S
G
T
M
A
J**



Sgt. Eva Snyder

Major Gen. O. K. Steele, Commanding General, 2nd MarDiv, presents the tradition NCO sword to incoming Division Sergeant Major, Sgt. Maj. Roy Y. Yeddo. Yeddo replaces Sgt. Maj. John V. Browne as the Division's top enlisted Marine. The sergeants major post and relief took place Jan. 29 at W. P. T. Hill field following the Division's 47th anniversary celebration. Browne received the Legion of Merit during the ceremony which capped a 30-year career in the Marine Corps.

**A
B
O
A
R
D**

**MarDiv. Assn.
Honors Div. Marines
in annual awards**

The annual 2nd MarDiv. award ceremony was held here honoring the Marines with five awards. The "John Henry Balch Award" was presented to Sgt. John J. Maziarski, squad leader, 1st squad, 1st Plt., Bravo Company, outstanding rifle squad commander.

The "Follow Me Award" for competition was Staff Sgt. James G. Headquarters Company, 6th Marines.

The "John Henry Balch Award" for outstanding corpsman was awarded to HM1 Walter A. Stacy Jr. Stacy belongs to Battalion Aid Station, 1/10.

Receiving the "Lt. Gen. Julian C. Smith Award" for the Marine best exemplifying leadership principles was Cpl. John F. Robles, Paper Btry., 5/10.

The "Maj. Gen. CB. Vogle Award" for NCO of the year went to Sgt. Allen L. Rector, Jr., H&SCo, 2nd Recon. Bn.

**Lejeune units depart
for duty with
Middle East Task Force**

The Norfolk-based Amphibious Transport Dock *USS Trenton* (LPD 14), with 400 Marines and Sailors of Contingency Marine Air Ground Task Force 2-88 embarked, departed Jan. 27 for a routine six-month deployment with the Joint Task Force Middle East, in the Persian Gulf.

The *USS Trenton*, with a crew of approximately 400 men, is commanded by Capt. Robert J. Reader, USN. Captain Reader will be relieved by Capt. Robert M. Nutwell during the ship's transit to the Persian Gulf.

Contingency Marine Air Ground Task Force 2-88, is commanded by Col. W. M. Rakow, and is comprised of Marines and Sailors from the 2nd MarDiv., 2nd MAW and 2nd FSSG, based at Camp Lejeune, MCAS, Cherry Point and MCAS, New River.

County Courts Martial
Personal Injury Suits
Legal Practice

Driving While Impaired
Military Administrative Board
Divorce and Separation

LARRY J. MINER
Attorney at Law

**24 YEARS
EXPERIENCE IN CRIMINAL LAW**

12 Anne Street
Old Bridge St. & Anne Street
Jacksonville, N.C.

347-7300

**7 DAY
BUFFET**

Mon. - Thur. 10:30 a.m. till 10:30 p.m.
Friday 10:30 a.m. till 10:30 p.m.
Sat. 1 p.m. - 10:30 p.m. Sun. 1 p.m. - 10:30 p.m.

Lunch	\$3.50
children	\$1.50
Dinner	\$5.95
children	\$2.95

Delivery 5 to 10 p.m.

NEW CHINA



Restaurant & Lounge

New China Lounge
Mon., Wed., and Fri. Specials

Carry Out Anytime

200 South Marine Blvd.
ALL ABC Permits

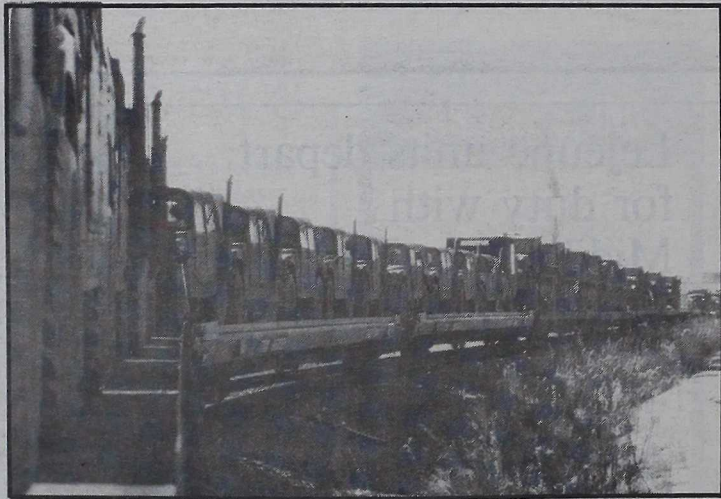
455-9555





(Left) Getting the equipment from ground to the railcar is the first step in the load-out process. A cone is used to drive the vehicles of the CSSD-27. (Above) Pfc. Bruce M. 1. stays in close contact with the CSSD-27 pool to advise what equipment is next to be loaded onto the railcars.

CSSD-27: When it absolutely, positively has to be there



The finished product of the load-out is a procession of railcars teaming with military vehicles ready to make the trip north to Wisconsin. The load-out was done in support of the 4th MAB's exercise Alpine Warrior '88.

Story and photos by
Lance Cpl. Kevin Doll

Combat Service Support Detachment 27, formed from 2nd FSSG Marines and Sailors was busy loading vehicles aboard railroad cars at Camp Lejeune's railroad yard recently. The vehicles were bound for Wisconsin to support the cold weather training as part of the 4th MAB's exercise Alpine Warrior '88.

Everything from forklifts, HMMWVs, Dragon Wagons, wreckers and cranes to an ambulance had to be loaded and chained down for the trip to the training grounds of Wisconsin.

"We first radio the CSSD-27 staging area, or motor pool, to let them know what to send over next," said Staff Sgt. Dwight D. Wilkins, BSSG-4 embarkation chief. "When it arrives, the loading crew begins to direct the drivers onto the loading ramp and then to the railcars. Then we move them down each car to their tie-down point. We have ten drivers and a ten-man working party from

CSSD-27 doing the loading. Marines carefully guide vehicles onto one railcar to the next, fitting them down their cumulative lengths.

"The cars are 89 feet long," explained Wilkins. "We have to be careful how we load the vehicles so we don't find a gap in the middle of the line. If we do, we can't back up so if there is a gap we would have to use a crane to lift the vehicle which would take up more time." Beginning at about 8 a.m., the 20-Marine team fully loaded and chained down 41 vehicles aboard railcars by 11:30 a.m.

"The boarding has gone smoothly," said WO1 Robert Bowman, embarkation officer. "The initial plan was to load the vehicles and to ship out by train. Now we can ship out by train should reach Wisconsin in a few days."

HEY, PARDNER!
COME AND GET IT!

CATTLEMAN EXPRESS
BBQ Pork Ribs, French fries or potato salad, corn-on-the-cob, salad bar & dinner roll. **\$3.35**
Coupon Good only at . . . Exp. 2/29/88

7 a.m. to 9 p.m. daily

XTC STATION
1207C Gum Branch Road • 347-4112

PERSONAL LOANS

- For home improvement, vacations, or any worthwhile purpose
- Flexible payments and terms
- Fast and friendly 24 hour service

Call or Stop By **MANUFACTURERS HANOVER**
The Consumer Services

44½ E Western Blvd
(919)455-4211
Weekdays 9 to 5

Manager - Bill
SgtMaj
CSR - Ke
CSR - Deb
CSR - Nan

Loans made by Manufacturers Hanover Consumer Services, Inc. or Manufacturers Hanover American Inc. depending on amount of loan and type of security.

SSG
A. Vaughan
Service Supp
the N
Associa
mass
and get
six ma
presente
military bra
achievem
4th Marine
Alpine War
Northern
Den
Warrior
Norway 150
Service Supp
unit design
support
transporting pas
heavy equipm
all vehicle
norma
based on six ex
TC
TRI-COUN
HOMES, INC.
The World's Largest Retailer
NEW 14 WID
DEEPER THAN
\$9,888.00
Exp. Financing Avail
Low, Low Down Paym
REPO SALE
New Double Wh
\$17,900.00
Low Down Paym
New Easy Credit
To Everyone
No Money Down
347-9133
1207 E. Wilmington Wh
from Camp Gele

Non-9 p.m.
9 a.m.-9 p.m.
9 a.m.-6 p.m.

Onslow
(Ame
\$2 Adm
Do

BSSG braves cold for transportation award

By Al. Vaughan

Brigade Service Support Group-4, 2nd FSSG received the National Defense Transportation Association Unit Award for coordinating massive amounts of transportation and getting supplies to forward areas during six major cold weather exercises.

The award is presented annually to one unit in each military branch for unusual and outstanding achievements in transportation during the year. The plaque was presented to BSSG-4 during the 22nd Annual National Defense Transportation Association Unit Award ceremony in Little Rock, Ark.

The nomination for the award was based on BSSG-4's achievements while supporting the 4th Marine Amphibious Brigade during Alpine Warrior '86, Northern Wedding '86, Northern Wedding '86, Bold Guard '86 in Denmark and German Alps '87 and Cold Weather '87 in Norway 150 miles north of the Arctic Circle.

Brigade Service Support Group-4 is a mobile unit designed to provide logistical support on a 24 hour basis transporting passengers, rations, and heavy equipment as well as maintaining all vehicles.

Although the nomination for this award was based on six exercises, I feel

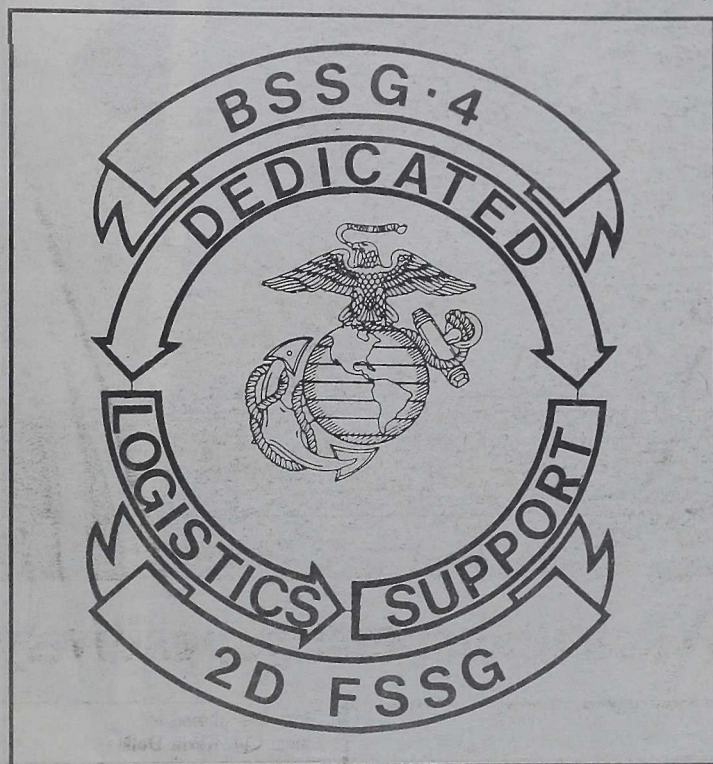
the ones that really won it for us were Northern Wedding and Bold Guard '86 because the two were so transportation heavy with sea, air, rail and convoy

movements," said Captain Ralph Ingles, BSSG-4's operation officer.

During Northern Wedding and Bold Guard '86, Ingles said BSSG-4 off loaded seven Naval amphibious ships at the Port of Esbjerg, Denmark and coordinated heliborne operations at two separate landing zones. Simultaneously they staged 583 wheeled vehicles into 25 separate convoys that later traveled 137 miles.

In addition to the convoy, BSSG-4 dispatched 10 separate trains loaded with 3,608 passengers, 40 amphibious assault vehicles, 28 battle tanks, two engineer-towed assault bridges and 15 pieces of engineer support equipment. In ten short hours the massive rail movement was completed on schedule and in 26 hours from the time the first ship docked, the dock was clear of all people and vehicles. The entire movement was conducted ahead of schedule without any accidents or breakdowns.

"The unique thing about us winning this award is we did everything other branches do—air lifts, sealifts and land moves—and we did it tactically under harsh conditions," said Col. David Douglas III, commanding officer of BSSG-4. "Every Marine in the 2nd FSSG that made up our ranks during these exercises definitely earned the title of Arctic Warrior."



as to be
CSDD-27 doing the
Marines carefully
one railcar to the
down their cumula
length.
"The cars are 89 feet
Wilkins. "We have to
load the vehicles so we
a gap in the middle of
vehicles to load and
You can't back up
we would have to use
which would take up
Beginning at about
20-Marine team fully
down 41 vehicles about
11:30 a.m.
"The boarding
smoothly," said
Bowman, embarked
"The initial plan was
loading and to ship
Now we can ship
train should reach
days."

TC TRI-COUNTY HOMES, INC.
"The World's Largest Retailer"

NEW 14 WIDE DEEPER THAN RENT \$9,686.00
Easy Financing Available
Low, Low Down Payment

REPO SALE
Like New Double Wide
\$17,900.00
Low, Low Down Payment
With Easy Credit To Everyone
Also Several 14 x 70's
No Money Down
347-3133
120 S. Wilmington Why.
cross from Camp Geiger)

A FULL SERVICE TRAVEL AGENCY

International Tours
of Jacksonville
Don't Be Left In Town!

BOOK NOW!!

PRESIDENTS' DAY WEEKEND
February 12th-15th


353-8550
Mon. - Sat. 10-9

THE HAIR CLINIC

wants your hair to look great in '88... with that in mind... **conditioning treatments are essential if you are to maintain healthy, attractive hair.**

COUPON
Conditioning Treatment with haircut \$10
Exp. 2/11/88 with this coupon

640 Maplehurst Road (across from Air Station)
Call 347-1108 for Appointment

Dorothy's Ruffled Originals, Inc.

Custom and ready made
Curtains & Accessories

6721 Market St.
Wilmington, N.C. 28405 919-791-1296
Call toll-free 1/800-334-2593
in N.C. call 1/800-672-2947
Shop Hours: Mon.-Sat., 9 a.m.-5 p.m.

AL LOAN
ment, vacations
se
ents and terms
ndly 24 hour ser
MANUFACTURER
ANOVER
e Consumer Serv
Manager -
Sp
lvd
CSR -
CSR -
CSR -
5

Onslow County Power Boat and Sail Boat Show
February 5th, 6th & 7th

Friday, Noon-9 p.m.
Saturday, 9 a.m.-9 p.m.
Sunday, 9 a.m.-6 p.m.

Onslow County Fairgrounds (American Legion Building)
\$2 Admssion Under 10 Free
Door Prizes Daily

Taylor and Kripner Attorneys at Military Law

Courts-Martial
Office Hours
Clemency Petitions

Administrative Hearings
Appeals
Medical Boards

455-3704

Engaging exclusively in the world-wide practice of military criminal and administrative law.
Free initial consultation.
Weekdays and Saturday mornings.

Vaughn E. Taylor
George Martin Kripner
Charles R. Jones, Associate

824 Gum Branch Road
Suite G
Jacksonville, N.C. 28540



Corporal Greg Weathers of Wpns. Co., 3/8, digs deep for the courage to challenge a hay-covered hill during dry grass ski training.



Pfc. Eric Leclair of Lima Co., 3/8, checks the bindings on his snowshoes as he checks the trim.



Making sure the bindings are tight to glide and prevent foot problems.

3/8 embarks on a snowshoe adventure courtesy of the USMC

Story and photos by Cpl. Val Bode

Playing Yukon Jack and creating snowangels face down in the grass wasn't exactly what Lima Co., 3/8, 2nd Mar Div., had in mind when they went through cold winter snowshoe training recently in preparation for the real snow up north.

Lima Co. humped 10 miles from their home base, Camp Geiger to TLZ Cardinal where they faced three days of unpredictable weather. While undergoing cold winter training there, Lima practiced emplacements, dry grass skiing, yukon stove setup, assembling cold winter tents

and, most humorous "The cold winter training is not what we are doing is and familiarization gear," said Lt. Col. De commander of 3/8. "I save the Marine time spend time in the snow." The first step in learning any piece of equipment is its nomenclature. Snowshoes are made of four parts—the frame, wire mesh and nylon. "Before attempting to use you need to inspect for cracks, torn or raveled

The adv... to cross-co... to use, acc... can proper... a 20-minu... But just... are disadva... through of... "Beating... rain is the... here," Tho... table and tr... concentrate... whether or... snowangels

So...no snow. Grass isn't white and snow doesn't grow.

Story and photo by Cpl. Val Bode

"On top of 'ole Smokey, all covered with grass, I lost my footing and fell on my They brought out the HMMWV and carried me out. I'd broken my leg and needed morphine. Please, let me go home," chants a Marine inside a cold winter shelter tent.

The cold seems to bring out the anxieties of many of helplessness of the atures that ines to curse the be it's simply the of not knowing how beat its chilling breath.

"Training in the freezing snow is no different than training in the desert or jungle. Every terrain has its own secrets and unknowns. It's just a matter of unlocking those secrets and learning the do's and don'ts," said Pvt. Robert Deans. "The more training a Marine receives, the more at ease he will feel when he actually has an encounter the cold. Dry grass skiing will keep the Marines on their feet."

To start off with, all parts of the ski must be checked for serviceability. The adjustments on the bindings of the skis is of utmost importance. A bad fit or lose adjustment will result in blisters.

"You have to check the bottom surface of the ski with your hand, feeling for rocks, wood, glass and gouges. If any chunks are missing, they must be repaired with glide wax and sandpaper until the entire ski is completely smooth," Deans said.

Private Robert Deans, H&SCo., 3/8, can't help but smile as he tries to turn around on skis.

"You also have to check the poles for dry rot on the basket and rips on the wrist strap."

Care of the skis is very important in a cold atmosphere. Every night, white gas should be applied to the skis to dissolve the old wax. Once this is accomplished, you have to use a P-tex candle to wax the bottom surface and wait two-to-three minutes, scrape off the excess and sandpaper for smoothness.

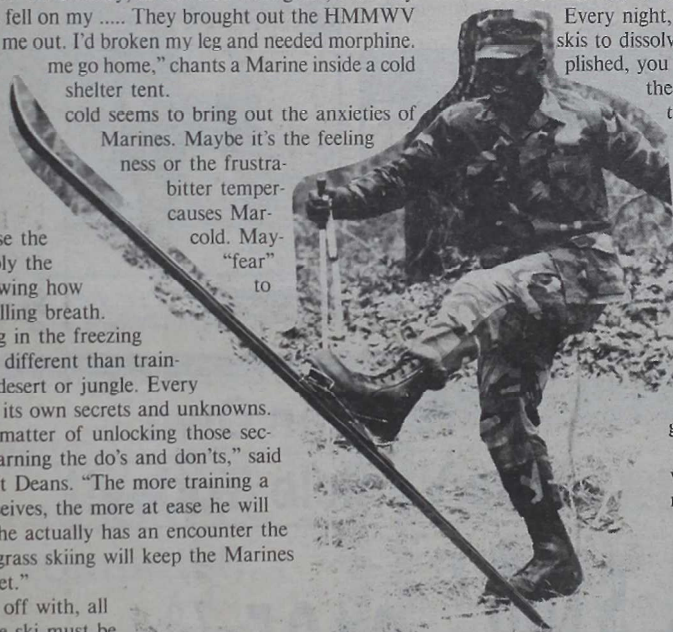
The type of wax used on the ski depends on the terrain and condition. There are three types of wax, the wax that goes on the kick zone underneath the boot and binding. Each can of wax is identified by color. The hardest wax is red, the medium wax is blue and the softest wax is green. The colder the snow, the harder the wax. These waxes are added in addition to the glide wax.

"Storing the skis properly in a cold weather, combat environment can mean life or death. The skis should be placed in sleeping order for accessibility and set face or white side up to prevent the straight black line of the ski bottom from being seen by a passing aircraft giving your position away," Deans said. Movement in the snow should be limited

to one file keeping to the same track as much as possible to prevent the squad from being an easy enemy target.

Ski oaring is another way of travel, used whenever accessible. It is simply when skiers are towed by a vehicle on a rope. The top speed the vehicle can go is 15 miles per hour and a passenger in the vehicle must keep his door open, always viewing the skiers.

"Familiarization is the key in real cold," Deans explained.



Marines from Lima Co., 3/8, don snowshoes and set out on patrol as they prepare for cold weather training up north.



The advantage of snowshoes compared to cross-country skis is that they are easy to use, according to Thomas. A Marine can properly negotiate in the shoes after a 20-minute class.

But just as there are advantages, there are disadvantages. Snowshoes can't go through obstacles, such as deep brush. "Beating the cold temperatures and terrain is the main thing we try to teach out here," Thomas said. "If you feel comfortable and trust your equipment, you can concentrate on the enemy instead of whether or not you're going to make snowangels."

or Cpl. The cold weather training is a challenge for the Marines. They are learning to survive in the elements. The first step is to get used to the cold. The second step is to learn how to move in the snow. The third step is to learn how to set up a shelter. The fourth step is to learn how to cook in the cold. The fifth step is to learn how to stay warm. The sixth step is to learn how to stay alert. The seventh step is to learn how to stay safe. The eighth step is to learn how to stay healthy. The ninth step is to learn how to stay motivated. The tenth step is to learn how to stay determined. The eleventh step is to learn how to stay focused. The twelfth step is to learn how to stay disciplined. The thirteenth step is to learn how to stay organized. The fourteenth step is to learn how to stay efficient. The fifteenth step is to learn how to stay effective. The sixteenth step is to learn how to stay successful. The seventeenth step is to learn how to stay victorious. The eighteenth step is to learn how to stay triumphant. The nineteenth step is to learn how to stay victorious. The twentieth step is to learn how to stay victorious.

ANGLICO Marines tackle Canadian white powder

Story by Sgt. Eva Snyder
Photos by 1st Sgt. John R. Holmes

Recently, Marines of 2nd ANGLICO, 2nd FSSG, participated in two doses of cold-weather training.

The company deployed to Goose Bay, Canada, allowing 2nd Brigade Plt. to 'continue to march' on skis preparing for a later bout in Bridgeport, Ca.

"The terrain features of both training areas allowed us to gain valuable expertise, making us doubly-skilled. Goose Bay had a more level terrain and sub-zero temperatures, whereas; Bridgeport is a mountainous area with a milder climate," said 1st Sgt. John R. Holmes, company 1st Sgt., 2nd ANGLICO.

The platoon kicked off the training by drawing Special Training Allowance Pool

(STAP) gear, tailored for extreme weather and not normally used here.

One of those items included water resistant Artic tent sheets. One was issued to every Marine and can be interlocked by buttons to form a tent.

Artic tent sheets proved especially useful during a windstorm ANGLICO Marines encountered. "Prepared for all weather conditions, we dug three feet deep into the snow and put our tent sheets up. This afforded us a stable protective base in the snow," Holmes said.

The outcome was exactly as predicted.

"We came out of the storm unscathed, and the close quarters and the extended period of time spent in the tents helped strengthen the esprit de corps 2nd ANGLICO Marines are so famous for," Holmes added.



Marines from 2nd FSSG's 2nd ANGLICO get a quick class on the fun of downhill skiing while in Canada.



What looks like a waltz of the snowbirds is actually skiers warming-up with some stretching exercises before taking to the slopes.



Tractors such as this, able to go where wheeled vehicles can't, with mobility in the snow.

Don't Wait!

S-15 Pick Up



\$146.⁸⁷
per mo.

\$895
Down
Cash or Trade

\$146.87 per mo.
48 months
11.96 APR

You Can Own This Vehicle Today!!

\$195.⁷⁹
per mo.

\$9462
Down
Cash or Trade



\$195.79 per m
60 months
12.96 APR

CALL NOW!

6349

CREDIT APPLICATION

NAME _____

SSN _____

PHONE Home _____ Work _____

Signature _____

No Obligation

(All prices include factory rebate plus tax, tags and \$79.00 service charge.)

Kennedy Oldsmobile-GMC

GM 1200 Gum Branch Rd. Phone 455-1727 GMC

See How Easy it is to Qualify for Financing

Mail this form to stop by Kennedy Oldsmobile-GMC today. You'll receive an answer immediately.

Ask for Ken, Don or Steve

1200 GUM BRANCH RD. KENNEDY OLDS *Kmart Hwy 17N

... snowfall a treat die hard Floridian

Cpl. Kevin Doll

new it had to happen sooner
er 25 years, I'm finally going
that rarest of weather
n, water in its grandest form,
at put the word "white" in
snow!

say? Grand? For someone
all their life in Florida, i.e.,
e State, snow ranks up there
ains, both of which make
ame number of appearances
nsula.

a, and much of the south,
s packaged in either rain or
inda lies there in lakes, rivers

What little I know of this
ipitation is that every flake
al as human fingerprints. It
ed in balls to hit passersby
or it can be made in man-size
f the Pillsbury doughboy.

all pebble down a hill picks
ow to wipe out a small town
use I saw it on Bugs Bunny).
inks to my ever-transient
os training, I will be serving
in the snow of far-off nor-

to some southern sun-
who still think hockey

masks are only worn on Friday the 13th,
being sent to the confines of the Arctic
Circle may be too horrifying to think
about. But to this motivated snow-devil
dog, I'm sure I will remember it for
winters to come.

I can see myself now during cold-
weather training in the wintry Northwest
learning how to ski (free lessons, mind
you, courtesy of my Corps), low-crawling
through unflavored Sno-Cone filling, and
eating MREs heated by that oldest of por-
table heaters, the armpit.

Don't get me wrong; complaining I'm
not. Who wants to see the world through
the window of a heated tour bus or from
the bow of a cruise ship with the mist of
the heated pool rising behind you? I know
the best way to see the world is to ex-
perience it as the natives do. To feel the
numbing blow of the wind crawling down
from the mountains and the crunch of
virgin snow under your feet.

Feeling good about doing your job in
a place where people dream of visiting,
but usually only see on television specials.
My heart may be in the sweltering heat
and humidity of the Florida swamps, but
my mind yearns for the experiences and
memories that can be gained from doing
the uncommon. Which is part of what be-
ing a Marine is all about.



Cpl. Val Bode

Pulling together

(Left to right) Corporal William Davis, Lance Cpl. Mike Scooby and Lance Cpl. Marty Pratt from H&SCo., 3/8, drag an Akio sled loaded with a Yukon stove during cold weather training at TLZ Cardinal. Hip harnesses are attached to the Marines when pulling the sled, which is used extensively during cold weather operations to move gear around.

What will \$799 buy you? MORE than an IBM PC compatible computer...

- 5.25" 360K disk drives
- 1MB RAM (expandable to 640K on motherboard)
- 8-bit 8086 CPU running at 8MHz
- monochrome and color graphics built in
- grey levels on tilt-swivel, filtered RGB monitor
- Microsoft compatible Mouse
- Digital Research's GEM software collection
- DOS 3.2, Locomotive BASIC, Calculator, Spooler and more
- software...valued at over \$500. No public domain "tricks"!
- serial and parallel ports, clock, joystick port and more...
- MS DOS software—the Navy/Marine Corps standard
- is 1-2-3 certified

AMSTRAD

Most popular PC is here...name brand quality at "no-name" pricing!
Come in for a demonstration this week.



Available from Jacksonville Mall in Plaza Shopping Center. 577-PLUS

Registered trademark of International Business Machines. GEM is the registered trademark of Digital
MS DOS and Microsoft are the registered trademarks of Microsoft Corp. Lotus 1-2-3 is the
trademark of Lotus Development Corp. Specifications are subject to change without notice.
Designed and printed with the Laser Printing facilities of Software Plus! Computers. Call for infor-
mation. Documents can also have the "typewritten" look for pennies. (Sorry, we currently support only BAS
using files.)

WINTER REBATES Still in Effect

Use your tax refund as your down payment.

Bring your completed tax forms and ask for details.

You don't have to wait for your money to enjoy the BIKE you want NOW!



YAMAHA of Jacksonville

The only dealer in N.C. & S.C. to be awarded
Yamaha's Pacesetter Dealer Award for 1987

We make the difference

925 N. Marine Blvd. 455-0124



(Above) Lance Cpl. Stephen P. Ames, 3/6, mans the MULE and waits for air support from an AV-8B Harrier. (Right) Marines from 3/6, wearing darkened goggles, watch as a Harrier moves in for an ordnance drop. The goggles protect their eyes from any laser reflection from the target while the MULE is operating.

MULES

from Pg. 1A

The Marines from 3/6 were conducting a two-day exercise at the G-10 impact area using the MULE's abilities and were supervised by pilots on one year infantry tours as forward air controllers in a tactical air control party.

"We advise the battalion commander on his air assets, such as the capabilities of aircraft and equipment, and suggest the best ways to employ them," said Capt. Hansel D. Bumgarner, a CH-53D pilot.

"The MULE's ultraviolet light is intense enough to blind," said McCollum. "We try to aim its spot on a flat, square or reflective surface that makes it easiest for the aircraft's sensors to pick up."

"The range of the MULE is around

2500 meters," said Capt. field, A-6 Intruder pilot at "If the ordinances had b combat payload, all of t have at least neutralized the half of them would have be

"During these exercises enlisted comm Marines on the air strikes," said Sat gives them the experience such a mission in case som to the officer in combat."

The accuracy with wh point targets for air supp of its operation makes weapon capable of servin Corps well in future train



MILITARY SPECIAL

Highway 17 South

FREE HBO **ESPN** **TV**
THE TOTAL SPORTS NETWORK MUSIC TELEVISION

15% DISCOUNT ON ALL ROOMS

With this Coupon and Military Identification
For Reservations Call 455-4923

Valid through February 6, 1988

WELCOME

25 Varieties of Submarine Sandwiches, Hoagies & Salads

Sun. - Thurs. 10:30 a.m. - 10 p.m.
Fri. - Sat. 10:30 a.m. - 11 p.m.

88¢ SUB SALE
★ Buy 1 Whole Sub & Large Drink
And Get Second Sub For 88¢ of equal or lesser value Exp. 2/10/88
with this coupon

SUB-SATIONAL

577-7777
Plaza Shopping Center
Across from Mall

Love Note

Roses and violets may be all right, but s
"I love you" in black and white.

Just \$1.00 per line.
Minimum ad 3 lines.

Ads must be re-
ceived no later than
Feb. 7th.

Allow 24 characters for the first line and 31 characters for each additional line. Count every letter, space and punctuation mark as one character. Ads will be printed in alphabetical order in Feb. 11th Edition. To place your ad fill out the coupon and mail with your payment to . . .

THE GLOBE
c/o Whitney Stevens
825 Gum Branch Rd.
Suite 127
Jacksonville, NC
28540

for
inform
call 342

Highlights and happenings...

1 courses offered

will be offering a Multimedia Stan-
Course Feb. 10 and 11 from 6:30-9:30
14, Mainside. A CPR Course will be
nd 25 from 6-10 p.m. To register, or
mation, call Linda Christie or Cathy
451-173/2182.

Mobile visit scheduled

will be conducting a bloodmobile
9 a.m.-3 p.m. at the Hadnot Point
n. For more information, call
451-173/2182.

Zoo trip offered

trip to Asheboro April 16 has been
e animals at the zoo and the spring
he price is \$17 for adults and \$15 for

Relief volunteer training

is offering two training courses for
s. The first will be at the MCAS, New River
O Feb. 18, 19, 22-24 and the second
jeune Staff NCO Club Feb. 25, 26,
Mar 2.
lase five days long from 9 a.m. to noon
n child care, make your own reserva-
me, come learn about Navy Relief.

Call 451-5346 or 5584 for more information.

Thrift shop sale

The Staff NCO Wives Club Thrift Shop will hold a Ten-Cent Sale Feb. 17 from 9 a.m. to 1 p.m.

The Thrift Shop also is in need of paper bags and wishes to remind everyone that they do accept goods on consignment.

The Staff NCO Wives Club will be having its monthly meeting on Feb. 18 starting at 7 p.m. in the Hadnot Point Staff NCO Club.

For more information call 451-5591.

Art auction scheduled

The MCAS Officers' Wives' Club is sponsoring an Art Auction Feb. 13 in the New River Staff NCO Club. The items up for auction can be previewed beginning at 7 p.m. and the auction will begin at 8 p.m. Cost at the door will be \$2 per person with the benefits going to the OWC Scholarship Fund.

Complimentary refreshments will be served. For more information call 353-7818.

The Officers' Wives' Club Executive Board is sponsoring an Art Auction Feb. 27 and 28 at Marston Pavilion. Preview begins at 6 p.m. with the auction commencing at 8 p.m. Feb. 27. February 28 will be a stand-up auction from 10 a.m. to 2 p.m. Cost is \$1 per person and is open to the public.

USO hosts dance

The Jacksonville USO is hosting a '50s, '60s and '70s dance on Feb. 13 from 7 p.m. to 10 p.m. There will be live music provided by 'Live Wire', a lip-sync contest and free munchies. Dress is casual or period-related. The dance is open to the public for singles or couples. For more information call Starr Lawhorn at 451-3411.

During February the Officers' Wives' Club Hospitality Groups of Camp Lejeune will be providing free homemade cake at the USO.

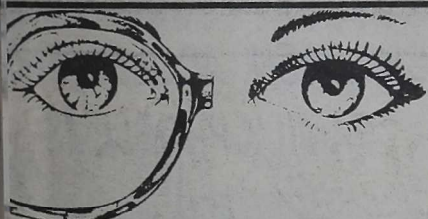
The USO also has a full schedule of events as part of their Service Wives Support Group throughout the month of February. Included are crafts, bowling, candy-making and cosmetic demonstrations. Call the USO at 455-3411 for more information.

Flea market scheduled

The monthly Indoor Flea Market will be held Feb. 6 at the Tarawa Terrace Community Center from 8 a.m. to 3 p.m. Buy, sell or just look around. Table rental is \$3 and may be reserved by calling 451-2253.

Garden plot registration

Re-registration for garden plots, located on Stone St. will be held at the Base Stables on Feb. 9. Patrons wishing to obtain plots for the first time may do so by applying on Feb. 23. All registrations will take place at the Base Stables. For more information call the Base Stables at 451-2238 or 1315.



AUSCH & LOMB SOFLENS CONTACTS
COMPLETE FOR ONLY \$120

WITH THIS AD

includes your initial eye examination, lenses, kit, instructions and follow up visits for one month. Come see us and see for yourself how you can look for soft contact lenses.

NOW, LOOKING GOOD COSTS LESS

WESTERN BLVD 353-1011

Samuels and Haire



WOODSON MUSIC & PAWN

We LOANCASH

Fair
Prices

Red Dot
Special
on
Selected
Items
90 Day
Layaways

Fair
Loans

Sunday
3 Locations
11 a.m. - 6 p.m.

18 HWY. 24 E. PINEY GREEN SHOPPING CTR. 577-2000
11 LEJEUNE BLVD. 353-2228 • 2423 LEJEUNE BLVD. 353-0313
11 WILMINGTON HWY. 347-2112 • TRIANGLE SHOP. CTR. 455-4106



BEAT THE PRICE INCREASE
4 WHEEL DRIVE
EXCELLENT FOR SNOW OR SAND

SUZUKI
SAMURAI
4X4



\$166.⁶⁸ per*
month

*\$1,000 down, cash or trade, sale price \$8295, plus tax & tags, 60 months at 12.95% with approved credit.

1-800-451-4633

MOUNTAIN HOLIDAY

With the purchase of any new or used Suzuki receive a 1988 Mountain Holiday. Hotel accommodations by: The Cardinal Motel, Featuring: Ski Hawk's Nest, Wahoo's Outdoor Adventure, Tweetsie Railroad, Grandfather Mountain, Linville Caverns, Mystery Hill, Dan'l Boone Inn, Rob's Sheraton Appalachian, Western Steer Steakhouse, Sandpiper Seafood Restaurant, Sollicifas, Mountain House Restaurant.

Al Smith **SUZUKI**

1-800-451-4633

832-6409 2401 WAKE FOREST RD., RALEIGH, N.C.

What's on the tube...

The following broadcasts will be aired on Camp Lejeune Cable Television, channels 5, 8 and 12, Feb. 8 - 12

- | | |
|--|--|
| <p>Feb. 8
Ch.12 - 8:05 a.m. Lejeune Report
Ch.5 - 9 a.m. Fire Prevention
Ch.8 - 9 a.m. How to Fight Soviet Tanks
Ch.5 - 10 a.m. How to Fight Tactical Deception
Ch.8 - 10 a.m. Contact: Ambush
Ch.5 - 11 a.m. Traditions Old and New
Ch.8 - 11 a.m. Operation Bluejay
Ch.12 - Noon Lejeune Report
Ch.5 - 1:30 p.m. Building on a Proud Tradition
Ch.8 - 1:30 p.m. Amphibious Ops: Naval Gunfire Support
Ch.5 - 2:30 p.m. Seamine Warfare
Ch.8 - 2:30 p.m. All Our Novembers
Ch.12 - 4 p.m. Navy News
Ch.12 - 5:30 p.m. Lejeune Report</p> <p>Feb. 9
Ch.12 - 8:05 Lejeune Report
Ch.5 - 9 a.m. Parachute Release and Rescue
Ch.8 - 9 a.m. Aircrew Rescue Procedures
Ch.5 - 10 a.m. Comm. within an Infantry Bn.
Ch.8 - 10 a.m. Amphib. Ops.: Arty. Planning and Employment
Ch.5 - 11 a.m. The Refugees: All Their Tomorrows
Ch.8 - 11 a.m. Stay Alive in the Summer Bush
Ch.12 - Noon Lejeune Report
Ch.5 - 1:30 p.m. Amphib. Ops.: Ship to Shore Boat Group Tactics
Ch.8 - 1:30 p.m. Amphib. Ops.: Ship to Shore Helo Assault
Ch.5 - 2:30 p.m. Hamlet Village: Search and Clear Techniques
Ch.8 - 2:30 p.m. Supporting Arms Arty.
Ch.12 - 4 p.m. Navy News
Ch.12 - 5:30 p.m. Lejeune Report</p> <p>Feb. 10
Ch.12 - 8:05 a.m. Lejeune Report
Ch.5 - 9 a.m. Amphib. Ops.: Ship to Surface Assault</p> | <p>Ch.8 - 9 a.m. Ambush and Immediate Action
Ch.5 - 10 a.m. Stay Alive in the Winter Bush
Ch.8 - 10 a.m. 2nd LAV Bn. Orientation Brief
Ch.5 - 11 a.m. Sexual Assault
Ch.8 - 11 a.m. Snake Bite Treatment
Ch.12 - Noon Lejeune Report
Ch.5 - 1:30 p.m. AAVP7A1 Operation Checks and Service
Ch.8 - 1:30 p.m. Health Record Maint.
Ch.5 - 2:30 p.m. Navy Enlisted Service Records
Ch.8 - 2:30 p.m. Pharmacy Math
Ch.12 - 4 p.m. Navy News
Ch.12 - 5:30 p.m. Lejeune Report</p> <p>Feb. 11
Ch.12 - 8:05 Lejeune Report
Ch.5 - 9 a.m. OCR Correspondence Pt. 1
Ch.8 - 9 a.m. Heat Stress
Ch.5 - 10 a.m. OCR Correspondence Pt. 2
Ch.8 - 10 a.m. Explanation of Navy Advancement system
Ch.5 - 11 a.m. Sea Turtles
Ch.8 - 11 a.m. Pre Operative Care
Ch.12 - Noon Lejeune Report
Ch.5 - 1:30 p.m. MK 19 40mm Grenade Launcher
Ch.8 - 1:30 p.m. Post Operative Care
Ch.5 - 2:30 p.m. Combat in a Built Up Area
Ch.8 - 2:30 p.m. The Eyes of Thomas Jefferson
Ch.12 - 4 p.m. Navy News
Ch.12 - 5:30 p.m. Lejeune Report</p> <p>Feb. 12
Ch.12 - 8:05 a.m. Lejeune Report
Ch.5,8,12 - 9 a.m. Off Limits
Ch.12 - Noon Lejeune Report
Ch.5,8,12 - 2 p.m. Off Limits
Ch.12 - 4 p.m. Navy News
Ch.12 - 5:30 p.m. Lejeune Report</p> |
|--|--|

On the radio..

The Camp Lejeune Report - a 2½ min. daily is aired on:

WJNC (1240am) at 1:30 p.m. weekdays

WJIK (1580am) at 7:45 a.m. weekdays

WEGG (710am) at 2:30 p.m. weekdays

WJCV (1290am) at 12:45 a.m. weekdays

WLAS (910am) at 1:30 p.m. weekdays

The Camp Lejeune Calendar - 90 sec. of up highlights is aired on:

WJIK at 12:45 p.m. weekdays

WEGG at 2:30 p.m. weekdays

WLAS at 10:30 a.m. weekdays

WJCV at 2:30 p.m. weekdays



Captain D's

A great little seafood place.

BITE SIZE SHRIMP DINNER



An extra large serving of delicious bite-size fried shrimp, crisp french fries, fresh cole slaw, Southern-style hush puppies, cocktail sauce and lemon wedge.

\$3.79

NEW MON-TUE SPECIAL: BATTER DIPPED SHRIMP DINNER \$2.99

FISH SANDWICH PLATTER 2 FOR \$3.99



Each platter includes: A Golden Brown fish fillet on a Toasted Bun, Crisp French Fries, Fresh Cole Slaw and Tartar Sauce.

Captain D's

No Other Discounts Valid With This Offer. PRESENT THIS COUPON TO CASHIER AT: 1417 Marine Blvd. Offer good thru Feb. 20, 1988

FISH & FRIES \$2.29



Two tender fish fillets, crisp French fries, and 2 Southern-style Hush Puppies.

Captain D's

Good up to 4

No Other Discounts Valid With This Offer. PRESENT THIS COUPON TO CASHIER AT: 1417 Marine Blvd. Offer good thru Feb. 20, 1988

FOR CHILDREN, ADOLESCENTS

FAMILY PROBLEMS and EATING DISORDERS

Dr. Kim G. Abulsaad, Ph.D.
Licensed Practicing Psychologist

CHAMPUS and other insurance accepted

410 New Bridge Street, Office Park, Suite 100
455-4727



May

EXTERMINATING COMPANY

Complete Household Pest & Termite

PERMITTED TO SERVICE GOVERNMENT QUARTERS FOR HOUSEHOLD PEST CONTROL

Call Your Professional Pest Control Specialists
"We Control Any bug Except A Litterbug"

Locally Owned And Operated

Havelock 447-8663
2701 COMMERCE RD. 455-5888

What's for dinner...

Thursday

Breakfast: sausage, ham, creamed beef on toast **Lunch:** soup, ravioli, lasagna, pizza, assorted vegetables, desserts and beverages **Dinner:** soup, stuffed green peppers, ham steaks, mashed potatoes, assorted vegetables, desserts and beverages

Friday

Breakfast: bacon, sausage, creamed beef on toast **Lunch:** clam chowder, fish, shrimp, oysters, beef patties jardiniere, macaroni and cheese, assorted vegetables, desserts and beverages **Dinner:** clam chowder, Polish sausage, veal steak, Franconia potatoes, assorted vegetables, desserts and beverages

Saturday

Breakfast / Brunch: assorted fruits and juices, cereal, eggs to order, bacon, fried potatoes, sausage, hamburger or cheeseburger, french fries, onion rings, assorted desserts and beverages **Dinner:** soup, Swiss steak, meat loaf, Lyonnaise potatoes, assorted vegetables, deserts and beverages

Sunday

Breakfast / Brunch: Same as Saturday **Dinner:** soup, steamship round, sloppy Joe, mashed potatoes, French fries, assorted vegetables, desserts and beverages

Monday

Breakfast: ham, sausage, creamed beef on biscuits **Lunch:** soup, scalloped ham and noodles, hot tamales, chili, burritos, assorted vegetables, desserts and beverages **Dinner:** soup, breaded veal cutlets, baked chicken, mashed potatoes, assorted vegetables, desserts and beverages

Tuesday

Breakfast: bacon, sausage, cream beef on toast **Lunch:** soup, simmered or apple glazed corned beef, Salisbury steak, oven-browned potatoes, assorted vegetables, desserts and beverages **Dinner:** soup, pork chop suey, turkey a la king, rice, egg rolls, assorted vegetables, desserts and beverages

Wednesday

Breakfast: creamed beef on toast, bacon, sausage **Lunch:** soup, fried rabbit, Swedish meatballs, O'Brien potatoes, assorted vegetables, desserts and beverages **Dinner:** soup, baked knockwurst w/sauerkraut, BBQ spare ribs, simmered chitterlings, parsley buttered potatoes, assorted vegetables, desserts and beverages

At the movies...

WEEK OF FEB. 4-10

Thursday: Nadine (PG) Camp Theatre
Friday: The Morning After (R) Camp Theatre
Saturday: The Color Purple (R) Camp Theatre
Sunday: The Principle (R) Camp Theatre
Monday: The Princess Bride (PG) Camp Johnson
Tuesday: The Principle (R) Camp Theatre
Wednesday: The Big Easy (R) Camp Johnson
Thursday: Cotton Comes to Harlem (R) Camp Theatre
Friday: Power (R) Camp Johnson
Saturday: Like Father, Like Son (PG-13) Camp Theatre
Sunday: Billy Galvin (PG) Camp Johnson

Camp Theater Matinee
Starts at 2 p.m.

Saturday
and Sunday: The Chipmunk Adventure

Movies may be substituted without notice due to nonavailability

Start Your New Year with a NEW CAR!

'88's ARE HERE!!



Nissan Pulsar



Nissan Standard Pickup

There ain't nothing like it..NOWHERE!

We Have Deals That Dazzle!

Cardinal
MOTORS, INC.
JACKSONVILLE, NC

353-7700

310 Western Blvd.,
Next To Jacksonville Mall



Nissan Sentra



Nissan Maxima

ADOLESCENT PROBLEMS and DISORDERS

Abulsaad, Ph.D. Practicing Psychologist

Other insurance accepted. Street, Office Park. 455-4727

May

PEST CONTROL COMPANY

COMMITTED TO SERVICE GOVERNMENT QUARTERS FOR HOUSEHOLD PEST CONTROL Professional Pest Control Specialists. Any bug Except A Littlebug. Locally Owned And Operated. 455-5888

In the highest tradition...

HqBn., MCB
1stLt. Lewis J. Burley - Ltr. of App.
1stLt. Carl V. Ramano - Ltr. of App.
Cpl. Darryl P. Rankin - Ltr. of App.

SptBn., MCB
Sgt. Gregory T. Simpkins - GCM
Sgt. Clayton B. Boyd - GCM
Sgt. Anna L. Bartell - GCM
Cpl. Rodney L. Karlsfrand - GCM
Lance Cpl. Jacqueline P. Mitchell - GCM
Lance Cpl. Ramon L. Washington - GCM
Lance Cpl. Keith A. Major - GCM
Cpl. Yolanda Rogers - Cert. of Comm.
Lance Cpl. Dwayne W. Farr - Cert. of App.
Lance Cpl. Ramon L. Washington - Mert. Mast
Lance Cpl. Junior R. Jackson - Mert. Mast

SOI, MCB
Gunnery Sgt. Ramon E. Reyes - Mert. Mast
Sgt. David L. Lyon - Mert. Mast
Sgt. Ruben C. Martinez - Mert. Mast

MCSSS, MCB
Cpl. Eddie R. Brown - Mert. Mast
Lance Cpl. Paul S. Teverle - Mert. Mast
Pfc. Samuel H. Shaw - Mert. Mast

RR Det., MCB
Sgt. Larry M. Hughes - GCM
Cpl. Terry A. Lee - GCM
Cpl. John D. Hagood - GCM
Lance Cpl. Cobie D. Harris - GCM
Lance Cpl. Robert E. Takacs - GCM
Lance Cpl. Stacy C. Bottoms - Mert. Mast

6th MAB
Capt. Brendan P. Ryan - Navy Comm. Medal
Lance Cpl. Jonier Gutierrez - NAM

Lance Cpl. Derek W. Harrison - Cert. of Comm.
Lance Cpl. Michael O. Hatfield - Cert. of Comm.
Lance Cpl. Derek W. Harrison - Cert. of Comm.

HqBn., 2nd MarDiv.
Capt. Patrick H. Hannum - Navy Comm. Medal
Staff Sgt. Phillip L. Fenn III - NAM
Cpl. Glen A. Edelman - GCM
Sgt. Lynn R. Wright - Mert. Mast

6th Marines
Sgt. Kim L. Dexter - NAM

8th Marines
Cpl. John W. McDavid - Cert. of Comm.
Cpl. Tommy G. Oostrich - Ltr. of App.
Cpl. Robert R. Deans - Ltr. of App.
Cpl. Timothy J. Pelamati - Ltr. of App.
Cpl. Micheal S. Patterson - Ltr. of App.
Lance Cpl. Michael R. Taylor - Ltr. of App.
Lance Cpl. Matthew Stallworth - Ltr. of App.
Lance Cpl. Errol O. Diaz - Ltr. of App.
Lance Cpl. Robert M. Fry - Ltr. of App.
Lance Cpl. Matthew Stallworth - Ltr. of App.
Cpl. William C. Morgan Jr. - Cert. of App.
Cpl. Wade M. Lescord - Cert. of App.
Lance Cpl. William W. Engle - Cert. of App.
Lance Cpl. Anthony J. Carleon - Cert. of App.
Lance Cpl. Allister G. Jones - Cert. of App.
Lance Cpl. Matthew R. Worden - Cert. of App.
Lance Cpl. Edward L. Schmoke - Cert. of App.
Lance Cpl. Steven W. Hurley - Cert. of App.
Lance Cpl. Randy G. King - Cert. of App.
Lance Cpl. Bryan E. Crouser - Cert. of App.
Lance Cpl. Kevin E. Koo - Cert. of App.
Lance Cpl. Jerry A. Hales - Cert. of App.
Lance Cpl. Scott J. Addington - Cert. of App.

Lance Cpl. Kenneth T. Lyons - Cert. of App.

10th Marines
Lance Cpl. Gary L. Davis - NAM
Sgt. Terry M. Gaylor - GCM
Cpl. John M. Kater - GCM
Lance Cpl. Audrey G. Hood - GCM
Lance Cpl. Steve T. Bennett - GCM
Lance Cpl. Matthew L. McMillan - GCM
HM2 Ronald R. Cozzolino - Mert. Mast
Cpl. Michael S. Warren - Mert. Mast
Lance Cpl. Matthew L. McMillan - Mert. Mast

2nd LAV Bn.
Sgt. Edward R. Milewski Jr. - GCM
Sgt. Paul R. Kopjoe - GCM
Lance Cpl. Robert Gonzalez Jr. - GCM
Lance Cpl. Jeremiah S. Farmah - GCM
Sgt. Christopher T. Paulus - Mert. Mast
Sgt. Kevin T. Halloran - Mert. Mast
Lance Cpl. Jeremiah S. Farmah - Mert. Mast

2nd Aslt Amphib Bn.
1stLt. Daniel J. Holzrichter - NAM
Cpl. Daryl M. Fogg - Cert. of Comm.

2nd CEB
Cpl. Gary W. McClelland - NCO of C

2nd Supply Bn.
Cpl. Luther M. Birt - GCM
Lance Cpl. John G. Carpenter - GCM
Cpl. Marshall J. Miller - Mert. Mast

2nd Dental Bn.
Lt. John R. Gordon - FMF Ribbon
DT2 Charlie Wright Jr. - FMF Ribbon

THE LAVECCHIA WARD GROUP, INC.
824 Gum Branch Road • Suite E • Jacksonville, N.C.

RÉSUMÉ PREPARATION SERVICE

Prepare now for your second career with the most experienced resume preparers in Jacksonville.

- Broadcast Letters
- Resumes
- Corporate Research
- Executive Placement
- Interview Training

Call now for a cost-free initial private interview. Contact JIM YANTORN at 347-2600 or 353-8877 any time.

YARD SALES OVER 100 SALES

Come Out and Find a Bargain or Set Up Your Own Yard Sale

AT THE MARKET PLACE

Located On The Corner of Hwy. 17 and Western Blvd.
Entrance at College Plaza

A Flea and Farmer's Market

Spaces \$7.00 & Up

Open Saturday and Sunday 7:30 A.M. until 347-2747

Network Travel Center

WORLDWIDE RESERVATIONS FOR ALL YOUR TRAVEL NEEDS.

Enjoy refreshments while viewing a video of your dream vacation

347-1177
Mon. - Fri. 10:00 - 5:30 Sat. By Appointment

BUSINESS OR LEISURE TRAVEL

Airlines / Amtrak
Cars / Hotels
Tours / Cruises
Passport Photos / Insurance

Dall's Plaza 1106 B Hwy 258
(across from Winn Dixie) Jacksonville

BOBBY'S HAIR

233-J Western E

15% OFF MILITARY AND DEPENDENTS

- perms
- Frosting, Hi-Lites
- Hair Coloring
- Waxing
- Manicures
- Precision Cuts
- Tanning Bed

WALK-IN OR CALL with co

353-5644

Our Taste Is Homemade

Dough Boy PIZZA.

Announcing our NEW LOCATION 347-7400
Highway 17 South
Delivering to Camp Geiger, Air Station, Verona & Southwest areas.

455-5111
New River Shopping Ctr.
Delivery to Camp Johnson, Northwoods & Lauradale.

COUPON 14" TWO ITEM PIZZA Two at \$11.90 Expires 2/21/88 *Not valid with other special offers.	COUPON 17" ONE ITEM PIZZA Extra Items \$1.35 Ea. Expires 2/21/88 *Not valid with other special offers.	COUPON 17" ONE ITEM PIZZA & 2 Doz. "BUFFALO" CHICKEN WINGS Extra Items \$1.35 Ea. Expires 2/21/88 *Not valid with other special offers.	COUPON TWO LARGE 14" DELUXE PIZZAS AND TWO PEPSIS Includes: pepperoni, sausage, mushrooms, green peppers and onions. Expires 2/21/88 *Not valid with other special offers.
\$5.95 PLUS TAX	\$7.50 PLUS TAX	\$11.95 PLUS TAX	\$13.50 PLUS TAX

VA & FHA LOANS NOW AVAILABLE!

Live at the Beach

For The Same Amount In Total

Oceanfront Condominiums On Emerald Isle

by Island Resorts Realty

Come See
Pebble Beach & Queen's Court

Call Today
9100 Emerald Drive
Emerald Isle, N.C. 28557
1-800-682-7810 (Rentals)
1-800-672-4228 (Sales)

100% VA In-Service RENT

Worship services...

Chapel notes

Tarawa Terrace Chaplains Office is sponsoring **Nutritional Planning for Families**. The classes were held the second, third and fourth of each month in the TT Community Center from 10-11:30 a.m. For more information call the Tarawa Terrace Chaplain's Office at 534-117.

Command Chaplain and Family Service is sponsoring a two-day **Marriage Preparation** Feb. 16 and 17. This monthly program is designed to familiarize couples with a variety of techniques that serve as a basis for building a healthy marital relationship. The classes run from 9 a.m. to 5:15 p.m. and both classes must be attended. For more information contact your command or the Family Service Center.

Catholic

- St. Francis Xavier Chapel
- Camp Geiger Chapel
- French Creek Chapel
- St. Francis Xavier Chapel
- Naval Hospital Chapel
- Courthouse Bay Chapel
- St. Francis Xavier Chapel
- Tarawa Terrace Community Center

Saturday Masses

- 5 p.m. St. Francis Xavier Chapel
- 5 p.m. Camp Johnson Chapel

CCD Classes

- 11 a.m. Sun., Bldg. 37 Preschool and Kindergarten
- 6:30 p.m. Sun., Bldg. 37 High School
- 6:30 p.m. Mon., Brewster Jr. High Grades 1-8
- 6:30 p.m. Mon., TT Community Ctr. Grades 1-3
- 7 p.m. Wed., Bldg. 37 Adult Education Class

Baptism Classes

5:15 p.m. Bldg. 37 the Wed. before the first and third Sunday each month. Call your unit Chaplain to register.

Confessions

3:45-4:45 p.m. St. Francis Xavier Chapel or contact your unit Chaplain.

Eastern Orthodox

- 11:30 a.m. Sun. Naval Hospital Chapel

Islamic (Muslim Juma)

- 11:45 a.m. Fri. French Creek Chapel

Latter Day Saints (Reorg.)

- 10:30 a.m. Sun., Bldg. 37 Sunday School
- 11:30 a.m. Sun., Bldg. 37 Sunday Worship

Seventh Day Adventist

Call 451-3210

Jewish

- 8 p.m. Fri. Sabbath Eve Service Jewish Chapel
- 10:30 a.m. Sun. Hebrew School Jewish Chapel
- 3 p.m. Mon. Hebrew School Jewish Chapel
- 3 p.m. Wed. Hebrew School Jewish Chapel

Protestant

Sunday Worship

- 9 a.m. Protestant Chapel
- 9 a.m. Camp Johnson Chapel
- 9:15 a.m. Naval Hospital Chapel
- 10:30 a.m. Protestant Chapel
- 10:30 a.m. Camp Geiger Chapel
- 10:30 a.m. French Creek Chapel
- 10:30 a.m. Tarawa Terrace Community Center
- 11 a.m. Courthouse Bay Chapel
- 6 p.m. Protestant Chapel

Weekday Services

- 5:30 p.m. Wed. Protestant Chapel

Sunday School

- 9 a.m. Bldg. 400 ages 3 to 6
- 9 a.m. Family Service Ctr. Jr. High thru Adult
- 9:30 a.m. TT Community Ctr.

ASTAL FOOT CLINIC
Diseases and Surgery Of The Foot Children and Adults

Dr. Todorov
531 Western Blvd.
57-3222

- Medicine
- Heel Spurs
- Toenail Problems
- Foot Infections
- Flat Feet
- In-Toe-Out-Toe
- Bunions
- Corns-Calluses
- Warts
- Orthopedics
- Sports Medicine
- Fractures
- Arthritis (gout)
- Diabetic-Foot Problems
- Neuromas
- Skin Problems
- Industrial Injuries
- Workmens Comp

We Accept Assignments On
Champus — Costwise — Medicare
BC/BX — All Insurance Plans Filed

Tar Heel Aviation, Inc.
Albert Ellis Airport
Jacksonville, NC
324-2500 324-3202 (Nights)
Open 7 Days A Week 0800-Dusk

FAA Approved Flight School
Fixed Wing Add On For Rotocraft Pilots

24 Hour Charter To All 48 States
Fly To Your Favorite Resort Or Go Home On That "96"!

Realize Your Dream
Get Your Pilot's License

WINTER SPECIAL
1st Lesson - \$20.00
Flight Instructors 11 Aircraft Available

Slender You® Figure Salon
INTRODUCES THE NO-SWEAT WORKOUT™

- You are monitored by certified consultants at all times
- Free computerized figure analysis and diet program

YOUR FIRST SESSION IS ON US.
Please call for an appointment.

Hours: Mon. - Fri. 9-9
Sat. 9-3

Slender You®
445 Western Blvd. Jacksonville, N.C. Suite P 346-9600

Diamond Outlet

Right my diamond diamond Outlet that's where I'll buy my Valentine gift.

We Rent DRESS BLUES
(No Deposit Required)
Hwy. 17 S. Past Bus Station

Accounts Welcome
CASH DOWN

Tire Country
CUSTOM INSTALLATION

of the **WORLD'S FINEST CAR STEREO SYSTEMS**

Panasonic and PrecisionPower
BLAUPUNKT
AMPS AND ACCESSORIES

Cerwin-Vega! BECKER

100% FINANCING NO MONEY DOWN!

Tire Country
CORNER WESTERN & LEJEUNE BLVD.
353-TIRE

Courts-martial...

Lance Cpl. C. J. Gofinco, 2nd Maint. Bn., 2nd FSSG, was convicted by general court-martial of distribution of marijuana. He was sentenced to forfeit all pay and allowances, 12 months confinement, reduction to E-1 and a bad conduct discharge.

Lance Cpl. Alvin C. Green, RR Det., MCB, was convicted by general court-martial of UA, larceny, forgery and wrongful use of an Armed Forces ID Card. He was sentenced to two years confinement, forfeiture of all pay and allowances, reduction to E-1 and a dishonorable discharge.

Lance Cpl. R. L. Cooper, 2/6, 2nd MarDiv., was convicted by general court-martial of carnal knowledge and committing indecent acts with a child. He was sentenced to seven months confinement, reduction

to E-1 and a dishonorable discharge.

Pfc. P. F. Baluzoski Jr., 8th MT Bn., was convicted by general court-martial of writing bad checks. He was sentenced to 14 months confinement, forfeiture of all pay and allowances, reduction to E-1 and a bad conduct discharge.

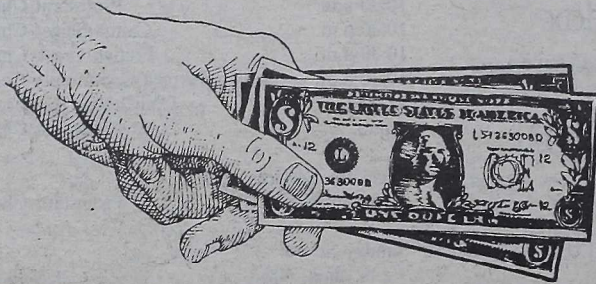
Pvt. B. B. Barrow, H&SBn., 2nd FSSG, was convicted by general court-martial of larceny and housebreaking. He was sentenced to four years confinement, forfeiture of all pay and allowances and a dishonorable discharge.

Cpl. T. Santiago, 1/6, 2nd MarDiv., was convicted by special court-martial of UA. He was sentenced to 60 days restriction and reduction to E-3.

Cpl. R. T. Vermeulen, 2nd Maint. Bn., was convicted by special court-martial of being drunk in public. He was sentenced to confinement, forfeiture of \$400, reduction to E-2 and a bad conduct discharge.

Cpl. S. J. Kelly, 2nd LAV Bn., 2nd Convicted by special court-martial of soliciting the commission of an offense. He was sentenced to 48 days confinement and reduction to E-2.

Pvt. Mark A. Phillips, MCSSS, MCB, was convicted by special court-martial of UA. He was sentenced to three months confinement, forfeiture of all pay and allowances and a bad conduct discharge.



Last week, the number and amount of worthless checks written to base exchange, commissary and club facilities totaled:

627 checks for a total of
\$50,967.95

Setting it straight.

The *GLOBE* wishes to correct errors which appear in this issue. Readers wishing to point out errors, whether ours or those of our sources, should contact the Managing Editor at 451-5655. Corrections will appear promptly in this space.

In an article published Jan. 21 about 2nd LAV Bn., the type of rounds fired by the LAV's 25 mm chain gun were incorrectly identified. The armor piercing discarding Sabot (APDS) round and the High Velocity Tracer (HEIT) round.

Last week's article on Pg. 7A featuring HqCo., 6th Mar. firing an automatic weapon incorrectly identified the SAW as an M72. It was actually an M249 squad automatic weapon.

Last week's article which appeared on Pg. 18A featuring artillery hand grenade training listed the unit of Lance Cpl. Allen as Oscar Btry., 2/10. Homeister's unit is Oscar Btry., 5/10.

Wordsearch...

A P O S T R P H E B R E C K E T S V S N
C A P E N E L R A D A S E R E T S I E E
O R E F X R E G N I L P E K G E T R M L
M E R F P E R E N T H E S E X P E G E U
M N O C T G S D A S K K Z C R E K L C C
M T I F S N E H Y P H R L I X R C U O I
A H D X E I M Y Y T R A H S A D A E L M
E E S U N L I P O P M M U M G N R O E E
X S E S I P C H Q A H N N Z O A B R N S
C I Y R R E O E T U Q O O D A V Y O Z H
L S U I A K L I O U I I X O M Y E E Y E
A A O C M H O P T T C T Z I M O N P E L
M E I X Y N N N A P O S T R O P H E S L
A I E Z M E M T O Y L E F E C E X L T L
T O A A N L O G V O O U Z P N O N L E I
O U R A X U Z A G X N Q U S M C T I O P
I K C O Q G N S E S E H T N E R A P A S
N A M E S R R E H P O T S I R H C S Y I
Q U E S T I O E D A G A N S I L L I E S
L U G R I V I R E G N I L P E K X S Z P

Punctuation

- APOSTROPHE
- BRACKETS
- COLON
- COMMA
- DASH
- ELLIPSIS
- EXCLAMATION MARK

CAMP LEJEUNE

SPORTS

February 4, 1988

Division B

East boxers head All-Marine team selections

Cpl. Val Bode
Lance Cpl. Kevin Doll

boxers from Okinawa and teamed together to take five out of gold in the 1988 All-Marine trials here, Jan. 28. Three of the ne boxers persevered to make The finals member of the team Parris Island.

ervice champion and CISM medalist Lance Cpl. Jeffery from Kaneohe Bay, Hi. began g's bouts with a confident deci- over Camp Pendleton's Cpl. ung in the 119-pound class. dominated Young from the ving blood and an eight-count t round.

125-pound division, three-time Lance Cpl. Tony Braxton Kaneohe Bay squeezed by the Tex- from Camp Pendleton, Pfc. Randolph. Action was continuous thers scored with key shots to nd head-Braxton attacking the Randolph chopping at the and head. The speed and ck punches kept the audience e of their seats and proved to st exciting bout all evening.

rd bout featured a battle of h both men over six-feet tall. shorter reach, Okinawa's Pfc. ghers sent 132-pound Lance Miles from 5/10, 2nd MarDiv. t for an unrecoverable eight- the RSC in the second round. ne interservice champion and medalist Cpl. Arthur Mar- 2nd MarDiv. had no trouble his title against Pfc. Garrett 2, 2nd MarDiv. in the class. West was forced to e towel at the end of the first

round after a Martinez direct hit to the liver.

Parris Island's Lance Cpl. Marnix Stamps took advantage of his longer reach to glide past Lance Cpl. Jeffery Boatwright for the win by decision.

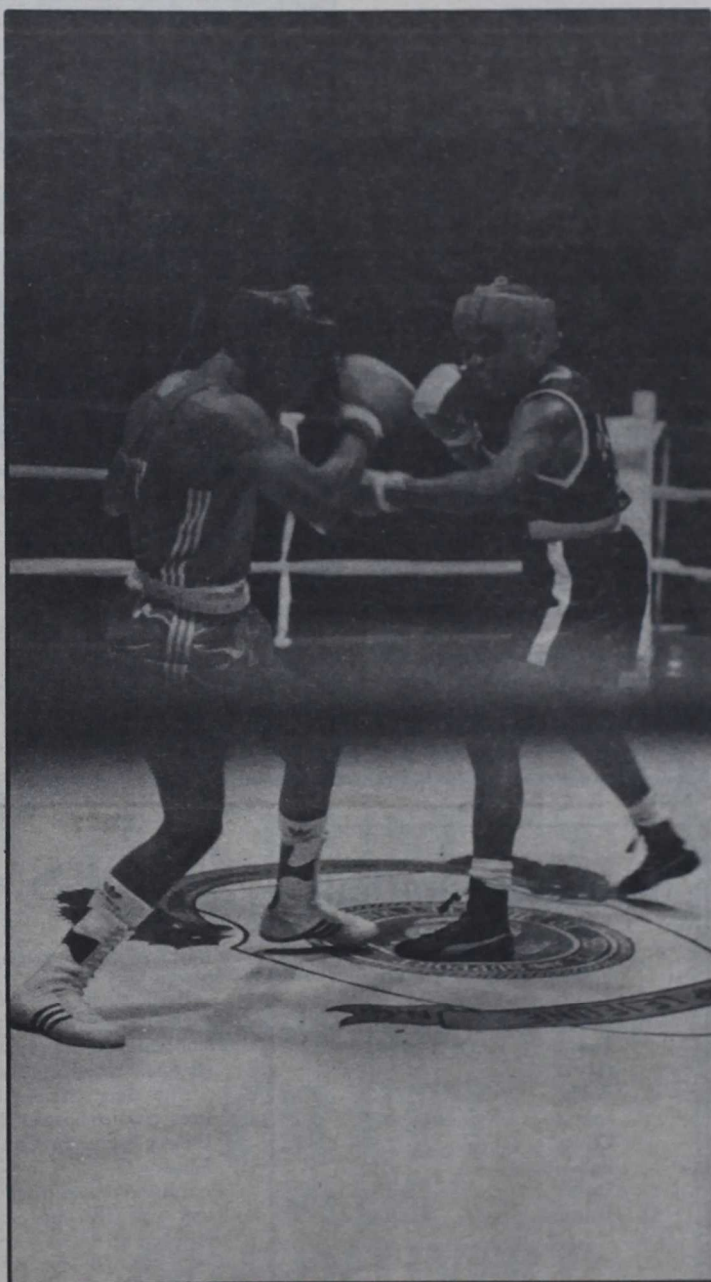
Okinawa's 156-pound Cpl. Ricky Uzzel awakened the crowd after intermission with an exhilarating decision win over Camp Pendleton's Pfc. Guadalupe Serna. Uzzel kept Serna on the defensive the entire bout with continuous stinging shots to the body.

The upset decision in the 165-pound class brought the crowd to their feet. Former All-Marine Sgt. William Lyle from Kaneohe Bay ruled the fight keeping his opponent 2nd FSSG's Lance Cpl. Gregory Terry backed against the ropes. Lyle continuously capitalized on Terry's ducking. But when the decision was announced, Terry's hand was raised by the referee.

The entire crowd rose to their feet with screams in protest and was still booing as the next bout was being announced.

Division's Lance Cpl. Joseph Pember-ton pounded Lance Cpl. David Marino, 3/4, 2nd MarDiv. in the first round with a blasting right sending him to the mat for an eight-count. Marino's coach threw in the towel before the second bout started, preventing any further damage.

The heavyweight action finished the evening with Okinawa's Lance Cpl. Jocelyn Sturge winning the decision over Camp Pendleton's Lance Cpl. Gary Butler. Superheavy Sgt. Eddie Donerlson from Okinawa showed his power by delivering an eight-count to Camp Pendleton's Pfc. Ronald McDonald in the second. McDonald's coach also threw the towel in during the second round giving Donerlson the victory.



(Above)Pfc. Teddy Randolph of Camp Pendleton, Calif. takes advantage of an opening against Lance Cpl. Tony Braxton from Kaneohe Bay, Hawaii during the All-Marine Boxing Finals 125-pound championship bout. Braxton won the fight by decision. (Left) Braxton retaliates moments later with a body punch of his own in what spectators agreed was the most exciting bout on the card.



ermenen, 2nd Main
by special court-mar
public. He was senten
forfeiture of \$400, res
ct discharge.

ly, 2nd LAV Bn.,
y special court-mar
e commission of an
48 days confinement

A. Phillips, MCSSS, M
ourt-martial of U.A. H
s confinement, forfeit
uct discharge.

straight

ors which appear in
ether ours or those of
5655.
this space.

2nd LAV Bn., the 137
ncorrectly identified. T
PDS) round and the H
ec
uring HqCo., 6th Mar
ed the SAW as an M1
eapon.

Pg. 18A featuring ar
unit of Lance Cpl. Al
it is Oscar Btry., 510

Punctu

OSTROPHE

RACKETS

OLON

OMMA

ASH

LLIPSIS

EXCLAMATION

MARK

Referee uses 'official' title to improve her game

Story and photo by
Lance Cpl. Kevin Doll

Going up for the rebound, the player grabs the basketball and scrambles away downcourt for the basket. She jumps for the shot but collides with an opposing player and both women fall to the floor in a tangle of torsos.

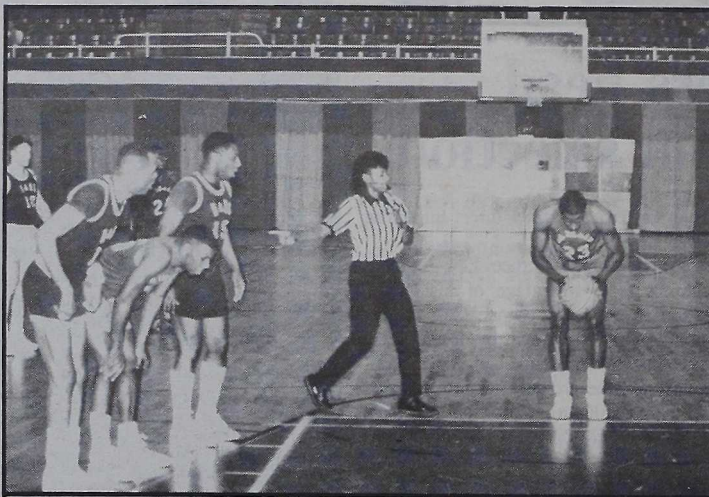
The referee blows the whistle and signals a foul against the defender. Cries of disbelief and anger erupt from the defender's team and from the audience but they fall on deaf ears as referee Sgt. Lavis A. Jackson, assistant instructor coordinator, Motor Transport School, Camp Johnson, sets up the free throw.

Jackson is in her second year as a referee for the New River Referee Association which serves Onslow County junior high schools, high schools, and city and county leagues, as well as games at Camp Lejeune and New River.

"I knew a captain who was a referee and I asked him how I could become one," said Jackson. "He told me about the association and I started attending their classes."

Jackson, who holds both motor vehicle operator and computer operator MOSs, also plays as a forward and center on MCSSS's basketball team.

"By being a referee you learn more about the technical and mechanical



Referee, Sgt. Lavis A. Jackson sets players for a free throw attempt during a semi-final game in the men's All-Camp Basketball Championships.

aspects of the game, like rule changes and signaling."

However, basketball isn't the only sport Jackson participates in.

"I started body building in '82 when I was stationed in Okinawa," she said. "I won first place in a body building contest the next year."

Jackson continues to train in body building and said she looks forward to being in future body building contests.

While in Okinawa, Jackson also received the All-Marine Most Valuable Player Award twice for her efforts on the basketball team.

Jackson explained that being a referee can be tough, sometimes.

"My first year, I didn't think I was doing a good job," she said. "But players kept coming up to me after the game and telling me I called a good game, and that helped a lot."

"You're always going to have pressure from the audience about your calls. You have to be firm, you see and block out the audience, the players know you're in control and they will respect you. Control is the key of the game," said Jackson.

"A good thing about being a referee is that it can bring out the aggressive side in a shy person. You're in front of the audience and what you're doing is for yourself, your abilities and your confidence," she said.

The 25-year-old Jackson, who has been a Marine seven years, isn't content just for physical fitness, though.

"I'm working on my association in computer science," she said. "I'm also taking college algebra now, and I love math."

Jackson, who was born in Salem, N.C., but raised in Quantico, also finds the time to raise her two children. Her oldest daughter, Antonneshae, is usually seen in the stands on the sidelines at her mother's games.

Jackson hopes to further her education in bigger games.

"I would like to be a college basketball player, perhaps the first woman NBA player," said Jackson with a smile.

With her track record and her experience, that may not be a three-point shot.

Youth Basketball Standings

Midget League

Team	W-L
Hawks	5-0
Wildcats	4-1
Lakers	4-2
Celtics	2-3
Bulls	1-3
76ers	1-3
Warriors	0-5

Minors League

Team	W-L
Celtics	5-0
Bulls	4-1
Knicks	4-1
Lakers	2-2
Pistons	1-3
Rockets	1-3
Blackhawks	1-4
Bucks	0-5

Major League

Team	W-L
Celtics	4-1
Lakers	4-1
Bulls	3-2
Rockets	3-2
Pistons	1-4
76ers	0-5

MCES engineers tourney win

By Lance Cpl. F. E. Charles

Headquarters and Service Company, MCES, engineered a victory to take the Commander's Cup Volleyball tournament at Courthouse Bay in a double round robin points scoring tournament.

After three days of preliminary competition between rival companies, H&SCo. faced off against Utilities Instruction Co., MCES in the final match, January 28.

Teamwork was paramount for the H&SCo. victory over UIC. But individual efforts from team members led the way. In the first game, Cpl. Garret Newsham and Capt. Mike Etter scored points from the spike line. While Lance Cpl. Jerome Harris scored

with accurate serves to open holes in UIC. The first game ended 15-10.

But UIC wasn't easily defeated and some cause for concern in the second game was highlighted by acrobatic saves. Though, helping pull out the victory for H&S was the ballistic leaps in defense by Lance Cpl. Paul Dunn. Final score, H&S 12, UIC 12.

The overall standings for the MCES Cup Volleyball Tournament was: H&SCo.; second place, UIC; third place, CEIC; fourth place, CEIC.

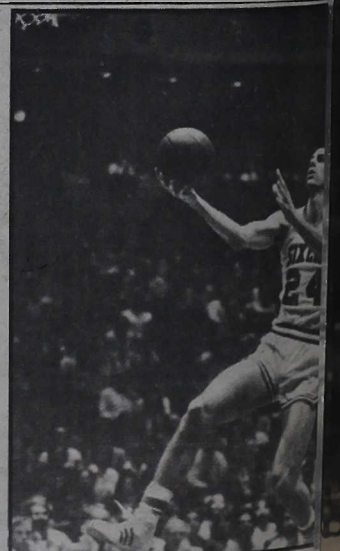
The winners were presented with the Commander's cup trophy.

"The Main Event"

Date: Feb. 6
Place: Jacksonville High School
Time: 7 p.m.
Cost: Free

Hear former NBA Philadelphia 76'er, UNC All-star, and 1976 Olympic Basketball Team member Bobby Jones speak. The 6'9" forward retired from the NBA in 1986 after a 12-year career. Jones, a motivational Christian speaker, was a member of the 76'ers 1983 World Championship team.

Sponsored by the Onslow County Fellowship of Christian Athletes



her sport shorts...

You're always going to have pressure from the sidelines. You see and block out the ball. You respect your opponent. A good thing about it is that it can bring out the shy person. You're a person and what you're doing is yourself, your abilities and the game." said Jackson. "The 25-year-old Jackson Marine seven years ago. I'm working on my computer science." Jackson, who was raised in Salem, N.C., also finds the time to raise his old daughter, Antonia, usually seen in the sidelines at her games.

softball registration

Camp Lejeune Dependent Wives' Spring League registration at Goettge Memorial Hall, 9 a.m. to noon, March 15-18. The fee is \$10.00. Dependent wives and daughters are eligible to participate. Dependent must be 16 years of age by April 1, 1988. Participating in another softball league. Personnel may participate, but can't participate in intramural league.

racquetball tournaments

Intramural and All-Camp Racquetball tournaments will be conducted here by double. There are five divisions including: Open military men regardless of age. Senior 35-39 years of age. Master-Open to 40 years of age or over. Women's-Open women regardless of age. Women's seniority women 30 years of age and over. Information call 451-3636.

turner classes

Turner classes are now scheduled for evenings in bigger games in addition to the noon hour. Classes will be held at the Fitness Center, Monday through Friday, noon to 5 p.m. Monday, Tuesday and Wednesday. For more information call Vickie at extension 5411.

Upcoming sporting events

Youth Basketball Schedule

(All games at Area 1 Gym)

Feb. 5
7 p.m. Lakers vs Rockets (Minor)
8 p.m. Pistons vs Rockets (Major)

Feb. 6
8 a.m. Wildcats vs Warriors (Midget)
9 a.m. 76ers vs Tigers (Midget)
9 a.m. Bulls vs Hawks (Midget)
10 a.m. Blackhawks vs Pistons (Minor)
11 a.m. Knicks vs Bulls (Minor)
Noon Bulls vs Lakers (Major)
1 p.m. Celtics vs 76ers (Major)

Men's Intramural Volleyball

(All games at Area 4 Gym)

Feb. 4
5:30 p.m. 4/10 vs HqBn., MCB

6:30 p.m. MCSSS vs JPAO
7:30 p.m. 2nd Tank Bn. vs HqBn., Div.
8:30 p.m. 2nd Radio Bn. vs RR Det.
9:30 p.m. 2nd Aslt Amphib Bn. vs 6th MAB

Feb. 9
5:30 p.m. 2nd Supply Bn. vs HqBn., MCB
6:30 p.m. HqBn., Div. vs H&SBn., FSSG
7:30 p.m. JPAO vs MCES
8:30 p.m. SptBn., MCB vs HqBn., MCB

Women's Intramural Volleyball

(All games at Area 4 Gym)

Feb. 8
6:30 p.m. HqBn., MCB vs NavHosp.
7:30 p.m. HqBn., Div. vs 2nd Supply Bn.
8:30 p.m. MCSSS vs Dep. Wives

Feb. 10
6:30 p.m. MCSSS vs HqBn., Div.
7:30 p.m. 2nd Supply Bn. vs NavHosp.
8:30 p.m. Dep. Wives vs HqBn., MCB

Travel in fast company.



\$600 Discounts
on ALL Volkswagens
(except Fox)



power.
18 Volkswagen high-performance GTI 16V, Scirocco 16V and a GLI 16V. These top performers are a German-engineered 16-head cam engine, rack-and-independent sport suspension

German engineering. Volkswagen way.

Volkswagen Inc.

353-2142
Corner Of Lejeune
And Western Boulevards
Jacksonville, N.C.



CRUSTY'S PIZZA

FREE DELIVERY

BUY ONE, GET ONE FREE!

PLUS FREE DELIVERY

(Limited Area)

CRUSTY'S PIZZA
137 Marine Blvd.
347-7676

Serving Camp Geiger,
Camp Johnson, Air
Station and New River

NOW OPEN CRUSTY'S PIZZA
15 Doris Ave.
455-8900

Serving Northwoods,
Cardinal Village,
Gum Branch Road &
Ramsey Road

CRUSTY'S PIZZA
211 Western Blvd.
353-3393
Serving Mainside
French Creek, MOQ's,
TT's Midway Park,
Brynn Marr
& Piney Green

CRUSTY'S PIZZA

EXTRA! EXTRA!™
TWO SMALL
THREE ITEM
PIZZAS
\$8.65

Price does not include tax. Price subject to change.

Expires 2/14/88

CRUSTY'S PIZZA

NEW!
TWO MEDIUM
THREE ITEM
PIZZAS
\$10.99

Price does not include tax. Price subject to change.

Expires 2/14/88

CRUSTY'S PIZZA

EXTRA! EXTRA!™
TWO LARGE
THREE ITEM
PIZZAS
\$12.89

Price does not include tax. Price subject to change.

Expires 2/14/88

CRUSTY'S PIZZA

EXTRA! EXTRA!™
TWO LARGE
TWO ITEM
PIZZAS
PLUS 4 COKES
\$13.99

Price does not include tax. Price subject to change.

Expires 2/14/88

Due to the tremendous success of our new car sales, we are overstocked with good used cars! Come in today!

USED CARS - TRUCKS - VANS - 4x4's

WE HONOR ALL CREDIT UNIONS
ON LOT BANK FINANCING - IMMEDIATE DELIVERY
3000 Miles / 3 Month Warranty on Units That Qualify

SPORT CARS

1984 300ZX TURBO

WAS \$10988 NOW **\$9800**

ECONOMY

1981 TOYOTA TURCEL

WAS \$2988 NOW **\$2400**

1986 NISSAN SENTRA

WAS \$6488 NOW **\$5800**

1984 ESCORT SW

WAS \$3988 NOW **\$3200**

1983 280ZX

WAS \$8988 NOW **\$8000**

1986 NISSAN STANZA SW

WAS \$10488 NOW **\$9000**

1986 PULSAR NX

WAS \$8488 NOW **\$7500**

1984 OLDSMOBILE

WAS \$6988 NOW **\$5800**

INTERMEDIATE

1984 CHRYSLER 5th AVE.

WAS \$8488 NOW **\$7400**

TRUCKS

1985 TOYOTA EXTRA CAB

WAS \$6488 NOW **\$5800**

1986 BUICK LESABRE

WAS \$10988 NOW **\$9900**

1986 CHEVY SILVERADO

WAS \$9988 NOW **\$8500**

1987 NISSAN MAXIMA

WAS \$14488 NOW **\$13500**

1986 GMC S-15

WAS \$6488 NOW **\$5500**

1984 MERCURY MARQUIS

WAS \$6488 NOW **\$5400**

1985 DODGE RAM 4x4

WAS \$6988 NOW **\$5900**

1986 NISSAN MAXIMA

WAS \$12988 NOW **\$11500**

1985 GMC S-15

WAS \$5488 NOW **\$4500**

100% FINANCING

To Those Who Quality

VANS

1984 TOYOTA VAN

WAS \$6988 NOW **\$6200**



353-7700

310 Western Blvd.
Next to Jacksonville Mall

3-1988 CHEVY CUSTOMIZED

WERE \$24988 NOW **\$21988**

Hi-Rise Vans (Full Power, Color TV, VCR, Power Seats, Dual A/C)

We Have Deals That Dazzle!

PURE WATER

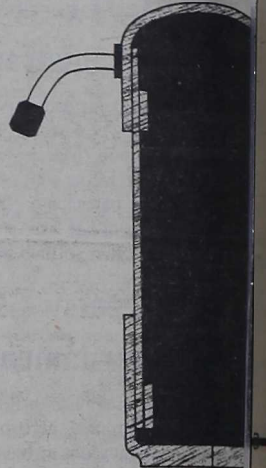
ARE YOU CONCERNED ABOUT GOOD HEALTH?

DO YOU SPEND A SMALL FORTUNE ON BOTTLED WATER?

WOULD YOU DRINK MORE WATER IF IT WERE CHEMICAL-FREE AND PURE?

IF THE ANSWER IS YES TO ANY OF THESE, GIVE US A CALL:

347-2557.



Distributed by:

CONSOLIDATED SALES ASSOCIATES

A CONTRACT SALES & MARKETING COMPANY

JOHN F. FITZGERALD JR

825 Gum Branch Road
Suite 125
Jacksonville, N.C. 28540

(919)

**Winter Sidewalk Sale
Feb. 5-7**



Merchants bring out the bargains for three days. Great savings on fall and winter merchandise. Register to win a \$300, \$200 or \$100 ping spree. Drawing to be held Sunday, Feb 7th at 5 p.m.

73 stores for all you shopping needs.



Western at Country Club

10 a.m.-9 p.m. Monday thru Saturday,
1-6 p.m. on Sunday

EXTRA LOW  PRICES!

WHOLE FRYERS 39¢ Lb.



Holly Farms Grade A

Prices in this ad good thru Sunday, February 7, 1988.

We Reserve The Right To Limit Quantities On All Items.

USDA Choice Beef RIBEYE STEAKS \$3.98 Lb.



10 Lb. Bag - Jumbo California Seedless

NAVEL ORANGES

\$3.49

10 Lb. Bag - Washington State Red

DELICIOUS APPLES

8 Lb. Bag - Fresh Florida Pink Or White

GRAPEFRUIT



Fresh Lean BOSTON BUTTS 98¢ Lb.

Imported Red PLUMS & NECTARINES \$1.29 Lb.



Thompson Or Red SEEDLESS GRAPES \$1.29 Lb.

Food Lion, Inc.
EXPIRATION DATE: FEBRUARY 29, 1988
Save \$1.00
ON YOUR NEXT PURCHASE OF ANY FLAVOR OF NEW HOLLY FARMS OVEN ROASTED CHICKEN.



Chili With Beans 69¢
15 Oz. - Libby's

Fresh Cut Whole Or Rib Half
Pork Loins \$1.38 Lb.
Sliced FREE!

Fresh Florida Temple
Oranges Or Tangerines 11/\$1.99



EXTRA LOW PRICES ... Everyday

Ramen Pride Noodles 5/89¢
3 Oz. - Beef/Mushroom/Chicken

Potato Flakes 3/\$1
8 Oz. - Idahoan

Del Monte Raisins 89¢
15 Oz. - Seedless



Slim Line Budget Gourmet \$1.49
10 Oz. - Frozen Assorted

Cake Mixes 69¢
Betty Crocker 18.25 Oz. - Assorted

Chef Boy-Ar-Dee 75¢
15 Oz. - Beef A-Roni/Mini Ravioli/Spaghetti With Meatballs

Broccoli Spears 2/\$1
10 Oz. - Frozen Pictsweet

Pictsweet Spinach 3/\$1
10 Oz. - Frozen Chopped/Leaf

Downy Fabric Softener \$2.89
96 Oz.



Scot Towels 69¢
Large Roll - Assorted

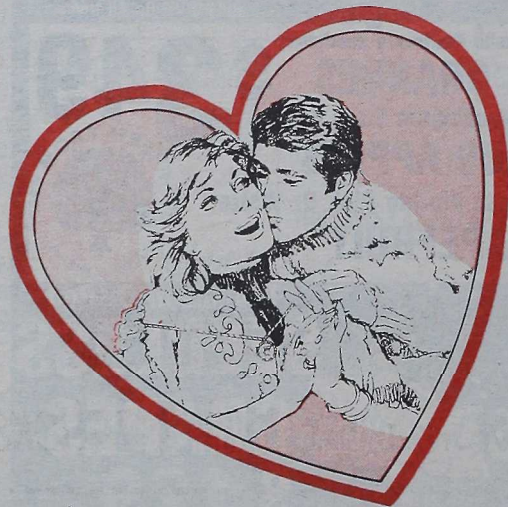


Friskies Cat Food 3/\$1
13.5 Oz. - Beef & Liver/Mixed Grill/
13 Oz. - Turkey-Giblet

Chatham Dog Food \$2.79
20 Lb. - Chunk/Ration

GLOBE 4B Feb
WATER
SALES & MARKETING
GERALD JR
ewalk S
5-7
the bargains for
on fall and winter
a \$300, \$200 or
to be held Sunday
Jacksonville
Monday thru Satur
m. on Sunday

For just Dollars per month DEVON has Super Valentine Gold & Diamond Gifts

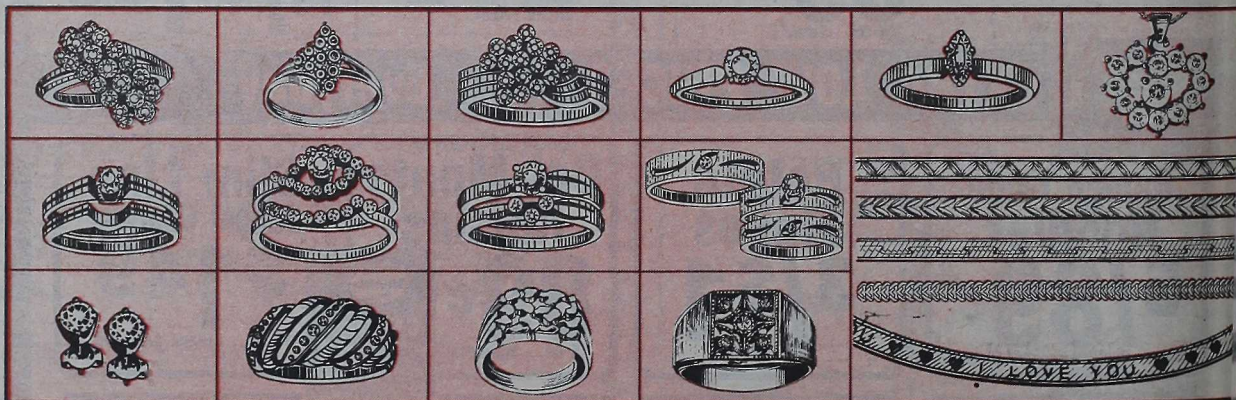


Serving the Military (E1 & up) and Civil Service with

- ★ CONVENIENT CREDIT
- ★ NO DOWN PAYMENT
- ★ TAKE IT HOME TODAY

MAKE THIS VALENTINE DAY SPECIAL

- 14 KT. GOLD
- TOP QUALITY DIAMONDS AND PRECIOUS GEMS
- FREE RING SIZING
- FAMOUS WARRANTY WITH ANY DIAMOND PURCHASE
- LOW, LOW MONTHLY PAYMENTS
- FREE 14 KT. GOLD CHARM WITH PURCHASE OF ANY DIAMOND RING, 14 KT GOLD CHAIN OR DIAMOND EARRINGS



BONUS BUY!



Technics 6375*
plus tax
per month

SALE \$999.99
Del. Pmt. \$1147.90

TECHNICS 100 WATT STEREO W/TOWER SPEAKERS

- Dual cassette with high speed editing & Dolby® B NR
- FM/AM quartz synthesized digital tuner
- 14 band graphic equalizer
- 3-way tower speakers
- Optional compact disc player with remote control

OPTIONAL CD PLAYER 25⁵⁰ plus tax
per month
SALE \$399.99 Del. Pmt. \$459.00

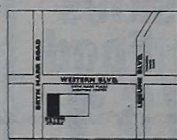



DEVON
Home Center Stores

★ ELECTRONICS ★ JEWELRY ★ FURNITURE ★ APPLIANCES

SALE ENDS FEB. 14th, 1988

And for more GIFT IDEAS for your VALENTINE SEE your store manager for SUPER DEALS on ELECTRONICS, FURNITURE & APPLIANCES



JACKSONVILLE #235
236 Brynn Marr Road
(919) 577-1328

Mon.-Fri. 10am to 8pm
Sat. 10am to 5pm
Sun. Closed

WE FINANCE ALL QUALIFIED MILITARY & CIVIL SERVICE EMPLOYEES
*Per month price based on no down payment with 17.9% annual percentage for 18 months. Multiply monthly payments by 18 months for total cost. Price may vary depending on local sales tax.

Shopping for a loan?
At
MARINE FEDERAL

We respond
to your loan request
in minutes
NOT days

Great rates, too!

Here's a few to compare	Marine Federal Premium Loan Rates*	Navy Federal Loan Rates**
New Auto (up to 48 mos.)	8.9%	9.5%
New Auto (up to 60 mos.)	9.5%	9.9%
Signature	13.9%	14.5%
VA (no annual fee)	13.92%	14.0%

The lower the interest rate
the lower your monthly payment

APPLY TODAY!

Active and retired members of
the following are eligible to join
MARINE FEDERAL!

- All ranks of Navy and Marine Corps personnel associated with Camp Lejeune and MCAS.
- O.D. and Non-appropriated Fund Civilians at CLNC and MCAS.

Also:
Navy Relief and Red Cross Employees, Jacksonville City Employees, Postal Employees, Onslow County Employees, Onslow Memorial and Brynn Marr Hospital Employees and more (for a complete listing call or stop by).

You can belong to more than 1 credit union!

* for qualified members

** As published in "Home Port", 1st. Qtr. 1988, Vol. 29, No. 1

MARINE FEDERAL CREDIT UNION

"We're doing more for you"

(919) 451-2492 or 577-7333

MFCU Hours

Bldg. 58 Camp Lejeune	Jacksonville Offices
Mon. - Thurs. 9:00 - 5:00 Fri. til 6:00	Brynn Marr Gum Branch Air Station Mon. - Thurs. 9:00 - 5:30 Fri. til 6:00
Swansboro Mon. - Thurs. 9:00 - 5:30 Fri. til 6:00	Wilmington Mon. - Fri. 9:00 - 5:00



NOW IN PROGRESS . . .

MAZDA TRUCK SALE!

At Mazda of Jacksonville
(Through Feb. 15th)

\$500
CASH BACK ON ALL TRUCKS

100% FINANCING AVAILABLE*

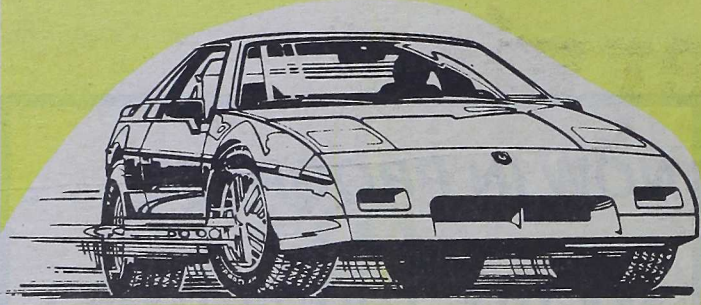


1988 MAZDA SE-5

SAVE SERIOUS MONEY AT MAZDA

* To those who qualify.

mazda
OF JACKSONVILLE
123 Western Blvd. 353-7387



Comple
TIREVILLE
HOME C

Announcing the easiest credit program
in the Jacksonville area.

Up to \$3000 instant credit

**NEED CREDIT?
We Can Handle It!**

We accept ALL Major Credit and Automotive Cards



**A COMPLETE
AUTOMOTIVE SERVICE CENTER**

All Technicians Certified By The National Institute for Automotive Ex



Wheel Alignment



Breaks



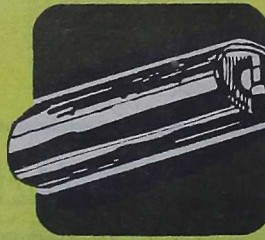
Tune-up



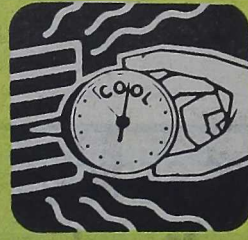
Shocks



Trans
Ser



Mufflers



Air
Condition



Front
End Repairs



Batteries



Lub
Conv

TIREVILLE
HOME OF 100% FINANCING

Oil, Filter, Lube
\$9.95

Most American & Imports
with this coupon.

Mon.-Fri. 8 a.m. - 8 a.m.

2221
Lejeune Blvd.
353-1190



TIREVILLE
HOME

Serving Camp Lejeune for over 35 years

HIGH PERFORMANCE TIRES & WHEELS

TIRES & TIRES & TIRES



Goodrich
T/A RADIAL



GOODYEAR
Eagle GT Gatorback



PIRELLI



UNIROYAL



MICHELIN



ENGLEBERT



TOYO
HP600



AURORA
817HR



CENTENNIAL TIRES
INTERCEPTOR H/R

Wheels & Wheels & Wheels



CRAGAR



TRUE SPINZ



ENKEI



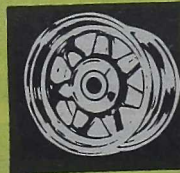
AMERICAN



ET MAS



KEYSTONE



Convenient Locations to Serve You in Jacksonville

8 a.m.-4 p.m.



1132
Gum Branch Rd.
347-1212

TIREVILLE

HOME OF 100% FINANCING

Disc Brakes

\$19.95

Metallic Pads Extra
with this coupon.

TIREVILLE

CLASSIFIED

AUTOS

87 Mazda RX7, Tornado Silver, loaded w/accessories. \$15200 or BO. 1-253-5500 after 6.

1978 Jeep CJ7 304 CI 3 speed, w/hardtop. Runs great. \$2100. 353-5296 after 5.

HELP WANTED

ADVERTISING AGENCY
Needs experienced print media account executive. Excellent working conditions for an aggressive, success oriented individual. Send resumes to Suite 127, 825 Gum Branch Rd., Jacksonville, NC 28540.

AMERICAN ENCYCLOPEDIA BY GROLIER
Needs salespersons. Great pay. Send resume to Encyclopedia, 407 Snow Hill Street, Ayden, NC 28513.

IMPORT AUTO MECHANICS NEEDED! MUST HAVE 2 YRS. EXPERIENCE & OWN TOOLS. EXCELLENT PAY PROGRAM & BENEFITS! APPLY IN PERSON TO DON BURTON AT CARDINAL MOTORS, 310 WESTERN BLVD., JACKSONVILLE, NC 353-7700.

HELP WANTED

Qualified typesetter needed. Work part time evenings. Must know Compugraphics Power View 10 System. Apply in person only at Jacksonville Printing Company, 1300 Gum Branch Rd., Jacksonville. Between 10 a.m. & 5 p.m. Mon.-Fri.

ADVERTISE IN THE CLASSIFIED

It's so easy to place your ad! Just call Julie at 347-7399. Cost is \$1.50 per line/per day. Classified ads sell!

Only a few days left to let your loved one know how much you love them!! Send in your LOVE NOTES TODAY!! Need more info call Julie 347-7399.

PET & SUPPLIES

BETTA ROW - AQUA FERRE PETS

TROPICAL AND SALT-WATER FISH
BIRDS
SMALL ANIMALS
REPTILES

455-1858
12AM-7PM 7 DAYS A WEEK

BUSINESS OPPORTUNITIES

RESUMES

Effective Resumes tailor designed. Years of successful experience translating military service into marketable job skills! 353-3028.

BUSINESS ASSOC. NEEDED
Ground Floor opportunity in new business, incredible income POTENTIAL. Small investment required. Send resume to SPAHR'S International Enterprises, Rt. 3, Box 115B, Newport, NC 28570 or call (919) 223-3410.

New in town? Be sure to check out the Professional Service Page!!!

MANY THINGS

NEW DOG HOUSES, treated bottom siding, shingled top. Small \$25, Medium \$35, Large \$50, X-large \$75. 324-3973.

NEW STORAGE BUILDINGS, 8 x 8 \$525, 8 x 12 \$695, 324-3973.

AVON

Skin So Soft & Other Products! 455-4429

Military Pawn & Surplus, 1921 Lejeune Blvd. next to Arby's Roast Beef. We LOAN CASH. Buy and Sell Dress Blues.

MANY THINGS

Cleaning out your closet? Classified ads sell your goods! Call 347-7399.

ENTERTAINMENT

DISCO JIM (Dee Jay for Hire)
Music for all occasions with discotheque effects. (Clubs, Schools, Colleges, Receptions) Call (919) 346-2315.

REAL ESTATE

PRIVATE LOT WITH MOBILE HOME. \$19,900. CALL PLANTATION 455-1168.

NEED TO SELL YOUR MOBILE HOME? CALL PLANTATION - 455-1168.

FOR RENT, EXCELLENT NEW 3 BEDROOM DUPLEXES - in SW area close to MCAS - lawn maint., garbage pickup, sewer incl., no pets. 346-5302.

Apartments for rent - Furnished one bedroom \$200 monthly. NO PETS. 347-6561.

REAL ESTATE

Trailers for rent-Furnished one or two bedrooms \$175 monthly. Located behind the 7-Eleven across from the Air Station. 347-6561.

REAL

Tri Court EXPERT from Car Mobile H Tub, Clean 347-3134

Jacksonville Printing



Publishers of the "Globe"

"To me, old age is also fifteen years older than I am."
— Bernard Manning

AUTO Sale

100% Financing
For Those Who Qualify

MAINSIDE:

1982 Pontiac T1000	\$2300
1983 Datsun 280ZX	\$7225
1984 Olds Cutlass	\$6200
1984 Mercury Capri	\$6900
1984 Olds Cutlass	\$5950
1985 Dodge Lancer	\$7000

BRYNN MARR COMPLEX:

1973 Mercedes 450SL	\$6900
1982 Dyna Trak Boat	
1982 Evinrude 1500 HP Motor	
1982 Cox Trailer	\$6500
1983 Renault Alliance	\$2000
1984 Ford Thunderbird	\$6100
1986 Ford Aerostar	\$12,500
1987 Dodge Dakota	\$7900
1987 Ford Taurus Station Wagon LX	\$12,725

AIR STATION:

1979 BMW 528i	\$5500
---------------	--------

Reclaimed Vehicles

1985 Chrysler LeBaron	\$6850
1986 Pontiac Grand Am	\$7925
1987 Honda CRX	\$7300

GUM BRANCH:

1982 Chevy Monte Carlo	\$3925
1983 Ford Escort	\$2375
1984 Pontiac Grand Prix	\$6125
1984 Toyota Corolla	\$4850

SWANSBORO:

1981 Nissan 280ZX	\$6900
1983 Ford Escort	\$2350
1985 Chevy S-10 P/U	\$4850
1985 GMC S-15 P/U	\$4525

Marine Federal Credit Union

P.O. Box 8478, Bldg. 58, Camp Lejeune, N.C. 28542
Executive Offices, 188 Center Street, Jacksonville, North Carolina
(919) 577-7333 or (919) 451-2492

Key Washington Decision-Maker



Nurse Andree' Turner is a critical member of the surgical care team, working on the past three years. D.C. General rewards nurses like Andree'—her career is taking off.

D.C. General is a 500 bed teaching hospital in the heart of the Nation's Capital. With complete orientation and preceptorship programs, D.C. General offers top salary and benefits, an on-site Day Care Center, satellite R.N. BSN programs, visa sponsorship for foreign nurses, and extensive learning opportunities.

We currently have openings for Registered Nurses in: Critical Care, Emergency Room, Medicine/Surgery, Operating Room, Substance Abuse, Maternal & Child, and NICU.

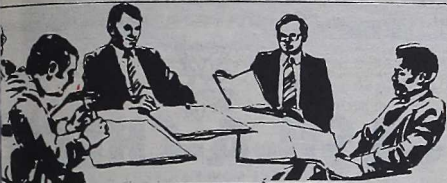
Find out more. Call our Nurse Recruiter at

1-800-654-7257 or (202) your resume today.

DC District of Columbia General Hospital

Nurse Recruitment Office, D. Attn: S. Livingston, Nurse R. 19th & Massachusetts Ave., Washington, D.C. 20003

Our Nurses Make the Difference. An Equal Opportunity Employer



Professional Services



GREGORY A. WILLIAMS M.D.
Obstetrics • Gynecology

ility, Colposcopy, Sterilization, Ultrasound
SATURDAYS CHAMPUS CERTIFIED
WERN BLVD. 346-4734

Coastal ENT & Facial Plastic Surgery, P.A.

Board Certified, Otolaryngology • Head & Neck Surgery
Facial Plastic Surgery • Allergy

H. BEN STONE, III, M.D.
WILLIAM J. HALL, JR., M.D.
R. DWIGHT GRADY, M.D.
H. J. MACDONALD, JR., M.D.

709 PROFESSIONAL DRIVE
NEW BERN NC 28561-2406
(919) 838-2666

TERRY A. HALL, M.A.
KATHY BENFIELD, M.S.
KATHARINE T. AUSTIN, M.A.
TOLL FREE
1-800-672-2666
CRAVEN COUNTY HOSPITAL
(919) 633-8111

445 WESTERN BLVD. SUITE O
JACKSONVILLE NC 28540
(919) 455-9884

CARTERET PROFESSIONAL CENTER
3110 ARENDELL STREET, SUITE 7
MOREHEAD CITY, NC 28557
(919) 247-3257



REALTY WORLD®

CENTER AGENCY
JLB Property Management, Inc.

SALES: OLD AND NEW HOMES
Government Homes (VA & FHA)
Commercial and Residential Lots
PROPERTY MANAGEMENT: Commercial and Residential
RENTAL: Residential and Commercial, 3 and 4 Bedroom
Houses, 2 Bedroom Townhouses / Duplexes.
INVESTMENT PROPERTIES

CALL 353-3383

NIGHTS 353-1846

WHITNEY STEVENS AGENCY

Marketing Agents for The Globe

ANCY B. FANSLER
Marketing Director

825 GUM BRANCH RD.
SUITE 127
JACKSONVILLE, NC
2 • 8 • 5 • 4 • 0
919 • 347 • 7399



WEDDINGS • ANNIVERSARIES
ANY SOCIAL EVENT

FOR DETAILS
CALL: MIKE GONZALEZ - (919) 455-8392

RUSSELL C. LOWERY, II, M.D., P.A.

GENERAL THORACIC AND
VASCULAR SURGERY

Certified By the American Board of Surgery

224 Memorial Drive, Suite B
Jacksonville, N.C. 28540

Phone 577-1228

For Information
on Advertising
on the
Professional Services
Page — Call
347-7399
And Ask For
Debbie!

FRAMERS WORKSHOP

1116 Gum Branch Rd.
346-4334

FRAME SALE
50% OFF
Selected Moldings

Need insurance for your home, car, life, boat or RV?

Leave It to The Good Hands People.

Call me!
I have the right coverage for all your needs.

ROGER H. BROWN
Hwy 258
346-9111

Allstate®

Allstate Insurance Company
Allstate Life Insurance Company
Northbrook, Illinois

PoFolks

Hearty, Homestyle Cooking

HAD TO PINCH PENNIES AFTER THE HOLIDAYS?

10% Discount Kids Under 10 Eat Free
For Senior Citizens 6 Eat Free

Catering Available! 100 Western Blvd. 353-3400

You don't have to have a lot of money to eat at PO FOLKS

LUNCH OR DINNER!

LOOK!

CHICKEN DINNER.....\$1.99
STEAK SANDWICH.....\$1.99
CHICKEN BREAST SANDWICH..\$1.99

1-800-454-7227
DC District
GH General
Our Nurses Make

Coastal ENT & Facial Plastic Surgery, PA.

H. Ben Stone, III, M.D.
 W. J. Hall, Jr., M.D., F.A.C.S.
 R. Dwight Grady, M.D.
 H. J. MacDonald, Jr., M.D., F.A.C.S.

SPECIALIZING in the treatment of Ear, Nose and Throat diseases, Facial Plastic Surgery, Head and Neck Surgery, Allergies, Facial Skin Cancer, Liposuction, Hearing Difficulties, and Hearing Aids.

Hours-Monday-Friday by Appointment
 445 Western Blvd., Suite O
 Jacksonville, N.C.
 Telephone (919) 455-9884 or 1-800-672-2666

CASH-A-CHECK
 "THE MONEY STORE"

237-3 New River Drive — New River Shopping Center
 455-7611

WE CASH

Payroll	Two Party	Money Order
Welfare	Cashier's Checks	Traveler's Checks
Government	Tax Refunds	Insurance
Unemployment	Personal	Out of State

MONEY ORDERS CREDIT CARD CASH SOLD



MONDAY THRU SATURDAY 10:00 A.M. - 8:00 P.M.
 CLOSED SUNDAY



DON'T FORGET YOUR SWEETHEART THIS VALENTINES DAY.

VALENTINES DAY

THE PROFESSIONAL PIZZA PEOPLE

GIANT HEART SHAPED PIZZA

ANY TWO ITEMS ONLY \$7.99

No other coupon accepted with this offer. OFFER EXPIRES FEB. 15, 1988.

ASK ABOUT OUR HEARTS DELIGHT

PIZZA SPECIAL!

PIZZA CITY USA

FREE DELIVERY

We accept checks at no extra charge.



We Accept: VISA, MasterCard, Pickup or Delivery

327-2000 PINEY GREEN SHOPPING CENTER IN THE HUBERT AREA 326-1111

353-2222 455-7800 * 328-2000 SNEADS FERRY FOOD LION SHOPPING CENTER

PINEY GREEN

..NOW! OPEN DAILY FOR LUNCH FROM 11:00 AM

PEPSI 50 Cents 16 Oz. Bottles

FREE DELIVERY

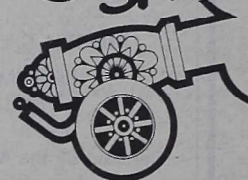
PIZZA CITY USA
ONE 12" PIZZA
 CHEESE & PEPPERONI
 ONLY \$6.35
EXTRA ITEMS AVAILABLE. No other coupon accepted with this offer. Price does not include tax.

PIZZA CITY USA
TWO LARGE PIZZAS
 ANY TWO ITEMS PLUS F-R-E-E PEPPERONI
 ONLY \$11.10
EXTRA ITEMS AVAILABLE. No other coupon accepted with this offer. Price does not include tax.

PIZZA CITY USA
ONE 16" X-LARGE 2-ITEM PIZZA
 ONLY \$9.99
EXTRA ITEMS AVAILABLE. No other coupon accepted with this offer. Price does not include tax.

CHECK OUT OUR NEW GOURMET PIZZA

Bang-up SAVINGS



Gore-Tex Boots & Socks & Underwear

(See us for ALL your military supplies & accessories)

Drive-thru Window! Mon. - Fri. 9 - 5

B&K Military Surplus & Camping Supplies

2239 Lejeune Blvd. 577-1111 Mon.-Fri. 9-5 Sun. 10-5

"Military organizational-type equipment and clothing will not be purchased from individuals."

Brynn Marr Hospital

192 Village Drive Jacksonville, North Carolina (919) 577-1400 24-hour Help-line: 577-1400

A CHANCE FOR A NEW BEGINNING

Adults and adolescents with chemical-dependency problems are chronically ill. Whether they are dependent upon alcohol or other addictive drugs, they suffer from a primary, progressive disease. There is hope, however, for these individuals. And that prospect of a productive life is a great motivator in their treatment and subsequent recovery.

Brynn Marr Hospital treats you as an individual - and works to give you the right treatment for you. If you suspect that you or someone you know has an alcohol or drug problem, call Brynn Marr Hospital, for the beginning.

Call to Arrange a Confidential Consultation Toll Free 1-800-822-9507

RENT FOR AS LITTLE AS \$25 a day



Shadow 4 dr.



Omni 4 dr.



Caravan



- For Business
- For Vacation
- For Out-of-Town Visitors
- Or while your car is being serviced

RENTAL CARS: Omni, Shadow, Aries, Caravan * PLUS 100 miles FREE EACH DAY

NATIONAL DODGE
 353-3777

2301 Lejeune Blvd.

CHECKER

Ads must reach the Joint Public...
e. 67 by noon, Friday a week prior
n the *Globe*. Ads must be signed
her information filled in. The ad
D LEGIBLY or mistakes may be
Neither ads for services nor ads
published. **MILITARY WORK
ERS WILL NOT BE LISTED**

MOBILES



4 dr., loaded, \$8500, 346-5499

ork, \$400, 353-7634.

3 dr., ac, low mi., exc. cond.,

new carb. & headers, great car for

\$1000, 455-1362.

an Customized, low mi., run roof,

n cass., fold down bed, exc. cond.,

\$7000/BO, 455-7864.

Prix, ps, pb, am/fm cass., ac, good

great, elec. windows, \$2200/BO,

5 spd., low mi., spoiler pkg., cruise,

m int., am/fm cass. upgrade, much

326-3406 after 5:30 p.m.

x4, 3" lift, 10-15 tires on 10" rims,

lights, will consider '73-'79 Ford

ide, \$6000, 451-1781, Rm. 121

Cruiser SW, 12000 mi., ac, at,

ise, many extras, out. cond.,

eds work, \$150; 350 GM mtr.,

Harvard Classic, \$50; '66 VW for

759.

ter, slant 6, 2 dr., light blue, \$400,

ab, 4x4, ps, pb, am/fm cass., tilt,

new tires, cb, \$6000, 455-3764.

Am, am/fm cass., cruise, tilt, pw,

roof, alum. wheels, exc. cond.,

162.

13000 mi., am/fm, 4 spd., 4 cyl.,

10, 326-1238 AWH.

1, 5 spd., ac, am/fm cass., sun roof,

18000 mi., \$8000/BO, 353-1197

etle, new clutch, new carb., runs

work, \$650, 455-3851 after 7 p.m.

ck, fully loaded, 34000 mi., exc.

able offer, 451-7471 J.D. Johnson

'80 Datsun PU, new paint, exc. int., very good cond. all around, 1 owner, ready to drive, \$2200, 743-6951 leave message.

'69 Ford Falcon, good cond., \$1500/BO, 353-5946 AWH.

'72 Datsun 240Z, exc. cond., see at 200 W. Saltwood Pl., Jacksonville, 455-2937 AWH.

'70 Ambassador, 4 dr., 360, new exhaust, 2 new tires, comp. new brake job, runs good, \$1000/BO;

'78 550K Honda, exc. cond., low mi., \$875; 455-5896.

'81 Scottsdale 1/2T PU, at, ac, cc, ps, pb, am/fm stereo w/4 spkrs., tilt wheel, custom rims, new tires, camper shell, 70241 mi., like new, 346-2287 AWH.

'86 Toyota PU, 4 spd., red, TOP \$170 mo. & \$300 MFCU or pay off balance, 353-7899.

'84 Z28, 5.0 liter eng., ps, pb, am/fm cass., 5 spd., T-top, exc. cond., \$6800, 577-3086 after 6 p.m.

'84 Chevy Cavalier, 2 dr., red, 4 spd., am/fm stereo, run roof, ac, ps, pb, TOP of \$135 mo., 577-3187.

'87 Chevy Z-24, loaded, everything power, sun roof, comp. spoiler kit & bra. Amorguard prot. on paint & undercoating w/scotchguarded seats, low mi., \$12400, 451-7138, Cpl Davis AWH.

'83 Cadillac Coupe DeVille, 82000 mi. pwr everything, showroom cond., all high way mi., asking \$7000 neg., 451-3463 AWH LCpl. Shaw.

'80 Pontiac Sunbird, 2 dr., runs good, needs body work & drivers door, \$400, 324-2505.

'70 Mercedes 280 SEL, exc. cond., 353-1532.

'67 VW Bug, rebilt. eng. brakes & frnt. end & new tires, runs good, body good, \$800/BO, 455-2518 AWH.

'78 Isuzu Opel, 4 dr., 1800 cc, 5 spd., runs good, maint. records, good mpg., \$750, 353-3438.

'86 R.S. Cavalier, 2 dr., ac, am/fm cass., tilt wheel, 5 spd., int. wipers, cruise, elec. locks, reclining fr. seats, exc. cond., asking \$7150 neg., see at HP155 C St., Rm. 125, 451-1633 AWH Cpl. Ball.

'79 Ford Fiesta, fair cond., runs good, \$500 firm, 328-2236 AWH.

'74 Gremlin-X, am/fm, ps, pb, ac, \$500 neg, 353-3553 AWH.

'79 Jeep Wagoneer Golden Eagle, auto, ac, ps, pb, \$1500, 353-9926 after 6 p.m.

'86 Dodge Daytona Turbo Z, 5 spd., ac, rem. sun roof, am/fm cass., new tires, pw, pm, reclin. seats, TOP of \$300 mo., 577-1422 AWH.

'87 Blazer w/Silverado pkg., 350 EFI eng., loaded, 7400 mi, \$16500; utfl. trl., steel const., 4x8 tilt bed, 1 yrs. old, \$450, 354-3016 AWH.

'81 Ford Escort SW, auto, ac, am/fm cass., new tires, rel. trans., minor body damage, \$1500, 577-1958.

'76 Pontiac SS Ventura, ps, pb, new tires, runs exc., \$800/BO, 455-4606 AWH.

'85 Ford Bronco XLT, loaded w/extras, exc. cond., 328-1395 AWH.

'74 Audi Fox, 4 dr., sun roof, auto., am/fm cass., 353-6788 AWH.

'74 Plymouth Duster, 3 spd., slant 6, runs good, needs some work on body, \$150, 353-3348 after noon.

'77 Dodge Aspen SW, auto, ac, am/fm, 1 owner, \$475, 455-5502 after 2 p.m.

'86 Isuzu I-Mark, great cond., \$5500 firm, 577-7647.

'82 280ZX, black/silver w/black & silver leather int., 5 spd., ps, pb, pw, cruise, exc. running cond., looks good, \$5500/BO, LCpl. Rodney Kennedy, Bldg. HP550.

'80 Chevrolet Chevette, rebilt. eng., good cond., \$800/BO, 353-1668.

'74 Mazda RX4, rotary eng., body & inside great shape, eng. blown, 2 dr., trans. & running gear great shape, '84 Mazda PU w/camper shell, 5 spd., am/fm, exc. cond.; 393-8574.

'86 Plymouth Turismo, auto., ac, sun roof, TOP, 353-6788.

'77 Vega Wagon, 2 dr., needs eng. work, good body cond., asking \$300, 353-6454.

'86 Nissan 300ZX Turbo, all options, \$18500, 353-0189 after 6 p.m.

'79 Ford Ltd., trans. needs work, clean car, eng. runs great, 577-1405.

'77 Monte Carlo, gray, minor body work, exc. int., \$950/BO, 324-3533 leave message.

'84 Nissan Sentra, ac, am/fm, 2 dr., full recline seats, exc. cond., \$3195; '68 Ford PU, 3/4T., 6 cyl., runs well, 393-8574.

'85 Ford Ranger 4x4, am/fm stereo cass., camper shell & extras, \$5500, 455-5485 AWH.

'86 Isuzu Trooper II LS, 4 wheel drive, ac, stereo/tapedeck, cruise, 24000 mi., \$10500, 353-9244.

'81 Ford Escort SW, auto, ac, am/fm cass., new tires, rel. trans., minor body damage, \$1500, 577-1958.

'66 Plymouth Belvedere, V8, runs well, \$600, 455-1877 AWH.

'82 LeBaron Coupe, loaded, \$2700, 455-1877 AWH.

'86 Olds Calais, loaded, TOP, 346-6030 AWH.

'81 Datsun PU, super clean, 5 spd., over drive, \$1650; '71 VW Fast Back, almost antique, runs great, looks good, \$650; 455-0704.

'79 Honda Civic CVCC, 5 spd., yellow, good dep. car, \$1000/BO, 353-5966 AWH.

'81 Buick Regal, 38000 mi., am/fm cass. stereo, ac, ps, pb, beige, exc. cond., \$3000/BO, 326-3866.

'76 Pontiac Trans Am, Auto parts, 346-6030.

'80 Pontiac Sunbird, 4 spd, ac, ps, pb, am/fm stereo, good cond., all papers avail., 577-3262 AWH.

'71 Cutlass w/spoiler, white & black, Keystone wheels, good cond., \$1000/BO, 577-4234.

'84 Thunderbird, black, new tires, good cond., power everything, \$5500, 577-1077.

'77 Ford Pinto Wagon, exc. body, cass. stereo, new starter & battery, 32600 mi., \$825/BO, 353-9022.

Branchwood Colonial home, formal areas, den/fp, 3 bdrms., 2 1/2 ba., all appl., 660 sq ft. garg., covered wood deck overlooks lrg. wooded lot, \$77500, 346-634.

Country Club Hills, 3 bdrms., 2 1/2 ba., lrg. fm. rm., country curtains, wood stove, many extras, 577-7105.

'81 Chevette, runs good, needs some work, good local trans., \$700, 455-9345 AWH.

'81 Mustang Cobra, T-top, am/fm stereo cass., 4 cyl., black & red, body in exc. cond., \$2500/BO, 353-6331 AWH.

'82 Toyota Starlite, 3 dr., am/fm, ac, TOP \$115 mo., 353-6331 or 455-4678 AWH.

'79 Merc. Zephir SW, 6 cyl, 83600 mi., at, ps, pb, am/fm cass., cruise, \$1000, 353-0696.

'79 Ford Courier, needs eng. work, good for parts, \$225, 346-5499 AWH.

Boat mtr. 20 hp Chrysler, elec. start, center console & steering controls, \$450, 353-2076.

23' Grampian Sail boat made in Canada, fully equipped, new mtr., sleeps 5, will sell boat w/boat slip or boat alone, 326-5032 Swansboro.

Outboard mtrs., 9 hp, 15 hp, both run good, can be water tested, \$500, 326-4404.

15' Fiberglass speed boat w/steering wheel and controls for flat bottom metal boat w/trlr. or mtr., 324-2505.

16' Barbour boat, trlr., 75 hp eng., \$550; WANTED: 7 to 25 hp eng. also 10' to 14' Jon boat, 326-1264 ask for Joe.

16' boat, exc. for skiing or fishing, 65 hp Johnson outboard, runs strong, all acc., \$1650, 455-0704.

King sz. waterbed, 4 drw. pedestal, mirrored head board, \$450, 353-7634.

Queen sz. waterbed, mirrored head board, full motion mattress, siderails, heater, 6 drawer pedestal incld., exc. cond., \$175/BO, 455-1120.

Kenmore washer & dryer, asking \$150 for the set; Lowery organ, 2 key board, rhythm section, exc. cond., asking \$1500, 455-1018.

5 pc. beige living room set w/queen sz. sleeper, boys & girls clothes 0-5T, exc. cond., 353-5371 AWH.

Cocktail & end table, solid oak and ash w/smoked glass inset, \$225 pr/BO; Technics SL-D2 turntable, \$100; 259-9855.

Kenmore Apt. sz. washer & dryer w/rack for stacking & permanent or portable attach., \$350, 353-8772.

China Closet, \$175; Mahogany twin sz. bed, \$100; Japanese hibatchi end table, \$75; living room lamps, \$50; 48x75 Sealy mattress, \$10; 455-7748.

Kenmore microwave, DP Gym, 25" RCA console TV, 40 ch. CB, 2-radar detectors, 353-4502 AWH.

Matching sofa & chair w/foot stool, brown plaid, good cond., \$75, 353-5013.

BAUSCH & LOMB
soft contact lenses
As Low As **\$119** Complete
Includes: Eye Examination, fitting, follow-up care, lenses, care kit.
COASTAL VISION CENTER
Dr. F.L. Roberson, Optometrist
Routine Eye Exams: \$35.00
346-4490
1703 Country Club Rd.
Suite 101

THE QUALITY CHOICE

Comfort Inn

In Wilmington
Comfort Inn Executive Center

Send your out-of-town guests to the Quality place to stay in Wilmington. The Comfort Inn Executive Center.

We're conveniently located near the beaches, museum and UNC (Wilmington), just off US 17 and 74.

Features include a lounge, pool, cable TV, in-room movies, Free Continental Breakfast and an exercise room. Meeting facilities are available.

Comfort Inn Executive Center
151 S. College Road
Wilmington, NC 28403

For reservations call
919-791-4841 or toll-free
800-228-5150

GREAT EXPECTATIONS

THE PRECISION HAIRCUT (Reg. \$12.95)
Complete with shampoo and blow style (offer excludes military rate)

\$2 OFF
Exp. 2/21/88

COMPLETE CHEMICAL SERVICES
Perm, body wave, highlight, relaxer, curl or frosting

\$5 OFF
Exp. 2/21/88

577-3242

Appointments welcome but not necessary.

...chemical-dependency problems...
...are dependent upon alcohol...
...from a primary, progressive...
...individuals. And that prospective...
...in their treatment and...
...you as an individual... and...
...you suspect that you or someone...
...them, call Brynn Marr Hospital...
...with a Confidential Consultation...
...Free 1-800-822-5967

...5 a day...
...Shadow, Aries, C...
...FREE EACH DAY...
...IAL DO...
...2301 L...

Trader

Pine (dark stain) 5 pc. bdrm. set, king sz. waterbed, mirrored dresser, chest, 2 night stands, \$550 firm, 326-5202 AWH.

Kitchen table & 4 chairs (western style) good cond., \$70, 2-bed frames, extends to full \$20 for both, 353-3670.

3 mo. old Country Blue loveseat w/throw pillows, \$200/BO; also misc. king sz. linens, reasonably priced; 455-5011 after 6 p.m. ask for Susan.

Simmons Oak Crib, exc. cond., \$125; future swinging/suspension gate, used 2 wks., \$15; car seat w/cover, \$10; 353-3438.

Queen sz. waterbed, mattress, heater, pedestal, mirrored head board w/cabinets & shelves, great cond., \$350, 353-8937.

All wood wardrobe 72"hx48"wx24"d, \$50; metal head & footboard, full sz., \$30; dbl. filing cabinet and safe, \$20 both; 2 living room chairs, \$10 ea.; 1 living room chair, \$20; bedrail adj. to any sz., 2 sets, \$10 ea.; 353-1335.

TV-18" Sony, color, cable ready, remote control, \$175, 347-4396 after 6 p.m.

Full sz. mattress & box spring, inclds. numerous sets of sheets w/pillow cases & mattress covers, \$125; dinette table w/6 chairs, \$75; all in very good cond., 353-3562.

Loveseat, brown & burnt orange, exc. cond., \$75; 12" b&w TV, like new, \$35; 353-9036.

Round folding card table w/4 folding chairs, \$20; 8X10 carpet, \$10; glass front stereo cabinet, \$25; 455-2285 AWH.

Living room set, 7' sofa, coffee table, chair w/ottoman, 2-end tables, beige color w/solid oak construction, exc. cond., \$400, 326-3866.

5 drw. dresser, \$75/BO, made by Stanley furn., nat. wood finish, med. bro. color, 326-4568.

All wood king sz. bdrm. set triple dresser w/hutch mirror, tall chest w/doors & drawers, 2-lrg. night stand, cannon ball head & foot board w/frame, \$800 set mattress & foundation mattress has 9 water cyl. only used 2 mo., \$1200 for all or sell sep., 346-6766.

Sofa bed Queen sz., \$50; foam fold out sofa bed, \$25; infant car seat, \$5; other baby items, \$5-\$10; 577-7647.

Dresser w/mirror and matching Queen sz. headboard, 353-9376.

Water bed that looks like conv. bed, Queen sz., exc. cond., w/heater, asking \$300, 353-8824.

Queen sz. w/6 drawer pedestal and night stands, \$450/BO, 455-4394 after 2:30 p.m.

Couch w/matching chair, fair shape, \$75/BO, 455-4394 after 2:30 p.m.

Rattan glass top dinette w/4 chairs, exc. cond., \$325/BO, 353-9154.

Rattan dbl. Pappasan couch, single Pappasan chair w/ottoman, cushions are rust color, like new, \$475/BO, 455-4394 after 2:30 p.m.

King sz. waterbed, lighted bookcase, side pads, bench, 6 drawer pedestal, \$200, 353-4192 ask for Mary.

Brand new Queen sz. mattress & box spring set, \$250; like new Red Highback chair, \$75; 2-red lamps w/shades and tables, \$30 pr.; kitchen table w/4 chairs, smoked glass top, \$50; 455-5451.

LOST & FOUND



2 Lost Dogs, 1 black Lab & 1 Golden Retriever, both approx. 16 wks. old, last seen together 14 Jan. 88, contact Bruce or Jim at 577-3246.

MISCELLANEOUS



21" Ross Sign. bike, top of the line in Ross bikes, 12 spd., solid blk., like new, many accs., asking \$300/BO, 455-2779 Wayne, after 5 p.m.

27" men's 10 spd. bike, dual brakes, good cond., \$80; woman Marine unit., almost brand new, price neg., "A" blouses, skirts, pants, 353-7719 ask for Sylvia.

3 yr. old Wurlitzer piano w/bench, \$1000, 353-5907.

Encyclopedia Britannia, '76 Ed., '77-'78 Yearbooks, \$75, 347-4396 after 6 p.m.

Winchester Mod. 1200 pump shotgun 12 ga., vent rib, checkered walnut stock, recoil pad, winchoke full, mod., imp. syst., exc. cond., \$170, 353-0914.

Baby care seat, asking \$20 neg., 353-0349 before 8 p.m.

Piano, Wurlitzer, console model & bench, 1 yr. old, hardly ever played, BO, 353-7359.

Many RPG manuals & modules incld. AD & D, Warhammer, Stormbringer, Turtles, many more, 577-1812 AWH.

Matsushita 7 watt spkrs., 1 pr., \$20; Pioneer CSA31 40 watt spkrs., \$25 pr.; 353-0125.

Dog house, med. or lrg. dog, 2 1/2x3x3, \$30, will deliver, 347-6225.

Super accur. custom made 22-3000 rifle (25-20 SS Winchester necked down) Hi-side 1879 Winchester action 1" diller stainless steel brl. A5 Winchester scope spec. loading tools, 763-4374.

Ataria 2600 w/7 games, asking \$60; Mask vehicles w/Bolder Hill base, asking \$70; 347-5026.

Remington 1100 12 ga. skeet limited not yet fired \$350/BO, 353-2752.

4 tires & rims, Cragar S/S 13" Uni-Lug, 70's front, 60's rear, all mounting hardware incld., good cond., \$175, 353-9642 AWH.

Wilson golf clubs, incld., woods, irons, putter, bag and hand cart, \$125/BO, 455-1769.

Dortan tanning sys., 6' tall, 5 bulbs wide, fits in any closet, almost new, 353-3895.

Fiberglass camp shell for full sz. PU, \$275/BO, 346-8194.

Rust colored carpet fits Midway Park housing, \$15; Eureka can. vac., \$15; 4-Sears radial guardsman tires on chrome rims-P185/80R13, \$100; 455-9121 AWH.

Cyclone header, fits 318 through 360 ci Mopars, new, still in box, \$40, 328-3696.

Gibson Saturn 50 watt 2-ch. amp., \$95, 328-3696.

19" color Soundesign tv, needs antenna, 1 1/2 yrs. old, \$75, 347-6063.

Intelevision w/15 assort. tapes, \$60 neg., 353-6813 AWH.

2 Living room chairs, 1 swivel rocker; 22' Sunline self cont. camper w/ac and awning; 1 Chevy PU w/towing pkg. for camper; will sell as one unit or sep., 347-2213.

Thompson Center Arms, 50 cal Hawken w/dbl. set trigger, \$175, 347-9071.

Lrg. pet trvl. carrier, like new, \$40, 353-9263 AWH.

Commodore 128 computer w/1 or monitor 1902, joy stick w/50 games, \$800, 347-4614 AWH.

Apple IIE computer sys., loaded Bernina 830 sewing mach.; 34

Sears b&w 13" tv, \$30; Sigrn \$100/BO; 12-cup Espresso coff. leather coat, tan, sz. 40 mens, \$50 fish to good home; 353-6735

Target pistol 22 cal., high st military citation w/Koplin p 347-9071.

Exotic chickens, laying boxes, tiple tie downs, 150 gal. oil dr trlr. steps, love seat, high b 353-2076.

Piano, like new, upright, Kohler- 353-6132.

3 lb. cap. sausage stuffer w/3 stu for deer sausage, \$45, 353-048

Parachute, Strata Cloud Main strong tandem cont., \$800, 45 Nymen.

Lrg. bean bag chair, \$10; men's port. b&w tv., \$25; 8x10 car AWH.

2-van chairs, \$30; attic pull do 353-1601 leave message.

Bunnies, dressed and frozen, \$10

20 gal. aquarium w/wrought hood, all acces., \$100; Usika C w/head phones and case, \$100 sz. 12, \$25; 2-am/fm cass. play cond., 743-6432.

Original Aviator leather jacket, AWH.

Movie Buffs: Sears Beta VCR 200 movies, great movie libra Okinawa, \$600/BO, 353-2558

Snapper rear eng. riding mowin area, 5 yrs. old, \$450, 34

Typewriter/Smith Corona 347-1949.

Pool table/bumper, exc. cond., a

Custom car cover, will fit Niss Caury w/pw. atenna & side 577-2795 after 6 p.m.

JAKE'S

Auto & Truck Sales
Cars & Trucks
You Can Bank On
Gum Branch Rd. & Hwy. 17 N
(Behind Burger King)
347-7377

79 MERCURY BOBCAT
was \$2400 **NOW \$1700**

83 FORD ESCORT
was \$2900 **NOW \$2300**

84 MAXIMA
was \$6300 **NOW \$5600**

82 DATSUN 280ZX
was \$7995 **NOW \$7400**

83 HONDA CIVIC
was \$4200 **NOW \$3600**

83 NISSAN MAXIMA
was \$4900 **NOW \$4200**

81 OLDS CUTLASS
was \$3200 **NOW \$2200**

83 DODGE CHARGER
2 + 2
was \$4500 **NOW \$3500**

79 DATSUN 210 HB
was \$2900 **NOW \$2000**

84 SENTRA SW
was \$4200 **NOW \$3300**

Complete Stock - No Reasonable Offer Refused
Over 100 Cars & Trucks To Choose From
ON LOT FINANCING - BANK & CREDIT UNIONS
100% FINANCING - To Those Who Qualify

PARTS & ACCESSORIES
CUSTOM FABRICATION

COMPLETE PERFORMANCE
MACHINE SHOP

- GLASS BEADING
- GUN S & AMMO
- CUSTOM PAINTING
- SAND BLASTING
- HELIC ARC WELDING
- CHROME EXCHANGE
- BALANCE &
- CUSTOM FABRICATION
- BLUE PRINTING
- MOTORCYCLE STORAGE

BILL BAIN - OWNER

347-1523

921 MARINE BLVD. JACKSONVILLE

LOTS AND ACREAGE

Private, Peaceful and Perfect for Beautiful Country Living

- Single Lots
- One Acre Tracts
- Five Acre Tracts
- Mobile Home and Land Packages
- Assistance with Loan
- All Services Available

353-1373
1639 Lejeune Blvd.

COASTAL INSURANCE AGENCY

- Auto Insurance
- Mobile Home Insurance
- Motor Cycle Insurance

(Harley Davidson's Auto)

"Let us help you protect all your property"

Financing Available
Lowest Down Payments

1939 Lejeune Blvd. phone for price
Jacksonville N.C. 353-2611

THE COXE LEGAL CLINIC

Offers the Following Legal Service

Uncontested Divorces	\$10.00
Separation Agreements	\$10.00
Adoptions	\$10.00
Driving While Impaired	\$15.00

*(Fees do not include court costs)

NO FEE FOR INITIAL CONSULTATION

Robert Cox 825 Gum Branch S
Attorney at Law Suite 107

346-9886

Commodore 128 computer
or monitor 1902, joy stick
games, \$800. 347-4618 AWH

Apple IIe computer system
Bernina 830 sewing machine

Sears h&w 13" tv, \$38.95
\$100/BP, 12-cup Expresso
leather coat, tan, sz. 40, \$122.00
fish to good home, 353-9770

Target pistol 22 cal., high
military citation w/ribbon
347-9071.

Exotic chickens, lay eggs
triple tie downs, 150 gal. oil
trir, steps, love seat, 353-2076.

Piano, like new, upright, 100
353-6132.

3 lb. cap. sausage stuffer
for deer sausage, \$45.95

Parachute, Strata Cloud
strong tandem cond., \$80
Nyma

Lrg. bean bag chair, \$110
port. h&w tv, \$25.95, \$100
AWH.

2 van chairs, \$30, attic
353-1601 leave message.

Bunnies, dressed and fringed
20 gal. aquarium w/water
hood, all acces., \$100. Like
w/head phones and case,
sz. 12, \$25; 2-amfm car
cond., 743-6432.

Original Aviator leather
AWH.

Movie Buffs: Sears Best
200 movies, great movie
Okinawa, \$600/BO, \$300
Snapper rear eng. riding
ting area, 5 yrs. old, \$49
Typewriter/Smith Corona
347-1949.

Pool table/bumper, exc. cond.
Custom car cover, w/100
Camry w/pw, attempt at
577-2795 after 6 p.m.

INSURANCE
AGENCY
Insurance
Home Insurance
Cycle Insurance
Davidson's Auto
Protect all your p
g Available
own Payments
phone for
353

LEGAL CL
owing Legal Ser
atio
atic

es
ents
red
t include court cos

INITIAL CONSULTA
825 Gum Branch
Suite 10
46-9886

aler

dash) w/4 4" spkrs., never us-
4946 leave message.

reel player/recorder, almost
53-4946 leave message.

cal w/case, new cond., asking
\$125/BO.

w/glass top, \$85; Sansui amp.
EAC reel to reel mdl. 4010S,
mdl CS88, 100; comp. \$225
all-trans. \$40; antique banjo
nautle clock, \$85; antique din-
round w/claw feet, \$325;

sys., am/fm stereo turntable,
and 2-spkr., \$125/BO.

OSR14 tires on chrome rims
GM 5 lugs front wheel drive
30, 353-8761 leave message.

caster brakes, \$40; tool box,
5; projector 8mm, \$20; tobacc-
pen, extra heavy f/pu or jeep,
\$25; Porti-potti, \$20; pellet
st, \$20; 455-3665.

ild bike helmet, \$10; Japanese
7-7072.

y; child booster seat, \$5; doll
ike, \$10; Little Tyke toddler
oll
e w/figures, furn., \$15; FP air-
power figures ea \$1.25; Sweet
Kit, \$50/BO; stroller, \$10;
by swing, \$10; play pen, \$10;
7158.

rabbit fur coat, sz. med., good
4394 after 2:30 p.m.

ise mach., never used, \$75/BO,
3-5966.

ed wood, bolt together for easy
175, 455-0704.

\$20; Win' blouse wool & Po-
6-5499.

dbl. keyboard organ, use car-
self, TOP, 455-9345 AWH.

ooden stand, brand new, \$100

ens 40L, \$40, 326-4568.

ms, male, worn less than 10
K brand, accouterments incl.,
D/B \$200; sz. 43; make offer.

Olympus camera bag \$8;
ronic flash, \$15; 1-Vivitar 2x
Olympus camera strap and
ies \$2; 577-7849.

w/35" mast, \$20, 326-5856.

backboard used 6 mo., \$50,

bellhousing, will fit sm. block
100/BO, 353-5966 AWH.

CYCLES

e, 750 cc, V.G.C., Vetter fair-
\$1500, 347-5776 after 5 p.m.

'80 Yamaha 400 Spec., good cond., 13000 mi., well kept., \$350/BO, 455-6687-Tom after 5 p.m.

'80 Kawasaki 440 Ltd., red tank, black frame. Dunlop tires, cover & acces., \$650/BO, 328-3340 nights.

'80 Honda CM400E, 10000 mi., backrest w/luggage rack, cruise, helmet, exc. cond., \$600; 320 lb. steel wt. set, \$150; power reverse rotortiller by Wizard, 5 hp, \$150; 326-3866.

'81 Harley Davidson Sportster, \$2000, 346-9798 AWH.

'81 Yamaha, 650 cc, Spec., 18000 mi., stored for 2 yrs., needs battery-chain-tire, \$400; 30' Shrimp Trawl w/doors & chains, new-never used, \$250; Sears washer & dryer, large tub cap., avocado green, exc. cond., 9 yrs. old, \$350; 346-6909.

'81 CX500 Custom Honda, \$400; Christian Eagle remote control airplane, all acc., \$350 will sell sep. or as pkg.; 346-8412.

'82 Kawasaki CSR-250, showroom cond., 3300 mi., must sell PCS \$500, 455-9345 AWH.

'83 Kawasaki 750 Ltd., black & chrome, 1300 mi., exc. cond., low rise backrest w/luggage rack, 2 helmets, \$1100, 353-0321 after 5 p.m.

'83 Kawasaki, good cond., 577-7404 after 5 p.m.

'83 Yamaha Venture Royale, gold w/extras, 1200 cc, exc. cond., great for around town or cross country, cruise, \$2700, 455-9345 AWH.

'85 Yamaha 250 Tri-Z, \$800; '85 Yamaha YZ 125, \$400; Suzuki RM50, \$200; 353-7519.

'86 Honda Rebel 250cc, low mi., great cond., BO, 353-7359.

2-Honda Big Red 3 Wheelers, includes tilt bed trlr., tarp, and many extras, \$1800, 353-0189 after 6 p.m.

Angel Moped, good cond., \$175, 353-1732.

Moped, new, never used, ready to go, all steel not alum. or plastic, \$300, 455-0704.

PETS

AKC Great Dane puppies, 353-4887 after 6 p.m.

AKC Yellow Lab puppies, whelped 1/9, 4-females, 3-males, \$150 ea, now taking deposits, 455-8878.

Shihtzus, 6-males, 2-females, dewormed, shots, AKC papers, asking \$200, 455-9438.

Free to good home, Ferrit w/cage, born Aug. 24th, 346-6578 after 5 p.m. ask for Kathy.

Free: female, 3 yr. old part dachshund part pekinese, exc. watch dog; baby stroller, \$10; 353-2476.

AKC English Springer Spaniels, ready to go, \$125, 353-9582 AWH.

AKC reg. Cho Chows, male & female, 353-2131 after 6 p.m.

Siberian Husky pups, 2-blue eyed females, left one light brn. & 1-blk. & white, now 6 wks. old, \$150 ea., 455-9638 AWH.

Zebra Finches, 577-4454.

Female full breed Pitt Bull, br. w/white streak going down face, has got first shot already, 10 wks. old, selling for \$50, M-Th. 8-3 p.m. 577-9404, after 3 p.m. 455-9439 & Fri. 8-4:30 p.m.

Pure white AKC Samoyed puppies, fluffy pups have had their 1st shots and are ready to go, 346-1371 after 6 p.m.

Free 2 1/2 mo. old 1-male & 1-female, Lot 226, Gatline MHP, Hubert.

3-good riding horses, all mares and gentle, reasonably priced, 326-4524.

AKC reg. male Siberian Husky, up-to-date shots, good family pet, \$450 neg., 577-1405.

WANTED

Dog carriers of all sizes. 353-3368 AWH.

Male Roommate to share new deluxe MH, 2 mi. from mangate, \$150 mo., incl. utl./cable, private lot, 353-8384.

Riders wanted to share expenses to Norfolk area, leave Friday return Sunday, frequent trips made, 353-6970.

Toyota Mini Mtr. Home, '80 or newer in real good cond., 327-0901.

Babysitter for 2 1/2 yr. old girl, must be non-smoker, older woman preferred, 455-1877.

Male/Female to share 5 bdrm. home in Regalwood area, \$200 incls. uttl., 347-3504.

RENT & REAL ESTATE

RENT: 3 bdrm., 2 1/2 ba., unfurn, appl., carpet, pool, Brynwood Twnhse., contact housing ref. off. Bldg. TT43, \$385 mo.

Rock Creek, all brick, 1600 sq. ft. on crawl space, fp. in den, formal dining room & eat-in kitchen, \$89900, 324-2447.

4.3 acres in SW near MCAS all wooded, county water avail., \$17500, owner fin. at 10.5%, 455-7733 or 455-6911.

39 wooded acres, 2 creeks, 28 mi S. of Charlottesville, Va, \$23000, standing timber, 455-7733 or 455-6911.

3 bdrm., 1 1/2 ba., fm. rm. w/fp, lrg. fenced yd. w/garden space, new heat pump, very clean, no pets, close to schools, 3 mi., fr. main gate, dep. req., \$390 mo., call btwn. 4-8 p.m. only, 353-6833.

RENT: MH, priv. lot, no pets, \$200 mo., off of Gum Branch Rd., 346-5630 btwn. 7-8.

RENT: Topsail Reef Condo, 2 bdrm., 2 ba., washer/dryer & microwave, short or long term lease avail., 353-9261.

32 plus acrea, off I-77 near Salt Fork Lake, OH, creek, mineral rights, most tillable, 1000 plus rd. frontage, \$23000, 346-5076 or 455-0877 (W).

3 bdrms., 2 ba., eat-in kitchen plus dining rm., laundry rm. & garg. plus lots more, 347-7385.

Immac. 3 bdrm., 2 1/2 ba., 2 story, extra lrg. lot w/privacy fence on quiet cul-de-sac, assume a 9 1/2% VA loan, asking \$86500, PITI \$708 mo., seller will pay all closing costs, 347-1949. NO REALTORS PLEASE!

RENT: room in lrg. house, female sm. preferred, \$175 mo., incls. uttl., 455-1877.

3 bdrm., 2 ba., ranch style house in Woodlands area, lrg. eat-in kitchen, family room w/ceiling fan & fp, dining & laundry rooms, lrg. deck, garg., assume VA at 10 1/2%, 455-0679.

'84 MH 14x52, exc. cond., like new, unfurn., 2 bdrm., 1 ba., lr, dr, 7 mi. from Triangle Outpost side gate, \$75 lot rent, very peaceful area, lrg. lot, just TOP of \$230 mo., 353-2631.

RENT: 4 bdrm., home, \$525 mo. incls. uttl., and water, 347-1324.

4 bdrm., lrg. lot near both bases, \$75000, 347-1324.

Invest In Yourself! You can own this 2 bdrm., furn., MH on about 1/2 acre lot for only \$21500, 326-4524.

SALE/LEASE: home in prestigious Country Club Hills, 4 bdrm., 2 1/2 ba., lrg. corner wooded lot entering cul-de-sac, all formal areas & fm. room w/fp, eat in kitchen, deck & 2 car garg., 353-3792 after 6 p.m.

RENT: 3 bdrm. 2 ba. close to C. Geiger & MCAS, furn, free water & sewage, trash collect, \$210 mo., 346-4033.

'85 Redman MH, assume loan, 3 bdrm., 2 ba., tot. elec., central heat/air, washer & dryer, microwave, dishwasher, ceiling fan, garden tub, skirting, very good cond., located in Holiday City, 353-1668.

'85 14x64 Fischer home, 2 bdrm., 1 1/2 ba., lrg. kitchen & closets, all carpeted, all elec., located near main gate, 353-6156 AWH.

MH & Lot, 12x65, 2 bdrm., 2 ba., carpeted, 455-4327 days, 347-4898 AWH.

'86 Prowler Regal Travel Trlr., 33' ac, lrg. ref., frt. kitchen, rear bdrm., awning, 353-3713 AWH.

'86 Parkway MH, 14X72, 2 bdrm., unfurn., shed, 8x16 deck, stove & refrig., dbl. ins., wood siding, lux. penthouse model, ref. VA loan, no equity, 577-7158.

RENT: 3 bdrm., 2 ba., Townhouse w/fp, immac. Country Club Villas (by Mall), 455-4604.

'87 Champion MH, 14x76 w/fp, w/gar. tub, 2 bdrm., 2 full ba., central air & heat, priv. lot, 4 mo. old, assume VA & TOP, 455-2713 AWH.

Brick home in country, 3 bdrm., 1 1/2 pb., lr, den, dining room, 2 car garg. w/auto. doors, shade trees, trlr. space in back, reduced \$64500, 326-4079.

RENT: Winterwood MHP, furn., 2 bdrms., washer & dryer, ac, \$285 mo., 455-4126.

'86 Sterling 14x70 MH, 2 bdrm., 2 ba., tot. elec., furn., skirting, assume VA loan of \$245.72 mo., located at The Pines MHP, Hubert, 326-3155.

'83 Marshfield MH, 2 bdrm., 2 ba., central air, fp, skirt., set up, fenced, TOP \$281, 57-1077.

'85 Conner MH, 14x54, 2 bdrm., 1 ba., located 3 mi. from Main gate, nice quiet trlr. park, big lot, TOP \$237.74, 577-7699.

Branchwood, 3 bdrm., 2 ba., lr, dr, fp, eat-in kitchen w/appl., laundry rm. & pantry off kit., clean, fenced yard, deck, shed, assume 9 1/2% VA \$593 asking \$3000 equity, 347-6300.

'85 Conner 14x54, 2 bdrm., 1 ba., furn., incls. shed, no dwn. pymt., no pymt. for 2 mo., assume conv. loan of \$240.90 mo., 455-6840.

10 Miles to Main Side, 3 bdrm., 3 1/2 acres plus lot w/all hook up for trlr., new vinyl siding, new 10x20 deck, low equity, assume to pay off \$41500 at \$387 mo., 326-5700.

RENT: MH, 2 bdrm., 1 1/2 ba., all elec. w/washer & dryer, lrg. private yard, furn., \$225 plus dep., 326-407.

Brick home in country, 3 bdrm., 1 1/2 ba., lr, dr, den, 2 car garg., trlr. space (rent on 2.8 acres, 326-4079).

2 bdrm. house, must have place to put in on, exc. cond., \$30000/BO, Clara 353-7738 after 6 p.m.

'83 Conner MH, 2 bdrm., 2 ba., fp, \$750 equity, assume VA loan, \$247.85, 353-8975.

'83 Conner MH, 3 bdrm., 1 1/2 ba., tot. elec. assume VA of \$223.66 mo., located Knox MHP, serious inquires only, 353-5170.

RENT: 4 bdrm. dbl. wide MH, unfurn., priv. fenced yard, near main gate, \$350 mo., 353-2076.

Great Starter Home! This 2 bdrm., furn. MH on approx. 1/2 acre lot can be your own home for only \$21,500, 326-4524.

Rooms for RENT: male only \$150 mo., leave message on recorder 353-1601.

RENT: 3 bdrm., country style home w/fenced yard, \$425 mo., 324-3533.

PROTECT YOUR PRIVACY
YOU'VE ALWAYS WANTED.

WOOD & WOOD FENCING
warranty on labor. 25
warranty on materials. In-
conforms to base

WINTER SPECIAL
protection of bad weather,
ess... 20% SAV-
the months of Jan. and
Nov. the time to buy and
ward ready for Spring.

FREE ESTIMATES
(919) 347-3634

LOCATED
BUYERS

Locally Owned & Operated
by Carl & Malcolm Duff
487-B WESTERN BOULEVARD
JACKSONVILLE NORTH CAROLINA 28540

NATURAL HEALTH FOODS CENTER

"Double Feature"

Gravity Guiding Systems®

"What comes down must go up™"

Gravity exercise is the newest and perhaps best way to keep our bodies in good shape.

We carry a full line of York weight lifting equipment and body building accessories.

HEAVYHANDS™

Use while walking, jogging, aerobic dance and more for a complete cardiovascular fitness routine.

YOUR BODY BUILDING HEADQUARTERS

MON. - THUR. 10-6:30
FRI. 10-8 SAT. 10-6

NewsRiver 347-4721

MCX

Marine Corps Exchange

Fresh Cooking Great Looking

Announcing the Grand Re-opening of
the MCX Steakhouse

(EVENING DINING HOURS)

Feb. 16, 1988

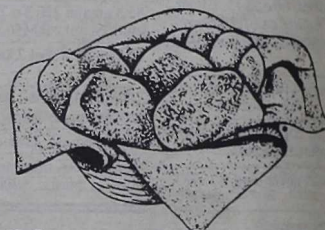
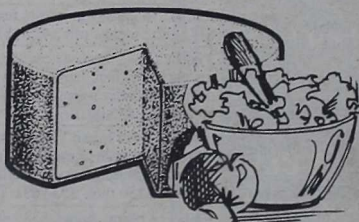


Choose from this
Main Course
selection

- 6 oz. Filet Mignon
- 6 oz. Rib Eye
- 8 oz. Rib Eye
- 8 oz. Sirloin
- 8 oz. Chopped Sirloin
- 8 oz. New York
- 12 oz. T-Bone
- 3 pcs. Broasted
Chicken

Try something
fresh & light from
our Salad Bar

- Lettuce
- Tomatoes
- Cucumbers
- Sliced onions
- Cold slaw
- Pasta salad
- Cottage cheese
- Julienne cheese



Plus a delectable
side dish from
the new Vegetable
Bar

- Hot rolls
- Steamed rice
- Green beans
- Fresh broccoli
- Pinto beans
- Whole kernel corn
- Onion rings

- Steaks are never frozen.
- Select your steak and have it cooked to order.
- We fry your food in cholesterol-free cooking oil.
- * Cocktails available for your dining pleasure.

Grand
Special
Free Dr.
with each dr.
purchased



New hours effective Feb. 16, 1988

MCX Cafeteria/Lunch

Open Mon.-Fri. 11:00am-2:00pm

Steakhouse

Open Mon.-Fri. 5pm-9pm

Closed Sat., Sun. & Holidays

(except for special parties)

Call our Party Coordinator & book your
special party today! 451-2591/2592