



# NEWSCASTLE

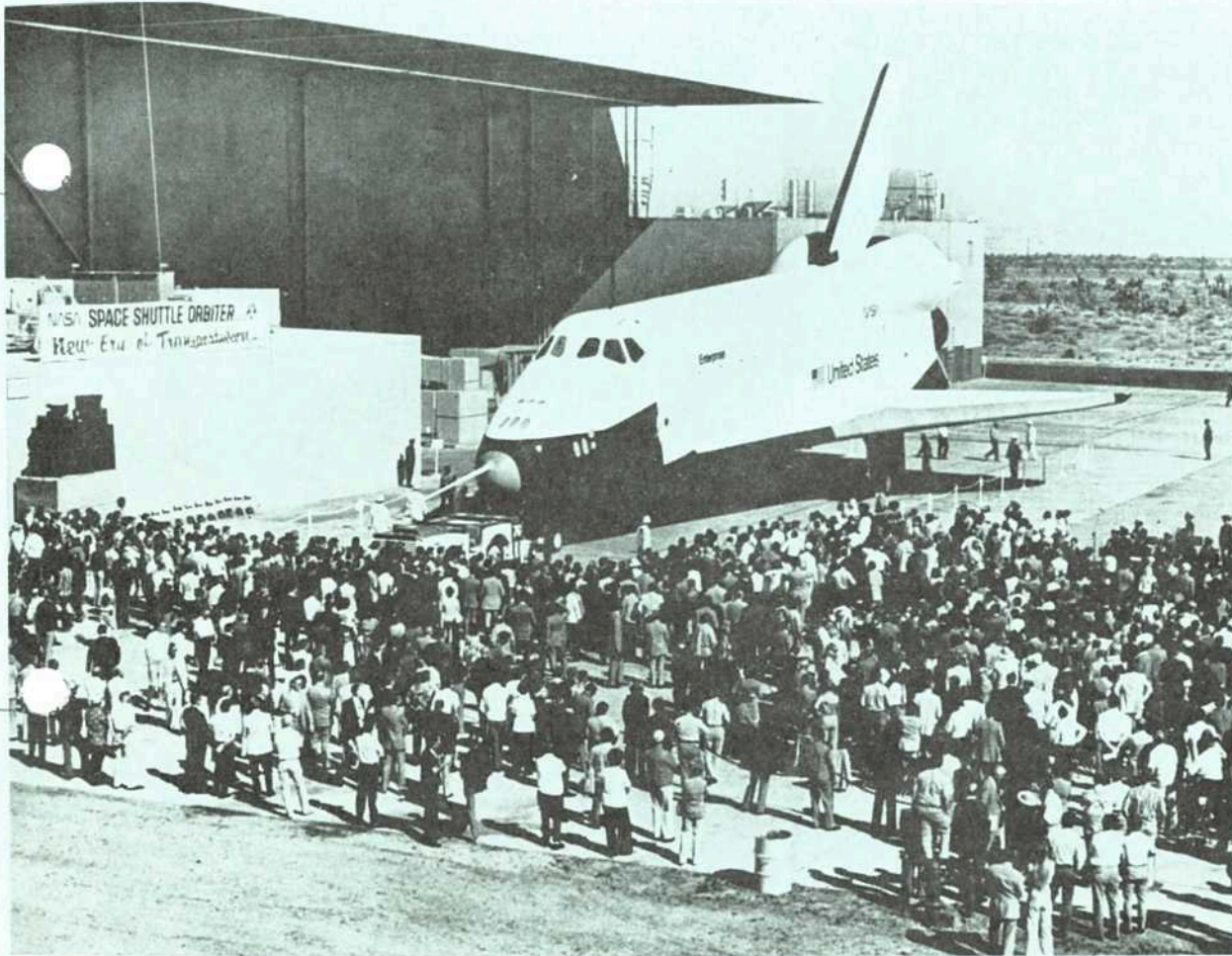


U.S. ARMY ENGINEER DISTRICT, LOS ANGELES  
CORPS OF ENGINEERS

Vol. 10 No. 2

INFORMATION EXCHANGE BULLETIN

February 11, 1977



## LAD Paves Way For Space Shuttle Debut

On January 31, a gargantuan structure, loaded atop a specially designed 90-wheel truck, was transported at a snail's pace from Air Force Plant #42 at Palmdale, California, to Edwards Air Force Base. Traveling at the rate of about three miles per hour, the truck and its gigantic load finally arrived at Edwards AFB 10 hours later. This was the Space Shuttle on its way to Edwards for flight testing.

A whole new era of transportation will become a reality in the 1980's with the advent of the Space Shuttle and its ability to inexpensively place a variety of payloads into orbit and retrieve and return satellites to earth. It is designed to reduce the cost and increase the effectiveness of using space for commercial, scientific, and defense needs. And as a transportation system to space, it will offer the workhorse capabilities of such earthbound carriers as trucks, ships, and airlines and will be as vital to the nation's future in space as the more conventional carriers of today are to the country's economic life and well-being.

The Space Shuttle is more than a transport vehicle. The Orbiter has the capability to carry out missions unique to the space program: to retrieve payloads from orbit for reuse; to service and refurbish satellites in space; and to operate space laboratories in orbit. The Shuttle also provides its own laboratory capability to do research and develop

(Continued on Page 6)



## Annuity Increase

A 4.8 percent cost of living increase in annuities will go into effect March 1 for federal retirees.

The higher rates will be reflected in checks mailed out April 1.

This raise, the first under the law passed last year, is based on a rise of 4.8 percent in the Consumer Price Index from December 1975 to December 1976.

Future raises under the revised law will occur at six month intervals depending upon the pace of inflation.

The CPI reported by the Labor Department for December 1976 was 174.3, a rise of exactly eight index points over the base level of December 1975. In terms of the base month CPI, 166.3, the rise was 4.8 percent and annuities are automatically adjusted by this percentage.

### METRIC SYSTEM

In case you've wondered about the metric system, it's fairly simple to learn. For use in your everyday life, you will need to know only basic units.

1. Meter: A little longer than a yard (about 1.1 yards).

2. Liter: A little larger than a quart (about 1.06 quarts).

3. Gram: About the weight of a paper clip.

Common prefixes (to be used with basic units):

4. Milli: One-thousandth (0.001).

5. Centi: One-hundredth (0.01).

6. Kilo: One-thousand times (1000).

Thus:

7. Millimeter: 0.001 meter - diameter of paper clip wire.

8. Centimeter: 0.01 meter - width of a paper clip (about 0.4 inch).

9. Kilometer: 1000 meters - over 1/2 miles (about 0.6 mile).

10. Kilogram: 1000 grams - over 2 pounds (about 2.2 pounds).

11. Milliliter: 0.001 liter - five of them make a teaspoon.

Other useful units you may refer to include a hectare, which is about 2 1/2 acres, and a tonne which equals about one ton.

For more information, write to: Metric Information Office, National Bureau of Standards, Washington, D.C. 20234.

## Safety in numbers.



Take stock in America.  
Buy U.S. Savings Bonds.

## Command Objectives

The Chief of Engineers has targeted seven specific "Command Objectives" for Corps-wide attention and achievement during 1977. They are:

1. SUPPORT TO TOTAL ARMY: This is not only the Corps top priority objective, but also the Department of the Army's number one objective. For us, it involves the same level of knowledge of and involvement with National Guard and Reserve components that we experience with active components.

2. CUSTOMER SATISFACTION: We must respond promptly to the needs of Congressional, military and civil customers with engineering planning, advice and technical assistance, and timely delivery of required facilities of top quality design and construction at a reasonable cost.

3. PUBLIC PERCEPTION: We should develop a more accurate perception and understanding among those we serve of the Corps' role - methods of performance and limitations in providing service.

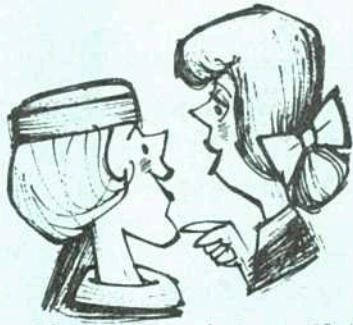
4. FINANCIAL MANAGEMENT: We must obligate, expend and manage the funds entrusted to us in a prompt, well planned, and fully auditable, controlled manner thus obtaining optimum value to our customers for the dollars available.

5. PROCUREMENT: We should improve efficiency and responsiveness in the acquisition and control of supplies and services.

6. ENVIRONMENT & ENERGY: By our initiatives we must seek out means to fulfill the objectives of National environmental and energy programs as they apply to both civil works and military functions. Each member of the Engineer family can contribute to developing among the American people an ethic and conservative use of our environmental and energy resources.

7. PEOPLE MANAGEMENT: Continue our efforts to recruit, train, organize and manage fairly and equally the Corps' work force to ensure optimum mission performance and to retain a solid professional structure which can respond promptly to future challenges.





Noontimers Toastmistress Club is having its Annual Speech Contest on Wednesday, February 23, at Taix Restaurant, 1911 West Sunset Blvd., 11:30 A.M. All are invited.

The contestants will be Sheryl Crumpacker, Director, Renegotiating Division, Western Regional Renegotiation Board, Sandra East, EEO Officer, Betty Gladwill, Construction-Operations Division, Diane Marbury, Finance & Accounting Branch, and Mona Shermerhorn, Bureau of Land Management.

Luncheon tickets (beef or sea bass) are \$5.00. For reservations, call Thelma Choto, Ext. 5511, no later than February 21.

## CLOUD 9

Ida Simms, Office of Counsel, reports she was completely unaffected by the 25 degree temperature in Washington, D.C., during the recent inaugural. As special guests of Florida Congressman Paul Rogers, she and her companions enjoyed the entire ceremony in VIP seats located at the steps of the Capitol. Later, they attended the Inaugural Ball held at the Sheraton-Park Hotel where they were entertained by the incomparable Aretha Franklin. Needless to say, Ida is still on Cloud 9.

And, as if that wasn't enough excitement, on her return home, Ida's son and his wife, presented her with a bouncing 8 lb. 5 oz., 20" long granddaughter! Wow, what a way to start the New Year!

## FEDERAL WOMEN'S PROGRAM

The Federal women's Program Committee will hold a "Brown Bag" session on Wednesday, February 10, at 11:30 A.M., in Room 7412. Judy Ashman, guest speaker, who drafted the State Equal Credit Act, will discuss that Act as well as "Consumer Protection".

Since February 1976, Ms. Ashman has been Special Counsel to the City Attorney in charge of legislation. Previously, Ms. Ashman, a UCLA and Whittier College School of Law graduate, served as Deputy Attorney General in charge of Constitutional Rights and also worked on Consumer Protection legislation.

It should be an interesting session and all employees are invited to attend.

## WATCH IT !

Home accidents claimed the lives of 25,500 Americans in 1975. Another four million persons suffered disabling injuries, with 100,000 of these injuries resulting in some type of permanent impairment.

## RETIREMENT

Jewell Fiddler retired from the Real Estate Division on December 31 after 25 years of Federal service. Jewell came to the Corps in 1965 and had been with the Real Estate Division since 1967.

In addition to carrying out her duties as Realty Clerk, she was the "Girl Friday" to the Real Estate Division's Closing Attorney and Claims Officer, and her efficient support will be greatly missed.

The District extends best wishes for a happy and rewarding retirement, Jewell.

## Crop Report

And "Ole Farmer Bob" Weber, Specification and Estimating Section, reports a bumper citrus crop so far this year. Lemons, oranges and grapefruit overflow his one and a half acres. With some modesty, Bob allows as how his corn ain't doin' so bad either.

## Grandpa Land

Bob Land, Construction-Operations Division, welcomed his first grandchild on December 1 when his daughter presented the family with Jennifer.

## Naomi Now "GG"

Just being an ordinary grandparent wasn't enough for Naomi Glover, OAS Publications. She became a GREAT grandmother of a 7 pound, 9 ounce girl born in San Antonio, Texas, on January 14. Just call her "GG" for short.

## Solar Energy in Use

A building, powered by the sun and serving as a laboratory to test the latest energy conservation technology, has been opened by Federal government.

The \$8.7 million Federal Building in Manchester, New Hampshire, with its large roof-top solar collector, is already a landmark on the city's skyline.

## A PAO First

It's never happened in the Public Affairs Office before, but there's always a first time. And it is with great pleasure that we announce the arrival of another member of the PAO family. The Hawthornes, Grace and Larry, welcomed their first child, Heather Lynne, on February 2. Heather weighed in at six pounds, three ounces, 20-1/2 inches long. Father is doing well.



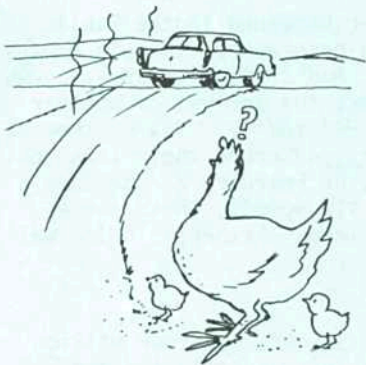


## GUIDE FOR HANDICAPPED

Determining not only the most interesting but also the safest sights to see in a big city is no easy task. But for a handicapped person, it's imperative.

The non-profit Junior League of Los Angeles, Inc., publishes a 52-page guide for just such persons as a public service. Titled Around the Town with Ease, this digest-sized booklet contains a location map and detailed information on 108 of the most famous and interesting public attractions in the greater Los Angeles area and San Diego. You can know in advance about parking requirements; best entrance to use, door size, etc.; steps - size and number; curbs; railings; floor surfaces; elevators; floor levels; seating; food; restroom sizes and facilities; and medical facilities.

If a relative or friend of yours is handicapped and will be visiting Southern California, you can get this little gem free by writing to the League at Farmer's Market, Third and Fairfax, Los Angeles, CA 90036.



### CONSTRUCTION-OPERATIONS DIVISION - (Base Yard)

Mark A. Hofeldt      Adopted Suggestion (Joint)  
Richard T. Solesbee      \$67.50 each

Minnie L. Thompson      Quality Step Increase

### OFFICE OF ADMINISTRATIVE SERVICES

Carlos J. Cruz      Adopted Suggestion - \$25

### ENGINEERING DIVISION

Carolyn West      Quality Step Increase

Allen C. Tom      Ltr of Commendation- REDI  
District Volunteer

Christopher Sands      Adopted Suggestion (Joint)  
Richard A. Gutchow      \$92.50 each

Rebecca Sheff      Outstanding Performance and  
Sustained Superior Performance

Thomas H. Sage      Quality Step Increase

Delores M. McCree      Ltr of Commendation - REDI  
District Volunteer

W. George Harski      Adopted Suggestion - \$25

Lorraine M. Dimpfl      Ltr of Commendation - REDI  
District Volunteer

## SNIFF, SNIFF.....

What do rotten eggs and catalytic converters have in common? Would you believe smell? This rather distinct odor (actually hydrogen sulfide) is generated by the converter whenever the available oxygen supply is insufficient to oxidize all the hydrogen in the exhaust gases.

If you're unfortunate enough to be plagued by this problem, check out your car for one of the following conditions:

Carburetor adjustments incorrect, such as:

1. Choke set too rich.
2. Idle air/fuel mixture set too rich.
3. Metering rods (on some carbs) set too rich.
4. Float level too high.

Choke not opening fully or not opening soon enough, caused by:

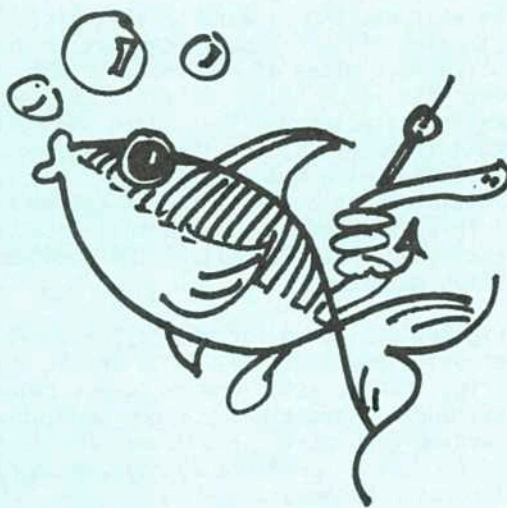
1. Leaking choke cover gasket.
2. Blocked choke hot air tube (heat riser).
3. Choke linkage bent or binding.
4. Power valve (on some carbs) leaking.



## How Can You Top This?

Most fishermen talk about the big ones that got away, but how about the ones they catch by pure luck? Well, it seems there are these two fellows, Fillmore Turner, Geology Section, and Tom Laverty, Reproduction Branch, who go fishing together quite often at Channel Islands in Oxnard.

While bottom fishing recently in 300 plus feet of water off San Nicholas Island, Turner was standing at the rear of the boat when he snagged his line in the boat's propeller. After much effort, he and a crew member had to break the 80 pound line which meant Turner had to hang up his rod. He lost all that heavy line plus a five pound sinker, five hooks and a steel leader. About a half hour later, one of the crew came around looking for the fellow who lost some heavy weight green filament line. Turner popped up and said he had. They proceeded splicing the lines and Turner recovered everything he had lost PLUS five fish, each weighing between eight and ten pounds, that were hooked at the bottom!



## A Bit of Corps History

Among the many famous members of the Corps of Engineers, General George Washington Goethals, the builder of the Panama Canal, stands in the first rank. It was his persistence, intelligence, and drive that made possible the solving of gigantic engineering programs in the Canal's construction. He himself said, apropos of building a bridge over the Spokane River early in his career

It is scarcely ever the big, spectacular things that really count with an engineer....It is the difficulties overcome that make for greatness....Nothing is hard if you know what you are doing. What makes my first bridge so stick out in my memory is that I did not know what I was doing. The man who is entitled to most credit is the man who does something, no matter how crudely, for the first time.

When the disastrous slide occurred in the Culebra Cut in 1913 and his frantic assistants asked whatever could they do now, the then Colonel replied "Hell! Dig it out again."

Less well known is his service, in a private capacity, in California during the nineteen twenties. He inspected the site of Hoover Dam, and acted as a consulting engineer for the East Bay Municipal Utility District and for the Los Angeles County Flood Control District, where he inspected the dam sites at Pacoima and San Gabriel Canyon.

As well as recounting his achievements and fame, Goethals' biographers also mention some lighter episodes. Shortly after his graduation from the Military Academy, when he hesitantly presented a letter of introduction to William Tecumseh Sherman, the General Commanding the Army, the latter asked him what branch of the service he had joined. To the reply, "The Engineers, sir," Sherman responded, "Oh, hell! However, in spite of that, I hope you may do some good for your country some day." And while teaching at the Military Academy in the eighteen eighties, in a rickety classroom with a knothole in the floor, out of which ran periodically a tiny mouse, he would lazily snap a piece of chalk at it.

The cadet at First Front Board, his discussion rudely interrupted by this bombardment of the mouse, would hesitate and lose the thread of his engineering problem. Always at this psychological climax Lt. Goethals would say: 'Never mind the little mouse, Mr. Blank; go on with your discussion just as if he never existed.'

Of the Congressmen who accompanied him on his first voyage down to Panama, he wrote they "are not the drawbacks I thought they would be, and there are many pleasant chaps among them. The most amusing are those who have never been at sea before, and who think they are remarkably good sailors...."

Contributed by Jeannette Hargrave  
District Librarian



# Space Shuttle...

(Continued from Page 1)

techniques and equipment that may evolve into new operational satellites.

And what was LADO's part in all this? The project started in March 1976 with the District being given unusual authority to deal directly with NASA. Our job was to design and construct 10 miles of new road for the transport of the Space Shuttle from Palmdale to Edwards Air Force Base. In addition, the entire 36 mile route had to be cleared of all interfering obstacles which included the relocation of overhead telephone and power lines, cable television lines, traffic islands and other traffic control facilities in addition to the trimming of a number of trees. In order to accomplish the relocation, the District initiated action with other agencies such as the Southern California Edison Company, General Telephone Company, and County Road Department as well as numerous smaller agencies. It is estimated that the cost of the road work and utilities relocation amounted to over one million dollars.

Originally planned for completion in 13 months, the project deadline was accelerated to nine months and it is to LADO's credit that the shortened deadline was met without sacrificing the precision and exactness required when dealing with such a valuable cargo. The assistance of practically every segment of the District's organization was involved and according to Captain Kent Gonser, Project Manager, it proved that "when the Corps has a job to do, with a deadline to meet, we can do it, thanks to the hard work and responsiveness of Corps personnel".

## Credit Union

Here are a few reminders from your Credit Union.

**PERSONAL PLANNING** Where are your important papers? Is your family "in the know" as to the existence and location of YOUR IMPORTANT PAPERS?

**SAFE PLACE AT HOME** Insurance policies, bank books, income tax records, cancelled checks, credit card numbers, education/employment/medical records, Social Security cards, and warranties.

**SAFETY DEPOSIT BOX** Birth certificates, wills, trust instruments, stock/bond certificates, marriage licenses, divorce/adoption papers, passports, military service records, property deeds, mortgage papers, car titles, leases/contracts, patents/copyrights.

Your SAFETY DEPOSIT BOX is the best place to keep a current inventory of financial, household, and personal assets. Your family will be grateful.

PERSONAL PLANNING - YOUR PERSONAL RESPONSIBILITY.



*Valentine's Day*

**Feb. 14**

## Spanish Speaking Program

The LADO bus will be put to good use on February 15 when the Los Angeles Federal Executive Board's Spanish Speaking Program Coordinators Committee hold their monthly meeting hosted by the Naval Ship Weapon System Engineering Station at Port Hueneme, California.

## Get Well, Dan

Daniel Norling, Civil Engineer, Water Resources Branch, is recuperating at home following an emergency appendectomy.

Take care, Dan! Hope to see you soon.

## BY GEORGE!

In case anyone has forgotten, George Washington's birthday, which will be celebrated on February 21, is a legal holiday.


As we honor the memory of George Washington on his birthday, we also honor the legacy he left for leadership in our country: dedication, perseverance, and confidence of "...triumph over all our misfortunes."

## NEWSCASTLE

An information exchange bulletin published by the Public Affairs Office, Los Angeles District.

Perry Hume Davis II Chief

Eleanor McCarthy Editor

  
HUGH G. ROBINSON  
COL, CE  
District Engineer