

# HAWAII Marine

Vol. 22, No. 13

Serving Marine Forces Pacific, 1st MEB, MCAS Kaneohe Bay, Marine Barracks Hawaii, Camp H. M. Smith and 1st Radio Battalion.

March 31, 1994

## Vandalism aboard the base can result in stiff penalties

By Sgt. Lou Ramirez  
Staff Writer

In the past two months there has been a rise in vandalism acts throughout the air station. Two incidents in the past two weeks occurred at the station golf course.

In the most recent incident the door to the water cooler locker was removed and two coolers and paper cups were thrown on the golf course.

Although the incidents were minor station officials feel it is important to stop these destructive acts.

"We're not going to allow vandalism to continue; we don't have a lot of vandalism, but what we do have needs to stop," said LtCol. Kenneth Gregory, station inspector.

The monetary value of the destruction caused by the most recent vandalism was not great. However, the acts of mischief take time and money from other recreational activities.

"These acts not only cause time to be wasted on repairs but it also inconveniences the golfers," said Lou Lee, supervisor of golf operations.

Even though nobody has been caught committing vandalism, Capt. Chris Martin, deputy provost marshal, explained it will not be long before they do.

"We may not always catch vandals [right away] but over time we usually get a lead and we [apprehend] them," he said.

If it is a juvenile dependent who is responsible for vandalism, it is ultimately the service member who

will be held accountable.

According to Gregory, service members should make their dependents aware of Air Station Order 5500.6C, which states "Military personnel are responsible for the actions of their dependents aboard the Station. It is the responsibility of the military members to ensure that their dependents are aware of applicable laws and regulations."

"When we have any type of regulation violations, the station magistrate has the authority to handle problems in any number of ways," Gregory explained.

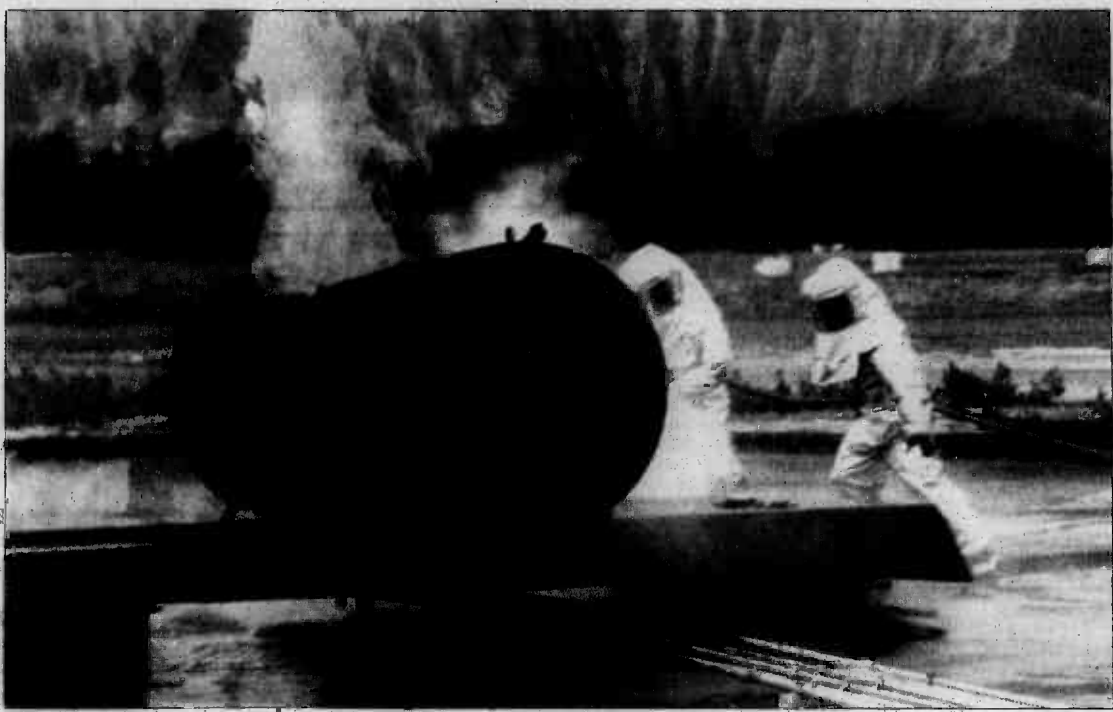
Administrative action can be taken, such as warning letters, or in a worst-case scenario, the whole family may be removed from station housing.

"If we have people who are not under our jurisdiction, we will refer them to the U.S. magistrate. Each time an infraction is conducted we look at the seriousness of it. We take a lot of different things into consideration," Gregory said.

There are several avenues of approach which can be taken against vandals, but the one preferred by station officials is one of deterrence. The help of everyone is needed to accomplish this. A watchful eye should be kept and abnormalities should be immediately reported to the military police.

It is important for everyone to remember keeping an eye out for vandalism is the same as protecting their own benefits.

"Any time we have to stop and do repairs to damaged property, time and money which would have been spent on other recreational areas is spent on these repairs," Gregory said.



"Where's the burgers?"

Crash, fire, rescue personnel work toward extinguishing flames in a simulated aircraft fire. The Marines were participating in a monthly training evolution.

Cpl. Justin Larson

## Marines return from Restore Hope

□ Last group of Marines come home after successful operation

By Sgt. Lou Ramirez  
Staff Writer

After several months, 30 Kaneohe Bay Marines returned from Somalia, Monday.

Their return was part of the final departure of forces from Somalia. Several thousand Marines and sailors will remain

off the coast of Somalia embarked on Navy ships.

Since 1992, more than 200 Kaneohe Bay Marines have been involved in the humanitarian effort. Although many said they didn't mind going over there and doing their share, they were definitely glad to be back.

"Everything went very smooth,

but I am just glad to be back," said Cpl. Shaun Garza, Headquarters and Service Company, 1st Marine Expeditionary Brigade.

According to Maj. Dan Choike, who was the Egyptian liaison officer there, the people in Somalia appreciated what the Americans

had done and were very sad that the Marines were leaving.

"According to them, things are better there since we arrived," Choike said.

Although the Marines were glad to help, some Marines had more reasons than others to want to be back. Capt. Stacy Kaucher, Headquarters 3d Marines, saw his 17-day-old son for the first time at the airport Monday.

While Kaucher was extremely anxious to see his newborn baby, Reed Kaucher, his baby felt sleep was even more important and slept throughout the homecoming.

Kaucher, who was a Marine liaison to the multiservice headquarters in Somalia's capital, Mogadishu, explained that the worst part of the whole deployment was missing the birth of his son.

"It was a good learning experience. I think the Somali people are in better shape now than when we arrived," he said.

His wife Jeri said everything also went very well in the homefront. "We were kept very well informed while they were gone. The only time I got a little worried was when they kicked in that imminent danger pay," she said.

Although for most families the worry is over, a few Marines are still in Somalia continuing their work toward a better tomorrow for the Somali people.



Capt. Stacy Kaucher was given a warm welcome from his wife Jeri and a sleepy homecoming from his 17-day-old son Reed.

Sgt. Lou Ramirez

## NQLB meeting tonight, elections scheduled

Joint Public Affairs Office

The Neighborhood Quality of Life Board meeting will be held tonight at 7 p.m. in building 267, the Training and Audio Visual Support Center (TAVSC), classroom 1.

There will be no guest speakers at the meeting. The board members are planning to discuss the results of past issues and then to open up the floor for those in attendance to bring up new problems and suggestions.

Depending on the attendance at this meeting, the annual elections for the board will also be held tonight. There are a total of nine people who serve on the board. The elections are for the six at-large member seats.

Anyone, including single or

married military personnel and their spouses, may run for the seats on the board.

The board was created by the station commanding officer to address quality of life issues. The meetings give the military community a chance to express concerns about quality of life issues which normal procedures have failed to address or correct. It also provides station residents a way to actively improve the quality of life here.

In addition to the monthly meetings, quality of life issues may be addressed by filling out a NQLB suggestion form located at the Commissary, Main Exchange and 7-Day Store.

The board is not intended to circumvent the normal chain of command or the normal procedures of station facilities.

## Against the coping stone of change The Dept of the Navy and the future

Gen. Carl E. Mundy Jr.  
Commandant of the Marine Corps

Editor's Note:

This article is the third of a three part series written by Gen. Carl E. Mundy Jr. This article originally appeared in Strategic Review magazine's Winter 94 issue.

Clearly, "... From the Sea" is philosophically and functionally in concert with the Bottom Up Review. Like the Bottom Up Review, it is capabilities based. At a level once removed from the strategy outlined in the Bottom Up Review, it is a Department of the Navy blueprint for how the two sea services will contribute to the regionally-oriented national security strategy.

This evolution re-emphasizes amphibious forces, mine warfare forces, and other capabilities

that were of lesser priority during the long Cold War. It is a quantum leap for the Navy; turning the bow of the carrier towards shore, and away from the central blue.

The philosophical heart of "... From the Sea" stresses the ability of the naval services to influence events ashore by using our uncontested control of the oceans and by operating forces from sea bases, rather than on our steadily receding overseas land bases. In an era of increasing regional threats, the ambiguity and ubiquity of sea-based forward operating forces — forces with a robust power projection capability — is more attractive than ever.

Because of this ability to operate from the sea, from the amphibious and tactical aircraft platforms that are small moveable islands of national resolve, unencumbered by

basing requests or overflight problems, it is possible to conduct subtle and controlled engagement across the broad spectrum of diplomatic and military interaction. Because of this, Marines can come ashore rapidly for operations across the spectrum of conflict, from crisis response to a major regional conflict.

Operational maneuver from the sea

Integral to the broad concepts outlined in "... From the Sea" is operational maneuver from the sea. OMFTS embodies the principles of maneuver warfare, a philosophy of land combat the Marine Corps adopted in the wake of Vietnam. It has great applicability to naval expeditionary forces — carriers and Marines — operating in littorals. Maneuver warfare is a warfighting style that



Gen. Carl E. Mundy Jr.

emphasizes the strengths of our Corps: rapid maneuver and quick, decentralized decision making. When meshed with our naval partners in naval expeditionary forces, we add the enormous advantages that accrue from the inherent strategic mobility and flexibility of seabasing.

See Coping, A-5

## Inside



Marines conducted several live-fire exercises on the Big Island... See A-6.

□ Ads .....	B-4
□ Blotter .....	A-2
□ Briefs .....	A-10
□ MWR Offerings .....	B-2
□ Movies .....	B-4
□ Spice of Life .....	B-3
□ Sports Briefs .....	B-2
□ Sport commentary .....	B-1
□ This Week Around the World .....	A-3

# Blotter

• Military police observed two Marines in a physical altercation at the Enlisted Club. When another Marine attempted to intervene, one Marine struck him in the mouth with his fist. No medical attention was required.

• A Marine reported a stove fire at his assigned quarters aboard the base. The victims were transported by ambulance to Tripler Army Medical Center, treated for smoke inhalation and released. There was no damage to government property.

• During a command authorized vehicle inspection at Mokapu Gate inbound, military police seized suspected marijuana, drug paraphernalia and an alcoholic beverage from a vehicle occupied by two juveniles. Both suspects were detained and released to their parents.

• A Marine reported he and

another Marine were assaulted by a group of unidentified males at an unknown location in Waikiki. Both Marines were transported by ambulance to Tripler Army Medical Center, treated and released.

• The Honolulu Police Department reported to the military police that two Marines were suspects in an assault that occurred in Honolulu. HPD released them on bond.

• There were three larcenies of private property. Items stolen included a battery, carburetor, distributor cap, spark plug wires, two bicycles, nine compact discs.

• There was one DUI this week off base. There were no DUIs or DWIs aboard the base this week.

The evidence/lost and found custodian has in his possession bank cards, jewelry, keys, wallets, several bicycles, and much more. If you think any of these items belong to you, contact Sgt. Fink at 257-3425/3110.



Courtesy of Julie Mail

## Grand Opening

(From left to right) 1st MEB Sgt. Maj. P.D. Hershey, MCAS Sgt. Maj. Don Michel, and Col. R.R. Crawford, MCAS commanding officer cut the ribbon to the Koa Mallna. The restaurant is the former Kilpper Inn. The grand opening was held March 22.

# HAWAII Marine

The Hawaii Marine is an unofficial newspaper published every Thursday by RFD Publications, Inc., 45-525 Luluku Road, Kaneohe, HI 96744, by a private firm not connected with the Department of the Navy or the United States Marine Corps. All advertising is provided by RFD Publications, Inc., 235-5881.

The Hawaii Marine is a free publication delivered each week to all family housing units aboard Marine Corps Air Station, Kaneohe Bay and to all Hawaii-based Marine Corps commands. Housing carriers are paid only by voluntary contributions from customers who are satisfied with the delivery service. A voluntary contribution of \$1.30 a month may be solicited by these carriers. Housing residents may contact the publisher directly if they wish to stop home delivery. Questions concerning circulation policies and service can be answered by calling the publisher.

The Hawaii Marine welcomes stories and photo submissions

from its readers, but submission is no guarantee of publication. Please call the MCAS/1st MEB Joint Public Affairs Office at 257-2178 for Windward activities, FAX 257-5743, or the FMFPac Public Affairs Office at 477-5053 for Leeward activities. Opinions expressed by the publisher and journalists are their own and are not to be considered an official expression of the Department of the Navy or the United States Marine Corps.

Items advertised in the Hawaii Marine must be made available for purchase, use or patronage to everyone without regard to race, creed, color, national origin, religion, age or sex of purchasers, user or patron. The appearance of all advertisements in the Hawaii Marine, to include, inserts and/or flyers does not constitute endorsement of the firms' products or services by the Department of the Navy or the United States Marine Corps.

Commanding Officer ..... Col. R.R. Crawford  
 Joint Public Affairs Officer ..... Maj. P. A. Sivigny  
 Press Chief ..... Sgt. Paul Schneider  
 Editor ..... Aaron Martin

# HAWAII Marine

Serving the following major commands

- Marine Forces Pacific ..... Lt. Gen. H. C. Stackpole III
- 1st Marine Expeditionary Brigade ..... BGen. R. F. Vercauteren
- MCAS Kaneohe Bay ..... Col. R.R. Crawford
- Marine Barracks Hawaii ..... Col. W.W. North
- Camp H. M. Smith ..... Col. F.C. Wilson
- 1st Radio Battalion ..... Lt. Col. R. Moureaux

**It's time for a change.**

We Accept Competitors' Coupons

33500

**Havoline**  
 FORMULA MOTOR OIL  
 Add More Life to Your Car.

You Don't Have To Wait 45 Minutes For A 10 Minute Oil Change. Every three months or 3,000 miles, bring your car to our Havoline facility. We'll perform the most important maintenance job in your car's life: an oil and filter change using quality Havoline products. And we'll do it fast with trained lube technicians. We'll also lube the chassis, check and fill your car's other fluids, inspect your tires, and do much more.

So stop in our Havoline facility today.

**Xpress Lube**  
 Military Discount • Senior Citizen Discount  
 Wizard of Oil • 555 N King St. at Kingsgate Plaza • 847-2657  
 Mon - Fri. 8-6 • Sat. 8-5 • Closed Sundays • \*We feature Havoline Formula Motor Oils and Filters.

Present This Ad For **\$400 OFF** Any Full Service Oil Change or Automatic Transmission Fluid & Filter Change. Not valid w/any other offers. Exp. 4-14-94

**Considering CONTACT LENSES?**

Bring in your military eyeglass prescription or current glasses and leave with comfortable, problem-free contact lenses.

**SOFT & DISPOSABLE LENSES CALL FOR PRICE LOWEST PRICE GUARANTEED**

**PRESCRIPTION GLASSES 50% OFF ALL FRAMES IN STOCK**  
with purchase of a complete pair

**TRICARE Accepted for Dependent Eye Examinations**

**DR. CHARLES DEAN**  
 Optometrist Specializing In Contact Lenses  
**261-9735**  
 139 Hekili St., Kailua

Eye Examinations Available • Full-Service Vision Care

**Build For The Future**

U.S. Savings Bonds are an excellent building material for any goal: a new house, an education, vacation, retirement. Savings Bonds are safe, backed by the U.S. Government. They are a competitive investment, with market-based rates, and tax-deferral and tax-exempt benefits. You are never too young to start building.

**U.S. SAVINGS BONDS**  
 THE GREAT AMERICAN INVESTMENT

**Fashion Dream Shots**

Make your Mother's Day picture perfect with a gift certificate from Fashion Dream Shots.

Make your appointment today!

Photo Session Includes:  
 \*Makeover & Hair styling \$29.95  
 \*Wardrobe & Accessory changes  
 \*High Fashion Photo Session  
 \*Photography: 50 prints in 10x10 format

**High Fashion Photography**  
 Hickam Skills Development Center  
 • 335 Kuntz Ave., Hickam AFB  
**449-1568**

*Mother's Day Special*

\*Portraits are available in a variety of sizes/dollar amounts and are back in about a week after proof review.

**AARON'S DIVE SHOPS**

Dive in at **AARON'S**

Learn to dive with a friend and save with our **2 for 1 special!**

Sign up for any class — Your friend dives in for **50% OFF!**

**DIVE GEAR ON SALE NOW — READY, SET, DIVE!**

<b>IST FINS</b> \$19.95 SAVE \$20.00!	<b>IST PROFLEX FINS</b> \$59.95	<b>IST SATURN SNORKEL</b> \$8.95 SAVE \$18.00!	<b>IST STANDARD SNORKEL</b> \$9.95 SAVE \$7.00!	<b>IST TUCANA MASK</b> \$16.95 SAVE \$8.00!	<b>OCEANIC MAXIM EYES MASK</b> \$49.95 SAVE \$17.00!	<b>IST JUPITER MASK</b> \$44.95 SAVE \$15.00!
---	------------------------------------	--	---	---	--	---

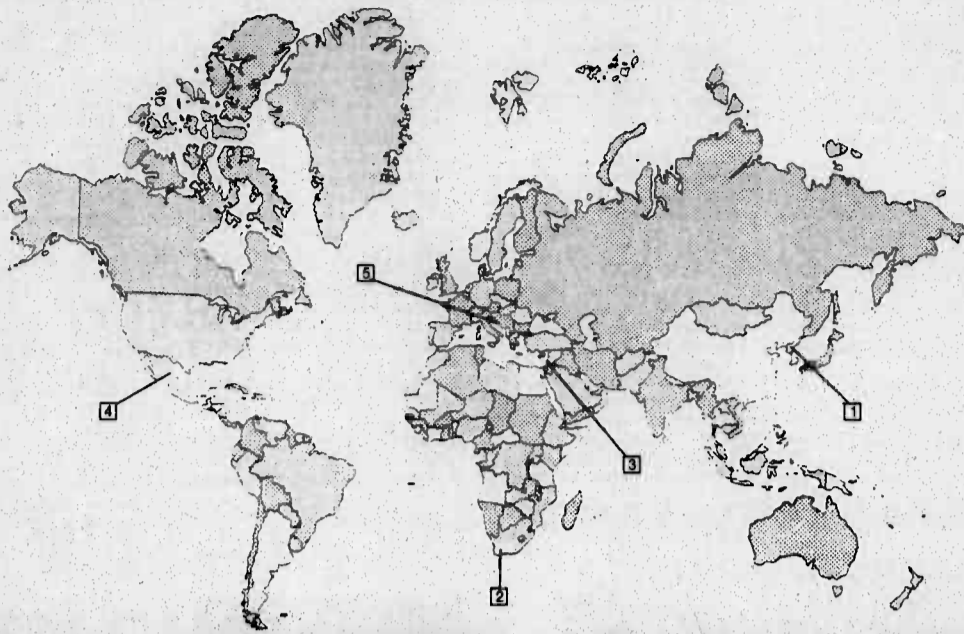
BC's	REGULATORS	COMPUTERS
PSJ BC \$199.95 Reg. \$299.95	Oceanic Alpha III \$199.95 Reg. \$249.95	Oceanic Data Max Pro \$575.95 Reg. \$719.95
Oceansport \$279.95 Reg. \$339.95	Sherwood Brut \$183.95 Reg. \$230.95	Oceanic Data Max Sport Navcon \$399.95 Reg. \$549.95
Sea Quest "Predator" \$336.95 Reg. \$450.95	Scubapro MK2-R190 \$169.95 Reg. \$199.95	Sherwood Source Capsule \$279.95 Reg. \$382.95

Financing Available: Easy Credit Terms: 90-Days Interest-Free

<b>PEARL CITY</b> 98-406 Kam Hwy. <b>487-5533</b>	<b>KAILUA</b> 602 Kailua Road <b>262-2333</b>	<b>CAMP SMITH</b> Scuba Locker <b>477-0514</b>
---	---	--

Prices good through 4-10-94

# This week around the world



## 1 Korean peninsula remains tense

Although South Korea's president has tried to tone down the rhetoric aimed at North Korea, tension remains high on the Korean peninsula.

Both countries continue to keep their forces on a high state of alert. The United States is carrying out its plan to deploy Patriot missiles to South Korea and is planning to resume its joint-exercise, Team Spirit, with Korea later this year.

While the United States has kept the diplomatic pressure on North Korea, South Korea has turned to China in an effort to end the confrontation.

North Korea escalated the crisis after it refused to let international inspectors into some suspected nuclear sites. The United Nations believes North Korea is developing nuclear weapons and may already be close to having one.

The U.S. is pushing for sanctions against North Korea if they don't allow inspections of the suspected nuclear facilities.

## 2 South Africa explodes as factions vie for power

A Zulu leader threatened war after dozens of Zulus were killed during protests demanding Zulu

self government Monday. The Zulus' Inkatha Freedom Party threatened their rival, the African National Congress, with 'Armageddon.'

South Africa's Transitional Executive Council said it may impose a state of emergency if the violence which has plagued South Africa recently isn't ended.

Despite the deaths, the Zulus

are continuing to demonstrate against the April 27 multi-racial elections, the first for South Africa, since they want to restore the Zulu monarchy.

## 3 Violence continues in Israel

The Israeli-Palestinian peace process appears to be in jeopardy

as six more Palestinians were killed in the Gaza Strip Monday.

Israeli soldiers fired on Palestinian protesters throughout the Gaza Strip and West Bank, Tuesday, killing one and wounding more than 75.

Palestinian Liberation Organization Chairman Yasser

Arafat demanded an explanation for the attacks from Israeli Prime Minister Yitzhak Rabin. Arafat believed the attacks were planned and were designed to destroy the peace process.

Although the Israeli government stressed the deaths were very sad and unintentional, Palestinians who witnessed the attacks said

the Palestinians were killed without any provocation.

## 4 Mexico's ruling party names candidate

Ernesto Zedillo was named the new presidential candidate for the ruling Institutional Revolutionary Party, Tuesday, after the lead candidate, Luis Donaldo Colosio, was assassinated.

Zedillo, a Yale-trained economist, ran Colosio's campaign until he was killed. He instantly became the favored candidate to lead Mexico for the next six years.

## 5 Cease-fire signed between Croats, Serbs

Croatians and Serbs signed a cease-fire agreement which will take effect Monday.

The cease-fire will be a final truce between the two rivals. A truce mediated by the U.N. has been in effect since early 1992, but Serb forces still hold parts of Croatia and some fighting has broken out during the past two years.

Russia and the United States pressured the two sides to reach the final truce.

### TRINITY WINDWARD CHURCH

Where People Care... and Where the Bible Makes Sense for Daily Living.

9:30 A.M. Bible School (for all ages)  
11:00 A.M. Morning Worship

262-8587

875 Auloua Road  
Kailua



A Congregation of the Presbyterian Church in America.

**PRESTIGE TRAVEL UNLIMITED, INC.**  
1513 YOUNG ST. SUITE #102 PH 945-7400  
OPEN 7 DAYS A WEEK

<b>INTERISLAND COUPONS</b> \$270 of 6 Special - One Week Only	<b>LAS VEGAS PACKAGE</b> From \$365 4 NIGHTS BASED LAX/STOP AVAIL OTHER HTS. AVAIL
---	--

LAX \$99	R/T \$249	SFO \$149	R/T \$249	SEATTLE \$199	R/T \$303
----------	-----------	-----------	-----------	---------------	-----------

OMAHA DENVER HOUSTON MILWAUKEE NEW ORLEANS OKLAHOMA CITY MINNEAPOLIS-ST. PAUL	R/T \$415	DETROIT WICHITA ST. LOUIS CINCINNATI LITTLE ROCK KANSAS CITY INDIANAPOLIS	R/T \$517	MIAMI BOSTON ATLANTA HARTFORD NEW YORK CHARLOTTE PHILADELPHIA NORFOLK	R/T from \$542
---	-----------	---	-----------	---	----------------

CALL NOW FOR SPECIAL CHILD/SENIOR DISCOUNTS  
CALL FOR OTHER DESTINATIONS

### Koolau Baptist Church

45-633 Keneke St.  
Kaneohe, HI 96744  
247-5442

**SERVICES**

Sunday  
Sunday School.....9:45am  
Morning Worship.....10:45am  
Evening Service.....6:30pm

Wednesday  
Prayer Meeting.....7:00pm  
Nursery Available For All Services

Koolau Baptist Church Academy  
Grades K-12  
Military Welcome!

### Dancers

Inviting All Kids of Hawaii ages 3-19

We Have The Perfect Classes FOR YOU!

JAZZ-TAP-BALLET-ACROBATICS & HULA  
ENROLL NOW!



**DANCE SPECTRUM HAWAII**  
254-3116  
National & International Teacher-Two Masters Degrees in Dance

## PRICE BUSTERS

The Store Everyone's Talking About!



# EASTER BLOW-OUT SALE!

### 25% OFF ALL EASTER THEME ITEMS!

- Large Plastic Eggs
- Furry Baby Lambs
- Erasers
- Wind-Up Chicks
- Pencils
- Easter Ceramic Candles
- Figurines
- Vinyl Window Decorations

**25% OFF**  
ALL PURSES & WALLETS

**25% OFF**  
ALL TABLE CLOTHS

Beautiful Prints on Vinyl w/Flannel Backs or Vinyl Lace. Ass't. Sizes

DOVE DISHWASHING LIQUID

99¢

22 oz. Limit 3

HOURS: MON. - SAT. 9A.M. - 9P.M. SUNDAY 10A.M. - 5P.M.

**247-1800**

45-934 Kam Hwy., Kaneohe - Next To Times SuperMarket

Sale ends 4/6/94.

### What's Missing?

# CH \_ \_ CH

You are! We want you to know that you are welcome at these churches for Easter Sunday services and every Sunday. You are important to us and to the Lord!

### IN HONOLULU OHANA BAPTIST CHURCH

4435 Salt Lake Blvd.  
Next to Radford High School  
422-4343

Sunday School 9:15 AM  
Morning Worship 10:15 AM  
Evening Service 6:00 PM

Early Easter Service 8 AM

### IN KANEOHE KOOLAU BAPTIST CHURCH

45-633 Keneke St.  
Corner of Likelike & Kahekili Hwys.  
247-5442

Sunday School 9:45 AM  
Morning Worship 10:45 AM  
Evening Service 6:30 PM

### IN MAKAKILO KAHUA BAPTIST CHURCH

Meeting at:  
Mauka Lani  
Elementary School  
672-4613

Sunday School 9:15 AM  
Morning Worship 10:00 AM  
Evening Service 6:00 PM

### IN WAHIAWA HUKILAU BAPTIST CHURCH

147 Westervelt St.  
Behind the Post Office  
625-3668

Sunday School 10:00 AM  
Morning Worship 11:00 AM  
Evening Service 6:00 PM

# Ambulance service policy changes on Oahu

By Maj. Jack Scott  
Tripler Army Medical Center

*(Editor's Note: This article was written by Tripler Army Medical Center's chief of the Emergency Response Team. It deals with Oahu's 911/Ambulance policy which will impact all service members.)*

Beginning Friday all Oahu residents who utilize the City and County of Honolulu 911 ambulance services may experience a change in hospital destination for treatment of their illness or injury. The City and County Emergency Medical Services system, which operates the 911 emergency ambulance system, is changing the transportation guidelines so that ambulances only transport patients to the nearest hospital-emergency department capable of

treating or stabilizing their illness or injury.

If the patient's hospital of choice is further away, the patient may be transported there if the additional EMS case time does not exceed twenty minutes.

These changes are necessary to enhance the 911 ambulance response time, an ability currently in jeopardy when ambulances transport patients to hospitals many miles away, out of the ambulance district.

The results of these changes may mean that Department of Defense patients, including active duty military, family members, retirees, and Veterans Administration beneficiaries, may not be transported to Tripler Army Medical Center, but to a civilian hospital closer to the incident location.

As an example, patients in central Oahu may be transported to Wahiawa General Hospital; leeward patients to St. Francis Medical Center-West or Pali Momi; Windward, Kaneohe and Kailua patients to Castle Medical Center; or Diamond Head patients to metropolitan hospitals (Queen's Medical Center, Kuakini Medical Center, St. Francis Medical Center, Straub Clinics and Hospital or Kapiolani Medical Center for Women and Children).

All patients transported to civilian hospitals will be responsible for charges incurred for ambulance transport and emergency room fees.

Patients needing assistance with claims may contact the following: active duty military to the Civilian Medical Claims Office, Patient Administration Division, TAMC;

CHAMPUS to the fiscal intermediary (claims processor); retirees age 65 and older to Medicare; and VA beneficiaries to the VA clinic. All claims for ambulance transport and civilian emergency department visits will be reviewed for medical necessity. Claims will be denied and patients will pay all costs if it is determined that an alternate means of transportation and/or clinic visit for this condition would have been appropriate and more cost effective.

Patients requiring admission will be admitted to the civilian hospital they were evacuated to. The exception will be that military personnel who are not likely to deteriorate will be transported to TAMC as mandated by military regulation.

The EMS system, civilian and military, provides the community

with personnel and ambulances able to respond to requests for help at any time. But these resources are limited, and depend on appropriate utilization by all citizens. Everyone has a responsibility to call 911 only for emergencies. Any other requests may jeopardize a patient with a life-threatening emergency who cannot be reached in time if that ambulance crew is tied up and unable to respond.

An emergency condition exists when a sudden illness or injury is an immediate threat to life, or may become a threat to life if the condition worsens in the next one to two hours.

Examples of reasons to call 911 include: chest or upper abdominal pressure or pain; difficulty breathing or shortness of breath; sudden dizziness,

weakness, or change in vision; fainting; change in mental status (confusion, abnormal behavior, or difficulty arousing); vomiting blood or coughing up blood, seizure; suicidal behavior; bleeding that does not stop after applying pressure for 15 minutes; or bleeding in late pregnancy or imminent childbirth.

If a less serious condition exists, such as minor lacerations, minor contusions or sprains, low back strain, alcohol intoxication, cold syndromes, rashes, fever with normal mental status or minor illness, 911 should not be called and an alternate means of transportation should be arranged. This may include friend, neighbors, taxi, handi-van, or contacting the active duty members unit. This may be less costly for the patient and will allow care at the clinic or hospital of the patient's choice.

If the patient or family member is in doubt about whether an emergency condition exists the best recommendation is "Call 911."

**NON-STOP TRAVEL**

ONE WAY	ROUNDTRIP
SFO \$149	\$249
LAX \$99	\$249
Seattle \$149	\$349
Phoenix \$387	
Las Vegas \$387	
Dallas \$549	
Chicago \$549	
New York \$589	
Orlando \$589	
Raleigh Durham \$589	

CALL US FOR BARGAIN FARES FROM MOST MAINLAND CITIES ONE WAY OR ROUNDTRIP

SERVING ALL ARMED FORCES SPECIAL MILITARY RATES AVAILABLE

**CALL 946-1484**

711 KEEAUMOKU STREET - SUITE 209  
NEXT TO THE LIKELIKE DRIVE-IN  
FREE VALIDATED PARKING  
CERTAIN RESTRICTIONS APPLY TA 11076

**COUPON**

**SEWING MACHINE TUNE-UP (ALL MAKES) \$9.95**

INCLUDES:  
• ADJUST TENSIONS  
• ADJUST BELT  
• ADJUST BOBBIN WINDER  
• INSPECT TIMING  
• INSPECT FEEDING  
• INSPECT WIRING  
• STITCH TEST  
• CLEAN, OIL, LUBE  
• COMPRESSED CLEANING

Reg. \$29\* Plus Parts

OFFER EXPIRES APRIL 9, 1994

**NEW HOME SEWING CENTER** 762 Kapiolani Blvd. 597-1600

Free store front parking (Mauka between Ward & Cooke St.)

**10% OFF WITH COUPON**

**MILITARY HQ**

AVOID MALL MANIA!  
OAHU'S LARGEST GI SURPLUS STORE!

- Military Clothing • Equipment
- Patches • Flags • "Dog Tags"
- Children's BDU's
- Flight Jackets • Boots

Field-Tested BDU Jackets Small & Med. Only \$5.00 & UP

Exp. 04-15-94

550 Paiea St. • Ste. 103 Honolulu  
OPEN: 8:30am - 6pm Mon.-Fri.  
8:30am - 5pm Sat.

**833-1989**

Map showing location at Paiea St. & Frontage Rd. near Koapaka St. and Byron's.

*Harry's Cafe*

Serving Kailua Since 1981

A Perfect Setting For Romance...

Tim Owens, son of legendary composer Harry Owens, invites you to visit Harry's Cafe in Kailua.

Harry's commemorates the spirit of old Hawaii, perpetuating the island feeling, Hawaiian style... Just For You.

Choose from a delicious menu and surround yourself with the beauty of handmade Hawaiian Quilts and the Koa framed artwork of Hawaii's own Kim Taylor Reece.

E Komo Mai...  
Dinner: Nitey - 5:30 - 9:00  
Lunch: Mon-Sat - 11:00 - 3:00  
629 Kailua Road 261-2120

**JOY CHRISTIAN CENTER**  
CARING FOR YOU Joe Robinson - Sr. Pastor

**EASTER CELEBRATION**

Come and join us at JCC during our Easter Celebration with Evangelist Mary Alice Isleib April 1 - 3 and FREE Pancake Breakfast on Sunday.

Good Friday Communion Message  
Friday, April 1, 7:30 p.m.

Women of Joy Breakfast  
Saturday, April 2, 9:00 a.m.  
Mid Pacific Country Club cost: \$9.00

Easter Sunrise Service  
Sunday, April 3, 6:30 - 7:30 a.m.

FREE Pancake Breakfast  
April 3, 8:00-9:00 a.m. (Just come, just serve)

Special Morning Service  
Sunday, April 3, 9:30 a.m.

Children's Easter Egg Hunt  
Sunday, April 3, 9:30 a.m.

Mary Alice Isleib  
"A very Powerful Woman of God!"

Joy Christian Center meets at Kaneohe Elementary School Cafeteria  
For more information about Easter Celebration call 235-7777  
Child care will be provided for all services except 6:30 a.m. service.

HAVE YOU EVER WONDERED WHAT ALL THAT FAT IS DOING TO YOUR ARTERIES?

Before you sit down to another meal oozing with saturated fat, try some food for thought. Think about how all that fat will raise the amount of cholesterol in your blood. Think about thick layers of cholesterol-laden plaque building up along your artery walls. Think about your arteries becoming dangerously congested. Think about the pain of a heart attack. Finally, think about dying. It's enough to make you lose your appetite.

**American Heart Association**

WE'RE FIGHTING FOR YOUR LIFE

This space provided as a public service.

*Bouboir Portraits*  
by **STU** 2000  
396-7723

Lingerie - courtesy of Next To Nothing  
Alma, Modak, Make-over, Fashion, Fashion

FOR HIM...  
FOR YOURSELF

**Little Italy**  
Trattoria *Manzo*

Under New Management

Sunday Champagne Brunch  
Starting this Easter Sunday,  
April 3 at 10 am

20% Off All Sunday Brunches  
and Dinner Sunday thru Wednesday  
with this ad

Reservations Recommended  
522-1714

Restaurant Row  
500 Ala Moana Blvd. Good Thru April 17, 1994

**Mental illness has warning signs, too.**

Withdrawal from social activities. Excessive anger. These could be the first warning signs of a mental illness. Unfortunately, most of us don't recognize the signs. Which is tragic. Because mental illness can be treated. In fact, 2 out of 3 people who get help, get better.

For a free booklet about mental illness, call the National Mental Health Association:  
1-800-969-NMHA.

Learn to see the warning signs.

National Mental Health Association - Mental Health Association in Hawaii

**Baskin 31 Robbins**  
Ice Cream & Yogurt

**It's Our 1st BIRTHDAY!**

Our Kapolei Store is 1 Year Old!

Celebrate at all Three Locations.  
Enter This Weekend at Any of Our 3 Locations:  
\*KAILUA  
Kailua Shopping Center  
\*MARINE CORPS BASE HAWAII  
\*KAPOLEI SHOPPING CENTER

Enter to Win!  
Round Trip to the Neighbor Islands  
Compliments of MAHALO AIR  
Also Sign up to Win Ice Cream Gift Certificates "Flavor of the Month" Coupons

Drawing to be held Sunday, April 3 at 8:30pm at the Kapolei Store. No purchase necessary - need not be present to win.

**Banana Royale**

**\$2.59** Ice Cream (2-Scoop) OR Yogurt (Regular)

KAILUA SHOPPING CTR. 261-2770 (next to Times Supermarket)  
M.C.B.H. 254-3419  
KAPOLEI SHOPPING CTR. 674-0131

Baskin 31 Robbins Ice Cream & Yogurt

Limit one per coupon \* Not good in combination with any other offer \* Present coupon \* Expires 4/30/94

**Sundae**

**\$1.99** Ice Cream (2-Scoop) OR Yogurt (Regular)

KAILUA SHOPPING CTR. 261-2770 (next to Times Supermarket)  
M.C.B.H. 254-3419  
KAPOLEI SHOPPING CTR. 674-0131

Baskin 31 Robbins Ice Cream & Yogurt

Limit one per coupon \* Not good in combination with any other offer \* Present coupon \* Expires 4/30/94





LCpl. Christopher M. Pitts carries a SMAW during a live-fire exercise.

# PTA 2-94

Photos and story by  
Sgt. Marlon J. Martin



LCpl. Jason Lawless, assault section leader, and LCpl. Darel W. Cantrell of Weapons Platoon, Company E, 2/3 un-pack-SMAW rockets as their platoon prepares to go out on a live-fire exercise, during PTA 2-94.



Training on the live-fire range was a highlight for 2/3 Marines. Marines unload on enemy positions amid rocky, lava flow terrain.

## 2/3 Marines fire up at PTA

By Sgt. Marlon J. Martin  
Staff Writer

**POHAKULOA TRAINING AREA**—Rockets, mortar rounds and machine gun fire pierced the skies as 2d Battalion, 3d Marines prepared for its Marine Corps Combat Readiness Evaluation (MCCRE) test, March 23-26. After successfully completing the evaluation, 2/3 proved that it is ready for its upcoming deployment to Okinawa and that it is combat ready.

"2/3 Marines know they will be 'under the gun' and are ready and eager to prove themselves. I expect there will be mistakes, but that's OK. Honest mistakes are stepping stones to becoming better," said LtCol. Eric Nyberg, commanding officer, 2/3. "Though the MCCRE was an evaluation, I saw it as another opportunity to learn and become more proficient."

Continuous training allowed 2/3 to take part in several exercises to include the Tactical Air Control Party Exercise (TACPX) and Valiant Fire 2-94, a fire support coordination exercise (FSCEX) designed to exercise company fire support cells and the infantry battalion Fire Support Coordination Center/Command Operation Center.

In an attempt to exercise all echelons of fire support planning, coordination and execution for the

infantry battalion, 2/3 also acquired battle skills training on the Infantry Platoon Battle Course (IPBC) and individual ranges.

The 2/3 Marines had the opportunity to exercise the full potential of their combat skills on one of the ranges, which is designed to support a platoon-sized, live-fire attack supported by all of the rifle company's crew-served weapons, i.e. machine guns, SMAWs and mortars.

Training on the live-fire range was a highlight for 2/3 Marines. Especially for Marines assigned to Company E, who initiated their plan of attack with a leader's reconnaissance. Company E's plan of attack was quite simple. After making reconnaissance, platoon commanders, platoon sergeants and squad leaders scanned the terrain for enemy activity, formulated a plan of attack, returned to the platoon to issue orders and then conducted rehearsals on ways of reaching their objective.

Artillery was used for long-range fire. After pouring fire upon enemy positions, the platoon commander requested mortar fire to suppress enemy positions. This allowed the machine guns to establish a base of fire, which in turn, suppressed the enemy with even more firepower.

Once the platoon had taken its objective, it was responsible for guarding against any counter-

attack, establishing a hasty position with each of its squads on line.

"In a tactical situation, we try to make it as realistic as possible," said 1stLt. Bill McCollough, executive officer, Company E, 2/3.

McCollough said if there was anything for his company to improve on, it would be the defense. Nonetheless, he and his Marines of Company E had a solid performance in last year's MCCRE.

"Anytime you challenge these Marines with a task, such as a MCCRE, they will rise to the occasion, because their reputation is on the line. So, when 2/3 does well, it's because of the individual Marines," McCollough said. "These guys are definitely ready."

During the training evolution for PTA 2-94, 2/3 was evaluated in several areas, such as its performance while conducting heliborne raids, night and daylight attacks, and night and daylight defense tactics. 2/3 showed it is undoubtedly capable of fulfilling its mission in combat.

"2/3 Marines train at all times of the year, using every range and training area available. However, the opportunity to deploy to PTA is a special opportunity to focus on our training and refine our combat skills," Nyberg concluded.



LCpl. Hector Perez Pacheco, a squad leader for weapons company 2/3, drops a high explosive round into the tube of an 81mm mortar, during a Tactical Air Control Party Exercise at PTA.

# Taxpayers do have written rights

## American Forces Information Services

Thanks to a 1988 law, the Internal Revenue Service has to tell you what action it is taking against you in plain, easy-to-understand language.

In response to numerous complaints from taxpayers that IRS was not treating people fairly, Congress added what is known as the "Taxpayer's Bill of Rights" to another piece of tax legislation.

These rights include the right to complete privacy and confidentiality; the right to fair, courteous and considerate treatment; the right to appeal an examiner's audit findings; and that IRS will pay interest on any refund it delays in paying you.

If your tax return is audited or you are involved in a formal collection interview, IRS must give you a written copy of your rights, as well as information on the audit and collection process. If you wish, you have the right to record the interview also, but the IRS has to give you 10 days' notice that it intends to tape the meeting.

If the IRS decides that you owe more taxes or penalties or interest, it must explain its reasoning to you in detail.

If, after you have filed your tax

return, you feel that you have paid too much in taxes, you may request a refund. However, IRS officials said the burden of proof is on you.

If paying taxes will cause you significant hardships, IRS may help you arrange an installment payment plan, or it may decide to suspend collection.

The law also talks about audit location rules, property seizure, acting on wrong IRS advice and possible court action against the U.S. government.

IRS officials said their job is to

collect the correct amount of taxes in the fairest and least costly way possible. The rights' bill guarantees that you, as a taxpayer, will not be mistreated nor will you pay more than your fair share of taxes, they added.

For complete details on the rights, ask for a copy of IRS Publication 1, "Your Rights as a Taxpayer." Check with the installation tax assistance office or local library. If you are overseas, check with the nearest U.S. embassy or consulate. Or call IRS toll-free at 1-800-829-3676 or write to:

IRS  
Forms Distribution Center  
PO Box 25866  
Richmond, VA 23289

# Unclaimed refunds held

## Internal Revenue Service

The Internal Revenue Service is looking for more than 96,000 taxpayers who have not received their 1992 refund checks. These undelivered refunds total more than \$50 million, an average of \$518 per check.

The Postal Service returned these checks to the IRS because they could not deliver them. Thousands of checks are returned because the names or addresses on the checks are incorrect. Some taxpayers move and do not give the IRS their new address.

Delays of an undelivered refund can be avoided by sending the IRS a change of address, using

IRS Form 8822, when moving. Or, file the tax return electronically and have the refund deposited directly into a bank account. Direct deposit eliminates the possibility of lost, stolen or undelivered refund checks.

In 1992, there were 81,000 undelivered refunds. For 1993, however, the number of refunds returned was smaller — one-tenth of one percent of all refunds issued. More than 74 million taxpayers received their 1992 refund checks on time during the 1993 filing season with the average refund being \$1,000. Statistics for 1993 tax returns, filed this year, are not yet available.

Taxpayers who have not received their 1992 refund should call the IRS at 1-800-829-1040.



ask the IRS

**SHIRLEY DEVARIS**  
Attorney at Law

**DIVORCE**  
• Low fees for uncontested  
• Support • Custody • Visitation

**GENERAL BUSINESS LAW**  
• International Transactions

**ESTATES**  
• Trusts • Wills • Probate

**FREE INITIAL CONSULTATIONS**  
Evening & Weekend Hours • 970 Kalaheo Ave., #C-210, Kailua  
Member ABA & ASIL 254-3345

THE HARDEST VIDEOS ON THE WINDWARD SIDE

FREE VIDEO! with any \$20 video purchase

**TAG TEAM VIDEO**

RENT 2 VIDEOS GET 1 FREE!

Rental period 2 days, 3 evenings.

10% OFF Complete Line of Sports Supplements.

TWINLAB SPORTPHARMA USA  
CYBERGENICS SPORTS ONE INC.

Business Hours Sun.-Sat. 11am-9pm Located Above Mui Kwai Chop Suey 45-1052 Kam Hwy, Kaneohe • 2nd Floor 247-1161

34 YEARS OF SERVING HAWAII

**\$10.00 OFF FLASHTAXI**

**IRS REFUNDS IN 12-21 DAYS!**

Whether you do your own return or if it is professionally done, we can electronically file for you!

HONOLULU Gen Store 333 Ward Ave. 896-8868	KAILUA 105 Hukui Street 263-3533	KALIHI 1101-N. King Street 841-1725	KANEOHE Windward City Shopping Center 335-2570	AIEA Westridge Shopping Center 498-8438	WAIKALUA Waikeolu Shopping Plaza 671-1893
--	--	---	--	---	---

Offer expires April 15, 1994. Prescheduled appointments required to be eligible for this offer. Not valid with other offers.

**Marines Coaches Teachers Team Moms Businesses**

**Windward Trophies**  
ENGRAVING & AWARDS  
Phone/FAX 261-2712  
167 Hamakua Drive, Kailua

New Location:  
167 Hamakua Drive  
Across from Jack in the Box & Mikes Hubler

- Custom Awards
- Engraving
- Plaques
- Trophies
- Plastic Signs
- Nametags
- Desk Signs
- Medals
- Certificates
- Ribbons
- Custom Logos
- Specialty Ad
- School Awards
- Clocks
- Gifts, Trays, Mugs
- Signature Plaques
- Hand Engraving
- Bowls

**EPIC DIVES Hawaii**

**Go Down in History With EPIC DIVES**

**DIVE NITROX FREE!**

For a limited time EPIC DIVES IS OFFERING FREE NITROX INTRO DIVES To Certified Scuba Divers

**DOUBLE YOUR BOTTOM TIME!**

We have certified over 200 Nitrox Divers in Hawaii. We also offer PADI & NAUI Certifications Open Water Thru Instructor.

Find out why NOAA & the scientific community has used Nitrox for over 20 years.

45-781 Kamehameha Highway  
KANEHOE  
247-PADI (247-7234)

\* limited time offer with this coupon

**MARSHALLS BEATS THE PANTS OFF THE COMPETITION.**

(NOT TO MENTION THE SHORTS, TOPS AND T-SHIRTS)

**The Marshalls Activeman Event.**  
Prices 40% - 66% below better sporting goods store prices.

**THE HOTTEST WARM-UPS FROM TWO FAMOUS BRANDS**

**NYLON SHORTS \$9.99**  
Compare at \$22

**NYLON PANTS \$14.99**  
Compare at \$28-\$30

**NYLON JACKETS \$19.99**  
From leading activewear brands  
Compare at \$40-\$60

**TEAM LOGO NYLON JACKETS**  
All the names of your favorite teams  
**\$29.99**  
Compare at \$65-\$75

**WORLD CUP T-SHIRTS**  
the real thing.  
**\$9.99**  
Compare at \$17

**THE MARSHALLS ACTIVEMAN EVENT ENDS SOON. SO GET MOVING.**

**Marshalls**  
Never, never, never pay full price.

PEARL CITY (PEARL HIGHLANDS CENTER, UPSTAIRS FROM SAM'S)  
KAMEHAMEHA HIGHWAY AND ACACIA ROAD (808) 456-1005  
STORE HOURS: MONDAY - SATURDAY 9:00 AM - 9:00 PM, SUNDAY 10:00 AM - 6:00 PM  
MERCHANDISE WILL VARY BY STORE.  
For the store nearest you, call toll-free 1-800-MARSHALLS • Over 450 stores nationwide

# Front and center He came from down under

By Cpl. Robert Berry  
Staff Writer

"An exchange of ideas," said Capt. Troy A. Crilly, 7th Signal Regiment, Australian Army, is what this exchange is all about.

Crilly is the fourth Australian officer to come to the air station on an exchange program between the United States Marine Corps and the Australian Regular Army.

The program offered Crilly the chance to work with a larger military force and further his military career. Being an officer in a force of little more than 25,000, Crilly began preparing for the opportunity after another officer, who was the first

Australian in the exchange program, explained the career opportunities.

The program, which has been used between the 1st Radio Battalion and the 7th Signal Regiment for the past six years, exchanges officers for a two-year period. A Marine captain posts to the 7th Signal Regiment in Cabarlah, Queensland, Australia, and the Australian Army posts a captain to the 1st Radio Battalion here.

Crilly, who has been here since August 1993, enlisted in the Australian Army in 1985 in the electronic warfare field. Then in 1987 Crilly attended the Royal Military College, Duntroon. After 18 months of school he was commissioned as a Lieutenant in December 1988. "Every officer is trained in

infantry tactics regardless of the type of occupational field," said the 29 year-old. "When officers graduate they immediately become unit troop commanders."

Because of a total force of approximately 25,000, the occupational fields are less specialized and officers at any time can be expected to take command of an infantry unit.

Crilly, who was serving as the Assistant Operations Officer of the 7th Signal Regiment, is currently serving as the operations officer with 1st Radio Battalion.

Being from a different service has presented the electronic warfare officer with unique challenges. The lighter camouflage pattern, light brown boots, slouch hat and placement of the rank on the

Australian uniform, has caused a few minor problems. Crilly, who is currently the only Australian service member on the base, explained some of the differences.

"The placement of the rank for Australian officers is on the shoulder and the placement of the enlisted rank is on the upper half of the sleeve."

"The slouch hat is how the Australians can be easily identified."

Even though there is a difference in the size of the two services Crilly sights professionalism, dedication and devotion as being the common elements that make the two very similar.

Crilly hopes to take back knowledge that will help his service in the event of joint operations.



Capt. Troy Crilly, an Australian officer here on an exchange program, has been working with 1st Radio Battalion since August 1993.

**PAMPERING BODYWRAPS!**  
"Lose 4 To 14 Permanent Inches In 1 Hour!"

1 European Bodywrap was clinically formulated in 1961. The \$5900  
2 NATURAL Thermogenetic cream stimulates circulation  
3 in fat cells, increases metabolism, which aids in cellulite &  
4 BODYPREP (Pre-wrap)  
5 With A Firm DEEP PORE  
6 MASQUE FACIAL  
7 & NON-SURGICAL  
8 FACE LIFT (Pre-wrap)  
9 natural elimination organs

**Life Styles Beauty Health Center**  
45-953 Kama Hwy, Kaneohe, Suite 310  
Tel: Pte. American Savings Bank Bldg. 236-4400

**LOWEST MILITARY RATES!!!**

Mainland to Hawaii special rates  
New York to Honolulu.....\$551.00  
Honolulu to  
DETROIT.....\$540.00  
LOS ANGELES.....\$249.00  
ANY ISLAND AIR/ROOM/CAR PACKAGE.....\$89.50 PP  
TO MAUI, KAUAI, OR KONA AIR/CAR.....\$72.00 PP  
DELUXE MAUI PACKAGE  
Includes: roundtrip airfare/2 nights hotel/2 days car rental.....\$190.50PP

DISNEYLAND/LAS VEGAS PACKAGE.....\$598.00PP  
Includes: 2 nights Disney/3 nights Las Vegas roundtrip airfare, 5 nights hotel, off meals and transfers in Las Vegas, admission to Disneyland and 1 breakfast at Disneyland w/ all your favorite Disney characters

**All Class Travel**  
A Full Service Travel Agency  
942-8147  
TA#2775

**FULL SET NAILS \$35.00** Reg. \$50  
**FILL SPECIAL \$20.00** Offers Expire 4-15-94

**STYLISH POWER**  
Call 262-0007

**Tina Sanchez**  
Nail Artist  
Acrylics or Backscratchers  
1090 Keolu Drive, Kailua

**YOU CAN MAKE SOME CASH AND SAVE LIVES AT THE SAME TIME!**

Enjoy Sports/Videos on our new Satellite Dish

**INSTANT CASH**

EARN AT LEAST \$120 BY DONATING PLASMA  
For more information Call **836-0647**

**Sera-Tec Biologicals**  
Mon-Fri Noon till 7pm  
Sat 9am-4pm  
3179 Koapaka Street

New Donors \$500 Xtra with this ad

**RESUMES** and Sr. Writers

- **Military Specialist** — so you don't have to keep explaining all your terminology.
- **Award Winning Writer** — to put you in the best possible light.
- **Laser Set Availability** — to set you out in a crowd.
- **MasterCard & Visa Accepted**

**COMPLETE BUSINESS SERVICES**  
488-2800

**JOY CHRISTIAN CENTER**  
CARING FOR YOU Joe Robinson - Sr. Pastor

**EASTER CELEBRATION**  
Come and join us at JCC during our Easter Celebration with Evangelist Mary Alice Isleib April 1 - 3 and FREE Pancake Breakfast on Sunday.

**Good Friday Communion Message**  
Friday April 1, 7:30 p.m.

**Women of Joy Breakfast**  
Saturday April 2, 9:00 a.m.  
Mid Pacific Country Club cost: \$9.00

**Easter Sunrise Service**  
Sunday April 3, 6:30 - 7:30 a.m.

**FREE Pancake Breakfast**  
April 3, 8:00-9:00 a.m. (just come just serve)

**Special Morning Service**  
Sunday April 3, 9:30 a.m.

**Children's Easter Egg Hunt**  
Sunday April 3, 9:30 a.m.

**Mary Alice Isleib**  
"A very Powerful Woman of God!"

Joy Christian Center meets at Kaneohe Elementary School Cafeteria  
For more information about Easter Celebration call 235-7777  
Child care will be provided for all services except 6:30 a.m. service.

**KAILUA MINI STORAGE**

**U-HAUL CENTER**  
262-6573  
Trucks & A Complete Line of Packing & Moving Supplies

**Mailing Services:**  
Mailbox Rentals, FAX Service

**Storage Lockers:**  
High-Tech Security, LOW RATES

**NEW! FORT KNOX RECORD STORAGE**  
Secure and Convenient

150 Hamakua Drive, Kailua 261-4805 or 261-1137

**CHECKS CASHED**

**LOCAL & OUT-OF-STATE PERSONAL CHECKS CATALOG SALES**

3057 Koapaka, Unit 2B  
(Near Airport, first right off Lagoon Drive)  
**833-2529**

**4 MINUTE APPROVAL**

"Now I read everything I can get my hands on"

— James J.

From reading to math, Sylvan Learning Center® helps children make the grades. With our positive, individualized instruction, students find their grades soaring — along with their self-esteem. Instead of dreading school, students actually look forward to it. We've already helped more than a million children turn their grades around. Let's talk about how we can help your child.

**Sylvan Learning Center®**  
Helping kids be their best.™

263-6656  
56 Oneawa St.  
Suite 104, Kailua  
Entrance off Ulukou St.  
Behind TCBY

◆ Reading ◆ Writing ◆ Math ◆ SAT/ACT ◆ Study Skills ◆

**JOE PESCI • CHRISTIAN SLATER**

One thing stands between Jimmy and stardom.  
Reality.

**Jimmy Hollywood**

PARAMOUNT PICTURES PRESENTS A MORE PICTURES PRODUCTION A BARRY LEVINSON FILM  
JOE PESCI • CHRISTIAN SLATER JIMMY HOLLYWOOD VICTORIA ABRIL  
ORIGINAL MUSIC BY ROBBIE ROBERTSON EDITOR JAY RABINOWITZ DIRECTOR OF PHOTOGRAPHY PETER SOVA EXECUTIVE PRODUCERS PETER GIULIANO  
PRODUCED BY MARK JOHNSON AND BARRY LEVINSON WRITTEN AND DIRECTED BY BARRY LEVINSON  
SCREENPLAY ALBUM AVAILABLE ON ATLAS RECORDS, A POLYGRAM COMPANY  
A PARAMOUNT COMMUNICATIONS COMPANY

**KAHALA 8-PLEX & PEARLRIDGE WEST**  
See Directory for Showtimes

**Windward Community College**  
Features

**JIM MAY**  
Emmy Award winning Master Storyteller

Presenting a workshop for...  
Storytellers young or old, beginning or experienced.  
Teachers • Coaches

**FINDING YOUR STORYTELLING VOICE.**  
\$39 workshop fee  
Saturday, April 23, 1994  
9:00 a.m. - 12 noon  
Call 235-7433 to register.  
Limited Enrollment.

# KEEP SAVING THE MILES.

MARLBORO COUNTRY STORE

## NEW GEAR IS COMING MAY 1.

The Marlboro Country Store will be opening soon with a new gear collection made for the great wide open. Everything from blankets and barn coats to barbeque tools. Even a special offer for a custom pool table.

Keep an eye out for Marlboro packs with the Marlboro Country Store UPC symbol appearing at your store soon.

In the meantime, keep saving the Adventure Team Miles because you'll be able to use up to 300 Adventure Team Miles (60 UPCs) towards the exciting new gear from the Marlboro Country Store Catalog.



© Philip Morris Inc. 1994

16 mg "tar," 1.1 mg nicotine av. per cigarette by FTC method.

**SURGEON GENERAL'S WARNING: Smoking Causes Lung Cancer, Heart Disease, Emphysema, And May Complicate Pregnancy.**

LIMITED TO SMOKERS 21 YEARS OF AGE OR OLDER. OFFER VOID IN KANSAS AND WHEREVER ELSE PROHIBITED. SEE CATALOG FOR DETAILS.

# Briefs

## HMX-1

HMX-1 will present a fleet information brief at MAG-24 squadrons, April 11 and 12. The briefs will be held at HMM-265 April 11 at 9 a.m. and HMM-463 at 3:30 p.m. Briefs will be held at HMM-364 April 12 at 9 a.m. and MALS-24 at 1 p.m. Missions of HMX-1 and qualifications needed to apply will be discussed at the brief. All interested personnel should attend. Duty with HMX-1 is open to a wide range of MOSs. For more information contact Maj. Farmer at 257-1409.

## TAMP

The Transition Assistance Program will be offering the following classes in the month of April:

**New arrival/New Employee Orientation** — A one stop orientation to the services/facilities available to personnel and families and addresses important safety and security issues. The class will be held April 5 from 7:30-11:30 a.m. at the Station Theater.

**How to Write Your Resume** — Learn to prepare a resume that will make a positive impression on prospective employers. The class will be held April 6 from 9:10-30 a.m. at the Training and Audiovisual Support Center, building 267, classroom 2.

**Sponsorship Training** — Provides a complete orientation to the duties and responsibilities of those assigned as sponsors to inbound Marines and sailors. The class will be held April 8 and 22 at TAVSC, classroom 2.

**Transition Assistance Workshop** — Mandatory workshop for military personnel separating within six months. The workshop will be held April 11-14 from 8 a.m. to 4 p.m. at the Station Theater.

**DORS Workshop** — The workshop will provide personnel the opportunity to work with transition counselors in preparing an effective DORS application. The class will be held April 18 from 9-11 a.m. at TAVSC, classroom 1.

**How to Complete the SF-171 Application for Federal Employment** — Anyone considering federal employment will learn how the selection and hiring process works. Information on veteran's preference and military spouse preference, as well as completing the application, are included. The class will be held April 19 from 8-10:30 a.m. at TAVSC, classroom 2.

## TQL nominations

Nominations are being accepted for the following TQL courses: April 5-15, Team Skills and Concepts at the TAVSC classroom 1; April 26-28 TQL Statistical Tools at the TAVSC classroom 1, and April 29, TQL Awareness at TAVSC classroom 1.

Inquiries, scheduling and coordination should be directed to Mr. Bill Lang, TQL manager, at 257-2130 or E-mailed to TQL.Manager@CO@MCAS HI before Tuesday.

## Hale Koa

In recognition of the Month of the Military Child, children who attend any of the Tuesday Night Magic shows during the month of April will be given a special gift to take home with them. Tuesday Night Magic is sure to delight every family member. Held in the Banyan Tree Showroom, the show begins at 6 p.m. with an all-you-can-eat Italian/Mexican dinner buffet. The show costs \$17.95 for adults and \$9.50 for children under 12. Tickets can be purchased at the Hale Koa Activities desk or at the ITT Office up to four-weeks in advance. For more information or reservations call the Hale Koa Activities Desk at 955-0555.

## Toastmasters Area Six Speech Contest

Local Toastmasters from the Army, Air Force, Navy and Marines will compete in the Toastmasters Area Six Speech Contest at 7 p.m., April 1, at the Airport Post Office on Aolele Street.

All military and civilians are welcome to attend the contest and learn more about Toastmasters International. For more information, call Gina Williams at 477-5108/486-7640.

## Red Cross

The Red Cross is looking for a records chairman to record volunteer hours and produce a monthly volunteer report. The chairman will also keep phone numbers updated and will hold a position on the advisory board committee. Contact the Red Cross at 257-3150.

The following classes are offered in the month of April: **Emergency assistance to families, modules I and II** — This free course, held April 4-5, trains students to help families assess their emergency disaster-caused needs through effective casework procedures.

**Community first aid and safety** — The course includes child and adult CPR as well as basic first aid. The classes will be held April 23-24 and will cost \$38 for military personnel and their families, and \$48 for civilians.

**Intro to disaster** — This free course provides an overview of disaster response and preparedness. This course is a prerequisite course for other disaster courses.

**Damage assessment** — This free course instructs students on how to obtain and assess reliable information on damages immediately after a disaster. The class will be held April 26.

For information on classes or volunteer work call 257-3150. The hours of operation are 7:30 a.m. to 3:30 p.m. Monday-Friday. In case of emergencies call 257-3150 or 471-3155.

## Housing offices closed

The family housing offices throughout Oahu will be closed April 15. The housing office, loaner furnishing office and the self-help store here will all be closed. However, due to the April

15 closure the offices will be open the entire day April 13 instead of the usual Wednesday afternoon closure.

## ASYMCA

To sign up for any of the following programs/classes, or for more information, call 254-4719 or 254-4965. The Armed Services YMCA helps pay for child care while you attend our classes.

**Hearts Apart** — Is your spouse deployed? Our support group meets Fridays from 9-11 a.m. at the Armed Services YMCA. We provide on-site child care by reservation only.

**Plus size ladies aerobics class** — This is a six-week, no fee, program that meets Tuesdays and Thursdays from 9-10 a.m. The next set of day classes begin April 19 and end May 23. If you are a size 14 or more, this program takes your special needs into consideration. Evening classes are also available; the classes run for six weeks from 7:30-8:30 p.m. on Wednesdays and Fridays and cost \$25 for the full six weeks or \$2.50 per class. The next set of evening classes begins April 20.

**Crafts** — The Japanese art of Mizuhiki (dyed, rolled paper chords woven into various shapes) will be offered April 8 from 8:30 a.m. to 12:30 p.m. The fee is \$21 and includes supplies. Enrollment is limited to eight. A Haku Head Lei Class will be offered from 9-11 a.m. April 30. The fee is \$12.

**Prenatal classes** — This four-week class is offered on Wednesdays from 6:30-8:30 p.m. Sign up now for the class beginning April 6.

**Swap Meet** — The Swap Meet begins April 2 at 8 a.m. The Easter Bunny will be there too with candy and toys. A picture with the Easter Bunny will be offered for \$2.

**Guest speaker and luncheon** — How to talk to men and other males, followed by delicious Filipino cuisine. The presentation is scheduled from 9:30-10:45 a.m. and the luncheon from 11 a.m. to 12:30 p.m. April 13. Fee is \$3.

**Baton instruction** — Interest list for an eight week course for children 8-13 years old beginning in April. The fee is \$30 plus the cost of the baton.

**Active parenting today** — In six fast moving sessions, learn communication skills for parenting. Classes are offered during the day from 9-11 a.m. Tuesdays and Thursdays from April 26 to May 12 and night classes from 6-8 p.m. on Mondays from April 18 to May 23.

**Dog obedience** — A four-week class will be held on Sundays from 4-5 p.m. behind the Veterinary's Office. The classes are scheduled to begin April 24. The fee is \$25.

## Education

**Kindergarten Readiness Fair** — The month of the Military Child/Child Abuse Prevention Month will be recognized at MCAS Kaneohe Bay with a Kindergarten Readiness Fair. The fair is for all children planning to enter Kindergarten this year, their parents/caregivers and younger siblings. The fair is sponsored by the various Early Childhood Education programs here. This event will be held from 9-11 a.m. April 22 in the courtyard behind building 455 (7-Day Store/FSC).

## THE ANSWER TO LOVE & ROMANCE IS COMPUTATE



Meet Quality People • Find Honest Romance  
DATING ETIQUETTE OF THE '90s  
1188 Bishop St., Ste 611 536-3804

# EMBRY-RIDDLE

## AERONAUTICAL UNIVERSITY

Is Offering

### AS 120 Principles Of Aeronautical Science PRIVATE PILOT GROUND SCHOOL

**\*\*FOR OUR SPRING TERM\*\***  
**April 11-June 21, 1994**  
**Saturday 0800-1210**  
At Hickam AFB Center

For More Information Contact:  
Robert Dixon, Center Director, at  
**422-0835**

**\*\*FREE EG-B Computer & Whooms Plotter When You Present This Ad With Your Registration\*\***

# SPLASH INTO SUMMER FUN

Available to the Community

### K-6TH GRADE

- Swimming Lessons
- Weekly Excursions
- Mini Academic Review Lessons
- Games & Sports
- Cooking
- Drama/Puppetry
- Picnics and Hikes
- Overnight Adventure

### INTRODUCING SUMMER ELECTIVES

- Computer: Becoming a Published Author
- Art
- Gymnastics (5-6 Year Olds)
- Hawaiian Arts/Crafts
- Dance
- Computer Design
- Small Group Tutoring
- Photography (Grades 4-6)
- Music

### SUMMER PRESCHOOL/DAYCARE PROGRAMS ALSO AVAILABLE

### FALL PROGRAMS

Limited Openings in Elementary Grades & Preschool/Daycare

**TRINITY CHRISTIAN SCHOOL**  
262-8501  
875 Auloa Road, Kailua

<b>LOS ANGELES</b> From <b>\$190</b> o/w / <b>\$288</b> r/t \$377 o/w First Class \$593 r/t	<b>SAN FRANCISCO</b> From <b>\$210</b> o/w / <b>\$308</b> r/t \$377 o/w First Class \$593 r/t			
<b>SEATTLE</b> From <b>\$242</b> o/w / <b>\$364</b> r/t \$361 o/w First Class \$543 r/t	<b>PORTLAND</b> From <b>\$234</b> o/w / <b>\$380</b> r/t			
<b>From \$318 o/w MIDWEST From \$510 r/t</b>				
Austin Chicago Cincinnati Dallas	Dayton Cleveland Columbus Des Moines	Detroit Houston Indianapolis Kansas City	Little Rock Milwaukee Nashville New Orleans	Oklahoma Omaha San Antonio
<b>From \$336 o/w EAST COAST From \$542 r/t</b>				
Albany Atlanta Baltimore	Boston Fayetteville Fort Lauderdale	Madison Memphis Miami	Norfolk Newark	Fort Myers Harrisburg

## ROYAL ADVENTURE TRAVEL

Low season midweek. Subject to changes/availability/restrictions.

## Call Airfare Hotline

839-0039 732-5533

# We've got great news for you!

Now you can use your **NEXCARD** for purchases of \$ **50** or more.

**Buy it now... Take it home... & Pay Later!**

You can use your NEXCARD now and enjoy your purchases today while you make easy monthly payments.

With NEXCARD, the annual percentage rate is only 12%... much lower than other charge cards... with extended payments over a twelve month period from the date of purchase... receive a monthly statement mailed to your home... pay conveniently by mail... know your available credit limit on the statement.

**Apply today... if you don't already have a NEXCARD.**

All authorized persons who hold a valid Exchange identification—active duty, reservists, members of the National Guard, Exchange associates, military and Exchange retirees, widows/ERS, divorced spouses with Exchange privileges are eligible to apply for NEXCARD.

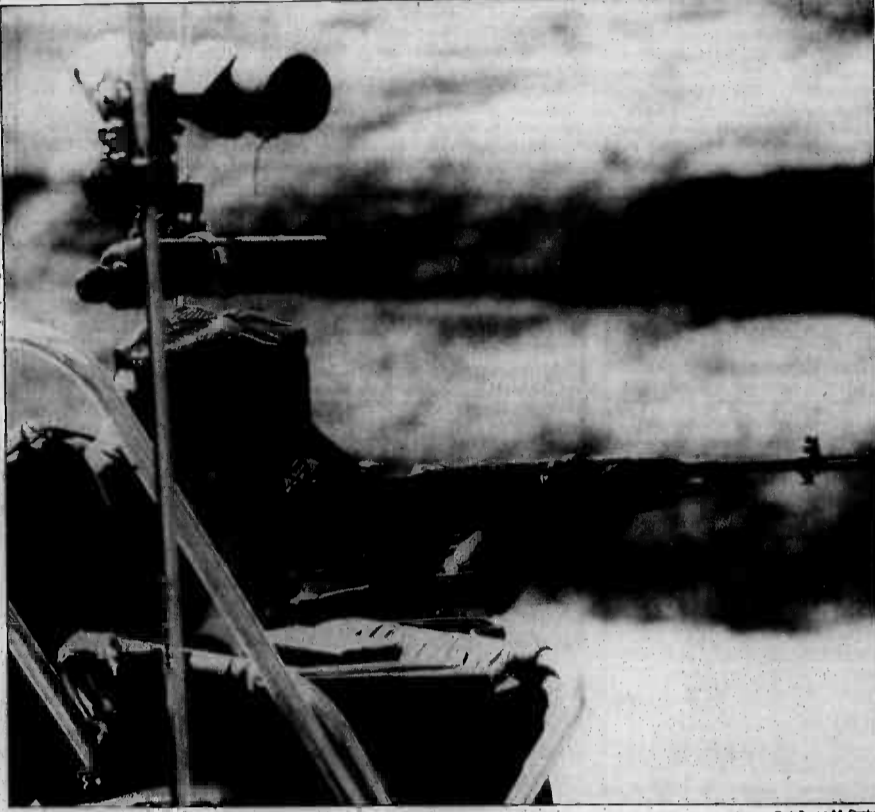
**More buying flexibility...**

with the new NEXCARD minimum of \$50 or more on purchase(s). Use your NEXCARD at the Uniform Center; Outdoor Living Center; Personalized Services Center; Beverage Stop and Mini Marts too.

**Improving your quality of life...**  
your Navy Exchange is working for YOU!

For more information call a customer service representative at 422-9449.

## Marines place, despite winds, in rifle matches



Cpl. Bruce M. Drake

A Marine takes aim during the recent high-power rifle tournament held here.

By Cpl. Bruce M. Drake  
Staff Writer

Marines took the top two individual titles and the Kaneohe Bay team took second in the team competition at the Hawaii Pacific Highpower Rifle Regional Championship Tournament Saturday and Sunday at the rifle range here.

Marines Timothy Grimm, 748-11x, and Gabriel Vega, 731-15x, took first and second respectively in the Hawaii Pacific Regional Championship Saturday, during a windy and cool day of shooting.

Sunday, Vega helped the Kaneohe Bay Gold Team capture the Second Place Team Award. The team, which also consisted of George Holland, Kenneth Katter and Brian Yohe, was edged out of the team championship trophy by the Hawaii National Guard Gold Team. The National Guard team finished with 1120-19x and the Marines had 1103-15x. The competition was so close the winner wasn't determined until the final stages of the match.

Also Sunday, Marines Kenneth Katter and George Holland took first and second respectively in the "Leg" (Excellence in Competition) Match. Katter scored 472-7x while Holland had 471-9x.

The Marines were propelled to the top of the standings based on strong performances in each of the matches. While Marines placed high in virtually every stage and category, some notable

performances included: Kenneth Katter, who won the First Place Sharpshooter Class Award with 724-7x; Brian King, who won the First Place Marksman Class Award.

The Marines from Camp H.M. Smith and Marine Corps Air Station Kaneohe Bay found the competition very tough against teams from the Navy, Hawaii Army Reserve, Hawaii Army National Guard, as well as several civilian teams.

During both days of competition, the stiff wind was a critical factor in determining the final outcome of the championship. Because of the wind's erratic gust, many shooters did not fire as well as expected, while some shooters who didn't think they would be competitive were firing outstanding shot groups and found themselves near the top of the standings.

According to CWO-4 J. Windsor, the officer-in-charge of the Station Rifle Range, "Competing at a high powered competition is a bit different from what you would experience if you were firing for annual requalification. In high-power, the target is divided into ten rings and an additional X-ring within the 10-ring, vice the standard layout that most Marines see on the targets they are familiar with."

Additionally, in high-powered shooting, only shots within the 5-ring or better are scored, anything in the 4-ring and below is scored a miss even though it might be

on the target.

Because the quality of the shooters at a high-powered competition is often outstanding, the X-ring is often required to break ties. Even though both the 10-ring and the X-ring score as 10s on the score card, the X-ring is harder to achieve. Therefore, if two individuals both have equal scores, the shooter with more X-rings to his credit would be ranked higher.

Using match-grade rifles and ammunition helps solve some of the problems of firing accurately from long distances, but Windsor stressed that the fundamentals of marksmanship must always be employed in order to fire well.

While the Marines were happy with their finish, they are not letting their sights down. The championships were used by the Marine teams as an opportunity for them to gain some competitive practice before heading to the Aloha State Games Rifle and Pistol Matches which will be held at Camp H. M. Smith's Puuloa Rifle Range June 18-19.

Windsor added that the Regional Pistol Championships would be held here April 23-24.

Individuals interested in firing in the upcoming competitions or trying out for the Hawaii Marines Rifle Teams should contact CWO-4 Windsor at 257-5663 for further information.

## Lacrosse looking for players

By Sgt. Lou Ramirez  
Staff Writer

Those who enjoy speed, thrill, power, keen competition and fair play can satisfy their need for this excitement at the Honolulu Lacrosse Club.

Founded in 1989, the league has grown to the point where it sponsors a tournament in Hawaii.

Although the Honolulu Lacrosse Club sticks to the modern version of the game, the ancient spirit of its originators is maintained in the sport and players compete with a sense of freedom and enthusiasm.

Just as many other games, lacrosse originated from war. Legend has it that as many as thousands of Indians on each side, would engage in a violent contest called Baggataway (little brother of war). They played on a field ranging anywhere from one to fifteen miles in length, sometimes for two or three days. The primary

purpose of the sport was to prepare young braves for battle and develop young men.

The sport continues to be a means for players to free that "brave" spirit within and enjoy a game in which they can display their ruggedness and endurance. The modernization of the game provides them with the opportunity to do this in a safe and sportsmanlike way.

The number of lacrosse fans continues to grow throughout the United States and the world. In the past 10 years, there has been a 45 percent increase in the number of high school and youth league teams and a 35 percent increase in the number of collegiate and club teams.

Lacrosse also continues to grow in Hawaii, growing from three men playing in the park while other enthusiasts gathered around and joined them, to a league which includes several active duty military members and reservists, as well as many civilians.

But the Honolulu Lacrosse Club is more than just a bunch of men having fun, it is a serious organization which sponsors a formal tournament in November.

"Our tournament brings teams from the mainland and Canada and we feel very confident that Australia, Japan and maybe England will be represented in this year's tournament, or one in the future," said Lou Jonske, a founding member of the Honolulu Lacrosse Club.

In addition to holding a tournament in Hawaii, the club also travels to the mainland for a tournament.

"We would like to see the interest to travel more often," Jonske said.

The Honolulu Lacrosse Club is open to anyone who enjoys or wants to learn about the sport. It meets every Sunday at 10:30 a.m. for practice at the University of Hawaii at Manoa campus. For more information on the sport or the club, contact Trevor Spiers at 247-1925.



Sgt. Lou Ramirez

Lacrosse players practice at the University of Hawaii athletic complex.

## Easter events, Beach Bash and volleyball upcoming

By Julie Mall  
MWR

### Eggstravaganza

Join the Easter Bunny at the Easter Egg-stravaganza, April 2 from 10 a.m. to 12 p.m., on the field behind the Temporary Lodging Facility. Sponsored by Long Distance USA/Sprint, this event is free and open only to military families aboard MCAS Kaneohe Bay.

Kids won't want to miss out on this fun-filled day including a huge Easter Egg Hunt with separate areas for ages 2-12, including "Golden Eggs" with

U.S. Savings Bonds for each age category; a homemade Easter Bonnet or Hat Decorating Contest; a petting zoo from the Hawaiian Humane Society with live bunnies and guinea pigs; entertainment from the Marine Forces Pacific Band; visits from famous characters such as the Easter Bunny; door prizes; giveaways from Long Distance USA Sprint; free refreshments provided by Castle Medical Center; prizes from Outrigger Hotels, the Navy League, McDonald's, Webco; and much more.

Children wishing to join the Easter Bonnet and Hat Decorating Contest should wear their homemade bonnet or hat to the event; no store-bought hats are eligible for the contest. Judging will be at 10 a.m. Categories include the funniest, most patriotic and most creative.

This event is being organized by Outrigger Hotels Hawaii, MWR, MCAS Kaneohe Bay, 1st Marine Expeditionary Brigade, 1st Radio Battalion and base wives' groups. For further information, call MWR Marketing at 254-2562/2466.

### Regional Volleyball

The Commander Marine Forces Pacific Regional Volleyball Tournament will be held April 1-7, in the Main Gym at Kaneohe Marine Corps Air Station. Marine teams from Okinawa, Iwakuni and Hawaii are participating in this week-long tournament.

The tournament kicks off with an opening ceremony at 4 p.m.

Friday. Subsequent games will be played Saturday from 10 a.m. to 4 p.m. and Monday through April 7 at 6 p.m. in the Main Gym. The Regionals begin with a round-robin tournament, for seeding purposes, and then go into a double-elimination tournament. The Regionals are the qualifying games for the All-

Marine camp. Last year K-Bay had four Marines qualify and go to All-Marine competition.

The championship game will be played April 7 at 6 p.m., immediately followed by an awards ceremony. The regional tournament is sponsored by AT&T. For more information, contact the Athletic Office at 254-2458.

### Beach Bash next week

Spend the day creating a sand masterpiece in the Oceanic Cable Sand Sculpting Contest at Marine Corps Air Station Kaneohe Bay's Pyramid Rock Beach Bash, April 16 from 10 a.m. to 2 p.m. Participants will be competing for \$250 in cash and prizes. This event is free and open to all ages.

The contest offers categories for adults (ages 18 and over),

youth (ages 10-17) and children (ages 5-10). Sculptors will be competing for cash and prizes from Oceanic Cable and Domino's Pizza. First place in the adult category is \$75, second place is \$50 and third place is \$25. First place for the youth and children's categories is \$25, second place is \$15 and third place is \$10. No preregistration is necessary.

Sand sculptures must be made out of sand and any natural items found on the beach may be included; no manufactured items may be used in the sculpture; no electrical tools are allowed. Teams of up to five persons are allowed, however, only one prize will be awarded per group. For more information, contact MWR Marketing at 254-2562/2466.

## From the cheap seats: A sports commentary

By John Magnus  
KMCAS Outdoor Recreation Supervisor

NCAA Final Four has been a far cry from the predictions, but John's pick of Arkansas may be right on the money

When the pairings came out for the 1994 NCAA Men's Basketball Championship Tournament, it was fairly obvious that the bracket makers had a difficult time in determining the seedings and placement of the participating schools. The parity in the NCAA this year was, as I discussed in my Feb. 3 article, incredible.

At that time I felt that the four favorite teams to win the championship were UCLA, North Carolina, Arkansas and Duke. With Purdue, Michigan, Indiana, Kentucky, Temple and Louisville having outside shots at the title. When the tourney brackets were released,

North Carolina, Arkansas, Purdue and the surprising Missouri Tigers were the number one seeds in the regionals. Kentucky, Michigan, Duke, UCLA, Indiana, Temple and Louisville were ranked anywhere from second to fifth in their respective regions. So, compared to my predictions of eight weeks ago, the tourney pairings were not that far off.

I was feeling pretty confident and thought that I would go through the entire tournament brackets and try to pick the winners of every game. This was before the tourney was to start. And, even though I was confident, I knew it was going to be difficult because of the parity in college hoops.

Missouri was the top seed in the West, and that is supposed to mean that they are the favorite to reach the Final Four. But, I didn't feel that way and picked Louisville to defeat California for that regional title. But Cal, despite having one of the best guards in the country, Jason Kidd, was upset by the Fighting Phoenix of Wisconsin-Green Bay.

And what is this with three teams from America's dairyland making the NCAA tournament? Being an Illinois boy I don't much like North Carolina or Indiana. Maybe milking cows helps to develop a shooter's touch.

But I'll get off that subject. In the

Midwest, Arkansas was the number one seed. The Razorbacks are, dare I say it, my pick to win it all. So now that it is in print, they'll probably lose. Michigan should give Arkansas a good run for their money.

Defending champion North Carolina was mine, and probably many others, pick to win it in the East Regional. But with their upset to Boston College, that means that Indiana or Connecticut should make the Final Four.

Boston College, the ninth seed in that region, which puts them in the top 36 teams in the tournament, were one of the three lowest ranked teams in the sweet sixteen. Tulsa a 12 seed, and Maryland a 10 seed, also made the final sixteen teams. This happens every year. A team or two gets on a roll and pulls off some upsets. But with the parity in college hoops this year, perhaps these upsets are not as spectacular as in previous years.

The final region, the Southeast, had the Purdue Boilermakers, led by my Player of the Year, Glenn Robinson, as the number one seeded team. And even though I think that Glenn Robinson is by far the best player in the country, I feel that Duke would be the team to go to the Final Four from this region.

There you have it, my pre-tournament Final Four of Duke, North Carolina, Arkansas

and Louisville. With the Final Four being held in Charlotte, North Carolina, Duke and UNC both would have a "home court" advantage. I figured the odds must be on one of those two teams winning it all. So obviously I went the other way.

According to the brackets and my pre-tourney picks, Louisville would play Arkansas and Duke would play North Carolina. But could you imagine the hysteria that could have been caused if Duke and UNC came from opposite brackets. A Duke vs. North Carolina championship game in Charlotte. Whoa buddy! Thank god the bracket makers had enough foresight to avoid that.

My predictions were to have a Tar Heel vs. Razorback National Championship with Arkansas winning the title in North Carolina's backyard. The Razorbacks up tempo and pressing defense would be too much for any team in this tournament to handle.

Well as the final four this weekend takes place Florida, Duke, Arizona and my pick, Arkansas, face off for the chance at the national championship all the questions will be answered.

Despite all of the parity and upsets, I felt my Final Four picks were pretty good. I also enjoyed the excitement, upsets and basketball that make March Madness a truly one-of-a-kind event.

# SPORTS Briefs

## Aerobics

Semper Fit Aerobics classes including the STEP program are offered everyday at the Main Gym. Classes are \$2 for dependents and 50 cents for active duty. Monthly passes are \$20 for dependents and \$10 for active duty personnel. For more information, contact the Athletic Office at 254-2516.

## K-Bay Officials Association

The K-Bay Officials Association is looking for any person interested in becoming a sports official. Experience is not required; the individual will be trained. For more information, please contact Harold Sharrer at 289-6175 (pager).

## Varsity soccer

The Hawaii Marines varsity

soccer team is holding tryouts. All active duty Marines stationed in Hawaii and all Navy personnel stationed at Kaneohe Bay are eligible to participate. For more information, contact the Athletic Office at 254-2516/2458.

## 30 and over basketball

The 1994 30 and Over Basketball League organizational meeting is scheduled for April 14, at 1 p.m. in the Main gym. All units wishing to field a team must have a representative present at the meeting. For further information, call the Athletic Office at 254-2458.

## Lacrosse

The Hawaii Lacrosse Club is looking for players of any skill level. No experience is required. Contact Trevor Spiers at 247-1925 or come to practice at 10:30 a.m.

most Sundays at Cook Field on the University of Hawaii at Manoa campus (next to baseball stadium).

## Kaneohe Rod and Gun Club

Meetings are held the first and third Tuesday of every month. For more information, contact Mike Dunlap at 254-4964.

## HMAC Racquetball

The 1994 Hawaii Marine Athletic Council Racquetball Tournament is scheduled for April 8-10. All active duty Marines stationed in Hawaii and Navy personnel stationed at K-Bay are eligible to compete. This tournament is the qualifier for the Hawaii Armed Services Athletic Council Racquetball Tournament. For information and registration call the Athletic Office at 254-2458.

## MWR offerings

By Julie Mall  
MWR

**Baseball Camp**  
Baseball season is upon us. Does your child know how to hit, throw, catch and run bases? Learn the fundamentals of baseball from the Marine varsity baseball team and Hawaii Pacific University's baseball team at the Varsity Baseball Spring Training For Kids, April 9 from 11 a.m. to

12:30 p.m. at Risely Field. The players will educate children of all ages on the fundamentals of baseball and play an exhibition game. The event is free and open to all dependents aboard the air station. Come out and cheer on your favorite team, learn about the game of baseball and meet some of your favorite baseball players in one afternoon. For more information contact the Athletic Office at 254-2516/2458.

**Easter Brunch**  
Enjoy Easter Brunch at the Officers' Club Sunday. The kids won't want to miss the live baby chicks and ducks and the drawing for stuffed bunnies.

Choose from two seatings, 9:30-11 a.m. and 11:30 a.m. to 1 p.m. The menu includes fruit and cheese, turkey and ham beef, seafood newburg, fried chicken, sausage, scrambled eggs, creamed beef, rice pilaf, home fried potatoes, buttermilk biscuits, pastries, candy and much more. The prices for the Easter Brunch for members are: adults \$12.50, children under 12 \$6.25; and non-members are: adults \$14.50, children \$7.25, any children under six are charged \$3. A 10 percent service charge will be added to all dinners; no coupons will be accepted. Reservations are limited so call the Officers' Club now at 254-5166/4785.

Until there's a cure, there's the American Diabetes Association.

**HAWAII HANA** TA2302  
1481 S. KING ST. #125  
CALL 951-8448

\*\*\* SPECIALS \*\*\*  
Fantastic Disneyland via United Airlines

Interisland Coupons	Book of 6	\$260	Singles	\$44	Good for 7 days a week
LOS ANGELES	O/W	R/T	MINNEAPOLIS/ST PAUL	O/W	R/T
SAN FRANCISCO	169	249	ATLANTA	299	489
SAN DIEGO	149	249	NEW YORK/DCA	310	529
LAS VEGAS	219	369	PORTLAND	319	529
PHOENIX	219	309	SALT LAKE CITY	209	369
SEATTLE	179	285	ORLANDO	219	369
DENVER	259	429	BOSTON	319	529
DALLAS/FT. WORTH	299	489	TAMPA	319	529
CHICAGO	299	489	NORFOLK	319	529
HOUSTON	299	489	SAN ANTONIO	269	469
OMAHA	299	489	CHARLOTTE	319	529
DETROIT	299	489			

Some Restrictions May Apply  
PLUS TAX

**LEAVE YOUR FAT BEHIND!**  
...Also Stomach, Hips and Thighs  
Beneficial Natural Body Contour Wrap and Inch-Loss Program will eliminate toxic waste that clogs your system. Lose 4-14 permanent inches in 1 hour.

CELLULITE NOT A WATER LOSS TREATMENT.  
Weight Loss Program Also Available  
Total programs for men and women

FREE Body Fat Analysis

**BODY WRAP \$10.00 OFF**  
with this ad

**BENEFICIAL HEALTH & BEAUTY CENTRE**  
1400 Kapiolani Blvd., #B20 • 842-WRAP(9727)

**WINDWARD MUFFLER, AUTO REPAIR**

• General Repair  
• Free Exhaust System Inspections  
• Free Estimates

Mufflers..... 10% OFF  
Brakes..... \$85<sup>00</sup> a Up  
Replace pads, rotor resurface, inspect caliper & rear brakes.  
Clutch..... 25% OFF  
Transmission Replacement

629 Kailua Rd., Kailua **261-3710**

**WE'RE THE #1 HOPE FOR THE #3 KILLER, LUNG DISEASES.**

AMERICAN LUNG ASSOCIATION<sup>®</sup>  
The Christmas Seal People<sup>®</sup>

**the Regulation Barber, Nails, Hair Salon**  
Men • Women • Military

Active Duty Military	\$6.50	Nails	
Women's Haircut	\$9.00	Full Set	\$35.00
Civilian	\$7.50	Fills	\$15.00
Perms	\$35.00 & up	Manicure	\$10.00
		Pedicure	\$20.00

Open 365 Days • 8 am-9 pm  
By Appointment or Walk-In

**Kailua Fort Shafter**  
Alkahi Park Shopping Ctr. Outside PATCH Gate, 1435 Middle St.  
**254-4111 841-8414**

**PALI PALMS DENTAL CENTER**  
DENTAL SERVICES

General Dentistry • Preventative and Restorative Dentistry  
Cosmetic and Esthetic Procedures

INSURANCE ACCEPTED: HDS, HMSA, Delta Dental Services (Military), Hawaii Dental Health Plan

**Dr. Derek Ichimura, DMD**  
Office: 254-6694  
970 N. Kalaheo Ave., A-108  
Kailua, Hawaii 96734

**Dr. Alan M. Yugawa, DMD**  
Office: 254-6477  
970 N. Kalaheo Ave., A-108  
Kailua, Hawaii 96734

**A&P - I.A. - FCC**

- 100% Guaranteed
- Day & Night Classes
- 4-6 Days
- Oral & Practical Review Included

Classes starting April 18, 1994

AVIATION GROUND SCHOOLS OF AMERICA  
- Call Now to Register -  
**(800) 345-2742 • (916) 346-6792**

**Another VIDEO STORE**  
Kailua Shopping Center  
(Across from Liberty House)  
**261-4VDO (4836)**

Look for these titles coming in APRIL:

- FEARLESS
- BEVERLY HILLBILLIES
- BRONX TALE
- AGE OF INNOCENCE
- MALICE
- COOL RUNNINGS
- CARLITO'S WAY
- ROBOCOP 3
- MRS. DOUBTFIRE
- MR. JONES
- ANOTHER STAKEOUT
- BATMAN - MASK OF THE PHANTASM

More than just MOVIES...  
• Karaoke Laser Games:  
• Super Nintendo  
• Sega Genesis  
• CD ROM  
• New Releases  
• Adult Videos  
• Discount Membership: Save On All Services!  
• Children's Videos at Discount Prices

**Has the true meaning of Easter gotten a little fuzzy?**

Give your children more than bunnies and baskets this year. Give them a miracle. Join us on Easter as we celebrate the resurrection of Jesus Christ.

**Trinity Church Windward**

**WILL NOT**

- bore you with the irrelevant messages that mean nothing to your life
- heap guilt on you just when you're reaching out for understand and help.
- make you feel as though you have to break into some "in-crowd".

We believe that churches need to meet people's needs the way Jesus did. That's why Trinity Church Windward

**WILL**

- Share the meaning of life & give you hope for the future.
- bring out the best in you by helping you get in tune with God's plan for your life.
- strengthen your marriage and family, provide genuine friendships, and help you succeed in the real world.
- give your young children and teenagers a spiritual environment that will make them look forward to rather than dread "church".

God cares about you and your needs and the quality of your life, and so do we!!! Believe me. Life in Hawaii can get even better. Go for it, this Sunday at 875 Auloa Road in Kailua! Why? Because you are made to enjoy and succeed in life, not just survive.

Sunday School for all ages 9:30 a.m. • Easter Worship 11:00 a.m.  
Pastor Anderson 262-8587  
A Congregation of the Presbyterian Church in America

**Here's My Card!**

Windward Business & Professional Services Directory

**WINDWARD BUSINESS & PROFESSIONAL SERVICE DIRECTORY**  
To Place Your Business Card Ad In This Section Call

**KAILUA BUSINESSES** Michelle Reed, ext# 337 **235-5881** **KANEHOE BUSINESSES** Darla Isales, ext# 318

**Spring Sale!**  
15% Off ALL ITEMS  
(Except Quilts & Everyday Greeting Cards)  
March 11-April 3

**A COUNTRY TREASURE**  
"Kailua's little country gift store"  
315 Uluniu St., Kailua Square, Kailua 262-4344

**There are a Million Here are Two**

America's young military and their families desperately need our support—and yours!  
For 130 years the Armed Services Y has served those who serve America, but the need has never been greater than now.  
Mail your donation today to: The Armed Services YMCA, #215, 6225 Brandon Avenue, Springfield, Virginia 22150-2510.  
If you'd like to do more, call Dick Stotz, National Executive Director, at 703-866-1260.

**NEW IN TOWN?**

**Welcome!**  
If you have moved to Kailua, Kaneohe or K.M.C.A.S. within the past year, call

**ALOHA WELCOME SERVICE**  
254-5413

- Community Information
- A Complete Map of Your Area
- Gifts & Discounts from Local Merchants

FREE to new residents — with a warm ALOHA!

# Spice of life!

*Editor's Note: Spice of Life is a column for military spice (plural of spouse). You are invited to write Maggie with any questions you have concerning military life. Please address your letter to: Joint Public Affairs Office, (Hawaii Marine, Spice of Life), Box 63003, MCAS Kaneohe Bay, HI 96863-3003.*

**Dear Maggie:**  
I am writing to you in hopes of correcting this station's negligence in maintaining the community lawn sections around the housing area. This problem has continued for the two years that I have lived here. I began complaining last September. When I called the Housing Office, they directed me to the Facilities Shop. I spoke to the man in charge of lawn care. I explained that I have a 5-year-old son with severe asthma, who has to take medicine just to remain healthy and active, and due to the two-foot high overgrowth of weeds and grass, my son is forced to take additional medication, which brings additional side effects, just to play in his own backyard.  
The man told me that he

just hired more lawn mowers and they were beginning a new rotating cycle for these areas. He did get my area done right away, but since then it has continued to be neglected. This is so unfair!  
Now I find out that my friend has rats coming into her property, along with centipedes. She was told that they are nesting in the tall grass right behind her fence and that she better brace herself because when the grass gets cut the rats are going to come running. Can you believe this?

This situation is a disgrace to the base. Every housing resident is required to maintain their quarters. We are doing our part, why can't Housing do theirs?  
Maggie, please do all that you can to correct this health hazard in our own backyards.

**Fed Up**

**Dear Fed Up:**  
I gave your letter to Facilities, but don't know how much good it will do. You'd probably have better luck if you and some neighbors would bring it to the Neighborhood Quality of Life Board. They generally have more power than I do when dealing with the base departments.

The problem is that many people hire on as lawn crew just to get into the federal system. As soon as any job

opens at a higher level, they jump at it, leaving the maintenance crews chronically short-handed. Add to that the effects of Hawaii's warm climate and plentiful rain, and you have the makings of a hay field in no time at all.

With all the budget cutbacks, Facilities can't hire as many people as they need to keep up with the grass, nor can they keep the overworked equipment going forever. However, they will make a point to cut areas that have "special needs." If you will write a letter to Housing, stating your child's medical requirements, they will make sure that the grass stays down, as long as the area is designated for cutting.

As to the rats and centipedes, I'm afraid you will have to learn to deal with them. Animal control will come out and put bait and traps out for rats, but they've been around Hawaii since the first ships landed. The centipedes are a real (and painful) annoyance. Make sure that you have your backyard sprayed regularly, and check the area thoroughly before your son goes out — especially toward evening or after heavy rains.

I know it's tough having an asthmatic child in Hawaii. Hopefully, we can make it a little easier on the little guy.

Maggie

# Tickets

The MWR Ticket Office offers tickets and information on how to get them at special military rates. The office also takes reservations for events and attractions around the island. Call the Entertainment Hotline at 254-3304 or stop by the Marine Corps Exchange for information and reservations. The office is open Monday - Friday, 10 a.m. to 5 p.m., and Saturday, 10 a.m. to 2 p.m. This week's offerings include:

**Consolidated Movie Theaters** — Tickets cost \$4.25 and are good until June 8.

**Sea Life Park/Waimea Falls Park** — ITT now has discount tickets on sale: adult, \$8.50; junior (6-12 years old), \$5.75; and children (4-5 years old), \$2.50. Every Friday evening Sea Life Park invites the very best island musicians to entertain on the Galley Stage at 8:30 p.m. Regular park admission includes the entertainment and all of the regular park water shows. Please enter the park after 5 p.m. for Friday night water shows and entertainment. Don't miss it.

**Aloha Diners Club** —

Entertainment and dining is available at a big discount. Books are only \$12 and are good until December. Enjoy 2-for-1 dining at 60 great restaurants, free cover charge at six popular night clubs, special savings on entertainment and lots more.

**Whale watching season** — The Navatek has a Breakfast Whale Watch cruise from 8:30 - 11 a.m. or a Lunch Whale Watch cruise from noon to 2 p.m. The Star of Honolulu has Whale Watching, Oahu Coast and Pearl Harbor Cruises from 8:30 a.m. to noon everyday. Come in for more details and reservations.

**Dinner cruises** — On the Navatek, Windjammer, Star of Honolulu, Starlet and Alii Kai. The Alii Kai offers a dinner cruise combo with the SOS or Magic of Polynesia Cocktail Show. For more details and cost, contact the ITT office.

**Hawaii IMAX Theatre Waikiki** — Features "Hidden Hawaii," "Tropical Rainforest" and "Rings of Fire." Adult rates are: single show \$5.50, or double feature, \$8.50; child rates single show, \$3, or double feature, \$5. Tropical Rainforest will show through June.

Contact the ITT office for more information.

**Waikiki Trolley** — Enjoy a day on the Old Town Honolulu Trolley Tour. It is a 2 hour narrated city tour that takes you on a fun and nostalgic trip into Honolulu's fascinating past. The Trolley stops at 18 locations to include Chinatown/Asian Mall, Dole Cannery Square, Aloha Towers and more. The adult rate is \$13.50 and children 11-years and under are \$5 for an all-day pass.

**Honolulu Jaycees 50th State Fair** — ITT will have presale tickets which are good for any day and any time at the State Fair. The presale program runs from April 2 to May 25. The tickets will be on sale for \$5. These tickets have a \$10.50 to \$12 value.

**Sun and Fun** — Enjoy the fun on the Atlantis Submarine, Holo Holo Kai Glass Bottom Boat, Nautilus, Hawaii Maritime and more. Stop by ITT for more information and details.

**Habilitat Rodeo** — Coming to Town and Country Stables in Waimanalo the April 15, 16 and 17. Call ITT for prices.

**April Budweiser 1994**

**HAWAIIAN PROFESSIONAL CHAMPIONSHIP**



**NEW TOWN & COUNTRY STABLES • WAIMANALO**

WINDWARD DODGE • JEEP • RAMBLER | KITV2 | WYVERN | 1-800- | Best PRINTING

**CLUB PEARL Rodeo Ticket Giveaway**  
Wednesdays & Thursdays  
April 6, 7, 13 & 14  
2030-2330  
Fridays & Saturdays  
April 8, 9 15 & 16  
2030-0130

**Friday, April 15 7 pm**  
**Saturday, April 16 1:30 & 7 pm**  
**Sunday, April 17 1:30 pm**

**Family Pass for 4**  
**VIP Tent at the Rodeo**

**Many Other Door Prizes Including — Hats, Shirts & Belt Buckles**

**PRE-RODEO PARTY BEFORE EACH PERFORMANCE**  
LIVE COUNTRY MUSIC, DANCING, WESTERN BBQ AND MORE!

Tickets available at all Military Outlets, JR's Music Stores, House of Music and The Connection — Plus Applicable Service Charges.  
**CALL 235-3691**  
Ask about AUGUST RODEO

Neither the U.S. Navy nor any other Federal Government Agency officially endorses any sponsors or their products and services.

**ALASKA \$299\***  
*THE FISH ARE BITING THIS SUMMER!*

Call your Travel Agent **alaskan vacations** or 800-770-2700  
\*minimum-ground package required

**KAILUA OPTICAL**  
Will BEAT Any Advertised Discount In Hawaii

Call Today About Our Super Savings Military Discounts

**Bausch & Lomb Contacts \$59**

Luke Jones, Owner  
315 Ulukou Street, Kailua Square • 262-6191

**HAWAII PACIFIC UNIVERSITY**

**SUMMER 1994 COURSES**

**REGISTRATION NOW OPEN FOR SUMMER I SEMESTER**  
CLASSES BEGIN MAY 16, and END JUNE 25, 1994

ACCTG 200	Principles of Accounting I	TTH	12:30 - 4:00 p.m.
ACCTG 201	Principles of Accounting II	MWF	2:00 - 4:40 p.m.
ANTH 200	Cultural Anthropology	TTH	5:15 - 8:45 p.m.
ANTH 395	Gender, Ethnicity/Race in the Workplace	MWF	8:00 - 10:40 a.m.
BIOL 101	Introduction to Biological Sciences	MWF	2:00 - 4:40 p.m.
COM 100	Career Skills	MWF	11:00 - 1:40 p.m.
CSCI 150	Computer Science I	MWF	11:00 - 1:40 p.m.
CSCI 151	Computer Science II	TTH	5:15 - 8:45 p.m.
ECON 405	International Trade and Finance	TTH	12:30 - 4:00 p.m.
ENG 110	English Composition	MWF	2:00 - 4:40 p.m.
ENG 310	Career Communications	TTH	12:30 - 4:00 p.m.
FIN 600	Financial Management/Strategy	MWF	11:00 - 1:40 p.m.
HIST 221	World Civilizations I	MWF	11:00 - 1:40 p.m.
HIST 222	World Civilizations II	TTH	12:30 - 4:00 p.m.
HUM 100	Introduction to the Humanities	MWF	2:00 - 4:40 p.m.
HUM 450	World Problematique	TTH	5:15 - 8:45 p.m.
JOUR 496	Newspaper Production I	MWF	2:00 - 4:40 p.m.
LAW 300	Business Law I	TTH	8:00 - 11:30 a.m.
LAW 345	Constitutional Law	TTH	4:15 - 8:45 p.m.
MATH 130	Pre-Calculus	MWF	11:00 - 1:40 p.m.
MATH 140	Pre-Calculus II	TTH	8:00 - 11:30 a.m.
MGMT 100	Organization and Management	TTH	12:30 - 4:00 p.m.
MGMT 325	Human Resource Management	TTH	8:00 - 11:30 a.m.
MKTG 350	Advertising	MWF	8:00 - 10:40 a.m.
PHIL 201	Principles of Logic	MWF	2:00 - 4:40 p.m.
PSYCH 328	Group Dynamics in Organization	TTH	12:30 - 4:00 p.m.
PSYCH 371	Client Counseling and Interview	MWF	11:00 - 1:40 p.m.

*Over 500 courses are offered. The above list is only a sample. Please call for a complete schedule with dates and times.*

**HOW TO REGISTER:**

**NON DEGREE-SEEKING STUDENTS:** Register in the Registrar's Office, 1164 Bishop Street, 2nd floor, Monday through Friday between 8:00 a.m. and 5:00 p.m., or call 544-0239 to obtain registration forms.


**NEW DEGREE-SEEKING STUDENTS:** Stop by our Admissions Office, 1164 Bishop Street, 2nd floor, or call 544-0238 for information. Open Monday through Friday between 8:00 a.m. and 5:00 p.m.

**CURRENTLY ENROLLED STUDENTS:** Register in the Registrar's Office, 1164 Bishop Street, 2nd floor. Open Monday through Friday between 8:00 a.m. and 5:00 p.m.

**HAWAII PACIFIC UNIVERSITY**  
1164 BISHOP STREET  
HONOLULU, HAWAII 96813  
Telephone 544-0238 FAX 544-1136

Hawaii Pacific University is accredited by the Accrediting Commission for Senior Colleges and Universities of the Western Association of Schools and Colleges.

**CALL NOW FOR REGISTRATION INFORMATION**  
**544-0238 or 544-0200**



*Bill Nave saved these kids from drowning. He's not a lifeguard—*

*he's a teacher. But to the kids he's reached, he's a hero.*

**BE A TEACHER. BE A HERO.**

Call 1-800-45-TEACH.

AG LEADER A Public Service of The Publication Photo: Robin Sachs

**Movies**

David Johansen • John McGinley  
Fran Drescher • Nipsey Russell

**CAR 54,  
WHERE ARE YOU?**



PG-13 An Orion Pictures Release

All movies shown at the theater, building 219, begin at 7:15 p.m., unless otherwise noted. For more information, call 254-2113. Movies may be subject to change due to

circumstances beyond the theater's control.

"Car 54 Where Are You" (Comedy) PG-13: 89 minutes,

GÉRARD DEPARDIEU

My  
**Father  
The Hero**



Touchstone Pictures

PG

plays Friday: Comedy about two mismatched New York City patrol car policemen.

"My Father The Hero" (Comedy) PG: 90 minutes, plays

Saturday and Sunday. A 14-year-old girl tries to impress a guy by passing off her divorced dad (Gerald Depardieu) as her lover.

**Ads**

**Miscellaneous**

1987 Evinrude Outboard — 48 horsepower in good condition, \$1,200 or best offer. Unused GPS depthfinder combo accurate \$1,000. Call Scott at 261-3587.  
Baby items — Miscellaneous baby items for sale, stroller, playpen, infant seat, swing, all like new, please contact Brandy at 254-0781.

to hit the road, asking \$800, call 254-6195.

**For Rent**

Two bedroom, one bath. For rent in Kailua town, only nine minutes to KMCAS. New carpeting, walking distance to shopping, restaurants, and bus line, available April 1, \$850 a month, 261-1828.

**Lost**

Lost - Black bat bag with 34 inch TPS bat, glove, cleats, three softballs, 1994 ASA rule book, call Donna, 254-1798; reward.

**Autos**

1988 Volkswagen squareback sedan — Great island car, good condition, ready

**STOP SMOKING  
in 22 minutes**

-No Weight Gain-

**523-1191**

Free phone consultation  
1 YEAR GUARANTEE

- Our 19th year
- By Individual Appointment
- Visa & MasterCard Welcome
- Special Military Rates



LAURENCE  
BIFFER, Ph.D.  
CERTIFIED  
HYPNOTHERAPIST

**Aloha United Way**

**Dunn & Dunn**  
Attorneys at Law  
A Law Corporation

- Uncontested Divorce
- Bankruptcy
- Consent Adoption

LOW FIXED FEES  
OPEN EVENINGS & SATURDAYS  
HONOLULU: AIEA/PEARL CITY  
841-Bishop Street, #2221 Ph. 524-4529  
98-1247 Kailuanua St., #12 Ph. 487-6164

**Greg T. Dunn**  
Former Military  
JAG Attorney

**LIBERTY TRAVEL**

LOW AIRFARE AVAILABLE

Call For Current Prices & Specials  
Including Military Discounts

We'll Deliver  
TAR #2841 (808) 497-5450

**TAKE FLIGHT  
and Soar  
ABOVE THE REST!**

Become A  
**PILOT!**

Flying is the most exclusive, exciting, rewarding hobby available...Ask us how.

**FREE SEMINAR** DOOR PRIZES

Wednesday, April 6, 1994  
7:00 p.m., Hangar 13, Hickam AFB

Call **449-1228** For Details  
Hickam-Wheeler Aero Club

**S O M E P L A C E E L S E**

**Easter Sunday  
Champagne Brunch  
Buffet**

April 3rd  
9am-2pm  
\$11.95 adults \$6.95 children (3-10 yrs.)

**Easter Dinner  
Specials**  
from 4:00pm

Featuring:  
Fresh Island Fish  
or Prime Rib

In addition to our regular menu items.  
"We Unconditionally Guarantee Our Food & Service"

33 Aulike St.  
(Next to Pizza Hut) Kailua  
263-8833

**LAW OFFICES OF  
JOSEPH P. H. AHUNA, JR.**

**CAR ACCIDENTS**

PERSONAL INJURY  
WRONGFUL DEATH  
WORK INJURY

FREE INITIAL CONSULTATION  
HOME & HOSPITAL VISITS AVAILABLE  
NO RECOVERY • NO FEE

**235-4000**

48-001 KAM HWY., SUITE 101  
**KANE OHE**

**WE KNOW  
HOW TO LUAU!**

Every week, we serve up a royal Hawaiian feast, just for you at the Hale Koa Hotel! Our luau begins with a breathtaking sunset, along with an aloha lei greeting and a tropical cocktail. Relax to gentle island music while you learn lei making and coconut frond weaving. Then it's time to feast on luau delicacies such as kalua pig, lomilomi salmon, teriyaki beef, mahimahi, haupia, pineapple and poi. And to keep you royally entertained, a spectacular show featuring ancient Hawaiian songs and dances, lovely hulas, and an exciting Samoan fire-knife dance!

So join us every week! At the Hale Koa, we know how to luau!

**HALE KOA HOTEL**  
A Resort for the Military  
2055 Kalia Road • Phone 955-0555

Every Monday & Thursday

**BLOW OUT WINTER SCUBA SALE GIANT STRIDE INTO SPRING**

SAVE UP TO **45% OFF** FRIDAY, APRIL 1ST TO SUNDAY 17TH

**OCEAN EDGE**

<b>COMPUTERS</b> MC-36 \$229.95 Reg. \$400	<b>FINS</b> Spectra Fins \$69.95 \$102 Regular Price	<b>MASK 3</b> \$39.95 \$62 Regular Price	<b>MASK 3</b> W/CORRECTIVE LENSES \$99.95 \$142 Regular Price	<b>BALANCED REGULATORS</b> \$199.95 TO \$249.95 \$360 Regular Price	<b>BCD'S</b> \$179.95 TO \$239.95 \$440 Regular Price
---	---	--	--	---	---

AND MORE!

**“LIKE NO OTHER PLACE”**

**Ocean Concepts Scuba**

INSTRUCTION  
CHARTERS  
RENTAL  
SALES

**36' CUSTOM DIVE BOAT**  
94-547 Ukee St. Unit 211, Waipio  
**677-7975**

**McNETT CORPORATION**

**ikelite**  
INNOVATIVE SCUBA CONCEPTS, INC.

**seaQuest**

Table with columns for course numbers (1730, 1950, 1730, 1950, 1730, 0800, 1220, 1145, 1250) and course titles (PRIN ACC 1, HUM RES MG, BUS LAB 2, INTRO CSC I, INTRO LIT, INTRO CSC I, BUS APPS, INTRO CSC I, etc.).

Advertisement for JANE WETZEL, CPA, offering tax and consulting services. Includes contact number 262-6116.

Advertisement for SUZIE'S Adult Centers, now open 24 hours. Lists various services like video rentals, adult products, and body oils.

Tuition Assistance helps fund future

By Sgt. Paul Schneider, Press Chief. If someone were to offer anyone in the military between \$2,150 to \$3,500 every year, as long as it was used as an investment in their future, it would seem as if few people would turn it down.

members pursuing a college degree pay the high cost of tuition. The program pays 75 percent of the cost of undergraduate, vocational and graduate courses for those pursuing college degrees.

hour tuition assistance/educational opportunities class given every Wednesday at 12:15 p.m. at the Joint Education Center. Filling out a couple of forms is all that is required to be eligible to begin using the money.

be able to attend class and satisfactorily complete the course. "Tuition Assistance will be denied if the grades are not satisfactory," Cornett explained. In fiscal year 93, the station spent about \$768,000 for tuition assistance.

complete a class or withdraw from a class, they must know the policy of the school they are attending," Cornett said. "If a student gets an 'F' or an incomplete, the student will be required to pay the Marine Corps back."

THE CLASSIFIED INDEX

Telephone Service 235-5656 Mon.-Fri. 8 a.m.-5 p.m. Counter Service 45-525 Luluuku Kaneohe Mon.-Fri. 8 a.m.-5 p.m. Deadlines: Line Ads due by 12 Noon - Tuesday Class Display Ads due by 4:00 p.m. Friday CANCELLATIONS & CORRECTIONS due by 12 Noon-Mon.

TRAFFIC CONTROL DEVICES Traffic Schedule No. 94-3. IN ACCORDANCE WITH THE PROVISIONS OF ORDINANCE NO. 01-87 AMENDING ARTICLE III, THE DEPARTMENT OF TRANSPORTATION SERVICES, CITY AND COUNTY OF HONOLULU, HEREBY ESTABLISHES TRAFFIC SCHEDULE NO. 94-3 TO AMEND SCHEDULE III OF SECTION 15-6.3 ESTABLISHING PROHIBITED RIGHT/LEFT TURN ON RED; SCHEDULE IV OF SECTION 15-7.2(a)(2) ESTABLISHING SPEED LIMIT - 15 MPH; SCHEDULE V OF SECTION 15-7.2(b)(3) ESTABLISHING SPEED LIMIT - 25 MPH; SCHEDULE VII OF SECTION 15-7.2(d) ESTABLISHING SPEED LIMIT - 35 MPH; SCHEDULE VIII OF SECTION 15-7.2(e) ESTABLISHING SPEED LIMIT - 45 MPH; SCHEDULE XIV OF SECTION 15-11.3 ESTABLISHING STOP INTERSECTIONS; SCHEDULE XX OF SECTION 15-13.10(a)(7) ESTABLISHING TOW ZONES - 24 HOURS; SCHEDULE XXII OF SECTION 15-14.5(a) ESTABLISHING PROHIBITED PARKING CERTAIN AREAS; SCHEDULE XXIV OF SECTION 15-15.1(d) ESTABLISHING CURB LOADING ZONES; SCHEDULE XXV OF SECTION 15-15.3(d) ESTABLISHING OFFICIAL BUS STOPS; SCHEDULE XXVI OF SECTION 15-16.1 ESTABLISHING TIME LIMIT PARKING; SCHEDULE XXX OF SECTION 15-22.1(a) ESTABLISHING PARKING METER ZONES; SCHEDULE XXXVIII OF SECTION 15-24.17 ESTABLISHING MISCELLANEOUS TRAFFIC CONTROLS.

"Cooke St. Traffic on Cooke St. shall stop before entering Halekauwila St." "Kahouua St. Traffic on Kahouua St. shall stop before entering Pakou St." "Kihouua St. Traffic on Kahouua St. shall stop before entering Paupu St." "Kuliewa St. Traffic on Kailiewa St. shall stop before entering Pakou St." "Kailiewa St. Traffic on Kailiewa St. shall stop before entering Paupu St." "Keawe St. Traffic on Keawe St. shall stop before entering Halekauwila St." "Moeha St. Traffic on Moeha St. shall stop before entering Moekahi St." "Moeha St. Traffic on Moeha St. shall stop before entering Moelima St." "Moekaa Pl. Traffic on Moekaa Pl. shall stop before entering Moelima St." "Moekolu St. Traffic on Moekolu St. shall stop before entering Moekahi St." "Moelima Pl. Traffic on Moelima Pl. shall stop before entering Moelima St." "Moelima St. Traffic on Moelima St. shall stop before entering Moekolu St." "Moelua St. Traffic on Moelua St. shall stop before entering Moekahi St." "Pakou St. Traffic on Pakou St. shall stop before entering Akeake St."

"Hawaii Kai Dr., mauka side, distance 150' Koko Head direction from the Koko Head curb prolongation of Kailiewa St." "Mountain View Dr., both sides, for its entire length." "Ninth Ave., Ewa side, distance 84' mauka direction from the mauka curb prolongation of Waiialae Ave." "Nuuanu Ave., Ewa side, distance 45' mauka direction from a point 12' mauka of the mauka curb prolongation of 'Marin St., 6:30 am to 6:00 pm, except Sundays and holidays." "Nuuanu Ave., Ewa side, distance 170' mauka direction from the mauka curb prolongation of Waiialae Ave." "Ninth Ave., Ewa side, distance 170' mauka direction from the mauka curb prolongation of Waiialae Ave." "Twile Rd., Koko Head side, distance 150' mauka direction from a point 62' mauka of the mauka curb prolongation of Sumner St." "Twile Rd., Koko Head side, distance 150' mauka direction from the mauka curb prolongation of Sumner St." "Ninth Ave., Ewa side, distance 138' mauka direction from the mauka curb prolongation of Waiialae Ave." "Ninth Ave., Ewa side, distance 170' mauka direction from the mauka curb prolongation of Waiialae Ave."

DIVORCE Serving Oahu Since 1977 \$125.00 595-2533 Staff Attorney Gene Bridges A Public Service Project. 4 Health & Fitness #1 THIGH CREAM and #1 THIGH CREME. AMAZING THIGH CREAM. DIET MAGIC. EXCELLENT WEIGHT-LOSS PROGRAM.

YOU ALWAYS HIT THE MARK WITH Sun Press Classified 235-5881

0 Free Bees FREE KONO Male Terrier. SEARS FLEX FORCE. CLASSIFIEDS are money makers!



REPO & OWNER TRANSFER "A PUBLIC NOTICE"

Table listing various cars for sale with prices, including '76 FORD LTD WGN, '77 DODGE ASPEN, '84 PLYMOUTH TURISMO, etc.

Dealers Welcome • All cars stored at: WHOLESALE MOTORS, Inc. 3033 N. Nimitz Highway

EXPERIENCE THE DIFFERENCE AT... CUTTER FORD ISUZU SEE WHY WE'RE THE #1 RETAIL DEALER IN HAWAII!



Grid of car listings for '94 ESCORT, '94 RANGER P/UP, '94 F150, '94 MUSTANG, '94 AEROSTAR WGN, '94 TAURUS, '94 RODEO.

Grid of car listings for '94 ASPIRE, '94 ISUZU 4x4 P/UP, '94 PROBE, '94 AMIGO, '94 T-BIRD, '93 CROWN VIC.

SPECIAL FINANCING AVAILABLE! FROM 3.9% APR OR UP TO \$1000 CASH REBATE! NO DOWN PAYMENT!

Grid of car listings for '73 PLYMOUTH SCAMP 2DR, '86 HYUNDAI GSI 4DR, '87 NISSAN SENTRA, etc.

Automotive Source, Inc. 671-4333. Specializing in foreign & domestic vehicles. 20% OFF BODY WORK.

ADOPT! PUPPIES, DOGS PUREBREDS! Come in TODAY and see our fabulous selection of cute & cuddly pets.

127 Miscellaneous Wanted. SHIPPING CRATES WANTED NOW! TRAVEL KENNEL for large dog.

132 Computers. AMAZING WAVE BBS has moved. Dial by modem. 847-8875.

146 Boat Sales & Service. LET'S GO FISHING 33' boat, lic. Capt. Military/Kamaaina rates.

DO-IT-YOURSELF PORTABLE PICNIC TABLE. For information on plans, table & how to order.

WANTED. HAWAIIAN Items, Books, Papers, Jewelry Collectibles, Antiques.

140 Photography. PHOTOGRAPHER Affordable Quality. Dan at 422-1535.

148 Water Sports Equipment. SPAS • HOT TUBS Wholesale Pricing.

151 Pets/Everything. CHIHUAHUA, male, 9 weeks old. \$250 without papers.

130 Antiques & Art. OLD COMICS for sale, Marvel, DC, etc. 20-40% off.

146 Boat Sales & Service. 12' NOVURANIA Inflatable w/25 hp Merc. O/B.

150 Livestock/Horses. GAME COCKS Payton Democrats, Roberts.

156 Auto Service & Parts. '78 FORD F250 VAN Whole or parts, \$400/otr.

132 Computers. COMPUTER HELP DOS, Windows, major programs.

146 Boat Sales & Service. 12' NOVURANIA Inflatable w/25 hp Merc. O/B.

151 Pets/Everything. AKC Rottweiler pups for sale. 4 males, 2 females.

156 Auto Service & Parts. '77 CJ5 JEEP 304, 8 cyl, good motor.

156 Auto Service & Parts. '78 FORD F250 VAN Whole or parts, \$400/otr.

166 Pickup Trucks. '93 CHEVY C1500 TRUCK #51942, \$14,999.

174 Heavy Machinery. AIR COMPRESSOR 220v Champion portable, like new.

175 Vans & Campers 4-Wheel Drive. '88 CHEVY ASTRO PASSENGER VAN 6 cyl.

175 Vans & Campers 4-Wheel Drive. '91 GMC JIMMY 6 cyl. A/C.

175 Vans & Campers 4-Wheel Drive. '91 GMC JIMMY 6 cyl. A/C.

PROFESSIONAL SERVICES

PROFESSIONAL SERVICES: Accounting/Bkpg, Appliances, Cabinetry, Carpentry, etc.

Accounting & Bookkeeping. QUALITY BOOK KEEPING & Payroll Services.

Cleaning. SPOTLESS House Cleaning. General, move out, etc.

Contracting & Construction. PRESTIGE BUILDERS & KUHIO ROOFING LIC.

Handyman. BOB A HANDYMAN TO KNOW inside outside home repair.

Masonry. ATTN: HOMEOWNERS Save time & money with Tomita Masonry.

Painting. ISLAND BUDGET PAINTING & MILDREW WASH.

Remodeling. PATIO new additions, repair, concrete, Clifford Iwano.

Screens & Jalousies. AFFORDABLE SCREEN & GLASS CO. Screens & Jalousies.

Yard Service. DESIGN SCAPES Top quality full serv. landscape maint.

# NO APRIL FOOLIN'

## JUST SUPER SAVINGS

### Pflueger Car & Truck Center

- '86 5TH AVE. Nice, Great Buy. CFY-225 **2,695**
- '89 ESCORT 4 Dr, Auto, Air. CWU-451 **2,995**
- '83 FORD T-BIRD Loaded, Nice. BSP-714 **2,995**
- '88 OLDS CALAIS 4 Dr, Auto, Air, Great Value. CTG-128 **2,995**
- '86 MONTERO 5 Spd, Runs Great. CJT-685 **2,995**
- '90 EXCEL H/B 5 Spd, Runs Great. DFV-142 **2,995**
- '74 TOYOTA V-6, Auto. Good Cond. EWG-420 **3,495**
- '88 DODGE RAM 350 16-Pass, Dual A/C, Great Cond. EYC-020 **5,295**
- '87 CRX Air, Auto, Lo Mi. CJS-677 **5,495**
- '88 MINI RAM Air, Auto, Cargo Van. FJB-618 **5,495**
- '88 RIVIERA Leather, Loaded, Excl. Cond. A2GOOD **6,895**
- '89 626 4 Dr, Auto, Air, More. CXU-633 **6,895**
- '91 CIVIC H/B 5 Spd, Cass., Lo Miles. EDD-591 **7,395**
- '90 CRX Air, 5 Spd, Alloy. EAJ-726 **7,695**
- '88 PRELUDE Air, 5 Spd, Alloys. CVP-099 **7,895**
- '93 ESCORT 4 Dr, Air, Cass., Like New. 732-AAD **7,995**
- '88 GRAND CARAVAN V-6, LOTS OF GOODIES. CUB-730 **8,595**
- '89 IROC-Z Auto, Air, Nice. DCB-975 **8,995**
- '89 GRAND CARAVAN Loaded, Lo Mi. FEC-739 **8,995**
- '92 TRACKER Air, Excl. Cond. EWW-232 **9,795**
- '88 9000 T 4 Dr, Leather, S/roof, Excl. Cond. FBX-789 **9,995**
- '92 LEBARON 4 Dr, Air, Cass., Loaded. EV1-860 **10,895**
- '92 F-150 Auto, Clean, Lo Mi. FBN-280 **12,295**
- '92 F-150 6 Cyl, O/D, Low Miles. MUV-988 **13,495**

Waipahu  
**676-2220**  
94-097 Farrington Hwy.

# PFLUEGER CARS

## MILITARY WELCOME

- '83 MAZDA 626 Auto, A/C, New Tires EPV806 **1,895**
- '82 PONTIAC FIREBIRD Auto, Very Sporty EPJ458 **2,795**
- '85 OLDS CIERA Auto, 4 Dr, Family Special EXC368 **2,995**
- '86 MAZDA 626 4 Dr, Cold A/C FEZ583 **2,995**
- '84 NISSAN MAXIMA Auto, A/C, Low Miles EZB414 **3,995**
- '73 VOLVO P1800ES A rare Find! Great Shape ERV261 **4,495**
- '86 HONDA CRX 5 Spd, A/C, Blk on Blk EFG156 **4,495**
- '89 TOYOTA TERCEL 2 Dr, H/B, A/C, Low Miles DBT547 **4,495**
- '87 VW CABRIOLET Pre-Summer Special CNG123 **4,995**
- '90 PLYMOUTH COLT Silver Bullet, Super Special FFP389 **4,995**
- '83 BMW 320i Auto, Sunroof, Clean Car. EWW462 **4,995**
- '86 CHEVY S10 Blk V8, Buffed Up, Must See EGN614 **5,995**
- '91 FORD PROBE See Thousands Of Retail Book ECC904 **6,995**
- '86 CHEVY BLAZER 6 Cyl, 4x4, A/C, Alloys CEV938 **6,995**
- '89 CHEVY CAMARO Auto, A/C, Cherry Red, Cherry Condition FPG551 **6,995**
- '92 MAZDA B2200 SE5 Package, Low Miles FBX168 **7,895**
- '92 HYUNDAI ELANTRA Auto, A/C, Low Miles EGT973 **7,995**
- '88 FORD F150 5 Spd, A/C, Runs/Looks Great CSC621 **7,995**
- '91 CHEVY CAVALIER Auto, A/C, Sweet Little Wagon EGV610 **7,995**
- '89 BUICK LESABRE 4 Dr, Auto, Full Pwr DBS830 **8,495**
- '88 MAZDA RX7 5 Spd, A/C, Lots o' Power CVP547 **8,979**
- '90 ISUZU KINGCAB P/U A/C, 4x4, Sharp MYJ379 **9,995**

PFLUEGER CARS  
775 NIMITZ HWY.  
Ph: 599-2612

### CUTTER MITSUBISHI DODGE OF WAIPAHU

**SPECIAL PARTS DISCOUNT 10% OFF**  
TAKE 10% OFF THE FOLLOWING GENUINE MITSUBISHI PARTS FOR A DO IT YOURSELF SPECIAL:  
SPARK PLUGS • FUEL FILTERS • V-BELTS  
AIR FILTERS • RADIATOR CAP & HOSES • PCV'S

**BRAKE INSPECTION**  
Special Price **\$1425**  
Reg. \$28.50  
Good brakes save lives! Take advantage of this brake inspection and make sure your brakes are working properly.  
• Inspect brake pads and/or shoes, rotors/drums, cylinder, callipers and wheel cylinder.  
• Add brake fluid as needed.  
• Road test.  
Expires: 4-15-94  
CUTTER MITSUBISHI

**OIL AND FILTER CHANGE**  
Special Price **\$2295**  
Reg. \$40.84  
Changing your car's oil and filter regularly is your first step to help ensure your Mitsubishi's long life.  
• Change motor oil per specifications.  
• Install a Genuine Mitsubishi Oil Filter.  
Trucks, V-6 models and diesels slightly higher.  
Expires: 4-15-94  
CUTTER MITSUBISHI

**TUNE-UP SPECIAL**  
Special Price **\$3495**  
Reg. \$76.26  
• Perform electronic scope analysis  
• Adjust timing and engine idle  
• Inspect ignition system, belts, hoses and PCV valve  
• Install Genuine Mitsubishi Spark Plugs  
• Valve adjustment extra if needed  
Sigma, 3000GT, Diamante, Galant VR-4 and Van/Wagon vehicles with platinum-tipped spark plugs higher. Excludes diesels.  
Expires: 4-15-94  
CUTTER MITSUBISHI

**AUTOMATIC TRANSMISSION SERVICE**  
Special Price **\$5995**  
Reg. \$126.70  
During acceleration, does your transmission slip or shift slowly? If so, it should be serviced as soon as possible.  
• Test Performance. • Adjust bands (where applicable).  
• Clean and adjust shift and throttle linkages.  
• Change fluid, replace filter and pan gasket.  
Trucks, V-6 and diesel models slightly higher.  
Expires: 4-15-94  
CUTTER MITSUBISHI

94-149 Farrington Hwy. Phone: 671-2626

A DIFFERENT KIND OF COMPANY. A DIFFERENT KIND OF CAR.

## The new family value.

# \$197<sup>57</sup> mo.



With our GMAC 36 month SmartLease and credit approval, you can take delivery on a new '94 Saturn SL sedan with only \$1,850 cash or trade equity. Then only \$197.57 per month plus tax. Payments total \$7,112.52 with normal wear plus .20 per mile in excess of 15k miles annually. Purchase option at lease end, \$6,683.34. Six to choose from, stock #43215, #43326, #43390, #43253, #43534, #43439. Offer valid thru 4/18/94.

**SATURN of HONOLULU**  
2901 North Nimitz Hwy., Honolulu  
Phone: 836-7007  
Factory Authorized Sales & Services Available Only On Oahu.

THE LUCAS DEALERSHIP GROUP

### COME SEE OUR DAILY SPECIALS!!!

Large Selection To Choose From

- '84 Buick Electra 4 DR, FDJ726 **\$995**  
'99 x 12 mos.
- '81 Buick Regal 2 DR, A/C, FGX667 **\$995**  
'99 x 12 mos.
- '87 Hyundai Excel 4DR, (DFY231) **\$1,995**  
'99 x 24 mos.
- '83 Honda Accord 4 DR, AUTO (EJT110) **\$2,495**  
'184 x 15 mos.
- '88 Ford Escort Wagon CSX505 **\$2,995**  
'104 x 30 mos.
- '87 Toyota Tercel 2 DR, AUTO A/C, CPB580 **\$3,995**  
'166 x 24 mos.
- '90 Geo Storm 2 DR, EDC293 **\$3,995**  
'103 x 42 mos.
- '85 Toyota Camry 4 DR, AUTO, A/C, FEFO05 **\$4,595**  
'186 x 24 mos.
- '88 TOYOTA TERCEL 5 DR, AUTO, A/C, CRW957 **\$4,595**  
'153 x 30 mos.
- '89 Buick Regal 2 DR, AUTO, A/C, CYG371 **\$5,995**  
'173 x 36 mos.
- '87 Honda Accord LX 4 DR, A/C, FFB486 **\$5,995**  
'199 x 30 mos.
- '87 Toyota Camry 4 DR, AUTO, A/C, CNA870 **\$6,595**  
'221 x 30 mos.
- '88 Ford Bronco II AUTO, A/C, MUM748 **\$6,595**  
'221 x 30 mos.
- '89 Mazda MX-6 GT A/C, EXG483 **\$6,595**  
'180 x 36 mos.
- '89 Dodge Caravan AUTO, A/C, FFD437 **\$6,995**  
'234 x 30 mos.
- '89 Lincoln Continental 4 DR, DFX685 **\$6,995**  
'199 x 36 mos.
- '92 Nissan Sentra 2 DR, MUR408 **\$7,995**  
'181 x 48 mos.
- '92 Toyota Paseo 2 Dr, FCD628 **\$9,995**  
'226 x 48 mos.

**Pacific Mazda**  
94-223 Farrington Highway, Waipahu  
Body Shop 677-0227  
Sales 671-5115 • Parts 677-0118 • Service 671-7511  
Prices plus tax, license, and DOC. FEE of \$195. All cars subject to prior sale. Financing on approval of credit. Terms 20% Down, 11.9% APR. Expires 3/30/94.

### TRUCK SALE! IN WAHIAWA!

Another Fine Shipment of Toyota & Chevy Trucks Just Arrived!

**1994 CHEVY S-10 PICKUP TRUCK EXT-CAB 4x2 "FLEETSIDE"**  
DEMO! (Lo. FD-407) Automatic, air conditioning, power windows/door locks, power mirrors, rear anti-lock brakes, AM/FM stereo w/CD, speed control, bedliner, and more!

**1994 CHEVY FULL-SIZE 4x2 PICKUP TRUCK**  
ONLY: **\$14,297\***

**1994 CHEVY ASTRO CARGO VAN**  
ONLY: **\$16,578\***

**1994 CHEVY S-10 BLAZER 4x2 2-door**  
ONLY: **\$18,995\***

**HURRY! THIS SALE ENDS: APRIL 4TH!**  
\*Prices do not include tax, license and \$95 doc. fees. Subject to prior sale. May not be exactly as shown. Includes all applicable rebates and incentives. Ends: April 4, 1994.

**SERVICE MOTOR CO.**  
CHEVROLET - GEO  
105 KAM HWY. WAHIAWA CALL 622-4195

- | Cadillac   | Classic Cars   | Ford  |
|--|--|---|
| '80 SEVILLE Original owner, black, excellent cond., \$2500, 943-1931.  | '87 LONDON TAXI Runs good, diesel, must sell, \$5000, 949-7874.              | '88 MUSTANG LX CONV auto, A/C, loaded, FDJ-828 (was \$8,995) now \$7,995.   |
| '82 SEVILLE, \$3200/offer. Fully loaded. Must see. 262-8888 or 262-8198.   | '87 T-BIRD 32,000 orig. mi., excl. cond., \$22,000/OBO. 1-245-8823, even.    | <b>MIKE MCKENNA'S WINDWARD FORD</b><br>725 KAILUA RD. 266-7000  |
| <b>Chevrolet</b>   | '80 CHEVETTE, 4 dr., auto., good transportation, \$650, dir. 239-7873.       | '88 MUSTANG conv't, LX, auto, A/C, AM/FM, alloy wheels, 4 spd., Classic, 1 of a kind. No dealers, please. 254-3210. |
| '85 CAMARO, Must sell. V6, white, Good cond., \$2500/OBO. 456-7826.  | '87 CAMARO 5 spd., CD, A/C, T-top, tinted, 56K mi. \$5100, 261-1710.         | '88 T-BIRD Dark blue, V6, 34K mi., excl. cond., \$5900, 254-5735.   |
| '88 CELEBRITY WAGON CRW177, \$3,288.   | <b>MIKE MCKENNA'S WINDWARD FORD</b><br>725 KAILUA RD. 266-7000               | '88 CIVIC 4 dr., 5 spd., running car, for parts, strong rebuilt engine, \$200, 237-8847, even.                      |
| '87 MUSTANG Rebuilt 289 eng. & trans. excl. cond. \$4500, 247-4581.  | '87 MUSTANG collector's special, fastback, #10764 (was \$6,995) now \$4,795. | '88 ACCORD 4 dr., auto., A/C, new brakes, excl., \$4450/OBO, 734-0808.  |
| '81 CAVALIER 4 dr., 4 cyl., auto., 25K mi., excl. cond. \$7500, 734-3552.  | <b>MIKE MCKENNA'S WINDWARD FORD</b><br>725 KAILUA RD. 266-7000               | <b>Hyundai</b>  |
| '84 Le BARON CONV. 1 owner, 39K mi., Immac. A/C, loaded. FBE818, (was \$5,995) now \$4,995.  | '79 LTD SW 4 dr., auto., great transportation, \$490, Dir., 239-7873.        | '88 EXCEL GLS AM/FM cass., 4 speaker, power sunroof, good cond., \$3000/OBO, 254-2245.                              |
| <b>MIKE MCKENNA'S WINDWARD FORD</b><br>725 KAILUA RD. 266-7000   | '82 MUSTANG H/B auto, 6 cyl., new brakes, \$1000/OBO, 247-0650.              |   |
| <b>CLEAN UP IN THE CLASSIFIEDS!</b> Find a bargain for sale and sell your unwanted items for cash in the Classifieds, call 235-5881! |  |   |

### SIX MONTHS OF ADVERTISING FOR \$48

If that's what it takes, we'll advertise your car or truck until you sell it. Two weeks or six months—no gimmicks. For \$48, we'll run it till you sell it.

Private party only includes MidWeek, Windward, Hawaii Kai/Endeavour, Central Sun Press, Hawaii Marine, Army Weekly, Hawaii Navy News, and The Hawaiian Falcon. Call for details.



### HOLIDAY AUTO SALES

- '83 FORD MUSTANG 2 DR, AUTO, A/C, TRM, MAGS, FOGS... **\$1995**
- '80 PONTIAC LEONARD 4 DR, AUTO, PWR, AC, CRUISE... **\$2795**
- '80 CHEVY CAVALIER 4 DR, 5 SPD, A/C, BLACK ON BLACK... **\$2795**
- '84 TOYOTA TERCEL 4 DR, AUTO, A/C, CRUISE... **\$3495**
- '84 HONDA ACCORD LX 5 DR, AUTO, PWR, STEREO, CRUISE... **\$3695**
- '87 OLDS OUTLAK SUPRE 4 DR, AUTO, PWR, A/C, EYE-M... **\$3995**
- '87 HONDA CRUISE 4 DR, AUTO, PWR, A/C, CRUISE... **\$3995**
- '84 FORD BRONCO 4 DR, AUTO, PWR, A/C, SHARP, DEBIT... **\$3995**
- '84 CAMARO 4 DR, AUTO, PWR, A/C, CRUISE... **\$3995**
- '87 STAZZA 4 DR, AUTO, PWR, A/C, CRUISE... **\$4195**
- '84 GMC 4x4 V6, 5 SPD, A/C, BLACK, DUB... **\$4295**
- '89 MAZDA 323 1.8L 5 SPD, A/C, STEREO, CRUISE... **\$4395**

2022 REPUBLICAN ST. CORNER OF PUUHALE & NIMITZ  
**841-2276**

- Mazda**  
\$45 TRANSFER FEE '87 SABLE S/W, KHT547, 30 mos, \$112/mo., apr. 15%, OAC. FAMILY MOTORS 878-1600.
- '88 MX-6, 5 spd., 4 cyl., air, excl. cond., \$5500/OBO. Call 221-4742 cel.
- Mercury**  
\$45 TRANSFER FEE '87 SABLE S/W, KHT547, 30 mos, \$112/mo., apr. 15%, OAC. FAMILY MOTORS 878-1600.
- MG**  
MQB QT was show car. Rebuilt, runs excl., some rust, offer. 398-8284.
- Nissan**  
'85 SENTRA 4 dr., hatch back, runs good, \$1500/OBO. 528-2613.  
'86 SENTRA, 5 spd., new brakes, tires, cass., excl. cond. \$3500, 239-6008.
- '91 SENTRA #51018/HNW663, \$5,988.
- Oldsmobile**  
'87 CUTLASS CIERA EFP022, \$2,988.  
'82 T-BIRD All power, air, stereo, low mi., \$12,500/OBO, 678-1176.
- Plymouth**  
'80 ACCLAIM nice vehicle. #51909, \$6,988.
- Subaru**  
'82 JUSTY GL 2 dr., H/B, A/C, auto, trans, new tinted windows, white w/ black int., low miles, \$5200, 238-1405.
- Toyota**  
'73 COROLLA, 2 door, 3KC engine. Phone 239-2251.  
'83 TERCEL 2 dr., H/B, A/C, auto, trans, new tinted windows, white w/ black int., low miles, \$1200, 239-7873.  
'86 CELICA GTS fully loaded, dark gray, 5 spd., good cond. \$3500/OBO. 624-1267.
- '82 PASEO Excl. cond., auto, A/C, stereo, 8K mi., \$9995, 589-8632.  
'82 TERCEL Red, tinted windows, pull-out stereo, 25,000 mi., \$6300/OBO. 423-1018.
- Volkswagen**  
'73 VW BUG clean, sharp. ERX138, \$2,888. #1844/CSY400, \$4,988.
- '77 "BEACH BUG" Good engine, needs work. \$325/OBO, 254-5666.
- '85 CABRIOLET CONV., 90K mi., good top, red, auto., \$3500, 821-3666.
- '85 SCIROCCO Gray, 2 dr., A/C, good cond., \$3000/OBO, 523-9878 even.
- '89 JETTA GL Auto., H/B, stereo, sunroof, \$6790, 951-7610, or 737-6131.

Sun Press Classified

CALL YOUR TICKET TO JOBS HOMES EVERYTHING 235-5881

**'94 Mustang GT**  
Fully Loaded  
\$249/Mo. (94240)  
24 Mos @ \$249.93 + TAX, INITIAL INVESTMENT \$5964.30 + DRIVE-OFF FEES + RESIDUAL \$13086.00 OAC.

**'94 RANGER 4x4 SPLASH**  
Super Cab  
\$219/Mo. (94122)  
24 Mos @ \$219.83 + TAX, INITIAL INVESTMENT \$5766.83 + DRIVE-OFF FEES + RESIDUAL \$12713.02 OAC.

**'94 FORDS**

**UNBEATABLE EASTER Specials!**

**'94 F150 TRUCK**  
\$229/Mo. (94045)  
24 Mos @ \$229.02 + TAX, INITIAL INVESTMENT \$4745.89 + DRIVE-OFF FEES + RESIDUAL \$12387.00 OAC.

**'94 TAURUS GL**  
Fully Loaded  
\$238/Mo. (94006)  
24 Mos @ \$238.74 + TAX, INITIAL INVESTMENT \$5275.89 + DRIVE-OFF FEES + RESIDUAL \$12277.75 OAC.

**THE MOST LOVED CARS ON THE ISLAND!**  
SEE WHY ALL YOUR FRIENDS ARE DRIVING VOLKSWAGENS

- NO HUGE DOWN PAYMENT • SPECIAL MILITARY PROGRAMS
- SHORT ROTATION - OK! - OFF ISLAND FINANCE - OK - WE CAN HELP.

**1994 GOLF**  
\$169/Mo.\*\*

**LOOK AT WHAT YOU GET**

- Air Conditioning
- 8 Speaker Stereo w/Cassette
- Central Locking System
- Alarm System
- 4 Wheel Disc Brakes

**FREE!**  
10 Yr/100,000 Limited Factory Warranty Including All Scheduled Maintenance and Roadside Assistance For 2 Yrs 24,000 Miles

**1994 JETTA**  
\$199/Mo.\*\*

**1994 RODEO ROUNDUP DAYS!**  
COMPARE THE ALL NEW ISUZU RODEO

- 4x2 Wheel Drive • Fuel Injection
- Power Steering • Spare Carrier
- AM/FM Stereo Cassette • Roof Rack
- 4-Wheel Disc Brakes • 5 Yr Limited Factory Warranty

**\$15988**  
#40012

<b>'89 FORD ESCORT LX</b> Great Transportation Special, 5 Spd, A/C, Runs Great, Excl. Cond. Was \$3795 \$3688	<b>'72 FORD MUSTANG</b> Collector's Special, Fast Back, No Rust, Was \$4995 \$4795	<b>'84 CHRYSLER LEBARON</b> 1 Owner, 39K Mi, Immac. Cond., Auto, A/C, Fully Loaded, Auto Top, Was \$5995 \$4995	<b>'87 TOYOTA 4X4 P/U TRUCK</b> Extra Cab, 5 Spd, Turbo, Cass. Excl. Cond. Was \$8995 (CUY8247) \$6995	<b>'87 OLDS CUTLASS CIERA</b> Auto, A/C, Cassette, Low Miles, Was \$4488 (JEP0221) \$2488	<b>'73 VOLKSWAGEN BUG</b> Clean, Sharp Custom Was \$4488 (EX138) \$2688	<b>'85 HONDA CIVIC WAGON</b> Auto, PWR Steering, A/C, Was \$4488 (DDY8041) \$2988	<b>'88 CELEBRITY WAGON</b> Auto, A/C, 3rd Seat, Priced to Move, Was \$3688 (CRW677) 2988
<b>'90 HONDA CIVIC</b> 3 Dr, 5 Spd, A/C, Cass, Runs, Excl. Cond. Was \$8995 (EEB294) \$7995	<b>'88 FORD MUSTANG LX CONV.</b> Auto, A/C, Fully Loaded Was \$9995 (FDX8281) \$7995	<b>'89 MERCURY SABLE</b> Auto, A/C, Full Power, Loaded, Only 26K Mi, Must See Was \$9995 (107961) \$7995	<b>'89 HONDA ACCORD LXI</b> 4 Dr, Auto, A/C, Loaded, Sunroof, Must See! Was \$11995 (CXJ847) \$10995	<b>'87 ISUZU PICKUP</b> AM/FM, Cassette, Low Miles, Clean Condition; Was \$6488 (CPB896) 3988	<b>'89 AEROSTAR VAN</b> V6, Auto, Air, Great for Delivery or Cargo, Was \$8488 (173101) \$6988	<b>'87 ISUZU TROOPER 4x4</b> PWR Steering, A/C & More, Was \$9488 (720TND1) \$7988	<b>'89 JETTA WOLFSBERG</b> 5 Sp, Sunroof, Alpine, Air, Trk Wheels, Was \$11488 (W206832) \$8988
<b>'91 NISSAN PICKUP 4X4</b> Extra Cab w/Comper, A/C, 5 Spd, AM/FM Cass Was \$13995 \$11875	<b>'93 TOYOTA COROLLA</b> 4 Dr, Auto, A/C, Excellent Cond. Was \$13995 (ET3382) \$11995	<b>'91 JEEP WRANGLER RENEGADE PKG 4X4</b> Auto, AM/FM Cass, 4.0L V6, 3" Lift, 32" Tires W/Moss, Must See, Was \$14995 (ED8909) \$12995	<b>'89 CHEROKEE LTD 4X4</b> Auto, A/C, Leather, Was \$18 995 (107277) \$16995	<b>'90 TOYOTA CAMRY</b> A/C, PWR Steering, Cassette, Low Miles, Was \$11488 (ED1107) \$9988	<b>'92 FORD MUSTANG</b> Auto, Air, Cassette, Was \$11988 (147497) \$9988	<b>'91 CHEVROLET LUMINA APV</b> V6, Auto, Air, 7 Pass, Low Miles, Great For the Family, Was \$12488 \$10988	<b>'89 CHEVY 4x4 STEPSIDE</b> V8, Auto, Air, Bedliner, Full Size Fun Truck, Was \$14988 (HVA370) \$12988

**SPECIAL MILITARY FINANCING!**

ALL CARS SUBJECT TO PRIOR SALE. PRICE + TAX, LIC. & DOC FEE, OAC. SALE ENDS 4/6/94. \*\*Jetta + Tax, 48 Mos. CEL Drive Off \$1101.96 GFV \$7468 #4028, Golf + Tax, 48 Mos. CEL Drive Off \$1045.76 GFV \$6855 #4014.

725 Kailua Rd. 266-7000 **MIKE MCKENNA'S WINDWARD** 105 Oneawa St. 266-8000

**Spring Fever SELLOUT**

NO CREDIT? E2-E3's? DIVORCE? • BANKRUPTCY? • DISABILITY? WE HAVE A FINANCE PROGRAM FOR EVERYONE! CALL FOR INFO

- '88 MAZDA 323 \$1595
- '88 CHEVY BERETTA \$1895
- '86 HONDA CIVIC 4 DR. \$2195
- '87 DODGE COLT \$2295
- '86 FORD ECONOMY WINDOW VAN \$2495
- '86 BUICK PARK AVE. \$2895
- '88 MERCURY TOPAZ \$3695
- '85 NISSAN MAXIMA \$3695
- '87 DODGE RAM 50 P/U 4X4 \$3895
- '90 PONTIAC LEMANS \$3995
- '88 BUICK REGAL \$4195
- '89 OLDS CALAIS \$4795

Subject to Credit OK Prices Plus Tax & Lic. Fees  
**FAMILY MOTORS**  
94-267 Fannington Hwy. • Waipahu. Call for Directions  
676-1600 • Hours 9-9 Sat-Sun 9-4

**CYCLE CITY LTD**

NO REASONABLE OFFER WILL BE REFUSED

EX250 • EX500 • Vulcan  
500 • Vulcan 1500 • Ninja  
ZX1100 • Ninja ZX6

Hawaii's Oldest Harley-Davidson, Kawasaki and Moto Guzzi Dealer  
A Division of Wholesale Motors, Inc. • Established in 1961

Cycle City, Ltd.  
2965 N. Nimitz Hwy. • 831-2600

**HOT CHROME & LEATHER SALE**

NOW THRU APRIL 15th AT CYCLE CITY LTD

Chrome Drag Pipes for Harley-Davidson from just **\$89!!**

Genuine Leather Police Style Motorcycle Jackets from just **\$159!!**

Most Men's and Women's Sizes in Stock Now!!

**Cycle City Ltd. Parts & Accessories Department**  
2965 N. Nimitz Hwy. Honolulu, HI 96819  
Limited to stock on hand. No other discounts apply.

**PARTS DEPARTMENT**  
831-2601

Hours: Mon-Fri 9:00 am - 6 pm, Saturday 9:30 am - 5 pm

**WISE OWL BUYS**

OPEN SUNDAY

- '94 S-10 P/U TRUCK \$10,988
- '94 CHEVY CAVALIER WAGON \$12,988
- '94 PONTIAC GRAND AM \$13,988
- '94 CHEVY CAMARO \$13,988
- '94 PONTIAC FIREBIRD \$14,988
- '94 CHEVY ASTRO PASS. VAN \$17,988

**ISUZU**

WINDWARD OAHU'S ONLY AUTHORIZED ISUZU DEALER

ALL NEW RODEO THE ORIGINAL MULTI-PURPOSE VEHICLE \$THOUSANDS LESS THAN HONDA PASSPORT!

NEW SHIPMENT JUST ARRIVED! Dare to Compare!

HOME OF THE "GOOD GUYS"

**WINDWARD ISUZU**  
106 OAHU • KAILUA • 266-9000

**HAWAII'S BEST USED VEHICLES 737-0500 3060 Kapiolani**

<b>'85 OLDSMOBILE CALAIS</b> (52136/DPUS04) 4 CYL, AUTO, A/C, P/W \$1988	<b>'85 MERCURY COUGAR</b> (51091/CBR82) 8 CYL, AUTO, A/C, P/W, P/SEAT \$2988	<b>'85 HONDA CIVIC</b> (52118/JESW788) A/C, P/S, AM/FM CASSETTE, 4 CYL \$2988	<b>'88 CHEVROLET NOVA</b> (52006/ENW736) GREAT BUY FOR A SMALL PRICE! \$3988	<b>'87 JEEP CHEROKEE</b> (52038/CPF293) A/C, GOOD BUY AT A LOW PRICE! \$4488	<b>'92 CHEVROLET CAVALIER</b> (52018/DYL778) 4 CYL, A/C, AM/FM CASSETTE, CLEAN \$4988
<b>'91 DODGE DYNASTY</b> (52097/EDR677) 6 CYL, AUTO, A/C, P/S, P/W, P/L, AM/FM CASS \$4988	<b>'90 SUBARU LEGACY</b> (52107/DGC062) 4 CYL, P/S, A/C, AUTO \$6988	<b>'90 CHEVROLET LUMINA</b> (52040/DSC364) CLEAN TRANSPORTATION WON'T LAST! \$8988	<b>'88 CHEVROLET C1500 TRUCK</b> (52050/JC196) EXCELLENT WORK TRUCK, WON'T LAST SEE TODAY! \$8988	<b>'92 GEO STORM</b> (52028/HTK364) FUN TO DRIVE, GREAT ON GAS \$8988	<b>'92 HONDA ACCORD</b> (52093/ENY865) 4 CYL, AUTO, A/C, P/S, P/L, CLEAN & MORE \$10,988

**CUTTER CHEVROLET • GEO • PONTIAC**  
946-8311 1391 Kapiolani Blvd.  
Hours: Mon-Sat. 8:30am-9pm, Sunday 9am-6pm

Prices include all applicable rebates, Plus Tax, Lic. & \$195 doc. fee. Subject to prior sale. O.A.C. Some vehicles may not be exactly as illustrated. Sale ends 4/7/94.



**MIKE SALTA** PONTIAC LINCOLN MERCURY ISUZU



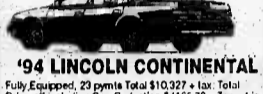
1994 TRACER SEDAN, TRACER WAGON OR TOPAZ 4-DOOR  
OVER 40 IN STOCK! All With Automatic, Air Conditioning, Power Steering, Stereo and more.

**\$11,995**

Great Leases... Great Automobiles!  
TAKE YOUR CHOICE  
**\$449** PER MO. 24 MONTH LEASE



'94 LINCOLN TOWNCAR  
Fully Equipped, 23 pmts Total \$10,327 + tax. Total Drive-off including Cap. Reduction \$4,907.83 + Tax + Lic. & DOC = \$320. Lease Based On 15K mi per yr. Closed-End Lease. On Approved Credit. (VIN#613915)



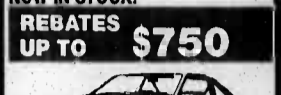
'94 LINCOLN CONTINENTAL  
Fully Equipped, 23 pmts Total \$10,327 + tax. Total Drive-off including Cap. Reduction \$4,907.83 + Tax + Lic. & DOC = \$320. Lease Based On 15K mi per yr. Closed-End Lease. On Approved Credit. (VIN#60847)



'94 LINCOLN MARK VIII  
Fully Equipped, 23 pmts Total \$10,327 + tax. Total Drive-off including Cap. Reduction \$4,907.83 + Tax + Lic. & DOC = \$320. Lease Based On 15K mi per yr. Closed-End Lease. On Approved Credit. (VIN#63213)

**PONTIAC**

'94 PONTIAC TRANSPORTS  
NOW IN STOCK!  
REBATES UP TO **\$750**



NEW!  
'94 PONTIAC BONNEVILLE  
NOW IN STOCK!  
PRICED TO SELL



1994 GRAND AM  
Air-Bag, Anti-Lock Brakes, Power Door Locks & more.  
(VIN#527535)



1994 PONTIAC FIREBIRDS  
FINANCING AS LOW AS **4.8%** WITH YOUR CREDIT APPROVAL



**GOOD SELECTION NOW AVAILABLE!**

**ISUZU**



'94 ISUZU AMIGO  
Rear Anti-Lock Brakes, Steel Wheels, Bucket Seats, AM/FM Cassette, Power Steering. (VIN #802259)

**\$13,995**



'94 ISUZU RODEO  
Power Steering, Rear Anti-Lock Brakes, Tinted Glass, AM/FM Cassette & more. (VIN #317411)

**\$14,995**



'93 ISUZU TROOPER  
Auto, A/C, Rear ABS, 4 Wheel Drive, AM/FM Cassette & much more. (VIN #905411)

**\$18,995**

**MIKE SALTA** PONTIAC LINCOLN MERCURY ISUZU

TWO LOCATIONS TO SERVE YOU!  
FULL PARTS & SERVICE HONOLULU: 2915 N. Nimitz Hwy. Ph: 836-2411  
WAIPAHU: 91-212 Looku St. Ph: 671-8033

SALES HOURS: SALES OPEN EVERY DAY  
Mon.-Fri. 9:30am to 9:00pm  
Sat. 9:00am to 6:00pm  
PARTS & SERVICE: Mon.-Fri. 7:00am to 5:00pm

# SOUTH SEAS HYUNDAI

MEANS A GREAT DEAL

**NO PAYMENTS FOR 6 MONTHS!**

REBATES UP TO **\$1000** 2% APR\*\* ON SELECTED MODELS

**NO DOWN PAYMENT!**

NO CHARGE 2-YEAR MAINTENANCE!

**NO EXCUSES NOT TO BUY!**

**72 HOURS ONLY! WHILE SUPPLY LASTS!**

**\$4000\*** GUARANTEED TRADE IN

**1994 ELANTRA • EXCEL • SCOUPE • SONATA**



ALL REBATES APPLIED. NOT TO BE COMBINED WITH ANY OTHER OFFER.  
\*\$4000 GUARANTEED ONLY ON IN STOCK NEW VEHICLES; \*\*2% ON SELECT NEW MODELS. O.A.C. ALL CARS SUBJECT TO PRIOR SALE.

## SOUTH SEAS HYUNDAI

AIRPORT CORNER OF NIMITZ & LAGOON DRIVE • 836-0515

## CUTTER CHRYSLER-PLYMOUTH DODGE • JEEP/EAGLE

#1 IN THE STATE OF HAWAII • Sales, Service, Parts

NEW '94 DODGE CARAVAN OR PLYMOUTH VOYAGER  
119 IN STOCK  
4 AT THIS PRICE STARTING AT **\$14,988**

#420215, #420216, #420217, #410334  
7 Passenger, Auto, 3.0L V6 Engine, AM/FM Cass., w/4 Speakers, Dual Airbags, Air Conditioning, P/Steering, P/Breaks, Includes \$400 Recent College Grad Rebate & Much, Much More!

OVER \$1,000,000 USED CAR INVENTORY

'87 TOYOTA TERCEL 1 Spd. Clutch, Clean, Great Transportation (#7754/CP/858)	\$1988
'88 MITSUBISHI PRECIS 4 Dr. Auto, AC, Cass. Much More (#7902/CX/R164)	\$3488
'85 BUICK PARK AVENUE Auto, AC, PW, P/B & Much More (#900280/CF/553)	\$3988
'94 ESCORT LX 4 Dr. Auto, A/C, Much More (#7903/HV/300)	\$3988
'88 NISSAN STANZA Auto, AC, PW, P/B & Much More (#930358/8K/1404)	\$3988
'89 CHEVROLET CORSICA Auto, AC, PW, P/B & Much More (#7642/DG/P131)	\$4988
'89 CHRYSLER LEBARON Auto, AC, PW, P/B, Tilt, Much More Cruise, P/S, (9303133/02/841)	\$4988
'89 HONDA CRX Caring, AC, Much More (#930386/CY/263)	\$5988
'85 VOLVO 760 WAGON Leather Interior, Moon Roof, Loaded (#930800/CC/332)	\$5988
'89 MERCURY COUGAR The One Has It All (#40182/DJ/F743)	\$5988
'90 FORD E350 CLUB VAN 15 Ft. Auto, AC, PW, P/B & Much More (#930728/DG/R25)	\$6988
'88 LINCOLN CONTINENTAL Black Stripes, Full Loaded, Much More (#930020/CX/598)	\$7988
'91 SUZUKI SAMURAI 4 Dr. Coverd. Back, 1.8 Tilt, Sport, Much More (#7839/YQ/494)	\$7988
'90 FORD BRONCO II 4 Dr. Package, Auto, AC, Bumper, Much More (#7900/SX/A219)	\$8988
'90 NISSAN 240SX Auto, AC, AM/FM Cass., Tilt, Much More (#94069/DG/G130)	\$8988
'91 CHEVROLET 1/2 TON TRUCK 4 Dr. AM/FM Cass., Tilt, Much More (#930841/E/18395)	\$11,988
'90 FORD BRONCO Auto, AC, PW, P/B & Much More (#7837/EG/J496)	\$12,488
'93 CHEVY ASTROVAN Auto, AC, Tilt, AM/FM Cass., Much More (#7826/FC/206)	\$13,988
'92 DODGE STEALTH TWIN TURBO Fully Loaded, 16 Valves, 1 Much More 18,657 (ENE050)	\$22,988

NEW '95 DODGE OR PLYMOUTH NEON  
GOLD KEY PLUS, SPECIAL PURCHASE

**\$8399** OR **\$169** Per Month

Dual Airbags, 5-Speed, P/Breaks, Tinted Windshield, Halogen Headlights, Bucket Seats, Stainless Steel Exhaust & Much, Much More! Includes \$400 Recent College Grad Rebate.

NEW '94 DODGE SPIRIT OR PLYMOUTH ACCLAIM  
17 IN STOCK • 2 TO CHOOSE FROM STARTING AT **\$11,988**

#410399, #420255  
Cloth Seats, 4 Speed Automatic, 3.0L V6 Engine, AM/FM Stereo Cass., w/ Clock & 4 Speakers, Air Conditioning, P/Steering, P/Breaks, Includes \$400 Recent College Grad Rebate & Much, Much More!

NEW '94 DODGE SHADOW OR PLYMOUTH SUNDANCE  
37 IN STOCK • 2 AT THIS PRICE STARTING AT **\$7888** OR **\$139** Per Month

2.2L Wheel Covers, Bucket Seats, Carpeting, Steel Belled Racks, P/Steering, P/Breaks, Includes \$400 Recent College Grad Rebate & Much, Much More  
#420223, #410394

NEW '94 DODGE STEALTH  
6 IN STOCK • STARTING AT **\$17,988**

#410341  
Cloth, Recurve Seats, 3.0L V6 12 Valve V6 Engine, Leather Wrap Steering Wheel with 18 Columns, P/Steering, P/Breaks, Includes \$400 Recent College Grad Rebate & Much, Much More!

NEW '94 DODGE OR PLYMOUTH COLTS  
18 IN STOCK • 9 TO CHOOSE FROM STARTING AT **\$7788**

#420081, #410095, #410087, #410098, #410099, #410100, #410101, #410199, #410200  
Stereo, Prep, Window Dalgator, Cloth Seats, Includes \$400 Recent College Grad Rebate & Much, Much More!

## UP TO \$1,500 REBATE! of waipahu CHECK OUT THESE PRICES!

'94 DODGE SPIRIT - AIR CONDITIONING  
**\$11,488**

239 Mo. AUTO, 4 DR. BENCH SEAT 36 MGS. GVY \$2983.87, \$500 Down Payment  
Total of payment \$8604 #D0177

USE YOUR REBATE AS DOWN PAYMENT **-\$0-DOWN**

GRAND SE!  
'94 DODGE CARAVAN  
This vehicle qualifies for "More" than \$500 rebate. Example Tilt & Cruise option add \$100  
3.0 MPI V-6, 4 SPEED, AUTO #D0121

'94 DODGE DAKOTA  
Independent Front Suspension, Magnum 3.9L V-6, 600 Amp Maintenance-Free Battery & 75 Amp Alternator, High-strength Carbon Steel 36,000 PSI Ladder Type Frame, Step Bumper With 2000 lb Tow Rating, Premium Cloth Seat, Tilt Steering, SCT Adv. Package #D0219

94-149 farrington hwy • Waipahu • 671-2626

cutter mitsubishi in waipahu

'94 MITSUBISHI ECLIPSE  
**\$12,988**

#M4116  
Or 36 Mos GFV 6444 Down Payment \$500 Total of Payment \$7800.48  
Auto, Air AM/FM Cassette, Power Steering

'94 MITSUBISHI GALANT  
**\$13,988**

#M4119  
Or 24 Mos GFV 10024  
Down Payment \$500 Total of Payments \$4497.36

SPECIAL PROGRAMS ON THE FOLLOWING:  
'94 3000GT VR-4 • '94 3000GT SL • '93 3000GT  
EXCELLENT PKGS HELP MAKE THESE VEHICLES EASY TO OWN. COME IN AND SEE!  
**SPECIAL • SPECIAL • SPECIAL • SPECIAL • SPECIAL**

**ADVANTAGE COUPON ALL MILITARY- ALL RESIDENTS OF HAWAII**

Bring in this coupon for **\$500 OFF\*** Strike your best deal and receive an additional \$200 off\*  
\*Not applicable on sale items. Present coupon at time of purchase. 1 Coupon per purchase. Tell us which newspaper brought you in.

**THE PURCHASE OF ANY NEW OR USED VEHICLE!**

'79 MAZDA 626 Transportation Special (ESN380/4331)	\$195	'90 FORD GT, 5 Spd., A/C, Tilt, Cruise, Alarm (EZK598/4342)	\$4595
'86 DODGE COLT Auto, Radio, Good Transportation (FGS236/4332)	\$495	'90 TOYOTA COROLLA Auto, A/C, P/Steering, AM/FM (DFV784/4329)	\$5,995
'85 HONDA CRX 5 SPD., Runs Good & Looks Good! (FFD989/4208)	\$2595	'91 ACCLAIM Auto, A/C, Tilt, Cruise, Cassette (FER335/4270)	\$6,495
'84 PONTIAC TRANS AM V-8, AUTO, A/C, CLEAN & VERY SHARP (EY1188/4232)	\$3495	'89 DODGE RAIDER 5 Spd., A/C, V-8, Clean & Sharp (FCN210/4338)	\$6,595
'85 PONTIAC GRAND AM Auto, A/C, P/Steering, Good Car! (EZU785/4333)	\$3995	'87 FORD F150 XLT Lariat, Supercab, A/C, Dual Gas Tank, Very Low Miles. (CPF238/4340)	\$7,595
'85 PONTIAC FIERO GT 5 SPD., A/C, P/Steering, Cass., V-8 (ETT390/4229)	\$4195	'89 FORD MUSTANG GT Loaded! Black Convertible (FGS820/4335)	\$7,595

**WE DO CREDIT MAGIC!**

PEARL CITY 455-1071  
921 KAMEHAMEHA HIGHWAY

DILLINGHAM 842-6300  
735 DILLINGHAM BLVD.

NAME \_\_\_\_\_ CITY \_\_\_\_\_ ZIP \_\_\_\_\_  
ADDRESS \_\_\_\_\_  
PHONE \_\_\_\_\_ WORK PHONE \_\_\_\_\_ SOCIAL SECURITY NO. \_\_\_\_\_  
TYPE OF CAR INTEREST IN \_\_\_\_\_ ARE YOU WORKING? \_\_\_\_\_ HOW LONG IN PRESENT JOB? \_\_\_\_\_  
YES \_\_\_\_\_ NO \_\_\_\_\_ HOW \_\_\_\_\_ YEARS \_\_\_\_\_  
SIGNATURE \_\_\_\_\_  
COMPLETE & MAIL IN TODAY TO CUTTER CHRYSLER PLYMOUTH DODGE JEEP/EAGLE • 735 DILLINGHAM BLVD. HONOLULU, HI 96817 PH: 836-2411 FAX: 836-2412

All prices are net after factory rebates & incentives. Vehicles not exactly as shown. Plans vary, inc. & \$120 doc fee. Subject to prior sale. O.A.C. Sale ends 4/7/94. \*10% \$500 rebate on selected models. \*\*Not combinable with any other advertised offers. GFV - Shadow \$3,299.08 w/\$1000 Cash Down. Neon \$3,700 w/\$1000 CASH DOWN FOR 48 MONTHS. VEHICLES SUBJECT TO PRIOR SALE, IN US TAX, LIC. & 1% DOC FEE. ON APPROVAL OF YOUR GOOD CREDIT. PICTURED UNITS MAY NOT BE EXACTLY AS SHOWN. THRU 4/7/94. ALL REBATES APPLY. PICTURED UNITS MAY NOT BE EXACTLY AS SHOWN.