

# HAWAII Marine

Vol. 22 No. 19

Serving MCAS Kaneohe Bay, 1st MEB, Camp H.M. Smith and Marine Barracks.

May 13, 1993

## Women's roles in military begin to change over

By Sgt. Lou Ramirez  
Staff Writer

On April 28, Secretary of Defense Les Aspin announced that he is directing the military services to assign women to every aircraft type in the military as soon as possible.

Presently the Marine Corps does not have any women pilots. This policy change means that qualified women will be allowed to serve as pilots and fly all aircraft.

In addition, Secretary Aspin also directed the services to draft a proposed legislation to change the combat exclusion law to allow women to serve in combatant ships. The Navy is to open as many additional ships to women as is practicable under the existing law.

Although current law only allows women officers who are naval aviators to serve aboard ships engaged in a combat mission in an air wing or air element, including Marine women, the secretary of defense said he will encourage congress to lift this remaining restriction.

The Marine Corps along with the Army was also directed to look at opportunities for women to serve in additional ground positions such as in field artillery and air defense artillery units.

Even though some have argued for these changes for years, Secretary Aspin explained that this action was led by experience combined with the new administration's determination to ensure readiness.

A timeline for any upcoming changes has not been set. While some of these actions may be implemented fairly soon, others will take time because of operational considerations and changes required in training programs.

"We know from experience that women can fly our high performance fighter aircraft," Secretary Aspin said. "We know from experience that they perform well in assignments at sea. And we know from operation Desert Storm/Desert Shield that women stand up to the most demanding environments."

For those areas in which women

have not had experience in, studies are being conducted to identify which additional positions should be opened for women. This will also take time in order to ensure effectiveness and readiness is maintained throughout the military forces.

Exceptions to the general policy of opening assignments to women shall include units engaged in close ground combat, assignments where physical requirements are prohibitive and assignments where the costs of appropriate berthing and privacy arrangements are prohibitive.

Additional exceptions may be proposed by the services, together with their justification, as they deem appropriate.

"In order to do the jobs well, we need to recruit the best talent we can find and assign the most qualified individual for each military job. Right now we aren't doing that. Many important military jobs are closed to women, and as long as that is the case, we cannot be sure that we are putting the very best person in the job," Secretary Aspin said.



Sgt. Paul Schneider

The role of women in the military has continually changed throughout the years. April 28 marked another significant change for military women. Secretary Aspin directed the military services to assign women to every aircraft type in the military.

### MC League meets tonight

Joint Public Affairs Office

The Marine Corps League will hold a meeting at the Enlisted Club's Tun Tavern today at 7 p.m. The meeting is open to anyone who wants to be a member; military (any rank retired or active), or civilian.

The Marine Corps League was founded in January 1937 and was originally headed up by MGen. John A. Lejeune, serving as the honorary national commandant.

The basis of the league was to form a group which would

carry on the traditions of the Marine Corps as well as promote interest in the Marine Corps. It also was a chance to bridge the gap between the retired and active duty personnel allowing for a time to fellowship and esprit de corps.

The league also encourages the spirit of patriotism and helps to remind Marines of the price that some paid with the ultimate sacrifice.

If anyone is interested in joining the Hawaii chapter, contact Col. R.R. Crawford at 257-3443 or Sgt. Maj. Don Michel at 257-3443.

## Marines end chapter in Somalia

By Sgt. Paul Schneider  
Staff Writer

**Editor's note:** This article was compiled from Marine Corps press releases from Somalia and from various media sources.

The commanding general of Joint Task Force-Somalia and CG I Marine Expeditionary Force, LtGen. Robert Johnston, was welcomed home by President Bill Clinton at the White House May 5.

Lieutenant Gen. Johnston returned to the states after he turned over command of military

forces in Somalia to Turkish Army LtGen. Cevik Bir.

The turnover from United States to United Nations control has taken much longer than originally planned, but the Somalia operation is the largest, and perhaps the most complex, mission the U.N. has ever attempted. It is even larger than the extensive U.N. operation in Cambodia.

During Operation Restore Hope, which began Dec. 9, 1992, 149 Marines from the 1st Marine Expeditionary Brigade joined the Marines of I MEF to participate in the Somalia operation. Currently seven Marines from the brigade are still deployed.

Like the Marines here, thousands of Marines home-based in Camp Pendleton, Calif., have also returned home.

While many Marines, soldiers, sailors and airmen have returned from the operation, according to a news release from Marine Col. Fred Peck and Air Force Sgt. Dave Rogers, several thousand U.S. troops, primarily Army, will remain in Somalia to provide logistics support.

In addition to logistics support, a quick reaction force of about 1,300 soldiers will remain under the tactical control of the commander of U.S. Forces in Somalia.

The change over to U.N. control was an important milestone in the Somalia's healing. Significant progress has been made since the Marines arrived.

Operation Restore Hope was conceived to help end two years of anarchy and famine in Somalia which has existed since President Siad Barre was forced to flee the country in January 1991.

The battle against Somalia's problems was spearheaded by the Marines and sailors of the 15th Marine Expeditionary Unit when they landed in Mogadishu Dec. 9, 1992.

When the Americans arrived, See Somalia, A-3

## NQLB works!

Idea turns into reality

By Sgt. Paul Schneider  
Staff Writer

It began as an idea at a Neighborhood Quality of Life Board meeting almost a year ago, but a station skateboard park is finally becoming reality.

Marines from Marine Wing Support Squadron-174 worked during the week of May 3-7 to prepare the site, next to the tennis courts, and install the obstacles.

The MWSS-174 Marines still have to put the finishing touches on the obstacles and it's planned that station facilities will finish the site.

Peter Rudisill, recreation

supervisor, Morale, Welfare and Recreation, explained that they do not know when the park will actually open. He said MWR is currently working to get the area fenced in and establish hours it will be open.

"Safety is our main concern," Rudisill said.

Although NQLB has done a lot since it was first formed in the beginning of 1992, the skateboard park is one of the most visible signs that the board does work.

Board member SSgt. Ed Agans explained that getting the park was a long drawn out process, not because people didn't like the idea, but because of the money crunch. See NQLB, A-3

## Meals on Wheels

By Sgt. Lou Ramirez  
Staff Writer

The station messhall is now feeding more than 1,500 Marines who in the past were either not eating or paying for their meals out of their own pocket. The messhall "Meals on Wheels" program delivers bag lunches to units who request them.

Due to the distance between the messhall and the units located around the Boondocker Theater and Station Exchange, it was decided that an alternative method was needed to allow Marines sufficient time for them to attain their meals.

"Most sections allow Marines about one hour for chow, and Marines were complaining that it took them approximately 15 minutes to walk over and another ten waiting in the chow line. This, they said did not allow them sufficient time to eat their chow

and make it back on time for their training," said GySgt. Jimmy Rivera, noncommissioned-officer-in-charge of Meals on Wheels.

To accommodate the needs of these Marines, the "Meals on Wheels" program was established. The bag lunches must be requested two days in advance and may only be requested for those Marines who are on a meal card.

"Originally Meals on Wheels was designed for Marines who were unable to make it the messhall because of their work schedule," said GySgt. Jeffrey Giltner, former messhall manager.

Giltner explained, that the number of bag lunches delivered each day far exceeds what they had expected.

"Last Friday we served more than 5,400 meals and that is not counting what we served inside the messhall," he said.

Although the number of meals prepared by the messhall See Meals, A-3

## JTF-FA begins ops in Laos

By Joint Public Affairs Office

**Editor's note:** This article was compiled from release from Headquarters, Joint Task Force-Full Accounting at Camp H.M. Smith.

Representatives of the governments of the United States, Vietnam and Laos held technical level discussions in Hanoi Friday and Saturday.

The meetings in Vietnam were aimed at improving coordination among the three nations and accelerating the pace of ongoing joint efforts to account for Americans still missing in Southeast Asia as a result of the Vietnam War.

Discussions focused on the means required to review and continue investigations of American losses in areas of Laos controlled by Vietnamese forces during the war and in areas close to the border separating the two countries.

While discussions were being held in Vietnam, the third joint field activity by United States and Lao Peoples Democratic Republic representatives this year began Saturday in Laos.

Operations are being conducted in the Lao provinces of Khammouan and Savannakhet and are scheduled to last 22 days.

The joint team plans to investigate and survey 10 priority cases, and as time permits, to investigate and survey as many as 38 other cases. The team, made up of 32 U.S. team members and joined by Lao officials, will also conduct excavations of at least three sites.

There are 2,260 Americans still listed as missing or otherwise unaccounted for in Indochina. Of that total, 516 are listed as unaccounted for in Laos, with most lost in areas controlled by Vietnamese forces during the war.

Since the end of the war, 48 Americans previously listed as missing in Laos have been accounted for, 44 of whom were recovered by joint investigations.

During the most recent operation in Laos, March 4-27, a joint U.S. and Lao team conducted investigation, survey and recovery operations in Savannakhet province. Some remains, which may be those of Americans killed in the Vietnam War, were recovered during those operations. The remains are currently being analyzed at the Central Identification Laboratory in an effort to determine individual identification.

Accounting for Americans still missing in Southeast Asia as a result of the Vietnam War is a matter of highest national priority for the United States.

## Inside

### Family fun

The Young American Bowling Alliance league began knocking down pins here recently to provide fun for the whole family. B-5



Blotter	A-2
Salutes	A-2
Briefs	A-4
Mess hall menu	A-4
Sports	B-1
Religion	B-2
Ads	B-2
Tickets	B-2
Movies	B-2
Sports Briefs	B-2

## 3/3 is Super Squad

By Sgt. Paul Schneider  
Staff Writer

Two squads made up of the best Marines and sailors from the 1st and 3d Battalions, 3d Marines, battled each other April 26-30 for the right to represent the regiment in the 3d Marine Division Super Squad competition in June.

When the week-long series of events were complete, the squad from Company 1, 3/3, earned the trip to Okinawa.

Events for the competition included a physical readiness test (PRT), a written test, call-for-fire, offensive and defensive patrolling, a 12-mile forced march, live fire and a field meet.

"It was a pretty hard week physically," said Sgt. Michael Kelly, squad leader, 3/3. "The first day we had a PRT—and the field portion was hard—but I think that's where we did our best." Perhaps the toughest part about the super squad competition was See Super, A-3

## Navy/MC Relief drives on

Joint Public Affairs Office

Marines pride themselves on taking care of their own, but sometimes a problem is too big for a fellow Marine or sailor to handle. Fortunately there are other places to turn to for additional help.

The Navy-Marine Corps Relief Society plays a vital role around the world in helping Marines, sailors and their

families in times of need by providing interest free loans and grants. In addition it provides education loans, visiting nurse services, thrift shops, infant layettes, food lockers, budget counseling services and volunteer training programs.

The society was founded as the Navy Relief Society in 1904 when Navy supporters collected \$9,000 at the Army-Navy football game to assist widows

and orphans.

Since that small beginning, the society has grown immensely. In 1992, the society gave more than \$2,190,000 in loans and grants to Hawaii-based Navy and Marine Corps personnel.

Although the Navy-Marine Corps Relief Society is sponsored by the Department of the Navy, it is a private organization and receives no government funding. All funds

are generated from an annual fund drive, which began here May 7 and continues until June 4.

One thing which is unique about the fund drive is that 100 percent of the contributions are returned to Marines, sailors and their families through loans grants and services.

The reason no funds are spent on operating costs is because there are 3,600 society See Relief, A-3

Salutes

HQ & SV. Co.  
Certificate of Commendation  
Sgt. B.A. VanWinkle  
Promotions  
Cpl. W.C. Augustine  
Cpl. V.R. Bell  
Cpl. A. Short

1st Bn., 3d Marines  
Promotions  
Cpl. D.R. Bal  
Cpl. J.S. Blankenship  
Cpl. M.T. Dinnie  
Cpl. J. Gonzales  
Cpl. D.R. Hawkins  
Cpl. K.C. Jones  
Cpl. T.V. Lawrence  
Cpl. O. Mendoza Jr.  
Cpl. J.B. Olson Jr.  
Cpl. E.F. Polhamus  
Cpl. J.C. Rivera  
Cpl. T.C. Scharton  
Cpl. C.B. Thomas  
Cpl. J. Villalpando Jr.  
Cpl. K.R. Walker  
Cpl. J.M. Wiggins  
Cpl. B.C. Young  
LCpl. A. Araizavega  
LCpl. J.J. Aualos  
LCpl. S.T. Batea  
LCpl. G. Bousum  
LCpl. J.H. Brandt Jr.  
LCpl. V.L. Burt  
LCpl. J.W. Carlson  
LCpl. J.B. Cates  
LCpl. S.S. Chang  
LCpl. J.E. Cholko  
LCpl. G.M. Costa  
LCpl. P.P. Dangler  
LCpl. E. Dervin  
LCpl. C.A. Drevler II

LCpl. R.H. Gregorash  
LCpl. C.L. Hightower  
LCpl. M.J. Hingston  
LCpl. C.E. Hoogendourn  
LCpl. T.W. Jarmer  
LCpl. G.P. Kelly  
LCpl. R.R. Lendhart  
LCpl. L. Neal III  
LCpl. J.J. Pendleton  
LCpl. B. Phuonguyen  
LCpl. B.L. Stafford  
LCpl. M.T. Talbott  
LCpl. J.W. Tomes  
LCpl. E.L. Trowbridge  
LCpl. A. Tulian  
LCpl. J.E. Walsh  
LCpl. K.D. Williams  
LCpl. R.R. Ybara  
PFC. C.W. Cain

2d Bn., 3d Marines  
Certificate of Commendation  
Sgt. T.M. Fogauty

MWSS-174  
Good Conduct Medal  
LCpl. G.L. Blevins  
Certificate of Commendation  
LCpl. S.D. Haik  
Promotions  
Cpl. C.R. Barbor  
Cpl. D.A. Boyd  
Cpl. J.D. Rogers  
LCpl. S.E. Harris  
LCpl. V. Delisle

1st Radio Bn.  
Navy Achievement Medals  
Sgt. D.J. Raglin  
Sgt. C.C. Zimmer  
Cpl. T.A. Carver  
Certificates of Commendation  
Cpl. J.E. Edwards  
Cpl. M.D. Poage

Meritorious Mast  
Cpl. T.R. Gregg  
Letter of Appreciation  
Cpl. R.J. Alcoh

BSSG-1  
Navy Achievement Medals  
Cpl. T.C. Lee  
Good Conduct Medal  
Sgt. R.A. Hosey  
Cpl. J. Escobaz  
Cpl. A.J. Mallini

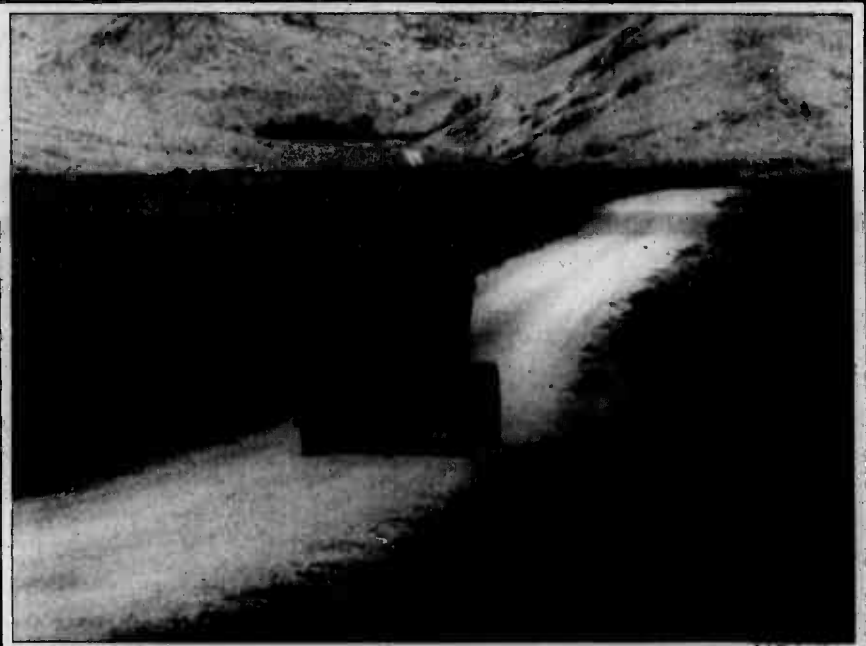
Certificate of Commendation  
Sgt. P.C. Lynch  
Meritorious Mast  
LCpl. A. Souchet

Promotion  
Cpl. S.W. Cole  
Cpl. P.J. Knighten  
Cpl. M.D. Krieg  
Cpl. J.E. Presnell  
LCpl. C.A. Barrera  
LCpl. R.S. Booze  
LCpl. B.J. Clark  
LCpl. B.J. Pike

Periodontal Board Certificate  
LCDR S.J. Martin

Hurricane Iniki Certificate  
Sgt. D.K. Duffield  
Cpl. A.M. Collo  
LCpl. R.E. Martin  
LCpl. E.P. Morgan  
LCpl. S. Singfield III  
LCpl. M.O. Stewart  
PFC L. Curry

Sergeant's Course  
Navy Achievement Medals  
Sgt. E.M. Hinzo



No problems

Marine Wing Support Squadron-174 recently sent five Marines, SSgt. John Cruz, Cpl. Dean Gleason, LCpl. James Finn, LCpl. Steven Bushman and LCpl. Noland Kropf, to help Army Range Control reconstruct the impact area at the Makua Military Reservation. The five-man team used the 1306 Roadgrader, D7G Bulldozer and SEE tractor to repair fire-break roads, redig trenches for the range and level out the ground so vehicles can get to the impact area in case of fire or disorder. Working around the Army's live-fire training schedule, 174 Marines worked from daybreak until the range became "Hot." This 1306 Roadgrader heads home to see LCpl. Kropf, the crew's mechanic, for maintenance.

# Hawaii Marine

The Hawaii Marine is an unofficial newspaper published every Thursday by RFD Publications, Inc., 45-525 Luluku Road, Kaneohe, HI 96744, by a private firm not connected with the Department of the Navy or the United States Marine Corps. All advertising is provided by RFD Publications, Inc., 235-5881.

The Hawaii Marine is a free publication delivered each week to all family housing units aboard Marine Corps Air Station, Kaneohe Bay and to all Hawaii-based Marine Corps commands. Housing carriers are paid only by voluntary contributions from

customers who are satisfied with the delivery service. A voluntary contribution of \$1.30 a month may be solicited by these carriers. Housing residents may contact the publisher directly if they wish to stop home delivery. Questions concerning circulation policies and service can be answered by calling the publisher.

The Hawaii Marine welcomes stories and photo submissions from its readers, but submission is no guarantee of publication. Please call the MCAS/1st MEB Joint Public Affairs Office at 257-2178 for Windward activities, FAX 257-5743, or the FMFPac Public Affairs Office at 477-5033 for Leeward activities. Opinions expressed by the publisher and journalists are their own and are not to be considered an official expression of the Department of the Navy or the United States Marine Corps.

Items advertised in the Hawaii Marine must be made available for purchase, use or patronage to everyone without regard to race, creed, color, national origin, religion, age or sex of purchasers, user or patron. The appearance of all advertisements in the Hawaii Marine, to include, inserts and/or flyers does not constitute endorsement of the firms' products or services by the Department of the Navy or the United States Marine Corps.

Commanding Officer.....Col. R.R. Crawford  
Joint Public Affairs Officer.....Maj. P.A. Sivyngny  
Editor.....Cpl. Barry Baker

### PAMPER YOURSELF TODAY!

"Lose 4 to 14 permanent inches in 1 hour!"

European Contour Body Wrap Will:

- Restore elasticity, tone & firming loose and flabby skin
- Restore your body - lose from problem areas
- This is not a water loss
- Guarantee to take off inches on your first wrap
- Eliminate toxic waste that clogs lymph system and restores circulation
- IT WORKS!
- Affordable for Men & Women

FAT BURNER AVAILABLE (6 Week Supply) \$39.95

Life Styles Beauty Health Center 236-4400

American Savings Bank Bldg. 45-955 Kam Hwy., #306

C O U P O N

# 5 1 2

### RESUMES

and SF 171's

- Military Specialist - so you don't have to keep explaining all your terminology.
- Award Winning Writer - to put you in the best possible light.
- Laser Set Availability - to set you out in a crowd.
- MasterCard & Visa Accepted

COMPLETE BUSINESS SERVICES  
488-2800

### PET EXPRESS BOARDING KENNEL

COMPLETE GROOMING WITH LOVING CARE!

- All Breed Boarding
- Air Conditioned Kennels
- Island Wide Pick-up and Delivery
- IAMS • Natures Recipe • Max
- Interisland Crate Rentals

847-0058

989 Dillingham Blvd.

10% OFF GROOMING & BOARDING

Expires 5/31/93

### ATTENTION TEENS!

SUMMER CLASSES FOR YOU!!

SELF IMPROVEMENT

- Makeup • Hair • Diet
- Poise

CAREER MODELING

- Runway • TV Commercials
- Photo

Join The Winners!!

SUMMER SPECIAL!

\$200 OFF

CALL 955-2271

SusanPageModeling

AGENCY & SCHOOL

MISS HAWAII USA 1993  
Kelly Hu  
Susan Page Model

## Gary Reed

### AUTOGRAPH SESSION

Come see and meet Hawaii's Premiere Landscape Artist

Sat., May 15  
11 a.m. - 1 p.m.

UPCOMING EVENTS

FRAME SALE  
June 11 - 20  
Ready-Made Frames and Mats  
Prints also available

KIM TAYLOR REECE  
AUTOGRAPH SESSION  
Saturday, July 3 - 11 a.m. to 1 p.m.

PEARL HARBOR

## AARON'S DIVE SHOPS

Spring

### CLEARANCE SALE

FINAL 3 DAYS-SALE ENDS MAY 16TH!

TANKS

\$99<sup>95</sup>

Aluminum 80's

SAVE 40%

SALE: \$365<sup>00</sup>

AARON'S PRO. PKG.

SAVE 30%

SALE: \$524<sup>00</sup>

SHERWOOD SILHOUETTE BCD

Reg. \$290.95

SALE: \$204<sup>95</sup>

SHERWOOD MAXIMUS Regulator

Reg. \$400.95

SALE: \$285<sup>95</sup>

SCUBAPRO AIR 2 Regulator

Reg. \$260.95

SALE: \$199<sup>95</sup>

OPEN WATER DIVER CLASS

Only \$59<sup>95</sup>!!!

Clearance Prices on These Items and More...

MASKS From \$44<sup>95</sup>

BOOTIES From \$26<sup>95</sup>

SNORKELS From \$8<sup>95</sup>

FINS From \$44<sup>95</sup>

POWER HEADS, SPEAR GUNS, GEAR BAGS & KNIVES

Enter to Win \$5,000 in Prizes!

FINANCING AVAILABLE Easy Credit Terms - 90 Days Interest Free

AARONS DIVE SHOPS

KAILUA  
602 Kailua road  
262-2333

PEARL CITY  
98-106 Kam Hwy.  
487-5533

CAMP SMITH  
Scuba Locker  
477-0514

OCEANIC

PADI

TST

SSA

U.S. DIVERS

XCEL

ABRILLY

SHERWOOD

Tabata

Underwater Kinetics

Wanda SEA STYLE



## NQLB

from A-1  
In addition, a site for the park had to be found.

Agans said he and personnel from the Joint Safety Center identified the site, but the money for it took a long time.

When the money became available, the primary units and offices responsible for making the park reality were Station Facilities, MWR and MWSS-174.

For the 17 engineers of MWSS-174, the project allowed them to use skills they don't get to use too often—and none had ever built a skateboard park before.

"The Marines are really concerned about doing a good job on it and are curious and anxious to see it used," said SSgt. Martin Nuckols, one of the two MWSS-

174 staff noncommissioned officers who supervised the project.

Although the Marines worked long days to get the bulk of the work done in a week, the engineers didn't mind.

"This is a lot better than working on boxes, or something like that. We get some real skills out of this," explained Cpl. James Sisk, MWSS-174. "I just hope the kids enjoy it and it helps to keep them out of trouble."

Giving children something to do besides getting into trouble was the main reason the skateboard park idea was not allowed to die. Because of the NQLB, a need for older children was identified.

"The Neighborhood Quality of Life Board has made a big difference on this base," Agans said. "But people are not going to see an improvement unless they get involved."

## Somalia

from A-1  
the country was controlled by armed bandits and warlords and the numbers of Somalis dying each day from starvation numbered in the hundreds.

Any aid that was going to the country was intercepted by the warlords and bandits and the people who needed the aid most were not getting it. Americans were sent to Somalia to end that and to bring stability to the country.

Although virtually everyone admits that Somalia has a long way to go, LtGen. Johnston said significant progress has been made in the country.

No longer does starvation reign in the countryside, there is much more stability and the warlords are talking to each other.

While, until recently, the primary forces in the country were American, several countries committed troops to the operation. Some of the military forces of other countries the Marines worked closely with were the Canadians, French, Belgians and Australians. The Marines and French Foreign

Legion worked closely together from the beginning of the operation. Also, on Dec. 20, 1992, Marines and Belgian paratroopers secured the first combined amphibious assault since the landing at Inchon, Korea.

The U.S. troop strength peaked at 25,800 Jan. 16.

As the U.S. and coalition forces reached their peak strengths and control was gained throughout the country, violence began to decrease.

According to Peck and Rogers, Mogadishu's Digfer Hospital officials reported on Feb. 11 that the average number of gunshot wound patients dropped from 45 a day to four or five each day. Other hospitals around the city also reported dramatic drops in the numbers of victims of violence.

At the same time the dramatic reductions in violence were being seen in Somalia, the U.N. was making preparations to take over control. In February they named LtGen. Bir as the U.N. commander.

Although there is much the U.N. forces still have to do, the operation so far has given the Somalis something they did not have before — hope.

## Super

from A-1  
that there was no break in the action. By the end of the week, the two squads were well worn.

"The hump back from Bellows (Air Force Station) was tough," explained LCpl. David Jacob, 3d fire team leader. "We tried to keep it under two hours, after working hard all week, it was hard." The hump was one of the last events, which made the Marines from both battalions have to reach for some extra energy to complete the trek.

When the top squad was announced April 30, the 3/3 squad was already confident they had won.

"I was confident we would do well all along. We knew we had a good disciplined and motivated squad. We also had a lot of confidence and experience in our leadership billets," Kelly said.

With the first hurdle passed, the Lima Company Marines are not taking a break. They are already continuing their training and have intensified it to prepare for the division competition.

Second Lt. Darin Dunham and SSgt. Brian Thomas have been the two Lima Company Marines who have supervised the training of the squad for the regimental competition and are now getting the Marines ready for the division competition.

Dunham explained that the 3/3 squad will face two other squads representing the top squads from the 4th and 9th Regiments.

"I think we will do well; we are looking to be the division champs," Kelly said. "We are keeping the same training level, but we have moved it up a notch."



## Your call could make history.

Help us find the parts of our history we're missing.

Call us with your story. It could be a historic moment for all of us.

The Easter Seal Story Search  
1-800-STORIES (Voice or TDD)



## Gen. Stackpole III thanks military in observance of Armed Forces Day

May 15, Marine Forces Pacific will stand proud alongside our sister services as we join in celebrating the 44th observance of Armed Forces Day. This year's theme, "Proud...Professional...Prepared," truly describes today's forces. By working together, the Armed Forces of America have demonstrated time and again their dedication to our country and their stalwart belief in the virtues of freedom.

In good times and bad we have given our all to support and defend what is right and just about America. It is this unwavering devotion that serves as the foundation and centerline of the nation's being. We in the Armed Forces can stand proud in knowing that whenever our nation has called we have been ready and capable of answering that call.

This Armed Forces Day should be a time of reflection for all of us. There have been many changes among the nations of the world which we as Americans and members of the Armed Forces have encouraged and helped to achieve.

With great pride, I express my sincere admiration for the unselfish courage and commitment displayed by Marines/sailors of Marine Forces Pacific and the sacrifices you and your families have made. Your uplifting spirit and pride renews my spirit each day. Happy Armed Forces Day and Semper Fidelis.

LtGen H.C. Stackpole III  
Commander Marine Forces Pacific

## Relief

from A-1  
volunteers worldwide and only a small professional staff. In addition, because of wise leadership during World War II, a "Reserve Fund" was created through a large fund drive among private citizens, which raised \$10 million. Today that fund is worth \$125 million.

To support operations in 1991, the society received funds totaling from the following sources: \$39.6 million from loan repayments; \$13.5 million from the annual fund drive; \$3 million from Desert Storm corporate and individual grants; \$5 million from foreign government grants; \$700,000 from thrift shop operations; \$6.1 million from interest and dividends from investments; and \$11.9 million from gains on investments. The society

spent \$66.3 million last year.

Obviously, if the "Reserve Fund" were used instead of conducting a fund drive, at current rates of aid, it would only take two or three years for the society to run out of money.

While most Marines and sailors are eager to donate to the society, there are some who refuse to donate after being turned down for a loan. Sometimes people misunderstand what the society is for.

There are some things the society can't do. It won't pay non-essential bills, finance liberty and vacations, pay fines and legal expenses or help you live beyond your means.

Whenever there is a genuine need, however, Navy-Marine Corps Relief will come through, no matter how much it costs.

By giving to the society, Marines and sailors can continue to help their own during a fellow Marine or shipmate's time of need.

## Meals

from A-1  
has increased by more than half, the number of personnel has not. In addition to having to serve three meals at the messhall, two crews have to go to work and prepare the breakfast and lunch bag lunches.

"As with all things, Meals on Wheels has its good and

bad points. But the best part of Meals on Wheels is that a large quantity of Marines who were not getting fed before are now getting the meals they should get," Rivera said.

The bag breakfast crew starts working at 6 p.m. the prior day to prepare approximately 1,300 to 1,700 bag lunches. The bag lunch crew begins their workday at 4 a.m. each day to prepare the bag lunches for that day.

The breakfast meals include

two muffins, one hard boiled egg, two fruits, a juice and condiments.

"This is expected to change in the near future because our breakfast bag lunch menu will be expanding to have a greater variety," Rivera said.

There is a variety of six different menu items for lunch. Each meal contains one sandwich or fried chicken, potato chips, a hard boiled egg, cookies, a vegetable pack, condiments and a soda.

## EXHAUST SYSTEMS HAWAII

NOW FEATURING...  
**HYDRAULIC  
SUSPENSION KITS**

• Headers \$119  
• Dual Exhaust from \$239

We will MEET or BEAT any competitor's written estimate

• Unsurpassed Quality • Competitive Prices  
• Personalized Service • Service All Makes & Models

KAILUA 171 Hamakua Dr. 263-8111  
HONOLULU 2457 S. King St. 946-7110  
WAIPAHU 94-150 Leoleo St., 3-A 671-8111

### MUFFLERS

**\$39.95\***  
from  
plus installation



Hawaii's Largest Locally-Owned Muffler Shop

## SOFT CONTACT LENSES

From: **\$79**

Includes: Lenses, CareKit, Follow-up Care, & 90 DAY TRIAL PERIOD.

DISPOSABLE LENSES

CALL FOR PRICE

LOWEST PRICE GUARANTEED

Prescription Glasses

**50% OFF**

ALL FRAMES IN STOCK

• Complete Eye Examinations  
• One-Stop Vision Care



**DR. CHARLES DEAN**

Optometrist

**261-9735**

139 Hekili St., Kailua

Specializing In Contact Lenses

# KAILUA MINI STORAGE

**NEW  
LOCKERS  
AVAILABLE  
NOW!!**

- many sizes available TODAY!
- high-tech security • easy entrance

COUPON

**SAVE UP TO \$30.00**

**KAILUA MINI STORAGE**

- Savings based on locker size & lease term
- With coupon only.
- Not good with any other offer.
- Expires 6-3-93
- Limit one coupon per customer
- Certain restrictions apply

**Space  
Available  
TODAY!**

150 Hamakua Drive, Kailua **261-1137 or 261-4805**

Visit our

**newly expanded facility today!**

**Also Available:**

- Mailbox Rentals
- Mailing Services
- FAX Service • Storage Lockers

150 Hamakua Drive, Kailua

**261-1137 or 261-4805**



Briefs

WMA luncheon

The Women Marines Association, Hawaii Aloha Chapter Hi-01, encourages all women who now serve or have served in the United States Marine Corps to join us for a luncheon the second Saturday of each month.

If you share our proud tradition, we want you to be part of our organization.

For more information, contact Ruth LeeLoy at 946-5242.

Key Wives

The Family Service Center will hold training classes for the Key Wives Network to begin with "Orientation to the Key Wives Network" Wednesday, 6-8 p.m. and May 21 from 9-11 a.m.

For more information/reservations, call 257-3655.

Stress class

The Family Service Center is sponsoring a stress management class Thursday from 1-4 p.m. Learn

how to handle stress effectively at home and at work.

For reservations, call 257-3655.

SNCO Wives

The Staff NCO Wives Club meets the second Monday of each month at the Staff NCO Club. Please join us for fun and friendship.

For more information, call Vicki Whitehead at 254-5516 or Lu Arnett at 254-1401.

Red Cross

The American Red Cross, Service to Armed Forces activity will be moving from Hickam Air Force Base to Naval Station, Pearl Harbor.

The phone number for all Emergency Communications is now 471-3155. The location is Building 1514 (across from the Makalapa Medical/Dental Clinic). Office hours are from 4 a.m.-midnight every day.

For more information, call 257-3150.

Homestay families

Twenty host families are currently being sought in the state of Hawaii to provide homestays

during the academic year 1993-94 for high school aged young women and men under the auspices of the International Hospitality Center (IHC). The homestay begins Aug. 20-25.

Hosts may choose sex, nationality, age (15-17) and work closely with IHC in the selection process. Counselling and assistance by IHC is provided throughout the academic year.

Students in 1993-94 will come from Germany, Spain, Macedonia, Belgium, Australia, Japan, and several Latin American countries.

For more information, contact Barbara Bancel at 521-3554.

Officers' fellowship

The Officers Christian Fellowship is holding a luncheon Tuesday at 11:45 a.m. at the Koa Room in the Officer's Club. Everyone is welcome. Chaplain Gammon, from 3/3, will be speaking on "Praying the Promises of God."

For more information, contact John Chitester at 261-8132.

TAMP class

The Transition Assistance Management Office is holding a class Tuesday from 8-10:30 a.m.

on how to complete the SF-171 application for federal employment.

For more information, call 257-3135.

Civil Air Patrol

The Civil Air Patrol will have a booth in front of the Main Exchange here Saturday from 9 a.m.-5 p.m. for a recruiting drive. Membership fees will only be accepted by check or money order and made payable to National and Wing HQ for those desiring to join.

For more information, contact 1st Lt. Gary Barron at 257-5987/9660.

"Karate Kid"

Pat Morita will be at the Main Exchange here Saturday from noon-2 p.m. to promote his new video, "Shiatsu."

USS Cushing

The USS Cushing (DD985) will be open to the public Saturday from 9 a.m.-4 p.m. at Pearl Harbor in celebration of Armed Forces Day.

Cushing's primary mission is anti-submarine, but can also provide Naval gunfire support,

anti-surface warfare and anti-air warfare.

The ship's armament includes two five-inch 54-caliber gun mounts, a harpoon missile system, a NATO Sea Sparrow missile system and six torpedo tubes.

Saturday's visitors should enter Pearl Harbor through Halawa Gate, which is located on Kam Highway near the Arizona Memorial Visitor Center.

Singles dance

A Parents without Partners open dance is being held May 22 at Fort Shafter's NCO Club from 8 p.m.-1 a.m. There will be door prizes, free pupus and a no host bar.

For more information, call 262-6442/7441.

Chess Tourney

The Station Library is hosting the Kaneohe Tournament May 22 at 9:30 a.m. and May 23 at 1 p.m. The Kaneohe Tournament will identify superior players and provide experience.

First place for the Armed Forces Chess Tournament will be held in Washington D.C. this summer. First and second place winners will receive trophies.

Pre-registration is not required, and there is no fee.

For more information, call 254-6301.

Marriage encounter

Married couples are invited to give each other the priceless gift of time by attending the next Marriage Encounter Weekend May 22 & 23 at St. Anthony's Retreat Home in secluded Kalihi Valley. This experience will deepen and enrich the marriage relationship and strengthen family life. There is a \$20 deposit.

For more information, call 422-4603 or 677-0121.

Youth Fun Day

Come and play at Youth Fun & Fitness Day! In conjunction with National Physical Fitness and Sports Month, MWR's Youth Activities Department has organized Youth Fun & Fitness Day, May 22 from noon-4 p.m. at Pop Warner Football Field.

For more information, call 254-2963.

Menu

**Friday, May 14**  
**Lunch**  
Old Fashion Bean Soup  
Baked Fish Fillet  
Fried Fish Portions  
Cottage Fried Potatoes  
Chili con Carne  
Steamed Rice  
Corn Bread  
Corn  
Club Spinach  
**Dinner**  
Old Fashion Bean Soup  
Baked Meat Loaf  
Baked Ham  
Pineapple Sauce  
Tomato Gravy  
Mashed Potatoes  
Green Beans  
Mixed Vegetables  
**Saturday, May 15**  
**Dinner/Brunch**  
Beef Rice Soup  
Szechwan Chicken  
Salisbury Steak  
Mashed Potatoes  
Brown Gravy  
Brussels Sprouts  
Succotash  
Dinner Rolls  
**Sunday, May 16**  
**Dinner/Brunch**  
Vegetable Soup  
Grilled Steak to Order  
Baked Potatoes  
French Fried Potatoes  
Sautéed Mushrooms &

Onions  
Green Beans  
Cauliflower Polonaise  
Sour Cream  
**Monday, May 17**  
**Lunch**  
Egg Drop Soup  
Shrimp Creole  
Beef Sauerbraten  
Mashed Potatoes  
Steamed Rice  
Brown Gravy  
Broccoli  
Corn on the Cob  
Dinner Rolls  
**Dinner**  
Egg Drop Soup  
Sweet & Sour Pork  
Sukiyaki  
Fried Rice  
Chow Mein Noodles  
Chinese Fried Cabbage  
Succotash  
**Tuesday, May 18**  
**Lunch**  
Potato Soup  
BBQ Spareribs  
Chili Macaroni  
Grilled Cheese Sandwich  
Oven Browned Potatoes  
Green Beans  
Carrots  
**Dinner**  
Potato Soup  
Syrian Beef Stew  
Chicken Cacciatore  
Mashed Potatoes  
Steamed Rice  
Brown Gravy  
Peas & Carrots  
Com

Baking Powder Biscuits  
**Wednesday, May 19**  
**Lunch**  
Minestrone Soup  
Beef Ball Stroganoff  
Roast Lamb  
Mashed Potatoes  
Egg Noodles  
Brown Gravy  
Brussels Sprouts  
Carrots  
**Dinner**  
Minestrone Soup  
Spaghetti w/Meat Balls  
Baked Lasagna  
Italian Style Pizza  
Broccoli  
Waxed Beans  
Toasted Garlic Bread  
**Thursday, May 20**  
**Lunch**  
Corn Chowder  
Baked Meat Loaf  
Chicken Ala King  
Mashed Potatoes  
Egg Noodles  
Tomato Gravy  
Mixed Vegetables  
Peas & Carrots  
**Dinner**  
Corn Chowder  
Yankee Pot Roast  
Pineapple Sauce  
Lyonnaise Potatoes  
Brown Gravy  
Com  
Southern Fried Okra

Blotter

Military Police Department  
MCAS Kaneohe Bay

•A Marine was apprehended for a DUI by HPD. The Marine elected to submit to an intoxilyzer which resulted in a blood alcohol content of .145 percent. The Marine was processed and released on bail.

•Branch Medical Clinic reported a medical emergency aboard the air station. Military Police made contact with a dependent who stated that a Marine was in an unconscious state. The Marine was transported by ambulance to Castle Medical Center for treatment of possible alcohol poisoning.

•Hawaii Armed Service Police

reported that HPD observed a Marine purchase two marijuana cigarettes from an unidentified civilian male. The Marine was arrested and transported to the Honolulu receiving desk where he was processed and released on bail.

•A sailor reported a dependent had related suicidal ideations earlier to him. Military Police made contact with the dependent and transported her to Branch Medical Clinic for evaluation.

•Branch Medical Clinic requested assistance at a barracks aboard the air station. Military Police made contact with a Marine who stated that another Marine had cut his left wrist with razor blades and a USMC K-Bar knife. The Marine was treated on scene for his cuts and then transported by ambulance to Tripler Army

Medical Center for further evaluation.

•Military Police responded to a report of suicidal ideations at a barracks aboard the air station. Military Police made contact with the Duty NCO who stated the Marine had received a 3 3/4" folding lock blade from a civilian and intended to kill himself with it. The Duty NCO had transported the Marine to Branch Medical Clinic where he was evaluated. The Marine was later transported to Tripler Army Medical Facility for further evaluation.

•The Lost and Found custodian has in his possession: bicycles, glasses, jewelry, keys, bank cards, ID cards, clothing and knives. If you think any of these items may belong to you, contact Sgt. Fink at 257-3110.

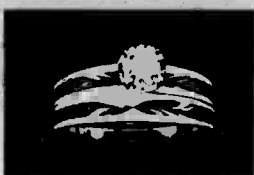
A BRILLIANT PROPOSAL



PROMISE RINGS  
from \$89



MARQUESE RINGS  
from \$400  
\$54.85 mo. 6 months



DUO WEDDING SETS  
from \$295

MILITARY ALLOTMENTS AVAILABLE

SUPPLIER TO

\* THE MILITARY SINCE 1940 \*

The House of Adler salutes our military in Hawaii  
Come in today and we'll help you select just the right diamond to fit your budget at the most affordable terms possible.

**House of Adler**  
THIRD GENERATION DIAMOND CUTTERS

If you are not buying your diamonds from the House of Adler, you are paying too much!

PEARLRIDGE PHASE II 487-0808 • WAIPAHU (next to Longs) 871-8227  
PAN AM BLDG. • 1600 Kapiolani Blvd. 12th Floor • Validated Parking • 949-4196

30% OFF  
CITIZEN  
WATCHES

75 Years of  
Keeping Hope Alive

Hope is hot meals and shelter for disaster-ravaged families... important messages to service people far from home. CPR and first aid skills that save lives.

Hope depends on caring people like you. Please help. Support your local Red Cross chapter.

Hawaii State Chapter  
4155 Diamond Head Road  
Honolulu, Hawaii 96816  
Phone (808) 734-2101

American Red Cross

**COME FLY WITH US!**  
**HICKAM WHEELER AERO CLUB MEMBERSHIP DRIVE**

**Initiation Fee Reduced 50%**  
**Introductory Flights \$20**  
May 14-16, Hickam AFB, Hanger 13,  
Next to the Audio-Video Sale

**HICKAM AERO CLUB**      **WHEELER AERO CLUB**  
Hanger 13    449-1228      Bldg. 202    656-1091

**AUTOMASTERS**  
INTRODUCES  
**KAILUA'S KWIK-LUBE**

**INCLUDES 16 POINT LUBRICATION & CHECKLIST SERVICE**

1. OIL CHANGE
2. INSTALL NEW OIL FILTER
3. INSPECT & FILL BRAKE FLUID
4. INSPECT & FILL TRANSMISSION FLUID
5. INSPECT WIPER BLADES
6. LUBRICATE CHASSIS
7. CLEAN EXTERIOR WINDOWS
8. INSPECT & INFLATE TIRES
9. INSPECT BREATHER ELEMENT
10. INSPECT PCV VALVE
11. INSPECT BATTERY FLUID
12. INSPECT AIR FILTER
13. INSPECT & FILL WINDSHIELD WASHER FLUID
14. INSPECT & FILL POWER STEERING FLUID
15. INSPECT & FILL DIFFERENTIAL FLUID
16. INTERIOR VACUUM

**\$29<sup>95</sup>**  
Prices good through May 20, 1993

**ASE CERTIFIED**  
We Employ Certified Technicians

**Quaker State** No Appointment Necessary **261-2612**  
**ONE TOUGH MOTOR OIL**  
337 Ulukou St., Kailua  
Mon-Fri 7:30-5:30 Sat 8:30-5

**SUMMER SPLASH for Education & Fun**  
Available to the Community

**K-6TH GRADE**

- Academic Review
- Critical Thinking
- Reading Builders
- Swimming Lessons
- Arts & Crafts
- Weekly Excursions
- Cooking
- Game Room & Sports
- Family Rates

**INTRODUCING SUMMER ELECTIVES**

- Keyboard & Vocal
- Art
- Computer

**PRESCHOOL/ DAYCARE PROGRAMS AVAILABLE**

**FALL PROGRAMS**  
Limited Openings  
in Some Elementary Grades & Preschool/Daycare

**TRINITY CHRISTIAN SCHOOL**  
262-8501  
875 Aulua Road, Kailua

# Asian-American heritage

## Former Philippine scout recalls 'Death March'

By Rudi Williams  
Armed Forces Information

Ted P. Liwanag, 72, thought he was dying three times during World War II during the infamous "Bataan Death March," from a serious illness in a Japanese prisoner of war camp and after enemy soldiers stabbed and severely beat him.

Events leading up to Liwanag's capture started with a Dec. 8, 1941, surprise Japanese attack on the Philippines, only nine hours after the one on Pearl Harbor. Liwanag was a Philippine Scout, a member of an elite unit that fought with the U.S. Army. Today, he's the administrative officer of the Philippine Embassy's Veterans Affairs Office in Washington, D.C.

From early January to the middle of February 1942, the Philippine Scouts fought a fierce battle against the Japanese. The Scouts bore the brunt of the nearly 800 American and Filipino casualties suffered, wrote Army Capt. John Gordon IV in a 1987 Military Review magazine article, Among the Best: The Philippine Scouts.

For example, Gordon said, one battalion of the 45th Infantry Regiment began the fight at Quinauan Point on Bataan Peninsula with 500 men; two weeks later, it marched away with 212 survivors and a lieutenant in temporary command. The Scouts were fighting with no air support and very little artillery.

Another battle northeast of the Anyasan and Quinauan points pitted the 1st Battalion, 45th Infantry, against more than 1,000 Japanese and ended after three weeks of vicious jungle fighting. All but about 300 Japanese were killed, Gordon said.

A lull settled over Bataan. "The Japanese were defeated in that area — captured, killed or escaped back to their lines — and we went back to our areas to rest," said Liwanag. "We'd fought for about three weeks continuously."

They rested in agony: Malaria, beri-beri, dysentery and other diseases swept through the force. Food was in short supply.

Japanese invaders ended the Scouts' rest and recuperation the first week of April. The enemy invaded in masses.

"There was an announcement from Gen. Wainwright (Maj. Gen. Jonathan M. Wainwright, U.S. Army Far East commander) that we were going to surrender because there was no more hope," said Liwanag. "We were hungry. Didn't have any food. Our ammunition was low. We'd been bombarded every day. We were sick and weak."

Nearly 70,000 U.S. and Filipino soldiers surrendered at Bataan on the morning of April 9, 1942. The "Bataan Death March" began.

"We marched to a town in Bataan — Mariveles — all the soldiers from different areas," said Liwanag. "From there, we marched about 60 miles to San Fernando, Pampanga (Province). We started marching on Holy Friday — Viernes Santo — in April, the hottest month of the year in the Philippines, more than 100 degrees."

They marched from four to 10 days in the blazing Philippine sun. "We were not given food, not allowed to drink for two, three days," said Liwanag, pointing to a painting on a wall in his embassy office. The painting shows Japanese soldiers bayoneting civilians who try to

help passing prisoners.

From San Fernando, the prisoners were crammed 100 to a box car for a 30-mile trip to Capas Tarlac, Liwanag said. Then they walked about six miles to the concentration camp at Camp O'Donnell, a former Philippine army training camp, he added.

More than 10,000 Americans made the Death March, and reportedly about 1,000 died along the way. Another 5,000 died later while in Japanese hands.

Casualty statistics for the 1941-1942 Philippine Campaign are imprecise because of incomplete records, according to information from the DoD 50th Anniversary of World War II Commemoration Committee. Army casualty statistics, including U.S. Army Air Forces and Philippine Scouts, show that 2,118 soldiers were listed as missing in action and more than 70,000 captured. Total deaths were

43,000.

In most cases, prisoners held at Camp O'Donnell were separated into different units according to their nationality.

"Conditions in the camp were terrible. We lacked food, proper medical care, everything," said Liwanag, who was 20 and suffering from malaria and dysentery at the time. "Sometimes we'd get camote, something like sweet potatoes, sometimes rice and sometimes rice mixed with camote. Sometimes we'd get a little meat from people on the outside."

The lack of medical care forced prisoners to treat their own illnesses and wounds. For example, they boiled tree bark to make a tea similar in taste to quinine to treat malaria, Liwanag said.

But he had strange luck. He spent only four months as a POW, because the Japanese thought he was near death from disease. They

sent him to a hospital for treatment.

"That's when I was really tortured — bayoneted, beaten, kicked in the head and body," Liwanag recalled. "I thought I'd be dead when they left me."

"My midsection was covered with blood. I thought they'd castrated me," he said. He'd been stabbed in his upper thigh. Liwanag walked slowly to a group of trees, pulled leaves off and chewed them, putting the resulting juice in his wounds.

"I never confessed I was with the guerillas (he was) and after a few months, they let me out again," he said.

American forces retook most of the Philippine islands by the end of February 1945.

Liwanag joined the Philippine Constabulary, under the Philippine Commonwealth, in June 1940, and became a Philippine Scout in September 1941 after the Scouts were incorporated into the U.S.



Ted P. Liwanag

Army forces in the Far East. After the war, he became a university economics professor in the Philippines.

Liwanag's first trip to America came in March 1990, when he visited his daughter, Maria. He extended his stay and applied for citizenship after the 1990 Immigration Act was passed. His seven other children remain in the Philippines.

Recalling his wartime experiences is still painful, Liwanag said. "I still wake up in the middle of the night — nightmares, nervous, sweating. Once you've been in that kind of war, you never forget it."

## Asians in the Forces

American Forces Information Service

Asian-Pacific Islanders make up about 2.6 percent of DoD's active duty service members, with 46,612 currently on duty.

The Army's figures indicate 11,232 Asian-Pacific Islanders in its ranks. Of these, 1,707 are officers and 9,525 are enlisted personnel, or 1.9 percent of the total Army force.

In the Navy, 4.6 percent of service members are Asian-Pacific Islanders. This breaks down to 1,653 officers and 22,826 enlisted.

Marine Corps statistics show 1.5 percent are Asian-Pacific Islanders, with 233 officers and 2,466 enlisted members.

About 1.8 percent of the Air Force's total personnel are Asian-Pacific Islanders. There are 1,454 officers and 6,748 enlisted currently serving.

The Office of Management and Budget considers Asians and Pacific Islanders to have origins in the Far East, Southeast Asia, the Pacific Islands and the Indian subcontinent. This includes the countries of Japan, Korea, China, Vietnam, India, the Philippines and Indonesia.

HOUSEWARES  
**20% OFF**  
This Week Only!

## GOODWILL RETAIL STORES

Come in and see our large selection of top quality merchandise.

Beretanla	Dillingham
Kailua	Kalmuki
Kam Shopping Center	Kaneohe
Pearl City	Wahiawa

Sales prices good until May 16, 1993



Goodwill Industries  
Our Business Works. So People Can.

Goodwill Industries of Honolulu, 2610 Kilihaui Street, Honolulu, HI 96819-2020, Phone: 836-0313

## MILITARY

### COST LESS ■ AUTO REPAIRS

- MILITARY DISCOUNTS
- FREE ESTIMATES
- FREE TOWING (MAJOR REPAIRS)
- COMPLETE AUTO REPAIR
- QUALITY WORKMANSHIP
- LOWEST POSSIBLE PRICES
- BRAKE SERVICE SPECIALS
- TUNE-UP SPECIALS
- AUTO BODY AND PAINT

WE'LL MEET OR BEAT ANY MILITARY EXCHANGE PRICES

OPEN 5 DAYS A WEEK

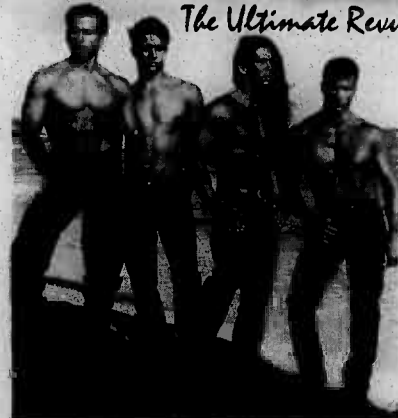
M-F 7AM-5PM

530 Paloa St.

836-1234

## MALE INTERNATIONAL

The Ultimate Revue



FRIDAYS & SATURDAYS  
8:30 PM

Tickets: \$10.00 Advance \$12.00 at the Door 18-20yrs \$15.00 all seats

Buy 2 Tickets in Advance Get the 3rd Ticket FREE!

FAST EDDIES NIGHTCLUB

52 ONEAWA STREET, KAILUA • 261-8561

PRODUCED IN HAWAII BY GLOBAL ATTRACTIONS 808-261-8563

## WE KNOW HOW TO LUAU!

Every week, we serve up a royal Hawaiian feast, just for you at the Hale Koa Hotel! Our luau begins with a breathtaking sunset, along with an aloha lei greeting and a tropical cocktail. Relax to gentle island music while you learn lei making and coconut frond weaving. Then it's time to feast on luau delicacies such as kalua pig, lomilomi salmon, teriyaki beef, mahimahi, haupia, pineapple and poi. And to keep you royally entertained, a spectacular show featuring ancient Hawaiian songs and dances, lovely hulas, and an exciting Samoan fire-knife dance!

So join us every week! At the Hale Koa, we know how to luau!



HALE KOA HOTEL

A Resort for the Military  
2055 Kalua Road • Phone 955-0555

## Too Many Bills?

Immediate Relief from Creditor Harassment

Call TODAY for Information on Bankruptcy

• Military Welcome •



Ellen Luigi Fera

Attorney At Law

Evening & Weekend Appts. Available

261-4788

## AIRFARE SALE

CALL NOW 839-0039

Los Angeles

FROM \$179 O/W FROM \$229 R/T

San Francisco

FROM \$179 O/W FROM \$229 R/T

San Diego

FROM \$299 R/T

Seattle

FROM \$249 R/T

Portland

FROM \$308 R/T

Minneapolis

FROM \$358 O/W FROM \$548 R/T

Detroit

FROM \$361 O/W FROM \$548 R/T

New York

FROM \$375 O/W FROM \$578 R/T

Boston

FROM \$375 O/W FROM \$578 R/T

Washington, D.C.

FROM \$375 O/W FROM \$578 R/T

Chicago

FROM \$358 O/W FROM \$584 R/T

Dallas

FROM \$375 O/W FROM \$548 R/T

Atlanta

FROM \$375 O/W FROM \$578 R/T

Orlando

FROM \$375 O/W FROM \$578 R/T

Tampa

FROM \$375 O/W FROM \$578 R/T

Call for other cities. Restrictions apply.

ROYAL ADVENTURE TRAVEL

3229 Koapaka St. Honolulu HI 96819

(Behind Plaza Hotel Off Nimitz)

OFFICE HOURS

Monday thru Friday 9 am to 5 pm

Saturday 9 am to 1 pm

PHONE 839 0039 FAX 833 9942

## ROLLING STONES



MAX

IMAX

Now Showing at

Hawaii IMAX Theatres  
next to the Walkiki Twin Theatres

Fridays & Saturdays - 9pm

! HELD OVER !  
SPECIAL \$15 ADMISSION

5 story high screen, with  
6 channel stereo surround sound.

For showtimes and ticket  
information call 923-4629

"Hidden Hawaii", and other great  
IMAX film presentations will continue  
during this special engagement.

IMAX is a registered trademark of IMAX Corporation, Toronto,  
Canada. IS is a registered trademark of IMAX Corporation.



# Hollow force dealt with

F. Peter Wigginton  
APR

The United States can cut the defense budget safely and still have ready, capable forces if DoD employs six strategies over the next four years, Deputy Defense Secretary Bill Perry said.

By the late 1990s, DoD's "top line budget" will have decreased 40 percent or more compared to 1985, Perry predicted. "We are going to take the defense budget from about 6 percent gross national product down to about 3 percent; from over 25 percent of the federal budget to about 13 percent," Perry told Cruise Missiles Association members at their recent annual meeting in Washington.

But international political problems continue to exist that could erupt into war in the next three to five years, he warned. "So, the big challenge facing us in defense management today is how to maintain the readiness of our forces and a high technology in the face of this major budget decrease," he said.

He said DoD will follow six strategies during the next four years to keep the armed forces strong.

First, the department will try to keep a proper balance in four major accounts: Personnel, operations and maintenance, modernization and technology. After Vietnam, DoD tried to maintain force structure. Perry said the number of Army divisions, for example, was kept high even though there were not enough soldiers to man them effectively. As the budget dropped, the operations and maintenance and modernization accounts decreased disproportionately. "And that's what led to the 'hollow force,'" he said.

To keep the four components in balance, force structure must be reduced. "We have taken one significant action on that in the last few months," he said. "We inherited the so-called base force from the Bush administration, which entailed a decrease of active duty forces from 2.1 million to 1.6. We propose to take that down

further to 1.4 million."

Force structure changes include cutting two Army divisions, reducing the Navy's battle fleet from 443 to 413 and cutting Air Force fighter wings from 28 to 24.

The second strategy is to maintain morale. In the face of a one-third decrease in force size, Perry said DoD is now asking its volunteer military to leave their jobs because the department does not have enough resources to support them.

"That's a tough prospect," he said. "One specific action we've taken already and which we will continue to implement is to use what industry calls 'early-out techniques.' That is to provide special benefits that offer incentives to retire early to both military and civilians." Perhaps early-out benefits alone will not prevent flagging morale, he said. But they can help ensure that most separations will be voluntary and DoD will not need to resort to reductions in force.

The third strategy is to reduce infrastructure and overhead costs proportionally to the budget decrease. This is in many ways the most difficult strategy to implement, said Perry. Typically during a drawdown in any organization, personnel are easiest to cut. But infrastructure and overhead must be cut, too.

"We are now going through the third round of base closings," he said. "If you've followed the news, you know it's much more substantial than any other of the previous base closings. We are taking quite a lot of criticism for going too far too deep. My report to you is that we have not gone nearly far enough."

Perry added that accumulated base closures and realignments for 1988, 1991 and 1993 have not developed a 15 percent reduction of infrastructure. He warned there will not be enough money left for training or modernization if the department does not move farther and faster.

The fourth strategy involves the defense industrial base. "How can DoD ensure that companies surviving the drawdown will be

capable of minimum production capacity to meet department needs?" Perry asked.

Part of the answer depends upon greater emphasis of dual-use technology that will enable DoD to use more fully technology and products coming from other segments of industry. He suggested the ideal will be to require program managers to get waivers if they want to use military specifications. Now, they have to get waivers to use commercial items.

Nonetheless, some equipment, such as nuclear submarines and tactical fighters, cannot have a dual use. With such critical components, Perry said, DoD must maintain some limited production capability to meet future needs, even when current inventories exceed supply.

"We don't want to be in the position of forgetting how to build nuclear submarines," he said. "We'll have to take some action to deal with that problem, not for the purpose of adding to the deployed force in submarines but to maintain a defense industrial base. That's going to be very difficult to conceive the right program for that."

The fifth strategy is to maintain a technological edge. Though difficult because of budget cuts, it will be critical, said Perry.

The sixth strategy is to maintain the readiness of DoD forces, regardless of number. "Our responsibility is that each unit in that force will be in a state of readiness and modernization to be the most capable fighting force in the world," he said. "And they must be ready at all times because we don't know where or when the need will occur."

Perry concluded, "British novelist Graham Green once said, 'There always comes a moment in time when the door opens and lets the future in.' Well, with the dissolution of the Warsaw Pact, the Soviet Union and the end of the Cold War, that moment in time has come. The door has opened. Our responsibility now is to see the future out there and do what we can to shape it so that life will be comfortable for our children and grandchildren."



Devildogs of 2/3 debark a CH-46 helicopter.

LCpl. K.P. Laborde

## 2/3 prepares for 'Cobra Gold'

By LCpl. K.P. Laborde  
Okinawa Marine

**CENTRAL TRAINING AREA**—Marines from 2d Bn, 3d Marine Regiment went to the field recently in preparation for Exercise Cobra Gold '93. The field exercises took the battalion to the Northern Training Area, Central Training Area and Ie Shima.

During one of the operations of the exercise, Echo Co. conducted a raid on Combat Town. TOW Plt., 9th Marine Regiment played the role of the aggressors during the raid.

"One of the tactics we used was having a deception force firing on one side of the town to distract the enemy force," said 2nd Lt. Robert J. Cooke, 1st Plt. commander, Echo Co.

"The enemy shifted their position onto the other side of the town, thinking it was the main attack force. Once they shifted, the main attack went in and cleared all buildings methodically and with real precision," he said.

Later, Echo Co. conducted a night raid on Ie Shima.

Components of both Echo and Fox Companies maneuvered their way through a live-fire course in the Central Training Area on two different days.

"The Marines landed in CH-46 helos, then got their ammunition at the landing zone. After that, they moved to contact," said Gunner Woodford E. Broadbush, infantry weapons officer, 2/3. Along the route between the

landing zone and the objective, the Marines went through the Point Man Course. Going through this course, the point man's weapon was loaded and ready to fire.

"The point man leads the Marines through the course and engages targets with live rounds as he sees them," said Broadbush.

At the end of the course, the Marines proceeded to the objective, where they eliminated the "enemy encampment," first by a barrage of live fire and then a squad of Marines sweeping through the area.

Earlier in the exercise, Golf and Fox Companies trained using blocking tactics in the Northern Training Area, according to SSgt. Stanley Becton, 1st Plt., Fox Co.

"Golf Co. was out forming perimeters and doing patrols. They were also the point element to get to the objectives. They pushed the 'rebels' to Fox Company's blocking position where the aggressors were wiped out," he said.

For the purposes of Exercise Cobra Gold '93, 2/3 will be the Battalion Landing Team for the 35th Marine Expeditionary Unit.



LCpl. K.P. Laborde

After debarking the CH-46 helicopter LCpl. Raymond Goveiro helps hold the perimeter of a landing zone so other helicopters can land.

### Come Play With Us!

RENT IT TRY IT BUY IT!

## ELECTROGAMES PLUS

LARGEST SELECTION IN HAWAII

#### SEGA

**Cool Spot** \$48.99

**X-Men** \$48.99

#### SUPER NINTENDO

**Mech Warrior** \$59.99

**Desert Strike** \$29.99

#### GAME GEAR

**TV Tuner** \$59.99  
with purchase. See store for Sega coupons & details

**Vampire** \$29.99

**Sonic 2** \$19.99

#### SEGA

**World of Illusion** \$19.99

**Lightening Force** \$19.99

**Steel Talons** \$19.99

**Buck Rogers** \$9.99

& Many others

#### SUPER NINTENDO

**Blazeon** \$19.99

**Battle Clash** \$19.99

**Zelda** \$39.99

& Many others

**\$7 OFF**

w/Military ID

\*on reg. price game; one coupon per game

**\$7 Exp 5/20/93 \$7**

### WE'VE GOT IT ALL! - TO BUT! TO RENT!

• **GAME GEAR** • New Collectors Comics • **SUPER NINTENDO** • **GAME BOY!** • **SEGA** • Nintendo • Atari Lynx • Neo Geo • Mega Drive • Super Famicom • Sega CD • IBM Computer Games

**WINDWARD LOCATION** at Windward City Shopping Center  
Hours: 10AM to 10 PM  
**235-3677**

**MOANALUA ROAD**  
Hours: 10AM to 10 PM  
**488-6765**

**HONOLULU LOCATION** at 815 Keeaumoku St.  
Hours: 10 AM to 10 PM  
**946-1026**

## WINDWARD DIVE CENTER

16, Hoolai Street, Kailua (Next to Blockbuster Video)  
Open 7 Days  
**263-2311**  
Prices good through May 26th

ASK ABOUT OUR EASY FINANCING!  
\$300 Minimum Loan Amount, O.A.C.

### CLASSES • CLASSES • CLASSES

**Open Water Class**

**2 \$99.95**

**Reduced Open Water** \$179.95  
All inclusive  
Includes text, boat, rental & course

### TANKS • TANKS • TANKS

**Luxfer Aluminum**  
80's & 63's  
with Sherwood 5000 K-Valve  
**\$99.95**

### SHERWOOD ACCESSORIES

**Bottom Timer**..... \$70.95  
Reg. \$99.95

**Compass Module**..... \$42.95  
Reg. \$60.95

**Source Computers**..... \$279.95  
Reg. \$379.95

**Lock Knives**..... \$65.95  
Reg. \$80.95

**Combo 150' Depth & SPG**.... \$130.95  
Reg. \$170.95

**Combo 200 Depth with MDI & SPG**..... \$145.95  
Reg. \$190.95

### FINS

**Scubapro Rubber Seawings** \$65.95  
Reg. \$80.95

**Hyperthane Seawings**..... \$79.95  
Reg. \$110.95

**Sherwood Magnum/Mini Magnum**..... \$43.95  
Reg. \$58.95

### MASKS

**Sherwood Genesis**..... \$51.95  
Reg. \$70.95

**Scubapro Hot Frame**..... \$85.95  
Reg. \$99.95

**Scubapro New View**.... \$59.95  
Reg. \$80.95

**Scubapro Compact**..... \$59.95  
Reg. \$80.95

### GENESIS STEEL TANKS

**3500 PSI**

**80 cu. ft.** \$299.95  
Reg. \$400.95

**100 cu. ft** \$337.95  
Reg. \$450.95

**120 cu. ft.** \$412.95  
Reg. \$550.95

### UK LIGHTS

**1200 NR** \$59.95  
Reg. \$87.95

**400** \$49.95  
Reg. \$69.95

**SL4** \$29.95  
Reg. \$36.95

All prices limited to stock on hand.

# Gen. Vaught campaigns for memorial

By Sgt. J. Kinchen-Schneider  
Staff Writer

Arlington National Cemetery, Arlington, Va., is the resting place to many of the nation's veterans. There are guards keeping vigil over the graves of the "Unknown Soldiers" and there are memorials with hundreds of names listed. However, most of the names listed on the memorials are of men who served the nation gallantly.

Well, what about the women who have served the nation with the same gallantry and dedication? It is a known fact that women have served in many of the nation's conflicts. Since the American Revolution women have put their lives on the line to help gain and preserve liberty, but to find the names of those who did serve can only be found by extensive research into the nation's history. This is about to change.

Retired Air Force BGen. Wilma Vaught, president of the Women in Military Service for American Memorial Foundation, is campaigning to raise funds for the first major national memorial to honor military women.

The foundation received authorization from Congress in 1986 to build a memorial for women veterans. Vaught recently visited the military installations here to inform servicemembers, male and female, about the memorial and to encourage military women to register their names and the names of any female family members who have served.

By registering, this will help to raise the \$15 million needed to erect the memorial which will be located at the entrance of the Arlington National Cemetery.

The foundation doesn't receive any federal funds, so it's depending on the \$25 registration fee and contributions from the public. Contributions can also be made through the Combined Federal Campaign.

"This memorial will provide a legacy to future generations by capturing the undocumented history of our American servicewomen," Vaught said during a seminar here. "It will be a place of honor for the living and deceased; those who served in the past, those who serve today, and those who will serve in the future."

Once the memorial is finished, there will be an auditorium and a registration room where a

computer will display photographs and career highlights of registered servicewomen.

The foundation is seeking to register as many women as possible of the 2 million women veterans. The foundation has the support of each of the service secretaries and is enlisting the support of all governors to assure every service woman has the opportunity to take her place in history, Vaught said.

"If someone can't afford the \$25 registration fee, the foundation will find someone who can. Husbands, sisters, parents, friends, anyone can register a servicewoman," she explained. "Any woman who has served in the military, whether in World War I, World War II, the Persian Gulf or Somalia, can register."

"The important thing is not to lose these incredible anecdotes of achievement, sacrifice and determination. We can't possibly appreciate what it means to the women who served in WWI, WWII and Korea. They didn't get their medals. They didn't get the recognition. They didn't get much of anything. And when they got out, they got nothing. They were forgotten," she said.

However, those who register before the dedication of the memorial will be Charter Members and all registrants can update their information at anytime.

For more information on how to register, or make a contribution, call (800) 222-2294.



BGen. Wilma Vaught

Sgt. J. Kinchen-Schneider

## WIFE WANTED

Due to a massive overstock situation New Home Sewing Center is offering for sale to the public a limited number of new special 1993 HEAVY DUTY New Home Zig Zag Sewing Machines (MODEL 535) that are made of METAL and sew on all fabrics, Levi's, canvas, upholstery, nylon stretch, vinyl, silk. EVEN SEWS ON LEATHER! No attachments needed for button holes (any size), monograms, sews on buttons, satin stitches, darts, appliques and more. Just set dials and see magic happen without old fashioned cams or programmers. These HEAVY DUTY New Home Sewing Machines are suitable for home, professional or school room sewing. 25 year warranty. Head only. Your price with ad \$99, without this ad \$399. Check, cash, VISA/MasterCard accepted. 5 DAYS ONLY May 13-17.

**NEW HOME SEWING CENTER** 762 Kapiolani Blvd. 524-6700

Free store front parking (Mauka between Ward & Cooke St.)

**PRESTIGE TRAVEL UNLIMITED, INC.**  
1513 YOUNG ST. SUITE #102 PH 945-7400  
OPEN 7 DAYS A WEEK

INTERISLAND COUPONS		LAS VEGAS PACKAGE	
\$270	Book of 6	\$390	3 NIGTS PER PERSON/DBL
Special—Limited Offer		Free LAX Stop	
Special Limited Offer		O/W	R/T
LAX/SFO		\$149	\$217
OMAHA	R/T	LANSING	R/T
DALLAS	from \$493-	WICHITA	from \$493-
HOUSTON	\$508	ST. LOUIS	\$493-
MILWAUKEE	O/W	CINCINNATI	\$508
NEW ORLEANS	\$349	FORT WAYNE	O/W
OKLAHOMA CITY	\$349	KANSAS CITY	O/W
MINNEAPOLIS-ST. PAUL		INDIANAPOLIS	\$349
		MIAMI	R/T
		BOSTON	from \$528
		ATLANTA	
		HARTFORD	
		NEW YORK	O/W
		PHILADELPHIA	\$384
		WASHINGTON D.C.	

CALL FOR OTHER DESTINATIONS

**LIMITED ENROLLMENT!**

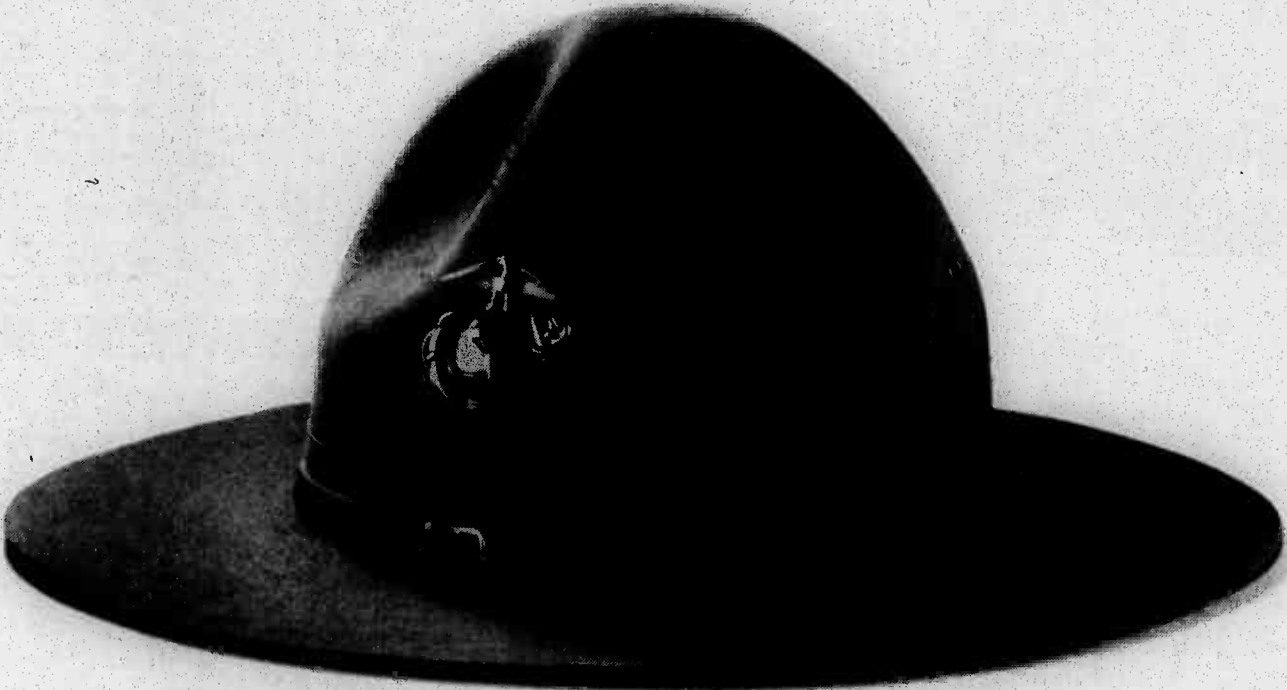
**Kailua Christian Academy**  
536 Oneawa Street Kailua

Now Enrolling Grades 7 through 12

- Balanced Academic Curriculum
- Proven Skills Development Program
- Christian Education - Small Classes

For Information Call: **261-7299**

"Providing Quality Education for the Children of Windward Oahu Since 1974"



## Getting through inspection

Being a Marine can be tough. But getting AT&T on base is easy. First, check the sign on any public

## isn't always easy.

phone to make sure it's AT&T. If it's not AT&T, or you dial and don't hear "AT&T" after the bong, hang up.

## Getting your call through is.

Then dial 10+ATT+0. You'll get all of the service you depend on. At prices you've come to expect.

## Dial 10+ATT+0

plus the area code and number.



Can't complete your call?  
Call 1 800 321-0288.  
© 1993 AT&T. Neither the U.S. Marine Corps nor any other component of the Dept. of Defense has approved, endorsed, or authorized this service.

GENTRY PACIFIC CENTER  
OPEN 7 DAYS  
PLenty of FREE PARKING

**MISSION CONTEMPORARY**

Our new line of furniture.  
Designed for today's lifestyle. Affordable.  
Exquisitely simple.



Shaker inspired. Handcrafted  
in Hawaii of koa and ash.

**Martin & MacArthur**  
DOWNTOWN AND GENTRY PACIFIC CENTER  
Gentry Pacific Center: 560 N. Nimitz Hwy. • 528-3373  
Downtown: Dexter Pacific Center • 524-4434

**Harry's Cafe**  
Serving Kailua Since 1981



**New Dinner Menu!**  
Featuring Flavors of the Mediterranean...

Fresh fish, seafood, chicken & pasta, plus lite dinner specials, sandwiches, salads & soups

**Now Serving Beer & Wine**

DINNER: Nitely 5:30-9  
LUNCH: Mon-Sat 11am-3pm

Home of the...  
**Hawaiian Quilt Collection**  
629 Kailua Road 261-2120



# Joint Military Family Abuse Shelter offers time and space to make decisions

By Fred Filbert

Crisis Driver  
Joint Military  
Family Abuse Shelter

Along the edge of an ancient glacier on the Coast of Alaska a huge mass of ice breaks off with a thunderous roar and falls into the sea with a mighty splash. After a short time it slowly settles and begins its Southward journey with only one tenth of its mass visible above water. The bulk of it remains submerged and undetectable.

The early morning telephone call from the Shelter Support Counselor is calm, with just a hint of urgency.

"We have an immediate pickup at Helemano Military Reservation Housing. A woman with one son, 4, a daughter, 2, and a daughter 11 months.

The victim's husband had left the house about 15 minutes earlier, his whereabouts unknown. She had been physically abused six times over the past year, each occasion observed by the children. Two a.m. traffic on the H-1 poses no problem. A steady 55 mph is maintained en route to Helemano. Schofield Barracks Military Police Station has been alerted and two MPs are on the scene within minutes. There is no sign of the husband and loading of passengers and baggage is accomplished without incident. In 45 minutes everyone is safely behind the shelter doors.

The most unreported crime.

It is now 3 a.m. The next calls could come at any time. As always there will be calls for help; calls to remedy a crisis situation brought on by domestic violence. It's considered the most unreported crime; an estimated six to 10 million women are abused each year by their husbands or boyfriends, yet only 2 percent of the abusers are arrested.

Domestic violence is a pattern of controlling behavior which can involve physical, sexual, economic, emotional, verbal and psychological abuse. It affects people in all socio-economic and ethnic groups—married, divorced, living together, dating or in a homosexual relationship.

In at least 70 percent of the homes where the woman is battered, so are the children. Nearly all murders of females in Hawaii are domestic violence situations. In 1991 on Oahu 23 died as a result.

Until less than 100 years ago wife beating was legal and acceptable. No shelters existed until 1970 and the mandatory arrest of abusers began only

## TRINITY PRESBYTERIAN CHURCH

Where People Care...  
and Where the Bible Makes  
Sense for Daily Living.

9:30 A.M. Bible School (for all ages)  
11:00 A.M. Morning Worship

262-8587

875 Aulou Road  
Kailua

BUY DIRECT FROM THE MANUFACTURER AND SAVE...

## Solid Gold Creations

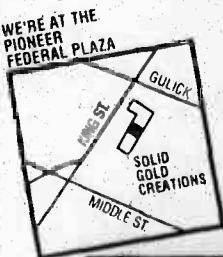
Manufacturer of Finest Handcrafted Hawaiian Heirloom Jewelry

### 4 FOR 1 HAWAIIAN SETS!

Includes Barrel Bracelet Ring,  
Pendant plus FREE 16" rope chain.

LIGHTWEIGHT	MED. WEIGHT
6 mm set \$355	6 mm set \$435
8 mm set \$425	8 mm set \$535
10 mm set \$525	10 mm set \$645
12 mm set \$605	12 mm set \$765

Sale Ends 05/15/93



COAT OF ARMS  
\$129



MEDIUM PALAOA  
\$129



CUT-OUT PENDANT  
\$179



INITIAL PENDANT  
\$179

WE CREATE JEWELRY BETTER THAN THE REST-FOR LESS!

LAY AWAY • FINANCING  
MAJOR CREDIT CARDS ACCEPTED

OPEN MON.-FRI. 9AM-6PM  
SATURDAY 9AM-4PM

2153 N. KING ST., SUITE 108, HONOLULU, HI TEL. 847-5093

recently.

Like the iceberg we are seeing only the tip, since nine-tenths is concealed under the surface.

Domestic violence affects all walks of life and the military services are no exception. Here more of the iceberg seems to be surfacing as time goes on. In the fiscal year ending September, 1992 the Joint Military Family Abuse Center received nearly 2,000 crisis calls.

This facility serves active duty and retired military personnel and their family members. The shelter provides a safe place to stay, a 24-hour crisis line, crisis intervention, supportive counseling, advocacy, transportation, services for children, information and referral, food and other necessities and time and space to make decisions. All services are free.

Why do men batter?

In most cases male abusers are convinced they have the right, most probably because they have experienced childhood battering. This can mushroom into alcohol abuse, sexual assaults and violence against children. These men tend to be extremely jealous, possessive and easily angered. Many try to limit their wives' contact with family and friends. Typically they deny that the abuse is happening and/or they believe it occurs only rarely and no one really gets hurt. Many abusive men view women as inferior and believe men are meant to dominate and control women.

Why do women stay?

Abusive relationships usually start out as loving and rewarding

to both parties. Later, after the first violence occurs, the woman is willing to believe her husband's apology and promise never to do it again. As abuse is repeated many women believe that somehow they are to blame; if they could just act differently the abuse will stop. If there are children and the woman has no other means of support, she feels trapped and her self esteem descends to its lowest level. And when the children are exposed to violence, the problem continues into the next generation. Children learn that violence is the way to handle things.

Many an abused woman is ashamed to admit what is happening, especially since the man she chose, loves and had children with, is the perpetrator. She may take responsibility for the success or failure of the marriage.

Finally, numerous battered women don't believe they can support themselves, much less their children. Other fears can keep them from leaving: Retaliation, loneliness, having the children taken away, loss of personal property and pets, fear of hurting his military career. Unable to visualize a future, they become even more passive, anxious and depressed.

Over time the abuse escalates. There may not always be physical violence, but the threat of it is enough to terrorize. For some victims the final solution is murder.

Is there an answer? Can domestic violence be tamed? Will

it ever end? Why do the icebergs continue moving through my dreams?

Their silent journey is

interrupted by the telephone, just as sleep begins to blank them out.

Station: Pickup at the MP station.

It is 11:45 p.m. Time to roll again.

Mike McKenna's

Windward Volkswagen-Isuzu

"May Special"

15%

OFF ALL SERVICE & PARTS

Does Not Apply To Specials • Expires 6-15-93 • VW & Isuzu Only

(Hazardous waste disposal and tax not included)  
Please present coupon at time of write-up.

Parts Department Open Saturdays 9-2

266-8000

105 Oneawa Street

"Keep A Great Thing Going"

Kailua

## We Are Now Accepting Applications For Your Child's Future.



If you're tired playing the waiting game with Hawaii's big high-priced private schools.

Our Redeemer is your affordable alternative to quality private education. Your

child learns in a caring, one-on-one environment from kindergarten through high-school graduation with unsurpassed preparation for college.

Before and after school care available.

NOW ACCEPTING APPLICATIONS FOR SEPTEMBER ENROLLMENT K THROUGH 4. (LIMITED ENROLLMENT AVAILABLE 5 THROUGH 12.)



Our Redeemer Lutheran School

"We care for your keiki - body, mind and soul"

2428 Wilder Avenue • Honolulu, Hawaii 96822 • Phone: 945-7765

## Hawaii's Best Luau



Paradise Cove

Military Week Has  
Been Extended To  
Military Month  
At Paradise Cove

Paradise Cove Luau For Military Forces, Related  
Personnel and  
Their Dependents, May 1, 1993 to May 31, 1993

In conjunction with the MILITARY WEEK in May, Cove Marketing, Inc. will be extending special rates for the Paradise Cove Luau to all military, related military personnel, and their dependents for the entire month of May.

MWR, Activity and Ticketing Outlets for the military.

- A Mai Tai greeting upon arrival at Paradise Cove
- Arts and crafts demonstrations
- Hukilau on the beach
- Royal court procession
- Spectacular Polynesian Revue
- Polynesian games
- Shower of flowers
- Hawaiian buffet dinner
- Free gift from the Market Place

Paradise Cove - Framed against the most spectacular sunset of any luau in Hawaii, 12 beachfront acres come alive with island games and crafts, tropical feasting and Hawaii's largest luau show.





1993 Audio/Video/Photo Fair

# Opens Today!

9 a.m. to 9 p.m. daily  
Hickam AFB, Bldg. 2035  
Now thru May 17

*(For your shopping convenience, selected items will also be available at the Schofield main store).*



**FREE**  
AAFES collectible AVP  
Fair Milk Covers  
to the first  
1500 customers  
every day.

**AAFES BX/PX**

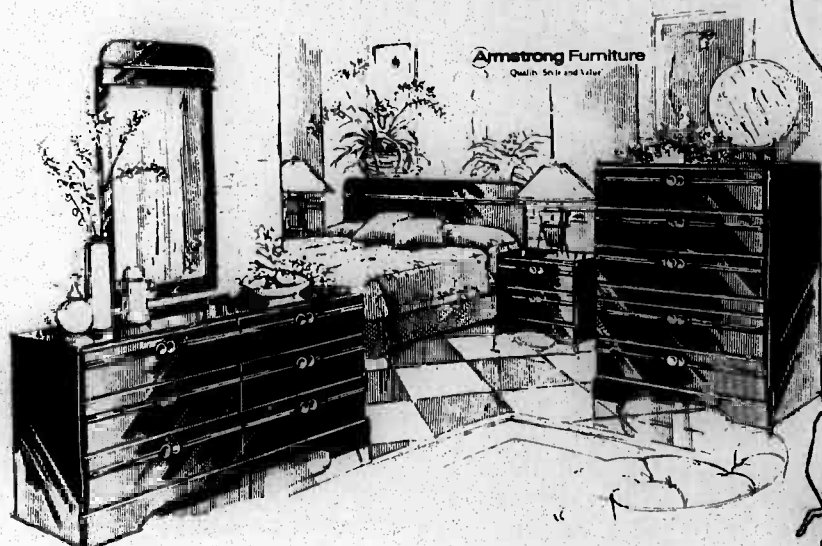
*Now is the best time to buy the newest high tech audio/video/photo equipment you've been saving for. Don't miss it!*



# A FLIGHT OF SAVINGS!

INTERIORS PLUS, PEARL HARBOR,  
RAINBOW ANNEX, BARBERS POINT  
WHILE SUPPLIES LAST!

**Have the High Style of High Gloss With Black and Brass.**



A masterpiece of contemporary design  
that's an up to date value, too.

Collection #594

**\$499**

Features: sleek, black lacquer finish accented by gleaming brass finished disks pulls and beaded banding. Five piece set includes double dresser, vertical mirror, panel full/queen headboard; and (2) nightstands. 5-drawer chest - \$120. 5 piece set.

**Armstrong Furniture**  
Quality, Style and Value™

**Charming American Country  
Affordably Priced...**



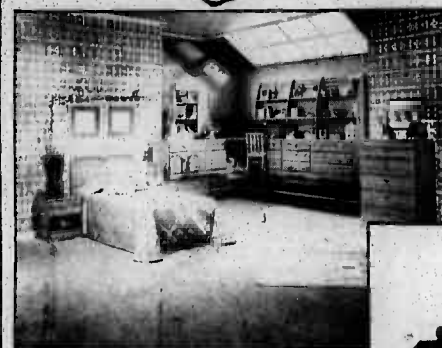
Bring the warmth of yesteryear  
into your bedroom today.

Collection #437

**\$599**

Handsome Early American collection in a medium brown finish. Five piece set includes door dresser, hutch mirror, double/queen cannonball headboard, and (2) nightstands. 5 piece set.

**Armstrong Furniture**  
Quality, Style and Value™



**Mix and Match Youth  
Correlates**  
in a Natural Fruitwood Finish.  
Collection #280

Dresser 280-135	\$105
Mirror 280-215	\$65
Chest 280-330	\$125
<b>Bunk Bed Components</b>	
280-477	\$100
280-478	\$50
280-479	\$35

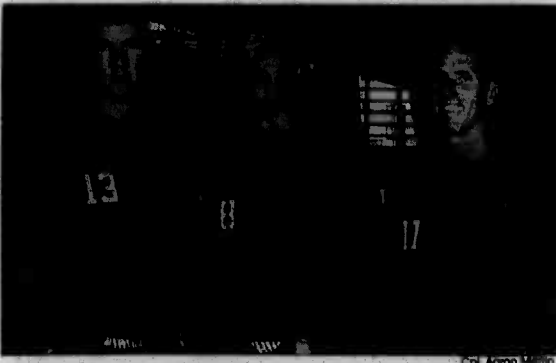
Not all items pictured are available.

**Sale Dates: 14-23 May 1993**

This advertisement was not paid for in whole or in part, by the Department of the Navy or the Navy Exchange. This advertisement does not constitute endorsement by the Navy Exchange, the Department of the Navy or the U.S. Government of the products or services advertised.







Drew Aschenbrenner, Mamona Maxwell and Scott Arnold, members of the Hawaii Marine Volleyball team, were selected to represent the Marine Corps at the All-Armed Forces Championships this week. Aschenbrenner and Maxwell as players and Arnold serving as assistant coach.

## K-Bay players to Armed Forces

By Cpl. Aaron Martin  
Staff Writer

The All-Marine Volleyball Team has established their line up for the All-Armed Forces Championship at Fort Indiantown Gap, Pa., with two Marines from here among the selections and a third serving as the assistant coach.

The Marines held try-outs at Camp Lejeune until last week when the final selections were made. Mamona Maxwell and Drew Aschenbrenner were selected to play for the All-Marine team while Scott Arnold will serve as

the assistant coach for the team. The Marines will face the Army, Navy and Air Force at the All-Armed Forces Championships this week.

This will be last time this year that a team will be comprised of every one in the same service. Following the competition this week selections will be made for the All-Armed Forces Team.

Should Maxwell or Aschenbrenner be selected they will represent the Marine Corps for the All-Armed Forces Team which will compete against other nation's military teams in an upcoming worldwide competition.

## 3/3 receives Radio's call sign



Eight of the 10 players on the floor gather inside the paint to grab a rebound in recent Over 30 Basketball League action. 3/3 rallied to beat Radio Bn., 44-36, Friday.

By Cpl. Aaron Martin  
Staff Writer

The Over 30 League of basketball had the men of 3/3 battling 1st Radio Battalion Friday which ended with a surge of scoring on 3/3's part to win by a margin of 44-36.

The game was a very tight game for the first ten minutes with scoring being exchanged basket for basket when Radio began to work their way inside the key and finding the weak spots in the 3/3 defense. With some key shots, including a three pointer with less than eight minutes left in the first half, Radio had sustained a seven-point lead which they took with them to the half, 28-21.

The second half showed Radio's lead slowly dwindle away. Fouls on the part of Radio sent 3/3 to the free throw

line many times in the second half.

The lead returned to the 3/3 squad with 9:45 left in the game and they went on to build a four-point lead, 35-31, with eight unanswered points.

Radio would not surrender and fought to get back into the game. The frustration of the Radio team began to show as 3/3 continued to shoot from the free throw line due to the fouls on Radio's part.

The game was closer than the score reflected with 3/3 winning by 44-36.

"We could have played better. Our defense in the first half was hurting," said Demetrius Cassellas, coach of the 3/3 squad. "I was worried that we wouldn't wake up and play like we can, but in the second half we came around and played well to win the game."



Second place Na Hano Hano team members Joe Larson, batting, Randy Borges, center, and Mariny Kousskouts lost to the Marines in the finals.

## Over 30 Basketball League Standings

as of May 9

H&HS	2-0
1/3	2-0
1st Radio	1-1
H&S 1st MEB	1-1
HQ 1/12	1-1
3/3	1-1
HQ BSSG-1	0-2
MWSS-174	0-2

### Results

May 3	
H&S 1st MEB, 50	
HQ BSSG-1, 43	
1/3, 40	
HQ 1/12, 39	
1st Radio, 61	
MWSS-174, 33	
May 5	
H&HS, 45	
3/3, 41	
HQ 1/12, 62	
H&S 1st MEB, 58	
1/3, 40	
MWSS-174, 39	
May 7	
3/3, 44	
1st Radio, 36	
H&HS, 58	
HQ BSSG-1, 50	

## Marines win OTL tourney

By Cpl. Aaron Martin  
Staff Writer

An Over-the-Line Softball tournament was held here Saturday with 10 teams competing in this innovative form of softball and a team comprised of Marines winning with a near perfect record.

The Rookies, comprised of Tony Sito, Lonny Dillard and Howard "Duck" Hope, all Marines based here, faced a tough and defensively strong team called Na Hano Hano, which means the "Respected Ones."

The Na Hano Hano team, comprised of Randy Borges, Manny Kousskouts and Joe Larsen proved to be worthy opponents to the Rookies who are certainly not rookies to the sport of softball.

The championship round was a low scoring game of 1-1 until the bottom of the fourth when the Na Hano Hano team exploded with eight hits and scoring six runs to take 7-1 lead.

The Rookies posted a two-run rally sparked by a home run by Sito but was not enough. The game ended with Na Hano Hano taking it 7-3.

The Rookies had not experienced a loss in the tournament while the Na Hano Hano team had lost to the Rookies earlier in the

tournament so another game had to be played to decide the tournament champion.

The second game was a close game throughout with the Rookies scoring two runs in the second on a home run by Dillard. The Na Hano Hano team would fight until the bottom of the fifth to try and rally once again over the Rookies. With three hits in the fifth they could only get one run and this gave the Rookies the championship by a score of 2-1.

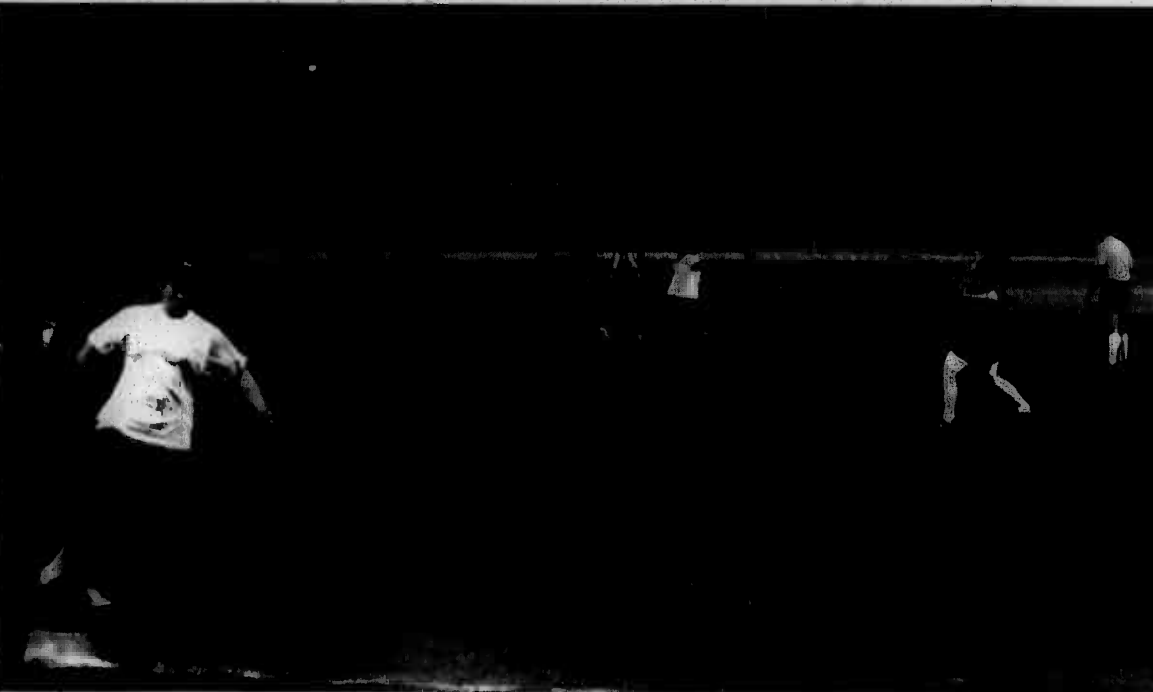
"These guys were great competitors," said Hope. "We had a really good time playing here."

Roger Bond and Greg Hudson, who hosted the tournament had hoped for more teams to participate but was not disappointed because there was a good response.

"We have had several curious onlookers stop by to see what we are doing," Hudson said. "I think this tournament allowed people to see the sport actually played and hopefully they will try it out when we hold the next tournament."

Over-the-Line softball is played three-on-three with no gloves and a 18-inch ball. The sport is popular on the West coast and there is a growing interest to the sport here in Hawaii. The recreational sport also draws a lot of interest because no running, except to catch the ball, is involved.

## Hawaii Marine women's softball team still winless



Shortstop Terri Brown, number 24, stretches to make a forced out during a Hawaii Marine women's softball game against NO Ka Oi May 6.

By Cpl. Aaron Martin  
Staff Writer

The teams were there... the umpires were there... but home plate was not. Someone had literally stolen home. This was the problem when the women's Hawaii Marine softball team was to face the No Ka Oi in a game May 6.

The start of the game was delayed while Umpire Commissioner Ed Peerenboom tried to resolve the situation. The decision was made by both teams to play with the understanding that there would be no sliding at home plate.

"This is inexcusable to show up for a game and the field not be prepared," said Mike Black, coach of the Marines. "This is the second time the fields have not been ready for play."

The fields are prepared by the Morale, Welfare and Recreation Division of the station.

"Apparently someone stole the home plate," said Miles Okamura, assistant athletic director. "Our guys had marked off the field and they couldn't do it without a home plate, so I guess someone was playing a joke or something by taking it."

When play finally began, the Marines started out the scoring with Mel Burkitt crossing the

imaginary plate after she singled and two batters followed with another single and an error taking a 1-0 lead for the only time in the game.

The bottom of first had the Na Ka Oi, which means The Best or Number One, hitting two back-to-back singles and then Diane Milner hit a ball to right, which was misjudged and allowed two runs to score while Milner stopped at third. Moments later Milner scored on a fielder's choice to give them a 3-1 lead.

The defense of the Marines struggled with several fielding and throwing errors while the Na Ka Oi poured on the heavy hitting.

The bottom of the second had the Na Ka Oi loading up the bases and chipping away at the Marine's defense. Diane Milner once again helped with the scoring by sending one deep to right, circling the bases for a three run home run. The margin was then 8-1.

The Marines staged a two out rally in the third with two singles and a three-run homer by Tina Franks to right center. The Marines continued to struggle defensively as the Na Ka Oi loaded the bases again and Bernadette LamHo drove in another run. With time running out, the Marines were unable to post a rally and the game ended with a 17-5 score.



## Religion

• In the station chapel: Catholic Mass is held Monday-Friday, beginning at 11:45 a.m.; Saturday, starting at 6 p.m.; and Sunday, beginning at 7:30 a.m. and again at 9:30 a.m. CCD classes begin Sept. 28 at the following times: Preschool/Kindergarten from 3:45-4:30 p.m. at the station chapel; grades 1-12 from 6:15 p.m. at Mokapu Elementary School. Protestant Communion takes place Sunday, beginning at 8:30 a.m. and Protestant Worship begins at 11 a.m. Hispanic Protestant Worship takes place Sunday at 6:30 p.m. A Gospel Protestant Joy Night Service takes place Friday at 7:30 p.m. Gospel Protestant Morning Worship will be held Sunday at 1 p.m. Sunday School is held from 9:30-10:30 a.m. in building 1391 for preschoolers through high school students and in the Family Service Center for adults. For more information about the station's religious services, call 257-3552.

• The 1st MEB will hold Catholic Mass, Monday and Thursday at 11:30 a.m. and Protestant Bible Study, Tuesday at 11:30 a.m. in the Brigade Chapel.

• At Camp H.M. Smith: Catholic Mass is held Sunday, beginning at 8 a.m. Protestant Worship is at 9:30 a.m. and Protestant Sunday School begins at 8:30 a.m. There is a Gospel Choir and service at 11 a.m. For more information about religious services, call 477-8098.

• Jewish services are held at the Aloha Jewish Chapel aboard Naval Base Pearl Harbor. Shabbat services take place Friday, beginning at 7:30 p.m. For more information, call 471-3971.

## Tickets

The MWR Ticket Office offers tickets and information on how to get them at special military rates. The office also takes reservations for events and attractions around the island. Call the Entertainment Hotline at 254-3304 or stop by the Marine Corps Exchange for information and reservations. The office is open Monday-Friday, 9 a.m.-5 p.m. and Saturday, 10 a.m.-2 p.m. This week's offerings include:

**Consolidated Movie Theatre**—Discount tickets cost \$4.25 and are good until December 1993.

**Military Week**—Paradise Cove Luau May 14 from 6-9 p.m. This includes Hawaiian music, arts and crafts, royal court, hula, emu ceremony, refreshments and a buffet dinner and show. Adult

tickets are \$15 and children, \$10.

**The Four Preps**—The original lead singers from The Diamonds, The Association and The Four Preps will be singing your favorite tunes from the '40's and '50's at the Outrigger Hotel until Tuesday only.

**Paradise Cove Luau**—In conjunction with Military Week, Cove Marketing is extending special rates for Paradise Cove to

all military, related military personnel and their dependents for May. The special is \$22.50 for adults and \$16.50 for children.

**Honolulu Symphony**—"Porgy and Bess" will be performed tomorrow and Saturday at the Blaisdell Concert Hall.

**Polynesian Culture Center**—Has extended their special through

May. Admission/show special is \$12.06 for resident adults, \$10.10 for resident children. Non-resident adults are \$14 and children \$11. The admission/show/buffet special for residents is \$24.56, child \$17.39. Non-resident adults are \$26.50, child \$18.30.

**Sea Life Park/Waimea Falls Park**—You can buy these tickets at a discount from your ITT office. Adults—\$8.50, Juniors—\$5.75, children (4-6)—\$2.50.

## Movies

All movies shown at the theater, building 219, begin at 7:15 p.m. unless otherwise noted. For more information, call the theater at 254-2113.

"Teenage Mutant Turtles III"



### Dynamic Duo

Reggie Sawyer holds up Teri Cordon during the Coed Posing Competition of the Hawaii Armed Forces Bodybuilding Championship held April 10 at Pearl Harbor. Sawyer also placed fourth in the Men's Heavyweight Division.

(Action/Comedy—PG; 96 minutes) plays Friday at 7:15 p.m. and Saturday at 5:30 and 7:15 p.m. The Turtles find themselves battling Samurai warriors.

"Amos and Andrew" (Comedy—PG-13; 96 minutes)

## SPORTS Briefs

### Softball league

All units interested in playing in the 1993 Intramural Softball League must have a team representative present at the organizational meeting today at 1 p.m. at the Main Gym. League play begins June 7.

### Coach needed

Active duty Marines or Navy personnel (stationed at KMCAS) interested in coaching the Women's Varsity Basketball Team need to contact the Athletic Office at 254-2516.

### Women's B-ball

All active duty women Marines and Navy personnel (stationed at KMCAS) interested in playing on the Women's Varsity Basketball

Team can call the Athletic Office at 254-2516.

### HMAC Golf

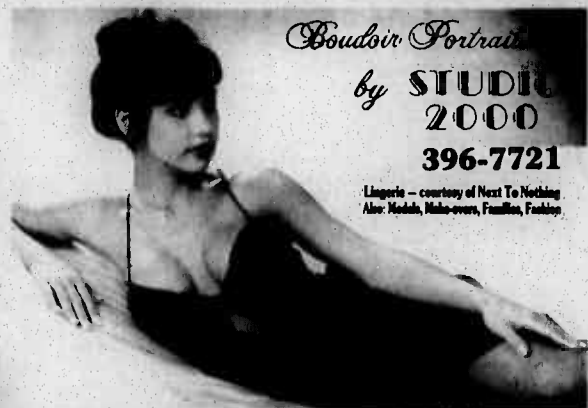
The Hawaii Marine Athletic Council Golf Tournament will be held June 3-6 and is open to all active duty Marines and sailors. Sign-up deadline for the tournament is May 21 at the Athletic office in the Main Gym. For more information, call the Athletic Office at 254-2516.

### 10K run

The Hard Rock Cafe is sponsoring a "Benefit for the Homeless" 10K run June 20. Proceeds from the race will be donated to the Institute of Human Services and the Hawaii Foodbank. Entry fee is \$18 and an application must be submitted by June 2. Late entries will be accepted at the Hard Rock Cafe until 11:30 p.m. June 18. For more information contact John Clark 254-2996.

## IF SPORTS WERE A RELIGION SPORTSTIME WOULD BE THE CATHEDRAL

COME & ENJOY  
HAWAII'S ULTIMATE SPORTS BAR  
SPORTSTIME BAR & GRILL  
1130 NO NIMITZ 545-1504



Lingerie—courtesy of Next To Nothing  
Also: Models, Makeovers, Fashion, Fashion

## Ads

### Autos

1992 Geo Metro—4-door, auto, air, stereo, white, mint condition, moving must sell; \$6,995, 254-6034 leave message.

1988 Suzuki Samurai—Convertible, 4-wheel drive, 5-spd., AM/FM radio, 43,000 miles, excellent condition, \$3,000, 235-3219.

1987 Yamaha FJ1200—Excellent condition, \$4,200 firm, Capt. Hoxley, 261-4336.

1979 Toyota Corolla Delux—2-door, sedan hatchback, good running condition, great second hand car.

### Lost

Mixed Male Lab—Sandy-brown color, 58 pounds, name is Kona and he means a lot to me, please call Sue at 254-1836.

### Miscellaneous

Lawn Mower—Must sell, 21" cut, 3.5hp, w/bag, excellent condition, very clean, \$125, 254-0187.

Shed & A/C's—Moving, must sell, 9' X 10' utility shed, \$100; 10,000 BTU A/C, \$150; 6,000 BTU A/C, \$125; new calypso BC, \$175, 254-6034, leave message.

10-Piece Living Room Set—Sectional, matching recliner/rocker, off-white, \$400 OBO, 254-1961.

1980 Moped—Runs great, fabulous mileage, asking \$350, 254-4718.

Baseball Card Collection—Classics like Mantle, Mays, Mathews, and more, promos and commons, 254-5240.

VCR & Tape Deck Fabrics—Deck needs repair, doll making

supplies, flower making supplies, 254-2789 between 3:30-7 p.m.

Carpets and Drapes—Rust-colored rug; 13'5" X 12'4", \$25, blue-colored rug; 9'4" X 10', \$15, lots of draperies, 254-5574.

Baldwin Piano—Upright, w/bench, pecan finish, moving must sell, paid \$2,000, will sacrifice for \$900, 254-6034, leave message.

Whirlpool A/C—18,000 BTU, 11 months old, 220 volt, paid \$570, asking \$425, 254-5574.

Child's Bedroom Set—Chest of drawers, mirror, book case, head board, box spring, mattress, white, \$300, 236-0605.

King Waterbed—Oak, dresser w/mirror, excellent condition, \$500 for both, 254-5262.

Miniature Schnauzer—AKC, 3 yrs. old, breedable male, super house dog, moving must sell to good home, \$400, 254-6034, leave message.

### Real Estate

Kailua Condo—2 bedroom, 2 bath, 2 covered parking stalls, cathedral ceiling, pool, appliances, close to MCAS, available May 1, \$1,250 per month, 261-1828.

El Toro Condo—2 BR, 1 BA, in Lake Forest, outstanding condition, recently painted, large country kitchen, upper unit w/balcony, near pool, 10 minutes from base, \$850 per month, call David or Martha at (714) 587-9420.

### Yard Sales

Saturday—1838 Harris Ave., KMCAS, 8 a.m.-noon, moving sale, furniture, children's toys and clothing and other misc. items.

Saturday—2511-B, Lawrence KMCAS, 8 a.m.-2 p.m., women's clothes, car seat, crib, children's toys and clothing and other misc. items.

## FAST EDDIE'S NIGHTCLUB

presents

The California Dreams



SUNDAY MAY 16 9PM MONDAY MAY 17-9PM 21 Years & Older ID Required

52 ONEAWA STREET, KAILUA 261-8561

Do it  
out of respect  
for the dead.  
And the living.

THE AMERICAN HEART  
ASSOCIATION  
MEMORIAL PROGRAM  
WE'RE FIGHTING FOR YOUR LIFE  
American Heart Association  
This space provided as a public service.

## 66 I KNEW SHE COULD DO BETTER. AND SHE USED HER SUMMER TO PROVE IT. 99

How can you help your child turn C's and B's into A's? Bring her to Sylvan Learning Center. We offer a special program to help students study better. Your child will learn how to manage time better, how to set and meet goals, and more. This is accomplished with customized learning programs that include lots of individual attention, motivation and rewards. So, for the learning skills that will help your child now and throughout her life. Sylvan® is the answer.

Take the first step.  
Call Sylvan today! SYLVAN SHOWED US HOW.



Sylvan Learning Center  
Helping kids be their best.

WORLD BOOK DISTRIBUTOR

♦ FOR MORE INFORMATION, PHONE 263-6656 ♦

## KAILUA

Behind TCBY  
56 Oneawa Street, Kailua  
Corner of Oneawa & Uluniu

Here's  
my Card!

Windward  
Business &  
Professional  
Services  
Directory



HUGE SELECTION OF FANTASY,  
HISTORICAL, & SCI-FI  
• MINIATURES • GAMES  
• MODELS • FEATURING HAWAII'S  
SERIES 77 MINIATURES\* • COMICS  
• CARDS • PLUSH TOYS & GIFTS

4510 SALT LAKE BLVD. 487-3426  
STADIUM MALL NEXT TO ICE PALACE

20% OFF ALL  
GAMES

WITH THIS COUPON. EXP. 5/21/93



ALOHA WELCOME SERVICE  
254-5413

- Community Information
- A Complete Map of Your Area
- Gifts & Discounts from Local Merchants

FREE to new residents — with a warm ALOHA!

### Welcome!

If you have moved to  
Kailua, Kaneohe or K.M.C.A.S.  
within the past year, call

RESOLUTION 1993:  
Positive Change

TRY HYPNOSIS  
FOREVER TRIM! A Life  
Changing Weight Control  
Program.

FOREVER FREE! A  
Guaranteed Stop Smoking  
Program.

CALL FOR FREE CONSULTATION APPT.  
JOHN DAUGHTERS, M.S.  
Certified Hypnotherapist



JOHN DAUGHTERS, M.S.  
261-9111

A COUNTRY TREASURE  
"Kailua's little country gift store"  
U.S.A. Crafted  
gifts & decorative accessories  
Quilts, Cards & Collectibles  
Open 7 Days  
315 Uluniu St., Kailua Square, Kailua  
262-4344

Beneficial Equestrian Ventures  
(B.E.V.) is a small business whose  
mission is to promote  
horsemanship education and  
therapy as an artform and  
science. Located in beautiful  
Waianae we service all ages  
and ethnic groups.



- Milkcaps
- Beginners welcome
- Beginning training for horses

For information or appointment

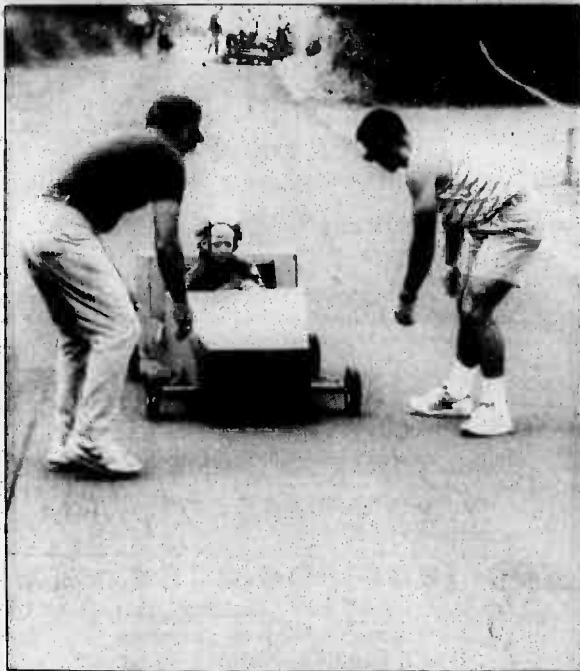
Bev or Van  
259-6509





Cub Scouts from Pack 225 go over last minute details preparing for their derby.

Sgt. K.H. Hart



One scout from Pack 225 crosses the finish line as a couple Dads prepare to stop the car.



The flames on the side of this soapbox must have provided too much speed for this scout as he loses control.

Sgt. K.H. Hart

# Pack 225 test skills at Soapbox Derby Day

By Joint Public Affairs Office

It may not have been the Indianapolis 500, but to the Cub Scouts of Pack 225, it was just as big — it was the Pack's annual Soapbox Derby. The station Cub Scouts worked for several weeks building their cars and getting them into the optimum running condition, then put their cars on the road May 1 to see which Den did the best on their car. Dens 1, 3 and 4 raced their cars down the hill on Palikilo Road, located across the runway, for top honors. Although having fun was one of the goals of the derby, the Cub Scouts also learned a lot about teamwork. In addition, the kids, with the help of their leaders and parents, learned from building the cars. At the end of the day May 1, it appeared that Den 4 had built their car a little better as they drove away with top honors.

### A & P License

100% Guaranteed  
Live Classroom Instruction  
No Video/Self Study Formats  
O & P Brief Included  
Job Placement Assistance  
1-800-627-5557  
Endorsed by  
Air Transport Workers Union 1781  
Chuck Trebino's

American Diabetes Association

### SHIRLEY DEVARIS

Attorney at Law

**Divorce**  
•Low fees for uncontested  
•Support •Custody •Visitation  
**GENERAL BUSINESS LAW**  
•International Transactions  
•Business Organizations  
•Dispute Resolution

**FREE INITIAL CONSULTATIONS**

Evening and Weekend Hours      Member ABA and ASIL

970 N. Kalaheo Ave., #C-210, Kailua      **254-3345**

## JCPENNEY STYLING SALON

### BE BOLD.

Brighten your future. Make a bold move with professional hair coloring from JCPenney. For a limited time, our 20% OFF\* sale makes it easier than ever.

**OPTICURL PERM**  
Reg. \$68. Sale \$54.  
Price includes haircut, shampoo and style. Long hair and design wraps extra charge.

\*Savings off regular price. Check with your local salon for details. Sale prices effective Sun., May 16 thru Sat., May 22.

WINDWARD SALON ONLY  
SCULPTURED NAILS  
ACRYLICS—FULL SETS  
Reg. \$50  
GELS—FULL SETS  
Reg. \$60

ONLY \$35  
ONLY \$45

OPEN SUNDAYS  
FOR YOUR CONVENIENCE  
WINDWARD: 235-4224

### A WHOLE NEW LOOK

## Fashion Dream Shots

### GRADUATION SPECIAL

**\$19.95 (Sitting fee) CAP AND GOWN PLUS 1 CASUAL LOOK (Bring your own cap and gown)**

**Picture Package Special includes:**

- 2- 8x10 \$74<sup>95</sup>
- 4- 5x7 (Savings of 136\* over our regular low prices).
- 24-wallets

**Gift Certificates Available**

**Photo Session Includes:**

- Makeover & Hairstyling
- Cap & Gown Plus One Casual Look
- High Fashion Photo Session
- Photography Sold In Packages

**Call for more information!**  
**449-1568**

Expires 1 June 1993

Hickam Arts & Crafts Center • 335 Kuntz Avenue, Hickam AFB  
Portraits are available in a variety of sizes/dollar amounts and are back in about a week for proof review

## Quit smoking.

WE'RE FIGHTING FOR YOUR LIFE

American Heart Association

## MILITARY TRAVEL CENTER

**INSTANT RESERVATIONS**

**MILITARY FARES**

**SERVING ALL MILITARY BASES**

**LOWEST DISCOUNT PACKAGES**

**FREE TRAVEL PLANNING**

**WE SERVE ALL FAMILY MEMBERS**

**WE HANDLE:**

- MAINLAND
- INTER-ISLAND
- INTERNATIONAL

**We understand Military needs and will save you money!**

**OPEN 7 DAYS A WEEK**

**AIRPORT 836-0000**

## Island ODYSSEY TRAVEL

### LOWEST FARES

**WE SELL IN LARGE VOLUME AND PASS THE SAVINGS ON TO YOU.**

- Instant Reservations
- Quick Airport Service
- Discount Packages To All Major West Coast Cities
- Ski Package Specials
- Senior Citizen Discount Travel
- Fully Computerized
- Kamaaina Discounted Fares
- Business Travel Service
- All Major Credit Cards

**LOWEST FARES - QUALITY SERVICE OPEN 7 DAYS**

**WAIKIKI 924-8888**

**AIRPORT 833-2111**

## NEW BUS SERVICE

New **TheBus** Downtown **Express** Service Starting Monday May 17, 1993 by Gray Line Hawaii!

**Route 101 -Ewa Gentry**  
**Route 103 - Waikale**

City **TheBus** fares will apply:

For information regarding bus routes and schedules please call, **TheBus** Information at 848-5555.

**Route 102 - Kapolei**  
**Route 104 - Mililani Mauka**

If you have any complaints regarding the operation of the above service, please call Gray Line Hawaii at 836-2669 or the Honolulu Public Transit Authority at 523-4445.

AM Eastbound				PM Westbound			
Route 101 Ewa Gentry	Ft Weaver & Kolowaka 5:00 6:00	King & Beretania 5:40 6:40	King & Punchbowl 5:50 6:50	Route 101 Ewa Gentry	Alapai Terminal 4:15 5:00	Vineyard & H-1 4:27 5:12	Ft. Weaver & Kolowaka 5:10 5:55
Route 102 Kapolei	Kowelo Street 5:40 6:10	King & Beretania 6:35 7:00	King & Punchbowl 6:45 7:10	Route 102 Kapolei	Alapai Terminal 4:20 5:10	Vineyard & H-1 4:32 5:22	Kowelo Street 5:18 6:07
Route 103 Waikale	Paiwa & Lumaina 5:45	King & Beretania 6:35	King & Punchbowl 6:45	Route 103 Waikale	Alapai Terminal 4:45	Vineyard & H-1 4:57	Paiwa & Lumaina 5:28
Route 104 Mililani Mauka	Meheula & Ainalakua 6:00	King & Beretania 6:40	King & Punchbowl 6:50	Route 104 Mililani Mauka	Alapai Terminal 4:50	Vineyard & H-1 5:02	Meheula & Ainalakua 5:45

*Schedule may change, due to modifications and reasons beyond our control.*

### Honolulu Public Transit Authority



## SPICE of life!

**Editor's Note:** *Spice of life* is a column for military spice (plural of spouse). You are invited to write to Maggie with any questions you have concerning military life. Please address your letters to: Commanding Officer, MCAS (Hawaii Marine, Spice of Life), Box 63003, MCAS Kaneohe Bay, HI 96863-3003.

**Dear Maggie,**  
I was driving through Housing during the morning last week and there were all kinds of sprinklers going. Isn't there a rule about watering? Why aren't these people being cited?

RV

**Dear RV,**  
You're right. There IS a rule about watering on base. If you live in an EVEN numbered house (ending in 2,4,6,8 or 0), watering is on Monday, Wednesday and Friday. If it's an ODD numbered house (1,3,5,7 or 9), then you should water on Tuesday, Thursday, and Saturday. Watering should only be done between the hours of 3 p.m. and 7 p.m.

Water is a precious resource on Oahu and we should all do our best to conserve it. Wasting it is wrong and very expensive. This base is spending over \$700,000 per month for utilities and has been attempting to educate all hands to conserve. Watering your lawn during the heat of the day is pointless. The moisture just evaporates

and the grass burns. It's better for the lawn to do it in the afternoon, when the sun is going down.

As to the problem of citing the abusers, I can only say that the housing office has inspectors looking for abusers, and they'll investigate if you call them. You might like to organize a neighborhood "watch". You should be able to find people who are more than willing to help. If the problem is a major one, you might try Neighborhood Quality of Life Board. They have the ear of the Base Commander (who also pays the water bills!). Hope this helps.

Maggie

**Dear Maggie,**  
Are employees at the PX exempt from the dress code? I

was in the exchange last week and there was an employee in spandex pants and a fishnet top that didn't leave anything to the imagination. Why do the customers need to dress up, but not the employees?

Miffed

**Dear Miffed,**  
Fishnet and spandex? That's an interesting combination. I spoke to the assistant manager of the exchange and asked her your question. Her answer was that there IS a dress code for the exchange, but it varies by the job. Sales people are required to wear business-type clothes and adhere to the same standards as the customers. The cash cage people have another standard which allows them to dress more casually, but still within the "customer"

standards. Stock people have a much more liberal code. The problem, of course, is that stock people are frequently on the floor filling shelves and pricing merchandise. This is probably one of the folks you saw.

The assistant manager was concerned about your perception, however, and plans to take look at the problem. She said spandex are never permitted on anyone. She also thanks you for your comments and hopes that the folks with concerns about the exchange will put them in writing and drop them in the box near the cash cage. Everyone of the letters are read and acted on, if possible. You'll get a phone call or a letter on any complaint made.

Maggie

## Clip-n-Save PAT'S CARPET CLEANING

FLAT RATE!

- Condo \$65
- Car \$75
- Townhouse \$85
- House \$99
- Upholstery

Everyday Low Prices!

247-4274

## OBSERVE THE WARNING SIGNS.

If you have chest pain lasting two minutes or more, see a doctor.

**American Heart  
Association**

© 1992, American Heart Association

## Corner Education

### Kalaheo High School

**Transferring Students:** Parents of students not planning to return to Kalaheo High School in September should come to room 2 at the school at least two weeks prior to the last day of school (June 9) to sign a Request for Release form. Students may bring this form home for parents to sign.

The school office remains open all summer. If parents receive transfer orders after the last day of school, please come in to sign the Request for Release form as soon as possible.

**Final Report Cards:** All students should bring a stamped self-addressed envelope to their period 1 teacher. The school will then mail home the final report card. Report cards not mailed home can be picked up by parents June 21-22 at the school office from 8 a.m.-noon.

## Club Scene

### Enlisted Club

The Windward Enlisted Club now features an all-ranks hot lunch in the newly-remodeled Tun Tavern. It's the place for a fast, filling and economical meal in a pleasant, air-conditioned atmosphere.

Every Wednesday night, the Enlisted Club features some of the best chow and Country Western music this side of the Brazos. Boots, cowboy hats and jeans are the proper uniform for Western Night, which begins with a cook-your-own-steak buffet from 5:30-9 p.m. Included are all-you-can-eat baked potatoes, vegetables, salad bar and rolls for just \$7.95 (Top Sirloin or N.Y. Strip) \$8.95 for T-Bone. Then two-step the night away with live music from one of Oahu's hottest C&W bands, Straight Shot, from 8 p.m.-midnight.

### Staff Club

Come dance the night away, tomorrow, with your favorite DJ music brought to you by Fabulous Woody. Fabulous Woody will "rock your socks off" until the wee hours of the morning.

Tired of eating at the "same old places" day after day? Check out the lunch buffet at the Staff NCO Club. The lunch buffet includes your choice of three daily specials with all the fixings for only \$5 (members), \$6 (non-members). All ranks welcome.

### Officers' Club

The Officers' Club welcomes a new chef, Tim Sawamura. Sawamura has over 30 years of experience, with recognition awarded in the areas of sauce and soup preparation and creative menu innovations. In addition to owning/operating his own restaurant, Sawamura has experience with the Queen Kapiolani Hotel, Hilo Hawaiian, John Dominis and Canlis Broiler.

The Officers' Club will be alive with aloha during the Aloha Auction, May 29 at 5:30 p.m. Join members of the Officers' Wives Club for an evening of Polynesian Pupus and Chinese-style auction. This is your chance to bid for Hawaiian, Polynesian, Oriental items and a host of miscellaneous items. Reserve your space by May 22 by calling 254-1544.

## 2ND ANNUAL KMCAS 5K RUN FOR NAVY/MARINE CORPS RELIEF SOCIETY OPEN TO THE PUBLIC!



**Saturday, May 29, 1993 • 7:00 am**  
5-kilometer course starting and ending at Dewey Square on MCAS, Kaneohe Bay

**Entry Fees:** \$15.00 (with T-shirt) per runner and \$9.00 (without T-shirt) if received by May 22, 1993 • Late Entries: \$18.00 (with t-shirt) and \$12.00 (without t-shirt) for entries received after May 22, 1993 (T-Shirts are 100% cotton, and will be distributed to all entrants in race packets.)

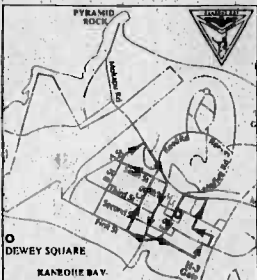
**Drop off applications at the Main Gym, Bldg. #3037, or mail to:**  
2nd Annual KMCAS 5K Run Make checks payable to:  
Box 63062, Kaneohe Bay MCAS HI 96863-3062 2nd Annual KMCAS 5K Run

**Check In:** Racing numbers and course layout will be distributed at the Kinohi Bay Marine Corps Air Station Main Gate Pass & ID parking lot from 11:00 am to 1:00 pm on Thursday, May 27 and from 3:00 pm to 7:00 pm on Friday, May 28, 1993. Numbers will also be available on race day at Dewey Square, but don't get caught in long lines a few minutes before the start of the race.

**Awards:** There will be awards for the first three males and females in the following divisions: Elite, Age Groups (19 and under, 20 to 24, 25 to 29, 30 to 34, 35 to 39, 40 to 49, 50 to 59, and 60 plus in each category). Clydesdale (entrants over 200 lbs.). For those who enter this optional division, weigh-in will be at 6:30 am on race day. Baby Stroller Division. This division consists of persons pushing baby strollers/buggies. Awards Ceremony to be held at approximately 8:15 am at Dewey Square.

**Formation Teams:** There will be competition for formation teams of twelve or more runners. The only rule is that the teams must finish with a minimum of twelve runners in formation. Send in a package with one application for each runner on your formation team. Write your unique team name on the bottom right corner of each application.

For More Information call Capt. Joel Baker at 257-2171 or Cpl. Keith Johnson at 254-5566.



### 2ND ANNUAL KMCAS 5K RUN

NAME \_\_\_\_\_ LAST \_\_\_\_\_ FIRST \_\_\_\_\_ MI \_\_\_\_\_

ADDRESS \_\_\_\_\_

CITY \_\_\_\_\_ STATE \_\_\_\_\_ ZIP \_\_\_\_\_ PHONE \_\_\_\_\_ HOME \_\_\_\_\_ WORK \_\_\_\_\_

SEX ☐ MALE ☐ FEMALE ☐ OTHER ☐ AGE ☐ 19 & UNDER ☐ 20-24 ☐ 25-29 ☐ 30-34 ☐ 35-39 ☐ 40-49 ☐ 50-59 ☐ 60+ ☐ T-SHIRT ☐ YES ☐ NO

AGE ON MAY 29, 1993 \_\_\_\_\_ ☐ CLYDESDALE DIVISION (200+ LBS.) ☐ BABY STROLLER DIVISION

IN CONSIDERATION OF THIS APPLICATION BEING ACCEPTED, I, THE UNDERSIGNED, INTENDING TO BE LEGALLY BOUND HERETO, FOR MYSELF, MY HEIR, EXECUTORS AND ADMINISTRATORS, WAIVE AND RELEASE ANY AND ALL RIGHTS AND CLAIMS FOR PERSONAL INJURY, INCLUDING DEATH OR PROPERTY LOSS, I MAY HAVE AGAINST EACH OFFICIAL, VOLUNTEER AND SPONSOR, OR THEIR DESIGNEES OR AGENTS, RESULTING FROM INVOLVEMENT IN THIS EVENT.

SIGNATURE OF RUNNER (PARENT OR GUARDIAN IF UNDER 18) \_\_\_\_\_

## Learn Jewelry Making 2 Courses Available



**CLASS #1**  
•Pine Hawaiian Heirloom Jewelry

**CLASS #2**  
•Casting, Wax Carving & Mold Making

**CLASSES BEGIN IN 2 WEEKS!**  
Limited Openings  
Call Today!  
239-7204

## Dunn & Dunn Attorneys at Law A Law Corporation

- Low Uncontested Divorce
- Bankruptcy
- Low Uncontested Adoption
- Car Accidents & Deaths

OPEN EVENINGS & SATURDAYS

HONOLULU:

841 Bishop Street, #450  
Ph. 524-4529

AIEA/PEARL CITY:

98-1247 Kauhuanani St., 212  
Ph. 487-8464

**Greg T. Dunn**  
Former Military  
JAG Attorney

**A&P-I.A. RATINGS**  
CLASSES START AUG. 16  
HONOLULU, HI

- 100% Guaranteed
- Day & Night Classes
- 4-6 Days

✓ **NEW!! FCC HOME STUDY VIDEO COURSE \$249**

AVIATION GROUND SCHOOLS OF AMERICA  
— Call Now to Register —

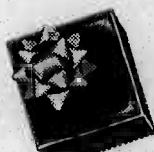
**(800) 345-2742 • (916) 346-6792**

## We do it all.... wrap it, pack it, ship it!

- Custom Packing  
Includes carton, packing materials, sealing tape & labels.
- Gift Wrapping  
Includes box, paper and ribbon
- All Shipping Services  
• Federal Express  
(Domestic & International).
- U.P.S. (Domestic & International)
- Postal



For...  
Weddings  
Father's Day  
Birthdays  
Graduations  
Special Occasions



## THE POSTAL CONNECTION of KAILUA

MON-FRI: 7am-7pm

SAT: 8am-4pm

Aikahi Park Shopping Center

25 Kaneohe Bay Drive, Kailua

**254-5094**

## USE A LITTLE RESTRAINT WITH YOUR KIDS.



Sometimes you just gotta put kids in their place. And when you're on the road, that place is buckled in their own safety belts, and firmly. Do this, and your kids will be more than ready for the long road ahead of them.

**YOU COULD LEARN A LOT FROM A DUMMY.  
BUCKLE YOUR SAFETY BELT.**

A Public Service of  
This Publication

For more information call the Acting & Child Safety Helpline (800) 474-9393

U.S. Department  
of Transportation



# Family fun

## Young American Bowling Alliance league begins

By Cpl. Aaron Martin  
Staff Writer

Some sports are seasonal and occupy young peoples' time for the same portion each year, but one sport that youth can participate in throughout the year regardless of the weather is bowling.

Youth bowling is alive and well here. The youth, ranging from five years to high school graduates participate in the Young American Bowling Alliance league every Saturday morning.

Jim Bensman, who is the league organizer, came to the station in 1989 and saw the league with little participation and virtually no parent participation.

"When I first got here I decided to upgrade the quality of the youth league. I wanted to stimulate the interest in bowling and also make it more family oriented," Bensman said. "I wanted to do this for the kids and give something back to bowling because it has meant a lot to my life."

One of the first steps was to get the parents involved. Bensman helped initiate a program which parents could serve as certified coaches to the youth.

Susan Babcock has attended the eight-hour course and enjoys working with the young people who want to learn how to bowl.

"I got so much out of the course when I went. They made us bowl and do everything with our opposite hand so it was like bowling for the first time," Babcock said. "As a coach, I try to encourage the kids with a positive attitude. This is such a good family sport and it can encourage some fun competition between family members."

The need for more trained coaches is great. Many of the

coaches are covering two and sometimes four lanes in instructing the bowlers.

"I am so tired after the morning league because I work with so many different individuals, but in the end it is very rewarding," Babcock said.

The league officials are pleased with the level of participation the league is having.

"This is a big league even for the summer months. A lot of kids are playing baseball and other sports but we have had a good turnout this summer," said Janis Botelho, who serves as one of the league officials. "The kids seem excited to be here and are doing well."

The attendance of parents is encouraged for moral support in a positive way. The youth enjoying hearing encouraging words from mom or dad or just cheering them on after a strike.

"This is first time that Eddie has ever bowled and he is really doing good," said Ed Agans, Eddie's father. "I am really proud because his average is steadily improving."

The league also features some special bowling days. One of the days the youth look forward to is when they bowl against their coach. Parent day also provides for a fun event.

The league officials and coaches are full of care and concern for the youth. The need for young people to have productive entertainment and learn more about a family oriented sport is one of the main goals of the league.

"If we have a kid who really desires to learn how to bowl," said Bensman, who will retire in June and remain here working with the league, "we will teach them."



Cpl. Aaron Martin

Young bowlers like the sport, some for fun, others are serious as the concentration was apparent on some faces.

## Youth K-Bay bowlers perform well at nationals

By Cpl. Aaron Martin  
Staff Writer

The National Junior Bowling Championships held April 9-11 at Schofield Barracks had four K-Bay youths placing in the tournament.

The tournament, known as the Coca-Cola Tournament, brought youth bowlers from Oahu and some of the other Hawaiian Islands for the championship.

Angela Greiger took first place in the Juniors (ages 12-17). Lane Greenblatt took fourth, and Andrea Bedford finished in fifth place in the Prep (age 9-11) Division. Kyle Ross placed fourth in the Bantam (ages 5-8) Division.

"Our kids bowled very well in the tournament and showed a lot of potential," said Jim Bensman, who is the league organizer for youth bowling here. "They have definitely made us proud with their performance."



Cpl. Aaron Martin

One way to get the ball down the lane is using both hands and giving it a big toss!



Cpl. Aaron Martin

### PALI PALMS DENTAL CENTER DENTAL SERVICES

General Dentistry • Preventative and Restorative Dentistry  
Cosmetic and Esthetic Procedures

INSURANCE ACCEPTED: HDS, HMSA, Delta Dental Services (Military),  
Hawaii Dental Health Plan

Dr. Derek Ichimura, DMD  
Office: 254-6694  
970 N. Kalaheo Ave., A-108  
Kailua, Hawaii 96734

Dr. Alan M. Yugawa, DMD  
Office: 254-6477  
970 N. Kalaheo Ave., A-108  
Kailua, Hawaii 96734



\*\*\*\*\*  
\$ **NEED CASH** \$  
\$ **QUICK?** \$  
\$ REPAY OVER 6-18 MONTHS \$  
\$ **SPECIALISTS IN** \$  
\$ **MILITARY LOANS** \$  
\$ **UP TO \$4000** \$  
\$ **623-3838** \$  
\$ **24-HR. HOTLINE** \$  
\$ **NO ADVANCE FEES** \$  
\$ **NO POST DATED CHECKS** \$  
\$ **MILITARY LOAN** \$  
\$ **SERVICES CO.** \$  
\$ A DIV. OF SECURITY MORTGAGE SERVICES CO. SOME \$  
\$ **RESTRICTIONS APPLY** \$  
\*\*\*\*\*

**Suzie's**  
**HAWAII'S**  
**DIFFERENT**  
**ADULT STORE**

Comfortable shopping  
for you and your  
wife and friends

Open Daily  
8 a.m. - Midnight

All categories of adult items  
Video Sales & Rental  
Mags, Books, Leather, Lingerie, Kama Sutra, etc.

Aleia Shopping Center  
Second Level  
**Phone**  
**486-3103**

### NON-STOP TRAVEL

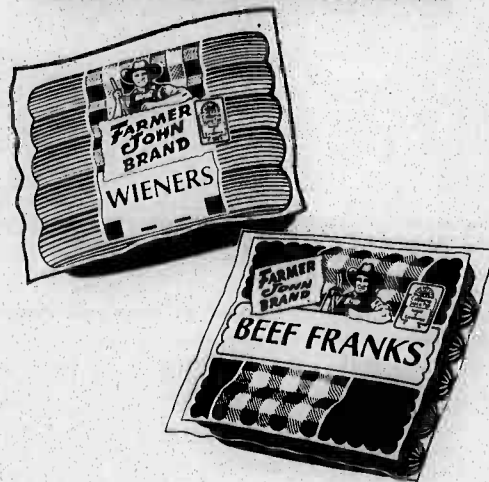
	ONE WAY	ROUNDTRIP
<b>SFO</b>	<b>\$99</b>	<b>\$229</b>
<b>LAX</b>	<b>\$149</b>	<b>\$249</b>
<b>Phoenix</b>		<b>\$367</b>
<b>Dallas</b>		<b>\$559</b>
<b>Reno</b>		<b>\$357</b>
<b>Las Vegas</b>		<b>\$367</b>
<b>Chicago</b>		<b>\$533</b>
<b>New York</b>		<b>\$538</b>
<b>Orlando</b>		<b>\$579</b>
<b>Manila</b>		<b>\$769</b>

**CALL US FOR  
BARGAIN  
FARES FROM MOST  
MAINLAND CITIES  
ONE WAY OR  
ROUNDTRIP**

**SERVING ALL ARMED FORCES  
SPECIAL MILITARY  
RATES AVAILABLE**

**CALL 946-1484**  
711 KEEAUMOKU STREET • SUITE 209  
NEXT TO THE LIKELIKE DRIVE-IN  
FREE VALIDATED PARKING  
CERTAIN RESTRICTIONS APPLY. TA #1078

## Memorial Day Winners



MANUFACTURER'S COUPON

EXPIRES AUGUST 31, 1993

**30¢  
OFF**

**FARMER  
JOHN.**

Your Choice • 1 lb. pkg.  
Beef Franks or Meat Wieners

This coupon good for purchase of 1 package of product indicated. Any other use constitutes fraud. Coupon not transferable. Limit one coupon per package. RETAILER: To receive payment, send this coupon to Farmer John, CMS Dept., 50500, 1 Fawcett Drive, Del Rio, Texas, 78840. You will receive face value plus 8¢ handling when you redeem in accordance with terms of this offer. Cash value 1/20¢. 93-0143

Pull out your Blue Suede Shoes  
and get set  
to give your best  
Hound Dog look  
and sound for the....

## ELVIS KARAOKE CONTEST

Being held in conjunction  
with Big Brothers/Big Sisters  
of Honolulu 1st Annual  
Movie Premiere Fundraiser  
"A Touch of Hollywood"

A Re-Premiere of Elvis Presley's  
"Blue Hawaii"

with Celebrity Host, ☆ Jeffrey Meek ☆  
Star of the island-based television series, Raven

☆☆☆ Karaoke Military Semifinals ☆☆☆

Monday, May 17, 1993 • 9 p.m.  
Aloha Lightning NCO Club  
Schofield Barracks

Thursday, May 20, 1993 • 9 p.m.  
Hurricane Club  
Schofield Barracks

Semifinal winners will be picked up by limousine and taken to the FINALS at the Cast Party  
following "A Touch of Hollywood" • Monday, May 24, 1993 • Neal Blaisdell Concert Hall

**GRAND PRIZE** ☆ Viva! Las Vegas ☆ A trip for two to Las Vegas, Elvis Presley's Second Home

Semifinals at Schofield Barracks open to all ☆ No entry fee

Call 624-2230 for more information and rules

MWR



# THE CLASSIFIED INDEX

**Telephone Service**  
235-5656  
Mon.-Fri. 8 a.m.-5 p.m.

**Counter Service**  
45-525 Lulu  
Kaneohe  
Mon.-Fri. 8 a.m.-5 p.m.

**Deadlines:**  
Line Ads due by 12 Noon - Tuesday  
Class Display Ads due by 4:00 p.m. Friday  
CANCELLATIONS & CORRECTIONS due by 12 Noon-Mon

Important Information  
Please check your ad on the first day and bring any error to the attention of Classified immediately. RFD Publications assumes responsibility for errors in copy for the first insertion only, and any adjustments or credit will not exceed the value of the ad. The publisher assumes no further liability and the advertiser expressly waives any and all claims of consequential damages due to errors. RFD Publications cannot assume responsibility for the claims or performance of advertisers.

**ALAN V. EDMUNDS**  
ATTORNEYS AT LAW  
NEED A CALIFORNIA ATTORNEY?  
DIVORCE  
CONTESTED & UNCONTESTED  
CHILD CUSTODY & SUPPORT  
MILITARY LAW  
ADMINISTRATIVE DISCHARGE, MEDICAL  
THE ARMY, NAVY, MARINE, AIR FORCE  
MILITARY GOVERNMENT, MILITARY  
CIVILIAN MATTERS  
1-800-995-0392

**0 Free Bees**  
FREE PAIR OF ZEBRA  
Finches to go home  
w/age cage \$24.10  
FREE Punt, Gentle,  
playful, female Terrier, 1  
yr. Med. size. Needs  
permanent loving home.  
668-7222.

**4 Health & Fitness**  
DIET MAGIC: HERBAL  
products, all natural,  
chemical free. 395-7203.  
MESSAGE SPECIALIST  
for You. Low rates. Free  
counseling. 951-8330.  
MIRACULOUS SHARK  
CARTILAGE As seen on  
TV. Arthritis? Gout?  
Cancer? Diabetes? Emily  
Carter. 537-1174.

**REPROGRAM NEGATIVE BELIEFS**  
Hypnotism. Break old  
patterns. Improve  
performance. Free phone  
consultation. Gary  
Carter. 239-8526.  
STOP PAYING \$1. PLUS  
a gallon for bottled  
water. For better quality  
water at 2¢ a gallon. Call  
Bill & Jane. 254-3896.  
Please leave message.

**10 Cemetery Plots**  
DIAMOND HEAD Memorial  
Park plots. \$6000  
each. Call 238-1829.  
VALLEY OF THE TEMPLES  
6 plots. Eternal Love  
\$1200 each. 537-6801.

**15 Announcements**  
A GUARANTEED 8%  
for your pension plan for  
next 15 years. Fully  
secured. Call 263-9900.  
ADVERTISING  
STANDARDS  
Advertising published in  
the Sun Press and  
MidWeek papers is  
accepted on the premise  
that the advertiser  
willingly sold to  
customers at the  
advertised price.  
Advertisers are aware of  
these conditions.  
Advertising that does not  
conform to these standards  
or that is deceptive or  
misleading is never  
knowingly accepted. If  
any reader encounters  
non-compliance with  
these standards, we ask  
that you inform us.  
CLASSIFIED  
ADVERTISING  
235-5656  
or  
BETTER  
BUSINESS BUREAU  
942-2355

**NEW! UNIQUE!**  
MAGNETIC BIT MULTI-  
DRIVER 16 Bits. Easy To  
Use. You View. Select.  
Place Bit in 3 sec. Good  
for Any Job. Great Gift.  
All occasions. Life-Time  
GUAR. Free details: ARC  
2 250 H St. 8110-230,  
Blaine, WA 98230.

**20 Lost & Found**  
FOUND mature female  
dog, 600 block on N.  
Kaneohe, 5/11, 262-9573.

**25 Personals**  
BACKYARD PARTY Tent  
20 x 20 or 30 x 30, rental  
& sale. Call 737-9662.

**PSYCHIC**  
BEVERLY LYONS  
Spiritual  
Counseling  
Phone 531-2508

**DIVORCE**  
Serving Oahu  
Since 1977  
\$12500  
595-2533  
Staff Attorney  
Gene Bridges  
A Public Service  
Project

**DIET MAGIC!**  
15-30 LBS.  
30 DAYS  
FOR  
\$29.95!!!  
BURNS FAT!  
REGULATES  
METABOLISM!  
INCREASES ENERGY!  
TOTAL CONTROL!  
APPETITE!  
DR. RECOMMENDED  
100% GUARANTEED  
CALL NOW  
539-8040

**ST. JUDE**  
On Holy St. Jude Apostle and  
patron of lost causes. In  
miracles, near kinship of  
Jesus Christ and faithful intercession  
of all who invoke your special  
patronage in time of need. To  
you I have recourse from the  
depth of my heart and humbly  
beg to whom God has given  
such great power to come to my  
aid. I have no other recourse  
but to your intercession. I  
promise to make your name  
known and cause you to be  
invoked.  
Say three Our Fathers, three Hail  
Marys and Glories.  
Publication must be promised.  
St. Jude, pray for us all who  
invoke your aid. Amen.  
This Novena has never been  
known to fail. This Novena must  
be said for 9 consecutive days.  
J.K.C.

**30 Income Tax**  
FAST IN HOME TAX SVC.  
rates, rates. All states.  
BACK YEARS. 523-1081  
INCOME TAXES. Island  
wide, in-home svc. Com-  
puterized. Free consulta-  
tions. Call Capt. Stan  
the Tax Man. 949-5501.  
LATE TAXES PAST YRS.  
in your home svc. Steve  
White, M.B.A. 395-7141.

**HELP!**  
EARN  
\$100-\$1000/WEEK  
PART TIME  
WORK FROM HOME  
MILITARY & SPOUSE  
HOUSEWIFE'S-MOM'S  
RETIRED PEOPLE  
STUDENTS  
CONTACTS NEEDED  
IN U.S. & A.I.  
TAIWAN & S. KOREA  
CALL NOW!  
539-8074

**60 Help Wanted**  
Male/Female  
SUPER learning for children  
& teens; study skills  
& academics. 595-8440.

**60 Help Wanted**  
Male/Female  
TRAVEL TRAINING  
Airlines, Travel Agency  
Cruises, Tours  
Hotels, Computer  
KOTNER TRAVEL  
INSTITUTE  
282-7749  
2 Locations  
Honolulu 282-9622  
Kaneohe 233-1155  
Licensed by DOE

**59 Employment**  
Opportunities  
OWN YOUR OWN busi-  
ness. No inventory/risk.  
\$1000/more wk. 988-7329

**60 Help Wanted**  
Male/Female  
"PIANO LESSONS"  
in your home. Juilliard  
M. Music. 528-4427.

**60 Help Wanted**  
Male/Female  
"AVON"  
BE YOUR OWN BOSS  
For the best earnings  
possible  
\$5 CALL \$5  
THIS AD ONLY  
Jo 395-6970  
or  
Kandy 235-7641

**"JOBS JOBS JOBS"**  
HOME  
CLEANERS  
43 OPENINGS  
Up to \$9/hour  
Need own car  
Need home phone  
Flexible daytime hrs.  
Work own area  
Call 732-9490  
Dana's Housekeeping  
Personnel Service  
Since 1976

**CERTIFIED NURSE AIDES**  
OUR NURSING TEAM  
WANTS YOU  
Full-Time  
Join our progressive nursing staff,  
Share your caring with us  
Apply In Person - 7 Days A Week  
HALE NANI  
REHABILITATION  
AND NURSING CENTER  
1677 Pensacola Street 537-3371  
AN AFFIRMATIVE ACTION/EQUAL OPPORTUNITY EMPLOYER

**PART TIME SALES POSITION**  
with Established Retailer  
Hourly Plus Commission  
Excellent Benefits  
& Training Program  
• Prefer Japanese Speaking  
Career Opportunities With a Future  
Call Curie 923-4971  
THE SULTAN COMPANY

**60 Help Wanted**  
Male/Female  
\$200-\$500 WEEKLY  
Assemble products at  
home. Easy! No selling.  
You're paid direct. Fully  
Guaranteed. FREE  
Information 24-Hour  
Hotline. 801-379-2900  
Copyright ©HIO10250

**60 Help Wanted**  
Male/Female  
BOOKKEEPER/SECT.  
F/T flex. hrs. for  
Windward CPA firm.  
Please Call 266-1800.  
CARPET CLEANERS  
Needed. \$5 Experience  
or will train. Must be  
familiar with Oahu. Bring  
drivers abstract. Must be  
able to lift 100 lbs. or  
more. Apply at: 96-1197  
Waltona St. #E1, Pearl  
City, or phone 453-3333.

**60 Help Wanted**  
Male/Female  
HOUSEKEEPERS we  
train, up to \$7 hr. after  
training, weekdays only.  
Full or part time.  
bonus, mileage,  
medical, paid vacation &  
more. Need car and  
phone. Join our friendly  
supportive team system  
& join the best. Military  
& house wives welcome.  
CALL: MRS. CLEAN  
488-4822.

**60 Help Wanted**  
Male/Female  
KIDS 10 & UP. Carriers  
needed for Sun Press.  
Please call Marilyn.  
624-0676.  
KIDS-KIDS-KIDS  
10 Years & Up  
Boys & Girls Needed for  
Sun Press Delivery  
Make your own money.  
No investments. If inter-  
ested, Hawaii Kai from  
Kamiloiki to Portlock.  
Call Mia at 395-3155.

**60 Help Wanted**  
Male/Female  
LPN, MATUR, responsible  
for 40 bed care home.  
239-7993.  
MANAGER TRAINEE  
Entrepreneurial Goal-  
oriented, people  
interested in learning  
while learning. How to  
run your own Carpet  
Cleaning Company.  
Call 842-1210 for appt.

**60 Help Wanted**  
Male/Female  
MANY KAY COSMETICS  
Career opportunity. Free  
facial. Free. 422-1057.  
MED. OFC. PHYSICAL  
THERAPY AIDE. M-F  
5-8 HRB./DAY. NO EXP.  
NCC. In Kailua. 261-8631

**60 Help Wanted**  
Male/Female  
MILITARY Welcome  
Immed. P/T sales in  
retail store. 532-5770.  
MODELS WANTED Open  
call. All types. All ages.  
855-2271. Susan Page  
Modeling.

**60 Help Wanted**  
Male/Female  
PIANO/VOCAL music  
Teacher wanted for  
private elementary  
school in Wahiawa.  
Call 621-1896 for an  
application.

**60 Help Wanted**  
Male/Female  
RECEPTIONIST/OFFICE  
SUPERVISOR new prop-  
erty business seeks  
full-time person w/ great  
attitude, needed to  
answer phones and handle  
general office duties.  
y. exp. benefits, excl.  
work cond. Salary and  
mo. bonus. Call Meling.  
848-8080 for interview.

**60 Help Wanted**  
Male/Female  
RECEPTIONIST/  
SERVICE WRITER for con-  
struction co. Windward  
side. High energy, quick  
learner, exp. req. 12 line  
phone system, light typ-  
ing. EOE. Call Julie G.  
261-8891.

**BURGER KING**  
THE SUCCESS OF A BUSINESS  
BEGINS WITH  
THE QUALITY OF ITS EMPLOYEES  
BURGER KING of Hawaii stands ready  
to launch you into the fast-paced world of  
restaurant management. You'll get the  
technical hands-on experience that has  
made us one of the top 250 businesses in  
Hawaii.  
We offer:  
Employer-Paid  
Training Program  
Medical  
LTD, D&D, Life Insurance  
Generous Bonuses  
Continuing Education Benefits  
Vacations  
Excellent Promotion Opportunity  
401(K) Plan  
Dental  
Now accepting applications  
Monday - Friday, 9AM-4PM  
at the  
PENTAGRAM CORPORATION  
81 South Hotel Street, Suite #216  
Honolulu, Hawaii 96813  
An Equal Opportunity/Affirmative Action Employer

**PIZZA PLUS/**  
THE VENUS CAFE  
HIRING ALL  
RESTAURANT  
POSITIONS  
For new dining room  
in Kailua  
Cooks (Pizza & Italian  
knowledge helpful)  
Food Servers  
Bussers  
Dishwashers  
Delivery Drivers  
Hostesses  
Apply in Person:  
130 Kailua Rd., Kailua  
Mark

**PAY ATTENTION**  
I am a Naval  
Flight Officer.  
One month ago I  
began a new  
career marketing  
personnel health  
care products.  
I'm looking for  
motivated people  
to do the same.  
P/T or F/T.  
CALL 422-5198.

**60 Help Wanted**  
Male/Female  
MYSTERY SHOPPERS  
NEEDED WHO LIVE IN  
AIEA. Part-time,  
occasional, unique  
assignments. No sales-  
no investments. If inter-  
ested, send your name, address  
and phone to Shop: N  
Chek, P. O. Box 26175,  
Atlanta, Ga. 30358-0175,  
attention FP.

**60 Help Wanted**  
Male/Female  
P/T OR F/T Sales/  
Management positions  
available in rapidly expand-  
ing co. Will train. Call  
247-8782.

**60 Help Wanted**  
Male/Female  
P/T BOOKKEEPER  
Includes weekends. Exp.  
preferred. 247-8671.

**60 Help Wanted**  
Male/Female  
POSTAL JOBS.  
\$18,392-\$87,126/yr.  
Now Hiring. Call (1)  
805-962-9000 EXT. 4-031

**60 Help Wanted**  
Male/Female  
PART-TIME ART  
Teacher wanted for  
private elementary  
school in Wahiawa.  
Call 621-1896 for an  
application.

**60 Help Wanted**  
Male/Female  
RECREATION HOTEL  
Recreational Jobs  
\$10-\$25 per hr. Full &  
Part-time, seasonal & yr.  
and. For its long  
benefits. Please apply in  
person, 25 Kaneohe Bay  
Drive, Kailua, EOE.

**60 Help Wanted**  
Male/Female  
SAVERS Thrift Dept.  
STORE is now hiring for  
Full-part time Sales  
Clerks. Must be available  
evenings & weekends.  
\$8/hr. to start, excl.  
benefits. Please apply in  
person, 25 Kaneohe Bay  
Drive, Kailua, EOE.

**60 Help Wanted**  
Male/Female  
TEACHERS Pre-school,  
Elementary degrees or 2  
yr. college. 845-8233.  
TELEMARKETERS  
9 needed Salary +  
commissions. Benefits,  
flex. hrs. Call 735-8452

## CLASSIFIED INDEX

HEADING	CLASS	HEADING	CLASS
Houses Unfurnished	82	Boats, Supplies &	146
Income Property	113	Business	50
Houses		Opportunities	50
Part. Furnished	83	Prof. Services/	37
Income Tax	30	Cleaning	37
Jewelry & Clothing	133	Card of Thanks	10
Jobs Wanted	63	Cemetery Plots	10
Legal Notices	1	Condos/	
Lost & Found	150	Townhouses Furn.	86
Office Equipment	153	Condos/Townhouses	109
Miscellaneous	126	Part. Furn.	85
Wanted	127	Condos/Townhouses	87
Investment	55	Unfurnished	132
Motorcycles		Computers	132
Mopeds & Scooters	171	Domestic	82
Moving & Storage	123	Help Wanted	82
Musical Instruments	144	Domestic	84
Personals	25	Jobs Wanted	84
Real Estate	116	Employment	59
Real Estate For Sale	114	Free-See	0
Real Estate Loans	119	Garage/Lanal	124
Real Estate For Trade	117	Health & Fitness	124
Real Estate Wanted	118	Heavy Machinery	174
Rentals to Share	76	Help Wanted	84
		Male/Female	60
		Auto Appliance	125
		Home Furnishings	120
		Houses Furnished	81
		Housekeeping	84

## HOME & APARTMENT GUIDE

73 Apts. Furnished	74 Apts. Partly Furnished	83 Houses Partly Furnished	85 Condos/Townhouses Partly Furnished	93 Vacation Rentals	114 Real Estate For Sale
<b>PUNALUU</b> beachfront 1 bdrm., 1 studio, fully furn. util. incl. \$350 per wk. or \$850 per mo. Call 942-6193 please lv. msg.	<b>KANEOHE</b> 1/1 ba, bay view. \$700/mo. Incl. util. & cable. 235-7901.	<b>HAULUA</b> 2/2, DUPLEX nr. beach, bus. shopping center \$1000. 293-5176.	<b>KAILUA</b> Priv. entrance & ba. Nr. beach. 1 working person only. \$550/mo. Utills. Incl. 261-7371.	<b>NORTH SHORE STUDIO</b> Bed & breakfast. Quiet get-away. Call 639-1185.	<b>5 ACRES \$3795.</b> Great investment! Recreation/retirement property. Near lakes, hunting, golf. High min. valley land - all flat. \$595/dwn. \$95/mo. 800-858-8540.
<b>74 Apts. Partly Furnished</b> <b>GENTRY</b> WAIPOI Village Annex. Clean 2 bdrm./1 ba. \$875/mo. Daughters (R) 676-3533.	<b>KANEOHE</b> 2 Bdrm. Recently upgraded in Hauka Hale. \$1240/mo. Incl. elec. water, & cable. Call Ben 238-5422.	<b>KAILUA</b> 3 bdrm., 1 1/2 ba. Duplex. Avail. May 28. \$1045. 262-5391.	<b>KAILUA</b> 1 BDRM Apt. w/ ba./priv. ent. Walk to beach. Call 261-1237.	<b>98 Rentals Wanted</b> NEED 1 OR 2 BDRM. home in Kailua, Moanalua, Aiea. Working couple. 262-4302 lv. msg.	<b>BIG ISLAND 3 BDRM.</b> 2 bath home on 3 acres, huge deck, country setting, \$69,500. Clark & Assoc. (H) 943-6037 (B) 737-7969.
<b>74 Apts. Partly Furnished</b> <b>HAWAII KAI</b> Mauna Luan 2/2 deluxe apt. w/2 prkg. stalls. only \$1500 mo. Call 247-4663.	<b>WAILUA</b> 2 bdrm., 1 ba. Prkg. across beach. \$800. No pets. 621-5678.	<b>KAILUA</b> 1 BDRM Apt. w/ ba./priv. ent. Walk to beach. Call 261-1237.	<b>KAILUA</b> 2 units, large studio/bdrm., private ent., pool. Ph. 262-8540.	<b>103 Stores &amp; Offices For Rent</b> <b>WAIKALUA-NEW</b> 26,000 sq. ft. mixed use Retail/Light Industrial/Office space. Completion 11/93. Pre-leasing now. \$1.50 - \$2.25/sq. ft. Call Bob. 845-7851.	<b>115 Real Estate Announcements</b> Through FHA/VA and other programs. Let us show you how! Call Jim Makagon (RA) or Betty Wickstrom (RA) at 396-9999 or 941-8024.
<b>74 Apts. Partly Furnished</b> <b>KAILUA</b> Clean, lrg. studio, full ba. kit. \$850/mo. Nr. beach. 262-4005.	<b>WAIKALUA</b> 2 bdrm., 1 ba. Prkg. across beach. \$800. No pets. 621-5678.	<b>KAILUA</b> 1 BDRM Apt. w/ ba./priv. ent. Walk to beach. Call 261-1237.	<b>KAILUA</b> 2 units, large studio/bdrm., private ent., pool. Ph. 262-8540.	<b>103 Stores &amp; Offices For Rent</b> <b>WAIKALUA-NEW</b> 26,000 sq. ft. mixed use Retail/Light Industrial/Office space. Completion 11/93. Pre-leasing now. \$1.50 - \$2.25/sq. ft. Call Bob. 845-7851.	<b>115 Real Estate Announcements</b> Through FHA/VA and other programs. Let us show you how! Call Jim Makagon (RA) or Betty Wickstrom (RA) at 396-9999 or 941-8024.
<b>74 Apts. Partly Furnished</b> <b>KAILUA</b> 2 bdrm., 1 ba. Prkg. across beach. \$800. No pets. 621-5678.	<b>WAIKALUA</b> 2 bdrm., 1 ba. Prkg. across beach. \$800. No pets. 621-5678.	<b>KAILUA</b> 1 BDRM Apt. w/ ba./priv. ent. Walk to beach. Call 261-1237.	<b>KAILUA</b> 2 units, large studio/bdrm., private ent., pool. Ph. 262-8540.	<b>103 Stores &amp; Offices For Rent</b> <b>WAIKALUA-NEW</b> 26,000 sq. ft. mixed use Retail/Light Industrial/Office space. Completion 11/93. Pre-leasing now. \$1.50 - \$2.25/sq. ft. Call Bob. 845-7851.	<b>115 Real Estate Announcements</b> Through FHA/VA and other programs. Let us show you how! Call Jim Makagon (RA) or Betty Wickstrom (RA) at 396-9999 or 941-8024.
<b>74 Apts. Partly Furnished</b> <b>KAILUA</b> 2 bdrm., 1 ba. Prkg. across beach. \$800. No pets. 621-5678.	<b>WAIKALUA</b> 2 bdrm., 1 ba. Prkg. across beach. \$800. No pets. 621-5678.	<b>KAILUA</b> 1 BDRM Apt. w/ ba./priv. ent. Walk to beach. Call 261-1237.	<b>KAILUA</b> 2 units, large studio/bdrm., private ent., pool. Ph. 262-8540.	<b>103 Stores &amp; Offices For Rent</b> <b>WAIKALUA-NEW</b> 26,000 sq. ft. mixed use Retail/Light Industrial/Office space. Completion 11/93. Pre-leasing now. \$1.50 - \$2.25/sq. ft. Call Bob. 845-7851.	<b>115 Real Estate Announcements</b> Through FHA/VA and other programs. Let us show you how! Call Jim Makagon (RA) or Betty Wickstrom (RA) at 396-9999 or 941-8024.
<b>74 Apts. Partly Furnished</b> <b>KAILUA</b> 2 bdrm., 1 ba. Prkg. across beach. \$800. No pets. 621-5678.	<b>WAIKALUA</b> 2 bdrm., 1 ba. Prkg. across beach. \$800. No pets. 621-5678.	<b>KAILUA</b> 1 BDRM Apt. w/ ba./priv. ent. Walk to beach. Call 261-1237.	<b>KAILUA</b> 2 units, large studio/bdrm., private ent., pool. Ph. 262-8540.	<b>103 Stores &amp; Offices For Rent</b> <b>WAIKALUA-NEW</b> 26,000 sq. ft. mixed use Retail/Light Industrial/Office space. Completion 11/93. Pre-leasing now. \$1.50 - \$2.25/sq. ft. Call Bob. 845-7851.	<b>115 Real Estate Announcements</b> Through FHA/VA and other programs. Let us show you how! Call Jim Makagon (RA) or Betty Wickstrom (RA) at 396-9999 or 941-8024.
<b>74 Apts. Partly Furnished</b> <b>KAILUA</b> 2 bdrm., 1 ba. Prkg. across beach. \$800. No pets. 621-5678.	<b>WAIKALUA</b> 2 bdrm., 1 ba. Prkg. across beach. \$800. No pets. 621-5678.	<b>KAILUA</b> 1 BDRM Apt. w/ ba./priv. ent. Walk to beach. Call 261-1237.	<b>KAILUA</b> 2 units, large studio/bdrm., private ent., pool. Ph. 262-8540.	<b>103 Stores &amp; Offices For Rent</b> <b>WAIKALUA-NEW</b> 26,000 sq. ft. mixed use Retail/Light Industrial/Office space. Completion 11/93. Pre-leasing now. \$1.50 - \$2.25/sq. ft. Call Bob. 845-7851.	<b>115 Real Estate Announcements</b> Through FHA/VA and other programs. Let us show you how! Call Jim Makagon (RA) or Betty Wickstrom (RA) at 396-9999 or 941-8024.
<b>74 Apts. Partly Furnished</b> <b>KAILUA</b> 2 bdrm., 1 ba. Prkg. across beach. \$800. No pets. 621-5678.	<b>WAIKALUA</b> 2 bdrm., 1 ba. Prkg. across beach. \$800. No pets. 621-5678.	<b>KAILUA</b> 1 BDRM Apt. w/ ba./priv. ent. Walk to beach. Call 261-1237.	<b>KAILUA</b> 2 units, large studio/bdrm., private ent., pool. Ph. 262-8540.	<b>103 Stores &amp; Offices For Rent</b> <b>WAIKALUA-NEW</b> 26,000 sq. ft. mixed use Retail/Light Industrial/Office space. Completion 11/93. Pre-leasing now. \$1.50 - \$2.25/sq. ft. Call Bob. 845-7851.	<b>115 Real Estate Announcements</b> Through FHA/VA and other programs. Let us show you how! Call Jim Makagon (RA) or Betty Wickstrom (RA) at 396-9999 or 941-8024.
<b>74 Apts. Partly Furnished</b> <b>KAILUA</b> 2 bdrm., 1 ba. Prkg. across beach. \$800. No pets. 621-5678.	<b>WAIKALUA</b> 2 bdrm., 1 ba. Prkg. across beach. \$800. No pets. 621-5678.	<b>KAILUA</b> 1 BDRM Apt. w/ ba./priv. ent. Walk to beach. Call 261-1237.	<b>KAILUA</b> 2 units, large studio/bdrm., private ent., pool. Ph. 262-8540.	<b>103 Stores &amp; Offices For Rent</b> <b>WAIKALUA-NEW</b> 26,000 sq. ft. mixed use Retail/Light Industrial/Office space. Completion 11/93. Pre-leasing now. \$1.50 - \$2.25/sq. ft. Call Bob. 845-7851.	<b>115 Real Estate Announcements</b> Through FHA/VA and other programs. Let us show you how! Call Jim Makagon (RA) or Betty Wickstrom (RA) at 396-9999 or 941-8024.
<b>74 Apts. Partly Furnished</b> <b>KAILUA</b> 2 bdrm., 1 ba. Prkg. across beach. \$800. No pets. 621-5678.	<b>WAIKALUA</b> 2 bdrm., 1 ba. Prkg. across beach. \$800. No pets. 621-5678.	<b>KAILUA</b> 1 BDRM Apt. w/ ba./priv. ent. Walk to beach. Call 261-1237.	<b>KAILUA</b> 2 units, large studio/bdrm., private ent., pool. Ph. 262-8540.	<b>103 Stores &amp; Offices For Rent</b> <b>WAIKALUA-NEW</b> 26,000 sq. ft. mixed use Retail/Light Industrial/Office space. Completion 11/93. Pre-leasing now. \$1.50 - \$2.25/sq. ft. Call Bob. 845-7851.	<b>115 Real Estate Announcements</b> Through FHA/VA and other programs. Let us show you how! Call Jim Makagon (RA) or Betty Wickstrom (RA) at 396-9999 or 941-8024.
<b>74 Apts. Partly Furnished</b> <b>KAILUA</b> 2 bdrm., 1 ba. Prkg. across beach. \$800. No pets. 621-5678.	<b>WAIKALUA</b> 2 bdrm., 1 ba. Prkg. across beach. \$800. No pets. 621-5678.	<b>KAILUA</b> 1 BDRM Apt. w/ ba./priv. ent. Walk to beach. Call 261-1237.	<b>KAILUA</b> 2 units, large studio/bdrm., private ent., pool. Ph. 262-8540.	<b>103 Stores &amp; Offices For Rent</b> <b>WAIKALUA-NEW</b> 26,000 sq. ft. mixed use Retail/Light Industrial/Office space. Completion 11/93. Pre-leasing now. \$1.50 - \$2.25/sq. ft. Call Bob. 845-7851.	<b>115 Real Estate Announcements</b> Through FHA/VA and other programs. Let us show you how! Call Jim Makagon (RA) or Betty Wickstrom (RA) at 396-9999 or 941-8024.
<b>74 Apts. Partly Furnished</b> <b>KAILUA</b> 2 bdrm., 1 ba. Prkg. across beach. \$800. No pets. 621-5678.	<b>WAIKALUA</b> 2 bdrm., 1 ba. Prkg. across beach. \$800. No pets. 621-5678.	<b>KAILUA</b> 1 BDRM Apt. w/ ba./priv. ent. Walk to beach. Call 261-1237.	<b>KAILUA</b> 2 units, large studio/bdrm., private ent., pool. Ph. 262-8540.	<b>103 Stores &amp; Offices For Rent</b> <b>WAIKALUA-NEW</b> 26,000 sq. ft. mixed use Retail/Light Industrial/Office space. Completion 11/93. Pre-leasing now. \$1.50 - \$2.25/sq. ft. Call Bob. 845-7851.	<b>115 Real Estate Announcements</b> Through FHA/VA and other programs. Let us show you how! Call Jim Makagon (RA) or Betty Wickstrom (RA) at 396-9999 or 941-8024.
<b>74 Apts. Partly Furnished</b> <b>KAILUA</b> 2 bdrm., 1 ba. Prkg. across beach. \$800. No pets. 621-5678.	<b>WAIKALUA</b> 2 bdrm., 1 ba. Prkg. across beach. \$800. No pets. 621-5678.	<b>KAILUA</b> 1 BDRM Apt. w/ ba./priv. ent. Walk to beach. Call 261-1237.	<b>KAILUA</b> 2 units, large studio/bdrm., private ent., pool. Ph. 262-8540.	<b>103 Stores &amp; Offices For Rent</b> <b>WAIKALUA-NEW</b> 26,000 sq. ft. mixed use Retail/Light Industrial/Office space. Completion 11/93. Pre-leasing now. \$1.50 - \$2.25/sq. ft. Call Bob. 845-7851.	<b>115 Real Estate Announcements</b> Through FHA/VA and other programs. Let us show you how! Call Jim Makagon (RA) or Betty Wickstrom (RA) at 396-9999 or 941-8024.
<b>74 Apts. Partly Furnished</b> <b>KAILUA</b> 2 bdrm., 1 ba. Prkg. across beach. \$800. No pets. 621-5678.	<b>WAIKALUA</b> 2 bdrm., 1 ba. Prkg. across beach. \$800. No pets. 621-5678.	<b>KAILUA</b> 1 BDRM Apt. w/ ba./priv. ent. Walk to beach. Call 261-1237.	<b>KAILUA</b> 2 units, large studio/bdrm., private ent., pool. Ph. 262-8540.	<b>103 Stores &amp; Offices For Rent</b> <b>WAIKALUA-NEW</b> 26,000 sq. ft. mixed use Retail/Light Industrial/Office space. Completion 11/93. Pre-leasing now. \$1.50 - \$2.25/sq. ft. Call Bob. 845-7851.	<b>115 Real Estate Announcements&lt;/</b>



## DO YOU HAVE RETAIL MANAGEMENT EXPERIENCE?

### CORNET STORES

has opportunities for experienced Store Managers, Assistant Managers or Department Managers.

- EXCELLENT WORKING HOURS • PAID BENEFITS
- RAPID ADVANCEMENT • HEALTH BENEFITS

For Personal Interview Contact:  
Mr. Pierce Phone 261-6186  
Tuesday-Saturday 8am-5pm

Paying for college has never been easy. But you can make it a lot easier. Join the Hawaii Army National Guard and see a world of benefits. Free College Tuition through Graduate School at any University of Hawaii Campus. And if you qualify, a \$2,000.00 Bonus. Plus, we will pay up to \$10,000.00 in Student Loans. All for about two days a month — and two weeks a year.

## There are big bucks for college in the Hawaii Army National Guard.

You'll discover many other benefits, new dimensions of experience and training, PX and commissary privileges, retirement benefits and low-cost life insurance. You'll also have opportunities to travel on military flights when space permits.

And most important, you'll be there when people in your community need your help most.

Call to see if you qualify.

HONOLULU 737-9825  
WAHIAWA 622-3078  
KANEHOE 235-8368  
PEARL CITY 456-4637  
KALIHI 848-0551



## Americans At Their Best.

The Army National Guard is an Equal Opportunity Employer.

## DENTAL ASSISTANT HYGIENIST PATIENT SERVICE REPRESENTATIVE

We are seeking qualified individuals to join our growing group practice in Honolulu.

Benefits include:

- Competitive Salaries
- Paid Vacation
- Incentive Bonuses
- 11 Paid Holidays
- Health/Life Insurance
- Continuing Education
- 100% Matched Savings
- Credit Union

### HAWAII FAMILY DENTAL CENTERS

We give you something to smile about



EXPERIENCE NECESSARY  
Call Kay 536-1696 Ext. 113

### UNEMPLOYED/NEED EXTRA INCOME?

Looking for self motivated, enthusiastic people to help in new business. Career opportunity Salary up to \$1600/mo. Positions in sales, thru management. Training avail. F/T, P/T Military & Students welcome. Ask for Pete. 845-1487, 841-0166

FOR THE BEST in Home, Apartment & Condominium listings, check the classifieds.

### 64 Domestic Jobs Wanted

EXCELLENT CLEANING SERV. Kailua & Kaneohe. Good ref. 261-3081.  
EXP. CAREGIVER in my Ewa Beach home. F/T, P/T. M-F. 889-4591.  
EXP. QUALITY LOVING Childcare. Early learning. P/T. 8-12, or F/T 1-4 yrs. only. CPR. 239-6602.  
EXP. caregiver in my home. F/T-P/T. Mon-Fri. 235-0718/259-5481.  
LICENSED DAY-CARE Infants & Toddlers. Mon-Fri. 235-7608.  
DAY CARE Program avail. in home setting. Flex. hrs. Small, provider child ratio. Call Carol, 395-0413.

## 10% DISCOUNT ON ALL UPHOLSTERY FABRICS

DISCOUNT WITH AD EXP. 5/15-5/31/93  
Alamoana 456-2525  
Kalihi 848-0551

### 120 Home Furnishings

4 CHAIR LANAI SET, \$90. Desk, \$20. Wicker chest & mirror, \$80. King size bed, \$125. Dining table & 6 chairs, \$200. TV, \$60. Matching loveseat & recliner, \$200. On size waterbed, free. Misc. items. 261-5333.

### FINISHED KOA ROCKERS

by Chairmaster. 263-8392.

### FOR SALE Girls bedroom set

German bunk beds. Formal sofa & loveseat. 624-6908.

### MUST SELL Living room set

set, dinette, dresser, crib, & infant bed. 239-8349.

### NEW Black sofa/love-seater

set/chair, \$600/obo. Wellborn Cherry ant. set. \$150. 254-0736.

### OCCASIONAL CHAIRS

Recliner w/vibrator. Electrolux Vacuum. Remodeling & Repairs. 624-5318.

### REMODELING & REPAIRS

To \$1000. 247-6061.

### JON'S Carpentry Co.

Redwood fences & deck. To \$1000. 533-7799.

### RE-KAMANA CONST.

Remodeling & Repairs. To \$1000. 247-6061.

### PROFESSIONAL Carpentry

Home repairs, 15 yrs. exp. work guar. To \$1000. Michael 595-3657.

### SUNSHINE MAINT. CO.

Gen. carpentry & painting. To \$1000. 732-9407.

### WALT'S MAINTENANCE

carpentry, joinery, etc. To \$1000. Call 262-8862.

## OUR PRIDE IS SHOWING JOIN OUR HAWAII KAI TEAM

### PENTAGRAM CORPORATION is proud to announce their soon to be opening HAWAII KAI BURGER KING RESTAURANT

We are now recruiting for all crew positions. Pick up applications May 15, 21 & 22, between 9 a.m.-5 p.m. at the Hawaii Kai Towne Center

BLDG. 4 333 KEAHOE STREET

EEO/AA Employer F/M/H/V Encouraged to Apply

### CLEAN-UP WITH merry maids...

Earn up to \$8/hr. Work 1 or more days per week FULL or PART-TIME Monday - Saturday!

Great benefits, including: Dental, drug & vision coverage Paid Vacations

Employee Incentive Programs Advancement Opportunity Military & Housewives welcome!

The U.S.A.'s Housecleaning Experts!

merry maids 1416 Dillingham Blvd. 841-4133

CALL FOR APPOINTMENT

## ACCOUNTS-RECEIVABLE-CLERK

Full Charge: EXPERIENCED CREDIT & COLLECTION KNOWLEDGE in General Clerical Duties & Remittances

### COMPUTERIZED OFFICE

Wahiawa Co. 35+ Yrs. Old

One of the Largest Manufacturers of Gifts and Souvenirs in Hawaii

### EXCELLENT BENEFITS

Hrs: 7:30 to 4pm Weekdays

SALARY DEPENDS ON EXPERIENCE

Mail Only:

Send Resume to: HORIZON INDUSTRIES INC., 401 N. CANE ST. - Bldg. B - Wahiawa, HI 96786 622-0481. Attention: S.K.

## NEEDED IMMEDIATELY!

• Word Processors • Secretaries • General Clerical • Receptionists • Data Entry/Acc'tg Clerks

TEMPORARY & FULL-TIME POSITIONS

ADIA 533-8889 NEVER A FEE

The Employment People

## GARAGE SALE

5/22, 8-2 Toys & hshld. items, ex. cond. 2073A Campbell Drive, KMCAS.

5/22, 8-2 Toys & hshld. items, ex. cond. 2073A Campbell Drive, KMCAS.

5/22, 8-2 Toys & hshld. items, ex. cond. 2073A Campbell Drive, KMCAS.

5/22, 8-2 Toys & hshld. items, ex. cond. 2073A Campbell Drive, KMCAS.

5/22, 8-2 Toys & hshld. items, ex. cond. 2073A Campbell Drive, KMCAS.

5/22, 8-2 Toys & hshld. items, ex. cond. 2073A Campbell Drive, KMCAS.

5/22, 8-2 Toys & hshld. items, ex. cond. 2073A Campbell Drive, KMCAS.

5/22, 8-2 Toys & hshld. items, ex. cond. 2073A Campbell Drive, KMCAS.

5/22, 8-2 Toys & hshld. items, ex. cond. 2073A Campbell Drive, KMCAS.

5/22, 8-2 Toys & hshld. items, ex. cond. 2073A Campbell Drive, KMCAS.

5/22, 8-2 Toys & hshld. items, ex. cond. 2073A Campbell Drive, KMCAS.

5/22, 8-2 Toys & hshld. items, ex. cond. 2073A Campbell Drive, KMCAS.

5/22, 8-2 Toys & hshld. items, ex. cond. 2073A Campbell Drive, KMCAS.

5/22, 8-2 Toys & hshld. items, ex. cond. 2073A Campbell Drive, KMCAS.

5/22, 8-2 Toys & hshld. items, ex. cond. 2073A Campbell Drive, KMCAS.

5/22, 8-2 Toys & hshld. items, ex. cond. 2073A Campbell Drive, KMCAS.

5/22, 8-2 Toys & hshld. items, ex. cond. 2073A Campbell Drive, KMCAS.

5/22, 8-2 Toys & hshld. items, ex. cond. 2073A Campbell Drive, KMCAS.

5/22, 8-2 Toys & hshld. items, ex. cond. 2073A Campbell Drive, KMCAS.

5/22, 8-2 Toys & hshld. items, ex. cond. 2073A Campbell Drive, KMCAS.

5/22, 8-2 Toys & hshld. items, ex. cond. 2073A Campbell Drive, KMCAS.

5/22, 8-2 Toys & hshld. items, ex. cond. 2073A Campbell Drive, KMCAS.

5/22, 8-2 Toys & hshld. items, ex. cond. 2073A Campbell Drive, KMCAS.

5/22, 8-2 Toys & hshld. items, ex. cond. 2073A Campbell Drive, KMCAS.

5/22, 8-2 Toys & hshld. items, ex. cond. 2073A Campbell Drive, KMCAS.

5/22, 8-2 Toys & hshld. items, ex. cond. 2073A Campbell Drive, KMCAS.

5/22, 8-2 Toys & hshld. items, ex. cond. 2073A Campbell Drive, KMCAS.

5/22, 8-2 Toys & hshld. items, ex. cond. 2073A Campbell Drive, KMCAS.

5/22, 8-2 Toys & hshld. items, ex. cond. 2073A Campbell Drive, KMCAS.

5/22, 8-2 Toys & hshld. items, ex. cond. 2073A Campbell Drive, KMCAS.

5/22, 8-2 Toys & hshld. items, ex. cond. 2073A Campbell Drive, KMCAS.

5/22, 8-2 Toys & hshld. items, ex. cond. 2073A Campbell Drive, KMCAS.

5/22, 8-2 Toys & hshld. items, ex. cond. 2073A Campbell Drive, KMCAS.

5/22, 8-2 Toys & hshld. items, ex. cond. 2073A Campbell Drive, KMCAS.

5/22, 8-2 Toys & hshld. items, ex. cond. 2073A Campbell Drive, KMCAS.

5/22, 8-2 Toys & hshld. items, ex. cond. 2073A Campbell Drive, KMCAS.

5/22, 8-2 Toys & hshld. items, ex. cond. 2073A Campbell Drive, KMCAS.

5/22, 8-2 Toys & hshld. items, ex. cond. 2073A Campbell Drive, KMCAS.

5/22, 8-2 Toys & hshld. items, ex. cond. 2073A Campbell Drive, KMCAS.

5/22, 8-2 Toys & hshld. items, ex. cond. 2073A Campbell Drive, KMCAS.

5/22, 8-2 Toys & hshld. items, ex. cond. 2073A Campbell Drive, KMCAS.

5/22, 8-2 Toys & hshld. items, ex. cond. 2073A Campbell Drive, KMCAS.

5/22, 8-2 Toys & hshld. items, ex. cond. 2073A Campbell Drive, KMCAS.

5/22, 8-2 Toys & hshld. items, ex. cond. 2073A Campbell Drive, KMCAS.

5/22, 8-2 Toys & hshld. items, ex. cond. 2073A Campbell Drive, KMCAS.

## 126 Miscellaneous

CLIFF'S Economy Furn. & Thrift Shop, 1716 N. King St. Ph. 841-4443.

CORSIKA 7 MAN Jacuzzi, \$2800 or offer. Call 623-9552.

FILTER Queen Vacuum Cost. \$850. Must sell \$250. 735-4651, 926-7292.

I WILL BUY YOUR "Gently" used clothing for cash. Call Patti for appointment 836-0924.

LARGE SAFE, \$125. Rowing skier exercise machine, \$100. Word Processor, 261-1691.

LARGE refrig., \$100. desk/X-Mas tree/T.V. ant. \$10/ea. 262-0919.

MINTENDO \$5.99. Sage & SUPERNEO. Buy/sell/ trade. Makiki Video 1231 Wilder. 537-2885.

SEARS RIDING MOWER 12 h.p. 40" cut, 6 spd. '92. Excellent cond. 637-1280.

SONY TS1 speakers, ceramics-name potter, etchings-Hoe, Doi, Rusef. Others, 737-4998, apps.

TEAK China hutch, \$395; 2 bar stools, \$50/ea. or best offer. 487-8475.

VACUUM Cleaners, like new \$24.95 & up with guarantee. Ph 735-6452.

VERTICAL Blinds - 50% Off! Fabric 16 x 84, \$124. Ken Hatch, 254-2080.

WHITE & GOLD Bdrm. set incl. desk w/hutch, dresser, twin bed w/mattress & box spring. \$250. 625-3831.

127 Miscellaneous Wanted

I WANT TO BUY A Timberwolf drill or Milwaukee Wholesaler drill. Call 262-4302 or 843-8802 leave message.

MANGOS WANTED-RIPE. Any Quantity. Call Michael, 834-0496.

UNWANTED UPHOLSTERY? We will haul it away for you at no charge. 453-3333.

WANTED CRAFTERS & MILK CAP VENDERS

For craft fair. May 31, Roosevelt High School. Details: 821-7951, evs.

146 Boat Sales & Service

LET'S GO FISHING 30' boat, lic. Capt. Military/Kamaaina rates. You keep the fish. 488-4854.

19-20 FT RIENEL BOAT & TRAILER. No motor. \$1500 or trade for 70' outboard. Jay, 261-7639.

25 CAL Fully equipped. Can charter. Live aboard. Ref. At K-Bay. Offer. 834-1706.

BALDWIN UPRIGHT PIANO Hamilton 243. Excl. cond. \$2950. Cash. 247-0277.

DRUMS & hardware, new used. Buy & Sell. Drum lessons. Fred's Pro Drums. Call 533-7550.

147 Sporting Goods

KENDO EQUIP. Excl. cond. \$450. for all. 833-4314, or 622-4603 lv. msg.

148 Water Sports Equipment

WINDSURFING BOOMS Purple, \$15. 262-6281.

## Immediate Openings NEWSPAPER EMPLOYEES WANTED

Progressive company offering excellent wages and benefits has the following positions open:

### FULL-TIME POSITIONS

#### Billing Clerk

Kaneohe accounting office needs sharp self-starter for billing/accounts receivable. Previous accounting experience or business school graduate preferred. Computer experience preferred. 10 days by touch necessary. Knowledge of computer spreadsheets and a word processing a plus. Excellent benefits to include medical, life insurance and profit sharing. Starting pay \$7.50 - \$8.50 per hour.

#### Bindery Crew Person

Seeking hard-working, dependable people to fill entry level positions in our bindery operation. Day shift only. Apply in person.

#### Cheshire Operator

Established mailing operation needs skilled Cheshire operators. Full and part-time hours are available. Must be able to work weekends. Top wages paid for experienced individuals.

#### Field Supervisor

Circulation Department is seeking independent self-starter with supervisory skills. Needs to be capable of creating and implementing motivational programs for youth and adults. Responsible for individual and group training. Work schedule varies. Own vehicle required. Excellent salary/benefit package.

#### Pressroom Trainee

Entry level positions in the printing trade for mechanically minded individuals. Physical work in machinery environment. Must be capable of heavy lifting and working 12 hour shifts. Full-time only. \$7.34/hr. to start. Up to \$9.34/hr. after one year. Apply in person - no phone calls.

#### Records Clerk

Busy Circulation Office needs self-starter for Accounting Records Clerk position. Experience preferred but will train the right person with computer and 10-key skills, detail oriented and eager to learn. Apply in person.

### PART-TIME POSITIONS

#### Circulation Representative

Must be cordial and energetic. Must have own vehicle for delivery of newspapers to businesses each Thursday in designated areas of Kailua. Good Salary Gas Allowance.

#### District Managers

Must be able to communicate and work well with pre-teens and teens. Work from your own home, must have own vehicle. Have fun and make money on your own schedule by recruiting, training and supervising boys and girls who deliver newspapers. Good salary and bonuses. Gas allowance. Districts available in KANEHOE, HAWAII KAI, WAHIAWA, HICKAM, SCHOFIELD and FORT SHAFTER.

For further information contact Ginny Watts

## Sun Press

45-525 Luluku Road, Kaneohe  
Phone 235-5881 Monday-Friday 8 a.m.-5 p.m.

### 127 Miscellaneous Wanted

VIDEO GAMES Trade/Buy, Makiki Video 1231 Wilder 537-2885.

### WANTED

HAWAIIAN Items, Books, Papers, Jewelry Collectibles, Antiques, Anything of Value.

HUNTER 262-4868

764 Kailua Rd., Kailua

129 Stereo & Video

WE BUY OR REPAIR non-working VCR's & Nintendo systems. Call Econ Photo 239-4295.

130 Antiques & Art

4 LARGE PAINTINGS by local artists. Le Branch, Nahualewa, Ryk. Burgess. Bill Furtado. 841-4807.

133 Jewelry & Clothing

MOTHER'S DAY! Need gift of fine jewelry at low price? Please lv. msg. 486-7701.

140 Photography

WILL PHOTO or Video tape everything anywhere. On location only. By appt. 261-6048.

141 Video Taping

FILMS TRANSFERRED to video. Many locations. Econ Photo 239-4295.

144 Musical Instruments



# PFLUEGER

## Car & Truck Center



Week Long Specials!

'82 DODGE  
D50 P/U  
Weekend Special  
#4145-2

**1,995**

'84 PLYMOUTH  
RELIANT  
Mid size, Auto/Trans  
#4082

**2,095**

'82 TOYOTA  
CELICA  
Auto, Air  
#4136

**2,895**

'84 TOYOTA TERCEL  
H/B  
Auto, Air  
#4169

**2,995**

'87 MAZDA 323 DX 4 DR.  
Weekend Special,  
Huge Savings!  
#4091 / CPW074

**3,795**



'86 FORD MUSTANG  
CONVT  
Auto, Air  
#72084

**3,995**

'86 TOYOTA CRESSIDA  
4 Dr, Auto, A/C-Nice  
#72093-1

**4,895**

'89 MERCURY SABLE LS  
6 Cyl., Auto, A/C  
#72132

**4,995**

'88 CHEVY C2500 P/U  
V-8, Low Miles,  
Won't last!  
#4224

**6,995**

'88 AUDI  
90 SEDAN  
Auto, Air, Nice  
#4512

**6,995**



'89 HONDA ACCORD LX  
A/C, All Power,  
Whitel  
#4199

**7,995**

'89 FORD AEROSTAR  
VAN  
6 Cyl.  
#4199

**7,995**

**WEEKEND SALE**  
**PFLUEGER**  
**WAIPAHU**  
**676-2220**  
94-088 Farrington Hwy.

**WE'RE WORTH THE DRIVE!**  
**WE BUY CARS**

Offer Ends Soon. All offers an Approved Credit. Vehicles subject to prior sale. Prices, taxes, fees, and license. Illustrations not necessarily shown.

# REPO & OWNER TRANSFER

## "A PUBLIC NOTICE"

'87 HYUNDAI (EBB-277)  
Excl, Stereo Economy  
Transportation Balance \$1226.69

'80 MG CONVT (EEA-314)  
Open Air Motoring  
Balance \$2112.16

'87 CELEBRITY WGN (CPP-650)  
6 Cyl, Auto, Air, Stereo  
Balance \$2112.21

'88 ISUZU I MARK (CSR-263)  
Auto, Air, Excl Balance \$2469.89

'86 SUZUKI SAMARAI 4X4  
(CGG-754) Stereo, Wheels, Excl  
Balance \$2469.89

'87 TOYOTA COROLLA (EJB-503)  
Auto, Air, Excl Balance \$2986.16

'89 FORD FESTIVA (EPA-592)  
Economy Transportation, AC  
Balance \$2989.21

'86 JEEP CHEROKEE (CFS-558)  
Air, Stereo, Excl... Balance \$3916.16

'73 MERCEDES BENZ 280 SE  
(BEV-640) Classic, Must See  
Balance \$4929.62

'85 S-10 BLAZER 4X4 (CEE-282)  
Trk Wheels, 6 Cyl... Balance \$4977.79

'84 NISSAN MAXIMA (BTU-752)  
Leather, Low Miles, Excl  
Balance \$4986.69

'89 NISSAN SENTRA WGN  
(EXY-607) Auto, Stereo, Excl  
Balance \$5466.29

'89 MITSUBISHI 4X4 (DCJ-989)  
Sport Truck, Air, Stereo, Excl  
Balance \$5979.86

'90 DODGE 15 PASS VAN  
(EAZ-414) Auto, Air, Excl  
Balance \$5986.69

'85 GMC P/U (742-TJV)  
Full Size, Stereo, Excl... Balance \$5988.89

'87 PORSCHE 944 (CRJ-634)  
Trk Wheels, Sunroof Excl  
Balance \$7986.11

'89 F-150 4X4 (CYV-657)  
Stereo, Low Miles, Excl  
Balance \$8768.29

'90 NISSAN PATHFINDER  
(EJX-741) 4 Dr, Stereo, Low Miles, Excl  
Balance \$9899.66

'90 MITSUBISHI MONTERO  
(DUE-269) 6 Cyl, Auto, Air, Low Miles, Excl  
Balance \$12,989.69

'89 MASERATI (DWF-341)  
Superb Car, Showroom Condition  
Balance \$17,989.11

Above prices include all rebates.  
Dealers Welcome • All cars stored at:  
**WHOLESALE MOTORS, Inc.**  
3033 N. Nimitz Highway

CALL NOW & SAVE  
**831-2721**

# HONOLULU FORD FORD DELIVERS

**\$99.00 DOWN**  
**TERMS**  
MILITARY OR CIVILIAN  
YOU CAN BUY THOUSANDS BELOW MARKET  
30 DAY EXCHANGE ANY CAR  
**PRIME USED CAR CLEARANCE SALE**

VEHICLE	BOOK VALUE	NOW!	'99 DOWN
'87 VW Fox	#5827	\$4,610	\$2,995
'87 Chevy Cavalier	#5900	\$4,590	\$2,995
'92 Ford Festiva	#5960	\$6,085	\$4,995
'89 Honda Civic	#5995	\$8,735	\$5,995
'90 Chevy Lumina	#5966	\$8,675	\$5,995
'92 Ford Escort	#5884	\$9,285	\$6,995
'91 Pontiac Sunbird	#5895	\$9,875	\$6,995
'87 Dodge Caravan	#5993	\$10,135	\$6,995
'89 Honda Prelude	#5944	\$10,450	\$6,995
'91 Ford Escort LX	#5987	\$8,900	\$7,595
'90 Ford F-150 P/U	#5914	\$9,775	\$7,995
'87 Lincoln Continental	#6000	\$11,060	\$7,995
'89 Ford Aerostar	#5908	\$12,200	\$8,995
'92 Ford Crown Victoria	#5915	\$18,100	\$14,995

**GREAT TERMS ON NEW FORDS TOO!**  
'93 FORD RANGER PICK-UP  
**\$159.00** MONTH  
YOUNG BUYER PROGRAM PRICE  
#59124

**TAKE YOUR CHOICE**  
'93 FORD ESCORT LX's  
1. 3dr H/B #931820 2. 3dr H/B #931445  
3. 4dr Bn. #931572 4. 4dr Wgn. #931660  
**\$189.00** MONTH **\$9,595**  
YOUNG BUYER PROGRAM PRICE  
#59124

\*Credit on app. Vehicles subject to prior sale. Young buyer price upon Ford approval. All rebates already applied. Ranger and Escort terms are 24 months closed end lease to wh. w/ drive-away \$1,500 cap. reduction. First payment security deposit \$1,000. And the lease of \$75. Residuals are Ranger \$4,782. Escort LX's \$9,116.00. \$5,200. #931572 \$6,081. #931445 \$5,956. #931660 \$6,375. Used cars written at 36 to 48 months. 13.5% APR. Prices plus tax, lic. and doc. fees of \$75. Exchange must be for vehicle of equal or greater value. Ends May 1993.

# HONOLULU FORD FORD

711 ALA MOANA CALL 523-8200

# HONDA WINDWARD

In Kaneohe • Only 40 Minutes From Almost Anywhere

**No Dealer Mark Up!**  
**Free Loan Cars!**  
**Mainland Prices!**  
**#1 in Customer Satisfaction!**

# USED CAR SPECIALS

'80 HONDA ACCORD	EJA-051	\$1595
'84 VW RABBIT	HXX-950	\$2695
'84 CHRYSLER 5th AVE.	RLJ-838	\$2995
'87 ISUZU I-MARK	EN2-972	\$3395
'84 HONDA CIVIC	BWN-956	\$3995
'83 MAZDA 626	EJY-451	\$3995
'84 HONDA ACCORD	BTY-944	\$3995
'85 TOYOTA WAGON	CDN-674	\$4295
'89 HONDA CRX	EEB-532	\$5995
'87 HONDA PRELUDE	CJD-782	\$5995
'87 NISSAN MAXIMA	CEU-413	\$7695
'88 HONDA CIVIC	CSW-254	\$7995

**HONDA WINDWARD**  
In Kaneohe 247-8544  
Open 7 Days A Week  
Mon.-Sat. 9am-6pm  
Sunday 10am-4pm

All prices quoted are plus tax, license, and title. All vehicles are subject to prior sale. Prices, taxes, fees, and license. Illustrations not necessarily shown.

# LOVE STAR

REPOSSESSED VEHICLES  
— ON SALE DAILY —  
OVER 150 UNITS MONTHLY  
TREMENDOUS SAVINGS!  
ALL MAKES AND MODELS  
AVAILABLE

\* BANK REPOS  
\* LEASE RETURNS  
\* CLASSIC MUSCLE CARS

# USED CAR SPECIALS

'80 HONDA ACCORD	EJA-051	\$1595
'84 VW RABBIT	HXX-950	\$2695
'84 CHRYSLER 5th AVE.	RLJ-838	\$2995
'87 ISUZU I-MARK	EN2-972	\$3395
'84 HONDA CIVIC	BWN-956	\$3995
'83 MAZDA 626	EJY-451	\$3995
'84 HONDA ACCORD	BTY-944	\$3995
'85 TOYOTA WAGON	CDN-674	\$4295
'89 HONDA CRX	EEB-532	\$5995
'87 HONDA PRELUDE	CJD-782	\$5995
'87 NISSAN MAXIMA	CEU-413	\$7695
'88 HONDA CIVIC	CSW-254	\$7995

**HONDA WINDWARD**  
In Kaneohe 247-8544  
Open 7 Days A Week  
Mon.-Sat. 9am-6pm  
Sunday 10am-4pm

All prices quoted are plus tax, license, and title. All vehicles are subject to prior sale. Prices, taxes, fees, and license. Illustrations not necessarily shown.

# Buy • Sell • Trade

'71 FORD GALAXIE 2 DR CXP751 <b>\$195</b>	'82 HONDA CIVIC S/W AUTO, STEREO HSA318 <b>\$1695</b>
'78 MERCURY ZEPHYR 4 DOOR, AUTO, 6 CYL EJF073 <b>\$495</b>	'88 PLYMOUTH RELIANT 4 DR, AUTO, AIR STEREO CDX112 <b>\$1995</b>
'77 LINCOLN VERSAILLES 4 DR, P/W, SP/SEATS EJY335 <b>\$595</b>	'85 FORD T-BIRD AUTO, AIR, P/W, PWR/ SEATS, SUNROOF CDX112 <b>\$2295</b>
'79 DATSUN 200SX 2 DR, 5 SPEED ERA910 <b>\$795</b>	'78 FORD MUSTANG COBRA V-8, T-TOPS, 4 SPD ERD589 <b>\$2495</b>
'84 PONTIAC GRAND PRIX 6 CYL, AUTO, STEREO DJU872 <b>\$995</b>	'89 NISSAN SENTRA 2 DR, 4 SPEED CXY985 <b>\$3695</b>
'81 DODGE RAM 50 P/U 5 SPEED, RADIO BFU826 <b>\$1095</b>	'87 CHEVY ASTRO VAN PASS, AUTO, AIR, V-6 CRUISE, TILT, STEREO EAF089 <b>\$4595</b>

OPEN 7 DAYS A WEEK  
Cars subject to prior sale. All prices plus tax, lic. and DOC fees

# LEEWARD USED CARS

94-819 FARRINGTON HWY.  
WAIPAHU, HI 96797  
**677-3333**

# ADOPT!

PUDDLES • KITTENS  
DOGS • CATS  
PUREBREDS

NEW PETS ARRIVING DAILY!  
Come in TODAY and see our fabulous selection of cute & cuddly pets. Don't wait... ADOPT NOW!

# FREE ADOPTION BONUS!!

\* Starter Kit \* Neutering  
\* Pre-Adopt Shots \* Vet Exam—& much more!  
Directions: Exit H-1 Freeway #25A. Corner of King and Waialae.  
**Hawaiian Humane Society**  
Open: Mon-Sun 10AM-6PM  
2700 Waialae Ave., Honolulu 946-2187

# 151 Pets/Everything

LARGE WHITE WROUGHT IRON Macaw parrot bird cage, \$950/ OBO. 833-4314, or 822-4803 iv. msg.

# PRIVATE OBEDIENCE

Training, Puppies & Adult results guar. NO ABLUSE! 890-986-4357.

# OR VISIT OUR AIRPORT LOCATION

590 PAIEA ST. CORNER OF NIMITZ HWY.

**834-0808**

# 156 Auto Service & Parts

WASH, POLISH, CLEAN, & Seal your car. Beautiful high quality shine. Only \$18.50. 247-6569.

# 161 Auto Wanted

DONATE your Car, Van, RV, Boat to Charity Serving The Blind. I.R.S. Tax Deductible. FREE TOWING. Need Not Run. 1-800-995-8889.

# 166 Pickup Trucks

'90 NISSAN EXT CAB P/U clean, low mi. stop in today! VET8298 \$988.

# CUTTER CHEVROLET GEO • PONTIAC

737-0500

# CUTTER CHEVROLET GEO • PONTIAC

737-0500

# RACE WEEK SPECIALS!

FOR THE POWER PACKAGE

**\$23795**

• Completes the Edelbrock Power Package for a no guesswork parts combination.  
• Engineered & calibrated to Edelbrock specs.  
• All-aluminum, lightweight construction keeps fuel cool to prevent vapor lock.  
• No power valves to blow out or break.  
• No plastic parts.  
• Compatible with gasohol and blended fuels.  
• Two-piece construction increases carburetor life by preventing warping.  
• No gaskets below fuel level means no leaking.



STOCK #1405-600clm (Limited to stock on hand) Good thru 5/29/93

# "WE HELP YOU GET THERE FASTER"

**PACIFIC PARTS & PERFORMANCE PLUS**

84-165 Leonul Street / Waipahu, Hawaii 96797  
**671-1706**

M-F 9:30-6:30pm SAT 9:30-6:30pm

MAZDA

# Kawasaki

# SPRING CLEARANCE SALE

Check Out These Great Prices

EX500 \$3,695 ZR1100 \$6,795  
Valcan 500 \$3,895 ZXR \$8,295  
Valcan 1500 \$6,795 ZXR600 \$8,695

Prices plus D.H. Doc, tax and lic.

from **\$3,095\***

**Back By Popular Demand!**

**Limited Supply!**

**KAWASAKI NINJA 250**

Price plus D.H. Doc, tax and lic.

**FINANCING AVAILABLE**

**834-2600**

**2965 N. NIMITZ HWY.**

Hawaii's Oldest Harley-Davidson, Kawasaki & Moto Guzzi Dealer

A Division of Wholesale Motors, Inc. • Established in 1961

171 Motorcycles & Scooters

78 HARLEY DAVIDSON S & S stroker, fast, clean, low miles. \$8000/ OBO. 833-7240, 922-6472.

'87 HONDA 450 REBEL \$1500 or trade for 70+ outboard motor. Call Jay. 261-1269.

'90 YAMAHA FZ 700 Great cond. 42,000 mi. many extras. \$3000/OBO. John. 254-0825 eves.

'90 CUSTOM HD, LOW Rider, black, lots of chrome. Only 2,000 miles. \$10,000. Call Ken. 398-1821 or 235-5881.

DO YOU HAVE A moped that is dependable and in fair cond. & reasonable call 262-4302 or 943-8502 leave message.

# MOTORCYCLE INSURANCE

Best rates & service in town 2 payment plans.

**261-7922**

Jack Wolfe Insurance

# 175 Vans & Campers 4 Wheel Drive

'92 ASTRO PASSENGER VAN 6 cyl., auto, A/C. ETC818, \$13,988.

CUTTER CHEVROLET GEO • PONTIAC

737-0500

# 176 Autos For Sale

**LEASE A USED CAR**

SMALL DOWN NO CREDIT NECESSARY!

**456-3994**

TRI-STAR LEASING

# BMW

'90 320i MOVING: MUST be restored beauty. No rust, new int./ext. 4 more. \$8100/off. 696-4981.

'87 325 4 dr. 5 spd. low mi. Bronzi/sunroof, excl. cond. \$8750. 735-1569.

'89 BMW 750i L Bk, fully loaded, real sharp. EFS892 Must sell Honda Windward 247-8844.

# Cadillac

'71 SEDAN DE VILLE 80K mi., runs: excl. needs windshield. \$500 OBO. 921-0061 eves.

'83 BIARRITZ, LEATHER air, loaded, \$3000. Call 269-8463.

# Chevrolet

'89 NOVA 4 dr., 6 cyl., auto, radio. \$350. 261-1691.

'88 CAVALIER 224 Fully loaded plus, great cond. \$4500/off. Lyle. 499-2830.

'87 NOVA Good condition, 5 speed, 5 door. \$2700. 423-4232.

'87 SPRINT, 5 SPD, excl. cond. 40 mpg. \$1860 OBO. 423-6733.

'88 NOVA auto, tint, AM/FM cass., low mi., excl. cond. \$5000/OBO. 838-3865.

'89 CORICA Fully loaded excl. cond. \$5500/OBO. 422-7850.

'91 LUMINA SEDAN extra clean, 6 cyl., auto, A/C. ETC801 \$9,288.

# CUTTER CHEVROLET GEO • PONTIAC

737-0500

# Classic Cars

'41 DODGE KINGWAY 2 dr., "original" 6 cyl. First \$4650. 247-3345.

'67 PLYMOUTH 4 dr., restored in/out. \$8700/off. 247-8008.

'87 T-BIRD, 2 dr., 4v, 390 excl. AM/FM, ees. \$6500 OBO. 238-4834.

# CAMPER TOP

"SNUGTOP" lite Ford Ranger, Dodge-50, Mitsubishi, Mazda Cab + 2000. P.H. 262-8890 or 261-8026.

NO MATTER what you're buying or selling, the Classifieds give you fast results. 235-5858!

# CLASSIFIED

ads get the job done. Call today 235-5858

# Mazda

'83 MAZDA 626 EY451 \$3,995. Honda Windward 247-8844.



It doesn't matter how you get it here... you'll still get a

**ONLY \$275 per mo**

**'93 FORD RANGER XLT 4X4**

AM/FM Stereo/Pass/Door-Opening/locking rear window. 5.0 V6 engine, auto, all terrain tires, fog lamps, cloth sport bucket seats.

89408



**BRAND NEW! '93 EUROVAN**

**ONLY \$298<sup>62</sup>**

**'48 Mo**

\*Plus Tax 48 Mo Period Initial Investment \$3500 + Drive Off Fees Residual \$914.00 Closed end lease O.A.C.



## THE BEST USED CAR DEALS ANYWHERE

<b>'87 PONTIAC FIREBIRD</b> V-8, Auto, Air, PWR/PSK, Alloys Was \$7995 (MUV973) <b>\$5995</b>	<b>'88 FORD TAURUS GL</b> 4 dr. Sedan, V-6, Auto, A/C, P/S, Cruise Tilt. Pwr. Pkg. Was \$8,995 (EDV476) <b>\$6995</b>	<b>'86 PONTIAC GRAND AM SE</b> Auto, Air, Fully Loaded. Was \$6995 (CDW259) <b>\$4495</b>	<b>'89 MAZDA MPV VAN</b> Fully Loaded, Clean, MUST SEE! (CWP-150) <b>OFFER</b>
<b>'89 FORD TAURUS</b> Auto, A/C, P/S, Power Package Was \$9995 (CXV430) <b>\$7995</b>	<b>'88 LINCOLN CONTINENTAL</b> Low, Low Miles! Auto, A/C, P/W, P/L, Loaded! (DGJ670) <b>\$9995</b>	<b>'84 MAZDA 626</b> 4 Dr. Super Clean, Economy Car, Auto, Air, Low Miles. Was \$6995 (BTA983) <b>\$4995</b>	<b>'87 NISSAN PICKUP</b> 5 Spd., Utead, Rims & Tires. MUST SEE! Was \$7995 (EFO-202) <b>\$5495</b>
<b>'91 RANGER XLT</b> Super Cab! Loaded, A/C, Cassette! Was \$12,995, (EVB265) <b>\$10,995</b>	<b>'90 T-BIRD LX</b> Fully Loaded, Extra Clean, Low Mi. Only 28K mi. Was \$13,995, (DJG742) <b>\$10,995</b>	<b>'87 TOYOTA PICKUP 4X4</b> Utead Big Wheels & Tires. MUST SEE! Was \$7995 (CPJ-946) <b>\$5995</b>	<b>'85 BMW 323E</b> 5 Spd., Black w/ BBS Wheels, A/C Was \$9995 (511661) <b>\$7595</b>
<b>'89 FORD AEROSTAR XL</b> Auto, P/S, Dual A/C, Stereo Cassette! Was \$11,995 (7921FF) <b>\$10,995</b>	<b>'89 FORD AEROSTAR EDDIE BAUER PCK</b> Loaded, Full Power, Only 26K Miles Was \$14,995 (LDV003) <b>\$12,995</b>	<b>'89 VW JETTA</b> 2 Dr. Sharp, 5 Spd, Air, Cass, Low Miles! Was \$9995 (CYX611) <b>\$7995</b>	<b>'88 VW VANAGON</b> 7 Passenger, 5 Spd., Great people mover. MUST SEE! Was \$10,995 (EXG-246) <b>\$8,995</b>
<b>'91 FORD AEROSTAR EXTEND VAN!</b> 7 Pass., Auto, Dual A/C, Stereo Was \$15,995 (MDF266) <b>\$12,995</b>	<b>'93 HONDA ACCORD LX SEDAN</b> Fully Loaded, Only 4K miles, Must See, Was \$18,995 (EBN790) <b>\$16,995</b>	<b>'91 NISSAN SENTRA GXE 4DR</b> Auto, Cruise, Full Power, Air - Only 19,574 Miles. Was \$11,995 (EBW268) <b>\$9395</b>	<b>'89 MAZDA MPV</b> Fully loaded, CD player, Dual Air and More Only 36,487 Miles. Was \$14,995 (DBF252) <b>\$11,995</b>

WE SPECIALIZE IN MILITARY FINANCING

**Ford**

725 Kaula Rd  
266-7000

**MIKE MCKENNA'S WINDWARD**

**ISUZU**

105 Onigawa St  
266-8000

**FAMILY MOTORS CREDIT CRAZE SALE**  
TERMS! TERMS! TERMS!

**E-3's FINANCING...**  
NEW IN TOWN? CALL!

We are accepting all applications.  
We will OKAY your CREDIT on the phone!  
In House Financing Available Call Now!

<b>'86 PONTIAC 6000</b> 3 dr. GV957 <b>\$2995</b>	<b>'87 FORD TAURUS</b> 4 dr. Auto, P/S, Air, P/W, Tilt. Cruise, Cruise. GV957 <b>\$4495</b>
<b>'87 HONDA CIVIC</b> Auto, Air, P/S, Stereo <b>\$3495</b>	<b>'87 FORD RANGER KING CAB</b> Auto, Air, P/S, Stereo <b>\$4795</b>
<b>'88 EAGLE PREMIER</b> Auto, P/S, Stereo, Tilt, Cruise, Air. GV957 <b>\$3995</b>	<b>'88 NISSAN MAXIMA</b> 4 dr. Loaded. GV957 <b>\$4895</b>
<b>'88 SUBARU GL</b> Auto, P/S, Stereo, Tilt, Cruise, Air. GV957 <b>\$4195</b>	<b>'88 NISSAN SE COUPE/HATCHBACK</b> 2 door, Auto, P/S, Stereo, Tilt, Cruise, Air. GV957 <b>\$5995</b>
<b>'87 CHEVY CELEBRITY</b> 4 dr. Auto, P/S, Air. GV957 <b>\$4295</b>	<b>'88 BUICK CENTURY</b> Auto, P/S, Tilt, Cruise, Air GV957 <b>\$6495</b>

OAC MANY MORE TO CHOOSE FROM

SAT 9AM-5PM, SUN 12AM-4PM  
FARRINGTON HWY. AT LEONAH WAIPAHU, HI 96797  
PHONE: 676-1600

<b>Mazda</b> '84 MAZDA 626 LX 4-dr., automatic, very reliable. \$2000. 261-2458.	<b>Nissan</b> '84 STANZA Auto., P/S, P/W, A/C, AM/FM cass., sunroof. Needs minor repairs. \$1500/OBO. Must sell Rhonda! at 267-0077. M-F. Days.
<b>Mercedes</b> '87 CLASSIC 360 SE great cond., stereo, 4 dr., \$3000/OBO. 668-1186.	<b>'87 MAXIMA Auto, A/C.</b> CEU413. \$7,995. Honda Windowed 247-8644.
<b>'80 300CE 40,000 mi.</b> excl. cond. \$42,150/or take over lease 922-1503.	<b>'88 GXE VAN, AUTO, A/C.</b> 864-8262 or 488-2842.
<b>Mercury</b> '83 MERCURY WAGON Auto., clean, new tires, no A/C. \$1200. 282-0084	<b>'88 300ZX, 5 SPD., T-top,</b> bik., leather, 28K mi., \$17,500. 239-9148.
<b>'86 COLONY PARK WGN</b> Low mi. full pwr., loaded, clean. \$8,500/Offer. 677-0116. 623-7585 eve.	<b>Oldsmobile</b> '88 DELTA 88 4 dr., auto, like new, 8 cyl., P/L, P/W low mi. \$10,368. CXG727.
<b>'88 SABLE 4 dr., mint,</b> low mi., AM/FM cass., new tires & trans., warr. inc. \$12,000/OBO 948-3310 days, or 235-1770 eve.	<b>CUTLER CHEVROLET GEO-PONTAC</b> 737-0500
<b>MG</b> '78 MG CONVERTIBLE red, runs well, good top. \$2500/offer. 261-8895.	<b>Plymouth</b> '83 TURISMO 75K mi., sporty 2 dr., runs good. \$1600/OBO. 422-6206.
	<b>Saab</b> '87 900 Auto., pwr. steer. pwr. brakes, A/C. \$8200 or offer. 263-2350.

## 4 WHEEL PARTS WHOLESALE MONSTER MADNESS

**1 DAY SUPER SALE**

★ SATURDAY MAY 15 8:30-4:00PM ★

AWESOME SHOWROOM AIR CONDITIONED FOR CUSTOMER COMFORT

**LIVE MUSIC**

**SHAVE ICE**

**BIKINI GIRLS**

**CUSTOM 4X4 TRUCK SHOW TROPHIES**

**BLOWOUT!!**

**MANY ITEMS SOLD FAR BELOW OUR COST**

**UNREAL DEALS ON TIRES & WHEELS**

**LIVE DJ BROADCAST KPOI 98 ROCK LOGO CONTEST**

**DON'T MISS THE SAVINGS**

**FOUR WHEEL PARTS WHOLESALE 676-2266**

**94-158 Leole St. Waipahu, HAWAII 676-2211**

<b>Pontiac</b> '84 SUNBIRD CONV. EVY004 \$3,895. Honda Windowed 247-8644. '87 FIREBIRD V-8, auto, A/C, pwr. pkg., alloys. MUV973, (was \$7,995) now \$5,995.	<b>Subaru</b> '87 JUSTY economy special, best buy! EAF180 \$1,895. PELEUGER WAIPAHU Car & Truck Center 676-2220	<b>Toyota</b> '87 TERCEL CNG222, \$3,995. Honda Windowed 247-8644.
<b>Mercedes</b> '81 SUPRA 5 speed, all accessories work. \$2150/OBO. Call 235-2802	<b>Toyota</b> '82 CELICA GT8 2-dr. 5-spd., A/C. Must see! \$2950. Greg. 235-8680.	<b>Volkswagen</b> '84 COROLLA 4 dr. hatchback, 1 owner, air, JVC radio/cass. player. Priced to sell. \$1950. Ph. 254-1826, eve.
<b>Mike McKenna's WINDWARD FORD</b> 725 KAULUA RD. 266-7000	<b>'89 GTA TRANS AM</b> excl. cond., fully equipped. A steal at \$9,200. Call Ken 398-1821 or 235-5881.	<b>'86 CELICA ST auto, A/C, easy terms.</b> HTT947 \$4,995. PELEUGER WAIPAHU Car & Truck Center 676-2220
<b>Porsche</b> '78 911S White, clean, car phone, Alpine CD stereo. \$14,000. 677-9115. '87 924S A/C, cass., sunroof. Excellent condition. \$9900. 438-2889.	<b>'89 COROLLA 4 dr., auto, A/C, weekend special.</b> EYV018 \$5,895. PELEUGER WAIPAHU Car & Truck Center 676-2220	<b>'72 SUPER BEETLE</b> Fire engine yellow, good running cond. \$2600/OBO. 633-4314, or 622-4603 if msg.
<b>Saab</b> '87 900 Auto., pwr. steer. pwr. brakes, A/C. \$8200 or offer. 263-2350.		<b>'83 RABBIT 4 dr., 5 spd., blue, dual carbs, GTI ready. \$1200/make offer. Won't last call now! 262-4913.</b>

## WE'RE DOUBLING FACTORY REBATES! REBATES UP TO \$3000!

\*Two Free Milk Caps With Every Test Drive of a '93!

\*Excluding Grand Cherokee, Vans and Grand Wagons.



**DOUBLE THE FACTORY REBATE!!**

1992 JEEP CHEROKEE LAREDO



**DOUBLE THE FACTORY REBATE!!**

1993 JEEP WRANGLER S

**GUARANTEED \$3000 MINIMUM TRADE-IN\* ON OUR PREMIUM LATE MODEL USED CARS!**

\*Cannot be combined with discounts. Does not apply to sale cars.)

Sign Up Today!  
ALOHA STATE GAMES  
**SOUTH SEAS JEEP EAGLE 10K RUN! JUNE 13!**

Pick-up your application here, at any sporting goods store or call 947-4141 for information.

**1993 Eagle Summit 2-door Coupe**  
(3701)

FOUR TO CHOOSE FROM!  
**SPECIAL PRICE: ONLY \$10K!!**

## THIS WEEK'S SPECIAL SALE CARS!

<b>'86 Nissan Sentra Coupe</b> One Owner, Always Garaged, CVT683 <b>\$1995</b>	<b>'87 Honda Civic</b> 4 dr Sedan, Low, Low Miles 30,642, Looks and runs like new. CJR169 <b>\$4995</b>
<b>'86 Toyota Tercel Wagon</b> Only 50,000 Miles, One Owner Garaged Beauty, Ice Cold AC, Automatic, Cassette 14295T <b>\$3995</b>	<b>'89 Dodge Colt DL Wagon</b> Automatic, Ice Cold AC Cassette, Cruise Control Awesome One Owner Family Car! HVG370 <b>\$4995</b>
<b>'84 VW Jetta GL Sedan</b> Low Miles, Ice Cold AC, Cassette EXC398 <b>\$3995</b>	<b>'90 Pontiac Lemans</b> Automatic, AC, Cassette and more! Great economy and a great used car bargain! KSU975 <b>\$4995</b>
<b>'88 Mazda 323</b> Black Beauty, Low Miles Automatic, AC, Cassette, Great Fuel Economy! Won't Last! 741TCP <b>\$4795</b>	

(ALL CARS SUBJECT TO PRIOR SALE)

**SOUTH SEAS** **HYUNDAI**

AIRPORT • CORNER OF NIMITZ & LAGOON DRIVE • 836-0515

## Today's Special Sale Prices!

<b>'86 Nissan Hard Body Pickup</b> Looks & runs great! \$500 down \$189 a month for 24 mos * DGW910 <b>\$3495</b>	<b>'90 Dodge Shadow</b> 4-dr., AT & Ice Cold AC! Zero down \$199 a month for 42 mos * EXB094 <b>\$5995</b>	<b>'88 Nissan GXE Van</b> Ultra Deluxe, Dual AC! AT! Dual Sun Roof, Ice Maker, Only 45,000 Miles, HURRY WON'T LAST! CTC939 <b>\$8995</b>
<b>'88 Nissan Sentra</b> Deluxe 4 dr Automatic & AC! Zero down \$159 a month for 30 mos * EEV074 <b>\$3595</b>	<b>'89 Mercury Cougar LS</b> 2-dr, Fully Equipped! Zero down \$259 a month for 36 mos * EXB053 <b>\$6995</b>	<b>'91 Ford Probe Sport Coupe</b> 6 cylinder, AT, Awesomel Zero down \$284 a month for 48 mos * EPG325 <b>\$8995</b>
<b>'90 Mazda 323 Hatchback</b> Only 11,000 Miles! Like New! Zero down \$185 a month for 42 mos * EJD632 <b>\$4995</b>	<b>'90 Geo Tracker 4x4</b> AC! Extra Nice! Zero down \$263 a month for 42 mos * EYG472 <b>\$7995</b>	<b>'90 Mazda RX7 GTU</b> Dream Car! Hurry Won't Last! Zero down \$359 a month for 42 mos * HNU748 <b>\$10,995</b>
<b>'90 Ford Tempo</b> 4-dr., AT, AC & Only 19,000 Miles! Zero down \$195 a month for 42 mos * DOW858 <b>\$5895</b>		

\* Prices Plus Tax Lic. & Doc. A.P.R. 15.9% O.A.C.  
(ALL CARS SUBJECT TO PRIOR SALE)

**SOUTH SEAS MOTORS**

46-004 KAWA STREET • KANEOHE • 247-CARS

## DOUBLE REBATES! WE'RE MATCHING THE FACTORY DOLLAR-FOR-DOLLAR!

\*Two Free Milk Caps With Every Test Drive of a '93!

\*Excluding Voyager, Concorde, Grand Cherokee, & Grand Wagons.

**DOUBLE REBATES!!**

1993 Voyager  
Either short or long version

**DOUBLE REBATES!!**

'93 Chrysler LeBaron Coupe



**GUARANTEED \$3000 MINIMUM TRADE-IN\* ON OUR PREMIUM LATE MODEL USED CARS!**

\*Cannot be combined with discounts. Does not apply to sale cars.)

## THESE CARS MARKED FOR QUICK SALE!

<b>'81 Toyota Tercel</b> 4-dr, Extra clean! Spectrum blue, Automatic, Stereo, Priced Right! DFY971 <b>ONLY \$2295</b>	<b>'87 Ranger Super Cab Pickup</b> Don't miss this one! Immaculate, Original Condition, Two Tone, Runs & Looks new! EEJ107 <b>ONLY \$5995</b>	<b>'92 Honda Civic VX</b> Only 10,799 Miles, Custom Wheels Ice Cold AC, Like new but thousands less! ENY268 <b>MUST SEE</b>
<b>'81 VW Vanagon L</b> 7 passenger, Low Miles, Chrome Wheels, Two Tone Paint, Priced Right! CJT220 <b>ONLY \$3777</b>	<b>'92 GMC SLE Sierra 271 4x4</b> None nicer than this one! All the options, Automatic, Chrome roll bar, Centerlines, Low Miles, Hurry! 167DZJ <b>MUST SEE</b>	<b>'92 Geo Tracker 4x4</b> Only 7896 Miles, Absolutely Mint! Bright White, Automatic, Ice Cold AC! PS, Stereo and more! ATW397 <b>MUST SEE</b>
<b>'89 Ford Festiva LX</b> Ice Cold AC, Custom Wheels, Stereo, Gas Mileage Plus, Hurry! EAA832 <b>ONLY \$3995</b>	<b>'87 Jeep Cherokee Pioneer</b> 4-dr, One Owner, AC, 4.0, 6 cyl., Alloy wheels, Excellent Condition! CNG158 <b>ONLY \$7995</b>	<b>'92 Ford Ranger XLT Pickup</b> Don't miss this one! Midnight Blue! Alloy Wheels, Ice Cold AC Like new but thousands less! 14272P <b>ONLY \$8995</b>

(ALL CARS SUBJECT TO PRIOR SALE)

**OAHU** **CHRYSLER JEEP**

94-245 FARRINGTON HIGHWAY WAIPAHU, HAWAII 96797 • 676-5454





# CUTTER TEAM

ALL STORES OPEN  
8:30 A.M.-9 P.M.  
SUN. 9 A.M.-6 P.M.

HAWAII'S DRIVING FORCE  
WITH FORD CREDIT, CHRYSLER CREDIT AND GMAC  
\*TAKE IT WITH YOU WHEN YOU LEAVE \*NO HASSLES—NO RED TAPE

\*SPECIAL MILITARY FINANCING  
WITH FORD CREDIT, CHRYSLER CREDIT AND GMAC  
\*TAKE IT WITH YOU WHEN YOU LEAVE \*NO HASSLES—NO RED TAPE

## CUTTER FORD-ISUZU

98-015 Kamehameha Hwy.  
AIEA  
487-3811

## MAKIN' DEALS

\$\$\$ HUGE SAVINGS NOBODY DOES IT BETTER  
HAWAII'S LEADER IN RETAIL SALES!  
WE SELL MORE SO YOU PAY LESS!

WE'RE DEALING  
GREAT VALUE, SMALL PRICE!  
YOUNG BUYER'S PROGRAM! (#1494)  
**'93 FESTIVA \$5988**

WE'RE DEALING  
YOUNG BUYER'S PROGRAM  
TOP 10 SELLER IN AMERICA (#1288)  
**'93 ESCORT \$7388**

**BEST FINANCING  
NO DOWN PAYMENT!**  
FINANCING FROM 6.9% APR OR UP TO \$2000 REBATE

WE'RE DEALING  
2.3 LIT, MIRRORS, TINT  
STILL HAWAII'S BEST BUY! (#1484)  
**'93 ISUZU P/U \$7888**

WE'RE DEALING  
FULL SIZE 1/2 TON  
#1 SELLING TRUCK IN AMERICA (#1454)  
**'93 F-150 P/U \$10,988**

WE'RE DEALING  
WAGON, AIR  
IN A CLASS BY ITSELF! (#1001)  
**'93 AEROSTAR \$12,488**

WE'RE DEALING  
#1 SELLING CAR IN AMERICA!  
V-6, AUTO, AIR (#1399)  
**'93 TAURUS GL \$13,988**

WE'RE DEALING  
2.8 LIT, P/S  
ISUZU'S HOTTEST SPORT UTILITY VEHICLE! (#1002)  
**'93 RODEO \$14,988**

WE'RE DEALING  
V-6, ALL POWER LOADED  
YOUNG BUYER'S PROGRAM! (#1338)  
**'93 MUSTANG 5.0 \$14,988**

## QUALITY USED CARS

'83 MAZDA 3LC AUTOMATIC (88R942)	\$295
'84 PONTIAC SUNBIRD CONVERTIBLE (EXC408)	\$1495
'83 MERCURY GRAND MARQUIS AIR, WORKS GREAT (EV284)	\$1995
'83 MERCURY COUGER LOADED (D0Y047)	\$3895
'88 DODGE CARAVAN 7 PASSENGER (CDN051)	\$3995
'88 EAGLE SUMMIT DL LOW MILES (CYA007)	\$4095
'87 JEEP WRANGLER A GREAT VALUE (EP5778)	\$4195
'90 CHEVROLET LUMINA AUTO, AIR (D4C100)	\$4995
'91 DODGE SHADOW 6 CYL (EC2294)	\$5995
'88 ISUZU P/U LOW MILES (EY3551)	\$6595
'87 MERCURY SABLE S/W GS LOADED, 6 CYL (EC0807)	\$6895
'91 PONTIAC SUNBIRD LE CLEAN (EFT010)	\$7495
'88 MITSUBISHI VAN L3 7 PASSENGER, AIR (CW3074)	\$7995
'89 FORD PROBE GREAT VALUE (GVY400)	\$8495
'91 NISSAN STANZA CASSETTE, AIR (DPW001)	\$8595
'91 CHEVROLET BLAZER ISLANDER (MV5251)	\$10,995
'82 FORD AEROSTAR XL AUTO, AIR, 7 PASSENGER (EW6735)	\$13,495
'81 FORD AEROSTAR XLT RUMBLE SEATS, AIR (EP2101)	\$13,995

## CUTTER CHRYSLER-PLYMOUTH DODGE JEEP/EAGLE 2 GIANT LOCATIONS

'94 LH "S"  
IN STOCK NOW!  
#1 IN SALES  
2 GIANT LOCATIONS

NEW '93 DODGE & PLYMOUTH COLTS  
EAGLE SUMMITS 61 IN STOCK  
P/B, MINI CONSOLE, FRONT WHEEL  
DRIVE, GAUGES AND MORE!  
**\$6988**  
8 AT THIS PRICE

NEW '93 PLYMOUTH  
LASER 14 IN STOCK  
OD/TRAN, OVER HEAD CAM ENGINE  
P/DISC BRAKES, MUCH MORE!  
**\$9988**  
2 AT THIS PRICE

NEW '93 DODGE DAKOTA  
CLUBCABS 20 IN STOCK  
YOUR CHOICE SPORT PKG OR LE PKG  
EXT CAB, P/S, P/DISC BRAKE, 6 CYL & MORE!  
**\$11,988**  
2 AT THIS PRICE

NEW '93 CHEROKEE 4 DR 70 IN STOCK  
AIR, P/S, P/DISC BRAKES,  
MUCH MORE!  
**\$12,988**

NEW '93 PLYMOUTH VOYAGERS  
OR DODGE CARAVANS 110 IN STOCK  
AIR COND, AUTO, 7 PASS, AIR BAG,  
P/S, P/B, T/GLASS, AND MUCH MORE!  
**\$15,488**  
7 AT THIS PRICE

'88 DODGE COLT	\$2488
'85 OLDS CUTLASS CALAIS SUPREME	\$2988
'86 OLDS DELTA 88	\$2988
'87 OLDS CUTLASS CIERA	\$3988
'89 CHEVY CAVALIER	\$4588
'87 JEEP WRANGLER 4X4	\$4988
'88 DODGE DYNASTY	\$5988
'91 CHEVY CAVALIER	\$5988
'91 FORD RANGER	\$5988
'89 VW JETTA	\$6988
'90 FORD CLUB WAGON	\$7488
'90 FORD AEROSTAR	\$8988
'91 DODGE SHADOW CONV	\$8988
'91 JEEP CHEROKEE 4X4	\$11,988

## WE DO CREDIT MAGIC!

NAME \_\_\_\_\_ CITY \_\_\_\_\_ ZIP \_\_\_\_\_  
ADDRESS \_\_\_\_\_ WORK PHONE \_\_\_\_\_  
SOCIAL SECURITY NO. \_\_\_\_\_  
TYPE OF \_\_\_\_\_  
CAR INTERESTED IN: \_\_\_\_\_  
ARE YOU WORKING? HOW LONG IN PRESENT JOB?  
YES ☐ NO ☐ 6 mo 1 yr 2 yrs ☐  
SIGNATURE \_\_\_\_\_

COMPLETE & MAIL IN TODAY TO CUTTER CHRYSLER PLYMOUTH DODGE JEEP/EAGLE  
735 DILLINGHAM BLVD., HONOLULU, HI 96817 PH: 842-6300 FAX: 842-6306

I understand by signing this application I authorize The Cutter Team and the Bank to check my credit with a credit reporting agency, verify employment, and that I warrant that this information is correct.

CUTTER DODGE CHRYSLER PLYMOUTH DODGE JEEP/EAGLE  
842-6300  
CUTTER DODGE CHRYSLER PLYMOUTH DODGE JEEP/EAGLE  
455-1071

## CUTTER CHEVROLET GEO-PONTIAC 3 IN TOWN LOCATIONS

SPECIALLY PRICED FOR A  
LIMITED TIME ONLY

'93 CHEVY ASTRO  
6 CYL ENGINE, P/LOCKS, RALLY WHEELS,  
AM/FM STEREO, A/C #130719  
PASS VAN  
STARTING AT  
**\$14,950**

INCREDIBLE OFFER!!!  
FOR LIMITED TIME  
'93 CHEVY S-10 P/UP  
6 CYL ENGINE, TINTED GLASS, P/S,  
AM/FM CASS, AND A/C  
#130706  
STARTING AT  
**\$9950**

'93 PONTIAC LEMANS  
4 CYL, CASS & MORE  
\$1500.00 DOWN, RESIDUAL \$3142.00,  
SELLING PRICE \$8400 #23048, #23021

ONLY  
**\$17388**  
36 MOS/8.5%  
2 TO CHOOSE FROM

'93 PONTIAC GRAND AM  
4 CYL, AIR, CASS & MORE  
\$1500.00 DOWN, RESIDUAL \$4648.00  
SELLING PRICE \$13,600 #23022

ONLY  
**\$19786**  
48 MOS/8.85%

## \*USED CARS & TRUCKS\* 737-0500

'84 PLYMOUTH RELIANT CLEAN, AUTO, AIR, CRUISE, TLT (DVL072)	\$2188	'85 NISSAN SENTRA AUTO, 4 CYL, AIR, AM/FM CASS, CLEAN (EYF013)	\$5488
'89 FORD FESTIVA L 4 CYL, AIR, NICE TRANSPORTATION (DVT001)	\$2888	'81 CHEVROLET CORVETTE 5.7 LITER, AUTO, AIR, CASS, P/L, P/W, TLT, CRUISE, T-ROOF LOW MILES (EAM001)	\$6888
'89 TOYOTA CELICA AUTO, CASS, GOOD CONDITION (CAAG57)	\$3188	'88 MAZDA RX7 NICE CAR, 4 CYL, AUTO, P/B, AIR, AM/ FM STEREO, CASS (CYN088)	\$6988
'89 PONTIAC GRAND AM CLEAN, AIR, TLT, MUST SEE TO APPRE- CIATE (EYV001)	\$4488	'89 FORD AEROSTAR XL VAN AUTO, AIR, AM/FM, CASS, 8000 FAMILY CAB (CYN088)	\$7888
'89 DODGE 150 EXCELLENT CONDITION, NICE WHEELS, 4 CYL (CYN088)	\$4488	'81 BEG TRACKER 4X4 LSI AIR, CASS, LOW MILES, CONVERTI- BLE (EAG009)	\$10,988
'87 CHEVROLET CELEBRITY SEBAM 4 CYL, AUTO, AIR, AM/FM CASS, CLEAN (EOT002)	\$4788	'87 CHEVROLET ASTRO VAN EXCELLENT SHAPE, V-6 ENGINE, AUTO, P/L, AIR, 6 PASS (DVT088)	\$12,288

## CUTTER CHEVROLET

GEO-PONTIAC  
Three-In-Town Locations

3080 KAPIOLANI BLVD. PH. 737-0600  
1845 KAPIOLANI BLVD. 946-6311  
1391 KAPIOLANI BLVD. PH. 946-6311

Prices include all factory rebates & incentives. \*No previous record of new vehicle financing or leasing. Plus tax, lic. & \$140 doc fee. Vehicles subject to prior sale. \*Financing through Ford Motor Credit or GMAC. All vehicles subject to credit review. \*Selling price may vary.

Not combinable with special finance rates. Rebates & assistance on selected models. Subject to prior sale, plus tax, lic. & \$140 doc fee. All applicable rebates, first time buyer applied. Not all cars available in all locations. \*Selling price may vary.