

# HAWAII Marine

Vol. 21, No. 38

Serving MCAS Kaneohe Bay, 1st MEB, Camp H.M. Smith and Marine Barracks

October 1, 1992

## NQLB meeting focuses on new ideas

□ Outgoing chairperson honored by CO; new board member elected from field of five

By Sgt. Jason Erickson  
Staff Writer

Although the Sept. 24 meeting of the Neighborhood Quality of Life Board lost some attendees and members of the board to school open houses, several issues were still discussed and a new board member was elected.

Additionally, Air Station Commanding Officer Col. R.R. Crawford took the opportunity to present former Chairperson Vicki Whitehead with a certificate of commendation for her service to the board. Having served a six-month term as chairperson, Whitehead has since turned over the helm of the board to David Keen who was elected to the

position by his fellow board members.

The election of a ninth member to the board was just barely able to be done with five board members present. Five candidates threw in their hat and Robert Andrews was elected by those in attendance. The junior Marine, who promised to look out for single Marines, beat out a retired Marine now working on base, a representative of the Enlisted Wives' Club, an officer from MAG-24 and another married enlisted Marine.

This month's session, unlike the past several before it, did not have a particular focus, such as child care or children's issues. Instead, the open forum was started soon after the meeting began.

Due to the limited number of suggestions, each issue brought up was immediately discussed, which is also a deviation from past meetings. Usually, because of the number of suggestions made, attendees have to vote on the top three or four to decide which topics to delve into. The other suggestions are always dealt with later by the board in closed session, but don't get the attention of the open meeting due to time constraints.

One suggestion during the Sept. 24 meeting was to close a gap in the fence at the intersection of Middaugh Street and Harris Avenue to keep children from going in to the Section 802 housing construction site. Apparently, some kids cut through

the site on their way to and from school. The children run the risk of being hit by truck drivers and heavy equipment operators. The gap has since been closed off by a fence to solve the problem.

The question of children's safety led to a discussion for a needed crossing guard at the intersection of Harris and Mokapu before and after school. According to a representative of Mokapu School, the school can not afford to pay another crossing guard because it already employs one. Attendees suggested that volunteers be sought to perform this task. Anyone interested in volunteering should contact Mokapu School.

There was also a lengthy discussion about lattice work in housing. This is not a new issue. Several months ago, a suggestion was made to the board that families in housing be allowed to put up lattice work. After being

approached with the idea, Oahu Consolidated Family Housing agreed to allow certain types of lattice under specific circumstances. But according to one attendee, the rules governing the lattice are vague, while approval from housing is tough to get. His main complaint is that the lattice can not be nailed to the unit — something he feels is a safety hazard. The board said it would look into the issue.

There was also a somewhat agitated sergeant major who said he couldn't believe the junior enlisted housing areas were allowed to be so shabby. He said as a senior Marine he is ashamed to have to tell his new Marines this is the only government housing available for them here. His suggestion was to fix up the housing and require better standards of upkeep by the residents.

Some of the other topics discussed included a request to

fix street lights along Lawrence Road that have been broken since the hurricane; a request that mowing standards on base be more stringently enforced because some grass areas in housing, at the school and around various units here are not being regularly mowed; a request to have a civil defense warning system installed in the new Ulupa'u housing area; a suggestion to have the new video rental store put up a more visible open/closed sign; a suggestion to create a cash-only line at the commissary and exchange; a recommendation that something be done to ensure children observe proper safety on their bikes; a question whether a stop light will be installed at Mokapu and Harris (it will); a suggestion to do I.D. checks at the door to the exchange; and a suggestion to have each unit send a representative to the NQLB meeting to improve community-wide participation.



LCpl. Michael Isham

### Housing opens

Air Station Commander Col. R.R. Crawford and Oahu Consolidated Family Housing Commander, Army Col. Walter L. Cloyd, tour the newly constructed Ulupa'u housing area Sept. 24 after the official opening of the 40-unit area to occupancy. The project, part of a three area construction contract which includes units at Helemano and Hickam Air Force Base, began in August 1991. The Ulupa'u portion came at a cost of approximately \$5 million.

## Anderson Hall closes Oct. 18, Pless Hall opens following day

By Sgt. Jason Erickson  
Staff Writer

After serving the afternoon meal Oct. 18, Anderson Hall will lock the doors for several months while renovations are done to the facility. But there will be no break in chow services.

At 4 a.m. the following day, Pless Hall will open its doors to become the air station messing facility for the period that Anderson is closed.

According to mess hall officer GySgt. Jeff Giltner, there will be no lapse in service during the move. He also assured patrons that the services will be no different at Pless Hall than they were at Anderson Hall.

"We'll have the same hours and the same number of food lines," Giltner said. "The only difference is we'll be working out of a different building."

Anderson will be closed for approximately six to eight months. When it reopens, Pless will permanently close and its future role is still undetermined.

Giltner said the move from one chow hall to the other will not require any major work. It will simply be a matter of packing up a few desks and equipment and taking them over to Pless Hall. Everything else is ready to go.

"We're moving stuff a little bit at a time right now, so that when we close after evening chow on the 18th, we won't have much left to take over," Giltner said.

He added that because hundreds of Marines are going to be training on the Big Island, it will be easier to make the move because fewer patrons will be using the facility. Additionally, the move will occur during a payday weekend, which also cuts down on the number of patrons.

## Timely distribution of FPCAs hampered by mistakes

Marine Corps News Service

State election officials have contacted the Federal Voting Assistance Program (FVAP) expressing concern about the number of incorrect federal post card applications (FPCA) forms they are receiving from military and U.S. citizens overseas.

When completing your request for registration and ballot for the

Nov. 3 general election, remember that local election officials are processing thousands of applications and it is critical that they be able to read the application. Therefore, if you cannot type your FPCA, make sure you print clearly and legibly. In 1988, 26.6 percent of all FPCAs could not be processed due to illegibility.

Follow the instructions for completing the form provided by

your state voting residence and listed in the 1992-93 Voting Assistance Guide. Procedures vary from state to state so it is important to follow the procedures for your state carefully to avoid rejection or a delay in processing your form.

If a rural route or post office box is your only voting residence address be sure to describe the actual physical location of your home in as much detail as

possible in the remarks section of the form. Without sufficient information, the local election official cannot place you in a proper voting precinct, a critical step in obtaining a ballot from your jurisdiction. In 1988, inadequate home address accounted for 78.5 percent of problems associated with processing the applications.

Once completed, the form should be returned to the appropriate

office in your county, town or city of voting residence. Addresses are listed in the state chapter of the Voting Assistance Guide. Do not return the FPCA to the FVAP as this will only delay processing your assistance.

If you require further assistance in completing your form, contact your unit voting officer or call FVAP toll free (800) 438-8683.

Approximately 60 days before each election, the Voting

Information Center will provide recorded messages from the candidates, as well as other information concerning the election. Voters may call (703) 693-6500 to hear these messages.

The Voting Information Center can receive calls and questions 24 hours a day. Voting assistance officers may also contact their service voting action officers through the Voting Information Center.

## DoD to track Persian Gulf vets

American Forces Information Service

The Department of Defense (DoD) will keep a registry of servicemembers exposed to fumes of burning oil in connection with Operation Desert Storm.

Deputy Secretary of Defense Donald J. Atwood told the services and defense agencies to start the registry. The Department of Veterans Affairs asked the DoD to track servicemembers to make it easier to help them later, should exposure-related health problems develop.

The registry will include a roster of troops assigned to each unit in the areas affected by the Kuwaiti oil well fires. DoD will also keep records of daily unit locations from Jan. 15, 1991, through the date of the last unit withdrawal from the region. DoD will also track air pollution levels at sites where troops were stationed.

## Report examines women's role in war

### Persian Gulf Conflict conflict answered questions concerning women and deployment

By Jim Garamone  
American Forces Information Service

A Department of Defense (DoD) study on women's performance during the gulf crisis shows they were less deployable than men and had a higher return-from-theater rate — but both rates were small and did not hamper military operations.

Christopher Jehn ordered the report — *Utilization of American Women in Operations Desert Shield and Desert Storm*. Jehn is assistant secretary of defense for force management and personnel. The President's Commission of the Assignment of Women in the Military, the Defense Advisory Committee of Women in the Services, Congress, the military services and DoD will use the report — with other sources of information — when formulating policy.

The Persian Gulf war was the first large-scale deployment featuring a significant number of women. More than 40,000 American women deployed with their units to the gulf region. The report says this was the largest deployment of military women in U.S. history. Women made up more than

7 percent of all U.S. forces in the area.

The deployment allowed the United States to track questions that have been raised for years. In the past, critics of women in the military said they would not deploy easily. Further, once deployed, these theorists said, women would experience a higher early return from deployment rate than men. Finally, critics raised many questions about pregnancy rates during a long deployment. Some contended women would get pregnant to avoid duty.

Medical problems prevented more servicemembers from deploying than any other reason. Information indicates more than 2 percent of men and 9 percent of women considered for deployment were not deployed due to medical reasons. The Army, Navy and Marine Corps kept specific figures for pregnancy. Pregnancy accounted for about half of the medically nondeployable women. Even with pregnancy out of the picture, 4.5 percent of the women considered for deployment were unable to go vs. 2 percent of all men.

"One problem with the deployment figures is that each service has a different definition," Jehn said. "Sometimes the definition differed within the services and was different between the active component and the reserve component."

As an example, Jehn pointed to a unit that had to send a detachment to the gulf. He said the commander would look through the

unit and decide who was deployable. "He's not going to send the man who sprained his knee, he's not going to send the man who is just getting over the flu, he's not going to send the woman who just gave birth. So when he puts the detachment together, they are 100 percent deployable."

Had the unit deployed rather than a detachment, the same people would not have gone. The unit, then, would have had a higher nondeployment rate.

Women were returned from deployment at a greater rate than men also. According to the figures available, 2 percent of men deployed returned early. About 2.5 percent of the women returned early. Jehn said medical problems accounted for most early returns.

The survey also shows that pregnancy rates remained constant through Desert Shield/Storm. "Many critics of women in the military used the pregnancy rates as an excuse to bash the whole concept of women in the military," Jehn said. "In fact, there was no difference between pregnancy rates prior to the deployment and during the deployment."

Jehn said he was not surprised by the general conclusions of the report. "Essentially, the report stated that everyone — men and women — did an outstanding job in the gulf," he said. "The overall conclusion is the deployment went extremely well and that our policies make sense."

## Week

INSIDE THIS

- Blotter ..... A-2
- Briefs ..... A-3
- Sports Briefs ..... B-1
- Briefly ..... B-6
- TV Schedule ..... B-7
- Ads ..... B-7
- Tickets ..... B-7
- Movies ..... B-7

Commentary

# Mishaps don't know to count

SSgt. Reginald Cray  
MAG-24 Ground Safety Officer

I've had an opportunity to observe, over a three year period, a very high-tempo Marine Aircraft Group-24 from a unique vantage point—that of a "Safety Pogue." I've seen the results of complacency, over-confidence, preoccupation and, on numerous occasions, blind obedience. Operations involving rapid deployment and combat developed an undeniably acute awareness of what our jobs really are. During those times, astute personnel became commensurably more aware of the need for observing caution. One would think that those would be the times when we might be more prone to overlook a procedure or safety precaution and have a serious mishap. Unfortunately, that theory does not pan out. What I have learned is that personnel are far more likely to be seriously injured during the most routine tasks.

In January 1986, a MAG-24 Marine was killed when he free-

dove (at night, alone) to dislodge an anchor after scuba diving. Certainly he had heard of the dangers of diving alone many times prior to, during and after his scuba training. In December 1986, a MAG-24 Marine was killed while driving a motorcycle; a routine activity that he had probably done hundreds of times. Undoubtedly, he felt no danger at all. It is remarkable that we haven't had any fatalities in MAG-24 since that incident because we've had more than our share of close calls. Those close calls should be considered warnings and whet our attention to the potential for a serious accident. But don't be misled into believing that there will always be near misses to remind you. The potential is always there, even in the most obscure form or unlikely place. Should that reality escape you, even for a moment, one of the elements that set you up for a mishap may be in place. The problem being that you really never know how many elements it will take to create the mishap. One, a few,

or many; every mishap or close call depends upon the same undeterminable number of contributing factors. Mishaps don't know how to count.

The most serious mishaps in MAG-24, during that past three years, have indeed occurred during simple activities, and at unlikely times. One Marine injured his leg so severely while running wind sprints that it resulted in permanent disability. Another Marine, under supervision, severed a finger and a portion of his hand while performing a very routine task that was only going to take a moment. Dispensing safety precautions for "only a moment" in this case resulted in permanent disability and the end of a military career. Recreation has dominated the mishap statistics over the past three years. The fact is, MAG-24 Marines do not remain safety conscious while we are at play.

The potential for tragedy is not determined by the degree of hazard alone. There are hazards

in nearly all activities. And don't think for even a nanosecond that permanent disability or death only occurs during high hazard activities. Be informed and knowledgeable of procedures and limitations for different activities. Keep your mind on the task at hand and don't take shortcuts.

Don't forget your buddies. They may not be as knowledgeable as you. Look out for their welfare, too. If you see a hazard, don't assume that they see it, or even recognize it as a hazard. The MAG-24 Ground Operational Safety and Health Program manual provides a form that can be submitted to the safety officer to report unsafe or unhealthy conditions. It can be submitted anonymously if you wish.

Mishaps don't know how to count, so don't get hung up on how great a past record you've had. Your good fortune is history. Enjoy it. But don't let it cloud your awareness of the need for caution now and in the future.

## Two-memorial design chosen for Hawaii vets

By Cpl. Lou Ramirez  
Staff Writer

Hawaii's memorial to honor veterans of the Korean and Vietnam wars was chosen Tuesday, after narrowing the number of designs from 51 to 14 Sept. 23. The commission chose Paul Medley's two-memorial design.

Some of the preferences expressed by the veterans and others who studied the designs were that the winning memorial should be simple yet dignified, and it should be Hawaiian.

Several also commented that they did not want the memorial to depict a soldier or glorify war in any way.

The commission elected the memorial following guidelines set forth by the state legislature and keeping in mind the public's wishes.

"We did a good evaluation of all the designs and came up with what the people wanted," said retired Sgt. Maj. Allan Kellogg Jr., vice chairman of the memorial commission.

The two memorials are totally separated and independent of one another, but because of the close proximity they both maintain the same concept.

They consist of two snaking walls of terraced pedestals. Each pedestal is inscribed with the names of a soldier killed in the war with the pedestal dedicated in his honor.

There will be a three-inch copper letters pin mounted to the rock wall giving a Hawaiian dedication for each memorial. The Korean War dedication will read "E no'opomaika'i mau lou ka moana, na mauna, a me ka lani ia Hawaii nei, 'a'ole kakou e poina i kokakou mau koa himoe loa." Which translated means "As long as the ocean, mountains, and sky bless Hawaii, we will not forget our fallen warriors."

The Vietnam war dedication will read "O ko Hawaii mohi po'okela mamua a kakua i ko lakou mau inoa." The English translation is "Hawaii's greatest sacrifice is before us in their names."

## Blotter

### Military Police Department

MCAS Kaneohe Bay

### Alcohol-Related Incidents

Two Marines were apprehended for DUI and one DWI, two of the Marines were apprehended at the H-3 gate and

one at Barracks 1655. The Marines were transported to MPD for field sobriety testing which they failed. The Marines elected to submit to an intoxilyzer test which resulted in BACs ranging from .05 to .13. The Marines were processed and released to their unit representatives.

A Marine was found stabbed and unconscious in the Fort DeRussy parking lot. The Marine was transported to Tripler Army

Medical Center for treatment and observation. There are no suspects due to the severity of intoxication of the Marine at the time of the incident.

A Marine was apprehended for possession of a prohibited weapon, larceny of government property and underage drinking. Contact was made when military police observed the Marine driving with the left headlight out on his vehicle. While conducting the

traffic stop, military police observed a three-foot axe handle lying on the back seat of the car. The Marine was apprehended and a search of the vehicle was conducted which resulted in the seizure of a can of government issue lubricating compound. The Marine was transported to MPD, processed and released to his unit representative.

### Other Incidents

A Marine struck a car while

riding a bicycle at the Marine Corps Exchange parking lot. Investigation revealed that the driver of the car failed to notice the Marine while pulling out of the MCX parking lot. As a result the Marine struck the front corner panel of the vehicle throwing him across the vehicle striking the pavement 14 feet from the point of impact. The Marine was transported by ambulance to the Branch Medical Clinic and treated for a broken right wrist, three

stitches above the left eye and moderate scrapes and bruises.

### Lost and Found

The Lost and Found custodian has in his possession watches, jewelry, perfume, keys and numerous bicycles. There are also a pair of eyeglasses, camera and case, children's purses and speakers, which have been turned in. If you think any of these items may belong to you, please call Cpl. Dunbar at 257-3110.

## HAWAII Marine

The *Hawaii Marine* is an unofficial newspaper published every Thursday by RFD Publications, Inc., 45-525 Luluku Road, Kaneohe, HI 96744, by a private firm not connected with the Department of the Navy or the United States Marine Corps. All advertising is provided by RFD Publications, Inc., 235-5881. The *Hawaii Marine* is a free publication delivered each week to all family housing units aboard Marine Corps Air Station, Kaneohe Bay and to all Hawaii-based Marine Corps commands. Housing carriers are paid only by voluntary contributions from

customers who are satisfied with the delivery service. A voluntary contribution of \$1.30 a month may be solicited by these carriers. Housing residents may contact the publisher directly if they wish to stop home delivery. Questions concerning circulation policies and service can be answered by calling the publisher.

The *Hawaii Marine* welcomes stories and photo submissions from its readers, but submission is no guarantee of publication. Please call the MCAS/1st MEB Joint Public Affairs Office at 257-1347 for Windward activities, FAX 257-5743, or the FMFPac Public Affairs Office at 477-5053 for Leeward activities. Opinions expressed by the publisher and journalists are their own and not to be considered an official expression of the Department of the Navy or the United States Marine Corps.

Items advertised in the *Hawaii Marine* must be made available for purchase, use or patronage to everyone without regard to race, creed, color, national origin, religion, age or sex of purchasers, user or patron. The appearance of all advertisements in the *Hawaii Marine*, to include, inserts and/or flyers does not constitute endorsement of the firms' products or services by the Department of the Navy or the United States Marine Corps.

Station Commander ..... Col. R.R. Crawford  
Director, J PAO ..... Maj. P.A. Stigony  
Editor ..... Christy Edwards  
Press officer ..... WO-1 Joe Boyer

## SOFT CONTACT LENSES

Daily Wear, Extended Wear,  
Tinted & Disposable

From: **\$79<sup>00</sup>**

Includes: Lenses, Care Kit,  
Follow-up Care, and 90-Day  
TRIAL PERIOD.

**PRESCRIPTION GLASSES**

From: **\$69<sup>00</sup>**

**FAMILY EYE EXAMINATION PLAN**  
**\$49<sup>00</sup>**

COMPLETE PROFESSIONAL VISION SERVICES  
DEDICATED TO QUALITY AND SERVICE IN VISION CARE

**DR. CHARLES DEAN**

Optometrist 139 Hekili St., Kailua 261-9735

MasterCard  
VISA

SOFTEN'S  
SOLUTIONS

Wish you were here!

Dear Elise & Jake  
Got off the boat in China and read the headlines about Hurricane Iniki.  
It's good to know the resort is doing fine and open for business. Isn't it  
funny how I'm never around when there is bad weather brewing. See you  
on the 23rd.

Love,  
Mom & Dad

Schrader's

**Windward Marine Resort**  
47-039 Lihikai Drive, Kaneohe-Hawaii  
(808) 239-5711 - Fax (808) 239-6658  
Call Today For Reservations Tomorrow

## FURNITURE CLEARANCE

We are not a  
FURNITURE STORE  
We are a  
FURNITURE LIQUIDATOR  
We liquidate sofas, chairs, sleepers, lamps, dining  
and bedroom sets, occasional tables, etc. ALL  
NEW BRAND NAME MERCHANDISE IN ORIGINAL  
CONTAINERS

NO FANCY SHOWROOMS  
No elegant sales people putting us  
on or off the spot  
We are a liquidator  
We own inventory outright  
Low cost - Wholesale (wholesale prices)  
We are a full service store  
No shipping fees  
Cash and Carry (no credit terms)

WE WILL BEAT ANY PRICE  
ON LIKE QUALITY MER-  
CHANDISE NEW &  
UNDAMAGED GOODS  
WILL NOT BE UNDERSOLD  
WE GUARANTEE THIS

CHINA HUTCHES  
ALL WOOD Hundreds sold  
By Big Chain Stores  
Reg. \$1200  
SALE \$699  
NOW \$499

5-PIECE DINETTE  
\$139

SOFA-LOVESEAT  
Reg. \$2200 SALE \$1300  
NOW \$899

BOOKCASES  
99 \$139 \$159

6 PC. COMPLETE BEDROOM SET  
WARM OAK FINISH  
58 SETS  
Dresses, mirror, headboard, 2  
nightstands chest  
NOW \$699

3 PC. ALL WOOD COFFEE SET  
\$199

CONTAINER LOAD SALE!  
NO REASONABLE OFFER REFUSED

3 PC. SECTIONALS  
Very contemporary  
\$899

AMERICAN BEDDING  
FREE FRAME  
TWIN \$199 QUEEN \$349  
FULL \$289 KING \$499

Rattan Livingroom Sets  
\$799  
(AS SHOWN)

BOSTON ROCKER  
\$7900

10 PIECE BEDROOM SET  
\$799  
• 6 Drawer Dresser • Mirror  
• Headboard • 2 Nightstands  
• 2 Lamps • Boxspring • Mattress • Frame

834-7173  
638 KAKOI  
Open Daily  
9-6 M-F  
9-6 SAT. 10-5 SUN.



# First phase of risk assessment complete; contamination level low

By Cpl. Lou Ramirez  
Staff Writer

Studies have found that lead poisoning is dangerous to a child's health. Because of this concern military family housing is being tested.

The lead base paint poisoning prevention act prohibits the use of lead in paint produced after 1976. An amendment to this public law mandates that all public housing must be tested by 1994.

The first phase of this testing has already been completed by military housing, according to Jared St. John, housing manager. Lead exposure and risk

assessment was determined by criteria such as age of the unit, exterior condition, interior condition, whether or not it's used for family child-care, or if there is documentation of lead base paint. Few houses on base were found to be at risk.

Because the painting contractors wanted to protect their employees from lead, they had already taken some scrapings and tested them. "From the random sampling, we found very few contained lead," said St. John.

Most of the testing will be done when units are empty, explained St. John. "When the contractors scrape the wall to repaint them, some of the scrapings will be kept for testing,"

he said.

"If areas are found to have lead we will go into further detail," said St. John. "We don't think that many of our buildings contain exposed lead paint."

Buildings built before 1976 have been painted many times and because of this the paint that might contain lead has been encapsulated, explained St. John. When paint is covered it is no longer a danger.

One of the biggest dangers is lead dust particles in the air which enter a person's body through inhalation. The painters have already started certain precautions to lessen the danger.

One of the precautions taken by painters include wearing protective covering and a mask to avoid breathing particles in the air. Lead dust is created when sanding, so now painters scrape instead of sanding.

"Parents should be especially careful with children around areas where paint is peeling," said Mary Stuart, director of family child care. "If there is peeling, parents should scrape it off and paint over it."

"Even though lead paint is not a known problem in base housing, testing will be done to insure that if a problem is found we can do detail testing and remove it," said St. John.



Paint Contractors protect themselves from lead particles that may be in the air when paint is removed.

Cpl. Lou Ramirez

## Briefs

### III MEF announces restructuring

The III Marine Expeditionary Force on Okinawa announced last week the creation of the 31st Marine Expeditionary Unit, which will bring in a total of 60 new troops and result in several internal alterations. There are other restructuring moves within III MEF that were also announced, including the transfer of Marine Medium Helicopter Squadron-262 to Japan from its former home here and the return of a Marine Observation Squadron with 10 OV-10 aircraft and troops from Japan to the United States sometime this

winter.

### RS Cleveland seeks assistants

Recruiting Station Cleveland, Ohio, is looking for Marines to return home for 30 days permissive temporary duty as part of the Command Recruiting Program. For more information contact MSgt. Shriner at (216) 243-4010 and see your unit's administration section.

### CEA collecting Kauai relief donations

The Civilian Employees Association will be conducting a Holiday Food Drive from Friday through Nov. 6. All donations

will be given to the Salvation Army to aid Hurricane Iniki victims on Kauai. All types of canned goods are welcome as well as other nonperishable food items such as boxed items. Several collection points are being set up now and others may be added in the future. To find out which point is closest to you, contact Janet Birchfield at 257-2775 or Bonny Olson at 254-5871.

### Space-A travel cost increases

As of Oct. 1, the cost for flying military space-available flights will increase from \$10 to \$15 for flights outside the continental United States. According to Air Force spokesmen, the price increase was made after a Defense Department Inspector General investigation revealed that prices

were too low to cover the cost of operating space-A terminals.

### Puerto Ricans honored in presentation

A one-hour talk and slide presentation will be held at the library Oct. 6 and will focus on the history of Puerto Ricans in Hawaii. It will begin at 7 p.m. and is being held to commemorate the quinquennial anniversary of Hispanic Heritage. Blase Souza will be the guest speaker and pupus will follow. It is open to anyone wishing to attend.

### TAMP classes offered

The Transition Assistance

Management Office is offering three upcoming classes for Marines and their families planning to leave Hawaii. One is on planning a change of station move and is being offered Oct. 27 from 8-11:30 a.m. It will feature several guest speakers. Another class, for those looking for a civilian job, will be offered Oct. 7 from 9 to 10:30 a.m. and will focus on how to write resumes. October 21 from 8-10:30 a.m. a class on how to seek federal employment will be offered. All of the classes require prior registration and all are held in building 267. To enroll, call 257-3135.

### Station clean-up slated

The semi-annual air station clean-up will be held Oct. 9. The

Inspector's Office expects this to draw big participation and the commanding officer encourages everyone to get involved. Recycling bins will be made available and trucks will be dispatched around the installation to pick them up. The will also be designated dump sites for the disposal of hazardous waste. During the last clean-up, held in April, 116 truckloads of trash were collected.

### Fire prevention week held

Sunday through Oct. 10 is National Fire Prevention Week. This year's theme is "Test Your Detector." The Joint Safety Office stressed that this year's theme is sound advice, and is in fact, words to live by.

**HAIR APPEAL** Expires 10/7/92

A FULL SERVICE HAIR SALON!

**20% OFF ALL PERMS** **\$5 OFF FULL SET ACRYLIC NAILS**

45-655 Kam Hwy., 1st Floor Kaneohe, Next To Windward Toyota CALL TODAY FOR AN APPT. 236-1234/236-1235

**Marine-O Pizza**

Hours: M-F 1100-2130 Sunday 1630-2130 For Walk-In and Take-Out Orders Delivery Service 7 Days A Week 1700-2130

**Buy a Large Combo Pizza and Receive a Medium Single Topping Pizza FREE!**

Call 254-2663 or 254-2732 LOCATED AT K-BAY MAUI OMAHA

**DAWN SMITH** Attorney At Law

Fast Service at No Extra Charge

**BANKRUPTCY** CALL FOR A FREE QUOTATION

- ✓ STOP Creditor Harassment
- ✓ STOP Collectors
- ✓ STOP Lawsuits
- ✓ STOP Evictions
- ✓ STOP Garnishments
- ✓ STOP Foreclosures

Immediate Relief • Chapters 7, 11 & 13 • Protect Your Co-Signers • Keep Your Assets

**521-6600** 737 Bishop St. Suite 1850 • Honolulu, Hawaii 96813

CARS, VANS, TRUCKS OR BUSES, WE POLISH THEM ALL!

**LET US POLISH YOUR CAR**

Package #1 IN 'N OUT SPECIAL

- Clean and polish auto exterior, body and quarter panels, bumpers and chrome
- Clean windows in and out
- Condition and protect tires
- Basic clean rims/wheels
- Vacuum interior carpet, upholstery, dash and console
- Neutralize interior odors

**\$34.95\***

Package #2 PUTTING ON THE RITZ \$49.95\*

Package #3 THE MIDAS TOUCH \$89.95\*

**\*MOST CARS**

**We can do it while you wait**

**Detail Magic** AUTO APPEARANCE SPECIALISTS

848-8080

Appointments Recommended Comfortable Waiting Room 1409 Colburn St. (corner of Waiakamilo near Midas)

**\$5.00 OFF** ANY ONE OF OUR PACKAGES

Coupon not valid with any other special offer or coupons. Only one coupon per customer per day. Offer expires 10/15/92

Other Detailing Services also available ASK ABOUT OUR MOBILE SERVICES

**PRESTIGE TRAVEL UNLIMITED, INC.**

1513 YOUNG ST. SUITE #102 • PH. #945-7400

\*OPEN 7 DAYS A WEEK \*DELIVERY AVAILABLE TO KAILUA\*

O/W	R/T	RT \$548	RT \$568
•LAX/SFO \$163	•\$258	OW \$339-\$359	OW \$359-\$379
O/W	R/T	OMAHA • CHICAGO	BOSTON • ATLANTA
•SEATTLE \$183	•\$283	DETROIT • HOUSTON	NORFOLK • NEW YORK
		KANSAS CITY	WASHINGTON
		NEW ORLEANS	MIAMI/TAMPA

**XMAS SPECIALS**

FROM \$333	FROM \$413	FROM \$563
LAX/SFO	DENVER	MIAMI
SAN DIEGO	HOUSTON	BOSTON
SAN JOSE	BILLINGS	ATLANTA
OAKLAND	NEW ORLEANS	WASHINGTON D.C.
	OKLAHOMA CITY	

CALL FOR OTHER DESTINATIONS SOME RESTRICTIONS MAY APPLY PRICES SUBJECT TO CHANGE

OPEN MON-FRI 8:30 AM-6:00 PM SAT-SUN 9:00 AM-1:00 PM

**Hickam Arts & Craft Center** 1889 Kuntz Ave.

**10% OFF**

**Complete Picture Framing**

- Superior Quality
- Affordable Prices
- Koa, Metal & Wood Frames
- X-Stitch Framing
- Engraving/Plaques
- Rush Service Available
- Ask us about Do-It Yourself Framing

**HICKAM FRAME SHOP** 449-2453

Tues.-Thurs. 11:30-9:00  
Fri.-Sat. 9:00-5:00  
Sun.-Mon. Closed

Expires 10/14/92

## ANNOUNCING! ASTON'S SPECIAL MILITARY RATES

Aston Hotels & Resorts in Hawaii gives you a wonderful choice of accommodations, from spacious condominium resorts to tropical inns and hotels.

Aston's Waikiki	
RATES PER NIGHT	
From \$49	Waikikian on the Beach Hotel room/standard.
From \$50	Honolulu Prince Hotel room/standard.
From \$52	Coral Reef Hotel Hotel room/standard.
From \$52	Inn on the Park Hotel room/standard.
From \$58	Aston Island Colony Hotel room/standard.
From \$84	Aston Waikiki Sunset Studio suite.
From \$87	Aston at the Waikiki Banyan One-bedroom suite/superior.
From \$95	Aston Waikiki Beachside Hotel Luxurious guest rooms/superior.
From \$99	Aston at the Waikiki Shore Studio suite/deluxe.
From \$224	Aston Waikiki Beach Tower One-bedroom suite/deluxe.

Aston's Big Island	
RATES PER NIGHT	
From \$49	Kona Islander Inn Hotel room/garden view.
From \$85	Aston Royal Sea Cliff Resort Studio suite.
From \$95	Kona by the Sea Studio suite.
From \$126	The Shores at Waikoloa One-bedroom suite/superior.

Aston's Maui	
RATES PER NIGHT	
From \$55	Maui Lu Resort Hotel room/standard.
From \$57	Maui Vista Studio suite.
From \$59	Maui Park Studio suite/garden view.
From \$69	Aston Kamaole Sands One bedroom suite/standard.
From \$79	Maui Hill One-bedroom suite/ocean view.
From \$79	Maui Kaanapali Villas Hotel room/superior.
From \$89	Aston Kaanapali Shores One-bedroom suite/garden view.
From \$99	Mahana at Kaanapali Studio suite/oceanfront. (3 night minimum)

For \$9 more daily, drive a Budget Rent-a-Car! Receive the Aston Fun Book filled with free or discounted coupons for meals, gifts and admissions, too.

**ASTON** Hotels & Resorts

Toll Free 800 321 2558

24 Hours A Day, 7 Days A Week.

Call for reservations at nearly 30 Aston hotels and resorts on five major Hawaiian Islands or see your travel agent or SATO office.

One-bedroom rates good for 1-4 persons. Rates good through December 21, 1992. Some restrictions apply.

A French Marine is recovered by Marines from the special training section, during a high speed casting and recovery exercise.



Cpl. Lou Ramirez



Cpl. Lou Ramirez

# French Marines end training

By Cpl. Lou Ramirez  
Staff Writer

French Marines from Regiment D'Infanterie de Marine du Pacifique-Polynesie arrived here Sept. 18. Even though their training time was shortened because of hurricane Iniki, the emphasis on training was not lessened. The unit is made up of mostly draftees from Tahiti. These draftees serve their country for at least 10 months. Even though the time they serve is very short, according to 1stLt. Kris Stillings, commanding officer, A Co., 1st Battalion 3rd Marines, they are very professional troops. The French Marines first received an orientation on what to expect of their stay here. A formation run around the base was their first physical training. The training was kicked off with shallow water egress training. Then the French Marines received an indoctrination on helicopters,

which included rappelling, fast roping and special patrol insertion and extraction (SPIE rigging). "Tahitians don't have many helo's, so first of all we wanted to show them the helo's capabilities," said 1stLt. Dave Elwell, executive officer of Co. A. "They really enjoyed this type of training and said they wanted it again next year." "This type of training is very good for our platoon," said Maj. Gerard Dubois, French Marine Detachment commander. "Plus it gives our NCOs and officers the opportunity to improve their knowledge." Early Tuesday, Sept. 22 found the Marines at Pohakuloa Training Area (PTA), where they conducted a combined live-fire exercise. Even though the U.S. Marines were training the French Marines, they both learned about each others weapons. One of the weapons classes given to the U.S. Marines was on their assault rifle, the FAMAS or 5.56 F1 rifle. This rifle can shoot in three

different settings, semi auto, three burst and burst. It also fires rifle grenades. That night was spent at PTA. They returned the next afternoon and immediately continued training. A raid was first conducted first by the U.S. Marines and then by the French. "The raid was very well executed," said Elwell. "We were very impressed with their discipline and motivation." Many of the techniques used by the Americans during the raid are very similar to those used by the French expalined 2dLt. Gabriel de Broasses, French Marines translator and advisor. The next day a raid was executed at Kahukus POW Camp. A scenario was played where two scientists were captured by terrorists and a combined team of U.S. and French Marines came to rescue them. The team fast roped into the area and rescued the prisoners. "This training has been very interesting," said Capt. Bernard Rambaud, French Marines platoon leader. "It is very technical, tactical and physical. In many ways it is very similar to ours." One of the final training exercises was helo cast and high speed cast and recovery. Training here concluded with a live-fire exercise at Kaneohe Bay range and then a 24-hour patrol at Camp Kahukus. This exercise proved to be a real training experience for both the French and the Americans. Here they learned how similar but also how different each others techniques are. Both sides techniques were incorporated during this patrol exercise. "The French showed very good fire discipline," said Stillings. During the night they threw grenades instead of firing, to conceal their positions, he explained. According to Stillings the exercise was a success. It afforded both militarys the opportunity to learn about each other. "Because we learn about other military, we learn to think like the enemy," he said.

**PAMPER YOURSELF TODAY!**  
"Lose 4 to 14 inches in 1 hour!"  
LAST CHANCE!  
European Contour Body Wrap Will:  
• Restore elasticity, toning & firming loose flabby skin  
• Contours your body — lose from problem areas  
• This is not a water loss  
• Guarantees to take off inches on your first wrap  
• Eliminates toxic waste that clogs lymph system and restores circulation  
• This unique method is safe, easy, relaxing and IT WORKS!  
• FREE CONSULTATION  
For A Complete Body Wrap w/Deep Pore Masque Facial (Reg. \$100) Expires 10/10/92  
**Life Styles Beauty Health Center, Inc.**  
American Savings Bank Bldg. Open Mon.-Sat. By Appointment  
45-965 Kam Hwy., #306 • KANE0HE • 236-4400

**Dunn & Dunn Attorneys at Law**  
A Law Corporation  
• Low Uncontested Divorce  
• Low Uncontested Adoption  
• Bankruptcy  
• Car Accidents & Deaths  
OPEN EVENINGS & SATURDAYS  
HONOLULU: 841 Bishop Street, #450 Ph. 524-4529  
AIEA/PEARL CITY: 98-1247 Kamehameha St., #212 Ph. 487-8464  
**Greg T. Dunn**  
Former Military JAG Attorney

**ALOHA TATTOOING COMPANY**  
custom tattooing at its finest we can draw anything  
320 ku'ulei rd.  
kailua hawaii  
Larry & Leonard Hanks  
263-2019

**THE FUTON STORE**  
Totally Tropical  
One Week PROMOTIONAL SALE!  
Special Price Reductions On All Futon & Frame Sets.  
Hardwood Futon & Frame sets .....from \$159!  
Futon Covers .....\$39<sup>00</sup> or less!  
(limited quantities on certain items)  
3 Month No Interest Financing Available  
HONOLULU 1363 S. Beretania St. PH: 955-3478  
KAILUA 320 Uluniu St. PH: 262-9312  
Kailua Only — Closed Wed.  
AIEA Behind Cutter Ford Second Left Turn 98-025 Hekaha Bldg. B #15 PH: 488-7658  
HOURS MON-SAT: 10:30-6:30 SUN: 12 noon-4

**We Serve the Finest Mexican Food plus "New" Western Bar-B-Q Ribs ... and Sandwiches**  
NEW!  
TACO PLATE \$4<sup>25</sup> SANDWICHES \$1<sup>99</sup>  
2 Tacos on WHITE, crispy corn tortillas with refried beans and spanish rice.  
Shredded Beef Or Pork.  
BABY BACK & BEEF RIBS  
Combo Plate includes baked beans, cole slaw and corn on the cob.  
\$7<sup>25</sup>  
**THE TACO SHOP**  
Ask Us About Our Catering & Take-Out Platters  
Food Court Windward Mall 235-2229

**T&T TINTING SPECIALISTS**  
OPEN 7 DAYS A WEEK!  
10th ANNIVERSARY TINT SPECIAL  
\$479<sup>00</sup> MOST CARS TITANIUM -TAX \$79<sup>00</sup> 3-WINDOW MINI PICKUPS -TAX  
FREE NATIONAL LIFETIME WARRANTY WITH ANY TITANIUM TINT JOB AND THIS COUPON  
COUPON  
OVER 50,000 SATISFIED CUSTOMERS  
CALL FOR APPOINTMENT 247-8468 KANE0HE  
46-158 B MALINA PL. BEHIND WINDWARD NISSAN - NEXT TO KEN'S AUTO DETAILING

**KEN'S AUTO DETAILING, Inc.**  
Professional car care center  
LICENSED & BONDED SAME LOCATION 4 YEARS  
SAVE \$ SAVE \$ SAVE \$  
OVER 7,000 SATISFIED CUSTOMERS  
DELUXE PACKAGE SPECIAL  
INCLUDES:  
• HAND WASH  
• HAND POLISH  
• SHAMPOO INTERIOR  
• STEAM/CLEAN ENGINE  
• CLEAN WHEELS & WHEEL WELLS  
• TAR REMOVAL  
• POLISH CHROME  
• RUBBER & VINYL DRESSING  
• INTERIOR/EXTERIOR WINDOW CLEANING  
• VACUUM CARPET  
• INTERIOR VINYL DRESSING  
• INTERIOR DEODORIZING  
REG. \$149.00  
NOW ONLY \$85<sup>00</sup> -TAX  
Expires 10/30/92  
COUPON  
WE ALSO OFFER....  
• RUSTPROOFING (Limited Lifetime Warranty)  
• BODY SIDE MOLDING  
• PIN STRIPING  
• WATER SPOT REMOVAL  
• COMPOUNDING  
• CAR ACCESSORIES  
• FABRIC GUARD  
Gift Certificates Available!  
Call Today For Your Appointment!  
46-156 Malina Pl. Kaneohe Behind Windward Nissan  
235-5668  
OPEN M-SAT 8am-5pm  
NEXT TO T & T TINTING — MOBILE SERVICE AVAILABLE



# Marine support for Kauai began here at home

By Sgt. Jason Erickson  
Staff Writer

Every meal-ready-to-eat (MRE), water purifier and generator that Marines on Kauai are using to help Hurricane Iniki stricken residents has a history of travel behind it. Most came from here at Kaneohe Bay.

In order to get the hundreds of tons of supplies and equipment to Kauai, Marines here had to work grueling hours to overcome several logistical challenges. Perhaps greatest of these challenges was keeping helicopters flying to spite rough maintenance requirements.

Nonetheless, through some sort of magic, as one appreciative pilot put it, Marines managed to overcome this obstacle which allowed the birds to make continual

flights from sunup to sundown and be ready to do it all again the next day.

At one point, early in the relief efforts, both sides of hangar 104 were packed with pallet upon pallet of 1st Marine Expeditionary Brigade goods, as well as supplies from outside agencies. In a small corner of the hangar, dwarfed by the cargo, a small group of Marines set about weighing, recording and preparing each pallet for shipment. These were the embark Marines and before they could even think about mission accomplishment, they would have to clear this entire hangar.

As supplies came in, the Marines had to manifest each piece of gear, weigh it so they knew how much could be placed on each aircraft and band it so it was firmly secured to its pallet. At

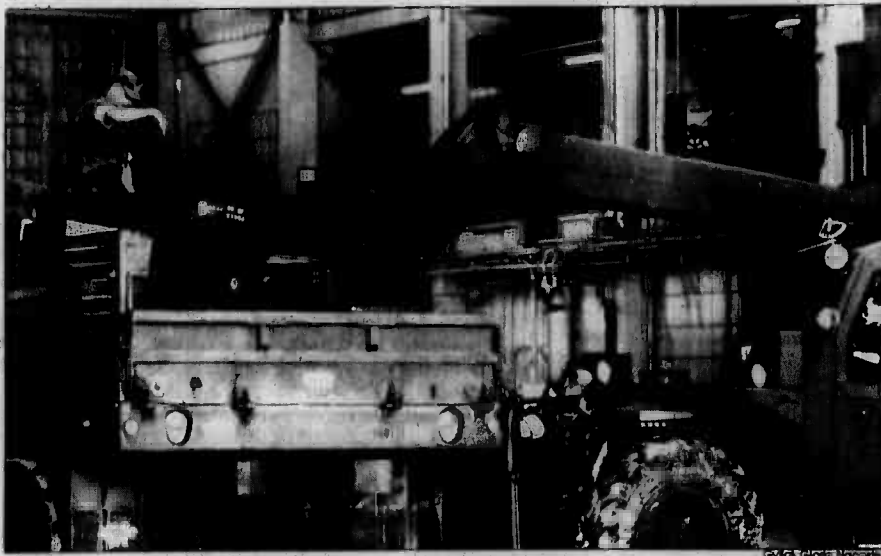
first, with the overwhelming amount of cargo, helicopters came right to the hangar for loading, said GySgt. Warren Schlichter, the embarked from Marine Wing Support Squadron 174 who ran the show. Later in the week, however, the pallets were taken by heavy equipment operators to whichever squadron would be doing the flight.

"We were working constantly for seven days straight," he explained. Pointing to a pair of cots set up next to their embark desk, Schlichter said a couple of Marines would take a nap while the rest worked and then they'd switch off. He said the hardest part of the whole embark was control. "We have a lot of cargo coming from a lot of different places and it was tough to keep it coming in," Schlichter said. "Other than that it was just a matter of time before we could get it all sent. From what I hear, it got there quick enough to keep everyone happy, though."

Embark was the middleman, the wholesaler in a sense. They weren't working alone, however. Marines in three helicopter squadrons, with a total of 12 CH-46s and four CH-53s, worked nearly around the clock to keep the cargo moving through the air, while heavy equipment operators from MWSS-174 kept it moving on the ground both here and on Kauai. Additionally, reserve, Air National Guard and Coast Guard C130s were also used.

Keeping track of it all were the 1st MEB G-3 and G-4 shops with a lot of help from Marine Aircraft Group-24's S-3 and S-4 shops.

The process worked something like this: The Federal Emergency Management Agency (FEMA), which had overall control over relief efforts on Kauai, would let Joint Task Force (JTF) Garden Isle know what type



Cpl. Patrick Holt, extended boom forklift driver, eases supplies onto a MWSS-174 vehicle as fellow Marines give guidance.

of support was needed. The JTF, in turn, let 1st MEB know what support it needed and the proper staffs within the brigade were tasked.

For example, the brigade delivered more than 80,000 MREs to Kauai. After tasking various units to provide the ready to eat meals, brigade notified MAG-24 to prepare to embark all this food and plan the flights needed to ship it.

This left S-3 to plan the flights needed to ship that specific amount of cargo, and S-4 to make sure all the cargo was ready for shipment once it arrived at the hangar.

Perhaps the toughest job in this whole operation, explained Capt. Mike Collins, rotary wing officer for MAG-24 S-3, was that of the Marines who keep the helicopters flying.

"For every hour that an aircraft is in the air, it takes five manhours of

maintenance," he said. "You can see that after an eight-hour day of flying, that bird needs 40 hours of work."

Long after the pilots had gone home, and long before they returned for another day of flying, mechanics in each of the three squadrons were hard at work preparing the birds for a new day.

While Collins said he couldn't imagine how these dedicated young Marines do it — that is keep up their morale in spite of such a demanding job — one mechanic said it was easy.

"The hard part about this job is the routine work — the day-to-day stuff," said SSgt. Douglas Harding in the avionics section at Marine Heavy Helicopter Squadron-463. "But when an emergency like Iniki comes up, we know we're working for a good reason and we know our work is crucial. That's just one

opinion, but I think it's one that most of us share."

Since the Brigade moved a total of 219 short tons of cargo to Kauai in roughly a seven-day period without a single mishap, it seems obvious that the staff sergeant has a point. The 175 sorties it took to deliver that cargo wouldn't have been flown accident-free if the Marines weren't paying attention.

With the passing of the first week, the bulk of supplies and equipment had been delivered. Most of the work was left to the servicemen and women in Kauai providing relief, and especially to the residents themselves, as they did their best to put their lives back together after the storm.

The supplies and equipment delivered from K-Bay, and the Marines who made that happen, played a large part in the relief of the Garden Isle.



A mechanic from HMH-463 works on the rotor of a CH-53 helicopter. The helicopter mechanics were an instrumental part of keeping the supply line open to Kauai during Hurricane Iniki relief efforts.

## PALI PALMS DENTAL CENTER DENTAL SERVICES

General Dentistry • Preventative and Restorative Dentistry  
Cosmetic and Esthetic Procedures

INSURANCE ACCEPTED: HDS, HMSA, Delta Dental Services (Military),  
Hawaii Dental Health Plan

Dr. Derek Ichimura, DMD  
Office: 254-6694  
970 N. Kalaheo Ave., A-108  
Kailua, Hawaii 96734

Dr. Alan M. Yugawa, DMD  
Office: 254-6477  
970 N. Kalaheo Ave., A-108  
Kailua, Hawaii 96734

## Dance Spectrum Hawaii

NEW YORK  
STYLE!

### Fun & Energy-Filled

• Ballet/Pointe • Jazz • Tap • Hula  
• Acrobatics • Stars-Of-Tomorrow  
(3-5 yr. old) • Street Dance • Adult  
Tap, Jazz, Belly Dancing &  
Exercise Class

254-5474 Leave Message

B.J. Lellani Van Scoy —  
Director/Teacher/Choreographer  
2 Masters Degrees in Ballet & Theatre Dance. Performed & taught  
throughout the U.S., Europe & the Orient.

## Windward YMCA

### Bazaar & Plant Sale

Saturday, October 3rd  
8 am-12 noon

- Clothing for the Entire Family — New, Recycled & Irregulars
- "White Sale" Items
- Household Items
- Plants, Plants, Plants

To Benefit the YMCA Youth Scholarship Fund

1200 Kailua Road, Kailua



# TOYOTA YOUR CHOICE

These brand new 1992 Toyota Cars & Trucks  
must be sold at ridiculously low prices to  
make room for the 1993s.

PICK THE  
BEST  
ONE FOR  
YOU

1992  
CAMRY  
LE  
CAR & DRIVERS  
10 BEST



STOCK #225320

SALE \$18,695

ONLY \$345.26 MO\*  
Automatic, Power Package,  
2.2-Liter Twin-Cam 16-Valve EFI  
Engine, Anti-Lock Brake System  
(ABS), Air Conditioning, Stereo  
Cassette, Driver-Side Air Bag,  
Aluminum Wheels and More!

1992  
4x2 TRUCK  
Number 1 in  
CUSTOMER  
SATISFACTION



STOCK #225798

NOW \$9,695

ONLY \$179.88 MO\*  
5-Speed Manual Transmission,  
2.4-Liter SOHC EFI Engine, Air  
Conditioning, Power Steering,  
One-Touch Tailgate Release, Double-  
Wall Bed, and More!

1992  
PASEO  
A BEST BUY  
FOR 1992



STOCK #226146

HOT BUY \$11,695

ONLY \$216.54 MO\*  
Automatic, Air Conditioning, 1.5-Liter  
Twin-Cam 16-Valve EFI Engine,  
Fold-Down Rear Seat, Remote  
Control Mirrors, Digital Clock,  
and More!

1992  
CRESSIDA  
LAST CHANCE TO  
GET A CLASSIC



STOCK #225266

LIMITED EDITION \$23,795

Automatic, Air  
Conditioning, 3.0-Liter 6-Cyl.  
Twin-Cam 24-Valve EFI  
Engine, Power Package, Theft  
Deterrent, Cruise Control,  
Stereo Cassette, and More!

1992  
4x2 XTRA  
CAB TRUCK  
NUMBER 1 IN  
RESALE VALUE



STOCK #225826

SPECIAL \$13,395

ONLY \$247.69 MO\*  
Automatic, Power Steering, 2.4-  
Liter SOHC EFI Engine, Air  
Conditioning, Double-Wall Bed,  
Towing & Comfort Package and  
More!

\*Monthly Payments Based Upon 20% Down, 60 Months, 11.5% Annual Percentage Rate on  
Approval Credit. Price does not include tax & license fees. Cars subject to prior sale.  
Not exactly as shown. Offer not applicable with any other discounts. Sale Ends 10/10/92.

Hurry! At These Prices They'll Sell Out Fast!

TOYOTA  
"I love what you do for me."

TOYOTA CITY • 2850 A Pakoia St., Mapunapuna • 834-1402  
WINDWARD TOYOTA • 45-655 Kani-Hwy., Kaneohe • 233-2600  
MOTOR IMPORTS TOYOTA • 650 Kapiolani Blvd., Honolulu • 926-2888  
WAIKAPU TOYOTA • 94-787 Farrington Hwy., Waikeolu • 677-3161  
SERVICE MOTOR CO. • 105 S. Kani Hwy., Waikeolu • 677-4195  
KAIMUKU TOYOTA • 3282 Waikeolu Ave., Kaimuki • 733-7373  
KAILUA TOYOTA • 4327 Kailua Rd., Lihue • 243-8073

# Combat engineers tackle Iniki's aftermath

By Sgt. Kevin Doll  
Staff Writer

Marines from 1st Platoon, Company A, 3d Combat Engineer Battalion, were among the many 1st Marine Expeditionary Brigade units helping in the cleanup and clearing efforts in Kauai.

But when it came to emergency work requests, the combat engineers were always on top of the job. Literally.

The CEB Marines provided temporary roofing repairs to 20 houses, five schools, one Red Cross center and a church during their two-week stay on the storm-wrecked Garden Isle.

The work requests were taken by civilian agencies, passed to the Joint Task Force Garden Isle and then tasked to the Marines if the buildings were in the Marines relief area of operations. Civilian homes were accepted only if it was determined the damage was bad enough to warrant immediate repairs and the owners were too old or sick to do the work themselves.

"We brought our carpentry kits with us and we received our supplies from the Army Corps of Engineers," said 1stLt. Erik Kraft, 1st Platoon commander. "We used more than 150,000 square feet of plastic in the roofing repairs."

The most difficult roofing job the combat engineers tackled was a church with steep, sloping sides. Undaunted, the engineer team wasted no time scrambling up on top to nail down the plastic covering as their fellow Marines covered the church's broken windows with plastic also.



Sgt. Kevin Doll

"This was a good experience," said Sgt. Ricky Collins, Co. A, combat engineer. "We learn how to build in our school, but in 3d Marines we hardly get the chance to use our carpentry skills."

Collins said some of the roofs his platoon worked on were tin and they had to nail boards down to cover entire gaps before putting down the plastic. Even though some of the work was dangerous, they completed all the jobs with no accidents.

"About 75 percent of our time on Kauai was spent roofing," said LCpl. Ed Poma, also from Co. A. "But we were directly helping people this way and they were always very appreciative. That makes you want to do this best job you can."



Sgt. Kevin Doll



Sgt. Kevin Doll

(Above) An Alpha Co., 3d CEB Marine readies a church window for plastic covering. (Top, left) Alpha Co., 3d CEB Marines cover the steep roof of a Kauai church with plastic during temporary roofing repairs. (Bottom left) Combat engineers clamber up the sides of a Kauai church as they begin temporary roofing repairs.

**SEARS**

AUTHORIZED CARPET & UPHOLSTERY CLEANING

**CARPET CLEANING**  
**\$19.95**  
Expires 10/30/92  
Per Room  
3 Room Min., residential only.  
(LR/DR 2 rms.)  
**676-8410**

**COUPON**  
**UPHOLSTERY**  
**\$25.00 OFF**  
Any upholstery cleaning  
of \$75 or more  
Expires 10/30/92  
**676-8410**

**COUPON**  
**DRAPERY CLEANING**  
**40% OFF**  
\$57.50 minimum  
purchase  
Expires 10/30/92  
**676-8410**

Oahu Only. Must present coupon. Not good with any other discount.

**CHERYL R. BRAWLEY**

ATTORNEY AT LAW

**"Former Prosecutor and Experienced Trial Lawyer"**

- Criminal Law
- Divorces
- Traffic Offenses & D.U.I.
- Child Custody
- French/Vietnamese interpreter available 578-4135
- Adoption
- Business Law
- Real Estate



**593-0052**  
available 24 hours

YOU'LL FIND TWO GREAT  
HAIR SALONS AT KAILUA



**HAIR**  
ALTERNATIVES  
AT KAILUA

Visit Hair Alternatives at Liberty House Kailua for your next haircut, permanent wave or color. Appointments are available. Walk-ins are always welcome.

**SERVICES INCLUDE:**

	Master	Stylist
• Haircut	10.00	12.00
• Haircut and style	16.00	18.00
• Permanent wave, haircut	32.00	36.00

Hair and nail services also available in our full service salon at Kailua. We carry seven retail product lines.  
Phone 945-5696  
second floor, kailua

THE BEAUTY SALON  
AT KAILUA



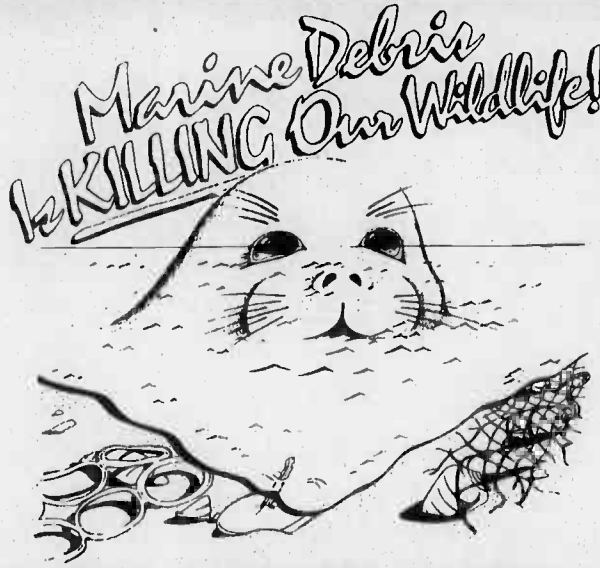
**ENJOY SPECIAL PRICES!**

Liberty House is pleased to bring you the full service Beauty Salon at Kailua. Now you can enjoy reduced prices on some of our more popular services. Just call 945-5696.

	Reg.	Sale
Haircut & style	30.00	22.00
Perm (includes hair cut)	73.00	55.00
Acrylic nails	60.00	55.00
Nail fills	30.00	25.00

Prices on long hair slightly higher. There will be an additional charge on special wraps. We carry seven professional product lines.  
beauty salon, kailua, 945-5696  
sale ends october 31

**LIBERTY HOUSE**



**Get The Drift & Bag It!**

Every day innocent marine life is being killed by man-made pollution. "GET THE DRIFT & BAG IT!" is aimed at ridding our beaches and oceans of marine debris. Open your eyes to the effects of discarded plastics, trash and other debris on marine wildlife. PLEASE KOKUA! Join us in this statewide cleanup.

**On Oahu, Kauai, & Hilo, Hawaii, Saturday, October 10, 1992**  
**In Maui County, Saturday, October 3, 1992**  
**In Kona, Hawaii, Saturday, October 17, 1992**

Neighbor Islands call collect or contact your island coordinator

Big Island State Litter Control Office ..... **933-4577**  
Maui Community Work Day Program ..... **243-7325**  
Kauai State Litter Control Office ..... **241-3626**

For Information About How YOU Can Help, Call...

**586-8444**

**Community Work Day Program**

Sponsored by the Governor's Advisory Committee on Litter Control and the State Litter Control Office



# Task force keeps relief efforts organized

By Sgt. Kevin Doll  
Staff Writer

As Marines of Task Force USMC Engineer (TFUSMCE) spread out over Kauai during Hurricane Iniki relief efforts, a sustaining force was always behind them, providing needed support and guidance.

This often overlooked force was the TFUSMCE command and service support base camp, located at the Pacific Missile Range Facility, Barking Sands.

From initial disaster assessment and immediate relief needs to the massive cleanup operation of Garden Sweep, the Marine task force was practically self-sustaining and task-organized.

Communications, administration, engineers and motor transport were all vital assets needed to keep Marines ready to provide assistance in almost any cleanup and relief mission.

Staff Sergeant Robert Bandy was the admin section of TFUSMCE. Assigned from the 1st Marine Expeditionary Brigade's G-1, Bandy's many tasks included personnel accountability, flight manifests and mail delivery. He also coordinated with Army disbursers to cash Marine checks, distributed morale items from Navy chaplains and collected general base information, such as exchange hours.

Communications chief SSgt. David Sheehan had 18 radiomen in his section, assigned from Brigade Service Support Group-1, Marine Wing Squadron-174 and Company B, 7th Communication Battalion. Sheehan and his Marines provided internal and external communication for the Marine task force. External communication was provided by two satellite networks and were used for communication with MEB rear at Kaneohe

Bay, Joint Task Force Garden Isle headquarters at Lihue, Kauai, and with the commander-in-chief, U.S. Pacific Command in Honolulu.

"Within five minutes of the first Marines arriving on Kauai Sept. 13, comm was established with MEB rear," Sheehan said. "This was probably the most important net we had since we passed immediate situation assessment information to the rear to give them a picture of what was needed."

The TFUSMCE communication section sent comm teams to water distribution sites, cleanup crews and with the mobile forward command operations center to keep in constant contact with the base camp. Radios were also sent with mobile maintenance teams so Marines could keep the base camp apprised of the maintenance needs of Marine relief operations.

Sheehan said his radiomen

used their communication ingenuity to keep nets constantly open. One example is of a water purification site located down a valley road with steep gullies on both sides. The radioman corporal eventually found a usable site for his radio field antenna — in someone's front yard. Explaining his situation, the corporal persuaded the resident to "surrender" his yard for as long as the water purifying site was needed.

"We had to deal with power lines, land obstacles and highly congested civilian areas, all places we normally try to stay away from when setting up a comm network," Sheehan said. "It's a 24-hour job just adjusting to keep it open." Sheehan said without his Marines' efforts, resupply, maintenance and medevac information would be difficult, as it can be a four-hour ride from one side of the island to another.

The wheels of TFUSMCE

are under the guidance of 1stLt. Stephen Tozzi, motor transport officer-in-charge. Tozzi has 38 men in his section, from BSSG-1, MWSS-174 and 1st Bn., 3d Marines. His army of Marine vehicles include 14 five-ton trucks, two logistical vehicle systems, nine "hummers," three dump trucks and a number of other pieces of equipment needed in relief efforts.

His men and machines are used to transport electrical generators, water purification units, clearing and cleanup crews and to haul trash to dump sites. The center of Tozzi's motor pool is a general purpose tent located at the base camp and not only has a dispatching section but a mechanics "shop" as well.

Working primarily in the Kauai towns of Kekaha, Waimea and Hanapepe Heights during Garden Sweep, Tozzi's men drove a total of 2,000 miles and hauled approximately 200 truckloads

of debris, or about 500,000 pounds — every day.

"A lot of the drivers said this the first operation where they actually see the good they're doing," Tozzi said, "and that it makes them work even harder."

Marine engineers were called upon to assist in a number of ways in the Kauai relief efforts and this was coordinated at the base camp by the engineers section. According to GySgt. Philip Manto, utilities chief, the engineers first task was to test and provide potable water for not only the civilian population but for the military also.

"We have produced 145,000 gallons of purified water to date and continue to issue fresh water at our distribution sites," he said. "I've seen people bring all kinds of containers to hold the water, including fish tanks, garbage cans and ice coolers."

See Relief, A-12

## CLOSING

OUR MAINLAND LOCATIONS



The Greatest Sale in our  
56 Year History!

MILLIONS of DOLLARS  
of FINE JEWELRY  
MUST BE SACRIFICED!

— IN HOUSE FINANCING AVAILABLE —

SECURITY  
DIAMOND



CONRAD  
JEWELERS

Ala Moana Center & Pearl Ridge Center • Mon. - Sat. 9:30-9, Sun. 10-5 • All major credit cards accepted.

## DOMINO'S NFL SPECTACULAR DEAL



Any Medium With Unlimited  
Toppings \$12.99



NOBODY  
KNOWS  
LIKE  
DOMINO'S.

How You Like Pizza At Home.

Call Now!

Kailua  
263-3030  
107 Hekili Street

Kaneohe  
235-7575  
45-1151 Kamehameha Hwy.

Aiea/KMCAS  
254-6433  
25 Kaneohe Bay Drive

BUILD YOUR OWN

\$12.99

Medium Pizza With your Choice of Toppings.  
GET ANOTHER ONE FOR ONLY \$5.00 MORE.

FAMILY MEAL DEAL

\$15.99



Large 3-Topping Pizza PLUS  
Four Cans of Coca-Cola® Classic  
or Diet Coke®.



Additional toppings extra. Coupon required. Expires 10/26/92.  
Valid at participating stores only. Not valid with any other offer. Prices may vary. Customer pays applicable sales tax. Delivery areas limited to ensure safe driving. Our drivers carry less than \$200. Our drivers are not permitted to use cell phones. Cash value .005. There is a \$20 charge for returned checks.  
© 1992 Domino's Pizza, Inc.

## EXHAUST SYSTEMS HAWAII

NOW FEATURING...

HYDRAULIC  
SUSPENSION KITS

•Headers \$109  
•Dual Exhaust \$239

We will MEET or BEAT any competitor's  
written estimate

•Unsurpassed Quality •Competitive Prices  
•Personalized Service •Service All Makes & Models

KAILUA	171 Hamakua Dr.	263-8111
HONOLULU	2457 S. King St.	946-7110
WAIPAHU	94-150 Leoleo St., 3-A	671-8111

## Princeton Carpet Mill Shuts Down

Large Carpet Operation Succumbs To Economy

DALTON, GA (July 20) Princeton Mills, one of the country's oldest and largest carpet manufacturers, ceased broadloom carpet manufacturing operations today, another victim of the country's enduring recession. A leader in premium quality, stain-resistant carpets, Princeton was known for its wide variety of "top shelf" luxury Berber carpets. The nation's slow housing market was blamed for the company's financial difficulties. Although broadloom manufacturing operations have ceased, Princeton's warehouses contain a substantial inventory of carpet.

The Carpet Co Op of America, the country's largest carpet retailing organization, purchased all remaining inventory. Member dealers are expected to liquidate sections of the multi-million dollar inventory.

## THE BAD NEWS.

One of the country's  
largest carpet mill has  
closed its doors forever.

## THE GOOD NEWS.

We're liquidating their  
inventory at  
unbelievable prices!

How did we get to make this buy?

The Carpet Co Op of America, a national buying group, purchased Princeton's entire remaining inventory - at bankruptcy prices. We and several other member dealers divided the inventory.

ALL NAME BRANDS-ALL FIRST QUALITY-LOCAL STOCK AVAILABLE.

20 oz Level Loop 12 popular colors. Compare at \$10.95.	BWCC Member Price \$4.75	25 oz Solids/Tones 100% nylon Compare at \$14.45.	BWCC Member Price \$6.09	Beautiful Berber Pile Contemporary beauty. Compare at \$16.95.	BWCC Member Price \$6.95
DuPont STAINMASTER Plush Hawaii's largest selection. Compare at \$15.95.	BWCC Member Price \$6.95	30 oz Commercial Cut Pile 100% nylon Compare at \$22.95	BWCC Member Price \$7.85	Residential & Commercial carpets. BWCC prices are roll prices. Cut prices available.	

NOW FEATURING NEW PRODUCTS AT WHOLESALE PRICES!

• Armstrong Vinyl Tile... Do it yourself, self adhering tiles. 45 sq. ft. per carton. Vernay series, locally stocked.	\$29.99 a carton	• Berber Tile... Indoor/Outdoor carpet tile. Self stick, easy to install. 12 x 12 tiles.	\$1.09 each
• Prefinished Wood Flooring... Beautiful Parquet Flooring. 10 sq. ft. per carton.	\$16.99 a carton	• Ready Made PVC Verticals by Levolor. 78 x 84.	\$49.99 each
		84 x 84, 2 colors.	\$54.99 each

CUSTOM DRAPERIES

Just bring in your measurements.  
Ready made prices!  
Tremendous savings!

CARPET REMNANTS

Hawaii's largest selection, over  
700 to choose from.  
\*SAVE UP TO 70%!

\*off manufacturers suggested retail price.

LEVOLOR BLINDS

Hawaii Rainbow Horizontal Blinds,  
in today's colors.  
\*SAVE UP TO 75%!

We are a wholesale club with over 11,000 sq. ft of showroom/warehouse space near Costco.  
We also carry all the installation supplies needed for your floor covering.

PLENTY  
OF SHADED  
PARKING!

Bougainville WHOLESALE  
CARPET CENTER

4577 Bougainville Drive • Honolulu, Hawaii 96818 • Phone 831-2300  
Visa and Mastercard Welcomed.

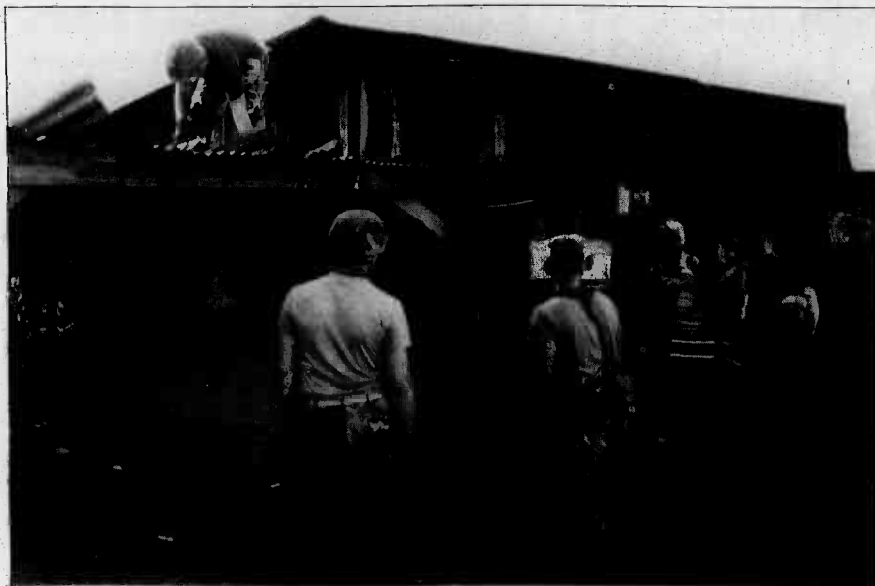
Store Hrs: Mon. to Fri. 10 a.m. to 6 p.m., Sat. 10 a.m. to 5 p.m., Sun. 12 noon to 5 p.m.

OPEN 7  
DAYS A  
WEEK!

# 'I had no idea the Marines would be coming...'



(Right) A HQ Co., 3d Marines team listens to the daughter of 76-year-old Carla Akuna describe what happened to her carport and storage shed during Hurricane Iniki. (Above) Marines help Kauai residents shovel sand from their yard. The sand was carried from the beach, over a highway and into their yard by Hurricane Iniki's tidal surge.



Sgt. Kevin Doll

By Sgt. Kevin Doll  
Staff Writer

Kekaha, Waimea, Hanalei Heights. It will probably be a long time before citizens of these and other Kauai communities forget the time the Marines came to town.

Nearly 500 members of the 1st Marine Expeditionary Brigade spearheaded Operation Garden Sweep, the massive cleanup effort conducted by the military of Joint Task Force (JTF) Garden Isle. The JTF was formed to provide relief efforts after Hurricane Iniki devastated the island Sept. 11.

**The mission**  
First MEB Marines were formed into Task Force USMC Engineer (TFUSMCE) for Kauai relief efforts. The first phase consisted of relief assessment and then meeting immediate relief needs of Kauai residents, such as distributing purified water and meals-ready-to-eat. The second phase of relief efforts included Operation Garden Sweep, although many of the initial relief efforts are still underway.

Marines were tasked with the cleanup of the western and southern part of Kauai and the Army and Hawaii National Guard had the eastern side of the island to clear. The cleanup began on the morning of Sept. 22 and concluded Tuesday.

**The Marines**  
As the JTF is formed from different military services, so is the Marine task force composed of different MEB units. Support elements from both Brigade Service Support Group-1 and Marine Wing Support Squadron-174 provided a number of Marines with vital military occupational specialties needed for the relief efforts. The skills of motor transport drivers, heavy equipment operators, water hygiene equipment operators, electricians, landing support specialists and radiomen were

invaluable before and during Garden Sweep efforts.

The 3d Marine Regiment provided infantrymen from three 1st Battalion, 3d Marine companies for the heavy labor needed in the massive cleanup job. Engineers from Alpha Company, 3d Combat Engineer Battalion, were tasked with numerous minor roofing repair jobs and also assisted in cleanup and clearing missions.

The wing support squadron was also tasked with providing the command element of TFUSMCE, which coordinated with JTF Garden Isle and civilian agencies on all aspects of the relief efforts.

"In addition to Garden Sweep, we still have electrician contact teams assessing power needs in town, Marines manning water distribution sites and handling civilian emergency construction requests," said Capt. Dan Choike, TFUSMCE operations officer. He added that military generators are still powering some Kauai hospitals, schools, relief centers, fresh produce markets, electrical companies and deep water wells and their pumping stations.

## The work

Every morning during Operation Garden Sweep, Marines crawled out of their sleeping bags at the TFUSMCE base camp, located at the Navy Pacific Missile Range Facility, Barking Sands, and prepared for the day's cleanup work. Convoys of five-ton trucks packed with Marine cleanup crews left camp for their designated towns at approximately 7:30 a.m. and returned that afternoon at about 5 p.m.

"In each of the towns, there is coordination with civil defense," Choike said. "We worked closely with the sugar plantation owners who provided support with their own dump trucks, front-end loaders and cranes." Choike also acquired city maps from the county surveyor's office to help the teams in their cleaning and clearing sweeps.

See Sweep, A-12

**American Heart Association**

TRAVEL LIGHT. EXERCISE.

**Interested in a place to retire in Hawaii?**

Write for free information. Clip this ad and mail to:

**Gatherings Hawaii**  
720 Iwilei Rd., Suite 422  
Honolulu, HI 96817

**TRINITY PRESBYTERIAN CHURCH**

Where People Care... and Where the Bible Makes Sense for Daily Living.

9:30 A.M. Bible School (for all ages)  
11:00 A.M. Morning Worship

**BANKRUPTCY EXPERT**  
**Frances C. McIntyre**  
**ATTORNEY AT LAW**  
(14 years in Federal Court)

- Emergency Filing
- STOP: Creditor Calls Garnishments
- STAY: Foreclosures & Evictions
- DISCHARGE: IRS Liens, other taxes

**GET A FRESH START**

FREE CONSULTATION — Eve & Wknd Appts

550 Halekauwila #303  
524-9013

Also: Immigration, Sexual Harassment and Civil Rights Attorney

**Columbus Day Sale**  
Sale effective October 1st thru 24th. OAHU STORES ONLY

**Thunderbolt**  
AC/DC arc welding power source for shielded metal arc (stick) welding offers maximum value.  
List \$440.00 Sale \$379.00

**Legend AEA-200LE**  
Designed for shielded metal arc (stick) welding, the versatile LEGEND AEA-200LE engine driven welder/ac generator can also perform gas metal arc (MIG) and gas tungsten arc (TIG) welding with optional equipment.  
List \$3,106.00 Sale \$2,790.00

**Trailblazer 250G Arc Welding Generator**  
List \$3,625.00 Sale \$3,225.00

**Dialarc 250** List \$1,145.00 Sale \$ 990.00  
**Millermatic 250** List \$1,878.00 Sale \$1,575.00

**20% off**  
all Welding Leather Jackets, Gloves, Cape Sleeves, and Welding Helmets

**Hobart Handler**  
Plugs in the wall...welds it all!  
Plugs into most 120 VAC outlets and is ready to weld in seconds. Only 2 controls-voltage is wire speed.  
• Only 67 pounds  
• Rated output current, 90  
• Duty cycle, 50%  
List \$627.00 Sale \$525.00

**Hobart Beta Mig 250**  
List \$1,631.00 Sale \$1,450.00

**Hobart Champion 16**  
List \$2,891.00 Sale \$2,500.00

**Foul Weather Gear for the Outdoor Person!**  
**Nelson Weather-rite Complete Rainsuit**  
Model 8117 SM - XL  
List \$21.95 Sale \$16.99

**Deluxe Poncho** List \$14.95 \$11.99  
**Academy Rainsuit** List \$20.59 \$16.99  
**Academy Poncho** List \$ 3.08 \$ 2.29

Quality: Our Commitment  
**GASPRO**  
Enjoy The Gas Advantage

**Your Propane Filling Stations**

Honolulu 2305 Kam. Hwy. Next to Foremost Ph. 842-2130	Kaneohe 46-174 Kalalipua St. Ph. 235-6085	Waipahu 94-150 Leoleo St. Across City Mill Ph. 671-5435	Hilo 525 Katanianaoic Hwy. Ph. 935-3341	Kailua-Kona 74-3590B Eho St. Ph. 329-7393	Maui Kahului 365 Hanakai St. Ph. 877-0056	Kauai Lihue 3990C Rice St. Ph. 245-6766
--	--	--	---	--	--	--

Sale prices limited to quantities on hand.

**He's the biggest thing to hit Japan since Godzilla.**

**Mr. Baseball**  
A FRED SCHEPISI FILM

**TOM SELLECK**

UNIVERSAL PICTURES PRESENTS AN OUTLAW PRODUCTION IN ASSOCIATION WITH PACIFIC ARTISTS "MR. BASEBALL" DENNIS HAYSBERT KEN TAKAKURA "JERRY GOLDSMITH" CROCKETT JOHN KAO JEFFREY SILVER "THEO PELLETIER & JOHN JUNKERMAN" "GARY ROSS AND KEVIN WADE AND MONTE MERRICK" "FRED SCHEPISI DOUG CLAYBOURNE AND ROBERT NEWMYER" "FRED SCHEPISI A UNIVERSAL PICTURE"

**COMING SOON TO A THEATRE NEAR YOU**



# ASYMCA welcomes new family members home

By Cpl. Lou Ramirez  
Staff Writer

A brand new baby comes home today. It is this young

military family's first. The excitement is boundless. But behind this euphoria lie several questions and confusion about proper parenting. If only they were

at home, surely mom would know what to do. But while those blood relatives may be thousands of miles away, their military family surrounds them. And

down at the Armed Services Young Men Christian Association (ASYMCA), a volunteer is waiting to help. In fact, they can begin helping before the baby is even born.

The Welcome Baby Program is one of many family-oriented services offered by the ASYMCA for military personnel and their family members.

Parents-to-be can fill out an application at one of their prenatal visits to be sure a volunteer is available just as soon as junior comes home from the hospital.

Once the ASYMCA receives the referrals they contact the family and set a time for the first visit. The home visitors see the families at least three times, sometimes more, depending on the need.

"The Welcome Baby program is set up primarily to teach proper parenting," said DeRose Wallace, Welcome Baby Program coordinator.

A mother, grandmother, aunt or sister can relieve some of the pressure on new parents by being there to answer questions and lend a helping hand. That support is not always available to military families who are stationed far from home, explains Wallace.

"We're sort of like ground zero," she adds. Jamie Singer, mother of a 2-month-old, thinks it's a great program. "It's wonderful because many mothers don't have anybody to call," she explained.

Although most parents receive only three home visits, according to Carmen Parks, ASYMCA home visitor, she will call the families at least once a week and is also available anytime she is needed.

At the first visit, which is usually early in the third trimester, the home visitor gives the family information on what to expect during the rest of the pregnancy.

The next visit is usually after the baby is born, if one is not needed sooner. The home visitor then examines the baby, answers any questions the new parents might have and explains to the new mother about feeding, bathing and caring for her newborn.

Even though most visits last about one hour, the postpartum visit is usually longer mostly because new parents have many questions.

A follow-up visit, occurs when the baby is about 2 or

3 months old. The visitors are also trained and educated in Lamaze, growth development, nutrition and other such things about which parents might need to learn. According to Parks her most important job is answering the new mothers questions and reassuring them that everything they are feeling is normal.

"The home visitor was great when she came. She answered all my questions," said Jamie Singer. "Even though she was here because of my newborn, she made my older son feel very special by including him in the conversation."

A new baby, whether first or sixth, means many changes and adjustments. According to Wallace, the home visitor knows about these changes and adjustments and has probably experienced most of them herself. The home visitor can give the new parents advice about what to do when a baby stays up all night, about most feeding problems and changes associated with a new baby.

In essence, she is a source of information and guidance during a very important time in a family's development.



Carmen Parks, ASYMCA Home Visitor, answers Lisa Light's postpartum questions during a follow up visit. The Home Visitor Program is offered through the ASYMCA in an effort to alleviate some of the changes that are part of having a new baby.

**A&P - I.A. RATINGS**  
Airframe & Powerplant — Inspection Authorization  
94-8 Days • Includes Oral & Practical Review  
• 100% Guaranteed • Day & Night Classes

Classes start Oct. 19th  
Honolulu, HI

**Aviation Ground Schools of America**  
CALL NOW! (800) 345-2742

**WHAT IS THE GOOD NEWS OF JESUS CHRIST?**  
How can you be born of the Spirit?  
What does it mean to become a Christian?  
Come and find out! At 7:30 p.m., every Sunday in October  
**ENCHANTED LAKE SCHOOL**  
770 KEOLU DR. KAILUA  
SPONSORED BY WINDWARD FELLOWSHIP 236-1535

**RESUMES** and SF171's

- Military Specialist — so you don't have to keep explaining all your terminology.
- Award Winning Writer — to put you in the best possible light.
- Laser Set Availability — to set you out in a crowd.
- MasterCard & Visa Accepted

**COMPLETE BUSINESS SERVICES**  
488-2800

**SPECIAL OFFER OAHU**  
GET RESULTS NOW!  
Eat anything you want and still lose up to 29 lbs in the next 30 days... and KEEP IT OFF!  
• No Drugs - 100% Natural  
• Doctor Recommended • 100% Guaranteed  
"We will help you look and feel great"  
Call Shirley 521-6318 • Offer good thru 10/7/92  
no answer, leave msg.

Thanks For Your Help!

The Polish American Congress Charitable Foundation means hope to the sick and the disabled. Organized in 1981 as the "Relief for Poland", the PACCF provides:

- medical supplies and equipment to hospitals
- two cardiac centers specializing in children's cardiology
- wheel chairs, patient aids and equipment for crippled children and the elderly
- neonatal training and research

For every \$1.00 donated, PACCF is able to send up to \$30 of humanitarian assistance to hospitals, orphanages and rehabilitation centers for the handicapped.

Help the Needy Children in Poland.  
**Polish American Congress Charitable Foundation**  
5711 N. Milwaukee Ave., Chicago, IL 60646  
(312) 763-9944

**TAN IN-DOORS AT ELECTRIC BEACH TANNING SALONS**

2 LOCATIONS  
212 Merchant St., #310  
**599-5999**  
629 Kailua Rd., #206  
**261-5594**

**2 • 4 • 1 SPECIAL**  
WOLFF OR ULTRATAN ON REGULAR 20 MINUTE SESSIONS  
Limit 4 per coupon • Good 10/1-31/92

Amazing **ONE DAY DIET**  
Lose up to 7 lbs in 7 days.  
Come in for a **FREE SAMPLE**  
Don't be shy... give it a try!

**TOWER RECORDS VIDEO**

# ROCKTOBER HITS SALE

GET THESE HITS ON SALE NOW OR "NAME YOUR HIT"

<b>JOE SATRIANI</b> The Extremist 11.99 CD 7.99 CS	<b>ALICE IN CHAINS</b> Dirt 11.99 CD 7.99 CS	<b>ERIC CLAPTON</b> Unplugged 11.99 CD 7.99 CS	<b>NAME YOUR HIT COUPON</b> BRING THIS COUPON INTO ANY TOWER RECORDS TO GET "YOUR HIT ON SALE." ARTIST _____ TITLE _____ COMPACT DISCS <b>11.99</b> CASSETTES <b>7.99</b> EVERYDAY DISCOUNT PRICE \$13.99 - \$14.99 Offer good on any title in stock at these price points. One title per coupon. Offer expires 10/13/92.
<b>RED HOT CHILI PEPPERS</b> The Power of Reggae 11.99 CD 7.99 CS	<b>MICHAEL PENN</b> Free-For-All 11.99 CD 7.99 CS	<b>PATTY SMYTH</b> Patty Smyth 11.99 CD 7.99 CS	<b>BAD COMPANY</b> Here Comes Trouble 11.99 CD 7.99 CS
<b>MEGADETH</b> Countdown to Extinction 11.99 CD 7.99 CS	<b>HONEYMOON IN VEGAS</b> Elvis Presley Hits 11.99 CD 7.99 CS	<b>DA LENCH MOB</b> Guerillas In The Mist 11.99 CD 7.99 CS	<b>SINEAD O'CONNOR</b> Am I Not Your Girl? 11.99 CD 7.99 CS
<b>THE PARTY</b> The Party 11.99 CD 7.99 CS	<b>MICHAEL BOLTON</b> The Classics 12.99 CD 7.99 CS	<b>MIKI HOWARD</b> Miki Howard femme fatale 11.99 CD 7.99 CS	<b>CHUBB ROCK</b> Chubb Rock 11.99 CD 7.99 CS
<b>HAL KETCHUM</b> Super Love 11.99 CD 7.99 CS	<b>PUBLIC ENEMY</b> Greatest Misses 11.99 CD 7.99 CS	<b>RANDY TRAVIS</b> Randy Travis 11.99 CD 7.99 CS	<b>THE NYLONS</b> Live To Love 11.99 CD 7.99 CS
<b>MARKY MARK</b> You Gotta Believe 11.99 CD 7.99 CS	<b>GARTH BROOKS</b> The Chase 12.99 CD 7.99 CS	<b>OPEN 9AM TO MIDNIGHT EVERYDAY! • TOP 25 ALWAYS ON SALE! • MAIL ORDER: 1-800-648-4844 (9AM-9PM E.S.T.)</b>	

**TOWER RECORDS VIDEO**

**HONOLULU**  
RECORDS...611 Keeaumoku (808) 941-7774  
Across Kapiolani from Ala Moana Center  
VIDEO...1470 Kapiolani (808) 949-3335  
Corner of Kapiolani and Keeaumoku Next to KFC

**AIEA**  
RECORDS/VIDEO...Pearl Kai Center (808) 486-4966  
Across from Pearlridge Shopping Center

**OPENING SOON TOWER OUTLET**  
1538 MAKALOA

**RENT FOR CARS**  
49.99  
2.49

# 3/3 Marines hone combat skills with garrison training

By LCpl. Jeff Evans  
Okinawa Marine

**CAMP HANSEN, Okinawa** — Most people think of infantry training as field work. However, a lot of important training takes place in the rear. That extra effort put into training while in garrison can make a difference and was recently demonstrated by a group of Marines here.

"The intensity of training must be high in garrison as well as in the field if we are going to be prepared for field operations," said Capt. Joseph Molofsky, commanding officer, Company L, 3d Battalion, 3d Marine Regiment.

Approximately three times a week the company holds a "round-robin" training session in addition to their regular infantry training.

The three 40-minute training

periods include hand-to-hand combat, escape and evasion tactics, scout swimming, buildings and similar topics.

This session covered hand-to-hand combat, tough terrain, cordoning and searching.

"In hand-to-hand combat we teach the Marines how to use their bodies to defend themselves," said Cpl. Michael D. Wilson, a third degree black belt in Tae Kwon Do and hand-to-hand combat instructor. "This training has brought a lot of interest in the martial arts and has really improved their skills."

The training done here can also be useful in an urban environment, Wilson added.

The tough terrain class covers the use of ropes, rope bridges, assault ascenders, rappelling techniques and a variety of knots.

"We cover techniques for rappelling such as, how to get

injured people down from high places and the use of rope litters," said LCpl. Cody R. Miranda, tough terrain instructor.

The cordoning and searching classes cover clearing streets, buildings and villages, prisoner handling and crowd control, according to Molofsky.

Each period of instruction is taught by a select group of Marines.

"We form small groups of Marines who are knowledgeable in specific areas and have them teach larger groups what they know," Molofsky explained.

When a Marine from the unit is sent to a special school, such as Scout Swimmers, he passes on that knowledge when he returns.

The comprehensive coverage of topics is a valuable asset to the Marines who receive

the training.

"The best part of the training is that they break everything down into detail and there's a lot of one on one help," said LCpl. Christopher G. Burton. "They make sure you know what you are doing."

Preparing for low-intensity conflicts (LIC) is an area that LtCol. V.J. Goulding, battalion commander, emphasizes.

"In order for us to prepare for missions in an LIC environment," Molofsky began, "this type of training is an absolute requirement."

"When we go to the field," he continued, "it's our intention to be able to travel long distances over the least likely avenues of approach, consolidate a mass combat power and attack the objective from an unanticipated direction. Our garrison training prepares us for that."



Two instructors give hand-to-hand combat demonstration.

LCpl. Jeff Evans

## Brigade Schools fine tune military training

By Sgt. Kevin Doll  
Staff Writer

"As a leader, you have to recognize that your people want to be taught. They want to do well and to be somebody. You have to create an environment that fosters teaching. You must be prepared to step up and teach at anytime, any place..."

Gen. A.M. Gray,  
29th Commandant

Training, leadership and experience in actual operations help the men and women of the Marine Corps keep their edge as the nation's premier fighting force.

Professional instruction for two of these important

elements, training and leadership, is given to Marines throughout the Corps at a number of various schools, including Non-Commissioned Officer (NCO) School, staff academies and the Amphibious Warfare School.

Here at Kaneohe Bay, this higher level of training is provided by 1st Marine Expeditionary Brigade Schools in four different areas. Brigade tactics school, motor vehicle operators school (MOVOS) and nuclear, biological and chemical (NBC) defense school all offer courses which provide instruction and enhance the skills of Hawaii Marines. Shallow water egress training is also provided by brigade schools.

NCO school is still available for Marines at Kaneohe Bay but it is now under the direction of the Marine Corps University and not brigade

schools, as it had been in the past, according to 1stLt. Kenneth Wolf, director of brigade schools.

Wolf said instructors are assigned to the school for six months temporary additional duty. Only the director, the non-commissioned officer-in-charge and the brigade tactics school officer-in-charge are preassigned to the school.

"Brigade order sets guidelines for instructors and we screen them," Wolf said. "The instructors we have are extremely proficient and after their tour here, they go back to their units even better Marines." Wolf said the instructors are teaching their military occupational specialty (MOS) and learning more about not only their expertise but also about themselves while they do it.

During Operations Desert Shield and Desert Storm,

brigade schools shut down for approximately 10 months, except for MOVOS school, and these courses were taught by only one staff sergeant.

"It took us a while to get back up to par after returning from Southwest Asia," Wolf said. "But we have improved our schools to meet the challenges and lessons learned in Saudi."

These improvements include more emphasis on the NBC and tactics school instruction.

"NBC school is hot now because of the threat that existed in the Gulf and tactics instruction is now suggested for all Marines, not just the infantry MOS," Wolf said. "Standardization of training is important, because if a Marine becomes familiar with the training, he will remember it when it is needed most," he emphasized.

Wolf explained although the

different types of instruction offered at brigade schools can either enhance a skill or teach a new one altogether.

"Some of the schools' courses, such as the squad leaders course, are tough as hell but give the Marine the feeling 'hey, if I can do this, there's no telling what else I can do.' Other schools, such as MOVOS, give Marines skills which they can literally use as soon as they graduate. Whatever instruction Marines receive not only enhances their skills but gives them the opportunity to take the knowledge back to their unit for further dissemination."

**Editor's Note:** This article is the first in a series about the different types of instruction offered at brigade schools. The following articles will examine the individual schools and the courses available.

# ALBU & ALBU

ATTORNEYS AT LAW

PERSONAL INJURIES  
AUTO ACCIDENTS  
OTHER ACCIDENTS  
WRONGFUL DEATH

FAMILY LAW  
DIVORCES  
ADOPTIONS

Phone 266-6200

26 Hoolai Street, Suite 200  
Kailua, Hawaii 96734

In the Kailua  
Blockbuster Center



Kathryn Momi Albu

Ronald Albu

**Atlantic**  
When you're going places.

### GRASSHOPPER COLLECTION

Shoulder Tote #2580-14	\$39.99
Boarding Bag #2580-02	\$39.99
Garmet Carrier #2580-48	\$39.99
28" Pullman w/wheels #2580-28	\$59.99
28" Pullman w/wheels #2580-28	\$59.99

\*This advertisement was not paid for in whole or in part by the Department of the Navy or Navy Exchange. This advertisement does not constitute endorsement by the Navy Exchange, the Department for the Navy or the U.S. Government of the products or service advertised.

The PLAZA  
at  
Pearl Harbor

## Travelers Sale 1-4 October



### MAYFAIR AUTUMN LEAF COLLECTION

Classic Satchel #6382-80	\$39.99
Satchel Tote #6382-80	\$39.99
On Board w/wheels #6382-92	\$59.99
28" Pullman w/wheels #6382-28	\$59.99
28" Pullman w/wheels #6382-28	\$59.99

**NEX**  
Navy Exchange

# KOOLAU PETS

WINDWARD MALL  
Lower Level,  
Next To JC Penney's



**Starter Kit For Mice**  
Featuring a sky pet house.  
**\$15.95**

**30% off**  
**ALL TROPICAL FISH**  
Freshwater & Marine Varieties

## Autumn Sale

Sale ends 10/4/92.

**KAYTEE**

**FIESTA**

**Fortified Gourmet Bird Feed**

3 lbs. Parrots **\$5.99**  
3 lbs. Cockatiels **\$4.99**

**Lambert Kay**

**Flea & Tick Shampoo**  
With 1/3 more pyrethrin.  
**\$4.99**



**SUPPLIER TO  
THE MILITARY  
SINCE 1940**

The House of Adler salutes  
our military in Hawaii.

**MILITARY  
ALLOTMENTS  
AVAILABLE**

Come in today and we'll help  
you select just the right  
diamond to fit your budget  
at the most affordable  
terms possible.

**House of Adler**  
THIRD GENERATION DIAMOND CUTTERS

If you are not buying your diamonds from the House of Adler, you are paying too much!

PEARLRIDGE PHASE II 487-080•WAIPAHU (next to Longs) 671-8227  
PAN AM BLDG. #1600 Kapiolani Blvd. 12th Floor•Validated Parking#949-4196



**Aloha United Way**

With your help, there's hope.

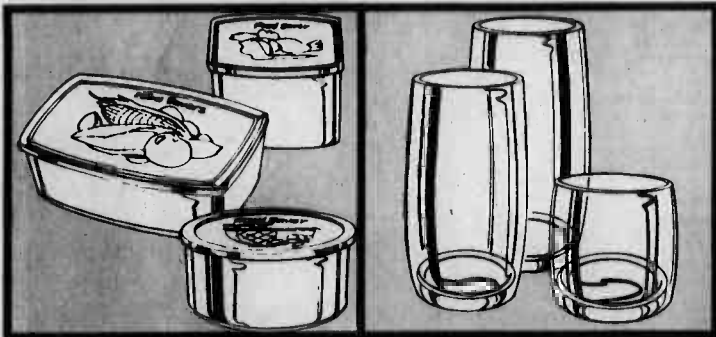


# Woolworth

"38 Years Serving You Faithfully"

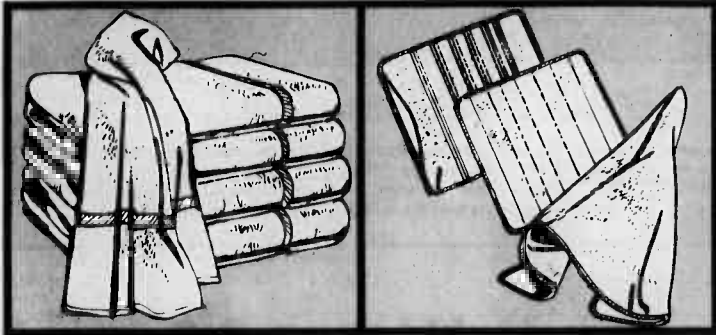
COMING SOON  
TO KONA  
& MILILANI

## OCTOBER VALUES



**3 for \$5** Food Savers.  
Storage container  
assortment.

**\$15** 40 Piece  
Glassware Set.



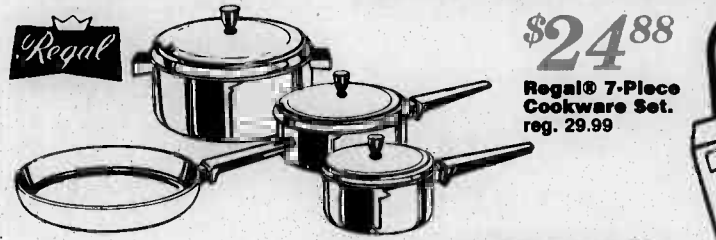
**2 for \$7** Bath Towels.  
Various solid colors.  
reg. 4.99

**2 for \$1** Wash Cloths.  
Various solid colors.  
reg. 69¢



**\$1** Our Brand Toilet Tissue.  
reg. 1.59

**3 for \$2** Our Brand  
Paper Towels. reg. 89¢

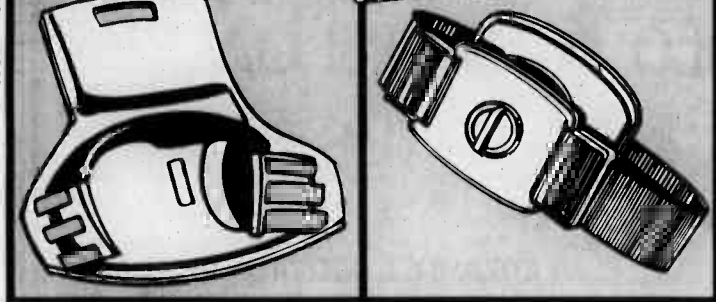


**\$24<sup>88</sup>**

Regal® 7-Piece  
Cookware Set.  
reg. 29.99

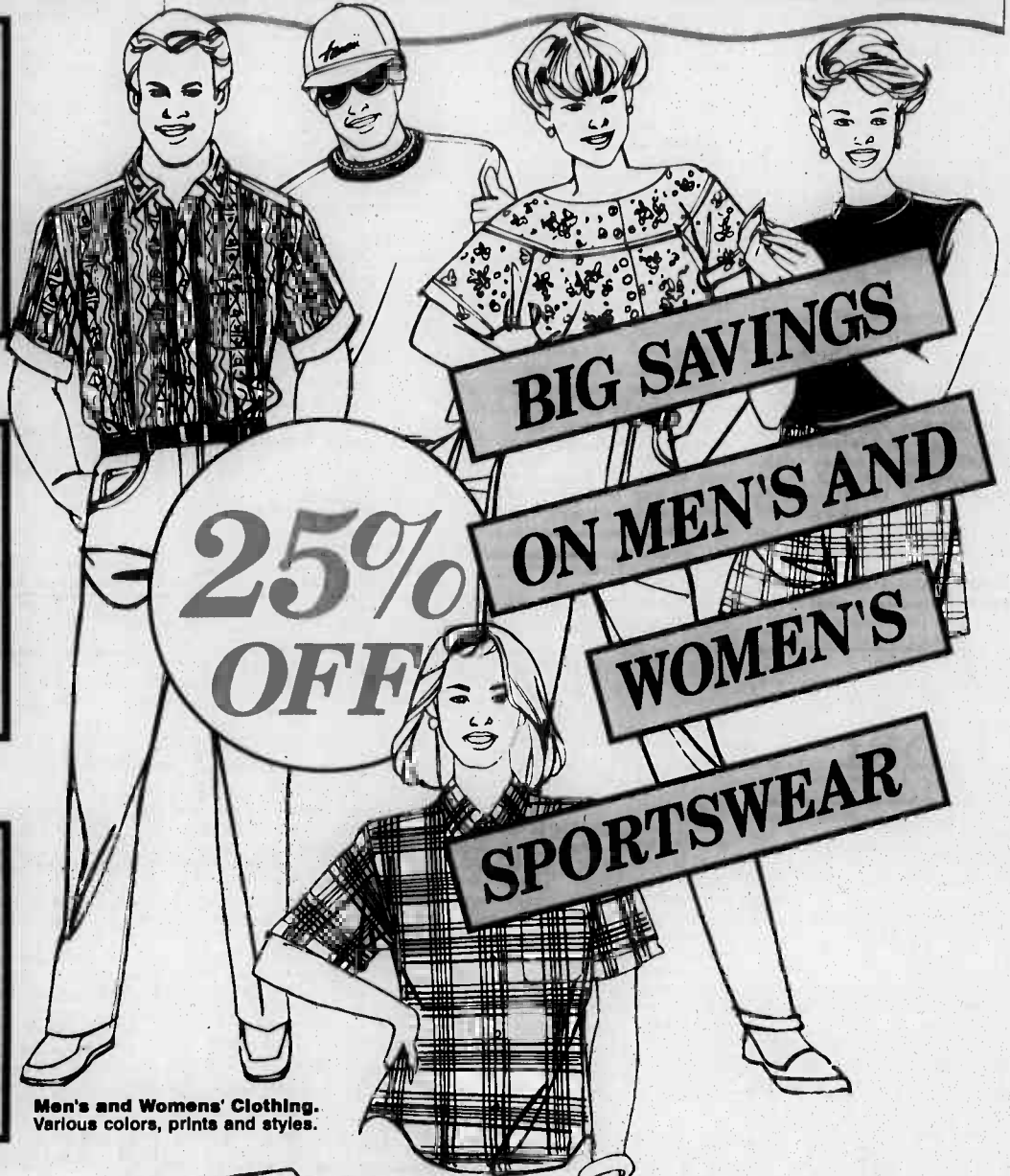


**\$27<sup>88</sup>** Foot Lockers.  
reg. 34.99



**\$8** Abdominizer Exerciser.  
reg. 19.99

**\$8** Tummytizer Exerciser.  
reg. 19.99



Men's and Women's Clothing.  
Various colors, prints and styles.

**25% OFF**

**BIG SAVINGS**

**ON MEN'S AND**

**WOMEN'S**

**SPORTSWEAR**



**188**

VHS Cartoon  
Classics  
Videos

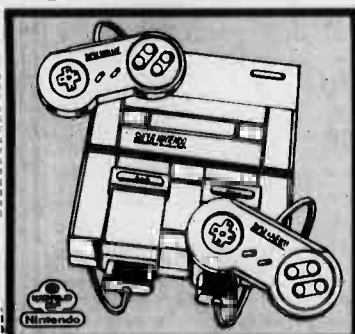


**SAVE NOW**

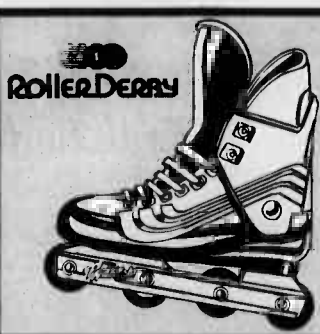
**ON FOOTWEAR**

**25% OFF**

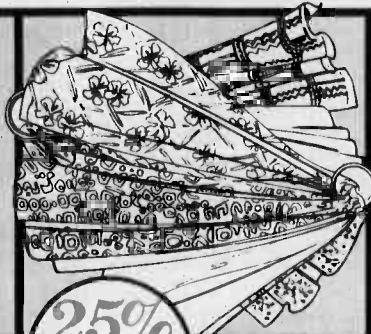
Shoes for the whole family  
Many different colors and styles.



**\$149<sup>99</sup>** Super Nintendo®  
Video Entertainment  
System.

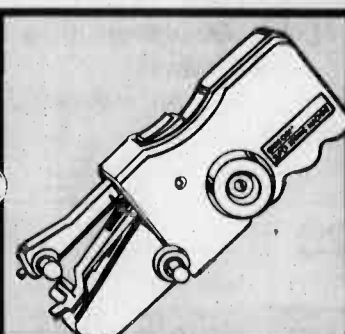


**\$54<sup>88</sup>** Phantom®  
Inline Skates.  
reg. 59.99



**25% OFF**  
Regular  
Prices

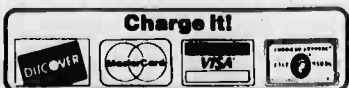
Assorted  
Fashion  
Fabrics.



**\$17<sup>88</sup>** Emerson®  
Hand Sewing  
Machine. reg. 19.99



**2 for \$3** Fujitsu® AA 4 Pack  
Batteries.  
reg. 1.99



Charge It!

**PRICES EFFECTIVE OCTOBER 1 THRU OCTOBER 6 AT THESE STORES ONLY!**

**WAIPAHU TOWN CENTER**  
94-050 FARRINGTON HWY.

**WINDWARD MALL**  
46-056 KAMEHAMEHA HWY.

**PEARLRIDGE CENTER**  
98-1005 MOANALUA RD.

## Relief

from A-7  
"We have also inspected wiring in schools and relief centers and set up their generators if they didn't know how," he said. "People were ecstatic over the help we provided. Every engineer was feeling proud for just doing his normal job because it meant so much to the public and they showed it in their gratitude."

Major Robert Lottie, TFUSMCE commander and assigned from MWSS-174, said the Marine efforts on the

island have made a difference. "When Marines first arrived, people on Kauai were desperate for supplies and relief services," he said. "Although we had no firm direction at the time, I made the decision to supply MREs (meals-ready-to eat) and set up a water distribution site at Hanapepe."

Lottie said Marines worked well in the joint task force situation and efficient use of total force capabilities was utilized.

"Lessons learned in this operation are a clear assessment of immediate needs is vital," he said. "Something

that became very clear is that the Marine Corps could provide immediate relief quickly and then the other services could provide sustaining services."

"The Marines here realize that this could have been them," Lottie said of the hurricane's destruction and its proximity to Oahu. "For this reason, task force Marines worked hard and had a true sense of urgency in their efforts. When we first organized, we emphasized although we come from different units at K-Bay, here we are one team ... and that's exactly the way we worked."

## Sweep

from A-8  
For the majority of Garden Sweep, three cleanup teams, Alpha, Bravo and Charlie, spread out through their designated towns, first clearing roads for easy passage and later cleaning up debris along roads, parks and wherever else needed. Marines armed with chainsaws, shovels and axes powered their way through streets blocked by downed trees, demolished buildings and practically every other kind of debris scattered by Iniki. Marines on foot and driving front-end loaders packed five-ton trucks and dump trucks

with trash which was then hauled to temporary dump sites. Later, the trash was moved by civilian workers to permanent dumps or burned in incinerators.

**The people**  
Seventy-six-year-old Hanapepe Heights resident Clara Akuna was surprised when the Marines showed up at her door Saturday morning. Iniki had nearly blown down her carport and made a shambles of an outside storage room. Both structures, located near her house, were safety hazards and could collapse at any time. Akuna's great-grandchildren often played near or under the structures.

A platoon from TFUSMCE Alpha team, composed of HQ Co., 3d Marines, received the emergency work request to remedy the situation. In a little more than four hours, the Marine team tore down the carport, dismantled the storage shed and cleared Akuna's yard of all debris.

"You Marine boys have been so helpful," she told them after the job was completed. Although she first thought "the boys" were Army soldiers, she quickly learned the difference. "I had no idea the Marines would be coming through and I don't know what I would have done without their help."



Sgt. Kevin Doll

### High-powered shooters

Station Marines recently presented Col. R.R. Crewford, station commander, with the trophy for their win at the Hawaii State High-powered Rifle Championships. Presenting the trophy are Sgt. Tim Schlox, Sgt. Blaine Davis and 1st Lt. Brent Ranning. Team members not present include Cpl. Gary Roy, SSgt. Dennis King and CWO-4 Joe Winsor. The Marines fired the M14 rifle, which uses a 7.62mm round.

## Misuse is a crime

# Lost I.D. cards increase the possibility of fraud

By Cpl. Lou Ramirez

A patron shows his military identification card (I.D.) and enters the commissary. This seems like an easy thing to do, but the task is sometimes complicated when a person has either an expired I.D. card or doesn't have one to show because it's lost.

I.D. cards are controlled items, but people continue to take them for granted; being careless with them, losing them or forgetting to renew them, explains MSgt David Keen, Deers/Temporary Lodging Allowance (TLA) officer-

in-charge. "I.D. cards should be taken care of a lot better because they are what identifies you as being what you are," said Keen. "If someone gets hold of your I.D. card they might be getting your entitlements, such as exchange, commissary and medical privileges."

According to SSgt. Ricky B. Martin, staff-non-commissioned-officer-in-charge of Deers/TLA, more than 150 I.D. cards are lost every month.

"When an I.D. card is lost there is a concern," said Martin, "because with every lost I.D. card there is the possibility of fraud."

In order to keep track of how

many times a person gets a new I.D. card the month and date it was issued is put into a computer record. Lately there hasn't been a problem with repeat offenders, explained Martin. "If there is any reason for concern we get Criminal Investigation Division/Naval Investigative Service involved and they handle it from there."

According to the warning on the back of a dependent's I.D. card a person found guilty of using a false military I.D. card or authorizing someone else to use their I.D. card is liable for prosecution under applicable federal laws pertaining to false statements.

According to Capt. Louis Puleo, military justice officer, if a Marine is convicted of possessing a fraudulent I.D. card or of giving or selling an I.D. card they are liable under Article 134 of the Uniform Code of Military Justice and can receive a dishonorable discharge, forfeiture of all pay allowances, three years confinement and reduction to E-1.

"Marines may think that using or allowing someone to use their I.D. card is not a big deal," said Puleo. "However this is a crime that can lead to a court martial." Persons losing I.D. cards have to go through their administrative section, then take the request for

a new I.D. card to the Provost Marshall's Office (PMO) and get the paperwork stamped. If it has not been taken to PMO the I.D. card office will not issue a new card.

"This week I picked up four I.D. cards that were lost or had been confiscated because they were expired," said Keen. "Three of the four had already been reissued someplace else and the other had expired since February."

According to Jane Scheehan, cashier supervisor at the commissary, when a patron tries to enter the commissary with an expired I.D. card it is confiscated and turned in. "I have confiscated several I.D. cards and other

cashiers have too," she said. Some patrons get upset but most are surprised, said Scheehan.

"Most people just don't realize the I.D. cards are expired," said Martin. "If an enlisted person extends his enlistment, that extension normally doesn't go on their dependants I.D. card until the day it actually begins. Sometimes when the time comes, I.D. cards are forgotten."

Military I.D.s are controlled items. Even though issued to an individual, it is property of the U.S. government. The responsibility still lies with the individual.

# ELECTROGAMES\* PLUS

\*LICENSED TO VIDEOGAMES, LTD. and ELECTRONIC BOUTIQUE, INC.

R.B.I. 4 BASEBALL \$4999

NHLPA HOCKEY '93 \$5499

DREAM TEAM USA BASKETBALL \$4799

YOUNG GALAHAD \$4499

ELECTRONIC ARTS

**SUPER NINTENDO**

**10% OFF**

**ALL SUPER NINTENDO GAMES!!**

(Streetfighter II not included in sale.) Offer good Oct. 1-6, 1992.

**JOHN MADDEN FOOTBALL**

**AXELAY**

**WE'VE GOT IT ALL!**

- Sega Genesis • Game Boy • Mega Drive
- IBM Computer Games
- Super Nintendo • Game Gear • Mega CD
- Super Famicom
- Nintendo • Atari Lynx • Neo Geo

93.1FM • 690AM

— COME IN TO REGISTER NOW! —

— SUPER ACTION PLAYOFFS!! —

— STREETFIGHTER II AND SONIC —

SPONSORED BY KQMQ, KHNL. WINNER TO BE ANNOUNCED ON KQMQ.

**HONOLULU LOCATION** at 815 Keeaumoku St. Hours: 10 AM to 10 PM **946-1026**

**98-1029 Moanalua Rd. at Pearlridge** Hours: 10 AM to 10 PM **488-6765**

*Navy Exchange Hawaii announces the debut of*

**POLO RALPH LAUREN**

*An exclusive Concept Shop— now open in the Men's Department, The PLAZA at Pearl Harbor.*



## PMO shoots down ATC, 28-0

By Cpl. Marlon J. Martin  
Staff Writer

The Provost Marshal's Office (PMO) "Bad Boyz" shot Station Operations and Maintenance (SOMS) Air Traffic Controllers (ATC) down 28-0 in flag football action, Friday. After landing the air traffic controllers, the men in black walked off the field with a 5-0 season record.

Quarterback George "Mazz" Mazraff initiated the offense with a 35-yard pass to receiver Tony "Burned Ya" Silveria. Unfortunately, the quick receiver dropped the pass.

Although the wide receiver failed to catch his pass, Mazraff continued his air assault. This time, he aimed the pigskin to receiver Brian "Woody" Woods. Woods gained 20 yards on the play, but an off-setting penalty for holding sent the crimefighters back to the line-of-scrimmage.

The Bad Boyz didn't gain any yardage until a Silveria catch put them in field goal range. This was PMO's first scoring opportunity, but a missed Troy Mallonee kick sent them back to the drawing board.

Matt Slusser, defensive tackle, aided the defense in quickly shutting SOMS down. The defense inspired the offense to attack. After failing to score, the Bad Boyz were on a mission to reach the end zone. And they did.

Randy "Nuke" Newkirk scored PMO's first score on a quick slant. Mazraff mislaid a 25-yarder to the wide receiver who ran it in from the 40-yard line. Silveria burned his man again to shoot off a couple more rounds with a two-point conversion, increasing the score to 8-0.

The air traffic controllers/maintenance men didn't seem to have any luck in the air or on the ground. They dropped a Mallonee 55-yard kick-off, which touched down on the one-yard line.

Bad Boyz' Slusser tightened up the defensive line, stopping SOMS from advancing upfield. Realizing they couldn't go through the Bad Boyz, the air traffic controllers took to flight.

With 30 seconds remaining in the first half, SOMS hurled a bomb on third, and long. But Thom Beyer intercepted, giving his team possession of the ball.

It got hot in the kitchen for SOMS after Silveria smoked his way to another PMO score. Splitting two SOMS' defenders, the wide receiver gave the Bad Boyz a 14-0 lead.

The wide receivers weren't the only weapons SOMS had to battle. They also went up against the referee's yellow flags. The yellow flags went up in the air on almost every play and seemed to be more intimidating than their opponents.

In an attempt to prevent more penalties, Gary Roy insisted the team stick to simple, basic plays. With the coach being absent, Roy was elected

as the man-in-charge.

"We can't get down on ourselves or each other when we make mistakes," the quarterback added in an effort to keep the team's spirit in tact.

Bad Boyz had lots of spirit and they showed it, putting Edwyn Kleckley to work. The tight end rushed several yards upfield to spark an untouchable offense. Pushing PMO closer and closer to the goal line, Kleckley impressed the crowd with a one-handed catch. But he was stopped short due to an inadvertent whistle by the referee.

Still, his teammate Napoleon "D.B." Dunbar worked on the scoring drive. On a reverse play, Dunbar took possession of the ball and ran it 25 yards up the left side of the field. A play-action pass to Woods caused another PMO touchdown. Mallonee then finished off the scoring drive with a two-point conversion.

With the score 22-0, Mallonee booted another long kick. SOMS took possession of the ball at the nine-yard line after dropping Mallonee's end-over-end kick. But PMO's DeWayne "Smitty-II" Smith took the ball back. The outside linebacker was in the right spot at the right time, picking off a SOMS' pass.

The Bad Boyz proved to be bad news for SOMS ATC. Thus, it was Roger Bond who acted like a bad boy. The defensive lineman was ejected from the game for unsportsmanlike conduct, pushing Bad Boyz' quarterback to the ground. That really put a dent in the SOMS defense.

A few minutes later, SOMS suffered another penalty for impeding the runner. Their defense was not as effective as PMO's nor their offense. The Bad Boyz finished off the game with another Woods' score, 28-0.

Dedicating the game to Col. Paul J. Chase, Headquarters and Headquarters Squadron's commanding officer who is presently ill, Bad Boyz' coach Harold Sharrer said, "We never take any team for granted. The team played up to their potential and they really earned this win."



Cpl. Marlon J. Martin

The Bad Boyz of PMO were equipped with a strong defensive line, led by Matt Slusser. As soon as SOMS quarterback Gary Roy takes the snap, he is pursued by PMO defenders. The Bad Boyz stopped Gary Roy from igniting his offense, beating SOMS ATC, 28-0.

## 'Legends of Golf' come to Kaneohe

By Cpl. Marlon J. Martin  
Staff Writer

The Klipper Golf Course has hosted several tournaments throughout the years, but the granddaddy of them all is the Legends of Golf in the Klipper Classic. The 18-hole tournament gives amateur golfers an opportunity to play alongside legendary members of the Professional Golf Association and is coming to K-Bay, Oct. 27.

This year, the 5th Annual Pro-Am Tournament will

feature the 1992 U.S. Open Senior Champion Larry Laoretti. Golfers can also look forward to meeting and playing with golfing greats, such as Lee Elder, Don Bies, Joe Jimenez, Mike Fetchick, Ralph Terry, Ken Still, Charles Sifford, Rafe Botts, Bob Erickson, John Paul Cain, Dick Rhyne, Jim O'Hern, Bob Brue, Walt Morgan, Dick Hendrickson, and Bobby Nichols. Charles Coody will not be able to attend as scheduled, but he will be replaced by another professional golfer.

Prior to the tournament, golfers can share an evening

with the Legends of Golf at the Staff NCO Club, beginning at 6 p.m. The tourney will be played in a scrambled format, giving amateurs even more time with these golfing greats. Rather than branching out throughout the course, each team will tee off and play on the ball in the best position. Their will be 18 teams, pairing five amateur players with one professional.

According to Chuck Larson, golf course manager, "We initiated this Pro-Am tourney to give military and civilian golfers an opportunity to play with the pros and get to know

them." As a result, amateur golfers have been able to improve on their game and pick up pointers from professionals who have done well in their careers.

At the tournament's end, a golf clinic is scheduled at 12:30 p.m. on tee 1. Bob Brue, a Senior PGA professional, will entertain the gallery of spectators, explaining the golf swing and ways one can improve the game.

Following the clinic, a showdown of champions will take place at 1 p.m. During the Honolulu Ford Shoot-Out, which features all Senior PGA players, professionals will

compete for thousands of dollars in prize money.

To prepare the amateurs for a round of golf with the Senior PGA Tour Professionals, practice rounds can be played, Oct. 18, 20 and 22. A souvenir package will be given to all amateur participants, a \$75.00 value.

Amateur spots are still available and individuals are encouraged to come out and participate. Entry forms can be picked up at the Golf Shop and must be received no later than close of business, Friday, Oct. 16. For more information call 254-2107 or 254-1745.

## Knights tame K-Bay Wildcats, 19-6

By Cpl. Marlon J. Martin  
Staff Writer

The Knights of Schofield Barracks fought off the persistent K-Bay Wildcats, 19-6, in the Termite league of youth tackle football. With their height advantage, the Knights presented an intimidating presence, but the Wildcats battled it out until the timeclock ticked its last second.

The Knights opened the scoring with a Maurice Samms touchdown. The tailback blasted up the left side of the field, leaving all defenders behind on a double reverse to give his team a 6-0 lead.

The Wildcats charged back with a 20-yard reception by running back Darius Hill. On a 85-roll-out pass, quarterback William Thomas dropped a pass in Hill's lap, giving the Wildcats a first down. Nevertheless, a fumble at the four-minute mark set the Wildcats back, just as they sought to score.

Finding themselves back on defense, the Wildcats busted up the Knights' next play with a minute remaining in the first half. However, a talented Kenneth "Lil' Bit" Randolph was able to convert the broken play into another touchdown. As he ran to the right, Randolph was facing the Wildcats' hungry defensive linemen, so he broke back to the left side and took advantage of some good blocking. Randolph's score boosted the Knights' lead to 12.

Randolph tried a little bit of scrambling on the two-point conversion, but the Wildcats shut him down.

Unable to gain yardage on the ground, the Wildcats decided to go to the air. Thomas threw long, but his pass was picked off by Knights' cornerback Tim Mitroka. Mitroka slipped a couple of tackles and scored on the play, making the score 18-0.

Samms boosted the Knights' lead to 19-0 with a one-point conversion.

Samms caught the ball on a screen pass from quarterback Kaukalani Castro.

The Wildcats didn't seem to have a defense strong enough to stop the Knights. Flanker Kenyonta Evans scored back-to-back touchdowns, but they were both called back due to offensive penalties, holding and chopping below the waist.

Since Evans was having no problems running through the defense, the Knights kept giving him the ball. He tried to score again, but corner back Steven Laupati stopped the swift runner dead in his tracks for a loss of yardage.

On fourth down, Evans rushed the

ball again, but this time it was cornerback Brandon Phillips who saved the day for the Wildcats.

The Wildcats formed a tighter defense late in the second half, but it was too late. The Knights had built themselves a comfortable lead. However, they pursued yet another goal.

With the Knights running the ball, a linebacker fumble created an opportunity for the Wildcat to score and they took it. Jose Martinez scooped up the football, giving the Wildcats their first and only score of the game, 19-6.

The Wildcats' coaching staff commended their players for not

quitting. Although the Wildcats were dominated by height and weight, they stuck with the Knights.

When asked about his team's size and height, assistant coach John Crosby said everyone was legally within their limits and that he was willing to weigh everyone one of them.

"We got some talented players who will only get better. With only two experienced players, there is a lot for the team to learn," said Crosby.

Expecting the team to finish the season off undefeated, defensive coach Kevin Robinson said, "Our defense was the key. There was some good solid blocking. We organize it where we always keep a fresh defense."



Cpl. Marlon J. Martin

Samuel "Bo" Gray leads a pack of Wildcats in a chase to catch Knights' Maurice Samms. Unfortunately for K-Bay, Samms was not caught and he scored the first points of the game. He led the Schofield Barracks Knights in a 19-6 victory over the K-Bay Wildcats.

## Briefs

### 217th Marine Corps Birthday 10K Fun Run

Registration for the upcoming 10K fun run will begin Oct. 15, celebrating the 217th Marine Corps birthday. There will be a registration log book in the main gym lobby. There is no entry fee. Race day is scheduled for Nov. 10 at 6:15 a.m.

### Hole-in-one

Ron Rarick, a Honolulu businessman, hit a hole-in-one in the March of Dimes Annual Golf Classic, which was held Sept. 22. In doing so, he won a brand-new Nissan Maxima, which was sponsored by Nissan Hawaii.

The March of Dimes is a national voluntary health agency whose mission is to help babies be born healthy by preventing birth defects, low birth weight and infant mortality. Through its campaign for healthier babies, the March of Dimes funds programs of community services, advocacy, research and education.

### Table tennis

The next K-Bay Table Tennis Tournament is scheduled for Oct. 10 in the main gym. For registration and information, please contact the athletic office at 254-2516.

### Basketball meeting

All team coaches and representatives must attend an organizational meeting for the upcoming basketball league. The meeting is Oct. 11 at 1 p.m. in the main gym.

### Hunting

The K-Bay Rod and Gun Club will meet in the Dependent Recreation Center at 7 p.m., Oct. 6. Primary items to be covered include pig hunting and the upcoming bird hunting season. Military and civilian personnel are invited. For more information, call 254-5739.

### Wrestling coach

An active duty Marine or sailor stationed with Marines who is interested in coaching the Hawaii Marine Men's Wrestling Team is being sought. For more information call the athletic office at 254-2516.

### Softball tourney

The 1st annual K-Bay Halloween Classic softball tournament will be held Oct. 30 and 31. Unit competition is welcomed, however, participants must be from the same command. The entry fee is \$150 per team and class 'D' civilian teams are welcomed. For further information, call GySgt. Ed Peerenboom at 257-3267.

### Canoe race

Outrigger canoe racing is the State of Hawaii's official team sport. The 41st annual 40.8-mile Moloka'i-to-Oahu world championship outrigger canoe race will be held Oct. 11. The race starts at Hale O Lono Harbor, Moloka'i and crosses the Kaiwi channel to a finish at Fort DeRussy Beach, Waikiki, Oahu. The race is owned, organized and produced by the Oahu Hawaiian Canoe Racing Association (OHCR). Participants include world-class teams from Australia, California, Canada, England, Tahiti, Hawaii and the Mainland United States. The event is free and open to the public. Spectators are invited to come to Fort DeRussy Beach to participate in the colorful finish.

### Underwater cleanup

Scuba divers from all over Oahu will join forces to rid our island's underwater reefs of plastics and other debris harmful to our fragile ecosystem and wildlife Oct. 10. This year Project Coordinator Candy Young, a PADI course director, is organizing an all-out, island-wide effort in support of "Project A.W.A.R.E. Month." The project is affiliated with the Hawaii State Litter Control Office's "Get the Drift and Bag It" campaign in cooperation with the Center for Marine Conservation/Coastweeks '92.

All dive stores, dive clubs, dive boat operations and independent instructors have been invited to join in this year's project. This cooperative effort among different organizations hopes to highlight the environmental issues facing divers and oceans worldwide.

A total of 30 popular shore diving sites and an additional 10 boat access only reefs will be assigned to participating dive groups. The cleanup is open to all certified divers and non-divers can participate by helping to clean the adjoining beaches.

Anybody interested in participating in this voluntary project should call Candy Young at 262-2333 for information on the nearest participating dive facility.





# Marlboro

SURGEON GENERAL'S WARNING: Smoking By Pregnant Women May Result in Fetal Injury, Premature Birth, And Low Birth Weight.

16 mg "tar," 1.2 mg nicotine  
av. per cigarette by FTC method.





(Above) Wildcat Darious Hill attempts to rush the ball upfield, but he is stopped by two Knights. The Schofield Barracks Knights went on to stop the K-Bay Wildcats from winning, 19-6. (Right) Coach Crawford Frederick, the defensive coach, preps his Wildcats on ways of stopping a slightly bigger Schofield Barracks team.



Cpl. Marlon J. Martin

Cpl. Marlon J. Martin

## Kaneohe youth grab pigskins, 'tackle' football

By Cpl. Marlon J. Martin  
Staff Writer

When the leaves fall from the trees and the outside temperatures drop, fall has arrived. For athletes, it means football season.

After a long summer, football players are finally able to dig their cleats into the gridiron. The National Football League has started its regular season, collegiate football is well on its way, Intramural football has kicked off its schedule and now K-Bay's youth football is

grabbing everyone's attention.

There are three tackle and two flag divisions. The tackle division is composed of the Termite, age 8-10, Pee Wee, age 11-12, and Midget leagues, age 13-14. Mitey Mites, age 5-6, and Termites, age 7-8, make up the flag division.

The parents and coaches are just as excited about youth football as the kids are. In support of the program, parents are organizing car washes, setting up concession stands and selling refreshments to help the children raise money for trophies, team pictures, end-of-

year parties and other accessories that go along with the sport.

Coaches spend many hours preparing themselves and the kids for youth football. The head coach of each team must be certified through the National Youth Sports Coaches Association, which calls for the individual to attend a five-hour clinic.

According to Dave Pablo, youth sports director, all military installations fall under the Hawaii Youth Sports League and must abide by its regulations. For the kids participating in the tackle division, one of the regulations requires each child to undergo an official weigh-in.

Termite leaguers must weigh less than 100 pounds. Kids playing in the Pee Wee league have to be 120 pounds or less and Midget players can't be more than 140 pounds. This year, the weigh-in sight was at the Aliamanu Reservation.

Although the young men are ready to throw on their uniforms and hit the field, Dependent Recreation is insisting that neither parents nor coaches place an emphasis on winning. Winning is not the sole objective of the game.

A recent study by the Sports Psychology Laboratory of the University of California, Los Angeles found winning to be the least important reason for children becoming involved in sports. The attitudes of 2,000 southern California boys and girls who participate in sports were measured and the rankings of the factors they said contributed most to their enjoyment were: Positive coach support; learning-effort (tie); positive parent interaction; sports ability; feeling fit; and winning.

"Children are more concerned with the process, rather than the product," Pablo mentioned. "Kids just want to play and have fun. Therefore, we are urging parents and coaches to keep sports in perspective."

Dependent Rec has provided the children all the equipment necessary to participate in youth football. With their support and the aid of parents and coaches, children can look forward to a successful season.



Cpl. Marlon J. Martin

Wildcats' head coach Mathew Love helps center Michael Champagne adjust his uniform. In an attempt to keep his jersey from getting in the center's way when snapping the ball, Love tucks the jersey up under his protective gear.

## Volunteer For Active Duty.

When you're in the mood for active good times, make the Hale Koa your top

priority. Volunteer your family and friends, too. From R & R on the best stretch of beach in

Waikiki to dancing in the Warriors Lounge, if it's fun, it's here.

If you're ready for fun at the beach, everything's here, including sand volleyball courts. At our Beach Rental Hut, you'll find all you need to snorkel, surf, windsurf, canoe and kayak. Or ride the waves on a Hobie Car, aquacycle or boogie board.

If you're into physical fitness, work out at our Fitness Center and enjoy a sauna after. If tennis is your game, sharpen your serve on one of our three courts.

Then when it's time to mellow out, retire to one of our lounges, refuel in one of our restaurants, or watch our entertainers get active. Come for Tuesday's Magic show, Wednesday's Polynesian Revue or Thursday's Luau. It's all just for you!



**HALE KOA**  
HOTEL

"Come For The Fun Of It"

ARMED FORCES RECREATION CENTER  
On The Beach At Waikiki  
2055 Kalua Road • Phone 955-0555



## DON'T MISS THE THUNDER, HAWAII!



And don't miss the thrill of fast, powerful hydroplanes like the Miss Budweiser, the Winston Eagle and the Miss Tide as they compete for \$150,000 in prize money and the Hydrofest championship!

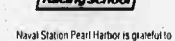


At Pearl Harbor • October 10-11, 1992

Enjoy Formula Ford Racing, The Maritime Expo, Stunt Aircraft, Keiki Land and much more!



Long Distance/USA  
A Sprint Company



Advance Ticket prices start from just

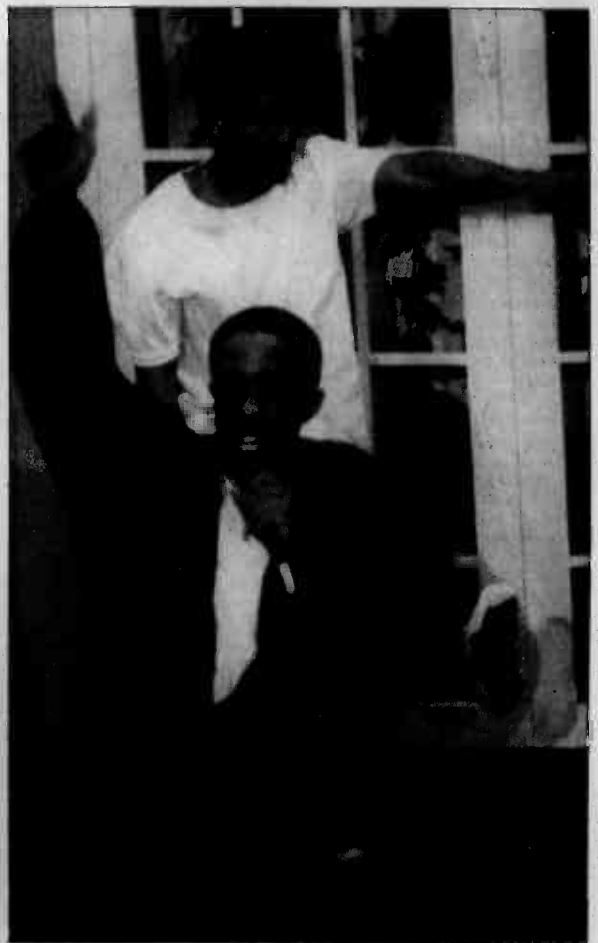
**\$3**

For adults at Pearl City Peninsula and \$8 at Ford Island

Tickets available at:

- Blockbuster Video
- NAPA Auto Parts
- Sears
- Military Outlets
- For more info call 471-0818

Ample parking will be available at Richardson Fields, Aloha Stadium and the Pearl City Peninsula.



(Left) Posse on a Mission's lead male vocalists, Freddie Acevedo (with cap/glasses) and Marcus Hammond perform a Christian rap song while Jeda Rodriguez and Chaz Tlogangco dance in the background. (Above) Lead male vocalist, Marcus Hammond performs a rap as a Posse on a Mission member Chaz Tlogangco dances in the background.

## Youths spread word

By G/Sgt. Gloria Nacosta  
Public Affairs Chief

One of Hawaii's hottest new Christian youth groups brought new meanings to traditional music here at the air station chapel Friday.

Posse on a Mission rode in with a powerful vengeance at heart to spread the Gospel of Jesus Christ in songs and personal testimonies.

The group began its musical message with such songs as "Jesus Christ," "G-O-D," "Turn-it-up," "Jump" and "Do Not Pass Me By." The Posse takes music that is popular to today's youths and presents Jesus Christ through the lyrics.

"The mission of the group is to fulfill the master's great commission by evangelizing the streets with the Gospel of Jesus Christ and to win the lost to Jesus Christ through Christian song-rap, reggae and dance," said Gina Smoots, leader of Posse on a Mission.

"We're bold youths and we're very serious about sharing the message of Jesus Christ. We're excited that Jesus saw fit to use us as vessels to bring his word across to the unsaved."

Established Jan. 1, 1992 as part of Honolulu's Word of Life Christian Center Outreach Ministries, the Posse on a Mission consists of 52 active members from 8 to 30 years old.

Smoots said in order to join the group, one must be working toward membership or be a member of the Word of Life Christian Center, be committed to Jesus Christ and allow Him to be Lord and Savior of his life.

"If a Posse member is still in school, he/she must maintain a C average," said Smoots. "We also offer tutoring for children on the team who need assistance and show a willingness to learn. In addition to the six-hour weekly rehearsals, we have one-hour Bible study. We work

very closely with the parents of the youths to ensure that the children's whole life is balanced such as home, church and school."

Art Sepulveda, senior pastor of Word of Life Christian Center and his wife and associate pastor, Kuna ensure that the youths are properly trained, supervised, taught and ministered to before they venture out to minister to others.

"We're trained youth ministers of the Gospel who confess and profess it in a radical way," said Marcus Hammond, one of the male lead singers of the Posse. "The rap and other music we sing reach the youths who see church in a traditional way. We share Jesus with joy and boldness to reach them right where they are."

Freddie Acevedo, 14, also a lead singer, adds that the Posse on a Mission performs where the need is. Acevedo said in addition to churches,

the group has appeared at beaches, parks, shopping malls, parking lots and in front of prominent businesses to reach today's youths. "We like to meet them on their turf," said Acevedo.

Although the group dresses in today's fashions and look like any youth from a distance, once they begin to speak, witness or sing, the difference is clearly seen.

The group is also known by the various "witness" T-shirt they wear that proclaim such messages as "Get Radically Committed," "C'mon, Bust a Move For Jesus" and "No Doubts, No Borders, No Limits, No Fears, Only Faith in Jesus."

The Posse on a Mission has taken its music and messages all over Oahu, Neighbor Islands and on the Mainland to Seattle.

The Posse stresses in one of their songs that the group is "too legit to quit" and has just begun to do things to

reach youths for Christ.

Smoots said the heart beat of the Posse is to be able to reach the unreachable. The group has already performed at a Boys Home here and have been invited to go to Fiji, the Philippines and several large Mainland cities.

While referring to the last song she sung at the Chapel here, Smoots said "Lord I Pray" that "no girl, boy, woman or man should perish." She said while the Posse ministered at certain sites, she saw children looking for someone to look up to or relate to. Smoots added that many of the youths were wrapped up in gangs.

"We have a lot of work to do," said Smoots. "The Posse on a Mission are young people who desire to live 24 hours a day, seven days a week for Jesus. We're His examples with a purpose of not pleasing the traditions of men, but to win the lost to Jesus Christ."

### Too Many Bills?

Immediate Relief  
from Creditor  
Harassment

Call TODAY  
for Information  
on Bankruptcy

• Military Welcome •

**Ellen Luigi Fera**  
Attorney At Law  
Evening & Weekend Apps. Available  
**261-4788**

**\$98**

FROM  
**FOR TWO NIGHTS A  
ROOM & CAR FOR TWO**  
Kona Seaside \$98  
Hilo Seaside \$109  
Maui Seaside \$119  
Kauai Sands \$119

**SENIOR CITIZEN** 55 yrs & older get free deluxe room & free arrival breakfast.

**GROUPS** Discount Interland airline tickets available on the above. Deluxe rooms have air conditioning, 2 double beds, ceiling fan, refrigerator, cable TV. Cars are '92 Budget Rent-A-Car auto compacts. Rates are plus daily taxes.

**SAND & SEASIDE HOTELS** or your travel agent **922-1228**

**SHARING IS CARING**

**A COUNTRY TREASURE**  
"Kailua's little country gift store"  
U.S.A. Crafted  
gifts & decorative accessories  
Quilts, Cards & Collectibles  
Open 7 Days  
315 Ulukouli St., Kailua Square, Kailua  
**262-4344**

## PATT USED PARTS SPECIALISTS



- Domestic & Foreign
- Engines
- Auto Glass
- Hard to Find Parts
- Transmissions
- Installation Available
- Computerized for Faster Accurate Service

**OPEN 7 DAYS MON.-SUN.  
WEEKDAYS TILL 7 P.M.  
PHONE: 455-4200 Fax: 456-1681**

96-1268 Waihona

### NON-STOP TRAVEL

ONE WAY	ROUNDTRIP
SFO \$119	\$219
LAX \$180	\$269
Seattle \$189	\$360
Denver \$428	
Dallas \$478	
Chicago \$528	
New York \$578	

**Interland Coupon Book** 6 segments  
Plus taxes • OTHER CITIES AVAILABLE

**LAS VEGAS PACKAGES**  
DELTA/FITZGERALDS  
AIRFARE  
TRANSFERS  
HOTEL AND MEALS  
**FROM \$479**  
Plus tax

**DISNEYLAND CALIFORNIA**  
AIRFARE,  
TRANSFERS  
HOTEL AND  
PASS  
**FROM \$399**  
Plus tax

**SERVING ALL ARMED FORCES  
SPECIAL MILITARY  
RATES AVAILABLE**

**CALL 946-1484**  
711 KEEAUMOKU STREET • SUITE 209  
NEXT TO THE LIKELIKE DRIVE-IN  
FREE VALIDATED PARKING  
CERTAIN RESTRICTIONS APPLY TA #1076

**SALE \$48-\$54**  
**QUANTUM PERMS**  
Reg. \$58-\$68. Haircut, shampoo and style included. Long hair and design wraps additional charge.  
Sale price effective through Thurs., Oct. 17, 1992

**NEXUS**  
WE USE AND RECOMMEND  
**PROLITMICH**  
SALON HAIRCARE PRODUCTS

**JCPenney Styling Salon**  
Mon., Tues., Wed.  
SENIOR CITIZENS  
Take 10% OFF  
All Salon Services

**CAREER OPPORTUNITIES**  
STYLISTS  
Great Benefits

**Matrix**  
HAIR AND SKIN CARE

**Windward: 235-4224**

Can you tell which person has Lupus?

Neither can we. Most people with Lupus look pretty healthy. Many don't know they have a serious autoimmune disorder because the symptoms can vary and mimic other diseases.

Some of the symptoms can be a facial rash, occasional low-grade fever, joint pain, chest pain, sun sensitivity, fatigue, headaches, even a loss of hair or weight. There is no known cause or cure. But there is treatment to control it.

**Hawaii Lupus Foundation**  
1200 College Walk Suite 114  
Honolulu, Hawaii 96817  
Telephone 538-1522  
A PUBLIC SERVICE ANNOUNCEMENT



# Get up close and personal with marine life

## Joint Public Affairs Office

Aloha State residents are in love with Hawaii's beautiful ocean waters, but most know little about the life underneath the waves.

The mysteries of the underwater world are open to those few who scuba dive, but for most people the mystery remains — except for those who have visited the Waikiki Aquarium.

The aquarium, a non-profit education and research institution, is affiliated with the School of Ocean and Earth Sciences and Technology, University of Hawaii. As one might expect, it differs from other marine-life attractions in Hawaii in that it presents a more academic approach to its displays.

Aquariums and displays are arranged by various groups like marine life found in tidepools, the surge zone, bays, deep water reefs and more. There is also an aquarium with dangerous marine animals and plenty of sharks.

A few aquariums also show marine life which scuba divers have seen. There are a few very deep marine animals like the deep-sea chambered nautilus for viewing.

Besides the actual marine plants and animals for viewing, there are displays and video tapes which explain marine life and the marine ecosystems.

While many of the tanks are inside, some of the more interesting displays are outside. Hawaiian Monk Seals are anxious to entertain their visitors — although



Sgt. Paul Schneider

A Hawaiian Monk Seal takes a break and relaxes in the sun just like a person would do laying on the beach.

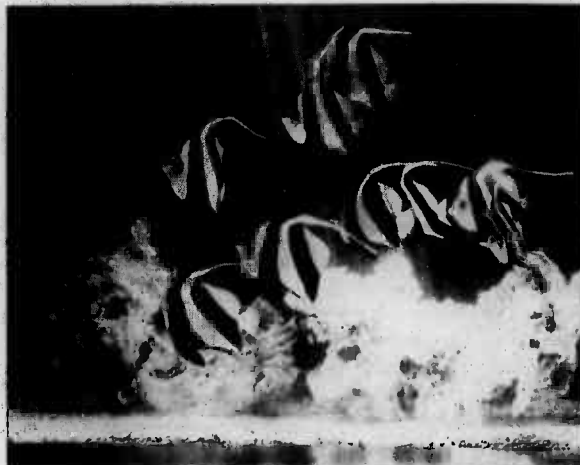
sometimes they do take a break and sun themselves like the people on Waikiki Beach.

Another outdoor exhibit is devoted to showing what life exists along Hawaii's rocky shoreline, complete with some hands-on experience.

While there is a whole new world to see upon entry into the aquarium, it still can be adequately seen in about an hour.

The aquarium is easy to find. It is located on the ocean side of Kalakaua Avenue between Waikiki Beach and Diamond Head, in Kapiolani Park. It is open daily 9 a.m.-5 p.m., except Thanksgiving and Christmas. Children 16 and younger are admitted free; a small donation is required for adults.

Any further questions can be answered by calling the aquarium at 923-9741.



Sgt. Paul Schneider

Many wonderful and amazing species of fish can be seen at the Waikiki Aquarium.



Sgt. Paul Schneider

The kids observe the many different marine ecosystems seen at the Waikiki Aquarium.

\*\*\*\*\*  
**HAWAII'S #1 SCHOOL FOR MARTIAL ARTS**  
 INSTRUCTION  
**3 MONTH SPECIAL! FREE UNIFORM**  
 With Registration Offer Ends 10/17/92.  
 Children & Adults  
 Morning • Evening  
 & Saturday Classes  
**SMITH TAE KWON-DO INSTITUTE**  
 46-144 Kahuhipa Street  
 Kaneohe  
**247-3114**  
 \*\*\*\*\*

## Koralee Gady, DDS

is pleased to announce the opening of her dental practice at:

**641 Kailua Road, Kailua**

behind Straub Clinic

formerly Hawaii Family Dental Center

For appointment, call

**263-6620**

Accepting HDS, HMSA, HMSA-HMO, DELTA and most other major insurance plans.

<b>DIVORCE</b> • Flat Fee • Quick Court • Settings • Child Support • Visitation • Custody Disputes	<b>BANKRUPTCY</b> • Flat Fee • Get out of Debt! • Stop Creditor Harassment/Collectors	<b>CRIMINAL DEFENSE</b> • Military Court • Felonies • Misdemeanors	<b>DRUNK DRIVING</b> • Traffic Cases • No Insurance • Reckless Driving
--	--	---	---

QUALITY LEGAL SERVICE • IMMEDIATE HELP

"Put your trust in an attorney who cares"

**STEVE H. CEDILLOS**

Executive Centre • 1088 Bishop, Suite 1107

536-5242

**VISA**  
**BAD CREDIT? NO CREDIT? TURNED DOWN BEFORE? WE CAN HELP!**  
 \* GUARANTEED ISSUE  
 By: National Consumer Credit Guaranteed Association  
 Providing: Your Own Personal Line of Credit  
**We've Been Helping People Financially For Over 10 Years**  
 \* Over 95% of our Members receive a worldwide recognized major credit card. If you are over 18 and employed, you probably qualify for a credit card. Don't jeopardize your financial future by lack of credit.  
**MAIL TO:**  
 NCCGA ATTN:  
 Lacey or Mark, 1440 Kapiolani Blvd., #1225, Honolulu, HI 96814  
 NAME: \_\_\_\_\_  
 ADDRESS: \_\_\_\_\_  
 City/State/Zip: \_\_\_\_\_  
 Phone: Home \_\_\_\_\_ Work \_\_\_\_\_  
 AGE: \_\_\_\_\_ Married ☐ Yes ☐ No  
**FILL IN AND MAIL TODAY!**

*Boudoir Portraits*  
**STUDIO 2000**  
**FOR HIM... FOR YOURSELF**  
**WE ALSO DO:**  
 Make-Overs • Model Portfolios  
 Families • Weddings • Grads  
 Photography by  
 Dwight Iwasa  
 Make-up & Hairstyling  
 by Sandra & Chris  
 Liniger courtesy of  
 Naughty But Nice  
**396-7721**

## BE PREPARED FOR GREAT RESULTS!

Let Sylvan Learning Centers show you how a little advance preparation can lead to great things (like great grades on homework and report cards, great scores on admissions tests, and great attitudes towards studying, to name a few.)



**Sylvan Learning Center**

**KAILUA**

New location! Behind TCBY  
 56 Oneawa St. • 263-6656  
 Corner of Oneawa & Uluniu

**WORLD BOOK DISTRIBUTOR**

## THE RETURN OF HONEY'S PLACE

1224 KONA ST.

**537-4826**

Many New Beautiful Dancers

**EXOTIC DANCERS • START 2 PM-2 AM**  
**COME CHECK OUT THE REST!**

## EXOTIC NIGHTS

**ISLAND GIRLS**

15 TO 20 CONTINUALLY  
 FROM 5 P.M.-4 A.M.

**COME & CHECK OUT THE BEST!!**

909 HALEKAUWILA ST.  
 CORNER 350 WARD AVE.  
 PH. 538-1491 OPEN DAILY

## Just One Of The 50 Million Americans Who Invests In U.S. Savings Bonds.

Across the country, more and more Americans are planning for the future of their children by buying U.S. Savings Bonds. This Little League slugger gets a Savings Bond for each birthday. As he grows older, his Bonds grow in value. So he's not just getting a gift, he's getting an investment. Find out how U.S. Savings Bonds are making millions of American dreams a reality. Call 1 800 4 US BOND for more information.



**U.S. Savings Bonds**  
 Making American Dreams A Reality

A public service of this newspaper

# Take a walk on the wild side at Honolulu Zoo

□ Children's zoo offers bird's eye view, chance to reach out and touch something

### Joint Public Affairs Office

There's plenty to see and do at the Honolulu Zoo.

Although the zoo may not be as big as other major city zoos, there is a lot of wildlife to view and appreciate. There are even special activities like elephant encounters at the children's zoo. And the nice thing is the whole zoo can be explored without feeling like you've undertaken a major safari.

Perhaps the most enjoyable part is the children's zoo located at the back of the main zoo. While it may be for children, many adults sneak in and have just as much fun. Children get to view and pet several animals up close. Everything from lamas to ducks to goats, can capture the little one's attention and give them an experience they won't soon forget.

Another big experience is the elephant encounters held daily at 11 a.m. and 1:30 p.m.. The elephant keeper will show how to care for elephants and possibly give some lucky visitor a chance to feed an elephant.

Currently, the mainstay of the zoo is its large variety of birds and monkeys from all

over the world. There are exotic flamingos, ostriches and parrots, to name a few, as well as the more "blue collar" birds like vultures and ducks.

The most remarkable animals found in the zoo don't have feathers or fur, they have shells and thick leathery skins. The giant tortoises and the huge alligators are impressive enough to watch for several minutes.

While the zoo is going through the process of

growing, the new African Savanna exhibit is currently open, and there are plenty of animal encounters to enjoy in the zoo.

The Honolulu Zoo is located on Kapahulu Avenue in Waikiki across the street from the Waikiki Shell and Kapiolani Park. It is run by the Honolulu Zoological Society. Admission to the zoo is free for children while a small donation is required for adults. For more information, call 971-7174



Sgt. Paul Schneider



Sgt. Paul Schneider

(Above) The lamas are a perennial favorite at the petting zoo, located at the rear of the main zoo. (Left) Youngsters of all ages delight in interacting with exotic animals from around the world.

## Briefly

### Craft fair

Ku Hui Lokahi O Na Wahine NCO/EM Wives' Club, Fort Shafter will present their annual fall craft fair Oct. 17 from 9 a.m.-2 p.m. in the Fort Shafter Community Club. Vendors will be in the Crystal Room and inner lanai. The fair is open to the public with plenty of parking. The snack bar will also be open. For more information, call Bandy at 841-3209.

### Baby pageant

To sign up for the Staff NCO Wives' Club 5th Annual Pageant stop by the Thrift Shop, building 245. For more information, call 254-0199.

### Key wives training

The Family Service Center will provide key wives training on a rotating schedule. Six subjects will comprise basic key wives training: Orientation, empathy, resources, crisis intervention and suicide prevention, alcohol and drug abuse in families and family violence.

Reservations are needed for each workshop and can be made

by calling 257-3655. All classes will be held at the FSC or the Enlisted Spouse Center.

The following is a schedule of the training workshops: Family Violence, Friday from 9-11 a.m.; Crisis Intervention and Suicide Prevention, Oct. 7 from 7-9 p.m. and Oct. 9 from 9:30-11:30 a.m.

### Education

The Joint Education Center offers daily briefings from 12:15-12:45 p.m. Prepare to use your tuition assistance for the Oct. 5-Dec. 18 on-base term. For more information, call 257-1232.

### Playmornning

A free, mobile preschool program for children, infant to 5 years of age, will be available four mornings each week from 9-11 a.m. at the following addresses: Mondays — 2460 Cochran St.; Tuesdays — Harris St. and Elrod Drive; Wednesdays — Cochran St. and Dodson St.; Thursdays — Daly Road and Bordelon Loop.

### DD 295 workshop

A DD 295 workshop is offered at the Joint Education Center weekly from 1:30-2:30 p.m. Bring your service record book and document your military training for college credit. For more

information, call 257-1232.

### Abuse center

The Military Family Abuse Shelter provides help to families in need by providing a safe haven and by offering professional guidance and support. Call 533-7125 for information.

### Staff NCO ball

The Staff NCO birthday ball will be held at the Hilton Hawaiian Village Nov. 6. Cocktails will be served at 5:45 p.m. and the ceremony will begin at 6:30 p.m. Tickets are \$50 per person and are on sale at the staff NCO club here. For more information, call GySgt. Greene at 477-0456.

### Christmas crafts

The Schofield Barracks OWC presents their annual Christmas craft bazaar Nov. 7 from 9 a.m.-3 p.m. at Sills Field. The public is welcomed to attend and vendors are needed. If you are interested in being a vendor, call 624-3102.

### Halloween

Enjoy the Hale Koa Hotel's spooktacular Halloween Magic Show Oct. 27 with sorcerers, Curtis Kam and Greg Gabaylo. The Magic of Halloween show combines a world of mystifying illusions, juggling and

endless comedy into a fun-filled evening.

Let your youngsters dress up for this magical occasion and they may win prizes for the most original, the funniest or the scariest costume. The Hale Koa will even provide a free family photo of your costumed characters as a keepsake. There will also be treats for all the little ghosts and goblins at the end of the show.

Included in this magical evening is an all-you-can-eat Mexican/Italian buffet dinner. Tickets go on sale Wednesday: Adults, \$17.95 and children under 12, \$9.50.

### College scholarships

The Marine Corps Scholarship Foundation is looking for students who may qualify for academic year 1993-94 scholarships.

You could qualify if you are the dependent son or daughter of a Marine who served honorably for a minimum of 90 days in the Marine Corps; a Marine on active duty or in the reserves; a former Marine or Marine reservist who has been honorably discharged and/or medically discharged or who is deceased. Applicants can be high school seniors, high school graduates, currently enrolled as an undergraduate in an accredited college or post-high school accredited vocational

school. Gross family income must not exceed \$37,000. Submission deadline if Feb. 1, 1993.

For an application packet write to: Marine Corps Scholarship Foundation, James Forrestal Campus, P.O. Box 3008, Princeton, NJ 08543-3008.

### Oktoberfest

The liveliest of German traditions returns to the Hale Koa Hotel. Oktoberfest '92 runs through Sunday for five full evenings of merriment, authentic German fare and thirst quenching libations. Revel in the sights and sounds of an old world Bavarian tavern in the Banyan Tree Showroom. Admission is \$6 per person and tickets are on sale at all ITT offices and at the Hale Koa Activities desk. Call the Hale Koa for more information, 955-0555.

### Cold seminar

The Kaneohe Branch Medical Clinic is offering a health maintenance seminar on the "Common Cold." Learn to treat the common cold at home. Cold medications will be prescribed after successful completion of the seminar with refills for six months. No need to make an appointment every time you or your family members have a cold. Classes are offered to groups of six or more. Bring a friend. Call 257-2131 to sign up for the class.

### Spouse scholarships

The Awa Lau Wahine is offering 10 \$1,000 continuing education scholarships for any type of study beyond high school. The scholarships may be used towards an advanced degree or any training which prepares you for the job market. Any active duty or retired Navy, Marine Corps or Coast Guard spouse living in Hawaii is eligible.

The scholarships will be awarded in December to the 10 applicants who best explain why they would like to continue their education. Financial need is not a criterion and applicants need not be enrolled in school at this time.

Applications are available from Marcia Smith-White, 1308 Tampa Dr. Honolulu, HI 96819 or Judy Brown, 5618 Dovekie Ave. Ewa Beach, HI 96706.

Completed applications must be received by Oct. 15. Applicants should include a stamped, self-addressed envelope with their application requests.

### Preteen/teen dance

The Dependent Recreation Center will be hosting a preteen/teen dance Friday from 6:30-9:30 p.m. Cost is \$2 per person. Call Dependent Rec for more information, 254-2963.

LOOK  
THERE'S AN ECLIPSE  
IN YOUR FUTURE  
Present This coupon For A

**FREE** **\$50.00** **VALUE**

- SUN-GARD® Lifetime Warranty covers 100% material & labor
- Windshield Strip
- Exterior Wash

This offer good only with the purchase of a complete tint job.  
Offer expires 10/14/92.

We Use The Highest Quality Tint Films In The U.S.A.!

**Kaneohe Glass**  
Tinting of Hawaii  
ESTABLISHED 1981

**SAME DAY SERVICE**  
Special Military & Senior Citizens Discounts  
Open Mon-Sat 8am-5pm

Call Us Today And Check Our Prices!  
**236-4139**  
Across from Windward Nissan  
46-149 Malina Place  
Kaneohe, Hawaii

**LAW OFFICES OF**  
**JOSEPH P.H. AHUNA, JR.**

CALL IF YOU ARE:

- Injured In an Auto Accident
- Injured at Work
- Suffering from Personal Injury

FREE INITIAL CONSULTATION  
NO FEE FOR REPRESENTATION UNLESS  
YOUR CASE IS DECIDED IN YOUR FAVOR

**235-4000**

The Castle Professional Center  
Suite 101  
46-001 Kam Hwy  
**KANEOHE • HAWAII**

Joseph P.H. Ahuna, Jr.  
Attorney at Law

**LOW AIRFARES**  
available now

San Francisco, Los Angeles \$269  
Seattle \$299 Phoenix \$399

**SPECIAL CHRISTMAS FARES**

- Denver, Houston, New Orleans, Salt Lake City \$428
- Chicago, Detroit, Minneapolis \$528
- Boston, New York, Atlanta, Orlando, Washington D.C. \$578

Call for complete details  
**833-3347**  
Airport area • Open 7 Days • 550 Paiea St., #104  
**395-7588**  
Hawaii Kai • Next to COSTCO

**PORTRAIT STUDIO**  
Coreen and George Photography, Inc.

**SPECIAL 1-8x10 Custom Portrait**  
**NOW \$19.99** Limited Time (\$50.00 Value)

This portrait can be of families, couples, children or individuals. The cost is only \$19.99 for processing and handling, payable at sitting.  
Present this coupon. Limit 1 per subject.  
Offer ends 10/15/92

**422-2539**  
(By Appointment)  
**The PLAZA at Pearl Harbor**

**\$ CASH \$**  
**NOW**

**WE WILL CASH YOUR PERSONAL CHECK AND WILL NOT DEPOSIT IT TIL YOUR NEXT PAYDAY**  
Proof of Payroll Direct Deposit Required

**3057 Koapaka**  
(Near Airport, first right off Lagoon Drive)  
**833-2529**

**AL JACK ALEC ED ALAN**  
**PACINO LEMMON BALDWIN HARRIS ARKIN**

"Two enthusiastic thumbs up!  
Great performances right across the board"

"This movie is a scorcher  
Every performance is brilliant"

"★★★★★  
The best film of the year. Powerful"

**GLENGARRY GLEN ROSS**  
BASED ON THE PULITZER PRIZE WINNER

**KAPIOLANI & PEARLRIDGE WEST**  
Call Theatre For Showtimes • No Passes!



## Religion

■ In the station chapel: Catholic Mass is held Monday - Friday, beginning at 11:45 a.m.; Saturday, starting at 6 p.m.; and Sunday, beginning at 7:30 a.m. and again at 9:30 a.m. CCD classes begin Sept. 28 at the following times: Preschool/Kindergarten - 3:45-4:30 p.m. at the station chapel; grades 1-12 from 6-7:15 p.m. at Mokapu Elementary School. Protestant Communion takes place Sunday, beginning at 8:30 a.m. and Protestant Worship begins at 11 a.m. Hispanic Protestant Worship takes place Sunday at 6:30 p.m. A Gospel Protestant Joy Night Service takes place Friday at 7:30 p.m. Gospel Protestant Morning Worship will be held Sunday at 1 p.m. Sunday School is held from 9:30-10:30 a.m. in building 1391 for preschoolers through high school students and in the Family Service Center for adults.

■ The 1st MEB will hold Catholic Mass, Monday and Tuesday at 11:30 a.m. and Protestant Bible Study, Tuesday at 11:30 a.m. in the Brigade Chapel.

■ At Camp H.M. Smith: Catholic Mass is held Sunday, beginning at 8 a.m., and again at 11:30 a.m. Protestant Worship and Sunday School both begin at 9:30 a.m. For more information about religious services at Camp Smith, call 477-8098.

■ Jewish services are held at the Aloha Jewish Chapel aboard Naval Base Pearl Harbor. Shabbat services take place Friday, beginning at 7:30 p.m. For more information, call 471-3971.

## Tickets

The MWR Ticket Office offers tickets and information on how to get them at special military rates. The office also takes reservations for events and attractions around the island. Call the Entertainment Hotline at 254-3304 or stop by the Marine Corps Exchange for information and reservations. The office is open Monday-Friday, 9 a.m.-5 p.m. and Saturday, 10 a.m.-2 p.m. This week's offerings include:

**Consolidated Movie Theatre** discount tickets cost \$4.25 and are good through December 1992.

Ocean Concepts promises four hours of the best night fishing charter, soft drinks and snacks for only \$220. Daytime fishing charters are available for \$180.

**Morrisey** - Concert at Aloha Tower Oct. 20. Tickets are \$25.50.

**Barefoot Catamaran Cruise** - Three and a half hours of fun, breakfast, lunch, snorkeling, entertainment and much more. A special for all servicemembers and their dependents for only \$30.

**Rollins Band** - At Pink's Garage Oct. 9 & 10, tickets are \$16.

**Honolulu Comedy Club** - San Franciscan Milt Abel will

headline with featured act, Robert Jenkins, through Sunday.

**Aikane Moonlight Sail** - A special discount for all military personnel and their dependents is currently being offered. A two-hour dinner cruise and show is only \$23 for adults and \$17 for children.

**Skid Row Concert** - Oct. 15 at Aloha Tower; tickets are \$19, general admission.

**Honolulu Symphony** - Donald Johanos will conduct Bella Davidovich on the piano Oct. 11 and 13. George Shearing will be performing at Blaisdell

Concert Hall Oct. 16.

**Diamond Head Theater** opened its 1992-93 season with a "Little Night Music" now through Oct. 11.

**Aloha Bowl** - Tickets on sale now for this Christmas Day football classic. Tickets are \$17.50.

**Testament** - Concert at Pinks Garage. Tickets are \$17 for the Oct. 23 and 24 concerts.

**U of H Football** - Fresno State plays Oct. 17. Sideline tickets, \$14.50, endzone, \$12.50 and youth, \$7.70.

**Hydrofest** - They're back. The third annual Outrigger Hotels

Hydrofest, Oct. 9-11, brings excitement, thrills and action as the world's fastest boats rip through the calm waters of Pearl Harbor. Ford Island tickets - adults, \$8.50, children, \$4.50; Pearl City - adults, \$3.50, children, \$1.50.

**Jazz Festival** - Listen to the great jazz artists Bradford Marsalis, Freddie Hubbard and Pancho Sanchez Saturday at the Turtle Bay Hilton. Gold tickets are \$28 and silver are \$23.

**Pro Bowl** - Tickets are now on sale for the 1993 Pro Bowl game Feb. 7. Sideline seats are \$20.50, end zone \$15.50.

## Ads

### Autos

**Suzuki Samurai** - red, 36,000 miles, 4-wheel drive, soft top, well maintained, \$3,200 OBO; Keith, 254-4695.

**1978 Olds Cutlass Supreme** - good condition, no rust, new

muffler/rear tires, \$1,200, available Oct. 30; 261-3097.

**1979 Mercury Bobcat** - runs good, needs minor repairs, \$450 OBO; 422-7067.

**1979 4x4 Ford Bronco** - \$3,500 firm; 676-9631 or 677-7975.

**1981 Mazda RX7** - great body, new tires, \$1,000 OBO; 676-9631 or 677-7975.

**1985 Chevy Sprint** - must

sell, \$1,000 OBO; 676-9631 or 677-7975.

### Miscellaneous

**Book Shelf** - easy to assemble, \$15; 254-5574.

**Car Stereo** - Audiovox, amplifier/equalizer, 7-band, 100w, brand new w/manual, \$40 OBO; 254-3570.

**Moving Sale** - Panasonic air

conditioner, 7-months old, 9,000 BTU, \$225; three sets of white mini blinds, \$10 each; beige carpet, 13x15 w/hall runner, \$50; 9x12 oriental rug, \$75; Keith, 254-4695.

**Boat** - 14' rigid hull, inflatable Nuvorania, 25 hp, w/trailer, extras, fast, agile, fun, superb condition, priced to sell; 254-5355.

**Organ** - Schaffer, walnut,

superb condition, rarely used, \$850; 235-0664.

**Epson Apex 100/20 Computer** - 8086 microprocessor, great starter computer with software, \$625; 235-0664.

**19" Sanyo TV** - color, \$150; 235-0664.

## Movies

All movies shown at the theater, building 219, begin at 7:15 p.m.

unless otherwise noted. For more information, call the theater at 254-2113.

**"Death Becomes Her"** (Comedy - PG-13; 104

minutes) will play Friday, Saturday and Sunday and stars Meryl Streep, Bruce Willis and Goldie Hawn. Dark, nasty and delicious as two Hollywood ladies,

desperate to hang on to their youthful faces and figures compete for a plastic surgeon. **"Mo' Money"** (Comedy - R; 91 minutes) will play Monday

and stars Damon Wayans. Entertaining story about a street hustler who tries to go straight. No movies Tuesday, Wednesday or Thursday.

### Windward Review on Oceanic Cable

### Channel 2 offers educational options

THURSDAY	FRIDAY	MONDAY	TUESDAY	WEDNESDAY
8:00 A.M. NAVY NEWS THIS WEEK	NAVY NEWS THIS WEEK	NAVY NEWS THIS WEEK	NAVY NEWS THIS WEEK	NAVY NEWS THIS WEEK
8:30 A.M. WINDWARD REVIEW	WINDWARD REVIEW	WINDWARD REVIEW	WINDWARD REVIEW	WINDWARD REVIEW
9:00 A.M. 9MM PISTOL	NBC DEFENSE	LAW OF WAR	SGTMAJ. HUFF	MUST WE FALL
10:00 A.M. URGENT FURY	MARINE RIFLEMAN	DI CHALLENGE	POSTMARK TERROR	FUTURE WARS
11:00 A.M. NAVY NEWS THIS WEEK	NAVY NEWS THIS WEEK	NAVY NEWS THIS WEEK	NAVY NEWS THIS WEEK	NAVY NEWS THIS WEEK
11:30 A.M. WINDWARD REVIEW	WINDWARD REVIEW	WINDWARD REVIEW	WINDWARD REVIEW	WINDWARD REVIEW
12:00 P.M. BULLETIN BOARD	BULLETIN BOARD	BULLETIN BOARD	BULLETIN BOARD	BULLETIN BOARD
1:00 P.M. 9MM PISTOL	NBC DEFENSE	LAW OF WAR	SGTMAJ. HUFF	MUST WE FALL
2:00 P.M. URGENT FURY	MARINE RIFLEMAN	DI CHALLENGE	POSTMARK TERROR	FUTURE WARS
3:00 P.M. PATROLLING	MARINE AVIATION	TACTICAL DEFENSE	OFFICIAL MAIL	GROUND RECON
4:00 P.M. NAVY NEWS THIS WEEK	NAVY NEWS THIS WEEK	NAVY NEWS THIS WEEK	NAVY NEWS THIS WEEK	NAVY NEWS THIS WEEK
4:30 P.M. WINDWARD REVIEW	WINDWARD REVIEW	WINDWARD REVIEW	WINDWARD REVIEW	WINDWARD REVIEW
5:00 P.M. 9MM PISTOL	NBC DEFENSE	LAW OF WAR	SGTMAJ. HUFF	MUST WE FALL
6:00 P.M. URGENT FURY	MARINE RIFLEMAN	DI CHALLENGE	POSTMARK TERROR	FUTURE WARS
7:00 P.M. NAVY NEWS THIS WEEK	NAVY NEWS THIS WEEK	NAVY NEWS THIS WEEK	NAVY NEWS THIS WEEK	NAVY NEWS THIS WEEK
7:30 P.M. WINDWARD REVIEW	WINDWARD REVIEW	WINDWARD REVIEW	WINDWARD REVIEW	WINDWARD REVIEW
8:00 P.M. BULLETIN BOARD	BULLETIN BOARD	BULLETIN BOARD	BULLETIN BOARD	BULLETIN BOARD
9:00 P.M. 9MM PISTOL	NBC DEFENSE	LAW OF WAR	SGTMAJ. HUFF	MUST WE FALL



**HYATT** presents

**Jeep Eagle Aloha Bowl Hawaii**

celebrates

**Family Values**

Nobody can put a price on the family experience offered at the Jeep Eagle Aloha Bowl. It has always been more than just a football game. It's a special day where families come together to share the most important time of the year. Now, you can truly celebrate family values two ways. Bring your family closer together and save by purchasing the special YEAR OF THE FAMILY plan!

**KEIKI'S (12 & UNDER) GAME TICKETS AT ONLY \$5.00 EACH...**  
(with purchase of an adult ticket at \$20 or Senior Citizen Ticket at \$18)

and receive

**FREE FAMILY PHOTO AT SEARS**  
portrait studio

**FREE FAMILY DINING PACKAGE AT HYATT**  
(Including kids under 12 eat free on Sundays at the Terrace Grille)

**FREE FAMILY APPETIZER AT FRIDAY'S**  
EVERYONE LOOKS FORWARD TO

**FOR TICKET INFORMATION CALL 947-4141**  
CHARGE BY PHONE, VISIT SEARS CONVENIENCE CENTER OR

Clip and send

Name: \_\_\_\_\_ Apt. \_\_\_\_\_

Address: \_\_\_\_\_

City: \_\_\_\_\_ State: \_\_\_\_\_ Zip: \_\_\_\_\_

Day phone: \_\_\_\_\_ Night phone: \_\_\_\_\_

Send \_\_\_\_\_ tickets on the \_\_\_\_\_ sideline at \$20 each for a total of: \$ \_\_\_\_\_  
(Adult Number) (Mauka or Makai)

Send \_\_\_\_\_ tickets on the \_\_\_\_\_ sideline at \$5 each for a total of: \$ \_\_\_\_\_  
(Keiki Number) (Mauka or Makai)

Postage & handling: \$ 2.00

Final total: \$ \_\_\_\_\_

Pay by Visa or MasterCard (circle one)  
Visa or MC account no.: \_\_\_\_\_  
Expiration date: \_\_\_\_\_  
Signature: \_\_\_\_\_

Pay by check and mail to:  
Aloha Bowl Charities, Inc.  
1110 University Ave., Suite 503  
Honolulu, Hawaii 96826

**FAMILIES COME TOGETHER AT THE JEEP EAGLE ALOHA BOWL**

**OCEANIC CABLE PRESENTS OIA FOOTBALL LIVE ON KBLE 17**

Photo: Rogers of Kailua

Catch this week's game on Saturday, October 3rd at 8:00pm live from Aloha Stadium.  
(Replayed on Monday, October 5 at 5pm.)

Or show your School Spirit, Personal Pride and come see the games in person!

Sponsored by:

**KRAFT GENERAL FOODS HAWAII**

**KRAFT** **GENERAL FOODS** **OSCAR MEYER**

**KBLE 17**  
Only On Oceanic Cable

# THE CLASSIFIED INDEX

**Telephone Service**

235-5656

Mon.-Fri. 8 a.m.-5 p.m.

**Counter Service**

45-525 Luluuku

Kaneohe

Mon.-Fri. 8 a.m.-5 p.m.

**Deadlines:**

Line Ads due by 12 Noon - Tuesday

Class Display Ads due by 4:00 p.m. Friday

CANCELLATIONS &amp; CORRECTIONS due by 12 Noon-Mon.

**Important Information:**

Please check your ad on the first day and bring any error to the attention of Classified immediately. RFD Publications assumes responsibility for errors in copy for the first business day only, and any adjustments or credit will not exceed the value of the ad. The publisher assumes no further liability and the advertiser expressly waives any and all claims of consequential damages due to errors. RFD Publications cannot assume responsibility for the claims or performance of advertisers.

**ALAN V. EDMUNDS**  
Attorneys At Law  
Over 17 years experience  
RETIRED MILITARY JUDGES ON STAFF

## NEED A CALIFORNIA ATTORNEY?

☆☆☆☆☆☆☆☆☆☆

### DIVORCE

CONTESTED & UNCONTESTED  
CHILD CUSTODY & SUPPORT

### MILITARY LAW

ADMINISTRATIVE DISCHARGE  
MEDICAL HEARINGS  
CAPTAIN'S MAST & COURTS MARTIAL  
GOVERNMENT SECURITY  
CLEARANCE MATTERS

WORLDWIDE REPRESENTATION HELPING MEN &amp; WOMEN IN UNIFORM

### MONTHLY PAYMENT PLANS AVAILABLE

CALL 1-800-995-0392 TOLL FREE

**0 Free Bees**

FREE Schnauzer spayed, female, 1 yr. Needs permanent loving inside home, older couple with no children. 668-7222.

FREE kittens hand raised orphans, 1st shots, to loving home. 261-4275.

FREE part-persian kittens to good home. 247-0235.

FREE to good home, 8 month old / Pit Bull. Call 254-8529.

**4 Health & Fitness**

"ONE DAY DIET" Lose 15-30 lbs. or more in 30 days. Call 737-7663.

GOLDS GYM 3/mo. membership. Reg. \$199, asking \$100. 236-0578.

LOSE WEIGHT! Thermo Jetica convert fat into energy. 100% natural herbal, product 100% guaranteed. Call 695-8114.

MASSAGE THERAPY For stress & pain relief. Lic. MAT2781, 946-9928.

TIERED DIETS THAT DON'T WORK? TRY VAXA'S DAY DIET A healthy new way to lose weight fast!

For a FREE Sample & Audiotape, send \$2 shipping & handling to: Innovative Marketing Inc. 1018 Lunalilo St. Suite 1104 Honolulu, HI 96822.

**15 Announcements**

LIVING TRUST or a WILL? Get all the facts. Free Consultation, no pressure. Your personal trust will be thoroughly reviewed and approved by one of Hawaii's most respected attorneys. No Trust too big or small.

VERY AFFORDABLE Call Mid-America Living Trust Company 261-8963.

CLASSIFIEDS are money makers! Call today and place your ad where it'll get last results, 235-5656.

**15 Announcements**
**ALOHA PAWN**

(Buy, Sell, Loan, Trade)

Come see us for best deals in Wahiawa

Ph. 622-2898

540 California Ave.

**ADVERTISING STANDARDS**

Advertising published in the Sun Press and MidWeek papers is accepted on the premise that the merchandise and/or services offered are accurately described and willingly sold to customers at the advertised price. Advertisers are aware of these conditions.

Advertising that does not conform to these standards or that is deceptive or misleading is never knowingly accepted. If any reader encounters noncompliance with these standards, we ask that you inform us.

ADVERTISING 235-5656

BETTER BUSINESS BUREAU 942-2355

SHORT ON CASH? EASY MONEY PAWN

Call 839-2005

3180A KOAFAKA ST. Behind Airport Plaza Hotel

25 Personals

20 Lost & Found

LOST 9/13 GOLD Bracelet, somewhere between Windward, Airport. Great sentimental value. REWARD! 247-6273 aft. 8pm.

BACKYARD Party Tent 20 x 20 or 30 x 30, rental & sale. Call 737-9662.

CUT YOUR GROCERY BILL Select coupons you want over 1200 name brand products. 422-1059

25 Personals

ST. JUDE

On Hwy 81, Jude Apostle and Mary, great in blue and red in maroon, near Kahanui of Jesus Christ. Child of all who invoke your special presence in time of need. I have recourse from the depth of my heart and humbly beg to whom God has given such great power to come to my assistance. Help me in my present spiritual crisis. I am a 35 year old male, single, divorced, and I am a member of the St. Jude Parish. This message has never been known to fail. The message must be said for 3 consecutive days. W.C.

25 Personals

25 Personals

25 Personals

25 Personals

25 Personals

25 Personals

25 Personals

25 Personals

25 Personals

25 Personals

25 Personals

25 Personals

25 Personals

25 Personals

25 Personals

25 Personals

25 Personals

25 Personals

25 Personals

25 Personals

25 Personals

25 Personals

25 Personals

25 Personals

## WARNING



Some unscrupulous people have been illegally printing and selling these designs without permission. This is a federal copyright violation! I alone own all copyrights to my artwork.

T-shirts and fabrics are being sold at various places including swap meets. To add insult to injury the prints are printed poorly and are not prepared properly so the ink will run or fade at the very first washing.

Don't get ripped off! I am preparing a lawsuit but in the meantime please do not purchase these products.

Keoni Montes, Illustrator, Artist

## CAUTION


**0 Free Bees**

FREE Schnauzer spayed, female, 1 yr. Needs permanent loving inside home, older couple with no children. 668-7222.

FREE kittens hand raised orphans, 1st shots, to loving home. 261-4275.

FREE part-persian kittens to good home. 247-0235.

FREE to good home, 8 month old / Pit Bull. Call 254-8529.

**4 Health & Fitness**

"ONE DAY DIET" Lose 15-30 lbs. or more in 30 days. Call 737-7663.

GOLDS GYM 3/mo. membership. Reg. \$199, asking \$100. 236-0578.

LOSE WEIGHT! Thermo Jetica convert fat into energy. 100% natural herbal, product 100% guaranteed. Call 695-8114.

MASSAGE THERAPY For stress & pain relief. Lic. MAT2781, 946-9928.

TIERED DIETS THAT DON'T WORK? TRY VAXA'S DAY DIET A healthy new way to lose weight fast!

For a FREE Sample & Audiotape, send \$2 shipping & handling to: Innovative Marketing Inc. 1018 Lunalilo St. Suite 1104 Honolulu, HI 96822.

**15 Announcements**

LIVING TRUST or a WILL? Get all the facts. Free Consultation, no pressure. Your personal trust will be thoroughly reviewed and approved by one of Hawaii's most respected attorneys. No Trust too big or small.

VERY AFFORDABLE Call Mid-America Living Trust Company 261-8963.

CLASSIFIEDS are money makers! Call today and place your ad where it'll get last results, 235-5656.

**15 Announcements**
**ALOHA PAWN**

(Buy, Sell, Loan, Trade)

Come see us for best deals in Wahiawa

Ph. 622-2898

540 California Ave.

**ADVERTISING STANDARDS**

Advertising published in the Sun Press and MidWeek papers is accepted on the premise that the merchandise and/or services offered are accurately described and willingly sold to customers at the advertised price. Advertisers are aware of these conditions.

Advertising that does not conform to these standards or that is deceptive or misleading is never knowingly accepted. If any reader encounters noncompliance with these standards, we ask that you inform us.

ADVERTISING 235-5656

BETTER BUSINESS BUREAU 942-2355

SHORT ON CASH? EASY MONEY PAWN

Call 839-2005

3180A KOAFAKA ST. Behind Airport Plaza Hotel

25 Personals

20 Lost & Found

LOST 9/13 GOLD Bracelet, somewhere between Windward, Airport. Great sentimental value. REWARD! 247-6273 aft. 8pm.

BACKYARD Party Tent 20 x 20 or 30 x 30, rental & sale. Call 737-9662.

CUT YOUR GROCERY BILL Select coupons you want over 1200 name brand products. 422-1059

25 Personals

ST. JUDE

On Hwy 81, Jude Apostle and Mary, great in blue and red in maroon, near Kahanui of Jesus Christ. Child of all who invoke your special presence in time of need. I have recourse from the depth of my heart and humbly beg to whom God has given such great power to come to my assistance. Help me in my present spiritual crisis. I am a 35 year old male, single, divorced, and I am a member of the St. Jude Parish. This message has never been known to fail. The message must be said for 3 consecutive days. W.C.

25 Personals

25 Personals

25 Personals

25 Personals

25 Personals

25 Personals

25 Personals

25 Personals

25 Personals

25 Personals

25 Personals

25 Personals

25 Personals

25 Personals

25 Personals

25 Personals

25 Personals

25 Personals

25 Personals

25 Personals

25 Personals

25 Personals

25 Personals

25 Personals

**25 Personals**
**VALLEY OF TEMPLES**

2 plots, Eternal Love \$1500 each, 236-0146.

WEDDING Ceremonies - Baptisms - Memorials - Nondenominational - Any location, Rev. Joan Drake, 239-7120.

WEDDINGS Beautiful Music to add elegance to your ceremony or reception. Viola & guitar, Steve, 235-5505.

WEDDINGS, ALWAYS YOURS. Short Notice OK. Nondenominational. Spectacular Seaside or Anywhere Oahu. Budget to Luxury. No Counseling. 233-8038 anytime.

30 Income Tax

FAST IN HOME Tax adv. at reas. rates. All states BACK YEARS, 523-1881

LATE TAXES, past yrs. In your home, s.v.c. Steve White MBA, 395-7141.

TAX/BOOKKEEPING In home s.v.c., back yr. all states, Call Capt. Stan Tax Man, 949-5501.

TAXES TAXES TAXES!! Do you need help filing back or current taxes? Call Rachel 521-0078.

50 Business Opportunities

\$1000 WEEKLY stuffing envelope, send S.A.S.E. to Worldwide Enterprise, P.O. Box 4256, Millilani, HI. 96789.

"NEED EXTRA CASH?" Make \$1500 to \$2000 a month working 10-20 hrs. per week from home. Flex. hrs., company support & training. Serious inquiries only 946-1718, 24 hr. rec.

DALLAS based company has proven plan of action, \$125 million 1st yr., \$43 million 2nd yr., on pace to double this yr. Hawaii Grand Opening 5 Serious Leaders Needed. Call 638-7144.

IF A LITTLE extra cash would light up your life, turn on to the Classifieds

50 Business Opportunities

50 Business Opportunities

50 Business Opportunities

50 Business Opportunities

50 Business Opportunities

50 Business Opportunities

50 Business Opportunities

50 Business Opportunities

50 Business Opportunities

50 Business Opportunities

50 Business Opportunities

50 Business Opportunities

50 Business Opportunities

50 Business Opportunities

50 Business Opportunities

50 Business Opportunities

50 Business Opportunities

50 Business Opportunities

50 Business Opportunities

50 Business Opportunities

50 Business Opportunities

50 Business Opportunities

50 Business Opportunities

50 Business Opportunities

50 Business Opportunities

50 Business Opportunities

50 Business Opportunities

50 Business Opportunities

**50 Business Opportunities**
**NEED MORE MONEY?**

WANT TO HELP OTHERS?

AS A BEAUTICONTROL IMAGE CONSULTANT? You Can Do Both!

PART-TIME/FULL-TIME Opportunities

Professional Training Provided

672-4610

TUPPERWARE TO BUY OR SELL CALL AYA 423-7634.

WORKING PARTNER to manage accounts for graphic design, copywriting, typesetting, desktop co. 239-8600.

58 Schools & Instruction

"PIANO LESSONS" In your home, Julliard M. Music, 528-4427.

FRENCH LESSONS Private, low rates, any level, Fred 261-5376.

JOHN SCHOUTEN Piano Studio 247-6010

KAULAKA S.A.M. BERNARD Hula classes. Beginners & advanced registration. All Sat. in Oct. between 8:30-10:00am. Pauoa School, Sam, 942-3554 or Charles 833-1433.

TRAVEL TRAINING Airlines, Travel Agency Cruises, Tours Computer Windward Travel Institute 262-7749 or 233-1155 Licensed by DOE

WOULD like to buy or make copy of Hawaiian music on saxophone by Andy Iona. 377-5279.

50 Business Opportunities

50 Business Opportunities

50 Business Opportunities

50 Business Opportunities

50 Business Opportunities

50 Business Opportunities

50 Business Opportunities

50 Business Opportunities

50 Business Opportunities

50 Business Opportunities

50 Business Opportunities

50 Business Opportunities

50 Business Opportunities

50 Business Opportunities

50 Business Opportunities

50 Business Opportunities

50 Business Opportunities

50 Business Opportunities

50 Business Opportunities

50 Business Opportunities

50 Business Opportunities

50 Business Opportunities

50 Business Opportunities

50 Business Opportunities

50 Business Opportunities

50 Business Opportunities

50 Business Opportunities

50 Business Opportunities

## CLERICAL POSITIONS

Temporary Assignments





**Buy • Sell • Trade**

'81 PLYMOUTH CHAMP 4 SPEED, GAS SAVER BF3315 <b>\$695</b>	'85 HONDA CRX 5 SPEED, STEREO CFC408 <b>\$2795</b>
'82 DATSUN 210 H/B AUTO, STEREO BG405 <b>\$795</b>	'89 DODGE OMNI 5 SPEED, STEREO, LOW MILES ODA733 <b>\$2795</b>
'87 DODGE CHARGER AUTO, 4 CYL CVN342 <b>\$1695</b>	'87 OLDS FIERENZA 4 CYL, AUTO, P/S, AIR, LOW MILES, STEREO CG3324 <b>\$2995</b>
'82 BUICK REGAL 6 CYL, AUTO, AIR, STEREO EDS534 <b>\$1995</b>	'89 NISSAN SENTRA 4 SPEED, STEREO CY5744 <b>\$3395</b>

OPEN 7 DAYS A WEEK  
Cars subject to prior sale. All prices plus tax, lic. and doc fees.

**LEEWARD USED CARS**  
94-819 FARRINGTON HWY.  
WAIKAPU, HI 96797  
**677-3333**

**SEARS** AUTHORIZED CARPETS & UPHOLSTERY CLEANING

<b>CARPET CLEANING</b> <b>\$19.95</b> Per Room 3 Room Min. residential only. (0-1000 sq. ft.) <b>676-8410</b>	<b>UPHOLSTERY</b> <b>\$25.00</b> OFF any upholstery cleaning or \$75.00 or more. <b>676-8410</b>	<b>DRAPERY CLEANING</b> <b>40% OFF</b> \$57.50 minimum purchase <b>676-8410</b>
--	---	---

Oahu Only. Must present coupon. Not good with any other discount.

**\$ REWARD**  
We'll buy your  
**USED FURNITURE**  
Beds, Appliances, etc.  
**678-0533**

**60 Help Wanted**  
Male/Female

**POSTAL JOBS \$18,392**  
\$87,125/yr. Now Hiring. Call  
(1) 805-682-8000 ext.  
1-4031. For current list.

**SERVICE** If you are  
responsible & self  
motivated & like to work out-  
doors. Pacific Pool & Spa  
has immediate full time openings.  
261-3508.

**TEACHER'S ASST.**  
AM/PM position for  
Montessori preschool at  
Pearl Harbor. Will train,  
military welcome. Apply in  
person at 45 Makalapa Dr.

**TELEMARKETERS**  
9 needed. Salary +  
commissions. Benefits, flex.  
hrs. Call 735-6452.

**UNDERCOVER WEAR**  
Home Linenies Parties. Be  
your own boss. P/T pay for  
P/T work. Flex. hours. Call  
239-7008.

**WAITRESSES/Waiters.**  
Diet Aides, Dishwashers,  
Paint, P/T. For info, call  
Patty at 247-6211, M-F,  
9-3pm. Poha! Nani,  
Kaneohe, EOE

**WANTED**  
Newspaper Carriers  
10 years to adult. Deliver 1  
day a week in your own  
neighborhood.

**Area Available in:**  
Hialeah Valley  
Mariners Ridge  
Koko Kai Port Lock  
Respond NOW & if hired by  
Oct. 31 you'll receive a  
special bonus.  
Call 235-5881 ext. 353

**62 Domestic**  
Help Wanted

**CLEANING** person needed  
4 hrs. every other week.  
254-3354.

**FEMALE LIVE-IN**  
housekeeper, Kailua.  
Tagalog or English speak-  
ing. Call 254-8955.

**HOUSE CLEANING** Need  
person who is honest &  
responsible. \$10/hr. for 4  
hrs. Ahihuanu Rd.  
239-3999.

**P/T NANNY/BABYSITTER**  
to care for infant in my  
home while I work. Mon.  
Wed., Fri., 9am-5pm.  
References. 263-0465.

**64 Domestic**  
Jobs Wanted

**BEFORE & after school**  
care, drop-off & pickup from  
school. 262-5531.

**CHILD CARE-EARLY**  
Childhood & Elementary  
teacher has 2 openings in  
my Kaneohe home. Call  
Tina at 236-0721.

**HEALTHY GOURMET**  
Private Chef, Professional  
References. 263-4502.

**I WILL BABYSIT** in my  
Maunaloa home. Lic., exp.,  
flex. hrs. & wknds. Full time.  
Call 261-3795.

**LICENSE Millani Day-care**  
structured program. Mon-  
Fri. Patch Certified.  
623-0129.

**SEAMSTRESS** 682-4036  
Alterations, Custom dress  
making/windows.

**WILL baby-sit P/T.**  
Nani home. Call  
625-9526.

**120 Home**  
Furnishings

**\$ CASH \$**  
**WE BUY BEDS &**  
**FURNITURE**  
**486-2677**

**6 PIECE** Chinese living rm.  
set, hand carved, top  
shape. \$495. After 5pm  
677-1110.

**CLASSIFIED MAGIC**  
GET IN ON THE ACT

**CLASSIFIED**  
**DISAPPEARING ACT**

Count on the classifieds to make your household items  
disappear! Garage sale announcements and for sale ads  
are two great starting places. Call us this week and  
place your ad with the most read classifieds in Oahu!

**MIDWEEK/SUN PRESS**  
**235-5656**

\*Some restrictions apply

**120 Home**  
Furnishings

**Garage Sale**  
8FT. SOFA reclines, brn.  
tweed. Good cond. \$200/  
offer. 239-2049.

**BLACK LACQUER** 5 piece  
brn. set, 2 pc. chaise  
couch, both like new.  
\$1200/offer. 236-2336.

**DRESSERS** BEDS, dining  
set, sofa, recliner, office  
desk, ice box, washer,  
cheap prices. 262-4440.

**FINISHED Koa** rockers by  
Chairmaster. Wholesale  
293-8392.

**HARD WOOD FRAME**  
couch & love seat w/ large  
foam cushions. \$150/set.  
Call 262-9546.

**PAT'S Furniture and Thrift**  
Shop. Hookele St.,  
688-2006. Mon., Tues.,  
Thurs. & Sat. 10-5pm.  
Wed. & Fri. 12-30-5pm.

**SINGLE bed, w/ht. enamel**  
frame \$40. Call 261-6909.

**SOFA bed \$200; sofa \$150;**  
dining set table w/ 5  
chairs \$150; electric  
massage chair \$200; side  
chair \$15; Singer sewing  
machine \$100; Ray  
395-6900 after five.

**WALL UNITS** elegant, tall,  
solid oak, white washed, w/  
rattan weave design, glass  
shelves. \$3500.  
Call 239-5566.

**WALNUT TABLE & 4**  
chairs. Also bench & end  
table. 239-5575 w/ mess.

**WHITE LEATHER sofa** and  
love seat. Call 487-5222.

**Garage Sale**  
BIG SALE: Sat., Oct. 3, 8-  
1pm, 159 Uliana St. corner  
of Kailua, Kailua.

**DOUBLE GARAGE SALE**  
AMR 240 Hibiscus St. Sat.  
Sun. 3-4. 8pm. 575-E Keolu  
Dr., Kailua, 10-4. 8pm. corner  
of Hahani & Heikili St.,  
Kailua.

**Garage Sale** We have  
everything! Sat. & Sun.  
10-4. 8pm. 186 Makua,  
Kailua.

**Garage Sale** Lots of  
good stuff! 8-5pm, 225 N.  
Kaliahoe Ave., Kailua.

**Garage Sale** We have  
everything! Sat. & Sun.  
10-4. 8pm. 186 Makua,  
Kailua.

**Garage Sale** Lots of  
good stuff! 8-5pm, 225 N.  
Kaliahoe Ave., Kailua.

**Garage Sale** We have  
everything! Sat. & Sun.  
10-4. 8pm. 186 Makua,  
Kailua.

**Garage Sale** Lots of  
good stuff! 8-5pm, 225 N.  
Kaliahoe Ave., Kailua.

**Garage Sale** We have  
everything! Sat. & Sun.  
10-4. 8pm. 186 Makua,  
Kailua.

**Garage Sale** Lots of  
good stuff! 8-5pm, 225 N.  
Kaliahoe Ave., Kailua.

**Garage Sale** We have  
everything! Sat. & Sun.  
10-4. 8pm. 186 Makua,  
Kailua.

**Garage Sale** Lots of  
good stuff! 8-5pm, 225 N.  
Kaliahoe Ave., Kailua.

**Garage Sale** We have  
everything! Sat. & Sun.  
10-4. 8pm. 186 Makua,  
Kailua.

# REPO & OWNER TRANSFER

## "A PUBLIC NOTICE"

'80 LINCOLN CONTINENTAL (ESU-451) low miles, excellent..... Balance <b>\$2198.21</b>	'79 PORSCHE 924 (BTT-911) truck, wheels, excellent..... Balance <b>\$1421.27</b>
'81 FORD MUSTANG (BAE-871) air, stereo..... Balance <b>\$1297.21</b>	'87 HONDA CRX (CJE-173) auto, stereo..... Balance <b>\$3987.69</b>
'86 TOYOTA 4-RUNNER (236-TEY) air, stereo..... Balance <b>\$7821.26</b>	'84 OLDSMOBILE CUTLASS (BWC-010) coupe..... Balance <b>\$1989.21</b>
'83 TOYOTA COROLLA (AUT-369) wheels, excellent..... Balance <b>\$981.27</b>	'84 MUSTANG GT (EBU-322) wheels, sunroof, excellent..... Balance <b>\$4466.21</b>
'84 TOYOTA TERCEL (BTP-743) auto, 4-dr..... Balance <b>\$1987.69</b>	'86 NISSAN 300ZX (DJC-370) low miles stereo..... Balance <b>\$5976.88</b>
'88 ISUZU I MARK (CSX-414) coss., low miles..... Balance <b>\$2987.67</b>	'89 MASERATI (DWF-341) superb car, showroom condition..... Balance <b>\$17,989.11</b>

Dealers Welcome • All cars stored at:  
**WHOLESALE MOTORS, Inc.**  
3033 N. Nimitz Highway  
**CALL NOW & SAVE 831-2721**

# DRIVE A NEW ISLAND STYLE VOLKSWAGEN

Lease or Purchase a Brand New Volkswagen Today!

Plus Hundreds Of Quality Used Cars

FAHRVERGNÜGEN.  
IT'S WHAT MAKES A CAR A VOLKSWAGEN.

APR 12.9% 60 mo. In plus tax and license. Sale or lease subject to purchase eligibility.

1992 JETTA GL For **\$179/mo.**  
Monthly payment subject to \$1400 down or sale price \$10,900.

1992 CABRIOLET WLE For **\$239/mo.**  
Monthly lease payment subject to \$950 down. Sale price \$13,665.

1992 PASSET GL For **\$249/mo.**  
Monthly lease payment subject to \$950 down. Sale price \$13,925.

**PACIFIC**  
OLDSMOBILE • GMC • VOLKSWAGEN

98-055 Kanehameha Hwy.  
Across From Pail Bank  
**PH: 487-5526**

# NEW MCKAY'S USED

## FURNITURE & APPLIANCES

### KING BED SETS \$199

### TWIN/DOUBLES/QUEEN

### JUST ARRIVED!

### RATTAN & BAMBOO

### SWIVEL ROCKERS \$199

### COFFEE TABLES \$69

### END TABLES \$49

### DINETTES From \$99

### RATTAN/GLASS SHELVES

### RATTAN SLEEPERS-RATTAN STYLE DRESSER,

### NIGHTSTAND, DESK, MIRRORS & LAMPS.

### QUALITY NEW FURNITURE

### BLACK LACQUER DRESSERS & MIRRORS

### BUNK BEDS-OAK & BRASS COFFEE & ENDS

### GLASS TOP DINING SETS - 6 & 7 PIECE

### OPEN 10 AM - 9 PM

### 94-265 LEOWAHINE ST.

### WAIKAPU 678-0533

### BUY & SELL QUALITY USED FURNITURE

### FAN MASTER

### ONLY \$39

### WHOLE SUPPLY LAST!

### LOWEST PRICE GUARANTEED

### ASSORTED BRAND NAMES

### PERSONALIZED SERVICE

### FREE DELIVERY/INSTALLATION

### ON SOME BRANDS

### CALL 682-3874

### RATTAN MAN

### 50% Off This Week!

### WHOLESALE TO THE PUBLIC!

### Come & See Us

### 98-025 Hekaha St.

### (BEHIND TONY HONDA / AIEA)

### 486-2677

### Open 9:30-6 Mon. - Sat., 10-4 Sun.

# Classified

## ADS 235-5656

### NEW STARTING TIME 8 AM • NEW STARTING TIME 8 AM

### PUBLIC WELCOME!

### INSURANCE AUCTION

### SATURDAY 8AM OCTOBER 3

### INSURANCE AUTO AUCTIONS

### 91-240 Komohana St.

### Campbell Industrial Park

### Call 682-2858 for more info!

### CALENDAR

### Registration Fee: \$10 per auction or \$35 per year!

### NO ONE UNDER 18.

### BRING THIS COUPON

### \$5.00 OFF

### ONE DAY REGISTRATION

### \$10.00 OFF

### ONE YEAR REGISTRATION

### GOOD FOR 10/3/92 AUCTION ONLY

### TERMS:

### Cash, Traveller's Checks, Money

### Orders. Everything sold as is where is.

### Frank Adotti

### Auctioneer No. 000406

### NEW STARTING TIME 8 AM • NEW STARTING TIME 8 AM

### MOVING?

### We Buy Fine

### Quality Used

### Furniture.

### Fast, Free

### Pick-up.

### PARADISE USED

### FURNITURE

### 235-8056

### Remnant Sale

### Quality

### Upholstery Fabric

### Large selection of

### 1-10 yd. pcs.

### \$1.00-\$2.00

### per yd.

### Moanalua

### Upholstery 456-2525

### P.O. Industrial Park

### 66-1186 WAIKONA STREET, C-6

### PEARL CITY, HAWAII 96782

### 151 Pets/Everything

### CULTURED live rock for

### your salt water tanks.

### 822-1350 Days.

### IN need of quality afford-

### able vet care? Dr. Eric

### Pearson's Home Pet Svc.

### 235-8457 Islandwide.

### LOP bunnies

### 1/2 Dwarf bunnies

### 254-5911.

### LOVE YOUR DOG

### BUT...

### Don't have time for

### training?

### Call Us 247-4894

### Simple Puppy

### Obedience Training

### MINIATURE Pot Belly

### piglets, 2 females, house

### broken, harness trained w/

### papers. Call 261-0880.

### PARAKEETS - breeding

### pairs \$10/pair, singles \$5

### each. Call Sat. 1-3, 8 to

### 5pm. 263-3787 Mark.

### PUPS TERRIER 4 mo.

### Chihuahua/Terrier & wks

### Toy Terrier M/F 688-7222

### Copyright #H102KC.

### WANTED Male Doberman

### to breed w/ my female (no

### papers). 1 puppy exchange

### for stud fee. Ray. 621-4787.

### 151 Pets/Everything

### CULTURED live rock for

### your salt water tanks.

### 822-1350 Days.

### IN need of quality afford-

### able vet care? Dr. Eric



# PUBLIC NOTICE HONDA

## INVENTORY REDUCTION

### EXCLUSIVELY

On the Grounds of  
**HONDA WINDWARD**  
in Kaneohe

October 2nd thru 5th

9a.m. to 9p.m. Daily (Sunday 10a.m. to 6p.m.)

- Over 200 new Hondas available!
- Prices not publicly advertised but prominently displayed.
- No negotiating necessary.
- There will be no sales presentation due to the nature of this sale. Your Down Payment is required at time of purchase, payable in cash, check or credit card.
- Retail public only. Absolutely no dealers.
- Trades accepted. Paid for or Not. Buyers will be present during sale hours to offer the highest bids. Please bring your title and payment book.
- Over \$4,000,000.00 in reasonable finance money is available through First Hawaiian Bank, G.M.A.C., Bank of Hawaii, City Bank and Your Credit Union.

**Held on the grounds of**

DON LUCAS

**PLEASE!**  
No phone calls  
on this event.

**HONDA**  
WINDWARD

45-671  
Kam Hwy.  
KANE OHE

# DOUBLE REBATES

**WE'LL MATCH THE FACTORY  
REBATE ON ALL '92s!!**

FACTORY  
REBATE ON  
WRANGLERS  
**\$500**  
SOUTH SEAS REBATE  
**\$1000!**



**EVERY  
'92 JEEP  
RENEGADE!**

**DOUBLE  
SAVINGS**



**EVERY '92  
JEEP  
WRANGLER  
"S"!**

FACTORY  
REBATE ON  
CHEROKEES  
**\$1500**  
SOUTH SEAS REBATE  
**\$3000!**



**EVERY '92 JEEP CHEROKEE!**

**HAWAII'S NUMBER ONE JEEP DEALER!**

**SOUTH SEAS**



**AIRPORT**  
CORNERS OF HILITE & LACONA  
2041 N. HILITE HWY  
836-0515

**WAIPAHU**  
2421 N. HILITE HWY  
676-5454

**WHY BUY A  
NEW CAR WHEN  
YOU CAN OWN  
AVIS '92's?**

**AVIS**  
Car Sales Outlet  
The Smart Place to Buy



**FROM AS  
LOW AS  
\$199/mo.  
ONLY  
\$1000  
DOWN!**

**...everything looks new  
except the price...**

- '91 GEO METRO
- '91 GEO PRIZM
- '91 PONTIAC SUNBIRD
- '92 FORD TAURUS
- '92 NISSAN SENTRA XE
- '92 SUBARU LOYALE/LEGACY

417 LELE ST. 834-5533 • 834-5547  
(Off Nimitz & Lagoon Dr.) M-F 8:30 AM-6 PM Sun. 10 AM-5 PM

Fin. pkg. Also installed options, tax and doc. for 92's. No discounts apply to specialty-priced vehicles. Vehicles subject to prior sale. 11/3/92. 14.75 APR. 80 mo. D.C. When you buy from us you get the benefits of our financing program. See us today!

**BMW**  
'87 325 absolutely perfect, low miles, \$13,800 or offer. Must Sell. Call 395-4885.  
'88 BMW 325, wht., 4 dr., sun. roof, excel. cond. 35,250 miles, \$15,800, Call Al mornings only 236-3006.

**Chevrolet**  
'77 NOVA 4 dr., auto., V-8, \$350, Call Jay, 261-7839.  
'78 NOVA for sale, \$1000, 395-6150.

**Datsun**  
'85 CAVALIER, sta. wgn., \$2800 or best offer, excel. in/out. 254-5810.

**Dodge**  
'72 DATSUN 240Z current lic./reg./safety check. Needs time chain. Good cond. \$2000/offer, for parts. 293-7782 after 6pm.

**Ford**  
'78 T-BIRD A/T, A/C, clean. Must sell. EPB-050, \$1995. MIKE SALTA, Waipahu. 671-8033.

**'83 LTD STA. WGN.** 4 dr., all no rust, nice, 73K, \$1500, 293-2911.

**'89 FORD/MERCURY** Tracer with low mileage, in top condition. New tires, battery, brakes, White, wired and grey striping. Moving. Must sell. \$4,200 or best offer. Call Ken, 247-3201, 247-6322 or 235-5881.

**'91 ESCORT** must see, clean. #50913, \$5988. **RAINBOW CHEVROLET** 737-0500

**'90 PRIZM** nice car. Excl. buy. \$5,988, #50778. **RAINBOW CHEVROLET** 737-0500

**'91 METRO** 2 dr., H/B, A/T, A/C, economical. EET-377, \$6495. MIKE SALTA, Waipahu. 671-8033

**Honda**  
'81 PRELUDE \$995. BGA-674, Cutler Ford - Ales. 487-3811.

**Honda**  
'84 CIVIC \$1895. BWW-447, Cutler Ford - Ales. 487-3811.  
'86 ACCORD LX, 4 dr., 5 speed, good condition, 70K mi. \$3700, 261-7572.  
'88 CIVIC H/B good cond., \$3000/offer, 449-1200, 7am-3pm.  
'89 HYUNDAI H/B \$1295. DFA-433, Cutler Ford - Ales. 487-3811.  
**leuzu.**  
'84 IMPULSE racing black. Alpine deck, 5 spd. Must sell! Best offer. 949-3531 or 732-0630.  
**Lincoln**  
'78 LINCOLN A/T, A/C, loaded, low mi., excel. cond. ESN-545, \$2495. MIKE SALTA, Waipahu. 671-8033

**Lincoln**  
'84 LSC, immaculate cond. fully loaded, charcoal grey w/gray leather, tinted windows. Recently inspected & appraised \$8000. New brakes, premium tires & tune-up. Quick sale \$5600. Call Chris 235-5881 or 261-7198 eves.  
**Mazda**  
'81 626 \$795, BFD-626. Cutler Ford - Ales. 487-3811.  
'83 RX7 in top shape. Original paint, no rust. Low mileage, \$3500. Moving. Must sell. Call Ken, 247-6322, 247-3201, or 235-5881.  
'84 626 Excl. cond., no rust, auto., 4 dr., \$2950, 261-1545.  
'87 626 won't last, must see. CNR-383, \$2,988. **RAINBOW CHEVROLET** 737-0500

**Mercedes**  
'89 220 D \$1495. EAW-941, Cutler Ford - Ales. 487-3811.  
'72 280 SEL 4.5, 4 dr., auto., Michelin, A/C, \$2900/offer, 523-0999 day.  
**CHEAPEST FBI/US SEIZED**  
'86 VW.....\$200  
'86 VW.....\$50  
'87 MERCEDES.....\$100  
'85 MUSTANG.....\$50  
Choose from thousands starting \$25. 24 Hour Recording. Reveal Details 801-379-2929 Copyright H102JC.  
**Mercury**  
'88 COUGAR V-8, A/T, A/C, P/S, P/steers. Low mi. CVU-720, \$6995. MIKE SALTA, Waipahu. 671-8033  
BAG A BARGAIN in the Classifieds. Your super marketplace for items for sale, services to offer... and 1001 other things! 235-5658.

**Mercury**  
'89 GRAN MARQUIS great transportation! #50660, \$7,988.  
**RAINBOW CHEVROLET** 737-0500  
'91 CAPRI CONV'T excellent buy, won't last! #50844, \$8,988.  
**RAINBOW** 737-0500  
**Nissan**  
'83 200 SX 5 speed, last, clean, sporty loaded, A/W FM case, \$1100, 262-1190.  
'83 PULSAR NX 5 spd. AM/FM case, new paint & tires. \$1200/firm. 948-0200 leave message.  
'84 STANZA, 4 dr. sdn., auto., stereo, air, P/W, clean, \$2250, 293-2278.

**Oldsmobile**  
'87 CALAIS 2 dr., auto., A/C, sunroof, leather, new tires/exhaust/alt. Have records, excel. cond. Must sell. \$2500/offer. 456-6902 eves.  
**JUST STARTING OUT?** Check the Real Estate Section of the Classifieds

**Pontiac**  
'81 SUNBIRD best buy won't last! #51111, \$6,288.  
**RAINBOW CHEVROLET** 737-0500

**Subaru**  
'88 GL STATION Wagon, A/C, 4 x 4, good condition, \$2100, 254-2160.  
**BUY IT OR SELL IT HIRE IT OR RENT IT CLASSIFIED** Call today, 235-5658

**Toyota**  
'79 COROLLA \$800/offer 54-3487.  
'89 CAMRY 4 dr., look at this great buy! Financing available. ERA-678, \$7950. **CLUBHOUSE** 671-8033

**Volkswagen**  
'73 BUG \$300 395-8150.  
'73 VW THING Excl. mechanical cond., needs some body work. \$1600/offer. 261-9428.

# CUTTER TEAM

**HAWAII'S DRIVING FORCE**  
★ TAKE IT WITH YOU WHEN YOU LEAVE ★ NO HASSLES — NO RED TAPE

ALL STORES OPEN  
8:30 A.M.-9 P.M.  
SUN. 9 A.M.-6 P.M.

★ SPECIAL MILITARY FINANCING  
WITH FORD CREDIT, CHRYSLER CREDIT & GMAC

★ TAKE IT WITH YOU WHEN YOU LEAVE ★ NO HASSLES — NO RED TAPE

## CUTTER FORD-ISUZU

98-019 Kamehameha Hwy  
AIEA  
487-3811



WE ARE MAKING GREAT DEALS  
ON EVERYTHING, FORD'S/ISUZU'S  
EXECUTIVE DEMO'S AND MORE!

### OCTOBER SPECIAL '93 TAURUS GL

**1/2% INTEREST TERM**  
**\$253.99**  
A MONTH ★  
#30196  
24 MO. CLOSE END LEASE LEV 9029.61 1ST MO PYMT  
253.99 SEC DEP 295 PLUS LIC FEES 118.98

### '93 FESTIVA GREAT VALUE SMALL PRICE! #057

1st TIME BUYERS PRICE!  
**\$5988**

### '92 ISUZU PICK-UP STILL HAWAII'S BEST BUY! #1961

2.3 LITER, 5-SPEED, MIRRORS  
**\$6688**

### '93 FORD ESCORT ONE OF AMERICA'S BEST SELLERS #0156

1st TIME BUYERS PRICE!  
**\$6988**

'92 TEMPO LX  
V-6, ALL POWER  
EXECUTIVE DEMO  
(EJE174)  
**\$9988**

'92 AEROSTAR  
V-6, AIR  
IN A CLASS BY ITSELF  
(#2131)  
**\$11,988**

'92 MUSTANG GT  
AUTO, LOADED  
EXECUTIVE DEMO  
(EPW547)  
**\$13,888**

'92 T-BIRD SC  
ALL POWER  
EXECUTIVE DEMO  
(EPJ879)  
**\$18,688**

### QUALITY USED CARS

'86 MERCURY TOPAZ GS	\$1695
'89 GEO SPECTRUM	\$3495
'85 CHEVROLET CAMARO	\$3895
'86 FORD MUSTANG CONV.	\$3995
'84 TOYOTA CELICA	\$3995
'87 DODGE DAKOTA	\$3995
'87 CHRYSLER 5TH AVE	\$3995
'87 NISSAN PULSAR NX	\$4695
'91 DODGE COLT	\$5495
'87 FORD TAURUS GL S/W	\$5495
'90 MERCURY TOPAZ GS	\$5995
'90 MITSUBISHI P/L	\$5995
'87 FORD AEROSTAR XL	\$7495
'90 OLDSMOBILE CUTLASS	\$7695
'88 FORD E250	\$7995
'90 NISSAN STANZA XE	\$7995
'89 JEEP WRANGLER	\$7995
'91 CHEVROLET S-10	\$9495
'91 MAZDA MIATA CONV.	\$12,995
'91 FORD F150 XLT LARIAT	\$14,495

## CUTTER CHRYSLER-PLYMOUTH DODGE JEEP/EAGLE

2 GIANT LOCATIONS

### HAWAII'S CHRYSLER CENTER '93 RED DOT CLEARANCE SALE

'93 SHADOW #310012  
O/D TRANS, AIR BAG, P/S, P/B AND MORE!  
**\$7988**

'93 DODGE COLT #310055  
O/D TRANS, P/B, MINI CONSOLE, HALOGEN HEADLAMPS AND MORE!  
**\$7988**

'93 CHEROKEE 4X4 #310019  
P/S, P/B, ARGENT WHEELS, MINI CONSOLE,  
FENDER FLARES, T/GLASS, STABILIZER BARS  
**\$13,988**

'93 CARAVAN #310122  
7 PASSENGER, AIR BAG, AUTO, AIR, P/S, P/B, AND MORE!  
**\$14,988**

### HAWAII'S USED CAR CAPITAL

'86 PLYMOUTH GRAND FURY	\$1988
'86 PONTIAC GRAND AM	\$1988
'87 ISUZU PICK-UP	\$3488
'85 ISUZU TROOPER	\$3988
'87 SENTRA	\$3988
'90 FORD FESTIVA	\$4488
'74 BMW 733i	\$4988
'88 CHEVY CORSICA	\$4988
'88 FORD TAURUS LX	\$5988
'88 MAZDA MX6	\$5988
'87 TOYOTA CELICA	\$6988
'89 DYNASTY	\$6988
'90 GEO STORM	\$6988
'91 PLYMOUTH ACCLAIM	\$7988
'89 JEEP CHEROKEE	\$8988
'90 ISUZU SPACECAB 4X4	\$8988
'90 MAZDA MIATA CONV.	\$10,788
'91 CHRYSLER LEBARON	\$10,988

### WE DO CREDIT MAGIC!

NAME: \_\_\_\_\_  
ADDRESS: \_\_\_\_\_  
CITY: \_\_\_\_\_ ZIP: \_\_\_\_\_  
PHONE: \_\_\_\_\_ WORK PHONE: \_\_\_\_\_  
SOCIAL SECURITY NO. \_\_\_\_\_  
TYPE OF CAR INTERESTED IN: \_\_\_\_\_  
ARE YOU WORKING? YES ☐ NO ☐ HOW LONG IN PRESENT JOB? 6 mo. ☐ 1 yr. ☐ 2+ yrs. ☐  
SIGNATURE: \_\_\_\_\_

### COMPLETE & MAIL IN TODAY TO

CUTTER  
CHRYSLER PLYMOUTH DODGE JEEP/EAGLE  
735 DILLINGHAM BLVD.  
HONOLULU, HI 96817  
PH: 842-6300 FAX: 842-6398

I understand by signing this application I authorize The Cutter Team and the Bank to check my credit with a credit reporting agency, verify employment, and that I certify that this information is correct.

CUTTER  
CHRYSLER PLYMOUTH DODGE JEEP/EAGLE  
**842-6300**  
CUTTER DODGE  
PEARL CITY  
**455-1071**

Prices include all factory rebates and incentives. Cars subject to prior sale. Plus tax, lic. & \$149 doc fees. Some cars located at 921 Kam Hwy, Cutter Dodge Pearl City. Prices include all applicable consumer rebates. 1st time buyers incentive. \*4.9% financing on selected models only, for 24 months. Ask dealer for details. \*Chrysler 3 Mo/3000 Miles LIMITED Powertrain warranty, available on 1985 models and newer with less than 100,000 miles. Sale ends October 7, 1992.

## CUTTER MITSUBISHI WAIPAHU

94-149 Farrington Hwy  
671-2626

### WE SAVE YOU MONEY! with MITSUBISHI QUALITY

NEW '92 **MIRAGE** #M3813  
**\$7788**

NEW '92 **MIGHTY MAX** PICKUP #M3599  
**\$7788**

NEW '92 **GALANT** #M3782  
**\$11,788**

NEW '92 **ECLIPSE** #M3750  
**\$11,988**

NEW '92 **DIAMANTE**  
3.0 LTR, 12 VALVE, 6 CYL, FUEL INJECTION,  
AUTO-TRANS, SUNROOF, ALLOY WHEELS,  
LOADED AND MORE!  
**\$11,988**

### EXPO SPORT WAGON HERE... NOW!

### QUALITY USED CARS

'82 HONDA PRELUDE	\$1250
'82 MAZDA GLC	\$1350
'81 PLYMOUTH RELIANT	\$1350
'81 PONTIAC GRAN PRIZ	\$1650
'81 NISSAN SENTRA	\$1950
'83 BUICK CENTURY	\$2350
'84 CHRYSLER NEW YORKER	\$2450
'83 TOYOTA CELICA	\$2650
'83 TOYOTA SUPRA CELICA	\$2850
'87 CELEBRITY EUROSPORT	\$3350
'87 DODGE SHADOW	\$3650
'88 CHEV CORSICA	\$3850
'89 SUBARU GL	\$4450
'89 ISUZU PICKUP	\$4950
'88 MERCURY SABLE LS	\$5850
'88 AEROSTAR PASS VAN	\$5950
'88 DODGE CARAVAN	\$5950
'85 NISSAN 300 ZX	\$6550
'90 CHEV LUMINA	\$6950
'89 TOYOTA CAMRY	\$7950

All prices & discounts incl. any and all applicable factory incentives. All vehicles subject to prior sale. Prices plus tax, lic. & \$149 doc fees. D.C. Sale ends October 7, 1992.

## RAINBOW CHEVROLET COURTESY PONTIAC

2  
IN TOWN LOCATIONS



### "WHAT'S" GOING ON AT RAINBOW CHEVROLET

'93 **GEO METRO** #130027  
5 DR H/B SEDAN AUTO, AM/FM STEREO, AIR.  
**\$8988**

'92 **S-10 TRUCK** #20091  
FULLY FACTORY EQUIPPED  
**\$9988**

'92 **GEO PRIZM** #120425  
AUTO, AIR, AND MUCH MORE  
**\$11,888**

'92 **CAMARO** #130048  
AIR, AM/FM STEREO, CABS, AND MORE FACTORY EQUIPPED  
**\$12,988**

'92 **S-10 BLAZER** #121128  
2 DR AIR, V-6, AM/FM CABS,  
LOADED  
**\$14,988**

'93 **ASTRO VAN** #130048  
6 CYL, AUTO, AIR, PLENTY OF OPTIONS  
**\$15,988**

'79 CHEVY P/U TRUCK  
GREAT WORK HORSE #51161 EGS978... **\$1688**  
'85 HONDA ACCORD  
EXCELLENT VEHICLE MUST SEE #51051... **\$3188**  
'89 GEO METRO  
GREAT ON GAS BEST BUY #50952... **\$3488**  
'87 MITSUBISHI MONTERO  
#50950... **\$3988**  
'88 MAZDA B2200 TRUCK  
COULD BE YOURS STOP BY TODAY #51002... **\$3988**  
'87 MERCURY TOPAZ  
DON'T MISS THIS ONE WON'T LAST! #50651... **\$4388**  
'88 PONTIAC BONNEVILLE  
RUNS GREAT GOOD BUY #50662... **\$5488**  
'89 CAMARO RS  
CLEAN, EXCELLENT BUY #51170 DBK903... **\$6588**  
'89 FORD RANGER  
GREAT BUY, WON'T LAST! #51171 343MBH... **\$6888**  
'91 FORD MUSTANG  
CLEAN, GREAT BUY #51178... **\$6988**  
'87 PONTIAC FIRE  
SPORT RIDE AT AN EXCELLENT PRICE #50338... **\$7388**  
'88 VW VANAGON  
#50596... **\$7988**

### RAINBOW CHEVROLET COURTESY PONTIAC Two In-Town Locations Member of the CUTTER TEAM

3060 KAPIOLANI BLVD. PH. 737-0500 1391 KAPIOLANI BLVD. PH. 946-8311

Not combinable with special finance rates. Rebates & assistance on selected models. Subject to prior sale, plus tax, lic. & \$149 doc fee. All applicable rebates, first time buyer applied. Sale ends October 7, 1992.