



Staff NCOs  
tee off

B-2

## Marines travel to Mt. Fuji for training /A-4

Feature

## 30 seconds changed course of war/A-7

Feature

# HAWAII Marine



Vol. 21, No. 20

Serving MCAS Kaneohe Bay, 1st MEB, Camp H.M. Smith and Marine Barracks

May 28, 1992

## VMFA-235 honored as tops in DoD

### □Death Angels named best in Maintenance two years in row

By Capt. Mathew Lutz

VMFA-235

The Death Angels of VMFA-235 were recently awarded the Secretary of Defense Award for Maintenance Excellence for fiscal year 1992.

VMFA-235 has walked away with this prestigious award for the second year in a row. The award solicits nominations from the entire Department of Defense and includes both ground and air maintenance programs.

In order to be considered, the squadron had to submit an in-depth package highlighting its activities during the year. The Death Angels' package was filled with information about a squadron deployed from their

homebase here for eight out of 12 months. The majority of that deployment was to Southwest Asia for Operations Desert Shield and Desert Storm.

During the period Oct. 1, 1990 to Sept. 30, 1991, the squadron faced every obstacle and challenge in its path performing flawlessly and exceptionally throughout. '235 sustained the highest overall mission-capable and full-mission-capable ratings of any Hornet squadron in the Marine Corps during both

Desert Shield and Desert Storm. Additionally, the Death Angels flew the most hours and sorties of any F/A-18C squadron in the Navy or Marine Corps during those operations, delivering approximately two million pounds of high explosive ordnance upon Iraqi targets.

The ensuing months of FY '92 witnessed the squadron retrograde from Southwest Asia with all 12 original aircraft returning to Kaneohe Bay to continue its

performance on the leading edge of Marine Corps tactical aviation.

The accomplishment of VMFA-235 and its record of maintenance excellence over the past year have not only been extensive, but without precedent. This tireless dedication to combat readiness through excellence in maintenance policy, procedure, and practice has been standard for the past two years and will continue to be the standard for the Death Angels.

### NEWS Briefs

#### Donations being accepted for Pinatubo disaster victims

The International Filipino Society of Hawaii is seeking donations of clothing from Kaneohe Marines, sailors and civilians to help the victims of last year's Mt. Pinatubo eruption. This non-profit organization will distribute these and other donations to the villages most heavily damaged by the volcano. Clothing will be accepted Saturday and Sunday at the Station Chapel.

#### NQLB meets tonight

The monthly meeting of the Neighborhood Quality of Life Board is tonight a 7 p.m. in the Training Audiovisual Support Center Classroom 1, building 267.

#### Weapons registration scheduled

Hawaii state law and Air Station orders require all people to register firearms of any description or any condition with both the state and the Military Police Department here. In an effort to assist Station community members, MPD will begin both state and Station registration of firearms Tuesday in building 1096. Persons wishing to register a weapon must report to the desk sergeant with their weapon from 3-5 p.m., Tuesdays and Thursdays.

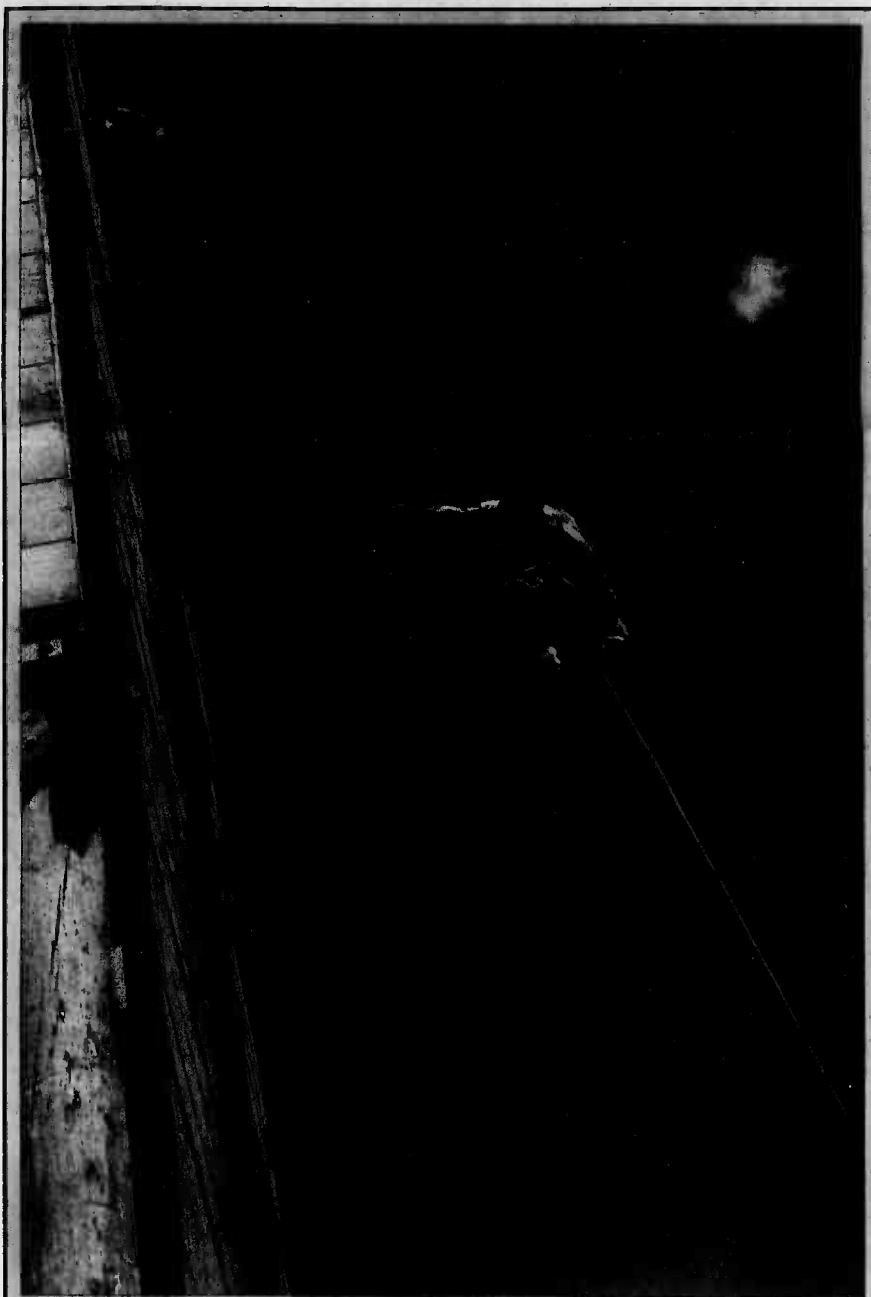
Firearms must be transported unloaded, in a closed box, carrying case or other form of covering not permitting their display. Proof of ownership must be provided and background checks will be performed on all applicants. For further information, call 257-2104.

#### Preschool registration slated

The Station's preschool will register 3- and 4-year-olds for the 1992-93 school year Monday, 7:30 a.m.-1 p.m. Registration will be on a first-come, first-serve basis. Children must be 3 by Sept. 1 to enroll in the 3-year-old classes and 4 by Dec. 31 to enroll in the 4-year-old classes. Both morning and afternoon classes are offered for each age group and a choice of two, three and five days per week programs for 3-year-olds and three and five days per week programs for 4-year-olds is offered. For more information, call 254-3190.

### Inside

Blotter	A-2
Salutes	A-2
Briefly	B-1
Sports Briefs	B-4
Tickets	B-5
Movies	B-6
Ads	B-6
Religion	B-6
TV Schedule	B-6



'On rapel'

An H&S Co., 1st MEB Marine works on the rappelling tower in the Boondocker Training Area. The H&S Marines practiced rappelling and fast-roping from the tower in preparation for rappelling from a helicopter. The 3d Marines Special Training Section coached the Marines while on the tower and provided classes prior to the training.

Sgt. Paul Schneider

#### 1992 fund drive begins

## Society helps Marines help each other

By Cpl. Poznar Smith

To a Marine, responsibility to the Corps, country and family go hand-in-hand.

One organization which helps Marines and sailors with these responsibilities is the Navy/Marine Corps Relief Society. Through no-interest loans, grants and counseling, among other things, the society functions as an organization dedicated to helping Marines, sailors and their families during

times of need.

"We want people to think of us as a resource, not as a last resort," said Anne Freund, chairman of volunteers at Kaneohe Bay. "We don't want people to be embarrassed — we are here to help."

As the society operates almost solely on private donations and volunteer man hours, the amount of aid rendered is directly relative to the amount of money donated.

The society's annual fund drive, which starts here Monday

and runs through June 30, is the main source of donations for the society every year.

In 1991, the Hawaii Auxiliary of the society, which includes NAS Barbers Point, Pearl Harbor and Kaneohe Bay, collected about \$623,966 in private donations.

The three society branches gave out more than \$2 million in loans and grants for that same period with \$759,000 of assistance being provided at Kaneohe Bay alone.

More than 700 layettes

(layettes include baby items such as clothes, diapers and blankets) were provided on Oahu alone and worldwide, society visiting nurses made 53,000 home visits last year helping new mothers learn to care for their infants and providing care for convalescents. Children's waiting rooms at six hospitals were maintained to supervise children while their parents received medical treatment.

All told, more than \$53 million of assistance was provided to 113,000 individual cases by the

society in 1991.

Freund stressed that the society would not be able to function as it does without the volunteer effort. Ninety-six percent of Navy/Marine Corps Relief Society workers are unpaid volunteers. Sixteen out of 17 workers at the Kaneohe office alone are volunteers, and Freund stressed more volunteers are always needed.

The fact the N/MCRS only aids Marines, sailors and their families makes it unique.

### New facility will solve many existing commissary problems

By Sgt. Jason Erickson

After three months suggestions, 17 out of the 68 issues raised at the Neighborhood Quality of Life Board meetings deal with the commissary.

During an interview with the commissary officer and manger, these issues were discussed individually and the vast majority of them appear to hinge on the fact that at present, the commissary is stuck operating out of what was intended to be a machine shop when it was built more than 40 years ago.

In only a matter of months, however, a brand new commissary will be built and many of the current suggestions will be taken care of, explained Harlon Kurisu, commissary officer.

"If people can just bare with us a few more months, things are finally going to get better," he added.

The problems associated with the building are known, and for years patrons and Station officials alike have been trying to have something done about them. Now, as construction crews hammer away on the new facility, it seems the years of work done by so many former community members will pay off when the commissary is completed next spring.

For instance, several suggestions deal with commissary selection, both in general and such specifics as diabetic foods and toiletries. Kurisu explained that with the current store, their ability to provide a wide range of products is severely hampered, and they are forced to stick primarily with the high-volume items.

"But when we get our new store, we'll be able to stock about 2,000 more items, so it will be much, much better," added Judy Bailey, store manager. She said sections such as toiletries and health foods which must now be very small, will be "huge."

Another facility-related suggestion deals with the cold temperature of the store. Kurisu explained that unlike most food markets, this commissary was not built to accommodate the needs of a supermarket. "We've got a lot of open-faced freezer units that dispel a lot of cold air, and we also have very poor insulation between sections that need to be cool and sections that don't."

He again stressed, that "in a few months that will all be behind us."

The problems with the current store also relate to a suggestion to get bigger shopping carts. Kurisu said that the narrow aisles in the store make any larger carts impractical and unsafe. With the bigger carts the store used to have, several people were getting their feet

See Solved, A-10

### Housing available for junior enlisted, June 6

By Sgt. Jason Erickson

Lance corporals and below will soon have 64 government units aboard the Air Station dedicated to them alone. Thus far, 12 of the targeted quarters have been vacated by the former occupants, and junior enlisted Marine families have moved in.

The move to allow E-3s into government quarters was made here in February, and is now being followed Oahu-wide by all military housing, according to a release from the Oahu Consolidated Family Housing Office.

As part of this move, all junior enlisted members on-island, including those here at K-Bay, have until July 2 to get on the waiting list. This will not preclude members from signing up who become eligible only after that date, but those who are already eligible must do so by the cutoff or risk missing out.

According to Jared St. John, manager of the Kaneohe Area Family Housing Office, there are currently 175 junior enlisted Marines on the waiting list for

See Housing, A-10





# Controlling the skies from the ground

Story and photos  
by Sgt. Jason Erickson

When a battle in the sky gets hot there's little room for error. Every move a pilot makes could be his last. He's got to be quick, smart and well-armed with both weapons and knowledge of the enemy. The simple fact is he can't do it alone — and he doesn't have to.

Marine pilots who head into the skies take with them an entire squadron of leathernecks who act as an extra set of eyes to keep track of the enemy's movements and help determine its capabilities.

The very mission of these warriors is to detect, track and distinguish all air traffic in their air space sector. If it's an enemy, they'll determine how to kill it, using either ground-based anti-aircraft assets or by assigning fighters to take 'em on — perhaps both.

At K-Bay, this service is provided by MACS-2. While concentrating on 1st MEB support, the squadron works a great deal with other service-wide and federal units. In fact, during the Persian Gulf War, MACS-2 became a crucial link in the coalition forces' air control network.

This was for several reasons. They were deployed the furthest north, their radars provide accurate information in a radius of up to 300 miles and their equipment allows them to communicate with both Navy and Air Force controllers — something the other two services had problems doing. This made MACS-2 and other Marine controllers a very needed bridge for interservice air control communication.

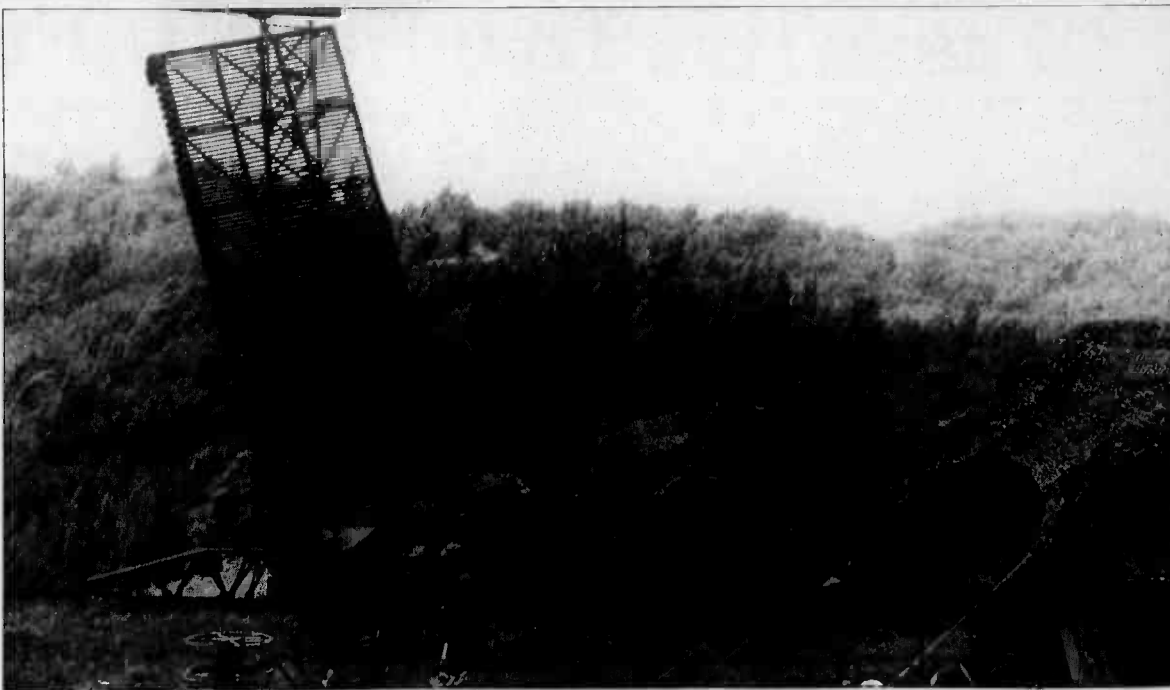
MACS-2 is a squadron of approximately 220 Marines whose specialties represent a diversity nearly as broad as that of BSSG-1. This self-supporting unit is ready to go wherever tasked with little to no added support, depending on the situation.

## Behind the wheel

*In a dark, air conditioned box on a thickly forested hill near North Shore, two Marines sat fiddling with buttons and dials, each behind their own radar screen. Luminescent green lines and symbols flickered and twitched to the momentary sweeping update of a clockwise hand. Represented on each of their consoles by electronic blips, was the aircraft activity of a portion of the squadron's sector of responsibility.*

While grounded in a specially designed embark box, these Marines are, for all but reality, up there soaring across the skies; hearts pounding as the enemy tries to engage, palms sweating as the battle is joined and fingers twitching nervously to stay on top of the fight. The exhilaration of a "kill" is no less felt by these devil dogs than their comrades in the cockpit.

Their role in any skirmish is paramount and the lives and success of "our boys" depends on their ability to do the job.



One of the squadron's two long-range radars was brought to the Kahukus recently during a month-long deployment. A short-range radar was also used during the deployment.

It is a complicated job, too. SSgt. Ron Chesney, a senior weapons director, attempted to explain this technical skill while sitting behind one of those consoles during the squadron's deployment to the Kahukus in April. But, what had appeared a simple task at first had, in fact, become far too complex to fully comprehend once he'd gotten into the nuances of the craft.

In basic terms, controllers sit behind a radar console, which is fed information from several sources. The primary source is the squadron's four radars. Two of these, known as "gap-fillers," are capable of providing two-dimensional (range and bearing) coverage of airspace activity for up to 100 nautical miles. The other two are long-range radars that provide three-dimensional (range, bearing and altitude) coverage for up to 300 miles. The gap fillers are known as such because they are mobile and can be placed in areas where other radars can't read data, such as behind a mountain.

Their other sources of information, in the form of electronic data which shows up on the consoles, depends on who the squadron is working with. Several data link channels allow them to connect with multiple sources.

So complicated and crucial is the job of controller, that Marines in this military occupational specialty do not simply come out of school and sit down behind the console. It takes up to a year and a half to learn all the necessary skills, Chesney explained. In the mean time, they go through specific steps and qualifications as they slowly learn the ropes.

"We've got to know for sure that a Marine sitting down at one of the consoles controlling either weapons or aircraft is capable of doing his job," Chesney emphasized. "There's a lot of pressure and they have a great deal of responsibility."

## Make it work

Like anything else in the Marine Corps, support plays an unquestionably critical role within MACS-2. This can be broken into two groups — direct and indirect support. The former keeps the operational gear running and the latter is all other support such as transportation, administration, regular logistics and medical aid.

The radars, radios and electronic communications have got to work. So too do the air conditioning units that keep the energy-sucking machines capable of running without blowing up from overheating.

Keeping these systems going requires regular maintenance, on-the-spot reactive maintenance, and set up and breakdown of the gear when the squadron or a detachment is on the move.

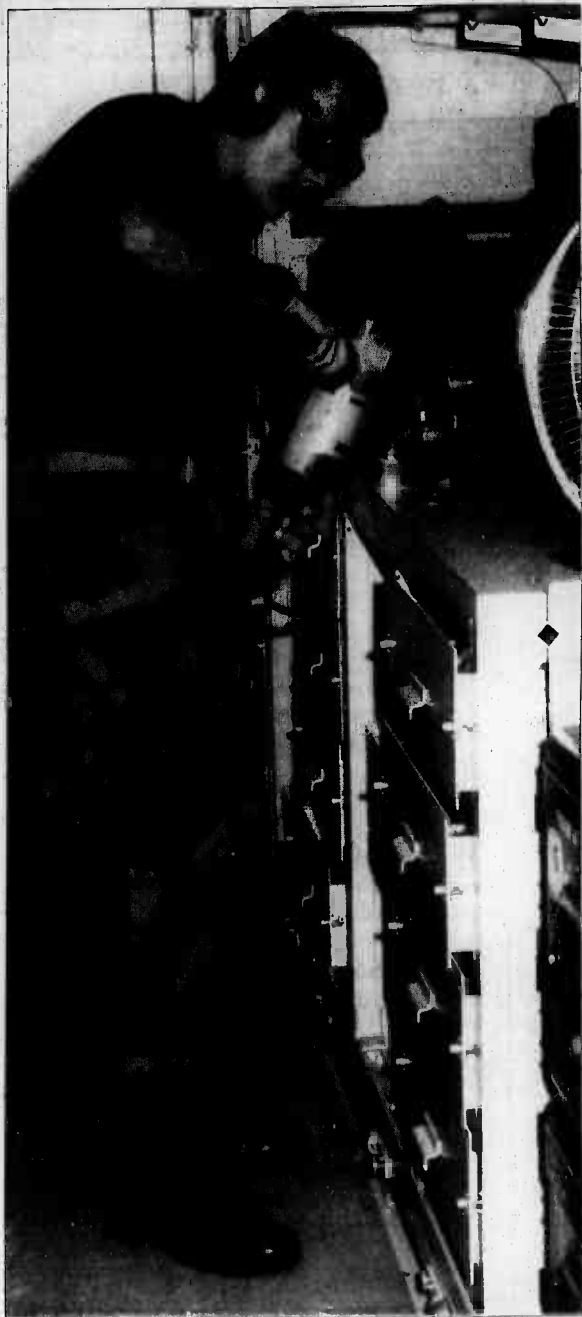
GySgt. Dale Cornell, in charge of maintenance on the long-range radar, explained that the initial set up is the biggest worry.

"Once you get it up and running, your main concern — that something was damaged during transportation — is over," he said. "At that point it's just a matter of babying it and keeping it going."

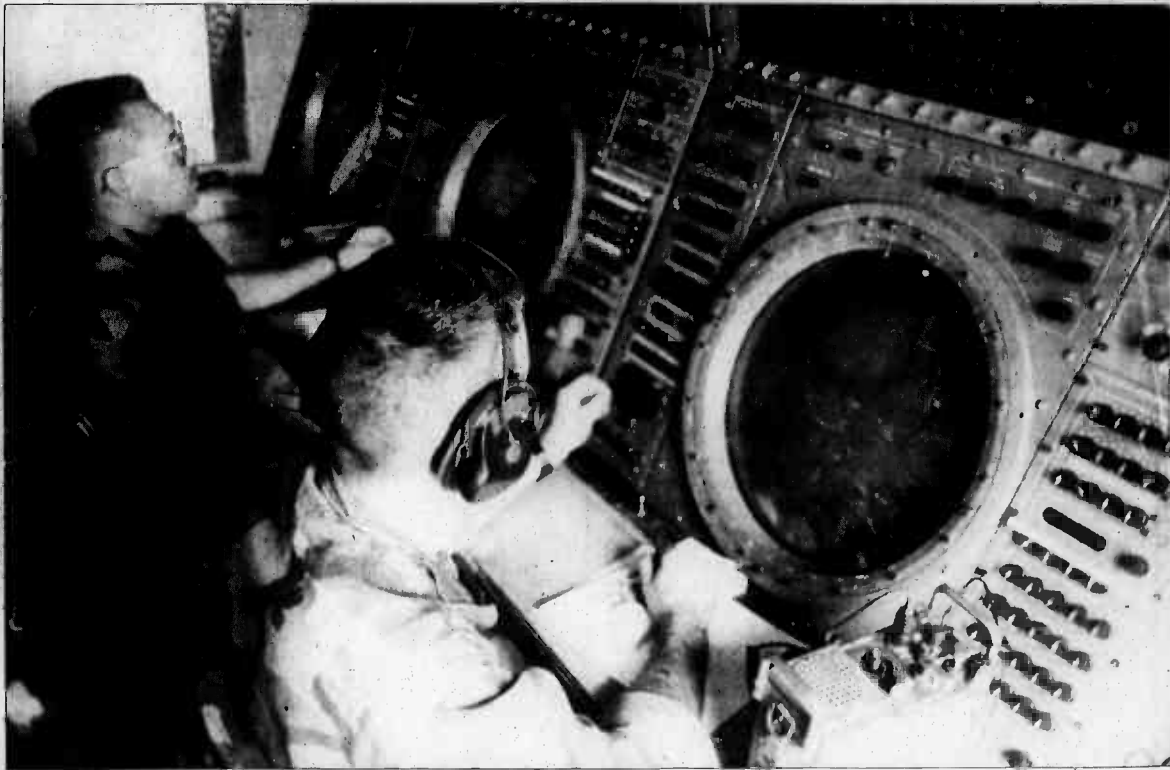
## Diversity doesn't hinder morale

With a group this diverse, how does the squadron maintain integrity and unit esprit? This question was posed to the executive officer, Maj. Jack Rees. He said it isn't exactly easy, but he feels nonetheless, that MACS-2 is a tight group.

"We're pretty much out on our own, whether it's in garrison out here on the other side of the runway or deployed all by ourselves on a battlefield, so we've got to stick together," Rees said. "We all rely on one another to get the mission done, so I think our Marines see the importance of teamwork."



(Above) PFC Shawn VanHom, MACS-2, Operational Communications, cleans corrosion off of a field radio cable. (Top right) SSgt. Ron Cheney (left) and 2dLt. Les Prior work the consoles inside a specially designed embarkation box during the recent Kahukus deployment. (Bottom right) A MACS-2 Marine makes his way with a spool of cable across the Kahukus field compound.



# 1/3 uses live fire for Mt. Fuji training

By LCpl. Jeff Evans  
Okinawa Marine

CAMP FUJI, Japan—Marines with B Co., 1st Bn., 3d Marines took an assault evolution a step further here by incorporating live rounds into the recent training scenario.

The use of live rounds, as opposed to blanks, added realism to the maneuver-oriented attack, according to Capt. David N. Keuhn, company commander.

The Hawaii-based Marines assaulted their objective, encountering pop-up and silhouette targets.

In the training scenario, 1/3 pursued insurgent guerrillas. The Bravo Co. Marines' role called for them to proceed the battalion and eliminate an enemy force left behind to delay the battalion's advance.

The company developed its plan of attack and then

walked everyone through it using a field-expedient, scale model.

One platoon ran a reconnaissance screen, setting up a picket to identify the enemy's location.

Once the enemy's location was determined, the Marines then focussed on pinning them in place and enveloping them with the use of fire and maneuver. A base of fire was set up and a maneuver element then flanked the enemy.

"The focus of this training evolution was the company's ability to fire and maneuver since the enemy did not exist," said Keuhn. "The fact that we had no actual enemy and certain range restrictions were incorporated into our plan of assault."

The distance covered in the assault, approximately 2,000 to 3,000 meters, added additional realism to the training.

"It was a realistic distance

to travel to the objective," said Sgt. Curtis McBride III, 2d Plt. sergeant. "Usually we work with distances of 100 to 200 meters, but the 2,000 to 3,000 meters we covered this time was more realistic."

The terrain features here, such as high grass, tree lines, hills and gullies, provided good cover for the maneuvering element.

"It was very difficult," said PFC James T. Perry, 1st Plt. "I was disoriented and couldn't tell where the terrain features were."

While the terrain and distance took their toll on the B Co. Marines, they were forced to maintain extra discipline with their locked and loaded weapons.

"Training like this teaches the Marines to have complete control," said Cpl. Wojciech K. Romanik, a squad leader with B Co., 1/3. "They get used to live rounds and shooting at a target, and don't just shoot wildly."



LCpl. Jeff Evans



LCpl. Jeff Evans

(Left) A 1/3 Marine moves through the brush at Mt. Fuji. (Above) A 1/3 Marine adjusts a mortar during Fuji training.

## 1/3 Weapons Co. shoots from the hip at Mt. Fuji

By LCpl. Jeff Evans  
Okinawa Marine

CAMP FUJI, Japan—The 81mm Mortar Plt., Weapons Co., 1st Bn., 3d Marines conducted a 'hip shoot' exercise that covered several minutes from insertion to extraction by helicopters from HMM-265.

The helicopters came in just over the tree tops, landing in the clearing. As soon as the rear ramps of the helicopters were open the mortar Marines quickly unloaded. The helicopters then lifted off and disappeared over the tree line. Each gun section then moved into position and set up their mortars.

Once they were set up, they received their deflection and made the proper adjustments in the guns. They began sending rounds down range within two to three minutes of their arrival, according to Sgt. Dennis M. Shoemaker, section leader, 81mm Mortar Plt., Weapons Co., 1/3.

They quickly fired four rounds then received new deflection. After the new adjustments were made, they sent four more rounds down range.

After all rounds were fired, they broke the guns down

and prepared to reload the helicopters. About that time, the helicopters appeared over the trees dropping quickly into the landing zone to pick up their passengers.

As the helicopters touched down, the mortar Marines hurriedly moved to the CH-46, loaded and disappeared as quickly as they had appeared. According to Shoemaker, the whole evolution took approximately seven and a half minutes.

"It was a good time," said LCpl. Stuart L. Stetter, 81mm Mortar Plt. "I was a little tense a first. We had to get out and set up."

"It went real smooth," Stetter continued. "It's motivating to do these kind of operations."

"Everybody did their job," Shoemaker said. "They did what they had to do. With today's modern technology you have to be able to do it like that (fast) because the enemy can locate your position quickly."

"This is something that could have applications in counterinsurgency warfare," said Capt. Christopher C. Conlin, Weapons Co. commander. "We have to be able to hit fast before they know we're there."

"It's definitely good to have in our bag of tricks," added Conlin.



### LAW OFFICES OF JOSEPH P.H. AHUNA, JR.

#### CALL IF YOU ARE:

- Injured in an Auto Accident
- Injured at Work
- Suffering from Personal Injury

FREE INITIAL CONSULTATION  
NO FEE FOR REPRESENTATION UNLESS  
YOUR CASE IS DECIDED IN YOUR FAVOR

**235-4000**



Joseph P.H. Ahuna, Jr.  
Attorney at Law

The Castle Professional Center  
46-001 Kam Hwy.  
Suite 101  
**KANEOHE • HAWAII**

### PALI PALMS DENTAL CENTER DENTAL SERVICES

General Dentistry • Preventative and Restorative Dentistry  
Cosmetic and Esthetic Procedures

INSURANCE ACCEPTED: HDS, HMSA, Delta Dental Services (Military),  
Hawaii Dental Health Plan

Dr. Derek Ichimura, DMD  
Office: 254-6694  
970 N. Kalaheo Ave., A-108  
Kailua, Hawaii 96734

Dr. Alan M. Yugawa, DMD  
Office: 254-6477  
970 N. Kalaheo Ave., A-108  
Kailua, Hawaii 96734



### PRESTIGE TRAVEL UNLIMITED, INC.

1513 YOUNG ST. SUITE #102 • PH. #945-7400  
\*OPEN 7 DAYS A WEEK \*DELIVERY AVAILABLE TO KAILUA\*

• Los Angeles	\$173	\$287	• San Francisco	\$159	\$287
• Portland	\$314	\$398	• Seattle	\$209	\$327

Denver	R/T	Omaha	R/T	Miami	R/T
Houston		Detroit		Boston	
Billings		Cleveland		Atlanta	
New Orleans		Columbus		Norfolk	
Oklahoma City	\$523	Indianapolis	\$528	Baltimore	\$548
Albuquerque		Minneapolis/St. Paul		Washington D.C.	

#### CALL FOR OTHER DESTINATIONS

Over-Nighter Packages	FLY/DRIVE PACKAGES
From \$115 Per Person Trough/Other Rest + Car	From \$90 Per Person *Packages Based on Double Occupancy*

SOME RESTRICTIONS APPLY PRICES SUBJECT TO CHANGE  
OPEN MON-FRI 8:30 AM-6:00 PM SAT-SUN 9:00 AM-1:00 PM

### Fujio Matsuda Education Center Windward Community College

45-720 Keaahala Road, Kaneohe, HI 96744

#### MAY-JUNE-JULY 1992 COMPUTER COURSES

Course#	Course Title	Dates	Day	Time	Fee
C92 269	Introduction to the IBM-PC	5/30	Sat	9-12/1-4 pm	\$40
C92 270	Introduction to Works (MAC)	5/30	Sat	9-12/1-4 pm	\$60
C92 271	DTP Using PageMaker (MAC)	5/30	Sat	9-12 & 1-4 pm	\$60
C92 280	Intro Disk Operating System (DOS)	6/1	Mon	1:30-4:30 pm	\$35
C92 281	Intermediate WordPerfect	6/1-2	MT	6:00-9:00 pm	\$60
C92 282	Introduction to WordPerfect	6/2-4	TWTh	1:30-4:30 pm	\$90
C92 283	Intermediate Lotus 1-2-3	6/3-4	WTh	6:00-9:00 pm	\$60
C92 284	Intro Disk Operating System (DOS)	6/6	Sat	9:00-12 noon	\$35
C92 285	Introduction to the Macintosh	6/6	Sat	9:00-12 noon	\$30
C92 286	Introduction to the IBM-PC	6/8-9	MT	1:30-4:30 pm	\$40
C92 287	Introduction to WordPerfect	6/8-10	MTW	6:00-9:00 pm	\$90
C92 288	Introduction to the Macintosh	6/8	Mon	6:00-9:00 pm	\$30
C92 289	Introduction to Works (MAC)	6/9-10	TW	6:00-9:00 pm	\$60
C92 290	Intro to Disk Operating System (DOS)	6/10	Wed	1:30-4:30 pm	\$35
C92 291	Introduction to the IBM-PC	6/13	Sat	9-12 & 1-4 pm	\$60
C92 292	Macintosh Basics	6/13	Sat	9-12 & 1-4 pm	\$40
C92 293	Intermediate WordPerfect	6/15-16	MT	1:30-4:30 pm	\$60
C92 294	Intro Disk Operating System (DOS)	6/15	Mon	6:00-9:00 pm	\$35
C92 295	Introduction to Word (MAC)	6/15-16	MT	6:00-9:00 pm	\$60
C92 296	Introduction to dBASE III Plus	6/16-18	TWTh	6:00-9:00 pm	\$90
C92 297	Intermediate Lotus 1-2-3	6/17-18	WTh	1:30-4:30 pm	\$60
C92 298	Introduction to PageMaker (MAC)	6/17-18	WTh	6:00-9:00 pm	\$60
C92 299	Hard Disk Management	6/20	Sat	9:00-1:00 pm	\$45
C92 300	Intro Desktop Publishing (MAC)	6/20	Sat	9:00-12:00 noon	\$30
C92 301	Setting Up Desktop Publishing Business	6/20	Sat	1:00-4:00 pm	\$30
C92 302	Intro Disk Operating System (DOS)	6/22	Mon	1:30-4:30 pm	\$35
C92 303	Intro Disk Operating System (DOS)	6/22	Mon	6:00-9:00 pm	\$35
C92 304	Intro Desktop Publishing (MAC)	6/22	Mon	6:00-9:00 pm	\$30
C92 305	Introduction to dBASE III Plus	6/23-25	TWTh	1:30-4:30 pm	\$90
C92 306	Introduction to Lotus 1-2-3	6/23-25	TWTh	6:00-9:00 pm	\$90
C92 307	Setting Up Desktop Publishing Business	6/23	Tues	6:00-9:00 pm	\$30
C92 308	Desktop Publishing Using PageMaker (MAC)	6/24-25	WTh	6:00-9:00 pm	\$60
C92 309	Advanced Disk Operating System (DOS)	6/27	Sat	9-12&1-4 pm	\$60
C92 310	Introduction to Works (MAC)	6/27	Sat	9-12&1-4 pm	\$60
C92 311	Desktop Publishing Using PageMaker (MAC)	6/27	Sat	9-12&1-4 pm	\$60
C92 312	Introduction to IBM-PC	6/29-30	MT	6:00-9:00 pm	\$40
C92 313	Introduction to Excel (MAC)	6/29-30	MT	6:00-9:00 pm	\$60
C92 314	Introduction to Lotus 1-2-3	6/30-7/2	TWTh	1:30-4:30 pm	\$90

Special arrangements for the disabled may be made if requested in advance.  
Contact the WCC Office of Community Services at 235-7434 to make arrangements.  
Refer to the Catalog of Events for policies for non-credit classes and activities.

To Register, call 235-7433. Visa & MasterCard accepted.

## Pops, you're the tops! Father's Day Sunday, June 21st



#### Tripler Club

Brunch 10 AM to 1 PM  
\$12.50 Adults • \$7.00 Children  
Music by Joanie Komatsu  
Reservations Requested!  
**833-1268**

#### Wheeler Community Club

Brunch 10:30AM to 1:00 PM  
\$11.95 Adults • \$6.95 Children  
Reservations Requested Early!  
**656-1718/1229**

#### Schofield O' Club

Brunch 10:00 AM to 1:00 PM  
\$12.50 Adults • \$6.95 Children  
Reservations Requested!  
**624-5600**

#### Waianae Beach Club

"Pig Pickin' Jamboree" 4:00 to 8:00 PM  
\$11.50 Adults • \$6.95 Children (ages 5-11)  
Old fashioned BBQ featuring ribs, chicken and  
roast pig with all the fixin's.  
Country & Western entertainment.  
Reservations please.  
**696-4778**

#### Cannon Club

Brunch 10AM to 1 PM  
\$15.95 Adults & \$10.95 Children (ages 6-10)  
Reservations required!  
**737-5996**



U.S. Army MWR Hawaii



# 30 seconds changed course of war

By Sgt. Paul Schneider

By April 1942, America had been at war for more than four months and there wasn't much to be happy about.

Ever since the Japanese surprise attack at Pearl Harbor, there had been a string of defeats for America and her allies across the Pacific Theater.

Guam had fallen to the Japanese. Wake Island held out, amazingly, for 16 days but also fell. A large portion of China was Japanese and China was controlled by Indochina.

The Philippines were miraculously holding on — but just barely.

The Japanese also

controlled most of the Pacific islands extending just short of Midway Island. And they were steadily pushing toward Australia.

The American people desperately needed a boost in morale. They were to get it April 18, 1942.

Shortly after Pearl Harbor, President Franklin D. Roosevelt began asking his military advisors when it would be possible to strike back at Japan for Pearl Harbor.

Since the military was in the beginning stages of its largest build up in its history and with very limited resources, striking back, at least in the early months, seemed impossible.

A carrier strike on Japan would have been suicide;

naval planes only had a range of about 300 miles. At that range, the Imperial Navy would wipe out the U.S. task force before it could do anything.

During the early days of the war, carriers were scarce and American aircraft were simply outclassed.

If a raid was to be launched on Japan, it would have to be a complete surprise and the aircraft would somehow have to be launched outside of the range of Japanese air and surface patrols.

In January 1942, the Navy came up with a unique solution to the problem — fly Army B-25 bombers off a Navy carrier.

When the idea was presented to Gen. Henry H. "Hap" Arnold, chief of the Army Air Forces, he was enthusiastic about the idea. But, before he would go along with it, Gen. Arnold needed someone to check the Navy's calculations. He called for Army Lt. Col. Jimmy Doolittle, his special projects officer.

Without giving Doolittle any reasons, Gen. Arnold asked him, "What airplane have we got that will get off in five hundred feet with a two-thousand-pound bomb load and fly two thousand miles non-stop."

Doolittle, who held a doctor of science degree in aeronautical engineering from M.I.T., reported back with two candidates the next day: the Douglas B-23 or the North American B-25.

The general then asked which one could take off from a narrow area not more than 75 feet wide. Doolittle said only the B-25

could be used.

Gen. Arnold quickly filled Doolittle in on the idea. Doolittle immediately volunteered to lead the mission.

He was ordered to start preparing for the mission, which would leave from the West Coast around April 1, 1942.

Finding volunteers for the mission wasn't too difficult. Only the 17th Bomb Group and 89th Reconnaissance Squadron, stationed at Pendleton, Oregon, were flying the new B-25 bomber.

Doolittle simply asked for volunteers for an extremely hazardous mission which would be of great benefit to the war effort. He needed enough volunteers for 24 B-25 crews and their ground support personnel.

There was no shortage of volunteers. Doolittle may have been helped by his reputation. Doolittle was famous across the country. Before coming back into the Army, he was a racing pilot and had several aviation firsts to his name.

Volunteers knew that if Doolittle was leading the mission, it must be something really dangerous and important.

The volunteers arrived at Egland Field, Fla., between Feb. 27 and March 3 to begin training. The pilots and crew began training in short take-off techniques while mechanics worked hard to modify 16 of the B-25's for the mission.

The arrival of Navy Lt. Henry Miller, a flying instructor from Pensacola Naval Air Station, might have given some indication of what the volunteers were

going to be doing, but still they were told nothing.

Still guessing, they boarded the USS Wasp, the Navy's newest carrier, in San Francisco and set sail April 2, with the cruisers Vincennes and Nashville, four destroyers and an oiler.

Once aboard ship, the mission was explained in detail — 16 planes would take off from the carrier about 450 miles off the coast of Japan and strike Tokyo, Osaka, Yokohama and Kobe. After their mission they would fly to the free part of China.

April 13, the task force rendezvoused with the USS Enterprise and its task force. The ships continued on toward Japan by a northern route.

While everything seemed to be going well, the Japanese had picked up radio messages between the American ships April 10 and mounted a massive sea and air search. The Japanese believed the force would be within striking distance by April 14.

When that date came and went without any further report of the task force, the Japanese began to wonder where the American ships were. They still felt safe though. They figured with the carriers having to get at least 300 miles off the coast, they could easily find the ships and attack them at their leisure.

Everything went relatively well for the task force. The ships were making good progress and would arrive at their planned launching point 450 miles from Japan, April 18, a day earlier than planned.

In a costly oversight, neither Washington or China was informed of the change. In order for the B-25's to find the airfields in China, they needed directional beacons to guide on. There would be no beacons on April 18.

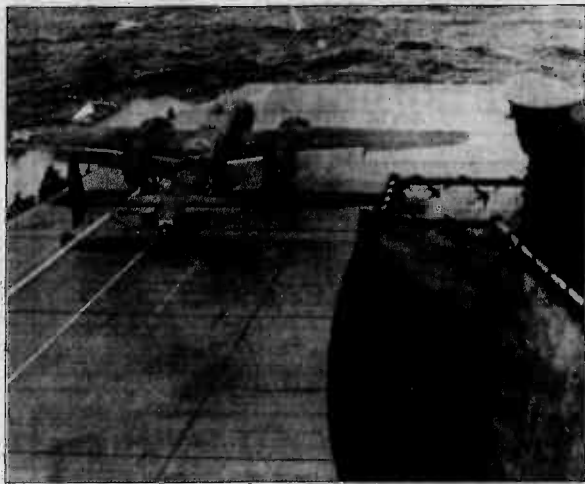
**"At 12:30 p.m., bombardier Sgt. Fred Braemer dropped the first bombs on a factory near the center of Tokyo."**

Luck began to run out April 18. A Japanese ship spotted the task force about 700 miles from Tokyo. The destroyers fired at the boat and sank it, but since they didn't know if a message was sent, the Army pilots were immediately ordered to execute their mission.

At 668 miles out, with Doolittle piloting the first aircraft, the B-25s began their journey from the Wasp. Miraculously, all the planes got off successfully in spite of heavy seas.

Each plane made its way to its target independently. Doolittle was the first one

See Raid, A-7



Courtesy U.S. Air Force

The first plane to take off from the Hornet's deck was piloted by Lt. Col. Jimmy Doolittle. He had been gone about an hour when the last plane, shown here, piloted by Lt. William Farrow took off.

**A&P - I.A. RATINGS**  
Airframe & Powerplant —  
Inspection Authorization  
•4-6 Days •Includes Oral & Practical Review  
•100% Guaranteed •Day & Night Classes

Classes start June 29th  
Honolulu, HI

Aviation Ground Schools  
of America  
CALL NOW! (800) 345-2742

You are invited to —  
Honolulu's 4th Annual International  
**IN-THE-WATER BOAT SHOW**  
Sat. & Sun., May 30 & 31,  
10 a.m.-4 p.m.

Registration is at the Harbor Pub, Hobron Lane. 40 Boats & Yachts  
will be open in the Ala Wai & other area harbors. See you there!

**The Yacht Connection, 523-1383**

**HUKILAU BAPTIST CHURCH**  
147 Westervelt Ave., Wahiawa 96786  
Corner of Kili and Westervelt behind the post office.

Sunday School at 10 a.m.  
Worship Service at 11 a.m.  
Evening Service at 6 p.m.  
Wednesday Service at 7 p.m.

Pastor Bill Hewitt  
**625-3668**  
Warm welcome awaits you!

**FANTASTIC OFFER**  
We Guarantee the LOWEST PRICES  
or we refund DOUBLE the DIFFERENCE!

**• TAPES • CD'S**

Imagine a Super Discount Coupon Booklet that offers 20 FREE CD's, Tapes, and Blank Video Tapes, and FREE Bonus Gifts with our Frequent User Program. Portable AM/FM Receiver w/Headset, VHS Video Cassette Recorder and 2 Round-Trip Airfare to 12 great destinations. Send a self-addressed stamped envelope and \$19.95 to AIMCO.

Name \_\_\_\_\_  
Address \_\_\_\_\_  
City \_\_\_\_\_ State \_\_\_\_\_ Zip \_\_\_\_\_  
☐ Fund-Raising Information ☐ Certain Restrictions Apply

Mail to: AIMCO  
P.O. Box 30778  
Honolulu, Hawaii 96820  
**689-7718**

**SOFT CONTACT LENSES**  
Daily Wear, Extended Wear,  
Tinted & Disposable  
From: **\$79<sup>00</sup>**

Includes: Lenses, Care Kit,  
Follow-up Care, and 90-Day  
TRIAL PERIOD.

**PRESCRIPTION GLASSES**  
From: **\$69<sup>00</sup>**

**FAMILY EYE EXAMINATION PLAN**  
**\$49<sup>00</sup>**

COMPLETE PROFESSIONAL VISION SERVICES  
DEDICATED TO QUALITY AND SERVICE IN VISION CARE

**DR. CHARLES DEAN**  
Optometrist 139 Hekili St., Kailua **261-9735**

MasterCard  
VISA

**SUMMER TUNE UP SPECIAL**  
GEAR UP YOUR BICYCLE WITH THE PROS!

**Performance Tune-Up**  
**\$10 OFF**  
Expiration June 7, 1992

•Professional Service Dept.  
•Clothing & Accessories  
•Parts & Accessories

**247-5200**

**NEW LOCATION**  
46-216 Kahuhipa St.  
Kaneohe  
(Across City Mill)

**Island SPOKERY**  
Bicycle Works

Hours: M-F 10:00am - 7:00pm  
Sat 9:30am - 5:00pm  
Sun 10:00am - 3:00pm

Domino's Pizza Delivers  
**MORE OF WHAT YOU ORDER PIZZA FOR**  
From Now On, Every Domino's Will Have:

**MORE Fresh Toppings** **MORE Cheese** **MORE Flavorful Crust**

More Value, More Taste,  
Delivered To You In 30 Minutes Or Less

**NOBODY KNOWS LIKE DOMINO'S**  
How You Like Pizza At Home.

**Call Now!**

**Kailua**  
**263-3030**  
107 Hekili Street

**Kaneohe**  
**235-7575**  
45-1151 Kamehameha Hwy.

**Aiea/KMCAS**  
**254-6433**  
25 Kaneohe Bay Drive

**WHO COULD ASK FOR MORE!**

**Meal For 2**  
**\$10.99** plus tax  
Order a medium pizza with 2 toppings  
PLUS 2 cans of Coca-Cola classic or  
diet Coke® for only \$10.99, plus tax.  
Coupon required.

**Large 2-Topping Pizza**  
**\$12.99** plus tax  
Try our large Original Style pizza with 2 of  
your favorite toppings for just \$12.99,  
plus tax.  
Coupon required.

Valid at participating stores only. Not valid with any other offer. Prices vary.  
Customer pays sales tax on items purchased. Delivery areas limited to  
primary sales area. Out-of-area delivery fee \$5.00. Cash only. In-store  
orders are not eligible for sale. See delivery.

MSP/121 Good thru 6/30/92

© 1992 Domino's Pizza, Inc.

To the editor:

# Apology and thanks

Editor's Note: The following two letters were submitted to the Hawaii Marine.

The first was written by a teenager whose actions could very well cost him and his family their home. The youth along with a friend were responsible for the recent vandalism of cars and motorcycles parked in Station housing areas. Station regulations state that all military members are responsible for the actions of their dependents aboard the Station and that repeated violations of these regulations can result in mandatory counseling, mediations and eviction from government quarters.

The second is to the Marines who participate in the Kailua Intermediate School Adopt-A-School program.

Dear People I Hurt,

I am sorry for taking them emblems off of your cars. I was doing this while you were asleep, so I deceived you unrightfully. I also ripped up some seats of people's motorcycles. I am sorry for this too. I have hurt many people by damaging their property, and

even more people by deceiving them.

The person I hurt the most is my Dad. All of the people that this pertains to, (being Marines and all) realize what I did could have, and still can get him in alot of trouble. I also endangered my family by leaving the door unlocked, so I could go and damage your property. I have hurt the people I love the most, and for that I am really, really sorry.

A K-Bay youth

Dear Editor,

The entire Kailua Intermediate School community would like to express a sincere thank you for generously giving of your time and expertise in helping our students and staff. Your service has made a positive difference in our school. Kailua Intermediate has grown as a result of your continued support and commitment toward our goal of providing an overall positive educational experience for every student.

A special thanks to the following Kaneohe Marines

and sailors: Chaplain Gerald MacDicken, Col. Kenneth Frantz, Col. Gary Hughes, GySgt. Donald Dean; the BSSG-1 unit including William Allen, Kevin Bailey, Raul Balderas, Russell Baker, Clinton Brown, Benjamin Castillo, Shawn Chapman, Harry Echiquine, Brett English, Bill Eskridge, Brian Gentry, Cindy Hart, Randy Hicks, Thomas Lennon, Mark Lewis, Matthew Love, David Meyndert, Xochitl Morales, Russell Negele, Jarad Oliver, Charles Penn, Justin Powell, Mack Price, Wallace Saunders, Patrick Schubert, Andrew Schiro, Sherman Smith, Jonathan Wayne, Kendrick Young, Tony Adams, John Allman, Johnny Brown, Kevin Gue and Rodney Koyne; the Co. A, 3d Recon Bn. volunteers: Sgt. Emilio Espinoza, Gregory Benoit, Jeff Brown, Mike Dange, John Franks, Rick Kleimon, Steve Mallepaard, Scott McCarthy and James Smith.

We salute you all!!!! Everone one at Kailua Intermediate School thanks you for your support.

Irene Cramer

Parent Facilitator

## Purple Fox mascot missing

By 1stLt. B.E. Kuhn  
HMM-364

"Appalling...the lowest despicable act," said LtCol. R. Beaulieu, commanding officer of HMM-364, of the recent "terrorist" attack against his squadron.

Swiftly, the '364 mascot, was kidnapped from his "den" sometime between May 16 and May 18. Logbook entries verify that after hosting Swiftly at the Officers' Club Friday evening, 1stLt. A.J. Ficus, official "Keeper of the Fox," escorted Swiftly promptly and safely back to his den in the CO's office. After that, the trail goes cold.

GySgt. J.K. Perry, the squadron OOD, May 16, reported "no suspicious characters in or around the squadron" but could not verify Swiftly's whereabouts during his watch. Perry was heard to comment, "A thief and his hand should be soon parted."

A ransom note arrived on Beaulieu's vehicle May 20 outlining the kidnappers' demands. Beaulieu could not be reached for comment on those same demands.

Investigations are currently underway and '364 investigators report that they have already gathered many clues including the fingerprints off of the ransom note.

HMM-364 Internal Affairs

is also conducting its own investigation to ensure there was no conspiracy from within the squadron itself.

Swiftly is approximately 1-foot tall and weighs eight pounds. He was last seen

wearing the squadron's traditional and distinctive purple satin blazer. Any persons having information about Swiftly's whereabouts should contact the squadron immediately.

### DIS IS de OFFICEAL RANDSCUM NOTE

YooS dirty ~~DATA~~ ~~been~~ musclin in **ON** our territory. Dat ain't nise! YooS forced us to **upsecond** with the little furry guy - dats rite - the flea bag in the **poornle** jacket is on ice!!

If yas wants to see him alive again, it's gonna **COST** ya. Consider it **your basic** insurance policy, kinda a mutual understandinS. YoOS gives us the **stuff** weeZ want and yooS gets da **critter** back.

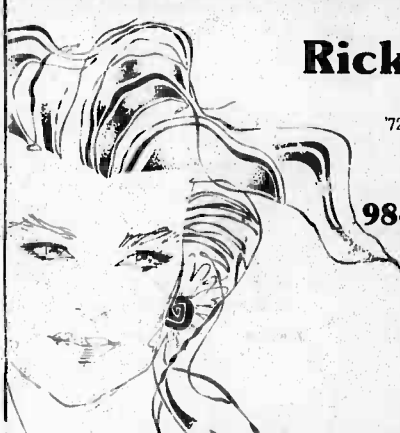
### De DEMANDS

- A. one (1) full keg
- B. **one** (1) box of premium cigars - **unopened**

MakeS de arrangements for de demands at de Officers Club on **29 May** at 1630 sharp. Everybodys welcum to participates. REMEMBER...ANY **MONKEY BUSINESS**...AND THE FOX **GETS IT!!**

## WOMEN'S CLINIC

◆ Gynecology ◆ Infertility ◆ Sperm Bank ◆ Family Planning ◆



### Rick Williams, M.D.

'66 B.S., Physics, M.I.T.  
'68 M.A., Biology, Harvard  
'72 M.D., Univ. of Calif. at San Francisco  
'77 Board Certified in Ob-Gyn

**98-1254 Kaahumanu St.,**  
**Pearl City, Hawaii 96782**

FOR INFORMATION  
OR AN APPOINTMENT  
CALL:  
**487-2988**

## EXHAUST SYSTEMS HAWAII



**MUFFLERS**  
**\$39.95\***  
from **plus installation**

**Headers** from **\$89**

**Dual Exhaust** from **\$239**

**Hawaii's Largest Locally-Owned Muffler Shop**

We will MEET or BEAT any competitors written estimate  
\*Unsurpassed Quality \*Competitive Price \*Personalized Service  
\*Service All Makes & Models.



**KAILUA** 171 Hemakua Dr. 283-8111  
**HONOLULU** 2457 S. King St. 946-7110  
**WAIKAPU** 94-150 Leoleo St., 3-A 671-8111

# THE NEXT WAVE



Jump in this summer to the Hale Koa's brand new swimming sensation. A pool with gallons of fun for you and the entire family. There will even be a separate wading pool for kids. So come check us out even if you're not checking in. You're invited to join us on our spacious deck, or you can kick back, relax, and have a drink at one of our poolside snack and beverage bars. We have everything to keep you cool this summer at the Hale Koa.

**WATCH FOR THE GRAND OPENING in June 1992.**



## HALE KOA HOTEL

"Come For The Fun Of It"

ARMED HORSE RECREATION CENTER  
On The Beach At Waikiki  
2055 Kalaniana'olani Blvd. • Phone 955-0555



### ALPINE PULLOUT SPECIAL

**ONLY \$299**  
REG. \$395 PKG.

Now you can own an ALPINE pullout at a very affordable price. We included 8 1/2-inch, 2-way, 90-watt speakers to make a great system for you. You simply must see this beautiful pullout and listen to its musicality. Shop and compare, this is an unbeatable value.



### ALPINE CD PULLOUT SYSTEM

**ONLY \$933**  
WEEK ONLY  
REG. \$1110

7815/K8C 7701/8257CD/DCA3150

This is a complete system featuring our #1 selling ALPINE 7815 CD/tuner with the latest in technology. DENON'S OCA 3150 4-channel amplifier offers ultra low distortion and superior sound quality to pass all of CD's dynamic range and clarity. KENWOOD'S famous K8C 7701 hatchback box features two 10's, two mids, and two tweeters in a dual tune port enclosure. Up in front, you get ALPINE'S EXCELLENT sounding 8257 CD, 8 1/2 inch, 2 ways for up-front sound staging.

**CUSTOMER SERVICE ... IS OUR #1 COMMITMENT TO YOU**

- ✓ FRIENDLY, PERSONALIZED SERVICE BACKED BY THOROUGH PRODUCT KNOWLEDGE
- ✓ "NO PRESSURE" ATMOSPHERE. NO SALESMAN ON COMMISSION
- ✓ WE ARE OWNER OPERATED AND KNOW YOU ARE THE REASON WE'RE HERE
- ✓ YOU NEEDS COME FIRST, ALWAYS
- ✓ PERFECT RECORD WITH BETTER BUSINESS BUREAU

**QUALITY AND VALUE ...**

- ✓ ALL PRODUCTS CAREFULLY TESTED AND EVALUATED FOR RELIABILITY AND BEST VALUE
- ✓ FULL WARRANTY OF 1 YR. OR MORE ON ALL OUR PRODUCTS
- ✓ ALL WORK DONE USING ONLY THE FINEST SUPPLIES AND CONNECTORS
- ✓ INSTALLATION LABOR GUARANTEED FOR DURATION OF OWNERSHIP
- ✓ WE KNOW QUALITY AND VALUE ARE WHAT YOU WANT AND NEED



### ALPINE'S "FACTORY" CAMARO ON DEMO SATURDAY, MAY 30

12:00 Noon to 4:00 PM  
Prepare to be BLOWN AWAY!

**IN STORE SPECIALS ON ALPINE**

CD's, Speakers, amps and Alarms

**INVEST IN THE BEST!**  
Waipahu - Wai'anae - Mililani  
Hawaii Kai  
MAKE THE DRIVE—IT'S WORTH IT!!!





### '92 SPECIAL 180 WATT SUBWOOFER SYSTEM

HI FONICS CYCLOPS & KICKER COMPETITION 10's

**REG. \$750.00 PKG**  
**'92 SPECIAL \$489**

This is one hot sub system — HI FONICS 180 watt special subwoofer amp with continuously variable active x-over and hi pass outputs drives 2 each KICKER competition 10 inch subwoolers. We chose the subs that are the best for maximum bass from the smallest space... KICKER. Don't be left behind... move up and get the best!

## HAWAII'S #1 VIPER EXPERTS 4 YRS. OVER 2,300 VIPERS!!

CAR ALARMS ARE RECOMMENDED BY THE HPD CHIEF OF POLICE — DON'T BECOME ONE OF 3,800 VICTIMS!



### VIPER 300

REG/ \$479.00  
**NOW \$299.00**  
**FULLY INSTALLED**

OUR MOST POPULAR VIPER HAS ALL THE OTHERS BEAT.

SHOP AND COMPARE NOTHING COMES CLOSER!

- ✓ LIMITED LIFETIME ORIGINAL OWNER PARTS AND LABOR EXCLUSIVE WARRANTY.
- ✓ SILENT DISARM/ARM CONTROL
- ✓ UNIQUE 128 db 6 SOUND DESIGN PLUS ALL THESE FEATURES



### VIPER SPECIAL

**FULLY INSTALLED**

- ✓ GOOD, BASIC PROTECTION WITH FULL EXPANSION ABILITY.
- ✓ 300 FOOT REMOTE CONTROL (OTHERS ONLY 60 FT.)
- ✓ 2 REMOTE TRANSMITTERS (OTHERS ONLY 1)
- ✓ LIFETIME WARRANTY (OTHERS 3 YEARS)
- ✓ NATIONWIDE SERVICE (OTHERS ?)
- ✓ IS THERE ANY REASON TO BUY OTHERS?

IF YOU FEEL WE'RE TOO FAR — WE'LL GIVE YOU THE CREDIT TOWARDS YOUR ALARM FOR "GAS MONEY"

### LIFETIME WARRANTY PARTS AND LABOR

46-158-A Malina Place • 235-8847

19.6 Mon. Sat. Return Voucher Hawaii

SALE ENDS 6/3/92 FINANCING O.A.C.

MasterCard Visa



# Raid

Raid, from A-5 over Tokyo. At 12:30 p.m., bombardier Sgt. Fred Braemer dropped the first bombs on a factory near the center of Tokyo.

When the planes arrived over their targets, there were no sirens, but the Japanese planes were already in the air doing routine patrols and exercises. Many of the planes experienced intense, but inaccurate, anti-aircraft fire. Only one plane was hit with minor machine gun fire from a Japanese fighter.

All the planes, with the exception of one which was burning too much fuel and instead headed for Russia, were able to drop their bombs and head for China intact.

Unfortunately, when the

planes arrived over China they were almost out of fuel, there was no beacon from the Chinese airfields for the pilots to follow, and nighttime and bad weather combined to make it impossible to see anything on the ground.

The crews of 11 planes had to put on their parachutes and jump, hoping for the best. Four other planes crash landed. Only the plane which landed in Russia had a safe landing, but the plane was confiscated and the crew was promptly arrested and held for 13 months.

It took several days for Doolittle to find out what had happened to his men. One died bailing out, two drowned, and four were badly injured.

Of the 80 airmen which

participated in the mission, only eight airmen fell into Japanese hands when they landed in the Japanese-occupied portion of China: Three were executed; one died of beri beri; only four made it home at the end of the war.

When Doolittle found out there were no planes left and that several of his men were dead or captured, he considered the mission a failure and was sure his first combat mission would end in a court-martial.

In America though, the mission was viewed quite differently. Although he didn't know it, right after the mission, Doolittle was promoted to brigadier general, completely skipping the rank of colonel.

Once Doolittle had accounted for 70 of his 80

men, he was ordered to Washington, D.C., where he was awarded the Medal of Honor. He never believed he deserved the award.

While the raid didn't have a tangible military value, it had a massive psychological impact both in America and Japan, and helped to change the course of the war.

Because of the raid, the Japanese sped up their war plans, trying to expand their defensive perimeter. Their haste proved to be a costly mistake. It led to their strategic defeat in the Battle of Coral Sea and a much bigger defeat in the Battle of Midway.

After Midway, the Japanese expansion ceased and they were forced onto the defense — the price they paid for psychological defeat during "30 seconds over Tokyo."



Lt. Col. Jimmy Doolittle pins a "returned" medal to the lapel of a 500-pound bomb while crewmen look on. Medals, awarded by Japan, were returned "with interest" via bombs dropped from the B-25 Mitchells.

Courtesy U.S. Air Force

## Schrader's Windward Marine Resort Waikiki Alternative

A unique hotel on  
Oahu's Kaneohe Bay

- Sailing
- Windsurfing
- Kayaking
- Swimming
- Relaxing
- Private

Schrader's Windward Marine Resort  
Kaneohe's Homegrown Hotel & Vacation Rentals  
On Beautiful Kaneohe Bay



47-039 Lihikai Drive, Kaneohe — Hawaii  
(808) 239-5711 — Fax (808) 239-6658  
Call Today For Reservations Tomorrow

## Trinity Christian School

### Summer Fun Program

We may have a spot  
for your child

- Elementary K-6
- Preschool/Daycare
- Swimming
- Crafts
- Cooking
- Excursions
- Clay Classes
- Quality Christian Environment

Now Enrolling for Fall Elementary  
& Preschool Also

262-8501

875 Aulua Road, Kailua

LOWEST  
PRICE,  
BEST  
SELECTION

## ELECTROGAMES PLUS

The Electronics Boutique

Sale Ends June 3, 1992

**SEGA + SONIC**  
**GAME GEAR** = \$20<sup>00</sup>  
COLOR PORTABLE VIDEO GAME SYSTEM **REBATE!!!**

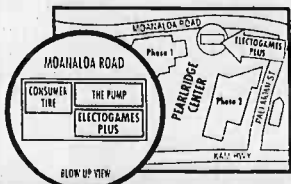
**HERE'S THE DEAL:**  
Everyone Who Buys  
**A SEGA GAME GEAR**  
(with Columns® In-Pack)

**AND**  
**SONIC THE HEDGEHOG**  
cartridge  
**GETS A WHOPPING**  
**\$20<sup>00</sup> check from Sega!**

**GAME GEAR**  
**GAMES**  
Your Choice  
**\$21<sup>99</sup>**

Super Monaco GP Clutch Hitter Leader Board Golf

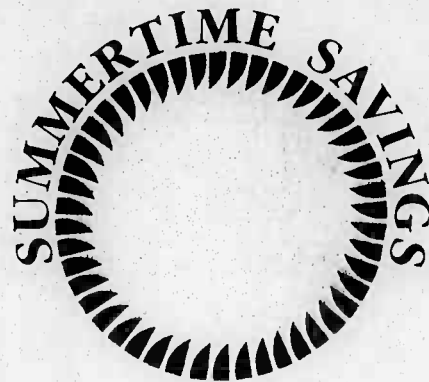
**SEGA GENESIS**  
**\$129<sup>99</sup> Reg. \$134<sup>99</sup>**



**ELECTROGAMES PLUS**  
The Electronics Boutique

HOURS: 10AM to 10PM  
**488-6765**

98-1029 Moanalua Rd.  
at PEARL RIDGE



**JUNE  
SPECIAL!**

**Cheesy  
Bacon  
Burger**  
with Fries  
& 24 oz. Soda

**Only  
\$3.00**

At participating facilities

**AAFES**

If arthritis is just minor aches and pains, why is it  
the number one crippling disease in America?

IT'S TIME WE TOOK ARTHRITIS SERIOUSLY



**Sun Press Classified Call 235-5656**

## Parental involvement

Patty Martinez was named Mok-  
upa Elementary School Volunteer  
of the Year at the school's final  
awards ceremony, May 22. Patty is  
the wife of Sgt. Jeffrey Martinez, K  
Co. 3/3 and they have one kinder-  
gartner attending the school. Patty  
comes in every day to help out  
with everything from office work to  
book fairs. School Principal Jim  
Schlosser, pictured above, pres-  
ents Patty with her award.



Christy Edwards



Sgt. Jason Erikson

## Espirit de corps

BGen. C.D. Kuhn Jr., 1st MEB commanding general, took time out of his busy schedule to share camaraderie and build esprit de corps with Kaneohe Bay Marines and sailors May 20. The general ate lunch with both MEB and Station Marines in conjunction with the month-long observance of Asian-Pacific American Heritage month.

**Elegant Boudoir**  
• D.I. Photos  
• Portrait  
• Head Shots  
• Makeovers  
• Family  
• Weddings

**PRINTS FINISHED  
IN 35 MINUTES**  
Color/Black & White Photography  
Military Discount with this ad  
**INTERNATIONAL PORTRAIT  
DESIGN INC.**  
1541 S. Beretania, Suite 201  
(corner of Kalakaua, Free, Easy Parking)  
Ph. 941-8300 Fax 949-4311

**Red Cross**  
Feel Good  
ABOUT  
YOURSELF...

**KAILUA OPTICAL**  
Has One Hour Service On Most FT 28  
and Single Vision Lenses.

**CONTACTS from \$59**  
**50% OFF ALL FRAMES**  
in stock  
**OVER 1,000 FRAMES**

Kailua Square • Uluniu Street • 262-6191 Luke Jones, Owner

**12 VOLT PRODUCTS HAWAII**  
Practical & Innovative  
12 Volt Appliances  
for your Boat, Van, R.V. or Car

Use While Fishing, Boating, or Camping

**BUG ZAPPER**  
(plug into cigarette lighter)

Call or Write for FREE Catalog  
P.O. Box 17398, Hon., HI 96817

**ONE OF MANY ITEMS AVAILABLE 395-1820**

**Too Many Bills?**  
Immediate Relief  
from Creditor  
Harassment  
Call TODAY  
for Information  
on Bankruptcy  
• Military Welcome •

**Ellen Luigi Fera**  
Attorney At Law  
Evening & Weekend Apprs. Available  
261-4788

**COMPUTDATE**  
926-3283

**LADIES FREE TRIAL  
MEMBERSHIP**  
Hawaii's only computerized video  
dating club. Call for details.  
2130 Kalia Ave. Bldg. C Room 214 WAIKIKI

**WIFE WANTED**  
PRICING

Due to a massive overstock situation New Home Sewing Center is offering for sale to the public a limited number of new special 1991 HEAVY DUTY New Home Zig Zag Sewing Machines (MODEL 535) that are made of METAL and sew on all fabrics, Levi's, canvas, upholstery, nylon stretch, vinyl, silk, EVEN SEWS ON LEATHER! No attachments needed for button holes (any size), monograms, sews on buttons, satin stitches, darts, appliques and more. Just set dials and see magic happen without old fashioned cams or programmers. These HEAVY DUTY New Home Sewing Machines are suitable for home, professional or school room sewing. 25 year warranty. Head only. Your price with ad \$99, without this ad \$399. Check, cash, VISA/MasterCard accepted. 4 DAYS ONLY May 20-23.

**NEW HOME  
SEWING CENTER** 762 Kapiolani Blvd.  
524-6700  
Free store front parking (Mauka between Ward & Cooke St.)

**TRINITY PRESBYTERIAN  
CHURCH**

Where People Care . . . and  
Where the Bible Makes Sense for  
Daily Living.

9:30 A.M. Bible School (for all ages)  
11:00 A.M. Morning Worship

**262-8587**  
875 AULOA ROAD, KAILUA

**It's Time  
for a Change!**

14 automotive chores  
in 10 minutes!

**jiffy lube**  
"How do I know?  
Oil Change"

Pearl Kai Shopping Center  
98-199 Kamehameha Highway  
Across From Pearlridge  
Phone: 488-5433

\*Gift Certificates Available

OPEN DAILY:  
Monday - Friday: 8 a.m. - 6 p.m.  
Saturday: 8 a.m. - 5 p.m.  
Sunday: 9 a.m. - 5 p.m.

Performance Protection Quality. © Jiffy Lube International, Inc. 1991

**P5 TRAVEL** Pioneer Federal Bldg  
306 Ku'ulei Road  
263-3366 8:00 - 5:00 Mon-Fri

**CALL FOR MILITARY & SENIOR DISCOUNTS !!!**

INTERISLAND COUPONS  
\$44 single \$255 book of 6  
OVERNIGHTER  
AIR, ROOM & CAR PACKAGES  
on all islands from \$119.99 p/p  
LOS ANGELES from \$169.99 \$315rt  
SAN FRANCISCO from \$179.99 \$315rt

Seattle.....from \$219.99 \$359rt  
Anchorage...from \$299.99 \$359rt  
Las Vegas Package from \$439rt  
Denver, Salt Lake....from \$498rt  
Dallas, Houston.....from \$525rt  
Atlanta, Chicago.....from \$538rt  
Newark, DC, Boston from \$565rt

Call for many more specials. Some restrictions may apply. Prices subject to change & may vary depending on travel dates. TA1158

**Bring the world into your home.**

**Host an international student!**  
Elementary through college age from Europe and Asia  
For information about programs available call  
**Hawaii Homestay - 735-5660**  
Stipends paid to cover expenses: \$14 per day (\$420 per month)  
**Hawaii Study Tours \* Kilohana Square \* 735-5660**

**SALE \$48-\$54**  
**ALL QUANTUM®  
PERMS**

Reg. \$58-\$68. Shampoo and  
styling included. Long hair  
and design wrap additional  
charge.  
Sale price effective Sunday,  
May 31 through Saturday,  
June 6.

**SAVE 50% OFF ANY CARPET!**  
ALL FIRST-QUALITY CARPETS • ALL NATIONAL NAME BRANDS • LOCAL STOCK AVAILABLE FOR IMMEDIATE PICK-UP!

**DUPONT  
CERTIFIED  
STAINMASTER  
CARPET**

**LOWEST PRICE  
STAINMASTER  
CARPETS  
IN HAWAII!**

**STAINMASTER PLUSH**  
• 30 decorator colors! • 5 yr. wear warranty!  
Suggested Retail: \$17.95 sq. yd.

**\$800**  
sq. yd.  
ROLL PRICE

**Vinyl at Wholesale Prices Too!**  
Fantastic savings on sheet vinyl and vinyl tiles from  
Congoleum, Armstrong and Amtico.

**HAWAII'S LARGEST REMNANT SELECTION!**  
Buy below wholesale cost! Sizes 12' x 3' to 12' x 35'

SIZE	COLOR	COMPARE AT	MEMBER PRICE	SIZE	COLOR	COMPARE AT	MEMBER PRICE
12 x 3	Multicolor	\$40	\$18	12 x 11	Smoke	\$190	\$58
12 x 3	Silver Tankard	\$60	18	12 x 12	Silver Grey	\$144	68
12 x 4	Silver Grey	\$48	18	12 x 12	Silver Tankard	\$240	68
12 x 5	Acorn	\$68	28	12 x 13	Acorn	\$156	78
12 x 5	Amber Glow	\$68	28	12 x 13	Amber Glow	\$156	78
12 x 6	Cottonseed	\$120	38	12 x 14	Smoke	\$242	88
12 x 8	Gold Dust	\$96	38	12 x 14	Teakwood Blue	\$224	88
12 x 9	Smoke	\$156	48	12 x 15	Multicolor	\$200	88
12 x 9	Teakwood Blue	\$144	48	12 x 15	Cottonseed	\$300	98
12 x 10	Rust	\$120	48	12 x 17	Gold Dust	\$204	98
12 x 10	Cottonseed	\$200	58	12 x 18	Multicolor	\$240	98
12 x 11	Gold Dust	\$132	68	12 x 18	Rust	\$216	98

Limited to stock on hand. Hurry for best selection.

**CUSTOM DRAPERIES AT READY-TO-HANG PRICES! . . .**

HEIGHT:	WIDTH:					Additional Widths Available
	31' to 51'	52' to 79'	80' to 105'	106' to 131'	132' to 158'	
UP to 42"	\$17 <sup>10</sup>	\$25 <sup>60</sup>	\$34 <sup>20</sup>	\$42 <sup>76</sup>	\$51 <sup>30</sup>	
43" to 60"	\$19 <sup>80</sup>	\$29 <sup>70</sup>	\$39 <sup>60</sup>	\$49 <sup>50</sup>	\$59 <sup>40</sup>	
61" to 84"	\$23 <sup>86</sup>	\$35 <sup>10</sup>	\$47 <sup>03</sup>	\$58 <sup>96</sup>	\$70 <sup>20</sup>	
85" to 108"	\$27 <sup>23</sup>	\$40 <sup>50</sup>	\$54 <sup>46</sup>	\$67 <sup>73</sup>	\$81 <sup>00</sup>	

Great low wholesale prices on beautiful custom draperies for your home. Bring in your measurements today!

**OPEN 7 DAYS A WEEK!**

Over 11,000 sq. ft. of Showroom/Warehouse space near Costco.

**Bougainville WHOLESALE  
CARPET CENTER**

We are a Wholesale Carpet Club  
4577 Bougainville Drive • Honolulu, Hawaii 96818 • Phone 831-2300  
Visa and MasterCard Welcomed

**NOBODY BEATS OUR PRICES!**

Bougainville Warehouse  
Monday-Friday . . . 10 a.m. to 6 p.m.  
Saturday . . . 10 a.m. to 5 p.m.  
Sunday . . . 12 noon to 5 p.m.

**JCPenney** OPEN SUNDAYS FOR YOUR CONVENIENCE  
Styling Salon

**Windward: 235-4224**

**Career Opportunities**  
Manicurist & Stylist  
GREAT BENEFITS

Mon., Tues., Wed.  
**SENIOR CITIZENS**  
TAKE 10% OFF ALL SALON SERVICES

**NEUS** **SEBASTIAN**  
© 1992, JCPenney Company, Inc.





# Marlboro

SURGEON GENERAL'S WARNING: Quitting Smoking  
Now Greatly Reduces Serious Risks to Your Health.

17 mg "tar," 1.2 mg nicotine  
av. per cigarette by FTC method.

© Philip Morris Inc. 1992

# Solved

Solved, from A-1  
run over and traffic jams were very bad because you couldn't pass another cart.  
In addition to issues created by the current facility, others deal with concerns which will be taken care of when the consolidation of all commissaries is complete. Kurisu added that the consolidation is also a few months down the road.  
Although the actual consolidation is done in terms

of authority, several elements of control have yet to catch up with the system. Price structuring is one of these, Kurisu said. Right now, different systems operate with different prices based on who they buy from. But soon, all Oahu commissaries will be supplied as part of one system, so all prices will be the same, and Bailey said this will cause prices to go down for most items.  
"We buy our products as a single store. But when all commissaries products are purchased together, it will allow

a greater savings because of the higher volume," she said.  
Kurisu added that with the exception of produce and meat, all items are sold to customers at cost. That means if the store pays 79 cents for a can of peas, the customer will too.  
Another suggestion was to have double-coupon days for added savings. Bailey said these are not done now because they must be done as part of a region-wide event. Kurisu added that as the consolidation becomes more solidified, such activities will start to happen frequently.

There were six other suggestions, which are not effected directly by either the facility or the consolidation.  
For instance, one suggestion was to extend the hours for using push carts. This commissary has the longest hours in the Marine Corps, but some of that time, in the evening, is devoted to only hand-carried baskets. Kurisu explained this unique practice is done during a time when they would not otherwise be able to be open.  
"The register is run by a

member of the night stocking crew. We couldn't have carts because they would interfere with the stocking crew in our narrow aisles," he explained.  
Another person wanted to know why most products are by Proctor and Gamble. Bailey said the store has no company preference.  
"If there is any particular item that a customer would like us to carry, we have suggestion and request forms at the front desk," Bailey said. "After I've read these, I give them to the commissary officer and he takes

them to his buyer meetings to see if it is feasible." She added, however, that they get very few suggestion forms from the customers.  
One other suggestion was not to check the identification cards of servicemembers in uniform. But Bailey pointed out they are required by Station regulations to do so, because there are several people, such as reservists, who may have a uniform, but do not necessarily rate to use the commissary.  
"We are just protecting our patrons rights by doing this."

# Housing

Housing, from A-1  
housing. The units being dedicated to E-3s and below are coming from within the housing areas currently occupied by NCOs.

In what St. John described as a "domino effect," the redesignation also includes moving NCOs into 88 two-bedroom units which used to be occupied by staff NCOs, which is opening up space for the junior enlisted.  
"We are making the changes by attrition," St. John explained.

This means that as an NCO moves out of a unit now targeted for junior enlisted, an E-3 or below is moved in. The same procedure is being used for the NCOs moving into former staff NCO quarters.  
"With the summer months coming up, I think a lot of the change-overs will take place,"

he added.  
While the staff NCO ranks are losing 88 two-bedroom units, they are gaining the 40 new units being build on the northern side of Ulu'pau Crater, and will also be able to move into the Project 802 houses. Both developments are expected to be done by November, and some

"802" units will start being filled as early as August, he added.  
St. John said the "802" units will be for E-6s and below, to include privates. These units will be rented for a set amount, and occupants will receive full BAQ/VHA allowances.  
Although the fixed price is set so that staff sergeants can live

in them at no cost, a private who moves in will still save substantially as compared to living in the current civilian rental market, St. John said. He estimated that it would cost a private \$160 out of pocket to live in an "802" unit, compared to about \$480 living off base.



**ALOHA TATTOOING COMPANY**

custom tattooing  
at its finest  
we can draw  
anything

320 ku'ulei rd.  
kailua  
hawaii

Larry &  
Leonard  
Hanks  
263-2019

## BLUE STAR FURNITURE

Pre-Owned Furniture & Appliances

Twin Beds	\$25	Washer	\$50
Double Beds	\$50	Dryer	\$25
Queen Beds	\$75	Icebox	\$50
King Beds	\$100	Air Cond.	\$25
Bunk Beds	\$50	Dining Sets	\$25
Dressers	\$25	Sofas	\$50
Coffee Tables	\$10	Desks	\$20
Lamps	\$10	Chairs	\$5

All furniture re-conditioned and re-upholstered  
MON-SAT: 9-5:30 262-4440 60 Kihapai St., Kailua  
(Next to True Value Hardware Hawaii)

**CASH FOR USED FURNITURE**



**MIKE McKENNA'S**  
**WINDWARD VOLKSWAGEN**  
**"SPRING SPECIAL"**

**OIL CHANGE** \$19.95\*  
Reg. \$45.00 • Includes Oil Filter • With Add • Offer Expires 6/15/92

\*Present coupon at time of write-up.

Parts Dept. Open Sat. 9am-2pm  
**262-6576**  
"Keep a Great Thing Going"



725 Kailua Rd., Kailua

## Barber & Hairstyling

For Men & Women

Active Duty Military \$650  
Civilian \$725

Open 7 Days  
By Appointment or Walk-In

the Regulation  
254-4111



## NON-STOP TRAVEL

ONE WAY	ROUNDTRIP
SFO \$129	\$329
LAX \$149	\$288
Seattle \$339	
Vancouver \$365	
Phoenix \$417	
New York City \$589	
London \$929	


Interland Coupon Book \$265  
16 segments  
Plus taxes • OTHER CITIES AVAILABLE

**DISNEYWORLD FLORIDA**  
AIRFARE, TRANSFERS, HOTEL AND PASS FROM \$918


**DISNEYLAND CALIFORNIA**  
AIRFARE, TRANSFERS, HOTEL AND PASS FROM \$399

SERVING ALL ARMED FORCES  
**SPECIAL MILITARY RATES AVAILABLE**

**CALL 946-1484**  
711 KEEAUMOKU STREET - SUITE 209  
NEXT TO THE LIKELIKE DRIVE-IN  
FREE VALIDATED PARKING  
CERTAIN RESTRICTIONS APPLY. TA 1076



Last year we fed millions of hungry people in the United States. You can help us. We're The Salvation Army.





## Getting through inspection

Any Marine who's stood an inspection knows how hard it can be. Which is why we've made getting AT&T from

## isn't always easy.

public phones on base so easy. When you make a Calling Card or collect long distance call, simply dial 10+ATT+0

## Getting your call through is.

before the number you're calling. You'll be assured of all the service you've come to depend on, at the prices you expect.

## Dial 10+ATT+0

plus the area code and number.



For more information call 1 800 525-7955, Ext. 755.  
©1992 AT&T



## Briefly

### Employment programs

The ERC is offering the following employment programs: "How to Write Your Resume," Wednesday from 9-10:30 a.m.; and "How to Complete the SF-171," June 16 from 8-11:30 a.m. Reservations are required and can be made by calling, 257-3135.

### Driver's education

Driver's education classes begin Monday and will be held for five consecutive Monday from 9:30-11:30 a.m. There is small registration fee which includes a manual and the trip to the licensing bureau for the permit test. Call the ASYMCA for more information, 254-4719.

### Empathy training

The FSC will offer a class designed to improve communication through listening skills, Monday, Tuesday and Wednesday from 6-9 p.m. at the Enlisted Spouses Center. This key wives training is open to anyone interested in the key wives program. Call 257-3655 for reservations.

### New arrivals island tour

An around Oahu tour will be held June 12 from 9 a.m.-4 p.m. Lunches are needed but sodas are provided. Children are welcome. Call 257-3655 for reservations.

### Welcome aboard orientation

A program for all newly arrived active duty personnel, spouses and new Station civilian employees will be held Tuesday from 7:30-11:30 a.m. in the Station Theater.

### DI reunion

The Marine Corps Drill Instructors Association, West Coast Chapter, will hold its annual reunion in San Diego, July 16-19. For more information contact Jim Banks, P.O. Box 400084, MCRD San Diego, CA 92140, (619) 297-2500 ext. 296.

### Summer fashion show

A tropical fantasy summer fashion show will be held at the Windward Enlisted Club, June 6. Come and see the latest in summer, back-to-school and fall fashions. Tickets cost \$12 and include a luau buffet and fashion show. Tickets are available at all area Marine Corps exchanges.

### Financial secrets

Edward Coda of the Hawaii Financial Specialists will share six simple, yet dynamic, concepts designed to beat inflation, and to help finance a home, educate your children and afford a comfortable retirement. Learn how to develop winning habits and attitudes about money in a FSC class June 11 from 11:45 a.m.-12:45 p.m. Reservations are needed and can be made by calling 257-3655.

### Parents support

Do you ever feel parenting is more than you bargained for? Do you find yourself yelling at your children? Do you wonder what to do when they misbehave? Would you like someone who will listen, provide support and give advice? A new parents support group meets every Tuesday from 6-8 p.m. at the FSC. Call Debbie or Lauri for information, 257-3655, or just drop in.

### Anger management

A workshop with the See Briefly, B-5

## Wahines wallop Fly Girlz

By Sgt. Kevin Doll

The blistering offense of the Ikaika Wahines swatted the Fly Girlz May 21 with a 6-3 win in the women's intramural softball championship here.

The Wahines were the number one team in women's intramural softball this year with a 15-0 regular season record. The Girlz came into the championship game looking for revenge as the undefeated Wahines had already walloped them four times in regular season play.

The Wahines wasted no time getting busy in the championship game, either. Coach/player Brenda Siebold smacked a line-drive single to the Girlz shortstop and later made it home when Shelly Ball sent one straight up the middle to centerfield. The Wahines threatened to score again with bases loaded but the Girlz' defensive stronghold held them back and retired the side.

The Girlz first time at bat proved to be an omen for the rest of the night. The first batter struck out, the second, Girlz batting powerhouse Angie Hill, was purposely walked, and the third sent a bloop to the pitcher for an easy out at first. Hill was picked off at second when the next batter sent a grounder to shortstop Siebold.

The Wahines couldn't get anything going in the second inning as the first batter popped out at third, the second whiffed out at home and the third sent a pop-fly to left field for an easy out.

The Girlz showed more life at their second chance at bat. The first batter was picked off at first after sending a grounder to the third baseman. But Rose Pollion chopped one in the short centerfield hole for a single and Nicole Ferguson did the exact same, putting runners on first and second. Unfortunately, the next Girlz batter sent a grounder to the pitcher and Pollion was thrown out at third. Carlotta Moore struck out to retire the Girlz still down by one.

The Wahine offense came alive again in the third inning when, with one out against them, leftcenter Alecia Stade zipped

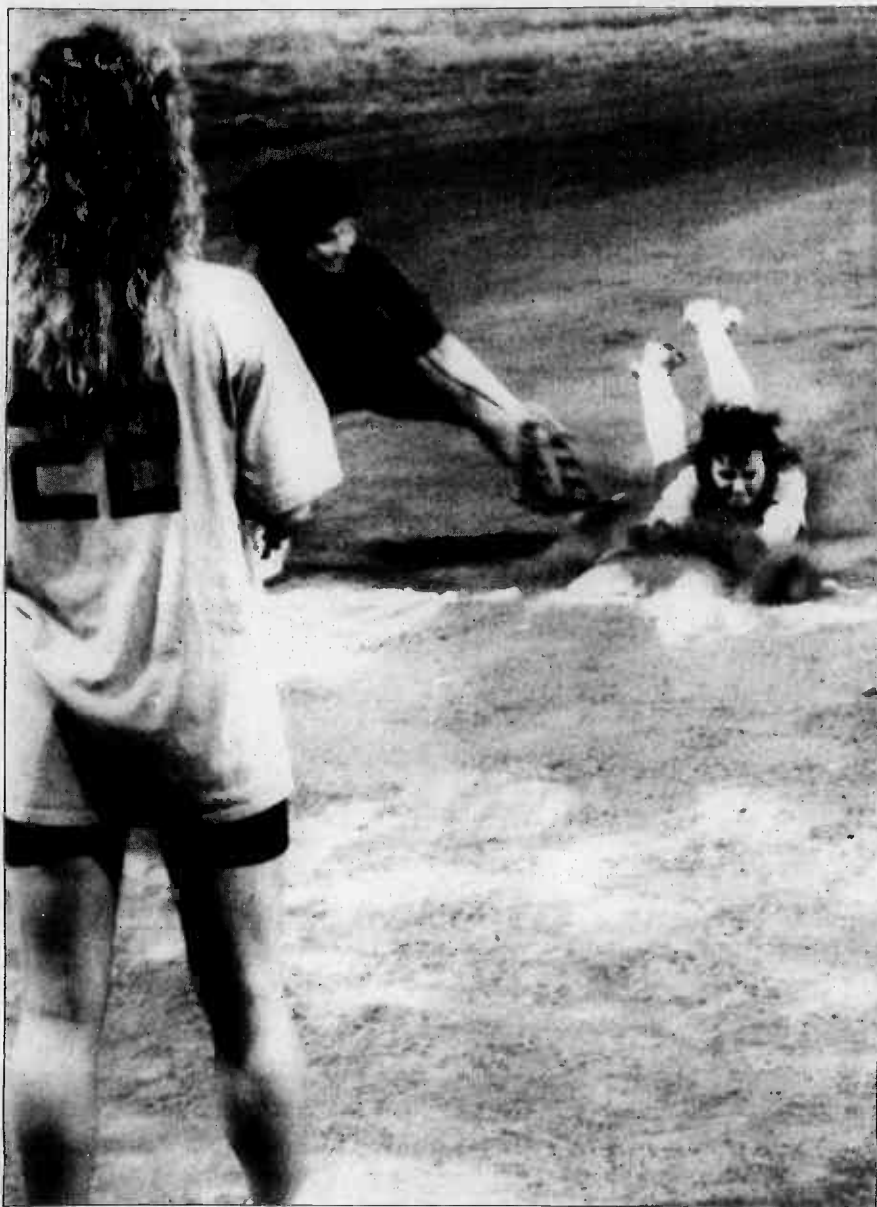
one to right field for a single. Second baseman Jo Warwick popped one up to left field for the second out but advanced Stade to second base. Next up to the plate was Siebold and she smacked a long one to left field. An error by the leftfielder turned Siebold's double into a triple, bringing Stade home to up the Wahine score to 2-0. The Wahine landslide continued when an error by the Girlz rightfielder turned Marcy Estrada's single into a double and RBI with Siebold crossing home plate, putting them up by three. The Girlz stopped the Wahine drive when the centerfielder caught a Ball pop fly.

At the bottom of the third, a possible Girlz triple turned into tragedy when Kim Mahler stumbled at second, slowing her enough to be picked off with a perfect Wahine throw to third. This seemed to temporarily let the steam out of the Girlz' offense, as Millie Rambert grounded out at second and Coressa Key grounded out to the pitcher.

The Girlz defense saved a Wahine avalanche in the fourth inning. Mili James was walked and Chris Zander sent a shot to second for a single. Beth Thore-McKenzie smacked a grounder to third where James was tagged out. The next Wahine popped out to Girlz star shortstop Pollion. Nancee Hergert batted in Zander to make it 4-0. Sheri Broad smacked a single, loading the bases with two down. Luckily for the Girlz, Stade popped one to the center field for an easy third out.

The Wahines were taking no chances, however, again purposely walking Hill, the first Girlz batter in the fourth inning. Lanita Saunders was also walked to first, unpurposely. Jo Almager zipped a grounder to second where Saunders was tagged out, putting runners on first and third. The Wahine defense quickly snuffed the threatening Girlz when a Pollion grounder to the shortstop was capitalized into a double play, snagging Almager at second and Pollion at first.

See Wahines, B-4



Sgt. Kevin Doll

Coach/player Brenda Siebold of the Ikaika Wahines is safe at third as she slides headfirst in a cloud of dust during the women's intramural softball championship May 22.

## Woman triathlete trains at Kaneohe Bay



Debbie Hornsby

Sgt. Kevin Doll

By Sgt. Kevin Doll

Two weeks before Debbie Hornsby competed in the Honolulu Waterfront Triathlon, she was struck by a car while training on her bike.

Injured, but undaunted, she continued training and competed in the 1K swim, 40K bike and 10K run event, not knowing how competitive she would be.

She was competitive enough, however, to be the first woman to cross the finish line and be the 30th overall finisher out of a field of 800 entrants. The surprised triathlete is now looking at future competitions in a whole new light.

Hornsby's upward climb through the triathlete ranks continued Sunday with her finishing first in the women's division in the Kaeuhou/Kona Triathlon, which puts triathletes through half the distances of the famous but grueling Ironman Triathlon. Hornsby's time in the 1.2 mile swim, 56 mile cycle and 13.1 mile run

event was 4 hours and 45 minutes, her longest triathlon to date. She finished 23rd out of 166 entrants, set a new course record in the cycling portion of the race and finished with the second fastest overall time for women in the 10-year history of the event. With her win, Hornsby is now qualified to compete in the Ironman, which last year was only a dream for her.

The wife of Bellows AFS Commanding Officer Capt. Russ Cutting, Hornsby said her husband was the catalyst for her triathlete aspirations. He has participated in both marathons and triathlons. They both observed the Ironman competition on the Big Island last year and they came away amazed at the endurance and spirit of the athletes. They both decided to try and qualify for this year's Ironman. Cutting has the chance to qualify for the Ironman through the lottery system the triathlon conducts which allows a number of "underdogs" to compete. He has

to finish an Ironman-qualifying triathlon, which he plans to do at K-Bay's Windward Triathlon later this year.

As evidenced by her bike accident, Hornsby said training on populated Oahu can be hazardous.

"There are only two types of cyclists," she said. "Those who have been hit and those who will be hit." She trains at various places on Oahu, including the Station pool in the MWR-sponsored master swim program under the instruction of Marty Jones.

"My husband taught me how to run," said the 28-year-old Canadian. "And I've only been training on the bike five-and-a-half months." Her knowledge of biking has been enhanced by Mike Buonagario, who finished 53rd in last year's Ironman.

A typical training week for Hornsby includes biking 175-200 miles a week. She rides her bike to work four days a week and the 35 mile round trip adds up. She runs about 25-35

See, Hornsby B-5

## Thompson to compete in Summer Olympics

Public Affairs Office  
The Sentry

Staff Sergeant Roxane Thompson, a marksmanship instructor at the Weapons Training Bn., MCCDC, will compete in the 1992 Summer Olympic Games in Barcelona, Spain. Thompson earned her position on the team by winning the final Olympic qualification competition in women's sport pistol held May 14-17 at the Peterson Prado Tiro Range in Chino, Calif.

Thompson is on the Marine Corps International Shooting Team and made the U.S. National Shooting Team in 1991 and 1992 and the 1991 Pan American Team. During the Pan American games, she won a bronze individual medal and silver team medal, earning the

coveted International Distinguished Shooter Award, becoming the first woman Marine and one of the five active-duty Marines to do so.

Thompson was also the 1989 and 1990 National Women's Pistol Champion. She earned a silver medal at the 1991 Interservice Championships in sport pistol and earned second place in conventional pistol at the 1991 NRA National Women's Championships. She was chosen as the 1991 Armed Forces Female Athlete of the Year, the first woman Marine to earn the honor.

The Sandpoint, Idaho, native recently participated in the Conseil International du Sport Militaire competition. She earned three gold medals and broke three CISM records, accumulating an aggregate score which earned her the title of Women's Pistol High Shooter.



### Marine triathletes

Two K-Bay Marines finished first and second in the military division of the Kaeuhou/Kona Triathlon Sunday. Capt. Kevin McCord had a 4 hour and 40 minute finish for the first place honor, followed by LtCol. Gil Loomis at 4:57. The triathlon includes a 1.2 mile swim, a 56 mile cycle and a 13.1 mile run, half the distance of the Ironman Triathlon. Pictured left to right are K-Bay Marines 1st Lt. Dan List, who had a 5:04 finish time, McCord, Loomis, and Maj. Dick Shufflers, who crossed the finish line at 6:46.

Courtesy of Cheryl Loomis

# 'The sun didn't shine,' but still they played

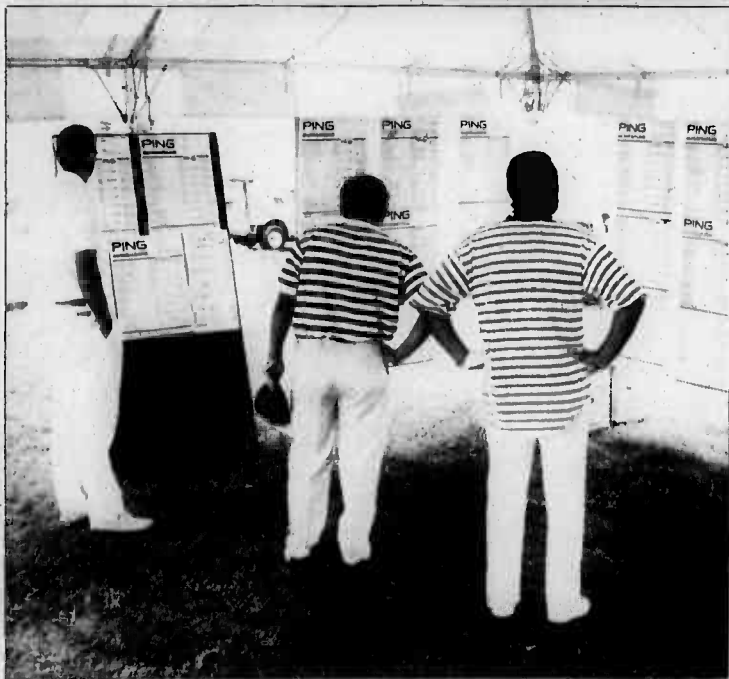
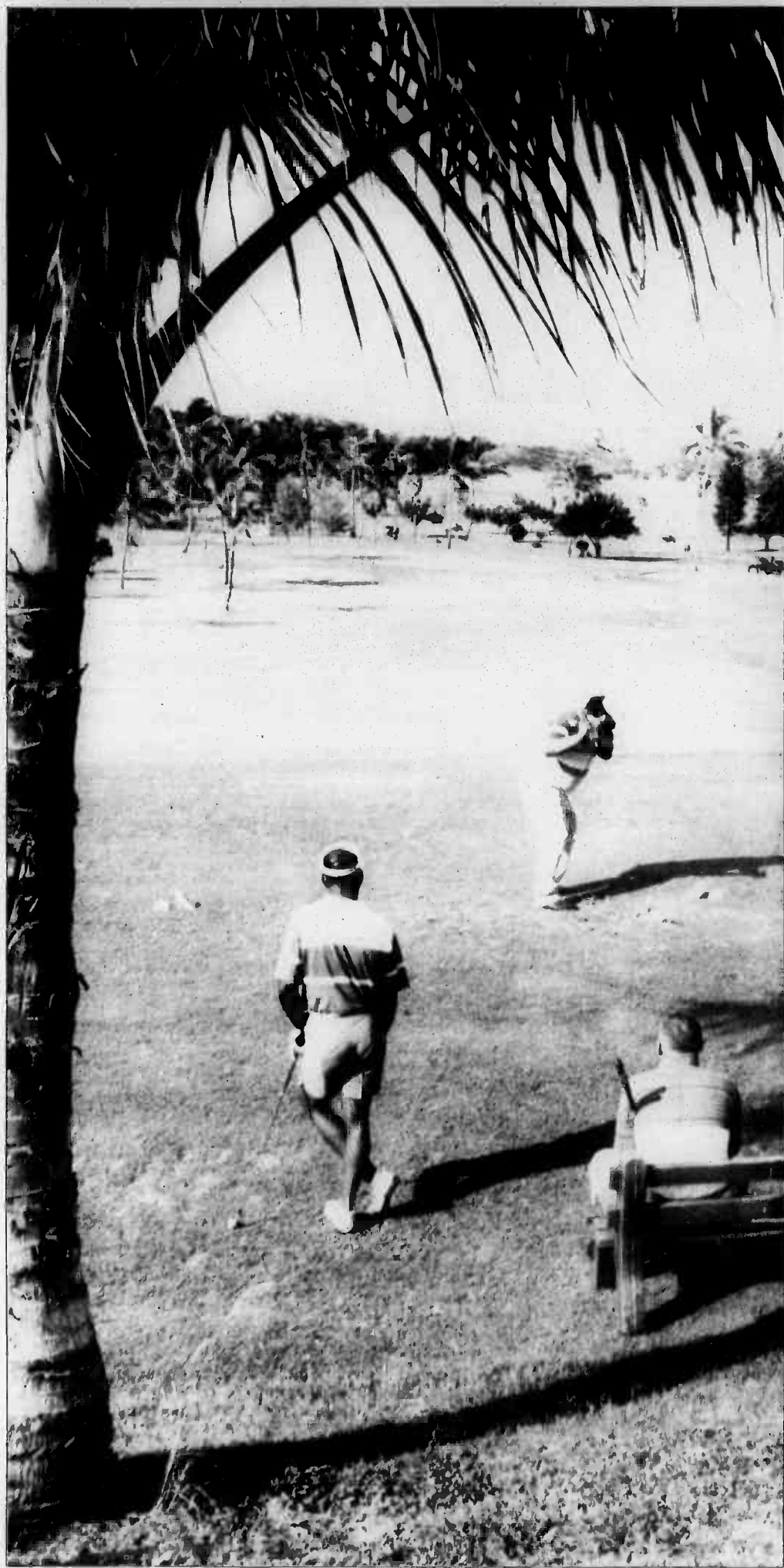
Story and photos  
by Sgt. Kevin Doll

A downpour on the last day of play couldn't dampen the spirits of Klipper Course golfers here during the 16th Annual Staff NCO Golf Tournament as Jeff McCleary held on to win in the championship flight as the low gross scorer for the tournament.

The tournament, with 158 entrants, was the largest in years, according to assistant pro Louis Lee. The tournament was open to all active duty Marines and sailors, retired military and K-Bay DoD civilian workers.

Golfers armed with umbrellas and windbreakers braved the Memorial Day rainstorm which started in the early morning and lasted into the late afternoon. The previous days of play had good weather.

"Other than Monday, we couldn't have had better playing conditions or a course in better condition," said SgtMaj. Harold T. Chapman, brigade sergeant major. According to Chapman, all fees for the tournament go back into the prizes awarded, which included \$5,000 in MWR gift certificates, golf clubs and a color TV.



(Clockwise from top) Joe LeClaire, H&S Bn., Camp Smith, huddles underneath his umbrella trying to keep dry before his next tee-off during the final day of play at the 16th Annual Staff NCO Golf Tournament. Klipper Course Pro Chuck Larson radios the starter's office to call the next group to the first hole. Golfers check out the day's standings. The sun finally did reemerge in the afternoon to dry out the golfers, like these finishing up on the 18th hole.



# Play ball

## Youth ball leagues to wrap-up season, Saturday



5-year-old Kyle Godby sizes up the ball as Coach Ken Ciolek gives him pointers on his stance.

By Sgt. Kevin Doll

**Editor's Note:** The Blue Angels will battle the Angels in the T-Ball championship Saturday at 11 a.m. at the Ft. Hase field. The Red Sox will go head to head against the Warriors at 11 a.m. in the Coach Pitch championship at the commissary field. In the Pee Wee championship, the Pirates will fight the Mob at 11 a.m. at the other commissary field.

If you think big league ball players have it rough, consider the woes of the fledgling T-Ball athlete. Confusion often reigns on

the field during play because these 6- and 7-year-old youngsters have yet to learn many of the fundamental rules of baseball, much less to sharpen their skills in the sport. But, unlike major leaguers, their goal is to have fun and, in the meantime, maybe to win.

Coaches Rick Lehron, Mike Cobine and Ken Ciolek had their hands full with their future big leaguers recently as they put their Athletics through the paces at the Ft. Hase ballfield.

The required skills are slowly being mastered by the players, although well-meaning efforts often fall short.

Just because the ball is stationary when a player bats, it's doesn't mean it's all that easy to hit. Batters know their teammates will erupt in laughter if they swing and miss. And sometimes it's just too much when a player bats, manages to hit the ball and sprints to first base only to hear the dreaded "you're out" - and no words of consolation will stop the tears.

Some of the players are still getting accustomed to that big hunk of leather they must wear on their hand and use it with some sort of dexterity. And a thrown ball often has the strange trait of going in

directions never intended.

Even too much enthusiasm causes trouble. Scrambling to beat their teammates to a hit ball instead of getting the ball to the proper baseman is more often than not the goal. Exasperation shows on their little faces when, after quickly fielding a ball and tagging a player or base, they discover they dropped the ball enroute.

Daydreaming can also be a problem for the T-ball tykes.

Coach Cobine caused the team to break out in giggles when he accused First Baseman Aaron Nutter of looking for pictures of his girlfriend when a groundball rolled right by him as he was busy kicking dirt around.

Unfortunately, the big-league hopefuls are finding common sense often has no place in the strict confines of baseball regulations. What should you do when a player is trying to tag you out between bases? Run into the outfield, of course - but not according to coach.

Whatever troubles the Athletics experienced in this practice didn't take away from the feeling they had when they got it right, either by swatting the ball into the outfield, catching a pop fly or tagging a runner out. And although their towering coaches point out their mistakes, the players know they're just as quick to praise when they excel.



Anthony "Ant" Lehron scrambles to scoop up a line drive as Justin Morris races to back him up.

**Sansior Portraiture**  
**STUDIO 2000**

**FOR HIM... FOR YOURSELF**

**WE ALSO DO:**  
Make-Overs • Model Portfolios  
Families • Weddings • Grads

Photography by  
Dwight Iwasa  
Make-up & Hairstyling  
by Sandra & Chris  
Lingerie courtesy of  
Naughty But Nice

**396-7721**

**ATTENTION PARENTS!**

**WE'RE NOT JUST "KIDDING" AROUND**

*Hawaii's Very Own*  
**FOX KIDS 13 CLUB**  
**KHNL**

The KHNL/Fox Kids Club has a lot more to offer than fun and games. We've got special discounts at museums and theaters; cultural and educational events; and community involvement.

Of course, there's lots of fun and games, too!

### JOIN US... FOR FREE!

The 50,000 members of the KHNL/Fox Kids Club invite you to join the most totally fun club for kids in Hawaii. Just fill out this entry form completely. You will receive your membership kit and I.D. card in 8 weeks.

ALL KIDS 2-14 are eligible!

PLEASE PRINT

Name \_\_\_\_\_

Address \_\_\_\_\_

City \_\_\_\_\_ State \_\_\_\_\_ Zip \_\_\_\_\_

Birthdate \_\_\_\_\_ Month \_\_\_\_\_ Day \_\_\_\_\_ Year \_\_\_\_\_ Phone \_\_\_\_\_

MAIL TO: KHNL FOX KIDS CLUB, P.O. BOX 17847, HONOLULU, HI 96817

<p><b>Here's My Card!</b></p> <p>Windward Business &amp; Professional Services Directory</p>	
<p><b>TOWING</b></p> <p><b>DEAN &amp; RC's TOWING</b> Quality Service • Reasonable Rates Island Wide • 24 Hours <b>263-5809</b></p>	<p><b>ENGRAVING &amp; TROPHIES</b></p> <p><b>Jamin</b> Sales Inc. Trophies, Plaques, Pins, Medals, Engraving, Ribbons, Rosettes, Custom Laser Plaques, Koa Wood Custom Made Products <b>FREE ESTIMATES DELIVERY</b> James &amp; Connie Willis <b>HONOLULU</b> 1234 N. King Street <b>841-5574</b> <b>KANEHOE</b> 45-873 Luana Place <b>247-7744</b></p>
<p><b>FEATHERS HULA SUPPLIES</b></p> <p><b>Aloha Feather Co.</b> 417 Uluniu St., Kailua <b>261-1178</b> Feathers, Polynesian Crafts</p>	<p><b>MARTIAL ARTS</b></p> <p><b>UNIFIED THE KIWONO</b> Martial Arts Instruction &amp; Supplies <b>FREE 1 WEEK TRIAL</b> Children • Adults &amp; Private Lessons 6 Week Self-Defense Course For Women <b>235-7741 Walter Herrington, Jr.</b></p>
<p><b>ACRYLICS &amp; FIBERGLASS NAILS</b></p> <p><b>Priti Fingers</b> for Acrylic Nails Full Set \$45.00 Fills \$20.00 Acrylic &amp; Fiberglass Nails with a difference • No re-growth ridge • 4 Weeks between fills • No lifting or chipping • Thin &amp; slender "natural look" Margaret (formerly of Susan Beers) <b>263-3005</b></p>	<p><b>AUTO DETAILING</b></p> <p><b>KEN'S AUTO DETAILING</b> Professional car care center FULLY LICENSED AND BONDED "We Wax While You Relax" Ask about our FREE pick-up and delivery service. • Rustproofing by Rustech • 46-158 Malina Place Kaneohe Mon.-Sat. 8am-5pm <b>235-5668</b></p>
<p><b>BOAT REPAIR</b></p> <p><b>D &amp; T Boat Mobile Repair Service</b> Specializing In: FORCE &amp; SUZUKI OUTBOARDS, BAYLINERS, VOLVO PENTA, GAS, DIESEL &amp; FIBERGLASS Tommy Medeiros <b>261-2128</b></p>	<p><b>BUSINESS SYSTEMS &amp; CONSULTING</b></p> <p><b>AIMS</b> specializes in aiding small and medium companies in automating their business <b>RETAIL POINT-OF-SALE ACCOUNTING INFORMATION MANAGEMENT</b> "FREE Initial consultation" A small business for small businesses. <b>247-2139</b></p>
<p><b>CERTIFIED HYPNOTHERAPIST</b></p> <p><b>RESOLUTION 1992: Positive Change</b> <b>TRY HYPNOSIS</b> FOREVER TRIM! A Life Changing Weight Control Program. FOREVER FREE! A Guaranteed Stop Smoking Program. CALL FOR FREE CONSULTATION APPT. <b>JOHN DAUGHTERS, M.S. Certified Hypnotherapist 261-9111</b></p>	<p><b>RESIDENTIAL HOUSEKEEPING</b></p> <p><b>CLEAN SWEEP</b> RESIDENTIAL CLEANING WEEKLY, BI-WEEKLY &amp; MONTHLY SERVICE MOVE-IN/MOVE-OUT SPECIALISTS Call Today For A Free Estimate <b>235-8768</b> 45-955 Kamehameha Hwy. #304, Kaneohe</p>

SPORTS  
Briefs

Racquetball  
tournament

The Summer Sizzler Racquetball Tournament will be June 5-7. Entry forms are available at the main gym and deadline for entries is 4 p.m. today.

Track coach

Dependent Recreation is

looking for a youth track and field coach for the National Hershey Track and Field Meet and other meets. Competition starts in June. Those interested should call Dave Pablo at 254-2963.

Aloha  
State Games

Volunteers are needed for the Aloha State Games windsurfing

competition, June 8-13. The competition will be at Kailua Beach Park June 8-9 and at Diamondhead Beach Park June 10-13. For more information contact Pat Howard at 254-4137.

HMAC Golf  
tournament

The HMAC Golf Tournament will be June 11-14 at the Klipper

Golf Course. The event is open to all Hawaii active duty Marines and to sailors stationed at K-bay with All-Marine level playing ability. The Athletic Office has the right to raise the handicap to make a more competitive tournament. Qualifications are: open division, four and under handicap; seniors (40 years old and older), six and under handicap; women's open, 14 and under handicap.

Softball tryouts

Tryouts for the Hawaii Marine men's varsity softball team will be conducted June 1-6 at the Station softball annex from 7-9 p.m. The team will participate in regional tournaments and players will be eligible for selection to the All-Marine softball team. For more information, contact SSgt. Lamont Hales, 471-5872.

Wahines

Wahines, from B-1

The Wahines again showed their offensive championship form in the fifth. After Jo Warwick popped out at right field, Siebold got on base again with a line-drive single to centerfield. Estrada did likewise with a single to left, putting runners on first and second. The second Wahine out was made when Ball popped out to third. But James kept the drive alive with a single to third and, with Siebold sliding safely at third in a close call, the Wahines had the bases loaded. Zander scored two RBIs when she swatted a double, giving the Wahines a six-run lead. The Girlz had enough and made the third out when Pollion caught Thorne-McKenzie's pop-fly.

Ferguson gave the Girlz their

first out in the fifth with a pop fly to left field. Beverly Childer also popped out to right center. Moore smashed a line drive to left field for a single and Kim Mahler sent her to third with a line-drive double that the Wahine leftfielder missed. Unfortunately, another Girlz' chance to get on the board was missed when Rambert sent a short shot to the Wahine pitcher for the easy third out.

The Girlz defense performed superbly in the sixth, shutting out the Wahine offense. Mickey Dudley's tip was picked up by the Girlz catcher and she was quickly picked off at first. "Josie" Josypenko smacked a line drive to Pollion, where she partly stopped it with her stomach but persevered and still made the play at first. Lori Ross' swat to Pollion was to no avail as Pollion made it two outs in a row.

The Girlz finally made it on

the board in the sixth, beginning with a Key smash into centerfield for a single. Hill wasn't given the chance to perform and again walked. Saunders blasted one to centerfield, loading the bases and giving the Wahines reason to worry. Almager was walked next, Key went home, giving the Girlz their first run. But the Wahines tightened down and a Pollion smash to the shortstop was turned into the second double play of the game, although Hill came home to make it 6-2. Ferguson grounded out at first on the next play, ending the Girlz' drive.

In their last chance at bat, the Wahines were looking to up the score again but the Girlz had other plans. A Stade shot to the shortstop got her to first base but she was picked off at second on the next play when Warwick popped one to right center. Warwick herself was

picked off the same way when Siebold smacked one to the shortstop. Siebold made it three runners in a row picked off at second base when Estrada sent a grounder to the third baseman for the last out.

The Girlz girls knew it was do or die and were pumped for their last time at bat. Childer began the drive by zipping a line-drive single by the Wahine shortstop into left center. But Moore smashed a pop fly to leftfield where she was snagged out. Mahler did the exact same, making it two down and only one to go before Wahine victory. But Rambert dropped a pop-fly behind third base, putting runners on first and second. What should have been the last play of the game turned into a last gasp of life from the Girlz when an easy-out pop fly by Key dropped between the second baseman and the pitcher, loading the bases. As chance

would have it, Hill stepped up to the plate and, given the opportunity, could have possibly smashed a grand slam, tying the game. But the Wahine strategy had no place for a Hill hit, and a run was sacrificed to walk her yet again to first. Saunders grounded out on the next play, ending the game.

"Teamwork and consistency won it for us," Siebold said after the game. "We have an aggressive style of play and we worked on our fundamentals."

This was the first year the undefeated Wahines played together as a team, and, according to Siebold, it will be the last.

"One of our players changed her flight off the island so she could play in the game tonight," she said. "And within a few weeks a few more of us, including me, will be leaving."

**Electric BEACH**  
Hit the Beach EVERYDAY at the "Electric Beach" Tanning Salons  
INTRODUCTORY SPECIAL 100 MINUTES \$2000  
GOOD ON INITIAL TANNING ONLY WITH COUPON EXPIRES 7-12-92  
**FREE SESSION**  
WITH PURCHASE OF ANY PACKAGE WITH COUPON EXPIRES 7-12-92 NOT GOOD WITH ANY OTHER OFFER  
HIGH PRESSURE TANNING ALSO AVAILABLE  
  
Kailua 629 Kailua Rd., Kailua 261-5004  
Seymourville 222 Seymourville St., #110 Honolulu 808-5290

EXTRA CASH WITH COUPON  
**CASH TODAY!!**  
Want \$20 bucks Today?  
Desert Storm Vets CAN Donate Plasma  
For More Information, Call  
**836-0647**  
Plasma Center of Hawaii • 3179 Koapaka St., Honolulu  
EXTRA CASH WITH COUPON

Live Entertainment! at  
**Someplace Else**  
TUE. "HAPPY NIGHT" with "THE HUDDY'S"  
WED. "OVER THE HUMP NITE" with "PAR 3"  
THU. "FOR THOSE WHO SERVE" with WINDWARD  
FRI. "PAR 3"  
SAT. "WINDWARD"  
Someplace Else 33 Aulike St., Kailua 263-8833

**"I KNEW SHE COULD DO BETTER. AND SHE USED HER SUMMER TO PROVE IT."**  
How can you help your child turn C's and B's into A's? Bring her to Sylvan Learning Center. We offer a special program to help students study better. Your child will learn how to manage time better, how to set and meet goals, and more. This is accomplished with customized learning programs that include lots of individual attention, motivation and rewards. So, for the learning skills that will help your child now and throughout her life, Sylvan is the answer.  
Take the first step. Call Sylvan today! **SYLVAN SHOWED US HOW.**  
  
**Sylvan Learning Center**  
Helping kids be their best.  
WORLD BOOK DISTRIBUTOR  
◆ FOR MORE INFORMATION, PHONE 263-6656 ◆  
**KAILUA** New Location! Behind TCBY  
56 Oneawa Street, Kailua  
Corner of Oneawa & Uluniu

A New Book on Marine Corps Football  
**\$21.95**  
J&J Publishing  
404 Brighton Springs  
Costa Mesa, CA 92627

Hawaiian Heritage Furniture & Lumber Co.  
2870 Ualena Street • Honolulu • Phone (808) 839-6656  
**30-50% OFF**  
on discontinued stock  
Koa headboards, coffee tables, dressers, end tables, writing desks, and much more.  
Selected Items (Limited to Stock on Hand)  
Sale effective through May 30, 1992  
NOW ACCEPTING CUSTOM ORDERS  
Ask us about our financing plan.

**Dunn & Dunn Attorneys at Law**  
A Law Corporation  
• Low Uncontested Divorce  
• Low Uncontested Adoption  
• Bankruptcy  
• Car Accidents & Deaths  
OPEN EVENINGS & SATURDAYS  
HONOLULU: 641 Bishop Street, #450 Ph. 524-4529  
AIEA/PEARL CITY: 98-1247 Kaeumanu St., #212 Ph. 487-8464  
  
**Greg T. Dunn**  
Former Military JAG Attorney

**HEALTHY CHOICES**  
MANAGER'S SPECIALS  
**HOT STUFF** 32 oz. Advanced Formula 20% OFF  
Burns Body Fat & Enhances Muscle Definition  
Entire line of **WEIDER PRODUCTS** 15% OFF  
Supplements, Protein Powders, Muscle Enhancers, Fat Burners  
Valid at Kailua Store Only; certain restrictions apply.  
Expires 6-15-92  
Over 20 Years Experience  
**Vin-n-Vigor**  
The Windward Community's Total Health & Fitness Store  
**345 Hahani St., Kailua** 261-4036  
Outside Holiday Mart  
Also In Ala Moana Center, Street Level

**Send Your Love to Dad or Congratulate Your Grad!**  
Special Father's Day/Graduation section, Thursday, June 18.  
**4 lines for \$7.36** or boxed for \$11.23  
additional lines \$2.45 ea.  
  
Just fill out this coupon & mail it with your check or credit card number to:  
Sun Press "Dads & Grads"  
45-525 Luluku Road  
Kaneohe, HI 96744  
Attention: Nicole Horn  
Name: \_\_\_\_\_  
Address: \_\_\_\_\_  
Home Ph. \_\_\_\_\_ Bus. Ph. \_\_\_\_\_  
☐ VISA ☐ MasterCard No. \_\_\_\_\_ Exp. \_\_\_\_\_  
Payment must accompany your ad  
Allow for each letter, punctuation or space. Please do not abbreviate.  
FIRST LINE \_\_\_\_\_  
2 \_\_\_\_\_  
3 \_\_\_\_\_  
4 \_\_\_\_\_  
5 \_\_\_\_\_  
6 \_\_\_\_\_  
7 \_\_\_\_\_  
art will be positioned on all messages on either top or sides.  
  
TO OUR POPS: Happy Father's Day to the COOLEST Dad of all Love, Ben, Shel & Dee.  
  
Congratulations Ann L. Best of luck in the future! We love you. G-ma & G-pa



# Tickets

The MWR Ticket Office offers tickets and information on how to get them at special military rates. The office also takes reservations for events and attractions around the island. Call the Entertainment Hotline at 254-3304 or stop by the Marine Corps Exchange (in the old video rental center) for information and reservations. The office is open Monday-Friday, 9 a.m.-5 p.m. and Saturday, 10

a.m. - 2 p.m. This week's offerings include:

**Consolidated Movie Theatre** discount tickets cost \$4.25 and are good through December 1992.

**Ocean Concepts** presents four hours of the best night fishing charter, soft drinks and snacks included, for only \$220. Daytime fishing is \$180 for four hours.

**Aikane Moonlight Dinner Sale** - A special discount for all military and their dependents is being offered. A two-hour dinner sail and show for only \$23 for adults and \$17 for children.

**Pantera** - Presented by Z Rock at Aloha Tower, July 2. Doors open at 7 p.m., showtime, 8 p.m. Tickets are \$18.

**Barefoot Catamaran Cruise** - three and a half hours of fun, breakfast, lunch, snorkeling, entertainment and much more. A special for all servicemembers and their dependents for only \$30.

**Honolulu Comedy Club** - Bruddah Jaz Kaner with his high flying guitar is returning by popular demand, Phil

Covington will be featured through Sunday. Comedian-hypnotist Flip Orley will perform Tuesday-June 7.

**Diamond Head Theater** - "George M. - It's a Yankee Doodle Dandy" through June 14. Tickets are \$8-\$35.

**Aloha Diner's Club** - A super saving of 50 percent off

for restaurants and entertainment and free cover charge at many night clubs. Club books are only \$10 and are good until December.

**The Ultimate Male Review** - for women only, July 7-11 and 14-18 at the Hawaiian Hut Theater, Ala Moana Hotel. Showtime is 8:30 p.m. Tickets are \$18.

Briefly, from B-1 emphasis on understanding and accepting responsibility for aggressive behavior and its consequences will be held June 9, from 1-4 p.m. at the FSC. Call for reservations, 257-3655.

## Summer reading program

The summer reading program heats up June 17. Children reading 10 books at their age levels will receive a coupon good for a free

hamburger, small fries and soft drink at Burger King. Stop by the Station Library for more details.

## Thrift Shop

The Staff NCO Wives' Thrift Shop is now offering more convenient hours. The shop, located in building 245 next to the Station Theater, is now open Tuesday-Thursday from 9 a.m.-1 p.m. and every Saturday from noon-4 p.m. Donations are greatly appreciated and consignments are welcome. Craft items are also accepted on a consignment basis. There are

currently plenty of car seats on hand for \$5 each. Stop in and save a bundle.

## Dog obedience

Learn handling technique and train your dog to obey simple commands. Instructor is PMO Kennel Master. The classes will run for six consecutive Sundays from 5-6 p.m. beginning June 7. There is a small fee. Call the ASYMCA to register.

## Hula

The ASYMCA is offering an introductory hula class

June 10 from 9:30-11:30 a.m. Sign up and learn the lovely dance of the Hawaiian islands. Call 254-4719 to register.

## Welcome baby

An ASYMCA home visitor is available to visit families who request this free service. The visitor will answer questions, provide friendly support, advice and information to families dealing with the changes a new baby brings. For more information call, 254-4719.

# Hornsby

Hornsby, from B-1 miles a week - not much, she admits, but it's mostly speed training.

"It's quality running, not quantity," she said. She averages about eight-nine miles a run, with a lot of hill training. Hornsby swam competitively in college and now swims about 5,000 meters a week, a combination of both pool and ocean swimming.

"I just want to survive the Ironman," she said. "I collapsed after I got to the finish line at Kona. I've got to do more

distance running and continue with my hill work. I was really solid for the first 10 miles but the last three were hell." Hornsby said even though the pressure was now off for her Ironman qualification, she wasn't slowing down - but she doesn't have any illusions about placing in the world-class event.

"The half-Ironman was a learning experience and a real eye-opener," she said. "My goal is to finish the Ironman at around 11 hours, maybe even 10:30, nowhere near the top women finishers. But in this sport you never know who's out there - and I'm the perfect example."

# THE FUTON STORE

*Totally Tropical* Yea! 4th Anniversary Sale!

## SAVE UP TO 40% ON EVERY FUTON AND FRAME SET IN STOCK!

Every futon cover in stock... 30% off or more  
(except custom-made covers)  
Sale ends June 2nd  
3 Month No Interest Financing Available

**HONOLULU**  
1363 S. Beretania St.  
PH: 955-3478

**KAILUA**  
320 Uluniu St.  
PH: 262-9312  
Kailua Only - Closed Wed.

**AIEA**  
Behind Cutter Ford  
Second Left Turn  
96-025 Hekaha Bldg. B #15  
PH: 488-7658

**HOURS**  
MON-SAT: 10:30-6:30  
SUN: 12 noon-4

# A BRILLIANT PROPOSAL

**PROMISE RINGS**  
from \$89

**MARQUISE RINGS**  
from \$400  
\$54.85 mo. 6 months

**DUO WEDDING SETS**  
from \$295

**MILITARY ALLOTMENTS AVAILABLE**

**SUPPLIER TO**  
\* THE MILITARY SINCE 1940 \*  
The House of Adler salutes our military in Hawaii  
Come in today and we'll help you select just the right diamond to fit your budget at the most affordable terms possible.

**30% OFF**  
CITIZEN  
WATCHES

If you are not buying your diamonds from the House of Adler, you are paying too much!

**PEARLRIDGE PHASE II 487-0808 • WAIPAHU (next to Longs) 671-8227**  
**PAN AM BLDG. • 1600 Kapiolani Blvd. 12th Floor • Validated Parking • 949-4196**

**DIRECT FROM CALIFORNIA**

**California Dreams**  
HOT OIL WRESTLING REVUE

The "Slippery When Wet" Tour - North America 1992  
"Pulse Pounding Action in a pin of Hot Oil" - Sports Entertainment  
**LIMITED ENGAGEMENT - DON'T MISS OUT!**

Women pictured here are just some of the many performers from three touring troupes, and may or may not be the actual performers in any one given performance. Alternative performers will be equally as stunning as those shown.

Appearing at  
**FAST EDDIE'S NIGHTCLUB**  
MONDAY, JUNE 1st & 8th  
Doors: 8pm, Showtime 9pm  
TICKETS: \$4.00 ADVANCE, \$5.00 AT THE DOOR  
Reservations with advance tickets only  
21 Years & Older, I.D. Required

**52 ONEAWA STREET, KAILUA 261-8561**

Produced in Hawaii By Global Attractions (808) 261-8563

# LIFECO

TRAVEL SERVICES

**A FULL SERVICE TRAVEL AGENCY - OPEN TO MILITARY AND CIVILIAN**

- ★ AIRLINE TICKETS
- ★ HOTEL RESERVATIONS
- ★ TOUR PACKAGES
- ★ AMTRAK

- ★ CRUISES
- ★ CAR RESERVATIONS
- ★ INTER-ISLAND RESERVATIONS
- ★ MILITARY & KAMAAINA RATES

**LOCATED TO SERVE YOU AT:**

**KANEOHE BAY POST EXCHANGE 254-3581 hrs: 8:30am-5:00pm**  
**CAMP H.M. SMITH - AIEA 487-1567 hrs: 7:30am-4:00pm**

MALAMA • KA • AINA



## It's your world.

Learn what's at stake on television's most comprehensive look at the issues facing our planet: 65 hours of programs, environmental updates, Rio special reports, and action steps to get involved.



Hawaiian Electric Company

**Zippy's**  
Restaurants



PROTECT THE LAND

Movies

All movies shown at the theater, building 219, begin at 7:15 p.m. unless otherwise noted. For more information, call the theater at 254-2113.

"Memoirs of an Invisible Man" (Suspense/Adventure — PG-13/Language; 99 minutes) will play Friday and Saturday and stars Chevy Chase and Daryl Hannah. A suspense-

filled adventure with romance and comedy about a Wall Street analyst, Nick Holloway, who is rendered invisible in a laboratory accident.

"Once Upon a Crime" (Comedy — PG/Language; 94 minutes) will play Sunday and Monday and stars John Candy and James Belushi. The "mad cap" comedy begins when

a lost dachshund named Napoleon inadvertently brings together a group of travelers on their way to Monte Carlo. Unfortunately, Napoleon's owner, Madame Van Dougen, is found murdered and each traveler in the group appears to have a motive for this heinous crime.

No movies, Tuesday or Wednesday.

Ads

Autos

1981 VW Jetta — automatic transmission, AC, very clean inside and out, no rust, great second car, available early July, \$995; 263-0293.

1981 Toyota Truck — new clutch and brakes, must sell, \$500; 254-5031.

1984 Toyota Tercel — four door, hatchback, runs great, reliable car, \$1,500; 235-6293.

1986 Chrysler New Yorker — just inspected, new tires, leaving island must sell, \$3,000; 254-1335.

Miscellaneous

RCA Victor Radio Cabinet — 1950s era, mahogany, 3' high, 3' wide, 26" deep, has no electronics, just cabinet, collector's item, \$5 OBO; 263-0293.

Computer — Apple IIC computer, Panasonic printer, several programs, desk, all \$600; 254-5574.

Carpet — light gray living room and three tan bedroom; 254-6776 after 5 p.m.

Moving Sale — clothing, seven-piece dinette, dressers, console TV, almost new rocker/recliner, misc; 254-3082 for information.

Racing Bike — Men's, 12-speed, racing bars, water bottle and pump, 2 years old, \$900 value, asking \$300; 236-0201 afternoon.

Casio Electronic Piano — with stand and book, 1 year old, \$300 value, asking \$100 OBO; 236-0201 afternoons.

Pets

Blue Front Amazon Parrot — Two-and-half years old, talks, semi-tame, with cage, \$350 OBO; 254-4695.

American Pit Bull — AKC, excellent blood line, four males and one female, \$350; 254-4950.

Real Estate

Two Rooms — in a three-bedroom Kaneohe house, panoramic ocean view, deck, washer/dryer, private, quiet neighbors, \$475 \$550; 235-4675.

Wanted

Girl's Uniforms — Redemption Academy School; 254-5574.

Share Ride — to and from Redemption Academy School for the 1992-1993; 254-5574.

Yard Sale

Saturday — Multi-family, baby items, furniture, Ilmano St., 8 a.m.-1 p.m., for directions, call 254-254-6046.

Saturday — 7 a.m.-?, baby, toddler, boys, men and women clothing, books, crib and mattress, coffee maker, misc.; 2516A Pancoast Place.

Religion

• In the Station chapel: Catholic Mass is held Monday - Friday, beginning at 11:45 a.m.; Saturday, starting at 6 p.m.; and Sunday, beginning at 7:30 a.m. and again at 9:30 a.m. Protestant Communion takes place Sunday, beginning at 8:30 a.m. and Protestant worship begins at 11 a.m. Hispanic Protestant Worship takes place Sunday at 6:30 p.m. A Gospel Protestant Joy Night Service takes place Friday at 7:30 p.m. Gospel Protestant Morning Worship will be held Sunday at 1 p.m. For more information about the Station's religious services, call 257-3552.

• 1st MEB weekday worship schedule is as follows: All services will be held at 11:30 a.m. Brigade Chaplain's office: Catholic Mass, Monday and Thursday; Protestant service, Tuesday; Episcopal, Wednesday. 3d Marines: 1/12 classroom: Catholic Mass, Monday and Friday; Protestant services, Tuesday and Thursday. MAG-24 Chaplain's office: Catholic Mass, Tuesday and Friday; Protestant services, Monday and Thursday. BSSG-1 S-3 conference room: Catholic Mass, Tuesday; Protestant services, Monday and Friday.

• At Camp H.M. Smith: Catholic Mass is held Sunday, beginning at 8 a.m., and again at 11:30 a.m. Protestant worship and Sunday School both begin at 9:30 a.m. For more information about religious services at Camp Smith, call 477-8098.

Windward Review on Oceanic Cable

Channel 2 offers educational options

THURS.	FRI.	MON.	TUES.	WED.
8:00 A.M. NAVY NEWS THIS WEEK 8:30 A.M. WINDWARD REVIEW 9:00 A.M. ARTILLERY IN DEFENSE 10:00 A.M. AMBUSH: TERROR TOOL 11:00 A.M. NAVY NEWS THIS WEEK 11:30 A.M. WINDWARD REVIEW 12:00 P.M. BULLETIN BOARD 1:00 P.M. ARTILLERY IN DEFENSE 2:00 P.M. AMBUSH: TERROR TOOL 3:00 P.M. COMBAT LEADERSHIP 4:00 P.M. NAVY NEWS THIS WEEK 4:30 P.M. WINDWARD REVIEW 5:00 P.M. ARTILLERY IN DEFENSE 6:00 P.M. AMBUSH: TERROR TOOL 7:00 P.M. NAVY NEWS THIS WEEK 7:30 P.M. WINDWARD REVIEW 8:00 P.M. BULLETIN BOARD 9:00 P.M. ARTILLERY IN DEFENSE	NAVY NEWS THIS WEEK WINDWARD REVIEW BARRIERS WAR FUTURE WARS NAVY NEWS THIS WEEK WINDWARD REVIEW BULLETIN BOARD BARRIERS WAR FUTURE WARS LIVING W/STRESS NAVY NEWS THIS WEEK WINDWARD REVIEW BARRIERS WAR FUTURE WARS NAVY NEWS THIS WEEK WINDWARD REVIEW BULLETIN BOARD BARRIERS WAR	NAVY NEWS THIS WEEK WINDWARD REVIEW INFANTRY PATROLMAN VALIANT FURY NAVY NEWS THIS WEEK WINDWARD REVIEW BULLETIN BOARD INFANTRY PATROLMAN VALIANT FURY REIGN OF TERROR NAVY NEWS THIS WEEK WINDWARD REVIEW INFANTRY PATROLMAN PLANET EARTH, PT. 5 VALIANT FURY NAVY NEWS THIS WEEK WINDWARD REVIEW BULLETIN BOARD INFANTRY PATROLMAN	NAVY NEWS THIS WEEK WINDWARD REVIEW ROUGH WATER RESCUE STRIKE FIGHTER NAVY NEWS THIS WEEK WINDWARD REVIEW BULLETIN BOARD ROUGH WATER RESCUE STRIKE FIGHTER MID EAST SURVEY NAVY NEWS THIS WEEK WINDWARD REVIEW ROUGH WATER RESCUE STRIKE FIGHTER NAVY NEWS WEEK WINDWARD REVIEW BULLETIN BOARD ROUGH WATER RESCUE	NAVY NEWS THIS WEEK WINDWARD REVIEW UNDER THE INFLUENCE WHY DROWN NAVY NEWS THIS WEEK WINDWARD REVIEW BULLETIN BOARD UNDER THE INFLUENCE WHY DROWN ARTILLERY SUPPORT NAVY NEWS THIS WEEK WINDWARD REVIEW UNDER THE INFLUENCE WHY DROWN NAVY NEWS WEEK WINDWARD REVIEW BULLETIN BOARD UNDER THE INFLUENCE

**COMPUTER PRICE BREAKTHROUGH**  
486/33MHz, 4MB RAM  
FULL TOWER CASE  
SVGA COLOR MONITOR  
120 MB 28ms HARD DISK  
1.2 & 1.44 FLOPPY DRIVES  
**--- \$2,400 ---**  
INFORMATION SYSTEMS ENGINEERING  
**737-8270**

**Marine-O Pizza**  
We're Open Daily  
Mon.-Sat.: 1130-2130 hrs.  
Sun.: 1630-2130 hrs.  
For Walk-in and Take-out Orders  
Deliveries Daily 1700-2100 hrs.  
**Buy a Large Combo Pizza and Receive a Medium Single Topping Pizza FREE!**  
Call 254-1537, 254-1538, 254-1539 CONVENIENTLY LOCATED NEAR PACKAWA STORE

**CLASSIC FURNITURE**  
DECORATIONS AND GIFTS  
**Grand Opening Sale**  
**10-50% OFF**  
Rosewood dining sets, china cabinets, living room sets, curio cabinets, plant stands, pedestals, screens in 4, 6, 8, 10, 12, or 16 panels, wall plaques, bars, porcelain vases/small to giant (9 ft. tall). Furniture from Italy, French livingroom sets, Curio, comode and bedroom sets, tea carts and capodimonte from Italy. Designer purses and many more gift items.  
FURNISH YOUR HOME WITH A TOUCH OF CLASS AT REASONABLE PRICES  
2184 N. King St.  
**842-3600**

**FRIENDS DON'T LET FRIENDS DRIVE DRUNK.**  
CALL A CAB. TAKE THE KEYS.  
TAKE A STAND.  
U.S. Department of Transportation

THE CLASSIFIED INDEX

Telephone Service 235-5656 Mon.-Fri. 8 a.m.-5 p.m.  
Counter Service 45-525 Luluku Kaneohe Mon.-Fri. 8 a.m.-5 p.m.  
Deadlines: Line Ads due by 12 Noon - Tuesday Class Display Ads due by 4:00 p.m. Friday CANCELLATIONS & CORRECTIONS due by 12 Noon-Mon.

**0 Free Bees**  
FREE Need Homes for declawed, spayed & neutered cats. 737-5924.  
**SIBERIAN HUSKY** Free to good home. Call John 395-9394.  
**4 Health & Fitness**  
"MICRO DIET WORKS" Delicious - Nutritious - Convenient - Affordable. Anna Chang, Independent Advisor, 377-1345.  
LOVE my Mary Kay. Want healthier skin? Call Jeanette 487-0155.  
MELT DOWN Diet \$19.95 Use it, lose it, Earn \$3FJ. Hrac msg 948-4428, 24.  
**10 Cemetery Plots**  
VALLEY of the Temples, Eternal Love, 8 plots \$10,000/offer or sold separately. Call 261-1344.  
**15 Announcements**  
**ALOHA PAWN** (Buy, Sell, Loan, Trade) Come see us for best deals in Wahiawa Ph. 622-2898 540 California Ave.  
IF A LITTLE extra cash would light up your life, turn on to the Classifieds

**15 Announcements**  
**ADVERTISING STANDARDS**  
Advertising published in the Sun Press and MidWeek papers is accepted on the premise that the advertiser and/or services offered are accurately described and willingly sold to customers at the advertised price. Advertisers are aware of these conditions. Advertising that does not conform to these standards or that is deceptive or misleading is never knowingly accepted. If any reader encounters noncompliance with these standards, we ask that you inform...  
**CLASSIFIED ADVERTISING** 235-5656 or **BETTER BUSINESS BUREAU** 942-2355  
**SHORT ON CASH? EASY MONEY PAWN** CALL 839-2005 3180A KOAPOKA ST. Behind Airport Plaza Hotel  
**NO MATTER** what you're buying or selling, the Classifieds give you fast results. 235-5658

**25 Personals**  
**ASTROLOGY PALMISTRY FACE-READING** to answer any question. \$35/45 min. Call after 9am to 6pm. 833-1777  
**BACKYARD Party Tent** 20 x 20 or 30 x 30 rental & sale. Call 396-8066.  
**DIVORCE** From 1125 *Regal-Ease* Paralegal Typing Service Weekday, Weekend & Eve. Appointments 261-5339  
Do You Want To Learn The Hula? For information call 847-0078.  
**NUTRIQUE NUTRITIONAL SKIN CARE** Look 10 years younger. Free sample - 488-5667.  
**PSYCHIC** Mary Vine helps all problems concerning love, marriage, business, reunites loved ones. Reveals future. Immediate results. 1-800-547-4936  
**SOFTBALL** 32 yr. old just relocated to Hawaii from mainland is looking to join a competitive mens softball team on Windward side. Call Mike at 236-4630.

**25 Personals**  
**DIVORCE** **Serving Oahu Since 1977** **\$12500** **595-2533** Staff Attorney Gene Bridges A Public Service Project  
**QUIT Smoking!** Results guaranteed. Certified Hypnotherapist 261-4595.  
**ST. JUDE** Oh Holy St. Jude Apostle and Martyr, great in Virtue and rich in miracles, take thine hand of Jesus Christ, faithful intercessor of all who invoke your special patronage in time of need, to you I have recourse from the depth of my heart and humbly beg to whom God has given such great power to come to my assistance. Help me in my present urgent position. In return, I promise to make your name known and cause you to be invoked.  
Say three Our Fathers, three Hail Marys and Glories.  
Publication must be promised. St. Jude, pray for us all who invoke your aid. Amen.  
This Novena has never been known to fail. This Novena must be said for 9 consecutive days. M.C.  
**THANK** You St. Jude for prayers answered. D.J.  
**Holistic Psychic** **BEVERLY LYONS** 531-2508 **CARD-READING CLASS** CORPORATION the turn of a playing card dates 6/9/92 Tuesday  
**WEDDINGS, ALWAYS YOURS.** Short Notice OK. Nondenominational. Spectacular Seaside or Anywhere Oahu. Budget to Luxury. No Counseling. 293-8038 anytime.  
**WEDDING Ceremonies** - Baptisms - Memorials - Nondenominational. Any location. Rev. Joan Drake, 239-7120.  
**30 Income Tax** **FAST IN HOME** Tax adv. at reas. rates. All states **BACK YEARS**. 523-1881  
**LATE TAXES**, past yrs. in your home, ssc. Steve White MBA, 395-7141.  
**TAXES TAXES TAXES** If Do you need help filling back or current taxes? Call Rachel 521-0078.  
**50 Business Opportunities** **AT LAST A NUTRITIONAL** Company with 250 products that work. No front-end load. No group qualifying. No breakaways. Pays bonuses 9 ways including car program. Free details. Recorded message. 528-6873  
**EARN EXTRA INCOME** Home business-mail/pass out fliers. Ed 261-2258.  
**58 Schools & Instruction** **LEARN TO DANCE** It's Fun & Easy. We teach all social ballroom dances. Call for Free lesson. 525-0103.  
**60 Help Wanted Male/Female** **SALES** Immed. opening for a full time goal oriented individual to work in retail sales. Will train for wallpaper, paint & blind department. This job provides excl. compensation package and advancement potential. **Decorating Center**, 45-1015 Kam Hwy., Kaneohe, 235-3018  
**"AVON IS GROWING!"** Call Jack, A. Manager Kathryn 423-0693.  
**"AVON"** Earn extra money by being a leader. Call Beverly 624-1327.  
**BE YOUR OWN BOSS** For the best earnings possible **\$5 CALL \$5 THIS AD ONLY** Kandy 235-7641 and Jo 395-6970  
**TRAVEL TRAINING** Airlines, Travel Agency Cruises, Tours Computer **Windward Travel Institute** 282-7749 or 233-1155 Licensed by DOE  
**MAKE A fortune** in network marketing. Unique, proven program, for free information. Call 528-6894 24 hour recorded msg.

**CLASSIFIED INDEX**

HEADING	CLASS	HEADING	CLASS	HEADING	CLASS	HEADING	CLASS
Announcements	15	Condos/Townhouses for Sale	109	Income Property	113	Announcements	115
Antiques-Art	130	Condos/Townhouses Part. Furn.	85	Income Tax	30	Real Estate for Sale	114
Apts. Furnished	73	Condos/Townhouses Unfurnished	87	Jewelry & Clothing	133	Real Estate Loans	119
Apts. Partly Furnished	74	Computers	132	Jobs Wanted	63	Real Estate Trade	117
Apts. Unfurnished	75	Domestic	62	Legal Notices	1	Rentals to Share	76
Auto	173	Help Wanted	62	Livestock & Horses	150	Rentals Wanted	98
Auto Leasing	172	Domestic	62	Lost & Found	20	Restaurants, Bars	118
Automobiles for Sale	176	Jobs Wanted	64	Office Equipment	153	Rooms for Rent	88
Auto Service/Parts	156	Opportunities	59	Miscellaneous	126	Schools & Instruction	58
Autos Wanted	161	Free B&E	0	Investment	127	Short Term Rentals	94
Bicycle Sales & Service	131	Garage/Land	124	Opportunities	55	Sporting Goods	147
Boats, Supplies & Service	146	Health & Fitness	4	Moped & Scooters	171	Stereo, Video & Television	109
Business	50	Heavy Machinery & Equipment	174	Moving & Storage	123	Stores & Offices for Rent	123
Opportunities	50	Help Wanted	64	Musical Instruments	144	Swaps & Exchanges	128
Prof. Services/Cleaning	37	Male/Female	60	Personals	25	Travel	122
Card of Thanks	8	Home Appliances	125	Pets-Everything	151	Vacation Rentals	93
Cemetery Plots	10	Home Furnishings	120	Photography	140	Waves, Campers, Jeeps, AWD	175
Condos	86	Houses Furnished	81	Pickups, Trucks	166	Water Sports Equipment	148
Townhouses Furn.	86	Houses Unfurnished	82	Property Management	112		

**Sun Press MidWeek COMBO**

	1 wk	2-4 wks	5-8 wks	9 wks
1 wk	\$2.45 per line	\$4.34 per line	\$3.84 per line	\$2.14 per line
2-4 wks	\$2.36 per line	\$4.05 per line	\$3.84 per line	\$2.14 per line
5-8 wks	\$2.24 per line	\$3.84 per line	\$3.64 per line	\$2.14 per line
9 wks	\$2.14 per line	\$3.64 per line	\$3.44 per line	\$2.14 per line

**ASK ABOUT OUR 3 WEEKS FOR 2 SPECIAL**  
Commercial advertising, rentals, employment, business listings or services are NOT eligible for the 3 weeks for 2 special.

Name \_\_\_\_\_ Address \_\_\_\_\_ Home Ph. \_\_\_\_\_ Bus. Ph. \_\_\_\_\_  
☐ VISA ☐ MasterCard No. \_\_\_\_\_ Exp. \_\_\_\_\_

**PLACE YOUR AD HERE**  
Allow for each letter, punctuation or space. Please do not abbreviate. Please turn this in at your next issue of Sun Press Newspapers.

**MINIMUM 3 LINES PER AD**

No. of Lines \_\_\_\_\_ x Cost per line \_\_\_\_\_ x No. of weeks \_\_\_\_\_ **TOTAL COST** \_\_\_\_\_  
Payment must accompany your ad.

**Sun Press MidWeek 235-5656**



**60 Help Wanted Male/Female**

**AUTO DETAILERS and MANAGER.** Excellent pay plus medical. Call Bob 845-7851 for appl.

**BOOKKEEPER** account receivable, & computer exper. part time. Mon.-Fri. Flex hrs. 876-2237

**AVON** The best "shop in town". Earn extra money now. Call ass't managers, Maryhelen 455-8397 or Char 676-1588

**60 Help Wanted Male/Female**

**CASHIERS/SALES** Immed. P/T openings in Honolulu, Kaneohe & Pearlridge for retail shoes & clothing departments.

532-5770  
M-F 9 a.m. to 4 p.m.

**CHURCH Nursery Asst.** tants, Sundays, 6 to 12, \$5 per hr., start 6/14, 281-2309 or 282-6153.

**NEEDED IMMEDIATELY!**

- Word Processors • Secretaries
- General Clerical • Receptionists
- Data Entry/Acct'g Clerks

**TEMPORARY & FULL-TIME POSITIONS**

**ADIA** 533-8889  
The Employment People NEVER A FEE

**DOLE PLANTATION WAHIAWA**

Visitor attraction facility has openings for:

**Counter Attendants** - previous food & beverage experience helpful.

**Sales Associates** - Japanese and English speaking positions available. Sales and/or retail background desirable.

Apply in person at:  
64-1550 Kamehameha Hwy,  
Monday-Friday 9 a.m.-2 p.m.

Equal Opportunity/Affirmative Action Employer

**NURSES**

**RN: \$20.00 LPN: \$14.50**  
per hour job rate with experience

**OUR NURSING TEAM WANTS YOU**

Full-Time/Part-Time

- NEW competitive wage scale
- 10 day orientation for experienced nurses
- Educational reimbursement
- Free parking
- Stock purchase plan
- Retirement plan
- Medical/Dental, Drug/Vision
- Life Insurance
- Expand your acute nursing skills in our 56 bed Medicare unit.
- In house Physical, Occupational, and Speech Therapy departments
- 288 bed facility

Apply In Person - 7 Days A Week

**HALE NANI REHABILITATION AND NURSING CENTER**  
Shaping the Future of Health Care  
1677 Pensacola Street 537-3371

An Affirmative Action/Equal Opportunity Employer

**TEACHERS CARE GIVERS AIDES**

Full time and part time positions available. Benefits include 50 to 100% child care discount. Work in a clean, well equipped environment.

**SUNRISE PRESCHOOLS**

Pearl City 486-9377 Kailua 282-2331

Equal Opportunity Employer

**60 Help Wanted Male/Female**

**AIRPORT**

Andy Frain Services is now hiring passenger screeners for the Honolulu International Airport. Will train. Applicants must be dependable, mature, 18 or older, high school diploma or GED is required. All shifts available. F/T, P/T work. Drug free environment. Ideal for homemakers, students, retirees & 2nd jobs. Starting salary \$4.75 per hr. + benefits & incentives. 839-8046 ask for Emy.

**CHURCH** Secretary needed. Temporary P/T for summer months. Secretary skills, working knowledge of computer. Call 282-6911 lv. msg.

**CLEANING PEOPLE NEEDED**  
For residential service. Full & Part-Time positions avail. Windward area. Weekly commission paid + mileage. 235-8768

**CUSTOMER SERVICE.** Retail Sales. STARTING PAY \$10.25, F/T, P/T. positions avail. no exper. nec. Will train. Ideal for college students. Internships/Scholarships avail. 24 hr. placement information. 944-1154.

**60 Help Wanted Male/Female**

**DON'T** get swamped by inflation. Let the Classifieds keep you afloat, phone 235-5658!

**COUNTER/KITCHEN** help. P/T days/nights.

Military, Service and students welcome. Call Cajoe's 833-7386, 3131 Nimitz by Sizzler.

**DENTAL** Asst., F/T, near Blaisdell Center, exper. preferred. Call 531-5071.

**DISHWASHER** P/T, M-F, days, Bob's Salmin, 46-132 Kahulipa St.

**EARN \$48.00 weekly!** Easy, enjoyable, home assembly work, no exper. necessary. 24 hr. recording. 1-801-756-1401. Dept. H-2

**EARN EXTRA MONEY** Sell decor. & More! No investment. Set your own hours. Also booking parties. Janet 839-7250.

**HANDYMAN/YARDMAN** Wanted part time. Kailua \$5/hr. 262-8344

**H O M E**

**CLEANERS**

\*Up to \$9.00/hr.  
\*Need own car  
\*Need home phone  
\*Flexible daytime hrs.  
CALL 732-9490

**DANA'S HOUSEKEEPING PERSONNEL SERVICE SINCE 1978**

**HOUSEKEEPERS** car/lc. needed F/T, avail. now. Supervisory position also. ESTABLISHED CALL: MRS. CLEAN 486-4822

**HOUSEKEEPERS** car/lc. needed F/T, avail. now. Supervisory position also. ESTABLISHED CALL: MRS. CLEAN 486-4822

**HOUSEKEEPERS.** honest, trustworthy, reliable, dependable, can communicate & take constructive criticism, supportive work environment, excel. benefits, trans. avail. 625-8185.

**KENNEL** HELP 40 hrs./wk. must be able to work Sat or Sun. reliable adult. 262-2118.

**NEED EXTRA CASH.** recog. for travel, or new friends? We can do it for you in '92! Christmas Around The World now hiring sales reps. Higher comm. national No investment, collecting, delivery. Senior citizens welcome. 881-4038 5pm-8pm or iv. msg.

**PLANT** Nursery Worker part time 239-8987. Windward Res. prefer.

**WAREHOUSE WORKERS** DRIVERS W/CLEAN ABSTRACTS • DRIVER ASSISTANTS

**DISHWASHERS • MESSENGERS**

Transportation a plus, jobs located from Campbell Ind. Park to Downtown. Days, weekend work, early a.m. hours.

Pioneer Plaza 900 Fort Street Mail, Suite 1202 Honolulu, HI 96813 (808) 525-3313

Stuart Plaza 941 Kam Highway #201 Pearl City, HI 96782 (808) 466-6666

**LABORERS NEEDED**

Apply Today - Work Tomorrow Get Paid Friday

**WAREHOUSE WORKERS** DRIVERS W/CLEAN ABSTRACTS • DRIVER ASSISTANTS

**DISHWASHERS • MESSENGERS**

Transportation a plus, jobs located from Campbell Ind. Park to Downtown. Days, weekend work, early a.m. hours.

Pioneer Plaza 900 Fort Street Mail, Suite 1202 Honolulu, HI 96813 (808) 525-3313

Stuart Plaza 941 Kam Highway #201 Pearl City, HI 96782 (808) 466-6666

**LOOKING FOR WORK?**

In Between Jobs?

Want To Earn Extra \$

Apply Monday - Work Tuesday Get Paid Friday

**WE OFFER GREAT BENEFITS!**

Same week pay - Immediate Assignments - Long or Short term - Days or Evenings - Vacation pay - Referral Bonus - FREE Word Processing training - Recognition Awards - Contests - have fun!

**WE NEED:**

Secretaries • Transcribers • Word Processors (all kinds) • Accounts Payable Clerk • Accounting Clerks • Bookkeepers • Data Entry Clerks • Receptionists • Clerks • Typists • TELEMARKETERS

Come In Today!

Pioneer Plaza 900 Fort Street Mail, Suite 1202 Honolulu, HI 96813 (808) 525-3313

Stuart Plaza 941 Kam Highway #201 Pearl City, HI 96782 (808) 466-6666

**HAULING**

"A" HAULING & Moving, printing press, appls. & misc. items. 396-8066.

**Masonry**

"AAAAA" All types of concrete & masonry, driveway, sidewalk, retaining wall, rock or tile, fencing of any type. Free est. to 100 293-9703.

**Financial Services**

**NEED CASH?**

\$2,000-\$20,000. Pay off your bills. Fast approval. Call today 1-800-832-3911 Lender Agency

**Floors & Tile**

**CERAMIC TILE.** marble, flagstone. Expert workmanship, 20 yrs. exper. To 100 247-6189.

**MARBLE & Ceramic Tile** Specialist. Refs. To 100. Guar. Free est. 942-3939.

**Handyman**

**ISLANDWIDE** Handyman Home repair, carpentry, & termite damage repair. Refs. To 100. 948-3265.

**J. L. HOME IMPROVEMENT & RENOVATION** Carpentry, Plumbing, Electrical, Water Rot, Termite, Drywall & Ceramic Tiles. Lic. BC-14943. Call 236-0052 or 847-2693.

**SPECIALIZING IN** Senior Citizen Painting, plumbing, elect., carpentry, to 100. 948-9358.

**PAINTING**

**QUALITY** Painting & Repair int./ext. Refs. Call 235-0347 to 100.

**AAA PAINTING.** Father & Sons. Islandwide. Neat & fast. To 100 254-1329

**PAINTING**

**QUALITY** Painting & Repair int./ext. Refs. Call 235-0347 to 100.

**AAA PAINTING.** Father & Sons. Islandwide. Neat & fast. To 100 254-1329

**PAINTING**

**QUALITY** Painting & Repair int./ext. Refs. Call 235-0347 to 100.

**AAA PAINTING.** Father & Sons. Islandwide. Neat & fast. To 100 254-1329



**MWR SUBASE** IS NOW RECRUITING FOR THE FOLLOWING ANNOUNCEMENTS.

**SUPERVISORY ACCOUNTING TECH**

\$18,000-\$24,000 (Full Time)

**LABORER**

NA-03 \$6.39 hr. (Full Time)

**CHILD DEV. PROGRAM ASST.**

(Part Time & Flex. Hrs.) \$7.27 + Cold

**COOK**

NA-05 \$7.46 hr. (Full Time)

FOR MORE INFORMATION CONTACT TAMMY

471-9183

**60 Help Wanted Male/Female**

**KANEHOE** Vet clinic. Needs full time kennel help. Apply in person. 45-480 Kaneohe Bay Dr. Windward City Shopping Ctr. lower level.

**LIVE-IN KENNEL** HELP 5 days a wk. must be able to work Sat. and/or Sun., reliable adult. 262-2118.

**MARKETING** Company seeks energetic, hard working, business minded person for great returns from great efforts. Call 395-9796

**MATURE, ORGANIZED** Person for clerical, typing, filing, inventory. 262-2629 Liz.

**MILITARY** Welcome! Immed. P/T sales in retail store. 532-5770.

**PHUONG'S TAILOR** SHOP Needs exper. sewing person to work on K.M.A.S. Holiday & medical insurance paid. Call VI 254-6721.

**MANAGER TRAINEES** Harpo's Pizza is looking for motivated, responsible people to help lead us into the 90's. Shift Manager Trainee position available at our Pearl City Store. Pearl City Shopping Center/Holiday Mart Food Court. Call for an interview 455-9044.

**PLANT** Nursery Worker part time 239-8987. Windward Res. prefer.

**NEED EXTRA CASH.** recog. for travel, or new friends? We can do it for you in '92! Christmas Around The World now hiring sales reps. Higher comm. national No investment, collecting, delivery. Senior citizens welcome. 881-4038 5pm-8pm or iv. msg.

**WAREHOUSE WORKERS** DRIVERS W/CLEAN ABSTRACTS • DRIVER ASSISTANTS

**DISHWASHERS • MESSENGERS**

Transportation a plus, jobs located from Campbell Ind. Park to Downtown. Days, weekend work, early a.m. hours.

Pioneer Plaza 900 Fort Street Mail, Suite 1202 Honolulu, HI 96813 (808) 525-3313

Stuart Plaza 941 Kam Highway #201 Pearl City, HI 96782 (808) 466-6666

**LABORERS NEEDED**

Apply Today - Work Tomorrow Get Paid Friday

**WAREHOUSE WORKERS** DRIVERS W/CLEAN ABSTRACTS • DRIVER ASSISTANTS

**DISHWASHERS • MESSENGERS**

Transportation a plus, jobs located from Campbell Ind. Park to Downtown. Days, weekend work, early a.m. hours.

Pioneer Plaza 900 Fort Street Mail, Suite 1202 Honolulu, HI 96813 (808) 525-3313

Stuart Plaza 941 Kam Highway #201 Pearl City, HI 96782 (808) 466-6666

**LOOKING FOR WORK?**

In Between Jobs?

Want To Earn Extra \$

Apply Monday - Work Tuesday Get Paid Friday

**WE OFFER GREAT BENEFITS!**

Same week pay - Immediate Assignments - Long or Short term - Days or Evenings - Vacation pay - Referral Bonus - FREE Word Processing training - Recognition Awards - Contests - have fun!

**WE NEED:**

Secretaries • Transcribers • Word Processors (all kinds) • Accounts Payable Clerk • Accounting Clerks • Bookkeepers • Data Entry Clerks • Receptionists • Clerks • Typists • TELEMARKETERS

Come In Today!

Pioneer Plaza 900 Fort Street Mail, Suite 1202 Honolulu, HI 96813 (808) 525-3313

Stuart Plaza 941 Kam Highway #201 Pearl City, HI 96782 (808) 466-6666

**HAULING**

"A" HAULING & Moving, printing press, appls. & misc. items. 396-8066.

**Masonry**

"AAAAA" All types of concrete & masonry, driveway, sidewalk, retaining wall, rock or tile, fencing of any type. Free est. to 100 293-9703.

**Financial Services**

**NEED CASH?**

\$2,000-\$20,000. Pay off your bills. Fast approval. Call today 1-800-832-3911 Lender Agency

**Floors & Tile**

**CERAMIC TILE.** marble, flagstone. Expert workmanship, 20 yrs. exper. To 100 247-6189.

**MARBLE & Ceramic Tile** Specialist. Refs. To 100. Guar. Free est. 942-3939.

**Handyman**

**ISLANDWIDE** Handyman Home repair, carpentry, & termite damage repair. Refs. To 100. 948-3265.

**J. L. HOME IMPROVEMENT & RENOVATION** Carpentry, Plumbing, Electrical, Water Rot, Termite, Drywall & Ceramic Tiles. Lic. BC-14943. Call 236-0052 or 847-2693.

**SPECIALIZING IN** Senior Citizen Painting, plumbing, elect., carpentry, to 100. 948-9358.

**PAINTING**

**QUALITY** Painting & Repair int./ext. Refs. Call 235-0347 to 100.

**AAA PAINTING.** Father & Sons. Islandwide. Neat & fast. To 100 254-1329

**PAINTING**

**QUALITY** Painting & Repair int./ext. Refs. Call 235-0347 to 100.

**AAA PAINTING.** Father & Sons. Islandwide. Neat & fast. To 100 254-1329

**PAINTING**

**QUALITY** Painting & Repair int./ext. Refs. Call 235-0347 to 100.

**AAA PAINTING.** Father & Sons. Islandwide. Neat & fast. To 100 254-1329

**PAINTING**

**QUALITY** Painting & Repair int./ext. Refs. Call 235-0347 to 100.

**AAA PAINTING.** Father & Sons. Islandwide. Neat & fast. To 100 254-1329

**PAINTING**

**QUALITY** Painting & Repair int./ext. Refs. Call 235-0347 to 100.

**AAA PAINTING.** Father & Sons. Islandwide. Neat & fast. To 100 254-1329

**PAINTING**

**QUALITY** Painting & Repair int./ext. Refs. Call 235-0347 to 100.

**AAA PAINTING.** Father & Sons. Islandwide. Neat & fast. To 100 254-1329

**PAINTING**

**QUALITY** Painting & Repair int./ext. Refs. Call 235-0347 to 100.

**AAA PAINTING.** Father & Sons. Islandwide. Neat & fast. To 100 254-1329

## ALOHA HEALTH CARE CENTER

### 247-6661

#### DIETARY MANAGER

— MUST BE CERTIFIED  
— 1 YR. EXPERIENCE

**PUT YOUR ROOTS WHERE THEY CAN GROW**

— YOU WON'T BE DISAPPOINTED  
— LET'S SUCCEED TOGETHER

“WE CARE FOR OUR HERITAGE”

**APPLY IN PERSON**

### ALOHA HEALTH CARE CENTER

45-545 Kam Highway  
Kaneohe, HI 96744  
an EOCC employer

**62 Domestic Help Wanted**

**BABYSITTER** for afterschool care & transportation. Ref. car req. 823-6483 Milliani.

**SITTER NEEDED** 8/1/92 P/T, 12 hrs./wk., 6 mo. old, Pearl Harbor to Makakilo. 672-8379

**SITTER NEEDED** for 2 year old. Kailua area. refs. Call 262-0772.

**64 Domestic Jobs Wanted**

**AUNTY FRANKS** Child care svc. Register now for July 1 openings. Kailua area. 263-3716

**CHILD CARE** immed. opening for 2 children in my home. Patch certified any age. 235-1335

**EWA Child Care** Days/eves. by exper. mom. F/T start 8/1. leave message 841-2592.

**KANEHOE** Childcare full-time only. Monday to Friday. Any age. 247-7259, Aunty Iwa's.

**QUALITY** daycare avail. for your child. \$85 per wk. Activities & meals incl. 395-8782 eves.

**NEW STARTING TIME 9AM - NEW STARTING TIME 9AM - NEW STARTING TIME 9AM**

# PUBLIC WELCOME!

## INSURANCE AUCTION

**SATURDAY 9 AM JUNE 13, 1992**

### INSURANCE AUTO AUCTIONS

LIVE AUCTION SECOND SATURDAY OF EVERY MONTH  
91-240 Komohana St.  
Campbell Industrial Park  
Call 682-2858 for more info!

Registration Fee: \$10 per auction or  
\$35 per year! Good at all locations: Honolulu, N. Hollywood,  
Gardena, Riverside, San Diego and Phoenix.  
NO ONE UNDER 18.

• 4X4's • Jeeps • Foreign • Domestic  
• Theft Recoveries • Cheap Cars • Parts Car • More!  
• Late Model Clear Title Car • Rebuildable Cars • Repossessions • Motorcycles • Trucks

BRING THIS COUPON FOR  
**10.00 OFF**  
ONE YEAR  
REGISTRATION

TERMS: Cash, Traveller's Checks, Money  
Orders. Everything sold as is  
where is.

Frank Adell  
Auctioneer  
No. 00004

**NEW STARTING TIME 9AM - NEW STARTING TIME 9AM - NEW STARTING TIME 9AM**

### 120 Home Furnishings

VERTICAL Blinds - 50%  
Off! Fabric 76 x 84 \$124.  
Ken Hatch. 254-2080.

**WICKER WORKS-FURN.**  
Baskets, gifts, misc. open  
Tues-Thur 11-4, Sat 10-4  
Corner Sand Island &  
Nimitz 841-3055.

### MOVING?

We Buy Fine  
Quality Used  
Furniture.  
Fast, Free  
Pick-up.

**PARADISE USED  
FURNITURE**

235-8056

### GARAGE SALE

**GARAGE SALE-May 30**  
& 31, 10-4. P/C, furn.,  
chairs, rug, etc. chairs,  
baby things & misc.  
Items. 91-110 Waimanua  
Pl., Ewa by Genly.

**CERAMIC CLASSES**  
Also specializing in  
center pieces for all  
occasions. Call 262-8662.

**GARAGE SALE**  
Sat, May 30, 9-2  
560 Ulukou St. Kailua.

**2 HOME GARAGE SALE**  
Sat/Sun, ladders, tools,  
clothes, appliances, etc.  
44-329 Kaneohe Bay Dr.

**SAT. MAY 30 King Bed**  
Queen sofa, coffee table  
vacuum, recliner, furni-  
ture, misc. 232 Aweke  
Rd. 261-5174

**GARAGE SALE: Sat.**  
5/30, 9 to 3: 594 Ulukou  
St., Olomana, Kailua.

**KANEOHE Queen mat-**  
tress/box, desk set,  
lawnmower, jewelry,  
armoire bar, tools, much  
more! Sat/Sun, 8-4  
45-029-A Liliupuna Rd.

**MULTI FAMILY MOVING**  
SALE Variety of items:  
children's to furn. In  
great cond. May 30, 9-2.  
290A Akiohala St.  
Enchanted Lake.

**MULTI-FAMILY GARAGE**  
SALE Furn., clothing,  
hishid. items, much more.  
Sat. May 30, 8am-2pm:  
West Loch Estates.  
Follow signs off Fort  
Weaver Rd.

**MULTI-FAMILY GARAGE**  
SALE Sat. May 30  
127-A Maluniu Ave. 8-2.  
No early birds please!

**MULTI-FAMILY GARAGE**  
SALE Sat. May 30,  
8am-5pm, 186 Makua St.,  
Kailua. Follow signs.

### 125 Home Appliances

CLOTHES dryer, heavy  
duty, excellent condition  
\$150. Call 625-5639.

**FROST FREE**  
refrigerator, excellent con-  
dition. 486-2677.

**KIRBY LEGEND II** vacu-  
um all accessories incl.,  
\$550. 833-4506

**NEW GE double dr.** frig.  
white hook-up \$500. Ken-  
more washer/dryer \$225 ea.  
or \$400 both. 262-4129

### 73 Apts. Furnished

**KANEOHE** Pk. studio,  
full bath, priv. ent., non-  
smoker, near mall/bus,  
util. incl. \$800. 247-5893

**KANEOHE studio** \$600  
per. mo. non-smoker/  
drinker. Pr. 247-1139  
eves. 235-8661.

### 74 Apts. Partly Furnished

**KAILUA** Nice 2bdrm/1  
ba. w/d/p/rk. 614  
Waiilepo 3785 239-7885

**KAILUA** lrg. studio, A/C,  
pool & spa, non-smoker,  
\$650 incl. util. 261-2510

**LARGE STUDIO** quiet,  
near beach, util. & cable  
incl. \$650/mo. Avail 6/3.  
No pets. 261-3545 eve.

### 76 Rentals To Share

**HOUSEMATE WANTED/**  
KANEHOE female pref.  
to share new home w/  
pool. Own bdrm. and ba.  
Use of wash./dry. and  
kitch. \$400/mo. incl. util.  
Call 239-5586.

### 81 Houses Furnished

**KAILUA/ENCHANTED**  
LAKE 3 bdrm., 2 ba.,  
carpeted floor, 6/1/92 \$1500  
261-0477

# LOOK!...LOOK!...LOOK!

## New Arrivals!

(CALL FOR DETAILS)  
GOOD CREDIT. BAD CREDIT. BANKRUPTCY  
IT DOESN'T MATTER! NEED A VEHICLE. WE  
CAN HELP! MILITARY E-2 & VP WELCOME

- (1) '83 VOLVO RABBIT (CAA 640) ..... \$1495
- (2) '84 FORD TEMPO (BU229) ..... \$1495
- (3) '86 TOYOTA TERCEL (HUC257) ..... \$1495
- (4) '83 NISSAN SENTRA H/B (BSS415) ..... \$1495
- (5) '82 CHEVY CAMARO Z-28 (ECE928) ..... \$2395
- (6) '83 MAZDA 626 LX (CBG376) ..... \$2495
- (7) '70 MERCEDES 220 DIESEL (EFK297) ..... \$2495
- (8) '81 HONDA ACCORD 4 DR (BEY619) ..... \$2495
- (9) '85 PONTIAC Fiero (BX4402) ..... \$2495
- (10) '85 PONTIAC FIREBIRD  
TRANS AM (CCF104) ..... \$2995
- (11) '84 CHEVY BLAZER S-10 4X4 (EAF253) ..... \$2995

### IN HOUSE FINANCING!

VEHICLES \$600...\$2000  
KAMAHA'S ALWAYS WELCOME  
Let us turn your BAD CREDIT  
INTO GOOD CREDIT

All terms 15% A.P.R. 24 Mo.  
O.A.C. Plus \$25 DOC  
ALL PRICES GOOD ONLY WITH AD IN HAND  
SALE ENDS 6/3/92

## FAMILY MOTORS

501 LAGOON DRIVE (AIRPORT) HONOLULU

MON SAT 9-6  
SUN 10-6

833-0072

### ADOPT!

PUPPIES, DOGS  
PUREBREDS!

Come in TODAY and see our  
fabulous selection of cute &  
cuddly pets.

### ADOPT!

KITTENS, CATS

Don't Wait... ADOPT NOW!

**New Pets Daily!**  
Directions: Exit H-1 Freeway #25A, Corner  
of King and Waiwai

**Hawaiian Humane Society**  
Open: Mon-Fri 10am-6pm  
Sat & Sun 10am-3pm  
2700 Waiwai Ave.  
Honolulu, Hawaii  
846-2187

## PET'S CENTRAL

**IMPORTERS OF QUALITY  
REGISTERED PUPPIES**  
FOR THE HAWAIIAN ISLANDS

Health Guaranteed In Writing  
Dog Food and Supplies

**PET'S CENTRAL**  
2333 Alaheo Pl. Bldg. E  
(Just off Sand Island Rd.)  
Ph. 848-1688

10 a.m. - 8 a.m. 7 Days a Week  
Financing Available  
VISA, MasterCard, AMEX, Discover

# PUBLIC NOTICE

# HONDA

## INVENTORY REDUCTION EXCLUSIVELY

### On the Grounds of HONDA WINDWARD in Kaneohe

## May 28th through 31st.

9a.m. to 9p.m. Daily (Sunday 10a.m. to 6p.m.)

- Over 200 new Hondas available!!
- Prices not publicly advertised but prominently displayed.
- No negotiating necessary.
- There will be no sales presentation due to the nature of this sale. Your Down Payment is required at time of purchase, payable in cash, check or credit card.
- Retail public only. Absolutely no dealers.
- Trades accepted. Paid for or Not. Buyers will be present during sale hours to offer the highest bids. Please bring your title and payment book.
- Over \$4,000,000.00 in reasonable finance money is available through First Hawaiian Bank, G.M.A.C., Bank of Hawaii, City Bank and Your Credit Union.

## Held on the grounds of

DON LUCAS

# HONDA WINDWARD

45-671  
Kam Hwy.  
KANEOHE

**PLEASE!**  
No phone calls  
on this event.

**Sun Press \$245 per line**  
Classified Ads 3 lines for \$7.35

## 7 PAPERS

1 LOW PRICE

**CALL TODAY 235-5656**  
Circulation 102,888

# HOME & APARTMENT GUIDE

### EQUAL HOUSING OPPORTUNITY

All real estate advertising in this newspaper is subject to the Federal Fair Housing Act which makes it illegal to advertise any preference, limitation or discrimination based on race, color, religion, sex, national origin, handicap, and familial status.

This newspaper will not knowingly accept any advertising for real estate which is in violation of the law. Our readers are hereby informed that all dwellings advertised in this newspaper are available on an equal opportunity basis.

To complain of discrimination call HUD toll free at 1-800-424-6890.

**BUY IT OR SELL IT  
HIRE IT OR RENT IT  
CLASSIFIED**  
Call today, 235-5656

### 73 Apts. Furnished

**KANEOHE** Pk. studio, full bath, priv. ent., non-smoker, near mall/bus, util. incl. \$800. 247-5893

**KANEOHE studio** \$600 per. mo. non-smoker/drinker. Pr. 247-1139 eves. 235-8661.

### 74 Apts. Partly Furnished

**KAILUA** Nice 2bdrm/1 ba. w/d/p/rk. 614 Waiilepo 3785 239-7885

**KAILUA** lrg. studio, A/C, pool & spa, non-smoker, \$650 incl. util. 261-2510

**LARGE STUDIO** quiet, near beach, util. & cable incl. \$650/mo. Avail 6/3. No pets. 261-3545 eve.

### 76 Rentals To Share

**HOUSEMATE WANTED/** KANEHOE female pref. to share new home w/ pool. Own bdrm. and ba. Use of wash./dry. and kitch. \$400/mo. incl. util. Call 239-5586.

### 81 Houses Furnished

**KAILUA/ENCHANTED LAKE** 3 bdrm., 2 ba., carpeted floor, 6/1/92 \$1500 261-0477

### 83 Houses Partly Furnished

**KANEOHE** New, 3 bdrm, 1 1/2 ba., w/appl., nr. busline, incl. water/dry, svc. No pets, please. \$1,800. 247-5527.

### 85 Condos/Townhouses Partly Furnished

**KAILUA** 3 bdrm., 2 ba, view pool, spa, tennis, 2 cvrd prks., security avail. 6/3/92, \$1600 262-9721

**WHEN IT'S TIME FOR RESULTS...** call the Classifieds, 235-5656

### 86 Condos/Townhouses Furnished

**BEACH CONDO PAYS** AT PUALU 1 bdrm. furnished. 235-3445.

### 88 Rooms For Rent

**AIEA:** private bath, kitchen & laundry access, hot tub, must like animals. \$500/month 488-5523.

**KALAHEO** Hills, rm & ba, util. incl. \$475/mo, non-smoker. Ph. 254-5785

### 93 Vacation Rentals

**ADORABLE COTTAGE** in Kailua near beach. Priv. & clean. 261-0756.

**CUTE large 2 bdrm.** cottage near beach. Avail. July/Aug. Call 262-5922.

**KAILUA** 2 blocks from beach, fully furn., 1 bdrm, 1 ba. full kitchen, family rm., vaulted ceilings, wood flr, T.V., phone, lanai, sleeps up to 5. \$60 day, \$350 per wk. \$1200 mo. 263-0986.

**KAILUA** 2 units, large studio/bdrm., private ent., pool. Ph. 262-8540.

**KAILUA** Vacation Rentals, Near Beach. Call 261-5174.

**KAILUA** beautiful new 1 bdrm. house nr. beach & shops \$45 day. 254-5757.

**KAILUA** small studio/cottage from \$40, near beach. Call 262-9545.

**KAILUA** small studio \$40/day, 3 houses from beach. 262-0862.

**LANIKAI/KAILUA** nr. beach. Summer. Homes or cottages. 262-5445.

**PROBLEM:** Got an over crowded closet? Try the Classifieds solution! Advertise those unwanted unused items "For Sale" and then pocket the cash you make! Call today. 235-5656

### 93 Vacation Rentals

**LARGE cottage** near beach, June thru Aug. Daily/monthly. 261-0756.

**WANTED:** Windward home to house sit or swap for San Diego 4-bdrm. home. Prefer July or Aug. 2-4 weeks. 254-3491

### 103 Stores & Offices For Rent

**PEARL CITY** Prime commercial/retail warehouse. 10,800 sq. ft. Assume existing lease. 60¢ per sq. ft. Call Bob or Mark 845-7851.

### 114 Real Estate For Sale

**BEACH HOUSE-Waianae** Owner, may include power boat & furniture. 5400 sq. ft. FEE. 88-076 Pkai Bay St. \$369,900 Offer? Call 696-2000.

**KAILUA WINDWARD PASSAGE** HIGH FLOOR, OCEAN VIEW. New listing, amazing value. 2 bdrm., 2 ba. & parking. Prestigious w/ healthclub-like amenities. \$269,500. 263-3522.

**MAIN STREET REALTORS**

**LANIKAI** BEAUTIFUL 2 story home w/ "knock-out" view. Near Lanikai Park & sandy beach. Possible extended family living. MLS#87872. \$750,000 FS. Marjorie L. Yokum (R) 264-5311

**MAIN STREET REALTORS**

**LOKELANI** at Ma'ili Kei. New 2, 3, & 4 bdrm. homes by Lusk Hawaii from \$185,000 Fee Simple. Call Homes Pacifica 668-2656

**YOU'LL BE AMAZED** at the amount of money you can make on things you no longer need. They're someone else's treasure. & the Classifieds bring you together. Phonn 235-5656 today

### 114 Real Estate For Sale

**NEARLY NEW** 3 bdrm., 2 1/2 ba. in beautiful cond. Prestige neighborhood. Call for details. \$385,000 FEE. Suzanne E. Jackson (R) 263-3522

**MAIN STREET REALTORS**

**Waiolo Gentry Townhouse** Financing. Down pymt. to \$21,900 loan amt. \$197,100. Int. rate 7.25% APR 7.53% Term 30 years. Will pay first 2 month. Heritage Homes Hawaii Brian Panee RA 823-1258, 223-0703 (C)

**118 Real Estate Wanted**

**ATTENTION FOR SALE** BY OWNERS: I would like to buy a one bedroom unit at Windward passage. (No agents please.) 259-8148

### WHY PAY RENT?

Financial freedom, family pride, tax savings, freedom from landlords, personal privacy and appreciation in value are just a few of the benefits enjoyed by home owners...

Call me for a FREE "Rent Vs. Buy" Analysis on my new listing at EWA BEACH 4 BR / 2 BA HOME IN GOOD CONDITION ON NICE FLAT LOT! \$232,000 (LH) FEE AVAILABLE

**JEANNE GREENE, Realtor**  
Century 21 Kahala Hale, Inc.

### MAIN STREET, REALTORS, INC.

## NEW LISTING

**ENCHANTED LAKES \$399,500 FEE!**  
Large home with SWIMMING POOL. Quiet street in an excellent neighborhood. Three bdrms, 2 baths. Spacious upgraded kitchen. Ready for your finishing touches. CALL TODAY FOR DETAILS. MLS #38521

**LAND! LAND! LAND!**  
44-215 KANEOHE BAY DRIVE  
Build your own custom home with a "forever" view AND water access. Only \$325,000 including an interest in recreation area AND complete plans for a large custom home. Call today for a private tour and details. MLS #38532 FEE SIMPLE.

**WINDWARD PASSAGE**  
Great View! Two bedroom, two bath unit on high floor. This is a private building with "health club" facilities. Pool, tennis, racquetball and much, much more. Call to see today. \$269,500 LH MLS #38525

**SUZANNE E. JACKSON**  
Realtor 263-3522

118 Hekili Street, Kailua, Hawaii 96734  
(808) 263-6999 TOLL FREE 1-800-624-6999  
A REAL ESTATE CORPORATION



**Now! Sale!**

<b>ED</b>	'83 PONTIAC FIREBIRD AUTO, AIR, P/S, P/W AM/FM CASS. \$19,995	'83 CAMRY 5 DR H/B AUTO, AIR, P/S AM/FM. EFR7272	'85 LINCOLN TOWN CAR FULL POWER BXW456
<b>ALEX</b>	'87 FORD T-BIRD AUTO, AIR, P/S, P/W AND D/L P/SEAT, AM/FM CASS. C/VOM	'88 TOYOTA TERCEL 3 DR H/B AUTO, P/S, 1600 C/VOM	'85 TOYOTA CELICA GT 2 DR, 1.8, 5 SP, AIR, P/S P/W, T/W, R/W, C/SE75
<b>GARY</b>	'85 TOYOTA CRESSIDA 4 DR SEDAN AUTO, AIR, P/S, P/W AND D/L AM/FM CASS. C/CRMC	'86 PONTIAC BONNEVILLE 4 DR SEDAN AUTO, AIR, P/S, AM/FM CASS. C/SC286	'87 FORD AEROSTAR VAN AUTO, AIR, P/S AM/FM. EXK220
<b>GERRY</b>	'88 TOYOTA CAMRY 4 DR SEDAN AUTO, AIR, P/S AM/FM. C/5476	'86 MERCEDES 190 E 4 DOOR SEDAN AUTO, AIR, P/S, P/W AND D/L AM/FM CASS. C/VOB90	'90 ACURA LEGEND LS 2 DR COUPE AUTO, FULL POWER SUNROOF. D/J130

**ROCKY**

Subject to prior sale  
Plus tax, lic. & fees.  
Sale Ends 6/3/92

**KAIMUKI TOYOTA**  
735-1737

**TOYOTA**  
"I love what you do for me."

5TH AVENUE  
EXT.  
B-1 FREEMAN DOWNTOWN  
SACRED HEARTS  
ACADEMY  
MALAKAL AVENUE

**156 Auto Service & Parts**  
Porsche Auto Parts.  
New & used. Call for low  
prices. 488-3448.  
CLASSIFIEDS are money  
makers! Call today and  
place your ad where it'll  
get fast results. 235-5656.

**156 Auto Service & Parts**  
BUY IT OR SELL IT  
HIRE IT OR RENT IT  
CLASSIFIED  
Call today, 235-5656

**LEASE  
A USED CAR**  
SMALL DOWN  
NO CREDIT NECESSARY  
456-3994  
TRI STAR LEASING

**YOU BETTER BELIEVE...  
WE CAN SAVE YOU  
\$5 MONEY \$6**

'88 HYUNDAI DPI-613	\$2295
'88 SENTRA 4 DR. AUTO DPB572	\$2495
'88 FORD MUSTANG LX C/FB-738	\$2995
'88 CHEVY CELEBRITY BLK LOADED GBA-302	\$3695
'88 DODGE DAYTONA TURBO CS DSA-226	\$3695
'84 HONDA PRELUDE BTE-898	\$3995
'86 PONTIAC SUNBIRD CONV CDA-553	\$3995
'88 FORD TEMPO BDY-666	\$3995
'83 FORD 4X4 F250 XL 254-TJB	\$4495
'85 NISSAN MAXIMA S/W LOADED CAR-760	\$4495
'86 MERCURY COUGAR LS C/FB-722	\$4895
'87 HONDA ACCORD LXI CRY-255	\$6495

**We Can Finance  
Bankrupts, Call...**  
**FAMILY MOTORS**  
84-287 Farrington At Lookma St. WAIKAPU  
Next to Firestone, 676-1600  
We are financing experts. No Credit.  
Fair Credit. So So Credit.  
In house financing on some cars.  
Call Today for info.  
Open Weekdays 9 a.m.-6 p.m.  
Subject to credit review. Plus tax & lic.

**HAWAII RACEWAY PARK, CIRCLE TRACK**

**SPRINTS  
SUPER STREET STOCKERS**

**STOCK CAR RACING  
AT IT'S BEST**

**Budweiser #1**

**SUPER MODIFIEDS  
MINI MODIFIEDS  
MINI STOCKERS  
BOMBERS**

**EVERY SATURDAY NITE**

GATE OPENS at 4:30  
RACES START at 7:00  
CAMPBELL INDUSTRIAL PARK '91-201 MALAKOLE ST \* 682-4060

**SAVE UP TO  
\$4,500**

**EVERYTHING MUST GO!  
BIGGEST INVENTORY REDUCTION  
SALE EVER!**

**LIVE BAND  
SATURDAY & SUNDAY  
FREE SOFT  
DRINKS  
BRING THE FAMILY**

**SAVE UP TO  
\$3000\*  
ON EVERY '92  
JEEP WRANGLER**

**100  
180 TO CHOOSE FROM!**

**SAVE UP TO  
\$4500\*\*  
ON EVERY '92  
JEEP CHEROKEE**

**130  
180 TO CHOOSE FROM!**

**SAVE UP TO  
\$3000\*  
ON EVERY USED CAR,  
TRUCK OR VAN!**

**150 QUALITY USED CARS  
TO CHOOSE FROM!**

O.A.C. Cannot be applied to any advertised price. \*Wranglers: \$2100 discount from dirs. list price; \$500 factory rebate and \$400 First Time Buyer Plan.  
\*\*Cherokees: \$3000 discount from dirs. list price; \$1500 factory rebate.

**SOUTH SEAS**

**Jeep Eagle**

**AIRPORT**  
CORNER OF NIMITZ & LAGOON  
735 N. NIMITZ HWY.  
836-0515

**WAIKAPU**  
401 W. LEO RD.  
676-5454

**Ford**  
'90 FIESTA  
Low monthly payments.  
DGA-106 \$3888  
**RAINBOW  
CHEVROLET**  
737-0500

**Geo**  
'91 METRO CONV'T  
Won't last.  
EEZ-323 \$9988  
**RAINBOW  
CHEVROLET**  
737-0500

**Honda**  
'77 CIVIC wgn., auto.  
\$400; '80 Prelude, 2 dr.  
auto. \$400; '81 Accord, 4  
dr., auto. \$1250; '84 Civic  
wgn., auto. nice \$2250.  
239-7673, Cell. 285-8889

**Mercury**  
\$45 TRANSFER FEE &  
paperwork - '84 LYNX  
WOODY WGN. Sharp  
extras. BXY-398. Pymts  
of \$136/mo. Apr 15%, 24  
mo. OAC

**FAMILY MOTORS**  
676-1600

**'77 COUGAR** Good  
transportation, \$595  
BGT-440. Cutter Ford  
Ala. 487-3811

**'83 MARQUIS**  
57K mi., good cond.  
\$2000, 261-8752

**'89 COUGAR** fully  
equipped, low mi., excel.  
cond. \$8500, 262-8288

**Nissan**  
'85 300 ZX TURBO Dark  
blue, T-top, loaded, 75K  
mi., \$5000/offer  
489-2747 evenings

**'88 SENTRA** 2 dr., A/C,  
radio, 64,000 mi., \$2100/  
offer. Call 487-6816

**Oldsmobile**  
'91 DELTA  
Nice car, runs great!  
CWQ-428 MAKE OFFER

**RAINBOW  
CHEVROLET**  
737-0500

**Pontiac**  
'79 LEMANS \$295.  
BDR-421. Auto. 4 dr.  
Cutter Ford - Ala. 487-3811

**'83 GRAND PRIX** Looks  
good. Needs minor  
engine work. \$850.  
235-4182

**'84 SUNBIRD**  
Nice car, great price.  
BVA-238 \$2188

**RAINBOW  
CHEVROLET**  
737-0500

**'84 TRANS AM** glass t-  
top, auto. A/C, excel.  
cond., \$4200, 261-4302

**'85 TRANS AM** Auto.  
T-top, super potential.  
\$2595, CCF-104

**FAMILY MOTORS**  
501 Lagoon Dr.  
Sunday 12-4 833-0072

**'87 FIERO GT**  
Beautiful car must see.  
CPT-568 \$6988

**RAINBOW  
CHEVROLET**  
737-0500

**'87 LEMANS**  
Shop now then compare.  
#50504 \$5995

**RAINBOW  
CHEVROLET**  
737-0500

**'91 FIREBIRD**  
Extra low mi. Like new.  
DGS-077 \$11,888

**RAINBOW  
CHEVROLET**  
737-0500

**AVIS**  
Car Sales Outlet  
The Smart Place To Buy

**SALE PRICED!  
YOUR CHOICE**

**\$194**  
per month

**... everything looks new  
except the price...**

**417 LELE ST.  
(Off Nimitz & Lagoon Dr.)**

**834-5533 • 834-5547**  
OPEN 7 DAYS A WEEK 8:30am-6:00pm

**'91 CHEVY CORSAIC LT**  
sedan EC085

**'91 DODGE SPIRIT**  
4 dr. sedan EC358

**'91 PONTIAC LEMANS**  
4 dr. sedan EC054

**'91 PONTIAC GRAND AM LE**  
4 dr. sedan EC392

**'91 GEO METRO**  
car hatchback 00015

**'91 GEO PRIZM**  
4 dr. sedan EC487

**'91 GEO TRACKER**  
4x4 5 spd EC434

**POWER STEERING** **POWER BRAKES**  
**AIR CONDITIONING** **AM/FM STEREO**  
**RECLINING BUCKET SEATS** **MANUFACTURER WARRANTY**

**Spring Clearance**

**\$2,995.\***

**Back by Popular Demand!**

**Limited Supply!**

**KAWASAKI NINJA 250**

Check Out These Other Great Prices

EX500	\$3,415	ZX11	\$7,895
ZX600R	\$4,545	ZX7R	\$8,895
ZX6	\$5,365		

And More!

**Financing Available  
To Qualified  
Buyers**  
831-2600  
2965 N. Nimitz Hwy.

**CYCLE CITY LTD**

Hawaii's Oldest Harley-Davidson, Kawasaki & Moto Guzzi Dealer  
A Division of Wholesale Motors, Inc. Established in 1961

# CUTTER TEAM

ALL STORES OPEN  
8:30 A.M.-9 P.M.  
SUN. 9 A.M.-6 P.M.

**HAWAII'S DRIVING FORCE**  
WITH FORD CREDIT, CHRYSLER CREDIT AND GMAC  
★ TAKE IT WITH YOU WHEN YOU LEAVE ★ NO HASSLES—NO RED TAPE

★ SPECIAL MILITARY FINANCING  
WITH FORD CREDIT, CHRYSLER CREDIT AND GMAC  
★ TAKE IT WITH YOU WHEN YOU LEAVE ★ NO HASSLES—NO RED TAPE

## CUTTER FORD-ISUZU

98-015 Kaneohe Hwy  
AIEA  
487-3811

Quality People... Quality Products

**GO WITH THE WINNER!**  
**SALE**  
LOWEST PRICES  
BEST SELECTION  
HIGHEST TRADE-INS

**RED  
TAG**

**NO HASSLES!**  
AMERICA'S BEST ALL  
MARKED WITH LOW PRICES,  
AND READY FOR DELIVERY!

**'92 FESTIVA #1710**  
GREAT VALUE... SMALL PRICE!  
1st TIME BUYERS PRICE!

**\$5488**

**'92 RANGER #1718**  
#1 SELLER IN ITS CLASS!  
1st TIME BUYERS PRICE!

**\$6588**

**BETTER FINANCING  
NO DOWN PAYMENT!**  
(FINANCING FROM 2.9% APR OR UP TO 2900 REBATE)

**'92 ISUZU PICK-UP**  
STILL HAWAII'S BEST BUY! #1390  
2.3 LITER 5-SPEED MIRRORS

**\$6888**

**'92 ESCORT #1583**  
AUTO, AIR, POWER STEERING!  
1st TIME BUYERS PRICE!

**\$7988**

**'92 TEMPO**  
#1595 AIR, TINT & LOTS MORE  
1ST TIME BUYER PRICE!

**\$8,488**

**'92 AEROSTAR**  
V-6 AIR COND.  
IN A CLASS BY ITSELF!

**\$11,988**

**'92 T-BIRD**  
#1308 AUTO AIR, LOADED,  
SUPER PRICE!

**\$13,988**

**'92 PROBE**  
#4599 AUTO, AM/FM CASS, TINT  
1ST TIME BUYERS PRICE!

**\$9,988**

**'92 TAURUS**  
V-6, AUTO, AIR  
AMERICAN'S DESIGN LEADER!

**\$12,588**

**'92 EXPLORER**  
AIR #1 IN ITS  
CLASS, GREAT PRICE

**\$14,588**

## QUALITY USED CARS

'81 DATSUN P/U KING CAB NICE BUY (BFB500)	\$1295
'88 MITSUBISHI PRECIS AUTO, 4 DR (E5585)	\$2495
'85 DODGE LANCER TURBO VERY NICE (CAV738)	\$2495
'87 TOYOTA COROLLA AUTO, AIR, P/S (E6821)	\$3495
'86 TOYOTA TERCEL S/W AUTO, AIR, P/S, NICE (E4115)	\$3995
'86 HONDA ACCORD LXI MANY X-TRAS (CSD491)	\$4695
'87 DODGE B350 12 PASS, LOW BOOK \$6525.00 (CFR920)	\$4995
'87 DODGE B350 15 PASS LOW MILES (CFR921)	\$4995
'87 DODGE RAM 4X4 STEREO, HARDTOP (CAV738)	\$4995
'87 JEEP COMMANCHE SPT 6 CYL (D0A21)	\$4995
'91 DODGE DAKOTA P/U GREAT BUY (E6A943)	\$6895
'85 DODGE CARAVAN LE CASSETTE, LOADED, VERY CLEAN (CBW544)	\$6995
'88 ISUZU TROOPER LS 4X4 4 DR RIMS, LOADED (CUE647)	\$8695
'80 MITSUBISHI GALANT LOADED (E0C323)	\$10,295
'80 NISSAN 240SX CASSETTE, AUTO TILT (D0C363)	\$10,695
'90 FORD RANGER XLT 4X4 VERY LOADED (E0C319)	\$10,695
'89 HONDA ACCORD LXI SUNROOF, BLACK, LOADED (D0V736)	\$10,995
'86 GMC SIERRA 4X4 LOADED, LOADED, CAMPER (D0Y544)	\$10,995
'91 HONDA ACCORD LX LOADED (E1B656)	\$13,995
'82 FORD RANGER STX SUPERCAB AIR, LOADED (E0V820)	\$13,995

## CUTTER CHRYSLER-PLYMOUTH DODGE JEEP/EAGLE 2 GIANT LOCATIONS

**SALE**  
842-6300 455-1071

**'92 EAGLE SUMMIT**  
FULLY FACTORY EQUIPPED #23015

**\$6988**

**'92 DODGE SHADOW**  
P/S P/B Air Bag and Much, Much More. #210666

**\$7988**

**'92 PLYMOUTH ACCLAIM 4 DR**  
Air Cond., P/S, P/B, Tilt, Cruise Air Bag & More #220249

**\$10,988**

**'92 JEEP CHEROKEE 4X4**  
#230083

**\$13,988**

**'92 DODGE CARAVAN**  
Air Cond., Auto., Cass., Air Bag, P/S, P/B #210760

**\$13,988**

**TAKE THE GUESS WORK  
OUT OF BUYING  
YOUR NEXT USED CAR  
NEW CHRYSLER  
LIMITED POWERTRAIN WARRANTY  
INCLUDED WITH MOST USED CARS**

**WE DO CREDIT MAGIC!  
CALL CREDIT MANAGERS**

'83 BUICK REGAL 2 Dr., 6 Cyl., Auto, Air & More #7070/EDJ942	\$1988
'84 ISUZU P/U Manual Trans., Step Bumper, Mirror #7067/BUX854	\$2588
'88 ESCORT 2-Door, P/S & More #8026/CVS245	\$2988
'85 HONDA PRELUDE Auto, P/S, P/B & More #8086/CB1307	\$2988
'85 PONTIAC GRAND AM Auto, P/S, P/B & More #8086/CB1307	\$2988
'85 HONDA CIVIC 4-Door, Auto, P/S & More #8086/CB1307	\$3588
'84 DODGE CARAVAN Auto, Radio, P/S, P/B & More #8086/CB1307	\$3688
'89 FORD ESCORT Auto, Radio, P/S, P/B & More #8086/CB1307	\$3888
'84 FORD BRONCO II Auto, Radio, P/S, P/B & More #8086/CB1307	\$3988
'84 HONDA PRELUDE Auto, Sunroof, P/W & More #8086/CB1307	\$3988
'88 RAM 50 P/U TRUCK 5-Speed, Cass #8086/CB1307	\$3988
'89 FORD TEMPO Auto, Air, Cass, P/S & More #8086/CB1307	\$4588
'89 DODGE VISTA WAGON Auto, Radio, P/S, P/B & More #8086/CB1307	\$5888
'88 DODGE DYNASTY V-6, Auto, Air, P/S, P/B & More #8086/CB1307	\$6888
'87 MUSTANG CONV. V-6, Auto, Air, P/S & More #8086/CB1307	\$6988
'89 MUSTANG V-6, Auto, Air, P/S & More #8086/CB1307	\$7888
'87 DODGE CARAVAN #8453/DCD483	\$7988
'89 MAZDA RX7 GTU Air, Cassette, P/Locks & More #8453/DCD483	\$8988
'91 TOYOTA 1 TON P/U Air, P/S, P/B & More #8453/DCD483	\$9988

**CUTTER  
CHRYSLER PLYMOUTH DODGE  
JEEP/EAGLE  
842-6300 455-1071**

Prices include all factory incentives and rebates. Cars subject to prior sale. Plus tax, lic. & \$149 doc. fees. OAC. Some cars located at 901 Kam Hwy, Cutter Dodge Pearl City. Prices include all applicable consumer rebates. 1st time buyers incentive. \*0.0% financing on selected models only, for 24 months. Ask dealer for details. \*Chrysler 3 Mo/3000 Miles 1 MTD PowerTrain warranty available on 1986 models and newer with less than 100,000 miles. Sale ends June 3, 1992.

## CUTTER MITSUBISHI WAIPAHU

94-149 Farrington Hwy  
671-2626

**MITSUBISHI**  
Our Record Speaks For Itself

**WE'RE  
#1  
IN HAWAII**

**WE SAVE  
YOU MONEY**

Open Mon.-Sat. till 9pm  
Sun. till 6pm



They've got  
**YOUR DEAL** at  
**Cutter  
Mitsubishi**

**WE NEED  
YOUR TRADE!**  
even if you owe  
more than it's  
WORTH!



**NEW**  
**Mirage**  
**\$5988**  
(#M3698)

**YES**

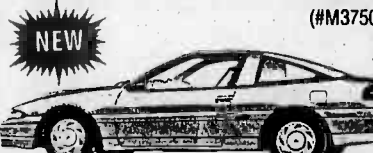


**NEW**  
**Mighty  
MAX**  
(#M3598)

**\$6988**

**SAVE \$  
BIG DOLLARS**  
★ MIRAGES ★ ECLIPSE ★ GALANTS  
★ EXPOS ★ MIGHTY MAX P/UPS  
★ MONTEROS ★ 3000GTS ★ DIAMANTE

**ECLIPSE**



**NEW**  
(#M3750)

**\$9988**

**PH. 671-2626**  
**QUALITY USED CARS, TRUCKS, AND VANS**

'78 DODGE ASPEN (ASD013)	\$450
'78 CHEV CHEVETTE (A0V009)	\$650
'78 VOLVO 244 DL 4 DR, AUTO (A0V714)	\$1250
'80 CHEV CELEBRITY BUY NOW! (D0V010)	\$1450
'83 NISSAN SENTRA 2 DR, GREAT DEAL! (A0V001)	\$1650
'87 PLYMOUTH HORIZON 4 DR, HATCHBACK (C0V070)	\$1850
'83 TOYOTA COROLLA 4 DR, AUTO, AIR (A0V303)	\$2250
'83 VW QUANTUM 4 DR, AUTO, AIR (C0V009)	\$2350
'83 FLY TURISMO HATCHBACK, SPORTY! (C0V011)	\$2350
'85 TOYOTA TERCEL 2 DR, AUTO, CASSI (C0V040)	\$2350
'86 FORD TAURUS WGN AUTO, LOW PRICE! (E0D000)	\$2450
'83 HONDA ACCORD 4 DR, AUTOMATIC (E0B005)	\$2750
'83 NISSAN 2000SX AUTO, AIR (A0V011)	\$3350
'88 DODGE DAYTONA LOW, LOW PRICE! (E0V000)	\$4450

All prices & discounts incl. any and all applicable rebates. All vehicles subject to prior sale. Prices plus tax, lic. & \$149 doc. fees. OAC. Sale ends June 3, 1992.

## RAINBOW CHEVROLET COURTESY PONTIAC 2 IN TOWN LOCATIONS

**UNDER THE  
RAINBOW SALE**



**'92 GRAND AM**  
#22087  
AM/FM CASSETTE, AIR, CRUISE  
CONTROL, TILT, STEERING, CONTROL  
CYCLE WIPERS, AND MORE!  
**\$11,988**

**NEW**  
**PONTIAC LEMANS**  
#P1067  
AM/FM, HALOGEN HEADLAMPS, SPORT MIRRORS,  
BODY SIDE MOLDING, SPARE TIRE  
**ONLY \$7,988**

**NEW**  
**GEO STORM**  
#1-1458  
LOADED, POWER BRAKES, TINTED GLASS, REMOTE,  
MIRRORS, AM/FM STEREO  
**ONLY \$9,488**

**'92**  
**CONVERTIBLES**  
#2-1025  
AS LOW AS  
**\$10,488**

**NEW**  
**FULL SIZE TRUCKS**  
#10248  
H.D. SHOCKS, H.D. COOLING SYSTEM  
REAR STEP BUMPER AND MORE!  
(2 TRUCKS TO CHOOSE FROM)  
**ONLY \$11,688**

**'92**  
**FIREBIRD**  
#P-2001  
V-6 ENG. AUTO/TRANS, AM/FM CASS,  
REMOVABLE HATCH ROOF, P/L, P/W & MORE!  
**ONLY \$13,988**

**'92 CAMAROS**  
25 on Order  
Reserve Yours Today  
STARTING FROM  
**\$11,988**

**FINANCING  
MADE EASY—CALL  
CREDIT MANAGER 946-8311**

**USED CAR SPECIALS**  
Phone 737-0500

'87 SUBARU GL WAGON NICE CAR! LOADED! EXCELLENT BUY! E6A908 #50888	\$3988
'91 GEO METRO FULLY FACTORY EQUIPPED WON'T LAST E6B552 #50821	\$4988
'89 PONTIAC GRAND AM LE AUTO, AIR, AM/FM CASS, WON'T LAST D0V780 #50810	\$5985
'91 FORD ESCORT LX AUTO, AIR, AM/FM, DISCOT #50815	\$6995
'88 FORD AEROSTAR XL MINTY #50810 COMPARE AT ONLY	\$8995
'90 OLDS CIERA 4 DR. D0V397, LOADED, EXCELLENT BUY!	\$9695

**FINANCING AVAILABLE**

**FINANCING AVAILABLE**

**'88 PONTIAC SUNBIRD**  
AUTO, AM/FM, AIR, TILT, P/LOCKS AND MORE CSW25 #50821

**'87 CADILLAC DEVILLE**  
NICE CAR, C0V040

**'91 MERCURY CAPRI**  
THIS ONE WON'T LAST CH00V000 #50844

**'91 VOLVO 740 TURBO SEDAN**  
GORGEOUS MUST SEE A0C2

**RAINBOW CHEVROLET**

**RAINBOW CHEVROLET**

Not combinable with special finance rates. Rebates & assistance on selected models. Subject to prior sale, plus tax, lic. & \$149 doc. fee. All applicable rebates, first time buyer applied. Sale ends June 3, 1992.