



SRT hones skills A-8

# HAWAII Marine



Volume 21, No. 11

Serving MCAS Kaneohe Bay, 1st MEB, Camp H.M. Smith and Marine Barracks

March 19, 1992

## NEWS Briefs

### Officer monitors to visit K-Bay

The officer monitors will visit Kaneohe Bay Monday through Wednesday to discuss assignments, current assignment policies and related officer manpower issues such as projected opportunity for augmentation, retention and promotion.

A 1st MEB message (DTG:091434W MAR 92) was recently released outlining scheduling procedures to meet with the monitors. In addition to individual interviews, a two-hour manpower presentation will be given in the Station theatre at 1:30 p.m. March 23 and again March 24. The presentation will cover officer assignment policies, career counseling, augmentation, retention, acquisition, joint considerations and force structure.

Interview scheduling for individuals will be based on rank, unit assigned and nature of billet. For instance, interviews for ground officers who are majors and assigned to BSSG-1 should schedule their interview between 2 and 4:30 p.m. March 23. For complete scheduling details refer to the Brigade message.

### WM reunion slated

The Women Marines Association is holding their 17th biennial convention at the Town & Country Hotel in San Diego, Sept. 1-5. For information, contact Lorre Rosa, 1624 NW Rolling Hill Drive, Beaverton, OR 97006; telephone, (503) 645-3438.

### Baltimore Marines needed

Recruiting Station Baltimore is looking for Marines to help with recruiting in Maryland, the D.C. area, Delaware, northern Virginia and West Virginia.

Permissive TAD gives you 30 days where you can earn up to 100 points towards your cutting score. If you're interested in becoming a recruiter assistant, call MSgt. Upson at (301) 379-5701.

### Mace is illegal

In accordance with Honolulu County Ordinance and Air Station regulations, to carry, to use or to possess mace or any chemical weapon is unauthorized. The Honolulu Police Department reports that a permit is required to carry mace and can be obtained through the police department; however, those permits are restricted to private security companies to be used by licensed security guards only. Air Station Order P5500.6C prohibits the possession of any device which projects noxious gas or liquid. Military personnel in possession of mace aboard the Station are subject to the Uniform Code of Military Justice; civilians found in possession of mace can also be subject to legal action.

## Inside

|                    |     |
|--------------------|-----|
| Blotter.....       | A-2 |
| Salutes.....       | A-7 |
| Briefly.....       | B-1 |
| Sports briefs..... | B-3 |
| Education.....     | B-4 |
| Religion.....      | B-5 |
| Movies.....        | B-5 |
| Tickets.....       | B-5 |
| Ads.....           | B-5 |



A pair of Red Footed Booby Birds perch in a Kiawe tree Ulupa'u Crater as Marines work on a firebreak road nearby.

## Station preserves booby bird colony

Story and photo by Sgt. Jason Erickson

The range at Ulupa'u Crater here is hot. But not in the sense of live-fire training as is usually the case. Throughout March, the range has been and will remain closed to weapons firing as numerous projects take place.

While range improvement efforts are going full-speed, and archaeologists comb the ravines in search of anything historically significant, perhaps the project being most closely watched is an environmental undertaking for the federally-protected booby birds. It's a multi-phased operation which, by the end of the month, is expected to greatly improve the security and quality of life for this unique colony of legally protected seabirds.

**Tragic fire**  
The project traces its origin

to a large-scale fire in August 1990 within the crater which caused long-lasting troubles for the boobies. Although over 100 birds lost their lives in the blaze, another serious impact was the loss of their favorite roosting and nesting trees.

More than a year later, as the birds near the peak of their nesting season, they are experiencing a severe housing shortage.

Additionally, as the lower portion of the crater remains the only viable small-arms weapons range throughout Windward Oahu for Kaneohe Marines, the threat of recurring fires can not be overlooked. The vegetation throughout the crater is both dense and dry - a fire waiting to happen once live ammunition is factored into the equation. In fact, there was another fire only a month ago. Although it was contained and extinguished before it spread up the hill to the boobies, it offered

a remainder of the fire-driven ecology man has created here. As fires recur, they foster growth of more fire tolerant non-native alien grasses which push out the native plants and make the area even more fire prone.

The situation has caused great concern among Station, federal and state wildlife protection officials. As both the tenants and caretakers of Mokapu Peninsula, Kaneohe Marines have the moral and legal responsibility to ensure the well-being of this protected species. Something had to be done.

According to Dr. Diane Drigot, Station environmental specialist, the command worked with federal and state wildlife officials and hired experts to develop a fire management plan. This plan recommends a whole suite of actions to reduce the risk of fire to the booby colony.

Drigot added that these actions serve three requirements: See Booby Birds, A-10

## Training, teamwork nets SRT top honors

Story and photo by Cpl. J. Kinchen-Schneider

Physically and mentally taxing training, long days and short nights is how a five-man team of military policemen here described the Special Reaction Team School located at Fort McClellan Army Base in Alabama.

The team, who recently graduated from the school as the Honor Team, and received a meritorious mast for their achievement, explained that the feat was not easy.

Their days would start at 4 a.m. Physical training was always first on the day's agenda followed by lectures and practical application classes, according to LCpl. Robert J. Vavra, utility defense man for the team.

"We put in 16 to 18 hours a day," he said. "Sometimes we wouldn't finish until 11 p.m. or midnight. This went on Monday through Friday until the day we graduated."

Forced to spend so much time together, the five individuals became one - one team. "We studied, lived, ate and even went to the bathroom together," he said. "When one of us had to go, all of us packed our stuff and went."

The team leader, Sgt. Robert

A. Bott, explained that this was done to reinforce the fact that the five Marines were a team and not five separate individuals going through a course.

"We stuck together more than any other team," he said. "We definitely had team unity while we were there."

Apparently, it was this team unity that helped put the team on top. With each member of the team having a specific job, the team set out to be the best in the course.

With Bott as the team leader; Vavra, the utility defense man; and LCpls. Robert G. Hoch, Layne E. Leu and Anthony J. Silveria as the point man, the rear security man and the point defense man, respectively, they became a hard team to beat.

Their competition was four Army teams, another Marine team and a Department of Defense team made up of civilians and two military officers.

During the first week of the course, the teams learned parts of a mission little-by-little everyday. Then during the last week, the teams had to perform the whole mission from beginning to end. This, along with physical training scores and written tests, were used to decide which team

was best.

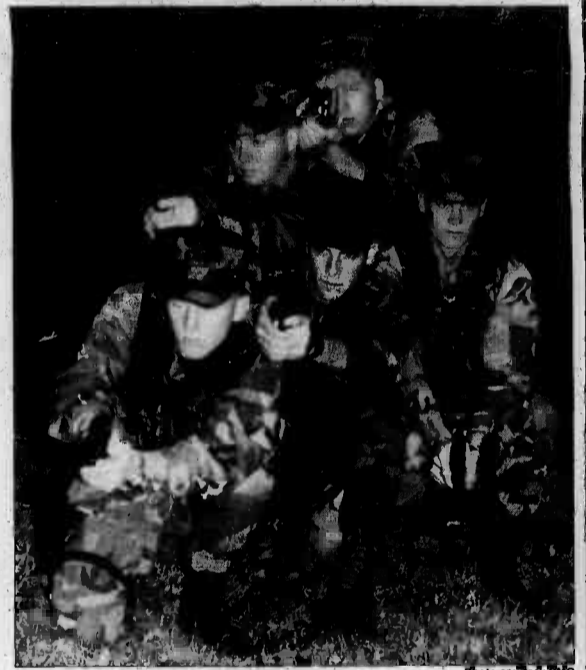
"The decision on which team is the best is decided by a combination of PFT scores, motivation, team unity, test scores and so forth," Bott explained. The MP team consistently scored the highest on written, physical and practical application tests during the two-week course.

Although the Marines agreed teamwork and determination had a lot to do with the team winning the school's top honors, they also gave credit to Gysgt. Richard G. Barnes, plans and training officer, Provost Marshal's Office here.

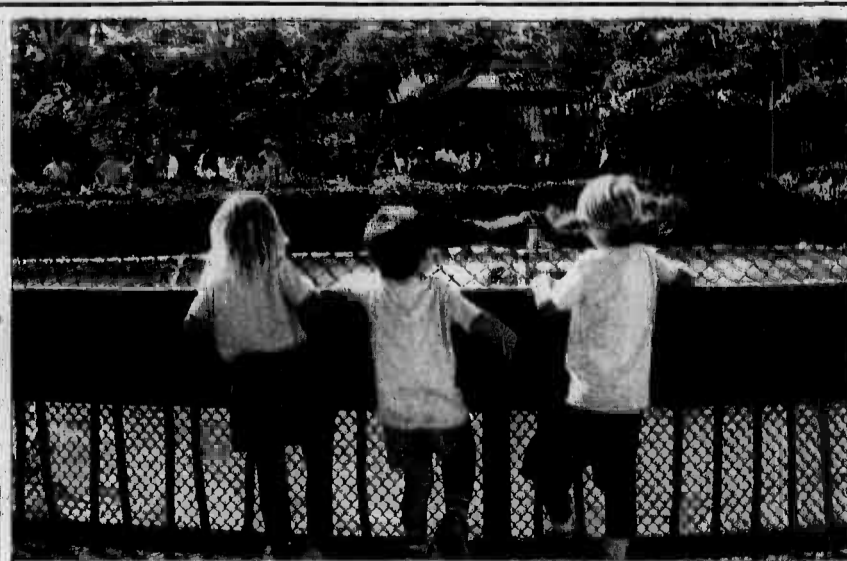
With a little more than two months to prepare for the course, Barnes coordinated the team's training and briefed them on what to expect once they'd arrived. "Basically, the training here is the same as the school's," he said.

However, Vavra went on to explain that each member also contributed a lot to the team's winning. He said that each team member had an input on any missions the team was to perform during the course.

But it is also that same input that is going to help their fellow Marines in PMO here to become more proficient at their hobs, Bott said.



(Clockwise left to right) LCpls. Robert G. Hoch, Robert J. Vavra, Layne E. Leu, Sgt. Robert A. Bott and LCpl. Anthony J. Silveria, are the Special Reaction Team that took top honors at the Army's SRT school at Fort McClellan Army Base in Alabama.



Sea Life Park

Preschoolers for Manehune Rainbow Preschool watch as sea lions and seals sunbathe during a recent visit to Sea Life Park.

## Urinalysis standards toughened by DoD

By Jim Garamone  
American Forces Information Service

The Department of Defense recently toughened the urinalysis standards used in detecting cocaine, officials said.

"The tests are so good and so accurate, we've been able to toughen the standards," said Sharon Cooper, director of the Pentagon's Demand Reduction Office. "The amount of cocaine that will show a positive now is smaller." The new test level as of Jan. 1 is 100 nanograms a milliliter for a positive. The old level was 150 nanograms a milliliter.

In addition to toughening cocaine standards, DoD will increase emphasis on detecting amphetamines and hallucinogens. The standards will not change, but DoD will test more for these substances.

The Demand Reduction Office - part of the Office of the DoD

Coordinator for Drug Enforcement Policy and Support - sets policy and standards for the armed services' urinalysis programs. In addition, it's involved with educational programs to warn and educate servicemembers and their families of the dangers of drug abuse.

Other government officials have held up the DoD program as an example of the effectiveness of drug demand reduction policies. DoD figures for 1980 show 27 percent of those in the military admitted they had used some illegal substance within the last 30 days. In 1988 - the most recent data available - that figure dropped to 4.8 percent.

"Commanders in the field are saying they have better troops, and productivity has improved," Cooper said. "The military effort is being held up as a flagship for other government agencies

See Urinalysis, A-10



Lasean Timmons looks over the different types of dolls trying to decide which ones to select.

# Family child care receives \$50,000 of toys

Story and photos  
By Sgt. Jason Erickson

The Family Child Care Program here is now lending out \$50,000 worth of toys, books and training aids to its certified providers aboard the installation as part of the newly established Toy Lending Library program. The items were purchased by Headquarters Marine Corps and issued to each installation with a family child care program Corps-wide. The amount allotted per installation was either

\$25,000 or \$50,000 depending on the size of the program. Because it is one of the five largest in the Corps, Kaneohe's program received the full amount. According to Mary Heckert, Family Child Care director, the toys and other items will be signed out, to certified home care providers only, for one of three durations: 30-day, 90-day or long term. The duration will depend on the type of equipment and the level of demand for that product balanced with the supply available, Heckert said.

In a world filled with child care problems, for parents and providers alike, this addition to the nearly two-year-old program was well received. Child care providers who attended opening festivities for the Lending Library March 11 and 12 were as enthusiastic as "a bunch of kids in a candy store," as one observer put it. They were also thankful.

impressive items, such as the "Housekeeping Cube" -- a miniature toy sink/stove -- is in limited supply, and will surely be in great demand with perhaps a lengthy waiting list. However, other items such as tiny individual mats and child-sized desks are in ample stock and most of the providers should be able to get their hands on at least a few.

"This is absolutely fabulous," praised Karen Corona as she guarded the items she selected to borrow and filled out the necessary paperwork. Susan Rich added that not only was the variety of stock sufficient, but "much more than I expected."

In order to make the sign-out process run smoothly and allow all providers a fair opportunity, Heckert and her staff created a detailed system. It includes a precise inventory system to keep track of every single item and a lending policy that specifically spells out due dates, sign outs and other procedures.



Mary Heckert, Family Day Care director, shows providers a sleeping mat now available at the newly-opened Lending Library.

Ranging from balls and dolls and blocks, to gates, high chairs and strollers, the items cover the gamut of needed supplies for any developmentally appropriate family child care program. In total, nearly 30 different types of equipment are now available. Within those types, for instance dolls, there is a wide variety to pick from. Also on hand for check-out are smaller items like scissors and other art supplies which can be kept for long-term periods, Heckert explained.

There are also specific hours during which the check-in and out of items can be done. Regular hours are 8 a.m. to 3 p.m. Monday-Friday, but the Library will also be open for extended hours the third week of each month. This will be until 7 p.m. that Monday and from 9 a.m. to noon the following Saturday.

For more complete information on the policy contact the Home Day Care office at 254-2112 or stop by the office in Building 244 next to the Station Theater.

A couple of the more

## Blotter

Military Police Department  
MCAS Kaneohe Bay

### Alcohol-Related Incidents

• A Marine was apprehended by military police for driving under the influence while attempting to gain access through the main gate. The Marine was administered a field sobriety test which he failed and elected to submit to an intoxilyzer test which resulted in a reading of .17 BAC. The Marine was processed and released to his

unit representative.

### Other Incidents

• Fort Shafter military police apprehended a Marine for driving on state suspension after a military policeman observed the Marine speeding. After making contact with the Marine, it was determined his state drivers license was suspended. The Marine was processed and released to his unit representative.  
• Two civilian workers were apprehended for larceny of gov-

ernment property during the course of an investigation by military police. The workers admitted to the theft and the property was recovered.

• Military police apprehended a Marine for larceny of private property after another Marine had reported his bicycle stolen. The Marine and bicycle were discovered near Anderson Hall. The Marine was processed and released to his unit representative.  
• Military police apprehended

a Marine for failure to pay a just debt after failing to pay for gas at the gas station here. The Marine's unit was notified and the Marine reported to the Military Police Department. The Marine was processed and released to his unit representative.

• A sailor escaped from military control after being placed in custody of his command. The sailor had been apprehended by military police for being in an unauthorized

status for 21 days. After being released to his unit, the sailor was taken to his quarters to obtain his personal effects for pre-trial confinement and during that time escaped.

• A Marine and his wife were involved in a family disturbance at their quarters which escalated when the wife grabbed a kitchen knife and attempted to stab him. While the Marine was leaving, his wife chased him and threw the knife at him. Both individuals were appre-

hended by military police.

### Lost and Found

The lost and found custodian has in his possession a radio/cassette player, a car stereo, a backpack, golf clubs and a kitchen knife. There is also assorted jewelry, wristwatches, keys and bicycles. If you think any of these items may belong to you, please contact Sgt. Chapman at 257-3110.

## HAWAII Marine

The *Hawaii Marine* is an unofficial newspaper published every Thursday by RFD Publications, Inc., 45-525 Luluku Road, Kaneohe, HI 96744, a private firm not connected with the Department of the Navy or the United States Marine Corps. All advertising is provided by RFD Publications, Inc., 235-5881.

The *Hawaii Marine* is a free publication delivered each week to all family housing units aboard Marine Corps Air Station, Kaneohe Bay and to all Hawaii-based Marine Corps commands. Housing carriers

are paid only by voluntary contributions from customers who are satisfied with the delivery service. A voluntary contribution of \$1.30 a month may be solicited by these carriers. Housing residents may contact the publisher directly if they wish to stop home delivery. Questions concerning circulation policies and service can be answered by calling the publisher.

The *Hawaii Marine* welcomes stories and photo submissions from its readers, but submission is no guarantee of publication.

Please call the MCAS/1st MEB Joint Public Affairs Office at 257-1347 for Windward activities, FAX 257-5743, or the FMFFac Public Affairs Office at 477-5052 for Leeward activities. Opinions expressed by the publisher and journalists are their own and are not to be

considered an official expression of the Department of the Navy or the United States Marine Corps.

Items advertised in the *Hawaii Marine* must be made available for purchase, use or patronage to everyone without regard to race, creed, color, national origin, religion, age or sex of purchasers, user or patron. The appearance of all advertisements in the *Hawaii Marine*, to include inserts and/or flyers, does not constitute endorsement of the firms' products or services by the Department of Defense, the Department of the Navy or the United States Marine Corps.

Commanding Officer.....Col. R.R. Crawford  
Public Affairs Officer.....Maj. L.M. Ryan  
Editor.....Christy Edwards

## SOFT CONTACT LENSES

Daily Wear, Extended Wear,  
Tinted & Disposable

From: **\$79<sup>00</sup>**

Includes: Lenses, Care Kit,  
Follow-up Care, and 90-Day  
TRIAL PERIOD.

**PRESCRIPTION GLASSES**

From: **\$69<sup>00</sup>**

**FAMILY EYE EXAMINATION PLAN**

**\$49<sup>00</sup>**

COMPLETE PROFESSIONAL VISION SERVICES  
DEDICATED TO QUALITY AND SERVICE IN VISION CARE

**DR. CHARLES DEAN**  
Optometrist 139 Hekili St., Kailua 261-9735



## Schrader's Windward Marine Resort Waikiki Alternative

A unique hotel on  
Oahu's Kaneohe Bay

- Sailing
- Windsurfing
- Kayaking
- Swimming
- Relaxing
- Private

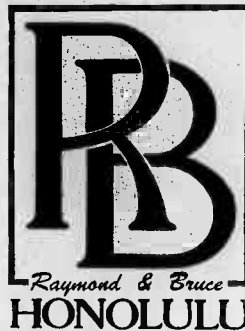
Schrader's Windward Marine Resort  
Kaneohe's Homegrown Hotel & Vacation Rentals  
On Beautiful Kaneohe Bay

47-039 Lihikai Drive, Kaneohe — Hawaii  
(808) 239-5711 — Fax (808) 239-6658

Call Today For Reservations Tomorrow



## Formerly Arby's Pearlridge & Windward Mall



"Featuring Parker Ranch Beef"

SAVE  
A  
BUCK!

**\$169**  
Reg. \$2.69

NOW  
ONLY!

For A  
**HOT HAM & CHEESE**  
OR  
**TURKEY DELUXE**  
**SANDWICH**

We Made A Change For The  
Better For Hawaii!

SAVE PRESENT THIS COUPON FOR SAVE  
**\$169** HOT HAM & CHEESE  
OR TURKEY DELUXE  
SANDWICH

Buy up to six with this coupon at this price. Offer not valid with any other discount. Must present this coupon. Expires April 1, 1992.



Available at Pearlridge & Windward Mall only.

# Lima 3/3 cleans house during PTA raid



Part of the training 3d Marines conducted at PTA was day and night raids on an abandoned boy's school near Hilo. Waiting inside the school were "enemy" aggressors, who were prepared to defend the building at all costs. The plan of attack for Lima Co.'s raid included being dropped off by HMM-165 helicopters approximately two miles from their objective and moving by patrol to surround the school. After suppressive fire from their weapons platoon began, the assault element moved in to take the school compound.

- (Clockwise from top left) LCpl. Jacob Jones directs his fireteam during their approach of the boy's school.
- A Lima 3/3 Marine scans the rafters of the school for enemy movement.
- A Lima 3/3 fireteam keeps a wary eye on their surroundings during their boy's school raid.
- LCpl. Jones and his fireteam find an opening to gain access into the barricaded school.
- After being dropped off by helicopters, Lima Marines follow a road leading to the boy's school before moving into the brush to surround the school.

# PTA mess hall caters to field Marine

Story and photos by Sgt. Kevin Doll

## POHAKULOA TRAINING AREA, Hawaii-- Marine Corps chow.

The mention of these three words has been known to strike terror into the heart of the toughest Marine.

But utter these same words in the field and, more often than not, Marines will come running.

During PTA 2-92, the Marines who ran the field mess hall here not only provided food to the base camp but to the Marines

living out in the bush. Behind this "field catering" enterprise was SSgt. Armstead Hayes, chief cook, and his band of 24 food service specialists and 62 temporarily-assigned messmen.

"We usually feed about 2,600 Marines a day here, at both the base camp and in the field," Hayes said. "This includes two meals a day, breakfast and dinner, and then 'hot wets' for the approximately 10 or more units always in the field." Hot wets are soup, coffee and hot water with cocoa mix served in the late

**'It warms you up at night, gives you a boost of energy and makes it easier to stay awake.'**

*LCpl. Campbell*

evening.

A typical day for a cook begins at 1 a.m., according to Sgt. John Walton, cook and chief messman. The cooks begin the food preparation, and at 3 a.m., the messmen begin arriving. The mess hall opens its doors at 5:30 a.m., the same time that individual unit 5-ton trucks and "humvess" begin arriving to haul the hot chow out to the field Marines.

The food is delivered, and served in the chow hall, in insulated vat-cans to keep it hot. Beverages are kept hot, or cold, in field coolers.

A staging crew stacks food, beverages and utensils on wooden pallets outside the mess hall, and as unit vehicles drive up, their Marines load it on, sign for what they received and move out. The process is repeated again for dinner and later hot wets.

"It's like a McDonald's drive-thru," Walton commented.

To accomplish their food service mission, the cooks brought with them most of what they needed to cook and prepare the food. This includes 16 field ranges and burners to cook with and four immersion heaters. The heaters are placed on garbage cans filled with water and are used in washing the pots, pans and utensils. The vat-cans and field coolers round out the items to keep the service nearly self-sufficient.

Serving their first meal

Feb. 13 and their last March 14, the mess Marines operated both enlisted and officer/staff NCO chow halls. During this time, the number of Marines fed twice daily peaked at about 4,800, according to SSgt. Neal Tackitt, assistant mess hall manager and subsistence chief.

"The total cost of the food and paper products for PTA 2-92 is about \$250,000," Tackitt said. Part of this expense translates into about 5,000 individual milks a day, 400 eggs for breakfast, 150 pounds of bread per meal, 60 gallons of coffee a meal and 150 gallons of Kool-Aid per meal. A Sunday steak dinner was served once by the mess hall crew, which totaled about 1,400 pounds of beef. For the month of February, Tackitt said his expenses came \$2,6000 under budget.

"We emphasize safety in everything we do," said Walton. "For example, the burners and immersion heaters run on mogas, and if you don't watch what you're doing and something goes wrong, they could explode."

And what do the Marines on the receiving end of the chow line think?

"It's a lot better than a MRE," said LCpl. Lance Campbell, HQ Co., 3d Marines. Campbell likes dinner the best "because you don't get green eggs."

"I guess I like the cake," said LCpl. Brice Primrose, also of HQ Co. "It's sweet

and it fills you up a little better."

"I like dinner because you don't know what you're going to get," said LCpl. Erving Willingham. "I think chili-mac is the best thing they make."

These Marines agree the hot wets are one of the most important services the mess Marines provide.

"It's easier to have hot water delivered than try and make it in the field," Primrose said.

"It warms you up at night, gives you a boost of energy and makes it easier to stay

awake," Campbell said.

As with all Marine missions, it's not one person who can take the credit for a job well done.

"Teamwork is the name of the game for the service we provide," Hayes explained.

"We have a day and night shift, so everyone can get enough sleep to do their job and not burn out."

"Everyone here is doing an outstanding job," Tackitt said. "The Marine Barracks cooks, all the new cooks and the messman all pulled together, worked hard and got the job done."



A Marine rinses utensils in a field washer. The water is warmed by an immersion heater, seen jutting out of the garbage can.



PTA messmen load food aboard a five-ton truck from HQ 1/12. The artillerymen then truck it out to the field for their unit's evening chow.

**Afronesian Hair Care Specials**  
Bring in coins for these specials

- Relaxer **\$35** (Incl. Condition & Set)
- Carefree Curl **\$50**
- Hair Cuts **\$15** and up (longer hair slightly more)

Matrix SYSTEME BIOLAGE

**The HAIR CELLAR**  
1314 South King St., Suite 709  
Call for appt. **536-6855**

**Dunn & Dunn Attorneys at Law**  
A Law Corporation

- Low Uncontested Divorce
- Low Uncontested Adoption
- Bankruptcy
- Car Accidents & Deaths

**OPEN EVENINGS & SATURDAYS**

HONOLULU: 841 Bishop Street, #450 Ph. 524-4529  
AIEA/PEARL CITY: 98-1247 Kauhuanu St., #212 Ph. 487-8464

**Greg T. Dunn**  
Former Military  
JAG Attorney

**KAILUA OPTICAL**  
Has One Hour Service On Most FT 28 and Single Vision Lenses.

**CONTACTS from \$59**  
**50% OFF ALL FRAMES** in stock  
**OVER 1,000 FRAMES**

Kailua Square • Uluniu Street • 262-6191  
Luke Jones, Owner

**ATTENTION PARENTS!**

**WE'RE NOT JUST "KIDDING" AROUND**

Hawaii's Very Own  
**FOX KIDS 13 CLUB**  
KHNL

The KHNL/Fox Kids Club has a lot more to offer than fun and games. We've got special discounts at museums and theaters; cultural and educational events; and community involvement.

Of course, there's lots of fun and games, too!

**JOIN US... FOR FREE!**

The 50,000 members of the KHNL/Fox Kids Club invite you to join the most totally fun club for kids in Hawaii. Just fill out this entry form completely. You will receive your membership kit and I.D. card in 8 weeks.

ALL KIDS 2-14 are eligible!  
PLEASE PRINT

Name \_\_\_\_\_  
Address \_\_\_\_\_  
City \_\_\_\_\_ State \_\_\_\_\_ Zip \_\_\_\_\_  
Birthdate \_\_\_\_\_ MONTH \_\_\_\_\_ DAY \_\_\_\_\_ YEAR \_\_\_\_\_ Phone \_\_\_\_\_

**MAIL TO: KHNL FOX KIDS CLUB, P.O. BOX 17847, HONOLULU, HI 96817**

**SAVE 62% ON LEVOLOR® BLINDS**

3 Day Availability or it's FREE!

For a limited time only, Bougainville Wholesale Carpet Center is offering all Levolor Vertical, Horizontal and Wooden blinds at an unbelievable 62% SAVINGS! Just bring in your window measurements and we will manufacture your Levolor blinds to their exact specifications. And on Levolor Riviera Horizontal blinds, if they're not ready in 3 working days-the blinds are yours-FREE! So hurry down to Bougainville Wholesale Carpet Center!

**LOCAL STOCK AVAILABLE FOR IMMEDIATE PICK-UP!**

**ALL FIRST-QUALITY CARPETS!**

**ALL NATIONAL NAME BRANDS.**

**LOWEST PRICE STAINMASTER CARPETS IN HAWAII!**

**DUPONT CERTIFIED STAINMASTER CARPET**

**STAINMASTER PLUSH**

- Durable, easy-care!
- 5 yr. wear warranty!
- 30 decorator colors!

**\$800** sq. yd. ROLL PRICE

Suggested Retail: \$17.95 sq. yd.

**Over 11,000 sq. ft. of Showroom/Warehouse space near Costco.**

**Bougainville WHOLESALE CARPET CENTER**

We are a Wholesale Carpet Club  
4577 Bougainville Drive • Honolulu, Hawaii 96818 • Phone 831-2300  
Visa and MasterCard Welcomed  
Offer expires April 10, 1992.

**NOBODY BEATS OUR PRICES!**

**SAVE 50% OR MORE ON ANY CARPET!**

Buy below wholesale cost! Sizes 12' x 3' to 12' x 35'... Just a few of over 800 in stock:

| SIZE    | COLOR          | COMPARE AT | MEMBER PRICE | SIZE    | COLOR          | COMPARE AT | MEMBER PRICE |
|---------|----------------|------------|--------------|---------|----------------|------------|--------------|
| 12 x 3  | Multicolor     | \$40       | \$18         | 12 x 11 | Smoke          | \$190      | \$58         |
| 12 x 3  | Silver Tankard | \$60       | 18           | 12 x 12 | Silver Grey    | \$144      | 68           |
| 12 x 4  | Silver Grey    | \$48       | 18           | 12 x 12 | Silver Tankard | \$240      | 68           |
| 12 x 5  | Acorn          | \$68       | 28           | 12 x 13 | Acorn          | \$156      | 78           |
| 12 x 5  | Amber Glow     | \$68       | 28           | 12 x 13 | Amber Glow     | \$156      | 78           |
| 12 x 6  | Cottonseed     | \$120      | 38           | 12 x 14 | Smoke          | \$242      | 88           |
| 12 x 8  | Gold Dust      | \$96       | 38           | 12 x 14 | Teakwood Blue  | \$224      | 88           |
| 12 x 9  | Smoke          | \$156      | 48           | 12 x 15 | Multicolor     | \$200      | 88           |
| 12 x 9  | Teakwood Blue  | \$144      | 48           | 12 x 15 | Cottonseed     | \$300      | 98           |
| 12 x 10 | Rust           | \$120      | 48           | 12 x 17 | Gold Dust      | \$204      | 98           |
| 12 x 10 | Cottonseed     | \$200      | 58           | 12 x 18 | Multicolor     | \$240      | 98           |
| 12 x 11 | Gold Dust      | \$132      | 68           | 12 x 18 | Rust           | \$216      | 98           |

Limited to stock on hand. Hurry for best selection.

Balloon

# Mania

**20% OFF\***  
 at the register  
 •Presto TaterTwister #02930 reg. \$29  
 •Brother Sewing Machine #VX808/809 reg. \$119  
 •Selected Display Models  
 8mm & Full Size Camcorders

**20-22 MARCH 1992**

Balloons identify savings on selected merchandise.

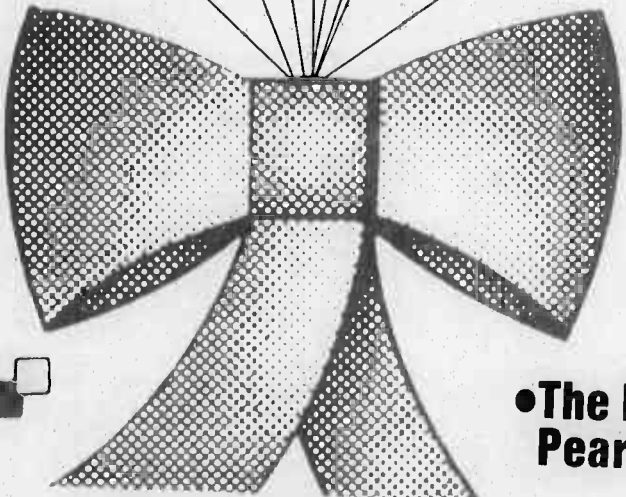
**25% OFF\***  
 at the register  
 •HAWAIIAN ISLE KONA COFFEE  
 •DIAPER BAGS  
 •I-95 BOYS' JEANS Size 4-7, 8-16

**SAVE 20-50% OFF\***  
 ON SELECTED MERCHANDISE

**25% OFF\***  
 at the register  
 •Girls' "Rosebuds" Briefs By House of Ronnie, 3-pack Size 2-14, reg. 2.30  
 •Tucker 32 gal. Wheeled Trash Container reg. 7.99

Look for our balloons throughout the main stores at Pearl Harbor & Barbers Point

**50% OFF\***  
 at the register  
 •NINJA TURTLE ACTION FIGURES #5610, #5000  
 •SPORT DUFFLE BAGS By Ogio.  
 •HANE'S BOYS' DUCK TAILS 3-pack, Selected sizes 3-8, reg. \$5  
 •PEN & SNOOPY BRIEFS By Hurlitz, reg. 49.99



**NEX**  
 Navy Exchange

•The PLAZA at Pearl Harbor

•The MALL at Barbers Point



\*Sorry, no rainchecks.

# Assault course built at range

Story and photos by Sgt. Jason Erickson

After nearly a year of planning, Squad Leader's School is finally getting the assault course it has yearned for. During this entire month, rapid construction has been, and continues to be, in progress as Marines from MWSS-174 blaze new trails and trenches at the range here.

The course will feature a barbed wire section for high and low crawling, trenches to maneuver, pop-up targets for weapons practice and a host of simulated enemy fire devices.

It is all part of a plan designed by SSgt. Rodney Stephens, NCOIC of Squad Leaders School. However, he emphasized that the assault course will be for everyone here to use, not just Brigade Schools.

1stLt. Kenneth Wolf, OIC of Squad Leaders School, added that having the assault course will be a tremendous asset to the training. "This will be great. Right now, we just can't run the students through the level of training the new range will provide."

According to Wolf and Stephens, the students will begin their assault after having already spent a week in the field and humped back from Bellows beach with full packs - to add the fatigue they'd likely have in an actual combat situation.

Once at the range, the students will have to low and high crawl through a 30-yard long section of barbed wire and other obstacles as simulated enemy mortars pummel their position. From the barbed wire, they'll "roll" into one of two trenches and hustle their way forward toward their enemy. As they approach the end of the

trench, machine gun fire from two pneumatic (air-operated) .50 caliber machine guns will begin to fire on the team. Maneuvering in tactical formation, they must continue forward, while randomly firing on pop-up targets, until they assault their objective.

"It should be an impressive course," Wolf said. "Although it can't match the types of assault ranges at bigger training bases like Camp Pendleton and Camp Lejeune because of acreage constraints, it will be a big improvement from what we currently have."

Both Wolf and Stephens tipped their covers to the job the MWSS-174 Marines are doing. When the heavy equipment operators and engineers from the unit began work on the range at the first of the month, they would-be assault course was nothing more than a weed-covered field. Within only a handful of days, the entire field was cleared to the soil, two trenches were built and gun emplacements for the pneumatic .50 cal were well on their way to completion. Meanwhile, trenches for the pop-up targets had to be greatly improved and barbed wire had to be set in place.

Because of a limited, if not non-existent, budget the design for the course was kept both simple and flexible. Using a combination of organic and DRMO assets, as well as what Wolf called "other sources," the range will come to the Brigade at almost no cost above fuel for the heavy equipment.

"When we first set out to build the assault range, we estimated a cost of \$11,000 in needed parts," Wolf added. "Since we don't have that money, we used what we already had or could get for free and did it for nothing instead."



Marines from MWSS-174 dig one of two trenches which will be used on the new Squad Assault Range.



Heavy equipment operators from MWSS-174 load up a new arrival of coral to be spread over their newly constructed firebreak road at Ulupa'u Crater.

## Heavy equipment Marines get chance 'to play'

Story and photos by Sgt. Jason Erickson

The heavy equipment operators from MWSS-174 working on the range this month have a secret. While everyone watching them do great things there thinks they're working hard, these Marines are actually just having fun.

Apparently, when they're in their tractors and bulldozers - lifting, moving and compacting earth - the leathernecks are having the time of their lives.

"It's fun - I love what I do, it's not really like work to me," admitted LCpl. Dean Gleason. "The last time I did this was in Saudi Arabia, so I missed it."

Gleason explained that he and his fellow heavy equipment operators seldom have projects like this to do, so ordinarily their time at MWSS-174 is spent doing other projects for the squadron or maintaining their equipment.

Cpl. Jeff Riggins added that the few times they get to do stuff like the range projects are the only time they get to work in their actual MOS. He said everyone was pretty excited about the whole thing. "We were pumped up like before a football game," added the Marine who also stars for '174's championship-winning intramural football team. "Not everyone from the shop could do it, so they had to pick who'd get to come up here."

And it's not just an individual thing these Marines do when they're in their massive machines. According to Cpl. Jack Whitehead, there's plenty of competitive spirit among the group. "Everyone wants to show the others they're the best operator by doing stuff the quickest or most efficiently."

This competitiveness is evident in the job they've done at the range. The Marines are split into two groups and are working on two different projects. One is a range improvement undertaking, the other involves the building

See Equipment, A-7

**Pamper Yourself Today!**  
**"Lose 4 to 14 inches in 1 hour!"**  
 • Restore elasticity, toning & firming loose flabby skin  
 • Contours your body - lose from problem areas  
 • This is not a water loss  
 • Guarantees to take off inches on your first wrap  
 • Eliminates toxic waste that clogs lymph system and restores circulation  
 • \*This unique method is safe, easy, relaxing and IT WORKS!  
**\$5250**  
**Body Wrap**  
 Which Includes  
 Deep Pore Cleansing  
**Masque Facial**  
 Reg. \$100  
 Expires 3/28/92  
**Life Styles Beauty Health Center**  
 236-4400  
 Kaneohe, American Savings Bank Bldg. Open Mon.-Sat. By Appointment  
 45-955 Kam Hwy., #306

**RESUMES** and SF171's  
 • Military Specialist - so you don't have to keep explaining all your terminology.  
 • Award Winning Writer - to put you in the best possible light.  
 • Laser Set Availability - to set you out in a crowd.  
 • MasterCard & Visa Accepted  
**COMPLETE BUSINESS SERVICES**  
 488-2800  
**AIEA**

**THE FUTON STORE**  
**EXTRA SPECIALS!**  
**Prices TOO LOW To Advertise.**  
 • Eucalyptus Bifold Frames ..... \$\$\$  
 • Black Lacquer A Frames ..... \$\$\$  
 • Oak Bifolds (Walnut & Honey Finish) ..... \$\$\$  
 ... And much much more!  
 (prices good thru 3/24)  
 3 Month No Interest Financing Available  
**HONOLULU** 1361 S. Beretania St. PH: 955-3478  
**KAILUA** 320 Ulukou St. PH: 262-9312  
**AIEA** Behind Corner Ford 9500 Kalia Hwy. #113 PH: 488-7658  
 HOURS MON-SAT 11A-6P SUN 12 noon-5P

**PALI PALMS DENTAL CENTER**  
**DENTAL SERVICES**  
 General Dentistry • Preventative and Restorative Dentistry  
 Cosmetic and Esthetic Procedures  
 INSURANCE ACCEPTED: HDS, HMSA, Delta Dental Services (Military), Hawaii Dental Health Plan  
**Dr. Derek Ichimura, DMD**  
 Office: 254-6694  
 970 N. Kalaheo Ave., A-108  
 Kailua, Hawaii 96734  
**Dr. Alan M. Yugawa, DMD**  
 Office: 254-6477  
 970 N. Kalaheo Ave., A-108  
 Kailua, Hawaii 96734

**IRS REFUNDS IN 12-21 DAYS!**  
**FLASHTAX**  
 Whether you do your own return or it is professionally done, we can electronically file for you!  
 Call **946-4033** for your kit or pick one up at any Pendleton office  
**FLASHTAX** is an affiliate of **PENDLETON TAX SERVICE**

**TRINITY PRESBYTERIAN CHURCH**  
 Where People Care . . . and Where the Bible Makes Sense for Daily Living.  
 9:30 A.M. Bible School (for all ages)  
 11:00 A.M. Morning Worship  
**262-8587**  
 875 AULOA ROAD, KAILUA

**Now Tax Free For College**  
  
**U.S. Savings Bonds**  
 A public service of this publication

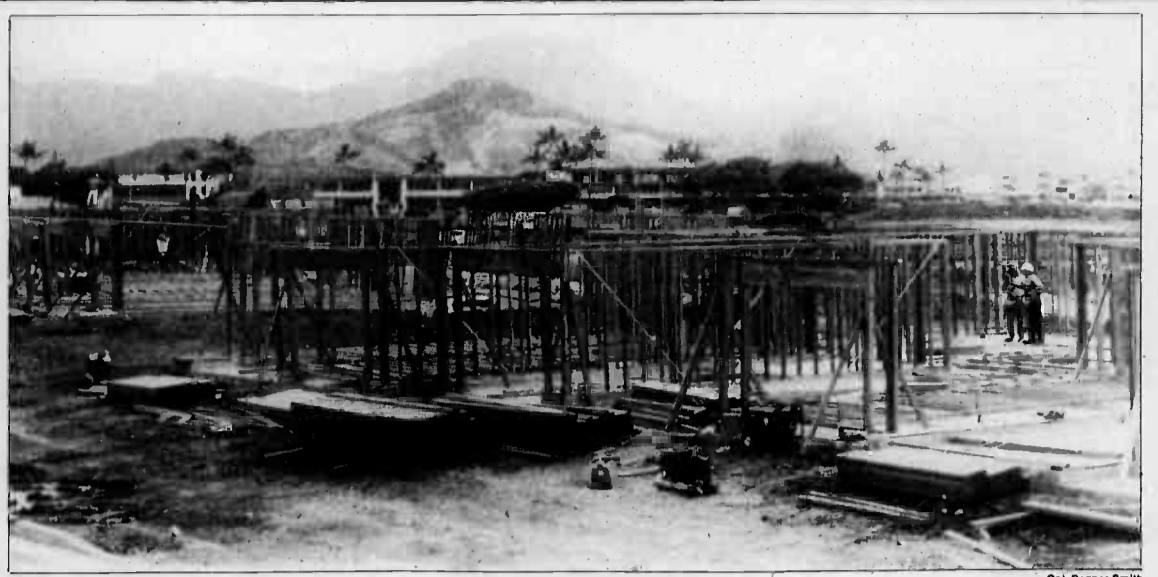
**VISA** **BANKRUPTCY? BAD CREDIT? NO CREDIT? TURNED DOWN BEFORE? WE CAN HELP!**  
 No Service Charge For Applying  
**GUARANTEED ISSUE**  
 By: National Consumer Credit Guaranteed Association  
 Providing: Your Own Personal Line of Credit  
 We've Been Helping People Financially For Over 10 Years  
 \* Over 95% of our Members receive a VISA card. If you are over 18 and employed, you probably qualify for a VISA card. Don't jeopardize your financial future by lack of credit.  
 NAME: \_\_\_\_\_  
 ADDRESS: \_\_\_\_\_  
 City/State/Zip: \_\_\_\_\_  
 Phone: Home \_\_\_\_\_ Work \_\_\_\_\_  
 AGE: \_\_\_\_\_ Married  Yes  No  
**PH in and mail today, or call Carolyn Roache at 951-8488**  
 Mail to: NCCGA ATTN: Carolyn Roache 1440 Kapiolani Blvd. #1020, Honolulu, HI 96814-9718

**HAIR**  
**ALTERNATIVES**  
*At Kailua*  
 Visit Hair Alternatives at Liberty House Kailua for your next hair cut, permanent wave, color or nail beautifying. Consultations are complimentary and no appointment is needed with our stylists.  
**SERVICES INCLUDE:**  

|                           |         |                |
|---------------------------|---------|----------------|
|                           | Stylist | Master Stylist |
| • Haircut only            | 10.00   | 12.00          |
| • Haircut and style       | 16.00   | 18.00          |
| • Permanent wave, haircut | 32.00   | 36.00          |

 Prices for additional services available upon request.  
**Phone 945-5696.**  
 hair alternatives . second floor . kailua  
**LIBERTY HOUSE**

Equipment, from, A-6  
of firebreak roads for environmental purposes. Both projects, while still in progress until the end of March, have made great headway since being started March 1.  
SSgt. Ricardo Lebron is the foreman for the firebreak project. Walking around the circular road once it had already been basically built, Lebron explained that making such a road is no easy task.  
“To look at it now, you’d think there always was a road here, but trust me, when we first started it was far from it.”  
The new road stretches across the face of a downward sloping hill within Ulupa’u Crater. According to Lebron, after clearing the thick weeds growing in the area, a great deal of filling had to be done to make the road level. And while much of the surface is covered by a soft soil, just below this lies extremely hard volcanic tuff, which adds to the difficulty.  
“‘But these guys weren’t held back by the difficulties, they’re in their environment and they did what had to be done to get the job done,” Lebron said.  
Meanwhile, in the Crater’s lowlands, their fellow operators have been building a brand new range that will serve as a squad assault course. Like the firebreak road project, the area being used for the range had to be cleared of very dense brush first. Once the field (about the size of two football fields placed side-by-side) was cleared, two zigzag trenches about 15 feet deep and 50 yards long had to be dug out.  
To some, this task of manipulating giant machines back and forth would seem a monotonous job. Not to these Marines. Perhaps it is the fact that they seldom get to do it. Perhaps they just truly love what they do.  
Summing up their philosophy on life as heavy equipment operators, Lebron stated: “MWSS-174 heavy equipment operators don’t play - in fact we quit school because of recess.”



Cpl. Poznar Smith

**Home sweet home**

Framing for the first houses in the 802 housing project here went up recently. The project, the first of its kind on a military installation, is unique in that a civilian contractor is building the housing units and will then rent them out to Air Station families. The Air Station will guarantee a 97 percent occupancy rate in the 276 units now being built.

**Salutes**

- B Co., 7th Comm Bn.**  
Promotion  
LCpl. Wayne I. Carroll  
*Good Conduct Medal*  
Cpl. Gregory Hilliard  
LCpl. John C. Kinney  
**C Co., 1st Bn., 3d Marines**  
Promotion  
Cpl. Whilliam C. Corson
- HMM-262**  
Promotion  
LCpl. Lanorris Pla
- HMM-364**  
*Good Conduct Medal*  
LCpl. Steven B. Wright  
Reenlistment  
Sgt. Gary G. Lee
- MWSS-174**  
Promotion  
LCpl. Scott M. Schoen
- MAG-24**  
*Meritorious Mast*  
LCpl. A.S. Jackson

- MALS-24**  
Promotion  
LCpl. Donnie R. Bivens  
LCpl. Gaven Haney  
Cpl. Dirk J. Harris  
Sgt. Mark E. Finerfrock  
Sgt. Russell H. Rivard  
Sgt. Bryon D Sager  
Sgt. Andrew J. Upshaw  
CWO-4 A.F. Madril  
*Navy Achievement Medal*  
Cpl. Kurt A. King  
SSgt. R.L. Reuter Jr  
SSgt. Ted W. Weier  
*Certificate of Commendation*  
SSgt. Patrick A. Wilson

- H&HS**  
Promotion  
LCpl. K.A. Rennaker  
LCpl. Edgar Siqueiros  
Cpl. Gregory M. Lehto  
Sgt. David B. Borders  
SSgt. M.T. Leonard

**PRESTIGE TRAVEL UNLIMITED, INC.**  
1513 YOUNG ST. SUITE #102 • PH. #945-7400  
\*OPEN 7 DAYS A WEEK \*DELIVERY AVAILABLE TO KAILUA\*

|             |       |       |               |       |       |
|-------------|-------|-------|---------------|-------|-------|
| Los Angeles | \$174 | \$267 | San Francisco | \$159 | \$267 |
| Portland    | \$229 | \$325 | Seattle       | \$194 | \$257 |

|               |       |                      |       |                 |       |
|---------------|-------|----------------------|-------|-----------------|-------|
| Denver        | R/T   | Omaha                | R/T   | Miami           | R/T   |
| Houston       |       | Detroit              |       | Boston          |       |
| Bilings       |       | Cleveland            |       | Atlanta         |       |
| New Orleans   | \$523 | Columbus             | \$528 | Norfolk         | \$548 |
| Oklahoma City |       | Indianapolis         |       | Baltimore       |       |
| Albuquerque   |       | Minneapolis/St. Paul |       | Washington D.C. |       |

**CALL FOR OTHER DESTINATIONS**

|                               |                                      |
|-------------------------------|--------------------------------------|
| <b>AIR/ROOM/CAR PACKAGES</b>  | <b>FLY/DRIVE PACKAGES</b>            |
| Honol. Kona, Maui, Big Island | From \$109 Per Person                |
|                               | *Packages Based on Double Occupancy* |
|                               | From \$95 Per Person                 |

SOME RESTRICTIONS APPLY. PRICES SUBJECT TO CHANGE. OPEN MON-FRI 8:30 AM-6:00 PM SAT-SUN 9:00 AM-1:00 PM

**"IN PAIN? LET US HELP YOU" WHY WAIT FOR TREATMENT? YOU CAN SEE A DOCTOR IMMEDIATELY**

Will not interfere with current military medical care.  
**25% MILITARY DISCOUNT** **DISSATISFIED? WITH MILITARY HEALTH CARE!**  
**NO CHARGE INITIAL CONSULTATION**

**RECEIVE IMMEDIATELY CARE FOR:**

|   |   |
|---|---|
| <input checked="" type="checkbox"/> HEADACHE/MIGRAINE | <input checked="" type="checkbox"/> BACK PAIN     |
| <input checked="" type="checkbox"/> PINCHED NERVES    | <input checked="" type="checkbox"/> SLIPPED DISC  |
| <input checked="" type="checkbox"/> SHIATSU/MASSAGE   | <input checked="" type="checkbox"/> STIFF NECK    |
| <input checked="" type="checkbox"/> MUSCLE THERAPY    | <input checked="" type="checkbox"/> SHOULDER PAIN |

**NO COST FOR: WORK OR AUTO INJURIES! NO APPOINTMENT NECESSARY**

**486-8888**

DR. HOWARD MARTIN, II DC  
**AIEA CHIROPRACTIC & SHIATSU CLINIC**  
AIEA MEDICAL 99-128 AIEA HEIGHTS DR. SUITE 202

**KAILUA High School**

**FRIDAY, MARCH 20 6:00 p.m. - Midnight**  
**SATURDAY, MARCH 21 12:00 p.m. - Midnight**  
**SUNDAY, MARCH 22 Noon - 6:30 p.m.**

**SEE KAILUA TOYOTA'S ALL NEW 1992'S!**

Paseo • Tercel  
• Corolla  
• Trucks!

**Featuring E.K. Fernandez Rides**

**FOOD GAMES**

**COUNTRY FAIR!!**

**CARNIVAL**

**HOLIDAY THEATRES**  
Starts Friday  
**Enchanted Lake Cinemas**  
1060 Keolu Dr. 263-4171  
NO PASSES

**Once Upon A Crime**  
**PG**  
12:15, 2:15, 4:15, 6:15 & 8:15

**The Adventures of THE GREAT MOUSE DETECTIVE**  
**G**  
NO PASSES  
12, 1:45, 3:30, 5:15 & 7

**ARTICLE 99**  
**R**  
9:00 PM  
"99" IS 100% ENTERTAINING!

**JFK**  
The story that won't go away.  
12:30, 4 & 7:30  
KAILUA 261-9103

**Medicine Man**  
**PG-13**  
12, 4 & 8  
**DOUBLE FEATURE**  
**STOP! OR MY MOM WILL SHOOT**  
2, 6 & 10

(Right) Special Reaction Team members discuss their plan of approach during a training exercise. (Far right) LCpl. Layne E. Leu, rear security man for the team, slowly approaches the target while covering the rear as the rest of the team prepares to enter.



## SRT training emphasizes teamwork

By Cpl. J. Kinchen-Schneider

When a problem arises, the Provost Marshal's Office is called. But when the MPs have a problem, they call the Special Reaction Team.

Handing out tickets, arresting law breakers and standing gate duty is only part of a military policeman's job. Another part entails hostage recovery which requires special training and a special team.

Recently, a five-man team was sent to Fort McClellan Army Base in Alabama to attend the Special Reaction Team School. This is a school where MPs learn techniques and tactics similar to a Special Weapons Assault Team.

The two-week course is approximately 150 hours long, offering a variety of classes on dealing with weapons, rappelling, exercises on entering buildings and retrieving hostages.

"The Marine Corps doesn't have its own formal school so we utilize the Army's school," said GySgt. Richard G. Barnes,

plans and training officer at the Provost Marshal's Office here. "The Army has been doing this type of training for years and the Marine Corps was doing it on and off."

However, Headquarters Marine Corps has stipulated, within the last two years, that each installation will have an SRT team or have an agreement or contract with a civilian agency with a team which can be utilized during high threat situations, he said.

As a result, PMO here has been fortunate enough to send two teams through the school so far. "Normally, only one team from each installation can go through the school, Barnes said.

The basis of the course is teamwork. The team works, sleeps and eats together. If one member of the team fails any part of the course, then the whole team is dropped from the course," Barnes explained. "But if the team works well together, then they will do well."

Although it is a military police

school, Department of Defense employees are sometimes sent for training along with Army and Marine teams, according to Barnes.

The Air Station team competed against four Army teams, another Marine team and a team which consisted of three civilians and two military officers.

"When the teams arrive at the school, the first thing they have to do is pass an Army physical training test. Each team member on the team has to score 250 points or above. So my staff and I make sure the team is as prepared as it can be."

Before a team is sent to the school, the volunteer Marines are screened and then put through an identical prerequisite course here.

Hence, Barnes and his staff look for marines who are willing to give 110 percent. The Marines must have at least one year of military service, be a lance corporal or above, have one year experience as a MP out on patrol and be in excellent physical condition.

In addition to those requirements, the Marines must have a PFT score of 250 points or higher and be extremely proficient at shooting their firearms (M16A2 and 45mm pistol). They must also be non-smokers, have no nonjudicial punishment or courts-martial and have at least one-and-a-half-to-two years of service left to do here. And the last requirement is compatibility with the other members of the team.

"The reason for this is because when we do training it's just like the school. We go all day long," Barnes said. "There's enough of us here that have been through the school that we can train them (the students.) We also have the manuals that are used at the school."

However, the SRT team is not the only Marines who benefit from the intense course. Once the Marines return to their duty station, the information and skills they've learned are then passed on to their fellow Marines in the unit.

As a result, PMO is more

adequately prepared to handle high threat situations. "We can't wait until the situation arises and then decide we need a SRT team. We need to keep training so we have people ready at all times," Barnes said.

Although the circumstances that call for a SRT team are rare, the need for training in those types of techniques remains to be high on PMO's priority list.

Basically, the SRT team and its training is an enhancement

to the law enforcement mission here. Therefore, it is important for the Marines, after they graduate, to keep training in areas where the threat is most likely to take place, explained 1stLt. Gino P. Amoroso, SRT commander, PMO.

The team continues to train as much as possible on improving and fine tuning their small unit leadership skills and team readiness which is in keeping with the idea of being a "Force in Readiness."

**Lunch:**  
M-F from 11 am  
Sat from 11:30

**Dinner:**  
7 Nights  
5 pm-10 pm

**Live Music**  
Tues-Sat  
10 to Close

**"Champagne" Sunday Brunch**  
Every Sunday  
9 am-2 pm

**Ample Parking**  
Across the street & behind Kailua Professional Ctr.

**263-8833**  
33 Anlike Street, Kailua  
**Someplace Else**

**Law Offices of Pamela J. Berman**

CARLA J. LARSON, Senior Associate  
Daniel B. Parriott, Legal Assistant  
Julie Pascual, Legal Assistant\*

**WE DO**

- Slip and Fall
- Medical Negligence
- Auto Accidents
- Wrongful Discharge
- Crime, incest, rape victims
- Other Serious Injuries to the Person
- Caused by Another

**WHY US?**  
Because we know what we're doing, and because we treat you with respect.

**WE WILL RECOVER FOR YOU OR YOU PAY NO FEE**  
**FREE CASE EVALUATION**  
**526-9781**

\*Ilocano and Tagalog Spoken

**Valley Art & Antique**

**GONE OUT OF BUSINESS EVERYTHING MUST GO! PRICED TO SELL!**

This Friday, Saturday & Sunday  
March 20th - 22nd

Come To: **GEORGE'S BARGAIN WAREHOUSE**

9am - 7pm 7 Days A Week  
**283-7926**  
55-756 Waiwaleke Street • Kaneohe

TOWER RECORDS/VIDEO

# KILAUEA

**NOW ON SALE!**  
**11.99 CD 7.99 CS**

**ALSO ON SALE!**  
Antigua Blue 11.99 CD 7.99 CS

OPEN 9AM TO MIDNIGHT EVERYDAY! SALE ENDS 3/24/92

**TOWER RECORDS/VIDEO**

**HONOLULU**  
611 Keeaumoku  
Across Kapiolani from Ala Moana Center  
VIDEO SALES - NO REPAIRS

**AIEA**

Pearl Kal Center  
Across from Penitentiary Shopping Center  
VIDEO SALES AND REPAIRS

## GELATO

means Ice Cream in Italian!

**CIAO! CIAO!**

### GELATO!

**Better than any Ice Cream You ever tasted!**

**Gelato is 95% Fat Free!**  
**Sorbetto is 100% Fat Free!**

**CIAO! CIAO! GELATO!**

Kailua  
**261-5668**

Kahala  
**732-9517**

Restaurant Row  
**536-8886**

**Fujio Matsuda Education Center**  
Windward Community College  
45-720 Kealahala Road,  
Kaneohe, HI 96744

## MARCH-APRIL 1992 COMPUTER COURSES

| Course# | Course Title                | Dates   | Day   | Time         | Fee  |
|---------|-----------------------------|---------|-------|--------------|------|
| 187     | Hard Disk Management        | 3/21    | SAT   | 9-1 pm       | \$45 |
| 188     | Intro Desktop Publish (Mac) | 3/21    | SAT   | 9-12 noon    | \$30 |
| 189     | Setting Up DTP Business     | 3/21    | SAT   | 1-4 pm       | \$30 |
| 190     | Intro to dBASE III+         | 3/23-25 | MTW   | 1:30-4:30 pm | \$90 |
| 191     | Intro to Lotus 1-2-3        | 3/23-25 | MTW   | 6-9 pm       | \$90 |
| 192     | Intro to the Macintosh      | 3/23    | MON   | 6-9 pm       | \$30 |
| 193     | Intro to Works (Mac)        | 3/24-25 | TW    | 6-9 pm       | \$60 |
| 194     | Advanced Disk Operating     | 3/28    | SAT   | 9-12/1-4 pm  | \$60 |
| 195     | DTP Using PageMaker (Mac)   | 3/28    | SAT   | 9-12/1-4 pm  | \$60 |
| 196     | Intermediate WordPerfect    | 3/30-31 | MT    | 6-9 pm       | \$60 |
| 200     | Intro IBM-PC                | 4/1-2   | WTh   | 1:30-4:30 pm | \$40 |
| 201     | Intermediate Lotus 1-2-3    | 4/1-2   | WTh   | 6-9 pm       | \$60 |
| 202     | Intro to Macintosh          | 4/1     | WED   | 6-9 pm       | \$30 |
| 203     | Intro Desktop Pub Macintosh | 4/2     | THURS | 6-9 pm       | \$30 |
| 204     | Intro IBM-PC                | 4/4     | SAT   | 9-12/1-4 pm  | \$40 |
| 205     | Intro to Macintosh          | 4/4     | SAT   | 9-12 noon    | \$30 |
| 206     | Intro Disk Operating System | 4/6     | MON   | 1:30-4:30 pm | \$35 |
| 207     | Intro Disc Operating System | 4/6     | MON   | 6-9 pm       | \$35 |
| 208     | Setting Up DTP Pub Business | 4/6     | MON   | 6-9 pm       | \$35 |
| 209     | Intro to Lotus 1-2-3        | 4/7-9   | TWTh  | 1:30-4:30 pm | \$90 |
| 210     | Intro to WordPerfect        | 4/7-9   | TWTh  | 6-9 pm       | \$90 |
| 211     | Intro to Macintosh          | 4/7     | TUES  | 6-9 pm       | \$30 |
| 212     | Intro to Works (Macintosh)  | 4/8-9   | WTh   | 6-9 pm       | \$60 |
| 213     | Hard Disk Management        | 4/10    | FRI   | 9-1 pm       | \$45 |
| 214     | Intro to IBM-PC             | 4/11    | SAT   | 9-12/1-4 pm  | \$40 |
| 215     | Intro to Works (Macintosh)  | 4/11    | SAT   | 9-12/1-4 pm  | \$60 |
| 216     | Macintosh Basics            | 4/11    | SAT   | 9-12/1-4 pm  | \$60 |
| 217     | Intro Disk Operating System | 4/13    | MON   | 1:30-4:30 pm | \$35 |
| 218     | Intro Disk Operating System | 4/13    | MON   | 6-9 pm       | \$35 |

Special arrangements for the disabled may be made if requested in advance. Contact the WCC Community Services Office at 235-7434 for arrangements. Refer to Catalog of Events for policies and procedures for non-credit classes.

**To Register, call 235-7433.**  
Visa & MasterCard accepted.

Legally Speaking

# Deciphering the combat zone tax exclusion

By Capt. Steve Austin  
Legal Services Center

The designation of the Persian Gulf as a combat zone triggered a number of federal tax relief provisions for Marines and sailors who served in Operation Desert Storm.

Members of the U.S. armed forces who serve in a combat zone may exclude certain pay from their income. They do not have to receive the pay while in a combat zone, but it must be paid for service there, or for a period during which they were hospitalized as a result of their service there. The following military pay can be excluded from their taxable income:

- Active duty pay earned in any month served in a combat zone.
- A dislocation allowance if the move begins or ends in a month they served in a combat zone.
- A reenlistment bonus if the voluntary extension or reenlist-

ment occurs in a month served in a combat zone.

• Pay for accrued leave earned in any month served in a combat zone. The Department of Defense must determine that the unused leave was earned during that period.

• Pay received for duties as a member of the armed forces in clubs, messes, post and station theaters and other nonappropriated fund activities. The pay must be earned in a month the member served in a combat zone.

• Awards for suggestions, inventions or scientific achievements members are entitled to because of a submission made in a month served in a combat zone.

A combat zone is any area the president of the United States designates by executive order as an area in which the U.S. armed forces are or have engaged in combat. An area becomes a combat zone and ceases to be a combat zone on

the dates designated by the president.

By Executive Order 12744, the president designated the following locations (including airspace) as a combat zone beginning Jan. 17, 1991 (to this date this status has not been changed):

- The Persian Gulf,
- The Red Sea,
- The Gulf of Oman,
- The part of the Arabian Sea which is north of 10 degrees north latitude and west of 68 degrees east longitude,
- The Gulf of Aden and
- The total land areas of Iraq, Kuwait, Saudi Arabia, Oman, Bahrain, Qatar and the United Arab Emirates.

**Service in a combat zone**

Service is performed in the Persian Gulf area combat zone only if it is performed on or after Jan. 17, 1991. Service in the combat zone includes any periods military members are absent from duty because of sickness, wounds or leave. If

as a result of serving in a combat zone, they are missing in action or become prisoners of war, they are considered to be serving in a combat zone as long as they keep that status for military pay purposes.

**Qualifying service outside the combat zone**

Military service outside of a combat zone is considered to be performed in a combat zone if:

- The service is in direct support of military operations in the combat zone, and
- The service qualifies a member for special military pay for duty subject to hostile fire or imminent danger.

Note: The Department of Defense determines whether or not service was in "direct support" of military operations in a combat zone.

Military pay received for this service will qualify for the combat zone exclusion if the other requirements are met.

**Non-qualifying service in the combat zone**

The following service does not qualify as service in a combat zone:

- Presence in a combat zone while on leave from a duty station located outside the combat zone.
- Passage over or through a combat zone during a trip between two points that are outside a combat zone.
- Presence in a combat zone solely for a member's personal convenience.

**Hospitalized while serving in a combat zone**

If a member is hospitalized while serving in the combat zone, the wound, disease or injury causing the hospitalization will be presumed to have been incurred while serving in the combat zone unless there is clear evidence to the contrary.

Example: Sgt. Tank Killer is hospitalized for a specific dis-

ease after serving in a combat zone for three weeks, and the disease for which he is hospitalized has an incubation period of two to four weeks. The disease is presumed to have been incurred while he was serving in the combat zone. On the other hand, if the incubation period of the disease is one year, the disease would not have been incurred while he was serving in the combat zone.

**Hospitalized after leaving the combat zone**

In some cases the wound, disease or injury may have been incurred while serving in the combat zone even though the member was not hospitalized until after he or she left.

Example: LCpl. Helena Troy was hospitalized three weeks after she left the combat zone. The incubation period for her illness is two to four weeks. The disease is considered incurred while serving in the combat zone.

**A COUNTRY TREASURE**  
"Kailua's little country gift store"  
U.S.A. Crafted  
gifts & decorative accessories  
Quilts, Cards & Collectibles  
Open 7 Days  
315 Ulukou St., Kailua Square, Kailua  
262-4344

**Hawaii Historic Arms Association PRESENTS**  
**Great Guns**  
1st 1992 Semi-Annual Gun Show  
**ARMS-SWORDS-MILITARIA**  
Saturday March 21, 1992 10 a.m. to 6 p.m.  
Sunday March 22, 1992 10 a.m. to 5 p.m.  
at Neal Blaisdell Center Banquet Hall  
BUY ★ SELL ★ TRADE ★ BROWSE  
An Expanded Show Admission \$250  
For Information, Phone: 373-4960  
Blaisdell Box Office 521-2911

**It's Time for a Change!**  
14 automotive chores in 10 minutes!  
jiffylube  
Pearl Kai Shopping Center  
99-199 Kamehameha Highway  
Across From Pearlridge  
Phone: 488-5433  
\*Gift Certificates Available  
OPEN DAILY:  
Monday - Friday: 8 a.m. - 6 p.m.  
Saturday: 8 a.m. - 5 p.m.  
Sunday: 9 a.m. - 5 p.m.  
Performance Protection Quality - © Jiffy Lube International, Inc. 1991

**TAKE IT OFF... BY TURNING IT ON!**  
**THE DIETMAX™ WEIGHT LOSS PLAN**  
The DietMax Weight Loss Plan's unique herbal formula works to speed up metabolism and burn calories. The plan alternates caloric intake by increasing and decreasing calories so your body's metabolism does not become accustomed to a very low caloric intake, switching into low gear and increasing fat storage potential.  
**THE DIETMAX™ ADVANTAGE...**  
You have made a decision to lose weight and keep it off. DietMax Weight Loss Plan can help you accomplish your goal with a complete 7-day meal plan, plus exercise, life-style and dieting tips enclosed. DietMax is an all natural herb and nutrient formula in Liquid-Gels® liquid-filled gels, designed to work fast.  
DietMax is available at both Vim-n-Vigor Stores. Pick one up today and start losing those unwanted pounds!  
**Vim-n-Vigor**  
KAILUA 345 Hahani St. outside Holiday Mart 261-4036  
Over 20 years Experience  
HONOLULU Ala Moana Center Street Level 955-3600

**SPRING SALE**  
**SUPER SYSTEMS**  
386/33 \$1999  
386/25 \$1799  
386/25SX \$1699  
All Systems Include:  
• 4 Megabytes RAM  
• 120 Megabyte Hard Disk Drive  
• 5.25 and 3.5 High Density Floppies  
• 1 Megabyte Super VGA Graphics Card  
• Edison Technology 14 SVGA Monitor  
• 2 Serial, 1 Parallel & 1 Game Port  
• Windows 3.0, DOS 5.0 & Mouse  
• 1 Year Warranty  
Diamond  
486/33 \$2399  
• 128K Cache Memory  
• 4 Megabytes RAM  
• 128 MB 15ms Maxtor Hard Drive  
• Teac L2 and 1.44 MB Floppy Drive  
• Trident 1 MB 512K SVGA Card  
• Edison Tech 14 SVGA Monitor 1024 x 768 28 dp  
• 2 Serial, 1 Parallel, 1 Game Port  
• DOS 5.0, Windows 3.0 & Mouse  
• 1 Year Warranty

**\$1149 SAVE \$550 Professional Publishing System MrSOFTWARE**  
**MAGNAVOX 386/SX**  
• 40 MB Hard Drive  
• 3.5 & 5.25 HD FD  
• SVGA Color Monitor  
• Lotus Works  
• Lotus Magellan  
**COMPLETE PACKAGE: NOTHING LEFT TO CHANCE!**  
• 68000-16 Mega STE  
• GEM Operating System  
• 4 Megabytes RAM  
• 50 MB Hard Drive  
• 300 dpi Laser Printer  
• 14" Paper White Monitor  
• 400 dpi Hand Scanner  
• Professional Publishing Software  
• Easy Draw & Touch Up Software  
**\$2995 SAVE \$1525**  
The same system used to create this advertisement.  
**TOP TEN SOFTWARE HITS**  
Turbo Tax \$ 49  
Hawaii State Version \$ 49  
MicrosofWorks \$149  
Norton Desktop \$ 99  
PC Tools 7.1 \$109  
Desqview 386 \$135  
QEMM 386 V6 \$ 79  
Castle of Dr. Brain \$ 35  
Megatraveller II \$ 45  
Links (Golf Challenge) \$ 45

**\$185 SAVE \$214 SERIOUS ABOUT MUSIC? ONLY \$99 SAVE \$200**  
**CITIZEN 200GX COLOR \$49**  
**PANASONIC**  
\$219 KX-P 2180  
\$289 KX-P2123  
\$ 49 Color Option  
**ROCK SOLID TIMING ROCK SOLID SUPPORT**  
Computronics offers the finest MIDI computer available at a price you can afford. Soon offering full lineup of MIDI software  
1040 STE \$ 499  
Mega STE-16 \$1199  
Stacy 2/20 \$1799  
TT030-32 \$2099  
Roland CS10 \$ Call  
Roland CM64 \$ Call  
TenTrax \$ Call  
Cubase \$ 449  
**2400 BAUD MODEM 9600 BAUD SEND/RCV FAX**  
**96/24 FAX MODEM**  
**96/96 FAX MODEM**  
\$299 Supra 9600 v.32  
\$399 Supra 9600 v.32 bit

**\$5 OFF THE PRICE OF ANY SOFTWARE ADVERTISED BY SOFTWARE PLUS Expires 3/30/92**  
**COMPUTRONICS™**  
3131 N. NIMITZ HWY • NEAR AIRPORT SIZZLER • 831-5555  
MON - FRI: 9am - 7pm  
SAT: 9am - 5pm  
**EASY FINANCING AVAILABLE!**  
**\$25 OFF ANY COMPUTER ADVERTISEMENT OR WRITTEN QUOTE FROM SOFTWARE PLUS Subject to verification Expires 3/30/92**

# Month-long range-project preserves booby bird colony

**Booby Birds, from A-1**  
Move the birds away from the targets (source of fire); reduce the grass-fuel which spreads fires; and increase the Station's fire-fighting capabilities. The means to accomplish these tasks is not quite so simple, however, although Drigot feels confident at this point that the Station is taking the necessary steps.

**Affordable Housing**  
The boobies need more trees to nest in and they need them now. There is not time to plant a whole new crop of Kiawe trees and hope they'll survive several seasons to one day become a habitable home. Although long-term revegetation plans are in

progress, more immediate short-term actions are also under way. After the last big fire, an experiment was conducted to see just how picky the birds are as to the style of "pad" they nest in. A set of four man-made trees were erected as an alternative, low-cost housing solution. Additionally, branches off Kiawe trees were collected and placed on these platforms to fool the birds into thinking they were nesting trees. Although somewhat reluctant at first, as space grew even more precious this season, at least five of the birds selected the structure to nest in, explained Drigot.

With the prototype a proven

success, Drigot says several more of these man-made trees will be put up in the very near future - perhaps some by the end of the month. Additionally, a few Kiawe trees growing elsewhere around the range will be transplanted. Even if these transplanted trees die, the boobies will still nest in them. The long-term revegetation plan involves planting fire-resistant ground cover, such as Naupaka, which will be nourished by a portable irrigation system during the start-up month. This and the new trees will give the boobies the "furniture" they need for both their new and old roosts. But what good would these

new homes be if the likelihood of another fire looms as a threat to burn them down? Enter phase two. **A break for the boobies** Since the beginning of the month, a group of heavy equipment operators from MWSS-174 has been working long days up on the hill building a network of firebreak roads. While one fire access road already exists to help the lumbering fire tracks get closer to the fire at its source, it was not sufficient to prevent a fire from sweeping up the hill, according to Drigot. Firebreak roads, widely used throughout the country in

potential blaze areas, act basically as a blockade to a fire, thus preventing it from spreading beyond its confines. These also aid first response vehicles by providing increased accessibility. Drigot explained also that the new roads will greatly increase accessibility to the booby birds for future projects, such as replanting more fire-resistant vegetation along the road margins. One clump of Kiawe trees sits only a few feet above one of the impact areas. It is being newly colonized by the boobies. That is simply too close, Drigot said. The plan is to prune back these trees a little bit at a time,

encouraging the birds to move up the hillside, perhaps to one of the man-made trees. Several other efforts to improve fire-fighting capabilities have also been initiated. For instance, Marines at the range and from units which frequently use the facility attend regular brush fire training schools; local helicopters have been equipped with more modern fire-fighting "BAMBI Buckets," and the range now has a 2,700-gallon pump-sprayer truck from Facilities to augment portable water sources available. A \$620,000 waterline is also being designed to ensure more reliable sources of water are available in the future.

**Urinalysis, from A-1**  
and private corporations. We were the first with a "Zero Tolerance" program, we were the first government agency to test civilian workers, and we were the first to require contractors to test certain employees. "The lessons we have learned can be transferred," she said. The biggest lesson is that a demand reduction program needs the "stick" of a deterrence/detection program to work. "Education alone, without urinalysis, is less effective," she said. "People know there are real penalties if they use drugs. In the military, only junior enlisted may get a second chance."

The urinalysis program is effective from several levels. Those people who might be tempted to experiment with drugs are deterred from experimenting by detection through urinalysis. The "second-level" user - one who dabbles in illegal substances - may not be deterred from using, but may not take as much or as often. For the hard-core user, urinalysis will detect them and get them out of the service.

The same deterrence works for industry. "Those who have developed a urinalysis program - DoD contractors are prime examples - have noticed better productivity, they've had fewer health problems and accident rates have gone down" Cooper said.

More people with drug problems are calling the office. "These calls are from people asking how they can get help before they are detected," she said. "The program is so credible that people believe it's only a matter of time before they get caught. It's a far cry from when the program was introduced."

She anticipates no great changes in the urinalysis program. "The tests are cheaper now," she said. "so there certainly will be no reduction in testing. This is not the kind of program you can declare victory in and shift the funds to another area. You have to maintain it."



## LIFECO TRAVEL SERVICES

Take a vacation from the ordinary

Come Visit The New Leisure Office  
Now Open At Our New Location  
The Former Video Store At The Main Exchange KMCAS.  
Hours: 9:00am - 5:30pm Monday thru Friday

Phone 254-3581  
Inter Island Coupon \$44<sup>00</sup> each Limited Time Only!  
(cash or check only)



## LAW OFFICES OF JOSEPH P.H. AHUNA, JR.

- CALL IF YOU ARE:
- Injured in an Auto Accident
  - Injured at Work
  - Suffering from Personal Injury

FREE INITIAL CONSULTATION  
NO FEE FOR REPRESENTATION UNLESS  
YOUR CASE IS DECIDED IN YOUR FAVOR

235-4000



Joseph P.H. Ahuna, Jr.  
Attorney at Law

The Castle Professional Center  
46-001 Kam Hwy.  
Suite 101  
KANEOHE • HAWAII

# Push the right buttons.



(Plus area code and number)

Whenever you make an AT&T Calling Card or Collect Call from public phones on base.

To ensure that your call will be billed at consistently low AT&T rates—with no surprises, just dial the easy AT&T access code when making AT&T Calling Card or Collect Calls on base. Simply dial 10 + ATT + 0 before the Area Code and Number you're calling. It's that easy.

Don't give up the quality AT&T Long Distance Service you've come to depend on. Push the right buttons, and keep AT&T right at your fingertips.

To order an AT&T Calling Card or for more information call 1 800 551-3131 Ext. 2850.



**COMPUTATE**  
926-3283

VIDEO DATING FOR MEN & WOMEN  
Hawaii's only computerized video dating club. Call for details.  
2139 Kuhio Ave. Bldg. C Room 214 WAIKIKI

**ALOHA TATTOOING COMPANY**  
custom tattooing at its finest we can draw anything  
320 ku'ulei rd.  
kailua hawaii  
Larry & Leonard Hanks  
263-2019

Make yourself feel good... volunteer.  
**AMERICAN CANCER SOCIETY**

## Prep wrestling team hard to the Corps

Story and photo  
by Cpl. Poznar Smith

Jim Redmond sat on a hard bench in a little room at Kalaheo High School surveying his pride and joy - the Kalaheo High School wrestling team.

"Just look at them," he said with a proud voice and a fatherly glint in his eye. "Look how aggressive they are."

And Redmond, after his first year as wrestling coach at Kalaheo, has good reason to be proud.

Three years ago, Kalaheo

High didn't even have a wrestling team. Last year, it finished 30th out of 31 teams at the state tournament. The Mustang wrestling program certainly didn't seem like a dynasty in the making.

In September 1991, Redmond, already a Kalaheo football and track coach, volunteered to coach the floundering wrestling team. After finishing 19th out of 34 teams at this year's state tournament held in late February, there's a new attitude among this tight-knit group. While "dynasty in

the making" may be a little premature, Kalaheo has certainly raised a few eyebrows in the Hawaii prep wrestling community.

With seven state qualifiers returning next year, and an active off-season schedule aimed at improving strength, skills and conditioning, Kalaheo can only continue to improve. If that doesn't convince the competition, maybe attending a Mustang workout would.

Even now, in the off-season, more than half a dozen of his wrestlers showed up for an impromptu

workout. Without a lot of horsing around so common with boys this age, the Mustangs quickly rolled out and arranged two blue and orange mats in a cramped, smelly back room of the Kalaheo gym.

The young men began to square-off and flex their sinewy muscles in a time-honored battle of strength, technique, leverage and balance that is wrestling.

What makes Kalaheo's wrestling team different from any other in the state isn't its work ethic though. Ten out of 17 members - eight out

of 11 state qualifiers - are sons of Marines from Kaneohe Marine Corps Air Station.

"We'd be in hard shape without the military kids," said Redmond, who also coaches football and track along with teaching physics and science.

But Redmond realizes the very strength the Marine sons bring to his team are also a major weakness.

"We need more non-military wrestlers," he added. "The problem with the military kids is they can leave at any time, whenever their parents get orders to move."

Still, Redmond is already looking to next year, looking and expecting to improve. Competing in the Oahu Interscholastic Association, which consists of all Hawaii public high schools, Redmond wants to qualify 13 wrestlers, who hopefully, will all go on to state.

"We didn't have wrestlers in two weight classes, so we might have finished even higher at state," he said. "So first, I'd like to increase the number of guys we put into OIA, then get 13 into state."

To keep the edge throughout the off-season, Redmond is having some of his team compete in freestyle (collegiate) wrestling competition, and encourages weight room and other sports activity for his wrestlers.

During the wrestling season, we train three ways," Redmond said. "Conditioning, weight room and actual wrestling. For the wrestling portion, we'll do team drills and also different techniques."

To help him with all this, Redmond considers himself fortunate to have three helpers: Bill Sullivan, and Marines Robert Sutton and Richard Schaedel. Sutton is a lance corporal with Co. B,

See Wrestling B-3



Tony Prudhomme tries to control Steven Sigafus during a workout at Kalaheo High School. Both wrestlers are Air Station dependents.

### Briefly

#### New arrivals tour

An orientation to the Air Station and Hawaii, including a free bus tour around the island will be held April 10 from 9 a.m.-4 p.m. Singles and families are invited. Bring a lunch, soda will be provided. Call the FSC for reservations, 257-3655.

#### Day camp

The Kokokahi YMCA will host a spring break day camp, March 23-27. The camp will be filled with swimming, excursions, games and crafts. For more information call, 247-2124.

#### Nature camp

An overnight nature camp for children ages 8-12 will be held April 3-5. The camp will focus on exploring nature, toasting marshmallows and making new friends. Call the Kokokahi YMCA for more information, 247-2124.

#### International host families

The International Hospitality Center is currently seeking host families for the fall semester and academic year 1992-93. Twenty high school exchange students from Germany, Belgium, Finland, Spain, Australia, Japan and several Latin American countries will be placed in Hawaii. For additional information and volunteer registration materials, call Barbara Bancel, executive director, at 521-3554. Bring the world to your doorstep by participating as an international volunteer.

#### Chinese stir fry

The ASYMCA will present an introductory class on nutrition and the art of Chinese stir-fry cooking. The class will be held March 18 from 9:30-11:30 a.m. For more information, call 254-4719.

#### Massage therapy

A massage therapy class is being offered by the ASYMCA March 25 from 9:30-11:30 a.m. The class will feature relaxation techniques through therapeutic massage and health basics. Call 254-4719 for more information.

#### Shopping spree

The ASYMCA's excursion of the month will be a trip to Ala Moana, March 26 from 9 a.m.-2 p.m. Treat yourself to this "shopping spree" and walking around this huge mall is exercise too. Call 254-4719 for more information.

#### Children's crafts

A children's craft program especially for Easter will be offered by the ASYMCA March 19 from 2:30-4 p.m. Baskets will be created and decorated and can be later reused for the children's personal "stuff."

#### Playmorning Pre-school

A free pre-school program for infants to 5-year-olds and their parents meets Monday-Thursday, 9-11 a.m. at the following sites:

Monday 2454/2460 Cochran St.

Tuesday Harris and Elrod Dr.

Wednesday Dodson and Cochran St.

Thursday Daly Rd. and Bordelon Loop

Playmorning will not meet during Spring Break, March 23-27.

Families who live off-base are also welcome. On rainy days, Playmorning meets at the Family Service Center's lanai. For more information, call FSC, 257-3655.

#### Story Time reading program

The Station library, building 219, will be conducting the Story Time reading program at 10 a.m. every Thursday for children ages 3-4. Children must be accompanied by an adult. For more information call 254-6301.

See Briefly, B-5

## Might as well face it I'm addicted to golf

By Cpl. Poznar Smith

As I lined up for a 45-foot putt on the 5th hole of the beautiful Kaneohe Klipper Golf Course here, I felt pretty calm. All I had to do was get it close, and I would have a decent bogey hole. Making par on this 304-yard severe dog-leg menace of a hole never really seemed feasible. After all, as a "hacker" who didn't even have a handicap, a par for me was a rare thing indeed.

Before, golf to me was a less than a hobby. A chance to get out in the sun, drink a few beers, you know, just a recreational thing. I often gave my friends, who always seemed to be either coming or going from the links, lots of flack for their "addiction" to what I considered a wimpy sport. And to me then, calling golf a sport was pushing it. Today was no different. I was out there mainly playing for kicks. And here I stood with a chance for what would a perfect hole ... for me at least.

My tee shot had actually shocked me. My playing partner/coach/co-worker,

Jason, had led off with a beauty: straight through the dog-leg, over a monster line of trees, where it came to rest on the left of the fairway about 90 yards from the green. Nice shot, I thought to myself. If I could only do something close to that, I could shave at least a stroke off ...

"Okay," Jason said, interrupting my wishful planning. "You probably just want to hit straight and safe. Those trees are ..." blah, blah blah.

How did he know what I wanted? What I wanted was to hit it right where he had. My pig-headedness and competitive side took over. "Yeah, alright, uh-huh, yep." I quieted him down as I lined up with my three-iron, which is the closest thing to a driver I had in my bag. Hacker, like I said.

To cut through the rough, so to say, my tee-shot went high and straight, exactly what it had to do to clear that formidable treeline. My partner was probably more surprised than I was, because at least I knew I was going to try for it.

"Nice, nice," he smirked, shaking his head just a bit.

We walked around the trees, and found that my ball had come to rest about 15 yards short of his, in good position to the now straight-ahead green. I pulled out a seven-iron, hoping to drop it high on the sloping green. My shot was a little short, more to the right, and bounced twice before just failing to enter a sizeable sand trap introducing the green. Ahh, I get to use my trusty pitching wedge, I thought, grabbing it after rubbing the dirt and grass from its dented face.

Now, my short game is definitely better than my driving, and I felt confident I could at least place it on the green from where I lay; about 30-yards from the pin. I did, but not very close, and now. I had the 45-foot putt for par.

Meanwhile, my partner was having problems. Every time we play, I feel bad because I know his game suffers when he spends time trying to help mine. This hole was no different. Actually, I think my decent shots were surprising him to the point of

distracted. Gee, all I have to do is play well, and whoever I play with will play badly? Golf is a mental game, you know.

I walked up on the green, and I said nonchalantly, "Par huh, I'm goin' for par?" My partner casually replied "yeah" - as if a chance at par were an everyday occurrence for me. I lined up the best I could and, as it was a severe uphill slope, put some pace on the ball. It amazed me then, and it still does, how long it took that dimpled sphere to reach its destination. When it dropped, and made that unmistakable spinning "pooka pook pook" sound all balls make when they hit the cup, I was truly stunned. So was my partner.

But I found out that we were astonished for different reasons. He thought the putt was "a helluva shot." I was more pleased with the par, and that I had beat him by two strokes on the hole. I was more impressed with my tee-shot(it took more guts). Also, I would get to tee-off first on Number Six!

That one hole, that one putt,

made my entire day of golf. I didn't do that well the rest of the way however, but I didn't care. Having a beer at the club afterwards, I knew those four shots on that Number Five Hole had addicted me. I'm actually practicing on the driving ranges and chipping greens. But I'm not putting, though; why mess with perfection? As a beginner, I'm establishing a handicap, so I'll be ready for the intramural season here that starts up soon. And, of course, I'm always thinking about new clubs and accessories.

One day, when pars are the norm for me, and birdies hopefully common, I'll look back at those four shots. I'm willing to bet very few shots I make the rest of my life will compare, for without those, there might not have been anymore.

So I admit it. I'm hooked on golf and damn proud of it. Funny how it's the little things that mean so much, but then, golf's a funny game.

## Elliott dominates HMAC racquetball

By Cpl. Poznar Smith

Tom Elliott continued his dominant reign on Air Station racquetball as he won all four of his matches to take the top spot on the Hawaii Marine varsity team during the Hawaii Marine Athletic Council tournament Friday and Saturday.

Elliott, ranked number one in the Marine Corps 1988-90 and Hawaii state champ for the last two years, had little trouble with the open division competition. Now he must try to lead the Hawaii Marines in the Hawaii Armed Services Athletic Council championships starting the first week of April at Schofield Barracks. It's a heavy weight Elliott will bear.

In recent years, the Marine teams hasn't fared well at HASAC, mainly due to lack of female players. This year is no different, as only one woman Marine, Helen "Josie"

Josypenko, will compete for the Marines.

"We lose points right off the bat because we never have any women to compete," said Elliott. "We also lost some good male players this year. But we've got new guys, so it's pretty much up in the air."

As in past years, the Army figures to have the strongest team, but Elliott is favored to take the open title.

Joining Elliott on the Marine team are: Rich Koenke, Rick Rozman and Tom Byer (open); Kelvin Ruffin and Mark Johnson (seniors); William Wesley and Michael George (masters); and Helen Josypenko (women's open).

In addition to concentrating on HASAC, Elliott is staying tuned for the All-Marine Trials which are going the first week of May in San Diego. It's an important competition for him because he'll be trying to reclaim his number one ranking.

### BOXING SURVEY

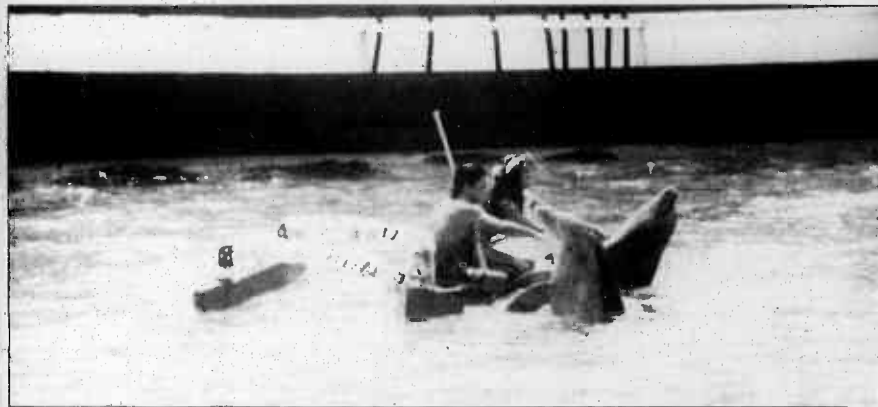
1. Would you voluntarily sign up to box in an amateur Station boxing event?  Yes  No
2. Would you voluntarily be a paying spectator for an amateur Station boxing event?  Yes  No
3. (Officers and SNCOs Only) Would you approve of a Marine under your command boxing in an amateur Station sporting event?  Yes  No
4. Do you approve of boxing as an amateur Station sporting event?  Yes  No
5. How often would you like to see boxing events held?
  - Every three months \_\_\_\_\_
  - Every six months \_\_\_\_\_
  - Once a year \_\_\_\_\_
6. Are you aware that at all amateur Station boxing events, official USA/ABF referees, judges, timekeepers, headgear, mouthpieces, no-foul groin protectors, and gloves, as well as Station medical personnel and equipment, are on hand to comply with USA/ABF and Marine Corps boxing safety policies?  Yes  No

Turn in survey forms to the Athletic Office in the Main Gym





Dolphins take to the sky for visitors at Sea Life Park.



As a narrator relates the story of a princess and her fisherman boyfriend, the princess and fisherman play with their pet dolphins.



The fisherman shows the audience how he rides his pet dolphins as he tries to impress the princess.



Menehune Rainbow Preschool students enjoy a day at Sea Life Park.

# A whale of a good time

Sea Life Park provides K-Bay preschoolers a glimpse of the sea

Story and photos by Cpl. J. Kinchen-Schnelder

Set in the midst of one of Hawaii's most beautiful oceanside settings is Sea Life Park. The park is home to a variety of island marine life.

Recently, children of the Menehune Rainbow Preschool here visited the park and were introduced to different exhibits and shows.

Some displays include a 300,000 gallon aquarium. Depicting the ocean life of a Hawaiian reef, the aquarium houses nearly 4,000 different specimens including sharks, moray eels and rays.

The children were also able to see a bird sanctuary filled with red-footed and brown boobies, gooney birds and iwa birds; and a turtle lagoon which houses several species of sea turtles.

However, the most exciting exhibit for the children seemed to be the dolphin show. There, they watched the animals jump over a rod which was extended from the roof of the amphitheater and play volleyball with volunteers from the audience. They also received a goodbye splash from the dolphins as the show ended.

Another show the children enjoyed, was the park's "Whaler's Cove." Here they learned of an ancient love story about a princess and her fisherman boyfriend. While listening to the story, the children were awestruck as dolphins performed tricks on cue.

As the day drew to an end, the children, filled with boundless energy, briefly stopped at the touch pool to see the seal lions and seals.

However, due to time constraints, the children didn't get to experience the park's other attractions such as the Pacific Whaling Museum, Shark Gallery, the Hawaiian Monk Seal Care Center, Wholphin Lagoon and Penguin Habitat.

These exhibits make Sea Life Park a fun place for family outings along with other attractions Hawaii has to offer such as Hanauma Bay, Halona Blow Hole and the offshore islands. All of these can be seen on the way to the park.

For more information, call 259-7933.

**SPORTS**  
**Briefs**



**Basketball live-fire**

In between training at PTA, Marines often get on the basketball "range" and fire some rounds at the hoop. These Marines from various units took the time out recently to improve their "squad tactics."

Sgt. Kevin Doll

**Softball tourney**

The April Fool's Day One-Pitch softball tournament has been cancelled. Instead, the Hawaii Marine varsity team is holding an intramural tourney March 27-29 open to all unit/intramural teams. The fee is \$175 per team. Teams should contact MSgt. Cassidy ASAP at 257-3230.

**Facility reservations**

For all court and field reservations, except varsity sports, call 254-2658, not 254-2516/2458. Varsity sport reservations should call 254-2516.

**IM bowling**

Intramural Bowling opens its season Wednesday. Teams need to sign-up at the bowling alley. For more information, call GySgt. Bensman at 257-1053, or the bowling alley at 254-4980. Sign-ups can be made by phone to the bowling alley.

**Beach Bash**

The Pyramid Rock Beach.

Bash will be held April 11 from 8 a.m.-4 p.m. Competitions will be held in surfing, boogie board and a 6-person sand volleyball tournament. Entry forms must be dropped off at Dependent Recreation only and must be received by April 10. For more information, call 254-2963.

**Track resumes**

All-Marine track resumes are due April 10. Pick up resume forms at the Athletic Office and return by due dates if you wish to be considered for the All-Marine programs.

**Soccer coach**

An active-duty Marine or Navy person stationed at K-Bay is being sought to coach the men's varsity soccer team. Call the Athletic Office at 254-2516.

**Racquetball tourney**

The Spring Fling Racquetball Tournament will be held March 27-29. Deadline for entry is March 20 at 4 p.m. Sign-up at the Athletic Office, or call 254-2516 for more information.

Wrestling, from B-1  
7th Comm. Bn. and Schaedel is a reserve Marine with 4th Force Recon Co.

"The fact that we've got four coaches allows us to work with the wrestlers in pairs more often," Redmond explained. "We can pair them off and concentrate on specific moves and techniques."

One Marine dependent Redmond is keeping a watchful eye on is Mike Sharper, whose father, SSgt. Harris Sharper, works at the Military Police Department.

Sharper, a 14-year-old freshman wrestler in his first year of varsity, finished second in state at 145-pounds. He was also only his third year of wrestling.

"I was actually pretty nervous I finished that high," he said. "A lot of the guys at state were more experienced and stronger. I was nervous to do worse, but I'm happy to finish ninth as a freshman."

Sharper, who is wrestling freestyle in the off-season and playing football, is only one example of a Redmond wrestler.

Steve Sigafus, son of MSgt. Victor Sigafus with Crash Fire and Rescue, finished seventh at state. His short, 115-pound build is chock-full of power, and compliments his feisty style on the mat. Sigafus wants the Kalaheo teams to become a feared force in Hawaii prep wrestling.

"Man, if we only keep working at it, keep with it, we can be so good," he said with a seriousness almost eerie in a high school junior.

With a talented crop of wrestlers returning and Jim Redmond returning to the coaches chair next year, Kalaheo is sure to return as a major contender in OIA and state.

**Too Many Bills?**

**Immediate Relief from Creditor Harassment**

Call TODAY for Information on Bankruptcy

• Military Welcome •

**Ellen Luigi Fera**  
Attorney At Law  
Evening & Weekend Appointments  
**261-4788**

MICHAEL DOUGLAS

A brutal murder.  
A brilliant killer.  
A cop who can't resist the danger.

**BASIC INSTINCT**

STARTS TOMORROW  
**WAIKIKI TWINS**

Please Consult Directory For Showtimes • Sorry, No Passes!

EXTRA CASH WITH COUPON

**CA\$H TODAY!!**

Want \$20 bucks Today?

Desert Storm Vets CAN Donate Plasma

For More Information, Call

**836-0647**

Plasma Center of Hawaii • 3179 Koapaka St., Honolulu

EXTRA CASH WITH COUPON

Old-Fashioned Quality & Value

**3-PIECE LOVESEAT RECLINER SECTIONAL \$1299**

- Style #358
- Includes R.A.F. and L.A.F. Loveseat Recliners and Table
- Multi-colored durable textured fabric
- Same fabric as shown — not exactly same pieces as shown

**3-PIECE INCLINER SECTIONAL \$999**

- Style #342
- Includes L.A.F. Incliner Loveseat, Table and R.A.F. Incliner Loveseat
- Multi-Colored Durable Textured Fabric
- Same Fabric as shown—Not Exactly Same Pieces as shown

**3-PIECE RECLINER-SLEEPER SECTIONAL \$1499**

- Style #346
- Includes R.A.F. Recliner Loveseat, Wedge, L.A.F. Full Size Innerspring Sleeper Loveseat
- Multi-Colored Durable textured Fabric
- Same Fabric as shown—Not Exactly Same Pieces as shown

**SHEFFIELD FURNITURE CORPORATION**

**NEX Navy Exchange**

Hurry while supplies last

Pearl Harbor Interiors Plus  
Barbers Point Rainbow Annex

This advertisement was not paid for, in whole or in part, by the Department of the Navy or the Navy Exchange. The advertisement does not constitute endorsement by the Navy Exchange, the Department of the Navy, or the U.S. Government of the products or services advertised.

**NON-STOP TRAVEL**

|           | ONE WAY | ROUNDTrip |
|-----------|---------|-----------|
| SFO       | \$99    | \$259     |
| LAX       | \$139   | \$258     |
| Seattle   | \$209   | \$269     |
| Vancouver | \$299   |           |
| Sydney    | \$450   |           |
| Frankfurt | \$725   |           |
| London    | \$596   |           |

Interisland Coupon \$249  
Book 6 segments  
Plus taxes • OTHER CITIES AVAILABLE

**DISNEYWORLD FLORIDA**  
AIRFARE TRANSFERS HOTEL AND PASS FROM **\$918** Plus Tax

**DISNEYLAND CALIFORNIA**  
AIRFARE TRANSFERS HOTEL AND PASS FROM **\$399** Plus Tax

SERVING ALL ARMED FORCES  
**SPECIAL MILITARY RATES AVAILABLE**

**CALL 946-1484**  
711 KEEAUMOKU STREET - SUITE 209  
NEXT TO THE LIKELIKE DRIVE-IN  
FREE VALIDATED PARKING  
CERTAIN RESTRICTIONS APPLY TA-1016

# Education

## Job-hunting assistance

A computerized listing of island jobs is available. Call the ERC, 257-3135, for an appointment with a counselor.

## New arrivals, employees orientation

A new program for all newly arrived active duty personnel, spouses and new employees will be held on the first Tuesday of each month from 7:30-11:30 a.m. at the Station theater.

## Budgeting for baby

The Navy-Marine Relief Society will offer a class which will help parents in knowing how to financially prepare for their new baby. Upon completion of the class, parents will receive a certificate for a free layette. All ranks are welcome. The class will be offered second and fourth Monday of each month from 11:45 a.m.-12:45 p.m. Call NMCRS for reservations, 254-1328.

## Scholarships

The Staff NCO Wives' Club will present scholarships to high school seniors, dependent wives of enlisted active duty, retired or deceased members of the U.S. military whose present or final duty station is/was here. The applicant may or may not yet be in college. Applica-

tions will be available at the Staff NCO and Enlisted Clubs, the JEC, ASYMCA, NMCRS, FSC and from high school counselors. Applications must be returned no later than April 30. For more information, call Sandra, 254-6852 or Kim, 254-3690.

## Financial planning

The FSC will offer a financial planning course tomorrow which will cover SGLI-VGLI conversion, pensions, annuities, IRAs and survivor's benefits. The class will be held from 11:45 a.m.-12:45 p.m. Call, 257-3655, for more information.

## Planning your PCS move

Persons anticipating a permanent change of station move within the next few months are invited to learn ways to make their family's move as smooth as possible. Guest speakers from disbursing, housing, TLA and TMO will provide information and answer questions about PCS moves. The workshop will be held Wednesday from 8-11:30 a.m. in the Training Audiovisual Support Center, Bldg. 267. Call 257-3135 to register.

## Teen job fair

Dependents of active duty or retired military personnel from 15-22 years of age can meet with local business representatives at the Teen Job Fair, March 26. The fair will be held at the Chief Petty Officer's Club, Pearl Harbor, from 9 a.m.-1 p.m. Call 257-3135, to register.

## Positive discipline

Parents' frustration in dealing with problems, ranging from temper tantrums to curfew violations, reflect a need to better understand a child's viewpoint and set reasonable limits for their behavior. The FSC will offer a course designed to build a better relationship with your child April 8 from 7-9 p.m. Call 257-3655 to register.

## Essay contest

The U.S. Naval Institute will award cash prizes of \$1,000, \$750 and \$500 to the authors of the three winning essays in its recently announced Marine Corps Essay Contest. The Naval Institute created this contest to encourage discussion on current issues and new directions for the Marine Corps. Essays must be postmarked no later than June 1, 1992. The following rules apply:
 

- Essays must be original and no longer than 3,000 words,
- All entries should be typewritten, double-spaced, on 8 1/2" x 11" paper and should include address, phone number, biographical sketch and SSN.

 The Naval Institute will judge the competition and will notify the three award winners by Aug. 1, 1992. Winning entries will be published in *Proceedings*.

## Dog obedience

Learn how to handle your dog with obedience training. Class meets Sundays from 4-5 p.m. Sign up now at the ASYMCA, 254-4719.

## Marriage encounter

Married couples are invited to give each other the priceless gift of time by attending a

marriage encounter weekend Saturday and Sunday at the St. Anthony's Retreat Home in secluded Kalihi Valley.

The emphasis of marriage encounter is on communication between husband and wife who spend a weekend together away from the distractions and tensions of everyday life. You will rediscover the warmth and power of your married love, and have an opportunity to concentrate in a unique way on those matters of fundamental importance to your marriage and family life. Attending couples will not reveal their private lives to anyone during the weekend. Couples of all ages and faiths are invited to attend.

For further information or a reservation, please call 677-0120. The registration fee is \$20.

## Women's support group

A confidential program to help women who have been victimized in a destructive relationship is held every Friday from 9-10:30 a.m. Learn about violent behavior and ways to increase protection for you and your children. Call Lauri at 257-3655.

## Parents support group

Do you ever feel the job of parenting is more than you bargained for? Do you find yourself losing patience and yelling at your children? Would you like someone to talk to and to get advice from? A parents group meets Tuesdays from 6-8 p.m. at the FSC. Parents and children attend separate groups to improve family relationships. Call Lauri or Debbie for reservations at 257-3655.

## Employment programs

The ERC is an offering employment program "How to Take the Civil Service Exam for Clerical Positions" Tuesday from 7-9 p.m. Reservations are required and can be made by calling, 257-3135.

## Masters programs

The University of Oklahoma is offering a master of public administration and a master in managerial economics. Classes are held at Hickam Air Force Base and registration is always in progress. Call 422-5509 for more information. A counselor is available aboard the Air Station Thursdays.

## CHAMPUS

Your CHAMPUS Representative from the Queen's Health Care Plan, Inc. will be available on the first and third Thursday of the month at the Branch Medical Clinic from 9-11 a.m. Persons unable to meet with the CHAMPUS representative can obtain information by calling 522-7545.

## Remedial education

Scholastic Aptitude Test review classes will begin March 28 and will run for six consecutive Saturdays from 8 a.m.-2 p.m. Classes are open to dependents on a space available basis. A Reading Enhancement

Course is scheduled to begin March 30. Classes are held Monday through Thursday from 8-11 a.m. for five weeks.

Armed Forces Classification Test review classes will also start March 30 and will run for five weeks. Classes will be held Monday through Thursday from 8 a.m.-3:30 p.m.

Registration for these courses is being held at JEC through March 27. There is not cost for any of the courses. For more information, call 257-1232.

## Outreach program

The ASYMCA is now providing "in home" service to military families with the primary focus in junior enlisted off-base housing. Emphasis will be on home management, budgeting, parenting skills and information and referrals to community resources. Call 254-4719 for more information.

## Ready, set, grow

The ASYMCA is offering a three-day program April 28, 29 and 30 incorporating assertiveness training, stress management and putting pizzazz back in your marriage. Call 254-4719 for more information.

## Parenting class

Your children CAN learn to be more responsible for their schoolwork and chores. Learn how to help them in the ASYMCA's parenting class. Classes begin April 24 and will run for six weeks from 9:30-11:30 a.m. There is a small fee. Call the ASYMCA for more information, 254-4719.

# HOTTEST BIGGEST LIVE ROCK-N-ROLL NITE CLUB

G5

VIDEO  
SATELLITE

Every Tuesday  
**MILITARY APPRECIATION NITE**

Mon - Classic Rock  
Tues - Hard Rock  
Wed - Jam Nite  
Thurs - Original Nite  
Fri/Sat - Hard Rock - \$5 cover  
Sun - Thrash Band

Open 7 Days a Week  
2 p.m. - 4 a.m.

Live Entertainment  
CONCERTS  
**848-0990**

Rock-N-Roll Night Club  
(Formerly located on Hotel Street)

## L A S V E G A S

From **\$334\*** (limited time only)

**PLAYERS EXPRESS**

CALL YOUR TRAVEL AGENT OR PLAYERS EXPRESS AT...  
**1-800-645-9555**

- Voted #1 in slots, dining, bingo, keno and more by Las Vegas locals!
- New 600 room tower! Over 1,000 rooms and suites!
- Five great restaurants!
- Full-service Casino & Race/Sports Book

Package Includes:

- ✓ Round trip airfare on America West.
- ✓ 4 days/3 nights Garden Room accommodations.
- ✓ FREE 24-hour Dollar Rent-A-Car
- ✓ 2 "Teas" Buffet meals per person, per day.

\*Per person, double occupancy. Singles higher. Program good midweek, based on double occupancy. Weekends higher, subject to availability. Tower Room \$10 + tax higher per night.

## If you want your kids to get better grades, do your homework.

Discover how Sylvan Learning Center gives your child the educational edge that makes a difference. In our stress-free, positive environment, children become excited about learning. You can see it on their faces - and on their report cards.

Sylvan offers help in reading, writing, math, algebra, study skills, homework support and time management.

To learn more about Sylvan's many benefits, call today.

Sylvan Learning Center

Helping kids be their best.

◆ FOR MORE INFORMATION, PHONE 263-6656 ◆

KAILUA

New Location! Behind TCBY

58 Oneawa Street, Kailua

Corner of Oneawa & Uluniu

## HEY MARINES!!

What would it take to pin you into checking out our new store?

UNIQUE PATCHES

FITTED & TAPERED TROUSERS

CUSTOM SILK SCREENING

EMBROIDER U.S. MARINES IN ONE DAY!

NAME TAGS

DESIGN & SEW DRESSES & MEN'S ATTIRE w/or without pattern

CAMOUFLAGE ATTIRE

ONE DAY SEWING

Aikahi Shopping Center  
(next to Safeway)

254-2215

MON-SAT 10:00am-6pm

## After Inventory Specials

Sale effective March 9th thru 31st. OAHU STORES ONLY

Sale prices limited to quantities on hand.

**SKIL** Model: 77

5 1/2" Trlm Saw 5510  
List \$166.00 \$ 99.00

8 1/4" Worm Drive Saw 5860  
List \$275.00 \$185.00

10" Mlter Saw 3810  
List \$353.00 \$239.00

**THERMADYNE VICTOR**

You Deserve The Best™

7 1/4" Worm Drive Saw  
List \$271.07 \$175.00

Entire Stock of Steiner Leather and Cotton Jackets and Cape Sleeves 15% Off!

Entire Stock of Jackson or Huntsman Welding Helmets 15% Off!

All Victor Accessories 20% Off!

Super Range

Journeyman List \$482.25 \$295.00  
Acetylene/Toteweld \$357.41 \$322.00

Stadium Chairs Assl. Colors List \$16.99 Sale \$12.99

Quality: Our Commitment

# GASPRO

### Your Propane Filling Stations

|  |  |  |  |
|--|--|--|--|
| <p>Honolulu<br/>2305 Kam. Hwy.<br/>Next to Foremost<br/>Ph. 842-2130</p> | <p>Kaneohe<br/>46-174<br/>Kaluhipa St.<br/>Ph. 235-6085</p>  | <p>Waipahu<br/>94-150 Leoleo St.<br/>Across City Mill<br/>Ph. 671-5435</p> | <p>Kauai<br/>Lihue<br/>3990C Rice St.<br/>Ph. 245-6766</p> |
| <p>Hilo<br/>525 Kalaniana-<br/>ole Hwy.<br/>Ph. 935-3341</p>             | <p>Kailua-Kona<br/>74-5590B<br/>Eho St.<br/>Ph. 329-7393</p> | <p>Maui<br/>Kahului<br/>365 Hanakai St.<br/>Ph. 877-0156</p>               |  |

Enjoy The Gas Advantage

## THE COS AND EFFECTS OF HIGH CHOLESTEROL

Bill Cosby knows how high blood cholesterol can lead to heart disease. He also knows how changes can help turn the problem around. To learn more, contact your nearest American Heart Association.

You can help prevent heart disease. We can tell you how.

American Heart Association

This space provided as a public service

SALE \$44

**CATIO THERM® PERM**

Reg. \$63. Give your hair healthy body and shine. Price includes shampoo, haircut and styling. Long hair and designer wraps additional charge.

JCPenney Styling Salon

POST IMPRESSIONS® PERM

Reg. \$63. SALE \$52 price includes shampoo, haircut and style. Long hair and designer wraps additional charge.

Sale price effective March 22 through March 28.

Career Opportunities

Manicurist & Stylist GREAT BENEFITS

Mon., Tues., Wed. SENIOR CITIZENS TAKE 10% OFF ALL SALON SERVICES

NEXUS

©1992, JCPenney Company, Inc.

Windward:

235-4224

OPEN SUNDAYS FOR YOUR CONVENIENCE

# Religion

• In the Station chapel: Catholic Mass is held Monday - Friday, beginning at 11:45 a.m.; Saturday, starting at 6 p.m.; and Sunday, beginning at 7:30 a.m. and again at 9:30 a.m. Protestant Communion takes place Sunday, beginning at 8:30 a.m. and Protestant worship begins at 11 a.m. For more information about the Station's religious services, call 257-3552.

• 1st MEB weekday worship schedule is as follows: All services will be held at 11:30 a.m. Brigade Chaplain's office: Catholic Mass, Monday and Thursday; Protestant service, Tuesday; Episcopal, Wednesday. 3d Marines: 1/12 classroom: Catholic Mass, Monday and Friday; Protestant services, Tuesday and Thursday. MAG-24 Chaplain's office: Catholic Mass, Tuesday and Friday; Protestant services, Monday and Thursday. BSSG-1 S-3 conference room: Catholic Mass, Tuesday; Protestant services, Monday and Friday.

• At Camp H.M. Smith: Catholic Mass is held Sunday, beginning at 8 a.m., and again at 11:30 a.m. Protestant worship and Sunday School both begin at 9:30 a.m. For more information about religious services at Camp Smith, call 477-8098.

• Jewish services are held at the Aloha Jewish Chapel aboard Naval Base Pearl Harbor. Shabbat services take place Friday, beginning at 7:30 p.m. For more information, call 471-3971.

# Movies

All movies shown at the Station theater (building 219) begin at 7:15 p.m. unless otherwise noted. For more information, call the theater at 254-2113.

"Shining Through" (Drama - R) will play Friday and Saturday and stars Melanie Griffith and Michael Douglas.

A half-Jewish secretary from Queens goes into Germany as an OSS operative working undercover inside the home of a high-ranking Nazi official.

Based on the best selling novel by Susan Isaacs. "Free Jack" (Science Fiction-R) plays Sunday and Monday and stars Emilio

Estevez, Mick Jagger and Anthony Hopkins. A futuristic thriller about a race car driver who narrowly escapes death to awaken 20 years in the future.

# Tickets

The MWR Ticket Office offers tickets and information on how to get them at special military rates. The office also takes reservations for events and attractions around the island. Call the Entertainment Hotline at 254-3304 or stop by the Marine Corps Exchange (in the old video rental center) for in-

formation and reservations. The office is open Monday-Friday, 9 a.m.-5 p.m. and Saturday, 10 a.m.-2 p.m. This week's offerings include: Consolidated Movie Theatre discount tickets cost \$4.25 and are now good through June 1992. Aloha Diners Club memberships are available for \$12

and entitle you to up to 50 percent off restaurants, entertainment and more. Ocean Concepts - fishing and diving charter reservations are available at ITT. Honolulu Comedy Club - Cary Odes and Dave Parker appear now through Sunday.

1992 Kamaaina Discount Cards for Sea Life Park and Waimea Falls are free and available at ITT. Hawaiian Country Concert - featuring Kapena, Willy K, Lawai'a, Brudda Walta, food booths and pony rides Saturday at Schofield Barracks. Pre-sale tickets are \$6, children's tickets

are just \$3. Overkill Concert - Aloha Tower, April 16. Doors open 5 p.m., show starts at 7 p.m. Tickets are \$18. Shabba Ranks with Yellowman Concert, Richardson Field, Saturday. Gates open at 4 p.m.; show starts at 7 p.m.

# Ads

**Autos**  
1988 Nissan Van; excellent condition; 18 month transferrable warranty; dual air; luggage rack; trailer hitch; stereo; great island car; \$8,400; 247-0039.  
1988 Ford Temp GL; outstanding condition; new brakes; front end work; \$4,700 OBO; 254-1335.

1986 Chrysler New Yorker; real beauty; \$4,300 OBO; just inspected; new tires; 254-1335.  
1989 Nissan Sentra; red; auto; AC; stereo cassette; great condition; moving must sell; available June 1; \$5,000; 254-3139.  
1980 Chevy Chevette; parts only; \$50; must go; 833-4269.

**Miscellaneous**  
Childcraft oak changing table; good condition; moving must sell; \$50; 254-3139.  
Carrier air conditioner; 9,500 BTU; 2 years old; good condition; moving must sell; 254-3139.  
Whirlpool air conditioner; 13,000 BTU; 2 years old; great

condition; moving must sell; 254-3139.  
Windsurfer Windservice Hawaii board; w/2 sails and gear; \$400; 254-1631.  
Complete set dress blues; 40L coat; worn once; \$125 OBO; 254-4708.  
Hobie 15' power skiff; 48 HP

Evinrude; trailer; Bimini top cover; ski; dive; easy maintenance; excellent condition; \$6,800; 247-0039.  
Franklin rocker recliner; burgundy; almost new; paid \$375; asking \$300; must sell; 254-3082 leave message.

**A&P - I.A. RATINGS**  
Airframe & Powerplant - Inspection Authorization  
• 4-6 Days • Includes Oral & Practical Review  
• 100% Guaranteed • Day & Night Classes  
Classes start March 23 Honolulu, HI  
Aviation Ground Schools of America  
CALL NOW! (800) 345-2742

**P5 travel**  
306 Kuuale Road Kailua, HI 96734  
263-3366  
INTER-ISLAND COUPONS  
LOS ANGELES ..... from \$189 o/w  
SAN FRANCISCO/SEATTLE ..... from \$199 o/w  
NEWARK, WASHINGTON DC, BOSTON ..... from \$565 r/t  
ATLANTA, MIAMI, ORLANDO ..... from \$585 r/t  
ANCHORAGE ..... from \$299 o/w/\$389 r/t  
DENVER, DALLAS, COLORADO SPRGS. .... from \$525 r/t  
CALL FOR MANY MORE SPECIALS  
restrictions apply... prices subject to change TA #1158

**ARRESTED FOR DRUNK DRIVING?**  
CALL NOAH D. FIDDLER  
Attorney at Law  
Free Consultation  
545-7400/261-3233

**MWR Marine-O Pizza**  
We're Open Daily  
Mon.-Sat.: 1130-2130 hrs.  
Sun.: 1630-2130 hrs.  
For Walk-in and Take-out Orders  
Deliveries Daily 1700-2100 hrs.  
Buy a Large Combo Pizza and Receive a Medium Single Topping Pizza FREE!  
Call 254-1537, 254-1538, 254-1539 CONVENIENTLY LOCATED NEAR PACKAGE STORE

**Tama's Polynesian Revue...**  
Feel the beat of the South Pacific.  
Tama's talented troupe of entertainers takes you on a fantastic musical voyage of the South Pacific. It's Waikiki's most exciting Polynesian revue. At the Hale Koa.  
Start your evening with tempting selections from our magnificent buffet, including carved roast baron of beef and specialties from the islands and the Orient.  
Then let yourself be carried away to distant, colorful lands. And charmed by exotic chants. Hypnotized by graceful hula.  
Thrilled by the pounding Tahitian drums. This is one night in paradise you won't forget.  
Just \$16.95 for adults, includes dinner, show and gratuity. Children under 12, \$7.50. Every Wednesday in the Banyan Tree Showroom. Dinner from 6-7:30. Show at 8.  
Purchase tickets up to four weeks in advance at our Activities Desk or any Military Ticket Outlet.  
Feels like paradise!  
**HALE KOA HOTEL**  
Armed Forces Recreation Center  
On Waikiki Beach at Ft. DeRussy • 2055 Kalia Road  
955-0555

**A BRILLIANT PROPOSAL**



**PROMISE RINGS**  
from \$89



**MARQUISE RINGS**  
from \$400  
\$54.85 mo. 6 months



**DUO WEDDING SETS**  
from \$295

**MILITARY ALLOTMENTS AVAILABLE**

**SUPPLIER TO**  
\* THE MILITARY SINCE 1940 \*  
The House of Adler salutes our military in Hawaii  
Come in today and we'll help you select just the right diamond to fit your budget at the most affordable terms possible.

**House of Adler**  
THIRD GENERATION DIAMOND CUTTERS  
If you are not buying your diamonds from the House of Adler, you are paying too much!

**30% OFF CITIZEN WATCHES**

PEARLRIDGE PHASE II 487-0808 • WAIPAHU (next to Longs) 871-8227  
PAN AM BLDG. • 1600 Kapiolani Blvd. 12th Floor • Validated Parking • 949-4196

**7th Anniversary Celebration!**  
Special Discount Prices Throughout March  
**Happy Birthday!**

**Cinnamon's RESTAURANT**

**HAPPY BIRTHDAY!**  
Cinnamon's  
Cinnamon's

**WINNERS ALL!**  
\$377  
BIRTHDAY BREAKFAST or BIRTHDAY LUNCH  
Mon.-Fri. Only  
Mar. 1st-31st

**WIN Dinner For 7**  
Prime Rib & Shrimp  
Scampi, Soup • Salad  
• Appetizer • Wine  
• Beverage • Dessert

**WEEKLY DRAWING**  
Win Dinner for 4  
Favorite Cinnamon's Entree  
Soup or Salad  
Beverage  
Dessert

**261-8724**

**ENTRY BLANK**  
Our Favorite Cinnamon's Dinner:  
Name: \_\_\_\_\_  
Phone: \_\_\_\_\_  
(Please fill in for weekly drawing)

No Purchase Required - Need Not Be Present To Win  
Cinnamon's Restaurant  
**315 Ulunui St. • Kailua Square**



**NEEDED IMMEDIATELY!**

•Word Processors •Secretaries  
•General Clerical •Receptionists  
•Data Entry/Acc'tg Clerks

**TEMPORARY & FULL-TIME POSITIONS**

**ADIA** 533-8889  
The Employment People NEVER A FEE

**MILITARY SPOUSES  
VETERANS  
&  
RETIRES**

UAFSA counselors needed full-time or part-time work. Employment near all military installations paid while in training. Call your local United Armed Forces Association.  
487-7227 or 822-2677

**LOOKING FOR WORK?  
In Between Jobs?  
Want To Earn Extra \$**

Apply Monday - Work Tuesday  
Get Paid Friday

**WE OFFER GREAT BENEFITS!**  
Same week pay - Immediate Assignments - Long or Short term - Days or Evenings - Vacation pay - Referral Bonus - FREE Word Processing training - Recognition Awards - Contests - have fun!

**WE NEED:**  
Secretaries • Transcribers • Word Processors (all kinds) • Accounts Payable Clerk • Accounting Clerks • Bookkeepers • Data Entry Clerks • Receptionists • Clerks • Typists • PHONE SURVEYORS

Military Welcome! Come In Today!

Pioneer Plaza 1202  
500 Fort Street, Suite 200, Honolulu, HI 96813  
(808) 522-3313

Stuart Plaza 941 Kalia Highway #201  
Honolulu, HI 96817  
(808) 442-8666

United States Coast Guard

The COAST GUARD is a different choice from serving in the other branches of service. Receive Full Military Pay & Benefits, \$12,600.00 per Colleague. Tuition Assistance, Housing, Medical & Dental, Food Allowance and much more. We will TRAIN you in one of over 24 Technical Skills to be used in SAVING LIVES, PROTECTING OUR MARINE ENVIRONMENT, STOPPING DRUG SMUGGLING & BOATING SAFETY.

We have opportunities for MOTIVATED WOMEN & MEN between the ages of 17 & 27 who are High School or College Graduates.

PRIOR MILITARY SERVICE PERSONNEL MAY APPLY.

486-8677  
Bill or Stacey  
**THE COAST GUARD.**  
AN ARMED SERVICE AND MORE.

**Sun Press CLASSIFIEDS**  
235-5656

**58 Schools & Instruction**

PIANO LESSONS Kaneohe area only. 235-4432 or 841-1198.  
PRO. FLUTYIST "Masters Degree" 12 yrs. teaching exp. Also at college & university level. Int. recital list. Ph. Kailua at 377-1823.

**TRAVEL TRAINING**  
Airlines, Travel Agency Cruises, Tours Computer  
Windward Travel Institute  
262-7749 or 233-1155  
Licensed by DOE

**60 Help Wanted Male/Female**

"AVON IS GROWING!"  
Call Asst. Manager Kathryn 423-0863.

"AVON" Earn extra money by being a leader. Call Beverly 624-1327.

"AVON" BE YOUR OWN BOSS For the best earnings possible  
\$3 CALL \$5 THIS AD ONLY  
Kandy 235-7841 and Jo 395-6970

**ACC'T./GRANT ADMIN. WINDWARD**

Immediate opening for a grant admin. accountant. Asst's Controller in overseeing various Federal grant reporting, budget and filing requirements. Position requires accounting, WordPerfect, Lotus 1-2-3 skills & attention to detail. Familiarity with Federal grant regulations a plus. Non-smoking environment. Salary commensurate with experience. Mail resume to:  
The Oceanic Institute, Mokuapu Point, Waimanalo, HI. 96795  
EOE

**Sun Press Advertising Department**  
235-5656

**MWR**

WE ARE NOW RECRUITING FOR THE FOLLOWING ANNOUNCEMENTS:  
**WAITERS/WAITRESS**  
Flexible hrs. \$5.81 hr.  
**COOK**  
Part Time, NA-05 \$7.46  
**CATERER**  
Part Time, pay band 1  
**DISHWASHER**  
(Food Service Worker) Part time  
NA-01 \$5.16  
Ph. 471-2435  
Submit SF 71 to address above!

**60 Help Wanted Male/Female**

440,000/yr! READ BOOKS and TV Scripts. Fill out simple "like/don't like" form. EASY! Fun, relaxing at home, beach, vacations. Guaranteed weekly check. 24 Hour Recording 801-379-2925 Copyright #H102EB.

10 PEOPLE needed for special sales promotion. 15-20 hrs./wk. \$100 to \$200/wk. Must be available for Saturday training. 486-4844 (24 hrs.).

**YOU'LL BE AMAZED** at the amount of money you can make on things you no longer need. They're someone else's treasure, & the Classifieds bring you together. Phone 235-5656 today!

**AIRPORT**

Andy Frain Services is now hiring passenger screeners at the Honolulu International Airport. Will train. Applicants must be dependable, mature, 18 or older, high school diploma or GED is required. All shifts available. F/T, P/T work. Drug free environment. Ideal for homemakers, students, retirees & 2nd jobs. Starting salary \$4.50 per hr. Effective 4/1/91 starting wage will be \$4.75. Benefits & incentives. 839-8048 ask for Emy.

**BIG \$ SHARING HOW TO SHED FAT...FOREVER!**  
24 Hr rec msg 948-0426.

**CASHIERS/SALES**  
Immed. P/T openings in Honolulu, Kaneohe & Pearlridge for retail shoes & clothing departments.  
532-5770  
M-F 9 a.m. to 4 p.m.

**CHURCH** nursery assist. Sundays, 7:30 am-12 noon. \$5 per hr. Start 5/3, 261-2309/262-6153.

**CONSTRUCTION & SERVICE** if you are responsible & self-motivated like to work outdoors. Pacific Pool & Spa has immed. full time openings. 281-3508.

**GET MORE MILEAGE FOR YOUR DOLLAR IN THE CLASSIFIEDS!** If all those odds & ends are driving you crazy, sell 'em for extra cash through the Classifieds. Call today and place your ad. Buyers and sellers agree, the Classifieds are a bargain. 235-5656.

**FLORIST NEEDED**  
experienced preferred.  
Hickam Florist  
422-6400  
Tripler Florist  
833-3367

**GET PAID \$100** per book you read. 24 hr. recorded msg. 948-4311.

**GRAPHIC ARTS CAMERA OPERATOR/STRIPPER**  
Position open for motivated individual with experience in halftone and line camera work, light stripping, plate-making. Work for a growing company offering great benefits and profit sharing.  
SUN PRESS/MIDWEEK  
45-525 Luluku Rd., Kaneohe  
235-5881, ext. 369

**ETC., ETC., ETC.**  
Cars, Homes, Jobs, Merchandise, Professional Services. You name it. Whatever you're looking for to add to, update or improve your life, you'll find in the Classifieds. 235-5656.

**CALL AVON**  
America's #1 beauty company since 1886.  
949-3266

**HOW TO MAKE MORE MONEY IN YOUR PRESENT POSITION**  
Now you can bring beauty right into your office, and bring a bigger check home. Become the Avon Representative.  
•Earn up to 45% of everything you sell, plus earn by sponsoring others as Avon Representatives  
•Free professional sales training  
•Products backed by an unconditional guarantee  
•Credit privilege

**CALL AVON**  
America's #1 beauty company since 1886.  
949-3266

**PROBLEM:** Got an over crowded closet? Try the Classifieds solution! Advertise your unwanted unused items "For Sale" and then pocket the cash you make! Call today. 235-5656!

**PRESSROOM TRAINEES**  
Entry jobs in printing trade for mechanically minded. Physical work in machinery environment. Must be capable of heavy lifting and working 12-hour shifts. Full-time only. Apply in person - no phone calls.  
Sun Press/MidWeek  
45-525 Luluku Road  
Kaneohe, HI 96744

**60 Help Wanted Male/Female**

**CLEANER** wanted, flex. hrs. Must have own transportation. 3 phone. Kailua area. 262-3836.  
**COOKS** needed, some experience please. F/T-P/T, 2 shifts, 10 to 4 & 4 to 10 Apply in person. No Name Bar, 131 Hekili St., Kailua.

**COUNTER PERSON F/T,** P/T, days, 10:00-4:30, nights 3:30-9:30 weekends day or night. Military & seniors welcome. Dairy Queen 599-2582.

**CUTTER** for clothing manufacturer. Experienced only. In Kailua. Call 261-3801.

**DRESSMAKER** excel. (see detail), exper. only 261-0706. 767 Kailua Rd.

**CLEAN UP IN THE CLASSIFIEDS!** Find a bargain for sale and sell your unwanted items for cash in the Classifieds, call 235-5656.

**DRIVER** Earn money while your children are in School. Dependable with clean abstract, car provided. M-F, 3 hr/day at \$5.50/hr. 487-3692.

**DRIVER/DELIVERY PERSON**  
Part-time position for dependable worker. Must be available Thursday 8am-6pm. Driver's abstract required. Need own truck/van. Good hourly wage plus mileage.  
Call 235-5881  
**SUN PRESS**  
Circulation

**FOR THE BEST IN HOME, APARTMENT & CONDOMINIUM LISTINGS,** check the classifieds.  
**EARN \$100** for every book you read at home. 24 hr. recording reveals. 1-801-756-1700 Dept. HI-2  
**EARN \$450.00** weekly! Easy, enjoyable, home assembly work, no exper. necessary. 24 hr. recording. 1-801-756-1401. Dept. HI-2

**FLORIST NEEDED**  
experienced preferred.  
Hickam Florist  
422-6400  
Tripler Florist  
833-3367

**GET PAID \$100** per book you read. 24 hr. recorded msg. 948-4311.

**GRAPHIC ARTS CAMERA OPERATOR/STRIPPER**  
Position open for motivated individual with experience in halftone and line camera work, light stripping, plate-making. Work for a growing company offering great benefits and profit sharing.  
SUN PRESS/MIDWEEK  
45-525 Luluku Rd., Kaneohe  
235-5881, ext. 369

**ETC., ETC., ETC.**  
Cars, Homes, Jobs, Merchandise, Professional Services. You name it. Whatever you're looking for to add to, update or improve your life, you'll find in the Classifieds. 235-5656.

**CALL AVON**  
America's #1 beauty company since 1886.  
949-3266

**PROBLEM:** Got an over crowded closet? Try the Classifieds solution! Advertise your unwanted unused items "For Sale" and then pocket the cash you make! Call today. 235-5656!

**PRESSROOM TRAINEES**  
Entry jobs in printing trade for mechanically minded. Physical work in machinery environment. Must be capable of heavy lifting and working 12-hour shifts. Full-time only. Apply in person - no phone calls.  
Sun Press/MidWeek  
45-525 Luluku Road  
Kaneohe, HI 96744

**60 Help Wanted Male/Female**

**HAIR Dresser** wanted Full or part-time. Windward side. 261-5380.  
**HAIRDRESSER** busy full service Kaneohe salon. Guaranteed wages, paid vacation, no clientele nec. Full-time & part-time positions avail. Welcome all military dependents. Paulette 642-4852/236-4514.

**HELP** wanted \$325 wkly. at Home. Assembly Products etc. No experience. 1-800-768-7020 7days/ave. \$5/min.

**HOME CLEANERS 27 OPENINGS**  
\*Up to \$9.00/hr.  
\*Need own car  
\*Need home phone  
\*Flexible daytime hrs.  
CALL 732-9490  
DANA'S HOUSEKEEPING PERSONNEL SERVICE SINCE 1975

**HOUSEKEEPERS** needed full-time, available now. Supervisory position also. ESTABLISHED CALL: MRS. CLEAN 486-4822.

**HOW** to get government jobs. Call 948-0862. 24 hour recording.

**JANITORS** wanted \$8 per hr., day or night shift. Call 449-5179.

**MANICURIST** Full or part time. Windward side. Call 261-5380.  
**MILITARY** Welcome! Immed. P/T sales in retail store. 532-5770.

**MUFFLER MAN** exper. with pipe bender and welding of mufflers. Good pay. Call 247-0078.

**NOW ACCEPTING** Teacher applications for junior high, coaching & P.E. Call 821-6033

**NURSE'S Aides, UHII,** worker, 40 bed Kaneohe Care Home. 239-7993.

**OLSTEN HealthCare**  
RNs, LPNs, Nurse Aides, Home Health Attendants & companion. We have the work you want at the pay rate you want.  
Call 836-2275 Now!

**PART-TIME** WANTED To Address Envelopes at home. You must have a Typewriter or have Good Handwriting. 1-800-783-8997 Ext. 238

**PART-TIME** Receptionist for medical office. Transcription experience necessary. 235-1655.

**PART-TIME POSITIONS**  
• Kaneohe  
• Kailua  
Dependable person needed to deliver newspapers to businesses on:  
**THURSDAY ONLY**  
Need own vehicle. Salary, bonus and gas allowance.  
Call  
Circulation Office  
235-5881  
ext. 355

**Western**  
TEMPORARY SERVICES  
THE PERFECT FIT

**IF A LITTLE** extra cash would light up your life, turn on to the Classifieds

**RACE WEEK SPECIALS!**  
FOR THE POWER PACKAGE

**Edelbrock** \$237.95

STOCK #1405-600cfm  
Good thru 3/28/92

• Completes the Edelbrock Power Package for a no guesswork parts combination.  
• Engineered & calibrated to Edelbrock specs.  
• All-aluminum, lightweight construction keeps fuel cool to prevent vapor lock.  
• No power valves to blow out or break.  
• No plastic parts.  
• Compatible with gasohol and blended fuels.  
• Two-piece construction increases carburetor life by preventing warping.  
• No gaskets below fuel level means no leaking.

Need Shop Services Available  
Machine Shop Services Available  
Engine Balancing Service

"WE HELP YOU GET THERE FASTER"

**PACIFIC PARTS & PERFORMANCE PLUS**  
94-165 Leonul Street / Waipahu, Hawaii 96797  
671-1706  
M-F 8:30-8:30 pm  
SAT 8:30-5:30 pm

**Back By Popular Demand!**  
**Limited Supply**

**KAWASAKI NINJA 250**  
\*Price plus \$296.10 D&H \$75 Doc Fee Tax & Lic. OAC Models may vary & are subject to prior sale.

**BRING THIS AD WITH YOU AND RECEIVE 15% DISCOUNT ON ANY PURCHASE OF PARTS OR ACCESSORIES**

**Financing Available To Qualified Buyers**  
831-2600  
2965 N. Nimitz Hwy.

Hawaii's Oldest Harley Davidson, Kawasaki & Moto Guzzi Dealer  
A Division of Wholesale Motors Inc. • Established In 1961

**60 Help Wanted Male/Female**

**POSTAL JOBS** \$18,392-\$67,125/yr. Now hiring. Call (1) 805-962-6000 ext P-4031.

**PLANT** Nursery Worker part time 239-8987. Windward Res. prefer.

**RESUME & SF-171 EXPERT**  
Military Resume Service  
487-3537

**SECRETARY** Kailua 20 yrs exp. pref. Windward United Church of Christ. 254-3802

**SEW-SURGE** Contractor. Home sewing exper. offered only factory trained. Kailua 261-3801.

**SEWING** persons. Contract piece work. Fabric cutter. 749 Kailua Rd. 262-6366.

**60 Help Wanted Male/Female**

**TEACHERS** Elementary & Preschool for Christian school in Kailua. Immediate openings. Preschool assist. Elementary after school & substitute. Also summer & fall openings. 262-8501

**TELEMARKETERS** 9 needed. Salary + commissions. Benefits, flex. hrs. Call 735-6452.

**WAITRESSES/Waiters,** Diet Aides, Dishwashers, Maint., P/T. For info. call Patsy at: 247-6211, M-F 9-3pm, Poho Nani, Kaneohe, EOE

**WANTED:** Telemarketers to work from home. Up to \$20 an hr. 283-2278.

**HOUSECLEANER** up to \$1000 net per mo. Your hrs./car. 247-0111.

**62 Domestic Help Wanted**

**MATURE** companion for elderly lady, live-in, rm. & board, lite housework, + sal. 247-2489, 734-4016.

**NANNY** Part-time, competitive pay, work refs. required. Call for interview after 5 pm. 254-2412.

**SITTER NEEDED** for 2 year old. Kailua area only. Call 262-0772.

**64 Domestic Jobs Wanted**  
BEST Buddies Childcare, openings in June Kailua/Alhaili 254-3637  
HAWAII KAI Childcare, full-time only, any age. Call 395-3387  
LITTLE Tykes Day Care, Loving, affordable. Kaneohe, 239-6939.  
STUDENT seeking part-time house cleaning position. Reference avail. Call Germain 235-5513 between 6pm-8pm only.

**AREA MANAGERS Hawaii Kai**

Challenging positions for independent self-starters. Must be able to recruit, train, motivate and supervise young newscasters; assure dependable delivery service to all residents in area. Must have own car. Residency in area helpful. Part-time flexible hours. Earn \$430-\$600 per month, plus gas allowance. Work 12-16 hours per week.  
Call Circulation Office  
The Sun Press Newspapers  
235-5881

**GRAPHIC ARTS CAMERA OPERATOR/STRIPPER**

Position open for motivated individual with experience in halftone and line camera work, light stripping, plate-making. Work for a growing company offering great benefits and profit sharing.

**SUN PRESS/MIDWEEK**  
45-525 Luluku Rd., Kaneohe  
235-5881, ext. 369

**If you can fix it, clean it or build it, classified can advertise it!**  
Classified Advertising  
235-5656

**HOME & APARTMENT GUIDE**

**74 Apts. Partly Furnished**

**AAA DEAL!** Base area col. utils. \$600; larger private \$850. 879-7803 Homecoaters Fee.

**76 Rentals To Share**  
HAWAII Kai 1 turn. rm. avail. In 4 bdrm. house. W/D, T.V. & refrig. beds, avail. In rm. \$475 mo. + dep & utils. 395-8262.

**82 Houses Unfurnished**  
KAILUA 4 bdrm., very lg. & big yard \$1600 + dep. Call 254-4253.

**83 Houses Partly Furnished**  
HANDY BASE! 1 bdrm. \$750; 2 bdrm. \$780; 3 bdrm. \$900; 4 bdrm. \$975. 979-7803 Homecoaters.

**85 Condos/Townhouses Partly Furnished**  
KANEKOE, Temple Valley, 2 bdrm., 1 ba., 2 prkg. Avail. \$719, \$807 mo. Jett Pacific Prop. 235-8558 or 235-6196.  
MAKIKI 2 bdrm., 1 ba. condo. Very clean, w/d. 1 cvd. prkg., view, roomy. \$1177/mo. 523-8907.

**88 Rooms For Rent**

**K-BAY DRIVE** Lgo. master w/priv. ba., pool, \$525 + util & dep. 254-6305 or 282-2154.  
KAILUA lgo. rm., priv. ent. & ba., pool, prkg., nr. bus 500. 262-8688.  
KAILUA single rm. \$400; or master bdrm. for couple \$525. nr. busline. Nonsmokers. 262-0574.  
KANEKOE lrg. turn. rm., bare kitchen & ba. util incl. \$400. Ph. 235-3928.

**MAUNAWILI** 2 rms. \$350, \$885 both, nonsmoker, no pets. Ph. 262-4786.

**93 Vacation Rentals**  
ADORABLE COTTAGE in Kailua near beach. Priv. & clean. 261-0756.  
KAILUA Large Studio. Steps to beach, sm. kit w/eating area. Pvt. ent. \$55/day. 262-0839.

**KAILUA** 2 units, large studio/bdrm. private ent., pool. Ph. 262-8540.

**ETC., ETC., ETC.**  
Cars, Homes, Jobs, Merchandise, Professional Services. You name it. Whatever you're looking for to add to, update or improve your life, you'll find in the Classifieds. 235-5656.

**103 Stores & Offices For Rent**

**PRIME** Kailua location, \$1.00-\$1.50 per sq. ft., Ferry & Assoc. Realty. Call 261-1708.

**PRIME RETAIL/WAREHOUSE SPACE** off Dillingham Blvd. 3600 sq.ft. available at \$1.10 per sq. ft. For more info. call Bob 845-7851.

**109 Condos/Townhouses For Sale**  
NUUANU CRAIGSIDE 1 bdrm. on cool side. Dramatic min. & max. view. Call 263-6999.  
REDUCED! \$225,000 LH. Pool. 263-6999.

**114 Real Estate For Sale**  
3 BDRM. 2 ba., 3 Hawaiian acres, 1272 sq. ft. huge deck, beautiful country setting \$79,500. Call Clark & Assoc. (H) 943-6037 (H) 737-7969

**40 ACRES** Colorado \$12,500 Foreclosure - pick up \$150 payments, on \$8K loan, invest now - enjoy life! (808) 376-8690.  
**BURKE CENTER**, Va. 3 level townhse, w/court yd. entry, 2 1/2 ba., 2 bdrm., rm. sq. ft. for more pool, tennis, shops. 487-1118.

**FREE HOME BUYERS SEMINAR**

Join us for a free Home Buyers Seminar. Seating is Limited, so call today.

The Realty Corp.  
946-3951  
Date: March 19, 1992, Thursday  
Time: 7-9 P.M.  
Place: Century 21 of the Pacific Manoa Marketplace  
2752 Woodlawn Dr. #5-218

**MAIN STREET, REALTORS**

**OPEN SUNDAY 2-5**  
NEW LISTING  
47-689 ALAWIKI STREET  
One year old but BETTER THAN NEW! Move up from your townhome and those sky-high maintenance fees. Landscaped to perfection.  
Excellent double wall construction. Time for an effortless move to your own home. No deferred maintenance. No remodeling.  
Three bdrm. 2.5 baths. Beautifully finished with carpet, tile and lovely draperies.  
**\*\$85,000 FEE SIMPLE**  
MLS #36669  
Contact:  
**SUZANNE E. JACKSON, REALTOR**  
(808) 263-3522  
TOLL FREE:  
1-800-524-6999  
118 Hekili Street, Kailua, Hawaii 96734  
(808) 263-6999  
A REAL ESTATE CORPORATION

**MIKE SALTA**  
**BELOW FACTORY INVOICE**  
**WE GUARANTEE IT!**  
**GREAT USED CAR SAVINGS!**

|  |  |  |   |   |  |
|--|--|--|---|---|--|
| '86 ISUZU P/U TRUCK<br>AM/FM Cass. 5 Sp. Mag Wheels (CDW036)<br>\$1495       | '85 MAZDA 626 LX<br>4 Dr. A/C, AM/FM Cass. P/S and More (CCP137)<br>\$3995 | '87 MAZDA 626 LX<br>4 Dr. Auto, A/C, Cass. and More (CNU943)<br>\$4995 | '87 PONTIAC FIERO GT<br>TRUCK<br>A/C, AM/FM Cass. Extra Nice (CYY486)<br>\$5995     | '90 PONTIAC SUNBIRD LE<br>4 Dr. A/C, Auto, P/S, Clean (EPF470)<br>\$6895    | '90 PONTIAC SUNBIRD LE<br>4 Dr. A/C, Auto, A/C and More (OFF981)<br>\$8995                 |
| '85 CHRYSLER 300 AVE.<br>4 Dr. V-6, A/C, Auto and More (EFS829)<br>\$2995    | '87 TOYOTA TERCEL<br>2 Dr. V-6, A/C, P/S, AM/FM Cass. (CEJ271)<br>\$3995   | '88 HONDA CIVIC<br>4 Dr. Auto, AM/FM Cass. P/S (CS3906)<br>\$4995      | '90 NISSAN P/U TRUCK<br>AM-FM Cass. 5 Sp. Low Miles (DJE173)<br>\$6495              | '89 CHEVROLET CAVALIER SW<br>V-6 Auto, Air, P/W and More (CWA474)<br>\$6995 | '91 CHEVROLET CAMARO Z28<br>V-6 Auto, A/C, T/Tops, CD Player and More (FDD121)<br>\$11,995 |
| '84 HONDA CRX<br>AM/FM Cass. 5 Sp. One of a kind graphics (BTE747)<br>\$3395 | '83 VOLVO 740 GLE<br>A/C, Auto, P/S, Cass. (CCA800)<br>\$4595              | '90 ISUZU P/U TRUCK<br>AM/FM Cass. 5 Sp. Low Miles (DFE756)<br>\$5795  | '87 CHEVROLET 8-10 P/U<br>Towing Cap. 4400 Lbs. A/C and Much More (H5434)<br>\$6795 | '89 FORD AERO STAR<br>5 Cyl. Auto, A/C, P/S (CXJ007)<br>\$8495              | '90 CADILLAC BROUGHAM<br>4 Dr. 16 Valve, Equipment, Great Tires (E2V54)<br>\$16,995        |

**MIKE SALTA**  
 • Pontiac  
 • Isuzu  
 • Lincoln  
 • Mercury

# HONDA WINDWARD

In Kaneohe • Only 20 Minutes From Anywhere!

## OVERSTOCKED

### Everything must go!!!

|   |   |  |
|---|---|--|
| '92 CIVIC CX<br>3 Door, #8653<br><b>7,995</b><br>or \$151/mo. | '92 ACCORD DX<br>4 Door, #8576<br><b>11,995</b><br>or \$239/mo. | '92 PRELUDES<br>#8739<br><b>14,795</b><br>or \$299/mo. |
|---|---|--|

### USED CAR SPECIALS!

|   |  |   |
|---|--|---|
| '72 VOLKSWAGEN BUG<br>Lic# CWW-012<br><b>895</b>  | '86 PONTIAC GRAND AM<br>Lic# CDD-561<br><b>2,995</b> | '86 FORD MUSTANG<br>Lic# EBF-247<br><b>4,295</b>  |
| '78 CHEVROLET VAN<br>Lic# 548-TCW<br><b>2,995</b> | '85 TOYOTA COROLLA<br>Lic# HHX-532<br><b>3,995</b>   | '88 TOYOTA TERCEL<br>Lic# CST-997<br><b>4,995</b> |

Payments based on \$1000 down and 10.9% APR for 60 months. All prices and payments quoted are plus tax, license and \$18 DOC Fee. Cars subject to prior sale. Prices good through March 22, 1992.

**By HONDA For Customer Satisfaction**  
**By AAA For Professionalism Quality & Speed**

**HONDA WINDWARD**  
 45-671 Kam Hwy., Kaneohe

**FREE LOAN CARS!**  
**HONDA HOTLINE: 247-8544**  
**OPEN 7 DAYS A WEEK: Mon.-Sat. 9-9pm • Sun. 10-8pm**

**120 Home Furnishings**  
 2 PIECE sectional, blue, incl. sleeper & recliner. Like brand new. \$1200. 395-3284.  
 FINISHED Koa rockers by Chairmaster. Wholesale. 293-8392.  
 FOR SALE Koa cocktail table, \$800, good cond. A/C 120 volts. 254-4580.

**\$ CASH \$ WE BUY BEDS & FURNITURE 486-2677**

**120 Home Furnishings**  
 SOFA & chaise lounge, good condition \$550. Call 235-8326 eves.  
 SOFABED, drawer, good cond., baby furn., & more household items. Call Harumi 261-7767.  
 WATERBED headboard, good cond. \$150. Call 293-5199.

**QUEEN BED SETS \$149**  
 DOUBLE BEDS \$125  
 BUNKBEDS \$249  
 METAL OFFICE DESKS \$125  
 SOFAS \$99  
 LOVESEATS \$79  
 DINETTES \$59  
 COFFEE TABLES \$25  
 LAMPS \$5 to \$15  
 RATTAN ARM CHAIRS \$19  
 4 PC. SCAN DESIGN TEAK BORN. SETS \$499  
 Large selection of: Sofas, Brasers, Chests, Livingroom sets, Dining room sets, etc. etc. Come in or call for quote.  
 CREDIT CARDS ACCEPTED

**FURNITURE CONNECTION**  
 98-025 HEKANA ST. BEHIND FORTO FUR AIEA  
**486-2677**

**GARAGE SALE**  
 16 FAMILY GARAGE SALE Sat., 21 March, at 721 Paopua Ln. Kailua, 9-3. Furn., clothes, sports equip., toys, you name it we have it.  
 BARBIES MISC. & Collectibles. 45-552 Keneke Pl. Kaneohe. Fri. Sat, Sun  
 CERAMIC CLASSES Also specializing in center pieces for all occasions. Call 262-8862.  
 CRAFT SALE: Easter hats, wreaths, dolls & some shirts. Mar. 28, 10 to 5pm., 310 Kalaiahua Pl. Kailua, OHI Oneawa.

**GARAGE SALE**  
 YARD SALE at 255 Kuupue St. & 27 Kuaalea St. Sat., 3/21, 8am.

**125 Home Appliances**  
 REFRIG. Amana Side By Side, 22 cu. ft. Sm. freezer & am. ref. All free items for \$300.395-5032.  
 WHIRLPOOL Washer fairly new, JCPenny range fairly new. 235-3007.

**126 Miscellaneous**  
 15 x 15 wood deck, \$500 firm. Was \$1000 to build. Call 254-5012.  
 2 MEN'S New double breasted suit size 42 reg. Dark gray w/stripes bought in SF. Sacrifice. Paid \$250 each. Sell for \$100 each. Call 262-4302.  
 BOOGIE brd. \$10; micro \$50; surfboard \$30; vacuums \$25/\$40, 261-5174.  
 CELLULAR PHONE \$75 for Saving Club Members. Call 261-2258.  
 CLIFF'S Economy Furn. & Thrift Shop, 1718 N King St. Ph. 841-4443.  
 DISPLAY Case-home or store, 72 x 18 x 38 \$300. Call 236-0339.  
 FILTER Queen Vacuum Coat, \$850. Must sell \$250. 735-4651, 926-7292.  
 FOR SALE: Carpet, Living Room & Carpet Runners, also '89 Moped. Call 423-0268.

**MOVING?**  
 We Buy Fine Quality Used Furniture. Fast, Free Pick-up.  
**PARADISE USED FURNITURE**  
 235-8056

**BEWING MACHINE**  
 \$125, day bed \$70, table & 4 chairs \$70, 22 in. hedge trimmer. \$40 484-4217.

**BUY IT. SELL IT. FIND IT. TELL IT. FIX IT. SAY IT CLASSIFIED ADS 235-5656**

**122 Travel**  
 ONEWAY Honolulu to Seattle. April 7th 1992, \$150. Call 247-1134

**GARAGE SALE**  
 A VARIETY of interesting, unusual & useful items priced to sell. Come to 588 Paokona Loop in Enchanted Lake on Friday, Mar. 20, Sat., Mar. 21, 7am. to 4pm. Don't Miss This Sale.

**HAWAIIAN QUILTS Sale \$875**  
 Call Cynthia  
 254-2486 or 239-2289

**IF you have too many No Fr fruit and want to share them, please call me. 262-4302.**

**126 Miscellaneous**  
 MARCH SALE: Vertical Blinds, open weave macramé 75" x 84" \$188; Ken Hatch Int. 254-2080.  
 OAK TRUNDLE day bed & 2 sewing machines w/ cabinet, 1 is Industrial strength, 262-4291.  
 PIANO Tune-Up Time Special-\$35 Complete. Expert Repairs. Free est. Mr. Mayers 395-0304.  
 VACUUM Cleaners, like new \$24.95 & up with guarantee. Ph 735-6452.  
 WEDDING gown, off white taffeta, off shoulder sleeves, bead lace bodice, train, size 6 \$450. Call 239-1178.

**127 Miscellaneous Wanted**  
 ANYONE who has too many No Fr fruit and want to share some, please call me. 262-4302.

**144 Musical Instruments**  
 CASIO CT-80 with stand \$350. Call 625-5639  
 DRUMS & hardware, new & used. Buy & Sell Drum supplies. Fred's Pro Drums. Call 533-7550.  
 EVERETT Spinnet, black laquer, bench, good cond. \$950. 236-0339.  
 PIANO 1982 Kimball, oak finish \$1200 or best offer. Call 262-5227.  
 REALISTIC Mike stands with boom. \$75 ea. Call 625-5639.  
 WANTED Violin lessons in Kailua area. Call 261-3081.

**146 Boat Sales & Service**  
 '86 SUZUKI 30hp, O/B, excel. cond. \$975. Call 247-6993.  
 14 x ALL GAME FISHER excel. cond., low hrs., 9.9 Suzuki engine & trailer. Call 235-6322.  
 20' GLASS-PRO w/ bridge & cabin, equipped for trolling; Merc cruiser, int. newly upholstered \$10,500. 235-5438 after 4.

**129 Stereo & Video**  
 RCA 12" color TV w/ remote, like new, 1 yr. old \$75. Call 239-5680.  
 WE BUY or Repair non working VCR's. Call Econ Photo 239-4295.

**131 Bicycle Sales**  
 1991 HARO IMPULSE Mtn. bike, 21 spd., 19 1/2 in. frame, like new \$500. Dan 239-9351 lv. msg.

**132 Computers**  
 APPLE IIa computer, Sony color monitor, 2 disk drives, printer, joystick, koola pad & tons of programs & games, \$500. Todd 261-1431.  
 COMMODORE USER CLUB meets 3rd Thurs. of each month. For info call 235-4182.  
 MAG PLUS; 20MB hard disk, imagewriter II; software \$1000. Neil 261-2798.  
 WANTED. 1571 Commodore Drive, booklets, etc. 235-4182.

**133 Jewelry & Clothing**  
 14K 24" HERRINGBONE necklace. Asking \$300 or best offer. 823-1831.

**141 Video Taping**  
 FILMS transferred to video. Many locations. Econ Photo 239-4295.

**144 Musical Instruments**  
 4 SWINGLAND TOMS 9", 10", 13", and 14". \$150. Call 625-5639.

**146 Boat Sales & Service**  
 '86 SUZUKI 30hp, O/B, excel. cond. \$975. Call 247-6993.  
 14 x ALL GAME FISHER excel. cond., low hrs., 9.9 Suzuki engine & trailer. Call 235-6322.  
 20' GLASS-PRO w/ bridge & cabin, equipped for trolling; Merc cruiser, int. newly upholstered \$10,500. 235-5438 after 4.  
 25 FT. SAILBOAT \$14,000 great cond. Phone 872-8406.  
 FLAT bottom skiff 21' x 8', twin 48hp Evinrude \$8000 or offer. 261-0150.

**MEAGAN SPORT FISHING**  
 Marlin - Tuna - Shark  
 • Lowest rates  
 • Best equipment  
 Capt. Hank Chase 488-4854

**148 Water Sports Equipment**  
 8' THRUSTER U-Tri-1. Big wave gun \$200/offer. Call Jay 261-7639.

**150 Livestock/Horses**  
 HORSE to share. Dressage rider preferred. Call 254-3625  
 HORSEBACK Riding Lessons - English, Jumping, Western & Jody Woods Call 395-8743.  
 LARGE quality built Tack/Feed box w/whelf. Will hold 4, 80# bags of cubes. \$300. 247-4894.  
 NEW ZEALAND Thoroughbred, 12 yr. old Bay, Gelding, \$2500. By appt. only. For further info. call 247-4894.

**151 Pets/Everything**  
 20 GALLON octagon aquarium, complete pump, etc. \$130. Call 833-4314.  
 55 GALLON aquarium w/ stand, pumps, etc. \$275. Call 267-6836

**AVIS.**  
 Car Sales Outlet  
 The Smart Place To Buy  
 Why buy a New Van or Car when there are AVIS 90's and 91's ... everything looks new except the price ...

**As Low As \$210 per month**

**BUY IT. SELL IT. FIND IT. TELL IT. FIX IT. SAY IT CLASSIFIED ADS 235-5656**

**122 Travel**  
 ONEWAY Honolulu to Seattle. April 7th 1992, \$150. Call 247-1134

**GARAGE SALE**  
 A VARIETY of interesting, unusual & useful items priced to sell. Come to 588 Paokona Loop in Enchanted Lake on Friday, Mar. 20, Sat., Mar. 21, 7am. to 4pm. Don't Miss This Sale.

**HAWAIIAN QUILTS Sale \$875**  
 Call Cynthia  
 254-2486 or 239-2289

**IF you have too many No Fr fruit and want to share them, please call me. 262-4302.**

**126 Miscellaneous**  
 MARCH SALE: Vertical Blinds, open weave macramé 75" x 84" \$188; Ken Hatch Int. 254-2080.  
 OAK TRUNDLE day bed & 2 sewing machines w/ cabinet, 1 is Industrial strength, 262-4291.  
 PIANO Tune-Up Time Special-\$35 Complete. Expert Repairs. Free est. Mr. Mayers 395-0304.  
 VACUUM Cleaners, like new \$24.95 & up with guarantee. Ph 735-6452.  
 WEDDING gown, off white taffeta, off shoulder sleeves, bead lace bodice, train, size 6 \$450. Call 239-1178.

**127 Miscellaneous Wanted**  
 ANYONE who has too many No Fr fruit and want to share some, please call me. 262-4302.

**144 Musical Instruments**  
 CASIO CT-80 with stand \$350. Call 625-5639  
 DRUMS & hardware, new & used. Buy & Sell Drum supplies. Fred's Pro Drums. Call 533-7550.  
 EVERETT Spinnet, black laquer, bench, good cond. \$950. 236-0339.  
 PIANO 1982 Kimball, oak finish \$1200 or best offer. Call 262-5227.  
 REALISTIC Mike stands with boom. \$75 ea. Call 625-5639.  
 WANTED Violin lessons in Kailua area. Call 261-3081.

**146 Boat Sales & Service**  
 '86 SUZUKI 30hp, O/B, excel. cond. \$975. Call 247-6993.  
 14 x ALL GAME FISHER excel. cond., low hrs., 9.9 Suzuki engine & trailer. Call 235-6322.  
 20' GLASS-PRO w/ bridge & cabin, equipped for trolling; Merc cruiser, int. newly upholstered \$10,500. 235-5438 after 4.

**129 Stereo & Video**  
 RCA 12" color TV w/ remote, like new, 1 yr. old \$75. Call 239-5680.  
 WE BUY or Repair non working VCR's. Call Econ Photo 239-4295.

**131 Bicycle Sales**  
 1991 HARO IMPULSE Mtn. bike, 21 spd., 19 1/2 in. frame, like new \$500. Dan 239-9351 lv. msg.

**132 Computers**  
 APPLE IIa computer, Sony color monitor, 2 disk drives, printer, joystick, koola pad & tons of programs & games, \$500. Todd 261-1431.  
 COMMODORE USER CLUB meets 3rd Thurs. of each month. For info call 235-4182.  
 MAG PLUS; 20MB hard disk, imagewriter II; software \$1000. Neil 261-2798.  
 WANTED. 1571 Commodore Drive, booklets, etc. 235-4182.

**133 Jewelry & Clothing**  
 14K 24" HERRINGBONE necklace. Asking \$300 or best offer. 823-1831.

**141 Video Taping**  
 FILMS transferred to video. Many locations. Econ Photo 239-4295.

**144 Musical Instruments**  
 4 SWINGLAND TOMS 9", 10", 13", and 14". \$150. Call 625-5639.

**146 Boat Sales & Service**  
 '86 SUZUKI 30hp, O/B, excel. cond. \$975. Call 247-6993.  
 14 x ALL GAME FISHER excel. cond., low hrs., 9.9 Suzuki engine & trailer. Call 235-6322.  
 20' GLASS-PRO w/ bridge & cabin, equipped for trolling; Merc cruiser, int. newly upholstered \$10,500. 235-5438 after 4.  
 25 FT. SAILBOAT \$14,000 great cond. Phone 872-8406.  
 FLAT bottom skiff 21' x 8', twin 48hp Evinrude \$8000 or offer. 261-0150.

**MEAGAN SPORT FISHING**  
 Marlin - Tuna - Shark  
 • Lowest rates  
 • Best equipment  
 Capt. Hank Chase 488-4854

**148 Water Sports Equipment**  
 8' THRUSTER U-Tri-1. Big wave gun \$200/offer. Call Jay 261-7639.

**150 Livestock/Horses**  
 HORSE to share. Dressage rider preferred. Call 254-3625  
 HORSEBACK Riding Lessons - English, Jumping, Western & Jody Woods Call 395-8743.  
 LARGE quality built Tack/Feed box w/whelf. Will hold 4, 80# bags of cubes. \$300. 247-4894.  
 NEW ZEALAND Thoroughbred, 12 yr. old Bay, Gelding, \$2500. By appt. only. For further info. call 247-4894.

**151 Pets/Everything**  
 20 GALLON octagon aquarium, complete pump, etc. \$130. Call 833-4314.  
 55 GALLON aquarium w/ stand, pumps, etc. \$275. Call 267-6836

**146 Boat Sales & Service**  
 '86 SUZUKI 30hp, O/B, excel. cond. \$975. Call 247-6993.  
 14 x ALL GAME FISHER excel. cond., low hrs., 9.9 Suzuki engine & trailer. Call 235-6322.  
 20' GLASS-PRO w/ bridge & cabin, equipped for trolling; Merc cruiser, int. newly upholstered \$10,500. 235-5438 after 4.  
 25 FT. SAILBOAT \$14,000 great cond. Phone 872-8406.  
 FLAT bottom skiff 21' x 8', twin 48hp Evinrude \$8000 or offer. 261-0150.

**MEAGAN SPORT FISHING**  
 Marlin - Tuna - Shark  
 • Lowest rates  
 • Best equipment  
 Capt. Hank Chase 488-4854

**148 Water Sports Equipment**  
 8' THRUSTER U-Tri-1. Big wave gun \$200/offer. Call Jay 261-7639.

**150 Livestock/Horses**  
 HORSE to share. Dressage rider preferred. Call 254-3625  
 HORSEBACK Riding Lessons - English, Jumping, Western & Jody Woods Call 395-8743.  
 LARGE quality built Tack/Feed box w/whelf. Will hold 4, 80# bags of cubes. \$300. 247-4894.  
 NEW ZEALAND Thoroughbred, 12 yr. old Bay, Gelding, \$2500. By appt. only. For further info. call 247-4894.

**151 Pets/Everything**  
 20 GALLON octagon aquarium, complete pump, etc. \$130. Call 833-4314.  
 55 GALLON aquarium w/ stand, pumps, etc. \$275. Call 267-6836

**We Can Finance Bankrupts, Call...**  
**FAMILY MOTORS**  
 84-287 Farrington At Lookaa St. WAIKANA  
 Next to Firestone. 678-1600

We are financing experts. No Credit Fair Credit. So So Credit In house financing on some cars. Call Today for info. Open Weekdays 9 a.m. - 6 p.m. Some restrictions may apply.

**Now! Sale!**

|   |   |   |
|---|---|---|
| <b>'82 DATSUN MAXIMA 4 DR SEDAN</b><br>AUTO AIR P/S P/W AND OIL D/L AM/FM CASS. 86/783<br>\$2495  | <b>'84 TOYOTA CAMRY 4 DR SEDAN</b><br>AUTO AIR P/S P/W AND OIL AM/FM BT1066<br>\$4495     | <b>'87 MAZDA 626 4 DR</b><br>5 SP. SPEED P/S AM/FM CASS. CJE302<br>\$4495             |
| <b>'85 LINCOLN TOWN CAR</b><br>FULL POWER B/WASH<br>\$4995  | <b>'84 TOYOTA CELICA GT 2 DR. H/O</b><br>5 SPEED AIR P/S P/W AM/FM CASS. BX490<br>\$6495  | <b>'88 PONTIAC BONNEVILLE 4 DR SEDAN</b><br>AUTO AIR P/S AM/FM CASS. CSC296<br>\$6695 |
| <b>'87 NISSAN MAXIMA 4 DR SEDAN</b><br>AUTO AIR P/S P/W AND OIL SEAT AM/FM CASS. CGY807<br>\$6995 | <b>'85 TOYOTA CRESSIDA 4 DR SEDAN</b><br>AUTO AIR P/S AM/FM P/W AND OIL. CDB846<br>\$7495 | <b>'87 FORD AEROSTAR VAN</b><br>AUTO AIR P/S AM/FM EX220<br>\$7995                    |
| <b>'88 ACURA INTEGRA 4 DR SEDAN</b><br>5 SPEED AIR P/S P/W EG470<br>\$8495                        | <b>'88 SUBARU LEGACY S/W</b><br>5 SPEED AIR P/S P/W AND OIL. AM/FM. OFD382<br>\$9995      | <b>'90 ACURA LEGEND LS 2 DR COUPE</b><br>AUTO FULL POWER SUN ROOF DUS30<br>\$18,895   |

Subject to prior sale Plus tax, lic. & fees. Sale Ends 3/25/92

**KAIMUKI TOYOTA**  
 735-1737

**131 Bicycle Sales**  
 1991 HARO IMPULSE Mtn. bike, 21 spd., 19 1/2 in. frame, like new \$500. Dan 239-9351 lv. msg.

**132 Computers**  
 APPLE IIa computer, Sony color monitor, 2 disk drives, printer, joystick, koola pad & tons of programs & games, \$500. Todd 261-1431.  
 COMMODORE USER CLUB meets 3rd Thurs. of each month. For info call 235-4182.  
 MAG PLUS; 20MB hard disk, imagewriter II; software \$1000. Neil 261-2798.  
 WANTED. 1571 Commodore Drive, booklets, etc. 235-4182.

**133 Jewelry & Clothing**  
 14K 24" HERRINGBONE necklace. Asking \$300 or best offer. 823-1831.

**141 Video Taping**  
 FILMS transferred to video. Many locations. Econ Photo 239-4295.

**144 Musical Instruments**  
 4 SWINGLAND TOMS 9", 10", 13", and 14". \$150. Call 625-5639.

**146 Boat Sales & Service**  
 '86 SUZUKI 30hp, O/B, excel. cond. \$975. Call 247-6993.  
 14 x ALL GAME FISHER excel. cond., low hrs., 9.9 Suzuki engine & trailer. Call 235-6322.  
 20' GLASS-PRO w/ bridge & cabin, equipped for trolling; Merc cruiser, int. newly upholstered \$10,500. 235-5438 after 4.  
 25 FT. SAILBOAT \$14,000 great cond. Phone 872-8406.  
 FLAT bottom skiff 21' x 8', twin 48hp Evinrude \$8000 or offer. 261-0150.

**MEAGAN SPORT FISHING**  
 Marlin - Tuna - Shark  
 • Lowest rates  
 • Best equipment  
 Capt. Hank Chase 488-4854

**148 Water Sports Equipment**  
 8' THRUSTER U-Tri-1. Big wave gun \$200/offer. Call Jay 261-7639.

**150 Livestock/Horses**  
 HORSE to share. Dressage rider preferred. Call 254-3625  
 HORSEBACK Riding Lessons - English, Jumping, Western & Jody Woods Call 395-8743.  
 LARGE quality built Tack/Feed box w/whelf. Will hold 4, 80# bags of cubes. \$300. 247-4894.  
 NEW ZEALAND Thoroughbred, 12 yr. old Bay, Gelding, \$2500. By appt. only. For further info. call 247-4894.

**151 Pets/Everything**  
 20 GALLON octagon aquarium, complete pump, etc. \$130. Call 833-4314.  
 55 GALLON aquarium w/ stand, pumps, etc. \$275. Call 267-6836

**ADOPT! ST. PATRICK'S ADOPTION SPECIAL!**  
**ADOPT! PUPPIES • KITTENS DOGS • CATS**

**PUREBREEDS!!**  
 Come in TODAY and see our fabulous selection of cute & cuddly pets. Don't wait... ADOPT NOW!

**New Pets Daily!!**

Directions: Exit H-1 Freeway #25A Corner of King and Wai'alea

**Hawaiian Humane Society**  
 Open: Mon-Fri 10AM-6PM Sat & Sun 10AM-3PM  
 2700 Wai'alea 946-2187

**FREE Adopter's Bonus**  
 • Pre-Adopt Shots  
 • Starter Kit  
 • Vet Exam  
 • Neutering  
 • and much more!

**FREE to a good home, 2 dogs spayed & shot, house broken. Call 471-0797 or 896-8828.**

**AKC Registered Italian Greyhound, Female 6 mo., all shots \$550. 834-7135**

**AKC Samoyed Pups. Cute/fluffy white, terms available, males \$850, females \$1000. 247-5883.**

**'91 MERCEDES 200** MAKE OFFER  
 4-Dr. ANT-400  
**'84 FORD ESCORT** \$2495  
 Auto., P/S, Clean, 822-CKO  
**'87 FORD ESCORT S/W** \$2695  
 CVN-881  
**'88 MITSUBISHI PRECIS** \$2895  
 0UG-627  
**'86 DODGE DAYTONA TURBO** \$2695  
 Auto., P/S, CPX-774  
**'86 MUSTANG LX** \$2995  
 41,000 Mi., CF6-730  
**'85 CHEVY CAMARO Z28** \$3295  
 CAU-645  
**'86 VW GOLF** \$4295  
 2-Dr., CCR-918  
**'88 TOYOTA TERCEL** \$4295  
 4-Dr. Auto., P/S, A/C, CDX-432  
**'83 CHEVY BLAZER 4x4** \$4495  
 V-8, AXB-886  
**'86 MAZDA 626E** \$4495  
 Auto., CEM-215  
**'88 FORD TEMPO** \$4495  
 0BY-066

**We Can Finance Bankrupts, Call...**  
**FAMILY MOTORS**  
 84-287 Farrington At Lookaa St. WAIKANA  
 Next to Firestone. 678-1600

We are financing experts. No Credit Fair Credit. So So Credit In house financing on some cars. Call Today for info. Open Weekdays 9 a.m. - 6 p.m. Some restrictions may apply.

**'91 CHEVY GRAND CARAVAN SE**  
 \$300/mo. 16,700 miles (DJJ 858)

**'91 CHEVY ASTRO VAN**  
 \$300/mo. MANY

**'91 PONTIAC LeMANS**  
 (EDE 582) 9,000 miles  
 \$174/mo.

**'91 SUNBIRD LE SEDAN**  
 (MANY) 11,000 miles  
 \$192/mo.

**'91 GRAND AM**  
 (DUJ 704) 13,000 miles  
 \$192/mo.

**'91 DODGE SPIRIT**  
 (EBE 580) 7,000 miles  
 \$192/mo.

**'91 SUNBIRD CONVERTIBLE**  
 (EOD 885) 10,000 miles  
 \$264/mo.

**'91 OLDS CUTLASS CIERA**  
 10,000 miles  
 \$284/mo.

**'91 CADILLAC DeVILLE**  
 (DPS 580)  
 \$481/mo.

PRICES VALID THROUGH 3/31/92

**417 LELE ST. 834-5533**  
**OPEN 7 DAYS A WEEK 834-5547**  
 8:30am-6:00pm

Tax, title and registration fees are extra. No discounts apply to specially priced vehicles. Vehicles subject to prior sale 1/3 down. 11.75 annual percentage rate. 60 mos. P.A.C. Ask for details. When you buy AVIS, you get protection you can count on the remainder of the unexpired manufacturer's warranty.

**Classified Ads 235-5656**

# Kailua Toyota's

## Carnival of Savings



**DEMO** 1992 TOYOTA PASEO  
Retail \$14,884 Sale Price **\$11,610**

Automatic, Air Conditioning, Rustproof, Sealant, Rear Spoiler, Tire Upgrade, AM/FM w/Cassette, Color: S. Red. Stk. No. 220175



**DEMO** 1992 TOYOTA CAMRY V6 DLX  
Retail \$21,379 Sale Price **\$16,310**

Automatic, AM/FM w/Cassette, Air Conditioning, Rustproof, Sealant, Color: Almond Beige. Stk. No. 220599



Not exactly as shown. Camry 4-Door

**DEMO** 1991 SUZUKI SWIFT 4 DR. Retail Sale \$10,522 Price **\$7,345**

5 Speed, Air Conditioning, Rust-proof, Sealant, Body-side Mldg., AM/FM w/Cassette, Rear Spoiler, Stripe Kit. Stk. No. 170014

**NEW** 1991 SUZUKI SWIFT GT. Retail Sale \$10,393 Price **\$8,155**

5 Speed, Sealant, Wheel-Well Mldg., AM/FM w/Cassette, Rear Spoiler, Power side mirrors. Stk. No. 170252

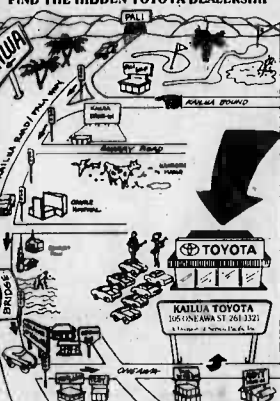
**NEW** 1992 TOYOTA HILUX 4X2. Retail Sale \$10,878 Price **\$9,395**

5 Speed, 2.4 Liter, EFI Engine, Rustproof, Sealant, and much more! Stk. No. 222751

Prices good through March 29, 1992  
**SEE US AT THE KAILUA CARNIVAL March 20, 21 & 22**

USED CARS - USED CARS - USED CARS

- '87 FORD TAURUS 4 DR AUTO, AC, V-6 CJF-942 ..... \$4,995
- '90 GEO METRO LSI AUTO, AC, CLEAN MTA-073 ..... \$5,595
- '80 SUZUKI SWIFT GT 5 SPD, CASS DGF-237 ..... \$5,995
- '88 TOYOTA CAMRY AUTO, AC, PS CVE-466 ..... \$7,950
- '88 TOYOTA CAMRY DLX AUTO, AC, POWER WINDOWS & LOCKS CVP-609 ..... \$8,595
- '80 FORD PROBE GT V-6, AUTO, LOADED DJG-443 ..... \$9,995
- '90 TOYOTA CELICA ST AUTO, AC, CASS, X-CLEAN DGA-680 ..... \$10,995
- '89 CORVETTE CONVERTIBLE AUTO, LOADED, LOW MILES EGR-318 ..... \$22,995



**KAILUA TOYOTA**  
105 ONEAWA ST., KAILUA  
**261-3321**  
A DIVISION OF SERVO PACIFIC INC.

# REBATES UP TO \$3000

South Seas Jeep Eagle is #1 in Sales and Customer Satisfaction.

SAVE UP TO \$3000 ON EVERY NEW JEEP OR EAGLE!



**JEEP CHEROKEES!**

There's never been a better time to buy!



**EAGLE TALONS!**

A sensational car at a sensational price!



**JEEP WRANGLERS!**

Rough, Tough and Ready for the road!



Plus! FREE CELLULAR PHONES with every new car sold!

Limited Time Only!

## USED CARS

Airport

Waipahu

- |   |          |  |               |
|---|----------|--|---------------|
| '87 FORD ESCORT 2-Dr., H/B at A/C DXY-025                     | \$2,795  | '87 CHARGER 3 Dr., A.J., P.S. A/D. Low Mainland miles. Good Cond DDY-358                 | ONLY \$2,988  |
| '84 CHEVY CAMARO RUT-776                                      | \$3,795  | '89 HONDA EXCEL 4-Dr., 5 Spd., P.S., Cass., and more. Priced right EBF-795               | ONLY \$4,588  |
| '86 PONT FIERO Silver FPT-246                                 | \$3,995  | '87 NISSAN SENTRA SE COUPE A/T, P/S, A/C, Cass., Low miles HSA-099                       | ONLY \$5,588  |
| '86 TOYOTA COROLLA 4 Dr. Cream EEB-404                        | \$3,995  | '88 NISSAN P/U 5 Spd., P/S, Cass., low miles, Fresh trade CVJ-291                        | ONLY \$5,988  |
| '87 TOYOTA TERCEL 2-Dr., Sdn, White CND-183                   | \$3,995  | '90 FORD ESCORT 2-Dr., 5 Spd., P/S, Cass., 13,136 miles DGF-462                          | ONLY \$5,988  |
| '86 PONT GRAND AM 4-Dr., Blue CDS-167                         | \$4,495  | '88 CHEV S-10 P/U V-6 5 Spd., P/S, Cass., Mags, Tool Box, 18,879 miles. Like new CXA-992 | ONLY \$6,888  |
| '90 MAZDA 323 3-Dr., H/B White DJT-761                        | \$4,995  | '91 DODGE RAM 50 P/U 5 Spd., P/S, Cass., Priced right EAW-985                            | ONLY \$6,988  |
| '86 HONDA CRX Blue CNW-875                                    | \$4,995  | '89 TOYOTA COROLLA 4-Dr., S/W, A/T, P/S, A/C, Cass., Good Cond DBG-488                   | ONLY \$7,488  |
| '84 TOYOTA CELICA ST Sdn. Brown BUE-686                       | \$4,995  | '89 DODGE DAYTONA TURBO ES 9,681 miles Showroom cond., Must See DDB-465                  | ONLY \$7,888  |
| '90 DODGE COLT 3-Dr. H/B Blue DPC-400                         | \$5,495  | '90 CHEV CORSICA LT V-6 Fully loaded and low miles too. DPU-691                          | ONLY \$8,988  |
| '88 JEEP COMANCHE P/U Blue EDU-819                            | \$5,495  | '90 MAZDA B-2600I 4x4 P/U P/S, Cass., low miles, extra nice DJD-957                      | ONLY \$9,888  |
| '88 FORD T-BIRD Black EEJ-302                                 | \$7,495  | '88 CHEV S-10 EXT-CAB 4x4 Tahoe pkg., loaded w/extras CWB-835                            | ONLY \$9,988  |
| '90 CHEV CAVALIER 2-Dr., Red DPS-548                          | \$7,495  | '90 FORD AEROSTAR PASS VAN V-6 A/T, P/S, Dual A/D. Below Blue Book HRJ-355               | ONLY \$9,988  |
| '91 FORD ESCORT LX S/W, White EDU-681                         | \$7,995  | '91 SUZUKI SIDEKICK 4-Dr., 4x4, J/LX Pkg., A/T, P/S, A/C, Fire engine red EBZ-901        | ONLY \$12,488 |
| '86 JEEP CHEROKEE 4-Dr., White CDU-243                        | \$8,495  | '91 CHEROKEE SPORT V-6, A/T, P/S, A/C only 5,598 miles, Priced right EFA-563             | ONLY \$16,988 |
| '88 DODGE CARAVAN SE V-6 Maroon EDU-498                       | \$8,995  |  |               |
| '89 HONDA ACCORD 2-Dr., H/B Blue CXS-242                      | \$8,895  |  |               |
| '88 JEEP WRANGLER 4-WD Silver MUE-592                         | \$8,995  |  |               |
| '89 CHEV I ROC-Z 2-Dr. Top EEY-446                            | \$9,495  |  |               |
| '91 JEEP COMANCHE P/U Blue EDZ-059                            | \$9,495  |  |               |
| '90 CORVETTE Black conV1, loaded leather, Bose stereo DFY-953 | \$22,995 |  |               |

**SOUTH SEAS** Jeep Eagle AIRPORT WAIPAHU  
CORNER OF HIMITZ & LAGOON 2841 N. HIMITZ HWY 836-0515 94-2501 (LONU) ST 676-5454

**151 Pets/Everything**

COCKATIELS - For Sale: Hand-fed, sweet & tame baby cockatiels. Lutinos only \$60 each. Call eves. 235-8087.

IN need of quality affordable vet care? Dr. Eric Pearson's Home Pet Svc. 235-8457 Islandwide.

**LOVE YOUR DOG BUT...** Don't have time for training? Call Us 247-4894 Simple Puppy Obedience Training

**PUP'S** Terrier 2-3 mos. Chihuahua/Terrier 1 yr. Boxer M/F 2 yr. 668-7222

**156 Auto Service & Parts**

300 ZX engine, 1 burnt piston. \$250. Call 262-8838.

4 ENKI blade rim 15x7, 8 bolt w/2 50 series tires, good cond. \$550 or offer. 843-8802 or 262-4302.

CHEVY transmission, automatic, \$100. Call Jay 261-7839.

**JUST STARTING OUT?** Check the Real Estate Section of the Classifieds

**156 Auto Service & Parts**

**DON'T BUY A LEMON**  
Computerized Diagnostics. Call for free Blue Book quote.

**PORSCHE** Auto Parts. New & used. Call for low prices. 486-3448.

**166 Pickup Trucks**

'83 MAZDA B2000, 5 spd., new rims & paint. Must see! Asking \$4800/offer. 262-0780

**DRUGLORD TRUCKS**

'86 BRONCO ..... \$50  
'91 BLAZER ..... \$150  
'77 JEEP ..... \$50  
Seized Vans, 4x4's, Boats. Choose from thousands starting \$25. 24 hr. rec. reveals details. (801)-379-2930. Copyright #HI102KC.

**WANTED** Shall for '89 Mazda P/U truck. FOR SALE OR TRADE: Bedliner & A/C for '89 Mazda P/U. Call Russ at 237-7083.

**171 Motorcycles & Scooters**

'89 KX125 Modified engine, carburetor, suspension, pipes, bar, sprocket & clutch. \$1900. Kan 235-5010

'91 KAWASAKI ZEPHYR 580 #7847. Last one! A steel at \$3,995 plus dealer handling, doc., tax, lic.

'91 KAWASAKI KX80 Big wheel. Used about 8 hrs. excl. cond., fast & fun. Must see! \$1800. 262-7089 or 236-3493.

'92 HARLEY DAVIDSON LOW RIDER #6171. Manager's demo with full warranty, \$10,995 plus dh, doc., tax, lic.

'92 HARLEY DAVIDSON FXR high performance custom #7921. 1-of-a-kind mgr. demo w/full warranty. \$12,495 + dh, doc., tax, lic.

'92 KAWASAKI VOYAGER X11 #8268. Load factory demo w/full warranty. \$9,838 plus dh, doc., tax, lic.

**176 Autos For Sale**

'74 LUNCH wagon, auto. '88 Mazda wagon; '71 Toyota Landcruiser. No tax. 621-3694.

**CORVETTE \$400**

'89 MERCEDES ..... \$200  
'87 BMW ..... \$190  
'85 MUSTANG ..... \$50  
U.S. Public Auction, Druglord properties. Choose from thousands starting at \$25. Recording Reveals Giveaway Prices (801)-379-2929 Copyright #HI102RC

**GOV'T seized vehicles.** '88 Mazda wagon; '71 Toyota Landcruiser. No tax. 621-3694.

**Audi**

'82 Audi, 2 dr. cpe, gold. Just overhauled \$1800. Call 247-5345.

**Cadillac**

'85 CIMARRON, 39,000 mi., loaded, sunroof \$4200/best offer. 422-0542.

**Chevrolet**

'87 CORVETTE, 20,000 mi., still under warranty, mint cond. \$20,500. Call 254-5709 days, 254-4827 eves. Ask for Carl.

'89 CAMARO RS 305 V8, T-tops, 5-spd., white w/gray int. New tires & brakes. LOAEB 24,000 mi. \$8900. 281-4923 or 396-3378 Rick or Andy.

**Chrysler**

\$45 TRANSFER FEE & paperwork - '84 Town & Country S/W. BVD-631. Payments of \$112/mo. Apr 15%, 24 mo. OAC. FAMILY MOTORS 676-1600

'77 830 C81 sun roof, fast, white, a/c, best offer. Ph. 261-9988

'88 TURBO LEBARON conv., ext. wrnty, excel cond., 36,000 mi. \$6800/offer. 621-2813 lve. mag.

**Datsun**

'78 B210, 60,000 mi. runs good \$400/offer. Sell by 3/22. 261-5174.

**Dodge**

'84 600 TURBO CONV'T. Loaded, all power, great cond., \$3500. 599-5934 or 239-9912.

'86 ARIES 4 dr., good cond. \$1875/best offer. Call 955-1467/449-9709.

**STOP** Have you filed **BANKRUPTCY?** NEED A CAR? WE WILL HELP  
Call for information and details

|                        |        |
|------------------------|--------|
| '81 TOYOTA TERCEL      | \$995  |
| '83 VOLKS RABBIT       | \$1995 |
| '79 CHEVY MALIBU WAGON | \$1595 |
| '88 CHEVY CAVALIER     | \$1795 |
| '87 FORD ESCORT GT     | \$2995 |

\$100 DOWN DELIVERS (O.A.C.)

|                          |            |
|--------------------------|------------|
| '77 TOYOTA PICKUP        | \$799/mo.  |
| '88 TOYOTA TERCEL        | \$1229/mo. |
| '78 MERCEDES WAGON 300TD | \$1569/mo. |
| '88 PONTIAC GRAND AM     | \$1769/mo. |
| '87 CHEVY CAVALIER       | \$1769/mo. |
| '88 CHEVY BLAZER 816 434 | \$1849/mo. |

**IN HOUSE FINANCING!** VEHICLES \$400...\$2000  
SPECIAL TERMS FOR E2'S-E3'S  
Let us turn your BAD CREDIT INTO GOOD CREDIT

ALL TERMS 15 APR. 24 Mo. O.A.C. Plus \$25 DOC

**FAMILY MOTORS**  
501 LAGOON DRIVE (AIRPORT) HONOLULU  
833-0072

GOVERNMENT SEIZED Vehicles from \$100. Fords, Mercedes, Corvettes, Chevys, Surplus Buyers Guide. (1) 805-962-8000 Ext. S-4031.

**BAG A BARGAIN** in the Classifieds. Your super marketplace for items for sale, services to offer... and 1001 other things! 235-5656.

**176 Autos For Sale**

\$45 TRANSFER FEE & paperwork - '87 Escort GT. 2-dr. DBV-888. Pymts of \$174/mo. Apr 15%, 24 mo. OAC. FAMILY MOTORS 676-1600

'87 MUSTANG, white/blue int., 8 cyl., auto., \$5200. Call 467-9443.

**Ford**

'87 GRAND AM SE \$4595. V6, auto., A/C, P/W, P/Door Locks EDE-700. FAMILY MOTORS 501 LAGOON DR. Sunday 12-4 833-0072

**Pontiac**

'81 OMEGA, 63,000 mi., runs good, \$1400/offer. Sell by 3/22. 261-5174.

**Toyota**

'81 COROLLA WAGON 2-Dr., A/C, runs excellent. BAC-177. FAMILY MOTORS 501 LAGOON DR. Sunday 12-4 833-0072

'92 PASEO blue, 5 spd., 3000 mi., loaded, alloy wheels, tinted windows, spoiler. \$13,000/offer. 735-0436 & 526-5833 pgr.

**Mercedes**

'70 220D \$2995. Diesel, showroom cond., classic! EFR-287

**Mercury**

'82 COUGAR 2 dr., pwr., air, good cond. Any res. offer. 262-4335

**Nissan**

'82 NISSAN wagon, needs valve job, new trans. \$1900/otr. 261-3483.

'84 SENTRA Needs transmission. Has new tires/shocks. AM/FM, \$500/offer. Call 261-6651.

**Oldsmobile**

'87 MUSTANG, white/blue int., 8 cyl., auto., \$5200. Call 467-9443.

**Volks**

'74 BUG runs, rebuilt parts, new tires. \$450. 261-5867.

'78 RABBIT: \$1695. Runs & looks great. (WA) 769-DLC.

**FAMILY MOTORS** 501 LAGOON DR. Sunday 12-4 833-0072

# CUTTER TEAM

ALL STORES OPEN  
8:30 A.M.-9 P.M.  
SUN. 9 A.M.-6 P.M.



HAWAII'S DRIVING FORCE  
WITH FORD CREDIT, CHRYSLER CREDIT AND GMAC  
★ TAKE IT WITH YOU WHEN YOU LEAVE ★ NO HASSLES—NO RED TAPE

★ SPECIAL MILITARY FINANCING  
WITH FORD CREDIT, CHRYSLER CREDIT AND GMAC  
★ TAKE IT WITH YOU WHEN YOU LEAVE ★ NO HASSLES—NO RED TAPE

## CUTTER FORD-ISUZU

98-015 Kamehameha Hwy.  
AIEA  
487-3811

QUALITY PEOPLE... QUALITY PRICES  
**March Markdown  
Madness**



#1 IN HAWAII

EVERYTHING MARKED WITH LOW SALE PRICES

**'92 FESTIVA** #1320  
GREAT VALUE... SMALL PRICE!  
1st TIME BUYERS PRICE!  
**\$5988**

**'92 ISUZU PICK-UP** #982  
STILL HAWAII'S BEST BUY!  
2.3 LITER 5-SPEED MIRRORS  
**\$6988**

**BEST FINANCING  
NO DOWN PAYMENT!**  
FINANCING FROM 2.9% APR OR UP TO \$1900 REBATE

**'92 ESCORT** #613  
#1 SELLING CAR IN THE WORLD!  
AUTO TRANS  
1st TIME BUYERS PRICE!  
**\$7988**

**'92 AEROSTAR WGN.** #1334  
IN A CLASS BY ITSELF!  
V-6, AIR COND.  
**\$11,988**

|  |  |   |
|--|--|---|
| <b>'92 PROBE</b><br>#387 AUTO, AM/FM CASS, TINT<br>1ST TIME BUYERS PRICE!<br><b>\$10,988</b> | <b>'92 AMIGO</b><br>#1177 TINT, AM/FM CASS,<br>HOOD PROTECTOR AND MORE!<br><b>\$12,988</b> | <b>'92 RODEO</b><br>#856 ISUZU'S HOTTEST<br>SPORT UTILITY VEHICLE!<br><b>\$12,988</b> |
|--|--|---|

|   |   |   |
|---|---|---|
| <b>'91 BRONCO</b><br>#2031 FULL SIZE 6-CYL. OPTIONAL<br>AXEL, 10.5 TIRE SUPER PRICE!<br><b>\$14,988</b> | <b>'91 T BIRD SC</b><br>#1178 SUPER COUPE, AUTO, ALL POWER<br>GREAT PERFORMANCE AND PRICE!<br><b>\$18,988</b> | <b>'92 CROWN VIC</b><br>#557 AUTO, ALL POWER,<br>GREAT STYLE! SUPER PRICE!<br><b>\$18,988</b> |
|---|---|---|

### QUALITY USED CARS

|  |   |
|--|---|
| '80 PINTO<br>#3836 (AUR-388) ..... <b>\$295</b>                          | '88 FORD ESCORT GT<br>Tilt, Cruise (DFY-730) ..... <b>\$4995</b>              |
| '76 BUICK SKYLARK<br>#3811 (APU-533) ..... <b>\$345</b>                  | '89 MERCURY TRACER<br>Auto, Air (CYG-966) ..... <b>\$4995</b>                 |
| '85 FORD TEMPO<br>Cassette, Auto (CEE-848) ..... <b>\$695</b>            | '90 NISSAN P/U<br>Low Miles, Very Clean (DPS-089) ..... <b>\$5895</b>         |
| '82 NISSAN 200 SX<br>#3849 (BDX-939) ..... <b>\$995</b>                  | '88 FORD TAURUS LX<br>Loaded (CSC-753) ..... <b>\$6495</b>                    |
| '86 CHEVROLET CAVALIER<br>Auto, Air (CVA-149) ..... <b>\$2495</b>        | '90 PLYMOUTH LASER RS<br>Tilt, Cruise, Cassette (EFC-250) ..... <b>\$6695</b> |
| '84 FORD TEMPO GL<br>Very Clean, Auto, Air (EAV-295) ..... <b>\$2995</b> | '88 NISSAN STANZA 4 DR<br>Auto, Air (EFR-700) ..... <b>\$6995</b>             |
| '86 SUBARU GL<br>Cassette, Equalizer, P/S (CEE-273) ..... <b>\$3695</b>  | '90 FORD RANGER XLT<br>Rims (MXA-910) ..... <b>\$6995</b>                     |
| '86 TOYOTA COROLLA SR-5<br>Cassette, Auto (CEE-126) ..... <b>\$3995</b>  | '88 CHRYSLER 5TH AVE<br>Fully Loaded (EBV-453) ..... <b>\$7995</b>            |
| '87 FORD MUSTANG LX<br>Low Miles (CY1-431) ..... <b>\$3995</b>           | '91 PLYMOUTH VISTA<br>Auto, Air, Low Miles (EGJ-173) ..... <b>\$10,995</b>    |
| '87 FORD F-10<br>Good Truck (CPN-453) ..... <b>\$4995</b>                | '91 FORD MUSTANG XL<br>Loaded, Burgandy (EAS-180) ..... <b>\$11,495</b>       |

## CUTTER CHRYSLER-PLYMOUTH DODGE JEEP/EAGLE 2 GIANT LOCATIONS

**CASH BACK**  
on select models  
**735**  
**842-6300**

**'92 PLYMOUTH COLT** AUTO #220085  
AS LOW AS  
**\$6988**

**'92 PLYMOUTH SUNDANCE**  
P/S, P/B, Air Bag, and Much, Much More. #220085  
AS LOW AS  
**\$7988**

**'92 DODGE SPIRIT** Air/Con., P/Steering, P/Brakes,  
Auto, Tilt, Cruise, Air Bag #210487  
AS LOW AS  
**\$10,988**

**'92 JEEP CHEROKEE 4x4** #230048  
AS LOW AS  
**\$13,988**

**'92 DODGE CARAVAN** 7 Pass., Auto, A/C, Air Bag,  
P/Steering, P/Brakes. #210582  
AS LOW AS  
**\$13,988**

**WE DO CREDIT MAGIC!**  
CALL CREDIT MANAGERS  
842-6300 455-1071  
OILINGHAM PEARL CITY

|   |   |
|---|---|
| '87 TEMP<br>Auto, Air, P/S, 17 Windows #118/EPF24 ..... <b>\$2588</b>                               | '84 TEMPO<br>Auto, P/S, P/B, P/W, 100/107/108 ..... <b>\$1588</b>                             |
| '83 FORD 15 PASS WAG<br>Auto, Air, P/S #2111/00731 ..... <b>\$2988</b>                              | '85 DODGE OMNI<br>4-Speed, AM/FM, P/B, P/W, 100/107/108 ..... <b>\$2788</b>                   |
| '89 DODGE RAM 50 P/U<br>Fully Loaded Equip #164/00285 ..... <b>\$3488</b>                           | '86 FORD ESCORT<br>Auto, Air, P/S, (CDA-155 #884) ..... <b>\$2788</b>                         |
| '85 HONDA CIVIC<br>4-Door, Radio, Air and More. (BT5437 #418) ..... <b>\$3588</b>                   | '83 BUICK RIVEIRA<br>Auto, Air, AM/FM Cass, P/W, P/S, P/B, 100/107/108 ..... <b>\$2988</b>    |
| '89 MUSTANG LX<br>P/S, P/W, P/B, 1600 Mile (C2111 #119) ..... <b>\$3988</b>                         | '84 CHRYSLER LASAR<br>Cass, Air, P/W, P/S (CPH11 #882) ..... <b>\$2988</b>                    |
| '85 NISSAN 200SX<br>Auto, Air, P/W, Much More (C880/01280) ..... <b>\$4688</b>                      | '88 RAM 50 P/U TRUCK<br>5-Speed, Cass. (D0Y311 #810) ..... <b>\$3988</b>                      |
| '89 PLYMOUTH SUNDANCE<br>#207/00281 ..... <b>\$4988</b>   | '87 PLYMOUTH SUNDANCE<br>Auto, Air, P/S, P/B, P/W, 100/107/108 ..... <b>\$4788</b>            |
| '89 DODGE SPIRIT 4 DR<br>Auto, Air, P/S, P/B, 1600 Mile (C2111 #119) ..... <b>\$5588</b>            | '88 CORSICA<br>Auto, Air, P/S, P/B, P/W, 100/107/108 ..... <b>\$4788</b>                      |
| '86 VW VANAGON<br>Auto, Air, P/S, P/B, 1600 Mile (C2111 #119) ..... <b>\$5988</b>                   | '84 JEEP CHEROKEE 4X4<br>Auto, Air, P/S, AM/FM, P/W, P/S, 100/107/108 ..... <b>\$4988</b>     |
| '80 OLDS CALAIS<br>Auto, Air, P/S, P/B, 1600 Mile (C2111 #119) ..... <b>\$5988</b>                  | '88 PLYMOUTH SUNDANCE<br>Auto, Air, P/S, P/B, P/W, 100/107/108 ..... <b>\$5188</b>            |
| '84 DAYTONA TURB<br>Radio, Air, P/S, P/B, 1600 Mile (C2111 #119) ..... <b>\$6488</b>                | '89 FORD TEMPO 4 DR<br>Auto, Air, P/S, P/B, 1600 Mile (C2111 #119) ..... <b>\$5388</b>        |
| '87 FORD BRONCO II<br>6 Cyl, 4 Dr, Trans, Air, P/S, P/B, 1600 Mile (C2111 #119) ..... <b>\$7488</b> | '88 STANZA WAG<br>Auto, Air, P/S, P/B, 1600 Mile (C2111 #119) ..... <b>\$5988</b>             |
| '89 MUSTANG LX CONV<br>V-6 Auto, Air, P/S (C2111 #119) ..... <b>\$7988</b>                          | '87 DODGE CARAVAN<br>#207/00281 ..... <b>\$7988</b>   |
| '90 NISSAN 240 SX<br>4 Dr, 1600 Mile (C2111 #119) ..... <b>\$8988</b>                               | '88 TOYOTA CELICA GT<br>Auto, Air, P/S, P/B, 1600 Mile (C2111 #119) ..... <b>\$7988</b>       |
| '89 LEARON CONV<br>Auto, Air, P/S, P/B, 1600 Mile (C2111 #119) ..... <b>\$9888</b>                  | '91 FORD F 150 XLT 4x4<br>Auto, Air, AM/FM, P/W, P/S, 100/107/108 ..... <b>\$14,988</b>       |
| '89 LINCOLN TOWN CAR<br>Fully Loaded Luxury Car #245/00285 ..... <b>\$10,988</b>                    | '91 DODGE GRAND CARAVAN<br>Auto, Air, P/S, AM/FM, P/W, P/S, 100/107/108 ..... <b>\$15,988</b> |
| '91 WRANGLER ISLANDER<br>6 Cyl Auto, Air, P/S (E2107 #822) ..... <b>\$11,988</b>                    |   |

**CUTTER  
CHRYSLER PLYMOUTH DODGE  
JEEP/EAGLE  
842-6300**

**CUTTER DODGE  
PEARL CITY  
455-1071**

## CUTTER MITSUBISHI WAIPAHU

94-149 Farrington Hwy.  
671-2626

**MITSUBISHI**  
Our Record Speaks for Itself

BIG SAVINGS  
DEPENDABILITY  
HIGH QUALITY

COME SEE OUR AWARD WINNING LINE!!

TRADE INS WELCOME PAID FOR OR NOT

**MIRAGE #3613**  
**\$6777**

**MIGHTY MAX #3556**  
**\$7777**

**DIAMANTE LS #3536**  
**\$8777**  
OFF RETAIL

**ECLIPSE #3661**  
**\$9877**

**GALANT #3648**  
**\$11,877**

**EXPO LRV WAG #3691**  
**\$12,877**

### VALUE LEADER SPECIALS!

|  |   |
|--|---|
| '79 FAIRMONT<br>"LOW, LOW, PRICE" (LCR784) ..... <b>\$477</b>      | '87 280 ZX<br>"LOW, LOW, PRICE" (CHX485) ..... <b>\$2777</b>        |
| '80 PINTO S/WGN<br>"LOW, LOW, PRICE" (BPL380) ..... <b>\$977</b>   | '88 TOYOTA CELICA<br>"LOW, LOW, PRICE" (CXC758) ..... <b>\$2777</b> |
| '81 RIVEIRA<br>"AUTO, AIR" (ECR364) ..... <b>\$1677</b>            | '88 CHEV SPINRT<br>"AUTO, AIR" (CWJ804) ..... <b>\$3377</b>         |
| '80 MAZDA 626<br>"LOW, LOW, PRICE" (CYC106) ..... <b>\$1777</b>    | '84 YW QUANTUM<br>"AUTO, AIR" (EDAB43) ..... <b>\$3777</b>          |
| '87 HORIZON 4 DR<br>"LOW, LOW, PRICE" (CNP078) ..... <b>\$2277</b> | '88 NISSAN PULSAR<br>"AUTO, AIR" (CEA829) ..... <b>\$3777</b>       |

### EASY FINANCING CALL 671-2626

|   |  |
|---|--|
| '83 MAZDA RX-7<br>"EXTRA CLEAN" (AWA508) ..... <b>\$3777</b>      | '88 TAURUS GL<br>"AUTO, AIR" (CVC468) ..... <b>\$5377</b>          |
| '89 FORD ESCORT<br>"LOW, LOW, PRICE" (MTN871) ..... <b>\$3777</b> | '89 SUBARU GL<br>"AUTO, LOW PRICE" (CXU485) ..... <b>\$5477</b>    |
| '87 CHEV EUROSPORT<br>"AUTO, AIR" (EBO638) ..... <b>\$3777</b>    | '80 FORD TEMPO<br>"AUTO, AIR" (DOW378) ..... <b>\$5777</b>         |
| '88 DODGE 600 CONV.<br>"AUTO, AIR" (CDS745) ..... <b>\$4477</b>   | '88 JEEP CHEROKEE<br>"4X4, AUTO" (BYX887) ..... <b>\$5777</b>      |
| '87 CAVALIER RS CONV.<br>"AUTO, AIR" (CXD078) ..... <b>\$4777</b> | '91 PONTIAC SUNBIRD LE<br>"AUTO, AIR" (EFE751) ..... <b>\$7777</b> |

Prices include all factory rebates & incentives. \*No previous record of new vehicle financing or leasing. Plus tax, lic. & \$149 doc. fees. Vehicles subject to prior sale. Financing through Ford Motor Credit 48 mos. on selected models. OAC. Sale ends March 25, 1992.

Prices include all factory rebates & incentives. \*No previous record of new vehicle financing or leasing. Plus tax, lic. & \$149 doc. fees. Vehicles subject to prior sale. Financing through Ford Motor Credit 48 mos. on selected models. OAC. Sale ends March 25, 1992.

All prices & discounts incl. any and all applicable rebates. Cars subject to prior sale. Prices plus tax, lic. & \$149 doc. fees. OAC. Rebates from us applied only at purchase price. MSRP or more rebate on selected models. Sale ends March 25, 1992.