



Hawaii Marine

Vol. 17, No. 47

Serving MCAS Kaneohe Bay, 1st MEB, Camp H.M. Smith and Marine Barracks, Hawaii

November 24, 1988

Pro-Am open to spectators

The first-ever military-sponsored Senior PGA golf tournament kicks off here Sunday, and is open to the public to watch.

The Kaneohe Klipper Senior Pro-Am is open to all authorized Special Services patrons with military ID cards, and to civilians, who can watch for a \$5 fee.

The Air Station gates open for the event at 6 a.m.; civilians should use the H-3 gate. There will be photo sessions between 7 and 8:30 a.m., when the Pro-Am begins with a shotgun start. Refreshment and food stands will be set up on the golf course, as well as souvenir stands.

Tickets to watch the tournament are available at the golf course Pro Shop, and—for civilians—at local Burger King restaurants.

Some of the seniors playing in the tournament are Billy Casper, Lee Elder (last week's Senior PGA tour winner), Larry Mowry (last month's Senior Las Vegas winner), Charles Coody, Don Bies, and Charlie Sifford.

Ninety amateur golfers have signed up to play with these pros on Sunday.



HAPPY THANKSGIVING! — This red-footed booby bird sends his Thanksgiving greetings today from his home at the Ulupa'u Crater here. Considering what's on the menu, though, he decided not to make a personal appearance. See related story, page A-8.

Cpl. Diane Oban photo

2/3 Marine killed at CAX 2-89

A Marine from 2nd Bn., 3rd Marines, was killed at the Marine Corps Air-Ground Combat Center at Twentynine Palms, Calif., when at approximately 2:50 a.m., Saturday, a 20-ton tracked fighting vehicle backed over him.

PFC Christopher J. Bellecci, 22, of Vallejo, Calif. was on the ground in a sleeping bag when the incident occurred.

The AAV was being guided into position when the fatality occurred. In the darkness of the desert training area, a Marine guide was being used to direct the vehicle's backward movement.

The vehicle's crew found PFC Bellecci about five minutes later while preparing the AAV for its communication mission.

A helicopter was dispatched immediately to transport PFC Bellecci to the Combat Center Hospital where he was pronounced dead.

PFC Bellecci was off duty as a radio operator at the time of the incident. His wife and parents have been notified.

The battalion is in Twentynine Palms for highly realistic combat training and was engaged in a continuous "three-day war" involving more than 2,000 troops and hundreds of combat vehicles including tanks and AAVs.

AAVs and other combat vehicles operate closely to personnel in these tactical training exercises, where deliberate dispersion of troops is standard.

The incident is under investigation.

Environmental exhibit pavilions dedicated

By LCpl. Doris Carrero
A dedication ceremony for two new Air Station environmental exhibit pavilions was

held Nov. 17 in front of Temporary Lodging Facility (TLF) here.

The exhibits, which cost

nearly \$100,000, are located at TLF and the entrance of the rifle range. Display topics include the Mokapu

Peninsula's cultural and historical significance, geological origins, and other aspects of the environment and history of the Air Station.

The 10-sided outdoor pavilion in front of TLF gives an overview of the Air Station—from its origins and military history to the ongoing community and military efforts toward the upkeep and protection of the endangered wildlife in the Nu'upia Ponds.

The theme of the second exhibit explains the Ulupa'u Crater's history and the life cycle and habits of its residents—the red-footed booby bird.

See EXHIBITS/A-5



Richard Ambo photo

HAWAIIAN-STYLE RIBBON CUTTING — Col. W.E. Daniell, Air Station commanding officer, and Dr. Diane Drigot, station environmental project specialist, open the exhibit by untying the Malle Lei — a native Hawaiian plant used in ceremonies.

Energy Tip:

Ensure your refrigerator door seals are airtight. Test them by closing the door over a piece of paper or a dollar bill so it is half in and half out of the refrigerator. If the paper/bill can be pulled out easily, the latch may need to be adjusted or replaced.

News In Brief

New Midwest POV Processing Center

Effective Dec. 1, Marines and sailors transferring between overseas and CONUS commands can ship or pick up their car at the gateway to the west.

The Charles M. Price Support Center, located 20 miles from Lambert-St. Louis International Airport, will provide Marines and sailors at Midwest commands with the same services available at Military Traffic Management Command (MTMC) ocean terminal, where their cars are now handled.

The center will serve servicemembers and DoD civilians who used Gateway City, St. Louis, as their point of departure or return from an overseas move.

For more information, contact your command travel officer.

Hawaii Marine Named Corps' Top Newspaper

The *Hawaii Marine* has been selected by HQMC as the best commercial enterprise newspaper in the Corps for the past year. The competition included the *Camp Pendleton Scout*, the *Camp Lejeune Globe*, the *El Toro Flight Jacket*, and all other newspapers that have advertising. In January, the *Hawaii Marine* will be judged against the Army, Air Force and Navy newspapers by a group of civilian news media representatives to determine which is the best paper in the Department of Defense. If we win, we'll let you know; if not, we probably won't.

El Toro, Tustin Prefixes Change

All commercial phone numbers aboard MCAS El Toro and MCAS Tustin have changed. The prefix changed from 651-XXXX to 726-XXXX. The last four digits and the Autovon prefix will remain the same.

There will be an intercept message directing callers attempting to use the old commercial phone numbers to use the new numbers.

Piedmont Airline Discounts

Marines and sailors on leave and their families can now purchase a ticket on Piedmont Airlines at 50 percent off the regular coach fares.

The discount fare has no advance purchase or length of stay restrictions, and is fully refundable. Family members need not travel with the servicemember to obtain the fare.

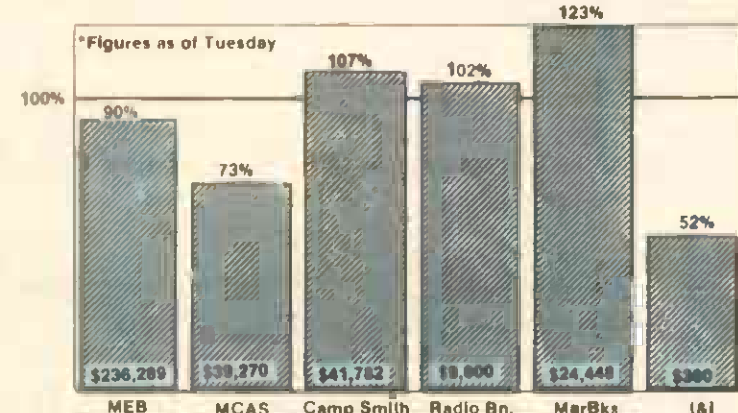
Marines and sailors are advised to shop around for the best fare, and to check with their command travel office for more details.

Inside Hawaii Marine

At a Glance
ASYMCA
Family Services
Special Services
On The Blotter

B-4 Legally Speaking
B-5 Religious Services
B-4 Hawaii Marine Ads
B-4 Salutes
B-3 Tickets

A-11
B-5
B-3
B-5
B-4



CFC final tally shows record fair shares given

CAMP H.M. SMITH —

Did you dare to care and give your fair share? You did if you are one of the island's 86,000 federal employees who gave a part of the \$3.4 million to this year's Combined Federal Campaign (CFC).

Monies collected will be given to the more than 300 local, national and international, non-profit health and human service agencies to which federal workers designated their gifts.

The concept for CFC was

approved by President John F. Kennedy in 1961 as an efficient means to give military and federal personnel an opportunity to make charitable contributions to approved non-profit health and human service agencies.

The 1988 Hawaii Pacific Area general campaign began Oct. 3, and ended Nov. 16, under the leadership of BGen. Lloyd G. Pool, deputy commanding general, FMFPac. BGen. Pool guided the

See CFC/A-2

CFC/from A-1 campaign from his position as the chairman of the CFC Steering Committee, which is made up of the heads of the nine largest military federal agencies in Hawaii. BGen. Pool's CFC staff realized early on that educating federal workers about how CFC donations help the needy was the key to a successful effort.

A local video featuring Russ Francis, an NFL football player from Hawaii and Melveen Leed, a popular island performer was made. Public Service Television spots about CFC were also produced and aired during prime time. Guest speakers from receiving agencies were made available to speak to donor groups as were tours of agency facilities. All approved CFC agencies appeared in brochures given to donors with descriptions of the agency's services.

The \$3.4 million raised is the largest amount collected in Hawaii to date, according to LtCol. Sam Tillett, BGen. Pool's CFC project officer. Donations on an average were up nearly 120 percent from 1987.

"From everything we've heard, education was truly the key to this year's campaign," said LtCol. Tillett. "People just feel comfortable giving to those in need when they see the difference in people's lives the contributions make."

EDITOR'S NOTE: Monday will mark the 213th year that chaplains have trudged after Marines, supplying spiritual guidance and comfort in every clime and place. Most recently, chaplains from the 1st MEB were called to duty in California's Mojave Desert.

Story and photo by Cpl. Reginald Cole

Navy Lt. J.C. Kienzie hops out of his tactical vehicle and wipes some Mojave Desert dust from his face. This is a strange place to see a minister setting up shop, but he and his fellow chaplains believe in taking their fellowship to the field.

During CAX 2-89 at Marine Corps Air-Ground Combat Center Twentynine Palms, Calif., they did just that.

"I would have to call myself a field chaplain, for lack of a better description," said Lt. Kienzie. "We, as chaplains, earn our money when the boys go to the field. This is where we can probably give them the most support."

The corps of Navy chaplains has been around since the first Marine climbed the

rigging of a Man-of-War and sniped at British soldiers during the Revolutionary War. They have brought comfort to warriors since in many different ways.

"What we do is not just religious," said Lt. Kienzie. "I would say the fellowship and temporary diversion are just as important. We try to make the men feel good about themselves and what they are doing."

A religious service in the field is a simple, straightforward affair. With all of the ornate decorations gone, Chaplain Kienzie feels he gets more attention to the sermons he gives. The sermons are tailored to the situation the unit is in.

The military dictates a fast-paced schedule for chaplains. During a training exercise, the unit can be scattered over miles of ground and the chaplain must make his way around ministering to all the men.

"We do our best to provide a meaningful and motivating service for the men," said Cmdr. Jack W. Roberts, 3rd Marines chaplain. "Sometimes, you're doing four or five services a day to men of different religious beliefs. You just try to foster their fellowship through spiritual



FIELD SERVICE — Lt. W.E. Renfrow leads a prayer during Protestant Field Services at CAX 2-89.

guidance. You generally get good results in the field."

Important in helping the chaplains is a group of sailors called "religious program specialists." "Basically, an RPS is trained in administrative and logistical support for chaplains," said Petty Officer 2nd Class Steven Edwards, Cmdr. Roberts' assis-

tant. "We are also sort of like bodyguards for the chaplains."

To perform their mission, all chaplains' assistants assigned to the Fleet Marine Forces go through a course of instruction at one of the Corps' Schools of Infantry.

"The front lines are where

it's at," said Lt. Kienzie. "That's where men face life or death, and hopefully we can help them cope with it."

"War is an abnormal situation. We as chaplains try to bring a sense of normality to it by presenting the presence of God and a feeling of fellowship to Marines and sailors."

Marines 'wax,' paint nostalgic over F-4S

Story and photo by Cpl. Reginald Cole

Marines from VMFA-212 and other squadrons here participated in the restoration and conversion of a F-4S Phantom II into an eternal

monument for all the pilots who have flown the fighter.

Beginning in April, the Phantom will be taken from the Marine Corps' ranks and placed to rest in the aircraft salvage "boneyard."

Three Marines from VMFA-

212's corrosion control team recently spent more than 600 man-hours repainting a Phantom for display aboard the Air Station.



VMFA-212 will put the plane on display in late December.

Cpl. Kurt Kadel, LCpl. John Jones, and LCpl. Nick Komo repainted the Phantom to match the color scheme of those that flew in Vietnam.

Before painting, the volunteers removed the jet's engine and filled its fuel cells with concrete to keep the wings balanced.

"This plane will be the only one here for us to remember the Phantom by," said Cpl. Kadel.

The F-4S Phantom II has been in operation in the

Marine Corps for more than 20 years. Some say the Phantom is the most reliable aircraft ever introduced in the armed services.

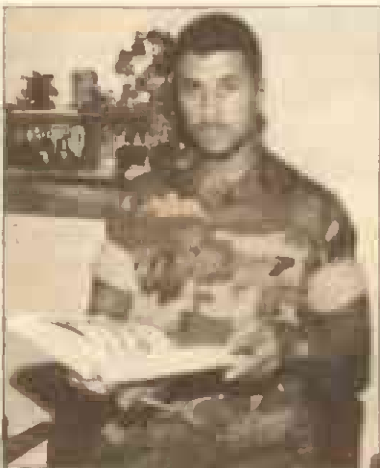
Though the Phantom II will soon no longer be in the Marine Corps' inventory, it will be flown by the U.S. Air Force and 13 other countries.

At one time, the plane held the world speed and altitude records.

"I feel it's an honor to work on the plane," said LCpl. Komo.

At least 100 aircrews here have flown this Phantom. The last pilot to fly it was Capt. Kenneth Burnside.

"Hopefully, one day I can come back here with my grandchildren and show them the F-4S Phantom II their grandfather helped restore," Cpl. Kadel said.



DT-2 Albert Fogg

tions and events that require medical supervision and receiving and reviewing incoming correspondence reports.

Although the aid station was under-manned, Flagel, an HM2 holding the billet of a chief petty officer, helped to bring a consolidated logistics inspection score of "unsatisfactory" to "noteworthy" in three months.

"He never objects to taking on added responsibility," said Petty Officer 3rd Class Brian Isaacs, "but most of all, he's not there just looking out for himself. He's there for everyone."



PHAREWELL, PHANTOM II — Lcpl. Nick Komo, Cpl. Kurt Kadel and Lcpl. John Jones pose with the F-4S Phantom II they recently repainted for display.

Top sailors for quarter recognized

Story and photo by Cpl. Reginald Cole

Two 1st MEB sailors were recently recognized for superior achievement as they were named Sailors of the Quarter.

Petty Officer 3rd Class Albert Fogg, a dental technician with the 21st Dental Co., was chosen as Junior Sailor of the Quarter and subsequently Sailor of the Brigade.

DT2 Fogg, of Louisville, Ky., was previously stationed at Balboa Naval Hospital, San Diego, Calif., where he was an administrative clerk and X-ray assistant.

Upon transferring from Balboa, he checked in to 21st Dental Co., where he has been for approximately eight months.

DT2 Fogg's duties include daily reception of patients, inspecting dental record books and numerous

"Around here, we call him a 'dental grunt,' because of his hard-charging attitude and steadfast devotion to his work."

—DT2 Paul Holbrook

administrative tasks.

"At times we may have 300 patients in here, which can be very stressful," said the 27-year-old, "but being right up front helping people is where I want to be."

"Everyone feels Albert deserves this award," said Petty Officer 2nd Class Paul Holbrook, a 21st Dental Co. technician. "Around here, we call him a 'dental grunt,' because of his hard charging attitude and steadfast devotion to his work."

Petty Officer 2nd Class David Flagel, medical chief of 1st Bn., 12th Marines, is

the Senior Sailor of the Quarter for the third quarter.

Flagel, a Long Beach, Calif., native, was previously stationed as a boatswain mate aboard the USS Copeland.

During his tour of duty there, he requested to "strike" (apply for on-the-job training) for the position of medical corpsman. Finally, in 1984, his training paid off and he was redesignated as a medical corpsman and transferred to 1/12.

HM2 Flagel's present duties include providing medical corpsmen for field opera-

A Thanksgiving message from CMC

This Thanksgiving, we again celebrate the magnificent spirit of our forefathers, who abandoned the security of a stable government to strike out for religious freedom in a new land of unknown hazards. Their spirit of Thanksgiving was born of endurance through times of great personal suffering and deprivation. The legacy we obtained from the pilgrims' sacrifice continues to bless us today.

As Marines, we all share in the responsibility as guardians of a great nation—one offering unparalleled freedoms, abundance and individual opportunities. I am personally grateful for the unselfish commitment and dedication you continually demonstrate preserving the qualities our predecessors strove so valiantly to obtain.

Let us give thanks to God for the many blessings He has bestowed on this great nation and pray for the strength to remain diligent to preserve our God-given freedoms. We should cherish the opportunity we have to be champions of our free nation.

To each Marine, your families, and all of your associates serving with you, may God bless you and grant you a safe Thanksgiving.



Gen. A.M. Gray
Commandant of the Marine Corps

Holiday hours

In observance of Thanksgiving, the following hours will be in effect:

Activity	
Commissary	closed
Auto Hobby Shop	closed
Beaches	10 a.m. - 4 p.m.
Child Care Center	closed
Dependent Recreation	closed
Golf Course	6 a.m.-5 p.m.
Klipper Snack Bar	6 a.m.-5 p.m.
Gymnasium	closed
K-Bay Lanes	closed
Library	closed
Marina	closed
Mini Gym	closed
Outdoor Recreation Center	closed
Pool	closed
Recreational Tickets	closed
Recreation Housing TLF	closed
Skeet Range	closed
Theater	no change
CFS #1	10 a.m. - 5 p.m.
CFS #2	9 a.m.-5 p.m.
Car Rental Facility	8 a.m.-6 p.m.
Golf Pro Shop	6:15 a.m.-5 p.m.
Staff NCO Club	closed
Enlisted Club	4:30 p.m.-11 p.m.
Officers Club	closed
Pizza Parlor	4 p.m. - 11:30 p.m.
Package Store	10 a.m.-5 p.m.

Hawaii Marine

The Hawaii Marine is an unofficial newspaper published every Thursday by RFD Publications, Inc., 45-525 Luluku Road, Kaneohe, HI 96744, a private firm not connected with the Department of the Navy or the United States Marine Corps. All advertising is provided by RFD Publications, Inc., by calling 235-5881 or by visiting their office. Circulation is 8,000.

The Hawaii Marine is a free publication delivered each week to all family housing units aboard Marine Corps Air Station, Kaneohe Bay and to all Hawaii-based Marine Corps commands. Housing carriers are paid only by voluntary contributions from customers who are satisfied with the youngsters' delivery service. A voluntary contribution of \$1 a month may be solicited by these carriers. Housing residents may contact the publisher directly if they wish to stop home delivery. Questions concerning circulation policies and service can be answered by calling the publisher. The Hawaii Marine welcomes stories and photo sub-

missions from its readers, and can respond to timely requests for specialized coverage. Please call the MCAS/1st MEB Joint Public Affairs Office at 257-5745 for Windward activities or the Fleet Marine Force, Pacific, Public Affairs Office at 477-5052 for Leeward activities. Opinions expressed by the publisher and journalists are their own, and are not to be considered an official expression of the Department of the Navy or the United States Marine Corps. Items advertised in the Hawaii Marine must be made available for purchase, use, or patronage to everyone without regard to race, creed, color, national origin, religion, age

or sex of purchasers, user or patron. The appearance of all advertisements in the Hawaii Marine, to include inserts and/or flyers, does not constitute endorsement of the firms, products or services by the Department of Defense, the Department of the Navy or the United States Marine Corps.

Commanding Officer Col. W.E. Daniell
Public Affairs Officer Maj. K.K. Gershanek
Editor Cpl. B.V. Mitzelfelt
Sports Editor Sgt. Joe P. Jascur

Scouts, Marines practice teamwork during Camporee

Story and photos by LCpl. Doris Carrero

Boy Scouts from Kaneohe to as far as Pearl City invaded Bellows Air Force Station recently, with packs on their backs and "boogie boards" in hand for the 1988 island-wide Boy Scouts Camporee.

Some 1,400 scouts and scoutmasters started at the



THIS IS GOING TO STING — Petty Officer third class Dickson attends to David Butt, one of the few injured scouts.

front gate and marched more than a mile to their campsite, which would be home from Nov. 10-13.

After setting up the tents and campsite, most of the scouts "hit the waves" to break in their boards. While some swam, others were feeding their hunger that was caused by the day's activities.

As the scouts' first day came to a close and they sat around their campsite, Marines of Brigade Service Support Group-1 gathered together to celebrate the 213th birthday. The party wasn't held in a club, but in a field mess tent in utilities. Although this was a unique birthday ceremony, the Marines made sure Marine Corps traditions were upheld with the reading of the messages and the announcing of the oldest and youngest Marine present.

For the next two days, the Camporee was packed with activities, all of which emphasized group achievement. An event like the "log-hauling

contest" tested not only the groups' strength, but also their knowledge of loops and knots.

"Scouting teaches them traits like leadership through trial and error," explained Col. Gene Schwartzlow, assistant chief of staff at Camp Smith. "The adult leader should stand in the shadow. When the boy troop leader gets in over his head, sometimes I step in and sometimes I don't. Being able to make mistakes and learn from them helps develop their leadership traits."

Most scoutmasters and volunteers become involved with boy scouts through their sons or by having been scouts themselves.

LtCol. John Wintersteen, station provost marshal, falls into both categories. He has been involved in scouting for 31 years — five of which he spent as a scout himself.

"I have two sons who are involved in the boy scouts," he said. "I became a scout leader when my oldest son

carried on the family tradition."

Not all Marines who were out there were counselors. Ten Marines from BSSG-1 gave up their four-day weekend and volunteered to provide not only logistical support, but 24-hour watches, and other assistance as well.

"It may seem simple, but a lot of hours went into setting up the site, water, and the generator," said 1stLt. John Sumner, BSSG-1 logistics officer.

According to Sgt. Steven Nelson, a field wireman, the Marines came out a day before the scouts and spent hours running up communication line in order for the district leaders to communicate with each other in case of an emergency. They also set up the general-purpose tents, and assembled the Reverse-Osmosis Water Purification Unit (ROWPU) so the boys could have clean water.

The ROWPU can chemically purify any type of water — in this case salt water from the ocean.

"It could even purify mud, if the mud had enough moisture in it," 1stLt. Sumner said.

BSSG also provided hospital corpsmen to attend to injured scouts. Petty Officers Third Class A. Dickson and S. Nelson were prepared for the worst with their medical shelter stocked with supplies. Fortunately, they didn't see many patients, according to HM3 Dickson. Most of the scouts they saw were for man-taray stings.

On the second day of the Camporee, the scouts were greeted by this year's chairman, LtGen. E.J. Godfrey, commanding general of FMFPac. LtGen. Godfrey walked through every district observing and talking to scouts and the leaders.

"Things haven't changed much since I was a boy scout in New Jersey almost 50 years ago," he said.

LtGen. Godfrey once held the rank of Eagle Scout, the highest rank in scouting.



TASTES GOOD — Members of Kaneohe's Troop 659 sample water just purified by the ROWPU.



FIRE 'ER UP — Cpl. Raymond Gammon, an electrician, starts up the generator that runs the ROWPU.



THIS YEAR'S CHAIRMAN — Lt Gen. E.J. Godfrey talks to some boy scouts and their leader.

NEW! DISPOSABLE! CONTACT LENSES

PLUS***

Family Eye Examination Plan... **\$39.00**

Soft Contact Lenses... **\$79.00**

Prescription Glasses... **\$49.00**

Complete Professional Vision Services
Dedicated To Quality And Service In Vision Care

Dr. Charles Dean
Optometrist

261-9735

Kailua
139 Hekili St.



COMPUTER SOFTWARE

BANKRUPTCY LIQUIDATION

4 DAYS ONLY

SATURDAY	SUNDAY	MONDAY	TUESDAY
NOV 26th	Nov 27th	Nov 28th	Nov 29th
10 AM-6PM	10AM-6PM	10AM-8PM	10AM-8PM

MACINTOSH
HUNDREDS OF
PROGRAMS FROM
\$7.99
VALUES
TO \$200.00

BLANK DISKS
DS/DD
NO SLEEVES
NO NOTCHES
TOP QUALITY
\$39.95

TURBO VACS
\$9.95 AS ADVERTISED
ON TV
KEEP YOUR
COMPUTER CLEAN

IBM JOYSTICKS
ADJUSTABLE
GREAT
XMAS GIFT
19.95
LIST 49.95

IBM PROGRAMS
1000+ TO CHOOSE FROM
GAMES • BUSINESS
EDUCATION
VALUES
TO \$25
3 FOR \$25

IBM-MS DOS
DESK TOP PUBLISHING
COMPLETE PROGRAM!
BEST
BUY LIMITED
QUANTITY
19.95

APPLE 'GAMES'
BUSINESS
EDUCATIONAL
VALUES
TO \$400
3 FOR \$25
VALUES TO \$100

ATARI 400/600/800/1200 / ST.
C-64/128
APPLE II II+ IIc IIe III
IBM PC PCJR AT XT
MACINTOSH
MORE SOFTWARE THAN
YOU HAVE EVER SEEN
DEALERS WELCOME

ATARI 400/600/800/1200 / ST.
C-64/128
APPLE II II+ IIc IIe III
IBM PC PCJR AT XT
MACINTOSH
MORE SOFTWARE THAN
YOU HAVE EVER SEEN
DEALERS WELCOME

ATARI 400/600/800/1200 / ST.
C-64/128
APPLE II II+ IIc IIe III
IBM PC PCJR AT XT
MACINTOSH
MORE SOFTWARE THAN
YOU HAVE EVER SEEN
DEALERS WELCOME

ATARI 400/600/800/1200 / ST.
C-64/128
APPLE II II+ IIc IIe III
IBM PC PCJR AT XT
MACINTOSH
MORE SOFTWARE THAN
YOU HAVE EVER SEEN
DEALERS WELCOME

BLAISDELL CENTER
777 WARD AVENUE
HONOLULU

FROM AIRPORT, TAKE ALA MOANA BLVD.,
TO WARD, TURN LEFT 1 MILE
BE EARLY

WARD AVE
BLAISDELL CENTER
ALA MOANA
RISHMAN'S WHARF

PLAY WORLD

THE PLACE FOR TOYS & GAMES
KANEHOE BAY SHOPPING CENTER

6 BIG DAYS

20% OFF

OUR ENTIRE
STOCK OF
TOYS
AND
GAMES

HOLIDAY HOURS

Mon-Fri	9am-9pm
Saturday	9am-8pm
Sunday	9am-5pm

AD EFFECTIVE:
11/25-30/88 Fri.-Wed.

Sale prices limited to stock on hand
No rainchecks — No special orders

CHARGE IT! MASTERCARD/VISA

Kilo 3/3 Marines 'hit cliffs, surf' on Okinawa

Story and photos
by Sgt. Kelley Hughes

CAMP HANSEN, Okinawa, Japan — More than 120 Marines from K Co. 3rd Bn., 3rd Marines, got a "taste of home" here Oct. 4-6.

Under the six-month unit deployment program, the Hawaii Marines were hitting the surf once again. Only this time, hitting the water was part of their job.

Training at Kin Blue Beach, the Marines sharpened combat skills both in and out of the water. Water training was highlighted by employing the Zodiac, the combat rubber raft craft, and land training meant learning different rappelling techniques and rope bridge-building skills.

"We've never done this type of training before," said Capt. Jim Quinlan, Kilo's commanding officer.

Trained by a team of instructors from the III MEF Operations Training Group, Marines executed small boat handling maneuvers.

The Zodiac water exercise included the assembly, launching, handling, beaching and disassembly of the boats. In addition, Kilo Marines exercised crew and boat positions.

"One of the most difficult parts of this training is handling the boats," said one of the training instructors.

"Controlling the Zodiac becomes a physical task when they're out there fighting the rough waters," the instructor explained. "A lot of strength is required to keep the boat from drifting."

After the training in the water, it was time to hit both the beach and cliffs. Marines were taught new knots and rappelling techniques.



"I've learned a lot of new knots to use for repelling," said LCpl. Carlos Armenta. "The knots ensure safety, especially the 3-anchor point."

"With two additional points, there's more security and you'll have more confidence in the rope," he said.

And as confidence became more evident by using the new rope techniques, morale of the younger Marines in the company rose.

While some Marines went "Australian" (rappelling facing down the cliff) for the first time, others rappelled off natural obstacles.

"NCOs were a great help when it came time for me to go down," said LCpl. Dwayne Davis. "After watching them do it first, it gave me more confidence to go for it."

Training on both land and sea was an Okinawan adventure for the Kilo Marines. Riding the waves meant yet another type of warrior training.

ROPE TRAINING — (Above) SSgt. Greg Cullen instructs Weapons Co. on a method of transporting rope.

"AUSTRALIAN" — (Left) Cpl. Mike Sharrow of Weapons Plt. rappels "Australian" style.



ACROBATIC TRAINING — 1stLt. Bob Simonsen demonstrates sit-ups while rappelling as Sgt. Mlla Fonoti watches.



LAUNCHING — Kilo Co. Marines launch the Zodiac.

GENTRY HOMES

CALL US FIRST

Let us help you with your housing needs. We have homes to buy and homes to rent. Gentry homes are in well planned communities within close proximity to schools, shopping and major military installations.

Award winning Gentry communities include:

Ewa by Gentry, Crosspointe, Waipio by Gentry

Single family homes from \$121,900

Townhomes from \$95,500

We have a home for you! Call us.

671-0522

Gentry Realty, Ltd.



TRAVEL FOR LESS\$ MAINLAND/EUROPE

COMPLETE PACKAGE
SNI TAIPORE RENO
FROM
\$575

Non-Stop Travel is a full service travel agency. Call us for airline, hotel, car rental or any of your travel needs.

CALL 946-1484

DAILY FLIGHTS START FROM

	ONE WAY	ROUNDTRIP
San Francisco	\$99	\$198
Los Angeles	\$99	\$175
San Diego	\$199	\$299
Portland	\$172	\$299
Seattle	\$199	\$329
Salt Lake	\$199	\$329
Chicago	\$358	\$572
Dallas	\$430	\$498
New York	\$340	\$398

Other cities available, plus tax.

**NON-STOP
TRAVEL**

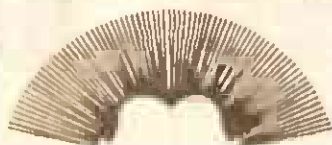
TA#1076

*Certain restrictions apply.

1860 Ala Moana Blvd. Suite 114

Honolulu, Hawaii 96815

(across from Fort DeRussay)



TEAZERS

Hair & Body Care
A Colour & Perm Salon
We fix \$8 Hair Cuts

Gift Certificates Available

767 Kailua Road, Kailua

261-9778

Open evening hours & Sundays

BROADCAST PREMIERE!



Was it real... or just

F/X

A shocking
suspense
thriller
about the fine
art of movie
illusion known as
Special Effects

STARRING Bryan Brown and
Brian Dennehy

13 Hawaii's
KTHN
Wednesday at 8:05pm

WAIKIKI 2 STAYS WEDNESDAY 11/23/88
1:30-3:45
6:00-8:15
8:30-10:30
923-2394
Sorry, No Passes
Crosstime Double II (PG)
Sorry, No Passes

BILL MURRAY

The spirits will move
you in odd and
hysterical ways.

SCROOGED

PG-13 A PARAMOUNT PICTURE



Quit smoking.

WE'RE FIGHTING FOR
YOUR LIFE

American Heart
Association



Lima 3/3 trains in Okinawa's 'Peter's Pit'

Story and photo by
Sgt. Kelley S. Hughes

CAMP GONSALVES, Okinawa, Japan—More than 130 Marines of L Co., 3rd Bn., 3rd Marines, swam their way to confidence here as they negotiated the Northern Training Area's (NTA) infamous "Peter's Pit."

Training along the jungle slopes of the NTA, Marines had mixed feelings before plunging into the pit, which is part of the 2.5 mile-long Combat Skills Endurance Course. This aspect of training concluded the company's 11-day training package and included the land navigation obstacles prior to the pit.

Exhausted but eager to experience what they've heard so much about, "Lima" Marines low-crawled toward the final obstacle. Ahead, they saw their platoon commanders standing in four feet of murky cold water waiting to assist them.

As the COs motioned for their Marines to jump into the pit, instructions were also bellowed out to ensure safe and successful procedures.

After each Marine entered the pit, he took a deep breath, submerged and firmly grabbed the guide rope under the muddy waters. He continued

to stay underwater, passing the concertina wire above him until his awaiting platoon commander touched him at the other end.

The touch signaled him to pop up, climb over the pit's wall and attack the enemy. "The most difficult part of the pit is a Marine's inability

to see where he's going," said 2nd Lt. Mike Donovan, Weapons Platoon commander. "He may be somewhat disoriented at first, but it's realistic training."

For others, the realistic training seemed to be testy, yet motivating. "The water wasn't too inviting, but that's

expected in combat," said LCpl. William Luke, a fire team leader.

"The pit is a confidence-builder," said SSgt. Richard Moss, Weapons Co. platoon sergeant. "After today, swimming under those conditions will be second nature. They know they can do it now," he said.



PETER'S PIT — Platoon commanders SSgts. Ray Moring (r) and Richard Moss, assist LCpl. David Walls as he emerges from the underwater portion of Peter's Pit.

EXHIBITS/From A-1

According to Diane Drigot, Ph.D., the station environmental project specialist, the locations were picked because they are well-traveled areas.

"You figure, when Marines first arrive here, they want to know everything about the island. For a family staying in TLF, the exhibition will give them a 'snapshot' idea of the history of the Mokapu Peninsula and the Air Station," she said.

Station environmental personnel, professional exhibit planners and the National Park Service worked together to plan, design, and produce the displays.

Dr. Drigot and her associates spent a year collecting written and graphic data, as well as historic and current photos depicting the Air Station's natural and cultural history.

To conclude the ceremony, a traditional Hawaiian blessing was given by Rev. Tyronne Reinhardt, director of the Hawaiian Program for the City and County of Honolulu.

Set your sights high.

As a Marine, you expect to be the best. It's the extra effort you give that makes all the difference, that makes you a leader among men, a Marine. Now you've got another challenging opportunity. It's your future in the Marine Reserve.

You'll be back on an elite team, for one weekend a month and two weeks of annual training duty. You'll work with other Marines from your hometown, upgrading your skills and mastering new ones. You'll also share in the pride

again, the unmatched confidence, the teamwork. It's an important job reserved for the few. And you'll find that the skills and leadership experience you get could help you achieve success in your civilian career.

The generous benefits include good pay, travel opportunities on military aircraft, college tuition assistance under the Reserve G.I. Bill, and limited PX and commissary privileges.

If you've got active duty experience, set your sights high. Get in the Marine Reserve. For information on how to reserve your place on the team, call 1-800-MARINES.



Marine Reserve
Reserve your place on the team.



INJURED?

Accident Cases
Handled on a
Contingency Basis
No Recovery—NO FEE
CALL
NOAH D. FIDDLER
Attorney at Law
Free Consultation
545-7400
820 MILILANI ST.
11K BLDG. SUITE 612

261-3233
PALM PALMS PLAZA
970 N. KALANIE
SUITE A-210

YOU CAN CHANGE THE ODDS

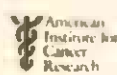
High fiber cereal at breakfast...
whole wheat bread for lunch and
wiches... including more vegeta-
bles at dinner... more fresh fruits
for dessert.

They're all great ways to get more
fiber into your diet, but does it really
matter?

Current scientific research says
yes! Current research indicates that
increased quantities and varieties of
fiber in our daily diet can help
reduce the risk we face from a
number of types of cancer.

Want to learn more? For your
free copy of "Dietary Fiber to Lower
Cancer Risk" write the:

American Institute for
Cancer Research
Dept. DF2
Washington, D.C. 20069





PRE-FLIGHT — Joshua Dowd, LtCol. William Morgan, squadron commander, and a CAP pilot discuss flight plans before boarding a plane.

CAP looking for young cadets

Story and photo by Cpl. Reginald Cole

The Kaneohe Composite Squadron Civil Air Patrol (CAP) is looking for a few good young men and women.

The Cadet CAP is sponsored by the Civil Air Patrol, an auxiliary of the U.S. Air Force. It provides emergency rescue services as well as striving to guide and develop its members. The mission of the Cadet CAP is "To inspire the country's youth to become leaders and dynamic American citizens through an interest in flying."

The CAP welcomes young men and women 14 to 18 years-of-age. The cadets are trained to fly gliders and motorized planes while learning the rules and theories of flying.

The cadet program also develops the knowledge, skills, and attitudes necessary for understanding how air and space vehicles affect society. They learn self-discipline through the study of leadership practices and military training. The cadets also participate in physical fitness through an special aerobics program.

As cadets progress, they are rewarded by an increase in rank and presentation of ribbons and certificates. They also become eligible for nationally sponsored special activities and compete for academic scholarships.

Anyone over the age of 18 will be allowed to join as senior members.

There are six free flights for cadets paid for by the CAP Airport Committee, a committee comprised of various airlines that donated \$200,000.

Merry Christmas!
IT WILL BE IF YOU HAVE CREDIT!

NEED CREDIT?
ONE CALL DOES IT ALL.
OVER 90% WHO CALL DO GET IT.

\$1000 Credit Card
REGARDLESS OF CREDIT HISTORY
NEW! Airing Divorce Head Credit - HAWAII ONLY

CALL CREDITNOW
973-0305 247-7466

"PLENTY" OF STYLE
262-0582
A LARGE SIZE WOMEN'S APPAREL SHOP featuring

DRESSES • MUU-MUUS • JEANS • NIGHTGOWNS • LINGERIE • BLOUSES • SKIRTS • SLACKS •

LARGE SIZES (SIZES 16-60)
PLENTY OF STYLE, INC.
Enchanted Lakes Shopping Center
1020 Keolu Dr.
Kailua, HI 96744
10-6 M-TH
10-8 FRI
10-6 SAT

Perishable pudding a perplexing problem

By Bill Buck

EDITOR'S NOTE: According to a recent DoD message, a large surplus of chocolate pudding stored on depot shelves in Philadelphia has only eight months of shelf life left. The message asks for "assistance in depleting the assets."

Suppose you checked your mailbox one day and found that Ed McMahon and American Family Publishers had bestowed on you the fantastic sum of 67-and-a-half tons of chocolate pudding.

Are you pudding me on? Well, nothing of the sort could possibly happen, but the Army is in the sticky predicament of trying to figure out how to dispose of this tasty mess.

Will they try to foist it off on the Marines, who by tradition never look a gift mule in the mouth?

I suppose some enterprising Army supply-type non-com might try to pass it off as a new and improved "heavy duty grease" for HUMMV rear ends. But in three-pound cans? Come on; they wouldn't even buy that at Camp Geiger, or Camp Horno.

Well, strange as it may seem, the Army really does have a problem.

Seems some overzealous dogface ordered 45,000 three-pound cans of the calorie-loaded, weight-inducing chocolate pudding, for inclusion in mount-out gear. Trouble is, the cans are bigger than the modules in which they are supposed to fit.

Is that a problem? You bet your last gedunk ribbon it is.

However, if Eskimos, oil-field workers, scientists, and skippers from two Russian icebreakers can rescue two whales, bailing the Army out of this predicament should be a piece of cake, or at least Boston cream pie.

Look at it this way: the Corps could come out way ahead on this deal. We could take the cans of pudding and use them as puff rounds on Kaho'olawe. This gives our artillery types precious training with their tubes, lobbing dangerous stuff miles in front of the infantry, and at the same time, provides soil nutrient to induce plant growth. In addition, it also makes things a whole lot safer for EOD types who have to sweep the area for duds.

"Take it easy with that thing. One slip could wipe

out the whole team," just doesn't come off as frightening when we're talking dud pudding cans.

Maybe the National Park Service could take the whole batch, bombard Kilauea Volcano, and give the Big Island resident a hot chocolate treat. No. That wouldn't work. Some of it would probably end up in Kailua-Kona, and we'd have pudding-covered refugees fleeing from the Kona Coast.

Or maybe we could just give all 125,000 pounds of the caloric gunk to the Pless Hall cooks and let their culinary creativity go berserk.

Imagine...chocolate lasagna every night for the next three months!

Fried liver-au-chocolate, anyone?

NAVY Exchange 1988 HOLIDAY CALENDAR

SUNDAY	MONDAY	TUESDAY	WEDNESDAY	THURSDAY	FRIDAY	SATURDAY
				24 Nov. THANKSGIVING CLOSED	25 Nov. 0800-2300 (JC) 0800-2300 (BP)	26 Nov. 0900-1900 (JC) 0900-2100 (BP)
27 Nov. 0900-1900 (JC) 0900-1800 (BP)	28 Nov. 0900-2100 (JC) 0930-1800 (BP)	29 Nov. 0900-2100 (JC) 0930-1800 (BP)	30 Nov. 0900-2100 (JC) 0930-1800 (BP)	01 Dec. 0900-2100 (JC) 0930-2000 (BP)	02 Dec. 0900-2100 (JC) 0930-2000 (BP)	03 Dec. 0900-1900 (JC) 0900-1800 (BP)
04 Dec. 0900-1900 (JC) 0900-1800 (BP)	05 Dec. 0900-2100 (JC) 0900-1800 (BP)	06 Dec. 0900-2100 (JC) 0900-1800 (BP)	07 Dec. 0900-2100 (JC) 0900-1800 (BP)	08 Dec. 0900-2100 (JC) 0900-2000 (BP)	09 Dec. 0900-2100 (JC) 0900-2000 (BP)	10 Dec. 0900-1900 (JC) 0900-1800 (BP)
11 Dec. 0900-1900 (JC) 0900-1800 (BP)	12 Dec. 0900-2100 (JC) 0900-1800 (BP)	13 Dec. 0900-2100 (JC) 0900-1800 (BP)	14 Dec. 0900-2100 (JC) 0900-1800 (BP)	15 Dec. 0900-2100 (JC) 0900-2000 (BP)	16 Dec. 0900-2100 (JC) 0900-2000 (BP)	17 Dec. 0900-1900 (JC) 0900-1800 (BP)
18 Dec. 0900-1900 (JC) 0900-1800 (BP)	19 Dec. 0900-2100 (JC) 0900-1800 (BP)	20 Dec. 0900-2100 (JC) 0900-1800 (BP)	21 Dec. 0900-2100 (JC) 0900-1800 (BP)	22 Dec. 0900-2100 (JC) 0900-2000 (BP)	23 Dec. 0900-2100 (JC) 0900-2000 (BP)	24 Dec. 0900-1800 (JC) 0900-1800 (BP)
25 Dec. CLOSED CHRISTMAS DAY	26 Dec. 0900-2100 (JC) 0900-1800 (BP)	27 Dec. 0900-2100 (JC) 0900-1800 (BP)	28 Dec. 0900-2100 (JC) 0900-1800 (BP)	29 Dec. 0900-2100 (JC) 0900-2000 (BP)	30 Dec. 0900-2100 (JC) 0900-2000 (BP)	31 Dec. 0900-1900 (JC) 0900-1800 (BP)
01 Jan. 0900-1900 (JC) 0900-1800 (BP)	HOLIDAY SALE 29 NOV.-04 DEC.		12 DAYS OF CHRISTMAS SALE STARTS 13 DEC.		WHITE SALE 14 DEC.-30 DEC.	

(JC) Johnson Circle
(BP) Barbers Point

NAVY Exchange COURTESY SHUTTLE BUS SCHEDULE

SHUTTLE SERVICE SCHEDULE (EFFECTIVE 25 NOVEMBER-24 DECEMBER)

Holiday Shuttle Bus hours will coincide with store operating hours. Shuttle Bus service will run from the Navy Exchange Johnson Circle to Naval Station approximately every half hour making stops at the Uniform Center, Nimitz Gate, along North Road and Makalapa Gate. Shuttle Buses will continue running every Saturday and Sunday from Toyland Manana to the Barbers Point Main Store.

VISIT SANTA

SANTA CLAUS IS COMING!!
Santa Claus will be arriving at Johnson Circle Exchange on Friday, 25 November at 1000 and will be at Johnson Circle Fridays, Saturdays and Sundays until Christmas from 1000-1900. Santa will be at Barbers Point Personalized Service Center on Friday, 25 November at 1000.

TOYLAND (Bldg. 31 Manana) HOURS:
Will be open daily from 0930-1730 (Monday through Sunday)

BABYSITTING AT BARBERS POINT:
Free BABYSITTING will be provided by Navy Exchange NAS Barbers Point volunteers from 1930-2200 on Friday, 25 November, and Saturday, 26 November from 1800-2000.

MINI MARTS' HOLIDAY SCHEDULE:

	THANKSGIVING	CHRISTMAS	NEW YEAR'S DAY
SUBASE #93	0800-2100	0800-2100	0800-2100
NAVAL STATION 150	0800-2100	0800-2100	0800-2100
HALEPY TERRACE	0800-1800	0800-1800	0800-1800
PEARL CITY	0800-1800	0800-1800	0800-1800
TOUCH N GO	0800-1800	0800-1800	0800-1800
ILIOQUOIS POINT	0800-1800	0800-1800	0800-1800

Jewelry that speaks in the eloquent tones of precious metal and dazzling stones.

HOLIDAY JEWELRY CARAVAN

\$3.4 million in diamonds and fine jewelry for both men and women are waiting for you at our Holiday Jewelry Caravan. Exceptional prices on a wide selection of cocktail rings, pendants, and earrings are sure to please even the most discriminating tastes for years to come.

HOW TO CHOOSE YOUR DIAMOND

When shopping for your diamond, AAFES wants you to keep in mind these important facts to help you decide what you want in value or cost, size and quality. The price of all diamonds is determined by the following physical characteristics known as the four c's: carat, color, clarity and cut.

Carat is the weight measurement of a diamond. There are 142 carats in an ounce. A carat of a diamond is divided into 100 points, like cents in a dollar; therefore, a 25 point diamond would weigh a quarter of a carat.

Color of most diamonds ranges from completely colorless (most expensive) to light yellow.

Clarity is the degree to which a diamond is free of internal blemishes.

Cut is how the diamond is faceted to produce a stone that will reflect and refract light to produce the highest degree of brilliance and fire.

DIAMOND GUARANTEE & TRADE-IN REGISTRATION & CERTIFICATES

Customers receive a valuable and exacting guarantee when purchasing any diamond from AAFES weighing .05 carat and above. The Guarantee and Trade-In Registration Certificate, issued at time of purchase, sets out the exact minimum specifications of the diamond purchased. You may trade your .05 carat or larger diamond in at any time and receive the full purchase price toward the purchase of another diamond item(s) of at least 50% additional value above the original purchase price of the trade-in item.

Our expert gemologist will be available to assist you.

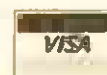
Enjoy your diamonds - wear them with pride and pleasure.

Hickam BX

Thursday thru Sunday, November 24-27, 1988

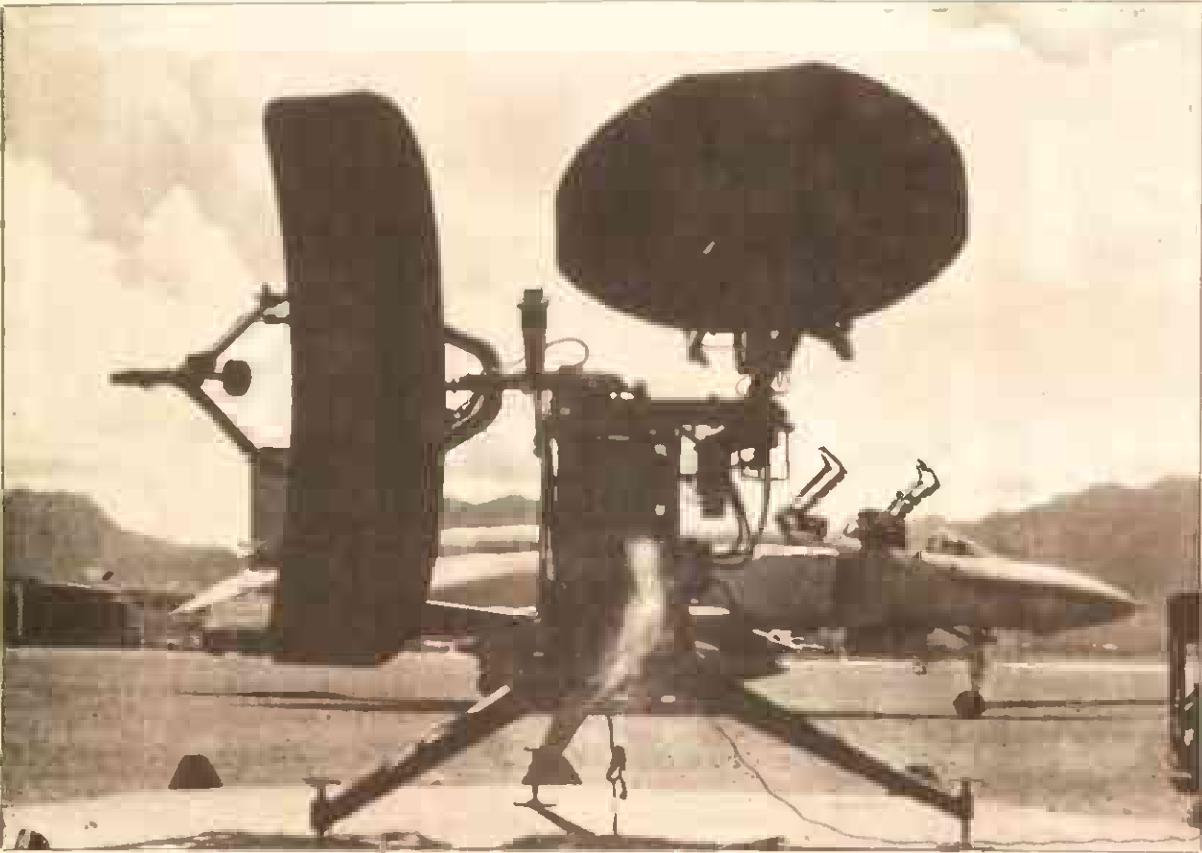
Schofield PX

Friday thru Sunday, November 25-27, 1988



AAFES

Army & Air Force Exchange Service



ON THE WAY OUT — As modern technology continues to grow, the TSQ-18A complex and the F-4 are being phased out.

New ATC system to take MATCS-18 'from stone age to Star Wars'

Story and photos by
LCpl. Doris Carrero

The aviation side of the Air Station has been hit with the transition from Stone-age to Star Wars," according to GySgt. Ken Attwood, NCOIC of Marine Air Traffic Control Squadron (MATCS)-18, Detachment Bravo.

Not only are the F-4 Phantoms soon to be replaced by F/A-18 Hornets, but the TSQ-18A complex at MATCS-18 was replaced by the Marine Air Traffic Control and Landing System (MAT-CALS) complex.

The MATCALs will upgrade and automate the task of directing and controlling air traffic, making its predecessor obsolete by 25 years.

The heart of the new system is the Control and Communication Shelters (CCS), which are divided into an "A" and "B" side," explained GySgt. Attwood. "This configuration allows for simulated training scenarios to be conducted in half the shelter, without interfering with live operations being conducted in the other half."

With the new system, simulated air traffic control scenarios can be pre-programmed and recorded on a cassette for conducting air-traffic control training, without the benefit of live traffic.

The MATCALs offers beneficial training to Marine controllers who train here as well as to controllers who are about to deploy.

The MATCALs complex allows us to create a radar map right on the display screen, and train for deployment months in advance," said GySgt. Attwood.

Before the new system was implemented, getting a radar

map to train the controllers for a deployment was a long and drawn-out process. Prior to the MATCALs, MATCS-18 would have had to draw a map of where they were going and send it to the Naval Flight Information Group (NAVFIG) in Washington, D.C., for approval.

NAVFIG would create a map on negative film and send it back to MATCS-18. They would then have to load it into the radar video mapper before they could start training. "By the time we had the map in our hands, we were already out in the field," said GySgt. Attwood.

The new system is not only beneficial to the air-traffic controllers but also to the Marines who repair the equipment.

The only way the technicians could determine that something was wrong with the TPN-8 radar system was by having the pilot or the controller tell them. Now, due to modern technology, that has changed.



ANGLE ONE TWO TURN RIGHT HEADING — GySgt. Ken Attwood, an air-traffic controller, uses the new MATCAL system.

"Before the new equipment, the 'techs' would have to search for the problem if they didn't know what it was. Now, because of the indicators of the MATCALs, which light up on the display screen, the problem can be pinpointed. The MATCALs improves maintenance response and indicates problems that might have been overlooked, which could interfere with air-traffic controllers' mission; providing safety in flight," explained GySgt. Attwood.

The main drawback to the MATCALs is the fact that it is 41,000 pounds heavier than its predecessor, but according to GySgt. Attwood, the added weight isn't much of a problem.

"In spite of the 19 percent increase, other MATCS detachments have proven that the expeditionary field equipment is mobile," he said. "For example, MATCS-28, which is stationed at MCAS New River, N.C., has taken the system as far as Denmark."

Booby birds keep an eye on station

By Cpl. Diane Oban

When living and working on an Air Station, it is not unusual to observe various types of aircraft gliding across the sky. Often, the airspace is shared with the civilian community as well as other branches of the service.

One section of the civilian populace that shares the great aerial expanse above the Air Station is a part of a family known as marine plunge divers.

As their name suggests, they not only enjoy the skyways here, but often take advantage of the fishing opportunities off the coast of Ulupau Crater and Fort Hase Beach.



BIRD WATCHING — Petty Officer Second Class Susan Hinckley watches the birds fly overhead.

Although the MATCALs complex has introduced many changes, the method of deploying the equipment has not.

The system can be transported in a variety of ways. On land, the system is placed on flat-bed trucks, and for a deployment to another island, a barge is used. If the system were to be transported overseas, it would be loaded onto a C-5 or C-141 cargo jet.

There are no initial plans to deploy the new system outside the Hawaiian Chain, however, according to Capt. Steven Eddy, officer-in-charge of MATCS-18, training at Wheeler AFB is in the planning stages for this spring.



LCpl. Doris Carrero photo

VIEW FROM THE CRATER — The red-footed booby bird.

Even though they have been around for 20 million years, they have lived on the Mokapu Peninsula only since the late 1940s.

These active creatures of the air and sea are more commonly known as red-footed booby birds.

The boobies nest on nearly all the Leeward islands in Hawaii. The largest population of red-footed boobies on Oahu, averaging in population from 1,000 to 1,500 birds, can be found at Ulupau Crater aboard the Air Station.

The red-footed booby bird, cousin to the brown- and blue-footed, masked, and white boobies, average two feet in height and weigh between two and eight pounds. Although their bodies are primarily white, the red-footed booby bird has some colorful markings. Its long, narrow wings are trimmed with black; its skin is blue and pink, and its beak is blue.

The bird's beak is strong, with serrated cutting edges and sealed nostrils to assist in catching food.

Due to the vast amount of food in the area, the boobies chose to inhabit the trees that outline the perimeter of the impact area at the rifle range. They scan the sea from heights of less than 10 feet to more than 100 feet. They plunge into the water grabbing squids or flying fish.

With a wingspan of 40 inches, the birds can travel great distances. The young

birds will roam thousands of miles to find a nesting site, while adult birds seldom travel more than 50 miles.

Once they find a suitable site, the birds establish their own territory.

Once the boobies select their nesting area, they conduct an elaborate "dance" of head and wing movements to signify ownership of territory. Once the male has established his place in the sun, he begins to advertise for a mate to share his nest and breed with.

Once a female is enticed by the male, the two nest in trees or bushes. They build their nests of sticks, twigs, branches or green leaves, which are replaced constantly during the incubation period of the soon-to-be-laid eggs.

The breeding season of the red-footed booby living on Ulupau Crater is from April to June. While the female lays one egg at a time, the male and female share the responsibility of incubating the egg with their webbed feet.

The young are hatched almost naked, but within two to three weeks, they begin to sprout down (baby feathers). The parents continue to protect the young until the fifth week of its life, when the baby is capable of regulating its own body temperature. Between three and four months after hatching, the young fledgling's feathers are suitable for flight. Once the birds master the technique of flight, the young will fly on to establish their own homes.

Straight Shooters

Mary's Mainland-Style Billiards

"A PLACE WHERE EVERYONE KNOWS YOUR NAME"

Military personnel and families may:

- Cash Checks •Use Party Facilities
- Receive Membership Discounts

9', 8', 7', 6' Tables — Darts & Video Games

With Televised Sporting Events,

All in a friendly, clean, homey atmosphere

Lots of FREE parking

1270 No. King Street (Next to Pizza Hut — King Kama Bldg.)

848-4606

Open 7 days a week

Le' Class C

Salon & Boutique

Curls...49⁹⁵
Color...12⁹⁵
Weave (fullhead)...180⁹⁵

Relaxers...29⁹⁵
Weave...20⁹⁵

Ad expires 11/30/88 Mon.-Sat. 10am-7pm

879 Kam Hwy., Pearl City, HI

455-5353

Pre-Holiday Bicycle Specials!

'88 Raleigh, BMX & Freestyle Models
KHS Mountain Bikes & Cruisers

Bicycle Close-Out Prices

Layaway For Christmas Now!
Many In-Store Pre-Holiday Specials

Our elves are ready to fully-assemble your new bike or service your old one. Tune up Christmas Gift Certificates available.

"We service your bike as if it were our own."

247-5200

48-174 Kahuhipa St., Kaneohe
(Across Windward Dodge, Isuzu, Subaru)

Oakley Specialized Look

UNCONTESTED DIVORCE

WHY DRIVE DOWNTOWN?

423-9071

Moanalua Shopping Center, across from Pizza Hut

THE LAW OFFICE OF

BOB GARBETT

LOW COST DIVORCE

- Free Parking
- Open Mon.-Sat.
- Time Payment Plan
- Major credit cards

ALSO:

- Adoptions
- Guardship
- Paternity
- Separations

You don't have to be a financial genius to have a smart financial strategy.

Sam L. Barth, CLU, ChFC
Ch. Financial Consultant

New York Life's Asset Positioning Guide can help guide you to your financial goals.

Your chances of reaching your financial goals are a lot better if you've got a sound strategy.

That's why New York Life has put together the Asset Positioning Guide. Designed to give you several benefits, it serves as a financial model to help identify investments that aren't performing the way you'd like; to review your protection and savings programs; and to help you reduce the impact of taxes.

Best of all, this valuable tool is free. And you decide what, if any, action to take with your assets. So call me today. I'll tell you more about the Guide that can help guide you to your financial goals.

Sam L. Barth, CLU, ChFC
New York Life Insurance Company
641 Bishop St., Suite 1410, Honolulu, HI
235-2578

Get the most out of life.™

NEW YORK LIFE

APPLE'S AFTER THANKSGIVING SALE



Apple® IIc ColorMonitor System

It gives you crisp, color graphics. And, faster than you can say "special feature," you can flick a switch and turn the ColorMonitor IIc into an 80 column high resolution monochrome display.

**THIS PRICE TOO LOW
TO ADVERTISE!**



Authorized Apple Military Exchange Reseller



Apple® IIc Monochrome System

Simple to use, because you can set it up in minutes. Easy to learn, because it comes with everything you need to start working right away. Comes with 128K computer with monochrome monitor. Includes a built-in 5 1/4" floppy disk drive and a full size keyboard.

\$499



Authorized Apple Military Exchange Reseller



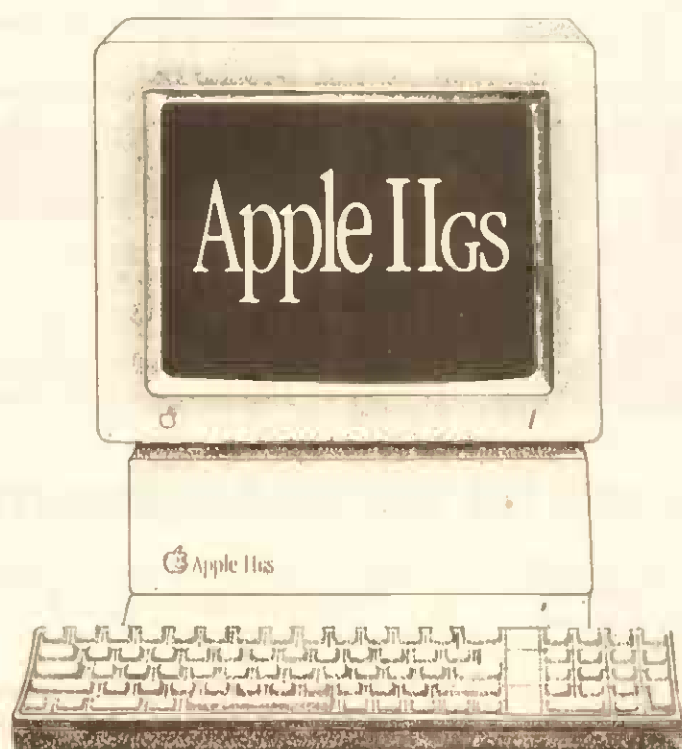
Macintosh® Plus

1 megabyte. Expandable to 4 megabytes. Built-in 800K disk drive with built-in 9" monitor, detachable keyboard, numeric keypad and mouse.

\$1395



Authorized Apple Military Exchange Reseller



Apple® IIgs

512K of memory. Expandable to 8 megabytes. Eight expansion slots to connect peripheral devices. A palette of 4,096 colors and a 15 voice sound capability.

\$1495



Authorized Apple Military Exchange Reseller



Macintosh® SE

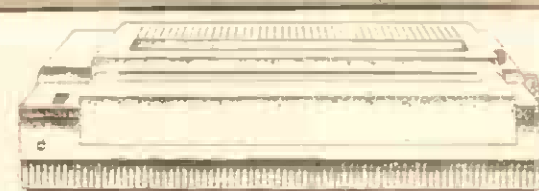
1 megabyte. Expandable to 4 megabytes. Two built-in 800K disk drives with built-in 9" monitor, standard detachable keyboard, numeric keypad, mouse, Hypercard™ and MultiFinder™.

\$2249

(Not available at all exchanges)



Authorized Apple Military Exchange Reseller



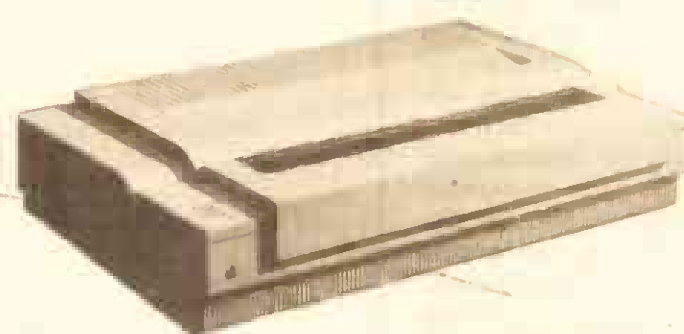
ImageWriter® II Printer

High quality text and graphics. Prints in black or color with the change or ribbon and appropriate software. Prints 2.5 pages minute.

\$479



Authorized Apple Military Exchange Reseller



Imagewriter® LQ

Ideal for users who need a versatile 27-in dot matrix printer to handle a broad range of printing. The ImageWriter LQ offers paper handling color and network capabilities.

**THIS PRICE IS TOO
LOW TO ADVERTISE!**

(Not available at all exchanges)



Authorized Apple Military Exchange Reseller

Limited supplies — Items are not exactly as shown. Apple, the Apple logo, IIc, IIgs, and Macintosh are registered trademarks of Apple Computers, Inc.

**NAVY
exchange**

AAFESTM
Army & Air Force Exchange Service

Available at

Pearl Harbor Main Exchange
Barbers Point Main Exchange
Hickam Sonic Boom
Schofield Main Exchange

This advertisement was not paid for, in whole or in part, by the Department of the Navy, Army and Air Force or the Navy or AAFES exchanges. This advertisement does not constitute endorsement by the Navy or AAFES exchanges, the Department of the Navy, Army or Air Force, or the U.S. Government of the products or services advertised.

Matching up Marines who fly with those who walk

Story and photo
by Sgt. T. Shearer

Matching up Marines who fly with Marines who walk is a job that keeps Capt. Jim V. Parran busy around the clock. He's a CH-53D Sea Stallion pilot and concurrently serves as the rotary-wing aircraft fragger for Marine Aircraft Group-24.

"It's like juggling three handfuls of sand with two hands," he said. "I haven't dropped any yet, though."

Stretched out behind a desk stacked with paper and a tower of in and out baskets, he explains his mission as, "...combining the MAG helicopter assets with the 3rd Marines, or any other unit that needs aviation support."

This is what requires the juggling act: he must know all of the four flying squadrons' training schedules, take into consideration the number of aircraft that are ready to fly, and match everything to the number of missions he is asked to support.

In addition to getting helicopters where they are supposed to be, Capt. Parran still flies the required number of missions to keep his flying skills up. It's a combination that keeps him hopping around the clock.

"I've been in this job about six months," he says, pointing to a new grey hair. "I pinned on my aviator wings in 1984, but this is my first taste of the operations side of the house."

"I just jumped in sort of head-first and learned on the job."

"Being a fragger opened my eyes to a lot of things I never really thought of before," he said.

Now, Capt. Parran is one of the MAG's operations specialists and works with nearly every 1st MEB unit on a daily basis. He also must coordinate missions with other branches of the service. He once fragged a flight for a hard-charging Boy Scout Troop.

"Units go through their operations sections, which come to me with a request," said Capt. Parran. "I then do my best to match what we have with what they need. You can believe I spend a lot of time on the phone and sometimes several phones at once."

When the warriors of 2nd Bn., 3rd Marines were planning for a recent exercise on the island of Kaho'olawe, Capt. Parran had to be involved in nearly every step of the exercise. All of the logistics and troop transport requests came across his desk, and he worked to ensure that all of the air assets were used in the most economical way.

"Accomplishing the primary troop lift missions is only the beginning," he said. "Equally important is getting the most out of our flight dollars, both for the unit we're supporting and getting all the pilots their share of stick time."

This means hours of advance planning and coordination before a pilot ever takes up an aircraft. If the mission calls for transporting a company of warriors to a distant island, Capt. Parran looks at the overall picture to find a support-related mission the helo can perform on the turn around flight.

"All of their water and chow on Kaho'olawe was



PARTY LINE — Capt. Jim Parran attempts to "juggle three handfuls of sand with two hands."

Obey laws when operating motorcycles, mopeds

By Cpl. Gregg Marcantel, MP Dept.

Many people consider motorcycling or mopeding to be a means of enjoying Hawaii, while other people use these economical forms of transportation to travel back and forth to work.

Here are a few guidelines that should be followed while operating motorcycles and mopeds.

MCO 5100.19c and OPNAVINST 5100.12c prescribe the wearing of certain protective gear while operating a motorcycle or moped. While riding, both the operator and the passenger must wear a helmet, a reflective vest, and protective eyewear (goggles, face shield, or a windshield four inches above eye level). Passengers are not allowed on mopeds.

Although the Hawaii statutes have no law concerning the wearing of such equipment, all military members are required by both the OPNAVINST and the Marine Corps Order to do so both on- and off-station.

Violators can be held accountable for disobeying these orders. Additionally, DoD has stated that it may not pay on the service member's Service Members

Group Life Insurance policy in the event of death as a result of failure to wear the prescribed safety gear.

DoD has also expressed reservations in regards to paying hospital bills that result from injuries sustained under such circumstances.

While on the Air Station, these orders can be enforced by any officer, staff NCO, NCO, or MP.

It's also important to remember that the running path next to the H-3 has been opened for moped travel. Moped operators should take care to avoid walkers and runners.

flown in," stressed the captain. "To support a battalion in the field, we have to keep the aircraft full going both ways. It is important to make sure you have the right type of helicopters to accomplish each mission and take into consideration what is waiting to be done at the

other end."

For example, troop lifts are primarily handled by CH-46s and heavy cargo missions go to the CH-53s. If it is known in advance that a helicopter will need to bring a heavy external load back, then a CH-53 will be used to fly the mission.

Over the course of a month, as many as 100 requests for aviation support will come across his desk. He divides these between three CH-46 squadrons and one CH-53 squadron, which maintain more than 40 helicopters on the station. That works out to about four missions sched-

uled in advance every day.

"In addition to these, there are last minute requests and any emergencies that may come up," Capt. Parran said. "It's like someone throwing in the extra handful of sand. We keep everyone happy and there still hasn't been any sand on the deck."



MILITARY SPECIAL

CUSTOM UNIFORM BALL
CAPS ONLY \$5.00 PER HAT
BASED ON AN ORDER OF 12 DOZEN!



Embroidery
1711 HOE ST.
841-7351

MON-THURS 7:30-4:30
FRI 7:30-3:30



DR. LAWRENCE J. CONNORS, MA., DC.

CHIROPRACTOR

Headaches • Shoulder-Arm Pain
Whiplash • Numbness in Hands & Feet
• Backache • Pinched Nerves

HONOLULU FEDERAL SAVINGS
& LOAN BLDG.
45-1144 Kam Hwy., Suite 200A, Kaneohe

235-6677



UNDER NEW MANAGEMENT

CHICKEN ALICE'S II

WE'RE OPEN 6 DAYS A WEEK
M-TH 10 AM-9 PM • FRI-SAT 10 AM-10 PM

HOT & SPICY KOREAN CHICKEN

Marinated with Alice's secret sauce and deep fried.


THE PERFECT HOLIDAY PUPU

FOR
PARTIES, POTLUCKS & GALA GET TOGETHERS

18 pks. for just \$6.00
60 pks. for just \$20.00

Call In Advance
for Take Out Orders
beginning Sept. 6

518 Wailepo St. Kailua 792 262-2443



PERSONAL INJURIES

- AUTO ACCIDENTS
- SLIP AND FALLS
- PROPERTY DAMAGE
- WRONGFUL DEATHS
- DEFECTIVE PRODUCTS
- OTHER INJURY CLAIMS

JERRY JERVIS RON ALBU

SERVING THE WINDWARD COMMUNITY

JERVIS & ALBU
ATTORNEYS
PALI PALMS PLAZA
970 N. KALAHEO AVE.
KAILUA

EVENING & WEEKEND APPOINTS AVAILABLE
NO RECOVERY • NO FEE
254-5855

DEEP SEA FISHING AT ITS BEST!!!!

RAINBOW BY MARINA PEARL HARBOR

The 44' fishing machine "KALOHI" runs daily from Rainbow Bay Marina, Pearl Harbor. We provide all the gear; you keep the fish.

EXPERIENCE THE THRILL OF A LIFETIME WHEN THAT BIG ONE STRIKES!!

5 Passenger Exclusive Charter
\$300.00 full 8 hour day
6 Passenger Exclusive Charter
\$330.00 full 8 hour day
Overnighter to Molokai
\$400.00 (32 hours)



Weekdays & Weekends
Other packages available upon request.

All military, active duty, retire, DOD and government employees call the charter fishing office at 423-1113 Special Services Pearl NAVASTA at 474-9163, 474-1190 for details. Reserve early and confirm your charter date today. All reservations on a first-come, first-served basis.

This ad not paid for by Special, Pearl NAVASTA.

YOU KEEP THE FISH!!

THERE IS SOMETHING YOU CAN DO ABOUT AIDS



Life Foundation

The A.I.D.S. Foundation of Hawaii

924-AIDS

Enclosed is my tax deductible donation to help the AIDS Foundation of Hawaii

Name _____ Donation \$ _____

Address _____

MAIL TO: Life Foundation, P.O. Box 88980, Honolulu, HI 96830-8980

A public service of Midweek magazine

Legally Speaking

URINALYSIS PROGRAM

By Capt. William Capulos

The urinalysis program is the major means of detecting and deterring drug abuse in the Marine Corps.

Due to the reliability of the collection procedures and the accuracy of the testing procedures, the program has been very successful in identifying drug abusers. The test results are used to punish and rehabilitate or eliminate drug users from our ranks.

Collection

Every active duty Marine should be well aware of the urinalysis program. Regardless of rank, Marines are periodically required to submit a urine sample as part of a unit sweep or random sampling of an organization. In addition, commanding officers, under certain conditions, can order a member of their command to provide a urine sample for testing.

To ensure accuracy, every urinalysis is supervised by the unit substance abuse coordinator. In addition, the Marines providing samples are observed by a member of the same sex.

To further ensure the integrity of the system, detailed paperwork, called urine sample custody documents, are maintained for every sample.

What is unknown to many Marines, however, is what happens to their sample once it leaves their hands. After they are collected by the coordinator, the samples and custody documents are reviewed for accuracy and the information on each document is compared against each sample. The samples are then wrapped in plastic and placed in boxes for shipment to the Navy Drug

Screening Labs for scientific testing.

Samples from the 1st MEB and the Air Station are sent to the Navy Drug Screening Lab (NDSL) in Oakland, Calif.

Testing

At the Navy Drug Screening Lab, the samples are tested using the latest scientific technology. Every sample that arrives at the lab is subjected to an immunological screening test (Radioimmunoassay). If the sample is positive, it is tested two more times to confirm the result.

For a sample to be reported by the lab as positive, it must show the presence of the chemical "fingerprint" of a controlled substance in all three tests in amounts equal to or greater than the DoD

This chemical fingerprint can be detected up to 30 days after use, depending on the drug ingested.

The lab tests for the presence of the chemical fingerprint of six drugs of abuse. The six drugs are: marijuana, cocaine, methamphetamine, opiates (codeine, morphine, heroin), PCP, and all barbiturates.

Oakland Drug Screening Lab

NDSL, Oakland, tests thousands of samples a year. Its procedures are routinely checked by both the Navy and the DoD. The Navy drug

screening labs also employ internal quality control checks. Under the blind sample testing method, the lab is routinely sent samples by the DoD that appear to be from a command. The DoD, however, is aware of the exact quantities and types of drugs contained in each sample. This blind testing of the drug screening lab is used in grading the reliability of reported results and determining whether that Navy drug screening lab will retain its DoD certification. Since 1983, NDSL, Oakland, has never reported a false positive under the blind testing method.

Customs and Courtesies

What's Your Call?

Q. Sgt. Steve Bird is riding his bicycle when colors is sounded. Is it correct for him to salute while still mounted?

(See page B-3)



Yes ☐ No ☐

"The Storage Room came to pick-up my items FREE..."

The Storage Room has safe, affordable storage spaces of all sizes. PCS moves, Deployments, TAD, WestPac, TDY, Team Spirit, Float, or whatever reason you need temporary storage. Call the Storage Room for a free pick up and Military Discount now!

521-7572
The Storage Room
407 Coral St. • Open 7 Days A Week



DAMIEN Memorial High School

A Private Catholic School for Young Men GRADES 9-12

- College Preparatory
- ILH Sports
- JROTC
- Computer Science
- Band
- Christian Values



1401 Houghtailing Street
Honolulu, Hawaii 96817
CALL 841-0195



Accepting applications for 1989-1990

ENTRANCE TEST SATURDAY, DECEMBER 3, 1988 8:00 AM
TESTING FEE \$40.00
REGISTRATION ACCEPTED ON TEST DATE

BEING TRANSFERRED? STUCK WITH A VEHICLE AND BIG PAYMENTS?

Avoid repossession. No more big payments. We take over lease/contract purchase. No fee or charge. We do it all fast!

528-0606 American Financial Group

KAILUA ELECTRONICS 262-7677

VCR • TV • MOVIE CAMERA REPAIR
FREE VCR TAPE WITH MAJOR VCR REPAIRS!
1 DAY VCR SERVICE

VCR CLEANING ONLY \$1000
COUPON EXPIRES 12-1-88

MEET YOUR REALTOR

DILKS & JACOBS INC. 261-3314 21 ONEAWA ST. KAILUA

Call JODY to feature your home in this space.

CONGRATULATIONS To JODY HEYDON (R) For Passing The Broker's Exam!



Call: JODY HEYDON (R) 261-3297

DILKS & JACOBS INC. 261-3314 21 ONEAWA ST. KAILUA



A beautiful Koi pond & waterfall make the Japanese Garden a focal point of this 4 Bdrm., 2 Bath NEW LISTING in desirable Alkahi Park. \$289,000 FEE SIMPLE.



Call: INGA DOUGHERTY (R) 239-7885

DILKS & JACOBS INC. 261-3314 21 ONEAWA ST. KAILUA



A NEW LISTING in lovely Kalaheo Hillside has been totally remodeled with new kitchen, new carpeting & fresh paint. 3 Bdrms, Den, 2 Baths. FEE SIMPLE.



Call: MAUREEN O'GUIN (R) 263-3957

1 Huffman & Drake

261-4677 417 ULUNI ST. KAILUA

- Do you own vacant land — not sure what to do with it? Subdivide, ohana, HPR? Call Frank!
- Are you thinking about developing a parcel of land, but aren't sure how? Call Frank!
- Could a tax-free exchange benefit you on investment property? Need advice on how to proceed? Call Frank! "Experience Makes A Difference"

Call: FRANK ADAMS (R) 254-1646



KAILUA REALTY LTD.

263-6000 130 KAILUA ROAD KAILUA



Breathtaking view from this mountain-top executive home. 4 Brm., 3 Bath, with maid's quarters. Enjoy the 270° everchanging view of the mountains, town, island-dotted bay and distant ocean. Landscaping includes Japanese garden, rolling lawn & fruit trees. Very private & quiet. \$1,350,000. FEE SIMPLE.



CALL: PATRICK O'MALLEY (R) 261-1653

Guess Who's Coming to Breakfast.

You and Santa, that's who.

Free Breakfast and Hawaiian Christmas Celebration when Santa arrives to kick off *The Dazzling Holidays* at Pearlridge, Phase II, Friday, November 25 at 9 AM. And everyone's invited.

Santa's Schedule

9 AM. Santa Arrives

He's coming by Monorail into Phase II. Serenaded by the Aiea High School Band.

No reindeer, they'll be resting up for Christmas Eve.

9 to 10 AM. Free Breakfast with Santa

Courtesy of Burger King. Served Center Court, Phase II. You and Santa will enjoy Portuguese sausage, eggs and rice.

Santa says it's ono maui!

There'll be Traditional and Hawaiian Christmas music by Blaine and Chad with Celebrity MC Kimo Keawe. Courtesy of KCCN 1420AM Station Aloha, co-sponsors of Santa's big day.

10 AM. Santa Takes His Throne

Ready for pictures and listening to all your Christmas wishes. At the bottom of the escalator in Phase II. And at the top in Phase I.

3 PM. Beautiful Christmas Songs

Prime Time will be entertaining you in Phase I 'til 4 PM.

7 PM. Leilehua High School Singers

This 35 member choir will sing all your Christmas favorites. Phase I.

Come share *The Dazzling Holidays* with us. 170 very Christmas stores filled with the most wonderful gifts.

To make dreams come true.

Co-sponsored by



Breakfast provided by



Breakfast is limited to the first 1,000 arrivals.

Gift Wrapping by Air Force ROTC
U of H/Arnold Air Society, Phase I

Pearlridge
Your Very Christmas Center

Surprises

170 Exciting Stores / Entertainment / 16 Theatres / 2 Food Courts
Open Monday through Saturday, 10AM to 9PM, Sunday 10AM to 5PM

Skeet, Trap Range host turkey shoots



AIMING IN — (Left to right) Jerry Mosher, Dan Kaul, Scott Rayholtz, and Mark Krieg shoot in the standard relay.

The K-Bay Rod and Gun Club held their turkey shoot Saturday, which featured two types of relays — a Standard shoot for \$2 per relay and a Long Board shoot for \$3 per relay.

The Standard turkey shoot consists of a six-man-relay, with each shooter firing at his/her own target from approximately 30 yards. The shooter with a pellet hole closest to the center of the target won a \$10 certificate toward the purchase of a turkey or ham at the commissary here.

In the Long Board shoot, four shooters fired at the same single target trying to aim their shot into their own quadrant of the target.

"The Long Board relay is all luck," stated Rod & Gun club member Mark Krieg.

According to another club member, a 12-gauge full-choke shotgun firing skeet rounds, throws a pattern of pellets two to three times larger than the 11-by-8 inch target, so the Long Board relay can be considered a "lucky shot" competition.

The winners of the Long

Board shoot also received a \$10 gift certificate.

The winners in the two categories were:

Standard Shoot

Scott Rayholtz (2)
Todd Wichman
Jerry Mosher (2)
D.L. Wittenhagen
Mark Krieg
Tom Dykers

Long Board Shoot

Al Mongeon
Nick Harrell
Dan Kau

"Tom Turkey takes a Holiday"

With the hustle and bustle of mothers planning their menus for the Thanksgiving feasts, some of their "mighty - hunters" waited until the last weekend to "bag" a turkey for the holidays.

The Air Station's Special Services Skeet and Trap Range and the K-Bay Rod and Gun Club held their annual turkey shoots Saturday and Sunday at the skeet and trap range here.



BY A HAIR — Al Mongeon calibrates the pellet hole from the center of the "X".



"A WINNER" — Mike Sanford shoots a "bird" with a streamer attached.



TURKEY "BIRD" — Ralph King, manager, shows the shooters the modified clay.

The Skeet and Trap Range turkey shoot was different than the K-Bay Rod and Gun Club's because the competitors fired at a skeet disc (clay discs that are nicknamed birds). The winners were not determined by the number of hits recorded, but by shooting down a specially-made bird with a paper streamer attached. The paper streamer altered the flight pattern of the bird which kept the shooters off-balance. When the special skeet was hit, the relay ended, and the shooter received a turkey.

WOMEN'S FALL SOFTBALL UPDATE

The race for first-place in the Women's Fall Softball League is beginning to shape up. Here are the Nov. 20 results.

The first-place Base Busters were handed their first loss this season to the bats of the fourth-place team Pretty in Pink 10-9. The ladies in Pink also played two more

games sweeping the New Breed squad 13-2 and 20-2.

The Hurricanes pounded Fantastic Sam's in five innings 12-0, and K-Babes defeated JAFT 10-5.

There are four games remaining in the season. If there is a tie for first-place, an extra game will be played to determine the champions.

Here are the league standings as of Nov. 20.

Team	W	L
Base Busters	7 - 1	
K-Babes	6 - 2	
Hurricanes	5 - 2	
Pretty in Pink	5 - 3	
JAFT	3 - 5	
Fantastic Sam's	1 - 7	
New Breed	0 - 8	



EYE ON THE BALL — Mary Medford, leftfielder of the Base Busters, waits for "her" pitch.

Corps Marathon hosts 12,000

WASHINGTON, D.C. — Fighting gusting winds and stiff competition, Jim Nage from Washington D.C., won the 13th Annual Marine Corps Marathon Nov. 6, in a time of 2:21:59.

Hage, who has come in third place the last two years, fought off second place finisher and two-time Marine Marathon winner Brad Ingram, from Mansfield, Ohio, who crossed the finish line at 2:22:18.

Coming in third for the men in the celebrated "People's Race" was John Stephens of the British Navy, who made it a horse race to the end and added to one of the closest Marine Marathon finishes ever. Stephens posted a time of 2:22:27.

Lori Lawson, 22, a medical student from Philadelphia, was the top female finisher with a time of 2:51:26. Ann Wehner of Newark, Del., and Mary Lynn Pastizzo, of Avon, Conn., came in second and third with time of

2:51:44, and 2:55:28 respectively.

Also, Kenneth Archer won his eighth Marine Marathon in the Wheelchair Division. Archer, a former Marine who was disabled in Vietnam, downed his closest rival, Tim Whitehead, by more than 10 minutes. Whitehead came in at 2:27:17, and third place finisher Kenneth Carnes was third in the Wheelchair Division with 2:32:46.

Hage, Lawson, and Archer placed first in their division from a field of 12,197 runners who raced through the scenic streets of Washington, D. C.

The race was estimated by officials to be the largest in the 13-year history of the marathon. What began in 1976 with a field of 1,175 runners, the "Peoples Race" has ballooned into what is considered the largest amateur race in the country.

See Corps/B-2

On the Blotter

Compiled by Cpl. Gregg Marcantel, MP Dept.

Alcohol Incidents

• A Marine was apprehended for drunk and disorderly conduct. MPs discovered the Marine unconscious next to the Nuupia ponds, after he was seen stumbling on Mokapu Road by the Mokapu gate sentry. The Marine was taken to the Branch Medical Clinic where it was learned he was currently in alcohol rehabilitation. The Marine was later taken to Tripler Army Medical Center and admitted for detoxification.

• A Marine was apprehended for DUI and driving on suspension after MPs observed him lane weaving while attempting to gain access aboard the Air Station at the H-3 Gate in another Marine's vehicle. A test of the Marine's breath resulted in a .06 percent blood alcohol content. A records check revealed that the Marine was currently on the Station driving suspension list.

• A Marine was arrested off Station for DWI, no driver's license in possession, driving without a seat belt, and contempt of court. A Honolulu police officer noticed an odor of alcohol on the Marine's breath after stopping him for driving without a seat belt. A test of the Marine's breath resulted in a .22 percent blood alcohol content. A records check revealed that the Marine has been in contempt of court since Sept. 30.

• Another Marine was arrested off Station for DWI and driving without headlights. A Honolulu police officer noticed an odor of alcohol on the Marine's breath after stopping him for driving without headlights. A test of the Marine's breath resulted in a .19 percent blood alcohol content.

• A Marine was apprehended for DWI and underage drinking. MPs notice an odor of alcohol on the Marine's breath after stopping him for lane weaving as he approached the H-3 Gate. A test of the Marine's breath resulted in a .10 percent blood alcohol content. MPs also discovered that the Marine was under the legal age for alcohol consumption.

• A Marine was apprehended for assault after MPs learned he had assaulted another Marine at the Enlisted Club during an argument. The victim required no medical attention.

• A Marine was apprehended for assault, communicating a threat, disrespect to a Staff NCO, and disorderly conduct. The Staff NCO reported that there had been a disturbance at the Enlisted Club. MPs learned that the Marine had verbally and physically assaulted the Staff NCO. After the Marine had been returned to his barracks by a unit representative, MPs received another report that the Marine had assaulted another Staff NCO while at his barracks. The Marine was again apprehended and released to the Counseling and Assistance Center (CAAC) personnel where he was transported to Tripler Army Medical Center for evaluation.

• A Marine was apprehended for breach of peace and assault. MPs discovered that the Marine and his wife had been in an argument that resulted in the Marine attempting to choke his her. MPs learned that the Marine was under the influence of alcohol at the time of the altercation. The dependent wife was treated and released by the Branch Medical Clinic for cuts to her face.

To report a crime, or any suspicious activity on the Air Station, please call the Military Police Department's 24-hour Crime Stopper number at 257-2123.

Customs and Courtesies

What's Your Call?

(From page A-11)

A. It is improper to render a salute while mounted on a bicycle. Sgt. Bird dismounts, comes to attention, and salutes.



Yes



No



Hawaii Marine Ads

MISC.

GENERAL Electric washer and dryer. Heavy duty. Excellent condition. Asking \$400. Call 254-1052.

GOING to the Mainland. Have I got a deal for you. Sears Kenmore Series 80 washer & dryer. \$499⁰⁰ OBO. Call 257-3289 DWH or 239-4503 AWH.

BASSETTE baby crib & mattress. Excellent condition. \$130.00 firm. Baby playpen \$20 firm. Call 254-4989 after 3:30 pm.

WASHER & dryer, gold, white, good cond., \$75 each. \$150 for both. Call 254-2613 after 6 p.m.

CONVECTION toaster oven \$20. Call after 3:30 254-4989.

ONE way ticket either direction between Honolulu and San Francisco. Exp. Dec. 31, 1988 \$140 OBO. Call Lynn 263-2573.

AUTO

'74 CUTLASS Supreme. Runs good. PS, PB, PW, New trans/stereo. Leaving must sell. \$800 OBO Call 254-4983, Jeff.

'84 CHEVY Cavalier 4-dr AT. Great cond. No rust. Sanyo AM/FM cassette. Good tires. \$3500 OBO. Call 254-1375.

'73 TOYOTA Corolla station wagon. New tires, battery. Good condition. A little rust. Excellent 2nd car. \$600. Call 226-4161 or 239-4050.

'84 TOYOTA van customized 5-spd. Fully loaded. Low miles. No rust. Bra, luggage rack, sacrifice \$8500. Call 254-4177 5 p.m.

'81 FORD Escort 4-dr. wagon \$2000 OBO Call 235-6814 after 6 p.m.

LAX

\$249

SFO

SAN DIEGO

CHRISTMAS SPECIAL!

LAX

SFO

*round trip

*Some restrictions apply

\$178

LOTUS INTERNATIONAL

CALL 946-2126 ALA MOANA BLDG. #1901 TA756

MIDAS

SPECIALS

SAVE NOW ON EXPERT CARE

\$10⁰⁰ OFF

BRAKES

\$59 with coupon

per axle

Reg. \$69

•We install new guaranteed brake pads or shoes (semi-metallic pads extra)

•Inspect calipers •Recondition drums or rotors

•Inspect wheel cylinders

•Inspect brake hardware

•Road test your car.

Offer expires 11/30/88

MOST CARS & LIGHT TRUCKS

MIDAS

FREE BRAKE INSPECTION

\$10⁰⁰ OFF

MIDAS® GOLD MUFFLER

Guaranteed for as long as you own your foreign or U.S. car or truck.

Bring Midas anyone's written estimate for installing mufflers or brakes and we'll meet it or beat it, no ifs, ands or buts. Going someplace else could cost you.

Offer expires 11/30/88

*Off regular price

\$50⁰⁰ OFF

Reg. Price

MIDAS REBUILT TRANSMISSION

Offer expires 11/30/88

FREE INSPECTION AND ESTIMATE

MIDAS

\$24⁹⁵

most cars

4 WHEEL BALANCE AND ROTATION

Reg. \$40.00

MIDAS

•Computerized balance

•Four tire rotation

•Check inflation on all tires

Offer expires 11/30/88

DISCOVER

VISA

MIDAS

Good w/coupon at Hawaii Shops

HOW LOCATIONS TO SERVE YOU

BERETANIA 536-1818

KAIMUKI 735-3527

KALIHI 841-7361

KAILUA 262-6544

AIEA 487-6477

PEARL CITY 487-0095

WAIKAPU 677-9157

WAIHANA 622-3991

HILO 935-0045

MAUI 871-9581

7 A.M.-5 P.M.

MONDAY-SATURDAY

NOBODY BEATS MIDAS



LISTEN & WIN!



A Family Christmas in Paradise!



We Bring your Mainland Home ... Home to You!

Enter to win at your military ticket outlet or your favorite Burger King on Oahu.

Entry deadline: Monday, Nov. 28, 1988

EACH WINNER WILL RECEIVE FREE — A TRIP FOR UP TO FOUR FAMILY MEMBERS, INCLUDING...

- Round-Trip Air Fare from the U.S. mainland to Honolulu, departing Dec. 19, returning Dec. 25, 1988.
- Limousine ride to and from Honolulu airport.
- Hotel accommodations in Honolulu.
- Tickets and ground transportation to EAGLE ALOHA BOWL.
- See rules on back of entry blank.

Listen to KDEO TO WIN!



TICKETS AVAILABLE AT:
ALOHA STADIUM,
SEARS AND MILITARY
TICKET OUTLETS.



At A Glance

MCJROTC Vacancy at 9th MCD

The 9th Marine Corps District has an opening for an enlisted Marine instructor at the Marine Corps Junior Reserve Officer Training Corps in River Rouge, Mich.

Applicants for the position must be retired staff NCOs with at least 20 years of active service. Applicants must be drawing retirement pay, possess a high school diploma and must have spent one tour of duty at a training command, on recruiting duty, or on inspector/instructor duty.

Interested Marines who are retired or who will retire in the near future may contact Capt. Brian Goodson at (913) 236-3520/3521, or Autovon 465-3520/3521, for additional information.

Castle Medical Hosts 'Mocktail Party'

A holiday "Mocktail Party," featuring non-alcoholic beverages, will be held at Castle Medical Center's Health Promotion Center Monday, Dec. 5 at 7 p.m.

During the party, there will be demonstrations and tastings of various non-alcoholic holiday drinks that can easily be made for private

parties. All participants will get "mocktail" recipes. Non-alcoholic beverages and wines which can be purchased from local stores will also be on display.

The fee is \$5 and RSVPs are required. Reservations may be made by calling the Castle Health Promotion Center at 235-8737.

Recruiter Assistants Sought

Several recruiting stations across the U.S. are looking for Marines to serve as TAD recruiter assistants during the upcoming holiday season.

Marines can spend up to 30 days at home while helping the local recruiting effort, and permissive TAD does not count against leave balances.

The following are the recruiting stations and their points of contact:

RS Dallas, Texas - GySgt. McFarland - (214) 905-9278/9270

RS Long Island, N.Y. - MGySgt. Gavin - (516) 228-3686/3678

RS Kansas City, Mo. - MSgt. Williams - (816) 374-6264

RS Orlando, Fla. - SSgt. Devitt - (407) 240-2113

Christmas Food Drive

The Staff NCO Wives Club is collecting food and money donations for the Christmas

Food Drive. Those interested in donating should contact the Armed Services YMCA outreach office at 254-4719/4965.

Celebrities Open Home to Visitors

The Hawaii State Chapter of the American Red Cross is holding an "Exceptional Homes Tour" as a fundraiser Dec. 18, 10 a.m.-4 p.m.

Leading Honolulu citizens will open their homes to visitors who will sing Christmas carols and tour the homes.

The tax-deductible donation/entry fee is \$11. For more information, call 734-2101.

Tripler: 'Pardon the Delay'

Tripler Army Medical Center is asking patience of callers who may be inconvenienced temporarily by the installation of a new Central Appointments computer system. The system is designed to speed the appointment process.

The initial delay is due to the requirement to get routine information from patients which will be loaded into the computer, and available for swift access during subsequent calls.

Red Cross CPR Course

The Hawaii State Chapter

of the American Red Cross will offer a Multi-Media Standard First Aid course Saturday from 8 a.m.-4 p.m. The class is open to anyone and preregistration is required. Registration is being taken at the Kaneohe Red Cross Office, located in Building 455, next to the 7-Day Store. For more information, call 254-6217 or 254-5575 weekdays between 7:30 a.m.-3:30 p.m. Class size is limited to the first 10 paid participants.

City Christmas Tree Lighting Debuts

"Honolulu City Lights," the city's annual Christmas lighting celebration, debuts Thursday, Dec. 8, when Mayor Frank Fasi lights the 50-foot city tree on the front lawn of Honolulu Hale.

The illumination ceremony will trigger the lighting of 16 blocks of building facades and trees linking downtown Honolulu with the capital district and the Civic Center.

Five free events at various locations in the Civic Center will also be part of the festivities.

After opening night, the 16-block "Honolulu City Lights" display will remain visible nightly through Jan. 3. The public will be able to view the Christmas tree and a wreath display in the Honolulu Hale courtyard from Dec. 8-26.

Family Services

New Arrivals Island Tour

The New Arrivals Island Tour is held the second Friday of each month. The Family Service Center offers this orientation program to new arrivals within their first three months on Station. The tour is open to both single military members and to those with families. Learn about the culture of Hawaii from guest speakers and a videotape. A bus tour around the island and a picnic lunch on the North Shore completes the day-long excursion. Dress casually and pack a lunch. Sodas are free. For reservations, call 254-1541/42/43.

Commissary Money Savers

CORRECTION! The coupon and refunding group will meet on Wednesdays, 7-8:30

p.m. at the Family Service Center. Would you like to save money when you check out of the commissary? Can you use some money-saving ideas to get you through the holidays? Learn all about coupon and refunding programs and double-your-coupon value days by coming to the Wednesday evening group. No reservations are needed. For information, call Mary at 257-3312.

Weight Control Group

A free support group for anyone desiring help in losing weight meets Tuesdays at the Family Service Center, 10:30-11:30 a.m. Discussion on overeating behavior, menus and nutrition, stress management, building self-esteem, and motivation help participants learn to control their eating behavior. No reservations are required.

Movies

Family Theatre
7:15 p.m. nightly
254-2113

Tuesday,
Wednesday

Bambi—classic/animated (G) the timeless Walt Disney classic, first featured in 1942.

has drunk himself into a homeless state after a series of anxiety-causing conflicts. He tries to find work, but is thwarted at every turn while his wife once again adapts to waitressing.

Monday

Brazil—Sci-Fi comedy (R)—Robert DeNiro. Science fiction movie about a society reduced to second class status serving machines and the war waged by Robert DeNiro and rebel Jill Greist against the establishment.

Friday-Sunday

Arthur 2 — on the Rocks — comedy (PG)—Dudley Moore. An amusing romp where Arthur

Special Services

Santa's Village

Dependent Recreation will once again sponsor Santa's Village Dec. 10. This special holiday event is expected to be bigger and better than last year. If your organization would like to participate, please contact the Dependent Recreation Center at 254-2963.

Christmas Tole Painting

Tuesday morning classes and Thursday evening classes have been scheduled for Tole Painting in December. The Tuesday class starts Dec. 6, 9-11 a.m., and runs for four weeks. Thursday classes start Dec. 1, 6:30-8:30 p.m. and run for four weeks.

Projects include reindeer, a stocking, and Christmas tree ornaments.

The cost is \$25. Call 254-2963 for more information.

Projects are on display at the Dependent Recreation Office in Building 1391.

Rag Baskets

The next session for rag basket classes is scheduled for Dec. 6 and 13, Tuesday evenings from 7-9 p.m. Cost is \$10. The coil and instructions are included. Bring one yard of material of your choice. Finished basket size is approximately 10 inches. Choose from several different designs. Display at Dependent Recreation. Call 254-2963 for more information.

Semper Fit

Have you been to the Main Gym exercise room lately? Dependent Recreation's Semper Fit program has a new, safer, cushioned floor to make exercising more enjoyable. Come out and try it. Call Dependent Recreation for more information.

tion for more information at 254-2963.

Classes are held five days a week, with free PT for active duty personnel at 11:30 Mondays through Fridays.

Youth Basketball

Registration will be held at Dependent Recreation through Nov. 25 from 7:30 a.m.-4:30 p.m., Mondays through Fridays.

All applicants must be accompanied by a parent or guardian. For more information, please call 254-2963.

Bestsellers

The Station Library has added many new best-selling books to its collection. New novels that are currently on the Best-sellers list include:

"Cardinal of the Kremlin" — Clancy
"Breathing Lessons" — Tyler
"Till We Meet Again" — Krantz

"Alaska" — Michener
"Koko" — Straub
"Silence of the Lambs" — Harris
"Bonfire of the Vanities" — Wolfe
"Love in the Time of Cholera" — Marquez
"Shell Seekers" — Pilcher
"Final Flight" — Coonts
"Sword Point" — Coyle
"Tracks" — Erdrich

Telephone Reassurance

The Hawaii State Chapter of the American Red Cross announces that its Telephone Reassurance Program is still flourishing after six years.

The program involves volunteers who periodically call to check on the well being of elderly or incapacitated persons who live alone.

If you wish to refer clients or want to become a volunteer caller, contact Traci Smith at 622-1899.

Tickets

The Station Ticket office, located in the lobby of the Station Theater (Building 219), is open daily from 9 a.m.-3:30 p.m. and 9 a.m.-1 p.m. Saturdays. Call 254-3304 or 254-6286 for more information about any events.

Pro-Am spectator

passes, \$5; Senior Pro-Am, Sunday;

Honolulu Community Theater — "The Mousetrap" — Agatha Christie's Eerie comedy. Tickets are \$7, \$10, and \$12 for tomorrow through Dec. 11's shows;

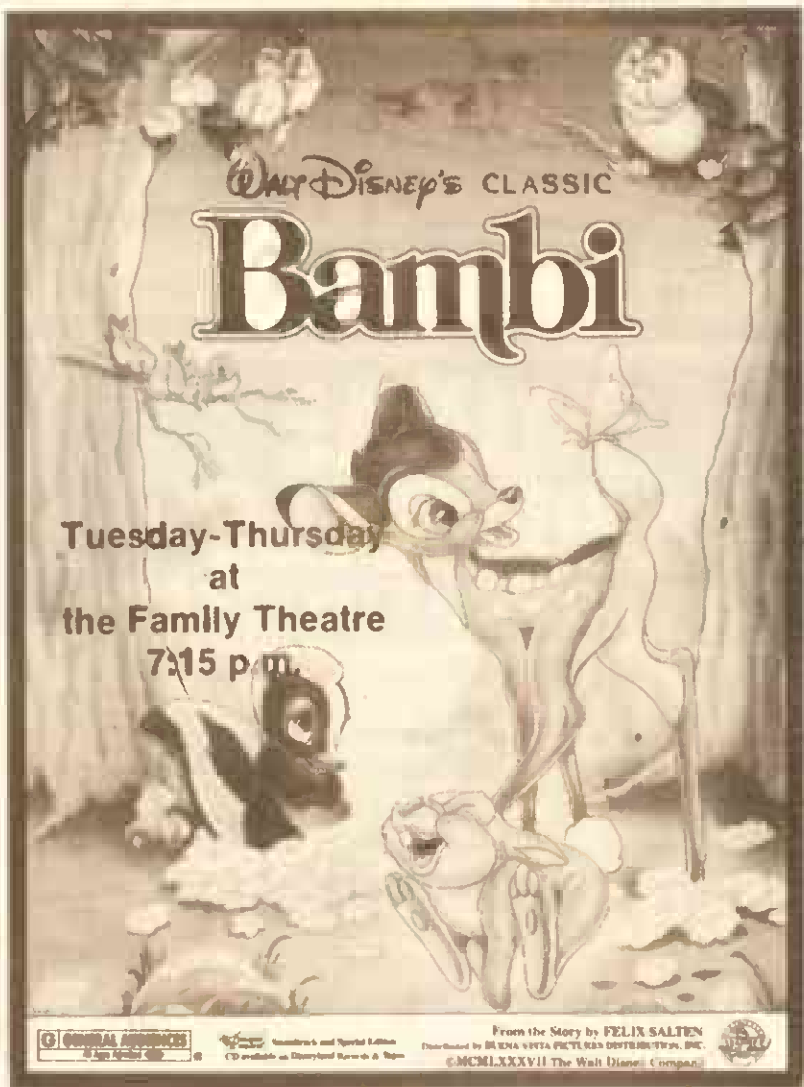
Honolulu Symphony performances. Special "Hawaiian Christmas" program Dec. 16 and 17 is Handel's "Messiah" with the Symphony Chorus.

Deep Sea Fishing Boat — All-day fishing for \$280 for four; \$345 for five and \$405 for

six. Catch the big ones with Captain Hank.

Consolidated Theater tickets are available for \$3.75.

Honolulu Comedy Club features political comic Jeff Gerbino and Tamayo Otsuke from Tokyo through Sunday.



RESUMES

and SF171's

Pearl City

- **Military Specialist**—so you don't have to keep explaining all your terminology.
- **Award Winning Writer**—to put you in the best possible light.
- **Laser Set Availability**—to set you out in a crowd.
- **Mainland Job Search**—start looking for your new job today.



455-1177

COMPLETE
BUSINESS
SERVICES

A-1 TAILORS

FAST 1-DAY SERVICE

Available

MON.-FRI., 9-5:30; SAT., 9-4;

The Best Is Getting Better

Between Jack-In-The-Box and Craigs Bakery

333 Uluniu St.
262-7844

JOSEPH P.H. AHUNA, JR. ATTORNEY AT LAW

- Traffic Accidents
- Personal Injury
- Wrongful Death
- Workers Compensation
- Criminal Defense

Kaneohe Business & Professional Center
46-005 Kawa St., Suite 101
Kaneohe, HI 96744

235-4000



The Hair Cellar is Now in Kaneohe!

46-005 Kawa St., Ste. #104
(Across from Windward Mizud)

235-8878



Vanessa Tracy Janice

Hours: Tues-Fri 10-6
Sat. 9-4
Evenings by appt.

Leisure Curls \$65.00
TCB & Care Free Curls \$50.00
Relaxers \$30.00
Includes Conditioner
(Haircut Extra)
Body Perms \$35.00
Hair Styles \$17.00
Shampoo, Haircut, Blow Dry
We Do Finger Waves,
Braiding, & Hair Weaving
Long Hair Slightly More
All Prices Subject to State Tax

THE HAIR
CELLAR

ORDER NOW
For The
HOLIDAYS!

Good N' Natural
NOW TAKING ORDERS
FOR
Holiday Pies and Pastries
PUMPKIN-APPLE-CHERRY CRUMB
Old-Fashioned, Homemade, Whole Wheat &
DELICIOUS!

Open 9am-5pm/Food Bar Open 9am-3pm

COSMETICS-GROCERIES-VITAMINS-FOOD BAR
124 Oneawa St. Kallua Call: 261-0353

USASCH Entertainment

Army Community Theater presents

IRVING BERLIN'S
CALL ME MADAM

November 25 & 26 1988

Fort Shafter Richardson Theater
December 2 & 3, 1988
Schofield Barracks SGT Smith Theater
Curtain time is 7:30 PM each evening

\$8.00 General Admission

OPEN TO THE PUBLIC

For more information call 655-9081



CONGRATULATIONS — LtCol. Peter S. Morosoff, commanding officer of 1st Bn., 12th Marines, congratulates high school diploma recipients from Btry. F, Oct. 24. The diplomas were awarded from City Colleges of Chicago. The battery now has 100 percent high school graduates, according to 1stLt. Roger A. Garay, the battery's education officer. The graduates were: LCpls. Bolivar J. Piloza, Jr., Benjamin Villegas, Daniel E. Metivier, Todd J. Palmer, Marvin L. Robinson, Vernon L. Skipper, and PFC Alfred Robles, Jr.

Armed Services YMCA

Prenatal Exercise Classes

Expectant mothers can exercise the safe way with Tracey Villiger, RPT, beginning Nov. 28, from 1-2 p.m. Classes will be on Mondays and Thursdays from 1-2 p.m. for three consecutive weeks. Fee is \$7.50 for the six classes. Call 254-4719/4965 to register.

Upcoming Events

Dec. 7, Christmas Ceramic Ornaments Paint-

ing Workshop with Pennie Sosinski and Dec. 15 - holiday shopping at Hickam and Pearl Harbor Exchanges, via the ASYMCA van.

Women's Awareness Programs

Nov. 30 — "Hawaiian Christmas Angels" with Bea Krauss. Using traditional Hawaiian materials, Bea will show guests how to make these beautiful tree toppers. Call to sign up. Fee is \$1.25.

Religious Services

Aloha Jewish Chapel Pearl Harbor 471-0050

Friday
8 p.m. — Shabat
Saturday
10 a.m. — Shabat and Torah Study

Kaneohe Bay 257-3552

Weekdays
11:45 a.m. — Catholic Mass
Fridays
Noon — Jumah Prayer Services, Bldg. 401.
Saturdays
6 p.m. — Catholic Mass
Sunday
7:30 a.m. — Catholic Mass
8:30 a.m. — Protestant Communion
9:30 a.m. — Protestant Sunday School, Pre-School, Bldg. 1391
9:30 a.m. — Catholic Mass
11 a.m. — Protestant Worship
1 p.m. — Samoan Congregation

Confraternity of Christian Doctrine for Catholics is held on Mondays. Pre-School through Kindergarten levels are taught at the Chapel, 3:45 to 4:45 p.m. Grades 1-2 are taught at Mokapu Elementary School, 6:45 to 7:45 p.m.

Camp H.M. Smith 477-5098

Sunday
8 a.m. — Catholic Mass
9:30 a.m. — Protestant Worship
9:30 a.m. — Protestant Sunday School
Tuesday
11:30 a.m. — Catholic Mass
Wednesday
6:45 a.m. — Prayer Breakfast
7 p.m. — Choir rehearsal
Friday
11:30 a.m. Catholic Mass

ARRESTED FOR DRUNK DRIVING?
CALL
NOAH D. FIDDLER
Attorney at Law
Free Consultation
545-7400
828 MILILANI ST.
HK BLDG. SUITE 612
261-3233
PALI PALMS PLAZA
970 N. KALAHEO
SUITE A-210

Salutes

HMM-165

Welcome Aboards
PFC M.J. Statler
LCpl. J.B. Kimbro
LCpl. D.J. Madden
Sgt. S.E. Post
1stLt. M.P. Bruen

Promotions

LCpl. C.S. Carmoney
LCpl. W.T. Craig

Navy Achievement Medal

SSgt. A.J. Sayama

Meritorious Mast

Sgt. J.M. Gjin

Letters of

Appreciation
LCpl. D.L. Roush
LCpl. R. Serafin
Cpl. A.L. Lent
Cpl. L.M. Nichols
Sgt. R.D. Cloutier

1st Bn., 3rd Mar.

Welcome Aboards
Pvt. C.B. Bane
Pvt. J.O. Cartagena
Pvt. D.L. Klitzke
PFC M.T. McClure
PFC R.L. Rowe
Cpl. T.J. O'Brien
1stLt. L.J. DeFrancisci

Promotions

LCpl. B.D. Roberson
Cpl. S.A. Basaldo

Good Conduct Medal

LCpl. G.A. Williams

B Co., 7th Comm. Bn.

Promotions
LCpl. T.S. Alexander
LCpl. R.A. Beighley II
LCpl. J.W. Jones
LCpl. R.M. Kent
LCpl. G.N. Phass
LCpl. K.B. Schmitt
Cpl. P.G. Melhado
Cpl. O.J. Silvey
Sgt. P.R. Elliis
Sgt. M.K. Hasan

Navy Achievement Medal

Sgt. P.M. Broadway

SOMS

Promotions

LCpl. J.J. Bloss
Cpl. R.G. Frie Jr.

1st Radio Bn.

Meritorious Promotion
Cpl. D.A. Dougherty

Certificate of Commendation

Cpl. J.B. Abrams

Meritorious Mast

Cpl. R.J. Gilfert Jr.

Biennial Maintenance Command

Navy Commendation Medal

MSgt. D.L. Stovall

20 Year Retirement

MSgt. D.L. Stovall

H&HS

Promotions

Cpl. R.L. Brun
Cpl. L.M. Farrell
Cpl. M.L. Jones
Sgt. T.A. Cornilsen
Sgt. T.B. Olson
Sgt. M.A. Pirtle

Good Conduct Medal

LCpl. W.C. Johnson

Navy League Award

Capt. A.P. Fazio

HMM-265

Promotions

LCpl. F.D. Davis
LCpl. T.E. DeZotelle
LCpl. W.F. Starzynski
Cpl. T.J. Emanoff
Capt. J.C. Cunningham
Capt. B.H. Hunt

Good Conduct Medals

Cpl. T.J. Emanoff
Cpl. M.E. Patton

MACS-2

Welcome Aboard

SSgt. M.A. Needel

Promotions

Cpl. J.W. Bow
Cpl. Y.R. Bow

Good Conduct Medal

Cpl. M.J. Baldwin

Letters of

Appreciation
Sgt. J.L. Krizek
SSgt. T.J. Johnson

Reenlistments

LCpl. J.R. Oakley
Sgt. M.L. Rauenhorst
Sgt. D.P. Singleton

Marine of the Quarter

LCpl. B.L. Green

NCO of the Quarter

Cpl. C.W. Scott

BSSG-1

Welcome Aboards

Pvt. E.P. Roberts
Pvt. T.L. Selcer

PFC S. Curry
PFC H.M. Navarro
LCpl. N.P. Dorman
LCpl. M.D. Vickers
Cpl. M.D. Boffeli
Cpl. G.L. Harrison
Cpl. J.R. Kerruish
Cpl. J.S. Kerruish
Cpl. J.S. Smith
SSgt. G.A. Thobis
SSgt. F. Torres

Promotions

PFC M.J. Randolph

Good Conduct Medal

LCpl. J.C. Parry

Meritorious Mast

LCpl. J.C. Parry

Letters of

Appreciation
PFC J. Solis Jr.
LCpl. C.A. Moss
LCpl. V.R. Myrick
LCpl. B.E. Sibert
LCpl. A.J. Volkman
Cpl. L.W. Estes

VMFA-212

Welcome Aboards
LCpl. G.W. Atwell
LCpl. W.S. Busse
Cpl. D.A. Westner

See SALUTES/B-8

KAILUA PAWN SHOP
"Windward's Only Pawn Shop"

ANTIQUES • JEWELRY • GOLD
DIAMONDS • GUITARS • CAMERAS • TOOLS

NEED FAST CHRISTMAS CASH?
COME TO THE PEOPLE YOU CAN TRUST

SERVING THE WINDWARD SIDE FOR 7 YEARS
OPEN MONDAY — SAT. 9-6

262-8688 NEXT DOOR TO WINDWARD CHECK CASHING SERVICE 438 ULUNI ST. KAILUA



DETROIT ITALIAN DELI NO. 121

FREE DELIVERY*
*(\$10 Minimum Order)
KMCAS ONLY 4 PM-8PM

2 FOOT LONG SUBMARINES \$10
BUY ANY 2 WHOLE SUBMARINES FOR JUST \$10
Hot Subs 2 For \$12.00!
EXP. 12/14/88 w/Coupon
Not valid with other offer

MO-TU-SAT 10:00-8:00
SUNDAY 11:00-4:00 121 HIKILI ST. **262-DELI®**

2ND PACIFIC OCEAN MUSIC FESTIVAL
STARRING

92X FM
WITH SPECIAL GUESTS
BARBEE BOYS AND HAWAII'S OWN... **PASSION**

DEC. 19 • BLAISDELL ARENA • 7:30 PM
TICKETS AVAILABLE AT BLAISDELL BOX OFFICE AND SEARS OUTLETS.

HAWAII'S LARGEST SELECTION OF CHILDREN'S BICYCLES
BICYCLES FOR CHRISTMAS
MONGOOSE • SCHWINN • GT • HARO • DIAMOND BACK • KUWAHARA • NISHIKI • CYCLEPRO • DYN0

Kuma Club NISHIKI
• Available in Pearl Soft Pink or Lavender
• Two wheel sizes
16" wheel size for 4 to 7 years old
20" wheel size for 7 to 11 years old
• FREE Official Kuma Club Membership Kit!

\$139.95

SALE
GT Vertigo America's most popular Freestyle bike \$219.95
FUJI Odessa 12-Speed City Bike w/Accu-shift Regular price \$249.95 \$219.95
SCHWINN Air-Dyne Exercise upper and lower body muscles as well as aerobic conditioning indoors Regular price \$649.95 \$629.95
GT 6-Speed Cruiser Was \$189.95 \$169.95

Scooters by MONGOOSE
12" Scooter, regularly \$109.95 \$99.95
14" Scooter, regularly \$189.95 \$129.95

CLOSE-OUT on older model HARO FREESTYLE Bikes up to \$100 OFF.

HONOLULU 531-7071
1149 South King St. Between Pensacola and Pihai

AIEA 487-3615
98-019 Kama Hwy. Near Cutter Ford

HAWAII KAI 396-6342
Hawaii Kai Shopping Center

KANEOHE 235-8722
Windward City Shopping Center

Sale ends 12/24/88

CHRISTMAS LAYAWAY PLAN and GIFT CERTIFICATES AVAILABLE

GOOD THINGS ARE COMING DOWN



Santa Arrives Friday at 10am

Santa's coming, and he's bringing friends!

Join us at Center Court for his arrival with Mrs. Claus and the cast of Ballet Hawaii's "Nutcracker." You'll be entertained by dancing dolls, toy soldiers, and more!

WINDWARD MALL

Shop in cool comfort at 100 of Hawaii's favorite stores. We're open late every night in December for your Christmas shopping convenience.

DEPARTMENT STORES:

Liberty House
J.C. Penney
Sears Roebuck & Co.

WOMEN'S APPAREL:

Casual Corner
Contempo Casuals
Cotton Cargo
Foxmoor Casuals
Hartfields
Hartfields Plus
Jay Jacobs
Jeans Warehouse
Mako's
Penthouse
Rags In Motion
Rosebuds
Villa Roma
Wildflowers

MEN'S APPAREL:

Body Shop
Jay Jacobs
Jeans West
Kramer's
Oak Tree

SPECIALTY/CHILDREN'S

APPAREL:

Bubble Gum
Crazy Shirts
Get Wet
High Gear
Local Motion
Trapeze

JEWELRY:

14 Karat Plum
A & A Diamond Center
Gold Corner
Gold Mart
Granat Brothers
Hildgund
Zales

SHOES:

Footlocker
Kinney Shoes
Leeds
Robins
Thom McAn

CARDS, GIFTS & BOOKS:

Delirious
The Giving Tree
Hopaco Stationers
Jenai's Hallmark
Please Read To Me
Sentimentally Yours
Something Special!
Special Dreams
Splendors of The World
Waldenbooks

SERVICES:

Eyewear Hawaii
Fromex One Hour Photo
Hawaii Family Dental Center
King's Den Haircutters
Liberty Bank
The Model... You!
Phone Mart
Regis Hairstylists
Straub Family Health Center
Windward Pharmacy
GBC Boxes & Packaging

HOME FURNISHINGS/ APPLIANCES/MUSIC:

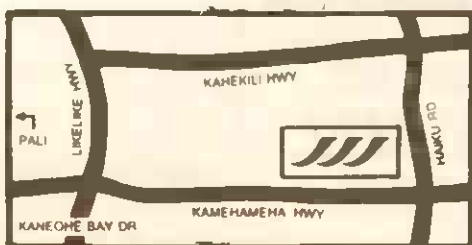
BJ Furniture
Baldwin Sanders Piano & Organ
Basic Concepts
ComputerLand
Frame Shack
JR'S Music
Radio Shack
Scan Gallery
Video Vision
What's Cookin'

SPECIALTIES:

General Nutrition Center
The Hobby Company
Honsport
Kay-Bee Toy & Hobby
Koolau Pets
Koolau Pets Gifts
Merle Norman Cosmetics
Pflueger Auto Leasing
Pro Image
Tilt
Windward Beauty Supply

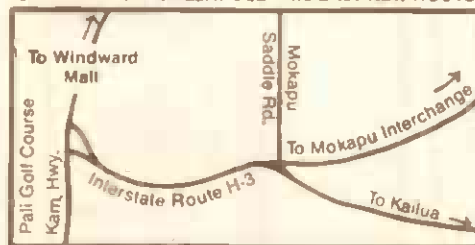
RESTAURANTS & FOOD SERVICE:

Arby's
Baskin-Robbins Ice Cream
The Food Court:
Cinnabon
Cookie Corner
Deli Express
Double Rainbow
Harpo's Pizza
Little Tokyo
Patti's Kitchen
Yummy Korean BBQ
Hot Dog On A Stick
McDonalds
Marie Callender
Maruki Tei
Morrow's Nut House
Mrs. Field's Cookies
Orange Julius
Seeds 'N Things
Yami Yogurt
Hickory Farms



**KAMEHAMEHA HIGHWAY
& HAIKU ROAD, KANEOHE**

COMING FROM KAILUA? USE THIS EASY NEW ROUTE.



WINDWARD MALL

100 Stores and Growing Strong

WINDWARD MALL

Open Thanksgiving Day
Breakfast & Lunch
until 5 PM



Yami's
Restaurant

Open For
BREAKFAST
LUNCH
DINNER
.....
BAKERY SPIRITS

Pies will be
available for pickup
Thanksgiving Day
Call ahead to
reserve your
favorite pie

Live Entertainment
Friday Nights
9:00 p.m.-Mid.
Hours: Sun.-Thurs.
7:00 a.m.-9 p.m.
Fri. & Sat.
7:00 a.m.-10 p.m.

Call ahead to order your pie

235-6655

Located on ground floor next to Liberty House

PINT SALE
\$1.58
With Coupon
Regular \$2.30
Limit 3 pints per coupon

ONE PINT YAMI SOFT
FROZEN YOGURT

Yami Soft Frozen Yogurt is made fresh daily right here in Hawaii. The Major health benefits to be derived from Yami Yogurt are a direct result of THREE LIVE CULTURES—working toward a healthier you, and its 97% FAT FREE!

YAMI YOGURT
WINDWARD MALL

Valid
Nov. 25, 26, 27

Christmas Studio Special
Only \$49.95

Includes:
Sitting Fee*
One 8x10 Enlargement
Two 5x7 Enlargements

Plus
50 Christmas
Cards

FROMEX
Photo Systems

Studio on premise
Call for appointment
247-6737

WINDWARD MALL

Offer good through Dec. 25
copy neg. available

*Maximum of 4
people in sitting

WINDWARD PHARMACY
Richard Thompson, RPH

Prescriptions:

- FIRST AID SUPPLIES
- GIFTS
- SNACKS
- TOBACCO
- SENIOR CITIZENS DISC.
- COSMETICS
- COPYING SERVICE
- POSTAGE STAMPS

235-6416
M-F 9am-9pm
Sat. & Sun. Mall Hours
WINDWARD MALL
2nd Level
Next to JCPenney

HOLIDAY SPECIALS

MARINELAND
penguin
POWER FILTERS

• Overflow window clearly
tells when to change filter
cartridge • Unit construc-
tion: no separate motor
unit, no leaks possible
• Comes with most efficient
highest quality filter cartridge.



PENGUIN POWER HEAD MODEL 550
• Directs and diffuses water
flow without reducing
gallons per hour • Adjustable
jetation without affecting
flow rate • Fully submersible
and good for saltwater

Penguin
Power Filter
Model 300
\$2495

Penguin
Power Filter
Model 160
\$1795

Penguin
Power Filter
Model 110
\$1595

Penguin
Power Head
Model 550
\$1495

ENHANCE YOUR
UNDERWATER WORLD
WITH THESE SPECIALS
AND MORE!

MADE BETTER IN THE USA

Visit

our new
Gift Shop
Next to Morrow's Nut House

Gift wrapping and
layaway available

**KOOLAU
PETS**

Windward Mall
235-6577

Handcrafted Gifts
and
Christmas Decorations
From around the World

Save 20%
on
Wall Hangings

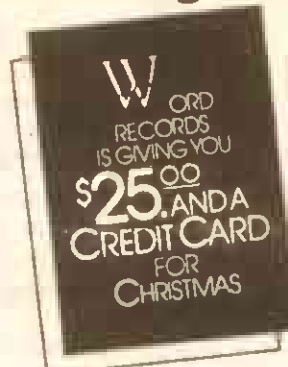
We have Menorahs &
Chanuka Candles
Gift Certificates and
Layaway Available
Sale Ends 12/4/88

Splendors
of the World

WINDWARD MALL
KANELOE, HI
247-8837

THE GIVING TREE

Now at The Giving Tree . . .



For information stop by
Now through Dec. 25th

the Giving Tree

Windward Mall
247-8775
(Upstairs near JCPenney)

FREE
*Glorious
Gifts*

GLORIOUS LIP AND NAIL COLORS FREE
WITH ANY \$13.50 MERLE NORMAN PURCHASE.



Imagine, five dazzling beauty
accents, free. And what a gift!
Includes: a duo of luminous
lipsticks, long-wearing Nail
Glaze plus lip-perfecting
Trimline Lip Pencil and Extra
Rich Hand Cream. One per
customer while supplies last.
Bring this ad to redeem free
gift. And for your purchase,
we recommend a new holiday
look from Merle Norman's
glorious color collection.

MERLE NORMAN STUDIO

Windward Mall 235-5064 Kahala Mall 737-3086

QUANTUM EXTRA



A look
that's ahead
of it's time.
SALE \$52

Quantum reg. perm
Reg. \$58 Sale \$48
20% OFF all Salon Master
Appliances

Midweek Special: Sebastian
Products 20% OFF

Reg. \$63 There was a time when I
thought standing out from the crowd
meant you had to spike your hair or
dye it green, but now I know that a
naturally beautiful style is the most
outstanding look of all. Even hair
that's been overworked can stand up
to the super-gentle Quantum™ Extra
perm by Helene Curtis. With the
great deal I got that includes a
shampoo, cut and style at the
JCPenney Styling Salon, Quantum™
set me apart from the everyday.

Sale prices effective through Saturday Dec. 3.
Long hair slightly more.

The Styling Salon at

Open on Sundays!
9:00-5:00

Windward—235-4224

JCPenney



GBC Now at the Windward Mall!



Let GBC Boxes and Packaging be your
Christmas secret weapon! We'll save you
time because we have everything you need
for gift wrapping all in one place.

- Christmas shopping bags
- Christmas gift boxes
- Gift wrapping supplies
- Shipping and mailing boxes
- Packing and cushioning materials

- Tape, mailing bags
- Gift tags, and more.

Best of all, if you need ideas for gift
wrapping or packing, just ask us! We'll have lots
of great tips for you. See us today at
Windward Mall between Penney's and
Sears, we'd love to see you!

GBC Boxes & Packaging

- 419 Waiakamilo Road
(between Nimitz & Dillingham) 845-9331
- Windward Mall 247-3405
- Royal Hawaiian Shopping Center



SALUTES/from B-5

Sgt. R.M. Feisthamel

Sgt. S.M. Treacy

Sgt. B.L. Wilkins

Sgt. J.A. Williams

SSgt. J.K. Howe

SSgt. J.W. King

SSgt. J.J. Stasiulis

MSgt. D.G. Gayle

Maj. N.P. Mammarella

Promotions

LCpl. G.W. Atwell

Cpl. J.A. Doerr

Cpl. D.M. Hamlin

Cpl. K.K. Ludwig

Cpl. E.A. Tobin

Cpl. E.A. Wolf

Sgt. M.A. Hawkins

Sgt. J.E. Montgomery

Sgt. S.A. Wise

Navy Achievement Medal

Sgt. M.A. Hawkins

Good Conduct Medal

Cpl. M.J. Benike

Meritorious Masts

LCpl. D.L. Gatlin

LCpl. M.W. Glisson

LCpl. J.J. Jones

LCpl. D.A. Martz

LCpl. F.A. Minarik

LCpl. T.W. Mitchell

LCpl.T.R. Voss

LCpl. M.L. Weaver

LCpl. J.M. Wicka

Cpl. K.R. Glazier

Cpl. J.L. Lewis

Cpl. J.E. Montgomery

Cpl. J.G. Priaco

Sgt. S.A. Wise

HMM-262

Meritorious Promotions

Cpl. D.B. Dickens Jr.

Cpl. J.R. Lege

Promotions

LCpl. R.C. Inch

LCpl. D.K. Kaaihue

LCpl. R.D. Vega

LCpl. B.S. Wolin

Cpl. C.F. Dehn

Cpl. D.F. Harris

Cpl. J.W. Lindell

Cpl. S.M. Timmons

LtCol. F.J. Geier

Good Conduct Medals

Cpl. P.J. McDonald

Cpl. S.M. Timmons

Meritorious Mast

LCpl. S.S. Douglass

Letters of Appreciation

LCpl. A.J. Aupperlee

LCpl. M.D. Braun

LCpl. E.E. Myers

LCpl. C.B. Schroeder

LCpl. R.D. Vega

HM3 D.G. Loftis

Sgt. D.E. Beatty

Sgt. V.A. David

Sgt. B.M. Vilardofsky

Sgt. T.W. Young

1stLt. C.C. Foster

Marine of the Quarter

LCpl. L.L. Sweet

NCO of the Quarter

Cpl. R.E. Murray

Aircrewman of the Month

LCpl. D.O. Maldonado

Sgt. C.L. Holwerda

Crew Chief Designations

LCpl. S.T. Woolsey

Cpl. P.L. Wood

1st Bn., 12th Mar.

Welcome Aboards

Pvt. T. Clements

Pvt. G.R. Melancon

PFC W.C. Atkinson

PFC C.N. Odom

LCpl. R.A. Montavon

HN G.A. Russell

Cpl. G.D. Babb

Cpl. R.B. Davis

Cpl. L. Jones Jr.

Cpl. J.R. Washington III

MSgt. N. Hunter Jr.

2ndLt. A. Cook

2ndLt. C.T. Mayette

1stLt. B.F. Mimms

Promotions

LCpl. W.C. Atkinson

LCpl. J.W. Clark

LCpl. D.M. Crowe

LCpl. G.M. Jennings

LCpl. S.L. Tart

LCpl. B.L. Tindall

Cpl. C.M. Arayo

Cpl. K. Evans

Cpl. S.K. Gardner

Cpl. M.A. Martindelcampo

Cpl. T.L. Masters

Cpl. B.C. Olkey

Cpl. D.L. Rost

Cpl. R.T. Sathe

Navy Achievement Medal

Cpl. L.D. Shivers

Meritorious Masts

PFC R.L. Goodfox

LCpl. H.M. Benson

LCpl. S.R. Bogenreif

LCpl. C.J. Gianunzio

LCpl. R.C. Martinez

LCpl. J.D. McDonald

LCpl. T.P. Ryan

LCpl. S.L. Smith III

Reenlistments

Cpl. D.E. Pemberton

Sgt. G.L. Scott

If you have friends or family who use cocaine, give them a rough time. Because if you don't, it's certain the drug will.

COCAINE. IT'S NOT FOR ANYBODY.

A public service message from the Hawaii Council, American Association of Advertising Agencies, and this publication.

THE CLASSIFIED INDEX

Telephone Service

235-5881

Mon.-Fri. 8 a.m.-5 p.m.

Counter Service

45-525 Luluku

Kaneohe

Mon.-Fri. 8 a.m.-5 p.m.

Deadlines:

Line Ads due by 12 Noon - Tuesday

Class Display Ads due by 4:00 p.m. Friday

CANCELLATIONS & CORRECTIONS due by 12 Noon-Mon.

Important Information:

Please check your ad on the first day and bring any error to the attention of Classified immediately.

RFD Publications assumes responsibility for errors in copy for the first insertion only, and any adjustments or credit will not exceed the value of the ad. The publisher assumes no further liability and the advertiser expressly waives any and all claims of consequential damages due to errors.

RFD Publications cannot assume responsibility for the claims or performance of advertisers.

Write an Ad that Works!

1/2 PRICE ad with color coded receipt from carrier, good for 1 week only — during 30 day period.

(Sorry, No Phone Orders Accepted on this Offer.)

1 week

\$2.27 per line

2-4 weeks

\$2.16 per line (per week)

5-8 weeks

\$2.05 per line (per week)

9 weeks +

\$1.94 per line (per week)

TAX INCLUDED (per week)

MidWeek only rates available on request

Deadline: Tuesday, 12 Noon for The Next Issue of Sun Press Newspapers

Name

Address

Bus. Ph:

Home Ph:

Exp

VISA MasterCard No.

PLACE YOUR AD HERE

Allow for each letter, punctuation or space. Please do not abbreviate. Please run this ad in your next issue of Sun Press Newspapers

MINIMUM 3 LINES PER AD

FIRST LINE

2

3

4

5

6

7

No. of Lines

x Cost per line

x No. of weeks

TOTAL COST

Payment must accompany your ads

Sun Press

45-525 Luluku Rd.

Kaneohe, HI 96744

235-5881

SEND A Christmas GREETING

Wish your relatives and friends "Merry Christmas" with a Christmas Greeting to be published Thursday, December 22.

Compose your own Christmas Greeting... It's easy to do!

Clip and mail or call us to place your Christmas Greeting.

Deadline is 5 pm, Monday, December 19.

All ads must be pre-paid. Use your VISA or MasterCard!

3 line minimum \$5.00 tax included for 3 lines \$200 for each add'l line

PLACE YOUR AD BELOW

Allow for each letter, punctuation or space. Please do not abbreviate.

Name

Address

Home Ph:

Bus. Ph:

VISA MasterCard

Exp.

MINIMUM 3 LINES PER AD

FIRST LINE

2

3

4

5

6

7

3 lines \$5

Add'l line \$2

TOTAL COST

Payment must accompany order

Mail to:

Sun Press Classifieds

45-525 Luluku Road

Kaneohe, HI 96744

or call:

Sun Press

235-5881

ADVERTISING REPRESENTATIVE

Applications now being accepted for outside sales position. Opportunity for energetic, self-motivated individual with 2 years sales experience to have a challenging career in the publishing industry. Print, layout & copy writing experience preferred. Salary plus commission & car allowance. Benefits include dental & medical, profit sharing. For interview call:

235-5881

Christopher McMahon

ATTENTION PROPERTY OWNERS AND REALTORS!

PLACE YOUR AD FOR 4 WEEKS AT 1/2 PRICE

(3 line minimum)

HOME

home: one's principle place of residence: a domicile.

Buyers and sellers meet every day in the Classifieds, where value and quality always cost less. Find what you need and sell what you don't need in the Classifieds.

235-5881

We invite you to take advantage of this limited special offer. Please call the classified advertising department

235-5881

DEADLINE 12 NOON TUESDAY

0 Free Bee

FREE: Pit bull/Terrier, spayed, 30 lbs., 1 yr. old female needs perm home. 696-6826

FREE: 5 mo. old puppy Beagle mix, house broken. Call 235-3155.

FREE: black Lab. female, 1 1/2 years old, good w/kids. 834-2310

FREE: Adorable 7 week old male kitten. 423-1115

FREE: Shepherd/Lab., male, 2 yrs. old, white, tame, good with children. Call 235-6947.

FREE to good home: Declawed, neutered, house cat. 623-1263 eves.

FREE: Adult male Chihuahua to a good home. Call 623-2156.

0 Free Bee

FREE: to good home, 7 mo. female kitten, orange tabby. Ph. 422-6161.

FREE: One ginger colored kitten. Born Aug. 29th. 261-0963.

FOUND: Ladies Gold ring Nov. 12 in Waianae Coast area. Call 695-9427.

4 Health & Fitness

MASTERS Personal Fitness. 1 on 1 fitness training. Therapeutic massage. (MAT-1849) 247-2967.

The ACUPUNCTURE Clinic. Helps many ailments. Pain, stress, fatigue. Disposable needles used. Work Comp. & No Fault Ins. Teresa Ayres. 261-0633.

LOSE Weight/Firm up w/o dieting or exercising. Uncond. guar. 682-5039.

0 Free Bee

FREE: Kittens 8-wks. old. Litter trained. Call 259-7718.

LEEWARD PAWN BROKERS

Finest Shop In Pearl City

No Loan Too Big or Small!

•Lowest rates on Leeward side

•Loan on or buy anything of value

•Highest dollar paid for your gold.

•Wanted gold watches & old coins.

•Check us out

•Open 7 days a wk. 9-7 p.m.-Wed. till 5 p.m.

For the best buys in quality merchandise visit our air conditioned showroom

"Million Dollar Buying Power"

945 Kam Highway

(next to Pearl City Tavern)

Call 456-5900

PEARL CITY PAWN

"UNLIMITED BUYING POWER"

LOAN

TRADE

BUY

SELL

HOCK IT TO ME

"K.C. & POPS"

"THE LARGEST PAWN SHOP IN THE ISLANDS"

WE PAY TOP \$\$\$

HIGHEST LOANS offered on anything of value!

LOWEST RATES anywhere!

ALL ITEMS are insured and warranteed!

WE CARE about our customers!

OPEN 7 DAYS, 9-6

488-9723

Behind Cutter Ford in Aiea

WE TAKE IN

•Gold

•Jewelry

•TV's

•VCR's

•Stereos

•Cameras

•Tools

•Musical Instruments

•Sporting Equipment

•Automobiles/Mopeds

25 Personals

25 Personals

25 Personals

25 Personals

25 Personals

10 Cemetery Plots

VALLEY of the Temples — 2 plots \$990 ea; 1 plot \$850/offer. 261-4347

15 Announcements

CRAFTS Fair, Dec. 3 & 4, 9-5 p.m. More vendor info. Call 263-0966.

20 Lost & Found

LOST Medium Sized tan dog w/white feet, short hair & cropped tail. No collar. Answers to Louie, Reward! Kaihua Area. 262-4304.

25 Personals

IS YOUR CAR DIRTY? And you don't have enough time to do it yourself! Lot Ace Pacers Top Quality Car Cleaning Service make your car shine and sparkle. Call Anthony at 261-3985 or leave a message. Reasonable Rates.

PSYCHIC reader will help all problems. Readings by phone. Call (415) 994-6208

Aloha Pawn (Buy, Sell, Loan, Trade) Come see us for best deals in Wahiawa Ph. 622-2898 540 California Ave.

SAVE A BUNDLE

ON YEAR-END CLOSEOUTS

CUTTER MITSUBISHI QUALITY USED CARS

'87 MITSUBISHI MIRAGE 5 spd., AM/FM, radio (CJA-788)	\$6495
'84 SUZUKI FORSA 5 spd., AC, AM/FM, auto (CCT-774)	\$3795
'79 VOLVO 264 GL 4 dr., auto, P/W, AM/FM, case, sunroof (CTR-053)	\$2995
'79 FORD MUSTANG 4 spd., AM/FM, cass, air (AFX-845)	\$2995
'84 TOYOTA TERCEL auto, AC, 5 dr., radio (CCT-005)	\$2795

1988 PRECIS

\$5595

+ dealer installed options

SUPER SPECIALS

'81 PLYMOUTH HORIZON TC3 auto, P/S, tinted windows, black, 4 cyl. (BFU-101)	\$1995
'79 FORD GRANADA 4 dr., auto, clean (AUT-288)	\$895
'85 DODGE 600 4 DR. Air, AM/FM, P/S, P/B, Powerdoor (BYC-322)	\$4695
'85 DODGE ARIES 4 DR. Air, AM, P/S, P/B (LH-787)	\$3295
'79 PONTIAC GRAND PRIX 2 AM/FM, P/S, P/B, Powerdoor, Cass, Powerair (AEA-200)	\$1195

1989 MIGHTY MAX

\$7395

+ dealer installed options

**SUDDENLY, WE'RE
THE OBVIOUS CHOICE**



CUTTER MITSUBISHI

94-149 Farrington Hwy., Waiapahu

Across from GEM • Military Financing is Our Specialty • We Buy Cars

671-2626

25 Personals

QUIT Smoking Today
Results Guaranteed
Certified Hypnotherapist
Call 261-4595.

PAST-lives Regression
Certified Hypnotherapist
Call 261-4595.

NEGATIVE Credit Manag-
ing? Call us for help.
Credit Mgmt. & Resources,
Ph. 247-2303 M-S.

STOP waiting time in sin-
gle bars, you can find the
right person thru modern,
comfortable, discreet com-
puter dating. Call Compu-
Date 926-3283.

RENT a Keiki Ride for your
party, \$75 up. Also pop-
corn, cotton candy, shave
ice, generators & tent ren-
als. 671-3667

NORA'S FLORALS

Plants—
Flowers—
Balloons
\$199 Wedding Special
Wahiawa 624-2272

PSYCHIC Gathering,
Thurs. evenings, channel-
ing, readings, counseling,
healing, Bluester 623-3506

VISA MASTER CARD
GUARANTEED! Bad Credit,
no credit, no problem. To
get application started right
away call 671-8013 or write
94-903 Farrington Hwy. #1
Waiapahu 96797.

SPIRITUAL Counseling
Sensitive healing Chnl.
Tarot, crystals, etc.
Call Harold 261-3422.

MAY the most sacred
heart of Jesus be
praised, honored,
adored and glorified
throughout the world
now and forever. Amen RJS

25 Personals

MASSAGE
by appointment #0204
Call 488-2011

SAILING on gorgeous 56'
Teak yacht. Day/inter island,
weddings, etc. Lowest prices
259-5428/835-1663

LOOKING for persons to
join existing carpool from
Hickam to downtown
Honolulu. Convenient
parking. Call 422-1775.

ERASE debt — establish
AAA credit, loans by mail
Free yourself — easily —
free information Box 12101
Hon., HI 96828

SOLIDARITY T-Shirts \$10.
Call Jan, 737-3876. Support
Solidarnosc

30 Income Tax

TAXES filed late, past yrs.
in your home service. Steve
White MBA 395-7741.

36 Resumes

Jane Lomont's

Windward

Resumes Etc.

Military & Civilian

Writing &
Counseling

261-7524

580 Uluhaku St., Kailua
(Near Castle Hospital)

37 Business Services

PIANO tuning \$35
Satisfaction guaranteed.
David, 624-2394.

37 Business Services

WILL bring vinyl floor sam-
ples to your home. Free
estimates. Wayne (The
Happy Hoie) 259-8110.

JL Handyman Service Home
maintenance. Up to \$100. Ph.
235-6328 evenings.

GOURMET Chinese Food
caterer. House/office/boat
parties up to 300 people.
Jose or Harvey, 486-9693.

NOT enough time for your-
self? Call Errand Runner
and Courier Service for
home or business. Call 398-
2327.

DIAGNOSTIC T-Shirts \$10.
Call Jan, 737-3876. Support
Solidarnosc

30 Income Tax

TAXES filed late, past yrs.
in your home service. Steve
White MBA 395-7741.

36 Resumes

Jane Lomont's

Windward

Resumes Etc.

Military & Civilian

Writing &
Counseling

261-7524

580 Uluhaku St., Kailua
(Near Castle Hospital)

37 Business Services

PIANO tuning \$35
Satisfaction guaranteed.
David, 624-2394.

Clerical/Typing

WILL do typing in my home.
Days call 834-1487, even-
ings, 834-0469.

PROFESSIONAL Typing—
Computer Word Process-
ing. Call Wanda 261-4488.

PACIFIC Isle Contractors
Specialists in kitchen bath
remodeling/addition.
Call 242-0626. Ph. 672-3282.

CONTRACTING/Con-
struction Chris Contract,
Inc. Gen. contracting,
fine home bldg. Addition,
remodeling, all phases of
construction. Free est. Lic.
14220 Insured. 254-2288

D & M CONTRACTING,
INC. Gen. Contractors,
planning & design svcs.,
new homes, additions,
remodeling, all construction
phases. Free est. Lic.
BC14233 & Insured. 239-
4546.

NEW CONSTRUCTION & REMODELING

Need help? We can
assist
•Design
•Building permits
•Financing
WE DO
•Home remodeling
•New Construction
•Complete Assistance
from design thru
finish.
Call 262-8544
Lic. #C11397

HAULING

AAA Fast, reliable light junk
hauling. You call we haul.
263-3736.

GOT things to haul in a
hurry? Have no worry give
Masa a call. 734-1192

PAINTING

LOWEST Rates in town! Ex-
per. Neat eff. work guar. To
\$100. 259-5351/734-6014.

CLEANING

CLEANING, res., incl.
windows. Thorough, major
or reg. 732-8915 lv. msg.

HOUSEPROUD Cleaning
Ser. Res./Comm. Reas.
Satisf. guar. 623-8185

HOUSE Cleaning/ironing.
\$8 per hour. Refs. 262-2745,
keep trying.

PACIFIC Home Cleaning
General — Move Out
Windows — Carpets
Holiday Sparkle — Up
Specials Ph. 487-9460

QUALITY House cleaning at
affordable prices. Call
262-8658

"CLEAN WINDOWS"
Prof. Service since 1968.
Ins. Ronn Albert 524-5411.

CUSTOM Auto detailing &
cleaning. Free est. to \$65.
Call 247-5588.

HOUSE cleaning, wkly. bi-
monthly, one time. Quality
cleaning — reasonable,
reliable. Phone 262-5679

SPARKLE Fresh will clean
your home. Would like to
stay in Kailua & Kaneohe.
239-4918, 239-5142

AL'S Cleaning Service
Houses, apts., commercial
moving in/out. Will do
most cleaning jobs. Call
eves & lv. msg. 261-4976.

IS YOUR CAR DIRTY?
And you don't have enough
time to do it yourself? Let
Ace Pacers Top Quality Car
Cleaning Service make
your car shine and sparkle
Call Anthony at 261-3985 or
leave a message. Reason-
able Rates.

DOMESTIC housecleaning at
affordable prices. Call
523-7457.

Repair

FREE Estimate
Pickup & Del.
TV & VCR REPAIRS
Fast, efficient, reasonably
priced service. 31 years experience
Myson T.V. & Electronics
254-6544

SCREEN & Jalousies
repair. Harveys' Mobile Ser-
vice. We come to you. Free
est. Harvey, 263-4857.

SEWING/Alterations
CINDY'S Alterations & cus-
tom sewing, new location,
629 Kailua Rd., Suite 207
above Penguin. Mon.-Fri.
10-5 p.m., Sat. 9-1 p.m.,
Sun. 1-5 p.m. 261-8613

HANDMADE Quilts: Star
Bethlehem, Windmill,
Double Wedding Ring,
Dresden Plate, fls
full or queen size
beds and king size
waterbeds. Excellent
Christmas gift. 834-4810

YARD Service
FILIPINO Yard Man.
\$20 and up.
Call 842-5903.

A new concept in land-
scape, prof. design, quality
maint. 247-6621, 921-4554.

BYRON'S Yard Service,
affordable prices, free esti-
mate. Call 261-5584.

REMI Yard Service Mow-
ing, trimming, weeding.
Free est. 261-4952

DUKE'S Yard Svc. & Land-
scaping. Quality work at
call or lv. msg. 263-7777.

WINDWARD Yard Service
Mowing, trimming/Maint.
Free estimates.
Phone 262-6055

QUALITY Landscaping &
Yard Service. 261-6882,
leave message.

HIRE a Bobcat, Grading,
light places. Hourly/Job.
Call 254-2518.

TREE Service. Large
removal to ornamental
trimming 12 yrs. exp. Lic.
Ins. C14433. Free est. All
Paradise Tree Service. 695-
8228

AFFORDABLE, quality
yard service. Free estimate.
Call 262-4117.

50 Business Opportunities

EARN EXTRA INCOME.
Become a Visa/Master card
consultant. To start your
new career call 671-8013 or
write 84-903 Farrington
Hwy. #1, Waiapahu 96797.

PACIFIC Paradise
Painters, custom int. ext.
painting, low rates. Free
est. to \$100. Call Bobby B:
927-0453, H. 422-8289.

JAL Services
The Painting Contractors.
Fully Insured — Lic.
#C13054. Call 396-4221 for
FREE Estimate

EXPERT painting & wall
papering small or large
jobs Call Barbara 395-3718
or Suzanne 395-8086.

Remodeling
PATIO and New Additions
Repair, remodel Cliford
Iwane C-4477 677-4695

Repair
HOME Repair prof. looking
for fiber up house, work-
exchange for low rent or
car/cats, refs. Call Bill Berg
837-6340

CANE/CHAIR REPAIR
Also rush weave.
734-6492

H & J Maintenance Home,
office, condo & apt. Main-
tenance, repair and renova-
tion, free est. to \$100. Har-
vey Rogalsky, 263-4857.

ALOHA Tutoring Service.
All subjects, all grades
Indiv. Instrn. 533-5457.

PIANO Lessons.
Kaneohe area only.
Call 235-4432, 841-1196.

73 Apts. Furnished

MAKAKILO 3 Bdrm., 1 1/2
Ba., TV, linen & dishes.
\$950/mo. 672-3000

75 Apts. Partly
Furnished
PEARL Area. 1 bdrm. utils.
\$415. 2 bdrm. \$625. 943-
0091 Rent Mart Fee.

KAILUA Studio. Clean, lg
1 bdrm. w/sit & din. area.
Kitch., full ba., priv. ent.,
extras. Nr. beach. 262-4005.

TWO bdrm. Prkng. Near Ft.
Shafter. Avail. 12/10 \$650.
Incl. water. 455-6964 eves.

76 Rentals to Share
HANDY Base 1 bdrm. \$480.
2 bdrm. pool \$825. Others.
943-0091 Rent Mart Fee.

KANEKOE, avail. 12/01.
Share lge. apt. Own rm. &
ba., many amenities \$375/
mo. + dep., share util. 247-
2534

KAILUA lge. rm. in home w/
pool, nr. bus, share all
amenities. \$475. 262-9868

83 Houses Partly
Furnished
LEEWARD 2 bdrm. \$600.
bdrm. \$800. Others. 943-
0091 Rent Mart Fee.

KAILUA, Alkali, Spacious
3/2, 2 Lanais, remote cont.
garage. Lrg. enclosed yard.
Solar, wash/dry. Wonderful
school, nr. beach & shops.
254-5149

WINDWARD 1 bdrm. utils.
\$350. 2 bdrm. \$750. Others.
943-0091 Rent Mart Fee.

A STUDIO cottage \$690.
New, quiet, near bus. no
car. Call 262-0254

MILANI 3 bdrm., 2 ba.,
lanal, 2 car garage, 8 mo.
lease, \$1000. 823-2569

58 Schools & Instruction
TUTORING Social Studies
(history, government, econ-
omics & geography). Gr.
7-12. Teacher 15 yrs. exper.
in HI. Your home or mine.
Windward side. 261-3558.

MASSAGE Classes. Ongo-
ing Swedish & Shiatsu.
Ideal for beg & pro. 12 yrs.
of exper. Debbie, 262-9955.

GIVE Your children the
priceless gift of a lifetime.
Educational Reading & writ-
ing skills. Call 259-8273

LEARN Massage For fun
or for state licensure.
DOE Carl, Nancy 259-8768

GUITAR lessons. Jazz,
Contemporary & Classical.
Private, \$10/half hr. Call
988-9251.

TUTORING. All subjects K-12
reading specialist &
teacher cert. 261-6008

59 Employment Opportunities
"AVON" start w/\$5. Sell
anywhere. Earn up to 50%
Call Margot. 455-1947.

60 Help Wanted
Male/Female
HOME/office cleaning.
All you need is to be
dependable. Ph. 521-3372

AVONI Own your own busi-
ness. Be your own boss.
Call Kandy 235-7641.

CHURCH recruiting, low
pay, great future. Improve
while you have a job. Call
Scott or Allen from 9 a.m.-
10 p.m. 545-5804

IMMEDIATE openings for
several hard working indi-
viduals for a newspaper
inserting department.
Applicants must be willing
to work long hours all day
or all night, 3 to 5 days a
week, on in-plant inserting
equipment. Starting pay
\$4.50/hr. No experience
necessary, will train. Apply
at Sun Press, 45-525 Lulu-
lu Road, Kaneohe.

AREA
FIELD
MANAGERS
FOR WEEKLY
NEWSPAPER
Work from your own
home. Challenging
positions for inde-
pendent self-starters
interested in working
with young people.
Supervise & train new
carriers. Part-time
positions available.

KANEKOE,
MILANI, WAIHAWA
Pearl City Naval Hsg.
Excellent salary,
bonuses & gas allow.
For info. call
Linda Bulatao
235-5881

FULL TIME
TYPESETTER WANTED
Night shift 5 p.m.-1 a.m.
Type 50 wpm/accurate.
Call Cathy 235-5881.

HOME & APARTMENT Guide

84 Housesitting

HOUSEIT or Trade svcs.
for home. P.O. Box 838,
Kaneohe, HI 96744. 247-
5549/wk. 948-6488

85 Condos/Townhouses
Partly Furnished
KAILUA 3 bdrm., 2 ba., all
amenities, completely re-
furnished \$1200. 261-2834

AIKAHI Gardens 2 bdrm.,
1 1/2 ba., w/pool, carpeting.
\$950/mo. 254-2172

86 Rooms for Rent
WRKNG. or Welfare Sgt.
Parent share a lg. home w/
others. \$350 & up 456-8189

VERY nice bedroom, bath,
sitting rm. & kitchenette,
near beach. 261-5503

KAILUA and Enchanted
Lake turn. rooms, near bus
stop, shopping, use of
kitch., living area, shower,
wash/dry. Nice & quiet
\$350/mo. 262-2072

KAILUA - furnished room,
non-smoker, \$300/month,
includes utils. 262-7432

TOWNHOUSE: Your own
Room & Bath. Incl. pool,
hot tub, paddle tennis. On
water in Kaneohe Bay.
\$450/mo. 235-1686

93 Vacation Rentals

LANIKAI/Kaneohe Christ-
mas rentals. 3 different
properties. Dec. 21 to Jan.
2. Fully furn. & equip'd.
Prices \$75 to \$300 per nite.
Ph. 536-6927

KAILUA Vacation rentals,
near beach.
Call 261-6174.

CUTE bdrm. & ba. in Kailua
private entry, cable TV.
\$35/day. 261-4222

CHARMING Cottage fully
furn., pvt. patio/pool. Kailua
\$50/day, wkly/mo. 261-
8289 or 254-1167

58 Schools & Instruction
TUTORING Social Studies
(history, government, econ-
omics & geography). Gr.
7-12. Teacher 15 yrs. exper.
in HI. Your home or mine.
Windward side. 261-3558.

MASSAGE Classes. Ongo-
ing Swedish & Shiatsu.
Ideal for beg & pro. 12 yrs.
of exper. Debbie, 262-9955.

GIVE Your children the
priceless gift of a lifetime.
Educational Reading & writ-
ing skills. Call 259-8273

LEARN Massage For fun
or for state licensure.
DOE Carl, Nancy 259-8768

GUITAR lessons. Jazz,
Contemporary & Classical.
Private, \$10/half hr. Call
988-9251.

TUTORING. All subjects K-12
reading specialist &
teacher cert. 261-6008

59 Employment Opportunities
"AVON" start w/\$5. Sell
anywhere. Earn up to 50%
Call Margot. 455-1947.

60 Help Wanted
Male/Female
HOME/office cleaning.
All you need is to be
dependable. Ph. 521-3372

AVONI Own your own busi-
ness. Be your own boss.
Call Kandy 235-7641.

CHURCH recruiting, low
pay, great future. Improve
while you have a job. Call
Scott or Allen from 9 a.m.-
10 p.m. 545-5804

IMMEDIATE openings for
several hard working indi-
viduals for a newspaper
inserting department.
Applicants must be willing
to work long hours all day

TOYOTA

NEW CARS AND TRUCKS
USED CARS AND TRUCKS



1989 V6 4X4 SR5 X-CAB

FEATURES: 3.0 LITER V6 ENGINE FULLY SPLIT 60/40 FRONT BENCH SEATS. FRONT FACING REAR SEATS IN EXTRA CAB
MILITARY FINANCING AVAILABLE*
*ON APPROVED CREDIT

VISIT US TO DAY

WINDWARD TOYOTA

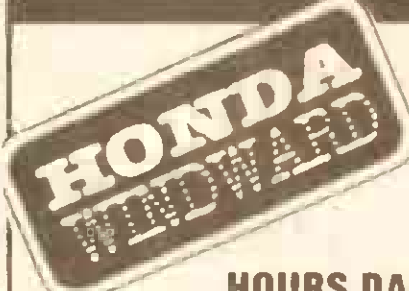
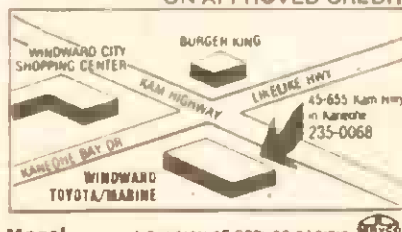
Corner of Kam & Likellie Hwy. in Kaneohe

PHONE 235-0068

TOYOTA QUALITY

Who Could Ask For Anything More!

A DIVISION OF SERVO PACIFIC



45-671
KAMEHAMEHA HWY
Kaneohe
PHONE
247-8544
HOURS DAILY 9 AM to 9 PM

OFF ISLAND FINANCING
MILITARY SPECIALIST

GREAT DEALS ON USED WHEELS

82 MAZDA GLC BGR-742 4 SPEED HATCHBACK RUNS & LOOKS GREAT \$2,000.00

80 DATSUN PICKUP
PB8-387
4X4
CUSTOM WHEELS
VERY CLEAN

\$4,500.00

84 MAZDA PICKUP
CEX-034
CUSTOM WHEELS
A/C, AM/FM
VERY CLEAN

\$5,000.00

86 HONDA CRX
CDW-302
AUTOMATIC
AM/FM CASSETTE
HARD TO FIND MODEL
LESS THAN 2,500 MILES

\$8,000.00

87 JEEP WRANGLER
CNA-883
LAREDO
CUSTOM INTERIOR

\$10,000.00

85 DODGE CARAVAN
9-411
AUTO, P.S. CRUISE
MANY MORE EXTRAS

\$10,500.00

87 BUICK LE SABRE
CNJ-881
LUXURY IN & OUT
THIS CAR COULD BE
IN A SHOW ROOM
LOW MILEAGE

\$11,000.00

87 CHEVROLET CAMARO Z28
CNA-177
T-TOP, FUEL
INJECTION, SHARP

\$12,000.00

85 CADILLAC FLEETWOOD BROUGHAM
BXW-745 THIS IS A
REAL CAD LESS THAN
16,000 MILES
LOADED, LIKE NEW

\$12,000.00

87 NISSAN MAXIMA
CFE-712
THIS CAR IS
BEAUTIFUL
LOW MILES
HAS ALL THE TOYS

\$13,000.00

79 PORSCHE
CNX-457
FULLY EQUIPPED
RED & BEAUTIFUL
ULTIMATE IN DRIVING

\$14,000.00

88 OLDS CUTLASS CLASSIC BROUGHAM
CTU-622 LESS THAN
8,000 MILES, HAS ALL
THE TOYS PLUS V-8

\$15,000.00

84 BMW 528E
BVF-194
FULLY EQUIPPED
5 SPEED, LIKE NEW
PERFORMANCE PLUS

\$18,000.00

HONDA WINDWARD
247-8544

PLUS TAX, LICENSE &
DOC FEES
OFFER EXPIRES 12/1/88

WAIPAHU TOYOTA'S 4 DAY

Sale

November 25, 26, 27, 28

All remaining 1988 NEW and DEMO
Toyota's will be specially priced during
this once a year clearance sale!!
Full Factory Warranty.

1988 Tercel (15 To Choose From)



3 DR., H/B

1988 Corolla (10 To Choose From)



4 DR. DELUXE SEDAN

1988 Celica (5 To Choose From)



GT SPORT COUPE

1988 Pickup 4x2 (15 To Choose From)



XTRA CAB SR5

1988 Pickup 4x4 (5 To Choose From)



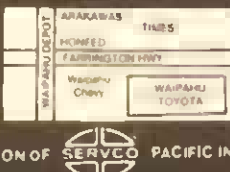
LONG BED DELUXE

SAVE THOUSANDS\$
BUT HURRY, INVENTORIES ARE
GOING FAST!!! Subject to prior sale

WAIPAHU TOYOTA

94-757 FARRINGTON HWY.

PH: 677-3161



A DIVISION OF SERVO PACIFIC INC

60 Help Wanted Male/Female

NURSE Aide, live-in for Kaneohe 40-bed care home. Call 239-7993.

HAIRSTYLISTS. Excl. opportunity at Fantastic Sam's Kailua and Aiea, Ph. 261-4406 or 488-2466.

WANTED

Experienced Real Estate Licensees. For a growing co. involved in: New project sales General brokerage Residential & commercial sales/leasing We offer: Competitive commissions Incentive programs Confidentiality of inquiries respected. K. Chong, Box 25007, Honolulu, HI 96825. 395-2331. PACIFIC HOMES Honolulu Kai Corporate Plaza

FULL time Medical Asst. for sports Med. Clinic exp. required. 521-6564

HELP Wanted: work in fresh air and sunshine. Call Richard or Connie. Phone 262-2236.

HELP! Bell ringers wanted for holiday season. Call 235-1408.

LOOKING for a second job? Apply now. Inventory takers wanted. We are more than just a seasonal job. Approx. 3 to 5 hour shift during early morning, evenings or weekends. We fit your schedule. Paid training provided. No exp. nec., drivers license & phone required. Apply M-F, 8 to 6 p.m., 904 Umi St., Suite 104, Honolulu, HI 96813. 942-7177. 765 Kam Hwy., #102-B, Pearl City 455-6563

Calling KALAMA VALLEY Parental Would you like your kids to earn good money delivering Sun Press papers? Only once a week, 10 years & up. Routes available in the above area. For more info call 395-5855 even., or the Circulation Office at 235-5881. Adults also welcome.

NEED Energetic, creative person to work in clothing factory. 263-4801

HAIRSTYLIST/manicurist needed, 945-5696. Ask for Elizabeth.

GOVERNMENT Jobs now filling in Western States. \$9,811-\$77,500. Call 1-800-337-2584 ext. 2-098. small fee.

JANITORS/janitors for Windward Mall. Call b/w. 8:30-5. 839-0133. 833-7088

\$\$\$ HOLIDAY MONEY \$\$\$
PART TIME JOB
ATTENTION MILITARY PERSONNEL & SPOUSES

Earn Extra Money Part-time \$6 per hour 5:30 to 9:00 p.m. Mon. thru Fri.

We need part-time workers immediately to train for our newly established "Discount Buying Ware-house Outlets." Specializing in clothing, jewelry, radios, toasters, furniture, TVs, microwaves, baby furniture and many more appliances. Following areas are available: Honolulu, Pearl Harbor, Sall Lake, Wahiawa, Barbers Point and Kaneohe. Other Benefits include: Advancement Bonuses and Incentive Pay.

Call 486-0173 ask for Judy

60 Help Wanted Male/Female

IF you want a job in the Leeward area, come to Job Center. Call 487-3858.

NEEDLECRAFTERS turn your hobby into cash. Walk-in. Call Janet, 499-1403.

AVON Own your own business. 50% earnings possible. Jo 395-6970.

PART TIME POSITION CIRCULATION REPRESENTATIVE Seeking energetic, dependable person to deliver newspapers once a week on Thursday. Own vehicle. Work from your home. Residence in Waikanae helpful. Excellent salary, gas allowance. Call 235-5881 Circulation.

BASKIN-ROBBINS Kailua or Windward Mall. P/T 8:30 a.m.-3 p.m. Avail. Advancement oppor. Please call 263-4331

DRIVER/Companion for little old lady. About 9 hrs./wk. \$5/hr. Non-smoker. Salt Lake area. 833-3946

REG'D Nurses & LPNs Windward & Hono., 4 hr. expanding Rental Dialysis Ctr. at Castle Medical Ctr. Aloha Dialysis Ctr., Aloha Dialysis Ctr., Oahu, Kuakini Kidney Disease Ctr. OJT provided, work schedule involves rotating shifts 7:30 p.m., 3:30-11 p.m. Mon.-Sat., Sundays for emerg. only Excl. fringe benefits. Send resume or apply in person: Intercontinental Medical Svcs., 347 North Kuakini St., Honolulu, HI 96817

JOGGERS needed for pressroom. Will train reliable, energetic, hard working individuals interested in learning production of large commercial printer/newspaper company. Experience helpful but not necessary. Benefits include medical, dental, paid life insurance, excellent profit sharing. Apply at Sun Press/Mid-Week, 45-525 Lulu Rd., Kaneohe, Mon.-Fri. 8 a.m.-5 p.m.

ASST. Mgr. Trainee - Ready to get back into the work force? 537-5911, ext. 54.

CASHIER/Sales. Need extra \$\$\$ Immediate P/T openings. 537-5911, ext. 54.

NEED Extra Cash? Carriers needed. Coconut Grove/Kailua Call 261-5197.

HAIRSTYLISTS. Excl. opportunity at Fantastic Sam's Kailua, and Aiea, Ph. 261-4406 or 488-2466.

DISHWASHERS & Food Prep needed now day and swing. 842-7190 or 622-4343

NEED Cooks day/night/starting \$4.50/\$6.50 hr. Host/Hostess starting \$4 hr. Call 254-5661.

HAIRSTYLISTS excl. benefits w/Fantastic Sam's at Waikeke Mall. 949-4275 or 545-2722.

JANITOR wanted F/T job. Pail Lanes Bowling Ctr. 261-0828.

PART-TIME job cleaning assisting, filing at Phy. Ther. office. 261-8931 Call B/w 12-5.

Date Entry, CRT Operators EARN GOOD PAY! BE A KELLY TEMPORARY EMPLOYEE.

• Variety of assignments
• Flexible schedule
• Competitive pay
• Short & long term assignments

If you qualify, we'll train you to use one of 3 leading PC spreadsheet software packages. So you can expand your skills and accept even more assignments. Call today for details.

CALL TODAY 521-7458 BRING THIS AD WHEN YOU APPLY FOR A FREE GIFT

LABORERS "Blue Jeans and Sneakers" jobs. Call 533-8889. Aiea Personnel Svc. Never a fee.

RECEPTIONIST/General office. Join the "elite" group at Aiea. Call 533-8889. Never a fee.

SECRETARIES-Don't file away your skills. Con Aiea Personnel Svc. Never a fee. 533-8889.

MODELS. Actors & Extras for local, nat'l commercials, movie work, print ads. All ages. For interview, 944-2035. Morgan Models

CARETAKER for school, a room for your service, non-smoker, single, retired OK. Call 259-9696.

MidWeek is Looking for YOU! Do you have editorial paste-up experience? Are you a meticulous demon for detail? Do you thrive under deadline pressure? Do you work well with others? Then MidWeek has a job for you. We're looking for an experienced paste-up artist to help put MidWeek to bed every week. We need you, your smiling face and your talented hands every Tuesday evening and all day Wednesday to paste up the best little paper on the island. If you think you're the one we're looking for, come in and fill out an application. You can find us at 45-525 Lulu Rd., in Kaneohe.

Call 486-0173 ask for Judy

60 Help Wanted Male/Female

RETAIL Jewelry firm seeks English-Japanese speaking salesperson. Salary plus commission. 924-7922 Phil.

AIRLINE jobs. \$19,000 to \$20,000 per year. 531-3853 eves.

LIKE to clean? Proud of your cleaning skills? Join our team & join the best. Must have a car & phone. Military welcome. Mrs. Clean, Inc. 486-4822

60 Help Wanted Male/Female

COCKTAIL waitress & doorman needed, apply at Fast Eddie's, 261-8561.

MAID Service now hiring. depend. people to work in town & wind. areas. Must have car, hourly rate + mileage. Call 235-8768.

CLEANING people. Exp. honest, good benefits, transportation avail. Must have phone. 623-8185

REG'D Nurses & LPNs Windward & Hono., 4 hr. expanding Rental Dialysis Ctr. at Castle Medical Ctr. Aloha Dialysis Ctr., Aloha Dialysis Ctr., Oahu, Kuakini Kidney Disease Ctr. OJT provided, work schedule involves rotating shifts 7:30 p.m., 3:30-11 p.m. Mon.-Sat., Sundays for emerg. only Excl. fringe benefits. Send resume or apply in person: Intercontinental Medical Svcs., 347 North Kuakini St., Honolulu, HI 96817

JOGGERS needed for pressroom. Will train reliable, energetic, hard working individuals interested in learning production of large commercial printer/newspaper company. Experience helpful but not necessary. Benefits include medical, dental, paid life insurance, excellent profit sharing. Apply at Sun Press/Mid-Week, 45-525 Lulu Rd., Kaneohe, Mon.-Fri. 8 a.m.-5 p.m.

ASST. Mgr. Trainee - Ready to get back into the work force? 537-5911, ext. 54.

CASHIER/Sales. Need extra \$\$\$ Immediate P/T openings. 537-5911, ext. 54.

NEED Extra Cash? Carriers needed. Coconut Grove/Kailua Call 261-5197.

HAIRSTYLISTS. Excl. opportunity at Fantastic Sam's Kailua, and Aiea, Ph. 261-4406 or 488-2466.

DISHWASHERS & Food Prep needed now day and swing. 842-7190 or 622-4343

NEED Cooks day/night/starting \$4.50/\$6.50 hr. Host/Hostess starting \$4 hr. Call 254-5661.

HAIRSTYLISTS excl. benefits w/Fantastic Sam's at Waikeke Mall. 949-4275 or 545-2722.

JANITOR wanted F/T job. Pail Lanes Bowling Ctr. 261-0828.

PART-TIME job cleaning assisting, filing at Phy. Ther. office. 261-8931 Call B/w 12-5.

Date Entry, CRT Operators EARN GOOD PAY! BE A KELLY TEMPORARY EMPLOYEE.

• Variety of assignments
• Flexible schedule
• Competitive pay
• Short & long term assignments

If you qualify, we'll train you to use one of 3 leading PC spreadsheet software packages. So you can expand your skills and accept even more assignments. Call today for details.

CALL TODAY 521-7458 BRING THIS AD WHEN YOU APPLY FOR A FREE GIFT

LABORERS "Blue Jeans and Sneakers" jobs. Call 533-8889. Aiea Personnel Svc. Never a fee.

RECEPTIONIST/General office. Join the "elite" group at Aiea. Call 533-8889. Never a fee.

SECRETARIES-Don't file away your skills. Con Aiea Personnel Svc. Never a fee. 533-8889.

MODELS. Actors & Extras for local, nat'l commercials, movie work, print ads. All ages. For interview, 944-2035. Morgan Models

CARETAKER for school, a room for your service, non-smoker, single, retired OK. Call 259-9696.

MidWeek is Looking for YOU! Do you have editorial paste-up experience? Are you a meticulous demon for detail? Do you thrive under deadline pressure? Do you work well with others? Then MidWeek has a job for you. We're looking for an experienced paste-up artist to help put MidWeek to bed every week. We need you, your smiling face and your talented hands every Tuesday evening and all day Wednesday to paste up the best little paper on the island. If you think you're the one we're looking for, come in and fill out an application. You can find us at 45-525 Lulu Rd., in Kaneohe.

Call 486-0173 ask for Judy

60 Help Wanted Male/Female

RETAIL Jewelry firm seeks English-Japanese speaking salesperson. Salary plus commission. 924-7922 Phil.

AIRLINE jobs. \$19,000 to \$20,000 per year. 531-3853 eves.

LIKE to clean? Proud of your cleaning skills? Join our team & join the best. Must have a car & phone. Military welcome. Mrs. Clean, Inc. 486-4822

COCKTAIL waitress & doorman needed, apply at Fast Eddie's, 261-8561.

MAID Service now hiring. depend. people to work in town & wind. areas. Must have car, hourly rate + mileage. Call 235-8768.

CLEANING people. Exp. honest, good benefits, transportation avail. Must have phone. 623-8185

REG'D Nurses & LPNs Windward & Hono., 4 hr. expanding Rental Dialysis Ctr. at Castle Medical Ctr. Aloha Dialysis Ctr., Aloha Dialysis Ctr., Oahu, Kuakini Kidney Disease Ctr. OJT provided, work schedule involves rotating shifts 7:30 p.m., 3:30-11 p.m. Mon.-Sat., Sundays for emerg. only Excl. fringe benefits. Send resume or apply in person: Intercontinental Medical Svcs., 347 North Kuakini St., Honolulu, HI 96817

JOGGERS needed for pressroom. Will train reliable, energetic, hard working individuals interested in learning production of large commercial printer/newspaper company. Experience helpful but not necessary. Benefits include medical, dental, paid life insurance, excellent profit sharing. Apply at Sun Press/Mid-Week, 45-525 Lulu Rd., Kaneohe, Mon.-Fri. 8 a.m.-5 p.m.

ASST. Mgr. Trainee - Ready to get back into the work force? 537-5911, ext. 54.

60 Help Wanted Male/Female

JANITORIAL Services needed, mornings 9 to 12 pay \$25. For all day \$50. M-F. Reply to Mr. Abe 377-5402. Kailua Gaidai Hawaii College, Aiea, Hawaii.

ACCOUNTING BOOKKEEPING World's Largest Temporary Specialists in Acctg & Bkpg Personnel. w/over 40,000 Temporary Employees. CALL TODAY! accountemps 531-8056

62 Domestic Help Wanted

LOVING babysitter/after school care for 5 & 9 yr. old. Milliani Call 625-2073.

YARD Person \$6 an hour. 247-7925

NANNY/Au pair wanted. Care for 1 & 4 yr. old in Milliani. Immed. opening. Call 623-1460 after 6 p.m.

ELDERLY lady wants a mature live-in helper, call 945-3533 (TDD) They relay to me at 923-1386

EXP. Babysitter wanted. Milliani area for 13 mo. Call 533-5319 8-4 p.m.

MOTHERS helper needed, 2 children, light housekeeping, 5 days a wk. Afternoons/early evening plus 2 nights per wk. Hours/days/salary negotiable. Kailua Call 254-6345.

HOUSECLEAN and baby sit, 6 mo. old, M-F, 4 to 5 hrs. per day. Mature Windward resident w/car, non-smoker. 263-7721

54 Domestic Jobs Wanted

EXP. baby sitter, any age, Mon. to Fri., meals & snacks incl. Kailua 262-9445.

DEPENDABLE baby sitter will baby sit in my Kailua home. Reas. rates. Meals & snacks. CPR & first aid certified. Call Lisa 263-3970.

CHILD care in my Milliani home. Monday-Friday. Call 623-3967.

EXPERIENCED mother will babysit weekly or monthly. Reasonable rates. Infants and toddlers preferred. Call 239-6267.

WILL Babysit my home M-F, 7-6 p.m. 2 Meals & snacks. All ages. 239-5890.

I will babysit your children weekdays. Ages 1-5 yrs. Call 254-5785.

EXPER. Mom has 3 more full-time openings. Meals & snacks provided 263-0988

IRONING. Reasonable rates. Free pickup and delivery. Kaneohe area. Call 237-8075.

QUALITY after-school care for Heia students by Asst. Teacher. 235-4423

SAFE, reliable childcare. Meals & Activities. Exp. Teacher. 263-6470.

WILL Babysit my home, Kaneohe, M-F, T.L.C. 2 meals, snacks. 247-1675. 247-2461.

120 Home Furnishings

MATCHING bassinet, crib & drsr., & playpen. Water heater. 239-8516 eves.

FOR Sale. Sofa, recliner, qn. sz. bed, mbrl. coffee tbl. Call 536-1124.

CARPET 12x24x3/4 inch pad, exc. cond. \$195 or best offer. 422-0856

RATTAN-Beautiful 5 pc. living rm., \$550. Dining set \$350 new. 734-1554.

WANTED: corner shelf unit. (Shaped like triangle) Good condition. Reasonable. Call 262-4



CHRYSLER Plymouth ANNOUNCES:

NEW LOCATION RELOCATION SALE!!

**1988 PLYMOUTH
HORIZON AMERICA
5 DR LIFTBACK**
#24078

\$6694*

*AFTER \$300 REBATE, \$300 DOWN PAYMENT, PRICES PLUS TAX, LIC., AND \$89 DOC FEES

**1988 CHRYSLER
LEBARON COUPE
LUXURY EQUIPPED PKG**
#23545

\$10,980*

*AFTER \$1000 REBATE AND \$1000 DOWN, PRICES PLUS TAX, LIC., AND \$89 DOC FEES

**1989 PLYMOUTH
VOYAGER
7 PASSENGER WAGON**
#95011

\$13,547*

*AFTER \$1000 DOWN, PRICES PLUS TAX, LIC., AND \$89 DOC FEES

**1988 CHRYSLER NEW
YORKER LANDAU 4 DR
MARK CROSS**
#23918

\$19,601.49*

AFTER \$1000 REBATE AND \$1000 DOWN, PRICES PLUS TAX, LIC., AND \$89 DOC FEES

**MILITARY
FINANCING**

*** 30 DAY EXCHANGE

**CCD924
1985 FORD ESCORT**
-0- \$109
DOWN MONTHLY

2831.97 Plus Tax, Lic., And \$89 Doc Fees.
36 Mos. 18.5% Annual Percentage Rate

**CNX624
1984 NISSAN KING CAB**
-0- \$124
DOWN MONTHLY

3175.00 Plus Tax, Lic., And \$89 Doc Fees.
36 Mos. 18.5% Annual Percentage Rate

**BRT925
1979 CHEVROLET Z28**
-0- \$129
DOWN MONTHLY

3370.58 Plus Tax, Lic., And \$89 Doc Fees.
36 Mos. 18.5% Annual Percentage Rate

**CAY314
1985 CHEV CAVALIER**
-0- \$129
DOWN MONTHLY

3370.58 Plus Tax, Lic., And \$89 Doc Fees.
36 Mos. 18.5% Annual Percentage Rate

**CFB503
1987 DODGE OMNI**
-0- \$130
DOWN MONTHLY

3773.00 Plus Tax, Lic., And \$89 Doc Fees.
42 Mos. 18.5% Annual Percentage Rate

**KEC253
1985 DODGE ARIES**
-0- \$139
DOWN MONTHLY

3639.88 Plus Tax, Lic., And \$89 Doc Fees.
36 Mos. 18.5% Annual Percentage Rate

**CAE008
1985 FORD LTD WAGON**
-0- \$139
DOWN MONTHLY

4103.65 Plus Tax, Lic., And \$89 Doc Fees.
42 Mos. 18.5% Annual Percentage Rate

***007919
1988 PLYMOUTH COLT**
-0- \$139
DOWN MONTHLY

5287.33 Plus Tax, Lic., And \$89 Doc Fees.
36 Mos. 18.5% Annual Percentage Rate

**CBG010
1985 CAVALIER WGN**
-0- \$139
DOWN MONTHLY

3639.88 Plus Tax, Lic., And \$89 Doc Fees.
36 Mos. 18.5% Annual Percentage Rate

**CDC471
1986 CARAVELLE**
-0- \$149
DOWN MONTHLY

4775.00 Plus Tax, Lic., And \$89 Doc Fees.
48 Mos. 18.5% Annual Percentage Rate

**BUP254
1985 BUICK SKYLARK**
-0- \$149
DOWN MONTHLY

4406.32 Plus Tax, Lic., And \$89 Doc Fees.
42 Mos. 18.5% Annual Percentage Rate

**CDC515
1986 NISSAN SENTRA**
-0- \$149
DOWN MONTHLY

3908.17 Plus Tax, Lic., And \$89 Doc Fees.
36 Mos. 18.5% Annual Percentage Rate

**BUF428
1984 SENTRA S/W**
-0- \$149
DOWN MONTHLY

3975.00 Plus Tax, Lic., And \$89 Doc Fees.
36 Mos. 18.5% Annual Percentage Rate

**BWA110
1984 FORD LTD**
-0- \$149
DOWN MONTHLY

3909.17 Plus Tax, Lic., And \$89 Doc Fees.
36 Mos. 18.5% Annual Percentage Rate

**MKB412
1985 CHRYSLER LeBARON**
-0- \$159
DOWN MONTHLY

4778.82 Plus Tax, Lic., And \$89 Doc Fees.
42 Mos. 18.5% Annual Percentage Rate

**CYR762
1986 RELIANT SE**
-0- \$179
DOWN MONTHLY

5875.00 Plus Tax, Lic., And \$89 Doc Fees.
48 Mos. 18.5% Annual Percentage Rate

**CUW026
1986 CHEV CAMARO**
-0- \$219
DOWN MONTHLY

6562.37 Plus Tax, Lic., And \$89 Doc Fees.
42 Mos. 18.5% Annual Percentage Rate

**CSA116
1986 CHEVY S-10 BLAZER**
-0- \$299
DOWN MONTHLY

6983.87 Plus Tax, Lic., And \$89 Doc Fees.
42 Mos. 18.5% Annual Percentage Rate

UTTER
CHRYSLER Plymouth

**735 Dillingham
842-6300**

ON APPROVED CREDIT ***30 DAY EXCHANGE ON USED CARS
OVER 2000 SALE PRICE. EXCHANGE WITHIN 30 DAYS ON
EQUAL OR GREATER VALUE, ON APPROVED CREDIT.
ALL CARS SUBJECT TO PRIOR SALE. GOOD TILL NOV. 30, 1988



126 Miscellaneous

FILTER Queen Vacuum
Cost \$650. Must sell \$250.
Ph. 735-4651, 926-7292

VACUUM cleaners, like
new \$24.95 & up with guar-
antee. Call 735-6452.

CHRISTMAS SPECIAL
Last few stalls for lease!
Inquire now for great
opportunities! Coral Indoor
Swap Meet. 526-0344

TIRED of sending Mac-nuts
for Christmas? Treat your
friends & family to Kanaka
Pineapple Delicious Dried
Fruits. Call 261-7031 for
free taste.

SOLAR Heater Sale!
Excl. systems were \$3200-
just \$1295! 22 left. Tell
your friends. 261-7657.

SOLAR panels - 2 used
panels 2'x4' \$150 each/
offer. Ph. 623-2411.

IS YOUR CAR DIRTY?
And you don't have enough
time to do it yourself? Let
Ace Pacers Top Quality Car
Cleaning Service make
your car shine and sparkle.
Call Anthony at 261-3985 or
leave a message. Reason-
able Rates.

20'x 20' or 30'x 30' PARTY
tent, 12 x 12 trampoline
for rent/sale. 396-8066

SWIMMING pool chemi-
cals 100 lb. drum \$125.
42 chlorine tabs \$55. 261-6980

BEDS For Sale: 1 King,
1 Queen, 1 Twin - All with
years of wear left. Best
Offer. 263-6334.

AMWAY Products deliv-
ered, money back guaran-
tee. Call 487-5241.

10" CRAFTSMAN radial
saw with table, 2hp \$150.
Call 841-3889.

SONY 3 1/2" Diskettes
10 for only \$13.
263-4561

2 ONE-step Century car
seats, \$20 each, good cond.
Ph. 262-0796.

New Arrival?

**Jim
71be
Max 1**

Tell Everyone
with a 7 1/2 foot Stork.
Rents for 5 days.
A hand painted
bundle with baby's
name, weight & date
becomes a keepsake.

A Great Gift!
Daily Deliveries

Stork News
263-3777

125 Miscellaneous

RECLINER...punch w/bol-
sters. Girls' drsr, Barbie
twnse, my pony prdse. est.
Toddler ride-ems. 235-4818

MINI-Gym-Butterfly mach.
w/wire \$100, 2 surfboards
\$50 ea. Studio frp. as new
\$95, futon, wht. as new
\$180, color TV 22" \$75. 262-
2072

127 Miscellaneous
Wanted

\$\$\$ CASH \$\$\$
The Hunter buys & sells
gold, silver, jewelry, col-
lectibles, antiques or any-
thing of value. 764 Kailua
Rd., 262-4868

CASH for unwanted/bro-
ken refrigs., washers, etc.
Will pickup, 262-7693.

129 Stereo, Video, T.V.

YORK stereo system, dual
cass., phono, 5-band
graphic equal., great cond.
\$200/offer. 261-4854.

PA SYSTEM Stereo mixer,
Roland SP120 AMP 2-8
ohm Fender speakers 15"
1 Road monitor. Must sell
\$500. Ven 524-8404, 847-
7136

CLASSIC crib \$150; Best
Africa stroller w/accs.
both excl. \$150. 247-6753

2 DRESSERS, 1 recliner; 1
blue occasional chair; 1
dehumidifier, evenings call
262-6081.

CLIFF'S Economy Furni-
ture and Thrift Shop 1716
N. King St. 841-4443

BRUNSWICK Heritage
Pool Table 8 ft. genuine
slate \$1100. call 259-8016.

BRAND NEW Fisher Video
Camcorder-8 (FVS-801), w/
case. Only \$899. Never
been used. Call 836-8713.

PEAVY 12 channel stereo
mixer. Excl. cond. Sacrifice
\$1000. 239-7054

130 Antiques-Art

ALII Jewelry & Antiques
Buy & Sell.
Top cash for gold,
diamonds, antiques, &
collectibles.
1525 Kalakaua Ave.
942-7474 Parking in front.

ANTIQUES R Ltd. Furn.
direct from Europe. Ware-
house prices. 768 South St.
downtown. Fri. to Sun. 100
to 5 p.m. 526-1966

LARGEST Antique Shop on
the Windward side. Open-
ing Nov. 18. Buying, Buy-
ing, Buying. Also accepting
consignments for Grand
Opening. For further infor-
mation call 261-9695 or
263-4763.

131 Bicycles Sales/
Service

NISHIKI men's 10 spd bike,
good shape, 27", black. Call
after 6:30 pm 254-5474

20" boys bicycle, 10 spd.,
excellent condition \$50.
Call 262-4302 eves.

YAKIMA Bike Rack w/
attachments. Length up to
55", \$100. Call 262-0459.

131 Bicycles Sales/ Service

18 SPEED bicycle
for sale. Asking \$125.
Call 474-6634

132 Computers

LAP Top Zenith w/2400
modem, software & carry-
ing case \$1895. Cy 948-
8604, 262-2453 eves.

ATARI 520ST 2 1/2 MB Mem-
ory \$750; SH204 Hard disk
\$450; Huge software library
\$400. Call 624-4405.

RGB 19 inch color monitor
for PC computer. \$250
Phone 239-7982

140 Photography

PHOTOGRAPHY - portfo-
lios weddings & family
portraits. 50% discount.
VPS Photo Designers. Call
239-4090.

WEDDING & Special Occa-
sion Photography stills &
video. Call Ecom Photo.
239-4295.

141 Video Taping

FILMS transferred to video.
6 convenient locations. Call
Ecom Photo, 239-4295.

144 Musical Instruments

WANTED used drums,
cymbals & stands. Fred's
Pro Drums. Call 533-7550

DRUM Set Sale: Drum Les-
sons. Fred's Pro Drums.
1008 Kawaiaho, 533-7550

KIMBAL Artist console
piano excellent condition.
\$1400. Ph. 254-5062.

MIRAGE Digital Keyboard
& Winter Spinnet Piano. Call
261-6142/offer.

SMALL portable Harpsi-
chord, brand-new, \$3500.
Ph. 235-3040

CHICKERING 5' Grand
fully restored w/unique
1945 art case in Burled
walnut. A decorator's
delight. Ph. 235-3040.

146 Boats/Supplies/
Services

CAL 2-30 cruiser/tracer
a super deal \$30,000
949-7288, 946-7323

Powerful, quick, fast, and
fun is all part of this 18 ft.
REGATTA Ski boat. Fully
equipped and ready for
you! 175hp Mercury takes
you from 0-60 in no time at
all! Call Chris at 235-5881
days. 235-0387 eves. Best
offer over \$4950 takes it.

21 ft. REINELL 18/0B,
sleeps 2. \$8000/offer. Call
395-7088.

14 ft. FIBERGLASS Boat.
50hp Evinrude/trailer;
needs steering. \$925. 262-
4260

147 Sporting Goods

BODY Boards & Fins For
sale, asking \$50 or best
offer. Call 235-5086.

GOLFSMITH radial irons.
(New) 2-PW, (SD)-0, \$250
set. No. 1 Irons, \$40. Driver
\$60. Active duty 10% off.
422-7229

PORSCHE Auto Parts New
& Used. Call for low prices.
836-4550

Auto and Pickup Fleet Sales and Brokerage

**NEW
CARS & TRUCKS
COST LESS**

For prices
please call or write

Since 1946
Roberts and Redfield
Oregon Route 101
(503) 295-5556 1313 W. Burnside
Portland, Oregon 97209

148 Water Sports
& Equipment

SCUBA outfit, complete
90 tank, wet suit, reg.,
fins, etc. \$400. 422-1759

150 Livestock & Horses

16.3 THOROUGHBRED
gelding, also 15.2 Thoro-Arab
mare. \$750 each. 499-3079

151 Pets-Everything

SCOTTISH Fold kittens
for Xmas: show/pet, CFA
\$150 & up. 235-4391

IN NEED of quality afford-
able care? Dr. Eric Pearson's
Home Pet Service. Call 235-
8457.

HAND fed baby love birds
very tame. \$40. Call 262-
6493.

2 FANCY Cockatiels, trned
w/cage \$100; 2 parakeets
w/cage \$25. 263-0278

KITTENS/Puppies avail-
from adoption program.
Nominal fee. Vacc'd,
dewormed. Call Haiku Vet
Clinic, 235-6405.

GERMAN Roller Canaries
\$145 trio 1 male, 2 females.
Ph. 235-2608

PET sitting at your home
while you are away. Exp.
reasonable rates. Call VIPS.
259-5092.

153 Machinery &
Equipment

BROTHER CE-50 XL Elec-
tronic typewriter, w/extra rib-
bon & corr. tape. Call 261-
4995

LAPIDARY machine, for
sale. \$1200/offer. Call 247-
0550.

156 Auto Service/Parts

IS YOUR CAR DIRTY?
And you don't have enough
time to do it yourself? Let
Ace Pacers Top Quality Car
Cleaning Service make
your car shine and sparkle.
Call Anthony at 261-3985 or
leave a message. Reason-
able Rates.

MOBILE Auto Lube, reas.
rates. At your home or bus.
Go Lube. 235-5678.

RENAULT Repairs by fac-
tory trained tech. Work
guaranteed 239-4733

PORSCHE Auto Parts New
& Used. Call for low prices.
836-4550

157 Auto Service/Parts

KAPOHUA Mules has moved
to Kailua by the Creek Side.
Bring your pony for some
game riding, for tasty tapas.

79 DODGE BVS-819 \$495
78 SUBARU ANG-58 \$495
81 CHAMP MD-568 \$495
74 VW VAN BRJ-780 \$495
74 HONDA ARJ-009 \$495

SELL • BUY
• TRADE • CONSIGN
Bonded dealer Lic. #365
Wouldn't you rather be driving
a mule from Kapiolani Mules?
153 Hamakua Drive
Kailua, Oahu 96734
263-0209

**SUZUKI
SAMURAI**

DIRECTING
YOUR ATTENTION
TO THE CHART
Melissa Dela Cruz
Miss Oahu Filipina 1988

WHE-E-E

THE FUN DOES NOT END!

SUZUKI SAMURAI-ZES THE FACTS:

1. SUZUKI SAMURAI'S SALES ARE **UP** 455% IN AUGUST
OVER JUNE!! NATIONAL NEWS REPORT 9/88
2. NHTSA (NATIONAL HIGHWAY TRAFFIC SAFETY ADM.)
CONFIRMS THE SUZUKI SAMURAI IS JUST AS SAFE
AS CHEVROLET'S S-10 BLAZER & GMC'S S-15 JIMMY
AND EVEN SAFER THAN THE FORD BRONCO II.
3. YOU WON'T SEE THE PRICE ANY LOWER THAN
IT IS NOW!

**RECEIVE \$2,000* CASHBACK ON ANY
PURCHASE OF REMAINING NEW 1988, 88 1/2 OR DEMO.
OFFER GOOD 'TIL NOVEMBER 30, 1988**

*\$2,000 may be used toward down payment.

**IN SUMMARY: YOU CAN'T GET MORE FUN OUT
OF A VEHICLE THAN THE SUZUKI SAMURAI!**

CONFIRM THESE FACTS AT YOUR NEAREST TOYOTA/SUZUKI DEALER

• KAILUA TOYOTA Kailua Ph. 261-3321 • TOYOTA CITY Moanaiua Ph. 834-1402 • WAIAPAHU TOYOTA Waiapahu Ph. 677-3161 • MOTOR IMPORTS 650 Kapiolani Ph. 526-2688 DIVISIONS OF SERVICE PACIFIC INC. • KAIMUKI TOYOTA Kaimuku Ph. 735-1737 • KAUAI TOYOTA Lihue Ph. 245-6978 • WAHIAWA TOYOTA Wahiawa Ph. 622-4195 • WAHIAWA TOYOTA Wahiawa Ph. 622-4195

171 Motorcycles, Mopeds & Scooters

1988 BMW K75S. Fast fun
bike. The ladies love it.
\$6000. Ray 947-4909

SUZUKI 250 Quad Racer.
Great cond. Under 24 hrs.
running. \$1800. 239-7054.

'83 YAMAHA Maxim 4000
ml. immaculate cond.,
many extras \$2000, 4 alu-
minum 4-bolt rims \$20 each.
682-3997 after 5

175 Vans, Campers, Jeep, 4 WD

'82 FORD Econoline. con-
version, clean \$5500 Firm.
Call 623-1012.

'86 CJ-7 JEEP HJ609, 4x4,
Black Beauty, \$7575. 842-
6300 Dir.

'87 NISSAN 4x4 PU
CSR700 Great Shape!
\$8775. 842-6300 Dir.

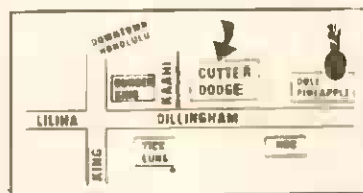
'88 RANGER XLT CTV287
Auto., Sliding Rear Win-
dows. Duraliner \$10,275.
842-6300 Dir.

175 Vans, Campers, Jeep, 4 WD

CUTTER DODGE ANNOUNCES: NEW LOCATION RELOCATION SALE!!!

The **#1** DODGE DEALER
HAS A NEW HOME!!!

**SPECIALIZING IN
MILITARY FINANCING!!**



**LARGEST SELECTION OF DODGE CARS, TRUCKS,
VANS & 4x4'S IN HAWAII!!**

**1989 DODGE COLT
3DR HATCHBACK
20 TO CHOOSE FROM
\$5930***

Or
\$149.⁵⁹ MONTHLY

*AFTER \$500 DOWN PAYMENT PLUS TAX, LIC., AND \$89 DOC FEES. 60 MOS. 14.25% ANNUAL PERCENTAGE RATE.

**1989 DODGE OMNI
AMERICA 5DR HATCHBACK
3 TO CHOOSE FROM
\$6369.⁷⁹***

Or
\$160.⁵² MONTHLY

*AFTER \$300 REBATE. PLUS TAX, LIC., AND \$89 DOC FEES. 60 MOS. 14.25% ANNUAL PERCENTAGE RATE.

**1989 DODGE RAM 50
PICKUP TRUCK
8 TO CHOOSE FROM
\$6972.⁹⁵***

Or
\$174.⁵⁹ MONTHLY

*AFTER \$500 REBATE. PRICES PLUS TAX, LIC., AND \$89 DOC FEES. 60 MOS. 14.25% ANNUAL PERCENTAGE RATE.

**1989 DODGE DAKOTA PICKUP
FULLY EQUIPPED
3 TO CHOOSE FROM
#90483, #90484, #90485
\$7744.¹³***

Or
\$194.³⁴ MONTHLY

*AFTER \$300 REBATE. PRICES PLUS TAX, LIC., AND \$89 DOC FEES. 60 MOS. 14.25% ANNUAL PERCENTAGE RATE.

**1989 DODGE B-150 CARGO VAN
FULLY EQUIPPED
3 TO CHOOSE FROM
#90167, #90168, #90178
\$11,994.³¹***

Or
\$298.⁷⁴ MONTHLY

*AFTER \$500 REBATE. PRICES PLUS TAX, LIC., AND \$89 DOC FEES. 60 MOS. 14.25% ANNUAL PERCENTAGE RATE.

**1989 DODGE CARAVAN
FULLY EQUIPPED, INCL AIR COND
3 TO CHOOSE FROM
#90432, #90433, #90434
\$13,112.⁴⁶***

Or
\$324.⁷² MONTHLY

*AFTER \$1000 DOWN PAYMENT, PRICES PLUS TAX, LIC., AND \$89 DOC FEES. 60 MOS. 14.25% ANNUAL PERCENTAGE RATE.



All Cars Subject To Prior Sales. On Approved Credit. GOOD NOW TILL Nov. 30, 1988

**DOWNTOWN
735 DILLINGHAM
842-6300**

**PEARL CITY
(Next to Pearl City Tavern)
921 KAM HWY
455-1071**

PUBLIC NOTICE **LIQUIDATION** OF HONOLULU NISSAN DEALER STOCK

THESE CARS ARE FROM THE REMAINING INVENTORY OF HAWAII'S LARGEST NISSAN DEALERSHIP, AND ARE SPECIALLY DISCOUNTED FOR LIQUIDATION. MOST OF THESE CARS ARE NEW, WITH FULL FACTORY WARRANTY. SOME ARE EXECUTIVE DEMONSTRATORS, WITH WARRANTY STILL IN EFFECT. THEY MUST BE SOLD. . .

REGARDLESS OF PROFIT OR LOSS.

PLUS... **ENTIRE STOCK OF VEHICLES**

INCLUDING EVERY NEW 1988 & 1989 MODEL PONTIAC, ISUZU AND DAIHATSU. EVERY COMPANY CAR, EVERY SALES DEMONSTRATION CAR AND EVERY MAKE AND MODEL OF USED CARS. HUNDREDS OF VEHICLES. AT SPECIALLY REDUCED PRICES.

PRICES: NOT PUBLICLY ADVERTISED, IN CONSIDERATION OF OTHER RETAIL DEALERS.

PRICES: PROMINENTLY DISPLAYED ON ALL SALE VEHICLES.

PRICES: ON ALL NEW 1988 and 1989 PONTIACS, ISUZUS, DAIHATSUS, NISSANS AND USED CARS — LOWER THAN EVER BEFORE.

FINANCING AVAILABLE TO QUALIFIED BUYERS THROUGH DEALER AUTHORIZED BANKS, YOUR BANK, YOUR CREDIT UNION OR ANY OTHER ACCREDITED LENDING INSTITUTION OF YOUR CHOICE. AUTHORIZED TRADE-IN APPRAISERS IMMEDIATELY AVAILABLE.

OFFER VALID THROUGH SUNDAY ONLY!

MIKE SALTA **PONTIAC • ISUZU • DAIHATSU** 2945 N. NIMITZ HIGHWAY 836-2441

Chevrolet	Dodge	Ford	Honda	Mercury	Nissan	Subaru	Toyota	Toyota	Volkswagen
'88 CAVALIER a/c. warranty, 40,000 mi., excl. cond., \$4800. 623-3038	'87 OMNI, CFB503. Family Car! \$3775 842-6300 Dir.	'82 EX-P C.U.009. Very Clean. \$1975. 842-8300 Dir.	1978 CIVIC runs good. \$400/offer. call 261-2081.	'77 MERCURY Cougar. loaded, excl. cond. \$1300 or best offer. 263-0278	'87 XE 2 dr. sedan. \$675 below blue book. Air, stereo, adjust. wheels, dent on side. Asking \$8,000. 235-8555 7:30-10 p.m.	'89 SUBARU Justy automatic, AM/FM radio. \$7300. Phone 637-7592.	'78 CELICA GT. Moving, 5 spd., air, cass., custom stripes, excl. 941-1639	'86 DELUXE TERCEL. Showroom condition. must sell immediately. Silver w/ cloth interior, 5-speed w/ only 9,300 miles. First \$6,450 takes it. Private financing available if necessary. Call Joni at 235-5881 M-F days. 872-8103 eves.	'71 BUG. Good cond. \$650/offer. Call Eves 261-6905
Datsun	'87 OMNI Hatch back. Air, auto. p/s, p/b, alarm, rear delcost, tint windows. AM/FM equalizer. Excl. cond., just serviced. Reg. & safety good till Sept. '89. \$5,900. Ask for Angela. 247-4275.	'84 MUSTANG convertible, p/s, p/b, AM/FM cassette, V8, great cond. \$8000/offer. 395-9349 eves./wknds.	Lincoln	MG	'87 SENTRA CJA226. Great Condition. \$4975. 842-6300 Dir.	Toyota	BANK Repol '81 Tercel. Call Kehau 525-8224. M-Th 8-4 p.m. Fri. 8-5:30.	'81 TERCEL. 4 dr., auto., AM/FM, cass., tint, clean, good cond. \$1200/offer. 261-7585 eves./wknd.	'73 BEETLE Good body needs transmission work best offer. 262-0459, leave message.
'76 280Z 2+2. Black & Sporty! \$3000 or offer. 735-2505, 737-2591 evenings	'80 B210 hatchback, 5 spd., white, AM/FM radio. \$1100 of offer. 262-9897.	'86 MUSTANG LX convible, new tires/battery, full power, a/c, V8, excl. \$8000. Call 499-3081.	'74 CONTINENTAL great cond., a/c, stereo, runs well, \$700. 261-4825.	'74 MGB excl. cond., new top, tires & paint. No rust, \$2200/offer. 845-9761	Plymouth	'74 CELICA 5-speed, red, tint windows, centerline rims, twin cam engine, dual 44 Mikuni carb, mini condition. \$3500/best offer. 599-4841 eves.	'81 TERCEL, 4 dr., auto., AM/FM, cass., tint, clean, good cond. \$1200/offer. 261-7585 eves./wknd.	'75 SUPER Beetle as is for parts or repair \$300. Ph 423-1694	
Dodge	Fiat	Foreign Cars	Mazda	Nissan	Subaru	Toyota	Volkswagen		
'88 CORONET, new tires, battery. \$300/offer. Phone 247-8476.	'88 ARIES LE, air, power, 12,000 mi., blue. \$7,800. Ph. 923-5171.	'67 TEMPO 4 dr. grey sedan, excl. cond., a/c. 5 yr. warranty. \$6700. Home 293-1042, work 293-3152	'80 626 4 dr., air, rebuilt engine, excl. cond. \$2,000, 623-0835.	'84 SENTRA, good cond. 4 door, \$3200. 262-9849	1982 Plymouth TC-3 FB 4-sp., low mi., exc. cond. \$1500. 293-9347	1978 CELICA Gt Liftback, auto, good cond. \$900. 293-9347.	'87 TERCEL, a/c, tint, stereo, new brakes/tires, runs good, \$1800/offer. 395-5430	'77 VW Bus, newer engine new brakes, looks good in & out. \$2000. 422-0821	'78 CONVTBLE excl. & reliable \$3900 white top blue body 247-6534.
'86 CARAVELL CDC471 Auto., Air, \$4775. 842-6300	'73 SPIDER excl. motor & trans. Sell for parts. Offers 261-4825	'78 PEUGOT 504 Sta. wgn. best offer. Call 261-0003 after 6 p.m.	'81 GLC sta. wgn., rear damaged but in good running cond. \$500/offer. Call 235-6766.	'85 SENTRA wagon, 1 owner, rustproof, tinted windows \$3000 247-0550	1979 STATION wagon, auto good transpt., \$700 or offer. Eves. 261-5284	'80 TERCEL, 6 cyl, 2 dr., auto, good cond., always garaged, 10 mileage, \$1000/ offer. Ph. 263-4061.	'87 TERCEL, silver, 4 spd., AM/FM, 12,000 mi., excl. cond. \$4750. Ph. 988-6286	'69 VW, 1776cc engine. Custom interior, runs good, \$2300/offer. 839-4003.	'78 SUPER Beetle. Conv 68,000 miles, good conc 247-7108