

# Hawaii Marine

## 1st Radio Battalion celebrates 22nd birthday

First Radio Battalion will celebrate its 22nd birthday during an afternoon-long family day festivity at Bellows Beach, tomorrow, starting at 11:30 a.m.

The birthday celebration will include team sporting events and individual games; eight teams will vie for an afternoon championship in a "superstars-like" game involving several events. Volleyball, softball and horse shoes will be played at random, and food will be available.

In July 1943, the 2nd Radio Intelligence Platoon, the earliest ancestor of 1st Radio Battalion, was activated at Linda Vista Camp in San Diego, Calif. During that year, the platoon became a signal company, the 32nd Replacement Battalion, and the 31st Replacement Battalion, FMF.

The Radio Intelligence Platoon grew as World War II

intensified; and by 1945, it formed five platoons that gave direct cryptological support to Marine combat divisions. Intelligence platoons participated in the Solomon Islands and Peleliu campaigns of World War II.

The close of World War II and post-war occupations saw the end of the intelligence platoons; they were redesignated in 1949 as a company-size reserve unit, the 5th Signal Company. The reserve company was renamed 1st Radio Company and activated in 1951, at Camp Pendleton, only to move to Camp Lejeune — rooting itself as the makings of the present-day 2nd Radio Battalion.

On Sept. 15, 1958, the radio company was split into two entities. Personnel from the company at Camp Lejeune formed a new company at Camp Smith, on the Territory of Hawaii, which was

designated as the 1st Radio Company. The company at Camp Lejeune was redesignated as the 2nd Radio Company.

A year later, both companies were redesignated as "Composite Radio Company, FMF," with an authorized strength of seven officers and 110 enlisted. Also, in 195, 1st Radio Composite Company moved to the present site at MCAS Kaneohe Bay.

In September 1963, the companies dropped the composite designation. During the late 1950s and early 1960s, 1st Radio Company went to Taiwan and the Philippines several times for training. On July 14, 1964, 1st Radio Company was enlarged becoming a battalion.

First Radio Battalion was one of the early Marine units deployed to Vietnam in the early 1960s. Detachment One

operated in Vietnam from May 1963 until August 1964; 1st Radio Battalion deployed Detachment "J" in support of 9th Marine Expeditionary Brigade operations in Quang Nam Province. Later, in January 1966, another unit designated Sub Unit One supported 111 Marine Amphibious Force combat operations.

In 1971, after being deployed to the Da Nang area, the Battalion returned to Kaneohe Bay. Battalion members returned to Southeast Asia to support the U.S. evacuation from Cambodia in 1975 and from Saigon in the following year.

In December 1974, the battalion underwent a reorganization, which eliminated the operations company and electronic warfare company, and formed its present configuration.



**Canoe Regatta**  
A member of Healani Canoe Club goes to "great depths" to support his teammates during the John D. Kaupiko Regatta held here Sunday. For more on the regatta see page A-4



**Change of Command**  
Lieutenant Colonel John R. Murray (l) receives the unit colors from LtCol. Robert A.G. Berns during MACS-2's change of command ceremony held July 8. LtCol. Murray assumed command of the squadron after graduating from the Army Schools at Carlisle Barracks, Penn.; LtCol. Berns will report to HQMC.

## Cope Canine: Marines participate in air defense exercise

**Story and photo by Sgt. Leah Gonzalez**

A joint military air defense exercise, Cope Canine, was held in and around Hawaii last week.

The USCINCPAC-sponsored exercise included more than 1,800 people, and equipment, from the Marine Corps, Air Force, Navy, Coast Guard and Hawaii National Guard.

Marine units participating were VMFA-235, VMFA-212 and H&MS-24.

Participants from other services were the 154th Composite Group; 169th Aircraft Control and Warning Squadron and 150th Aircraft Control Warning Squadron; 199th Tactical Fighter Squadron; 15th Air Base Wing; 552nd Airborne Warning and Control Wing, Tinker AFB, Okla.; 22nd Tactical Air Support Squadron, and 6924th Electronic Security Squadron.

Also participating were

Patrol Wing-2 and Fleet Composite Squadron-1 from NAS, Barbers Point; and Coast Guard District 14, Honolulu.

"Basically, this exercise, which is held twice a year, is for the air traffic controllers and communications personnel," said Capt. Richard Morrill, MAG-24 fixed-wing coordinator. "We can see how the controllers and communications personnel handle the

large amount of incoming planes and communications "jamming" where the "aggressors" try to break into our communication nets."

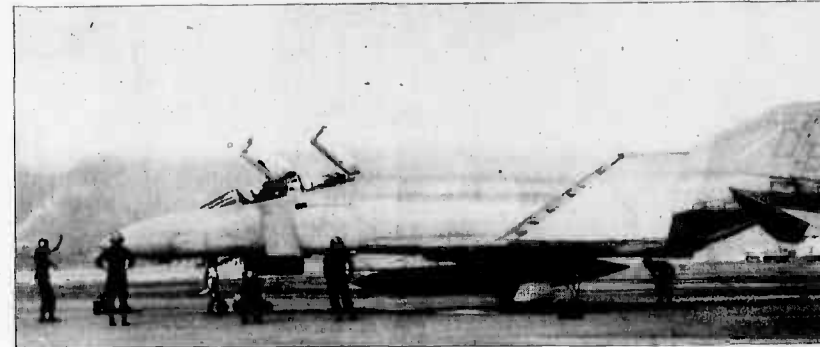
"The Marines' mission ranged from intercept and identification and air combat maneuvering, to being aggressors which put all their talents to use.

"On the first day, over 45 targets flew in; then on the second day, 65," said Morrill.

"They came in from all directions and at speeds from 250 knots to Mach-1 plus."

According to Maj. Brad Holve, the exercise director with the 326th Air Division at Wheeler AFB, the missions were all a success.

The Marines performed well as "targets," and in other phases of their participation. Overall, the exercise went as planned and was very successful," said Holve.



Crew members of VMFA-235 here gives final checks before pilots take off during Cope Canine exercises.

## Congress passes new retirement legislation

Washington, D.C. — Congress has passed an act to amend the military retirement system despite strong objections from the Department of Defense.

Present and retired members will not be affected by the change, according to Assistant Secretary of Defense for Force Management and Personnel Chapman B. Cox, their benefits will remain exactly the same. The revised system will apply only to persons entering the military on, or after Aug. 1, 1986.

Under the new system, retired pay for members with 20 years of service will be reduced from the present 50 percent to 40 percent of their highest three-year average of base pay. In addition, retirees under the new system will receive cost-of-living adjustments equal to the consumer price index, minus one percent, until age 62.

"Although the Congress has enacted new retirement

legislation, we are encouraged by the fact that retirement benefits for present members of the Armed Forces have been protected," Cox said. "We will continue our efforts to provide members and their families the compensation and quality of life their service deserves."

I n s i d e	Education	A-10
	Special Services	A-9
	Movies	A-9
	Tickets	A-9
	Salutes	A-8
	At a glance	A-6
	What's cooking	A-6
	Religious Services	A-5
	Island Happenings	B-5
	Sport Shorts	B-4

## Change of Command

Colonel J.D. Howell will relinquish command of MAG-24 to Col. W.R. Gage during ceremonies at hangar 101, starting at 10 a.m., next Wednesday.

Lieutenant Colonel R.H. Eisel will take command of H&MS, MCAS from LtCol. D.R. Eisenbrey during ceremonies tomorrow. Ceremonies will start at 2 p.m. at Dewey Square. Uniform is summer service

Colonel Gage is reporting in from HQMC where he was chief of the Officer Monitor Branch. Colonel Howell will become the Chief of Staff for the 1st MAB.

"C" for military personnel and appropriate attire for civilians. Eisel was the Operations Officer for MAG-24 and LtCol. Eisenbrey will be reporting to the 3rd Marine Division.



# Country and western star visits enlisted club

By Cpl. Stephen Frank

Country-western singer Tanya Tucker made a special appearance July 11 at the Windward Enlisted Club, playing to a packed house of "transplanted" cowboys and cowgirls.

Tucker, best known for hits such as "Delta Dawn," "Jamestown Ferry," "Love's the Answer," and "Texas When I Die," played for almost an hour, offering the audience many of her old hits as well as some new material.

Despite having played an earlier show at the Royal Hawaiian Hilton in Waikiki, and starting an hour-and-a-half late at the "E" Club, Tucker brought a bright, enthusiastic stage presence to the performance that soon had everyone forgetting about the time they had to wait to see her. This performance marks the end of a tour of military installations that took the glamorous star to Korea and Japan.

"I really enjoyed playing for military audiences, especially for guys overseas because they're so appreciative. It's not often that they get any entertainment at the Demilitarized Zone (Korea), so when they do, they get really



Tanya Tucker, country-western star and recording artist, performs to a packed Windward Enlisted Club.

enthusiastic," she said.

"I don't really change my show for the military guys, except that I usually do a few more patriotic songs because that's what they want to hear.

"We never have too many problems, either. Sometimes the guys will get a little rowdy, and the MPs will have a fit, but I figure the rowdier the better," Tucker said.



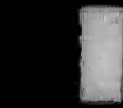
photo by SSGT Virginia Bueno.

## Home from PTA

Members of the 3d Marine Regiment (Rein) are silhouetted on the flightline here after coming home from the Pohakuloa Training Area on the big Island on Sunday. The Marines spent nearly a month on PTA undergoing routine training.

**ENERGY CONSERVATION AT YOUR FINGERTIPS**

TURN ME OFF



SAVE ENERGY

**We can't afford to waste it.**

## Hawaii Marine

The Hawaii Marine is an unofficial newspaper published every Thursday by RFD Publications, Inc., 46-016 Alaloe St., Kaneohe, HI 96744, a private firm in no way connected with the Department of the Navy or the United States Marine Corps. All advertising is provided by the publisher, RFD Publications Inc., by calling 235-5881 or by visiting their office. Circulation is 8,000.

The editorial content is edited, prepared and provided by the Joint Public Affairs Office, Marine Corps Air Station/1st Marine Amphibious Brigade, Kaneohe Bay, Hawaii, 96863-5001, telephone 257-2178/2179. Opinions expressed by the publisher and journalists are their own, and are not to be considered an official expression of the Department of the Navy or the United States Marine Corps.

Articles for publication must be submitted to the Joint Public Affairs Office by 4:30 p.m., on Thursday for the following week's publication. The Hawaii Marine staff solicits articles and photographs from all Marine Corps, Navy and civilian organizations sanctioned by the Commanding Officer, MCAS Kaneohe Bay; however, the Joint Public Affairs Officer, or his designated representative, reserves the right to edit or rewrite materials submitted for publication. Submission does not constitute publication. All photographs published are Official Marine Corps photographs unless otherwise noted. The Hawaii Marine subscribes to the American Forces Information Service (AFIS), and Navy Editor Service (NES), which articles are published on a regular basis.

Items advertised in the Hawaii Marine must be made available for purchase, use, or patronage to everyone without regard to race, creed, color, national origin, religion, age or sex of the purchaser. A confirmed violation, or rejection, of this policy of equal opportunity by any advertiser will result in the refusal to print advertising from that source. The appearance of all advertisements in the Hawaii Marine, to include inserts and/or flyers, does not constitute endorsement by the Department of Defense, the Department of the Navy or the United States Marine Corps, of the firms, products or services advertised.

A voluntary monthly contribution of \$1 from residents of government housing at the Marine Corps Air Station, Kaneohe Bay, may be requested by Sun Press carriers delivering the Hawaii Marine. This contribution is strictly voluntary, and residents will receive the Hawaii Marine whether they contribute or not.

## IG Quiz #7

1. What is the defensive mission on the rifle squad?
2. How many steel pellets are there in the M-16A1 apers mine (Claymore)?
3. What is the minimum time in grade required for promotion to Corporal?
4. When can the NCO be prescribed for use with the utility uniform?

5. What should be the target length of the All Weather Coat?
6. Hitler and Mussolini held the same rank in World War I. What was it?
7. When boarding a naval vessel, who do you salute first, the Officer of the Deck or the National Ensign?
8. Drill -- Can you begin

9. What is the newest SNCO rank?
10. The battle of Bunker Hill took place on Bunker Hill on June 17, 1775.

Questions 2 and 10 are not EST-related.

See Answers/A-3



## 12 PACK BEER

ALL POPULAR BRANDS



# 6.99

EACH

12/12 OZ. CANS

TRY ONE OF OUR FRESH NEW SANDWICHES TODAY!

## SUPER SANDWICH SPECIAL



- ANY FRESH SUB SANDWICH
- ANY FLAVOR BIG GULP
- SPECIAL BAG OF LAY'S POTATO CHIPS

# 3.49

NO LIMIT!

## BOMB POPS

RED, WHITE AND BLUE

PERFECT HOT SUMMER TREAT. TRY ONE TODAY!



# 15¢

NO LIMIT!

EACH

## LOVES BREAD



KING WHITE & GOLDEN WHEAT 1 lb.

YOUR CHOICE!

# 89¢

EACH

## L'EGGS HOSIERY

ALL SIZES AND STYLES



# 25% OFF

MANUFACTURER'S SUG. RETAIL

EACH

## CASE PEPSI

- DIET PEPSI
- PEPSI
- MOUNTAIN DEW
- PEPSI FREE
- PEPSI LIGHT
- ALL FLAVOR PRODUCTS
- 7-UP
- DIET 7-UP
- MUG ROOTBEER
- DIET MUG ROOTBEER



# 7.99

EACH

24, 12 OZ. CANS

## CASE COKE

- COKE
- CLASSIC COKE
- DIET COKE
- CF COKE
- CF DIET COKE
- CHERRY COKE
- DIET SPRITE
- CI TAH
- SPRITE

MIX N MATCH ANY COMBINATION YOU DESIRE



# 7.99

EACH

24, 12 OZ. CANS



# Government housing is on the rise in '86

Nobody likes to receive orders to a new duty station, only to learn that it could be months — even years — before they will be assigned government quarters.

Almost 58 percent of those family members polled during the Defense Department's most recent survey about housing at stateside installations, published in 1983, said they were dissatisfied with the length of waiting lists for family housing; 40 percent of military families stationed overseas expressed similar dissatisfaction in a 1984 survey.

In some cases, a family might be ready to move on the next duty station before receiving notice of on-base housing availability.

A military family stationed at El Toro, Calif., can expect to wait as long as three years for base housing; and two-plus year waits are common for sailors in San Diego, Calif., soldiers at Fort Ord, Calif., and Fort Polk La., and airmen at Ramstein, Germany.

It would be impossible for DoD to provide enough government quarters for all 1.2 million military families. Two-thirds of these families live in the civilian community.

Yet, even off-base housing is often difficult to find. More than half of those polled in the DoD family housing survey complained of difficulty in locating temporary civilian housing.

Sometimes, in places like Fort Polk, La., and Kings Bay, where the Navy is building a new Trident submarine base in a sparsely populated area of southern Georgia, the local housing market can't accommodate the number of families to be housed.

In many other areas, like the California coast and Washington, D.C., the cost of civilian housing prices many military families right out of the market even with Variable Housing Allowance.

Bill McCay, head of the Navy's housing acquisitions

program, said the greatest needs are in the metropolitan coastal cities, where housing is in demand and, therefore, expensive.

"We find ourselves forced to deal with many housing markets that are prohibitive (in price) for the population as a whole," he said. "Service members, particularly those in the junior grades, just can't compete in these markets."

Unable to obtain on-base housing, military families often are forced to live in substandard housing, the only kind they can afford. DoD is working to improve this situation by providing more and better on-base housing and a steady supply of affordable civilian housing.

According to Robert A. Stone, deputy Assistant Secretary of Defense for Installation, DoD has provided more new housing

for military families in the past three years than in the previous nine.

DoD's fiscal 1987 family appropriation request includes \$3.4 billion to build or acquire 5,600 more houses and to maintain and upgrade some 406,000 existing houses, most of which are more than 20 years old.

Tight purse strings and the need for a quick response to housing shortages are driving housing officials to consider alternatives to military construction. Lieutenant Colonel Jack Crownover, director of Defense Housing, said it often takes five years from the time a housing shortage is identified until funding is obtained and construction is completed.

Housing officials are coming up with faster and less expensive alternatives.

In Hahn, Germany, the Air Force responded by

sending out a team to comb the local community for new sources of housing. The team literally walked the streets, knocked on doors and uncovered hundreds of previously unknown rentals.

At Fort Ord, Calif., where housing cost are exceptional — high and the waiting list for on-base housing included 2,500 families, officials leased 60 acres of government land to private developer for a 25-year period for \$1.

The developer, in turn, agreed to develop, build, operate and maintain a community of 220 manufactured homes. Within nine months, the homes were ready for occupancy — at rents averaging some \$200 below comparable housing in the community.

Already Fort Ord is planning another project in which developers will propose and bid on a mixed group of single-family homes, townhouses and apartments to be built on a 25-acre tract next to the existing manufactured home community.

In Oakland, Calif., another area of sky-high housing costs, the Navy joined forces with the Oakland Urban Housing Institute to obtain a low-cost loan and refurbish Oakland's inner city public housing. This housing is offered to junior Navy families for the cost of their basic allowance for quarters

and variable housing allowance, which is used to repay the loan.

In Kings Bay, the Navy is working with local developers to spur an extensive community development effort so when the new Trident submarine base there is fully operational, housing for some 3,000 Navy families will be available.

Defense officials agree that the availability and quality of family housing directly affects morale and ultimately, readiness. In a 1984 DoD survey of living conditions overseas, family housing was most often cited as the area needing improvement.

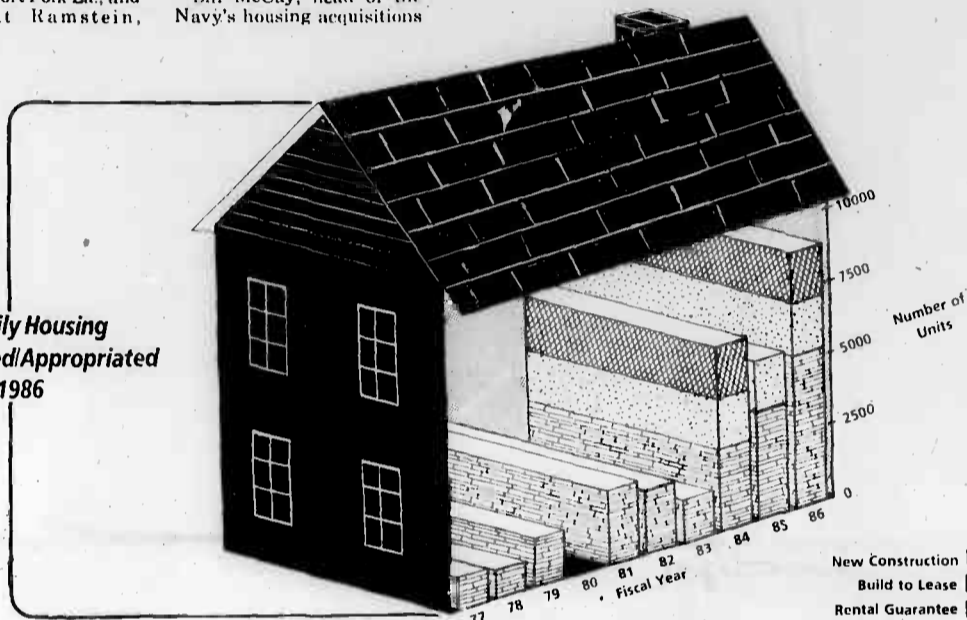
More than half of the respondents said that living conditions affected their job performance, and a third said those conditions affected their career intentions.

"Housing has a tremendous effect on families," according to Lt. Col. William Gooding, head of housing management for the Marine Corps.

"Moving has to be one of the most traumatic things in the world. It means a new job, new environment and new circumstances. If you have family housing available, whether on or off base, it makes the move a lot smoother. You've reduced a lot of the anxiety of the move for the whole family."

By Donna Bolinger  
American Forces  
Information Service

New Family Housing  
Authorized/Appropriated  
FYs 1977-1986



## IG Answers

1. To repel the enemy's assault by fire and close combat.	6. Corporal.
2. 700.	7. The National Ensign.
3. None — meritorious.	8. Yes.
4. Never — service uniform only.	9. Master sergeant (1946).
5. It shall extend to a point midway between the knee and mid-calf.	10. False. The Battle actually took place on Breed's Hill.

# Finally, a great pizza delivered.

Fast, fresh and hot!

(Kailua Only, 4:30 p.m. to 11:00 p.m.)  
7 Days a Week  
Limited Delivery Area  
Single Orders of Small Pizza Not Delivered

## Godfather's Pizza™

Major credit cards accepted

**11am-11pm**

**\$4 OFF** LG. PIZZA  
Regular or Deep Pan (Deep pan is \$1.00 more).  
Must present coupon when ordering. One Coupon Per Purchase. COUPON EXPIRES AUG. 30, 1986

Not to be combined with any other form of discount

**KAILUA ONLY** 309 HAHANI ST.  
Between Phone Mart & Post Office  
PH. 261-3368

The Richest, richest pizza ever.

**FREE**  
PITCHER OF  
COKE

with a large or medium pizza  
Now thru August 30, 1986

The Richest, richest pizza ever.

Godfather's Pizza  
Find out its worth!

# 2 For 1\* SPECIAL

IT'S OUR TWO MEMBERSHIPS FOR THE PRICE OF ONE SPECIAL!  
NOW IS THE TIME TO PAIR UP WITH A FRIEND OR LOVED ONE.

## SHAPE UP! Work out with the BEST!

Hawaii's only Full Facility Fitness Centers...

INCLUDES —  
Nautilus, Universal Machines, Free Weights, Racketball, Spa Areas, Aerobic Classes, Basketball, Volleyball, Babysitting, Bar & Grill, ActiveWare Boutique, Bodytone Massage, Body Fat Testing and much, much more.

**CALL OR COME IN TODAY!**  
OFFER LIMITED EXPIRES 7/31/86 \*2 for 1 offer first visit only.

International fitness centers  
FOR MEN & WOMEN 7 DAYS PER WEEK

Kapiolani Club  
1680 Kapiolani Blvd.  
OPEN 24 HOURS  
**942-8990**

Pao Club  
2810 Pao Street  
OPEN 6AM-10PM  
**833-6619**

Kaneohe Club  
43-608 Mam Hwy.  
OPEN 6AM-10PM  
**235-5839**

# John D. Kaupiko Regatta

Story and photos  
by SSgt. Virginia Bueno

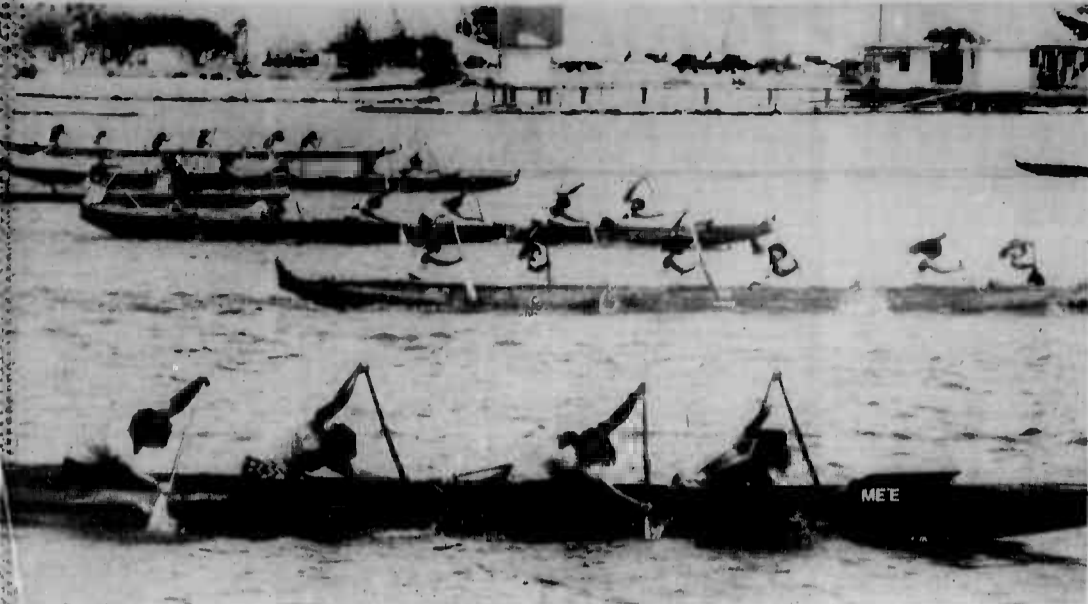
Despite a lot of rain on Sunday, nothing seemed to dampen the spirit of the John D. Kaupiko Regatta held here, attended by thousands of competitors and spectators.

Nearly 5,000 people showed up for the annual event, sponsored by the Hui Nalu Canoe Club and the Oahu Hawaiian Canoe Racing Association, in memory of the late Lukela "John D." Kaupiko, a pioneer of modern canoe racing.

In the opening ceremonies, Col. Robert P. Rogers, Air Station commanding officer, welcomed the 15 canoe clubs from Oahu which competed in some 31 events. Events included the 1/4, 1/2, 3/4 and one-mile distance races.

The overall winner of the regatta was the Kailua Canoe Club with 91 points; trailed by the Outrigger Canoe Club scoring 67; and the Hui Nalu Canoe Club with 41 points.

The Air Station has been the site of the Kaupiko regatta since 1979, and is one of the station's largest community relations events.



Wahines race to the finish.



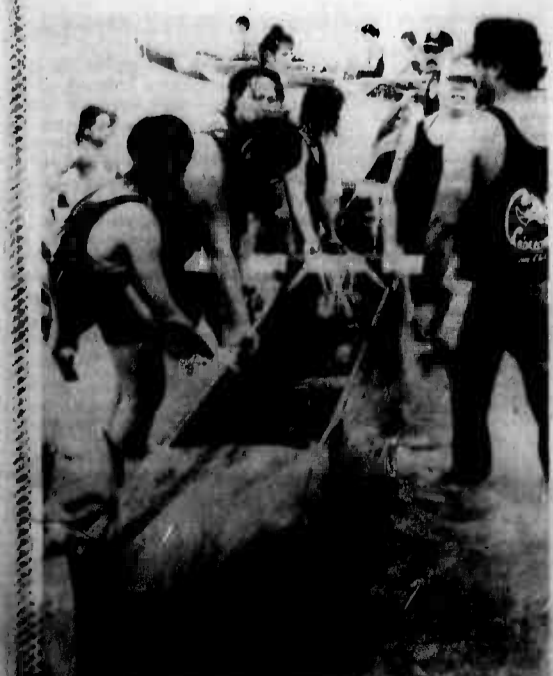
Marines aren't the only ones who do pushups as a few paddlers demonstrate.



The rain brought a new form of entertainment for this young girl as she jumps about on the Air Station flightline.



Paddlers coast in toward shore.



A coach gives some last minute instructions to his team.



Some preferred solitude, while others made it a team effort; but all in all, most of the paddlers felt that a prayer would guide them to victory.

# Deployment: The effects on military families

Deployments are a routine occurrence in the lives of many military families; however, these separations can drastically affect parents as well as children as young as three months.

Common reactions of children to deployment are sadness, anxiety and anger. These feelings may be reflected in behavioral problems, such as increased irritability; changes in sleeping and eating patterns; withdrawal; and testing of limits with the remaining parent.

Children's reactions depend upon several factors: age, sex, closeness to dad and how well prepared they are for the deployment. Preparation is the key to helping children adjust well.

Discussing the deployment is an effective way to accomplish this task. Dad

should discuss the separation with each child individually. He should explain that his reason for leaving has nothing to do with the child's behavior, rather it is a requirement of his job.

Next, dad should reassure his child of his love and let him/her know that life will not change drastically. Most importantly, he should encourage his child to share feelings about the separation.

It is also important to make the deployment "real" for children. If possible, parents should take them to the ship, and explain that it is where dad will be living during the separation. For very young children, creating deployment in a bathtub, with toy boats is helpful.

During deployment, the mother must remain strong and stable. Her reaction has a significant influence on her

children, and her emotional support is essential to helping them deal with their sense of loss. They need to be able to share their feelings with her and to receive her assurance that everything is "OK."

Mothers can also help their children to adjust by keeping their routines and discipline consistent. In addition, keeping them busy with planned activities is helpful.

To help with preparation for deployment, the Family Services Center at Pearl Harbor offers a Children's Predeployment Brief. The presentation includes a puppet show, discussion and a "hands on" activity. It is geared to children ages 5 to 12.

For more information, call 474-4222 or 474-2220.

# WINDWARD ENLISTED CLUB KMCAS

OPEN TO ALL MILITARY PERSONNEL AT KMCAS!

## FRIDAY NIGHT AT THE FIGHTS!

A STATION-WIDE BOXING SMOKER  
FRIDAY, JULY 18, 1986  
KMCAS, ENLISTED CLUB BALLROOM 1700

FREE FREE FREE

- Current USA/ABF rules will apply.
- Registration/weigh-in at Gym, 20 June-10 July
- All competitors must present written command authorization upon registering
- Awards to all bout winners
- No prior boxing experience is required.
- Call Athletic Office, 257-3550 for more info.

RESERVATIONS: 257-2657 or 257-2873  
MASTERCARD & VISA ACCEPTED FOR SPORTS EVENTS, DINNER & BEV. PURCHASES

# WINDWARD ENLISTED CLUB KMCAS



The Windward Enlisted Club & Hawaii International Promotion, Inc. Presents a . . .

## PRO WRESTLING CARD

SATURDAY, JULY 19, 1986

MAIN EVENT

Hawaii International Tag Team Championship Title. The winners will be the new TAG

SuperSoul Patrol	VS	The Hollywood Blondes
Rocky "Soulman" Johnson Jimmy "Superfly" Snuka New York/Fiji Islands (Comb. Wt. 500 lbs.)	VS	Bill Anderson Tim Patterson Hollywood (Comb. Wt. 505 lbs.)
Corporal Clint Terrell Arkansas/225 lbs.	VS	The Falcon Parts Unknown/240 lbs.
Doug Hiu Hawaii/245 lbs.	VS	Crusher Stevens New Zealand/270 lbs.
Sam Save Samoa/230 lbs.	VS	Virgil the Black Panther Florida/290 lbs.

PLUS ONE MORE MATCH

TEAM CHAMPS, ADULTS

\$700

UNDER 12

\$350

Referee — Roland Faiga  
Announcer — Kimo Keawe  
Guest Time Keeper — Revin' Little Kevin

# WINDWARD ENLISTED CLUB KMCAS

## Religious services



MCAS Kaneohe Bay 257-3553 Weekdays

11:45 a.m. — Catholic Mass

Saturdays

6 p.m. — Catholic Mass

7 p.m. — Catholic Confession Reconciliation

Sunday

7:30 a.m. — Catholic Mass

8:30 a.m. — Protestant Communion

9:30 a.m. — Protestant Sunday School

9:30 a.m. — Catholic Mass

11 a.m. — Protestant Worship

1 p.m. — Samoan Congregation

The Station Chapel is located in the right rear corner of the Marine Corps Exchange, building 1090.

Sunday Schools and CCD are held in the pre-school area, building 1391.

Camp H.M. Smith

477-5098

Sunday

8 a.m. — Catholic Mass

9:30 a.m. — Protestant Worship

9:30 a.m. — Protestant Sunday School

Monday 11:30 a.m. — Bible Study

Wednesday

6:45 — Prayer breakfast

7 p.m. — Choir rehearsal

Friday

11:30 a.m. — Catholic Mass

Aloha Jewish Chapel Pearl Harbor

471-0050

Saturday

8 p.m. — Shabat

9:30 a.m. — Shabat and Torah Study

## SAN DIEGO BOUND?

Interested in Buying a Home?

FREE

Relocation Brochure

JOAN KIDDER

Multi-Million Dollar Producer

Corky McMillin Realty

Call Toll Free

1-800-525-8910 ext. 9961

## The Omni™

Therapeutic Pillows And Seat Supports



PILLOW \$21.50

SEAT SUPPORT \$24.00

Designed to relieve pressure, increase circulation, improve posture.

Marine Corps Exchange Kaneohe Bay

# Shape it up

THIS SUMMER

\$10.00 ENROLLMENT PLUS ONE YEAR FREE!



Mademoiselle Spa takes pride in offering the best to the ladies of Hawaii with personalized programs and the finest, the most luxurious exercise equipment and facilities available. So ladies if you wish to reduce pounds and inches, firm, tone and join in the fun of exercise and aerobic classes while gaining fitness along the way, then Mademoiselle is the answer for you.

CALL TO RESERVE YOUR APPOINTMENT NOW!

(LIMITED OFFER)

235-3511

HAWAII'S ONLY LUXURY SPA EXCLUSIVELY FOR WOMEN!

Mademoiselle® Spa Lady

WINDWARD CITY SHOPPING CENTER

HOURS:  
8 AM-9 PM MONDAY-FRIDAY  
9 AM-6 PM SATURDAY  
12-6 PM SUNDAY

- BABYSITTING
- AMPLE FREE PARKING

\*Based on Bronze V.I.P. Membership Offer Good On First Visit Only Offer Expires 7/31/86

# At a glance



## Soldiers' Sailors' Airmen's Club

The Soldiers', Sailors', and Airmen's Club is offering low-cost, comfortable rooms and meals for service members visiting the New York City area.

A clean comfortable room costs only \$10 per night, and on the weekends below-cost meals are available. Modeled in a club-style, the facilities are located in mid-town near subway and bus lines.

For reservations, call (212) 683-4353 or write the Soldiers', Sailors' and Airmen's Club, 283 Lexington Ave., New York, New York 10016.

## Seminar on Stress

The Family Service Center at Pearl Harbor is presenting a seminar on stress management, July 24, 7 to 9

p.m. at the FSC classroom, building 193.

The course will explain what stress is, how it affects your body, how you can cope with it, and what relaxation techniques can help.

For information and reservations, call 257-2128/2129.

## Japanese film series

Windward Community College in Kaneohe will continue its Japanese film series through July with four classic samurai movies.

Two showings are scheduled for July 12 and 19 at 7 and 9 p.m., in Eckerdt building, room 102. The last film in the series will be shown at 7 p.m. only on July 26. Admission is \$2 for adults and \$1 for children under 12 and senior citizens. The movies are:

July 19 — "Harakiri," the powerful story of a warrior

who challenges the strict code of the samurai after his son-in-law is forced to commit suicide.

July 26 — "Seven Samurai," Kurosawa's highly acclaimed movie about the inhabitants of a small village who hire seven samurai to protect them from bandit attacks.

For more information, call 235-7433.

## Bus fares lowered

Greyhound Lines has extended the military Ameripass and package express discount programs through Dec. 31.

The program offers 30 days of unlimited travel for \$169; 15 days of unlimited travel for \$119; and 7 days of unlimited travel for \$94. Package express allows eligible people to ship or receive packages of 100 pounds or less anywhere throughout the Greyhound

System for \$10 or less.

Active duty personnel, retirees, National Guardsmen, reservists, foreign military serving with U.S. forces and all military family members are eligible for the program; however, reservists and National Guardsmen are not eligible for the 7-day Ameripass; and foreign Military personnel and family members of retirees are not eligible for the package express program. A

valid military I.D. card is required for these programs.

For more information, call Jennie Bell at (autovon) 289-1590 or (202) 756-1590.

## Preschool enrollments accepted

The air station's Menchune Rainbow Preschool is accepting enrollments for two special "Introduction to

Preschool" classes scheduled for Aug. 5 through 21.

The classes are intended for three-year-olds who will be entering the preschool in the fall. They will meet Tuesdays and Thursday, from 9 to 11 a.m., and are designed to help the children adjust to the preschool environment and to being separated from their parents.

For more information call 254-3190.

## What's cooking



Today	Sunday	Wednesday
<b>Today</b> Liver Fiesta, Newport fried chicken <b>Dinner</b> Swiss steak with brown gravy, hot turkey sandwich	<b>Brunch</b> Grilled Canadian bacon, grilled sausage patties <b>Dinner</b> Chirbonil steak-to-order, baked chicken	<b>Breakfast</b> Minced beef, oven fried bacon <b>Lunch</b> Turkey pot pie, grilled liver <b>Dinner</b> Roast fresh ham, Salisbury steak
Friday	Monday	Tuesday
<b>Breakfast</b> Baked sausage links, oven fried bacon <b>Lunch</b> Beef pot pie, hot roast pork sandwich <b>Dinner</b> Seafood platter, hot roast beef sandwich	<b>Breakfast</b> Cured beef hash, grilled ham slices <b>Lunch</b> Barbecued sliced pork, Sukiyaki <b>Dinner</b> Veal roast, french fried fish portions	<b>Breakfast</b> Baked sausage links, creamed beef <b>Lunch</b> Chili Conquistador, BBQ spurs ribs
Saturday		
<b>Brunch</b> Grilled minute steak, grilled ham slices <b>Dinner</b> Yankee pot roast, Salisbury steak		

## FAMILY EYE EXAMINATION PLAN

Includes All Immediate Family Members  
**\$39**  
CHAMPUS Participant  
SOFT CONTACT LENSES  
From \$79  
PRESCRIPTION GLASSES  
From \$49



All Contact Lens Fees include Lenses, Care Kit Follow up Care and 90 DAY TRIAL PERIOD

COMPLETE PROFESSIONAL VISION SERVICES DEDICATED TO QUALITY AND SERVICE IN VISION CARE

Dr. Charles Dean  
Optometrist

KAILUA  
139 Hekili St.  
261-9735



## NEW MILDS BOX

# KOOL



SURGEON GENERAL'S WARNING: Cigarette Smoke Contains Carbon Monoxide.

©1986 HAWT Co

12 mg. "tar", 1.0 mg. nicotine av. per cigarette by FTC method.

Your child will gain one full grade level in just 36 hours.

**Guaranteed.\***

For more information on how Sylvan can guarantee your child's academic improvement, please call:



**KAILUA 263-6656**  
629 Kailua Road #206  
Kailua, Hawaii 96734  
**KAHALA 735-8811**  
Kahala Professional Bldg.  
4747 Kilauea Ave., Suite 103-106  
Honolulu, Hawaii 96816

\*Your child will improve at least one full grade equivalent score in math or reading skills after 36 hours of instruction, or we will continue up to 12 additional hours of instruction at no further cost. Measurement will be based on a nationally recognized achievement test for improvement in basic reading (comprehension or vocabulary) and math (computation or application).

## The Hale Koa Luau



## An Evening of Vintage Hawaii

Only here will you feel like you're really there. Our spacious oceanfront garden lawn provides a lush setting and panoramic views reminiscent of the early days on Waikiki Beach. The evening begins with a fresh flower lei greeting, cocktails and a shimmering sunset, followed by authentic imu (cooking pit) and torchlight ceremonies, traditional Hawaiian dinner and a captivating South Seas show spanning centuries of music and dance. Tickets are \$21.95 for adults and \$12.95 for children under 12. Dinner, show, two complimentary cocktails or one exotic drink (soft drinks for children) and gratuity are included. Get yours now at the Hotel Activities Desk or at the Kaneohe MCAS Special Services Office.

Tuesday & Thursday evenings on our oceanfront lawn  
Cocktails: 5:30 PM / Dinner: 6:30 PM



Armed Forces Recreation Center, 2155 Kalia Road  
Honolulu, HI 96815-1908 / Telephone: 955-0555

# 30%-40% OFF Samsonite®

## Series 2100™

## Rhapsody™

## Prego™



	REG.	SALE
•CARRY-ON	\$46.00	\$29.00
•26" w/WHEELS	\$62.00	\$39.00
•28" w/WHEELS	\$70.00	\$45.00
•GARMENT BAG •AVAILABLE IN TAN	\$66.00	\$42.00



	REG.	SALE
•TOTE	\$42.00	\$25.00
•26" w/WHEELS	\$92.00	\$59.00
•28" w/WHEELS	\$102.00	\$69.00
•GARMENT BAG •AVAILABLE IN TAN	\$100.00	\$63.00



	REG.	SALE
•SHOULDER DUFFEL	\$42.00	\$25.00
•STRAPPED DUFFEL	\$69.00	\$41.00
•24" TRAVELLER	\$84.00	\$50.00
•26" w/WHEELS	\$105.00	\$63.00
•29" w/WHEELS •AVAILABLE IN DARK OLIVE	\$115.00	\$69.00

# SUMMER TRAVEL SALE SALE SALE

## Silhouette III™

## System 4™

## Accord ST™



	REG.	SALE
•BEAUTY CASE	\$56.00	\$39.00
•CARRY-ON*	\$65.00	\$45.00
•24" TRAVELLER*	\$79.00	\$55.00
•26" CARTWHEELS	\$100.00	\$67.00
•29" CARTWHEELS	\$118.00	\$82.00
•DELUXE CARRY-ON*	\$68.00	\$47.00
•3-SUITER CARTWHEELS* •AVAILABLE IN MOJAVE TAN, WINEBERRY AND BRONZE*	\$108.00	\$75.00



	REG.	SALE
•BEAUTY CASE	\$70.00	\$40.00
•CARRY-ON	\$85.00	\$50.00
•24" w/WHEELS	\$117.00	\$70.00
•26" w/WHEELS	\$135.00	\$79.00
•4 SUITER	\$170.00	\$97.00
•VALET GARMENT BAG •AVAILABLE IN STEEL GREY	\$145.00	\$87.00



	REG.	SALE
•3" BRIEFCASE	\$72.00	\$49.00
•5" BRIEFCASE •AVAILABLE IN BLACK, SLATE, BROWN.	\$76.00	\$52.00

## Classic XL™



	REG.	SALE
•4" BRIEFCASE	\$54.00	\$37.00
•5 1/2" BRIEFCASE •AVAILABLE IN SILVER & WINE	\$56.00	\$39.00

**SALE ENDS 8/3/86**

WHILE SUPPLIES LAST

This ad not paid for by the Marine Corps Exchange

**Marine Corps Exchange**  
Kaneohe Bay

# Salutes

## ECG 1st MAB, Panama City, Fla.



### Promotion

Lance Corporal D.K. Nelson has his chevrons pinned on by Col. J.W. Cunningham, commanding officer, Embarkation Command Group, 1st MAB and GySgt. E.C. Smith acting first sergeant, ECG.



### Reenlistment

Lance Corporal R.E. Sterling is given the oath of enlistment by Col. J.W. Cunningham, commanding officer, Embarkation Command Group, 1st MAB, Panama City, Fla. Sterling, a combat engineer, reenlisted for four years and received a bonus.



### Meritorious Mast

Lance Corporal J.L. Newberry is congratulated by Col. J.W. Cunningham, commanding officer, Embarkation Command Group, 1st MAB, Panama City, Fla., for receiving a Meritorious Mast.

EDITORS NOTE: Salutes recognize individuals for their achievements and exceptional performance and welcomes new arrivals to Hawaii. The information is compiled by the Unit Information Officers and submitted to the Joint Public Affairs Office.

3/3  
Welcome Aboard  
Cpl. M.P. Ankiewicz  
Cpl. M.R. Dolly

HMH-483  
Welcome Aboard  
LCpl. C.M. Campo  
Promotion  
MSgt. Vasquez  
Meritorious Mast  
Cpl. M.L. Schaffner  
Cpl. S.P. Hopkins  
LCpl. J.A. Guschen  
Sgt. H.E. Clink  
Cpl. D.G. Brewster  
Cpl. J.W. Burns  
Cpl. S.A. Alloway  
Cpl. M.J. Rose  
Cpl. A.G. Shreve  
Cpl. J.D. McCall  
Cpl. H.A. Humanglang  
Cpl. J.J. Heineman  
Cpl. J.O. Teuton

Good Conduct Medals  
SSgt. R.M. Robinson  
SSgt. R. Aviles  
Sgt. M.A. Wilson  
LCpl. M.L. Kruse  
Cpl. P.D. Lively  
Cpl. W.G. Shepard, Jr.  
Letter of Appreciation  
Cpl. D.L. Miesse  
CommSupt Co.  
Certificate of Appreciation  
SSgt. J.L. White  
Sgt. M.C. Felts

MACS-2  
Welcome Aboard  
2ndLt. K.S. Keeney

HMM-165  
Promotion  
Cpl. A.L. Lent, Jr.  
Meritorious Mast  
Cpl. A.E. Easler  
Cpl. C.M. Hayes  
Good Conduct Medal  
LCpl. W.B. Walker  
Aviation Safety Award  
Maj. S.J. Bartram

HQS CO., 3rd Marines  
Welcome Aboard  
PFC D.B. Wiley  
LCpl. T.J. Bruce  
LCpl. V.C. McClinton  
LCpl. R.A. Webber  
Sgt. C. Guzman Carrasquillo  
Good Conduct Medal  
Cpl. I.W. Jackson  
See Salutes/A-10

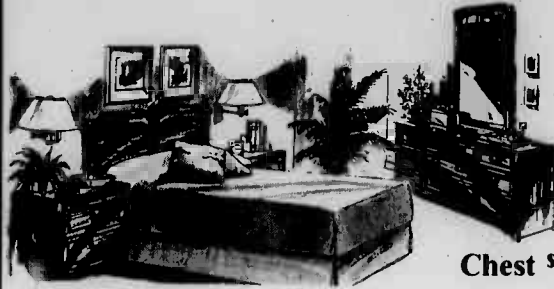
# Thomasville

## Furniture

Selected groups of Thomasville® Furniture are in Stock and on Sale. July 17 - August 3

### Intuition

East meets West in this subtle union of contemporary oriental styling

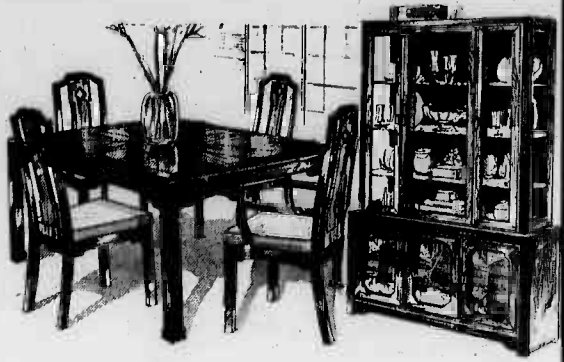


5 PIECE BEDROOM  
Includes Dresser, Mirror, Headboard & Two Nightstands

\$1159<sup>00</sup>

Chest \$400 Armoire \$700

7 PIECE DINING ROOM  
Includes Parsons Table  
4 Side Chairs, 2 Arm Chairs



\$1499<sup>00</sup>

CHINA HUTCH  
\$1290<sup>00</sup>

The Thomasville representative, Paige Via, will be at Interiors Plus July 19 & 20 to answer questions.

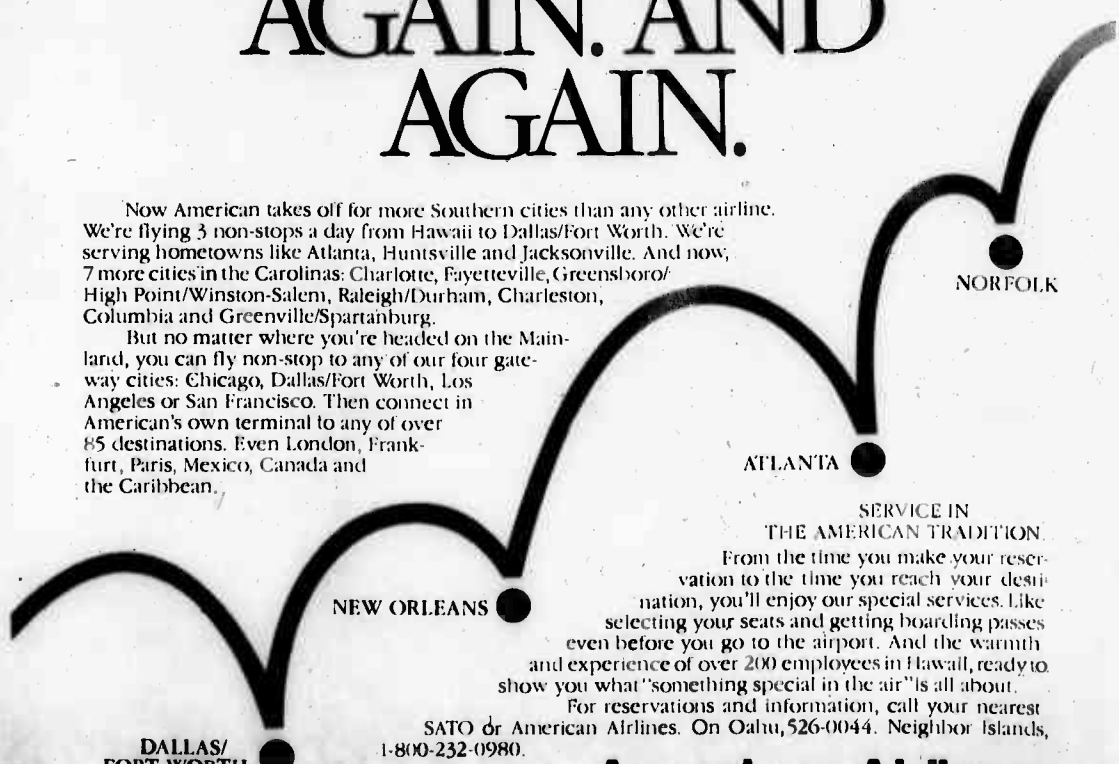
# NAVY exchange HAWAII

Interiors Plus @ Pearl Harbor  
Rainbow Annex @ Barbers Point

# ON AMERICAN, THE SOUTH RISES AGAIN. AND AGAIN. AND AGAIN.

Now American takes off for more Southern cities than any other airline. We're flying 3 non-stops a day from Hawaii to Dallas/Fort Worth. We're serving hometowns like Atlanta, Huntsville and Jacksonville. And now, 7 more cities in the Carolinas: Charlotte, Fayetteville, Greensboro/High Point/Winston-Salem, Raleigh/Durham, Charleston, Columbia and Greenville/Spartanburg.

But no matter where you're headed on the Mainland, you can fly non-stop to any of our four gateway cities: Chicago, Dallas/Fort Worth, Los Angeles or San Francisco. Then connect in American's own terminal to any of over 85 destinations. Even London, Frankfurt, Paris, Mexico, Canada and the Caribbean.



NEW ORLEANS

ATLANTA

NORFOLK

DALLAS/FORT WORTH

SATO or American Airlines. On Oahu, 526-0044. Neighbor Islands, 1-800-232-0980.

# American Airlines

Something special in the air.™

**Neck Pain? Backache?**  
Don't Suffer Needlessly!

**Pacific Chiropractic**

TRAINED IN 5 RECOGNIZED TECHNIQUES INCLUDING "LOW FORCE"

COMPLETE PHYSICAL EXAM

X-RAY FACILITIES

COMMON SYMPTOMS:  
• BACK PAIN  
• HEADACHES  
• NECK PAIN  
• ARM & LEG PAIN  
• JOINT PAIN  
• MUSCLE SPASMS  
• NUMBNESS  
• PINCHED NERVES

DR. JEANNE MICHAELS  
R.N. DC.

SPECIALIZING IN:  
• ON THE JOB INJURIES  
• AUTO ACCIDENTS  
• SPORTS INJURIES  
• CHRONIC & DIFFICULT CASES  
• GENERAL PRACTICE  
• FAMILY CARE PLAN  
• PERSONALIZED CARE

602 KAILUA RD. NO. 207, KAILUA  
(between Cornet & Hardware Hawaii-2nd floor rear)  
NO CHARGE FOR BRIEF SPINAL ANALYSIS

261-0831

**Law Offices of Lawrence K. Blume**

Specializing In:  
Personal Injury  
Workers' Compensation  
Domestic Relations

Lawrence K. Blume  
&  
Lillian Ramirez Uy

Tagalog Spoken

Free Initial Consultation

Suite 1850, Pioneer Plaza  
900 Fort St. Mall  
Honolulu, HI 96813  
523-9165

# Special Services

Kaneohe Bay, Hawaii



## Aulea Swim Club

The Aulea Swim Club of Kailua is expanding its membership. Age groups are formed for swimmers eight years old and under, through high school. No previous competitive experience is necessary.

Aulea's coaching staff is directed by Albert Minn, founder of the swim club and head coach since 1957. Minn also coaches the UH Wahines and was selected Coach of the Year by the Pacific Coast Athletic Association.

Practice is in the late afternoons Monday through Friday at the Kailua Recreation Center Pool. Competitive interclub meets are held on weekends.

Registration and tryouts will be held at the Air Station Pool tomorrow from 4 to 6 p.m., and on Monday and Tuesday from 4 to 6 p.m.

For more details, call Pat or Chuck Akstin at 254-4646.

## Junior Sailing

The second session of junior sailing will be July 21 through Aug. 11. Classes are Mondays and Thursday 9 a.m. to 3 p.m., and are for youth ages 13-18. Cost is \$30. Sign-up is going on now at Dependent Recreation.

For more information, call 254-2963.

## Scuba Locker

The Scuba Locker here offers everything needed to go diving. Tanks, regulators, weights and weight belts,

masks, fins and snorkels are available for rent.

Scuba classes are also held year round. Classes range from basic diving to specialties.

For more information, call 257-2548 or stop by building 238 on "D" Street.

## Library

The Station Library has the book "Hitler's Mistakes," by Ronald Lewin.

This thought provoking book is the last work of Ronald Lewin, one of England's most distinguished military historians. He was fascinated with the complexities of Hitler's character and what made the Nazi leader tick. Lewin displays a sure grasp of one of the greatest evil geniuses of our time.

For more information, call 257-3583.

## Recreation Equipment

The Outdoor Recreation Equipment Center offers a wide variety of rental equipment, including tents, stoves, lanterns, coolers, sleeping bags, fishing poles, snorkeling equipment, camping trailers, boogie boards, horseshoes, and balls and nets.

For scuba divers, there are tanks, buoyancy compensators, regulators, masks, fins, snorkels, wight belts, dive accessories and wet suit tops.

A certified instructor is available to basic scuba diving to advanced and specialty classes. An air compressor is also available for filling both Marina-rented and privately owned tanks.

Hours are Thursday - Monday, 9 a.m. to 5 p.m.

Holidays, 9 a.m. to 5 p.m.; and closed Tuesdays and Wednesdays. Scuba tank air fills are 7:30 to 9 a.m., Saturdays, Sundays and Holidays.

For more information, call 257-3548.

# JCPenney

## Windward MALL

### — WEEKEND SALE —

FRI. — SAT. — SUN.

<b>14K GOLD-FILLED JEWELRY</b> <b>NOW</b> <b>5.99-15.99</b> <small>ORIG. 8.95-52.95 Pendants, earrings some w/ Genuine Stones.</small>	<b>MEN'S PUTTER PANT PAR FOUR-ELASTIC</b> <b>NOW</b> <b>7.99</b> <small>ORIG. 25.00 Poly/cotton. 600 Only.</small>	<b>COMFORTERS, SPREADS, ELECTRIC BLANKETS</b> <b>NOW</b> <b>19.99</b> <small>ORIG. 29.99-\$70 All sizes. 80 Only.</small>	<b>GIRL'S ROMPERS</b> <b>NOW</b> <b>3.99</b> <small>ORIG. 9.99-13.99 Preschool, school age and Jr. misses sizes. 200 Only</small>	<b>WOMEN'S CHEROKEE SHOES</b> <b>NOW</b> <b>1/2 PRICE</b> <small>ORIG. 19.99-37.00 Summer styles. 150 Only</small>
<b>SOLID COLOR SHEETS</b> <b>SAVE 40%</b> <small>Selected styles and colors. All sizes.</small>	<b>WOMEN'S SPORTSWEAR</b> <b>NOW</b> <b>1/2 PRICE</b> <small>Selected Sweaters. ORIG. 13.99-\$24 Jr., Misses, Petites</small>	<b>LUGGAGE, ATTACHE, PORTFOLIOS NCW</b> <b>3.99-49.99</b> <small>ORIG. \$9-\$125 Selected styles. 80 Only</small>	<b>WOMEN'S BRIEFS AND BIKINIS</b> <b>NOW</b> <b>1/2 PRICE</b> <small>ORIG. 3.25-\$4 Selected styles. 350 Only</small>	<b>BOYS' MOREY BOOGIE TEES</b> <b>NOW</b> <b>2.99</b> <small>ORIG. 10.00 Assorted colors. 72 Only</small>
<b>NAME BRAND WATCHES</b> <b>NOW</b> <b>39.99</b> <small>Selected Selko, Pulsar, Citizen, Blass ORIG. 79.50-\$175 33 ONLY</small>	<b>REVERE COOKWARE SETS</b> <b>NOW</b> <b>49.99</b> <small>10 pc., 11 pc., 15 pc. ORIG. 119.99-149.99 60 Only</small>	<b>ALL SHAMPOO, CONDITIONERS &amp; SKIN CARE PRODUCTS</b> <b>NOW</b> <b>20% OFF</b> <small>Styling Salon. Quantities limited.</small>	<b>WOMEN'S BELTS</b> <b>NOW</b> <b>3.99</b> <small>ORIG. \$8-\$21 Selected styles. 60 Only</small>	<b>19" COLOR TV</b> <b>NOW</b> <b>279<sup>95</sup></b> <small>ORIG. 479.95 Digital keyboard control. 4 Only</small>
<b>SATIN HANGERS 5 PER PACKAGE</b> <b>NOW</b> <b>3.99</b> <small>ORIG. 9.00 Assorted colors. 100 only</small>	<b>INFANT &amp; TODDLER TOPS AND SHORTS</b> <b>NOW</b> <b>1.99</b> <small>ORIG. \$6-\$10 Sizes 1T to 4T 250 Only</small>	<b>WOMEN'S SHORT SLEEVE BLOUSES</b> <b>NOW</b> <b>9.99</b> <small>ORIG. 24.00 Assorted colors, prints. 100 Only</small>	<b>BEACH TOWELS</b> <b>NOW</b> <b>1/2 PRICE</b> <small>Selected styles. 60 Only</small>	<b>ALOHA SHIRTS</b> <b>NOW</b> <b>2.99</b> <small>ORIG. 21.99 In 4 colors. 72 Only</small>
<b>DINNERWARE</b> <b>NOW</b> <b>59.99-99.99</b> <small>Assorted Patterns ORIG. \$90-\$120 40 Only</small>	<b>PAR FOUR MEN'S SHIRTS</b> <b>NOW</b> <b>6.99</b> <small>ORIG. 19.00 Assorted colors. 250 Only</small>	<b>GIRLS TOPS</b> <b>NOW</b> <b>3.99</b> <small>ORIG. 5.99-\$12 Preschool, school age and Jr. HI sizes. 96 Only</small>	<b>SELECTED MEN'S SWIMWEAR AND WEED'S SHORTS</b> <b>NOW</b> <b>5.99</b> <small>ORIG. 11.99-\$22 Selected styles and colors. 120 only</small>	<b>WOMEN'S 9-2-5 SHOES</b> <b>NOW</b> <b>19.99</b> <small>ORIG. 45.00 Selected styles. Broken sizes.</small>
<b>JUNIOR ROMPERS</b> <b>NOW</b> <b>12.99</b> <small>ORIG. \$18-\$21 Selected wovens and Knits. 60 Only</small>	<b>JR. HUNT CLUB JEANS</b> <b>NOW</b> <b>1/2 PRICE</b> <small>ORIG. 29.00 White, blue, fushia, red, turquoise. 48 Only</small>	<b>AM/FM STEREO PRESET RECEIVER</b> <b>NOW</b> <b>19.99</b> <small>ORIG. 44.95 8 Only</small>	<b>ASTROFILL BEDPILLOWS</b> <b>NOW</b> <b>5.99</b> <small>ORIG. 8.99 Standard only. 48 Only</small>	<b>MEN'S DRESS SHIRTS</b> <b>NOW</b> <b>4.99</b> <small>ORIG. 12.99-20.00 Assorted colors. Selected styles. 48 Only</small>

**SALE ENDS JULY 20**  
**— QUANTITIES LIMITED —**

## Movie schedule

**Family Theater**  
 7:15 p.m., nightly  
 257-3668  
 Today and Tomorrow

House (R). Horror. A horror novelist and his wife move into an inherited Victorian mansion. He begins his memories on Vietnam and evil house creates nightmares of its own.

**Saturday and Sunday**

Just Between Friends (PG-13). Mary Tyler-Moore. Comedy drama. A housewife, mother and former dancer believes she is happily married to a seismologist. Her newfound friend, a TV news correspondent, is having an affair with her husband.

**Monday**

Surprise film classic.

**Tuesday**

Eliminators (PG). Action. A mad scientist creates a "mandroid" which gets wise to his scheme to go back in time to rule ancient Rome. When it escapes, the "mandroid" encounters a "good guy" scientist and river boat captain. They fight their way into the jungle and adjust the time machine, foiling the doctor's plans.

**Wednesday**

Sleeping Beauty (G). Animation. A classic story of a princess placed in a deep sleep by a evil fairy's magic spell. Awakened by a handsome prince's kiss, she lives happily ever after.

## Ticket info

Polo Matches — at Mokuieia through August. Tickets are \$4.

Hawaii Islanders Baseball — Rainbow Stadium. Seasonal book of 20 tickets at \$25, single tickets are \$1.25.

Castle Park Special — Action pass gift certificates for two people \$10.95.

Championship Wrestling — NBC Arena on July 10. Tickets are \$12.70, ringside, \$10.70, risers; and \$8.70, general admission.

Frank Sinatra — Aloha Stadium on July 26 at 8 p.m. Tickets are \$50.70.

Julian Lennon — Waikiki Shell on Aug. 3 at 8 p.m. Tickets are \$17.20 for reserved seats, and general admission is \$12.70.

For more information, call Margaret at 254-3814 or stop by building 219, from 9 a.m. to 3:30 p.m., Monday through Friday.

SALUTES/ from A-8

Meritorious Mast



Cpl. Thomas L. Russell photo

Lance Corporal R.L. Green is congratulated by Col. J.W. Cunningham, commanding Officer, Embarkation Command Group, 1st MAB, Panama City, Fla., for receiving a Meritorious Mast.



Cpl. Thomas L. Russell photo

Corporal R.L. Holmes is congratulated by Col. J.W. Cunningham, Commanding Officer, Embarkation Command Group, 1st MAB, Panama City, Fla., for receiving a Meritorious Mast.

Good Conduct Medals



Cpl. Thomas L. Russell photo

Lance Corporal T.H. Rohmann is congratulated by Col. J.W. Cunningham, commanding Officer, Embarkation Command Group, 1st MAB, Panama City, Fla., for receiving his first Good Conduct Medal.



Cpl. Thomas L. Russell photo

Corporal B.E. Owens is congratulated by Col. J.W. Cunningham, commanding Officer, Embarkation Command Group, 1st MAB, Panama City, Fla., for receiving his first Good Conduct Medal.



Cpl. Thomas L. Russell photo

Corporal L.M. Sandoval is congratulated by Col. J.W. Cunningham, commanding Officer, Embarkation Command Group, 1st MAB, Panama City, Fla., for receiving his first Good Conduct Medal.

Quit Smoking Program

"FreshStart," a quit smoking program, will be held at the Family Services Center, here in four 90-minute sessions, Aug. 19, 21, 26 and 28, from 7 to 8:30 p.m. space is limited and the program is free. For information or reservations, call 257-2128/2129.

Teen, parents course

Family Service Center, here, offers a course to parents of teenagers, July 14 to Aug. 17, on Mondays 7 to 9 p.m. Systematic Training For Effective Parenting is a realistic and sensible approach to family relations making them more satisfying and enjoyable for both parents and teens. This class is free and includes a

Education

The University of Oklahoma is offering a graduate program in Managerial Economics, including economics, management, systems analysis and liberal arts. For information, call 449-1849.

parenting workbook for each family. For reservations call 257-2128/2129.

Preretirement The Family Service Center

at Pearl Harbor is offering preretirement seminars once a quarter, which cover the rights and benefits of the retiree such as Veterans Administration, CHAMPUS and Survivor Benefits Plan. Job information is also discussed, both in the general market

place and in federal employment. The next seminar will be held on Aug. 6 at the Chief Petty Officers Club from 8 a.m. to 3 p.m. Call 474-2220/4222 to register.

**TIME IS RUNNING OUT!** **1st TIME EVER LIMITED OFFER\*** **HURRY!**

**1 YEAR MEMBERSHIP 2 FOR 1 \$99\***

PLUS \$20 REGISTRATION FEE PER PERSON

- OPEN 7 DAYS A WEEK
- MEN, WOMEN & STUDENTS
- CYBEX EQUIPMENT
- STAIR MASTER
- BICYCLE
- SAUNA, STEAM
- DANCE AEROBICS & EXERCISE CLASSES
- OLYMPIC FREE WEIGHTS
- PERSONALIZED TRAINING
- BABYSITTING AVAILABLE (M-F 8 am - 10 am)

**ASK FOR OUR UNADVERTISED SPECIAL!**

**263-6678**

1090 Keolu Drive  
Kailua, Enchanted Lake  
Next to 7-11

Hours: M-F 6am-9pm • SAT. 9am-5pm • SUN. 12pm-5pm

**KAILUA Health Club**

\*Must Join On First Visit

**Ronald T. Nelson D.D.S. FAMILY DENTISTRY**

970 N. Kalahep Ave. Suite C #309  
**PALI PALMS PLAZA KAILUA**

HRS: Days & Evenings By Appointment  
**254-5503**

**Midsummer Sports Sale**

**Forster® Croquet Set**  
39<sup>99</sup> reg. 49.99  
For hours of family fun this 6-player set comes complete with mallet, balls & stakes.

**Yamaha® CG 100 Ceramic Tennis Frame**  
79<sup>99</sup> reg. 99.99  
Oversize head, graphite frame for super freeland performance. Leather grip. Custom stringing available.

**Academy Broadway® 3-Person Dome Tent**  
59<sup>99</sup> reg. 89.99  
Easy to set up. Light enough for backpacking.

**Sea Raider® Inflatable Boats**  
Silver boat with blue trim. Molded oar locks, large inflator valve.

**One-Person Boat** 12<sup>99</sup> reg. 17.99  
**Two-Person Boat** 19<sup>99</sup> reg. 24.99

**Men's Knit Sport Shirts** 16<sup>99</sup> reg. 24.99  
Choose from Jaccar® Munsingwear or Filart® in solids and stripes, 100% cotton or cotton/polyblend. Size S-XL

**Court Casual® Shorts** 17<sup>99</sup>  
men's sizes in navy or white cotton/polyester for easy care and comfortable wear.

**Crosman® A-1-R-17 Air Rifle** 49<sup>99</sup>  
• Authentic detail styling  
• Single pump power  
• #21 BB magazine  
• 4-shot pellet clip

**Igloo® 48-Quart Cooler** 26<sup>99</sup> reg. 36.99  
mfg. mail-in rebate ..... 4.00  
Net Cost ..... 22<sup>99</sup>

**Harvard® Backboard Only #1909** 19<sup>99</sup> reg. 24.99

**Goal & Net** 17<sup>99</sup>

**Reebok® Phase I Leather Court Shoes** 38<sup>99</sup> reg. 47.99  
Men's white leather shoes for court or leisure wear.

**Spenco® Blossom Ankle/Wrist Weights** 14<sup>99</sup>  
Lifelike polymer molds to wrist and ankle. Machine washable and dryable.

**Nike® Gamebreaker Court Shoes** 24<sup>99</sup> reg. 42.99  
White leather stealth, super grip soles.

**Athletic Socks** 8<sup>99</sup> 6 per pkg.  
reg. 12.99 Choose solid white or striped

**Nike® Shark Hi Field Shoes** 28<sup>99</sup> reg. 36.99

**Dodger Shorts** 4<sup>99</sup> reg. 5.99  
Perfect for workouts, running & leisure wear.

**Nike® Terminator Court Shoes** 49<sup>99</sup> reg. 59.99  
Hi-top Court shoes for quick moves.

**HONSPORT**  
Division of Oshman's Sporting Goods

• Pearlridge 487-1517  
• Windward Mall 247-8733  
• Kailua 261-9751

We honor Visa, American Express, Mastercard.  
Prices good thru 7-22-86

# B Hawaii Marine

July 17, 1986

## Marines test fire new SMAW

Story and photos by Cpl. Stephen Frank

Marines from Company A, 1/3 recently travelled to the Makua Military Reservation, on the western coast of Oahu, to conduct a demonstration of the new Shoulder fired, Multi-purpose Assault Weapon.

The SMAW, recently introduced into the Marine Corps inventory, is an 83mm, smooth bore rocket launcher capable of penetrating up to eight inches of concrete. Sometimes called the "Bunker Buster," the weapon is designed for use against field fortifications and weapon emplacements.

The SMAW is equipped with a 9mm spotting rifle mounted on the side of the weapon which fires tracer rounds ballistically matched to the trajectory of the rocket, giving the SMAW a high hit probability.

The demonstration was witnessed by BGen. G.L. Cates, commanding general

of the 1st MAB, along with several Army officers including LtGen. Louis Wagner, Army deputy chief of staff for research, development and acquisition; BGen. Thomas Lightner, deputy commanding general of the Army Western Command; and BGen. Charles Lightner, assistant division commander of the 25th Infantry Division.

During the demonstration, Sgt. Benny Vigil, SMAW section leader for Co. A, 1/3, blew a hole in an eight-inch-thick concrete wall with the first round. After the initial demonstration, Marines fired seven more rounds at the wall, blasting huge holes in it.

"This is a great weapon," said Sgt. Leon Wilson, Assault Section leader for Co. A, 1/3. "The penetration capability is good, and the spotting rifle improves the first round hit probability. I like everything about this weapon."



Lieutenant General I.C. Wagner, Army deputy chief of staff for research, development and acquisition (l) congratulates Sgt. Benny Vigil, Assault Section leader for Co. 1, 1/3, on his ability with an SMAW during a demonstration shoot.



Private First Class J.D. Pickens (l) and Sgt. Leon Wilson, both from Co. A, 1/3, display the new SMAW, prior to a demonstration shoot.



A Marine from Co. A, 1/3, prepares to fire a SMAW.



Brigadier General G.L. Cates, Commanding General of 1st MAB (r) and LtGen. L.C. Wagner, Army deputy chief of staff for research, development and acquisition, discuss the damage-producing capability of the SMAW after reviewing the results of a demonstration shoot.

# Navy chief takes HASAC golf tourney



Cpl. Stephen Frank photo

Dave Jackson tees off at the 16th hole at the Kaneohe Klippers Golf Course during the third day of competition in the HASAC Golf Tournament. Jackson, who was one of the Marines participating won second place in the Open Singles division with a 300.

**By Cpl. Stephen Frank**

The Hawaii Armed Services Athletic Council Golf Tournament was held recently with Navy golfers taking top honors as overall winners.

The four-day tournament was played at the Navy-Marine Golf Course at Pearl Harbor, the Barbers Point, Kaneohe Klippers and the Hickam AFB golf courses.

Navy dominated most of the tournament, with Mike Carrillo winning the Senior Singles division with a 293; the Senior Team division win

went to Navy with a 919. Navy was the overall winner with a 2451.

Marines took second in three different categories. In the Senior Singles division Earl Danielle shot a 295, while Dave Jackson took second in the Open Singles with a 300.

In the Senior Team division, Marines again took second with a 945, and were third in the Open Team standings with a 1543. Navy took second in that division with a 1532, while Air Force came out ahead with a 1531.



Photo by LCpl. J.J. Wichaire

Navy chief Mike Carrillo raises his golf club in victory after winning the Senior Class of the Hawaii Armed Services Athletic Council Golf Tournament at Hickam AFB, recently. Carrillo won the tournament with a 293.

# Gearing-up for MC Marathon

MCDEC, Quantico, Va. — Now is the time for running enthusiasts to start gearing up for the 11th Annual Marine Corps Marathon, to be held Nov. 2, starting at the Marine Corps (Iwo Jima) War Memorial in Arlington, Va., at 9 a.m.

Marathoners will leave the starting line at the memorial, trek through Arlington, Georgetown, and the District of Columbia, finishing at the Iwo Jima Memorial. National landmarks along the course include the Capitol, the White House, the

Jefferson and Lincoln Memorials, the Pentagon, national museums and the Kennedy Center. Preparation running clinics will be held Aug. 1, Sept. 5, Oct. 3 and 24, at George Washington University's Medical Center, at 7 p.m., in Ross Hall. Topics covered will include treatment and prevention of injuries, training, nutrition and equipment needed to endure the distance.

For the second year, the United States Association of Blind Athletes will run the Marine Corps Marathon to determine their championship. All participants will receive a marathon T-shirt

and a patch. All finishers receive a completion certificate, and more than 300 awards will be given to winners of various categories of the race. The open winner will be presented the Middendorff Trophy. In addition, awards will be presented to the top men and

women finishers in the following age groups: 19 and younger; 20-24; 25-29; 30-34; 35-39; 40-44; 45-49; 50-54; 55-59; 60 and older. Registration for the Marathon is \$12, and is payable by sending a check or money order to the Marine Corps Marathon, P.O. Box 188, Quantico, Va., 22134. Team applications must be postmarked by Oct. 21, and individual entries must be mailed by Oct. 7. No applications will be accepted after the deadline or upon reaching the field limit of 11,000 entrants, whichever occurs first.



**V.W. Performance!**  
RMR ASSOC.  
**QUALITY HIGH Performance Parts**

Cam Shafts • Oil A Gear • Big Valve Heads • Oil Systems • Fuel Systems • Nitro Carburetors • Systems • Exhaust & Intake Systems • Header • Lateral • GTI Engine Kits 90 & 100 HP • Suspension Systems • Blister Shocks • Boge Turbo • Sae's Sport Box

Specializing in the Euro look for Rabbit, Scirocco, Golf, GTI, Jetta & Bugs

Carburetors & Suspension Systems for Toyotas & Datsuns

725 Kalia Road in Woodward VW **261-4293**

**\$38 A Room and Car For Two**

KAUAI SANDS from \$48 KONA HUKILAU from \$38  
MAUI HUKILAU \$49 KONA SEASIDE \$48  
MAUI SEASIDE \$55 HILO HUKILAU \$38

Includes standard room on or by ocean, a 1986 Budget auto compact, free mileage. Most rooms have color TV, refrigerator, ceiling fan, A/C, phone, pool, dining room, free ice, free parking. Hawaii's largest room and car operator.

**ROOMS ONLY from: \$28 single or double.**

See your travel agent or call: **922-1228**  
Sand & Seaside Hukilau Hotels  
or Aloha Airlines ☎ 836-1111

**MILITARY PERSONNEL...** from **\$31** for 2

at neighbor islands at special hotel rates.

<b>KAMAONA OR MILITARY RATES</b> (All rates are for double occupancy)	Standard rooms ..... from \$31-40
	Superior rooms ..... from \$35-44
	Deluxe rooms ..... from \$39-49

<b>KAUAI KAPOLIANI</b> Waikiki/From \$38	<b>WAIKIKI HANA</b> Waikiki/From \$31	<b>MAUI BEACH</b> Kahului, Maui/From \$40	<b>MAUI PALMS</b> Kahului, Maui/From \$31
---	--	--	--

For reservations and information see your travel agent or call **531-5235** From neighbor islands, toll-free 1-800-272-5275

Executive offices: 1150 S. King Street, Honolulu, HI 96814

Need a car? Ask us about our "Room & Room," a super value hotel and car package with cars provided by DOLLAR RENT A CAR. Reservations may also be made through ALOHA AIRLINES, phone 836-1111.

Hawaii Tel. (808) 942-5601 1500 Kapiolani Blvd. Honolulu

**HONOLULU HAWAII'S GRAND OPENING**

**JINDO FUR SALON**

**5% Military Discount With Military I.D.**  
Hawaii Store Only

US\$1,535 Mink Reinforced Dark Coat #JD8681347	US\$435 Mink Corduroy Jacket #4011/24	US\$1,070 Mink Reinforced Dark Jacket #JDS7401/26	US\$440 Mink Vest #0541/24
US\$465 Blue Fox Dyed Brown Vest #JDS2408/25	US\$570 Blue Fox Jacket #3731/27	US\$320 Fur Lined Rain Coat #JDS2415/48	US\$220 Fur Lined Men's Leather Jacket #JDS1403/27

**WHO SAYS THAT YOU CAN'T AFFORD FUR?**

Jindo Fur Salon has come to Honolulu, offering beautiful and fashionable furs at incredibly affordable prices. Our beautiful fur coats, jackets, and fur-lined raincoats are finely crafted in top-quality mink, blue and silver fox, raccoon, and opossum. The Islands have always had lots to offer, and now with the arrival of Jindo Fur Salon, you can bring home the alluring warmth and beauty of a Jindo fur. So, come visit, and see what Jindo Fur Salon has to offer... and take home something special from the Islands, or write to our Seoul Salon for a free mail order catalog. Jindo Fur Salon, Dept. TP, P.O. Box 242, Seoul, Korea. Telex: K26541

• Open Monday through Saturday  
• 10:00 am to 7:00 pm  
• Major Credit Cards Invited

**Blackglama®**  
SAGA MINK SAGA FOX

Seoul Tel. 02-261-1111 Fax 02-261-1111	Hong Kong Tel. 277-0314 Fax 277-0314	Hong Kong Tel. 277-0314 Fax 277-0314	London Tel. 01-421-9377 Fax 01-421-9377	Frankfurt Tel. 069-241-1111 Fax 069-241-1111	Dusseldorf Tel. 0211-241-1111 Fax 0211-241-1111	W. Berlin Tel. 030-241-1111 Fax 030-241-1111
--	--	--	---	--	---	--

Prices are subject to change without notice. Prices may vary store to store depending on exchange rates, import duty.

# 2/3 Marines climb Mt. Fuji

Camp Fuji, Japan — Marines from 2/3 ended their

12-week stay, here, by climbing Mount Fuji on July 25. A

total of 375 Marines reached the top of the world famous

mountain which stands at 12,388 feet, the highest peak in Japan.

runs wearing combat boots and utility trousers.

special occasion. Upon reaching the summit, there was a ceremony to reenlist him. For the rest of the climbers, the day ended with a cookout.

The Marines from 2/3 are now back on Okinawa looking for new challenges to conquer.

Submitted by Capt. S. Rodriguez 2/3 U10



Marines from 2/3 start a 17-mile hike to get ready to climb Mt. Fuji.

The battalion was divided into groups of approximately 25 Marines to facilitate accountability, the possibility of injuries, and for maneuvering in the often narrow foot paths. The groups left in 10-minute intervals, and the climb averaged five-and-one-half hours. The hikers stopped at eight rest stations located on the way to the top, and the descent took them two-and-one-half hours.

For the hike, the Marines carried ALICE packs with food, water, field jackets and parkas for possible cold, rainy weather. Although they were prepared for the worst, the climbers found mild, clear weather on the day of the hike.

They prepared for the climb by conducting weekly conditioning hikes carrying their combat gear, and went on P1



Marines from "E" Co., 2/3, pose with their walking sticks after reaching the summit of Mt. Fuji.

# From LA to Tokyo in an X-30

When Bob Stanley buckled himself into the cockpit of the Bell Aircraft Corporation's XP-59 jet in October 1942 and took off, it was considered quite a technological leap from propeller-driven aircraft. The implications of the jet age on commercial and military aviation seemed limitless. Each and every jet aircraft engineered in the United States since then has its roots in the XP-59.

Now, the Department of Defense and the National Aeronautics and Space Administration are working together to build the national aerospace plane, a revolutionary aircraft so advanced that personnel or cargo could be routinely transported anywhere on the earth in less than two hours.

In theory, the aero-space plane would fly at speeds between four and 8,000 miles per hour at altitudes between 100 and 150,000 feet. The same aircraft would also be used as a space launch vehicle capable of accelerating directly into low-earth orbit without the use of rocket boosters.

The idea of an aero-space plane has been studied within DoD and NASA for a number of years, and there are still many hurdles to overcome before it becomes reality.

Doctor Robert C. Duncan, director of the Defense Advanced Research Projects Agency, in a recent statement to Congress, said that a consensus has been formed that "an aerospace plane might be possible."

"Greater knowledge of supersonic combustion phenomena, developments in high strength, lightweight materials and the availability of supercomputers for engine/airframe design and integration are further examples of recent technological advances that support this consensus," said Duncan.

The technology development phase, or Phase II of the research project now under way, will look at the fine-tuning of key technologies and the development of propulsion modules and airframe designs needed to build an experimental flight

research vehicle.

Currently, wind tunnels in the United States are capable of testing full-size engines only up to Mach 8 — eight times the speed of sound. Engines capable of achieving speeds of Mach 8 will be built and tested. During Phase III of the project, an experimental aircraft (the X-30) will be built and tested.

"The X-vehicle will be designed to explore propulsion performance above Mach 8, while structures and materials needed to fabricate such a vehicle will be developed and tested," Duncan told the subcommittee. "All program participants and others familiar with the program understand and agree that there is a high degree of risk," he added.

In addition to DARPA and NASA, the Strategic Defense Initiative Organization, Air Force and Navy are involved in the project. The vehicle is of interest, according to the DARPA, because of its capabilities as a global flight vehicle or a long-range air defense interceptor.

It could also be important

because of the potential for significantly reducing the costs of getting a payload into orbit. Currently it costs \$2,000 a pound to get a payload into orbit using the space shuttle.

It is estimated the aerospace plane could get a payload into space for less than \$200 a pound. NASA is also pursuing a long-range hypersonic transport for carrying passengers virtually anywhere on the globe in

about two hours.

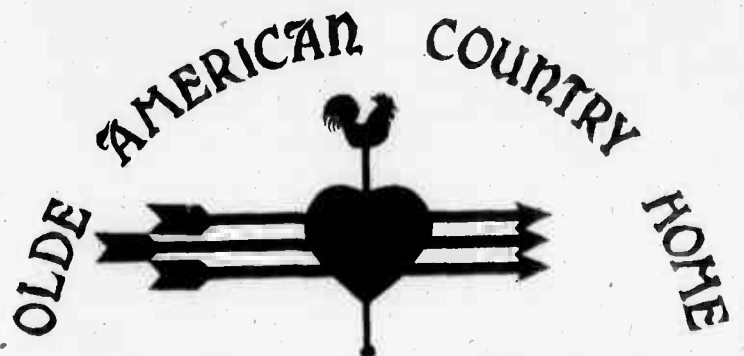
According to Duncan, the results of the National Aerospace Plane program will provide the civil industry, DoD and NASA with an effective aerospace plane configuration based on technology sufficiently mature for development of operational systems.

The Air Force has been assigned overall Department of Defense responsibility for the hypersonic vehicle

research program and for Phase III. DARPA will manage the Phase II technology development activity and conduct critical tests of engines and other components. Program offices for both that agency and the Air Force will be staffed with Navy, Air Force and NASA personnel.

By Tom Joyce  
American Forces Information Services

# NOW OPEN



COUNTRY COLLECTABLES  
11 a.m.-7 p.m. Mon. thru Sat.

- Custom-made Country Designs
- Practical & Beautiful Home Furnishings
- Antique Toy Reproductions

332 Uluniu St. —Kailua— 262-0008

## Kailua Super Saver Salon

Our Specialties For Women, Men & Children

- Precision Hair cut ..... \$7
- Shampoo/Conditioner/Finish ..... \$7
- Permanent Wave

with either or both of the above ..... additional \$7

NO APPOINTMENTS! COME IN TODAY!  
(service subject to time availability)  
Must be 12 years or older for permanent wave.  
Long hair slightly higher.



LIBERTY HOUSE  
an AMFAC COMPANY

# Sports Shorts



## Volunteers needed

The Windward Triathlon is looking for volunteers to help with aid stations. Special T-shirt will be given to all volunteers. For more information call 1st Lt. Scott Lance at 257-3550/3622.

## Camp Smith Navy Relief Fun Run

The Camp Smith Navy Relief Fun Run will be held at Camp H.M. Smith on July 26, starting at 7 a.m.

The Fun Run is open to all active duty, retired and reserve military, Department of Defense employees, and their family members. The run is 5 miles, beginning and ending at Bordelon field. Entry is \$8 and deadline for registration is July 15.

Plaques will be given to the first male and female finishers. All runners will receive a T-shirt and will be eligible for door prizes. The drawing will start at 8:30 a.m. and you must be present to win. Parking is available at all lots on Camp Smith, except for designated spaces and Bordelon field.

For more information, call 477-5031/ 6807/ 6048/ 5054/ 6389. Mail registration forms to Navy Relief Fun Run, c/o Capt. Donahue, FMFPac, Camp H.M. Smith, HI 96861-5001.

## KWGA Ace

Kaneohe Women's Golf Association Ace of Aces for January through June is Cappy Morrison. Winning Ace for July is Rose Muauu, who shot gross 91 giving her a 68 net.

## Volunteer Coaches

Individuals interested in coaching a youth football team or cheerleading squad should contact Mark at 257-3550/3622 as soon as possible. Training will be provided to coaches of all levels.

## 1st MAB 10K for Navy Relief

The first 1st MAB 10K Run for Navy Relief will be held July 25, at 6 a.m., on a course similar to the Marine Corps Birthday Run.

The entry fee is \$5. The run is open to all active duty personnel, their family members, and DoD employees. The entire fee is going to Navy Relief.

Also available are T-shirts in a variety of colors and sizes for \$5 each. Registration begins July 1.

Call Capt. John Rattick at 257-3214, for information.

## Flag Football

An organizational meeting for the 1086 Flag Football Program will be held at the Station Theater Aug. 7, at noon. Unit coaches should preregister at the Athletic Office. For more information call 257-3550/3622.

## Women 10K Runners

The Hawaii Marines field a five women team in the Hawaiian Armed Services Athletic Council 10K cross country run each September. Women interested in competing in this event, or any of the other runs held weekly on island, are urged to call SSGT. Kathy Creswell at 257-3250/3290.

## Girls Volleyball

Volleyball registration for girls 10-15 years old is being conducted at Dependent Recreation, building 1391, from 1 to 4 p.m., Monday through Friday.

The minimum number of players per team is six and the maximum 15. Extras will be put on a waiting list.

All applicants must be accompanied by a parent or guardian. Military I.D. card or a birth certificate is required.

For more information call 254-2963.

## Cheerleading

Registration for cheerleaders is being conducted at the Dependent Recreation Center, building 1391, Monday-Friday, from 1 to 4 p.m. Last day of registration is July 25. All applicants must be accompanied by a parent or guardian.

For more information call 254-2963.

## Boxing Smoker

The second semiannual "Friday Night at Fights" smoker is tomorrow. First bout starts at 5 p.m.

## Youth Football

Youth Football registration for youth 6-17 years old is being conducted on a first-come, first-served basis at Dependent Recreation, building 1391, from 1 to 4 p.m., Monday through Friday, last day of registration is July 25.

All applicants must be accompanied by a parent or

guardian. Registration forms will be available at the time of registration. Military I.D. card or a birth certificate is required.

For more information call 254-2963.

## Ala Moana Keiki Fun Run

The Ala Moana Keiki Fun Run will be held Aug. 10 starting at 7 a.m.

The 3K event for boys and girls 6 to 13 years old will take place on Ala Moana Center's mall level. Proceeds will go to the American Cancer Society.

Medals will be presented to

the first five male and female finishers in each age category. All entrants will have a chance to win a prize in a drawing following the race. Entry fee is \$8, which includes a t-shirt, refreshments and a chance to win prizes. Entry deadline is Aug. 1.

Applications are available at Ala Moana Center stores, McDonald's, Robins and Wildflowers, the Hawaii

Visitors Bureau at Ala Moana and the American Cancer Society Offices.

For additional information, call 531-1341.

## Station Catfight

The Summer Station Golf Catfight will be a shotgun start at 12:30 p.m., Aug. 13. Entry deadline is 3:30 p.m., Aug. 8. Entry fee is \$28 per foursom, payable at the Special Services Ticket Office, building 219.

**Take the Plunge**  
OAHU'S MOST ACTIVE DIVE CLUB  
COMPLETE OPEN WATER CLASS including all equipment! Only \$79.95  
PACIFIC GUEST DIVERS  
46-216 Kahaupapa St.  
Across from City Mill  
247-1015

**KATHLEEN L. DURANTE, M.D.**  
COMPREHENSIVE CARE FOR INFANTS, CHILDREN, ADOLESCENTS  
HMSA/CHAMPUS Participant  
263-6623  
Kailua Professional Bldg. I  
After Hours: 988-2188  
30 Auilke St. Kailua, Hawaii Suite #201 Kailua Prof. Bldg. I

**STOCKLAND CAMPERSHELLS**  
Commercial Models Available (Domestic & Import)  
  
• GAYLORD Fiberglass' • Tool Boxes • Roll Bars  
• Tonneau Covers • Flatbeds • Grill Guards  
• HARBOR Utility Bodies • Liftgates • Tube Bumpers  
• Sliding Rear Windows • Pipe Racks • & MUCH MORE  
**TRUCK EQUIPMENT HAWAII**  
944 AHUA ST. (behind Carpet Corner) 836-0525

# DELTA GETS YOU THERE. OVER 100 MAJOR CITIES, THE EASY WAY.



**Fly Delta nonstop to Dallas/Ft. Worth, nonstop to Atlanta. Make fast connections for dozens of other cities.**

**Fly nonstop to Dallas/Ft. Worth any evening for arrival the next morning.**

**Our nonstop to Atlanta leaves every evening. You arrive in Atlanta the next morning.**

**Save with Delta's discount fares. Be sure to ask about our big discounts off regular Day Tourist Fares. Discount fare seats are limited and there are**

special requirements; reserve early. We also have Military Fares that save you 25%. No restrictions—leave on any flight that has available space.

**Check your on-base SATO (Scheduled Airline Ticket Office). See your professional Travel Agent. Or call Delta. Schedules are from Honolulu and subject to change without notice.**



# Island Happenings



## Korean veterans week

The Veterans Administration Regional Office and the Korean Veterans Association of Hawaii are cosponsoring an open house in honor of those who served during the Korean Conflict, June 25, 1950 through July 27, 1953.

The open house will be held July 25 at the VA Regional Office from 9 a.m. until noon, followed by a nohost luncheon in the federal building fifth floor cafeteria. A tour of the regional office, including medical facilities, will be conducted and refreshments will be provided.

Mayor Frank F. Fasi signed a proclamation today proclaiming July 20-26 as Korean Conflict Veterans Week.

Korean Conflict veterans are invited to attend the open house.

For additional information, call 546-8962.

the Aloha Theatre, starting at 7:30 p.m.

Tickets are available at the Makai Recreation Center, Hickam; Bloch Arena, Pearl Harbor; or at the door. They are \$3 for adults, and \$1 for children under 10.

For more information, call Bobbi O'Connor at 422-0660.

## Job Seeking Assistance

The Family Services Center at Pearl Harbor is offering classes to help spouses and military families seek and get hired for jobs.

The classes and dates are: Resume Writing, July 15, 9 to 11:30 a.m.; Goal setting for your career/Hawaii, July 16, 9 to 11:30 a.m.; Dress for Success, July 17, 9 to 11:30 a.m.; Interviewing Techniques, July 18, 9 to 11:30 a.m.; and Job Searching Techniques, July 24, 9 to 11:30 a.m.

## Selfdiscovery

A four-session series on art therapy as a means of self-discovery will be offered this month by Windward Community College in Kaneohe.

The sessions are at 7 p.m., on July 15, 22 and 29, and will include how people can use their own drawings to uncover feelings, discover creative potential and solve problems. Art therapy has been used with cancer patients, children with learning difficulties and in family therapy.

The cost for the series is \$35. The only supplies required are a large drawing pad and a box of pastels.

For more information, call 235-7433.

## Montessori School

An alternate educational opportunity will be available this fall when the Montessori Center of Pearl Harbor opens.

This fully accredited, American Montessori certified institution will offer quality education from preschool through third grade, and is specifically tailored to meet the special needs of children of military families.

Applications are being accepted for the 1986-1987 school year, and enrollment is open to children of military and civilian personnel. Special programs such as Hawaiian culture, Japanese language, and other cultural and sports activities will be offered.

For additional information, call 621-3010 or 696-4339.

**A SOUND SALE YOU CAN'T RESIST  
JUST LISTEN TO THIS SPECIAL OFFER**

**KIT 1**  
#39B6444 - CASSETTE PLAYER \$37.44  
#39BDM52 - 2 WAY SPEAKER KIT \$37.44  
**\$74.88** + TAX

**KIT 2**  
#39B6446 - CASSETTE PLAYER \$56.13  
WITH AUTO REVERSE  
#39BDM52 - 2 WAY SPEAKER KIT \$37.44  
**\$93.57** + TAX

**ALSO ON SPECIAL**  
#39BEPB100 - EQUALIZER BOOSTER \$56.19  
#39BDM53 - 3 WAY SPEAKER KIT \$56.19  
INSTALLATION EXCLUDED/QUANTITIES LIMITED  
OFFER GOOD AT PARTS DEPT. ONLY  
ESTABLISHED 1923

**Schuman Carriage Company**  
LIMITED  
PARTS DEPARTMENT • PHONE 524-8571  
DISTRIBUTOR OF AUTOMOTIVE PRODUCTS

**HERE'S SOMETHING SPECIAL from Rob Roy's**  
in the center of Kailua

**Succulent PRIME RIB**  
Finest beef pick, tender, juicy and just the way you want it.  
**\$12.95**

**STEAK LOBSTER**  
Need We Say More?  
**\$19.95**

**SHRIMP CURRY**  
With our own sauce seasoned to perfection. Condiments you'll love.  
**\$8.50**

**Rob Roy's**  
26 Hoolai Street  
Open From 6:30 AM Daily  
**262-6992**

## USO volunteers

The USO of Hawaii is looking for volunteers to work at both the Hickam MAC Terminal and the Airport Center at Honolulu International Airport. Both are open 24 hours a day for all service members and their family members. Regular shifts for volunteers are four hours, usually the same day each week.

For information, call Mary Dumeyer at 836-3351.

## Book Fair

Friends of the Library of Hawaii's annual book sale is Aug. 29 at McKinley High School cafeteria from 10 a.m. to 8 p.m., everyday except Aug. 9, when the sale ends at 1 p.m.

Everything from cookbooks to classics and paperbacks and records will be available for purchase. Most books are under \$1, and proceeds go to the public libraries.

## Moon Walks

Waimea Falls Park is offering walks beneath the moon through the park's grounds, July 20 and 21. A park guide will conduct a free, one-hour night tour down a moonlit path to the waterfall.

For more information, call 338-8511.

## Don't Drink The Water

The Aloha Players, a newly formed amateur theatre group at Hickam, will present the Woody Allen comedy, "Don't Drink the Water," tomorrow and Saturday at

# Work with the best in the field.

You remember the commitment, the confidence, the unbeatable teamwork and pride you felt as a Marine. This experience can be yours again when you work with the best in the Marine Reserve.

It's elite training, designed to upgrade your skills and help you learn new ones. Along with your advanced skills, the outstanding leadership experience you

get will be of great benefit in your civilian career. Above all, you'll be back on the team. You'll attend one weekend of drill a month at a local Reserve unit and two weeks of annual training duty, working with fellow Marines who share your drive and determination to be the best.

The extra money you earn will come in handy. So will the great benefits like tuition assistance under the new G.I. Bill, retirement, promotions, and limited PX and commissary privileges.

You've got the best in active duty experience. Put it to work with the best in the Marine Reserve. For more information on how to reserve your place on the team, call 1-800-THE-USMC.



**Marine Reserve**  
Reserve your place on the team.



hot, dry eyes need cool, wet eye wash  
**Lavoptik**  
at your local Pharmacy

**ARRESTED FOR DRUNK DRIVING?**  
CALL  
**NOAH D. FIDDLER**  
Attorney at Law  
Free Consultation  
**545-7400**  
#20 Millard St.  
HK Bldg. Ste. #612  
**261-3233**  
415 A. I. Imiti St.  
Kailua



# ON THE ROAD AGAIN

Friend of the Family

**FRIDAY • SATURDAY • SUNDAY**

**FREE CHICKEN**  
SODA & BALLOONS


**LIVE BROADCAST**  
KDEO DANCERS  
KDEO COUNTRY CRUISER

**WIN DRAWING FOR KDEO COUNTRY CRUISER**  
4:30 pm Saturday 7/19/86  
Entries Must Be In By 4 pm

<p><b>'79 SUPRA H/B</b> Metallic blue w/blue int. 6 cyl. 5 spd. AM/FM cass. alloy wh. #BEFB17..... <b>\$3995</b></p>	<p><b>'78 BLAZER K-5 CHEYENNE</b> Belge w/beige int. 4x4. V8. auto. AM/FM. air. #BRX029..... <b>\$6495</b></p>
<p><b>'80 GLC WGN</b> Blue w/blue int. auto. Financing Available in 10 Min. TEST DRIVE #BAU513..... <b>\$1995</b></p>	<p><b>'71 VW BUG</b> fire engine rad. black velour int. AM/FM cass. sport wh. headers. carb. etc. SHELLEY'S SUPER SAVER #H8860..... <b>\$1995</b></p>
<p><b>'77 DATSUN B210 H/B</b> White w/white int. 4 cyl. 4 spd. alloy wh. LODKS SHARP #APC265..... <b>\$1995</b></p>	<p><b>'78 CAMARO LT</b> Black on black. AM/FM tape. V8. auto. p/w. s/s. sport wh. air. original paint. very desirable. TEST DRIVE NOW #AF7492..... <b>\$2995</b></p>
<p><b>'77 CUTLASS SUPREME</b> Black w/blue int. V8. auto. AM/FM cass. sport wh. VERY DESIRABLE #ARE999..... <b>\$1995</b></p>	<p><b>'83 CJ-7 H/T</b> 4 spd. 4 wh. drive. apoker wh. AM/FM cass. deluxe int. LAST OF A BREED #MPH733..... <b>\$5995</b></p>

## SHELLY CARS

NIMITZ & LAGOON 836-0466 OPEN 'TIL 9 P.M. EVERY DAY  
5 min. from Hickam Gate




**KOLEKOLE PASS HALF MARATHON**  
"FROM HERE TO ETERNITY"  
HONOLULU, HAWAII


THE AMERICAN CANCER SOCIETY  
in cooperation with the U.S. ARMY and U.S. NAVY  
PRESENTS: The Fourth Annual  
**KOLEKOLE PASS HALF MARATHON**  
SUNDAY, AUGUST 3, 1986  
6 a.m.

**1st PLACE**  
MALE & FEMALE  
WIN  
ROUND TRIP TICKET TO  
San Francisco  
Courtesy of  
WORLD AIRWAYS

Team Spirit  
Hawaii



Walk  
Hawaii



THE AMERICAN CANCER SOCIETY INVITES YOU to run, walk, or racewalk "From Here to Eternity" over the Waianae Mountain Range. Because Kolekole Pass normally is "off limits" to the public, this half marathon is an experience to remember. You will travel trails forged by ancient warriors, and at the same time, enjoy spectacular views of the entire Waianae coastline.

THE DIVISIONS: Elite Division (first five males, first five females) are not eligible for age group awards. Age groups: 19 and under; 20-24; 25-29; 30-34; 35-39; 40-44; 45-49; 50-54; 55-59; 60+.

AWARDS & PRIZES: First three males, females in each division. Everyone is eligible for random door prizes. T-shirts and participation certificates are awarded to paid entrants at the finish line, and participation plaques to military units with 10 or more entrants. A special award is given to the military unit with the most entrants. All entrants are eligible for random prize drawing.

**RUNNERS ROUTE**  
ENTRY FEE: \$13.00 (non-refundable)  
ENTRY DEADLINE: JULY 26, 1986

Mail to: KOLEKOLE PASS HALF MARATHON  
c/o American Cancer Society  
98-027 Hekaha St., Bldg. 3, Unit 31  
Aiea, Hawaii 96701

## CC & COMPANY

USA/MEXICO  
CARIBBEAN

\$499. Coach, \$799. 1st Class  
Europe \$779. R/T, \$1699. 1st Class R/T  
West Coast \$295. R/T, Las Vegas \$308 R/T

Some restrictions apply  
**942-7785**  
TA-711

**73 Apts. Furnished**  
KAILUA studio, 1 person. avail. immed. \$375 incl. utils. Ph. 261-0663

**75 Apts. Partly Furnished**  
KAILUA furnished studio \$475 a mo. plus utilities. Call 262-6364

**KOOLAU VISTA 2 bdrm.**  
1 1/2 bath. Avail. July 1. 262-9246

**KAILUA 1 bdrm \$550 or studio \$475.** no pets or waterbed. Ph. 262-6462

**PRIVATE large studio apt.** one block from Kailua Beach, full kitchen, separate bath \$495 incl. utils. Sorry no dogs. Call Rick 521-8080 or 261-4923 Avail. Now!

**WINDWARD Harbor, 3 bdrm., 2 bath, dlx. apt., amenities.** 261-2834

**KAAAWA - neat studio.** ocean view \$475 includes utils. Call 237-8390

**KAILUA cozy apt. \$320 or 1rg. 2 bdrm. \$525.** others. 943-0092 Rent Mart Fee

**KANEHOE 2 bdrm., view \$625 or 3 bdrm., kids ok \$675.** 943-0092 Rent Mart Fee

**PEARL 1 bdrm., lanai \$475 or 2 bdrm., carpet \$500.** 943-0092 Rent Mart Fee

**85 Condos/Townhouses Partly Furnished**  
WAIPIO Gentry 2 bdrm., 1 bath, pkg., washer/dryer \$700. Ph. 521-5226

**MOANALUA 2 bdrm., 2 bath, pkg., pool, BBQ \$625 mo. Ph. 737-2124 eves.**

**SALT Lake 2 bdrm., 1 1/2 bath, security, amenities \$750/mo. 833-7015 eves.**

**88 Rooms for Rent**  
WAIHAWA Hgls. lge. rm., bath, in quiet neighborhood, own entrance \$225 incl. utils. 621-2442

**IN 3 bdrm., 2 bath home** across from beach, washer/dryer, utils. incl. female pref. \$300. 261-9189

**KAILUA female non-smoker** pref. \$250 + deposit. + 1/4 utils. refs. 261-3935

**KANEHOE room for rent** own bathroom, \$70 per wk. Female pref. Call Cindy 235-5381 between 8 & 5

**ROOM to rent \$300,** share utils. women preferred, non-smoker, must like animals Avail. Sept. 1, 261-8349 after 4 p.m.

**EWA Beach duplex - 3 bdrm., 1 bath.** Fee, solar fenced. Courtesy \$145,000 839-5871

**NEW TOWN 98-528 Kipapa** St. Cool, well maintained energy saving, 2032 sq. ft. 3 bdrm/2 ba. 2 car garage, cathedral ceilings, appls. New wall to wall carpet, mossrock walls, timed sprinklers. FS. Courtesy. By Owner 487-8093. \$199,900

## MILITARY DISCOUNT

**\$450 R/T**  
EAST COAST  
Includes Midwest, Mexico, Canada, Caribbean

**EUROPE**  
BIG DISCOUNTS  
TRAVEL MART  
373-9824  
(TAB802)

## AIRLINE COUPONS

USA/CARIBBEAN/MEXICO

**COACH SPECIAL \$399 R/I**

## TRAVEL DISCOUNTS INTERNATIONAL

Serving Hawaii Since 1979

Credit Cards OK **943-7900** TA-439

## KEONI'S VCR REPAIR

**\$30.00 SPECIAL**

INCLUDES COMPLETE HEAD CLEANING  
LUBRICATION. ELECTRO-MECHANICAL INSPECTION.  
**FREE PICK-UP AND DELIVERY**  
254-1470

## COLORADO 5 ACRE RANCH FOR SALE BY OWNER

Near Major Ski Resort.  
\$300 down, \$65 per month - \$5000 total price

CALL **545-1104**

## PRICE LESS USED FURNITURE

Good Quality & Clean

DESKS from ..... \$45  
Coffee Tables from ..... \$15  
Twin Daybed ..... \$45

Sofas, Loveseat, Recliner, Dressers, Night Stands, Chairs, Dining Tables and more.  
139-A Hekili St. Kailua 262-7938

## \$450 R/T EAST COAST

Includes Midwest, Mexico, Canada, Caribbean

## EUROPE BIG DISCOUNTS TRAVEL MART

373-9824  
(TAB802)

PLEASE SEND SELF-ADDRESSED, STAMPED ENVELOPE FOR RACE PACKET AND NUMBER

Male  Female  Date of Birth: Mo. Day Year

YES, I need bus transportation back to start area.

Last Name: \_\_\_\_\_ First Name: \_\_\_\_\_

Mailing Address: \_\_\_\_\_  
City: \_\_\_\_\_ State: \_\_\_\_\_ Zip Code: \_\_\_\_\_

Phone (Days): \_\_\_\_\_ Phone (Eves.): \_\_\_\_\_

Run  Walk  Racewalk

T-shirts (Mens Sizes) S  M  L  XL

NO ENTRIES AFTER 7/26/86

We are not responsible for applications that are not delivered by the Post Office

RELEASE: In consideration of this application being accepted, I, the undersigned, intending to be legally bound hereby, for myself, my heirs, executors and administrators, waive and release any and all rights and claims for damages I may have against race officials, volunteers and sponsors, resulting from involvement with this event.

Runner's Signature: \_\_\_\_\_  
(Parent or Guardian Sign if under 18 years of age.)

Please Complete Military Address: \_\_\_\_\_

Awards to Military Units With The Most Entries.

**MAKE CHECKS PAYABLE TO THE AMERICAN CANCER SOCIETY**

THIS AD SPONSORED BY:

**ALA MOANA FAMILY & EMERGENCY MEDICINE**  
943-1111  
ALSO IN HAWAII KAIKUAPA KAI SHOPPING CTR. 396-6675

**WO FAT RESTAURANT**  
Corner of Hotel & Maunakea

**INTERNATIONAL FITNESS CENTER**  
1680 Kapiolani Blvd.

**BANK OF HAWAII**  
HAWAIIAN TRUST COMPANY LTD.

**TERRI LEE HASKELL**  
COLOR CONSULTANT  
Beauty for all Seasons 254-1818

**MRS. ELEANOR J. CODY**

**DR.'s KUWABARA & YAMANE OPTOMETRIST INC.**  
Waipahu, Hawaii 96797

**J.C. PENNEY CO. HAWAII**

**PRINCESS KAILANI FASHIONS**  
847-4806

**CHANEY, BROOKS, & CO.**  
Hank Rigg-Commercial Real Estate  
544-1620

**TRAVEL DISCOUNTS INTERNATIONAL**  
943-7900

**BRET'S GYM**  
129A Hekili St., Kailua, HI.

**UPJOHN HEALTH CARE SERVICES**  
HOME HEALTH AGENCY & PRIVATE DUTY NURSING 24 Hour  
526-9333

**McDONALD'S® OF HAWAII**

**FORTUNATE LIFE WEIGHTLOSS CENTERS**  
AIEA, AINA HAINA, ALA MOANA, KAILUA, MILILANI

**78 Rentals to Shore**  
CHRISTN Female Rm/mate \$250 mo. Incl. utils. avail. now. 262-4051 Nancy aft. 4

**KANEHOE - condo \$275.** Prefer female, non-smoker. Call 235-2626

**KAILUA large 3 bdrm., 2 bath** house 2 blks. to beach. \$450 + 1/2 utils. 261-1017

**KAILUA lge beautiful home.** Pool, patio, parking. Other amenities. Male preferred. \$400. 262-9968

**KAILUA - En. Lakes Working** female share home w/same Dep. \$375 + util. 262-8537

**MAKAKILO house: own room.** near bus line. util. incl. \$325 mo. 672-9329

**81 Houses Furnished**  
KAILUA lg. ctg. nr. beach. TV, ph., linens, etc. Short term ok. \$850. 261-2293

**MAKIKI Corner 2 bdrm.** washer/dryer, pkg. util. \$875 Condos. 262-5391

**LOVELY 1 bdrm., w/Dia.** Head & ocean view. All new appl. & new wall-walt. All you need to bring is a toothbrush. \$850 mo. incl. util. 735-2531

**83 Houses Partly Furnished**  
KAHALUO-cool, 1 bdrm., 1 acre, quiet cul de sac, \$450 w/uti. dep. dwn. 239-3857

**KAILUA-3 bdrm., 2 bath** yd. lanai, solar, yd. svc. Avail. Aug. 1 \$1050 mo. 262-5418

**TEMPLE Valley 4 bdrm., 2 ba., fam. home.** No pets. Avail. 8/1. \$1000 254-3994. 261-5807 P. Curtis (B)

**KANEHOE Haku Village** fabulous 4 bdrm., 2 bath large family home, quiet clean, close to schools shopping center. New appl. avail. 8/15. Good lease \$1000 mo. 924-1091 or 235-2545 after 6 p.m.

**HAIUULA 2 bdrm., 1 bath.** access to beach. \$900 mo. Call 262-5257

**KANEHOE Bay 3 bdrm., 1 ba.** Spectacular view, \$850 w/ service. 239-7645

**HANDY base 2 bdrm., yard \$580 or lge. 4 bdrm. \$600.** 943-0092 Rent Mart Fee

**3 BDRM., 1 bath,** carpet, fenced, Ewa Beach, \$675 mo. Avail. now. Call 677-9506 anytime or 671-3841 after 4:30 p.m. M-F

**ATTRACTIVE Windward** Beach front studio. Pkg. pool \$385 mo. 235-5600

**KANEHOE Great Bay view** new 2 bdrm/1 ba duplex nr. base. no smokers \$775 util. 247-6574 eves

**84 House/Sitting**  
FEMALE non-smoker seeks long/short term hse/ltng. 845-8526 incl/late pm

**KAILUA couple seeks** house, month of August. Our house being remodel. ed. 261-8232

**RETIRED couple** looking for residence to house sit for anytime between the first of November and the end of February. Call 623-0440

# NISSAN OF WAHIAWA

621-0761

## SUMMER NEW CAR SAVINGS

UP TO **\$2,000\*** AS LOW AS **\*5.7%**

REBATES ON ALL NEW NISSANS  
ANNUAL PERCENTAGE RATE ON NEW NISSAN PICKUPS

### QUALITY USED CAR SPECIALS

<p><b>'79 FORD MUSTANG</b> 8 cyl. auto. \$995</p>	<p><b>'79 FORD MUSTANG H/B</b> 4 cyl. 4 speed. \$1295</p>	<p><b>'78 TOYOTA COROLLA</b> 2 dr., 4 cyl., auto. \$1695</p>	<p><b>'78 CUTLASS 4 DR.</b> 8 cyl. auto. air. \$1995</p>	<p><b>'79 TOYOTA 585 LIFT BACK</b> 4 cyl., 5 speed. \$2195</p>	<p><b>'80 DODGE COLT</b> 4 cyl., 4 speed. \$2295</p>	<p><b>'82 DATSUN 4 DR. S/W</b> 4 cyl. auto. stereo. \$3295</p>	<p><b>'83 TOYOTA 4 DR.</b> 4 cyl. auto. \$3995</p>
---	---	--	--	--	--	--	--

REBATES NOT COMBINABLE WITH 5.7% FINANCING OFFER GOOD THRU 7/23/86

\*36 MO. FINANCING NEW NISSAN PICKUPS ONLY ALL CARS SUBJECT TO PRIOR SALE. \*EXCLUDES STANDARD MODELS & MAXIMAS

<p><b>124 Garage/Lanal Sale</b> BIG Lanai Sale! For 2 weekends, July 18, 19 &amp; 20 &amp; weekend of 25, 26 &amp; 27, there will be a big lanai sale at the Summer Palace, 1848 Kahakai Dr., Apt. 904 or call 941-7317 for appt. to buy before the sale. Nothing more than 2 yrs. old. Anything like new, incredible savings on furniture, crystal, oil paintings, silk hanging baskets &amp; much more.</p>	<p><b>124 Garage/Lanal Sale</b> STEREOS, bunk beds, car organ, misc. Must sell! 98-1394A Nola St., 455-8940</p> <p><b>GARAGE Sale Sat. 8-1.</b> Stereo cabinet &amp; equipment, 11x14 rug, linens, toys, misc. 303 Hamakua Dr. Kailua 262-2176</p> <p><b>MULTI-Garage Sale:</b> household, kids items, give equip. 7202 Kuahou Pl. Sat. 7-12</p> <p><b>COUCH \$600,</b> ladder back chair \$12. Web bug killer, like new \$75, tools, pictures, clothes, small kitchen appls. Etc. 90 Laiki Pl. 9-12 Kailua 262-7331</p> <p><b>TEAK bdrm. set:</b> oak dresser, desk; many toys; hshed. items, 2 sleeper sofas, misc. Sat. 8 a.m. 430 Manono St., Kailua</p>	<p><b>124 Garage/Lanal Sale</b> 12" DEWALT radial arm saw; TRS80 computer; many new sleepers, wallsets etc. Sat 8 to 1 p.m., 1039 Kupaia St., Kailua</p> <p><b>KANEHOE 45-419</b> Whina Pl. 7/19, many baby items, crib, swing, dishwasher, etc.</p> <p><b>GARAGE Sale:</b> Patio furniture w/umbrella; trike; reel; Trumpe; stroller, and coffee tables; stereo/entertainment center; grain mill; toys. 2161 Bancroft Dr., 8-2, Sat., July 19, 254-1865</p> <p><b>GARAGE Sale</b> July 19 &amp; 20 8-2 p.m. 618 Illiana Dr., Papaian chair, desks, infant car seat, playpen &amp; misc.</p> <p><b>GARAGE Sale:</b> 7/19, 8 to 2 p.m., 621A Haleia St., Kailua, misc. items.</p>	<p><b>124 Garage/Lanal Sale</b> MOVING Sale - Furn. &amp; many household goods. Sat., July 19, 9-2, 702 Puhamee Way, 261-0246</p> <p><b>MOVING Sale</b> 7/19 &amp; 20 8-5 p.m. 527B Keolu Dr., Kailua opp. Kaelele School</p> <p><b>MOVING Sale - Sat., July 19, 9-2, 540 Ulumama Dr., Kailua.</b> Hshed. appl. office equip., furn., TV &amp; more</p> <p><b>MOVING Sale - Sat., July 19, 9-3 p.m.</b> 527B Keolu Dr., Kailua opp. Kaelele School</p> <p><b>MOVING Sale - Sat., July 19, 45-383, Kumoa Lp., 9-3 p.m.,</b> din. tbl., books, etc.</p> <p><b>MAUNAWILI Community Sale,</b> 20+ homes to shop. Look for streamers. Sat., July 19, 9-4.</p>	<p><b>124 Garage/Lanal Sale</b> WASHER/Dryer, Refrig. Furn., Childrens. 7520 Puumahuoe Pl. 7/18, 19, 8-4</p> <p><b>125 Home Appliances</b> WHIRLPOOL Washer/dryer \$250 ea. or both \$400. Whirlpool refrig. \$300. Excl. cond. Both under 2yrs. 623-6167 hm., 471-0671 wk. FREEZER For Sale \$250. Call 689-5151</p> <p>WHIRLPOOL Dryer - used 1 yr. \$250/best offer. Call 455-7520 after 5 p.m.</p> <p>MAYTAG Repair Specialist. Island wide day/night service "By Don." Ph. 623-2933</p> <p>SEARS Kenmore washer/dryer. Excl. cond. \$325 both. Call 247-4710</p>
---	--	--	--	---

Classified III July 17-23, 1986  
**\$2 OFF W/THIS AD**  
**HONOLULU**  
**RENT-A-CAR**  
**487-2702**  
**\$49.95** wk.  
 + Insur.

Monthly Rates Available  
**FREE Mileage • FREE Map • FREE Airport Pickup**  
**98-360 Kam Hwy., Aiea**  
 (Next to ARCO Gas Station & BC Used Cars)

**126 Home Appliances**

KITCHENAID D/W port. \$395. Champion juicer \$120. Cuisinart DC10 \$250 283-4211

2 DR. Refrigs. \$130. Frost Free ref. \$195 & up. Guaranteed. Delivery avail. Pete's Appliance 621-9003

WAREHOUSE Clearance—New Stoves, Refrigerators, Dishwashers, Washers, Dryers and Disposals. All for quick sale. Will Deliver. Call Lucille at 836-2141

9" BLK. & Wht. TV \$50; Texas Instrument computer \$80. Call 254-3442

**126 Miscellaneous**

MOVING Sale: misc. bdrm. furn., Mexican credenza, serving cart, surfboard, dirt bicycle. 395-0318

BABY stroller, car seat. \$60 each, like new John 524-8629

MAHOGANY dining rm. set w/8 chairs. Best offer. Shelf unit, book shelves. \$5-40. 422-2125

6 ft. surfboard w/ twin fin & cord — used good cond. \$75. 2 wetsuits — \$10 ea. 847-8427 after 7 p.m.

WANTED: sm. space needed for custom fiberglass work. 262-4194 lv. message

19" COLOR TV remote control, \$300. Girls 10 spd. bike, \$20. 254-3442

MOVING - everything must go fast! Appliances, bikes, furn., beds, misc. 847-3185

BAMBOO dining table w/6 chairs. Bamboo queen sofa office desk, bookcase, 4 dr. Dodge 4500 ml. 531-8471

52 GAL. State water heater, like new. Installation & delivery avail. 263-4857

TOLE & decorative painting classes (beginners) to begin in August. Teddi 247-3495

'85 RAINBOW Vacuum. Cost \$900. Must sell \$350. Call 735-2055 or 923-7943

VACUUM cleaners, like new \$24.95 & up with guarantee. Call 735-6452

NEW Picnic Tables \$85. porch swing \$75. Call 293-8392

CHINA setting for 6 w/ serving pieces & matching goblets \$300/otr. 488-9842

DRESSY mummus. Bikes, photo, velvet picture. Plants, stroller. 422-5882

6x5 SHED, palettes, blocks, \$60. Whirlpool air conditioner, 13,500 BTU, base approved \$250. Sears freezer, 15.9 cu. ft. \$250. 422-4118

MASSAGE tables; steam cabinets; vibrating belt; exercycle; otc. desk chair; filing cabinet; safe & equip.; washer; dryer; wood paneling; mirrors; stereo equip.; speakers & much more. 261-8385

IBM Selectric typewriter good condition. \$100. Krystle 261-4390

CASH register for sale, 10 key pad/memory \$125. Call 299-4442 ask for Carol

FREE: two 20' to 25' coconut trees. Must be dug out, hauled, and fill ground back with soil. Call 261-7904 12 noon to 4 p.m.

KING size bed, freezer, new CB 700 drums w/cymbals. Call 247-0315 after 6 p.m.

USED building material; king size bed & furniture. Call 254-2681 eves.

FDR Sale Vitamaster exercycle, like new, \$70. Call 254-3076

ROCKAWAY bed \$50; Everest Jennings Traveler wheel chair \$250. 247-2641

SEARS frost free freezer \$195. Carpeting \$25-\$50. Flush hide a bed \$200. 422-2125

LEAVING island furniture, TV, stereo, tools & misc. items. 2160 Aumakua St., Pacific Palisades. Call 455-2341

ELECTROLUX Vacuum. Cost \$1000. Must sell \$300. Call 455-9374

HANDMADE Gingham Layette set \$35-w/quarter. Wika Kim P.O. Box 26134 Honolulu HI 96825 for details.

EXERCISE Cycle-Sears. Good cond. \$90/offer. Call 595-3489

MONTEREY 66" sq Spa Fiberglass, Pump & heater. \$240/offer. 373-1973

AQUARIUM 35 gallon set-up complete w/wrought iron stand, excel. cond. \$165. Call 254-1706

SEARS exercise equip. gym-pac, Patio furn. 2 sofas, coffee tables, Bunk beds & 1 chest. 254-3340

TWIN size left bed w/drawers & shelf unit. \$65. Holy Family Uniforms. Boys & girls all sizes. Best offer. 422-2125

COMPUTER Commodore MdI. 8032. Excellent 847-5781

KING size bed \$300; Dinette set \$25. 24-in. TV \$40; Gym-pac 2000-\$100. Monogoose bike \$20; Ping Pong table \$25. Ph. 262-5418

**126 Miscellaneous**

VACUUM cleaner, Rainbow like new \$349. used vacuums for sale. 262-2011 629A Kailua Rd.

KIRBY'S REBUILT, LIKE NEW \$150 & UP. 629A Kailua Rd. #111. 262-2011

RETIRING HULA TEACHER disposing of her entire superb collection of instruments & skirts. Check prices — make offer. 737-2552

JAPAN Go Game — Mint cond. Polished Jessmine base & obsidian & shell stones. Collectors item. Original price \$400. Make offer. 737-2552

'85 FILTER Queen Vacuum Cost \$850. Must sell \$250. 735-4651, 926-7292

CASH paid for Waterbeds, dead or alive. Paris. accessories. Ph. 486-3288

PHOTO Freakst! Hate high prices? Big photos for little \$\$, Ph. 293-5583

TENNIS Partners wanted. Inter. level. Hon. - will comm. some. 946-1911 George

CASH for unwanted refrig., washers, dryers, stoves, etc. Will pickup. 262-2196

TO PORTLAND 1-way via San Fran. 3 UAL seats 1 boy. Leave by Aug. 7 pm. 531-8625

MOVING - everything must go fast! Appliances, bikes, furn., beds, misc. 847-3185

SCM Typewriter printer III electronic portable. Unused, will trade for stnd. typewriter. 737-2552

19" SEARS TV, \$75; AM/FM stereo record player, 8-track, w/tapes. \$125. 262-8633

WINDWARD ANTIQUES — Buy, Sell, Trade. Wanted: Junk, col'tbis, & old ptngs. 160 Hamakua 262-5526

FOR SALE 10 SPEED BIKE. Lotus Classic 24 Inch. Used only a dozen times. \$225. 735-2531

10 SPEED bicycle. Cycle Pro. excel. cond. \$110. Call 262-5802 eves.

EXPERT Piano Moving, Crating, Storage. 633-1859 S&S Delivery 395-7295

MARTIN guitar about 40-45 years old. \$300 or offer. Call mark 261-7723

BALDWIN Plano, walnut finish. \$1195. Ph. 732-3240.

14' HOBBIE cat \$650. Complete ready to sail. 8' wooden dingy. \$125. Lynn 261-2546

12' DYNOSU inflatable. 18 hp Tohatsu & trail. '85 Mid. Like new. \$2700. 455-5964

78 20 ft. GALAXY excellent cond., lots of extras, 170 hp Mercruiser \$9000/offer. Call 672-4320

BOAT trailer for Zodiac \$75. Call 254-2361

HOLDER 12 Sailboat, racks, sails & all incl., hardly used \$1100/offer. 624-9946

CAL 20. Orig owner. Asking \$5500. Phone 377-5002 or 538-7721

'86 HOBBIE Cat w/trailer. Excel. Cond. Many Extras. \$2400/offer. Call 235-1033

42" GRAND Banks trailer. Twin diesels, generator. Free slip. \$110,000/offer. Makani Kai Marina. 235-6599

'86 HOBBIE w/trailer. Good cond. Ready to sail. \$1200. (bus) 257-3280 (res) 949-7254 Bart Bacon.

ALWAYS wanted to live on a Yacht? Finely crafted 35' Trimaran for \$38,000. Check it out! 943-0394

1986 BAYLINER 18' outboard w/trailer 85hp. AM/FM stereo cass., skis, used once \$8700. 396-4830

SIAMSESE kittens, 12 wks., papers, lilac, choc., blue point \$200. 239-9700 eves.

DWARF baby bunnies & adult parents. Unusual Markings. \$10 ea. 422-2125

AKC Belgian Tervuren shots, wormed, 6 wks. top of line in Belgium. 263-4350

SIAMSESE kittens, 12 wks., papers, lilac, choc., blue point \$200. 239-9700 eves.

50th STATE Battery Inc. Everyday low-low price on your battery needs. Price everybody can afford. Call 676-1669. 95-378 Pupupani St. Waipahu

SHIHTZU AKC stud service Gold/Whit. Direct Champ. Lee-Ja-Leu Keni. 486-0495

29 GAL. Aquarium w/stand, filter, etc. \$148/offer. Must sell. 671-7612

FREE to good home, banana patch kittens w/adopton paper. 395-8673

NEED Tires for truck or equip? New and recaps at fleet prices. Call me for best service. Mitchell 841-6111 days: 732-2683 eves.

151 Pets - Everything

'85 MARQUIS BROUGHAM WAGON  
 Stk #2-0140  
 Was \$15,972  
**Now \$11,600**

'85 GRAND MARQUIS 2-DR.  
 Stk 1-8149  
 Was \$19,414  
**Now \$11,500**

'85 MARQUIS 4-DR.  
 Stk 2-0064  
 Was \$18,829  
**Now \$8,995**

'86 GRAND MARQUIS 2-DR.  
 Stk 2-1387  
 Was \$22,014  
**Now \$14,695**

'86 LINCOLN TOWN CAR CARTIER  
 Stk 2-0863  
 Was \$32,460  
**Now \$24,925**

'86 SABLE 4-DR.  
 Stk 2-1392  
 Was \$17,077  
**Now \$11,995**

1986 TOPAZ 4-DOOR Demonstrator  
 SPECIAL PRICE  
**\$8,995**

6.9%\* Financing OR \$300  
 Annual Percentage Rate Factory Rebate

1986 COUGAR GS  
 SPECIAL PRICE  
**\$13,995**

6.9%\* Financing OR \$600  
 Annual Percentage Rate Factory Rebate

1986 CAPRI GS  
 SPECIAL PRICE  
**\$9,995**

6.9%\* Financing OR \$300  
 Annual Percentage Rate Factory Rebate

1986 LYNX WAGON  
 SPECIAL PRICE  
**\$7,575**

6.9%\* Financing OR \$300  
 Annual Percentage Rate Factory Rebate

Discounted Prices... Rebates... Low Interest Rates... Make Buying A Car Easy!  
 \*6.9% Annual Percentage Rate on approved credit. 36 month term. Other terms available. Must be purchased from Honolulu inventory only.  
 All prices plus tax, license and D.O.C. fees. Cars subject to prior sale. Offer good thru 7/22/86.

**PFLUEGER**  
 LINCOLN • MERCURY

2901 N. Nimitz Hwy. • Honolulu, Hawaii 96819  
 (Next to Popo's Restaurant)  
 Phone 836-0033

1986 TOPAZ 4-DOOR Demonstrator  
 SPECIAL PRICE  
**\$8,995**

6.9%\* Financing OR \$300  
 Annual Percentage Rate Factory Rebate

1986 COUGAR GS  
 SPECIAL PRICE  
**\$13,995**

6.9%\* Financing OR \$600  
 Annual Percentage Rate Factory Rebate

1986 CAPRI GS  
 SPECIAL PRICE  
**\$9,995**

6.9%\* Financing OR \$300  
 Annual Percentage Rate Factory Rebate

1986 LYNX WAGON  
 SPECIAL PRICE  
**\$7,575**

6.9%\* Financing OR \$300  
 Annual Percentage Rate Factory Rebate

Discounted Prices... Rebates... Low Interest Rates... Make Buying A Car Easy!  
 \*6.9% Annual Percentage Rate on approved credit. 36 month term. Other terms available. Must be purchased from Honolulu inventory only.  
 All prices plus tax, license and D.O.C. fees. Cars subject to prior sale. Offer good thru 7/22/86.

**PFLUEGER**  
 LINCOLN • MERCURY

2901 N. Nimitz Hwy. • Honolulu, Hawaii 96819  
 (Next to Popo's Restaurant)  
 Phone 836-0033

'78 PORSCHE TARGA  
 Av. 35,000 miles HJH 193  
**SAVE**

'84 CONTINENTAL MARK VII  
 Full power, excellent cond. BTV 590  
**\$12,995**

'82 CADILLAC ELDRADO  
 Full power, low miles. AUR 724  
**SAVE**

'86 NISSAN SE PICKUP  
 AT. 1,800 miles. CEF 691  
**\$8,995**

'80 CADILLAC SEVILLE  
 Full power. AND 247  
**\$7,595**

'83 OLDSMOBILE CUTLASS 2-DR.  
 Full power, good condition. BBF 162  
**SAVE**

'84 MERCURY TOPAZ  
 4 dr., AT, air BTJ 039  
**\$4,495**

'83 MERCURY CAPRI  
 AT, air AVS 618  
**\$3,995**

Map showing location: Puloa Road, Nimitz Hwy, Aiea - Airport overhead ramp, Nimitz Hwy, South Seas, Kapapa St, Lagoon Drive.

**SHELLY LEASING**  
**USED CAR SALES**  
**CLOSING OUR DOORS**  
**JULY 31**  
**EVERYTHING GOES**

'81 FORD ESCORT 4-DR.  
 Runs great (BCC-350)  
 Was \$2495  
**SAVE \$600**  
**NOW \$1895**

'81 PLY. CHAMP 2-DR.  
 4-spd. (AGS-211)  
 WAS \$2495  
**SAVE \$500**  
**NOW \$1995**

'81 TOYOTA TERCEL  
 2-dr., AT (BEJ-519)  
 WAS \$2995  
**SAVE \$1000**  
**NOW \$1995**

'81 MAZDA GLC 2-DR.  
 4-spd. (BDT-755)  
 WAS \$3995  
**SAVE \$500**  
**NOW \$3495**

'81 SEARS TV, \$75; AM/FM stereo record player, 8-track, w/tapes. \$125. 262-8633

129 Stereo, Video & Television

130 Antiques-Art

131 Bicycle Sales & Services

144 Musical Instruments

146 Boots-Supplies/Services

147 Sporting Goods

151 Pets - Everything

156 Auto Service/Parts

156 Auto Service/Parts

156 Auto Service/Parts

156 Auto Service/Parts

156 Auto Service/Parts

156 Auto Service/Parts

**CONSTRUCTION SALE**

Models may not be exactly as shown

'82 Honda Civic 4 cyl, 5 spd., AT \$725 **\$4,395**

'78 Monte Carlo V6, AT, air, 09A122 **\$2,995**

'78 Buick Regal V6, AT, 1000cc, BT 0408 **\$3,595**

'84 Isuzu Impulse AT, 1000cc, BT 0408 **\$8,995**

'82 Mazda RX-7 GS 4 cyl, 5 spd., AT, 1000cc, BT 0408 **\$7,995**

'84 Dodge 600 Cpe. AT, AM/FM 1000, CEW217 **\$7,695**

'84 Nissan Pulsar 8 cyl, 4 spd., AT, 1000cc, BT 0408 **\$5,995**

'81 VW Rabbit Convertible, AT, AM/FM, ATX185 **\$7,595**

'81 Chevy Malibu AT, AM/FM 1000, AUJ729 **\$2,995**

'85 Camper Van Sleep 6, 1000cc, CDT034 **\$16,988**

'78 Jeep CJ-5 V6, new paint, CAJ647 **\$4,888**

'83 S-10 Blazer 4x4 8 cyl., AT, PS, 1000cc, 45V355 **\$9,788**

'83 Chevy C-10 P'Up 8 cyl., 3 spd., PS, AirV50 **\$4,988**

'79 Datsun Pickup 4 spd., good condition, ARC202 **\$1,988**

156 Auto Service/Parts

166 Pickups, Trucks

171 Motorcycles, Mopeds & Scooters

1986 CAMARO Z-28 IROC V6, 5 spd., loaded including T-top. 5933 **\$15,988**

1986 CAPRICE CLASSIC 4 DR. SEDAN Fully loaded, luxury driving at an affordable price. 5354 **\$13,788**

1986 CELEBRITY 2 DR. AT, AC, tilt wheel & much more. 5782 **\$10,488**

1986 MAZDA 626 LX 5 speed, 2 dr., loaded. 5204 **\$12,299**

1986 MAZDA B2000 P'UP 5 spd., 4 cyl. retail \$73650. M5922 **\$12,588**

1985 CHEVY 4x4 S-10 P'UP V6, 5 spd., PS, retail \$15,945.50. LT4190 **\$13,988**

1986 CHEVY ASTRO 7 PASS. VAN 6 cyl., AT, PS, AC, retail \$15,919.50. LT6013 **\$6,388**

1986 MAZDA B2000 P'UP 5 spd., 4 cyl. retail \$73650. M5922 **\$9,788**

1986 MAZDA B2000 P'UP 5 spd., 4 cyl. retail \$73650. M5922 **\$9,788**

1986 MAZDA B2000 P'UP 5 spd., 4 cyl. retail \$73650. M5922 **\$9,788**

1986 MAZDA B2000 P'UP 5 spd., 4 cyl. retail \$73650. M5922 **\$9,788**

1986 MAZDA B2000 P'UP 5 spd., 4 cyl. retail \$73650. M5922 **\$9,788**

1986 MAZDA B2000 P'UP 5 spd., 4 cyl. retail \$73650. M5922 **\$9,788**

1986 MAZDA B2000 P'UP 5 spd., 4 cyl. retail \$73650. M5922 **\$9,788**

1986 MAZDA B2000 P'UP 5 spd., 4 cyl. retail \$73650. M5922 **\$9,788**

1986 MAZDA B2000 P'UP 5 spd., 4 cyl. retail \$73650. M5922 **\$9,788**



**'82 TERCEL**  
AUTO., DLX., 4 DR.  
AUB180

**\$225 DOWN ONLY**  
**\$104.44 PER MO.**  
36 MOS.

# SHELLY WAIPAHA

## CONSTRUCTION SALE

# BLOW OUT



**'81 MUSTANG**  
2 DR., SUPER CLEAN!  
CAC977  
LIKE NEW  
WAS \$4995  
NOW  
**\$2995**



PRICES GOOD  
THRU 7/31/86

## WE MUST MAKE ROOM WHILE WE REMODEL



**'72 RANCHERO**  
AUTO., V8, CASSETTE  
#1947U  
WAS \$2995  
NOW  
**\$1995**



**'79 DODGE 4X4**  
V8, AUTO., MAGS WITH  
WIDE TIRES. #1955U  
WAS \$5495  
NOW  
**\$3695**

**'81 DODGE PICK UP** NOW  
V8, SUPER CLEAN  
WAS \$5995 **\$4295**

**'81 DATSUN 210** NOW  
ARX534  
AUTO., VERY NICE  
WAS \$3995 **\$1995**

**'78 TOYOTA S/W** NOW  
LOOKS & RUNS  
LIKE NEW  
WAS \$3895 **\$2495**

**'85 NISSAN 200 SX** NOW  
SUPER CLEAN!!  
BXE847  
WAS \$9995 **\$7995**

**'82 MAZDA S/W** NOW  
BFU282  
WAS \$3495 **\$1795**

**'81 ESCORT S/W** NOW  
22,000 ORIGINAL MILES  
LIKE NEW  
BCJ988  
WAS \$2995 **\$1995**

**'85 MAZDA 626 LX** NOW  
4 DR., DLX., AUTO., A/C  
ALL POWER  
BXP533  
WAS \$8995 **\$7895**

**'79 FORD FAIRMONT** NOW  
AUTO., A/C, RUNS GREAT  
BAS816  
WAS \$2495 **\$995**

# SHELLY MAZDA WAIPAHA

94-212 LEOKU ST.

PHONE: 677-0761

100% FINANCING O.A.C.

- 175 Vans, Campers  
Jeep, 4 WD
- FIBERGLASS shell for S-10  
or S15 long bed w/ carpeted  
insert. 621-1101
- '76 CampVan. Auto. a/c,  
AM/FM, refrig., sink, stove,  
couches, table. In 1980  
interior redone. Steeps 6.  
\$3000 or offer. 422-2125
- '82 SUZUKI Jeep, soft top,  
excl. cond. Leaving island.  
Must sell. \$2500/offer. Ph.  
629-9412
- '83 NISSAN 4x4 loaded w/  
extras. AM/FM, 20,000 mi.  
leaving. \$6988. 671-7529
- '84 BRONCO 4x4, a/c,  
AM/FM, excl. cond. Low mi.  
\$13,000/offer. 671-6356
- '84 ISUZU Trooper II 4x4  
AM/FM cass., rust proof.  
\$8300. Excl. cond. 262-9147
- '85 NISSAN 4x4, 5 spd., low  
mi., rust proofed, stereo.  
\$7200/offer. 395-1233
- '85 DODGE Caravan SE, 5  
spd., 7 pass., air, AM/FM,  
extras. Must sell \$10,500.  
Ph. 254-4097

**PACIFIC NOW SERVING OLDSMOBILE & GMC YOU IN AIEA**

From 5.9% Financing  
STOP IN OR CALL TODAY

**CUTLASS SUPREME**

**GMC JIMMY**

SAVINGS UP TO \$3000

**SUMMER CLEARANCE SALE**

Subject to prior sale  
Price tax & lic.  
Sale Ends 7/23/86

**PACIFIC OLDSMOBILE & GMC AIEA**  
WESTRIDGE SHOWROOM  
98-150 KAONOHI ST.  
487-5526

Mon.-Fri. 10 am-9 pm  
Sat. 9 am-8 pm  
Sun. 10 am-5 pm

**Tropical CAR SALES**

PRICE QUALITY SERVICE

**2 DAYS ONLY**

# BIG BLOW OUT SALE

NO DOWN PAYMENT WITH APPROVED CREDIT AND ON THE SPOT FINANCING

**'83 ESCORT BEST BUY**  
\*1042 ONLY **\$1995**

THE BOSS SAYS "LET'S GET RID OF THESE" — NO REASONABLE OFFER REFUSED!  
OVER 100 CARS TO CHOOSE FROM

**2 FREE TICKETS FOR THE AT&T FRANK SINATRA CONCERT JULY 25th W/EACH CAR PURCHASED**

**'84 DODGE 600 CONVERTIBLE**  
\*3661 ONLY **\$4995**

**'81 MAZDA GLC ECONOMY SPECIAL**  
\*8270 ONLY **\$1795**

WHILE SUPPLIES LAST  
SALE DATES SAT., JULY 19-SUN., JULY 20  
BETWEEN 10 A.M.-4 P.M.

LOCATION  
**550 PAIEA ST.**  
1 BLOCK OFF NIMITZ ON PAIEA  
FOR INFO PLEASE CALL  
**836-3336 OR 671-0505**

**AT&T**

FRANK SINATRA CONCERT SPONSORED BY AT&T  
ALL CARS SUBJECT TO PRIOR SALE & TAX, LIC., DOC FEES. OFFER ENDS 7/21/86.

- 1176 Automobiles for Sale
- Order from OREGON any NEW CAR or PICKUP contact **ROBERTS and REDFIELD** Portland Write for price lists and full information ANY MAKE - ANY MODEL DELIVERED ANYWHERE Including HAWAII **ROBERTS and REDFIELD** 1313 W. Burnside Portland, OR 97209 (503) 295-5556
- MILITARY & DOD Discounts European & Japanese autos. Div. anywhere Europacar Int'l! Wheels Hawaii 836-1851, 839-6577
- DISTRESS Sale! '86 Chrys. 2 dr. sdn., brand-new, econ. gas. Aud. 300, no bugs, auto., misty blue, sturdy blue vinyl interior, 6 seat-belts. Was \$12,650 Now \$10,500. Family car, extras. 247-1587
- Audi
- '78 FOX: silver, excl. cond w/new radials, new battery AM/FM, well loved. \$3000 Jim 521-9588 days or 949-5446 eves. til 9 p.m.
- Austin
- '66 SPRITE red conv't., restored, 3 tops, new tires, custom paint. Ofr. 237-8197

- | BMW  | Ford   | Lincoln   |
|--|--|---|
| '65 BMW 1800 classic 4 dr. std., new clutch \$1000/offer. 262-6870   | '64 FORD Classic Galaxy 500 51,000 miles, light blue, all original \$4000. 235-3286                                  | '69 LINCOLN Continental MK III, top shape, low mileage, \$4200. 254-5102 Dick.  |
| Cadillac   | '66 MUSTANG 289 3 spd., console shift, stereo, all original, all stock. \$2100. Ph. 623-0933 mornings                | Mazda   |
| '82 CIMARRON, '77 BIARRITZ both in excl. cond., low mi., well maintained Offer. 455-2341                   | '74 MUSTANG II Ghia, V6, a/c, p/c, restorable. \$500. 254-1987 after 5:30 p.m.                                       | '81 MAZDA 626 sedan, green, 73,000 mi., good cond. \$2000. Ph. 395-0318   |
| Chevrolet  | '74 NOVA, 4 dr. Good Cond. \$500 Final. Ph. 528-4072   | '85 MAZDA 626 4 dr., auto., AM/FM cass. \$7000/offer. 262-5573  |
| '80 CITATION 2 dr., auto., air, AM/FM, radials, clean \$1275/offer. 261-6108                               | '74 LTD, runs good. \$325. Mike 537-5316 days. 395-2289 eves.  | Mercedes  |
| '83 MALIBU Wgn. a/c good cond. \$5500/offer. Gwenn/Evelyn Paradise Planners 922-0691                       | '75 FORD Gran Torino runs good. \$4000. Call 263-4350  | '72 280 SE Classic - good cond., runs great. \$5,000/offer. Nancy - 947-5553  |
| Datsun   | '76 PINTO, good cond., must sell. \$800/best offer. 247-8465   | '73 220D-Std., new brakes, eng., paint, sheepskins. Pristine cond. Sacrificial Classic \$7500/offer. 262-8528                               |
| '75 DATSUN B210, std., h/chbk., good interior, just tuned & serviced, new tires \$950/offer. 261-5706      | '76 PINTO wagon. Best offer. Call 235-3791 eves.   | Mercury   |
| '84 300ZX - AM/FM cass. air, all power, t-top. \$13,500/offer. 623-7415 eves.                              | '79 FORD Fairmont p/s, p/b, a/c, excl. cond. auto trans. 262-5808 after 1 p.m. \$1800                                | '79 BOBCAT, 2 dr., 67,000 mi., a/c, looks & runs well. \$1200. Ph. 845-9089   |
| Dodge  | '80 T-BIRD for sale, good cond., \$2000. Call Bill 262-2011 days   | '73 ZEPHYR - 4 dr., 6 cyl., auto, air, AM/FM cass., full power. Excl. cond. \$1100/offer. Eves. 254-5448                                    |
| '73 COLT S/W, excl. transportation, orig. paint, very little rust \$1250/offer. 239-5812, 395-3242         | '81 ESCORT p/s, air, AM/FM cass., 4 spd., new tires & belts, no rust. Listed below blue book \$1750/offer. 623-7415. | '77 VOLARE excl. cond. 34,000 mi., 1 owner, orig. paint, waxed regularly, garage kept, lots of miles left \$1450/offer. Call 621-6787 eves. |
| '73 DODGE white, 4 dr. sedan, \$650. Call 254-4606   | '82 ESCORT-2 dr., hatchback, Automatic, very low miles-\$3000. 833-9174  | '80 GRAN Fury, auto., p/s, p/b, velour int., very good cond. \$1350/offer. 237-8832   |
| '77 MONACO st. wgn. \$750 cash gd. cond., air, AM/FM etc. 845-5875 appt.                                   | '84 ESCORT L, air, auto., 4 dr., excl. cond., \$3600/offer. 836-4699   | '75 MARK II, 2 dr., htdp., p/s, a/c, auto., no rust \$1850/offer. 235-6026  |
| '79 DODGE Colt, h/b, AM/FM cass., very good cond. \$1000. Call 263-8370                                    | '85 PRELUDE - Sunroof, AM/FM cassette, \$11,900/offer. 261-2059 after 5.   | '77 CORONA 4 dr. \$500. Ph. 262-8021 evenings   |
| '85 DODGE Omni, 7000 mi. AM/FM, ST, p/s, p/b, dix int many extras, excl. cond. \$6000. Must sell. 423-2888 | '82 CIVIC, 1 owner, excl. cond. \$3950 Ph. 247-2367 home; 235-4551 work.   | '80 TERCEL, 2 dr., auto., good cond. \$1800. Call 262-6158 after 5 p.m.   |
| '85 DAYTONA, 5spd., cass., low mi., brn./tan. Must see. \$799. 254-1209                                    | '84 MAXIMA 4 dr., loaded! Excl. cond. \$12,000/offer. Loretta 696-5084   | '83 COROLLA, no rust, 5 spd., AM/FM. \$4250/offer. 262-2355 (d), 254-2853 (e)   |
|  |  | '76 VW Dasher, 4 dr., \$500 or best offer. Call 261-8184  |

**CUTTER FORD**

MILITARY FINANCING AVAILABLE

'73 INT'L 4x4 PICKUP (7782)	\$795	'70 CORONA (7850 APC98)	\$295
'75 CHEV 4x4 (7913)	\$675	'79 CAPRICE (7794 BGM677)	\$595
'70 CHEV PICKUP (7869 RMY035)	\$395	'79 MUSTANG (7924 BAW144)	\$795
'78 CHARGER (7916 BJ7705)	\$395	'69 TORINO (7527 BJR330)	\$395

98-015 Kam Hwy., Aiea Ph. 487-3811 JULY 17, 18, 19

Volkswagen	Volkswagen	Voho
'79 RABBIT - fuel injection, good cond., must sell. \$1200 7-9 p.m. 373-3060	'81 RABBIT DIESEL L 4 dr., Extras, excl. cond. \$2800. 623-7772 eves	'72 VOLVO Sedan 144E. 4 spd. \$1500. Ph. 732-3240.
'80 DIESEL pick-up, rebuilt engine, dependable, great mi. \$4000/offer 262-5037	'82 RABBIT Conv't. AM/FM cass. Excl. cond. Very well maintained. \$7000. 735-2531	'79 242DL, 2 dr. sdn., auto., air, AM/FM, sunroof. \$3500/offer. eves. 456-7837

**MIKE SALTA**  
**AUTHORIZED**  
**PUBLIC SALE**

**FRIDAY**  
NOON-9 PM

**SATURDAY**  
9 AM-9 PM

**SUNDAY**  
10 AM-6 PM

**6.9%**  
FINANCING AVAILABLE  
ON MOST MODELS  
On Approved Credit

**ENTIRE STOCK OF VEHICLES**

EVERY LAST 1986-MODEL PONTIAC AND ISUZU, EVERY COMPANY EXECUTIVE CAR, EVERY SALES DEMONSTRATION CAR, EVERY MAKE AND MODEL USED CAR—HUNDREDS OF VEHICLES!

**PRICES:** NOT PUBLICLY ADVERTISED, IN CONSIDERATION OF OTHER RETAIL DEALERS.

**PRICES:** PROMINENTLY DISPLAYED ON ALL SALE VEHICLES

**PRICES:** ON ALL NEW 1986 PONTIACS AND ISUZUS—LOWER THAN EVER BEFORE

FINANCING AVAILABLE TO QUALIFIED BUYERS THROUGH DEALER-AUTHORIZED BANKS, YOUR BANK, YOUR CREDIT UNION OR ANY OTHER ACCREDITED LENDING INSTITUTION OF YOUR CHOICE.

AUTHORIZED TRADE-IN APPRAISERS IMMEDIATELY AVAILABLE

**OFFER VALID THROUGH SUNDAY ONLY!**

MIKE SALTA PONTIAC•ISUZU  
2945 N. NIMITZ HIGHWAY  
836-2441