

Leisure
Kids relieve
school's tension
in homey atmosphere
See Page A-4

When War Begins
Air station
was first target
of Japanese attack
See Page A-8

Hoop Shooting
BLT 1/3, SOMS
battle it out
in intramural basketball
See Page B-1

HAWAII MARINE

Voluntary payment for delivery to MCAS housing/\$1 per four-week period.

VOL. 12 NO. 49

KANEOHE BAY, HAWAII, DEC. 7, 1983

TWENTY-FOUR PAGES

BIKERS' HEAVEN

— Some 400 blue jean clad motorcyclists from Street Biker's United of Hawaii rumbled through downtown Honolulu Sunday with toys strapped to their machines in the annual Street Biker's Ride for the Toys for Tots campaign. The toy collection effort sponsored by the Honolulu Marine Corps Reserves brought in two pickup trucks full of toys donated by the bikers. According to Leroy Hensley, president of Street Biker's United of Hawaii, this was the biggest turnout of island bikers since the club started its annual parade. All the toys gathered by the Marine Corps Reserves here will go to the underprivileged children of Hawaii for Christmas. (Photo by Sergeant Chuck Jenks)



News in brief

Marines killed in Beirut

Eight Marines died in Beirut last weekend as the result of a massive artillery bombardment, according to a United Press International story in Monday's *Honolulu Advertiser*. The bombardment reportedly came after Syrian gunners shot down two American aircraft conducting air strikes against Syrian forces.

According to UPI, Marine spokesman Major Dennis Brooks reported that Marines "... came under heavy rocket, Z-U23 anti-aircraft, mortar and small-arms fire." Brooks said the Marines responded with artillery, mortar and naval gunfire.

The air strike was conducted by Navy A-6 Intruder and A-7 Corsair II aircraft, according to Monday's *Advertiser* story and one of each was shot down.

In another UPI story in Monday's *Advertiser*, President Reagan was reported as saying he ordered the massive bombing raid in response to an "unprovoked attack." The air strike was approved after Syrian forces carried out what White House spokesman Larry Speakes described as "particularly vicious and violent" attacks against U.S. reconnaissance flights Saturday, UPI reported.

Beware of fallen birds

The season of "Fallen Shearwaters" has arrived and air station residents are being asked to look-out for the fallen birds.

The wedge-tailed shearwater, a brown and white sea-bird native to Oahu, comes and goes to nesting burrows after dark. In doing so, they often cross highways and populated areas that have bright lights.

The young birds are attracted to the artificial light and become temporarily blinded or confused and injure themselves by flying into utility wires, tree limbs and buildings. Many fall on the highway and are hit by cars.

If any of these birds are found aboard the air station, residents are asked to contact Diane Drigot, environmental protection specialist aboard the air station, at 257-2171 or the Provost Marshal animal control section at 257-2103.

If the birds are found over the weekend, place in a box, do not feed and notify authorities Monday morning.

Kudos to 31st MAU

It is with a sense of regret that Comphibron One's Amphibious Ready Group Alfa ships debark Marine Medium Helicopter Squadron-165, Battalion Landing Team 3d Battalion 3d Marines, and Marine Amphibious Unit Service Support Group-37 who have been our shipmates and personal friends throughout this historic and challenging deployment.

Your collective professionalism, readiness and dedication to excellence have been consistently noted and enabled the Navy-Marine Team of Amphibious Ready Group Alfa to establish an enviable record of success from Okinawa to the Eastern Mediterranean. Not only have you demonstrated peak combat effectiveness but your incident free deportment ashore as goodwill ambassadors of our country has been particularly noteworthy.

You have been an impressive first team all the way and will be missed. On behalf of all your Navy teammates please accept my best wishes for a joyous homecoming and sincere appreciation for a job well done. You are the best.

Commodore David Morris
Commander, Amphibious Squadron One

Pay raise approved

EDITOR'S NOTE: The following article is being used with the permission of Navy Times.

by Martha Lynn Craver

WASHINGTON — Most military people will receive a 4 percent pay raise effective Jan. 1, 1984, even though federal civilians will receive only a 3.5 percent hike.

The exceptions are E-1s with less than four months' service, who will receive no raise, and top-ranking officers, who will be limited to 3.5 percent.

Earlier, it appeared that the military and the civilian raises would be the same, and it was uncertain for a time whether the common increase would be 3.5 percent or 4 percent. There also was some doubt as to the raise's effective date.

Here's what happened in the end: Congress failed to pass a budget reconciliation bill before adjourning for the year. That bill would have provided a 4 percent pay increase for both federal civilians and military people.

Since the bill did not pass, the President's pay plan will go into effect. That plan provides for a 3.5 percent pay raise for federal civilians, effective Jan. 1.

Under law, military pay raises usually are tied to federal civilian

raises. However, language in the FY '84 Defense Authorization Act passed by Congress earlier this year provides that military people will receive a 4 percent hike, and not the 3.5 percent figure.

The Authorization Act also says the 4 percent pay raise for the military will be effective April 1, unless federal civilians receive an earlier raise, which they now will. So, military people will receive their 4 percent hike when the civilians receive their increase — on Jan. 1.

Members of the Senior Executive Service, whose salaries have been capped at \$63,000 a year, will receive a 3.5 percent hike. The new cap, effective Jan. 1, will be \$66,000. Military people in pay grades O-9 and O-10 also are affected by this cap.

Other items in the reconciliation bill of interest to military people include the seven-month delay in cost-of-living adjustments for retirees and the repeal of the COLA offset for military retirees who go back to work for the federal government.

Both of these items may be considered by Congress when the new session begins Jan. 23.

The COLA delay would move the next cost-of-living adjustment for military and federal civilian retirees to Jan. 1, 1985.

"The idea behind the COLA delay

For a related story and charts, see Pages A-10, A-11

was to save money and help cut the deficit. The deficit problem will be here when Congress returns, and it would not surprise me if the Congress comes back and passes the COLA delay along with some other money-saving cuts," one Budget Committee staff member said.

Some staff members on Capitol Hill predict that Congress may go even further and, in addition to delaying the COLA, may move to permanently cap the COLAs in all federal entitlement programs.

As for repealing the COLA offset, staffers say its fate is much more uncertain. (The offset requires that military retirees who go back to work for the federal government have their salaries reduced, dollar-for-dollar, by the amount of the COLA increase.)

The Senate version of this year's budget reconciliation bill would have repealed the COLA offset, but the House version contained no such provision. In fact, it was Rep. William Ford (D-Mich.), chairman of the House Post Office and Civil Service Committee, who successfully led the effort to include the COLA offset in the FY '83 Budget Reconciliation Bill. Ford is expected to fight any attempt to repeal the COLA offset.

Sun never sets on 'day of infamy'

by Sgt Greg Berry

President Franklin D. Roosevelt said Dec. 7 was a day that would "live in infamy" and, as we commemorate the fallen heroes of 42 years ago, it appears the years have proven him correct.

It was a quiet Sunday morning when the first wave of Japanese aircraft came in low, cleared Kansas Tower, and attacked the sleeping air station. The attack on Oahu began at 7:45 a.m.

The final tally for the Kaneohe Naval Air Station was: 17 men dead; 67 wounded; and 33 of 36 PBV seaplanes either destroyed or severely damaged.

Kaneohe was the first place attacked on that fateful morning, and Navy Chief Ordnanceman John Finn became the first serviceman to earn the Medal of Honor in World War II.

Finn was at home with the first wave of Zeros attacked, and he immediately headed for his hangar. When the only available machine gun which had been set up for instructional purposes became jammed, Finn took over the position, fixed the .50-caliber weapon, and returned fire.

Despite being exposed to enemy fire, having the gun's platform literally shot out from under him, and being sprayed with shrapnel,

Finn kept firing at the enemy aircraft.

There were no confirmed kills during the first wave of the attack, but during the second wave a Japanese Zero, piloted by Lieutenant Fusata Iida, received a disabling hit.

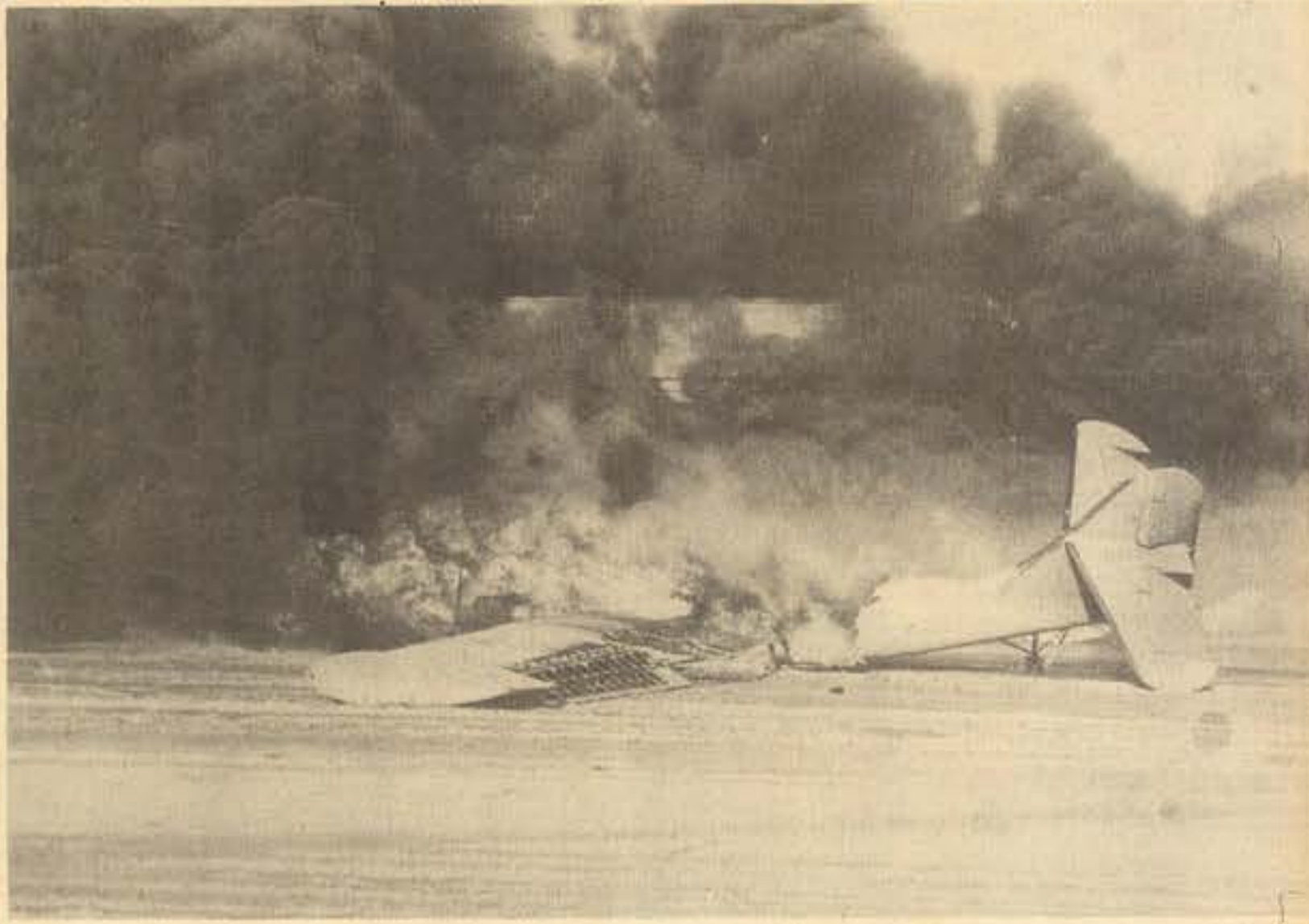
Iida knew his crippled Zero wouldn't make it back to his carrier. True to his Samurai tradition, he returned to crash his aircraft where it would do the most damage. Iida probably aimed his Zero at one of the hangars, but lost control after receiving a hail of bullets.

Iida, the highest ranking Japanese officer to die in the attack, crashed near Kansas

Tower, where a marker now marks the spot, across from the Child Care Center.

Finn returned to Hawaii two years ago for the first time since 1946, for the 12th Biennial Congressional Medal of Honor Society Convention. When he toured the air station, Finn spent a moment of silence at the memorial.

The controversies of the attack on Pearl Harbor have raged since the first bomb blast on that fateful day, with books, films, and documentaries exploring every angle. But the one thing they all agree with is that Dec. 7 will "live in infamy."



WAR!!! A Navy PBV seaplane burns on the Naval Air Station, photos of the Kaneohe devastation, turn to Page A-8. (Official Kaneohe runway. Before screaming into Pearl Harbor, the U.S. Navy photo) Japanese attacked the air station, leaving 17 dead. For more

Courts-Martial Report



EDITOR'S NOTE: The information contained in Courts-Martial Report is submitted by the Joint Legal Service Center and is published as a source of information for all Marines.

Staff Sergeant Kenneth A. Bell, Marine Fighter Attack Squadron-235, was convicted at

trial by special court-martial of knowingly and wrongfully using marijuana.

He was sentenced to two months confinement at hard labor, reduction to private, and a bad-conduct discharge from the U.S. Marine Corps.

Lance Corporal Charles E.

Smith, Marine Air Base Squadron-24, was convicted at trial by special court-martial of unauthorized absence from March 18-July 21, 1983; wrongfully possessing drug abuse paraphernalia; and wrongfully possessing 8.4 grams of marijuana.

He was sentenced to five months confinement at hard labor, forfeiture of \$380 pay per month for five months, and reduction to private.

Private Johnny Garcia, 1st Battalion, 3d Marines, was convicted at trial by special court-martial of unauthorized absence from July 17-19, 1983; Aug. 13-15, 1983; and Aug. 20-23, 1983;

stealing camera equipment of a value in excess of \$100; and stealing an AM/FM cassette stereo of a value of \$70.

He was sentenced to six months confinement at hard labor, forfeiture of \$380 pay per month for six months, and a bad-conduct discharge from the U.S. Marine Corps.

Pvt Steven Kahanaoi, Marine Heavy Helicopter Squadron-463, was convicted at trial by special court-martial of unauthorized absence from June 27-Oct. 12, 1983.

He was sentenced to three months confinement at hard labor, forfeiture of \$200 pay per

month for three months, and a bad conduct discharge from the U.S. Marine Corps.

LCpl Phillip L. Carter, 1st Battalion, 12th Marines, was convicted at trial by special court-martial of unauthorized absence from April 3-17, 1983; and April 25-June 16, 1983; and knowingly and wrongfully using marijuana.

He was sentenced to four months confinement at hard labor, forfeiture of \$380 pay per month for four months, and reduction to private.

HALE KOA HOTEL



Joint venture expedites vehicle registration

In a joint cooperative venture, the city and county of Honolulu and Naval Base Pearl Harbor have established a mini-registration unit to process motor vehicle registrations for Department of Defense personnel, military and civilians.

The unit is located in Building 3455, Base Security/Pass and Identification office, Naval Station, Pearl Harbor, just outside the Nimitz gate.

The unit offers information and forms for all types of transactions, and will issue out-of-state vehicle permits, Hawaii license for out-of-state registered vehicles being registered in Hawaii for the first time, and process registration renewals. This unit will not generate certificates of registration or ownership, and

will not process transfer of ownership transactions.

Days and hours of operations are every Tuesday and Thursday from 8:30 a.m. to 2:30 p.m., except federal and state holidays. The unit is presently open under a trial period which ends Dec. 18; however, usage indicates continuation through another trial period.

The mini-registration office is restricted from having a very large change fund and customers not having a local bank account will be required to bring money orders. Service charges may be obtained by calling 474-2196.

The following is a list of required documentation for the indicated transactions:

Registration with current out-of-state license plates: Application for out-of-state vehicle

registration (DF-L-27); last issued certificate of registration; Hawaii vehicle safety inspection certificate; Bill of Lading (Shipping receipt).

Registration to obtain Hawaii plates for the first time; last issued certificate of registration; Hawaii vehicle safety inspection; Bill of Lading (Shipping receipt); Certificate of ownership (Title); application for registration (DF-L-1); vehicle identification number verification (DF-L-22); non-resident certificate for military personnel on active duty (DF-L-50) if applicable.

For more information, contact Second Lieutenant M.T. Force, Deputy Provost Marshal, Service Support Division, at 257-2103 or 2104.

See your Career Planner

You'll get straight talk. Answers to your questions. And a fair look at all the Corps has to offer.

HQCO 1st MAR BDE
SGT White
257-3607

3/3
SGT Jackson/SSGT Micciotto
257-3580

BSSG
GySgt Mendoza/SSGT Stinson
Sgt Balizan
257-3127

MACS-2
SSgt Hosea
257-2995

VMFA-212
Sgt Doyle
257-2417

CommSptCo
Sgt Fernandez
257-3632

FmfPac
GySgt Blackwell
477-5090

HQCO 3D Mar
SSgt Alldredge
257-2758

1/12
SSgt Lofftis
257-3225

MAG-24
GySgt Wrede
257-2285

HMM-165
Sgt Hughes
257-2436

VMFA-232
SSgt Pietrzak
257-3627

H&HS
SSgt Drost
257-2841

MARBKS HI
SSgt Hall
471-9516

*There's
a big
difference
between a
hard hat
and a cover.*

Respect. Part of being a Marine is the respect and pride that come with the uniform. Belonging to such a select group has certain benefits of self-esteem, purpose, and commitment you're not going to find in a civilian job. And there aren't many other jobs or organizations that offer the immediate recognition that being a Marine does.

If you're thinking about leaving the Corps, think it over. Also consider the benefits like medical, educational, retirement and job security that being a Marine offers. There's a big difference between being a Marine and working as a civilian.



You can count on the Corps.

S T A Y M A R I N E.

Stay Marine.

The Hawaii Marine is an unofficial newspaper published every Wednesday by RFD Publications, Inc., 46-016 Alalan St., Kaneohe, Hawaii 96744, in the interest of U.S. Marine Corps personnel in Hawaii. All news copy is prepared in the Joint Public Affairs Office, Marine Corps Air Station, Kaneohe Bay, Hawaii 96863, 257-2179.

Copy must be submitted no later than noon Thursday for the following Wednesday publication. Hawaii Marine solicits contributions of information and photographs from all Marine Corps organizations. However, it reserves the right to edit or rewrite material submitted. All advertising is arranged by the publisher, RFD Publications, Inc., telephone 235-5881. Circulation is 8,000.

Everything advertised in this publication must be made available for purchase, use or patronage without regard to race, creed, color, national origin, age or sex of the purchaser, user or patron. A confirmed violation or rejection of this policy of equal opportunities by an advertiser will result in the refusal to print advertising from that source.

At-a-glance

Barber hours extended

The Marine Corps Exchange Barber Shop at the Main Exchange, Building 1090, has extended its Sunday hours of operation to better meet the heavy patron demand on Sundays and to reduce the crowds on Mondays. On a trial basis, the new Sunday hours will be 8 a.m.-4:30 p.m.

Roosevelt courses

Roosevelt University will be offering four computer science classes this Spring I term (Jan/Feb). Data processing Fundamentals, Interactive Programming, Management Information Systems, and Introduction to Data Bases are three semester hour lecture and lecture-laboratory courses designed to train the newcomer or professional to

understand and work in the modern world of computing and information systems.

Registration for the Spring term will be Dec. 12-23. Marines who qualify may utilize tuition assistance or their Veteran's benefits. For more information, contact Gary Larberg at the Joint Education Center, Building 219, Monday, Wednesday, and Friday at 254-2687.

Holly Berry Ball

The Officers' Wives' Club here is sponsoring the Holly Berry Ball Saturday.

The Ball will be held at the Officers' Club at a cost of \$11 per person. A no-host bar will open at 6 p.m. with dinner at 7:30 p.m. Dancing is from 9 p.m. to midnight for the aloha-attire affair. Reservations are requested as soon as possible.

REACH volunteers

REACH (Recreational Education for Adults and Children with Handicaps) is in need of volunteers to assist with its recreational programs. Activities include: bowling, hiking, swimming, movies, camping, and arts and crafts.

The centers are located at Camp H.M. Smith, Schofield Barracks, and Hickam Air Force Base. Programs run from 9 a.m. to 2 p.m. on Saturdays and from 9 a.m. to 12:30 p.m. on Tuesdays and Thursdays.

Anyone interested in helping the handicapped should call 533-3844.

Ice cream fund raiser

Ice cream eating and raising funds for Muscular Dystrophy Association are com-

ing together 1-3 p.m. Dec. 11, at the Ilkai Hotel. "Ice Cream Dreams: A Sunday Delight" fund raiser is an ice cream adventure that has 19 different ice cream manufacturers donating 58 flavors of the tasty treat.

Adults must pay \$10, children \$5 for an opportunity to come and sample the best Hawaii has to offer in ice cream. A special \$2.50 discount will be given to all 1983 Honolulu Marathon runners who show up at the fund raiser with verification of participation in the marathon.

In addition to the rainbow of flavors being dished up, Copenhagen Cones and a variety of cookies will be available for munching. Coca Cola will also be on hand.

Jan Brenner, a local entertainer, is the honorary ice cream

lover and official ice cream scooper.

Tickets can be purchased by calling the MDA office at 945-3545 or by contacting any ERA Magnum Realty office.

Navy Relief program

Norma Bellinger, field representative from the Navy Relief Society Headquarters will be visiting the Kaneohe Branch, Jan. 16-20.

While here, she will instruct a course designed to inform the military community about the numerous programs offered by the local NRS Auxiliary. Navy Relief policy, volunteerism, budgeting, pay and allowances, some dependent benefits, interviewing, and office procedures will be discussed.

The course will be offered from 8:30-11:30 a.m. Jan. 16-20,

at the Enlisted Club. Spouses, retirees, active duty personnel, civilians are all welcome.

Children's Christmas party

A dependent children's Christmas party will be held at 10 a.m. Dec. 17 at the station theatre. Kids can enjoy animated films, candy, gifts, and Santa Claus. All children, 12 years and under, are invited to attend. Those under 5 years old must be accompanied by an adult. Volunteers are needed to work, and more information can be obtained by calling Dependent Recreation at 257-3501.

Wayland registration
Registration for Wayland Baptist

University's Christmas Microterm began Monday. Registration for the next full semester begins Dec. 15 and continues through the first week of classes to Jan. 9.

The Wayland counselor is located at the Joint Education Center here on Mondays and Wednesdays from 9-11 a.m. and at Camp H.M. Smith on Thursdays from 1-3

p.m. For further information or a counseling appointment, call 537-6500.

Dependent dentistry

The next Preventive Dentistry Program is scheduled for Dec. 10. Parents may begin to make appointments for their children immediately.

The dental program for dependents is

limited to relieve pain of severe emergencies, and preventive dentistry only.

Preventive dentistry consists of dental examinations, lectures on dental hygiene and nutrition, and application of stannous fluoride.

To make an appointment, call 257-2290. Children must be 5 years of age or older.

Ombudsman



If you have a question or complaint about the content of the *Hawaii Marine* — or a suggestion or compliment — please telephone our Ombudsman, Gunnery Sergeant Don Gilbert, at 257-2178.

Gilbert, the Joint Public Affairs media operations chief, will endeavor to answer your questions and complaints through impartial investigations. He will accept calls between 7:30 a.m. and 4:30 p.m.

WE BUY

GOLD • SILVER • PLATINUM DIAMONDS • WATCHES U.S. & FOREIGN COINS

We Never Tell You We Pay The Highest, We Just Do!!

HONOLULU
746 KAPAHULU
735-2368

Prestige

KANEOHE
46-216 KAHUHIPA
247-8477

OPEN 9-5 DAILY • SAT. 9-2

PIONEER HOLIDAY SHOPPER SPECIALS

A TASTY, QUICK AND EASY SOLUTION
TO THOSE HECTIC HOLIDAY MEALS



SAVE
64¢
\$2.53 VALUE

HOLIDAY STRIPS™ DINNER \$1.89

- 3 Chicken Strips™
- Crispy Fries
- Creamy Cole Slaw or New Spicy Rice
- Dinner Roll
- Hawaiian Sauce

With coupon only at participating Pioneer Take Outs

Save up to \$2.56 on 4 offers

SAVE
64¢
\$2.53 VALUE

HOLIDAY FISH DINNER \$1.89

- 2 Fish Fillets
- Crispy Fries
- Creamy Cole Slaw or New Spicy Rice
- Dinner Roll
- Tartar Sauce

With coupon only at participating Pioneer Take Outs

Save up to \$2.56 on 4 offers

BIG SAVINGS ON THESE PIONEER FAVORITES

SAVE
\$3.39
\$9.38 VALUE

PIONEER 8 PIECE CHICKEN FEAST \$5.99

REGULAR
AND
SPECIAL

- 8 Pieces of Delicious Golden Pioneer Chicken
- 1 Large Mashed Potatoes and 1 Large Gravy
- 1 Large New Spicy Rice
- 4 Dinner Rolls

Save up to \$6.78 on 2 offers

With coupon only at participating Pioneer Take Outs

HONOLULU
Ala Lili St.
(at Salt Lake Shopping Center)
Waialae Ave. at Kahala Mall
King St. at Palm

AIEA
Kahala Mall St.
(at Waialae Plaza Shopping Center)

WAIHANA
Kamehameha Hwy. at Olive
WAIANAE
Farrington Hwy.
(at Waialae Shopping Center)

WAIKAKULU
Papakahi St. at Farrington Hwy.
KAILUA
Kamehameha Hwy. at
(at Kailua Park Shopping Center)

WAIKAKULU
Papakahi St. at Farrington Hwy.
KAILUA
Kamehameha Hwy. at
(at Kailua Park Shopping Center)

\$24.95

Can protect you and your family from the worst nightmare ever to strike this holiday season. With the increase in lights, decorations, dried Christmas trees and more... the risk of FIRE is limitless!

FIRE BURNS

One Home Every Minute—
365 Days A Year.

FIRE DESTROYS

Over \$874,000,000 In
Residential Property Every Year.

FIRE KILLS

More Than 6,600 People Every
Year—That's 18 Lives A Day!



Anyone who knows the harm
a fire can cause
should want to know about
the products of
The Stephens Group.

STAY-ALIVE™ Formula I

STAY-ALIVE™ FORMULA I flameproofing solution will impart flame retardant properties to any absorbent materials and is suitable for a wide range of both natural and synthetic materials, including: curtains, upholstery, paper, cardboard, unfinished lumber, wallboard, ceiling panels, hardboard, wallpapers, decor materials, cork, work wear, expanded polystyrene and polyurethane foam, backdrops, particle board, plywood, and carpets. When treated with STAY-ALIVE™ flameproofing solutions, carpets will automatically have anti-static qualities.

STAY-ALIVE™ FORMULA I is available in ready-to-use form and application is by means of simple hand spray.

STAY-ALIVE™ Formula II

STAY-ALIVE™ FORMULA II is suitable as an additive for a wide range of emulsion-base paints (latex/water base type only). Adding STAY-ALIVE™ FORMULA II will impart fireproofing qualities to any emulsion paint. Any surface normally painted with emulsion paint may be painted with the FORMULA II and paint mixture.

STAY-ALIVE™ fire retardant and flameproofing solutions offer complete protection combined with: easy of application, long-lasting protection, versatility, ability to withstand dry cleaning, no harmful side effects, safe to use.

BE SAFE THIS HOLIDAY SEASON
CALL NOW, OR WRITE FOR A FREE BROCHURE!

836-5894



THE STEPHENS GROUP

"Making homes safe from fire"

Payment by Money Order only.

—Distributorships Available—

BEST OF ALL... IT'S PIONEER!



HELP YOURSELF — Kelly Retan helps herself to fruit cocktail during snack-time, a very popular part

of After-School Kids, an organization designed as a parent-saving device.



MOVING UP IN THE WORLD — Katrina Hall (front) and Jessica Morris relax after mounting the top of the "tire climb" during play at After-School Kids.



SNACK-TIME — Anne Dolan, afternoon supervisor, After-School Kids, helps with

a very popular part of the program, snack-time.

Kids unwind from after-school tension

Story and photos
by Sgt R.D. Dewey

Parents who suffer from what Erma Bombeck frustratingly calls the "postnatal depression," take heart. Help is just around the corner of the 7-Day Store.

A parent-saving device called After-School Kids is readily available to all military parents here with children in kindergarten to sixth grade. The faculty of ASK care for children after regular classes, until their parents get off from work.

"A real need exists for child care after school," said Anne Dolan, afternoon supervisor, ASK. "Many parents don't feel comfortable sending their children home with the key. They would rather their children be supervised. Some parents don't like their kids watching television after school or running around the neighborhood."

The faculty of ASK pick up Mokapu School children after classes and walk them to their facility in Building 1391. All other dependent children, attending other elementary schools, can participate in the ASK program. In those cases, parents must

supply transportation for their children.

"The ASK program is very effective," continued Dolan, "but it has seen many changes. It used to be a very structured type of program. It was too much like an extension of the school day."

"Children need to be able to unwind," Dolan added. "They need to be able to play as if they were home, but with more choices of things to do. Children can choose to cook, draw, paint, or dance to a record if they want. They can't always do that at home."

ASK has 38 children enrolled, with a staff of three teachers and one supervisor.

"The program has really grown," explained Dolan. "When I first took over, about two years ago, there were 12 children involved in ASK. Now, every fall we have approximately 60 children enroll in the program. We start very big, but families move and our numbers dwindle. It seems we start losing kids just when we get a very good, effective staff going. Then, we have to cut back staff hours."

The children are grouped together by personality and

maturity, not by gender or age.

"Most teachers have a 'sharing time' when their kids can tell each other about their day," continued Dolan. "The group also has a snack-time and lots of time to play."

"One of the highest compliments that can be paid to us," said Dolan, "is when parents come to pick up their kids, and they don't want to go home. It's because they're doing more here. And, for kids who used to go home and do nothing, ASK is a very good alternative. The program provides an opportunity for socialization. More importantly, the kids seem to be very happy."

ASK meets a need for working parents who no longer have to worry about the safety of their children after school.

"I've been living here about six months," said Sandra McCoy, "and my son, Jerome, has been attending ASK all that time. He enjoys it and likes all of his teachers. The program is very convenient for me, as I work just next door at the Housing Office."

"I think ASK is terrific," said Diana Ramirez. "It helps me a lot when I know Sabrina is being taken care of. I like the way they pick her up at school because I can't get off work to do it."

The adults like ASK, but the

effectiveness of the program lies in how well the children like it.

"I like coming here because you can play on the slide, and they have stuff to climb on," said 7-year-old Jimmie Retan. "They got a big tree you can climb in too, and I like all the nice people."

"I'd rather stay here after school than at home," said almost 8-year-old Suzanne Harrison. "At home it

gets a little boring because all my friends are gone. It's really fun here, because of all the things to do."

The cost of the ASK program is \$50 monthly. It costs \$40 a month if another child in the same family is presently involved in child care on station.

The children are picked up at Mokapu School after classes, and

they are kept by ASK until 6 p.m. A late fee is charged if a staff member must wait after 6 p.m. for a parent.

ASK closes only on federal holidays. Children can be kept all day, for an extra \$1.75, on those days off from school when parents still have to work.

For more information, call ASK at 257-2253.



HANGING IN THERE — Jerome McCoy monkeys around on the "tire climb" during

play at After-School Kids. Some kids like it so much they don't want to go home.



HANG ON TIGHT — Sabrina Ramirez hangs on tight while preparing to slide upside down

during play at After-School Kids.

To the editor:

On the Forward Edge

Thanks for the special salute to the Fifth Grade Class of Laie Elementary School. Enclosed is a letter several classmates asked for. Please forward it if at all possible to Mr. Elliott who should receive the letter for his class! Thanks from MSSG-31 on the Forward Edge!

1stLt George Amerine Jr.
MSSG-31 Maint. Officer

P.S. You may publish any part of the enclosed letter that you like!

Thanks for letters

The Fifth Grade Class of Laie Elementary School, I want to tell you who the real brave people are! You are. Our friends and fellow Marines are safe in God's protective arms, and I ask that you pray for the wounded military men. We too will pray for you to have a full and free life to choose. I want to thank you so very much for the kind thoughts you sent to us.

I know a few special names, and I am sending a special thanks to you, Marci M. Geddes, Rebecca Kay Smith, Itala Mili, Kawehi Garside, Jim J., Lisa Joy Fehoko and Teleni Solipo and your teacher and also to the *Hawaii Marine* for saluting you and putting your letters in the paper! I wish they would have put the address in the paper but I know their address so I will ask them to send this on to you at your school. Again, I want to thank you for your letters, prayers and let you

know we wish we could see your fun house.

Tell Mr. Elliott we thank him very much for sending the letters. We are also very proud to be able to protect our country and the freedom we cherish so much! Oh—Happy Birthday to Rebecca Kay Smith on Nov. 30.

I don't have a picture but will send one if I get your address from school. I have three brothers and no sisters, but I also have a wonderful wife in Hawaii and a beautiful daughter named Summer.

I hope your play went real good, too. You are correct. School teaches us to learn how to be good citizens and also how to use our brains. Don't ever quit school, okay? I still attend school now that I am a Marine, and I learn something new everyday. Ask your family if they still learn new things every day. Mr. Elliott has taught me something, too! Do you know what? That you do not have to be grown up to understand what we are fighting for. Thanks for writing.

Semper Fi,
1stLt George Amerine



LtCol Krulak takes 3/3 helm

Lieutenant Colonel Charles Krulak assumed command the 3d Battalion, 3d Marines from LtCol Robert Earl during a change of command ceremony at Platt Field, Friday.

Earl will assume duties as the operations officer, G-3, 1st Marine Brigade. Krulak graduated from the U.S. Naval Academy in 1964. Since his commissioning and graduation from The Basic School, Krulak has held a variety of command and staff billets.

He commanded a platoon and two rifle companies during his tours in Vietnam. He commanded a series and company at Marine Corps Recruit Depot, San Diego, Calif. and served at the Counter-Guerilla Warfare School, Northern Training Area, Okinawa. Krulak also commanded a company at the U.S. Naval Academy and the Marine Barracks at Naval Air Station, North Island, Calif.

Staff assignments have included operations

officer of 2d Battalion, 9th Marines; chief of the Combat Arms Monitor Section, Headquarters Marine Corps; Administrative assistant to the Director of Personnel, HQMC; action officer to the Director of Personnel, HQMC; action officer in the Plans Division, Fleet Marine Force, Pacific; and executive officer of 3d Marines.

Krulak has been awarded the Silver Star Medal, three Bronze Star Medals, the Navy Commendation Medal, two Purple Heart Medals, the Combat Action Ribbon, the Vietnamese Cross of Gallantry with Palm, and the Vietnamese Cross of Gallantry with Silver Star.



LtCol Charles Krulak

INTERLUDE BOOKS

Opening Soon
Buying Books Now!
10AM - 3PM Daily
537-4316



Corner of King and Kalakaua (next to Cinema Theater)



Somebody is a
looking for
your Bargain.

OFFER IT TODAY

Phone Classified 235-5881

COUPON

HILLTOP RANCH

Bring this coupon Spend
4 for the price of 3 A Day
In The Country!



TRAIL RIDES

All Ages
Group Rates
Bring you
family & friends

Waimanalo
Reservations Please
255-8463 or 261-9504

COUPON

STEFFY'S Auto Body & Paint NOW Offering

Mechanical Services For Foreign & Domestic Cars

DRIVE TUNED UP
and Save Replace Plugs, Points; Set
Timing, Adjust Carb.



SPECIAL

*4 cyl. \$25
*6 cyl. \$35
*8 cyl. \$45

BRAKES

FREE Brake Check-Up

Replace Disc Pads/Brake Shoes - All 4 Wheels
Bleed System, Resurface Rotors/Drums (if necessary)
Repack Front Wheel Bearings

SPECIAL \$115⁹⁵

Brake Work is **GUARANTEED**

For All Work Done For 3 months/30,000 miles, Whichever Comes First

*Automatic Transmission Service & Major Repair
*Clutches Repaired *Complete Engine Restoration
*State Certified Mechanic

Come In & Compare! You SAVE!

131 "A" Hekili St. Kailua (behind Sylvesters) 262-5060



ADVENTURE BEGINS AT 3,000 FEET!

Paradise Paracenter Inc.

1 Day - 1st Jump Course

Also Available: **\$115**

*Sky diving Instruction
*Parachute Sale & Service
*Observer Rides

Classes every Sat., Sun., & Holidays
CALL NOW! 536-7311

KIKI

OFFICIAL HAWAIIAN MUSIC REPORT

December 4, 1983

| LAST WEEK | THIS WEEK | | |
|-----------|-----------|-----------------------------|----------------------------------|
| 1 | 1 | All Night Long | Lionel Richie |
| 3 | 2 | Say Say Say | Paul McCartney & Michael Jackson |
| 2 | 3 | Total Eclipse Of The Heart | Bonnie Tyler |
| 4 | 4 | Islands In The Stream | K. Rogers & D. Parton |
| 5 | 5 | Spice Of Life | Manhattan Transfer |
| 9 | 6 | Say It Isn't So | Hall & Oates |
| 6 | 7 | True | Spandau Ballet |
| 11 | 8 | One Thing Leads To Another | Fixx |
| 7 | 9 | Bad Boys | Wham U.K. |
| 13 | 10 | Tonight I Celebrate My Love | P. Bryson & R. Flack |

Step ahead of your time to Panasonic.
Until now, a video system this advanced
could never be this portable.

The Panasonic Omnivision®
VHS™ recorder-tuner/timer
(PV-6500) and stereo sound/
color (PK-957).

Outdoors, no portable system
can record your family more
automatically. In less time than it
takes to say "smile," the camera
focuses and sets exposure.
Linked with the lightweight
recorder, the system reacts as
quickly as the action unfolds.

Indoors, the recorder, with its
tuner/timer becomes a sophisti-
cated home system. It records 8
hours from TV. And it plays back
stereo tapes in full Dolby stereo
when connected to your hi-fi.

Panasonic Omnivision. It will
change the way you picture
the world.

Panasonic
just slightly ahead of our time



The **SWITCH** is on to . . .



INTERNATIONAL
Fitness & Racquetball Centers®
Hawaii's Largest & Most Complete Health & Fitness Centers

Now's the right time to SWITCH . . . make your move today to join Hawaii's
hottest Health & Fitness Centers! SWITCH . . . for fantastic enrollment
discounts . . . SWITCH for one year free membership offers . . . SWITCH
to facilities and programs to keep you busy 24 hours a day . . . SWITCH to exciting
aerobic classes, or work out in our complete fitness center on Nautilus®,
Universal® and free-weight personalized programs.

SWITCH . . . for racquetball, or to join a volleyball or basketball league!
SWITCH . . . for fun! SWITCH . . . to your choice of co-ed workouts, or
private women's and men's facilities! SWITCH . . . to our Sauna,
Therapeutic Whirlpool, relaxing lounge, and complete restaurant facilities.
SWITCH . . . to the relaxing manipulations of our body massage experts,
the Body-Tuners.

There's no better time than right now, so
SWITCH today for 50% OFF* enrollment plus
ONE YEAR FREE.

SWITCH to International from your
former health club and we'll give
you ONE ADDITIONAL YEAR FREE!



SWITCH TODAY
or you'll miss out
on this special,
limited-time offer.
Membership enroll-
ment prices are
now half the
regular price! * Call
today for your
appointment with
one of our
counselors.

INTERNATIONAL
Fitness & Racquetball Centers®

- 1680 Kapiolani Boulevard
- 2810 Paa St., Mapunapuna
- 45-608 Kam Hwy., Kaneohe

942-8990
833-6619
235-5839

**50%
OFF***
ENROLLMENT
PLUS ONE YEAR
FREE

*Based on 2-year membership,
minimum down payment plan

OFFER EXTENDED
UNTIL DECEMBER 31st!

Underutilized lawyers solve legal problems

by Sgt Jeanette C. Haynes

CAMP H.M. SMITH, Hawaii — Lieutenant Colonel Mark L. Haiman is one of those valuable resources whose worth is often overlooked.

As a lawyer, Haiman yearns for the opportunity to aid Marines who feel they have a legal problem. However, he and other military lawyers are often ignored until servicemen find themselves with expensive debts to a civilian attorney — debts that could probably have been avoided.

"Our services to the Marine community are free and underutilized," the Fleet Marine Force Pacific staff judge advocate declared. "A Marine is foolish to engage a civilian lawyer without seeing us first."

Until the foolishness is replaced by sound judgment, Haiman stays busy as legal advisor to Lieutenant General Charles G. Cooper, Commanding General, Fleet Marine Force, Pacific, Commander Marine Corps Base Pacific. He advises the general on such matters as international law, military justice, investigations, discharges and disciplinary matters.

Haiman also supervises a legal assistance program where Marines and their families may receive advice on such things as taxes, wills and contracts.

The New York native strongly disagrees with those who believe that legal offices are not ready, willing and available to provide help before a situation becomes desperate.

"Service people may be misguided in thinking that we only offer services after they get in trouble. That's not true. We would prefer to see the person before the problem arises. For instance, if someone is about to sign a contract that they don't fully understand, they should bring it to us first. Any reputable firm will allow that."

Whether it's a contract or another problem, military lawyers try to help.

Sergeant Richard Moss, an FMFPac electrical maintenanceman, is evidence of a Marine saving himself a civilian lawyer's fee because he sought the help of the military legal system first.

"A few years ago, while I was stationed at Camp Lejeune, my wife purchased an item that didn't work properly after we brought it home," Moss explained. "After numerous attempts at trying to get it fixed or replaced with no results, I went to legal for help."

After hearing Moss' complaint, the legal office advised him of what to do and the problem was soon over. "We were surprised at how quickly legal got the matter cleared up," Moss recalled.

For every Sgt Moss who takes the initiative to seek legal help, there are more who don't for various reasons. The most common explanation is, according to Haiman, "I didn't know legal could help me with that."

More often than not, legal can help. Haiman cited an instance of a Marine with an IRS problem as an example.

"The young man was being sought by the IRS because he hadn't filed an income tax return. When I asked him why he had not filed, he said he didn't understand the forms. We were able to help him because we understand the forms. We will help anyone who asks us to help them complete and file their returns."

"That's another one of our functions," explained the 18-year veteran.

The legal office also supplies some state income tax forms or can tell you where to send for them. The SJA's staff assists Marines and their families with applications for visas and passports, and will give advice on adoption, marriage and divorce.

And, of course, military lawyers often defend servicemen. "All Marines accused of criminal offenses under military jurisdiction are provided lawyers free of charge," the former executive officer of the Infantry Training School at Camp Pendleton, said. "We cannot represent military personnel in civilian court except in certain areas where pilot programs are being tested. Hawaii is not one of these areas."

However, added Haiman, the military member can go to the base legal office to seek

advice on civilian matters before going to a civilian lawyer.

A graduate of New York's Columbia University School of Law, Haiman considers the military legal system more protective of the rights of the individual than is the civilian system.

He enjoys being one of the spectators and hopes more Marines will recognize his value to them. "I am here to advise the general, protect the command and, when asked, help Marines and their families with legal problems. I can think of no finer way to serve," Haiman concluded.

Marines and their families stationed on Hawaii can get legal help from the SJA's office on Marine Corps Air Station Kaneohe Bay located in Building 256, and the SJA office at Camp Smith, located on the second deck of Building 32.

You support
Red Cross
through your
Combined
Federal
Campaign
gift.

We'll Help
Will You?

American
Red Cross

HALE KOA HOTEL

MONEY MAKING POTENTIAL
• Low Priced Stock
• INVESTMENTS
CHESLEY & DUNN, INC.
Investment Banking Firm
CALL 523-0930
Ask For
RON MUELL
FREE INFORMATION

TLA Waikiki
\$2900 + TAX
Single Occupancy

MILITARY Special
\$3200 + TAX
Double Occupancy

HOTEL FEATURES

- Air conditioned rooms
- Color T.V. and alarm clock radio
- Free Shuttle to/from Ala Moana Shopping Center & Waikiki
- Restaurant Serena, Piko Bar, Cast-N-Kettle
- Large Sun Deck and Pool
- Meeting and Banquet facilities, Shopping Arcade
- Guest laundromat, Shopping Arcade

Hawaiian Monarch Hotel
444 NIU STREET • HONOLULU, HAWAII 96815
RESERVATIONS
(808) 949-3911
BONWOOD RESORTS

APPLE IIE STARTER SYSTEM

Apple IIe 64K

- 64K of user memory with additional 64K available
- 80 column display
- Upper and Lower case
- Full ASCII Keyboard
- Special Function Keys
- Built-in Self Testing
- Apple Disk Drive
- 12" Green Monitor II
- Easy to use manual
- Self-teaching Disk

APPLE IIE STARTER SYSTEM 1650⁰⁰ (tax included)
STARTER SYSTEM with APPLE DOT MATRIX PRINTER 2250⁰⁰ (tax included)

Apple computer ★ **FREE** ★
Authorized Dealer
60 programs and training

(above prices for military only) (military ID required)
MICROCOMPUTER SYSTEMS
Mon. thru Fri. 10-6 Sat. 9-3 Serving Hawaii Since 1976 PH. 521-8686
833 KAPIOLANI BLVD. (CONVENIENT PARKING)

HAWAII KODEN KAN KARATE ASSOCIATION

HAWAII'S MOST ECONOMICAL KARATE TRAINING PROGRAM

- Low Tuition
- Comprehensive Training System
- Strictly Modified Shotokan
- Karate Uniform Provided

LEARN THE HAWAIIAN KODEN KAN SYSTEM OF TRAINING...
LEARN TO KEEP YOURSELF PHYSICALLY AND MENTALLY IN PEAK CONDITION...
LEARN TO KEEP YOURSELF PHYSICALLY AND MENTALLY IN PEAK CONDITION...

TO ALL MILITARY PERSONNEL (MEN & WOMEN)
Train in these combinations of Karate Arts:
KARATE - KENDO - AIKIDO - JIUJITSU
under the KODENKAN system

Also, inquire about our "Special Training" program in becoming an "UNDERCOVER BODYGUARD" for V.I.P.'s, Movie Stars, Diplomats, Couriers, Air Marshall, etc.

Beginners classes will start on January 2, 1984.
For further information - Please call ph. 577-7553.
(Ask for the special office and rates)

KING: 17 mg. "tar", 1.3 mg. nicotine, 100's: 17 mg. "tar", 1.4 mg. nicotine, av. per cigarette by FTC method.

Winston. America's Best.

Join the first team. Reach for Winston.

© 1983 R.J. REYNOLDS TOBACCO CO.

Warning: The Surgeon General Has Determined That Cigarette Smoking Is Dangerous to Your Health.

FAN SALE

We have purchased over 1000 fans to guarantee you the lowest prices in Hawaii for your holiday shopping. OVER 30 FANS ON DISPLAY. ALL ARE ON SALE!

Professional Fan Installation at Discount Prices

SALE ENDS SUN. 12/11/5 p.m.

42" WHITE W/BRASS \$78
• 3 SPEED
• REVERSIBLE
• 4 HARDWOOD BLADES
• 5 YR. WARRANTY
• SEALED BEARINGS
SUG. RETAIL \$119.00

52" ALL BRASS FAN \$98
• VARIABLE SPEEDS
• REVERSE AIR FLOW
• 5 YR. WARRANTY
• SEALED BEARINGS
SUG. RETAIL \$168.00

52" 5 BLADE SPECIAL \$178
• 6 in. Case
• RARE TRIM
• 4 SPEED
• REVERSE AIR FLOW
• 5 YR. WARRANTY
• WHISPER QUIET
SUG. RETAIL \$499.00

FREE \$39.95
4 Light kit with the purchase of any of these advertised fans. Offer good with coupon only thru 12/11/5 p.m.

PACIFIC SURPLUS & DISTRIBUTORS
MON-SAT 9:30 A.M. - 6 P.M. THURS 9:30 A.M. - 5 P.M. SUN 11:00 A.M. - 5 P.M.
1247-F KAHUA RD. (NEXT TO 7-11)
262-8131

HMM-265 aircrewman named Corps' best

Story and photo
by SSgt W.S. Saunders

Oliver Wendell Holmes once said, "The means by which the inevitable comes to pass is effort." And the inevitable came to pass for an air station Marine here whose efforts made him the best helicopter aircrewman in the Marine Corps.

Sergeant Gregory S. Floyd, crewchief for Marine Medium Helicopter Squadron-265, was selected as the Marine Corps Aviation Association's Helicopter

Aircrewman of the Year.

The competition was open to all Marine helicopter aircrewmen, active and reserve.

Floyd, 22, from Marietta, Ga. received the award while serving as a CH-46E crewchief and Naval Air Training and Operation Procedure Standardization evaluator for HMM-165.

In his capacity as NATOPS noncommissioned officer, Floyd was charged with administering crewchief training and NATOPS evaluation.

His efforts in this vital area produced an "outstanding" evaluation during the Commanding General's pre-deployment inspection. His unit received only one other "outstanding" evaluation during the past two years.

"I was in Beirut when I heard I had won," said Floyd. I was flown home to pick-up my mom and then proceeded to San

Diego, Calif. At the ceremony there, I got to meet the Assistant Commandant of the Marine Corps General J.K. Davis and John Glenn."

Floyd's interest in aircraft began when he was a child. "My father used to work as an aircraft mechanic on C-130s for the Lockheed Company in Georgia," said Floyd, "so everything I did was centered around aircraft."

When he joined the Marine

Corps, he was guaranteed the aviation field. "I asked for fixed wing but ended up in helicopters because the field was short," said Floyd. I wasn't happy with the choice, but it turned out for the better. In helicopters, I got to fly and that's what I've always wanted to do."

Floyd's goal is to someday work on C-130s like his father. "I reenlisted for C-130s, but the school was full and my scores were

not quite high enough," he said.

"Lieutenant Colonel Ponnwitz, my commanding officer, told me about Marine Experimental Helicopter Squadron-1 in Quantico, Va. This squadron serves the President. He said that it would be a good tour of duty for me. After my tour there I'll try for C-130s again."

Floyd was transferred to Quantico Nov. 30.



ATTENTION TO DETAIL — Sergeant Gregory Floyd, crewchief for Marine Medium Helicopter Squadron-265 takes meticulous care in maintaining his aircraft. Floyd was selected as the Marine Corps Aviation Association's Helicopter Aircrewman of the Year for 1983.

ACCIDENT CASES

INCLUDING
WRONGFUL
DEATH CLAIMS
AND
CATASTROPHIC INJURIES

You may qualify if you or any member of your family has been injured.

524-5400

Law Offices of
GARY GALIHER & ASSOCIATES

No Charge For Initial Consultation
No Recovery - No Fee

333 Queen Street, Suite 800 Validated Parking

PERFECT CHRISTMAS GIFTS 14K GOLD CHAINS

| Braided "S" Chain | | Baby Box Chain | |
|-------------------------------|-------|----------------|-------|
| Bracelet | 18.00 | 16" | 21.20 |
| 16" | 36.00 | 18" | 23.60 |
| 18" | 40.00 | 20" | 25.20 |
| Twisted Box Chain (not shown) | | | |
| 16" | 36.00 | 18" | 42.40 |
| 20" | 47.20 | | |

EXPIRES

Golden Dimensions

WAIMANU PLAZA SHOPPING CENTER

30-1277 KAAHUMANU ST.

487-1536

MON-SAT
9:30-6:00
SUN
CLOSED

COUPON

MAGOO'S PIZZA with 31 exotic varieties

SPECIAL OFFER!
Pickup or Delivery

1 FREE 2-litre PEPSI-COLA with Purchase of Medium or Large PIZZA

with this coupon

OR

2 FREE 2-litre PEPSI-COLA with Purchase of GIANT PIZZA

(2 items or more) with this coupon

ONLY AT KAILUA STORE! 261-4688 KAILUA SH. CTR. expires 1/31/84

COUPON

Happy Holidays!

Come To Us For Your HOLIDAY

Haircut & Perm Reg. \$40 NOW \$27⁵⁰

—OR—

Sculptured Nails Reg. \$50 NOW \$30

And Receive A FREE Gift For The Holidays!

A \$3.00 Gift Certificate

Good Toward Any Purchase At

CRAIGS BAKERY

Offer Expires Dec. 13, 1983

Call Now For Appointment

PLUS!

Carefree Perm & Haircut - Reg. \$60

NOW \$40!

Gift Certificates Available



Celia Mae's Hairstyling

Complete Beauty Services For You And Your Family

Evenings By Appointment

262-0623

438-A ULUNUI ST., KAILUA

Festive Holiday Hair Fashions



Now Under NEW Ownership

paul joseph's
Hair Company

1247 Kailua Rd.

261-9797

NOW 100% PRIME RATE FINANCING OR A \$500 CHRISTMAS BONUS



Nissan Stanza XE
2-Door Hatchback



Nissan Sentra
Deluxe Wagon



Nissan Pulsar NX



Nissan Deluxe 4x4 with optional
Fender Flares and 4x4 Graphics



Nissan Maxima Sedan

The Prime Rate! The interest rate of the millionaire, the big corporation, the bank's major depositors is now available to you. Choose any 1984 Nissan Sentra Deluxe, Stanza, Pulsar NX, Maxima or Nissan truck by year's end.

Buy a Nissan and qualify with approved

credit for a Bank of Hawaii 48 month auto loan, and Nissan Hawaii will provide the



bank's Prime Rate just for you. Up to 100% financing. ** At the Prime Rate.

Or if no financing is necessary, Nissan will send you a Christmas Bonus check for \$500. Prime Rate financing or \$500 cash. That's a prime choice. At any Nissan/Datsun dealer in Hawaii.

COME ALIVE, COME AND DRIVE **NISSAN** MAJOR MOTION FOR CHRISTMAS

Honolulu Datsun
630 Piikoi St.
531-3721

Kaimuki Nissan
3060 Kapiolani Blvd.
734-0241

Aiea Datsun
545 Lagoon Dr.
833-0062

Datsun of Wahiawa
1912 Wilkino Dr.
621-0761

Datsun of Maui
1935 Main St.
244-7433 (Wailuku)

Windward Datsun
46-151 Kahuipua
235-6433

Datsun of Waipahu
94-119 Farrington Hwy.
671-2611

Pearl City Datsun
806 Kamehameha Hwy.
456-5938

Datsun of Kauai
3215 Kuhio Hwy.
245-6731 (Lihue)

Datsun/Hawaii
471 Kalaniana'ole Ave.
969-1484 (Hilo)

*Offer applies to retail purchases only, on approved credit. Current rate quoted as prime is 11%. Rate is subject to possible fluctuation during this promotion (12/01/83-12/31/83)

**Financing based on manufacturer's suggested retail price.



**Japanese Caught
At Pearl Harbor
Recalls Experiences
Of 25 Years Ago**

By HAL DRAKE
Book, Story and Screen-Play Writer
MY NAME IS KAZUO SAHMAEL. I am
a Japanese officer. Kill me!

Nakamaki was only 23 and had seen little of the world outside his native Japan—yet he was having very hard on the Air for visits to international American hotels on a day-to-day basis. American brotherhood still thrived in Pearl Harbor and would soon flow from Honolulu to the rest of the Pacific.

The day before, he had cleared his forenoon from
writing toward the narrow channel that led into the
springs, and had been looking at the mountains of the
Sierra Nevada.

The document itself has been sent to a sister country, Brazil, a newly industrialized nation, where it will be used to help the government of Brazil to help its people who live in the Amazonian region.

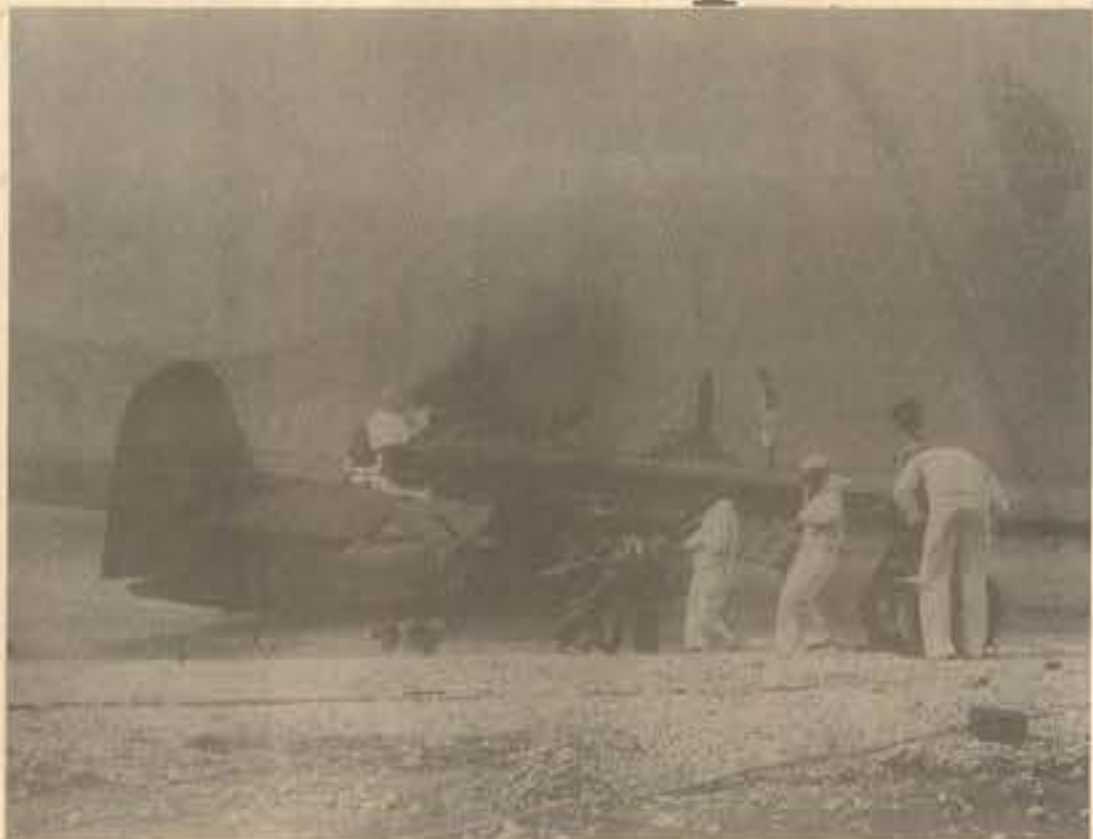


GUERRILLA EXPERT—David M. Akui, of 45-249 William Henry Road, Kaneohe, is on active duty for training at the First Marine Brigade's Guerrilla Warfare School with his Seabee reserve unit. Akui is credited with capturing the first Japanese prisoner of war during WW II. —Official Marine Corps Photo

In times of war, valor triumphs



BURNING — Firefighters tackle one of many blazes caused by attacks from Japanese aircraft. The air station sustained heavy damage, with 17 men killed



SALVAGE — Sailors try to save a burning PBV seaplane after a Japanese attack. Only three of 36 Kaneohe-based PBVs survived the Dec. 7, 1941 attack here. (Official U.S. Navy photograph)



WATCHFUL — Sailors probe the skies for Japanese aircraft following a surprise attack against Oahu. Japanese war planes struck a crippling blow to the air station Dec. 7, 1941, a day that will "live in infamy." (Official U.S. Navy photograph)



TAPS — A burgler plays as Marines and sailors pay tribute to their fallen comrades. The Dec. 7, 1941 Japanese attack here claimed 17 lives, and wounded 67 others. (Official U.S. Navy photograph)

KANE OHE BAY MARINE CORPS EXCHANGE SANTA'S SPECIALS DECEMBER 7-11

NOW OPEN • GIFT WRAP

(LOCATED IN FRONT OF THE STORE: BY BASKIN ROBBINS)

10AM-5PM MONDAY-SATURDAY

12NOON-5PM SUNDAY

EXTENDED
HOURS OF OPERATION

EFFECTIVE
NOVEMBER 25-DECEMBER 23

MONDAY-SATURDAY
10AM-9PM

SUNDAY
12NOON-5PM

MILITARY PAYDAYS
9AM-9PM

AUDIO

COMMODORE
VIC-20 Computer
**THE FRIENDLY
COMPUTER**

\$69.00

SHOES NIKE

ELITE CLASSIC
Men's Racing Flat \$19.99

REG. \$30

LIMITED SIZES & COLORS
ON ALL SHOES

DIABLO COLUMBIA,
INTERNATIONALIST, TERRA

Men's Training Shoes \$10.99 - \$27.99
REG. \$18 - \$47

TERRA

DIABLO

TOYLAND

ALL
STUFFED
ANIMALS
25% OFF

50% OFF LADIES' 50% OFF
MISS ELAINE
ASST. SLEEPWEAR & LOUNGEWEAR
REG. \$15.50 - \$26.50
\$7.75 - \$13.25
SELECTED ITEMS

CHILDREN'S

ROB ROY
Boy's Dress Pants
Sizes 4-7 \$6.99
REG. \$11

ROBROY

DANSKIN
Girl's Swimwear
REG. \$5.20 - \$11.50

\$2.99 - \$7.99



JEWELRY

BARONESS

Gold Filled
Earrings

ENTIRE STOCK

25% OFF
REG. \$5.20 - \$12.50

SELF SERVICE

IVORY 3.5 oz.
BAR SOAP 4-PACK
LIMIT 6
REG. \$1.05 SAVE 25%
.69



HI-DRI
BATH TISSUE
LIMIT 12
REG. .95 SAVE 50%
.59



CAROL CABLE

EXTENSION CORDS UL LISTED
All Vinyl, Cube Top

6 Ft. - Brown or White
REG. .76 .60

9 Ft. - Brown or White
REG. .94 .70

15 Ft. - Brown or White
REG. \$1.25 .95



HAWAIIAN HOST
MACADAMIA NUT CLUSTERS
8oz. BOX
REG. \$2.40 \$1.95



SPORTS

SPALDING
POWER RINGS
110 Lbs. Exercise
Weight Set
Interlocking Rings
REG. \$82.50 \$70.00



WILSON

TENNIS BALLS
X Duty Yellow
3 Per Can \$1.80
REG. \$2.70



NFL BASEBALL CAPS
W/ Official NFL Team Logos
REG. \$4.00 - \$4.20 \$3.25



ERO LEISURE
SLEEPING BAGS
ASST. DESIGNS
REG. \$22.50 \$15.00

MEN'S

IZOD
S/S KNIT SOLID SHIRT
REG. \$18.50 - \$19.50 \$13.99



SUNDAY
S/S KNIT SHIRT
REG. \$13.50 - \$14.50 \$8.99



JOCKEY
WARM-UP SUITS
REG. \$47.00 \$29.99

HOUSEHOLD

CORNING WARE CORNING WARE
OPEN ROASTER
CHOICE OF 3 PATTERNS
REG. \$17.00 \$12.95



16 PIECE DINNERWARE
Dimension IV
Cinnamon, Almond, Citrus, Slate
REG. \$27.50 \$19.50



MR. COFFEE
Automatic 10 Cup Brewer
REG. \$24 \$19.50

MR. COFFEE

CAMERA

KEYSTONE
35mm Compact
Everflash Camera Kit
REG. \$37.00 \$32.00



110 Pocket Everflash Kit
REG. \$22.00 \$19.00
*XR-308



C.P.C. PHASE 2

Large Cordura Camera Bag
Caribou Series
Asst. Colors
REG. \$25 \$21.00



LOOK FOR MORE FANTASTIC SAVINGS THROUGHOUT THE STORE DURING OUR EXTENDED HOURS 6pm - 9pm

SELECTED ITEMS AVAILABLE AT 7-DAY STORE, CAMP SMITH, MARINE BARRACKS & MANANA

Reagan signs defense acts, complete with pay raise

President Ronald Reagan has signed into law the fiscal year 1984 defense authorization act, and congress has submitted fiscal year 1984 defense appropriation act to the president. These acts contain several important compensation provisions. The following are key elements:

Effective Jan. 1, 1984, basic pay, basic allowances for quarters and basic allowances for subsistence will increase by 4 percent. E-1s with less than 4 months are excluded from the increase.

Aviation officer continuation pay (ADCP): New ADCP contracts are authorized and funded for pilots and NFOs.

Three, four or six year contracts only, six-year contracts may be executed only between 6th and 7th year of active duty.

— Pays \$3,400 per year for three-year contracts and \$6,000 per year for four and six-year contracts.

— Forthcoming change to SECNAVINST 7220.79 will provide specific eligibility criteria and application procedures.

BAQ in overhaul: BAQ/VHA has been authorized for personnel on ships in overhaul whose quarters are declared uninhabitable, if no other government quarters are available.

Limitation of BAQ/VHA payments: total of combined BAQ/VHA payments may not exceed Sept. 30, 1983 levels for the same rank/rate in the same geographical location. Hence, the 4 percent increase in BAQ on Jan. 1, 1984 will be offset by decrease in VHA for members receiving these allowances. In addition, total combined BAQ/VHA payments may not exceed \$800 for personnel with dependents or \$600 for personnel without dependents.

Overseas dependent student travel: one annual round trip at government expense is authorized for dependents stationed overseas to attend secondary/high school (if a DOD school is not available at the overseas duty station) or a college/university in CONUS. Travel from CONUS to Alaska and Hawaii is excluded.

Retirement provisions: Retirement checks will be rounded to next lowest dollar.

The one year "Look Back" has been repealed. However, it's grandfathered for three years for those eligible to retire on or before Sept. 24, 1983 with save pay provision. The Tower amendment "Look Back" provision remains in effect.

Time in service calculations for

retirement pay will be based on the closest month. Example: 20 years, 3 months, 29 days, counts as 20 years, 3 months (months always rounded down).

Physician and dental pay: Special and incentive pay for physicians and dentists, and continuation pay for dentists is authorized and fully funded.

Accrued leave in excess of 60 days: personnel originally entitled to accrue leave in excess of 60 days as a result of Indian Ocean operations during fiscal year 1980, who ended up losing leave at end of fiscal year 1981 and fiscal year 1982, may have such lost leave reinstated and now have until Sept. 30, 1984 to use that accrued

leave. All other (subsequent) entitlements of excess leave accrual program have until the end of the third fiscal year after qualifying service is terminated to use such excess leave.

Voluntary services: Military is authorized to accept volunteers to work in family support programs and military museums. Coverage under federal employees' compensation act and federal tort claims act has been extended to volunteers for accidents and injuries incurred or caused by volunteers while performing services.

The president also signed into law the fiscal year 1984 military construction authorization and

appropriations acts, which provide for construction of 16 new Navy family service centers, to be built at Subase Bangor, Naval Air Station Barbers Point, NAS Bermuda, NAS Cecil Field, NAS Chase Field, NAS Corpus Christi, Naval Station Guantanamo Bay, NAS Key West, NAS Kingsville, NAS Meridian, NAS Oceana, Navsta Roosevelt Roads, Naval Support Activity Holy Loch, Navsta Subic Bay, NAS Whiting

Field, and Naval Amphibious Base Little Creek, and the modernization of the Family Service Center at Navsuppact Mare Island.

These acts include funds for seven Navy child care centers to be built at Weapons Station Charleston, Naval Air Test Center Patuxent River, Naval Ship Yard Norfolk, NavPhiBase Little Creek, NAS Chase Field, Subase Pearl Harbor, and NAS Sigonella.

Cinema

MCAS Theater

W T F S S M T
1 2 3 4 5 6 7

1. DEADLY FORCE — Wings Hauser, Joyce Ingalls, R, action-drama.
2. THE BEST LITTLE WHOREHOUSE IN TEXAS — Bart Reynolds, Dolly Parton, R, musical-comedy.
3. TIM — Piper Laurie, Mel Gibson, PG, drama.
4. ZAPPED — Scott Baio, Willie Aames, R, comedy.
5. FINAL ASSIGNMENT — Genevieve Bujold, Michael York, PG, drama.
6. IN HARMS WAY — John Wayne, Kirk Douglas, PG, drama.
7. THE HUNTERS OF THE GOLDEN COBRA — David Warbeck, Alimanta Suska, R, action-adventure.

The Station Theater opens at 6:45 p.m. for ticket sales and the movie starts at 7:15. For information on Camp Smith movies call 477-6467/6382.



U.S. SAVINGS BONDS

DIVORCE

LOW FEES • NO CHARGE FOR INITIAL CONSULTATION

261-3233

415A ULUNIU STREET, KAILUA

LAW OFFICES

OF NOAH D. FIDDLER



alii florist

Holiday Arrangements
Wreaths
Tropical Flowers Air-Mailed to the Mainland
Poinsettias
Nuts and Dried Fruit Trays

43 Kihapai St (Across Star Market), Kailua 261-5352

HERE NOW!
OR AVAILABLE THRU
YOUR SPECIAL ORDER DESK

ZENITH
ADVANCED SYSTEM 3

THE SMART SET

THE COLOR TV WITH A COMPUTER BRAIN

NOTICE OF NON DISCRIMINATORY POLICY AS TO STUDENTS

The Fairhaven School admits students of any race, color, national and ethnic origin to all the rights, privileges, programs and activities generally accorded or made available to students at the school. It does not discriminate on the basis of race, color, national and ethnic origin in administration of its educational policies, admissions policies, scholarship and loan programs and athletic and other school administered programs.

944-0173

THIS IS A TEST CEILING FANS

IN ORDER TO TEST THE EFFECTIVENESS OF THIS ADVERTISING MEDIA - WE ARE OFFERING A 48" WHITE CEILING FAN WITH SEALED BEARINGS, 5 YEAR WARRANTY AND SINGLE LIGHT KIT AT BELOW NORMAL DEALER COST.

Sug. Retail \$249.00 SALE \$89.95
Offer ends 12/11/5 p.m.

PACIFIC SURPLUS CALL 262-8131
1247-F KAILUA RD.



A COMMUNICATIONS and THEATER SKILLS PROGRAM

for Youth 3½ through 13 Years
from CREATIVE THEATER CLASSES

Offering: Creative Expression, Mime, Comedy, Pantomime, Video Production, Performance Skills.
Hawaii Kai, Kailua, Pearl Harbor, Pearl City, Mililani, Waikeae
Small Classes Enrolling Now to Begin Jan.
Special Assistance to the Shy Child

PH. 941-2798, 261-0808, 737-5544

Going Home On Leave?
Going Outer Islands?
Bringing Someone From The Mainland?

We Are A Professionally Staffed Travel Office
Designed To Serve Your Travel Needs At The Best Possible Price!



Camp H.M. Smith 487-1567
Bldg. 1, Rm. 2AA202
KMCAS, Bldg. 209 254-1564
Open Mon.-Fri. — 0730 to 1530



SZ2541X

25" ULTRAMODERN STYLING PLUS ZENITH'S EXCLUSIVE SPACE COMMAND® 4400

Inside this ultramodern console are all the quality features that make this the epitome of everything Zenith for the decade of the '80s... plus Zenith's exclusive Advanced Space Phone.™ Turns your TV into a telephone. Even stores two 13-digit numbers for automatic recall any time. And you still enjoy all the normal remote control functions that have made Zenith the world leader in remote control TV!



SZ1961W

19" DUAL SPEAKER SOUND PLUS ZENITH SPACE COMMAND® 3400

Dual speaker sound, yet its cabinet with simulated grained American Walnut finish is no wider than previous single speaker sets. Features Zenith Computer Space Command® 3400 Remote Control so you can press buttons to turn set on or off... scan programmed channels UP or DOWN... make sound louder or softer... completely mute sound... and recall channel number and time on screen.

See here the inside story on these great new 1984 Zenith Color TVs



NEW Z-TECH CHASSIS

Zenith's most automatic chassis ever, 100% modular design for greater reliability.



NEW EXCLUSIVE COMPUTER BRAIN

Maintains color fidelity year after year automatically.



NEW PATENTED VIDEO FILTER

Reduces picture noise and snow effect in the color picture automatically.

TRI-FOCUS PICTURE TUBE

EFL® Gun uses three focusing actions instead of just one for exceptional picture sharpness and highlight detail.

ADVANCED COLOR SENTRY

8 automatic sub-systems work together to control* and correct the color picture 30 times a second automatically.

PRP CIRCUIT

Reproduces up to 330 lines of picture resolution... 25% more than ordinary TVs... to give you all the detail being transmitted automatically.



NEW 178 CHANNEL TUNING 178

Select all VHF and UHF including 122 cable channels without converter (except scrambled channels).

NEW REDI-PLUG

Easy provision for connection of accessories.

*Cable systems vary. Check your cable company for compatibility.

Also available at your PX or thru your Special Order Desk

New ZENITH CUSTOM SERIES Color TVs!



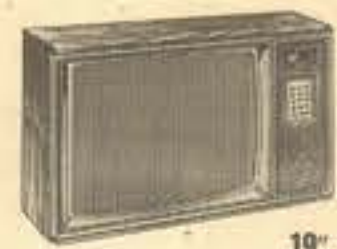
25" DIAGONAL

ZENITH CONSOLE COLOR TV SZ2517NWK with Computer Space Command® 2400 remote control of ON/OFF, plus direct access channel selection and all-channel UP/DOWN.



25" DIAGONAL

ZENITH CONSOLE COLOR TV SZ2508P with Zenith quality clear thru its 100% modular chassis. Classic Style console with simulated grained Pecan finish.



19" DIAGONAL

TABLE MODEL COLOR TV Z1926W with Zenith Keyboard Touch-Command channel selection featuring UP/DOWN scanning of all VHF, UHF and CATV channels.



13" DIAGONAL

TABLE MODEL COLOR TV SZ1310W with Computer Space Command® 2400 remote control of ON/OFF, plus direct access channel selection and all-channel UP/DOWN.

SEE! BUY! NOW! AT YOUR EXCHANGE OR THRU YOUR SPECIAL ORDER DESK

This advertisement is neither sponsored nor paid for in whole or part by any military issue activity.

| MONTHLY BASIC QUARTERS ALLOWANCES | | | | |
|--------------------------------------|--------------|--------------------|--|-----------------|
| | | Without Depend. | | With Depend. |
| Pay Grade | Full Rate | Partial Rate | | |
| Q-10 | \$528.90 | \$50.70 | | \$661.80 |
| Q-9 | 528.90 | 50.70 | | 661.80 |
| Q-8 | 528.90 | 50.70 | | 661.80 |
| Q-7 | 528.90 | 50.70 | | 661.80 |
| Q-6 | 474.90 | 39.60 | | 579.00 |
| Q-5 | 437.70 | 33.00 | | 527.10 |
| Q-4 | 399.70 | 26.70 | | 470.10 |
| Q-3 | 342.60 | 22.20 | | 422.70 |
| Q-2 | 297.60 | 17.70 | | 376.20 |
| Q-1 | 232.50 | 13.20 | | 302.40 |
| W-4 | 375.30 | 25.20 | | 453.30 |
| W-3 | 334.80 | 20.70 | | 412.80 |
| W-2 | 291.00 | 15.90 | | 370.80 |
| W-1 | 262.80 | 13.80 | | 340.50 |
| E-9 | 283.20 | 18.60 | | 398.70 |
| E-8 | 261.00 | 15.30 | | 368.10 |
| E-7 | 222.00 | 12.00 | | 342.60 |
| E-6 | 201.90 | 9.90 | | 315.30 |
| E-5 | 194.10 | 8.70 | | 289.80 |
| E-4 | 171.00 | 8.10 | | 254.70 |
| E-3 | 153.00 | 7.80 | | 222.00 |
| E-2 | 135.00 | 7.20 | | 222.00 |
| E-1 | 127.50 | 6.90 | | 222.00 |

R. L. SMITH & ASSOCIATES
ANNOUNCES
Free **PENNY STOCK SEMINARS**
Please call for time & reservations
NASD 528-2900 SIPC

THIS IS A TEST
MICROWAVE OVENS

IN ORDER TO TEST THE EFFECTIVENESS OF THIS ADVERTISING MEDIA - WE ARE OFFERING A FAMILY SIZE MICROWAVE OVEN WITH DIGITAL, PROBE, ELECTRONICS, ETC. AT BELOW NORMAL DEALER COST.

| | |
|-----------------|-----------------|
| Sug. Retail | SALE |
| \$499.00 | \$239.00 |

OFFER ENDS 12/11/5 p.m.

PACIFIC SURPLUS
1247-F KAILUA RD.

CALL
262-8131

WAIKIKI 1
Seaside nr. Kalaheo
923-2394

**STARTS
FRIDAY!**

**CLINT
EASTWOOD**



**DIRTY
HARRY
IS AT IT AGAIN**

**SUDDEN
IMPACT**

Starring CLINT EASTWOOD and SONORA LEE
Produced and Directed by CLINT EASTWOOD

FROM WARNER BROS.  **R** RESTRICTED
UNDER 17 REQUIRES ACCOMPANIMENT
PARENTS STRONGLY CAUTIONED



SANTA SAYS:
"Ho! Ho! Take advantage of
Dr. Tim Togikawa's
Christmas Special"
Sleep-In Lens \$185 Reg. \$265
(Wear up to 2 weeks without removing)
Soft Lenses
\$79 with prescription
\$99 complete. Includes contact lens exam.
Includes lenses, rotation & case, all follow-up visits
for a 60 day period. Same day service in most cases!
Offer Expires Dec. 31, 1983
Dr. Tim Togikawa Dr. Edwin Endo
Optometrist Pearl City
Downtown 88-1238 Kaahumanu St.
146 Union Mall Suite 301
538-8228 487-7907

"King of Bargains"

JOB LOT
MAKING BARGAINS
STRAIGHT TO HAWAII

5 CHRISTMAS LOCATIONS! ALL STORES OPEN EVERY DAY! 9 AM-9 PM
DOWNTOWN STORE (FORT ST. MALL) HOURS: M-F, 7-7 • Sat. 8-5 • Sun. 8-2
PIIKOI TENT — HOURS: 9 AM-12:00 MIDNIGHT, 7 DAYS A WEEK

The RUSH IS ON
Christmas Bargain Centers

YOU SAVE UP TO
55%-85% OFF
RETAIL PRICES
ALL ITEMS —
WHILE SUPPLIES
LAST

CHRISTMAS TREES
AVAILABLE FRI., DEC. 2
FRESH FRAGRANT
\$4.99
WITH PURCHASE
\$2.00 FREE
KANEHOE AND PIIKOI ONLY
PRICES START AT
DOUGLAS FIR, REGULAR & PREMIUM
—WHILE SUPPLY LASTS—

**ELECTRONICS!
FOODSTUFF!
HARDWARE!**

**HOUSEWARES!
JEWELRY, WATCHES!**

**AUTOMOTIVE ACCESSORIES!
CLOTHING! TOYS!**

TOYS!

PAMPERS
NEWBORN 80%
EXTRA-ABSORBENT
8.60
TODDLER 48%
YOUR CHOICE
PAMPERS
WITH GATHERERS
NEWBORN 80%
EXTRA-ABSORBENT
9.99
TODDLER 48%

COMPLETE STEREO PACKAGE —INCLUDES:
1) Cassette car stereo player with AM/FM MPX radio
2) 7 band graphic equalizer booster
3) 150 watt set of speakers.
NOW ONLY \$99
RETAIL VALUE \$149.00

LAND CRUISER
Battery operated 4-wheel drive jeep with headlights.
\$2.99

CHILDREN'S BOOKS
Select from wide assortment.
49¢ AND UP TO 55% OFF

BACKYARD BUBBLER
Convert your faucet into a drinking fountain.
Retail Value 18.00
\$5.99

FRISKY KITTY
Moving animal toy. Walks, shakes tail, rolls over and wags again.
\$7.99

CHRISTMAS DECORATIONS
Select from a wide assortment of Holiday Ornaments and Decorations.
30% AND UP TO 70% OFF!

CALL MATE
SPEAKER PHONE/QUARTZ CLOCK RADIO
Rechargeable. Auto. wake to music or buzzer. Push button pulse dialing.
\$64.99

CRAYON CHILDREN'S LIGHT UP VANITY GIFT SET
Retail Value 24.00 •
\$8.39

CRAYON CHILDREN'S PLAY COSMETICS "HAIR CARE PLUS" GIFT SET
Retail Value 24.00
\$7.19

BIG SOUNDER TOY SABRE SAW
Realistic sound. Just like Daddy's!
Retail Value 12.00
\$5.50

CLOTH BOOK AND DOLL
Play with Mickey Mouse —delightful activity on each page!
Retail Value 4.95
\$1.99

SMURF PAINT SET
Airyle Paint by number set with paint, paintbrush and bowl. 4" x 12"
Retail Value 7.00
\$3.59

FOLDING PATIO CHAIR
Light-weight, folding metal chair.
\$7.99

TDK SA-X90
Super Audio Cassette. High resolution. Dynamic tape.
\$3.99

TDK SAX-60
Metal alloy cassette. Hi-fi. High resolution. 30 minute tape.
\$2.99

CORDLESS QUARTZ WALL CLOCK
Battery Operated. In assorted design.
RETAIL VALUE \$95.95
\$39.99

KANEHOE
KANEHOE BAY SHOPPING CENTER
(Next to Wendy's and Thrift Super Market)
Phone 247-8796

PERMA FLARE
WATER PROOF
High intensity strobe warning light.
Retail Value 15.00
\$6.99

FUNNY FIREBIRD
Battery operated. Radio-Controlled with its functions — Forward, reverse, etc. COOL! WHOLESALE
Retail Value 40.00
\$24.99

5-PIECE TOOL SET
Handy assortment of screwdrivers.
Retail Value 2.00
99¢ SET

SPORT DESIGN HANDGRIPS
2 heavy tennis-grips develop powerful hands, wrists and forearms.
Retail Value 3.40
\$2.99

AMF VOIT BASKETBALL
Retail Value 37.60
\$12.99

AMT VOIT BASKETBALL
Retail Value 37.60
\$12.99

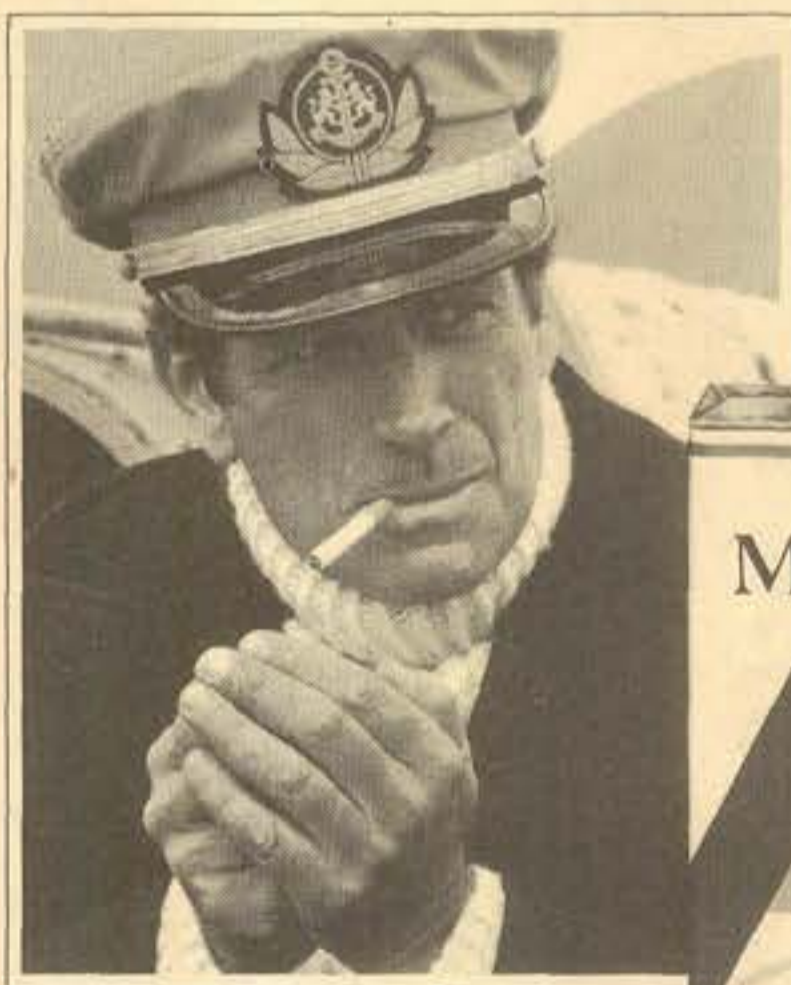
5-PIECE TOOL SET
Handy assortment of screwdrivers.
Retail Value 2.00
99¢ SET

404 PIIKOI
DOWNTOWN
JOB LOT
PIIKOI
SEARS
ALA MOANA BLVD
PH. 526-3981

450 KAM — WAIMALU
DOWNTOWN
KAM HWY
WAIMALU
PIIKOI
SEARS
ALA MOANA BLVD
PH. 486-7778



Reach for a world of flavor. MERIT



The low-tar cigarette
that changed smoking.



Warning: The Surgeon General Has Determined
That Cigarette Smoking Is Dangerous to Your Health.

8 mg "tar," 0.6 mg nicotine av. per cigarette, FTC Report Mar '83

© Philip Morris Inc. 1983



BACKBOARD CONTROL — Corporal James Roberts, Battalion Landing Team, 1st Battalion, 3d Marines, goes up for a rebound during intramural basketball action against Station Operations and Maintenance Squadron. BLT 1/3 controlled the boards and the game, beating SOMS 65-58, Nov. 30. (Photo by Cpl Pat Lewandowski)

1/3 defeats SOMS

by GySgt C.D. Gilbert

In two fast-paced, 20-minute halves, Battalion Landing Team, 1st Battalion, 3d Marines backed up its claim of "Best Roundballers" in the league by defeating Station Operations and Maintenance Squadron 65-58, during intramural basketball action Nov. 30.

The two teams were undefeated when they met on the hopped field of battle. BLT 1/3 was 7-0 and SOMS was 8-0.

It seemed like an even match-up during the first five minutes of play as the two teams traded basket for basket. But after a 10-10 tie, with Sergeant Miguel Gonzales, SOMS, keeping his team alive with accurate outside shooting, SOMS went cold.

SOMS starting five were looking for Alaskan parkas to keep warm, but none were available in Hawaii. For five minutes, SOMS couldn't hit from the outside or inside and couldn't control the ball, repeatedly turning it over to BLT 1/3.

Although SOMS couldn't score, Lance Corporal Gary Rimer kept his team in the ball game with good defensive play. BLT 1/3 pulled ahead by only five points. SOMS finally broke the ice and put two points on the scoreboard with free throws.

But by then, BLT 1/3's Corporal Willie Mitchell and LCpl Kenneth Staten, whose shooting arms were locked and cocked, found the range. They led their team to an 11 point lead at the half, 33-22.

SOMS came back strong in the second half, controlling the ball from the tip-off. The "Cold Bloodeds" came back to within six points. But with 8:50 left in the game, BLT 1/3, led by Cpl Larry Bishop and Mitchell, pulled ahead with a 14 point lead.

With three minutes left, and BLT 1/3 leading by 17, 60 to 43, SOMS got its act together — too late. BLT 1/3 won it by 7, 65-58.

The big guns for 1/3 were Staten with 20 points; Mitchell with 18 and Bishop, 13. Sergeant Kenneth Gray contributed 5 points; LCpl Arthur Fliggins hit the bucket for 4 points; Sgt Roth Coleman added 2 points and Cpl James Roberts put a free throw through the hoop.

For SOMS, Gonzales and LCpl Clint Byther hit double figures with 17 and 15 points respectively. Private Kevin Brown, Rimer and Cpl Michael Kaloi contributed 8 each and Sgt Belmont Macklin added 2.

Since that action-packed contest, BLT 1/3 fell from the ranks of the undefeated, losing to BLT 3/3, 54-47.



TIP-OFF CONTROL — Private Kevin Brown, Station Operations and Maintenance Squadron, and Lance Corporal Kenneth Staten, Battalion Landing Team, 1st Battalion, 3d Marines, battle for control of the tip-off. BLT 1/3 controlled the ball and the game, Nov. 30, beating the SOMS team 65-58. (Photo by Cpl Pat Lewandowski)

B HAWAII MARINE

SPORTS

limited quantities

Merry

up to 65% OFF

On BULOVA Watches

KANEOHE MARINE CORPS EXCHANGE

•Caravelle
•Bulova
•Accutron

(Not necessarily watches shown)

the Bulova two year warranty is the result — offering you two full years of protection on every Bulova made timepiece. It makes a great timepiece even better.

ONE GREAT FACE DESERVES ANOTHER

Christmas

This Ad is not paid for by the Kaneohe Marine Corps

LET THEM SEE AND HEAR FROM YOU THIS SEASON WITH A PERSONAL

Video Greeting Card

It's easy! Fill yourself in on video cassettes — up to 20 minutes — VHS or Beta. We record it — you send it — JUST

\$39.95 (Studio recording includes tape and mailing envelope)

COMPLETE IN ONE DAY • BY APPOINTMENT ONLY • CALL 526-0207

SLASH into WINTER with

Ocean Sports

Custom Thruster \$265 Full-Line

Top-Quality SURFBOARDS

Shop Now For Christmas!

43-2 Oneawa St., Kailua 262-0113

Handmade On-Site, Watch Your Board Being Made!

MICROWAVE OVEN CHRISTMAS SALE

WE GUARANTEE THE LOWEST PRICES IN HAWAII INCLUDING ALL MILITARY EXCHANGE OUTLETS!

INDIVIDUAL FEATURES INCLUDE:

- ROTORWAVES
- CAROUSELS
- DIGITALS
- PROBES

NEW!

VALUES TO \$498

239

SELECT FROM EITHER:

- PANASONIC
- TAPPAN
- AMANA
- LITTON

NEW!

BUILT-IN BROWNER

368

FREE \$4700 cookware set and cookbook with oven purchase

169

Sug. Retail \$348 Demo

PACIFIC SURPLUS & DISTRIBUTORS

CALL 262-8131

1247-F Kailua Rd.

Sun. 11:00-5:00
Mon.-Sat. 9:30-6:00 p.m.
Thurs. 9:30-8:00 p.m.

1 Block makai of Castle Medical Center (next to 7-Eleven)

CALL TODAY! 262-8131

5 DAYS ONLY SALE ENDS SUNDAY 12/11/83

LAYAWAY NOW FOR CHRISTMAS

This month at Nutri/System

LOSE 15 LBS FOR 29 DOLLARS

Wait no longer to shed those extra 15 lbs. Now, for the first time and for a very limited time, Nutri/System gives you the popular 15 lb. Program for a low \$99. Hawaii's safest, fastest and most popular way to lose weight is now on sale! Don't refuse it — lose it!

Jane Pryor
Honolulu
34 1/2 lbs. in 17 wks.

No weight maintenance reward valid only for new clients. One coupon only per client. Good through 12/31/83.

Aiea Haina
850 West Hana Dr.
373-2101

Downtown
1164 Bishop St.
531-4695

Kailua
Pali Pali Plaza
254-5811

Pearl City
98-1254 Kalia Highway
488-1919

nutri/system
weight loss centers

Localmotion

K-BAY OFFICERS' CLUB

TODAY — Lunch in the Pacific Room from 11 a.m. to 1 p.m. features two specials of the day, deli line, salad bar, chef and shrimp salads, soup plus an array of desserts. Mongolian barbecue on the Lani from 6-8:30 p.m. The Koa Bar is open from 4-10 p.m.

THURSDAY — Lunch in the Pacific Room. Beefsteak Buffet from 6-8:30 p.m. featuring steamship round, seafood item, spaghetti, rice, potatoes, vegetables and salad bar. The Koa Bar opens at 4 p.m. and closes at 10:30 p.m.

FRIDAY — Lunch in the Pacific Room. Happy hour in the Koa Lounge from 4:30-6:30 p.m. The Ali Bar opens at 3 p.m. Happy hour in the Ali Room from 4:30-6:30 p.m. Mongolian barbecue and "steak-out."

SATURDAY — Prime rib, Alaskan king crab, soup, mahi mahi, almondine on the buffet in the Pacific Room from 6-8:30 p.m. The Koa Bar is open from 4-10:30 p.m.

SUNDAY — Champagne brunch in the Pacific Room from 10 a.m. to 1 p.m. featuring a buffet to include top round of beef, chicken a la king, eggs benedict to order, complimentary juice and champagne. In the evening, prime rib and peel your own shrimp buffet. The Koa Bar opens at 5 p.m. and closes at 10 p.m.

MONDAY — Lunch in the Pacific Room. Monday evening the club is closed.

TUESDAY — Lunch in the Pacific Room. The Koa Bar is open from 4-9:30 p.m.

SNCO CLUB

TODAY — Lunch from 11 a.m. to 1 p.m. featuring beef kabobs and fried rice. The dinner special will be a ju ju tempura shrimp plate.

THURSDAY — Our lunch special will be lasagna. Thursday night is Mongolian barbecue from 5 to 8 p.m. "Elijah Powers" plays from 8:30 to 11:30 p.m.

FRIDAY — Lunch special will be mahimahi or chicken fried steak. Our dinner special on Friday is stuffed shrimp, prime rib, or stuffed shrimp and prime rib. Listen to the sounds of "Elijah Powers" from 9 p.m. to 1 a.m.

SATURDAY — Dining room is open from 6 to 9 p.m. Our dinner special is all the beef and crab you can eat or just beef. Come to our "Oldies Show" with Gary Slade from 9 p.m. to 1 a.m.

SUNDAY — Enjoy our champagne brunch from 9:30 to noon. Every Sunday evening our dinner special will be broil your own steak, which includes salad, baked potato, baked beans and vegetable. Dining room is open from 5 to 8 p.m.

MONDAY — The lunch special is macho burrito. The dining room is closed on Monday evenings.

TUESDAY — Lunch special is liver and onions. Bingo has been discontinued.

WINDWARD ENLISTED CLUB

TODAY — Lunch from 11 a.m. to 1 p.m. Dining room opens from 5 to 9 p.m. The chef's special this month is top sirloin with all the shrimp you can eat. The beer garden is open from 10 a.m. to 10 p.m. Monday through Friday. The beer garden features sandwiches, pizza, homemade chili, bagels, salads and many more items.

THURSDAY — Lunch from 11 a.m. to 1 p.m. Dining room opens from 5 to 9 p.m. with an open menu. Our dinner special this evening is top sirloin with all the Alaskan crab legs you can eat including soup and salad bar. The beer garden is open today from 10 a.m. to 10 p.m. Live band plays the best of rock'n'roll in the Moongate Lounge.

FRIDAY — Lunch from 11 a.m. to 1 p.m. Dining room open 5 to 9 p.m. The dinner special is prime rib and lobster tail. Just prime rib, or just lobster tail. Peter plays top 40 in the ballroom from 7 p.m. to 2 a.m. Every Friday special happy hour from 5 to 6 p.m. The

club is open until 2 a.m. every night. The beer garden is open from 8 a.m. to 10 p.m.

SATURDAY — Breezy Inn opens from 5 to 9 p.m. our dinner special tonight is lobster tail, or just prime rib. Then it's ladies' night at 9 p.m. with free rooms for the ladies in the Moongate Lounge with special drink prices. The beer garden is open this evening from 5 to 10 p.m.

SUNDAY — Club opens at 11 a.m. The Breezy Inn opens for dinner from 5 to 9 p.m. Our dinner special tonight is prime rib and lobster, just prime rib or just lobster tail, or try our fried chicken to go available

from 5 to 9 p.m. Tonight we will be featuring two guest D.J.s, one from Detroit and one from New York City, in the main ballroom from 7:30 p.m. to 1:30 a.m.

MONDAY — Lunch from 11 a.m. to 1 p.m. Dining room opens 5 to 9 p.m. with the "Italian Special," all the spaghetti or lasagna you can eat including salad bar, garlic bread and a complimentary glass of our house wine. Tonight "White Lightning" plays the best of country and western from 6:30 to 11:30 p.m.

TUESDAY — Lunch from 11 a.m. to 1 p.m. Dining room opens from 5 to 9 p.m., with all you can eat smorgasborg every Tuesday night.



CARPET CORNER

PH. 834-1456

LAST SALE

THAT'S RIGHT - OUR LAST SALE - THAT IS, WE WANT TO BE LAST, ON YOUR LIST OF STORES WHEN YOU SHOP FOR CARPET, 'CAUSE YOU'LL BE FIRST IN SAVINGS. ROLLS, REMNANTS WALL TO WALL, AUTOMOTIVE.

LOWEST PRICES
FREE ESTIMATES - FAST DELIVERY.
SHOP US LAST!

HOURS
M-THUR. 9:00-5:30
FRI. 9:00-5:00
SAT. 9:00-4:00
CLOSED SUNDAY



THE GREAT AMERICAN FUN HOUSE

Private Parties
Fund Raisers
Call for Details

PRE-CHRISTMAS DRAWING

1st Prize: Win a Mattel Intellivision Console with game cartridge
2nd Prize: \$50 cash for Christmas
3rd Prize: \$25

Drawing to be held 6 p.m. Friday, December 23rd. Need not be present to win.

"They're Here"

Latest Laser Game M.A.C.H. 3

Also: Crystal Castles Mr. Do's Castle
Donkey Kong III

Join The Fun!

274 Kuulei Rd., Kailua, HI.
Ph: 262-2774

Come by or call for details

CHRISTMAS SEWING MACHINE SALE

We have purchased over 1000 machines to give you the guaranteed lowest prices in Hawaii for your holiday shopping. Come to Hawaii's

LARGEST SEWING MACHINE CENTER

BERNINA • VIKING • RICCAR

This is just
"one example"



SALE ENDS
SUN. 12/11/5 p.m.

5 DAYS
ONLY
•ZIG ZAG
•BUTTONHOLE
•MONOGRAM
•OPEN ARM

•STRETCH
STITCHES
•BLIND HEM
•TWIN NEEDLE

Sug. Retail
~~\$488~~
FREE Machine
Instruction
w/Purchase



Sale
\$159



PACIFIC SURPLUS & DISTRIBUTORS

Sun. 11:00-5:00
Mon.-Sat. 9:30-6:00 p.m.
Thurs. 9:30-8:00 p.m.

CALL 262-8131

1247-F Kailua Rd.

WATCH, CLOCK, JEWELRY REPAIR

Prompt, Expert, Guaranteed Service...
On Premises
Certified Appraisals

Specializing in Personalized, Hand-Engraved
HAWAIIAN HEIRLOOM JEWELRY
1 week delivery

WINDWARD TIME SERVICE JEWELERS

Kailua Shopping Center 261-6661

Neck Pain? Backache?

Don't Suffer Needlessly!

Pacific Chiropractic

TRAINED IN
5 RECOGNIZED
TECHNIQUES
INCLUDING
"LOW FORCE"

COMPLETE
PHYSICAL
EXAM

X-RAY
FACILITIES

DR. JEANNE MICHAELS
R.N. DC.

COMMON SYMPTOMS:
•BACK PAIN
•HEADACHES
•NECK PAIN
•ARM & LEG PAIN
•JOINT PAIN
•MUSCLE SPASMS
•NUMBNESS
•PINCHED NERVES

SPECIALIZING IN:
•ON THE JOB INJURIES
•AUTO ACCIDENTS
•SPORTS INJURIES
•CHRONIC & DIFFICULT
CASES
•GENERAL PRACTICE
•FAMILY CARE PLAN
•PERSONALIZED CARE

261-0831

602 KAILUA RD. NO. 207, KAILUA
(between Cornet & Hardware Hawaii-2nd floor rear)
NO CHARGE FOR BRIEF SPINAL ANALYSIS

Are you **one**
of the **7 out of 8**
who have not
prepared a will?

When you die you must leave behind everything for which you have worked and saved. The question is, "TO WHOM?" If you have a will, you have already instructed the state, attorneys and judges to act according to YOUR wishes.

but if you don't have a will
the state will simply distribute your estate according to law. Without a will you let the state determine the disposition of your assets, the welfare of your spouse and the guardianship of your children. Probate costs, taxes and fees increase. What's worse, you rob yourself of the privilege of continuing stewardship through designated gifts.

DON'T MAKE THE MISTAKE OF THINKING:
• only wealthy people need a will
• that drawing a will is too complicated
• or that it is too expensive.

Take the first step toward doing something about that which you own... for your own peace of mind and for the benefit of those you hold dear.

For FREE information about "Wills" send coupon below:



THE SALVATION ARMY
Hawaiian Islands Division
P.O. Box 620 2950 Manoa Road
Honolulu, HI 96809

We want to thank the first step toward clarifying the distribution of my estate. Please send the without cost or obligation your literature or ideas.

NAME _____
ADDRESS _____
CITY _____ STATE _____ ZIP _____
PHONE NO. _____ BIRTH DATE _____

SP-C

HALE KOA HOTEL NEWS

SPECIAL EVENTS THIS MONTH

ARMED FORCES RECREATION CENTER / FORT DERUSSY AT WAIKIKI / HAWAII / TELEPHONE 955-0555

SPECIAL HOLIDAY EVENTS

Saturday Dinner Buffet & Show Christmas Eve with Rebecca

The lovely REBECCA presents an evening filled with beautiful Christmas songs in the Banyan Tree Show Room. Rebecca's special guest will be SANTA, who will bring Christmas Eve goodies for the children. Just \$13.95 for adults and \$8.95 for children under 12 includes a gourmet buffet featuring Standing Baron of Beef, show and gratuity. Buffet open from 6-7:30pm; program will follow. Tickets on sale from December 11.

Christmas Day Buffet

Sunday, December 25
Roast Turkey, Christmas Ham, and all the trimmings for only \$10.95 for adults and \$6.50 for children under 12 (gratuity included). Seatings will be available from 9:30am to 2:30pm. Reservations are recommended; call 955-0555 beginning December 5.

Christmas Dinner in the Hale Koa Dining Room

Sunday, December 25
Christmas Ham and succulent Prime Rib are just a few of the holiday menu items served in the elegant Hale Koa Dining Room from 5-9pm. Only the special Christmas menu will be offered this evening. Reservations are advised; call 955-0555 beginning December 5.

Returning in January: Al Harrington - The South Pacific Man

Hawaii's most popular entertainer returns to the Saturday Dinner Buffet & Show in the Banyan Tree Show Room, January through March. \$19.95 for adults; \$14.95 for children under 12. Tickets on sale two weeks in advance.

FREE HOLIDAY EVENTS

Santa Comes to Waikiki Beach!

Saturday, December 17
When Santa comes to Hawaii he arrives in an Outrigger canoe. He'll land on Fort Derussy Beach around noon with treats for the youngsters. Music, races, and skydiving add to the day-long HOLIDAY JAMBOREE, on the beach from 8am on!

Trim the Hale Koa Christmas Tree

Monday, December 19
Share in a Hale Koa tradition and help trim the tree by contributing an ornament representative of your home town! The tree trimming party begins at 5PM in the Mauka Lounge. Then Celebrity Night continues with free pupus and entertainment.

Special Christmas Concerts

Sunday, December 11
The U.S. Pacific Fleet Marine Band presents a holiday concert on the outdoor Luau Stage at 2pm.

Monday, December 12
The highly acclaimed Pacific Fleet Naval Band gives its annual Christmas concert in the Banyan Tree Show Room at 6:45pm.

RING IN THE NEW YEAR!

New Year's Eve Magic with Ron Miyashiro & Friends

Ring in the New Year with the classiest dance band in all Waikiki! Ron Miyashiro, dynamic vocalist Caryl Chellis, and their combo will whisk you into 1984 with a great show and terrific dance music. Festivities begin with a gourmet prime rib au jus dinner, wine, and all the extras. This complete party package includes dinner, dancing, entertainment, unlimited standard drinks, party favors, New Year's champagne, and gratuities. All for only \$45.95 per person. Banyan Tree Show Room doors open at 7pm; entertainment until 1am.

Polynesian New Year's Eve Spectacular

Explode into 1984 with a special edition of Tama's Polynesian Revue! Don't miss the New Year's Eve Countdown and a chance to win one of the great door prizes that will be given away throughout the evening! This exciting New Year's package includes a lavish Polynesian Buffet Dinner, dazzling show, dancing, two standard drinks, champagne at midnight, party favors, and gratuities. Just \$39.95 per person. Waikiki Ballroom doors open at 7pm; entertainment until 1am.

New Year's Eve Rock Around the Clock

Dance your way into 1984 at the Hale Koa's sensational light and sound show. A live D.J. will play your favorite Top 40 hits all night long! No-host bars will be open throughout the evening, and party favors, light snacks, and a New Year's champagne toast are on the house! Only \$6 per person. DeRussy Hall (on the second floor) will be open from 8:30pm until 1:30am! Tickets for all three New Year's Eve events are on sale from December 7.

Football Finales!

Watch two great days of football action, satellite live, on the Big Screen TV in the Waikiki Ballroom. Cocktail and sandwich service will be available.

Sunday, January 1 - AFC and NFC Divisional playoffs
Monday, January 2 - The best of the College Bowl Games



Sportsnotes

Tee time for the tri-annual station catfight is 1 p.m. Dec. 15 at the Kaneohe Klipper. Entry forms are available at the athletics office and at the golf course. Entry is limited to the first 40 teams. The entry deadline (including \$28 entry fee) is 4 p.m. Friday. Late entries will not be accepted.



All Marine and Navy women stationed at the air station here are urged to attend a sports luncheon at 11:30 a.m. Dec. 14 at the Enlisted Club. A soup and salad special for \$1.50 will be offered. For reservations, call or stop by the station gymnasium (257-3550/3622). Entry deadline is Friday.

1983 Intramural Basketball Standings (as of Dec. 5)

| Phi-Jamma-Slamma Division | | W | L |
|---------------------------|----|---|---|
| 1/3 | 10 | 1 | 1 |
| SOMS | 8 | 3 | 3 |
| H&S BSSG | 7 | 4 | 4 |
| Supply Co. | 7 | 4 | 4 |
| 1stRadBn | 7 | 4 | 4 |
| H&S No. 1 | 5 | 4 | 4 |
| 3/3 | 4 | 1 | 1 |
| HMM-165 | 0 | 4 | 4 |
| Rim Shot, Division | | | |
| Motor T | 9 | 3 | 3 |
| H&MS-24 | 9 | 4 | 4 |
| HqCo, 3dMarines | 6 | 5 | 5 |
| CSC | 5 | 5 | 5 |
| MACS-2 | 4 | 7 | 7 |
| H&S No. 2 | 4 | 8 | 8 |



Intramural basketball playoffs start Tuesday with the championship game at 7 p.m. Dec. 18. There will be several games starting at 7 p.m. each evening during this period.

The tri-annual racquetball tournament for active duty personnel is Saturday and Sunday. Persons interested in competing should pre-register with the athletics office by 4 p.m. tomorrow. Marine Barracks Hawaii and Camp H.M. Smith personnel are eligible to compete.

Former Oakland Raider Ben Davidson will make a special public appearance at 5 p.m. tomorrow at the package store here. Davidson will hold an autograph session and answer questions. The event is free and open to all.



A turkey shoot will be conducted at 8 a.m. Saturday at the 1000-inch range here. For more information, call 257-3108.

KAILUA SUPER SAVER SALON

WE'RE HERE EVERYDAY

You'll find the same low prices, the same high quality products, and the same service by trained stylists.

OUR SPECIALTIES FOR WOMEN, MEN & CHILDREN:

- PRECISION HAIRCUT \$6
- SHAMPOO/CONDITIONER/FINISH \$6
- PERMANENT WAVE with either or both of above additional \$6

NO APPOINTMENT! COME IN TODAY!

beauty salon - kailua 945-5696
Monday, Tuesday, Wednesday, Saturday, 9:30 a.m.-5:30 p.m.
Thursday, Friday, 9:30 a.m.-9:00 p.m. Sundays, 10 a.m.-4 p.m.
(service subject to time availability)
Must be 12 years or older for permanent wave.
Long hair slightly higher.

LIBERTY HOUSE

Get 75 for 30

Retire after 30 years and get 75% of your base pay from the day you retire. Not at age 55, 62 or 65 like most civilian jobs.

Now You Can Afford To Smile Again!

We offer the latest in orthodontic treatment and materials, including "invisible braces" to give you a beautiful smile. Our efficiencies in treatment result in savings for you. Please call us for a free consultation.

523-2402



HONOLULU ORTHODONTIC SPECIALISTS

Arthur T. Kamisugi, DDS, MDS
Diplomate, American Board of Orthodontics

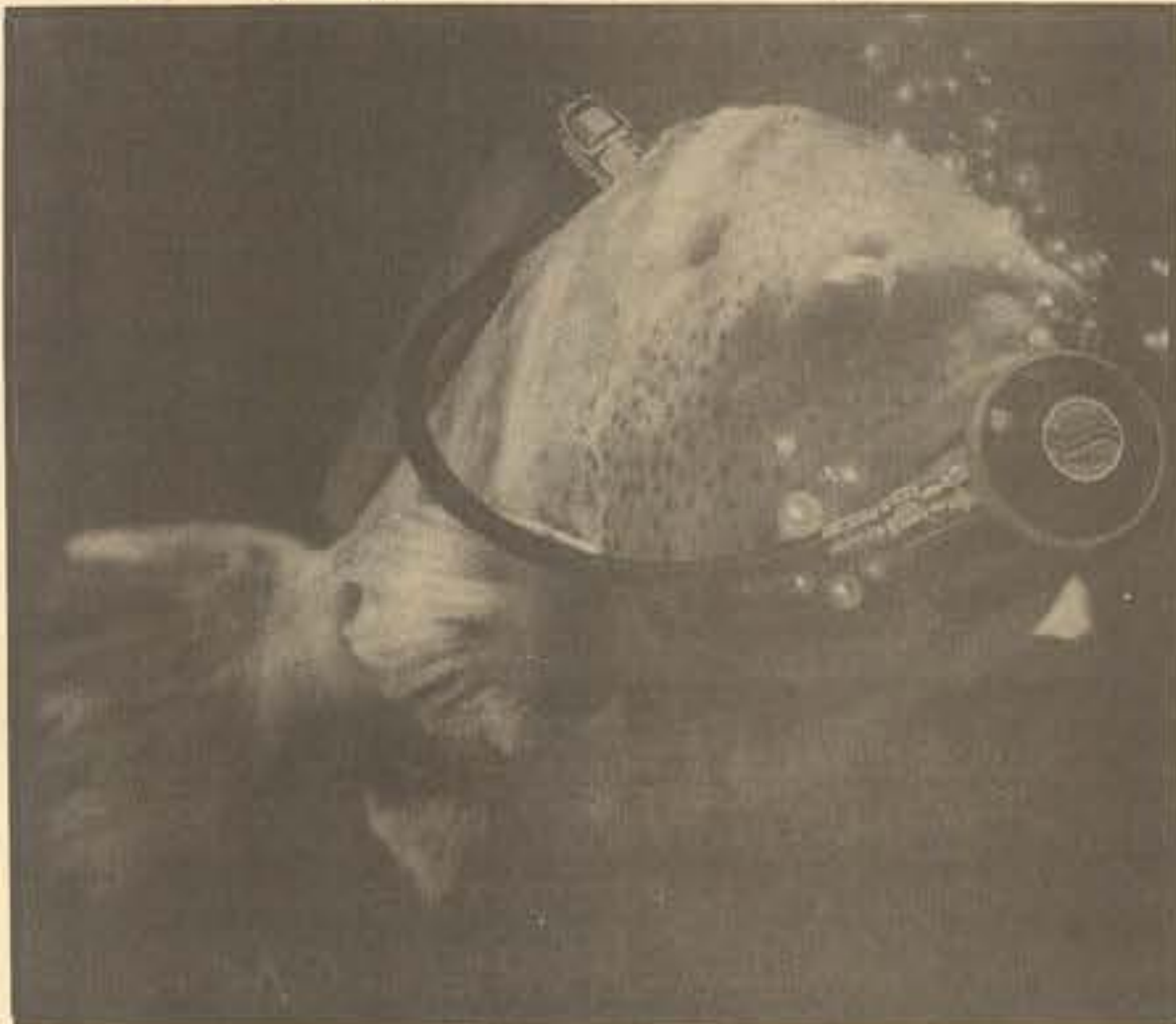
Randal D. Morita, DDS
Curtis N. Kamisugi, DDS, MDS (7/83)



Offices in Honolulu, Pearl City/Aiea, Mililani, Kaneohe, Kailua and Haleiwa

NEW!!

For the first time ever we have Sherwood Professional Diving Equipment & Accessories!



Available now at . . . **Kaneohe Marine Corps Exchange**

This ad not paid by Marine Corps Exchange.

FURNITURE LIQUIDATION

MAJOR HOTEL RENOVATIONS OFFER YOU QUALITY USED FURNISHINGS AT BARGAIN PRICES



| | |
|--------------------------|-------------------|
| Queen Sofa Bed | 129 ⁰⁰ |
| Parsons Corner Table | 39 ⁰⁰ |
| Parsons Library Table | 59 ⁰⁰ |
| Table Lamp | 18 ⁰⁰ |
| Rattan Hex. Coffee Table | 59 ⁰⁰ |
| Wicker Hutch | 50 ⁰⁰ |
| Rattan Swivel Chairs | 34 ⁰⁰ |
| Rattan Side Chairs | 29 ⁰⁰ |
| Teak TV Cabinet | 69 ⁰⁰ |

| | |
|----------------------------|------------------------------------|
| Teak & Wicker Nightstands | 29 ⁰⁰ -35 ⁰⁰ |
| Full Size Bed | 49 ⁰⁰ -59 ⁰⁰ |
| King Bedspreads | 19 ⁰⁰ |
| Twin Bedspreads | 14 ⁰⁰ |
| Round Occ. Table | 15 ⁰⁰ |
| Laurel Occ. Table | 12 ⁰⁰ |
| Laurel Chairs | 15 ⁰⁰ -25 ⁰⁰ |
| Framed Pictures | 9 ⁰⁰ |
| Drapery Approx. 126" x 90" | 12 ⁰⁰ |

INTERISLAND FURNITURE CO.

717 Moowaa St.
Call 847-1361 for details

Back of Kapalama Shopping Center
Open Mon. thru Sat. 8:30-5:00

GOODYEAR

3-DAY SALE!

Arriva Steel Belted Radials



For significant savings on Arriva Steel Belted Radials, this is the time to act. These are the road-hugging ALL SEASON radials you've seen on TV, tracking through heavy rain. This 3-day sale ends Saturday, and so do the savings. Until then, all 12 sizes listed are sale priced, and every one of them is a whitewall.

SALE ENDS SATURDAY

| WHITEL WALL SIZE | ARRIVA STEEL BELTED RADIALS |
|------------------|-----------------------------|
| P155/80R13 | \$46.00 |
| P165/75R13 | \$50.75 |
| P175/80R13 | \$57.00 |
| P185/80R13 | \$59.25 |
| P185/75R14 | \$62.50 |
| P195/75R14 | \$66.50 |
| P205/75R14 | \$70.55 |
| P215/75R14 | \$73.85 |
| P205/75R15 | \$74.50 |
| P215/75R15 | \$76.40 |
| P225/75R15 | \$80.25 |
| P235/75R15 | \$85.50 |

Plus \$1.51 to \$2.90 FET
No trade needed.
Other Sizes Sale Priced.

Is Your Car Ready For Rainy Weather?



Wheel Alignment \$19

Get front or rear wheel caster, camber, and toe on cars with adjustable suspension. Chevrolet light trucks, cars requiring MacPherson Strut correction extra.



NEW! Credit card convenience for automotive needs. Sign up now at your nearby Goodyear retailer. • Use The Silver Card nationwide at participating Goodyear retail outlets. • Enjoy credit convenience whenever you travel.



Watch the 1984 Winter Olympics on ABC-TV, brought to you by Goodyear.

GOODYEAR

AUTO SERVICE CENTERS

Kaneohe Bay Shopping Center

46-047 Kam Hwy., Kaneohe
HI 96744 247-8668
Mgr. Philip G. Smith

New Store Hours
MON.-SAT. 7:30 a.m. to 6:00 p.m.
SUN. 11:00 a.m. to 4:00 p.m.

Waimalu Plaza Shopping Center

98-1277 Kaahumanu St.
Aiea, HI 96701 487-0066
Mgr. Wayne Nagai



NOT A DANCE — Dawn Davis and Sean Savage trade kicks as they pit their skill in a Tae Kwon Do tourney here. Savage took the 8 to 10-year-old division Saturday at the YMCA Gym, while Davis claimed third place.

Skill wins in Tae Kwon Do

Story and photos
by Sgt Greg Berry

Skill, not size or strength, is needed in the martial arts, and Saturday's Tae Kwon Do tournament here proved it.

Boys and girls from 5 to 16 years of age took their skill to the floor at the YMCA Gym and executed hand and foot attacks to score points against their opponents.

Fighters had to deliver their attacks with precision to score points, with hand attacks to the mid and high sections, and foot attacks to the mid section, worth one point. Two points were awarded for correct foot attacks to the high section, and attacks while in the air, and flying kicks directed to the mid or high section.

Hand attacks to the head were not permitted; excessive contact to the high section was grounds for disqualification.

The Tae Kwon Do rank structure starts with white belt, then yellow stripe, yellow belt, green stripe, green belt, blue stripe, blue belt, red stripe, red belt, black stripe and finally black belt. It takes an average of three years for a student to reach black belt.

"Tournaments inspire competition and give students an opportunity to test their skills against others," said Bart Gonzales, tournament director. Gonzales teaches Tae Kwon Do through Special Services Monday, Wednesday, and Friday nights at

the YMCA Gym here. Children go from 5 to 6 p.m. and adults from 6 to 7 p.m.

The tourney was divided into two portions: pattern competition and fighting competition. "Pattern competition is classed by rank, and fighting competition is by age and weight," Gonzales said. Children fought in four age divisions: 5-7, 8-10, 11-13, and 14-16.

Michael Sullivan took the 5-7 division, followed by Jonathan Thomas and Lisa Faaiu. Sean

Cont. on Page B-6

CALIFORNIA'S MOST EXCITING EXOTIC
NIGHTCLUB COMES TO HONOLULU
Featuring Mainland Dancing Girls

DIRTY DAN'S

205 SAND ISLAND RD.
Ph. 541-9063
(formerly
THE SAND BOX)

CONTINUOUS SHOWS 1:00 p.m. to 4 a.m.
Sun 6 p.m. to 2 a.m.

"NO COVER CHARGE"
COCKTAILS — FOOD — GAME ROOM

GORGEOUS DANCING BEAUTIES

Sponsored By **Nike** **JON ANDERSON**

At

RUNNERS WINDWARD

Saturday, December 10, 1983

12 Noon - 2 p.m.

Anderson's Record
US Olympic Team 1972 10,000 Meter
US Cross-Country Team 1977 World
Championships
WINNER Boston Marathon 1973
2:16:03

WINNER Nike/OTC Marathon 1975
2:16:08
WINNER Antwerp (Belgium)
Marathon 1981 2:17:23
WINNER Honolulu Marathon 1981
2:16:34

1980 Nike/OTC 2:12:03

Besides competing, Anderson also specializes in clinics on training techniques. Anderson will be at the Mid-Pacific Road Runners Club sponsored RUNNING CAMP on the Big Island, March 8th thru 11th. Details at RUNNERS WINDWARD.

WINNERS
REUNION
WINDWARD
316 Uluniu St., Kailua
(next to Paradise Used Furniture)
262-9292
OPEN 10-5 PM Sun. 1-4 PM
Tuesday Closed

Public Is Invited

FEELING THE SQUEEZE?



Get **FREE** "miscellaneous" For Sale Ads!
When You Subscribe to Our Newspaper

So round up your miscellaneous! Clean out those closets, cupboards, and garages. We'll list your sewing machine, vacuum cleaner, appliances, china, bicycles, beds, computers, pachinko machine, and much more! (Sorry, no cars, motorcycles, garage sale, real estate, or help wanted.) It's easier than you think to generate extra cash. Reach 109,000 homes! Just fill out the coupon in our classified section and send it in with your GREEN subscription receipt! You'll get an ad worth \$5.46 absolutely free!

SUN PRESS Dec. 1 thru Dec. 28
Carrier _____
Phone _____
VOLUNTARY SUBSCRIPTION PAYMENT

*Free miscellaneous for sale ads must be placed with the current coupon and the ad copy. This offer is for miscellaneous for sale. Additional fee for the first three items are sold at a rate of \$1.75 per line plus tax. Additional payment, if applicable, should be enclosed with the above.

Sun Press

Publishers of Hawaii Navy News, Hawaiian Falcon, Hawaii Marine, Waipahu Sun News, Waianae Sun Times and Sun Press.

46-016 Alaloa St.

Kaneohe, HI 96744



Auto Decor and Protection Specialists

- Body Side Molding
- Pin and Custom Striping
- Wheel Well Molding
- Door Edge Guard
- 3M Scotchgard
- Trim-Line Paint Sealant
- Window Tinting
- Other Auto Acc.
- All Work Guaranteed
- Mobile Service
- Servicing Hawaii 8 yr.

When buying a new car ask for Trim-Line Products

2954 Koapaka

836-1561



Dolphin

ACTIVEWEAR

The Winning Combination

for the
HONOLULU MARATHON

Quality, fit, styling...three elements that work together to make our selection of trackwear the best for you. Running gear for men & women featuring the light, cool feel of nylon tricot and mesh, provide total comfort for every activity. Stop by to find your "Winning Combination" today!

Marine Corps Exchange

This ad not paid for by Marine Corps Exchange.

FINAL DAYS!

To take advantage of our...

PRE-
GRAND
OPENING
For the
NIU VALLEY
SPA!

FOR ONLY
\$8.98*
PER MONTH
All 5 Locations!
Cash, checks, VISA
Master Card Only
Please

We Offer The Most Extravagant
& Luxurious Facilities Anywhere!



fitness center
Open 7 days a week

- *Exercise Classes
- *Yoga
- *Individual Programs Designed for Reducing, Gaining or Muscle Tone
- *Nutritional Guidance
- *Swimming Pool
- *Private Showers
- *Vanity Area
- *Individual Locker
- *100,000 in Modern Exercise Equipment
- *World Wide Attraction
- *Olympic Weights
- *Larger Exercise Floors
- *Lifetime Aerobic Trainers
- *New Exciting Classes
- *Certified Instructors
- *Hydro Whirlpool
- *Ice Plunge
- *Steam Room
- *Sauna

Niu Valley
Spa
Coming
Soon

AINA HAINA 373-9836 PEARL RIDGE 487-5551 PUNAHOU 671-5431 WAIPIU 949-0026 KANEHOE 235-6461

\$8.98 down \$8.98 for 35 months \$13.95 the last month. Total cash price \$325.

Salutes

EDITOR'S NOTE: Salutes is designed to recognize individuals for their achievements and exceptional performance as well as to welcome new arrivals to Hawaii. The information is compiled by Unit Information Officers and submitted to the Joint Public Affairs Office.

SOMS

Welcome aboard:
2dLt J.S. Worden
SSgt R.E. Jacobus
LCpl B.L. McKinzy
PFC R.J. Egger
PFC J.A. Schaer
Promotions:
Sgt M.L. Bolding
Cpl R.M. Deming
Cpl T.S. Gilbert
Cpl M.R. Hindley
LCpl G.S. Rimer
Meritorious Promotion:
Sgt S.R. Bieri
Meritorious Mast:
Cpl R. Probst
Good Conduct
Medals:
Cpl D.M. Hansen
Cpl A.L. Runge
LCpl A.E. Freeman
Reenlistment:
SSgt D.W. Dewitt
Sgt E. Estevez
Sgt J.H. McCartney
Sgt M.D. Russell
Cpl D.E. Branham
Rescue Citation:
Sgt A. Oliva
1/3
Promotions:
Cpl R.L. Cole
Cpl R.E. Donnelly
Cpl B.J. Dorton
Cpl S.R. Fisher
Cpl A. Gonzalez
Cpl M.D. Harsh
Cpl W.V. Hollis
Cpl R.J. James
Cpl N.R. Limb
Cpl A.P. Mulderig
Cpl K.G. Nelson
Cpl D.R. Peplinski
Cpl J. Soto

3/3

Welcome aboard:
Capt S.L. Strother
GySgt B.W. Plumb
SSgt J.L. Allen
SSgt P. Ortiz
Sgt J.P. Alm
Sgt C.J. Dewalt
Sgt S.T. Hernandez
Cpl T.H. Moala
LCpl G.D. Bennett
LCpl J.A. Butler
LCpl S.A. Osgood
LCpl D.L. Wells
PFC G.L. Erickson
PFC J.T. Flynn
PFC R.J. Johnson
PFC T.K. Johnson
PFC G.A. Marciaz
PFC D.E. Mantel
PFC D.E. Milojevich
PFC M.T. Rietvelt
PFC A.A. Smith
PFC J.M. Toy III
PFC D.A. Vaughn
Pvt J. Arrasate Jr.
Pvt R.K. Drewrymoore
Pvt K.L. Gregory
Pvt R.G. Mayerson
Pvt T.P. McConnell
Pvt T.M. Messer
Pvt J.L. Miller
Pvt J.P. Morrissey
Pvt T.D. Meal
Pvt R.A. Phillips
Pvt G. Pierson
Pvt T.B. Roles
Pvt K. Smith
Pvt K. Thomas
Pvt G.F. Williams
Pvt R.D. Williams

1/12

Promotions:
LCpl S.P. Hockenberry
LCpl D.R. Little
LCpl J.J. Mera Jr.
LCpl P.T. Ogan
PFC D.C. Brackett
PFC J.S. Morrin
Good Conduct
Medal:
SSgt B.W. Osborn Jr.

BSSG

Welcome aboard:
1stLt M.D. Swete
2dLt R.F. Browne Jr.
2dLt J.P. Conklin
2dLt J.F. McCabe IV
GySgt L.M. Greenwood
Sgt D.K. Britt
LCpl M.A. Freed
PFC S.C. Curie
PFC T.S. Jones
PFC A.R. Miller
PFC G.R. Perrin
Promotions:
Capt M.F. Chanenchuk
Cpl S.A. Dean
Cpl R.A. DeFazio
Cpl J.W. Quicksall
LCpl R.J. Johnson
LCpl W.V. Kilthao
LCpl G.B. Young
Meritorious Masts:
Sgt J.E. Stockman
Cpl J.E. Beuharnois
Cpl M. Diaz
Cpl J.H. Latham
Cpl D.N. Waugh
Good Conduct
Medal:
LCpl R.M. Schmidt
Letter of Appreciation:

SSgt J.A. Ripa
Service School Graduate:
Sgt V.T. Boyd, Professional Career Counselor Cns. and Command Career Counselor Cns.
St. Louis High School Graduate:
LCpl M.E. Root
H&MS-24
Welcome aboard:
SSgt M.O. Meehan
Sgt F.P. McEachern
Cpl C. Bailey Jr.
Cpl R.L. Barton
Cpl A.E. Carver
Cpl F.A. Cermak III
Cpl K.M. Lee
Cpl C.D. Reeves
LCpl R.P. Corrie Jr.
PFC M.A. Hankins
PFC W.G. Payne
PFC J.D. Waldron
PFC S.L. Wood
Reenlistment:
Cpl P.G. Manalo

MACS-2

Welcome aboard:
1stLt E.C. Buckner
LCpl D.K. Head
Promotion:
Cpl T.T. Geat
Meritorious Mast:
Cpl C.M. DaVall
Good Conduct
Medal:
Sgt W.K. Noble
Letter of Appreciation:
LCpl T.T. Geat
Service School Graduate:
Sgt R.A. Garcia,
Tactical Air Defense Controller Cns.

HMM-265

Welcome aboard:
Sgt M.C. Howell
Cpl J.H. Murdock Jr.
Promotion:
Cpl M.F. Hayes
Reenlistment:
SSgt K.W. Marino

CONSOLIDATED THEATRES

KAM DRIVE-IN
"SUPER" SWAP MEET
EVERY WED., THURS., SAT. & SUN.
7 AM TO 3 PM • 488-3422

WAIKIKI 1
SEASIDE NR. KALAKAUA
923-2394

STARTS FRIDAY!
"SUDDEN IMPACT" (R)
Call Theatre For Show Times
No Passed

WAIKIKI 2
"NEVER SAY NEVER AGAIN" (PG)
1:00 • 3:30 • 6:00
8:30 • 10:45
No Passed

WAIKIKI 3
KALAKAUA NR. SEASIDE
923-9353

STARTS FRIDAY!
"SCARFACE" (R)
Call Theatre For Show Times
No Passed

KUNIO 1
2000 KUNIO • 841-4472

MOVES OVER FRIDAY!
"THE BIG CHILL" (R)
Call Theatre For Show Times

KUNIO 2
STARTS FRIDAY!
"SHOGUN'S NINJA" (R)
Call Theatre For Show Times

CINERAMA
KING NR. KALAKAUA • 941-5201

STARTS FRIDAY!
"YETI" (PG)
Call Theatre For Show Times
No Passed

YARISITY
UNIVERSITY NR. BENETANIA
346-4147

MOVES OVER FRIDAY!
"RUMBLEFISH" (G)
Call Theatre For Show Times

KAPOLANI
KAPOLANI NR. KAHEKA
984-4112

STARTS FRIDAY!
"CHRISTINE" (R)
In 70mm Dolby Stereo
Call Theatre For Show Times

KAM DRIVE-IN 1
MOANALUA NR. KAM HWY.
STARTS FRIDAY!
"CHRISTINE" (R)
"AMERICAN WEREWOLF IN LONDON" (R)
Gates Open At 5:30
Show Starts At 6:30
No Passed

KAM DRIVE-IN 2
STARTS FRIDAY!
"SCARFACE" (R)
"NIGHTMARE" (R)
Gates Open At 5:30
Show Starts At 6:30
No Passed

PEARLRIIDGE 1
PEARLRIIDGE CNTR. • 987-5881

"RICHARD PRYOR HERE & NOW" (R)
TONIGHT • 6:45 • 8:45 • 10:30

PEARLRIIDGE 2
"THE RIGHT STUFF" (PG)
TONIGHT • 6:00 • 8:15

PEARLRIIDGE 3
"FLASHDANCE" (R)
TONIGHT • 6:15 • 8:15 • 10:15

PEARLRIIDGE 4
STARTS FRIDAY!
"RISKY BUSINESS" (R)
"MR. MOM" (PG)
Call Theatre For Show Times

KAILUA DRIVE-IN
QUARRY RD. at PALL HWY.
STARTS FRIDAY!
"SUDDEN IMPACT" (R)
"THE OUTSIDERS" (PG)
Gates Open At 5:30
Show Starts At 6:30
No Passed

ALAKA
ALAKA PARK SHOPPING CNTR.
254-1220 • ALL SEATS \$54
STARTS FRIDAY!
"SLUMBER PARTY MASSACRE" (R)
"MS-45" (R)
Call Theatre For Show Times

Camp H.M. Smith

Welcome aboard:
GySgt R.E. Cundiff
LCpl W. D. Caldwell
PFC D.E. Reynolds
PFC B.J. Peck
PFC A.R. Anzaidua
Pvt D. Dahlberg II
Pvt W.J. Sipple
Promotions:
LCpl D.B. Copes
LCpl J.R. Dale
LCpl J.E. Duff
LCpl W.V. Fogle
LCpl H.A. Hooker
LCpl R.C. Phillips
Good Conduct
Medals:
Cpl C.M. Bickham
Cpl V.L. Crocker
Cpl R.L. Hamilton
Certificate of Commendation:
Sgt R.C. Jenks

EASTERN ONION
Telegram
SEND A MESSAGE IN SONG!
261-4655
NATIONWIDE

Christmas trees pose fire hazard

The Christmas tree is a beautiful symbol of Christmas, but bringing it into the home makes it a dangerous fire hazard. Because of this, consumers should use care in selecting a tree and in placing it in the home, warns the International Association of Fire Chiefs. Here are 12 suggestions:
• Choose a small tree instead of a large one. A small tree can be just as pretty and less hazardous.
• Keep the tree outdoors until you're ready to install it.
• Don't set up the tree until just before Christmas.
• Set up the tree in the coolest part of the house — away from open flames, heaters, fire places. Stand it in water to retard drying.
• Use fireproof decorations of glass or metal,

never cotton or paper decorations unless flameproof.
• Don't set up electric trains around or near the tree.
• Use electric lights — never candles. Inspect every electric socket and wire to make sure the set is in good condition. Discard lighting sets with frayed wiring. When buying new sets, select those with the UL label of Underwriters' Laboratories, Inc.
• Provide a switch at some distance from the tree for turning tree lights on and off.



• Don't leave lights burning when away from home.
• From time to time inspect the tree to see whether any of the needles near the lights have started to turn brown. If so, change the position of the lights.
• When needles start falling, take the tree down and discard it outdoors.
• Gift wrappings, of course, should be discarded promptly and safely after presents are opened.

ANYTIME YOU NEED A HAND... WITH A TRANSPORTATION PROBLEM



You'll Find The Hand You Need In Classified
235-5881 622-3966

KDEO COUNTRY RADIO

TOP 10 COUNTRY SONGS

December 9, 1983

| LAST WEEK | THIS WEEK | TITLE | ARTIST |
|-----------|-----------|----------------------------|------------------------------------|
| 2 | 1 | A Little Good News | Anne Murray |
| 5 | 2 | Tell Me A Lie | Janie Fricke |
| 1 | 3 | Holding Her & Loving You | Earl Thomas Conley |
| 8 | 4 | Black Sheep | John Anderson |
| 6 | 5 | Heartache Tonight | Conway Twitty |
| 9 | 6 | Houston | Larry Gatlin & The Gatlin Brothers |
| 7 | 7 | Don't Count The Rainy Days | Michael Murphey |
| 4 | 8 | Baby I Lied | Deborah Allen |
| 11 | 9 | You Look So Good In Love | George Strait |
| 13 | 10 | Slow Burn | T.G. Shepard |

Hear the Top Country Songs in the Nation on the WEEKLY COUNTRY MUSIC COUNTDOWN SUNDAY MORNINGS at 9 A.M. on AM94 at KDEO Country Radio.

Introducing CENTURY Taste that delivers IN THE MONEY SAVING 25 pack



Warning: The Surgeon General Has Determined That Cigarette Smoking Is Dangerous to Your Health.

LIGHTS: 10 mg. "tar", 0.9 mg. nicotine, FILTER: 16 mg. "tar", 1.1 mg. nicotine, av. per cigarette by FTC method.

© 1983 R.J. Reynolds Tobacco Co.



CHAMPION FORM — Bill Brooks steps back as Tony Weaver hits the deck. Brooks' martial arts skill carried him to a first-place finish in the 14 to 16-year-old division and the overall championship in Saturday's Tae Kwon Do tourney here. Weaver defeated Steven Guzman for the second-place slot, leaving Guzman in third place.

Cancer Hotline

by Dianne Watanabe
Cancer Information Service

Children add special meaning to the holiday season. If a loved one has cancer or is being treated for it, Christmastime can be a difficult period for everyone.

The Hawaii Cancer Information Service, 524-1234, is based on Oahu. Neighbor island residents may call collect. All calls are confidential. The trained staff can answer questions immediately; more detailed requests will be researched.

People can overcome some of their uneasiness around their children or friends with cancer by learning more about the disease, medical procedures, and by becoming familiar with the patient's needs.

"Young People With Cancer" and "Students With Cancer" are publications offered by the service without charge.

The first one is a complete handbook describing the emotional states of children of different ages with cancer, the side effects of different medications and tests, and the common needs of young cancer patients.

The other booklet explains how to help students with cancer feel comfortable in the classroom and gives suggestions for helping the other students adjust to the situation.

The Cancer Information Service offers a wide selection of free, cancer-related brochures and pamphlets available upon request. These cover such areas as methods of detecting cancer, emotional counseling services, financial aids, and the causes of cancer.

Free degree.

The Marine Corps gives you plenty of educational opportunities. If you can qualify, you could earn a college degree free! You can count on the Corps.

Stay Marine



The Ultimate Telegram Party Entertainment Service For Adults & Kids!

*Performers *Balloons, Arts, Reviews *gifts & more
*Exotic entertainment
100's of fabulous original acts as rated on TV & Penthouse magazine
WIN A FREE PEEL-A-GRAM
955-3799 for info.

Tae Kwon Do . . .

Cont. from Page B-4

Savage triumphed in the 8-10 group, with Eric Quintana and Dawn Davis close behind.

The 11-13 division found Romell Regulacion in first, with Kenneth Okagi next and Charles Funk in third. The oldest division was

taken by Bill Brooks, followed by Tony Weaver and Steven Guzman.

Brooks went on to take the overall competition, despite a determined bid for the title by Regulacion.

The next Tae Kwon Do tournament is scheduled for April.

**Would you
be as proud of
any other job?**



**GENERAL ELECTRIC
COMPANY
Factory
Service**



WE OFFER THESE SERVICES

- Scheduled Service Mon.-Sat.
- Emergency Service
- Service Contracts
- Step-by-Step Repair Manuals/Parts
- Factory Trained Technicians
- Refrigerator/Freezer
- Washer/Dryer
- Range/Microwave
- Dishwasher/Disposal
- Compactor
- T.V.
- Room Air Conditioner

Service 533-7462
Emergency 533-7462
Parts 538-1141

Chris



404 Cooke St.

Save for a sunny day.



Buy U.S. Savings Bonds.

Give the Gift of a Slim Chance.

This year, give that special person a chance to be that new someone he or she has wanted to be. Just come in to Nutri/System and choose from a wide variety of our slim pickings. We'll wrap and tie your personal gift certificate in the brightest of ways as you watch your gift-giving worries disappear into thin air!

| | | | |
|--|--|--|--|
| Alma Haina 650 West Hind Dr. 373-2101 | Downtown 1164 Bishop St. 531-4695 | Kaliua Pali Farm Place 294-5811 | Pearl City 95-1224 Kaimukapu 488-1104 |
|--|--|--|--|

nutri/system
weight loss centers

Federal Employees

MAKE THE RIGHT CHOICE

NOW BLUE CROSS AND BLUE SHIELD TAKES CARE OF YOU TWO WAYS

1. NEW STANDARD OPTION

Our new Standard Option is an unbeatable value.

It gives you a wide range of benefits—including dental—for only \$7.19 every two weeks for individuals; \$17.15 for families. (For postal employees: \$1.80 individual, \$4.29 family.) And now Standard Option offers increased benefits for 1984:

- ☐ 100% hospital emergency room coverage for accidental injury after the deductible
- ☐ 100% UCR for physician's care of accidental injury after the deductible
- ☐ 10% increase in dental payments
- ☐ Unlimited number of doctor's office visits
- ☐ Hospital admission deductible applies toward catastrophic protection
- ☐ 25 outpatient mental illness sessions

2. HIGH OPTION

High Option gives you extra protection to meet today's high cost of health care. Because it pays more when you need to use care.

And High Option offers these additional features for 1984:

- ☐ 100% UCR accidental injury coverage, in doctor's office or emergency room—no deductible
 - ☐ Unlimited doctor's office visits
 - ☐ Hospital admission deductible applies toward catastrophic protection
 - ☐ New mental health benefits including 50 outpatient mental illness sessions
 - ☐ New catastrophic protection
- Call our toll-free Open Season hotline to find out more.

1-800-554-6800

Ask for Operator R515

Open Season
begins Nov. 14.



Call today!



**Blue Cross.
Blue Shield.**

What's Fun & Free Every Weekend?

"THE ART MART"
at the Honolulu Zoo Fence

YOUR ART MART... FEATURING 100 ARTISTS
INCLUDING THE GREAT AND NEAR-GREAT
BARGAIN PRICES
ALL ORIGINALS.

BROWSE · BUY · INVEST.
SAT. & SUN. 10 AM-4:00 PM

HARRY'S
cafe & DELICATESSEN
Alkali Shopping Center

Put More Fun in Your
Holidays—with our Beautiful
Holiday Party Trays

- ★ 4 to Choose From ★
- ★ Parties of 15 to 150 ★

Call Harry's to Order
254-2277

Band spreads yuletide cheer

CAMP H.M. SMITH, Hawaii — The Fleet Marine Force, Pacific Band, under the direction of First Lieutenant William M. Clemons, has scheduled a series of informal Christmas concerts during the next two weeks at various military housing areas.

In addition, Christmas concerts have also been set for Dec. 11 at 2 p.m. at the Fort DeRussy Beach Bandstand and Dec. 19, at the Camp H.M. Smith Portico at noon.

The public, as well as Waikiki beachgoers, is invited to attend the concert at Fort DeRussy which will feature such musical selections as Sleigh Ride, White Christmas, 'Twas the Night Before Christmas and Mele Kalikimaka.

The schedule for the Christmas programs at selected military housing areas includes:

| Date | Time | Housing Area | Location |
|---------|-----------|-----------------|-----------------------------|
| Dec. 11 | 6 p.m. | Manana | Date & Elm Drive |
| Dec. 11 | 6:30 p.m. | Manana | Cedar & Birch Circle |
| Dec. 12 | 6 p.m. | Aliamanu Crater | Ball Field beside Shoppette |
| Dec. 12 | 6:30 p.m. | Aliamanu Crater | Rim & Pomelaiki Place |

Dec. 13 6 p.m. Kaneohe Bay
Dec. 13 6:45 p.m. Kaneohe Bay
Dec. 13 7:30 p.m. Kaneohe Bay

Dec. 13 8:15 p.m. Kaneohe Bay

Dec. 13 9 p.m. Kaneohe Bay

Dec. 15 6 p.m. Catlin
Dec. 15 6:30 p.m. Catlin
Dec. 16 6 p.m. Halsey

Dec. 17 6 p.m. Radford
Dec. 17 6:30 p.m. Radford
Dec. 18 6 p.m. Pearl Harbor

Dec. 19 6 p.m. Makalapa Drive

Dec. 19 6:30 p.m. Makalapa Drive

All residents of each of the above listed areas and their guests are cordially invited to attend.

Pancoat Place
Moses Street
Between Bancroft Drive & Blaine Drive
Between Parks Drive & McLennon Drive
Nimitz Road near CG's Quarters
Meyekord Place & Catlin
Kilmor Circle
Arizona Road & Anderson Court (near ball park)
Stonewall & Murray
733 Ney Circle
Vicinity of Quarters "A"
Quarters "17"
Quarters "35"

Take off for 30



You can count on the Corps.

SUPPORT RED CROSS

LET US Tune Your Engine!

BRAKE SPECIAL!

Most foreign and American cars. Including pads and shoes, repack bearings, grease seals, cut rotors and drums if necessary, inspect calipers, inspect master cylinder, bleed system, adjust emergency brake.
Reg. \$175.00

All 4 Wheels!!
\$119⁹⁵

TUNE-UP SPECIAL

Plugs, points and condenser replaced, inspect rotor cap wires, set timing, adjust carb, and general check.
SPECIAL

4-CYL. \$25. 6-CYL. \$35. 8-CYL. \$45

OIL CHANGE & FILTER SPECIAL!

Includes Oil & Filter!

For Most Foreign & Domestic Cars
\$20

NOW AT 33 ONEAWA ST. Kailua
262-0781

(Next to Times Coffee Shop & Bakery)



ANDY'S AUTO RECONDITIONING INC.



Specializing in Foreign Repairs

MAINLINER and TRAVEL HOLIDAY Award Winners

L'Auberge

French Cuisine

Superb Dining In A Charming Country French Manner

RESERVATIONS AFTER 2 P.M.

262-4835

Open: Wed. thru Sun. 6 p.m. to 10 p.m.

117 HEKILI STREET, KAILUA

Your Hosts: Marcel & Elvi Baltzer



TLA SPECIAL
Rooms w/FREE In-Room Movies & Rates starting at **\$35⁰⁰** + TAX

TLA accommodations conveniently located to all military bases featuring:

AIR-CONDITIONED ROOMS
COLOR TV
SWIMMING POOL
FREE PARKING
FREE AIRPORT TRANSPORTATION

Restaurant serving Breakfast, Lunch and Dinner with Children's Menu and Room Service available.

Complimentary Welcome Cocktail Parties!

TLA Information Receptionist in the lobby of the Hotel.

— also —

ASK ABOUT OUR SPECIAL MEAL PACKAGE AVAILABLE FOR TLA GUESTS.

THE PLAZA HOTEL
An Ironwood Resorts Hotel

"Call Us A Family Hotel"

3234 N. Nimitz Hwy.
Honolulu, HI 96819
Phone (808) 836-3636
An IRONWOOD Resort

Larc Records Company Presents:

The Chi-Lites

★ OH GIRL

★ HAVE YOU SEEN HER

★ STONED OUT OF MY MIND

5 Gold Lp's
17 Top 20 R&B Singles.



SQUIRREL MARSHALL GENE

ALL RANKS!

WINDWARD ENLISTED CLUB

Kaneohe Marine Corps Air Station

Saturday, December 10, 1983

Get Your Tickets NOW!

Advance \$7⁵⁰
At The Door \$10⁰⁰

Doors Open 7 PM
Showtime 9 PM

ALL-YOU-CAN-EAT!
Buffet 7-9 PM
\$5⁰⁰

For A Dickens Of A Christmas!

Buy or Sell your items

Phone 235-5881 or 622-3966

*15 ANNOUNCEMENTS

HALAU Hula O Polenekia has just started! Fridays only at Kahaluu Key Project 259-5697

HAVE SANTA CLAUS COME TO YOUR HOME! Give your children the best gift ever! A private visit with Santa Claus in your home. No pushing crowds - no standing in lines. Have Santa's full attention on your children. Reservations 261-2056

PENNY STOCKS
Offers great investments and opportunity. For free brochures, call 523-0938
Ask for G. Kobayashi
Aves. 735-3774
Cresley & Dunn, Inc.

*20 LOST & FOUND

FOUND: Portable radio at Hawaii Kai bus stop after Xmas parade Sat., Nov. 26. Call police lost & found to identify.

*25 PERSONALS

IF You want to drink, that's your business. If you want to stop, that's ours. Alcoholics Anonymous, Ph. 940-1438

HAVE SANTA CLAUS COME TO YOUR HOME! Give your children the best gift ever! A private visit with Santa Claus in your home. No pushing crowds - no standing in lines. Have Santa's full attention on your children. Reservations 261-2056

*35 PROFESSIONAL SERVICES

GOOD JOBS ARE AVAILABLE!
Professional resumes open doors
Military Specialists
Free Consultation
Computerized Job Lead Services
PROFESSIONAL RESUME SERVICE
735 Bishop St., #238 — 521-7901
"Established 1977"

CONTEMPLATING wedding bliss? Party, Shells Grading Co. Custom makes gowns for the bride & her maids. Prom & special occasion dresses. Call Maggie Ball at 247-4657 or 262-5779

HAVE SANTA CLAUS TO YOUR HOME! Give your children the best gift ever! A private visit with Santa Claus in your home. No pushing crowds - no standing in lines. Have Santa's full attention on your children. Reservations 261-2056

DIVORCE
Serving Oahu Since 1977
\$1100
533-4533
Half Attorney Sam Bridges
A Public Service Project

TOO LATE TO CLASSIFY

*25 PERSONALS

CHRISTMAS cleaning, low rates. Friendly service. Amy 362-7693

***68 GARAGE/LAUNDRY SALES**
SAT. 9-5 p.m., 1420 Auwahi St., Kailua, 262-7871, turn, clothes, misc.

FACTORY SALES OUTLET
SALE: All Candles 20% off, mens shirts \$13.95. Buy your bargains where your money stretches farthest! Mon-Sat. Factory Sales Outlet 46-174 Kahulapa St., Kaneohe, Ph. 247-4402, Hrs. 10 a.m.-4 p.m.

MOVING toys: Strawberry Shortcake; child's desk; quality baby girls clothes; small appliances; speakers; Barco lounge & more. Sat. only, 8 to 1 p.m., 583 Awakaa Rd., Kailua

GARAGE SALE: Dec. 10 & Dec. 17, 8 to 2 p.m., 41-113 Huli St., Waimanalo. Lots of clothes & household goods & misc. items.

MOVING Sale, large assortment furniture, clothes, kitchen appliances, art, much misc. Sat. & Sun. 9-3 p.m., Poinciana Manor, 1015 Aiea St., #302, Ph. 262-9242.

FULL set of Encyclopedia, men's shirts, women's clothing, figurines, numerous other items. Sat-Sun. 12/10 & 11, 10-5 p.m. 94-184 Kiana Pl., Milani.

MOVING Sale, Dec. 10 9-4 p.m. dining set, rocker/recl. desk, dresser, stereo, cameras & more. 45-367 Mokulele Dr., #47, 247-0531.

*76 RENTALS TO SHARE

KANEOHE: 2 bdrm. house to share, close to shopping & bus. Female preferred \$250 + utils. Call 235-1730.

***88 ROOMS FOR RENT**
WAHIAWA Studio, \$165 & \$185. Includes utils. Singles, 548 California Ave. 622-2857, 623-8745 after 4 p.m., Peter.

*98 RENTALS WANTED

COUPLE needs 1-2 bdrm. house, Windward area, up to \$450, occupancy 1/84. 261-8974.

WANTED: studio apt., Kailua/Kaneohe for professional working person, Call 235-0381 eves.

*126 MISCELLANEOUS

FACTORY SALES OUTLET
SALE: All candles 20% off, mens shirts \$13.95. Buy your bargains where your money stretches farthest! Mon-Sat. Factory Sales Outlet 46-174 Kahulapa St., Kaneohe Ph. 247-4402, Hrs. 10 a.m.-4 p.m.

WASHER \$158, dryer \$75, small 110 v. dryer \$55. 262-0324.

SEARS gas rotary mower, excl. cond., \$150. Call eves. 235-3171.

1983 KIRBY Vacuum, cost \$975, must sell, \$450. Ph. 941-1784, 537-5900

POINSETTIA for sale, Nani Loa Gardens Phone 247-4071

Xmas Craft Sale, Sat. Dec. 10, 9-1, 511 Kameka Loop, 261-0090.

*127 APPLIANCES

WASHER/Dryer, heavy duty \$350, refig. Frostless \$195. Both excellent. 923-1543

TOYOTA Celica, 4 spd., radio AGS037, \$995. Schuman Carriage 848-0902, 848-0903.

80 TERCEL, 2 dr., 4 spd., radio MDX858, \$2995. Schuman Carriage 848-0902, 848-0903.

75 TOYOTA Celica, excl. cond., no rust, \$5,000 ms. \$2550/offer. 235-0026.

*144 MUSIC SALES AND SERVICE

WIZARD Studios Xmas special, \$6/hr. rehearsal, big room, 4 track recording. 538-3102.

***147 SPORTING GOODS**
ROLLER Skates-Buildings \$75-like new-blue suede Sims wheels-stops-guards size 5 but fits to 6 1/2 261-5710 after 6 p.m.

***156 AUTO PARTS & SERVICE**
4 ET Mags with G60 TA radial tires, lug nuts included, excellent condition. \$350/offer. 395-4113.

***175 VANS, CAMPER & JEEPS**
COLEMAN Pop-top tent trailer. Must sell \$475. Call 261-3184, 261-4511.

*176 AUTOS FOR SALE

CHEVROLET
72 CHEVY, 4 dr., sdn., 350, good trans., must sell, \$500. 261-3184, 261-4511.

78 MONTE Carlo, auto, air, radio AGG563, \$2195. Schuman Carriage 848-0902, 848-0903.

78 CAMARO, auto, radio, Sharp! B/G348, \$3195. Schuman Carriage 848-0902, 848-0903.

70 MALIBU, 4 door, auto, new paint, excl. cond., \$475. 261-6906.

DATSUN

75 510 STATION wagon, auto, radio AGS035 \$1495. Schuman Carriage 848-0902, 848-0903.

DODGE

70 CORONET 440, 4 dr., auto. AYS538, \$4495. Schuman Carriage 848-0902, 848-0903.

FORD

70 MUSTANG II Ghia, 4 cyl, 4 speed, p/s, p/b, air, excl. cond., \$2150. 261-6906.

73 GRAN Torino Broughm, 4 dr., AGS036 \$595. Schuman Carriage 848-0902, 848-0903.

76 MAVERICK, 4 dr., auto, air, BGG478, \$1295. Schuman Carriage 848-0902, 848-0903.

76 FORD Granada Ghia, 2 dr., auto, B/GC114, \$1995. Schuman Carriage 848-0902, 848-0903.

78 FIESTA, good on gas. Call 944-8702. Ask for Don during work hours.

LINCOLN

72 MARK IV, all power, leather ACJ324, \$1495. Schuman Carriage 848-0902, 848-0903.

MAZDA

80 GLC MAZDA, good on gas. Call 944-8702. Ask for Don during work hours.

PLYMOUTH

69 SATELLITE Sta. wgn. auto., radio, ART580 \$495. Schuman Carriage 848-0902, 848-0903.

78 VOLARE, 4 spd., auto, radio, AAJ187, \$1995. Schuman Carriage 848-0902, 848-0903.

SUBARU

79 DL, 2 dr., 4 spd., radio BDD923, \$2195. Schuman Carriage 848-0902, 848-0903.

TOYOTA

81 GL Station wagon, auto, air, AJT152, \$4995. Schuman Carriage 848-0902, 848-0903.

TRIUMPH

70 TR7, 4 speed, air, AM/FM cassette, excl. cond., \$2150. 261-6906.



For A Dickens Of A Christmas!

Buy or Sell your items in Classified!

Call 235-5881 or 622-3966
to place your Ad!

*35 PROFESSIONAL SERVICES

REPAIRS, renovations, additions & consultations. Free estimate. By lic. contractor. 395-9057.

DESIGNER custom-made, all types of garments and alterations. Ph. 262-4949.

MASONRY-Free trimming. Stumpwork & driveway. All types of tree hauling. Sam. 847-8155.

RICK'S house cleaning & window washing. Reasonable rates. Limited openings. Call 262-0371.

MOVER-REPAIR other appliances. Free pickup and delivery. Salt Lake to Hawaii. Ph. 337-2541.

PAUL Special Super house cleaning service by exp. domestic engineers. We care. 36-6180, 254-2680.

SEWING Machine repairs. 23 years of experience. All makes. Ph. 261-3010.

HOME Cleaning, experienced with references. Weekly, bi-weekly, one time. 261-4264.

FELIPE Yard and Housecleaning. 2:00 and 8:00 p.m. KAKAMA, house cleaning, interior/exterior. Cleaning yards, painting. See references. Free est. No. 261-8964.

CARPENTRY, lending. All types of repair. Reasonable rates. Call Jacques 235-4002. Free est.

ATTENTION: Are you moving? Call GW-Sun for your house. GWS to pass inspection. 682-3787.

SATISFIED Yards Service. Call for fertilizing, topsoil, landscaping. Free est. 262-3324 anytime.

*35 PROFESSIONAL SERVICES

PREGNANT AND WORRIED? WE'LL HELP FREE P.G. TEST
Res. 9:00-5:00
487-7087, 538-3577
262-2171, 622-1532

I-LANDSCAPERS HAWAII The Professional Landscaping Gardeners, Commercial and residential. Landscaping, sprinkler systems, tree trimming, plant pest & disease control, wedding and other phases of maintenance. Call for capabilities and estimate. Lic. #C-08446. (Sun. 7:11-7:52 or Home 247-2496)

MAID To Please House Cleaning. Reasonable rates. Efficient service, prefer between Aveo & Pearl City. Call 481-2296.

FURNITURE & Cabinet making & repairs. Reasonable rates. Call Ray 261-8777 evenings.

EXOTIC HANDS Swedish Massage eliminates stress, aching muscles. Results "Total Relaxation". Lic. Therapist 925-9027. Relax. Xmas Gift Certificates.

K-I CUSTOM TAILORING & DRESSMAKING
Specialized Alterations for Men and Women.
Phone 942-4762
1110 University Ave.
(1st New Bank Bldg. Rm. 505)

HOME improvement-Ceramic tile, countertops, floorplans, concrete slabs, follow the lines, remodeling, painting. Free est. Charles 438-3340 9:00-5:00.

LAWN MOWER Repair, Waipahu to Makaha. Pick-up & deliver. Phone 571-5565.

COMPLETE Therapeutic Body Rub-Draws By European Specialists. By appointment only. Werner 528-2254.

*35 PROFESSIONAL SERVICES

DRESS making and alterations for men and women. Call anytime before 9:30 p.m. 262-7050.

HOME improvement: painting, repairs, flooring, wallpaper, 1 time cleaning. 262-5598.

BOOKKEEPING for small business. Finan. Stmt., Taxes, IBM Computer. Julie 734-0933.

"Busybodies" - LET US DO IT! - Rent A Housewife
Cleaning, water plants, load dogs, later, painting, wash windows, shopping, visit elderly, parties, etc. etc.
537-4858, 261-4966

*36 RESUMES

Dorothy Hazzard
Resumes & Business Writing
Free Consultation
947-8422
1550 Ryland St., #101
Across from Pagoda Hotel

*36 RESUMES

WINDOWARD RESUMES, ETC. PROMOTIONAL WRITING
261-7524
COMPLETE SERVICES
580 Hialeah St., Kaka, HI
Also open evenings and Saturdays

*45 SCHOOLS & TRAINING

CHALLENGE yourself to a "DAY OF DISCOVERY." Non-Competitive Initiative Games develop leadership & communication skills, trust & confidence. A half-day outdoors for adults age 13 and up. Call Bill at 235-5881 to leave a message, 262-9457 evs., for full info and application form. FUN!

PIANO - ORGAN LESSONS
For free orientation lesson
Call John Schouten
in Kaneohe: 247-6010
downtown at Baldwin:
521-0325

*45 SCHOOLS & TRAINING

SEWING classes at Chic Mode. Dresses in Pearl City. Mon. to Sat. Call 455-2045.

RADIO Production &/or drama classes. Call 262-0888. Ask for Bill.

PIANO, accordion, clarinet & guitar lessons. Call 423-1252.

GIRLS

8-16 years
Train for a full year as a "Hoonani Hula Maid" tuition free for a new Hula School opening in January. Must be able to do steps of the hula and most implements.
Tryouts Dec. 28-29-30
Call
261-9021

ATTN: Wood craftsman. You purchase power tool, equip. \$10,000. We buy back all you produce. Free rent. Ph. 638-9134 or 638-7941.

*50 BUSINESS OPPORTUNITIES

EARN extra income. Full/part time. Call 455-1796. (Leave message).

MAKE MONEY WORKING AT HOME!! Be flooded with offers! Details - rush stamped, addressed envelope. Dennis Donovan, Dept. 5, Route 3, Box 846, Smithfield, VA 23430.

*60 HELP WANTED M/F

BETTY'S PERSONNEL SERVICE
Needs clerical, receptionists, cashiers, messengers, clerks. NO FEE on temporary fee on permanent placements. Ph. 523-1617.

HAWAIIANA teacher needed immediately for small private school. Ph. 732-7744.

HAIR Stylist, progressive salon, advanced classes & video tapes. Hair in Motion, Kaneohe. 235-6611.

WANTED: Permanent, part-time office person for established State Farm Agency. Insurance background desired. Kailua. Call 261-5889.

SECRETARY for townhouse in Hawaii Kai, part time, hours flexible. Call 395-6996.

Holiday Special
EXECUTIVE HEALTH CLUB & MASSAGE
Grand Opening
Lic. Therapeutic Masseuse
\$10 OFF expires 12/31/83
486-0200 486-0600
Open 24 hrs. 36-1234 Kahanamoku St. 2nd floor Above Midas Muffler

Find fellowship with us...

Experience the real meaning of Christmas. The Sun Press will be featuring a special Christmas Church section for various religious services and events around the island. Your service will target into active suburban households in your area. Contact Susie at 235-5881 for our Church rate and to place your reservation.

Publication Date: December 21
Space Deadline: December 16

235-5881

Sun Press
Publishers of Hawaii Navy News, Hawaii Marine, Hawaiian Falcon, Waipahu Sun News, Waiānae Sun Times, and the Sun Press newspapers.

PEARL CITY
COLLEGE GARDENS
OCCUPANCY IN JANUARY
PRICED BELOW APPRAISAL
VA-FHA approved starting at \$89,850. Spacious 2 bed-room, 2 bath ranging from 984 to 1,013 sq. ft. Hula Mae funds available. Investors welcome. Leasehold.
Equal Housing Opportunity
OPEN: 10-1:00 on Sat. 2-5 on Sun.
Follow signs to
Loeward Community College, Waiawa Rd.
488-1996, 455-1065
LUKE & LUKE

WHAT IS THE REAL ESTATE OUTLOOK FOR 84?
WHAT MAKES BETTER HOMES & GARDENS DIFFERENT?
HOW WILL INDUSTRY CHANGES EFFECT YOU IN 84?
A Career Night and Christmas Social for new and experienced agents will be held in our 615 Piikoi Training Center at 7 p.m. on December 15th. (If you can't attend, call for a personal interview). Learn about Better Homes and Gardens and what we're doing to make 1984 more successful for our agents. Call Joni today at 524-3333 to reserve your seat and a cup of THE BEST EGG NOG IN TOWN!
HALE KOA Better Homes Realty, Inc. and Gardens.

HEY KIDS! ENTER OUR EXCITING COLORING CONTEST!
Entries to be postmarked no later than Fri., Dec. 9.
Ages 2-4 years of age. Ages 5-7 years of age.
1st prize... A "loaded" piggy bank. 1st prize... A Cocoa mug with kisses.
2nd prize... A Cocoa mug with kisses. 2nd prize... A digital watch.
3rd prize... A digital watch. 3rd prize... cocoa mug with kisses.
All winners will also receive a Frisby, pizza coupons, a large supply of coloring paper. Prizes to be awarded Dec. 16. Winners should be present.

3 Age Groups. 6 Winners!
Ages 2-4; 5-7; 8-10

My name is: _____
I am _____ years old.
Parents, please complete:
Name _____
Address _____
Phone _____

Send all entries to the Sun Press
Sun Press families & Carriers not eligible.

Attn: Christopher McMahon
46016 Alaloa St.
Kaneohe, HI 96744

Area Managers Needed For Circulation Department Of Growing Weekly Newspaper.
Part-Time Positions
Openings in Pearl City/Aiea and Kaneohe. Work with children. Must have van, truck or station wagon. Good salary, gas allowance and bonus.
For appointment contact Linda Bulatao, Circulation Manager.
Sun Press Newspapers
Publishers of Hawaii Navy News, Hawaiian Falcon, Hawaii Marine, Waiānae Sun Times, Waipahu Sun News and Sun Press
46-016 Alaloa St., Kaneohe, HI.
235-5881
An Equal Opportunity Employer

DON'T GIVE UP

Check out the **SUN PRESS** car section for a sporty new car or truck. We've got a good selection to choose from—so—don't give up, check us out!

10-GOOD REASONS
why your boy or girl should have a newspaper route

1. To earn money.
2. To learn self-reliance.
3. To learn to keep records, and to apply in a practical way math taught in the classroom.
4. To learn to handle money and appreciate its value.
5. To learn to be on time and how to ration time.
6. To learn courtesy and how to get along with people.
7. To learn marketing principles and salesmanship.
8. To experience the principles of the "free enterprise" system.
9. To be operating "a business" of their own.
10. To become sharper, brighter, more mature.

For information on newspaper route management for your son or daughter, phone or visit our Circulation Department. They will be pleased to give you full details on available routes.

Sun Press
Publishers of Navy News, Hawaiian Falcon, Hawaii Marine, Central Military, Waiānae Sun Times, Waipahu Sun News and Sun Press newspapers.
235-5881



*60 HELP WANTED M/F

***ATTENTION* MILITARY**

Broke Even on Pay Day?
Military Men
Military Wives
Never Enough Money?
Want to spend the
CHRISTMAS HOLIDAY
with Mom & Dad?
Earn Extra Money
Part-time
\$6 per hour
5:30 to 9:00 p.m.
Mon. thru Fri.

We need part time workers immediately to train for our newly established "Discount Buying Warehouse Outlet". Specializing in clothing, jewelry, radios, televisions, toys, baby furniture and many more appliances. Following areas available: Honolulu, Pearl Harbor, Salt Lake, Wahiawa, Barbers Point, and KMCAS. Other benefits include: Advancement, Bonuses and Incentive Pay.

Call
486-0173
 ask for Judy

*63 SITUATIONS WANTED M/F

CHILD CARE in my Kaneohe home. Lots of love & attention. Any age. Call 247-4200.

WILL babysit in my Schofield home, good care, hot meals. Any age. 624-4353, 624-3578.

RESPONSIBLE Mother will babysit in my home, Hickam Air Force Base, any age. Ph. 423-1882.

MINISTER's wife will babysit in my Kaneohe home, ages 1-5. Our 4 yr. old daughter would love a playmate! 235-0560.

CHILD CARE Mother will babysit in KMCAS home. Any age, Mon.-Fri. Ph. 254-5063.

IRONING SERVICE
 pickup & delivery
 in Kailua
 flat rate
 Call Charlie 261-3617

*68 GARAGE/LANAI SALES

MOVING Sale: Everything must go! Sat. Dec. 10, 8-3:30. Auwahi Rd., Kailua.

MULTI-FAMILY Safe-hand-crafted Xmas ornaments, quality furniture-contemp. sofa & chair, marble lamp table, gold velvet caneback chairs, modern 5 light chandelier, glass coffee table, gold rococo hallway mirror & console, 15" stereo speakers, turntable, weight-lift bench, 5x7 area rug, folding tables, 10 cup rice cooker, loads of miscellaneous. Fri. & Sat. Nov. 9 & 10 at 48-099 Ipuksa St. 235-1464, 235-3524.

DECEMBER 10, 7 a.m., 212 Kuumele Pl., Kailua. Tools, furniture, baby things, household.

GARAGE Sale: Sat. Dec. 10, 9-4, 101 Koko Isle Circle, Hawaii Kai. Many toys, furn., clothes, misc.

SAT., Dec. 10, 8-noon only. Xmas tree, rope, plumb, tools, shutters, etc. 5192 Koa Dr., Kailua. 261-1952.

SAT., Dec. 10, Christmas Sale, clothes, toys, crafts, 10-4 p.m., 526 Kautani Way, Kailua.

CHRISTMAS Magic Boutique Craft Sale: Dec. 10 & 11, from 9 to 3, 120 Maunaloa Ave., Kailua.

YARD Sale. Cameras & equip., jewelry, furniture, toys & misc. items. 877 Kailua Dr., Kailua. Sat., Dec. 10, 9 to 2.

*68 GARAGE/LANAI SALES

CHRISTMAS Swap Meet, 548 Kipuka Pl., Kailua. Sat. 8 to 3. Toys, clothes, old & used goods & misc. items.

MOVING Sale: Sat. 8 to 4, 7103 Kamilo St., Hawaii Kai. Misc. items at bargain prices.

MOVING Sale, Sat. Dec. 10, 8 a.m.-3 p.m., 2323 University Ave., a/c, 2 cars, furn., misc.

ASS'T. clothing, plants, books, misc. items. Dec. 7 to Dec. 11, 9-3 p.m., 750 Kahoa Dr., Ph. 261-2976.

KAAWA COUNTRY CRAFT FAIR
 Sat., Dec. 10, 1983
 10 a.m. to 4 p.m.
 Swanzy Beach Park
 Kaaawa

CALIFORNIA King waterbed w/heater, 1980 Deluxe Pontiac Phoenix, dishwasher, gym locker, dresser, boys Schwinn bike, kitchen misc., toys, clothing, etc. Sat. 9-3 p.m., 420 Manono St., Kailua. 262-9455.

SAT. & SUN. 12-4 p.m., 46-365 Kahupia St., Kaneohe. Toys, stereo, etc.

KAILUA, 1323 Nanawale Pl., 12/11, 7-12. Baby furn., exc. cond., & other great deals!

CHRISTMAS Craft Sale, Dec. 10, 9-3 p.m. 1542 Akaia St., Kailua.

DEC. 10, 9-2, dinette set, furn., misc. 94366 Makapipi St., Mililani. Great Buy!

MOVING: Must sell everything, 556 Iliana St., Kailua, 1 block off Mokapu. Fri. Dec. 9, 1 p.m. to 6 p.m. 263-4316.

ANNUAL Plant & Rummage Sale, Sat. 12/10, 9-4, 710 Green St., Makiki. Sponsored by Easter Seals.

CHRISTMAS & YARD SALE: gifts, plants, macramé, bottle gardens, hanging & misc. items. Also clothes, most 25¢, 50¢ some FREE! 9-3 p.m. Sunday only, 12/11, 226A N. Kailua Dr., Kailua.

*68 GARAGE/LANAI SALES

20% OFF NOW TILL XMAS. All ready frames & art supplies/posters. Lots of beautiful koi. Four Corners Custom Picture Framing. 127A Heikili St., Kailua. Ph. 261-7902.

CHRISTMAS CRAFT SALE
 Sat., Dec. 10, 9 to 5
 573 Ulukahu St.
 (Olomana) Kailua

*73 APTS. FULLY FURN.

PUNALUU Beach front, 1 bdrm., util., security, \$380. 254-3994 or 261-5807.

ATTENTION All areas, sizes, prices, kids/pets no problem. 943-0993 RENT MART, Inc.

*74 APTS. UNFURN.

KAILUA: Unfurnished small studio for single, no pets, \$350 incl. util. & parking. 261-1454

*75 APTS. PART. FURN.

RENTAL GUIDE 523-6711 Oahu's oldest & largest rental service. Fee.

1 bdrm. LARGE unit in four plex unit, parking, util. furn., close to everything. Call oven. 261-5536.

ATTENTION All areas, sizes, prices, kids/pets no problem. 943-0993 RENT MART, Inc.

*76 RENTALS TO SHARE

KAILUA, room for mature working oriental woman preferred. Call after 6 p.m. 262-8592.

LIBERAL male has home in Kaneohe to share w/same. Call 235-4720.

KAILUA: Working single mother share 3 bdrm. Kuaie Track home - master bdrm., bath avail., \$300 mo. + util., single working female preferred. 262-4728 after 8 p.m.

*76 RENTALS TO SHARE

AIEA: Single professional or couple to share beautiful large waterfront home. Fully furnished, all conveniences including boat dock. 486-0779.

*83 HOUSES PART. FURN.

RENTAL GUIDE 523-6711 Oahu's oldest & largest rental service. Fee.

ATTENTION All areas, sizes, prices, kids/pets no problem. 943-0993 RENT MART, Inc.

GRAND-New studio party furnished, walk to beach, \$450 month + 1/2 security deposit, includes utilities & cable. 261-3001

4 BDRM., 2 bath near Kailua beach \$1000 a month. Call 525-8054 or 261-3945.

*85 CONDOS/TOWNHOUSES PART. FURN.

95-273 WAIKALANI Dr., 3 bdrm./2 bath, partly furn. townhouse, rent incl. water. 5850. John 623-0111.

RENTAL GUIDE 523-6711 Oahu's oldest & largest rental service. Fee.

MILILANI, deluxe townhouse on golf course, 2 bdrm./2 bath, garage, great view, \$850. 947-3106.

WELL maintained condo w/view of bay, UNF. incl. \$700/mo., deposit required. 474-2101, 235-6340 aves.

BEACHFRONT
 2 Bedrooms, 2 Bath Condo
 Starting at \$785
 Lee Greenbaum
 Realty, Inc.
 523-9406

*88 ROOMS FOR RENT

KANEKOE: Room furnished share bath/kitchen, lovely setting, no children, \$200 includes util. 247-5893.

*83 VACATION RENTALS

KUILIMA 1 bdrm. fully furnished apt., no pets. Call 239-8539.

*93 VACATION RENTALS

LANIKAI - nr. beach, 1 bdrm., deck, gardens, avail. 12/21. \$165/week, \$610/month. 262-7254.

*98 RENTALS WANTED

KUILIMA: 1 bdrm. apt., sleeps 4, amenities. Daily/Weekly/Monthly. Call 235-1481.

MOLOKAI Wave Crest, sleeps 4, beach, pool, \$30 day, \$190 per week. Ph. 235-8699.

VACATION Rental, studio cottage, near Kailua beach, \$25 day, 261-5174.

BEACHFRONT Condo, near Crouching Lion, Week/month, pool. Ph. 235-6196.

BED & Breakfast in Aiea Hgts., close to military bases, priv. lg. room w/bath, quiet cool, 3 day minimum or mo. rate. 487-1662, 535-0909.

KAILUA, 1 bdrm. cottage, 2 quiet adults only, 1 block to beach, \$225/week. 262-4287.

KAILUA, near beach, 3-4 bdrm., 2 bath, \$250 per wk. Call 525-8054 or 261-3945.

*98 RENTALS WANTED

WANTED TO RENT: partly furn., mature responsible professional man is seeking a 1 bdrm. 1 bath cottage, approx. \$275/mo. or 3 bdrm., 2 bath house approx. \$600/mo. Long term only. Last rental lasted 10 years. All small repairs & maintenance performed, yard work and landscaping, minor painting, carpentry and plumbing taken care of. Excellent tenant. Friendly and quiet, with pet bird, own furniture. Call 235-5881 days with message, 262-9457 nights, ask for Bill.

*98 RENTALS WANTED

RESPONSIBLE Local family needs house or apartment for \$550. Milani/Wahiawa area. Will rent for a long time. Ph. 623-7757.

*103 OFFICE FOR RENT

KANEKOE office space for lease, excellent rates. 154 sq. ft. to 265 sq. ft. Call Phil 533-7468.

*108 BUSINESS PROPERTY FOR SALE OR RENT

Severest/Ackerson & Assoc. Inc.

988-6822
 Courtesy to brokers.

*114 REAL ESTATE FOR SALE

MTN View Condo, 3-bdrm, 1 1/2 bath, 970', \$80,000, assum \$70,000. Defer equity. 254-1833.

*108 BUSINESS PROPERTY FOR SALE OR RENT

LOCATION - MORE BUSINESS! WHOLESALE PROFESSIONAL & OFFICE CENTER

Strategically located in the hub of expanding Kaneohe near Windward Mall. Liberal construction benefits. Keep your professional edge. Call us today.

Severest/Ackerson & Assoc. Inc.

988-6822
 Courtesy to brokers.

*114 REAL ESTATE FOR SALE

MTN View Condo, 3-bdrm, 1 1/2 bath, 970', \$80,000, assum \$70,000. Defer equity. 254-1833.

*114 REAL ESTATE FOR SALE

\$59,500 1 br. 1 ba. fee for bachelor or couple. Waikeala. ML339643.

\$130,000, 4 br. 2 ba. fee. Ewa Beach, ML331210.

\$150,000, 4 br. 2 ba. fee. Waikeala, assume VA mortgage w/o subs. MLS New Glen S. Fontillas, (RA) 456-1346, Tanega Realty, Inc.

LAKEVIEW, lowest price 3 bdrm/2 bath townhouse has assumable FHA loan, is AHUIMANU GARDENS, no down needed on agreement of sale. 3 bdrm/1 bath is home. PEARL RIDGE GARDENS & TOWER, 1 bdrm/1 bath, well maintained unit, air, impressive view of Pearl Ridge area. All homes covered by ERA Buyer's protection plan. ERA Magnum Properties, Al Whalen (RA) 261-7475.

DENTAL CARE—EYE CARE

—up to 40% OFF—

Top quality professional care at low cost thru the Armed Forces Benefit and Aid Association

Serving the Military community since 1960.

Call 487-7227

Put a great gift under the tree... give computer literacy!

HPC'S HOLIDAY COMPUTER CAMP

By request, for the first time ever, Hawaii Pacific College will present the "Holiday Computer Camp." This "camp" has been designed to give each participant (intermediate school level students on up to adults) hands-on experience with a computer, and an opportunity to learn how computers work and why their use is growing so rapidly. Each one-week, fifteen hour session meets every day, Monday through Friday.

Session 1: December 19-23
Session 2: December 26-30
Session 3: January 2-6
Time: 2-5 p.m.

Session 4: January 9-13
Time: 5:30-8:30 p.m.

All sessions will be presented in classroom 301 of the Hawaii Pacific College Building, 1166 Fort Street Mall, 3rd Floor. The computer labs will meet in HPC's Computer Center in the same building on the 2nd Floor.

COST IS AS FOLLOWS:

| | |
|----------------------------------|--------------|
| Single Adult or Single Child |\$99 |
| Parent Accompanying Children |89 |
| Second Child, Same Family |89 |
| Third Child or More, Same Family |each 79 |
| Senior Citizen (60 on up) |79 |

a presentation of
HAWAII PACIFIC COLLEGE
 For Further Information and a Brochure
 Call the Special Programs Office at 544-0206

ART AROUND THE ISLAND

KOKO MARINA SHOPPING CENTER

(Between Especially for You and Kupu Drygoods)

NOW THRU DECEMBER 24

Nov. 30-Dec. 18 Mon.-Fri. 10 AM to 7 PM Sat. & Sun. 10-5

Dec. 19-23 Mon.-Fri. 10 AM to 9 PM Sat. & Sun. 10-5

CHRISTMAS CRAFT FAIR

Dec. 10, 9 a.m. to 9 p.m.

Christmas trees, wreaths, crafts, bake goods, food, fun. Something for everyone.

Calvary Christian School
 1215 Ala Aolani St.,
 H-1 Freeway at Red Hill exit.
 Phone 839-2656

CHRISTMAS CRAFT FAIR

Dec. 10, 9 a.m. to 9 p.m.

Christmas trees, wreaths, crafts, bake goods, food, fun. Something for everyone.

Calvary Christian School
 1215 Ala Aolani St.,
 H-1 Freeway at Red Hill exit.
 Phone 839-2656

CHRISTMAS CRAFT FAIR

Dec. 10, 9 a.m. to 9 p.m.

Christmas trees, wreaths, crafts, bake goods, food, fun. Something for everyone.

Calvary Christian School
 1215 Ala Aolani St.,
 H-1 Freeway at Red Hill exit.
 Phone 839-2656

CHRISTMAS CRAFT FAIR

Dec. 10, 9 a.m. to 9 p.m.

Christmas trees, wreaths, crafts, bake goods, food, fun. Something for everyone.

Calvary Christian School
 1215 Ala Aolani St.,
 H-1 Freeway at Red Hill exit.
 Phone 839-2656

CHRISTMAS CRAFT FAIR

Dec. 10, 9 a.m. to 9 p.m.

Christmas trees, wreaths, crafts, bake goods, food, fun. Something for everyone.

Calvary Christian School
 1215 Ala Aolani St.,
 H-1 Freeway at Red Hill exit.
 Phone 839-2656

CHRISTMAS CRAFT FAIR

Dec. 10, 9 a.m. to 9 p.m.

Christmas trees, wreaths, crafts, bake goods, food, fun. Something for everyone.

Calvary Christian School
 1215 Ala Aolani St.,
 H-1 Freeway at Red Hill exit.
 Phone 839-2656

CHRISTMAS CRAFT FAIR

Dec. 10, 9 a.m. to 9 p.m.

Christmas trees, wreaths, crafts, bake goods, food, fun. Something for everyone.

Calvary Christian School
 1215 Ala Aolani St.,
 H-1 Freeway at Red Hill exit.
 Phone 839-2656

CHRISTMAS CRAFT FAIR

Dec. 10, 9 a.m. to 9 p.m.

Christmas trees, wreaths, crafts, bake goods, food, fun. Something for everyone.

Calvary Christian School
 1215 Ala Aolani St.,
 H-1 Freeway at Red Hill exit.
 Phone 839-2656

CHRISTMAS CRAFT FAIR

Dec. 10, 9 a.m. to 9 p.m.

Christmas trees, wreaths, crafts, bake goods, food, fun. Something for everyone.

Calvary Christian School
 1215 Ala Aolani St.,
 H-1 Freeway at Red Hill exit.
 Phone 839-2656

CHRISTMAS CRAFT FAIR

Dec. 10, 9 a.m. to 9 p.m.

Christmas trees, wreaths, crafts, bake goods, food, fun. Something for everyone.

Calvary Christian School
 1215 Ala Aolani St.,
 H-1 Freeway at Red Hill exit.
 Phone 839-2656

CHRISTMAS CRAFT FAIR

Dec. 10, 9 a.m. to 9 p.m.

Christmas trees, wreaths, crafts, bake goods, food, fun. Something for everyone.

Calvary Christian School
 1215 Ala Aolani St.,
 H-1 Freeway at Red Hill exit.
 Phone 839-2656

CHRISTMAS CRAFT FAIR

Dec. 10, 9 a.m. to 9 p.m.

Christmas trees, wreaths, crafts, bake goods, food, fun. Something for everyone.

Calvary Christian School
 1215 Ala Aolani St.,
 H-1 Freeway at Red Hill exit.
 Phone 839-2656

CHRISTMAS CRAFT FAIR

Dec. 10, 9 a.m. to 9 p.m.

Christmas trees, wreaths, crafts, bake goods, food, fun. Something for everyone.

Calvary Christian School
 1215 Ala Aolani St.,
 H-1 Freeway at Red Hill exit.
 Phone 839-2656

CHRISTMAS CRAFT FAIR

Dec. 10, 9 a.m. to 9 p.m.

Christmas trees, wreaths, crafts, bake goods, food, fun. Something for everyone.

Calvary Christian School
 1215 Ala Aolani St.,
 H-1 Freeway at Red Hill exit.
 Phone 839-2656

CHRISTMAS CRAFT FAIR

Dec. 10, 9 a.m. to 9 p.m.

Christmas trees, wreaths, crafts, bake goods, food, fun. Something for everyone.

Calvary Christian School
 1215 Ala Aolani St.,
 H-1 Freeway at Red Hill exit.
 Phone 839-2656

CHRISTMAS CRAFT FAIR

Dec. 10, 9 a.m. to 9 p.m.

Christmas trees, wreaths, crafts, bake goods, food, fun. Something for everyone.

Calvary Christian School
 1215 Ala Aolani St.,
 H-1 Freeway at Red Hill exit.
 Phone 839-2656

CHRISTMAS CRAFT FAIR

Dec. 10, 9 a.m. to 9 p.m.

Christmas trees, wreaths, crafts, bake goods, food, fun. Something for everyone.

Calvary Christian School
 1215 Ala Aolani St.,
 H-1 Freeway at Red Hill exit.
 Phone 839-2656

CHRISTMAS CRAFT FAIR

Dec. 10, 9 a.m. to 9 p.m.

Christmas trees, wreaths, crafts, bake goods, food, fun. Something for everyone.

•114 REAL ESTATE FOR SALE

MARGARET LOCKRIDGE
Real Estate Service
You Show We Transact 1 1/2%
You Save
262-5403

PERFECT for right buyer. 1 acre 16 land in beautiful Makaha Valley. Spacious 3 bdrm. home which offers potential for expansion. Terms open. Call State Realty, 671-5461. (Phone) Saucerman, 695-8749 (RA)

BY Owner, lovely home, quiet cul-de-sac, 3 bdrm./2 bath, fireplace, jacuzzi, near Kailua beach, \$190,000. 262-6430 eyes.

ATTN. ALL MILITARY PERSONNEL ENJOY HAWAII TO THE MAX! Move into this large 3 bdrm., 2 bath home w/reading rm./den, secluded in quiet neighborhood, only 2 blocks from beach! - shopping, NO DOWN, V.A. AVAILABLE. NOW! Wilson-Gay & Assoc. Realtors, Joe Washington (RA) 623-5862.

2 TEN acre wooded parcels in Washington State, low down, take over payments. Call 696-7873.

NO CASH NEEDED
(To purchase a home of your own for active duty military and veterans select from one of the many 1/4 acre parcels available in your area. Call today for more information. **John Polakoff (RI)** SHERLOCK HOMES REALTY CO 254-1100 OR 254-2770

•118 JEWELRY & CLOTHING

ANTIQUE jewelry for sale - Also have precious & semi-precious stones. 261-2546 for appt.

•120 FURNITURE

SALE!! Dining rm. set, monkey pod coffee table, table & chair, bdrm. set & more. 239-9936 eyes.

SOFABED, \$175. Call evenings after 5 p.m. 262-0673

BEAUTIFUL Large 1700 Spanish furn. includes bar See-make offer. 422-7430.

PREMIER Quail, Chippendale rattan, 2 settings, 6 piece dining. Offer. 422-7430.

SIMMONS Hixendox sofa, \$300, coffee table & end table \$200. Call after 4 p.m., 254-3490.

POWER lawn mower \$75, 2 table lamps \$20 each, wood water \$75, stereo \$75, California slab tables \$75, Isral end table \$45, 12 x 12 white bear rug \$75, night stands \$50 each, golf balls. 623-8538, 9 to 5.

DINETTE set w/4 chairs, butcher block top w/4, paid \$150, sell \$75, like new. 261-8092

SOFA & hide-a-bed, \$50 each, or best offer. Call 422-2662.

LARGE spindle wall unit \$149; gsm. cabinet \$125; electric defrost cooler, excl. cond. \$59. 488-1985

BEAUTIFUL, like new Oriental style bdrm. furniture, 2 nightstands w/2 drawers ea.; 1 dresser & 6 drawers \$475 for all. 235-2807, 239-6070

SMALL apartment dryer 110V, like new \$125; large heavy duty dryer \$99; small 6 cu. ft. rfr. \$89. 488-1985

DREXEL 5 p.c. dining set \$249; pecan 7 p.c. dining set \$199. Call 488-1985

SOLID maple wagon wheel bunk bed set \$249; 19" B/W TV \$69. Call 488-1985

9' GREEN Velour sofa, \$75. Call 395-8870

3 PIECE Bedroom suite \$425; drop-leaf dining table w/4 chairs, \$150; coffee table, cherry, \$95; queen w/chair, maple, \$100; queen sofa sleeper, \$400. Ph. 450-9372 eyes.

QUEEN size mattress - foam, clean, low mileage. Best offer over \$50. Ph. 235-5852 evenings.

KING size brass rotation bed w/box springs, excellent cond., \$875. 488-0779

RATTAN Couch - 4 p.c. sectional, new upholstery, \$275; woven rattan lounge chair, pullout foot rest, new. \$125. Ph. 263-4569

QUEEN size water bed, \$230. Call 235-1510

SOFABED; queen bed; chair; tables; wall unit; bicycle, much more. 261-6961, 262-8502

FREE PICKUP & CASH \$ for good used furniture Rattan, wicker & beds 261-8492 or 247-1937

VACUUM CLEANERS SPECIAL
10% Off on Repair
Get Cleaned up for Holidays
Repair most makes & models
Kirby Center of Oahu
146 Hekili St., Kailua HI
262-2011
Rebuilt Kirbys For Sale and Used Vacuums Cleaners

SLIM DOWN FOR THE HOLIDAYS!
With the most successful weight loss program in the world.

WEIGHT WATCHERS
START NOW! 955-1588
1522 MAKALDA ST., SUITE 210, HON., HI 96814

FREE PICKUP & CASH \$ for good used furniture Rattan, wicker & beds 261-8492 or 247-1937

VACUUM CLEANERS SPECIAL
10% Off on Repair
Get Cleaned up for Holidays
Repair most makes & models
Kirby Center of Oahu
146 Hekili St., Kailua HI
262-2011
Rebuilt Kirbys For Sale and Used Vacuums Cleaners

SLIM DOWN FOR THE HOLIDAYS!
With the most successful weight loss program in the world.

WEIGHT WATCHERS
START NOW! 955-1588
1522 MAKALDA ST., SUITE 210, HON., HI 96814

FREE PICKUP & CASH \$ for good used furniture Rattan, wicker & beds 261-8492 or 247-1937

VACUUM CLEANERS SPECIAL
10% Off on Repair
Get Cleaned up for Holidays
Repair most makes & models
Kirby Center of Oahu
146 Hekili St., Kailua HI
262-2011
Rebuilt Kirbys For Sale and Used Vacuums Cleaners

SLIM DOWN FOR THE HOLIDAYS!
With the most successful weight loss program in the world.

WEIGHT WATCHERS
START NOW! 955-1588
1522 MAKALDA ST., SUITE 210, HON., HI 96814

FREE PICKUP & CASH \$ for good used furniture Rattan, wicker & beds 261-8492 or 247-1937

VACUUM CLEANERS SPECIAL
10% Off on Repair
Get Cleaned up for Holidays
Repair most makes & models
Kirby Center of Oahu
146 Hekili St., Kailua HI
262-2011
Rebuilt Kirbys For Sale and Used Vacuums Cleaners

SLIM DOWN FOR THE HOLIDAYS!
With the most successful weight loss program in the world.

WEIGHT WATCHERS
START NOW! 955-1588
1522 MAKALDA ST., SUITE 210, HON., HI 96814

FREE PICKUP & CASH \$ for good used furniture Rattan, wicker & beds 261-8492 or 247-1937

•120 FURNITURE

FURNITURE WANTED TOP CASH \$\$\$
for dressers, beds, rattan, wicker, etc.
Call Mon-Fri. 8 a.m. to 5 p.m. 247-6621

DINING Room set, table & 6 chairs, \$150. Ph. 235-1044

PARADISE USED FURNITURE
Double sofa bed \$125, king bed \$100, crushed velvet chaise lounge \$195, wall-away recliner \$200, rattan couch \$195, 4 p.c. rattan liv. rm. set \$300, rattan buffet \$125, 5 p.c. rattan dining set \$295, 3 p.c. rattan drop leaf dining set \$250, 5 p.c. game table set \$295, 5 p.c. Country style dining set \$350 & \$375, rattan dining chairs \$35 ea., Korean chest \$195, old style rattan couch & chair \$225, 8' conference table \$200, pecan buffet \$125, elec. dryer, wicker \$125, elec. dryer, wicker \$100 & \$125, sewing machine, w/cabinet \$95, glass top china hutch \$75, queen, king bed frames, new, \$30, also lamp, tables & more. 261-6882, 340 Uniu. St., Kailua. WE ALSO BUY USED FURNITURE.

\$\$\$ CASH \$\$\$
for used furniture
beds
Rattan & Wicker
834-1080

LARGE solid teak amoire chest, excl. cond. \$500. Sealy king bed \$149. 488-1985

NIMITZ USED FURNITURE
Large selections of quality home furnishings at low prices. We are easy to find. 3154 No. Nimitz Hwy. (between Ramada Inn & Lagoon Drive). Open every day 834-1000

UNIQUE barrel bar w/padded rail & 2 bar stools \$249. Call 488-1985

SOLID Mahogany sofa, 2 chairs, coffee table, end table, new covers \$299. 488-1985

SOLID wood desks \$59; large selections of dining sets from \$79 to \$199. 488-1985

UNIQUE solid oak Bentwood wall unit w/4 glass shelves \$149. Call 488-1985

TWIN from \$39; double \$49; queen & king available w/frams. Ph. 488-1985

REWARD \$5 to \$5000
For your furniture in good condition.
We buy it all and pickup free islandwide.
488-1985
10-6 p.m. any day

•126 MISCELLANEOUS
HAVE SANTA CLAUS COME TO YOUR HOME! Give your children the best gift ever. A private visit with Santa Claus in your home. No pushing crowds - no standing in lines - Have Santa's full attention on your children. Reservations 261-2056

KAHANAHOU Craft & Food Fair Sat. & Sun., Dec. 10 & 11, 9 a.m.-5 p.m., handmade & decorated clothing, Xmas ornaments, pottery, toys, gifts & lots more! Also featuring Santa Claus for kids. 45-929 Kahanahou Cir., Kaneohe

DINETTE: 4 chairs, \$35; hemlock blue. Little girl's bike, \$12. 262-0544

ANNUAL Plant & Rummage Sale, Sat. 12/10, 9-4. 710 Green St., Makiki. Sponsored by Easter Seals.

CHAIRS, tables, bookcases, desk, luggage. 247-2898

78 MOPED Vespa Grande, good cond., runs excl., \$350. 636-6910

CLARINET \$80, Acme Juicer, both like new, large US flag w/stand. 262-9948

FOR Sale: Boys' MongOOSE bike \$100. Call 261-7440

WROUGHT Iron aquarium stand, 10x20 gallon, \$30, like new. 624-4879

HAVE SANTA CLAUS COME TO YOUR HOME! Give your children the best gift ever! A private visit with Santa Claus in your home. No pushing crowds - no standing in lines. Have Santa's full attention on your children. Reservations 261-2056

20% OFF TILL XMAS! Already made frames & art supplies/posters. Lots of beautiful koa. Four Corners Custom Picture Framing, 127A Hekili St., Kailua. Ph. 261-7902

•126 MISCELLANEOUS
MARY Kay Cosmetics, complimentary facials & reodor. Laura 455-5298

BRAND-NEW TTL CAMERA COLOR VIDEO CAMERA TOSHIBA 1K 1900 \$450. Call 456-1132 NIGHTS BEFORE 9:30 p.m.

DOLLS - handmade Raggedy Ann-Andy, Hawaiian. Washable. Ph. 261-7743.

R.K. ENTERPRISES Home shopping service, call our bargain line for current values. Ph. 623-1337

MOVING SALE: 9x12 rug, \$100. Kenmore washer \$200, stereo cabinet \$100. Double & twin mattresses & box spring \$50. Headboard \$50. Stereo \$40. Coffee table \$10. Swivel rocker \$20. 455-4245, 5 p.m.

MEN'S 10 speed bike for sale, excl. cond. 623-3198

943 DR Asian's original Romanian dietary supplement formula. Are you interested? Call 396-0411 or write W/H 637083, Hawaii Kai Dr. Hon. HI 96825

TRAILER HO trains, hand wind, tires, HO layout, furniture, racks, much more. Ph. 235-6627

3 BARBER'S Mirror cabinets, 1 tools & towels cabinet. Ph. 262-8498, 262-7341.

SINGER Industrial Straight Stitch, excl. cond., 1/2 hp, \$250. 261-2546, Lynn.

TYPEWRITER, Smith Corona portable, with case, like new, \$100. Ph. 261-9992

MOVING SALE: 5 p.c. bdrm. set, Windsor, golf equip, stereo, Lowrey organ. 261-6227

16" HUFFY Strawberry Sundae bike, 1 year old, \$60; 16" Strawberry Shortcake bike, 1 year old, \$60. After 2 p.m. 261-5679

13-PUSH button phones, 10 lines, \$10.00 ea.; wood tool box, Denton Nissan pickup, \$40. 262-6097

WASHER/Dryer, Sears Kenmore, good condition, \$125 ea. Call 239-4016

FOR Sale: Encyclopedia Britannica \$250. Call after 6 p.m. at 839-9814

ROY'S LAWN MOWER REPAIR
Free Estimate!
Lawn mowers for sale
Battery \$75, steel \$125
Call 259-5927

MARY KAY COSMETICS. For re-orders & FREE facials, call Yolanda 259-9021

BIORHYTHM Charts-plan your life s/m to unfold. \$60/yr. year. \$171 month. (plus \$50 postage) send to: Jerry McAllister, Box 3174, Mililani, Hawaii 96789

DOUBLE Bed \$75, wicker chair \$35, rattan chair \$30, 5 drawer dresser \$25, nite stand \$10, 7 piece dining room set \$250 & misc. Ph. 261-9804

REDHEAD Mexican parrot \$250; Connolly water ski \$325; green shag carpet 100 sq. yds. \$75; windsurfer complete \$500. Call 261-2915

VACUUM cleaner, shag take included, \$30. Princess smart bells \$7. Ph. 488-3196

BABY Crib and mattress, white with Snoopy design, like new. \$99. 488-1918

COLORTIME TV RENTAL
Rent to Own
Stadium Mall
4510 Salt Lake Blvd.
487-6421
Kailua
333 Uniu. St.
262-2328

ATARI w/11 games, \$200; overseas Panasonic VCR adaptor, \$70. 626-0439

CUSTOM lit sheepskin carseat covers, Universal & tie on also, 422-9385

LOOKING FOR X-MAS GIFTS!
New product introduced here in Hawaii. Self watering planters for House Plants. Takes the guesswork and hassle out of watering your plants. Waters plants automatically for up to 3 months or more. Ph. Darlene 235-5469 Faye 247-0993

•126 MISCELLANEOUS

SEA SHELLS
Make Christmas decorations, shell mirrors. For hobbyist or collectors. Buy at wholesale prices. Small minimum required. **Exotic Shells, Inc.** 94-070 Lookane St. Ph. 671-3725

PINATAS - Smurfs, clowns, etc. Filled w/100 toys & candies. Santa, elf, star for Xmas. Order now! Ph. 624-0016

NIKKO stereo w/2 speakers; JC Penney washing machine, both excl. cond., best offer. 247-2495 after 4:00 p.m.

EEL Skin - briefcases & men's pouches, also ladies' suit clothes. Wholesaler going out of business. 262-8922

MARY KAY CHRISTMAS FAIR
Nov. 26 & Dec. 10
10 a.m. to 4 p.m.
2464 Komomai Dr.
Pearl City

NEW Picnic tables, \$75; Porch swings \$80; Hawaii Swings & Tables. Ph. 293-8392

NEW 2600 ATARI Video with 6 games, like new, Mongoose box, Zenith console stereo, offers. Ph. 261-5697

SINGER Industrial Straight Stitch, excl. cond., 1/2 hp, \$250. 261-2546, Lynn.

TYPEWRITER, Smith Corona portable, with case, like new, \$100. Ph. 261-9992

MOVING SALE: 5 p.c. bdrm. set, Windsor, golf equip, stereo, Lowrey organ. 261-6227

16" HUFFY Strawberry Sundae bike, 1 year old, \$60; 16" Strawberry Shortcake bike, 1 year old, \$60. After 2 p.m. 261-5679

13-PUSH button phones, 10 lines, \$10.00 ea.; wood tool box, Denton Nissan pickup, \$40. 262-6097

WASHER/Dryer, Sears Kenmore, good condition, \$125 ea. Call 239-4016

FOR Sale: Encyclopedia Britannica \$250. Call after 6 p.m. at 839-9814

ROY'S LAWN MOWER REPAIR
Free Estimate!
Lawn mowers for sale
Battery \$75, steel \$125
Call 259-5927

MARY KAY COSMETICS. For re-orders & FREE facials, call Yolanda 259-9021

BIORHYTHM Charts-plan your life s/m to unfold. \$60/yr. year. \$171 month. (plus \$50 postage) send to: Jerry McAllister, Box 3174, Mililani, Hawaii 96789

DOUBLE Bed \$75, wicker chair \$35, rattan chair \$30, 5 drawer dresser \$25, nite stand \$10, 7 piece dining room set \$250 & misc. Ph. 261-9804

REDHEAD Mexican parrot \$250; Connolly water ski \$325; green shag carpet 100 sq. yds. \$75; windsurfer complete \$500. Call 261-2915

VACUUM cleaner, shag take included, \$30. Princess smart bells \$7. Ph. 488-3196

BABY Crib and mattress, white with Snoopy design, like new. \$99. 488-1918

COLORTIME TV RENTAL
Rent to Own
Stadium Mall
4510 Salt Lake Blvd.
487-6421
Kailua
333 Uniu. St.
262-2328

ATARI w/11 games, \$200; overseas Panasonic VCR adaptor, \$70. 626-0439

CUSTOM lit sheepskin carseat covers, Universal & tie on also, 422-9385

LOOKING FOR X-MAS GIFTS!
New product introduced here in Hawaii. Self watering planters for House Plants. Takes the guesswork and hassle out of watering your plants. Waters plants automatically for up to 3 months or more. Ph. Darlene 235-5469 Faye 247-0993

•126 MISCELLANEOUS
MARY Kay Cosmetics, complimentary facials & reodor. Laura 455-5298

BRAND-NEW TTL CAMERA COLOR VIDEO CAMERA TOSHIBA 1K 1900 \$450. Call 456-1132 NIGHTS BEFORE 9:30 p.m.

DOLLS - handmade Raggedy Ann-Andy, Hawaiian. Washable. Ph. 261-7743.

R.K. ENTERPRISES Home shopping service, call our bargain line for current values. Ph. 623-1337

MOVING SALE: 9x12 rug, \$100. Kenmore washer \$200, stereo cabinet \$100. Double & twin mattresses & box spring \$50. Headboard \$50. Stereo \$40. Coffee table \$10. Swivel rocker \$20. 455-4245, 5 p.m.

MEN'S 10 speed bike for sale, excl. cond. 623-3198

943 DR Asian's original Romanian dietary supplement formula. Are you interested? Call 396-0411 or write W/H 637083, Hawaii Kai Dr. Hon. HI 96825

TRAILER HO trains, hand wind, tires, HO layout, furniture, racks, much more. Ph. 235-6627

3 BARBER'S Mirror cabinets, 1 tools & towels cabinet. Ph. 262-8498, 262-7341.

SINGER Industrial Straight Stitch, excl. cond., 1/2 hp, \$250. 261-2546, Lynn.

TYPEWRITER, Smith Corona portable, with case, like new, \$100. Ph. 261-9992

MOVING SALE: 5 p.c. bdrm. set, Windsor, golf equip, stereo, Lowrey organ. 261-6227

16" HUFFY Strawberry Sundae bike, 1 year old, \$60; 16" Strawberry Shortcake bike, 1 year old, \$60. After 2 p.m. 261-5679

13-PUSH button phones, 10 lines, \$10.00 ea.; wood tool box, Denton Nissan pickup, \$40. 262-6097

WASHER/Dryer, Sears Kenmore, good condition, \$125 ea. Call 239-4016

FOR Sale: Encyclopedia Britannica \$250. Call after 6 p.m. at 839-9814

ROY'S LAWN MOWER REPAIR
Free Estimate!
Lawn mowers for sale
Battery \$75, steel \$125
Call 259-5927

MARY KAY COSMETICS. For re-orders & FREE facials, call Yolanda 259-9021

BIORHYTHM Charts-plan your life s/m to unfold. \$60/yr. year. \$171 month. (plus \$50 postage) send to: Jerry McAllister, Box 3174, Mililani, Hawaii 96789

DOUBLE Bed \$75, wicker chair \$35, rattan chair \$30, 5 drawer dresser \$25, nite stand \$10, 7 piece dining room set \$250 & misc. Ph. 261-9804

REDHEAD Mexican parrot \$250; Connolly water ski \$325; green shag carpet 100 sq. yds. \$75; windsurfer complete \$500. Call 261-2915

VACUUM cleaner, shag take included, \$30. Princess smart bells \$7. Ph. 488-3196

BABY Crib and mattress, white with Snoopy design, like new. \$99. 488-1918

COLORTIME TV RENTAL
Rent to Own
Stadium Mall
4510 Salt Lake Blvd.
487-6421
Kailua
333 Uniu. St.
262-2328

ATARI w/11 games, \$200; overseas Panasonic VCR adaptor, \$70. 626-0439

•126 MISCELLANEOUS

SEA SHELLS
Make Christmas decorations, shell mirrors. For hobbyist or collectors. Buy at wholesale prices. Small minimum required. **Exotic Shells, Inc.** 94-070 Lookane St. Ph. 671-3725

PINATAS - Smurfs, clowns, etc. Filled w/100 toys & candies. Santa, elf, star for Xmas. Order now! Ph. 624-0016

NIKKO stereo w/2 speakers; JC Penney washing machine, both excl. cond., best offer. 247-2495 after 4:00 p.m.

THE **Marsh** COMPANY

Christmas Sale

High Style Casual Dining Furniture at a Bargain Price

Sturdy hardwood tables have heat, stain and scratch resistant high-pressure laminate tops.

Chairs are Solid Hardwood Construction



A. 36" x 48" table extends to 60" with one 12" leaf; has four High Back side chairs.
Reg. \$799 **SALE \$399**

B. 42" round table extends to 54" with one leaf; has four First Mate chairs.
Reg. \$699 **SALE \$349**



A. Reg. \$299 **SALE \$199** B. Reg. \$299 **SALE \$249**

CURIOS...

A. #10170 Glass Curio (Framed, Lighted w/glass shelves and mirror back)
B. #14420 Curio (Framed Mirror back, lighted with glass shelves)
C. #10410 Curio (Framed Lighted w/glass shelves and mirror back)

Reg. \$299 **SALE \$188**
Your Choice

LA-Z-BOY

There's no need to settle for anything less than the best for the sake of saving money. Right now you can enjoy the incomparable comfort, styling and quality of a genuine La-Z-Boy chair at very substantial savings.

Sale Price From **\$299**

\$100 to \$200 OFF Every Recliner in Stock



Oak Replica Ice Boxes

A. Oak Replica Ice Box TV Stand
Beautiful replica of an antique ice box in oak with solid brass hardware. Includes swivel top for 19" TV.
SAVE \$70 **\$169**
Reg. \$239

B. Oak Replica Ice Box Hamper
Antique finished oak. 12" x 18" x 23".
SAVE \$150 **\$149**
Reg. \$299

C. Oak Replica Ice Box
Large 21" x 16" x 25" ice box replica. Ideal for a corner table, large storage, storage unit, etc. Made of beautiful oak.
SAVE \$120 **\$99**
Reg. \$219



A. Louvered Video Wall System

Beautiful wall system for audio equipment, built-in FM stereo system. Center console compartments for TV, VCR, and video game equipment. Impressive mirrored wall and light bridge.
Reg. \$1899 **SALE \$1499**

B. Entertainment Console

Sturdy furniture for all of your electronic equipment! Sealed glass door protects electronics from dust.
Reg. \$549 **SALE \$399**

C. Audio Cabinet

Sturdy cabinet features finished back with wire mesh, cooling vents, and built-in multi-directional FM stereo antenna.
Reg. \$339 **SALE \$269**



D. Computer Cabinet/Cart

Large work surface, eye-level monitor shelf and printer storage area with paper feed slot. Luminate surface top built in static shield. Built-in phone jack and electrical outlets.
Reg. \$519 **SALE \$439**

A. Bunching China

Each china 20" W, 17" D, 80" H. Tilted glass in top, glass shelves, fluorescent light.
Reg. \$999 **SALE \$799**

B. Bench

33" x 22" x 41" H. Lift lid storage compartments. Carved figure.
Reg. \$799 **SALE \$599**



"Get-Away" Luggage

Covered in durable nylon and accented with designer trim. Includes 28" and 20" Pullmans with wheels and pull straps. 24" and 22" over-nighters and tote bag.

\$129 Value **SALE \$59**

TREAT YOUR FAMILY THIS YEAR...BUY FURNITURE FOR CHRISTMAS!

FINANCING

We offer excellent financing on your good credit. Please feel free to ask us about down payments... monthly payments... anything! We promise quick, courteous answers to all your questions.

Main Store
1505 Dillingham Blvd.
Phone 847-5382
Between Pay 'n Save and Emjays

Waipahu Store
94-300 Farrington Hwy.
Phone 671-3995
Between Pay 'n Save and Emjays

STORE HOURS:
9 AM - 9 PM
TODAY THRU FRI.
9 AM - 6 PM SAT.
Sale Ends Sat., Dec. 10

THE **Marsh** COMPANY