

**Cross-training**  
**'Lancers,' 'trackers'**  
 switch positions  
 on flightline, beachhead  
 See Page A-4

**Hazardous Waste**  
 Federal agencies adopt  
 'cradle to grave'  
 management policy  
 See Page A-9

**Fast Farley**  
 Speed demon  
 prepares for  
 Marine Marathon  
 See Page B-1

# HAWAII MARINE

Voluntary payment for delivery to MCAS housing/\$1 per four-week period.

VOL. 12 NO. 11

KANELOHE BAY, HAWAII, NOV. 2, 1983

TWENTY PAGES

## Joint task force takes Grenada

**EDITOR'S NOTE:** The following article is reprinted from Navy Newsgram 4483.

U.S. military forces, in conjunction with the governments of the Caribbean States, are conducting

operations to protect United States and foreign citizens on the Caribbean island country of Grenada, and to assist in stabilizing that country's political situation.

In a press briefing, Oct. 25, a

White House spokesman said, "The United States government has decided to accede to a formal request of the OECS, to support and participate in a collective security effort to restore peace and order in Grenada."

Military action by U.S. forces began at 5:30 a.m., Oct. 25, when they simultaneously seized the objectives of the Point Salinas Airfield and the Pearis Airfield on opposite ends of the island.

Additionally, American forces have secured the Grand Anse Campus of the island's Saint George's University School of Medicine, and have evacuated more than 400 American medical students and foreign nationals to Charleston Air Force Base, S.C.

U.S. military forces also rescued the Governor General of Grenada, Paul Scoon and his family, who were being held as prisoners in their residence by elements of the "Revolutionary Military Council."

Heavy fighting occurred on the evening of Oct. 27 at the Caligny Military Barracks area. Supporting air strikes and artillery were used to help U.S. forces secure the area as they were continuing to receive small arms fire. American forces have been well received by a friendly populace, who have assisted in the discovery of several large arms caches.

The composition of U.S. ground forces include approximately 6,000 personnel, from Marine Amphibious Unit-22, the 1st and 2nd Battalions of the U.S. Army's 75th Rangers and two brigades of the Army's 82nd Airborne Division.

The commander, Joint Task Force-120, and overall operational commander is vice Admiral Joseph Metcalf III, commander, U.S. Second Fleet. Off the coast of Grenada is a carrier battle group centered around the USS Independence, and includes USSs Richmond K. Turner, Caron, Moosbrugger, Coontz, and Clifton Sprague.

Ships composing Marine Amphibious Readiness Group 1-84, under the command of Captain Carl R. Erie, commander Amphibious Squadron-4 are: USSs Guam, Trenton, Fort Snelling, Barnstable County, Manitowoc, and detachments from Beachmaster Unit-2, Assault Craft Unit-2, Amphibious Construction Battalion-2 and Tactical Air Control Squadron-21. The commander of the 22d MAU is Colonel J.P. Faulkner. Embarked with the 22d MAU is Marine Medium Helicopter Squadron-261.

Participating with U.S. Forces are more than 300 soldiers of the Caribbean Peace Force, which include military units from the countries of Antigua, Barbados, Dominica, Jamaica, Saint Kitts, Saint Lucia and Saint Vincent. These forces are presently securing their positions and are assisting in restoring peace and order throughout the island.

Military forces in opposition to U.S. intervention included the Grenadian "People's Revolutionary Army" of approximately 1,200 personnel, various armed reserve militia and more than 600 trained and armed Cuban nationals, most of whom have been taken prisoner by U.S. forces.



## Car seats save lives

## Youths die in car crashes

by Sgt Greg Berry

Mary and Bill blame themselves for the death of their son... it's a guilt trip that'll last the rest of their lives.

They didn't mean for Johnny to die, they were just in a hurry to get to work. They didn't "buckle up" on the short ride to the babysitter. They re-live that nightmare everyday.

A drunk, coming home from an

all-nighter, struck them broadside at an intersection. The investigating officer noted Johnny's age — 4½ years old. The mandatory seat belt law applies only to children younger than 4, so no laws were broken, except by the drunk. It was his third drunk driving charge.

But Mary and Bill found no comfort in the fact that they hadn't broken the law — Johnny might still be alive if he had been

in his car seat.

Mary, Bill, the drunk and the investigating officer are products of this writer's imagination, and the fatal car crash never happened. But variations of the story do happen — and they happen every day.

Car accidents are the No. 1 child killers in the United States, according to health care professionals, and Hawaii has sought to stem the tide of deaths

by passing a mandatory seat belt law.

The bill, signed into law June 14 by Governor George Ariyoshi, makes it illegal for children younger than 3 years old to ride in a car unless they're carried in federally-approved infant car seats. The bill also requires children between the ages of 3 and 4 to wear a seat belt or restraint system.

Penalties for violations carry fines of up to \$100 or a maximum 10 days in jail for first-time offenders. Subsequent violations carry stiffer penalties, but the fines and jail terms can't compare to the anguish a child suffers from being thrown about in an accident.

There are exemptions to the law, however. Ambulances, commercial vehicles, public buses and large school buses with a capacity of 16 or more passengers are exempt from the law. There is also an exemption to the law when all of the seat belts in a vehicle are being used. In this case, children not otherwise restrained must ride in the back seat.

Child car seats usually range in price from \$35 to \$70, and are available in most Oahu military exchanges and civilian department stores.

Thrift shops and swap meet sales are also good places to shop for used car seats, but state Department of Transportation officials caution buyers that the law requires car seats to be approved by the U.S. Transportation Department at the time of manufacture.

Drivers and concerned parents may learn more about Hawaii's mandatory seat belt law by calling state transportation officials at 548-5756 or the Provost marshal's Office here at 257-2103.



**SAFE AND SOUND** — This little tyke slumbers without a care because he knows he's safe and sound in his car seat. Hawaii state law requires children younger than 4 to use a restraint

system when riding in a vehicle, and infants younger than 3 must be in a federally approved infant car seat. (Photo by Cpl Pat Lewandowski)



**A GHOUL AND HER MONEY** — Nancy Carvelo, a cashier at the Marine Corps Exchange, displays her "molars" during Halloween festivities held at the main store. Employees and management dressed up to help bring the Halloween spirit to the air station. For a related story, see Page A-8. (Photo by Cpl Pat Lewandowski).

## Marines receive awards

Five Marines here received distinguished Navy League Awards from the Honolulu Council of the Navy League during an award luncheon at the Hibiscus Ballroom, Ala Moana Hotel, Oct. 27.

The Marines here are among 60 outstanding junior officers and enlisted personnel representing the U.S. Navy, Marine Corps, and Coast Guard.

The criteria for award selection was based on overall outstanding performance of duty, individual achievement, excellence in leadership, participation in community activities, plus an outstanding military bearing and appearance.

Two of the 60 winners were selected by a panel of Navy League judges to receive special recognition as Grand Award Winners.

Staff Sergeant David Watson, Headquarters and Headquarters Squadron here and Lieutenant Commander David A. Duval, Fleet Composite Squadron VC-1, Barbers Point Naval Air Station were the overall Grand Award Winners.

"I was very surprised and felt very honored to win such an award," said Watson. "I've thoroughly enjoyed the past three years in Hawaii. I love working with the children and I've had a lot of help from many associates

and friends in my various endeavors."

Other award winners were: First Lieutenant Henry Leonard, 1st Battalion, 12th Marines; Gunnery Sergeant Ronald Koebbe, Marine Heavy Helicopter Squadron-463; Staff Sergeant Edward Steinhauer, Brigade Service Support Group; and Sergeant Jerry Lewis, Marine Air Control Squadron-2.

The keynote address for the luncheon was given by Lieutenant General Charles G. Cooper, Commanding General, Fleet Marine Force Pacific/Commander, Marine Corps Bases, Pacific, who joined Honolulu Council president E.D. Higgins, in the presentation of the awards.



SSgt Dave Watson

## Reagan raps illegal leaks

President Reagan, in a recent memorandum for federal employees, addressed the subject of unauthorized disclosure of classified information.

Citing previous unauthorized releases of classified information concerning U.S. diplomatic, military and intelligence activities, the President stated that, "The unauthorized disclosure of our nation's classified information is improper, unethical, and plain wrong."

"This kind of unauthorized disclosure is more than a so called 'leak' — it is illegal. The attorney general has been asked to investigate a number of recent disclosures of classified information... We intend to take appropriate administrative action against any federal employee found to have engaged in unauthorized disclosure of classified information, regardless of rank or position. Where circumstances warrant, cases will also be referred for criminal prosecution."

"We must... be able to protect our military forces from present or potential adversaries. From the time of our founding fathers, we have accepted the need to protect military secrets. Nuclear dangers, terrorism, and aggression similarly demand that we must be able to gather intelligence information about these dangers — and our sources of this information must be protected if we are to continue to receive it. Even in peacetime, lives depend on our ability to keep certain matters secret."

"As public servants, we have no legitimate excuse for resorting to these unauthorized disclosures. There are other means available to express ourselves... as servants of the people, we in the federal government must understand the duty we have to those who place their trust in us. I ask each of you to join me in redoubling our efforts to protect that trust."



## To the editor:



(Official USMC photo)

### Prayers for Marines in Lebanon, Grenada

Like most Americans, I am stunned, incensed and outraged by the losses we have suffered in Lebanon.

As a mother of four, one of whom is currently serving with the United States Air Force, I feel as though each precious American life lost was one of my own.

Please convey this message to our Marines in Lebanon and Grenada: our hearts, our thoughts

and our prayers are with you and your families and with the friends you have lost. We are extremely concerned for your safety and welfare and hope that this horrible situation is short-lived so that you may all return home safely. God bless you all!

Sandra Hee Bateman  
Honolulu

American  
Red Cross



## ADVENTURE BEGINS AT 3,000 FEET!

Paradise Paracenter Inc.

1 Day - 1st Jump Course  
Also Available: \$115

•Sky Diving Instruction  
•Parachute Sale & Service  
•Observer Rides

Classes every Sat., Sun., & Holidays  
CALL NOW! 536-7311

# FAN SALE

We're having our hottest sale of the year due to a late shipment of over 1000 ceiling fans. All are at or below WHOLESALE PRICES.



Professional  
Fan Installation  
at discount prices

SALE ENDS SUN. 11/6/5 p.m.

**36" BROWN UTILITY**  
\$58  
•3 SPEED  
•REVERSIBLE  
•4 HARDWOOD BLADES  
•5 YR. WARRANTY  
•SEALED BEARINGS  
SUG. RETAIL \$119.00

**48" WHITE W/BRASS**  
\$78  
•VARIABLE SPEEDS  
•REVERSE AIR FLOW  
•5 YEAR WARRANTY  
•SEALED BEARINGS  
SUG. RETAIL \$168.00

**52" ALL BRASS FAN**  
\$98  
•VARIABLE SPEEDS  
•REVERSIBLE  
•SEALED BEARINGS  
•LIGHT ADJUSTABLE  
•5 YR. WARRANTY

**52" 5 BLADE SPECIAL**  
\$178  
•Oak or Pine  
•HANG TRUE  
•4 SPEED  
•REVERSE AIR FLOW  
•5 YEAR WARRANTY  
•WHISPER QUIET  
SUG. RETAIL \$499.00

**FREE \$39.95**

4 Light kit with the purchase of any of these advertised fans. Offer good with coupon only thru 11/6/5 p.m.

OVER 30 FANS ON DISPLAY ALL ON SALE

**PACIFIC SURPLUS & DISTRIBUTORS**

MON.-SAT. 9:30-6:00 p.m. THURS. 9:30-8:00 SUN. 11:00-5:00 TUES. CLOSED

1247-F KAILUA RD. (NEXT TO 7-11)

**262-8131**

Datsun has gone Nissan for 1984

**KNOW YOUR NISSAN**  
7600 Instant Winners  
\$50,000 in Prizes

**NAME YOUR NISSAN**  
Sweepstakes Drawing  
You Pick the Grand Prize:



NISSAN PULSAR NX



NISSAN SENTRA



NISSAN 300ZX

NISSAN STANZA



NISSAN MAXIMA



NISSAN KING CAB

Quick. Get to any participating Union 76 service station and ask for a **Know Your Nissan** Gamecard. If the hidden name matches the Nissan pictured, you're an instant one in 76 winner of a Road Emergency Kit, a Highway Helper or an Auto Wondermug.

Your Gamecard is also your entry form for the **Name Your Nissan Sweepstakes**—a drawing for the winner's choice of any one of the 1984 Nissans pictured above. One Gamecard/Entry form per visit per vehicle. And you must be a Hawaii licensed driver age 18 or older. All prizes will be awarded. Car is **f.o.b. Honolulu**. Name Your Nissan Sweepstakes entries or hand drawn facsimiles must be turned in to Nissan/Datsun dealers by December 15, 1983. Winner to be announced on January 15, 1984. Know your Nissan Game ends when all 577,600 cards are distributed; instant winners can claim prize from their Union 76 station. It's worth your while to know your Nissan/Datsun dealer.

**UNION 76**  
Hele with the Spirit

**NISSAN**

Honolulu Datsun  
630 Piikoi St.  
531-3721

Kaimuki Nissan  
3060 Kapiolani Blvd.  
734-0241

Airport Datsun  
545 Lagoon Dr.  
833-0062

Windward Datsun  
46-151 Kahuhipa  
235-6433

Datsun of Waipahu  
94-119 Farrington Hwy  
671-2611

Pearl City Datsun  
806 Kamehameha Hwy.  
456-5938

Datsun of Wahiawa  
1912 Wilkuna Dr.  
621-0761

Datsun of Kauai  
3215 Kuhio Hwy  
245-6731 (Lihue)

Datsun of Maui  
1935 Main St.  
244-7433 (Wailuku)

Datsun of Hawaii  
471 Kalaniana'ole Ave.  
969-1484 (Hilo)

COME ALIVE, COME AND DRIVE

**NISSAN**  
MAJOR MOTION  
FOR HAWAII

The Hawaii Marine is an unofficial newspaper published every Wednesday by RFD Publications, Inc., 46-016 Alaloe St., Kaneohe, Hawaii 96744, in the interest of U.S. Marine Corps personnel in Hawaii. All news copy is prepared in the Joint Public Affairs Office, Marine Corps Air Station, Kaneohe Bay, Hawaii 96863, 257-2179.

Copy must be submitted no later than noon Thursday for the following Wednesday publication. Hawaii Marine solicits contributions of information and photographs from all Marine Corps organizations. However, it reserves the right to edit or rewrite material submitted. All advertising is arranged by the publisher, RFD Publications, Inc., telephone 235-5881. Circulation is 8,000.

Everything advertised in this publication must be made available for purchase, use or patronage without regard to race, creed, color, national origin, age or sex of the purchaser, user or patron. A confirmed violation or rejection of this policy of equal opportunities by an advertiser will result in the refusal to print advertising from that source.









**"HANDS ON" TRAINING** — Captain David "Dizzy" Dean, a pilot with Marine Fighter Attack Squadron-212, shows Private John Tavoletti, Detachment, Company A, 3d Amphibious Assault Battalion, how to control the F-4 Phantom in flight. The "trackers" and Marines from VMFA-212 conducted an informative cross-training exercise here Oct. 7.



**MAKING WAVES** — Corporal Charles Barton, Detachment, Company A, 3d Amphibious Assault Battalion, guides a "Lancer" through the waters of Kaneohe Bay. The Lancers of Marine Fighter Attack Squadron-212 had the opportunity to drive the "tracks" around the bay here Oct. 7. The "trackers" and Marines of VMFA-212 exchanged jobs for an afternoon to learn about other facets of "Marine life."

**A REAL CROWD PLEASER** — Marines of Detachment, Company A, 3d Amphibious Assault Battalion, climb all over an F-4 Phantom displayed by Marine Fighter Attack Squadron-212 during a cross-training exercise held here Oct. 7. The training provided information and a change of pace to the Marines of both units.



**TAKE IT OVER THERE** — Corporal Charles Barton, Detachment, Company A, 3d Amphibious Assault Battalion, gives directions to a Marine from Marine Fighter Attack Squadron-212. The Lancers had a chance to drive and ride in a LVPT-7 for an afternoon. The "trackers" and Lancers had an afternoon of cross-training to get the feel of each other's job.

## Marines schooled on flightline, beachhead

Story and photos  
by Cpl Pat Lewandowski

"I want to come down and take a look at your F-4s."

"Good, I've always wanted to climb on a track."

What began as a friendly conversation between Staff Sergeant Robin Whitcher, Marine Fighter Attack Squadron-212, and Sergeant Bruce Gough, Detachment, Company A, 3d Amphibious Assault Battalion, ended up being a valuable training experience for the Marines of VMFA-212 and Det. Co A, 3d AAVBN.

On Oct. 7, Marines from VMFA-212 and Det. Co A, 3d AAVBN brought flightline and beachhead together during a cross-training exercise.

Mechanics, drivers, crew chiefs and platoon sergeants from the detachment had an opportunity to talk to pilots and climb aboard an F-4 Phantom aircraft provided by VMFA-212. They donned flight helmets and sat in the cockpit, getting the "feel" of the plane. The "trackers" learned the capabilities of the F-4 as well as what's needed to keep it flying.

While the "amphibious monsters" (as they jokingly refer to themselves) assaulted the F-4's,

the mechanics, avionicsmen and plane captains of VMFA-212 tried their hand at making "tracks."

After a thorough safety brief, the "Lancers" had the opportunity to take the LVTP-7 for a spin in Kaneohe Bay. The maintenance personnel of VMFA-212 learned how to navigate the "tracks" and about its features and mission.

"That plane is out of sight," said Private First Class Art Echanove, "Tracks."

"I learned a lot about aviation terms like Gs and Machs," said Lance Corporal Dennis Waddy, "tracks."

One "tracking" Marine said with a smile, "I'm glad they don't drive tracks."

One Marine summed up the "Lancers" experience by saying, "It was pretty neat." The "Lancers" also referred to the tracks as "bad little animals." First Lieutenant Ray Duquette, a pilot with VMFA-212, said, "The occasion gave both units the opportunity to see first-hand, what each unit is capable of, and how we go about accomplishing our respective missions."

"For everyone involved, it was a better educational experience than one would get in a classroom environment," Duquette concluded.



**HEAVY METAL** — Private Eldon Barnes, Detachment, Company A, 3d Amphibious Assault Battalion, looks at 25-pound practice bombs that were displayed by Marine Fighter Attack Squadron-212 during a cross-training exercise. The "trackers" learned about the weapons and tactics of the F-4 Phantom, while the "Lancers" of 212 took to the water in LVPT-7's.



**ORDNANCE CLASS** — First Lieutenant David Ferrucci, Radar Intercept Officer with Marine Fighter Attack Squadron-212, explains the different ordnance loads of the F-4 Phantom to

Marines of Detachment, Company A, 3d Amphibious Assault Battalion. The "trackers" received "hands on" training with the F-4 during a cross-training exercise held here Oct. 7.



# Kids wreak traffic havoc

Story and photo  
by SSgt W.S. Saunders

Something should be done to keep the children from being killed and to keep them from misbehaving."

This is the out-cry of concerned residents and parents of Mokapu School students here who use the crosswalk at Lawrence Road.

"The children are playing a mild game of 'catch me if you can' with the on-coming traffic," said Sharon Oliva, a concerned parent. "A lot of the parents walk their children because the motorists don't always stop," she added.

Until March 1982, the Lawrence Road crosswalk was manned by Junior Police officers from Mokapu School.

"The service was terminated due to lack of adult supervision," said Gladys Naitoh, vice principal of Mokapu School. "The

crosswalk is not within the jurisdiction of the school to have JPO's out there. They were there before as part of an agreement between the Honolulu Police Department, which is in charge of the JPO program, and the air station parents."

The agreement was that JPOs were to man the crosswalk provided that trained parents would supervise.

"This program will remain dormant until a plan can be formulated and implemented by interested and trained parents," said Naitoh.

Another problem that adult supervision can remedy is the sass and vandalism residents along the school route have to put up with.

"The little darlings can be devils at times," said a concerned resident. "I pick up sandwich bags and candy wrappers everyday. My flowers are trampled, and I got

a nice long scratch on my car," she continued.

"The kids really don't like having to use the sidewalk. They tear up my lawn with their bicycles, and the Housing Office is on my back to maintain it."

Several cases have been reported to the Station Inspector's Office, and the residents were instructed to get the children's names so that the parents can be notified.

"I think with adult supervision these problems can be eliminated," said Oliva.

Parents wishing to donate their time to supervise the children at the crosswalk should contact Gladys Naitoh, at 254-1348.



"HOLD IT RIGHT THERE, MISTER!" — A Mokapu student uses his lunch box to control traffic at the Lawrence Road crosswalk. This crosswalk is considered hazardous for the children because the motorists don't always

stop. The Mokapu Parent, Teacher, Student Association is looking for adults to help supervise this crosswalk to make it safer for the children.

## AUTO STEREO CONNECTION

NOW WITH 2 CONVENIENT LOCATIONS  
VISIT OUR NEW WINDWARD STORE  
FOR SUPER DEALS

Prices Good Till 11/15/83

CRAIG W460	CRAIG T619	CRAIG T560	CRAIG T503
•Full Feature Digital	•Auto Reverse •Tape Search	•Auto Reverse •Tape Search •Many Features	•Auto Reverse
Reg. \$299 <sup>95</sup> <b>\$269<sup>99</sup></b>	Reg. \$299 <sup>95</sup> <b>\$185<sup>00</sup></b>	Reg. \$279 <sup>95</sup> <b>\$165<sup>00</sup></b>	Reg. \$129 <sup>95</sup> <b>\$108<sup>00</sup></b>
Clarion 5500R	JET SOUND 9401	LEAR JET STEREO A14	LEAR JET STEREO A-77
•Push Button •Full Feature	•Tape Search •Local/Distance	•Digital •Auto Reverse •Many Features	•Basic
Reg. \$265 <sup>00</sup> <b>\$168<sup>00</sup></b>	Reg. \$179 <sup>95</sup> <b>\$125<sup>00</sup></b>	Reg. \$319 <sup>95</sup> <b>\$179<sup>00</sup></b>	Reg. \$106 <sup>95</sup> <b>\$69<sup>00</sup></b>

"PROTECT YOUR STEREO"  
Alarm Systems Are Available For As Low  
As **\$98<sup>00</sup>\***  
•SONIC ALERT  
INSTALLED  
ANY CAR

CUSTOM TAILORED DASH COVER  
Save Your Dash From The Sun's Rays  
DASH GUARD  
•Custom Fit  
•Choice of Colors only **\$29<sup>99</sup>**

**AIRPORT**  
3160 Koapaka St.  
836-4055

Ask about our Lay-away Plan  
Put 10% down and lay-away  
anything in store

No finance charge 30-60-90 Days  
**AUTO STEREO CONNECTION**  
HOURS 9 AM-6 PM  
INSTALLATION AVAILABLE

**KANE OHE**  
45-773 Kam Hwy.  
247-8786

ADON PLAZA  
D. LUCAS  
HONDA  
45-773 KAM HWY.  
KANE OHE  
TOWN



## NEW 1984 ZENITH ADVANCED SYSTEM 3 THE SMART SET

THE COLOR TV WITH A COMPUTER BRAIN



**\$50 REBATE**  
(PRICE REDUCTION)  
For Limited Time

**25" ULTRAMODERN**  
DIAGONAL  
**STYLING PLUS**  
**ZENITH'S EXCLUSIVE**  
**SPACE COMMAND® 4400**

Inside this ultramodern console are all the quality features that make this the epitome of everything Zenith for the decade of the '80s...plus Zenith's exclusive Advanced Space Phone™. Turns your TV into a telephone. Even stores two 13-digit numbers for automatic recall any time. And you still enjoy all the normal remote control functions that have made Zenith the world leader in remote control TV!

**NEW Z-TECH CHASSIS**  
Zenith's most automatic chassis ever. 100% modular design for greater reliability.

**NEW EXCLUSIVE COMPUTER BRAIN**  
Maintains color fidelity year after year automatically.

**NEW PATENTED VIDEO FILTER**  
Reduces picture noise and snow effect in the color picture automatically.

**TRI-FOCUS PICTURE TUBE**  
EFL® Gun uses three focusing actions instead of just one for exceptional picture sharpness and highlight detail.

**ADVANCED COLOR SENTRY**  
8 automatic sub-systems work together to control and correct the color picture 30 times a second automatically.

**NEW REDI-PLUG**  
Easy provision for connection of accessories.

**PRP CIRCUIT**  
Reproduces up to 330 lines of picture resolution...25% more than ordinary TVs...to give you all the detail being transmitted automatically.

**NEW 178 CHANNEL TUNING**  
Select all VHF and UHF including 122 cable channels without converter (except scrambled channels).

**NEW REDI-PLUG**  
Easy provision for connection of accessories.



**\$25 REBATE**  
(PRICE REDUCTION)  
For Limited Time

**19" DUAL SPEAKER**  
DIAGONAL  
**SOUND PLUS**  
**ZENITH SPACE**  
**COMMAND® 3400**

Dual speaker sound, yet its cabinet with simulated grained American Walnut finish is no wider than previous single speaker sets. Features Zenith Computer Space Command® 3400 Remote Control so you can press buttons to turn set on or off...scan programmed channels UP or DOWN...make sound louder or softer...completely mute sound...and recall channel number and time on screen.

**NOW AT YOUR PX**  
OR AVAILABLE THRU YOUR SPECIAL ORDER DESK

This advertisement is neither sponsored nor paid for in whole or part by any military resale activity.

## GOODYEAR HAWAIIAN SPECTACULAR SALE

SOME OF GOODYEAR'S BEST SELLING TIRES FOR IMPORTS AND U.S. CARS AND LIGHT TRUCKS ARE ON SALE NOW. CHOOSE YOUR TIRE AND SIZE...THEN STOP AT ANY GOODYEAR RETAILER LISTED BELOW...NOW THRU SATURDAY

**SALE ENDS SAT. NOV. 5!**

### SUPER SAVINGS ON THESE SUPER SELLERS!

**Arriva Radial**  
**\$42<sup>95</sup>**  
P165/80R13 Blackwall  
Plus \$1.67 FET.  
No trade needed.

**Custom Polysteel Radial**  
**\$49<sup>95</sup>**  
P195/75R14 Whitewall  
Plus \$2.13 FET.  
No trade needed.

**Viva II Radial Whitewalls**  
**\$34<sup>95</sup>**  
P195/75R14  
Plus \$1.84 FET.  
No trade needed.

**Custom Polysteel Radial**  
**\$42<sup>95</sup>**  
P195/75R14 Whitewall  
Plus \$1.84 FET.  
No trade needed.

**\$52<sup>95</sup>**  
P195/75R14 Whitewall  
Plus \$1.84 FET.  
No trade needed.

**Power Streak II**  
**\$24<sup>95</sup>**  
A78-13 Blackwall  
Plus \$1.44 FET.  
No trade needed.

**Cushion Belt Polyglas**  
**\$36<sup>95</sup>**  
B78-15 Whitewall  
Plus \$1.78 FET.  
No trade needed.

### ARRIVA RADIALS SIZES FOR IMPORTS

Blackwall Size	SALE PRICE
P155/80R12	\$46.80
P145/80R13	\$50.00
P155/80R13	\$52.30
P175/80R13	\$57.70
P165/80R14	\$55.80
P175/80R14	\$59.90
P185/80R14	\$63.85
P155/80R15	\$54.65
P165/80R15	\$56.95

Plus \$1.38 to \$1.91 FET, depending on size. No trade needed.

### SUPER SAVINGS FOR OLDER CARS

### POWER STREAK II

Bias Ply Blackwalls

Size	SALE PRICE
600-12	\$28.95
B78-13	\$27.95
C78-14	\$29.95
D78-14	\$31.95
E78-14	\$32.95
F78-14	\$33.95
G78-14	\$34.95
H78-14	\$36.95
600-15	\$32.95
E78-15	\$33.95
F78-15	\$34.95
G78-15	\$35.95
H78-15	\$37.95

Plus \$1.42 to \$2.55 FET, depending on size. No trade needed.

### WHITE LETTER PERFORMANCE RADIALS

### LIGHT TRUCK SUPER SAVERS

### WRANGLER ALL-SEASON RADIALS

Size and Load Range	Sidewall	SALE PRICE
7.00R15D	BL	\$108.75
GR78-15C	OWL	\$106.25
HR78-15C	OWL	\$115.75
LR78-15D	OWL	\$124.50
LR78-16D	OWL	\$133.75
8.00R16.5D	BL	\$108.75
33-1250R16.5D	OWL	\$143.75
33-1250R16.5D	OWL	\$145.00
33-1250R16.5D	OWL	\$153.75
33-1250R16.5D	OWL	\$165.00
33-1250R16.5E	OWL	\$178.75
33-1250R16.5E	BL	\$170.00

Plus \$3.54 to \$6.69 FET, depending on size. No trade needed.  
Sidewall codes: BL - Black Letters, OWL - Outline White Letters

### ARRIVA RADIAL WHITETALLS

Size	SALE PRICE
P155/80R13	\$43.75
P165/75R13	\$45.75
P165/80R13	\$47.65
P175/75R13	\$51.35
P175/80R13	\$51.95
P185/80R13	\$53.95
P185/65R14	\$56.50
P175/75R14	\$52.95
P185/75R14	\$56.50
P195/75R14	\$61.75
P205/75R14	\$63.95
P215/75R14	\$66.50
P165/80R15	\$52.30
P195/75R15	\$63.95
P205/75R15	\$66.95
P215/75R15	\$68.95
P225/75R15	\$72.30

Plus \$1.47 to \$2.90 FET, depending on size. No trade needed.

### EAGLE ST RADIAL

Size - Raised White Letter Sidewall	SALE PRICE
P 185/70R13	\$55.00
P 195/70R13	\$60.00
P 195/70R14	\$67.50
P 215/70R14	\$73.75
P 225/70R14	\$76.25
P 225/70R15	\$77.50
P 235/70R15	\$80.65
P 205/60R13	\$63.75
P 235/60R14	\$78.95
P 245/60R14	\$81.00
P 245/60R15	\$82.95
P 255/60R15	\$86.25
P 275/60R15	\$92.50

Plus \$1.95 to \$3.36 FET, depending on size. No trade needed.

Use any of these ways to buy:  
• MasterCard • Visa • American Express • Carte Blanche • Diners Club • Cash

## GOODYEAR

SEE YOUR INDEPENDENT DEALER FOR HIS PRICE AND CREDIT TERMS. PRICES AND CREDIT TERMS AS SHOWN AT GOODYEAR AUTO SERVICE CENTERS IN ALL COMMUNITIES SERVED BY THIS NEWSPAPER.

### GOODYEAR AUTO SERVICE CENTERS

**AIEA**  
Goodyear Auto Service Center  
Waimalu Plaza Shopping Center  
98-1277 Kaohumahu Street  
Phone: 487-0066

**KANE OHE**  
Goodyear Auto Service Center  
Kane Ohe Bay Shopping Center  
46-047 Kam Highway  
Phone: 247-6668

**HILO**  
Goodyear Auto Service Center  
475 Kilauea St.  
Phone: 935-9756

**Motor Supply, Ltd.**  
170 Kilauea St.  
Phone: 935-8626

**DOWNTOWN**  
Motor Supply, Ltd.  
1391 Kapalama Blvd.  
Phone: 946-8311

**Gem Automotive Center**  
333 Ward Avenue  
Phone: 533-6228

**KAILUA**  
Motor Supply, Ltd.  
724 Kailua Road  
Phone: 261-1741

**KAPALAMA**  
Gem Automotive Center  
1199 Dillingham Blvd.  
Phone: 645-5958

### GOODYEAR INDEPENDENT DEALERS

**WAI PAHU**  
Gem Automotive Center  
94-144 Farrington Hwy.  
Phone: 641-0535

**MAUI**  
Maui Recycling Service, Inc.  
726 Lower Main St.  
Wailuku  
Phone: 244-4074

**KAUAI**  
Garden Island Motors, Ltd.  
3050 Hoolala St.  
Lihue  
Phone: 245-6711



# Seat belts save lives

by Sgt R. D. Dewey

"American people are very conscious about their looks," said Master Sergeant Wayne Baxter, Station Safety. "It's all part of the new sexuality. People get upset over a 'zit' these days. How good-looking do they think they'll be after their face goes through a car windshield because they weren't wearing safety belts?"

"Many misconceptions or 'myths' have developed against the use of safety belts," said Baxter. "I don't need safety belts because I'm a really good driver. I have excellent reactions."

"A good driver has no control over the drunk or bad driver's automobile," said Baxter. "Approximately 50 percent of collisions are from other vehicles coming head-on, and even a good driver can't always avoid those."

"A good driver also requires seat belts to keep him in place while operating the vehicle," said Captain H. E. Tobey, Deputy Provost Marshal. "It's hard to control a vehicle when you're sliding across the front seat while swerving to miss an obstacle."

"I don't want to be trapped in by a

seat belt. It's better to be thrown free in an accident."

"It is 25 times more deadly to be thrown from a vehicle during a collision," said Baxter. "Seat belts increase the chances that you will remain conscious and thus able to help yourself and other passengers."

"First of all, seat belts can keep you from plunging through the windshield. They keep you from being thrown out the door and hurtled through the air. Seat belts also can keep you from scraping along the ground or being crushed by your own car."

"I just don't believe it will ever happen to me."

"According to statistics," said Baxter, "everyone will be involved in a crash once every 10 years. For one out of 20, it will be a serious crash. It will be fatal for one out of 60 today. In fact, the leading cause of death for people 44 years old and younger is auto accidents."

"A person can increase his chances for survival by wearing safety belts. They can cut the number of serious injuries by 50 percent and can also cut the number of fatalities by 60 percent to 70 percent."

"Well, I don't have to wear them when I have to go on long trips, or at high speeds."

"According to Department of Defense regulations and Marine Corps order," said Tobey, "seat belts will be worn by all military personnel and civilian employees while operating government vehicles on this station. They will also wear safety belts if they are driving a government vehicle off-base, or their own vehicle off-base if on government business."

"The Air Force enforces mandatory seat belt wear for everyone, military or civilian, while on any of their installations."

"More importantly, 80 percent of all deaths and serious injuries occur in cars traveling less than 40 mph," said Baxter. "Of those deaths and injuries 75 percent occurred less than 25 miles from home."

"I can touch my head to the dashboard when I'm wearing my seat belt, so there's no way it can help me in a car accident."

"Safety belts are designed to allow freedom of movement," said Baxter.

Con't. on Page A-7

**HALE KOA HOTEL**  
ARMED FORCES RECREATION CENTER  
2055 Kalua Road, Honolulu, Hawaii 96815  
(808) 955-0555 Toll free # 1-800-367-6027

You support  
Red Cross  
through your  
Combined  
Federal  
Campaign  
gift.

We'll Help.  
Will You?

American  
Red Cross

**CRAFTSMEN & HOBBYISTS**  
Nov. 11 & 12  
Seagull Lab School Art Fair  
Castle Junction at fountain  
**\$35 PER BOOTH**  
Chuck 261-8334 Sharon 235-6785 (R) 533-4185 (W)

**THE EYECARE EXPERTS**

2 WEEK  
SLEEP IN  
LENSES

**\$185\***

SPECIAL LIMITED OFFER  
STANDARD SOFT LENSES  
**\$79 WITH COUPON**

Includes lenses, care kit, solution and case. All follow-up visits with the doctor. Wear them home the SAME DAY in most cases.

**DR. TIM K. TOGIKAWA**  
VISION CARE SPECIALISTS

Pearl City  
DR. EDWIN ENDO  
98-1238 Kaahumanu St., No. 301  
PH. 487-7907

**WE'VE MOVED**  
Downtown Office  
233 Merchant St. (1/2 Block Ewa of Post Office)  
PH. 538-6226

**FOR THEIR SAKE...**



**BUCKLE UP**

**ALEX Jewelers**  
Windward City Shopping Center  
(By Foodland Gate)  
Hours: M-F 10-6, Sat. 10-6:30, Sun. 10-4  
Ph. 235-6299

Quality Jewelry At Affordable prices

**15% OFF** With Valid Military ID

14K Wedding Band and Sets  
14K Chains & Charms  
14K Birthstone Earrings, Pendants & Rings  
14K Gold Beads  
14K Hawaiian Jewelry

Italian Sterling Silver Chains & Charms

We Do Jewelry Repairs, Engraving,  
Watch Battery, Ear Piercing &  
**FREE**  
Ring Cleaning  
& Inspection.

**PRE-CHRISTMAS SALE!**  
Specializing in Hawaiian Diamond Wedding Sets  
LAY AWAY NOW FOR CHRISTMAS, IT'S ONLY 7 WEEKS AWAY

DIAMOND HAWAIIAN PROMISE RINGS 2 1/2 MM BAND	DIAMOND HAWAIIAN WEDDING SETS 4MM BANDS W/HEAVY WEIGHT
18 CT. 165.00 15 CT. 185.00 25 CT. 235.00 33 CT. 285.00 50 CT. 595.00	25 CT. 405.00 33 CT. 479.00 50 CT. 679.00 MATCHING BAND 4MM UP TO 7 LETTERS 96.00 UP TO SIZE 7 1/2

TAPERED HAWAIIAN FRENCH MOUNTING

4MM 18 CT. 225.00 15 CT. 285.00 25 CT. 425.00	6 MM 33 CT. 499.00 50 CT. 699.00
---	-------------------------------------

Larger Diamond Sizes Available On Request.

EXPIRES

**Golden Dimensions**  
WAIMALU PLAZA SHOPPING CENTER  
98-1277 KAAHUMANU ST.  
487-1526


MON-SAT 9:30-6:00  
SUN. CLOSED

**Buy Savings Bonds**

**Pence School of Real Estate**  
A Real Estate Salesman  
Candidate Course  
**LAST CHANCE TO ENROLL FOR 1983**  
Tuesday and Thursday night classes.  
For free brochure call  
955-5850  
Century Center  
1750 Kalakaua Avenue

**A Medical Practice Opens in Kaneohe Obstetrics and Gynecology**  
Fully participating  
CHAMPUS & HMSA  
•Infertility •Pregnancy  
•Annual Pap Smear •Female Disorders

**247-8737**  
**ROBERT C. ALLIN, M.D.**  
Honolulu Federal Building #400



**GET OUT OF DEBT**

through Chapter 13

A federal law which helps qualified debtors to pay off debts without borrowing and in payments you can afford, stops creditor harassment and law suits, protects your job, qualified co-signers and property. Free information packet without obligation.

Please call or write:

**HOWARD Y. TANAKA**  
ATTORNEY  
Suite 703, Alii Bishop Bldg.  
1136 Union Mall, Honolulu  
Phone: 526-1544

**Attention Sponsors**

**TLA APPROVED**

**PepperTree RESIDENCE INN**  
•2 & 1 Bedrooms  
•Children Welcome  
•TV, Pool, Laundromat  
•Maid's Service, Free Phone  
•Close to most bases with transportation available

PEARL HARBOR SHOPPING CENTER  
\* Pearl City  
\* Lipoa Pt.  
\* Lipoa Pt.

**488-1993**

**HALE KOA HOTEL**

**SPECIAL EVENTS THIS MONTH**

**NOV. NEWS**

Proper Military I.D. required including  
Pink I.D. Card for Reserve Components  
and Club Card for Military Club Members  
Scheduled activities, prices and  
menus are subject to change  
1983

ARMED FORCES RECREATION CENTER / FORT DERUSSY AT WAIKIKI / HAWAII / TELEPHONE 955-0555

**THE ALIIS!**

**Mostly Music... A touch of madness... All magic!**

Starring at the Saturday Dinner Show through November 26. Just **\$18.95** **\$9.95** for children under 12! lets you share an unforgettable evening with the zaniest show group in all Waikiki. Ticket price also includes a fantastic dinner buffet featuring Standing Baron of Beef. Every Saturday in the Banyan Tree Show Room. Buffet is served from 6-7:30 pm; show follows. Tickets are on sale two weeks in advance at the hotel Activities Desk and all Military Ticket Outlets.

**A CHANGE FOR THE BEAUTIFUL**

A major transformation is now taking place in the **Hale Koa LOBBY**. New furnishings, carpeting, and lighting, plus redesign of the Guest Registration Counter, Activities Desk, and Bell Desk, will make the lobby more functional and a more beautiful place for you to relax and enjoy your hotel! Please pardon any inconveniences that the renovation may cause and watch for a new Hale Koa to emerge in time for the holiday season! The Hale Koa is self-sustaining and all improvements are paid for from operations to maintain the finest of military resorts.

**A BEAUTIFUL SPECIAL IN THE MAUKA LOUNGE JUST 95¢**

The Mauka Lounge is the place to celebrate every day until the new lobby is completed. Wear your "Change for the Beautiful" button and you'll be able to buy **THE RAISIN CAIN** special for just 95¢. Buttons are available at the Front Desk or from the Mauka Lounge bartenders. You can "raise Cain" in the Mauka Lounge every day from 5 pm to Midnight until the new lobby is unveiled!

**Hale Koa Tidbits**

★ The greatest luncheon buffet in town can be found on the Hale Koa Room Lanai every Friday. It's a Hawaiian-style affair with endless rows of salads, hot entrees, and desserts for you to enjoy at a leisurely pace. It's offered at the best price in town, too - just **\$7.95** (plus 10% gratuity). Advance reservations are highly recommended.

★ Believe it or not, Christmas is just around the corner, and the Hale Koa can make this year's holiday shopping a breeze. Stop by the **Gift Shop** just off the hotel lobby for a wide selection of Hale Koa T-Shirts, mugs, and other beautiful souvenirs. Or give your eligible military friends a **Gift Certificate** good for any of the great shows in the Banyan Tree Show Room or a delightful dining experience in the award-winning Hale Koa Dining Room. Gift Certificates are on sale at the hotel Activities Desk.

★ Celebrate Thanksgiving Hawaiian-style at a special Thanksgiving Week Luau on Tuesday, November 22. You'll have all the regular Luau features plus some holiday extras, like Kalua Turkey! Tickets are on sale at regular Luau prices 6 days in advance at the hotel Activities Desk and all Satellite Ticket Outlets.

**The Hale Koa Thanksgiving**

**Thursday November 24**

**Midday and Evening Holiday Buffet**  
Treat yourself to a bounteous buffet of turkey, ham, pumpkin pie, and many other Thanksgiving favorites. The buffet will be open for midday dining from **10 am** until **3 pm** and again in the evening from **5 pm** to **8 pm** so you can choose the best time for your Thanksgiving feast! Just **\$10.95** for adults and **\$6.50** for children under 12 includes gratuity. Call the hotel Activities Desk at 955-0555 for reservations beginning November 7.

**Thanksgiving Candlelight Dinner**  
The elegant Hale Koa Dining Room offers a Thanksgiving dining experience that is not to be missed! Choose from the regular award-winning menu or select the special Thanksgiving Turkey Dinner. Evening dining will be available from **6 to 9 pm**. Call the hotel Activities Desk at 955-0555 for reservations beginning November 7.

**Thanksgiving Barnyard Display**  
Everyone in the family will enjoy seeing the live farm animals and the beautiful fresh fruit and vegetable display on the lobby level from **9 am** to **6 pm**.

**Can't Stop the Music**

**LOUNGE ENTERTAINMENT NIGHTLY!**

**RON & THE SOUNDS OF MUSIC**  
Enjoy the magical sounds of this dynamic quartet in the **WARRIORS LOUNGE**. Easy listening sounds and great dance music are their specialty, featuring **RON MIYASHIRO** at the keyboard and vocalist **CARYL CHALLIS**.  
Sunday, Tuesday, Wednesday & Thursday, 8:30pm-12:30am.  
Friday & Saturday, 9pm-1:30am.

**PIANO STYLINGS IN THE WARRIORS LOUNGE**  
Nightly, 6-8:30pm except Monday, 8pm-midnight.

**HAWAIIAN STRAINS WITH "HAUOLI"**  
Enjoy your favorite Hawaiian tunes performed by this talented duo nightly in the **Mauka Lounge**.  
Sunday, 9-11:30pm, Monday, 5-10:30pm  
Tuesday, 8-11pm, Wednesday, 9-11:30pm  
Thursday, 8-11:30pm, Friday & Saturday, 5-7pm.



# Seat belts . . .

Con't. from Page A-6

"A latching device reacts when the automobile comes to a sudden halt. It's there when you need it."

"When I have my lap belt fastened, I don't need to fasten my shoulder belt."

"Lap belts are better than nothing," said Tobey. "They provide support for the lower trunk of the body, but no support for the upper body. The head, shoulders, and chest are left free to slam into the steering column, dashboard, and windshield during an accident."

"All commercial government vehicles are equipped with at least lap belts," said Baxter. "The newer vehicles are equipped with both lap belts and shoulder restraints."

"Tactical vehicles are equipped with seat belts," said Tobey, "when the Commandant of the Marine Corps deems them appropriate. The 'M151' jeep has a side strap that must be fastened while the vehicle is in motion."

"Most people would be offended if I asked them to put on a seat belt in my car."

"Most people don't understand," said Tobey, "that in a split second, a collision can either seriously injure or kill them. They could be crippled for

the rest of their lives. It seems safety belt wear is a small price to pay in preventing injury."

"Polls have shown that the majority of passengers would willingly put seat belts on," said Baxter, "if the driver would only ask."

"If I wear a safety belt, I might be trapped in a burning or submerged car."

"Less than one-half of 1 percent of all injury producing collisions involve a burning or submerged vehicle," said Baxter. "However, individuals would be much better off in that type of collision if they had been wearing safety belts. The chances for remaining conscious and having a chance to escape are greater when wearing safety belts."

"I don't need safety belts. In case of an accident, I can brace myself with my hands. I can also hold a young child in my lap just as safely."

"There are two collisions involved when a vehicle has an accident," explained Baxter. "The first occurs as the vehicle itself is stopped upon striking an object. The second occurs as the occupants strike some part inside the vehicle."

"When a vehicle traveling 35 mph suddenly stops, the passengers continue traveling at that speed until that second collision. Hopefully, they have on safety belts to absorb that 35 mph pressure."

"The force of impact at just 10 mph is equivalent to the force of catching a 200-pound bag of cement from a first story window," he added.

"A child should never be carried on the lap of an adult while riding in a vehicle. A seat belt is designed for one. The adult could crush a child during a collision with pressure from his upper body while wearing a lap belt only. The child could be crushed between the adult and the dashboard or windshield if no seat belt was worn at all."

"I'd like to see people wear safety belts, not out of fear for punishment," said Tobey, "but because of command safety awareness."

"However, seat belt wear in government vehicles and on government business is part of Marine Corps Order 5100.19C and Department of Defense Instruction 1000.16. Violators will be cited and will have to appear before the station traffic court judge, Major M.R. Massie."



Take Stock in America. Buy market-based rate U.S. Savings Bonds.



## DIVORCE

LOW FEES • NO CHARGE FOR INITIAL CONSULTATION

**261-3233**

415A ULUNIU STREET, KAILUA

LAW OFFICES OF **NOAH D. FIDDLER**



Buy U.S. Savings Bonds

**MONEY MAKING POTENTIAL**  
• Low Priced Stock  
• INVESTMENTS  
**CHESLEY & DUNN, INC.**  
Investment Banking Firm  
**CALL 523-0930**  
Ask For **RON MUELL**  
FREE INFORMATION

**HIGH TECH PENNY STOCKS**  
Call **MAURICE BRISBEE**  
AT **528-2900**  
RL SMITH & ASSOCIATES  
NASD-SIPC



If your eyes need to be open, soothe them with **Lavoitik** EYE WASH AT PAY 'N SAVE

### HALE KOA HOTEL

Step ahead of your time to Panasonic. Until now, a video system this advanced could never be this portable.

The Panasonic Omnivision® VHS™ recorder-tuner/timer (PV-6500) and stereo sound/color (PK-957)

Outdoors, no portable system can record your family more automatically. In less time than it takes to say "smile," the camera focuses and sets exposure. Linked with the lightweight recorder, the system reacts as quickly as the action unfolds.

Indoors, the recorder, with its tuner/timer becomes a sophisticated home system. It records 8 hours from TV. And it plays back stereo tapes in full Dolby stereo when connected to your hi-fi.

Panasonic Omnivision. It will change the way you picture the world.

**Panasonic**  
Just slightly ahead of our time



Hawaii's Premiere

## Rock -n- Roll Nightclub

Presents

### THE TOYES

SUN. & WED.

LADIES NIGHT

**75¢**

DRAFT BEER FOR ALL  
10-11 P.M.

TUES & THURS.

**\$5.00**

ALL YOU CAN DRINK  
8-10 P.M.



SPECIAL LIMITED ENGAGEMENT

OPEN NIGHTLY  
TIL 4 A.M.

The Jazz Celler  
205 Lewers St.  
Ph. 923-9952

## AVIS SALUTES YOU... WITH SPECIAL SAVINGS!

Avis has very special discounts for military personnel. You save on every Avis daily rental, for personal or official travel. Save with special unlimited free mileage rates, good in the 48 contiguous states and Hawaii:

CAR GROUP	DAILY RATE
Subcompact	\$26
Compact	29
Intermediate	30
Full Size 2-Door	31
Full Size 4-Door	31

To get your special savings, all you need is an Avis or Avis-honored charge card and an Avis Worldwide Discount card. (Clip the AWD card in this advertisement for temporary use; to get a permanent AWD card, fill in and mail the coupon below.)

The next time you rent a car, get all the quality and service of Avis, and special military discounts too. Mail your AWD request coupon today!



Avis features GM cars. Buick Century.

**AVIS**

TRYING HARDER MAKES AVIS SECOND TO NONE.

Clip this card for temporary use.

Mail coupon for permanent AWD card.

### MILITARY PERSONNEL DISCOUNT CARD

AWD # AIA 143008

To reserve a car, call the Avis location nearest you. Or call toll free:

For reservations in the U.S.A.  
**1-800-331-1212**  
For international reservations  
**1-800-331-2112**

THIS IS NOT A CREDIT CARD



TRYING HARDER MAKES AVIS SECOND TO NONE.

To: Government Sales  
Avis Rent A Car System, Inc.  
6301 Ivy Lane  
Greenbelt, MD 20770

Please send me: \_\_\_\_\_ Avis Military Personnel Discount Card(s).

NAME \_\_\_\_\_

ADDRESS (or APO) \_\_\_\_\_

## ONLY A TURKEY WOULD MISS THE BURGER KING® CHICKEN DEAL.



At Burger King, we've got a fantastic offer! If you buy one Chicken Sandwich, we'll give you another one absolutely free! Just present the coupon below when ordering.



Buy one  
Chicken Sandwich,  
get one free!

Coupon good at all participating Burger King® restaurants in Hawaii. Limit one per customer. Not to be used with other coupons or offers. Coupon expires November 27, 1983.





**HALLOWEEN MESSAGE** — Gina Marcucci (right) and Kathy Hengel send a video-taped greeting to their husbands, First Lieutenants Anthony Marcucci and Michael Hengel, who are deployed with the 37th Marine Amphibious Unit.

**Free degree.**

The Marine Corps gives you plenty of educational opportunities. If you can qualify, you could earn a college degree free!

You can count on the Corps.

**Stay Marine**

**CREATIVE EXPRESSION**

for youth 3½ to 7¼

Use Many Puppets

A playful, active, valuable communication skills class that builds confidence, verbal and thinking skills through Games. Use Many Puppets.

SIX Locations: Mililani, Hawaii Kai, Pearl City, Pearl Harbor, Kailua, Waihee

Ph. 941-2798, 261-0808, 737-5544, 471-0392

**GENERAL ELECTRIC COMPANY**

Factory Service

**WE OFFER THESE SERVICES**

- Scheduled Service Mon.-Sat.
- Emergency Service
- Service Contracts
- Step-by-Step Repair
- Manuals/Parts
- Factory Trained Technicians
- Refrigerator/Freezer
- Washer/Dryer
- Range/Microwave
- Dishwasher/Disposal
- Compactor
- T.V.
- Room Air Conditioner

Service 533-7462  
Emergency 533-7462  
Parts 538-1141

**ALAN**

404 Cooke St.  
Honolulu, Hawaii 96813

**DOMINO'S PIZZA DELIVERS™ FREE.**

**Within 30 minutes.**

Our drivers carry less than \$20.00. Limited delivery area. ©1983 Domino's Pizza, Inc.

**Free Extra Cheese!**

Free extra cheese with any pizza. One coupon per pizza. Expires: 11/16/83

Wahiawa 874 Kilani Ave. Phone: 821-0707  
Pearl City 98-593 Kam Hwy. Phone: 456-4233  
Kailua 107 Hekili St. Phone: 261-7958  
Honolulu 3131 N. Nimitz Hwy. Phone: 838-0707

## Families celebrate Halloween

Story and photo by Sgt Greg Berry

Witches, goblins, vampires and even crabs found a place to have fun Sunday at the 37th Marine Amphibious Unit's family Halloween party.

A fortune teller gazed into her "crystal ball" and saw visions that delighted the young ghosts, monsters and other assorted creatures that braved to enter her tent at Mokapu Elementary School. "Someone you love and who loves you very much isn't with you now, but he will return soon..." intoned LeeAnn Moore. Her husband, Major Tom Moore, is with Marine Medium Helicopter Squadron 262.

The crystal ball wasn't necessary for her to tell that fortune. The estimated 280 kids and 150 wives at the party are eagerly awaiting the return of their loved ones who are deployed with the 37th MAU.

Service Support Group 31 left in September for a six-month Western Pacific deployment.

The festivities included apple bobbing, ring toss, fortune telling, and other traditional fare, but the highlight of the day was a videotaping session for the families to wish their Marines and sailors a happy Halloween.

**Don't get caught uncovered.**

## GOING TO THE BALL?

**Sculptured Nails**

by Loretta  
18 Years in California  
Now in Kailua

Get A Cinderella Hairstyle For The MARINE CORPS' 208th Birthday Ball

**HAIRCUT & STYLE** ..... \$19<sup>00</sup>

Blow or Set

**HAIRCUT & PERM** ..... \$30<sup>00</sup>

**SCULPTURED NAILS** ..... \$30<sup>00</sup>

**DON'T BE LATE, CALL NOW!**

For An Appointment

**Celia Mae's**  
Hairstyling

Evenings By Appointment  
262-0623  
438-A ULUNUI ST., KAILUA

**HAPPY 208th BIRTHDAY!**

**U.S. MARINE CORPS**

**November 10, 1983**

**Order Flowers NOW!**

For the MARINE CORPS Ball

**15% discount**

For Orders Received Prior to NOVEMBER 7, 1983

**Pali Florist & Gift Shop**  
Under New Management

312 KUNLEI ROAD  
KAILUA, HAWAII 96734  
PHONE 261-1818

**THE COURTHOUSE GOES ... INTERNATIONAL**

Hawaii's Largest & Most Complete Health & Fitness Center

There is only one word to describe the ultimate in health and fitness conditioning in Hawaii ... INTERNATIONAL. And as our new name indicates, INTERNATIONAL HEALTH & FITNESS CENTER members receive the finest health and fitness programming and facilities!

Enjoy our exciting aerobic exercise classes or work out in our complete fitness center on Nautilus® Universal® and free-weight personalized programs, enjoy a fast game of racquetball, or join a volleyball or basketball league ... Fun for everyone ... We offer co-ed workouts or use our private women's or men's facilities, as well as sauna, therapeutic whirlpool, relaxing lounge and complete restaurant facilities.

There's no better time than RIGHT NOW to join your friends at Hawaii's LARGEST & MOST COMPLETE Health & Fitness Centers. And for a limited time only, you can take advantage of all this and more at 50% OFF ENROLLMENT plus 1 YEAR FREE!!

But you must hurry!

**COME JOIN THE EXCITEMENT!**

**FREE T-SHIRT OR GYM BAG** with enrollment (while supplies last)

**50% OFF\* ENROLLMENT PLUS ONE YEAR FREE**

\*Based on 2-year membership—minimum down payment plan.

**ACT NOW! THIS OFFER WON'T LAST LONG.**

**INTERNATIONAL** Fitness & Racquetball Centers®

1680 Kapiolani Blvd. 942-8990

2810 Paa St., Mapunapuna 833-6619

45-608 Kam Hwy, Kaneohe 235-5839





**EASY DOES IT** — Captain J.E. Thompson, Supply Company, Brigade Service Support Group, shows Warren Cook, Defense Property Disposal Office, lithium batteries stored in a bunker due to their explosive nature.

# Hazardous waste threatens water, soil

Story and photo  
by Sgt R.D. Dewey

In the past, many materials now classified by the Environmental Protection Agency as hazardous, were buried, dumped on the ground, or poured down drainage systems. These materials usually showed up again in the forms of contaminated water systems and soil.

"In response, the federal government adopted a 'cradle to grave' hazardous waste management policy that all Department of Defense activities must follow.

"This station's hazardous material management program

makes every activity responsible for proper storage, use, and identification of all hazardous material and hazardous waste in their inventory," said Dennis Pang, hazardous waste coordinator, Facilities Department. "These activities are also responsible for the disposal of their hazardous waste through the Defense Property Disposal Office."

An hour-long program is available, through the Facilities Department, to assist activities in the storage and disposal of hazardous materials. On-site inspections to identify and correct potential violations of EPA requirements are also a part of the

hazardous material management program.

Hazardous material is defined as any new or reusable, ignitable, toxic, or corrosive material that has the potential to pollute the environment or pose a hazard to life. Some examples are: oil, solvents, fuel, acids, medical supplies, asbestos, heavy metals and pesticides.

In addition hazardous waste is any non-reusable, ignitable, toxic, or corrosive material that has the potential to pollute the environment or pose a hazard to life. Examples include contaminated oil and fuels, used solvents, chemicals, and paints.

"The management and disposal

of hazardous material," said Pang, "can be simplified by ordering only what is needed for operations, avoiding a stockpile, and rotating stock to use older materials first. In fact, most of the material disposed of at DPDO is due to expired shelf life.

"Reusable material should be turned over to other units for use, if possible. Activities using petroleum products should prepare three separate 55-gallon drums to receive fuel, waste oil, and synthetic oils and solvents (i.e. hydraulic fluid).

The accumulated fuel will be picked up by the fuel department

Con't. on Page A-10

## CELEBRATING OUR GRAND OPENING! HALE KOA Better Realty, Inc. Homes and Gardens

"Two Names in Hawaii You Can Trust"  
announcing our  
**GRAND OPENING SWEEPSTAKES**

- 1ST PRIZE:** Round Trip Tickets for Two to Los Angeles or Oakland  
**2ND PRIZE:** 2 Day Vacation for Two at any neighbor island Surf Resort.  
**OTHER PRIZES:** 1 year subscriptions to Better Homes & Gardens magazine, Better Homes & Gardens cookbooks.

Visit any Sunday Open Houses or branch office anytime to register before November 6 without obligation.

HONOLULU — 615 Piikoi St., Suite 1205  
KAILUA — 629A Kailua Rd., Suite 109  
MILILANI — 95-390 Kuahelani Ave.

## KDEO COUNTRY RADIO

TOP 10 COUNTRY SONGS

LAST WEEK	THIS WEEK	TITLE	ARTIST
2	1	Islands In The Stream	Kenny Rogers
4	2	You've Got A Lover	Ricky Skaggs
6	3	Somebody's Gonna Love You	Lee Greenwood
5	4	Midnight Fire	Steve Wariner
1	5	Lady Down On Love	Alabama
8	6	One Of A Kind Pair Of Fools	Barbara Mandrell
9	7	The Wind Beneath My Wings	Gary Morris
10	8	You Put The Beat In My Heart	Eddie Rabbitt
13	9	Tennessee Whiskey	George Jones
12	10	Your Love Shines Through	Mickey Gilley

Hear the Top Country Songs in the Nation on the WEEKLY COUNTRY MUSIC COUNTDOWN SUNDAY MORNINGS at 9 A.M. on AM94 at KDEO Country Radio.

Angel Inc. Presents



Opera's  
Favorite  
Soprano

**ROBERTA PETERS**

Program: 11 arias from 10 operas including: The Marriage of Figaro, La Boheme, Adrianna Lecouvreur, The Barber of Seville, Le Perle du Bresil, Rigoletto, The Merry Widow.

**NBC CONCERT HALL-8 PM  
SUNDAY, NOVEMBER 6**

**Ticket prices:** \$25, \$22, \$19, \$15 ON SALE  
NOW at Blaisdell Box Office, Sears and all  
STAR ticket outlets.

**CHARGE TICKETS- CALL: 524-2028.**

Senior Citizens, Students & Military Personnel  
Discounts available



## KAILUA SUPER SAVER SALON

WE'RE HERE EVERYDAY

You'll find the same low prices, the same high quality products, and the same service by trained stylists.

### OUR SPECIALTIES FOR WOMEN, MEN & CHILDREN:

- PRECISION HAIRCUT .....\$6
- SHAMPOO/CONDITIONER/FINISH .....\$6
- PERMANENT WAVE

with either or both of above ..... additional \$6

**NO APPOINTMENT! COME IN TODAY!**

beauty salon . kailua 945-5696

Monday, Tuesday, Wednesday, Saturday, 9:30 a.m.-5:30 p.m.

Thursday, Friday, 9:30 a.m.-9:00 p.m. Sundays, 10 a.m.-4 p.m.

(service subject to time availability)

Must be 12 years or older for permanent wave.

Long hair slightly higher.

## LIBERTY HOUSE

## San Miguel Beer

Available at Your Favorite Package Store

Now you can reminisce the most wonderful times you had while you were there.

Cavite-Subic Bay  
Clark Field-Manila  
Sangley Point

For further information  
Call  
Paradise Beverages  
(808) 833-3044  
2950 Paa St. Honolulu



Painted Label



## Bank Of Hawaii Presents A Golden Fund-raising Opportunity!

**Gold C Values Discount Coupon Books are a great way for your non-profit organization to raise money, and for you to save money, too.**

As a community service, Bank of Hawaii is again pleased to present the Gold C Values discount coupon book, a no-risk way for your non-profit group to raise money, and for buyers to save hundreds of dollars on products and services.

Each book contains values worth over \$1,500 at leading restaurants, stores and recreational activities throughout Oahu and the Neighbor Islands.

Your group may request a



supply of coupon books directly from Gold C Values. There's no up-front expense or commitment. Sell each book for \$6, give \$3 to Gold C, and keep \$3. (Bank of Hawaii makes no money.) The more you sell, the more you make!

For information about how your non-profit group can apply for this golden fund-raising opportunity—or how you may purchase a book—call Gold C Values on Oahu at 732-7878.

Sponsored as a community service for  
non-profit organizations in Hawaii by

 **Bank of Hawaii**  
WE'RE LIVING UP TO OUR NAME

MEMBER F.D.I.C.  
EQUAL OPPORTUNITY



Hazardous waste . . .

Con't. from Page A-9

and turned over to Crash, Fire and Rescue for use in training fires. Waste oil will be picked up by the Facilities Department for reuse in station boilers. Synthetic oil and solvents will be reported to the Facilities Department, which will arrange for their off-station disposal.

Personnel safety and safe storage of hazardous material are important parts of the hazardous material management program.

"Different hazard groups should be kept separated by three-foot aisles and stored on steel shelving when possible, to avoid potentially lethal fires," said Pang. "Ideally, fire walls should also be installed between hazard groups and corrosives should be stored close to the ground."

"Oxidizer material requires special consideration," said Pang,

"because they produce oxygen when they react. The oxidizer, calcium hypochlorite is used for swimming pool sanitation and can spontaneously cause explosive fires. This hazardous material should be stored by itself in a separate building, or isolated from other chemicals if stored in the same building."

"The most significant accomplishment of this program," said Pang, "has been the establishment of a monthly hazardous material/waste 'dump day'. On that day, a DPDO representative visits all requesting activities. He inspects

and accepts for disposal, all properly packed and identified hazardous material/waste. This monthly visit is announced by station message. Enough advanced notice is given for units to prepare their material for inspection.

After the inspection, the unit can either haul the properly packed material to DPDO themselves, or deliver the properly packed material to Station

Supply, Building 209. They then will transport the material to DPDO.

More information about the hazardous material management program can be obtained from Station Order 6280.2. A hazardous material training class will be held at 10 a.m., Nov. 4 at classroom two, Building 267. More information about the class can be obtained by calling Dennis Pang at the Facilities Department, 257-2171.



COMBINED  
FEDERAL  
CAMPAIGN

**WE ARE BULLISH  
ON  
PENNY STOCKS!**

CALL AND ASK US FOR OUR  
RECOMMENDED  
**STOCK OF THE WEEK!**

**R. L. SMITH AND ASSOCIATES**  
1311 KAPIOLANI BLVD., HONOLULU, HAWAII  
Limited Service on Weekends  
528-2900

**QUESTION:** Where can you get FAST cleaning on your uniforms cheaper than the BASE LAUNDRY?

**ANSWER: CAESARS CLEANERS**

Prices Based On Less Than 3-Day Service

Same Day Service	HICKAM	NAVY EX	FT. SHAFTER	KMCAS	CAESARS CLEANERS
	\$4.00	\$3.78	\$3.50	\$3.78	\$3.45
	Not Avail.	Not Avail.	Not Avail.	Not Avail.	YES M-F

**OPEN 7-7 Mon.-Fri. 9-5 Sat. (No Cleaning)**

**WAIMALU**  
IN BY 9 A.M.  
READY AT 5 P.M. (M-F)  
Corner Kaahumanu & Moanalua  
Ph. 488-3889



**KANEOHE**  
IN BY 10 A.M.  
READY AT 4 P.M. (M-F)  
45-681 Kam Hwy.  
Ph. 235-2533

**FURNITURE LIQUIDATION**

MAJOR WAIKIKI HOTEL RENOVATION OFFERS YOU QUALITY USED FURNISHINGS AT BARGAIN PRICES!

Nightstand 18"x25"	29 <sup>00</sup>	Rattan Hexagon Coffee Table	59 <sup>00</sup>
Rattan Occasional Chair	45 <sup>00</sup>	Parsons Corner Table	39 <sup>00</sup>
Rattan Side Chair	29 <sup>00</sup>	Parsons Desk/Table	59 <sup>00</sup>
Rattan Lounge Chair	69 <sup>00</sup>	Parsons Game Table	59 <sup>00</sup>
Rattan Princess Chair	55 <sup>00</sup>	Rattan Round Game Table	59 <sup>00</sup>
Queen Size Sofa Bed	129 <sup>00</sup>	Table Lamp	18 <sup>00</sup>
3 Seat Sofa	95 <sup>00</sup>	Full Size Bed	49 <sup>00</sup>
Lanai Chair	29 <sup>00</sup>	Twin Size Bed	29 <sup>00</sup>
Lanai Occasional Table	12 <sup>00</sup>	King Bedspread	19 <sup>00</sup>
Lanai Chaise Lounge	69 <sup>00</sup>	Twin Bedspread	14 <sup>00</sup>
Carpet (Approx. 11'x17')	22 <sup>00</sup>	Drapery Panel	12 <sup>00</sup>

**ISLAND TRADING, INC.**  
717 Moowaa Street  
Back of Kapelama Shopping Center  
CALL 847-1361 FOR DETAILS  
OPEN MONDAY THRU SATURDAY 8:30-5:00

**POST PRODUCT SHOW  
SEWING MACHINE  
SALE**

For those of you who missed the product show specials, here's your opportunity from Hawaii's LARGEST SEWING MACHINE CENTER

**BERNINA • VIKING • RICCAR**

5 DAYS ONLY

**•ZIG ZAG  
•BUTTONHOLE  
•MONOGRAM  
•OPEN ARM**



MODEL 414

Sale

**\$438**

FREE Machine Instruction w/Purchase

20 YEAR WRITTEN WARRANTY

**\$159**

SALE ENDS SUN. 11/6/5 p.m.

**•STRETCH STITCHES  
•BLIND HEM  
•TWIN NEEDLE**

PACIFIC SURPLUS & DISTRIBUTORS  
Sun. 11:00-5:00  
Mon.-Sat. 9:30-5:00 p.m.  
Thurs. 9:30-8:00 p.m. Tues. Closed  
CALL 262-8131  
1247-F Kalia Rd.

What's Fun & Free Every Weekend?

**"THE ART MART"**  
at the Honolulu Zoo Fence

YOUR ART MART... FEATURING 100 ARTISTS  
INCLUDING THE GREAT AND NEAR GREAT  
BARGAIN PRICES  
ALL ORIGINALS

**BROWSE • BUY • INVEST**  
SAT. & SUN. 10 AM-4:00 PM

**COUPON**

**HILLTOP RANCH**

Bring this coupon Spend 4 for the price of 3 A Day In The Country!

**TRAIL RIDES**  
All Ages  
Group Rates  
Bring you family & friends

Waimanalo  
Reservations Please  
259-8463 or 261-9504

**COUPON**

**TLA SPECIAL \$35.00 + TAX**

Rooms w/FREE In-Room Movies & Rates starting at

TLA accommodations conveniently located to all military bases featuring:

AIR-CONDITIONED ROOMS  
COLOR TV  
SWIMMING POOL  
FREE PARKING  
FREE AIRPORT TRANSPORTATION

HAIR SALON  
LOUNGE  
LAUNDROMAT  
CAR RENTAL  
TRAVEL AGENCY

Restaurant serving Breakfast, Lunch and Dinner with Children's Menu and Room Service available.

Complimentary Welcome Cocktail Parties!  
TLA Information Receptionist in the lobby of the Hotel.  
— also —  
ASK ABOUT OUR SPECIAL MEAL PACKAGE AVAILABLE FOR TLA GUESTS.

**RAMADA INN**  
"Call Us A Family Hotel"

3253 N. Nimitz Hwy.  
Honolulu, HI 96819  
Phone (808) 536-3636  
An IRONWOOD Resort

**INCHING YOUR WAY TOWARDS THE HOLIDAYS?**

**SPA fitness center**  
Presents  
**\$1,000,000 SPA IN NIU VALLEY**  
CALL NOW & Take Advantage of

**PRE-GRAND OPENING SPECIAL!**  
**8.98** PER MONTH

Cash Price \$325  
\$40 DN.  
8.98 - 35 months  
13.45 last month  
Expires Nov. 15.

**SPA fitness center**

WE OFFER THE MOST EXTRAVAGANT & LUXURIOUS FACILITIES ANYWHERE!

- EXERCISE CLASSES
- YOGA
- DANCE/ROCK
- INDIVIDUAL PROGRAMS DESIGNED FOR REDUCING, GAINING OR MUSCLE TONE
- NUTRITIONAL GUIDANCE
- SWIMMING POOL
- HYDRA WHEELPOOL
- ICE PLUNGE
- STEAM ROOM
- SAUNA
- PRIVATE SHOWER
- VANITY AREA
- INDIVIDUAL LOCKER
- \$100.000 IN WOODEN EXERCISE EQUIP.
- WORLD WIDE AFFILIATION

**PUNAHOU 949-0026 PEARLRIDGE 487-5551 KANEOHE 235-6461 AINA HAINA 373-9836 WAIPAHU 671-5431**



## Speedster readies for Marine race

by Sgt Chuck Jenks

CAMP H.M. SMITH, Hawaii—At first it's not easy to see the connection between the ancient Roman god Mercury and a present day Marine Corps sergeant at Camp Smith, but for the many long distance runners who have had victory flash past them in the form of Farley Simon, it's as obvious as the shoes on your feet — it's speed.

Since Simon began entering long distance races in Hawaii in 1981, he has remained undeniably the fastest runner in the state.

One of his recent victories came when he shattered the Honsport 30-kilometer race record by three minutes and 43 seconds. Simon, who said he came into the race "flowing" and "ready to race," ran the 18.6-mile course in 1:37:47. He added that he had to run against the clock because his nearest competitor was nowhere in sight — almost nine minutes to the rear. The 28-year-old speedster is

gratified with his victories in Hawaii but has goals that stretch much further.

On Sunday Simon will slow down long enough to fly to Washington D.C. for the Marine Corps Marathon, a grueling 26-mile contest through the streets of the nation's capitol.

"I want to be the first Marine to win the Marine Corps Marathon," said the confident racer. "Not only do I plan on winning the marathon, but I plan to use my official time as the qualifying time for the Olympic trials."

He believes that he can take the race but says his training in Oahu has not been without drawbacks.

"The climate in Hawaii is probably the best that a runner could hope for when training for long distance races," said the Marine noncommissioned officer. "However, having won all the races here except one, I've constantly found myself racing against the clock instead of another runner. I could run much

faster if the competition were better and I had someone to run against. Every chance I get, I travel to the mainland to race against the faster competition so that I can improve."

The lithe athlete's one defeat since coming to Oahu almost two years ago came Sept. 25, when professional runner, Pete Wysocki, from Los Angeles, returned to Hawaii to defend his four-year championship reign in the annual Pepsi Challenge 10-kilometer race. Although Simon led the race for the first four miles, he claims Wysocki's experience and endurance was a little too much.

"Many people have been giving me a hard time for losing the race to Wysocki," said Simon. "But, I look at it as a lesson in humility and learned a great deal from the loss. It helped me put the competition back into perspective, and this will be an advantage for me while I'm training for and actually racing in the Marine Corps Marathon."

Training for long distance races is no easy task, yet Simon contends that it just takes discipline to win.

"Many runners I've known have certain diets, good luck shoes or shirts and other little quirks when preparing for a big race," continued the Camp Smith Marine. "I have none of that. I eat what I want when I want and don't

put any significance on the color of the shirt or make of the shoes I wear for a race. I just get mentally prepared for a good run and go out and do it."

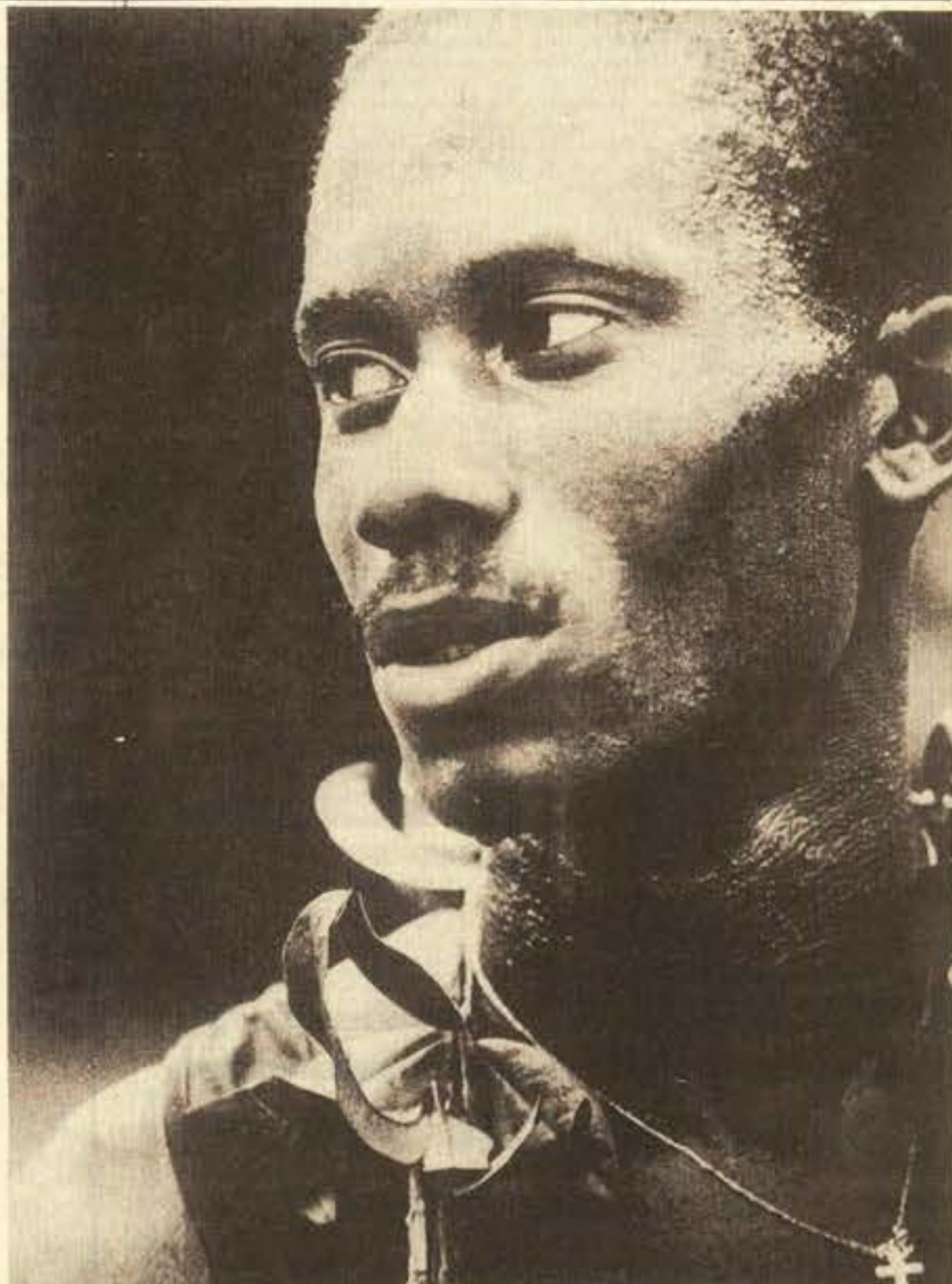
Being mentally up for a race is not the only factor that makes a good competitor. Strength and proper training play a major role, and to Simon, this is a vital part of the regimen.

"For training purposes, I'm glad I'm stationed at Camp Smith," said the veteran of five years in the Corps. "If there's one thing I have to do, it's run. I do it every day and try to log 105 to 110 miles a week."

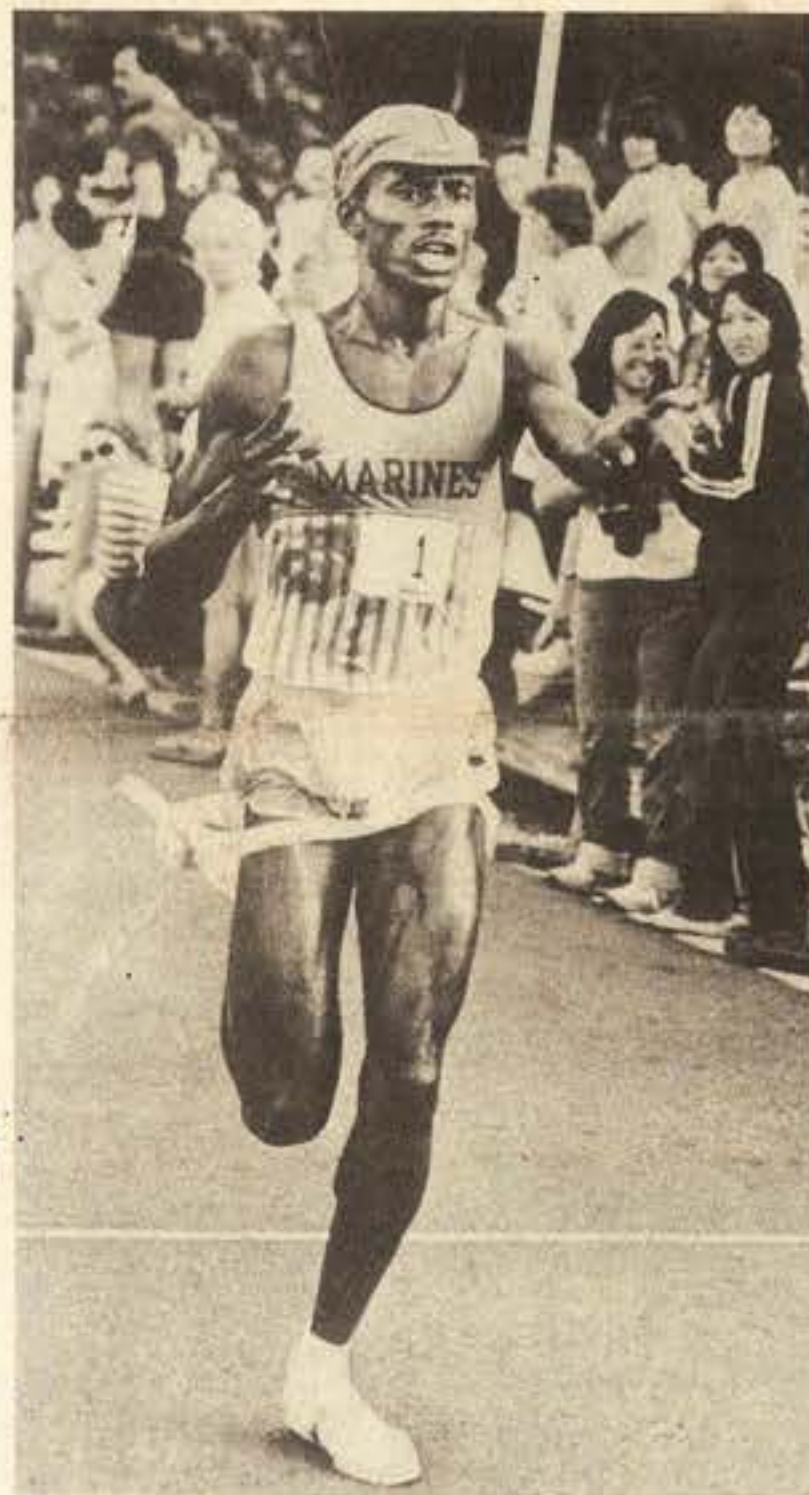
"It never really seems hard to go out and run, it just gets to be boring sometimes. I have to be motivated to go out and log a lot of miles, and if I don't feel too good, I run as far as I can before I almost fall asleep," he said jokingly. "Seriously though, the psychological aspect of the run is the most important factor. You have to feel hyped and good about your potential to run a fast race. If you don't, you'll be lucky to win."

Although Simon was born in the West Indies, he claims Brooklyn, N.Y. as home. He moved to the United States when he was 16 and worked for several years, first as a security guard for a hotel and then as a manager for a restaurant before enlisting in the Marine Corps. After boot camp in 1978, he was sent to Fort Belvoir, Va., for training in the reproduction field. Following school, he was initially assigned to Headquarters, Fleet Marine Force, Atlantic, in Norfolk, Va.

It was while he was stationed in



(Photo courtesy of the Honolulu Star-Bulletin)



(Photo courtesy of the Honolulu Star-Bulletin)

Norfolk that Simon became interested in competitive running.

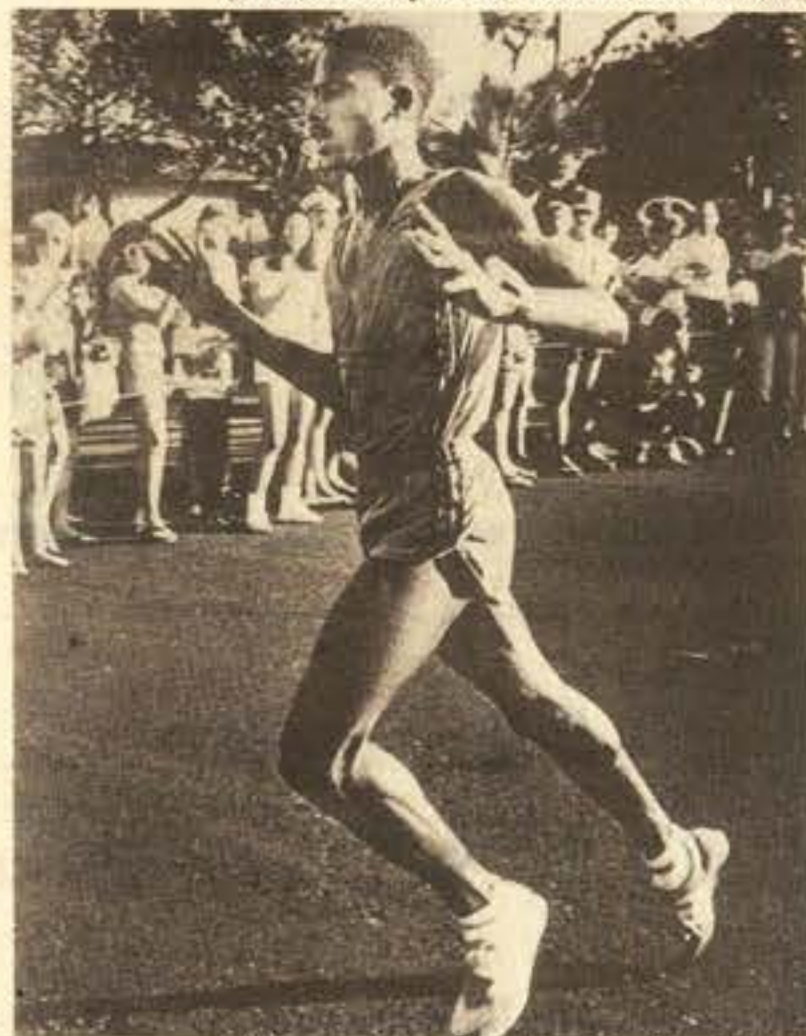
"I really started to run while I was in Virginia," said Simon. "Basically it was just to stay in shape for the Marine Corps Physical Fitness Test. But then some friends talked me into entering a 10-kilometer run that was being held to benefit children with bone disease. It was a lot of fun. The runners were given printed T-shirts and free refreshments at the end of the race. After a few of these fun runs, I was hooked."

The Hawaii-based Marine claims he wasn't always a fast runner.

"When I first started, I didn't run very fast. In fact, I only ran 10-kilometers (6.2 miles) in about 34 minutes. But because I have two brothers who were runners in college, I was determined to stick with it and improve."

"I still enjoy the races here and I've made plenty of running friends, but I'm looking for the Olympics and the stiffest competition I can find. I'm sure I'll find it at the Marine Corps Marathon."

As Mercury was a messenger to ancient Rome, Farley Simon would appear to be a messenger to the athletes gathering for the Marine Corps Marathon. The message is clear — "Move out of the way, I'm coming through."



(Photo courtesy of the Honolulu Star-Bulletin)

### KIKI

OFFICIAL HAWAIIAN MUSIC REPORT  
October 30, 1983

LAST WEEK	THIS WEEK	SONG	ARTIST
5	1	All Night Long	Lionel Richie
1	2	True	Spandau Ballet
2	3	Making Love Out Of Nothing At All	Air Supply
6	4	Telephone	Sheena Easton
3	5	Safety Dance	Men Without Hats
7	6	Bad Boys	Wham U.K.
4	7	How Am I Supposed To Live Without You?	Laura Branigan
11	8	Delirious	Prince
8	9	Miracles	Stacey Lattisaw
14	10	Total Eclipse Of The Heart	Bonnie Tyler

The Official Hawaii Music Report is determined by weekly ballots you fill in, local record sales, caller requests, and KIKI research.

MAINLINER and TRAVEL HOLIDAY Award Winners

## L'Auberge

French Cuisine

Superb Dining In A Charming Country French Manner

RESERVATIONS AFTER 2 P.M.

262-4835

Open: Wed. thru Sun. 6 p.m. to 10 p.m.

117 HEKILI STREET, KAILUA

Your Hosts - Marcel & Elvi Baltzer

### Trim-Line DESIGN

Auto Decor and Protection Specialists

- Body Side Molding
- Pin and Custom Striping
- Wheel Well Molding
- Door Edge Guard
- 3M Scotchgard
- Trim-Line Paint Sealant
- Window Tinting
- Other Auto Acc.
- All Work Guaranteed
- Mobile Service
- Servicing Hawaii 8 yr.

When buying a new car ask for Trim-Line Products.

2954 Koapaka 836-1561

### FOOT PAIN?

A Doctor of Podiatric Medicine is the specialist concerned with the diagnosis, prevention and treatment of foot disorders by medical and surgical means.

- Ingrown Toe Nails
- Calluses & Bunions
- Orthotics
- Sore Heels
- Corns & Hammertoes
- Warts

KAILUA PODIATRY CLINIC  
407 Ulanui St. Suite 301  
Kailua, Hawaii  
262-6961

Dr. Theodore G. York  
615 Piikoi St. Suite 1461  
Honolulu, Hawaii  
538-1831

Dr. David Heaton  
98-211 Pali Momi St. Suite 737  
Pearl Ridge, Hawaii  
487-9949

- Breyer Horses
- Avalon Hill Games
- Steffi Animals
- Playmobil Sets
- Corgi Cars

## JEANLU TOYS

32 Years in Hawaii

25 Malunui Ave., Kailua 261-0037

COUPON

The Thanksgiving Turkey Alternative

Choice Meats 5th Anniversary Specials Why Pay More?

Hamburger Patties or Bulk \$1.69/lb. READY FOR CHARCOAL End Cut Pork Chops \$1.88/lb. ... Family Pak \$2.37/lb. ONO! Table Bacon \$1.25/lb. (3 lb. limit) SUPER BARGAIN! 1" Beef Ribs \$1.95/lb. THE BEST!

MORE THAN 50 ITEMS TO CHOOSE FROM

Offers Good Only With This Coupon

## Windward Meats

150B Hamakua - Kailua — 261-7116

COUPON



# Sportsnotes

The annual Marine Corps Birthday Run will start at 6:30 a.m. Nov. 10 at Dewey Square here. T-shirts, at a cost of \$5, will be available immediately after the race to the first 400. All participants should pre-register at the station gymnasium beginning at 9 a.m. today. Medallions will be awarded for different age group winners, and times of the first 50 finishers will be recorded. All "fun runners," Department of Defense civilians and dependents are encouraged to participate on a noncompetitive basis.



The Hawaii State Powerlifting Meet will be conducted Nov. 13 at the Pacific Beach Hotel in Waikiki. Tickets are available at the mini-gymnasium. For more information, call 257-2723.

## WATCH, CLOCK, JEWELRY REPAIR

Prompt. Expert. Guaranteed Service...

Certified Appraisals  
Specializing in Personalized, Hand-Engraved  
HAWAIIAN HEIRLOOM JEWELRY  
1 week delivery

WINDWARD TIME SERVICE JEWELERS  
Kailua Shopping Center 261-6661

A tri-annual tennis tournament will be conducted Nov. 19-20 here. All players will play two matches on Nov. 19 and two matches on Nov. 20. Divisions will be contingent upon the number of entries. Players are urged to pre-register in the athletics office beginning Nov. 14. Marine Barracks Hawaii and Camp H.M. Smith personnel are eligible to compete.



Naval Station Pearl Harbor's Special Services will be hosting the first leg of the NISSAN Satellite Tennis Tournament, the first professional event of this nature to be held in Hawaii, Friday through Nov. 11.

The matches will be played at the Wentworth and Nimitz tennis courts on Naval Station, Pearl Harbor. Admission is free and the public is invited to attend. Tennis professionals from all over the world will be participating in this event.

For more information, contact the Wentworth tennis pro shop at 471-0610 and ask for Margherita Parent, Naval Station Tennis Director.

## WE BUY

GOLD • SILVER • PLATINUM  
DIAMONDS • WATCHES  
U.S. & FOREIGN COINS

HONOLULU 748 KAPAHULU 735-2368  
KANEHOE 46-336 KAHUHIWA 267-8477  
Prestige

Athletes are still needed for the women's variety basketball team. For more information, call Staff Sergeant Larry Gholston (Camp H.M. Smith at 477-6330) or Gunnery Sergeant "Skip" Best (Kaneohe) at 257-3220.

A slow-pitch station invitational softball tournament will be conducted Nov. 18-20 here. Tournament entry fees will be approximately \$60 per team, with teams guaranteed five

games. Teams will be divided into pools, with winners advancing to the championship Nov. 20. For more information, call 257-3550.



HALE KOA HOTEL

lea Collectibles  
BUYS AND SELLS

STAMPS - COINS - BOTTLES  
BASEBALL CARDS - MORE

488-8690  
BEHIND CUTTER FORD IN AIEA

Start Saving Now!

UP TO  
**50%**  
On your calls to the mainland  
Long Distance USA  
526-2671

COME 'N'  
GET IT!  
-FREE!

with every

PANIOLO PLATTER

During November  
(except Thanksgiving)

An Old-Fashioned  
STRAWBERRY  
SHORTCAKE

A scrumptious, Homemade Short  
bread Muffin, Split and Filled with  
Luscious, Red, Ripe Strawberries  
and fluffy Whipped Cream.

Available 5-9 p.m. Only  
Every Night

261-8724

BIB's

Family Restaurant

315 Uluniu St.  
Kailua Square



## Now You Can Afford To Smile Again!

We offer the latest in orthodontic treatment and materials, including "invisible braces" to give you a beautiful smile. Our efficiencies in treatment result in savings for you. Please call us for a free consultation.

523-2402



HONOLULU ORTHODONTIC SPECIALISTS

Arthur T. Kamisugi, DDS, MDS  
Diplomate, American Board of Orthodontics

Randal D. Morita, DDS  
Curtis N. Kamisugi, DDS, MDS (7/83)



Offices in Honolulu, Pearl City/Aiea, Mililani, Kaneohe, Kailua and Haleiwa.

Swivel  
Papason Chair  
with foot stool  
and cushions

Reg. \$227<sup>20</sup>

Sale \$199<sup>00</sup>

Financing Available O.A.C.  
Military ID Required

Sorry, no lay-aways on sale items!  
This ad not paid for  
or sponsored by AAFES



Buri/Rattan Hut

Hickam AFB  
Bldg. 1706 (rear of Toyland) 422-1175

20%  
OFF!

On  
New Jewelry  
Just Arrived!

Happy 208th Birthday  
U.S. Marine Corps



Best Selection  
Now 'til Nov. 16th

Caribe  
Diamonds

KANEHOE MARINE  
CORPS EXCHANGE  
254-5370



This Ad Not Paid For By MCX

## PRE-CHRISTMAS SALE MICROWAVE OVENS

5 DAYS  
ONLY

A CONTAINER OF NEW MICROWAVE OVENS  
HAVE ARRIVED FOR IMMEDIATE LIQUIDATION.  
ALL ARE REDUCED AT PRACTICALLY WHOLESALE COST!

SALE ENDS  
SUN., 11/6/5 p.m.

INDIVIDUAL  
FEATURES INCLUDE:  
ROTOWAVES  
CAROUSELS  
DIGITALS  
PROBES

VALUES TO \$498

\$239

Limit 2 per customer

NEW!

SELECT  
FROM EITHER:

PANASONIC

TAPPAN

AMANA

LITTON

COMPACT OVEN

169

Sug. Retail \$348 Demo

FREE

\$4700

cookware set  
and cookbook  
with oven  
purchase

368

Sug. Retail \$598

OUR GUARANTEE:

Simple, we guarantee you the lowest prices in Hawaii on any oven including military exchanges.

This applies to the Microwave/Convection Ovens from SHARP & PANASONIC. In addition, we have 22 models on display.

PACIFIC SURPLUS & DISTRIBUTORS

CALL NOW 262-8131

MON.-SAT. 9:30-6:00 p.m.  
TUESDAY CLOSED  
THURSDAY 9:30-8:00 p.m.  
SUNDAY 11:00-5:00 p.m.

1247-F Pali Hwy. (1 block east of Castle Hospital)  
in the new 7-Eleven Complex in Kailua





# Localmotion

## K-RAY OFFICERS' CLUB

**TODAY** — Lunch in the Pacific room from 11 a.m. to 1 p.m. features two specials of the day, deli line, salad bar, chef's shrimp salad, soup, plus an array of desserts. Mongolian barbecue on the lanai from 5 to 8:30 p.m. The Alii Bar is open from 4 to 10 p.m.

**THURSDAY** — Lunch in the Pacific Room. Beefsteak's buffet from 6 to 8:30 p.m. featuring steamship round, seafood item, spaghetti, rice/potatoes, vegetable, salad bar. The Alii Bar opens at 4 p.m. and closes at 10:30 p.m.

**FRIDAY** — Lunch in the Pacific Room. The Alii Bar opens at 3 p.m. Happy hour in the Alii Room from 4:30 to 6:30 p.m.

**SATURDAY** — Prime rib, Alaskan king crab, soup, mahimahi, almondine on the buffet in the Pacific Room from 6 to 8:30. The Alii Bar is open from 1 to 11:30 p.m.

**SUNDAY** — Champagne brunch in the Pacific Room from 10 a.m. to 1 p.m. featuring a buffet to include top round of beef, chicken ala king, eggs benedict to order, complimentary juice and champagne. In the evening, prime rib and peel your own shrimp buffet. Alii Bar opens at 4 and closes at 10 p.m.

**MONDAY** — Lunch in the Pacific Room. Monday evening, the club is closed.

**TUESDAY** — Lunch in the Pacific Room. The Alii Bar is open from 4 to 10 p.m.

## SNCO CLUB

**TODAY** — Lunch from 11 a.m. to 1 p.m. featuring beef kabobs and fried rice. The dinner special will be a jumbo tempura shrimp plate.

**THURSDAY** — Lunch from 11 a.m. to 1 p.m. Lunch special is lasagna. Every Thursday is Mongolian barbecue from 5 to 8 p.m. Our entertainment is "Elijah Powers" from 8:30 to 11:30 p.m.

**FRIDAY** — Lunch from 11 a.m. to 1 p.m. featuring mahimahi or fried chicken. Happy hour from 4:30 to 6:30 p.m. Our dinner special is jumbo stuffed shrimp, prime rib, or stuffed shrimp and prime rib. The dining

room is open from 6 to 9 p.m. Listen to the music of "Kneet" from 9 p.m. to 1 a.m.

**SATURDAY** — Dining room is open from 6 to 9 p.m. Our dinner special is all the beef and crab you can eat or just beef. DJ plays your favorite tunes from 9 p.m. to 1 a.m.

**SUNDAY** — Enjoy our champagne brunch from 9:30 to noon. Every Sunday evening, our dinner special will be "broil your own steak," which includes salad, baked potato, baked beans and vegetable. Dining room is open from 5 to 8 p.m.

**MONDAY** — The lunch special is macho burrito. The dining room is closed on Monday evenings.

**TUESDAY** — Lunch special is liver and onions. Bingo starts at 6:30 p.m.

## WINDWARD ENLISTED CLUB

**TODAY** — Lunch from 11 a.m. to 1 p.m. Marine Corps Ball tickets on sale today and all days. Dining room opens from 5 to 9 p.m. The chef's special this month is top sirloin, with all the shrimp you can eat. The beer garden is open from 8 a.m. to 10 p.m. Monday through Friday. The beer garden features sandwiches, pizza, homemade chili, bagels, salads and many more items. Tonight, Mark request line of rock'n'roll in the moongate lounge from 7:30 to 11:30 p.m.

**THURSDAY** — Lunch from 11 a.m. to 1 p.m. Marine Corps Ball tickets on sale all day. Dining room opens from 5 to 9 p.m. with an open menu. Our dinner special this evening is your top sirloin with all the Alaskan crab legs you can eat including soup and salad bar. The beer garden is open today from 10 a.m. to 10 p.m. Live hand plays the best of rock'n'roll in the moongate lounge.

**FRIDAY** — Lunch from 11 a.m. to 1 p.m. The dinner special in prime rib and lobster tail just prime rib, or just lobster tail; or try our friend chicken to go available daily from 10 a.m. to 9 p.m. Peter plays Top 40 in the moongate lounge. Every Friday special happy hour from 5 to 6 p.m. The club is open until 2 a.m. every night. The beer garden is open from 8 a.m. to 10 p.m.

**SATURDAY** — Breezy Inn opens from 5 to 9 p.m.

our dinner special tonight is lobster tail and prime rib, just lobster tail, or just prime rib. Then, it's ladies' night at 9 p.m. with free roses for the ladies in the moongate lounge. The beer garden is open this evening from 5 to 9 p.m.

**SUNDAY** — Club opens at 11 a.m. The Breezy Inn opens for dinner from 5 to 9 p.m. Our dinner special tonight is prime rib and lobster, just prime rib or just lobster tail. Tonight we will be featuring two guest DJs, one from Detroit and one from New York City, in the main ballroom from 7:30 p.m. to 12:30 a.m. Also rock'n'roll in the moongate lounge from 7:30 p.m. to 12:30 a.m. The beer garden is open this evening from 5 to 10 p.m.

**MONDAY** — Lunch from 11 a.m. to 1 p.m. Dining room opens 5 to 9 p.m. with the "Italian Special". All the spaghetti or lasagna you can eat including salad bar, garlic bread and a complimentary glass of our house wine. Tonight, "White Lightning" plays the best of country and western from 6:30 to 11:30 p.m.

**TUESDAY** — Lunch from 11 a.m. to 1 p.m. Dining room opens from 5 to 9 p.m. with all you can eat smorgasbors every Tuesday night. Peter Wolf's rock'n'roll T-shirts from 6:30 to 11:30 p.m. The beer garden is open from 8 a.m. to 10 p.m.

Would you  
be as proud of  
any other job?

## X-rays spoil film

The Federal Aviation Administration recently issued a warning to all airline passengers carrying photographic film. Photographers are urged to check their film for particularly sensitive type of high-speed color film with an ASA speed rating of 1,000.

It appears that the low level of x-ray energy emitted by the security X-ray machines at airport security checkpoints can significantly affect the extremely sensitive film. The FAA recommends that the film be removed from carry-on luggage before it is X-rayed.

## ACCIDENT CASES

INCLUDING  
WRONGFUL  
DEATH CLAIMS  
AND  
CATASTROPHIC INJURIES

You may qualify if you or any member of  
your family has been injured.

524-5400

Law Offices of  
**GARY GALIHER & ASSOCIATES**

No Charge For Initial Consultation  
No Recovery - No Fee

333 Queen Street, Suite 800 Validated Parking

Give  
to the  
Red  
Cross.

## CONSOLIDATED THEATRES

KAM DRIVE-IN  
"SUPER" SWAP MEET  
EVERY WED., THURS., SAT. & SUN.  
7 AM TO 3 PM • 555-5522

WAIKIKI 1  
SEASIDE NR. KALAKAUA  
923-2354

STARTS FRIDAY  
"THE RIGHT STUFF" (PG)  
Call Theatre For Show Times

WAIKIKI 2

"NEVER SAY NEVER  
AGAIN" (PG)  
12:30 • 2:30 • 5:30  
8:00 • 10:45  
No Passes

WAIKIKI 3  
KALAKAUA NR. SEASIDE  
"3"

STARTS FRIDAY  
"DEAL OF THE CENTURY" (R)  
Call Theatre For Show Times

KUHO 1  
2050 KUHO • 841-4422

"ALL THE RIGHT MOVES" (R)  
6:15 • 8:15 • 10:15

KUHO 2

MOVES OVER FRIDAY  
RICHARD PRYOR  
"HERE & NOW" (R)  
Call Theatre For Show Times

CINERAMA

KING NR. KALAKAUA • 341-5291

"RETURN OF THE JEDI" (PG)  
In 70mm. Dolby Stereo  
5:15 • 8:00 & 10:45  
NO PASSES

VARSITY

UNIVERSITY NR. BERETANA  
940-4148

"UNDER FIRE" (R)  
8:00 • 8:30 • 10:45

KAPOLANI

KAPOLANI NR. KAHAKA  
855-6115

"THE BIG CHILL" (R)  
8:30 • 8:45 • 10:45

KAM DRIVE-IN 1

MOANALO NR. KAM HWY.  
489-1905

STARTS FRIDAY  
RICHARD PRYOR  
"HERE & NOW" (R)  
Gates Open at 6:15  
Show Starts at 7:15

KAM DRIVE-IN 2

STARTS FRIDAY  
"DEAL OF THE CENTURY" (PG)  
"MAN WITH TWO BRAINS" (R)  
Gates Open at 6:15  
Show Starts at 7:15

PEARLRIIDGE 1

PEARLRIIDGE CNTR. • 489-5581

"STRANGE INVADERS" (PG)  
8:15

"REVENGE OF THE NINJA" (R)  
8:30 • 10:15

PEARLRIIDGE 2

STARTS FRIDAY  
"FLASHDANCE" (R)  
Call Theatre For Show Times

PEARLRIIDGE 3

STARTS FRIDAY  
"BRAINSTORM" (PG)  
Call Theatre For Show Times

PEARLRIIDGE 4

"TRADING PLACES" (R)  
8:15 • 8:15 • 10:30

KAILUA DRIVE-IN

QUARRY RD. AT PALU HWY.  
261-0032

STARTS FRIDAY  
"RISKY BUSINESS" (R)  
"PRIVATE SCHOOL" (R)  
Gates Open at 6:15  
Show Starts at 7:15

AIKANA PARK SHOPPING CNTR.

254-1330 • ALL SEATS 55¢

STARTS FRIDAY  
"STYKER" (R)  
"ESCAPE 2000" (R)  
Call Theatre For Show Times

CALIFORNIA'S MOST EXCITING EXOTIC  
NIGHTCLUB COMES TO HONOLULU  
Featuring Mainland Dancing Girls

**DIRTY  
DAN'S**

205 SAND ISLAND RD.  
Ph. 841-9063  
(formerly  
THE SAND BOX)



CONTINUOUS SHOWS 1:00 p.m. to 4 a.m.  
Sun 6 p.m. - 2 a.m.  
**"NO COVER CHARGE"**  
COCKTAILS — FOOD — GAME ROOM

30

GORGEOUS DANCING BEAUTIES

30

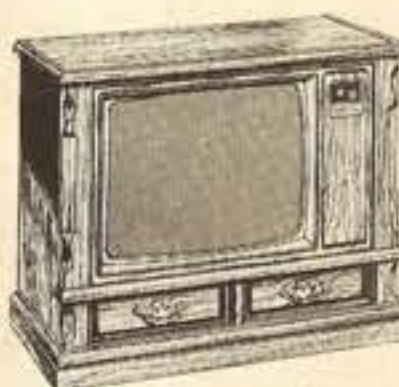
**NOW AT YOUR PX!**  
OR AVAILABLE THRU YOUR SPECIAL ORDER DESK

**ZENITH**  
NEW 1984 COLOR TVs  
**CUSTOMSERIES**

**25" ZENITH CONSOLE  
COLOR TV  
with REMOTE CONTROL**

- ChromaSharp 100 picture tube for outstanding picture sharpness
- 100% modular Z-1 chassis for reliability
- Precision Quartz-Controlled Electronic Tuning featuring 157+ channel tuning capability of all normal VHF/UHF channels and 101 cable channels
- LED Channel Display with large, easy-to-read numbers
- Chromatic One-Button Automatic Color Control to maintain factory-set color level and tint

• Charming Country Style console with simulated grained Nutmeg Oak finish  
**Computer Space Command®  
2400 Remote Control**  
Features UP/DOWN scanning of channels or direct access channel selection. Turn set on or off, make sound louder or



SZ2517NK

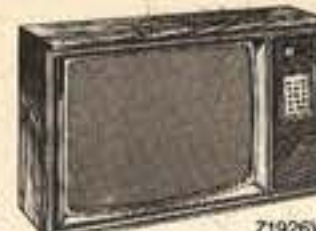
softer through a continuous range, and/or completely mute sound while picture remains on screen.



Z2508P

**25" ZENITH CONSOLE  
COLOR TV**

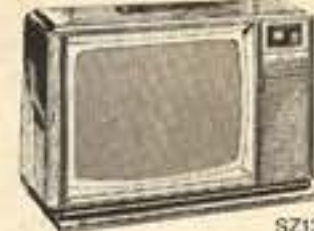
- Features ChromaSharp 100 picture tube for great picture sharpness
- 100% modular Z-1 chassis for long-life reliability
- Automatic Color Control System
- Classic Style console with simulated grained Pecan finish



Z1926W

**19" ZENITH COLOR TV**

Here's compact color TV with Zenith quality clear thru its 100% modular chassis. Electronic Tuning with Keyboard Touch-Command features 157+ channel tuning capability of all normal VHF/UHF channels and 101 cable channels. LED Channel Display with large, easy-to-read numbers.



SZ1319W

**13" ZENITH COLOR TV  
with REMOTE CONTROL**

Computer Space Command® 2400 Remote Control lets you control power on/off, direct access channel selection and all-channel scan UP/DOWN from the comfort of your easy chair. 157+ Channel Electronic Keyboard Tuning capability includes 101 Cable TV channels.

**See! Now at your PX!**

\*Cable systems vary. Check your cable company for compatibility.

This advertisement is neither sponsored nor paid for in whole or part by any military resale activity.

Gold Prices Are Down, But  
We're STILL Paying MORE!!

**We Pay More For Your . . .**

- **Gold** Chains, Broken, Scrap Any Condition
- **Gold Coins**
- **Diamonds**
- **Silver** Sterling, Mexican, etc.
- **Silver Coins**
- **Watches** "Especially wanted Cartier or Rolex Watches," Working or Not.

Serving the Windward Side

- Save a trip to town • Plenty of Free parking • Deal close to home

**Gold Collectors International**

767 Kailua Rd. Suite 202-204 Ph. 262-0726

We're hard to find, but worth the climb! Upstairs, above "Mescalito" in Kailua

OPEN 10 a.m.-6 p.m. Mon. to Fri.

Graduate Gemologist on the Premises.

the  
**body factory**  
Presents . . .



Body by Janis

**FREE Seminar**

**TAKE CARE of YOUR BODY**

**Pat Cantin — Registered Dietician**  
"Eating on the Run, The Healthy Way"

**Janis McDonald — Exercise Expert**  
"Exercise & Relaxation," "How to Get Started And Stay Motivated"

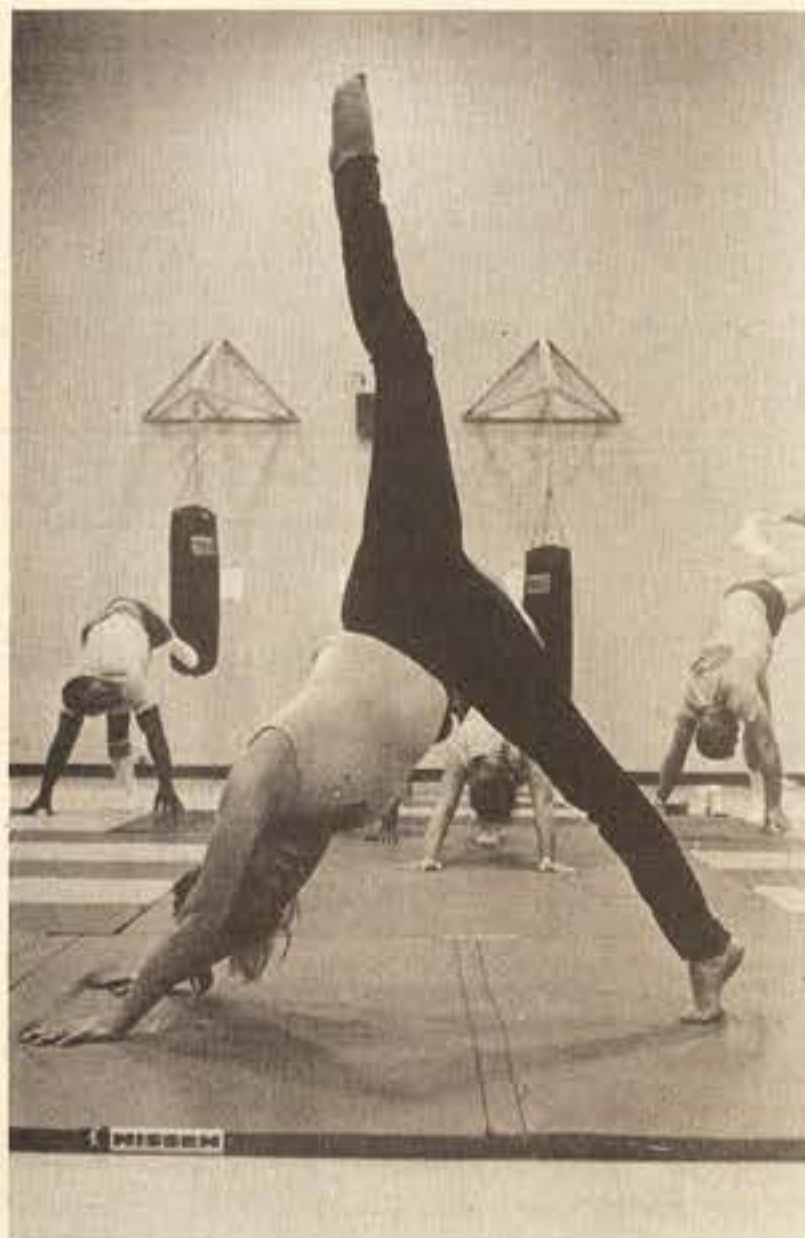
November 8th, 1983 — 7:30 p.m.  
November 9th, 1983 — 10:30 a.m.

Phone 261-7916

Keolu Shopping Village  
1090 Keolu Dr.  
Enchanted Lake, Kailua







**STRETCHING OUT** — Diane Boyd, stretch class instructor for a local helath club, instructs Marines involved in the Physical Fitness Improvement Program from Headquarters and Headquarters Squadron and volunteers on the proper ways of stretching during a class held here recently. The purpose of the class was to show the Marines a variety of ways to keep in shape.

## Stretching loosens dormant muscles

Story and photos  
by SSgt W. S. Saunders

Bend, stretch, reach for the sky — that was the theme of the day for personnel of Headquarters and Headquarters Squadron here when their Physical Fitness Improvement Program took a twist for the better.

This new twist came during a stretch and flexibility class held in the station gymnasium Oct. 11.

The class was conducted by Diane Boyd, a stretch class instructor for a local health and fitness spa. She is also the waitress leader at the Staff Noncommissioned Officers' Club.

"The purpose of the class was to

give the Marines incentives on learning various ways to keep in shape and to break up the weekly routine of standard physical training," said Staff Sergeant Rick Mayorga, training noncommissioned officer and PFIP instructor.

"The idea behind my class is to teach the Marines about the exercises and their bodies, and how important stretching is with exercise," said Boyd.

According to Boyd, stretching is for everyone and should be done whenever possible, especially before and after exercises.

Stretching relaxes the mind and tunes the body. Regular stretching will do the following: reduce

muscle tension and make the body feel relaxed, help coordination by allowing freer and easier movement and increase range of motion.

Stretching also prevents injuries such as muscle strain, makes strenuous activities easier and prepares the body for activities.

It also develops body awareness when stretching various parts of the body. Stretching also loosens mind control of the body so that the body moves for "its own sake" rather than for competition or ego. It promotes circulation and most of all, it feels good, Boyd said.

"Personnel who fail the physical fitness test and who are

on weight control are assigned to PFIP," said Mayorga. They go through three phases of training to get back to shape.

"The first phase is the preparatory phase. We break down the muscle tissue by doing more than normal exercises. The second phase is conditioning where we try to achieve 120 beats per minute heart rate for a five minute period. We do this by starting out with a minimum of 300 sit-ups a day and running 3 miles five days a week. After two weeks, they are up to 500 sit-ups a day and 12 to 14 miles a week. The third phase is the maintenance

Cont. on Page B-5

**Liven up this Halloween Party with a Surprise Visit from**

*Fantasy Gram*

- Hawaii's most complete, most exotic entertainment service
- Belly Grams to marching bands & everything in between
- For adults & kids
- Messages from mild to outrageous!

Come check out our large selection of Costume Rentals.

**Call 487-1529**

Located at KICKS  
98-825 Hekaha St., Pearl City

**APPLE IIe STARTER SYSTEM**

- 64K of user memory with additional 64K available
- 80 column display
- Upper and Lower case
- Full ASCII Keyboard
- Special Function Keys
- Built-in Self Testing
- Apple Disk Drive
- 12" Green Monitor II
- Easy to use manual
- Self-teaching Disk

**64K**

APPLE IIe STARTER SYSTEM	1750 <sup>00</sup> (tax included)
STARTER SYSTEM with 2nd DISK DRIVE	2050 <sup>00</sup> (tax included)
STARTER SYSTEM with APPLE DOT MATRIX PRINTER	2350 <sup>00</sup> (tax included)

**apple computer** ★ **FREE** ★  
Authorized Dealer 60 programs and training

(above prices for military only) (military ID required)

**MICROCOMPUTER SYSTEMS**

Mon. thru Fri. 10-6 Sat. 9-3 Serving Hawaii Since 1978 PH. 521-8686  
833 KAPOLANI BLVD. (CONVENIENT PARKING)

**Going Home On Leave?  
Going Outer Islands?  
Bringing Someone From  
The Mainland?**

We Are A Professionally Staffed  
Travel Office  
Designed To Serve Your Travel Needs  
At The Best Possible Price!



Camp H.M. Smith 487-1567  
Bldg. 1, Rm. 2A202  
KMCAS, Bldg. 209 254-1564  
Open Mon.-Fri. — 0730 to 1530

**Neck Pain?  
Backache?**  
Don't Suffer Needlessly!

**Pacific  
Chiropractic**

TRAINED IN 5 RECOGNIZED TECHNIQUES INCLUDING "LOW FORCE"

COMPLETE PHYSICAL EXAM

X-RAY FACILITIES

**DR. JEANNE MICHAELS**  
R.N. D.C.

COMMON SYMPTOMS:  
•BACK PAIN  
•HEADACHES  
•NECK PAIN  
•ARM & LEG PAIN  
•JOINT PAIN  
•MUSCLE SPASMS  
•NUMBNESS  
•PINCHED NERVES

SPECIALIZING IN:  
•ON THE JOB INJURIES  
•AUTO ACCIDENTS  
•SPORTS INJURIES  
•CHRONIC & DIFFICULT CASES  
•GENERAL PRACTICE  
•FAMILY CARE PLAN  
•PERSONALIZED CARE

**261-0831**  
602 KAILUA RD. NO. 207, KAILUA  
(between Cornet & Hardware Hawaii-2nd floor rear)  
NO CHARGE FOR BRIEF SPINAL ANALYSIS

**KUHIO 1**  
2095 Kuhio  
941-4422

**TONIGHT:**  
6:15-8:15  
& 10:15

**"ALL THE RIGHT MOVES"**  
MAKES ALL THE RIGHT MOVES.  
Tom Cruise proves once again he is an actor to watch. I really liked this one.  
Katie Kelly, ABC-TV, New York

"One of the year's best!" Jeffrey Lyons, South Francisco, PBS-TV

"Don't miss ALL THE RIGHT MOVES... especially winning work from Tom Cruise."  
Stephen Schuster, US Magazine

"Movie of the Month."  
Ed Mills, Savannah Magazine

"Convincing acting and sincere sentiments."  
Joan Martin, New York Times

**Tom Cruise**  
**All The Right Moves**

**Michael Chapman**

**Warning: The Surgeon General Has Determined That Cigarette Smoking Is Dangerous to Your Health.**

Introducing

# CENTURY

Taste that delivers

IN THE MONEY SAVING

## 25 pack

Low Tar

Regular

Warning: The Surgeon General Has Determined That Cigarette Smoking Is Dangerous to Your Health.

LIGHTS: 10 mg. "tar", 0.9 mg. nicotine, FILTER: 16 mg. "tar", 1.1 mg. nicotine, av. per cigarette by FTC method.

© 1983 R.J. Reynolds Tobacco Co.



# Salutes

**EDITOR'S NOTE:** Salutes is designed to recognize individuals for their achievements and exceptional performance as well as to welcome new arrivals to Hawaii. The information is compiled by Unit information officers and submitted to the Joint Public Affairs Office.

Sgt D. Macklin  
Sgt J.H. McCartney  
Sgt B.J. Pleasants  
Sgt M.R. Wright  
Cpl J.L. Geller  
Cpl E.J. Jones  
Cpl J.C. Leitman  
Cpl J.C. Sauder  
Cpl A. Sharpe  
LCpl C. Esponza  
LCpl J.J. Gresham  
LCpl M.I. Morales  
LCpl C. Williamson

**HMM-265**  
Basic Helo Door  
Gunner Course:  
Cpl L.E. Rodriguez  
LCpl M.P. Sistoek  
Good Conduct Medal:  
Cpl L.D. Schmid

**CommSptCo**  
Welcome aboard:  
Sgt M.C. Felts  
MCI Completions:  
Sgt M.S. Phillips  
Cpl A.L. Adams  
Reenlistments:  
SSgt K. Bustamente  
Cpl R.T. Russell

**VMFA-232**  
Welcome aboard:  
Sgt W.E. Bites  
LCpl C.O. Cole  
LCpl J.D. Cox  
LCpl J.S. Peters  
LCpl D.A. Ramsey  
LCpl C. Saldana  
PFC J.J. Herbert  
PFC G.H. Schmidt  
PFC R.C. Settles  
Pvt P.J. Takemura

Pvt M.A. Witkowski  
Promotions:  
Maj R.W. Elfein  
Capt T.G. Brewer  
Capt B.D. Kallay III  
Capt D.L. Moak  
Sgt A.R. Cantu  
Cpl W.E. Harrison  
Capt C.G. Salaski  
PFC M.A. Witkowski

**1/12**  
Welcome aboard:  
2d Lt C.I. McDaniel  
GySgt I.E. Owens  
SSgt S.W. Douglas  
LCpl J.R. Erwin  
LCpl H.I. Fagan  
LCpl J.L. Fultz  
LCpl S.D. Kilby  
LCpl C.R. Lewelling  
LCpl A.K. Poog  
PFC D.W. Cebra  
PFC R.A. Fricano  
PFC J.A. Hartman  
PFC J.T. Lachowicz  
Jr.  
PFC C.M. Murdock  
Meritorious Masts:  
Cpl L. Middleton

LCpl J.W. Lyles  
LCpl T.C. Jon  
Good Conduct Medal:  
Sgt C.E. McLaughlin  
LCpl T.A. Carpenter  
Letters of Appreciation:  
Sgt A.D. Badgett  
LCpl W.D. Lawless  
NCO of the month:  
Cpl L. Middleton  
Naturalized Citizen:  
1st Lt M.S. Toupin  
Reenlistment:  
Cpl G.R. Enlow

**BSSG**  
Welcome aboard:  
Lt S.M. Stefula  
W01 M.H. Van Syckel  
1st Sgt W. Edwards Jr.  
GySgt L.S. Cheatham  
SSgt C.J. Berry  
SSgt P.J. Kendler  
SSgt C.A. Lewis  
Sgt R.A. Henlon  
Cpl H.R. Patterson  
LCpl D.L. Glass  
LCpl J.A. Herrera  
LCpl S.L. Ringer  
LCpl F. Ruiz  
PFC K.E. Baker

PFC M.C. Chan  
PFC D.D. Pitre  
Promotions:  
Sgt G.E. Boylan  
LCpl L.B. Byrd  
LCpl D. Edwards  
LCpl C.W. Knutson  
PFC B.J. Wessel  
Meritorious Mast:  
Cpl B.A. Lamie  
Good Conduct Medals

Sgt M.Q. Shelton  
Cpl S. Dean  
Cpl R.W. Morreira  
Cpl C.E. Tull  
LCpl J.A. Conley  
Letter of Appreciation:  
Cpl R.L. Biggs  
Certificate of Commendation:  
DT2 K.A. Meadows

Completion of Professional Career Counselor Course:  
Sgt R.K. Aman  
Completion of Officers Basic School Nonresident Course:  
GySgt J.R. Holmes II  
Reenlistments:  
HM2 M.J. Honaker  
HM3 B.D. Julian

**SOMS**  
Welcome aboard:  
GySgt R.L. Hartzler  
Cpl M.T. Sopkin  
MCI Completions:  
SSgt J.K. Brown  
SSgt R.R. Caldwell  
SSgt T.A. Carford  
SSgt R.L. Russell  
SSgt E.J. Shepherd  
SSgt A.L. Whitney  
Sgt J.P. Doyle  
Sgt G.D. Enochs  
Sgt J.P. Ferguson  
Sgt D.A. Hoover  
Sgt R.A. Howell

**HqCo, Bde**  
Welcome aboard:  
SSgt J.R. Carpenter  
LCpl R.J. Drybread  
LCpl S.G. Gustafson  
**H&MS-24**  
Welcome aboard:  
GySgt A.A. Boyd  
GySgt G.M. Flores  
Sgt C.A. Berrigan  
Sgt R.M. Tankersley  
Cpl R.M. Huihui  
Cpl D.K. Sulfridge  
LCpl B.E. Paul  
PFC I.R. Price  
PFC I.R. Wideman

## Cinema

MCAS Theater

W T F S S M T  
1 2 3 4 5 6 7

1. **TRIUMPHS OF A MAN CALLED HORSE** — Richard Harris, Michael Beck, PG, western drama.
2. **DEAD MEN DON'T WEAR PLAID** — Steve Martin, Rachel Ward, PG, comedy.
3. **STROKER ACE** — Burt Reynolds, Loni Anderson, PG, comedy.
4. **PENITENTIARY II** — Leon Isaac Kennedy, Glynn Turman, R, drama.
5. **MODERN PROBLEMS** — Cenny Chase, Patti D'Arbanville, PG, comedy.
6. **DEATHTRAP** — Michael Caine, Dyan Cannon, PG, mystery.
7. **DEADLY EYES** — Sam Groom, Sara Botsford, R, horror-drama.

The Station Theater opens at 6:45 p.m. for ticket sales and the movie starts at 7:15. For information on Camp Smith movies call 477-6467/6382.

## Stretching . . .

Con't. from Page B-4

phase where we maintain any progress the Marines have achieved. Our goal is to help the Marines lose weight and pass the PFT."

"I don't like coming to PFT, but it's necessary," said Lance Corporal Gordon Wilkins from the Provost Marshal's Office. You get out what you put in it. If instructions are followed properly, no one shouldn't be on PFT for any extended time. I was on and got off. For four months, I found myself doing nothing. I got fat and out of shape and I'm here again. After I'm done, I don't plan to come back. I'm going to stick to the program of staying fit since it's a lot easier to stay in shape than to get in shape."

"I think this stretching class was interesting, different and a change of pace," Wilkins added.

After an hour of moaning, groaning and trunk twisting, Boyd left the Marines with these words of advice: "Stretching is easy to learn. But, there is a right way and a wrong way to stretch. The right way is a relaxed, sustained stretch with your attention focused on the

muscle being stretched. The wrong way is to bounce up and down, or to stretch to a point of pain. This method can actually do more harm than good."

"Stretching correctly and regularly, you will find every body movement becomes easier. It will take time to loosen up tight muscle or muscle groups, but time is quickly forgotten when you start to feel good."

**Give Your Spirits a Boost With...**

**BOOKS**

**TLA Waikiki**

**\$29.00** Single Occupancy

**\$32.00** Double Occupancy

**MILITARY Special**

**HOTEL FEATURES**

- Air conditioned rooms
- Color T.V. and alarm clock radio
- Free Shuttle to/from Ala Moana Shopping Center & Waikiki
- Restaurant, Bar, Piko Bar, Caviar-Kettle
- Large Sun Deck and Pool
- Meeting and Banquet facilities, Shopping Arcade
- Guest laundromat, Shopping Arcade

**Hawaiian Monarch Hotel**  
444 Niu Street • HONOLULU, HAWAII 96815

**RESERVATIONS**  
(808) 949-3911

**IAI HOTEL SYSTEM International**

**UNCONTESTED DIVORCE — \$160.\***  
(fair terms to which both parties agree)  
(no children of the marriage & no real property interest)

**ADDITIONAL CHARGE FOR CHILDREN \$30\***  
**ADDITIONAL CHARGE FOR REAL PROPERTY \$50\***

**DIVORCE CONSULTATION — \$50\***  
**UNCONTESTED ADOPTIONS — \$265**  
**OTHER FEES UPON REQUEST**

**BARBARA LEE MELVIN**  
National Secretary — National Association of Women Lawyers  
521-7496  
evenings and weekends by appointment  
**\*TAX & COURT COST EXTRA**

**NOVEMBER**

**BULK REPRINTS**  
**25 FOR \$6.99**

CHRISTMAS IS JUST AROUND THE CORNER! SEND A SPECIAL PICTURE WITH YOUR HOLIDAY WISHES TO FRIENDS EVERYWHERE. WE'LL PRINT YOUR FAVORITE NEGATIVE (110, 126, 135 OR DISC) 25 TIMES FOR **ONLY \$6.99** — TUCK A COPY IN ALL YOUR CHRISTMAS CARDS. MUST BE FROM SAME NEGATIVE.

Available at all **Clic Photo** Locations **THRU NOV. 30, 1983.**

**Clic PHOTO** 836-0691 for nearest drive-up location.

**Kodak PAPER** for a Good Look

**KIKI AM 85 STEREO** wants you to . . .

**FOLLOW THE ARMOUR HOME FOR THE HOLIDAYS**

And win a round trip ticket for yourself or someone you love to anywhere on the mainland or for someone to come home to Hawaii for the holidays.

Please enter my name in the contest for a chance to win a round trip ticket to go home for the holidays. Two lucky winners will be announced on KIKI December 5. Winners will be notified by mail and telephone. I have enclosed an Armour Trademark from an Armour meat product package or a facsimile of an Armour Star drawn on a 3"x5" card. Contest entry deadline will be December 2, 1983. Must be 18 years or older to enter contest.

**NO PURCHASE NECESSARY TO ENTER.**

NAME \_\_\_\_\_

ADDRESS \_\_\_\_\_

CITY \_\_\_\_\_ STATE \_\_\_\_\_ ZIP \_\_\_\_\_

TELEPHONE \_\_\_\_\_

Mail entry to:  
**KIKI-Follow The Armour Star Home**  
841 Bishop St., Suite 1700  
Honolulu, HI 96813

**DOES CHRISTMAS SNEAK UP ON YOU!**

This season Sun Press is presenting three exciting advertising supplements that will affordably help merchants attain their sales goals this Christmas. These special shoppers' guides are designed to help busy readers plan their gift giving from their living rooms! Your gift idea will reach over 109,000 active suburban and military households of whom 25% to 30% DO NOT receive home delivery of the inner city dailies. Be prepared for an outstanding Christmas retail season. . . make your reservations today!

**Holiday Shoppers Showcase**  
Publication Date: Nov. 23,  
Space Deadline: Nov. 16

**Sun Press**  
**235-5881**

Publishers of Hawaii Navy News, Hawaiian Falcon, Hawaii Marine, Waipahu Sun News, Waianae Sun Times and Sun Press

## LEX BRODIE'S FOR BETTER GAS PRICES

Lt. Gal.  
Reg. 31.9 120.9  
Unl. 32.9 124.5  
Pre. 35.9 135.9

## LEX BRODIE'S TIRE VALUES!

Prices are firm until Sat. Nov. 5, 1983. Please read notes at the base of this advertisement.

## GOOD!

**AURORA FIRST QUALITY\***  
APPROX. 30,000 MILES\*  
BLACK STEEL RADIALS  
NO FULL TIRE SERVICE

SIZE	PRICE	PRICE
155-12	22.50	32.50
155-13	24.75	34.75
165-13	28.25	38.25
185-14	36.50	46.50
165-15	28.75	38.75
*175-13	28.00	38.00
*185-13	32.25	42.25
*185-14	35.25	45.25

\*70 Series

## BETTER!

**TOYO SEMI-PREMIUM QUALITY\***  
APPROX. 40,000 MILES\*  
BLACK STEEL RADIALS

155-12	26.00	36.00
145-13	27.00	37.00
155-13	27.75	37.75
165-13	31.75	41.75
175-13	32.00	42.00
175-14	37.00	47.00
185-14	38.25	48.25
165-15	36.75	46.75

**WHITEWALLS**

155-13	33.75	43.75
165-13	38.50	48.50
175-13	38.50	48.50
175-14	44.25	54.25
185-14	46.00	56.00
165-15	44.25	54.25

**BLACKWALLS 70 SERIES**

165-13	35.50	45.50
175-13	36.50	46.50
185-13	40.75	50.75
185-14	42.75	52.75
195-14	45.75	55.75

**WHITEWALLS 75 SERIES**

*185-13	43.25	53.25
175-14	42.25	52.25
185-14	46.50	56.50
195-14	50.00	60.00
205-14	53.25	63.25
215-14	60.00	70.00
195-15	52.75	62.75
205-15	57.25	67.25
215-15	60.25	70.25
225-15	66.75	76.75
HR78-14	59.75	69.75
LR78-15	69.25	79.25

\*80 Series

## BEST!

**MICHELIN PREMIUM QUALITY\***  
APPROX. 50,000 MILES\*  
BLACK STEEL RADIALS (XXZ)

145-10	33.00	43.00
155-12	44.50	54.50
145-13	40.50	50.50
155-13	47.50	57.50
165-13	54.50	64.50
155-14	51.25	61.25
165-14	57.25	67.25
175-14	64.00	74.00
185-14	69.75	79.75
155-15	54.50	64.50
165-15	61.50	71.50
*175-15	86.75	96.75

\*Whitewall

**BLACKWALLS 70 SERIES (XXZ)**

165-13	52.25	62.25
175-13	59.50	69.50
185-13	66.75	76.75
175-14	64.25	74.25
185-14	72.00	82.00
195-14	76.00	86.00

**WHITEWALLS 75 SERIES (X)**

*175-13	78.00	88.00
*185-13	82.50	92.50
185-14	81.75	91.75
195-14	86.25	96.25
205-14	92.75	102.75
215-14	97.00	107.00
225-14	100.50	110.50
205-15	104.25	114.25
215-15	99.00	109.00
225-15	102.50	112.50
235-15	108.00	118.00

\*80 Series

\*Lex Brodie Quality Designation  
\* mileage expected on smaller cars under average Hawaii driving conditions.

Note: Full retail prices include tire mounting, balancing, weights, valve stems and back-up services. Our no-service prices for outer island and over-the-counter sales do not include services. Air freight charges for shipment to outer islands must be added. Should we run out of stock, we will give you a raincheck good for 30 days. Fed. Ex. Tax must be added (1.95-2.41), plus Hawaii 4% state tax. Easy pay plan available. VISA and MasterCard are accepted.

**HONOLULU**  
701 Queen St.  
Ph. 536-0381  
**WAIKAPU**  
94-169 Farrington Hwy.  
(Next to McDonald's)  
Ph. 671-4561











**\*75 APTS. PART. FURN.**

RENTAL GUIDE 523-6711  
Oahu's oldest & largest  
rental service. Fee.

KANE OHE (Temple Valley) 2  
bdrm., 1 bath, Appliances,  
carpets, blinds. \$575/mo. 262-  
7181 eves.

KAILUA, studio, \$510, 1 bdrm.,  
\$550, no pets, lease, RENT  
PLUS. Ph. 262-6482

KANE OHE kids \$500 Others  
too. 943-0093. RENT MART  
fee.

SALT Lake 3 bdrm., \$575  
Others. 943-0093. RENT  
MART fee.

**\*76 RENTALS TO SHARE**

LIBERAL male has home to  
Kaneohe to share w/males.  
Available now. Call eves. 235-  
4720.

MILILANI, secure home, own  
room, \$300, own sm.  
apartment, \$450, secure  
deposit + util. 623-6264

MALE/FEMALE, Windward  
Passage luxury condo, private  
rm. & bath, \$275/mo. + 1/3  
util., many amenities. 261-  
7741

KAILUA, share 3 bdrm., turn-  
tenure, own bath, female  
same, pool parking \$300 +  
util. 235-1429

KANE OHE 2 bdrm. house to  
share, close to shopping &  
bus. Female preferred \$250 +  
util. 235-1730.

KAILUA, furn. home w/pool &  
util. incl. 2 people wanted at  
\$350 ea. near KMCAS & beach  
254-2221

BED & Breakfast in Aiea Hgts.  
close to military bases, priv.  
lge. room w/bath, quiet, cool, 3  
day minimum or mo. rate. 487-  
1662. 526-0909.

**\*83 HOUSES PART. FURN.**

LANIKAI/BLUESTONE 3  
bdrm., 3 bath, w/pool, tennis,  
view, golf course, \$1200/mo.  
487-0050 days, 261-3997 eves.

OCEAN View rental, quiet  
setting, 3 bdrm., 3 bath, \$1300  
month. Mike McCormack  
Realtors. 247-6681/Mike  
Dudley (RA) 235-6117

A STEAL, pets, 1 bdrm., \$350  
Call 943-0093. RENT MART  
fee.

HAULULA, 3 bdrm., 2 bath,  
excl. cond., \$630, kids/pets  
okay. Call 293-9928

PETS, kids, 3 bdrm., \$850  
Others. 943-0093. RENT  
MART fee.

KANE OHE BAY FRONT  
Lovely 3 bed/2 bath home, very  
private, low maint. yard, large  
living room with fireplace.  
Rental at its best, older  
but renovated. \$1180

SAM DAILY REALTY, INC.  
235-8766  
8 to 5 p.m. Mon. thru Fri.

**\*83 HOUSES PART. FURN.**

SALT Lake, 4 bdrm., 2 bath  
(top level of house), near  
shopping center, school & bus  
line, w/lanai overlooking  
airport. \$925 incl. util. 422-  
6375

HAULULA 2 bdrm., 1 bath, big  
yard, close to the beach,  
\$650/mo. Ph. 262-0257

RENTAL GUIDE 523-6711  
Oahu's oldest & largest  
rental service. Fee.

\*85 CONDOS/TOWNHOUSES  
PART. FURN.

RENTAL GUIDE 523-6711  
Oahu's oldest & largest  
rental service. Fee.

NANAKULI, 3 bdrm., 1 1/2 bath,  
avail. 12/1, nr. Luahua &  
Barbers Pt. NAS. Call 833-  
6402 after 5 p.m.

KANE OHE, large, 3 bdrm.,  
pool, \$795 & \$825 a month  
Quality Management 841-  
7578, Mon.-Fri.

KANE OHE, Na Pali Condo, 2  
bdrm., couple \$500 mo. Avail.  
Nov. 1. Ph. 237-8117.

MAKAUI Village 2 bdrm., rec  
area, \$625 incl. plus deposit.  
Call 237-8110

RENTAL GUIDE 523-6711  
Oahu's oldest & largest  
rental service. Fee.

KAILUA, 3 bdrm., 2 bath  
suitable for 2 E's or higher  
Ph. 261-3004

\*87 CONDOS/TOWNHOUSES  
UNFURNISHED

KANE OHE, 2 bdrm., 2 car  
garage, security system, open  
Nov. \$650, 395-5618 eves.

\*88 ROOMS FOR RENT

PUNAHU, furn. room in 2  
bdrm. house, \$200, util., &  
HBO included. 237-8451 eves.

KANE OHE, room for rent in 3  
bdrm. condo, non-smoker,  
furnable to share w/males.  
\$237.50 + util. 235-6726

EWA Beach furnished 1 bdrm.  
\$130 month, including utilities.  
Call 689-5315 anytime.

KANE OHE, Room for rent,  
kitchen privileges, large pool,  
\$450 plus util. 235-4203

WAIHANA, studio for rent,  
\$160 & \$185, includes util.  
623-6745 or 622-2657 after 4  
p.m. Ask for Peter.

\*93 VACATION RENTALS

KUILIMA, 1 bdrm. apt., sleeps  
4, amenities, Daily/Weekly/  
Monthly. Call 235-1481

BEACHFRONT condo, near  
Crouching Lion, Week, month,  
pool. Ph. 235-6196

LANIKAI, Nov. 20-March, 4  
bdrm. home 2 blocks to beach,  
ocean view, quiet, \$1000 per  
month. References 261-6578

AVAIL. Dec. 19, for 1 wk., 3  
bdrm. house w/car, Enchanted  
Lake area. 262-4752

NO CASH NEEDED  
(To participate a home of your own  
for active duty military and widows  
Select from one of the many VA  
Approved homes, townhouses and  
apartments available in your area.  
Call today for more information  
Joe Polakoff (R)  
SHERLOCK HOLMES REALTY CO  
254-1100 OR 254-2770

MINNESOTA  
3-Wheel Arms, Inc. handles  
hunting, fishing, hunting and  
hunting. Near Mililani Lake.  
Electric and phone available. \$2000  
full price. \$2000 down. \$2000  
a month, including 10% interest  
Call  
888-5115

FORECLOSURE Properties  
10%-50% below market value.  
Call Joe Tanaka (R) 488-7769,  
922-8542.

BY OWNER Spacious 1977 4  
bdrm. home in gd. neighborhood.  
4 bdrm., 2 bath, very nice  
unit. 10.5% VA assumption  
possible \$119,500. Disc. for  
cashout. OPEN HOUSE,  
Sunday 2-5 p.m., 1184  
Ulupouli Ln. or for app.  
phone 262-6521. Fee available.

WAIHANA, 4 bdrm., 2 bath  
home w/lanai, assumable SHA  
loan, many extras, \$139,000,  
week, shown by owner. 677-  
0126. M. Lockridge Inc. 262-  
5403

NO CASH NEEDED  
(To participate a home of your own  
for active duty military and widows  
Select from one of the many VA  
Approved homes, townhouses and  
apartments available in your area.  
Call today for more information  
Joe Polakoff (R)  
SHERLOCK HOLMES REALTY CO  
254-1100 OR 254-2770

MINNESOTA  
3-Wheel Arms, Inc. handles  
hunting, fishing, hunting and  
hunting. Near Mililani Lake.  
Electric and phone available. \$2000  
full price. \$2000 down. \$2000  
a month, including 10% interest  
Call  
888-5115

FORECLOSURE Properties  
10%-50% below market value.  
Call Joe Tanaka (R) 488-7769,  
922-8542.

BY OWNER Spacious 1977 4  
bdrm. home in gd. neighborhood.  
4 bdrm., 2 bath, very nice  
unit. 10.5% VA assumption  
possible \$119,500. Disc. for  
cashout. OPEN HOUSE,  
Sunday 2-5 p.m., 1184  
Ulupouli Ln. or for app.  
phone 262-6521. Fee available.

WAIHANA, 4 bdrm., 2 bath  
home w/lanai, assumable SHA  
loan, many extras, \$139,000,  
week, shown by owner. 677-  
0126. M. Lockridge Inc. 262-  
5403

**\*93 HOUSES PART. FURN.**

SALT Lake, 4 bdrm., 2 bath  
(top level of house), near  
shopping center, school & bus  
line, w/lanai overlooking  
airport. \$925 incl. util. 422-  
6375

HAULULA 2 bdrm., 1 bath, big  
yard, close to the beach,  
\$650/mo. Ph. 262-0257

RENTAL GUIDE 523-6711  
Oahu's oldest & largest  
rental service. Fee.

\*85 CONDOS/TOWNHOUSES  
PART. FURN.

RENTAL GUIDE 523-6711  
Oahu's oldest & largest  
rental service. Fee.

NANAKULI, 3 bdrm., 1 1/2 bath,  
avail. 12/1, nr. Luahua &  
Barbers Pt. NAS. Call 833-  
6402 after 5 p.m.

KANE OHE, large, 3 bdrm.,  
pool, \$795 & \$825 a month  
Quality Management 841-  
7578, Mon.-Fri.

KANE OHE, Na Pali Condo, 2  
bdrm., couple \$500 mo. Avail.  
Nov. 1. Ph. 237-8117.

MAKAUI Village 2 bdrm., rec  
area, \$625 incl. plus deposit.  
Call 237-8110

RENTAL GUIDE 523-6711  
Oahu's oldest & largest  
rental service. Fee.

KAILUA, 3 bdrm., 2 bath  
suitable for 2 E's or higher  
Ph. 261-3004

\*87 CONDOS/TOWNHOUSES  
UNFURNISHED

KANE OHE, 2 bdrm., 2 car  
garage, security system, open  
Nov. \$650, 395-5618 eves.

\*88 ROOMS FOR RENT

PUNAHU, furn. room in 2  
bdrm. house, \$200, util., &  
HBO included. 237-8451 eves.

KANE OHE, room for rent in 3  
bdrm. condo, non-smoker,  
furnable to share w/males.  
\$237.50 + util. 235-6726

EWA Beach furnished 1 bdrm.  
\$130 month, including utilities.  
Call 689-5315 anytime.

KANE OHE, Room for rent,  
kitchen privileges, large pool,  
\$450 plus util. 235-4203

WAIHANA, studio for rent,  
\$160 & \$185, includes util.  
623-6745 or 622-2657 after 4  
p.m. Ask for Peter.

\*93 VACATION RENTALS

KUILIMA, 1 bdrm. apt., sleeps  
4, amenities, Daily/Weekly/  
Monthly. Call 235-1481

BEACHFRONT condo, near  
Crouching Lion, Week, month,  
pool. Ph. 235-6196

LANIKAI, Nov. 20-March, 4  
bdrm. home 2 blocks to beach,  
ocean view, quiet, \$1000 per  
month. References 261-6578

AVAIL. Dec. 19, for 1 wk., 3  
bdrm. house w/car, Enchanted  
Lake area. 262-4752

NO CASH NEEDED  
(To participate a home of your own  
for active duty military and widows  
Select from one of the many VA  
Approved homes, townhouses and  
apartments available in your area.  
Call today for more information  
Joe Polakoff (R)  
SHERLOCK HOLMES REALTY CO  
254-1100 OR 254-2770

MINNESOTA  
3-Wheel Arms, Inc. handles  
hunting, fishing, hunting and  
hunting. Near Mililani Lake.  
Electric and phone available. \$2000  
full price. \$2000 down. \$2000  
a month, including 10% interest  
Call  
888-5115

FORECLOSURE Properties  
10%-50% below market value.  
Call Joe Tanaka (R) 488-7769,  
922-8542.

BY OWNER Spacious 1977 4  
bdrm. home in gd. neighborhood.  
4 bdrm., 2 bath, very nice  
unit. 10.5% VA assumption  
possible \$119,500. Disc. for  
cashout. OPEN HOUSE,  
Sunday 2-5 p.m., 1184  
Ulupouli Ln. or for app.  
phone 262-6521. Fee available.

WAIHANA, 4 bdrm., 2 bath  
home w/lanai, assumable SHA  
loan, many extras, \$139,000,  
week, shown by owner. 677-  
0126. M. Lockridge Inc. 262-  
5403

NO CASH NEEDED  
(To participate a home of your own  
for active duty military and widows  
Select from one of the many VA  
Approved homes, townhouses and  
apartments available in your area.  
Call today for more information  
Joe Polakoff (R)  
SHERLOCK HOLMES REALTY CO  
254-1100 OR 254-2770

MINNESOTA  
3-Wheel Arms, Inc. handles  
hunting, fishing, hunting and  
hunting. Near Mililani Lake.  
Electric and phone available. \$2000  
full price. \$2000 down. \$2000  
a month, including 10% interest  
Call  
888-5115

FORECLOSURE Properties  
10%-50% below market value.  
Call Joe Tanaka (R) 488-7769,  
922-8542.

BY OWNER Spacious 1977 4  
bdrm. home in gd. neighborhood.  
4 bdrm., 2 bath, very nice  
unit. 10.5% VA assumption  
possible \$119,500. Disc. for  
cashout. OPEN HOUSE,  
Sunday 2-5 p.m., 1184  
Ulupouli Ln. or for app.  
phone 262-6521. Fee available.

WAIHANA, 4 bdrm., 2 bath  
home w/lanai, assumable SHA  
loan, many extras, \$139,000,  
week, shown by owner. 677-  
0126. M. Lockridge Inc. 262-  
5403

NO CASH NEEDED  
(To participate a home of your own  
for active duty military and widows  
Select from one of the many VA  
Approved homes, townhouses and  
apartments available in your area.  
Call today for more information  
Joe Polakoff (R)  
SHERLOCK HOLMES REALTY CO  
254-1100 OR 254-2770

MINNESOTA  
3-Wheel Arms, Inc. handles  
hunting, fishing, hunting and  
hunting. Near Mililani Lake.  
Electric and phone available. \$2000  
full price. \$2000 down. \$2000  
a month, including 10% interest  
Call  
888-5115

FORECLOSURE Properties  
10%-50% below market value.  
Call Joe Tanaka (R) 488-7769,  
922-8542.

BY OWNER Spacious 1977 4  
bdrm. home in gd. neighborhood.  
4 bdrm., 2 bath, very nice  
unit. 10.5% VA assumption  
possible \$119,500. Disc. for  
cashout. OPEN HOUSE,  
Sunday 2-5 p.m., 1184  
Ulupouli Ln. or for app.  
phone 262-6521. Fee available.

WAIHANA, 4 bdrm., 2 bath  
home w/lanai, assumable SHA  
loan, many extras, \$139,000,  
week, shown by owner. 677-  
0126. M. Lockridge Inc. 262-  
5403

NO CASH NEEDED  
(To participate a home of your own  
for active duty military and widows  
Select from one of the many VA  
Approved homes, townhouses and  
apartments available in your area.  
Call today for more information  
Joe Polakoff (R)  
SHERLOCK HOLMES REALTY CO  
254-1100 OR 254-2770

MINNESOTA  
3-Wheel Arms, Inc. handles  
hunting, fishing, hunting and  
hunting. Near Mililani Lake.  
Electric and phone available. \$2000  
full price. \$2000 down. \$2000  
a month, including 10% interest  
Call  
888-5115

FORECLOSURE Properties  
10%-50% below market value.  
Call Joe Tanaka (R) 488-7769,  
922-8542.

BY OWNER Spacious 1977 4  
bdrm. home in gd. neighborhood.  
4 bdrm., 2 bath, very nice  
unit. 10.5% VA assumption  
possible \$119,500. Disc. for  
cashout. OPEN HOUSE,  
Sunday 2-5 p.m., 1184  
Ulupouli Ln. or for app.  
phone 262-6521. Fee available.

WAIHANA, 4 bdrm., 2 bath  
home w/lanai, assumable SHA  
loan, many extras, \$139,000,  
week, shown by owner. 677-  
0126. M. Lockridge Inc. 262-  
5403

NO CASH NEEDED  
(To participate a home of your own  
for active duty military and widows  
Select from one of the many VA  
Approved homes, townhouses and  
apartments available in your area.  
Call today for more information  
Joe Polakoff (R)  
SHERLOCK HOLMES REALTY CO  
254-1100 OR 254-2770

MINNESOTA  
3-Wheel Arms, Inc. handles  
hunting, fishing, hunting and  
hunting. Near Mililani Lake.  
Electric and phone available. \$2000  
full price. \$2000 down. \$2000  
a month, including 10% interest  
Call  
888-5115

FORECLOSURE Properties  
10%-50% below market value.  
Call Joe Tanaka (R) 488-7769,  
922-8542.

BY OWNER Spacious 1977 4  
bdrm. home in gd. neighborhood.  
4 bdrm., 2 bath, very nice  
unit. 10.5% VA assumption  
possible \$119,500. Disc. for  
cashout. OPEN HOUSE,  
Sunday 2-5 p.m., 1184  
Ulupouli Ln. or for app.  
phone 262-6521. Fee available.

WAIHANA, 4 bdrm., 2 bath  
home w/lanai, assumable SHA  
loan, many extras, \$139,000,  
week, shown by owner. 677-  
0126. M. Lockridge Inc. 262-  
5403

NO CASH NEEDED  
(To participate a home of your own  
for active duty military and widows  
Select from one of the many VA  
Approved homes, townhouses and  
apartments available in your area.  
Call today for more information  
Joe Polakoff (R)  
SHERLOCK HOLMES REALTY CO  
254-1100 OR 254-2770

MINNESOTA  
3-Wheel Arms, Inc. handles  
hunting, fishing, hunting and  
hunting. Near Mililani Lake.  
Electric and phone available. \$2000  
full price. \$2000 down. \$2000  
a month, including 10% interest  
Call  
888-5115

FORECLOSURE Properties  
10%-50% below market value.  
Call Joe Tanaka (R) 488-7769,  
922-8542.

BY OWNER Spacious 1977 4  
bdrm. home in gd. neighborhood.  
4 bdrm., 2 bath, very nice  
unit. 10.5% VA assumption  
possible \$119,500. Disc. for  
cashout. OPEN HOUSE,  
Sunday 2-5 p.m., 1184  
Ulupouli Ln. or for app.  
phone 262-6521. Fee available.

WAIHANA, 4 bdrm., 2 bath  
home w/lanai, assumable SHA  
loan, many extras, \$139,000,  
week, shown by owner. 677-  
0126. M. Lockridge Inc. 262-  
5403

NO CASH NEEDED  
(To participate a home of your own  
for active duty military and widows  
Select from one of the many VA  
Approved homes, townhouses and  
apartments available in your area.  
Call today for more information  
Joe Polakoff (R)  
SHERLOCK HOLMES REALTY CO  
254-1100 OR 254-2770

MINNESOTA  
3-Wheel Arms, Inc. handles  
hunting, fishing, hunting and  
hunting. Near Mililani Lake.  
Electric and phone available. \$2000  
full price. \$2000 down. \$2000  
a month, including 10% interest  
Call  
888-5115

FORECLOSURE Properties  
10%-50% below market value.  
Call Joe Tanaka (R) 488-7769,  
922-8542.

**\*93 HOUSES PART. FURN.**

SALT Lake, 4 bdrm., 2 bath  
(top level of house), near  
shopping center, school & bus  
line, w/lanai overlooking  
airport. \$925 incl. util. 422-  
6375

HAULULA 2 bdrm., 1 bath, big  
yard, close to the beach,  
\$650/mo. Ph. 262-0257

RENTAL GUIDE 523-6711  
Oahu's oldest & largest  
rental service. Fee.

\*85 CONDOS/TOWNHOUSES  
PART. FURN.

RENTAL GUIDE 523-6711  
Oahu's oldest & largest  
rental service. Fee.

NANAKULI, 3 bdrm., 1 1/2 bath,  
avail. 12/1, nr. Luahua &  
Barbers Pt. NAS. Call 833-  
6402 after 5 p.m.

KANE OHE, large, 3 bdrm.,  
pool, \$795 & \$825 a month  
Quality Management 841-  
7578, Mon.-Fri.

KANE OHE, Na Pali Condo, 2  
bdrm., couple \$500 mo. Avail.  
Nov. 1. Ph. 237-8117.

MAKAUI Village 2 bdrm., rec  
area, \$625 incl. plus deposit.  
Call 237-8110

RENTAL GUIDE 523-6711  
Oahu's oldest & largest  
rental service. Fee.

KAILUA, 3 bdrm., 2 bath  
suitable for 2 E's or higher  
Ph. 261-3004

\*87 CONDOS/TOWNHOUSES  
UNFURNISHED

KANE OHE, 2 bdrm., 2 car  
garage, security system, open  
Nov. \$650, 395-5618 eves.

\*88 ROOMS FOR RENT

PUNAHU, furn. room in 2  
bdrm. house, \$200, util., &  
HBO included. 237-8451 eves.

KANE OHE, room for rent in 3  
bdrm. condo, non-smoker,  
furnable to share w/males.  
\$237.50 + util. 235-6726

EWA Beach furnished 1 bdrm.  
\$130 month, including utilities.  
Call 689-5315 anytime.

KANE OHE, Room for rent,  
kitchen privileges, large pool,  
\$450 plus util. 235-4203

WAIHANA, studio for rent,  
\$160 & \$185, includes util.  
623-6745 or 622-2657 after 4  
p.m. Ask for Peter.

\*93 VACATION RENTALS

KUILIMA, 1 bdrm. apt., sleeps  
4, amenities, Daily/Weekly/  
Monthly. Call 235-1481

BEACHFRONT condo, near  
Crouching Lion, Week, month,  
pool. Ph. 235-6196

LANIKAI, Nov. 20-March, 4  
bdrm. home 2 blocks to beach,  
ocean view, quiet, \$1000 per  
month. References 261-6578

AVAIL. Dec. 19, for 1 wk., 3  
bdrm. house w/car, Enchanted  
Lake area. 262-4752

NO CASH NEEDED  
(To participate a home of your own  
for active duty military and widows  
Select from one of the many VA  
Approved homes, townhouses and  
apartments available in your area.  
Call today for more information  
Joe Polakoff (R)  
SHERLOCK



# Joe Harris' Football Forecast



**THURSDAY**  
\*GEORGIA TECH 20, VIRGINIA 17  
**SATURDAY**  
\*AIR FORCE 35, HAWAII 21  
ALABAMA 21, \*LOUISIANA STATE 14  
ARIZONA STATE 21, CALIFORNIA 20  
\*ARKANSAS 20, BAYLOR 16  
\*AUBURN 17, MARYLAND 14  
BOSTON COLLEGE 35, \*ARMY 14  
BRIGHAM YOUNG 52, \*TEXAS-EL PASO 14  
\*CINCINNATI 21, RUTGERS 14  
COLGATE 31, \*PENNSYLVANIA 21

\*CORNELL 17, YALE 14  
DARTMOUTH 31, COLOMBIA 21  
\*FLORIDA STATE 24, SOUTH CAROLINA 14  
FLORIDA 21, GEORGIA 17  
HOLY CROSS 24, \*HARVARD 14  
ILLINOIS 42, \*MINNESOTA 7  
IOWA 24, \*WISCONSIN 14  
\*KANSAS 24, COLORADO 14  
MEMPHIS STATE 17, \*MISSISSIPPI STATE 14  
\*MICHIGAN STATE 28, \*NORTHWESTERN 17  
\*MICHIGAN 28, PURDUE 14  
\*NEBRASKA 49, IOWA STATE 7  
\*NEW MEXICO 24, WYOMING 21

\*NORTH CAROLINA 21, CLEMSON 20  
OHIO STATE 31, \*INDIANA 14  
\*OKLAHOMA STATE 35, KANSAS STATE 14  
OKLAHOMA 21, \*MISSOURI 14  
\*OREGON 17, U.C.L.A. 14  
\*PENN STATE 38, BROWN 14  
PITTSBURGH 17, \*NOTRE DAME 14  
\*SO. CALIFORNIA 24, STANFORD 21  
\*SO. METHODIST 38, RICE 7  
\*SO. MISSISSIPPI 28, LOUISVILLE 14  
SYRACUSE 24, \*NAVY 21  
\*TEXAS TECH 14, TEXAS CHRISTIAN 13

TEXAS 35, \*HOUSTON 14  
\*VANDERBILT 21, KENTUCKY 20  
VIRGINIA TECH 17, \*TULANE 14  
WAKE FOREST 21, DUKE 20  
WASHINGTON STATE 24, \*OREGON STATE 14  
WASHINGTON 24, \*ARIZONA 21  
\*WEST VIRGINIA 31, TEMPLE 14  
**SUNDAY**  
ATLANTA 20, \*NEW ORLEANS 17  
BUFFALO 24, \*NEW ENGLAND 20  
CINCINNATI 20, \*HOUSTON 17  
DALLAS 24, \*PHILADELPHIA 16

\*GREEN BAY 21, \*CLEVELAND 20  
LOS ANGELES RAIDERS 19, \*KANSAS CITY 19  
\*LOS ANGELES 19, CHICAGO 19  
MIAMI 20, \*SAN FRANCISCO 17  
\*MINNESOTA 20, TAMPA BAY 16  
\*NEW YORK JETS 20, BALTIMORE 17  
SAN DIEGO 24, \*PITTSBURGH 20  
\*SEATTLE 20, DENVER 19  
\*WASHINGTON 24, ST. LOUIS 14  
**MONDAY**  
\*DETROIT 20, NEW YORK GIANTS 19  
\*Depicts home team

## CHRYSLER

73 CHRYSLER T & G wagon, 87 power, new tires, alternator, brakes, radiator, over 3000 new parts, very clean, \$1993. Offer. May buy, excellent 695-5733.

## DATSUN

82 DATSUN 210 wagon, 5000/offer, 234-1919. Must sell, leaving island.

1978 DATSUN 510, 5 speed trans., excl. mechanical cond. \$1500. Ph. 234-5153.

## DODGE

88 DODGE Dart Slant, 6 good motor, As is \$100. Firm 262-2765.

78 DODGE Omni, good cond., new tires, 2 yr. service warranty, \$3800/best offer 239-8228.

## FORD

65 MUSTANG coupe, auto., 5 cyl., p/s. AGG233 \$2595. Car City 833-3017.

77 PINTO, auto., 4 cyl., A/J12 \$1095. Car City 833-3017.

76 FORD Mustang, V6, auto., low mi., excl. cond. \$2000 or offer. 373-3433 eves.

## FORD

74 MUSTANG II, 4 cyl., auto., BPUS96 \$895. Car City 833-3017.

76 MAVERICK 6 cylinder, 4 door, good cond., \$1100/offer 395-6970.

78 PINTO Wagon, 26,700 mi., excl. cond., 261-5286 after 6 p.m.

81 FORD Futura Wagon, AM/FM, air, power windows, Ph. 254-1629.

89 LTD Convertible, mechanically solid, needs interior work. 254-2415, eves.

80 PINTO new low miles, excl. cond., auto., p/s, a/c. New tires, \$2500/offer. 422-1773.

71 FORD Pinto, good running condition, plus extras. Call 235-6766.

74 PINTO station wagon, excl. cond., \$1000. 621-5162.

71 FORD Capri, great 2nd car. New brakes & clutch, excl. motor & trans. First \$4500 takes it. Call Chris 235-5881 days. 247-3079 eves.

67 MUSTANG, 6 cyl., auto., offer. Ph. 235-4732.

## HONDA

**DON LUCAS HONDA**  
Can lease you  
A New Honda  
Like No One Else Can  
Contact  
Graham Vautier  
at 247-8544

76 HONDA Civic station wagon, automatic, \$500/offer. Call 621-0901.

**THE '84 HONDAS ARE HERE!**  
Tony Honda of Waipahu  
671-1761

## Introducing the 1984 Buicks and Cadillacs at Special Prices!



**12.9% ANNUAL PERCENTAGE RATE** through Oct. 31, 1983.  
Save on the world's most popular Buick — the Regal!  
1984 Buick Regal Coupe: \$10,699\*  
Includes a full factory warranty only Schuman Carriage can give you. Also V-6 engine, power steering, power brakes, air conditioning, tinted glass, AM radio, whitewall tires, body molding, remote control mirrors, front & rear floor mats, trunk trim molding, door edge guards, 181 steering wheel and pin striping.

\*Suggested retail \$12,137. Price, plus tax and license. Sale ends October 31, 1983.

\*Stock numbers: 84-20, 22, 24, 26, 28, 27, 28, 29, 30, 32, 33. All cars subject to prior sale. If sold out, more Regals are on the way.

**SCHUMAN CARRIAGE CO.**  
1234 S. Beretania St. • Phone 533-6211  
Monday thru Friday 8:30 a.m. - 6 p.m. Saturday 8:30 a.m. - 5 p.m.

## A Sale You Can't Miss!

'71 CHEVROLET Malibu 2 dr., sports coupe, 8 cyl., auto. a/c. BAW003 \$295	'72 FORD Pinto station wagon 4 cyl. auto. BBN050 \$295	'71 FORD Pinto 2 dr., sedan, 4 cyl., auto. BBR177 \$295
'73 DATSUN 610 4 dr., sedan, 4 cyl., auto. BGV061 \$395	'78 MAZDA GLC 3 dr., sedan, 4 cyl., 4 spd. ADF039 \$395 Mechanic's Special	'74 CHEVROLET Impala 4 dr., sedan, 8 cyl., auto., p/s, radio ASP07 \$395
'73 PLYMOUTH Valiant 4 dr., sedan, 8 cyl., auto., p/s. ANY110 \$495 Mechanic's Special	'68 INTERNATIONAL Traveler 8 cyl., auto. AUX103 \$895	'75 FORD Granada 4 dr., sedan, 8 cyl., auto., p/s. ARB162 \$995
'76 FORD Granada 4 dr., sedan, 8 cyl., auto., p/s, radio. APX067 \$1295	'74 DATSUN 710 station wagon, 4 cyl., auto. AOS979 \$1495	'74 VW Dasher 2 dr., sedan, 4 cyl., 4 spd. BEG032 \$1595
'75 FIAT Spyder convertible, 4 cyl., 5 spd. BFJ267 \$2095	'80 SUBARU GL1600 station wagon 4 cyl., 4 spd. BAB124 \$2995	'81 TOYOTA Tercel dr. hatchback, 4 cyl., 4 spd. BSB447 \$3895

## WINDWARD TOYOTA

Corner of Kam & Likie Hwy. Prices good till Nov. 8, 1983. Subject to prior sale.  
PH. 235-0068 OPEN 7 DAYS A WEEK

**\$400<sup>00</sup> TO \$900<sup>00</sup>**  
Below  
Factory Invoice  
Now thru Saturday only!  
On New  
**VOLKSWAGENS\***  
Brand New  
SUBARU  
At Invoice†  
No Down Payment  
Final Clearance!  
*Pearl Harbor*  
**VOLKSWAGEN SUBARU**  
94-223 Farrington Hwy., Waipahu Ph. 577-0777

**CUTTER DODGE USED CARS & TRUCKS**  
**CLOSEOUT SALE**  
'83 COLT #31091 4 dr., auto., radiate Was \$8248 Sale \$5175  
'83 COLT #31108 2 dr., 5TS Package, auto., radio Was \$7180 Sale \$6195  
'83 CHALLENGER #31006 5 spd., p/s, stereo Was \$9023 Sale \$7975  
'83 CHARGER #31108 2 dr., auto., p/s Was \$8641 Sale \$7775  
'83 600ES #3098 bucket seats, sports sedan, air Was \$12,508 Sale \$10,495  
'83 600 #3099 4 dr., luxury 8 passenger, air Was \$11,852 Sale \$9975  
'83 RAM 50 Sport Pickup #31159 auto., \$1,000 Rebate incl. Was \$9193 Sale \$6795  
'83 RAM 50 Custom #3110 4x4 P/U, 4 spd., \$1,000 Rebate incl. Was \$9550 Sale \$7395  
Offer good 11/2 to 11/5  
3055 N. NIMITZ 836-0626  
Financing Our Specialty Subject to Prior Sale & Sold As Is. Plus Tax & Lic. Mon-Sat, 8:30-9 Sun. 8:30-5:30  
922 KAM HWY. (corner Pearl City Tavern) 455-1071

**TOYOTA CITY**  
(next to Gibson's)  
2850-A Pukuloa St. 834-1402  
'76 DATSUN 710 station wagon 4 spd. BNU732 \$1695  
'80 COROLLA HEC312 \$3195  
'81 CHEVY Chevette 4 spd. BDE703 \$1995  
'79 DODGE Colt auto. ARB375 \$1395  
'77 DATSUN 710 auto. BFC195 \$1895  
'82 TERCEL 2 dr., 4 spd. ATP501 \$4295  
'78 CHEVY Malibu auto., p/s BER186 \$1695  
'80 FORD Fairmont 4 dr., auto., p/s, a/c BAX306 \$2795  
'79 FORD LTD station wagon, auto., p/s, air. BRD412 \$2395  
'82 FORD EXP auto., p/s AUV130 \$4295  
'76 VW Convertible 4 spd. AUF888 \$3795  
'77 PLYMOUTH Volare 4 dr., auto., p/s, a/c BCF836 \$1691  
'73 CHEVY Camaro auto., a/c, ps ADN208 \$1895  
'80 HONDA Civic 5 spd. APP850 \$2695  
Come and Visit Us Today!  
Subject to prior sale. Offer good till Nov. 8  
Financing Available On approved Credit  
A DIVISION OF PACIFIC INC.

**NO DOWN PAYMENT**  
Flexible  
**Bank of Hawaii Financing**  
14% APR on Approved Credit  
'82 CITATION 4 dr., 6 cyl., auto., p/s, air, like new, low miles. 3 to choose from  
'81 & '82 MAZDA GLC 3 dr. & 5 dr. h/b, auto., 4 cyl., excl. cond. 6 to choose from  
'82 CHEVETTE auto., AM radio, air, low miles, like new, 1 only  
'83 TERCEL 3 dr., 4 spd., AM radio, like new, 2 to choose from  
**WAIPAHU'S SHELLY MAZDA**  
94-212 Looku St., Waipahu 677-0761  
All Units Subject to Prior Sale

**DATSUN OF WAHIAWA**  
621-0761 Across from Schofield Barracks  
**'84'S HAVE ARRIVED COME SEE THEM!**  
NEW DATSUN STANDARD LI'L HUSTLER  
'83 720 Standard P/Up \$5895\*  
Truck Stock #7503

'75 DODGE CORONET 2 dr., auto. BDM889 \$595	'78 TOYOTA COROLLA 4 dr., auto. APC995 \$2495
'74 DODGE DART auto., p/s. 6 cyl. BBU501 \$1095	'77 CHRYSLER CORDOBA 2 dr., auto., p/s. a/c. AJN528 \$2795
'75 DATSUN 710 S/W auto., a/c AEC234 \$1895	'72 VW CAMPER VAN 4 spd. ARB171 \$2795

Prices good thru Nov. 8, 1983  
Subject to prior sale. \*Price not including dealer installed accessories (if any)

**DOLLAR RENT A CAR HAWAII**  
**DOLLAR CAR SALES**  
**836-3581**  
**COMPARE THE DOLLAR VALUES Before You Buy**  
'82 SUZUKI 4x4 CONVERT. Black, classic striping, low mileage \$4575  
'81 OLDS CUTLASS 4 dr., auto., blue, low mileage, great value \$5650  
'82 CAVALIER 4 dr., auto., air, new paint \$4850  
'81 TOYOTA STARLET 2 dr., 5 spd., striping, excl. value \$3475  
'82 FORD MUSTANG FASTBACK 2 dr., auto., T-top, silver \$5850  
'80 FORD CLUB WAGON VAN 12 pass., priced to sell \$5850  
'81 DATSUN 210 2 dr. \$2695  
'80 FORD FAIRMONT p/w, brown metallic, tan interior, 4 dr. \$3175  
'82 TOYOTA COROLLA WGN. auto., p/s, air, brown/tan, low mileage \$6150  
RENT any of these vehicles on a trial basis. All money will be credited towards the purchase. LEASE with the option to purchase. Low, low rates... 6 month... 12 month... 24 month or 36 month lease. All units subject to prior sale. Prices plus tax & lic.  
CALL FOR MORE INFORMATION





Will be

**CLOSED**

**FRIDAY**

To Get Ready . . .

Others have imitated **THE BIG SALE** but no one does one like THE MARSH COMPANY!

We'll be closed all day Friday to re-tag merchandise throughout the store.

When the doors open Saturday, you'll find floor models, discontinued items, and our regular merchandise at fantastic savings!

Furniture from America's top manufacturers like *Thomasville, Bernhardt, Sealy, Lane, Stanley, and many more.* Come in for. . .

**\*20-70% OFF**

in every department!

**\*TAX INCLUDED**

in every purchase!  
(this sale only)

**\*A FREE GIFT**

(a \$13 value) with each  
purchase of \$100 or more!

If you need furniture. . .DON'T MISS THIS ONE!!

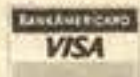
to Open Saturday for this Fall's

**BIG SALE!**

**10 AM - 10 PM**

**Financing Available**

We offer excellent financing on your good credit. Please feel free to ask us about down payments . . . monthly payments . . . anything!



**Main Store**

1505 Dillingham Blvd.  
Phone 847-5382

Between Pay 'N Save and Emjays

**Waipahu Store**

94-300 Farrington Hwy.  
Phone 671-3995

Between Pay 'N Save and Emjays

