

Ground Breaking
Construction begins
on air station's
package store, pizza parlor
See Page A-2

Corpsman
Bolivian native
preserves lives
as 'American'
See Page A-6

Beirut Relived
Marine recalls
startling days
in shattered city
See Page A-8

HAWAII MARINE

Voluntary payment for delivery to MCAS housing/\$1 per four-week period.

VOL. 12 NO. 10

KANEOHE BAY, HAWAII, OCT. 5, 1983

TWENTY PAGES

Peacekeepers challenge Beirut skies

by WO Charles Rowe

BEIRUT, Lebanon — Military training is supposed to be difficult, arduous, repetitive, frequently boring and often seemingly purposeless, but never fun.

SPIE (Special Patrol Insertion and Extraction) rigging is the indisputable exception. Designed to place reconnaissance patrols into and remove them from places where a helicopter cannot land, the esoteric art of SPIE rigging is not only simple but quite enjoyable.

For the 24th Marine Amphibious Unit here, it has been used to achieve several goals. "It's not normally used by infantry Marines, but by recon for its patrols. The primary reasons we started doing it here were to give the Marines some training and to give them some excitement. We consider it adventure training, a way of breaking up the possible boredom of duty here in Lebanon," explained Major Andrew Davis, operations officer for Battalion Landing Team 1st Battalion, 8th Marines, the 24th MAU's ground combat force.

The simplicity of SPIE rigging is in both the equipment required and the skills needed to participate. Equipment consists of a transport helicopter, a thick rope with rings embedded into it, parachute-type harnesses, safety ropes to supplement the harnesses and eight willing Marines.

The skill level required is even less complex. Any reasonably healthy adult, not given to fainting spells or suffering from unreasonable fear of heights, who can stand up long enough to be jerked several hundred feet into the air, can master the rig.

Once hooked onto the 75-foot-long rope, which dangles lazily from the belly of the hovering helicopter, it is only necessary to wait. The copter inches skyward until, with a slight jerk, each of the

riders — paired side-by-side for increased stability — is off the ground.

For 24th MAU SPIE riggers, the trip consisted of a 10-minute journey from a landing site on the east side of Beirut International Airport's runway in a slow circle over the suburbs of this troubled city and back to the landing site. This time of year, it is a cooling trip with a magnificent view of the mountains, the sea, the city and the postage stamp-sized buildings and farmers' patches below.

According to Davis, SPIE rigging is safer than driving an automobile, especially on Beirut's traffic-light-free streets. "We had absolutely no injuries," he said.

In addition to the fun of the flight, the Beirut SPIE scene will pay other dividends. Foot patrols through the areas near the Beirut Airport have been complemented by helicopter insertion and amphibious landings, all extra training for the Marines and enhanced capability to carry out the Corps' mission here.

"Once we get the whole BLT qualified both in SPIE rigging and in helo rappel, we will begin to insert our patrols by rappel and bring them out by SPIE rig," said Davis. "That will add significantly to where we go on patrol, our starting and ending points. It will also make the patrols a lot less dull for the Marines, and it will give them extra skills."

The extra skills and the tedious-destroying qualities of the SPIE rig have been shared with the other members of the Multinational Peacekeeping Forces. They gain the same benefits as the Marines, and the exercise enhances the coordination and cooperation of the elements of the MNF.

Since the BLT began SPIE rigging during the first week of June, more than 2,000 people have gone through it, including 100 French, 30 Italian, 70 British and

300 Lebanese soldiers.

For the Lebanese, it was part of the training the Marines gave to their 1st Air Assault Battalion. "It was required on their training syllabus. We wanted to make sure they had this capability," Davis said.

In addition, Davis praised the simplicity of arranging SPIE rigging, a once-a-week affair for the Marines and their allies. "You need a minimum of equipment, a small, cleared space, a few trained people to run the site and a helicopter."

The equipment and the trained Marines were provided by the reconnaissance platoon attached to BLT 1/8. "They did a very professional job of organizing the site, rigging all the participants and ensuring a very smooth operation," Davis said. "They were very safety conscious and very enthusiastic about the program." Besides chalking up an injury-free affair, the recon Marines were able to rig and ride an average of 200 people in a four-hour period and once hoisted as many as 320.

The helicopter was the responsibility of Marine Medium Helicopter Squadron — 162, the composite squadron that is the 24th MAU's air arm. "The aviation side of the house gave us excellent support all the way on this," Davis said.

In all ways, Davis said, the ongoing SPIE rig program of the Beirut Marines has been a success. It has enhanced the Marines' general skill level, increased MNF cooperation, aided the Lebanese Armed Forces and will add to the Marine mission in Lebanon, according to Davis.

But most of all, it's been an exception to the military rule that training should be difficult, arduous, repetitive, frequently boring and often seemingly purposeless. It's been fun.



UP, UP AND AWAY — U.S. Marines and French Foreign Legionnaires in Beirut take off on a

Special Patrol Insertion and Extraction rig lift over the city. (Photo by Sgt Nolan Wells)

Happy Vespucci Day, Columbus

This year's observance of Discoverers' Day, Monday, is just nine years short of the 500th anniversary of the discovery of the New World by Christopher Columbus in 1492. The holiday is set by law for the second Monday in October of each year, and it is declared annually by Presidential Proclamation.

The fact that the New World was not named after its discoverer is due to the machinations of an apple-brained geographer, Martin Waldseemüller.

In a short geography book which he published on April 25, 1507, Waldseemüller wrongly identified the discoverer of the New World as the Italian explorer Amerigo Vespucci (using the Latin, *Americus Vesputius*), stating:

"But now that these parts have been more extensively examined, and another fourth part has been discovered by *Americus Vesputius*... I do not see why anyone should object to naming it *America*... after its discoverer, *Americus*, a man of sagacious mind, since both Europe and Asia took their names from women."



Station revises liberty bus schedule

The liberty bus schedule here has been revised to accommodate Marines and sailors on liberty in the Kailua area. The new schedule is designed to enhance the safety of service members and includes two stops on Kaula Road on the return route.

The new schedule, which became effective Saturday is:

Pick-up Point	Times of Departure (outbound)			
Bus stop (across from Joint Reception Center)	6 p.m.	8:10 p.m.	11 p.m.	1:10 a.m.
Main Exchange (parking lot)	6:05 p.m.	8:15 p.m.	11:05 p.m.	1:15 a.m.
Main Gate (PMO ID check)	6:10 p.m.	8:20 p.m.	11:10 p.m.	1:20 a.m.
Aikahi Park Shopping Center bus stop (corner of Kaneohe Bay Drive and Mokapu Road)	6:15 p.m.	8:25 p.m.	11:15 p.m.	1:25 a.m.
Kailua bus stop (corner of Kailua Road and Hoolai St.)	6:20 p.m.	8:30 p.m.	11:20 p.m.	1:30 a.m.
Hale Kōa Hotel (Fort DeRussy parking lot)	7 p.m.	9 p.m.	12 a.m.	2 a.m.

Pick-up Point

Downtown Kailua bus stop #1 (Kaula Road at Kailua Elementary School parking lot)
Downtown Kailua bus stop #2 (Oneawa Street in front of Woodward Coin)
Aikahi Park Shopping Center
Main Gate (PMO ID check)
Main Exchange
Bus stop (across from Joint Reception Center)

Times of Departure (inbound)

No Stop	No Stop	12:40 a.m.	2:40 a.m.
7:45 p.m.	9:45 p.m.	12:45 a.m.	2:45 a.m.
7:50 p.m.	9:50 p.m.	12:50 a.m.	2:50 a.m.
7:55 p.m.	9:55 p.m.	12:55 a.m.	2:55 a.m.
8 p.m.	10 p.m.	1 a.m.	3 a.m.

*The liberty bus departs at 10:05 p.m. for a one-hour refueling stop at the Station Motor Pool.

**This is the last stop. The bus departs at 3:05 a.m. for the Station Motor Pool.

Fire prevention stressed

Fire Prevention Week, Oct. 9-15, 1983, marks the 72nd year that fire safety has been the subject of a national observance.

It all started on Oct. 9, 1911 when Fire Prevention Day was inaugurated. Oct. 9 was chosen because it marks the anniversary of the "Great Chicago Fire of 1871" — the conflagration which killed 250 people and destroyed 17,430 buildings at a cost of \$168 million, and the blaze which started people thinking in terms of fire prevention rather than only of fire fighting.

This year's theme is "Learn not to burn all through the year."

Fire is a national problem which kills more than 8,000 Americans annually. At least 100,000 people are injured, and billions of dollars in property is destroyed. A significant factor contributing to this unfavorable trend is human failure to recognize hazards and to take adequate preventive measures; failure to act intelligently at the outbreak of fire and failure to take appropriate actions to limit dangers.

A large percentage of the dead were children, elderly persons and invalids who had been left alone "for just a few minutes."

The chief causes of fires are: smoking, heating and cooking equipment, electrical wiring, children playing with matches, open flames and sparks, flammable liquids, suspected arson, and spontaneous ignition.

Lifesaving Tips:

- Be sure your cigarettes are out. Matches, too. Never leave matches and lights within the reach of children.

- Don't run cords under rugs or over radiators where they may get damaged. Replace a cord if it is frayed.

- Never leave small children or invalids alone in the house, not even for a few minutes.

- Have your wiring and electrical installations done by professionals.

- Store oily rags and paints in a cool place in tightly sealed metal containers.

- Never use flammable liquids for dry cleaning indoors.

- Have home fire drills to be sure everyone knows what to do in case of fire. Designate a specific meeting place outside the house so everyone can be accounted for.

- Remember: Fire extinguishers put out 97 percent of all fires on which they were used, and most large fires start as small fires. (So invest in a compact, easy-to-use fire extinguisher. Keep it handy in the kitchen, or be prudent and buy one for the cottage, the car, the boat and the back bedrooms.)

- Some excellent smoke, heat, and fire-detection systems are available to homeowners.

- In case of fire: If fire is suspected, alert the rest of the household. But first feel the top of the door. If it's hot, don't

open it. Escape through the window.

- If the window can't be opened, break it with a chair. Cover the rough edges with a blanket, sit on the window ledge with one leg hanging outside and one inside, and wait for help.

- The phone number to report a fire should be taped on or posted near every telephone. If it isn't, don't fumble around trying to find it. Get out and call from a neighbor's house.

- Apartment dwellers should use the stairway, not the elevator. If it fails, they're trapped.

- Once out, stay out. No treasure is worth risking life.

During the week, all Federal Fire Stations will host open houses.

Fire safety and prevention are not solely the responsibility of the fire inspectors or safety inspectors. They are jobs that must be performed every day by all.



DIGGING IN — Ground breaking ceremonies for a new \$1.7 million facility were held here Friday. The new complex, a combined package store and pizza parlor is due to be completed by June 1984. At hand for the ceremonies were (from left to right) Leonard Bradford, combined facilities manager; Colonel

Charles Robinson, commanding officer, Marine Corps Air Station; Lieutenant Colonel Larry Stoltz, personal services director and Chief Warrant Officer-4 William Thomas, acting director of the combined club systems. (Photo by Cpl Pat Lewandowski)

Take stock in America
Buy U.S. Savings Bonds

COUPON
SAVE UP TO \$20

	REG.	NOW
ACRYLIC NAILS	\$50	\$30
2-WEEK FILL	\$18	\$15
MANICURES	\$18	\$10

WITH THIS COUPON

Sculptured Nails

by Loretta
19 Years in California
Now in Kailua

SHAMPOO

Haircut-Cellophane Free Ear Piercing
with earrings

Haircut/Perm

Reg. \$40
& up

WITH THIS COUPON
Expires: Oct. 11, 1983



Celia Mae's
Hairstyling

Complete Beauty Service For You And Your Family
Evenings By Appointment
262-0623
438-A ULUNIU ST., KAILUA

UNCONTESTED DIVORCE — \$194.60*

(Don't waste time in which both parties agree)
ADDITIONAL CHARGE FOR CHILDREN \$1.20
ADDITIONAL CHARGE FOR REAL PROPERTY \$2.00*

DIVORCE
CONSULTATION — \$50*
UNCONTESTED ADOPTIONS — \$265*

OTHER FEES UPON REQUEST

BARBARA LEE MELVIN

National Secretary — National Association of Women Lawyers

521-7496

evenings and weekends by appointment
*INC. TAX

NEED 10 BUCKS TODAY?

THEN GET DOWN TO ALPHA!

Turn your spare time into spare cash! Right now Alpha Plasma Centers will pay you CASH every time you donate plasma. For only a couple of hour's time twice a week you can earn up to \$75 a month. Plus, you help people who need plasma products at the same time.

**CALL OR COME IN TODAY!
BRING THIS AD FOR YOUR
NEW DONOR CASH BONUS!**

Alpha
PLASMA CENTERS

836-0647

(Behind Airport Remains Inn)
3179 Kaloake

Opening at 9:00 am
Monday - Saturday
Closed Sunday

At . . .



We're Taking a Stab at Inflation!

We offer the finest in Stereos, TVs, Furniture, Microwave, Mopeds, Jewelry and all that can be carried away with . . .

NO MONEY DOWN!!

*Ask about our Cash Discount
*Call our Instant Credit Hotline for immediate approval

834-1496

FREE GIFT . . .

with every purchase!

FREE DELIVERY . . .

anywhere on Oahu!

This is your PURCHASE POWER

\$1	\$1,400
\$2	\$1,500
\$3	\$1,600
\$4	\$1,800
\$5	\$2,000
\$6 and up	\$2,400



**MILITARY
TV & STEREO**

Serving the Nation's Armed Forces from Coast to Coast with over 40 stores!



Check This Out, Buckaroo!

**Wiki-Wiki Take-Out Luncheons
For The Busy Office**

***TACO SALAD \$3.45**
A Mildly Spicy Blend of Crisp Lettuce, Meat, Cheese, Salsa And Lots of Other goodies.

***VEGGIE SALAD \$3.25**
Six Crisp Garden Vegetables Tossed Gently, For a Light and Appetizing Lunch. Choose Your Dressing.

***HAM 'N CHEESE \$2.95**
Thin Slices of Ham & Cheese Piled High on Whole Wheat, With Lettuce, Tomato and Onion with Mayo.

***MOLOKINI PICNIC \$3.25**
Tender Turkey Breast & Smokey Ham, Thinly Sliced and Mingled with Crunchy Garden Broccoli and Gilded with Hollandaise!

Call ahead and order early



261-8724

261-8724

Family Restaurant

315 Uluniu St., Kailua Square

FACTORY CLEARANCE CEILING FANS

NEW 52" GOLD FAN

- Mounts to short 7' 10" ceilings
- 52" Wood blades
- With reverse air flow
- Variable speed



Not exactly as shown

- 4-Light kit and tulip glass excluded
- 5 Year warranty
- Sealed Bearings Maintenance Free!

Ceiling Fan . . . Buy of the Year!

Professional Installation Available at Discount Prices

\$8895

*300⁰⁰ Value

5 Days Only Sale Ends 10/9/5 p.m.

PACIFIC SURPLUS & DISTRIBUTORS

Sun. 11:00-5:00

Mon.-Sat. 9:30-6:00 p.m.

Thurs. 9:30-8:00 p.m. Tues. Closed

CALL 262-8131

1247-F Kailua Rd.

The Hawaii Marine is an unofficial newspaper published every Wednesday by RFD Publications, Inc., 46-016 Alaloa St., Kaneohe, Hawaii 96744, in the interest of U.S. Marine Corps personnel in Hawaii. All news copy is prepared in the Joint Public Affairs Office, Marine Corps Air Station, Kaneohe Bay, Hawaii 96863, 257-2179.

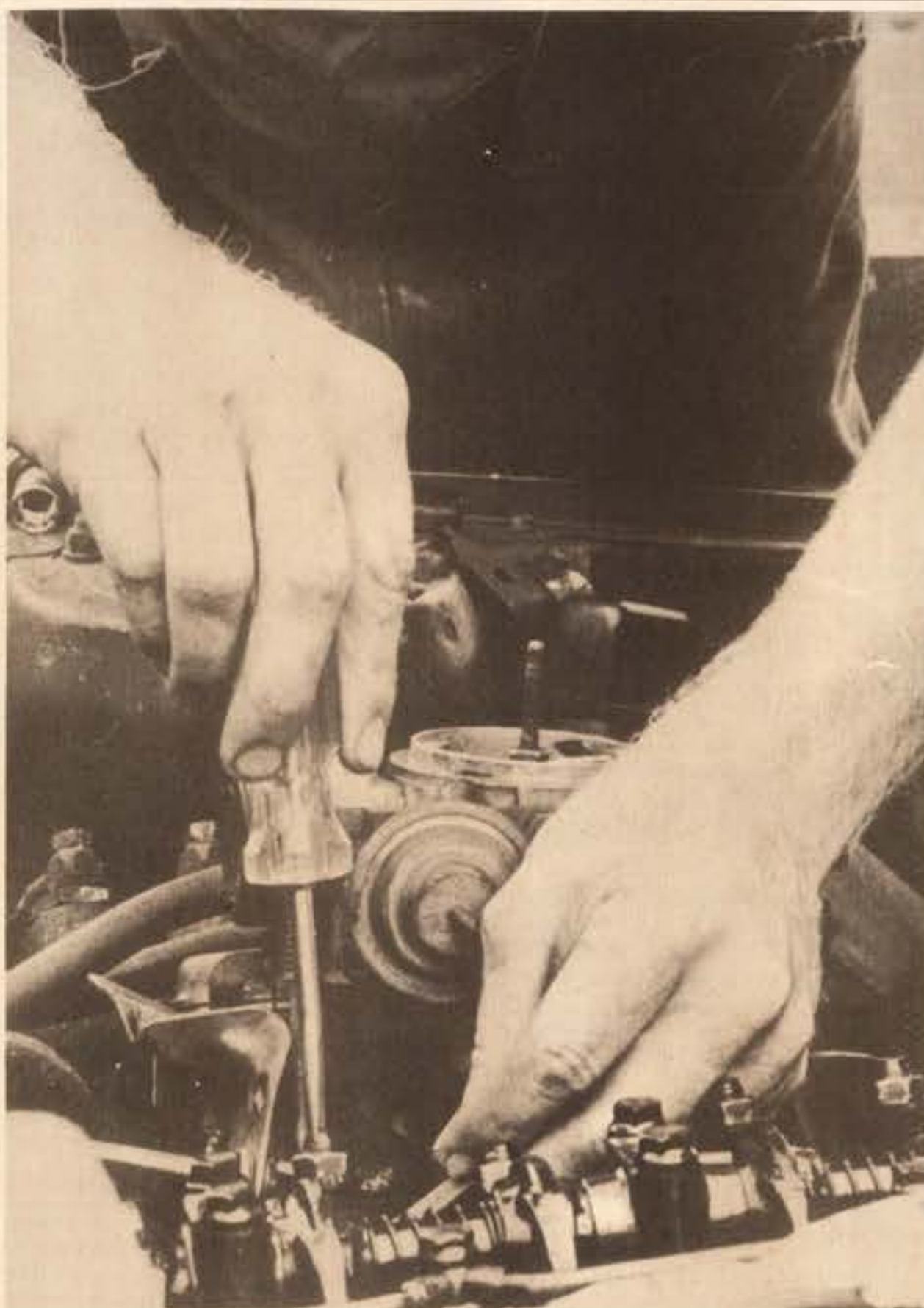
Copy must be submitted no later than noon Thursday for the following Wednesday publication. Hawaii Marine solicits contributions of information and photographs from all Marine Corps organizations. However, it reserves the right to edit or rewrite material submitted. All advertising is arranged by the publisher, RFD Publications, Inc., telephone 235-5881. Circulation is 8,000.

Everything advertised in this publication must be made available for purchase, use or patronage without regard to race, creed, color, national origin or sex of the purchaser, user or patron. A confirmed violation or rejection of this policy of equal opportunities by an advertiser will result in refusal to print advertising from that source.

GETTING INTO IT — Sergeant Bud Gardner, Marine Air Base Squadron-24, climbs into the engine while working on a stock car at the Auto Hobby Shop here.



NEW PAINT JOB — Tungsheng Wang, auto body instructor, puts a new coat of paint on a car at the Auto Hobby Shop here.



EXPERIENCED HANDS — Corporal Marlin Graham, Marine Fighter Attack Squadron-235, adjusts his engine valves at the Auto Hobby Shop here.

Auto hobby shop provides 'second home' atmosphere

Story and photos by Sgt R.D. Dewey

In 1769, Nicholas-Joseph Cugnot rode upon a steam-powered vehicle that traveled 2.5 miles per hour. That first automobile served as the basis for many other designs by many other inventors.

It's a distinct possibility that the amateur mechanics at the Auto Hobby Shop here could be the Nicholas Cugnots and Henry Fords of the future.

"Just about everything can be done here," said Staff Sergeant Warren Worchester, noncommissioned officer-in-charge, Auto Hobby Shop. "The level of work that can be done, more or less

relies only on the expertise possessed by the individual. High performance engines have been rebuilt here, along with stock cars and customized vehicles. The Corvette and Mustang Clubs have had shows at the hobby shop, with entries by military personnel and dependents utilizing this facility.

"We provide an area, the tools, and technical assistance required to do the job."

A person must show proof of ownership, a valid registration and inspection, and a valid auto insurance policy before entering the hobby shop.

Stalls are then assigned on a first come, first served basis. Each stall resembles a parking space, with enough room for a vehicle

and space to work around it. The shop has 30 available stalls, five of which are covered for rain protection.

"We have a number of mechanical capabilities," said Worchester, "which includes auto body work, an area to pull engines, and a booth for vehicle painting. We have electrical outlets and air available, two lube racks, and storage stalls for automobiles that can't leave daily."

Worchester and his four attendants provide assistance wherever possible to those less experienced automobile mechanics. They ensure a strict safety policy is maintained at the hobby shop.

"A major accident occurred three months ago," said Worchester. "A man dropped an engine on himself and cut his hand badly. Other than that, all our injuries are minor cuts and bruises associated with work on machinery."

Not everyone can be a mechanical genius, so mechanics classes are available when enough interest is shown. Tungsheng Wang conducts classes in body working and painting through Special Services. A class was also provided to dependent wives on automobile maintenance, to prepare them for their husbands' absence.

"The hobby shop offers me everything I need," said Corporal Ken Kovy, Marine Fighter Attack Squadron-212. "It's a very easy place to get to, and it's super cheap to work there. You can pull your engine, work on your electrical system, sand and paint your car, and put your car up on lube racks. There's also a lot of room to work comfortably on your car."

However, there are some individuals who misuse the facilities.

"Sometimes a person will bring in a car, pull the engine out, and leave the body behind," said Lance Corporal William Navarre, Auto Hobby Shop attendant.

"There is also minor pilferage of

screw drivers and wrenches," said Worchester. "But to many of the people who work here, the hobby shop is like a second home. As a result, they take pretty good care of the place."

The Auto Hobby Shop facilities are going to get even better, according to Worchester.

"If anyone is unsure of what the Auto Hobby Shop has to offer, just come down to the shop and we'll assist you in every way possible," Worchester concluded.

The Auto Hobby Shop is located in Building 206, across from Pless Hall. The hours are Wednesdays through Fridays from 11 a.m. to 8 p.m. On Saturdays and Sundays, the hours are 9 a.m. to 5 p.m.



GETTING TO IT — Corporal Bob Garrison, Marine Fighter Attack Squadron-212, tries to find the electrical problem on his friend's car at the Auto Hobby Shop here.



FINDING THE PROBLEM — Corporal Bob Garrison, Marine Fighter Attack Squadron-212, tries to find the electrical problem on his friend's car at the Auto Hobby Shop here.



We Save You More Than Time

LOVES FRUIT PIES
Assorted Flavors



2 FOR

79¢

**ROCKY ROAD
FRESH ISLAND
X-LARGE EGGS**



1 25
DOZEN
Grade A

ICE COLD CASE SODA Reg. \$8.99

- Coke • Tab • Diet Coke
- Regular & Caffeine Free



6 49
CASE
With this coupon
Limit one case
per coupon
Offer ends 10/11/83

**MEADOW GOLD
1/2 GAL ICE CREAM**



(except Mac Nut & Kona Coffee)

2 39
each

2 LITER SODA



- Coke • Tab
- Diet Coke
- Regular & Caffeine Free

1 39
each

• COLECOVISION
• ACTIVISION
• ATARI
CARTRIDGES



SAVE

2 50
With this Coupon
Limit One
Coupon Per
Customer
Offer Ends
10/11/83

**CARTON
CIGARETTES**
All Brands & Sizes



**7-ELEVEN
FREEDOM
EVERYDAY LOW PRICES**

8 99

BIG GULP
Fountain Soft Drink
32 Ice Cold
Fluid Ounces
All Flavors



**7-ELEVEN
FREEDOM
EVERYDAY LOW PRICES**

6 9¢

**LAYS POTATO
CHIPS • No Salt**
• Zesty Cheese
• BBQ
• Sour Cream
& Onion



1 19
8 oz. package

**MARS & M&M 1 lb.
CANDY PACKAGES**



2 39
16 oz. package

**MEADOW
GOLD MILK
NEW TWIN PACK
1 GAL**

- Homogenized
- Viva 2%



**7-ELEVEN
FREEDOM
EVERYDAY LOW PRICES**

3 25

**LOVES
WHITE
1 lb. BREAD**



**7-ELEVEN
FREEDOM
EVERYDAY LOW PRICES**

9 5¢

**COLD
CASE
BEER**



- Budweiser
- Budweiser Light
- Miller • Miller Lite

**7-ELEVEN
FREEDOM
EVERYDAY LOW PRICES**

12 79

**FRESH
HOT KONA
BLEND COFFEE**



6 oz. 35¢ 12 oz. 50¢

6 0¢
16 oz.

OPEN 24 HOURS EVERYDAY ALL SPECIALS GOOD THROUGH 10/11/83

FREEDOM



Prices Good At All Oahu 7-Eleven Food Stores.

The Southland Corporation
PRINTED IN U.S.A.

Navy corpsman salvages endangered lives

Story and photo by Sgt Greg Berry

Not everyone has an opportunity to hold someone else's life in his hands, but to a Navy corpsman here, the experience is old hat.

"Several times I've performed open heart massage on a patient while the doctors were scrubbing," said Hospitalman Second Class Jesus Dalmiro Gauna. Open heart massage is a technique where

a doctor or technician reaches into the chest cavity and squeezes the patient's heart to keep it pumping.

The life-saving experiences were part of his job as an operating room technician with an open heart surgery team at Baptist Memorial Hospital in San Antonio, Texas. Gauna worked there during his three-year separation from the Navy.

His interest in the Navy began when several of his high school

friends joined and told him about life as a sailor. The additional lure of GI educational benefits was enough to get him to enlist.

Gauna began his naval career in October 1975, but departed the service four years later to pursue a degree in bilingual education. He completed his bachelor's degree in 1981 at the San Antonio campus of the University of Texas.

But what could lure a vital member of an open heart surgery team to abandon his career to regain sail the seven seas? Without hesitation Gauna piped, "I like the Navy life." Job satisfaction is important to the 29-year-old Bolivian native.

Gauna's duties here at Brigade Medical Supply demand a high degree of responsibility — he's in charge of a multimillion dollar inventory of surgical instruments. There are 265 instruments in a medium-size set, and Gauna keeps 300 to 400 sets ready at all times.

"I can supply and outfit 24 battalion aid stations," Gauna said. That's in addition to the equipment he maintains for field hospital use. "If we were to establish a field hospital," he explained, "I could fully equip two operating rooms."

The legendary life of the sailor with a girl in every port isn't the

type of Navy life Gauna has chosen. He's interested more in working at shore station medical facilities, where he can enjoy his family.

Gauna became a United States citizen last month as one of the requirements for the naval commission he's seeking. He jokingly wrote to his parents, who still live in Bolivia, and told them he's now an "American." Citizens

of Central and South America also refer to themselves as Americans.

Counting, sorting and sterilizing surgical instruments is only one aspect of Gauna's Navy life. His application for a commission as a registered nurse could easily put him back on a surgical team, he said, where he would again experience the emotion of holding someone's life in his hands.



Hospitalman Second Class Jesus Dalmiro Gauna

ACCIDENT CASES

INCLUDING
WRONGFUL
DEATH CLAIMS
AND
CATASTROPHIC INJURIES

You may qualify if you or any member of your family has been injured.

524-5400

Law Offices of
GARY GALIHER & ASSOCIATES

No Charge For Initial Consultation
No Recovery - No Fee

333 Queen Street, Suite 800 Validated Parking

The Friends of Easter Seals Presents

6th Annual

"da CAR SHOW"

Sponsored by
TOYOTA



The Car
and Bike
Enthusiasts

Annual
Benefit
for



OCTOBER 7, 8, 9

NBC EXHIBITION HALL

OVER \$1,000,000 in CARS

LIVE ENTERTAINMENT ON STAGE

* NIGHTLY

BIKINI CONTEST

* HOURLY

PRIZE DRAWINGS

GRAND PRIZE:

1983 Nissan Pulsar NX

MODEL CAR CONTEST Sponsored by The Hobby Company

NUUANU BROTHERS SUNDAY EVENING

ERNIE SANTIAGO, MR. U.S.A. 1983 NIGHTLY

A Benefit for the Easter Seal Society of Hawaii

WE BUY

GOLD • SILVER • PLATINUM
DIAMONDS • WATCHES
U.S. & FOREIGN COINS

HONOLULU
146 KAPAHULU
726-2288

KANE OHE
88-376 KAHANU
247-8477

OPEN FROM 10-6 SAT. 11-5

TLA
Waikiki

\$29.00



MILITARY
Special
\$32.00

HOTEL FEATURES

- Air conditioned rooms
- Color T.V. and alarm clock radio
- Free Shuttle to/from Ala Moana Shopping Center & Waikiki
- Restaurant, Bar, Piko Bar, Cool-N-Kettle
- Large Sun Deck and Pool
- Meeting and Banquet facilities, Shopping Arcade
- Guest laundromat, Shopping Arcade

Hawaiian Monarch Hotel
444 NIU STREET • HONOLULU, HAWAII 96816

RESERVATIONS
(808) 949-3911

Going Home On Leave?
Going Outer Islands?
Bringing Someone From
The Mainland?

We Are A Professionally Staffed
Travel Office
Designed To Serve Your Travel Needs
At The Best Possible Price!



Camp H.M. Smith 487-1567
Bldg. 1, Rm. 2AA202
KMCAS, Bldg. 209 254-1564
Open Mon.-Fri. — 0730 to 1530

Are you one
of the 7 out of 8
who have not
prepared a will?

When you die you must leave behind everything for which you have worked and saved. The question is: "TO WHOM?" If you have a will, you have already instructed the state attorneys and judges to act according to YOUR wishes.

but if you don't have a will

the state will simply distribute your estate according to law. Without a will you let the state determine the disposition of your assets, the welfare of your spouse and the guardianship of your children. Probate costs, taxes and fees increase. What's worse, you rob yourself of the privilege of continuing stewardship through designated gifts.

DON'T MAKE THE MISTAKE OF THINKING

- only wealthy people need a will
- that drawing a will is too complicated
- or that it is too expensive

Take the first step toward doing something about that which you own — for your own peace of mind and for the benefit of those you hold dear.

For FREE information about Wills, send coupon below.



THE SALVATION ARMY
Hawaiian Islands Division
(P.O. Box 620) 2950 Manoa Road
Honolulu, HI 96809

NAME _____
ADDRESS _____
CITY _____ STATE _____ ZIP _____
PHONE NO. _____ (AREA) _____

Introducing CENTURY

Taste that delivers

IN THE MONEY SAVING

25 pack



Low Tar

Regular

Warning: The Surgeon General Has Determined
That Cigarette Smoking Is Dangerous to Your Health.

LIGHTS: 10 mg. "tar", 0.9 mg. nicotine; FILTER: 15 mg. "tar", 1.1 mg. nicotine av. per cigarette by FTC method.

© 1983 R.J. Reynolds Tobacco Co.



TAKE US TO YOUR LEADER — Marines from Headquarters and Headquarters Squadron, Operations and Maintenance Squadron, sit patiently aboard a bus prior to entering the gas chamber Sept. 26.

Station prepares for NBC disaster

Story and photos by SSgt W.S. Saunders

Nuclear, Biological and Chemical Warfare Training: Nobody likes it, but somebody has to do it.

Such was the case for Marines from Headquarters and Headquarters Squadron, Operations and Maintenance Squadron, who took time off from their daily routine to participate in this annual training.

The purpose of the training is to familiarize the Marines with the proper use of the gear which they seldom come in contact with, and to help them to overcome their fear of chemical agents.

"This year's training took a new twist," said Staff Sergeant Rick Mayorga, training noncommissioned officer for H&HS. "Normally we would have the Marines dress in camouflage utilities, give them a gas mask and

run them through the chamber. This time we had them dress in the full NBC protective suit to include rubber boots and gloves."

The training consisted of instructions on the proper wear of the suit, mask and chamber procedures. Once fully dressed, the Marines boarded buses and proceeded to the gas chamber. Once inside the chamber, the Marines were instructed to roll up their hoods and remove their mask for 30 seconds, don and clear the mask, then proceed out the chamber.

Having gone through the chamber, the Marines returned to the staging area and were given instructions on decontamination procedures.

The decontamination procedures consisted of several stations where a particular article of protective clothing was deposited.

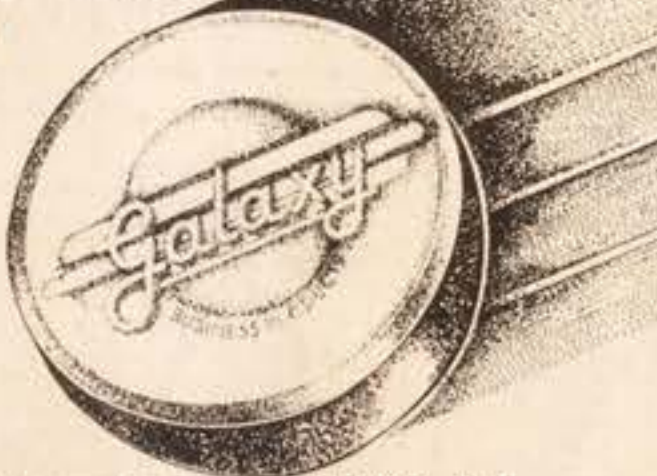
"The training overall was very good and the response was favorable," said Mayorga.



NBC TRYOUTS — Marines from Headquarters and Headquarters Squadron and Station Operations and Maintenance Squadron try on Nuclear Biological Chemical Warfare protective gear for size and comfort prior to entering the gas chamber. This training was conducted here Sept. 26.

SUPPORT RED CROSS

Here's how Hawaii spells relief...



Do as thousands do. Call 537-2991. Free delivery, discount prices on name brands. The complete office products company!

GALAXY BUSINESS PRODUCTS, INC. • 770 ILALO ST. HONOLULU, HAWAII 96813



After-School Special!

For Young Men & Young Women



20% OFF

During October
3 PM-9 PM

Offer Expires
10/31/83

NEW
INTERNATIONAL
HAIRCUTTERS

Alkahi Park Shopping Center, Kailua
Under New Ownership

OPEN:
9 AM-9 PM
MON.-SAT.

254-1585

"In just 3 months, I lost 13 pounds and controlled my diabetes naturally."
Jane Miller, Hawaii Kai



In just 3 months you can have a brand new you for Christmas.

Give yourself a brand new you, feeling good and looking great this holiday season the Nutri-System way. Hundreds of Hawaii's dieters have achieved stunning success through this sensible, nutritious, simple and safe way to lose pounds and inches. With Nutri-System you can give yourself the you you've always wanted to be. You owe it to yourself.

NOW
25% OFF

Now, a special discount offer to get you started! Just in time for this holiday season.

Offer good until October 31, 1983. Offer good only for new subscribers. One discount coupon per person. Available at all 4 Oahu locations.

COUPON

Aiea Haina
850 West Hind Dr.
373-2101

Downtown
1164 Bishop St.
531-4695

Kailua
Pali Palms Plaza
254-5811

Pearl City
96-1254 Kaahumanu
488-1919

nutri/system
weight loss centers



We brought down the cost of keeping up with old buddies.

You went through a lot together. You shared some of the best and hardest times of your lives.

Now, Hawaiian Telephone makes it easier to talk about old times with old buddies. International rates on direct dial calls to many points have decreased by 40%. And rates for evening*

calls to the Mainland were just reduced an additional 10%, making them 40% less than the standard day rate.

You've got lots of new stories to tell. So keep in touch. Because old friends are only as far away as the nearest telephone.

HAWAIIAN TELEPHONE
GTE

Our lower rates bring you closer to buddies around the world.

	FIRST MINUTE (DIRECT DIAL)	EACH ADDITIONAL MINUTE
GERMANY AND ITALY	\$1.87	\$1.09
JAPAN AND KOREA	\$2.50	\$.92
EAST COAST U.S.	\$.36	\$.25
MIDWEST U.S.	\$.34	\$.24
WEST COAST U.S.	\$.33	\$.22

Plus 3% Federal Excise Tax. Above rates based on discounts available during special discount periods. See your telephone directory or call the operator for details.

*Evening rate applies between 5 and 11 p.m., Sunday through Friday.

Marine relives experience in ravaged Beirut

EDITOR'S NOTE: The writer is the press chief for the Fleet Marine Force, Pacific, Public Affairs Office, at Camp H.M. Smith. His observations of Marines in Beirut provide valuable insight to the Corps' peacekeeping mission.

by Sgt Chuck Jenks

I had always thought that I'd seen the Marine Corps at its best and in its most comfortable setting — the field.

Little did I know, however, that four days after my wonderful honeymoon and 12 hours after I received orders to pack my 782 gear, draw film for my camera, stash extra reporter's notepaper and, of course, draw weapons, that I would be bumpily flying over the Atlantic in an Air Force C-141. I was headed for one of the hottest spots in the world. A fellow journalist, an officer and I were packed in the ice-cold (there was no heating aboard the jet at 30,000 feet) cargo hold with 100 other augmentees and supplies to join the 32d Marine Amphibious Unit in its peacekeeping efforts in Beirut, Lebanon.

"Where?" I asked myself.

"Why?" asked my new bride.

It's hard to believe that on Aug. 25, Camp Lejeune Marines marked a year of duty in Beirut. Happy Anniversary? What is it like? How does it feel to be a U.S. Marine in Beirut today?

Tension is surely high. I was tense when I was there with both the 32d and 22d MAUs. But, it must have been the same feeling that U.S. Marines felt over 25 years ago when they first landed in Beirut for the same reason they are there today... to help stabilize a war-torn region where life has been one of hostility for hundreds of years.

A quarter of a century ago,

Battalion Landing Team, 2d Battalion, 2d Marines landed at Khalde Beach, four miles from downtown Beirut. Last year, BLT, 2d Battalion, 8th Marines landed near that same spot only 700 yards from the Beirut International Airport to begin its peacekeeping mission.

The 32d MAU first landed in that volatile area in 1982 to evacuate civilians who had fled the city during the summer fighting. They landed in the port city of Janyah, and it marked the first time U.S. Marines had set foot on Lebanese soil since 1958. Their stay was relatively short, and the leathernecks were soon on their way out of the country to resume normal patrol duties in the Mediterranean.

Those same Marines were again called on Aug. 25, to assist in the evacuation of the Palestine Liberation Organization fighters who, for most of the war, had occupied West Beirut, a predominately Muslim section. This encore landing put the Marines in peacekeeping positions for 17 days before being ordered back to the Sixth Fleet ships waiting off the jagged Lebanese coast.

During the second landing, Marines occupied Checkpoint 54, later dubbed "Studio 54." Studio 54 was the PLO's entry point at the westernmost edge of the 32d MAU's perimeter. It was a dangerous time for the BLT leathernecks and was the closest U.S. troops have gotten to a combat situation since Koh Tong Island in the early '70s. Many of the Marines claimed they had an eerie feeling, thinking a sniper may be sighting on them relating to the fact that many tall buildings make up the Port of Beirut. When they left and

headed west across the Mediterranean for an eagerly awaited liberty stop in Naples, Italy, the men thought their mission was accomplished.

On Sept. 15, war clouds darkened over the Middle East again. Reports were coming across the news wires that there had been a massacre in Beirut. For the Marines of the 32d MAU liberty was secured.

Thirteen days later, the 32d MAU returned for the third time. This time, they were prepared to stay.

It was at this point that Camp Lejeune augmentees were quickly flown to join the 800 Marines on duty in Beirut. The mission called for us to land in Larnaka, Cyprus,

off the coast of Greece, then take choppers to the USS Guam and other ships with the Sixth Fleet.

It went like clockwork. We landed in the sweltering heat of barren Larnaka and waited on the airstrip until a wave of helicopters, from Marine Medium Helicopter Squadron 261, home-based at Marine Corps Air Station (Helicopter) New River, N.C., touched down on the baking asphalt. After loading supplies and equipment, the green birds shuttled us across the eastern Mediterranean toward the waiting warships.

The first glimpse of Beirut, even though we were four miles from shore, was similar to a diorama model of a city under siege.

Although it was not under attack, the crippled city was cloaked in a shroud of smoke trailing from numerous piles of burning debris. The once beautifully white plastered walls of the large skyscrapers were pitted and charred, most with huge, gaping holes where rockets had penetrated. It was like a scene from "Beneath the Planet of the Apes." The city was defaced and in disrepair.

According to the mission's strategy, there would be a two-pronged insertion into the city. One of the BLT's companies and the MAU Service Support Group (MSSG) would pull into the port and unload, while six miles to the south, the remaining two

companies would be helo-lifted into Beirut airport.

The world's eyes now focused on the actions of the U.S. Marines.

Simultaneously, the Marines entered the city. In contrast, those Marines being helo-lifted into the deserted airport didn't see much of the populace or the devastation caused by the war, while the MSSG and one company that landed in the busy port were met by a swarm of more than 100 reporters and TV crews. Once ashore, a convoy of jeeps, trucks and equipment took shape, and Marines saw the carnage of the city of the first time.

The narrow streets, the convoy

Continued on Page A-10

Stay
Marine.



A Medical Practice Opens

in Kaneohe
Obstetrics
and Gynecology

Fully participating
CHAMPUS & HMSA

•Infertility •Pregnancy
•Annual Pap Smear •Female Disorders

247-8737

ROBERT C. ALLIN, M.D.
Honolulu Federal Building #400



MAINLINER and TRAVEL HOLIDAY Award Winners

L'Auberge

French Cuisine

Superb Dining In A
Charming Country
French Manner

RESERVATIONS
AFTER 2 P.M.

262-4835



Open:
Wed. thru Sun.
6 p.m. to 10 p.m.

117 HEKILI
STREET,
KAILUA

Your Hosts -
Marcel & Elvi Baltzer

COUPON

HILLTOP RANCH

Bring this coupon Spend
4 for the price of 3 A Day
In The
Country!



TRAIL RIDES

All Ages
Group Rates
Bring your
family & friends

Waimanalo
Reservations Please
259-8463 or 261-9504

COUPON

CARRIERS SEEK SUBSCRIBERS

Hawaii Marine carriers will be seeking voluntary subscribers for the eleventh period of 1983 beginning Oct. 8, 1983. The four week period extends from Oct. 6, 1983 to Nov. 2, 1983.

If you enjoy reading the Hawaii Marine and delivery service is satisfactory, your voluntary subscription payment will ensure prompt, uninterrupted delivery.

Subscriptions are \$1.00 per period. All subscription fees revert to carriers and other circulation personnel.

MAHALO.

BRING THIS AD!

1¢ SALE TWIN PRINTS

BRING IN A ROLL OF COLOR PRINT FILM
FOR DEVELOPING AND PRINTING AND
RECEIVE A SECOND SET OF PRINTS FOR
A PENNY A PRINT!

Sizes 110, 128, 135 and Disc-3R size
SPECIAL NOT VALID WITH ANY OTHER OFFER



Available at all Clik Photo Locations Thru Oct. 31, 1983.

CLIC PHOTO

836-0691
for nearest
drive-up
location.

Kodak PAPER
for a Good Look

NOW AT YOUR PX!

OR AVAILABLE THRU YOUR SPECIAL ORDER DESK

ZENITH
NEW 1984 COLOR TVs
CUSTOMSERIES

25" ZENITH CONSOLE COLOR TV with REMOTE CONTROL

- ChromaSharp 100 picture tube for outstanding picture sharpness
- 100% modular Z-1 chassis for reliability
- Precision Quartz-Controlled Electronic Tuning featuring 157+ channel tuning capability of all normal VHF/UHF channels and 101 cable channels
- LED Channel Display with large, easy-to-read numbers
- Chromatic One-Button Automatic Color Control to maintain factory-set color level and tint



SZ2517NK

• Charming Country Style console with simulated grained Nutmeg Oak finish
Computer Space Command® 2400 Remote Control
Features UP/DOWN scanning of channels or direct access channel selection. Turn set on or off, make sound louder or

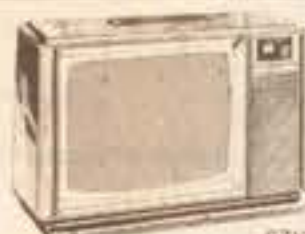
softer through a continuous range, and/or completely mute sound while picture remains on screen



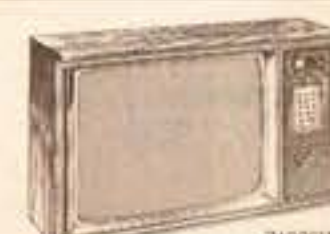
Z250EP

25" ZENITH CONSOLE COLOR TV

- Features ChromaSharp 100 picture tube for great picture sharpness
- 100% modular Z-1 chassis for long-life reliability
- Automatic Color Control System
- Classic Style console with simulated grained Pecan finish



SZ1319W



19" ZENITH COLOR TV

Here a compact color TV with Zenith quality clear thru its 100% modular chassis. Electronic Tuning with Keyboard Touch-Command features 157+ channel tuning capability of all normal VHF/UHF channels and 101 cable channels. LED Channel Display with large, easy-to-read numbers



Computer Space Command® 2400 Remote Control lets you control power on/off, direct access channel selection and all-channel scan UP/DOWN from the comfort of your easy chair. 157+ Channel Electronic Keyboard Tuning capability includes 101 Cable TV channels

See! Now at your PX!

*Cable systems vary. Check your cable company for compatibility.

This advertisement is neither sponsored nor paid for in whole or part by any military related activity.

JOIN THE FUN! ENTER TODAY!

Americanism Essay Contest

OPEN TO ALL STUDENTS
IN HAWAII
BETWEEN AGES 13 & 18

CASH PRIZES in 2 Age Groups!

\$100 1st Prize
IN BOTH GROUPS

\$50 2nd Prize
IN BOTH GROUPS

\$25 3rd Prize
IN BOTH GROUPS

It's Easy To Enter! Just Write
Between 450-750 Words
Relating To One Of These Three
Topics:

1. An American Requirement
2. An American Hero
3. America in the Year 2000

RULES:

1. Typewritten, double-spaced, manuscripts between 450-750 words may be submitted to Honolulu Scottish Rite Bodies (address below) no later than October 27, 1983.
2. The name and address of student submitting the essay must be at the top of the first page along with his or her address and phone number.
3. Topics should relate to one of three categories:
1. An American Requirement
2. An American Hero
3. America in the Year 2000
4. Essays may be entered with the 1000 word limit or may enter under a sub-title or sub-headline which more specifically addresses the subject.
5. Winners will be announced not later than November 10, 1983. Winning essays may be published, and winners may be invited to read their essays at a meeting of the Scottish Rite Bodies.
6. All essays must be the original work of the author. Plagiarism (copying or work which does not represent the substance of the author) will be disqualified.
7. Essays will be judged on the basis of the following criteria:
1. Clarity
2. Originality
3. Smoothness of Style
4. Relevance
5. Message
8. Further inquiry may be addressed to:
Honorable Chairman
Americanism & Education Committee
Honolulu Scottish Rite Bodies
c/o P.O. Box 1488
Honolulu, Hawaii 96814

SPONSORED BY:

THE HONOLULU SCOTTISH RITE BODIES





KEEPING TRACK - Army Private First Class, Omar Rieche, a lab technician assigned to Tripler Army Medical Center's bloodmobile, logs in the serial number of the tubing bags used to collect blood. Lance Corporal James Hosmer, Detachment, Company A, 3d Amphibious Assault Battalion, along with approximately 40 other Brigade Marines, gave blood Sept. 26. (Photo by Cpl Pat Lewandowski)

USO expands operation

The United Services Organization of Hawaii has expanded its operations to include the Hickam Military Airfield Command Terminal. The USO Lounge at the terminal opened Monday. Its hours of operation are from 10 a.m. to 10 p.m. daily, "depending on the number of volunteer workers we have," explained Jeanne Vaughn, USO coordinator for the Hickam project.

Hickam has had a family lounge for a number of years, but has not had regular monitors. The USO will now monitor the lounge.

"Our volunteers will keep fresh coffee and cookies available to those who use the lounge, our people will answer questions, help find transportation, hotels or other needed support for military members and their families," said Norm Guenther, USO of Hawaii executive director.

Vaughn explains that ideally, the lounge should be open 24-hours-a-day on weekends, when much of the terminal traffic increases. "We're starting this as a test program. If we don't get enough volunteers for the 10-to-10 schedule, we'll have to cut back; if we get plenty of volunteers, we can consider staying open longer on weekends," Vaughn said. The USO Lounge will be open to all military, retirees and dependents. USO of Hawaii has been providing magazines for the lounge since early September, in anticipation of the opening.

Those individuals who are interested in volunteering should call Mary Dumeier at 835-3351 Monday through Friday between 8 a.m. and 4 p.m.

USO of Hawaii will continue to operate the Aloha Center at Honolulu International Airport. Located in the Japanese Garden area of the airport, the Center operates 24-hours-a-

day, seven days a week for military members, retirees and military retiree dependents who use the airport.

"In addition to the Hickam project, we are also considering a USO Center at Fort DeRussy and a USO desk at the Hale Koa Hotel," Guenther remarked. "Key to those two operations will be more volunteers and the ability to get the needed space and facilities."

BOB HOPE FOR THE USO

"I've been performing for the USO for years—and so have tens of thousands of USO volunteers. They provide information, family services and a home away from home for the millions in the Armed Forces."

Get 75 for 30

Retire after 30 years and get 75% of your base pay from the day you retire. Not at age 55, 62 or 65 like most civilian jobs.

LEX BRODIE'S TIRE SPECIALS!

Prices are firm until Sat. Oct. 15, 1983. Please read notes at the base of this advertisement.

GOOD!			
AURORA			
FIRST QUALITY*			
APPROX. 30,000 MILES*			
BLACK STEEL RADIALS			
NO FULL			
TIRE	SERVICE	SERVICE	
SIZE	PRICE	PRICE	
155-12	22.50	32.50	
155-13	24.75	34.75	
165-13	28.25	38.25	
185-14	36.50	46.50	
165-15	28.75	38.75	
*175-13	28.00	38.00	
*185-13	32.25	42.25	
*185-14	35.25	45.25	

*70 Series

BETTER!

TOYO			
SEMI PREMIUM QUALITY*			
APPROX. 40,000 MILES*			
BLACK STEEL RADIALS			
TIRE	SERVICE	SERVICE	
SIZE	PRICE	PRICE	
155-12	26.00	36.00	
145-13	27.00	37.00	
155-13	27.75	37.75	
165-13	31.75	41.75	
175-13	32.00	42.00	
175-14	37.00	47.00	
185-14	38.25	48.25	
165-15	36.75	46.75	

WHITEWALLS

155-13	33.75	43.75
165-13	38.50	48.50
175-13	38.50	48.50
175-14	44.25	54.25
185-14	46.00	56.00
165-15	44.25	54.25

BLACKWALLS 70 SERIES

165-13	35.50	45.50
175-13	36.50	46.50
185-13	40.75	50.75
185-14	42.75	52.75
195-14	45.75	55.75

WHITEWALLS 75 SERIES

*185-13	43.25	53.25
175-14	42.25	52.25
185-14	46.50	56.50
195-14	50.00	60.00
205-14	53.25	63.25
215-14	60.00	70.00
195-15	52.75	62.75
205-15	57.25	67.25
215-15	60.25	70.25
225-15	66.75	76.75
HR78-14	59.75	69.75
LR78-15	69.25	79.25

*80 Series

BEST!

MICHELIN			
PREMIUM QUALITY*			
APPROX. 50,000 MILES*			
BLACK STEEL RADIALS (X2X)			
145-10	33.00	43.00	
155-12	44.50	54.50	
145-13	40.50	50.50	
155-13	47.50	57.50	
165-13	54.50	64.50	
155-14	51.25	61.25	
165-14	57.25	67.25	
175-14	64.00	74.00	
185-14	67.75	77.75	
155-15	54.50	64.50	
165-15	61.50	71.50	
*175-15	66.75	76.75	

BLACKWALLS 70 SERIES (X2X)

165-13	52.25	62.25
175-13	59.50	69.50
185-13	66.75	76.75
175-14	64.25	74.25
185-14	72.00	82.00
195-14	76.00	86.00

BLACKWALLS 75 SERIES (X2X)

185-13	91.50	101.50
195-14	103.75	113.75
205-14	111.25	121.25

*Lex Brodie Quality Designation

*Warranty respected in smaller cars under average Hawaii driving conditions.

*Full service prices include tire mounting, balancing, weights, valve stems and back-up services. Our no-service prices for outer island and over-the-counter sales do not include services. Air freight charges for shipment to outer islands must be added. Should we run out of stock, we will give you a raincheck good for 30 days. Fed. Ex. Tax must be added (1.05-3.41), plus Hawaii 4% state tax. Easy pay plan available. VISA and MasterCard are accepted.

LEX BRODIE'S FOR BETTER GAS PRICES!

HONOLULU			
701 Queen St.			
Ph. 536-8381			
	Reg.	Unleaded	Premium
Regular	31.4	118.9	
Unleaded	32.9	124.5	
Premium	35.9	135.9	

WAIKIKI

94-109 Farrington Hwy. (Next to McDonald's) Ph. 671-4561			
	Reg.	Unleaded	Premium
Regular	31.4	118.9	
Unleaded	34.9	128.3	
Premium	35.9	135.9	

Beach assault cancelled

by Sgt Greg Berry

SOMEWHERE AT SEA, Sept. 30 — Hundreds of leathernocks waited to mount an amphibious assault against the beaches at Barking Sands, Kauai. The task force of four ships, the USSs Peleliu, Cleveland, Fort Fisher and San Bernardino, steamed just beyond the horizon, keeping station out of sight from land.

They were halted before they began, by the only enemy the U.S. Marines couldn't conquer — Mother Nature.

The exercise, dubbed Operation Bell Volcano 83-2, was planned for Thursday, but the threat of Tropical Storm Narda put an end to the scheduled beach storming by the 37th Marine Amphibious Unit.

"The exercise was designed to test the

landing plan," explained Major Richard Morrell, the amphibious unit's S-3 officer. "The rehearsal Wednesday was successful," the major said, adding that valuable lessons were learned by the Marines from Battalion Landing Team 2d Battalion, 3d Marines; Marine Medium Helicopter Squadron 262 and Marine Amphibious Unit Service Support Group-31.

The rehearsal wasn't in full dress though, as the Mike boats and amphibious landing crafts merely touched the beach before heading back to the ships. The helicopters' human cargo boarded, then climbed out before the choppers headed for land.

With the remaining portions of the Mid-Pacific operations scrubbed, the ships steamed for Pearl Harbor before heading for a Western Pacific deployment.

Take stock in America.

Give to the Red Cross.

You support Red Cross through your Combined Federal Campaign gift.

We'll Help. Will You?

American Red Cross

KIKI

OFFICIAL HAWAIIAN MUSIC REPORT
October 2, 1983

LAST THIS WEEK		THIS WEEK	
1	1	1	True
2	2	2	Making Love Out Of Nothing At All
3	3	3	She Works Hard For The Money
4	4	4	Lovers and Friends
11	5	5	Safety Dance
6	6	6	All Time High
5	7	7	Sweet Dreams
9	8	8	How Am I Supposed To Live Without You?
12	9	9	Miracles
7	10	10	(Keep Feeling) Fascination

The Official Hawaii Music Report is determined by weekly before you 10 in, local record sales, radio requests, and KIKI research.

FOOT PAIN?

A Doctor of Podiatric Medicine is the specialist concerned with the diagnosis, prevention and treatment of foot disorders by medical and surgical means.

- Ingrown Toe Nails
- Sore Heels
- Calluses & Bunions
- Corns & Hammertoes
- Orthotics
- Warts

KAILUA PODIATRY CLINIC 407 Ulenia St. Suite 301 Kailua, Hawaii 262-6961	Dr. Theodore G. York 815 Piikoi St. Suite 1401 Honolulu, Hawaii 538-1831	Dr. David Neaton 98-211 Pali Momi St. Suite 737 Pearl Ridge, Hawaii 487-9949
--	---	---

FURNITURE LIQUIDATION

MAJOR WAIKIKI HOTEL RENOVATION OFFERS YOU QUALITY USED FURNISHINGS AT BARGAIN PRICES!

Desk/Dresser 20"x90"	89 ⁰⁰	Rattan Hexagon Coffee Table	59 ⁰⁰
Student Desk 20"x60"	85 ⁰⁰	Parsons Corner Table	39 ⁰⁰
6 Drawer Dresser	79 ⁰⁰	Parsons Desk/Table	59 ⁰⁰
3 Drawer Chest 20"x30"	69 ⁰⁰	Parsons Game Table	59 ⁰⁰
Nightstand 18"x25"	29 ⁰⁰	Rattan Round Game Table	59 ⁰⁰
Rattan Occasional Chair	45 ⁰⁰	Table Lamp	18 ⁰⁰
Rattan Side Chair	29 ⁰⁰	Full Size Bed	49 ⁰⁰
Rattan Lounge Chair	69 ⁰⁰	Twin Size Bed	39 ⁰⁰
Rattan Princess Chair	55 ⁰⁰	King Bedspread	19 ⁰⁰
Queen Size Sofa Bed	129 ⁰⁰	Twin Bedspread	14 ⁰⁰
3 Seat Sofa	95 ⁰⁰	Carpet (Approx. 11'x17')	22 ⁰⁰
Lanai Chair	29 ⁰⁰	Drapery Panel	12 ⁰⁰
Lanai Occasional Table	12 ⁰⁰	Framed Pictures	5 ⁰⁰
Lanai Chaise Lounge	69 ⁰⁰		

ISLAND TRADING, INC.
717 Moowaa Street
Back of Kapalama Shopping Center
CALL 847-1361 FOR DETAILS
OPEN MONDAY THRU SATURDAY 8:30-5:00

CAREER SEMINARS

MAJOR NATIONAL AND INTERNATIONAL CORPORATIONS SEEKING PROFESSIONAL MANAGERS WILL BE INTERVIEWING IN HAWAII IN OCTOBER 1983

CAREER SEMINARS will be seeking Junior Military Officers with a college education (or the equivalent) and the added experience and discipline of military service. During our October 15-24 visit, we will be selecting and preparing applicants for interviews with the representatives of major corporations accompanying us. A few of the companies represented by us are:

AIR PRODUCTS	GALLO	PFIZER
AMERICAN HOSPITAL SUPPLY	JOHNSON & JOHNSON	PROCTER & GAMBLE
APPLIED MATERIALS	MICHELIN	RICHARDSON-VICK
AVANTEK	MOBIL	TEXAS INSTRUMENTS
CORNING GLASS	NALCO CHEMICAL	VARIAN

Our schedule will be as follows:

INFORMATION SESSION: Saturday, October 15, 1983 - 1:00 to 3:00 p.m.
in the Garden Lanai Room of the Ala Moana Hotel. Open to all interested Junior Military Officers and their spouses. Included will be information on current market conditions, interviewing skills, major industry in general and a question and answer period.

INDIVIDUAL INTERVIEWS: Saturday - Thursday, October 15 - 20, 1983.
Appointments may be arranged following the INFORMATION SESSION or by contacting Susan Rau at the Ala Moana Hotel after October 11.

COMPANY INTERVIEWS: Selected applicants will be prepared and may interview with corporate representatives the week following the seminar.

PLACE: Ala Moana Hotel, 410 Atkinson Dr., Honolulu - 955-4811

NOTE: All CAREER SEMINARS' costs are paid by our client companies

CAREER SEMINARS • 260 CALIFORNIA ST., SUITE 405 • SAN FRANCISCO, CA 94111 • (415) 966-1429

CEILING FAN SALE

A container of over 1,000 ceiling fans have arrived factory direct for immediate liquidation. All are reduced at Practically Wholesale Cost

CASABLANCA • SMC • HUNTER

"One" example
30 on display, all are on sale!

• 52" Brown w/Brass
• 3 speed "Whisper quiet"
• Full size motor
• Hang True "Wobble free"

Sealed bearings "Maintenance free"
• Reverse air
• 5 year factory warranty
• Light kit excluded

Riccar 52" 4 Blade Fan
Sug. Retail (Model #404) Special

~~\$399~~ **\$99**

Hurry, Sale Ends Sun. 10/9/5p.m.

PACIFIC SURPLUS & DISTRIBUTORS
Sun. 11:00-5:00
Mon.-Sat. 9:30-6:00 p.m.
Thurs. 9:30-8:00 p.m. Tues. Closed
CALL 262-8131
1247-F Kailua Rd.

Beirut relived . . .

Con't from Page A-8

followed were empty, except for small curious groups of elders and barefooted children playing in puddles formed by bursted water mains that flooded many of the lower streets. Some buildings were untouched, while others adjacent to them were obviously targets for rockets and smelled of death throughout their scarred skeletons.

Glass, rocks, bricks, pieces of shell fragmentation and dried mud made up the texture of the streets the convoy had to navigate.

Occasionally, the long line of vehicles passed children wielding toy weapons and shouting, while only a few yards away lay huge cows and other farm animals stiff with rigormortis, blurred by the thousands of flies that hovered in and out of their rotting carcasses. They were victims of the fierce fighting.

As the convoy neared the airport and prepared for the link-up, the buildings became farther apart and smaller until they were basically single family homes lining the "highway."

The airport, its deserted hangers and maintenance buildings also burned out and war - scarred, quickly became the busy arena that would become the hub of Marine activity - the command post.

A few days before the third landing, then Commandant of the Marine Corps, General Robert H. Barrow, visited the Sixth Fleet and his Marines. He told the men, "It's hard to do better than perfect," referring to the flawless execution of the two previous landings. But, professional excellence was quickly marred by tragedy.

The day after the third landing, the Corps lost one of its own. Corporal David Reagan, Company B, 2d Combat Engineers, was attempting to disarm a cluster bomb, one of many that littered the airport area. The bomb exploded, killing Reagan and injuring three other Marines. It was a grave loss, but it instilled into the Marines' minds the seriousness of their situation.

Positions were heavily fortified, and guard duties became the most important function for the survivability of the MAU.

"Golf" Company was positioned three miles from the CP at Beirut University, which had been closed due to the fighting. "Fox" Company took up positions at the southernmost edge of the MAU perimeter, close to the Israeli positions, while "Echo" Company guarded the flank of the air strip.

Home became a sandbagged hole with corrugated tin for a roof. Fox Company was situated amidst large stands of cacti that served as a natural barrier between us and "them." Echo was surrounded by rolls of concertina wire. The Amtrac Marines were the lucky bunch. Their tractors became home and served as the strongholds in the company perimeters. But like all the other abodes, they took time and sweat to properly prepare. They were surrounded by hundreds of sandbags and small mountains of piled earth. Draped over their formidable steel hulls were large sheets of camouflaged netting to conceal them from aerial sightings.

Golf Company was dug in differently.

They took up positions at the foothills of the steep mountains that enclose Beirut. Easily sheltered from the elements, this position became the eyes and ears of the BLT. Strategically located above the city, Golf Co. was the closest to inner-city Beirut and was isolated further from the CP than the other companies.

While the air support elements remained headquartered aboard the USS Guam, the MSSG settled into one of the deserted buildings next to the CP.

The CP was a classic position. Colonel (now Brigadier General) James Mead, MAU commanding officer, and the rest of the headquarters element used part of the airport fire house and

the civic aviation school, which had been deserted earlier that year because of the shelling.

One section of the fire house became officer quarters while the other became the working sections of the headquarters. Berthed across a tree-lined field were the enlisted quarters.

The enlisted quarters were air-conditioned with gaping holes where hundreds of rockets had riveted the building. Now in place of the shrapnel were thousands of flies and mosquitoes that devised devious ways to get into the protective netting that draped our sleeping bags.

After a few weeks of occupation, the original "highspeed" attitude settled into a normal everyday routine. The Marines never lost the concept of their mission's

importance. After a while, the flies and mosquitoes weren't even noticed.

The 32d MAU remained in this position for 32 days.

On Nov. 1, 1982, Colonel Tom Stokes and the 24th MAU arrived to replace the weary men of the 32d. While fresh troops from 1st Battalion, 8th Marines hustled off choppers to replace the "Beirut Veterans," the "original" leathernecks scurried about gathering gear and preparing for their float home.

The 32d MAU arrived back at Morehead City, N.C. to bands and banners, townspeople, throngs of reporters and family members who greeted them as heroes. The unexpected attention was appreciated by the men of the 32d

MAU, but for most, they were just glad to be home.

Since Aug. 25, 1982, literally hundreds of Marines have stepped ashore to serve an uneasy tour of duty in Lebanon. Each Marine that has stood guard over the crater-pitted landscape or felt that "someone was watching" while on foot patrol through the rubble of a once beautiful city, has a newborn appreciation for the professionalism of the "Band of Brothers" of which he is a part.

For the Marines of 2d Battalion,

8th Marines, who are presently back on the front lines in Beirut, the mission hasn't changed. They are still helping to maintain a tenuous peace.

Take stock in America.



KAILUA SUPER SAVER SALON

WE'RE HERE EVERYDAY

You'll find the same low prices, the same high quality products, and the same service by trained stylists.

OUR SPECIALTIES FOR WOMEN, MEN & CHILDREN:

- PRECISION HAIRCUT \$6
- SHAMPOO/CONDITIONER/FINISH \$6
- PERMANENT WAVE with either or both of above additional \$6 long hair slightly higher

NO APPOINTMENT! COME IN TODAY!

beauty salon, kailua 945-5696

Monday, Tuesday, Wednesday, Saturday, 9:30 a.m.-6:30 p.m.
Thursday, Friday, 9:30 a.m.-9:00 p.m. Sundays, 10 a.m.-4 p.m.
(service subject to time availability)

LIBERTY HOUSE

Ever Popular
PapaSan Chair
(Non-Swivel)
SPECIAL \$145⁰⁰
(limited quantity)

New container arrived

Easy Financing For Military
Free Delivery For All Military Residents

THIS MAP IS WORTH \$10 ON A PURCHASE OF \$75 OR MORE

New Location Of
MAJESTIC FURNITURE
3632 Waialae Ave.
Honolulu, Hawaii 96816
2nd Level of Kahala Furniture
TELEPHONE 735-3068

GET OUT OF DEBT

through Chapter 13
A federal law which helps qualified debtors to pay off debts without borrowing and in payments you can afford, stops creditor harassment and law suits, protects your job, qualified co-signers and property. Free information packet without obligation.

Please call or write:
HOWARD Y. TANAKA
ATTORNEY
Suite 703, Alii Bishop Bldg.
1136 Union Mall, Honolulu
Phone: 526-1544

Start Saving Now!

UP TO
50%

On your calls to the mainland
Long Distance USA
526-2671

Attention Sponsors

TLA APPROVED

PepperTree RESIDENCE INN

- 2 & 1 Bedrooms
- Children Welcome
- TV, Pool, Laundromat
- Maid's Service, Free Phone
- Close to most bars with transportation available

PLANS/BOOKING CENTER
• Star City • Kaimanawa Hwy
Lipos B1 • Phoenix
Lipos P1

98-150 Lipos Place **488-1993**

HARRY'S
CAFE & DELICATESSEN
Alcohol Shipping Center 254-2277

ITALIAN LASAGNA!
Tuesday thru Saturday
Includes Soup or Salad and Garlic Bread
\$5.50

Plus:
Sandwiches, Salads, Soup & Take-Out
BYOB
Tues.-Thurs. till 8 p.m., Fri. & Sat. till 9 p.m.
Alcohol Shipping Center next to Firestone

You never had it this fresh!

BRIGHT

The taste that outshines menthol - and leaves you with a clean, fresh taste.

20 Cigarettes

20 Cigarettes

BRIGHT 100s

Warning: The Surgeon General Has Determined That Cigarette Smoking Is Dangerous to Your Health

1 mg. "tar", 0.5 mg. nicotine av. per cigarette by FTC method.



Football:

by Sgt R.D. Dewey

Both teams seemed to be throwing passes to phantoms. Thursday, as Headquarters and Headquarters Squadron barely squeaked by Brigade Service Support Group 7-0 during intramural flag football at Pop Warner Field.

The victory pushed the H&HS record to five wins and no losses, giving them the only undefeated status in the league.

Both teams attempted running

plays and passes, but neither could score. The winning score didn't come until the latter part of the second half, when H&HS quarterback Sergeant Andy Sanchez threw a short 12-yard pass to Corporal J.D. Balthis in the end zone.

The point-after attempt was successful through a kick by Lance Corporal John Miller.

On the third down of the first possession by BSSG, the quarterback threw a pass to a "ghost" who turned out to be

H&HS edges BSSG in Thursday play

Corporal A.J. Hatchett from H&HS.

Both teams had their share of incomplete passes and interceptions. Toward the end of the second half, the BSSG quarterback put the ball in the air and was intercepted by Cpl Peter Kramer, H&HS. The possession by H&HS resulted in the only score of the game.

"They made a lot of mistakes," said H&HS coach, Staff Sergeant Rick Mayorga, "but we analyzed their defense and found their

weakness. Their penalties helped us a lot also.

"We consider ourselves the top competition in the league. We're not going to get overconfident though, we're going to take them one game at a time."



Buy U.S. Savings Bonds

SIDE STEPPING — Corporal J.D. Balthis, Headquarters and Headquarters Squadron, avoids the hands of his opponent from Brigade Service Support Group during intramural football action, Thursday, at Pop Warner Field. H&HS won the contest 7-0. (Photo by Cpl P. Lewandowski)

Learn how to make up your face ...free.



Today, Merle Norman invites you to learn the design and colors of your own beautiful face. Our trained Beauty Advisors will teach you how to • **OPEN** your eyes with color. • **SHAPE** your lips softly. • **CONTOUR** your face. Let our Beauty Advisors teach you today... **FREE!**

MERLE NORMAN
The Place for the Custom Face®

WARD WAREHOUSE
PH. 523-8707

KAHALA MALL
PH. 737-3086

WINDWARD MALL
PH. 235-5064

PEARLRIDGE CENTER PHASE I PH. 487-3977



★ National Military Legal Plan! ★ ★ Justice For All! ★

Nothing is simple in today's complex world!

•Have you ever felt victimized by an unscrupulous merchant, car dealer etc.? •Have you ever worried about being named as a defendant in a lawsuit? •Ever felt short-changed by an insurance company? •Ever had a relative die without a will and you had to settle their estate? •Ever been falsely accused of a misdemeanor or felony? •Ever received an unfair traffic ticket or citation?

Have you hesitated in defending yourself in any of these situations because you were concerned about the high cost of lawyers fees? Well, you don't have to worry about high fees or feel unprotected any longer.

You now have the opportunity to enroll in the National Military Legal Plan. This low cost plan is tailor made to meet the legal needs of all military personnel and civilian base employees as well as their family members. Incidentally Reservists and retired military and civilian base employees are also eligible for the plan.

The plan will provide you with top-flight legal services at greatly reduced attorney's fees. (In some cases as much as a 50% discount.) Here are just some of the items covered: •Defense in traffic cases •Divorce action •Adoption •Consumer protection •Name changes •Debt collection defense •Landlord tenant matters •Real estate transactions •Juvenile defense •Personal injury suits •Civil rights defense •Misdemeanors •Felonies. The plan covers both on and off base legal matters. The National Military Legal Plan goes far beyond the legal services that you can expect from the base legal office.

The dues for this high quality comprehensive legal program are only \$5.00 (five dollars) per month and that covers the member, their spouse and all dependent children up to the age of 18. Just think with the reduced fees that the participating attorneys charge you will probably come out ahead financially with just one legal service case!

You will be receiving more specific information on the plan either with your credit union statement or by direct mail. Brochures on the plan are available at the following credit unions: "Barbers Point F.C.U." "Hickam F.C.U." "Wheeler Central F.C.U." "Schofield F.C.U." "Tripler F.C.U." "Pearl Harbor F.C.U." "Hawaii National Guard F.C.U."

NO WAITING PERIODS

Mail to: **National Military Legal Plan**
Suite 1850 Pioneer Plaza 900 Fort St. Mall Honolulu, HI 96813

We would like more information on the plan. Send additional information to:

NAME _____

ADDRESS _____

CITY _____ STATE _____ ZIP _____

The National Military Legal Plan is a division of the Hawaii Pre-Paid Legal Plan. Hawaii pre-paid legal has been serving the civilian population of Hawaii for over five years.

For Further Information Call 521-6568 or 521-6569

San Miguel Beer

Available at Your Favorite Package Store

Now you can reminisce the most wonderful times you had while you were there.

Cavite-Subic Bay
Clark Field-Manila
Sangley Point

For further information
Call
Paradise Beverages
(808) 833-3044
2950 Pali St. Honolulu



Painted Label



TRUCKLOAD SALE MICROWAVE OVENS

5 DAYS
ONLY

A CONTAINER OF NEW MICROWAVE OVENS
HAVE ARRIVED FOR IMMEDIATE LIQUIDATION.
ALL ARE REDUCED AT PRACTICALLY WHOLESALE COST!

SALE ENDS
SUN. 10/9/5 p.m.

INDIVIDUAL
FEATURES INCLUDE:
ROTORWAVES
CAROUSELS
DIGITALS
PROBES

VALUES TO \$498

\$239

Limit 2 per customer

NEW!

SELECT
FROM EITHER:

PANASONIC
TAPPAN
AMANA
LITTON

2 SUPER
SPECIAL
PRICES

COMPACT OVEN

199

Sug. Retail \$348

FREE

\$4700
cookware
and cookbook
with oven
purchase

NEW!

DIGITAL
W/BROWNER & PROBE

459

Sug. Retail \$698

OUR GUARANTEE:

Simple, we guarantee you the lowest prices in Hawaii on any oven including military exchanges. This applies to the Microwave/Convection Ovens from SHARP & PANASONIC. In addition, we have 22 models on display.

PACIFIC SURPLUS & DISTRIBUTORS

CALL NOW 262-8131

MON.-SAT. 9:30-6:00 p.m.
TUESDAY CLOSED
THURSDAY 9:30-8:00 p.m.
SUNDAY 11:00-5:00 p.m.

1247-F Pali Hwy. (1 block east of Castle Hospital)
in the new 7-Eleven Complex in Kailua



Bellows tests Marines

by SSgt W.S. Saunders

Twenty-five Marines from Camp H.M. Smith, Marine Barracks Hawaii and the air station here donned their running gear and hit the "boonies" during the 1983 Hawaii Marine Athletic Council's Cross-Country Trial Run held at Bellows Air Force Station Saturday.

"The purpose of the run was to collect the top finishers to make up the Marine Corps' entry in the upcoming Hawaii Armed Services Athletic Council Cross-Country Run Oct. 22," said First Lieutenant Jim Koppenhaver, athletic director here.

"The 5.5 mile run traversed rugged terrain, crested needle point and featured scenic running in the woods behind the air strip," said Koppenhaver. "The Marines, aided by natural 'Marine' navigation, all eventually found their way to the finish line," he added. "Due to 'hit and miss' navigation some of the times are not indicative of the runners' true abilities."

Finishing times are as follows:

OPEN DIVISION	TIME	UNIT
Lance Corporal Robert Wadell	30:51	H&MS-21
Corporal Richard Russell	30:57	Comm Supt Co.
Staff Sergeant Edward Steinhilber	31:16	Main Co. 18880
Corporal Paul Moysenbourg	32:25	H&MS
Sergeant Mark Arnold	32:30	Co. A 1/3
Sergeant Charles Lasler	32:30	H&MS
Staff Sergeant Jerome Rodgers	32:31	Marlaks
Captain Mike Boyd	33:01	Hq Co Bde
Gunnery Sergeant Tom Farris	33:32	H&MS
Staff Sergeant Francisco Andres	34:59	Camp Smith
MASTERS DIVISION		
Colonel Jack Tuttle	34:17	Camp Smith
Lieutenant Colonel Tim Roberts	35:11	1/12
First Sergeant Robert Poolan	36:48	Co A 1st Rad Bn
Master Sergeant Robert Davis	37:27	Hq Co Bde
Lieutenant Colonel Jim Mangani	38:48	Hq Co Bde
WOMEN		
First Lieutenant Maureen Harbac	41:30	MAIS-2
First Lieutenant Regina Healy	44:00	1st Rad Bn
First Lieutenant Terry Kern	46:01	1st Rad Bn
Lance Corporal Debra Johnson	44:42	1st Rad Bn
Corporal Pat Aragon	45:11	MAIS-21
Sergeant Laurie White	46:32	Hq Co Bde
Sergeant Delma Alvarado	49:43	MAIS-21
Sergeant J.D. Collins	51:47	MAIS-2

The top 10 open runners and the top five masters and women, will represent the Hawaii Marines in the HASAC Cross-Country Run Oct. 22.

Premier runners Sgt Farley Simons and Cpl Bruce Hall did not participate due to their participation in the upcoming Marine Corps Marathon.

Texas eases overseas voting laws

The state of Texas has enacted two laws designed to make voting easier for its overseas residents. Scheduled to take effect in the 1984 election year, the first new law requires the secretary of state to certify the names of candidates that will appear on the ballot 55 days prior to the general election. This will allow state election officials to mail out ballots to absentee voters 45 days before the date of the election. Previously, election officials mailed out ballots 30 days prior to elections, at the earliest.

The Federal Voting Assistance Program (FVAP) has been working with individual states to enact legislation to reduce the number of absentee voters disenfranchised as a result of receiving their ballots too late to vote and return them by poll closing deadlines.

The other new law solves a big problem for those eligible to use the Federal Post Card Application (FPCA). They no longer have to complete a sworn affidavit. In the past many absentee voters in Texas have had their applications returned because they had not

completed FPCA Item 16, the sworn affidavit. This item presents problems to absentee voters because it is often difficult to locate a person authorized to administer oaths, especially in remote areas.

The new laws have been submitted to the U.S. Department of Justice for pre-clearance before becoming effective in 1984. Response by the Department of Justice is expected some time in the middle of September.

The FVAP advises all military voters to contact their unit voting officer or counselor for information regarding absentee voting procedures in their state and seek the help they might need to vote. Information is available for civilian voters at U.S. embassies or consulates. Questions which cannot be answered at the local level may be referred to: Director, Federal Voting Assistance Program, Office of the Secretary of Defense, Room 1B457, The Pentagon, Washington, D.C. 20301, or by calling (202) 694-4928/4960 or Autovon 224-4928/4960.

Cinema

MCAS Theater

W T F S S M T
1 2 3 4 5 6 7

1. O'HARA'S WIFE — Edward Asner, Mariette Hartley, PG, comedy.
2. VISITING HOURS — Michael Ironside, Lee Grant, R, suspense.
3. THE MAN WITH TWO BRAINS — Steve Martin, Kathleen Turner, R, comedy.
4. MEGAFORCE — Barry Bostwick, Michael Beck, PG, action-drama.
5. I'M DANCING AS FAST AS I CAN — Jill Clayburgh, Nicol Williamson, R, drama.
6. PORK CHOP HILL — Gregory Peck, Harry Guardino, PG, drama-adventure.
7. THE OUTSIDERS — Matt Dillon, Ralph Macchio, PG, drama.

The Station Theater opens at 6:45 p.m. for ticket sales and the movie starts at 7:15. For information on Camp Smith movies call 477-6467/6382.

Stay Marine



THE EYECARE EXPERTS

2 WEEK SLEEP IN LENSES

185

SPECIAL LIMITED OFFER
STANDARD SOFT LENSES
\$79 WITH COUPON

Includes lenses, care kit, solution and case. All follow-up visits with the doctor. Wear them home the SAME DAY in most cases.

DR. TIM K. TOGIKAWA
VISION CARE SPECIALISTS

Pearl City
DR. EDWIN ENDO
98-1236 Kauhuanu St., No. 301
PH. 487-7907

WE'VE MOVED
Downtown Office
233 Merchant St. (1/2 Block E. of Post Office)
PH. 538-6226

The journey of a thousand miles starts with a single step.

CHINESE PROVERB

Buy U.S. Savings Bonds.

MIDWIFERY OPTIONS.

Prenatal Care; Hospital; Birth Center
Medicaid/CHAMPUS/Most Insurance Co.

MILILANI HONOLULU BIRTH CENTER
623-2212 734-2565 621-1160

R. STEVEN GESHELL

is please to
Announce the Opening of
his Law Offices
at

900 Fort Street Mall
Suite 1030
Pioneer Plaza

521-3318

Specializing in Civil & Criminal
Litigation, Family Law,
& Bankruptcy

THE PENNY STOCK BROKERAGE FIRM...

R.L. SMITH & ASSOCIATES

TAKES PLEASURE IN ANNOUNCING THAT:

JODY GRIEB GISELE POHAN
BRIAN HENRY DERON YEE
HOWARD LEE TALENA PRESLEY
JEAN BUCKNELL ROBERT L. SMITH

CLIFFORD SHIN

HAVE BECOME MEMBERS OF THE FIRM!

1311 KAPIOLANI BLVD., SUITE 409
PLEASE CALL 523-2800
FOR INFORMATION.

WAIKIKI 2 Starts Friday!
923-2394

SEAN CONNERY
is JAMES BOND in



NEVER SAY NEVER AGAIN

KDEO COUNTRY RADIO

TOP 10 COUNTRY SONGS

October 5, 1983

LAST WEEK	THIS WEEK	TITLE	ARTIST
2	1	Don't You Know How Much I Love You?	Ronnie Milsap
3	2	New Looks From An Old Lover	B.J. Thomas
4	3	Paradise Tonight	Mickey Gilley & Charlie McClain
5	4	What Am I Gonna Do?	Merle Haggard
6	5	Nobody But You	Don Williams
7	6	Scarlet Fever	Kenny Rogers
9	7	Lady Down On Love	Alabama
1	8	Baby What About You?	Crystal Gayle
13	9	You've Got A Lover	Rickey Skaggs
11	10	How Could I Love Her So Much?	Johnny Rodriguez

Hear the Top Country Songs in the Nation on the WEEKLY COUNTRY MUSIC COUNTDOWN SUNDAY MORNINGS at 9 A.M. on AM94 at KDEO Country Radio.

Windward Enlisted Club KMCAS Proudly Presents:

"The STYLISTICS"

"Break Up to Make Up"

"Thank You Baby"

"You're A Big Girl Now"

"I'm Stone In Love With You"

Friday
7 October
Doors open 6 p.m.



Latest Hit Single:
"Hurry Up This Way Again"

"You Make Me Feel Brand New"

"You're My Everything"

"Maybe It's Love This Time"

"Betcha By Golly Wow"

Tickets:
\$750 Advance
\$1000 Door

Windward Enlisted Club, KMCAS
MAIN BALLROOM



WINDWARD MALL

DISCOVERERS' DAY SALE

SALE DATES:
FRIDAY, SATURDAY,
SUNDAY & MONDAY
OCT. 7th thru 10th

Windward Artist Guild's
ART & CRAFT SALE/EXHIBITION, OCT. 7-14

Store Hours: FRIDAY 10am-9pm
SATURDAY 9:30am-5:30pm
SUNDAY 10am-5pm
MONDAY CLOSE AT 5 PM

KANEOHE AT KAM HWY & HAIKU ROAD



thru Monday!
**20% Off! Leather
Pumps & Sandals**

reg. 28.99 to 31.99
22.90 to 25.60



all leather handbags, 20% off
all pantyhose, 20% off

Leeds

MasterCard • Visa
ALA MOANA CENTER • KAHALA MALL
PEARLRIDGE CENTER • WINDWARD MALL

THE PEARL
UNDERSTATED ELEGANCE.



Beginning as a tiny flaw, the pearl becomes one of nature's most beautiful creations. Our superb 4mm cultured pearl pendant is set in 14 karat yellow gold with a diamond. A quality classic! \$95.00

GRANAT BROS
Fine Jewellers Since 1905

Where the best surprises begin.
Pearlridge Shopping Center (808) 499-0875 - Ala. Only
Kahala Mall Shopping Center (808) 733-1489 - Honolulu
Windward Mall Center (808) 247-8771 - Kaneohe
Also Greater San Francisco

50% OFF
Close Out Sale
on Boys
Sizes 8-14
Shorts, Shirts, Jeans, Trousers

40% OFF
Selected Mdse. on Girls
Sizes 4-14
Blouses, Shorts, Skirts, Knickers

Windcastles
Teen-Tot Fashion Shop

**McDONALD'S OF
WINDWARD MALL**

Join us for breakfast
8:00 a.m. - 10:00 a.m.



There's no trick
to this treat!

Halloween parties are fun, and Hallmark paper partyware makes them easy too! Our "Ghooly Ghost" design is frightfully festive and makes clean-up a snap!



JENAI'S Hallmark SHOP
WINDWARD MALL

Sears
WINDWARD MALL • STARTS FRIDAY



**Prices cut
25%-70%**

on Sears reg. prices.

**FASHION
CLEARANCE**

for the whole family
Big prices slashed on wearables.
Come in early for best selection.
Sizes for men, women, big 'n' lit
boys and girls.
Men's, Women's, Children's Wear

• Use your SearsCharge account.
• Most items at reduced prices.
• Broken sizes.
• Effective Fri. thru Mon., Oct. 7 thru 10

Sears

WINDWARD MALL
Please refer to the phone directory for
our direct dial department phone
numbers

Satisfaction guaranteed
or your money back

Discover New Life
through JESUS CHRIST!

20% OFF all Bibles
PLUS

50% OFF any bible
cover purchased at the
same time!

Windward only
sale ends
10/10/83



the Giving Tree
upstairs near Penneys



**This Halloween, treat
the little kids to cones.**
20 Cone Coupons \$4.00

Give these like trick or treaters coupons good for
a single \$4.00 ice cream cone. Twenty coupons
only \$4.00.

Kids 12 and under may obtain coupons at fast
food stores purchased from October 31 through
November 30, 1983.

Good Outlets at Hawaii's Finest.

BASKIN-ROBBINS

ICE CREAM STORE

WINDWARD MALL

WINDWARD CITY SHP. CTR. KAILUA SHP. CTR.

KINNEY CAN

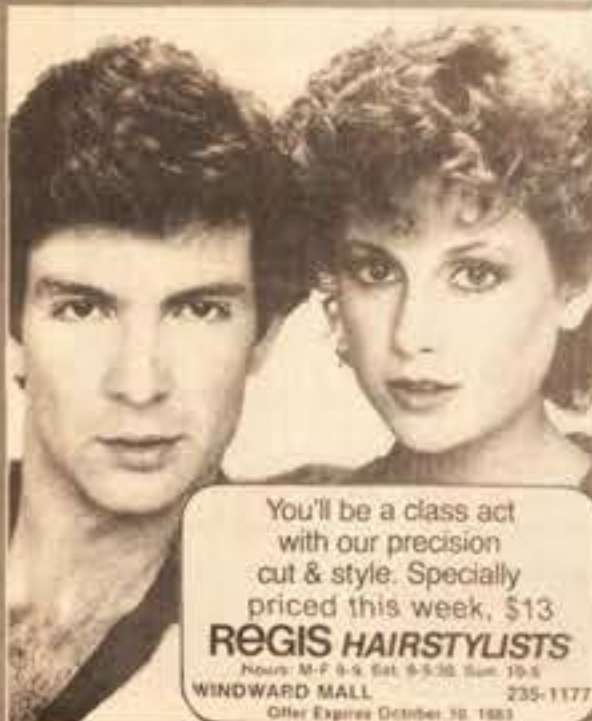
"October Saving Fest"
means a
harvest of
shoe savings."

And that's cause to celebrate. Save up to
30% on dress, casual and athletic shoes
during our "October Savings Fest" cele-
bration sale. Choose from selected shoes
with the red tags. For Mom, Dad and the
kids. Shoes that'll take you to school, work
and special occasions in style. That's how
to reap savings for the whole family, right
here at The Great American Shoe Store.
Cause Kinney can... and we are.

Sale ends
Oct. 29, 1983.

Kinney
The Great American Shoe Store

AND WE ARE



You'll be a class act
with our precision
cut & style. Specially
priced this week, \$13
REGIS HAIRSTYLISTS
Hours: M-F 9-5 Sat. 9-5 Sun. 10-6
WINDWARD MALL 235-1177
Offer Expires October 10, 1983

**Anniversary
SALE**

SAVE UP TO
30% to 50%
FOR EVERY MEMBER OF THE FAMILY

*Not all items or colors in all styles

Get the Gallenkamp Difference

Gallenkamp
WINDWARD MALL



Wildflowers
WINDWARD MALL IN KANEOHE

**SUNDRESS
ROMPERS**
16.99-19.99

Lots of colors and styles at
very special prices! Super
group you won't want to
pass up. Receive a
Bandana free with this ad
when you purchase a
romper!

Sale ends
Mon. 10/1



Runway 7
WINDWARD MALL NEAR SEARS
PEARLRIDGE CENTER PHASE II

ZIP-OFF SLEEVE
SKI VESTS
SPECIAL 30.95

LEVI'S
POLO SHIRTS
REG. \$17 12.99

CORDUROY
SHORTS
REG. \$12 8.99

CHINTZ
JACKETS
REG. \$35 19.99



**COUPON
SPECIAL**

\$15.00 Off Complete Single
Vision Glasses

\$25.00 Off Complete Bifocal
Glasses

Offer Expires 12/31/83

BAYVIEW OPTICAL
Ph. 247-3811

Division of Eyewear Hawaii, Inc.

Salutes

EDITOR'S NOTE: *Salutes* is designed to recognize individuals for their achievements and exceptional performance as well as to welcome new arrivals to Hawaii. The information is compiled from Fleet Home Town News releases submitted to the Joint Public Affairs Office by unit information officers.

PFC W.P. McGrain Jr.
PFC J. Melby
PFC P.T. Ogan
PFC G.D. Weiss Jr.
Pvt R.J. Byrnes
Promotions:
Cpl W.L. Jones
PFC W.J. Reddan
Meritorious Mast:
Cpl P.R. Burk
Navy Achievement
Medals:
1st Lt C.P. Hunsfeld
Sgt D.W. Stafford

BSSG

Welcome aboard:
Cpl A.M. Clark
PFC I.B. Bird
PFC D. Edwards
Promotions:
DTC R.G. Panepinto
Sgt C.L. Cortes
DT2 K.A. Moushawi
Cpl R.L. Hill
Cpl D.F. Ludwig
Cpl R.L. Stanley
Cpl K.A. Young
LCpl R.C. DeWolfe Jr.
LCpl J.R. Lewis
LCpl D.J. Zahradka
Meritorious Promotions:
Cpl B.A. Lamin

Cpl J.J. Taesa Jr.
Meritorious Mast:
Sgt M.A. Bradshaw
Sgt J. Torres
Cpl J.E. Beanharois
Cpl M.R. Kelley
Cpl A.W. Pelz
Cpl M.D. Schneider
Cpl M.E. Short
LCpl K.R. Kraft
PFC C.L. Colbert

Letters of Appreciation:
GySgt R.L. Donaldson
SSgt J.R. McKenzie
LCpl R.A. Beebe
Good Conduct Medals:
Cpl D.R. Breton
Cpl M.T. Moore
LCpl C.R. Burkes
Engineer Operations Chief Course graduate:
SSgt R.R. Rodriguez

NCO School graduate:
Cpl D.M. Johnson
NBC School graduate:
SSgt J.W. Spotts
MACS-2
Welcome aboard:
Cpl A.R. Aglaguta
Cpl D. Cabello
LCpl P.A. Strubbe
Promotions:
LCpl K.G. Phillips
Meritorious Mast:
LCpl P.H. Uhrig
Letter of Appreciation:
Cpl K.L. McDonald
Good conduct Medals:
Sgt L.D. Bridgeman
Sgt M.L. Jones
Sgt P.S. Sampedro
Meritorious Unit Commendation:
Sgt H.J. Thorpe

SSgt K.A. Bell
Sgt B.B. Oxborough
LCpl J.D. Cox
LCpl D. McNeil
LCpl B.K. Morris
PFC M.R. Board
HMH-463
Welcome aboard:
LCpl L.R. Barbosa
LCpl J.F. Shifflette
PFC J.R. Parks
PFC J.S. Rhodes
PFC R.K. Thurman
PFC T.J. Wallaw
Promotions:
PFC R.K. Thurman
Meritorious Promotion:
Cpl T.J. Krivograd
Meritorious Mast:
1st DN. Hartwell (USN)
LCpl L. Delao
PFC W.S. Ballard
Good Conduct Medals:
SSgt P.D. Ripolin

Cpl R.K. Harrelle
Cpl R.E. Santiago Jr.
Cpl K.M. Witsell

Camp H.M. Smith

Service School graduates:
Cpl K.L. Forbes
Cpl G.E. Grable
Cpl R.K. Harrelle
LCpl R.A. Moser
LCpl S.A. Nagle
LCpl J.L. Navarro

Welcome aboard:
LCpl S.D. Amburgey
LCpl S.J. Crossman
LCpl J.C. Wista
Promotions:
Cpl J.D. Sutton
Cpl D.J. Watson
LCpl D.A. Dorman
PFC M.J. Enright



SOMS

Welcome aboard:
Cpl R. Probst
PFC T.E. Carter Jr.
Good conduct Medal:
Cpl J.E. Hernandez
HqCo, Bde
Welcome aboard:
Maj J.P. Chessum
SSgt G.C. Laurin
Cpl R.J. Provencher Jr.

1/12

Welcome aboard:
LCpl G.H. Steeves
LCpl K.C. Wood
PFC T.S. Addie
PFC S.P. Hockenberry

AIEA COLLECTIBLES
Stamps • Coins
Collectibles
488-8690
OPEN 7 DAYS — 10 to 6
BEHIND CUTTER FORD AIEA

FREE LONG DISTANCE CALLS?



Want to make
A complete directory of mainland and interisland telephone numbers you can dial FREE from Hawaii.
— Perfect for Home or Office
• travel arrangements
• consumer agencies and investment advice
• government offices
• business suppliers
• and much more!
Send \$4.95 to:
PIA PUBLICATIONS
Dept. S Box 26300
Honolulu, Hawaii 96825
10% discount for 10 or more copies

Now You Can Afford To Smile Again!

We offer the latest in orthodontic treatment and materials, including "invisible braces" to give you a beautiful smile. Our efficiencies in treatment result in savings for you. Please call us for a free consultation.

523-2402



HONOLULU ORTHODONTIC SPECIALISTS

Arthur T. Kamisugi, DDS, MDS
Diplomate, American Board of Orthodontics

Randal D. Morita, DDS
Curtis N. Kamisugi, DDS, MDS (7/83)



Offices in Honolulu, Pearl City/Aiea, Mililani, Kaneohe, Kailua and Haleiwa.

CAR SEAT COVERS from New Zealand

Genuine lambskin, fully fitted & tie on styles. High quality.

We personally fit your car. Other sheepskin products available. Currently Sat. & Sun. at

Concession booth
Hickam AFB Exchange

Or Ph. 422-9385

What's Fun & Free Every Weekend?

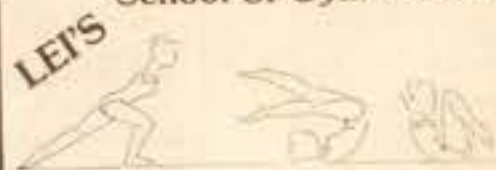
"THE ART MART" at the Honolulu Zoo Fence

YOUR ART MART FEATURING 100 ARTISTS INCLUDING THE GREAT AND NEAR GREAT

BARGAIN PRICES ALL ORIGINALS

BROWSE • BUY • INVEST
SAT. & SUN. 10 AM-4:00 PM

School of Gymnastics



Children 2½ and older
Small Classes
Call 263-4552

AT Bill Bohart's CARPET CORNER
The Sale Never Ends
NOW OPEN FRIDAY'S TIL 9 P.M.
Hours: Mon-Fri 9:00-6:00, Sat 9:00-6:00, Closed Sunday
970 AHUA ST. 834-1456 Across From Gibson's

WATERBED BONANZA!

9 Different Beds Under \$300

NO MONEY DOWN
100% FINANCING O.A.C.

Hickam A.F.B. 422-2747
Barbers Point 682-1539
Schofield 624-9811

NEW WAVE INC. Division of Pacific Spa and Hot Tub

CAMEL

LIGHTS and FILTERS

Camel Lights or Camel Filters.
Experience the Camel taste.

Warning: The Surgeon General Has Determined That Cigarette Smoking Is Dangerous to Your Health.

Sportsnotes

The annual Men's Golf Association Championship tournament will be conducted Saturday through Monday at the Kaneohe Klipper. A \$35 entry fee will cover the cost of prizes, refreshments, other activities, and dinner on Monday. Entry forms are available at the starter's desk. For more information, contact Master Gunnery Sergeant S.J. Holliday at 257-2888.

Entry forms are available at the station symposium for the following running events: Oct. 5 — Kaneohe Bay Shopping Center Fun Run at the shopping center (five miles). Oct. 15 — Marine Barracks 15K Run at Pearl Harbor. Oct. 16 — Val Nolasco Memorial Run. Oct. 16 — Molokai Triathlon. Nov. 11 — Veterans' Day 10K Run.

Dec. 11 — Honolulu Marathon.

An organizational meeting for intramural basketball will be conducted at noon today in the station gymnasium. The season is from Oct. 25 to Dec. 23.

Wrestling practice is conducted at 6:30 p.m. every Tuesday, Wednesday, and Thursday in the station gymnasium. For more information, contact the coach, Captain Rocky Chavez at 257-2880.

You can count
on the Corps.

This year's Fall Slow-pitch Softball program will consist of station invitational tournaments on Oct. 14-16, Nov. 18-20, and Dec. 9-11, rather than normal league play.

Tournament entry fees will be approximately \$60 per team, with each team guaranteed five games. Teams will be divided into four pools, with the winners advancing to a double-elimination bracket for the championship on Sundays. For more information, call 257-3550/3622.



SEWING MACHINE CLEARANCE SALE

DUE TO HEAVY OVERSTOCKING IN OUR MAINLAND LOCATIONS, WE MUST LIQUIDATE OVER 211 NEW AND LIGHTLY USED SEWING MACHINES AT... PRACTICALLY WHOLESale COST.

•VIKINGS •BERNINAS •RICCARS
•PFAFFS •SINGERS

5 DAYS
ONLY

"ONE" EXAMPLE:

SALE ENDS
SUN., 10/9/5 p.m.

•ZIG ZAG
•BUTTONHOLE
•MONOGRAM
•OPEN ARM

Sug. Retail

\$438



MODEL 414

25-YR. WRITTEN
WARRANTY
HURRY IN
FOR BEST
SELECTION!

•STRETCH
STITCHES
•BLIND HEM
•TWIN NEEDLE

SPECIAL

\$159

Reconditioned Machines
from only **\$49.95**

PACIFIC SURPLUS & DISTRIBUTORS

Sun. 11:00-5:00
Mon.-Sat. 9:30-6:00 p.m.

CALL 262-8131

Thurs. 9:30-8:00 p.m. Tues. Closed

1247-F Kailua Rd.

KANEOHE AUTO SUPPLY INC. 20th Anniversary 1963-1983

Discount Auto Parts & Accessories
Acme Automotive Paints & Body Repair Supplies



SAVE on Shell Gasoline
Low Prices self service or
Gas-N-Go

SALE
Pennzoil

30 & 40 **99¢** qt.



SALE
MONROE SHOCKS

VIP

Good '99 ea.

MONROE-MATICS

Better '15 ea.

GAS-MATICS

Best '24 ea.

McPherson Strat

'29 ea.

SALE
Tune-Up Parts

Points

Condenser

Dist. Cap

Rotor

Ignition Wires

25% OFF

**OPEN
SUNDAY**

Personal Check
Welcome

Next to
Burger King
Across
Windward City
Shopping Center

Call
247-0402
For low prices

HALE KOA HOTEL SPECIAL EVENTS THIS MONTH

ARMED FORCES RECREATION CENTER / FORT DERUSSY AT WAIKIKI / HAWAII / TELEPHONE 955-0555

Proper Military I.D. required including
Pink I.D. Card for Reserve Components
and Club Card for Military Club Members
Scheduled activities, prices and
menus are subject to change
1983



Mostly Music... A touch of madness... All magic!

Starring at the Saturday Dinner Show in October and November. Just \$18.95 (\$9.95 for children under 12) will let you share an unforgettable evening with the six zaniest musicians in all Waikiki. Ticket price also includes a fantastic dinner buffet featuring Standing Baron of Beef. Every Saturday in the Banyan Tree Show Room beginning October 8. Buffet is served from 6-7:30 pm; show follows. Tickets are on sale two weeks in advance at the hotel Activities Desk and all Military Ticket Outlets.

A CHANGE FOR THE BEAUTIFUL

A major transformation is now taking place in the Hale Koa LOBBY. New furnishings, carpeting, and lighting, plus redesign of the Guest Registration Counter, Activities Desk, and Bell Desk, will make the lobby more functional and a more beautiful place for you to relax and enjoy your hotel! Please pardon any inconveniences that the renovation may cause and watch for a new Hale Koa to emerge in early November! The Hale Koa is self-sustaining and all improvements are paid for from operations to maintain the finest of military resorts.

A BEAUTIFUL SPECIAL IN THE MAUKA LOUNGE - JUST 95¢

The Mauka Lounge is the place to celebrate every day until the new lobby is completed. Wear your "Change for the Beautiful" button and you'll be able to buy THE RAISIN' CAIN special for just 95¢. THE RAISIN' CAIN is a smooth blend of Irish Rum Cream, coffee, and club soda that will turn you off with a bang. Buttons are available at the Front Desk or from the Mauka Lounge bartenders. You can "raise cain" in the Mauka Lounge every day from 5 pm to Midnight until the new lobby is unveiled in early November!

DRINK SALE!

\$1 - Standard Bar Drinks
75¢ - Bottled Domestic Beer
Warriors Lounge - daily, 11am to 6pm
Mauka Lounge - nightly, 7pm to 10pm

Hale Koa Tidbits

★ The HALE KOA, the hotel built by service people for service people, celebrates its 8th birthday on October 25! In honor of the occasion, there will be a Birthday Cake on display in the lobby from October 21-25, and pieces of cake will be served at Spaghetti Western Night on Tuesday, October 25. Come celebrate YOUR hotel's birthday!

★ A song written expressly for the Hale Koa, "Hale Koa Cowboy" is soon to be released as a record! You can hear this hit song performed live by its composer, Eddy K., member of the popular duo, HAUOLI when they perform in the Mauka Lounge.

★ Celebrate the U.S. Navy's 208th Birthday at a free Beach Concert on Sunday, October 16, at 2PM. The Pacific Fleet Show Band will perform on the Luau stage.



LOUNGE ENTERTAINMENT NIGHTLY!

RON & THE SOUNDS OF MUSIC

Enjoy the magical sounds of this dynamic quartet in the WARRIORS LOUNGE. Easy listening sounds and great dance music are their specialty, featuring RON MIYASHIRO at the keyboard and vocalist CARYL CHALLIS.

Sunday, Tuesday, Wednesday & Thursday, 8:30pm-12:30am.
Friday & Saturday, 9pm-1:30am.

PIANO STYLINGS IN THE WARRIORS LOUNGE

Nightly, 6-8:30pm except Monday, 8pm-midnight.

HAWAIIAN STRAINS WITH "HAUOLI"

Enjoy your favorite Hawaiian tunes performed by this talented duo nightly in the Mauka Lounge.

Sunday, 9-11:30pm, Monday, 5-10:30pm
Tuesday, 8-11pm, Wednesday, 9-11:30pm,
Thursday, 8-11:30pm, Friday & Saturday, 5-7pm.

HOLIDAY FASHION SHOW BUFFET

Monday, October 31

Treat yourself to a preview of beautiful holiday fashions by some of Hawaii's most famous fashion designers. Just \$9.95 includes the fashion show and a delicious luncheon buffet. Buffet begins at 11 am; Fashion Show begins at 12:30 pm; held in the Banyan Tree Show Room. Advance ticket purchase is recommended for best table locations! Tickets go on sale on October 17 at the hotel Activities Desk and all Military Ticket Outlets.

STAY AT THE HOTEL YOU HELPED BUILD!

1984 Room Rates Start As Low As \$21 a Night, Single Occupancy.

Believe it or not, the Hale Koa will maintain the same room rates throughout 1984 that were used in 1982! Three years without an increase even for inflation proves that the Hale Koa is the best buy around for military patrons. Call the hotel Reservations Office for up-to-date information on rates and availability at 955-0555 or Toll Free from the mainland, 1-800-367-8027.

TREASURE CHEST OF BARGAINS!

call 235-5881
or 622-3966

•10 CEMETERY PLOTS

CEMETERY PLOTS - Hawaiian Memorial Park. Twelve grave spaces. May be purchased in any number 5000 each. Write J. Charnick, 1204 Lansdowne Drive, Arlington, Texas 76012.

•15 ANNOUNCEMENTS

PENNY STOCKS Offers great investment opportunities. For free brochure, call 523-0938. Ask for G. Kobayashi, even. 735-3774. Chesley & Dunn, Inc.

SQUARE AND COMPASS CLUB. Regular meetings Fridays 11:45 a.m. - Kaneohe. STAFF NCO Club. Info. 254-2973.

NEW Line of Prepared Vegetarian Foods. Nutritious and Delicious. Low in salt, fat, and price. Distributorships available. 395-2188.

•20 LOST & FOUND

LOST - near Ka Hanalei Circle. Medium size dog, white with brown spots. Friendly, answers to Jerry. Distraught family. Call Karen at 235-5881.

LOST - Blonde female cocker spaniel, \$100 REWARD. Call 261-4481, 261-4959.

FOUND - White female spayed cat, all shots. Area area. Ph. 477-6931, 477-6660.

LOST - GENEROUS REWARD FOR THE RETURN OF MY SHELTER (MINI COLLIE) TRI COLOR (BLACK/WHITE) FEMALE (9 MO.) ANSWERS TO "OPU" LOST IN ENCHANTED LAKE, MANU-LANI ST. CALL LORI 261-0652/836-1974.

•25 PERSONALS

IS MONOMONISM Christian? A new recorded message each week. 293-9495.

IF You want to drink, that's your business. If you want to stop, that's ours. Alcoholics Anonymous. Ph. 946-1438.

I AM Looking for a veterinarian whose voice was damaged in surgery. I have information for your malpractice suit against H. Scully of Straub. Anyone with information please call Mrs. Johnson 235-5354.

•35 PROFESSIONAL SERVICES

DIVORCE
Serving Since 1977
\$1100
533-4533
But Attorney Gene Bridges
A Public Service Firm

LAWNKEEPERS HAWAII The Professional Landscape Gardener - commercial and residential. Landscaping, sprinkler systems, tree trimming, plant pest & disease control, weeding, and other phases of maintenance. Call for consultation and estimate. See of course. Lic. #C-08448. Bus. 671-9782 or home 247-2495.

MAGICK shows with clown, puppets & balloons. Hawaii's Magic Ambassador. Call 942-3186.

ATTENTION! Moving? Let C & G clean your house. Guaranteed to pass inspection or you don't pay. Ph. 682-3797.

SWEDISH Deep Muscle Massage World Champions. Doctors. Travelers consider it the best. Expert from Europe. 923-1627, John.

TYPING Services-term paper, resume-student discount. Marion 625-2512.

"Bustobodies" - LET US DO IT! - Rent A Housewife. Cleaning, water plants, bed doing, silver polishing, wash windows, shopping, visit elderly, parties, etc. etc. 537-4658, 261-4966.

MOWER REPAIR, other small engine repairs, free pick-up and delivery. Salt Lake to Hawaii Kai. Ph. 537-2541.

LAWNSCAPES, lawn treated with TLC. Great work, great price. 261-4048 a.m., 261-3749 p.m.

CARPENTRY home repairs, call Nick 261-7496.

DON'S ROOF REPAIRS, most repairs under \$110. Free estimates. Ph. 456-2491.

BETH'S WORK Will take care of your home while you enjoy your FREE TIME. Longward Housekeeping. Ser. 485-0254.

CASH for your good used furniture. Call us today. 261-9944.

HOME cleaning. Weekly, monthly, 1 time. Experience with references. 261-4254.

EXPER painter, interior & exterior, quality work. Free estimates. 523-0811.

SATISFIED Yard Service. Cut, trim, fertilizing. Dep. reasonable. Free Est. 262-0324 anytime.

CARPENTRY, fencing. All types repair. Reasonable. Refs. Call 235-4002. Free estimates.

WAXING CARS and Handyman Service Windward side only 261-8728

CLASSIFIED INDEX

Classification categories are listed alphabetically

Accident for Sale	13
Advertisements	15
Antiques/Collectors Items	190
Auto. Detail	74
Auto. Part. Firm	75
Auto. Fully Equip.	73
Appliances	127
Auto. Announcements	173
Auto. for Lease	172
Auto. for Sale	176
Auto. Parts/Serv.	158
Auto. Washes	161
Baby Furnishings	124
Home Supplies & Serv.	140
Building Supplies	141
Business Directory	40
Business Opportunity	50
Business Property	166
For Sale or Rent	6
Carpet of Tiles	8
Ceramics	10
Condo/Townhouse Units	87
Condo/Townhouse Part	95
Condo/Townhouse Part	95
Furniture	120
Furniture for Rent	121
Garage/Land Sales	88
Hardware/Equipment	152
Household	84
Help Wanted Domestic	87
Help Wanted M.C.	87
Help Wanted Sales	87
Hobby & Craft Supplies	86
Houses For	81
Houses Part. Firm	83
Houses Units	87
Income Tax Serv.	112
Income Property	112
Jewelry & Clothing	118
Lease and Gardening	148
Legal Notices	1
Lease/Lease Wanted	50
Lost & Found	20
Machinery & Equipment	123
Musical/Amuse	129
Misc. Wanted	130
Motorcycle Sales & Serv.	170
Motorcycles Sales & Serv.	171
Music Sales & Serv.	144
Office for Rent	157
Perfume	20
Pet Supplies	151
Sales & Service	140
Photo Supplies	140
Professional Services	118
Real Estate Announcement	118
Real Estate for Sale	114
Real Estate Trade	117
Real Estate Wanted	116
Restaurants	123
Rent a Car	174
Restrooms to Share	76
Restrooms Wanted	80
Restrooms	36
Rooms for Rent	86
Schools & Training	40
Shipment Wanted	83
Make & Funds	147
Sporting Goods	129
Stamps & TV	129
Swaps	129
Travel	127
Trucks & Pickups	186
Vacation Rentals	83
Vans, Campers & Jeeps	175
Wright Reduction	27
Wild Wild Freebies	131

CLASSIFIED ADVERTISING RATES & REGULATIONS

Your classified ad reaches over 121,080 homes each Wednesday. Read Classifieds for profit, use Classifieds for results.

CLASSIFIED LINE ADS

Deadline Monday 6:00 p.m.
\$1.25 per line - 100
\$1 line min.

Ad will appear in the Sun. PRESS, Waikiki, Sun. NEWS, Hawaii News, Hawaiian Edition & Hawaii Marine.

Add \$15 per line for ad to also appear in Waikiki Sun. Times reaching an additional 11,400 Waikiki County residents. Deadline at 11 A.M. Mondays.

CLASSIFIED DISPLAY

Deadline Friday 5 p.m.
Call 235-5881

For information on open & contract rates.

Corrections & cancellations deadline Monday - 12:00 noon Free Ad Deadline Sat. - 1:00 p.m.

REPORT ERRORS AT ONCE

BFD Publications will be responsible for more than 100,000 circulation. If you have a correction, please call or write to the nearest office. We will be responsible only for the line in portion of the ad that appeared in error.

For quick experienced help in placing your ad

Ph. 235-5881
or
Ph. 622-3966

•93 VACATION RENTALS

KUILIMA: 1 bdrm. fully furnished apt., no pets. Call 239-8539.

MOLOKAI Wave Crest, sleeps 4, beach, pool \$30 day, \$190 per week. Ph. 235-0992.

•98 RENTALS WANTED

NEED to rent Jan. Feb.-March. 2 bedroom apt. furn. Hawaii. Kilauea area. Parents coming. Call 396-0686.

RELIABLE working couple looking for cheerful cottage in Kailua. Yard maintenance for reduction in rent. 254-2129.

CHRISTIAN prof. couple will lovingly care for your home, condo, etc. We believe in improving any place we live in. Prefer Kailua/Kahala. Will pay \$400/mo. 488-7683.

•114 REAL ESTATE FOR SALE

ALA WAI Plaza, fee simple unit in a quiet residential building wide open terms, assumable VA, ground floor with enclosed patio. Price is reduced to \$124,444. Call Doug Erway (RA) 526-7316.

KANEHIE Condo on the Bay. Spacious 3 bdrm., 2 bath, hot tub & pool. Assumable FHA. Perfect for bachelor or small family tired of paying taxes. Owner will consider partnership or sell outright \$128,500. Call 247-3186.

MAKAKILO-PALEHUA HALE. Luxurious 3 bdrm., 1 1/2 bath townhouse, spacious kitchen, garden, yard, deck, w/vine. \$119,500 Fee. Assume 10% VA loan. 872-9257. By Owner Courtesy.

WANTED 2 military persons to share beachfront highway 2 Br/2 bath, sandy beach. Rent Plus Special! Ph. 234-3370, 637-3155, 537-2198.

Lrg. immaculate 1 & 2 bdrm. Woodlawn Terrace/Cathedral Point Condos. Excel. VA/FHA/Hula Mae buys! Fee \$58,000/\$68,500. ML539831, 30937/37317. Knudson (R) 488-0028, 487-5249.

NO CASH NEEDED • (To purchase a home & pay rent) For active duty military and veterans. Select from one of the many VA approved homes, townhouses and apartments available in your area. Call today for more information. Joe Polakoff (R) 254-1100 OR 254-2770.

SHERLOCK HOMES REALTY CO. 254-1100 OR 254-2770.

•114 REAL ESTATE FOR SALE

MINNESOTA
5 Wooded Acres. Incredible Hunting, fishing, swimming and snowmobiling. Near Milwaukee Lake. Electric and phone available. \$2000. Full price. \$800 down. 988-8811. Home includes 20% interest.

Call 988-8811

WAHAWA 3 bdrm. house. 1 bath, fee simple. \$155,000 by owner. Ph. 622-5488.

COLORADO high country 1.4 acres. \$4,500-\$55 down. 118 payments of \$50. 8% APR. Near river. Call Owner 806-378-8893.

Attention Military!

I am retired military and a realtor with my own company, specializing in working with military families. Why forfeit your Rent Plus? Use VA/FHA with no/low down & let Rent Plus and tax write-off make your payment.

I will show you how

Call Ken Knudson (R) 488-0028 487-5249

FORECLOSURE Properties 10%-50% below market value. Call Joe Tanaga (R) 488-7788, 922-8842.

SALT Lake area. 3 bed/2 bath, new carpet/paint throughout. 2 car parking, perfect rent. \$2500. Call 487-5249.

OPEN HOUSE Price Slashed! \$69,500
Sun. Oct. 9 (2 p.m. - 5 p.m.)
Open House showing lovely 1 bdrm security condo located in Kanehie, w/tennis court, low, low down, Hula Mae option at 91% is qualified applicants.

Imagine owning your own home—main, full incl. water & electricity!
48-255 Kahuia St. Apt. A300

Investors welcome or call 247-4737 for info

•114 REAL ESTATE FOR SALE

KANEHIE security condo, 1 bdrm., unit 1. This perfect "starter" for those tired of renting. Includes washer/dryer, a/c, full kitchen, carpeting, tile floors, etc. \$69,500. Call Joe Tanaga (R) 488-7788, 922-8842.

•120 FURNITURE

\$\$\$ CASH \$\$\$
for used furniture
beds
Rattan & Wicker
834-1080

CASH for your good used furniture. Call us today! Call 261-9944.

WATERBED Queen Platform w/waterbed \$250. 261-9944.

OAK 8 dr. dresser w/mirror & side stand \$149. 488-1985.

SOLID Mahogany desks, 7 drawers, perfect for home or office. \$99 each. 488-1985.

LARGE Maple dining set, 7 piece, \$499, matching china. \$299. 488-1985.

MATCHING Sofa, loveseat & chair, wood frame, light brown vinyl cushions. \$299. 488-1985.

•120 FURNITURE

PARADISE USED FURNITURE
Antique style 4 poster bed w/matching chest \$450. 6 dr. dresser w/matching 5 dr. chest \$350. 8 dr. chest \$350. 10 dr. chest \$350. 12 dr. chest \$350. 14 dr. chest \$350. 16 dr. chest \$350. 18 dr. chest \$350. 20 dr. chest \$350. 22 dr. chest \$350. 24 dr. chest \$350. 26 dr. chest \$350. 28 dr. chest \$350. 30 dr. chest \$350. 32 dr. chest \$350. 34 dr. chest \$350. 36 dr. chest \$350. 38 dr. chest \$350. 40 dr. chest \$350. 42 dr. chest \$350. 44 dr. chest \$350. 46 dr. chest \$350. 48 dr. chest \$350. 50 dr. chest \$350. 52 dr. chest \$350. 54 dr. chest \$350. 56 dr. chest \$350. 58 dr. chest \$350. 60 dr. chest \$350. 62 dr. chest \$350. 64 dr. chest \$350. 66 dr. chest \$350. 68 dr. chest \$350. 70 dr. chest \$350. 72 dr. chest \$350. 74 dr. chest \$350. 76 dr. chest \$350. 78 dr. chest \$350. 80 dr. chest \$350. 82 dr. chest \$350. 84 dr. chest \$350. 86 dr. chest \$350. 88 dr. chest \$350. 90 dr. chest \$350. 92 dr. chest \$350. 94 dr. chest \$350. 96 dr. chest \$350. 98 dr. chest \$350. 100 dr. chest \$350. 102 dr. chest \$350. 104 dr. chest \$350. 106 dr. chest \$350. 108 dr. chest \$350. 110 dr. chest \$350. 112 dr. chest \$350. 114 dr. chest \$350. 116 dr. chest \$350. 118 dr. chest \$350. 120 dr. chest \$350. 122 dr. chest \$350. 124 dr. chest \$350. 126 dr. chest \$350. 128 dr. chest \$350. 130 dr. chest \$350. 132 dr. chest \$350. 134 dr. chest \$350. 136 dr. chest \$350. 138 dr. chest \$350. 140 dr. chest \$350. 142 dr. chest \$350. 144 dr. chest \$350. 146 dr. chest \$350. 148 dr. chest \$350. 150 dr. chest \$350. 152 dr. chest \$350. 154 dr. chest \$350. 156 dr. chest \$350. 158 dr. chest \$350. 160 dr. chest \$350. 162 dr. chest \$350. 164 dr. chest \$350. 166 dr. chest \$350. 168 dr. chest \$350. 170 dr. chest \$350. 172 dr. chest \$350. 174 dr. chest \$350. 176 dr. chest \$350. 178 dr. chest \$350. 180 dr. chest \$350. 182 dr. chest \$350. 184 dr. chest \$350. 186 dr. chest \$350. 188 dr. chest \$350. 190 dr. chest \$350. 192 dr. chest \$350. 194 dr. chest \$350. 196 dr. chest \$350. 198 dr. chest \$350. 200 dr. chest \$350. 202 dr. chest \$350. 204 dr. chest \$350. 206 dr. chest \$350. 208 dr. chest \$350. 210 dr. chest \$350. 212 dr. chest \$350. 214 dr. chest \$350. 216 dr. chest \$350. 218 dr. chest \$350. 220 dr. chest \$350. 222 dr. chest \$350. 224 dr. chest \$350. 226 dr. chest \$350. 228 dr. chest \$350. 230 dr. chest \$350. 232 dr. chest \$350. 234 dr. chest \$350. 236 dr. chest \$350. 238 dr. chest \$350. 240 dr. chest \$350. 242 dr. chest \$350. 244 dr. chest \$350. 246 dr. chest \$350. 248 dr. chest \$350. 250 dr. chest \$350. 252 dr. chest \$350. 254 dr. chest \$350. 256 dr. chest \$350. 258 dr. chest \$350. 260 dr. chest \$350. 262 dr. chest \$350. 264 dr. chest \$350. 266 dr. chest \$350. 268 dr. chest \$350. 270 dr. chest \$350. 272 dr. chest \$350. 274 dr. chest \$350. 276 dr. chest \$350. 278 dr. chest \$350. 280 dr. chest \$350. 282 dr. chest \$350. 284 dr. chest \$350. 286 dr. chest \$350. 288 dr. chest \$350. 290 dr. chest \$350. 292 dr. chest \$350. 294 dr. chest \$350. 296 dr. chest \$350. 298 dr. chest \$350. 300 dr. chest \$350. 302 dr. chest \$350. 304 dr. chest \$350. 306 dr. chest \$350. 308 dr. chest \$350. 310 dr. chest \$350. 312 dr. chest \$350. 314 dr. chest \$350. 316 dr. chest \$350. 318 dr. chest \$350. 320 dr. chest \$350. 322 dr. chest \$350. 324 dr. chest \$350. 326 dr. chest \$350. 328 dr. chest \$350. 330 dr. chest \$350. 332 dr. chest \$350. 334 dr. chest \$350. 336 dr. chest \$350. 338 dr. chest \$350. 340 dr. chest \$350. 342 dr. chest \$350. 344 dr. chest \$350. 346 dr. chest \$350. 348 dr. chest \$350. 350 dr. chest \$350. 352 dr. chest \$350. 354 dr. chest \$350. 356 dr. chest \$350. 358 dr. chest \$350. 360 dr. chest \$350. 362 dr. chest \$350. 364 dr. chest \$350. 366 dr. chest \$350. 368 dr. chest \$350. 370 dr. chest \$350. 372 dr. chest \$350. 374 dr. chest \$350. 376 dr. chest \$350. 378 dr. chest \$350. 380 dr. chest \$350. 382 dr. chest \$350. 384 dr. chest \$350. 386 dr. chest \$350. 388 dr. chest \$350. 390 dr. chest \$350. 392 dr. chest \$350. 394 dr. chest \$350. 396 dr. chest \$350. 398 dr. chest \$350. 400 dr. chest \$350. 402 dr. chest \$350. 404 dr. chest \$350. 406 dr. chest \$350. 408 dr. chest \$350. 410 dr. chest \$350. 412 dr. chest \$350. 414 dr. chest \$350. 416 dr. chest \$350. 418 dr. chest \$350. 420 dr. chest \$350. 422 dr. chest \$350. 424 dr. chest \$350. 426 dr. chest \$350. 428 dr. chest \$350. 430 dr. chest \$350. 432 dr. chest \$350. 434 dr. chest \$350. 436 dr. chest \$350. 438 dr. chest \$350. 440 dr. chest \$350. 442 dr. chest \$350. 444 dr. chest \$350. 446 dr. chest \$350. 448 dr. chest \$350. 450 dr. chest \$350. 452 dr. chest \$350. 454 dr. chest \$350. 456 dr. chest \$350. 458 dr. chest \$350. 460 dr. chest \$350. 462 dr. chest \$350. 464 dr. chest \$350. 466 dr. chest \$350. 468 dr. chest \$350. 470 dr. chest \$350. 472 dr. chest \$350. 474 dr. chest \$350. 476 dr. chest \$350. 478 dr. chest \$350. 480 dr. chest \$350. 482 dr. chest \$350. 484 dr. chest \$350. 486 dr. chest \$350. 488 dr. chest \$350. 490 dr. chest \$350. 492 dr. chest \$350. 494 dr. chest \$350. 496 dr. chest \$350. 498 dr. chest \$350. 500 dr. chest \$350. 502 dr. chest \$350. 504 dr. chest \$350. 506 dr. chest \$350. 508 dr. chest \$350. 510 dr. chest \$350. 512 dr. chest \$350. 514 dr. chest \$350. 516 dr. chest \$350. 518 dr. chest \$350. 520 dr. chest \$350. 522 dr. chest \$350. 524 dr. chest \$350. 526 dr. chest \$350. 528 dr. chest \$350. 530 dr. chest \$350. 532 dr. chest \$350. 534 dr. chest \$350. 536 dr. chest \$350. 538 dr. chest \$350. 540 dr. chest \$350. 542 dr. chest \$350. 544 dr. chest \$350. 546 dr. chest \$350. 548 dr. chest \$350. 550 dr. chest \$350. 552 dr. chest \$350. 554 dr. chest \$350. 556 dr. chest \$350. 558 dr. chest \$350. 560 dr. chest \$350. 562 dr. chest \$350. 564 dr. chest \$350. 566 dr. chest \$350. 568 dr. chest \$350. 570 dr. chest \$350. 572 dr. chest \$350. 574 dr. chest \$350. 576 dr. chest \$350. 578 dr. chest \$350. 580 dr. chest \$350. 582 dr. chest \$350. 584 dr. chest \$350. 586 dr. chest \$350. 588 dr. chest \$350. 590 dr. chest \$350. 592 dr. chest \$350. 594 dr. chest \$350. 596 dr. chest \$350. 598 dr. chest \$350. 600 dr. chest \$350. 602 dr. chest \$350. 604 dr. chest \$350. 606 dr. chest \$350. 608 dr. chest \$350. 610 dr. chest \$350. 612 dr. chest \$350. 614 dr. chest \$350. 616 dr. chest \$350. 618 dr. chest \$350. 620 dr. chest \$350. 622 dr. chest \$350. 624 dr. chest \$350. 626 dr. chest \$350. 628 dr. chest \$350. 630 dr. chest \$350. 632 dr. chest \$350. 634 dr. chest \$350. 636 dr. chest \$350. 638 dr. chest \$350. 640 dr. chest \$350. 642 dr. chest \$350. 644 dr. chest \$350. 646 dr. chest \$350. 648 dr. chest \$350. 650 dr. chest \$350. 652 dr. chest \$350. 654 dr. chest \$350. 656 dr. chest \$350. 658 dr. chest \$350. 660 dr. chest \$350. 662 dr. chest \$350. 664 dr. chest \$350. 666 dr. chest \$350. 668 dr. chest \$350. 670 dr. chest \$350. 672 dr. chest \$350. 674 dr. chest \$350. 676 dr. chest \$350. 678 dr. chest \$350. 680 dr. chest \$350. 682 dr. chest \$350. 684 dr. chest \$350. 686 dr. chest \$350. 688 dr. chest \$350. 690 dr. chest \$350. 692 dr. chest \$350. 694 dr. chest \$350. 696 dr. chest \$350. 698 dr. chest \$350. 700 dr. chest \$350. 702 dr. chest \$350. 704 dr. chest \$350. 706 dr. chest \$350. 708 dr. chest \$350. 710 dr. chest \$350. 712 dr. chest \$350. 714 dr. chest \$350. 716 dr. chest \$350. 718 dr. chest \$350. 720 dr. chest \$350. 722 dr. chest \$350. 724 dr. chest \$350. 726 dr. chest \$350. 728 dr. chest \$350. 730 dr. chest \$350. 732 dr. chest \$350. 734 dr. chest \$350. 736 dr. chest \$350. 738 dr. chest \$350. 740 dr. chest \$350. 742 dr. chest \$350. 744 dr. chest \$350. 746 dr. chest \$350. 748 dr. chest \$350. 750 dr. chest \$350. 752 dr. chest \$350. 754 dr. chest \$350. 756 dr. chest \$350. 758 dr. chest \$350. 760 dr. chest \$350. 762 dr. chest \$350. 764 dr. chest \$350. 766 dr. chest \$350. 768 dr. chest \$350. 770 dr. chest \$350. 772 dr. chest \$350. 774 dr. chest \$350. 776 dr. chest \$350. 778 dr. chest \$350. 780 dr. chest \$350. 782 dr. chest \$350. 784 dr. chest \$350. 786 dr. chest \$350. 788 dr. chest \$350. 790 dr. chest \$350. 792 dr. chest \$350. 794 dr. chest \$350. 796 dr. chest \$350. 798 dr. chest \$350. 800 dr. chest \$350. 802 dr. chest \$350. 804 dr. chest \$350. 806 dr. chest \$350. 808 dr. chest \$350. 810 dr. chest \$350. 812 dr. chest \$350. 814 dr. chest \$350. 816 dr. chest \$350. 818 dr. chest \$350. 820 dr. chest \$350. 822 dr. chest \$350. 824 dr. chest \$350. 826 dr. chest \$350. 828 dr. chest \$350. 830 dr. chest \$350. 832 dr. chest \$350. 834 dr. chest \$350. 836 dr. chest \$350. 838 dr. chest \$350. 840 dr. chest \$350. 842 dr. chest \$350. 844 dr. chest \$350. 846 dr. chest \$350. 848 dr. chest \$350. 850 dr. chest \$350. 852 dr. chest \$350. 854 dr. chest \$350. 856 dr. chest \$350. 858 dr. chest \$350. 860 dr. chest \$350. 862 dr. chest \$350. 864 dr. chest \$350. 866 dr. chest \$350. 868 dr. chest \$350. 870 dr. chest \$350. 872 dr. chest \$350. 874 dr. chest \$350. 876 dr. chest \$350. 878 dr. chest \$350. 880 dr. chest \$350. 882 dr. chest \$350. 884 dr. chest \$350. 886 dr. chest \$350. 888 dr. chest \$350. 890 dr. chest \$350. 892 dr. chest \$350. 894 dr. chest \$350. 896 dr. chest \$350. 898 dr. chest \$350. 900 dr. chest \$350. 902 dr. chest \$350. 904 dr. chest \$350. 906 dr. chest \$350. 908 dr. chest \$350. 910 dr. chest \$350. 912 dr. chest \$350. 914 dr. chest \$350. 916 dr. chest \$350. 918 dr. chest \$350. 920 dr. chest \$350. 922 dr. chest \$350. 924 dr. chest \$350. 926 dr. chest \$350. 928 dr. chest \$350. 930 dr. chest \$350. 932 dr. chest \$350. 934 dr. chest \$350. 936 dr. chest \$350. 938 dr. chest \$350. 940 dr. chest \$350. 942 dr. chest \$350. 944 dr. chest \$350. 946 dr. chest \$350. 948 dr. chest \$350. 950 dr. chest \$350. 952 dr. chest \$350. 954 dr. chest \$350. 956 dr. chest \$350. 958 dr. chest \$350. 960 dr. chest \$350. 962 dr. chest \$350. 964 dr. chest \$350. 966 dr. chest \$350. 968 dr. chest \$350. 970 dr. chest \$350. 972 dr. chest \$350. 974 dr. chest \$350. 976 dr. chest \$350. 978 dr. chest \$350. 980 dr. chest \$350. 982 dr. chest \$350. 984 dr. chest \$350. 986 dr. chest \$350. 988 dr. chest \$350. 990 dr. chest \$350. 992 dr. chest \$350. 994 dr. chest \$350. 996 dr. chest \$350. 998 dr. chest \$350. 1000 dr. chest \$350. 1002 dr. chest \$350. 1004 dr. chest \$350. 1006 dr. chest \$350. 1008 dr. chest \$350. 1010 dr. chest \$350. 1012 dr. chest \$350. 1014 dr. chest \$350. 1016 dr. chest \$350. 1018 dr. chest \$350. 1020 dr. chest \$350. 1022 dr. chest \$350. 1024 dr. chest \$350. 1026 dr. chest \$350. 1028 dr. chest \$350. 1030 dr. chest \$350. 1032 dr. chest \$350. 1034 dr. chest \$350. 1036 dr. chest \$350. 1038 dr. chest \$350. 1040 dr. chest \$350. 1042 dr. chest \$350. 1044 dr. chest \$350. 1046 dr. chest \$350. 1048 dr. chest \$350. 1050 dr. chest \$350. 1052 dr. chest \$350. 1054 dr. chest \$350. 1056 dr. chest \$350. 1058 dr. chest \$350. 1060 dr. chest \$350. 1062 dr. chest \$350. 1064 dr. chest \$350. 1066 dr. chest \$350. 1068 dr. chest \$350. 1070 dr. chest \$350. 1072 dr. chest \$350. 1074 dr. chest \$350. 1076 dr. chest \$350. 1078 dr. chest \$350. 1080 dr. chest \$350. 1082 dr. chest \$350. 1084 dr. chest \$350. 1086 dr. chest \$350. 1088 dr. chest \$350. 1090 dr. chest \$350. 1092 dr. chest \$350. 1094 dr. chest \$350. 1096 dr. chest \$350. 1098 dr. chest \$350. 1100 dr. chest \$350. 1102 dr. chest \$350. 1104 dr. chest \$350. 1106 dr. chest \$350. 1108 dr. chest \$350. 1110 dr. chest \$350. 1112 dr. chest \$350. 1114 dr. chest \$350. 1116 dr. chest \$350. 1118 dr. chest \$350. 1120 dr. chest \$350. 1122 dr. chest \$350. 1124 dr. chest \$350. 1126 dr. chest \$350. 1128 dr. chest \$350. 1130 dr. chest \$350. 1132 dr. chest \$350. 1134 dr. chest \$350. 1136 dr. chest \$350. 1138 dr. chest \$350. 1140 dr. chest \$350. 1142 dr. chest \$350. 1144 dr. chest \$350. 1146 dr. chest \$350. 1148 dr. chest \$350. 1150 dr. chest \$350. 1152 dr. chest \$350. 1154 dr. chest \$350. 1156 dr. chest \$350. 1158 dr. chest \$350. 1160 dr. chest \$350. 1162 dr. chest \$350. 1164 dr. chest \$350. 1166 dr. chest \$350. 1168 dr. chest \$350. 1170 dr. chest \$350. 1172 dr. chest \$350. 1174 dr. chest \$350. 1176 dr. chest \$350. 1178 dr. chest \$350. 1180 dr. chest \$350. 1182 dr. chest \$350. 1184 dr. chest \$350. 1186 dr. chest \$350. 1188 dr. chest \$350. 1190 dr. chest \$350. 1192 dr. chest \$350. 1194 dr. chest \$350. 1196 dr. chest \$350. 1198 dr. chest \$350. 1200 dr. chest \$350. 1202 dr. chest \$350. 1204 dr. chest \$350. 1206 dr. chest \$350. 1208 dr. chest \$350. 1210 dr. chest \$350. 1212 dr. chest \$350. 1214 dr. chest \$350. 1216 dr. chest \$350. 1218 dr. chest \$350. 1220 dr. chest \$350. 1222 dr. chest \$350. 1224 dr. chest \$350. 1226 dr. chest \$350. 1228 dr. chest \$350. 1230 dr. chest \$350. 1232 dr. chest \$350. 1234 dr. chest \$350. 1236 dr. chest \$350. 1238 dr. chest \$350. 1240 dr. chest \$350. 1242 dr. chest \$350. 1244 dr. chest \$350. 1246 dr. chest \$350. 1248 dr. chest \$350. 1250 dr. chest \$350. 1252 dr. chest \$350. 1254 dr. chest \$350. 1256 dr. chest \$350. 1258 dr. chest \$350. 1260 dr. chest \$350. 1262 dr. chest \$350. 1264 dr. chest \$350. 1266 dr. chest \$350. 1268 dr. chest \$350. 1270 dr. chest \$350. 1272 dr. chest \$350. 1274 dr. chest \$350. 1276 dr. chest \$350. 1278 dr. chest \$350. 1280 dr. chest \$350. 1282 dr. chest \$350. 1284 dr. chest \$350. 1286 dr. chest \$350. 1288 dr. chest \$350. 1290 dr. chest \$350. 1292 dr. chest \$350. 1294 dr. chest \$350. 1296 dr. chest \$350. 1298 dr. chest \$350. 1300 dr. chest \$350. 1302 dr. chest \$350. 1304 dr. chest \$350. 1306 dr. chest \$350. 1308 dr. chest \$350. 1310 dr. chest \$350. 1312 dr. chest \$350. 1314 dr. chest \$350. 1316 dr. chest \$350. 1318 dr. chest \$350. 1320 dr. chest \$350. 1322 dr. chest \$350. 1324 dr. chest \$350. 1326 dr. chest \$350. 1328 dr. chest \$350. 1330 dr. chest \$350. 1332 dr. chest \$350. 1334 dr. chest \$350. 1336 dr. chest \$350. 1338 dr. chest \$350. 1340 dr. chest \$350. 1342 dr. chest \$350. 1344 dr. chest \$350. 1346 dr. chest \$350. 1348 dr. chest \$350. 1350 dr. chest \$350. 1352 dr. chest \$350. 1354 dr. chest \$350. 1356 dr. chest \$350. 1358 dr. chest \$350. 1360 dr. chest \$350. 1362 dr. chest \$350. 1364 dr. chest \$350. 1366 dr. chest \$350. 1368 dr. chest \$350. 1370 dr. chest \$350. 1372 dr. chest \$350. 1374 dr. chest \$350. 1376 dr. chest \$350. 1378 dr. chest \$350. 1380 dr. chest \$350. 1382 dr. chest \$350. 1384 dr. chest \$350. 1386 dr. chest \$350. 1388 dr. chest \$350. 1390 dr. chest \$350. 1392 dr. chest \$350. 1394 dr. chest \$350. 1396 dr. chest \$350. 1398 dr. chest \$350. 1400 dr. chest \$350. 1402 dr. chest \$350. 1404 dr. chest \$350. 1406 dr. chest \$350. 1408 dr. chest \$350. 1410 dr. chest \$350. 1412 dr. chest \$350. 1414 dr. chest \$350. 1416 dr. chest \$350. 1418 dr. chest \$350. 1420 dr. chest \$350. 1422 dr. chest \$350. 1424 dr. chest \$350. 1426 dr. chest \$350. 1428 dr. chest \$350. 1430 dr. chest \$350. 1432 dr. chest \$350. 1434 dr. chest \$350. 1436 dr. chest \$350. 1438 dr. chest \$350. 1440 dr. chest \$350. 1442 dr. chest \$350. 1444 dr. chest \$350. 1446 dr. chest \$350. 1448 dr. chest \$350. 1450 dr. chest \$350. 1452 dr. chest \$350. 1454 dr. chest \$350. 1456 dr. chest \$350. 1458 dr. chest \$350. 1460 dr. chest \$350. 1462 dr. chest \$350. 1464 dr. chest \$350. 1466 dr. chest \$350. 1468 dr. chest \$350. 1470 dr. chest \$350. 1472 dr. chest \$350. 1474 dr. chest \$350. 1476 dr. chest \$350. 1478 dr. chest \$350. 1480 dr. chest \$350. 1482 dr. chest \$350. 1484 dr. chest \$350. 1486 dr. chest \$350. 1488 dr. chest \$350. 1490 dr. chest \$350. 1492 dr. chest \$350. 1494 dr. chest \$350. 1496 dr. chest \$350. 1498 dr. chest \$350. 1500 dr. chest \$350. 1502 dr. chest \$350. 1504 dr. chest \$350. 1506 dr. chest \$350. 1508 dr. chest \$350. 1510 dr. chest \$350. 1512 dr. chest \$350. 1514 dr. chest \$350. 1516 dr. chest \$350. 1518 dr. chest \$350. 1520 dr. chest \$350. 1522 dr. chest \$350. 1524 dr. chest \$350. 1526 dr. chest \$350. 1528 dr. chest \$350. 1530 dr. chest \$350. 1532 dr. chest \$350. 1534 dr. chest \$350. 1536 dr. chest \$350. 1538 dr. chest \$350. 1540

Classified IV Oct. 5, 1983

•126 MISCELLANEOUS

RADIO Page & Alarm System, new, Pacheco machine, \$20. Table, chest-of-drawers, lamps, bottles, dolls - Cheap! 262-4200

GIRL'S Bike 20" 10-sp. \$50. dresses, Barbie, clean stuffed animals & dolls. Nice. 262-4200

PLAYPEN, stroller, toys, high chair & assorted clothes. \$75-2108 days

WHIRLPOOL 4-burner, built-in Cooktop. Like new. \$95. 235-1743

MOVING, must sell, hutch & dining set, \$1700. Bedroom set, queen size \$425. 235-6984

HEAT PUMP Energy Saver, excl. condition, \$1100. Ph. 247-8805 ask for Peter

PICTURE Frames, Sat. only 10/8 9-12 p.m. all used picture frames, as is 50¢ each, no refunds. Come on down to Four Corners, 127-A Heik St. Kailua

ATARI 2600 - 14 Tapes - like new! \$199. NCR Cash Register, \$50. 282-8491

ROY'S LAWN MOWER REPAIR "Free Estimate" Lawn mowers for sale. Rotary \$55. Reel \$75. Guaranteed. 259-5927

PINATAS - Halloween Pumpkins, witches, skulls, etc. Daily. Avail. Call 624-6018

HIDE-A-BED, 2 chest high stands, storage cubes, book cases. 762-8535

PCA 25" Color Console, \$295. Turn bed, \$35. Cash only. Call 582-0504

WASHER \$145, Dryer, \$115. hand mower \$21. Stairer rocker (gold) \$50. 282-0024

REPRESENTATIVE Closeout. Topline cosmetics, jewelry, gifts. 50% off Everything! 261-5112

BOOKCASES, trundle bed, chairs, picnic table set, stereo, polaroid. 261-4479

VERY Nice 7-pc. dinette, \$125. Lg. outdoor TV set. \$110. new. 261-3417

SELL Designer jeans fabulous 2/1 program. Call 261-5130

"ELECTROPHONIC" 9 track AM/FM, 2 speakers, \$30.00. Good condition. Ph. 282-5370

BEDS: Full \$95, single roll away new \$75, gorgeous wooden frame, \$250. 247-6093

GUATEMALAN Handwoven blankets \$50. Leather suitcase \$20. 239-6507

DEMULFIER 20-pint Sinks, auto, Reg. \$189, only \$110. Call 260-2848

COLORTYME TV RENTAL Rent to Own Stadium Mall 4010 Salt Lake Blvd. 487-6421

LIKE new 4 piece living room set, waterbed. Call 625-0037 after 6 p.m.

KING size waterbed \$50. 235-5372

1/5 stamps, most, 1/5 stamps, most, 1/5 stamps, most. Call 254-2313

CAMBRIDGE Diet, vanilla or chocolate - \$15 - both for \$25, bar stool, \$15. 735-2933

DRESSERS \$40, Singer w/buttonhole attachment \$75, rattan couch \$120. After 5 p.m. 235-8184

HAWAIIAN Kitchen Witches \$10.00 ea. Great Xmas gifts. Call 623-3032

PLAYPEN \$40, Rocker \$40, cocktail, Cope & playyard, \$100. Ph. 261-5548

BLACK Vinyl Exec. chair and couch, elec. typewriter, elec. grass trimmer. 263-4061

ISLAND Flavor Cookbook 475 pages, 550 recipes, \$13. Boobie 254-2254

SANYO Tel. answering system, \$50. Radio Shack Tel. Amp. System, \$10. 254-4731

VICTORIAN Wedding Dress Paid \$600, now \$275. Baby bassinet, \$25. Ph. 261-2131

16" BIKE with training wheels. Good condition. \$80. Ph. 262-0084

MUST Sell inherited family treasures: Dishware, silver, music to settle estate. 261-6101

GOLD COLLECTORS INT'L \$ Top Cash Paid \$ Gold-Silver Broken or not Diamonds-Watches Selling the Windward Side 767 Kaula Rd. Suite 202 262-0726 Mon.-Sat. \$\$\$\$\$\$

CASH • BUY • SELL • LOANS Gold • Silver • Diamonds • Watches Coins • Camera • Cassettes • Guitars Tools • T.V. • (things of value) 46-020 Alanoa St., Kaneohe • 247-4067 SEANAND BUYERS INC.

CUTTER DODGE USED CARS & TRUCKS

AIRPORT 67 BMW 1600 auto, p/s \$995 71 TOYOTA Corona auto, p/s \$895 75 DATSUN B210 auto, p/s low miles \$595 75 OLDS Delta 88 w/c, auto, p/s \$495 70 TORINO auto, p/s A17280 \$395 70 FORD Maverick 4 cyl. auto, p/s \$295 78 MERCURY Montego auto, p/s \$295 78 CHEVY Impala p/s, auto \$195

PEARL CITY 79 CHRYSLER New Yorker 4 dr. power, loaded \$2995 80 DATSUN B210 5 spd. 2 dr. auto, new \$2295 78 AMC Concord 2 dr. clean, loaded \$1295 73 CHEVY Monte Carlo 4 dr. \$1295 77 MERCURY Cougar 4 dr. loaded \$995 73 DODGE Monaco s/w loaded in transportation \$595 73 DODGE Dart 4 cyl. 4 dr. auto \$595 72 CHEVY wagon Transp. loaded \$495

Offer good Oct. 5 to Oct. 8 Financing Our Specialty 922 KAM HWY. (near Pearl Harbor) (near Pearl Harbor) (near Pearl Harbor) 3035 N. NIMITZ 836-0626 455-1071

•126 MISCELLANEOUS

CAR Parts - Centerlines - Kimo Shop-Headline. Call 6-9 235-2026 Jon/Rob 262-4200

ANTIQUE Player Piano, Has stained glass panels, 20 rods. 623-8744

NEW Handmade Afghan. Large \$45.00. Baby size \$20.00. Call 623-7780

HAMMOND Electronic Smart Organ \$400. Child Car Seat \$40. 263-8041

KIRBY Vacuum, boy \$900. must sell. \$350. Ph. 941-1784. 456-4213

SOFA, coffee table, night stand, telephone chair table, AM/FM stereo w/cassette & 8 track, kitchen table. 247-4493

EASER-CISE: CLASSES for men & women. Sponsored by A.A.U.W. Tuition, fee, 90-10 scholarships. Begins Oct. 11 Mondays & Thursdays. Ph. Marie 291-4738

PICTURE Frames, Sat. only 10/8 9-12 p.m. all used picture frames, as is 50¢ each, no refunds. Come on down to Four Corners, 127-A Heik St. Kailua

CRAFTS FOR ALL SEASONS Sat. Oct. 15 8 A.M.-2 P.M. 303 Hamakua Dr. Kailua

Handmade gifts for all occasions. Macrame patchwork, stuffed toys, food items, holiday decorations, etc. etc. etc.

MARY KAY COSMETICS. For re-orders & FREE facials, call Yokanda 259-9021

BLUMER Pool table \$70. good condition. Ph. 229-7532

WANTED swimming pool filter. Call 623-6528 anytime

HEALTH Spa, lifetime membership, your name is renewal fee. \$299. 293-5133

COMPLETE king size brass bed, set to appreciate. \$1000. Heirloom cedar chest. Chrome & glass dining room set. Wedding dress. Books & misc. 293-8033. Leave message

IBM electronic 30 typewriter. Like new. \$800. 623-2006 or 625-2167

PICTURE Frames, Sat. only 10/8 9-12 p.m. all used picture frames, as is 50¢ each, no refunds. Come on down to Four Corners, 127-A Heik St. Kailua

•127 APPLIANCES NEARLY new 19 5/5 Refrigerator w/ice maker, \$250. Elec. drip in range, \$50. 261-1402

WASHER & dryer (Sears) \$395. dishwasher (portable) \$145. both excl. cond. 623-1543

SEARS Kenmore floor model portable dishwasher \$100. Ph. 261-2748

SEARS maytag washer & dryer, auto, excl. cond. \$395. For info. Ph. 623-1543

SEARS Kenmore heavy duty green washer \$75. 254-0335

FREEZER, Upright, 19 cu. ft. Great condition \$300. Call 262-0545

WASHER & dryer, \$100 each. Guaranteed delivery. Ph. 624-2585

KENMORE Dryer, excellent condition, less than 18 months old. \$271 or best offer. 422-2436

WANTED: Unserviceable color TVs and VTRs. Give make & model no. 845-1047

19" Z-Z WITH Color TV, \$100 or best offer. Ph. 254-2714 after 6 p.m.

COLOR TV 19", also color 25" \$165 each. Both excellent. 948-6940

SANYO 400 Video cassette recorder, 5 months old, \$350. Call Tom 261-0634 even

WANTED: Unserviceable color televisions. Call with make & model no. Ph. 671-2122

•131 WIKI WIKI FREEBEE FREE male puppy, 2 months old, Staffordshire Shepherd to good home. Call 261-4264

FREE: Mixed puppy, female, 6 wks. Small "Benji" type female, or Small mixed loving female, 1 yr. 422-1464

•131 WIKI WIKI FREEBEE

FREE: 3 beautiful cats, 1 mostly Persian. Also 2 precious kittens, all special. 422-1464

FREE kittens, please give a hungry stray kitten a safe healthy home. Ph. Laura 282-7053

FREE Irish Setter, 8 years old, spayed, good watch dog, needs lge. fenced in yard. 637-5389

FREE to good homes, 3 pretty kittens, Ph. 262-4263 or 262-4235

FREE to a good home, Part Terrier, German Shepherd. 455-7833

FREE Kitten 10 & good home. Call 254-1200 after 5 p.m.

•136 MISCELLANEOUS WANTED WE BUY USED FURNITURE TOP CASH & FREE PICKUP ISLANDWIDE 488-1985 7 DAYS

CASH for Lawn Mowers & Outboard Motors. Any Condition. Ph. 259-5927

WE BUY USED FURNITURE WE PAY CASH AND PICKUP CALL 261-8492 or 247-1937

WANTED: Live Scorpions. Wu Fay. Call 261-7443

WANTED: Fresh uncured ripe Aiea Palm seed. Deliver Monday-Friday, 8 a.m.-4:30 p.m. to 41-672, Waipahu. Ph. 261-5917

16" MOTOR boat, Fiber Form, Johnson 70 w/mw heavy-duty trailer. Drive, ski, fish. \$2750. 554-5199

16" HOBIE CAT, extra sharp sails great hurry! \$1475. 254-5185

WANTED: Behnke & accops for new father-son hobby. Also plans. Call 261-0361

LARGE Wheelbarrow, Robo-Tiger, Cantoni Mixer, House Jacks. 839-8009

WANTED: Metal weight bench, incl. weights, bars, etc. Ph. 264-2809

WANTED used 40W boat for Christian preschool as tax exempt donation. 263-8501. 262-0831

•141 BUILDING SUPPLIES APPROXIMATELY 200 Cinder blocks, 7"x10"x8", railroad ties. \$60. Call 621-0502

•144 MUSIC SALES AND SERVICE BUNDY Clarinet \$150. Call 247-3446 after 5 p.m.

EXPERT PIANO MOVING, storing, shopping. 623-1859 5 & 6 Delivery 295-7295

BALOVIN Organics organ. Ph. 261-6068

LOOKING For Lead guitar player for Country/Western Band. Call Peter 247-8825

Going to OREGON to buy a new car or pickup? -contact- ROBERTS & REDFIELD PORTLAND Write for price lists and full information ANY MAKE - ANY MODEL Delivered - used noted at Portland International Airport ROBERTS & REDFIELD Suite #102 8529 N.E. 82nd Portland, Oregon 97220 (503) 257-0501 Conveniently located just 3 minutes from Airport

•144 MUSIC SALES AND SERVICE

MAESTRO Echoplex, good condition, asking \$125 or best offer. Ph. 622-3986 or after 6 p.m. 621-5783

AKC Boxer pups, Brindle, 1 male, 1 female, 7 weeks. Ph. days 262-7588, even 499-2475

TEMPORARY home needed for Lab/Alfghan dog, gentle, female. Will pay \$33-9148

QUALITY Pitbull pups, shots, good temperament, males & females. Ph. 623-6860, 623-2453

PART Pitbull pups, 8 weeks, weaned. Ph. 247-3548

RIDGEBACK/Shepherd Lab puppies, \$25 each. Ph. 247-3910

AKC Beautiful Cocker puppies, Male and Female, 10 weeks old. 262-5997

CUTE Poodle-Maltese puppies, 8 weeks, \$200 House-dogs \$100. Ph. 247-6068

•146 BOATS SUPPLIES & SERV WINDSURFER - 12' Wayer, complete, \$595. Ph. 247-3906

21' HOME Built fishing boat, ply/fiber, AQ120 Volvo, front cabin, extras, no trailer, offers O.K. 943-0681. 841-5917

16" MOTOR boat, Fiber Form, Johnson 70 w/mw heavy-duty trailer. Drive, ski, fish. \$2750. 554-5199

16" HOBIE CAT, extra sharp sails great hurry! \$1475. 254-5185

WANTED: Behnke & accops for new father-son hobby. Also plans. Call 261-0361

LARGE Wheelbarrow, Robo-Tiger, Cantoni Mixer, House Jacks. 839-8009

WANTED: Metal weight bench, incl. weights, bars, etc. Ph. 264-2809

WANTED used 40W boat for Christian preschool as tax exempt donation. 263-8501. 262-0831

•147 SPORTING GOODS (THACA MOD37, 12G & Rem 700LH scope 3x/6 & carrying case. Offer. Ph. 459-5463)

HAND GLIDER: Harness, parachute, instruments, \$650 incl. lessons. 261-0708

2 MEN'S 10-speed bikes \$45 & \$100 or offer 262-8922

•151 PET SUPPLIES SALES & SERVICE AKC Boxer pups, (7) 6 weeks, call 671-3850 after 6 p.m.

•156 AUTO PARTS & SERVICE COMPLETE Overhauled truck engines, 6V53 GM diesel \$6500. Ph. 262-8244

•161 TRAILERS LITLTY Trailer, dual offer. Ph. 235-4733

•166 TRUCKS & PICKUPS '83 CHEVROLETS NEW FULL SIZE PICKUPS & 5-10 PICKUPS SALE! HIGH TRAIL INS BIG DISCOUNTS AT J.N. CHEVROLET TRUCK CENTER Ph. 626-1222 2909 N. Nimitz Hwy.

'78 FORD F100, pipe rack w/roof, new electronic ignition, new battery, new heavy duty radiator, new clutch & paint, \$4000. Must see to appreciate. 622-3158, after 4 p.m.

USED PICKUP SALE '82 Chevy 5-10 Pickup \$2600 (10) 4 spd. radio \$2275 '81 VW diesel pickup (16) \$2000 (4) spd. AM/FM, computer up \$3275 '81 Datsun 4x4 Pickup, (16) \$2000 (4) spd. 128/128, radio, no trailer \$6075 '81 Ford 7500 Pickup (16) \$2000 (4) spd. power steering, radio \$5975 '79 Ford 4000 Pickup (16) \$2000 (4) spd. power steering, radio \$4175 '77 Datsun Pickup (16) \$2000 (4) spd. stereo, chrome wheels \$2675

J.N. CHEVROLET TRUCK CENTER 626-1222 2909 N. Nimitz Hwy.

'72 DATSUN Pick-up, dirt bike, stereo, new shocks, AM/FM stereo, heavy duty tailgate, \$575. Ph. 262-6645

83 NEW TRUCK SALE '83 El Camino (17) \$2500 (16) auto, 4 dr., other options. \$AVE \$2204 SALE PRICE \$9999 '83 CHEVYS-10 PICKUPS (17) \$2700 (16) 4 spd. power steering, radio, sliding rear windows - other options. \$AVE \$2275 SALE PRICE \$7536 '83 Chevy C-10 Pickup (17) \$2800 (16) 4 spd. auto, 4 dr., 4 spd. power steering, radio - other options. \$AVE \$2196 SALE PRICE \$7892 '83 Chevy C-20 Pickup (17) \$2800 (16) 4 spd. auto, 4 dr., 4 spd. power steering, radio - other options. \$AVE \$2196 SALE PRICE \$9375 J.N. CHEVROLET TRUCK CENTER 626-1222 2909 N. Nimitz Hwy.

'76 SUBARU Brat, 4x4, 4 speed, good cond., \$2000/best offer. Call 235-4299

'80 TOYOTA 4X4, 4 spd. extras, some rust \$5800. 521-6601 days, Dwight

NEW 4x4 SALE '83 K-10 Blazer diesel (17) \$2800 (16) 4 spd. auto, power steering, radio - many other options. \$AVE \$2200 SALE PRICE \$14,975 '83 Chevy K-20 Pickup (17) \$2800 (16) 4 spd. auto, 4 dr., 4 spd. power steering, radio, AM/FM - other options. \$AVE \$2200 SALE PRICE \$11,455 '83 C-20 Diesel Pickup (17) \$2800 (16) 4 spd. auto, 4 dr., 4 spd. power steering, radio - other options. \$AVE \$2200 SALE PRICE \$13,775 J.N. CHEVROLET TRUCK CENTER 626-1222 2909 N. Nimitz Hwy.

•164 TRAILERS LITLTY Trailer, dual offer. Ph. 235-4733

•151 PET SUPPLIES SALES & SERVICE AKC Boxer pups, (7) 6 weeks, call 671-3850 after 6 p.m.

•156 AUTO PARTS & SERVICE COMPLETE Overhauled truck engines, 6V53 GM diesel \$6500. Ph. 262-8244

•161 TRAILERS LITLTY Trailer, dual offer. Ph. 235-4733

•166 TRUCKS & PICKUPS '83 CHEVROLETS NEW FULL SIZE PICKUPS & 5-10 PICKUPS SALE! HIGH TRAIL INS BIG DISCOUNTS AT J.N. CHEVROLET TRUCK CENTER Ph. 626-1222 2909 N. Nimitz Hwy.

'78 FORD F100, pipe rack w/roof, new electronic ignition, new battery, new heavy duty radiator, new clutch & paint, \$4000. Must see to appreciate. 622-3158, after 4 p.m.

USED PICKUP SALE '82 Chevy 5-10 Pickup \$2600 (10) 4 spd. radio \$2275 '81 VW diesel pickup (16) \$2000 (4) spd. AM/FM, computer up \$3275 '81 Datsun 4x4 Pickup, (16) \$2000 (4) spd. 128/128, radio, no trailer \$6075 '81 Ford 7500 Pickup (16) \$2000 (4) spd. power steering, radio \$5975 '79 Ford 4000 Pickup (16) \$2000 (4) spd. power steering, radio \$4175 '77 Datsun Pickup (16) \$2000 (4) spd. stereo, chrome wheels \$2675

J.N. CHEVROLET TRUCK CENTER 626-1222 2909 N. Nimitz Hwy.

'72 DATSUN Pick-up, dirt bike, stereo, new shocks, AM/FM stereo, heavy duty tailgate, \$575. Ph. 262-6645

83 NEW TRUCK SALE '83 El Camino (17) \$2500 (16) auto, 4 dr., other options. \$AVE \$2204 SALE PRICE \$9999 '83 CHEVYS-10 PICKUPS (17) \$2700 (16) 4 spd. power steering, radio, sliding rear windows - other options. \$AVE \$2275 SALE PRICE \$7536 '83 Chevy C-10 Pickup (17) \$2800 (16) 4 spd. auto, 4 dr., 4 spd. power steering, radio - other options. \$AVE \$2196 SALE PRICE \$7892 '83 Chevy C-20 Pickup (17) \$2800 (16) 4 spd. auto, 4 dr., 4 spd. power steering, radio - other options. \$AVE \$2196 SALE PRICE \$9375 J.N. CHEVROLET TRUCK CENTER 626-1222 2909 N. Nimitz Hwy.

'76 SUBARU Brat, 4x4, 4 speed, good cond., \$2000/best offer. Call 235-4299

'80 TOYOTA 4X4, 4 spd. extras, some rust \$5800. 521-6601 days, Dwight

NEW 4x4 SALE '83 K-10 Blazer diesel (17) \$2800 (16) 4 spd. auto, power steering, radio - many other options. \$AVE \$2200 SALE PRICE \$14,975 '83 Chevy K-20 Pickup (17) \$2800 (16) 4 spd. auto, 4 dr., 4 spd. power steering, radio, AM/FM - other options. \$AVE \$2200 SALE PRICE \$11,455 '83 C-20 Diesel Pickup (17) \$2800 (16) 4 spd. auto, 4 dr., 4 spd. power steering, radio - other options. \$AVE \$2200 SALE PRICE \$13,775 J.N. CHEVROLET TRUCK CENTER 626-1222 2909 N. Nimitz Hwy.

•164 TRAILERS LITLTY Trailer, dual offer. Ph. 235-4733

•151 PET SUPPLIES SALES & SERVICE AKC Boxer pups, (7) 6 weeks, call 671-3850 after 6 p.m.

•151 PET SUPPLIES SALES & SERVICE

IRISH Setter, male, 7 mos. house broken, \$100. 499-2478

AKC Boxer Pups, Brindle, 1 male, 1 female, 7 weeks. Ph. days 262-7588, even 499-2475

TEMPORARY home needed for Lab/Alfghan dog, gentle, female. Will pay \$33-9148

QUALITY Pitbull pups, shots, good temperament, males & females. Ph. 623-6860, 623-2453

PART Pitbull pups, 8 weeks, weaned. Ph. 247-3548

RIDGEBACK/Shepherd Lab puppies, \$25 each. Ph. 247-3910

AKC Beautiful Cocker puppies, Male and Female, 10 weeks old. 262-5997

Joe Harris' Football Forecast



SATURDAY
AIR FORCE 21, *NAVY 20
ALABAMA 35, *PENN
STATE 21
AUBURN 24, *KEN-
TUCKY 17
BOSTON COLLEGE 38,
*YALE 14
BRIGHAM YOUNG 31,
*WYOMING 28
BROWN 21, *PENNSYL-
VANIA 20
CALIFORNIA 14, *ORE-
GON 13
*CINCINNATI 24, TEM-
PLE 21
*CLEMSON 24, VIRGINIA
14
COLGATE 28, *HOLY
CROSS 21
*DARTMOUTH 17, WIL-
LIAM & MARY 14
DUKE 21, *VIRGINIA
TECH 20

*FLORIDA 28, VANDER-
BILT 14
GEORGIA TECH 17,
*NORTH CAROLINA STATE
14
GEORGIA 24, *MISSIS-
SIPPI 14
HARVARD 21, *CORNELL
14
ILLINOIS 21, *WISCON-
SIN 17
*INDIANA 21, MINNE-
SOTA 20
*IOWA STATE 14, KAN-
SAS 13
*IOWA 42, NORTHWEST-
ERN 7
LOUISIANA STATE 21,
*TENNESSEE 14
*MARYLAND 35, SYRA-
CUSE 14
*MEMPHIS STATE 14
TULANE 13

*MIAMI (FLA.) 35, LOUIS-
VILLE 7
MICHIGAN 24, *MICHIGAN
STATE 14
*MISSISSIPPI STATE 14,
SO. MISSISSIPPI 13
MISSOURI 21, *COLORA-
DO 14
NEBRASKA 35, *OKLA-
HOMA STATE 14
*NORTH CAROLINA 35,
WAKE FOREST 14
NOTRE DAME 21, *SOUTH
CAROLINA 14
*OHIO STATE 35, PUR-
DUE 7
OKLAHOMA 17, TEXAS
14
*PITTSBURGH 21, FLORI-
DA STATE 20
*PRINCETON 24, CO-
LUMBIA 14
RUTGERS 21, *ARMY 14

*SO. CALIFORNIA 28,
WASHINGTON STATE 14
*SO. METHODIST 24,
BAYLOR 14
*TEXAS A. & M. 14,
HOUSTON 13
TEXAS CHRISTIAN 14,
*RICE 13
*TEXAS TECH 17, NEW
MEXICO 14
U.C.L.A. 24, *STANFORD
21
*WASHINGTON 31, ORE-
GON STATE 7
SUNDAY
*ATLANTA 20, NEW
ORLEANS 19
*DALLAS 24, TAMPA BAY
13
DENVER 16, *HOUSTON
14
GREEN BAY 21, *DE-
TROIT 20

*LOS ANGELES RAID-
ERS 23, KANSAS CITY 17
*MIAMI 19, BUFFALO 13
MINNESOTA 17, *CHICA-
GO 16
NEW ENGLAND 24, *BAL-
TIMORE 23
NEW YORK JETS 26,
*CLEVELAND 24
PHILADELPHIA 20,
*NEW YORK GIANTS 17
*SAN DIEGO 24, SEAT-
TLE 20
*SAN FRANCISCO 20,
LOS ANGELES RAMS 17
WASHINGTON 20, *ST.
LOUIS 16

MONDAY
PITTSBURGH 20, *CIN-
CINNATI 17
*Home Team

176 AUTOS FOR SALE

**For the Best
Used Car Deal in
Hawaii — Come
to Downtown
Honda in Wai-
pahu 677-9167.**

LEASE
NEW TRUCKS/VANS
CHEVY/MAZDAS
JK CHEVROLET
TRUCK CENTER
335-1222 2998 K. Kalia Hwy.

BUICK
77 Regal Coupe, auto, air, air
power, low mi. \$3200 373-
1248 or 847-1521.

CADILLAC
74 CADILLAC Sedan, full
power, leather interior, new
tires, battery, best offer. Loan
message at 735-2156 or
926-5870.

CADILLAC

74 EL DORADO Mini
Condition! \$6500 or best offer
945-3566/396-9738, evenings

CHEVROLET

1973 CORVETTE 454 CID,
30,000 mi. loaded! \$8000
offer. Call 474-4225 672-5188

1980 CITATION X-11, 2 door
hatchback, A/C, low mileage
one owner. 254-3822

70 CHEVELLE Conversion
Just restored. Beautiful
condition. \$2995. 252-5997

72 MONTE Carlo, no rust
excellent, new paint job, air
stereo. \$1500. 672-4556

88 CAMARO convertible
as is \$300.
254-5446

DATSUN

79 DATSUN 3100X, Ziebart
rustproofed, air cond., velour
interior, pearl black w/strip
trim, radial tires, good gas
mileage, 5 spd. hatchback
model, original owner, FM
radio w/excellent Axi
speakers, \$2400 Ph. 521-3784

DATSUN

89 DATSUN Fancier 1600
convertible, \$2000 or best
offer. Call 262-0088

DODGE

74 CHALLENGER runs good
body - good, button back
interior. \$1750 696-5449

87 DART GT convertible, 5
cyl., new paint/brakes. Runs
well. Collectors item. Must
sell. 235-0465.

FIAT

74 FIAT station wagon, good
condition, try to satisfy, \$800
or offer. For info, call 362-
9100

FORD

1986 Ford Mustang,
excl. cond., call after 3 p.m.
833-6218

87 MUSTANG 5 cyl.
auto., offer.
Ph. 235-4732

FORD

87 FORD Wagon w/interior
finch, runs great! \$150/best
offer. Call 696-6484

75 MAVERICK \$1000. Good
reliable. Transportation.
624-2512, evenings

86 MUSTANG
Make offer
262-9431

81 FORD Futura wagon,
AM/FM, air, power windows,
warranty, \$5500/offer Ph. 254-
1629

HONDA

They're Here!
We have them TODAY
All New 1984 Honda including
THE CIVIC CRX
DON LUCAS
HONDA WINDOW
247-8544
45-871 Kam Hwy in Kaneohe

PLYMOUTH

1973 PLYMOUTH Sports Fury
65002 mi. 1 owner 3 new tires
recent alignment. 261-8821

77 PLYMOUTH Vulture,
good cond. Many Extras
\$1100. Offer. Ph. 338-3878

86 PLYMOUTH 4 door sedan,
order restoration, \$2200. Rush
at 262-5997.

PONTIAC

78 PONTIAC Sunbird V6
Sport hatch-back, 4 spd stick
shift, AM/FM, air, 30,000 mi.
offer. 946-8857.

76 TRANS AM, \$2,000 miles,
auto., very clean, \$3700/offer.
261-0387

87 FIREBIRD, convert, 6
cyl., overhead cam, standard,
\$1600 or best offer. 259-7911.

SUBARU

'83 SUBARU GL
hard top, auto, p/s, p/windows,
p/side mirrors, body side mold-
ing. #9479 was \$3248
NOW \$2499
677-0777

TOYOTA

80 TOYOTA Corolla Sedan, 2
door, AM radio, excl. cond.
\$3100. 946-1412 days 235-
1552 eves

76 COROLLA 4 dr sedan,
good condition, \$1950 or offer.
Ph. 235-8265 evenings

TOYOTA

1972 TOYOTA Celica, engine
& transmission brand new
Needs little framework
\$1000/best offer. George 247-
3099

TRIUMPH

76 TRIUMPH Spitfire, small
damage front end, radio, excl.
cond. in & out \$1700 or best
offer. 247-2495

1979 TR7 convertible
\$4500
235-5772 247-1754 evenings

VOLKSWAGEN

89 BUG,
\$900.
254-5446

VOLKSWAGEN

79 PRELUDE
A/C, Great car! \$4500 or
Best offer. 254-5346

77 DASHER Wagon Excellent
running condition. Extras.
\$2500 239-1405.

73 VW Bug, gs running auto.
\$1000. Ph. 623-3158, after 4
p.m.

VOLKSWAGEN

70 VW BUG
Sunroof, good condition,
\$1200 261-1018

73 VW Bug, gs running auto.
\$1000. Ph. 623-3158, after 4
p.m.

"THE BATTERY FACTORY"
AUTO BATTERIES
\$20 +
TRADE
ALSO NEW & UP
DISCOUNT TO THE PUBLIC!
INTERSTATE BATTERIES
FULL LINE OF "HEAVY DUTY" BATTERIES
(WE HAVE BETTER BATTERIES & BETTER DEALS)
PRICED RIGHT!
747 KAPIOLANI **533-3312**

WAIPAHU AUTO
CHEVROLET SALES & SERVICE
671-2871
PRICES GOOD
Oct. 5 thru Oct. 11

73 VENTURA 2 dr. coupe, auto, V6 p/s, BPS780	\$396
74 PLYMOUTH VALIANT 4 dr. auto, V6 p/s, AC3371	\$995
75 TOYOTA CORONA 4 dr. auto, A12880	\$995
71 DODGE SWINGER auto, V6, p/s, A8714	\$1095
77 NOVA 4 dr. auto, 8 p/s, B12741	\$1195
77 CHEVETTE 2 dr. 4 spd, B5041	\$1295
73 MONTE CARLO auto, 8 p/s, B41705	\$1295
76 VW RABBIT 2 dr. 4 spd, AP7283	\$1795
75 EL CAMINO auto, 8 p/s, B42143	\$1995
70 BUICK RIVIERA 2 dr. auto, 8 p/s, A7573	\$2295
79 SUBARU S/W Auto, A39885	\$2595
80 FAIRMONT 4 dr. auto, 8 p/s, A7C p/w, B80227	\$3395
80 VOLARE 2 dr. auto, 8 p/s, A7C, B1007	\$3595
81 CHEVETTE 4 dr. 4 spd, B81290	\$3595
80 CITATION CLUB COUPE A7A080	\$3895
82 CHEVY CAVALIER 4 dr. 4 spd, p/s, B93523	\$5195

Division of **SERVCO** Pacific Inc.

TONY HONDA
PEARLIRIDGE
USED CARS
Discoverer's Day Specials
98-057 KAM HWY.

81 FORD FUTURA 4 dr. auto, A/C, radio, AWT380	\$4995
80 BUICK SKYLARK 4 dr. auto, A/C, radio, B12247	\$4595
80 PLYMOUTH VOLARE S/W 8 cyl. auto, radio, B4A255	\$3195
80 TERCEL 2 dr. auto, radio, B4T330	\$3095
77 MONTE CARLO Auto, air, B5C857	\$2995
75 EL DORADO Fully equipped, A7V488	\$2595
77 COROLLA S/W Auto, radio, B4T235	\$2095
78 COROLLA 2 dr. 4 spd, radio, A7W780	\$1995
76 DASHER S/W 4 dr. radio, A4S780	\$1595
74 MONTE CARLO Auto, radio, air, AC2000	\$1395
72 MUSTANG Auto, air, mag, radio, B9K711	\$1595
77 RABBIT 2 dr. auto, radio, B9Y236	\$1495

Subject to prior sale. FINANCING AVAILABLE.
KAM HWY.
98-057
Phone 488-8499

**Do You Want To Save
MONEY?**
Come in to see these fine Pre-Owned
Motor Cars BEFORE YOU BUY!!!

79 TOYOTA COROLLA 4 dr. A7K 882	78 AUDI FOX 2 dr. A1G 882
82 GRANADA L WAGON AWT 242	82 CHEVY CAVALIER 4 dr. B5A 154
81 FORD ESCORT 5L Wagon B2B 451	80 MALIBU CLASSIC 2 dr. A8G 733
81 VOLKS SCIROCCO A8W 445	82 CHEVY CAVALIER 2 dr. A8G 738
82 VOLKS VANAGON Diesel A7P 044	80 CAMARO RALLY SPORT BAC 628
80 RABBIT CONVERT. BAB 348	79 CHEVETTE 4 dr. HEC 128
79 BUG CONVERT. A7Y 810	79 MALIBU CLASSIC WAG. A7K 646
70 VOLKS FASTBACK A8D 542	81 DATSUN 200SX A7B 157
78 VOLKS BUS 1 Pass. A8A 354	78 DATSUN 280Z A7B 105
79 VOLKS SCIROCCO BMS 102	77 DODGE ASPEN WAGON A8D 813
73 KARMANN 2 dr. A7S 180	82 GRANADA GL WAGON BBA 406
68 VOLKS BUG B7B 421	76 PINTO RUNABOUT ADC 346
72 VOLKS BUG AAN 583	80 M.G. CONVERT. B3B 381
74 VOLKS BUG A7F 605	81 PLYMOUTH RELIANT A7T 404
77 VOLKS BUS 1 Pass. A7P 810	81 SUBARU D/L 4 dr. AWT 515

Many More To Choose From & Most Units With Air Cond.
Prices Too Low To Advertise.
537-3386
ALA MOANA
PORSCHE Volkswagen
800 Ala Moana Blvd. **OPEN 7-DAYS A WEEK**
Prices plus tax & license. All cars subject to prior sale

DATSUN OF WAHIAWA
621-0761
Across from Schofield Barracks

**TEST DRIVE A NEW
NISSAN
SENTRA.**

**NEW DATSUN
STANDARD
L'I'L HUSTLER.**

Sentra Deluxe 2 dr., 6043	\$5595*	720 Standard P/Up 7325	\$5895*
78 DODGE DART 4 dr., 8 cyl., auto., BCV260	\$395	76 MONTE CARLO auto., p/s YJ6382	\$1795
74 DODGE DART 2 dr. auto, p/s BGV501	\$1295	75 DATSUN 710 S/W 4 cyl. auto. AEC234	\$1895
75 MUSTANG II 4 cyl., 4 spd., 2 dr. AGR29	\$1995	81 VW JETTA 2 dr., 4 cyl., 4 spd., AM/FM cass., a/c, low miles AUB718	\$5595

Subject to prior sale. *Price not including dealer installed accessories. (if any)
Good till Oct. 12, 1983

PFUEGER
USED CARS

**'81 DATSUN
200 SX**
clean 5462-1 **\$5395**

'79 LINCOLN TOWN CAR
full pwr., excel. cond. 5447-2 **\$6995**

81 RENAULT S/W like new, 14,841 miles, B-125-1	\$4495
80 FIAT STRADA 4555-1	\$2595
76 TOYOTA COROLLA 4 dr., B35-2	\$1995
81 DODGE ARIES 4517-1	\$4195
82 DODGE 400 like new 4197-1	\$6895
82 FORD RANGER P/U 5415-1	\$6495
78 CHEVY MALIBU 4 dr., like new, full power, 9-301	\$3895
79 CADILLAC DE VILLE excel. cond., full power, 5426-1	\$6995

2901 N. Nimitz Hwy. **Ph. 836-0033**

Localmotion

K-BAY OFFICERS' CLUB
TODAY — Lunch in the Pacific Room from 11 a.m. to 1 p.m. features two specials of the day, deli line, salad bar, chef's shrimp salad, soup, plus an array of desserts. Mongolian barbecue on the lanai from 6-8:30 p.m. The Alii Bar is open from 4 to 10 p.m.
THURSDAY — Lunch in the Pacific Room. Beefsteak's buffet from 6-8:30 p.m. featuring steamship round, seafood, item, spaghetti, rice/potatoes, vegetable, salad bar. The Alii Bar opens at 4 p.m. and closes at 10:30 p.m.
FRIDAY — Lunch in the Pacific Room. The Alii Bar opens at 4 p.m. Happy hour in the Alii Room from 4:30 to 6:30 p.m.
SATURDAY — Prime rib, Alaskan king crab, soup, mahimahi almondine on the buffet in the Pacific Room from 6 to 8:30 p.m. The Alii Bar is open from 1 to 11:30 p.m.
SUNDAY — Champagne brunch in the Pacific Room from 10 a.m. to 1 p.m. featuring a buffet to include top round of beef, chicken ala king, eggs benedict, order, complimentary juice and champagne. In the evening, prime rib and peel your own shrimp buffet. Alii Bar opens at 4 and closes at 10 p.m.

MONDAY — Lunch in the Pacific Room. Monday evening the club is closed.
TUESDAY — Lunch in the Pacific Room. The Alii Bar is open from 4 to 10 p.m.

SNCO CLUB
TODAY — Lunch from 11 a.m. to 1 p.m. featuring beef kabobs and fried rice. The dinner special will be a jumbo tempura shrimp plate.
THURSDAY — Lunch from 11 a.m. to 1 p.m. Luncheon special is lasagna. Every Thursday is Mongolian barbecue from 5 to 8 p.m. Our entertainment is "Elijah Powers" from 8:30 to 11:30 p.m.
FRIDAY — Lunch from 11 a.m. to 1 p.m. featuring mahimahi or fried chicken. Happy hour from 4:30 to 6:30 p.m. with music by "Cat". Our dinner special is jumbo stuffed shrimp, prime rib, or stuffed shrimp and prime rib. The dining room is open from 6 to 9 p.m. Listen to the music of "Knext" from 9 p.m. to 1 a.m.
SATURDAY — Dining room is open from 6 to 9 p.m. Our dinner special is all the beef and crab you can eat or just beef. Come to the oldest show with Gary Slade from 9 p.m. to 1 a.m.
SUNDAY — Enjoy our champagne brunch from 9:30 to noon. Every Sunday evening, our dinner special will be broil your own steak, which includes salad, baked potato, baked beans and vegetable. Dining room is open from 5 to 8 p.m.
MONDAY — The lunch special is macho burrito. The dining room is closed on Monday evenings.
TUESDAY — Lunch special is liver and onions. Bingo starts at 6:30 p.m.
WINDWARD ENLISTED CLUB
TODAY — Lunch from 11 a.m. to 1 p.m.

Red Cross. The Good Neighbor.

THE
Hand to Hand
YOU
DESIGNER RESALE
NEXT TO NEW
11-6 TUES-SAT
 3118 MONSARRAT AVE.

HIGH TECH PENNY STOCKS
 Call
MAURICE
 AT
528-2900
 R.L. SMITH & ASSOCIATES
 NASD-SIPC

FREE PENNY STOCK NEWSLETTER
 Call
BRIAN HENRY:
528-2900
 R.L. SMITH & ASSOCIATES
 1311 Kapiolani Blvd., Suite

If your eyes need to be open soothe them with
Lavoptik
 STERILE • POLYBUT • BUFFERS
 EYE WASH
 at your local Pharmacy

EASTERN ONION
Telegram
SEND A MESSAGE IN SONG!
 261-4655
 NATIONWIDE

Dining room opens from 5 to 9 p.m. The chef's special this month is your choice of New York steak, top sirloin, or T-bone with all the shrimp you can eat. The beer garden is open from 8 a.m. to 10 p.m., Monday through Friday. The beer garden features sandwiches, pizza, homemade chili, bagels, salads and many more items. Tonight will feature a request line of rock 'n' roll in the moonlight lounge from 7:30 to 11:30 p.m.
THURSDAY — Lunch from 11 a.m. to 1 p.m. Dining room opens from 5 to 9 p.m. with an open menu. Our dinner special this evening is your choice of New York, top sirloin, or T-bone with all the Alaskan crab legs you can eat including soup and salad bar. The beer garden is open today from 10 a.m. to 10 p.m. Live band plays the best of rock 'n' roll in the main ballroom from 8 p.m. to 12 midnight.
FRIDAY — Lunch from 11 a.m. to 1 p.m. The dinner special is prime rib and lobster tail, just prime rib, or just lobster tail. "Syntistics" show: door opens at 6 p.m., show at 8:30 p.m. in the main ballroom. Also in the moonlight lounge "Stage Freak" rock 'n' roll from 6:30 to 12:30. Every Friday, special happy hour from 5 to 6 p.m. The club is open until 2 a.m. every Friday night. The beer garden is open from 8 a.m. to 10 p.m.

SATURDAY — Breezy Inn opens from 5 to 9 p.m. Our dinner special tonight is lobster tail and prime rib, just lobster tail, or just prime rib. Then it's ladies night at 9 p.m. The beer garden is open this evening from 5 to 9 p.m.

SUNDAY — Club opens at 11 a.m. The Breezy Inn opens for dinner from 5 to 9 p.m. Our dinner special tonight is prime rib and lobster, just prime rib or just lobster tail. Tonight we will be featuring two guest DJs, one from Detroit and one from New York City, in the main ballroom from 7:30 p.m. to 12:30 a.m. Also, rock 'n' roll in the moonlight lounge from 7:30 p.m. to 12:30

a.m. The beer garden is open this evening from 5 to 10 p.m.
MONDAY — Lunch from 11 a.m. to 1 p.m. Dining room opens 5 to 9 p.m. with the Italian special, all the spaghetti or lasagna you can eat including salad bar, garlic bread and a complimentary glass of our house wine. Tonight "White Lightning" plays the best of country & western from 6:30 to 11:30 p.m.
TUESDAY — Lunch from 11 a.m. to 1 p.m. Dining room opens from 5 to 9 p.m. with all you can eat smorgasbord every Tuesday night. Peter Wolf's rock 'n' roll T-shirts from 8:30 to 11:30 p.m. The beer garden is open from 8 a.m. to 10 p.m.

Good manners are made up of petty sacrifices.
 EMERSON

Let's Have a Party!
THE GREAT AMERICAN FUN HOUSE
 ★ Everyone enjoys video games
 ★ Want to have a party?
 ★ Want to raise money for your charity or team?
 ★ Give us a call for fun.
 ★ Birthday Parties
 ★ Graduations
 ★ Special Occasions
 ★ Family Parties
 ★ Club Parties
 ★ All-Party Fund Raising Parties
 ★ Little League — Soccer Teams
 ★ Country Drives
 ★ By the Hour, Day or Week
 ★ Vide Video Games — Unlimited Play
 ★ For information on rates call
 The Great American Fun House
 2155 Kalia Rd., Suite 100, Honolulu, HI 96811
 362-2776

Free degree.
 The Marine Corps gives you plenty of educational opportunities. If you can qualify, you could earn a college degree free!
 You can count on the Corps.
Stay Marine
 U.S. MARINE CORPS
 CAREER PLANNING

Liven up this Halloween Party with a Surprise Visit from
Fantasy Gram
 • Hawaii's most complete, most exotic entertainment service
 • Belly Grams to marching bands & everything in between
 • For adults & kids
 • Messages from mild to outrageous!
 Come check out our large selection of Costume Rentals.
Call 487-1529
 Located at KICKS
 98-025 Hekaha St., Pearl City

1505 DILLINGHAM BLVD. & WAIPAHU • **1505 DILLINGHAM BLVD. & WAIPAHU** • **WAIPAHU**

THE
marsh
 COMPANY

HELP!
 Our Warehouse is stacked to the roof with Sealy Mattresses!
 And we need the room! Wow, do we need the room!
 Now you can buy at Clearance Prices.

4 BIG DAYS!
WED. thru SAT.
 Sale Ends Oct. 8th

EMERGENCY CLEARANCE!
 Our warehouse is loaded with excess stock of quality Sealy mattresses. The firm comfort is right up to date from specially tempered coils beneath layers of puffy cushioning. For durability, foundations feature exclusive torsion bar design.
 Come in for big savings through Saturday!

TWIN	Sug. Retail \$159 ea. pc.	TO CLEAR	\$77 pc.
FULL 2-PC SET	Sug. Retail \$399 ea. pc.	TO CLEAR	\$199 set
QUEEN 2-PC SET	Sug. Retail \$499 ea. set	TO CLEAR	\$299 set
KING 3-PC SET	Sug. Retail \$599 ea. set	TO CLEAR	\$299 set

Frames also at special prices

FINANCING:
 We offer excellent financing on your good credit. Please feel free to ask us about down payments, monthly payments, anything!

Main Store
 1505 Dillingham Blvd.
 Phone 847-5382
 Between Pay 'N Save and Emjays

Waipahu Store
 94-300 Farrington Hwy.
 Phone 671-3995
 Between Pay 'N Save and Emjays

STORE HOURS: 9 a.m.-9 p.m. TODAY THRU FRIDAY 9 a.m.-6 p.m. SATURDAY

1505 DILLINGHAM BLVD. • **1505 DILLINGHAM BLVD. & WAIPAHU** • **1505 DILLINGHAM BLVD.**

1505 DILLINGHAM BLVD. & WAIPAHU • **1505 DILLINGHAM BLVD. & WAIPAHU** • **WAIPAHU**

THE
marsh
 COMPANY

HELP!
 Our Warehouse is stacked to the roof with Sealy Mattresses!
 And we need the room! Wow, do we need the room!
 Now you can buy at Clearance Prices.

4 BIG DAYS!
WED. thru SAT.
 Sale Ends Oct. 8th

EMERGENCY CLEARANCE!
 Our warehouse is loaded with excess stock of quality Sealy mattresses. The firm comfort is right up to date from specially tempered coils beneath layers of puffy cushioning. For durability, foundations feature exclusive torsion bar design.
 Come in for big savings through Saturday!

TWIN	Sug. Retail \$159 ea. pc.	TO CLEAR	\$77 pc.
FULL 2-PC SET	Sug. Retail \$399 ea. pc.	TO CLEAR	\$199 set
QUEEN 2-PC SET	Sug. Retail \$499 ea. set	TO CLEAR	\$299 set
KING 3-PC SET	Sug. Retail \$599 ea. set	TO CLEAR	\$299 set

Frames also at special prices

FINANCING:
 We offer excellent financing on your good credit. Please feel free to ask us about down payments, monthly payments, anything!

Main Store
 1505 Dillingham Blvd.
 Phone 847-5382
 Between Pay 'N Save and Emjays

Waipahu Store
 94-300 Farrington Hwy.
 Phone 671-3995
 Between Pay 'N Save and Emjays

STORE HOURS: 9 a.m.-9 p.m. TODAY THRU FRIDAY 9 a.m.-6 p.m. SATURDAY

1505 DILLINGHAM BLVD. • **1505 DILLINGHAM BLVD. & WAIPAHU** • **1505 DILLINGHAM BLVD.**