

Loveable Lush
Foster Brooks
entertains troops
on Okinawa
See Page A-4

Navy Relief
Nightfighters
raise funds
for society
See Page A-4

Marathon
'Hard corps' runners
prepare for annual
Marine race
See Page B-3

HAWAII MARINE

Voluntary payment for delivery to MCAS housing/\$1 per four-week period.

VOL. 12 NO. 29

KANEOHE BAY, HAWAII, JULY 20, 1983

SIXTEEN PAGES

Boobies: Baby birds 'chick-napped' to Sea Life Park colony

Story and photo
by SSgt Bob Torres

The wind died down to nothing and an ominous silence filled the "ledge" above the rifle range. Birds circled and watched as five members from Sea Life Park began their "chick-napping" trip to the Red-footed Booby colony here.

"Sea Life Park has been getting chicks from here, off and on, since the park opened in 1964," said Ingrid Kang, curator for the park. "Over the past three years, we've been taking six chicks each year."

"I thought the colony looked much better than last year," she continued. "There were more chicks. I was really pleased to compare them to the last time I was here."

After traveling the entire ledge and locating the chicks, six of the younger ones were selected. Although it seemed that there were three distinct hatching periods, the chicks taken were not all from one area. None of the chicks were taken while a parent was in the nest.

Roger Horn, a trainer for the park, got instructions on which chicks were to be taken and then with assistance from Mark Denhardt, climbed the limbs of the Haale Koa shrubs that the birds were nesting on.

With painstaking care, sometimes awaying with the breeze, Horn reached up into the nest and gently lifted a chick from its roost. As the chicks were lifted out, they all bit and squawked. However, the chicks' bills were soft and there was no real danger from the bird bites. After being taken from the nest, the birds rested peacefully in Kang's arms.

"Once we get them to the park, we put them in individual nests," said Kang. "We have nests rigged off the ground, but we don't have trees. We have to make sure that mongoose and cats can't get to them."

"I would say that the ones that we took were 3 to 4 weeks old. They were about the same age except that one was a little bit younger. When they are this young, they are

not so frightened and they don't resist us as much. If we get them young, then they will accept anyone as their mother. But as they get older, they know more about their mother and it's harder for them to adjust," Kang said.

"Not everyone can get a collection of birds like this," said Dr. Diane Drigot, air station environmental specialist. "These are protected birds. They're not on the endangered list, but all sea birds are protected by the migratory treaty. Sea Life Park has to get permission from us before they can take these chicks. And, they also have to apply for permission to the Federal Fish and Wildlife Service and the Department of Land and Natural Resources," she explained.

"The reason we do this is because the birds are being provided for an exhibit in Hawaii which is open to the public, even though there is an admission charge. It's the only place in Hawaii where people can see these sea birds up close, without actually coming to this colony."



BOOBY PRE-FLIGHT — Mark Denhardt Although the chicks bit and squawked, there was no real danger from their soft bills.

Parent, child conflicts produce runaways

Story and photos
by SSgt Bob Torres



MISSING PERSON BOARD — Roy Urukawa, Juvenile Crime Prevention Division, Honolulu Police Department, points out the missing persons board located in the Honolulu Police

Station office. Although the board is international, military runaways may also be located on the board.

"No, you can't go to the movies. I want you to wash the dishes and you can't go outside after you finish. If you say anything more about it, you're on restriction for a month!"

"All my friends are going to the movies. I haven't done anything wrong. Why can't he understand? Why can't he just leave me alone? Maybe I should just leave. Who could I stay with if I ran away?"

Throughout the nation this type of conflict between parent and child is repeated as about one million children become runaways each year. In Hawaii, although the numbers are smaller, runaways are still very apparent.

"We get about 200 runaways per year," said Roy Urukawa, Juvenile Crime Prevention Division, Honolulu Police Department. "About 10 of the runaways in the past 12 months have been Marine dependents. Once kids run away in Hawaii, they go all over, but

mostly they go to Waikiki.

"A lot of the military kids that run away leave because of disciplinary problems," he continued. "Some military fathers are very strict. For instance, they might say that they want the dishes done. They don't mean later; they mean right now."

"When we hear that a child is missing, we fill out a runaway report," informed Master Sergeant Michael McKelroy, Air Station security department. "We ask the parents for a recent picture of the child, but sometimes they don't have one. We contact the Kailua Police Department and inform them that we have a runaway. We also find out from the parents what area the runaway may be in."

When the police department receives word that someone younger than 18 is missing, unless there is a reason to believe otherwise, they are declared a runaway. If it is found later that the person was not a runaway, then the report will be reclassified.

"We assign an investigator to

every case," said Urukawa. "Running away is a 'status' offense not a criminal offense; therefore, we don't actively enforce an all-out search. Some runaways will leave for a couple of hours, some for months or years."

According to the Oct. 12, 1982 edition of Newsweek, most runaways go no further than to a relative or friend, and 90 percent return home within 48 hours.

"Here on the island, when a military kid runs away, it's usually to a friend's house," remarked Urukawa. "We've had runaways as young as 7 years old. When they're that young though, they're scared. They won't stay gone long. It depends on how the parents act when they come home, whether there's a lot of yelling and screaming, or if the parents try to find out why the kid ran away from home. After the first time, running away becomes easier."

"The biggest thing we find about runaways is that there is no communication," said McKelroy.

Con't on Page A-8

Supreme Court invalidates damage suits filed against military superior officers

The United States Supreme Court has ruled unanimously that military service members may not bring damage suits against superior officers for alleged constitutional violations.

This decision stemmed from the case "Chappell vs Wallace" involving a suit for \$10 million against a commanding officer, an executive officer, various division officers and chief petty officers of a Navy ship for alleged violations of constitutional rights due to racial discrimination.

Speaking for the court, Supreme Court Chief Justice Warren E. Burger stated that the effect of exposing officers to personal liability at the hands of those they are charged to command would be to undermine the "unhesitant and decisive action" required of those officers and an "equally disciplined response by enlisted personnel."

In a similar case "Rush vs Lucas," the court also ruled that federal employees could not bring damage suits against supervisors for alleged constitutional violations.

However, there are alternate means available to seek justice for constitutional violations. In the case of military personnel, a formal request must or Article 138 complaint can be initiated at the organizational administrative level. This complaint must progress through the chain of command to the commanding general. All corrective action must then be reported to the Secretary of the Navy.

Another route open to military personnel is to file a petition with the Board of Correction of Naval Records. Forms and procedural information can be obtained at any station legal office. Federal civilian employees should route their complaints through the Civil Service system.



**Curtain closes
on Showboat**

GOING, GOING . . .

— After almost 40 years, the Showboat came down Monday. Built in 1944, the Showboat consisted of 14 units for guests coming to the Windward side. "She was a real lady in her time," remarked Bill Lang, Special Services. The Showboat got its name from a huge paddle wheel that was part of the original structure. (Photo by SSgt Bob Torres)

Courts-Martial Report



EDITOR'S NOTE: The information contained in *Courts-Martial Report* is submitted by the Joint Legal Service Center and is published as a source of information for all Marines.

Private Michael A. Townor, 1st Battalion, 12th Marines, was convicted at trial by special court-martial of unauthorized absence of a period less than one day; escape from lawful custody; and wrongful appropriation of a motor vehicle. He was sentenced to three months confinement at hard labor, and a bad-conduct discharge from the U.S. Marine Corps.

Private First Class R.M. Crawford, 2d Battalion, 3d Marines, was convicted at trial by special court-martial of unauthorized absence from June 16 to April 11. He was sentenced to four months confinement at hard labor, forfeiture of \$300 pay per month for four months, reduction to private, and a bad-conduct discharge from the U.S. Marine Corps.

Staff Sergeant Cyrus J. Warren III, Headquarters and Headquarters Squadron, was convicted at trial by special court-martial of wrongfully fraternizing

and associating with a married female Marine corporal, not his wife, during May 1982 through March 1983. He was sentenced to be reprimanded, forfeiture of \$444 pay per month for one month, and reduction to corporal.

Lance Corporal Richard D. Collins, Camp Smith, was convicted at trial by special court-martial of wrongful use of marijuana. He was sentenced to 30 days restriction, forfeiture of \$100 pay per month for two months, and reduction to private first class.

Private Eric P. Saver, Brigade Service Support Group, 1st Marine Brigade, was convicted at trial by special court-martial of two specifications of failure to go to his appointed place of duty; being disrespectful in language to a staff noncommissioned officer; two specifications of willfully disobeying orders from his superior staff noncommissioned officer; and stealing U.S. government property. He was sentenced to three months confinement at hard labor, forfeiture of \$100 pay per month for two months, and a bad-conduct discharge from the U.S. Marine Corps.

LtCol McGrath takes MSSG-31 reins

Lieutenant Colonel James Sanborn relinquished command of Marine Amphibious Unit Service Support Group-31 to LtCol Frederic McGrath during a change of command ceremony July 12.

Sanborn took over as executive officer, Brigade Service Support Group.

McGrath, a Hartford, Conn. native, was commissioned in 1966 and received orders to Battery 1, 3d Battalion, 13th Marines, 5th Marine Division. While attending Field Artillery Officer Basic Course, Fort Sill, Okla., he received orders to Vietnam.

He was assigned to the 4th Battalion, 12th Marines at Phu Bai. From there, he joined Battery B, 1st Battalion, 13th Marines and was assigned as a forward observer with 2d Battalion, 26th Marines. He participated in the battle for Khe Sanh.

Upon his return to the United States, he was assigned to 4th Battalion, 13th Marines, 5th Marine Division. He was released from active duty in October 1969.



LtCol James Sanborn

Ombudsman



If you have a question or complaint about the content of the *Hawaii Marine* — or a suggestion or compliment — please telephone our Ombudsman, Gunnery Sergeant Don Gilbert, at 257-2178.

Gilbert, the Joint Public Affairs media operations chief, will endeavor to answer your questions and complaints through impartial investigations. He will accept calls between 7:30 a.m. and 4:30 p.m.

After spending several summers attached to 4th Marine Division Headquarters, McGrath applied for extended active duty.

He received orders in September 1974 to report to the 1st Marine Division. After a year as battery commander of Headquarters Battery, 11th Marines, McGrath was transferred to the 3d Marine Division. There, he assumed command of Battery F, 3d Battalion, 12th Marines.

Upon rotation, he assumed duties as the commander, Armed

Forces Examining and Entrance Station, Pittsburgh, Pa. After a three year tour, he was assigned to the Marine Corps Development and Education Command, Quantico, Va., where he served as the officer-in-charge of the Fire Support Section of the Firepower Division.

From there, he was transferred to the 1st Marine Brigade and assumed command of Headquarters and Service Company, Brigade Service Support Group on Sept. 24, 1982.

FACTORY DIRECT

SATURDAY ONLY CASUAL FURNITURE

SALE

STACK CHAIR
\$27.50
LIST \$60.00



REVINYL & REPAIR
GOLD ANODIZED ALUMINUM
ADVANCE

OF HAWAII
117 SAND IS. ACCESS RD.

OUTER ISLAND SHIPMENTS MADE WEEKLY

HOURS:
MON.-FRI. 9-5
SAT. 9-4

SINCE
1953

TEL. 847-3923

the COMPLETE OFFICE PRODUCTS COMPANY

Locally owned and operated for more than eight years. Now, one of the fastest-growing small businesses in the country! Offering only major lines of office supplies and furniture. Free brochure of specially-priced sale items is available. Call 537-2991. Free delivery.

GALAXY BUSINESS PRODUCTS, INC. • 770 ILALO ST. HONOLULU, HAWAII 96813



Bang-up SAVINGS

We're knocking out the competition at MTV, with our No-Money-Down policy! We give Instant Credit to all active duty E-1's and above.

WEEKLY MANAGER SPECIALS AT ALL LOCATIONS!

NO MONEY DOWN

We'll Finance you to fit your budget! Call our Instant Credit Hotline for Immediate Approval!

834-1496

(E-1)	(E-2)	(E-3)
\$1,400	\$1,600	\$1,800
(E-4)	(E-5)	(E-6)
\$2,000	\$2,200	\$2,500

Serving the Nation's Armed Forces from coast to coast with over 40 stores



MILITARY TV & STEREO

HAWAII MARINE



On Tuesday and Thursday everyone has fun at the front!

BEACHFRONT LUAUS AT THE HALE KOA.



2002 KALIA ROAD / HONOLULU / HAWAII 96815 / (808) 955-0555

FAMILY EXAMINATION PLAN

One Examination Fee Per Family Per Year

\$39

Includes All Immediate Family Members

"Regular & Extended-Wear Soft-Contact Lenses"

139 Hekili St.

Call: 261-9735 For Information

Dr. Charles Dean, Optometrist

TRUCKLOAD SALE MICROWAVE OVENS

FREE COOKBOOK w/purchase

A CONTAINER OF NEW MICROWAVE OVENS HAVE ARRIVED FOR IMMEDIATE LIQUIDATION. ALL ARE REDUCED AT PRACTICALLY WHOLESALE COST!

SALE ENDS SUN. 7/24/83 p.m.

INDIVIDUAL FEATURES INCLUDE:
ROTOWAVES
CAROUSELS
DIGITALS
PROBES

FREE \$34.95 cookware set with oven purchase

VALUES TO \$498

\$239

Limit 2 per customer

SELECT FROM EITHER:
PANASONIC
TAPPAN
AMANA
LITTON

NEW COMPACT OVEN

189

Sug. Retail \$348

NEW BUILT-IN BROWNER

368

Sug. Retail \$598

NEW DIGITAL W/BROWNER & PROBE

468

Sug. Retail \$698

OUR GUARANTEE:

Simple, we guarantee you the lowest prices in Hawaii on any oven including military exchanges. This applies to the Microwave/Convection Ovens from SHARP & PANASONIC. In addition, we have 22 models on display.

PACIFIC SURPLUS & DISTRIBUTORS

CALL NOW 262-8131

MON.-SAT. 9:30-6:00 p.m.
TUESDAY CLOSED
THURSDAY 9:30-6:00 p.m.
SUNDAY 11:00-5:00 p.m.

1247-F Pali Hwy. (1 block east of Castle Hospital in the new 7-Eleven Complex in Kailua)



The *Hawaii Marine* is an unofficial newspaper published every Wednesday by RFD Publications, Inc., 46-016 Alaloa St., Kaneohe, Hawaii 96744, in the interest of U.S. Marine Corps personnel in Hawaii. All news copy is prepared in the Joint Public Affairs Office, Marine Corps Air Station, Kaneohe Bay, Hawaii 96863, 257-2179.

Copy must be submitted no later than noon Thursday for the following Wednesday publication. *Hawaii Marine* solicits contributions of information and photographs from all Marine Corps organizations. However, it reserves the right to edit or rewrite material submitted. All advertising is arranged by the publisher, RFD Publications, Inc., telephone 235-5881. Circulation is 8,000.

Everything advertised in this publication must be made available for purchase, use or patronage without regard to race, creed, color, national origin, age or sex of the purchaser, user or patron. A confirmed violation or rejection of this policy of equal opportunities by an advertiser will result in the refusal to print advertising from that source.

At-a-glance

Birthday ball

Marine staff non-commissioned officers will have an island-wide consolidated ball for the Corps' 208th birthday Nov. 10 in the Pacific Ballroom of the Western Ilikai Hotel.

Tickets are available from unit sergeants major and cost \$23 each. Room reservations can be made at the Ilikai until Aug. 1.

All staff NCO leathernecks, active duty, retired and reserve, are invited to attend.

For more information, call 257-3625/3443.

Quit-smoking clinic

The Kaneohe Branch Clinic will offer their

fourth "quit smoking" clinic, called Freshstart, 6:30 to 8:30 p.m. Aug. 2, 4, 9 and 11 in the training room opposite the Pharmacy.

Smokers of all ages are invited to register by calling the Adult Clinic at 257-2131 or by calling the Windward unit of the American Cancer Society.

The clinic is free.

Boat excursion

Cruise Kaneohe Bay and view brightly colored reef fish and coral gardens through a glass bottom boat 8 to 11:30 a.m. July 27 with the Family Service Center's Women's Awareness Program.

Child care is \$1.50 per child and transportation is provided.

Reservations should be made as soon as possible because child care space is very limited. The excursion costs \$2.50 per adult and the deadline is Friday.

Journalists needed

Volunteers are needed to bring the public affairs field here up to par.

To qualify for a public affairs move, applicants, male or female, must pass a screening test by the public affairs officer, or in his or her absence, a respective commanding officer.

Candidates must also have General Technical scores of 110 and be high school graduates or equivalent.

If selected, and upon the completion of formal training, the primary military occupational specialty will be assigned.

For more information about the public affairs field and its duties, call the public affairs chief at 257-2178/2179.

Boot regs

Marines and sailors

here are authorized to wear only Marine Corps issue combat boots with the utility uniform. This regulation became effective Monday.

The black leather combat boots are authorized for field and garrison wear, while the canvas top "jungle boots" are restricted to field wear.

The wearing of other boots with the utility uniform, most notably U.S. Army "Jump Boots" is not authorized.

News wanted

News items for At-A-Glance are appreciated and should be submitted to the Joint Public Affairs Office by noon Thursday the week before publication. Items are published on a case-by-case basis.



IT'S SHOW TIME! — Expressions vary as members of Virginia Rose's dancers go through a creative dance routine. The program at the 3d Marines Training Facility was the first recital for the dancers, who began lessons in February. The program included dancers 3 years old through adults. For information on dance classes, contact the dependent branch of Special Services. (Photo by SSgt Bob Torres)

Would you be as proud of any other job?

UNCONTESTED DIVORCE — \$160.00*

(Fair terms to which both parties agree)
two children of the marriage & no real property interest
ADDITIONAL CHARGE FOR CHILDREN \$30*
ADDITIONAL CHARGE FOR REAL PROPERTY \$50*

DIVORCE

CONSULTATION — \$50*

UNCONTESTED

ADOPTIONS — \$260*

SIMPLE WILLS — \$40*

OTHER FEES UPON REQUEST.

BARBARA LEE MELVIN

National Secretary — National Association of Women Lawyers

521-7496

evenings and weekends by appointment

*Plus tax.

FAMILY CHIROPRACTIC CENTER INC.

KANEOHE 235-6677



Dr. Lawrence J. Connors
M.A., D.C.



Dr. Michael L. Cervo
D.C.

CHIROPRACTIC... A NATURAL SOLUTION TO HEALTH PROBLEMS

- Headaches
- Neck Pain
- Shoulder-Arm Pain
- Bursitis
- Numbness In Hands & Feet
- Pinched Nerves
- Whiplash
- Backache
- Nervousness & Tension
- Muscle Spasms
- X-Ray

Open 6 Days a Week: Mon.-Fri. 8:30 a.m. to 6:30 p.m.
Sat. 9:30 a.m. to 1:30 p.m.

HONOLULU FEDERAL SAVINGS & LOAN BLDG.
45-1144 Kam Hwy., Suites 200 & 200A

BLAST THE BLAHS!



The blahs don't stand a chance against The Incredible Hulk and the rest of the spectacular Marvel Universe! We've got 'em all, as well as Marvel back-issues, paperbacks, posters, collectors' items and much more. Browsers welcome!

comics hawaii

WE BUY, SELL AND TRADE NEW & OLD COMICS

25 Oneawa St., Ph. 262-8778
Kailua HI 96734

25% OFF ON EYEWEAR. LENSES, FRAMES, SUNGLASSES

STANDARD SOFT CONTACT LENSES \$95

CONTINUOUS WEAR SOFT LENSES \$195

Fee includes lenses, care kit, follow up care and 60 DAY TRIAL PERIOD

Effective until July 31, 1983

COMPLETE PROFESSIONAL VISION SERVICES
DEDICATED TO QUALITY AND SERVICE IN VISION CARE

Dr. Charles Dean Optometrist KAILUA 139 Hekili St. 261-9735

Copyright © 1981 Marvel Comics Group. A Division of Cadence Industries Corp. All rights reserved.

Straub brings family health care close to home

INTRODUCING DERMATOLOGY SERVICES

Dr. Jay Grekin

at Straub-Hawaii Kai
Alternate Thursdays, 1:30-3:45 p.m.
beginning July 21

Dr. Roman Glamb

at Straub-Aiea
Alternate Thursdays, 1:30-3:45 p.m.
beginning August 25



Hawaii Kai

Straub Family Health Center
in Koko Marina
7192 Kalaniana'ole Highway
Phone: 396-6321

Aiea/Pearl City

Straub Family Health Center
in Newtown Square
98-1247 Kaahumanu Street
2nd floor
Phone: 487-2477

FREE 10-STEAKS

1" Tenderloin For Opening Your 90 Day Same As Cash Account

ALL MEAT GUARANTEED THAT IS CUT ON OUR PREMISES. NO TIME LIMIT GUARANTEE.

CHARGE IT!
90 DAYS TO PAY SAME AS CASH — NO INTEREST OR CARRYING CHARGES ADDED. PAYMENTS START 30 DAYS FROM PURCHASE!

PACKER TRIMMED STEAK & ROAST ORDERS 2.69-4.89
U.S.D.A. CHOICE LEAN BEEF TRIM-LOW-RIB-ROUND & CHUCKS

WE APPRECIATE YOUR BUSINESS MAHALO!

40 lbs FREE!
40 LBS. PORK & CHICKENS WITH PURCHASE OF SIDE OF BEEF

ONE WEEK ONLY

U.S.D.A. CHOICE 240 lbs. FOR ONLY \$18.17

PER WEEK FOR 12 WKS NO INTEREST

EXAMPLE 200 Lbs. Beef of 1.29 Lb. & Bonus Pack ONLY

SECTIONS B-C-D-E-F-G

ON BEEF CHART PLUS EXTRA 0 AND 1 SECTION WTS. AND 200 LBS LBS

40 LB. BONUS PACK FOR FREE

20 LBS. FRYERS
5 LBS. PORK CHOPS
10 LBS. SAUSAGE
5 LBS. HAM

NO PAYMENT TIL AFTER AUG. 20th

STORE HOURS: OPEN MONDAY-FRIDAY 10-8
SATURDAY 10-6, SUNDAY 10-6

THE BEEF CENTER

CALL NOW 833-0020 3131 N. NIMITZ (Airport Side)

Nightfighters play day games for Navy Relief



MUD MANIA — Sliding in the mud is Shirley Kanamu's contribution to the recent Navy Relief Carnival sponsored by Battalion Landing Team, 2d Battalion, 3d Marines. Her

fellow wrestlers are Lance Corporal Richard Olan (buried), who donated \$67 for this chance, and Christina Gadshaw. (Photo by Cpl T.J. Clark)

by Cpl Randy Dewey

"I've got \$66, who'll give me \$67 for the chance to wrestle these two mud-wrestling beauties?"

"I bid \$67!"

"The bid is \$67 from the rather excited young man at the edge of the mud ring. Going once, twice, wrestle!"

Where on this station could an auction of beautiful women and mud wrestling be found? Where else, but in the lair of the Nightfighters, Battalion Landing Team, 2d Battalion, 3d Marines.

It was Navy Relief Fund Drive time again and the Marines of BLT 2/3 decided to have a carnival. The main events consisted of a basketball free throw, arm wrestling, greased pig chase, and mud wrestling. There was also an auction of baked goods, with surprises attached to them to make things interesting.

The main event, however, was the Weapons Company 135 mile perimeter relay run. The 16 Marines and one Navy corpsman embarked upon the grueling

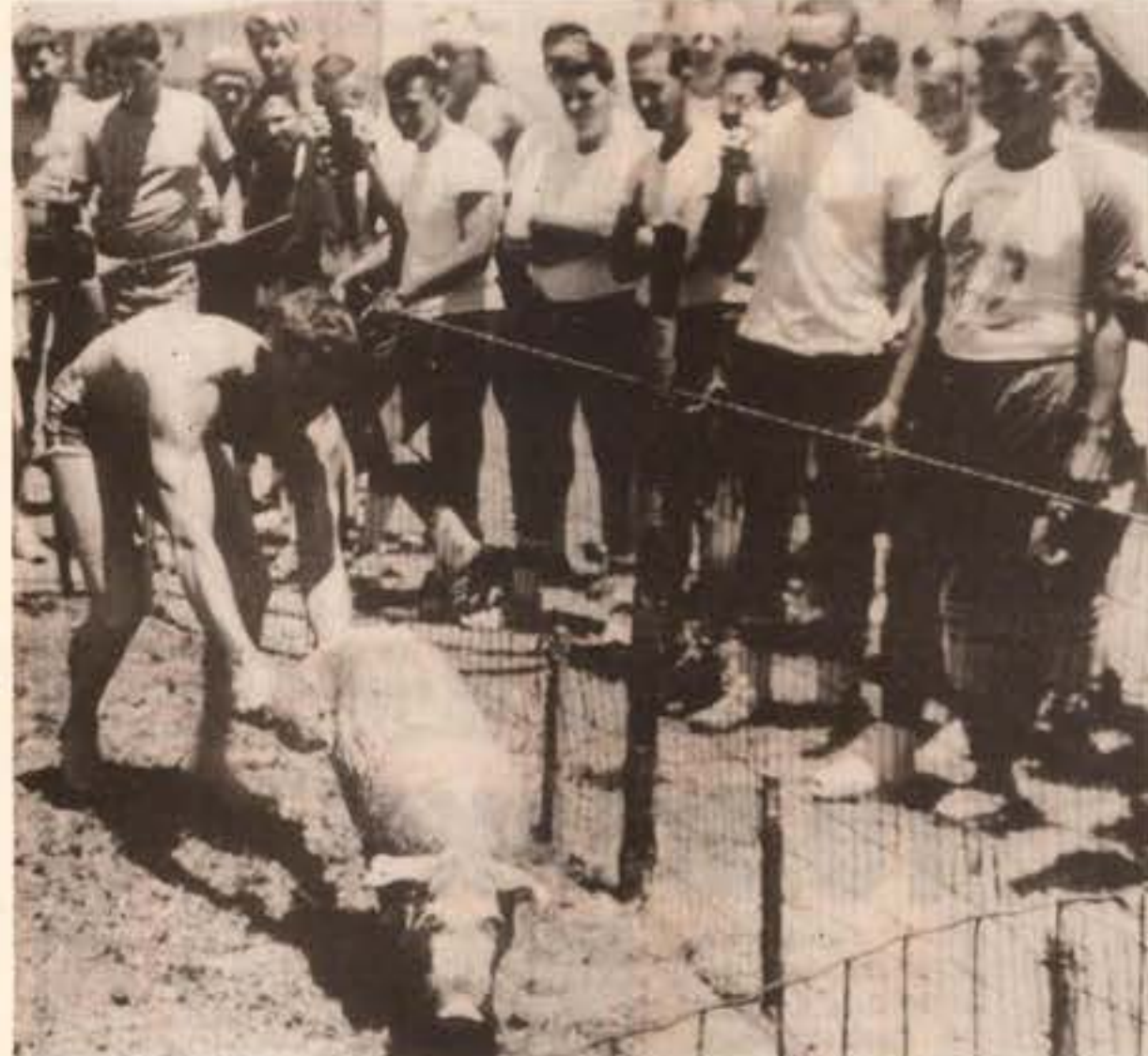
course at about 5 p.m. June 30 and arrived back here to kick off the carnival festivities at 11:30 a.m. July 1. They ran approximately two shifts of four miles each, one during the day and the other at night. As payment for their efforts, \$500 was pledged to Navy Relief upon completion of the run.

The BLT 2/3 Marines earned \$2,526 from their ingenious carnival. Overall, the Nightfighters raised \$8,477 for the Navy Relief Fund Drive, not counting run pledges and allotments that were later collected.



TOTAL TALLY — First Lieutenant Mark Burger, 1st Marine Brigade coordinator for the Navy Relief Fund Drive, and Major Charles Barton, station coordinator, present a check to Dee Wood (left), executive director of the Navy Relief Society, Kaneohe Bay Branch and Anita

Rice, chairman of interviewers. The air station and brigade collected a total of \$73,000. The additional \$2,000 was donated by the out-going and in-coming deployed Marines. (Photo by SSgt W.S. Saunders)



MEMORIES OF HOME — Private First Class Ralph Stinnett catches the greased pig to win \$10 at a Navy Relief Carnival sponsored by Battalion Landing Team, 2d Battalion, 3d

Marines. "I didn't do it for the prize money," said Stinnett. "I did it because it reminds me of home." (Photo by Cpl T.J. Clark)



PLAYING IN THE MUD — Four Marines from Battalion Landing Team, 2d Battalion, 3d Marines wrestle in the mud at their battalion's Navy Relief Carnival. Corporal Charlie Nieves (left), Cpl Damon Romanelli (right), Private

First Class Michael Chatellier (center), and PFC Michael Thomas (bottom) paid \$5 each for the opportunity to get muddy. (Photo by Cpl T.J. Clark)

Loveable lush entertains Marines

by LCpl Robert Johnson Jr.

CAMP FOSTER, Japan — Foster Brooks, America's loveable lush and bawdy bard, lumbered onto the makeshift stage here recently at the Fieldhouse. Orchestrating his every step, swagger and stagger was a lively vaudevillian tune, compliments of Kristi Evans' band.

Brooks, the comedian, and Evans, the former Miss Georgia, turned songstress, appeared before the full house as part of their DOD and tour of Korea and Okinawa.

Brooks, 71, a native of Louisville, Ky., is a tall, paunchy man with wavy alpine hair, a brushed beard to match, horn-rimmed glasses set on a broad nose and a rudy complexion.

Behind the scenes, Brooks speaks in a congenial, often fatherly, tone of voice about everything from fried chicken to his love of country music, to his farm in the East, to golfing with pals Bob Hope and Gerald Ford. On stage, he's loud and jolly with thick-tongued humor.

Just as Brooks started the first of the evening's jokes and anecdotes, the power failed leaving him stranded on the dark stage. "Somebody must've already saw my act!" he shouted out to the crowd. And, as expected when Brooks graces the stage, the crowd responded with laughter.

Once the show was underway, Brooks thrilled the people with his repertoire of jokes ranging from ice fishing to in-laws to his wife — all sprinkled with sexual innuendo, light sarcasm and mirth. And every joke and story was delivered without a profane word or gesture.

Brooks, a seasoned professional with 10 years of Las Vegas, Nev. performances to his credit, portrays his drunken character most convincingly. As he stammers through his routine, often summoning a loud belch at will or stretching words and intonation, a person truly wonders if his character didn't actually evolve from a personal affliction with the sauce. Foster Brooks isn't a drinking man, however.

Being a comedian is just one side of Foster Brooks, though. He's also an active family man with several children, 11 grandchildren and four great-grandchildren. And, much to the surprise of most audiences, he's one fine country singer with a deep, resonant voice. On his current tour he ends his shows with "Release Me" and "Make the World Go Away."

Little did the crowd know while Brooks performed that he wasn't quite feeling up to par. In fact, a combination of jet lag, the sweltering heat and his arthritis more or less had him down for the count earlier in the day.

But, Foster Brooks is a true professional. He knows as well as any performer that the show must, and inevitably will, go on.

In an interview for the **Okinawa Marine**, Brooks shared his opinions, insights and observations concerning his craft and craftiness.

Q: When a performer isn't feeling well what does it take to muster up the strength, energy and sincerity to go on with the show?

A: I really don't know what it takes, exactly. I guess when you know it's showtime. I'd have to be in pretty bad

shape not to go on stage. I've performed a number of times with a fever, or my arthritis acting up or just plain sleepy.

Once there was a time when I felt pretty bad. My doctor asked me about my thinking abilities, he checked my blood pressure and heart beat. He suggested that I cancel my show. I performed anyway. But I felt and looked ill.

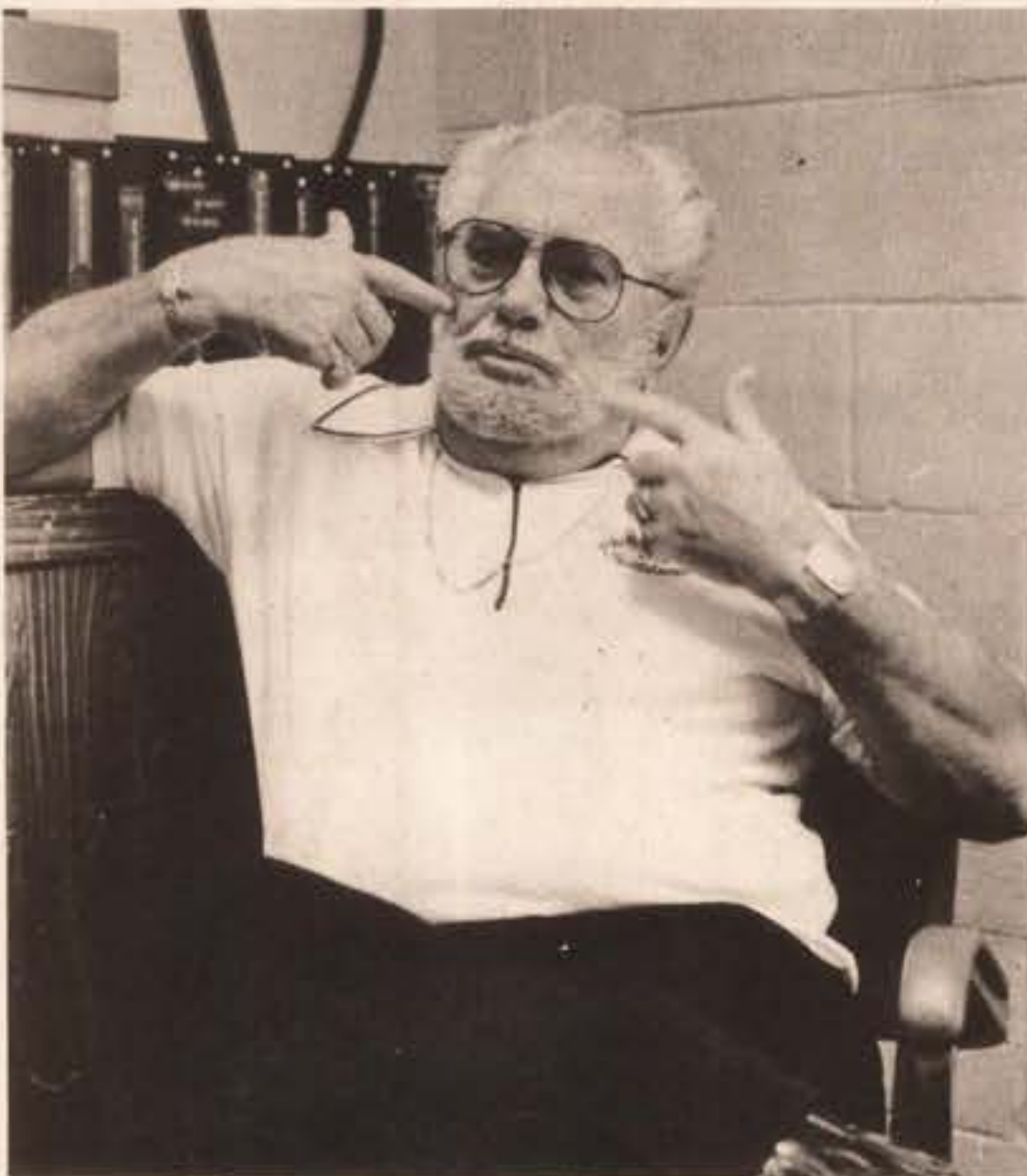
What peeved me about that particular illness was when the **National Enquirer** splashed it across the front page that Foster Brooks turned white as a sheet, had trouble breathing and had to be rushed to the emergency room. No such thing happened. I called the writer and asked him why he blew it out of proportion. He told me things had to be made dramatic for the paper. Whether it happened or not!

Q: Foster Brooks is a household name. Your character is synonymous with the loveable lush. In your many years in show business is it possible to pinpoint when you really hit the big time?

A: Steve Allen gave me my start in television when I appeared on 14 of his shows. But it was three particular shows out of three years I appeared on Dean Martin's roast that did more for me than anything else. It put me on the map, so to speak.

I came into the big money when Perry Como took me to Las Vegas. From there I appeared on the Johnny Carson Show, then did 26 weeks with Bill Cosby.

Success came to me late in life. The only thing that has changed about me is my bank account.



TRICKS OF THE TRADE — Foster Brooks, America's loveable lush and bawdy bard, talks about the tricks of the

trade during an interview. (Photo by LCpl Tim Shearer)

Localmotion

K-RAY OFFICERS' CLUB

TODAY — Lunch in the Pacific Room from 11 a.m. to 1 p.m. features specials, hot carved sandwiches, soup and salads. Mongolian barbecue on the Lani from 6 to 8:30 p.m. The Alii Bar is open from 4 to 10 p.m. The pool snack bar is now open from 11 a.m. to 5 p.m. Wednesday through Sunday.

THURSDAY — Lunch in the Pacific Room. Beebeater's Buffet from 6 to 8:30 p.m. featuring steamship round, seafood item, rice or potatoes, vegetable and a salad bar. The Alii Bar is open from 4 to 10 p.m.

FRIDAY — Lunch in the Pacific Room. Officer appreciation night in the Alii Bar from 4:30 to 6:30 p.m. with 75 cents off a pitcher of beer. All-American hot dogs will be served. Bar closes at 1:30 a.m.

SATURDAY — Hotel round of beef and Alaskan king crab buffet in the Pacific Room from 6 to 8:30 p.m. The Alii Bar is open from 1 to 11:30 p.m.

SUNDAY — Champagne brunch in the Pacific Room from 10 a.m. to 1 p.m. featuring a mini buffet, eggs Benedict to order, and juice and champagne. In the evening, prime rib and peel-your-own shrimp. The Alii Bar is open from 4 to 10 p.m.

MONDAY — Lunch in the Pacific Room from 11 a.m. to 1 p.m. Join us Monday through Friday for lunch specials, hot carved sandwiches, soup and salads. Monday evening the club is closed.

TUESDAY — Lunch in the Pacific Room from 11 a.m. to 1 p.m. The Alii Bar is open from 4 to 10 p.m.

SNCO CLUB

TODAY — Lunch from 11 a.m. to 1 p.m. featuring beef kabobs and fried rice. Open menu dining available from 5 to 8 p.m. Bid whiss and pinocle tournaments start at 6 p.m.

THURSDAY — Lunch from 11 a.m. to 1 p.m. featuring lasagna. Every Thursday is Mongolian barbecue from 5 to 8 p.m. From 8 to 11 p.m. "Elijah Powers" will entertain.

FRIDAY — Lunch from 11 a.m. to 1 p.m. featuring mahimahi or teri chicken. Happy Hour from 4:30 to 6:30 p.m. Dinner specials will be jumbo stuffed shrimp and/or prime rib or a one pound cowboy steak. Listen

to the variety sounds of "The Entertainers" from 9 p.m. to 1 a.m.

SATURDAY — Dining room is open from 6 to 9 p.m. featuring beef and crab or just beef, all you can eat. Ladies night tonight.

SUNDAY — Enjoy our champagne brunch from 9:30 a.m. to noon. Family smorgasbord from 5 to 8 p.m.

MONDAY — Lunch special is macho burrito. Dining room is closed Monday evenings.

TUESDAY — Lunch will be served from 11 a.m. to 1 p.m. The luncheon special is liver and onions. Bingo starts at 6:30 p.m. "Elijah Powers" will entertain from 8 to 11 p.m. every Tuesday in July.

WINDWARD ENLISTED CLUB

TODAY — Lunch from 11 a.m. to 1 p.m. Dining room is open from 5 to 9 p.m. The chef's special this month is your choice of New York steak, top sirloin, or T-bone with all the shrimp you can eat. Try our fried chicken to go available daily from 10 a.m. to 9 p.m. For more information, call 257-2657/2873. The beer garden is open from 10 a.m. to 10 p.m. Monday through Friday. The beer garden features sandwiches, pizza, homemade chili, bagels, salads and other items. Tonight "Jet Stream" plays the best of rock 'n' roll plus top 40 variety in the main ballroom from 7:30 to 11:30 p.m.

THURSDAY — Lunch from 11 a.m. to 1 p.m. Dining room is open from 5 to 9 p.m. with an open menu. Our dinner special this evening is your choice of New York steak, top sirloin, or T-bone with all the

Alaskan Crab legs you can eat, including soup and salad bar. A live band plays rock 'n' roll in the main ballroom from 8 p.m. to midnight.

FRIDAY — Lunch from 11 a.m. to 1 p.m. The dinner special is prime rib and/or lobster tail or just prime rib. Tonight in the main ballroom a live band plays the best of rock 'n' roll from 6:30 p.m. to 12:30 a.m. In the Moongate Lounge Al & Dan's top 40 request line from 7:30 p.m. to 1:30 a.m. Special Happy Hour tonight from 5 to 6 p.m. The club closes at 2 a.m.

SATURDAY — Breezy Inn is open from 5 to 9 p.m. Our dinner special tonight is lobster tail and/or prime rib. "Tequila Qualifications" plays at 8:30 p.m. Then it's Ladies Night at 9 p.m. with free roses for the ladies in the main ballroom. The beer garden is open this evening from 5 to 10 p.m.

SUNDAY — Club opens at 11 a.m. The Breezy Inn is open for dinner from 5 to 9 p.m. Our dinner special tonight is prime rib and/or lobster. Tonight we will be featuring two guest D.J.'s — One from Detroit and one from Newark, in the main ballroom from 7:30 p.m. to 12:30 a.m. In the Moongate Lounge "Black Widow" plays rock 'n' roll from 7:30 p.m. to 12:30 a.m. The beer garden is open this evening from 5 to 10 p.m.

MONDAY — Lunch from 11 a.m. to 1 p.m. Breezy Inn is open from 5 to 9 p.m. with all the spaghetti or lasagne you can eat including salad bar, garlic bread and a complimentary glass of our house wine. Tonight "Rio" plays the best of country and western from 8:30 to 11:30 p.m.

TUESDAY — Lunch from 11 a.m. to 1 p.m. Dining room is open from 5 to 9 p.m. with all you can eat

smorgasbord every Tuesday night. Peter Wolf's rock 'n' roll request line with trivia questions and free rock 'n' roll T-shirts from 6:30 to 11:30 p.m.

Cinema

MCAS Theater

W T F S S M T
1 2 3 4 5 6 7

1. **Roaring Fire** — Henry Savada, Sue Shiomi, R. drama.

2. **Deadly Games** — Sam Groom, Steve Railsback, R. drama.

3. **Lone Wolf McQuade** — Chuck Norris, David Carradine, PG, action drama.

4. **Butterfly** — Stacy Keach, Pia Zadora, R. drama.

5. **Deadly Harvest** — Clint Walker, Gary Davies, R. drama.

6. **Absence of Malice** — Paul Newman, Sally Field, PG, drama.

7. **The House on Sorority Row** — Kathryn McNeil, Eileen Davidson, R. horror drama.

The Station Theater opens at 6:45 p.m. for ticket sales and the movie starts at 7:15. For information on Camp Smith movies call 477-6467/6382.



Stay

Marine.

You can count on the Corps.



Support Navy Relief

MIDWIFERY OPTIONS,

Prenatal Care; Hospital; Birth Center
Medicaid/CHAMPUS/Most Insurance Co.

MILILANI 623-2212 HONOLULU 734-2565 BIRTH CENTER 621-1160

The Quest for Personal Freedom

a lecture series by...

Swami Dayananda Sarasvati

July 21-23 7:30 p.m.

at the Center for Korean Studies Auditorium 102

1881 East West Rd., University of Hawaii Admission Free



INSTANT WINNERS
Keep Playing!
Game ends August 15, 1983

Get game pieces at Chuck E. Cheese's Pizza Time Theatre. Collect the letters and spell Pizza Time characters' names to win cash, personal home computers, and video games.

NO PURCHASE NECESSARY
Minors must be accompanied by adult

PEARL CITY

Times Square-Waimalu

(Next to Times Supermarket) Phone 488-8487

Sun.-Thurs. 11 a.m.-11 p.m.
Fri.-Sat. 10 a.m.-12 p.m.
*Except holidays open at 10 a.m.

All Minors MUST be accompanied by an adult.



"10" A PERFECT

Panasonic 10" diagonal Color Portable TV with Quintrex II In-Line picture tube.

Add a little color to your life with Panasonic's CT-1110-B. For remarkable resolution, few others even come close to Panasonic quality.

Features include Panalock automatic fine tune, CATV/Master antenna connector, detachable VHF dipole and UHF loop antennas, privacy earphone and more.

See our Perfect "10" at your nearest military exchange today.

Panasonic
just slightly ahead of our time

HEALTH CLUB • HEALTH CLUB • HEALTH CLUB

HEALTH CLUB SPECIAL ENDS JULY 30!!



Only
\$49*
Initial Payment

Excludes Racquetball



KAPIOLANI CLUB

1680 Kapiolani Blvd., 942-8990
Open 24 Hours

KANEOHE CLUB

45-608 Kamehameha Hwy.
235-5839

MAPUNAPUNA CLUB

2810 Paa St.
833-6619

*\$49 Initial Payment for Paa & Kaneohe Clubs only.
*\$95 Initial Payment Includes Kapiolani Club.
*Based on 3 Year Membership
Must be 18 Years Old

HEALTH CLUB • HEALTH CLUB • HEALTH CLUB

Camp Smith constructs improved facilities, enhances workspace

by Sgt Chuck Jenks

The World War II vintage structures that once housed Camp Smith's Maintenance and Motor Transport equipment and workspaces have been replaced by a \$2.1 million facility which incorporates both sections under one roof.

The dilapidated buildings were demolished April 11 and maintenance and motor transport Marines made way for their new home, Building 600.

According to Captain Daniel J. Sebastian, facilities engineer officer at Camp Smith, there are many improvements over the old buildings.

"The old wooden buildings were not made for maintenance or

motor transport," he said. "This made it difficult to maintain well organized shops. The new complex is specifically designed to meet our needs and therefore progress has and is being achieved more fluidly."

In addition to the new facilities, the multi-million dollar construction contract included the demolition of two old buildings that housed maintenance and motor transport areas and construction of a facility parking lot and a military vehicle gas station.

"The new gas station here makes it more convenient for motor transport," the captain said. "Before it was constructed, we had to drive to Pearl Harbor to gas up our vehicles."

KOREA TOUR

\$695*

Monthly Departures

—Free stopover in Tokyo
—Stopover in Hong Kong (\$232)

- 5 nights, 6 days
- Deluxe hotel
- Full breakfasts
- Day Tour - Panmunjom (including lunch)
- Seoul City Tour

Inquire about:

—Single supplement (\$120)
—Optional extension in Korea

*Special price reserved for Active Military, Active & Retired, and Federal Employees and Their Families

Special Services
422-9444

2nd STORY

On behalf of our Staff & Management we'd like to thank all our patrons for their support.

Bill Baker's CARPET CORNER
HAWAII'S CARPET BARGAIN CENTER

COME TO OUR 1,000 ROLL SALE

EVERY DAY IS SALE DAY AND YOU SAVE IN EVERY WAY WITH THE LOWEST PRICES IN HAWAII

Hours: Mon-Fri. 9:00-5:30
Sat. 9:00-4:00
Closed Sunday

970 AHUA ST.
834-1456

Across From Sears

AIEA COLLECTIBLES

Stamps • Coins
Collectibles
488-8690
OPEN 7 DAYS — 10 to 6
BEHIND CUTTER FORD AIEA

JULY SALE

Big Savings On This Package!!
Includes: Commodore 64K Computer
Commodore Graphics Printer
Commodore Color Monitor
Gould Printer/Monitor Stand
All For Only \$999.95

or
Timex 1000 Computer \$39.95

KAILUA COMPUTER SYSTEMS
402 Uluniu Kailua 262-2619

TLA SPECIAL **\$35.00** + TAX

Rooms w/FREE In-Room Movies & Rates starting at

TLA accommodations conveniently located to all military bases featuring:

- AIR-CONDITIONED ROOMS
- COLOR TV
- SWIMMING POOL
- FREE PARKING
- FREE AIRPORT TRANSPORTATION
- HAIR SALON
- LOUNGE
- LAUNDROMAT
- CAR RENTAL
- TRAVEL AGENCY

Restaurant serving Breakfast, Lunch and Dinner with Children's Menu and Room Service available.

Complimentary Welcome Cocktail Parties!
TLA Information Receptionist in the lobby of the Hotel.

—also—
ASK ABOUT OUR SPECIAL MEAL PACKAGE AVAILABLE FOR TLA GUESTS.

RAMADA INN
"Call Us A Family Hotel"

3253 N. Nimitz Hwy
Honolulu, HI 96819
Phone (808) 836-3836
An IRONWOOD Resort

BRING THIS COUPON

FREE 5 X 7 ENLARGEMENTS

Just present this coupon when you bring in a roll of Color Print Film for PRO PRINT Developing and we will give you a COUPON for a FREE 5 X 7 Enlargement. Valid on 110, 126, 135 sizes.

Available at all Clic Photo locations thru July 31, 1983
Call 836-0691 for nearest Drive Up location

Clic PHOTO

Kodak

Hand Carved Teak Coffee Table w/2 end tables

Special \$580.00

Easy Financing For Military
Free Delivery For All Military Residents.

(Many other items available at special prices this week)

THIS MAP IS WORTH \$10 ON A PURCHASE OF \$75 OR MORE

\$10 EACH **\$10 EACH**

Majestic Furniture

New Location Of
MAJESTIC FURNITURE
3632 Waiialae Ave.
Honolulu, Hawaii 96816
2nd Level of Kahala Furniture
TELEPHONE 735-3068

FURNITURE LIQUIDATION

JUST ARRIVED!!

500 ROOMFULS OF QUALITY FURNITURE FROM LEADING WAIKIKI HOTEL!

MIRROR 30 x 40 \$25.00

TABLE LAMP \$16.00

RATTAN SIDE CHAIR \$29.00

PARSONS CORNER TABLE 30 x 30 x 21 \$39.00

PARSONS DINING/GAME TABLE 34 x 34 x 29 \$59.00

RATTAN OCCASIONAL CHAIR \$45.00

PARSONS TABLE WITH DRAWER 24 x 72 x 29 \$59.00

LANAI CHAIRS \$28.00

LANAI TABLES \$12.00 - 15.00

FLOOR LAMP \$19.00

RATTAN HEXAGONAL COFFEE TABLE \$59.00

ISLAND TRADING, INC.

717 Moowaa Street
Back of Kapalama Shopping Center

Free headboard with bed purchase.

Offer good while inventory lasts!

CALL 847-1361 FOR DETAILS

SONY
THE ONE AND ONLY

MARINE CORPS EXCHANGE

SIGHT & SOUND SALE — July 15 to 22, 1983

NEW!
KV-2654R
Remote Control Trinitron Concole TV

- Trinitron Color System (one-gun/one-lens)
- Spectacular 26" giant-screen picture
- New Dynamic Focus system for extra sharpness and resolution, corner to corner
- 14-push button Express Commander remote control for instant access to the channel of your choice
- Handsome beech wood veneer on all-wood cabinetry
- Sleep Timer Button that turns your TV off automatically after one hour

NEW!
KV-1955R
Remote Control Trinitron Color TV

- Trinitron Color System (one-gun/one-lens)
- 19" screen with brilliant, beautiful color
- 14-push button Express Commander remote control for instant access to the channel of your choice
- Sleep Timer control that turns your TV off automatically after one hour
- High technology metallic styling

NEW!
KV-1917
Trinitron Color TV

- Trinitron Color System (one-gun/one-lens)
- 19" screen with brilliant, beautiful color
- 14-push button Express Commander remote control for instant access to the channel of your choice
- Dynamic Picture for extended contrast ratio
- Contemporary walnut styling

Also available KV-1918 similar to the KV-1917 but with a silver metallic cabinet.

NEW!
Beta SL-2400

Betamax Videocassette Recorder

- Front-loading operation, front-mounted controls
- BetaSkipScan high-speed search capability lets you switch instantly from Fast Forward/Rewind to Betastop picture search mode
- 3-day/1-event easy-setting timer for automatic recording when you're away or asleep
- Sophisticated low-profile component styling

Also Available: SL-2405
Similar to the SL-2400 but with a Champagne Gold metallic finish.

NEW!
WM-F5
Walkman FM Stereo Cassette Player

WALKMAN

- Sturdy, water-resistant case
- Disc-drive cassette player resists instability caused by jogging
- Built-in FM tuner
- Ultra-mini MDR-type earphones
- Available in blue, red, and yellow

watchman

FD-210
WATCHMAN TV

- The world's finest pocket-sized TV with Sony's revolutionary flat-display picture tube
- Ultra-miniature 2" screen with crisp, high-contrast B/W picture
- TV Sound Switch for sound-alone listening when you're traveling (lightweight earphone supplied)
- AC DC operation

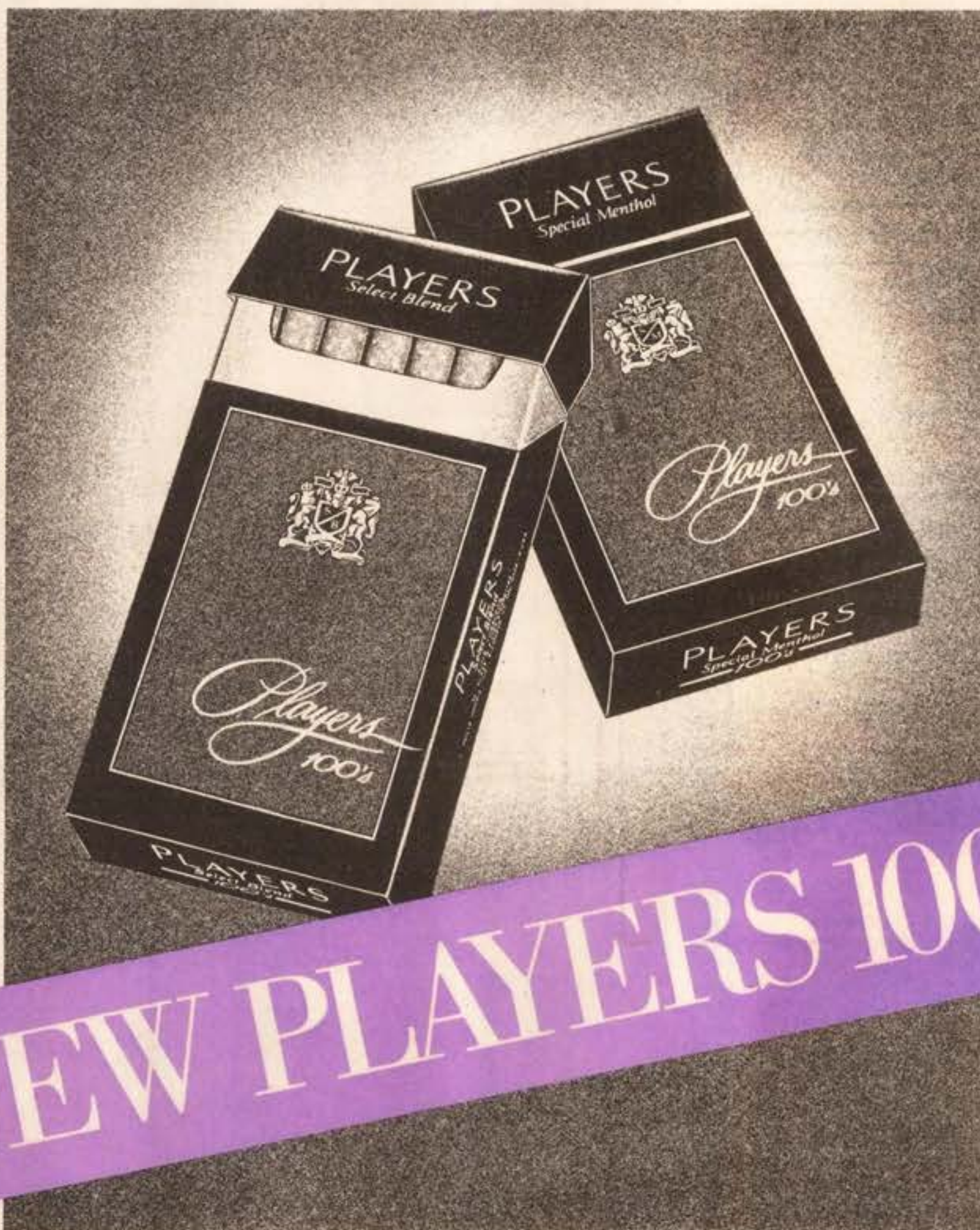
Betahi-fi **NEW!**

Beta Hi-Fi Videocassette Recorder

- New Beta Hi-Fi stereo recording system with higher audio fidelity than even open-reel tape recorders
- Stereo-Ready circuitry for multi-channel TV broadcasts
- New 2X Fast Play with Sound mode, for time-compressed review of your programs with fully intelligible sound
- 3-day/1-event easy-setting timer for automatic recording when you're away or asleep

This ad not paid for by Marine Corps Exchange

© Philip Morris Inc. 1983



Introducing Players 100's.
Regular and Menthol
Also available in Kings

Warning: The Surgeon General Has Determined
That Cigarette Smoking Is Dangerous to Your Health.

Kings: 12 mg "tar," 1.0 mg nicotine—100's: 14 mg "tar," 1.1 mg nicotine av. per cigarette, by FTC method.

Indonesian Marines view PTA training

by Cpl Lorraine Brooks

Five Indonesian Marine Corps officers are currently visiting here to observe and participate in training exercises.

The officers' military occupational specialties are infantry operations, education and training.

"We were chosen to come here mainly because of our ability to speak and read English well. We have visited the United States before, so we were familiar with its customs," said Major Howard Frans, senior officer of the group.

According to Frans, the structure of the U.S. Marine Corps is very similar to the Indonesian Corps. "We are also associated with our country's navy," he said.

"Of course, the U.S. Marines' weapons and equipment are more

advanced than ours," said Frans.

"Our mission here is to learn how U.S. Marines train at the Pohakuloa Training Area and to learn how to properly deploy. There is a lot we want to know about the American Marines," said Maj. Saldin Norman.

"After training here, we will take what we've learned and try to apply it to our troops and environment. Unlike the United States, Indonesia consists of 13,000 islands of which 3,000 are inhabited. Therefore, we have to make adjustments to what is taught here."

The officers expect field training at PTA with 2d Battalion, 3d Marines to be the highlight of their visit. They will return home Aug. 6.

Runaways . . .

Con't from Page A-1

"The child can't talk to the parents. There are a lot of different reasons, but mostly there is no communication."

"If a family is experiencing problems and a child is threatening to run away, they can call us," said Harvey Leighnor, Family Service Center. "We'll work with them. Seeing us before there is a problem could work as a preventative measure."

The FSC phone number is 257-3168.

"We've worked with runaway children here after they've been referred to us by the Provost Marshal's Office," continued Leighnor. "We assign a counselor to each individual on a case-by-case basis. Sometimes we refer a child to a CHAMPUS referee. They are professional counselors on the CHAMPUS program, so the cost is not very high. We also have a teenage group counsel that

we use to try to help with the runaway problem."

"It's very difficult to work with runaways," Leighnor said. "A lot of times it is an adolescent that is experiencing independence. They might be experiencing a new way of life, something that they didn't find at home, and they like it more. Or a runaway might fear that if he comes home, what the parents will do to him."

"I would recommend that if anyone is thinking of running away, or is having problems at

home, that they call the Suicide Prevention Center," Leighnor said. "Now the name itself does sound serious, but what the center has is a direct line to every resource known on the island. It works as a referral service for anything a person could want. It has a 24-hour number and the call doesn't have to be a life or death situation, but a call to the center can certainly help."

The suicide prevention number is 521-4555 and is found on the first page of the telephone book.

Don't get caught uncovered.
Stay Marine.

SUPPORT RED CROSS

941-4422
KUHIO 2
205 Kulu

STARTS FRIDAY!
No Passes!

THE THIRD DIMENSION IS TERROR.

JAWS 3-D

ALL NEW

JOHN LONSHURST presents JAWS 3-D
DENNIS DAVY BOSS ADAMSBERG
SAMUEL MCKINNONALE LOUIS GUSSETT JR.
"The CHIRON TRAILER" ALAN PARKER
ALAN LONSHURST "HOWARD UPSHORE" JON ALVES

Forget about Amway,
Forget about Avon,
Forget about Shaklee,
Forget about all those companies
and make some real MONEY!

Gold Party Express

\$100 PER HOUR COMMISSION POSSIBLE —

*No Selling Involved
*Our Prices are the lowest
*Quality the Highest on 14K Gold
*Semi-precious Stones
*No Investment needed

Call Anytime!

LENNY 396-6885
GEORGE 524-7647

THE EYECARE EXPERTS

2 WEEK SLEEP IN LENSES

\$185*
SPECIAL LIMITED OFFER
STANDARD SOFT LENSES

\$79 WITH COUPON
Includes lenses, care kit, solution and case. All follow-up visits with the doctor. Wear them home the SAME DAY in most cases.

Summer Special **20% OFF** Sunglasses

DR. TIM K. TOGAKAWA
LASIK CASE SPECIALISTS

Pearl City
DR. EDWIN ENDO
98-1238 Kauhuanu St., No. 301
PH. 487-7907

WE'VE MOVED
Downtown Office
233 Merchant St. (1/2 Block Ewa of Post Office)
PH. 538-6226



KAILUA SUPER SAVER SALON

WE'RE HERE EVERYDAY
You'll find the same low prices,
the same high quality products, and
the same service by trained stylists.

OUR SPECIALTIES FOR WOMEN, MEN & CHILDREN:

- PRECISION HAIRCUT \$6
- SHAMPOO/CONDITIONER/FINISH \$6
- PERMANENT WAVE
with either or both of above additional \$6
long hair slightly higher

NO APPOINTMENT! COME IN TODAY!
beauty salon • kailua 945-5694
Monday, Tuesday, Wednesday, Saturday, 9:30 a.m.-5:30 p.m.
Thursday, Friday, 9:30 a.m.-9:00 p.m. Salon closed Sundays.
(service subject to time availability)

LIBERTY HOUSE

A Package Deal For YOU!

\$30.00 PER DAY

PACIFIC Marina INN
AT THE AIRPORT
836-1131

MILITARY ROOM AND WHEELS

- \$48/Day Package
- 30 room
- 18 car

RENT-A-CAR

- In House Movies Nightly
- Day Rates Available
- Deluxe room at the Pacific Marina Inn
- Rental Car available

HOTEL FEATURES:

- All rooms are air conditioned
- Swimming Pool
- Kitchenettes
- Laundry Room
- 24 Hour Courtesy Car Service to and from Honolulu Int'l. Airport
- T.L.A. Approved
- Waikiki Beach just 20-minutes away from Pearl Harbor, just 10-minutes from hotel

2528 Waiwai Loop
Honolulu, Hawaii 96819

WE QUIT!!
Going Out-of-Business at Schofield!
SAVE 20 to 70% OFF

Doors Close 5 P.M. July 31st!

Sale Starts Now thru the 31st!

100 Rattan & Buri Items & Accessories

CASH ONLY — Everything Goes!
Military Only on Base at Schofield Bldg. 847
Quantities Limited to Stock On Hand!
DON'T MISS OUT!!

Rattan Hut (Only at Schofield)
Phone 624-4116



Registration still possible

Soccer teams spar in 'keen' games

Story and photo
by Cpl Randy Dewey

What do Hurricanes, Cougars, and the Force have in common? If it's on this station, it means Midget division, youth soccer. All three teams sparred

Saturday against teams from Aliamau Military Reserve and Wheeler Air Force Base. The competition was keen and spectator involvement was exuberant.

The Cougars were declared by

the Wheeler Cosmos by a score of 6-1. Hurricanes lost their steam in a confrontation with AMR, 5-2. And, the Force was barely forced out by Wheeler AFB, 2-1.

"It's not important if the teams win or lose," said Master Sergeant Clyde Harrison, president of the Kaneohe Bay Youth Athletic Sports Club. "There's no first place or last place, the important thing is that the kids get to play, and they do get to play at least half of each game."

The club is organizer and operator of the youth soccer program. Harrison initiated youth soccer after hearing of extreme interest from dependent families here.

Youth soccer participants must be dependents of station military personnel between the ages of 6 and 16. The kids are then divided into five divisions. The Grasshopper division is for children 6 to 8 years old, Termite division 8-9, Pee Wee division 10-11, Midget division 12-13, and the

Hantam division is for kids 14-16 years of age.

The children practice approximately two hours each day, but no more than six hours a week. Girls play right along with the boys and take their share of the bruises, and give as many too.

Registration for youth soccer expired June 10, but there is still limited registration in the Midget and Hantam divisions. The cost is \$20 for the first child in a home and \$15 for all others.

"It's difficult getting volunteers for any of our sports programs," said Harrison, "and youth soccer is no exception." All coaches, assistant coaches, and officiating personnel are volunteers and the youth soccer program still needs experienced volunteers, either dependents or active duty Marines. Anyone interested in registration or volunteering time to youth soccer should contact Special Services, athletic department at 257-3550/3622.



STEALING — Joey Schwartz, playing for the Force, goes in for the steal against Wheeler Air Force Base opponents. The youth soccer game resulted in a close loss by the Force Saturday.

The Original Run 1983 12th Annual ATHENS MARATHON Oct. 1-9



Run over the traditional Marathon-to-Athens route. It commemorates Pheidippides' run to announce the Athenian victory over the invading Persians in 490 B.C. The starting line is near the Tomb of Marathon, the finish line is at the 70,000 seat Olympic Stadium in the heart of Athens.

8 days out of LA \$1235
special fare HNL-LA

4 day cruise extension \$464
includes airfare, hotel, 2 meals/
day, pre-race dinner

Marathon registration fee
T-shirt

Some sightseeing
Prizes to winners, diplomas with
official times can be obtained

for more information and brochure

**Island World
TRAVEL**

Hawaii Kai
6650 Hawaii Kai Dr.
(between Texas Station
and Mauna Luani)
395-7588

Airport Ramada Inn
3253 N. Nimitz Hwy.
(free parking in garage)
Open 7 days a week
833-3347

Don't Suffer Needlessly From Pinched Nerves

- Headaches
- Stiff Neck
- Shoulder Pain
- Backaches
- Hip Pain
- Arthritis
- Allergies/Sinus
- Bursitis



See
Dr. Jeanne Michaels
R.N. D.C.

Pacific Chiropractic

602 KAILUA RD. SUITE #207



261-0831



Camp H.M. Smith Commissioned Officers Club

22 JULY, 1983

1630-2230



"CELEBRITY SESSION"

Join us for a fantastic
evening under the
stars!

15 Piece orchestra
1830-2230

Big Band Sounds
Thirties thru Eighties

Steak and Finger Lobster
Dinner — \$10.00
Serving 1900-2200

Reservations Required

Phone: 477-6491



We brought down the cost of keeping up with old buddies.

You went through a lot together. You shared some of the best and hardest times of your lives.

Now, Hawaiian Telephone makes it easier to talk about old times with old buddies. International rates on direct dial calls to many points have decreased by 40%. And rates for evening

calls to the Mainland were just reduced an additional 10%, making them 40% less than the standard day rate.

You've got lots of new stories to tell. So keep in touch. Because old friends are only as far away as the nearest telephone.

HAWAIIAN TELEPHONE
GTE

Our lower rates bring you closer to buddies around the world.

	FIRST MINUTE (DIRECT DIAL)	EACH ADDITIONAL MINUTE
GERMANY AND ITALY	\$1.87	\$1.09
JAPAN AND KOREA	\$2.50	\$.92
EAST COAST U.S.	\$.36	\$.25
MIDWEST U.S.	\$.34	\$.24
WEST COAST U.S.	\$.33	\$.22

Plus 3% Federal Excise Tax. Above rates based on discounts available during special discount periods. See your telephone directory or call the operator for details.

*Evening rate applies between 5 and 11 p.m., Sunday through Friday.

NOW APPEARING

**INTERNATIONAL
HAIRCUTTERS**

Alkali Park Shopping Center, Kailua

OPEN:
9 AM - 9 PM
MON.-SAT.
MEN'S NIGHT
Wed. 6-9 PM
Haircuts \$10
254-1585

Sportsnotes

The tri-annual racquetball tournament will start 9 a.m. Saturday and Sunday and will continue the following week, after duty hours, until completed. Divisions are: open, intermediate, novice, and senior. Players are urged to pre-register now on the sign-up sheets by the racquetball courts in the new gymnasium. This tournament is a warm-up for the Hawaii Marine Athletic Council and All-Marine programs, which start Aug. 27.

People interested in trying out for the men's or women's varsity volleyball teams should contact Staff Sergeant Bill Seale, Marine Fighter Attack Squadron-212, at 257-2856. Practices are conducted Tuesdays and Thursdays from 7:30 to 9:30 p.m. The varsity teams will be entered in tournaments throughout the year and form the nucleus of the upcoming Hawaii Marine Athletic Council, Fleet Marine Force, Pacific, and All-Marine teams. Camp Smith and Marine Barracks personnel are encouraged to participate and all superior athletes are encouraged to try out for this team.

An organizational meeting for flag football will be conducted at noon July 27 at the station gymnasium. Rosters are limited to 16 players and all units are encouraged to enter two or three teams, thus creating intra-unit as well as intramural competition. The season begins Aug. 20.



Entry forms and schedules for upcoming running events are available at the station gymnasium.

A golf catfight will be conducted 1 p.m. Aug. 3 at the Kaneohe Clipper. Entry forms are available in the athletics office and at the golf course. The field will be limited to the first 40 teams. Entry fees of \$24 must be paid by 4 p.m. July 27. Late entries will not be accepted.

The station marina has a new slalom waterski boat, 19 and a half feet long with a 115 horsepower outboard engine. The boat will require special licensing, and classes will be conducted twice a month. The last class for July

will be at 6:30 p.m. today. The licensing fee for the slalom ski boat is \$10. For more information, contact Sergeant Kellas Dodson at 257-2219.

The fourth Easter Seal Softball Marathon will be conducted Saturday and Sunday at Hickam Air Force Base. Teams will play for two-and-a-half hours and must raise a minimum of \$200 to enter. Each team receives two cases of beer and 15 Easter Seal Softball Marathon T-shirts.

Winning teams will be awarded trophies, and there will be individual prizes based on money raised to benefit children and adults with disabilities in Easter Seals programs throughout Hawaii.



Suggestions concerning possible sports stories should be directed to the Hawaii Marine Sports Editor, Corporal Christopher Wood, at 257-2178.

Take stock in America.



Buy Bonds

Free degree.

Get the degree you've always wanted. See your career planner and ask about the Corps' educational programs.

You can count on the Corps.



Stay Marine.

TLA
Waikiki
\$2900 + TAX
Single Occupancy

MILITARY
Special
\$3200 + TAX
Double Occupancy

HOTEL FEATURES

- Air conditioned rooms
- Color T.V. and alarm clock radio
- Free Shuttle to/from Ala Moana Shopping Center & Waikiki
- Restaurant Serena, Piko Bar, Cast-N-Kettle
- Large Sun Deck and Pool
- Meeting and Banquet facilities, Shopping Arcade
- Guest laundromat, Shopping Arcade

Hawaiian Monarch Hotel
444 NIU STREET • HONOLULU, HAWAII 96815

RESERVATIONS
(808) 949-3911

JAL HOTEL SYSTEM International

COUPON

"Summer Surf Drawing"

THE GREAT AMERICAN FUN HOUSE

★ NEW GAMES ★ PRIZES

★ FREE DRAWING

Win a Custom Surf Board

by Hawaiian Island Creations

2nd Prize — Boogie Board

3rd Prize — \$75.00 U.S. Savings Bond

4th Prize — \$50.00 U.S. Savings Bond

Need not be present to win

Starts in July High Score of the Month Club

Win 30 free games and 1 free "Great American Fun House" T-shirt

★ 274 Kuuilei Rd. Kailua, Hawaii
Phone: 262-2774

★ 5 FREE TICKETS WITH THIS COUPON
Limit: 1 per person

COUPON

Come in and join us for some family fun and details.

New Summer Hours:

Mon.-Thurs	9 a.m.-10 p.m.
Fri.-Sat	9 a.m.-12 Mid.
Sunday	10 a.m.-10 p.m.

★ Private Parties Fund Raisers Call for Details

The Hawaii Division of Forestry and Wildlife urges all citizens to report game law violators to the island office of the Conservation and Resources Enforcement Division. After duty hours on weekends and holidays, call the Conservation Hotline at 548-5918 on Oahu. From other islands, make a toll free call by asking the operator for Enterprise 5469.

FUN NIGHTS

Thurs., July 21

MINI SKIRT CONTEST

Great Prizes - 5¢ Beer

Tune to 93.0 For Details

★ ALL GIRL DART CLASSIC ★

July 31

\$750 CASH + Prizes

Sign up now for

ADA Tournament coming in Sept.

THE 23RD STEP

KAILUA, HAWAII

Ph. 261-4148 274 Kuuilei Rd.

COUPON

HILLTOP RANCH

Bring this coupon Spend

4 for the price of 3 A Day

In The Country!

TRAIL RIDES

All Ages

Group Rates

Bring you family & friends

Waimanalo

Reservations Please

259-8463 or 261-9504

COUPON

GET OUT OF DEBT

through Chapter 13

A federal law which helps qualified debtors to pay off debts without borrowing and in payments you can afford, stops creditor harassment and law suits, protects your job, qualified co-signers and property. Free information packet without obligation.

Please call or write:

HOWARD Y. TANAKA

ATTORNEY

Suite 703, Ala Bishop Bldg.

1136 Union Mall, Honolulu

Phone: 526-1544

NOW YOU CAN SAVE

up to **50%**

on your calls to the Mainland.

... Call us

Long Distance/USA

526-2671

Introducing

CENTURY

Taste that delivers

IN THE MONEY SAVING

25 pack

Low Tar

Regular

Warning: The Surgeon General Has Determined That Cigarette Smoking Is Dangerous to Your Health.

LIGHTS: 10 mg. "tar", 0.9 mg. nicotine; FILTER: 16 mg. "tar", 1.1 mg. nicotine, av. per cigarette by FTC method.

© 1983 R.J. Reynolds Tobacco Co.

Runners gear for aesthetic Marine trek

As the excitement of the seventh annual Marine Corps Marathon fades in memories, a new fire has been lit as runners throughout the nation gear for this year's run through the monuments.

A full field of 12,000 entrants is expected to take part in this year's race in Washington, D.C. Nov. 6. The eighth annual marathon is expected to draw more than 100,000 spectators — leaving little doubt in anyone's mind that this, the third largest marathon in the nation, will be a success.

An added plus for athletes entering this year's marathon, is

that this race has been included in the qualifying process for the Olympic Marathon Trials. To qualify, an athlete must be a citizen of the United States and be registered with The Athletics Congress.

The 1982 Open Division winner, Jeff Smith of Cumberland, Md., is expected to return this year to defend his title and try to better his time of 2:21:29. Smith won the 1982 race after taking the lead just 300 yards from the finish line.

Smith eased, passed Bill Stewart, a twenty-five-year-old

high school teacher from Winchester, Va., who had led the race from about the five-mile point.

The top woman finisher was Cynthia Lorenzoni, 24, a Charlottesville, Va., shopkeeper, with a time of 2:44:51. Although not a new women's course record, Lorenzoni did better her winning time from the 1981 marathon by more than five minutes.

The winner of the marathon is presented the Middendorf Trophy named after former Secretary of the Navy J.F. Middendorf. Awards are also presented to the

top three men and women in the open and military categories, as well as to the top finishers from the Washington, D.C., Virginia, and Maryland areas. Men and women can also compete for awards in five-year age categories.

The relatively flat course is also aesthetically appealing. The race begins at the Marine Corps War Memorial in Arlington and stretches across the Potomac and into Georgetown before winding through Washington amid the city's most historic monuments. The race ends at the Iwo Jima Memorial.



FOOT PAIN?



A Doctor of Podiatric Medicine is the specialist concerned with the diagnosis, prevention and treatment of foot disorders by medical and surgical means.

- Ingrown Toe Nails
- Sore Heels
- Calluses & Bunions
- Corns & Hammertoes
- Orthotics
- Warts

KAILUA PODIATRY CLINIC
407 Ulukou St.
Suite 301
Kailua, Hawaii
262-6961

Dr. Theodore G. York
615 Piikoi St.
Suite 1401
Honolulu, Hawaii
538-1831

Dr. David Heston
98-211 Pali Momi St.
Suite 737
Pearl Ridge, Hawaii
487-9949

What's Fun & Free Every Weekend?

"THE ART MART"
at the Honolulu Zoo Fence

YOUR ART MART... FEATURING 100 ARTISTS
INCLUDING THE GREAT AND NEAR-GREAT
BARGAIN PRICES
ALL ORIGINALS.

BROWSE · BUY · INVEST ·
SAT. & SUN. 10 AM-4:00 PM

PepperTree
Residence Inn

For about the same price as a standard room you'll enjoy a living room, fully equipped kitchen, maid service and a one or two bedroom suite.

PEARL RIDGE CENTER
KAM HWY
PepperTree
LUPA PL
98-150 Lipos Place

TLA Approved
488-1993

KILGO'S

KILGO'S, 180 SAND ISLAND ROAD ■ PHONE 847-4211 ■ OPEN MON. THRU SAT. 7:30 TO 5. SUNDAY 8 TO 4

INGERSOLL-RAND CHALLENGER

"Come in and save on these Ingersoll-Rand power tools, and Challenger hand tool sets"



For rebate check:
Send proof of purchase seal and this coupon. Offer expires September 30, 1983. Purchase receipt is necessary on both power and hand tool rebates.

SALE PRICES GOOD
TILL Sept. 30, 1983
WITH COUPON ONLY

SAVE \$31.00	SAVE \$77.00
SP Model 231 1/2" Sq. Drive Air	SP Model 250 1/2" Sq. Drive Air
Sugg. List \$129.95 Kilgo's Reg. 133.25 Now \$118.95 Rebate 10.00	Sugg. List \$379.95 Kilgo's Reg. 340.45 Now \$322.95 Rebate 30.00
\$108.95	\$302.95
SAVE \$28.00	SAVE \$34.00
SP Model WS250 1/2" Sq. Drive Electric Impacttool	SP Model WS550 1/2" Sq. Drive Electric Impacttool
Sugg. List \$120.00 Kilgo's Reg. 107.55 Now \$102.00 Rebate 10.00	Sugg. List \$160.00 Kilgo's Reg. 143.35 Now \$136.00 Rebate 10.00
\$92.00	\$126.00

20 piece Challenger Socket Set	11 piece Challenger Combination Wrench set
SP Sugg. List \$49.99 Kilgo's Reg. 46.76 Now \$33.33 Rebate 5.00	SP Sugg. List \$64.99 Kilgo's Reg. 60.82 Now \$43.33 Rebate 5.00
SAVE \$28.33 \$21.66	SAVE \$26.66 \$38.33

Now You Can Afford To Smile Again!

We offer the latest in orthodontic treatment and materials, including "invisible braces" to give you a beautiful smile. Our efficiencies in treatment result in savings for you. Please call us for a free consultation.

523-2402



HONOLULU ORTHODONTIC SPECIALISTS

Arthur T. Kamisugi, DDS, MDS
Diplomate, American Board of Orthodontics

Randall D. Morita, DDS
Curtis N. Kamisugi, DDS, MDS (7/83)



Offices in Honolulu, Pearl City/Aiea, Mililani, Kaneohe, Kailua and Haleiwa

the body factory



● **OPENING AUGUST 15th** ●

Featuring . . .

Body by Janis
(Body Dynamics)

- Full time coed facilities
- Women's & men's body building classes
- Gym & spa facilities
- Baby sitting
- Tennis
- Noon time businessmen fitness classes
- Volleyball

Inviting . . .

Singles • Couples • Families

Special consideration . . .

to former Natural Woman and Natural Man Members



Keolu Shopping Village
1090 Keolu Drive
Enchanted Lake Kailua

5 DAYS ONLY SALE ENDS 7/24/5 p.m.

BEAT THE HEAT! CEILING FAN SALE

Prices start at \$39.95

We Guarantee the lowest prices in Hawaii

30 on Display All on Sale! Choose from:

Hunter • Casabella • Riccar

42" S.M.C. Sug. Retail \$198.00 \$69 •Variable speed •Reversible •Sealed Bearings •Whisper Quiet •Brown w/Brass •Demo Model	48" G.A.C. SPECIAL Sug. Retail \$299.00 \$99 •3 speed •Reversible •Sealed Bearings •Whisper Quiet •Antique Brass •5 year warranty	52" HUNTER Sug. Retail \$328.00 \$139 •2 speed •Reversible •Sealed Bearings •U.S. Made •Brown •5 year warranty
---	---	--

PACIFIC SURPLUS & DISTRIBUTORS
Sun. 11:00-5:00
Mon.-Sat. 9:30-6:00 p.m.
Thurs. 9:30-8:00 p.m. Tues. Closed
CALL 262-8131
1247-F Kailua Rd.

***126 MISCELLANEOUS**

CHEST bed w/matching desk & chair \$200. surfboard \$70. white artan desk & chair \$150. Ph. 295-8584

130 LB. WEIGHT Set, bench, curl bar \$50. Dungeon & dragons books & modules. Call Ric 262-5230

PIRATES - Candy & toy filled, large \$11. Delivery local. Call 624-0516

EXERCISE WITH PAM flexibility, aerobics, toning & strengthening. Mon. & Weds. 8-10 p.m. Tues. & Thurs. 8:00-9:00. Pearl Harbor area. Call Pam 423-1404

UPRIGHT Admiral freezer 13.2 cu ft. \$100. Ph. 395-4093 after 5 p.m.

SLIPPER-8 sound movie set camera & projector excel. cond. \$299. Ph. 295-4248

GI benefit car wash products work at coast send info. P.O. Box 26387 Hawaii Kai. 96825.

DOUBLE E bed Sealy mattress & box springs match, clean, excel. cond. \$110. Ph. 262-9081 e.m.

KUNG size bed \$125. Dyna Gym \$200. exercising roller machine \$125. 488-1509

WASHER, \$145, dryer \$115. 2x21" bowls \$20, wall unit 485. Ph. 262-0324

SEARS Kenmore sewing mach. \$100. New color 13" TV \$200. Sears Gametrainer outboard 18hp new \$300. Double bed-firm \$50, exc. dekg. & swivel chair \$100. Double cat. 25' sailboat cheap, but nice \$239-8698

KING size cot, bed, waterbed frame, low seat w/matching chair, and table, rd. TV table. Call Paulette 988-7817

LIKE NEW, Simmonds lawn size, corner unit bed set paid \$729. Must sell for \$400. also Chevrolet reg. 81-2 paid \$923, will sell for \$320. Call 261-2261 after 5 p.m.

LAWN Mowers, gas & electric. Call 293-7074

QUEEN bed set, \$200. mower \$25. weight bench \$30. fan \$15. Ph. 623-2677

ROLLAWAY beds 1 slate pool table, 1 chest freezer. Call 235-8638 after 5 p.m.

FOR sale need room. 8' sofa, 2x21" bowls, w/matching love seat & chair \$350. 25" color TV wood base. Sylvia needs a little work \$250. 941-8923 from 7-9 a.m./7-10 a.m. Weekends anytime

BLACK white TV, good shape \$90. stereo AM-FM & track, excellent \$50. Atari 3 tapes \$150. 422-4166

NOTICE OF SALE The Marine Corps Exchange will offer for sale, vending equip., jukebox, pinball, snack machines & various motor vehicles. Equip. will be available inspection on 7/22 & 23 July 1983 between the hours of 10 a.m. & 3 p.m. at Bldg. 140, Marine Corps Air Station, Kaneohe Bay, Hawaii 96863. For further info, call Mr. Richard J. at 237-2111. The Marine Corps Exchange reserves the right to withdraw prior to final acceptance of a bid any item herein advertised as offered for sale. The Marine Corps Exchange further reserves the right to reject any & all bids that do not reflect a fair market value as determined by The Marine Corps. Receipts Officer in his sole discretion. The Marine Corps Exchange reserves the right to set minimum bid levels on bid items.

***129 TVS, STEREOS**

COLOR TV, 19" portable, also color TV 25" console, \$150 each. Both excel. cond. 948-6940

PANASONIC Stereo system, 2-two way speakers. \$100. Ph. 235-8876 after 5 p.m.

TOSHIBA stereo receiver model SA750, silver case, also 2 speakers model SS335W 138" Woofer & tweeters 40 watt power rating, maximum 70 watt \$750. Call 239-6081

***126 MISCELLANEOUS**

SINGER Featherweight sewing machine w/case, excel. cond. \$375. 595-8781 before 9 a.m.

***126 MISCELLANEOUS**

BEDROOM set, dining set, dresser, bike, rowing exerciser, make offer, call 422-5478

***126 MISCELLANEOUS**

AIRPLANE Rides over Oahu, perfect for mainland visitors & relatives. Call Nubb Aire at 833-8112 or 395-7854.

***126 MISCELLANEOUS**

BUNK Bed \$80, amplifier \$80. Call after 5:30 p.m. 422-4264

***126 MISCELLANEOUS**

SC Electric typewriter \$190. 2 floatation boat cushions \$7 each. 261-5850

***126 MISCELLANEOUS**

8 POOL Table, slates \$35 ea. po. pure water filter-Army style \$300. 10' crane boom sections. \$100. Jerry 696-6466/684-2286

***126 MISCELLANEOUS**

GE dishwasher w/butcher block top \$75. Cyster kitchen center w/all attach. \$45. 12 c. Mr. Coffee \$35. complete Encyclopaedia set-make offer 254-5172

***126 MISCELLANEOUS**

HITACHI Video camera & portable recorder, like new. \$1800 firm. Ph. 254-3074

***126 MISCELLANEOUS**

LOSE weight and feel great. Completely natural program. Call 595-6192 after 5

***126 MISCELLANEOUS**

ROY'S LAWN MOWER REPAIR "Free Estimate" Lawn mowers for sale. Rotary \$75. Reel \$125. Guaranteed 259-5927

***126 MISCELLANEOUS**

BRAND New top of the line Toshiba microwave. Work in M.D.A. Raffle. Never used, still in box, retails \$749.00 must sell \$415/offer. Call Chris 235-5681 days. 247-3079 eves.

***126 MISCELLANEOUS**

WASHER & dryer both Frigidaire 5 years old excel. cond. Washer \$250, dryer \$250 or take both for \$400. Call 623-9677 5 p.m. to 8 p.m.

***126 MISCELLANEOUS**

WASHER & Dryer, matching gold set. Good cond. \$150. Ask for Denman 287-2210 days. 239-7408 eves.

***126 MISCELLANEOUS**

NORELCO Microwave Oven, 3 yrs. old, Excel. cond. \$300. Call 263-8238

***126 MISCELLANEOUS**

LGE washer, good cond., \$195; Morse Photomatic TV set machine, sacrifice \$150. 623-1543

***126 MISCELLANEOUS**

MAYTAG washer, \$100. G.E. Heavy duty dryer \$150. Call 262-0389 eves.

***126 MISCELLANEOUS**

WHIRLPOOL 18,000 BTU, 220, air conditioners, good cond., coils 2 rms. \$250. Ph. 254-5039

***126 MISCELLANEOUS**

COLOR TV, 19" portable, also color TV 25" console, \$150 each. Both excel. cond. 948-6940

***126 MISCELLANEOUS**

PANASONIC Stereo system, 2-two way speakers. \$100. Ph. 235-8876 after 5 p.m.

***126 MISCELLANEOUS**

TOSHIBA stereo receiver model SA750, silver case, also 2 speakers model SS335W 138" Woofer & tweeters 40 watt power rating, maximum 70 watt \$750. Call 239-6081

***126 MISCELLANEOUS**

SINGER Featherweight sewing machine w/case, excel. cond. \$375. 595-8781 before 9 a.m.

***126 MISCELLANEOUS**

BEDROOM set, dining set, dresser, bike, rowing exerciser, make offer, call 422-5478

***126 MISCELLANEOUS**

AIRPLANE Rides over Oahu, perfect for mainland visitors & relatives. Call Nubb Aire at 833-8112 or 395-7854.

***126 MISCELLANEOUS**

BUNK Bed \$80, amplifier \$80. Call after 5:30 p.m. 422-4264

***126 MISCELLANEOUS**

SC Electric typewriter \$190. 2 floatation boat cushions \$7 each. 261-5850

***126 MISCELLANEOUS**

8 POOL Table, slates \$35 ea. po. pure water filter-Army style \$300. 10' crane boom sections. \$100. Jerry 696-6466/684-2286

***126 MISCELLANEOUS**

GE dishwasher w/butcher block top \$75. Cyster kitchen center w/all attach. \$45. 12 c. Mr. Coffee \$35. complete Encyclopaedia set-make offer 254-5172

***126 MISCELLANEOUS**

HITACHI Video camera & portable recorder, like new. \$1800 firm. Ph. 254-3074

***126 MISCELLANEOUS**

CHEST bed w/matching desk & chair \$200. surfboard \$70. white artan desk & chair \$150. Ph. 295-8584

130 LB. WEIGHT Set, bench, curl bar \$50. Dungeon & dragons books & modules. Call Ric 262-5230

PIRATES - Candy & toy filled, large \$11. Delivery local. Call 624-0516

EXERCISE WITH PAM flexibility, aerobics, toning & strengthening. Mon. & Weds. 8-10 p.m. Tues. & Thurs. 8:00-9:00. Pearl Harbor area. Call Pam 423-1404

UPRIGHT Admiral freezer 13.2 cu ft. \$100. Ph. 395-4093 after 5 p.m.

SLIPPER-8 sound movie set camera & projector excel. cond. \$299. Ph. 295-4248

GI benefit car wash products work at coast send info. P.O. Box 26387 Hawaii Kai. 96825.

DOUBLE E bed Sealy mattress & box springs match, clean, excel. cond. \$110. Ph. 262-9081 e.m.

KUNG size bed \$125. Dyna Gym \$200. exercising roller machine \$125. 488-1509

WASHER, \$145, dryer \$115. 2x21" bowls \$20, wall unit 485. Ph. 262-0324

SEARS Kenmore sewing mach. \$100. New color 13" TV \$200. Sears Gametrainer outboard 18hp new \$300. Double bed-firm \$50, exc. dekg. & swivel chair \$100. Double cat. 25' sailboat cheap, but nice \$239-8698

KING size cot, bed, waterbed frame, low seat w/matching chair, and table, rd. TV table. Call Paulette 988-7817

LIKE NEW, Simmonds lawn size, corner unit bed set paid \$729. Must sell for \$400. also Chevrolet reg. 81-2 paid \$923, will sell for \$320. Call 261-2261 after 5 p.m.

LAWN Mowers, gas & electric. Call 293-7074

QUEEN bed set, \$200. mower \$25. weight bench \$30. fan \$15. Ph. 623-2677

ROLLAWAY beds 1 slate pool table, 1 chest freezer. Call 235-8638 after 5 p.m.

FOR sale need room. 8' sofa, 2x21" bowls, w/matching love seat & chair \$350. 25" color TV wood base. Sylvia needs a little work \$250. 941-8923 from 7-9 a.m./7-10 a.m. Weekends anytime

BLACK white TV, good shape \$90. stereo AM-FM & track, excellent \$50. Atari 3 tapes \$150. 422-4166

NOTICE OF SALE The Marine Corps Exchange will offer for sale, vending equip., jukebox, pinball, snack machines & various motor vehicles. Equip. will be available inspection on 7/22 & 23 July 1983 between the hours of 10 a.m. & 3 p.m. at Bldg. 140, Marine Corps Air Station, Kaneohe Bay, Hawaii 96863. For further info, call Mr. Richard J. at 237-2111. The Marine Corps Exchange reserves the right to withdraw prior to final acceptance of a bid any item herein advertised as offered for sale. The Marine Corps Exchange further reserves the right to reject any & all bids that do not reflect a fair market value as determined by The Marine Corps. Receipts Officer in his sole discretion. The Marine Corps Exchange reserves the right to set minimum bid levels on bid items.

***129 TVS, STEREOS**

COLOR TV, 19" portable, also color TV 25" console, \$150 each. Both excel. cond. 948-6940

PANASONIC Stereo system, 2-two way speakers. \$100. Ph. 235-8876 after 5 p.m.

TOSHIBA stereo receiver model SA750, silver case, also 2 speakers model SS335W 138" Woofer & tweeters 40 watt power rating, maximum 70 watt \$750. Call 239-6081

***126 MISCELLANEOUS**

SINGER Featherweight sewing machine w/case, excel. cond. \$375. 595-8781 before 9 a.m.

***126 MISCELLANEOUS**

BEDROOM set, dining set, dresser, bike, rowing exerciser, make offer, call 422-5478

***126 MISCELLANEOUS**

AIRPLANE Rides over Oahu, perfect for mainland visitors & relatives. Call Nubb Aire at 833-8112 or 395-7854.

***126 MISCELLANEOUS**

BUNK Bed \$80, amplifier \$80. Call after 5:30 p.m. 422-4264

***126 MISCELLANEOUS**

SC Electric typewriter \$190. 2 floatation boat cushions \$7 each. 261-5850

***126 MISCELLANEOUS**

8 POOL Table, slates \$35 ea. po. pure water filter-Army style \$300. 10' crane boom sections. \$100. Jerry 696-6466/684-2286

***126 MISCELLANEOUS**

GE dishwasher w/butcher block top \$75. Cyster kitchen center w/all attach. \$45. 12 c. Mr. Coffee \$35. complete Encyclopaedia set-make offer 254-5172

***126 MISCELLANEOUS**

HITACHI Video camera & portable recorder, like new. \$1800 firm. Ph. 254-3074

***126 MISCELLANEOUS**

LOSE weight and feel great. Completely natural program. Call 595-6192 after 5

***126 MISCELLANEOUS**

ROY'S LAWN MOWER REPAIR "Free Estimate" Lawn mowers for sale. Rotary \$75. Reel \$125. Guaranteed 259-5927

***126 MISCELLANEOUS**

BRAND New top of the line Toshiba microwave. Work in M.D.A. Raffle. Never used, still in box, retails \$749.00 must sell \$415/offer. Call Chris 235-5681 days. 247-3079 eves.

***126 MISCELLANEOUS**

WASHER & dryer both Frigidaire 5 years old excel. cond. Washer \$250, dryer \$250 or take both for \$400. Call 623-9677 5 p.m. to 8 p.m.

***126 MISCELLANEOUS**

WASHER & Dryer, matching gold set. Good cond. \$150. Ask for Denman 287-2210 days. 239-7408 eves.

***126 MISCELLANEOUS**

NORELCO Microwave Oven, 3 yrs. old, Excel. cond. \$300. Call 263-8238

***126 MISCELLANEOUS**

LGE washer, good cond., \$195; Morse Photomatic TV set machine, sacrifice \$150. 623-1543

***126 MISCELLANEOUS**

MAYTAG washer, \$100. G.E. Heavy duty dryer \$150. Call 262-0389 eves.

***126 MISCELLANEOUS**

WHIRLPOOL 18,000 BTU, 220, air conditioners, good cond., coils 2 rms. \$250. Ph. 254-5039

***126 MISCELLANEOUS**

COLOR TV, 19" portable, also color TV 25" console, \$150 each. Both excel. cond. 948-6940

***126 MISCELLANEOUS**

PANASONIC Stereo system, 2-two way speakers. \$100. Ph. 235-8876 after 5 p.m.

***126 MISCELLANEOUS**

TOSHIBA stereo receiver model SA750, silver case, also 2 speakers model SS335W 138" Woofer & tweeters 40 watt power rating, maximum 70 watt \$750. Call 239-6081

***126 MISCELLANEOUS**

SINGER Featherweight sewing machine w/case, excel. cond. \$375. 595-8781 before 9 a.m.

***126 MISCELLANEOUS**

BEDROOM set, dining set, dresser, bike, rowing exerciser, make offer, call 422-5478

***126 MISCELLANEOUS**

AIRPLANE Rides over Oahu, perfect for mainland visitors & relatives. Call Nubb Aire at 833-8112 or 395-7854.

***126 MISCELLANEOUS**

BUNK Bed \$80, amplifier \$80. Call after 5:30 p.m. 422-4264

***126 MISCELLANEOUS**

SC Electric typewriter \$190. 2 floatation boat cushions \$7 each. 261-5850

***126 MISCELLANEOUS**

8 POOL Table, slates \$35 ea. po. pure water filter-Army style \$300. 10' crane boom sections. \$100. Jerry 696-6466/684-2286

***126 MISCELLANEOUS**

GE dishwasher w/butcher block top \$75. Cyster kitchen center w/all attach. \$45. 12 c. Mr. Coffee \$35. complete Encyclopaedia set-make offer 254-5172

***126 MISCELLANEOUS**

HITACHI Video camera & portable recorder, like new. \$1800 firm. Ph. 254-3074

***136 MISCELLANEOUS WANTED**

CASH for Lawn Mowers & Outdoor Motors. Any Condition. Ph. 269-5927

NEED Wheelchair w/removable arms. 235-3350

WANTED: Small, bar size refrigerator, 235-8514 or 622-3965, during business hours.

WE BUY used furniture. We pay cash and pickup. Call 261-8492 or 247-1937.

WE BUY USED FURNITURE TOP CASH & FREE PICKUP ISLANDWIDE 488-1985 7 DAYS

***140 PHOTO SUPPLIES**

28 MM. WIDE angle lens, Vivitar series 1, Olympus Mount. Call Hans 696-6286

JVC-color video camera model GX-780, new, great buy at \$395 compare at \$595. Call 499-1516

***144 MUSIC SALES AND SERVICE**

EXPERT PIANO MOVING, crating, shipping. 833-1659 5 & 5 Delivery 395-7295

EBONY Clarinet. Made in France. \$175. Ph. 237-8451

***146 BOATS SUPPLIES & SERV.**

15 ft. Prindle catamaran, excel. cond. + extras. \$1750-373-9242 (x), 487-0209 (d)

7 ft. hp SEAGULL outboard long shaft, runs well, needs minor servicing. \$208.12. 261-0286

28 hp JOHNSON 1971 \$695. 5.5 hp Johnson 1963 \$350. 4 hp Johnson 1979 \$450. New 7.5 Johnson extra long shaft waterator Now on sale \$868. Island Outboards 262-6338.

SALEBOAT-14' Sunfish w/trailer, good cond., \$495. OCEAN KAYAK 13' w/back reel & paddle \$350. Ph. 261-5670.

24' FIBERGLASS General Motors diesel, Volvo leg, good condition. \$10,000/offer. 254-3145.

21' CORRECT Craft, Cuddy, Inboard, equipped, ready to go. \$13,500 best offer. 624-9617.

***146 BOATS SUPPLIES & SERV.**

2nd BIG WEEK!

Marsh Company's

BIGGEST FURNITURE SALE EVER IN HAWAII

20-70% OFF in every department!

SUPER Markdowns!!!

Last weekend, the Marsh Company started its Biggest Sale Ever! The Sale will continue through the end of July. We are selling brand name furniture factory overstocks. Major manufacturers have reduced prices below normal wholesale prices, and we're passing these savings on to you. We

have drastically reduced prices on hundreds of items. You'll find savings of 40%, 50%, up to 70% off suggested retail prices. Below are just a few examples of the fantastic bargains you'll find during the remaining weeks of this sale.

• SOFAS!

Guildcraft Sofa

Reg. \$719
Elegant multi-pillow back sofa covered in a durable long-wearing olefin fabric. A fantastic value! Save \$420!

\$399

• CHAIRS!

Parkview Chairs

Reg. \$499
Beautiful living room chairs in warm, rich velvet fabrics. Features famous marflex cushions. HALF PRICE!

\$249

• TABLES!

Occasional Tables

Reg. up to \$199
Oak parquet living room tables. End tables, lamp tables, coffee tables. Easy assembly. Save up to \$100.

Your Choice
\$99

• BEDDING!

Hotel Posturepedic

Reg. \$799
Queen-size. Softly filled quilted cover! Famous Sealy warranty. Mattress and foundation. Other sizes available at comparable savings.

HALF PRICE!
\$379
set

• SECTIONALS!

Sectionals!

Reg. \$1299
Contemporary envelope-arm, 2-piece sectional. Perfect for today's casual living. HALF PRICE! Limited Quantity.

\$649

• DINETTES!

5-piece Set

Reg. to \$499
Entire container load of oak dinette! Breuer chairs, chrome with cane backs.

HALF PRICE!
\$249

• SLEEPERS!

Apartment-sized sleeper

Reg. \$799
Beautiful cuddler sleeper in durable long-wearing olefin fabric. Entire container load. Fabulous savings!

HALF PRICE!
\$399⁹⁹

DINING ROOMS

6-piece Set

Reg. \$1999
Lighted chairs with glass shelves. PLUS table with four side chairs.

HALF PRICE!
\$999

• TV STAND

TV STAND!

Reg. \$151
Top and bottom storage. Casters for easy moving. SAVE \$63!

\$88

• BEDROOMS

Pier Unit Group

Reg. \$1499
Two handsome pier units flanking a storage headboard with light bridge. Comes complete with platform island bed. SAVE \$800! A fabulous value!

\$699
set

• SPECIAL!

Director's chairs

Reg. \$29
Folding director's chairs in bright, durable canvas. Great for guests. HALF PRICE!

\$14⁹⁹

• LAMPS!

Entire Selection

Reg. from \$49 to \$319
A fabulous selection of table lamps, end lamps, and floor lamps. All lamps in the store are on sale!

All Lamps **1/3 OFF!**

**Come
in
today!**

marsh
COMPANY

MasterCard

VISA

Mon.-Fri. 9 a.m.-9 p.m. Sat. 9 a.m.-6 p.m.

Main Store
1505 Dillingham Blvd.
Phone 847-5382

Between Pay 'n Save & Emjays

Waipahu
94-300 Farrington Hwy.
Phone 671-3995

Next to Pay 'n Save & Emjays