

Selective Reenlistment Program

No more bonus money after

March 30

See Page A-2

Rent Plus System

Maximum rental allowance increase

should reflect in Feb. 28 paycheck

See Page A-6

Cowboy

Refueler driver lives

for a rodeo

See Page B-1

HAWAII MARINE

Voluntary payment for delivery to MCAS housing/\$1 per four week period.

VOL. 12 NO. 6

KANEOHE BAY, HAWAII, FEB. 9, 1983

TWENTY PAGES

Hands-on-training

Land cleared at Bellows

by Sgt Inez J. Stoner

Marines from the Heavy Equipment Platoon Engineer Company, Brigade Service Support Group are clearing 122.6 acres of land at Bellows Air Force Station. The clearing job is not only providing the Marines with invaluable training, but is also saving the government more than \$200,000.

According to Chief Warrant Officer-3 David Wood, platoon commander, it would cost the government about \$250,000 for a civilian contractor to do the clearing. It will cost less than \$50,000 for the Marines to do the job that is expected to take about another month to complete.

The Air Force land is being cleared so that a high security fence may be installed and to provide a straight line of sight between existing antennas.

"It's excellent training for our people," said Wood. "It's an opportunity for our people to train on each piece of our equipment."

Using bulldozers, road graders, dump trucks and a crane, 10-man crews are clearing about 20 acres of land each day. The brush ranges in height from four to 18 feet with some trees as tall as 50 feet. According to Wood, the crews are rotated every two weeks to allow all of the Marines in the platoon to train with the equipment.

"We should do a lot more of this," said Sergeant Kenneth Holland, heavy equipment operator. "It's a good training experience." The Marine from McRae, Ga., operates a crane, loading debris into a dump truck. An average of 60 truck loads of debris are hauled to the dump at Bellows each day.

The Heavy Equipment Platoon Marines have also received training during other similar projects. Late last year, the Marines cleared roads at the Kahuku Training Area, near Oahu's north shore.

"I think it's great when we

finally get a chance to get out and use the equipment," said Corporal Mike Reynolds, a 21-year-old mechanic from Decatur, Ill.

"It's nice when you're actually doing the job you were trained for," said Private First Class Cliff Enright, III, a heavy equipment operator from Albany, N.Y. "It gives you more confidence with your skills as an operator."

The hands-on training was also experience for Corporal David Laumeyer, a combat engineer from Peru, Ind. "Usually, it's just a lot of painting and PMing (preventive maintenance) back at the shop," he said. "It's a lot of fun to come out here and work and experience things."

In the future, the Heavy Equipment Platoon Marines plan to clear and dredge a lake at a park in Kaneohe.

"You can really apply your skills in the field," said Sergeant Dwight Siler, heavy equipment operator. According to Wood, that's what it's all about.



CLEANING UP — Gunnery Sergeant Patrick McCoy, noncommissioned officer in charge of the Heavy Equipment Platoon, guides a bulldozer down the path of heavy overgrowth at

Bellows Air Force Station. McCoy and other Heavy Equipment Platoon Marines are clearing 122.6 acres of brush ranging in height from four to 18 feet. (Photo by Cpl T.J. Clark)

Marines separating or retiring are due recognition

WASHINGTON, D.C. — You've given at least 20 years of "honorable and faithful" service to the Marine Corps, an organization rich in pride, customs and tradition. Or, perhaps you've fulfilled your enlistment contract, honorably of course, and have decided to venture back to the civilian world.

When "retirement" or "separation" day finally arrives, instead

of going "out like a bang" you're handed your papers and told "good luck."

An exaggeration? Possibly. Many times, however, that is the case on an occasion which should be marked with some fanfare. And it's that very topic that the Commandant addressed in White Letter No. 1-83, "Retirement Ceremonies And Delivery of Separation Documents."

"There is a long-standing custom among Marines to recognize the faithful and honorable service of Marines who are being separated or retired," Gen Barrow states. "I want this tradition continued and strengthened."

He cited correspondence crossing his desk proving that the "long-standing custom" was not being observed. "When Marines

are retired or separated without appropriate recognition of their contributions, the desire of those Marines to continue their support for our Corps can be diminished. The impact on a Marine whose service has not been recognized is very real as evidenced from the tone of letters I have recently received," the Commandant said.

Underlining the importance of acknowledging that "faithful

service," Gen Barrow outlined and set forth his objectives for recognizing Marines upon their retirement or separation from active duty.

"I desire that each commander personally interview retiring Marines and discuss the type of ceremonies that are appropriate based on the conditions within the command," he said. "As far as

possible, the request of the retiree should be met. Should the Marine not desire a ceremony, that wish will be honored."

"Every Marine being honorably discharged or released from active duty will be presented their separation documents by an officer, at the level of company commander or higher, at an appropriate ceremony," the commandant concluded.



HURRY UP! — Two Marines race for the finish line in the wheelbarrow race during the Brigade Service Support Group field meet. See story on Page A-4. (Photo by Sgt Pepper Davis)

Facilities pulls plug to install meters

A power outage will be in effect from 7:45 a.m. to 3:45 p.m. Thursday in order to hook up meters at quarters 2553D, 2551D, 2302A, 2306B, 2310A and 2316B. The same schedule will be in effect in quarters 2575A, 2577A. The following quarters will also be affected: 2293, 2306, 2320, 2343, 2574, 2294, 2307, 2322, 2345, 2575, 2296, 2310, 2335, 2347, 2576, 2298, 2312, 2337, 2348, 2577, 2300, 2314, 2339, 2551, 2578, 2302, 2316, 2341, 2552, 2303, 2318, 2342, 2553.

Another power outage is scheduled for Feb. 14-15 to hook up meters in quarters 2638B, 2640B, 1204 and 1205. The following quarters will be affected: 2339, 2640, 1201, 1203, 1205, 1202, 1204, 1026.

Ordnance Division trains with Phantoms

by Sgt Inez J. Stoner

Two F-4 Phantoms launched from the air station in mid-January, headed for the Pacific Missile Range Facility on Kauai. Once over the facility, an enemy aircraft was sighted. The radar intercept officer tracked the target, the pilot fired a missile and the enemy was destroyed.

The situation was real except that the enemy aircraft was a drone, a nonpiloted aircraft designed to simulate the enemy, and the missile never actually left the F-4.

It was all part of the Marine Corps Combat Readiness Evaluation System missile shoot for Marine Fighter Attack Squadron-232, conducted here and on Kauai, Jan. 10-13. Prior to each

Western Pacific deployment, fighter/attack squadrons are evaluated on their combat readiness. The Red Devils of VMFA-232 are scheduled to deploy in March.

The Ordnance Division of VMFA-232 worked around the clock during this portion of the MCCRES, loaded missiles aboard the squadron's F-4 Phantoms. Two crews worked 12 to 14 hour shifts, loading both the radar-guided sparrow and the passive heat-seeking sidewinder missiles.

"It was good training for them," said Warrant Officer-1 David Pearson, ordnance officer. "They did a super job. Everybody involved recognized the quality exhibited by the ordnancemen."

he added.

In all, 59 missiles were loaded by the ordnancemen under the Captive Carry Program. Although the missiles were inert, the guidance systems were still functional, allowing the missiles to act like live missiles up until the moment the pilot pulled the trigger. The inert missiles never leave the aircraft.

The missiles were assembled and delivered by Marines from Headquarters and Maintenance Squadron-24 and loaded by VMFA-232 ordnancemen in the Combat Aircraft Loading Area, west of the main runway. Most of the loading during the missile shoot was accomplished during the day, leaving the night for

maintenance, systems checks to verify reliability, and cleaning up.

"It's a complete team effort," said Pearson, "and it takes a lot of coordination."

The ordnance field has a lot of specific requirements because of the safety factors involved. Pearson agrees that it takes a special person to be an ordnance man. Every Marine working with ordnance is school trained in basic ordnance skills. There are no "on-the-job" trainees handling missiles in the Marine Corps.

Following school, ordnancemen are certified with specific ordnance and the aircraft on which they load the weapons. As a result of VMFA-232's missile shoot, five of the squadron's ordnancemen were certified with both the sparrow and sidewinder missile systems and the F-4 Phantom.

"I've never seen an ordnance shop perform any better than they did on this missile shoot," said Pearson.

Although the final scores for the MCCRES are not yet in, according to Major Harry Sprague, weapons tactics instructor, Marine Aircraft Group-24, it was probably one of the highest scoring missile shoots ever performed, either by the Navy or the Marine Corps. "It was the most successful shoot ever done at Kaneohe," said Sprague. "Everything was flawless, well coordinated and professionally executed."

SIDEWINDERS — From left, Master Sergeant Robert Kinnevey, ordnance chief, Lance Corporal James Collins, driver, and Staff Sergeant Dale Stuart, ordnance line chief, maneuver four sidewinder missiles during a recent missile shoot. (Photo by Cpl Carlos Ayala)



Temporary lodging facility to open doors in March

A new temporary lodging facility will soon welcome aboard incoming personnel and their families here.

The new 24 unit facility is scheduled to open in late March. Each unit will be furnished with two double beds, a couch, television and kitchenette, according to retired Sergeant Major Robert Porter, temporary lodging facility manager.

Total cost for the new accommodation is approximately \$1 million, according to Major Vincent Norako, Special Services officer.

Ombudsman



If you have a question or complaint about the content of the *Hawaii Marine* — or a suggestion or compliment — please telephone our Ombudsman, Gunnery Sergeant Don Gilbert, at 257-2178.

Gilbert, the Joint Public Affairs media operations chief, will endeavor to answer your questions and complaints through impartial investigations. He will accept calls between 7:30 a.m. and 4:30 p.m.

AFTER HOURS CLIP AND SAVE

Warrant Officer-1 Stephen Negahmet, Explosive Ordnance Disposal, called to inform Hawaii Marine that EOD could be reached for assistance after normal work hours and on weekends. The "Telephone numbers you need to know" article, published in the Jan. 19 issue of the *Hawaii Marine*, didn't list an "after hours" number. For EOD assistance after normal working hours call the Security Department at 257-2123 and they will contact EOD.





Dear Friends,

Shrove Tuesday is only one week away, so order my famous . . .

GRANDMA'S MALASADAS NOW!

Call Agnes' Portuguese Bake Shop

262-5367
Anytime
From 6 A.M.-8 P.M.

Thanks
Travis Tom



Bonus program terminated

If the thought of reenlisting brings dollar signs to your eyes, think again.

According to Gunnery Sergeant Fred Mitchell, joint career planner noncommissioned officer, no selective reenlistment bonus program money will be paid to anyone reenlisting after March 30, regardless of their MOS. "There is no money," said Mitchell.

"We highly encourage people eligible to reenlist to do it now," said GySgt Ronald Johnson, career planner, Headquarters Company, 1st Marine Brigade. "Until March 1 bonuses will still be computed by the 1982 pay scale. From March 1 through March 30, all payments will be computed by the 1983 pay scale. After March 30 there will be no money for any MOS for an indefinite period of time."

"Career planners will still be able to offer a choice of duty stations in reenlistment packages," said Johnson, "but for now, that's all we'll be able to offer."

For further information about reenlistment options contact your unit career planner.

INCOME TAX RETURN PREPARATION


Individual - Partnership - Corporation

GARY A. CLARK

- Tax Consulting
- Financial Planning
- Bookkeeping


Pali Palms Plaza A314
970 No. Kalaheo Ave.
Kailua - 254-5818

Century Center Suite 2801
1750 Kalakaua Ave.
Honolulu - 944-8079



Parties and banquets where you give the orders.

CATERING AT THE HALE KOA.



2095 KALIA ROAD • HONOLULU, HAWAII 96815 • (808) 955-0555

JULIE ASHBY SAYS:

"I LOST 120 LBS."



WITH THE HELP OF NUTRI/SYSTEM, AND NOW FRIENDS WALK BY WITHOUT EVEN RECOGNIZING ME!"

"I never used to think about how much I ate. But with Nutri/System I learned to concentrate and make every meal count. I did it with the help and encouragement of the staff and the delicious food. The seafood scampi was my favorite. I lost all the weight I wanted and now even people close to me aren't sure it's me!"

"NUTRI/SYSTEM, YOU'VE CHANGED MY LIFE!"

- No diet pills, no injections
- Professionally supervised
- No starvation or food decisions
- Wide choice of delicious Nutri/System meals
- Mistake-proof food plan, no constant calorie-counting
- Nutri/System guarantee: Follow the Nutri/System program and lose weight quickly, often up to a pound a day. Achieve your goal by the date specified or pay no additional charges for Nutri/System services until you do.

CALL TODAY FOR A FREE, NO-OBLIGATION CONSULTATION



Pearl City:
98-1254 Kaahumanu St.
Suite 101
Pearl City
488-1919

KAILUA
970 N. Kalaheo Ave.
Kailua Suite A015
254-5811

Aiea Haina
850 West Hind Dr.
Suite 110
Honolulu
373-2101

Downtown
1164 Bishop St.
Honolulu
Suite 1609
531-4895

You've got what it takes.

Salem Spirit

Share the spirit. Share the refreshment.



9 mg. "tar", 0.8 mg. nicotine av. per cigarette by FTC method.

Warning: The Surgeon General Has Determined That Cigarette Smoking Is Dangerous to Your Health.

The *Hawaii Marine* is an unofficial newspaper published every Wednesday by RFD Publications, Inc., 46-016 Alaloa St., Kaneohe, Hawaii 96744, in the interest of U.S. Marine corps personnel in Hawaii. All news copy is prepared in the Joint Public Affairs Office, Marine Corps Air Station, Kaneohe Bay, Hawaii 96863, 257-2179.

Copy must be submitted no later than noon Thursday for the following Wednesday publication. *Hawaii Marine* solicits contributions of information and photographs from all Marine Corps organizations. However, it reserves the right to edit or rewrite material submitted. All advertising is arranged by the publisher, RFD Publications, Inc., telephone 235-5881. Circulation is 8,000.

Everything advertised in this publication must be made available for purchase, use or patronage without regard to race, creed, color, national origin, age or sex of the purchaser, user or patron. A confirmed violation or rejection of this policy of equal opportunities by an advertiser will result in the refusal to print advertising from that source.

VMFA-235 accommodates Dallas MAG-41 crew

by Sgt Corrina Martell

Approximately 93 regular and reserve Marines traded cowboy boots and 30 degree weather for Marine Corps uniforms, the sunny skies of Hawaii and about two weeks of training.

The Marines, members of Marine Fighter Attack Squadron-112, Marine Aircraft Group-41, arrived here Jan. 28 from Dallas, Texas.

The reserve unit's home base is Naval Air Station, Dallas, where

approximately 2000 Marine reserves train. They are assisted by 250 active duty Marines, according to Master Gunnery Sergeant Bob Bryant, Group Maintenance Chief.

"We've come here for missile and air to air combat training," said Bryant. "We have active duty Marines with us as well as reserves. We travel to places such as Florida, North Carolina, and California. We complete at least one major deployment per quarter."

Bryant said that because of harsh winds, only three of the 10 scheduled F-4 aircraft have arrived here.

"Some of the aircraft are in California. But even with the restricting amount of aircraft, we are still conducting the maximum amount of training," he said. "We are flying our pilots in from California to ensure that they maintain the up-to-date proficiency they require."

Bryant feels that the reserve pilots within his unit are accurate and knowledgeable.

"A large percentage of the pilots are veterans," he said. "Their civilian jobs range from flying, to law, and business."

Although VMFA-235 is the host squadron for the reservists, Bryant said that there has been a lack of office space at their host's hangar.

According to Captain Steve Godin, VMFA-235 assistant operations officer, the hayside of VMFA-235's hangar is still experiencing power shortages due to Hurricane Iwa.

"Whenever it rains, the power has to be shut off to prevent electrical short circuits," he said.

As a solution to the space problem, VMFA-232 has offered the available space at their hangar.

"All the units here have been extremely helpful and hospitable," commented Bryant. "So far, the morale is tremendous. The guys love it here. When you come

from 30 degree weather to 80 degree weather, it feels good."

Sergeant Major Frank Riojas, MAG-41 Sergeant Major, agreed with Bryant.

"The squadron doesn't care how long or how hard they have to work, because they know that when they go on liberty, they're in Hawaii," he said.

VMFA-112 is due back in Dallas, Feb. 10.

At a glance

Parents meeting

A meeting for parents and teenagers to contribute ideas for the new Teen Club is scheduled for Saturday at 7 p.m. at the Teen Center, building 1391.

Quit smoking clinic

A free stop smoking class will begin here on Feb. 22 in the training room at the Kaneohe Branch Clinic.

The class consists of four two hour sessions, one session a week.

All persons, military or civilian, are

welcome to attend.

To register for the class or for further information contact the Adult Clinic here at 257-2131.

Commissary open

The Commissary Store will be open on Saturday, Feb. 19 from 8:30 a.m. until 4:30 p.m.

ADPAC facility

The Animal Disease and Prevention Control Facility (ADPAC) is open Monday through Friday from 8 a.m.-11:30 a.m. and 12 p.m.-3 p.m. Appointments for Monday-Thursday afternoons may be made by

calling 257-3643 at 5 a.m. each day. Appointments for Tuesday and Thursday mornings must be made a week in advance. The Clinic is located in Bldg 455, next door to the Housing Office.

For more information on the services offered, please call 257-3643.

Presentation of ID Card is required.

Chaminade University

The final weekend before the beginning of the Spring Accelerated Semester at Chaminade University

in the Easter Weekend; therefore the office of Accelerated Programs and counselor's office will be open April 1 and April 4 for registration and other business. The Registrar's office, Treasurers office and Bookstore will be closed. Personnel should complete registration on scheduled day.

Lenten Season

The Lenten Season begins with Ash Wednesday, Feb. 16. It is a day of fast and abstinence for all Catholics.

Masses will be celebrated at noon

and 6 p.m. Ashes will be distributed after each Mass and at 4:30 p.m.

Beginning Feb. 18 and on all the Fridays of Lent, the popular devotion, The Stations of the Cross, will be prayed at 4:45 p.m.

Bus discount

New bus discount fares, offered by 64 bus companies, were reinstated Jan. 6 for active duty personnel, their family members and service academy students, when traveling at their own expense between the 48 contiguous states.

Full discounts are now available: when

standard adult one-way fare is between \$30-\$40, reduced fare is \$30; a 25 percent discount is applied when standard adult one-way interstate fare is between \$40-\$60; discount fare is a flat \$45 when standard interstate fare is between \$60-\$75 and a 40 percent discount is applied when standard interstate fare is more than \$75.

Persons must furnish military identification and family members must travel with sponsor to receive reduced rates. Family members, age 5 and under, may travel free.



25% OFF
ON EYEWEAR,
LENSES, FRAMES
SUNGLASSES

STANDARD SOFT CONTACT LENSES

\$95

CONTINUOUS WEAR SOFT LENSES

\$195

Fees include lenses, care kit, follow up care by Dr. Dean and 90 DAY TRIAL PERIOD.

Effective Until February 28, 1983

COMPLETE PROFESSIONAL VISION SERVICES
DEDICATED TO QUALITY AND SERVICE IN VISION CARE

Dr. Charles Dean
Optometrist

KAILUA
139 Hekulu St.
261-9735



FAMILY CHIROPRACTIC CENTER INC.

Kaneohe 235-6677



Dr. George F. Clemens
D.S., D.C.



Dr. Lawrence J. Conors
M.A., D.C.

CHIROPRACTIC... A NATURAL SOLUTION TO HEALTH PROBLEMS

- Headaches
- Neck Pain
- Shoulder Arm Pain
- Bursitis
- Numbness in Hands & Feet
- Pinched Nerves
- Whiplash
- Backache
- Nervousness & Tension
- Muscle Spasms
- X-Ray

Open 6 Days a Week: Mon-Fri. 8:30 a.m. to 6:30 p.m.
Sat. 8:30 a.m. to 1:30 p.m.
2 Doctors • 3 Chiropractic Assistants

HONOLULU FEDERAL SAVINGS & LOAN BLDG.
45-114 Kam Hwy., Suites 200 & 200A

ROOSEVELT UNIVERSITY

An Undergraduate Degree in Computer Science

OPTIONS
COMMERCIAL DATA PROCESSING
SCIENTIFIC/ENGINEERING DATA PROCESSING
SYSTEMS ANALYSIS/PROGRAMMING

SPRING TERM II - MAR. 1 THRU APR. 30, 1983

REGISTRATION: FEB. 7-18

Control Data Building
2828 PAA ST., SUITE 3180

CONTROL DATA BUILDING—EVENING/SATURDAY CLASSES

MA100/75 INTERMEDIATE ALGEBRA
CS101/75 DATA PROCESSING FUNDAMENTALS
CS101/77 DATA PROCESSING FUNDAMENTALS
EN103/75 TOPICS IN COMPOSITION
CS201/75 INTERACTIVE PROGRAMMING
CS201/77 INTERACTIVE PROGRAMMING
CS208/75 SYSTEMS & PROCEDURES I
CS210/75 SYSTEMS & PROCEDURES II
CS201/76 SYSTEMS & PROCEDURES II
CS212/75 AP
CS215/75 COBOL PROGRAMMING I
CS216/75 ASSEMBLER LANGUAGE CONCEPTS
CS216/77 FORTRAN PROGRAMMING I
CS216/77 FORTRAN PROGRAMMING I
CS216/77 PL/I
MA223/75 CALCULUS I
CS225/75 JCL
CS225/75 FORTRAN PROGRAMMING II
CS225/77 FORTRAN PROGRAMMING II
CS317/75 OS CONCEPTS
CS322/75 COMPUTER SYSTEMS HARDWARE
CS322/75 EDP OPERATIONS AND MANAGEMENT
CS325/75 STRUCTURED ANALYSIS AND DESIGN
CS324/75 DATA AND SITE SECURITY
CS321/75 MILITARY EDP PERSONNEL TRANSITION

LECTURE, THUR. 5-10 p.m.
LECTURE, MON. 5-10 p.m.
LECTURE, SAT. 8-12, 1-3 p.m.
LECTURE, TUE. 5-10 p.m.
LECTURE, WED. 5-9 p.m.
LAB, FRI. 5-9 p.m.
LECTURE, SAT. 9-12 noon
LAB, SAT. 1-4 p.m.
LECTURE, WED. 5-10 p.m.
LECTURE, TUE. 5-10 p.m.
LECTURE, MON. 5-9 p.m.
LAB, WED. 5-9 p.m.
LECTURE, THU. 5-9 p.m.
LAB, THU. 5-9 p.m.
LECTURE, FRI. 5-9 p.m.
LAB, FRI. 5-9 p.m.
LECTURE, SAT. 9-12 noon
LAB, SAT. 1-4 p.m.
LECTURE, MON. 5-10 p.m.
LECTURE, WED. 5-10 p.m.
LECTURE, THU. 5-10 p.m.
LAB, MON. 5-9 p.m.
LECTURE, SAT. 9-12 noon
LAB, SAT. 1-4 p.m.
LECTURE, MON. 5-10 p.m.
LECTURE, WED. 5-10 p.m.
LECTURE, THU. 5-10 p.m.
LAB, MON. 5-9 p.m.

CONTROL DATA BUILDING—DAYTIME CLASSES

MA100/75 INTERMEDIATE ALGEBRA
CS101/75 DATA PROCESSING FUNDAMENTALS
CS201/75 INTERACTIVE PROGRAMMING
CS208/75 SYSTEMS & PROCEDURES I
CS210/75 SYSTEMS & PROCEDURES II
CS212/75 COBOL PROGRAMMING I
CS215/75 ASSEMBLER LANGUAGE CONCEPTS
CS216/75 FORTRAN PROGRAMMING I
CS225/75 JCL
CS225/75 FORTRAN PROGRAMMING II
CS322/75 COMPUTER SYSTEMS HARDWARE

KANEOHE CLASSES

CS101/75 DATA PROCESSING FUNDAMENTALS
CS201/75 INTERACTIVE PROGRAMMING
CS208/77 SYSTEMS & PROCEDURES I

Roosevelt University is a college based school, accredited by the North Central Association Of Colleges and Secondary Schools. Our program is approved for Military Tuition Assistance and Veterans Administration Benefits.

FOR MORE INFORMATION, CALL OR CONTACT
Suite 3180 836-2254
OR NEW CAMPUS SITE, KANEOHE, 254-2887

TOSHIBA

SPRING SPECIAL SALE

TOSHIBA COLOR TV AND VIDEO PRODUCTS

CZ9700
19" COLOR TV
Stereo Speakers, 117 Channel Remote Control Monitor System

\$620

CX 9200 19" COLOR TV
with 14 position Sensor Touch Tuning, 30-Month limited warranty.

\$365

V-9200
Front loading Beta Format with Picture Search Function FUU 5 hours of recording

\$395

CJ 300
13" COLOR TV

\$245

VM-32
Bill and Bill Beta Format 105 Channel Cable ready.

\$425

CE910
19" COLOR TV
Automatic Balanced Color & Automatic Fine Tuning.

\$349

TOSHIBA SMALL PORTABLES AND STEREO CASSETTES

RT120
AM/FM STEREO CASSETTE
Recorder with easy front operation controls.

\$85

RTS651
AM/FM SW1/SW2 STEREO CASSETTE RECORDER
With soft touch operation.

\$140

KTVS-1
AM/FM STEREO CASSETTE PLAYER
With Unique Front Panel Controls.

\$110

RC 7100
AM/FM CLOCK RADIO
With 0.6 inch LED display

\$25

RCK-1
AM/FM CLOCK RADIO
With dual color display for time (green) and alarm (orange).

\$40

KTR-1
FM STEREO CASSETTE RECORDER

\$110

KTS-3
FM STEREO CASSETTE PLAYER
With dual stereo headphone packs.

\$72

Available at your

MARINE CORPS EXCHANGE AND MARINE BARRACKS

This advertisement not paid for by the Marine Corps Exchange

Maintenance Company wins BSSG's field meet

Story and photos by Sgt Pepper Davis

Maintenance Company compiled 75 points to win the Brigade Service Support Group field meet Friday at Pop Warner Field.

Marine Amphibious Unit Service Support Group netted second place with 69 points, and Supply Company was third with 63.

Pop Warner Field was a beehive of activity as the support Marines ran, tossed, pulled, volleyed, chopped, batted, and twirled their way through 13 events. The lead switched several times between Maintenance and MSSG, but after nine events, MSSG had managed to hold on to a slim lead, with Maintenance breathing down their necks.

After 11 events, Maintenance and MSSG were tied with 59 points, but the softball and egg toss results gave Maintenance a combined 16 points to MSSG's 10, to break the tie. Major Jim Wilson, Maintenance Company commanding officer, accepted the Commanding Officer's Trophy from Colonel Harry Solter, BSSG commander, and then led his unit on to a victory lap around the track.

Wilson later commented, "Victory is nice, but the real reward was the comradery, team spirit, and outstanding competition between all the companies. It was very enjoyable."

The final BSSG field meet standings were:

EVENT	H&S	Maint	Motor "T"	Supply	Eng	MSSG	Navy
Wheelbarrel	10	4	8	6	3	2	0
Fireman's Carry	0	8	3	2	6	10	4
Run Of The Ranks	4	0	2	6	8	8	4
Dizzy Izzy	4	6	8	2	10	3	0
Egg Toss	10	6	2	8	0	3	4
Tug Of War	0	7	0	10	4	0	0
Chariot Race	3	8	6	0	2	10	4
Log Chop	0	2	10	4	3	6	8
Three-leg Race	2	3	4	10	0	8	6
Gas Mask Relay	6	8	4	0	2	10	3
Softball	4	10	0	0	0	7	0
Volleyball	2	10	0	7	0	2	0
Stretcher Race	6	3	2	8	10	0	4
Total	51	75	49	63	48	69	36



GAS! — A masked Marine goes through the paces of the Gas Mask relay.



DIZZY IZZY — With his head on a baseball bat, a Marine gives the dizzy izzzy event a whirl.



JOINT EFFORT — Combining "forces" these two Marines compete in the Three-legged Race.



GO! — Two leathernecks from Marine Amphibious Unit Service Support Group, exchange the baton during the Run of the Ranks event, which MSSG won.



THE CHOPPING BLOCK — This support Marine hacks at a log during the Log Chop event.



PULL! — Although the coach's left hand indicates No. 1, it did not turn out that way for the Maintenance Tug of War team. They were dragged down in defeat by Supply Company.



WELL DONE — Colonel Harry Solter (left), commanding officer, Brigade Service Support Group, presents the Commander's Trophy to Major Jim Wilson, commanding

officer, Maintenance Company. Sergeant Major Jeff Federmeier, group sergeant major, watches.

Household . . .



For the Family Room or Extra Bedroom!

FlexSteel Sofa Sleepers

Your Choice of Fabrics and Styles!

SPECIAL PURCHASE: **\$399.00**

Self-Service . . .

Hawaiian Candies

Macadamia Nut Clusters,

5 1/2oz.

Special Purchase: **\$1.75**

Gillette

Cricket Lighters, 3pack

Reg: \$1.20

SALE **\$0.95**



Sports . . .



20% Off:

ENTIRE STOCK of Baseball and Softball
Gloves, Wilson, Spalding, Trans Global

15% Off:

Entire Stock of Basketballs, Footballs,
Soccer, Asst. Styles & Prices From: Wilson,
Spalding, Trans Global, Rawlings

20% Off:

Trans Global Volleyball, Tetherball,
and Badminton Sets:

20% Off:

Trans Global Wood Croquet Sets
2 Styles to Choose from



Camera . . .

Flip & Magnetic Photo Albums

Asst. Sizes and Colors

Reg: \$2.95-\$8.00 **Sale: \$2.20-\$5.95**



Pentax Camera

K1000 SLR with SLR 2.0 Lens

Reg: \$189.00

Sale: \$125

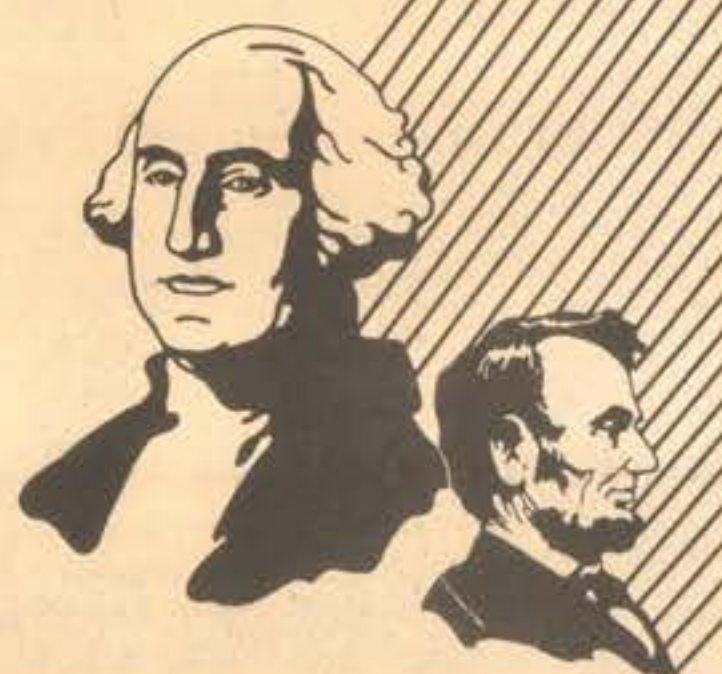


Presidents Day Sale!

February 14-21 *Hurry While Supplies Last!*

Marine Corps Exchange

Kaneohe Bay



Audio-Visual . . .

KENWOOD

Music System Spectrum 4448B

Reg: \$865 **Sale: \$675**

Music System Spectrum 4449B

Reg: \$1175 **Sale: \$870**

New Life Music System S-1

Reg: \$1095 **Sale: \$895**

Auto Quartz PLL D.D. Turntable KD-5100

Reg: \$250 **Sale: \$165**

Speaker KL-999Z

Reg: \$240 **Sale: \$195**

TOSHIBA

Video Cass. Recorder V-9200

Reg: \$425 **Sale: \$395**

Video Cass. Recorder VM-32

Reg: \$445 **Sale: \$425**

AM/FM Cassette RTS651

Reg: \$180 **Sale: \$140**

FM Stereo Cass. Player KTS-3

Reg: \$95 **Sale: \$72**

13" Color T.V. CJ300

Reg: \$265 **Sale: \$245**

AKAI

Auto Rev. Cass. Deck CSF39R

Reg: \$265 **Sale: \$225**

Receiver AAR32

Reg: \$255 **Sale: \$225**

HITACHI

Port. Cass. Recorder TRK5360H

Reg: \$54 **Sale: \$47**

Mini Stereo Cass. Player CP-1

Reg: \$115 **Sale: \$64.50**

13" Color T.V. CT1321

Reg: \$330 **Sale: \$245**

SANSUI

Stereo System KSC-707

Reg: \$1195 **Sale: \$980**

Port. Component System CP-7B

Reg: \$450 **Sale: \$370**

R.C.A.

19" Color T.V. FGC455W

Reg: \$405 **Sale: \$339**

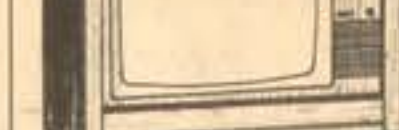
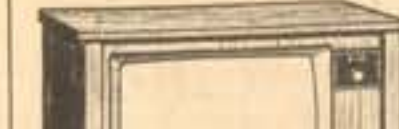
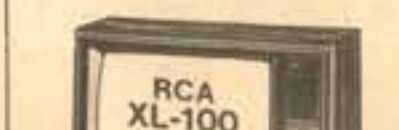
25" Color T.V. GGR640S

Reg: \$575 **Sale: \$495**

Plus More!!



TOSHIBA V-9200



Clothing . . .

Menswear:

Jordache

Black Denim Jeans **Sale: \$17.00**

Reg: \$23.50

Bardon

Corduroy Shorts **Sale: \$5.00**

Asst. Colors & Sizes

Reg: \$7.75

Roland

L/S Dress Shirts **40% Off!**

Reg: \$16.00-\$24.50

Ladieswear:

Dive into Fantastic Savings!

25% Off Selected Famous Maker

Swimwear by . . . Catalina, La Blanca,

Sassafras, Roxanne & more!

Sassafras

Stock up on Contemporary

Danskin Underfashions!

Buy now and save 20%!

Childrenswear:

O.P. Weatherwear

Boys Jackets Reg: \$33.00-\$40.00

Sale: \$23.00-\$27.00

Shoes . . .



Entire Selection of Ladies O.P. Footwear:

1/3 Off!



Nike

Mens Running Flat **\$17.00**

Reg: \$24.50

Incredible Savings on Selected Shoes: **1/3 to 1/2 Off!**
Bill Blass, Freeman, Joyce, Innovations, Pappagallo,
Cobbles, Candies, Jumping Jacks, Keds, & more!



DANSKIN
Bras and Panties

Religious Specialist help chaplains

by Sgt Corrina Martell

The Navy's Religious Program Specialist rating is only 4 years old. It was established on Jan. 15, 1979, and seven Navy personnel with the rating are stationed here.

"RPs not only perform clerical tasks for the chaplains, but they

are trained and skilled in specific areas to provide support for command religious programs," said Chaplain David White, 1st Marine Brigade chaplain. "They perform tasks that do not require ordination or licensing."

White said the duties of RPs may include instruction in

RP RATING INSIGNIA — The Religious Program Specialist rating insignia consists of a compass, globe, and an anchor. The compass suggests the direction which religion gives to life; the globe symbolizes that religious ministries are available throughout the world; and, the anchor indicates that religious support is provided continually for personnel of the naval services.

For related story turn to Page A-8.

methods of religious education, coordination of volunteer programs such as choirs and Bible studies, maintaining ecclesiastical records, assistance in the preparation of devotional and religious education materials, and the responsibility of budgets and chapel funds.

"RPs cannot counsel or function as a chaplain," he said. "The support they provide allows the chaplains to focus more on professional duties."

According to White, RPs are combatants whether stationed with a Navy or Marine Corps unit. "RPs assigned to the Fleet Marine Force, Pacific with the Marine Corps must complete Infantry Training School and continue to participate in Essential Subjects Training as well as individual small arms requalification as required by their Marine counterparts," he said.

"As combatants, RPs must protect chaplains in combat situations."

The brigade chaplain explained that before the RP rating, support for chaplains was provided by yeomen or Marines with an administrative MOS.

"They provided secretarial and clerical skills and were basically OJT," he said. "RPs attend the Chapel Management Specialist School at Keesler Air Force Base, Buloxi, Miss."

Four RPs are assigned to the brigade. They are RP3 Henry Wayne Boatright, Brigade Service Support Group; RP1 Daniel F. Cadacio, Marine Aircraft Group-24; RP1 Gary M. Matson and RPSN Peter Baggetta, Headquarters Company, 1st Marine Brigade.

"We also have three women RPs assigned to station," said White.

The women are RP2 Barbara Flores, RP3 Bethany Leech, and RPSN Sandra Seaman, Headquarters and Headquarters Squadron.



Take stock in America.
Buy U.S. Savings Bonds.

Station sponsors Ecology Camp for students

When students uproot young trees and throw debris in ponds, it's generally considered vandalism.

On Feb. 20, some 100 scholars from 10 Oahu high schools will be doing just that, but they'll be doing those things under adult supervision to give the station's

ecology a lift.

The students, all members of the Sierra Club's High School Hiker's Program, will be taking part in an activity called an Ecology Camp. Their stay aboard the station will be nothing new for them, they've undertaken other projects along the same lines.

The project was proposed to the air station's environmentalist, Dr. Diane Drigot, who recognized it as a good community relations tool for bringing the students and active duty Marines together.

On Saturday morning, the students will set up camp at the Hale Koa Beach area and spend the afternoon with one of several groups touring archaeological, geological, bird and marine wildlife sites.

Sunday morning, the students will attack unwanted mangrove trees encroaching the Nuupia Ponds and remove as many as

possible. While one group is engaged in that activity, the other group will be rebuilding artificial islands in Kailua Puhia Pond near Fort Hase Beach. Discarded tires will be the primary source building material. These artificial islands afford nesting birds protection from predators.

Marines, who are interested in showing the station's Aloha Spirit and who enjoy working with young adults, are invited to participate in the work projects. For further information, or to volunteer your services, call Staff Sergeant Bob Torres at 257-2178.

Rent Plus increased Feb. 1

Under the Rent Plus System, maximum rental allowance ceilings for Hawaii have increased as of Feb. 1, according to a recent All Navy Activities Message.

Rent Plus, a new housing allowance which was implemented in Hawaii on June 1, 1982, replaced the off-station housing allowance system (OSHA).

According to the message, the increase resulted from rental cost data provided by the service finance centers. The utility and initial occupancy allowances remain unchanged.

"Based on rent and electric bills, it is equitable to raise the ceilings," said Major Charles Barton, Disbursing Officer. "The ceilings increased for each rank and island."

Barton said the increase should reflect in the Feb. 28 paychecks.

RENT PLUS HOUSING ALLOWANCE MAXIMUM RENTAL ALLOWANCE CEILING (MONTHLY)

	Hawaii	Kauai	Mauai	Molokai	Oahu
E-1	400	400	465	425	380
E-2	400	400	465	425	450
E-3	450	400	465	425	510
E-4	450	500	530	485	550
E-5	475	525	530	485	590
E-6	475	575	580	530	680
E-7	585	600	580	530	750
E-8	585	650	625	570	825
E-9	585	650	625	570	825
O-1	585	575	580	530	875
O-2/W-2					
O-1E/W-1	600	650	680	680	745
O-3/W-3					
O-2E	750	850	700	660	900
O-4/W-4					
O-3E	750	725	800	735	925
O-5	750	725	800	735	970
O-6	750	795	830	810	1041
O-7					1100
O-8					1100

**Law Offices of
NOAH D. FIDDLER**
General Practice of Law
Including Divorce,
Bankruptcy, Real Estate
No Charge For Initial Consultation
261-3233
415-A Uluniu St., Kailua

One for the Heart
Capture her heart this Valentine's Day with a babydoll from Frederick's!

frederick's
OF HOLLYWOOD

Pearlridge Shop. Ctr.

SCHEDULED AIRLINES TICKET OFFICE (SATO)

Staffed by full time Airline personnel
To assist in your travel requirements

- Individual leave
- Family travel to the Mainland
- Neighbor Island
- International
- Dependent travel to West-PAC
- Fares
- Flight information

Contact SATO for reservations and airline tickets at any one of our three convenient on base locations.

Pearl Harbor - Bldg. 487 - Tele. 422-0571
Office hours - Mon. thru Fri. 0730-1600

Camp Smith - Bldg. 20 - Tele. 487-1567
Office hours - Mon. thru Fri. 0800-1600

Kaneohe MCAS - Bldg. 209 - Tele. 254-1554
Office hours - Mon. thru Fri. 0730-1530

The WINDWARD ENLISTED CLUB MCAS Kaneohe Bay, Hawaii

presents..

"SWEETHEART" DINNER AND DANCE! 15 FEBRUARY 1983

**DINNER 6 to 9pm
"ALL YOU CAN EAT!"**

ALASKAN KING CRAB	CORN ON THE COB
CARVED ROAST BEEF	BAKED POTATO
HAM	VEGETABLE
MAHI MAHI	FRUIT & SALAD BAR
STEAMED CLAMS	
CLAM CHOWDER	

LIVE DANCE BAND

"CIRCLE"
9pm to 12am

ALL THIS FOR ONLY \$12.50 PER PERSON!

TREAT YOUR VALENTINE TO A VERY SPECIAL EVENING!!

7-ELEVEN FREEDOM SUPER PRICES

ALL STORES
OPEN
24 HOURS
7 DAYS A WEEK!

All items plus tax
while supply lasts.
Specials good thru
Tuesday, 2/15/83

MILLER OR MILLER LITE

BUDWEISER OR BUDWEISER LIGHT



10⁸⁹

CASE
Reg. \$11.99
24 - 12 oz. Cans
or Bottles



11⁵⁹

CASE
Reg. \$12.79
24 - 12 oz. Cans
or Bottles



Every Day Low Prices

ICE COLD SOFT DRINKS

Mix or Match Any Combination You Desire
24 - 12 oz. Cans

8⁹⁹

CASE



FRESH HOT COFFEE

Kona Blend

6 oz. **30¢**

12 oz. **45¢**

16 oz. **60¢**



MILK

1/2 Gallon

1⁶⁷

BIG GULP

32 Ice Cold Fluid Ounce

69¢

CIGARETTES

All Brands & Sizes

8⁷⁹

Carton

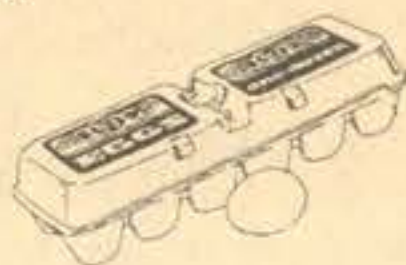
MORE 7-ELEVEN® SUPER SPECIALS

GRADE A FRESH ISLAND EGGS

Extra Large

1²⁵

Each
Dozen
Reg. \$1.49



CONTAC COLD CAPSULES

2²⁹

10 Capsules
Reg. \$3.79



2-LITER SOFT DRINKS

7-Up & Diet 7-Up

1⁴⁹

Each
Reg. \$2.19



MALOLO PUNCH

Qt. Size Concentrate
All Flavors

1¹⁹

Each
Reg. \$2.05



VALENTINE'S SPECIAL

Ladies' Quartz Watch

15⁹⁹



Not Exactly As Shown

The One Place Where Freedom and Super Prices Meet



RELIGIOUS DUTIES — Religious Program Specialist 3rd Class Henry Wayne Boatright, Brigade Service Support Group, prepares materials needed for Catholic services at the Station Chapel. Boatright is the first RP assigned to BSSG. (Photo by Cpl T.J. Clark)

Religious program specialist

He keeps pace with Marines

by Sgt Corrina Martell

He wore a Navy insignia, but he ran with Marines. And not only did he keep their pace, but he graduated third out of 371 at Infantry Training School, Marine Corps Base, Camp Lejeune, N.C.

He is Religious Program Specialist 3rd Class Henry Wayne Boatright, and he is the first religious program specialist assigned to Brigade Service Support Group.

According to Boatright, who was assigned to BSSG Jan. 1, Religious Program Specialists are new within the Navy and Marine Corps. The rating started four years ago.

Boatright said the main job at RPs is clerical work for the

chaplain and setting up proper materials for different religious services.

"Before RPs, these things were handled by Marines, Lance Corporal through Sergeants, who worked as chaplain assistants. They were basically OJT," he said. "RPs attend special schooling in the Navy, and all RPs stationed within the Marine Corps must complete ITS. This is to qualify them as a combatant within the Marine Corps — meaning they can carry a weapon. In the field or during time of war, my job would be to protect the chaplain. Under the Geneva Convention, chaplains are non-combatants and cannot carry weapons."

Boatright said that within the Navy he would not carry a weapon, because he would not go to the front line. He would be on ship or aboard station.

The 22-year-old sailor admits that ITS was not easy, but found it a good experience. "I was sort of scared when I first got there, because I didn't know what to expect," he said. "I was the only sailor. It was a totally new experience conforming to Marine Corps standards and at first it was tough. But, they made me a squad leader and I learned a lot. I also got into good physical and mental shape. I had a lot of fun and I'm glad I went through it."

Boatright said that he cannot do any counseling or anything with a

religious aspect, such as marriages. Those things must be handled by the chaplain.

"People don't have to give me a reason to see the chaplain," he said. "That's privileged information."

Boatright will officially take over his job in March. He will relieve Sergeant Joseph Orman, who has been serving as Chaplain's Assistant for BSSG in addition to other duties as Unit Information Clerk and Fleet Home Town News Clerk.

"This job is great," said Boatright. "I came into this field because I was interested in theology and religion. There's nothing I don't like about my work. I wouldn't have any other job."

天香園
Golden
Platter

A TASTE OF CHINA
8 COURSE DINNERS FOR 10
AS LOW AS \$90.00

Hot and Sour Soup
Whole Duck in Brown House Sauce
Sautéed Shrimp Platter
Lion's Head (Chinese Meatballs)
Shredded Chicken with Walnuts
Whole Fish with Sweet and Sour Sauce
Assorted Vegetable Dish
Sesame Dessert Strips

Gourmet Chinese dining awaits you at the Golden Platter Chinese Restaurant in Downtown Honolulu. Experience authentic Szechwan and Yanchow Mandarin cuisine, prepared by specialists in Mandarin food.

Open daily 10:30 a.m. to 9:00 p.m.

Valet Parking during dinner hours

CALL 537-6606 FOR RESERVATIONS

Special prices good through February 28, 1983

Mandarin Cuisine

1154 Nuuanu Avenue



PAINFUL FOOT PROBLEMS?

FREE foot health screening during
January and February.

• ingrown toenails • sports injuries
• calluses • warts
• sore heels • bunions
• properly balanced orthotics • hammertoes

A Doctor of Podiatric Medicine is the specialist concerned with the diagnosis, prevention and treatment of foot disorders by medical and surgical means.

Theodore G. York, DPM
Suite 1401
515 Bishop St.
Honolulu
538-1831

Kaliwa Podiatry Clinic
Suite 201
407 Ulukou St.
Honolulu
262-6961

David A. Haslen, DPM
Suite 727
68211 Pali Mall Dr.
Pearlridge
487-9949

See your Career Planner

You'll get straight talk. Answers to your questions. And a fair look at all the Corps has to offer.

1/3
SSgt. Holland
257-3107

3DAAVBN
Sgt. Drye
257-2694

H&MS-24
GySgt. Wrede
257-2486

HMM-262
GySgt. Miller
257-3444

VMFA-235
GySgt. Mitchell
257-3627

SOMS
SSgt. Eischen
257-3439

2/3
SSgt. Swain
257-3607

3D RECON
Sgt. Woods
257-2758

MABS-24
SSgt. Constante
257-3693

HMM-265
Sgt. Smith
257-2489

1ST RADBN
GySgt. Swanson
257-2977

HMM-463
GySgt. Devore
257-2208

Stay Marine.

You can count on the Corps.



Would you be as proud of any other job?

If you're thinking about whether or not to reenlist, ask yourself that question. Then answer it honestly. Remember, there are lots of civilian jobs. But there's only one United States Marine Corps. And you're part of it.

Then look at just the hard facts. Consider your job security, medical, educational and retirement benefits.

Can any civilian job offer as much?

Think it over and...

Stay Marine.



✶ REVOLUTIONARY WAR

CHAMPUS alters local motion filing deadlines

A recent change to Civilian Health and Medical Program of the Uniformed Services regulations makes it easier for patients eligible for CHAMPUS to get a waiver of the claim filing deadline, when the delay is not the fault of the patient.

Normally, claims must be in the hands of the claims processor not later than the last day of the year in which the care was received. Effective retroactively to April 9, certain exceptions to filing deadlines may be granted for claims that are delayed by federal, state, or local government institutions, for service they have provided.

Other circumstances in which a delay to the deadline can be obtained are: when a patient's eligibility was determined after the deadline; when there has been an administrative error by the program's headquarters office.

CHAMPUS, or by the CHAMPUS claims processor; when the beneficiary or guardian is mentally incompetent; or when physicians or other medical professionals who accept assignment as providers of care under CHAMPUS, mistakenly bill CHAMPUS directly.

Master Chief Deluca, the local CHAMPUS Representative, Kaneohe Branch Clinic, added, "The deadlines may also be extended when the delays, through no fault of the person using CHAMPUS, are caused by other health companies who must pay part of the costs for a particular service, before CHAMPUS can make the payment."

Any questions concerning this change, or questions about CHAMPUS should be directed to Master Chief Deluca at 257-3365.

Teen Center converts

by Sgt Corrina Martell

Records and bubble gum, football games and class rings are memories of teenage years. And then, there was always that special place where everyone hung out.

Until recently, that special place for teens aboard the air station was the Teen Center. But on Jan. 22, the center closed because of a budget cut, according to Kate Corcoran, Director of Dependent Recreation. The Teen Club will take its place, but will operate differently.

"The Teen Center had two full-time paid staff," said Corcoran. "The Teen Club will depend entirely on volunteers. We will try to coordinate the same activities that the Teen Center had, depending on the amount of volunteers we get. But we will have to have more fund-raising activities."

The Teen Club will open in late February. "We'll start with the club being open on Wednesday, Friday, and Saturday evenings at building 1991, the same place the Teen Center was at," said Corcoran. "We hope to extend the hours with a pre-teen program

where there are more volunteers to help out."

Corcoran explained that there is a parent advisory council and teen council which meets to discuss matters concerning the club.

"I think the teens are angry about the closing of the center," said Corcoran. "They feel that everyone has a place but them. However, there are some advantages to having the club instead of the center. Since the club will be strictly volunteer staff, more parents will be getting involved. Also, the teens will be involved in their own program planning. Before, the teen council didn't need to be as active because of the paid staff. Now the teens will get involved with everything from correspondence to arranging their own events."

Until the club opens, Corcoran said that the Armed Forces Services YMCA Outreach will use the old Teen Center building in the mornings, and the Girl Scouts will use it in the afternoons.

Active duty personnel as well as parents may volunteer to help at the Teen Club. Anyone interested may call Kate Corcoran at 257-3501.

K-BAY OFFICER CLUB

TODAY — Lunch in the Pacific Room from 11 a.m. to 1 p.m. features special hot carved sandwiches, soup and salads. The Tapa Bar will no longer be open during lunch time, Monday through Thursday. Beer and soft drinks can be ordered from the dining room. Mongolian barbecue on the Lanai from 6 to 8:30 p.m.

THURSDAY — Lunch in the Pacific Room. Beefsteak buffet from 6 to 8:30 p.m. featuring steamship round, seafood item, rice or potatoes, vegetable and a salad bar.

FRIDAY — Lunch in the Pacific Room. Happy Hour in the Tapa Bar from 4:30 to 6:30 p.m. Mongolian barbecue plus steakout on the Lower Lanai from 6 to 9 p.m. "CACTUS JACK" plays in the Tapa Bar from 8:30 p.m. to 12:30 a.m.

SATURDAY — Hotel round beef and Alaskan king crab buffet in the Pacific Room from 6 to 8:30 p.m.

SUNDAY — Champagne Brunch in the Pacific Room from 10 a.m. to 1 p.m. featuring a mini-buffet, menu orders, and all the juice and champagne you desire. In the evenings, prime rib and beef your own shrimp.

MONDAY — Lunch in the Pacific Room from 11 a.m. to 1 p.m. Join us Monday through Friday for lunch specials, hot carved sandwiches, soup and salads. Monday evening the club is closed.

TUESDAY — Lunch in the Pacific Room from 11 a.m. to 1 p.m. Happy Hour from 4:30 to 6:30 p.m. Tuesday evening the dining room is closed.

SNCO CLUB

TODAY — Lunch from 11 a.m. to 1 p.m. featuring beef kabobs and fried rice. Open menu dining available from 5:30 p.m. to 8:30 p.m. Oldies but Goodies Show from 8:30 p.m. to 12:30 a.m.

THURSDAY — Lunch from 11 a.m. to 1 p.m. Mongolian barbecue from 5:30 p.m. to 8 p.m.

FRIDAY — Lunch from 11 a.m. to 1 p.m. featuring mahi mahi or teriyaki chicken. Happy Hour from 4:30 p.m. to 6:30 p.m. Dinner special: jumbo stuffed shrimp, shrimp with prime rib or just prime rib. Disco every Friday night.

SATURDAY — Dining room open from 6 p.m. to 9 p.m.

p.m. featuring jumbo stuffed shrimp, shrimp with prime rib, or just prime rib. Country night featuring "CACTUS JACK." Dinner special for February is buy one dinner at full price and get the second one at half price.

SUNDAY — Champagne brunch from 9:30 a.m. to 1:00 p.m. Family smorgasbord from 5:00 p.m. to 8:00 p.m. A clown will be there to entertain the kids while mom and dad enjoy that after dinner cup of coffee.

MONDAY — Lunch will be served from 11 a.m. to 1 p.m. Featuring macho burritos and build your burrito from 5:00 p.m. to 7:00 p.m.

TUESDAY — Lunch will be served from 11 a.m. to 1 p.m. The luncheon special is liver and onions. Bingo starts at 8:30 p.m. Tonight's entertainment features "Pat Kaanoi" from 8:30 to 11:30 p.m.

WINDWARD ENLISTED CLUB

TODAY — Lunch from 11 a.m. to 1 p.m. Dining room opens from 5 to 9 p.m. with the chef's special tonight. Every Wednesday night the D.J. plays rock and roll in the Moongate Lounge from 7:30 to 11:30 p.m.

THURSDAY — Lunch from 11 a.m. to 1 p.m. Dining room opens from 5 to 9 p.m. with an open menu. Evening dinner special is all the barbecue beef ribs you can eat. Every Thursday night is country and western night featuring this month "JULIE AND THE ELECTRIC RANGERS" from 7:30 to 11:30 p.m.

FRIDAY — Lunch from 11 a.m. to 1 p.m. Dining room opens from 5 to 9 p.m. The dinner special is prime rib and lobster tail, just prime rib or just lobster tail. "X CITER" plays hard rock and roll in the ballroom from 7:30 p.m. to 12:30 a.m. and Top 40 sounds in the Moongate Lounge.

SATURDAY — Dining room opens from 5 to 9 p.m. with our lobster and prime rib, just lobster or just prime rib. \$3000 dance contest in the main ballroom. Check out our new lighting and sound system.

Stay Marine

Announcing New Airport Location!



Aloha Funway Rentals

WE RENT

- Cars
- Jeeps
- Harley/Kawasaki Motorcycles
- Bicycles
- Mopeds
- Snorkeling Equipment
- We Sell Show Tickets

3-Convenient Waikiki Locations Open Daily: 942-9696

*Airport Location 2882 Kopaka Ave. 834-1016
(Behind Hillis Motors)

***15% Discount For Military**

with this ad



BEDROOM EYES

NEW! Two Week Sleep-In Lens!

Wear up to 2 weeks without removing. Special Introductory Price

\$185 Permalens by CooperVision
(Reg. \$265)

Inquire also about standard soft lenses \$85

Includes lenses, care kit, solution & case. All follow up visits with the Doctor. All required visits. Same day service in most cases.

MUST BRING THIS AD IN FOR THE SPECIAL!!!

DR. TIM TOGIKAWA

Optometrist
DOWNTOWN
1146 Union Mall
538-6226

PEARL CITY

Dr. Edwin Enoki
98-1238 Kaahumanu St.
Suite 301
487-7907

A NEW ONE HOUR PHOTO LAB IS NOW OPEN



REPRINT SPECIAL
5 for 99¢
Now thru
Feb. 15th



We develop and print 110, 126, 135mm color print film in ONE HOUR.

CUSTOM QUALITY

AT NO EXTRA COST

SPECIAL SERVICES

- Disc
- Slides
- Magnaprints
- Enlargements
- Glossy Prints
- Black and White
- Prints From Slides
- Contact Sheets
- (B & W Color)
- Copying Services



We use Kodak paper... for a good look.

OPEN 7 DAYS

A WEEK

STORE HOURS:

Mon.-Fri. 9:30 a.m.-9 p.m.
Saturday 10 a.m.-5 p.m.
Sunday 10:30 a.m.-4 p.m.

PRICE LIST

12 exp. 4.63
20 exp. 6.39
24 exp. 7.27
36 exp. 9.91
Reprints 35¢ each

INTERNATIONAL HAIRCUTTERS

Now Open 9:00-7:30 p.m. Mon.-Fri.

5:00-7:30 p.m. Coupon Specials

	Reg.	Now
• Manicure	\$8 ⁰⁰	\$3 ⁰⁰
• Haircut	\$12 ⁰⁰	\$7 ⁵⁰
• Tint	\$14 ⁰⁰	\$9 ⁰⁰
• Cellophane	\$20 ⁰⁰	\$15 ⁰⁰
• Haircut & Blowdry	\$20 ⁰⁰	\$15 ⁰⁰
• Acrylic Tips	\$30 ⁰⁰	\$25 ⁰⁰
• Acrylic Nails	\$40 ⁰⁰	\$35 ⁰⁰
• Highlight	\$40 ⁰⁰	\$35 ⁰⁰

New Clients Only Offer Ends 2/16/83 With This Ad

PERM SPECIAL

For All Customers

\$35

- Includes:
- Conditioner
- Shampoo
- Perm
- Cut and Blowdry

Long Hair Slightly More



INTERNATIONAL HAIRCUTTERS
Alkahi Park Shopping Ctr. 254-1585

The Microwave Oven That Makes You a Genius!

Panasonic's NE-9930 adds a new dimension to microwave oven cooking... it's convection cooking for excellent baking or browning. Cook by microwave, convection or an automatic combination of both. With the NE-9930, every meal you cook will be a hit and make you a Genius.



DIMENSION 3



Available at your military exchange.

Panasonic
Just slightly ahead of our time.

FREE BIRTHDAY CAKE

when you have a birthday party for 10 or more at Chuck E. Cheese Pizza Time Theatre. This offer good Mon. thru Thurs. & reservations must be made two weeks prior to date of party.



*This coupon is good for one (1) FREE Birthday Cake with Birthday Party of 10 or more. Coupon valid through April 1, 1983.

Coupon must be redeemed on day of party and may not be used in conjunction with any other offer or coupon. Only one (1) coupon per purchase.

COUPON

DOUBLE TOKEN DAYS MON. thru THURS.

With purchase of Food Items! (Except Holidays)

PEARL CITY

98-1258 Kaahumanu St. Times Square-Waimalu
(Next to Times Supermarket) Phone 488-8487
Minors must be Accompanied by Adult.

HOURS:
11 A.M.-11 P.M.—MON.-THURS.
11 A.M.-12 MIDNITE—FRI.
10 A.M.-12 MIDNITE—SAT.
10 A.M.-11 P.M.—SUN.

CALL OUR "PARTY LINE"
487-2562
for info. & res. for
Special Birthday Parties

Chuck E. Cheese's
Pizza Time Theatre

Salutes

EDITOR'S NOTE: Salutes is designed to recognize individuals for their achievements and exceptional performance of duty as well as to welcome new arrivals to Hawaii.

The information is compiled from Fleet Home Town News releases submitted to the Joint Public Affairs Office by unit information officers.

H&HS

Welcome aboard:
GySgt P.J. Robertson
SSgt W.F. Fajardo
SSgt T.G. Glover Jr.
SSgt A.V. Ramirez
Sgt M. Rolland
LCpl J.W. Millen

Certificate of Commendation:
GySgt J.A. Farguharson

NCO of the Quarter:
Cpl J.H. Moore
Marine of the Quarter:
LCpl K.R. Hamblenton

BSSG

Welcome aboard:
LCdr R.D. Erb
1stLt R.J. Barlow
SSgt W.E. Daley
LCpl M.P. Gosselin
LCpl J.M. Leese Jr.
LCpl L.A. Marshall
PFC R.C. DeWolfe Jr.
PFC A.D. Fazio
PFC G. Hatcher
PFC D.J. Wilson
Pvt A. Smith

Promotion:
PFC K.R. Jowemaria

Letter of Appreciation:
Cpl W.M. Wilson

3/3

Welcome aboard:
Sgt S.J. Doherty
Sgt L.F. Martin Jr.
Sgt R.D. Rich
Sgt J.R. Young
HMS A.N. Broke II
Cpl P.T. Meagher
Cpl I.T. Swindle
LCpl D.D. Lyons
LCpl K.M. Monturio
PFC S.M. Adams
PFC M.H. Galland
PFC G.L. Snow

1/12

Promotion:
Sgt J.L. Rossi Jr.
PFC D.W. Daugherty
PFC R.L. Ferry
Good Conduct Award:
Sgt G.C. Axelson
Meritorious Mast:
Sgt H.P. Baylor
Letter of Appreciation:
LCpl D.B. Schackmann

NCO of the Month:
Cpl R. Simms
Marine of the Month:
LCpl E. Letarte

H&MS-24

Welcome aboard:
Maj S.T. Miffatt
MSgt C.E. Columbus
GySgt W.E. Mask
Sgt V.A. Neuvirth

Sgt M.J. Rondon
Cpl B.L. Krause
LCpl P.K. Bolling
LCpl T.D. Bowland
LCpl N.S. Gordon
LCpl C.L. Gregory
LCpl G.L. Kettner
LCpl O.L. Kroemer Jr.
LCpl C.D. Reeves
LCpl R.J. Ross
LCpl D.S. Tranbarger
LCpl M.R. Wannamaker
PFC J.W. Howell
PFC E.P. Macy
PFC T.L. Murdock
PFC M.M. Navarro
PFC D.J. Rapport
Pvt S.C. Dwyer

Promotion:
LCpl B.A. Munive
Meritorious promotion:
LCpl C.E. Brown

MACS-2

Welcome aboard:
GySgt R.G. Scott
SSgt J.K. Abbott
SSgt R. Harris
Cpl M.P. Loeffler
Pvt R.J. Stolen
Pvt T.S. Allen
Pvt P.V. Healy
Promotion:
PFC R.J. Stolen
PFC T.J. Allen

PFC R.V. Healy
Good Conduct Award:
Cpl B.L. Beauchamp
Cpl R.J. Hrivnak
Meritorious Mast:
LCpl J.D. McBroom
Reenlistment:
Cpl C.L. Veal

HqCo, 3dMar

Good Conduct Award:
Cpl J.M. Drake
Meritorious Mast:
Cpl J.L. Sheets

MABS-24

Welcome aboard:
SSgt D.T. Gray
Sgt T.W. Castleberry
Sgt D.R. Bruning
Cpl T.W. Amey
Cpl G.L. Blackmon Jr.
Cpl S.E. Burgard
Cpl L.C. Rice
LCpl R.C. Adams Jr.
LCpl L.K. Baker Jr.
LCpl M.A. Bartino
LCpl R.L. Bible
LCpl B.L. Jones
LCpl G.J. Tomaschik
PFC E.F. Collier
PFC G. Willaverde
Pvt M.E. Adams
Pvt D. Medina
Promotion:

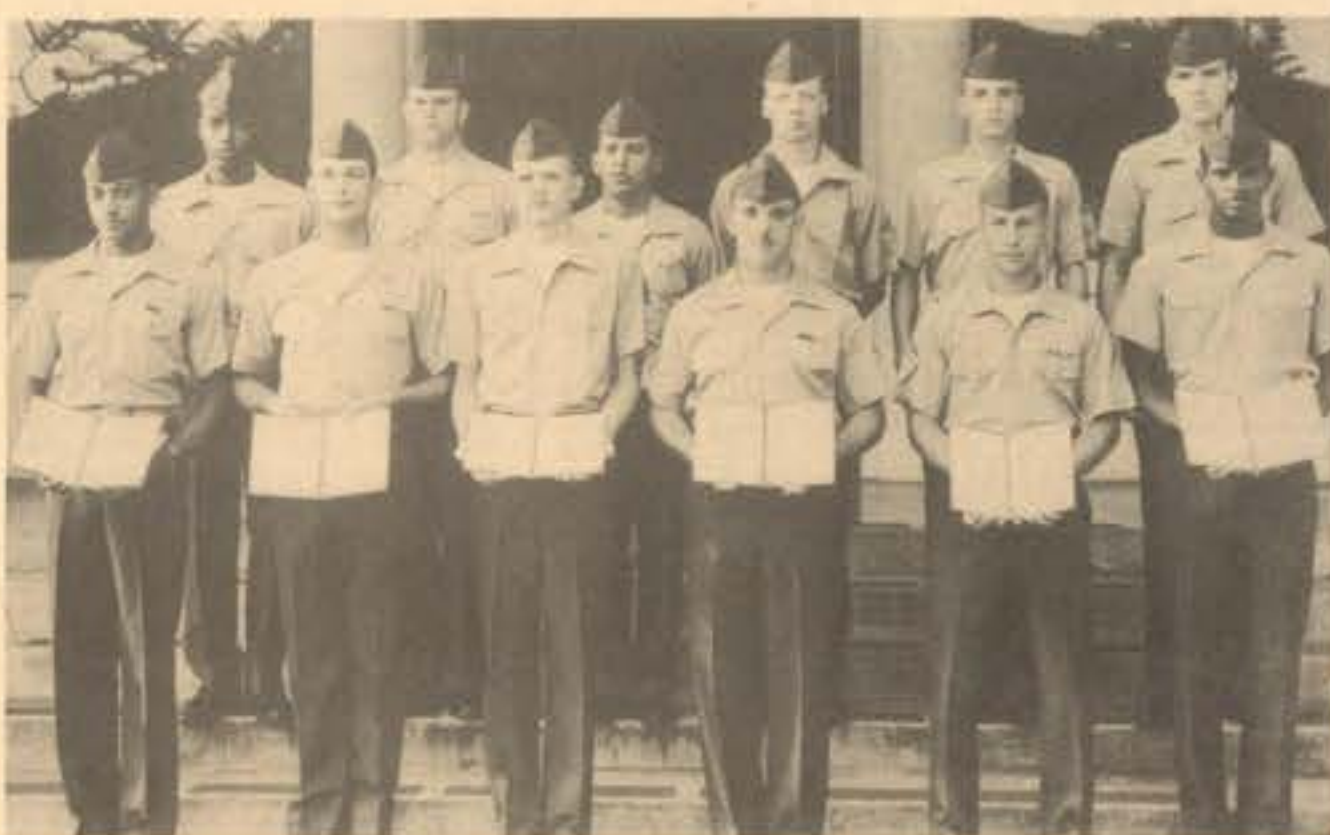
Sgt M.A. Johnson
LCpl P. Hernandez Jr.
LCpl C.W. Hoover
PFC M. Hrusovsky
Good Conduct Award:
Sgt L.R. Flack
Cpl A.I. Addinail

HMM-165

Welcome aboard:
Cpl K.D. Barrett
LCpl C.K. Munroe
LCpl J.E. Owen
PFC D.E. Pirch
PFC R.E. Weaver
NCO of the Month:
Cpl E.C. Krattli
Marine of the Month:
LCpl W.G. Sanabury

HMH-463

Welcome aboard:
SSgt J.T. Flynn
Sgt M.G. Peoples
LCpl B. Haggard
PFC F.A. Brudnowski
PFC S.A. Nagle
Promotion:
Cpl S.A. Cunningham
Cpl K.M. Horgan
Cpl P.E. Johnson
LCpl C.H. Frank
LCpl R.G. Hart
LCpl T.K. Johnston
LCpl J.H. Scobey



STANDING PROUD — St. Louis High School graduates pose with their diplomas. They are: Front row (from left), Sergeant Julius Gordon, Sgt Clifford R. Radford, Corporal Alan L. Reed, Lance Corporals Carl W. Bergen, III, John J. Dickson, Arnold B. Guy;

Back Row (from left), LCpls Dwayne Johnson, John A. Noiseux, Dennis Pagan, John W. Suiter and Mark L. Young and Private First Class Dennis R. Baty. (Photo by Cpl T.J. Clark)

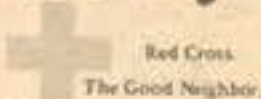
It's More you.



It's long.
It's slim.
It's elegant.



Giving blood is easy.



Get 50 for 20.

Retire after 20 years and get 50% of your base pay from the day you retire. Not at age 55, 62 or 65 like most civilian jobs.

You can count on the Corps.

Stay Marine.



Warning: The Surgeon General Has Determined That Cigarette Smoking Is Dangerous to Your Health.

17 mg. "tar", 1.4 mg. nicotine av. per cigarette by FTC method.

B SPORTS

HAWAII
MARINE

Rodeo champ gets kicks out of busting broncs

by Cpl Charlie Marshall

He's all cowboy... from the top of his All-American hat down to his pointed-toed Justin boots and he sports bruises and brags of broken bones from bronco bustin'.

"Once you get it into your blood, you can't stop," said the 1982 Hawaii State Rodeo champion.

Born and raised in a ranching community in Rifle, Colo., Corporal Chuck Disney eats, sleeps and lives for a rodeo.

"I remember when I was growing up, Dad always put me on something," recalled the 23-year-old. "During branding time at the sales barn, my uncle and Dad used to see how much my cousins and I could take. They'd hold down the calves, set us on top of them and laugh as we got bucked off."

"Seems like fun now, but it didn't then," he added.

Disney said he seriously started when his father bought him a mechanical bull 13 years ago, even though he rode his first steer when he was 7. By the time he was 16, he was riding bareback on the wild horses his uncle would catch.

"My uncle gets contracts from the Bureau of Land Management to catch wild horses for the government," he explained. "It keeps a balance between the land and horses. The government puts them up for the horse adoption program."

"I worked on his ranch when I was in high school. My cousins and I competed in all the local rodeos and we would 'butt heads' as to who'd finish first. One weekend, I'd be first and they would finish second and third. The next time, I'd finish third and they'd win."

But who does a ranch hand in a small town become interested in the Marine Corps?

"I wanted to go professional," he said with a western drawl. "My friend and I went to a recruiter and he told us the Marine Corps had a good team and great stock for practice. You only get better with practice," he interjected. "Well, to make a long story short, I joined and my friend didn't."

Disney, one of the top contenders of Colorado's high school rodeos, is now a refueler driver and line chief for Headquarters Battery, 1st Battalion, 12th Marines.

"Since I've been in Hawaii, I met up with Bud Gibson (a ranch owner in Waimanalo). He's got the best stock on the island. When I left Colorado, I said I was going to give up bull riding, but Bud got me back into it."

Gibson owns a 2200-pound bull that hasn't been rode yet. The bull is so mean that a beer company has offered \$1000 to the cowboy who can stay on him for eight seconds. Every time he bucks off a cowboy, the pot is increased by \$100.

Disney had his chance at the pot during his last rodeo, when he drew Rocky on the first round. "I rode him for about five or six seconds before I got bucked off," he said, as his smile was quickly replaced by a look of revenge. "He threw me, stomped on me and..." Disney hung his head and shook it from side to side, shuddering at the bad experience. "Now I am definitely giving up bull riding. There's a lot of money in it, but it's a short-lived event."

Of all the events, Disney said bareback riding is the most physically demanding. "You've got a 1000-pound animal beneath you and you're holding on with one hand."

Coordination, rhythm, balance and agility are Disney's keys in being rated No. 1 in the state.

The saddle bronc is another event Disney is near perfecting. In 1981, when he was ranked second in the state, he was first in the saddle bronc. "Saddle bronc is timing and rhythm," he said. "You have to make sure you're in the front end when the horse hits the ground, or you're going right over the dashboard."

Disney's philosophy to riding is: "It's all in the mind. You have to ride them mentally before you can ride them physically. And if you keep getting on the stock, your going to get better."

Along with the good must come the bad... the next morning. "After being on four or five head during a rodeo, you can't get out of bed the next day. You're pretty sore. And, every time you get hurt, it takes longer to heal." Some of the injuries Disney has suffered include a broken arm, a broken leg, a broken thumb, and a concussion, not to mention all the scrapes, scratches and bruises.

He said riders can't be scared of the animals. "If he throws you, you have to get right back on him and show yourself you can ride him."

At 5-foot 10-inches and weighing 160 pounds, Disney has to stay in shape to ride animals 10 times his weight. He attributes his rodeo success to luck and is still interested in going professional. But he also says the strong competition is on the mainland and he can make more decisions when he reached his next duty station.

Whether it's his experience or his skill that makes him the best in Hawaii and the best in the military, Disney said, at any rodeo, the whole sport boils down to the luck of the draw.

RODEO CHAMP
— Corporal Chuck Disney tells of experiences riding in rodeos. (Photo by Sgt Pepper Davis)



Disney's next rodeo is Feb. 19 and 20 at Waikalua on Big Isle.

One Hour
FROM MEX
Photo Systems™
2nd Set of Prints
FREE

or
Bring in 3 Rolls of
135, 125, 110, or Disc Film
3rd Roll Processed FREE

We guarantee all work
Total Finishing Services Available
10% Off Processing & Printing Of
Color Print Film With Military I.D.

WINDWARD MALL Lower Level
Kaneohe 247-6737
M-F 9:30-9:00
Sat. 9:30-5:30 Sun. 10:00-4:00

FROM
COLORTIME
WITH

Make this Valentine's Day
one to remember with a
gift that keeps on giving.
♥ No Credit Check
♥ No Long-Term Obligation
♥ Delivery and Service Included
♥ Rent-to-Own Plan

Name brands like: RCA,
Whirlpool, Sanyo, Gibson,
GE, Maytag, Hotpoint,
Fisher

RENT BY PHONE. CALL
NOW FOR IMMEDIATE
DELIVERY

COLORTIME
TV • Video • Audio • Appliances

Stadium Mall (across from Castle Park)
4510 Salt Lake Blvd.
10-7 Mon.-Sat. 487-6421



IS AT MTV
WHERE WE OFFER YOU
INSTANT CREDIT
on that TV, stereo or furniture
you've been wanting for that
Special Valentine of yours!
NO CREDIT CHECK!
LOW DOWN PAYMENT!
5 YEAR WARRANTY!
PLEASE DON'T FORGET YOUR L.E.S.!!
622-3995
177 SOUTH KAM HWY.
WAHIAWA

**\$2500 OFF YOUR
NEXT
PURCHASE
WITH THIS COUPON**

Gee... a Deli!
FREE Dr. Brown's
so...la with
purchase of a New York
Style Deli sandwich.
(Present this coupon)
Featuring
• Huge array of sandwiches
• Meats sliced to order
• Domestic & imported cheeses
• Freshly baked breads, bagels & rolls
• Scrumptious salads
• New York style cheesecake
• Catering for all occasions
418-F Kuulei Rd.
In the parking lot behind Kailua, McDonalds
261-4412

NOHUUHUA CALL
MAGGO'S PIZZA
WINDWARD CITY SHOPPING CENTER
FREE DELIVERY WITH THIS
COUPON (\$7.00 Minimum)
With 31 Exotic Varieties
40 MIN. DELIVERY SERVICE
CALL 235-4539
RADIO DISPATCHED TO
Kahaluu, Kaneohe, Yacht Club, Kailua, MCAS
HOURS: 11 a.m.-Mid. Weekend, Holidays
3:30-Mid. Mon.-Fri. 3:30 - Delivery

APPLE IIe or not IIe THAT IS THE QUESTION

Apple IIe

The New Apple IIe Starter System Package
• 44K Apple IIe with 80 column board
• Learning time more efficient. Whether you are a manager, a small business or an educator, you'll find in the new Apple IIe Starter System ways to solve everyday problems. Over three quarters of users can't be wrong. See Memory Lane Computers for more answers about the new Apple IIe today!

Memory Lane Computers
• Disk drive with controller
• One hour FREE training
• 100 business programs
• 100 business time-saving
• 100 business time-saving
• 100 business time-saving

Apple Computer
Contact Memory Lane Computers for more information.

\$30.00 PER DAY
PACIFIC Marina INN
AT THE AIRPORT
836-1131
MILITARY ROOM AND WHEELS
• In House Movies Nightly
• Day Rates Available
• Deluxe room at the Pacific Marina Inn
• Rental Car available
• 48/Day Package
• 30 room
• 18 car
RENT-A-CAR

HOTEL FEATURES:
• All rooms are air conditioned
• Swimming Pool
• Kitchenettes
• Laundry Room
• 24-Hour Courtesy Car Service to and from Honolulu Int'l. Airport
• T.L.A. Approved
• Waikiki Beach just 20-minutes away from Pearl Harbor, just 10 minutes from hotel
2528 Waiwai Loop
Honolulu, Hawaii 96819
NIMITZ HWY. AIRPORT (ADDITIONAL DRIVE WAIWAI LOOP)

Sportnotes

Try-outs for the Men's and Women's Varsity Softball teams will be held Saturday and Sunday at Risely Field. Women's try-outs start at 9 a.m. and the Men's start at 1 p.m. For more information contact the respective coaches: Master Gunnery Sergeant Dave Burnett at 257-2714 or First Lieutenant Nancy Hatfield at 257-3119. Camp Smith and Marine Barracks Marines are eligible.

The intramural soccer season has started and games are being played every weekend at 11 a.m. and 12:30 p.m. at the Station Training Field. Athletes interested in joining a team should contact the Athletic Office for details.

Registration for Dependent Women's Slowpitch Softball will continue until

Monday. Coaches and players are needed. For more information contact Kate Corcoran at 257-3501.

Tim Gee is conducting classes in the old classical style of kung fu — **Shaolin Si Lum**. For more information about enrollment contact Gee at 261-4979.

Upcoming Running Events:
 Max Telford Couples Run Saturday
 Camp Smith Fun Run Saturday
 11th Annual Biathlon Sunday
 6th Annual Hawaii Women's 10K Feb. 20
 Champagne and Chocolate Couples 10K Classic Feb. 26
 Big Brothers/Big Sisters Fun Run Feb. 27
 Entry forms for these and other races plus the

1983 Running and Marathon Calendar are available in the Athletic Office.

Organizational Meetings Calendar:
 Intramural Softball Today
 Over 30 basketball Feb. 16
 All meetings are held at noon in the Station Theater lobby.

Sergeant Kelly Rhodes of Camp Smith took second place in the Hurricane Iwa Makaha

Longboard Meet last weekend. Rhodes was in the over 30 category and was riding a long board under 10 feet.

The Marine Outrigger Canoe Club is looking for beginners and experienced paddlers both male and female for their upcoming season. Interested persons should contact Captain Bob Basham at 257-3241/2012 or show up at the Marina Monday through Friday at 5 p.m.

Wise up.

Get the degree you've always wanted. See your career planner and ask about the Corps' educational programs.

You can count on the Corps.

Stay Marine

Travel Career?
 TRAVEL AGENT
 RESERVATIONIST
 COMPUTER TRAINING
 NEW CLASSES BEGIN
 Feb. 8 Pan Am Bldg.
 March 8 Kailua
 955-0030 262-8121
 262-7749 evens./weekends.
KOTTNER
 TRAVEL INSTITUTE
 Affiliated Red Carpet Travel

GET OUT OF DEBT
 Bankruptcy laws offer hope for debtors in trouble. If you are having problems paying your bills and need a fresh start, call
261-3233
 Law Offices of
 Noah D. Fiddler
 No charge for initial consultation

February Special
 Touch Of Class Health Spa

 947-8800
 474 Ena Rd.
 Hot Oil Bath, Private Room
 Personalized Instructors
 Ample parking in rear entrance on 2nd floor above Kalakaua Forest
\$1000 off
 with coupon
 expires Feb. 20
 Open 10 a.m. to 4 a.m.

COUPON
 Present this coupon

KIM CHEE BAR-B-Q
 Specializing in Korean Style Bar-B-Q
FREE
 Fried Man Doo with
 Kim Chee's Bar-B-Q's Special
 Barbequed Beef, Chicken, Short Ribs,
 Kim Chee and Vegetables
 OPEN: Mon.-Sat. 10:30 a.m.-9 p.m., Sundays 11 p.m.-8:30 p.m.
 Take-out orders from 7 a.m.-8:30 p.m.
 16 Kanehe, Kailua (across from Kentucky Fried Chicken)
 Good thru March 15, 1983
262-8888

COUPON

MICROWAVE OVEN TRUCKLOAD SALE

A delayed container of ovens has arrived from our mainland distributors. They should have been sold by Jan. 30. Therefore, we've reduced all ovens to practically **WHOLESALE COST!**

Your Choice
AMANA • PANASONIC
TAPPAN • LITTON

Individual Features Include
CAROUSELS • PROBES
ROTOWAVES • DIGITALS

NEW
VALUES TO \$498
\$239
 Limit 2 per customer

FREE \$47.00
 Cookware Set and Cookbook with Oven purchase.

Compact Microwave
 .7 Cubic Ft. Demo Models
179

Microwave/Browner Combination
 Digital With Automatic Probe
469

OUR GUARANTEE:
 Simple, we guarantee you the lowest prices in Hawaii on any oven including military exchanges. This applies to the Microwave/Convection Ovens from SHARP & PANASONIC. In addition, we have 22 models on display.

5 DAYS ONLY SALE ENDS SUN. 2/13/5 p.m.
 Last Chance Before Valentines Day

PACIFIC SURPLUS & DISTRIBUTORS
 Sun. 11:00-5:00
 Mon.-Sat. 9:30-6:00 p.m.
 Thurs. 9:30-9:00 p.m. Tues. Closed
CALL 262-8131
 1247-F Kailua Rd.

THE Marsh COMPANY

TRUCKLOAD SALE!!!

Sealy Savings of up to \$300 ARE HEADED YOUR WAY!



ONE DAY ONLY! Saturday 9-6 Feb. 12, 1983

The story behind the sale
 We bought 'em all! Truckloads of Sealy overstock bedding in your choice of luxurious sleep surfaces. All with deluxe, specially tempered coils...putty cushioning...uniquely durable torsion bar foundations. Don't let this truckload of savings pass you up. Shop early!

Twin Size
 Reg. 139⁹⁵ ea. pc.
\$77 ea. pc.
 (mattress and foundation)

Great Savings! available on **Twin, Full, Queen and King Sizes**

King Size
 Reg. \$599/set
\$299 set
 (mattress and foundation)
 Available in "Firm" and "Extra Firm"

From the makers of the #1 selling mattress—**Sealy Posturepedic®**

THE Marsh COMPANY

Hawaii's Most Exciting Furniture Store

WAIPAHU
 Phone 671-3995
 Next to Pay 'n Save & Emjays

MAIN STORE:
 1505 Dillingham Blvd. Phone 847-5382
 Between Pay 'n Save & Emjays

WestPac wins best of 5 series

Okinawa tops Hawaii for FMFPAC championship

by Sgt Ray Tademey Jr.

CAMP KINSER, Japan — Okinawa All-Stars John Booth and Roosevelt Watkins combined for 40 points and 25 rebounds to lead their team to an 80-75 victory over Hawaii in the fifth and deciding game of the Fleet Marine Force Pacific Basketball Championships here Jan. 24.

Booth hauled down 15 rebounds and garnered 18 points while Watkins poured in 22 points and grabbed 10 rebounds in leading Okinawa to the title.

Okinawa had their hands full, however, rebounding from defeats in games two and four. Their opening game victory, a big win in game three and the final win definitely showed the odds were in their favor.

Okinawa topped Hawaii 88-86 in the opener Jan. 20. That victory came on a 25-foot jumper by Neal Browning with 18 seconds to go.

Hawaii came back and posted a 90-85 overtime victory in game two Jan. 21, behind the 23-point performance of Norris Chappell.

In game three, Okinawa was relentless in its attack and pounded the Hawaii five 86-55 Jan. 22.

Hawaii was at its best in game four as they defeated Okinawa 79-68 the next day to set up the fifth and final game.

The finale brought out the best in Okinawa.

Okinawa took control of the inside game and had a 17-9 lead after a John Booth tip-in with 11:02 to go in the half. As time in the first half clicked away, Larry Titus was scoring key baskets to keep Hawaii in the game. Hawaii cut the lead to 30-28 before Victor Mayes sank a pair of free throws with 11 seconds to go to give Okinawa a 32-28 halftime lead.

Ricky Hicks and Titus combined for Hawaii's first eight points in the second half and the score was knotted at 36 at the 16:45 mark. Okinawa then managed to hold on to a slim lead before Larry Rudolph scored on a driving layup to give Okinawa a 47-43 edge.

Larry Volley sparked a Hawaii surge when he scored on a two-handed slam dunk and sank two free throws to move Hawaii to within two points 49-47.

Watkins answered for Okinawa with two turnaround jumpers from the free throw line and Okinawa was up 53-47.

Later, Hawaii closed to within three, and then two points, 75-73 on two free throws by Ellis Duncan.

But, Johnnie Richmond broke Hawaii's full court press, zipped across the half court line and hit Booth with a pass that resulted in his 22nd point and a 77-73 Okinawa lead.

Hawaii's Duncan scored again to make it 77-75, before Richmond found another man underneath. Watkins converted a three-point play that made the final 80-75.

"Booth really came on strong today and Watkins hit some key points," said Rusty Hatfield, Okinawa coach. "We knew we had to win the game and we did."

"They (Hawaii) are well-coached and have two outstanding ballplayers," said Hatfield. "Chappell is one of the best one-on-one players I've seen and Hicks is another exceptional player."

It was Chappell and Hicks who presented most of the woes for Okinawa throughout the tournament. Chappell poured in 31 points in the opener and 23 in the second contest. He was held to just 10 points in the third game before cutting loose in game four for 22 and he tallied 18 in the final. Hicks scored 27 points in game four while grabbing 10 rebounds in leading Hawaii to the win.

Okinawa saw what was to come in the first game of the series.

Chappell began his scoring antics and triggered a 31-22 Hawaii lead late in the first half. Okinawa stormed back, but Hawaii still held a 42-38 halftime lead.

Mayes scored quickly in the second half to help Okinawa tie the game at 44. James Miller, Billy Potts and Browning all scored to give Okinawa a 58-50 edge at the 14:13 mark.

Late in the game, Hawaii made their move. They tied the score at 86-86 with 1:03 left before a succession of miscues by

both squads put a halt to the scoring. Then, Okinawa got a break. With seconds ticking away, Browning fired his game winning jumper.

The second game featured Hawaii's defense constantly shutting down the Okinawa five.

Hawaii jumped to a 13-4 lead mostly due to Hicks working the inside. Okinawa battled back to tie the score 23-23 behind the shot blocking of Mayes and the established board presence of Mark Jackson and Watkins.

Hawaii then quelled Okinawa's rally and erupted to take a 40-33 lead behind the shooting of Chappell and Hicks.

But, Okinawa scored 10 points in the final 1:15 of the half to take a 43-40 lead at the half.

The second half action was fast-paced and the lead continued to shift back and forth. Regulation time ended with the score deadlocked at 77.

Hawaii finally took complete charge in overtime, grabbed an 83-77 lead and coasted to the triumph.

Game three was revenge time. Okinawa remembered the beating it took on the boards the day before and took complete control. Hawaii crumbled under Okinawa's talented onslaught.

Okinawa, dominating the play, opened a 44-27 lead, and continued to romp in the second half, marching to the 86-55 victory.

"When it rains it pours," said Hawaii's Hicks. "It didn't bother me. Sometimes there is just nothing you can do about a blowout."

Hawaii had recuperated for game four and they came out to play.

The first half was nip and tuck and the battle on the boards took on ferocious dimensions. When the buzzer sounded at the half, Okinawa had a 40-36 lead, but also had foul trouble.

Okinawa opened up a 44-38 lead in the second half and upped it to 51-42 on a three-point play by Jackson.

Hawaii began chipping away at the lead and took it on an Eric Hook's basket with just under 10 minutes to go. Hawaii began pulling away and Okinawa couldn't make up the lost ground, dropping the decision 79-68.



OVERHEATED ACTION — The Okinawa Marine All-Stars worked repeatedly to break the stride of the Hawaii Marine team. The Okinawa team finally eluded their adversaries to win the FMFPAC Basketball Championship. (Photo by Cpl Lee Tibbetts)



"WAY TO GO" — The Windward District Special Olympics Track & Field Competition will be held at Castle High School Feb. 18. Volunteers are needed for assistants. For more information call Master Sergeant Earl McGeoghegan at 257-2389.

Porcelain Doll Classes
Learn the European art

For more information send a long, stamped, self-addressed envelope with phone number to:
Patricia LaRue
P.O. Box 909
Kaneohe, HI 96744

WE BUY
GOLD • SILVER • PLATINUM
DIAMONDS • WATCHES
U.S. & FOREIGN COINS

HONOLULU 786 KAPAHULU 786-2208 KANEHOE 46-276 KAHULU 367-8477

Prestige

ACCIDENT CASES
INCLUDING
WRONGFUL
DEATH CLAIMS
AND
CATASTROPHIC INJURIES

You may qualify if you or any member of your family has been injured.

524-5400

Law Offices of
GALIHER & JERVIS
No Charge For Initial Consultation
No Recovery - No Fee
333 Queen Street, Suite 800
Validated Parking

GET OUT OF DEBT

through Chapter 13
A federal law which helps to pay off your debts without borrowing and in payments you can afford, stops creditor harassment and law suits, protects your job, co-signers and property. Information packet without obligation.

Please call:
HOWARD Y. TANAKA
Attorney versed in Chapter 13 filings
Suite 703, Ali Bishop Bldg
1136 Union Mall, Honolulu
Phone: 526-1544

Allen Springs

PepperTree
APARTMENT HOTEL

- 2 & 1 Bedrooms
- Children Welcome
- TV, Pool, Laundromat
- Maid's Service, Free Phone
- Close to most bases with transportation available

PEARL RIDGE SHOPPING CENTER

TLA APPROVED
488-1993

Confused about the \$25 rebate for Hawaii residents?

H & R Block knows all about it.

H & R Block knows there's more to income taxes than paper and pencil. Especially this year. Our preparers have had intensive training in this and other tax-related issues. Because knowing how to do the best possible job on your return just might save you money on your State, Federal or out-of-state return.

H&R BLOCK

THE INCOME TAX PEOPLE

What we know about income taxes can help you!

DOWNTOWN—537-8845	LEEWARD—487-8531
882 Ala Moana Blvd	98-1288 Kalia Rd., Pearl City
KALIKU: Waikele Shp. Ctr.	ALA: 98-295 Moanalua Rd.
KAIMUKI: 3185 Waikele Ave.	OWA BEACH: P.O. Box 800
KAPAHULU: 485 Kapahulu	MILLIAN: Millian Shp. Ctr.
MAKIKI: 1231 Wilder Ave.	PEARL CITY: 953 Lehua Ave.
MANA: Manoa Market Place	WAIKANA: 538 California Ave.
MOILIILI: 1631 So. King St.	WAIKANA: Waikele Shp. Mkt.
KALAKAUA: 1307 Kalekalea	WAIKANA: Waikele Shp. Mkt.
AINA HAINA: Shopping Ctr.	WAIKANA: Waikele Shp. Mkt.
262-7628	—WINDWARD— 235-2647
KAILUA: 148 Hekili Street	KANEHOE: 48-018 Kam Hwy.

OPEN 9 a.m.-8 p.m., Weekdays; 9-5 Sat.; 9-2 Sun.
—APPOINTMENTS AVAILABLE—
MasterCard and VISA accepted at the above listed locations.

Also in most major **Sears** during regular store hours

Steffy's Auto Body & Paint, Inc.

Also
Automatic Transmission
Specialists

FREE Loaner Estimates

Guy Cayetano - Owner
(U.S. Navy Retired)



131 -A Hekili St.
Kailua, HI 96734
PHONE:
262-5060
261-8195

CONSOLIDATED THEATRES

KAM DRIVE-IN "SUPER" SWAP MEET
EVERY WED., THUR., SAT. & SUN. • 7 AM to 3 PM • 488-9232

WAIKIKI	KAM DRIVE-IN
Seaside • Kailua • 523-0284	Seaside • Kailua • 488-3635
STARTS FRIDAY: "JESSICA LANGE" "FRANCES" (R) Call Theatre For Show Times	"THE ENTITY" (R) 8:45 & 11:00 PM "THE JURY" (R) 8:00 PM ONLY Sales Open at 8:00 PM

WAIKIKI #3	PEARL RIDGE
Kapahulu • Seaside • 523-5353	Pearlridge Center • 487-5581
"VIDEODROME" (R) 12:30 & 2:30 & 4:30 8:30 & 10:30 PM	"BALLY FIELDS" "MISS ME GOODBYE" (PG) TONIGHT 8:45 & 8:55 & 10:30 PM

KURBO	WAIKIKI #3
528 Kailua • 341-4422	Kapahulu • Seaside • 523-5353
"THE ENTITY" (R) TONIGHT 8:00 & 8:15 & 10:30 PM	"VIDEODROME" (R) 12:30 & 2:30 & 4:30 8:30 & 10:30 PM

MOVIES OVER FRIDAY	WAIKIKI #3
"THE VERDICT" (R) Call Theatre For Show Times	Kapahulu • Seaside • 523-5353
"THE VERDICT" (R) Call Theatre For Show Times	"VIDEODROME" (R) 12:30 & 2:30 & 4:30 8:30 & 10:30 PM

CINEMA	WAIKIKI #3
King • Kailua • 341-4422	Kapahulu • Seaside • 523-5353
STARTS FRIDAY WITHOUT A TRACE" (PG) Call Theatre For Show Times	"VIDEODROME" (R) 12:30 & 2:30 & 4:30 8:30 & 10:30 PM

VARITY	WAIKIKI #3
University • Seaside • 341-4422	Kapahulu • Seaside • 523-5353
"BEST ACTRESS" "KERRY, STEVEN" "SOPHIE'S CHOICE" (R) Tonight 8:30 & 9:30 PM	"VIDEODROME" (R) 12:30 & 2:30 & 4:30 8:30 & 10:30 PM

KAPOLANI	WAIKIKI #3
144 Kailua • 341-4422	Kapahulu • Seaside • 523-5353
"VIDEODROME" (R) 12:30 & 2:30 & 4:30 8:30 & 10:30 PM	"VIDEODROME" (R) 12:30 & 2:30 & 4:30 8:30 & 10:30 PM

KAILUA DRIVE-IN	WAIKIKI #3
517 Pal Highway • 261-6532	Kapahulu • Seaside • 523-5353
"VIDEODROME" (R) 8:30 & 10:30 PM	"VIDEODROME" (R) 12:30 & 2:30 & 4:30 8:30 & 10:30 PM

ASIAN CINEMA	WAIKIKI #3
Seaside • Kailua • 341-4422	Kapahulu • Seaside • 523-5353
STARTS FRIDAY "TURTLE GIRL'S" "COLLEGE GIRL'S" "AFFAIR" Call Theatre For Show Times	"VIDEODROME" (R) 12:30 & 2:30 & 4:30 8:30 & 10:30 PM

KAILUA DRIVE-IN	WAIKIKI #3
517 Pal Highway • 261-6532	Kapahulu • Seaside • 523-5353
"VIDEODROME" (R) 8:30 & 10:30 PM	"VIDEODROME" (R) 12:30 & 2:30 & 4:30 8:30 & 10:30 PM

KAILUA DRIVE-IN	WAIKIKI #3
517 Pal Highway • 261-6532	Kapahulu • Seaside • 523-5353
"VIDEODROME" (R) 8:30 & 10:30 PM	"VIDEODROME" (R) 12:30 & 2:30 & 4:30 8:30 & 10:30 PM

KAILUA DRIVE-IN	WAIKIKI #3
517 Pal Highway • 261-6532	Kapahulu • Seaside • 523-5353
"VIDEODROME" (R) 8:30 & 10:30 PM	"VIDEODROME" (R) 12:30 & 2:30 & 4:30 8:30 & 10:30 PM

KAILUA DRIVE-IN	WAIKIKI #3
517 Pal Highway • 261-6532	Kapahulu • Seaside • 523-5353
"VIDEODROME" (R) 8:30 & 10:30 PM	"VIDEODROME" (R) 12:30 & 2:30 & 4:30 8:30 & 10:30 PM

KAILUA DRIVE-IN	WAIKIKI #3
517 Pal Highway • 261-6532	Kapahulu • Seaside • 523-5353
"VIDEODROME" (R) 8:30 & 10:30 PM	"VIDEODROME" (R) 12:30 & 2:30 & 4:30 8:30 & 10:30 PM

GEMS-JEWELRY
Custom Made-Ready Made-Repairs

**REASONABLE
PRICES-QUALITY
GEMS**

737-8414

ELLZ-GEMBROKER 1014 Kapahulu Ave.
at Max Davis & Assoc. Kilaheo Square Open Mon.-Sat. 10-4

**UNCONTESTED
DIVORCE — \$144.00 ***
(Fair terms to which both parties agree)
ADDITIONAL CHARGE FOR CHILDREN \$25**
ADDITIONAL CHARGE FOR REAL PROPERTY \$40**

DIVORCE
CONSULTATION — \$48*
UNCONTESTED
ADOPTIONS — \$240*
SIMPLE WILLS — \$38**
OTHER FEES UPON REQUEST

**BARBARA LEE
MELVIN**
National Secretary — National Association
of Women Lawyers
521-7496
evenings and weekends by appointment
*Plus tax

**KDEO
COUNTRY RADIO**

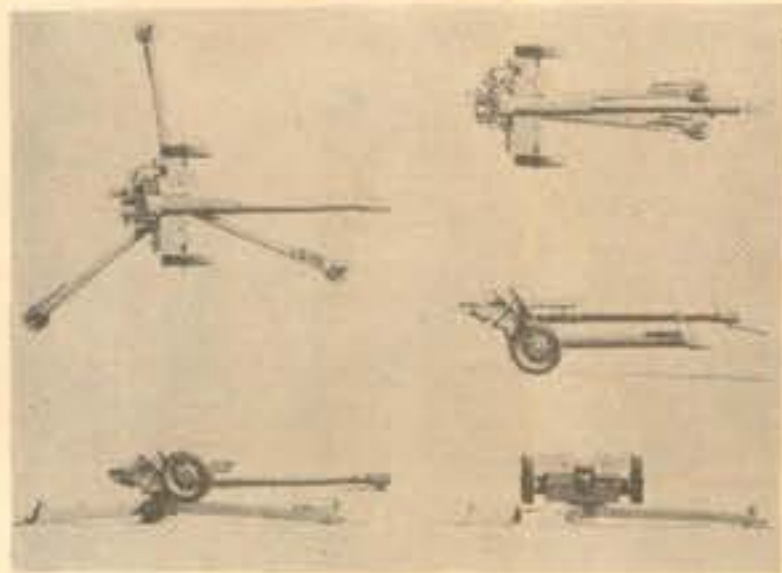
TOP 10 COUNTRY SONGS

FEBRUARY 3, 1983		
LAST WEEK	THIS WEEK	TITLE
2	1	Inside
4	2	Till I Gain Control Again
5	3	Faking Love
1	4	Talk To Me
10	5	Why Baby, Why?
8	6	Still Taking Chances
11	7	Somebody's Always Saying Good-Bye
12	8	If Hollywood Don't Need You
9	9	What She Don't Know Won't Hurt Her
3	10	Like Nothing Ever Happened

Hear the Top Country Songs in the Nation on the WEEKLY COUNTRY MUSIC COUNTDOWN SUNDAY MORNINGS at 9 A.M. on AM94 at KDEO Country Radio.

Intelligence Brief

122-mm Howitzer D-30



Recognition features: three-trail carriage, towing lunette mounted on multibaffle muzzle brake, box-shaped covering over recoil mechanism above tube, towed muzzle first.

The Soviet 122mm howitzer D-30 was introduced in the 1960's. This weapon is found in the howitzer battery of the motorized rifle regiment and in the artillery regiment of the motorized rifle, tank, and airborne divisions. It has a three-trail carriage which permits a 360-degree traverse. The weapon is towed muzzle first by a large lunette just behind the muzzle brake. When the D-30 is placed in firing position, the crew lowers a central firing jack, the wheels are raised off the ground, and each of the two outer trails is spread 120 degrees into the firing position. Other distinctive features of the D-30 include a small shield, a recoil system above the tube, and a multibaffle muzzle brake. This howitzer fires a variable-charge, case-type, separate-loading ammunition. Maximum range is 15,300 meters. Of great significance is the provision of a special nonrotating, fin-stabilized, HEAT projectile for the D-30. Direct fire HEAT range is 800 meters. A crew of seven mans the D-30. Maximum rate of fire is 6 to 8 rounds per minute. The 122mm also comes in a selfpropelled (SP) version. It replaces the D-30 in motorized rifle and tank divisions.

Stay Marine.

AVNET INSURANCE ASSOCIATES

AUTO INSURANCE

- No Fault
- Comprehensive
- Collision

LIFE
PROPERTY
CASUALTY
DISABILITY
FIRE

AVNET

Pali Palms Plaza
970 Kalaheo Ave.
Kailua, 96734

— IT PAYS TO COMPARE —

CALL 254-4663

Auto Insurance Financing Available
Office Hours: Mon.-Sat. 8 a.m.-6 p.m.

Councilman David Wilcox

Kahanu

Kahanu Ohana • A Fundraiser

PLACE: ABOARD THE OCEANIA,
301 ALA MOANA BLVD.

DATE: MONDAY, FEBRUARY 14, 1983
5:00 TO 7:00 P.M.

Cocktails • Pups • Entertainment • Aloha Attire
Sponsored by the Friends of David Wilcox Kahanu
Bobby Moore, Chairman
Tom Woo, Treasurer
P.O. Box 1429, Kaneohe, HI 96744 262-2600

Affects 99 percent of U.S.

Decay destroys teeth

This series of articles will explain the nature of some of the more common dental diseases and how they can be treated or prevented. Some preventive measures are carried out by the dentist, but the most important ones are in the hands of you, the reader.

We have all heard many times that tooth decay is the most common disease of mankind — a recent estimate is that 99 percent of the United States population suffers from it. We have also been told that the eating of sweets has something to do with the problem.

Nearly everyone knows that keeping the teeth clean helps prevent decay, but they don't know exactly why. And since tooth decay is so common, too many people still take it for granted.

The truth is that the individual can do much to prevent decay in his own teeth and those of his children. An explanation of why decay develops will suggest what can be done to prevent it.

Literally billions of bacteria and other microorganisms live in each individual's mouth. Some types of bacteria commonly found in the mouth use sugars from our food to produce a sticky substance that forms a film on the teeth.

Many bacteria — as well as dead cells, particles of food, and substances from the saliva — become trapped in the film. This sticky deposit on the teeth is called bacterial plaque (or dental plaque).

When bacteria in the plaque digest sucrose (ordinary table sugar) and other carbohydrates, they form acid. Acid may also be formed by bacteria trapped in the pits and fissures on the chewing surfaces of the teeth. Decay starts when the acid acts on the tooth enamel. The enamel is the hard, white outside layer of the tooth. The acid dissolves out the calcium and phosphates that give the enamel its hardness. This causes no pain, and it may be difficult for even a dentist to see what has happened without an X-ray examination.

Beneath the enamel is the dentin, which forms the bulk of the tooth. The dentin is also attacked by the acid produced by bacteria; and if treatment is not given, the decay may expose the dental pulp at the center of the tooth. The pulp, which consists of soft tissue, blood vessels, and nerves, is likely to become infected, causing a toothache. In many cases, the infection passes into the tissues outside the tooth, and a painful "abscess" develops. Often, the tooth must be extracted.

Reenlist and you could get a \$2,000 to \$16,000 cash bonus. That might be \$2,000 to \$16,000 more than you'll get for taking a civilian job. Find out how much you qualify for. See your career planner today.

You can count on the Corps.
Stay Marine.

Don't miss your bonus.

Does your child have reading/learning problems?

Success Learning Programs

Testing, Counseling and Direct Instruction

NEW! The Orton Gillingham Phonics Reading Spelling Program and Spalding Phonics

a learning disability/reading clinic
Jacquelyn Sprague, M.Ed., Director
Certified Learning Disability and Reading Specialist

261-0017

Kailua, Hawaii Kai, Central Honolulu, Aiea/Pearl City

Bill Ballard's

CARPET CORNER

HAWAII'S CARPET BARGAIN CENTER

COME TO OUR 1,000 ROLL SALE

EVERY DAY IS SALE DAY
AND YOU SAVE IN EVERY WAY WITH THE LOWEST PRICES IN HAWAII

Hours: Mon.-Fri. 9:00-5:30
Sat. 9:00-4:00
Closed Sunday

970 AHUA ST.
834-1456

Across From Gibson's

For active adults, teenagers and children

- New patients and consultations welcomed
- Multiple doctor diagnostic approach with rapid and efficient treatment
- Reasonable fees with flexible monthly payments
- Monday through Saturday appointments with special hours for working adults
- "Braces behind the teeth", clear braces and other new cosmetically acceptable appliances

Dr. Randal Morita shall offer an introductory fee of \$1900 for a Class I non-extraction child's case with no first visit fee. Dr. Arthur Kamisugi's usual and customary fee for a similar case is \$2400 which is average for the community.

HONOLULU ORTHODONTIC SPECIALISTS

Arthur T. Kamisugi, DDS, MSD
Diplomate, American Board of Orthodontics

Randal D. Morita, DDS
Curtis N. Kamisugi, DDS (7/83)

Offices in Honolulu, Pearl City/Aiea, Kaneohe and Mililani
Phone 523-2402



SEWING MACHINE CLEARANCE SALE

DUE TO HEAVY OVERSTOCKING IN OUR MAINLAND LOCATIONS, WE MUST LIQUIDATE OVER 600 NEW AND SLIGHTLY USED SEWING MACHINES AT ... PRACTICALLY WHOLESALE COST.

- VIKINGS • BERNINAS • RICCARS
- PFAFFS • SINGERS

"ONE" EXAMPLE:

5 DAYS ONLY

- ZIG ZAG
- BUTTONHOLE
- MONOGRAM
- OPEN ARM



MODEL 3400

SALE ENDS 2/13/5 P.M.

- STRETCH STITCHES
- BLIND HEM
- TWIN NEEDLE

\$438

SUGGESTED RETAIL

25-YR. FACTORY WARRANTY
HURRY IN FOR BEST SELECTION!

\$169

NOW

PACIFIC SURPLUS & DISTRIBUTORS

Sun. 11:00-5:00
Mon.-Sat. 9:30-6:00 p.m.

Thurs. 9:30-9:00 p.m. Tues. Closed

CALL 262-8131

1247-F Kailua Rd.

Carrier of the Week



Carl Hurtt

This week, Windward's Sun Press "Carrier of the Week" is Carl Hurtt. Carl is a fourth grader at Mokapu Elementary, where he's mastered the art of making friends. "That's the best thing about my job," he says, "meeting people."

Carl moved here from Texas almost seven months ago, and says he would like to return there with his family someday. "I sure liked living in Texas City," he says, and the charm of that southwestern state is still evident in his soft accent.

Residents along Moffett Place and Yarnell, watch for Carl Hurtt, your "Carrier of the Week." You're ensured weekly news with a smile!

Good luck, Carl!



McDONALD'S ASTOUNDING HAMBURGER STATISTICS

Enough shakes to wash down 16 billion hamburgers will fill every gas tank in the U.S. and that doesn't even include the countless gallons of soft drinks and coffee consumed at McDonald's.

Carrier of the Week receives a FREE Big Mac® from McDonald's.

HAWAII MARINE CIRCULATION POLICY

Each week, the HAWAII MARINE is delivered to all homes and apartments. Your carrier delivers the HAWAII MARINE and will call on you every few weeks.

If delivery service is satisfactory, and you enjoy the HAWAII MARINE, your voluntary payment will be a reward to our young businessman for a job well done. It's an incentive to work hard, and it's a way of letting our circulation department know which boys and girls are giving the best service.

The young carrier pictured above is a local businessman — a HAWAII MARINE carrier. Most likely, this is his first business venture, and it is an important educational experience. As one of his customers, you can make his route a way to genuine personal achievement and growth.

If you have any complaint about your HAWAII MARINE or the delivery service, please call 247-8755.



CARRIER APPLICATION

The HAWAII MARINE has openings for carriers. Responsible HAWAII MARINE workers earn as much as \$10 per week for only a few hours work. If you want a business route of your own near your neighborhood, please mail in the application for information.

NAME _____
ADDRESS _____
PARENT'S NAME _____
TELEPHONE _____
AGE _____

Mail to: Circulation, Sun Press,
46-016 Alaloa St., Kaneohe, HI.

MAINLINER and TRAVEL HOLIDAY Award Winners

L'Auberge

French Cuisine

Superb Dining In A
Charming Country
French Manner

RESERVATIONS
AFTER 2 P.M.

262-4835

Open:
Wed. thru Sun.
6 p.m. to 10 p.m.

117 HEKILI
STREET,
KAILUA

Your Hosts -
Marcel & Elvi Baltzer

FURNITURE LIQUIDATION

MAJOR WAIKIKI HOTEL RENOVATION OFFERS YOU QUALITY FURNISHINGS AT BARGAIN PRICES.

BEDS	39 ⁰⁰ -89 ⁰⁰	FLOOR LAMPS	19 ⁰⁰	LAWN OCC. TABLE	12 ⁰⁰ -15 ⁰⁰
HEADBOARDS	5 ⁰⁰ -12 ⁰⁰	DESK DESKERS	89 ⁰⁰	STACKING CHAIRS	11 ⁰⁰
BEDSPREADS	14 ⁰⁰ -19 ⁰⁰	MIRRORS	12 ⁰⁰	BUILT IN DRAPERIES	12 ⁰⁰
NIGHTSTANDS	15 ⁰⁰ -29 ⁰⁰	BATTAN SIDE CHAIR	29 ⁰⁰	CARPET 11x16	11 ⁰⁰ -22 ⁰⁰
TABLE LAMPS	18 ⁰⁰	BATTAN OCC. CHAIR	45 ⁰⁰		

BUY HALF A ROOMFULL AND GET THE CARPETING OR DRAPERIES FREE!
BUY A ROOMFULL AND GET THE CARPETING AND DRAPERIES FREE!

OFFER GOOD WHILE INVENTORY LASTS
CALL 847-1361 FOR DETAILS
MON. THRU SAT. 9 am to 5 pm

ISLAND TRADING, INC.

717 MOOWAA STREET
BACK OF KAPALAMA SHOPPING CENTER

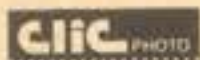
RED HOT VALUE

Brought to you by
K59 & KULA

introducing . . .

Clic brand film
Quality color, print 100 ASA
INTRODUCTORY PRICES

CP 110-12 1.19 CP 135-24 1.69
CP 110-24 1.59 CP 135-36 2.09



AVAILABLE AT ALL CLIC LOCATIONS
Sale Prices w/Coupon Valid Feb. 9th thru Feb. 28th, 1983



GODIVA
Chocolatier
BRUXELLES • NEW YORK
PARIS • COLOGNE

FREE

*Heart Replica with
every \$17.50 purchase*

Ala Moana Center — Makai St. Level
Waikiki — 2354 Kalakaua Avenue

EASTERN ONION

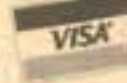
VALENTINE'S DAY

- Singing Hearts
- Super Pink Chickens
- Mood Pillows
- Belly Tellys
- French Onions
- Pidgin Pineapples
- She Devils
- Scarlet O'Piglets
- Phone Grams
- And Much More

Call for Free Sample

261-4655

offices nationwide



10% OFF
A Spencecliff Deflation Special!

Bring this coupon for

10% OFF

For two adults (Lunch or Dinner) at any of these
five Spencecliff Restaurants:

SOUTH SEAS STEAK HOUSE

Nimitz at Lagoon Drive
Phone 836-0655

SOUTH SEAS SEAFOOD GROTTTO

Nimitz at Lagoon Drive
Phone 836-0515

KELLY'S COFFEE SHOP

Kam Hwy. at Puuloa Rd.
Phone 836-3444

TOPS WAIPAHU

94-245 Farrington Hwy
Phone 877-9721

THE RANCH HOUSE

Kalanian'ole Hwy., Aiea Haina
Phone 373-2177



Spencecliff Restaurants
Serving the people of Hawaii since 1939

APPLIES TO CASH PURCHASES ONLY.
COUPON EXPIRES MARCH 15, 1983. CASH VALUE 1/10¢

St. Louis Florist & Fruits

*Capture your valentines heart...
with flowers or fruit baskets*

DELIVERED HERE OR IN 2-3 DAYS TO
ANYWHERE ON MAINLAND OR CANADA
Ready to Go DELIVERY SERVICE

732-1454

1113 KAPAHULU AVE.

Corner of Harding & Kapahulu — Enter from 1st Ave.

Valentine Values

FROM
Kilgo's Plant & Garden Shop

Telephone (808)
847-4211

180 Sand Island Road, Honolulu



Enter our **FREE**
DRAWING and win a
trip for two plus hotel
accommodations to
Maui... (no purchase
nec.) entry blanks
available at KILGO'S
180 Sand Is. Rd.
drawing on Feb. 14,
12 noon

Other new ROSE
Introductions for 1983

Candlelight (yellow)
Gold Medal (yellow)
Jennifer Hart (velvet red)
Karl Herbert (sage green)
Katherine Lohr (yellow)

BOUNTIFUL VARIETY OF FOODS
ALL YOU CAN EAT

\$8.95

(Children under 12 — \$5.95)

A JAPANESE DINNER BUFFET

FREE Sushi assort-
ment with purchase of
dinner. One per group.
Available Fri., Sat.,
Sun. ONLY

20 Selections
including:
• Shrimp Tempura
• Crab Legs
• Sashimi

(A part of Teruya Restaurant)

RESTAURANT DAIKOKUYA

600 Kapiolani Blvd.

Coupon expires 2/28/83

Ph. 538-6078

FREE!

A free dinner just for listening to my lifetime home protection.
(Qualified homeowners, please) You'll learn about the incredible
product double wall solid vinyl siding, and enjoy your dinner at
SHASTEEN'S Restaurant for the listening. So call me, Bud
Shasteen, and you'll say



VINYL is FINAL

537-2886

831-H Pohukaina Street, Honolulu, Hawaii 96813 Hawaiian Improvement Corporation



Jumbo Pistachio Sale

\$6.95 SPECIAL LB.
REG. \$8.95/LB.

SALE PRICES EFFECTIVE THROUGH
VALENTINE'S DAY FEB. 14, 1983.
WHILE QUANTITIES LAST.

Don't miss this special! Delicious Califor-
nia jumbo pistachio nuts, choice of natural or
red, now on sale at all Morrow's Nut House
stores!

Morrow's NUT HOUSE
Since 1866

- Pearlridge Center 487-1771
- Windward Mall 247-2500
- Kahala Mall Shopping Center 737-4471
- Ala Moana Center 947-7477

THE BEST IS
BERNINA
THE BEST PLACE
TO BUY IS YOUR

BERNINA SEWING CENTERS

Don't be misled. We are the **ONLY** authorized factory
dealer in Hawaii with a complete line of machines,
cabinets and accessories. We offer friendly service,
instruction and creative classes.

ONLY at the following locations:

Honolulu
800 Kapiolani Blvd.
(across from news building)
536-6931

Wahiawa
821 Olive Ave.
(behind Foodland)
621-1497

LUNCH LINE RESTAURANT

FREE SALAD with our exclusive Philly Hoagie Steak
Sandwich on Italian type roll. Made with tender slices of
beef, grilled with sweet fried onions and smothered with
melted provolone cheese. All flavored with garlic and
oregano. A complete meal for only **\$1.85.**

836-0313

2610 Kilihaui St. 1 block Mauka of Nimitz at Diamond Head end

COUPON DISCOUNT GOOD ONLY WITH COUPON COUPON WHILE QUANTITIES LAST COUPON

Valentine's Special

20% Off

ON ANY VALENTINE'S ITEM

That's anything heart-shaped.



Morrow's NUT HOUSE
Since 1866

- Pearlridge Center 487-1771
- Windward Mall 247-2500
- Kahala Mall Shopping Center 737-4471
- Ala Moana Center 947-7477

COUPON GOOD THROUGH
VALENTINE'S DAY, FEB. 14, 1983

DOWN-IN-THE-DUMPS ABOUT BIG BILLS?

Earn FAST cash when you sell your unwanted treasures with a classified ad. Fast results are a phone call away!

Phone 235-5881 or 622-3966

A friendly ad-visor will be happy to help you.



*10 CEMETERY PLOTS

MILANI Cemetery: 16 plots, Gardenia section at 50% discount from current price. Call Bess 536-6863 or 647-1040.

VALLEY OF THE TEMPLES: 2 choice plots, back of admin. bldg. Call 621-1092, 9-6 p.m.

*15 ANNOUNCEMENTS

PENNY STOCKS
Offers great investments and opportunity.
For free brochures call 523-0938
Ask for G. Kobayashi
even. 735-3774
Chesley & Dunn, Inc.

*20 LOST & FOUND

FOUND: Key ring w/7 keys on Kaneohe Bay Drive near Lane St. Feb. 1. Call 254-2911 or 247-1393.

FOUND: Watch at Kakaia Beach on Jan. 30. Call to identify 262-9307.

*25 PERSONALS

If you want to drink, that's your business. If you want to stop, that's ours. Alcoholics Anonymous. Ph. 946-1438

*35 PROFESSIONAL SERVICES

"Busybodies"
-LET US DO IT!
-Rent A Housewife
Cleaning, water plants, feed dogs, later, painting, wash windows, shopping, visit elderly, parties, etc. etc.
537-4658, 261-4966

CABINETS & Counters
fitted apart - need shelves or custom work?
Free Estimates 395-8338
Creative Woodwork & Design

CARPENTRY: Plumbing, all types maintenance & repair. Licensed. Free Estimate. Ph. 235-4002 Jacques

PROPERTY Management - we are small, but personalized income & res. CRC 321-9748

HOME improvement-Ceramic tile, countertops-flooring, concrete, stucco, pool tile, fences, remodeling, painting. Free est. Charles 488-3340 BCT822

WORD Processor Rental, \$5-\$8 hr. w/operator/tech. ONLY \$11/hr. 24 hours 521-9748

SECRETARIAL Work, administrative support, phone answering, 24-hour service, 7-days a week, hourly rates. Ph. Marge 395-8970

DIVORCE
Serving Oahu Since 1977
\$1100
533-4533
Full Attorney Services
& Public Service Provider

LAWNKEEPERS HAWAII
The Professional Landscape Gardener, commercial and residential. Landscaping, sprinkler systems, tree trimming, plant pest & disease control, weeding, and other phases of maintenance. Call for consultation and estimate, free of course. 536-0577 or 671-5996

T.V. and home appliance repair. Hawaii Kai area. Ph. 395-8282

CLEANLIVING home care & maintenance. Honest reasonable rates. 247-5923.

CARPENTRY, home repairs. Call Nick 261-7496

HOUSECLEANER, dependable reliable, well experienced. Kailua/Kaneohe area. Ph. 235-1242

McGOVERN Tax & Computer Services. Prompt, professional & reasonable. 239-0973.

RETIREE Dependable Yard Service. Call 262-7598

DON'S ROOF REPAIRS, most repairs under \$100. Free estimates. Ph. 456-2491

OHANA HOMES
by
CHARLES DYSAIT
Custom Homes built to suit your requirements.
From \$24,500
488-3340 BC-7828

FELIPE Yard and Housecleaning. Call 261-6050 between 2:00 and 8:00 p.m.

PROFESSIONAL HOUSE CLEANING, reliable & competent house cleaning avail. M-F, call Walt at 235-6353 or Mike at 247-6866 5-10 p.m.

MILITARY Quarters cleaned, guaranteed, husband & wife. \$130. Call 677-4517.

PREGNANT AND WORRIED?
WE'LL HELP
FREE P.G. TEST
MON-WED, FRI 8:00-9:00
487-7087, 538-3577,
262-2171, 622-1532

RELIABLE YARD SERVICES & TREE TRIMMING.
Five reasons why we are Reliable in doing business.

1. Cutting hedges.
2. Trimming & hauling.
3. Lot Cleaning
4. Commercial & Residential landscaping
5. Monthly maintenance
And much, much more, you name it, we will do it for you in the way you want to be in a low rate. Free Estimate.
Call Reliable Yard Services
734-4869

YOU ARE INVITED TO FREE RENT PLUS and FHA/VA SEMINAR
7:30 p.m. at **LOCATIONS** Bank of Hawaii Building
98-211 Pali Momi St. Suite 520
Feb. 17, 1983
For Further Information Please Call
488-7700

•VA/FHA •Rent Plus
• Insight Into Oahu's Real Estate Market
• Opportunities In Financing
• A Look Into Benefits Of Ownership

LOCATION'S
Real Estate Sales & Research

ANSWER TO FEB. 2 CROSSWORD IN THE SUN PRESS NEWSPAPER

ACROSS
1. HAWAIIAN ISLANDS
2. HAWAIIAN ISLANDS
3. HAWAIIAN ISLANDS
4. HAWAIIAN ISLANDS
5. HAWAIIAN ISLANDS
6. HAWAIIAN ISLANDS
7. HAWAIIAN ISLANDS
8. HAWAIIAN ISLANDS
9. HAWAIIAN ISLANDS
10. HAWAIIAN ISLANDS
11. HAWAIIAN ISLANDS
12. HAWAIIAN ISLANDS
13. HAWAIIAN ISLANDS
14. HAWAIIAN ISLANDS
15. HAWAIIAN ISLANDS
16. HAWAIIAN ISLANDS
17. HAWAIIAN ISLANDS
18. HAWAIIAN ISLANDS
19. HAWAIIAN ISLANDS
20. HAWAIIAN ISLANDS
21. HAWAIIAN ISLANDS
22. HAWAIIAN ISLANDS
23. HAWAIIAN ISLANDS
24. HAWAIIAN ISLANDS
25. HAWAIIAN ISLANDS
26. HAWAIIAN ISLANDS
27. HAWAIIAN ISLANDS
28. HAWAIIAN ISLANDS
29. HAWAIIAN ISLANDS
30. HAWAIIAN ISLANDS
31. HAWAIIAN ISLANDS
32. HAWAIIAN ISLANDS
33. HAWAIIAN ISLANDS
34. HAWAIIAN ISLANDS
35. HAWAIIAN ISLANDS
36. HAWAIIAN ISLANDS
37. HAWAIIAN ISLANDS
38. HAWAIIAN ISLANDS
39. HAWAIIAN ISLANDS
40. HAWAIIAN ISLANDS
41. HAWAIIAN ISLANDS
42. HAWAIIAN ISLANDS
43. HAWAIIAN ISLANDS
44. HAWAIIAN ISLANDS
45. HAWAIIAN ISLANDS
46. HAWAIIAN ISLANDS
47. HAWAIIAN ISLANDS
48. HAWAIIAN ISLANDS
49. HAWAIIAN ISLANDS
50. HAWAIIAN ISLANDS
51. HAWAIIAN ISLANDS
52. HAWAIIAN ISLANDS
53. HAWAIIAN ISLANDS
54. HAWAIIAN ISLANDS
55. HAWAIIAN ISLANDS
56. HAWAIIAN ISLANDS
57. HAWAIIAN ISLANDS
58. HAWAIIAN ISLANDS
59. HAWAIIAN ISLANDS
60. HAWAIIAN ISLANDS
61. HAWAIIAN ISLANDS
62. HAWAIIAN ISLANDS
63. HAWAIIAN ISLANDS
64. HAWAIIAN ISLANDS
65. HAWAIIAN ISLANDS
66. HAWAIIAN ISLANDS
67. HAWAIIAN ISLANDS
68. HAWAIIAN ISLANDS
69. HAWAIIAN ISLANDS
70. HAWAIIAN ISLANDS
71. HAWAIIAN ISLANDS
72. HAWAIIAN ISLANDS
73. HAWAIIAN ISLANDS
74. HAWAIIAN ISLANDS
75. HAWAIIAN ISLANDS
76. HAWAIIAN ISLANDS
77. HAWAIIAN ISLANDS
78. HAWAIIAN ISLANDS
79. HAWAIIAN ISLANDS
80. HAWAIIAN ISLANDS
81. HAWAIIAN ISLANDS
82. HAWAIIAN ISLANDS
83. HAWAIIAN ISLANDS
84. HAWAIIAN ISLANDS
85. HAWAIIAN ISLANDS
86. HAWAIIAN ISLANDS
87. HAWAIIAN ISLANDS
88. HAWAIIAN ISLANDS
89. HAWAIIAN ISLANDS
90. HAWAIIAN ISLANDS
91. HAWAIIAN ISLANDS
92. HAWAIIAN ISLANDS
93. HAWAIIAN ISLANDS
94. HAWAIIAN ISLANDS
95. HAWAIIAN ISLANDS
96. HAWAIIAN ISLANDS
97. HAWAIIAN ISLANDS
98. HAWAIIAN ISLANDS
99. HAWAIIAN ISLANDS
100. HAWAIIAN ISLANDS
101. HAWAIIAN ISLANDS
102. HAWAIIAN ISLANDS
103. HAWAIIAN ISLANDS
104. HAWAIIAN ISLANDS
105. HAWAIIAN ISLANDS
106. HAWAIIAN ISLANDS
107. HAWAIIAN ISLANDS
108. HAWAIIAN ISLANDS
109. HAWAIIAN ISLANDS
110. HAWAIIAN ISLANDS
111. HAWAIIAN ISLANDS
112. HAWAIIAN ISLANDS
113. HAWAIIAN ISLANDS
114. HAWAIIAN ISLANDS
115. HAWAIIAN ISLANDS
116. HAWAIIAN ISLANDS
117. HAWAIIAN ISLANDS
118. HAWAIIAN ISLANDS
119. HAWAIIAN ISLANDS
120. HAWAIIAN ISLANDS
121. HAWAIIAN ISLANDS
122. HAWAIIAN ISLANDS
123. HAWAIIAN ISLANDS
124. HAWAIIAN ISLANDS
125. HAWAIIAN ISLANDS
126. HAWAIIAN ISLANDS
127. HAWAIIAN ISLANDS
128. HAWAIIAN ISLANDS
129. HAWAIIAN ISLANDS
130. HAWAIIAN ISLANDS
131. HAWAIIAN ISLANDS
132. HAWAIIAN ISLANDS
133. HAWAIIAN ISLANDS
134. HAWAIIAN ISLANDS
135. HAWAIIAN ISLANDS
136. HAWAIIAN ISLANDS
137. HAWAIIAN ISLANDS
138. HAWAIIAN ISLANDS
139. HAWAIIAN ISLANDS
140. HAWAIIAN ISLANDS
141. HAWAIIAN ISLANDS
142. HAWAIIAN ISLANDS
143. HAWAIIAN ISLANDS
144. HAWAIIAN ISLANDS
145. HAWAIIAN ISLANDS
146. HAWAIIAN ISLANDS
147. HAWAIIAN ISLANDS
148. HAWAIIAN ISLANDS
149. HAWAIIAN ISLANDS
150. HAWAIIAN ISLANDS
151. HAWAIIAN ISLANDS
152. HAWAIIAN ISLANDS
153. HAWAIIAN ISLANDS
154. HAWAIIAN ISLANDS
155. HAWAIIAN ISLANDS
156. HAWAIIAN ISLANDS
157. HAWAIIAN ISLANDS
158. HAWAIIAN ISLANDS
159. HAWAIIAN ISLANDS
160. HAWAIIAN ISLANDS
161. HAWAIIAN ISLANDS
162. HAWAIIAN ISLANDS
163. HAWAIIAN ISLANDS
164. HAWAIIAN ISLANDS
165. HAWAIIAN ISLANDS
166. HAWAIIAN ISLANDS
167. HAWAIIAN ISLANDS
168. HAWAIIAN ISLANDS
169. HAWAIIAN ISLANDS
170. HAWAIIAN ISLANDS
171. HAWAIIAN ISLANDS
172. HAWAIIAN ISLANDS
173. HAWAIIAN ISLANDS
174. HAWAIIAN ISLANDS
175. HAWAIIAN ISLANDS
176. HAWAIIAN ISLANDS
177. HAWAIIAN ISLANDS
178. HAWAIIAN ISLANDS
179. HAWAIIAN ISLANDS
180. HAWAIIAN ISLANDS
181. HAWAIIAN ISLANDS
182. HAWAIIAN ISLANDS
183. HAWAIIAN ISLANDS
184. HAWAIIAN ISLANDS
185. HAWAIIAN ISLANDS
186. HAWAIIAN ISLANDS
187. HAWAIIAN ISLANDS
188. HAWAIIAN ISLANDS
189. HAWAIIAN ISLANDS
190. HAWAIIAN ISLANDS
191. HAWAIIAN ISLANDS
192. HAWAIIAN ISLANDS
193. HAWAIIAN ISLANDS
194. HAWAIIAN ISLANDS
195. HAWAIIAN ISLANDS
196. HAWAIIAN ISLANDS
197. HAWAIIAN ISLANDS
198. HAWAIIAN ISLANDS
199. HAWAIIAN ISLANDS
200. HAWAIIAN ISLANDS
201. HAWAIIAN ISLANDS
202. HAWAIIAN ISLANDS
203. HAWAIIAN ISLANDS
204. HAWAIIAN ISLANDS
205. HAWAIIAN ISLANDS
206. HAWAIIAN ISLANDS
207. HAWAIIAN ISLANDS
208. HAWAIIAN ISLANDS
209. HAWAIIAN ISLANDS
210. HAWAIIAN ISLANDS
211. HAWAIIAN ISLANDS
212. HAWAIIAN ISLANDS
213. HAWAIIAN ISLANDS
214. HAWAIIAN ISLANDS
215. HAWAIIAN ISLANDS
216. HAWAIIAN ISLANDS
217. HAWAIIAN ISLANDS
218. HAWAIIAN ISLANDS
219. HAWAIIAN ISLANDS
220. HAWAIIAN ISLANDS
221. HAWAIIAN ISLANDS
222. HAWAIIAN ISLANDS
223. HAWAIIAN ISLANDS
224. HAWAIIAN ISLANDS
225. HAWAIIAN ISLANDS
226. HAWAIIAN ISLANDS
227. HAWAIIAN ISLANDS
228. HAWAIIAN ISLANDS
229. HAWAIIAN ISLANDS
230. HAWAIIAN ISLANDS
231. HAWAIIAN ISLANDS
232. HAWAIIAN ISLANDS
233. HAWAIIAN ISLANDS
234. HAWAIIAN ISLANDS
235. HAWAIIAN ISLANDS
236. HAWAIIAN ISLANDS
237. HAWAIIAN ISLANDS
238. HAWAIIAN ISLANDS
239. HAWAIIAN ISLANDS
240. HAWAIIAN ISLANDS
241. HAWAIIAN ISLANDS
242. HAWAIIAN ISLANDS
243. HAWAIIAN ISLANDS
244. HAWAIIAN ISLANDS
245. HAWAIIAN ISLANDS
246. HAWAIIAN ISLANDS
247. HAWAIIAN ISLANDS
248. HAWAIIAN ISLANDS
249. HAWAIIAN ISLANDS
250. HAWAIIAN ISLANDS
251. HAWAIIAN ISLANDS
252. HAWAIIAN ISLANDS
253. HAWAIIAN ISLANDS
254. HAWAIIAN ISLANDS
255. HAWAIIAN ISLANDS
256. HAWAIIAN ISLANDS
257. HAWAIIAN ISLANDS
258. HAWAIIAN ISLANDS
259. HAWAIIAN ISLANDS
260. HAWAIIAN ISLANDS
261. HAWAIIAN ISLANDS
262. HAWAIIAN ISLANDS
263. HAWAIIAN ISLANDS
264. HAWAIIAN ISLANDS
265. HAWAIIAN ISLANDS
266. HAWAIIAN ISLANDS
267. HAWAIIAN ISLANDS
268. HAWAIIAN ISLANDS
269. HAWAIIAN ISLANDS
270. HAWAIIAN ISLANDS
271. HAWAIIAN ISLANDS
272. HAWAIIAN ISLANDS
273. HAWAIIAN ISLANDS
274. HAWAIIAN ISLANDS
275. HAWAIIAN ISLANDS
276. HAWAIIAN ISLANDS
277. HAWAIIAN ISLANDS
278. HAWAIIAN ISLANDS
279. HAWAIIAN ISLANDS
280. HAWAIIAN ISLANDS
281. HAWAIIAN ISLANDS
282. HAWAIIAN ISLANDS
283. HAWAIIAN ISLANDS
284. HAWAIIAN ISLANDS
285. HAWAIIAN ISLANDS
286. HAWAIIAN ISLANDS
287. HAWAIIAN ISLANDS
288. HAWAIIAN ISLANDS
289. HAWAIIAN ISLANDS
290. HAWAIIAN ISLANDS
291. HAWAIIAN ISLANDS
292. HAWAIIAN ISLANDS
293. HAWAIIAN ISLANDS
294. HAWAIIAN ISLANDS
295. HAWAIIAN ISLANDS
296. HAWAIIAN ISLANDS
297. HAWAIIAN ISLANDS
298. HAWAIIAN ISLANDS
299. HAWAIIAN ISLANDS
300. HAWAIIAN ISLANDS
301. HAWAIIAN ISLANDS
302. HAWAIIAN ISLANDS
303. HAWAIIAN ISLANDS
304. HAWAIIAN ISLANDS
305. HAWAIIAN ISLANDS
306. HAWAIIAN ISLANDS
307. HAWAIIAN ISLANDS
308. HAWAIIAN ISLANDS
309. HAWAIIAN ISLANDS
310. HAWAIIAN ISLANDS
311. HAWAIIAN ISLANDS
312. HAWAIIAN ISLANDS
313. HAWAIIAN ISLANDS
314. HAWAIIAN ISLANDS
315. HAWAIIAN ISLANDS
316. HAWAIIAN ISLANDS
317. HAWAIIAN ISLANDS
318. HAWAIIAN ISLANDS
319. HAWAIIAN ISLANDS
320. HAWAIIAN ISLANDS
321. HAWAIIAN ISLANDS
322. HAWAIIAN ISLANDS
323. HAWAIIAN ISLANDS
324. HAWAIIAN ISLANDS
325. HAWAIIAN ISLANDS
326. HAWAIIAN ISLANDS
327. HAWAIIAN ISLANDS
328. HAWAIIAN ISLANDS
329. HAWAIIAN ISLANDS
330. HAWAIIAN ISLANDS
331. HAWAIIAN ISLANDS
332. HAWAIIAN ISLANDS
333. HAWAIIAN ISLANDS
334. HAWAIIAN ISLANDS
335. HAWAIIAN ISLANDS
336. HAWAIIAN ISLANDS
337. HAWAIIAN ISLANDS
338. HAWAIIAN ISLANDS
339. HAWAIIAN ISLANDS
340. HAWAIIAN ISLANDS
341. HAWAIIAN ISLANDS
342. HAWAIIAN ISLANDS
343. HAWAIIAN ISLANDS
344. HAWAIIAN ISLANDS
345. HAWAIIAN ISLANDS
346. HAWAIIAN ISLANDS
347. HAWAIIAN ISLANDS
348. HAWAIIAN ISLANDS
349. HAWAIIAN ISLANDS
350. HAWAIIAN ISLANDS
351. HAWAIIAN ISLANDS
352. HAWAIIAN ISLANDS
353. HAWAIIAN ISLANDS
354. HAWAIIAN ISLANDS
355. HAWAIIAN ISLANDS
356. HAWAIIAN ISLANDS
357. HAWAIIAN ISLANDS
358. HAWAIIAN ISLANDS
359. HAWAIIAN ISLANDS
360. HAWAIIAN ISLANDS
361. HAWAIIAN ISLANDS
362. HAWAIIAN ISLANDS
363. HAWAIIAN ISLANDS
364. HAWAIIAN ISLANDS
365. HAWAIIAN ISLANDS
366. HAWAIIAN ISLANDS
367. HAWAIIAN ISLANDS
368. HAWAIIAN ISLANDS
369. HAWAIIAN ISLANDS
370. HAWAIIAN ISLANDS
371. HAWAIIAN ISLANDS
372. HAWAIIAN ISLANDS
373. HAWAIIAN ISLANDS
374. HAWAIIAN ISLANDS
375. HAWAIIAN ISLANDS
376. HAWAIIAN ISLANDS
377. HAWAIIAN ISLANDS
378. HAWAIIAN ISLANDS
379. HAWAIIAN ISLANDS
380. HAWAIIAN ISLANDS
381. HAWAIIAN ISLANDS
382. HAWAIIAN ISLANDS
383. HAWAIIAN ISLANDS
384. HAWAIIAN ISLANDS
385. HAWAIIAN ISLANDS
386. HAWAIIAN ISLANDS
387. HAWAIIAN ISLANDS
388. HAWAIIAN ISLANDS
389. HAWAIIAN ISLANDS
390. HAWAIIAN ISLANDS
391. HAWAIIAN ISLANDS
392. HAWAIIAN ISLANDS
393. HAWAIIAN ISLANDS
394. HAWAIIAN ISLANDS
395. HAWAIIAN ISLANDS
396. HAWAIIAN ISLANDS
397. HAWAIIAN ISLANDS
398. HAWAIIAN ISLANDS
399. HAWAIIAN ISLANDS
400. HAWAIIAN ISLANDS
401. HAWAIIAN ISLANDS
402. HAWAIIAN ISLANDS
403. HAWAIIAN ISLANDS
404. HAWAIIAN ISLANDS
405. HAWAIIAN ISLANDS
406. HAWAIIAN ISLANDS
407. HAWAIIAN ISLANDS
408. HAWAIIAN ISLANDS
409. HAWAIIAN ISLANDS
410. HAWAIIAN ISLANDS
411. HAWAIIAN ISLANDS
412. HAWAIIAN ISLANDS
413. HAWAIIAN ISLANDS
414. HAWAIIAN ISLANDS
415. HAWAIIAN ISLANDS
416. HAWAIIAN ISLANDS
417. HAWAIIAN ISLANDS
418. HAWAIIAN ISLANDS
419. HAWAIIAN ISLANDS
420. HAWAIIAN ISLANDS
421. HAWAIIAN ISLANDS
422. HAWAIIAN ISLANDS
423. HAWAIIAN ISLANDS
424. HAWAIIAN ISLANDS
425. HAWAIIAN ISLANDS
426. HAWAIIAN ISLANDS
427. HAWAIIAN ISLANDS
428. HAWAIIAN ISLANDS
429. HAWAIIAN ISLANDS
430. HAWAIIAN ISLANDS
431. HAWAIIAN ISLANDS
432. HAWAIIAN ISLANDS
433. HAWAIIAN ISLANDS
434. HAWAIIAN ISLANDS
435. HAWAIIAN ISLANDS
436. HAWAIIAN ISLANDS
437. HAWAIIAN ISLANDS
438. HAWAIIAN ISLANDS
439. HAWAIIAN ISLANDS
440. HAWAIIAN ISLANDS
441. HAWAIIAN ISLANDS
442. HAWAIIAN ISLANDS
443. HAWAIIAN ISLANDS
444. HAWAIIAN ISLANDS
445. HAWAIIAN ISLANDS
446. HAWAIIAN ISLANDS
447. HAWAIIAN ISLANDS
448. HAWAIIAN ISLANDS
449. HAWAIIAN ISLANDS
450. HAWAIIAN ISLANDS
451. HAWAIIAN ISLANDS
452. HAWAIIAN ISLANDS
453. HAWAIIAN ISLANDS
454. HAWAIIAN ISLANDS
455. HAWAIIAN ISLANDS
456. HAWAIIAN ISLANDS
457. HAWAIIAN ISLANDS
458. HAWAIIAN ISLANDS
459. HAWAIIAN ISLANDS
460. HAWAIIAN ISLANDS
461. HAWAIIAN ISLANDS
462. HAWAIIAN ISLANDS
463. HAWAIIAN ISLANDS
464. HAWAIIAN ISLANDS
465. HAWAIIAN ISLANDS
466. HAWAIIAN ISLANDS
467. HAWAIIAN ISLANDS
468. HAWAIIAN ISLANDS
469. HAWAIIAN ISLANDS
470. HAWAIIAN ISLANDS
471. HAWAIIAN ISLANDS
472. HAWAIIAN ISLANDS
473. HAWAIIAN ISLANDS
474. HAWAIIAN ISLANDS
475. HAWAIIAN ISLANDS
476. HAWAIIAN ISLANDS
477. HAWAIIAN ISLANDS
478. HAWAIIAN ISLANDS
479. HAWAIIAN ISLANDS
480. HAWAIIAN ISLANDS
481. HAWAIIAN ISLANDS
482. HAWAIIAN ISLANDS
483. HAWAIIAN ISLANDS
484. HAWAIIAN ISLANDS
485. HAWAIIAN ISLANDS
486. HAWAIIAN ISLANDS
487. HAWAIIAN ISLANDS
488. HAWAIIAN ISLANDS
489. HAWAIIAN ISLANDS
490. HAWAIIAN ISLANDS
491. HAWAIIAN ISLANDS
492. HAWAIIAN ISLANDS
493. HAWAIIAN ISLANDS
494. HAWAIIAN ISLANDS
495. HAWAIIAN ISLANDS
496. HAWAIIAN ISLANDS
497. HAWAIIAN ISLANDS
498. HAWAIIAN ISLANDS
499. HAWAIIAN ISLANDS
500. HAWAIIAN ISLANDS
501. HAWAIIAN ISLANDS
502. HAWAIIAN ISLANDS
503. HAWAIIAN ISLANDS
504. HAWAIIAN ISLANDS
505. HAWAIIAN ISLANDS
506. HAWAIIAN ISLANDS
507. HAWAIIAN ISLANDS
508. HAWAIIAN ISLANDS
509. HAWAIIAN ISLANDS
510. HAWAIIAN ISLANDS
511. HAWAIIAN ISLANDS
512. HAWAIIAN ISLANDS
513. HAWAIIAN ISLANDS
514. HAWAIIAN ISLANDS
515. HAWAIIAN ISLANDS
516. HAWAIIAN ISLANDS
517. HAWAIIAN ISLANDS
518. HAWAIIAN ISLANDS
519. HAWAIIAN ISLANDS
520. HAWAIIAN ISLANDS
521. HAWAIIAN ISLANDS
522. HAWAIIAN ISLANDS
523. HAWAIIAN ISLANDS
524. HAWAIIAN ISLANDS
525. HAWAIIAN ISLANDS
526. HAWAIIAN ISLANDS
527. HAWAIIAN ISLANDS
528. HAWAIIAN ISLANDS
529. HAWAIIAN ISLANDS
530. HAWAIIAN ISLANDS
531. HAWAIIAN ISLANDS
532. HAWAIIAN ISLANDS
533. HAWAIIAN ISLANDS
534. HAWAIIAN ISLANDS
535. HAWAIIAN ISLANDS
536. HAWAIIAN ISLANDS
537. HAWAIIAN ISLANDS
538. HAWAIIAN ISLANDS
539. HAWAIIAN ISLANDS
540. HAWAIIAN ISLANDS
541. HAWAIIAN ISLANDS
542. HAWAIIAN ISLANDS
543. HAWAIIAN ISLANDS
544. HAWAIIAN ISLANDS
545. HAWAIIAN ISLANDS
546. HAWAIIAN ISLANDS
547. HAWAIIAN ISLANDS
548. HAWAIIAN ISLANDS
549. HAWAIIAN ISLANDS
550. HAWAIIAN ISLANDS
551. HAWAIIAN ISLANDS
552. HAWAIIAN ISLANDS
553. HAWAIIAN ISLANDS
554. HAWAIIAN ISLANDS
555. HAWAIIAN ISLANDS
556. HAWAIIAN ISLANDS
557. HAWAIIAN ISLANDS
558. HAWAIIAN ISLANDS
559. HAWAIIAN ISLANDS
560. HAWAIIAN ISLANDS
561. HAWAIIAN ISLANDS
562. HAWAIIAN ISLANDS
563. HAWAIIAN ISLANDS
564. HAWAIIAN ISLANDS
565. HAWAIIAN ISLANDS
566. HAWAIIAN ISLANDS
567. HAWAIIAN ISLANDS
568. HAWAIIAN ISLANDS
569. HAWAIIAN ISLANDS
570. HAWAIIAN ISLANDS
571. HAWAIIAN ISLANDS
572. HAWAIIAN ISLANDS
573. HAWAIIAN ISLANDS
574. HAWAIIAN ISLANDS
575. HAWAIIAN ISLANDS
576. HAWAIIAN ISLANDS
577. HAWAIIAN ISLANDS
578. HAWAIIAN ISLANDS
579. HAWAIIAN ISLANDS
580. HAWAIIAN ISLANDS
581. HAWAIIAN ISLANDS
582. HAWAIIAN ISLANDS
583. HAWAIIAN ISLANDS
584. HAWAIIAN ISLANDS
585. HAWAIIAN ISLANDS
586. HAWAIIAN ISLANDS
587. HAWAIIAN ISLANDS
588. HAWAIIAN ISLANDS
589. HAWAIIAN ISLANDS
590. HAWAIIAN ISLANDS
591. HAWAIIAN ISLANDS
592. HAWAIIAN ISLANDS
593. HAWAIIAN ISLANDS
594. HAWAIIAN ISLANDS
595. HAWAIIAN ISLANDS
596. HAWAIIAN ISLANDS
597. HAWAIIAN ISLANDS
598. HAWAIIAN ISLANDS
599. HAWAIIAN ISLANDS
600. HAWAIIAN ISLANDS
601. HAWAIIAN ISLANDS
602. HAWAIIAN ISLANDS
603. HAWAIIAN ISLANDS
604. HAWAIIAN ISLANDS
605. HAWAIIAN ISLANDS
606. HAWAIIAN ISLANDS
607. HAWAIIAN ISLANDS
608. HAWAIIAN ISLANDS
609. HAWAIIAN ISLANDS
610. HAWAIIAN ISLANDS
611. HAWAIIAN ISLANDS
612. HAWAIIAN ISLANDS
613. HAWAIIAN ISLANDS
614. HAWAIIAN ISLANDS
615. HAWAIIAN ISLANDS
616. HAWAIIAN ISLANDS
617. HAWAIIAN ISLANDS
618. HAWAIIAN ISLANDS
619. HAWAIIAN ISLANDS
620. HAWAIIAN ISLANDS
621. HAWAIIAN ISLANDS
622. HAWAIIAN ISLANDS
623. HAWAIIAN ISLANDS
624. HAWAIIAN ISLANDS
625. HAWAIIAN ISLANDS
626. HAWAIIAN ISLANDS
627. HAWAIIAN ISLANDS
628. HAWAIIAN ISLANDS
629. HAWAIIAN ISLANDS
630. HAWAIIAN ISLANDS
631. HAWAIIAN ISLANDS
632. HAWAIIAN ISLANDS
633. HAWAIIAN ISLANDS
634. HAWAIIAN ISLANDS
635. HAWAIIAN ISLANDS
636. HAWAIIAN ISLANDS
637. HAWAIIAN ISLANDS
638. HAWAIIAN ISLANDS
639. HAWAIIAN ISLANDS
640. HAWAIIAN ISLANDS
641. HAWAIIAN ISLANDS
642. HAWAIIAN ISLANDS
643. HAWAIIAN ISLANDS
644. HAWAIIAN ISLANDS
645. HAWAIIAN ISLANDS
646. HAWAIIAN ISLANDS
647. HAWAIIAN ISLANDS
648. HAWAIIAN ISLANDS
649. HAWAIIAN ISLANDS
650. HAWAIIAN ISLANDS
651. HAWAIIAN ISLANDS
652. HAWAIIAN ISLANDS
653. HAWAIIAN ISLANDS
654. HAWAIIAN ISLANDS
655. HAWAIIAN ISLANDS
656. HAWAIIAN ISLANDS
657. HAWAIIAN ISLANDS
658. HAWAIIAN ISLANDS
659. HAWAIIAN ISLANDS
660. HAWAIIAN ISLANDS
661. HAWAIIAN ISLANDS
662. HAWAIIAN ISLANDS
663. HAWAIIAN ISLANDS
664. HAWAIIAN ISLANDS
665. HAWAIIAN ISLANDS
666. HAWAIIAN ISLANDS

•63 SITUATIONS WANTED M/F

EXCELLENT Childcare in my home. Phone 235-4311

MATURE Teenager will babysit in Kailua after school or evenings. Call 262-4613.

BABYSITTER will care for children in my Schofield home. Call 624-8095

•68 GARAGE/LANAI SALES

VALENTINE'S DAY PLANT SALE
Sat. & Sun., Feb. 12 & 13
The Ranch House
5156 Kalamansole Hwy.
"BLOOMING"
Miniature roses
4" full pot
2 for \$5.00
(or \$2.75 ea.)
HEATHER
1 gal. full pot \$6.00 ea.
Succulents for fresh & semi-potted.
Succulents shipped by Hawaii Kai
Kaleidoscope

GARAGE Sale: Sat. Feb. 12, 9 a.m. to 2 p.m., electricity, plumbing, 1980's, misc. 88 Hawaii Kai, Hawaii Kai

BIKES, cereals, washing machine, plant pots & other misc. items. 2112, 9:30-3:30 10-2, 878 Aiea Dr., Kailua

MOVING Sale: Sun. 2/13 only, 10-3 p.m. Clothes, jewelry, turn, plants, etc. 47-4134 Hui Iwa St., Kaneohe

MOVING to mainland & Family Garage Sale: Furniture & tons of stuff. 44-121 Laha on Kaneohe Bay Dr. Sat. & Sun., 8 to 5. 247-5097

MOVING: Sell everything must go. 8-11 p.m. 2/11, 912 and 912E, 44-174 Laha St., Yacht Club Terrace, Kaneohe

BATH tub, playpen, air conditioner, \$15, works. clothes, toys, paint, B/W TV \$50, dresser, and table, sewing machine, typewriter, loads of plants, misc. items. 232 Aiea Dr., Kailua, Sat. 9-2 p.m. 261-5174

GARAGE Sale: 983 Hanalei St., Hanalei, Feb. 12, 9-4. Heavy junk bag.

COME & Get it garage sale - treasures unlimited for your home. Sat., Feb. 12, 229 Hui Iwa St., Kailua

•73 APTS. FULLY FURN. APARTMENT on K-1 Hwy, 1 bdrm., 1 bath, yard work avail. \$550. 261-5882

STUDIO Bayview, ultra, incl. suitable for one laundry incl. \$350 + dep. 235-6883

KAILUA, garden studio for 1 non smoker. Lanai, clean, quiet. No kids/pets. \$325 incl. included. 262-6344

•75 APTS. PART. FURN. WAHIAWA/WAIPIO 3 bdrm., 2 bath, carpets, drapes, parking, pool. \$600. 735-2236

2 BDRM. with loft, Ocean, Kailua, \$500 villa incl. Call 237-8390

MAKANI Kai Marina, 2 bdrm., furn., \$800/wk. Judy Anderson (R) 236-0506

•76 RENTALS TO SHARE MILILANI house to share with 2 bdrm., yard, pool. \$250 + utils. 625-5559 or 948-4354

PEARL CITY, 3 bdrm., 2 bath house \$300. Call 455-6790

HIU VALLEY, beautiful 3 bdrm., 2 bath home w/pool, lg. yard, bar, fully furn., \$650 mo. Call 373-9379

KANEKOE 2 bdrm. apt. to share w/female \$212, pool, utils. incl. clean. 247-4216

KAILUA • Maunawili spacious house to share with easy going professional couple. Lots of privacy. \$350 couple pref. Ph. 261-4482 mornings

•82 HOUSES UNFURN. KAILUA, 5 bdrm., 2 bath house, convenient location for Military personnel. \$750 dep. info. 234-1107 after 5 p.m.

•88 ROOMS FOR RENT ONE bedroom available in Kaneohe, washer/dryer, pool, tennis. \$250 + deposit. Cheryl/Els 247-2454

SINGLES only, \$160-\$185 per month, includes utils. \$50. Call 625-8745 or 622-2857

ROOM for rent, \$200 plus utils. Private entrance, no kitchen privileges. Ph. 262-7232

KAILUA, bedroom & bath, pool, \$550 incl. utilities. Call 254-5147 days

WAHIAWA - room for rent kitchen privileges, man or woman okay. \$200 mo. Call Hyatt 622-1386 available March 1

•88 ROOMS FOR RENT

KAILUA: Bdrm. in nice house \$225 + utils. Avail. Feb. 1. Call 262-9074 anytime.

MILILANI 3 bdrm. townhouse own room, \$200 mo. + 1/3 utils. 455-6222 or 623-1106

WAHIAWA/HIS - room & bath in quiet residential neighborhood. Own entrance, 1500 incl. utils. Ph. 421-0370

NON-smoker for furn. inc. kitchen fac., dep. + utils. washer, carpet \$195. Call 455-6222

•93 VACATION RENTALS KULILANI: 1 bdrm. fully furnished apt. no pets. Lan. Call 239-8535

BEACH HOUSE KAAAWA \$500 per week. Call 261-4332

BEACHFRONT Condo., near Crouching Lion. Week, month, pool. Ph. 395-6196

MOLOKAI Wave Crest, sleeps 4, beach, pool, \$50 day \$180 per week. Ph. 395-6085

KAILUA beachside exclusive executive home, 4 bdrm., 3 bath, pool. Available 4 to 5 days. \$150 per day. 262-4450 after 9 p.m.

•98 RENTALS WANTED NON-smoking/drinker woman w/ 7 yr. old son seeking 1 rm. Kailua area, in exchange for babysitting/looking \$100. Call 261-2095 evens. or 261-1609 days

MATURE woman looking for cottage, apt. or share. Kailua area. Has some furn. & small appt. Ref. 262-6423

REMODELING contractor and family (3) seek house in country. Exchange services for reduced rent/lease. 688-2451

•103 OFFICE FOR RENT Pali Palms Plaza

A Fine Office Center Complex With General Offices and Professional Space Available.

870 NORTH KALANEO AVENUE KAILUA, HAWAII 96734 254-1505

KANEKOE OFFICE SPACE

(Excellent location across new Windward Mall Shopping Center) 3-story beautiful garden bldg. Present tenants: Castle Memorial Hosp., X-Ray and Health Center. Physicians of many specialties. Territorial Savings & Loan, Beautician, Travel Bureau, Real Estate Developers.

Offices available from 650 sq. ft. to 1,500 sq. ft.

Beautiful open beam. Excellent Kilowatts.

WALTER ZANE REALTY, INC. 48-005 Kawa St., Kaneohe PH. 235-6020

•108 BUSINESS PROPERTY FOR SALE OR RENT CRACKSEED Center in Kaneohe for sale, 45-850-2, Kam Highway, Phone 247-3071

COLD STORAGE For rent/lease, Kaneohe area. Chiller/Freezer. 293-5082

•114 REAL ESTATE FOR SALE 3 BDRM., 1 1/2 bath condo, on Likiep & Kam. Minutes from KMOA, view, rent plus payments, low down, \$62,000. Ph. 264-1633 AWH.

BROWN Floral queen sofa bed \$450. Call 395-5344

DANISH, Modern love seat, good cond., needs cushion covers. \$30. Ph. 261-5065

PEARLIDGE - 2 bdrm., 2 bath, quality wood, living/dining area, exercise room, heated pool, \$110,000 offer. Joan Tascano (RA), 944-8441

NEW TOWN Estates, 5 bdrm., 3 bath, den, A/C, times for sale, owner/agent. Call for appointment 488-3900

OPEN House 2-5 p.m. Sunday. 87-148 Palakama St. Option to buy, 3 bdrm., 1 bath, \$95,000. Assume 2.5% VA mortgage. Realtor, 488-3900

PEARL City, upgraded 3 bdrm., 1 1/2 bath townhouse, assume existing VA mortgage 9.5%, second mortgage split over/agent. Ph. 488-3900

MAIL: Ocean front, ground floor, Fee, 1 bdrm. completely furnished. 235-1801

TEMPLE Valley townhome, 3 bdrm., 2 bath, apt. story end unit, excl. cond., home wty incl. Home can be purchased for under \$1000 per mo. MLS13587 \$97,900

HAIKU Hale's best 2 bdrm., 1 1/2 bath unit highly upgraded, mountain & bay view, VA/FHA financing avail. MLS 13124 \$84,750

PEARLIDGE, very, very nice 2 bdrm., 2 bath Condo on The Green. Offers Golf course & harbor view, amenities, plus quiet & serene. MLS #119,250

PEARLIDGE Terrace, investor or 1st time buyer. Located 2 bdrm., 1 bath centrally located cond., near Pearlridge Shopping Center. MLS #148, \$90,245

ERA Sam Daily Realty John Sherwood (RA) 422-7646

EWA BEACH, fee, \$95,000, 3 bdrm., good cond., 12 yrs, 5000 sq. ft. Catherine (R) 688-1220

LOW DOWN & rent plus will buy 1-2 bdrm., mountain view, Judy Anderson (R) 235-0506

MINNESOTA, the possible dream: 5 fabulous tree-covered acres, incredible, hunting, fishing, farming & snowmobiling. Many lakes, close to major city. Electric and phone available. \$60,000 full price \$600 down, \$66.08 a mo. including 10% interest. Call 599-5692

42 ACRES on small stream COLORADO, Fronting main road, near mountains \$16,500 \$185 down, 135 payments of \$185, 3% interest. Trade for title model car. Owner, 595-376-8890

LARGE lot available in Florida, only \$4,500 over 10,000 sq. ft. lot, build now or later. Port Malabar nr. Patrick A.F. Base. Priced below market. Phone Culver 922-5442 Real Estate Broker

CUSTOM 1 bdrm., jewel in quiet wooded area, Ocean view, assume VA of \$99,000 at 9 1/4% for sale by owner, at \$144,000, reduced \$5000. Ph. 233-5496 evens

NO CASH NEEDED For active military and veterans. Here is with only monthly payment. Great opportunity! Special lowdown, good location. Only \$75,500. MRS. J. B. B. REALTY John B. B. (R) 254-1180 or 254-2770

•117 REAL ESTATE TRAGE COLORADO - Vail Ski area condo, for Kailua Bay, Maui or Kona. Phone 325-4358

•118 JEWELRY & CLOTHING DIAMOND Engagement ring 57 carats, cost over \$2000 sacrifice only \$1200 521-9746

•120 FURNITURE HIDE-A-BED, double size, good condition, you pick up, \$40. Phone 262-6891

•114 REAL ESTATE FOR SALE 3 BDRM., 1 1/2 bath condo, on Likiep & Kam. Minutes from KMOA, view, rent plus payments, low down, \$62,000. Ph. 264-1633 AWH.

BROWN Floral queen sofa bed \$450. Call 395-5344

DANISH, Modern love seat, good cond., needs cushion covers. \$30. Ph. 261-5065

PEARLIDGE - 2 bdrm., 2 bath, quality wood, living/dining area, exercise room, heated pool, \$110,000 offer. Joan Tascano (RA), 944-8441

NEW TOWN Estates, 5 bdrm., 3 bath, den, A/C, times for sale, owner/agent. Call for appointment 488-3900

OPEN House 2-5 p.m. Sunday. 87-148 Palakama St. Option to buy, 3 bdrm., 1 bath, \$95,000. Assume 2.5% VA mortgage. Realtor, 488-3900

PEARL City, upgraded 3 bdrm., 1 1/2 bath townhouse, assume existing VA mortgage 9.5%, second mortgage split over/agent. Ph. 488-3900

MAIL: Ocean front, ground floor, Fee, 1 bdrm. completely furnished. 235-1801

TEMPLE Valley townhome, 3 bdrm., 2 bath, apt. story end unit, excl. cond., home wty incl. Home can be purchased for under \$1000 per mo. MLS13587 \$97,900

HAIKU Hale's best 2 bdrm., 1 1/2 bath unit highly upgraded, mountain & bay view, VA/FHA financing avail. MLS 13124 \$84,750

PEARLIDGE, very, very nice 2 bdrm., 2 bath Condo on The Green. Offers Golf course & harbor view, amenities, plus quiet & serene. MLS #119,250

•114 REAL ESTATE FOR SALE

PEARLIDGE - 2 bdrm., 2 bath, quality wood, living/dining area, exercise room, heated pool, \$110,000 offer. Joan Tascano (RA), 944-8441

NEW TOWN Estates, 5 bdrm., 3 bath, den, A/C, times for sale, owner/agent. Call for appointment 488-3900

OPEN House 2-5 p.m. Sunday. 87-148 Palakama St. Option to buy, 3 bdrm., 1 bath, \$95,000. Assume 2.5% VA mortgage. Realtor, 488-3900

PEARL City, upgraded 3 bdrm., 1 1/2 bath townhouse, assume existing VA mortgage 9.5%, second mortgage split over/agent. Ph. 488-3900

MAIL: Ocean front, ground floor, Fee, 1 bdrm. completely furnished. 235-1801

TEMPLE Valley townhome, 3 bdrm., 2 bath, apt. story end unit, excl. cond., home wty incl. Home can be purchased for under \$1000 per mo. MLS13587 \$97,900

HAIKU Hale's best 2 bdrm., 1 1/2 bath unit highly upgraded, mountain & bay view, VA/FHA financing avail. MLS 13124 \$84,750

PEARLIDGE, very, very nice 2 bdrm., 2 bath Condo on The Green. Offers Golf course & harbor view, amenities, plus quiet & serene. MLS #119,250

PEARLIDGE Terrace, investor or 1st time buyer. Located 2 bdrm., 1 bath centrally located cond., near Pearlridge Shopping Center. MLS #148, \$90,245

ERA Sam Daily Realty John Sherwood (RA) 422-7646

EWA BEACH, fee, \$95,000, 3 bdrm., good cond., 12 yrs, 5000 sq. ft. Catherine (R) 688-1220

LOW DOWN & rent plus will buy 1-2 bdrm., mountain view, Judy Anderson (R) 235-0506

MINNESOTA, the possible dream: 5 fabulous tree-covered acres, incredible, hunting, fishing, farming & snowmobiling. Many lakes, close to major city. Electric and phone available. \$60,000 full price \$600 down, \$66.08 a mo. including 10% interest. Call 599-5692

42 ACRES on small stream COLORADO, Fronting main road, near mountains \$16,500 \$185 down, 135 payments of \$185, 3% interest. Trade for title model car. Owner, 595-376-8890

LARGE lot available in Florida, only \$4,500 over 10,000 sq. ft. lot, build now or later. Port Malabar nr. Patrick A.F. Base. Priced below market. Phone Culver 922-5442 Real Estate Broker

CUSTOM 1 bdrm., jewel in quiet wooded area, Ocean view, assume VA of \$99,000 at 9 1/4% for sale by owner, at \$144,000, reduced \$5000. Ph. 233-5496 evens

NO CASH NEEDED For active military and veterans. Here is with only monthly payment. Great opportunity! Special lowdown, good location. Only \$75,500. MRS. J. B. B. REALTY John B. B. (R) 254-1180 or 254-2770

•117 REAL ESTATE TRAGE COLORADO - Vail Ski area condo, for Kailua Bay, Maui or Kona. Phone 325-4358

•118 JEWELRY & CLOTHING DIAMOND Engagement ring 57 carats, cost over \$2000 sacrifice only \$1200 521-9746

•120 FURNITURE HIDE-A-BED, double size, good condition, you pick up, \$40. Phone 262-6891

•114 REAL ESTATE FOR SALE 3 BDRM., 1 1/2 bath condo, on Likiep & Kam. Minutes from KMOA, view, rent plus payments, low down, \$62,000. Ph. 264-1633 AWH.

BROWN Floral queen sofa bed \$450. Call 395-5344

DANISH, Modern love seat, good cond., needs cushion covers. \$30. Ph. 261-5065

PEARLIDGE - 2 bdrm., 2 bath, quality wood, living/dining area, exercise room, heated pool, \$110,000 offer. Joan Tascano (RA), 944-8441

NEW TOWN Estates, 5 bdrm., 3 bath, den, A/C, times for sale, owner/agent. Call for appointment 488-3900

OPEN House 2-5 p.m. Sunday. 87-148 Palakama St. Option to buy, 3 bdrm., 1 bath, \$95,000. Assume 2.5% VA mortgage. Realtor, 488-3900

PEARL City, upgraded 3 bdrm., 1 1/2 bath townhouse, assume existing VA mortgage 9.5%, second mortgage split over/agent. Ph. 488-3900

MAIL: Ocean front, ground floor, Fee, 1 bdrm. completely furnished. 235-1801

TEMPLE Valley townhome, 3 bdrm., 2 bath, apt. story end unit, excl. cond., home wty incl. Home can be purchased for under \$1000 per mo. MLS13587 \$97,900

HAIKU Hale's best 2 bdrm., 1 1/2 bath unit highly upgraded, mountain & bay view, VA/FHA financing avail. MLS 13124 \$84,750

PEARLIDGE, very, very nice 2 bdrm., 2 bath Condo on The Green. Offers Golf course & harbor view, amenities, plus quiet & serene. MLS #119,250

PEARLIDGE Terrace, investor or 1st time buyer. Located 2 bdrm., 1 bath centrally located cond., near Pearlridge Shopping Center. MLS #148, \$90,245

ERA Sam Daily Realty John Sherwood (RA) 422-7646

EWA BEACH, fee, \$95,000, 3 bdrm., good cond., 12 yrs, 5000 sq. ft. Catherine (R) 688-1220

LOW DOWN & rent plus will buy 1-2 bdrm., mountain view, Judy Anderson (R) 235-0506

MINNESOTA, the possible dream: 5 fabulous tree-covered acres, incredible, hunting, fishing, farming & snowmobiling. Many lakes, close to major city. Electric and phone available. \$60,000 full price \$600 down, \$66.08 a mo. including 10% interest. Call 599-5692

42 ACRES on small stream COLORADO, Fronting main road, near mountains \$16,500 \$185 down, 135 payments of \$185, 3% interest. Trade for title model car. Owner, 595-376-8890

LARGE lot available in Florida, only \$4,500 over 10,000 sq. ft. lot, build now or later. Port Malabar nr. Patrick A.F. Base. Priced below market. Phone Culver 922-5442 Real Estate Broker

CUSTOM 1 bdrm., jewel in quiet wooded area, Ocean view, assume VA of \$99,000 at 9 1/4% for sale by owner, at \$144,000, reduced \$5000. Ph. 233-5496 evens

NO CASH NEEDED For active military and veterans. Here is with only monthly payment. Great opportunity! Special lowdown, good location. Only \$75,500. MRS. J. B. B. REALTY John B. B. (R) 254-1180 or 254-2770

•117 REAL ESTATE TRAGE COLORADO - Vail Ski area condo, for Kailua Bay, Maui or Kona. Phone 325-4358

•118 JEWELRY & CLOTHING DIAMOND Engagement ring 57 carats, cost over \$2000 sacrifice only \$1200 521-9746

•120 FURNITURE HIDE-A-BED, double size, good condition, you pick up, \$40. Phone 262-6891

•114 REAL ESTATE FOR SALE 3 BDRM., 1 1/2 bath condo, on Likiep & Kam. Minutes from KMOA, view, rent plus payments, low down, \$62,000. Ph. 264-1633 AWH.

BROWN Floral queen sofa bed \$450. Call 395-5344

DANISH, Modern love seat, good cond., needs cushion covers. \$30. Ph. 261-5065

PEARLIDGE - 2 bdrm., 2 bath, quality wood, living/dining area, exercise room, heated pool, \$110,000 offer. Joan Tascano (RA), 944-8441

NEW TOWN Estates, 5 bdrm., 3 bath, den, A/C, times for sale, owner/agent. Call for appointment 488-3900

OPEN House 2-5 p.m. Sunday. 87-148 Palakama St. Option to buy, 3 bdrm., 1 bath, \$95,000. Assume 2.5% VA mortgage. Realtor, 488-3900

PEARL City, upgraded 3 bdrm., 1 1/2 bath townhouse, assume existing VA mortgage 9.5%, second mortgage split over/agent. Ph. 488-3900

MAIL: Ocean front, ground floor, Fee, 1 bdrm. completely furnished. 235-1801

TEMPLE Valley townhome, 3 bdrm., 2 bath, apt. story end unit, excl. cond., home wty incl. Home can be purchased for under \$1000 per mo. MLS13587 \$97,900

HAIKU Hale's best 2 bdrm., 1 1/2 bath unit highly upgraded, mountain & bay view, VA/FHA financing avail. MLS 13124 \$84,750

PEARLIDGE, very, very nice 2 bdrm., 2 bath Condo on The Green. Offers Golf course & harbor view, amenities, plus quiet & serene. MLS #119,250

PEARLIDGE Terrace, investor or 1st time buyer. Located 2 bdrm., 1 bath centrally located cond., near Pearlridge Shopping Center. MLS #148, \$90,245

ERA Sam Daily Realty John Sherwood (RA) 422-7646

•120 FURNITURE

GIANT FURNITURE CLEARANCE Gold velvet sofa \$149, green velvet sofa/love seat \$149, brown corduroy & chrome sofa/love seat & chair \$299. 7 pc. wtd. rattan set \$159, green sofa & 2 arm chairs \$149, bunk bed w/mattress \$132, queen hide-a-bed \$142, white vinyl corner group w/boilers \$249, campaign style bed, set - 4 pc. \$249, single beds \$69, king bed \$349, king arm water bed \$699, comfort color TV \$399, double pedestal desk from \$75, lg. exec. etc. desk \$299, lighted display case \$149, Maytag dryer like new \$249, granddaddy clock \$148, small rattan desk \$99, 8 pc. rattan din. rm. set \$199, framed mirrors \$19 ea., pictures, lamps, headboards & much more. 488-1885 (behind Cutler Ford Aisle)

FLEXSTEEL sofa, gold velvet striped, good condition, \$225. Ph. 254-1027 anytime

PARADISE USED FURNITURE Twin beds \$75 to \$125 set. Pillow power sofa \$225, 5 pc. dining set \$225, 6 drawer dresser \$75, Ethan Allen couch \$225, 7 drawer desk \$145 ea., 7 drawer dresser \$130 ea., queen size bed, set \$100, rattan/cane ampole excl. \$450, antique rockers \$150 & \$195, office chairs \$15 to \$60, bookshelves \$59 to \$95, hutch \$50 to \$150, corner corner group \$125, baby crib complete \$95, foldout queen size bed \$200, electric stove \$195, Whirlpool washer \$175, Oriental screen \$200, set of 4 leakdown in rm. table \$295, Also lamps, patio sets & more. 261-8452, 325 (Hui Iwa St., Kailua)

</

***126 MISCELLANEOUS**

CHEST/FREEZER, 15.1 cu. ft., \$300. Whirlpool washer/dryer, nvy. duty, \$300 & duty. Rockwell table saw, \$125; 300s lockoff 608-8678.

10 SPEED Centurion bicycle, good condition, ladies, \$80. Ph. 235-1033.

HASSELBLAD 5000 with 2 lenses, backs, extras \$2000 firm. Ph. 671-1652.

GRANDMA Birds, famous butter cookies. \$4.50 + \$1.45 433 Akiakia, Kaneohe.

UPRIGHT (15) freezer, 2250, Washer \$125. Ph. 623-2186.

2 VIVITAR Lenses, 1-85 to 205mm zoom w/ Nikon/AL mount, \$175/offer, 1-35mm telephoto w/ Minolta mount, \$125/offer. Barbers, 422-8361 after 5 p.m.

GORGEOUS Mink jacket value \$450, asking \$200. Call 395-3162.

WASHER \$156, dryer \$319, hand mower \$25, sun lamp \$22. Ph. 262-0324.

KING size water bed, \$220, Schwinn Exercise, \$75, evenings, 5-8, 422-6278.

OAK Bedroom set, garden hose and sprinkler. Ph. 455-2288.

PIANO, \$150, 2 den chairs, \$65 each, Kirby vacuum, \$50. Phone 238-8831.

BEARS freezer, \$110, small GE refrigerator \$30, student desk & chair \$80. 423-1497.

SINGER Free Arm sewing machine, automatic, button-hole, blind hem, stretch over lock, etc. Like new. Sacrifice, \$85. 262-8131.

WHITE bathroom vanity cabinet, cultured marble sink w/hardware \$50. 261-1420.

CAMERA K5-1 Pentax mount, 50mm/1.8 lens, tripod, flash, etc. all in exc. cond. \$275. Ph. 621-0897.

CHAIN link fence, 55 ft. of #16 ft. of 3/4" gate, post, top rail hardware, \$100. 422-0339.

UNITED Airlines 1st C. coupons, thru 6/15/83 (2) \$750. 488-8581 after 6 p.m.

MOPED 81 Honda NC50 lock helmet, side-baskets, \$300. Ph. 422-2184.

***127 APPLIANCES**

WASHER and/or dryer \$100 ea. Delivery available. Guaranteed. Call 624-2563.

REFRIG., 16 cu. ft. Chest freezer, 18 cu. ft. Both good cond. Call 247-0878.

DRYER, good condition, \$95 or offer. Call 235-0811, 455-9991, or 847-7994.

PHILO deluxe host free refg., 18 cu. ft. Guaranteed, \$95. 262-7881.

KENMORE Washer & dryer, used, \$250 takes all. Call 261-3293.

WASHER \$135 in good condition. Call 235-5778.

FRIGIDAIRE Washer \$300, dryer \$200. Almond, 3 yrs. old, excellent cond. Call 263-4222.

MUST Sell Upright freezer, works, \$80. Medium size air cond. \$70. 2 console stereos, \$20 ea. 395-5358.

REFRIG/Freezer Whirlpool 1990, ice maker, white, wife wanted side by, exc. cond. \$350. Ph. 262-7811.

KENMORE washer, like new, \$225, portable dishwasher, \$125. Double drainboards, w/sink, w/tapet & disposal, \$125. 262-8495.

WASHER \$65, dryer \$65, toaster oven \$10, plate \$5. Ph. 261-6651, 262-6502.

***128 TVS, STEREOS**

MADONNA Console 25" Color TV, w/AM/FM stereo, phonograph, adaptors for cassette & extra speakers. Beautiful cabinet, \$400/offer. Call 624-2681.

***130 ANTIQUES**

ANTIQUE Barrel-top desk, 120 years old, Victorian era, excellent condition, very large storage drawers. Must see to appreciate, \$1000/offer. Ph. 237-8030.

LARGE antique pool table, gd. cond., \$600/offer. Call 641-2012.

***131 WIKI WIKI FREEBEE**

FREE: Cats. Many to choose from! Healthy, good mousers. Pupukia Kitty Farm, 638-8198.

FREE: To good home, 3 mo. old German Shepherd mix, female. Good w/kids. Has shots. 235-9602.

FREE: mixed female dog, good with small children. Needs fenced yard. 469-8004.

FREE: Poi puppies, born Jan. 1. Call 259-9048.

FREE: playful 7 wk. old kittens, need homes. Call 247-5078.

FREE: Irish Setter to good home, male. Call 455-8744.

***136 MISCELLANEOUS WANTED**

CASH for Lawn Mowers & Outboard Motors. Any Condition. Ph. 258-5927.

WE BUY used furniture. We pay cash and pickup. Call 261-9482 or 247-1937.

WANTED: Second hand upright piano, reasonable cond., & price. Call 685-8519.

KING SIZE Mattress wanted immediately. Good shape. Ph. 261-4331 evenings.

***136 MISCELLANEOUS WANTED**

KAMA'AINA USED FURNITURE. Now buying all types of furniture. Top cash. 488-1985.

***137 MACHINERY & EQUIPMENT**

BOBCAT Rental w/backhoe attachment & posthole digger. Daily or weekly rates. 262-7030.

MOBILE Hydraulic crane for rent. Reasonable. 1818 Woodward ave only. Ph. 238-9008.

***140 PHOTO SUPPLIES**

16mm KODAK Pageant projector, exc. cond. \$450/offer, 262-8880 or 262-8073.

NIKON Camera System, complete w/many accessories. Worth \$1800. Will sell \$950. 859-5978. Leave message.

***144 MUSIC SALES AND SERVICE**

1957 BALDWIN Spinnet piano, some keys chipped. \$300. Phone 488-6249.

HANNAHLEE needs a band of country boys to help her get her act together. Serious only. 623-3894. 7-10 p.m. C&W writer/artist.

WANTED: Second hand upright piano, reasonable condition, reasonable price. Call 685-8519.

***146 BOATS SUPPLIES & SERV.**

5' 7" TOWN & Country twin 5' 4" Local Motion in-hull single 247-5838.

18' SKI Boat, 73 horse. Evinrude & trailer. \$2800. Call 264-3853.

15' PRINOLE Galamahan w/trailer, exc. cond., \$1650/offer. 456-4190.

16' Boat with trailer, fully rigged. 2500/offer. 261-8881.

14' HOBBIE Cat with trailer and 1/2 exc. cond. 995. Call 261-2088.

14' TWIN Hull, Aqueduct sailboat, w/trailer, needs some work, \$300 or offer. 262-4158.

24' SAILBOAT, classic design. Kaneohe Bay. \$4500/offer. Ph. 235-8365.

SIGNET SCIENTIFIC

We are offering a surprising discount on same items. Call or stop by our new shop and see if we have what you need.

ART NELSON

SAULMASON, INC.

837-0950 537-0950

Wanted 262-6238

***147 SPORTING GOODS**

24" 10 SPD, Girls' bike, good condition, \$80. Call 263-4752.

***151 PET SUPPLIES SALES & SERVICE**

ENG. Western Pressure horse. Gelding 11 yrs., 15.3 hands. \$700. 623-3088.

PUREBRED Pitbull pups, \$50 ea., 5 wks. old. Call 624-5002.

AKO Weimaraner pups, beautiful & (Grey Ghost) Show, field & obedience. 15.5 hands. Dressage, jumping, endurance. 239-9478.

VALENTINE pups, fluffy sable colored beauties \$30. Call 239-7743.

COCKATIELS - 4 babies hand tamed babies \$6 each. 239-9507.

IRRESISTIBLE: Valentine pups, born 12/27, Dachshund/Fox Ter. mix \$35. 247-6813.

RABBITS, \$2.00 each. Phone 262-8818.

after 4:00 p.m.

***151 PET SUPPLIES SALES & SERVICE**

CAT SHOW. Blaisdell Center. Feb. 12 - 9-5.

AFRICAN Grey Parrot, tame cage & perch. \$450/offer. Call 487-3959.

AKC male Shepherd, 8 months, black/tan \$150. Call anytime 423-2564.

BEAUTIFUL Parakeets, \$7-\$10. Dwarf bunnies \$7. Pet rabbits \$5. 239-6188.

***156 AUTO PARTS & SERVICE**

TOYOTA reclining seats, \$75 each. Toyota twin cam engine, \$1150. Phone 235-6026.

CUSTOM car wax at your home. \$20-\$50. Leave message on tape. 239-7584.

4 PORSCHE hubcaps for sale, \$70. Days 235-6118.

70 TOYOTA Wagon, all or part, exc. interior, good tires, bumpers, etc. Cheap. 262-6212.

PAIR of Mag rims, (F-60-15) with good rubber, \$75 for both. Call after 4 p.m. 422-6783.

FLATBED (w/porch rack) for small truck, \$200 or offer. Call 261-8109.

78 LUV gmb. apron, RH door \$50. 67 Mustang bumper rammer, mirrors, taillights, misc. \$60. 35 T-Bird 4 bbl manifold/Holley carb \$100. Call 261-6217.

VINYL Jacket for Triumph Sportster, convert. top, great cond. \$40/offer. 487-6664.

***161 AUTOS WANTED**

DESPERATE WE NEED YOUR CAR

FOR DR OR NOT

IMMEDIATELY!!

TOP DOLLAR GIVEN AT

WHOLESALE MOTORS

2998 K. Kimo Hwy. 426-1222

***166 TRUCKS & PICKUPS**

72 FORD F250 1/2 ton pickup, mach. excellent, body rusted out. \$850. Call 261-4065.

81 DODGE pickup, 3 spd, power steering, exc. cond. \$800 & take over payments or offer. Ph. James 258-9404 after 6 p.m.

75 TOYOTA Truck 2000 motor, headers, Weber Granger rims extra. \$1500. 247-3595. dependable.

***171 MOTORCYCLES SALES & SERVICE**

ANGEL Moped, old and not working, buy it as is and repair it yourself. \$40. Ph. 488-6249.

1978 HONDA 750cc like new, \$1500 or best offer. Call 695-8068.

91 YAMAHA 500XS, exc. cond., w/extras. \$2000 firm. 422-4596.

78 HONDA Hawk w/trunk, excellent, \$800. Call 262-2832.

91 YAMAHA 400XS special, exc. cond., \$1200. Call 456-2207.

81 SUZUKI GS 650G, luggage rack/back rest, \$2500/best offer 839-7348.

77 KZV1000, fairing rack, maps, low mileage, \$2095. Ph. 448-6474. 734-3418. Pat.

78 YAMAHA XS400, exc. cond. \$750. Call 262-2754.

SUZUKI GS 550 for sale \$2000 or best offer. Call after 6. 833-0842, Bill.

MOTORCYCLE - Suzuki 400 GN exc. cond. \$950 or best offer. Call 247-3646.

Hawaii Cycle Inc. New and Used Parts Service and Repair. P/U and Towing. INS. EST. 847-1553. 2010 Democrat St.

***171 MOTORCYCLES SALES & SERVICE**

81 HONDA 900F, rearsets, Hondaline Sport Fairing, alarm, many extras, \$2500/will consider call in trade. Call 235-8131.

***172 AUTO ANNOUNCEMENTS**

WILL lease '82 Chrysler Le Baron convertible. Leather interior. Only \$899. Less than 10,000 miles - well kept in top shape. Call Ken 235-5883 or 261-4854 after Friday.

NEW Low auto insurance rates from UIMA. Call Mr. Hedges at 955-0941 for free quote.

***174 RENT A CAR**

HAWAII Discount Rent A Car \$12 a day, \$47 a week, \$100 a mo., 12 to 15 water cars, wagons. Collision waiver extra. Call 526-9100.

***176 AUTOS FOR SALE**

SPECIAL OFFER

1 Week Only (Expires 2/10/83)

SUZUKI

"WE HANDLE HAWAII"

'82 GS650GL one of the best looking, best performing mid-sized cruisers around. Silky smooth shaft drive. WAS \$3475.

NOW ONLY \$2250

'82 GS550GL custom styling, smooth 4 cylinder performance, convenience features galore. WAS \$2840.

NOW ONLY \$1895

'82 SP 250Z on/off road riding, economy, easy to handle. WAS \$1738.

NOW ONLY \$1195

Tax, license, & 6/1 not included. DOWNTOWN SUZUKI 536-7023.

WAIHAWA SUZUKI 621-5543.

KANEHO SUZUKI 254-3343.

CUTTER FORD

TRUCKS & TRANSPORTATION SPECIALS

'80 CITATION \$3650

'79 VW Bug \$5995

'78 TRIUMPH \$3995

'79 OMNI \$2995

'80 LTD \$4995

'72 TOYOTA \$195

'74 VW Wagon \$195

'75 LE MANS \$1995

'74 VW Bug \$1495

'74 VW Bug \$1795

'76 GRANADA \$1495

'73 PLYMOUTH \$295

'77 DATSUN \$1495

'76 AMC \$650

'70 MAVERICK \$195

'73 PLYMOUTH \$195

'76 PINTO \$895

'76 PINTO \$995

'74 PONTIAC \$395

98-015 Kam Hwy., AIEA • Ph. 487-3811

TOYOTA CITY

2310 Kam Hwy. 848-1811

USED CAR SPECIALS

'80 CHEVY \$7595

'79 MAZDA \$3195

'74 GMC VAN \$2595

'75 PONTIAC \$1095

'72 PLYMOUTH \$895

'81 DATSUN \$3495

'73 TOYOTA \$695

Subject to prior sale. Offer good till Feb. 15, 1983.

Finance Available On Approved Credit.

***175 VANS, CAMPER & JEEPS**

78 VW BUS, 7 passenger, 4 spd., radials, tinted windows, \$5200. 422-5803 evenings.

'79 DODGE Cargo van 29,000 miles, excellent condition. \$4,400. 254-5610.

65 VOLKSWAGEN Camper van, new tires, brakes, tune-up. \$1600/best offer. Ph. 238-5653.

'70 FORD Club Wagon new tires, good engine, needs body work, \$500/offer. Call Eddy even. 262-0586.

***175 VANS, CAMPER & JEEPS**

79 CHEVROLET 4 wd. auto, p/s, t/s, top mechanical cond. \$6500/offer. Ph. 456-3853.

***176 AUTOS FOR SALE**

A SUPER SAVER

#1 HENTZ USED CAR SALES

Many More Autos. More people buy quality used cars from HENTZ than anywhere else in the world. 836-3888.

***176 AUTOS FOR SALE**

79 VW VAN, Ph. 262-5826.

79 VW VAN, Ph. 262-5826.

79 VW VAN, Ph. 262-5826.

79 VW VAN, Ph. 262-5826.

79 VW VAN, Ph. 262-5826.

79 VW VAN, Ph. 262-5826.

79 VW VAN, Ph. 262-5826.

79 VW VAN, Ph. 262-5826.

79 VW VAN, Ph. 262-5826.

79 VW VAN, Ph. 262-5826.

79 VW VAN, Ph. 262-5826.

79 VW VAN, Ph. 262-5826.

79 VW VAN, Ph. 262-5826.

79 VW VAN, Ph. 262-5826.

79 VW VAN, Ph. 262-5826.

BUICK

68 BUICK station wagon \$650, low mileage, excl. cond. Ph. 239-8002.

CADILLAC

64 SON, DeVille, 4 dr. 1 owner, 59,000 mi. \$1350/offer. Ph. 395-7106

Lots of Cadillacs

79 Fleetwood 4 dr. Elegance (ATG740) \$9975
76 Seville (88Y381) \$6775
WHOLESALE MOTORS
836-1222 2999 N. Nimitz Hwy.

CHEVROLET

80 CHEV. Monza Spyder, auto, a/c, AM/FM, 6 track, excl. cond. \$4500. 624-5571

BEAUTY, '82 Vet, silver on maroon, \$18,600 or offer Ph. 499-2230.

68 CHEVELLE Malibu, new paint, vms, \$1200 or best offer. Ph. 361-4319

78 MONTE Carlo, 2 dr., auto, p/s, excl. cond. \$2500. Call 61-4340

75 CAMARO, low mileage, \$2500 David between 8 a.m. to 8 p.m. 487-1303 ext. B

77 MONZA, 2-dr. coupe, 4 cyl., 4 spd., standard, AM/FM, 8 trk. \$2000. 235-6089 after 5 p.m.

76 EL CAMINO Sports Classic, excellent condition, fully powered, \$4500. 621-7486

LOTS OF CHEVYS, CAMAROS, CORVETTES, CHEVETTES
WHOLESALE MOTORS
2999 N. Nimitz Hwy. 836-1222

SUPER SAVINGS

'76 MERCURY Monarch 4 dr. auto, \$1995	'79 CHEVY Chevette 4 dr. auto, \$1995
'75 VW Bug 4 spd., \$2495	'77 VW Rabbit 4 dr. auto, \$2695
'74 DODGE Sportsman V6, 12 spd., \$2495	'81 CHEVY Pickup Truck, auto, \$5895
'76 FIAT 127 4 spd., \$2195	'80 DATSUN B210 Station wagon, auto, \$3795
'80 FORD Fairmont 4 dr. auto, \$3695	'75 HONDA Civic Station wagon, auto, \$1795
'80 DATSUN B210 Auto, \$3695	'81 AMC Concord Station wagon, auto, \$5395

Subject to prior sales.

KAILUA TOYOTA USED CARS

105 Oneawa St., Kailua 7 Days A Week 261-3321

Tropical

RENT-A-CAR SYSTEMS, INC.
FLEET REDUCTION CENTER
WAIPAHU & LAGOON DR.
Many Models To Choose

12 Month/12,000 Mile Limited Power Train Warranty
Professionally Maintained Cars

1980 MERCURY ZEPHYR STATION WAGONS
6 cyl., auto, a/c, p/s, radio
\$3895 Includes 12 month/12,000 mile limited warranty.

1980 MAZDA STATION WAGONS
Auto, a/c, radio, excellent cond.
\$3995 Includes 12 month/12,000 mile limited warranty.

1980 MERC. ZEPHYR 2-7
2 dr. auto, a/c, p/s, p/b, vinyl top, bucket seats
\$3195 Includes 12 month/12,000 mile limited warranty.

1980 DATSUN 210 DELUXE
4 dr. sedan, auto, radio
\$2795 Includes 12 month/12,000 mile limited warranty.

1980 DODGE COLT
Auto, radio
\$2995 Includes 12 month/12,000 mile limited warranty.

1980 MERC. MARQUIS
4 dr. sedan, auto, p/s, p/b, stereo, a/c, tilt wheel, vinyl top, immac. Tropical Exec. Car
\$4495 Includes 12 month/12,000 mile limited warranty.

1981 DATSUN 210
4 dr. deluxe, auto, radio
\$3395 Includes 12 month/12,000 mile limited warranty.

'81 PLYMOUTH CHAMP
4 spd., radio, a real gas miser
\$3395 Includes 12 month/12,000 mile limited warranty.

1980 PLYMOUTH ARROWS
2 dr. fastback, auto, radio, 4 cyl.
\$2895 Includes 12 month/12,000 mile limited warranty.

1980 DATSUN 510 DELUXE
S/W, auto, a/c, radio
\$3995 Includes 12 month/12,000 mile limited warranty.

Cash prices are plus tax & license. Cars subject to prior sale.

OPEN MON.-SAT. 8:30-6:00
94-250 LEONUI ST., WAIPAHU
BEHIND TOPS COFFEE SHOP, WAIPAHU

671-0505
501 LAGOON DRIVE
836-3336

Call for availability of cars at both lots

DODGE

64 DODGE 4-dr. Polara, 318 engine, good running cond. Family 12 hrs. per 1000 mi. \$350/offer. 239-9876

74 DODGE Dart, 4 dr., \$600 or best offer. Call after 5 p.m., 955-5781.

DATSUN

89 DATSUN, 4 dr., 4 spd., some rust, reliable trans., easy on gas \$500. 261-2088

78 DATSUN B210, excl. shape, like new, \$2500. Call 833-4340 ask for Jordan.

80 DATSUN Pickup, 8 spd., excl. cond. \$4000. Call 261-4340

LOTS OF DATSUNS

'78 Pickup (HON575) \$2975
WHOLESALE MOTORS
Ph. 836-1222 2999 N. Nimitz Hwy.

FIAT

78 X 1/9 Targa, 77 Spyder, excl. loaded. See, make offer. Ph. 422-7450 even.

LOTS OF FIATS

'76 X19 (AUD855) \$2975
WHOLESALE MOTORS
836-1222 2999 N. Nimitz Hwy.

FORD

79 FORD Fiesta, well maintained, \$2400/offer. 239-6881 (days) ask for Jim.

74 GRAN Torino, 4 dr., auto, p/s, p/b, p/w, easy on gas \$650. 261-2088

76 MUSTANG II, automatic, V6, AM/FM cassette, \$2400/ best offer. Ph. 261-6033

FORD

70 FORD Maverick, runs, needs body work \$150/offer. Call 281-5662

72 COMET, 2 dr., good engine, 6 cyl., \$700 or best offer. Call 235-4208

65 MUSTANG Hardtop, no rust, 6 cyl. interior needs work, \$3500/best offer. Ph. 423-6960 or 449-1981

MUST Sell, 1974 Ford LTD, looks good, runs good, AM/FM stereo, new tires, 4 door, leaving island First \$700 gets it! 254-5502

74 PINTO station wagon, standard shift, radiata, \$500. Call 262-9551 evenings

HONDA

A SPECIAL shipment of 1983 HONDAS arriving any day. Pioneer/Linc./Marc. Good selection & dealer now. Contact Robin or Dale. 836-0093. Or

78 CIVIC, low mileage, excellent, \$2950. Phone 395-9149

78 ACCORD LX, white, air, Michelin. \$4400. Call 261-1111.

SELECT YOUR HONDA TODAY

Our shipment is in

Tony Honda of Waipahu
671-1261

HONDA

LOTS OF HONDAS
75 Civic (AEC333) \$1975
WHOLESALE MOTORS
836-1222 2999 N. Nimitz Hwy.

JAGUAR

75 JAGUAR XJ6, motor & transmission. Call 868-1741

LINCOLN

71 LINCOLN Mark III, low mileage, \$1500. Call 254-2112

75 LINCOLN Continental. Excellent cond. of this classic model. Low mileage. Call Chris 235-6881, \$4000/offer.

MAZDA

1980 MAZDA 626, low miles, automatic, 2 new tires, \$5000 or offer. 235-1142 or 433-5773 ask for Chuck

82 RX-7 GSE, red, all options, 5 spd., like brand new. Ph. 254-2107, 1/2 mpg.

LOTS OF MAZDAS

'79 GLC Wagon (AYD248) \$2775
WHOLESALE MOTORS
2999 N. Nimitz Hwy.

MERCURY

78 ZEPHYR, looks and runs good, power, air, new battery, \$1950. Call 235-2895 evenings.

75 COUGAR XR7, leaving, must sell, newly painted, 2 dr., power, stereo, low mileage, good tires, excl. cond., \$1500. Call 254-3796

80 CAPRI, auto, air, p/s, \$4000. 235-2519 even/wh. ends., 548-2708 DWI

Lots of Mercurys
79 Zephyr 2 dr. (BAW126) \$2975
77 Monarch 2 dr. (JTR308) \$1475
WHOLESALE MOTORS
Ph. 836-1222 2999 N. Nimitz Hwy.

MG

72 MG MIDGET, convt., 4 spd., AM/FM cassette, extra parts, \$2000 or best offer. Call 689-7514

75 MGB, Anniversary edition, excl. shape \$2500. Call 239-8002

OLDSMOBILE

LOTS OF OLDS
75 Starfire (ARD202) \$975
WHOLESALE MOTORS
Ph. 836-1222 2999 N. Nimitz Hwy.

PLYMOUTH

79 TC3 hatchback, 21,250 mi., \$3000 buys, one owner, extra nice. Ph. 833-7259

Lots of Plymouths
78 Volare 2 dr. (AEN981) Auto, air., 6 cyl. Power steering. \$1975
WHOLESALE MOTORS
836-1222 2999 N. Nimitz Hwy.

PONTIAC

75 PONTIAC Venture, auto, pwr. steer., 5 radiata, new: AM/FM cassette, excl. cond. \$1250. 839-5979

Lots of Pontiacs
80 Grand Prix (AJE880) \$5475
79 LeMans Wagon (BJF349) \$3975
75 Grand Prix AM 2 dr. (BND42) \$1475
WHOLESALE MOTORS
Ph. 836-1222 2999 N. Nimitz Hwy.

SUBARU

80 SUBARU, 4-dr., 4 spd., air, low mi., \$3800/offer Larry 261-7922 or 261-0228

TOYOTA

75 TOYOTA Corona, auto, \$1100 or offer. Call evenings 262-6695.

TOYOTA

1978 TOYOTA Corolla ST, 4 spd., air, cpe., \$3850. Ph. 833-4979.

76 TOYOTA Corolla, 4 dr., working cond., needs some repair, \$750/best offer. 239-6601

82 CELICA, GT Liftback, performance pkg., 2 mo. old, \$11,500. 423-0907. call 9 a.m. to 10 p.m.

77 COROLLA, auto, 2 dr., runs well \$1500. Call 261-2983

TRIUMPH

72 TR-6, white, excl. cond./tires, \$2300/best offer. Call 422-8987.

VOLKSWAGEN

RARE 1969 Karmann Ghia convertible, auto, stickshift, \$4000. Call Spotz 235-5733 or 538-4995

66 VW BUG, sunroof, new engine, muffler, front end, \$850. Call Tony days 261-1521 even 261-7679

LOTS OF VW's
78 Rabbit 4 dr. (AFC925) \$2475
WHOLESALE MOTORS
Ph. 836-1222 2999 N. Nimitz Hwy.

VOLKSWAGEN

88 BLUG, runs good, needs work, \$575/offer. Sal and Sun. only. 262-7420.

79 VW Bug, excl. cond., 1776 cc, dual 44, everything like new, \$2300/offer. Ph. 239-9120

79 VW BUG, auto, which, new tires, \$900. Ph. 523-2451 days. 261-2034 after 5 p.m.

CUTTER DODGE

'69 PLYMOUTH Satellite ASN079	Cutter Dodge Sale	\$395
'76 DODGE Charger AZ8720	Cutter Dodge Sale	\$1195
'78 FORD Granada BAY405	Cutter Dodge Sale	\$1795
'76 MERCURY Marquis AFW290	Cutter Dodge Sale	\$1295
'73 PLYMOUTH Scamp BAJ007	Cutter Dodge Sale	\$395
'75 PLYMOUTH Fury AAD112	Cutter Dodge Sale	\$295
'76 DODGE Colt BDV884	Cutter Dodge Sale	\$295
'77 DODGE Aspen Wagon ADR438	Cutter Dodge Sale	\$895

Offer good Feb. 9 to 13
Vehicle Subject to Prior Sale & Sold As Is
Military Financing Our Specialty
First Hawaiian Bank/Dept. of Hawaii Financing Plus Tax & Lic.
822 Kam Hwy., Pearl City (Across Pearl City Tavern)
Mon.-Sat. 8:30-9, Sun. 8:30-5 455-1071

VOLVO HAWAII

Jim Skempson

487-7974 98-075 Kam Hwy.

SPORTS CAR SALE

CORVETTES

9 to choose from, t-tops, Roadster, auto., 4 spd., all models available.

PORSCH

three 914, three 911 to choose from

DATSUN

three 260Z, two 240Z, two 280Z to choose from

TRIUMPH

four TR7, three TR6 to choose from

MG

six MGB and MIDGETS to choose from

GUARANTEED TRADE IN VALUE \$1000 TOWARDS ANY CAR PURCHASED. Make your best offer. We'll take trades. All cars will have an 18-month warranty available. Military financing welcome. Easy terms.



We Don't Cop Out
When It Comes To Great Used Car Values!

'78 CHEVY ATU488	\$2988	'77 FORD LTD Landau 2 dr. BBY258	\$1988
'80 VW Rabbit Convertible DF7615	\$7488	'81 FORD Fairmont S/W MEB307	\$4888
'82 CHEVY Blazer MFK765	\$11,888	'77 CHEVY Malibu 4 dr. AAB589	\$1688
'80 FORD LTD S/W DAB077	\$3888	'76 VW Rabbit 2 dr. ANV882	\$1488
'79 CHEVY Caprice 2 dr. KBF084	\$3288	'80 MERCURY Zephyr 2 dr. BPU701	\$4388
'78 DATSUN 200SX BPU701	\$2888	'80 DODGE Colt 2 dr. AYN418	\$2988

Waipahu's Shelly Mazda

94-212 Leoku St., Waipahu 677--0761



DOLLAR CAR SALES
FLEET REDUCTION
1 YEAR - 12,000 MILE WARRANTY ON ALL CARS

'82 MAZDA GLC
4 dr., auto, a/c, cust. int. Green or Bronze \$4995

'80 TOYOTA TERCEL
2 dr., 4 spd. White \$2595

'80 FORD FAIRMONT
p/w, p/s, 4 dr., a/c, radio, vinyl top, Brown \$2595

'82 FORD MUSTANG
T-top AM/FM stereo, p/s, a/c, Hatchback, Tan \$6995

'81 TOYOTA TERCEL
5 spd., 4 dr. Champagne \$3195

'79 FORD VAN E350
V-8, 12 pass. a/c, p/s \$4995

MONDAY-SATURDAY 9 A.M. - 6 P.M.
SUNDAY 10 A.M. - 4 P.M.
435 KALEWA
ALL PRICES PLUS TAX & LICENSE

836-3581

DOWNTOWN HONDA

USED CARS-WAIPAHU
677-9167
Clearance Sale

'80 DATSUN p/w Truck mag wheels, stereo, many extras \$623-1 \$3895

'80 CHEVROLET Chevette clean inside and out 4887-3 \$3595

'70 BUICK Skylark Clean, very SHARP \$629-1 \$995

'79 HONDA Civic New paint, SHARP \$743-1 \$2995

'75 FORD Mustang Fastback 351 ci. auto, new paint, collector's item \$653 \$4SALE

'74 AUDI Fox Sunroof, 4 dr., classic sport sedan \$639 \$1995

'74 MERCURY Cougar Loaded, p/s, p/b, p/w, etc. \$6170 \$1895

'79 DODGE Colt Lowest Price \$6104 \$1595

'80 FORD Fairmont 91144 LOW PRICE

'79 TOYOTA Corolla 5590-1 \$3295

'76 HONDA Civic 9513-1 \$2695

'80 & '81 YAMAHA M/C 400 Special Red & Black Make Offer

'80 ACCORD Clean, like new \$2090 \$4995

'74 PINTO Sharp \$621-1 \$950

'81 FORD Escort S/W Just like brand new \$717-1 \$4695

'83 HONDA 4 dr. Accord, 2 to choose from

DROP IN TO SEE OUR TRANSPORTATION SPECIALS AT ONLY \$283

'74 Chevy Vega

'75 Datsun 210

'75 Vega

'66 Oldsmobile

Lou Kanoho Manager
621-0761



DATSUN OF WAHIAWA

Budget Car Sales
9 AM-6 PM Weekdays
Sat. & Sun. 9 AM-5 PM
448 Kalewa Drive

836-1707
Cars subject to prior sale. Financing on approved credit. Cash prices are plus tax and license. All models of each make in stock.

No Doubt About It.

MERIT, the 'Enriched Flavor' cigarette, delivers a taste bonus that comes across loud and clear.

You taste it on your first draw.

You taste it with every puff you take.

Extra taste.

That's 'Enriched Flavor' smoking.

That's MERIT.



The cigarette that delivers the taste of leading brands having up to twice the tar.

There's nothing halfway about it.

MERIT. We made it for you.

Nothing halfway about it.

MERIT

Warning: The Surgeon General Has Determined That Cigarette Smoking Is Dangerous to Your Health.

© Philip Morris Inc. 1982

7 mg "tar," 0.5 mg nicotine av. per cigarette, FTC Report Dec'81