

# HAWAII MARINE

Voluntary payment for delivery to MCAS housing/\$1 per four week period

VOL. 10 NO. 3

KANEHOE BAY, HAWAII, JANUARY 21, 1981

TWENTY PAGES

## Pass in Review

### Housing allowance rates

A new housing allowance rate for Oahu became effective Jan. 9. For those entitled, the new rates will appear on the January Leave and Earning Statements, and reflect in Feb. 13 paychecks.

The chart shows the old and new daily rates and the resulting difference computed on a monthly basis.

#### WITHOUT DEPENDENTS

	Daily Rates		Monthly Increase
	Old	New	
O7 through O10	\$8.15	\$8.75	\$18.00
O6	7.30	7.85	16.50
O5	6.70	7.25	16.50
O4	5.95	6.45	15.00
O3	5.25	5.65	12.00
O2	4.60	4.95	10.50
O1	3.55	3.85	9.00
W4	5.75	6.20	13.50
W3	5.10	5.50	12.00
W2	4.45	4.80	10.50
W1	4.05	4.40	10.50
E9	5.00	5.70	21.00
E8	4.65	5.30	19.50
E7	3.95	4.50	16.50
E6	3.60	4.10	15.00
E5	3.45	3.90	13.50
E4	3.05	3.45	12.00
E3	2.75	3.10	10.50
E2	2.40	2.75	10.50
E1	2.25	2.60	10.50

#### WITH DEPENDENTS

	Daily Rates		Monthly Increase
	Old	New	
O7 through O10	\$10.15	\$10.95	\$24.00
O6	8.90	9.60	21.00
O5	8.10	8.80	18.00
O4	6.50	7.00	15.00
O3	5.75	6.20	13.50
O2	4.65	5.00	10.50
W4	6.95	7.50	16.50
W3	6.30	6.80	15.00
W2	5.65	6.10	13.50
W1	5.20	5.65	13.50
E9	7.10	8.05	28.50
E8	6.55	7.45	27.00
E7	6.10	6.90	24.00
E6	5.60	6.40	24.00
E5	5.15	5.85	21.00
E4	4.55	5.15	18.00
E3	3.95	4.50	16.50
E2	3.95	4.50	16.50
E1	3.95	4.50	16.50

### Amphibious ready group

A three-ship amphibious ready group from the 7th Fleet, with an embarked Marine amphibious unit of about 1,800 Marines, entered the Indian Ocean Jan. 5 through the strait of Malacca.

Since amphibious ship Indian Ocean operations began in March 1980, this makes the fifth amphibious group to operate in that area.

The ready group consists of the USS Tarawa, USS St. Louis, and the USS Barbour County. A fourth ship, the USS Niagara Falls, joined the amphibious group in the Indian Ocean Jan. 8.

The last group to operate in that area was composed of three ships from the 6th Fleet. That group returned to the Mediterranean Sea by way of the Suez Canal in December.

### Rifle Squad Competition

The 1981 Marine Corps Rifle Squad Combat Competition will be held May 3 through 16 at the Marine Corps Development and Education Command, Quantico, Va.

The annual competition, held to promote offensive combat skills at the squad level, is also used to determine how effective Marine rifle squads are in combat techniques under simulated combat conditions.

Teams to be held during the competition will be selected by the commanding general, MCDEC, and will not be announced until the beginning of the competition.

Actual field competition events will be held May 16 through 18. On May 14, competitors will meet the nation's champion, and on May 15, a presentation of awards will be held at Marine Barracks, Washington, D.C.

The 1981 annual Marine Corps Rifle Squad Combat Competition was announced in Marine Corps Bulletin 500 of Oct. 21, 1980. Information is also available in Marine Corps Order 5551.1C.

## Hostages head home

by SSgt Dennis Litalien

After more than 14 months of captivity in Iran, the ordeal of the 52 American hostages has drawn to a close.

Two Algerian-owned 727s were used to transport the hostages out of Iran early yesterday morning, the first time in 444 days that the group wasn't held against its will.

**THE ENDING OF** the crisis brought joyful responses from around the globe. The release was made possible over the weekend when months of financial haggling came to a halt and the United States and Iran signed the final agreement. Documents were first signed in Teheran, then hurriedly flown to Algiers where Deputy Secretary of State Warren Christopher and several Algerian intermediaries stood by, waiting to add their endorsement to the agreement.

Families of the freed hostages reacted to the news with tears of happiness and relief that their long travail had finally ended. Many had kept their luggage semi-packed for months, hopefully awaiting the telephone call that finally came, sending them on their way to West Germany, and overdue reunions with their loved ones.

**RELEASE OF THE** hostages also brought the presidency of Jimmy Carter to a fitting climax. The planes carrying the hostages departed Iran as new President Ronald Reagan took the oath of office.

It had been an extremely lengthy and perilous journey from Nov. 4, 1979 when the U.S. Embassy in Teheran was seized, along with 65 Americans in response to the late Shah of Iran being permitted to

enter the U.S. for treatment of the cancer that would prove fatal to him in the summer of 1980. Thousands of angry Iranians took to the streets of Teheran, culminating with Iranian militants storming the embassy, battling the Marine Security Guards for three hours and finally gaining control of the compound. A few weeks later, 13 of the hostages were released under what the Ayatollah Khomeini termed "a humanitarian gesture."

**WHAT FOLLOWED** thereafter was an agonizing odyssey, a long series of threats, counter-threats and failed negotiations. Frustrations ran high on both sides. Outraged Americans vented their wrath at anti-Iran demonstrations

nationwide. President Carter sternly urged restraint saying, "No matter how deeply we feel, none of us would want to do anything that would worsen the danger our fellow Americans are in." Slowly, inexorably, America and the families of hostages settled in for the prolonged wait.

April 1980, saw the failed hostage rescue attempt, which seemed to deepen the despair Americans felt. A number of the hostages were removed from the Teheran embassy and Iran warned the U.S. not to attempt any other rescues.

**THE STALEMATE** dragged on through the hot summer months and on through to November. After nearly a year in captivity it

appeared that the crisis may have been coming to an end.

It was not to be. Once again terms couldn't be agreed upon.

Carter, despite losing the election to Ronald Reagan continued to seek a diplomatic breaking of the deadlock. Working through Algerian intermediaries the agreement was finally, painstakingly hammered out, just scant hours before the end of the Carter administration.

An Algerian medical team was flown into Teheran Sunday and the hostages were examined and prepared for departure while final touches on the agreement and loose ends were tied up. Finally, after more than a year in captivity, the hostages boarded the Algerian aircraft on their way to freedom.

## Survey

### Questionnaires establish housing requirements

The Fiscal Year '83, Family Housing Survey will be conducted during the remainder of January through February. The annual survey is a necessary part in determining Marine Corps requirements for new construction of, family housing, along with obtaining additional information to benefit members who presently require family housing.

**ACCORDING TO** MCAS Kaneohe Bay survey coordinator, Claire Silva, "The commandant of the Marine Corps will select persons to take part in the survey. Members in pay grades from E-1 through O-7 will be reviewed. This will have an effect on a large

percentage of the people stationed here.

"A questionnaire will be sent to the selected members by survey coordinators of each unit. The coordinators are to be appointed by unit commanders.

"The survey coordinators will, during a briefing of what is required on the members' part, present a package and instruction letters to the chosen people," Silva added.

The principal objective of the Department of Defense Family Housing Survey is to assure that married members of the armed services have suitable housing in which to shelter their families. To achieve this objective DoD policy

is to rely on the local housing market in communities near military installations as the primary source of family housing for military people.

**THE CAPACITY** of the local housing market to meet the military need will be determined by the installation commander. His determinations will be based on the surveys, using established DoD criteria, and in consultation with government agencies and other organizations knowledgeable of local housing conditions.

The information gathered from this survey is the basis for recommending projects for

cont. on A-2



**ON TARGET** — A CH-53 helicopter attached to Marine Heavy Helicopter Squadron-463 places an anchor down at Pearl Harbor after moving it from Ford Island. The anchor will be used to help secure the USS Bowfin. The submarine is a part of the Bowfin Mooring and Bowfin Park which will be open to the public in early February.

Photo by Sgt. Victor Gutierrez

### Leathernecks lend a hand

## WWII park nears completion

World War II, as fought in the vast Pacific Theatre of Operations, was primarily a naval and amphibious war. All of our military services took part, but in the final analysis, Japan's military power was wiped out, her commercial shipping was swept from the seas, her island outposts were destroyed, and the Empire was virtually strangled, by the greatest navy that ever put to sea.

Walter F. Schlech Jr., Rear Adm. (retired)

In early February the USS Bowfin will be

open to the public as part of the Bowfin Mooring and Bowfin Park, located next to the Ford Island Ferry Landing at Naval Station Pearl Harbor, Hawaii. The complex will be operated by the Pacific Fleet Submarine Memorial Association, Incorporated.

The complex has been in the planning stages for the past two years. A few months ago the park began to take shape.

**THE USS BOWFIN** submarine had nine successful war patrols during its four years of

participation in World War II. The sub sunk four merchant ships and six men-of-war. It also sank a Vichy French pilot ship, the Van Vollenhoven, off Saigon that waited to escort a Japanese convoy into port.

The Bowfin entered the Minami Daito Harbor where it struck a convoy moored there. In addition to sinking two freighters, a torpedo hit a quay destroying a crane, a bus on the quay and the quay itself.

**THE MEMORIAL** association, consisting of retired military

officers and civilians has worked along with many volunteers, primarily active duty military and sea cadets, to see the opening of the World War II memorial.

"The park area will consist of the USS Bowfin, equipped with recordings of the different areas in the submarine, a zero aircraft, a U.S. fighter aircraft, a PT boat, and a luau park," said James Hoblitzell, memorial association president. "The luau park will be open for the ships' parties and a place for people to relax."

**THE COMPLEX** was built solely from contributions of time and money. There will be three museums, a study library and three industrial halls added as soon as the money for them is raised.

"The museums will contain Navy relics from World War II," explained Warren Seesler, the association's curator. "We would also like to put in a section for the Marine Corps. Right now we have the room for the Corps, we just need to raise the interest."

On Jan. 12, Marine

Heavy Helicopter Squadron-463 donated some of their time, as Maj Jesse Pugh and 1st Lt Al Neff, along with members from 3d Combat Engineers Battalion, Brigade Service Support Group, boarded a CH-53 to move five anchors to be used as weights for the USS Bowfin.

**"WE HAD RUN** into some problems with moving the anchors for the submarine," said Seesler. "We thank the Marine Corps for doing a professional job in moving them. The Corps saved us."



# Survey

inclusion in the department of the navy Five-Year Defense Plan and subsequently, for justifying projects to Office of the Secretary of Defense and congress.

DATA OBTAINED may serve boards and committees concerned with matters unrelated to housing. For instance matters such as those involving computation of per diem studies require this information. In essence, the family housing survey provides the information for the following types of programs:

1. New family housing construction.
2. Rental guaranteed housing.
3. Improvement of existing quarters involving a change in bedroom composition of five or more units.

## 4. In-leased housing.

Where the local housing market has the capacity to provide suitable rental housing for military families, military-owned, leased or sponsored housing will not be programmed, except those people who must reside on station for reasons of military necessity.

GROSS FAMILY housing requirements will include servicemembers who are on permanent change of station orders for 20 weeks or more and draw Basic Allowance for Quarters at the with-dependents rate. Also included are those "key and essential" civil service employees who are heads of households and must reside on the installation for reasons of military

necessity, plus those members who commute to and from different commands on a regular basis for housing and work purposes.

The Sample Method Survey System will be the procedure utilized for conducting the survey. "Once the survey is filled out and checked by the member, it should be returned to the unit coordinator," said Silva.

She added, "It is very important that members selected for the survey carefully read the questionnaire before filling it out."

According to Silva, this program is not new, "Whenever CMC requests to review allowances for off-station quarters and increase of base housing construction it has to be adhered to."

Marine Corps Order 11101.51G

of Jan. 24, 1980 states, "All Marine Corps activities selected shall periodically be required to conduct a survey, using the SAMS as the sole method of determining fiscal year family housing requirements."

THE ORDER FURTHER states, "Commanders of Marine Corps activities responsible for providing housing support for tenant activities of other military services must include the housing requirements of the other services. Conversely, Marine Corps activities such as Marine Barracks, which are tenants of other military services will be covered in the surveys of the other services. They shall be excluded from the Marine Corps conducted survey."

## Showboat Recreation Facilities offer family fun

The Special Services Showboat Recreation Housing Facilities offer four conveniences at MCAS Kaneohe Bay.

The facilities include the Showboat Apartments, 14 beach cottages, a multi-purpose center and the MCAS Kaneohe Bay Skating Rink, the newest of the four.

THE SHOWBOAT apartment house, located on Manning Street, consists of 14 spacious two, three and four bedroom units. Prices range from \$16 to \$18 per day and the

maximum rental period is 15 days at one time.

Each unit is furnished with cable television, stove and furniture.

The Showboat is available to all enlisted active duty personnel as well as their sponsored relatives. The apartments provide a comfortable atmosphere and plenty of room for relaxation while visiting.

Secluded by the beautiful pines and palm trees at the Pyramid Rock area are 14 two-bedroom beach cottages.

The cottages are open year round with a maximum occupancy time of one week per reservation. The daily rate for a cottage is only \$14. These are also available to active duty military members and their dependents and guests. Marines have first priority for renting the cottages.

DOMESTIC tranquility isn't the only concern of the Recreation Housing Facilities. The receptionists at the Showboat reservations office can also provide plenty of party space.

The multi-purpose Community Center or the 19th Puka as it is more commonly known, is available for large and small parties, wedding receptions, luaus, or even chess club meetings.

Reservations must be made at least 60 days in advance for facilities available through the Showboat reservations

office. The office is located in the Bachelor Officer Quarters, Building 503.

THE NEWEST way for Marines, dependents and sponsored guests to enjoy both fast and slow-paced exercise is at the outdoor skating rink behind the Main Exchange.

The rink is open

Wednesday through Sunday from 7 to 10 p.m. Admission prices are \$1 with skates and \$1.50 without skates. Mondays and Tuesdays are available for reserved skating parties.

For more information on activities listed under the Showboat Recreation Housing Facilities, call their office at 257-2808.



Photo by SSgt Joseph Blackburn

OH, WHAT A FEELING! — SSgt Paul Bennington, Headquarters Company, 1st Marine Brigade; MSgt Jeff Lambert, Joint Human Affairs Office; GySgt Milt Goings, Headquarters and Service Company, Brigade Service Support Group; and SSgt Jim Trickett, 1st Radio Battalion, (from left to right), jump for joy as winners and runner-ups in the 1980 Novice Doubles Racquetball program. Lambert and Goings were the winning combination that defeated Bennington and Trickett.

## HYPNOSIS can help you . . .

Because the problem is in your head

**LOSE 25 LBS. IN SIX WEEKS  
STOP SMOKING IN 5 DAYS**

Hardly a day seems to go by that we do not hear of some miraculous use for hypnotherapy in a new area with startling results.

In addition to weight control, smoking control, alcoholism, mind control, sexual dysfunction, etc., it is now being used to remove seemingly incurable cases of warts, to control migraine headaches, nervousness, stuttering, pain control, and even to enlarge breasts. Find out what hypnotherapy can do for you.

**CALL TODAY FOR FREE CONSULTATION  
PH. 533-1811**



DR. MARK R. STEVENS, PH.D.  
DR. ROBERT BELL, M.D.  
MR. CHARLES YOUNG, R.H.

**THE CENTER FOR  
CLINICAL HYPNOSIS**

1221 KAPIOLANI BLVD., HON., HI 96814

Sponsored in the public interest by the College of Clinical Hypnosis

VISA and MASTERCARD ACCEPTED

## Ingenius.



**NEW!**

**DIMENSION 3  
MICROWAVE/  
CONVECTION OVEN  
NE-9900**

**3 Different ways to cook quickly, naturally and evenly. PLUS Panasonic's Unique COOK-A-ROUND Magnetic Turntable.**

1. The Convenience of **MICROWAVE COOKING**
  - Defrost, thaw and cook foods in a flash
  - Cook by Power and Time or by Temperature Probe
2. The Tasty Appeal of **CONVECTION COOKING** for Browning and Baking
  - Meats come out tender and evenly browned
  - Breads, pastries, cakes and pies done by constant circulation of dry, heated air.
3. The Unmatched Speed & Versatility of **COMBINATION MICROWAVE/CONVECTION COOKING**
  - The best of both worlds — fast cooking with eye appeal for meats, roasts, pork, lamb or poultry.

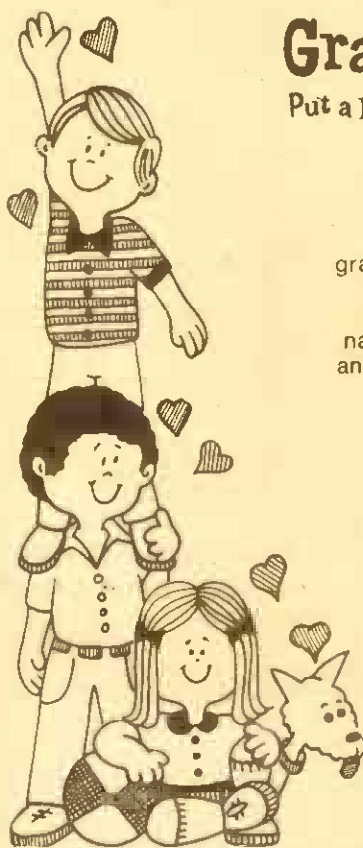
**Panasonic**  
just slightly ahead of our time.

Available At Your Military Exchange

parents and

## Grandparents!

Put a photo where your heart is!



Here's a chance to make a loved one happy! Send or bring us a photo of your children or grandchild (1-20 years). We'll place the photo in a heart like the one shown. It will include the child's name and your name and address, and will appear in a special section February 11th. Cost is \$15.00 per heart.



Juliana Burns  
Grandchild of  
Mr. & Mrs. Burns  
1450 Kam Hwy., Honolulu

**Sun Press**

Classified Advertising Department  
PH: 235-5881

## IT PAYS TO MIDASIZE

THIS COUPON GOOD FOR

**\$5.00  
OFF**

ON ANY MIDAS LIFETIME GUARANTEE MUFFLER

Good thru Jan. 31, 1981

ALL Midas Mufflers Include:

- Full Lifetime Guarantee
- Free Installation
- Free Inspection & Estimate
- Fast Professional Kamaaina Service

**"Who Else  
Offers These?"**

\*If anything ever goes wrong with your muffler, even if it is damaged by accident, we will replace it free for as long as you own your car.

Offer Good At:

98-1234 Kaahumanu St., Pearl City  
94-875 Farrington Hwy., Waipahu  
25 N. Kamehameha Ave., Wahiawa  
1415 Dillingham Blvd., Honolulu  
1335 S. Beretania, Honolulu  
174 Hamakua, Kailua

487-6477  
677-9157  
622-3991  
841-7361  
536-1818  
262-6544

Hours: All Shops Open 7 A.M. to 5 P.M. Mon.-Sat.  
For your convenience - Dillingham, Waipahu,  
stores open Sunday 9 A.M. to 3 P.M.

\*Full Financing Available  
\*No Interest If Paid in 90 Days

**MIDAS**

**DO-IT-YOURSELF SAVE**

Featuring  
The Beautifully Redesigned Kitchen Of  
Mr. and Mrs. John Day of Kaneohe



Totally redone by JANJAY CO., this new kitchen is highlighted by quality Diamond cabinets, Desert Sand tile and Whirlpool appliances. Glass doors were custom-made for the cabinets by JANJAY to display the crystal collection and the ceramic counter and floor is color coordinated with the white marble top dividing the kitchen and dining room.

In the comfort of your home let JANJAY CO. show you what they have to offer at Prices That Will Amaze You! Call Now.

Locally owned and operated

**JANJAY CO.**

235-4758

Ceramic Tile • Formica • Cultured Marble • Appliances

## HAWAII MARINE

The Hawaii Marine is an unofficial newspaper published every Wednesday by Community Publications, Inc., 46-016 Alaloe St., Kaneohe, Hawaii 96744, in the interest of U.S. Marine Corps personnel in Hawaii. All news copy is prepared in the Joint Public Affairs Office, Marine Corps Air Station, Kaneohe Bay, Hawaii 96863. Copy must be submitted no later than noon Thursday for the following Wednesday publication. Hawaii Marine solicits contributions of information and photographs from all Marine Corps organizations. However it reserves the right to edit or rewrite material submitted. All advertising is arranged by the publisher, Community Publications, Inc., telephone 235-5881. Circulation is 8,000.

Everything advertised in this publication must be made available for purchase, use or patronage without regard to race, creed, color, national origin, age or sex of the purchaser, user or patron. A confirmed violation or rejection of this policy of equal opportunities by an advertiser will result in the refusal to print advertising from that source.



# Family Services: Center enhances quality of life for Marines and their dependents

by 88gt Dennis Litalien

Information is a priceless commodity. Trouble is, people oftentimes have no idea where to turn when they have a problem, a question or just need someone to talk to.

Because of these, and many other important reasons, the Family Service Center located in Building 455, adjacent to Family Housing, was created.

THE CENTER'S purpose is to provide information, professional counseling and referral to other agencies, for Marines,

sailors and their dependents.

"Families frequently suffer from a lack of information when they arrive in Hawaii," explained Julia Anderson Aki, a social worker at FSC. "We try to help them through the adjustment period and set them on the way to an enjoyable tour."

Services provided at the Family Service Center are many and cover a variety of areas in which families may be experiencing difficulties.

A key program available is the Lending Locker, which

loans basic household items (dishes, sheets, cribs etc.) for 30-day periods to military families awaiting arrival of their household effects or departure from Hawaii. Another is access to viewing files which provide information on base facilities and services at military installations worldwide.

IN ADDITION to these functions, the Family Service Center sponsors a Family Information Program to acquaint new arrivals with activities and services on the air station and the com-

munities of Kailua and Kaneohe. The classes, consist of a slide and tape presentation. They are held monthly and will eventually be presented on a smaller scale for single service members as well.

Junior enlisted persons with families generally are eligible for food stamps. The FSC can provide applications, information and assistance in dealing with the state food stamp office.

Then there is the Family Service Auxiliary. Volunteers are sought on a continuous basis for membership in the auxiliary to participate in the

centers programs. The auxiliary also includes an Aloha Committee to welcome new arrivals to the air station and brigade. The volunteers deliver welcome aboard packages consisting of maps and discount coupons for base activities.

FAMILY Service Center staffmembers are professionals. Maj Thomas Loughlin is the director, Richard Sweet is his assistant and Jane Ing and Aki are the center's social workers. In addition to their regular functions, they maintain contact with all on-base and many civilian com-

munity service programs. If they can't help, they know who can.

The area of crises intervention and professional counseling is considered to be FSC's most important service. Many individual servicemembers and their families have difficulties in marital and parent-child relationships. FSC counselors can help in correcting or alleviating these problems. They also help people adjust to separation, loss, culture shock, and situations involving family violence, severe depression or suicide attempts. Any of these

can be accomplished through individual counseling, group sessions or by referral to outside resources. Counseling is provided on a confidential basis.

IN THE CASE of a crisis, FSC has a counselor available from 8 a.m. to 4 p.m. Monday through Friday. The Crisis Line number is 257-3606.

The Family Service Center maintains several on-going groups that deal with a myriad of difficulties. These include Women's Groups, Youth Groups and Parents' Groups.

Women's groups are provided to assist women who are involved with the military system and are experiencing various prob-

lems, such as dealing with the loneliness of being here while their husbands are on deployment. The groups help them gain support while making life-improving changes. This includes assertiveness training and self-image improvement exercises.

Save Our Sanity (SOS) is a parents group for those experiencing parenting difficulties and have or are afraid they might abuse their children. This is a 10-week program and children undergo a similar program at the same time.

THE YOUTH Group is for dependents ages 12 through 17 having problems coping with

growing up, family, school or adjusting to life in Hawaii. They meet weekly and discuss various issues of concern. They also participate in educational and social excursions.

The Family Service Center is a liaison with Navy Relief, the American Red Cross and Armed Service YMCA Outreach.

"There's a feeling among us at the Family Services Center that the importance of our job can't be overstated. We provide a direct service to Marines, sailors and their dependents," said Maj Loughlin. "Our overall objective is to enhance the quality of life for servicemembers and their families."

## At a glance

### Spot bid sale

The Defense Property Disposal Service will conduct a spot bid sale of 153 items of government surplus at 9 a.m. tomorrow.

The sale will be held at Building 4 at the Pearl City Junction area, located one block Ewa of Waimano Home Road in Pearl City.

Items offered will include typewriters; calculators; projectors; hand tools; file cabinets; office equipment; medical and laboratory equipment; food preparation and serving equipment; televisions; refrigerators; vehicle and support equipment components; plumbing and air treatment equipment components; and electrical and electronic equipment components.

Prospective purchasers may inspect the items between 7:30 a.m. to noon, and 12:30 p.m. to 3:30 p.m. today, and from 7:30 to 9 a.m. tomorrow. For more details, call 455-5171.

### Clothing store

The Retail Clothing

Store will be closed Monday through Jan. 29 for monthly inventory. Normal business hours will resume at 8 a.m. Jan. 30.

### Red Cross

A Cardiopulmonary Resuscitation class will be offered by the MCAS Kaneohe Bay American Red Cross, Jan. 27 through 30 from 6 till 9 p.m. There will also be a Multimedia First Aid class offered Feb. 3 through 5 from 9 till 9 p.m. Both classes will be held at the Red Cross Office in Building 455.

For more information call 257-2606 or 257-3575.

### Servmart

Servmart will be closed for inventory Jan. 29 through 30. Normal business hours will resume Feb. 2.

### W-2 forms

With the coming of the new year, most Marines anxiously await their W-2 forms to file their 1980 income tax.

According to Capt Lawrence Mullins,

disbursing officer, MCAS Kaneohe Bay and 1st Marine Brigade, W-2s will be ready by Jan. 30 at the latest.

Marines can use the figures from their Dec. 1980 Leave and Earning Statements to compute their taxes, but will have to wait for W-2s before mailing in their taxes.

### Tuition Assistance

Marines in pay grades E-5 and above with less than 14 years of service, can now get funding to cover 90 percent of tuition costs for approved college coursework. The change to the Marine Corps' Tuition Assistance program was announced in AlMar 007-81.

Marines not covered by the criteria outlined in the message will continue to be eligible for 75 percent tuition assistance.

Forms used to apply for tuition assistance are available from the Joint Education Center Office, Building 244. Specifics on the Marine Corps' Tuition Assistance program are

contained in Marine Corps Order 1560.28.

### Auto Accessory Store

The Pearl Harbor Subbase Auto Accessory Store and its Special Order Desk hours of business are as follows:

Auto Accessory Store: Monday through Friday—8 a.m. till 4:30 p.m.

Saturday—8 a.m. till 4 p.m.

Sunday—Closed

Special Order Desk: Monday through Friday—8 a.m. till 4 p.m.

Saturday and Sunday—Closed

### Dog obedience

Registration for the dog obedience class conducted at the Family Services courtyard are now being accepted. Classes are held Saturdays from 9-10 a.m. For more information, call the Special Services Office at 257-3520.

### Furlough Fares

Air Midwest Airlines has joined 11 other

commercial carriers participating in the special 50 percent military furlough fare discount program.

The airline is a regional carrier serving 30 points in the Colorado, New Mexico, Kansas, Nebraska, Missouri, Oklahoma, and Texas areas. For additional information, contact the Air Midwest Airlines office at 1-800-835-2915.

### Limited duty officers

According to Headquarters Marine Corps, women Marines will be eligible for appointment as limited duty officers when the Defense Officer Personnel Management Act becomes effective Sept. 15.

The DOPMA proposal was signed into law by the president Dec. 12. It revises many areas of officer management and equalizes the treatment of male and female officers with respect to appoint-

ment, promotion, separation, and retirement.

### Swimming lessons

MCAS Kaneohe Bay Special Services is offering basic, intermediate and advanced swimming courses.

The fee is \$10 for 10 basic lessons. The same price applies for the intermediates. There is no fee for the advanced courses.

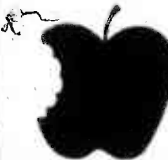
Adult and children's classes are provided. However, due to the depth of the pool, children have to stand at least four feet tall to participate in any course.

### Ship's visit

The salvage and rescue ship USS Brunswick will hold open house at Mike Piers Feb. 7 from noon till 4 p.m.

Visitors without base decals on their automobiles should obtain passes to enter the Pearl Harbor Nimitz Gate.

## HEADACHES & FACIAL PAIN



can be caused by improper alignment of your teeth and jaw.

Kailua Professional Ctr. Suite 503

WINDWARD DENTAL GROUP INC. Lee Hardy, D.D.S. 261-4694

Hairstyling for men and women  
Stylists:  
Phil Ventura  
Sharon Pearson  
Paul Joseph  
Verna Soga  
Keala Dolera  
Meg Lenzer  
Roy Trillo  
Sara Mae Junta  
Debi Clay  
Manicures  
Juliette Nails & Lady Fingers  
Acrylic Nails  
Manicurist:  
Lori Maddama

## Susan Beers' Salon INC

116-C Heikili St. Kailua 261-8571



## 16-month, evening/weekend MBA degree program

Here's your chance to look into a top quality MBA degree program that meets evenings and weekends right here in Honolulu. It's offered by Pepperdine University, which Forbes Magazine described as "probably the best example of... a real innovator in business education."

The program is as academically solid as it is practical. Pepperdine's full-time Los Angeles faculty members teach it, and they bring significant business experience to the classroom as well as solid academic background.

Winter applications are due Oct. 24. For more information call Sondra Seerlight at 521-8008.

### Pepperdine University School of Business & Management

1314 S. King Street, Suite 1050 Honolulu, Hawaii 96814

An equal opportunity educator, accredited by the Western Association of Schools and Colleges



## GLASSES OR SOFT LENSES?

SUCCESSFUL CONTACT LENS WEAR REQUIRES:

- PROPERLY FITTED LENSES • HIGH QUALITY MATERIALS
- THOROUGH FOLLOW-UP CARE BY YOUR DOCTOR DURING ADAPTATION

### SOFT CONTACT LENSES

Includes lenses, care kit, follow-up care and 60 day trial period

# \$120

ALSO AVAILABLE • SOFT CONTACT LENSES FOR ASTIGMATISM • ORTHOKERATOLOGY • ONE DAY SERVICE FOR GLASSES AND HARD CONTACT LENSES • IMMEDIATE SERVICE FOR SOFT CONTACT LENSES

DR. CHARLES DEAN  
Optometrist

Kailua  
1314 Heikili St.  
261-9735

## BIB's

Family Restaurant

Invites YOU to a fine dining experience seven days a week

### BREAKFAST DAILY

7 a.m. to 11 a.m. (Sun. 7 a.m. to 1 p.m.)

LUNCH DAILY  
11 a.m. to 5 p.m.

DINNER DAILY  
5 p.m. to 9 p.m.

315 Uluniu St.  
Kailua Square

Phone  
261-8724

## guys and gals haircut \$12

Includes shampoo, method cut and blow-dry with this ad Alkahi Park Only



Alkahi Park,

Kailua 254-1585

Koko Marina, second floor waterfront village. 395-7551

## International haircutters

FRIDAY 9-9 SATURDAY 9-5

SUNDAY 10-4 (Koko Marina Only)



# Navy Relief volunteers graduate

by SSgt Dennis Litalien

A graduation and awards luncheon was conducted Friday by the Kaneohe Bay branch of the Navy Relief Society. BrigGen W.H. Rice, commanding general, 1st Marine Brigade and Col Mel Sautter, commanding officer, MCAS Kaneohe Bay were on hand to congratulate the volun-

teers and present awards.

NINETEEN NEW volunteers graduated from the Navy Relief training course, the largest group from the Kaneohe auxiliary ever. The school consisted of five, three-hour sessions. Volunteer functions, inter-

viewing and office procedures, were among the subjects covered in the course.

The new graduates are: Joyce Dinnage, Marcia Molle, Pam Scarborough, Linda Diaz, Peggy Sheehan, Kathy Terhune, Linda Harris, Stella Lejeune, Paula Powers, Sharon Fjerstad, Lois Hayes, Arlene May, Anita Rice, Joan Keegan,

Brenda Bryant, Marilyn Ledoux, Dominique Barnard, Julia Anderson Aki and Roy Kekahuna.

Several volunteer workers were honored for their contribution of volunteer hours to the Navy Relief Office. The following women were awarded pins: 100 hours - Linda Bedworth, Joyce Dinnage, Peggy Hearlson, Betty

Mae Kaawa, Debbie Parker, Paula Powers and Kathy Dillon; 300 hours - Marcia Molle, Sharon Seymour and Kathy Zimmerman; and 1,000 hours - Linda Diaz, Millie Graham, and Sharon Thiry.

"WE HAD QUITE a few students working for Navy Relief before the course," explained Louise Diver, the course instructor and field representative of the Navy Relief Society's national headquarters.

Linda Diaz, recently appointed executive director of volunteers for the Kaneohe Bay branch of Navy Relief was named the recipient of the Volunteer of the Quarter Award and received a certificate of commendation.

Both Rice and Saut-

ter were lavish in their praise for the graduates and award winners. In 1980 alone, Navy Relief volunteers at Kaneohe Bay contributed 5,678 hours to the Kaneohe Bay auxiliary.

OPPORTUNITIES are still available for new volunteers to donate their time and talents to help others less fortunate. As the motto says, Navy Relief truly "Takes Care of its Own" as evidenced by the assistance provided last year. Four hundred sixty-six Marines, sailors and their families were assisted at a cost of more than \$106,000, nearly doubling the \$54,000 collected in the air station's 1980 Navy Relief Fund Drive.

## Organization sets goals

### Society aids naval personnel

by SSgt Dennis Litalien

The goal of the Kaneohe Bay branch of the Navy Relief Society is to help active duty and retired Navy and Marine Corps personnel and their dependents.

lost, essential care repairs and educational loans for dependent children.

Additional services offered by Navy Relief are: vocational training for widows, as a listening post for people with problems, budget counseling for those buried under an avalanche of bills, a visiting nurse to visit mothers and newborns, housebound retirees and widows or widowers, layettes for the new addition to the family, and much more.

Like any organization there are limits to

what Navy Relief can do. For examples, they will not grant loans for paying bills for non-essentials, pay car payments, finance vacations or liberty, pay fines or other legal expenses, pay car insurance or licensing, or pay normal daily expenses. Navy Relief is there to help in time of need... but they cannot help people to live beyond their needs.

THERE ARE things individuals can do to help themselves. Take common sense actions, use your head. Is your request a want or a need? Learn to shoulder

responsibilities, Navy Relief helps those who help themselves.

Additionally, be prepared. Provide for dependents before going on deployment or overseas by registering an allotment for them. Claim tax exemptions. They're there for the taking. Use them. Make them grow.

Make a will. Don't take the chance of leaving the family adrift when something happens.

When Navy Relief can be of assistance give them a call at 254-1327 or visit them at the Family Services Complex Building 455.

#### uncontested divorce

\$160 legal fee  
\$6 tax  
\$30 court costs

\$196

michael pence, attorney  
century center  
1750 kalakaua avenue suite 1710  
honolulu, hawaii  
955-4496

#### Breakfast - Lunch - Dinner

- Hotcakes
- French Toast
- Omelettes
- Plate Lunches
- Hamburgers
- Mahimahi
- Chicken
- Seafood
- Teriyaki

#### NEW HOURS:

Mon.-Sun.  
5 am-12 am  
Thurs., Fri., Sat.  
24 Hours

andy's  
drive-in

142 Oneawa St.

CALL FOR LATE  
TAKEOUT ORDERS  
262-4920

## the Wayland Way

To Get Your Degree  
with a

**B.S.O.E.**

For more  
information

Call

**595-2951**  
2429 Pali Hwy.

A Fully Accredited Equal Opportunity Institution

## We Can Get You On T.V.

If you can do something...



**UNUSUAL  
AMAZING  
INCREDIBLE**

**CALL US 247-6621, 239-6507**  
CREATIVE PRODUCTIONS

## PALMER'S SKIN SUCCESS ANTISEPTIC CLEANSING LOTION

A cool, invigorating,  
Deep Cleansing Lotion  
to remove excess oil, dirt  
and makeup; to tone,  
stimulate and revitalize  
the skin

Available in 4 fl. oz.  
& 8 fl. oz. Bottles

Available at select stores.



# Inauguration Day Sale

**HOT WAX**  
RECORDS & TAPES  
**COUPON SPECIAL**  
**2 FOR \$11.98**  
Any 7.98 or 8.98 List  
LP or TAPE w/COUPON  
EXPIRES JAN. 28, 1981  
Merchandise In Stock Only

**Radio Shack**  
Red Tag Special —  
Stereo Headphones  
Realistic Nova®-40 **17.95**

UP TO \$50,000  
IN McDONALD'S  
\$1.5 MILLION  
TOUCHDOWN GAME!



**FOODLAND**  
Kaneohe Store Only  
Comet or Calusa extra fancy  
Calrose Rice **6.99**  
Tasty Bird **1.99**  
Chicken Thighs 2 lb. box  
Navel Oranges US #1 3 lb. **99¢**  
Jan. 21-25, 1981

**Wuertz Jewelers**  
**20% OFF**  
ON ALL WATCHES  
till Jan. 31, 1981

**Hugh Menefee, Inc., Realtors**  
NEW LISTING - Clean, Fee Simple, 2  
Bdrm Townhome. A/S or VA ok. Call for  
details.  
Hal Dill (R)  
WINDWARD OFFICE  
235-8754 or 239-8158 eves.

**Tiki Tops  
Restaurant**  
Open 7 days a week  
Sun.-Thurs. 7 am-10 pm  
Fri. and Sat. 7 am-11 pm  
**247-2128**

**Robins**  
Men's, Women's, Children's  
**SHOE CLEARANCE**  
till Sat. 1/24/81

**Windward City  
Salon**  
All your beauty needs  
235-5818  
• permanents • make-up  
• hair coloring • hair styling  
• nail art

**TOWN PUMP**  
All the fixin's for a Party!  
Newport Vodka  
**\$5.53**

**After you fix breakfast,  
join us for some free rolls.**  
Take a break from housework and join us at Windward Bowl.  
We'll give you free instruction. Free shoes. Even free baby sitting.  
It's a lot of fun. And it's free.  
To get the ball rolling, call 247-2104.  
for more information. Or better yet,  
just roll on by to see us.  
**WINDWARD BOWL**  
247-2104

Now The First Hawaiian adds  
interest to your checking  
balance with Bonus Checking.  
**The First Hawaiian**  
Making Change.  
Member FDIC

**Chevron**  
**Self  
Service**  
Open 24 Hours

**WINDWARD TWIN THEATRES**  
**"SEE IT ON THE BIG  
SCREENS"**  
**235-3637**

**Sandy's**  
Cakes & Pastries  
Ph. 235-4351

**C.I.T. FINANCIAL  
SERVICES**  
"We have your answer"  
**Call Today, 235-5851**



# Honor

## Board selects outstanding Marines

by Cpl Nora Parrish

Marines selected for promotion, NCO or Marine of the Quarter boards sometimes wonder what the board members will expect of them.

Five people comprise a station or brigade board. Each looks for something a little different, as questions are asked and answered.

apart from the rest of the Marines who come before them. "We do quick visual checks of the Marines' uniforms when they come into the room. We check them for military bearing, composure and confidence. Then we determine the little extra things they've done."

league teams, church groups, special olympics or if they attend college or are pursuing a high school diploma in their off duty time. It better the Corps when people strive to better themselves.

"When people come before us, a factor considered is firm conviction," stated Davis. "Sometimes board members disagree with Marines' answers to opinionated questions. Then we are able to decide whether people really believe in what they say, or if they'll back down and agree with us."

**DURING THE** brigade selection boards, the service record book is used to determine many things about the Marine. The board uses the SRB to view rifle and pistol scores and to look at letters of commendation and meritorious masts.

Brigade boards also consider Marines' self-improvement efforts and abilities to perform in the next higher rank.

As a Marine answers questions asked by board members, his general military proficiency is being evaluated. The brigade board also considers the letter of recommendation from the nominee's commanding officer.

**SGTMAJ DAVIS** feels that Marines who aim for meritorious promotions, NCO of the Quarter, Marine of the Quarter or other awards should remember that in doing their jobs professionally, "always do that little extra without being asked."

According to the sergeant major, Marines who make it to the final board are the ones who work in their sections every day and observe the way the Marine Corps works. "These Marines are able to see things that go on around the air station that others may not notice," remarked Davis.

He added, "That is where the opinion questions come in. Many times one of the questions is, 'if you were the commanding officer for a day, what would you change about the air station?' Many answers given by the Marines are very useful to us. We give them to Col Mel Sautter (station commanding officer) and some of them are used. It may take time, but suggestions are considered."

**ANOTHER ITEM** the board considers is the Marine's involvement in community activities, and what the Marine does on his off duty time.

"People who get involved in the community, benefit the Marine Corps. Even if those people are not in uniform it becomes known that they are Marines," said Davis. "We look at whether the person is involved in such activities as little

**AT THE STATION** preliminary boards most of the questions are military-related to determine a Marine's general military knowledge. Once the final board is reached, the line of questioning changes to a more personal level, concerning current events and questions designed to elicit opinions.

**SgtMaj Earl Davis**, station sergeant major, is the senior member seated on MCAS boards. Also on the board are the sergeants major of Headquarters and Headquarters Squadron and Station Operations and Maintenance Squadron, and one staff noncommissioned officer from each squadron.

"Each member is aware that the Marines appearing for consideration are outstanding persons and usually average proficiency and conduct marks of 4.8 and above."

**SgtMaj Davis** explained that "Marines who make it to the final board are the ones who 'walk between raindrops.' It has been determined by the lower boards that they excel in their jobs."

**DAVIS ALSO** explained that the final selection board must determine who stands



Sgt Terry Findley, a fuel and electrical systems repairman, was selected as the Brigade Noncommissioned Officer of the Quarter.

Findley joined the Corps in September 1977 and hails from Westminster, Colo. "Being selected as the NCO of the Quarter is a nice honor. It has moved me up to a level that I feel I have to maintain, and now I have to set more of an example than before," said Findley.



Cpl Thomas Ortega was selected as the Noncommissioned Officer of the Quarter for station. 31-year-old Ortega works as a lifeguard at the MCAS Kaneohe Bay Pool.

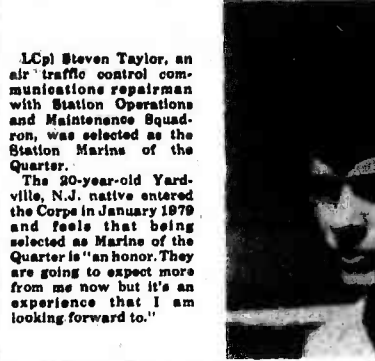
The Temple, Ariz. native received a free weekend at the Hale Koa Hotel and feels that being the NCO of the Quarter is something that "a lot of Marines should work for."

For exceptional performance . . .



LCpl William Redfain was selected as the Marine of the Quarter for brigade. The shore party specialist hails from Peru, Ind. and came on active duty July 1978.

Redfain received a letter of commendation and a meritorious promotion to corporal. His goal now is to "pick up sergeant before I have two and a half years in the Corps."



LCpl Steven Taylor, an air traffic control communications repairman with Station Operations and Maintenance Squadron, was selected as the Station Marine of the Quarter.

The 20-year-old Yardville, N.J. native entered the Corps in January 1979 and feels that being selected as Marine of the Quarter is "an honor. They are going to expect more from me now but it's an experience that I am looking forward to."

**Kaneohe Travel Agency**  
Ph. 247-2113

**Your Travel Headquarters**

- Airline Tickets
- Tours
- Hotel Reservations
- Anywhere in the World

Open Mondays thru Saturdays

Windward City Shopping Ctr. LIC. #XTRAG0053

In order to test the effectiveness of this advertising media, we are offering

**\$200 REWARD**

for finding and bringing in this ad. You will receive a \$200 savings on any Rainbow or Filter Queen Vacuum with attachments and power nozzles.

—Hurry, Quantities Limited—

**Pacific Surplus & Distributors**

35 Kaneohe St., Kailua  
262-8131

**A CORRESPONDENCE COURSE**  
through  
**Windward Community College**  
Kaneohe

Course Title: **CREATING YOUR FUTURE**  
SSCI 197 - CREDIT HOURS: 3  
10-week course: February 9 to April 17

**\*\*EARN COLLEGE CREDITS AT HOME\*\***

Explore your alternative futures in Hawaii. Create the future you want by selecting your goals and designing strategies to achieve them.

**Tuition & Mandatory Fee \$12 For Residents And Military Dependents. Enrollment Limited To 50 Students.**

**Call Now 235-0113 To Register By Mail, or Come See Us.**

# Windward City Shopping Center

**PAY 'N SAVE**

**Sweetheart**  
Dishwasher Detergent  
22 oz.  
**2/\$1.00**

**Pampers**  
Extra Absorbent  
Diapers, 80 Count  
**\$8.99 Box**

Sale ends Jan. 24, 1981  
Windward City Shopping Center

**MUSASHIYA**

**January Fabric Clearance 20% OFF**

till Jan. 31, 1981  
Kaneohe Store Only

**Sears**

**Thermo Saver**  
#1712  
**22.88**  
Reg. 28.99

**Water Heater Timer**  
#5898  
**26.88**  
Reg. 33.99

OFFER EXPIRES JAN. 24, 1981

VALUABLE  
WED. JAN. 21-24 ONLY  
**PATTERNS**  
**50% OFF**

SIMPLICITY - McCALLS  
ONLY WITH THIS COUPON  
LIMIT: 2 PATTERNS PER CUSTOMER  
1 COUPON PER CUSTOMER

COUPON

**DISCOVER PARADISE**  
Paradise Sun'n Surf.

Mon. thru Sun. 10:530 p.m.  
Open Wed. and Fri. till 9 p.m.  
**235-3036**

**Kaneohe Travel Agency**  
Ph. 247-2113

**Travel Headquarters**

- Airline Tickets
- Tours
- Hotel Reservations
- Anywhere in the World

No Service Charge

Violet Lee  
Greta Gora  
Miu Lang Mulligan  
Franklin Baker Jr.

OPEN  
Mon. thru Sat.  
LIC. #XTRAG0053

**VITAMINS & HEALTH FOODS**  
Windward City Shopping Center  
43-480 Kaneohe Bay City, Kaneohe, Hawaii

**YOUR LIFE, INC.**

- Vitamins
- Health Snacks
- Literature on Health Care

CLIP 'N SAVE  
**KOOLAU PETS**  
**15% OFF**  
ENTIRE STOCK

With this coupon only  
Expires Sun., Jan. 25, 1981

CLIP 'N SAVE

**Kaneohe Veterinary Clinic**

New Evening Hours  
Mon.-Fri. 7:30 a.m.-8:30 p.m.  
Sat. & Sun. 7:30 a.m.-5:30 p.m.  
**235-3634**

**Jean's Barber Shop**

We specialize in haircuts  
for all members of the family  
at reasonable prices.

**247-1801**

**The Little Restaurant**

**235-1002**

Open Mon. thru Sun. 6 a.m.-9 p.m.

Introducing the  
world's richest  
ice cream bar

**BASKIN-ROBBINS ICE CREAM STORE**

**MAGOO'S PIZZA**

**235-4539**

HOURS:  
11 a.m.-midnight  
Daily

With 31 Exotic Varieties

**ASSOCIATES FINANCIAL SERVICES**

Personal Loans  
Real Estate Loans  
Sales Financing

**247-0441**

**WINDWARD CITY SHOE REPAIR**

**235-5278**

**Honda Florist**

**247-6113**



# EDITORIAL / OPINION

## Street Scoop

Editor's Note: Answers to this week's question are from Marine Barracks Pearl Harbor.

"What do you do with your off-duty time?"



PFC Wayne Wengerd, sentry: "I never miss that liberty bus to Waikiki."



GySgt William Dawson, ordnance chief: "I take a drive out to Shark's Cove on the North Shore and scuba dive. I collect a lot of unique shells and other objects in the water."



PFC Lenford Wise, sentry: "I play basketball, run track, go to discos and swim."



Sgt Juan Morales, Sergeant of the Guard: "I spend most of my time with my wife and 3-year-old son. There's just not enough hours in a day to enjoy this island."



LCpl Monti Stauffacher, sentry: "I race motorcycles, party at night and study the Japanese language."

## Conviction

### Heartfelt drive inspires will to fight

by Chaplain Maxwell Dunks

It is not enough to recruit and train a man to be a Marine. Nor is it enough to equip him for battle, get him to the battlefield and provide the necessary material support. He is not an authentic, bona fide Marine unless he is a Marine all the way down in his heart and soul!

Pay, equipment and combatant skills alone will not make a man effective against an enemy on the battlefield. These are essential, but the will to fight and the passion for victory comes only from the heart. Without it, one does not possess that drive which takes him beyond the ordinary powers of man. And on the battlefield victory comes only to those who exceed ordinary human capabilities.

The kind of drive and inspired aggressiveness beyond the victor in battle comes only from a heart full of patriotism and love for country. It comes only from a knowledge of our country's history, the basic principles we stand for and the advantages and privileges of being Americans. It comes from believing with all your heart that our country has the best and is the best. It comes from believing so strongly in what we have and are that we

are even willing to risk our lives to preserve it.

While there is serious concern these days as to our readiness for battle in the areas of training and materiel, there is also a great need to pause and determine if there is heartfelt conviction within the man who may have to fight. What do we believe in? Is it worth our all? Will it last when the smoke and debris are cleared from the battlefield? If our values are only material values, they are not worth the loss of one human life.

From the Christian perspective, those things which are worthy of our sacrifice are religious freedom and respect for human dignity. We value an educational system that permits us to give our children the moral and religious training we desire them to have.

We prize the Judeo-Christian ideals which influence the conduct of government. The Christian Marine is convinced, both in peace and in the heat of battle:

"Blessed is the nation whose God is the Lord . . ." (Psalm 33:12) Thus, he faces the dangers of battle both with the assurance that God is with him as well as with the heart felt conviction that what he is defending is worthy of his all.



## Chart illustrates proper attire

Marines who use ignorance of regulations as their defense when admonished by superiors for violating uniform and off-duty uniform regulations have just seen that excuse run its course.

The "Uniform/Civilian Attire Authorization Chart" shown below is from the recently published Station Order 1020.4A and clearly illustrates what is acceptable and what is not.

In addition to the chart, there are other circumstances in which the wearing of the uniform is prohibited. Most fall under the

general category of not wearing the uniform under circumstances that would bring discredit upon the armed forces. Whenever any doubt exists as to the propriety of wearing the Navy or Marine Corps uniforms under given circumstances, specific queries and requests should be directed to the commanding officer, MCAS Kaneohe Bay, via the station adjutant.

Also no part of a prescribed uniform, except those items which are not exclusively military in character, shall be

worn with civilian clothing except as follows.

Male Marines are authorized to wear the following uniform items with civilian clothes: gold cuff links, studs, tie bars, mourning band, footwear, socks, gloves, drawers, undershirts, black bow-ties, service sweater, raincoat and service jacket without insignia of grade.

Women Marines are limited to wearing only the following uniform items with civilian attire: the white shirtwaist without insignia of grade, footwear, anklets, gloves,

handbag, white purse without cover, mourning band, scarfs, service sweater, raincoat and service jacket without insignia of grade.

Alteration or disfigurement of a uniform item does not make it a nonuniform item. Accordingly, uniform shirts, jackets and trousers that have the sleeves or legs cut off shall not be worn as or with civilian clothing. Likewise, no other uniform item which is prohibited from wear with civilian clothing, may be worn with civilian attire merely because it has been altered.

### "UNIFORM/CIVILIAN ATTIRE AUTHORIZATION CHART"

LOCATION TYPE ATTIRE	LOCATION																			
	DISCLOSED IN ENCLOSURE	LEAVE AND LIBERTY	STATION QUARTERS	STATION QUARTERS	STATION QUARTERS	STATION QUARTERS	STATION QUARTERS	STATION QUARTERS	STATION QUARTERS	STATION QUARTERS	STATION QUARTERS	STATION QUARTERS	STATION QUARTERS	STATION QUARTERS	STATION QUARTERS	STATION QUARTERS	STATION QUARTERS	STATION QUARTERS	STATION QUARTERS	STATION QUARTERS
UTILITY UNIFORM	(4)	NO	YES	YES	YES	YES	YES	YES	YES	YES	YES	YES	YES	YES	YES	YES	YES	YES	YES	YES
FLIGHT SUITS	(4)	NO	YES	NO	YES	NO	NO	NO	NO	YES	YES	YES	NO	NO	NO	NO	NO	NO	YES	YES
WHITE COVERALLS	(4)	NO	NO	YES	NO	YES	NO	NO	YES	YES	YES	NO	YES	NO	NO	NO	NO	NO	YES	YES
YELLOW COVERALLS	(4)	NO	NO	YES	NO	YES	NO	NO	YES	YES	YES	NO	YES	NO	YES	NO	NO	NO	YES	YES
MECHANICS COVERALLS	(4)	NO	NO	YES	NO	YES	NO	NO	NO	YES	YES	NO	YES	NO	YES	NO	NO	NO	YES	YES
SHOOTING JACKETS	(4)	NO	NO	YES	NO	YES	NO	NO	NO	YES	YES	NO	YES	NO	NO	NO	NO	NO	YES	YES
COOK, BAKER AND DINING ATTENDANT CLOTHING	(4)	NO	YES	YES	YES	NO	NO	YES	YES	YES	YES	YES	YES	NO	YES	NO	NO	NO	YES	YES
LIFE GUARD	(4)	NO	NO	YES	NO	NO	NO	NO	YES	YES	YES	NO	YES	NO	YES	YES	YES	YES	YES	YES
MP UNIFORM	(4)	NO	YES	YES	YES	YES	YES	YES	YES	YES	YES	YES	YES	YES	YES	YES	YES	YES	YES	YES
SWIM SUITS	(8)	YES	YES	YES	NO	NO	NO	NO	NO	FN	FN	FN	NO	YES	YES	YES	YES	YES	YES	YES
JOGGING/ATHLETIC	(8)	YES	YES	YES	YES	YES	YES	YES	YES	FN	FN	FN	FN	YES	YES	YES	YES	YES	YES	YES
PITH HELMETS	(4)	NO	NO	YES	YES	YES	NO	YES	YES	YES	YES	YES	YES	YES	YES	YES	YES	YES	YES	YES
CIVILIAN—TYPE UNIFORM	(4)	YES	YES	YES	YES	YES	YES	YES	YES	YES	YES	YES	YES	YES	YES	YES	YES	YES	YES	YES
UNIFORM OF THE DAY FOR OFFICERS	(2)	YES	YES	YES	YES	YES	YES	YES	YES	YES	YES	YES	YES	YES	YES	YES	YES	YES	YES	YES
UNIFORM OF THE DAY FOR ENLISTED	(3)	YES	YES	YES	YES	YES	YES	YES	YES	YES	YES	YES	YES	YES	YES	YES	YES	YES	YES	YES
CIVILIAN	(8)	YES	YES	YES	YES	YES	YES	YES	YES	YES	YES	YES	YES	YES	YES	YES	YES	YES	YES	YES

### FOOTNOTES

(A) MUST BE IN/ON POY WITH NO OFF-STATION STOPS IN BETWEEN AUTHORIZED. HITCHHIKING AND USE OF PUBLIC TRANSPORTATION IS PROHIBITED.

(B) PERMITTED IF CLEAN AND IN GOOD TASTE AS DETERMINED BY DUTY MANAGER.

(C) BUT NOT AFTER 1800.

(D) COVERALLS WITH GREASE OR HEAVILY SOILED NOT AUTHORIZED.

(E) UPPER BODY GARMENTS AND FOOTWEAR REQUIRED.

(F) SPECIAL SERVICES/GOLF COURSE GROUNDS/MAINTENANCE PERSONNEL ONLY.

(G) IN PERFORMANCE OF DUTY, AS A SPECTATOR, OR AS A PARTICIPANT IN UNIT ACTIVITY.

(H) REFER TO CONSTITUTION AND BY-LAWS FOR VARIOUS CLUBS FOR UNIFORM AND DRESS REQUIREMENTS.

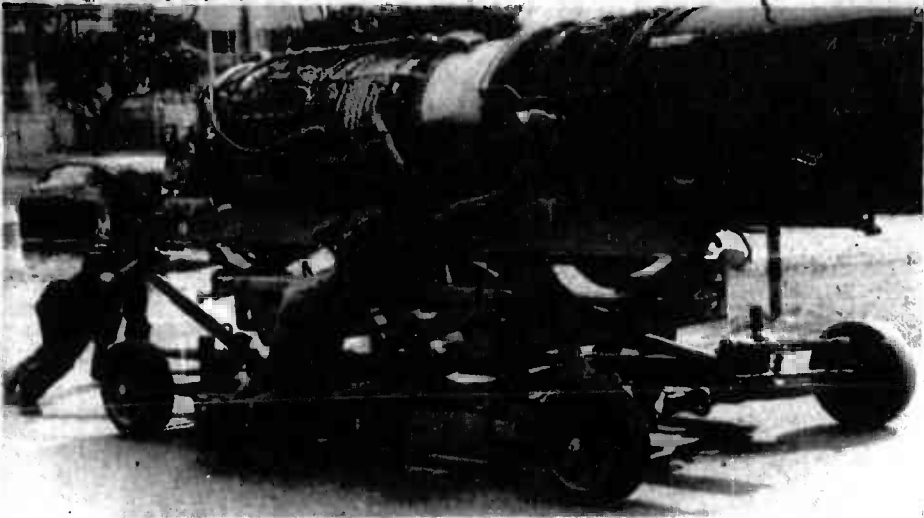
(I) A CLEAN AND PRESENTABLE P.T. UNIFORM IS AUTHORIZED FOR WEAR DURING MORNING ONLY, DURING WEEKDAYS IN ORDER TO PRECLUDE MULTIPLE CHANGES OF UNIFORM DURING THE TRAINING WEEK.

(J) EMERGENCY ONLY.









THE POWER BEHIND A PHANTOM — Three Marines push a J-79 jet engine into Headquarters and Maintenance Squadron-24's fixed test cell. Whether the engine is returning from the powerplant after receiving repairs, or it is undergoing a routine maintenance check, these Marines make sure the engine is in perfect working order before returning it to its aircraft.

Photo by Cpl Dave Davis

# Marines monitor rebuilt aircraft engines

by Cpl Charlie Marshall

The muffled roar and the clouds of white smoke billowing from the chimney are signs that more J-79 or J-52 engines from the F-4 Phantom jet aircraft or A-4 Skyhawk jet aircraft are being tested for efficiency in Marine Aircraft Group-24's "C" cell.

The cells were designed to minimize the inconvenience to residents, both on the air station and in the surrounding communities, caused by excessive noise generated by engine testing.

"AFTER THE jet engines have been repaired, it is our job to run them up to high temperatures to make sure the repair work has been done satisfactorily," states SSgt Charles Arthur.

"Most engines tested in the cell are from F-4 Phantoms, al-

though we have the capabilities to test almost all the aircraft engines in the Marine Corps," he says.

"After mounting the 4,200-pound engine in place and attaching fuel and other lines so we can get readings, the engines are started and allowed to idle. At this time we walk into the testing room and check for leaks, rattles or anything out of the ordinary."

"THEN WE throttle it up to 80 percent capacity. We can't enter the test room at this time because the sound and vibration are too much for anyone. But by monitoring the dials and gauges in the control room we can find out the information we need."

When the engine is performing at 100 percent capacity and 17,000 pounds of thrust are produced from the

engine, the test room gets pretty hot. "If we didn't have a way of cooling down the room the foot-thick concrete walls would have holes burned through them. The steel baffles would melt down to nothing."

"HERE'S WHERE the steam comes in. At the rear of the cell steel baffles disburse the thrust and channel it upward. Water is constantly being sprayed onto the baffles to keep them cool. The water turns into steam and mixes with the exhaust which everyone in the vicinity sees," he explained.

In an enclosed area behind the test cell is the site where the helicopter engines are tested. The performance of all the helicopter engines on the air station are checked in four portable test cells. The engines are considerably smaller and don't require the elaborate

cooling system of the fixed test cell.

"WE HAVE four portable test cells now and are expecting a new cell to arrive next year," boasted SSgt Michael Glenn. "Three of the cells are for testing the CH-46 Sea Knight and the CH-53 Sea Stallion engines."

We test the UH-1N engine in the fourth cell. This Huey engine is really two engines mounted to one gear box. That's why it needs a special test cell.

THE TEST cell provides another link to keep the fighter attack squadrons flying. A rebuilt engine must be tested before it can be mounted on a jet or helicopter. The role these Marines play in keeping the MAG-24 flying is as important as the repair work on the engines themselves.



Photo by Cpl Dave Davis

SOMETHING'S WRONG — Cpl Michael Dougherty, Headquarters and Maintenance Squadron-24, checks the umbilical cords to the J-79 jet engine as part of his training to become a test cell operator. Communicating through the headset, Dougherty speaks to co-workers in the control room to locate the problem with the engine's side.

If you don't know what you want, you'd better at least know where to find it.

YES



Yes! You can have wine. You can also have popcorn and peanut butter. And home-baked bread, too! Now you can have lots more of your favorite foods—within limits of course—and still lose weight. To find out more about our new 1981 food plans, join a Weight Watchers® class near you!

ASK ABOUT OUR LEGAL LOCAL FOODS: MISO, POI, GUAVA, TARO, BREADFRUIT, GOBO, LIMU and OUR VEGETARIAN PLAN.

WEIGHT WATCHERS® The most successful weight loss program in the world. 955-1588

Stay Marine.

AL HARRINGTON

Al Harrington — Hawaii's greatest performer comes to Hale Koa! Saturday nights in the Banyan Tree Room. Only \$15.95 for adults buys a delicious buffet dinner, show and gratuity. Tickets now on sale at Hale Koa's Activity Desk and Military outlets.



HALE KOA HOTEL Armed Forces Recreation Center / 2055 Kalia Road Waikiki / 955-0555

TACHERA'S UNLIMITED

Name brands in living room, dining room, bedroom furniture, carpeting and bedding. 35%-60% SAVINGS!!! Quality Furniture and Carpets At Contract Prices FREE Decorating Consultation 94-148 Leowena St. Unit D, Waipahu 671-0705 677-5236

GET OUT OF DEBT

through Chapter 13 A federal law which helps to pay off your debts without borrowing and in payments you can afford, stops creditor harassment and law suits, protects your job, co-signers and property. Initial consultation or info packet are without obligation. Please call: HOWARD Y. TANAKA Attorney versed in Chapter 13 filings Suite 466, Alexander Young Building

# SAFEWAY Where Everything's Right Including The Price

<b>SIRLOIN STEAKS</b> (Bone In) USDA Choice Beef  LB. <b>\$3.57</b>	<b>SPARERIBS</b> Small Lean Sides 2 to 3 lbs. (Meaty Country Style) Frozen lb. \$1.59  LB. <b>\$1.69</b>	<b>BONELESS CHUCK ROASTS</b> Tender USDA Choice Pot Roast  LB. <b>\$1.99</b>	<b>Vanilla Ice Cream</b> Lucerne 1/2 Gal.  SAFEWAY SPECIAL <b>\$1.99</b>	<b>Large Eggs</b> Lucerne Grade A Mainland Shelltreated  Dozen SAFEWAY Low Price <b>\$1.05</b>
<b>WHOLE SALMON</b> Alaskan Pink Bake or Steam  LB. <b>\$2.29</b>	<b>WHOLE FRYERS</b> Patti Jean Frozen Government Inspected  LB. <b>75¢</b>	<b>PORK BUTTS</b> From Young Lean Tender Porks  LB. <b>\$1.05</b>	<b>S &amp; S Saimin</b> Frozen 4.5 oz.  SUPER SPECIAL <b>5/\$1</b>	<b>Sprite Dr. Pepper</b> Reg. & Sugar Free 12 oz. Cans  SUPER SPECIAL <b>6/\$1.79</b>
<b>HEN TURKEYS</b> Scotch Buy 12 to 14 lb. LB. <b>77¢</b>	<b>Lean Smoked HAM HOCKS</b> (Ideal For Cabbage or Beans) LB. <b>\$1.09</b>		<b>Cragmont Soft Drinks</b> Diet or Regular 12 oz. Cans  SUPER SPECIAL <b>6/\$1.69</b>	<b>Hamburger Buns</b> Mrs. Wright's 8 Count  SUPER SPECIAL <b>55¢</b>
<b>LEAF LETTUCE</b> U.S. No. 1 Butter, Red or Green Leaf  3 BU. <b>\$1</b>	<b>HOREN SO SPINACH</b> U.S. No. 1 Quality  EA. <b>39¢</b>	<b>BROILER MUSHROOMS</b> 8 oz. Pkg. U.S. No. 1  PKG. <b>99¢</b>	<b>PEACHES &amp; NECTARINES</b> New Zealand U.S. No. 1 Quality  LB. <b>\$1.98</b>	<b>Nabisco Saltines</b> Premium and Unsalted Tops 1 lb.  SUPER SPECIAL <b>85¢</b>
				<b>Hormel Spam</b> 12 oz.  SUPER SPECIAL <b>\$1.19</b>

Hours and prices in this ad are available Jan. 21-24 at all Safeway Stores listed below:  
940 Ala Liliua St. Honolulu 96117 Kailua-Kona, HI 96741  
1271 S. Beretani St. Honolulu 1200 Kalia Dr. Kailua 40-205 Koa Highway, Kaneohe 25 Pali Highway, Honolulu 25 Pali Highway, Kailua

SAFEWAY



# Localmotion

**K-BAY OFFICERS' CLUB**  
**TODAY** — Lunch in the Pacific Room from 11 a.m. till 1 p.m. Mongolian barbecue on the Lower Lanai from 6 till 8:30 p.m.  
**THURSDAY** — Lunch in the Pacific Room from 11 a.m. till 1 p.m. Beefeaters' Night from 6 till 8:30 p.m.  
**FRIDAY** — Lunch in the Pacific Room from 11 a.m. till 1 p.m. Happy Hour in the Tapa Bar from 4:30 till 6:30 p.m. Mongolian Barbecue on the Lower Lanai from 6 till 9 p.m. "Star" plays from 8:30 till midnight in the Tapa Bar.  
**SATURDAY** — Candlelight Dining in the Pacific Room from 6 till 8:30 p.m.  
**SUNDAY** — Champagne Brunch in the Pacific Room from 10 a.m. till 1 p.m. with a wide variety of breakfast specials with a complimentary glass of champagne. Beef and crab served from 6 till 8:30 p.m., reservations requested.  
**MONDAY** — Lunch in the Pacific Room from 11 a.m. till 1 p.m.

**TUESDAY** — Lunch served in the Pacific Room from 11 a.m. till 1 p.m. The Dining Room is closed. The Tapa Bar is open from 4 till 10 p.m.  
**K-BAY SNCO CLUB**  
**TODAY** — Luncheon special is veal parmesian with spaghetti. Smorgasbord served from 5:30 till 8:30 p.m.  
**THURSDAY** — Luncheon special is beef stroganoff. Mongolian barbecue served from 5:30 till 8:30 p.m.  
**FRIDAY** — Luncheon special is seafood platter. Candlelight dining from 6 till 9 p.m. "J.T. Rowdy" plays from 9 p.m. till 1 a.m.  
**SATURDAY** — Prime rib and crab served from 6 till 9 p.m. "Spaceman Disco" plays from 9 p.m. till 1 a.m.  
**SUNDAY** — Family night buffet from 5:30 till 8:30 p.m.  
**MONDAY** — Luncheon special is Mexican plate. Happy Hour is from 5 till 6 p.m. Free pupus served at 5:30 p.m.  
**TUESDAY** — Luncheon special is pork chops.

**PUBLIC NOTICE**

The Shops at the  
**KAHUKU SUGAR MILL**  
 will be closing 2/15/81.

**A GIGANTIC CLOSEOUT SALE**  
 is now in progress  
**20%—30%—40% OFF**  
 On  
 Unique Antiques,  
 Imari, Fine Porcelain,  
 Dolls, Niihau necklaces  
 and much more!!  
 \* Hurry for Best Selection \*

**VIDEO TAPE MOVIES**  
 VHS or BETA

Over 200 titles to choose  
 Watch what you want - when you want  
**\$10<sup>00</sup> for 10 Days**

• Order by phone.  
 Delivery and return by mail.  
 Fast • Easy • Convenient  
 Phone us for free listing of  
 titles and order form.

**VIDEO PACIFIC**  
 PH. 836-3557  
 MON.-FRI. • 7:30-3:30 P.M.

**BERNINA**

YEAR END CLEARANCE continues... **50% off** Factory Suggested Retail of **\$650** YEAR END CLEARANCE continues...

NOTE THESE FEATURES:

- ★ Demo Model
- ★ Exclusive 25 Year Written Warranty
- ★ Open Arm
- ★ Monograms

**MODEL 800**

— PLUS —

- ★ Self Adjusting Tension
- ★ Buttonholes
- ★ Only **\$325<sup>00</sup>**

— Hurry, Quantities Limited —

**PACIFIC SURPLUS & DISTRIBUTORS**  
 35 Kaliae St. Mon.-Sat. 10:00-6:00 p.m., Wed. & Fri. till 8 p.m. **262-8131**

**U.B.M.** SALE BEGINS 1-21, ENDS 1-28  
 AIKAHI PARK AND  
 ALA MOANA/PUNCHBOWL

PH. 254-3517  
 MON.-SAT. 7:30-8:30  
 SUN. 8:30-5:00  
 PH. 537-3324  
 MON.-SAT. 7-5, SUN. 8-12

**WE NOW CARRY A FULL LINE OF PAINTING SUPPLIES FOR YOUR HOME IMPROVEMENT NEEDS**

**WD-40**  
 12 oz.  
 REG. \$2.77  
**SALE \$1.59**

**Zest**  
 11 oz.  
 REG. \$3.09  
**SALE \$2.09**

**HEAD & SHOULDERS LIQUID SHAMPOO**  
 11 oz.  
 REG. \$3.09  
**SALE \$2.09**

**KAL KAN**  
 chunky Beef Dinner  
 REG. \$1.49  
**SALE \$1.19**

**BAYER ASPIRIN**  
 100 Tablets  
 REG. \$1.49  
**SALE \$1.19**

**SPECTRUM 33 PLUS LAWN WEED KILLER**  
 1 Quart  
 REG. \$3.99  
**\$2.99**

**SweetHeart**

**ALL ITEMS AIKAHI STORE ONLY**

# SHOP KAILUA

**Lynn's Interiors**  
 305 Uluniu St.  
 "Under the yellow awnings"  
 262-6612

**This month's SPECIAL DECORATOR PILLOWS**

**25% OFF**

Many different styles and sizes to choose from.

**Yarn & Needlecrafts Ltd.**  
 Phone 262-9555  
 151 Hekili St. (Across from Holiday Mart Theatre)

Introducing...  
 1981 Needlepoint and crewel designs  
 by  
**DIMENSIONS**

For all your stitchery needs, come and see us. We're sure we can help you.

Mon. thru Fri. 9:30-5:30 p.m.  
 Wednesday 9:30-8:00 p.m.  
 Saturday 9:30-5:00 p.m.

**IS BUSINESS SLOW?**

Advertising in the Sun Press can boost your business. We are the most cost efficient print media serving Windward Oahu.

For more information  
 feel free to call Chris at 235-5881.

**COUPON**  
 Let THE  
**KAILUA CANDY CO.**  
 On Oahu,  
 Mail Hawaii's finest handmade chocolates to your Valentine sweetheart.

**\$1.00 OFF**  
 any \$6.00 purchase of boxed candy  
 with this coupon (1 coupon per purchase)  
 FREE TASTE SAMPLES

**418C Kuulei Rd.**  
 Kailua  
 Next to McDonald's on the city parking lot.  
 Where Pizza Pies used to be  
**262-2100**

Hurry, offer expires 1/27/81  
**COUPON**

**FOR BIG MEN**

**Levi**  
 Gabardine  
 Action Slacks

**Levi Jeans**  
 Stretch, 501,  
 Boot Cut, Flares

**Aloha Shirts**  
 Long & Short Sleeves  
 Sizes 1XL-5XL

**Velour Stripes & Solids**  
 Long Sleeves  
 Sizes 1XL-3XL

**Charlie's SPORTSWEAR**  
 13 Oneawa St. 262-8575  
 Across Coin Power!

**YEAR END INVENTORY CLEARANCE SALE continues...**

**MICROWAVE OVENS**

Sale Starts Today  
 One Week Only

**LITTON TAPPAN**

**NEW \$298**

**DIGITALS AUTOMATIC PROBE**

**PACIFIC SURPLUS & DISTRIBUTORS**  
 35 Kaliae St. #104  
 KAILUA  
 262-8131

**AMANA PANASONIC**

Hurry, we only have 37 ovens left.

**MEAL IN ONE CAROUSEL VARIABLE TEMPERATURES**

Hours:  
 Mon.-Sat. 10-6 p.m.  
 Wed. & Fri. till 8 p.m.  
 CLOSED SUNDAYS

**JANUARY SUPER SALE**

★ CUSTOM MADE DRAPERIES

**20% OFF**

Your Entire Bill  
 (Includes Fabric, Labor & Installation)

ALL IN STOCK  
 ★ CARPET ITEMS  
 up to  
**60% OFF**

Example:  
 New Down Plush Reg. 15.95 yd.  
 NOW ONLY \$7.00 yd.  
 New York, New York  
 Reg. 21.95 yd. NOW \$8.00 yd.

CALL NOW  
 Offer Expires 2/4/81

**MAHALO**  
 John Fornell Jr.

**CARPETS OF KAILUA**

155 Hamakua Dr.  
 Kailua  
 261-1808



## Consumers Choice

Would it occur to you not to swallow a tetracycline capsule with a glass of milk? Or to avoid aged cheese and Chianti wine if you are taking a certain medicine to combat depression? Or to eat more green leafy vegetables if you are on birth control pills?

**PROBABLY NOT.** Yet the effects foods and drugs have on each other can determine whether medications do their job and

whether your body gets the nutrients it needs. The Food and Drug Administration points out that the presence of food in the stomach and intestines can influence a drug's effectiveness by slowing down or speeding up the time it takes the medicine to go through the gastrointestinal tract to the site in the body where it is needed.

**FOOD ALSO** contains natural and added chemicals that

can react with certain drugs in ways that make the drugs virtually useless. Some reactions can be downright dangerous, triggering a medical crisis or, in rare instances, even death.

It is because of these interactions that your doctor tells you to take certain medications on an empty stomach, some just before meals, and some with meals.

**THE CALCIUM** in milk, cheese, and

yogurt, for example, impairs absorption of tetracycline. On the other hand, taking some iron supplements with citrus fruits or juices which contain ascorbic acid enhances absorption of the iron.

In general, it is unwise to take drugs with soda pop or acid fruit or vegetable juices unless you check with your doctor first. These beverages can result in excess acidity that may cause some drugs to dissolve quickly in the

stomach instead of in the intestines where they can be more readily absorbed into the bloodstream.

**ALCOHOL**, which is actually a drug itself, does not mix well with a wide variety of medications. A good rule of thumb is to avoid alcoholic beverages when taking any type of medication.

Drugs readily available without prescription can lead to nutritional problems.

The worst offenders, say doctors, are antacids, because they are so widely abused by the public. Chronic use of these remedies without a doctor's supervision can cause phosphate depletion, leading to muscle weakness or vitamin D deficiency.

**DRUG LABELS** now give patients little direct information about possible reactions with foods and beverages. But the FDA is seeking to make the

labeling of over-the-counter drugs, as well as labels on physician-prescribed drugs, more informative.

What can consumers do to prevent undesirable food-drug interactions? Here are a few suggestions:

Read the labels on over-the-counter reme-

dies and the package inserts that come with prescription drugs.

Don't be afraid to ask how drugs might interact with your favorite edibles, especially if you consume large amounts of certain foods and beverages.

Eat a nutritionally

well-balanced diet. Use of a needed drug is less likely to cause depletion of vitamins and minerals if your nutritional status is good.

Remember that warnings about food-drug interactions are only as good as the patient's willingness to heed them.

### THE GREAT SAFE

THE GREAT SAFE WITH CASH AND PRIZES IS WAITING TO BE OPENED AT

**PAR Auto Used Parts**

LISTEN TO



FOR CLUES AND DETAILS NOW!

Glenn M. Kaneda, D.D.S.

General Dentistry

45 Aulike St., Suite 45  
Kailua

Hours by appointment  
Mon & Fri 9:00-5:00 pm  
Tues, Wed, Thurs 12:00-8:00 pm  
Saturday 9:00-1:00 pm

PHONE 262-6000

**ENCHANTED TRAVEL, INC.**

WHY WASTE YOUR TIME?

We will service all your travel needs

at absolutely **NO CHARGE** and personalized service.

We work with all Airlines, just tell us the one you prefer.

1051 KEOLU DR. KAILUA  
(New bldg. next to Dairy Queen)

"around the islands" "around the world"

OPEN

Mon-Fri 9:00-5:00  
Sat 9:00-12:00

Phone

261-7947

**Have you been told that you cannot wear soft contact lenses? Too much astigmatism?**

The Answer:

Toric soft contact lenses for the correction of astigmatism provide both sharp vision and comfortable cost.



(60 Day Trial Period Included)

for more information call

DR. CHARLES DEAN  
Optometrist

261-9735

Kailua  
139 Hekili St

### See your Career Planner

You'll get straight talk. Answers to your questions. And a fair look at all the Corps has to offer.

2/3

Sgt Anderson  
257-2142

3d Recon

GySgt Winn  
257-2758

MABS-24

Sgt Zeek  
247-3693

HMM-265

SSgt Wrenn  
257-2489

1st Radio Bn

SSgt Richardson  
257-2725

HMH-463

GySgt Boddie  
257-2208

1/3

SSgt Paulino  
257-2673

3d AAV

SSgt Long  
257-2694/3537

H&MS-24

Sgt Scott  
257-2486

HMM-262

SSgt King  
257-2489/3248

VMFA-235

GySgt Morgan  
257-2630

SOMS

SSgt Hall  
257-3439

**Stay Marine.**

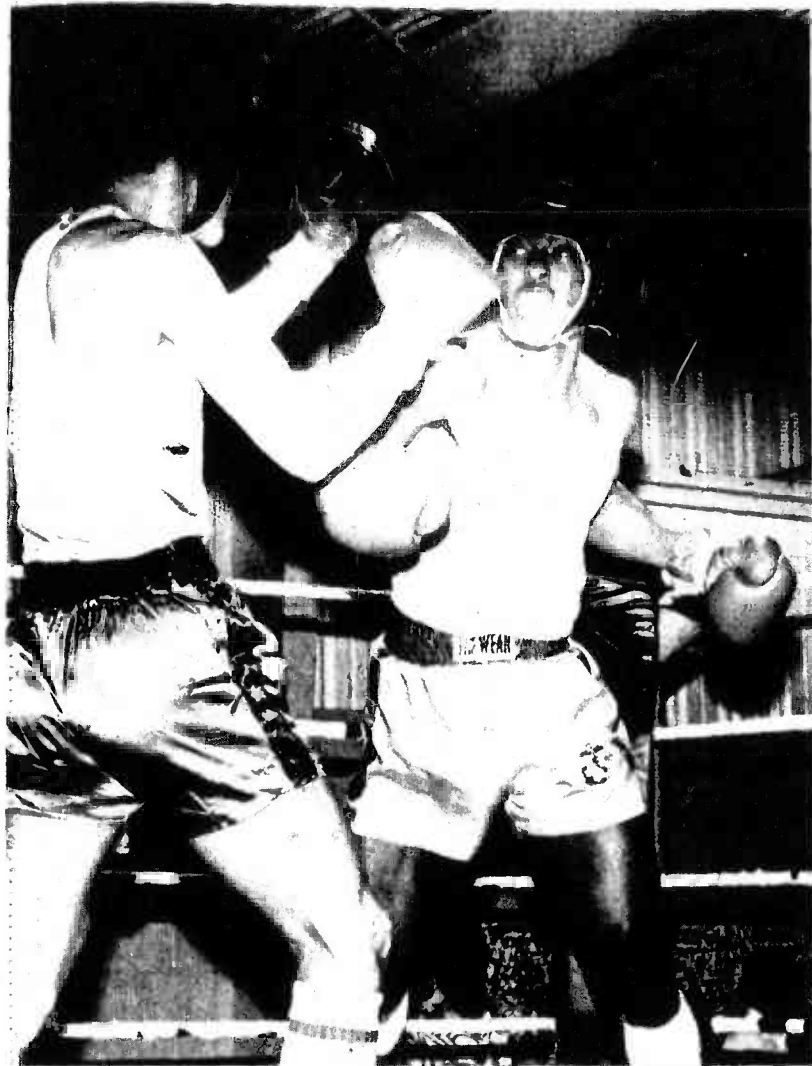
### To deliver. No charge.

In the Corps, you don't have to worry about a big medical bill when your child is delivered. It's free. You don't even have to pay for insurance. Now what civilian job can offer that? Free delivery is just one of the advantages a Marine family has. When you add up security and pride in the job, medical, educational, retirement and other benefits, you've got some good reasons to...

**Stay Marine.**



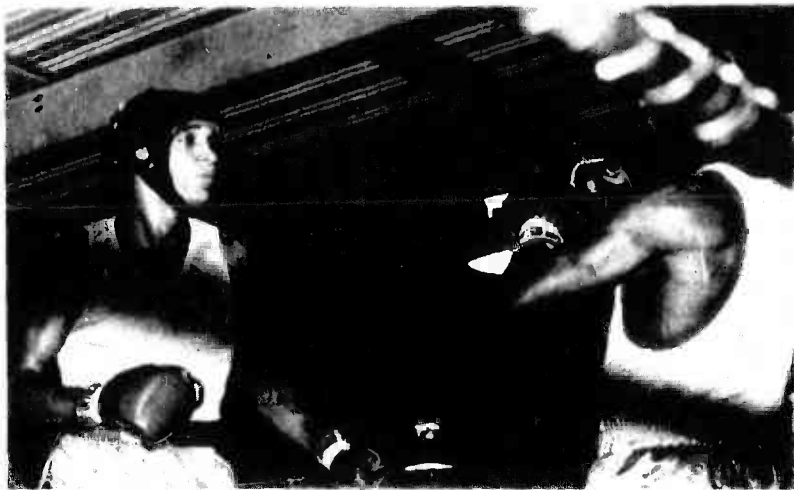




**SMOKIN' ANDY** — PFC Andrew Avery (right) of the Hawaii Marine Boxing Team, exchanges punches with his opponent Manuel Mamuscia, of the Wahiawa Boxing

Club during an Amateur Athletic Union tournament at the Waipahu Recreation Center. Avery and Mamuscia fought to a draw.

Photo by Sgt Pepper Davis



**STALKING** — With his opponent against the ropes, Hawaii Marine boxer Cpl Hakim Shabazz stalks the soldier as they squared-off during the 125-pound weight class bout at Waipahu Recreation Center Friday evening. The fight was declared a draw.

Photo by Sgt Pepper Davis

## Smoker ends in stalemate

by Sgt Phillip Williams

The Hawaii Marine Boxing Team participated in an Amateur Athletic Union boxing tournament Friday evening at the Waipahu Recreation Center.

The Leathernecks were matched in four bouts against Army and civilian boxers, fighting their way to two draws, and a technical knockout, but losing a bout by a knockout.

### 125 pounds

Cpl Hakim Shabazz opened the first round dancing, waiting for the precise moments to strike. Shabazz scored several well-placed blows to his Army opponent's face. Before

the end of the round, the Army pugilist attempted a flurry of punches to gain some points.

Shabazz wasted little time gaining his opponent's respect in round two. They were only seconds into the round when Shabazz tagged the Army boxer and sent him staggering into the ropes. The punch was not enough to put him under, however, and the fight continued.

Maintaining his poise, Shabazz stalked his opponent in the third round. Placed in a do-or-die situation, both boxers threw many well-placed punches throughout the round.

Flanking the referee, the two gladiators awaited the decision. The votes were in and, as the announcer read the verdict, the crowd sat waiting in anticipation. The judges had called the battle a draw.

### 156 pounds

PFC Andrew Avery came out smoking. He pounded his opponent's head for 30 seconds keeping control throughout the round.

Avery looked sluggish during the second round. His opponent, boxing for the Wahiawa team, took advantage of the situation and tallied some good blows.

Both fighters showed fatigue from the battle

in the third round, yet they still were able to get in a series of flurry exchanges. The decision in this bout was the same as before — a draw.

### 165 pounds

Leatherneck boxer LCpl Glenn Gerald was matched against a Kaneohe city boxer in this weight class.

The first round lacked action but Gerald was able to get in a few good punches. In the second round, the Marine boxer prepared to send his opponent home.

Gerald went to work on the Kaneohe team boxer's head almost immediately. Blood flowed profusely from

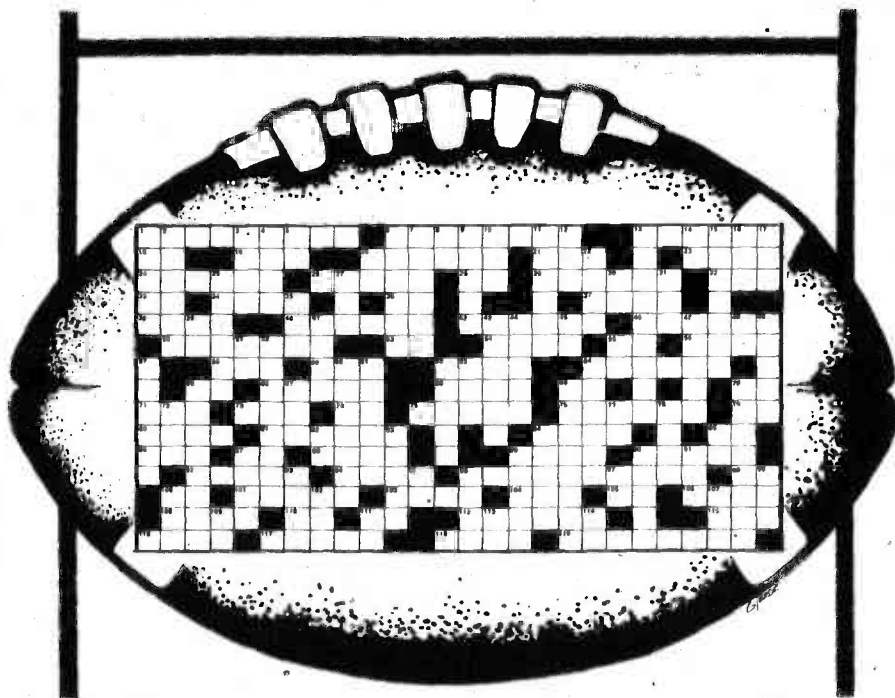
the Kaneohe boxer's nose until at 1:39 into the round, the fight ended. Gerald had scored a technical knockout and the team's first victory.

### Heavyweight

Was it a right? Was it a left? No one really knows which punch sent LCpl Charles Morgan crashing to the canvas in 22 seconds of the first round, giving his Army opponent an easy victory.

LCpl Jesse Ferguson, a Marine boxing for the Kaneohe Boxing Club, was billed on the card in the main event against an Army boxer. Ferguson took his opponent the full three rounds and decisively won the match.

## PIGSKIN PUZZLE



### HORIZONTAL

1. Carrot-topped Redskins' quarterback.
6. He said, "Winning isn't everything, it's the only thing."
13. 1912 Olympic star, later great NFL star.
18. Not off.
19. Keystone.
20. Superstar Chicago Bear running back of 1960's.
21. Jackie's number two hubby.
23. To venture.
24. Formation with extra defensive back.
26. Farm storage buildings.
28. Oklahoma.
29. Cowboys skipper.
32. Extremely bad movie.
33. And (Latin).
34. Small body of land.
36. Defensive tackle.
37. "It's the real thing."
38. Propulsion unit on the sea.
40. In plentiful amounts.
42. Broadway Joe.
46. Meet the enemy.
50. The "Juice."
52. Year.
54. Tool used to hold an object in place.
55. Indefinite article.
56. Afire.
59. Popular movement in 1970's.
59. Now (Japanese).
62. Continent.
64. The meanest Bear.
65. Masculine title.

66. "Over the Hill Gang" creator.
68. Sandy Clay.
69. That is.
70. Him.
71. Feeling after a loss.
73. Successful skin magazine.
74. Help for drinkers.
75. Mediterranean island or small car.
76. "The Galloping Ghost."
79. Either.
80. Hindu outer garment of silk or cotton.
81. All-time NFL scoring leader.
84. Small flying insect.
85. Pepper, Spock, J.
88. Unrefined metal.
89. Iowa.
89. German river.
89. Legal document.
90. Horn muffs.
92. Jig, Jerk, Twist.
94. Arabian Military Commander.
96. Grand plans.
98. Raised railroad (Col.).
100. Bismuth.
101. Seat.
103. Mrs. Peel.
104. One (Prefix).
105. Alternating current.
106. Cougar.
108. Home of BYU.
110. Thus.
111. Verbiage.
112. Land of fans.
115. Served food.

### VERTICAL

1. Baltimore's Bert.
2. Mr. Baltimore Colt.
3. Scrapes by.
4. Steeler coach.
5. Military cops.
6. Bert's backup or 29 Across.
7. Marine mollusk.
8. Maine.
9. Greatest NFL running back.
10. Inquire.
11. Texas titans.
12. Militants of Erin.
13. Viking scrambler.
14. Olive drab.
15. Perpendicularly plied tires.
16. NFL member.
17. Electroencephalogram.
20. Senior.
22. Short by an.
25. Old Whiskey, Redskins Over the Hill leader.
27. He sick.
30. Perform.
31. Craving.
35. Sell.
39. Two (Roman No.).
41. Indigo plant.
43. Bird copdo.
44. Champions of Superbowl VII & VIII.
45. Tight end.

47. Surgical dressing.
48. SAM's readers.
49. Volatile inhalant anesthetic.
51. Letter addendum.
52. "Roger the Dodger."
55. The American University.
57. Kansas City's "Super" Chief.
60. Wander aimlessly.
61. A garland or wreath.
62. Danger signal.
63. To dip or soak.
64. Severely scold.
65. "Dandy Don."
67. Small (Col.).
69. The act of sparking.
70. Notre Dame's famous four.
72. Rowing implement.
77. Near.
78. Adhesive.
82. Administration Officer.
83. The ram.
84. Impressive.
85. Defensive end.
87. 2 54 cm.
89. Twisted.
90. Very small (Prefix).
91. 1/2 tablespoon.
93. The Orient.
95. Room.
96. Free from risk.
97. Georgia.
99. Boy.
100. Mass transit vehicle.
102. Debt.
107. Space traveler.
109. Einstein's monogram.
111. Brigadier General.
113. Prefix for a rifle.
114. Master's degree.

## Sportnotes

In the ninth week of bowling, the MCAS Kaneohe Bay Intramural Mixed Handicap Bowling League standings are:

TEAM	W	L
VMFA-232	27.5	8.5
H&HS (A)	26.0	10.0
HqCoBde	25.0	11.0
H&MS-24 (C)	25.0	11.0
HMH-463	23.0	13.0
H&HS (C)	23.0	13.0
MACS-2 (A)	21.0	15.0
H&MS-24 (B)	21.0	15.0
1stRadBn	20.0	16.0
MABS-24	19.0	17.0
1/12	19.0	13.0
H&HS (B)	18.0	18.0
GEMO	18.0	18.0
H&MS-24 (A)	17.0	15.0
Hq3dMarComm	16.0	20.0
MaintCoBSSG	16.0	20.0
SOMS (B)	15.5	20.5
Navy	15.0	21.0
SOMS (A)	15.0	21.0
EngCoBSSG	15.0	21.0
MACS-2	13.0	23.0
H&MS-24 (D)	13.0	23.0
H&SCoBSSG	7.0	29.0
H&SCoBSSG (B)	0	36.0

Okinawan and Japanese Shorin-Ryu/Shobukan courses will be taught by MSgt Rick Raymond, a 6th degree black belt, in Building 455 in the Family Services complex. A starting date for the classes has not been set, however, interested persons can contact Raymond at 257-2216.

The Hawaii Marine Varsity Softball team is sponsoring an invitational softball tournament Feb. 6 through 8. The tournament is open to all Marine teams. An entry fee is required to participate with all proceeds going to Special Services. For more information, contact the MCAS Kaneohe Bay Athletic Department at 257-3108.

The Men's Hawaii Armed Services Athletic Council Volleyball League is currently under way, but the Marine teams are in need of players. A women's team is also being formed to participate in the league.

Volleyball players, regardless of skill level, are urged to contact GySgt Edwin Arita at 257-2388 or 254-4780.

A 10-bout Fleet Marine Force Pacific, Boxing Program will be held at MCAS Kaneohe Bay's gym in Hangar 103 Friday at 7:30 p.m.



**GETTING A KICK OUT OF A LESSON** — First Degree Black Belt Joe Walsh (right), lands a well placed kick to Cpl Joe Wachter of the battalion career planning office at Camp H.M. Smith. Wachter is one of eight students currently studying Ji Sung Tae Kwon Do

form of martial arts. The Camp Smith chapter is seeking new members to practice 5:30 till 6:30 p.m. on Monday, Wednesday and Friday each week. For more information, contact Sgt Mike Winters at 477-6294.

Photo by Sgt Mike Reynolds





**WESTERN ROCK 'N' ROLL** — The Charlie Daniels Band headlines the Rainbow Jam concert at Neal Blaisdell Arena, along with The Outlaws, Feb. 4 at 8

p.m. The concert also features a down-home jam session between acts. Tickets are on sale at HITS outlets and NBC box office.

## Paradise Pastimes

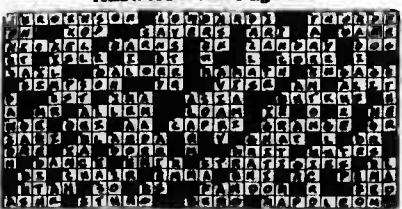
**BEYOND THE GATES** — Al Harrington, formerly of Hawaii 5-0, brings his Polynesian show to the Banyan Tree Show Room at the Hale Koa Hotel on Saturday nights in January and February. The Hale Koa's dinner buffet will precede the show. Dinner will be served from 6 till 7:30 p.m. before Harrington takes the stage at 8 p.m. Admission is \$15.95 for adults and \$10.95 for children 12 & under which includes dinner, show and gratuity. Tickets are on sale at the Hale Koa's Activities Desk (9 a.m. till 4 p.m. daily, 955-0555) and at all military satellite ticket outlets.

The Honolulu Theatre for Youth will present "The Overcoat," at Leeward Community College Theatre Feb. 3 to 18.

Public performances will be Feb. 13, 8 p.m.; Feb. 14, 2:30 and 4:30 p.m. and Feb. 15, 2:30 and 4:30 p.m. The Filipino Historical Society will sponsor a special Sunday night performance at 7:30 p.m.

The play is co-sponsored by Leeward Community College. Call 521-3487 for information and reservations.

Answers from Page B-1



The 1981 Second Annual Governor's/Mayors' Prayer Breakfast will be held Feb. 3, in the Hilton Hawaiian Village Coral Ballroom. The event, which will run from 7 till 8:30 a.m. will have Minnesota Governor Al Quie as the keynote speaker.

The public is invited to join with the Prayer Breakfast Committee for this occasion. Tickets are available at \$10 each by sending a check made payable to: Governor's/Mayors' Prayer Breakfast, P.O. Box 25822, Honolulu, HI 96825.

Additional information may be obtained by calling 537-5424.

## CELEBRATE.

Celebrating a birthday? A wedding? A promotion? Why not have it catered by the professionals at Hale Koa Catering. Complete banquet facilities. Call us at 955-0555.

**HALE KOA CATERING**  
At the Hale Koa Hotel, Armed Forces Recreation Center on Waikiki Beach.  
2055 Kalia Road, Honolulu 96815 / Ph: 955-0555.



Switch to Beneficial Income Tax Service

## FIND OUT WHAT YOU'RE MISSING.

The IRS allows more than 500 tax deductions, credits and exclusions. Our trained tax preparers know them all, and dig for every one you're entitled to.

We'll prepare your state returns, too, for any states in which you need to file.

Stop missing tax deductions! Call or come in today. No appointment necessary. Most offices open evenings and Saturdays.

### Beneficial Income Tax Service

Beneficial Income Tax Service at your nearest Beneficial Finance System office.

HONOLULU — (6 convenient offices)

- 36 North King Street ..... 533-4202
- 1451 South Beretania Street ..... 941-7702
- 3427 Wai'alae Avenue ..... 734-1947
- 1947 North King Street ..... 841-3671
- 1283 Kapiolani Blvd. .... 536-3565
- 1425 Liliha Street ..... 537-5248

See Telephone White Pages for other offices in area

### UNCONTESTED DIVORCES

(Both parties sign papers)

\$200 total cost "including court fees"

Barbara Melvin 521-7496

Evenings by Appointment

the law offices of  
**thomas j. carney, jr.**  
attorney-at-law

concentrating in:  
• personal injury (auto accidents, etc.)  
• family law (divorce, etc.)  
• business  
• real estate  
• criminal defense

suite 809 meijer building 333 queen st. ph. 523-5040

initial consultation free

### CONSOLIDATED THEATRES

#### REVOLUTIONARY CINE-FI SOUND AT THE KAM DRIVE-IN

YOUR AM CAR RADIO IS YOUR SPEAKER! (IF NO CAR RADIO, WITH IGNITION ACCESSORY POSITION, BRING YOUR OWN AM PORTABLE.)

#### NOW 4 BIG DAYS AT THE KAM D.I. "SUPER" SWAP MEET

100 A.M. to 3:00 P.M.  
EVERY WED - SAT - SUN  
PLUS: NOW EVERY THURSDAY!  
(Opp. Fairgrounds) • Ph: 536-3487 or 458-5622

WAIKIKI	HAWAII
WAIKIKI #1 Seaside at Kalia 923-2394	WAIKIKI #2 Seaside at Kalia 923-2394
WAIKIKI #3 Kalia at Seaside 923-5353	WAIKIKI #4 Kalia at Seaside 923-5353
KUHIO #1 2095 Kalia 941-4422	KUHIO #2 2095 Kalia 941-4422
KAPOLANI 1546 Kapiolani 955-5115	KAPOLANI 1546 Kapiolani 955-5115
PEARL RIDGE 1 Pearlridge Center 487-5581	PEARL RIDGE 2 Pearlridge Center 487-5581
PEARL RIDGE 3 Pearlridge Center 487-5581	PEARL RIDGE 4 Pearlridge Center 487-5581

## Racquetball

coming to Paa St. in MAPUNAPUNA (construction resumed)

Courthouse Racquetball

Memberships For TWO LOCATIONS!

Kaneohe — Now Open —  
45-808 Kam Hwy.  
235-5839

Mapunapuna  
Opening This Spring  
2810 Paa St.  
833-8819

JOIN NOW AT LAST YEAR'S PRICES

	Now	Price effective Feb. 1, 1981
Individual	\$80	\$90
Couple	\$80	\$120
Family	\$80	\$145
Junior	\$35	\$55

• Shuttle  
• Lunch  
• Child Care  
• Spa

• Pro Shop  
• 12 courts (Paa location)  
• 8 courts (Kaneohe)

"Where Hawaii Plays Racquetball"



**TLA SPECIAL "ROOM & CAR PACKAGE"**

Includes:  
• RENTAL CAR by Hertz, Avis, Budget, etc.  
• DELUXE, Spacious Rooms at the HOLIDAY INN AIRPORT with:  
Air Conditioning  
FREE Color Television  
Room Service Available  
FREE Parking, Babysitter  
Referral, WASHERS & DRYERS  
24-Hour Telephone Switchboard Service  
• CREDIT CARDS: American Express, VISA, Bank Americard, Carte Blanche, Diner's Club & MasterCard  
• LOCATION convenient to ALL Military Installations, Waikiki and Major Island Attractions

Additional Conveniences:  
LEIMAKER'S RESTAURANT  
KALAMA COCKTAIL LOUNGE (with entertainment nightly)  
POOL  
Kennels  
FREE Airport Shuttle

Special TLA Rate on Room Only \$33 Per Day

For Reservations & Information Call:  
**Holiday Inn AIRPORT 836-0661**

Opening Monday January 26

a famous brand shoe department for the entire family

Marine Corps Exchange Kaneohe Bay



# Cinema

**FAMILY THEATER** W T h F S S M T  
7:15 p.m. 1 2 3 4 5 6 7  
**CAMP SMITH** 7 p.m. 3 7 7 8 9 10 11

1. **MEMORIES IN MY MIND** — Michael Christian, Josette Banzet, PG, suspense drama. A suspenseful and romantic tale of a young man, Michael Christian, whose life so far has been a desperate escape from a tragic and violent past. (Note may not be suitable for children due to violence.)  
2. **USED CARS** — Kurt Russell, Gerrit Graham, R, comedy. Kurt Russell is a used car salesman who wants to run for the State Senate. He works for stroke-prone Jack Warden. Russell takes over the dealership for the proprietor and competes for money for his Senate race.  
3. **HE KNOWS YOU'RE ALONE** — Don Scardino, Caitlan O'Heaney, R, suspense drama. A psychotic killer runs rampant on New York's

Staten Island stabbing people. Primary victims are young women who are engaged to be married.  
4. **MY BOYS ARE GOOD BOYS** — Ralph Meeker, David Doyle, PG, action drama. A story of three teenage boys who successfully carry out their plan to break out of a maximum security institution and rob Meeker's truck.  
5. **THE FURTHER ADVENTURES OF THE WILDERNESS FAMILY PART II** — Robert Logan, Susan Shaw, G, action drama. Six months of life in the rugged Rockies has not dimmed the enthusiasm of the Wilderness family.  
6. **THE MAIN EVENT** — Barbra Streisand, Ryan O'Neal, PG, comedy drama. Barbra Streisand is head of a Beverly Hills perfume company that has succeeded because of her natural ability to sniff out winning scents.  
7. **OH GOD II** — George Burns, Louanne, PG, comedy. God in the person of George Burns comes to earth and appears to a little girl, Louanne, whose parents are separated.  
8. **SOME LIKE IT COOL** — Tony Curtis, Marisa

Berenson, R, comedy. The Caliph of Shiraz and the Calipha enter an unusual deal to finalize another deal on a rose oil contract.  
9. **WANDA NEVADA** — Brooke Shields, Peter Fonda, PG, drama. Wanda Nevada is the name of a 13-year-old orphan girl who joins forces with a gambler to go prospecting for gold in the Grand Canyon in 1950.  
10. **THE FIENDISH PLOT OF DR. FU MANCHU** — Peter Sellers, Helen Mirren, PG, comedy mystery. Villain Dr. Fu Manchu, Peter Sellers, has reached the ripe old age of 168 through the use of frequent doses of a youth elixir. He needs a new supply. In order to whip it up he needs a diamond that is under heavy guard. Fu Manchu decides to kidnap the King and Queen of England.  
11. **HOPSCOTCH** — Walter Matthau, Glenda Jackson, R, comedy. Walter Matthau is a renegade CIA agent in a battle of wits with his former colleagues. He enlists the aid of Glenda Jackson in escaping detection as he writes a book exposing their "dirty tricks" in the international spy ring.

If you don't know what you want, you'd better at least know where to find it.

You've got a lot to look forward to.

**BODY DYNAMICS FOR WOMEN**  
Fun, Music  
Total Body Workout  
Showers Sauna  
Sign Up Before Class  
800 MWF 8:15 AM  
TTh 7:30 PM  
KMCAS

Catch the New Wave  
A motorcycle on Water  
**ETBIKE**  
Rentals • Instruction  
For information & reservations  
CALL 845-3144

**SPECIAL MILITARY DISCOUNT \$25.00**  
PER HOUR PER BIKE  
(Reg. \$35.00)  
Locations:  
Kneeh Lagoon  
Kaneohe MCAS

In order to test the effectiveness of this advertising media, we are offering  
**\$200 REWARD**  
for finding and bringing in this ad. You will receive a \$200 savings on any Rainbow or Filter Queen Vacuum with attachments and power nozzles.  
—Hurry. Quantities Limited—  
**Pacific Surplus & Distributors**  
35 Kaneohe St., Kailua  
262-8131

**THE GREAT SAFE**  
THE GREAT SAFE WITH CASH AND PRIZES IS WAITING TO BE OPENED AT  
**PAR Auto Used Parts**  
LISTEN TO  
**Kita**  
FOR CLUES AND DETAILS NOW!

**Jewelry Repair . . .**  
G.I.A. educated jeweler on the premises — We do most repairs while you wait.  
• Heirloom Jewelry  
• Custom Jewelry • Hand Engraving  
• Diamond Setting • Appraisals  
**Pacific Gold**  
A personal jeweler in the old family style  
Phone 239-9427 for appointment.

**GOLD RUSH SALE!**  
Savings Now On Goodyear Quality & Value... IT'S AS GOOD AS GOLD!

**RADIAL SALE!**  
**\$47.20**  
TIEMPO RADIAL, 155/75R13 Blackwall, plus \$1.85 FEET NO TRADE NEEDED!  
P155/75R13 Fits Some Models Of:  
Datsun Fiat Honda Toyota Audi Triumph  
Offer Ends Saturday Night!

**TRUCK TIRE SAVINGS!**  
**\$52**  
TRUCKS, LT, 678-16 TL Blackwall, 11.6, plus \$3.19 FEET NO TRADE NEEDED!  
The strength of tempered, long wearing nylon cord plus the dependability of rugged bias ply construction  
Offer Ends Saturday Night!

**WHITEWALL SALE!**  
**\$30.95**  
POWER STEAK 70, 078-14 whitewall, plus \$1.81 FEET NO TRADE NEEDED!  
078-14 Fits Some Models Of:  
Century LeMans Aspen Regal Grand Prix Challenger Pacer Zephyr Monarch Comet Nova Gremlin  
Offer Ends Saturday Night!

**RADIAL SALE!**  
**\$50.45**  
TIEMPO RADIAL, 155/80R15 Blackwall, plus \$1.70 FEET NO TRADE NEEDED!  
P155/80R15 Fits Some Models Of:  
VW Beetle & Sedan  
Offer Ends Saturday Night!

**BIG CAR TIRE SAVINGS!**  
**\$54.95**  
CUSHION BELT POLYGLAS, 178-15 Blackwall, plus \$2.25 FEET NO TRADE NEEDED!  
178-15 Fits Some Models Of:  
Eldorado Corvette Wagon Continental Thunderbird Mercury Wagon Oldsmobile LTD Wagon  
Offer Ends Saturday Night!

**WHITEWALL SALE!**  
**\$34.50**  
POWER STEAK 70, 078-14 whitewall, plus \$2.25 FEET NO TRADE NEEDED!  
078-14 Fits Some Models Of:  
Impala Cordoba LeBaron Omega Toronado Chevy New York Ford Firebird Oldsmobile Delta 88  
Offer Ends Saturday Night!

**\$10.00 TRADE-IN!**  
**FREE INSTALLATION**  
As Low As **\$44.75**  
Trade in applies to all group sizes. Sample Buy \$55.00 225 top, plus \$10.00 Minus trade \$45.00  
**POWERGARD 40 BATTERY**  
Flash top seal battery eliminates periodic checking, protects against improper watering. Stays clean, service resists heat, vibration and overcharging.  
Ask for our free battery check.

**WHEEL SALE!**  
**WESTERN Tracker**  
Arctic Glaze™ finished, smart, crimson accent striping. No special valve stems needed. Lug nuts extra.  
Expert wheel service also available. Mounting, Balancing, Alignment.  
Sale Ends Saturday

**Automotive Stereo By KRACO**  
**SAVE \$10.00**  
Your Choice **\$69.95**  
In Under Dash AM/FM Radio W/8 Track Tape 229-20-1003  
In Under Dash AM/FM Radio W/Cassette 229-20-1004  
Save on rear deck speakers. 100.....\$29 pr.  
Sale Ends Saturday

**GOOD YEAR SERVICE STORES**  
Kaneohe Bay Shopping Center  
Store Hours: Mon.-Fri. 7 a.m. to 6:30 p.m. Sat. 7 a.m. to 5 p.m.  
Just Say 'Charge It'!  
Goodyear Revolving Charge Account  
Use any of these 5 other ways to buy: Our Own Customer Credit Plan • MasterCard • Visa • American Express Card • Carle Branch  
Manager: Jim Johnson  
Phone 247-6668

**the Mexican Gardens Restaurant**  
Kaneohe Shopping Center (Between Cornet and Times)  
Mexican Food & Margaritas  
The Best of Combinations  
Banquet Facilities Available  
Ph. 235-4141  
Monday thru Saturday 11 a.m.-10 p.m. Sunday 5-10 p.m.

.....Step into another world  
**WINDWARD OAHU'S FINEST KAMAANA RESTAURANT...**  
Offers Family Dining with full menu or buffet Specialty in Banquets and Receptions  
LUNCH 11:30 - 2:30  
DINNER FROM 5:30  
TUESDAYS THRU SUNDAYS (SORRY, CLOSED MONDAYS)  
RESERVATIONS — 247-6671  
46-336 HAIKU RD., KANEOHE

**Los Arcos**  
Featuring Gourmet Foods From Mexico City  
Dinner Supper \$6.75 & up  
• Snails • Steaks  
• Roast Beef • Chicken  
• Soups • Fish  
• Stuffed Mushrooms • Potatoes  
We have a good selection of Mexican, Mexican Food, Margaritas and Cocktails.  
Also join us for our Executive Lunches which are light and delicious. From \$3.95 and up.  
Lunch Mon.-Fri. 11:30 a.m.-2 p.m. Dinner Mon.-Sun. 5:30-10 p.m.  
19 Hoolai St. In Same Building As Hansen Gallery  
For Reservations 247-2537 262-8196

There's a gourmet delight every night at **Rob Roy's** in the center of Kailua  
**SHRIMP CURRY**  
Succulent shrimp served in a lively sauce that is seasoned and simmered to perfection. Topped with delicious condiments galore!  
With it comes soup or tossed salad, rice, roll and butter. A great dinner for only **\$6.50**  
**Rob Roy's**  
26 Hoolai Street In the center of Kailua Phone 262-6992







# When you place a Classified ad, results are just a phone call away!

TO PLACE YOUR AD—Dial 235-5881 Classified Advertising Department



**• 35 PROFESSIONAL SERVICES**

GENERAL roofing, pitch & gravel & shingle, reasonable rates, free est. Call 235-4871 after 5 p.m.

HOAKALEI Kamaau Announces Mula classes traditional and modern. Nuuanu and Kaimuki for men, women and children. Registration now open. Classes begin Feb. 3, 1981. For more information call 533-1492

**"Busybodies"**  
—LET US DO IT—

Sharpen knives, water plants, feed dogs, tutor, painting, wash windows, shopping, visit elderly, parties, etc. etc.

537-4868, 261-9832

**AESTHETIC TYPING**  
SHANTI SERVICE  
CALL 261-8072

WE are #1! Because we offer quality cleaning by reliable people. We do painting also. Call today for your free est. and see our low rates. 262-7316

**KENDALL & SONS**  
HOME - APT. - YARD CLEANING

- 25 yrs. mainland exp.
- Total yard care by U of H certified horticulturist
- Excl. local rates
- FREE estimates

PH. 734-2915  
595-2218

CAT got your tongue? We deliver messages, your words or ours. Call Wordsmiths, Inc. 261-4588

WORD Smiths, Inc. Creative Services for the busy executives who need an administrative assistant - sometimes. 261-4588

RELIABLE, Efficient Quality cleaning. Windward area. Call eves. Joyce 239-9470 or 239-9111

**DIVORCE**  
with attorney  
90 583-4533  
A Public Service Center

"WIKI wiki clean-up" quality house cleaning for gen. or major work. Kaneohe/Kailua only. 247-5719

Cleaning Services. Residential, Commercial. Ph. 521-2331

"MAINTENANCE Experience" Yard Service Cleaning. Call J.B. at 261-1496

GAB Baquero Carpentry & Painting Service. C-8144 Call 689-0843

**• 35 PROFESSIONAL SERVICES**

KAILUA MASONRY Additions, slabs, tile walls, pools, patios, driveways. Free Estimates very reasonable. Call 261-3584

FRED Domingo Yard, etc. lot clearing & hauling services. 422-7426

DESIGNER custom-made, all types of garments and alterations. Ph. 262-4949.

CABINETS & Counters falling apart - need shelves or custom work? Free Estimates 395-8336 Creative Woodwork & Design

OFFICE, apt. & house. No work too big or too small. Cleanliness is a pleasure. 235-0627

FURNITURE REFINISHING Antique restoration repairs. Free Estimate. Pick up & delivery. Ph. 261-7078

REUPHOLSTERY Special. Inventory clearance on fabrics. 1/2 OFF. John's Furniture & Upholstery. 247-1732 or 841-8563

**Your ad could be here.**  
Call Classified 235-5881

PAINTING, interior, exterior, 17 yrs. exp. meticulous work. 261-0085

ATTY Joe Tanaga, simple wills from \$100. Trust & Real Estate Investment Counseling. Call 487-8068

YARD Service: Retiree. Call 262-7588

DEPENDABLE yard care & hauling, a little or a lot! Free Estimate 235-4206

I will clean your quarters for you when you move, for a low rate, guaranteed inspection. 624-4226

SEAMSTRESS Reasonable Prices. Call 499-1585 after 1 P.M.

MONIZ Enterprises, kitchen cabinets, counter tops, furniture, carpentry, free estimates. 235-5362

TAX Preparer. Your home or office, 1156 Koko Head Ave., Hon., HI. Call 737-1022. 373-9476 eves.

PARKER books: Used paperback, new & collectibles comic. We buy, sell & trade. 909 A Lohua St., Pearl City. Store Hours: 10-6 p.m. daily 458-4996.

ASTROLOGICAL Services Insights & reflections. Call Elliot 261-8427

ESTATE, garage, moving sale done by a professional. No job too small. Licensed. Call Jonelle 247-5469

**• 45 SCHOOLS & TRAINING**

PIANO Lessons. Classical, Popular, or Chord Method. Ph. 235-4432

**Hawaii Math Institute**  
Academy & Learning Clinic  
By Appt. 261-8106

PIANO lessons. Hickam area. Has degree, specializing in classical music. Call Toshiko 422-2823

HONOLULU Music Institute: Group and private instruction in Guitar/Piano/Organ/Woodwinds. 2 locations: Honolulu and Kailua 536-6161

BEGINNING Piano or Flute lessons. Individual instruction. Ph. 247-2485

**PUKAIKAPUAKALANI Hula Studio**  
Classes of all ages. Registration now open. Ellen Castillo, instructor. Ph. 261-9514 or 259-5806

PRIVATE or group lessons in NEEDLEPOINT, CREWEL EMBROIDERY, KNITTING & CROCHET. Reasonable rates. Call 254-5145

**• 50 BUSINESS OPPORTUNITIES**

HELP your income with pleasant part time work. Training provided. Call 488-9797 between 9 & 3 p.m. Mon. to Fri. for interview. Ask for Pat

BE YOUR own boss. Full time or part-time. Local Shaklee distributor trains you for a unique opportunity. For appointment call Bob Briggs at 262-8298 or 261-1670

**"HOUSEWIVES!" NEED A JOB?**  
NEAL BLAISDELL CTR. ASSEMBLY ROOM  
777 WARD AVE. HON., HI.  
TIME: 7:30 P.M.  
JAN. 27  
FEB. 3, 17  
MAR. 3, 17, 31  
APRIL 7, 14, 28  
MAY 5, 12, 26

**• 60 HELP WANTED MALE & FEMALE**

BASKIN Robbins Pearlridge, cake decorators, part time. Ph. 262-2082

**Jewelry Importer REQUIRES SHIPPING SUPERVISOR TRAINEE**  
Typing & 10 key exp. desired. Military Welcome. Call 262-4828

**• 60 HELP WANTED MALE & FEMALE**

**Pressroom HELPERS**  
Sun Press has immediate openings for pressroom helpers. Duties include logging and stacking papers, helping with press make reads and cleaning pressroom. Apply in person. Benefits include medical, dental, profit sharing. Ask for Dennis Heupel.

**SUN PRESS**  
48-018 Alaloa St., Kaneohe  
Ph. 235-5881

**• 60 HELP WANTED MALE & FEMALE**

ARTEX Decorator Paints, accepting orders. Party Plan. Call 833-4146

LOST your Tri-Chem liquid Embroidery instructor? FREE services, classes: NEW '81 Spring Catalog. 235-3074, 624-4489, 422-9508, 264-4834 or 499-1513 F/part time career opportunities. No Exp. Nec.

**Part-Time SECURITY GUARD**  
Hawaii Loa College  
Call 235-3641  
Ext. 115  
for appointment  
An equal opportunity affirmative action employer

EXPERIENCE or non-exp. kitchen helper & part time party waitress. Apply in person, 130 Mango St., Wahiawa.

NEEDLECRAFT Demonstrators needed. Island wide. \$10 to \$12 hr. 499-2451

**Temporary Office Jobs**  
Just A Phone Call Away  
536-3456  
EMPLOYERS OVERLOAD

NEEDED volunteers to work part time in Republican Senators office Jan. - April. Call 548-3887

KAILUA Children Center needs experienced preschool teachers. 261-9666

EXPERIENCED Cashier. Apply in person. Country Liquors, Waiapahu. No phone calls please.

ARE you looking for work on Windward side? PRODUCTION WORKERS Manufacturing Co. In Kaneohe has immediate openings for full time or part time workers. Must be dependable, will train. Apply: Mon-Fri. 9-3 p.m. Coco Jones Products 45-552D Kam Hwy, Kaneohe.

CHURCH nursery needs sitters on Sunday mornings. Minimum wage. 262-8587

HELP WANTED: To prepare evening meals for small family. Call 262-4334

**EARN EXTRA MONEY**  
Military & Local Veterans  
Part Time 2:30-5 p.m.  
Nation's largest discount shopping service needs sales & delivery personnel. Distributors of home appliances, electronics, etc. We buy, sell & trade. 909 A Lohua St., Pearl City. Store Hours: 10-6 p.m. daily 458-4996.

**HELP WANTED: To prepare evening meals for small family. Call 262-4334**

**HELP WANTED: To prepare evening meals for small family. Call 262-4334**

**HELP WANTED: To prepare evening meals for small family. Call 262-4334**

**HELP WANTED: To prepare evening meals for small family. Call 262-4334**

**• 60 HELP WANTED MALE & FEMALE**

WILL share Beauty Salon station \$180 mo. Alberta, 622-2084

HELP wanted. Mature dependable person to do part time service work in Kailua, Kaneohe Area. Approximately 20 hrs. per week. Call Mr. Cockett after 5 p.m. at 524-7709

CHAIRSIDE assistant for Kaneohe Dental office. Exp. preferred but will train. Call 235-0018

4 FASHION Consultants needed. Full or part time. Free wardrobe. Commission basis. Car necessary. 623-9727 or 637-6337

WANTED NOW!!! Nurses Aids \$3.60 P.T. Vet Receptionist \$3.10 Cashier eves. \$3.50 Security Guard st. \$3.50 Checking out clerk \$600 Sales Clerk to \$3.35 Maintenance to \$8 Counter Persons at \$3.10 Grill Person at \$3.10 Factory/Driver \$3.35 Dental Asst. \$\$\$ Cashier/stock \$3.35 KOKUA EMPLOYMENT Apply at 767 Kailua Rd. Kailua - free parking

NEED extra income? Earn it in your spare time. Call 488-5667 for Appt.

JANITOR to work nights in Aina Haina Laundromat. 737-7884

MASSAGE Therapists licensed, pro. exp. to work ladies health spa. 261-9613.

GOOD driver for part-time light messenger/delivery work. Must have own car, live on Windward side. Hourly wage plus mil. allowance. Call Susan 254-3324

SPROUTS DELIVERY ROUTES. Top commission. Ph. 235-4410

**• 62 DOMESTIC HELP WANTED**

KAILUA: Babysitter needed, 2 or 3 days per week for 5 mos. boy. 261-3428

6 MO. baby boy needs loving sitters M-F from 6:30-4:30. 261-2812 eves.

MATURE 15 yr. old or older, occasional babysitter for 3 yrs & infant in my home. 839-6349

AFTER school care - Lanikai. Need after school care 2 to 4 hrs. 5 days a week. Contact William 833-5864 or 262-0778 eves.

**• 63 SITUATIONS WANTED**

QUALITY child care in my Kailua home. PATCH member Call Sherry, 261-4088

EXPERIENCED babysitter, fenced-in yard, Pearl Harbor area. 422-4460

QUALITY child care in my Kailua home. Patch member Call Sherry, 261-4088

**• 63 SITUATIONS WANTED**

WILL babysit in my home. Kaneohe area. Mon to Fri. Call 239-7649

ROCK group formed. Need musicians over 18 & P.A. systems, possible work 847-7127, 845-4747

LICENSED babysitter - Pearl Harbor area. Call 422-8302

WANTED: Mature responsible woman to care for two children age 10, some housecleaning, excellent pay, must have own transportation and references. Call 623-5241 after 7 P.M.

EXPER. care for Senior citizens. 4-6 hrs. per day. Kailua, or Enchanted Lake only. Call 261-3190

WILL Babysit my home, M-F, daytime only. References Ph. 235-2062

WILL babysit infant for working mother, in my home near Kokohahi YWCA. References available. Ph. 235-4290

WOMAN desires work in Kailua - Kaneohe area. 20 yrs. exp. A/P, A/R, pyrl, book, some taxes. Avail. anytime. Your o/c. or my home. 254-4223

WILL babysit in my home, 1 yr. & up, extra TLC. Call 624-3877

I will babysit in my home, Mon-Fri. Ph. 239-6382

**• 68 GARAGE & LANAI SALES**

GARAGE Sale Sat. & Sun. Jan. 24 & 25, 9:30 to 3:30. No pre-sales. 340 Lapa Pl. Kailua (Lanikai)

CHEST of drawers, couches, chairs, quilt cases & misc. 1/24 & 25, 115 Ulupohi Ln, Kailua.

BARGAINS for everyone. 3 Family Garage Sale. Portable stereo, dishes, Guardian Service pots, am. appliance, shopping cart, stroller & misc. items. Sat. 1/24, 9:30-4 p.m. 515 Ulukou St., Olomana

FURNITURE: bric-a-brac, odds & ends. Moving. 353 Weneao Rd., Kailua

SAT. overstuffed chair, ottoman; clothes; books; light fixtures, king size spread, drapes, bowling ball, Brown & Jordan frames; 4 lounge chairs; many household items. Ph. 262-8922, 1288 Aloha Oe Dr.

GARAGE Sale: 556 Pauku St., Kailua. Sat. from 8 to 12 noon

MOVING: Sears Lady Kenmore dryer - like new \$125; oak chest \$60; men's Schwinn bike \$55; boys' MongOOSE \$90; overstuffed chair \$100. 373-8007 afternoon

**• 68 GARAGE & LANAI SALES**

CLOTHES: small appliances: dryer, misc. items. 1/24 & 25 from 8 to 5. 468 Kaha St., Kailua

MOVING - color TV: queen bedspread: hide-a-bed: misc. furn. items. 1/22-1/24, 8 AM-5 PM 235-6586

KAILUA - Furniture misc. items, house plants, Sat. 1/24, 1598 Ulupii

BUFFETS: chairs; tables; dining, coffee & end; dressers; servers; wrought iron love seat & more. 45-124 Kahanahou Cr. Kaneohe

GARAGE Sale: Sat. 1/24, many good items. 206 Kailua Rd.

SAT. 9-5 p.m. 722 C Malunui Ave., Kailua: Clothing & kitchen, etc.

GARAGE Sale, Misc. Sat. 9 to 3 P.M. 1086 Loho St., Kailua

FURN. stereo, art, etc. Sat. 444 Lunailo Home Rd. Apt. #405, 395-7898

LOTS of "Stuff" 883 No. Kalaheo Ave., Fri. & Sat. 8 to 4 p.m.

MOSTLY furn., some misc. Sat. 9-4, 418 Kawaiulani St., Kailua. 261-7654

**• 73 APTS. FURNISHED**

KAILUA: Garden studio for one non-smoker. Lanai, private entrance, parking. \$300 utils. Incl. 262-8344

LANIKAI: \$350 incl. utils. close to beach & bus. Singles only. 262-5528

PACIFIC HEIGHTS: 1 bdrm duplex from 1/30 to 4/30. View, yard, no pets/kids. \$400 mo. plus dep. Call 537-1587 eves.

KAILUA: clean 1 bdrm. apt., no pets, no children. \$300 mo. 247-0290 eves.

**• 74 APTS. UNFURNISHED**

1300 SQ. FT. Exec. 2 bdrm., 2 bath. Prestige location, exceptional view, security, heated pool, amenities. Mr. Nelson. Realty Pacific at 521-1866

SAT. overstuffed chair, ottoman; clothes; books; light fixtures, king size spread, drapes, bowling ball, Brown & Jordan frames; 4 lounge chairs; many household items. Ph. 262-8922, 1288 Aloha Oe Dr.

GARAGE Sale: 556 Pauku St., Kailua. Sat. from 8 to 12 noon

MOVING: Sears Lady Kenmore dryer - like new \$125; oak chest \$60; men's Schwinn bike \$55; boys' MongOOSE \$90; overstuffed chair \$100. 373-8007 afternoon

**• 78 RENTALS TO SHARE**

WAIAPAHU: 2 bdrm. house to share \$150 plus utilities. Call 671-2285

LANIKAI, large unfurnished room, 3 bdrm. house, to share with 2 others \$225 plus 1/3 of utils. 261-3588

KAILUA: Share beautiful, quiet home, pool \$275 including utils. 261-9656

FEMALE to share house w/same \$250 plus utilities/ deposit. Call 261-8179

KANEKOE: male to share w/same, own room, private bath \$175. 235-8483

KANEKOE: 2 handy persons, gardener & maintenance. Share home reasonable rent & utils 235-1173 a.m.

KAILUA: Female to share spacious house w/same, own bdrm \$180 mo. + utilities. Call 261-8170

KAILUA: Beach House \$225. Mature, caring, Grace 261-1901 eves.

FEMALE share w/same. 2 bdrm, completely furnished, private bdrm w/bath, washer/dryer, TV room, microwave, lanai, pool, parking stall, near KMCAS, busline, shopping center. \$300 + Utils. 254-2073

SINGLE mother share w/same or single \$235 mo. + utils. 262-8537 Kailua

ROOMMATE to share house w/pool, cable TV, utils, ph. incl. \$205 mo. Call Jacques 235-6148, early a.m.

ALEWA: Spacious, charming duplex, tropical setting, no child/pets, view, quiet. \$450 595-4516

**• 82 HOUSES UNFURN.**

WAIAPAHU Estate: 5 bdrm., 2 bath, carpeted living rm., dining rm., 2 car garage, stove, microwave, no pets. Avail. Feb. 1. Call 455-4002 or 458-2255

4 BDRMS, multiple dwelling house w/view of Kailua Bay \$850, 262-5528

HAIKU Village: 3 bdrm., 3 bath, yard work incl. \$700 mo. 239-6066 eves.

**• 75 APTS. PARTLY FURN.**

KAILUA: 2 bdrm. duplex, near shopping & bus line \$400. Call 262-6462

DUPLEX for rent, 3 bdrm. 1 1/2 bath \$600. Utils. incl. deposit req. avail. now. 261-5116

KAILUA: Studio, comfortable, breezy, near busline, water \$275. 262-6462

SALT LAKE: "5 Regents," 1 bdrm., Amenities galore, 25th floor, view, utils. incl. \$395. Call 623-3663

**• 83 HOUSES PARTLY FURNISHED**

KAILUA: 3 bdrm., 1 & 2-1/2 baths lge. covered patio \$600 mo. Call 261-0574

KAILUA: 3 bdrm., 3 bath, all appliances, yd. wk. \$650/mo. Lease, Ann Jefferies, Inc. 261-9747

SALT LAKE: 4 bdrms, 1st floor duplex house. \$500. Call 422-9863 eves.

KANEKOE: Alii Shores, exec. 3 bdrm., 2 bath, air, lanai & BBQ, privacy \$750. Call 533-3156

KANEKOE: Unsurpassed view overlooking Old Haw'n. Fish Pond. 2 bdrm., 1 bath, lg. liv. rm., pool, 2 car covered parking, all utils. adults only. Refs. \$650 per mo \$500 dep. 247-1141

KAILUA: Lovely 3 bdrm. family rm., lanai, lge. yd., near bus & school. \$625. Call 262-0769

KANEKOE - Club View lge. 4 bdrm., 3 bath w/family dining, rumorm room, den, sundeck, single family only \$725. 487-1375 eves.

**• 84 HOUSE SITTING**

EXPERIENCED, reliable, retired couple. Available Apr.-June. Refs. Call 423-2132 after 5 p.m.

**• 85 TOWNHOUSES PARTLY FURNISHED**

KAAAWA 2 bdrm., sleeping loft, pool, tennis. \$475 mo. 237-8175

VERY Clean 3 bdrm., 2 1/2 bath, townhouse highly upgraded, \$825 per mo. Ph. 235-5209 or 521-8308

"WINDWARD Cove," 3 bdrm., 2 bath, carpets, drapes, microwave, ceiling fans, beam ceilings, solar security & many amenities \$650. Call 262-7443

KANEKOE: 3 bdrms., 2 bath, view, amenities, children OK \$500, 261-6141

WAILUA Beach, 2 bdrm., 1 bath, lanai, view \$400, 235-0876

## OFFICER AND ENLISTED ENGINEERS

Positions available nation-wide with major util. AE's, construction, consulting groups & expt. mfrs.

**ENGINEERING WATER SUPERVISOR**  
**HEALTH PHYSICS**  
**DESIGN**  
**QUALITY ASSURANCE**  
**START UP/OPERATIONS**  
**ELECTRONIC TECHS**  
**MAINTENANCE**  
**TRANSMISSION DISTRIBUTION**  
**PLANNING**  
**ENGINE ROOM SUPERVISOR**  
**MACHINISTS MATES**

All expenses & fees are paid by client companies.

**CALL DAVE CORMIER**  
**536-2338**

or send resume to: Robert T. Guard & Assoc.  
820 Milliani St., Ste. 714  
Hon., HI 96813

## WANTED! Newspaper Area Manager Full Time Position

Opening in Kaimuki-Kahala area. Work with children. Must have van, truck or station wagon. Salary commensurate with experience. Gas Allowance and Bonus. Profit Sharing, Medical, Dental & Disability Insurance.

Call Pat Meador, 235-5881

## ANSWERS TO JAN. 14 CROSSWORD IN THE SUN PRESS NEWSPAPERS

America's Greatest Puzzle...  
Every Week From The New York Times

## WASHINGTON, D.C.

Housing Info Center  
FEB. 5-10th Opens HERE  
11 am - 7pm  
AIRPORT HOLIDAY INN  
3401 Nimitz Highway  
836-0861

Hosted by professional representatives of one of the nation's largest real estate services representing the Washington metro area with 20 offices and 600 associates. On the spot qualifying. 1-1 questions answered, new facts about financing, color photos of homes currently available, school information and more.

MOUNT VERNON REALTY  
Fifth Annual Fall

May & Elmer Caldwell

Appointments recommended, but not required.

6090 Stevenson Ave., Alexandria, Va. 22304



• 85 TOWNHOUSES PARTLY FURNISHED

KANEHOE: End unit, 2 bdrm., 1 1/2 bath, excl. cond., 2 car garage, view, pool, close to bus & shopping \$550. Call 261-2258, 262-0988

KAILUA: Windward Cove, new luxury condo, 3 bdrm., 2 bath, tennis, pool, security lovely view. \$700. 422-2647, 422-2443

KAILUA: Windward Cove, 3 bdrm., 2 bath, kids okay, new unit \$850. Terri Strahl 254-1418, Ann Jeffries, Inc. 261-9747

KANEHOE: Clubview Gardens, 3 bdrm., 2 1/2 bath \$580/month. Roy 235-3971

AIEA: 3 bdrm., 1 1/2 bath town home above Pearlridge, overlooks golf course w/fantastic view, Pearl Harbor & ocean. Upgraded carpeting & all appliances included. High assumable VA mortgage at 10%. Make this unit even more desirable \$109,500 leasehold. Sun. Open house 2-5 p.m. 98-831D Kaonohi St., Ridgeway E-1. Shown by owner, 487-5903 M. Lockridge, Inc. (R) 262-5403.

• 86 TOWNHOUSES FURN.

KAILUA: "Windward Cove," 3 bdrm., 2 baths, executive luxury, many amenities \$975. Real Estate One, 261-2612; Ellen 261-6222

• 88 ROOMS FOR RENT

KANEHOE: mature, dependable, pet sitting duties. \$150 negotiable. 247-5007

SEEK responsible male or female to share 3 bdrm., 2 bath condo, near Pearlridge, pool, washer/dryer, unfurn. \$200 mo. + 1/3 util. 488-2264 after 6 p.m.

KAILUA: Prefer working person. Call 262-5634

KAILUA: furnished, use of pool & hot tub \$250 per mo. 521-4594, 254-1181

FEMALE to share w/same, on beach \$180 utilities included. 261-7879

KAILUA: Near bus, beach, town \$225 plus utilities. Singles. 261-0055

EWA Beach \$120 a month including utilities. Call after 7 p.m. 889-5315

KANEHOE: Small private rm., share bath, use of rest of house, pool, single adult. Refs \$200, \$50 dep. 247-1141

BDRM. Fully furn. \$175 + \$50. Dep. Util. Incl. Phone Vel 235-5213

KANEHOE: \$175 month, includes utilities. 235-0916 eves.

LARGE room in quiet vegetarian home, private entrance and bath \$250 monthly. Ph. 247-3859

KAILUA: new studio type w/private bath & entrance non-smoker only. 262-0871

WANTED: Working couple or single for furn., 2 rooms private bath, avail in Kailua on busline, also parking for auto, refs & \$100 dep. required. 254-1290

• 83 VACATION RENTALS

KAILUA: 1 bdrm., apt., sleeps 4, amenities. Daily/wkly/mo. 235-1481

MOLOKAI-Wave Crest sleeps 4, beach, pool, \$20 per day \$170 per week. 262-0988

LAIE beachfront, 3 bdrms., 2 bath home, furn., calm, private \$400 wk., refs., dep. 262-9285

• 93 VACATION RENTALS

KANEHOE Bay "Yacht Club Terrace," view, sundeck 2/15-3/30 \$200 wk. 235-0414

MAKAHA Valley Towers, 1 bdrm., furn. apt., weekly \$200 monthly \$650. Call 373-2744 eves.

VACATION Rental, Kaa-awa. Magnificent view 2 bdrm., 1 1/2 bath plus loft. Swimming pool, volleyball \$250 per wk. Cathy Lyman 261-4332

• 86 RENTALS WANTED

MALE Ph.D UH student/cottage. Lanikai or other desirable area. Ted 261-9890

RESPONSIBLE non-smoker w/2 children would like to rent 2 or 3 bdrm. house or apt. on Windward side. Under \$350. Please call 235-5881 9-5, ask for Robin

WANTED: Kuliakila Townhouse to rent 3 or 4 bdrms., preferably on water, but not necessary. Ph. 261-3584 or 235-5881 ask for Ingrid

4 ADULTS looking for a 2 or 3 bdrm. house from Mar. 5 to Apr. 2. Kailua/Kanehoe area. 254-2236

• 114 REAL ESTATE FOR SALE

KAILUA: 2 story, 2400 sq. ft., 5 bdrms., pool, \$158,000. Call 261-1111.

AIEA - Pearlridge: 1 bdrm. apt., new carpet & drapes, A/S, very low interest, very good for investment. 458-2258

WINDWARD Passage #1406 Large one bedroom, one bath with carpet, drapes all appliances, parking. Building has super amenities \$97,000 Lease mis 45836. Good terms on A/S Harbor Realty 941-9988

FAIRWAY Village, 3 bdrm., 2 1/2 bath town home, enclosed garage 9 1/2 VA assumption. To qualified Vet. \$138,900 fee, shown by owner. Call 623-8230, M. Lockridge, Inc. 262-5403

MUST sell Yacht Club Knolls, 44-307-7 Oline St. Reduced to \$110,000, 3 bdrm., plus alcove, 2 bath, possible VA mis #44490. Maria Miller (RA) Call 254-1181. Lei State Realty 521-4594

KAILUA: A-1 beauty, old charm, 3 bdrm., 1 bath, 5,800 sq. ft., new paint in/out, new carpet, tile bath/kit. Fee No A/S \$119,000 By Owner. Courtesy to agents. 941-3112

FOR SALE or lease, 3 bdrm., 2 bath condo, Haiku Hale, immediate occupancy. Tim Slavish (R) Tom Pico, Inc. Call 261-8359

WAIKIKI Kon-Tiki Studio, assume 10% A/S, furn. \$58,000 principle only 872-3922.

CAN you believe it, Ige. 4 bdrm. home, 20' inboard, outboard boat & station wagon \$97,900. No realtors! Owner selling, call 889-7873 between 9-7:30 p.m.

WATERFRONT Open House: 1/25, 1-5 p.m. 1058 Ipo Lp., Kailua. Beautiful 4 bdrm., 2 bath, 3000 sq. ft. jacuzzi, boat dock \$194,000. By owner 261-7021

WATERFRONT Open House: 1/25, 1-5 p.m. 1058 Ipo Lp., Kailua. Beautiful 4 bdrm., 2 bath, 3000 sq. ft. jacuzzi, boat dock \$194,000. By owner 261-7021

WATERFRONT Open House: 1/25, 1-5 p.m. 1058 Ipo Lp., Kailua. Beautiful 4 bdrm., 2 bath, 3000 sq. ft. jacuzzi, boat dock \$194,000. By owner 261-7021

WATERFRONT Open House: 1/25, 1-5 p.m. 1058 Ipo Lp., Kailua. Beautiful 4 bdrm., 2 bath, 3000 sq. ft. jacuzzi, boat dock \$194,000. By owner 261-7021

WATERFRONT Open House: 1/25, 1-5 p.m. 1058 Ipo Lp., Kailua. Beautiful 4 bdrm., 2 bath, 3000 sq. ft. jacuzzi, boat dock \$194,000. By owner 261-7021

WATERFRONT Open House: 1/25, 1-5 p.m. 1058 Ipo Lp., Kailua. Beautiful 4 bdrm., 2 bath, 3000 sq. ft. jacuzzi, boat dock \$194,000. By owner 261-7021

WATERFRONT Open House: 1/25, 1-5 p.m. 1058 Ipo Lp., Kailua. Beautiful 4 bdrm., 2 bath, 3000 sq. ft. jacuzzi, boat dock \$194,000. By owner 261-7021

WATERFRONT Open House: 1/25, 1-5 p.m. 1058 Ipo Lp., Kailua. Beautiful 4 bdrm., 2 bath, 3000 sq. ft. jacuzzi, boat dock \$194,000. By owner 261-7021

WATERFRONT Open House: 1/25, 1-5 p.m. 1058 Ipo Lp., Kailua. Beautiful 4 bdrm., 2 bath, 3000 sq. ft. jacuzzi, boat dock \$194,000. By owner 261-7021

WATERFRONT Open House: 1/25, 1-5 p.m. 1058 Ipo Lp., Kailua. Beautiful 4 bdrm., 2 bath, 3000 sq. ft. jacuzzi, boat dock \$194,000. By owner 261-7021

WATERFRONT Open House: 1/25, 1-5 p.m. 1058 Ipo Lp., Kailua. Beautiful 4 bdrm., 2 bath, 3000 sq. ft. jacuzzi, boat dock \$194,000. By owner 261-7021

WATERFRONT Open House: 1/25, 1-5 p.m. 1058 Ipo Lp., Kailua. Beautiful 4 bdrm., 2 bath, 3000 sq. ft. jacuzzi, boat dock \$194,000. By owner 261-7021

• 114 REAL ESTATE FOR SALE

PARADISE Found! Lovely 2 bdrm. split level unit in luxurious Kanehoe Bay, waterfront complex. Amenities include private boat ramp. Easy to show & only \$138,000. Karen Hamoon (RA) 262-0082 Sam Daily Realty 235-8866

SUNSET & BARBECUE Open house 2-5 p.m., 87-149-5 Heleluia St., Nana-kuli. Enjoy the spacious yard of this 3 bdrm., 1 bath town house. Excl. for quality family time. Only 1 block to beach. Open house, Sun. 1/18/81. \$71,500 MLS 47192, leasehold. ALAN PYLE (RA) Home ph. 941-3571

COUNTRY LIVING Over 1/4 acre Fee Simple Land. 6 yr. old. View of ocean & mt. Super cond., 5 bdrm. 3 bath home. \$185,000. TMK 1-4-7-5-0-83. David Chase (RA) 262-8006, Sam Daily Realty, Inc. 235-8866

VIEWING IMMAC. Diamond thru the rattling trees off the raised lanai. Assumption, VA, FHA, \$108,000 Lease 3 bdrm., 1-1/2 bath townhouse Makakilo Hale II By appointment. Tom Wilson (RA) 677-8889 Office 671-4511 Mike McCormack Realtors

LOVE AT FIRST SIGHT! As you walk into this freshly painted home, you are drawn immediately to the unique handcrafted country kitchen, cooled by the brass ceiling fan. This 4 bdrm., 2 bath home has been completely remodeled with a style to satisfy the most discriminating buyer. It also features a 429 sq. ft. lanai overlooking a free form pool. \$159,000 LEASE. TMK #1-4-2-56-54. David Chase (R) 262-8006 Sam Daily Realty, Inc. 235-8866

HULA Mae assumption 4 bdrm., 1-1/2 bath, beautifully upgraded townhouse, Ewa Beach \$89,900, 689-8730

WATERFRONT Open House: 1/25, 1-5 p.m. 1058 Ipo Lp., Kailua. Beautiful 4 bdrm., 2 bath, 3000 sq. ft. jacuzzi, boat dock \$194,000. By owner 261-7021

WATERFRONT Open House: 1/25, 1-5 p.m. 1058 Ipo Lp., Kailua. Beautiful 4 bdrm., 2 bath, 3000 sq. ft. jacuzzi, boat dock \$194,000. By owner 261-7021

WATERFRONT Open House: 1/25, 1-5 p.m. 1058 Ipo Lp., Kailua. Beautiful 4 bdrm., 2 bath, 3000 sq. ft. jacuzzi, boat dock \$194,000. By owner 261-7021

WATERFRONT Open House: 1/25, 1-5 p.m. 1058 Ipo Lp., Kailua. Beautiful 4 bdrm., 2 bath, 3000 sq. ft. jacuzzi, boat dock \$194,000. By owner 261-7021

WATERFRONT Open House: 1/25, 1-5 p.m. 1058 Ipo Lp., Kailua. Beautiful 4 bdrm., 2 bath, 3000 sq. ft. jacuzzi, boat dock \$194,000. By owner 261-7021

WATERFRONT Open House: 1/25, 1-5 p.m. 1058 Ipo Lp., Kailua. Beautiful 4 bdrm., 2 bath, 3000 sq. ft. jacuzzi, boat dock \$194,000. By owner 261-7021

WATERFRONT Open House: 1/25, 1-5 p.m. 1058 Ipo Lp., Kailua. Beautiful 4 bdrm., 2 bath, 3000 sq. ft. jacuzzi, boat dock \$194,000. By owner 261-7021

WATERFRONT Open House: 1/25, 1-5 p.m. 1058 Ipo Lp., Kailua. Beautiful 4 bdrm., 2 bath, 3000 sq. ft. jacuzzi, boat dock \$194,000. By owner 261-7021

WATERFRONT Open House: 1/25, 1-5 p.m. 1058 Ipo Lp., Kailua. Beautiful 4 bdrm., 2 bath, 3000 sq. ft. jacuzzi, boat dock \$194,000. By owner 261-7021

WATERFRONT Open House: 1/25, 1-5 p.m. 1058 Ipo Lp., Kailua. Beautiful 4 bdrm., 2 bath, 3000 sq. ft. jacuzzi, boat dock \$194,000. By owner 261-7021

WATERFRONT Open House: 1/25, 1-5 p.m. 1058 Ipo Lp., Kailua. Beautiful 4 bdrm., 2 bath, 3000 sq. ft. jacuzzi, boat dock \$194,000. By owner 261-7021

WATERFRONT Open House: 1/25, 1-5 p.m. 1058 Ipo Lp., Kailua. Beautiful 4 bdrm., 2 bath, 3000 sq. ft. jacuzzi, boat dock \$194,000. By owner 261-7021

WATERFRONT Open House: 1/25, 1-5 p.m. 1058 Ipo Lp., Kailua. Beautiful 4 bdrm., 2 bath, 3000 sq. ft. jacuzzi, boat dock \$194,000. By owner 261-7021

WATERFRONT Open House: 1/25, 1-5 p.m. 1058 Ipo Lp., Kailua. Beautiful 4 bdrm., 2 bath, 3000 sq. ft. jacuzzi, boat dock \$194,000. By owner 261-7021

WATERFRONT Open House: 1/25, 1-5 p.m. 1058 Ipo Lp., Kailua. Beautiful 4 bdrm., 2 bath, 3000 sq. ft. jacuzzi, boat dock \$194,000. By owner 261-7021

WATERFRONT Open House: 1/25, 1-5 p.m. 1058 Ipo Lp., Kailua. Beautiful 4 bdrm., 2 bath, 3000 sq. ft. jacuzzi, boat dock \$194,000. By owner 261-7021

WATERFRONT Open House: 1/25, 1-5 p.m. 1058 Ipo Lp., Kailua. Beautiful 4 bdrm., 2 bath, 3000 sq. ft. jacuzzi, boat dock \$194,000. By owner 261-7021

WATERFRONT Open House: 1/25, 1-5 p.m. 1058 Ipo Lp., Kailua. Beautiful 4 bdrm., 2 bath, 3000 sq. ft. jacuzzi, boat dock \$194,000. By owner 261-7021

WATERFRONT Open House: 1/25, 1-5 p.m. 1058 Ipo Lp., Kailua. Beautiful 4 bdrm., 2 bath, 3000 sq. ft. jacuzzi, boat dock \$194,000. By owner 261-7021

WATERFRONT Open House: 1/25, 1-5 p.m. 1058 Ipo Lp., Kailua. Beautiful 4 bdrm., 2 bath, 3000 sq. ft. jacuzzi, boat dock \$194,000. By owner 261-7021

WATERFRONT Open House: 1/25, 1-5 p.m. 1058 Ipo Lp., Kailua. Beautiful 4 bdrm., 2 bath, 3000 sq. ft. jacuzzi, boat dock \$194,000. By owner 261-7021

WATERFRONT Open House: 1/25, 1-5 p.m. 1058 Ipo Lp., Kailua. Beautiful 4 bdrm., 2 bath, 3000 sq. ft. jacuzzi, boat dock \$194,000. By owner 261-7021

WATERFRONT Open House: 1/25, 1-5 p.m. 1058 Ipo Lp., Kailua. Beautiful 4 bdrm., 2 bath, 3000 sq. ft. jacuzzi, boat dock \$194,000. By owner 261-7021

WATERFRONT Open House: 1/25, 1-5 p.m. 1058 Ipo Lp., Kailua. Beautiful 4 bdrm., 2 bath, 3000 sq. ft. jacuzzi, boat dock \$194,000. By owner 261-7021

WATERFRONT Open House: 1/25, 1-5 p.m. 1058 Ipo Lp., Kailua. Beautiful 4 bdrm., 2 bath, 3000 sq. ft. jacuzzi, boat dock \$194,000. By owner 261-7021

WATERFRONT Open House: 1/25, 1-5 p.m. 1058 Ipo Lp., Kailua. Beautiful 4 bdrm., 2 bath, 3000 sq. ft. jacuzzi, boat dock \$194,000. By owner 261-7021

WATERFRONT Open House: 1/25, 1-5 p.m. 1058 Ipo Lp., Kailua. Beautiful 4 bdrm., 2 bath, 3000 sq. ft. jacuzzi, boat dock \$194,000. By owner 261-7021

WATERFRONT Open House: 1/25, 1-5 p.m. 1058 Ipo Lp., Kailua. Beautiful 4 bdrm., 2 bath, 3000 sq. ft. jacuzzi, boat dock \$194,000. By owner 261-7021

WATERFRONT Open House: 1/25, 1-5 p.m. 1058 Ipo Lp., Kailua. Beautiful 4 bdrm., 2 bath, 3000 sq. ft. jacuzzi, boat dock \$194,000. By owner 261-7021

WATERFRONT Open House: 1/25, 1-5 p.m. 1058 Ipo Lp., Kailua. Beautiful 4 bdrm., 2 bath, 3000 sq. ft. jacuzzi, boat dock \$194,000. By owner 261-7021

WATERFRONT Open House: 1/25, 1-5 p.m. 1058 Ipo Lp., Kailua. Beautiful 4 bdrm., 2 bath, 3000 sq. ft. jacuzzi, boat dock \$194,000. By owner 261-7021

WATERFRONT Open House: 1/25, 1-5 p.m. 1058 Ipo Lp., Kailua. Beautiful 4 bdrm., 2 bath, 3000 sq. ft. jacuzzi, boat dock \$194,000. By owner 261-7021

WATERFRONT Open House: 1/25, 1-5 p.m. 1058 Ipo Lp., Kailua. Beautiful 4 bdrm., 2 bath, 3000 sq. ft. jacuzzi, boat dock \$194,000. By owner 261-7021

WATERFRONT Open House: 1/25, 1-5 p.m. 1058 Ipo Lp., Kailua. Beautiful 4 bdrm., 2 bath, 3000 sq. ft. jacuzzi, boat dock \$194,000. By owner 261-7021

WATERFRONT Open House: 1/25, 1-5 p.m. 1058 Ipo Lp., Kailua. Beautiful 4 bdrm., 2 bath, 3000 sq. ft. jacuzzi, boat dock \$194,000. By owner 261-7021

WATERFRONT Open House: 1/25, 1-5 p.m. 1058 Ipo Lp., Kailua. Beautiful 4 bdrm., 2 bath, 3000 sq. ft. jacuzzi, boat dock \$194,000. By owner 261-7021

WATERFRONT Open House: 1/25, 1-5 p.m. 1058 Ipo Lp., Kailua. Beautiful 4 bdrm., 2 bath, 3000 sq. ft. jacuzzi, boat dock \$194,000. By owner 261-7021

WATERFRONT Open House: 1/25, 1-5 p.m. 1058 Ipo Lp., Kailua. Beautiful 4 bdrm., 2 bath, 3000 sq. ft. jacuzzi, boat dock \$194,000. By owner 261-7021

WATERFRONT Open House: 1/25, 1-5 p.m. 1058 Ipo Lp., Kailua. Beautiful 4 bdrm., 2 bath, 3000 sq. ft. jacuzzi, boat dock \$194,000. By owner 261-7021

WATERFRONT Open House: 1/25, 1-5 p.m. 1058 Ipo Lp., Kailua. Beautiful 4 bdrm., 2 bath, 3000 sq. ft. jacuzzi, boat dock \$194,000. By owner 261-7021

• 114 REAL ESTATE FOR SALE

HAIKU Gardens: 2 bdrm., 2 bath end unit. New carpets \$112,000 A/S w/ \$20,000 down or VA possible. By owner Mr. Medlock, 836-6228 (W), 235-6929 (H)

PUNAHOU Gardens, fully renovated studio, close to Punahou & UH, A/S possible, lease. Banyan Realty 533-1825, Dennis Yoneoka (RA) 737-4234

KAILUA Gardens: Poinciana Manor, 2 bdrm., 2 bath condo, 930 sq. ft. inside, 350 sq. ft. of astro turf lanai. Semi-furn., near shopping ctrs. & schools \$103,000. Call after 6:30 p.m., 261-0489.

• 117 REAL ESTATE FOR TRADE

WANTED To trade our beautiful Fullerton, California home for your Hawaii Kai or Kailua home. 395-0473

• 120 FURNITURE

1 DINING room table w/4 chairs & extension board. \$100. 247-6420

PINE crib & dressing table w/accessories, excl. cond. \$125. 239-9892 eves.

FULL size bdrm. set, like new, Sealy box springs & mattress w/bed frame & headboard plus matching, full size 9 drawer dresser \$175. Call 261-3612

DESK - metal 30" x 60" top, 5 drawers, like new, chair incl. \$300. Call 488-8890 4-9 p.m.

WICKER tea cart, custom made, brand new \$175. Ph. 262-8922

WHITE Provincial twin bed, dresser w/mirror, mattress & new box spring, excl. cond. \$125. 458-5053

NEWLY upholstered two piece sectional sofa, 7 foot. \$250. 235-8384

DBL. BED; sofa bed; table; bookcases; desk chair; dresser; Cheap! 737-0595

RATTAN Chairs \$39; tables \$29; cane dressers \$59; mirrors \$19; nightstand \$19; headboard \$9; lamps \$14 and up. 833-3010

BABY Wondra chair 6 different combinations brand new, never used \$300 or offer. 422-0003

RATTAN/glass dining table; full sofa; coffee table. 235-8992

ANTIQUE love seat frame. \$25. Call 254-3258

SOFA & love seat, tan/gold plaid \$350/offer. 261-6589

FOUR Piece living or family room furniture \$400. 254-4021

42" ROUND patio table & 3 Danish arm chairs. \$75 Call 261-5214

SINGLE bed \$35. Call 235-8483

SECTIONAL couch, sand/rust color \$550. Call 261-8179

3 PIECE French Provincial bedroom set, cream colored table w/leaf; 4 overstuffed cream & chrome chairs \$175 or offer 839-8634

BUNK bed \$95; wicker love seat \$35; wht. desk w/chair & chest w/hutch \$175; pale grn. 12"x13-1/2" rug \$35; 254-1232 after 6 p.m. or Saturday

FURNITURE sale: 8 pc. dining set; couch & love seat; buffet, end tables; trunk bed; chest of drawers w/nightstand; desk; lamps. Call 261-3521

• 120 FURNITURE

FORMAL dining rm. table & chairs, all hand carved hardwood. Must be seen \$1295. 422-7858



# MISCELLANEOUS

**CAPIZ** shell lamps. High quality, many styles and colors. 16" diameter - 60% off \$40-\$50. 623-0888 after 6 p.m. & weekends

**CARPET shampoo Special** \$7.50 - 1 room with this ad. Call for details. 533-1606

**BRITANNICA** Encyclopedias. Halfroom, brand-new, retail \$800, sacrifice \$450. 422-2958 Mike, even.

**STANLEY HOME PRODUCTS**  
Ph. 262-6531

## I can help you BEAUTIFY YOUR YARD

Experienced, know-how, best references. Lic. 07903. Landscaping, rock garden, tropical garden, re-do your yard. **Wing**. Ph. 422-6558 any day 9-5:30

**REBUILT** air conditioners for sale, warranty, service, & repairs on all makes & models. Trade ins welcome. Cash for unwanted air conditioners. Ph. 487-7479

**DANISH** headboard '50s, '70s \$100; 2 walnut nightstands \$95 ea; table lamp \$30; fan \$15; leather camera case \$30. 536-9880

**RECONDITIONED** Singer stylist sew. mac. \$75. Ph. 477-0768

**FREE** Marcel Germaine manicure product for having a class in your home. Call Christine at 672-3337

**VACUUM** cleaners reconditioned w/warranty \$19.95 & up. Windward Vacuum Sales & Service. 239-8678

**HONEYCOMB** golf set 2-9 PW 4 woods all D2 stiff includes bag \$150 firm 262-9557

5 PC. dinette used 8 mo., cost \$200 will sell \$125 Call 623-1533

**DELUXE** Hydraulic rowing exerciser A-1 cond. \$80 firm. 262-9557

**GE** Freezer 12' works good, auto. defrost asking \$125; Call 732-3535

**APT.** stove \$49; wood bunk bed \$79; 4 pc. rattan sectional \$149; rattan coffee table \$15; rattan coffee table \$25; dresser w/mirror \$59; matching chest \$20; bar w/light & 2 stools \$99; desk \$49; mahogany buffet \$59; dinette set \$39; Zenith color TV \$199; double bed mattress like new \$30; twin bed set \$39; apt. size refrig. \$89; lg. frost-free refrig. excl. cond. \$189; mahogany sofa & 2 chairs \$125; lamps from \$18; double pedestal desk \$39; rattan bar stool \$69; Old But New, 35 Oneawa St., next to Invader Wars.

**AKAMAHI** AIR CONDITIONING & REFRIGERATION. Repair & Service. All makes. refrigerators, freezers, ice machines, etc. Commercial or residential. Repair and service. Buy & sell air condition. 631-6178, 247-3272

**REFRIGERATOR** 21 cu. ft. Sears, 2 dr. side-by-side w/ice maker - frost free \$250; dining table maple 42" round w/12" leaf & 4 capt. chairs \$150. Ph. 254-4787 after 5 p.m.

**GILMORE** loom new 48 in. 8 harness, all supplies for \$700 or best. 239-7010

**COMPLEAT** King size water bed \$125; Greek tapestry rug 9x12 \$30; rust area rug 6x12 \$20; wall tapestry \$20. 474-8139

**7' COUCH** \$50; black naugahyde sofa bed \$125; carpeting & padding - blue; gold; green. 254-2815

## APPLE TRS 80

Per. Etc. Computers  
Lowest Prices In Hawaii  
Open 7 Days A Week

**COMPUTER CENTER**  
488-2171

**ORIENTAL** rugs, bought & sold. Old, new, all sizes. Bill, 262-0792

**WE ARE NEW!!!** Beautiful handmade gifts, by our Seniors. Children's clothes, pillows, quilts, dolls, jewelry, purses, etc. New consignments.

**GOLDEN AGE DISCOVERIES**  
1034 Nuuanu Ave.  
(Near King St)  
Ph. 521-2564, 531-6940

**FOR SALE:** Ophi and dry opelu. Call 261-0190 eves.

**PRINCESS** House Crystal FREE for giving a home showing. For more info. Call Peggy 624-4122

**REDWOOD** patio chair, \$50; movie/slide screen \$20; 5" B/W portable TV \$75; bar stools \$5; 3" service oscilloscope \$50; acrope probes \$5. 672-9613 John

**SIDE** by side copper tone refrig. w/ice maker \$300; teak headboard & footboard & rails like new \$100; 2 Gouge speakers 23x25x12 \$150 for both; antique Chinese rug; console color TV \$150. 455-2750

**LIVING ROOM,** kitchen, bdrm, furn, plants, rugs, garden tools, misc. 254-1043

**PARADISE USED FURNITURE**  
Bentwood Arm Chairs \$25  
Twin beds like new \$60; double beds \$85; 5 pc. open hearth bdrm. set \$650; sewing desk \$100; apt. stove \$100; 7 drawer desks \$75; 3 drawer chests \$15; matching mirror \$15; beautiful chair w/ottoman \$150; lg. metal desk w/return \$100; ornate wicker sofa \$250 & much more. 261-8492, 155 Hamakua Dr., Kailua

**PUNEE** \$18; 8 trac tape player for auto. \$30; misc. VW parts. Ph. 261-2928

# MISCELLANEOUS

**MARY KAY COSMETICS.** For re-orders & free facials, call Yolanda, 259-9021

**WILSON** CB Beam Coax & rotor included \$65. Call 235-2345

**OVER-stuffed** rocking chair, \$60; glass front bookcase \$100; triple dresser \$100; 2 mirrors \$50. Call 239-6024

**STEEL** desk 34" X 60" & swivel chair \$50, Sialom water ski \$25, 261-6217 eves.

**BE A Career** woman and a homemaker. Shaklee offers the best of both worlds. Work at your own convenience. Earn a healthy part-time income. For appointment call Bob Briggs at 262-6298 or 261-1670

**GOLD \$ CASH REWARDS \$**  
Paying immediate cash for all Gold & Silver. We guarantee highest prices. Call us first.

**T & G Enterprises**  
923-1948  
2599 Kuhio Ave #101  
(Open 7 Days)

**AIR** Conditioner Norge 12,000 BTU, 230 volt \$100; Whirlpool upright 17 cu. ft. Frostless freezer, excl. cond. \$150 firm. 422-1413

**127 APPLIANCES**

**WASHER/dryer,** GE, heavy duty, clean & in good working cond. Both \$160. 623-1160

**WASHER/dryer,** GE, heavy duty, clean & in good working cond. Both \$160. 623-1160

**WASHER/dryer,** GE, heavy duty, clean & in good working cond. Both \$160. 623-1160

**WASHER/dryer,** GE, heavy duty, clean & in good working cond. Both \$160. 623-1160

**WASHER/dryer,** GE, heavy duty, clean & in good working cond. Both \$160. 623-1160

**WASHER/dryer,** GE, heavy duty, clean & in good working cond. Both \$160. 623-1160

**WASHER/dryer,** GE, heavy duty, clean & in good working cond. Both \$160. 623-1160

**WASHER/dryer,** GE, heavy duty, clean & in good working cond. Both \$160. 623-1160

**WASHER/dryer,** GE, heavy duty, clean & in good working cond. Both \$160. 623-1160

**WASHER/dryer,** GE, heavy duty, clean & in good working cond. Both \$160. 623-1160

**WASHER/dryer,** GE, heavy duty, clean & in good working cond. Both \$160. 623-1160

**WASHER/dryer,** GE, heavy duty, clean & in good working cond. Both \$160. 623-1160

**WASHER/dryer,** GE, heavy duty, clean & in good working cond. Both \$160. 623-1160

**WASHER/dryer,** GE, heavy duty, clean & in good working cond. Both \$160. 623-1160

**WASHER/dryer,** GE, heavy duty, clean & in good working cond. Both \$160. 623-1160

**WASHER/dryer,** GE, heavy duty, clean & in good working cond. Both \$160. 623-1160

**WASHER/dryer,** GE, heavy duty, clean & in good working cond. Both \$160. 623-1160

**WASHER/dryer,** GE, heavy duty, clean & in good working cond. Both \$160. 623-1160

**WASHER/dryer,** GE, heavy duty, clean & in good working cond. Both \$160. 623-1160

**WASHER/dryer,** GE, heavy duty, clean & in good working cond. Both \$160. 623-1160

**WASHER/dryer,** GE, heavy duty, clean & in good working cond. Both \$160. 623-1160

**WASHER/dryer,** GE, heavy duty, clean & in good working cond. Both \$160. 623-1160

**WASHER/dryer,** GE, heavy duty, clean & in good working cond. Both \$160. 623-1160

**WASHER/dryer,** GE, heavy duty, clean & in good working cond. Both \$160. 623-1160

**WASHER/dryer,** GE, heavy duty, clean & in good working cond. Both \$160. 623-1160

**WASHER/dryer,** GE, heavy duty, clean & in good working cond. Both \$160. 623-1160

**WASHER/dryer,** GE, heavy duty, clean & in good working cond. Both \$160. 623-1160

**WASHER/dryer,** GE, heavy duty, clean & in good working cond. Both \$160. 623-1160

**WASHER/dryer,** GE, heavy duty, clean & in good working cond. Both \$160. 623-1160

**WASHER/dryer,** GE, heavy duty, clean & in good working cond. Both \$160. 623-1160

**WASHER/dryer,** GE, heavy duty, clean & in good working cond. Both \$160. 623-1160

**WASHER/dryer,** GE, heavy duty, clean & in good working cond. Both \$160. 623-1160

**WASHER/dryer,** GE, heavy duty, clean & in good working cond. Both \$160. 623-1160

**WASHER/dryer,** GE, heavy duty, clean & in good working cond. Both \$160. 623-1160

# APPLIANCES

**HOT POINT** refrigerator \$60. Call 235-0335

**Like New - Reconditioned Washers & Dryers**  
Available - 8 mo. lease or longer. \$11.50 per mo. Includes full maintenance. 847-1344 Ask for Don

**NEARLY** new, Kenmore Heavy Duty washer, Sears warranty \$300. 422-4877

**REFRIGERATOR,** aqua \$25; desk; file; furniture. Call 254-3132

**REFRIGERATOR** \$125 and dishwasher \$25. After 6:30 P.M. Ph. 239-9205

**FREEZER,** 16 cu. ft. upright, runs good \$75. Call 261-1558 eves.

**SEARS** refrigerator; continuous clean stove. Best offer. 254-1704

**MAYTAG** gas dryer, used 3 mos. Cost \$429, asking \$300. 696-6466

**FRIGIDAIRE** dryer, runs well, needs no vent \$50. Call 235-4288 after 6 p.m.

**15 CU. FT.** upright frost-free freezer, excl. cond. \$275. 623-4910. Eckert

**KENMORE** Heavy duty washer/dryer \$175. Call after 3, 239-5448

**AIR** conditioner, new, never uncrated, 19,000 BTU \$325. 261-9174 after 5 PM

**127 APPLIANCES**

**WASHER/dryer,** GE, heavy duty, clean & in good working cond. Both \$160. 623-1160

**WASHER/dryer,** GE, heavy duty, clean & in good working cond. Both \$160. 623-1160

**WASHER/dryer,** GE, heavy duty, clean & in good working cond. Both \$160. 623-1160

**WASHER/dryer,** GE, heavy duty, clean & in good working cond. Both \$160. 623-1160

**WASHER/dryer,** GE, heavy duty, clean & in good working cond. Both \$160. 623-1160

**WASHER/dryer,** GE, heavy duty, clean & in good working cond. Both \$160. 623-1160

**WASHER/dryer,** GE, heavy duty, clean & in good working cond. Both \$160. 623-1160

**WASHER/dryer,** GE, heavy duty, clean & in good working cond. Both \$160. 623-1160

**WASHER/dryer,** GE, heavy duty, clean & in good working cond. Both \$160. 623-1160

**WASHER/dryer,** GE, heavy duty, clean & in good working cond. Both \$160. 623-1160

**WASHER/dryer,** GE, heavy duty, clean & in good working cond. Both \$160. 623-1160

**WASHER/dryer,** GE, heavy duty, clean & in good working cond. Both \$160. 623-1160

**WASHER/dryer,** GE, heavy duty, clean & in good working cond. Both \$160. 623-1160

**WASHER/dryer,** GE, heavy duty, clean & in good working cond. Both \$160. 623-1160

**WASHER/dryer,** GE, heavy duty, clean & in good working cond. Both \$160. 623-1160

**WASHER/dryer,** GE, heavy duty, clean & in good working cond. Both \$160. 623-1160

**WASHER/dryer,** GE, heavy duty, clean & in good working cond. Both \$160. 623-1160

**WASHER/dryer,** GE, heavy duty, clean & in good working cond. Both \$160. 623-1160

**WASHER/dryer,** GE, heavy duty, clean & in good working cond. Both \$160. 623-1160

**WASHER/dryer,** GE, heavy duty, clean & in good working cond. Both \$160. 623-1160

**WASHER/dryer,** GE, heavy duty, clean & in good working cond. Both \$160. 623-1160

**WASHER/dryer,** GE, heavy duty, clean & in good working cond. Both \$160. 623-1160

**WASHER/dryer,** GE, heavy duty, clean & in good working cond. Both \$160. 623-1160

**WASHER/dryer,** GE, heavy duty, clean & in good working cond. Both \$160. 623-1160

**WASHER/dryer,** GE, heavy duty, clean & in good working cond. Both \$160. 623-1160

**WASHER/dryer,** GE, heavy duty, clean & in good working cond. Both \$160. 623-1160

**WASHER/dryer,** GE, heavy duty, clean & in good working cond. Both \$160. 623-1160

**WASHER/dryer,** GE, heavy duty, clean & in good working cond. Both \$160. 623-1160

**WASHER/dryer,** GE, heavy duty, clean & in good working cond. Both \$160. 623-1160

**WASHER/dryer,** GE, heavy duty, clean & in good working cond. Both \$160. 623-1160

**WASHER/dryer,** GE, heavy duty, clean & in good working cond. Both \$160. 623-1160

**WASHER/dryer,** GE, heavy duty, clean & in good working cond. Both \$160. 623-1160

# APPLIANCES

**REFRIG.** & freezer (upright) ice & frost-free, both excl \$225; dryer, elec. \$150 623-1543

**REFRIGERATOR** & washer for sale. Best offer. Call 696-7857

**ALL MAJOR Rebuilt Appliances**  
90 Days/1 Year warranty.  
Quality Rebuilt Washers, Refrigerators, Dryers, Ranges, Large Appliances.  
SALES - REPAIRS - HOME REPAIRS  
**FROM \$89**  
WILL DELIVER - WILL FINANCE  
8000 & RECYCLED APPLIANCES  
Pier 36, 2 blocks from City Hall on  
Kalihi. Open Mon. thru Sat. 9:30-6:00

**REFRIGERATOR** \$275; dryer \$100. Excl. cond. Call 254-2447

**FREEZER** \$100. Steamer trunk \$5 ea. Call 235-3750

**WASHER/dryer,** GE, heavy duty, clean & in good working cond. Both \$160. 623-1160

**131 WIKI WIKI FREE BEE**

**FREE** German Shepherd puppies. Ph. 261-5105

**FREE:** 7 mos. pol puppy, female. Call 422-0667

**FREE:** Brown miniature Poodle, male, 3 years old. Needs loving home. 261-9438

**FREE:** Small mixed breed dog; house trained. 624-5884

**131 WIKI WIKI FREE BEE**

**FREE** German Shepherd puppies. Ph. 261-5105

**FREE:** 7 mos. pol puppy, female. Call 422-0667

**FREE:** Brown miniature Poodle, male, 3 years old. Needs loving home. 261-9438

**FREE:** Small mixed breed dog; house trained. 624-5884

**131 WIKI WIKI FREE BEE**

**FREE** German Shepherd puppies. Ph. 261-5105

**FREE:** 7 mos. pol puppy, female. Call 422-0667

**FREE:** Brown miniature Poodle, male, 3 years old. Needs loving home. 261-9438

**FREE:** Small mixed breed dog; house trained. 624-5884

**131 WIKI WIKI FREE BEE**

**FREE** German Shepherd puppies. Ph. 261-5105

**FREE:** 7 mos. pol puppy, female. Call 422-0667

**FREE:** Brown miniature Poodle, male, 3 years old. Needs loving home. 261-9438

**FREE:** Small mixed breed dog; house trained. 624-5884

**131 WIKI WIKI FREE BEE**

**FREE** German Shepherd puppies. Ph. 261-5105

**FREE:** 7 mos. pol puppy, female. Call 422-0667

**FREE:** Brown miniature Poodle, male, 3 years old. Needs loving home. 261-9438

**FREE:** Small mixed breed dog; house trained. 624-5884

**131 WIKI WIKI FREE BEE**

**FREE** German Shepherd puppies. Ph. 261-5105

**FREE:** 7 mos. pol puppy, female. Call 422-0667

**FREE:** Brown miniature Poodle, male, 3 years old. Needs loving home. 261-9438

**FREE:** Small mixed breed dog; house trained. 624-5884

**131 WIKI WIKI FREE BEE**

**FREE** German Shepherd puppies. Ph. 261-5105

**FREE:** 7 mos. pol puppy, female. Call 422-0667

**FREE:** Brown miniature Poodle, male, 3



**Classified V January 21, 1981**

**• 144 MUSICAL SALES & SERVICE**

GEORGE Stock piano, very good cond. \$800 or offer. 261-8270 eves.

**• 148 BOAT SUPPLIES & SERVICE**

FIBERGLASS fishbox; 2 1/2 outriggers; auto epib; Offer. 235-1890

28' LUHRS, depth recorder, fighting chair, 185 gal gas, flying bridge, head, stove, sink, fresh running water, excl. cond., lots of space, lots of extras. A Real Honey! \$18,500. Ph. 261-3584

MOVING to mainland: '80 PRINDLE cat. 18", like new. All deluxe eqpt. & trailer \$3795. 235-0965

14-1/2' P-14 boat, 40 HP Johnson, good running boat \$850/best offer. Ph. 247-0521 after 4

**• 151 PET SUPPLIES & SERVICE**

CHIUAHUA/Tot Terrier, female, 7 wks \$65. Call 373-2600

COLLIE pups, "Sables", Call 259-5270

Pet Health Insurance "SMM Inc." Tom, 839-5005 ext. 10, 262-5132

PART Shepherd & Labrador \$5 ea. 239-6917

**• 156 AUTO PARTS & SERVICE**

'71 VW Super Beetle for parts, 262-8659

'72 COROLLA Fastback 1600 auto., runs, for parts. Call 247-5150

4 WHITE Spoke rims 15x8 \$60. '74 Vega HB less eng., good cond. \$100. '56 Chevy less eng. & trans \$200. Best off. Ph. 235-5213

'70 BUICK GS, still runs, parts or whole, 350 eng. & trans. Ph. 254-2414



**MORE FOR LESS**  
**THE 1981 SUBARU**  
**Standard Hatchback**  
**ONLY**

**\$1130<sup>00</sup>**  
**per mo.**

With \$500<sup>00</sup> dn., 60 months financing, A.P.R. 15.25% on approved credit. Price \$4995 plus tax & lic. Deferred payment price \$7240. SIK 815012  
Good Selections 81's - New 80's & Demos, Too!

**Come Over To Our Side.**  
**We Make It Worth The Trip.**

**WINDWARD**  
**SUBARU**

Factory Authorized Sales & Service  
737 Kailua Rd., Kailua 262-6802, 262-6578

**MOTORCRAFT**  
**OIL and OIL FILTER SPECIAL**

Includes up to 5 quarts of Motorcraft oil, Motorcraft oil filter and installation.



**TOTAL SPECIAL PRICE—PARTS and LABOR**

**\$14.18 + tax**

VALID JANUARY-FEBRUARY, 1981

**AUTOMATIC TRANSMISSION**  
**CHECK**

Includes band adjustment, screen cleaning, adjustment of manual and throttle linkage; includes replacement of fluid and gasket. Ford built vehicles only. Does not apply to vehicles equipped with automatic overdrive or transaxle automatic transmissions.

**TOTAL SPECIAL PRICE AS DESCRIBED**

**\$32.95 + tax**

VALID JANUARY-FEBRUARY, 1981

Specials good for Ford Motor Company vehicles only.

**HONOLULU FORD**

711 Ala Moana  
Honolulu, HI 96813  
Ph. 531-0491



**• 158 AUTO PARTS & SERVICE**

'67 DATSUN for parts or whole (Mag wheels go last). Great engine & trans (no carb) \$200/offer. Chris 261-4923

**• 168 PICKUPS, TRUCKS**

LG. Caniper top \$500 propane stove & refrig., extras. Ivan 422-1080

**• 171 MOTORCYCLE SALES & SERVICE**

'72 VW 411 for parts \$250/offer. Ph. 239-9478

**• 171 MOTORCYCLE SALES & SERVICE**

'78 750 YAMAHA Special, good cond., needs minor repairs \$900/best offer. Call 841-5734 after 3

'75 HONDA 400, 4 cyl., extras \$570/offer. 254-4424, 235-6189 AWH

YAMAHA 400 Special, 1980, like new \$1400. Ph. 456-4673 after 6 p.m.

'74 HONDA CB 500/4, good cond. + extras \$800, 696-6719

'79 HONDA CM 400 T, new tire & muffler, good cond., \$1400, 623-5892

CIMATTI moped \$100. Call 488-4422

'77 SUZUKI GS-400, 1000 original mi, good cond. \$800/offer, 422-9014 eves.

'79 YAMAHA 750 special, excl. cond., extras \$2400. Call 254-4587

'81 KAWASAKI KLT 200 Trike, brand-new, save \$350, 949-3363

'73 HONDA 500 4 cyl. \$500/offer. Ph. 239-9478

MOVING to mainland: '79 RM-400 N Suzuki like new \$1000, 235-0965

MOVING to mainland: '79 GS-425 N Suzuki, like new \$1300, 235-0965

'78 PUCH Sport MK II excl. cond., low mi, \$550. 623-5578 623-0544

'77 WR 250 HUSKY 8 day trail model, cherry cond. \$850. Ph. 237-8400

MOVING to mainland: '79 RM-400 N Suzuki like new \$1000, 235-0965

MOVING to mainland: '79 GS-425 N Suzuki, like new \$1300, 235-0965

'78 PUCH Sport MK II excl. cond., low mi, \$550. 623-5578 623-0544

'77 WR 250 HUSKY 8 day trail model, cherry cond. \$850. Ph. 237-8400

MOVING to mainland: '79 RM-400 N Suzuki like new \$1000, 235-0965

MOVING to mainland: '79 GS-425 N Suzuki, like new \$1300, 235-0965

'78 PUCH Sport MK II excl. cond., low mi, \$550. 623-5578 623-0544

'77 WR 250 HUSKY 8 day trail model, cherry cond. \$850. Ph. 237-8400

MOVING to mainland: '79 RM-400 N Suzuki like new \$1000, 235-0965

MOVING to mainland: '79 GS-425 N Suzuki, like new \$1300, 235-0965

'78 PUCH Sport MK II excl. cond., low mi, \$550. 623-5578 623-0544

'77 WR 250 HUSKY 8 day trail model, cherry cond. \$850. Ph. 237-8400

MOVING to mainland: '79 RM-400 N Suzuki like new \$1000, 235-0965

MOVING to mainland: '79 GS-425 N Suzuki, like new \$1300, 235-0965

'78 PUCH Sport MK II excl. cond., low mi, \$550. 623-5578 623-0544

'77 WR 250 HUSKY 8 day trail model, cherry cond. \$850. Ph. 237-8400

MOVING to mainland: '79 RM-400 N Suzuki like new \$1000, 235-0965

MOVING to mainland: '79 GS-425 N Suzuki, like new \$1300, 235-0965

'78 PUCH Sport MK II excl. cond., low mi, \$550. 623-5578 623-0544

'77 WR 250 HUSKY 8 day trail model, cherry cond. \$850. Ph. 237-8400

MOVING to mainland: '79 RM-400 N Suzuki like new \$1000, 235-0965

MOVING to mainland: '79 GS-425 N Suzuki, like new \$1300, 235-0965

'78 PUCH Sport MK II excl. cond., low mi, \$550. 623-5578 623-0544

'77 WR 250 HUSKY 8 day trail model, cherry cond. \$850. Ph. 237-8400

MOVING to mainland: '79 RM-400 N Suzuki like new \$1000, 235-0965

MOVING to mainland: '79 GS-425 N Suzuki, like new \$1300, 235-0965

'78 PUCH Sport MK II excl. cond., low mi, \$550. 623-5578 623-0544

'77 WR 250 HUSKY 8 day trail model, cherry cond. \$850. Ph. 237-8400

MOVING to mainland: '79 RM-400 N Suzuki like new \$1000, 235-0965

**• 168 PICKUPS, TRUCKS**

FOR Sale '76 CHEVY halfton pickup; 8 ft. bed, \$2500. Call 254-3740 AWH or 257-2042 DWH

**• 171 MOTORCYCLE SALES & SERVICE**

'78 750 YAMAHA Special, good cond., needs minor repairs \$900/best offer. Call 841-5734 after 3

**• 171 MOTORCYCLE SALES & SERVICE**

'75 HONDA 400, 4 cyl., extras \$570/offer. 254-4424, 235-6189 AWH

**• 171 MOTORCYCLE SALES & SERVICE**

YAMAHA 400 Special, 1980, like new \$1400. Ph. 456-4673 after 6 p.m.

'74 HONDA CB 500/4, good cond. + extras \$800, 696-6719

'79 HONDA CM 400 T, new tire & muffler, good cond., \$1400, 623-5892

CIMATTI moped \$100. Call 488-4422

'77 SUZUKI GS-400, 1000 original mi, good cond. \$800/offer, 422-9014 eves.

'79 YAMAHA 750 special, excl. cond., extras \$2400. Call 254-4587

'81 KAWASAKI KLT 200 Trike, brand-new, save \$350, 949-3363

'73 HONDA 500 4 cyl. \$500/offer. Ph. 239-9478

MOVING to mainland: '79 RM-400 N Suzuki like new \$1000, 235-0965

MOVING to mainland: '79 GS-425 N Suzuki, like new \$1300, 235-0965

'78 PUCH Sport MK II excl. cond., low mi, \$550. 623-5578 623-0544

'77 WR 250 HUSKY 8 day trail model, cherry cond. \$850. Ph. 237-8400

MOVING to mainland: '79 RM-400 N Suzuki like new \$1000, 235-0965

MOVING to mainland: '79 GS-425 N Suzuki, like new \$1300, 235-0965

'78 PUCH Sport MK II excl. cond., low mi, \$550. 623-5578 623-0544

'77 WR 250 HUSKY 8 day trail model, cherry cond. \$850. Ph. 237-8400

MOVING to mainland: '79 RM-400 N Suzuki like new \$1000, 235-0965

MOVING to mainland: '79 GS-425 N Suzuki, like new \$1300, 235-0965

'78 PUCH Sport MK II excl. cond., low mi, \$550. 623-5578 623-0544

'77 WR 250 HUSKY 8 day trail model, cherry cond. \$850. Ph. 237-8400

MOVING to mainland: '79 RM-400 N Suzuki like new \$1000, 235-0965

MOVING to mainland: '79 GS-425 N Suzuki, like new \$1300, 235-0965

'78 PUCH Sport MK II excl. cond., low mi, \$550. 623-5578 623-0544

'77 WR 250 HUSKY 8 day trail model, cherry cond. \$850. Ph. 237-8400

MOVING to mainland: '79 RM-400 N Suzuki like new \$1000, 235-0965

MOVING to mainland: '79 GS-425 N Suzuki, like new \$1300, 235-0965

'78 PUCH Sport MK II excl. cond., low mi, \$550. 623-5578 623-0544

'77 WR 250 HUSKY 8 day trail model, cherry cond. \$850. Ph. 237-8400

MOVING to mainland: '79 RM-400 N Suzuki like new \$1000, 235-0965

MOVING to mainland: '79 GS-425 N Suzuki, like new \$1300, 235-0965

'78 PUCH Sport MK II excl. cond., low mi, \$550. 623-5578 623-0544

'77 WR 250 HUSKY 8 day trail model, cherry cond. \$850. Ph. 237-8400

MOVING to mainland: '79 RM-400 N Suzuki like new \$1000, 235-0965

MOVING to mainland: '79 GS-425 N Suzuki, like new \$1300, 235-0965

'78 PUCH Sport MK II excl. cond., low mi, \$550. 623-5578 623-0544

'77 WR 250 HUSKY 8 day trail model, cherry cond. \$850. Ph. 237-8400

MOVING to mainland: '79 RM-400 N Suzuki like new \$1000, 235-0965

MOVING to mainland: '79 GS-425 N Suzuki, like new \$1300, 235-0965

'78 PUCH Sport MK II excl. cond., low mi, \$550. 623-5578 623-0544

'77 WR 250 HUSKY 8 day trail model, cherry cond. \$850. Ph. 237-8400

MOVING to mainland: '79 RM-400 N Suzuki like new \$1000, 235-0965

MOVING to mainland: '79 GS-425 N Suzuki, like new \$1300, 235-0965

'78 PUCH Sport MK II excl. cond., low mi, \$550. 623-5578 623-0544

**• 171 MOTORCYCLE SALES & SERVICE**

'80 SUZUKI dirt bike, brand-new \$1200/best offer. Call 239-7550, 239-9156

**• 174 RENT-A-CAR**

RELIABLE Used Cars, \$7 per day, 1 wk. minimum, Special monthly rates, collision waiver extra. Auto Mart Car Rental, 98-7066 Kam Hwy., Ala. Ph. 487-9991

**• 175 VANS, CAMPERS & JEEPS**

BANK REPOSSESSION '79 CHEVY VAN, captain's high-back chairs, sunroof, sharp. \$5950 cash dn. pymt. + tax & lic. OAC. Repossession price \$5998.18. See Repossession Mgr. WHOLESALE MOTORS Ph. 636-1222 2909 N. Nimitz Hwy.

**• 175 VANS, CAMPERS & JEEPS**

'70 FORD Super Van E-100 - \$1400/offer. Ph. 239-9478

'77 DODGE van, fully customized \$5500. Call 449-2690 anytime

'71 FORD van E-300, panelled, rugged, stick, FM cassette, CB, platform bed. Offer, 239-9741, eves.

'77 C-J-7 JEEP Renegade package 6 cyl., 4 spd., excl. cond. \$6,000 mi. \$3800/offer. Call 254-5190

'75 DODGE Van, customized, fully equipped, air cond. \$8000 or best offer. Call 254-2447

MOVING to mainland: '79 RM-400 N Suzuki like new \$1000, 235-0965

MOVING to mainland: '79 GS-425 N Suzuki, like new \$1300, 235-0965

'78 PUCH Sport MK II excl. cond., low mi, \$550. 623-5578 623-0544

'77 WR 250 HUSKY 8 day trail model, cherry cond. \$850. Ph. 237-8400

MOVING to mainland: '79 RM-400 N Suzuki like new \$1000, 235-0965

MOVING to mainland: '79 GS-425 N Suzuki, like new \$1300, 235-0965

'78 PUCH Sport MK II excl. cond., low mi, \$550. 623-5578 623-0544

'77 WR 250 HUSKY 8 day trail model, cherry cond. \$850. Ph. 237-8400

MOVING to mainland: '79 RM-400 N Suzuki like new \$1000, 235-0965

MOVING to mainland: '79 GS-425 N Suzuki, like new \$1300, 235-0965

'78 PUCH Sport MK II excl. cond., low mi, \$550. 623-5578 623-0544

'77 WR 250 HUSKY 8 day trail model, cherry cond. \$850. Ph. 237-8400

MOVING to mainland: '79 RM-400 N Suzuki like new \$1000, 235-0965

MOVING to mainland: '79 GS-425 N Suzuki, like new \$1300, 235-0965

'78 PUCH Sport MK II excl. cond., low mi, \$550. 623-5578 623-0544

'77 WR 250 HUSKY 8 day trail model, cherry cond. \$850. Ph. 237-8400

MOVING to mainland: '79 RM-400 N Suzuki like new \$1000, 235-0965

MOVING to mainland: '79 GS-425 N Suzuki, like new \$1300, 235-0965

'78 PUCH Sport MK II excl. cond., low mi, \$550. 623-5578 623-0544

'77 WR 250 HUSKY 8 day trail model, cherry cond. \$850. Ph. 237-8400

MOVING to mainland: '79 RM-400 N Suzuki like new \$1000, 235-0965

MOVING to mainland: '79 GS-425 N Suzuki, like new \$1300, 235-0965

'78 PUCH Sport MK II excl. cond., low mi, \$550. 623-5578 623-0544

'77 WR 250 HUSKY 8 day trail model, cherry cond. \$850. Ph. 237-8400

MOVING to mainland: '79 RM-400 N Suzuki like new \$1000, 235-0965

MOVING to mainland: '79 GS-425 N Suzuki, like new \$1300, 235-0965

'78 PUCH Sport MK II excl. cond., low mi, \$550. 623-5578 623-0544

'77 WR 250 HUSKY 8 day trail model, cherry cond. \$850. Ph. 237-8400



**DATSUN**

'70 DATSUN 510 wagon, 4 spd, good economy trans. \$450/best offer, 262-0319

'69 DATSUN 510, good running cond. \$450. Call 235-8483

'70 DATSUN 510, 4 dr., needs timing change \$300. Call Tina 235-1837

'71 240Z, excl. cond., new paint, new battery \$450/offer. 623-1409

'72 240 Z 5 spd. trans., good cond \$3000. Ph. 237-8611 eves.

**DODGE**

'78 DODGE Dart, 1 owner, rustproofed, book \$2700, \$1700/trade/offer. Call 499-2233

'72 DODGE Colt, 4 dr. wagon \$500. Call 261-3494

**BANK REPOSSESSION**

'78 CHARGER, many extras, sharp (P20720) \$291.40 cash on gym. + tax & lic. OAC. Repossession price \$2284.15. See Repossession Mgr. **WHOLESALE MOTORS** Ph. 636-1222 2900 N. Nimitz Hwy.

**FORD**

'70 MUSTANG, light blue, 2 dr. needs trans work \$200. Call Lynn after 5 p.m. 254-3602

'69 TORINO station wagon, good condition \$400. Call 262-0727

'72 PINTO runs good, auto \$450. Call 949-4617

'70 LTD wagon, engine needs work, good tires \$200. Call 422-2692

'70 MAVERICK, excl. cond., no rust, CB radio, recently painted. Make offer. 262-7514 after 3 P.M.

'78 FIESTA, 4 spd., sport option, 35" MPG, extras, excl. cond \$2800, 254-3337

**HONDA**

'76 HONDA Accord \$3400, 5 spd, blue/blue, radials, 261-1111

'78 CIVIC CVCC, excl. cond., new tires & battery lowml, \$2850/best offer 477-8085, 261-1532 eves

'78 CVCC low ml, radials, offer. Jim, 247-5969

**HONDA**

'79 HONDA Prelude, red, sunroof, AM/FM stereo cassette radials 19,000 mi, 257-3690, 257-2725 Lt. Nardone

**MAZDA**

AAAA ARE YOU READY FOR AAAA THE GAS CRISIS? Try MAZDA at Honolulu's Oldest Mazda Dealer **WHOLESALE MOTORS** WHERE THE TRADE-IN DOES GIVEN Ph. 636-1222 2900 N. Nimitz Hwy.

**BANK REPOSSESSION**

'78 GLC Deluxe 3 dr., 4 spd., sunroof, immac. (6F1924) \$325 cash on gym. + tax & lic. OAC. Repossession price \$3998.18. See Repossession Mgr. **WHOLESALE MOTORS** Ph. 636-1222 2900 N. Nimitz Hwy.

**MERCEDES**

'70 COUGAR 428 CJ, extras \$1300/offer. Phone 239-7536

**MG**

'76 MGB, good, excl. cond., new tires & brakes \$3000 ml, \$3250/offer, 261-8937

**PLYMOUTH**

'72 DUSTER "Wild Cherry" excl. cond., balanced 340 custom interior, TV, also extra parts. Complete 383 & 318 engine, also 2-10" flicks, A-frame & more parts, must sell. First \$3000 takes all. 458-2130

**DESPERATE**

Need clean small car Will pay over top \$\$\$ **WHOLESALE MOTORS** 2999 Nimitz Hwy. 636-1222

**PLYMOUTH**

'74 PLYMOUTH Fury, new radiator & carburetor for parts or fix-up \$150, 261-3553

**PONTIAC**

MOVING to mainland: '79 Sunbird deluxe, air \$4595/best offer, 235-0965

**PORSCHE**

'75 PORSCHE Silver, excl. cond, 2.0" \$6400. Call 247-4792 eves.

'74 PORSCHE 914, 1.8 Saturn, yellow, rebuilt, AM/FM \$5800, 422-5080

**BANK REPOSSESSION**

'75 914 5 spd with only 28,000 mi. (6A2916) \$275 cash on gym. + tax & lic. OAC. Repossession price \$5716.16. See Repossession Mgr. **WHOLESALE MOTORS** Ph. 636-1222 2900 N. Nimitz Hwy.

**SUBARU**

'80 SUBARU Brat, excl. cond, low ml, rust-proofed, \$4900, 254-3692 eves.

'73 SUBARU station wagon, runs good \$995. Call 261-1380

**TOYOTA**

'72 CORONA Mark II wagon, auto, \$900/offer, 235-1009

'80 TOYOTA Celica GT, limited edition, fully loaded, special factory stereo, priced to sell. Call 422-7851 after 6 p.m.

'72 CELICA 4 spd., good cond, \$1400/offer. Call 261-1574 eves.

'71 CORONA Mark II, auto, 4 dr, excl. cond, new valve job, radiator, water pump & brakes 839-4842

**TOYOTA**

'79 COROLLA 2 dr. auto, \$300 & take over payments. 262-0663 after 3 p.m.

'74 COROLLA, leaving island, must sell \$1300/best offer, 254-5445

**VOLKSWAGEN**

'78 RABBIT, 4 spd., radio, new paint, excl. cond, \$1995, Call 254-4573

'73 SUPER Beetle, auto, engine overhauled \$1800 offer, 625-0925 eves.

**DON'T**

SELL UNTIL YOU SEE US FIRST! WE PAY TOP \$\$\$ **CAR CITY** 2845 Kilihaui 833-3017

**VOLKSWAGEN**

'71 VW Squareback, not running. Body & upholstery in good shape. \$900/offer. 833-4561 ask for Lu between 8 to 4 pm

'78 VW Super Beetle Convertible, excl. cond., new tires \$5800, 624-4633

'78 RABBIT, silver, sunroof, AM/FM Sanyo cassette stereo \$4,000. '56 Small window, runs great, \$1600. Ph. 237-8606 eves.

**VOLVO**

'71 VOLVO 142 E, restore/parts, runs \$400/offer. 262-5859

**FOR SALE:**

'78 Datsun King Cab \$2500 or best offer.

'66 FORD Van, \$700 or best offer.

'56 CHEVY Flatbed 2 1/2 ton dump. \$3500 or best offer. Ph. 262-8871 Mon. thru Fri.

**FREE! FREE! ONLY AT CAR CITY**

18 mo./18,000 mi. Limited Warranty

'77 CAMARO \$3688 Auto, p/s, air, lic. 1276

'73 EL CAMINO \$1688 Air, p/s, lic. 502207

'78 BRAT \$3888 4x4 Subaru pickup, 4 spd., lic. 560790

'73 CHEVY \$2288 1/2 ton van, auto, p/s, lic. 1437823

'77 SUBARU \$3288 4x4 station wagon, lic. 268221

'75 VW \$2688 Rabbit, 2 dr., 4 spd., lic. 543031

'74 VW \$1888 Dasher, 4 dr., auto, lic. 441880

'73 MONTE CARLO \$1088 Auto, air, lic. 248863

'78 PINTO \$3288 Hatchback, auto, p/s, lic. 215442

2845 Kilihaui St. Diamond Rd. side of Kilihaui Ph. 833-3017

**WE PAY MORE! MORE! MORE!**

FOR CLEAN LATE MODEL CARS, VANS & TRUCKS AT **SHELLY'S** PH. 836-0466 CORNER NIMITZ & LAGOON

**SUPER BOWL**

WINNING CAR VALUES

**WE'RE DEALING ON 1980 FIATS BIG \$1000 Buyer's Bonus For 1980 Brava \$800 Buyer's Bonus For X19 \$500 Buyer's Bonus For 1980 Estrada**

Plus a good supply of Spiders. HURRY for your Best Deal Plus excellent transportation specials.

'68 OPEL CADET Stk. 80132A \$981

'77 VW Dasher Super Clean plus air. (Stk. V518A) \$3581

'75 SUBARU Stk. Wgn. Super transportation (P183) \$1981

'77 DATSUN 710 4 dr., super clean. (Stk. 80146) \$2981

'78 VOLVO 264 4 dr., fully equipped. (Stk. 80119) \$9000

'77 CHEVY Malibu Wgn. 9 pass., super room, + air. (Stk. 80158) \$2581

'78 PLYMOUTH Supra Auto, super condition. (Stk. 6064) \$3981

'80 SUBARU GLF Like super new, 5 spd. \$4581

Good till Jan. 25

**VOLVO FIAT HAWAII** 88-875 Kam Hwy., near Opposite Pearlridge 487-7974

**PUBLIC NOTICE**

BANK REPOSSESSIONS—OWNER TRANSFERS

NO CASH needed with approved credit

Ask about 18-month or 18,000 mile warranty

'79 GLC Wagon.....\$3989.18 Sharp economy, 4 spd. (17748)

'78 Dodge 4x4.....\$5291.70 Pickup, loaded, sharp. (565354)

'78 Mustang Auto.....\$4163.65 Loaded incl. air. (64164)

ALL CARS STORED AT **WHOLESALE MOTORS** Trade-In Accepted ALSO OPEN SUNDAY 2900 N. Nimitz Hwy.

**ONE PRICE SALE \$2995**

1979 Mazda GLC 2 dr. & 4 dr., 4 cyl., in-line engine, standard & automatic transmission, radio.

12 to choose from

5F822	5F853	5F2313
5F843	5F861	5F2315
5F847	5F864	5F2317
5F848	5F867	5F2322

Prices good Jan. 21 thru 25

**CUTTER FORD**

98-105 KAM HWY., AIEA • PH. 487-3811

All cars sold as is. Plus tax & lic.

BANK OF HAWAII—FIRST HAWAIIAN BANK FINANCING

Military Financing our Specialty

**SAVE NOW at DON LUCAS HONDA WINDWARD**

'80 HONDA Accord 4 dr., 5 spd., still on warranty, a/c, AM/FM cond. Stk. 101 \$7995

'75 FORD Granada 5 cyl. auto, nice car, low miles. Stk. 1122 \$2495

'79 MERCURY Capri Immac. cond., loaded. Stk. 1156 \$3995

'76 HONDA Accord 3 dr., 5 spd., below 30,000 mi., immac. cond. Stk. 1042 \$\$\$\$

'74 VW Bug Convertible, extra nice. Stk. 1079 \$\$\$\$

**DON LUCAS HONDA WINDWARD** 45-671 Kahi Hwy. Kaneohe 247-8544

**CASH FOR CARS**

WE DESPERATELY NEED FRESH USED CAR STOCK THIS WEEK!! TOP PRICES PAID by.

**VOLVO HAWAII** 487-7974 98-075 Kam Hwy., Aiea, Opposite Pearlridge

**1980 DEMO CLEARANCE SALE**

**BUY NOW! SAVE! WHILE THEY LAST!**

WE NEED ROOM NOW! JAN. 21st-25th ONLY.

**FREE! JAN. 21st-25th ONLY. BALLOONS & A TONY HONDA TOWEL**

(1 per family who test drive a new Honda, or one of our fine demos!) While supply lasts.

**MANY MORE TO CHOOSE FROM!**

**DAILY HOURS** Monday-Fridays 8 a.m.-9 p.m. Saturdays 9 a.m.-5 p.m. Sundays 10 a.m.-4 p.m.

Engine	Est. MPG	Est. Hwy
<b>CIVIC</b>		
Civic	1300 4-speed	28 36
Civic	1500 4-speed	26 45
Civic DX	1300 5-speed	28 39
Civic DX	1500 5-speed	26 40
Civic DX	1500 5-speed	26 35
Civic BL	1500 5-speed	26 49
Civic Wagon	1500 5-speed	31 42
Civic Wagon	1500 5-speed	30 32
<b>ACCORD</b>		
Accord Accord LX & Accord 4 Door Sedan	1750 5-speed	25 35
Accord Accord LX & Accord 4 Door Sedan	1750 Automatic	23 28
<b>PRELUDE</b>		
Prelude	1750 5-speed	25 35
Prelude	1750 Automatic	23 28

\*Use the est. MPG for comparison. Your mileage may differ depending on weather, speed and trip length. Actual highway mileage will probably be less than shown.

**ACCORD HATCHBACK** AUTO, AM/FM CASSETTE, LOW ML (278468) \$6095\*

**CYCC HATCHBACK** 5 SPD., RADIO, (8F1075) SIDE MOLDING - RUSTPROOF \$3995\*

**CYCC HATCHBACK** 5 SPD., RADIO, (8F8363) SIDE MOLDING - RUSTPROOF \$4195\*

**TONY HONDA of Waipahu** authorized sales, service, parts

"You don't really have a Honda 'til you have a Tony Honda Honda"

94-081 Farrington Highway across from Royal Sunset Drive-In Theatre. Ph. 671-1761

**250 Additional Cars On Display!**

'78 PINTO STATION WAGON, 4 cyl. 4 spd., radio, deluxe exterior. A moving Machine (7F4100) \$2795

'75 CORVETTE T-top, loaded, genuine wire wheels, air cond. Burnt orange. Priced to sell. (9F1994) **SAVE**

'77 COLT Deluxe Wagon, 1 owner, auto, air cond. A clean machine. Be let on the block. (P1001) \$2995

'79 GLC 3 dr., auto, radio, various colors. Choice of many. (5F871) \$2995

'78 VW BUG CONVERTIBLE, 4 spd., radio, fire engine red. A collector's breed soon to vanish. (7E640) \$5995

'74 JAVELIN SPORT CPE, V8 auto, power steering, air cond., fire engine red. A steal. (267012) \$1995

**SHELLY'S CARS** Corner Nimitz & Lagoon 836-0466



# The real bonus is what you get in addition to 5<sup>1</sup>/<sub>4</sub>% interest.

Per Annum

**We started our on-the-job training in 1858. Not 1981.** For the first time in history, savings & loans will be offering checking accounts. We welcome the competition. You'll welcome our check-handling experience. Some financial institutions have to go elsewhere for the check processing expertise First Hawaiian gives you right here ... at the bank.

**Bonus Checking™ is a rewarding experience. 12 times a year.** First Hawaiian Bank pays you interest on checking monthly. And that's a difference you can take to the bank. Plus, there's no service charge if you maintain the minimum monthly balance of \$1,000.

**OTTO, TellerPhone®, Yes-Check, and CheckStorage™ are all part of our system.** You can expand your Bonus Checking account with OTTO, the 24-hour teller machine; TellerPhone, a convenient telephone bill-paying service; Yes-Check, your personal line of credit; and CheckStorage, our cancelled-check safekeeping service.

**A lot of yesterdays went into the development of our NOW account.** First Hawaiian Bank has been in the business of check handling for over 122 years. That's exactly 122 years longer than any savings & loan and 39 years longer than any other bank. No other financial institution knows more about checking than us. Let First Hawaiian's checking experience pay off for you with Bonus Checking. Call any First Hawaiian Customer Consultant and sign up today.



**First Hawaiian Bank**  
Member FDIC

YOUR FULL SERVICE BANK