

HAWAII MARINE

Voluntary payment for delivery to MCAS housing/\$1 per four week period

VOL. 9 NO. 41

KANEOHE BAY, HAWAII, OCTOBER 22, 1980

ENTRANCE
TWENTY-FOUR PAGES

Pass in Review

Meal price increase

Servicemembers received an 11.7 percent pay increase to offset rising prices of clothing, housing, transportation, and food.

Effective Oct. 1, the dining facilities on the air station were required to raise the price of meals offered to authorized personnel. The price hike is a nickel in certain categories and Marines, sailors and civilians will feel the pinch.

New prices for patrons without meal cards are: breakfast \$.70, lunch \$1.40, dinner \$1.40, brunch \$1.60, dinner/brunch \$1.90 and holiday meal \$2.05. Surcharges have increased and are now \$.40. The cost of the night meal will vary depending on the meal actually served.

A recent audit by the Defense Audit Service has revealed that serious deficiencies exist throughout military feeding facilities which cost millions of dollars annually. In a message dated Sept. 11, it was revealed that since budgets do not include monetary allowance for second portions, second portions of food will not be served unless personnel elect not to take their share or they select less expensive meals.

Comments concerning the food, its preparation or the dining facility itself should be placed in suggestion boxes located in both Pless and Anderson Halls. For a proper response to a suggestion or comment originators should include name, rank and a telephone number so the food service office can contact them.

BAQ applications

WASHINGTON, MCNews — Many Marines who get married and apply for full Basic Allowance for Quarters do not get it at first and have to reapply, according to Personnel Services officials here.

One of the reasons Marines have to reapply for BAQ is that they lack proper documents, such as marriage licenses or birth certificates necessary to receive BAQ payments.

Another problem, Personnel Services officials cite, is untimely submissions for BAQ. Marines should apply for BAQ as soon as someone becomes their dependent.

To receive full BAQ, Marines should talk to their company administrative clerk to properly submit a claim. Marines should ensure they have all the documents needed.

For more information on BAQ check Marine Corps Order 1751.3D.

Unleaded unavailable

Prior to purchasing 1981 automobiles, military personnel contemplating overseas assignments are cautioned to inquire about effects of using leaded fuels in 1981 automobiles purchased in the continental United States.

Also, the capability to remove and reinstall emission control systems, and costs involved, should be determined. Manufacturers do not recommend taking some 1981 models equipped with gasoline engines to overseas areas where unleaded fuel is not available.

Under the present Department of Defense Privately Owned Vehicle Import Control Program, modification of pre-1981 models is no problem since the emission control system or its components can be removed and preserved while leaded gasoline is being used. Later, the components can be reinstalled for use in the U.S. or its territories.

For some 1981 models however, the new components are expensive and the unit will have to be tested for compliance with EPA standards prior to reimportation.

One major manufacturer has taken the position of discouraging exportation of all 1981 vehicles equipped with its new emission control system.

Diesel engine equipped automobiles are not affected.

Airline fare decrease

Several commercial airline companies are introducing special reduced fares to patrons utilizing the airways as a means of travel.

Pre-designated travel zones will determine the cost of an airline ticket purchased from participating airlines.

The offer for reduced airfare will expire Dec. 31 for most airlines. Further information can be obtained by contacting the Scheduled Airline Ticketing Office aboard MCAS Kaneohe Bay at 254-1664.

New squadron to activate

Marine Heavy Helicopter Squadron 464 is scheduled to be activated during March 1981 at MCAS New River, N.C.

The helicopter squadron will have a total of 15 CH-53E "Super Stallions" to complement its fleet.

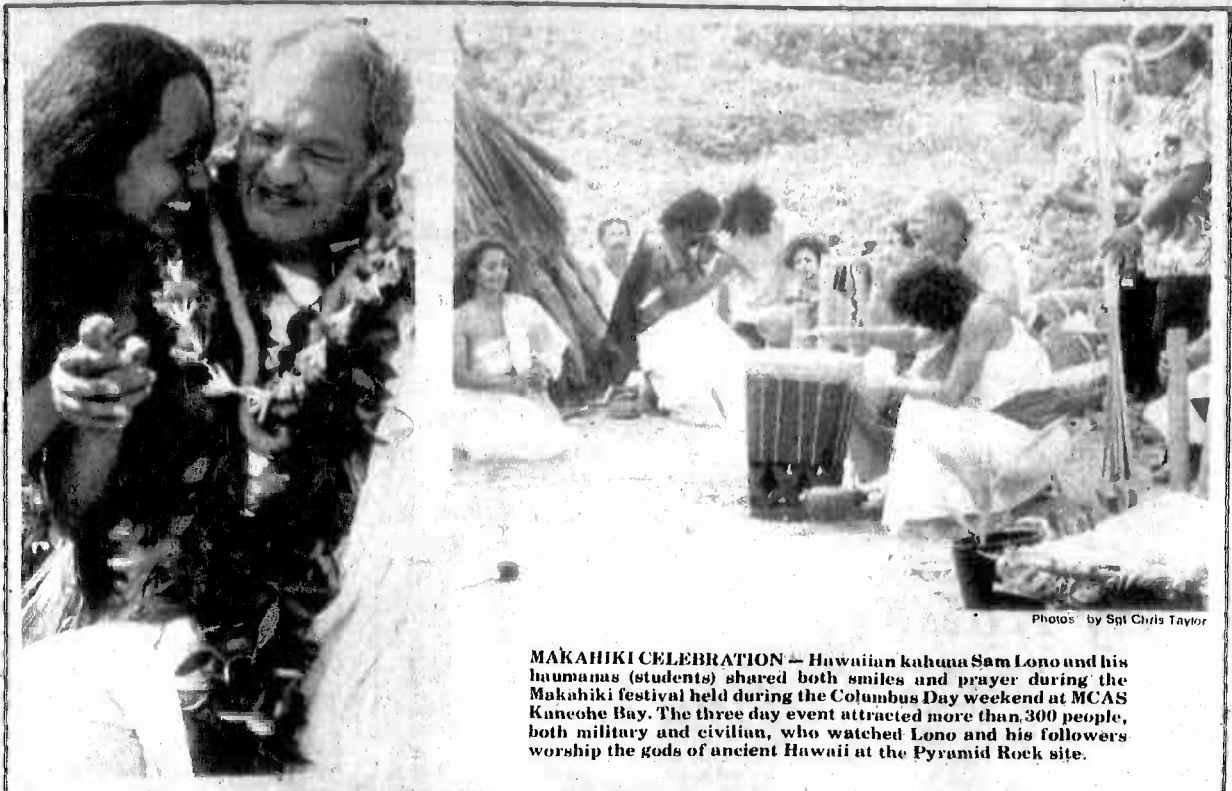
Money saving idea

WASHINGTON, MCNews — Officials here have developed a way to save the Corps nearly a million dollars in ammunition over a five-year period.

According to ALMAR 130-80, the \$940,000 savings will be achieved by using number 7 1/2 and 9 shot, 12-gauge shotgun ammunition in place of number 60 buckshot for training and familiarization firing.

This ammunition was previously used for trap and shoot matches. The Marine Corps no longer formally participates in the matches, leaving an excess of approximately two million rounds of ammunition. These rounds will be used for training and familiarization firing.

About 283,000 rounds of number 60 buckshot ammunition is used per year, and the use of both 7 1/2 and number 9 shot will supplement the number 60 buckshot used.



Photos by Sgt Chris Taylor

MAKAHIKI CELEBRATION — Hawaiian kahuna Sam Lono and his haumana (students) shared both smiles and prayer during the Makahiki festival held during the Columbus Day weekend at MCAS Kaneohe Bay. The three day event attracted more than 300 people, both military and civilian, who watched Lono and his followers worship the gods of ancient Hawaii at the Pyramid Rock site.

Pay raise offsets inflation

Aug. 26, Congress took final action on two significant bills. Both were approved by the president and have resulted in tangible improvements in military compensation, which should be evident in today's military paychecks.

Marines assigned to the 1st Marine Brigade, and MCAS Kaneohe Bay, should have their Leave and Earnings Statement by today, as well as a monthly personal pay file folder to maintain a record of their LES.

THE SEPTEMBER LES includes forecasts of the payable amounts of the 11.7 percent across the board pay increase, which became

effective Oct. 1. Capt. Larry Mullin, disbursing officer at MCAS Kaneohe Bay, explains important factors of the raise that brigade/station personnel can look forward to seeing in the pay categories.

He said, "I think we are all happy to see the 11.7 percent increase without a pay cap this

year. It is something every member can appreciate."

The strongest points include the Federal Subsistence Allowance, a 10 percent increase which is now payable to junior enlisted and officers.

Other pay adjustments over and above the 11.7 percent include a long list of adjustments," he continued. "There has been an increase in the maximum amount of selective reenlistment bonuses and zone 'C' has been added. There has been an

increase in aviation pay. The Variable Housing Allowance will be very beneficial to those members who are going to the continental U.S.

"BEING ABLE to get advanced pay for starting an allotment before going on a unit deployment should make new allotments easier for some families. The mileage allowance increase has raised sharply from 10 cents a mile to 18 and one half cents per mile," he added.

Flipping through his notes, messages and files on the pay increase, Mullin explained the method of calculating percentages of the mileage allowance.

"Persons who were in transit, as long as the effective date of their orders was after Oct. 1, are entitled to the new rate," he noted. "We must stress effective date of orders. This doesn't mean date of detachment or joining date, but the first day of

Cont. on A-2



Photo by Sgt Chris Taylor

UP, UP AND AWAY — A Search and Rescue helicopter from Station Operations and Maintenance Squadron, MCAS Kaneohe Bay, lifts David Cutshall, dependent of an air station Marine, out of the water when he was unable to swim back to shore. Cramps and physical exhaustion from fighting the water current overcame Cutshall Oct. 5 at Haleloa Beach, MCAS Kaneohe Bay and SSgt Joseph Contreras, 1st Battalion 3d Marines, rendered assistance to Cutshall by keeping him calm until SAR arrived.

High surf overcomes exhausted swimmer

A report of a distressed swimmer at Haleloa Beach approximately 500 yards off the beach occurred mid-afternoon Oct. 5.

"I was listening to our radio when I heard that there was a distressed swimmer," explained LCpl Owen Hagen, a Special Services lifeguard. "I was down on the 14th tee, so I looked through the binoculars and didn't see anyone. I ran down to the beach about three quarters of a mile where I saw the guy. I started swimming out but couldn't get to the guy. The surf was breaking at six to eight feet so I started back in."

"When I was about halfway out I saw that SSgt Joseph Contreras, 1st Battalion, 3d Marines, was

swimming out to him, and Search and Rescue was over the area in their helicopter."

When Contreras arrived at the point where David Cutshall, a dependent aboard MCAS Kaneohe Bay was struggling, he rendered assistance by keeping Cutshall calm while SAR's chopper maneuvered into position to lift Cutshall from the water.

Cutshall was treated for abrasions and released from the Naval Regional Medical Center, Kaneohe Branch.

An investigation revealed that Cutshall could not swim to shore due to cramps and that he was physically exhausted after battling the strong water current.



Photo by Sgt Chris Taylor

PAST MEETS FUTURE — HN Genard Hamilton, Naval Regional Medical Clinic, Kaneohe Branch, renders a hand salute to Lt. Cmdr. Louis Miller, retired, during Navy Birthday observances on MCAS Kaneohe Bay. Miller, a veteran of service in the Navy during World War I, was the honored guest at the ceremony. Hamilton is the youngest Navy person on the base.

Overboard: Helicopter rescue operation saves sailor who toppled from USS New Orleans' deck

by Sgt Chuck Henry

ABOARD THE USS NEW ORLEANS AT SEA, SEPT. 24. Finely-honed cooperation between a Navy/Marine Corps team in the Indian Ocean today saved a young man from possible drowning.

While working on an aircraft elevator which uts out from the ship's port side forward, a sudden sea-induced ship movement caused a sailor to fall over the side.

TOPPLING some 20 feet through the air into the ocean, the sailor bruised several ribs and sprained a hand, but was still able to stay afloat. Strictly enforced safety regulations had ensured the young man was wearing a life vest.

Alert Seaman Apprentice Andy Markowitz, 19, of Bronx, N.Y., watchstander on the fantail, spotted the man and notified the bridge. The ship's

commanding officer immediately sounded "man overboard" on the public address system, putting into effect a number of prearranged reactions by both the crew and embarked elements of the 31st Marine Amphibious Unit.

In the Combat Information Center, a special "man overboard plot" was activated. By calculating factors such as time of sighting, ship's speed and sea state, the CIC was able to establish the general area in which the sailor would be floating.

When the young man fell overboard, the ship was conducting routine external-lift flight operations with the U.S.S. Vancouver. Three of the rotary-wing aircraft, all from composite Marine Medium Helicopter Squadron-262, the aviation component of the Marine Amphibious Unit, were in the air

at the time of the incident. Employing the information provided by CIC, the ship began to maneuver back to where the sailor had been seen. They also launched a motor whaleboat to assist in surface support of the rescue effort.

In the New Orleans Helicopter Direction Center, rescue plans were implemented instantly.

"OUR POLICY in HDC whenever handling situations like this is to divert whichever aircraft is closest to where the man is supposed to be," explained Senior Chief Petty Officer Kent Savary, New Orleans air control chief. "The first helicopter we sent over spotted the man and dropped him a liferaft. We then called in a second chopper for the pickup."

The "pickup chopper" was one of HMM(C)-262's CH-46 "Sea Knight" Helicopters, piloted by Capt Jerry Kotz, 28, of Panama City, Fla., and 1st Lt Michael Barker, 26 of Winthrop, Mass. Kotz, whose helicopter was starboard of the ship when "man overboard" cackled through his radio, moved his Sea Knight into position, hovering some 50 feet above the floating sailor.

With the assistance of crew chief Sgt Steven Weslowski, 22, of Baden, Pa., and first mechanic LCpl Dennis Collins, 21, of Truxton, Miss., Kotz coordinated dropping a line on a collar which resembles, and is commonly referred to as, a "horse collar." Both Kotz and Collins had previously received intensive training in use of such equipment and rescue techniques, Kotz as a pilot and Collins as a swimmer.

The sailor strapped himself into the harness and was lifted by a hydraulic motor up into the helicopter.

"HE WAS WET and cold, and looked pretty sore," said Kotz about the sailor who had been lifted from 69 degree Fahrenheit water. "After we had him in the bird, it was a less than one minute flight back to the New Orleans."

Meeting the helicopter when it set down on the New Orleans' flight deck were doctors and medical corpsmen who wrapped a blanket

around the sailor and walked him to the medical clinic where he was examined and admitted to the ward. "We took x-rays and did a variety of other tests," said Petty Officer 3d Class Carl

Snow, a hospital corpsman, 23, of Wildwood, N.J. "Although his ribs were quite bruised, his overall condition was satisfactory. He was a bit shaken when he first returned, and rightfully

so, but he's doing fine now." The entire rescue operation lasted only 11 minutes from the time of the spotting until the sailor was returned to the New Orleans.

At a glance

Koolau Players

General membership meetings for the Koolau Players are held at 7 p.m. the second Tuesday of each month at the Boon-docker Theater, MCAS Kaneohe Bay. Persons are invited to stop by and watch rehearsals at the same location Monday and Wednesday evenings between 7 and 10 p.m. and Sundays 5 to 8 p.m. Membership will be accepted at any time.

Rehearsals are under way for the first production of "The Odd Couple," scheduled for presentation in late November and early December.

For more information, contact producer Georgia Buehl, 254-4612 or publicist Marilyn Boston, 254-2424.

Red Cross

The American Red Cross is offering free cardiopulmonary resuscitation classes for

active duty military, their dependents and civilian employees Oct. 27 through 30.

To register, call the Red Cross at 257-2606 or 257-3575.

Career Plus

"Career Plus," a presentation designed to enrich the professional and personal goals of military women at MCAS

Kaneohe Bay, will be presented tonight from 7 to 9 p.m. in Building 455.

Armed Services YMCA Outreach presents the program as part of the Service Women's Time-Out Program. All active duty military women are invited to attend.

For more information, call the Armed Services Outreach

Office at 254-4719 or 254-4965.

Crafts Fair

Hickam Air Force Base will host a Fall Crafts Fair at the Hickam Arts and Craft Center 8 a.m. to 5 p.m. Nov. 1.

Only items hand-crafted by the seller will be sold. For more information call 499-1568.

SIT BACK. RELAX.

For that next special occasion, relax and leave all the work to the staff at Hale Koa Catering. Complete banquet and meeting facilities. Call us 955-0555.

HALE KOA CATERING

At the Hale Koa Hotel, Armed Forces Recreation Center on Waikiki Beach, 2055 Kalia Road, Honolulu 96815 / Ph: 955-0555.



KAILUA OPTICAL for your fashion eyewear

- **SOFT CONTACTS \$112⁰⁰**
Includes tax, starter kit, fitting instructions, 120 day guarantee.
- **GLASSES START \$39⁰⁰**
- **1000 FRAMES IN STOCK**
- Please phone us for more information

ULUNI ST. PH. 262-6191 "Compare before buying"



GLASSES OR SOFT LENSES?
SUCCESSFUL CONTACT LENS WEAR REQUIRES:

- PROPERLY FITTED LENSES
- HIGH QUALITY MATERIALS
- THOROUGH FOLLOW-UP CARE BY YOUR DOCTOR DURING ADAPTATION

SOFT CONTACT LENSES
Includes lenses, case, kit, follow-up care and 90 day trial period **\$120**

ALSO AVAILABLE • SOFT CONTACT LENSES FOR ASTIGMATISM • ORTHOKERATOLOGY • ONE DAY SERVICE FOR GLASSES AND HARD CONTACT LENSES • IMMEDIATE SERVICE FOR SOFT CONTACT LENSES

DR. CHARLES DEAN, Optometrist
Kailua
1200 Maunaloa St.
261-9735

DR. TIM TOGIKAWA, Optometrist
Pearl City
1238 Kaahumanu St.
487-7907

Downtown
1146 Union Mall
538-6226



2 GAMES TO PLAY!

PLAY BALL

WIN UP TO \$1,000,000 in cash & product prizes available.

FAMILY A&W RESTAURANT

Save the Stub!

PLAY WORLD SERIES!

Over \$5,000,000 in free regular root beers

Game cards available at participating A&W Family Restaurants. Game cards available while supplies last.

© A & W Restaurants, Inc. 1980

A&W FAMILY RESTAURANT

AT THE HOLIDAY MART SHOPPING CENTER IN KAILUA

EDITORIAL / OPINION

Street Scoop

Do you watch soap operas?



GySgt Edward Yambao, HqCo 3d Marines: "No, I don't watch soap operas. First of all, I don't have the time and besides I feel as if there are better things that I can do with my time."



Lt. Cmdr. Neil Dalager, NASAP, Pearl Harbor: "I never watch soap operas. I don't feel that they add to the quality of my life. They don't reflect reality. They just show the negative side of life and weaknesses."



Jill Brohmer, dependent: "I'm too busy with work to watch them, and even if I was home I wouldn't watch them. I just don't want to get into that humdrum routine of sitting and staring at the television."



Sgt Gregory Nolan, SOMS: "I watch General Hospital because it's on at lunch time and it's interesting. I guess that once you get started, you can't stop."

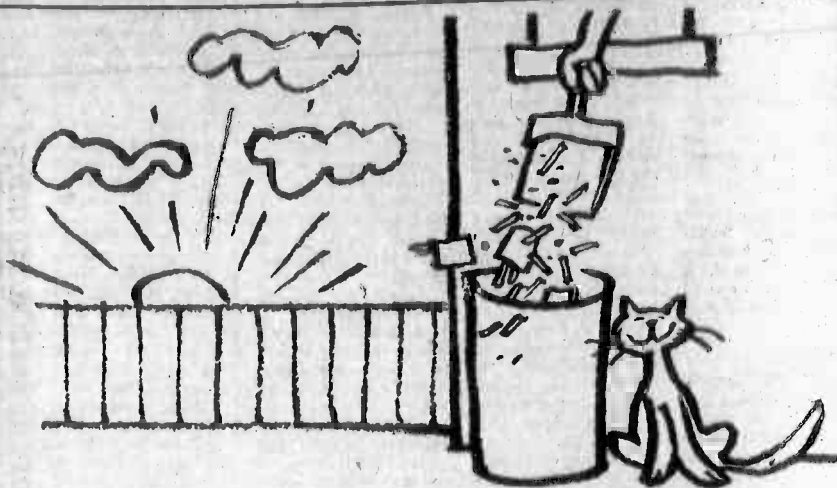


PFC Edward Smith, 3d AAV Bn: "Sometimes I watch General Hospital. I think it's good and the people really play out their parts."

CALLING IT QUILTS

On The Day You Quit ...

- ☐ Throw away all cigarettes and matches. Hide lighters and ashtrays.
- ☐ Visit the dentist and have your teeth cleaned to get rid of tobacco stains. Notice how nice they look, and resolve to keep them that way.
- ☐ Make a list of things you'd like to buy yourself or someone else. Estimate the cost in terms of packs of cigarettes, and put the money aside to buy these presents.
- ☐ Keep very busy on the big day. Go to the movies, exercise, take long walks, go bike riding.
- ☐ Buy yourself a treat, or do something special to celebrate.



Combat artists depict reality

by Philip Smith

Considering the pillage and destruction of art treasures by warring nations throughout history, war and art are hardly compatible. Still, battle has always been a dramatic subject for artists; some have depicted it from afar for propaganda or historical purposes while others have risked their lives by going to the front to capture, as one artist put it, "the shock and loss and bitterness and blood of it."

America's Revolutionary War was painted by such artists as John Trumbull. Alfred Waud recorded the Civil War with his drawings, as did Mathew Brady with his photographs. World War I and II saw American artists in all theaters, and during the Korean and Vietnam wars thousands of sketches, paintings and photographs were made by designated combat artists.

Capt Harvey Dann went over the top during World War I, carrying not a gun but a specially designed box with rollers to wind up unfinished sketches and unroll a clean sheet of paper as he needed it.

He was one of eight artists who was commissioned and sent by the U.S. War Department to cover that war with pen, pencil and brush. They roamed the front lines, the shell-torn villages and the rear sectors, endlessly sketching the battle-weary soldiers, the spiritless refugees and the ravages of battle. Before the war was over they had produced almost 700 pictures and paintings.

During World War II, some 40 artists participated in the combat art programs. Lt. William F. Draper, USNR, went ashore with U.S. forces as they invaded the

Japanese-held Aleutian Islands. His work was done under extremely trying, as well as dangerous conditions. The fierce Aleutian winds would often send his canvas sailing into the air like a kite. When he ran out of canvas, he worked on pieces of masonite salvaged from quonset huts.

The 1,800 works of art completed during the WW II period form the nucleus of the Services' war art collections. With additions from the Korean and Vietnam war periods, Army, Navy, Air Force and Marine Corps combat art now totals several thousand paintings, sketches and photographs. Many of these works hang in the corridors of the Pentagon, and others go on exhibit throughout the country at various times.

From the very beginning, combat artists have been as dedicated to their jobs as the servicemen they lived and sometimes died with. Marine Corps' artists in World War II, for example, fought alongside their buddies; if they had time to sketch, it was while the others were relaxing.

During the Spanish-American War, Frederic Remington, the great artist of the Old West, recalled bullets flying past him as he attempted to draw an enemy action in Cuba: "I dropped in the tall guinea grass and crawled to some soldiers hidden under a mango tree. I think that episode cost me my sketch book." Needless to say, it almost cost him his life.

The adage that the pen is mightier than the sword might well be applied to the work of combat artists. Long after the scars of war have healed, long after the last veteran has died, their legacy is a vivid recounting and reminder of the drama, courage and horror of war.



"THE SNIPER"

Capt. Harvey Dann, AEF, Great World War I

Vacation turns into nightmare

Leave or vacation time is fun time—right? Not always. Some people work so hard at having fun that they end up hurting themselves or others.

Some people try to jam so much fun into every available minute that they knock themselves out. They overstress themselves by doing more physical activity or a different type of physical activity than they are used to. Instead of getting more sleep, they get less. They eat too much, too fast, at wrong times.

The night before the first day of leave or vacation can be more hectic than the last day of the reporting period in the office, or the last day of the production cycle in the shop. There are so many things to do and so many things to remember: clothes, tools, car, maybe a boat, maps, food, medicines, etc.

The whole family may be busy late into the night, and then gets up early to drive a long distance! It doesn't make sense when you think about it, but a lot of folks do exactly that. Results? Oftentimes headache, upset stomach, fatigue, irritability

and occasionally even an auto wreck. This is fun?

And think about the children. The children are usually the ones for whom a family vacation is planned. But look what can happen. Trying to do too much in too little time puts parents under great stress.

Children are instructed, but in their own excitement they easily forget their instructions or become involved in other things. Then a most unfortunate situation can develop if parents under all these stresses lose their patience. Child abuse? Possibly. And wasn't this supposed to be a fun time for the children?

Here are some suggestions for getting the most fun out of your leave or vacation:

- Plan ahead; make checklists.
- Go to bed at your usual time. Better yet, get even more sleep than usual.
- Eat at your usual times; eat slowly.
- Don't count on much help from your children.
- Don't schedule yourself for driving excessive distances.
- Don't work too hard trying to have fun!



"Hello line? ... Hello office? ... Hello pizza parlor?"

My Turn

Skating Rink

Recently, one of our readers voiced some concern over the MCAS recreational skating rink, particularly regarding operations during inclement weather. I will attempt to answer these questions.

First of all, monies collected at the skating rink are not dedicated toward construction of a new skating rink. Rather, they are turned in to the general recreation fund at MCAS. From this fund, expenses back to the skating rink cover salaries for the employees, procurement and maintenance of skates and the sound system.

Second, policy at the skating rink is to issue a rain check for the period from

opening at 7 p.m. until one and one half hour later. During this time, if inclement weather develops which necessitates closing the rink, all patrons receive a "rain check" authorizing skating again at a future date. After 8:30, no rain checks are issued.

It is hoped that the present facility can be relocated to a new site in the vicinity of the Station Swimming Pool. Planning for this project has begun, however, availability of funds for this is uncertain at present.

I trust the above information will answer the questions concerning the skating rink. Your patronage is welcomed.

Maj M.R. Masile
Joint Special Services Officer

Concerned Consumer

In these days of rampant inflation most families, especially military can be pretty hard pressed to make ends meet. In addition, it appears the military is going through a period where their benefits are eroding. While we haven't lost anything of major importance yet, it is obvious that we're just no longer entitled to all the "bennies" we were privileged with five years ago.

I've heard it said by many people that all our benefits are rapidly drying up. One common subject of complaint is commissary and exchange privileges. Many people believe there just isn't any advantage to shopping the commissary anymore. I've even heard some boast they can do better by shopping in a civilian establishment.

All this got me thinking. So, concerned consumer that I am, I decided to find out the truth for myself. I conducted a price comparison between the commissary here at MCAS Kaneohe Bay and four other civilian markets in and around Kailua and Kaneohe. I compiled a list of 11 common grocery items. Each item priced in the civilian and military grocery stores were the same brand name and size.

The results of the Oct. 7 survey were truly remarkable. Here they are. The names of the civilian supermarkets have been deleted for obvious reasons.

	Store A	Store B	Store C	Store D	Comm.
Milk (one half gal.)	1.48	1.46	1.45	1.43	1.30
Bread, whole wheat, 1 lb.	1.05	.95	1.00	1.05	.88
Margarine, stick, 1 lb.	.82	.77	.71	.87	.50
Eggs, large, one dz.	.99	1.09	.99	1.09	.58
Bacon, 1 lb.	1.99	1.79	1.80	1.89	1.39
Hamburger, 1 lb.	1.69	1.49	1.69	1.69	1.39
Hot Dogs	2.19	1.69	1.99	1.99	1.50
Flour, 5 lb.	1.39	1.43	1.30	1.39	1.01
Sugar, 5 lb.	2.39	2.39	2.43	2.39	2.07
Coffee, regular, 2 lb.	7.59	6.59	6.59	7.29	5.59
Whole kernel corn, 17 oz. can	.59	.58	.54	.57	.38

By comparing the savings to all four stores the wise commissary shopper saves an average of 20 percent on every item listed.

I guess the message is clear enough. The next time someone tells you there's no advantage to buying your groceries at the commissary, smile, look em' in the eye and tell em' "Hey save yourself some bucks; shop the commissary."

Mrs. Linda Ritzler
dependent



ALOHA NUI 'LOA — Capt. Chris Gieser leans down to receive a welcome home hug and kiss from his daughter Megan. Gieser returned to MCAS Kaneohe Bay, Friday along with the elements of Marine Fighter Attack Squadron-232 after a six-month deployment to Iwakuni, Japan.

PARADISE USED FURNITURE INC.
155 Hanaia Dr.
DAVID & DORIS KNOWLES 261-8402

WE BUY AND SELL:

- Beds
- Dressers
- Tables
- Lamps
- Couches
- Stereos
- Desks
- Koa & Rattan
- Furniture
- Much More

Mon. thru Sat. 10 AM-5 PM

"DROWNED"
WE WILL NOT BE RESPONSIBLE FOR OUR COMPETITION GOING UNDER.

NOTE THESE SPECIALS

BERNINA 1980 Model. Zig zag, open arm, monograms, buttonholes & self adjusting tension. Suggested Retail \$645. Demo models only **\$325.00**

Viking Electronic 1980 Model. Stretch stitches, buttonholes, blind hems, monograms & open arm. Demo Models only **\$248.00**

SINGER. Open arm, buttonholes, blind hems, and monograms. Demo models only **\$98.00**

Many more specials available. Offer expires 10/22/80.
PACIFIC SURPLUS & DISTRIBUTORS
35 Kaneohe St., #104, Kailua 262-8131

WATCH CLOCK REPAIR
DAMAGE CLAIM SERVICE

DIGITAL WATCH REPAIR
FREE ESTIMATES

Call Us 487-8825

HOUSE CALLS FOR GRANDFATHER'S CLOCKS
We will come to your home and make all necessary adjustments, lubrication and general checkup for this low fee of **\$49.95** 10/31/80

98-151 Kulahehi Pl.
Pearl City, HI 96766
H. S. 273-2200

Old Fashioned Service
Antiques & Specialty
Buy your clock from people who service clocks. Stated with full time clock experts.

A CLOCK HOUSE
COMPLETE TIME-PIECE SERVICE CENTER

DISCOVERY TOYS

Interested in high quality educational toys for children of all ages that you cannot find in the local stores?

We offer home and school demonstrations. Ask about our hostess plan!!

For more information call:

B. Claire (Central)	623-9251
D. Braxton (Windward) (1-5 p.m.)	254-1971
E. Chun (Kaimuki/Kahala)	737-9842
S. Hirata (Central)	623-3137
M. Petris (Leeward)	487-2067
L. Sherman (Central)	623-2749
M. Tada (Palolo) (eves. only)	737-3842

Plan early for Christmas!

NAPA

KAILUA AUTO PARTS

is proud to announce the

GRAND OPENING

of their second store

AIKAHI AUTO PARTS

Special Grand Opening Hours:
Mon.-Fri. 9:30-7:00 p.m.
Saturday 10:00-4:00 p.m.

NOTE: we're open till 7 p.m. for your convenience Mon. thru Fri.

RENTAL RETURNS

CLEARANCE SALE

LAMPS - \$7

OFFICE DESK - \$139

NEW RATTAN 3-PC. DINETTE & CO. TABLE SET - \$139

COCKTAIL & END TABLES - \$7

NEW RATTAN SWIVEL CHAIRS WITH CUSHION - \$95

OFFICE CHAIRS - \$29

CHECK OUT THESE BARGAINS:

	USED	NEW
4-PC. BEDROOM SUITE	FROM \$129	FROM \$289
HEADBOARDS (ALL SIZES)	9	19
TWIN BED SETS	79	175
FULL SIZE BED SETS	95	225
QUEEN BED SETS	119	275
5-PC. DINETTE SETS	69	119
SOFA & CHAIR SET	95	295
SOFA & LOVE SEAT SET	195	549
SOFA SLEEPERS (ALL SIZES)	129	325
RATTAN DINING CHAIRS	49	49
LANAI CHAIRS	19	29
CHAISE LOUNGES	29	39

Yes, there are more items for every room in the house. Come in and see our entire selection.

ABC Furniture Rentals & Sales

2004 NORTH HAWAII HIGHWAY KAILUA • HAWAII • 96819 • PH. 254-0881
NEAR THE AIRPORT NEXT TO YAMAHA

HOURS
Mon. Fri. 9-7
Sat. 9-5
Sales Ends Saturday, Oct. 18th

10% OFF*

our everyday low discount prices on our Entire Inventory (except paints & tools)

AIKAHI STORE ONLY ONE WEEK ONLY!

★ We carry the full line of Martin Senour Paints in aerosols, quarts or gallons. Mixed paints also available.

PHONE 254-3535

Located in Aikahi Park Shopping Center

KAILUA AUTO PARTS

AIKAHI AUTO PARTS

KMCAS

NAPA

*Supercedes all other discounts, subject to stock on hand, and dealers not eligible.



SAVE NOW WITH

WHOLE FRYERS

Patti Jean Frozen U.S. Gov't Inspected



LB. **79¢**

SNOW CRAB CLUSTERS

Alaskan Snow Leg And Body



LB. **\$2.19**

STRIP LOIN STEAKS

Boneless USDA Choice, Extra Tender



LB. **\$6.09**

ROUND STEAKS

Boneless USDA Choice Full Cuts, Chicken Or Pan Fry



LB. **\$2.59**

GROUND BEEF

Regular 3 Lbs. Or More Less Than 30% Fat (Less Than 3 lb. Pkgs. lb. \$1.59)



LB. **\$1.49**

SCOTCH BUY

TURKEYS

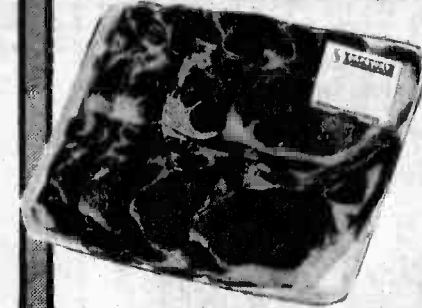
Both Hens & Toms (Redondo's Cooked Wings & Tails lb. \$1.39)



LB. **88¢**

PORK CHOPS

Assorted Both Ends And Centers



LB. **\$1.98**

PORTERHOUSE STEAKS

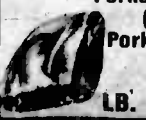
From USDA Choice Beef



LB. **\$4.98**

PORK BUTTS

From Tender Young Porks (Ground Pork lb. \$1.69)



LB. **97¢**

CROSSRIB ROASTS

Boneless USDA Choice Pot Or Oven Roasts



LB. **\$2.98**

SHORT RIBS

From Lean Tender Ribs, Cut For Bar-B-Que Style Frozen



LB. **\$1.49**

LEG OF LAMB

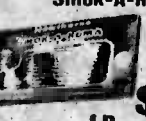
Whole Or Half New Zealand Frozen



LB. **\$1.98**

SLICED BACON

Smok-A-Roma (Armour lb. \$1.98)



LB. **\$1.79**

DUCKLING

Parts Missing

LB. **79¢**

TURKEY HIND QUARTERS

Jennie-O-Brand

LB. **73¢**

TURKEY TAILS

Jennie-O-Brand

LB. **69¢**

You'll Shop & Save With

Orange Juice

Bel Air 12 oz.



SUPER SPECIAL

89¢

Margarine

Scotch Buy 1 lb.



SUPER SPECIAL

55¢

Cragmont Soda

2 Liter Reg. & Diet



SUPER SPECIAL

\$1.09

Mayonnaise

NuMade QT



SUPER SPECIAL

\$1.19

SAFeway LIQUOR SPECIALS

Gin

Winner's Cup 80° 1 Litre



\$4.77

Regular Price \$5.39

Vodka

Winner's Cup 80° 1 Litre



\$4.77

Regular Price \$5.39

Olympia Beer

12 oz. Cans 6 Pk.



6 FOR \$2.39

Regular Price \$2.65

Mountain Wines

Sebastiani 1.5 Litre, Chablis, Vin Rose, Burgundy



\$3.39

Regular Price \$5.45

Red Label

Johnnie Walker 750 ml



\$8.29

Regular Price \$12.99

Straight Whiskey

Old Galhoun 750 ml



\$4.69

Regular Price \$5.65

Chicken Noodle Soup

Or Cream of Celery 10.5 oz.



SAFeway SPECIAL

3 FOR 99¢

Strawberry Jam

Empress 10 oz.



SAFeway SPECIAL

79¢

Join Safeway in supporting the Aloha United Way Fund Drive

Super Specials

Super Special tags in our stores highlight advertised feature items on which prices are especially reduced for the period of the ad.



Safeway Specials

A "Safeway Special" tag on the shelf at Safeway marks an item on which we can offer you a savings as the result of a special purchase or manufacturer's allowance. Safeway Specials are in effect from 2 to 4 weeks. Some are advertised, hundreds are not.

Green Beans

Town House 16 oz.



SAFeway SPECIAL

3 FOR \$1.289

Waffles

Bel Air 8 Ct. 5 oz.



SAFeway SPECIAL

Grapefruit Juice

Town House 48 oz.

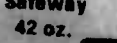


SAFeway SPECIAL

\$1.15

Quick Oats

Safeway 42 oz.



\$1.39

Items and Prices in This Ad Are Available Oct. 15 thru Oct. 18, 1980 At All Safeway Stores Listed Below:

8 SAFeway STORES TO SERVE YOU

548 Ala Lihua St. Honolulu
1121 S. Berland St. Honolulu
2655 E. Mahe Rd. Honolulu
1300 Pali Highway, Honolulu

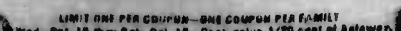
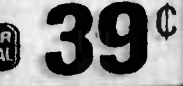
8:30 a.m. to 9:30 p.m. Mon. thru Sat. — Sun. 9:00 a.m. to 9:00 p.m.
8:30 a.m. to 12:00 Midnight Mon. thru Sat. — Sun. 9:30 a.m. to 1:00 p.m.
8:30 a.m. to 10:00 p.m. Mon. thru Sat. — Sun. 9:00 a.m. to 9:00 p.m.
8:30 a.m. to 10:00 p.m. Mon. thru Sat. — Sun. 9:30 a.m. to 9:00 p.m.

98 1277 Kapaeha St. Ala
1660 Keolu Drive, Aiea
46 105 Kani Highway, Kaneohe
25 Kaneohe Bay Drive, Kaneohe

9:00 a.m. to 10:00 p.m. Mon. thru Sat. — Sun. 1:00 a.m. to 9:00 p.m.
8:30 a.m. to 9:30 p.m. Mon. thru Sat. — Sun. 9:00 a.m. to 9:00 p.m.
8:00 a.m. to 9:00 p.m. Mon. thru Sat. — Sun. 8:00 a.m. to 9:00 p.m.
8:00 a.m. to 9:00 p.m. Mon. thru Sat. — Sun. 9:30 a.m. to 9:00 p.m.



\$139



SAFETY

BUILD FOR TOMORROW — A crane at the Organizational/Field Maintenance Facility construction site prepares to lift materials to workers on the second floor of the skeletal structure. The seven building facility is scheduled to be completed by May 1981 at an estimated cost of \$5.3 million.
Photo by Sgt Chris Taylor

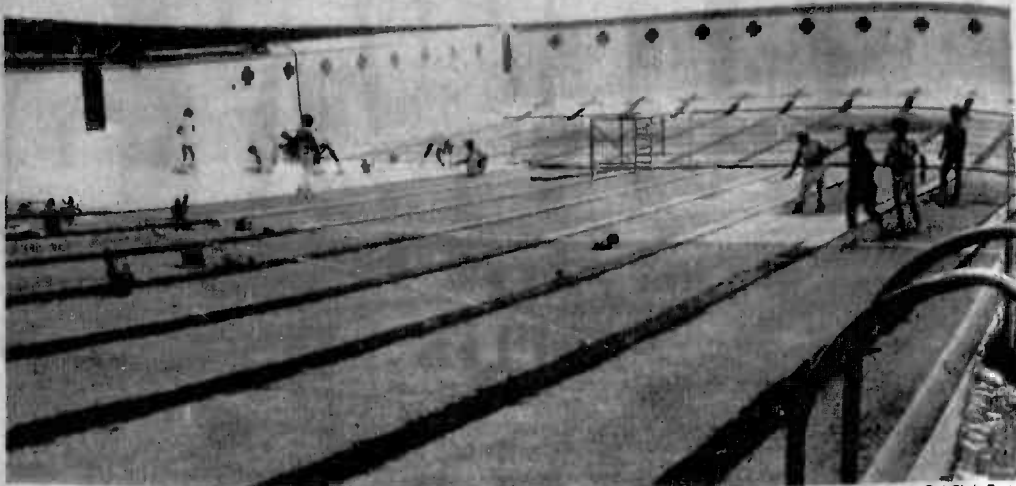


Photo by Sgt Chris Taylor

Projects

Construction enhances station's look

by LCpl Charles Marshall

The towering crane spotted by most people as leave the Marine Corps Exchange at MCAS Kaneohe Bay is the site of the proposed Organizational/Field Maintenance Facility to provide military vehicles with service ranging from refueling to general maintenance. The \$5.3 million seven-building structure is scheduled for completion in May 1981, provided there are no major setbacks.

ACCORDING to Morito "T-Bird" Yamamoto, superintendent of the construction site, the work is going well. "The building should be finished as scheduled," he says. "We are approximately 42 percent finished despite the carpenters' strike, which didn't hinder our progress. Six of the seven foundations have been poured and, of those six, the basic outline of the buildings can be seen. The buildings should look good when we finish."

"Subcontractors on the site have begun work installing the electricity, plumbing and the other necessary utilities," adds field engineer, Steven Fernandez.

Excavation is planned for a trench across Seldon Street and through a portion of the main exchange parking lot to provide the facility with primary

electrical service. The work is scheduled to begin Monday and last approximately six weeks. During the digging and other trench work, one lane of Seldon Street will be open to motorists at all times and a flagman will be posted to make sure traffic flows smoothly.

A project on the air station that is having problems meeting a deadline is the pool. Originally set to open in March, late arriving shipments, design changes and bad weather have all contributed to a seven-month delay of the opening.

"ABOUT \$420,000 has gone into the mechanical room and for resurfacing the pool and outer deck," said Lt. Jg. George Eichert, assistant resident officer-in-charge of construction, MCAS Kaneohe Bay. "The pumps and filters have been replaced by two new units which means the 'guts' of the pool's circulation system are brand new."

The original concrete of the deck has been sandblasted, then resurfaced using epoxy mixed with a slight bit of gravel to provide a non-slip floor. New lane markers and water-depth signs are being added along with rainbows painted on the dressing rooms to

make the facility more pleasing to the eye.

Contractors were scheduled to complete work Friday and to turn the pool over to Joint Special Services.

The focus of most interest, though, seems not to be in the pool being closed for nearly a year, but rather about the black-topping being done throughout the air station. Patrons of the main exchange and the Naval Regional Medical Clinic, Kaneohe Branch, are greeted with dust particles floating through the air and the smell of hot asphalt.

AT THE Exchange, roofers stripped the building top down to the concrete. They then replaced it, first with one-inch thick insulation, then with four-ply paper and gravel upon each layer. Contractors finished

work on this roof, which covers the exchange, snack shop, chaplains' and other offices, Oct. 8.

Other people tolerating a construction environment are the students who attend classes in the Joint Education Center classrooms. For three weeks civilian contractors have worked on replacing the hallway's painted windows with decorative concrete blocks. The purpose is to provide more ventilation.

The air station is doing its part in keeping up with the changing times by providing new facilities and improving old ones. Nearly \$10 million were spent on construction, repair and maintenance during the 1980 fiscal year. Projected figures for fiscal year 1981 are not yet available.

A POOL PARTY — Civilian contractors add finishing touches to the floor of the MCAS Kaneohe Bay Station Pool and ready it for re-opening. According to the

contract, the pool was slated for completion Friday and then be turned over to Joint Special Services for opening.



TLA SPECIAL "ROOM & CAR PACKAGE"

Includes:

- RENTAL CAR by *Trans-World Rent-A-Car*
- DELUXE, Spacious Rooms at the HOLIDAY INN AIRPORT with:
 - Air Conditioning
 - FREE Color Television
 - Room Service Available
 - FREE Parking, Baby-sitter
 - Referral, WASHERS & DRYERS
 - 24-Hour Telephone Switchboard Service
- CREDIT CARDS: American Express, VISA, Bank Americard, Carte Blanche, Diner's Club & MasterCard
- LOCATION convenient to ALL Military Installations, Waikiki and Major Island Attractions

ONLY
\$46⁹⁵
per day

Additional Conveniences:

- LEIMAKER'S RESTAURANT
- KALAMA COCKTAIL LOUNGE (with entertainment nightly)
- POOL
- Kennels
- FREE Airport Shuttle

Special TLA Rate on Room Only \$33 Per Day

For Reservations & Information Call:

Holiday Inn AIRPORT
836-0661

"The Last of the Red Hot Lovers"

On November 5, 6 and 7 the Hale Koa Dinner Theatre presents Neil Simon's hilarious "Last of the Red Hot Lovers". Come for cocktails at 5:30 pm. Sit down to an exquisite dinner in the Waikiki Ballroom, and at 8:30 pm the show begins! Only \$12.95 includes dinner, gratuity, play and a glass of wine. Tickets go on sale Oct. 13 at Hale Koa's Activity Desk and military ticket outlets.

HALE KOA HOTEL
Armed Forces Recreation Center/Waikiki
2055 Kalua Rd./Honolulu, Hawaii/955-0555

GET OUT OF DEBT

through Chapter 13

A federal law which helps to pay off your debts without borrowing and in payments you can afford, stops creditor harassment and law suits, protects your job, co-signers and property. Initial consultation or info packet are without obligation.

Please call:

HOWARD Y. TANAKA
Attorney versed in Chapter 13 filings
Suite 466, Alexander Young Building
Telephone: 531-5943

REAL ESTATE VENTURES

CUSTOM BUILDING
COMMERCIAL RESIDENTIAL
CONDOMINIUMS DEVELOPMENTS
COUNTRY ESTATES OFFICE BUILDINGS
FEE PURCHASE OF LAND UNDER CONDO
FOR LONG-TERM RENTAL INCOME STREAM

TEL: (808) 942-2851



Canadian
Investment Co.

1580 Makalae St., Ste. 1030, Honolulu, HI 96814

NOW at the MCAS FEDERAL CREDIT UNION



For more details, stop by or call at either office:
Building 401, KMCAS, Phone 254-1334 1335

OR

35 Kaneohe St., Suite 105 in Kailua, Phone 261-3442

No service charge,
no minimum balance...
and dividends!

TENTSALE

SMALL CARPET REMNANTS

Size 12 x 1 to 12 x 9

Save Up to 70%

From Manufacturer's Suggested Retail
Over 500 to choose from.

DRAPERY FABRIC REMNANTS

50¢ to \$150 per yd.
20 yd. or less

Cash & carry only
ALL SALES FINAL

NAVY Exchange PEARL

October 17, 1980 to October 19, 1980
9:30 am-5:30 pm

Located at the NIX truck rental lot on Bougainville Street from Mountain Shopping Center



Messages

Shipboard processing center ensures constant communication throughout commands

by Sgt Chuck Henry

ABOARD THE USS NEW ORLEANS AT SEA — In a society as fast-paced as ours today, it is necessary that those making decisions be capable of quickly exchanging ideas. The importance of accurate communication is obvious when looking at the number of relationships, both personal and international, that have failed due to lack of it.

In the Indian Ocean with the Navy's Amphibious Squadron One, eight Marines from the 31st Marine Amphibious Unit have joined forces with Navy communicators to ensure that a constant flow of information can be sent and received from this location.

THE MARINES, six from the Marine Amphibious Unit Headquarters element and two from the unit's ground combat component, Battalion Landing Team 2/3, have been assigned temporary duty with the New Orleans' Message Processing Center.

Operating 24-hours a day, seven days a week, the MPC handles between 300 and 400 incoming and outgoing messages per day. Some 50 pounds of paper is used daily, processing teletype traffic and distributing anywhere from one to seven copies of each message to whichever of 49 departments that might be concerned.

The heavy amount of message traffic is due partly to the embarkation aboard the New Orleans of the Headquarters for both the amphibious squadron and the Marine Amphibious Unit, as well as many of the battalion landing team's assets.

"WHEN THE Marines first reported for work here, they were a little lost insofar as understanding some of the differences between the Navy and Marines Corps' format and filing systems," recalled Petty Officer 1st Class Jim Blunt, 37, of Providence, R.I., leading petty officer of the MPC. "They learned quickly, though."

"I THINK each

group had a stereotypical impression of what members of the other group were going to be like," commented LCpl Doug Brillhart, 20, of Baltimore, Md. on temporary duty to the MPC from BLT 2/3.

"You pick these ideas up from boot camp and so they automatically pop into your mind when you meet a person in that group. After working together though, and just being around a person for awhile, you begin to realize that everyone is an individual with his own good and bad points. And besides, we're all here for the same basic reason. I think we've all made some good friends here."

According to Blunt, the comradery among

MPC personnel is such now that respect abounds and morale is high.

"EVERYONE works very well together as one Navy/Marine Corps team," said Blunt. "We even try to pull liberty together when we can."

As fully-integrated members of the MPC team, Marines participate in all phases of message handling. Processing an average of 85 outgoing messages every day, MPC Marines and sailors rotate doing such jobs as checking the accuracy of address information, assigning necessary filing codes to each message, "cutting" the message onto paper tape with a

typewriter keyboard instrument, proofreading the copy and actually using the tape to transmit the message. Incoming messages are copies and distributed through proper routing channels or relayed to other ships and stations, if

necessary, by team members.

"THE NAVY and Marine work force in the New Orleans MPC is a prime example of how well members of the two branches can work together," said LCpl Michael Taylor,

20, of Mesa, Ariz., a BLT 2/3 Marine, "this is my second float and I've worked with the Navy both times. I've definitely learned my share about telecommunications working on ship. The team here is made up of a really fine group of men. No matter what uniform

they wear or how short their hair is, when it comes to doing a job right, you can count on any of these guys."

The success of this operation is evident in that this story was transmitted to you via the facilities of the USS New Orleans' message processing center.



by Capt. Ronald Symonds
Senior Medical Officer
NRMC, Kaneohe Bay

EDITOR'S NOTE: This article is the last in a four-part series designed to inform the 19,000 patients treated at the Naval Regional Medical Clinic, Branch Clinic MCAS Kaneohe Bay on quality health care and the ways patrons can help improve the services.

There are certain rules we must follow as military, certain rules we must follow as professionals and certain rules we must follow as people. However, when we depart from those rules we do ourselves and our patients an injustice.

So, how can you help to better the situation? I think the following are good guidelines to get the "Quality Health

Care" you deserve and desire, and which we desire to render:

Is the appointment you have necessary? If it is, keep it; if not, then cancel in ample time to allow someone else the time to see the health care provider.

Is the visit to the emergency room really necessary? Or are there some things you can do first? If it's an emergency—don't hesitate, but remember what our limitations are. Don't forget, it may cause someone who is really sick additional waiting time because they don't want to make a fuss and are trying to cooperate.

Is the ambulance really needed? It may deprive someone else of

Guidelines cut work

Cooperation sought

the use: someone who needs it more than you. Or, is it just convenient transportation?

If you have a consultation to TAMC, keep it or cancel it. The person you saw to obtain the consultation didn't take the time to write it just for fun.

Remember to get your prescription refilled during normal working hours when a registered pharmacist is on duty. After working hours, we cannot afford to keep the pharmacy open, but must open it as the need arises.

Those hospital corps personnel assigned to man the pharmacy after hours are familiar only with the types of medication prescribed from emergency room calls. Errors can be made. So if you need a routine prescription refilled, please have it done during routine clinic hours.

If you're confused about something, don't hesitate to call and ask advice. We'll be glad to try and help you. But try to keep your questions in a medical area. I was recently phoned by a patient who had financial problems and wanted advice. We can't solve all problems. Sorry.

Keep in mind that many of our senior personnel have left the island or the Navy. The hospital corps persons with whom you are dealing are not really incompetent, but may well be inexperienced. Be patient with them. It may take a little longer, but they will try to get the information, the appointment or whatever else you need, even if they must refer you to someone with more experience or authority. They want to help. Give them the chance. Bad attitudes perceived by patients are frequently

no more than a mirror of what that patient has presented to the corpsperson. Think about it.

Please try to understand, when no more appointments are available, in any clinic, that we can't make more time or more people. We're using what we have as effectively as we know.

Don't hesitate to make suggestions through your Health Care Services representative. We're always open to suggestions but unfortunately, for a myriad of reasons, we're not always able to implement them.

Finally, understand that we want to take care of your needs but we can't be all things to all people. We've asked your cooperation before and graciously received it. We ask again, I know we can count on it.

GET OUT OF DEBTS.
Fast With Chapter 13 — Bankruptcy Not Necessary
STOP DEBTS, WORRIES, GO DEBT FREE With New Fed. Laws Gov't Help
STOP Creditors Calls, Law Suits FAST — SAVE YOUR CREDIT
Protect your Job, Property, Co-Signers/Individual, Business
FREE Information Pamphlets — Call, Write or Visit Us TODAY
FREE Case Evaluation — 1st Appointment
Debts/Divorce/Injuries/Damages/Business/Real Estate/Wills
Criminal/Military/Immigration/Collections/All law matters

LAWYER LEO TRIAL
FRANK L. LEO LAWYERS
THE FIGHTER for the people since 1953

• Yale Law School Graduate/Diploma Juris Doctor, LL.M. 1958 — with Honors
• Blue Ribbon/Commendation/Outstanding/Real Estate Broker/Public Service
• 24 hr. HOTLINE PH. 533-3307, 20 N. King St. HONOLULU

Read A LAWYER WHO CARES

the law offices of
thomas j. carney, jr.
attorney-at-law

concentrating in:

- personal injury (auto accidents, etc.)
- family law (divorce, etc.)
- business
- real estate
- criminal defense

office 909 melim building 333 queen st. ph. 523-5040
initial consultation free

RE-ELECT Margaret K. Apo
School Board of Education at Large

Herb's T.V. established 12 yrs. at
12, 14 Oneawa St., next to the Shell Station
"In Kalihi"

ZENITH
System 3... Best Ever
ALL 1981 Models on SALE

SAVE UP TO \$120
SAVE UP TO \$50.00

We warranty every T.V. we sell and service right here

262-9905 ask for David Chien 261-3742

Open to the Public Sundays! 9 am-5 pm

WWII ATTACK SUBMARINE THAT SANK 38 ENEMY SHIPS!

The U.S.S. BOWFIN (SS287)

A FASCINATING EXPERIENCE FOR THE WHOLE FAMILY!
Step aboard and actually walk through the compartments!
See where the crew lived and worked!
How can this experience with your donation.

WELCOME! WE WANT YOU!

OUR AUTO SERVICE FAMILY INCLUDES:
Tune up • Alignment • Lube & Oil • Brakes • Transmission Service • Shocks and more for CARS, LIGHT TRUCKS, VANS & RVs!

'THE STORE'
GOODYEAR
FOR PARTS & SERVICE

KANEHUE BAY SHOPPING CENTER

"DROWNED"
WE WILL NOT BE RESPONSIBLE FOR OUR COMPETITION GOING UNDER.

NOTE THESE SPECIALS

BERNINA 1980 Model. Zig zag, open arm, monograms, buttonholes & self adjusting tension. Suggested Retail \$649. Demo models only **\$325.00**

Viking Electronic 1980 Model. Stretch stitches, buttonholes, blind hems, monograms & open arm. Demo Models only **\$248.00**

SINGER. Open arm, buttonholes, blind hems, and monograms. Demo models only **\$98.00**

Many more specials available. Offer expires 10/22/80.

PACIFIC SURPLUS & DISTRIBUTORS
35 Kaliae St., #104, Kailua 262-8131

DELTA arranges participations in
OIL and GAS WELLS
FOR QUALIFIED INVESTORS

This announcement is neither an offer to sell nor a solicitation of an offer to purchase. Such an offer or solicitation may be made only by the presentation to prospective investors of a Private Offering Circular.

DELTA OIL CORP.

1580 Makaloa Street, Suite 1080 Honolulu, Hawaii 96814
Telephone (808) 942-2855

GOODYEAR
SALE POLYGLAS WHITEWALLS

If It Doesn't Say Goodyear — It Can't Be Polyglas

Now Only **\$39.95**
878-13 whitewall, plus \$1.05 FET
No trade needed

Cushion Belt Polyglas

- Get the strength of fiberglass cord belts, plus the cushioned ride of resilient polyester.
- Enjoy the firm road contact of the squirm-fighting tread, plus the mileage of double-belted construction.

RAIN CHECK — If we sell out of your size we will issue you a rain check assuring future delivery at the advertised price.

Just 3 Days To Save!

Whitewall Size	SALE PRICE	Plus FET, No trade needed
D78-14	\$46.15	\$2.08
E78-14	\$47.95	\$2.21
F78-14	\$49.95	\$2.37
G78-14	\$52.00	\$2.54
H78-14	\$55.30	\$2.79
G78-15	\$53.30	\$2.62
H78-15	\$57.45	\$2.84
L78-15	\$61.35	\$3.13

(Sale Ends Saturday Night)

PROLONG TIRE LIFE, BOOST MPG
FRONT-END ALIGNMENT
\$19.88 Parts and additional services extra
Deviates extra

- Inspect all four tires • Set caster, camber, and toe to proper alignment • Inspect suspension and steering systems • Most U.S. cars, including front wheel drive. Many import cars and light trucks.

MAINTAIN STOPPING DISTANCE
BRAKE SERVICE — YOUR CHOICE
\$79.88 Additional parts and services extra if needed

2-WHEEL FRONT DISC: Install new front brake pads and grease seals • Resurface front rotors • Replace front wheel bearings • Inspect calipers and hydraulic system • Add fluid (does not include rear wheels).

OR

4-WHEEL DRUM: Install new brake lining, all 4 wheels • New front grease seals • Resurface drums • Replace front bearings • Inspect hydraulic system • Add fluid • Most U.S. cars. Many import cars and light trucks.

OUR AUTO SERVICE FAMILY INCLUDES:
Tune up • Alignment • Lube & Oil • Brakes • Transmission Service • Shocks and more for CARS, LIGHT TRUCKS, VANS & RVs!

For Pickups, Vans, Campers, RV's

SALE!

SAVE now on **110 H-Miler** tires for low-cost mileage, heavy-duty strength

- Strong, bruise-resistant nylon cord carcasses
- Long-lasting 5-rib tread, bias-ply construction

\$45 \$64

100-15 11 H-Miler Load Range D only \$2.85 FET NO TRADE NEEDED
100-15 11 H-Miler Load Range D only \$3.85 FET NO TRADE NEEDED

SATURDAY is your last chance to save!

RAIN CHECK — If we sell out of your size we will issue you a rain check assuring future delivery at the advertised price.

THE GOODYEAR PROMISE
• WE DO PROFESSIONAL WORK • WE DO ONLY THE WORK YOU AUTHORIZE • WE RETURN WORK-OUT PARTS • WE HONOR OUR AUTO SERVICE LIMITED WARRANTY MATHEMATICS

LIMITED WARRANTY: As Good as New. We warrant for at least 90 days or 3,000 miles whichever comes first — many services much longer. If wear, service is never required, go to the Goodyear Service Store where the original work was performed and we'll fix it free. If however, you're more than 90 miles from the original store go to any of Goodyear's 1200 Service Stores nationwide.

CHARGE IT! APPLY TODAY FOR YOUR GOODYEAR CAR CARD
Goodyear Revolving Charge Account
Use any of these 7 other ways to buy: Our Own Customer Credit Plan • MasterCard • Visa • American Express Card • Car Charge • Debit Card • Cash

STORE HOURS:
MON.-FRI. 7 a.m. to 5:30 p.m.
SAT. 7 a.m. to 5 p.m.

PHONE 247-6888

Artillery training tightens fire mission

by Sgt Lamar Johnson

Marines of Battery K, 1st Battalion, 12th Marines, 1st Marine Brigade, spent the first 24 hours in October at Schofield Army Training Site 106, at Schofield Barracks. The time was devoted to conducting a one-day firing exercise and night training mission.

THE BATTERY transported only three of their six 155mm Howitzers to the designated training site. The artillery Marines doubled their firing teams during fire missions to direct closer attention to basic battery procedures for new members, and to

stress service practice on the Howitzer while in the field.

In the wilds of Schofield's training grounds, the men's motivation was enthusiastically displayed with each round fired from the big guns. According to SSgt Lewis Winston, guns section chief, "Practice missions are conducted

often at Schofield to tighten up fire missions.

"THE MARINES did a great job out there. Before we had completed our first hour of the fire mission, we fired 10 rounds which were good aims and on target, within the grid coordinates square that had been mapped out."

Although the training was considered beneficial for the Marines, SSgt Mike Frisby, also a "K" battery guns section chief, pointed out, "The operations at Schofield usually go pretty smoothly. This exercise wasn't really much different, except, it's really hard to shoot with the 155mm Howitzer at this site."

HE CONTINUED, "The majority of the Marines in this battery get a real kick out of being away from garrison and firing these big artillery weapons. The range control personnel at Schofield usually locate us in an area with good terrain, but in this operation our maximum firing range was between 3,500 to 4,000 meters and that's pretty tight shooting."

To compensate, the

"Killer Kilo" devil dogs also practiced night operations which involved detection of mines and booby traps, handling prisoners of war, communication coordination, fire detection, and a few hours of nuclear biological and chemical defense training.

THE MARINES claimed to enjoy their fire exercises. Many of them agreed, "It's better than the Pohakuloa Training Area on the Big Island this time

of year. Even though wherever we train we learn something new every time, Schofield seems to work out better."

Upon completion of

their fire exercise, many of the men expressed sheer satisfaction that the Army would allow them the "liberty" to really do some real training.



CONTACT TO IMPACT — Marines of Battery K, 1st Battalion, 12th Marines, 1st Marine Brigade, MCAS Kaneohe Bay conduct a 24-hour firing exercise at Schofield Army Barracks, Training Site 106, Oct. 1. The Marines doubled up in extra manpower teams as they fired 155mm Howitzer cannons and blasted rounds into a 3,500 to 4,000 meter grid square.

Photo by Sgt Chris Taylor

Glenn M. Kaneda, D.D.S.
General Dentistry

45 Auliki St., Suite 45
Kaliua

Hours by appointment
Mon & Fri 9:00-5:00 pm
Tues, Wed, Thurs 12:00-8:00 pm
Saturday 9:00-1:00 pm

PHONE 262-8000

HURRICANE EXPECTED

Our Fan Sale will generate powerful tradewinds within our store.

Hunter 36" ceiling fan, wood blades, 5 year factory warranty. Suggested Retail \$199. Now only \$129.95

Hunter 52" ceiling fan, white with full brass fitting and wood blades. Suggested retail \$379. Now only \$278.00

Full Brass Ritz ceiling fan, walnut blades, reversible motor. Suggested Retail \$399. Now only \$298.00

Plus many more in-store specials. Offer expires 10/22/80

PACIFIC SURPLUS & DISTRIBUTORS
35 Kaneohe St., #104, Kaliua 262-8131

Your Career Planners.

They're on the ball.

Your Career Planning office has pamphlets, booklets, and information on just about everything you need to know about your Corps. And it has something more. People who know what it's all about. Your Career Planners keep abreast of the changes in programs for one reason only: "You." Use them. They have a game plan that will work for you.

1st Radio Bn
GySgt RICHARDSON
Phone 2725

CommSptCo
Sgt SABLON
Phone 3143

H & HS
SSgt SAMUELA
Phone 2841/3653

SOMS
SSgt HALL
Phone 3439

BSSG
SSgt BESS/Sgt ANDERSEN
Phone 3127

MAG-24
SSgt PATTERSON
Phone 2012/3241

MABS-24
MSgt SMITH
Phone 3693

H&MS-24
Sgt SCOTT
Phone 2486

"Staying Marine means staying in shape. And I like being both."



"If there's one thing being a Marine has taught me, it's the importance of self improvement. At first, in boot camp, the goals are set for you. But after awhile, you learn to set your own. I work hard. I play hard. And I'm getting better every day."

You've got a lot to look back on. And even more to look forward to.

Stay Marine.



SHOP KAILUA

HELP

is HERE!

Reasonable Parts
& Service

**MAJOR
APPLIANCE &
REFRIGERATOR
SPECIALISTS**

262-8930

**AUTHORIZED
SUPPLY CO.**

664 Kailua Rd.
Near Kailua

Lynn's Interiors

305 Uluniu St.
Kailua
"Under the yellow
awnings"
262-6612

**PRE-HOLIDAY
SALE**
25% off

Imported Gifts & Accessories, Lamps,
Fine Furniture, Baskets,
Pillows, Etc.
Also: Custom Draperies, Bedspreads,
* Hundreds of Exciting New Fabrics *
— Hurry, offer good for October only —

CARPET SALE!!

BUY EARLY FOR THE HOLIDAY SEASON

CORINTHIA 5 Beautiful Colors Reg. \$15 ⁹⁵ NOW \$8⁹⁵ only yd.	Holiday Spirit Color: Champagne Reg. \$15 ⁹⁵ NOW only \$7⁹⁵ yd.	CARPET REMANENTS UP to 60% off
--	---	--

If you purchase 40 sq. yds. of
carpet or more, we will give you
a FREE area rug.
valued at \$18⁰⁰-\$27⁰⁰ (while supply lasts)

(OFFERS GOOD till 10/29/80)

MAHALO
John Farnell Jr.

**CARPETS
OF
KAILUA**

155 Hamakua Dr.
Kailua
261-1808

OUR PRICES WILL MAKE YOU HIT THE CEILING



★ Econ 42" 5 speeds
5 year warranty Only \$88⁰⁰

★ Union 52" full brass
walnut blades, solid
brass fittings and
10 year warranty Only \$188⁰⁰

★ Hunter 52" white w/ant.
brass, white or pecan blades,
5 year warranty Only \$278⁰⁰

★ Ritz 52" full brass
walnut blades, reversible
motor and warranty Only \$298⁰⁰

Offers expires 10/25/80

HUNTER
The Original
HOLD TIME
CEILING FANS

**PACIFIC SURPLUS
& DISTRIBUTORS**
35 Kanehe St., #104, Kailua.
262-8131
Mon.-Sat. 10:00-6:00 p.m., Wed. & Fri. till 8 p.m.

OCTOBER SAVINGS

KNIT SHIRTS

Terry & Interlock knits in fashion styles by
famous makers. Sizes: S-XL. **9⁹⁹**
REG. TO 22⁰⁰

FASHION JEANS Corduroy & twills by famous makers in ass. styles. Sizes: 28-38. REG. TO 25 ⁰⁰ 15⁹⁹	BIKE SHORTS BY "STUBBIES" Corduroy scoop shorts - solid colors. Sizes: 28-36. REG. 16 ⁰⁰ 11⁹⁹
---	--

Kramer's
650 KAILUA RD.

IS BUSINESS SLOW?

Advertising in the 'Sun Press' can boost your
business. We are the most cost efficient print media
serving Windward Oahu.

For more information
feel free to call Chris at 235-5881.

LADIES LEVI —

Polyester - Colors: Brown, Black,
N. Blue, Off White &
Grey. Sizes 6-16
Denim Jeans Stretch
Sizes 6-18

**BEND
OVER
PANT**

**Soft
Denim**

Charlie's SPORTSWEAR
43 Oneawa St. 262-8575 Open 9 a.m. to 5 p.m.
(Across Coin Power) Mon. thru Sat.



**DIET
CENTER**

**NO SHOTS
NO DRUGS
NO CONTRACTS**

**IN JUST 6 WEEKS I LOST 20 POUNDS
AND MY HUSBAND LOST 311**

THIS YEAR USE PILLOWS TO PLAY SANTA

**CALL TODAY
KAILUA 261-7854**

FRANCHISE AREAS AVAILABLE

WENDY'S FASHION GARDEN

PRE-Holiday SAVINGS



like "tutu"
wouldn't believe
Muumuus
reg. \$40⁰⁰-\$60⁰⁰
NOW \$29.95

50% OFF
on all
non-sale
merchandise
(Except
Polynesian
Wear)

We're now closed on Mondays
10:00-6:00 Tues. thru Sat. 10:00-4:30 Sundays
153 Hekili St. 261-0203
Across from Holiday Mart Theatre

Twice as Nice

fashion & lifestyle

Exciting contemporary Tropical
Clothing for the Fashion
conscious Woman.

Our new stock now includes
selected exotic island fashions
from Hawaii & California.
Come see us...



**ARE YOU A BUDGET
MINDED GAL?**

We have a great selection of next-to-
new fashions, too... tops, bottoms,
dresses, muumius, fashion jewelry &
accessories.

10 to 5 Tues.-Sat.
Corner of Oneawa & Kawaiinui Sts.
Opposite Andy's Drive-In
Master Charge
& VISA welcome! **261-1929**

SHEARPOWER

HAIRSTYLING FOR MEN & WOMEN

 HADIE—Stylist	QUALITY SERVICE AT INCREDIBLE PRICES	 BRENDA—Stylist
 JAN—Stylist	CHILDREN'S HAIRCUTS \$5.00 & UP SHAMPOO, BLOWDRY, OR SET \$9.00 & UP HAIRCUT, BLOWDRY \$10.00 & UP HAIRCUT, SHAMPOO, BLOWDRY \$11.00 & UP TINTS \$16.00 & UP FROSTING \$25.00 & UP PERMANENTS: INCLUDES CUT, SHAMPOO, BLOWDRY OR SET \$30.00 & UP	Norman! Now at Shearpower!
 LISA—Stylist	Complimentary Wine Served HELP CUT YOUR COST CALL NOW 262-0007 Open Mon.-Sat. 8-5 Wed.-Thurs. till 9:00 p.m. 1090 Keolu Dr. Keolu Shopping Village Enchanted Lake	 TINA—Stylist



Charity

Combined campaign reaches for goal

by Cpl Nora Parrish

The Combined Federal Campaign is an annual campaign that replaces many individual charity fund drives. CFC helps to support more than 70 national, local and international health and human care service agencies.

There are four groups of benefiting agencies in the Honolulu area CFC—the National Health Agencies, the International Service Agencies, the Aloha United Way Agencies

and the National Service Agencies.

This year's main goal is to ensure that all Federal agencies, including the military, are contacted by keypersons and given the opportunity to make a donation. CFC's overall monetary goal is \$1.8 million.

"We have the tools for a successful campaign," stated Rear Adm. Bernie Thompson, CFC chairman, in his second-week progress report to campaign key-persons.

In the report it was stressed that a fast and effective campaign had been recommended and that it was hoped 75 percent of the goal would be contributed by the time of the report. But according to the figures, out of 78,489 Federal employees, only 43.4 percent had been contacted. This is important because the campaign is quickly coming to a close.

A successful campaign requires more than the keypersons contacting each individual, it takes the

individual making a generous donation.

People who contribute, either by cash donation or payroll deduction, have all of their contribution benefit one or many agencies. This is achieved by marking a designated box which indicates who will benefit from the contribution.

The campaign ends Oct. 29, so the next time a keyperson asks for donations to the CFC, remember — "Kokun means you care."

Courts Martial Report

Cpl Patrick D. Williams, Station Operations and Maintenance Squadron, was convicted by special courts-martial of wrongful sale of marijuana.

He was sentenced to confinement at hard labor for two months, forfeiture of \$250 pay per month for four months, reduction in rank to private first class, and a bad conduct discharge.

Cpl Kevin R. Smith, Marine Air Base Squadron-24, was convicted by special courts-martial of the wrongful transfer of marijuana on two occasions.

He was sentenced to confinement at hard labor for two months, forfeiture of \$200 pay per month for three months, and reduction to private first class.

Petty Officer 2d Class Timothy W. Kearney, an aviation storekeeper, Headquarters Squadron, was convicted by special courts-martial of the wrongful transfer of marijuana.

He was sentenced to hard labor without confinement for two months, forfeiture of \$200 pay per month for three months, and reduction to petty officer first class.

PFC Thomas A. Hengels, Station Operations and Maintenance Squadron, was convicted by special courts-martial of wrongful sale of marijuana on two occasions.

He was sentenced to confinement at hard labor for 75 days, forfeiture of \$250 pay per month for four

months, reduction to private and a bad conduct discharge.

Cpl Craig A. Mueller, Station Operations and Maintenance Squadron, was convicted by special courts-martial of wrongful possession and transfer of marijuana.

He was sentenced to confinement at hard labor for one month, forfeiture of \$175 pay per month for four months, and reduction to lance corporal.

EDITOR'S NOTE: The information contained in Courts Martial Report is compiled by the Joint Legal Services Center and is published as an information tool for all station and brigade Marines.

KOKUA MEANS YOU CARE

KIRWAN'S SCHOOL OF DIVING SCUBA COURSE
• Beginning every 3 weeks
• 6:30 p.m.
• Call to register
• Cost: \$55
Denis Kirwan
261-5652

THE DOG SHOP
Horses are my hobby. Dogs & cats my pleasure, but Grooming is my specialty.
Ramona Dudolt
28 Oneawa St.
262-8804

HAIR REMOVER
• removes hair in minutes
• stays off for weeks
• Available at Longs, Holiday Mart, PayLess, Sav-Mor.
NEW ORGANIC hair away... epi vite

GOLD & SILVER

We will buy your old gold and silver at near spot prices
923-8672

silver mind control
Can Help You Learn To:
• Overcome Stress • Control Habits
• Improve Memory • Enrich Relationships
• Awaken Psychic Abilities
Taught by: Puanani Kini
Assisted by: Dr. Rand Pellegrino
For more information call:
Ph. 521-6558, 247-2763, 261-0623
Classes will begin Wed., Oct. 22, 1980
46-369 Haiku Rd., Apt. H-12
7 p.m. in Kaneohe

UPHOLSTERY SPECIAL DESIGNS
FREE Estimates
FREE Pick-Up & Delivery
FREE Shop At Home Service
254-4845
Call Now for Introductory Reduced Rates
For: • Home • Commercial • Auto • Classics • Antiques • Custom

KANEOHE SELF-STORAGE
Couple Good for Free Heavy Duty Padlock With This Coupon
With Rental of Any Storage Locker Military Discount
CALL 235-3044
46 158 KAHUHIPA ST.

TRANSMISSION TUNE-UP
HERE'S WHAT WE DO:
• ROAD TEST
• OIL CHANGING
• ADJUST BANDS & LINKAGE
• CLEAN FILTER
• NEW FIBER GLASS
• ADD NEW FLUID
YOUR AUTOMATIC TRANSMISSION NEEDS TO BE SERVICED EVERY 12 MONTHS
\$19.95
BY APPOINTMENT
CALL **836-0594**
2984 KOA PAKA ST. AIRPORT AREA

Didi Wilhelm Brennan
"New Visions"
"New Horizons Toward Change"
Board of Education Leeward School District
paid for by friends of Didi Brennan

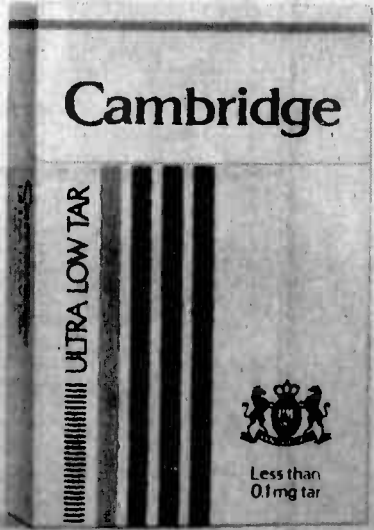
ENCHANTED TRAVEL, INC.
Servicing All Your Travel Needs, At No Charge and Free
Delivery Just For You!
1051 KEOLU DR. KAILUA (New bldg. next to Dairy Queen)
"around the islands—around the world"
OPEN Mon.-Fri. 9:00-5:00 Sat. 9:00-12:00
Phone **261-7947**

RE-ELECT

YAMASHITA, HIROSHI

BOARD OF EDUCATION OAHU-AT-LARGE
• 14 yrs. Hawaii Board of Education 1968-
• National President-All School Boards in U.S. 1979-80
• Presidential Appointment-Advisory Council on Education, 1960
Reliable, Responsive, Decisive

The lowest tar ever.



Box: Less than 0.1 mg tar.

Cambridge

Warning: The Surgeon General Has Determined That Cigarette Smoking Is Dangerous to Your Health.

© Philip Morris Inc. 1980
Less than 0.1 mg "tar," 0.01 mg nicotine av. per cigarette by FTC Method.

CONSOLIDATED THEATRES
REVOLUTIONARY CINE-FI SOUND AT THE KAM DRIVE-IN
YOUR AM CAR RADIO IS YOUR SPEAKER (IF NO CAR RADIO, WITH IGNITION ACCESSORY POSITION, BRING YOUR OWN AM PORTABLE.)
YOUR 1980 INFLATION FIGHTERS ARE OUR "SUPER" SWAP MEETS
SAVE TIME! SAVE ENERGY! SAVE GAS! SAVE BIG MONEY!
KAM DRIVE-IN • 7 AM to 3 PM
WEDNESDAY-SATURDAY-SUNDAY
PH. 536-3576 or 488-5822

WAIKIKI	DOWNTOWN
WAIKIKI #1 Seaside 923-2391 STARTS FRIDAY CHRISTOPHER REEVE JANE FUND "SOMEWHERE IN TIME" (PG) Call theatre for show times	HAWAII Bethel at Pearl 536-6300 STARTS TODAY "18 CLAWS OF SHALON" "SHAKE SOME SECRET" Call theatre for show times
WAIKIKI #2 Seaside 923-2391 STARTS FRIDAY RICHARD THOMAS JOHN VAUGHN JOHN SALON "BATTLE BEYOND THE STARS" (PG) Call theatre for show times	LIBERTY Nuuanu 537-1686 STARTS FRIDAY "KARATE LADY" "REVOLVE" Call theatre for show times
WAIKIKI #3 Kalakaua 923-3353 GOLDIE HAWN "PRIVATE" (R) 12:30 • 2:45 • 4:45 7:00 • 9:00 • 11:00 PM	TOYO College W. 538-1654 FRIDAY-SUNDAY "LOVE AND FURY" "MONEY" "NOT LOVE" "FOR THE MATURE" With Eng. Time Call theatre for show times
KUHO #1 2095 Kuho 941-4422 GEORGE BURNS "OH, GOD! BOOK II" (PG) TONIGHT: 8:15 • 8:18 • 8:15 PM	KAIMUKI Waialeale 737-8200 ENDS TOMORROW TOSHIO MUNE SHINICHI CHIBA "SHOGUN'S SAMURAI" With Eng. Time TONIGHT: 8:30 & 8:00 PM
KUHO #2 BIDS TOMORROW BRUCE DEHN ANNE MARCET "MIDDLE AGE CRAZY" (R) TONIGHT: 8:45 • 8:45 • 10:45 PM	KAM DRIVE-IN #1 Kam Hwy. 488-3635 ENDS TOMORROW GEORGE BURNS "THE GOOD-BYE GIRL" (PG) GATES OPEN AT 8:00 PM SHOW STARTS AT 8:45 PM Children under 12 yrs. FREE
KAPOLANI 1646 Kapolani 955-5115 HURRY MUST END BOOK OLIVIA NEWTON-JOHN "KANAHA" (PG) TONIGHT: 8:30 • 8:30 • 10:30 PM	KAM DRIVE-IN #2 THE CHILDREN (R) GATES OPEN AT 8:00 PM SHOW STARTS AT 8:45 PM "CINE-FI SOUND"
UNIVERSITY • PUNAHOU UNIVERSITY N. Beretania 946-4144 FINAL WRIST ROBERT DUVAL "THE ONE AT THE TOP" (PG) TONIGHT: 8:30 • 8:45 • 10:45 PM	PEARL RIDGE 1 Pearlridge Center 487-5581 CHEVY CHASE RODNEY DANIEL WELLS "CADDYSHACK" (R) TONIGHT: 8:45 • 8:45 • 10:45 PM
CINERAMA Kag. H. 945-5291 THE EMPIRE STRIKE BACK (PG) TONIGHT: 8:30 • 8:30 • 10:30 PM SPECIAL ENGAGEMENT SONY, NO PAGES	PEARL RIDGE 2 STARTS FRIDAY "BY BODYGUARD" (PG) Call theatre for show times
WINDWARD KAILUA DRIVE-IN 917 Pali Highway 261-8032 STARTS FRIDAY RICHARD THOMAS "BATTLE BEYOND THE STARS" (PG) GATES OPEN AT 8:00 PM SHOW STARTS AT 8:45 PM Children under 12 yrs. FREE	PEARL RIDGE 3 ENDS TOMORROW JOHN REINHOLD "THE OCTOBER" (R) TONIGHT: 8:30 • 8:30 • 10:30 PM
ALAKA Adult Part Shooping Center 254-1320 ENDS TOMORROW "CHERRY 45" (PG) TONIGHT: 8:30 • 8:30 • 10:30 PM "THE OCTOBER" (R) 8:30 • 8:30 • 10:30 PM	PEARL RIDGE 4 CHUCK NORRIS "THE VAN CLEEF" (R) TONIGHT: 8:30 • 8:30 • 10:30 PM "THE OCTOBER" (R) 8:30 • 8:30 • 10:30 PM

Marines reign supreme

by Sgt Pepper Davis

Despite two Army interceptions in the second quarter the MCAS Kaneohe Bay tackle football team staged an impressive rally to trample the Army's DIVARTY squad, 25-12 at Schofield Barracks Friday night.

The victory over DIVARTY clinched the sole possession of first place for the Marines who shared the honor

with DIVARTY throughout the first half of the season. These two powerhouses met at the start and stalemated each other, 14-14.

FRIDAY'S GAME was the culmination of a long-awaited event. Schofield's football stadium was filled with fans who turned out to witness what was billed as perhaps the most exciting gridiron

contest of the season. Though the Marine fans were outnumbered, they made their presence known with loud, forceful chants and cheers.

First quarter action was slow but the Leathernecks recovered a DIVARTY fumble in the end zone for a two-point safety.

On his first play of the second quarter Cpl Rushton Gunter threw an interception which DIVARTY returned 30

yards for a touchdown to lead 6-2. Five plays later Gunter's luck worsened as he threw another interception, good for an Army score and it appeared as if the Marines were well on their way to defeat.

DIVARTY HELD control for most of the second quarter. With less than two minutes remaining, an injured SSgt Joe "Speedy" Blackburn, entered the game.

LCpl Ray Radarte was now at the helm of the Marine offense. He got the snap and stepped back into the pocket and hurled a long bomb into the hands of Blackburn who covered by two defenders, cross the goal line. The two-point conversion was good, and K-Bay had crept within two at the close of the half.

The third quarter belonged to the Ma-

NOW WHAT? — Marine running back Cpl Abraham Jones prepares to outmaneuver a DIVARTY defender during gridiron action at Schofield Barracks Friday night. K-Bay earned the distinction of being the only undefeated team in the league with a 25-12 victory.

Photo by Sgt Chris Taylor



restaurant guide

.....Step into another world



WINDWARD OAHU'S FINEST KAMAAINA RESTAURANT....

Offers Family Dining
with full menu or buffet
Specialty in Banquets
and Receptions

LUNCH 11:30 - 2:30
DINNER FROM 5:30
TUESDAYS THRU SUNDAYS
(SORRY, CLOSED MONDAYS)

RESERVATIONS— 247-6671
46-336 HAIKU RD., KANEOHE

Just a few
Dinner Suggestions
from Rob Roy's
in the center of Kailua

Korean Style SHORT RIBS

Prime ribs with a
delicious Oriental
sauce.

STEAK AND CRAB LEGS

Great combination
of succulent
King Crab and
prime sirloin.

SHRIMP CURRY

With our own sauce
seasoned to
perfection.
Condiments you'll
love.

DEEP FRIED SHRIMP

Large shrimp, fried
in a light, crisp
batter.

... and many more,
all with soup or
tossed green salad,
potatoes or rice, roll
and butter.

Rob Roy's

26 Hoolal Street
Phone: 262-6992
Open from 6:30 A.M. daily



**Dine Out
..Family Style**
With These Windward
Merchants.
Prices Are Reasonable, And
Locations Convenient.



Experience a
fine Italian
Cuisine
at its best!
Entrees change
daily

Included with
Entree . . .
Antipasto
Soup
Salad
Homemade pasta dish



Bring Your Own Bottle
Dinner Wed. thru Sun. from 5:00 p.m.
For reservations and directions
Call 261-1401



YAMASHIROS HOMEMADE TAKE-OUT LUNCHES

Open 7 days a week.

Something for everyone!

- ★6 different entrees daily featuring lau lau & char siu
- ★Fresh manapua every Thursday
- ★Pupus, cold beer, and liquors
- ★Bentos every Sunday

Call in for take out lunches!

235-6295

(ask about our daily specials)
YAMASHIROS FRUIT & VEGETABLE
45-762 KAM HWY., KANEOHE, HAWAII



Buzz's Original Fish House Kailua



We Always

Have Fresh Fish

Lunches Mon.-Fri. 11 AM to 3 PM/Dinner Nightly 5 PM to 10 PM

Phone
261-7944

33 Aulike

Home of Bully Hayes



Invites YOU to
Breakfast, Lunch and
Dinner
7 Days A Week

Come and join us for MAKAWAO NIGHT

Our special sirloin cooked in delicious teriyaki
sauce, sliced thin and cooked to perfection.
Served with plenty of Makawao country style
fries, and your choice of soup or salad. All at a
country price of only

(Monday & Tuesday
night only)

\$4.95

Also featuring
a special keiki menu.

315 Unulu St.
(in Kailua Square) PHONE 261-8724

BREAKFAST
7 AM to 11 AM
(Sun. 7 AM to 1 PM)

LUNCH
11 AM to 5 PM

DINNER
5 PM to 9 PM

WE ARE OPEN ALL DAY LONG FOR YOUR CONVENIENCE

CELEBRATION

WINDWARD CITY SHOPPING CENTER

Radio Shack
Realistic Minisette VII 14-803
Versatile Compact AM/FM Portable

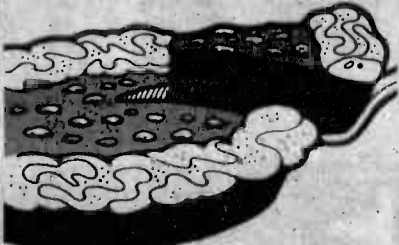
SALE
\$68⁹⁵
Reg. 103.95
SAVE \$35.00

•Auto-Level
•Auto-Stop
•Pause Control

FREE
with coupon only
limited quantities
Kaneohe only
Expires 10/22

Handy Pocket Magnifier
1.49 • Fits Easily in Pocket or Desk
• For Lab, Shop!

A huge value for technicians, hobbyists, just about anyone. Great aid for precision work, model building. It's virtually unbreakable. Vinyl case. 68-1025. 1.49



**The Delectable
Praline Pumpkin
Ice Cream Pie**

Our luscious gourmet dessert begins with spicy Pumpkin Ice Cream in a graham cracker shell. Over this we ladle rich praline caramel topping, praline-coated pecan pieces and real cream topping.
Try one today - It's scrumptious!

**BASKIN-ROBBINS
ICE CREAM STORE**

HOT WAX
Records & Tapes
PH. 247-1124 OPEN 9-10 DAILY

ANNIVERSARY SALE

Super Savings **\$5⁹⁹** LP OR TAPE

100s of LPs & Tapes on SALE NOW!



SALE ENDS OCT. 23, 1980



MUSASHIYA
1896-1980: A Tradition of Personalized Service

Fall Festival of Savings KANEOHE ONLY THRU OCT. 31ST

4.99 YD. LA GRAND QUE OIANA Reg. \$6.99 yd. 100% Nylon, 60" widths.	3.66 YD. QIANA By Burlington Reg. \$6.25 yd. 100% Nylon, 60" widths.
3.99 YD. TOOTAL OF ENGLAND Reg. up to \$7.19 yd. 100% Cotton, 45" widths.	2.22 YD. small PRINTS Reg. \$3.25 yd. Cotton Blends, 44"-45" widths.

And Many Autumn Selections

Hi and Lo Bottoms
Black, White or Tan.

Robins

SAS 'SLEEPER'
for women
reg. 36.95
SALE 31⁹⁰



Windward City Shopping Center
Sale Effective Oct. 15-22



KOOLAU PETS

Box Turtles
and
Water Turtles
at
SPECIAL PRICES
Offer Good Oct. 15-18
Phone **235-6333**



Hugh Menefee Inc., Realtors
Windward City Shopping Center

*Serving all your real estate needs
on Oahu and the neighbor islands.*

Agents, want to join the Windward team? Call:
Hal Dill, Broker-in-Charge, 235-8754



*Windward City
Salon*

A professional styling will make the difference.
Stop in soon and see the results.

All your beauty needs

- permanents
- hair coloring
- nail art
- make-up
- hair styling

235-5818




Honda Florist

50% Off
Dry Arrangements
While Supply Lasts

Ask about our leis, corsages,
fresh flower arrangements,
and wedding bouquets.

247-6113



VITAMINS & HEALTH FOODS
Windward City Shopping Center
45-480 Kaneohe Bay Dr., Kaneohe, Hawaii

Trail Mix 8 oz. SALE **1¹⁰** Reg. 1³⁰

Alfalfa Seeds 8 oz. SALE **1⁵⁰** Reg. 1³⁰

Sale Good Oct. 15-18



ASSOCIATES FINANCIAL SERVICES

for the money you need

SAME DAY SERVICE
with Personal Loans
Real Estate Loans
Sales Financing

247-1441

JEWELRY & WATCH REPAIR

Wuertz Jewelers
of Hawaii

WINDWARD CITY SHOPPING CENTER
45-480 Kaneohe Bay Drive • Kaneohe, Hawaii 96744

CASTING & DESIGN

CLIC PHOTO

"Say Cheese"

235-1335



**WINDWARD CITY
SHOE REPAIR**

235-5278

WINDWARD CITY SHOPPING CENTER

KANEOHE BAY DRIVE

"On the corner of
Kam and Likelike"

KAM HWY
LIKELIKE HWY

**After you fix breakfast,
join us for some free rolls.**

Take a break from housework and join us at Windward Bowl. We'll give you free instruction. Free shoes. Even free baby-sitting. It's a lot of fun. And it's free.

To get the ball rolling, call 247-2104 for more information. Or better yet, just roll on by to see us.

**Windward Bowl
247-2104**



Chevron

**First Chevron II
SAVE
with
Self Service
GAS**

247-1644



CONCERT SAT., OCT. 18th 12 noon

Featuring COUNTRY LIVING

and Keli'i Tau'a & Honolulu

WINDWARD CITY SHOPPING CENTER CTR.

COUNTRY LIVING



Sears

Tailgate Special!

7x35mm wide angle
Binoculars 34.99
reg. 44.99

2 burner
Propane Stove 22.90
reg. 29.99

28 quart
Foam Ice Chest 1.99
reg. 2.79

Kaneohe Store Only
Sale Good Oct. 15-18

FOODLAND

Real McCoy Corned Beef

1.89 lb.

U.S. #1 Yellow Onions

29¢ lb.

MJB Coffee

3 lb. Can

7.39 lb.

Kaneohe Only

SALE EFFECTIVE OCT. 15TH-21ST

PayLess

Super Drug Stores

Sweetheart Detergent 2/\$1.00
22 oz.

Figaro Cat Food 4/\$1.00
6 oz.

Kleenex Paper Towels 63¢

Kaneohe Only
Sale Effective Oct. 15-18

NO TRICKS,

THE HALLOWEEN TREAT IS ON McDONALD'S®

Get a free sample sundae when children drop by McDonald's® of Kaneohe IN COSTUME HALLOWEEN NIGHT, OCTOBER 31, 1980 between 5 and 9 p.m. Copyright McDonald System 1980

Now The First Hawaiian adds interest to your checking balance with Bonus Checking.

The First Hawaiian
Making Change
Member FDIC

Tiki Tops Restaurant

featuring Open 7 days a week

Daily Specials

(breakfast, lunch, dinner)

TIKI BAR: Cocktails at Happy Hour prices

Restaurant Hours:
Sun-Thurs. 7 am-10 pm
Fri. and Sat. 7 am-11 pm

Bar Hours:
11 am-midnight
Daily

247-2128



SAMPLE WEARHOUSE

Women's Muumuus
Short and long

No higher than **\$29.95**

Men's Shirts
Assorted styles & sizes

\$3.00-\$10.00

Fashion Clothes at Discount Prices

Fashion Fabrics

Kaneohe Store Only

Patterns 1/2 off
Regular Price

Vogue - Butterick
Simplicity - McCall's

Good Oct. 15-18 Only
Limit 2 Patterns Per Customer



Kaneohe Travel Agency, Inc.
Phone 247-2113

Personalized services for your travels throughout the world. No service charge.

ATC APPROVED



LICENSE #XTRAG0053

NEW OWNERS
MIU LANG & FRANK MULLIGAN
MIU LANG & FRANKLIN BAKER

OFFICE HOURS
Monday-Friday
9:00 a.m.-5:00 p.m.

C.I.T. FINANCIAL SERVICES

Home Owner Loans
Personal Loans

"We have your answer."
235-5851

NOHUU- CALL MAGOO'S PIZZA

With 31 Exotic Varieties



235-4539 DELIVERY SERVICE
TO: KAHALUU, KANEOHE, YACHT CLUB,
KANEOHE MARINE CORPS AIR STATION

HOURS:
11 a.m.-midnight
Daily

Kaneohe Veterinary Clinic

235-3634



The Little Restaurant

An intimate, relaxing way to enjoy lunch or dinner

Every Friday and Saturday
9:30 till Closing
Sundays from 1:00 till 5:00
Ph. 235-1002
(Next to Windward Bowl)



Jean's Barber & Styling Shop

We specialize in haircuts for all members of the family at reasonable prices.

4 Experienced Barbers To Serve You
247-1801

Town Pump Liquors

Italian White Wine

French Superior

SALE **2.04**
PRICE Reg. 3.99

Kaneohe 235-3227
Aiea 245-3185

WINDWARD TWIN THEATRES

"See It On The Big Screens"

235-3637

Sandy's Cakes & Pastries

Ph. 235-4351

BARGAINS GALORE! KRESS

Selected Items Drastically Reduced!
GOING OUT OF BUSINESS SALE

Sportnotes

Standings in the Men's Open Recreational Softball League Thursday were:

DIV TEAM	W	L
I		
PMO	10	0
BSSG Motor Transport	8	2
Vending	7	4
Bowling Center	5	6
H&MS-24 Ordance	4	6
HMM-265 (Black Sox)	3	8
Postal	1	10
II		
CommSptCo	9	2
HqCo,Bde	9	2
MACS-2	6	4
HMM-165	6	4
MAHS-24	4	6
Co "I", 3/3	4	7
Btry "C", 1/12	1	8
H&S BSSG	1	9
III		
Orioles	8	1
VMFA-212	8	2
Disbursing	5	6
Amtracs	4	6
HMH-463	4	6
H&MS-24	3	7
H&S, 3/3	3	7

Women's Recreational Softball standings are:

TEAM	W	L
Hi-Tymz	7	0
Attitudes	5	2
Blue Hawaiians	2	5
Tazmanian Devils	0	7

Standings in the Men's Intramural Flag Football League Thursday were:

TEAM	W	L
HMM-265	8	1
MACS-2	6	1
Co "A", 3d Med Bn	5	2
H&HS	5	3
CommSptCo	4	5
Amtracs	3	4
H&S BSSG	3	6
Recon	2	5
H&S, 3/3	0	7

During the 1980 Hawaiian Armed Services Athletic Council Cross Country Event Oct. 4 the Marines pulled their own to take an easy overall first.

Cpl Joe Flannery, Provost Marshal Office Service Company, Camp H.M. Smith, crossed the finish line first in 33.52 minutes to take overall first place.

The Marine team was composed of 18 people from throughout Oahu.

In the separate team divisions Marine women placed third, the senior men took an overall second. The open division placed first.

The 1980/81 Intramural Basketball League begins Nov. 12 and is projected to continue through January 1981.

A meeting of team coaches and unit representatives will be held at 10 a.m. Oct. 23 in the Family Theatre Lobby building 219.

Each team will consist of no more than 12 players. Players who are on the Hawaii Marine Team or have played for the team during the 1980/81 season are ineligible to participate.

Units desiring to field a team must submit written notices to the Special Services Athletic Office no later than 10 a.m. Oct. 23.

A meeting for people interested in the 1980 Intramural Volleyball Program occurs Oct. 24, in the Family Theater building 219.



RACQUETBALL CHAMP — Laurie Malone was defeated by Esther Maldonado to capture the MCAS Kaneohe Bay Women's racquetball title Oct. 8. Maldonado and Malone stormed through 12 other contestants to move into the finals and, during the course of the tournament, Maldonado and Malone were matched three times. Maldonado stopped Malone, 21-20 and 21-14 in the first meeting. Malone

Interested persons should contact the Special Services Athletics Department at 257-3520/3108.

A meeting to discuss the upcoming Women's Racquetball Doubles Tournament will be held today at 5 p.m. in the Family Theater Lobby.

All interested active duty women and dependents, 16-years or older of active duty Marines on the island are invited to attend and participate.

For further information contact Special Services at 257-3108/3135.

Entry forms for the Marine Corps Birthday Run are now available at the Special Services Athletic Office.

Registration for the Nov. 7 run begins at 7 a.m. at the Headquarters building 215.



Photos by Sgt Chris Taylor

bounced back in the second pair-up to stay in contention by thrashing Maldonado, 21-1, then skipping to a 21-18 win. In the championship match, Maldonado bested her opponent, 21-3 and 21-10 for the title. According to MCAS Kaneohe Bay Joint Special Services, the tournament was believed to have been a first for women racquetball players on the air station.

MACS-2 annihilates H&HS

by Sgt Phillip Williams

Marine Air Control Squadron-2 tacked on another victory in the MCAS Kaneohe Bay Intramural Flag Football League Oct. 8 by walloping Headquarters and Headquarters Squadron, 29-0.

THE ONE-SIDED action took place at the air station's Pop Warner Field. Cloudy skies prevailed and the moderate turnout of fans warmed the bleachers rooting for their favorite team.

H&HS received the opening kickoff and scampered downfield for good yardage. But a series of determined plays, including a 22-yard pass, wasn't

enough to get H&HS momentum going. They were forced to punt.

"THE EYES" of the 1st Marine Brigade, alias MACS-2, wasted no time moving the football down the gridiron. A successful aerial attack and a holding penalty against the opposition, put the MACS-2 team within yards of H&HS' goal line.

A quarterback rollout pass found LCpl Aaron Brown in the end zone for six MACS-2 points. The point after attempt hit but didn't cross the goal post, leaving the team with a 6-0 lead.

During their second

series of ball handlings, the H&HS squad came back on the field with every intention of retaliating.

THEIR EFFORTS were redirected, however, as MACS-2 picked off a pass intended for a H&HS receiver and returned it to the H&HS 10 yard line.

Calling his signals from the shotgun position, Sgt "Turk" Avanyim, MACS-2 quarterback, again found Brown in the end zone for touchdown.

The two-point conversion was good and MACS-2 assumed a commanding 14-0 lead.

Before the half ended, MACS-2 picked off another H&HS pass attempt. A touchdown

and two-point conversion followed the series of plays prior to the team dancing off the field in jubilation of their victorious first half.

IN THE second half both teams exploded onto the field, charged with the determination to annihilate their foe.

H&HS took the kickoff and made a gallant attempt to make strides toward the immense deficit they faced. As luck had

it, however, MACS-2 picked off their third interception.

Brown caught a screen pass from Avanyim and, in a zigzag pattern that had everyone both in the stands and on the field looking for him, broke free about mid-field and waltzed in for another MACS-2 touchdown.

The two-point conversion was good and MACS-2 took a decisive lead over the grasping H&HS football squad 29-0.

EACH SIDE ran a series of plays, then punted to the opposing teams.

Avanyim and Brown provided a harmonious combination that resulted in three of four MACS-2 touchdowns.

At the conclusion of Wednesday's contest MACS-2 holds a season record of seven wins and one loss, while H&HS' record goes to five wins and three losses.

Marines

rines as they executed superb plays. Cpl Berlin Stoute busted loose for 70 yards to set up a Gunter to LCpl Albert Wiley touchdown. The two-point conversion was good and the Leathernecks opened an 18-12 lead. The no-name Marine defense never gave DIVARTY a chance to move past the 50-yard line.

The Marines not only monopolized the fourth quarter but added seven points to their score to win the battle, 25-12 and earn the undisputed honor of being the only undefeated team thus far in the league.

MARINE COACH Maj Joe Yetter commented, "During half-time I told the team if

we play clean and honest ball, we could beat these guys. I asked for a hundred percent... they gave me that and more."

The Marines will try to add another victory to their record of five wins, no losses and one tie, Saturday at 2 p.m. as they take on the Hawaii Group at MCAS Pop Warner Field.

Cont. from B-1

CARRIERS SEEK SUBSCRIBERS

SUN PRESS carriers will be seeking voluntary subscribers for the eleventh period of 1980 beginning October 11. The four week period extends from October 15 to November 5. If you enjoy reading the SUN PRESS and delivery service is satisfactory, your voluntary subscription payment will ensure prompt, uninterrupted delivery.

Subscriptions are \$1.00 per period. All subscription fees revert to carriers and other circulation personnel.

MAHALO



SCHEDULED AIRLINES TICKET OFFICE (SATO)

Staffed by full time Airline personnel
To assist in your travel requirements

- Individual leave
- Family travel to the Mainland
- Neighbor Island
- International
- Dependent travel to West-PAC
- Fares
- Flight Information.

Contact SATO for reservations and airline tickets at any one of our three convenient on base locations.

Pearl Harbor	- Bldg. 487 - Tele: 422-0571 Office hours - Mon. thru Fri. 0730-1600
Camp Smith	- Bldg. 20 - Tele: 487-1567 Office hours - Mon. thru Fri. 0800-1600
Kaneohe MCAS	- Bldg. 209 - Tele: 254-1564 Office hours - Mon. thru Fri. 0730-1530

STEFFY'S AUTO BODY & PAINT, INC.



Complete Paint & Body Reconditioning. Foreign & Domestic Cars. Collision - Insurance

★ FREE LOANERS

GUY CAYETANO
U.S. Navy Retired
—Owner—
262-5060
261-8195

131-A HEKILI ST.
KAILUA
(Next to NAPA)

WHAT'S A B.S.O.E.?

If you have military experience in a specialized field, come in and find out from a Wayland Baptist Counselor.

Fort Shafter	10:00-12:00 Tuesdays	438-9215
Hickam AFB	9:00-11:00 Thursdays	449-2306
Kaneohe MCAS	9:00-11:00 Mon., Fri.	257-2061
Schofield Barracks	9:00-11:00 Mondays	655-4985
Tripler AMC	1:00-3:00 Tuesdays	433-6366
Pearl Harbor	9:00-11:00 Wednesdays	474-1278
Camp Smith	1:00-3:00 Thursdays	477-6867
Naval SubBase	9:00-11:00 Fridays	471-3490



Wayland Baptist College

2429 Pali Highway Tel. 595-2951

A Fully Accredited Equal Opportunity Institution



DOES A CAREER IN THE RECORD INDUSTRY INTEREST YOU?

6 gold album engineer offers introductory & advanced course in sound recording.

GRADS will be able to operate recording equipment anywhere in the world.

CLASS BEGINS Oct. 28th & Nov. 5th and last 10 weeks. Eve. & Day classes.

For more info call Chris Hinshaw at Jungle Recording **235-2940**

46-003 Alaloa St.
Kaneohe

Breakfast - Lunch - Dinner

- Hotcakes
- French Toast
- Omelettes
- Plate Lunches
- Hamburgers
- Mahimahi
- Chicken
- Seafood
- Teriyaki

NOW OPEN 24 Hours

andy's drive-in

142 Oneawa St.

CALL For Late Evening Take-Out Orders **262-4920**

Ingenius.



DIMENSION 3 MICROWAVE/ CONVECTION OVEN NE-9900

3 Different ways to cook quickly, naturally and evenly. PLUS Panasonic's Unique COOK-A-ROUND Magnetic Turntable.

1. The Convenience of MICROWAVE COOKING
 - Defrost, thaw and cook foods in a flash
 - Cook By Power and Time or by Temperature Probe
2. The Tasty Appeal of CONVECTION COOKING for Browning and Baking
 - meats come out tender and evenly browned
 - breads, pastries, cakes and pies done by constant circulation of dry, heated air
3. The Unmatched Speed & Versatility of COMBINATION MICROWAVE/CONVECTION COOKING
 - The best of both worlds...fast cooking with eye appeal for meats, roasts, pork, lamb or poultry

Panasonic
just slightly ahead of our time

Available At Your Military Exchange



AIKAHI WORLD TRAVEL, INC.

has expanded!

Our NEW OFFICE

Is conveniently located on the ground floor in Aikahi Park Shopping Center and offering

APOLLO

Windward's most efficient computerized travel service
Featuring on the spot:

•AVAILABILITY •TICKETING •CONFIRMATION
AND MILITARY FARES WHEN AVAILABLE

By Phone or In Person

254-3514

Mon.-Fri. 9-5, Sat. 9-1

Trivia

1. Name the male and female winners of the Associated Press' 1980 Athlete of the Year Award.

2. The New York Yankees have won more World Series championships (22) than any other team in baseball history. Who is runner-up in this category?

3. Who was the first winner of the National Collegiate Athletic Association Outstanding Player award in basketball?

4. George Brett of the Kansas City Royals attempted to become the seventh man in baseball history to hit over 400 for an entire regular season. Who was the last ballplayer to accomplish this feat, and what was his batting average?

5. Who was the only man to lose a heavy-weight title fight to Jack Dempsey via decision instead of by knockout?

6. Name the only married couple in tennis history to win the mixed doubles Wimbledon championship.

7. Who was the first golfer to win more than \$100,000 in a single year?

8. What former Marine won the world middleweight boxing championship from Sugar Ray Robinson in 1957?

Answers

1. Titleholder, world heavyweight champion, was also a two-time round split decision. He was Robinson via a 15-11 decision. Robinson was the former Marine who won the world middleweight boxing championship from Sugar Ray Robinson in 1957.

2. The St. Louis Cardinals won eight World Series championships.

3. The St. Louis Cardinals won eight World Series championships.

4. The St. Louis Cardinals won eight World Series championships.

5. The St. Louis Cardinals won eight World Series championships.

6. The St. Louis Cardinals won eight World Series championships.

7. The St. Louis Cardinals won eight World Series championships.

8. The St. Louis Cardinals won eight World Series championships.

uncontested divorce \$200
(5170 legal fee + \$30 court cost)
Michael Pence, attorney
grosvener center, 26th floor
523-6411

KMCAS WOMEN'S EXERCISE CLASS
Fun, Music
Total Body Workout
Showers Sauna
Sign Up Before Class
BOQ MWF 8:15 AM
17th 7:30 PM

recycle
OFFICE PAPER it
pays you
HAWAII RECYCLING SERVICES
8472088

When you place a Classified ad, results are just a phone call away!

Dial 235-5881 Classified Advertising Department



LEGAL NOTICE

TRAFFIC CONTROL DEVICES

Traffic Schedule No. 80-11
IN ACCORDANCE WITH THE PROVISIONS OF ORDINANCE NO. 78-44 AMENDING ARTICLE III, CHAPTER 15 (1978 TRAFFIC CODE) OF THE REVISED ORDINANCES OF HONOLULU 1978, THE DIRECTOR OF TRANSPORTATION SERVICES HEREBY ESTABLISHES TRAFFIC SCHEDULE NO. 80-11 TO AMEND SCHEDULE XX OF SECTION 15-13.10(1) (a) ESTABLISHING TOW ZONES-24-HOUR; SCHEDULE XXII OF SECTION 15-14.5(1) ESTABLISHING PROHIBITED PARKING CERTAIN AREAS; AND SCHEDULE XXIV OF SECTION 15-15.1(4) ESTABLISHING CURB LOADING ZONES.

SECTION 1. Chapter 15 (1978 Traffic Code), City and County of Honolulu, as amended, is hereby further amended in the following particulars:

a. By amending Schedule XX of Sec. 15-13.10(1) (a) establishing tow zones-24-hour by adding thereto the following:

"Kalaheo Ave., mauka side, for a distance 188' in the ewa direction from the ewa curbline prolongation of Royal Hawaiian Ave."

b. By amending Schedule XXII of Sec. 15-14.5(1) establishing prohibited parking certain areas as follows:

1. By adding thereto the following:

"Curtwright Rd., mauka side, for its entire length."

"Kihupai St., waimanalo side, for a distance 100' in the mauka direction from the mauka curbline prolongation of Kalaheo St."

"Moomuku St., kokoihead side, for a distance 70' in the mauka direction from the mauka curbline prolongation of Kalaheo St."

"Palua Ave., mauka side, between Moku St. and Mun St."

"Twin View Dr., mauka side, from its turnaround to Mahalo St. during the hours 7:30 a.m. to 5:00 p.m. except Saturday, Sunday and holidays."

"Twin View Dr., ewa side, from a point approximately 90' south of the curbline prolongation of Alewa Dr. and extending in the southerly direction to Mahalo St. during the hours 7:30 a.m. to 5:00 p.m. except Saturday, Sunday and holidays."

"William Henry Rd., makapuu side, for a distance 124' in the mauka direction from a point 100' mauka of the mauka curbline prolongation of Kamehameha Hwy."

2. By amending the items listed below as follows:

(a) By amending the item relating to Mahalo St., ewa side, between Judd St. and Walea Pl. during certain hours to read:

"Mahalo St., ewa side, between Judd St. and Twin View Dr. during the hours 7:30 a.m. to 5:00 p.m. except Saturday, Sunday, and holidays."

(b) By amending the item relating to Ohua Ave., kokoihead side, for a distance 388' in the mauka direction from Kihupai Ave. to read:

"Ohua Ave., kokoihead side, for a distance 314' in the mauka direction from the mauka curbline prolongation of Kihupai Ave."

(c) By amending the item relating to Twin View Dr., mauka side, from a point 18' ewa of the kokoihead property line of 738 Twin View Dr. and extending in the ewa direction to Alewa Dr. to read:

"Twin View Dr., mauka side, from the ewa property line of 716 Twin View Dr. and extending in the ewa direction to Alewa Dr. (approximately 400')."

c. By amending Schedule XXIV of Sec. 15-15.1(4) establishing curb loading zones by amending subsection (1) thereof relating to passenger loading zone by deleting therefrom the hours "7:30 a.m. to 8:30 a.m." from the item relating to Nehoa St., mauka side, for a distance 94' in the ewa direction from a point 20' ewa of the ewa curbline prolongation of Makiki St. during the hours 7:30 a.m. to 8:30 a.m. 1:00 a.m. to 12 noon, and 2:30 p.m. to 3:30 p.m. on weekdays."

SECTION 2. This Schedule is hereby attached to and made a part of Article VI hereof and shall take effect ten (10) working days after its publication.

AKIRA FUJITA, Acting Director
Dept. of Transportation Services
City and County of Honolulu
Dated: 10/8/80

(Copies of the Schedule are on file at the City Clerk's office for use and examination by the public.)
(Sun Press; Oct. 15, 1980)

ANNOUNCEMENTS

PACIFIC MARITIME ACADEMY

Sea Career Courses

Deck Officer
Crew & Maintenance
Appr. for Veterans

Oct. Term Call 537-5719
Top Salary Jobs for Deck Officers Available

LOST & FOUND

REWARD! \$50 to the finder of my boat's rudder lost in Kaneohe Bay near Chinaman's Hat. Call for details 247-6127, eves. - wkends.

LOST: Siamese cat. Reward. Hawaii Kai area. Call 395-0297

WAIKIKI'S NEWEST & HOTTEST ROCK CLUB!

DOMINIC'S ROCK & ROLL CLINIC PRESENTS

Teazer Hawaii's no. 1 rock band

10 PM-4 AM NIGHTLY CORNER OF McCULLY & ALA WAI

FREE admission Mon.-Thurs. with this ad. 2 drink minimum.

955-5688

Plaza Health Spa

Waipahu Shopping Plaza

94 210 Pupukahi St., Rm. 202

Personal attention

Ph. 671-4849

25 PERSONALS

DO Your Own: Divorce \$40. Free information. Call 524-3277

62 YEAR old, lonely, Kailua widower seeks female from 40-60 yrs. for companionship or marriage. Financially secure. Call 262-2117 nite or day

Dating for Singles-mail \$1 for appl. to: Singles Box 4472, Hon. 96813

IF YOU want to drink, that's your business. If you want to stop, that's ours. Alcoholics Anonymous. Ph. 946-1438.

DO IT YOURSELF IT'S EASY FOR FREE INFO ANYTIME 524-3277

35 PROFESSIONAL SERVICES

JOHN C. Scott Attorney at Law

Business, litigation, corporations, divorces, personal, injuries, bankruptcy, gen. practice of law 732-5473

LOW Budget masonry. No job too small. Driveways, slabs, sidewalks, blockwall & stucco. Dick 254-5102

PALMER HOUSE REFINISHING. Antique restoration, insurance claims, Formica work, any wood repairs, interior & exterior painting. Ph. 261-0002

SEWING Sally Mending alterations custom-made. 732-6710

GENERAL BUILDING Maintenance. Repair & Painting. Richard K. Chun. Ph. 247-2583

CARPENTRY, wood or concrete, walkways, patios, decking, fencing or repairs. Reasonable. Call Miles, 262-8859

FELIPE Yard and House-cleaning. Call 261-5050 between 2:00 and 8:00 p.m.

I WILL clean your military quarters when you move for a low rate. Inspection guar. 624-4228

CHARCOAL Portraits drawn from life. Think Xmas! for information: 262-5697

GENERAL maintenance. Handyman service by appt. Call 262-2135

AUTO upholstery quality work Free Estimates Now Life Upholstery 235-8384

Lawn mower - Moped repairs & tune-ups at your home. Reas. 395-6927

BT & SONS, INC. MASONRY CONTRACTING

Specializing in fence walls, tile & masonry, concrete driveways, slabs, pools, extensions and remodeling. Free estimates fast reliable service 259-8134

CARPENTRY home repairs - wood replacement, screens, doors, decks, rooms. You name it, we do it! Friendly Fouts, 261-0454

HOMES and apts. cleaned by the week at prices you can afford. Call 261-7169

LAWN mower sharpening, most models \$10 - \$15. Call 261-2672

FRED Domingo Yard, etc. House cleaning & hauling services. 422-7426

20 LOST & FOUND

FOUND: 1 bicycle near St. John, Kailua owner identify. Call Pat 261-1483

25 PERSONALS

LONELY? Join 40+ singles club, no membership fee. Just send \$1.00 for application to P.O. Box 1392, Hon., HI 96807

HAWAIIAN Swinger Magazine - Discreet introductions. Send \$3.00 to Box 850-C, Waimanalo, HI 96795

DARE to go bare, Nudist Park Information & free visit. Write P.O. Box 8417, Hon., HI 96815

ARE you lonely and feel no one cares, We care. Call 941-0931 Bayview Chapel

35 PROFESSIONAL SERVICES

HOUSE cleaning at good rate, apts., homes, condos & yard work. Contact Chris 239-9571

HOUSECLEANING guaranteed to pass inspection. Reasonable rates. Experienced. Contact Sharon. 499-2409

DIVORCE with attorney \$70 533-4539 A Public Service Firm

NON-Profit Plant Recycling Foundation will remove any unwanted trees at no cost. Call 638-7872

MONIZ Enterprises, kitchen cabinets, counter tops, furniture, carpentry. Free estimates. 235-5362

DESIGNER, custom-made, all types of garments and alterations. Ph. 262-4949

IS your domain in need of repair or painting? Free Estimates. 261-8034

KAILUA MASONRY Additions, slabs, tile walls, pools, patios, driveways. Free Estimates very reasonable. Call 261-3584

FURNITURE Refinishing Antique restoration repairs. Free estimate. Pick up & delivery. Ph. 261-7078

35 PROFESSIONAL SERVICES

HOUSE Painting will paint your house for less to establish self. Quality work - Jim 536-6670

CABINETS & Counters falling apart - need shelves or custom work? Free Estimates 395-8336 Creative Woodwork & Design

45 SCHOOLS & TRAINING

BEGINNING Piano or Flute lessons. Individual instruction. Phone 235-5098.

VIRGINIA Powers School announces beginning Jazz Dance for adults & children. Classes begin Oct. 21 from 5 to 8 p.m. Enrollment is limited. Register Now at 487-3324

ASTROLOGY - Classes on understanding & applying. Set up your own chart. Prepare now to make the most of the forthcoming holidays. \$10 per lesson. Call p.m. 395-4757

CERAMIC classes starting in Kaneohe for information please call 488-0707

SPELL WITH PHONICS IMPROVE READING Easy Phonetic Method. Beginning (reading) reading. Grammar, comprehension. Any level. K-Adult. Individual tutoring. Qualified, experienced teachers.

262-7242

45 SCHOOLS & TRAINING

EARN extra income, p/t or f/t, cosmetic sale, will train. 531-2823

FULL or part time couple and individual for business of your own. Local Amway Distributor assists you for splendid opportunity. Phone 239-7550 leave name and phone number.

SMALL Variety Merchandise & Thrift Shop for sale. Call 537-3767. 11-3 p.m.

BE YOUR own boss. Full time or part-time. Local Shaklee distributor trains you for a unique opportunity. For appointment call Bob Briggs at 262-8298 or 261-1670

GET DOWN TO ALPHA FOR EACH PLASMA DONATION \$7 You can help close the gap in worldwide plasma shortage and aid victims of disease and injuries too. Supplement your income. Wouldn't you like to be part of it? Get down to Alpha today!

3179 KOAPAKA ST. (behind Airport Ramada Inn) 336-0647 Open 6 days MON. THURS. 9:00 am-6 pm TUE. WED. FRI. SAT. 8:00 am-4 pm STARTING JULY 7th

JOBS, JOBS • JOBS • SECRETARIES RECEPTIONISTS CLERKS TYPISTS BOOKKEEPERS SWITCHBOARD 188 So. Hotel Street Alexander Young Bldg. Suite 205 631-0111 or 538-3456 EMPLOYERS OVERLOAD on equal opportunity employer

LIBERTY HOUSE is seeking salespeople for part-time day shifts. If you are available weekdays from 9 or 10 a.m., we would like to talk with you. Days and hours of work can vary to meet your needs. Liberty House offers employee discounts on merchandise and opportunities for advancement. Call 945-5575 for interviewing hours at the Liberty House store of your choice.

LIBERTY HOUSE

SUN PRESS CLASSIFIED ADS SAVE YOU MONEY It's so easy. Here's all you do. First, decide what you want to turn into cash. Go through your home and make a list of good things you find that you no longer use or enjoy... things like furniture, appliances, sporting goods, power tools, typewriters, bicycles and much more. Now you're ready to write your Want Ad on the handy order blank. Describe each item you want to sell and be sure to give the price you want for it. List your phone number and the hours to call. Be sure to print, using a pencil, ballpoint pen or typewriter. Complete Coverage Ad Appears In All 9 Papers 3 LINE MINIMUM \$1.40 PER LINE Per Week PLUS 4% TAX DEADLINE - MONDAY 4 P.M. FOR THE FOLLOWING WEDNESDAY EDITION PH. 235-5881 PLEASE RUN THE FOLLOWING AD FOR 1 WEEK 2 WEEKS 3 WEEKS 4 WEEKS NAME ADDRESS Please run my ad as follows: First Line

Look what's in it for you: MONEY! As a SUN PRESS carrier you earn and manage your own money, just like a businessman! PRIZES! In addition to your regular earnings, you can merit valuable prizes by excellence of service and gaining new subscribers! TRIPS! Being a SUN PRESS carrier is not all work... every year hundreds of our carriers win a variety of different prizes, this year, an all-expense paid trip for 3 to Disneyland is being given away!

Boys! Girls! If you are bright, energetic and have the desire, we need you! It's great to earn your own money... win valuable prizes... You'll be part of Community Publication's big SUN PRESS Newspaper team, working together to bring our neighbors the latest local news. JOIN THE SUN PRESS CARRIER TEAM CALL 235-5881 TODAY!

There's more in a carrier's bag than newspapers... The National Personnel System 900 Fort St. Mall (Pioneer Plaza, Ste. 740) Equal Opportunity Employer Employer-Paid Fees

EVER THOUGHT OF GOING TEMPORARY? MAKE GOOD \$\$\$ as a: Typist (60 wpm+) Bookkeeper Account Clerk Secretary Call Ann: 524-1733 Dunhill Temporary Systems

CHRISTMAS ALREADY? It's not too soon to be thinking about earning extra money for the holidays! APPLY NOW Earn top dollar with Honolulu's largest office & clerical temporary help firm. Short or long term assignments. You decide. The better your skills, the better the pay. We need Typists, Stenographers, Receptionists, Transcribers. Automatic pay raises-health care provided-no fees. You're the best! Work for the best! KELLY SERVICES INC. "The Kelly Girl People" 900 Fort Street Mall, Suite 1460 521-7468 Interviewing hours: Mon. Thru Fri. 9 a.m.-2 p.m. An Equal Opportunity Employer Male/Female/Handicapped

ATTENTION MILITARY WIVES Now is the time to start planning for the holiday. Want to make money for Xmas gifts to make enough money to take the kids to visit Grandma for the holidays? Better still, pay for Grandma's way to beautiful Hawaii? You can, by working part time 5:30 to 9:30 p.m. 3 to 4 evenings per week while hubby babysits. Our Co-op shopping outlets need workers in all their area outlets and will pay \$3.00 per hour or business commission. Call 833-2228, ask for Ann

DISHWASHER Utility person, 8 hour shift, 5 nights a week. Call Sue or Ray 261-1401

NEEDLECRAFT Demonstrators needed. Island Wide. \$10 to \$12 hr. Phone 254-5052.

NEED extra income? Earn it in your spare time. Call 488-5687 for Appt.

ARTEX Decorator Paints, accepting orders. Party Plan. Call 833-4146

Hawaii Male MATHEMATICS INSTITUTE Academy & Learning Clinic By Appt. 261-8106

50 BUSINESS OPPORTUNITIES

46016 Alaka St. Kaneohe, Hawaii 96741

• 60 HELP WANTED
MALE & FEMALE

WANTED NOW!
Phone Collections \$\$\$
Clerk Typist at \$590
Travel Agent at \$750
Shipping Clerk \$810
Counter Persons \$3.10+
Maintenance Persons \$3.50
Counter Part Sales \$\$\$
Security Guard \$3.50
Cooks \$\$\$
Bus Person \$3.10
Factory/Driver at \$3.25
KOKUA EMPLOYMENT
767 Kailua Rd.
262-8137
Free Parking

EXPERIENCED jewelry gift
items sales. Military &
Retail buyer contact
helpful. Excl. commission.
262-4828 for appointment

EARN extra money without
leaving home. Limited
openings available. Call
now. Between 3 to 6 p.m.
689-7474

JANITRESS p/t.
Kaneohe area.
Ph. 247-2614.

BOOKKEEPER, full charge,
p/t position, requires a
knowledge/exp. in prep.
of financial statements.
Barbers Point, Navy Flying
Club. 684-8221

PART time - flexible hours.
Business expanding.
Management, educational
or PR experience. 621-5508

PERSONABLE, energetic,
mature-minded indiv., for
receptionist/asst., full-time,
no exp. required. 247-6696

EARN EXTRA
MONEY

Military & Local Welcome
Part Time \$30-18 p.m.
Hawaii's largest diamond shopping
center with over 100 delivery
points. Free delivery. Also
the buying service for clothing,
jewelry, sporting goods, auto
accessories. Delivery and pickup
from home. Call for more info.
P.O. Box 100, Kailua, Hawaii.
Eve Beach, Barbers Point & Kailua.
Short at \$8.95/hr. or incentive pay
plan varies. Call Collect Personal
Office for interview.
633-4578 ask for Mary

• 61 HELP WANTED
MALE & FEMALE

LOST Your Tri-Chem liquid
embroidery instructor?
FREE services, classes, 261-
4035, 824-2991, 833-5425,
499-1513 or 247-1997.
Full/part time career
opportunities.

CLEANING single floor 2
bdm., Kailua AFB.
Includes washing &
ironing. 1 day per wk. 423-
2703 evens.

PERSONS to do crochet
work at home. Materials
supplied. Pay by the piece.
Call 536-3459 Peg

CLEANING lady, exp., 1/2
day per wk., Kaneohe. Ph.
247-1761

HOUSE cleaner needed 1
day a week, Kailua area.
Call 261-3172

CHRISTIAN babysitter
wanted: 2 days a wk., in my
home. 262-4663

CLEANING person in
Kailua needed, experi-
enced w/references. 4 to 6
hours weekly. Call 261-
5785

WANTED: someone to do
housework 5-6 hrs. every
3rd wk. \$3.50 an hr. 261-
6011

GENERAL house cleaning,
windows. Dependable,
honest. Call 638-7680

FORMER Preschool teacher
will give excellent day
time care to your child Mon.
thru Fri. Call 235-1264
Kaneohe

BABYSIT my home, full
time, part time. After
school, Waipahu. 671-7527

I WILL babysit, my home
Maunawili, 1/1 or occasional.
Ref. 261-3795

MOTHER will care for
infants Mon. thru Fri. in own
home. 8 a.m. to 5 p.m. 623-
0692

• 62 SITUATIONS WANTED

Will do ironing
my home
247-2477

DAY CARE, 1 1/2 yrs. old
and up, Kailua area.
254-5410

BABYSIT my home, fenced
yard, playmate, 5 days a
wk., Wahiawa area. 821-
0689

YOUNG man will do house
painting \$5 an hour. Call
261-0634

DEPENDABLE sister, 2
years and older, yard.
Waipio/Mililani 623-3839

Will Baby sit one child in
my home in Waimanalo.
Phone 259-9655

• 63 GARAGE & LANAI
SALES

KANEONE plantsale: lge. &
small sizes, many different
varieties, wholesale prices,
across Windward Shopping
Ctr. 45-600 Kam Hwy., Sat.
10/18 9-5 p.m.

PLANT Sale, Sat. 10/18, 9 to
3, Specimen plants, some 1
of a kind, 1308 Mokapu
Blvd., Kailua

NEW tools, toys, appli-
ances, misc. new & used,
bargain \$1.28 Kailua Pl.,
Kailua

MULTI-family sale: Sat. 8-5
p.m., Sun. 12-5 p.m. Desk,
tools, lawn mowers, garden
lamps, jewelry, many items.
158 Kailua Pl., Kailua

CRIB \$15; work table \$15,
rattan couch \$100, other
misc. Oct. 18, 9 to 1, 629
Wanawa Rd., Kailua

OCT. 18 & 19, 9-5, 7533
Laelua Pl., Kailua Valley,
Hawaii Kai, Washer/dryer.

MOVING Sale Oct. 18 &
19, 10-2 p.m. Desk, books
and much more. 2650-C
Connor Ln., KMCAS

FURN. household goods,
clothes, books, 10/16 & 17,
4-7 p.m. & 10/18, 10-2 p.m.
718 Lunalia Home Rd. 395-
7185

• 64 GARAGE & LANAI
SALES

GARAGE Sale: 18 Oct., 9 to
2, 241 Ilihu St., Aiea.
Park, bikes, wicker furn.,
TV, toys, decorative pieces
& much more

GIANT moving sale: beds-
queen, bunks, captains,
dressers, wood dining
w/6 chairs, baby furn.,
antique furn., rocker,
lamps, sewing machine,
bikes, toys, 40 & 50 gal. salt
aquarium; Sears swing
set, weight set, beautiful
plants; gift items, much
more. Starts Fri. 9
a.m. 45-215 Ohala St. 247-
0374

SAT 9 a.m.-5 p.m., misc.
house furn. & bike. 1326
Aupapohoe St., Kailua. Call
261-9896/261-3780

STUPENDOUS Garage
Sale: Antiques, lge.
wardrobe, chairs, many
baby items, and tables,
couches, tables, crystals &
much more. Fri. Sat. 8 to 5
Sun. 8 to 3, 607 Aiea Pl., off
of Keolu Dr. In Enchanted
Lake. 261-8225 or 254-5376

MOVING Sale: Rattan furn.,
appliances, sofas, bed,
children's bdms, furn.;
office chairs, toys, fabrics, 2
TV sets; new 100 gallon fuel
tank. Sat. 10/18 & Sun.
10/19, 9 to 4, 141 Paauhili Pl.,
Kailua

DOLL House furniture,
shadow boxes; light
fixtures, whiskey barrels;
furniture, rugs & lots of gift
items. 1343 Kahili St., 8:30
to 3, Sat. Only

BABy items, movie camera,
instruments, many misc.,
Sat. 9-12, 100-A N. Kalaheo,
262-7484

STUDIO apt., pool, view,
parking stall, security,
convenient location, Makiki
on busline \$335. Call 536-
7997

• 75 APTS. PARTLY FURN.

THE Fairway House
Brand-new, 2 bdrm., 2 bath
Date St. \$625. 839-9825

• 75 APTS. PARTLY FURN.

KAILUA: 1 bdrm., near bus
line, spacious breezy,
comfortable plush home
\$325. 262-6462

KANEONE: new 3 bdrm., 2
bath duplex, quiet, refs.
\$495. 533-6041

YES we have rental -
W.M. Weber, Inc., Realtors
623-2645, Mililani

KAILUA: studio near bus
line, spacious, breezy,
comfortable \$250. 262-6462

KAILUA - Lanikai studio
cottage, lush surroundings,
nr. beach \$280 includes
utils. Ph. 261-3018

KANEONE 2 bdrm. apt.
\$385 mo. Available
immediately. Call 621-8222

DATE Street - lovely 1
bdrm. penthouse apt.,
beautiful view & large lanai.
\$375. 536-3935 weekdays.
261-8702 weekends.

PUU Aiea: never lived in
ocean view, 2 bdrm., pool,
\$800. Lease. 235-8651

ALA WAI - Waikiki 2 bdrm.
Beautiful view, upgraded,
pool, parking \$500/mo.
Immed. avail. Call 261-7787
or 477-5211

• 76 RENTALS TO SHARE

KANEONE: Share home
near shopping, bus, etc.
couple \$300 + utils., single
\$275 + utils. Avail. Oct. 23
235-1173

KANEONE male/same, 3
bdrm., 2 bath, own room &
bath \$175 incl. utils. 235-
8483

ROOMMATE - share 3
bdrm., 2-1/2 bath town-
house in Pearlridge. All
amenities \$300 mo. 488-
0654 after 5 p.m.

SHARE new 3 bdrm.
townhouse, Enchanted
Lakes, Kailua. Private
master bdrm. & bath suite.
Lv. Message 262-9324

KAILUA: female/share 3
bdrm., 2 bath house w/2
same, non-smoking \$180/
mo. Call 261-8170

• 78 RENTALS TO SHARE

WANTED female share
w/same Mililani townhouse.
\$200 mo. incl. util. 625-0042

TO share - 3 bdrm. home
Kahaluu Gardens. Own
room & bath. \$150. Call
after 6 p.m. at 239-9365

KAILUA beach home to
share w/responsible
person. 251-7189

KAILUA: responsible
person to share lge. home
in Maunawili Estate.
wash/dry, cable TV, quiet,
secure area w/view \$175
per mo. Call 262-7261 evens.

KANEONE, 1 bdrm., share
kitchen, washer/dryer,
Seek Christian, non-
smoker \$280/mo. + util.,
dep. 247-4392

LIBERAL GI male 18-27 to
share w/same. Mililani
Appt. Low rent call
946-3377

AIEA: 1 bdrm., furnished,
carpeted, drapes, near
Pearlridge Shopping &
airport. For details call 456-
2258 or 537-5694

• 80 JEWELRY
JEWELRY - Importer
liquidating, buying for
X-mas or investment. 247-
0205

PEARL City 3 bdrms., 1
bath, duplex. Small family.
\$450. 456-2173

KANEONE Bay View, 1
bdrm., quiet single only
\$300 mo. Ph. 247-2318

• 82 HOUSES UNFURN.

MAKAKILO: 3 bdrm., 2
bath, 2 carports, amenities
\$800. 672-4224

• 83 HOUSES PARTLY
FURNISHED

1 BDRM. cottage, Kailua
beach, front \$450 mo.
Lease. 262-8726

KANEONE: Panoramic
ocean/mountain view. Executive
house, 3 bdrm., 2-1/2 bath,
private/quiet. Nice yard.
\$775/mo. 239-5447/946-
0867

WAIHANA heights, lge.
new custom built home,
plush redwood interior,
lanai, appl., yd. services. 3
bdrms. 2 1/2 baths \$595. 623-
2459 after 2

AIKAI: nice 3 bdrms., 2
bath, w/solar heater,
immediate occupancy
\$650. 239-6100

WAIHANA 2 bdrm. dish-
washer, washer/dryer,
pool. \$375. 521-3988

PUU Aiea 3 bdrm., end-unit,
garage, view, tennis, pool,
\$625. 261-1410

KANEONE - new 2 bdrm., 2
bath townhouse, super
amenities \$650. Call 521-
8833 or 373-3054

KANEONE Club View III, 3
bdrms., 2 baths, all appl.
\$550. 262-7720

3 BDRM. 2 baths,
util. incl. \$550
247-2477

• 83 HOUSES PARTLY
FURNISHED

WAIHANA Village Park,
new 3 bdrm., 2 bath, patio,
view, carpet, drapes, no
pets \$575. 488-5327

• 85 TOWNHOUSES
PARTLY FURNISHED

1 BDRM. cottage, Kailua
beach, front \$450 mo.
Lease. 262-8726

KANEONE Bay water front
- charming 3 bdrm. ideal for
small family. Freshly
painted, new appliances
\$675. Call 254-3560

LANIKAI across from
beach, lge. 4 bdrm., 2 bath,
family home, gardener incl.
\$900 mo. + utils. 254-3444

KANEONE Club View
Gardens, 3 bdrm., 2 bath
\$600 mo. Ph. 262-5090 or
262-7549

HAIKU Hale 3 bedrooms
and 2 baths \$500 a month.
Kaneohe. 235-6196

LANIKAI - BLUESTONE,
model B, end unit, 3 bdrm.,
3 bath \$950 mo. Ph. 524-
5394

PUU Aiea 3 bdrm., end-unit,
garage, view, tennis, pool,
\$625. 261-1410

KANEONE - new 2 bdrm., 2
bath townhouse, super
amenities \$650. Call 521-
8833 or 373-3054

KANEONE Club View III, 3
bdrms., 2 baths, all appl.
\$550. 262-7720

• 86 TOWNHOUSES
PARTLY FURNISHED

2 BDRMS., 1 bath, pool,
view, parking, util. incl.
walking distance to
Schofield \$450. Call 638-
7997

• 88 ROOMS FOR RENT

UH/Manoa/Moiliili
Lanikai nice view \$165.
Roommate Locations 955-4428

KAILUA share bath,
includes util. \$175 mo. +
deposit. Responsible
working male 261-1478

HAWAII Kai: 3 bdrm.
townhouse clean, quiet,
pool. \$200. 395-2885 Chuck

1 BDRM. own bath \$225
includes utilities + deposit.
261-4271 days

PRIVATE entrance, bath,
kitchenette, util. incl. \$215.
Single working person. Ph.
261-2174

MAKAKILO pool, quiet,
\$250 mo., util. paid. 672-
3468. 471-3410

1 BDRM. share kitchen,
\$100 incl. util. Call after 8
p.m. 689-6101

CHEERFUL house, pool,
own bdrm. & bath, near
shopping, bus & beach.
\$200 mo. + utilities, refs.,
deposit. 254-5147

KUILIMA: 1 bdrm. fully
furnished apt., no pets. Call
239-6539

KUILIMA: 1 bdrm., apt.,
sleeps 4, amenities.
Daily/wkly. mo. 235-1481

HOME IMPROVEMENT
CENTER

CARPET CLEANING
STEAM EXTRACTION
\$29.95
300 sq. ft.
Finest Deep Soil Extraction Equipment
Laboratory Cleaning also available
HOUSE OF RIK-JON II
Military Price \$29.95 thru Post-Renter Rug Exchange
Downtown Area

ROOFING
ROOFING
All types including
pitch & gravel
Lowest prices on the
Windward side
Kailua Construction
Lk. 4251 Ph. 247-6621

VINYL SIDING
Control termites, wood rot,
wind, & water
Save money again!
Install exterior vinyl wall siding
at 15% discount thru the end of October
623-6108
Brian Enterprises

LUMBER
Wood for
every
purpose.
Specials in Lumber
Lumber
Plywood
Hardwood
Lumber Co.
Ph. 424-2787

CONTRACTING
W.K. BUILDERS
Specializing in Home Building
and Improvement
Kitchen • Bathroom • Patios
• Extensions • Repairs
FREE ESTIMATE
CALL WALLY KIM
68-322 KAM HWY., KANEONE

HOME/OFFICE SECURITY
**ABSOLUTELY
FREE
LOUVER WINDOW
LOCKS**
ONE PAIR, INSTALLED IN YOUR HOME.
SEE WHY THE HONOLULU POLICE DEPT.
RECOMMENDS LOUVER WINDOW LOCKS AS A WAY
TO PREVENT THE MOST COMMON METHOD OF
ILLEGAL ENTRY IN HAWAII. WINDOWS LOOK AND
OPERATE THE SAME.
Also special prices on
• Double Glazed Windows
• Impact Resistant Windows
• Full Size Auto Locks
THE H.W.P. CO.
INSURED BOND
CALL 467-1944
HAWAII 247-1470

PLUMBING ACCESSORIES
**SALE
40% OFF**
all Delta Faucets
We're showering you with 40% savings now on our
entire inventory of fine Delta faucets for kitchen, bath
and shower. It's the perfect opportunity to replace your
old faucet equipment with excellent Delta designs. We
show one example. There are countless more. But only
quantities are limited, so shop early for best selection.
**Bathrooms by
COSCO**

THE DIAMOND EXCHANGE
HAWAII'S MOST COMPLETE JEWELRY CENTER
**WAIPAHU STORE HONOLULU FEDERAL
SAVINGS BUILDING**
SALE ENDS OCT. 25
A BIG GOLD EVENT
50%-60% off
GOLD CHAINS • CHARMS • EARRINGS
JADE • DIAMONDS
FREE MAILE LEAF WITH PURCHASE OVER 50 DOLLARS
HAWAIIAN JEWELRY
RINGS, FLAT
5MM WIDE \$119
8MM WIDE \$199
10MM WIDE \$229
BARREL
5MM WIDE \$129
8MM WIDE \$209
10MM WIDE \$245
TAPERED RINGS
8MM WIDE \$129
12MM WIDE \$319
18MM WIDE \$469
BRACELETS, FLAT
6MM WIDE \$479
8MM WIDE \$639
10MM WIDE \$749
BARREL
4MM WIDE \$439
6MM WIDE \$499
8MM WIDE \$679
10MM WIDE \$799
SPECIAL PRINCESS RING
5MM BARREL \$139
8MM BARREL \$219
10MM BARREL \$279
LOOSE DIAMONDS
1/6 Ct. \$175
1/3 Ct. \$549
1/2 Ct. \$889
SPECIAL 2 INITIAL RING \$399
2 1/2MM PROMISE RING WITH
DIAMOND \$229
PENDANTS
SQUARE PLUMERIA \$159
OVAL PLUMERIA \$189
PRINCESS PLUMERIA \$139
INITIAL PLUMERIA \$59
6MM FLAT ID BRACELET WITH
3MM ROPE CHAIN \$239
VERTICAL STICK PENDANTS
8MM WIDE STANDARD FLAT \$149
8MM STANDARD BARREL \$159
HORIZONTAL PENDANT STANDARD \$149
VERY SPECIAL STICK PENDANT \$109
COAT OF ARMS INITIAL PENDANTS \$129
INITIAL PENDANTS \$49
HAWAIIAN RING GUARDS \$62 EACH
ENGAGEMENT & WEDDING SETS
6MM WIDE BARREL SET \$269
SPECIAL ENGAGEMENT RING \$149
FRENCH STYLE MOUNTING \$189
LAYAWAY FOR CHRISTMAS NOW • 90 DAYS NO INTEREST
THE DIAMOND EXCHANGE

If you are buying or selling a home, contact THE PROFESSIONALS

- 83 VACATION RENTALS**

KAILUA: 3 bdrm. old Hawaiian charm, nicely furnished. Close to town on bus line \$585 monthly. 941-3112 Available Nov. 10.

MOLOKAI: Wave Great sleeps 4, beach, pool, \$26 per day, \$170 per wk. 395-8085

BEACHFRONT studio near Crouching Lion. Week. month. pool. 235-8196

VACATION Rental, Kaawala. Magnificent view 2 bdrm., 1 1/2 bath + loft. Swimming pool, volley ball \$250 per wk. Cathy Lyman. 261-4332

• 88 RENTALS WANTED

CHRISTIAN couple desires resident manager position or apartment or house in exchange for services. 732-7685.

MATURE quiet lady wanting cottage-studio 8:30 to 4:30 p.m. 537-5591 weekends 373-4730

WANTED: 2 bdrms., furn. apt./house, Jan. only, 4 responsible adults. 395-9792

KEA Corporation Dba Magoo's Pizza Kaneohe Interested in relocating from Windward Shopping Center to another location in Kaneohe. Interested landlord call Mark 235-4541

• 103 OFFICES FOR RENT

OFFICE Space for rent. Ala Moana Bldg. Ph. 955-4402

• 114 REAL ESTATE FOR SALE

HAIKU HALE 2 UNITS SEE OUR NEAT 2 bdrm., 1-1/2 bath unit \$79,000 or our roomy 3 bdrm., 2 bath at \$82,500 In this convenient bldg. Now in the process of being approved for VA financing. TMK 1-4-6-31-10. Call Ernie Reeves (R) 262-9083 or June Kristapovich (RA) 261-2739, J.M. Urner, Inc. 261-3389

KANELOE \$119,500 BRING US AN OFFER. Terms. Best home, Best buy. Roomy 3 bdrm., 2 bath home, great location, spacious family room, corner lot. Lease TMK 1-4-5-83-53. Call Myrle Poston (R) 261-2293, J.M. Urner, Inc. 261-3389

KAILUA \$127,000 NEW LISTING - Beautifully remodeled 3 bdrm. FEE home. Country charm in the heart of the city. TMK 1-4-2-61-73. Call lister Jan Hiett (R) 254-3124, J.M. Urner, Inc. 261-3389

KAILUA \$30,000 BEAUTY SHOP - great location mls 43565. Call Valerio Stubblefield (RA) 261-6228, J.M. Urner, Inc. 261-3389

KAILUA \$219,000 FEE SIMPLE Maunawili Estate, family prestige in this elegant 4 yr. old tri-level home, 4 bdrm., 2 bath, formal dining rm., 2-lane decks backs up to conservation area. TMK 1-4-2-63-47. Becky Meneses (RA) 261-5931, J.M. Urner, Inc. 261-3389

MAUNALUAN - West Bldg. end unit, luxury amenities makes this 2 bdrm., 2 bath apt. w/2 covered parking an exceptional buy 8% A/S can be assumed. Leasehold Sakoda Realty 538-1948 eves., 988-2933, 734-0873

MILILANI 95-553 Waegwaeg Lp., 3 bdrms., 2 baths, ideally located, open Sun. 2-5 p.m. \$142,000. Shown by owner 823-7488. M. Lockridge, Inc. 262-5403

IF YOU NEED - a large home 2,392' under roof, 4 or 5 bdrms., 2 car garage & a pool to play in. You just found it! Lease MLS 042844, David Chase (RA) 262-8006. Sam Daily Realty, Inc. 235-6666

KAILUA \$777 YOU WIN NAME YOUR TERMS. Comfortable 3 bdrm., 2 bath home in Enchanted Lakes on quiet street. Family room and fenced yard. Lease mls 40192. Call Betty Boxold (RA) 261-4418, J.M. Urner, Inc. 261-3389

WINDWARD-KANELOE 2 bedroom, 1 bath condo Tripler nurse reassigned to Texas Ideal for one or two or starting family. Pet OK. Every offer will be considered. MUST SELL... excellent VA loan available. Open Thursday beginning 9:30 - make an offer. Open Saturday 10:2 for "back up" (VA) loan included in Maintenance Fee. "Hale Anolele" 9-318 MLS-38871 48-258 Kahulipa Street, Kaneohe Please call for information TOM PICO REAL ESTATE 262-5065

• 115 REAL ESTATE ANNOUNCEMENTS

MILITARY ACTIVE DUTY OR VETERAN Own your home in Hawaii. Take advantage of your newest raise for housing allowance. Call me personally and I can tell you on the phone if you qualify to buy with no down payment. WALLY (RA) 839-0976 Locations, Inc.

• 116 REAL ESTATE WANTED

REAL ESTATE WANTED Have jewelry for equity or purchase price 247-0205

• 120 FURNITURE

DOUBLE bed; bdrm. suite; dining set; sofa & love seat; misc. bdrm. furniture. Must sell. 395-8248

HOLLTOP desk, solid oak. \$500 262-0138

HIDE-A-BED \$75; king size bed \$150; round table \$20; wicker King headboard \$25. 254-1412 after 5 p.m.

FLORAL print sofa \$150; console stereo \$100; dbl. papasan \$35. 872-3397

FRENCH Provincial bedroom set white, bed \$100; nightstand \$50; 6 drawer dresser \$125; student desk \$100; all 2 years old. Call 247-4102 after 6 p.m.

MAMASAN chair w/ stool; dining table w/ stools & misc. items. 235-5268

5 PC. overstuffed living room set \$900. 235-2561

COUCH \$80; dresser w/ mirror \$60; chest \$15; double bed \$70. 261-2445

DINING table set; elegere; stereo center; TV stand; all chrome & glass design; air cond.; 2 love seats; Must sell 262-5090

FURNITURE: living room & bdrm.; water bed. Call 254-2124

MOVING Sale: Brown & Jordan rattan furn.; neutral color sofa bed; children's bdrm. furn.; dryer; antique hat - box dresser; office chairs & more. 262-9733

SOLID Koa China hutch - handcrafted - You must see to appreciate! 735-3424

MOVING: sofa & love seat, chocolate brown fabric \$550 set or separate. 488-0084

LARGE blond dining table, extends to 11', 5 chairs & lge. buffet (52x21) solid wood \$980. 261-5781

KAILUA furniture sale: living rm., dining rm., Queen bdrm., tables, lamps, misc. Call 261-6539

5 DRAWER chest w/ matching hutch & bedside table in parquet finish. Call eves. 235-3308

RATTAN Chairs \$39; tables \$29; cane dressers \$59; mirrors \$19; nightstand \$19; headboard \$9; lamps \$14 and up. 833-3010

• 122 TRAVEL

"LOVE BOAT" Mexican Riviera, 8 day tour, air/sea cruise. Enquire about our fares. Vacations Hawaii, Inc. Contact Vivian Fitzsimmons, fully escorted. 235-2571, 922-4711 bus.

• 123 RENTALS

SPACE Invaders for rent: great for a party! \$35 a day/securely. Call Kenton or Anglo 922-4760

WINDWARD-KANELOE
2 bedroom, 1 bath condo
Tripler nurse reassigned to Texas
Ideal for one or two or
starting family. Pet OK.
Every offer will be considered.
MUST SELL... excellent VA loan
available.
Open Thursday beginning 9:30 - make an offer.
Open Saturday 10:2 for "back up"
VA loan included in Maintenance Fee
"Hale Anolele" 9-318 MLS-38871
48-258 Kahulipa Street, Kaneohe
Please call for information
TOM PICO REAL ESTATE 262-5065

KEA Corporation Dba
Magoo's Pizza Kaneohe
Interested in relocating from
Windward Shopping
Center to another location
in Kaneohe. Interested
landlord call Mark 235-4541

• 103 OFFICES FOR RENT
OFFICE Space for rent.
Ala Moana Bldg.
Ph. 955-4402

• 114 REAL ESTATE FOR SALE
BEACH front
2 bdrms. \$52,000 low, low
down, e/a. Condo Plus.
949-1180, Carol Gabbis
(RA)

KAILUA \$27,500
Chinese Restaurant - lease
furniture. Good location,
ready business TMK 1-4-
5-59-04. Call Chu Lan
Shubert (RA) 261-7885 or
261-3389 for details. J.M.
Urner, Inc.

KAILUA from \$98,000
WINDWARD PASSAGE
luxury condo 1, 2 & 3 bdrm.
unit. Tennis, pool, meeting
room, racquetball, sauna,
walk to beach. TMK 1-4-01-
48 Elizabeth McCarthy
(RA) 261-5873, Nick
Lawson (R) 254-4141, J.M.
Urner, Inc. 261-3389

LOVELY Otomana 3 bdrm.,
2 bath, family rm., new roof
in '77, new paint, excl.
Lease \$137,500. Shown by
owner 261-8425, M.
Lockridge Inc. (R) 262-5403

RARE - fee simple home,
excl. cond., double-wall
construction, shake roof, 8
yrs. old. Only \$139,000.
TMK #1-4-7-58-23. David
Chase (RA) 262-8008. Sam
Daily Realty, Inc. 235-6666

COUNTRY LIVING
Over 1/2 acre Fee Simple
land. 6 yrs. old. Super cond. 5
bdrm., 3 bath home
\$168,000. TMK 1-4-7-5-0-
63. David Chase RA 262-
8008. Sam Daily Realty,
Inc. 235-6666

GREAT home, excl. Inven-
ment, POINCIANA MANOR.
Quiet 2 bdrm., 2 bath unit
overlooking lush garden.
Pools, fountains. Priced at
only \$101,500. TMK #1-4-2-
1-48. lease. David Chase
(RA). 262-8008. Sam Daily
Realty Inc. 235-6666

WANT more leisure time?
Move into prestigious 999
Wilden condominium. Fee
Simple, 1,095 sq. ft., 1
bdrm. Diane Kamakawi-
woole (RA) Mike Mc-
Cormack, Realtors 944-
3888, 595-7852

KAILUA - REDUCED
AGAIN \$6000
ANXIOUS Mainland Owner
bring us your offer on
this charming 3 1/4 bdrm., 2
bath home on beachside of
Kailua. Just steps to great
swimming beach. Asking
\$180,000. Lease. (mls
#37804). Call Jeane
Easterling (R) 261-0188,
J.M. Urner, Inc. 261-3389

MAIKAHU Park Kailua:
\$159,500. 4 bdrm., 2 bath,
3 family rm., central air
conditioning, recently
decorated & upgraded.
Terms. Hawaiian Island
Realty, 254-3044 or 521-
8840

LANIKAI
YOU CAN'T BUY FOR
LESS
\$229,000. 14,082.5 sq. ft.
on the Simple land 4 bdrms./2
baths. Lush tropical setting.
Only a 3 minute slow walk
to the beach. THIS IS THE
ONLY BUY IN LANIKAI
TODAY! David Chase (RA)
262-8008 Sam Daily Realty,
Inc. 235-6666

PROPERTIES FOR SALE

NEW 3 BDRM. 2 bath house in
Makalei. 5 minutes from
Barbara Pt. Only \$177,500 Fee
Simple

INCREDIBLE BUY 4 bdrm. Fee
Simple. Only 4 yrs. old @ in
mint condition. Just minutes from
Barbara Pt. @ beautiful white
sand beach! Only \$110,000!

CHAMPAGNE TASTE but beer
budget? Furnished studio
w/pool, gym, sauna, next to
famous Makaha Beach. Only
\$50,000 Fee Simple

BEAUTIFUL NEW 2 bdrm. condo
w/great view! Only 10 minutes
to Hickam @ Pearl Harbor.
\$105,000!

SPACIOUS NEW HOME w/ large
swimming pool, 3 bdrm. house in
newest area of Mililani.
Appraised & Priced at \$171,000
VA D.K.

UNIQUE 4 BDRM. 3 bath. Fee
Simple. w/HUGE master bdrm. (walk-in
closet as large as bdrm.). Great
for growing family! So many
pluses @ Fee Simple! \$165,000
VA D.K.

Michael (RA) 877-5285/Lila (RA) 455-3523
Mike McCormack Realtors

REAL ESTATE SALES PEOPLE
We are now interviewing
Licensed Real Estate sales people and brokers for our NEW Windward
Real Estate sales office open daily in the Windward City Shopping
Center. We offer a highly visible location in the shopping center (just
across from McDonald's), with plenty of free parking for you and your
clients, convenient to all of the Windward area. We have a wide range
of listings for you to sell throughout the islands. We are very active in
project sales. We offer individual, personalized training. Realistic tax
map books, and other reference material.

For a personal interview, call
HAL DILL (R) Broker-In-Charge
Hugh Menefee, Inc., Realtors
235-8754 or 239-8158 eves.
All replies confidential

Hugh Menefee, Inc., Realtors

46-483 MAKENA ST., KANELOE
Charming 3 bdrm./2 bath home with spectacular views. Corner lot
in peaceful neighborhood. 1750 sq. ft. under roof. Lease. MLS
#25-42. \$185,000. Bert Borinick (RA) 373-2001 eves.

41-010 LAUMILO RD., WAIMANALO
Across from the ocean, a lovely 4 bdrm./2 bath conventional pole
house on a corner lot. Huge kitchen, 2 redwood decks and more!
FEE SIMPLE. Mls #1581. \$218,800. Tom Heffern (RA) 235-0888
eves.

BLUESTONE NIKAI
387 SOLD DR.
Executive home with 2 1/2 baths, 2 lanais
complete with pool, super amenities. Lease. MLS
#1184. \$225,000. C. Parry (RA) 261-7400 eves.

45-055 LILIPUNA RD., KANELOE
This 4 bdrm./3 bath hillside house has been completely
remodeled and upgraded. Super deck with a million dollar view of
Kaneohe Bay. So many extras! FEE SIMPLE. TMK 1/4-5/01/48
\$380,000. Bert Borinick (RA) 373-2001 eves.

59-565 HOALIKE PUPUEKA
Unique, curb ocean/mountain
view. FEE SIMPLE 1 acre
with 1/2 acre. Call 955-5646 eves.
Call 955-5646

59-565 AUKAUKA PL., PUPUEKA
Spacious 4 bdrm./3 bath tri-level home with rustic
woodland charm on 2 acres of FEE SIMPLE land of great natural
beauty. MLS #17438 \$470,000. Bob Burdett (R) 947-1837 eves.

Windward City Shopping Center
46-483 Kaneohe Bay Dr.
Kaneohe 957-44
235-6754

Ann Grubb REALTORS
A division of Mike Dietz Golf Shops, Inc.

PRIME 1. DIAMOND HEAD WHEN YOU WANT IT - YOU CAN'T FIND IT. Seldom available on the Waikiki Slope or DIAMOND HEAD. Truly a PREMIUM PROPERTY. If you can afford THE BEST, every 14,000 sq. ft. of FEE SIMPLE LAND improved by nearly 4,484 sq. ft. under roof - Swimming pool - PRIVATE LOCATION. 4 bedrooms, 4 1/2 baths - fruit trees - new carpeting - and so much more - close to EVERYTHING. MLS 36650. Geo Gallagher (RA) 373-0921. Helen Dietz (R) Lister \$835,000. TRULY CHOICE!

PRIME KAPIOLANI PARK OPPORTUNITY WEST MOLOKAI The "Something Special" at Kailua Kona Resort on WEST MOLOKAI. YOUR OPPORTUNITY to share in preserving WHAT HAWAII IS ALL ABOUT. Low risk, low density, low prices in the FEE SIMPLE POLYNESIAN condominium on beautiful Kailua Kona Golf Course. Prices start at \$107,000 with excellent financing. Anticipated completion date late 1981. Helen Dietz (R) 373-3003.

PRIME 3027 NOELA AT APPRAISAL SALT LAKE ATTENTION: These sellers have bought their land. It is FEE SIMPLE in one of the finest residential areas on Oahu - formerly a Leasehold community. These sellers have a CURRENT APPRAISAL to establish the worth of their property, and it is priced at its REALISTIC MARKET VALUE. If you are looking for an architecturally designed home - 3 bedrooms, 2 baths, swimming pool and much more - All in excellent condition in WAIKALE-KAHALA - You will not find a BETTER BUY. \$416,000. MLS #2959. Peter Blumberg (RA) 373-0530. Helen Dietz (R) 373-3003. BROKERS OPEN WED. 9:30-11:30

4. NEW LISTING AT APPRAISAL SALT LAKE ATTENTION: If you are looking for a GOOD BUY in a GOOD NEIGHBORHOOD, and FEE SIMPLE 100 (you own the land), this 3 bedroom, 2 bath home is for you. Another KAMAII SELLER has priced this home at its FAIR MARKET VALUE - It will sell at this price - NO OPEN HOUSES here. Our seller has an appraisal which substantiates his selling price. If you want to live fifteen minutes from downtown - five minutes from the airport - with many extra conveniences, call Mike Vimalite (RA) 373-0990 to see. \$185,000. MLS #2827.

You have asked why our listings SELL -
1. We WORK hard - We are PROFESSIONALS and we CO-OPERATE with other PROFESSIONALS.
2. Our listings are priced REALISTICALLY - We pay for the APPRAISAL BY A QUALIFIED APPRAISER OF YOUR CHOICE if you list at the current fair market value.
Call us if you are REALLY INTERESTED in SELLING your property -

949-5996

Tom Pico Inc
SERVING HAWAII SINCE 1969
WE ARE PLEASED TO
ANNOUNCE THE OPENING OF
OUR WAIANAE OFFICE
85-825 FARRINGTON HWY.

NANI KEA (R)
Broker in Charge

Elaine Davidson (R)
Sales-Property
Manager

Priscilla Mattos (RA)

Loretta Dela Cruz (RA)

Alex Kea (RA)

Susan Kagehiro (RA)

Walter Kea (RA)

Bernice Kalahiki Secretary

WINDWARD
572 Kailua Rd.
261-1771

LEEWARD
696-8434

BRING A LITTLE EXCITEMENT INTO YOUR LIFE, CALL ON THESE LISTINGS:

BRAND SPARKING NEW LISTING in this highly desirable and convenient location. Better than new condition 3 bedroom 2 bath with swim pool, putting green like yard that's level and completely enclosed for privacy. Located on quiet cul-de-sac and just minutes to sandy beach and shopping. A meticulously kept home with plush carpets and drapes. \$209,500 Stan Brilhante (R) 261-1293.

LOCATED AT THE END OF A cul-de-sac overlooking lush, green Haiku Plantation, this immaculate 4 bedroom 2 bath offers peace and privacy. Large, level 10,232 sq. ft. lot is enclosed and the lease is long and low. Custom built with family room and lanai. \$189,000 Paul Denis (R) 247-3120.

LUSH, VERDANT FOLIAGE abound on this beautiful 6,987 sq. ft. fee simple lot that enjoys a grand view of the Koolaus. Minutes to golf, shopping and schools. \$63,900 Rudy Brilhante (R) 261-1411.

WHY PAY BEACHFRONT PRICES... when for so much less you can own this charming fee simple home that just steps away. Three bedroom 2 bath on 10,017 sq. ft. level lot, on a quiet street. Spacious home has a large family room, is nicely carpeted and has a highly enjoyable lanai. \$179,000 Stan Brilhante (R) 261-1293.

DEAL FELL THRU... this beautiful fee simple home is back on the market. Spacious 3 bedroom 2 bath home on level 6,365 sq. ft. lot that enjoys a nice view from the large lanai. Enclosed by an attractive lava rock wall. \$139,500 Olive Souza (R) 262-0708.

Swim pool, family room, enclosed yard, quiet street, convenient location and beautiful condition make this 3 bedroom 1 1/2 gem a super buy at \$155,000 Paul Denis (R) 247-3120.

ESTATE REALTY INC
The Estate Builders
262-6934
1111 KAILUA STREET / KAILUA, HAWAII 96734

LIVE IN THE GARDEN!
Here is a beautiful 5 bedroom, 3 bath Haiku home with pool, formal dining, huge family room & wet bar. Lanai is screened. Home is professionally decorated inside and out. Convenient to schools, shopping, and recreation. Agreement of Sale or Lease/option \$120,000 JIM LIPSCHITZ 247-4600. KATHY CHING 254-2987.

PRICED FOR QUICK SALE!
Lovely 4 bedroom, 2 1/2 bath townhome in Kukuia. Unit is on quiet side of complex, has spacious kitchen, family room and two gardens! Ideally located 261-0045. ANNETTE PETERSON (RA) 235-5726.

ATTENTION - INVESTORS!!
Developers take a look at this fee simple 1.3 level acre in Kailua! There are three old buildings "on it" and R-5 zoning. Located in growing area and convenient to everything. Agreement of Sale or Exchange possible! \$265,000. JAN NAGAI (RA) 239-7342. KENNETH LAU (RA) 261-9458.

ENJOY THE BEACH AND THE VIEW!
Relax and enjoy this lovely 1 bedroom Makua Village townhome, just steps to a swimming beach. Extra loft space overlooking living room and lanai. Next door to Crouching Lion. CHEN (RA) 261-4276.

LUKE
602 Kailua Rd.
Ste. 202
262-8181

WURLITZER ultra console
piano, like new, 2 mos. old.

OLDS Mendez trumpet, silver finish, excl. cond.

SHURE Unisphere mic

stand & boom \$100. 637-
6905, 848-1438 days.

• 146 BOAT SUPPLIES
8 SERVICE

18½' RUNABOUT 120
Merc. I/O, new paint/steering/cleats/valve job; trailer
\$5100/offer. Kim 422-9830.

29' YAMAHA Sailboat
center cockpit.

VENTURE 22 Sloop, extras w/trailer, sharp \$6,000 or

17' GLASSPAR 85 HP
Mercury O/B, just over-
hauled, Billy trailer \$3,300/

18' SKI boat, wood glass
needs work \$250/offer

262-6663 Joe

vice



INC.
841-6121

1940

100

NR 1

y Hupback produces
and exhaust systems

Introducing Dual Muffler

FOR INSTANT RESULTS EFFECT YOUR AD IN THE BUSINESS & SERVICE DIRECTORY

148 BOAT SUPPLIES & SERVICE

16 - 7' flatbottom boat, ply/glass, minor fixing \$500/best offer. Call after 5 p.m. 261-7196

12' FIBERGLASS boat w/5 hp Sea King motor, 1 set of oars & 4 life saving devices \$400; set of scuba lungs, regulator & Atpack \$100. 54-3448 after 4

26 FT. sailboat/Thunderbird, excl. cond., many extras \$5,500. 254-2181

181 PET SUPPLIES & SERVICE

MONTH-old Pit Bull, male, dual registered, \$150. 456-3577 eves.

AKC Boxer puppies, fawn & white, 4 weeks old. Call 389-8347 after 5 p.m.

POODLE mini AKC, white, male, 18 mos. \$150. Call after 5 p.m. 224-2236

AKC German Shepherd w/papers, female, 3 yrs. good w/kids \$75. 262-0680

FOR Sale: Zebra Finches \$8. 261-0791

156 AUTO PARTS & SERVICE

WANTED: Fenders for '71 Volkswagen Bug, '69-72. Call 237-8450 eves.

WINDWARD VW Clinic. Mobile V.W. Repair Shop. Ph. 247-2525. Repairs done at your home by app't. Island Wide.

VW BUG for parts, '66 rebuilt engine (working), '78 trans., body rough. Call Rob after 5 p.m. 261-4478

'79 BLAZER, 4 W/D, std. trans., low mi., fully loaded \$9,000/offer. 623-2959, 472-8700

'77 DODGE p/u 318, auto., air, p/s, camper shell \$3,500/best offer. 456-5069 eves.

AAAA SUPER DEALS AAAA
LOTS OF
4X4 PICKUPS
WE HAVE A NICE SELECTION OF
1/2 TONS, 3/4 TONS
77 DODGE 4X4 PICKUP
Sharp chassis, AM/FM tape stereo, air power steering, wide tires/rims. Canopy top (P10040) \$4978.52
WHOLESALE MOTORS
Ph. 836-1222 2909 N. Nimitz Hwy.

166 PICKUPS, TRUCKS

'78 CHEVY p/u, big tires, sliding rear window-Scottsdale cab, 30,000 mi., \$4,500-Best offer. 732-7655 or 735-4186

'78 DODGE power wagon, 318, p/s, air, AM/FM, B-track, \$4,500/best offer. 624-3671

AAAAA SUPER DEALS AAAA
LOTS OF
PICKUPS
WE HAVE A NICE SELECTION
1/2 TONS, 3/4 TONS
2x2's, 4x4's - 4 cyl. 6 cyl. & V8's
70 TOYOTA 5 SP
Sharp pickup (383426) \$3175
WHOLESALE MOTORS
Ph. 836-1222 2909 N. Nimitz Hwy.

'67 CHEVROLET pickup 1/2 ton; pipe-rack, new tires, 12,000 miles on new 283 engine & clutch, no rust \$2000. 262-9733

'79 DATSUN King Cab, excl. cond., pipe rack, \$4,950 or offer. 373-0495

171 MOTORCYCLE SALES & SERVICE

BEAUTIFUL '80 Suzuki GS 450 L, 4 mos. old, mint cond. \$1,800 or will trade for Honda 16 of equal value. Call Ed 254-3901 eves.

**NOW AVAILABLE
Motorcycle
Leasing**
We lease all makes & models of motorcycles. Credit consideration for military personnel to fit your budget. Monthly payment to fit your budget.
LEISUREBIKES, INC.
815 Piikoi St., #1403
623-6441

CUSTOM King & Queen motorcycle seat, brand-new, never used before, \$45 or best offer 257-3537 Cpl. Thoren

'77 DODGE p/u 318, auto., air, p/s, camper shell \$3,500/best offer. 456-5069 eves.

**Wheels
Hawaii
Wahiawa
Now
Open**
655 Cali. Ave.
621-5201

171 MOTORCYCLE SALES & SERVICE

3 WHEEL utility scooter, needs work \$300/offer. 262-6683 Joe

**Wheels
Hawaii
Barbers
Point NAS
Now Open
Bldg. 459
682-4886**
*not paid for by Military

174 RENT-A-CAR

RELIABLE Used Cars, \$7 per day, 1 wk. minimum. Special - monthly rates, collision w/o extra. Auto Mart Car Rental, 98-7068 Kam Hwy., Aiea, Ph. 487-0991.

175 VANS, CAMPERS & JEEPS

'76 VW Bus, sunroof, new tires, AM/FM 8 trac stereo, excl. cond. \$4850. 262-9733

'75 VW van, auto., white/brown, spoke rims, excl. cond. \$3,100. 261-1111

WE NEED
CUSTOM VANS
TOP CASH PAID
**BIG
TRADE-IN ALLOWANCE GIVEN**
77 CHEVY VAN
3 seats auto., power steering, radio, heater, nice with top air vent. (806886) \$3975.
WHOLESALE MOTORS
Ph. 836-1222 2909 N. Nimitz Hwy.

CUTTER FORD
QUALITY USED CARS

'74 AMC Hornet \$395
'66 DODGE Coronet \$195
'75 FORD Torino \$795
'73 VOLKSWAGEN \$595
'66 MUSTANG \$1295
'71 DODGE Wagon \$495
'72 OLDS Cutlass \$395

**THE LARGEST FORD DEALER
IN AIEA**
"We Accept Anything In Trade"
Prices Good Oct. 15, 16, 17, 18 & 19, 1980
98-105 Kam Hwy., AIEA * Ph: 487-3811
All cars sold as is. Plus tax & lic.
BANK OF HAWAII/FIRST HAWAIIAN BANK FINANCING
Military Financing our Specialty

SUPER SAVINGS
'78 PLYMOUTH HORIZON 4 dr. H/B, auto., special (6858) \$3195
'77 TOYOTA COROLLA 4 dr., 4 spd., (6873) \$2295
'75 DODGE COLT S/W 4 dr., auto., (6843) \$1895

WINDWARD TOYOTA
'74 CHEVY CAPRICE WAGON (268173) \$895
'73 DATSUN 610 WAGON (4801) \$1695
'80 TERCEL 4 spd., (77704) \$3795

PH 243-0965 OPEN 7 DAYS A WEEK

176 VANS, CAMPERS & JEEPS

INT'L Step Van - lots of room, strong, auto., 8 cyl., seats in back \$1,350/offer. Wendell 262-6876 262-9483

'74 GMC Aluminum step Van 14,000 GVW, p/s, auto., runs & looks excl. \$5900. 261-1406

'70 BUS camper, new rebuilt engine, brakes, etc. Call 888-2523

178 AUTOS FOR SALE

AMC
'74 HORNET Sportabout, p/s, power brakes, auto. transmission, good condition. Ph: 257-3534 ask for Dawn.

AUDI
'77 AUDI 100 LS auto., low mi., air, AM/FM, excl. cond., \$2,200. 335-3855

BUICK
'80 REGAL Sport coupe many extras low mileage 26 mpg. XE \$7700 235-2091

'66 BUICK Electra \$300. Call 261-2445

CHEVROLET
'72 NOVA 350 cu. in., 2 dr. auto., good cond. \$1800 622-2563 after 5.

**DON'T
SELL UNTIL YOU SEE US
FIRST! WE PAY TOP \$\$\$.
CAR CITY**
2845 Kilihuu 833-3017

CHEVROLET

'77 MONZA Spyder, 31,000 mi. auto., p/s, p/b, air, rust-proofed, excl. cond. \$2,850. 261-3238

'77 NOVA, 4 dr. 33,000 mi. \$2000. Call 595-2524 or 595-4507

'73 IMPALA, 2-dr., full pwr., a/c. \$500. Call 262-6313

'76 CHEVETTE auto., AM/FM, B-track, \$1,000/offer. 499-2927, 664-8241

'80 CAMARO Berlletta, 4 spd., 305 cu. in., black on black, T-top, a/c, AM/FM cassette, rustproofed, alloy rims, loaded \$8800. 595-3722

CLASSICS & ANTIQUES
CLASSIC for sale, '67 Pontiac Firebird 328, V8 auto., outstanding condition. \$1200 or best offer. Call 254-2822

DATSUN
'79 DATSUN 280 ZX, excl. condition, 5 spd., air, AM/FM, tape, sunroof, \$8750. 474-8214-weekdays

DATSUN

'76 DATSUN 280Z, 4 spd., AM/FM, air, excl. cond. \$5200. Call 946-8229

'76 DATSUN B210; 4 spd., \$2,200/best offer. 262-7998

'78 DATSUN '510, 5 spd., Hatchback, air \$4000/offer. Call 422-2895

BANK REPOSSESSION
78 810 mile, air condition, AM/FM stereo digital clock plus lots more accessories in make driving a pleasure (3M7859) \$370 cash or trade-in. No pmt. tax & lic. with approved credit. Repossession price \$4011.16. See Repossession Mgr. WHOLESALE MOTORS
Ph. 836-1222 2909 N. Nimitz Hwy.

DODGE
'79 ASPEN leaving \$4,050 good cond., 4 drs. 346-9283

'68 DODGE Dart, 4 dr. sdri., 8 cyl., 4 new tires, starter and upholstery \$350 or offer. 247-5134

BANK REPOSSESSION
77 ASPEN Special Edition 2 dr. with all power options to make driving a pleasure (3A8657). \$260 cash or trade-in. No pmt. tax & lic. on approved credit. Repossession price \$2481.15. See Repossession Mgr. WHOLESALE MOTORS
Ph. 836-1222 2909 N. Nimitz Hwy.

FIAT

'74 FIAT 5 dr. stn. wgn., \$900. 833-2213

'78 FIAT Spider, good cond., stereo \$5000. Call 422-4097

FORD
'77 PINTO: Must sell! Good cond. \$2,000 or best offer. 235-4802 eves.

Going to OREGON to buy a new car or pickup?
- contact -
ROBERTS & REDFIELD PORTLAND
Write for price lists and full information
ANY MAKE - ANY MODEL
Delivered - road-tested - at Portland International Airport
ROBERTS & REDFIELD
Suite #102,
6829 N.E. 82nd
Portland, Oregon
97220
(503) 257-0551
Conveniently located just 3 minutes from Airport

FORD

'77 GRANADA fully equipped, low mileage, best offer, must sell. 841-4041

**WE
PAY
MORE!
MORE!
MORE!**
FOR CLEAN LATE
MODEL CARS,
VANS & TRUCKS
AT
SHELLY
PH. 836-0466
CORNER NIMITZ
& LAGOON

MICHELIN SPECIALS!

**SAVE UP
TO 35%**
Prices firm until
Oct. 31, 1980
(See notes
at base of ad)
**X White Steel
Radials
Save 35%**

Size	Our Reg. Price	Our Current Price
165-13	\$ 86.75	\$ 46.50
165-14	105.25	58.50
165-15	112.75	61.25
165-16	121.75	62.25
165-17	111.25	62.25
165-18	113.50	61.75
205-15	122.75	71.75
235-15	156.25	81.50

**ZX-ZXZ Black
Steel Radials
(*White Wall)
Save 25%**

165-10	48.75	26.50
155-12	62.00	36.50
155-13	74.25	45.75
146-13	57.25	33.00
155-13	65.25	38.00
155-14	73.25	43.00
155-14	69.25	42.00
165-14	76.50	47.50
175-14	83.50	52.75
185-14	100.25	65.25
155-15	73.25	48.00
165-15	81.00	50.75
165-15	86.75	54.00
175-15	115.50	76.75

**ZX Black
'70' Series
Save 25%**

175/70-13	74.75	48.00
185/70-13	87.25	55.50
185/70-14	94.50	61.00

**X White
Steel Radials
Save 25%**

165-13	101.00	63.75
165-14	101.25	67.50
165-14	105.25	69.00
165-14	110.25	72.75
165-14	112.75	74.50
165-14	121.75	81.25
165-14	126.00	86.25
165-14	127.50	85.75
165-14	134.25	90.75

**'P' Series, X-ZX
White Steel
Radials
Save 25%**

166/70-13	84.50	55.00
175/70-13	93.75	60.25
175/70-14	101.75	68.25
185/70-14	108.25	75.50
185/70-14	116.25	72.75
205/70-14	112.75	74.50
215/70-14	121.75	83.25
205/70-15	116.75	77.50

**XAS Black Steel
Radials
Save 15%**

165-13	84.25	61.50
165-14	87.75	64.50
165-15	93.25	69.25

**XVS Black Steel
Radials
Save 15%**

175-14	114.75	96.25
185-14	126.00	97.00

**XVS Black
'70' Series
Save 15%**

185/70-13	115.25	88.00
185/70-14	123.00	94.50
195/70-14	129.25	96.75
205/70-14	137.75	107.00

**XCA Black
T/L Truck
Save 15%**

670-14	100.50	75.50
700-15	118.50	89.00
800-16.5	154.50	123.50
875-16.5	169.25	132.75

Other Sizes Available

3331 KAM HWY. AIEA, HI 96101



NOTE: There are special discounts for fleet orders. Please call for details. All prices are in U.S. dollars and are subject to change without notice. Michelin is not responsible for any errors or omissions. Michelin is a registered trademark of Michelin & Co. Michelin is a registered trademark of Michelin & Co. Michelin is a registered trademark of Michelin & Co.

SAVE TIME!
Make an
Appointment
Phone Us!

LEX BRODIE'S

TIME CO.
Honolulu Ph. 539-8301
(Open Mon. thru Sat.)
Waipahu Ph. 871-6801
(Open Tues. thru Sat.)

**SEE THE
TOP SALESMAN
OF THE
MONTH**

DAVE BARRETT
Month of September
Tony Honda
Used Cars
94-081 Farrington Hwy. Ph: 871-1781

**'78 HONDA CIVIC
WAGON**
Like new, low miles, (8E8269)
\$4100
'72 VOLVO 142
Factory air, one owner, (A3093)
\$2500

WINDWARD TOYOTA
'74 CHEVY CAPRICE WAGON (268173) \$895
'73 DATSUN 610 WAGON (4801) \$1695
'80 TERCEL 4 spd., (77704) \$3795

**NOW THE LOWEST
FIAT PRICES
IS IN KANE OHE**
**THE FIAT
CASH
REBATE***
Come in and drive your best bargain now
and Fiat will give you a cash rebate on the cars that
keep saving you money down the road.
**\$300 OFF
FIAT STRADA**
The best
gas mileage
compact car
in America.
**\$400 OFF
FIAT BRAVA**
The affordable
European
high performance
sedan.
**\$300 OFF
FIAT X1/9**
The best mileage
two-seater
sports car
in America.
**28 EPA EST
MPG 38
EST HWY**
**24 EPA EST
MPG 34
EST HWY**
**26 EPA EST
MPG 37
EST HWY**
*Remember: Use for comparison purposes. Your mileage may vary depending on speed, trip length, and weather. Your actual highway mileage will probably be less. EPA estimates based on the 1980 fuel injection models. *Offer good for a limited time only. See us for details.
MOTOR CARS IN THE GREAT EUROPEAN TRADITION
**WINDWARD AUTO SALES
IN THE HEART OF DODGE CITY.**
46-177 Kahuhipa Street, Kaneohe
Call 235-8744

Price Breakthrough
Only \$99⁰⁰
ABOVE DEALER COST
on any 4 WD Brat or Hatchback in stock.
Offer good thru 10/31/80
**"Come over to our side,
we make it worth the trip"**
WINDWARD SUBARU
737 Kailua Rd., 262-6576, 262-6902
Lease or finance on approved credit

COUPON
MOVED TO LARGER & MORE MODERN FACILITIES
FINN'S
**30%
OFF**
ON PAINTING WITH COMPLETE BODY JOB
SALE ENDS OCT. 31
COLLISION REPAIRS — LOANER AVAILABLE
**HEAT BAKED ENAMEL
PAINTING**
NEW ADDRESS: 2312 KAM HWY.
Next to Toyota City — Across from Gaspro
Ph. 841-8081
COUPON!

**SAVE TIME!
Make an
Appointment
Phone Us!**

LEX BRODIE'S

TIME CO.
Honolulu Ph. 539-8301
(Open Mon. thru Sat.)
Waipahu Ph. 871-6801
(Open Tues. thru Sat.)

FORD

'76 PINTO hatchback, excl. cond., auto. \$1,200/offer. 235-0335

'78 FORD Fairmont Squire wagon, 8 cyl., auto., power steering/brakes, air, AM/FM 8 track, low mileage in excl. cond. \$4000. Call 254-5633

'65 MUSTANG, Fastback, 6 cyl., auto., leaving island \$2300. 839-5646

BANK REPOSSESSION
78 FORD Town Cpe. Immaculate 2 dr., with all the options to make driving a pleasure. (34712) \$371. Cash on trade in or good - tax & lic. on approved credit. Repossession price \$4470.15. See Repossession Mgr. WHOLESALE MOTORS
Ph. 836-1222 2999 N. Nimitz Hwy.

HONDA

'76 ACCORD 5 spd., radial tires, blue interior/exterior. \$3,400. 261-1111

'75 HONDA, 4 spd., radio, 25,700 mi. \$1800 or offer. Call 524-6137

LINCOLN

'74 LINCOLN Continental, Mark IV \$2,300 888-7338, mornings or after 5 p.m.

MAZDA

'76 MAZDA 808 station wagon, auto., good cond. 52,000 mi. \$1900. 254-4924

'79 RX7 limited edition \$6800 and take over payments. Call 261-0580

AAAA BUYER LEASE AAAA

'81 MAZDAS ARE HERE!!

DEMO SALE

BIG

SAVINGS

TRADE-IN ALLOWANCES

ON 1980

GLC-626-RX7

Hawaii's Oldest Mazda Dealer

WHOLESALE MOTORS

aka AIRPORT MAZDA

Ph. 836-1222 2999 N. Nimitz Hwy.

WE REFUSE TO BE UNDERSOLD

MERCEDES

'76 280C Mercedes Benz, excl. cond. \$10,000. 472-8994 days, 487-7825 evs. & weekends

MERCUY

'75 MONARCH Ghia 1 owner, air, AM/FM stereo, tape, low mi., excl. cond. \$1,690/offer. Call 262-5520

MERCURY

'73 CAPRI 4 spd., V-6, vinyl top, new stereo, excl. \$2,200/offer. 848-1438 days, 637-8905

'65 MERCURY Comet, 2 dr., V8, fair cond. Best offer. Ph. 841-4483

'70 COUGAR 428CJ, extras \$1300/offer. Phone 239-7536

MG

'78 MIDGET AM/FM stereo, cassette, new tires, luggage rack, tonneau covers, excl. cond. \$4,000/offer. 395-9091

'78 MGB - 4 brand-new tires, newly overhauled trans., just tuned, AM/FM cassette stereo w/4 speakers, Bright yellow w/black interior & black stripes. \$4500. Call Liz at 235-5881

OLDSMOBILE

'77 OLDS Cutlass Supreme, 4 dr., tilt wheel, all power, radials, excl. car. Best offer over \$3000. 254-4836 evenings.

WE NEED CUTLASS SUPREMES TOP CASH PAID

BIG

TRADE-IN ALLOWANCE GIVEN

'76 DELTA ROYAL 88

Immaculate 2 dr. with convenience accessories to make driving a pleasure. (P20073) \$4775.

WHOLESALE MOTORS

Ph. 836-1222 2999 N. Nimitz Hwy.

OPEL

'71 OPEL Kadett, 4 dr. sedan, 30 mpg, good cond., rollable \$600 or best offer. 689-5156 or 471-8760 ask for Fran

PLYMOUTH

'69 PLYMOUTH, fair cond., runs good, \$175. Call 235-6148

'71 PLYMOUTH Scamp, motor & trans. Best offer. Lee 261-6413

'68 VALIANT

\$250. 261-0055

PONTIAC

'75 PONTIAC LeMans, excl. cond. \$1500. Call 456-1429 after 5 p.m.

PONTIAC

'65 PONTIAC LeMans, spec. edition, convertible, runs excl., needs some body work. \$750. Call 262-7484

RENAULT

'74 T-12 Radial tires, AM/FM, auto., \$985/offer. Ph. 373-9588. Must sell.

ROVER

JUST arrived from the mainland. '70 Rover 3500 loaded w/extras, low mi. \$3,500. 261-4784 evs.

SUBARU

'80 SUBARU, 2 dr. hdp., excl. cond., 32 mi. per gal., radial tires, AM/FM radio. Call 682-3949 after 5 p.m.

'75 SUBARU station wagon, D/L, auto., radio, 4 dr., while, roof rack, new brakes, \$1100. Call 422-4572 or 449-2436

TOYOTA

For Your BEST Deal On a New or Used Car See EDDIE FREEMAN at WINDWARD TOYOTA 235-0088, 235-3588

'78 TOYOTA Pickup, 4 spd., mags & radials, excl. cond. \$4000. 373-9247

'73 TOYOTA stn. wgn., 4 spd., good cond., new tires, \$1,250. 261-1111

'76 TOYOTA Corolla, 4 dr. sedan, auto., excl. mechanical cond. \$1850/offer. Call 696-3444

'72 TOYOTA Corolla 1200, runs great, good tires, AM/FM stereo cassette. \$350. 235-1173

'68 TOYOTA Corolla wagon, good on gas! \$495. Call 262-8228

'75 TOYOTA, '76 engine, runs good, safety inspected, new battery, recent tune-up, asking \$2,000 or offer. Call Mrs. Ross 833-1490

'78 TOYOTA Corolla Sport coupe, automatic, air. 254-1294 after 6 p.m.

'75 TOYOTA, '76 engine, runs good, safety inspected, new battery, recent tune-up, asking \$2,000 or offer. Call Mrs. Ross 833-1490

'78 TOYOTA Corolla, auto., radio, 4 cyl., new paint. Sharp! (9F8041) \$2995

'78 DODGE Ram Charger 4x4 auto., V8, power steering, low mi., spoke mags. (5E8588) \$5995

'77 GRAND PRIX Hdp., loaded with luxuries, 2-tone special paint, buckets, air. Save! (1E4408) \$2995

'77 MALIBU Classic, full power, air cond., power windows, Immac. (8B4091) \$1995

'75 RABBIT CPE., 4 spd., radio, great transportation. (A7284) \$1595

'78 TOYOTA Corolla, auto., radio, 4 cyl., new paint. Sharp! (9F8041) \$2995

'78 DODGE Ram Charger 4x4 auto., V8, power steering, low mi., spoke mags. (5E8588) \$5995

'77 GRAND PRIX Hdp., loaded with luxuries, 2-tone special paint, buckets, air. Save! (1E4408) \$2995

'77 MALIBU Classic, full power, air cond., power windows, Immac. (8B4091) \$1995

'75 RABBIT CPE., 4 spd., radio, great transportation. (A7284) \$1595

'78 TOYOTA Corolla, auto., radio, 4 cyl., new paint. Sharp! (9F8041) \$2995

'78 DODGE Ram Charger 4x4 auto., V8, power steering, low mi., spoke mags. (5E8588) \$5995

'77 GRAND PRIX Hdp., loaded with luxuries, 2-tone special paint, buckets, air. Save! (1E4408) \$2995

'77 MALIBU Classic, full power, air cond., power windows, Immac. (8B4091) \$1995

'75 RABBIT CPE., 4 spd., radio, great transportation. (A7284) \$1595

'78 TOYOTA Corolla, auto., radio, 4 cyl., new paint. Sharp! (9F8041) \$2995

'78 DODGE Ram Charger 4x4 auto., V8, power steering, low mi., spoke mags. (5E8588) \$5995

'77 GRAND PRIX Hdp., loaded with luxuries, 2-tone special paint, buckets, air. Save! (1E4408) \$2995

'77 MALIBU Classic, full power, air cond., power windows, Immac. (8B4091) \$1995

'75 RABBIT CPE., 4 spd., radio, great transportation. (A7284) \$1595

'78 TOYOTA Corolla, auto., radio, 4 cyl., new paint. Sharp! (9F8041) \$2995

'78 DODGE Ram Charger 4x4 auto., V8, power steering, low mi., spoke mags. (5E8588) \$5995

'77 GRAND PRIX Hdp., loaded with luxuries, 2-tone special paint, buckets, air. Save! (1E4408) \$2995

'77 MALIBU Classic, full power, air cond., power windows, Immac. (8B4091) \$1995

'75 RABBIT CPE., 4 spd., radio, great transportation. (A7284) \$1595

TOYOTA

'75 COROLLA, 4 spd., 2 dr., good cond., \$2,100/best offer. 688-2627

'74 TOYOTA Corona, 4 dr., auto., air, good cond. \$1300. 262-5028

TRIUMPH

'74 TRIUMPH Spitfire, good cond. Best offer. Call 254-1149

FREE!!

18 mo./18,000 mi. limited warranty

'73 PINTO.....\$688 Station wagon, auto. (N5171)

'77 SUBARU.....\$3288 4 wheel drive, 4 spd station wagon (P26021)

'74 MUSTANG 2 + 2.....\$1888 Coupe, 4 spd, 8 cyl, new paint (8C7578)

'75 RABBIT.....\$2688 2 dr, 4 spd, (5C3031)

'79 LUV 4 + 4.....\$6288 Pickup, 4 spd, radio (P26005)

'79 B210.....\$3288 2 dr, 4 spd. Only 9000 mi. (N5328)

'78 DUC.....\$5988 CONV-TABLE, 4 spd (P2574)

'68 FORD.....\$888 ECONOLINE van (N1672)

'74 Linc Cruiser.....\$2488 4x4 hdp. (7A5508)

'73 JEEP 4 x 4.....\$2288 Wagoneer (2K437)

'74 VW Dasher.....\$2288 4 dr, auto, tape deck, (4A189)

'71 RANCHERO.....\$788 V8 auto, power steering (N5243)

'78 DATSUN.....\$4288 PICKUP, Like new. (N5587)

'76 FAIRMONT.....\$4288 Station wagon, 5 cyl, auto, power steering, air. (2F2044)

'76 COROLLA.....\$3288 WAGON, 4 spd (553385)

CAR CITY

2845 Kilihaui St. (Diamond Hl. side of Kaili) Ph. 833-3D17

SHELLY WILL NOT BE UNDERSOLD

'78 CHEV 1/2 Ton Pickup, 6 cyl., auto., power steering, new paint, nice! (551-795) \$3995

'77 MALIBU Classic, full power, air cond., power windows, Immac. (8B4091) \$1995

'75 RABBIT CPE., 4 spd., radio, great transportation. (A7284) \$1595

'78 TOYOTA Corolla, auto., radio, 4 cyl., new paint. Sharp! (9F8041) \$2995

'78 DODGE Ram Charger 4x4 auto., V8, power steering, low mi., spoke mags. (5E8588) \$5995

'77 GRAND PRIX Hdp., loaded with luxuries, 2-tone special paint, buckets, air. Save! (1E4408) \$2995

'77 MALIBU Classic, full power, air cond., power windows, Immac. (8B4091) \$1995

'75 RABBIT CPE., 4 spd., radio, great transportation. (A7284) \$1595

'78 TOYOTA Corolla, auto., radio, 4 cyl., new paint. Sharp! (9F8041) \$2995

'78 DODGE Ram Charger 4x4 auto., V8, power steering, low mi., spoke mags. (5E8588) \$5995

'77 GRAND PRIX Hdp., loaded with luxuries, 2-tone special paint, buckets, air. Save! (1E4408) \$2995

'77 MALIBU Classic, full power, air cond., power windows, Immac. (8B4091) \$1995

'75 RABBIT CPE., 4 spd., radio, great transportation. (A7284) \$1595

'78 TOYOTA Corolla, auto., radio, 4 cyl., new paint. Sharp! (9F8041) \$2995

'78 DODGE Ram Charger 4x4 auto., V8, power steering, low mi., spoke mags. (5E8588) \$5995

'77 GRAND PRIX Hdp., loaded with luxuries, 2-tone special paint, buckets, air. Save! (1E4408) \$2995

'77 MALIBU Classic, full power, air cond., power windows, Immac. (8B4091) \$1995

'75 RABBIT CPE., 4 spd., radio, great transportation. (A7284) \$1595

'78 TOYOTA Corolla, auto., radio, 4 cyl., new paint. Sharp! (9F8041) \$2995

'78 DODGE Ram Charger 4x4 auto., V8, power steering, low mi., spoke mags. (5E8588) \$5995

'77 GRAND PRIX Hdp., loaded with luxuries, 2-tone special paint, buckets, air. Save! (1E4408) \$2995

VOLKSWAGEN

'79 VW Rabbit Custom, 5 spd., sunroof, AM/FM 3,800 mi. Must sell \$5600. Call 261-1406

FOR Sale 1978 Volkswagen Scirocco, automatic transmission, good condition asking \$5500. Call 477-8296 during working hours, 847-3489 after working hours. Ask for GYSGT Hill

PUBLIC NOTICE

BANK REPOSSESSIONS—OWNER TRANSFER

NO CASH needed with approved credit

Ask about 18 month or 18,000 mile warranty

'80 TIIT.....\$8195.18 CONV-TABLE, 5 speed AM/FM cassette, air cond., luggage carrier. Only 2817 miles (N5680)

'78 DATSUN F10, \$3181.82 2 Dr. Hatchback, 5 spd., air cond., radio, Sharp! (1E571)

'74 CAMARO.....\$2271.71 Nice auto, power steering 2 dr. (15934)

'71 HONDA.....\$781.16 Converted to pickup, roll bar, mags, 4 spd, fun car! (N2088)

'79 LUV 4 + 4.....\$6288 Pickup, 4 spd, radio (P26005)

'79 B210.....\$3288 2 dr, 4 spd. Only 9000 mi. (N5328)

'78 DUC.....\$5988 CONV-TABLE, 4 spd (P2574)

'68 FORD.....\$888 ECONOLINE van (N1672)

'74 Linc Cruiser.....\$2488 4x4 hdp. (7A5508)

'73 JEEP 4 x 4.....\$2288 Wagoneer (2K437)

'74 VW Dasher.....\$2288 4 dr, auto, tape deck, (4A189)

'71 RANCHERO.....\$788 V8 auto, power steering (N5243)

'78 DATSUN.....\$4288 PICKUP, Like new. (N5587)

'76 FAIRMONT.....\$4288 Station wagon, 5 cyl, auto, power steering, air. (2F2044)

'76 COROLLA.....\$3288 WAGON, 4 spd (553385)

VOLKSWAGEN

'75 VW Van standard, 9 passenger, new tires, \$3,500/best offer. 235-4053

DUNE Buggy 1700cc, excl. cond., lots of new parts. Must sell. 261-6834 mornings.

VOLVO

'70 VOLVO 144S, radials, clean \$1,700/best offer. 261-3886 or 261-3773

GAS SAVERS SPECIAL

'72 BUICK Century 4 dr, sed., (355681) \$195	'69 PLYMOUTH Satellite 2 dr, sed., (387781) \$345	'69 CHEVY 1/2 Ton Van 5 cyl, auto., (383781) \$495	'73 MERCURY Capri 6 cyl, 4 spd., (383781) \$495	'72 IMPALA Wagon 8 cyl, 4 spd., (2C1587) \$495
'74 VEGA Cpe. (N5562) \$495	'74 IMPALA Cpe. (N5370) \$595	'74 PONTIAC LeMans Cpe. (187477) \$595	'73 PLYMOUTH Satellite Wgn. 8 auto, p/s (5A1871) \$695	'72 COROLLA 2 dr, sed., 4 spd., (C7971) \$695
'74 PINTO Runabout auto. (N4022) \$695	'74 MONTE CARLO (3F8484) \$795	'71 PONTIAC Firebird (585258) \$995	'74 VEGA auto., (N51520) \$695	'73 MUSTANG Mark I Cpe. (3C8082) \$1195

Prices Good Oct. 15, 16, 17, 18 & 19, 1980

Cars Subject to Prior Sale

WAIPAHU AUTO

OPEN SUNDAYS 10-5

94-729 Farrington, Waipahu 671-2871

'79 COMPACT SALE

BUY NOW AT BUDGET CAR SALES... WE'VE GOT A HUGE STOCK OF COMPACTS THAT MUST BE SOLD TO REDUCE OUR FLEET. EVERY CAR HAS BEEN PROFESSIONALLY MAINTAINED AND COMES WITH A FULL 12 MONTH/12,000 MILE LIMITED POWER TRAIN WARRANTY. SAVE!

YOUR CHOICE
\$106⁸⁷ per month

- '79 DATSUN B210 Automatic, 2 door and 4 door with radio
- '79 TOYOTA COROLLA Auto or stick in 2 and 4 door models
- '79 FIESTA 3 door, stick shift with radio

\$700 down 36 mo. 18% APR
Deferred \$4,547.32
Cash price \$3,595 plus tax

YOUR CHOICE
\$114¹⁸ per month

- '79 ZEPHYR SPORT
- '79 CAPRI SPORT COUPE
- '79 MUSTANG SPORT COUPE

ALL WITH AUTOMATIC, AIR CONDITIONING, POWER STEERING AND VINYL ROOF
\$700 down 36 mo. 18% APR
Deferred \$4,810.46
Cash price \$3,795 plus tax

4 WHEEL DRIVE STATION WAGON SPECIAL

\$136¹² per month

'79 SUBARU STATION WAGON... FOR FAMILY AND SPORT

\$700 down 36 mo. 18% APR
Deferred \$5,600.32
Cash price \$4,395 plus tax

Budget Car



What's Up On K-76?

NFL Monday Night FOOTBALL

Thursday, Sept. 11	LOS ANGELES at TAMPA BAY
Monday, Sept. 15	HOUSTON at CLEVELAND
Monday, Sept. 22	N.Y. GIANTS at PHILADELPHIA
Monday, Sept. 29	DENVER at NEW ENGLAND
Monday, Oct. 6	TAMPA BAY at CHICAGO
Monday, Oct. 13	WASHINGTON at DENVER
Monday, Oct. 20	OAKLAND at PITTSBURGH
Monday, Oct. 27	MIAMI at N.Y. JETS
Monday, Nov. 3	CHICAGO at CLEVELAND
Monday, Nov. 10	NEW ENGLAND at HOUSTON
Monday, Nov. 17	OAKLAND at SEATTLE
Thursday, Nov. 20	SAN DIEGO at MIAMI
Monday, Nov. 24	LOS ANGELES at NEW ORLEANS
Thursday, Nov. 27	CHICAGO at DETROIT
Monday, Dec. 1	DENVER at OAKLAND
Thursday, Dec. 4	PITTSBURGH at HOUSTON
Monday, Dec. 8	NEW ENGLAND at MIAMI
Saturday, Dec. 13	N.Y. GIANTS at WASHINGTON
	SEATTLE at SAN DIEGO
Saturday, Dec. 20	N.Y. JETS at MIAMI
	CHICAGO at TAMPA BAY
Monday, Dec. 22	PITTSBURGH at SAN DIEGO

**Plus AFC & NFC Playoffs
Championship games &
The Super Bowl**

University of Hawaii FOOTBALL

Saturday, Sept. 13	ABILENE CHRISTIAN - at home
Saturday, Sept. 20	PACIFIC - at home
Saturday, Sept. 27	WYOMING - at Wyoming
Saturday, Oct. 4	TEXAS-EL PASO - at home
Saturday, Oct. 11	WEST VIRGINIA - at home
Saturday, Oct. 18	NEW MEXICO - at New Mexico
Saturday, Oct. 25	BRIGHAM YOUNG - at home
Saturday, Nov. 1	FULLERTON STATE - at home
Saturday, Nov. 8	SAN DIEGO STATE - at home
Saturday, Nov. 15	NEVADA-LAS VEGAS - at Las Vegas
Saturday, Nov. 29	AIR FORCE - at home

PLAY-BY-PLAY
At Home and Away
with
Joe Moore &
Rick Blangiardi
PLUS
UH Basketball!

KGU **K76** RADIO

CBS RADIO NETWORK
HAWAII

"All the Radio Station you'll ever need"