

HAWAII MARINE

Voluntary payment for delivery to MCAS housing/\$1 per four week period

VOL. 9 NO. 36

KANELOE BAY, HAWAII, SEPTEMBER 10, 1980

TWENTY PAGES

Marines sponsor block party

The president of the United States has proclaimed the week of Sept. 14 National Hispanic Heritage Week.

The theme for this year's observance as designated by the Department of Defense is "Hispanics in America's Defense." In conjunction with this theme, MCAS Kaneohe Bay will sponsor a block party from 6 to 10 p.m. Sept. 18, to highlight the contributions made by Hispanic Americans in the defense of the U.S.

Panamanian Consul General, Mrs. Armenia White; Commanding General, 1st Marine Brigade, BrigGen W. H. Rice; Commanding Officer, MCAS Kaneohe Bay, Col Mel Sautter and Capt Pedro Gutierrez, 1st Radio Battalion will speak at the event.

The block party will include several events.

A HISPANIC Culture fashion show will feature ethnic fashions provided by Nancy Perry, president of the United Puerto Rican Association. Sgt Linda Garcia of Headquarters and Headquarters Squadron will preside in the festivities and read a citation in recognition of three Congressional Medal of Honor winners of Hispanic origin.

Naturally no party would be complete without music to fill the air and this blockbustler will be no different. Live entertainment will be provided by the Latin All Stars. A surprise band will perform disco tunes from 8 till 9:30 p.m.

The Marine Corps Exchange on the air station will present a buffet style menu with a variety of Hispanic food.

THE EXCHANGE will also have special sales on all Hispanic records and tapes. Hispanic artifacts and the citations of those who received the Medal of Honor will be displayed.

According to MSgt Jeff Lambert, noncommissioned officer-in-charge of the Human Affairs Office at Kaneohe Bay, "I think the event will turn out well. The Hispanic people are very close here in Kaneohe and presently the Army, Navy and Air Force are

organizing programs to recognize the 'Hispanics in America's Defense'.

"The entire recognition will occur the week of Sept. 14 through 20 and will include a grand celebration at the Hickam Air Force Base, Officers' Club."

THE AFFAIR at Hickam will include dinner and dance festivities. Tickets are available for the event at the Human Affairs Office, MCAS Kaneohe Bay.

For further information on any of the events during the 1980 National Hispanic Heritage Week, contact Lambert or Gysgt Milton Goings at 257-3653.



Photo by Sgt Chris Taylor

IT HAPPENED LIKE THIS — Rose Bathory, an inventory control clerk at the MCAS Kaneohe Bay's Special Services Warehouse, was credited with saving the life of a Marine who went into convulsions while working in the warehouse Aug. 22. Bathory, who is trained in cardio-pulmonary resuscitation, administered first aid to the Marine until he was able to breathe on his own and receive further medical attention. Bathory admitted that this was the first time she has had to use CPR.

Clerk applies first aid

Action saves life

A station employee has been credited with saving the life of a Marine who went into convulsions while working in the Special Services warehouse Aug. 22.

ROSE BATHORY, an inventory control clerk at the warehouse, said she was working at her desk when Sgt Richard Martin informed her that Cpl Robert Pomphry appeared ill.

"I went out back where he was working and he was bent over," she related. "I thought he was just feeling faint so I treated him for that but a few moments later he actually fainted."

According to Bathory, Pomphry immediately stopped breathing and went into convulsions. She said she rolled him on his side and began administering cardio-pulmonary resuscitation. Moments later the Marine was breathing on his own. He was

taken to the Naval Regional Medical Clinic, Kaneohe Branch and was later transported to Tripler Army Medical Center.

POMPHRY SAID his ordeal was a strange one. The only warning he had was impaired vision. "My sight became blurry so I went to wash my face. I went back to work and the next thing I knew, I blacked out." He also indicated that he is not an epileptic, nor has he experienced seizures, in the past.

Bathory said her reaction was purely automatic. Though she's trained in CPR, she admitted this was her first time putting it to use.

"This is a good example of the reason people should learn first aid and CPR," she said. "It's something you hope you never need, but are glad you have it in case you do."

Inaccurate information bogs promotion system

WASHINGTON, MCNews — The Commandant, in a statement issued recently to all commanders concerning composite scores, said that information is not being submitted for many Marines eligible for NCO promotions, and that many inaccurate scores are being given.

Gen. Robert H. Barrow, in White Letter 14-80, said: "Recently, it has been brought to my attention that some commanding officers are not complying with the requirement to ensure that composite scores are submitted."

THE NUMBER of requests for remedial consideration for promotion shows that, in many cases, inaccurate information is being used in computing scores, Barrow added. He emphasized that information must be accurate "...and Marines for whom the scores are submitted shall be counseled by the commanding officer or a designated representative."

He pointed out that the problem of inaccurate composite scores submissions has exempted some qualified Marines from promotion; while others, less qualified, are being promoted. "This practice (of

inaccurate submissions) is causing the Marine Corps to exceed budgeted grade strengths and precluded regular promotions to the grade of sergeant during the July promotion period."

IF CORRECT reporting procedures are not followed in the future, he said, further restrictions on NCO promotions may be required.

"I expect that composite scores will be submitted in accordance with Marine Corps Bulletin series 1430, for all eligible and qualified Marines recommended for promotion to corporal and sergeant. Only those meeting the established cutting scores are to be promoted," the general told commanders.

"WE CAN BEST take care of our Marines by ensuring that they all have an equitable opportunity for advancement and are kept informed of their promotion status," he said. "Anything less results in confusion, misunderstanding and frustration. Commanders are enjoined to give this matter their personal and continuing attention," the Commandant concluded.



Photo by Sgt Pepper Davis

INSTRUMENT PANEL CHECK — 1st Lt Mark Hunt (right) avionics officer for Marine Aircraft Group-24, MCAS Kaneohe Bay, checks the instrument panel of an F-4 Phantom II aircraft with WO-1 William Schmidt, avionics officer for Marine Fighter Attack Squadron-212. Hunt, recently selected as the Marine Aviation Ground Officer of the year, is responsible for avionics support of the squadron, one of eight in the largest MAG in the Corps. See Page A-2 for story and photo.

Children start 1980 school session

School days, school days, carefree school days. MCAS Kaneohe Bay parents saw their children hustle and bustle on the first day of school Sept. 3.

"It looked like everything was pretty well settled and ready to go," stated Mr. Elver Higashi, the Mokapu Elementary School principal. "There was some confusion with parents trying to get their children in the right classes, but I think everything is now in fine shape."

Glancing around the schoolyard one could sense the excitement and apprehension as children said their good-byes to mom and dad and were suddenly thrust amid friends, old and new.

Teachers soon established order in the classrooms and got classes off to a successful start. With the eagerness of a new beginning, Mrs. Gladys Yamashiro, kindergarten teacher, expressed, "I'm looking forward to the challenge of this new year."

Since almost 1,000 students are registered at Mokapu Elementary School, everyone is reminded to use caution while driving.

During the school day drivers are reminded that when school buses are stopped with their lights flashing, they are required by law to stop. It is also advisable for people to stop even if buses do not have their lights flashing but are stopped by the road.

Before and after school some intersections have road guards posted to assist children crossing the street.

The intersections of Lawrence Ave. near Pancoast Pl.; Cushman Ave. and Middaugh St.; Cushman Ave. and MacLacklin St.; MacLacklin St. and Harris Ave. and Middaugh St. and Harris Ave. have been noted as the busiest intersections during the school year. Extreme caution should be used when approaching these intersections during school hours.



Photo by Sgt Chris Taylor

SCHOOL IS STARTED — Sept. 3 marked the first day of school at the Mokapu Elementary School, MCAS Kaneohe Bay. More than 975 students are enrolled in the school. Motorists are reminded to use extra caution while driving in the vicinity of the school and crosswalks used by students.

In this issue...

Award

Headquarters select top 1980 Ground Aviation Officer
Page A-2

Battle

Marines mark decisive victory's 36th anniversary
Page B-2

Operation

Units test combat readiness at Pohakolua
Page A-7

Navy Relief

Society offers family planning assistance
Page B-3

Sports

Leatherneck team stalemates DIVARTY in gridiron action
Page B-1

Examinations

Annual check-ups encourage false sense of security
Page B-6

Marine aviator earns high honors

by Sgt Pepper Davis

Hard work, dedication, enthusiasm and a steadfast "can-do" attitude were contributing factors to a MCAS Kaneohe Bay aviator receiving one of the Corps' highest honors in the aviation field.

First Lieutenant Mart Hunt, avionics

officer for Marine Aircraft Group-24, was recently selected as the Marine Aviation Ground Officer of the Year by a committee at Headquarters Marine Corps.

ACCORDING TO an endorsement by BrigGen W.H. Rice, commanding general, 1st Marine Brigade,

Hunt has established a noteworthy reputation as an aviation ground officer.

Hunt modestly explains, "I can't take full credit for winning this honor. Lots of team effort went into it."

HUNT ASSUMED duties as the avionics officer of MAG-24, the largest air group in the Corps June of last year.

He immediately went to work formulating plans to boost the readiness of the avionics systems. Serving in a billet normally held by a higher ranking officer, he was responsible for the support of a composite air group comprised of eight

aircraft squadrons with 102 fixed-wing and rotary wing aircraft, a Marine Air Control Squadron, a Marine Air Base Squadron and approximately 2,600 items of test equipment.

Hunt's assignment to the MAG was a timely one. He had just

completed a unit deployment with Marine Fighter Attack Squadron-233 and was well versed on the importance of trained personnel.

HE PERSONALLY interviewed the avionics personnel to determine competence.



Photo by Sgt Pepper Davis

CAREFUL OBSERVATION — 1st Lt Mark Hunt, avionics officer for Marine Aircraft Group-24, MCAS Kaneohe Bay, observes as radar repairman Cpl Wayne Harvey performs delicate integrated circuitry on a circuit board component. Harvey's job is one made easier by ideas Hunt has implemented. The avionics officer's hard work and dedication led to his recent selection as the Corps' Aviation Ground Officer of the year.

Aloha, Dr. John Knudsen

Proudly announces the opening of his new Enchanted Lake family dental practice.

1051 Keolu Dr.
Suite 203

(Across from Safeway,
next to Dairy Queen)

261-1666

Gentle Care
Comfortable Atmosphere
Regular Evening Hours
& Saturdays Available



DR. & MRS. KNUDSEN

YAMAHA MUSIC CENTER

Studios NOW on the Windward Side

Offering

PIANO and ORGAN
Instructions

(Music Fundamentals - Ages 3½ to 8 Yrs.)

Register NOW

"Let your music fill the air."

Call Yamaha Center Studio 531-8002

CLIP & SAVE

A NEW TROPHY HOUSE

to serve Windward communities

Coupon good for

15% off

on all first time customers
for
leagues, teams or individuals



Enchanted Lake Prof. Center
1051 Keolu Drive, Suite 102
Kaliua - or call 281-2712
(NEW BLDG. NEXT TO DAIRY QUEEN)

E Komo Mai

Keep Windward, Windward

CLIP & SAVE



SCHEDULED AIRLINES TICKET OFFICE (SATO)

Staffed by full time Airline personnel
To assist in your travel requirements

- Individual leave
- Family travel to the Mainland
- Neighbor Island
- International
- Dependent travel to West-PAC
- Fares
- Flight Information.

Contact SATO for reservations and airline tickets at any one of our three convenient on base locations.

Pearl Harbor - Bldg. 487 --Tele: 422-0571
Office hours - Mon. thru Fri. 0730-1600

Camp Smith - Bldg. 2D - Tele: 487-1567
Office hours - Mon. thru Fri. 0800-1600

Kaneohe MCAS - Bldg. 209 -- Tele: 254-1564
Office hours - Mon. thru Fri. 0730-1530

A LAUGH A MINUTE 'TIL YOUR TUMMY HURTS!

VICTOR BORGE

WEDNESDAY, SEPTEMBER 17, 7:30PM

WAIKIKI SHELL

featuring the Honolulu Symphony Orchestra

GENERAL ADMISSION \$5

CHARGE IT TO VISA OR MASTERCARD

GENERAL ADMISSION TICKETS AND RESERVED SEATS

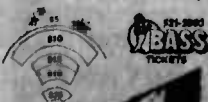
AVAILABLE

NOW AT NBC BOX OFFICE AND ALL BASS OUTLETS

INCLUDING SEARS (Tel. 521-2992)

RESERVED SEATS: \$10, \$15, \$35

(\$35 includes champagne reception)



ONE NIGHT ONLY!

DON'T MISS THE FUN NIGHT OF A LIFETIME!
TAKE A FRIEND — TAKE YOUR FAMILY

HAWAII
MARINE

Alive with pleasure! Newport



KINGS

Newport

SAVE \$25.00

Blue suede Sure Grip Jogger skates! A \$75.00 value for just \$49.95. Yellow polyurethane wheels, precision bearings and an aluminum alloy truck for strength and lightness. What's more... skating and saving! For each pair of Jogger skates send \$49.95 in check or money order (no cash) along with 5 bottom flap from any size of Newport cigarettes to:

Newport Jogger Skates
P.O. Box #2710, Hillsdale, N.J. 07205

Indicate your shoe size _____ (Male ☐ Female ☐

Name _____

Address _____

City _____ State _____ Zip _____

Offer available to persons over 21 years of age. Good in U.S.A. only, except where prohibited, licensed or taxed. Offer good until November 29, 1980 or while supply lasts. Please allow 4-6 weeks for shipping.

Warning: The Surgeon General Has Determined
That Cigarette Smoking Is Dangerous to Your Health.

The Hawaii Marine is an official newspaper published every Wednesday by Community Publications, Inc., 46-010 Alakoa St., Kaneohe, Hawaii 96744, in the interest of U.S. Marine Corps personnel in Hawaii. All news copy is prepared in the Joint Public Affairs Office, Marine Corps Air Station, Kaneohe Bay, Hawaii. Copy must be submitted no later than noon Thursday for the following Wednesday publication. Hawaii Marine solicits contributions of information and photographs from all Marine Corps organizations. However it reserves the right to edit or rewrite material submitted. All advertising is arranged by the publisher, Community Publications, Inc., telephone 235-5681. Circulation is 8,000. Everything advertised in this publication must be made available for purchase, use or patronage without regard to race, creed, color, national origin, age or sex of the purchaser, user or patron. A confirmed violation or rejection of this policy of equal opportunities by an advertiser will result in the refusal to print advertising from that source.

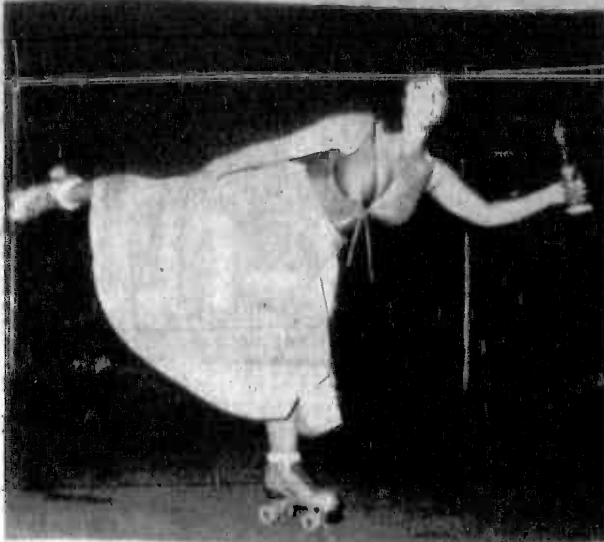


Photo by Sgt. Chris Taylor

1980 WINNER ON WHEELS — 16-year-old Amber White displays the style that made her the MCAS Kaneohe Bay Special Services Skating Rink's 1980 Winner on Wheels Friday. She skated free-style to the sound of Donna Summer to make her last chance of the five-week contest a success. Eight contestants between the ages of 10 and 22 skated their best only to be confronted with Amber's T-Style which won her the trophy.

CFC Meeting
A Combined Federal Campaign meeting for keypersons from Station Operations and Maintenance Squadron, Headquarters and Headquarters Squadron and civilian campaign workers will be conducted Friday at 1 p.m. in the station theater. Col. Mel Sautter, commanding officer, MCAS Kaneohe Bay and Maj. Sam Kirk, station CFC project officer, will address the assembly.

The meeting for the 1st Marine Brigade Combined Federal Campaign keypersons takes place Monday at 1 p.m. at the station theater. Speakers will be Capt. Richard Inghram and MSgt. Jeff Lambert, brigade CFC project officer and assistant project officer, respectively.

The meetings precede a gala kickoff rally for CFC keypersons Tuesday at Pearl Harbor's Bloch Arena. Free lunch and entertainment featuring Loyal Garner, Mo Keale and the Emersons, and Tsunami will be offered beginning at 11:30 a.m.

Health Council
The Health Care Services Council meets Friday at 9 a.m. in the Kaneohe Branch Clinic classroom.

The council is an advisory group addressing health care needs and services for military families at MCAS Kaneohe Bay. Representation from wives' clubs, neighborhoods and military units is encouraged to promote two-way communication between the clinic and the people it serves.

Dependents or retirees interested in joining the council are encouraged to attend or call Barbara Collins at 254-4086 evenings.

Crafts Fair
A charity fund-raising Arts and Crafts Fair will be hosted by the MCAS Kaneohe Bay Officers' Wives Club Oct. 4 at the Mokapu Elementary School cafeteria, between 10 a.m. and 2 p.m.

There will be no admission charge and the event is open to the public. Concession booths are also available for reservation. For more information, call 254-3670.

Band Concert
The Pacific Fleet Band presents a concert at the Windward Enlisted Club

Sept. 28 beginning at 2 p.m. The program features the Pacific Fleet Jazz Ensemble under the direction of Ltj. Leo Leary. The group

renders some of Hawaii's most exciting big band jazz.

The power-packed variety rock/show ensemble "Tsunami"

features '60's rock and roll.

The concert is free and open to the public. For more information contact Special Services at 257-3135.

BERNINA

50% off Factory Suggested Retail of **\$650**

NOTE THESE FEATURES:

- ★ Demo Model
- ★ Exclusive 25 Year Written Warranty
- ★ Open Arm
- ★ Monograms



MODEL 800

- PLUS—
- ★ Self Adjusting Tension
 - ★ Buttonholes
 - ★ Only **\$325⁰⁰**

PACIFIC SURPLUS & DISTRIBUTORS
35 Kalia St. Mon.-Sat. 10:00-6:00 p.m. Wed. till 8:00 p.m.

—Hurry, Quantities Limited—
262-8131

ENCHANTED TRAVEL, INC.

1051 KEOLU DR. KAILUA (New bldg. next to Dairy Queen)

Honolulu - Tokyo Round Trip (Haneda Airport)
\$632.00 via China Airlines

Honolulu/Taipei/Jakarta/Singapore
Bangkok/Hong Kong/Honolulu

Includes - Round Trip Air Transportation, Hotel, Sightseeing, And Some Meals \$1590.00 Per Person

NOV. 1 - 15, 1980

Phone

261-7947

OPEN
Mon.-Fri. 9:00-5:00
Sat. 9:00-12:00

LE STRADA 100 "around the islands—around the world"

STEFFY'S AUTO BODY & PAINT, INC.



Complete Paint & Body
Reconditioning. Foreign
& Domestic Cars.
Collision - Insurance

★ **FREE LOANERS**

GUY CAYETANO
U.S. Navy Retired
—Owner—
262-5060
261-8195

131-A HEKILI ST.
KAILUA
(Next to NAPA)

Reduce Rejuvenate Relax
NATURAL WEIGHT CONTROL CENTERS

- Personalized Nutritional & Fitness Programs**
- Nutritional Counseling
 - Behavior Modification
 - Exercise Prescription
 - Stress Management

Call Now For Special Introductory Rates

Offer Expires 9/24/80

Home by Appointment Please

261-3803



Natural Weight Control
116 Hekili St.
"In Kailua"

Membership Not Required

pacific home inventory

property registry service

Could you remember all your personal belongings if they were suddenly lost through fire or theft? Could you report their full value? You must if you expect complete compensation for your loss. And you could, if you had a property registry service from Pacific Home Inventory.

pacific home inventory

214 Kailua Road, Kailua, Hawaii 96734
(808) 262-8816

GLASSES OR SOFT LENSES?

SUCCESSFUL CONTACT LENS WEAR REQUIRES:

- PROPERLY FITTED LENSES
- HIGH QUALITY MATERIALS
- THOROUGH FOLLOW-UP CARE BY YOUR DOCTOR DURING ADAPTATION

SOFT CONTACT LENSES

Includes lenses, care kit and 60 day trial period.

\$120

- ALSO AVAILABLE • SOFT CONTACT LENSES FOR ASTIGMATISM • ORTHOKERATOLOGY • ONE DAY SERVICE FOR GLASSES AND HARD CONTACT LENSES • IMMEDIATE SERVICE FOR SOFT CONTACT LENSES

DR. CHARLES DEAN, Optometrist

Kailua
139 Hekili St.
261-9735

DR. TIM TOGIKAWA, Optometrist

Pearl City
98-1238 Keahumanu St.
487-7907

Downtown
1146 Union Mall
538-6226

2 GAMES TO PLAY!

PLAY BALL

FAMILY A&W RESTAURANT

WIN UP TO \$1,000!
\$1,000,000 in cash & product prizes available.



Save the Stub!
PLAY WORLD SERIES!

Over \$5,000,000 in free regular root beers

Game cards available while supplies last.

A&W

FAMILY RESTAURANT

AT THE HOLIDAY MALL SHOPPING CENTER IN KAILUA



HOUSE CALLS FOR GRANDFATHER'S OR ANTIQUE CLOCKS A SPECIALTY

We will come to your home and make all necessary adjustments, lubrication and general checkup for this low fee of **\$49.95**

A CLOCK HOUSE

ROUND STEAK

Full Cut Boneless
USDA choice
Chicken or Pan Fry



\$2.59
LB.

SNOW CRAB

leg & clusters
sweet and meaty

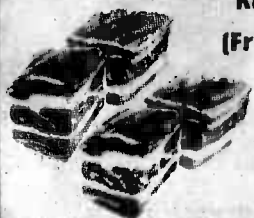


5 to 8# Pkg.
lb. \$1.89

\$1.99
LB.

SHORT RIBS

Fresh meaty Bar-B-Que or
Korean style
(Frozen bulk pack lb. \$1.39)



\$1.59
LB.

SAFEWAY FOR 4-DAY AD SPECIALS—PLUS

CROSSRIB ROASTS

Boneless
USDA
choice lean
tender pot
or oven roast



\$3.29
LB.

LEG OF LAMB

whole or half, young
frozen
New Zealand



\$1.79
LB.

PORTERHOUSE STEAKS

USDA Choice
beef



\$4.99
LB.

FILET STEAKS

leanest
tender
USDA
steaks



reg. 9.29 lb
(Save
1.64 lb)
\$7.65
LB.

SLICED BACON

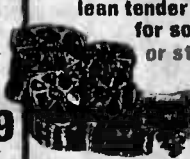
Smok-A-Roma
(Oscar Mayer lb 1.99)



\$1.79
LB.

OXTAILS

lean tender cut up
for soups
or stews



\$1.29
LB.

CHUCK STEAKS

tender blade or lean 7 bone
cut from USDA
choice beef



\$1.89
LB.

WHOLE FRYERS

Frozen Patti Jean U.S. Gov't
Inspected (Fresh Foster
Farm lb)



73¢
LB.

STEWING HEN

whole for stews and soups
Ewa
Brand



49¢
LB.

TURBOT FILLET

bulk pack white
sweet meat

SLICED BOLOGNA

Safeway Scotch Buy (Oscar Mayer 12 oz. ea. \$1.88)

HAM ROLLS

Hormel Brand (Cooked Ham Hormel 4 oz. ea. \$1.41)

POLISH SAUSAGE

Armour
1 lb. Vac Pack
(2# Spiced Luncheon Meat ea. \$3.28)

\$1.69
LB.

\$1.59
LB.

\$2.99
LB.

\$2.29
LB.

PORK CHOPS

lean tender assorted pack
both ends
and
centers



\$1.89
LB.

LIQUOR SAVINGS



Early Times
Straight Bourbon Whiskey
1.75L

\$13.89
Regular Price \$15.99



Seagram's "7"
Crown 1.75L

\$13.89
Regular Price \$16.09



Cutty Sark
Scotch Whiskey
750 ml

\$9.95
Regular Price \$12.09



Jim Beam
Straight Bourbon Whiskey
750 ml

\$5.89
Regular Price \$6.75



Andre' Champagne
750 ml

\$2.99
Regular Price \$3.89



**Spanada
or
Tyrolia Wine**
1.5L

\$2.89
Regular Price \$3.59

GREAT SAVINGS IN OUR

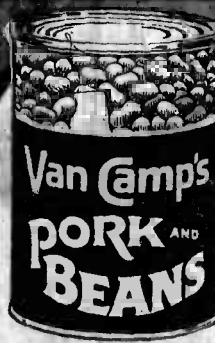


Mayonnaise

NuMade 32 oz.

SUPER SPECIAL

\$1.25



Pork 'n Beans

Van Camp 31 oz.

SUPER SPECIAL

69¢



Catsup

Del Monte 32 oz.

SUPER SPECIAL

\$1.09

ORIENTAL FOOD BUYS

Sardines
in Tomato Sauce
15 oz. Mum's

SUPER SPECIAL

\$1.23

**Water
Chestnuts**
5 oz. Mum's

SUPER SPECIAL

2.77

**Mushrooms
Pieces & Stems**
5.5 oz Mum's

SUPER SPECIAL

65¢

Lychee
20 oz., Mum's

SUPER SPECIAL

99¢

Long Rice
Mum's 2 oz.

SUPER SPECIAL

5.99

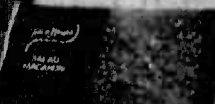
Young Corn
8 oz. Mum's

SUPER SPECIAL

69¢

Macaroni

Town House Salad 1 lb



SUPER SPECIAL

55¢



Fried Chicken

Manor
House
2 lb

SUPER SPECIAL

\$2.39



Soft Drinks

Cragmont, Diet & Reg. 2L

SUPER SPECIAL

\$1.09

Ice Cream

Lucerne 1/2 gallon All flavors
including flavor of the month



SUPER SPECIAL

\$1.99

Powered Beverage

Cragmont
8 qt.



SUPER SPECIAL

\$1.79

Peanut Butter

Creamy & Chunky
Scotch Buy 3 lb

SUPER SPECIAL

\$3.25

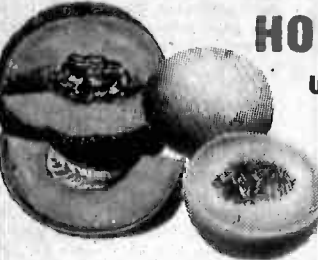
**8 SAFEWAY STORES
TO SERVE YOU**

1040 N. 11th St., Honolulu
1127 E. Kawili St., Honolulu
1045 E. Kawili St., Honolulu
1050 N. Kawili St., Honolulu
1040 N. 11th St., Honolulu
1127 E. Kawili St., Honolulu
1045 E. Kawili St., Honolulu
1050 N. Kawili St., Honolulu
1040 N. 11th St., Honolulu
1127 E. Kawili St., Honolulu
1045 E. Kawili St., Honolulu
1050 N. Kawili St., Honolulu
1040 N. 11th St., Honolulu
1127 E. Kawili St., Honolulu
1045 E. Kawili St., Honolulu
1050 N. Kawili St., Honolulu

BIG SAVINGS!

100'S MORE IN THE STORE

CRENSHAW U.S. NO. 1 "KING OF THE MELONS"  59¢ LB.	WATERMELONS U.S. NO. 1 WHOLE, SWEET, JUICY  23¢ LB.	MANOA LETTUCE HAWAII GRADE A  69¢ LB.	DAIKON HAWAII GRADE A  35¢ LB.
BELL PEPPERS U.S. NO. 1 STUFFERS LARGE SIZE  59¢ LB.	FRESH CARROTS U.S. NO. 1 GLIPTOPS  3 LBS \$1	YELLOW ONIONS U.S. NO. 1  3 LBS \$1	DANISH SQUASH U.S. NO. 1 ACORN  3 LBS \$1
CAULIFLOWER U.S. NO. 1 SNOWBALL  79¢ LB.	PUNA PAPAYAS HAWAII GRADE A GOLDEN RIPE  59¢ LB.	LETTUCE U.S. NO. 1 ROMAINE, YOUNG, TENDER  39¢ LB.	

BARTLETT PEARS U.S. NO. 1 LAKE COUNTRY MAKES A REFRESHING SUMMER TREAT  39¢ LB.	FRESH PEACHES U.S. NO. 1 QUALITY FULL OF COLOR, CRISP AND SWEET  59¢ LB.	CANTALOUPE HONEYDEWS U.S. NO. 1 QUALITY, RIPE AND SWEET  29¢ LB.
---	--	--

GROCERY DEPARTMENT!

 Lemonade Bel Air 12 oz. 59¢ SAFETY SPECIAL	 Spam Hormel 12 oz. \$1.15 SUPER SPECIAL	 Large Eggs Lucerne Grade A Mainland Shelltreated Dozen 97¢ SAFETY Low Price
--	---	--

 White Bread Holsum 1 lb fluffy 53¢ SUPER SPECIAL	 Dish Detergent Supurb 22 oz. \$1.15 SAFETY SPECIAL
 Cucumber Chips Town House fresh \$1.85 SAFETY SPECIAL	 Cat Food Safeway 15 oz. 4 FOR \$8.89 SAFETY SPECIAL
 Foam Cups Wonder 51 ct. 7 oz. 77¢ SAFETY SPECIAL	 Paper Plates Scotch Buy 100 ct. White \$1.29 SUPER SPECIAL

VARIETY SPECIALS

Aim Toothpaste 20c off label 6.4 oz.  \$1.15 SUPER SPECIAL	Signal Mouthwash 20c off label 18 oz.  \$1.39 SUPER SPECIAL
Reach Toothbrush med or soft  99¢ SUPER SPECIAL	Dental Floss Johnson's 50 yds.  99¢ SUPER SPECIAL
Anacin 50 ct.  \$1.39 SUPER SPECIAL	Secret Roll-On Deodorant 1.5 oz. Unscented or reg.  \$1.69 SUPER SPECIAL

ROSH HASHANA
Enjoy Your Holiday With Fine Foods From Safeway



Another **Mystery Special**

Clip the coupon below and bring it with you on your next shopping trip. Effective Wed., Sept. 10 thru Sept. 13, 1980. Search and Save.

LAST WEEK'S MYSTERY ITEM WAS SEA TRADER LIGHT CHUNK TUNA 6.3 OZ. **69¢**

MYSTERY COUPON

Come in and redeem this coupon for a surprising hot special!

??

LIMIT TWO PER COUPON—ONE COUPON PER FAMILY

Wed., Sept. 10 thru Sat., Sept. 13—Cash Value 1/20 Cent at Safeway

Everything you want from a store
...and a little bit more!



SAFEWAY

EDITORIAL / OPINION

Street Scoop

What makes you smile?



LCpl Marie Scavetta, Disbursing: "When I see another happy face, or someone else smiling, because that makes me feel good."



GySgt Cecil Graves, Disbursing: "On payday when I don't see 3,000 people with pay complaints. Then I know that we've done our job."



LCpl Rolando Rivera, PMO: "Bowling a 300 game. Now that always puts a smile on my face!"



SSgt Earl Gilpin, Disbursing: "When I hear from a long lost friend through the Corps. That's what makes me smile."



Capt Rick Childrell, PMO: "The interaction that I have with people. Basically knowing that I can help people when they need it."

Pain pulls no punches

As Marines, our reputation precedes us. The ideal Marine is a finely tuned piece of fighting equipment. Marines plan an attack, relay a warning order and, at the scheduled time, the left foot hits the deck on the other side of the line of departure. In short, we exhibit the ability to conceive and launch a unified plan of attack to achieve an objective.

COMBATANTS WITH inner cores of tensile strength, well-adjusted Marines are well-equipped to inflict pain. It's time again to realize that it is also well within our ability to ease pain.

We Marines, well in command of our physical senses, are tasked with perhaps the hardest mission of all—to stop.

Oct. 10 marks the beginning of the Combined Federal Campaign. Marines are offered the opportunity to provide the dog that becomes the eyes for a woman who can't see; to ensure that the young baby, who arrived on the scene far too early for the heralding sounds of an overture, will actually survive.

MARINES CAN PROVIDE the brace that straightens and strengthens the leg of a young boy who has existed in a special kind of limbo. We can guarantee that the dried up old man who played by all the rules, only to have the game plan horribly altered in the final seconds, can spend his final years fed, clothed and sheltered.

The Combined Federal Campaign is a special way for members of the Armed Services and the federal government to register their warmest support for vital community activities.

We Marines of the First Marine Brigade

and Marine Corps Air Station, Kaneohe Bay are being asked to dig deeply into our pockets and share.

WE WORK HARD for our green, the green of the Marine cloth and the green of reward. The two are not inseparable. Allow

the CFC keyperson to play on your heartstrings and loosen your purse strings. It's time.



Prepare yourself for life and death

by Chaplain Max Dunks

Consistent with the Marine Corps motto "Semper Paratus" is the prevailing theme of readiness which motivates us here at the 1st Marine Brigade. And the admonition to be ready is well taken. A military force with our mission yet unable to carry it out is, for all practical purposes, nonexistent. During my relatively short tenure at the 1st Marine

Brigade I have been impressed with our apparent military readiness.

This readiness relates to our security, peace, well-being and freedom as a nation. It relates primarily to our physical, political and material welfare. Yet, isn't there more to the life of a human being than his physical and material being? The Bible says man is made in God's image (Gen. 1:27). The Biblical psalmist writes, "...

what is man that you are mindful of him? You made him a little lower than the heavenly beings and crowned him with glory and honor." (Ps. 8:4-5) In numerous places the Bible reminds us of the life hereafter. Among them are Luke 16:19-31, Corinthians 15 and II Corinthians 5. As we read these passages it becomes abundantly clear that the decisions we make and our conduct in this life have a direct

relationship to life after death, to say nothing of future experiences in this life.

It is necessary to be ready in our national military posture. It is important to prepare for financial crises insofar as we can. We prepare for weather conditions by ensuring shelter and clothing. It is possible to prepare for almost any eventuality and yet go unprepared for the really important issues of life, including eternal destiny itself.

No wise counselor would suggest neglect of the above mentioned categories in which we commonly prepare ourselves. Even so, the wisest counselor calls to us and instructs us in personal readiness of the highest priority. As we attend class and receive practical instruction on military readiness so is it necessary to avail ourselves of the training provided by the Church to be prepared for the great issues and crises we will inevitably face.

It is too late to train when we have taken our positions in combat against the enemy. At that point we are in deep trouble if we are not already well trained. By the same token, we need the readiness that Church training provides if we are going to be prepared in the thick of life's crises. The things God has given us to enjoy can only be enjoyed to the fullest with instructions from the Creator.

Extra effort pays off

Self-pride breeds professionalism

At the heart of any organization is the pride of doing the mission better than any other unit. How does this relate to you?

AS A MEMBER OF the military service, you're on a team. Being on a team, you have responsibilities just like a member of a professional sports team. To be the championship team, each member must give a 100 percent effort. The same thing applies to you in your present job, and probably almost everything else you do.

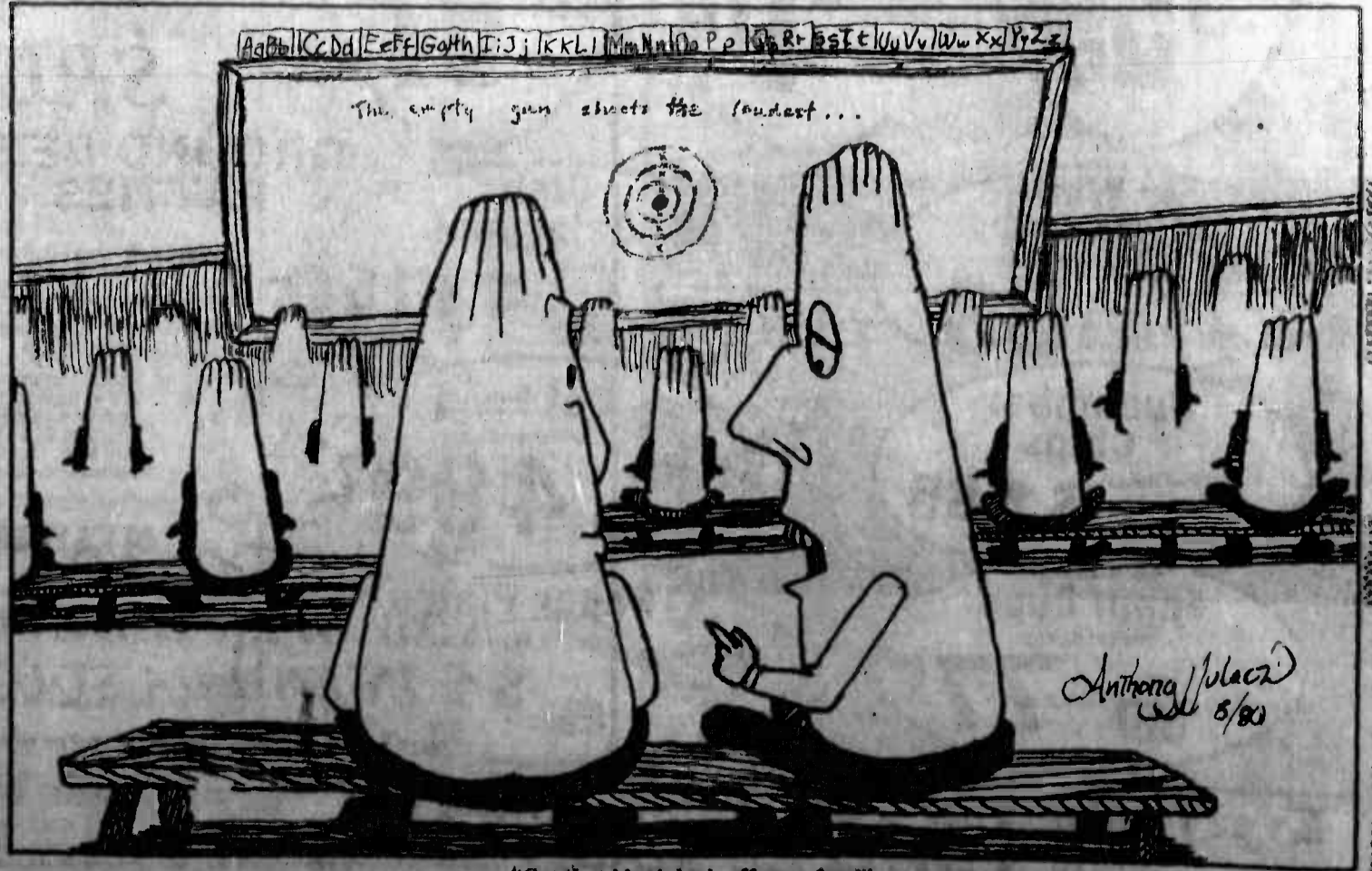
Once you've joined, you're a vital part of

the team and certain things are expected of you. First, do your full share. Second, bring out the best efforts in your team members. And third, play the game by the rules.

BY DOING THESE things, you gain respect and recognition as a "professional." The attitude of a professional leads to success for the team and the individual. A key factor in gaining this attitude is the willingness to give the extra effort that makes the difference. Motivation to make this effort can come from only one place—you.

Does the word "professionalism" apply to you? Webster defines it as "the conduct, aims, or qualities that characterize or make a professional person." As a member of a highly trained and competent group you fill basic requirements. The way you apply yourself determines how your professionalism is seen.

IF YOU FEEL YOU'RE not recognized as a professional, it's time to establish your goal and make your decision. Only you can make the decision—and your decision will make the difference.



"Get that blank look off your face!"



Photos by Sgt Roger Brown

A TEST OF READINESS — 1st Battalion 3d Marines, 1st Marine Brigade, conducted their Combat Readiness Evaluation Exercise at the Army's Pohakuloa Training Area on the island of Hawaii Aug. 26 through Friday. During the training operation the battalion received fire support and operational assistance from other brigade units including Battery A and Headquarters Battery, 1st Battalion, 12th Marines; 1st Platoon, Company A, 3rd Engineer Battalion and additional elements of the Brigade Service Support Group; 1st Platoon, Company A, 8d Reconnaissance Battalion and portions of the 1st Radio Battalion. The Marines returned to the air station yesterday from their two week exercise.

Marine aviator

their level of proficiency and after assessing problems breezed through the avionics program like a whirlwind, leaving behind him timely corrections and improvements.

Hunt's valuable contributions to the MAG have included, but are not limited to: implementing a computerized system of

conducting wall-to-wall inventories; coordinating and improving the air-to-air missile program that has increased the brigade's air-to-air missile readiness and contributed to noteworthy results on the squadron missile shoots.

He also initiated a program of back-to-back courses for

technicians on the mainland which reduces the extraordinary transportation cost per course ratio.

STRIVING TO increase aircraft readiness, Hunt introduced an "in-house" Integrated Logistic Support Management Team program within the air group. The

success of the program has been an example to others and a host of problems have since been resolved.

Hunt is more than just an avionics officer. As a result of his dual role as the Headquarters and Maintenance Squadron-24 avionics division officer, the squadron has been described as

one of the best in the entire Pacific area by the commander, Naval Air Forces, U.S. Pacific Fleet advisory team.

To put it simply, Lt Hunt single-handedly changed the avionics program of the 1st Marine Brigade.

HOWEVER THE 34-year-old Texas native says it's all part

of the job. "I won this honor because of the fine people I have working for me and the keen leadership in my unit," he commented. "If I hadn't been assigned to this air group, I don't think I would've won. Everything was just right... it's the greatest thing that's happened to me in my career."

cont. from A-2

**Kokua starts
with you.
Give to CFC**

recycle
OFFICE
PAPER it
pays
you \$
HAWAII
RECYCLING
SERVICES
8472068

the law offices of
thomas j. carney, jr.
attorney-at-law
concentrating in:
• personal injury (auto accidents, etc.)
• family law (divorce, etc.)
• business
• real estate
• criminal defense
suite 809 333 queen st.
melim building ph. 523-5040
initial consultation free

PRACTICE BOWL

50¢

**TUESDAYS
NOON TO MIDNIGHT**

PALI LANES

120 Hekili St., Kailua

261-0828

(Price good until further notice)

**THE
DIRT TRAP**

It's dirt in your oil that wears out your engine. With the Frantz, the dirt's in the filter... not in the engine.

Properly installed and serviced, the Frantz Oil Filter keeps engine oil clean 100% of the time, saves from 70% to 90% on oil and filter costs by extending oil drain intervals, and helps conserve our number one resource... oil.

Never change your oil again.

Frantz Filters, 98-1106 Kapaeha St., Aiea, Hawaii 96701. (808) 488-7540.

Does your child have reading/learning problems?

**Success
Learning
Programs**

Testing, Counseling
and
Direct Instruction in:

- Reading
- Writing
- Listening
- Verbal Skills
- Spelling
- Study Skills
- Comprehension
- Math
- Test Taking
- English
- Second Language

a learning disability/reading clinic
Jacquelyn Sprague, M.Ed., Director
Certified Learning Disability and Reading Specialist
261-0017

**NEED
AN
ELECTRICIAN?**

Electrical Services and
Discount Parts Supply
OPEN 7 DAYS

**GLENN'S
ELECTRICAL SERVICE, INC.**
46-012 Alaloa St.
(Around the corner from City Mill)
C-9488 Service 247-1979
Discount Sales 247-1201

**"Quality Parts With Speedy
Personalized Service"**

**KL
AUTO
PARTS
INC.**
Offer Good
Aug. 13-20

**Valvoline
Motor Oil**
reg. 1.55 qt.
Special \$1.09 qt.

**Oil Filters
Air Filters
Fuel Filters**
50% off

With This Ad

Kailua Enchanted Lake Shopping Center 261-4602	Kaneohe Kaneohe Bay Shopping Center 235-6468	Waimanalo Opening Soon! Kalaniana'ole Hwy. 259-9951
---	---	--

WAREHOUSE SUPER SALE

WE ARE LIQUIDATING 100 MICROWAVES ALL MUST GO!

CHECK THESE FEATURES:

- * 5 Year Written Warranty
- * 35 Minute Timer
- * 10 Stage Cooking
- * Suggested Retail \$499⁰⁰
- * Large Family-Size Unit
- * Micro-Sensor Probe
- * New in Factory Box
- * Sale \$288⁰⁰
- * One Week Only

NEW

\$288⁰⁰

Not Exactly As Illustrated
LITTON MODEL 425

Pacific Surplus & Distributors
35 Kainehe St., #104, Kailua
262-8131

SUMMER CLEARANCE SALE

ALL 125, 185, 250 & 400 ENDUROS \$100 - \$150 OFF!

ALL 250, 450 STREET TWINS \$100 - \$150 OFF!

Special deals on all new Suzuki motorcycles! See us now!
Bank Financing Avail., Including Military

**1 WEEK LEFT
SALE ENDS SEPT. 17**

ONLY AT: SUZUKI KANEHOE
46-144 Kahuhipa
Ph: 235-3300

SUZUKI 1980
The Performer.

BIBCO

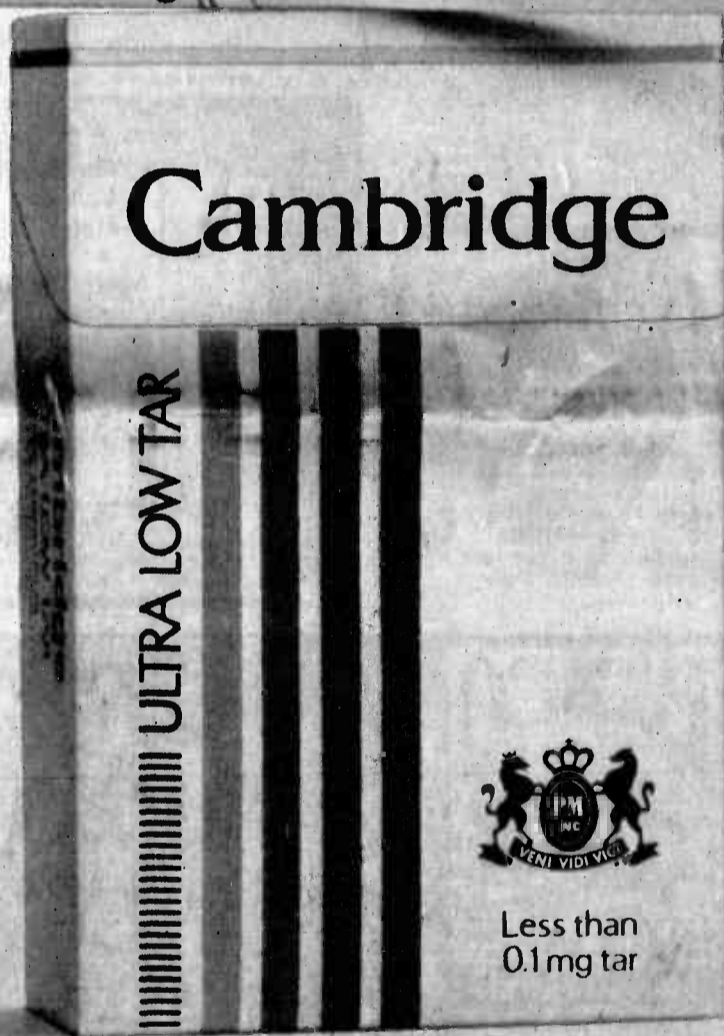
THE BIG ISLAND BEEF CO.

\$1.49 lb.
(5 lb. Maximum Any Size)
25% or less fat

Hurry — this offer good for September only

Introducing Cambridge Box:

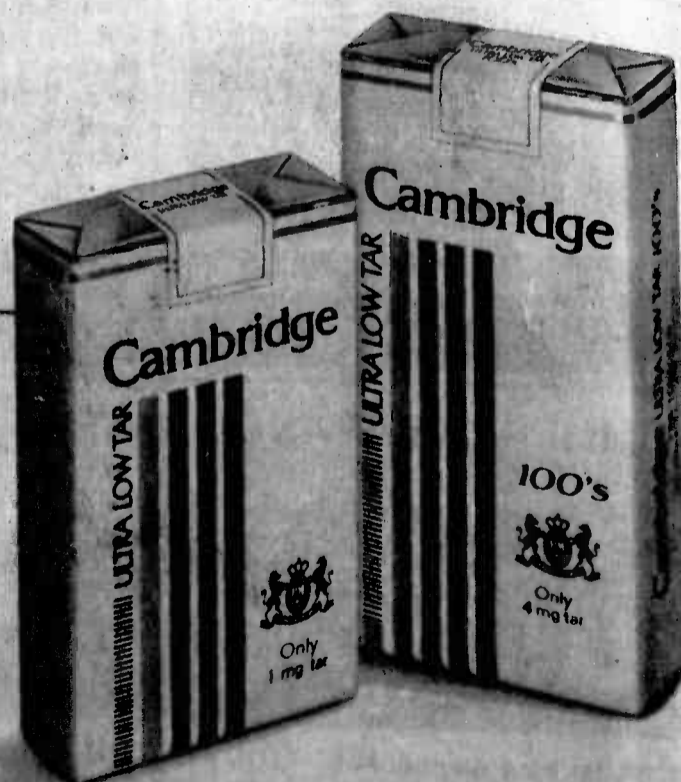
No cigarette is lower in tar or nicotine.



Cambridge
Box: Less than 0.1 mg tar.

Cambridge Soft Pack: For easy-drawing smoking satisfaction in an ultra low tar cigarette. Only 1 mg tar.

Cambridge 100's: For satisfying tobacco taste in a longer length, ultra low tar cigarette. Only 4 mg tar.



Warning: The Surgeon General Has Determined
That Cigarette Smoking Is Dangerous to Your Health.

© Philip Morris Inc. 1980

Box: Less than 0.1 mg "tar," 0.01 mg nicotine—Soft Pack: 1 mg "tar," 0.1 mg nicotine—100's: 4 mg "tar," 0.4 mg nicotine av. per cigarette by FTC Method.



ON THE MOVE — LCpl Abraham Jones, #20, of the Marine Varsity football team, tries to dodge defenders of the Army's DIVARTY squad and pick up some needed yardage. The Marines opened the tackle football season Saturday at the MCAS Kaneohe Bay's Pop Warner Field, to the delight of 200 fans who turned out to see the Leathernecks stalemate their opponents 14-14.

Photo by Sgt Pepper Davis

Marines break even in season opener

Varsity football kicks off

by Sgt Pepper Davis

Three unsuccessful field goal attempts prevented the Hawaii Marine Varsity Football team from copping a victory. Nevertheless, the Leathernecks stalemated the Army's DIVARTY squad 14-14, to open the tackle football season Saturday at Pop Warner Field, MCAS Kaneohe Bay.

IT WAS A perfect day for gridiron action with the warm Hawaii sun shining brightly through clear skies. More than 200 fans filled the bleachers to witness the Marine team's first test after months of preparation. Donned in white, black and gold uniforms, the Hawaii Marines went through their warm-up drills with precision. If there was any tension among the players, it went undetected. As one player commented, "All I have to do is hit me a couple of the other guys pretty hard and I'll be ready."

The start of the battle had an unusual twist. The game ball was delivered via members of the Kaneohe Marine Sport Parachute and

the Tropic Lightning Sport Parachute Clubs. After the impressive skydiving prelude, the contest was ready to start.

DIVARTY kicked off to the Marines who went through their first four downs with no luck. The Army squad didn't do much on their four tries, either.

Both teams hustled, smashed and grunted their way up and down the field, ending the first quarter scoreless. It wasn't until less than two minutes of the second period when DIVARTY caught the Marines' defense asleep, and tip-toed across the goal with a 26-yard touchdown.

Halftime rolled around and DIVARTY sat on their 6-0 lead. The Marines retired to a shaded area to discuss their strategy for the upcoming half. Plagued by penalties and mental errors in the first half, the Leathernecks had to do something to generate momentum.

THE THIRD period began and the Marines hung tough, thwarting several scoring at-

tempts by the opposition. They attempted to make a scoring drive of their own. The period ended with neither team crossing the goal line. One more quarter remained, and the game was far from over.

Seven minutes into the fourth quarter DIVARTY's quarterback hurled a 42-yard pass to his receiver who then beat feet into the end zone for another Army score. A quarterback sneak was good for the two-point conversion, and DIVARTY assumed a commanding 14-0 lead.

AS THE CLOCK ticked away, Cpl Rushton Gunter, the Marine quarterback, went into his act. The offensive line provided him time to scan the field for a receiver. He spotted Cpl Berlin Stoute streaking up the middle and sent a perfect pass into his hands. That 30-yard drive was good for a TD, and the game started to shape up.

That was the spark the Marines needed to fuel their motivation. The mean, green Marine defense held DIVARTY motionless and with less than

seven minutes remaining, the offense again hit paydirt.

The offense had inched their way closer to the goal when Gunter hit SSgt Joe Blackburn with a 34-yard pass. The two-point conversion was good, and it was a whole new ball game with the score deadlocked at 14.

THAT DRIVE wiped the smile from faces of DIVARTY players and they tried in vain to change the story. But, the Leathernecks didn't want to hear anything of the sort.

Six seconds showed on the clock when the Marine squad decided

to try and clinch it with a field goal. The first attempt was good but an offensive penalty nullified the score and gave the Marines a second try. This time it was short, but a defensive penalty was called.

DIVARTY blocked the third attempt and tried to return it. The play was unsuccessful and time expired signaling the end of the game. Final score: Marines, 14; DIVARTY, 14.

THE MARINES will journey to Fort Shafter to do battle with the Hawaii Group Friday at 7 p.m.

Sportnotes

The 1980 Hawaii Marine Athletic Council Cross Country event will be held at MCAS Kaneohe Bay Sept. 20.

The 10 kilometer run begins at 8 a.m. at the Headquarters Building flagpole. The event qualifies participants to represent the Marine Corps in the upcoming Hawaii Armed Services Athletic Council event.

Entry information and details are available at the Special Services Sports Office. Call Dan Dufrene at 257-3108 or 257-3135.

The Hawaii Marine Athletic Council Racquetball Tournament originally scheduled for next week has been changed to Jan. 12 through 15, at Marine Barracks, Pearl Harbor.

The dates for the Regional, All-Marine and Interservice Racquetball Championships have also been changed. The new dates are as follows:

Regionals — Jan. 26-30, 1981

All-Marine — Feb. 2-6, 1981

Interservice — Feb. 9-13, 1981

An organizational meeting is slated for Sept. 17 in the Family Theater Lobby at 5 p.m. for the upcoming Women's Racquetball Program. The program is open to all interested military personnel and dependents over 16 years of age.

Lasar Sailboat Races were held on Labor Day at the MCAS Kaneohe Bay Marina. 1st Lt Dymond Dempster came in first place with a 58 minute time, Sgt. Michael Gherardi took second in 64 minutes and Captains Bradley Turner and William BASHAM took third and fourth places in 75 and 85 minutes respectively.

The next Lasar Race will be held Sunday, Sept. 28. For more information, call LRick McGill at 257-2219.

Opening ceremonies for the Youth Athletic Association Football season is slated for Saturday at 10 a.m. on the field behind Station Training. An exhibition game follows at 11 a.m.



WINNERS— First Lieutenant Karen Hunt paces herself to capture first place for women during the extended limit physical fitness test held Aug. 29 at MCAS Kaneohe Bay. GySgt Richard Holloway (right photo) maintains his leads in front of Cpl Joseph Dean, at the half-way point of the three-mile run. Hunt and Holloway bested nine competitors to capture their first place trophies.

Photos by Sgt Chris Taylor



KMCAS SNCO CLUB

presents...

a 3 hour

Sunset Boat Cruise

Saturday, September 20th

FEATURING:

- * All you can drink!
- * Texas Western BBQ Dinner
- * Live music & dancing aboard "Hawaii State"
- * Location: Fisherman's Wharf



Transportation provided - Buses will depart from KMCAS Staff NCO Club at 4:00 p.m. Why drive when you can ride?

\$14.00 Per Person

— Hurry - Limited Tickets Available —

Tickets Available Now At
The SNCO Club Front Desk

257-2592

257-2945

Kono's Kaimuki Smoke Oven

1108 12th AVE. 735-5588

LUNCH IS GREAT

AT KONO'S

- STEW AND RICE
- SMOKED BRISKET OF BEEF SANDWICH
- SMOKED TURKEY (OUR FASTEST SELLING ITEM)

Businessmen's Lunch
Only \$2.00 -

WED. - THUR. - FRI. - SAT.

ALL THE SMOKED RIBS (BEEF) AND
SMOKED CHICKEN YOU CAN EAT FROM 5 P.M.

\$7.95

SERVED WITH SALAD, BEVERAGE, DESSERT

CHILDREN BELOW 10 \$3.95

TAKE-OUT ORDERS PREPARED TO YOUR WANTS

Smoked ribs, pork, chicken, lamb & fish

BREAKFAST
FROM 7 A.M. - 11 A.M.
ONLY 1.99
A REAL TREAT
PLENTY TO EAT

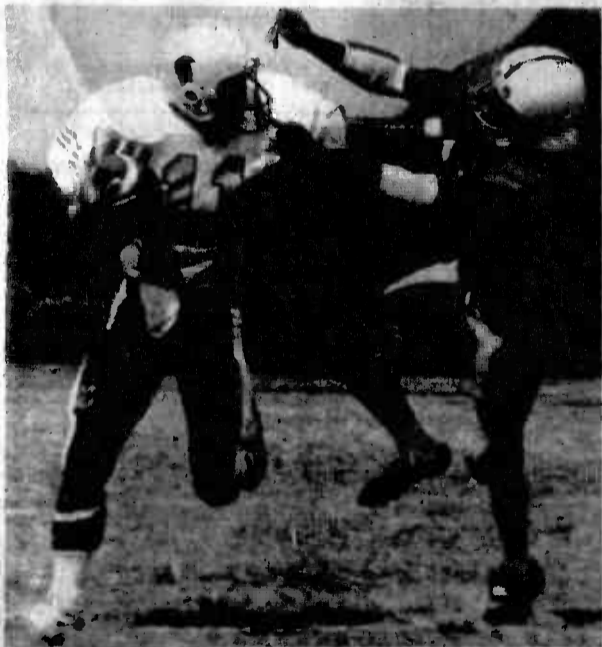


Photo by Sgt Pepper Davis

GET AWAY — LCpl Ray Radate, #11, of the Marine Varsity football team stiff arms a would-be tackler from the Army's DIVARTY team during the tackle football season opener at the Pop Warner Field, MCAS Kaneohe Bay Saturday. The Marines unleashed an impressive rally in the fourth quarter to come from behind and end the contest in a 14-14 tie.

Breakfast - Lunch - Dinner

- Hotcakes
- French Toast
- Omelettes
- Plate Lunches
- Hamburgers
- Mahimahi
- Chicken
- Seafood
- Teriyaki

NOW
OPEN
24 Hours

andy's
drive-in

142 Oneawa St.

CALL
For Late Evening
Take-Out Orders
262-4920

CT
FINANCIAL
SERVICES

An Equal Opportunity Company

1505 Dillingham Blvd.
Honolulu
841-6191

630 Piikoi St.
Honolulu
538-6902

3001 N. Nimitz Hwy.
Honolulu
836-0971

Kukui Plaza Bldg.
55 South Kukui St.
Honolulu
523-8877

317 Hahani St.
Kalihi
261-9771

Windward City Shopping Center
45-480 Kaneohe Bay Drive
Kaneohe
236-5851

765 Kamehameha Hwy.
Pearl City
466-9014

674 Kilani Ave.
Wahiawa
622-1681

94-226 Leaku St.
Waipahu
671-4516

Victory: Marines secure Peleliu beachhead as step to liberating Philippines

by Sgt Phillip Williams

Thirty-six years ago Marines fought one of the bloodiest battles in the history of the Marine Corps.

In September 1944, Marines hurled themselves onto the beaches of Peleliu. This heavily fortified island in the Palau Islands group would prove to be a not-so-easy victory for Marines tasked with bringing control of the island.

The successful seizure of the island would ensure a protected flank for forces moving to liberate the Philippines. Peleliu was dominated by a steep rocky ridge known as the "Umurbrogol." The ridge was honey-combed with caves and thick jungle growth. A coral reef encircled the entire island.

DEFENDING THE island against American attackers were forces comprised of the Japanese Army and Navy. Five infantry battalions, support from artillery and tanks provided by the Japanese 14th Division, 1,000 combat troops from the Navy's

45th Guard Force and anti-aircraft units, and approximately 2,200 men from a naval construction battalion made up the Japanese garrison force on the island. In all, a total of 10,700 soldiers were prepared to fight in defense of the island stronghold.

The Japanese plan of defense was to have their troops bury themselves deep within the island during the first wave of attack. Then, while using the Umurbrogol as an anchor position, counterattack and penetrate whenever it proved advantageous.

COGNIZANT OF the fortified positions and web of caves and tunnels, the Americans bombarded the island for three days. Little resistance was encountered as the Marines hit the shore. Only fire from light artillery and mortars were directed at the Leathernecks.

Surprisingly, the Japanese changed their tactics of defense. In contrast to earlier battles where they would meet the Marines at the beach in full force, they were not

fighting from an in the interior hills of the island.

The Leathernecks from the 1st Marine Division were headed into a fight that would be dirty and casualty-producing.

THE FIRST DAY of battle found members of the 5th Marines moving swiftly to capture the only airfield at the island's southernmost end.

Col Lewis B. "Chesty" Puller and his 1st Marines met stiffer opposition just inland of the beach. Fortified positions extending from the beach cost the assault company at least two-thirds of its force. Subsequently, survivors of the company had to fend off fierce Japanese counterattacks for 30 arduous hours.

Finally, however, the regiment of Marines broke through and linked up with the 5th Marines at the airfield.

The 7th Marines seized the southern portion of Peleliu during the first week of battle. During this same period, elements of the 5th Marines overran the remainder of the airfield and eventually took the

northeastern portion of the island.

UMURBROGAL Hill was all that remained to be captured. The Japanese had dug deep into the hillside. Long-range flame throwers and rifles were the Marines' tools in prying the well-entrenched enemy from their positions.

From the vigorous battles that took place in this area, names such as "Horseshoe," "Walt's Ridge" and "Death Valley" were inscribed in the battle journals of the Marine Corps.

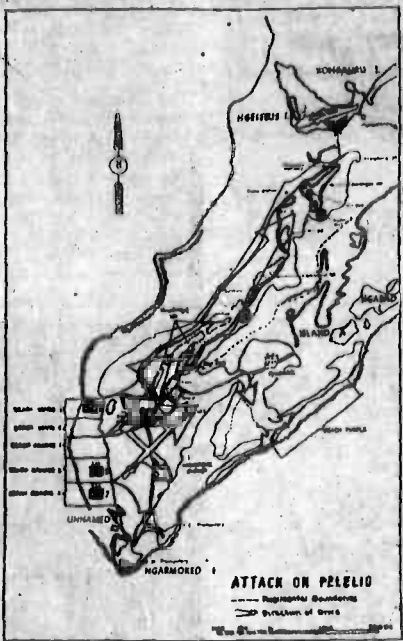
A month of continuous battling would transpire before the Marines were finally

relieved by the Army's 81st Infantry Division. Even so, Peleliu would not be declared under American control until one month thereafter.

Of the 1st Marine Division, 1,252 men lost their lives and another 5,274 were wounded on the small island. Eight Marines were awarded the Medal of Honor, five posthumously. The

Army's 81st Infantry Division suffered a total of 542 casualties and 2,736 men were wounded.

The Japanese also suffered extensive loss of human lives. All but 302 of the 10,700-man garrison were killed. Those who did survive were captured as prisoners of war.



THE DOG SHOP
Horses are my hobby. Dogs & cats my pleasure, but Grooming is my specialty.
Ramona Dudolt
28 Oneawa St.
262-8804

KIRWAN'S SCHOOL OF DIVING SCUBA COURSE
Beginning every 3 weeks
6:30 p.m.
Call to register
Cost: \$55
Doris Kirwan
261-5652

KMCAS WOMEN'S EXERCISE CLASS
Fun, Music
Total Body Workout
Showers Sauna
Sign Up Before Class
BOQ MWF 8:15 AM
TTh 7:30 PM

uncontested divorce \$200
(\$170 legal fee + \$30 court cost)
Michael Pence, attorney
grosvener center,
26th floor
523-6411

H & R BLOCK
Income Tax Preparation
Phone 533-1690
or 487-8531

RECYCLE IT PAYS YOU
HAWAII RECYCLING
847-2000

NEED ELECTRICIANS?
7 DAYS A WEEK
Windward Specialists
247-1979
GLENN'S ELECTRICAL SERVICE, INC.
Contractor #C-8488
48-016 Alaloa St. Kaneohe
Just off Kahuhipa across Nank's
DISCOUNT SALES & SERVICE

THE CROWBAR
Ladies Happy Hour
5:00-8:00 p.m. Well Drinks \$.90
(Wednesday Only)
HAPPY HOUR DAILY 4-6 p.m.
-plus-
FREE pupus
25-27 Hoolal St., Kallua

DEPARTMENT OF EDUCATION
ADULT EDUCATION
FIRST SEMESTER CLASSES FOR ADULTS

TO BEGIN SEPT. 22, 1980 AT COMMUNITY SCHOOLS ON OAHU

- ADULT BASIC EDUCATION
- HIGH SCHOOL EDUCATION
- CITIZENSHIP
- HOME AND PARENT EDUCATION
- FREE CLASSES FOR SENIOR CITIZENS (Funds Provided By The Executive Office On Aging)

REGISTRATION DATES: SEPT. 8-19, 1980

CALL THE FOLLOWING SCHOOLS FOR MORE INFORMATION

COMMUNITY SCHOOLS	ADDRESS	PHONE
AIEA	98-1276 ULUNE ST.	487-3657
FARRINGTON	1101 KALIHI ST.	841-8855
KAIMUKI	2705 KAIMUKI AVE.	737-3282
McKINLEY	1039 S. KING ST.	538-6250
Wahiawa	1515 CALIFORNIA AVE.	622-1834
Waipahu	94-1211 FARRINGTON HWY.	671-7322
WINDWARD	730 ILIANA ST.	254-1534

"NO DISCRIMINATION OF THE GROUNDS OF RACE, COLOR, RELIGION, SEX, AGE, NATIONAL ORIGIN, PHYSICAL OR MENTAL HANDICAPS SHALL EXIST IN ANY OF THE EDUCATIONAL PROGRAMS AND ACTIVITIES WITHIN THE DOE."

TRANSMISSION TUNE-UP
HERE'S WHAT WE DO:
• ROAD TEST YOUR CAR
• OIL FLUID
• ADJUST BRAKES & LINKAGE
• INSPECT
• CLEAN FILTER
• NEW PAN GASKET
• 100 NEW FLUID
\$19.95
YOUR AUTOMATIC TRANSMISSION NEEDS TO BE SERVICED EVERY 12 MONTHS
BY APPOINTMENT
CALL 836-0594
2984 KOAPAKA ST. AIRPORT AREA

GET OUT OF DEBT
through Chapter 13
A federal law which helps to pay off your debts without borrowing and in payments you can afford, stops creditor harassment and law suits, protects your job, co-signers and property.
Initial consultation or info packet are without obligation.
Please call:
HOWARD Y. TANAKA
Attorney versed in Chapter 13 filings
Suite 466, Alexander Young Building
Telephone: 531-5943

BEFORE YOU BUY #2 OR #3, SEE WHY PUCH IS #1.
Puch, America's best-liked moped, now has even more to like. More new models and new features than ever.
There's a hill-hungry new hi-torque engine. A 2-speed automatic transmission and oil injection.
Come in and see all the new Puchs. We're #1 and trying harder.
PUCH. THE MAXIMUM MOPED.
Back-to-School Sale...
\$500 Off!
on any new Puch moped.
Moped Mart
CITY BIKE & MOPED SERVICE CENTER
at the Holiday Mart in
• Pearl City 455-9722
• Kallua 261-3600
449 Cooke St. Honolulu 537-3088
Sale ends Sept. 30.

CONSOLIDATED THEATRES
REVOLUTIONARY CINE-FI SOUND AT THE KAM DRIVE-IN
YOUR AM CAR RADIO IS YOUR SPEAKER! (IF NO CAR RADIO, WITH IGNITION ACCESSORY POSITION, BRING YOUR OWN AM PORTABLE.)
YOUR 1980 INFLATION FIGHTERS ARE OUR "SUPER" SWAP MEETS
SAVE TIME! SAVE ENERGY! SAVE GAS! SAVE BIG MONEY!
KAM DRIVE-IN • 7 AM to 3 PM
WED.-SAT.-SUN. & MOST HOLIDAYS
PH. 488-5822 or 536-3576

WAIKIKI	DOWNTOWN
WAIKIKI #1 Seaside Mr. Kalakaua 923-2394 BURT REYNOLDS "SMOKEY & THE BANDIT II" (PG) 12:30 • 2:30 • 4:30 8:30 • 8:45 • 10:45 PM	HAWAII Bethel at Pasha 536-6300 Cell Theatre For Features & Show Times
WAIKIKI #2 DOLBY STEREO ARON ROXBOROUGH "RAISE THE TITANIC" (PG) 1:30 • 3:15 8:45 • 8:15 • 10:30 PM	LIBERTY Mr. Beretania 537-1686 STARTS FRIDAY! "BRUCE LEE INVINCIBLE" "SOUL OF BRUCE LEE" Cell Theatre For Show Times
WAIKIKI #3 Kalakaua Mr. Seaside 923-5353 JACKIE CHAN JOE FERRER "THE BIG BRAWL" (R) 1:00 • 3:00 • 8:00 7:00 • 9:00 • 11:00 PM	TOYO College W. at Beretania 538-1654 FRIDAY ONLY "LOVE AFFAIR" (FILIPINO FILM) SAT. & SUNDAY "CUBAN DOLLS" "YOUNG PRINCE & PLAYBOY" Cell Theatre For Show Times
KUHIO #1 2095, Kuhio 941-4422 BROOKE SHIELDS "THE BLUE LAGOON" (R) TONIGHT: 8:45 • 8:45 • 10:45 PM	KAIMUKI Waiolae 737-8200 ENDS TOMORROW CHEVY CHASE "CADDYSHACK" (R) 8:30 • 10:15 PM "OF LAUGHING" 8:15 PM ONLY
KUHIO #2 STARTS FRIDAY! BRUCE DERN ANN-MARGRET "MIDWINTER CRAZY" (R) Cell Theatre For Show Times	KAM DRIVE-IN #1 Masahiro at Kam Hwy. 488-3835 GATES OPEN AT 8:00 PM SHOWS 7:15 & 10:15 PM Rushy, no parking Children Under 12 yrs. FREE
KAPORANI 1546 Kaporani 955-5115 DOLBY STEREO OLIVIA HEWITON-JOHN "GEM KELLY" "HANDS" (PG) TONIGHT: 8:30 • 8:30 • 10:30 PM	KAM DRIVE-IN #2 Masahiro at Kam Hwy. 488-3835 GATES OPEN AT 8:00 PM SHOWS 7:15 & 10:15 PM Rushy, no parking Children Under 12 yrs. FREE
UNIVERSITY • PUNAHOU VARSITY University Mr. Beretania 946-4144 ENDS TOMORROW JOHN BELUSHI DAN AYKROYD "THE BLUES BROTHERS" (R) TONIGHT: 8:00 • 8:30 • 11:00 PM	PEARL CITY KAM DRIVE-IN #1 Masahiro at Kam Hwy. 488-3835 GATES OPEN AT 8:00 PM SHOWS 7:15 & 10:15 PM Rushy, no parking Children Under 12 yrs. FREE
CINERAMA Kali at Kalakaua 941-5201 "THE EMPIRE STRIKES BACK" (PG) TONIGHT: 8:30 • 8:30 • 10:30 PM SPECIAL ENGAGEMENT SORRY, NO PARKING	PEARL CITY KAM DRIVE-IN #1 Masahiro at Kam Hwy. 488-3835 GATES OPEN AT 8:00 PM SHOWS 7:15 & 10:15 PM Rushy, no parking Children Under 12 yrs. FREE
KAILUA DRIVE-IN 917 Pali Highway 261-8032 BURT REYNOLDS "SMOKEY & THE BANDIT II" (PG) TONIGHT: 8:30 • 8:30 • 10:30 PM GATES OPEN AT 8:00 PM SHOW STARTS AT 7:15 PM Children Under 12 yrs. FREE	PEARL CITY KAM DRIVE-IN #1 Masahiro at Kam Hwy. 488-3835 GATES OPEN AT 8:00 PM SHOWS 7:15 & 10:15 PM Rushy, no parking Children Under 12 yrs. FREE
KAHANA Ahaia Pali Shoreline Center 954-1370 ENDS TOMORROW "USO CAR" (R) 8:30 • 8:30 PM "HOT STUFF" (PG) 8:30 • 8:30 PM	PEARL CITY KAM DRIVE-IN #1 Masahiro at Kam Hwy. 488-3835 GATES OPEN AT 8:00 PM SHOWS 7:15 & 10:15 PM Rushy, no parking Children Under 12 yrs. FREE

KANE OHE SELF-STORAGE
Coupon Good For Free Heavy Duty Padlock With This Coupon
CALL 238-3044
48-158 KAHUHIPA ST.,
With Rental of Any Storage Locker Military Discount

SEE YOU AT OUR PEARLRIDGE SEPT. CARNIVAL

Orange Julius
4 Tempting Flavors
• Orange
• Strawberry
• Peach
• Pineapple
6 Hot Dogs To Choose From
• Hot Pretzels
Pearlridge Center Phase I & II
Kahala Mall
NOW OPEN!
ROYAL HAWN CENTER IN WAIKIKI

LEMONADE PLUS NOW OPEN!
AT PEARLRIDGE
FEATURING:
• FRESH-SQUEEZED LEMONADE
• FRESH-DIPPED CORN DOGS
• FRESH-DIPPED CHEESE-ON-THE-STICK
80¢
FOR ANY CHOICE
PEARLRIDGE CENTER PHASE II
NEXT TO FERNANDEZ FUN FACTORY

Farrell's Presents FARRELL'S™ DEEP DISH PIZZA
Delicious Cheese or Pepperoni Deep Dish Pizza.
Made fresh daily and baked in our own ovens.
\$1.00 OFF
With This Coupon
Your 2nd order when you purchase a regular order of 2 slices (with or without sauce) at the regular price
Good Only At
Pearlridge, Kahala Mall, Kaneohe
FARRELL'S
Not valid with other coupons.
This coupon good per person. No cash-out orders.
Each redemption value \$1.00 cents.
Offer Expires 9/15/80

Help cushions growing families tight budgets

If a group of newlyweds were asked what their most costly investment would be during the early years of marriage, most would probably answer "a new car" or "buying a home." There is no question about it. These items make a big dent in everyone's budget.

However, odds are, the really big expense

of their married lives is going to be the cost of raising a family. With hospitalization and medical care provided by the government at a small cost, the initial expense of a Marine Corps or Navy couple having a child is usually minimal.

HOWEVER, as far as "the upkeep" is

concerned, new parents are pretty much on their own. And upkeep starts accelerating the day the baby goes home. Infants may enter the world naked, but they sure need clothes when they leave the hospital.

To cushion the financial shock to a family on a tight

budget of outfitting their new arrival, dedicated Navy Relief volunteers at the MCAS Kaneohe Bay auxiliary of the Navy Relief Society spend many hours each year making baby clothing. Finished articles are assembled into layettes for distribution to Marines and sailors who need such help.

EACH LAYETTE contains a number of items to help the new baby off to a good start, including nightgowns, diapers, bibs, and receiving blankets. As is true of all Navy Relief assistance, layettes are provided on the basis of need, as evidenced by a service member's own financial circumstances.

If you need one, please visit the station's Navy Relief Office located next to the 7-Day store or call them at 254-1328. **IF POSSIBLE**, both husband and wife should come to the office to participate in budget planning for the needs of the new child. Families who take

advantage of this opportunity find that, as useful as the layette is, the formulation of realistic financial plans for a growing family is far more valuable. Volunteers to help make layette articles are needed. Interested persons are encouraged to contact the society's on-base office.

Pearlridge

COME ONE, COME ALL

SEPTEMBER CARNIVAL



OF VALUES

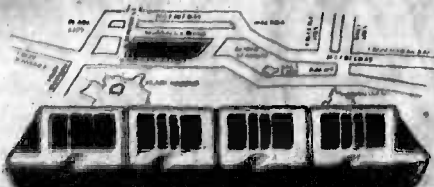
FRI • SAT • SUN - SEPT. 12 • 13 • 14

FREE ENTERTAINMENT FOR ALL

FRI. - 6:30 & 7:30 P.M.
"Peace & Rhythm"
Musical Quintet

SAT. - 1:00 & 2:00 P.M.
"Dusty T" Clown
"BH" the Juggler

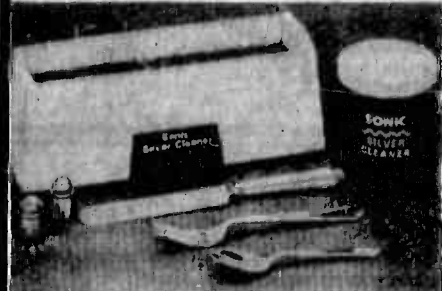
SUN. - 1:00 & 2:00 P.M.
"JJ" the Clown
"Ming the Magnificent" Magician



Now 135 stores, shops, theaters, restaurants, banks, and the one and only Monorail in Hawaii.

A sound idea for cleaning silver.

The Sonic Silver Cleaner cleans your silver completely in seconds, electrically and easily with its special solution. UL approved.



REGULAR
PRICE
\$29.95

Sale
\$19.95

Monday-Friday
10-6
Saturday 10-5
Sunday 11-4
Pearlridge
Shopping Center
488-8777
Kaneohe Mall
Shopping Center
732-1408

GRANAT BROS

Fine Jewelers Since 1905.

Sale Price Good Thru Sept. 30 While Supply Lasts

Also Greater San Francisco
MASTER GOLDSMITH
AVAILABLE

Five of Granat Bros. convenient
charge plans: Visa, Master Charge,
American Express,

Keepsake diamond center

Pearlridge

How to choose a diamond...
the perfect symbol of your love

Now that you're in love, for keeps, you'll want to know more about selecting your diamond engagement ring. Like your love, every diamond is unique, so you will want to consider all factors that affect your diamond's beauty and value.

When you choose a Keepsake, you need not be a diamond expert. Keepsake guarantees all center diamonds, in writing, forever, for perfect clarity, fine white color and correct modern cut.

CLARITY: A perfect diamond has no flaws, cracks, carbon spots, clouds or other imperfections when examined under 10x power magnification. Every Keepsake center diamond is guaranteed perfect.

COLOR: Fine white diamonds are rare and valued accordingly. Other diamond colors, in diminishing order of rarity are blue, yellow, brown and black. Keepsake center diamonds are guaranteed for life white color.

CUT: For true beauty, a diamond must be properly cut and faceted to bring out its full fire and brilliance. Keepsake center diamonds are guaranteed for correct, modern cut.

CARAT: The higher the carat weight, the rarer the diamond and the higher the price. However, a large diamond with imperfections may not be as valuable as a smaller, perfect diamond.

Come in soon and look over our exquisite Keepsake diamond rings, the largest selection on Oahu. America's No. 1 engagement ring with the nation's strongest diamond guarantee.

LARGE SELECTION OF OTHER FINE JEWELRY -
QUALITY IS OUR TRADEMARK



488-2800

Keepsake
The Great Diamond King
Established 1892

PEARLRIDGE CENTER PHASE II ACROSS FROM FAH

Let us help
you stock up
for the
football season!

OPEN 7 DAYS!
ALL HOLIDAYS

SUN.-THURS. 9:30-11 PM

FRI.-SAT. 9:30-MIDNITE

"For Friendly, Helpful Service Come See The Pumpers!"

THE PUMP

(YOUR FULL SERVICE LIQUOR STORE)

PEARLRIDGE SHOPPING CENTER
488-8700



Levi's



• Largest selection of basic
denim Levi's in the Islands!
• Sizes 27-48
• Also Levi's for kids &
Levi's for ladies

**The American
Denim Co.**

• Pearlridge Mall • Phase II • 487-6506

**michael
xception**

REPAIR AND
REDESIGNING
OF FINE JEWELRY



Your precious gemstones
can be bought back to new
condition in a setting from
our vast collection or a
relinquishing of your present
design.

All work is done on our
premises by our master
jewelers and designers.

Intelligence Brief

By Sgt Bob Miller

122mm Field Gun, D-74 — Artillery support is the keystone of Soviet operational planning. Soviet artillery is employed under centralized control and in great mass, and is used to annihilate defensive positions to open the way for rapid advancement of armored and motorized rifle units.

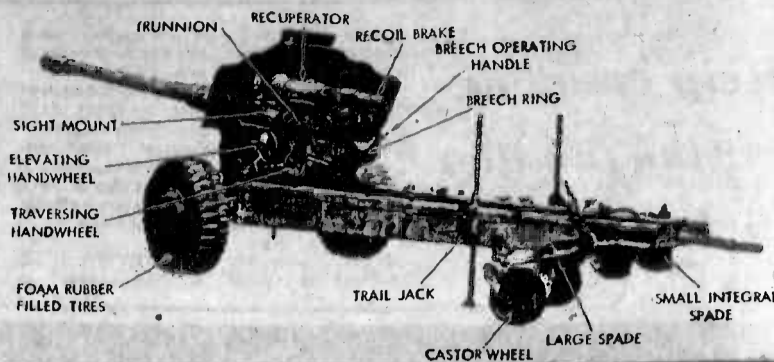
Most Soviet artillery is towed, like the 122mm D-74, although self-propelled versions of 122mm and 165

weapons have recently been introduced and are now the basic artillery weapons in many Soviet divisions and regiments. However, the D-74 and the newer 122mm D-30 are still present in substantial numbers in the Soviet, Warsaw Pact, Egyptian, Cuban and Chinese armies. Because of their range and effectiveness, they remain the primary general fire support weapon of the Soviet Field Army. The 122mm towed and self-propelled guns, including the D-74, are organic to Soviet motorized rifle divisions / regiments (MRD/MRR) and tank divisions. Approximately 54 are located in MRDs, 6 in MRRs, and 60 in tank divisions. Additionally, there are 18 122mm guns in an airborne division.

Like most Soviet weapons, the D-74 is characterized by simplicity of design and operation, which enables the 10 man gun crew (consisting mainly of draftees) to function well together. This weapon is mounted on the same carriage as the 152mm D-20, but is distinguishable from the D-20 by its gun tube, which is five feet longer and slimmer. The D-74 has a range of approximately 15 miles and can fire six or seven high explosive, anti-personnel or anti-tank rounds per minute. When the MRD is in the attack, the D-74, along with other division artillery, will normally be located three to six km behind the forward edge of battle area, while regimental artillery groups will be formed 1-4 km behind the forward edge of battle area. While on the march, division artillery will be well forward in the main force of the division—about 30 km behind the advance guard. Within the advance guard, artillery and tanks are habitually placed forward in the column, but may be located in the middle if an attack from the flank is threatened.

the forward edge of battle area, while regimental artillery groups will be formed 1-4 km behind the forward edge of battle area. While on the march, division artillery will be well forward in the main force of the division—about 30 km behind the advance guard. Within the advance guard, artillery and tanks are habitually placed forward in the column, but may be located in the middle if an attack from the flank is threatened.

the forward edge of battle area, while regimental artillery groups will be formed 1-4 km behind the forward edge of battle area. While on the march, division artillery will be well forward in the main force of the division—about 30 km behind the advance guard. Within the advance guard, artillery and tanks are habitually placed forward in the column, but may be located in the middle if an attack from the flank is threatened.



COMING SOON to the MCAS FEDERAL CREDIT UNION



For more details call us at 254-1334/1335 or 261-3442

No service charge, no minimum balance... and dividends!



TLA SPECIAL "ROOM & CAR PACKAGE"

Includes:

- RENTAL CAR by *Hertz, Avis, Budget, Rent-A-Car*
- DELUXE, Spacious Rooms at the HOLIDAY INN AIRPORT with:
 - Air Conditioning
 - FREE Color Television
 - Room Service Available
 - FREE Parking, Babysitter Referral, WASHERS & DRYERS
 - 24-Hour Telephone Switchboard Service
 - CREDIT CARDS: American Express, VISA, Bank Americard, Carte Blanche, Diner's Club & MasterCard
 - LOCATION convenient to ALL Military Installations, Waikiki and Major Island Attractions

ONLY **\$43⁹⁵** per day

For Reservations & Information Call:

Holiday Inn AIRPORT
836-0661

Additional Conveniences:

- LEIMAKER'S RESTAURANT
- KALAMA COCKTAIL LOUNGE (with entertainment nightly)
- POOL
- Kennels
- FREE Airport Shuttle
- Special TLA Rate On Room Only \$30 Per Day

TWO GREAT REASONS TO GET THE GREAT TASTE OF PIONEER CHICKEN.

BIG SAVINGS DAYS INCLUDE 2 BIG WEEKENDS

SUMMER FAMILY FEAST

- 8 Pieces of Delicious Golden Pioneer Chicken
- 4 Cobettes of Corn
- 1 Large Creamy Cole Slaw
- 4 Taste Temptin' Rolls

\$4.99

WITH COUPON ONLY

At all participating Pioneer Take Out Restaurants. No substitutions. Limit: 2 per coupon. Please present coupon before ordering. This offer not valid with any other discount or coupon. Good thru Sept. 21, 1980. 6/10/80

SUMMER DINNER SPECIAL

- 2 Pieces of Delicious Golden Pioneer Chicken
- Cobette of Corn
- Creamy Cole Slaw
- Taste Temptin' Roll

\$1.29

WITH COUPON ONLY

At all participating Pioneer Take Out Restaurants. No substitutions. Limit: 4 per coupon. Please present coupon before ordering. This offer not valid with any other discount or coupon. Good thru Sept. 21, 1980. 6/10/80

NOW THROUGH SEPTEMBER 21

GOOD YEAR

TIEMPO RADIAL SALE!

GET THE ONE, THE ORIGINAL ALL-SEASON RADIAL... TIEMPO! SAVE GAS EVERY MILE YOU DRIVE

(COMPARED TO NON-RADIALS) ER

\$38

P185/80R12 BLACKWALL plus \$1.38 FET. NO TRADE NEEDED.

RAIN CHECK — If we run out of your size we will issue you a rain check, assuring future delivery of the advertised price.

\$49

P185/70R13 BLACKWALL plus \$1.48 FET. NO TRADE NEEDED.

\$54

P185/70R14 WHITEWALL plus \$2.18 FET. NO TRADE NEEDED.

\$53

P185/60R15 BLACKWALL plus \$1.91 FET. NO TRADE NEEDED.

\$58

P195/60R13 WHITEWALL plus \$2.11 FET. NO TRADE NEEDED.

\$70

P205/70R14 WHITEWALL plus \$2.48 FET. NO TRADE NEEDED.

\$76

P225/70R15 WHITEWALL plus \$2.93 FET. NO TRADE NEEDED.

Don't Forget. Saturday Is Your Last Day To Save!

Just Say 'Charge It' Good Year Revolving Charge Account

KANEONE BAY SHOPPING CENTER

STORE HOURS: MON. THRU FRI. 7:30 a.m. to 8:00 p.m. SAT. 7:30 a.m. to 8:00 p.m.

PHONE **247-8668**

- HONOLULU**
Ma Lilihi St. at Sali Lake Shopping Center
Waikele Ave. at Kahala Mall
Hing St. at Palm
- AIEA** Kamehameha Hwy. at Waimalu Plaza Shopping Center
MAILO Kamehameha Hwy. at Hualapai Lane
KANEONE Kamehameha Hwy. at Temple Valley Shopping Center
WAIKANAHA Kamehameha Hwy. at Olive
- WAIKANAHA** Farrington Hwy. at Waikele Mall Shopping Center
WAIKANAHA Puukohala St. at Farrington Hwy.
KANEONE Kaneone Bay Drive at Adair Park Shopping Center

Localmotion

K-BAY OFFICERS' CLUB
TODAY: Lunch in the Pacific Room from 11 a.m. till 1 p.m. features specials, hot carved sandwiches, soups and salads. Mongolian barbeque on the Lower Lanai from 6 till 8:30 p.m.
THURSDAY: Lunch in the Pacific Room from 11 a.m. till 1 p.m. Beefsteak night from 7 till 8:30 p.m. features steamship round, a seafood item, rice or potatoes, vegetables and a salad bar.
FRIDAY: Lunch in the Pacific room from 11 a.m. till 1 p.m. Happy Hour in the Tapa Bar from 5 till 7 p.m. Mongolian barbeque on the Lower Lanai from 6 till 9 p.m. Entertainment by "Alter Ego" provides a variety of music from 8:30 p.m. till 12:30 a.m. in the Tapa Bar.
SATURDAY: Candlelight dining in the

Pacific Room from 6 till 8:30 p.m. with new dining menu. Entertainment by pianist "Akiko" from 6:30 till 9:30 p.m. in the Pacific room.
SUNDAY: Champagne brunch in the Pacific Room from 10 a.m. till 1 p.m. with a variety of breakfast specials with a complimentary glass of champagne. Prime rib and crab served from 6 till 8:30 p.m.
MONDAY: Lunch in the Pacific Room from 11 a.m. till 1 p.m. Join us Monday through Friday for a variety of specials, hot carved sandwiches, soups and salads. Also join us for Monday Night Football in the evening.
TUESDAY: Lunch in the Pacific Room from 11 a.m. till 1 p.m. Tuesday evening the dining room is closed. The Tapa Bar opens from 4 till 10 p.m.

K-BAY SNCO CLUB
TODAY — Luncheon special is chicken a la king over rice or noodles. Beefsteak special served from 5:30 till 8:30 p.m.
THURSDAY — Luncheon Special is beef stroganoff. Mongolian barbeque served from 5:30 till 8:30 p.m. "Rainbow Connection" plays from 7:30 till 11:30 p.m.
FRIDAY — Luncheon special is seafood platter. Candlelight dining from 6 till 9 p.m. "Star" plays from 9 p.m. till 1 a.m.
SATURDAY — Prime rib and crab served from 6 till 9 p.m. "Motion" plays from 9 p.m. till 1 a.m.
SUNDAY — Brunch served from 10 a.m. till 1 p.m. Family Barbeque Night featuring barbequed chicken, ribs, beef, served from 5:30 till 8:30 p.m. All you care to eat \$3.99 per adult, \$2.99 children 8-12, \$1.99 children 5-7. Children 4 and under are free.
MONDAY — Luncheon special is Mexican plite. Happy Hour is from 5 till 6 p.m. Burritos served at the bar.
TUESDAY — Luncheon special is Salisbury steak. Happy Hour is from 5 to 6 p.m. Burritos served at the bar.

Cinema

	W	T	F	S	S	M	T
FAMILY THEATER							
7:15 p.m.	8	1	2	9	10	3	6
CAMP SMITH							
7 p.m.	2	6	6	11	12	7	13
MARINE BARRACKS							
7 p.m.	1	2	3	4	5	6	7

1. **MR. MEAN** — Fred Williamson, Lou Costel, PG, drama
2. **DYNAMO** — Bruce Lee, R, action drama
3. **VOICES** — Michael Ontkcan, Amy Irving, PG, drama
4. **FAST CHARLIE** — David Carradine, Brenda Vaccaro, PG, action comedy
5. **THE LEGEND OF THE NORTHWEST** — Marshall Reed, Joey Young, G, adventure
6. **FATSO** — Dom Deluise, Anne Bancroft, PG, comedy drama
7. **THE CHAMP** — Jon Voight, Faye Dunaway, PG, action drama

8. **HAIR** — Treat Williams, Beverly D'Angelo, PG, rock musical
9. **CARAVANS** — Anthony Quinn, Jennifer O'Neill, PG, adventure drama
10. **LAND OF NO RETURN** — Mel Torme, William Shatner, G, adventure
11. **BRASS TARGET** — John Cassavettes, Sophia Loren, PG, drama
12. **BILLY BOY** — Duane Bobick, Kim Braden, PG, action drama
13. **WINDOWS** — Talia Shire, Elizabeth Ashley, R, drama

Word Wise

Our search for greater knowledge continues as we page through the dictionary loaded with new words to learn. Scanning the information-filled text, the word **effrontery** practically leaps out for recognition. **Effrontery** is defined as: ef-front-er-y (i-frun-to-re)n-lmpudent and insulting boldness; presumptuous self-assertion; audacity. An example of the meaning of **effrontery** is: "If you would kindly hold my glass while I dance with your girlfriend, I'd truly appreciate it." In a sentence: "He had the **effrontery** to admit to committing the theft."

CFC

Kokua means you care

—Announcing—

Wuertz Jewelers

2nd Anniversary Celebration

\$500 OFF Watch Repairs

Over \$20.00
Please Bring This Coupon

Located in the Windward City Shopping Center

247-0184

Offer Ends Sept. 30, 1980

WHAT'S A B.S.O.E.?

If you have military experience in a specialized field, come in and find out from a **Wayland Baptist Counselor**.

Fort Shafter	10:00-12:00 Tuesdays	438-9215
Hickam AFB	9:00-11:00 Thursdays	449-2306
Kaneohe MCAS	9:00-11:00 Mon., Fri.	257-2061
Schofield Barracks	9:00-11:00 Mondays	655-4985
Tripler AMC	1:00-3:00 Tuesdays	433-6366
Pearl Harbor	9:00-11:00 Wednesdays	474-1278
Camp Smith	1:00-3:00 Thursdays	477-6867
Naval Subbase	9:00-11:00 Fridays	471-3490

Wayland Baptist College

2429 Pali Highway Tel. 595-2951

A Fully Accredited Equal Opportunity Institution

BUY & SELL 261-1406

PARADISE USED FURNITURE INC.

155 Hamakua Dr.

DAVID & DEBBY KNOWLES 267-8492

WE BUY AND SELL:

- Beds
- Dressers
- Tables
- Lamps
- Couches
- Stereos
- Desks
- Koa & Rattan
- Furniture
- Much More

Mon. thru Sat. 10 AM-5 PM

No Matter What You Sell...
We'll Help You Sell More Of It

Phone 235-5881

Circulating To Over 99,000 Suburban Homes On Oahu

Sun Press

Butter Buds

Brand

NATURAL BUTTER FLAVOR GRANULES

3 ways better than butter!

Save Calories!

Whether you cook with it or season with it, Butter Buds has 99% fewer calories than butter or margarine but all the natural butter flavor good food needs to taste better.

Save Cholesterol!

Butter up your family and still fight cholesterol! Butter Buds has 99% less cholesterol than butter and all the buttery bounce that brings out the best in food.

Save Cash!

One four ounce box of Butter Buds (8 packets) equals the flavor of two pounds of butter and costs so much less!

As easy to use as 1, 2, 3.

1. Mix one packet with 1/2 cup of hot or cold water.
2. Shake well to make a 4 oz. bit of melted butter flavor.
3. Pour over or mix into any food you cook.

Butter Buds fluid over cooked vegetables like baked potatoes, green beans, corn on the cob, etc. or mix into casseroles, soups, gravies, etc.

Sprinkle dry from the packet on eggs, steaks, spaghetti, fried potatoes, popcorn, etc.

Recipes included in package. No refrigeration needed until reconstituted.

Available in dairy or diet sections everywhere.

FUN & FABULOUS GRAND OPENING!

POPEYES SHAKES & PIZZAS

COME ON DOWN FOR THE GREATEST CHICKEN AND PIZZA EVER!

IN KANEOHE

SAT. SEPT. 13

FREE CARICATURES!

DRAWN OF YOU WHILE YOU WAIT!

FREE RIDES!

ON THE EIK. FERNANDEZ FERRIS WHEEL!

WITH NO PURCHASE NECESSARY. Packages available at Shakey's Arcade. 11 AM-9 PM ONLY. ONLY \$3.00 WITH OUTRIGGER RACE!

SUPER COUPONS!

GOOD AT THE FOLLOWING LOCATIONS:

3-PIECE CHICKEN DINNER

Includes roll and french fries

\$1.99

PIZZA N' SALAD!

3 piece pizza and choice of salad dressing

\$1.99

plus tax

Any 2 for 3 Coupon

GOOD ON ALL SHAKES & PIZZAS

3 ways better than butter!

Save calories, cholesterol, cash!

Butter Buds

Available in dairy or diet sections everywhere.

Stay healthy longer with sensible plan

Barbara Collins is a registered nurse and has a Bachelor of Arts degree in Health Education. She is a member of the MCAS Health Care Council.

Many people assume that an annual check-up is the way to maintain health. However, more and more members of the medical profession disagree with this.

The most effective ways of staying healthy longer involve sensible living habits:

well balanced diet, exercise, adequate sleep, equanimity in interpersonal relationships at home and at work, moderation in intake of coffee and alcohol and avoidance of cigarette smoke. Acknowledging and practicing these habits places the emphasis for health on personal responsibility rather than fatalistically waiting for illness to strike and be detected in the annual check-up. The favored alternative to the annual

"head-to-toe" check-up for adults is selective health examinations. This is comparable to automobile maintenance inspections: only specific "susceptible" parts are checked for hidden faults to ascertain whether a breakdown is likely in the months ahead.

One reason for this shift in emphasis from complete exams to more selective health practices is the cost and risk versus the benefit. While almost any test or examination will

occasionally uncover an important abnormality, the cost and even the risk of many traditional procedures far outweigh the benefit derived when they are performed routinely on healthy persons. If more time and money go into examining healthy people, less is available to treat the sick.

A second reason is the variability of personal factors. Health assessment should be individualized according to

special needs posed by age (frequent check on height and weight are key checkpoints of health during the first few years of life, but not in adulthood), family history (a family history of breast cancer should influence the frequency of mammography examinations), personal life-style (an alcoholic requires more scrutiny than someone who does not abuse alcohol) and specific work exposures (frequent hearing tests to detect early deafness

makes sense in noisy work settings). Often a routine annual check-up encourages a false sense of security that can lead to minimizing new symptoms that should be investigated immediately, such as rectal bleeding or the onset of chest pain after exertion. In short, much more important than an annual physical examination is the investigation of significant symptoms when they occur.

Save Gas

SHOP KAILUA

HEALTHY Inflation Fighters

- Bulk Cheese \$2.50 lb.
- Raw Almonds \$3.20 lb.
- Kokua Bread 1 1/2 lb. \$1.30 ea.
- Brown Rice \$.29 lb.

• Many More In Store Specials

We have the lowest prices on the Windward side. Come in and compare for yourself.



32 Kainehe St. Kailua 261-6596

HELP

is HERE!

Reasonable Parts
& Service

MAJOR
APPLIANCE &
REFRIGERATOR
SPECIALISTS

262-8930

664 Kailua Rd.
**AUTHORIZED
SUPPLY CO.**

IS BUSINESS SLOW?

Advertising in the Sun Press can boost your business. We are the most cost efficient print media serving Windward Oahu.

For more information
feel free to call Chris at 235-5881.

Beautify Your Home
With Precious Plants From
De Aguiar's Garden Center

we have all of
your gardening
needs



- Hanging Baskets
- House Plants
- Patio Plants
- and much more

Come In Today
And See Our
Beautiful Display

60 Kihapai Street,
Kailua
Phone 262-5372

House
of Beauty

The Sculptured
Fingernail
Experience

Colors Are Fine,
But Our
Nails Look
Good Naked

Call Today For More
Information
261-1303

49 Malunui Ave.
Kailua

THE
CHOPPIN BLOCK

You Name It . . .

We can do it
all at
affordable
prices.

Call Today You'll
be glad you did!

4 Quality Hair Dryers On Sale

Hairstyling For
Him & Her &
Children

HAIR
STYLIST
WANTED

Enchanted Lake
Shopping Center
1020A Keolu Dr.

Visa & Master-
Charge
Air Conditioned
PH. 262-8482

REDKEN Retail Center

SHIRTS FOR EVERYONE

Long Sleeve - Assorted Prints & Fabrics

Sizes S-3XL

Placket Pullover - Short Sleeve

Assorted Prints & Fabrics

Sizes S-3XL

SPIRE OF CALIFORNIA
means comfort and quality in
today's world of gentlemen's
fashions.

SPIRE combines expert
craftsmanship with choice
fabrics, creating its uniquely
California style of casual
elegance.

SPIRE OF CALIFORNIA means a design
original for lasting enjoyment!



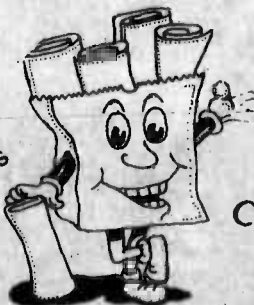
Charlie's SPORTSWEAR

43 Oneawa St. 262-8575 Open 9 a.m. to 5 p.m.
(Across Coin Power) Mon. thru Sat.

A SACK-FULL OF CARPET VALUES

SUPER BUYS
On Plush Remnants

Hurry—And Come
In Today. Quantities
Are Limited.



Up To
50% Off
On Selected
Carpets

Sizes And
Colors Galore!

MAHALO
John Farrell Jr.

**CARPETS
OF
KAILUA**

155 Hamakua Dr.
Kailua
261-1808

WENDY'S FASHION GARDEN



Get back
into
the swing
this fall

WITH OUR
locally made
FASHIONS

Style Shown
\$30.00

Easy care
polyester/cotton

We're now closed on Mondays
10:00-6:00 Tues. thru Sat. 10:00-6:30 Sundays
153 Hekili St. 261-0203
Across from Holiday Mart Theatre

**Yarn & Needlecrafts
Ltd.**

Enchanted Lake Shopping Center
Phone 262-9555

We have the largest and best
selection of new kits on the
Windward side.



Come in and see our
fall lines of:

Yarns, Needlepoint,
Crewel and Latch Hook Kits.

Mon.-Fri. 9:30 a.m. to 6 p.m.
Wed. evenings till 8 p.m.
Sat. 9:30 a.m. to 5 p.m.

WAREHOUSE SUPER SALE

WE ARE LIQUIDATING 100 MICROWAVES ALL MUST GO!

CHECK THESE FEATURES:

- * 5 Year Written Warranty
- * 35 Minute Timer
- * 10 Stage Cooking
- * Suggested Retail \$499.00

NEW

\$288.00



- * Large Family-Size Unit
- * Micro-Sensor Probe
- * New in Factory Box
- * Sale \$288.00

Pacific Surplus & Distributors

35 Kainehe St., #104 Kailua

262-8131

When you place a Classified ad, results are just a phone call away!

TO PLACE YOUR AD — **Dial 235-5881 Classified Advertising Department**



• 25 PERSONALS

IF YOU want to drink, that's your business. If you want to stop, that's ours. Alcoholics Anonymous. Ph. 948-1438.

Dating for Singles—Mail \$1 for appt. to: Singles Hawaii, Box 4472, Honolulu 96813

NEED ride from Le Jardin to Emmanuel Preschool Mon. thru Fri. at 2:30 p.m. Call Kathleen 524-2466 or 262-4278

MASSAGE in your home. Specializing in massage for women. Call Helena after 6 p.m. 262-0158

LONELY? Join 40 plus singles. For application send self addressed, stamped envelope to: P.O. Box 1392, Honolulu, HI 96807

• 35 PROFESSIONAL SERVICES

FRED Domingo Dep. Yard Ser., house cleaning & hauling, etc. 422-7426

FURNITURE Refinishing. Antique restoration & repairs. Free estimate. Pick up & delivery. Ph. 261-7078

LAWN mower - Moped repairs & tune-ups at your home. Reas. 395-6927

FELIPE Yard and House cleaning. Call 261-5050 between 2:00 and 8:00 p.m.

FRANCIS Domingo's Roofing, free est., reasonable. License #10301. 235-6059 day or night.

TUTOR: qualified teacher for Eng. as second lang. prep. for GED/SAT. French, Spanish. 262-0544

TYPING service in my home, reliable, reasonable rates. Call 261-9109

Davey - 732-7196
(10328) Moss rock, tile wall (fence or railing), chain link fence, sidewalk, etc. Free estimate on Oahu

POOL Chemicals & supplies. Kalaheo Hillside area. Free delivery/Free advice. John DeLong. Phone 254-2235.

FRED Domingo Yard, etc. House cleaning & hauling services. 422-7426

IS your domain in need of repair or painting? Free Estimates. 261-8034

DESIGNER, custom-made, all types of garments and alterations. Ph. 262-4949

EXPERIENCE a health oriented Swedish Massage by a licensed massage therapist. Sandra 239-7735

"Busybodies"
— LET US DO IT! —
Sharon Knives, water plants, feed dogs, tutor, painting, wash windows, shopping, visit elderly, parties, etc., etc.
537-4858, 261-4966

DRESSMAKING in Milliani, reasonable rates. 623-1132

PLUMBING C-10492. Reasonable rates, new remodel or repair. Free Est. Bonded. 247-3066

SEWING Sally Mending, alterations, custom-made. 732-6710

NOW HIRING

EXECUTIVE SECRETARIES
WORD PROCESSORS
LEGAL SECY'S.
TYPISTS
RECEPTIONISTS
CLERKS

188 So. Hotel St.
Alexander Young Bldg.
Suite 201
851-0111 or 851-0112

EO EMBROIDERS
Embroidery services

• 35 PROFESSIONAL SERVICES

"ALEXOS" Specializing in custom-made originals for weddings, queen size dresses & alterations. 261-2901

DIVORCE
with attorney
533-4533
A Public Service Project

A-A-A Painting Co. Residential Decor. Free Est. Ph. 239-6874. C-9669

MARY KAY Cosmetics' Free facial, reodor, free gift w/purchase. Call Elizabeth 262-0463

KAILUA MASONRY. Free estimates for additions, slabs, tile walls, pools, driveways. Very reasonable. Call 261-3584

LOW Budget masonry. No job too small. Driveways, slabs, sidewalks, blockwall & stucco. Dick 254-5102

HOU-Hana Cleaning Ser. Home cleaning services 1 time, weekly, monthly "We do windows, too!" Licensed & fully insured. Call Ric Roane 734-6043

BAQUIRO'S Home Improvement & Carpentry Repair. Call 689-7875 or 689-7386.

CABINETS & Counters falling apart - need shelves or custom work? Free Estimates 395-6336 Creative Woodwork & Design

GENERAL BUILDING Maintenance, Repair & Painting. Richard K. Chun. Ph. 247-2583

MONIZ Enterprises. Kitchen cabinets, counter tops, furniture, carpentry. Free estimates. 235-5362.

• 45 SCHOOLS & TRAINING

PIANO Lessons by experienced teacher. Openings for children & adults. Kailua 262-8897.

Hawaii Wabi MATHEMATICS INSTITUTE
Academy & Learning Clinic
By Appt. 261-8106

READING/Math tutoring, experienced teacher, M. Ed \$10 hour. 621-6606 eves.

BEGINNING Piano or Flute lessons. Individual instruction. Phone 235-5098.

SPELL WITH PHONICS IMPROVE READING
Easy Phonics Method. Beginning remedial reading. Grammar, comprehension. Any level. Adult. Individual tutoring. Qualified, experienced teachers.
262-7242

PIANO lessons, Alea/P.C.: personalized instruction by expert teacher w/degree, limited openings. 487-7733

PACIFIC MARITIME ACADEMY SEA CAREER SCHOOL

Deck & Engineering Officers
Ocean & Motorboat Operators
Celestial Navigation
A/B's, Diesel, Harbor Pilot
Learn A Second Career While In The Military.
Deck & Engr. Officer & A/B Jobs Are In Demand.
CALL 537-5715 NOW
Approved For Veterans

RECEPTIONISTS
SWITCHBOARD OPERATORS
TYPISTS (50 wpm +)
STENOGRAPHERS
WORD PROCESSORS
ACCOUNTING CLERKS (10-Key)
Are you looking for good working conditions with a work schedule YOU set? Work 1 day a week or 5 days a week... Kelly has interesting assignments in convenient locations. There is never any cost to you. Top pay. Health Care Provided.

SOUND INTERESTING?
Call us or come in:

KELLY SERVICES
"The Kelly Girl People"

900 FORT ST. MALL, #1400
821-7405

INTERVIEWING HOURS: MONDAY-FRIDAY 9-2 P.M.

• 45 SCHOOLS & TRAINING

PIANO Lessons on Hickam Air Force Base. Experienced teacher. Specializing in children. 422-4351

VOICE-Piano instruction conservatory grad. Masters degree. Call 622-4859

EXPERIENCED teacher, excellent references. Private Lessons. Wheelor, Milliani, Schofield, Wahiawa area. 623-0668

MEDICAL CAREERS
• MEDICAL ASSISTANT
• CLINICAL ASSISTANT
• MEDICAL SECRETARY
MED-ASSIST SCHOOL OF HAWAII
Now Open For Enrollment
For information & interview
Call 524-3363
1164 Bishop St., Suite 405
Licensed by DOE

• 50 BUSINESS OPPORTUNITIES

FULL or part time couple and individual for business of your own. Local Amway Distributor assists you for splendid opportunity. Phone 239-7550 leave name and phone number.

SELF EMPLOYMENT. Unlimited earnings. For more information, write to BTH, P.O. Box 1028 Wahiawa, Hawaii. 96786.

YOUR own business for only \$2,500 making concrete stepping stones and other concrete products. Price includes mixer, shovel, forms, 100 drying tables, and hand tools plus my help getting started. Call 262-9990 or 261-7495

OLDE WORLDE an exciting & fantastic opportunity. Call for appt. 262-4718

FULLY equipped beauty shop in Waiapahu Shopping Plaza. \$18,000. Ph. Thelma Kihano (R), 524-6123, 521-8620, 941-1891

• 60 HELP WANTED MALE & FEMALE

WEAR, Show & Sell Sarah Coventry Jewelry. Excl. comm. 737-3493

PERSONS to make continuous part-time restaurant reports for Nat'l Market Research Firm. References required. Proficiency Specialists, Box 20244, San Diego 92120

DUNHILL TEMPORARY SYSTEMS
Bookkeepers
Accounts Clerks
Secretaries
Typists
(60 wpm or higher)
Call Ann 524-1734
Fees paid by employers

Call Ann 524-1734

Fees paid by employers

• 60 HELP WANTED MALE & FEMALE

TYPIST writer editor part time \$5 hr. Call 247-3774

LEARN / Demonstrate Needlepoint, latch hook, embroidery, cross stitch, etc. Fun/Profit. 235-6308

NEED extra income? Earn it in your spare time. Call 488-5667 for appt.

AFTER school sports program aide wanted in Kailua. Ph. 239-8726, 262-0129

CLERK TYPIST
Mon. to Fri. 7:45 to 4:30 p.m. \$690 per mo., excellent benefits. **SHORT HAND 80wpm**, typing 40 wpm, 1 yr. clerical experience. Hawaii Job Corps Center
Call 395-2361
9 to 3 p.m.
An equal opportunity employer.

RETIRED person for p/t yard work. Call 262-6261. eves. Drivers license.

ARTEX Decorator Paints. Accepting orders. Party Plan. Call 833-4146

HOLY Family School 8th grader wanted part time to babysit & help with homework after school. Will provide transportation home. Call 422-7979

SAILING INSTRUCTOR
at Marina KMCS
\$4.78 per hour. Must have minimum 2 years sailing experience. Apply to Personnel Office, KMCS Exchange Bldg. 1404, Kaneohe Bay, Mon. thru Fri. 10 a.m. to 3 p.m.
Phone 267-2111, ext. 150
An equal opportunity employer

TEACHER early elem. degree, Kailua Children's Ctr. 261-9666

ENJOY the freedom of a commission sales career, the challenge & reward of the Sunlife of Canada extensive training & attractive compensation package, fringe benefits. Call Bob Galbraith at 536-4536, 621-9398

GET DOWN TO ALPHA
FOR EACH PLASMA DONATION
\$7
You can help close the gap in worldwide plasma shortages and aid victims of disease and injuries too. Supplement your income. Wouldn't you like to be part of it? Get down to Alpha today!
3178 KOAPAKA ST.
(Behind Airport Hamakua Inn)
836-0647
Open 6 days!
MON.-THURS 9:00 am-6 pm
TUE., WED., FRI., SAT. 8:00 am-4 pm
STARTING JULY 7th

• 60 HELP WANTED MALE & FEMALE

AVERAGE \$10 to \$12 per hr. demonstrating stitchery. Flexible hrs. 623-1998.

EARN EXTRA MONEY
Military & Local Welcome
Part Time 6:30 to 10 p.m.
Nation's largest discount shopping service outlet has sales & delivery positions avail. Distributors of stereo, electronics, microwave, etc. Also the buying service for clothing, furniture, sporting goods, auto accessories. Openings avail. in Honolulu, Pearl Harbor, Salt Lake, Wahiawa, Ewa Beach, Barber's Point & KMCS. Start at \$3.00/hr. or incentive pay plan varies. Call Central Personnel Office for interview.
833-4576 ask for Mary

ESTIMATOR & drywall contractor. Call 235-6655 for interview.

PART time Janitress. Kailua/Kaneohe/Enchanted Lake area. Ph. 247-2614.

LOST Your Tri-Chem liquid embroidery instructor? NEW XMAS CATALOG! Services, classes: 422-6156, 235-8455, 624-4988, 422-5957, 254-4892. Full/part time career opportunities.

U.S. ARMY RESERVE
Cash bonus
Part-time income
Must qualify
CALL
Kailua 847-3905
Wahiawa 531-3715
Waiapahu 671-3934
Kaneohe 235-6491

NEEDLECRAFT Demonstrators needed. Island Wide. \$10 to \$12 hr. Phone 254-5052.

WE need drivers for bicycle ice cream wagon, full/part time, commission, good exercise, good money, good fun. 262-8258

CHURCH Ministry worker for Sunday and Wednesday eves., Thursday, 9-11 a.m. Call 235-5561

SALES? Advertising - full & part time work from home. Comm. bonus. Rapid advancement to mgmt. Call 422-6713 for appt.

PRESSROOM HELPERS

Sun Press has immediate openings for pressroom helpers. Duties include jogging and stacking papers, helping with press make readies and cleaning pressroom. Apply in person. Benefits include medical, dental, profit sharing. Ask for Dennis Heupel.

SUN PRESS
48-016 Alaloa St., Kaneohe
Ph. 235-5881

WANTED!!

Newspaper Area Manager

Part Time Position

Openings in Alea and Waimanalo area. Work with children. Must have van, truck or station wagon. Good salary plus gas allowance.

Call Pat Meador 235-5881

Sun Press

MEN-WOMEN

What skill interests you the most?

With hundreds of skill categories to choose from in today's Army, there's sure to be one that interests you.

Here are a few:
• Food Service
• Law Enforcement
• Construction
• Dental Technician
• Machinist
• Personnel
• Radio Repair
• Communications
• Accounting

Of course, you have to qualify. Testing before you enlist will help determine in which area you're most likely to succeed.

You start at \$449 a month (before deductions). So why not get started.

Call Army Opportunities

Wahiwa 531-3715
Kaneohe 235-5881

• 63 SITUATIONS WANTED MALE & FEMALE

WILL babysit in my home. Pearl Harbor area. 422-4158

BABYSITTING - loving mother of 3 wishes to serve you in your eves. baby-sitting needs. Wk. end. Okay. My Kailua home. Call after 4 p.m. 254-1710

BABYSITTER needed, affectionate, nutrition-minded. Alea, P.C. area. Call Sue 623-5851

QUALITY child care in my Kailua home. Patch member. Call Sherry 261-4088

WILL babysit in my home, full or part time. Kailua. Call 239-6370

WOULD like to babysit in my Schofield home. Any age. For info. call 624-4902

HOUSE, boat, pet, car, carer. Windward only. References. 239-6449

CHILD CARE for 7 yr. old girl. Sun., Mon., Wed. eves. Own trans. 254-1672

RELIABLE cleaning lady once a week. Kailua. Call 261-6272

SCHOFIELD - Retired teachers aide, wants babysitting in home. 624-4252

SITTER companion for elderly lady. Waiapahu. 11-4 Sat., needed also for occasional eves. 732-0037 after 5 p.m.

RETIRED couple for resident manager, apt. cleaning and maintenance, in exchange for partial rent. Exper. & ref. required. Call after 5 p.m. 623-1156

HOUSECLEANING needed twice weekly, must be available to babysit including overnight & free to travel. Must be exp. & loving w/rel. Possible live-in. 261-5493

• 63 SITUATIONS WANTED MALE & FEMALE

LICENSED babysitter. Mon.-Fri. Ph. 262-9445

WILL babysit my home. Mon. thru Fri. Experienced. Ph. 235-3587

SMALL at home play school 9 to 12. Day care available for 24 hours. Shifts OK. Many activities. Lg. play room, lg. fenced yard. From 14 mos. Kailua 262-8423

• 68 GARAGE & LANAI SALES

GARAGE Sale: Kalamia Valley 60" stereo console; desk; shelving; bookcases; lamps; Lane cedar chest; dressers; clothes; plants; plant stands; linens; electric edger; books; kitchen items & misc. 7541 Mokunioa Pl., Sat. from 8 to 2, 395-8839

GARAGE Sale: 948 Luna-awa Pl., Maunawili, 262-6862, glass end tables; stereo speakers; desk; piano; and misc.

GARAGE Sale: Sat., Sept. 13, 9 to 3, 44 White Sands Place, Kailua

MOVING Sale: Begins Thurs. at 5 p.m., kitchen table & chairs; desk w/swivel chair; several small tables; a/c unit; queen & single bed; dresser; men's 3 spd. bike; easy chair; sofa; bookcase; lamps. Windward Passage, apt. 708, Kailua 262-8823

BIG Neighborhood Garage Sale: Rugs; dinette set; toys; stereo; household goods; cuckoo clock & misc. Fri. & Sat., Sept. 12 & 13, 9 a.m. to 5 p.m. 271 Alkane Pl., Kailua

I WILL babysit at my home - Reliable. Ages 1-1/2-4. Call 235-4311

• 68 GARAGE & LANAI SALES

GARAGE Sale: Kalamia Valley 60" stereo console; desk; shelving; bookcases; lamps; Lane cedar chest; dressers; clothes; plants; plant stands; linens; electric edger; books; kitchen items & misc. 7541 Mokunioa Pl., Sat. from 8 to 2, 395-8839

GARAGE Sale: 948 Luna-awa Pl., Maunawili, 262-6862, glass end tables; stereo speakers; desk; piano; and misc.

GARAGE Sale: Sat., Sept. 13, 9 to 3, 44 White Sands Place, Kailua

MOVING Sale: Begins Thurs. at 5 p.m., kitchen table & chairs; desk w/swivel chair; several small tables; a/c unit; queen & single bed; dresser; men's 3 spd. bike; easy chair; sofa; bookcase; lamps. Windward Passage, apt. 708, Kailua 262-8823

BIG Neighborhood Garage Sale: Rugs; dinette set; toys; stereo; household goods; cuckoo clock & misc. Fri. & Sat., Sept. 12 & 13, 9 a.m. to 5 p.m. 271 Alkane Pl., Kailua

I WILL babysit at my home - Reliable. Ages 1-1/2-4. Call 235-4311

• 68 GARAGE & LANAI SALES

GARAGE Sale: Kalamia Valley 60" stereo console; desk; shelving; bookcases; lamps; Lane cedar chest; dressers; clothes; plants; plant stands; linens; electric edger; books; kitchen items & misc. 7541 Mokunioa Pl., Sat. from 8 to 2, 395-8839

GARAGE Sale: 948 Luna-awa Pl., Maunawili, 262-6862, glass end tables; stereo speakers; desk; piano; and misc.

GARAGE Sale: Sat., Sept. 13, 9 to 3, 44 White Sands Place, Kailua

MOVING Sale: Begins Thurs. at 5 p.m., kitchen table & chairs; desk w/swivel chair; several small tables; a/c unit; queen & single bed; dresser; men's 3 spd. bike; easy chair; sofa; bookcase; lamps. Windward Passage, apt. 708, Kailua 262-8823

BIG Neighborhood Garage Sale: Rugs; dinette set; toys; stereo; household goods; cuckoo clock & misc. Fri. & Sat., Sept. 12 & 13, 9 a.m. to 5 p.m. 271 Alkane Pl., Kailua

I WILL babysit at my home - Reliable. Ages 1-1/2-4. Call 235-4311

• 68 GARAGE & LANAI SALES

GARAGE Sale: Kalamia Valley 60" stereo console; desk; shelving; bookcases; lamps; Lane cedar chest; dressers; clothes; plants; plant stands; linens; electric edger; books; kitchen items & misc. 7541 Mokunioa Pl., Sat. from 8 to 2, 395-8839

GARAGE Sale: 948 Luna-awa Pl., Maunawili, 262-6862, glass end tables; stereo speakers; desk; piano; and misc.

GARAGE Sale: Sat., Sept. 13, 9 to 3, 44 White Sands Place, Kailua

MOVING Sale: Begins Thurs. at 5 p.m., kitchen table & chairs; desk w/swivel chair; several small tables; a/c unit; queen & single bed; dresser; men's 3 spd. bike; easy chair; sofa; bookcase; lamps. Windward Passage, apt. 708, Kailua 262-8823

BIG Neighborhood Garage Sale: Rugs; dinette set; toys; stereo; household goods; cuckoo clock & misc. Fri. & Sat., Sept. 12 & 13, 9 a.m. to 5 p.m. 271 Alkane Pl., Kailua

I WILL babysit at my home - Reliable. Ages 1-1/2-4. Call 235-4311

• 68 GARAGE & LANAI SALES

GARAGE Sale: Kalamia Valley 60" stereo console; desk; shelving; bookcases; lamps; Lane cedar chest; dressers; clothes; plants; plant stands; linens; electric edger; books; kitchen items & misc. 7541 Mokunioa Pl., Sat. from 8 to 2, 395-8839

GARAGE Sale: 948 Luna-awa Pl., Maunawili, 262-6862, glass end tables; stereo speakers; desk; piano; and misc.

GARAGE Sale: Sat., Sept. 13, 9 to 3, 44 White Sands Place, Kailua

MOVING Sale: Begins Thurs. at 5 p.m., kitchen table & chairs; desk w/swivel chair; several small tables; a/c unit; queen & single bed; dresser; men's 3 spd. bike; easy chair; sofa; bookcase; lamps. Windward Passage, apt. 708, Kailua 262-8823

BIG Neighborhood Garage Sale: Rugs; dinette set; toys; stereo; household goods; cuckoo clock & misc. Fri. & Sat., Sept. 12 & 13, 9 a.m. to 5 p.m. 271 Alkane Pl., Kailua

I WILL babysit at my home - Reliable. Ages 1-1/2-4. Call 235-4311

• 68 GARAGE & LANAI SALES

• 68 • LAND SALES

2 FAMILY Moving Sale: Sat. 9-4 p.m. 534 Paulele St., Kailua. Piano, TV sets, pool table, stereo, desk, potted plants, sm. appliances, lots of misc.

GARAGE Sale: Sat. Sept. 13, 9-4 p.m. 261-4263. 229 Aloha St., Kailua.

HAWAII KAI MULTI-family sale: baby furniture, toys, clothes, lots of goodies. 1152 Kailua, Sat. & Sun. 9-5.

SAT. Sept. 13, 8-2 p.m. 1242 Honokahua St., Kailua - children's furn., ceramics.

2 TWIN beds, lamps, golf shoes, toys, clothes, misc. Sat. 9/13. 264-2643, 229 Aloha St., Kailua.

GARAGE Sale: miscellaneous household items; furniture; BSA 500 bike; baby clothes; contractor's materials; lumber; nails; green house window 4x3 and much more. Sat. & Sun., 10 to 4, 1024 Nanialli St., Kailua.

MOVING Sale: Sat. 9 to 3, 526 Kaimakee Ln., Kailua. Yamaha organ; piano; stereo; TV; kitchen utensils; books; bookcases, etc.

5 FAMILY Garage Sale: TV antenna; furniture; bric-a-brac; clothing. 5243 Paipai St., Aiea Haina, Sept. 13, 8 to 4.

GARAGE full of books, housewares, records, monaural tape recorder, player, two Panasonic speakers; 16" Chrysler O/B boat. Gator trailer. Sept. 12/14 from 9 to 3. 704 Pahumeha Way (Enchanted Lake), Kailua.

MOVING sale - Sat. & Sun. 9/14 - 9/15; dbl. beds, 11' sofa; small tables, plants, yard tools. Kakaia St., Kailua.

ST. JOHN Vianney's Church, gigantic garage sale. Sat. 9/13 9-1 p.m. Everything must go. 920 Keolu Dr., Kailua.

ODDS & Ends - Bargains galore. Kristian rug-blue 9 a.m. Sept. 13, 531-F Keolu Dr., Kailua.

GARAGE Sale Sat. Only, 9 to 5, 128 Aiea Loop, Kailua.

MOVING Sale Sept. 13, 9 to 5, 7487 Kekaa St., Kailua Valley.

FURNITURE refig., \$130. couch, \$100; loveseat, \$85; desk, \$75; coffee table, \$35; bed, \$100; either antique. Deana. 847-5385 or Harry 471-3971/423-2560.

"BARGAINS" - Toshiba 19" color TV, carpet, recliner, single bed, vacuum, couch, misc. Sell out no later than Sat. night 9/16 262-0003. 247-0067 day or night.

GARAGE Sale. Kailua Valley, sofa, washer, dryer, refrigerator, dressing table & misc. Sat. from 8 to 2, 7533 Mokunioi Pl., 365-7418.

BIG moving sale. 45-1133 Makalehi St. 235-2981.

A SUE-ANN SALE Sat. 9/13 entire contents of condo. Bdrm. furniture, chairs, dining set, bar, cables, collectibles - paintings, marble, onyx, antiques, misc. Call 521-8913.

YARD Sale, Sat. 9/13, 9-4 p.m. acuba tank, pillows, etc. 321-4 Hala, Aiea Gardens.

• 73 APTS. FURNISHED

PEARL Ridge Colonnade, 2 bdrm., 2 bath, washer, dryer, all amenities \$675 mo. 487-6593, 488-4486.

PUU Aiea: never lived in ocean view, 2 bdrm., pool \$850 Lease. 235-8661.

KAILUA studio for one non-smoker. No pets, private entrance, lanai, parking, util. incl. \$285. 262-8344.

WAIPAHU 1 bdrm., lanai, full bath, private entrance, \$200/mo. incl. utils. Gil. 671-1987 or 684-4381.

PUNALUU beach, 1 bdrm., lanai, pool, utilities. Ph. 235-0876 or 263-1082, Debbie.

• 75 APTS. PARTLY FURNISHED

THE Fairway House Brand-new, 2 bdrm., 2 bath. Date St. 682-6885.

KAHALUU: Brand-new 1 bdrm., \$450 mo. includes electric & water. Couple or single. No pets. 336-9790 or 236-7412.

KANEHOE: Makua Hale, 3 bdrm., 2 bath and unit, pool. \$600 mo. Ph. 262-8181.

DATE St. - Lurely 1 bdrm. Penthouse apt., lga. lanai & parking incl. \$550, March. 336-8888 or 261-6702.

PEARL Ridge 1 bdrm., lanai, pool, parking, util. incl. \$485. Ph. 487-6593.

KAHALUU: 2 bdrm., 2 bath, washer, dryer, pool, parking, util. incl. \$550. Ph. 262-8181.

• 75 APTS. PARTLY FURNISHED

STUDIO single person, no pets, \$230/mo. incl. utils. Phone 261-0708.

KANEHOE: 2 bdrm., \$370/month, 144 children, no pets. 261-235-0789.

KANEHOE-11th floor, bay view, 2 bdrm., incl. washer/dryer, parking. Short term lease or as desired. \$475/month. incl. Phone 247-5829.

MAKAKILO: 3 bdrm., 1 1/2 bath, ocean view pool, \$500/mo. Call evens. 536-9937, 623-6843, 684-7283 DWH.

KANEHOE: apt. partly furnished, 3 bdrm., 2 bath, all appl., drapes, pool, mountain/ocean view, \$500. Call 262-8298 or 262-9411 after 5 p.m.

PEARL Ridge 2 bdrm., modern \$375; Lanikai 3 bdrm., 1 bath home \$475. Apartment & House Finders. 955-4428.

• 76 RENTALS TO SHARE

RESPONSIBLE working female wanted to share 3 bdrm. apt. w/2 of the same. No children/no pets. \$150 per mo. + utilities. Call 261-4923 evens. only. Ask for Chris.

KAILUA GREAT BEACH HOUSE TO SHARE Mature single, \$225 incl. util. 261-1901. Wed. or evens. anytime 7:30 a.m. or after 6 p.m.

ROOMMATE 3 bdrm. townhouse, Pearlridge, own room & bath \$275 mo. 488-0654, 841-8174.

KAILUA: Beach house, responsible person, kitchen privileges \$215 mo. plus util. 262-9954 after 5.

SHARE home, female w/steady job or serious college student \$205 incl. util., pool & parking. 254-3815.

KANEHOE: own bdrm., in 2 bdrm., fully furn. twhs. 239-6990 after 7 p.m.

ABSOLUTELY the best method of finding a roommate. Manoa 3 brm. \$175; Salt Lake 2 bdrm., 2 bath \$160. Roommate Locators 955-4428.

HAVE many listings in Windward & Leeward areas. Kailua, 3 bdrm. on beach \$185. Pearlridge \$150. Serving Hawaii since '78. Roommate Locators 955-4428.

KANEHOE: Responsible working female wanted to share 3 bdrm. apt. w/2 of the same. No children/no pets \$150 per mo. plus utilities. Call 235-0319 after 6 p.m.

NAPALI GARDENS, single or couple to share 3 bdrms., 1 1/2 baths, partly furnished. \$225/Utilities-\$100/dep. H. Charles. 257-2635/235-6648.

NEED 2 singles or 1 couple to share quiet 3 bdrm. Kailua house, \$200/ev. w/util. Ph. 235-0002.

KANEHOE: own room & bath \$125, util. incl., no pets, pet sitting duties. Call 247-5007.

• 81 HOUSES FURNISHED

KANEHOE Bay Drive, fantastic view from 3 bdrm., 2 bath home, including household goods, washer/dryer, etc. Completely redecorated and carpeted. \$750. Phone 262-7420.

• 81 HOUSES FURNISHED

LANIKAI - Tropical garden surrounds this quaint older Hawaiian 3 bdrm., 2 bath home near great beach. Avail. 9-12. Call 261-3389 for Theo or 261-2293 after 6 p.m.

WAIPHO: 3 bdrm., 1 bath, living rm. drapes; \$500 utilities included & yard service. 623-6752.

KAHALA 1 bdrm. cottage \$385, Kapiolani 3 bdrm., 1 bath \$425. Apartment & House Finders. 955-4488.

AMAZING view 3 bdrm. Tantalus, Manoa 3 bdrm., 2 bath. Apartment & House Finders. 955-4428.

• 83 HOUSES, PARTLY FURNISHED

WAIPAHU: 3 bdrm. house, 2 bath, \$500 month. Call 677-9808 after 4:30 p.m.

NICE home, 3 bdrms., 2 baths, nr. KMCAS \$625 mo. Ph. 254-5470, 254-2144.

AIEA Haina: enclosed yard, 3 bdrm., 2 bath, wet bar, alarm system, enclosed garage, \$850. Call 373-4754 or 922-2929.

AIKAI PARK: 3 bdrm., 2 bath home w/lge. garden on no through street \$595. 262-9119. No pets.

KAILUA: On golf course, 3 bdrm., large family rm., landscaped yard, \$675 monthly. Call 247-0743.

KANEHOE Bay, fantastic view, 3 bdrms., 2 baths, spacious beautiful, kamaina home w/deck, large private yard, washer/dryer/dishwasher. \$900. 262-8922.

KAILUA: very nice 3 bdrm., no pets \$600 mo. incl. utilities & yard. Available now. Call Jan 254-3124 or 261-3389.

• 84 HOUSESITTING

HOUSE sitters. Available. Reliable couple. References. Tel. 455-9114.

• 85 TOWN HOUSES PART. FURN.

KANEHOE - new 2 bdrm., 2 bath, townhouse, super amenities \$650. Call 521-8833 or 373-3054.

LANIKAI - BLUESTONE, model B, end unit, 3 bdrm., 3 bath \$1000 mo. Ph. 524-5394.

HONO Hale Towers, 2651 Kuleia St. Immac. 1 bdrm., 1 bath, parking, pool, security, rec area, cool side of bldg., close to UH, shopping & bus. \$69,900. For sale by owner. 521-8203.

KANEHOE: Puu Alii, 3 bdrm., end unit, garage, view, tennis, pool. 261-1410.

KANEHOE: Puu Alii, 3 bdrm., 2 bath, pool & tennis, \$600. 235-5787.

3 BDRMS., 2 baths, parking, \$630. 487-3178 evens. 836-0544 days - Keenini.

CONDOS & TOWNHOUSES - 85 FURN.

1 BDRM. condo, ocean view, North Shore. \$400. Ph. 623-3486.

• 88 CONDOS & TOWNHOUSES FURN.

PUNALUU get away from it all and yet, be 25 minutes from Kaneohe. Beautifully furnished, 1 bdrm. apt. right on the beach, even includes quadraphonic sound system! Large covered, private lanai w/ocean and mountain views. \$400/mo. All utilities included. No pets. Call AWH 261-2419/524-2600 Ext. 51.

• 87 TOWNHOUSES UNFURNISHED

HAIKU Gardens - 4 bdrms. 2 1/2 baths, \$700/mo. + deposit. Call after 6 p.m. 235-4270.

• 88 ROOMS FOR RENT

OWN room w/phone and bath, sharing kitchen. Prefer female non smoker and likes children \$165 includes utilities. Call 235-5098 or 235-3743.

PRIVATE room w/bath for quiet working woman. \$200. Phone 247-3266.

BDRM. fully furn., kitchen privilege, util. incl. \$180 + \$100 dep. 235-5213.

UH/Manoa/Moiliili - Lanikai nice view \$165 Roommate Locators 955-4428.

LANIKAI: Large room & bath, private entrance, 1 block from beach, util. incl. \$225. 261-5809 after 6 p.m.

• 83 VACATION RENTALS

BEACHFRONT studio near Crouching Lion. Week, month, pool. 235-6196.

KUILIMA: 1 bdrm. fully furnished apt., no pets. Call 239-8539.

KUILIMA: 1 bdrm. apt., sleeps 4, amenities. Daily/wkly./mo. 235-1481.

VACATION Rental, Kaa- awa. Magnificent view, 2 bdrm., 1-1/2 bath + loft. Swimming pool, volleyball, \$250 per wk. Cathy Lyman 261-4332.

• 98 RENTALS WANTED

MATURE business person w/small house dog desires 1 or 2 bdrm. apt./cottage, Kaneohe/Kahaluu up to \$350. Oct. 1. Call 235-0205 after 5 p.m.

FEMALE from Boulder, Colorado will be doing internship at Rehab hospital Honolulu, Jan. 2, 1981 to 15 Mar. needs room & bath, will share kitchen if available. Will pay up to \$125 monthly. Call HI. contact at 487-2542 evenings.

DESIRE room from Oct. 1. To discuss arrangements leave ph. # at 734-7088.

WORKING Couple with 1 cat seeks 2-3 bdrm. house (or large 1 bdrm.) on Windward side, reasonable. Call 261-5065 evens.

• 103 OFFICES FOR RENT

KAILUA offices, 146 Hekili St. 1st Fl., up to 3,000 sq. ft. C. Jack Wolfe 261-1785.

SMALL ground floor, store or office space, Good bus. location. Ph. 845-1276.

• 114 REAL ESTATE FOR SALE

GREAT home, excl. investment, POINCIANA MANOR. Quiet 2 bdrm., 2 bath unit overlooking lush garden. Pools, fountain. Priced at only \$101,500. TMK #1-4-2-1-48. Lease. David Chase (RA) 262-8006. Sam Daily Realty, Inc. 235-6868.

KANEHOE \$139,000 SPARKLING, FEE SIMPLE, 3 bdrm., 2 bath home, open beam ceilings, fully fenced, huge kitchen area, shows pride of ownership. Exceptional buy. (mls 41733). Call Owner/Inator Lorin Chun (RA) 247-4545. J.M. Urner, Inc. 261-3389.

KANEHOE \$79,000. HAIKU HALE - Beautiful unit, 2 bdrm., 1.5 bath, mountain and ocean view. Upgraded and immaculate. Great starter home. Just listed, why not go? Tula Mae? TMK 1-4-6-31-18. Call June Kristapovich (RA) 261-2738, J.M. Urner, Inc. 261-3389.

KAILUA \$97,500. POINCIANA MANOR - Neat 2 bdrm., 2 bath unit. In well planned townhouse complex. Handy to all your needs. Will go Agreement of Sale with low down & good interest rate. TMK 4-2-1-48. Lease. Call Dorothy Calistro (RA) 262-4414, J.M. Urner, Inc. 261-3389.

KAILUA \$169,500. Windward Harbour - Fully upgraded 3 bdrm., 2 bath unit in fashionable new condo. Solar heating, pool, BBQ, tennis club, and numerous other amenities. Lease. Open to Exchange. (mls 40390). Call Jim Brown (R) 235-3874, J.M. Urner, Inc. 261-3389.

KANEHOE \$119,500. KEAPUKA just listed, T's majestic Koolaua protect this cozy 3 bdrm., 2 bath home, with spacious family room and private patio in quiet area. So convenient to all your needs. Lease. Priced to sell. TMK 1-4-5-83-53. Easy to see. Call Myrla Poston (R) 261-2293, J.M. Urner, Inc. 261-3389.

KAILUA \$135,000. SIMPLY LOVELY describes this spacious, immaculately kept home, 3 bdrm., 2 bath; professionally improved, huge enclosed garden lanai. Easy to see and well worth the effort. Lease. TMK 1-4-2-39-48. Call Becky Meneses (RA) 261-5931, J.M. Urner, Inc. 261-3389.

SALT Lake, large studio, upgraded, pool, agreement of sale pfd. \$58,000/offer. 458-2895 or 836-0828.

KAILUA 1241 Mokapu Blvd. \$123,000. Shown by owner. Open everyday 1 to 5. At this price you are getting a 4% comm. when you buy this 3 bdrm., 2 full bath beauty rather than paying a 6% premium if you buy another. Condition: Superb inside & out. Location: Outstanding. You will be delighted w/other features when you see it. Several financial options available. 254-1328, Margaret Lockridge, Inc. (R) 262-5402.

KAILUA: 1241 Mokapu Blvd. \$123,000. Shown by owner. Open everyday 1 to 5. At this price you are getting a 4% comm. when you buy this 3 bdrm., 2 full bath beauty rather than paying a 6% premium if you buy another. Condition: Superb inside & out. Location: Outstanding. You will be delighted w/other features when you see it. Several financial options available. 254-1328, Margaret Lockridge, Inc. (R) 262-5402.

KAILUA: 1241 Mokapu Blvd. \$123,000. Shown by owner. Open everyday 1 to 5. At this price you are getting a 4% comm. when you buy this 3 bdrm., 2 full bath beauty rather than paying a 6% premium if you buy another. Condition: Superb inside & out. Location: Outstanding. You will be delighted w/other features when you see it. Several financial options available. 254-1328, Margaret Lockridge, Inc. (R) 262-5402.

KAILUA: 1241 Mokapu Blvd. \$123,000. Shown by owner. Open everyday 1 to 5. At this price you are getting a 4% comm. when you buy this 3 bdrm., 2 full bath beauty rather than paying a 6% premium if you buy another. Condition: Superb inside & out. Location: Outstanding. You will be delighted w/other features when you see it. Several financial options available. 254-1328, Margaret Lockridge, Inc. (R) 262-5402.

KAILUA: 1241 Mokapu Blvd. \$123,000. Shown by owner. Open everyday 1 to 5. At this price you are getting a 4% comm. when you buy this 3 bdrm., 2 full bath beauty rather than paying a 6% premium if you buy another. Condition: Superb inside & out. Location: Outstanding. You will be delighted w/other features when you see it. Several financial options available. 254-1328, Margaret Lockridge, Inc. (R) 262-5402.

KAILUA: 1241 Mokapu Blvd. \$123,000. Shown by owner. Open everyday 1 to 5. At this price you are getting a 4% comm. when you buy this 3 bdrm., 2 full bath beauty rather than paying a 6% premium if you buy another. Condition: Superb inside & out. Location: Outstanding. You will be delighted w/other features when you see it. Several financial options available. 254-1328, Margaret Lockridge, Inc. (R) 262-5402.

KAILUA: 1241 Mokapu Blvd. \$123,000. Shown by owner. Open everyday 1 to 5. At this price you are getting a 4% comm. when you buy this 3 bdrm., 2 full bath beauty rather than paying a 6% premium if you buy another. Condition: Superb inside & out. Location: Outstanding. You will be delighted w/other features when you see it. Several financial options available. 254-1328, Margaret Lockridge, Inc. (R) 262-5402.

KAILUA: 1241 Mokapu Blvd. \$123,000. Shown by owner. Open everyday 1 to 5. At this price you are getting a 4% comm. when you buy this 3 bdrm., 2 full bath beauty rather than paying a 6% premium if you buy another. Condition: Superb inside & out. Location: Outstanding. You will be delighted w/other features when you see it. Several financial options available. 254-1328, Margaret Lockridge, Inc. (R) 262-5402.

KAILUA: 1241 Mokapu Blvd. \$123,000. Shown by owner. Open everyday 1 to 5. At this price you are getting a 4% comm. when you buy this 3 bdrm., 2 full bath beauty rather than paying a 6% premium if you buy another. Condition: Superb inside & out. Location: Outstanding. You will be delighted w/other features when you see it. Several financial options available. 254-1328, Margaret Lockridge, Inc. (R) 262-5402.

KAILUA: 1241 Mokapu Blvd. \$123,000. Shown by owner. Open everyday 1 to 5. At this price you are getting a 4% comm. when you buy this 3 bdrm., 2 full bath beauty rather than paying a 6% premium if you buy another. Condition: Superb inside & out. Location: Outstanding. You will be delighted w/other features when you see it. Several financial options available. 254-1328, Margaret Lockridge, Inc. (R) 262-5402.

KAILUA: 1241 Mokapu Blvd. \$123,000. Shown by owner. Open everyday 1 to 5. At this price you are getting a 4% comm. when you buy this 3 bdrm., 2 full bath beauty rather than paying a 6% premium if you buy another. Condition: Superb inside & out. Location: Outstanding. You will be delighted w/other features when you see it. Several financial options available. 254-1328, Margaret Lockridge, Inc. (R) 262-5402.

KAILUA: 1241 Mokapu Blvd. \$123,000. Shown by owner. Open everyday 1 to 5. At this price you are getting a 4% comm. when you buy this 3 bdrm., 2 full bath beauty rather than paying a 6% premium if you buy another. Condition: Superb inside & out. Location: Outstanding. You will be delighted w/other features when you see it. Several financial options available. 254-1328, Margaret Lockridge, Inc. (R) 262-5402.

KAILUA: 1241 Mokapu Blvd. \$123,000. Shown by owner. Open everyday 1 to 5. At this price you are getting a 4% comm. when you buy this 3 bdrm., 2 full bath beauty rather than paying a 6% premium if you buy another. Condition: Superb inside & out. Location: Outstanding. You will be delighted w/other features when you see it. Several financial options available. 254-1328, Margaret Lockridge, Inc. (R) 262-5402.

KAILUA: 1241 Mokapu Blvd. \$123,000. Shown by owner. Open everyday 1 to 5. At this price you are getting a 4% comm. when you buy this 3 bdrm., 2 full bath beauty rather than paying a 6% premium if you buy another. Condition: Superb inside & out. Location: Outstanding. You will be delighted w/other features when you see it. Several financial options available. 254-1328, Margaret Lockridge, Inc. (R) 262-5402.

KAILUA: 1241 Mokapu Blvd. \$123,000. Shown by owner. Open everyday 1 to 5. At this price you are getting a 4% comm. when you buy this 3 bdrm., 2 full bath beauty rather than paying a 6% premium if you buy another. Condition: Superb inside & out. Location: Outstanding. You will be delighted w/other features when you see it. Several financial options available. 254-1328, Margaret Lockridge, Inc. (R) 262-5402.

KAILUA: 1241 Mokapu Blvd. \$123,000. Shown by owner. Open everyday 1 to 5. At this price you are getting a 4% comm. when you buy this 3 bdrm., 2 full bath beauty rather than paying a 6% premium if you buy another. Condition: Superb inside & out. Location: Outstanding. You will be delighted w/other features when you see it. Several financial options available. 254-1328, Margaret Lockridge, Inc. (R) 262-5402.

KAILUA: 1241 Mokapu Blvd. \$123,000. Shown by owner. Open everyday 1 to 5. At this price you are getting a 4% comm. when you buy this 3 bdrm., 2 full bath beauty rather than paying a 6% premium if you buy another. Condition: Superb inside & out. Location: Outstanding. You will be delighted w/other features when you see it. Several financial options available. 254-1328, Margaret Lockridge, Inc. (R) 262-5402.

KAILUA: 1241 Mokapu Blvd. \$123,000. Sh

• 166 AUTO PARTS & SERVICE

WINDWARD VW Clinic
Mobile V.W. Repair Shop.
Ph. 247-2525. Repairs done
at your home by appt.
Island Wide.

AUTO TRANS. CLA fits 77
Pinto Mustang. Bobcat
\$100 offer. Used starter for
same \$15. 458-3819

5% OFF. Everything from
lenders to rear axles,
engines to glass. For most
makes & models. Foreign &
domestic. Ph. Pat. Ltd.
841-8024

• 166 PICKUPS, TRUCKS

70 DATSUN P/U Truck,
white spoke wheels, like
new 70 tires, new clutch,
good cond., \$1,075/offer.
422-5130 eves.

75 INTERNATIONAL 1/2
ton, low hitch, excl.
running, many new items,
\$2000 or offer, 238-0880 12-
5 p.m.

80 DATSUN Pickup, 5
spd., excl. cond., \$4700/
offer, 262-2090 after 5 p.m.

59 DODGE Fargo, 1 ton
w/ack, needs clutch work,
\$300/best offer, Ph. 235-
3246

1987 POWER Wagon 4 x 4,
2-ton, crew cab, twin range
trans., 6 cyl. sound
condition, 1st \$1,900 cash
take. Call David at 235-
5881 days, 941-7196 eves.

78 CHEV V. TON... \$2888
Van auto, power steering, air, 579
8000

59 GMC... \$1888
6 cyl. 4 spd. 1 1/2 ton van, 804
224

85 FORD VAN... \$988
1133333

68 FORD VAN... \$888
514 821

70 FORD RANGER... \$3888
4 cyl. 4 spd. auto, power steering, air,
140 267

71 RANCHERO... \$988
Auto, power steering, 130 2943

77 DODGE 200... \$5888
1 ton, loaded with accessories, 642
783

75 CHEV V. TON... \$3288
Chevrolet air conditioning, incl. air
50 500

74 RANGELASTER... \$2888
4 spd. 1 1/2 ton, 140 500

CAR CITY
Ph. 833-3017

• 171 MOTORCYCLE SALES & SERVICE

78 850 YAMAHA
fair condition \$800.
Call 823-4367

1979 SUZUKI Motorcycle
GS 425Ld excellent cond.
\$1400/offer, 823-7849

79 HONDA Twin Star, low-
mileage, like new cond.
Moving to mainland,
\$1,200. 402-2472 after 5 p.m.

CLASSIC Cruiser, rare 77
Norton 850 Commando.
Mint cond. By original
owner, luggage & too many
extras to list. \$3,400. Ph.
988-7521.

79 KX80 KAWASAKI,
good condition, \$550/offer.
Call 235-2636.

78 HONDA CB125,
\$310
247-4737, eves. only.

79 HONDA CX 500
Custom w/extras, \$2,100/
offer. Call 877-4726.

78 KZ 850 KAWASAKI in
excl. cond., \$2,000/best
offer. Call 823-1866.

80 YAMAHA 250XT 2,000
miles. Asking \$1,100.
Phone 257-2086.

NOW AVAILABLE
Motorcycle
Leasing
We lease all makes &
models of motorcycles.
Credit considerations
for military personnel.
Monthly payment
to fit your budget.

LEISURE BIKES, INC.
655 Pined St., #100
322-1500

GOING TO OAHU for
day or more? We'll get you
there & back for \$100.
Includes round-trip airfare,
hotel, car rental, & meals.
Call 823-4367 for details.

• 171 MOTORCYCLE SALES & SERVICE

78 YAMAHA YZ80. Good
cond. Offer. Must sell.
Morning & eves, 261-4280.

ULTIMATE moto-x, Yama-
ha 500 w/extensive mod for
dirt racing. Must sell.
Over \$5,000 invested.
Sacrifice \$1,900. Exper.
riders only. 988-7521.

• 174 RENT-A-CAR

RELIABLE Used Cars, \$7
per day, 1 wk. minimum.
Special monthly rates,
collision waiver extra. Auto
Mart Car Rental, 98-7068
Kam Hwy., Alea, Ph. 487-
9991.

• 175 VAN, CAMPER, JEEPS

89 CHEVY sport van, auto.,
upgraded paint, carpet &
seat, clean \$975/offer, 262-
6820

BANK REPOSSESSION
78 FORD ECONOLINE 150 2 captain's
high back chairs, auto. power steering,
AM/FM cassette stereo, roof rack,
air conditioning, 187211 570 cash
or trade in down pymt. + tax & lic. or
approved credit. Repossession price
\$3888.00. See Repossession Mgr. at
WHOLESALE MOTORS
2909 Nimitz Hwy. 830-1222

79 GMC 3/4 ton Van, p/s,
3/b, dual air, Poly rust &
seat, custom interior,
KPH9000, 4200 mi.,
\$9987/offer, 422-8659 eves.

68 VW Bus 1650cc engine,
runs great, looks good,
\$1,500/firm, 422-8991.

• 176 AUTOS FOR SALE

AMC

74 HORNET Sportabout,
p/s, power brakes, auto.
transmission, good condi-
tion, Ph. 257-3534 ask for
Dawn.

AUSTIN HEALEY

69 AUSTIN Healy Sprite,
convertible, good cond.,
runs good, new radiator,
clutch 235-3181, 247-4396

AUDI

72 AUDI auto, air, sunroof,
new tires, excl. cond.
\$850/offer, Ph. 623-8018.

79 CORVETTE—Loaded,
auto., \$13,000. Phone
595-4776 or 524-5104.

74 MONTE CARLO, trans.
& engine overhaul, mag
wheels, no rust, perfect
running cond. \$950. 247-
3640

69 CHEVY Impala, brand-
new radiator/water pump.
Excl. cond. Inside & out.
\$600/offer, 261-1240

LEAVING Oahu, must sell,
near complete V8 Vega
\$2200/offer, 488-7120

63 CHEVY 11 station
wagon, 6 cyl., good
running cond., body needs
repair, \$250. 238-9455.

AUDI

79 AUDI 5000S, silver
w/pale blue interior, all
options, \$11,500. 624-4853
after 6 p.m./weekends.

BUICK

73 BUICK LeSabre,
experienced power brakes/
steer, air \$500/offer, 395-
5028

73 BUICK station wgn.,
auto., runs great, \$450. 536-
8515 after 6 p.m.

CADILLAC

73 CADILLAC De Ville
Luxury plus, classy light
gold w/vinyl roof, all tan
leather interior. Excellent
condition. \$1,650. Phone
261-0532.

78 CADILLAC Coupe
DeVille, white, padded top,
p/s, p/b, air, cruise control,
stereo, p/locks, new tires &
tuneup. Excl. cond. Phone
487-5318.

CHEVROLET

79 CHEVETTE, green, 2
dr., low mileage, \$3,800/
best offer. After 5 p.m.
phone 823-3425.

70 NOVA, good cond.,
BEST offer, Ph. 521-8848 or
923-5689

78 CAMARO LT only
22,000 miles, air, FM/AM,
immac. cond., UH profes-
sor's car. \$4700/offer,
must sell. 948-6547 day,
254-2526

74 MONTE CARLO, trans.
& engine overhaul, mag
wheels, no rust, perfect
running cond. \$950. 247-
3640

69 CHEVY Impala, brand-
new radiator/water pump.
Excl. cond. Inside & out.
\$600/offer, 261-1240

LEAVING Oahu, must sell,
near complete V8 Vega
\$2200/offer, 488-7120

63 CHEVY 11 station
wagon, 6 cyl., good
running cond., body needs
repair, \$250. 238-9455.

WE PAY MORE! MORE! MORE!

FOR CLEAN LATE
MODEL CARS,
VANS & TRUCKS
AT

SHELLY
PH. 836-0466

CORNER NIMITZ
& LAGOON

CHEVROLET

70 CHEVROLET
Station Wagon, \$200.
Call 423-2482.

EZ DOZ IT car—78 Nova
Custom, auto., 2 dr. sdn., 6
cyl., AM/FM cassette
stereo, low mileage.
\$3775/best offer. Dugan,
471-3548 or 422-1028.

72 CAMARO, 1 owner, well
maintained, 8 cyl., auto.,
p/s, p/b, \$1,250. Phone
261-8544 evenings.

70 CHEVY Bel Air, good
engine, needs body work.
\$200/offer, Ph. 281-9418.

72 MALIBU 4 dr., V-8, p/s,
47,000 miles, \$800.
Call 254-5453.

CHRYSLER

71 CHRYSLER 9 pass-
enger station wagon, radio,
air, trailer hitch, 282-6129.

71 CHRYSLER, good
cond., first \$300 takes.
Call 839-0423.

BANK REPOSSESSION
78 COROLLA, Immac. cond.,
18249311 \$282 cash or trade in
down pymt. + tax & lic. or
approved credit. Repossession
price \$2588.85. See Repossession
Mgr. at WHOLESALE MOTORS
2909 Nimitz Hwy. 830-1222.

'81 GLC'S
ALL NEW
FRONT RUNNER
HERE! HERE!
Plus the LUXURIOUS
1981 626's

WHERE DEALS ARE MADE at
Hawaii's Oldest Mazda Dealer
WHOLESALE MOTORS
2909 Nimitz Hwy. 830-1222

WE PAY MORE! MORE! MORE!

FOR CLEAN LATE
MODEL CARS,
VANS & TRUCKS
AT

SHELLY
PH. 836-0466

CORNER NIMITZ
& LAGOON

DATSUN

77 DATSUN 280Z 4 spd.,
43,000 miles, \$6,200
499-1735

71 DATSUN 510 wagon, 4
dr., 66,600 mi., good cond.
\$900. 247-2379

SACRIFICE! '72 240Z
stand., blk., air, many new
parts \$3600. 235-2857, 422-
7418

76 DATSUN 710 sta. wgn.,
auto., air, excl. \$2895/offer.
422-8521

69 DATSUN, 4 dr., station
wagon, standard trans.
\$300/best offer, 833-0678

70 510, auto., 4 dr.,
runs good, \$400/offer.
239-7975

78 510 WAGON, red, 4
speed, 4 door. Great gas
mileage. \$3,495/offer. Ph.
247-3567.

78 DATSUN B-210, excl.
cond., like new. Over 30
mpg, tape stereo. See to
believe. \$3,250. 247-6071.

75 DATSUN 810, 2 dr., 4
spd., mag, rustproofed.
Excl. cond., \$2,575.
Phone 247-3760.

BMW

"Long-term low maintenance
reliability, touring comfort,
high-speed stability. Old World
craftsmanship, excellent fuel
economy, and an engine design
that allows the simplicity of
an unadorned twin"

CYCLE GUIDE

WHEELS SUPER SALES

NOW ON
SAVE UP TO
\$1400

**This ad is not paid for by military*
Wheels Hawaii
Airport
3165 N. Nimitz Hwy.
836-1851

DATSUN

75 DATSUN 280Z 2 x 2,
auto., air, AM/FM stereo,
low mi., good cond.,
\$4,900/offer, 281-2376 or
524-4048.

70 DATSUN 510
Runs good, low mi., \$800.
Call 422-4081.

DODGE

73 DODGE Polara, 2 dr.
hdp, 318 engine, air, auto.,
power steering, 68,000 mi.,
excl. shape, \$975. 422-
5866 after 5 p.m.

72 DODGE Swinger, auto.,
2 dr. hdp, \$800/best offer.
Call 235-2881 after 6 p.m.

70 ASPEN, "BLANT 0
cylinder", 4 dr., air, radio, 4
new radial tires, excl.
cond., \$2,895. 247-6067
eves. & weekends.

DODGE

74 DART, 4 dr., runs well,
good tires, body rust \$385.
262-4048

70 DODGE Swinger, auto.,
2 dr. hdp, \$800/best offer.
Call 235-2881 after 6 p.m.

70 ASPEN, "BLANT 0
cylinder", 4 dr., air, radio, 4
new radial tires, excl.
cond., \$2,895. 247-6067
eves. & weekends.

BANK REPOSSESSION
71 ASPEN 2 dr. Special Edition Auto.
power steering, radio, air cond., in
excl. cond. 182414 800 cash
down pymt. + tax & lic. with approved
credit. Repossession price \$2901.80
See Repossession Mgr. at
WHOLESALE MOTORS
2909 N. Nimitz Hwy. 830-1222

70 DODGE Coronet 383
engine, air, all power. \$450.
Call 235-1869

WINDWARD DATSUN • WINDWARD DATSUN • WINDWARD DATSUN

Service Your Car
at
WINDWARD DATSUN

We Fix All Makes and Models

DATSUN 46-151 Kahuhipa St., 235-6433 DATSUN

WINDWARD DATSUN • WINDWARD DATSUN • WINDWARD DATSUN

DODGE

74 DART, 4 dr., runs well,
good tires, body rust \$385.
262-4048

70 DODGE Swinger, auto.,
2 dr. hdp, \$800/best offer.
Call 235-2881 after 6 p.m.

70 ASPEN, "BLANT 0
cylinder", 4 dr., air, radio, 4
new radial tires, excl.
cond., \$2,895. 247-6067
eves. & weekends.

BANK REPOSSESSION
71 ASPEN 2 dr. Special Edition Auto.
power steering, radio, air cond., in
excl. cond. 182414 800 cash
down pymt. + tax & lic. with approved
credit. Repossession price \$2901.80
See Repossession Mgr. at
WHOLESALE MOTORS
2909 N. Nimitz Hwy. 830-1222

70 DODGE Coronet 383
engine, air, all power. \$450.
Call 235-1869

WINDWARD DATSUN • WINDWARD DATSUN • WINDWARD DATSUN

Service Your Car
at
WINDWARD DATSUN

We Fix All Makes and Models

DATSUN 46-151 Kahuhipa St., 235-6433 DATSUN

WINDWARD DATSUN • WINDWARD DATSUN • WINDWARD DATSUN

SALE!

NATIONAL
AND
MICHELIN
SAVE

20% to 30%
Prices firm until
9/30/80

(See notes
at base of ad)

NATIONAL
White Steel
Radials
Save 20%

Tire Size	Our Reg. Price	Current Price
875-15	\$77.50	\$61.25
875-14	\$68.25	\$54.60
875-13	\$61.25	\$49.00
875-12	\$54.60	\$43.68
875-11	\$49.00	\$39.20
875-10	\$43.68	\$34.94
875-9	\$39.20	\$31.36
875-8	\$34.94	\$27.95
875-7	\$31.36	\$25.09
875-6	\$27.95	\$22.36

White 2 + 2
Custom
Save 20%

875-15	\$77.50	\$61.25
875-14	\$68.25	\$54.60
875-13	\$61.25	\$49.00
875-12	\$54.60	\$43.68
875-11	\$49.00	\$39.20
875-10	\$43.68	\$34.94
875-9	\$39.20	\$31.36
875-8	\$34.94	\$27.95
875-7	\$31.36	\$25.09
875-6	\$27.95	\$22.36

White 4 Ply
Custom
Save 20%

800-12	\$44.25	\$35.40
800-11	\$41.25	\$33.00
800-10	\$38.25	\$30.60
800-9	\$35.25	\$28.20
800-8	\$32.25	\$25.80
800-7	\$29.25	\$23.40
800-6	\$26.25	\$21.00
800-5	\$23.25	\$18.60
800-4	\$20.25	\$16.20
800-3	\$17.25	\$13.80
800-2	\$14.25	\$11.40
800-1	\$11.25	\$9.00

FORD

'79 FORD Fiesta, bought new in Jan. '80, low mi., leaving late. Must sacrifice \$3950. Bob 624-3040

'75 GRANADA, 4 dr., air, radio, 36,000 mi., \$1500. Call 262-0888

'71 FORD Torino wagon, excl. cond., low mi., \$625/best offer. 395-8338

MUST Sell 1977 Pinto good condition. Call eves. 235-1802

'87 MUSTANG 289, auto., good cond., \$850/best offer. Ph. 247-4948

'73 PINTO, immaculate inside & out, low mi., new tires/battery/brakes/shocks & radiator. First \$1000 takes it. 254-1326

'75 PINTO Runabout, 4 cyl. economy, 4 spd., mag wheels, good cond. \$1775. 422-8968

'76 PINTO 4 spd. \$1800. Ph. 261-2043

BANK REPOSESSION
'78 FORD Super Cab pickup, range package, auto., power steering, air cond., AM/FM stereo, cruise control, sliding rear window, mag. (1337877) \$3750 cash or trade in down pymt. - tax & lic. on approved credit. Repossession price \$5081.16. See Repossession Mgr. WHOLESALE MOTORS 2999 Nimitz Hwy. 636-1222

'71 PINTO, standard \$400/best offer. 247-1929 eves. & weekends

'87 FAIRLANE, 4 dr., auto., runs good, rims included. \$100. 833-1083.

'75 MAVERICK Good cond., \$900. Ph. Dan, 474-8212 or 456-9589.

HONDA

'74 CIVIC Hatchback - new, brakes, recent engine work, runs great, 25+ MPG, some rust, needs paint. \$1,000/firm. Call 623-4488

'75 CIVIC CC Hatchback, 35 mpg, low mi. \$1950/offer. 239-9927

'70 HONDA roll bar-sunroof, 2 speakers, new paint, \$1,100. 247-0879 after 6 p.m.

MAZDA

'79 MAZDA GLC, like new, AM/FM cassette stereo, new tires, 20,000 miles, \$3700. 684-7474, 677-0269

AAAA BUY OR LEASE AAAA
ALL NEW 1981 MAZDA'S HERE!!
WHERE DEALS ARE MADE at
Hawaii's Oldest Mazda Dealer
WHOLESALE MOTORS
2999 N. Nimitz Hwy. 636-1222
WE WILL NOT BE UNDERSOLD!

1980 MAZDA'S CLOSE-OUT SALE

SAVE \$888 SAVE
WHERE YOU EXPERIENCE
TOP TRADE-IN ALLOWANCE
EASY FINANCING
ON APPROVED CREDIT at
Hawaii's Oldest Mazda Dealer
WHOLESALE MOTORS
2999 N. Nimitz Hwy. 636-1222
WE WILL NOT BE UNDERSOLD!

VIP AUTO

Kick Off
Specials

'76 TOYOTA CORONA 4 dr. wagon, 4 spd. (18539) \$3495

'73 TOYOTA CORONA 4 dr. sedan, auto., radio, no tax (BA 2067) \$695

'76 TOYOTA COROLLA 4 dr. sedn., 4 spd. (397033) \$3295

'73 TOYOTA COROLLA 2 dr. sedn., 4 spd. (9A6770) \$1295

'78 TOYOTA COROLLA 2 dr. sedn., 4 spd. 1800 engine (1F8147) \$3870

Division of Service Pacific
1150 Kapulani Blvd.
(next to Shellway Car Wash)
Ph: 537-5921

MAZDA

'79 MAZDA GLC, like new, am/fm cassette stereo, new tires, 20,000 miles, \$3,700. 684-7473 or 677-0259.

'79 RX-7, 5 spd., air, sunroof, AM/FM stereo cassette, rust-polyglycoated, 8,500 miles. \$8,200. 737-3174

MERCEDES BENZ

'65 MERCEDES, auto., good cond. Asking \$2500 or offer. 536-5027

'89 MERCEDES Diesel, 220 Economical (28mpg), New engine, paint, tires, etc. \$5,300/offer. Ph. 235-5141.

MERCURY

'72 MONTEGO 4 dr., Runs great. \$380. 262-4511

'71 MERCURY Montego, good cond., must see, \$400/make offer. 262-5348, evenings.

MG

'78 MGB - 4 brand-new tires, newly overhauled trans., just tuned, AM/FM cassette stereo w/4 speakers. Bright yellow w/black interior & black striping. \$4750. Call Liz at 235-5881 or 235-3588

'74 MIDGET, excl. cond. \$2200/offer. Must sell, 521-4475, 523-2441

'76 MIDGET, 2,000 mi. overhaul, must sell \$2,000. 621-0410 p.m.

'68 MGB, radials, paint, stereo, good cond., \$1,000. Call 254-1840.

'74 MGB blue, 1 owner. Excl. cond., \$3,500. 261-6544, eves.

DON'T

BELL UNTIL YOU SEE US FIRST! WE PAY TOP \$\$\$.

CAR CITY

2845 Kilihu 833-3017

CONVERTIBLES & CLASSICS

'68 MONTEGO MX \$1888
Convertible with air. (133340)

'68 FAIRLANE \$2238
Convertible with air. (133002)

'68 CADILLAC \$1888
Convertible with air. (1A8874)

'63 BUICK \$1888
W/over air. (17C5018)

'68 CONTINENTAL \$888
2 dr. cpe. with air. (158582)

CAR CITY

Ph. 833-3017

Style and Grace. This is for the collector or investor who wants to own and drive a truly distinctive vintage automobile. Now an antique, this rare full-power 1955 Thunderbird has been completely restored. Golden Rod Yellow/Raven Black, you can buy her at

Vintage Cars of Hawaii
2146 F Puuhale Place
Honolulu, Hawaii 841-3498

WE'RE BUYING

Looking For Clean
USED CARS

Come In At 10:00 A.M.
MON.-FRI. or
Call For Appt.

WINDWARD TOYOTA

45-655 Kam Hwy., Kaneohe
235-0068

PRESENTS A FULL LINE OF CARS THAT WILL HELP KEEP YOU OUT OF THE GAS LINES

Come in and see our new 1980 models, Test drive one today... Make a great deal and ride out in style.

Volvo Hawaii

98-075 Kam Hwy. Aiea Ph. 487-7974

1981 MAZDA 626s & GLCs NOW ON SHOW

We invite you to test drive one of these models

BAY MAZDA

789 Kailua Rd., Kailua 261-8595

2000 Nimitz Hwy. 636-1222

2000 Nimitz Hwy. 636-1222

2000 Nimitz Hwy. 636-1222

2000 Nimitz Hwy. 636-1222

2000 Nimitz Hwy. 636-1222

2000 Nimitz Hwy. 636-1222

2000 Nimitz Hwy. 636-1222

PONTIAC

'77 ASTRE etc. wgn, fully equipped, excl. cond. 235-6963

'73 PONTIAC Firebird Formula 400, top shape, \$2,000. Call 262-4211.

'76 FIREBIRD Esprit fully equipped, low miles, good gas. Must sell. Assume low int. loan. 261-3250.

OLDSMOBILE

'78 OUTLASS Supreme All power, air, \$4,500. 471-0442/649-5017 eves.

'78 OLDS Delta 2 dr., air, stereo, many extras, \$5,200/BO 487-8192 or 677-5170.

OPEL

'72 OPEL Manta—good condition, rebuilt motor, new muffler, no rust, \$650. Phone 254-2403.

PORSCHE

'78 PORSCHE 928—13,000 mi., leather seats, potro blue, \$3,000/cash & assume payments or \$30,000. Ph. 261-6544.

PONTIAC

'70 CATALINA, 4 dr., new tires, excl. running cond. \$275. 262-5132

'73 LeMANS, good for parts, good engine, cheap. 235-3185

CONVERTIBLES & CLASSICS

'68 MONTEGO MX \$1888
Convertible with air. (133340)

'68 FAIRLANE \$2238
Convertible with air. (133002)

'68 CADILLAC \$1888
Convertible with air. (1A8874)

'63 BUICK \$1888
W/over air. (17C5018)

'68 CONTINENTAL \$888
2 dr. cpe. with air. (158582)

CAR CITY

Ph. 833-3017

Style and Grace. This is for the collector or investor who wants to own and drive a truly distinctive vintage automobile. Now an antique, this rare full-power 1955 Thunderbird has been completely restored. Golden Rod Yellow/Raven Black, you can buy her at

Vintage Cars of Hawaii
2146 F Puuhale Place
Honolulu, Hawaii 841-3498

WE'RE BUYING

Looking For Clean
USED CARS

Come In At 10:00 A.M.
MON.-FRI. or
Call For Appt.

WINDWARD TOYOTA

45-655 Kam Hwy., Kaneohe
235-0068

PRESENTS A FULL LINE OF CARS THAT WILL HELP KEEP YOU OUT OF THE GAS LINES

Come in and see our new 1980 models, Test drive one today... Make a great deal and ride out in style.

Volvo Hawaii

98-075 Kam Hwy. Aiea Ph. 487-7974

1981 MAZDA 626s & GLCs NOW ON SHOW

We invite you to test drive one of these models

BAY MAZDA

789 Kailua Rd., Kailua 261-8595

2000 Nimitz Hwy. 636-1222

2000 Nimitz Hwy. 636-1222

2000 Nimitz Hwy. 636-1222

2000 Nimitz Hwy. 636-1222

2000 Nimitz Hwy. 636-1222

2000 Nimitz Hwy. 636-1222

2000 Nimitz Hwy. 636-1222

2000 Nimitz Hwy. 636-1222

2000 Nimitz Hwy. 636-1222

2000 Nimitz Hwy. 636-1222

2000 Nimitz Hwy. 636-1222

2000 Nimitz Hwy. 636-1222

2000 Nimitz Hwy. 636-1222

PLYMOUTH

'87 VALIANT 8 cyl., low mileage, great cond. \$775. 637-7030

'89 VALIANT 8 cyl., auto., good cond. \$475. Ph. 254-5029

SUBARU

'78 SUBARU DL wagon, 4 spd., \$4,850. 624-4681. PCS.

'74 SUBARU wagon, 4 dr., 4 spd., very good cond. \$1100. 455-2661 or 455-7807 evenings

PLYMOUTH

'71 PLYMOUTH Satellite, 2 dr., auto., air, new tires, \$700/offer. Eves./weekends 623-6078.

'72 SATELLITE coupe, top condition, \$2,000/offer. 487-9166 or 623-8008.

DESPERATE

Need clean small car Will pay over top \$\$\$

WHOLESALE MOTORS

2999 Nimitz Hwy. 636-1222

SUPER CHEVY CLEARANCE

ON ALL 1980 MODELS

BAY CHEVROLET

46-001 KAM HWY., KANEOHE 235-3621

PUBLIC NOTICE

BANK REPOSESSIONS—OWNER TRANSFER
NO CASH needed with approved credit
Ask about 18-month or 18,000 mile warranty

'80 CHEVY MONZA \$4991.00
2+ Hatchback, auto., power steering, AM/FM stereo, air cond., black on black (P20840)

'78 TRIUMPH \$4950.16
Spider, "Tie to the sun", convertible, like new (P20801)

'76 VW RABBIT \$4356.04
4 dr. auto., air cond., AM/FM, immac. (177702)

'77 MALIBU \$1981.20
Station wagon, auto., power steering, air cond., clean (B8399)

'73 BUG \$1988.19
4 spd., economy cruiser (UC3400)

'79 LABRADOR \$4961.70
Late of comfort & accessories in immac. cond. (P20840)

'78 HONDA ACCORD \$5579.80
Immac. Hatchback, 5 spd., AM/FM, str cond. (B64009)

'78 TOYOTA \$3190.15
Auto., AM stereo tape, clean (B8853)

'77 DODGE 4x4 \$5478.18
Sharp, shorty pickup with wide tires & rims, canopy top, & lots of accessories. (P20810)

'73 DATSUN WAGON \$981.61
4 spd., 4 spd., radio, heater (177207)

ALL CARS STORED AT
WHOLESALE MOTORS.
Trade In Accepted
ALSO OPEN SUNDAY
2999 N. Nimitz Hwy. Financing Avail.

CUTTER FORD

QUALITY USED CARS

'74 FORD Maverick, 2 dr., 6 cyl., auto., radio 7A7096 \$295

'74 FORD Pinto 2 dr., 4 cyl., auto., radio 9A7256 \$595

'74 CHEVROLET El Camino Pickup, V8, auto., p/s, radio 507336 \$795

'75 CHEVY Malibu 4 dr., V8, auto., p/s, air, radio 3M1122 \$995

'71 FORD LTD 9 passenger wagon, V8, auto., p/s, air, radio 6B6491 \$895

'72 CHEVROLET Kingswood wagon, V8, auto., p/s, radio F7822 \$195

'67 CADILLAC 4 dr., V8, auto., p/s, radio 1F5495 \$295

THE LARGEST FORD DEALER IN AIEA

We Accept Anything In Trade
Prices Good Sept. 10, 11, 12, 13, 14, 1980
98-105 Kam Hwy., AIEA * Ph: 487-3811

All cars sold as is. Plus tax & lic.
BANK OF HAWAII FIRST HAWAIIAN BANK FINANCING
Military Financing our Specialty

1980 HONDA ACCORD 3 DR. HB.

5 spd. Seven only

\$6393.00 PLUS TAX & LIC.

Good 'til 9/13/80.

TONY HONDA OF WAIPAHU

94-081 Farrington Hwy.
PH. 671-1781

5 spd. Seven only

\$6393.00 PLUS TAX & LIC.

Good 'til 9/13/80.

TONY HONDA OF WAIPAHU

94-081 Farrington Hwy.
PH. 671-1781

5 spd. Seven only

PLYMOUTH

'87 VALIANT 8 cyl., low mileage, great cond. \$775. 637-7030

'89 VALIANT 8 cyl., auto., good cond. \$475. Ph. 254-5029

SUBARU

'78 SUBARU DL wagon, 4 spd., \$4,850. 624-4681. PCS.

'74 SUBARU wagon, 4 dr., 4 spd., very good cond. \$1100. 455-2661 or 455-7807 evenings

PLYMOUTH

'71 PLYMOUTH Satellite, 2 dr., auto., air, new tires, \$700/offer. Eves./weekends 623-6078.

'72 SATELLITE coupe, top condition, \$2,000/offer. 487-9166 or 623-8008.

DESPERATE

Need clean small car Will pay over top \$\$\$

WHOLESALE MOTORS

2999 Nimitz Hwy. 636-1222

SUPER CHEVY CLEARANCE

ON ALL 1980 MODELS

BAY CHEVROLET

46-001 KAM HWY., KANEOHE 235-3621

PUBLIC NOTICE

BANK REPOSESSIONS—OWNER TRANSFER
NO CASH needed with approved credit
Ask about 18-month or 18,000 mile warranty

'80 CHEVY MONZA \$4991.00
2+ Hatchback, auto., power steering, AM/FM stereo, air cond., black on black (P20840)

'78 TRIUMPH \$4950.16
Spider, "Tie to the sun", convertible, like new (P20801)

'76 VW RABBIT \$4356.04
4 dr. auto., air cond., AM/FM, immac. (177702)

'77 MALIBU \$1981.20
Station wagon, auto., power steering, air cond., clean (B8399)

'73 BUG \$1988.19
4 spd., economy cruiser (UC3400)

'79 LABRADOR \$4961.70
Late of comfort & accessories in immac. cond. (P20840)

'78 HONDA ACCORD \$5579.80
Immac. Hatchback, 5 spd., AM/FM, str cond. (B64009)

'78 TOYOTA \$3190.15
Auto., AM stereo tape, clean (B8853)

'77 DODGE 4x4 \$5478.18
Sharp, shorty pickup with wide tires & rims, canopy top, & lots of accessories. (P20810)

'73 DATSUN WAGON \$981.61
4 spd., 4 spd., radio, heater (177207)

ALL CARS STORED AT
WHOLESALE MOTORS.
Trade In Accepted
ALSO OPEN SUNDAY
2999 N. Nimitz Hwy. Financing Avail.

CUTTER FORD

QUALITY USED CARS

'74 FORD Maverick, 2 dr., 6 cyl., auto., radio 7A7096 \$295

'74 FORD Pinto 2 dr., 4 cyl., auto., radio 9A7256 \$595

'74 CHEVROLET El Camino Pickup, V8, auto., p/s, radio 507336 \$795

'75 CHEVY Malibu 4 dr., V8, auto., p/s, air, radio 3M1122 \$995

'71 FORD LTD 9 passenger wagon, V8, auto., p/s, air, radio 6B6491 \$895

'72 CHEVROLET Kingswood wagon, V8, auto., p/s, radio F7822 \$195

'67 CADILLAC 4 dr., V8, auto., p/s, radio 1F5495 \$295

THE LARGEST FORD DEALER IN AIEA

We Accept Anything In Trade
Prices Good Sept. 10, 11, 12, 13, 14, 1980
98-105 Kam Hwy., AIEA * Ph: 487-3811

All cars sold as is. Plus tax & lic.
BANK OF HAWAII FIRST HAWAIIAN BANK FINANCING
Military Financing our Specialty

1980 HONDA ACCORD 3 DR. HB.

5 spd. Seven only

\$6393.00 PLUS TAX & LIC.

Good 'til 9/13/80.

TONY HONDA OF WAIPAHU

94-081 Farrington Hwy.
PH. 671-1781

5 spd. Seven only

\$6393.00 PLUS TAX & LIC.

Good 'til 9/13/80.

TONY HONDA OF WAIPAHU

94-081 Farrington Hwy.
PH. 671-1781

5 spd. Seven only

TOYOTA

For Your BEST Deal On a New or Used Car See EDDIE FREEMAN at WINDWARD TOYOTA 235-0068, 235-3588

'70 TOYOTA Corolla, 2 dr., runs good, needs work, \$500. 239-6854

'89 TOYOTA Corolla wagon, 4 spd., \$265. Call before 8 a.m. 261-5903

'73 CELICA auto., mags, new tires, AM/FM Cassette. Phone 261-5714.

FREE!!

18-mo./18,000-mi. Limited warranty

'79 260ZX \$7788
All power, incl. air. (B1354)

'78 FAIRMONT \$4488
Station wagon, 6 cyl., auto., power steering, air, AM/FM, tape (172844)

'79 DATSUN \$3288
8210, 2 dr., 4 spd. (4K5326)

'79 PINTO \$3288
Hatchback, auto., power steering. (175047)

'78 FIAT 128 \$2588
2 dr., 4 spd. (187502)

'78 MAZDA \$3288
GLC 3 dr., 4 spd., sunroof. (1E458)

'78 COROLLA \$298



MEET THE CANDIDATES

Mayor's race: A hot one

A mayor's race that had all of the excitement of a melted dish of ice cream took a spirited and heated twist during the closing weeks of the campaign.

Incumbent Frank Fasi and challenger Eileen Anderson suddenly came out swinging — hard — in an expensive media blitz, prompted by polls showing that the race could be a tight one.

The dispute will be settled on Saturday, Sept. 20, when Hawaii voters go to the polls for a primary election that will determine the candidates in the Nov. 4 general election.

For all practical purposes, the Democratic primary will determine the next mayor of Honolulu.

Fasi, always a rugged campaigner, began his bid for a fourth term on such a low key that many observers questioned whether he was taking the election seriously.

He steadfastly refused to debate his opponents, while his happy-go-lucky TV commercials quietly proclaimed, among other things, that he had added a touch of beautiful plantings around city buildings.

Anderson, the bespectacled former state budget director who had emerged from the pack of challengers as Fasi's leading foe, wasn't "worthy" of debate, the mayor said.

Anderson was simply a puppet for Gov. George Ariyoshi — Fasi's long-time arch-rival — and instead of debating Anderson, he should be taking the governor's position, Fasi contended.

Anderson, meanwhile, tirelessly continued a campaign launched in early spring, extensively



Eileen Anderson

touring the island to hammer out at Oahu's climbing crime rate, the degeneration of Waikiki and Fasi's 12-year record.

There are two other candidates in the Democratic chase — Hiram Kamaka, another former state budget director, and Larry Beck — but Anderson quickly became the only viable challenger.

By late summer, polls showed Anderson's popularity was increasing, and Fasi immediately stepped up his campaign tempo.

Gone were the happy-go-lucky commercials, replaced by hard-hitting ones that portrayed Anderson as a spend-thrift as budget director, while Fasi had kept city

and county taxes in tow.

The mayor emphasized his experience, saying he had more than all of his challengers combined.

And, while he acknowledged that crime was an issue, he noted that he had added 600 members to the police force during his tenure and that the crime level of Honolulu was no higher than that in cities of comparable size.

At the same time, he said the state wasn't doing enough to curb crime and was permitting such things as overcrowded prisons, leading to judges less willing to sentence people to serve time.

Again and again, he zeroed in on the charge



Frank Fasi

that Anderson would be little more than a front for the governor, and her election would allow the Ariyoshi machine to control not only the state but also Honolulu.

Fasi also made a point of emphasizing that he got things done "for the little guy."

Anderson countered in her campaign that one of the prime problems of Honolulu was the mayor's inability to get along with the governor.

She said that she could work "with" the governor, but will not work "for" him.

"I wasn't elected to run by anybody and I won't take orders from anyone after I'm elected," she

recently told a Windward audience.

Anderson said crime, transportation, housing and water were the main issues of the campaign, adding she believes the solutions to the crime problem include more police and improvement in the city prosecutor's office.

Anderson also contends that Fasi is simply seeking office again to remain in the political spotlight for another try for the governorship in 1982.

Meanwhile, crime was the major topic in another spirited race — for city prosecutor. For the first time, the office will be an elective one — and

Democrats Leland (Lee) Spencer and Adrienne King and Republicans Gordon Bronson and Charles Marsland are waging strong campaigns to oust Togo Nakagawa, a Democrat.

In the U.S. Senate race, long-term veteran Daniel Inouye faces only token opposition in the Democratic primary from John Paul (Aloha) Fritz and Kamuela Price.

E. Floyd Bernier-Nachtwey, Cooper Brown, Dan Dew and Lawrence I. Weisman are seeking the Republican nomination, while Bud Shasteen is on the Libertarian ballot.

Millionaire Cecil Heftel is expected to have no problems with state Sen. Charles Campbell or Romey Juan Ramolette Jr. in the 1st District U.S. House of Representatives race.

Incumbent Daniel Akaka is unopposed in the 2nd District race for the U.S. House.

There will be a new look to this year's primary because of an amendment to the state Constitution, ratified by voters in the 1978 General Election.

Under the new system, voters no longer will be required to declare their party preference, but they still may not cross party lines.

On primary election day, they will receive a sealed packet with ballots for all parties and for nonpartisan candidates, along with the same black plastic ballot holder as before.

There will be ballots for three parties in the packet, Democratic, Libertarian, Republican, as well as a nonpartisan ballot. These ballots will also be marked with an identifying color for each party.

Area candidates in the running

U.S. Senate

DEMOCRAT
Fritz, John Paul (Aloha)
•Inouye, Daniel K.
Price, Kamuela
REPUBLICAN
Bernier-Nachtwey, E.
Floyd
Brown, Cooper
Dew, Dan
Weisman, Lawrence I.
LIBERTARIAN
Shasteen, Bud

1st Congress

Campbell, Charles M.
•Heftel, Cecil
Ramolete, Romey Juan Jr.
REPUBLICAN
Noble, Aloma Keen
LIBERTARIAN
Johnson, Rockne H.

2nd Congress

DEMOCRAT
•Akaka, Daniel K.
LIBERTARIAN
Smith, D. Gordon

Mayor

DEMOCRAT
Anderson, Eileen
Beck, Larry
•Fasi, Frank F.
Kamaka, Hiram
REPUBLICAN
Gibson, Theodore W. (Ted)
Melnick, Irving
Schweigert, Jack
LIBERTARIAN
Savey, Jan E.
NON-PARTISAN
Leialoha, William N.
Price, Homer (Jahji)

County Prosecutor

DEMOCRAT
King, Adrienne
Nakagawa, Togo
Spencer, Leland (Lee)
REPUBLICAN
Bronson, Gordon M.
Marland, Charles F.

3rd Senate (Windward Oahu)

DEMOCRAT
Morse, Jack C.
REPUBLICAN
•Ajifu, Ralph
•George, Mary

4th Senate (Leeward Oahu-North Shore)

DEMOCRAT
•Mizuguchi, Norman
Ragasa, Poi R.
•Young, Patsy Kikue

5th Senate (Nuuanu-Aiea)

DEMOCRAT
Chesney, Thomas R.
Holt, Milton
Johnston, Edward
Kalama
•Wong, Richard (Dickie)
Wong, Wendell K. H.
•Yim, T. C.

7th Senate (Kaimuki-Hawaii Kai)

DEMOCRAT
•O'Connor, Dennis
REPUBLICAN
•Soares, W. Buddy

7th House (Aiea Haina-Hawaii Kai)

DEMOCRAT
•Dods, Robert D.
Kabilikane, Marjorie
Stegmaier, David D.

REPUBLICAN
Endrizal, Beverly Wolff
•Ikeda, Donna R.

8th House (Diamond Head-Aiea Haina)

REPUBLICAN
•Marumoto, Barbara
Rohlfing, Fred
LIBERTARIAN
Mason, George W.

9th House (St. Louis-Maunaloa Heights)

DEMOCRAT
Montero, Anthony
•Morioka, Ted
•Say, Calvin K. Y.

10th House (Kaimuki-Kapahulu)

DEMOCRAT
Asuncion, Norman J.
•Kiyabu, Ken
•Kobayashi, Bertrand

17th House (Pearl Harbor-Kulihi Kai)

DEMOCRAT
Albano, Gene
•Lee, Kenneth
Waihee, John

18th House (Aiea-Moanalua)

DEMOCRAT
Alcon, Emilio S.
Chun, Connie (Hunkybunch)
Fujimoto, Richard I. (Ichi)
Lai, Willie
Okamura, Tom
Takehara, Alice T.
Tatum, Bette

19th House (Pearl City-Pearl Ridge)

DEMOCRAT
Abrice, Elizabeth, C. (Liz)
•Hashimoto, Clarice Y.
Hayashida, Franklin I.
Marn, Jim Jr.
•Masutani, Donald T. Jr.
Tangpalan, Eloise
Yamashita

20th House (Ewa-Waipahu)

DEMOCRAT
•Kihano, Daniel (Danny)
•Shito, Mitsuo (Mits)
Wurdeman, Ginger
Kahapēa

21st House (Waianae-Ewa Beach)

DEMOCRAT
•Aki, James
ba Lacy, John Arellano
Crozier, Mike
•Peters, Henry Haalilio

22nd House (Wahiawa-North Shore)

DEMOCRAT
Hagino, Gerald T. (Gerry)
Hino, Akira (Alike)
•Lanasco, Oliver (Ollie)
•Nakamura, Yoshiro

23rd House (Hauula-Heeia)

DEMOCRAT
•Toguchi, Charles T.
Tom, Terrance W. H.

24th House (Kaneohe-Maunawili)

DEMOCRAT
•Ige, Marshall Kaoru
REPUBLICAN
•Evans, Faith P.

Wong, Jimmy (Kimo)

25th House (Alakahi-Enchanted Lake)

DEMOCRAT
Huiliui, Hazel A.

REPUBLICAN
•Anderson, Whitney T.
•Medeiros, John Justin

LIBERTARIAN
McConkey, Harry L.

26th House (Keolu Hills-Waimanalo)

DEMOCRAT
•Sakamoto, Russell J.
Wong, Norma
REPUBLICAN
Kaonohi, Leighton, K.
•Denotes incumbents

Nakamura wants 3rd term in 22nd

Rep. Yoshiro Nakamura, a Democrat and two-term member of the House of Representatives, is seeking his third term from the 22nd District.

Nakamura served as chairman of the Corrections and Rehabilitation Committee and member of the Policy Committee. He favors enlarging the Hawaii state prisons, including more work camps similar to Kulani Honor Camp.

He cited the overcrowded prisons as a potentially explosive problem. The rapidly rising rate of violent crimes and imposition of longer prison sentences with greater frequency are the main causes of overcrowding, he said.

He believes that inmate unrest, deficits in prison rehabilitation programs, and security problems are the main problems of the overcrowded prisons.

As chairman of the Corrections Committee, he pushed for the development of eucalyptus tree farms for alternate energy as a prison industry. He reports that one ton of eucalyptus chips is the energy equivalent of two barrels of crude oil.

Nakamura is also convinced that the Hawaii state prison system can become nearly self-supporting by the prison inmates raising their own foods.

He said much remains to be accomplished to improve traffic safety in the 22nd District.

Nakamura strongly opposed the Poamoho general aviation airport which was killed in the last session.

Developing fresh water supplies and alternate energy programs have been high on his list of legislative aims.

BEV!

... at last.
Someone who cares.



Beverly W. Endrizal (R)
for the
Hawaii State Legislature
7th Representative District
Vote her in!

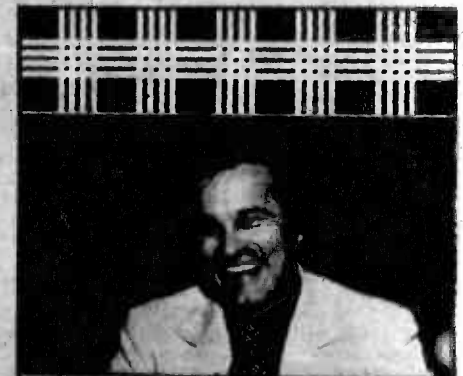
For Leadership, Experience, Action...



Donna Ikeda — 7th District

Reelect Our Representative
DONNA IKEDA

... a reason to vote.



Vote DODS
again in 1980.

7th District Aiea Haina-Hawaii Kai

Paid for by "Dods in '80 committee" (D)

Wong goes after 24th District seat

Jimmy Wong, chief researcher and legislative analyst for the Senate Minority Office since 1978, is making a strong bid to win a seat to the House from the 24th District.

The personable and energetic Republican was born and raised in the 24th District and taught at Castle High School for nine years where he was heavily involved in teacher and athletic activities.

Wong believes that implementation of the Hawaii State Plan and adoption of its functional plans is one of the most important items on the 1981 legislative agenda.

"The State Plan is going to have to be put into action within the constraints of fiscal accountability mandated by the voters when they approved the 1978 amendments to the State

Constitution.

"This calls for a big change from the past practices of virtually unlimited spending and the tradition of porkbarrel capital improvements," he said.

Wong said that he foresees the development of new methods for the allocation of the state's resources, both financial and manpower resources.

"This will have a tremendous impact on the 24th District where education, transportation and juvenile corrections are all major concerns.

"The voters are going to need legislators with the ability to adjust to and work effectively within a changing system," he said.

A supporter of both H-3 and a rapid transit system, Wong advocates an approach to transportation planning which recognizes that the



Jimmy Wong

success of any urban rapid transit system will depend upon commuters who live outside the central urban area.

"The system should be planned and built from the outside in, rather than the inside out.

"However, the political pressures to do the reverse are powerful, and I believe that only an independent transit authority will have sufficient autonomy to do the job properly," he said.

Wong is particularly concerned that in the legislature's efforts to control spending, long-term economies may lose out to short-term spending cuts which are politically attractive.

Medeiros bids for House

Veteran Kailua legislator John J. Medeiros is seeking re-election to the state House of Representatives from the 25th District.

Medeiros, an assistant floor leader for the House Republican caucus, has represented the area from Aiea to Enchanted Lake for 10 years.

He is credited with authoring legislation to maintain the state's school security program. He also introduced legislation calling for capital punishment measures for improve-

ment of the public education system and in dealing with juvenile crime.

During the recent legislative session Medeiros introduced an amendment to the state usury law to freeze present rates of interest on home mortgages in case of disaster. The amendment passed.

Medeiros has been active in the community for many years, serving in 1968 as a member of the State Constitutional Convention.

He has served as chairman of the Oahu Citizen Advisory Council, honorary mayor of Kailua and as member of the Nuuanu YMCA, Enchanted Lake Community Association and the state Boxing Commission.

Medeiros also worked to fund the recently completed, Kalaheo High School gymnasium and the Kailua Recreation Field swimming pool.

He also took part in efforts to build the Kailua field gymnasium, which is under construction.

Lee runs for 6th term

Rep. Kenneth Lee is running for re-election as a Democrat for the state House of Representatives from the 17th District (Kalihi-Aiea-Manu-Salt Lake-Pearl Harbor).

Lee will be running for his sixth term in office; he was first elected in 1968. Lee is one of only six surviving members of the 1969 House, comprised of 51 members, presently still serving as a representative.

Lee believes that his long legislative experience working for his constituents and the entire state equips him well to continue to make a significant contribution in the next legislative session.

Lee served as chairman of the Public Assistance and Human Services Committee and took personal command of a task force of legislators responsible for \$600 million

in public funding.

His committee addressed concerns about the spiraling health care and Medicaid costs, elderly and disabled adults in institutions and boarding and care homes, and the developmentally disabled.

Lee also served on the Judiciary, Consumer Protection and Commerce, Housing, Corrections and Rehabilitation, Health, and Youth and Elderly Affairs committees.

4th District team

Sen. Patsy K. Young and Sen. Norman Mizuguchi are running as a Democratic team for re-election to their 4th District Senate seats (Leeward and Central Oahu).

The two senators said, "We are running as a team because we share many of the same views and concerns. We have worked together well in the past, and we will continue to serve the people of our district in the best way possible."

The theme of their campaign is "Partnership with People."

Young is chairman of the Senate Committee on Housing and Hawaiian Homes. She was first elected to the Senate in 1974 and was re-elected in 1978.

She was also Housing chairman in the House of Representatives from 1972 to 1974. Young entered elective politics in 1966, when she was elected as a delegate to the Constitutional Convention.

As Senate housing chairman, Young spearheaded the passage of the "Hula Waie" program under which government bonds are used to provide homeowners both most

at reasonable rates. She also was successful in securing the passage of a program to finance the construction of rental housing projects.

Young said, "Housing is one of our most critical needs. I will continue to

develop innovative programs to help especially those who have been priced out of the home-buying market and those who need affordable rentals."

Mizuguchi is chairman of the Senate Transportation Committee and majority floor leader. He was elected to the Senate in 1978 and previously served two terms in the House of Representatives,

where he was chairman of the Education Committee.

As transportation chairman, Senator Mizuguchi stopped the State administration's proposal to build a general aviation airport in Paomoho.

He was successful in appropriating funds to improve safety at Honolulu International Airport and to upgrade military airfields for general aviation use.

REMEMBER
you have 2 votes for the third senatorial district.



please save one vote for the first candidate on your ballot.

Ajifu, Ralph ☒
for State Senator

Printed by: Hawaii's Ralph Ajifu, 200 Kalia Road, Honolulu, HI 96814

**RE-ELECT YOUR SENATE TEAM
FOR LEeward AND CENTRAL OAHU**
(4th Senatorial District)

Norman Mizuguchi

Patsy Young



"We ask for your support in the coming election. Together we pledge to serve the people of Leeward and Central Oahu with energy and dedication. Join us in working for a better Hawaii for all of our people."

**NORMAN MIZUGUCHI AND
PATSY YOUNG**
"Partnership With People"

P.O. Box 482, Pearl City, HI 96782

Dods seeks 3rd term

State Rep. Robert D. Dods (D-Aina Haina-Hawaii Kai), seeking his third term, is strongly in favor of the Kalaniana'ole expansion, stating the existing highway will be unable to accommodate increased traffic due to further residential development in the area.

Serving as chairman of the powerful House Transportation Committee for the last two years, he has

been a major advocate of upgrading existing state transportation facilities to meet increasing demands for transportation services.

As a member of the House Judiciary Committee, Dods noted the package of strong anti-crime measures adopted this year.

These include stiffer requirements in such areas as bail, mandatory

minimum sentencing, mandatory imprisonment for Class A felons, insanity as a defense, and clarification of laws relating to juvenile offenders.

At the same time, amendments were made to the State Crime Commission; new programs established to strengthen crime prevention and control, and laws relating to sexual offenses, a comprehensive evidence code, and privacy were adopted.

"But there still is a lot more to be done in the areas of crime, traffic, high taxes, and less government spending," Dods said, "since much of what the legislature did this year is good groundwork, we look forward to strong follow-up efforts at the next session."



Robert Dods

Dods is a graduate of St. Louis High School and attended both the University of Kansas and the University of Hawaii.

He is married to the former Joan T. Kawashima and has two sons.

He is also past president of the Aina Lunalilo Community Association and the Honolulu Jaycees. He also was a member of the Hawaii Kai Community Council.

Endrizal's concern: Highway widening

Beverly Endrizal, 35, a life-long resident of Oahu, is running for the state House of Representatives from the 7th District (Aina Haina-Hawaii Kai). She is the mother of three and works with her husband as a legal assistant and office manager for the law offices of Ronald J. Endrizal.

Endrizal is a Kalani High School graduate and attended the University of Hawaii, where she majored in political science. Endrizal is widely known as an active member and leader in her community.

She is president of the Niu Valley Community Association and president of CRUNCH (The Committee to Resist Useless Construction on our Highways).



Beverly Endrizal

The traffic along Kalaniana'ole Highway is a major concern to 7th District residents, she said. In regard to the proposed widening by two lanes of the highway, Endrizal says that the state has not considered more reasonable alternatives and is in violation of the National Environmental Policy Act.

Please Re-elect Proven Leadership & Experience



YOSHIRO NAKAMURA

22nd District - House of Representatives

Paid for by Friends of Yoshiro Nakamura
710 Olive Avenue, Wahiawa, HI 96786

Evans boasts impressive record

Seeking re-election to the state House of Representatives from the 24th District, Rep. Faith Evans has launched an active campaign throughout Kaneohe, Maunawili, Olomana, Pohakupu and Kukuonono.

In renewing her bid to represent the people of the 24th District, Evans has an impressive record of accomplishments and efforts for the past two years.

As minority floor leader, she has proved to be a "force to be reckoned with" in carrying out the minority's watchdog role in the House of Representatives.

Her actions both at the legislature and in the community have shown she is in tune with what's needed and what's happening in Hawaii.

Evans has worked with the Department of Transportation to install traffic signals at key



Faith Evans

intersections around Kaneohe and Kailua and has sponsored funding measures for other road projects throughout the district.

She recently has been deeply concerned about the removal of asbestos from public schools and disposal of the material at the Kapau Landfill, primarily because of the potential safety hazards involved as well as the impact of the disposal upon the endangered Kawaiunui Marsh.

To my Friends and Neighbors —19th District—

To help YOU, I need your support in my candidacy for the State House of Representatives. We are truly at a crossroads in the decision-making for the future of our community and our state. The action (or lack of action) in the coming legislature will affect us and our families for years to come.

We need a man—a family man and homeowner who is a leader in our community. As a local businessman (Royal Kai Drive In), I understand the day-to-day and long range needs of our area.

I believe that I am that man. My past and present civic activities in the Pearl City/Pearlridge communities will bear this out.

To get some results in the legislature that will help you and your family, I will need your support. I ask you...

X VOTE FOR JIM MARN
"I Give a Darn"

Paid for by the Committee to elect Jim Marn, 897 Kamehameha Hwy., Pearl City. Don Touchi, Treasurer.



Elect STATE HOUSE

Pearl City Highlands •

Pacific Palisades •

Newtown •

Pearl Ridge • Manana

• Waimalu • Waiala

SHE WILL WORK FOR YOU.



Elizabeth

LIZ

Abrice

A POLITICAL AD PAID FOR BY THE FRIENDS OF LIZ ABRICE
2312 AKIHI PLACE, PEARL CITY, HI 96782



Kenyon Sandra Debra Kendall
Peggy Kenneth Marion

The LEE FAMILY

LEE and his wife Peggy, a social work administrator, have instilled honesty, integrity and community spirit in their five children. Daughter Marion, a 1978 delegate to the Constitutional Convention, is a stock broker; son Kenyon is an engineer; daughter Sandra is a college counselor; son Kendall attends the University of Hawaii and daughter Debra is a high school student.

**NOW, MORE THAN EVER
We Need Professionalism
In Government
Return Your Representative**

KENNETH LEE

17th Representative District
Kalihi-Pearl Harbor, Aliamanu, Salt Lake
REPRESENTATIVE KENNETH LEE
1425 Lihua St., 20F Honolulu, HI 96817

Ikeda: Monitor penal system

Often described as spunky, determined and with keen insight, state Rep. Donna Ikeda is seeking re-election to the House of Representatives from the 7th District (Aiea-Hauna-Hawaii Kai).

The energetic young legislator serves as assistant minority floor leader in the state House, where she has been a representative of the East Oahu community since 1975.

She has demonstrated an ability to get her legislative proposals considered and passed, as well as insert her ideas into a number of significant measures.

Ikeda's highest legisla-

tive priorities include the monitoring of our penal institutions, implementation of the juvenile justice master plan and resolving traffic problems along Kalaniana'ole Highway.

"In areas of crime," Ikeda said, "this past legislature passed significant legislation—now the problem will be to monitor the penal system to be sure we have adequate space in those facilities, improve the Hawaii Youth Correctional Facility and implement the juvenile justice master plan."

As for the traffic congestion along Kalaniana'ole Highway, she said that she seeks the most "practical" approach to



Donna Ikeda

resolving this problem.

She said she favors the Department of Transportation's most recent proposal to widen the highway and provide two reversible lanes for use by mass transit vehicles.

Ikeda is a resident of Hawaii Kai and the mother of three teenagers who attend Kaiser High School and the University of Hawaii.

Hagino wants re-election

Gerald T. Hagino is seeking one of the two seats in the State House of Representatives from the 22nd District (Wahiawa, Waihalu, Kahuku and Laie).

Born in Paunene, Maui, he attended Hilo Union Elementary, Hilo Intermediate and Leilehua High School, where he was co-captain of the track and cross-country teams.

While attending the University of Hawaii he served as the treasurer of Johnson Hall dormitory, treasurer of the Inter-Hall Residents Association and later received a bachelor of science degree

in biology.

Higano was a delegate to the 1978 State Constitutional Convention and

served as co-chairman of the Environmental, Agricultural, Conservation and Land Committee.



re-elect
Danny Kihano D

**STATE REPRESENTATIVE
20TH DISTRICT
Waipahu, Mililani, Ewa,
Lower Pearl City, Waipio
and Kunia**

Paid for by Danny Kihano Campaign Committee
P.O. Box 314
Waipahu, Hawaii 96791

Kihano goes after votes in 20th

State Rep. Daniel J. Kihano, a Democrat, is seeking re-election from the 20th District (Waipahu, Mililani, Waipio, Ewa and Kunia).

First elected to the House in 1970, Kihano has served on a wide range of committees and as assistant majority floor

leader and assistant majority leader.

He is a contender for the House speakership, and currently serves as vice speaker, a leadership position he has held since 1977.

As vice speaker, his responsibilities have been to oversee the program areas of finance, housing,

youth and elderly, health, and public assistance and human services, and serve as a member of the policy committee, and the legislative management committee which oversees the operations of the House.

Kihano, whose approach has centered

around the effectiveness of a team effort to gain the most for the communities encompassed by the 20th District, believes that "our best hope for achieving the progress we desire for our communities, and for the State as a whole, comes through cooperative planning."

AIEA, HALAWA, FOSTER VILLAGE, STATE MOANALUA, KALIHI - 18TH DISTRICT HOUSE



RECIPE FOR A WINNING LEGISLATOR

Select one neatly packaged
Businesswoman • Teacher •
Author • Speaker • Researcher •
Legislature Aide • Wife • Mother •
(Best if aged in 18th district at
least 20 yrs.)

ADD:

Balanced emotions
Experience
Total commitment
Trustworthiness
Energy

Talent
Attitude (positive)
Tact
Uplifting faith
Moral character

Mix well, then add pinch of honesty and sincerity (These are omitted in other recipes but the finished product spoils quickly without them.)

- ★ Garnish generously with a sense of humor
- ★ Bake well! (Who wants a half-baked legislator?)
- ★ Will serve approximately 14,000 people for two years.

**FOR A REFRESHING ADDITION
TO OUR STATE HOUSE OF REPRESENTATIVES
VOTE BETTE TATUM**

**Saturday
September 20**

Paid for by
Friends of Bette Tatum,
1568 Puhia St.,
Honolulu, Hawaii 96818
Muriel Mizutani, Chairman
Glorie "Gibby" Fukutani,
Coordinator



GINGER KAHAPEA WURDEMAN

The answer to our problems of economic growth must be addressed through better planning. Legislators must write laws that:

- Conserve Natural Resources
- Diversify Our Economy
- Invest in Quality Land Utilization

Make Your Vote Count Sept. 20th

**Help Elect Ginger to the State House
You Deserve Something Better
20 Representative District**

Pd. for by friends for Ginger Wurdeaman, 95-119 Kam Hwy., Wahiawa, HI 96786

Tom makes first bid for office in 23rd

Kaneohe attorney Terrance Tom, 32, is making his first bid for public office, seeking election to the state House of Representatives from the 23rd District.

Tom, a Democrat, received his law degree from the University of San Francisco and was admitted to the Hawaii bar in 1973.

Born sightless, Tom was the first blind person to take the bar examination

in Hawaii and pass it.

He served for three years as a deputy city attorney before going into private practice. He now has offices in Kaneohe and Honolulu.

Tom said he is in favor of "quality" growth in the 23rd District (Hauula through Heeia), so long as it does not infringe on the present life-style of the area's people.

"I came to this community to get away from

the hustle-bustle so that my wife and I could raise our children and enjoy life," he said. "I'd like to keep it as much as possible for the people."

Tom said also he wants closer community involvement in all areas including crime control, preservation of the land and traffic problems.

"I would like to give judges more flexibility in sentencing," the young attorney said. "And there has to be more considera-



Terrance Tom

tion shown for victims of crimes."

He said he believes fishing and agriculture are compatible in the district and that the two industries can help create jobs.

Tom said he believes his legal training and experience can help

achieve his goals for the community.

He said challenges to the enrichment of life in his district encouraged him to run for office.

"Challenges and discouragement don't bother me," he said. "I've had to fight them all my life."

Businessman Marn running in 19th

Jim Marn was born and raised in the Islands and attended local schools. Following his graduation from St. Louis High in 1960, Marn entered the U.S. Army and was stationed in Washington, D.C. Completing his military service, he attended and graduated from the University of California at Berkeley.

Marn married the former Jeanned Nakagawa, who works as a public school teacher. The couple has two children, Kara, 6, and Andrew, 3. They own their home in Newtown Estates.

After gaining years of experience as a business manager, property administrator and restaurant supervisor, Jim decided to strike out on his own and start his own business.

As a result of this effort, the Royal Kai Drive In, Pearl City, is now in its fourth successful year of operation. With both a home and a business in

the community, Jim is keenly aware of the concerns shared by people of the district.

For this reason, he is deeply committed to actively serving the community through his involvement in community associations and organizations.

Marn's desire to run for the state House stems from his dissatisfaction with the lack of effective representation of the 19th District and the failure of the state legislature to pass important legislation, such as relief for the elderly, mass transit, repeal of the 4 percent excise tax on food and drugs, the reliever-airport and other vital issues.

Marn believes that with his business background and his wholehearted support of neighborhood activities, he can provide the effective and responsible representation the 19th District and the state deserve.

**It makes good sense to keep
THIS MAN in the HOUSE!
HE GETS THINGS DONE**



"He's Your kind of Guy!"

Re-elect Representative

John J.

MEDEIROS

25th District/Republican

Paid for by friends of Medeiros, Larry Freitas, Campaign Manager; Brian Benevides, Treasurer

Sakamoto seeking re-election in 26th

Seeking re-election to the House of Representatives from the 26th District, Rep. Russell Sakamoto said he will continue to oppose the use of Bellows Airfield as a general aviation airport and that he favors construction of the H-3 freeway as a means of easing traffic congestion on the Pali and Likelike highways.

"Because of the congestion at Honolulu International Airport," Sakamoto said, "I believe the next session of the legislature must make a decision on the location of the second general aviation airport, but I will continue to oppose any effort to locate it at Bellows."

The 26th District includes Keolu Hills, Enchanted Lake and Waimanalo.

"During my first term," Sakamoto said, "I was

able to accomplish most of what I wanted to get done, but I feel there is much more work to be accomplished in the areas of crime, housing, taxation, education and energy.

"While the legislature passed bills requiring mandatory prison terms for repeat felons and individuals convicted of crimes involving violence, I feel it is time for the legislature to review the sentencing practices of judges in serious criminal cases.

"I also think we should take a hard look at the performance of the parole board, which determines the minimum amount of time a convicted felon must serve in prison before becoming eligible for parole.

"Also high on my priority list is to review the situation at the state prison and the state's prison master plan."

**CHALLENGE THE '80's
with**



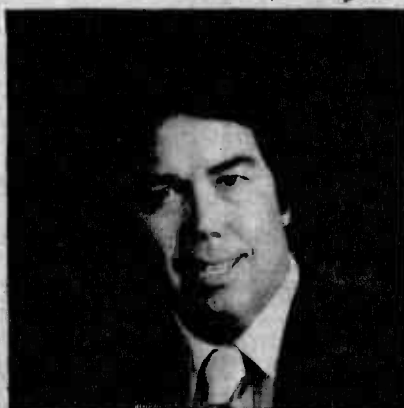
GERRY HAGINO

**STATE HOUSE OF REPRESENTATIVES
22nd District**

Paid for by friends of Gerry Hagino. 1787-A Waiala St. 96706

JIMMY WONG

Together through the 80's



**State House
24th District**

Paid for by Friends for Jimmy Wong P.O. Box 1394 Kaneohe, HI 96744

Faith Evans

**Re-elect
Representative**



Paid for by Friends for Faith Evans
James Asato, Chairman
867 Ulukou St., Kailua

**Full time, Hardworking,
Concerned, Independent**

Toguchi understands issues, concerns

Born and raised in Kahaluu, Charles Toguchi understands the issues and concerns of the 23rd District. Toguchi describes growth and development with all its accompanying problems as the most pressing issue in the district.

He feels that the rural characteristics of the area

from Kahaluu to Kahuku should continue to be preserved.

"We need to maintain, protect, and even expand productive agricultural areas so that we can be more self sufficient," he said.

He strongly feels that a comprehensive land-use plan, and adequate public

facilities should guide the rate and directions of future developments.

A survey taken by Toguchi of approximately 1,000 voters in the 23rd District reveals that more than two thirds favor another Trans-Koolau transportation corridor to relieve the present traffic congestion.

With the completion of the State Plan and the City Development Plan, Toguchi is hopeful that these documents can bring sensible land-use planning to our area, and that another Trans-Koolau Highway will not necessarily continue to dictate the rate and direction of growth on the

Windward side.

A former educator, Toguchi is described by Rev. Darrow Aiona, Board

of Education member, as "an outstanding and key member of the House Education Committee."

Tatum seeks election in 18th

Bette Tatum has always been a "do'er." She sang a solo at church at 2 years of age, according to her mother, a minister.

She won the National Audubon Society bird-

naming contest in the second grade.

She was a student government president, class officer, homecoming queen and cheerleader in high school.

She was state music and speech contest winner in college. At 20 she graduated with honors from the University of Nebraska.

She has written poetry

and short stories as long as she can remember, so it was natural she should become an English teacher, and go on to become author of a bestselling book, "Have Fun...the Write Way."

Kaonohi campaign Issue: Crime

Leighton K. Kaonohi, the Republican candidate for the state House from the 26th District (Keolu Hills-Waimanalo), has been doing more than his share in researching the community needs on criminal offenders.

"As long as I can remember, I was taught in school that we have the basic rights, under the

law, to persue happiness for ourselves," said Kaonohi, 28.

"Today I see the toll we pay for the criminal offenders who plague our communities and it really bothers me to the extent that I can no longer be silent about it."

Kaonohi, who is married and has three

children, is the youngest of five children. His parents are Mr. and Mrs. Gideon Kaonohi, home-steaders in Waimanalo.

He grew up in Waimanalo and saw much of the problem stemming from the family home life.

"Much of my campaigning is based upon the family man and how he and family would like to

see improvements for their community," Kaonohi said, outlining his viewpoints on crime:

- Mandatory sentences for the repeat offenders.
- Review of our justice system in Hawaii.
- Review of the courts and the procedures in Hawaii.
- Review of the appointed judges by the state.



RE-ELECT CHARLES D
TOGUCHI

**STATE HOUSE
23RD DISTRICT
HAUULA - HEEIA**

Paid for by Friends of Charles Toguchi

Champion of the Working Man....

REELECT OLLIE LUNASCO



Major Concerns:

Agriculture (strongly opposed Poamoho Airport), crime, education, housing, medical services, highway improvements....

**22nd Representative
District (D)**

- Worker for our community - meets our needs
- A full time legislator - Ollie is involved
- He gets things done - experienced

**Paid for by Friends of Ollie Lunasco
Ted Nagata Chairman
67-668 Kea Place, Wailua**



TERRANCE TOM

- ... has the expertise of putting ideas across
- ... has the expertise to do in-depth research
- ... has the expertise to analyze issues
- ... has the expertise to convince

TERRANCE TOM is a capable attorney

VOTE TERRANCE TOM

**23rd Representative District
Heeia - Hauula (D)**

Veteran Lunasco: Fulltime legislator

For the last 10 years, Rep. Oliver Lunasco, a Democrat, has served as a member of the state House of Representatives from the 22nd District (Wahiawa-Waialua-Haleiwa Laie).

As a full-time legislator, Lunasco has been able to keep in touch with the communities he represents because he is not "tied down" to any outside occupation or business that would require his time or efforts, especially during legislative sessions.

Serving as chairman and member on various legislative committees, especially in the areas of labor, agriculture, land use, and education has provided Lunasco with a good understanding of the programs and issues in

these areas and how government and the political process operates.

More importantly, Lunasco has been able to work with his fellow legislators in getting the necessary support for programs benefiting the Wahiawa community.

For example, Lunasco has been instrumental in getting his fellow legislators to support the development of the Wahiawa State Freshwater Park.

The first phase of the project, completed last year at a cost of about \$400,000, includes new restrooms, parking, and a caretaker's station to accommodate for growing recreational interests in fishing and picnicking.

Another major project which will benefit



Oliver Lunasco

Wahiawa residents is the new Wilson Bridge, which is about 60 percent completed. This \$4 million plus project will relieve Wahiawa of its current traffic congestion, especially during busy "rush" hours.

Lunasco is not afraid of speaking out on controversial issues. Earlier this year, the state Department of Transportation was pushing for a second Oahu aviation airport at Poamoho.

At the community and legislative hearings, Lunasco strongly opposed a Poamoho airport:

Ajifu seeks re-election

Preservation of the state's agricultural and natural resources and sound fiscal operation on the part of government are among the top priorities in Sen. Ralph Ajifu's bid for reelection to the state Senate from the 3rd District (Windward Oahu).

A farmer and conservationist for more than 34 years, Ajifu said island farming relies heavily upon proper planning and management of natural resources, as well as improved marketing and transportation of island-grown products.

He said the scarcity of

land is what has made it almost impossible for many small farmers to survive, and that the state government could do much more to assure every possible support to this industry.

"Not only could we be growing most of the agricultural products for use in island homes, we could also export many products and expand our state's economic base," Ajifu said.

Aquaculture, a modern-day offshoot of agriculture, is one area of tremendous income potential for the State of Hawaii, according to the

Windward senator.

Comprehensive and long-range planning for all the lands in the state, particularly those lands most useful for farming, is essential to diversifying the agricultural industry and broadening the job market, Ajifu said.

During his service in the House of Representatives, Ajifu was elected House minority leader for two years.

He is completing his first term in the state Senate.

Ajifu has been active in community affairs for more than 34 years.

Abrisce makes 2nd bid

Elizabeth "Liz" Abrisce is seeking election to the state House of Representatives from the 19th District (Pearl Ridge-Pearl City).

"This is my second bid to state legislature," she said.

"What prompts my continued effort to seek this post is the same as two years ago—the concern for the kind of environment our children will grow up in.

"Being a resident of this community for 14 years, I have seen Pearl City-Pearl Ridge expand as an urban center. Where there was once green sugarcane fields, now stands thousands of homes.

"Growth has brought development and a measure of prosperity to our neighborhoods. A wise person made this statement 'all change is not growth, as all movement is not forward.'

"At the same time, this rapid growth is presenting us a whole new set of problems that affect our community, our neighborhoods, our families and touch our individual lives," she said.

"For example, an increase in crime rate and traffic congestion. To you, the war on crime is waged right down the street. The 'school system' is the school your children attend. We cannot stop the changes nor can we totally reject them, therefore we must adapt to and plan for them," she continued.

"Ultimately, the issues that confront us are

political in nature—crime, education and rapid growth.

"As your representative on issue of crime, I would support increased severity of punishment for repeat offenders and work towards a central file on criminal offenders so they can be better followed through the justice system.

"On problems of education I would work to increase the ratio of counselors to students; provide means to strength-

en community and school relationship and work towards programs that support learning the basic 3R's in elementary and intermediary levels.

"In the area of rapid growth I would support legislation which provides for open space, state parks and limit high rise construction and I would work for controlled growth where adequate support facilities are planned for—e.g., roads, water, sewage disposal and police," she said.

Wurdeman wants 20th seat

Ginger Wurdeman is a graduate from Kamehameha Schools and holds a B.A. in political science and M.A. in public administration.

She is employed as a lecturer at West Oahu College, has two children and is married to City Corporation Counsel

Richard Wurdeman.

Wurdeman believes that the solutions to the problems of growth, a stagnant economy, crime and deteriorating government facilities are in new approaches, not in patching up out-moded systems.

Residents of the state of

Hawaii are among the highest taxed in the nation, she said, adding she believes that our people deserve something better.

"The public must demand the delivery of government services that compliment the tax crunch," she said.

LEIGHTON K. KAONOHI 26th Representative District TAKES ON THE CHALLENGE...



Paid for by Friends for Kaonohi
1160 Lohi Street, Kailua, HI 96734
Wayne Hikiada, Chairman

REPRESENTATIVE RUSSELL SAKAMOTO 26th DISTRICT, STATE HOUSE (D)



Re-elect Russell
He's earned our trust



Paid for by FRIENDS OF RUSSELL J. SAKAMOTO
Richard Botelho, Henry Lum King Chairmen 1547 Aake Place Kailua, Hawaii 96734