

HAWAII MARINE

Voluntary payment for delivery to MCAS housing/\$1 per four week period

VOL. 9 NO. 32

KANEOHE BAY, HAWAII, AUGUST 13, 1980

TWENTY PAGES

Engine failure forces landing

"We were crossing over behind four other helicopters when we felt our aircraft shudder. At first I thought we were just flying through someone's rotor wash (turbulence caused by helicopter rotors). Then the pilot and I both looked at the instruments at the same time and noticed everything winding down. That's when we knew we had lost an engine."

THAT IS HOW 1stLt Mike Murphy, copilot, described the first few seconds after the CH-46 Sea Knight helicopter he and 1stLt Stuart McMeans were flying Thursday developed a failure in one of its engines.

The helicopter and its four crew members, belonging to Marine Medium Helicopter Squadron 265 at Marine Corps Air Station, Kaneohe Bay, was transporting 18 Marines back to the air station from Kauai when the mishap occurred. The Marines, members of a composite squad from 1st and 2d Platoons, Company I, 3d Battalion, 3d Marines, had been on the west side of Kauai for four days of training on squad and platoon patrolling tactics before flying back to Oahu.

"AT FIRST I thought they were just kidding around," said 2dLt Robert Sellers, officer-in-charge of the squad. "But as soon as we felt the thump and heard the engine winding down, the crew chief

jumped up and started talking to the pilot. He quickly signaled to us that we were going down and we started getting ready to toss out all our field equipment to lighten the load. I guess there was a certain amount of fear, but no panic. It was just 'get the job done.'"

Three of the four helicopters flying with the crippled helicopter continued to the air station to report the problem while one remained as an escort. It was determined that the closest land was Kauai, 28 miles away. It looked grim.

"AT FIRST I thought we were too far from land to make it back," said McMeans, the pilot. "After we got rid of all the fuel we could spare and threw off the field equipment our descent slowed but didn't stop. We started emergency procedures to get more power to the good engine but I couldn't see land, so we prepared to land in the water if we had to."

The escort aircraft found a possible landing site on a cune access road approximately 100 yards from Kauai beach. They radioed the information to McMeans, then gained altitude and readied to rescue the passengers and crew if the race for land was lost.

"THE TROUBLE started about 10:15 and it took us almost 20 minutes to get back to land,"

reported McMeans. "When I spotted land and realized we wouldn't go down in the water I started concentrating on a safe landing. We had come too far to damage the craft in a rough touchdown."

The pilot and his crew were not to be disappointed. By following prescribed procedures and a bit of good luck the landing turned out very soft.

"I WASN'T ALL that surprised we set down easily," he said, "because everything was going just like it should. It was a massive relief to know that we were able to get down safely without anyone getting hurt or doing further damage to the helicopter."

"It is evident that the entire crew worked together in handling an extremely difficult emergency in a most professional manner. Their action prevented the possible loss of life and a valuable aircraft," stated Col Warren Ferdinand, commanding officer, Marine Aircraft Group-24.

A NEW ENGINE was transported to the downed aircraft Thursday afternoon and repairs were made. A decision to leave the helicopter on Kauai instead of flying it back to Kaneohe Bay was made because of the strain placed on the functional engine during emergency procedures. It was replaced by a second engine Friday and the CH-46 returned home.

As might be expected by the tradition of Marines, McMeans, Murphy, Cpl Brad Chighrow, mechanic, and SSgt Tom Schelling, crew chief, were back in the air the next day.

"I DON'T HAVE any reservations about flying in a CH-46," claims Murphy. "Actually the whole incident solidified my faith in that aircraft because any helicopter that can lose one of its two engines and carry a cargo of 18 Marines 28 miles to a safe landing on an unprepared surface is all right by me."

Remodeling nears finish

Pool reopens soon

The MCAS Kaneohe Bay swimming pool is alive, and, while not quite well, is on the mend. The pool, located across from K-Bay Hale O'Hana, has been closed for remodeling since March and should be ready to reopen in September.

Reconstruction of the 50x25 meter Olympic-sized swimming pool began in early March but unusually wet weather and non-

availability of parts have held up the operations.

Costing approximately \$400,000, the remodeling includes a completely new filter system, new pipes, valves, pumps and electrical system, along with a plaster interior, ceramic tile lane markers and a refinished deck.

CAPT HARRY Steever, Special Ser-

vices recreational officer, claimed, "The only original part of the pool is the hole in the ground. When the pool reopens operation will be geared toward troop and family recreational use. Its primary function is for use as a training tank for Marines."

Steever stated that if the weather holds up it is hoped the pool will be ready for action before the end of next month.



Photo by Sgt Chris Taylor

TILES AND TRIBULATIONS — Civilian construction workers lay tiles for lane markers in the Olympic-size swimming pool aboard MCAS Kaneohe Bay. Complete reconstruction of the pool is in full swing despite wet weather and problems procuring parts and is expected to be fit for fun in the sun by late September.



Photo by Sgt Chris Taylor

YOUNG RACER? — A little one appears to be limbering up for the next race at the 1980 State of Hawaii Outrigger Canoe Championship Regatta held on MCAS Kaneohe Bay Sunday. She is not a paddler though, just one of the 7,000 plus spectators on hand to watch the races. For story and photos, see Page B-1.

Lounge

Couples' area adds air of elegance

The new couples' lounge at the Windward Enlisted Club is having an open house Aug. 19 beginning at 4:30 p.m. Everyone is invited to come and enjoy free pupus and a no-host bar in the atmosphere of the new lounge.

One of few such lounges in the Marine Corps, it is complete with bar, dining room, dance floor, stage, lobby/library area and lanai.

The lounge is a place where couples can wine and dine in first-class style without leaving the base. Mrs. Suzann Owen, acting director

of the Club System commented, "The idea behind the couples' lounge was to present a classy type atmosphere—someplace separate from the rest of the club for couples to come and have a good time."

The lounge is tentatively scheduled to be open Wednesday through Sunday from 4:30 p.m. to closing. Sunday mornings will feature a brunch. The rest of the day and Mondays and Tuesdays the lounge can be reserved for private parties and banquets.

The dance floor/stage area has lights

swirling, twirling, flushing and bouncing from all angles. Entertainment will be provided nightly by a disc jockey or live bands.

"We've worked hard to create an air of elegance and relaxation in the lounge and I think we've done a good job," said SSgt Ed Fenton, club manager.

The lounge will require a name before opening night. All ideas are welcome and can be placed in the suggestion box at the entrance of the club or delivered to the Combined Club Systems Office in Building 822.

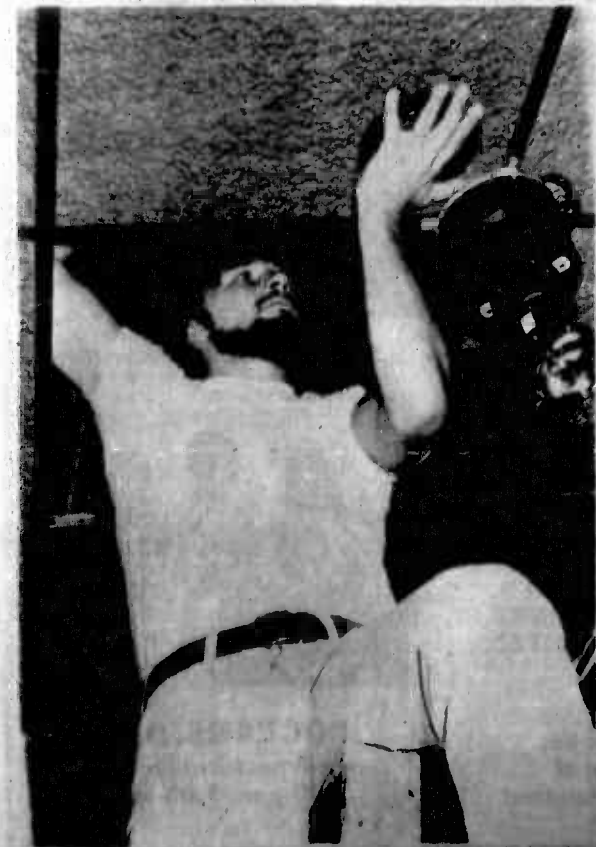


Photo by Sgt Chris Taylor

UP IN LIGHTS — Joe Novak, civilian contractor, installs an overhead flashing light as part of final preparations for the grand opening of the Windward Enlisted Club's couples' lounge. The lounge includes a light show, lighted dance floor and stereo system and will open Aug. 29.

New community center offers myriad of services

CAMP H.M. SMITH — Marine families residing at Aliamanu Military Reservation can now enjoy the comforts of a community center thanks to the efforts of Army Community Service Social Workers at Fort Shafter.

The new Aliamanu Community Service Center nestled at 1148B and C Vitex Road in the 'crater' officially opened Aug. 7 to offer a myriad of family services to more than 2,500 military dependents.

Community problems brought the need for the center and various organizations have teamed with Fort Shafter members to operate it.

Some of the programs available are classes in coping with children, divorce and single parenting.

The Naval Alcoholic Safety Action Program will hold classes for 13 to 18-year olds who want to

know more about alcohol and substance abuse. Classes start Aug. 18. Classes for adults will begin at a later date.

A staff from Tripler Hospital will sponsor a well-baby clinic with help from the Armed Services YMCA. The Armed Services YMCA will also sponsor a 'Welcome Baby' visitation program for new mothers.

Other programs and activities in the seven-room complex will include: religious counseling and services; budget counseling; American Red Cross classes; children's lending library; and Boy and Girl Scouts meetings.

Marine families desiring more information on the center or volunteer work, contact 2dLt Beth Mazur or SFC Pamela Fox at 833-2342/4723.

In this issue...

Boathouse

Self-contained unit equipped for emergencies
Page A-2

Boot Camp '80

Sea Cadets visit Marines, taste 'esprit'
Page A-7

Money Orders

Common disease can prove fatal if neglected
Page A-3

Tradition

Corps' history filled with unsung heroes
Page A-10

Health

Western Union takes up residence in the Exchange
Page A-3

Sports

Canoe races, soccer action, Marathon
Page B-1

Alert crew maintains waterfront operations

by Sgt Phillip Williams

Not all air station inhabitants know the location of the Station Operations and Maintenance Squadron, Waterfront Operations/Crash and Rescue unit. However, the services they offer are not a mystery to many of the commands at MCAS Kaneohe Bay.

THE NAVAL unit provides search and rescue services for both air and ground units operating from Pier 2219. Utilizing two 40-foot Aviation Rescue boats, three 18-foot Boston Whalers and one Light Craft Mechanical boat, the unit is well prepared for any

aviation or aquatic mishap. Among other duties they perform is the containment of oil spills or pollution contamination within a limited area on the air station.

BECAUSE of equipment limitations SOMS personnel at the unit are capable of contain-

ing only certain classifications of oil and pollution contamination. Any major catastrophes are turned over to a special unit attached to Pearl Harbor where proper equipment for those disasters is available.

Another function the Navy men and women of the Waterfront Operations unit assume is providing direct support to the Provost Marshal's Office in the support of water security regulations. Although they are not authorized to remove illegal fishermen or boaters occupying off-limits water areas, they can provide transportation to military police aboard the station who do have the authority to banish any violators.

One of these areas surrounds Mokapu Point. Because of heavy small arms firing on the station rifle range and the tendency boaters have to stray within danger zones outside of the impact area, the Waterfront Operations team is often called to assist in informing those boaters of possible dangers they may incur.

"IF WE COME in contact with violators, we give them a verbal warning and they usually leave," states CWO3 Richard Robbins, officer-in-charge of the Crash and Rescue unit.

The unit is self contained. They perform their own repairs and maintenance on

the boats, relying very little on other units for maintenance support. Within the unit area can be found an electric shop, a wood shop and a spare parts room.

SOMS Waterfront Operation/Crash and Rescue unit has a total of 22 sailors who perform a variety of tasks such as working on the boat's diesel engines.

ROBBINS SAID he feels "The sailors in this unit are good workers. They do their jobs when they're supposed to."

Personnel also stand watch at the waterfront tower. This watch consists of monitoring crash nets and harbor shore limitations.

Petty Officer First

Class Rebecca Perreira enjoys the time she spends on duty. "Usually it's nice, easy-going duty. I really enjoy the beautiful view the bay has to offer when I'm up in the tower."

PERREIRA also feels the duty enhances better civilian and military relations. "Sometimes we assist civilian boaters. In some cases, because of the direct contact, we make many friends."

Now that the duties, as well as the location of SOMS Waterfront Operation/Crash and Rescue unit is no longer a mystery, you know who will answer you should you need maritime assistance.



Photo by Sgt Chris Taylor

OFF WITH THE OLD — Petty Officer 2d Class Charles Wilson and SN Crystal Miller, Station Operations and Maintenance Squadron, Waterfront Operations/Crash and Rescue unit, scrape and sand paint and algae from one of the unit's boats in preparation for a new paint job. Such tasks are necessary to keep their equipment in top shape.

Toys pose threats to many children

Skates, tricycles, toy trucks, cars, non-flying airplanes, boats, wagons and balls are among children's favorite playthings.

But last year, approximately 150,000 people received emergency hospital treatment for injuries associated with toys, according to United States Consumer Product Safety Commission estimates.

The following tricycle-associated incident was taken from a CPSC injury investigation:

Joyce and her brother were racing when she turned her tricycle sharply. She was flipped over the handlebars and onto the sidewalk, fracturing her collarbone.

Another accident associated with a plastic tricycle happened recently at MCAS Kaneohe Bay.

A five-year-old was riding his tricycle in a parking stall by his home when he rolled

into the street and collided with a passing motorcycle. The child sustained bruises to his head and the left side of his body.

These case histories illustrate some major accident patterns associated with tricycles. The main problems with the vehicles are:

1. Poor construction or design. This includes breakage while in use and sharp edges or points;

2. Instability which may cause them to turn over, often during sharp turns or at high speeds;

3. Inability to stop, because tricycles are often designed without brakes; and

4. Small body parts can become entangled in a tricycle's moving parts.

The station Safety Office staff reminds parents that it is their responsibility to teach children safe riding habits. They offer these suggestions:

1. Caution children against riding double on small vehicles. Carrying passengers greatly increases instability.

2. Teach them the dangers of riding downhill. It can be impossible to stop without brakes.

3. Teach children to avoid sharp turns, to make all turns at low speeds and not to ride down steps or over curbs.

4. Advise children to keep hands and feet away from wheel spokes.

The station Safety Office also reminds air station residents of Station Order P5500.6A which states, in part:

"Parents will ensure their children do not play in the streets, parking lots, industrial and construction areas, dumpsters, sewers, condemned or vacant buildings, on the golf course or any other dangerous or prohibited area."



Photo by Sgt Chris Taylor

NEW ADJUSTMENTS — Fireman Jane Waters and SN Sandra Canup, SOMS, Waterfront Operations/Crash and Rescue unit adjust an engine on one of six vessels assigned to the unit. The two are among seven women currently attached to the waterfront section.



THE DIRT TRAP

It's dirt in your oil that wears out your engine. With the Frantz, the dirt's in the filter... not in the engine.

Properly installed and serviced, the Frantz Oil Filter keeps engine oil clean 100% of the time, saves from 70% to 80% on oil and filter costs by extending oil drain intervals, and helps conserve our number one resource... oil.

Never change your oil again.

Frantz Filters, 98-1106 Kahapili St., Aiea, Hawaii 96701. (808) 488-7540.

TLA SPECIAL "ROOM & CAR PACKAGE"

Includes:

- RENTAL CAR by **Hertz** or **Thrifty**
- DELUXE, Spacious Rooms at the HOLIDAY INN AIRPORT with:
- Air Conditioning
- FREE Color Television
- Room Service Available
- FREE Parking, Babysitter Referral, WASHERS & DRYERS
- 24-Hour Telephone Switchboard Service
- CREDIT CARDS: American Express, VISA, Bank Americard, Carte Blanche, Diner's Club & MasterCard
- LOCATION convenient to ALL Military Installations, Waikiki and Major Island Attractions

ONLY **\$43⁹⁵** per day

For Reservations & Information Call:

Holiday Inn AIRPORT
836-0661

Holiday Inn HONOLULU AIRPORT

Additional Conveniences:

LEIMAKER'S RESTAURANT
KALAMA COCKTAIL LOUNGE (with entertainment nightly)

POOL

Kennels

FREE Airport Shuttle

Special TLA Rate On Room Only \$30 Per Day

COME AND ENJOY POLYNESIAN NIGHT

at the **KMCAS SNCO CLUB**

August 16th
5:30 p.m.

LUAU

7:00-8:30 p.m.
Polynesian Show

\$8.00 per adult
\$5.00 eight and under

TICKETS ON SALE RIGHT NOW. HURRY, SEATS ARE LIMITED.

Don't miss this full night of special entertainment

"OCEANSIDE" will perform from 9:00 p.m.-1:00 a.m.



HAWAII MARINE

The Hawaii Marine is an unofficial newspaper published every Wednesday by Community Publications, Inc., 48-016 Alaloe St., Kaneohe, Hawaii 96744, in the interest of U.S. Marine Corps personnel in Hawaii. All news copy is prepared in the Joint Public Affairs Office, Marine Corps Air Station, Kaneohe Bay, Hawaii 96743. Copy must be submitted no later than noon Thursday for the following Wednesday publication. Hawaii Marine solicits contributions of information and photographs from all Marine Corps organizations. However it reserves the right to edit or rewrite material submitted. All advertising is arranged by the publisher, Community Publications, Inc., telephone 235-6681. Circulation is 8,000.

Everything advertised in this publication must be made available for purchase, use or patronage without regard to race, creed, color, national origin, age or sex of the purchaser, user or patron. A confirmed violation or rejection of this policy of equal opportunities by an advertiser will result in the refusal to print advertising from that source.



Photo by Sgt Chris Taylor

TENDER TRANSFER — Susan Stride, customer service clerk at the Marine Corps Exchange, MCAS Kaneohe Bay, transfers a telephonic money order via the new Western Union facility in that office. Exchange patrons can now send or receive money to or from the mainland quickly.

Money

Western Union expedites transfers

Aug. 1 marked the opening of a Western Union Office in the Marine Corps Exchange at MCAS Kaneohe Bay. The office, located in the Customer Service area is another service offered by the exchange system to support Marines.

The new service, operated on a telephonic transfer system, is a quick way to send or receive money to or

from the continental United States, Canada or Mexico.

The office is open in conjunction with operational hours of the main retail store.

The length of time it takes to transfer money from one place to another depends on how busy phone circuits are. It can be done in as little as 15 minutes, including paperwork.

There is a set rate for sending telephonic money orders to the mainland based on the amount sent. For instance, if the amount sent is \$50 the cost would be approximately \$9.

Having a Western Union Office on the base can save a trip to Honolulu should an emergency arise or if there is a need to transfer money quickly.

Sound health program thwarts deadly disease

by Sgt Pepper Davis

John has a habit. At first he took pills to satisfy his needs but soon they weren't strong enough. He needed something more potent and he found it... injections. The injections worked fine. They provided John with the "something" he needed to make life easier, more enjoyable.

YOU'RE probably thinking John is addicted to a harsh substance, possibly heroin, but that's not the case.

John is a diabetic. Since childhood he's had this disease from which more than 10 million other Americans suffer. The injections he takes are insulin shots he needs to survive.

Diabetes is a disease of the pancreas in which the body cannot make use of sugar and starches in a normal way. It's the third leading cause of death among Americans and each year more than 800,000 people discover they have it.

IT'S IMPORTANT to know about diabetes because it's one of the

most common ailments in America today. If overlooked or neglected, it can lead to serious complications including heart attack, blindness, kidney disease and gangrene. Diabetes is easily detected and some of the complications associated with the disease can be prevented and treated properly.

Food sugars are normally eaten, digested and changed into usable sugars called "glucose." They are then acted upon by insulin, a hormone produced by body cells, and stored or used for energy.

But a person with diabetes cannot produce enough insulin nor can it properly use the insulin it does produce. As a result, the body is forced to draw on proteins and fats, instead of glucose, for the energy it needs.

SCIENTISTS are not exactly sure why people get diabetes but they have several theories such as disease of the pancreas. When something goes wrong

with the "insulin factory" diabetes may appear. It is also theorized that some people are born with a tendency towards diabetes, although it may not appear for many years.

Another idea is that certain viruses and an insulin resistance cause the disease. The speculation goes on. However, it is known that diabetes occurs most often in certain types of people.

Heredity is a strong factor in diabetes. People with diabetic relatives are prone to the disease. The disease runs in families, though it may skip a generation or more. It's estimated one out of six diabetics has an affected mother while one out of 12 has a father who is diabetic.

DIABETES is usually a disease of middle and old age, so folks over 45 years of age stand a greater chance of becoming afflicted with the illness.

Overweight persons are often stricken with the disease. More than 90 percent of adult

Free Concert

Marine Corps Air Station Kaneohe Bay is most pleased to host a "Hawaii Military and Kamaaina Ohana Day" concert starring Danny Kaleikini and Friends, Sunday, Aug. 24 between 2 and 4 p.m.

The concert is free and open to the public. Shness (a top rock 'n' roll and recording group) will highlight a lineup featuring Kit Samson and the Sound Advice (Kahala Hilton Hotel Lounge stars), Na Pau Kano O Pio (Contemporary singers), Squires from the House of 1 (male Halau), and Sherri-Lyn Cabbab (Young ukulele artist).

Marine personnel will direct traffic from both the Main (H-3) and Mokapu gates to the concert site at Platt Field.

This special concert promises to be a thoroughly enjoyable and entertaining event for everyone attending. Voluntary donations to benefit MCAS Youth Activities will be invited at the conclusion of the performance.

Promotions

The October 1980 Sergeant promotion period was announced in a recent ALMAR. Minimum date of rank for eligible corporals is July 17, 1979 or earlier. Cutoff date for computing time in grade and time in service is Sept. 30, 1980. Cutoff date for proficiency and conduct marks is Aug. 31, 1980.

Information on promotion allocations for the 1980 gunnery sergeant selection board, including minimum date of rank and armed forces active duty base date requirements will be forthcoming in another ALMAR.

Approved selections for the 1980 staff sergeant selection board have been published in MCBul 1430 of July 16, 1980.

TLA Heaven

The Hale Koa Hotel, located on the beach in Waikiki, is approved for temporary lodging allowance.

The government-owned and operated recreation center affords military personnel, their dependents and federal employees a wide spectrum of activities.

In addition to the TLA authorized accommodations, a wide array of entertainment choices are available. For more information or to make reservations, contact the Hale Koa Hotel Management Office at 955-0555.

"Dirty Linen"

The MCASquaders Dinner Theater Group will perform at the MCAS Kaneohe Bay Officers' Club Aug. 20 at 7 p.m. The group will present a series of nine vignettes entitled "Dirty Linen."

The cast consists of 10 actors and actresses with Debbie Murray as the executive director and producer of the show.

For more information call the Officers' Club at 257-2081.

Orientation

A seven hour Career Orientation Information Course is scheduled for Aug. 19-20 at 3 p.m. in Building 244, Classroom 3.

Commanding officers are requested to ensure that each battalion and squadron send two unit representatives, either officers or staff non-commissioned officers to the class. Units wishing to send more than two representatives may do so by requesting additional quotas from the Joint Career Planners Office. Names and ranks of individuals attending the course should be submitted no later than 3 p.m. Aug. 15.

The course will cover information and enlistment/extension, prerequisites and incentives, military/veteran's/survivor's benefits, Fleet Marine Corps Reserve and Marine Corps Reserve, selective reenlistment bonus program, lateral moves, in-service education, and officer/enlisted assignment and promotion policy.

Commanders are requested to ensure all quotas are filled and to personally advise the brigade chief of staff or the station executive officer if full attendance cannot be accomplished.

For more information concerning the Career Orientation Information Course, contact the

Joint Career Planners Office at 257-3244 or 257-2403.

Outreach

Armed Services YMCA Outreach is sponsoring a general discussion on "Early Adolescence and the Teenage Years" for all

interested parents.

Guest speakers include James Jolliff, Ph.D. and Annette Higuchi, Ph.D., both clinical psychologists.

The meeting is scheduled for Aug. 19 from 7-9 p.m. at Building 455, MCAS Kaneohe Bay.

Child care is provided for the evening at 50 cents per child. Free transportation from the Windward side is available for persons making reservations. For reservations or information call AS-YMCA Outreach at 254-4719/4865.

WHAT'S A B.S.O.E.?

If you have military experience in a specialized field, come in and find out from a Wayland Baptist Counselor.

Fort Shafter	10:00-12:00 Tuesdays	438-9215
Hickam AFB	9:00-11:00 Thursdays	449-2306
Kaneohe MCAS	9:00-11:00 Mon., Fri.	257-2061
Schofield Barracks	9:00-11:00 Mondays	655-4985
Tripler AMC	1:00-3:00 Tuesdays	433-6366
Pearl Harbor	9:00-11:00 Wednesdays	474-1278
Camp Smith	1:00-3:00 Thursdays	477-6867
Naval SubBase		471-3490



Wayland Baptist College

2429 Pali Highway Tel. 595-2951

A Fully Accredited Equal Opportunity Institution

MILLIONS OF DOLLARS

are lost every year due to incomplete and unsubstantiated insurance claims.

Pacific Home Inventory has a property registry service that doesn't let your memory cost you money. Call us today. 262-8816



pacific home inventory

property
registry
service

214 Kailua Rd.
Kailua, HI 96734

COMING SOON to the MCAS FEDERAL CREDIT UNION



For more details call us at
254-1334/1335 or 261-3442

No service charge,
no minimum balance...
and dividends!

WINDWARD SWAP MEET:

KAILUA
DRIVE-IN THEATRE
EVERY SUNDAY

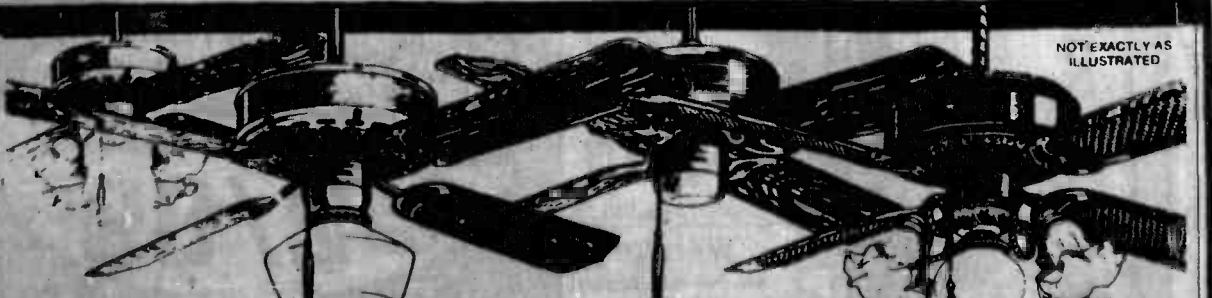
7 A.M. TO 1 P.M.
YOUR READY-MADE
MARKET-PLACE

- FOR
- FUNDRAISING •
- BAZAARS •
- GARAGE SALES •
- ARTS & CRAFTS •
- COLLECTIBLES •
- RECYCLING •
- PRODUCT • PLANTS •

FREE SELLING SPACE
FOR FUNDRAISING GROUPS

DOOR PRIZES!

EVERY HOUR



NOT EXACTLY AS
ILLUSTRATED

LOWEST PRICES
IN HAWAII!

FAN and ENCON Fan Sale

While they last, our entire inventory is on sale!

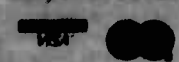
Modern energy savers and conversation pieces. Easy to install, quiet and efficient, repels insects and disperses smoke and odors. Comes in four sizes, with a variety of light kits available.

PACIFIC SURPLUS & DISTRIBUTORS

35 KAINEHE ST., KAILUA
PHONE TODAY 262-8131

MON.-SAT. 10:00 AM-6 PM, WED. & FRI. TILL 8 PM

Buy A Fan Today
And Have A Cool
Comfortable Summer



PRICES START AT
\$129.99

— Hurry — Quantities Limited —
One Week Only

GLASSES OR SOFT LENSES?

SUCCESSFUL CONTACT LENS WEAR REQUIRES:

- PROPERLY FITTED LENSES
- HIGH QUALITY MATERIALS
- THOROUGH FOLLOW-UP CARE BY YOUR OPTOM
- DURING ADAPTATION



SOFT CONTACT LENSES

includes lenses,
care kit and 90 day
trial period. **\$120**

ALSO AVAILABLE • SOFT CONTACT LENSES FOR ASTHMA/ALLERGY • CONTACT LENSES • IMMEDIATE SERVICE FOR SOFT CONTACT LENSES

DR. CHARLES DEAN,
Optometrist

DR. TIM YOSIKAWA,
Optometrist

Kailua 261-8735 Pearl City 92-1226 Kailua-Honolulu 497-7907 Downtown 1140 Union Mall 534-6226

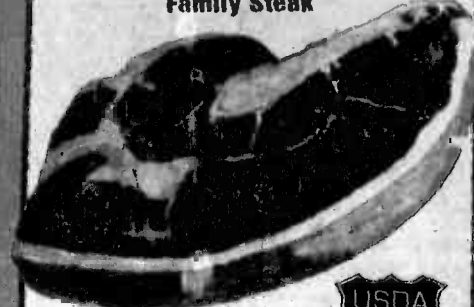
**Why Pay More. . .
Why settle for less?**

**Safeway USDA Choice
Grade Beef Guaranteed to
Please! Close-Trimmed for
Better Value. Priced to
Save You Money!**

SAFEWAY FOR 4-DAY AD SPECIALS—PLUS

SIRLOIN STEAKS

USDA Choice (Bone In)
Family Steak



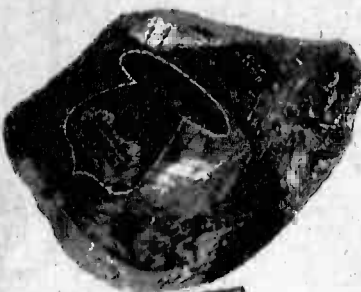
USDA
CHOICE



lb. \$3.49

TURKEYS

Swift Butter



TURKEY TAILS **lb. 69¢**
Jennie-O Brand
Ready-To-Eat lb. \$1.39
TURKEY HINDS **lb. 69¢**
Jennie-O Brand

lb. 98¢

PORTERHOUSE STEAKS

USDA Choice
Beef



USDA
CHOICE

TOP SIRLOIN STEAKS \$4.79
Boneless USDA Choice lb.
Extra Tender
STRIP LOIN STEAKS \$5.99
Boneless USDA Choice lb.

lb. \$4.99

PORK CHOPS

Assorted Family Pack
Frozen (Center Cuts lb. \$2.39)



lb. \$1.89

CROSSRIB ROASTS

Boneless USDA
Choice Pot or
Oven Roasts



lb. \$3.29

GROUND BEEF

Less Than 30% Fat
Family Packs 3 lbs. or More
(Less Than 3 lb. Pkg.)



lb. \$1.39

BEEF ROUND TIP ROASTS

Boneless Oven Roasts



USDA
CHOICE

lb. \$3.29

FRESH SALMON

Silver, Air Flow Whole or Half
(Center Roast or Steaks lb. \$3.19)
(Fresh Frozen Whole
or Half lb. \$2.39)
(Available
Thurs. A.M.)



lb. \$2.59

SLICED BACON

Safeway Smok-A-Roma
(Morrell Pride)



lb. \$1.59

MORE MEAT BUYS

SKINLESS FRANKS

Scotch Buy (12 oz. Beef Franks ea. \$1.37) **lb. \$1.49**

SLICED BOLOGNA

Scotch Buy (Safeway 12 oz. Meat ea. \$1.33) **lb. \$1.59**

SHORT RIBS

Lean Tender Bar-B-Que Style Frozen **lb. \$1.49**

WHOLE CRABS

Dungeness Frozen, Sweet Meaty **lb. \$1.39**

LIQUOR SPECIALS

Gin

Winner's Cup
80° Qt. or 1 L.



\$4.79

Regular Price \$5.39

Vodka

Winner's Cup
80° Qt. or 1 L.



\$4.79

Regular Price \$5.39

Dinner Wine

La Mesa 3 L.



\$3.89

Regular Price \$4.09

Whiskey

Old Calhoun Straight
80° 750 ML.



\$4.99

Regular Price \$5.05

Scotch

MacNair's
80° 750 ML.



\$6.89

Regular Price \$7.55

Vodka

Kaviana 1.75 L.



\$8.39

Regular Price \$9.59

GREAT SAVINGS IN OUR



**Orange
Juice**

Bel Air Frozen 12 oz.

89¢

SUPER
SPECIAL



**Cragmont
Soft Drinks**

12 oz. Cans
Diet or Regular

6 FOR \$1.29

SUPER
SPECIAL



Mayonnaise

Nu-Made
Quart

\$1.19

SUPER
SPECIAL



**Frozen
Vegetables**

Bel Air Corn, Mixed, Peas
or Peas & Carrots 10 oz.

2/89¢

SAFETY
SPECIAL



**Bacon
Bits**

Or Chipe Schillings
3.25 oz.

89¢

SUPER
SPECIAL

Ice Cream

Lucerne
Vanilla 1/2 Gal.



\$1.79

SUPER
SPECIAL

Calrose Rice

Town House 25#



\$5.59

SUPER
SPECIAL

**8 SAFEWAY STORES
TO SERVE YOU**

440 4th Street SE, Minneapolis
1121 E. Hennepin St., Minneapolis
2045 E. Hennepin St., Minneapolis
1300 Park Highway, Minneapolis

8:30 a.m. to 9:30 p.m. Mon. thru Sat.—Sun. 9:00 a.m. to 6:00 p.m.
8:30 a.m. to 12:00 p.m. Specialty Shop Mon. thru Sat.—Sun. 9:30 a.m. to 10:00 p.m.
8:30 p.m. to 10:00 p.m. Mon. thru Sat.—Sun. 9:00 a.m. to 9:00 p.m.
9:30 a.m. to 10:00 p.m. Mon. thru Sat.—Sun. 9:30 a.m. to 9:00 p.m.

80-1277 Koshumoto St., Aliso
1000 Koshumoto Dr., Aliso
40-000 Koshumoto Dr., Aliso
50 Koshumoto Dr., Aliso

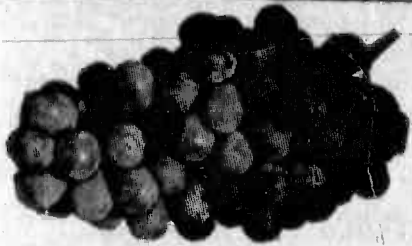
8:00 a.m. to 10:00 p.m. Mon. thru Sat.—Sun. 9:00 a.m. to 6:00 p.m.
8:30 a.m. to 9:30 p.m. Mon. thru Sat.—Sun. 9:00 a.m. to 6:00 p.m.
9:00 a.m. to 9:30 p.m. Mon. thru Sat.—Sun. 9:00 a.m. to 6:00 p.m.
9:00 a.m. to 9:30 p.m. Mon. thru Sat.—Sun. 9:00 a.m. to 6:00 p.m.

BIG SAVINGS!

100'S MORE IN THE STORE

Safeway has the Produce you can depend on . . .

You'll Find Every Season's Bounty of Fresh Fruits and Vegetables Selected by Safeway's Skilled Produce Buyers!



SEEDLESS GRAPES
CALIFORNIA GROWN
U.S. NO. 1 QUALITY



99¢
lb.



SALAD POTATOES
5# CELLO BAG
U.S. NO. 1 QUALITY
ALL PURPOSE



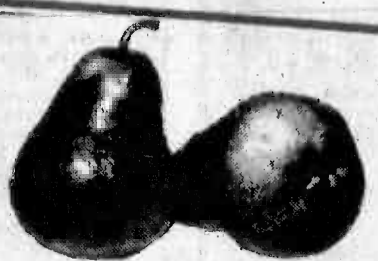
\$1.29
BAG



ICEBERG HEAD LETTUCE
FRESH, CRISP, TENDER
U.S. NO. 1 QUALITY



37¢
lb.



BARTLETT PEARS
SWEET, JUICY, FLAVORFUL
U.S. NO. 1 LARGE SIZE



37¢
lb.

GROCERY DEPARTMENT!



Tomato Sauce
15 oz. Town House

3 for \$1
SUPER SPECIAL



Macaroni & Cheese
Town House 7.25 oz.

29¢
SUPER SPECIAL



Salad Oil
NuMade 24 oz.

99¢
SUPER SPECIAL

ORIENTAL FOOD SPECIALS

Baby Clams	Mum's 8 oz. Seasoned	\$1.08
Smoked Oysters	Mum's 3.75 oz.	99¢
Tomato Sardines	7.5 oz. Mum's	69¢
Water Chestnuts	Mum's 5 oz.	2/79¢
Mushrooms	Mum's 5.5 oz. Pieces & Stems	69¢
Mixed Arare	Mum's 8 oz. Box	\$1.49
Sushi Nori	Mum's 10's	\$1.08
Sesame Oil	Mum's 8 oz.	\$1.11

VARIETY SPECIALS



Bar Soap
Deodorant
Truly Fine 5 oz. Asst'd.

2 for \$2.79
SAFEWAY SPECIAL

White Magic Sponge
2 Pk. Large Size

99¢
SUPER SPECIAL



Hand Lotion
Premium
Truly Fine 16 oz.

89¢
SUPER SPECIAL

Baby Oil
Truly Fine 16 oz.

\$1.19
SUPER SPECIAL



Large Eggs
Lucerne Grade A
Oz.

96¢
SAFEWAY Low Price



Yogurt
8 oz. Lucerne
Prestrir & Low Fat

43¢
SUPER SPECIAL



Catsup
Town House
32 oz.

93¢
SAFEWAY SPECIAL



Bath Tissue
Truly Fine 4 Roll
2 Ply

\$1.09
SUPER SPECIAL

Another Mystery Special

Clip the coupon below and bring it with you on your next shopping trip. Effective Wed., Aug. 13 thru Aug. 16, 1980. Search and Save.



LAST WEEK'S MYSTERY ITEM WAS Swanson's Chicken Broth 14.5 oz. 3/69

Effective Aug. 13 thru Aug. 16, 1980

MYSTERY COUPON

Come in and redeem this coupon for a surprising hot special!

??

LIMIT TWO PER COUPON—ONE COUPON PER FAMILY
Wed., Aug. 13 thru Sat., Aug. 16—Cash Value 1/20 Cent at Safeway

Everything you want from a store
...and a little bit more!



SAFEWAY

EDITORIAL/OPINION

Street Scoop

"What qualities make a good non-commissioned officer?"



LCpl Cedric Duncan, Company "B," 1/3: "Looking out for the welfare of his troops is what makes a good NCO."



GySgt Robert Rickenbrode, H&MS-24: "An NCO should be knowledgeable, skilled and willing to take charge of his Marines."



Sgt Dawn Wenner, H&MS-24: "Good NCOs should have the ability to handle their troops and be knowledgeable of their own jobs."



SSgt Dannie Keown, H&MS-24: "Good NCOs should possess self drive and initiative. They should also be capable of handling responsibility and caring for people under their command."



1stLt David Jankowski, H&MS-24: "A good NCO should be concerned with dedication to the welfare of his subordinates, on and off the job."

Disillusion reigns high in Corps

by Cpl Cheryl Martin

Before I signed four years of my life away to the Marine Corps, I was tasked first with writing an autobiography and second, putting my thoughts together in essay form on "Why I Chose the Marine Corps."

THE AUTOBIOGRAPHY wasn't hard. Dates, names, places and I was finished. The essay was a little more difficult, but not exactly a problem.

Having grown up in a Navy family, I had seen Marines before. I might even have known a few here and there. I was well aware of the public's opinion of "the few" and "the proud," and that's what I wanted to be.

I can remember writing "The Marines are the elite of the armed forces. Spit and polish, pride, in short... the best."

I was well prepared for bootcamp. I was mentally ready, physically ready and I was going to be the best damned Marine in the Corps.

IN THE FIRST phase of bootcamp, I found we were stripped of our identities. Our self-confidence was flushed down the tubes and were made to feel lower than the ground we walked on. During this trying time, faith in myself and my abilities kept me going and my head held high.

In the last phase of basic training we were built back up, slowly but surely, until we were human again. And when they pinned our emblems on we were sitting on top of the world. We were Marines!

Through permanent changes of duty stations, temporary additional duty or while on leave, I have traveled to almost

every Marine Corps base in the United States, in less than three years. Everywhere I've been, including Headquarters Battalion, Headquarters Marine Corps, one comment I've heard time and time again from senior and junior troops alike is, "Don't judge the Marine Corps by this base. This isn't the real Marine Corps!"

WHERE THE HELL is the "real Marine Corps?"

I hear staff noncommissioned officers talking about the "old Corps" and "when I was a young Marine." When did the "old Corps" begin to deteriorate?

I look around and see a few of the proud. Very few, and I wonder why. No, I don't really wonder, I know. The spit and polish turned to plastic; starched uniforms changed to fluff dries; snap and pop turned to slide and ride; and Semper Fidelis changed to "no one cares if we fool around."

I get tired of seeing Marines walking around with cigarettes dangling from their lips and their hands in their pockets as if they don't know the regulations. I get tired of seeing Marines with covers tipped back, long scraggly hair and fat bodies.

I GET FRUSTRATED when I hear Marines curse the Corps, their officer in charge and the "moron" who made up the duty roster. I get angry when they develop a short-timer's attitude with a year left on their enlistment (for which they signed a contract). And I am ashamed when they avoid saluting officers by nonchalantly looking the other way and when they duck inside the nearest building at the sounding of colors.

Pride and discipline are words that go hand in hand with the Marine Corps. Many of us joined the Corps because we were disappointed with the lack of both in the civilian world. I thought by joining the Corps I would be forced to learn more discipline. Strict discipline in the truest sense of the word.

INSTEAD, I LEARNED that self discipline and self-pride must come before any can be instilled from an outside source.

So many of us lower our own standards of discipline as our time in the Corps flies by. We tend to forget that exhilarating feeling

we felt when we graduated from bootcamp. We become "salty" or just plain don't care. Let's get back to basics!

I am still the same Marine I was when I graduated from basic training. Of course there are days when I love it and hate it all at the same time. But I am a Marine! Call me "gunny" if you will, but don't make it sound like a disease.

TWENTY YEARS from now when I go to my attic, dust off my cover and try on my dress blues, I want to be able to look back and honestly say, "I am proud to be a former Marine."

CALLING IT QUITS

Latest Advice On Giving Up Smoking



- ☐ Smoke only half of each cigarette.
- ☐ Each day, postpone lighting your first cigarette one hour.
- ☐ Decide you will smoke only during odd or even hours of the day.
- ☐ Decide beforehand how many cigarettes you'll smoke during the day. For each additional smoke, give a dollar to your favorite charity.
- ☐ Don't smoke when you first experience a craving. Wait several minutes; and during this time, change your activity or talk to someone.
- ☐ Stop buying cigarettes by the carton. Wait until one pack is empty before buying another.

Peace eludes men

by Chaplain Terry Buford

The word "peace" has been used often in the last 40 years. We talk about peace and we have many peace conferences, yet at the moment, it seems the world is heading toward anything but peace.

"The way of peace have they not known," said the Apostle Paul concerning the human race. As we look around we find that there is little personal, domestic, social, economic or political peace anywhere. Why? Because we all have the seeds of hatred and violence within us. Jesus said, "Blessed are the peacemakers." We are to try for peace. We are to work for peace.

But Jesus also predicted: "Ye shall hear of wars and rumors of wars: see that you be not troubled: for all these things must come to pass, but the end is not yet. For nation will rise against nation, and kingdom against kingdom." Jesus said there is going to be war until the end of the age. He knew that human nature is not going to change without a spiritual new birth. He knew that the vast majority of the human race was never going to be converted to him. So we always have the potential that violence will break out in a home, in a community and in the world.

There are three kinds of peace described in the Bible. First, there is peace with God.

The greatest warfare going on in the world today is between you and God. You may not realize that you're at war with God. But if you haven't committed yourself to Jesus Christ as Lord, God considers you to be at war with him. That chiasm has been caused by sin. The Bible says that all have "sinned and come short of the glory of God."

The second peace spoken of in the Bible is the peace of God. Everyone who knows the Lord Jesus Christ can go through any problem, and face death, and still have peace of God in his heart. When your spouse dies, or your children gets sick, or you lose your job, you can have a peace that you don't understand. You may have tears at a graveside, but you can have an abiding peace, a quietness. Colossians 3:15 says, "Let the peace of God rule in your hearts."

The third peace the Scriptures mention is future peace. The Bible promises there will be a time when the whole world is going to have peace. It seems the world is heading toward Armageddon. In Revelation 6:4 it says there's a red horse, "and power was given to him that sat on it to take peace from the earth." We're not going to have permanent peace until the Prince of Peace, Jesus, comes.

Do you have peace? If not, yield your body and soul to the giver of peace. Turn from your sins and give your heart and life to Christ now. Do not put it off.

Uniforms

Common violations lack enforcement

by Sgt Dennis Litalien

It's about time we enforce uniform regulations around here.

It is now a common sight to see Marines walking around town in utilities, coveralls, flight suits and other unauthorized liberty uniforms. The surprising thing is that some Marines don't do anything when they see it happen.

THE ATTITUDE of these ill-clad, so-called Marines is really amazing. Not only are they slob, incapable of properly wearing a uniform, they actually go off base to demonstrate their ineptitude to our civilian neighbors.

I've seen Marines who, upon spying another Leatherneck improperly attired, act as if the guy is invisible. What is this? Are we getting too lazy to police our own ranks?

WE HEAR A LOT nowadays about the Marine Corps getting back to basics. One of the most basic characteristics of this philosophy is the pride in the uniform we

are privileged to wear. If pride isn't enough to motivate Marines to wear their uniforms properly then look at it this way. Uniform regulations are mandated. To disobey them means to violate an order. Cut and dried, improperly worn uniforms are illegal.

IF WE CONTINUE to allow these blatant violations, we will have only ourselves to blame. Maybe we should abolish the wearing of utilities to and from work altogether. Sure, it will inconvenience people, but it may be the only way to enforce our uniform regulations.

I remember when I graduated from boot camp. All the guys in my platoon were proud to wear the Marine Corps uniform. That was almost six years ago and I fail to see why today should be any different for any Marine.

IF WE IGNORE the problem it will only become worse. If you see a fellow Marine out of uniform don't let him get away with it. Give him hell. Since when are Marines afraid to speak up?

DINNER MENU

SHARK STEAK
SHARK FIN SOUP

PINEAPPLE SALAD
ASST CAKES
BREADS

SALAD BAR
ASST DRESSING

COLD MILK
POP

HOT COFFEE
TEA

ICE CREAM



© Anthony J. Mulace
12/7/80



TAKING AIM — U.S. Naval Sea Cadets Michael Wisner (lower left) and Anthony Mamuscia sight in M-16 rifles loaded with blanks under the watchful eye of LCpl Reginald Guldry, Company I, 3d Battalion, 3d Marines. The Sea Cadets were at MCAS Kaneohe Bay July 29 as part of "Boot Camp 80", their annual summer training program.

Photo by Sgt Richard MacDonald

Sea cadets sample Marines' way of life

by Sgt Dennis Litallen

A group of 15 Sea Cadets from Hawaii and several mainland states received a brief glimpse of Marine Corps life and a tour of some of the facilities on MCAS Kaneohe Bay July 29.

THE VISIT was part of the Naval Sea Cadet Corps' "Boot Camp 80", an annual three-week basic training program conducted each summer. For the past two weeks the cadets have been

undergoing numerous forms of training at naval installations including Pearl Harbor and Barbers Point. The organization is sponsored by the U.S. Navy League and receives training support from all branches of the U.S. Armed Forces.

Studies include the same seamanship curriculum as active duty and reserve counterparts.

Retired Navy LCDR Wendell Woodward served as senior officer for the cadets.

THE CADETS began their visit aboard the air station at Ft. Hase Beach as they viewed a demonstration by Company D, 3d Assault Amphibian Vehicle Battalion, which put its amphibious vehicles through paces, both on land and in the water. Many cadets expressed amazement at the speed and maneuverability of the cumbersome-looking vehicles.

The delighted cadets were given rides and were even allowed to pilot the amphibious vehicles.

The cadets also received an orientation lecture and viewed a static display from Company A, 3d Reconnaissance Battalion. Sgt Kerlin Ritchie, talked about the mission of recon

Marines and answered questions from the inquisitive cadets.

NEXT STOP was the 3d Marines' Day Movement Course. Leathernecks from Company I, 3d Battalion, 3d Marines gave a high-spirited display as they raced, climbed and dove their way through the muddy course, firing blanks from both M-16 rifles and M-60 machine-guns.

After a sampling of Marine Corps C-rations and a demonstration in the art of field stove construction, the cadets were allowed to fire blanks from the M-16 and M-60 themselves. They also learned the proper way to throw smoke grenades. A few more agile cadets attempted to traverse the day movement course under the watchful eye of their newly-found Marine friends.

A YOUNGER cadet, 14 year-old Roger Davis, was quick to express his pleasure at visiting the Marines. "It's really been a lot

of fun," beamed the slight youngster. "I've always wanted to be a Marine and I joined the Sea Cadets because I thought it was a step toward eventually becoming a Marine."

At the conclusion of Company I's demonstration, the cadets were herded onto a bus by their three Marine drill instructors for a short drive to Marine Aircraft Group-24. The cadets then received a command orientation presentation at the Warfare Training Center. The program consisted of an integrated slide show and closed circuit television display designed to give them a look at the various fixed-wing and rotary aircraft of the 1st Marine Brigade.

ONCE THE program was completed, cadets were able to visit several aircraft hangars before piling onto buses for the drive back to Pearl Harbor. The cadets graduated from "Boot Camp 80" at a ceremony held at Camp H.M. Smith Staff Noncommissioned Officer's Club Aug. 1.

POINT OF DISCUSSION — A group of inquisitive U.S. Naval Sea Cadets receive a close-up look at one of Marine Fighter Attack Squadron-212's F-4 Phantom jet aircraft. The cadets' visit to the Lancers was part of their tour of MCAS Kaneohe Bay July 29.

Photo by Sgt Richard MacDonald



Photo by Sgt Richard MacDonald

CHOWTIME — LCpl Todd Poulsen, Company I, 3d Battalion, 3d Marines, demonstrates the proper method of constructing a field stove for cooking C-rations to U.S. Naval Sea Cadets Mathilda Boyd (left) and Denise Bowerman. They, along with 13 other cadets from Hawaii and the mainland toured MCAS Kaneohe Bay facilities July 29 as part of their Boot Camp-80 training syllabus. The organization is sponsored by the U.S. Navy League and studies the same seamanship curriculum as their active duty and reserve counterparts.

BERNINA

50% off Factory Suggested Retail of **\$650**

NOTE THESE FEATURES:

- ★ Demo Model
- ★ Exclusive 25 Year Written Warranty
- ★ Open Arm
- ★ Monograms



MODEL 800

PACIFIC SURPLUS & DISTRIBUTORS
35 Kaneohe St. Mon-Sat. 10:00-6:00 p.m., Wed. 10:00-5:00 p.m.

—PLUS—

- ★ Self Adjusting Tension
- ★ Buttonholes
- ★ Only **\$325⁰⁰**

—Hurry, Quantities Limited—
262-8131

Keepsake diamond center

Pearlridge

How to choose a diamond... the perfect symbol of your love

Now that you're in love, for keeps, you'll want to know more about selecting your diamond engagement ring. Like your love, every diamond is unique, so you will want to consider all factors that affect your diamond's beauty and value.

When you choose a Keepsake, you need not be a diamond expert. Keepsake guarantees all center diamonds, in writing, forever, for perfect clarity, fine white color and correct modern cut.

CLARITY: A perfect diamond has no flaws, cracks, carbon spots, clouds or other impurities when examined under ten power magnification. Every Keepsake center diamond is guaranteed perfect.

COLOR: Fine white diamonds are rare and valued accordingly. Other diamond colors, in diminishing order of worth are blue, yellow, brown and black. Keepsake center diamonds are guaranteed for fine white color.

CUT: For true beauty, a diamond must be properly cut and faceted to bring out its full fire and brilliance. Keepsake center diamonds are guaranteed for correct, modern cut.

CARAT: The higher the carat weight, the rarer the diamond and the higher the price. However, a large diamond with imperfections may not be as valuable as a smaller, perfect diamond.

Come in soon and look over our exquisite Keepsake diamond rings, the largest selection on Oahu. America's No. 1 engagement ring with the nation's strongest diamond guarantee.

LARGE SELECTION OF OTHER FINE JEWELRY — QUALITY IS OUR TRADEMARK



Keepsake
Registered Diamond Ring
Established 1902

488-2800

PEARLRIDGE CENTER - PHASE II - ACROSS FROM DAI EI

August Special

**Exam and X-Rays
2 for the price of 1**

— HURRY —
Offer Expires 8/29/80

Kailua Professional Ctr.
Suite 503

Ken Hicks, D.D.S. 262-6581

STEFFY'S AUTO BODY & PAINT, INC.



**Complete Paint & Body
Reconditioning. Foreign
& Domestic Cars.
Collision - Insurance**

★ **FREE LOANERS**

GUY CAYETANO
U.S. Navy Retired
—Owner—
262-5060
261-8195

**131-A HEKILI ST.
KAILUA**
(Next to NAPA)

Couples Lounge is Here!

**Come and help us celebrate
our Open House.
August 19th, from 4:30 till closing.**

- ★ All Military Personnel & civilians invited
- ★ Full service bar
- ★ Fast Eddie's D.J.
- ★ "Two for the Show"
- ★ Regular Days Wed.-Sun.
- ★ Come in and enjoy the Couples Lounge you've been waiting for!



**Only and Exclusively at the
Enlisted Club KMCAS!**

THE GREAT KAILUA DRESS SALE

Friday, AUG. 15, 3-7
Saturday, AUG. 16, 8-4
**AMERICAN SAVINGS
COMMUNITY ROOM**
ABOVE Holiday Mart
Theatre, Kailua

DRESSES AND SPORTSWEAR
\$4-\$16
Sizes 3-13 & 8-18
**IN SUPPORT OF THE WINDWARD UNIT
AMERICAN CANCER SOCIETY**

SAVE \$10 on 1st JUMP VALID ONLY WITH COUPON

Parachute instruction includes:

- ★ ALL EQUIPMENT
- ★ INSTRUCTION
- ★ AIRCRAFT
- ★ JUMPMASTER
- ★ USPA ACCREDITATION

CALL 836-2427
JUMP HAWAII

Coupon valid after Sept. 30, 1980

Station tests leathernecks' physical prowess

by Cpl Cheryl Martin

Marines assigned to station units will have the chance to demonstrate their physical prowess Aug. 29 in an "Ironman/Ironwoman Extended Limit Physical Fitness Test" at the station PFT field, adjacent to Station

Operations and Maintenance Squadron Crash Crew. The competition is set up to allow high scoring PFTers to go beyond limits normally imposed in the quarterly test. "We hold the Extend-

ed Limit PFT in order to provide recognition to Marines who maintain superior physical condition," explained MSgt. John Dean, noncommissioned officer-in-charge of the Training Audio Visual Support Center. To participate, Marines must have scored

the minimum requirements listed below on their last PFT.

	Age	Points
MEN	17-26	250
	27-39	225
	40-45	200
WOMEN	17-24	200
	25-31	182
	32-38	164

39 45 156

Points will be awarded after each event, with first place finishers receiving 10 points. After competition, the lowest scores will bear the titles of "Ironman" and "Ironwoman." The top three competitors in men's and women's

competition will win trophies.

To find out if you are eligible to compete, contact your squadron training office. Eligible Marines may sign up for competition by contacting the Training Audio Visual Support Center at 257-2467.

SHOP KAILUA

IS BUSINESS SLOW?

Advertising in the Sun Press can boost your business. We are the most cost efficient print media serving Windward Oahu.

For more information feel free to call Chris at 235-5881.

PARTY CLOWNS has a sensational offer just for you!

For Only \$35 plus tax

You Receive:
BOBO the CLOWN for 30 minutes
12 Party Invitations
12 Party Hats
12 Blowouts
24 Balloons
12 Goodie Bags, with surprise gifts
12 Party Plates
20 Party Napkins
12 Party Cups
24 Forks & Spoons.
1 Tablecloth
• Introductory offer ends 8/27/80 so call now •
262-7549



Save

- Time
- Money
- Gas

by letting these Shop Kailua merchants service your needs.

Back To School

Jeans - by Levi's
Blue Denim
Corduroy
Colors: Brn., N. & L. Bl., Off White
Sizes 6-12, Waist 25-29

Gauze & Corduroy Pants
by Sea Breeze
Colors: White, Brn., N. & L. Blue
Sizes 25-29

Placket Knit Shirts
Solids & Stripes
Assorted Colors
Sizes 4-20

Belts • Wallate • Slippers



Charlie's SPORTSWEAR
43 Oneawa St. 262-8575
(Across Coin Power) Open 9 a.m. to 5 p.m. Mon. thru Sat.

Trinka's BEAUTY SALON

is offering a back to school

Perm Special
Includes
Haircut, Shampoo,
Conditioning, Blow Dry
or Set

\$25.00 plus tax

Long hair slightly more

Offer good 8/6-8/29
Tues. 8:30-1:00
Wed. 8:30-1:30
Thur. 8:30-4:00
Fri. 8:00-1:30

261-6454
408 Uluniu St.
Kailua



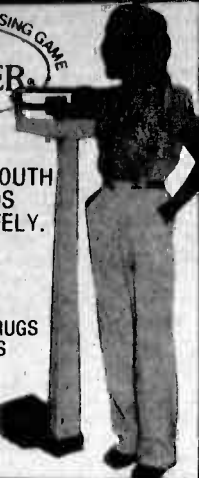
HOW TO WIN AT THE LOSING GAME DIET CENTER

MARTHA LEE ROUTH
LOST 24 POUNDS
QUICKLY & SAFELY.
YOU CAN TOO!

NO SHOTS • NO DRUGS
NO CONTRACTS

CALL TODAY

KAILUA 261-7854



CHARLEY SAYS:

"You too can be glamorous and attractive with good grooming, body care, make-up, hair style and fabulous wardrobe, etc. when you enroll in classes or individual instruction with Maureen McDonough at

Mrs. Hawaii 1980
Charmayne Del Rosario

THE NEW YOU WORLD OF HAWAII

Be your most beautiful.
You deserve it.

Ph. 262-6869 for more info.
and ask for Charley.



DECORATE THE HOUSE now that the kids are going back to school

De Aguiar's Garden Center

has all of
your gardening
needs



• Hanging Baskets
• House Plants
• Patio Plants
and much more

Come In Today
And See Our
Beautiful Display

60 Kihapai Street,
Kailua
Phone 262-5372

HEALTHY Inflation Fighters

* Brown Rice 29¢ lb.
* Whole Wheat Flour 25¢ lb.
* Alta Dena Bulk Cheeses \$2.50 lb.
* Vit. E 400 I.U. 90s \$7.05

We have the lowest prices on the Windward side.
Come in and compare for yourself.



32 Kanehe St.
Kailua 261-6596

HELP

is HERE!

Reasonable Parts
& Service

MAJOR
APPLIANCE &
REFRIGERATOR
SPECIALISTS

262-8930



66-1 Kailua Rd.
AUTHORIZED SUPPLY CO.

Yarn & Needlecrafts Ltd.

Enchanted Lake Shopping Center
Phone 262-9555

Up to **50% off**

on selected
Needlepoint,
Crewel,
Latch Hook and
String Art Kits.

Hurry — Sale Ends Tues., 8/19/80



Mon.-Fri. 9:30 a.m. to 6 p.m.
Wed. evenings till 8 p.m.
Sat. 9:30 a.m. to 5 p.m.

THE CHOPPIN BLOCK LTD.

You Name It ...
We can do it
all at
affordable
prices.

Call Today You'll
be glad you did!

4 Quality Hair Dryers On Sale

Hairstyling For
Him & Her &
Children

HAIR
STYLIST
WANTED

Enchanted Lake
Shopping Center
1020A Keolu Dr.

Visa & Master-
Charge
Air Conditioned
PH. 262-9482

REDKEN Retail Center

House of Beauty

Waxing

European method.
Remove unwanted
hair from face
& body
comfortably and
quickly.

261-1303

49 Maluniu Ave.
Kailua



"Little Smoke House"

NOW WITH FRESH MEAT,
BEST QUALITY, LOWEST PRICES.

Senior
Citizen's Days
Are
Tues. & Weds.
Come In And See
What We Offer You!

Imported
Meat and Cheese

- Teawurst
- Head Cheese
- Bierwurst
- Salami

Plus much, much
more!
Phone 261-0628
1090 Keolu Dr.
Enchanted Lake
Please call in for
meat orders.



TRUCKLOAD SALE MICROWAVE OVENS

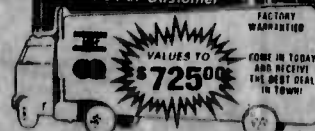
LITTON
TAPPAN

NEW

PRICES START AT
ONLY
\$325.00
EACH
Limit 2 Per Customer

AMANA
RICCAR

BROWNS
DIGITALS
AUTOMATIC
PROBE



MEAL IN ONE
CAROUSEL
VARIABLE
TEMPERATURES

BELOW PRODUCTION COST

PACIFIC SURPLUS & DISTRIBUTORS

35 Kanehe St. #104
KAILUA
262-8131

will be considered
HOURS:
Mon.-Sat. 10-8 p.m.
Wed. till 8 p.m.

Diabetes

diabetics are overweight before the disease develops, while at least 15 percent are too heavy when diabetes is discovered. Keeping a watchful eye on your weight helps prevent diabetes and reduces its severity. Like most diseases, diabetes has certain symptoms that serve as early warning signals. Some diabetics may experience few or no symptoms and today many cases are detected before symptoms appear.

A FEW diabetes warning signs are: frequent urination, excessive thirst, extreme hunger, rapid weight loss, drowsiness, blurred or changed vision, skin infections and general weakness. If any of these symptoms persists or recurs see a doctor as soon as possible.

Early detection of the disease can prevent much distress, pain and suffering. The tests are simple, painless and may be taken during a routine examination. These tests include a urine analysis. The doctor

adds chemicals to a few drops of urine or dips a coated strip or stick into the urine. If sugar is present, there will be a characteristic color change.

A supplementary test may be administered in borderline cases. Your doctor will give you a syrupy drink then test the blood at certain intervals for excessive sugar. If either of these tests are positive he can prescribe the necessary treatment.

DIABETES CAN be treated by diet, oral medication, insulin and exercise. More than half the people who develop the disease after age 45 can control it by diet alone. The diabetic's diet is well balanced and can be followed by the rest of the family.

Oral medication is usually prescribed for the individual with mild diabetes or the person who, for some reason, is unable to take insulin injections. However, when neither diet nor oral medication is sufficient to control diabetes insulin (extracted from the pancreas of animals)

must be used. Insulin is taken by injection since it would be destroyed in the stomach by gastric juices if taken orally.

Whether the diabetic is treated by diet alone, diet and oral medication or diet and insulin, exercise is the key in keeping the disease in balance. This in turn affects the amount of diet and medication needed.

INSULIN COMES in several forms and each varies in speed of action. A physician prescribes the correct type and amount, according to the severity of the case, diet and other health factors.

Most diabetics (even children) learn quickly to give themselves their own shots. Insulin is always injected under the skin in different areas from day to day. In some cases a single injection is sufficient to control diabetes.

Should a diabetic work? Can a diabetic get life insurance? Should a diabetic marry and have children? These are common questions asked about diabetes and

they can all be answered with a firm "yes." Diabetics are encouraged to work because a job helps burn sugar and stabilize a diabetic's day. All that's required is for the patient and doctor to work out a program according to the type of employment.

MANY insurance companies underwrite policies for diabetics who are in good physical condition and who are maintaining their health. Diabetics who follow a sound health program can be as good or better

insurance risks as non-diabetics who practice poor health habits.

Marrying a diabetic might mean a possibility of children being diabetic. A diabetic and his or her potential spouse should be aware of all aspects of the problem. But they can have a happy life.

No one should completely rule out the possibility of having diabetes without a proper medical check-up. You can help fight the disease by maintaining normal weight and following a good health routine. Perhaps the most

important thing is to understand diabetes; know it's symptoms. If you've experienced some of the symptoms mentioned earlier you shouldn't hesitate to see a doctor.

DIABETES MAY be the third leading cause of death in America now, but if enough "potential" diabetics disregard the disease it can quickly move up to number one.

cont. from A-3

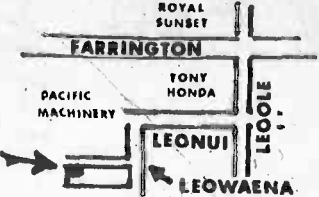
Command Recruiting

It helps you.
It helps your Corps.



DO IT IN WAIPAHU RECYCLE that is.....

WE BUY old NEWSPAPERS
TAB CARD, PRINTOUT etc



VULCAN TRADE CENTER
94-148 LEOWAENA ST.

BRING THIS AD
IN FOR A
10% BONUS!!
Except Newspapers

HAWAII RECYCLING SERVICES

• 677-5553

MAIN OFFICE: 140 PUHALE RD.
HONOLULU
TELEPHONE 8472068

NO OTHER MEDIUM MATCHES NEWSPAPERS FOR SELLING POWER

MONDAYS, TUESDAYS & WEDNESDAYS
5:30-7:30 P.M.

All the fun you can eat.
\$3.29



Our Super Supper features a choice of pizzas, spaghetti with rich meat sauce, toasted garlic bread and a visit to our Salad Bar.
All you want. All for one price. All ready when you walk in the door.

*SPECIAL CHILDREN'S PRICES.

Shakey's.
Come and get it.

SMOKEY ROAD BAND
"THE BEST IN COUNTRY MUSIC"
KANE OHE SHAKEY'S
THURSDAY NIGHT
AUG. 14TH
4:30-7:30 P.M.

KANE OHE
45-1151 Kam Hwy.
Corner of Kam Highway and
Liliupuna in Kaneohe Town
247-0405

THE HAIR PATCH

has an exclusive offer
just for you.

With any service you receive a
FREE
HAIR PATCH "T" SHIRT
(Value \$8.00 While Supply Lasts)

Call today, personalized
service, reasonable rates,
quality work, 262-7562

45 Kihapai St. (Across from Star Market)

Sunday Night Therapy

COUPLES ENCOUNTER

An Interpersonal Communication Workshop For Adults
4 Weeks Only \$55.00 Per Couple
• Limited Enrollment •

Only 3 Sessions Offered
For Sept.: Dates:

Mon. 1st, Tues. 2nd & Wed. 3rd
Time: 7-9 P.M.

Call Today 235-0235

For Information And Registration

- | | |
|------------------|----------------------|
| Honesty | Religion |
| Feelings | Fun & Games |
| Responsibilities | Time & Travel |
| Money | Friends & Children |
| Work & Rest | Relationships |
| Marriage | Health, Life & Death |

NEED AN ELECTRICIAN?

Electrical Services and
Discount Parts Supply
OPEN 7 DAYS

GLENN'S
ELECTRICAL SERVICE, INC.
46-012 Alaloa St.
(Around the corner from City Mill)
C-9480 Service 247-1979
Discount Sales 247-1201

SUPER

PIONEER

SALE

KANE OHE MARINE CORPS
AUTOMOTIVE CENTER

**AUGUST
15TH & 16TH**



SUPER TUNER CAR STEREO BY PIONEER



KP-250 Under-dash compact cassette with FM stereo radio. Fast forward, rewind. Automatic and manual eject. FM stereo radio. Stereo/mono switch. Separate balance and tone controls. One year limited warranty parts and labor.

SUGGESTED RETAIL \$144.95

SALE

\$8250



AD-80 50 watt graphic equalizer/amplifier. 5 frequency band tone controls. 10 LED's for power level display. "Power On" LED.

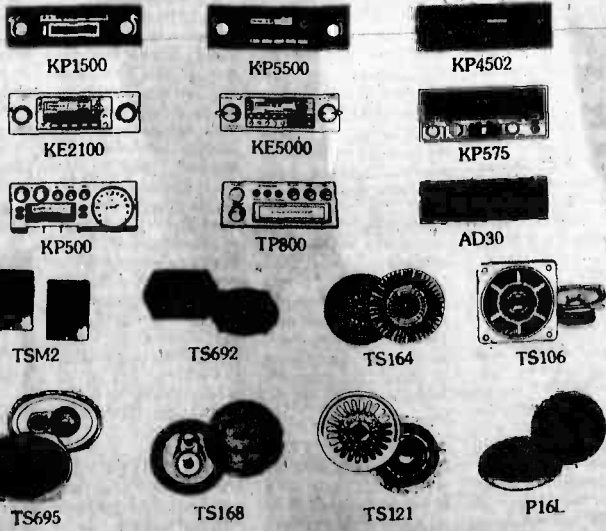
SUGGESTED RETAIL \$199.95

SALE

\$12000

5% OFF

THE EVERYDAY LOW PRICES OF
PIONEER CAR STEREOS IN STOCK



TS-493 6" x 9" speaker. 10-oz. magnet. Coaxial speaker. High-compliance woofer. 20 watts power handling.

SUGGESTED RETAIL \$71.96 PAIR

SALE

\$2950 PR.



**FREE
SUPER TUNER
T-SHIRT
WITH EVERY
PIONEER PURCHASE
LIMITED QUANTITIES**

THIS AD IS NOT PAID FOR BY
MARINE CORPS EXCHANGE OR SERVICES

A super system with Auto Reverse from Pioneer featured at a special factory authorized price.



SUGGESTED RETAIL \$179.90

SALE

\$11500



GM-12 Component stereo main amplifier - 12 watt, 6 watts per channel. More than 80 db signal-to-noise ratio.

Localmotion

K-BAY OFFICERS' CLUB

TODAY — Lunch in the Pacific Room from 11 a.m. till 1 p.m. features specials, hot carved sandwiches, soups and salads. Mongolian barbecue on the Lower Lanai from 6 till 8:30 p.m.

THURSDAY — Lunch in the Pacific Room from 11 a.m. till 1 p.m. Beefsteak night from 6 till 8:30 p.m. features steamship round, a seafood item, rice or potatoes, vegetables and a salad bar.

FRIDAY — Lunch in the Pacific Room from 11 a.m. till 1 p.m. Happy Hour in the Tapa Bar from 5 till 7 p.m. Mongolian barbecue on the Lower Lanai from 6 till 9 p.m. "Veletones" provide a variety of music from 8:30 a.m. to 12:30 a.m. in the Tapa Bar.

SATURDAY — Candlelight dining in the Pacific Room from 6 till 8:30 p.m. with new dining menu. Pianist Akiko plays from 6:30 to 9:30 p.m. in the Pacific Room.

SUNDAY — Champagne brunch in the Pacific Room from 10 a.m. till 1 p.m. with a variety of breakfast specials with a complimentary glass of champagne. Prime rib & crab served from 6 till 8:30 p.m.

MONDAY — Lunch in the Pacific Room from 11 a.m. till 1 p.m.

TUESDAY — Lunch served in the Pacific

Room from 11 a.m. till 1 p.m. The Dining Room is closed in the evening.

K-BAY SNCO CLUB

TODAY — Luncheon special is Swiss steak jardiniere. "Flash Back" plays from 7:30 till 11:30 p.m.

THURSDAY — Luncheon special is braised pork sauce Robert. Mongolian barbecue served from 5:30 till 8:30 p.m. "Rainbow Connection" plays from 7:30 till 11:30 p.m.

FRIDAY — Luncheon special is seafood platter. Candlelight dining served from 6 till 9 p.m. "Midpoint" plays from 9 p.m. till 1 a.m.

SATURDAY — The club features Polynesian Luau and a show. The luau starts at 5:30 p.m., all you care to eat. Tama's Hula Nani Polynesian Review entertains from 7 to 8:30 p.m. "Oceanside" plays from 9 p.m. till 1 a.m. Tickets are on sale at the club; \$8 per adult, \$5 for children under 5.

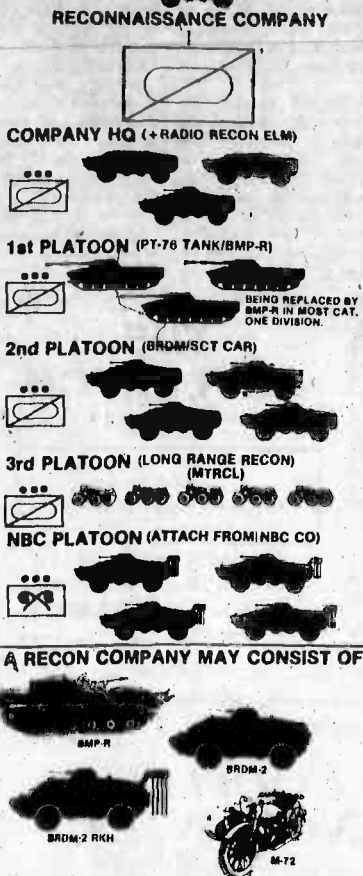
SUNDAY — Brunch served from 10 a.m. to 1 p.m. Prime rib and crab served from 6 till 8:30 p.m.

MONDAY — Luncheon special is Mexican plate. Happy Hour is from 5 till 6 p.m.

TUESDAY — Luncheon special is chicken a la king. Happy Hour is from 5 till 6 p.m.

Intelligence Brief

by Combat Intelligence Center
Pictured below are the units and individual equipment organic to the Soviet and Warsaw Pact Reconnaissance Company



Cinema

FAMILY THEATER

7:15 p.m. 8 1 2 9 10 3 6
CAMP SMITH
7 p.m. 2 6 6 11 12 7 13
MARINE BARRACKS
7 p.m. 1 2 3 4 5 6 7

1. **THE 39 STEPS** — Robert Powell, David Warner, PG, drama
2. **BRONCO BILLY** — Clint Eastwood, Sondra Locke, PG, comedy
3. **MURDER BY DECREE** — Christopher Plummer, James Mason, PG, mystery
4. **THE GLOVE** — Joanna Cassidy, Rosey Grier, R, action drama
5. **PINOCCHIO** — animated cartoon, G
6. **FOXES** — Jodie Foster, Scott Baio, R, drama
7. **RACQUET** — Bert Convy, Lynda Day George, R, comedy

8. **THE VISITOR** — Glenn Ford, Shelley Winters, R, horror drama
9. **QUINTET** — Paul Newman, Victoria Gassman, R, drama
10. **THE INNOCENT** — Siancarlo Gianni, Laura Antonelli, R, drama
11. **KING OF THE BPSIES** — Eric Roberts, Brooke Shields, R, drama
12. **SLOW DANCING IN THE BIG CITY** — Paul Sorvino, Anne Ditchburn, PG, drama
13. **TOM HORN** — Steve McQueen, Linda Evans, R, western

Heroes

Selfless men sacrifice lives for fellow Marines

by Sgt Pepper Davis

It is commonly said, "Heroes are born, not made." It is also voiced, "Out of sight and out of mind." All too often we forget about the heroes who shed their blood to help make this country the "land of the free and the home of the brave."

IN THE Marine Corps, names like Gysgt Dan Daly, MajGen Smedley Butler, Col Gregory "Pappy" Boyington and Gen Louis Wilson are all synonymous with the word "hero." But the Corps has other heroes. Some are highlighted and some remain shadowed. The following is an account of a few of those many unsung Marines.

Sgt Richard Binder served aboard the USS Ticonderoga during the attacks on Fort Fisher during the Civil War.

DESPITE HEAVY fire by the enemy and the explosion of a 100-pound Parrot rifle, which killed eight men and wounded 12, Binder, as captain of a gun, performed his duties with skill and courage during the first two days of battle.

He remained steadfast as the ship fired upon batteries ashore. Binder's blazing gun helped lessen enemy retaliation and aided the Ticonderoga's crew to a victory.

The Forest de Retz near Viller-Cotteries, France in the place Sgt Louis Cukela exhibited his heroism in July 1918. Cukela advanced alone against an

enemy stronghold that was pinning his line.

DISREGARDING the warnings of his fellow Marines, he crawled out from the flank in the face of heavy fire and worked his way to the rear of the enemy position. He rushed a machine-gun position and killed or drove away the crew.

Cukela peppered the remaining part of the strong point with German hand grenades capturing two machine guns and four men.

During World War II the Japanese launched a fierce, determined counterattack on Marines at Saipan. Pvt Harold Aberholm volunteered to assist with efforts to check the hostile attack and evacuate the wounded.

Driving an ambulance jeep, Aberholm repeatedly made extremely perilous trips under heavy rifle and mortar fire. He single-handedly located and evacuated approximately 45 casualties, working tirelessly and without regard for his own safety.

DESPITE THE intense enemy fire, he ran to aid two men whom he believed to be wounded Marines. While assisting the men, he was mortally wounded by a Japanese sniper.

88gt William Bordelon was serving with the assault engine platoon of the 2d Marine Division on the Olibert Islands in Tarawa, Nov. 20, 1943. He landed in the

assault wave under enemy fire that killed all but four of his tractor crew. Bordelon quickly made demolition charges and personally put two pillboxes out of action. He was hit by enemy machine-gun fire just as a charge exploded in his hand.

While assaulting a third position, he courageously remained in action. Though out of demolitions, he furnished rifle cover for a group of men scaling a wall.

HE WENT to the aid of one of his demolitions men, wounded and calling for help. He rescued this man, and another who had been hit by enemy fire.

Bordelon still refused medical attention for himself, and again made demolition charges. He single-handedly assaulted a fourth Japanese machine-gun position, but was killed instantly when caught in a final burst.

While engaged in an aerial battle, Capt Henry Talmadge Elrod shot down two of 22 hostile planes at Wake Island in December 1943.

HE EXECUTED repeated bombing and strafing runs at low altitude and close range. Elrod succeeded in inflicting deadly damage upon a large Japanese vessel, thereby sinking the first major warship to be destroyed by small-caliber bombs delivered from a fighter plane.

Elrod's plane was disabled by enemy fire and no other craft was

operative. He assumed command of one flank of the line setup and conducted a brilliant defense, enabling his men to hold their positions.

CAPTURING an automatic weapon, he gave his firearm to one of his men and fought vigorously against the Japanese. Elrod led his men with bold aggressiveness until he fell, mortally wounded.

It was approximately 7:30 on the morning of Feb. 11, 1912 and Pvt Albert Smith was on duty as a sentry at Gate One, Marine Barracks, Naval Air Station Pensacola, Fla. when a Navy seaplane crashed near his post.

Machinist Mate Second Class Pen Phelps was pinned inside the wreckage that was burning due to a gasoline explosion. Without regard for his

personal safety, Smith rushed to Phelps' aid. He positioned himself to reach Phelps. He rescued the sailor, although he received painful burns to his head, neck and both shoulders.

NOT ALL heroic actions were initiated in the course of heated combat action. Such was the case of Cpl Donald Leroy Truesdale.

Truesdale was second in command of a patrol during the Nicaragua Campaign of April 1923. While searching for a group of bandits, a rifle grenade fell from its carrier and struck a rock, igniting the detonator.

Several men were close to the grenade and Truesdale, standing several yards away, could have easily sought cover and

safety. But knowing the grenade would explode within seconds, he lunged for it.

GRASPING IT in his right hand, he attempted to throw it away from the patrol. The grenade exploded, severing his hand, and inflicting serious multiple wounds to his body. By absorbing the full shock of the explosion, Truesdale saved members of his patrol from loss of life or serious injuries.

You've probably never heard of these heroic Marines, and in a way that doesn't matter. The courage they've exhibited has been established as the Marine way.

NO, THESE heroes were not made. Though they're gone and out of sight, they're far from being out of mind.

Your place.

He'll put you in your place. Because wherever that place is, your Career Planner is the person to help you find it.

You've got a lot to look forward to.

NEWSPAPER
...IT
PAYS
YOU
HAWAII
RECYCLING
SERVICES
8472068



TWO WHEELER REPAIR

Full Motorcycle and Moped Service

(Behind Rocky's)
270 Kuulei Road
Mon.-Sat.
8:30-5:30
262-0092

Tune Up
Your Bike
Today...
And Get A
FREE
Oil Change
w/Coupon

Breakfast - Lunch - Dinner

- Hotcakes
- French Toast
- Omelettes
- Plate Lunches
- Hamburgers
- Mahimahi
- Chicken
- Seafood
- Teriyaki

NOW
OPEN
24 Hours

andy's
drive-in

142 Oneawa St.

CALL
For Late Evening
Take-Out Orders
262-4920

ENCHANTED
TRAVEL, INC.

1051 KEOLU DR.
KAILUA
(New bldg. next to Dairy Queen)

Inquire about a fabulous 4 days & 3 nights to wonderful Las Vegas. Only \$419⁰⁰ per person.

Double occupancy with superior accommodations in the UNION PLAZA. Depart Sun., Sept. 21, 1980; return Sept. 25, 1980. Be good to yourself and take this vacation.

OPEN
Mon.-Fri. 9:00-5:00
Sat. 9:00-12:00

Phone
261-7947

around the Islands—around the world

B G S COMPUTER SCIENCE IN

Take accredited courses using interactive programming languages and system analysis courses offered by Roosevelt University. Bachelors of General Studies and a Certificate in Computer Science and Management Analysis is available. **Hands On Experience.**

REGISTER NOW!

Classes begin September 8, 1980

Ph. 833-2555
for further information

ROOSEVELT UNIVERSITY
(Control Data Corporation Bldg.)

2828 Paa St., Suite 1000
Honolulu, HI 96818



VA/TA Approved

GET OUT OF DEBT

through Chapter 13
A federal law which helps to pay off your debts without borrowing and in payments you can afford, stops creditor harassment and law suits, protects your job, co-signers and property. Initial consultation or info packet are without obligation.

Please call:
HOWARD Y. TANAKA
Attorney versed in Chapter 13 filings
Suite 466, Alexander Young Building
Telephone: 531-5943

—GEAR UP FOR SCHOOL—

15% Off Tune-ups
10% Off On All Labor For Other Repairs. (\$20 Minimum)
(MOST FOREIGN & DOMESTIC CARS)
Offer Good 8/1/30-8/13/80

Complete Auto Repair
Radiator & Air Conditioning
KAILUA SERVICE STATION
56 Kihapai St. Call 262-4395

Uncontested divorce \$200
(\$170 legal fee + \$30 court cost)
Michael Pence, attorney
grosvener center
28th floor
523-4111

R. Richard Ichihashi
GENERAL PRACTICE & IMMIGRATION LAW
ATTORNEY AT LAW
All Bishop Building, Suite 608D
1136 Union Mall
Honolulu, Hawaii 96813
Telephone (808) 523-2605



READY AND WAITING — A koa log outrigger canoe lies in wait for the moment it will be pushed in the water and paddled in the 1980 State of Hawaii Outrigger Canoe

Championship Regatta. Approximately 7,000 people were aboard MCAS Kaneohe Bay Sunday for the biggest canoe races of the year.

Hui Nalu paddles to victory

by Cpl Cheryl Martin

Hui Nalu Canoe Club proved to be masters of the paddle as they swept the 1980 State of Hawaii Outrigger Canoe Championships at MCAS Kaneohe Bay, Sunday, Aug. 10.

RACKING UP 38 points for the day's efforts, Hui Nalu won its first state title. They took five first place

finishes, three men's events and two women's.

The Hawaiian Canoe Racing Association, pitted against the champions from the Hui Wa'a and Surfing Association, took the first five places in the state competition. Outrigger Canoe Club came in second with 22 points, while third

place went to Kai Opua with 20 points. Healanani finished fourth with 18 points and Hanalei totaled 16 points for fifth.

AN ESTIMATED 7,000 people were on hand to watch the two canoe racing associations square off on the tranquil waters of Kaneohe Bay.

Aug. 2 Hui Wa'a and Surfing Association

held its intra association championships and Kaneohe Canoe Club took top honors. Waikiki Beach Boys took second place and Loa'a came in third.

HUI NALU reigned victorious in the HCRA competition Aug. 9, edging Healanani, 55-52, while defending champion Outrigger Canoe club staggered in third with 37 points.

The top four finishers in each of the 19 events went on to state competition to compete for the individual crew title.

AFTER THE final race of the day, Col Mel Sautter, commanding officer MCAS Kaneohe Bay presented the Overall Championship Perpetual Award to a representative of the Hui Nalu Club.



Photo by Sgt Chris Taylor

PERPETUAL PADDLE — Col Mel Sautter, commanding officer MCAS Kaneohe Bay presents the Overall Championship Perpetual Award to a representative of the

victorious Hui Nalu Canoe Club. The club captured the state title in races held Sunday on the air station by racking up a total of 38 points.



MEDAL WINNERS

The freshmen men's team from the Kamehameha Hilo Canoe Club show their happiness after taking third place in their event at the state championship canoe races. They were awarded medals for their victory in a ceremony at the finish of the races held at MCAS Kaneohe Bay Sunday.

Photo by Sgt Chris Taylor

Soccer

Texas B-B-Q team tumbles K-Bay Marines

by Cpl Cheryl Martin

The "Texas B-B-Q" Soccer Team wasted no time in getting down to stinging business in a game against the K-Bay Marine soccer team at Wahiawa Sunday afternoon. In the first two minutes of play, they scored twice and took two other shots on goal.

The B-B-Q Team seemed to have an advantage right off the

bat. The Marines played on a shorter field than the practice field they are used to and had trouble adjusting in the first half. The B-B-Q offense dominated.

The game was rough and tumble from the very beginning with elbows and fists flying. Cpl Louis Matos commented flatly on

the aggressiveness of the other team. "Everybody's out to get a Marine."

The K-Bay Team played catch-up the entire game but the "Texas B-B-Q" team out-ran, out-kicked and therefore out-scored them, 6-1.

LCpl Gary Beckford scored the single Marine goal on a hard drive down the field, firing off a 15-yard shot.

"We didn't play as well as we normally do, but they're a better team so I don't feel bad about the loss," said 1st Lt David Bedworth, K-Bay coach.

The K-Bay Soccer Team has a 5-3-1 record and will play their next game Sunday against team Mexico. Persons interested in playing for the team should contact Bedworth at 257-3270.

Marine Corps to host marathon

The fifth annual Marine Corps Marathon has been scheduled for Nov. 2, 1980. The 9 a.m. event starts and finishes at the Iwo Jima Memorial located between Arlington National Cemetery and U.S. Route 50. The scenic Amateur Athletic Union certified

course winds through Arlington, Va., and Washington, D.C. and passes many of the nation's greatest historical monuments. There will be nine aid stations along the race course.

MORE THAN 50 awards will be present-

ed in several race categories. The overall winner will receive the Middendorf Trophy. All entrants will receive a Marine marathon patch and t-shirt. Finishers will receive a Certification of Completion. Competitors must be at least 10 years of age by the date

the race is held.

The entry fee is \$7.50 per runner. Additional immediate family members will be \$4.50 each. Make checks and money orders payable to the Marine Corps Marathon. Team entries must be made by separate correspon-

dence on the Marathon Team Application Form by the team captain and must include a listing of team members and the name of the team. Team applications require runners to already have a race number. Applications may be obtained by writing to Marine Corps Marathon, Attention: Team entries.

DEADLINE FOR individual entries is Oct. 27, 1980. Team entry deadline is Oct. 10, 1980. Individual entries not received by Oct. 27 should be hand carried for processing at the pre-race registration. The race is limited to 10,000 runners.

To request an entry form, send a self-addressed, stamped envelope to:

Marine Corps Marathon, Marine Barracks, 8th & I Streets, S.E. Washington, D.C. 20380.

Participants in the event were from the Marine Corps, Army, Navy, reserve units and the National Guard.

An eight-man tackle football team is forming to play in the 1980 Hawaii Armed Forces Tackle Football Program. Practices are held daily at Pop Warner Football Field at 4:30 p.m. All active duty Marines attached to MCAS Kaneohe Bay are eligible to participate.

Call the Special Services Sports Office for additional details at 257-3106 or 257-3135.

Sportsnotes

Deadline for entry in the Men's or Women's Open Recreational Softball Leagues is Aug. 19. Women begin play Aug. 24 and the men start Aug. 25.

The Intramural Flag Football (eight-man) season is tentatively set to start the week of Sept. 8. An organizational meeting is scheduled for Aug. 21 at 2 p.m. in the Family Theater lobby. Coaches and players are strongly encouraged to attend as well as unit special services officers. Entry deadline is Aug. 22.

The Marine Corps took first place in individual/team matches during the 19th Annual Interservice Rifle Championship Matches held at Marine Corps Development and Education Command, Quantico, Va. July 22-29. MQSgt R.E. Martin won the individual title



Photo by Cpl Cheryl Martin

HEADS UP! — Cpl Ted Davidson, of the K-Bay Soccer Team, and a Texas B-B-Q player move into position to head the ball during

soccer action Sunday in Wahiawa. The K-Bay team went down in defeat by a score of 6-1.

Veterans Administration furnishes educational help

Marines and sailors planning to use their veterans educational benefits should be aware of their entitlements and of the assistance the Veterans Administration can provide.

THE VA OFFERS two basic programs for veterans and servicepersons seeking educational and training assistance, the GI Bill and the Contributory Educational Assistance Program.

Veterans who served on active duty for more than 180 days between Feb. 1, 1955 and Dec. 31, 1976, fall under the GI Bill if they were released from active

duty under other than dishonorable conditions; or were discharged due to service-related disability; or are still on active duty.

ANYONE WHO meets the criteria or, in some cases, who entered under a delayed entry program, are entitled to educational assistance of one and one-half month for each month, or a fraction thereof, of service for active duty after Jan. 31, 1955 up to a maximum of 45 months.

Veterans who qualify for GI Bill benefits

under this program who were released from active duty after Jan. 31, 1955 have eligibility for 10 years after discharge or release, but not later than Dec. 31, 1989. Extensions to this deadline may be granted, depending on circumstances.

THE VA WILL provide educational and vocational counseling upon request.

Individuals who entered active service on or after Jan. 1, 1977 are eligible for educational assistance under the Contributory Educational Assistance

Program if they were released under conditions other than dishonorable, or who have continued on active duty but completed their first obligated period of service.

VETERANS who participate in this

program must contribute a monthly deduction of \$50 to \$76 of their military pay, up to a maximum of \$2,700 for deposit in a special training fund. The nature of this benefit is to permit the service person to voluntarily participate in a plan for

future education or training. At the time the eligible participant elects to use the benefit to pursue an approved course of education, the VA will match the serviceperson's contribution at the rate of \$2 for every \$1 saved by the participant. Contributions

receive benefits for the number of months they contributed, or 36 months whichever is less.

The amount of payments is determined by dividing the number of months benefits will be paid

into the participant's total training fund.

PARTICIPANTS may leave the program at the end of any 12 consecutive-month period of participation, and those who do may have their contributions



KIRWAN'S
SCHOOL OF DIVING
SCUBA COURSE

- Beginning every 3 weeks
- 6:30 p.m.
- Call to register.
- Cost: \$55

Denis Kirwan
261-5652

recycle
OFFICE
PAPER it
pays
you \$
HAWAII
RECYCLING
SERVICES
8472068

TRANSMISSION
Tune-Up

HERE'S WHAT WE DO

- ROAD TEST
- OIL & FILTER
- ADJUST BANDS & LINKAGE
- CLEAN & FLUSH
- NEW FAN BELT
- NO NEW FLUID

\$19.95

YOUR AUTOMATIC TRANSMISSION NEEDS TO BE SERVICED EVERY 12 MONTHS

BY APPOINTMENT
CALL
836-0594
2984 KOAPAKA ST.
AIRPORT AREA

CONSOLIDATED THEATRES

REVOLUTIONARY CINE-FI SOUND AT THE KAM DRIVE-IN

YOUR AM CAR RADIO IS YOUR SPEAKER (IF NO CAR RADIO, WITH IGNITION ACCESSORY POSITION, BRING YOUR OWN AM PORTABLE.)

OUR 2 "SUPER" SWAP MEETS WILL HELP YOU FIGHT INFLATION ALL YEAR LONG!

***KAM DRIVE-IN • 7 AM TO 1 PM**

***KAILUA DRIVE-IN • 7 AM TO 1 PM**

WAIKIKI	DOWNTOWN
<p>WAIKIKI #1 Seaside nr. Kalakaua 923-2394</p> <p>BROOKE SHELDS "THE BLUE LAGOON" (R) 1:15 • 2:30 8:45 • 9:15 • 10:30 PM</p>	<p>HAWAII Belmont at Pauahi 536-0300</p> <p>STARTS FRIDAY "INVINCIBLE KUNG FU TRO" (R) "TWO GREAT CAVALIERS" (R) Call Theatre For Show Times</p>
<p>WAIKIKI #2 Kailua nr. Seaside 923-5353</p> <p>KIM DOUGLAS "THE FINAL COUNTDOWN" (PG) 12:30 • 2:30 • 4:30 8:30 • 8:45 • 10:45 PM</p>	<p>LIBERTY nr. Beretania 537-1666</p> <p>STARTS FRIDAY "KUNG FU MASTERY" (R) "ENTER THE WHIRLWIND ROSE" (R) Call Theatre For Show Times</p>
<p>WAIKIKI #3 Kailua nr. Seaside 923-5353</p> <p>STARTS FRIDAY "PETER RABBIT" (PG) "WINDY CITY" (PG) Call Theatre For Show Times</p>	<p>TOYO College Wl. at Beretania 538-1554</p> <p>FRIDAY-SUNDAY "SHOGUN IMPOSTER" (R) "SAMURAI STORY" (R) With English Titles Call Theatre For Show Times</p>
<p>KUHO #1 2095 Kuho 941-4422</p> <p>CHEVY CHASE "RODNEY DANGERFIELD" (R) "CADDYSHACK" (R) 12:45 • 2:15 • 4:45 8:45 • 8:45 • 10:45 PM</p>	<p>KAILUA Waialae at Wilhelmina 737-8200</p> <p>ENDS TOMORROW "ROBERT REDFORD" (R) "BAGGIE" (R) 8:15 PM ONLY</p>
<p>KUHO #2 The "Sleepers" of the Year "MY BODYGUARD" (PG) 12:30 • 2:30 • 4:30 8:30 • 8:30 • 10:30 PM</p>	<p>KAM DRIVE-IN #1 Maunaloa nr. Kam Hwy. 488-3835</p> <p>"CHECKED & CHARGED" NEXT MOVIE: (R) "ANIMAL HOUSE" (R) GATES OPEN AT 6:45 PM SHOW STARTS AT 7:30 PM "CINE-FI SOUND"</p>
<p>KAPOLANI 1646 Kapiolani 955-5115</p> <p>RICHARD DREYFUS "THE SPECIAL" (PG) "CLOSE ENCOUNTER OF THE THIRD KIND" (PG) 12:30 • 2:30 8:30 • 8:30 • 10:45 PM</p>	<p>KAM DRIVE-IN #2 The Final Countdown (PG) "METROPOLIS" (R) GATES OPEN AT 6:45 PM SHOW STARTS AT 7:30 PM Children Under 12 Yrs. FREE</p>
<p>UNIVERSITY • PUNAHOU</p> <p>UNIVERSITY nr. Beretania 945-4144</p> <p>JOHN BELUSHI "THE BLUE BROTHERS" (R) TONIGHT: 8:30 • 8:30 • 10:45 PM</p>	<p>PEARL RIDGE 1 Pearlridge Center 487-5581</p> <p>STARTS FRIDAY "MATTI MATIN AND OBIT" (R) Call Theatre For Show Times</p>
<p>CINERAMA King nr. Kailua 941-5291</p> <p>DOORS OPEN 12 NOON "THE EMPEROR'S NEW MARE" (PG) "STRIKE BACK" (PG) 12:30 • 2:30 8:30 • 8:30 • 10:30 PM SPECIAL ENGAGEMENT BONNY, NO PAGES</p>	<p>PEARL RIDGE 2 ENDS TOMORROW "FAME" (R) TONIGHT: 8:30 • 8:30 • 10:30 PM</p>
<p>WINDWARD</p> <p>KAILUA DRIVE-IN 917 Pali Highway 261-6032</p> <p>THE EMPEROR'S NEW MARE "STRIKE BACK" (PG) GATES OPEN AT 6:30 PM SHOWS: 7:30 • 10:15 PM Children Under 12 Yrs. FREE SPECIAL ENGAGEMENT BONNY, NO PAGES</p>	<p>PEARL RIDGE 3 ENDS TOMORROW "VILLAGE PEOPLE" (R) "VALENTINE" (R) "CANT STOP THE MUSIC" (PG) SHOWS: 8:30 • 8:45 • 10:45 PM</p>
<p>ARKAM Akahi Park Shopping Center 254-1330</p> <p>ENDS TOMORROW "THE SHARPER" (R) "THE GREATEST PARTNER" (R) 8:30 • 8:30 • 10:30 PM</p>	<p>PEARL RIDGE 4 JACK NICHOLSON "THE SHARPER" (R) 8:30 • 8:30 • 10:30 PM AMPLE FREE PARKING</p>

BACK TO SCHOOL

50% OFF

ORIENTAL GRASS CLOTH

"The ultimate in fine wallpaper"


HURRY, OFFER EXPIRES AUG. 30TH

This is a new shipment - not a discontinued item -

CONSIDINE'S

315 Ulunlu St., Kailua Square

Daily 9:30-5:00
(Closed Sundays) **261-9818**



Fiberart Classes

basketry weaving dyeing
knitting spinning crochet

25% Discount with this coupon on
Mohair Yarn • Wool Yarns from Crete
While Supplies Last
Offer Good 8/16/80 9/3/80

THE YARN SHOP
Monday-Friday 9:30-4:30, Sat. 9:30-2:30
315 Ulunlu Street, Phone 262-0055
In Kailua Square

HUGE SAVINGS!!



20% OFF OUR REGULAR LOW PRICES ON ALL BEDROOM SETS.



20% OFF WALL UNITS.
SOME WITH DESKS, SOME WITH DOORS.
THE DESK UNITS WILL COME IN HANDY.
NOW THAT SCHOOL TIME IS HERE!



20% TO 30% OFF RECLINERS
THE MAN OF THE HOUSE CAN WATCH IN COMFORT AS HIS FAVORITE FOOTBALL TEAMS START A NEW SEASON.



LIVING ROOM SETS CAN BE EXPENSIVE. OURS AREN'T. PRICES START AS LOW AS \$289 FOR SOFA & CHAIR BACK FROM RENTAL.



GUESTS COMING THIS FALL?
A SOFA-SLEEPER CAN SOLVE THAT NEED FOR AN EXTRA BED.
20% OFF ALL SLEEPERS



TREAT YOURSELF TO A NEW DINING SET. NOW YOU CAN SAVE AT LEAST 20% ON ANY SET OF YOUR CHOICE.
SALE ENDS AUG. 18

NEW FURNITURE VALUES AND... WANT HAPPIER RETURN?

LifeStyle FURNITURE

WAREHOUSE CLEARANCE CENTER 95-718 MOANALUA RD.
ONE BLOCK EWA OF SUITE'S STEAK HOUSE
PHONE: 488-7755 (Evening Available)
Mon.-Wed. 9-6, Thurs.-Fri. 9-6, Sat. 9-6, Sun. 10-4

SALE

30% OFF

EVERYTHING ON SALE — NOTHING HELD BACK

Back To School Special For That Musical Student

Baldwin
Piano & Organ Center

9 AM TO 9 PM WEEKDAYS
9 AM TO 5 PM SAT. AND SUN.

PEARL RIDGE PHASE I
NEXT TO LIBERTY HOUSE
PH. 487-3621
AT 5050 ALA MOANA BLVD.
PH. 521-0025
SALE ENDS 8/31/80


COUPON
MOONLIGHT SALE ONLY
AUG. 16TH OPEN TILL 9:00 P.M.
Present This Coupon For
An Additional **\$50.00 OFF**

CITY OPTICIANS

Is offering a back to school

MIDSUMMER SALE!

20% Off on all prescription glasses



Hurry - This offer is good for August only

261-0220

315 Ulunlu St.
"In Kailua Square"

Celia Mae's
Hairstyling
"Complete beauty service for you and your family."
August Money Saver

Body Wave Special
Includes Shampoo, Haircut & Conditioning
Student Price \$15.00 (17 & Under)
Adults \$20.00

New Hours
Mon. 8 am to 5 pm
Tues.-Sat. 8 am to 8 pm
Sundays By Appointment
Stylists:
Celia Mae
Frances Young
Phone 262-0623
438A Uluani St., Kailua

— Hurry —
Offer Expires 8/31/80

BACK TO SCHOOL

CLIP THIS AD AND SAVE 30%
on all T-Tops, T-Shirt Dresses, Jeans & Slacks, Handbags, Karvings Sandals —plus— Selected Items

Connections Boutique
750 Kailua Rd.
(Next to Taco Hut)
Now Open Sundays 11:00 AM to 4:00 PM

Kokua Spirits
Pali Bottles
Kailua Hawaii

BE A KNOCK OUT at School
Wear a Mickey's T-Shirt Now 50% Off at your Mickey's Headquarters

The Pali Bottle Shoppe
Limited Supplies So Buy Now
(1 Week Only) 8/14/80-8/20/80

Mickey's Big Mouth 6 Pak
Sale \$2.69
(Best Price in town)

262-5665
662 Kailua Rd.
(Next to Kramer's In Kailua's Main Intersection)

Naile's Custom Upholstery

The kids are going back to school and we're offering you a super special to redecorate your house.

30% Off
on either any skirtless couch or on carpeting

261-7125
Call Now

Open Mon.-Fri. 9:00-4:30
Closed on Weekends
153 Hamakua Dr.

Now with Air Conditioning

Clip This Ad For One Free Game
(only one coupon per person)

PRACTICE BOWL
75¢
Weekdays 8 a.m. to 5:30 p.m.

PALI LANES
120 Hekili St., Kailua
261-0828
(League Openings Now Available)

Clip This Ad For One Free Game
Expires Oct. 31, 1980

HUNGRY EAR RECORDS

Select Titles List \$7.98 SALE 5.99

418 Kuulei Rd.
"In Kailua"

Expires 8/31/80

\$1.00 off our regular low prices on new records and tapes. 1 coupon per record or tape. (except on sale items)

We Buy Used Records & Tapes
— Hurry and Clip This Ad —
Offer Expires 8/31/80

Come in and see our super low everyday specials!

Call Now 262-6938

BUY & SELL 261-1406

PARADISE USED FURNITURE INC.
155 Hamakua Dr.
DAVID & DEBBY KNOWLES 261-8492

Come in and choose from a wide variety of Back-to-School specials

30% OFF

All wood night stands and wood framed mirrors

All wood 4 drawer dressers \$45
Mahogany desks \$75

We also have . . .
• Beds • Couches
• Tables • Desks
• Lamps • And Much More!

We would like to thank you for making our first year a success, and welcome all new customers to the best furniture buys in town!

Creative Interiors
Has a back to school special for Mom & Dad

20% off
Custom:
• Draperies
• Woven Woods
• Mini Blinds
—plus—
We'll come to your home for FREE consultation

153 Hamakua Dr.
In Kailua

Call Now — Offer Expires 9/30/80
262-9511

CARPET SALE

to rejuvenate your home while the kids go back to school

• Multi-Tone Plush in 6 gorgeous colors, installed with padding and labor
Reg. \$19.95 yd.
NOW \$16.95 yd.

• Beautiful Plush Tone in 8 colors, installed with padding & labor
Reg. \$17.95 yd.
NOW \$14.95 yd.

• Level Loop Carpet Desert tone padding attached.
Reg. \$7.99 yd.
NOW \$3.99 yd.

• Artificial Grass
Reg. \$7.99 yd.
NOW \$4.99 yd.

HURRY, OFFER EXPIRES 8/27/80

MAHALO
John P. Smith Jr.

CARPETS OF KAILUA

THE HAMAKUA ADRESS FROM TOP DOLLAR
261-1000

WENDY'S FASHION GARDEN

Back To School Savings Of Up To **45% off** on

Mu'us, (For Career Gals)
Blouses,
Hawaiian Tops,
Baggie Jeans,
and Much, Much More!!

Style Shown: \$25.00
Matching Cover-Up Shown in Aloha Printa or Tropical Bordered Rayons

Mondays Closed
Tues.-Sat. 10:00-6:00, Sun. 10:00-4:30

153 Hekili St. 261-0203
Across from Holiday Mart Theatre

Safety

by Sgt Pepper Davis

Olivia Newton-John did it on the cover of People Magazine. Movies have been made about it. Peaches and Herb sang about it. Robin Williams (TV's Mork), the Village People, Cher, and millions of other people are doing it too.

ROLLER skating is fast becoming one of the hottest trends to hit this country in years. According to the Roller Skating Suppliers and Manufacturers Association, approximately 80 million people skate indoors and out.

A big reason for the boom is that skating has moved outdoors. Until recently roller skaters had to skate either in a rink or use those noisy, rough-riding contraptions that clamp onto shoes and tighten with a key.

NOW THE WHEELS on outdoor skates have been revolutionized. They are the same polyurethane kind used on skateboards and the new wheels are quieter. They give a better ride because the plastic absorbs the shock while smoothing out small bumps and surface irregularities. Unlike the old skate, a roller skate today is a piece of engineered athletic equipment.

There is no doubt roller skating is popular, but the safety of the sport has often been questioned. Injuries do occur. Accord-

ing to figures released by the National Injury Information Clearing House, more than 70,175 people were treated for skating injuries since 1978.

OF THOSE injuries, 24,084 were cuts, scrapes or bruises while 20,718 were strains, sprains or dislocations and 25,119 were fractures or concussions. The largest number of fractures, 20,176, were of the arm.

The possibility of getting injured is a factor to be considered but it shouldn't keep people from skating. A major cause of skating accidents is crowded conditions.

TOO MANY people jammed together—which is the norm in most places—makes it hard to maneuver, so collisions are more likely to happen.

Overconfidence is another factor in skating accidents. Most skaters start out slow and easy because they're a little scared.

ONCE THE fear is conquered they get enthusiastic and start performing feats they can't control. These premature stunts lead to accidents and injuries.

But there's more to roller skating safety than avoiding crowds and knowing the proper way to fall. The first thing a novice should

know is the proper equipment.

There are several styles of shoes to choose from. The most popular are the high-top boot and the low-cut jogging shoe variety.

OF COURSE the choice is the skater's however, most experienced skaters prefer the high-top boot because they provide better support and movement of ankle joints.

The jogging shoe style is acceptable for slow, straight-forward skating, as long as no fancy techniques are attempted. Whatever shoe is selected, ensure a proper fit to prevent blisters.

PROTECTIVE equipment is also a must when skating, especially outdoors. A skater who wears wrist guards, elbow and knee pads, and light gloves will be well protected from most injuries caused by falls. Head protection is not necessary but for fast, trickier skating, the kind of helmet worn by skateboarders is recommended.

Once you have the right equipment you need to know some basic skills. Here's some advice on how to get out on your skates safely.

IF YOU'VE never skated before, start out slowly. Take time to get familiar with your skates. A roller skate is unlike an ice skate which goes in the

direction you point it. A roller skate goes in the direction you apply pressure with your weight. With your roller skates on, lean in different directions and see what the skates do as your weight shifts.

To actually start skating step out as in walking. Keeping your knees bent will lower your center of gravity and leaning forward slightly will help you keep your balance.

ONCE YOU get yourself moving, stopping and turning are two helpful techniques to know. The modified T-stop is considered the best method for a beginner.

With the T-atop method one skate stays in a straight line while the other is placed behind it at a slight angle. The rear skate is then dragged to slow down and stop. The angle of the rear skate will allow some rolling of the wheels so they won't be damaged, but there will be plenty of drag.

THE ADVANTAGE of the T-stop is that both skates are on the

surface, providing two good balance points. Another common way of stopping is to drag the toe stop on one skate.

Now that you know how to stop, here are some tips on changing directions. For a beginner, the simplest way to turn is best. The way to do that is lean in the direction of the turn, and your weight will maneuver the skate.

NOVICE SKATERS are cautioned not to try

the crossover turn—where one foot is crossed over in front of the other—until they've gained more proficiency. The crossover technique requires skating on one foot, and means some loss of balance.

Basically that's all there is to know about getting started in America's hottest trend. Intricate moves will come with experience.

Skating is more than just a fad, it's a healthy, fun activity

that can be enjoyed by everyone young, and old. Being safety conscious should help guarantee a roller skater many miles of injury-free thrills.

uncontested divorce \$200
(\$170 legal fee + \$30 court cost)
michael pence, attorney
grosvenor center, 26th floor
523-6411

KMCAS WOMEN'S EXERCISE CLASS
Fun, Music
Total Body Workout
Showers Sauna
Sign Up Before Class
BOQ MWF 8:15 AM TTh 7:30 PM



SCHEDULED AIRLINES TICKET OFFICE (SATO)

Staffed by full time Airline personnel
To assist in your travel requirements

- Individual leave
- Family travel to the Mainland
- Neighbor Island
- International
- Dependent travel to West-PAC
- Fares
- Flight Information.

Contact SATO for reservations and airline tickets at any one of our three convenient on base locations.

Pearl Harbor - Bldg. 487 - Tele: 422-0571
Office hours - Mon. thru Fri. 0730-1600

Camp Smith - Bldg. 2D - Tele: 487-1567
Office hours - Mon. thru Fri. 0800-1600

Kaneohe MCAS - Bldg. 209 - Tele: 254-1564
Office hours - Mon. thru Fri. 0730-1530

Kaneohe Discount Electrical Supply
20% to 30% Off
Buy It Yourself And Save
Professional Electricians Available
247-1979
For Parts - 247-1201
48-012 Alaloe St.
(Around the corner from City Mill)

Word Wise

Word Wise is a column aimed at injecting more definition, more understanding and a brighter outlook of the English word system.

Traveling through

the veins of knowledge this week is the word "haphazard," which means:

hap-haz-ard (hap-haz'erd): adj. Dependent upon or characterized

by mere chance. Casual-ly; by chance.

An example of a way haphazard can be used in conversation is:

"I made a haphazard bet on the last Super Bowl game and lost."

Rolex is for men who give watches a rough time.



ROLEX

It's a special kind of watch a man can take sea diving, parachuting, snow skiing... then to a formal reception. Rolex makes that kind of watch. Their sports watches all feature a stainless steel case, 30-jewel chronometer movement and stainless steel band. A. Explorer II, \$875. B. G.M.T. Master Oyster, \$900. C. Submariner Oyster, \$950.

GRANAT BROS. PEARLRIDGE NOW OPEN ON SUNDAYS

GRANAT BROS

Fine Jewelers Since 1905

MASTER GOLDsmith AVAILABLE
Pearlridge Plaza 1-408-9777
Kahala Mall-733-1400
Use one of Granat Bros. convenient charge plans or American Express.
Visa, MasterCard



WATCH
CLOCK
REPAIR

DIGITAL
WATCH
REPAIR

DAMAGE
CLAIM
SERVICE

FREE
ESTIMATE

CALL US: 487-8825

HOUSE CALLS
FOR
GRANDFATHER'S
OR
ANTIQUA CLOCKS
A SPECIALTY -

We will come to your home
and make all necessary
adjustments, lubrication and
general checkup for this low
fee of **\$49.95**
Expires 8-15-80

A CLOCK HOUSE

COMPLETE TIME PIECE SERVICE CENTER

Alive with pleasure! Newport



KINGS

Newport

SAVE \$25.00

Blue suede Sure Grip Jogger skates! A \$75.00 value for just \$49.95. Yellow polyurethane wheels, precision bearings and an aluminum alloy truck for strength and lightness. What a pleasure... skating and saving! For each pair of Jogger Roller Skates send \$49.95 in check or money order (no cash) along with 5 bottom flaps from any size of Newport cigarettes.

Newport Jogger Skates
P.O. Box #2710, Hillside, N.J. 07205

Indicate your shoe size _____ Male ☐ Female ☐
Name _____
Address _____
City _____ State _____ Zip _____

Offer available to persons over 21 years of age. Good in U.S.A. only, except where prohibited, licensed, or taxed. Offer good until November 29, 1980 or while supply lasts. Please allow 8 weeks for shipping.

Warning: The Surgeon General Has Determined
That Cigarette Smoking Is Dangerous to Your Health.

When you place a Classified ad, results are just a phone call away!

TO PLACE YOUR AD—Dial 235-5881 Classified Advertising Department



• 60 HELP WANTED MALE & FEMALE

MILITARY housewives looking for part time income? Location doesn't matter. Call for appt. 247-2989

MEDICAL Asst. Nurse for Kailua Pediatric office, part-time. Ph. 262-6551

FULL part-time waitress, cook & clerk. Apply in person 8 to 4 p.m., Walcott Tea Room, 3016 Oahu Ave.

SECRETARY/clerk typist \$600 plus. The Salvation Army. Planned giving director 988-2136 call for appt.

PART time permanent typing job in own home. Pickup and delivery provided. Call Susan 254-4151

SALES? Advertising—full & part time, work from home. Comm. plus bonus. Rapid advancement to mgmt. Call 422-8713 for appointment.

FULL time Dental Business Assistant Kailua office. Some bookkeeping background preferred. 261-4605

WANTED: Strong, willing young person to trim and weed Haiku Plantation lot, 1 day a wk. 235-4050

INSURANCE Office clerk. 30-35 hrs. per wk. Previous office experience desirable. Hickam area service wife preferred. Call 946-0248 for Appt.

WANTED: Daytime dishwasher beginning Aug. 16 to work in a family restaurant. Call Mike at 261-8724

EAGER to be away from home? Learn something new. Must type. 3-4 days a week in pleasant busy office. Start \$33.10 hr. Ph. 423-2333

UPHOLSTERY Seamstress, exp. only. apply Danish Furn. Ctr., 802 Lehua St., 456-4577

QUALIFIED CDC Assembler Language teacher needed for Fall Term. Contact Control Data Corp. 833-2555

LOST Your Tri-Chemiloid embroidery instructor? NEW XMAS CATALOG! Services, classes: 254-1022, 624-5907, 499-1513, 833-3914, 377-8488, 422-1266 Full/p-time career opportunities

JANITRESS, part time. Kaneohe area. Ph. 247-2614

MILITARY housewives looking for part time income? Location doesn't matter. Call for appt. 247-2989

KOKUA EMPLOYMENT HAS MANY, MANY JOBS ON WINDWARD SIDE FOR SERVICE WIVES LOCALS AND NEWCOMERS CALL US AT 262-8137 OR APPLY AT 787 KAILUA RD., FREE PARKING IN REAR

• 60 HELP WANTED MALE & FEMALE

WANTED part time cook for Kailua family restaurant. Call Mike 261-8724

BABY sitter wanted part time from 8:30 to 11:30 a.m. nursery exp. nec. Mon. to Fri. Lisa 235-5839

NEED person to do carpentry on weekends in Wahiawa. 621-5341, 698-0037

HAIRSTYLIST part-time. Ph. 261-2575 or eves. 282-5284

\$\$\$ Sales people needed immediately. More qualified leads than we can handle. Full or part time. Car nec. Windward Vacuum Sales & Service. 239-8678

ABC EMPLOYMENT, INC. WINDWARD sample Part time Secty's \$3.25 hr. Lot attend. trainees \$3.10 Exec. Sec. \$11,000 Clerk Typist \$800 Asst. Sec. \$600 Travel Agent to \$750 Auto Parts to \$400 Bookkeepers to \$1200+ Shipping Clerk \$325 Cashiers \$325 Dishwasher \$325 Town sample Recept. Sec. \$850 Claims trainee \$1125 Otc. Manager \$8/\$8.50 Customer Service \$750 Food/Bev. manage. to \$13,000 Exec. Secty's \$900/\$1000 Receptionist Fee Paid Staff Accountant \$900 Bank Trainees to \$800+ Distribution Manager \$850+ Part time purchasing to \$450 mo. Driver to \$750 Kailua Shop Ctr. Rm. 206 261-8781 3049 Ulenia St. 836-2321

PART time work, eves. Kaneohe. Good salary plus bonuses. No experience necessary. Mature persons. Military. Senior Citizens welcome. Call Aileen or Debbie 235-0225

DELIVERYMAN, must have own car, 3-4 nights per week. Ph. 262-8888

PART time work. \$100+ per week. Possible eves. and weekends. P.R. work - no selling. Must like meeting people. Call Larry 235-0225

YARD Work, 5 hours weekly. Student okay. Kahala area. Jim 239-9800

WE need drivers for bicycle ice cream wagon, full/part time, commission, good exercise, good money, good fun. 262-8259

• 62 HELP WANTED DOMESTIC

WANTED baby sitter Mon., Wed. & Fri. 8 to 12 noon. Call 261-3127

PERSON to care for elderly couple, mornings preferred. Salary to be arranged. 262-5346

WANTED part time domestic worker. Some cooking, dishes, laundry, etc. Kailua. Ph. 261-3680

• 62 HELP WANTED DOMESTIC

WANTED: Person to babysit 8 mo. girl in my home. Alkali area. 7 a.m.-6 p.m. Some housework. \$50 per wk. Call 6 p.m.-8 p.m. 254-2548

BABY sitter needed for 11 yr. old boy after school. Preferably near Hialeka Elementary. 422-4916 after 5.

AFTER school care w/transportation from Kaneohe Elem. for 1st grade boy. 235-4038

NEED babysitter for 1 child, Kaneohe area. Ph. 235-5075

NEED baby sitter for 6 mo. old as of Sept. preferably in own home. Hours 7 to 2:15. Refs. 239-6376

• 63 SITUATIONS WANTED MALE & FEMALE

I WILL babysit at my home—Reliable. Ages 1 1/2-4. Phone 235-4311.

WILL babysit in my Kailua home. Exp. Fenced yard. Ph. 262-4796

CHILD care in my home. KMCAS Mon. to Fri. Refs. avail. 254-3258

WILL do babysitting, my home. Mon. thru Friday. Days. Any age. Ph. 261-2352

CHILD Care, 2 yrs. & up. Temple Valley mom. Transportation to and from Auhimau Elem. and/or preschool. 239-9876

WILL babysit my home. Prefer infants - 2 yrs. Ph. 262-6243

RELIABLE Babysitter to care for your child Mon.-Fri. Refs. available. 247-3743

BABYSITTING in my Catlin Park home. Call 422-1044

WILL babysit. My home. Day Care & Nursery experience. Schofield area. 624-9081

YARDMAN needed Milliani area. Call 623-2279 eves.

WILL Babysit for working mother, full or part time. For info. Ph. 624-4157

• 68 GARAGE & LANAI SALES

Did you just buy something in a garage sale & can't get it home? We can — In our Van!

YOU CALL WE Haul No load fee small 261-2881 We work weekends

GARAGE Sale: Tropical fish; plants; uniforms & misc. items. 2530-C Bingham Way, KMCAS, Sat., Aug. 16.

GARAGE Sale, wide variety miscellaneous items. 307 Wanao Rd., Kailua, Aug. 16 & 17, 9 a.m. to 5 p.m.

BIG Plant & Rummage Sale! Sat. 8/23, 9 a.m.-9 p.m. Multi-hull chicken/food/games. 5339 Kalaiala Hwy. In Aina Haina Calvary Lutheran. Free admission!

GARAGE Sale: Fri. & Sat., Aug. 15 & 16, 10 to 4 p.m., 95-096 Kipapa Dr., #440, Milliani, misc. items.

GARAGE Sale: Sat., Aug. 16, 9 to 4, 338 Honono St., Hawaii Kai, misc. items.

MOVING Sale: 4 families, Sat., Aug. 16, 9 to 1, 94-194 Mahapili St., corner Lanikuhana, Milliani.

MOVING SALE: All turn: sofa, recliner swivel rocker, commode, Baldwin spinet, dinette/6 chairs, queen size bed set, 2 chests, GE H.D. washer, most items 1 yr. old. Good cond. Ph. 261-6095

MOVING Sale: Sat. & Sun., furn., toys, girls bike, women's & children's clothes; household items & misc. 719-C Wailepo Pl., Kailua

MOVING Sale: Furniture, baby furn. & small household items. 2483-D Cochran St., KMCAS 254-3127

CUSTOM deluxe bunk beds, dressers, rattan couch & chairs, hanging wrought iron lamp, white velvet chair, portable closet, water bed, practically new avocado drop-in gas stove top. Lanai Sale 261-2258

• 68 GARAGE & LANAI SALES

GARAGE Sale: 3446 Ala Akuliki St., Salt Lake, Sat. & Sun., 9 to 4

SEWING mach., cameras, baby items, ceramics. Sat. 1972-A Hanson Cir., KMCAS

GARAGE Sale, Milliani, 95-710 Kipapa Dr. #15, Sat. 9-2. Rattan dining set, clothes & odds & ends.

SAT., Aug. 16, 582 Palawiki St., Enchanted Lake, 28" glass louvers w/hardware, girls' bikes, Kenmore dryer & many beautiful lamps - \$15 ea. 261-4422

KING spreads, drapes, glass table, golf clubs, lamps, baby car carrier seat, bowling ball/bag clothes, misc. bargains. Sat. 10-4 p.m., 320 Kealahou Pl., Kailua

MOVING Sale: bdrm. sets, dining rm. set, hutch, bookcase, recliner, lamps, end tables, refrigerator, stereo stand, sewing cutting table. Fri. 15th, Sat. 16th, 10 to 4, 47-249-A Hui Iwa St., Hukuloa

GARAGE Sale: Sat. & Sun., Aug. 16 & 17, 10 to 4, furn. & misc. 98-1052 Mahalo Pl., Pearl Ridge

BENEFIT Garage Sale: Sat. 8 to 1, misc. items. 635 Wanao Rd., Kailua

GARAGE/Plant Sale, Aug. 16 & 17, 9-4. Clothes, household items, furn. & many plants. 7243, 7246 Mokuone St., Koko head Terrace, Hawaii Kai

GARAGE Sale: 9 to 5, Sat., Aug. 16, 1446 Mokolea Dr., Lanikai

ALOHA Sale: Moving, everything must go. All day Aug. 9 & 10, 16 & 17. Catlin Dr. across from Airport. 1993-B

GARAGE Sale: Furniture & miscellaneous items, 47-215 Iulu St., Kaneohe, Aug. 16 & 17, 10 to 4 p.m.

GARAGE Sale: toys, clothing, small appliances, some fabrics, misc. Aug. 16, 9 to 3 p.m. 646 Alahaki St., Kailua

• 68 GARAGE & LANAI SALES

GARAGE Sale, 8/16 from 9 a.m. to 4 p.m. 1339 Anapa St., Foster VII.

• 73 APTS. FURNISHED

ATTRACTIVE Windward ocean front studio. Pool, parking. 235-0273, 941-7711.

NANAKULI: 2 bdrm., ocean view \$275. Call 373-2424

WAIKIKI Foster Towers studio, oceanview. pool. \$350 mo. 488-3246

PUNALUU: Condo studio, beach, pool, utilities. \$260 mo. Lease 395-2198

MAKIKI Davenport: new ideal comfort for working couple 1 bdrm. low-rise, furnished, washer/dryer, microwave, covered parking. \$375. 595-2334, 595-3610

APT. FURN. Makiki - washer/dryer, lanai, a/c, \$500 mo. Call Mark or Becky. 941-5453 after 5 p.m.

LANIKAI studio, extra nice, 1 block to beach. Single \$295 double, \$325 incl. utils. 262-5528

WINDWARD Harbor Kailua - just completed. Lge. 3 bdrm., 2 1/2 bath on Windward side. 2 lanais, 1 roof top, microwave kitchen, trash compactor, cubes & ice water in refrig. dr., sauna, private tennis club, full time pro on grounds. Covered parking stalls. Top Security. 3 Singles can share. \$1000 mo., lease or rent. P.O. Box 82, Kaneohe, 96744. Ph. 261-8111

• 75 APTS. PARTLY FURNISHED

KALIHU—2 bdrms., washer/dryer, parking, near bus line, school, shopping center, \$400 & up. Hale Koa Inc. Ph. 423-1022.

SALT Lake new luxury condo, studio, 23 ft. pool, sauna, tennis, cable & other amenities. 524-2868

• 75 APTS. PARTLY FURNISHED

POINCIANA Manor: immediate occupancy, 3 bdrm., 2 1/2 bath, bi-level \$600 mo. Call 254-3885

MILILANI: 2 bdrm., carpet, drapes, all appl. incl. water \$450 mo. plus deposit. Immediate. 621-5234

WINDWARD Harbour: Brand-new deluxe excc. 3 bdrm., 2 1/2 bath, apt. overlooking exotically landscaped lakes & waterfall. Amenities galore! \$650 mo. 262-8984

LOVELY 2 bdrm. apt. garden view. Windward Passage \$500. Ph. 261-5324

NANI Koolau: 2 bdrm. \$470 mo., swimming pool. Call 247-2904

NEW large studio, private home, exclusive area, swimming pool \$400 a mo. incl. util. 262-8922

KANEOHE: 3 bdrm., 2 bath, pool, etc., immac. Haiku Hale \$500. 261-6141

• 76 RENTALS TO SHARE

KANEOHE: apt. partly furnished, 3 bdrm., 2 bath, all appl., drapes, pool, view \$525. Call 262-8298 or 262-9411 after 5 p.m.

• 76 RENTALS TO SHARE

AIKAI: Own room/bath including util., pool, share kitchen/laundry. Refs. \$225 mo. 264-2472 AWH

MALE to share w/same, 2 bdrm., \$212.50 + 1/2 util. 235-2976, 923-0277

LIBERAL GI Male 18-27 needed to share Waikiki apt. 2/3 same student low rent for right person. Call 946-3377

WANTED!!

Newspaper Area Manager

Part Time Position

Openings in Waipahu area. Work with children. Must have van, truck or station wagon. Good salary plus gas allowance.

Call Pat Meador 235-5881

Sun Press

PRESSMAN

Immediate opening for Web Offset Pressman on a 6 unit Goss Urbanite. Experienced in process color very helpful. Salary commensurate with experience, medical and dental, profit sharing.

Call Sun Press,

235-5881, ask for Dennis Keupel.

There's more in a carrier's bag than newspapers...



Look what's in it for you:

MONEY!

As a SUN PRESS carrier you earn and manage your own money, just like a businessman!

PRIZES!

In addition to your regular earnings, you can merit valuable prizes by excellence of service and gaining new subscribers!

TRIPS!

Being a SUN PRESS carrier is not all work... every year hundreds of our carriers win a variety of different prizes, this year, an all-expense paid trip for 3 to Disneyland is being given away!!

Boys! Girls! If you are bright, energetic and have the desire, we need you! It's great to earn your own money... win valuable prizes... You'll be part of Community Publication's big SUN PRESS Newspaper team, working together to bring our neighbors the latest local news.

JOIN THE SUN PRESS CARRIER TEAM CALL 235-5881 TODAY!

BUSINESS & SERVICE DIRECTORY

<p>Appliance Repair</p> <p>HOME APPLIANCE SERVICE Expert repair to all makes/models, reasonable Ph. 871-0445</p> <p>DAN'S Appliance, repairs washers & dryers, stoves & refrig. Call 242-4679 (Repairs Guaranteed)</p> <p>RJ'S REFRIGERATION & Air Conditioning Service. Workmanship guaranteed. Call 533-3877 ext. 5404</p> <p>Carpet/Upholstery Cleaning</p> <p>LONG'S CARPET CLEANERS Ph. 455-8271</p> <p>For the best time have your carpet & upholstery cleaned properly with DEEP STEAM EXTRACTION PROCEDURE. Fast drying time, even 24 hr. service. We also move furniture. Commercial rates free est.</p> <p>STATE CARPET CLEANING 671-0766 & 521-9297</p> <p>General Contracting</p> <p>S. KEO Contracting - Lic. C6746 - Concrete slabs & masonry walls. Free Estimates Ph. 247-0173</p>	<p>General Contracting</p> <p>D. ODA CONST. Additions, Complete Masonry New homes, plans & designs no charge. Lic. #88992 Ph. 398-5506</p> <p>KAILU CONSTRUCTION Complete home remodeling, additions, interior & exterior painting. 247-0621 or 247-0378</p> <p>Estate Volume Garage Sale</p> <p>BY SUE-ANN Professional Service. Accurate pricing. Licensed. 395-6676</p> <p>Instruction</p> <p>STAR School of Music. Instruction for all musical instruments. Piano, drums, guitar, etc. 621-0418</p> <p>PIANO Lessons your home. Exp. teacher w/masters degree. 521-6138 eves.</p> <p>Legal Services</p> <p>UNCONTESTED DIVORCE FULL SERVICE by attorney. \$160 fee incl. Children & Property. Barbara Melvin 621-7476</p> <p>MICHAEL A. Marr 531-1681 Immigration Accident Wills Divorce Business Litigation</p> <p>DO Your Own Divorce \$40. Free information Call 524-3277</p> <p>Maintenance</p> <p>B & B Maintenance, Inc. Home Improvement Painting, Plumbing, Repairs Lic. C-9985 Ph. 467-1244, 467-0533</p> <p>Masonry</p> <p>For Your Ready Mix Concrete & Block Improvements Additions?</p> <p>Ameron HC&D Direct Contractor Service Ph. 848-1081 Weekdays 7:30-4:15</p> <p>Massage</p> <p>Tokuhi Therapeutic Shinkai Massage Back problems or pinched nerves? 46-4046 Kam Hwy., Rm. 207 Ph. 247-8779 or 247-3218 By Appointment Only</p> <p>Moving</p> <p>RELOCATING??? Very Reasonable. No job too big or small Free Estimates Call Roy 923-6813 24 hrs.</p> <p>Painting</p> <p>LEE'S PAINTING Residential Lic. C-3858 Ph. 247-1454</p> <p>NARIKAWA PAINTING Free Estimates Lic. C-6455, Ph. 488-1080</p> <p>C & R PAINTING Commercial & Res. our specialty. Free Estimates. Ph. 247-4807, C-9724</p> <p>S. UMENO PAINTING Free Est. Lic. C-10211 Ph. 821-6523, 621-8393</p> <p>Akamai Painting & Waterproofing Residential Specialist. Professional work at reasonable prices. FREE Est. Lic. #C5710 Ph. 261-0625 or 630-1080</p>	<p>Painting</p> <p>KAMAANA PAINTING Free Estimates Lic. C-4767 Ph. 247-6621</p> <p>ROY'S PAINTING Inexpensive, courteous, professional. Free Estimate. C8473. Call any time 923-6813 24 hrs.</p> <p>Plano Tuning</p> <p>OLD RELIABLE J. PAUL DILLINGER TUNER TECHNICIAN 261-0457</p> <p>Plumbing</p> <p>PLUMBING repair service. Free estimate. Plumbing & drain cleaning. Ph. 247-0544</p> <p>Remodeling & Building Repair</p> <p>PATIOS AND NEW ADDITIONS Repair-garage. Free Est. Clifford Iwane C-4477 Ph. 677-4695</p> <p>E.C. & L. Builders Home Improvement. House painting, concrete work, carports & extension patios. Lic. B-9894, Ph. 871-7006</p> <p>ALPHA GLASS SALES & SERVICE Commercial & Residential Glasswork (Lic. 7846) Ph. 235-1304</p> <p>AFFORDABLE LOW COST BUILDERS HOME IMPROVEMENT SPECIALISTS Ph. 262-8775 Lic. BC 981940</p> <p>Roofing</p> <p>STATE ROOFING General Roofing. Free Estimates. Ben Pascal 37 years' Exp. Lic. C-2036 Ph. 247-2421</p> <p>SUMMER SPECIAL on sh. Hot Asphalt & Shingles • Serving All Island Areas • Repair, Free Estimates ROCKET ROOFING CO. 261-0034 Lic. 8256 No travel charge</p> <p>AKAMAI ROOFING FREE ESTIMATES 261-0625, 838-1080 841-4083 Any Time</p> <p>MR SCREENS HAWAII New or recreen Free Est. 262-0266</p> <p>Screening</p> <p>Yard Service</p> <p>COMPLETE Lawn Service. Big job cleanup & dependable monthly maintenance. Ph. 235-0543</p> <p>DEANARD YARD SQUAD All jobs large & small general cleaning, trimming & hosing, leaf clearing, pruning & grass mowing, carport & red chips, monthly maintenance. Fast reliable service. Free estimate. Call 282-7571 Ask for Desmond</p> <p>WALLACE GARDEN SERVICE General Yard Maintenance old lawns restored, new lawns planted, trim hedges & shrubs, remove rubbish. Hawaii Kai to Kahala. Free estimates. Ph. 395-1929</p> <p>Manila Gardens Fresh cut flowers, leis, oranges, wedding bouquets, corsages, boutonniere. Ph. 247-4071</p> <p>CUSTOM Lawn/garden Mowing Troy-Bilt Timer Free Est. Ph. 247-3883</p>
-------------------------------------------------------------------------------------------------------------------------------------------------------------------------------------------------------------------------------------------------------------------------------------------------------------------------------------------------------------------------------------------------------------------------------------------------------------------------------------------------------------------------------------------------------------------------------------------------------------------------------------------------------------------------------------------------------------------------------------------------------------------------------------------------------------------------------------------------------------------------------------------------------	----------------------------------------------------------------------------------------------------------------------------------------------------------------------------------------------------------------------------------------------------------------------------------------------------------------------------------------------------------------------------------------------------------------------------------------------------------------------------------------------------------------------------------------------------------------------------------------------------------------------------------------------------------------------------------------------------------------------------------------------------------------------------------------------------------------------------------------------------------------------------------------------------------------------------------------------------------------------------------------------------------------------------------------------------------------------------------------------------------------------------------------------------------------------------------------------------------------------------------------------------------------------------------------------------------------------------------------------------------------------------------------------------------------------------------------------------------------------------------------------------------------------------------------------------------------------------------------------------------------------------------------------------------------------------------------------------------------------------------------------------------------------------------------------------------------------------------------------------------------------------------------------------------------------------------------------------------------------------------------------------------------------------------------------------------------------------------------------------------------------------------------------------------------------------------------------------------------	-------------------------------------------------------------------------------------------------------------------------------------------------------------------------------------------------------------------------------------------------------------------------------------------------------------------------------------------------------------------------------------------------------------------------------------------------------------------------------------------------------------------------------------------------------------------------------------------------------------------------------------------------------------------------------------------------------------------------------------------------------------------------------------------------------------------------------------------------------------------------------------------------------------------------------------------------------------------------------------------------------------------------------------------------------------------------------------------------------------------------------------------------------------------------------------------------------------------------------------------------------------------------------------------------------------------------------------------------------------------------------------------------------------------------------------------------------------------------------------------------------------------------------------------------------------------------------------------------------------------------------------------------------------------------------------------------------------------------------------------------------------------------------------------------------------------------------------------------------------------------------------------------------------------------------------------------------------------------------------------------------------------------------------------------------------------------------------------------------------------------------------------------------------------------------------------------------------------------------------------------------------------------------------------------------------------------

FOR INSTANT RESULTS PLACE YOUR AD IN THE BUSINESS & SERVICE DIRECTORY

(3 LINES \$4.37)

CALL CLASSIFIED 235-5881

• 80 JEWELRY

1.00 KT BRILLIANT round diamond, grade SI-1-F. Appraised at \$9400, asking \$4500. Ph. 732-1604

• 81 HOUSES FURNISHED

WAIPIO: 3 bdrm., 1 bath, fully furnished includes utilities \$525. Available now. 623-5158

KANEONE: Fully eqpt., 3 bdrm., 2 bath home, lge. rec. rm. dead end street. Bring your own toothbrush. \$650 mo. 947-1343

• 82 HOUSES UNFURNISHED

2 BDRM./loft, 1 bath, pool, tennis court, oceanfront, unfurnished \$550 mo. Call 237-0982

ALLI Shores: Beautiful lge. immac. Exec. 3 bdrm. home w/ham, dining rms, decks & gar. dr. Lovely mt. & bay views. Private & Quiet. Immac. \$775/offer, incl. Gardener. No pets. Ph. 262-9118

• 83 HOUSES, PARTLY FURNISHED

AKAHI PARK: 3 bdrm., 2 bath home w/lge. garden or through street \$595. 262-9119. No pets.

WAIAPAHU Village Park, 3 bdrm., 2 bath, carpet, view, \$595. No pets. 488-5327

KANEONE, 3 bdrm., fantastic location, \$500. Ph. 261-8810

WAIAPAHU: large 4 bdrm. home, 1 1/2 bath, util. included. Avail. now, \$595. Call 732-3185 or 537-5826

NEWER 3 bdrm., 2 bath home in Enchanted Lake. Available month to month lease \$650. Over 2100 sq. ft. of living space. Call 261-3389 ask for Jerry Oden (R) (254-3372) or Chu Lan Shubert (RA) (261-7885), J.M. Urner, Inc.

KAILUA: Exec. Lake area. 4 1/2 bdrm., carpets, drapes, appliances, very private, low maint. \$775. 261-2172

KANEONE: Lovely, modern 3 bdrm., 2 bath, small yard, pool, recreation, lease \$590. Singles O.K. 261-6861/262-8502

3 BDRM., 2 bath home. Kaneone. \$525 per mo. Call 235-1822. 262-8886

NICE 3 bdrm., home for rent in good area. Close to KMCAS, 9 mo. lease. \$700. Call 254-5470

AKAHI Park - comfortable home, fenced-in back lawn, double carport, excl. \$750. Ph. 262-7472

KAILUALU - 3 bdrm., 1 1/2 bath, view, covered parking, carpet, yard \$550 incl. water. Ph. 247-0158

KAILUA - 3 bdrm., 2 bath, great location. Completely remodeled \$675. 261-8810

KANEONE - \$750, water-front & pool, 3 bdrm., 2 1/2 bath. Ph. Yoshie Bell 262-8181 or 235-1314

KAILUA - 3 bdrm., 2 bath, near school & bus line. Fenced yard & washer/dryer \$525. Ph. 262-7420

KANEONE: 4 bdrm. Available Sept. 1, ideal for large family w/pet. Centrally located. Large lanai, double carport, cul-de-sac \$650. Call Ginny at 438-9227/524-2582 or Ken 247-5165

• 85 TOWN HOUSES PART. FURN.

PUU ALLI - Spectacular ocean view 2 bdrm., Lease. Pool, tennis, etc. Ph. 235-8661 after 8/14

KANEONE: Puu Alii, 2 bdrm., 2 bath, spectacular view of the bay, pool, tennis \$550. 235-5767

KANEONE: Puu Alii - 3 bdrm., 2 bath, pool & tennis. \$600. Ph. 235-5767

LAKEVIEW - view, breezy, 2 bdrm., 2 bath, water, lanai \$575. Ph. 261-3166

KANEONE - new bdrm., 2 bath townhouse, super amenities \$650. Call 521-8833 or 373-3054

LANIKAI-BLUESTONE, model B, end unit, 3 bdrm., 3 bath, \$1250/mo. Phone 524-5394 dwh.

KAILUA Windward Harbor, brand new 3 bdrm. Pro tennis club, 2 parking, 2 bath. Phone 377-9189.

• 86 CONDOS & TOWNHOUSES FURN.

NANAKULI: Furn. 3 bdrm. townhouse Good location, near beach \$475/mo. 688-2159. Avail. Oct 1. Refs.

• 87 TOWNHOUSES UNFURNISHED

PUU ALLI, 3 bdrm., 2 bath townhouse, carpet, washer/dryer, 2 car garage, ocean view, tennis, pool, sauna & jacuzzi \$800 mo. + util. Call 235-8457, 395-0442

MILILANI - 2 bdrm. 3 bath, beautiful golf course location \$525 Ph. 623-5629 eves & winds 504-6510 dwh.

• 88 HOUSES FOR RENT

1 BDRM., 1/2 bath \$200 month, utilities included plus deposit. 261-5174

FURNISHED 1 bdrm. including utilities \$150 a mo. Call 6 a.m. and after 6 p.m. 689-8101

KANEONE - Hauku Village - 3 bdrm., 2 bath home. Own rm. & bath, \$200/util. incl. Ph. 247-5007

KAILUA room, \$250 incl. util. Near beach w/pool. Ph. 261-2915

• 93 VACATION RENTALS

KUILIMA: 1 bdrm. fully furnished apt., no pets. Call 239-8539.

LANIKAI view home sleeps 4, mo. Oct. \$1,500, car extra, refs. req. 262-5674

KUILIMA: 1 bdrm., apt., sleeps 4, amenities. Daily/wkly. mo. 235-1481.

BEACHFRONT studio near Crouching Lion. Week, month, pool. 235-6196.

KAUAI - Vacation with your mainland visitors on Kauai's North Shore, fully equipped beach home sleeps 10. \$350/wk. 261-5895

VACATION Rental. Kaawaa. Magnificent view 2 bdrm. 1 1/2 bath + loft. Swimming pool, volleyball \$250 per wk. Cathy Lyman 261-4332

• 98 RENTALS WANTED

MATURE married couple desires 3 bdrm. house to rent up to \$350 per month. Will sign lease. Must allow 1 well behaved dog. Fenced yard a must. Prefer 2 car garage. Ph. 235-1387 after 5 p.m.

RENTAL wanted: 1 or 2 car garage for storage. Kailua Area. Call 262-8360

WE WILL manage your property with Professional Service for local or absent owners. Personalized Service. Vandervoort Realty 261-1966.

WINDWARD Community studio needs room or share apt. Windward side under \$200. Refs. 254-3407 after 5.

WORKING Couple with 1 cat seeks 2-3 bdrm. house (or large 1 bdrm.) on Windward side, reasonable. Call 261-5065 eves.

RETIRED couple need home with separate cottage or 2 for elderly aunt to approx. \$700. 235-4206

• 103 OFFICES FOR RENT

270 SQ. FT. panelled, separate entrance, \$350 per mo. Contact Max 262-4628

• 108 BUSINESS PROPERTY FOR SALE OR RENT

KAILUA 2 Excellent Retail Spaces. 129 & 137 Hekili St. 262-8179 or 262-8144

• 114 REAL ESTATE FOR SALE

MILILANI Knob Hill III, 2 bdrm., 1 1/2 bath town home, good location, ideal home for investment. FEE \$82,000. Shown by owner. 623-6340. M. Lockridge (R) 523-9888.

KAILUA \$172,000 JUST STEPS TO BEACH from this charming 3/4 bdrm., 2 bath home. Owner anxious. BRING US AN OFFER! Lease. (mis 37804). Call Jeanne Easterling (R) 261-0186, J.M. Urner, Inc. 261-3389

KAILUA POOL \$145,000 NEWLY carpeted 4 bdrm., 2 bath home on quiet street, great area. Super family room. PRICED TO SELL! Lease. (mis 40281). Call Jeanne Easterling (R) 261-0186 to see. J.M. Urner, Inc. 261-3389

KAILUA \$129,500 KUKILAKILA - Plush white carpeting, beautifully decorated, breezy end unit, 2 bdrm., 1.5 bath. For The Discriminating. Lease. (mis 40182). Call Lucky Francis (RA) 262-9067, J.M. Urner, Inc. 261-3389

KAILUA \$155,000 MOVE RIGHT IN this neat 3 bdrm., 2 bath FEE SIMPLE country area. (mis 30753). Call Flossie Bonnet (R) 262-5595, J.M. Urner, Inc. 261-3389

MARINER'S COVE: beautiful 3 bdrm., 2 bath sleeping loft. Custom decorated w/wallpaper, upgraded carpet on large perimeter lot. Superbly landscaped including numerous fruit trees \$190,000. Courtesy Open 1 to 4, Sun., 7:141 Niu Malu Lp. Call 395-7108

KAILUA \$95,000 & \$98,000 CAREFREE LIVING in Kailua's new, luxury condo gorgeous mountain view. Lighted tennis courts, beautifully upgraded 1 bdrm., 1 bath units. TMKs 1-4-2-1-46. Call Gil Carr (R) 262-8964, J.M. Urner, Inc. 261-3389

KAILUA 1980 PARADE OF HOMES WINNER! Superb condo with solar heating system, tennis club, POOL, BBQ, and beautiful man-made lake and streams. Koolau view. NEW - 3 bdrm., 2 bath with many quality upgrades. Lease. Open to EXCHANGE. (mis 40390). Call Jim Brown (R) 235-3874, J.M. Urner, Inc. 261-3389

KAILUA \$189,500 ENTERTAIN - POOLSIDE while you enjoy this FEE SIMPLE 4 bdrm., 2 bath home in modern executive area. (mis 38901). Call Chu Lan Shubert (RA) 261-7885 to see. J.M. Urner, Inc. 261-3389

KAILUA \$145,000 YOU'LL BE PROUD to own this sparkling 3 bdrm., 2 bath Enchanted Lakes home, beautifully improved, new master bath, lovely enclosed yard, quality features throughout. Lease. (mis 37803). Call Jan Hiett (R) 254-4141 to see today, J.M. Urner, Inc. 261-3389

MOKULIEA SANDS: Great for HULA MAE financing. Lovely, large 1 bdrm., 1 bath unit located across from a white sandy beach. Conveniently located near Schofield Barracks. \$59,900. FEE tmk 1-6-8-11-26-32. Ph. Patty Yost (RA) 254-1713.

HAWAII KAI This 4 bdrm., 2 bath home, spells pride in home ownership. Just pack your bags & move in. MLS 32917, \$159,500. Lease. Frank Fujimura (R) 262-7876 PROPERTY RESOURCES CONSULTANT CORP. 523-8882.

HARBOR VIEW-WAIAPAHU 3 bdrm., 2 bath home w/solar heater & fenced. \$125,000 Lease. MLS 38599. Call Katrina Burton (RA) 487-7816 PROPERTY RESOURCES CONSULTANT CORP. 523-8882.

ALLI SHORES-KANEONE REMODELED 3 bdrm., 2 bath home on a large lot \$165,000. Lease. MLS 40763. Katherine Poeschl (RA) Owner 247-8851. PROPERTY RESOURCES CONSULTANT CORP. 523-8882

KANEONE \$125,000 OWNER TRANSFER. You must see this spotless 4 bdrm., 2 bath townhouse with patio overlooking meadowlands and majestic KOOLAUS. Spacious (1832 sq. ft.) Lease (mis 37802). Call Jim Brown (R) 235-3874, J.M. Urner, Inc. 261-3389

KAILUA 2 STORY Pool, 5 bdrm., 10,000 sq. ft. lot \$169,000. Ph. 261-1111

KAILUA \$167,000 2 story, 5 bdrm. 2400 sq. ft. pool. Aikahi Park. Ph. 261-1111

OPEN Sunday 2 to 5, 46-478 Makana St. Hauku Village. Bright, private, spacious 3 bdrm., 2 bath, tropical garden. Lease \$160,000. 235-9020

• 114 REAL ESTATE FOR SALE

KAILUA \$295,000 COUNTRY ESTATE - Rambling 3 bdrm., 3 bath on 1.5 acres - new lease - fireplace. Party sized TREE HOUSE, beautiful setting. (mis 38064). Call Laura Carr (RA) 262-9309, J.M. Urner, Inc. 261-3389

KAILUA \$126,000 NAME YOUR TERMS Agreement of Sale offered on this well priced 3 bdrm., 2 bath home with family room, on quiet street. Fenced yard. Good area. Lease. (mis 40192). Call Betty Boxold (RA) 261-4416, J.M. Urner, Inc. 261-3389

KAILUA LANIKAI - Three magnificent parcels of FEE SIMPLE, vacant land, zoned R-3 over 5 acres. Incredible ocean view. TMKs 1-4-3-1-5, 9, 10. For details call Gil Carr (R) 262-8964 or Nick Lawson (R) 254-4141, J.M. Urner, Inc. 261-3389

KANEONE \$125,000 DESIGN YOUR OWN HOME and here's the perfect setting! Gorgeous OCEANVIEW from this FEE 10,500 sq. ft. lot in peaceful country area. (mis 30753). Call Flossie Bonnet (R) 262-5595, J.M. Urner, Inc. 261-3389

MARINER'S COVE: beautiful 3 bdrm., 2 bath sleeping loft. Custom decorated w/wallpaper, upgraded carpet on large perimeter lot. Superbly landscaped including numerous fruit trees \$190,000. Courtesy Open 1 to 4, Sun., 7:141 Niu Malu Lp. Call 395-7108

MILILANI 2 Story, 4 bdrm., 2 1/2 bath home w/pool. Home needs TLC and priced low at \$118,500. See simple. MLS 39513. Call Alice "Alike" Ching (RA) 623-4438 PROPERTY RESOURCES CONSULTANT CORP. 523-8882

SUNSET Beach: 3 bdrm., 2 bath, Fee Simple \$127,000. 638-7843 a.m./p.m.

MILILANI Town Area: \$68,000 Fee, 2 bdrm. condo, Open House 1 to 4, Sun., Aug. 17. 623-7129

MAKIKI - 1804 Kinau Lanals. 1 bdrm., lister/owner includes furn., awnings, carpeted lanai, a/c & beautiful view. 3.5% to broker \$88,750. 525-6327

VALLEJO, Ca. - Stucco home 3 bdrm., 1 bath, living rm., fireplace, fam./dining combination, redwood deck, built-in pool w/slide, dbl. encl. gar., w/auto. opener, view of Mare Island Bridge, \$69,950. Flexible terms by owner. 839-5276

INVESTIGATE our space program. Outer space - pool, tennis court, park. Inner space - 4 bdrm., 2 1/2 bath, den, 2 car garage, patio. Our Hukuloa Townhouse for only \$127,500. For more info, Ph. Audrey Rehkemper (RA) 239-7291 or drop by Sun. 2-5, 47-018-A Hui Iwa Pl. Barbara Odr Realty Inc. 235-6457

7 QUEEN size sofa bed, 6 mos. old, excl. cond. \$700 new, asking \$550. Ph. 261-7730

2 MATCHING upholstered rockers \$115 ea.; heavy glass/wrought iron cocktail table \$300 or \$500 3 pc. set. Drexel corner unit, table - 2 complete twin bed \$180; blk. leather chair & ottoman \$125. 395-3579

RATTAN Chairs \$39; tables \$22; cane dressers \$59; mirrors \$19; nightstand \$19; headboard \$8, lamps \$14 and up. 833-3010

BLACK naugahyde Niagara chair \$1000 if new. 235-3109 before 7 p.m.

AQUARIUM 70 Gal. Salt water w/stand, filters, pump \$375. 30 Gal. salt water complete \$125. 235-5867

• 114 REAL ESTATE FOR SALE

WATERFRONT: Enjoy sailing & water skiing from your backyard door, 2,242 sq. ft. under roof - 3 bdrm., 2 bath, lake view from living room, dining area & lge. master bedroom. Excl. neighborhood, good schools, shopping close by, room for pool. PRICE \$195,000. MLS 039313. David Chase (RA) 262-8006 Sam Daily Realty, Inc. 235-6866

BEAUTIFULLY maintained 3 bdrm., 2 bath home on quiet street. Lge. & enclosed lanai for entertaining. Exterior freshly painted. DON'T MISS THIS ONE *** \$158,900 FEE. TMK 1-9-4-80-09 Susan Starritt (RA) 262-8006, Sam Daily Realty Inc. 235-6866

IMMACULATE 3 bdrm., 2 full bath. Prime location. Large living rm/dining area, patio, enclosed lanai, equipped kitchen w/paquet floor, fully equipped laundry room, new roof & driveway in 1979. lease \$123,000. Shown by owner 1241 Mokuapu Blvd. Kailua, 254-1325 Margaret Lockridge, Inc. (R) 262-5403

• 116 REAL ESTATE WANTED

LOOKING for windjammer model home in Mariner's Cove. If you plan to sell in 6 mos, call Anna 395-6878

• 120 FURNITURE

KING size water bed \$250/offer. Call Jim weekdays after 4. 456-2994

SIMMONS bed davenport & matching chair \$150. Also misc. upholstered chairs and other furniture. 262-5934

BOOKCASE cab. \$50; twin bed w/bookcase hdbd. \$65; trundle bed \$25. 488-4749

MOVING SALE: All furn. sofa, recliner swivel rocker, commode; Baldwin spinet, dinette/6 chairs, queen size bed set, 2 chests, GE H.D. washer, most items 1 yr. old, good cond. Ph. 261-6095

TWIN bed bookcase headboard; antique trunk; hardwood table w/4 chairs & 4 leafs. Call 254-2636

2 MATCHING upholstered rockers \$115 ea.; heavy glass/wrought iron cocktail table \$300 or \$500 3 pc. set. Drexel corner unit, table - 2 complete twin bed \$180; blk. leather chair & ottoman \$125. 395-3579

RATTAN Chairs \$39; tables \$22; cane dressers \$59; mirrors \$19; nightstand \$19; headboard \$8, lamps \$14 and up. 833-3010

BLACK naugahyde Niagara chair \$1000 if new. 235-3109 before 7 p.m.

AQUARIUM 70 Gal. Salt water w/stand, filters, pump \$375. 30 Gal. salt water complete \$125. 235-5867

• 120 FURNITURE

TEAK dining rm. tbl. w/six captain chairs. Hand made in Thailand \$1200; teak buffet \$750. 261-8061 eves.

NEED TO FURNISH SMALL HOUSE OR APT.? SELLING FURNISHINGS FROM BEACH RENTAL FURN. BEDS, LINEN, KITCHEN EQUIP. FINE QUALITY LIKE NEW. 262-0606

2 DRAWER legal file cabinet, sofa bed, desk, bookshelves & side chair. Ph. 261-5297

TWIN beds, Philippine mahogany, box springs & mattresses, practically new. \$150. 373-3548/941-6816

PILLOW furniture, Love lounge & captains chair \$200 or offer. 595-3484

TEAKWOOD grandfather clock w/chimes \$350. Call 422-5260

BUNK bed w/mattress \$175; bumper pool table \$150. 623-1313 after 6 p.m.

QUEEN size water bed for sale, \$200. Excl. cond. Ph. 261-7080

OAK Barrel furniture, two piece sectional; black vinyl couch; coffee tbl.; 2 end tbls. \$400 or best offer. 624-4556

SEARS Sofa bed, queen size floral print. Ph. 621-9271 or 941-7570

LARGE chair & ottoman \$154. Call 254-3309

PASSIONATE yellow steel desk, large. Call for measurements. 247-6127, eves. Asking \$100/offer.

• 126 MISCELLANEOUS

Reconditioned Air Conditioners and Repairs with 30 day guarantee. 5 to 12,000 BTU 110V \$95 to \$194. 10 to 24,000 BTU 220V to \$147 to \$278. Call 838-3103

PARADISE USED FURNITURE Rattan swivel rockers \$80 ea.; beautiful queen size sofa bed \$350; antique oak hall tree \$250; student desks \$20 & \$25; 7 drawer mahogany desk \$75; 7 drawer student desk \$40; 5 drawer metal dressers \$45; rattan fan chairs \$30 ea.; portable sewing machines \$40 & \$50. Also lamps; pictures; tables; headboards & more. 261-8492, 155 Hamakua Dr. Kailua in rear on canal next to Top Dollar Realty

AQUARIUM 70 Gal. Salt water w/stand, filters, pump \$375. 30 Gal. salt water complete \$125. 235-5867

• 126 MISCELLANEOUS

18 BEATLES 8 track tapes & carrying case. All for \$40. 422-0363

SEARS washer, dryer, \$150 ea.; dinette table \$35; gold carpet \$50; 10 ft. ladder \$25. 261-4551

VACUUM Cleaners rebuilt with warranty \$19.95 & up. Also parts & repairs for all makes & models. Windward Vacuum Sales & Service. 239-8678

SCUBA pro turtle, steel 72 tank, everything incorp. w/the turtle. Wet suit. Ph. 662-4075/684-8104 Leaving Island, must sell.

COOKBOOKS Lifetime complete set, mint cond. \$150; baby doll Madame Alexander Circa 1920's best offer. 537-1374

SUZUKI 3.5 hp outboard motor, nearly new, cost \$509, sell \$285. German Exakt camera 35mm, complete with telescope lens, bargain \$175; heavy 14 kt. gold coin ring w/1898 U.S. 2-1/2D gold coin \$475; Tasco 7x's 50 binoculars \$25; Coleman 2 burner camp stove, new \$20; 12" Hitachi B/W TV, 4 mos. old \$50. Ph. 239-6651

MOPED, Motobecane '77 model 501. \$275/best offer. Call 422-1625

FEED 1 adult for \$7.06 weekly. Includes 1lb. meat daily, choice of 8 fresh vegetables, and grain. Free details write: STN, P.O. Box 1051, Pearl City, HI. 96782

STANLEY HOME PRODUCTS Ph. 262-5531

HAWAII PARK SPECIAL \$5 OPEN HOUSE. MEET MISS NUDE EUROPE. SAT. - SUN, AUG. 16-17. CALL 949-8618

• 126 MISCELLANEOUS

ELECTRIC lawn mower, like new, \$45. Ph. 261-8533

FOR SALE: triple coconut planters from the Philippines; hand carved jewelry boxes from India, copper musical sculptures from Hong Kong, genuine jade from Taiwan; dolls, slippers, shoes from China. Sale starts Fri., Aug. 15 & all day Sat., Aug. 16th. 254-3280

STEEL shelving, 24" wide, 3 sections, \$100, valued at \$450. Call J. Porter 235-6644

CAPIZ Shell lamps, many styles, color from \$40. Call 623-6688 after 6 p.m.

MARY KAY COSMETICS. For re-orders & free facials, call Yolanda, 259-9021

ANTIQUe, paintings, lamps & misc. Call 833-8460 or 536-5604

2 GOTTIEB pinball machines, \$185; 10-spd. bike. Ph. 235-2254/293-8200

TOP \$\$ PAID FOR GOLD & SILVER GUARANTEED HIGHEST PRICES PH. 923-1948

PIONEER V KP 500 FM cassette player FF, RW, auto. eject. \$125. Dave Palumbo 257-2689 dwh

LANDSCAPE Rock Garden, Tropical Garden, Sprinkler, Old Yard Made New, Chain Link Fence, Concrete & Tile Work. Lic. 07903. Ph. 422-9556 Hing after 430 p.m.

CONSOLE stereo-8-track, AM/FM-radio-phonograph 135 dollars. Ph. 623-5115

MATCHING sofa, love seat, coffee table, end table, bookcase, lamp - all like new. Bill 536-3571 M-F.

CRAFT FAIR HOT LINE Sellers and buyers. Subscribe to monthly calendar listing craft fairs, where, when & so forth. For info, send stamped self-addressed envelope to: Hot Line 91-588 Pohakupuna Rd. Ewa Beach, HI. 96706 Ph. 689-8860 eves.

PURIFIED WATER Five cents per gallon. Ph. 259-7236.

14KT. HAWAIIAN JEWELRY SPECIAL 4mm ID Brac. w/2.5mm S.Rope chain or 12mm Taper band \$190.00

SUNBIRD HAWAII 955-1559 1481 S. King St. #412 PROFESSIONAL CENTER

Properties Available Now

KANEONE		KAILUA	
Crown Terrace 3/2	\$700	Windward Harbour 3/2	550
Alakai St. 3/2 with separate 1/1	700	Windward Passage 2/2	525
Haleku Villa 3/2	550	1/1	450
Tropicalia Village 3/2	525		
2/2	475		
Nokulua 3/2	600		
Kauhale Beach Cove			
3/2 furn.	700		
Haleku Hale 3/2	500		
Boat Slip	75		

WAIKIKI LaCasa 1/1 furn. 350

Property Management Dept. 235-8766

MARGARET LOCKRIDGE, INC. Specializing in **SHOWN BY OWNER 1 1/2%** Real Estate Service Honolulu office: 523-9888 Kailua office: 262-5403 262-5307

You: * Pay for your advertising * Show your home to prospective buyers * We take it from there

Our fee is 1 1/2% of the selling price. An additional 1/2% is requested if MARGARET LOCKRIDGE, INC. refers your buyer to you. **YOU SELL - WE TRANSACT - YOU SAVE!!**

THREE BEDROOMS TWO FULL BATHS From \$131,000

WAIKELE ESTATES Under Construction In Central Waipahu Now! Over 60% of these QUALITY HOMES Have Already Been Sold

HOME IMPROVEMENT CENTER

DRAPERY Super Sale PERFECT BEDROOM SIZES \$3300 Hooked & Ready To Hang Various Prints & Solids Pair 96"x48" Finished Size

HOUSE OF RIK-JON 524-4923 SHOWROOM 515 KAPLANAHI

LUMBER WE'RE STACKED WITH WOODS... HOTTEST SPECIALS IN TOWN!

Lumber	Plywood
Alamoia	Poplar
Angico	Purpleheart
Apitong	Rosewood
Ash	Shedra
Balsa	Spruce
Bela	Teak
Beech	Vermilion
Birch	Walnut
Buronga	Wenge
Cedar	Willow
Cherry	Zebra
Damar	Walnut

HARDWOOD LUMBER CO. PH. 836-3767

FEE SIMPLE **CUSTOM DESIGNED**

OPEN SATURDAY & SUNDAY Aug. 16 & 17 10 to 5

Split Hollow Tile Exterior Walls, and such luxury additions as specially imported baked ceramic tile roofs. EXCELLENT LOCATION WITHIN WALKING DISTANCE OF WAIAPAHU ELEMENTARY SCHOOL, WESTGATE SHOPPING CENTER AND BUSLINES.

GEORGE H. SAKODA REALTY 538-1948 1308 South King St / Honolulu, HI 96814 Richard Takahashi (R) 455-4990 Bill Racelo (RA) 941-6270 Harold Han (RA) 988-3501 Eustace Suzuki (RA) 595-4024 Financing Assistance Available

• 126

MISCELLANEOUS

SLEEPER sofa \$400 or best offer. 19" color TV \$300. Call 377-6492

LOUVES, clear glass, 4x28-1/2 and 29.70 pieces at 50 cents ea. 247-4522 anytime!

U.S. DOLLARS. Silver Morgan & Peace. Buy Sell Trade. Priv. collector 923-3303

BALDWIN Spinnet - Acrosonic. Only 3 years old. excellent cond. Ph. 261-6095

SLIDING glass doors w/screens & tracks \$175 you remove. 261-3464.

FREE gravel. You haul. Ph. 261-8297

9'6" HANSEN Hustler surfboard \$35/best offer. Ph. 261-7723

WE WILL BUY YOUR GOLD
Or Rework It Into New Jewels For You
Jewels of the Pacific
432-C Ewa Rd., Waikeiki
946-3822

GERRARD 408 turntable; Wollensak reel to reel; Harmon-Kardon 330A receiver; 2 Scott 24" speakers \$500 or best offer. 254-3109

RUGS (5) - 16x13, green shag, \$40 ea. Plants, misc. 1096 Kahili St., Kailua

FROSTLESS refig., clean (14) \$160; GE washer & dryer, 4 yrs. \$310 set; solid oak lge. office desk \$295; solid state color TV, 12", late model \$195; 2 baby love seats, padded, like new \$10 ea.; Free Spirit bike, 10-spd. \$75. Ph. 623-1543

APARTMENT Sale: leaving island. Nice furnishings. New/unused aquarium. Call 239-7309

STUDENT school desk - swivel seat - slip top \$15; small Weber BBQ grill brown, good cond. \$25. Call 254-2319

DOUBLE size hideabed \$249; mahogany buffet \$69; antique style china cabinet \$149; 6 drawer dresser \$39; 3 drawer chest \$29; rattan bar stools \$39 ea.; desk \$29; double pedestal desk \$59; crib w/mattress \$39; twin size bed \$29; mirrors from \$10 up; rattan coffee table w/matching end table \$49; dresser/desk combo \$69; 5 pc. dining set \$89; bookcase \$18, 35 Oneawa St., next to Space Invaders. 261-2852

ORIENTAL Rugs New, Antique. Call 262-0792

BODY DYNAMICS EXERCISE STUDIO
Aerobic exercise for men and women, music, spa, free child care. NAUTILUS
235-5830

BURI baby cribs and baskets from the Philippines. Call 395-6998

ARTEX Decorator Paints, Accepting orders. Party Plan. Call 833-4146

DON'T Want to be bothered with people coming into your home to buy your furniture? Give us a call. We pay cash! The Old But New Shop 261-2852 or 538-7187

KENMORE washer/dryer \$100 each - Heavy duty; bumper pool table \$200; wall shelf unit \$125. Ph. 422-1124

DIGITAL time delay system, ADS Model 10 cost \$1100 Sacrifice \$600 Call 623-5629 after 8 p.m.

DESK \$50; nightstands \$20 ea.; washer \$185; vacuum \$40. 261-6192

DISHWASHER \$225; bar \$125; 6' couch - love seat \$400; 2 end & coffee tbl. \$150. 488-6323 8 a.m.-10 p.m.

NIKKOMAT FTN, Black w/50mm f1.4 lens and case \$250. Call 623-6629 after 8 p.m.

NORITAKE China, 96 pc. set, never used \$400. 523-2652 days, 254-1836 eves. and wknds.

CARPET DYEING & CLEANING
Professional Service
Free Estimate
INSTANT CARPET COLOR
235-4263

MEN'S 10 speed w/lock. Must sell \$90. Ph. 261-1542

DUTCH doors for sale. Ph. 261-8269 ask for Candy

ALMOST new 30 gallon living world aquarium w/Dyna flo 150 filter, cover & light \$68, 395-3296

HUGE Meyer limes for sale Call 247-0317

UPRIGHT piano \$425; guitar \$20, 10 spd. bicycles - 1 girls, 1 boys \$80 ea. Call 623-6630

TURN SURPLUS CLOTHING INTO CASH!
We need ladies clothing & accessories to sell on consignment.
Twice as Nice Fashion Boutique
Ph. 261-1929

WEDDING dress, size 8, petite, beautiful detail \$50. Like new 395-6978

TROMBONE \$85; chandelier \$25; weights \$30; easy chair \$35; Lionel train \$25; electronic kit \$12; Schwinn 10 spd. \$35; hand mower \$18; gas reel mower \$50; swivel stool \$10; Priscilla curtains \$20; ironing board \$6. 262-8442

COMPACT vacuum cleaner - cost \$400. Must sell \$100. Call 456-4213

NORMAN studio flashheads model LH-4, yr. old \$80 ea. Ph. 537-2389

POLYNESIAN show. Thrill your guests at your next party by presenting the Beautiful Puakea dancers. Ph. 261-3579

SURFBOARD "Lighting" 7' \$70. Good cond. 261-5333

MAKAI surfboard, like new, Mongoses \$80. 261-0172

DINETTE set best offer. Desire \$250. Rattan comfort chair \$200 or best offer, must sell. 624-9310 All day.

TOSHIBA fax model BD-32A copier, excl. cond. will copy to 8 1/2x14 size on coated roll paper. A good buy at \$800. 848-0337

Buttons-Badges
SCHELLER
APOIAN SPECIALTIES
Manufacturers 239-7155

NIKON Lenses
24 mm f2.8 \$160
105mm f2.5 \$150
180mm f2.8 \$350
Call 623-5629 after 8 p.m.

VIVITAR automatic zoom lens 90-230mm Tx Mount. Make offer. 239-8148

PORTABLE bassinet, \$20; blue-green shag, rug, 1' 12x12, 1-9x12, \$60 both; girls clothes, size 0-6. 624-9427

MUSIC for your party. Trio plays mellow Hawaiian and Hapa-haole. Reasonable. Phone 261-3579.

REBUILT air conditioner for sale, warranty, service & repairs on all makes & models. Trade ins welcome. Cash for unwanted air conditioners. 487-7479.

NAME brand dresses, blouses, skirts, slacks, jr. & misses sizes. Fri., Aug. 15, 229 Kuukama St., Kailua

BABY Grand Piano, white, needs tuning, some broken strings, \$200; rattan bar stools, two, \$120. 261-2445

CHINON Zoom Lens 55-300mm f4.5 for Nikon \$350 Call 623-5629 after 8 p.m.

GOOD Deal - 2 bikes in good shape. Mongoses w/hand brakes, blue, 1 yr. old, hardly ridden, \$175; 5 spd. boy's Slingray blue w/chrome fenders, \$95. Ph. 261-7513

AVOCADO Whirlpool washer & dryer, dependable, \$150 for both; like new car top carrier, \$20; Boy Scout backpack, \$10. Ph. 422-2291

• 127 APPLIANCES

NON working 9 cu. ft. Whirlpool freezer, needs compressor, best offer. Call 624-4208

KENMORE dishwasher, avocado green, cutting board top \$150/offer. 422-7345

SEARS gas dryer, used 1 yr. \$275/best offer. Ph. 261-4892

• 131 WIKI WIKI FREE BEE

FREE: Calico cat to loving home. Spayed. Call 839-5783

• 130 ANTIQUES

ANTIQUE hutch Art Nouveau Period w/stylized stain glass & carvings. \$525. Call 261-6860.

• 131 WIKI WIKI FREE BEE

FREE: Calico cat to loving home. Spayed. Call 839-5783

• 131 WIKI WIKI FREE BEE

FREE: Calico cat to loving home. Spayed. Call 839-5783

• 131 WIKI WIKI FREE BEE

FREE: Calico cat to loving home. Spayed. Call 839-5783

• 131 WIKI WIKI FREE BEE

FREE: Calico cat to loving home. Spayed. Call 839-5783

• 131 WIKI WIKI FREE BEE

FREE: Calico cat to loving home. Spayed. Call 839-5783

• 131 WIKI WIKI FREE BEE

FREE: Calico cat to loving home. Spayed. Call 839-5783

• 131 WIKI WIKI FREE BEE

FREE: Calico cat to loving home. Spayed. Call 839-5783

• 131 WIKI WIKI FREE BEE

FREE: Calico cat to loving home. Spayed. Call 839-5783

• 131 WIKI WIKI FREE BEE

FREE: Calico cat to loving home. Spayed. Call 839-5783

• 131 WIKI WIKI FREE BEE

FREE: Calico cat to loving home. Spayed. Call 839-5783

• 131 WIKI WIKI FREE BEE

FREE: Calico cat to loving home. Spayed. Call 839-5783

• 131 WIKI WIKI FREE BEE

FREE: Calico cat to loving home. Spayed. Call 839-5783

• 131 WIKI WIKI FREE BEE

FREE: Calico cat to loving home. Spayed. Call 839-5783

• 131 WIKI WIKI FREE BEE

FREE: Calico cat to loving home. Spayed. Call 839-5783

• 131 WIKI WIKI FREE BEE

FREE: Calico cat to loving home. Spayed. Call 839-5783

• 131 WIKI WIKI FREE BEE

FREE: Calico cat to loving home. Spayed. Call 839-5783

• 131 WIKI WIKI FREE BEE

FREE: Calico cat to loving home. Spayed. Call 839-5783

• 131 WIKI WIKI FREE BEE

FREE: Calico cat to loving home. Spayed. Call 839-5783

• 131 WIKI WIKI FREE BEE

FREE: Calico cat to loving home. Spayed. Call 839-5783

• 131 WIKI WIKI FREE BEE

FREE: Calico cat to loving home. Spayed. Call 839-5783

• 131 WIKI WIKI FREE BEE

FREE: Calico cat to loving home. Spayed. Call 839-5783

• 131 WIKI WIKI FREE BEE

FREE: Calico cat to loving home. Spayed. Call 839-5783

• 131 WIKI WIKI FREE BEE

FREE: Calico cat to loving home. Spayed. Call 839-5783

• 127 APPLIANCES

MAYTAG washer & dryer - also portable dishwasher good working cond. \$35 each. 247-3441

FROSTFREE Goldspot 15 ft. refig., ice maker, \$150. Ph. 235-2372

WHIRLPOOL dryer, copper tone, \$90. Ph. 235-1982

WESTINGHOUSE 19 cu. ft. frost free refrigerator \$85. Call 623-4865

TAPPAN range, excl. cond. \$85. 262-5728, 329 Oneawa St., Kailua

AUTOMATIC clothes dryer, G.E. harvest gold. Good cond. \$50. 395-1850

SEARS washer and dryer \$100 each, good condition. Call 422-4253

AMANA 25 cu. ft. ice & water side by side refrigerator, avocado green \$800. Call 487-5443

ALL MAJOR Rebuilt Appliances FROM \$69
90 Day/1 Year Guarantee
Quality Washers, Refrigerators, Dryers, Ranges, Ice Selection
WILL DELIVER/WILL FINANCE
ROB'S RECYCLED APPLIANCES
P.O. Box 2, Waikiki, Honolulu, HI 96802
Hawaii's Open Market Sat. 8:30-5:00

• 130 ANTIQUES

ANTIQUE hutch Art Nouveau Period w/stylized stain glass & carvings. \$525. Call 261-6860.

• 131 WIKI WIKI FREE BEE

FREE: Calico cat to loving home. Spayed. Call 839-5783

• 131 WIKI WIKI FREE BEE

FREE: Calico cat to loving home. Spayed. Call 839-5783

• 131 WIKI WIKI FREE BEE

FREE: Calico cat to loving home. Spayed. Call 839-5783

• 131 WIKI WIKI FREE BEE

FREE: Calico cat to loving home. Spayed. Call 839-5783

• 131 WIKI WIKI FREE BEE

FREE: Calico cat to loving home. Spayed. Call 839-5783

• 131 WIKI WIKI FREE BEE

FREE: Calico cat to loving home. Spayed. Call 839-5783

• 131 WIKI WIKI FREE BEE

FREE: Calico cat to loving home. Spayed. Call 839-5783

• 131 WIKI WIKI FREE BEE

FREE: Calico cat to loving home. Spayed. Call 839-5783

• 131 WIKI WIKI FREE BEE

FREE: Calico cat to loving home. Spayed. Call 839-5783

• 131 WIKI WIKI FREE BEE

FREE: Calico cat to loving home. Spayed. Call 839-5783

• 131 WIKI WIKI FREE BEE

FREE: Calico cat to loving home. Spayed. Call 839-5783

• 131 WIKI WIKI FREE BEE

FREE: Calico cat to loving home. Spayed. Call 839-5783

• 131 WIKI WIKI FREE BEE

FREE: Calico cat to loving home. Spayed. Call 839-5783

• 131 WIKI WIKI FREE BEE

FREE: Calico cat to loving home. Spayed. Call 839-5783

• 131 WIKI WIKI FREE BEE

FREE: Calico cat to loving home. Spayed. Call 839-5783

• 131 WIKI WIKI FREE BEE

FREE: Calico cat to loving home. Spayed. Call 839-5783

• 131 WIKI WIKI FREE BEE

FREE: Calico cat to loving home. Spayed. Call 839-5783

• 131 WIKI WIKI FREE BEE

FREE: Calico cat to loving home. Spayed. Call 839-5783

• 131 WIKI WIKI FREE BEE

FREE: Calico cat to loving home. Spayed. Call 839-5783

• 131 WIKI WIKI FREE BEE

FREE: Calico cat to loving home. Spayed. Call 839-5783

• 131 WIKI WIKI FREE BEE

FREE: Calico cat to loving home. Spayed. Call 839-5783

• 131 WIKI WIKI FREE BEE

FREE: Calico cat to loving home. Spayed. Call 839-5783

• 131 WIKI WIKI FREE BEE

FREE: Calico cat to loving home. Spayed. Call 839-5783

• 131 WIKI WIKI FREE BEE

FREE: Calico cat to loving home. Spayed. Call 839-5783

• 131 WIKI WIKI FREE BEE

FREE: Calico cat to loving home. Spayed. Call 839-5783

• 131 WIKI WIKI FREE BEE

FREE: Calico cat to loving home. Spayed. Call 839-5783

• 131 WIKI WIKI FREE BEE

FREE: Calico cat to loving home. Spayed. Call 839-5783

• 131 WIKI WIKI FREE BEE

FREE: Mother and baby cat. Call 623-4642

FREE: 2 female short haired Collie/German Shepherd, 6 wks. old. 254-5238

FREE: Mice Black & white & pure white. Call 235-1458

FREE part Beagle puppies only to good loving homes. Ph. 261-2706

FREE: Black and white 1/2 Siamese, real comedian. Call 524-1619

FREE: Puppies, 2 part German Shepherd still need homes. Call 671-7895

• 131 WIKI WIKI FREE BEE

FREE: Calico cat to loving home. Spayed. Call 839-5783

• 131 WIKI WIKI FREE BEE

FREE: Calico cat to loving home. Spayed. Call 839-5783

• 131 WIKI WIKI FREE BEE

FREE: Calico cat to loving home. Spayed. Call 839-5783

• 131 WIKI WIKI FREE BEE

FREE: Calico cat to loving home. Spayed. Call 839-5783

• 131 WIKI WIKI FREE BEE

FREE: Calico cat to loving home. Spayed. Call 839-5783

• 131 WIKI WIKI FREE BEE

FREE: Calico cat to loving home. Spayed. Call 839-5783

• 131 WIKI WIKI FREE BEE

FREE: Calico cat to loving home. Spayed. Call 839-5783

• 131 WIKI WIKI FREE BEE

FREE: Calico cat to loving home. Spayed. Call 839-5783

136 MISCELLANEOUS WANTED

WANTED: Unserviceable CA, Zenith & Motorola juaser, Color TVs, 623-326

WANTED: Used trunk in good condition, (Reasonable) Call 262-4302

OLD Comic books wanted, highest prices paid. Call 623-0526

AIR CONDITIONERS that are inoperable but not stripped. Call 836-3103.

137 MACHINERY & EQUIPMENT
230 Amp A/C ARC Welder w/extras. \$185. Ph. 262-5588

144 MUSICAL SALES & SERVICE
KINCAID upright piano, excl. cond. \$950/offer. Must sell. Ph. 487-5389

BALDWIN Spinet - Acrosomic, Only 3 years old, excellent cond. Ph. 261-6095

SANYO AM/FM portable stereo cassette recorder, 4 Speakers, excl. cond. \$100. Ph. 623-8467

2 ACOUSTIC guitars and 2 beat boxes. Call 262-8428

KIMBALL Grand Piano, 5 ft. 8", walnut finish, 2 yrs. old, excl. cond. \$5,000 or best offer. 262-8697

BUNDY Alto Sax, excl. cond. \$400. Call 247-0317

STAGE PA, 2 column speakers w/organs & mic. \$700/offer. Ph. 262-6050

146 BOATS, SUPPLIES & SERVICE
HOBIE 14 \$900 or offer. Call 247-2641

12 RACING Lido, new sales, new rigging, excl. cond. \$800/offer. 499-2712

DILLY Boat trailer for 12' 14' boat, galvanized, excl. cond. \$295, 377-6570

27 FT. CABIN Cruiser, plyglass, VHF, CB, fishing gear, ideal fish & dive. Appraised \$8300. Asking \$6800/offer. 624-5380

17 FT. Gaspar, trailer, 85 HP Mercury, just overhauled, many extras \$3,300. Ph. 239-5040

2 TROLLING rods & reels, 1-10-0, 1-12-0, new 80 lb. test line. Ph. 261-7723 eves.

AQUA Cat 12', oldie but goodie \$800. Call 239-7309

151 PETS, SUPPLIES & SERVICE
IRISH SETTERS 8 males, Avail. August 29, \$175 to \$200. Champion bloodline. Call 422-1355. AKC Papers

SPRINGER Spaniel, very pretty, 5 mos. old, \$75. Ph. 623-9883

AKC American Staffordshire Terrier, 5 month old Blue Fawn/Male \$300/offer. 247-3743

CFA Siamese kittens, Champion lines, 6 weeks old \$75 up. 422-0952

AKC registered puppies Norwegian Elkhounds. Call 633-6420

TOP DOLLARS FOR CARS
IRON HORSE MOTORS 151 Wilkins Dr. Wahiawa 621-0757

DESPERATE
Need clean small car Will pay over top \$\$\$
WHOLESALE MOTORS 2909 Maunaloa Hwy. 926-3722

DON'T
SELL UNTIL YOU SEE US FIRST! WE PAY TOP \$\$\$
CAR CITY 2845 Kalia 933-2017

PORTUGUESE
SHORT TERM AUTO LEASING
\$99
PER MONTH 6-12 MOS.
PERFECT FOR BEGINNERS.
MILITARY OR 2ND CAR
LOW WEEKLY \$476. 100%
214001/214001 848-1783
Portuguese Used Cars

Going to DISCOUNT
buy a new car or pickup? contact --
ROBERTS & ROBERTS PORTLAND
Write for price lists and full information
ANY MAKE - ANY MODEL
Delivery - road tested 87
Forward International Airport
ROBERTS & ROBERTS
2100 N. Commercial
P.O. Box 1000
Portland, Oregon 97208
261-1011

151 PETS, SUPPLIES & SERVICE

J. MALE Golden Mantled Rosella w/ige cage \$175. Ph. 247-0768

AKC GERMAN Shepherd pups, 5 weeks, champion lines. Ph. 623-5847

ADORABLE, affectionate, pure Persian kittens, 2 males. \$50 ea. 237-8296

156 AUTO, PARTS & SERVICE
1989 PONTIAC paris, 400 cu. in. block & head, 4 big lock street dominator, other misc. Ph. 254-1123. Ask for Jim

VW 1600 engine, rebuilt, many new parts \$425/offer. Ph. 373-9455

'86 NOVA for parts. Ph. Chris at 262-7289

'78 SUBARU Brat Camper top, \$300/best offer. Ph. 261-5810/671-4807

166 PICKUPS, TRUCKS
'70 WHITE Toyota Land-cruiser, excl. cond. \$2000. Call Don 254-4961

'67 DATSUN truck 1950. Must sell. Leaving. Call 247-0780

'67 FORD Pickup, runs good \$400. Call 622-4879

'79 DATSUN pickup, many extras, must see to appreciate. \$5500/offer. Ph. 254-5432

'68 CHEVY Stepside, 6 cyl., new carb, new electrical system, new paint, clean \$1,900/offer. Call 261-6448 ask for Kurt.

'58 DODGE pickup 289, Ford V8, 4 spd., \$400 or best offer. 621-6021

1967 POWER Wagon 4 x 4, 2-ton, crew cab, twin range trans., 6 cyl., sound condition, 1st \$1,900 cash takes. Call David at 235-5881 days; 941-7196 eves.

'74 TOYOTA Landcruiser 4x4, hardtop, baby blue w/pinstripe, good cond. \$3800. 499-2712

17 FT. Gaspar, trailer, 85 HP Mercury, just overhauled, many extras \$3,300. Ph. 239-5040

2 TROLLING rods & reels, 1-10-0, 1-12-0, new 80 lb. test line. Ph. 261-7723 eves.

AQUA Cat 12', oldie but goodie \$800. Call 239-7309

151 PETS, SUPPLIES & SERVICE
IRISH SETTERS 8 males, Avail. August 29, \$175 to \$200. Champion bloodline. Call 422-1355. AKC Papers

SPRINGER Spaniel, very pretty, 5 mos. old, \$75. Ph. 623-9883

AKC American Staffordshire Terrier, 5 month old Blue Fawn/Male \$300/offer. 247-3743

CFA Siamese kittens, Champion lines, 6 weeks old \$75 up. 422-0952

AKC registered puppies Norwegian Elkhounds. Call 633-6420

TOP DOLLARS FOR CARS
IRON HORSE MOTORS 151 Wilkins Dr. Wahiawa 621-0757

DESPERATE
Need clean small car Will pay over top \$\$\$
WHOLESALE MOTORS 2909 Maunaloa Hwy. 926-3722

DON'T
SELL UNTIL YOU SEE US FIRST! WE PAY TOP \$\$\$
CAR CITY 2845 Kalia 933-2017

PORTUGUESE
SHORT TERM AUTO LEASING
\$99
PER MONTH 6-12 MOS.
PERFECT FOR BEGINNERS.
MILITARY OR 2ND CAR
LOW WEEKLY \$476. 100%
214001/214001 848-1783
Portuguese Used Cars

Going to DISCOUNT
buy a new car or pickup? contact --
ROBERTS & ROBERTS PORTLAND
Write for price lists and full information
ANY MAKE - ANY MODEL
Delivery - road tested 87
Forward International Airport
ROBERTS & ROBERTS
2100 N. Commercial
P.O. Box 1000
Portland, Oregon 97208
261-1011

166 PICKUPS, TRUCKS

'76 SR5 HILUX - w/in-sulated shell, \$3750. Ph. after 5 p.m. 621-8831

'73 TOYOTA Pickup, auto, bucket seats \$1300. 254-3441 a.m.

'64 FORD Pickup truck, pipe rack & tool box, rusty but very dependable, runs good. \$450/offer. 261-7723 eves.

'72 TOYOTA Pickup truck w/pipe rack. Asking \$1650. 247-5345

171 MOTORCYCLES, SALES & SERVICE
'79 HARLEY FLH 80 with side car undressed, extras. Low miles. Ph. 847-5245.

'76 HONDA CB400, 4 cyl., excl. cond., low mi., incl. helmets \$795. 235-5867

'78 HONDA CX500, low mileage, new pipes, factory custom paint, water cooled by radiator, take over payments or \$1700. 624-6167

'79 YAMAHA Daytona special, 400, good cond., leaving, must sell. \$1600/offer. Ph. Steve 235-6866

'78 HONDA Hawk 400, blk. beauty, extras, excl. cond., \$1200. 623-9726 after 6

'72 HONDA 350SL Dir/ Road, excl. cond., \$500. Ph. John 423-2190/449-2852

'75 KAWASAKI 400, fairing, saddle bags, new tires, best offer. 833-5436

'78 750 HONDAMATIC - comstar wheels, 1,900 miles. Bike cover incl. \$2000/offer. Ph. 449-6080 7-4 p.m.

176 AUTOS FOR SALE
AMC
'74 AMC Hornet, good cond., low mileage, \$1000/best offer. 922-7933 a.m.

BMW
'78 BMW 530i. Very clean, very low mi. A practical 4 dr. with sporty lines and a responsive shift. This wonder car has air, sunroof, power windows, power door locks and a cassette player. We can sell or lease with reasonable terms. (OU368) dir. 704 Aja Moana Blvd. 531-5971

BUICK
'70 BUICK GS455, \$1500/best offer. Ph. 237-8895

70 Electra 225, CONVERTIBLE, rare, sharp, must sell, leaving HI. \$2300/offer. 655-1312. 623-1103

'73 BUICK, 2 dr., 350, loaded, converted to LPG Propane gas \$2500. Reconversion kit with deal, 100 Gal. lpg free. 839-5105 7-3

176 AUTOS FOR SALE
AMC
'74 AMC Hornet, good cond., low mileage, \$1000/best offer. 922-7933 a.m.

BMW
'78 BMW 530i. Very clean, very low mi. A practical 4 dr. with sporty lines and a responsive shift. This wonder car has air, sunroof, power windows, power door locks and a cassette player. We can sell or lease with reasonable terms. (OU368) dir. 704 Aja Moana Blvd. 531-5971

BUICK
'70 BUICK GS455, \$1500/best offer. Ph. 237-8895

70 Electra 225, CONVERTIBLE, rare, sharp, must sell, leaving HI. \$2300/offer. 655-1312. 623-1103

'73 BUICK, 2 dr., 350, loaded, converted to LPG Propane gas \$2500. Reconversion kit with deal, 100 Gal. lpg free. 839-5105 7-3

176 AUTOS FOR SALE
AMC
'74 AMC Hornet, good cond., low mileage, \$1000/best offer. 922-7933 a.m.

BMW
'78 BMW 530i. Very clean, very low mi. A practical 4 dr. with sporty lines and a responsive shift. This wonder car has air, sunroof, power windows, power door locks and a cassette player. We can sell or lease with reasonable terms. (OU368) dir. 704 Aja Moana Blvd. 531-5971

BUICK
'70 BUICK GS455, \$1500/best offer. Ph. 237-8895

70 Electra 225, CONVERTIBLE, rare, sharp, must sell, leaving HI. \$2300/offer. 655-1312. 623-1103

'73 BUICK, 2 dr., 350, loaded, converted to LPG Propane gas \$2500. Reconversion kit with deal, 100 Gal. lpg free. 839-5105 7-3

176 AUTOS FOR SALE
AMC
'74 AMC Hornet, good cond., low mileage, \$1000/best offer. 922-7933 a.m.

BMW
'78 BMW 530i. Very clean, very low mi. A practical 4 dr. with sporty lines and a responsive shift. This wonder car has air, sunroof, power windows, power door locks and a cassette player. We can sell or lease with reasonable terms. (OU368) dir. 704 Aja Moana Blvd. 531-5971

BUICK
'70 BUICK GS455, \$1500/best offer. Ph. 237-8895

70 Electra 225, CONVERTIBLE, rare, sharp, must sell, leaving HI. \$2300/offer. 655-1312. 623-1103

'73 BUICK, 2 dr., 350, loaded, converted to LPG Propane gas \$2500. Reconversion kit with deal, 100 Gal. lpg free. 839-5105 7-3

176 AUTOS FOR SALE
AMC
'74 AMC Hornet, good cond., low mileage, \$1000/best offer. 922-7933 a.m.

BMW
'78 BMW 530i. Very clean, very low mi. A practical 4 dr. with sporty lines and a responsive shift. This wonder car has air, sunroof, power windows, power door locks and a cassette player. We can sell or lease with reasonable terms. (OU368) dir. 704 Aja Moana Blvd. 531-5971

BUICK
'70 BUICK GS455, \$1500/best offer. Ph. 237-8895

70 Electra 225, CONVERTIBLE, rare, sharp, must sell, leaving HI. \$2300/offer. 655-1312. 623-1103

'73 BUICK, 2 dr., 350, loaded, converted to LPG Propane gas \$2500. Reconversion kit with deal, 100 Gal. lpg free. 839-5105 7-3

176 AUTOS FOR SALE
AMC
'74 AMC Hornet, good cond., low mileage, \$1000/best offer. 922-7933 a.m.

BMW
'78 BMW 530i. Very clean, very low mi. A practical 4 dr. with sporty lines and a responsive shift. This wonder car has air, sunroof, power windows, power door locks and a cassette player. We can sell or lease with reasonable terms. (OU368) dir. 704 Aja Moana Blvd. 531-5971

BUICK
'70 BUICK GS455, \$1500/best offer. Ph. 237-8895

174 RENT-A-CAR

RELIABLE Used Cars, \$7 per day, 1 wk. minimum. Special monthly rates, collision waiver extra. Auto Mart Car Rentals, 96-004 Kani Hwy., Aiea. 487-9991.

175 VAN, CAMPERS, JEEPS
FOR Sale: '69 VW Bus, new tires, new paint, excellent condition, three seat. 281-6709 or 254-1120

CAMPER shell fits 7' bed. Call 833-4780

'70 FORD Van Econoline 300. Price \$800 or best offer. 262-9829

'76 DODGE Van, professionally customized interior, stick shift w/many extras \$5500/offer. 923-0343

176 AUTOS FOR SALE
AMC
'74 AMC Hornet, good cond., low mileage, \$1000/best offer. 922-7933 a.m.

BMW
'78 BMW 530i. Very clean, very low mi. A practical 4 dr. with sporty lines and a responsive shift. This wonder car has air, sunroof, power windows, power door locks and a cassette player. We can sell or lease with reasonable terms. (OU368) dir. 704 Aja Moana Blvd. 531-5971

BUICK
'70 BUICK GS455, \$1500/best offer. Ph. 237-8895

70 Electra 225, CONVERTIBLE, rare, sharp, must sell, leaving HI. \$2300/offer. 655-1312. 623-1103

'73 BUICK, 2 dr., 350, loaded, converted to LPG Propane gas \$2500. Reconversion kit with deal, 100 Gal. lpg free. 839-5105 7-3

176 AUTOS FOR SALE
AMC
'74 AMC Hornet, good cond., low mileage, \$1000/best offer. 922-7933 a.m.

BMW
'78 BMW 530i. Very clean, very low mi. A practical 4 dr. with sporty lines and a responsive shift. This wonder car has air, sunroof, power windows, power door locks and a cassette player. We can sell or lease with reasonable terms. (OU368) dir. 704 Aja Moana Blvd. 531-5971

BUICK
'70 BUICK GS455, \$1500/best offer. Ph. 237-8895

70 Electra 225, CONVERTIBLE, rare, sharp, must sell, leaving HI. \$2300/offer. 655-1312. 623-1103

'73 BUICK, 2 dr., 350, loaded, converted to LPG Propane gas \$2500. Reconversion kit with deal, 100 Gal. lpg free. 839-5105 7-3

176 AUTOS FOR SALE
AMC
'74 AMC Hornet, good cond., low mileage, \$1000/best offer. 922-7933 a.m.

BMW
'78 BMW 530i. Very clean, very low mi. A practical 4 dr. with sporty lines and a responsive shift. This wonder car has air, sunroof, power windows, power door locks and a cassette player. We can sell or lease with reasonable terms. (OU368) dir. 704 Aja Moana Blvd. 531-5971

BUICK
'70 BUICK GS455, \$1500/best offer. Ph. 237-8895

70 Electra 225, CONVERTIBLE, rare, sharp, must sell, leaving HI. \$2300/offer. 655-1312. 623-1103

'73 BUICK, 2 dr., 350, loaded, converted to LPG Propane gas \$2500. Reconversion kit with deal, 100 Gal. lpg free. 839-5105 7-3

176 AUTOS FOR SALE
AMC
'74 AMC Hornet, good cond., low mileage, \$1000/best offer. 922-7933 a.m.

BMW
'78 BMW 530i. Very clean, very low mi. A practical 4 dr. with sporty lines and a responsive shift. This wonder car has air, sunroof, power windows, power door locks and a cassette player. We can sell or lease with reasonable terms. (OU368) dir. 704 Aja Moana Blvd. 531-5971

BUICK
'70 BUICK GS455, \$1500/best offer. Ph. 237-8895

70 Electra 225, CONVERTIBLE, rare, sharp, must sell, leaving HI. \$2300/offer. 655-1312. 623-1103

'73 BUICK, 2 dr., 350, loaded, converted to LPG Propane gas \$2500. Reconversion kit with deal, 100 Gal. lpg free. 839-5105 7-3

176 AUTOS FOR SALE
AMC
'74 AMC Hornet, good cond., low mileage, \$1000/best offer. 922-7933 a.m.

BMW
'78 BMW 530i. Very clean, very low mi. A practical 4 dr. with sporty lines and a responsive shift. This wonder car has air, sunroof, power windows, power door locks and a cassette player. We can sell or lease with reasonable terms. (OU368) dir. 704 Aja Moana Blvd. 531-5971

BUICK
'70 BUICK GS455, \$1500/best offer. Ph. 237-8895

70 Electra 225, CONVERTIBLE, rare, sharp, must sell, leaving HI. \$2300/offer. 655-1312. 623-1103

'73 BUICK, 2 dr., 350, loaded, converted to LPG Propane gas \$2500. Reconversion kit with deal, 100 Gal. lpg free. 839-5105 7-3

176 AUTOS FOR SALE
AMC
'74 AMC Hornet, good cond., low mileage, \$1000/best offer. 922-7933 a.m.

BMW
'78 BMW 530i. Very clean, very low mi. A practical 4 dr. with sporty lines and a responsive shift. This wonder car has air, sunroof, power windows, power door locks and a cassette player. We can sell or lease with reasonable terms. (OU368) dir. 704 Aja Moana Blvd. 531-5971

BUICK
'70 BUICK GS455, \$1500/best offer. Ph. 237-8895

70 Electra 225, CONVERTIBLE, rare, sharp, must sell, leaving HI. \$2300/offer. 655-1312. 623-1103

'73 BUICK, 2 dr., 350, loaded, converted to LPG Propane gas \$2500. Reconversion kit with deal, 100 Gal. lpg free. 839-5105 7-3

176 AUTOS FOR SALE
AMC
'74 AMC Hornet, good cond., low mileage, \$1000/best offer. 922-7933 a.m.

BMW
'78 BMW 530i. Very clean, very low mi. A practical 4 dr. with sporty lines and a responsive shift. This wonder car has air, sunroof, power windows, power door locks and a cassette player

HONDA
 '78 HONDA Accord, low mil., AM/FM radio, air \$5500 or offer. 621-6365 or 621-6420
 '76 HONDA Civic - excl. running cond., new tires, \$2500/offer. Must leave. Call/leave message 523-8424
MAZDA
 '78 MAZDA GLC 2 dr. Hatchback, auto., 24,000 mi., 27 mpg, \$2950. 623-9762
BANK REPOSSESSION
 '78 GLC 3 dr. deluxe, 4 spd., radio, heater, sunroof, radial tires. \$70182. \$301.50 cash down good. + tax & lic. on approved credit. Repossession price \$3078.94. See Repossession Mgr. at:
WHOLESALE MOTORS
 2000 Nimitz Hwy. 838-1222
AAA BUY OR LEASE AAA
1980 MAZDAS
 RX7-828-GLC
 WHERE DEALS ARE MADE at
 Monthly's Oldest Mazda Dealer
WHOLESALE MOTORS
 2000 N. Nimitz Hwy. 838-1222

MERCEDES BENZ
 '71 220D - excl. cond., \$5500/offer. Ph. 261-6061 eves.
 '63 230SL - The classic sportscar from Mercedes-Benz is being offered by Davies Euromotors, Ltd. A coupe, convertible with 2 tops, auto. trans. This beauty will turn heads. You will appreciate our low price (MU1242). Please call 531-5971, 704 Ala Moana Blvd.
 '79 240D. Mercedes-Benz quality production in a car everyone can afford. The economy of diesel. The fun of a sports shift in a roomy 4 dr. sedan. This car has air cond., and AM/FM stereo and is still in factory warranty. (9F7224) dir. 704 Ala Moana Blvd. 531-5971
MERCURY
 '68 MONTEGO Wagon, runs good, first \$100. Ph. 254-5626, 257-2369
 CAPRI '78 Turbo-4, 24mpg. Michelin tires, alum. wheels, air, AM/FM 8-track, \$6200. 732-5635 eves.
 '78 MARQUIS Brougham - fully loaded, now tires, extra sharp in & out, \$3995. Ph. 623-1914
 '73 MERCURY - good transportation, \$500. Ph. 395-8270 eves.

MERCURY
 '64 COMET Calliente 2 dr., V-8, auto., p/s, mechanics special - car not running. \$180. Ph. 261-1542
MG
 MGB '79, Must sell, blue w/strip, 12,000 mi., excl. cond. \$5800/offer. Possible take over payments. Ph. 845-4454
 '77 MG Midget excellent cond., new tires \$3200 best offer. 623-7975
 '68 MIDGET, 5000 mi. on rebuilt engine, clutch & trans. Best offer. 833-5436
 '78 MGB - 4 brand-new tires, newly overhauled trans., just tuned, AM/FM cassette stereo w/4 speakers. Bright yellow w/black interior & black striping. \$4750. Call Liz at 235-5881 or 235-3588

PLYMOUTH
 '70 PLYMOUTH Duster, auto., V8 w/318 engine, runs good \$250. 261-5862
 '77 PLYMOUTH Arrow - tune-up new tires. \$3100. Ph. 237-8426
PONTIAC
 '74 PONTIAC LeMans, AM/FM stereo, power brakes/stoering, new radials, air. Leaving Island Offer. 471-8160/833-4005
SUBARU
 '78 SUBARU BRAT, low mil., \$450 down take over lease payment \$126. Call 947-3174
 '74 SUBARU GL, excl. cond. Call 833-8460 or 536-5604
 '78 TOYOTA Corolla 1600, 4 dr., deluxe, front end damaged left side. See & make offer. 239-8559
 '71 TOYOTA Corolla, excl. cond. \$400. Call 254-3331

TOYOTA
 '70 TOYOTA, auto., good cond., best offer. Ph. 254-3718
 '78 TOYOTA Celica Liftback GT. Many extras. Low mil., excl. cond. 239-7208
TRIUMPH
 '79 TRIUMPH Spitfire, brown w/stripes, elec. overdrive AM/FM cassette stereo. Exc. cond. 254-4218


VOLKSWAGEN
 '79 VW Scirocco, 4 spd., AM/FM radio, excl. cond., \$7500/offer. 823-6483
 '78 RABBIT, excl. cond., 4 dr., standard, \$2800. Ph. 235-4134
 '79 RABBIT - custom, 4 dr., excl. cond., AM/FM stereo cassette, \$5400/offer. Ph. 624-3669
 '65 VW Fastback, new muffler & battery \$400 or best offer. 235-5213
 '79 VW Bug, as is \$700. A mechanic's special! Call 235-6249, after 6 p.m.
 '76 BUG, major tune-up, chrome rims, AM/FM radio \$3500/offer. 259-5403
 '68 VW Squareback, rebuilt engine, \$700/best offer. Al 262-0463
 '69 KARMANN Ghia, runs good, needs paint \$1200/offer. Ph. 373-9455

ATTENTION...
VOLKSWAGEN & SUBARU OWNERS
 Complete Vehicle Diagnosis...
 Regular...\$18.00 NOW \$13.99 PLUS TAX
DIAGNOSIS INCLUDES...
 • Engine Analysis • Cooling System Analysis
 • Front and Rear Wheel Suspension Analysis
 • Electrical System Analysis • Wheels, Brakes, Tires Analysis
 • Manual or Automatic Transmission Analysis
\$ PRICE BRAKE \$
 Brake Adjustment Special...
 Regular...\$12.00 NOW...\$7.99 PLUS TAX
INCLUDED...
 • Remove 4 Tires and Inspect Front Brake Rotors or Brake Drums
 • Inspect Brake Lining For Wear
 • Inspect Wheel Cylinder and Calipers
 • Adjust Front or Wheel Bearings
 • Adjust Brakes and Refill Fluid
WINDWARD VOLKSWAGEN
 For appointment and information call SERVICE DEPT.
 262-6576
 (OFFER GOOD UNTIL SEPT. 30, 1980)
 725 Kailua Rd., Kailua
 OPEN MON. thru FRI. 7 AM to 5 PM

SEE THE TOP SALESMAN OF THE MONTH

DAVID JINBO
 Month of July
Tony Honda
 Used Cars
 84-228 Farrington Hwy. PH: 871-5667

NEW CARS at OLD PRICES!
 MOST MODELS STILL AVAILABLE AT PRE-INCREASED PRICES.
 SEE US BEFORE YOU BUY
 NEW PRICE
 EFF. JULY 1ST
\$6177.00
 OLD PRICE
\$5957.00
 GL STA. WGN. AUTOMATIC (STK. #80S135)
 "COME OVER TO OUR SIDE WE MAKE IT WORTH THE TRIP"
 Lease Or Finance With Approved Credit
WINDWARD SUBARU
 Factory Authorized Sales & Service
 737 Kailua Rd., Kailua 262-6902 / 262-6576



ON ANY OF THESE NEW TOYOTAS AND SUZUKIS YOUR CHOICE OF 13 MODELS!
HURRY, THIS OFFER IS GOOD THRU AUGUST 31, 1980 ONLY!

AND	'117.72 PER MONTH For A 1980 TERCEL 2 DR. SEDAN With 4 Spd., AM Radio, Bodyside Molding and Rustproofing	60 MONTHS @ \$117.72 PER MONTH ANNUAL PERCENTAGE RATE 15% DEFERRED PAYMENTS OF \$7063.20 INCLUDING TAX AND LICENSE. CASH SELLING PRICE \$4517.67 INCLUDING TAX AND LICENSE.
AND	'128.67 PER MONTH For A 1980 TERCEL 2 DR. SEDAN With Automatic, AM Radio, Bodyside Molding and Rustproofing	60 MONTHS @ \$128.67 PER MONTH ANNUAL PERCENTAGE RATE 15% DEFERRED PAYMENTS OF \$7120.20 INCLUDING TAX AND LICENSE. CASH SELLING PRICE \$4626.77 INCLUDING TAX AND LICENSE.
AND	'146.68 PER MONTH For A 1980 TERCEL 3 DR. HATCHBACK DLX. With 5 Spd., AM Radio, Bodyside Molding, Clock, Rear Wiper and Rustproofing	60 MONTHS @ \$146.68 PER MONTH ANNUAL PERCENTAGE RATE 15% DEFERRED PAYMENTS OF \$8000.60 INCLUDING TAX AND LICENSE. CASH SELLING PRICE \$5004.72 INCLUDING TAX AND LICENSE.
AND	'162.70 PER MONTH For A 1980 TERCEL 3 DR. HATCHBACK SR-5 With 5 Spd., AM Radio, Rear Wiper, Alum. Whls., L/R Mirrors and Rustproofing.	60 MONTHS @ \$162.70 PER MONTH ANNUAL PERCENTAGE RATE 15% DEFERRED PAYMENTS OF \$9762.00 INCLUDING TAX AND LICENSE. CASH SELLING PRICE \$6206.04 INCLUDING TAX AND LICENSE.
AND	'154.33 PER MONTH For A 1980 TERCEL 3 DR. HATCHBACK DLX. With Automatic, AM Radio, Rear Wiper, Clock, Bodyside Molding and Rustproofing.	60 MONTHS @ \$154.33 PER MONTH ANNUAL PERCENTAGE RATE 15% DEFERRED PAYMENTS OF \$8259.80 INCLUDING TAX AND LICENSE. CASH SELLING PRICE \$5091.87 INCLUDING TAX AND LICENSE.
AND	'153.82 PER MONTH For A 1980 COROLLA 2 DR. SEDAN STD. With 4 Spd., AM Radio, Bodyside Molding and Rustproofing.	60 MONTHS @ \$153.82 PER MONTH ANNUAL PERCENTAGE RATE 15% DEFERRED PAYMENTS OF \$8029.20 INCLUDING TAX AND LICENSE. CASH SELLING PRICE \$5073.00 INCLUDING TAX AND LICENSE.
AND	'156.87 PER MONTH For A 1980 COROLLA 4 DR. SEDAN STD. With AM Radio, Bodyside Molding and Rustproofing. 4 Spd.,	60 MONTHS @ \$156.87 PER MONTH ANNUAL PERCENTAGE RATE 15% DEFERRED PAYMENTS OF \$8412.20 INCLUDING TAX AND LICENSE. CASH SELLING PRICE \$5087.40 INCLUDING TAX AND LICENSE.
AND	'298.93 PER MONTH For A 1979 CELICA SUPRA - 5 Spd. with MPX, Alum. Whls., Sealant Package, Rear Wiper, Power Steering, Air Conditioning, Tape, Rustproofing.	60 MONTHS @ \$298.93 PER MONTH ANNUAL PERCENTAGE RATE 15% DEFERRED PAYMENTS OF \$17033.80 INCLUDING TAX AND LICENSE. CASH SELLING PRICE \$11320.00 INCLUDING TAX AND LICENSE.
AND	'313.92 PER MONTH For A 1979 CELICA SUPRA - With Automatic Alum. Whls. Power Steering, Air Conditioning, Tape, MPX, Rustproofing, Sealant Package, and Rear Wiper.	60 MONTHS @ \$313.92 PER MONTH ANNUAL PERCENTAGE RATE 15% DEFERRED PAYMENTS OF \$18635.20 INCLUDING TAX AND LICENSE. CASH SELLING PRICE \$11882.70 INCLUDING TAX AND LICENSE.
AND	'140.19 PER MONTH For A 1980 SUZUKI 2 DR. 4 Wheel Drive With Canvas Doors, Canvas Top, AM/FM Radio and Rustproofing	60 MONTHS @ \$140.19 PER MONTH ANNUAL PERCENTAGE RATE 15% DEFERRED PAYMENTS OF \$8411.40 INCLUDING TAX AND LICENSE. CASH SELLING PRICE \$5061.20 INCLUDING TAX AND LICENSE.
AND	'143.11 PER MONTH For A 1980 SUZUKI 2 DR. 4 Wheel Drive With Steel Doors, Canvas Top, AM/FM Radio and Rustproofing.	60 MONTHS @ \$143.11 PER MONTH ANNUAL PERCENTAGE RATE 15% DEFERRED PAYMENTS OF \$8588.80 INCLUDING TAX AND LICENSE. CASH SELLING PRICE \$5070.70 INCLUDING TAX AND LICENSE.
AND	'146.01 PER MONTH For A 1980 SUZUKI 2 DR. Hard Top, 4 Wheel Drive With AM/FM and Rustproofing	60 MONTHS @ \$146.01 PER MONTH ANNUAL PERCENTAGE RATE 15% DEFERRED PAYMENTS OF \$8780.80 INCLUDING TAX AND LICENSE. CASH SELLING PRICE \$5070.80 INCLUDING TAX AND LICENSE.
AND	'156.07 PER MONTH For A 1980 SUZUKI PICKUP 4 Wheel Drive, 2 Dr. With AM/FM and Rustproofing	60 MONTHS @ \$156.07 PER MONTH ANNUAL PERCENTAGE RATE 15% DEFERRED PAYMENTS OF \$8884.20 INCLUDING TAX AND LICENSE. CASH SELLING PRICE \$5067.23 INCLUDING TAX AND LICENSE.

NEW CARS at OLD PRICES!
 MOST MODELS STILL AVAILABLE AT PRE-INCREASED PRICES.
 SEE US BEFORE YOU BUY
 NEW PRICE
 EFF. JULY 1ST
\$6177.00
 OLD PRICE
\$5957.00
 GL STA. WGN. AUTOMATIC (STK. #80S135)
 "COME OVER TO OUR SIDE WE MAKE IT WORTH THE TRIP"
 Lease Or Finance With Approved Credit
WINDWARD SUBARU
 Factory Authorized Sales & Service
 737 Kailua Rd., Kailua 262-6902 / 262-6576



JERICO
Auto Sales
 The Working Man's Place to Buy a Car...
 where prices are down to earth and Military Financing is Our Specialty! There is also an 18,000 mile-18/Month Service Policy available on every car on our lot.
 We also handle a large fleet of RENT-A-CARS and specialize in Leasing!
 Come on in and see us!

71 MALIBU \$1195	71 MERCURY COUGAR CONVERTIBLE \$3395	77 CELICA GT \$4595	76 NOVA \$2195
76 MAVERICK \$1995	76 TOYOTA \$1895	73 MONTE CARLO \$1295	74 710 \$1695
75 DART \$2095	73 MUSTANG \$Save	77 VW CONVERTIBLE \$5295	74 DART SWINGER \$1995
78 DATSUN \$3995	77 LE MANS \$2795	78 CELICA GT \$5595	75 GRANADA \$2595

Prices good AUGUST 13, 14, 15, 16, 17, 1980
 ALL CARS SOLD AS IS - Plus tax & Lic.
3055 N. NIMITZ • PH: 838-0626

ONLY \$99.00 DOWN!
HURRY, THIS OFFER IS GOOD THRU AUGUST 31, 1980 ONLY!

AND	'117.72 PER MONTH For A 1980 TERCEL 2 DR. SEDAN With 4 Spd., AM Radio, Bodyside Molding and Rustproofing	60 MONTHS @ \$117.72 PER MONTH ANNUAL PERCENTAGE RATE 15% DEFERRED PAYMENTS OF \$7063.20 INCLUDING TAX AND LICENSE. CASH SELLING PRICE \$4517.67 INCLUDING TAX AND LICENSE.
AND	'128.67 PER MONTH For A 1980 TERCEL 2 DR. SEDAN With Automatic, AM Radio, Bodyside Molding and Rustproofing	60 MONTHS @ \$128.67 PER MONTH ANNUAL PERCENTAGE RATE 15% DEFERRED PAYMENTS OF \$7120.20 INCLUDING TAX AND LICENSE. CASH SELLING PRICE \$4626.77 INCLUDING TAX AND LICENSE.
AND	'146.68 PER MONTH For A 1980 TERCEL 3 DR. HATCHBACK DLX. With 5 Spd., AM Radio, Bodyside Molding, Clock, Rear Wiper and Rustproofing	60 MONTHS @ \$146.68 PER MONTH ANNUAL PERCENTAGE RATE 15% DEFERRED PAYMENTS OF \$8000.60 INCLUDING TAX AND LICENSE. CASH SELLING PRICE \$5004.72 INCLUDING TAX AND LICENSE.
AND	'162.70 PER MONTH For A 1980 TERCEL 3 DR. HATCHBACK SR-5 With 5 Spd., AM Radio, Rear Wiper, Alum. Whls., L/R Mirrors and Rustproofing.	60 MONTHS @ \$162.70 PER MONTH ANNUAL PERCENTAGE RATE 15% DEFERRED PAYMENTS OF \$9762.00 INCLUDING TAX AND LICENSE. CASH SELLING PRICE \$6206.04 INCLUDING TAX AND LICENSE.
AND	'154.33 PER MONTH For A 1980 TERCEL 3 DR. HATCHBACK DLX. With Automatic, AM Radio, Rear Wiper, Clock, Bodyside Molding and Rustproofing.	60 MONTHS @ \$154.33 PER MONTH ANNUAL PERCENTAGE RATE 15% DEFERRED PAYMENTS OF \$8259.80 INCLUDING TAX AND LICENSE. CASH SELLING PRICE \$5091.87 INCLUDING TAX AND LICENSE.
AND	'153.82 PER MONTH For A 1980 COROLLA 2 DR. SEDAN STD. With 4 Spd., AM Radio, Bodyside Molding and Rustproofing.	60 MONTHS @ \$153.82 PER MONTH ANNUAL PERCENTAGE RATE 15% DEFERRED PAYMENTS OF \$8029.20 INCLUDING TAX AND LICENSE. CASH SELLING PRICE \$5073.00 INCLUDING TAX AND LICENSE.
AND	'156.87 PER MONTH For A 1980 COROLLA 4 DR. SEDAN STD. With AM Radio, Bodyside Molding and Rustproofing. 4 Spd.,	60 MONTHS @ \$156.87 PER MONTH ANNUAL PERCENTAGE RATE 15% DEFERRED PAYMENTS OF \$8412.20 INCLUDING TAX AND LICENSE. CASH SELLING PRICE \$5087.40 INCLUDING TAX AND LICENSE.
AND	'298.93 PER MONTH For A 1979 CELICA SUPRA - 5 Spd. with MPX, Alum. Whls., Sealant Package, Rear Wiper, Power Steering, Air Conditioning, Tape, Rustproofing.	60 MONTHS @ \$298.93 PER MONTH ANNUAL PERCENTAGE RATE 15% DEFERRED PAYMENTS OF \$17033.80 INCLUDING TAX AND LICENSE. CASH SELLING PRICE \$11320.00 INCLUDING TAX AND LICENSE.
AND	'313.92 PER MONTH For A 1979 CELICA SUPRA - With Automatic Alum. Whls. Power Steering, Air Conditioning, Tape, MPX, Rustproofing, Sealant Package, and Rear Wiper.	60 MONTHS @ \$313.92 PER MONTH ANNUAL PERCENTAGE RATE 15% DEFERRED PAYMENTS OF \$18635.20 INCLUDING TAX AND LICENSE. CASH SELLING PRICE \$11882.70 INCLUDING TAX AND LICENSE.
AND	'140.19 PER MONTH For A 1980 SUZUKI 2 DR. 4 Wheel Drive With Canvas Doors, Canvas Top, AM/FM Radio and Rustproofing	60 MONTHS @ \$140.19 PER MONTH ANNUAL PERCENTAGE RATE 15% DEFERRED PAYMENTS OF \$8411.40 INCLUDING TAX AND LICENSE. CASH SELLING PRICE \$5061.20 INCLUDING TAX AND LICENSE.
AND	'143.11 PER MONTH For A 1980 SUZUKI 2 DR. 4 Wheel Drive With Steel Doors, Canvas Top, AM/FM Radio and Rustproofing.	60 MONTHS @ \$143.11 PER MONTH ANNUAL PERCENTAGE RATE 15% DEFERRED PAYMENTS OF \$8588.80 INCLUDING TAX AND LICENSE. CASH SELLING PRICE \$5070.70 INCLUDING TAX AND LICENSE.
AND	'146.01 PER MONTH For A 1980 SUZUKI 2 DR. Hard Top, 4 Wheel Drive With AM/FM and Rustproofing	60 MONTHS @ \$146.01 PER MONTH ANNUAL PERCENTAGE RATE 15% DEFERRED PAYMENTS OF \$8780.80 INCLUDING TAX AND LICENSE. CASH SELLING PRICE \$5070.80 INCLUDING TAX AND LICENSE.
AND	'156.07 PER MONTH For A 1980 SUZUKI PICKUP 4 Wheel Drive, 2 Dr. With AM/FM and Rustproofing	60 MONTHS @ \$156.07 PER MONTH ANNUAL PERCENTAGE RATE 15% DEFERRED PAYMENTS OF \$8884.20 INCLUDING TAX AND LICENSE. CASH SELLING PRICE \$5067.23 INCLUDING TAX AND LICENSE.

ALL FINANCING IS SUBJECT TO CREDIT APPROVAL
 PAYMENTS INCLUDE CREDIT LIFE AND ACCIDENT AND HEALTH INSURANCE
 SUPPLY IS LIMITED! OFFER VOID ONCE AVAILABLE MODELS ARE SOLD!

WINDWARD TOYOTA | KAILUA TOYOTA
 45-655 KAM HWY. PH. 235-0068
 105 ONEAWA ST. PH. 261-3321
 DIVISION OF SERVCO PACIFIC INC.

WE PAY MORE! MORE! MORE!
 FOR CLEAN LATI MODEL CARS VANS & TRUCKS AT
SHELLY
 PH. 836-0466
 CORNER NIMITZ & LAGOON

FREE!!
 18-mo./18,000-mi. Limited warranty
 '78 FAIRMONT \$4888
 Station wagon, 8 cyl., auto., power steering, air, AM/FM tape (27504)
 '77 VW RABBIT \$3488
 4 spd., radio, (115556)
 '79 280ZX \$8288
 Coupe, 6 spd., all power, incl. air (671584)
 '78 FIAT 128 \$2888
 2 dr., 4 spd. (877502)
 '78 PINTO \$3288
 Hatchback, auto., power steering w. (275042)
 '78 TOYOTA \$3288
 Station wagon 4-dr., 4 spd. (552-509)
 '73 MONTE CARLO \$1488
 Loaded, radio, (126216)
 '71 RANCHERO \$888
 (312843)
CAR CITY
 Ph. 833-3017

HAVE CARS WILL SELL

'72 VEGA (7E7006) \$281	'72 IMPALA Wgn. (2E1587) \$393	'70 MAVERICK Cpe. (4C8110) \$394	'69 CHEVY Caprice 4 dr. hdip. (5C661) \$593	'74 PONTIAC LeMans Cpe. (1B7477) \$623	'73 DODGE Coronet 4 dr. (4A8224) \$691	'73 PONTIAC LeMans Cpe. (5E5532) \$695	'75 FORD Torino Wgn. (H21009) \$732	'72 VALIANT 4 dr. sdn. 8 cyl. (2B506) \$791	'70 OLDS Cutlass Cpe. (3N9409) \$792	'74 IMPALA Cpe. (5F4379) \$844	'68 FORD Van (2N3808) \$895	'70 CAMARO (X1377) \$1295	'75 MONTE CARLO (2E3277) \$1343	'75 EL CAMINO (501815) \$2295	'77 DATSUN 8 210 4 dr. (4E7338) \$2695	'78 PINTO Wgn. 8 cyl. auto. p/s, air. (7B7400) \$2995	'77 VOLKS Rabbit 2 dr., 4 spd. (2E4098) \$3295	'78 PLYMOUTH Horizon 4 dr. sdn. (8E7326) \$3595
-----------------------------------	------------------------------------------	--------------------------------------------	-------------------------------------------------------	--------------------------------------------------	--------------------------------------------------	--------------------------------------------------	-----------------------------------------------	-------------------------------------------------------	------------------------------------------------	------------------------------------------	---------------------------------------	-------------------------------------	-------------------------------------------	-----------------------------------------	--------------------------------------------------	-----------------------------------------------------------------	----------------------------------------------------------	-----------------------------------------------------------

WAIIPAHU AUTO
 671-2871